

1988

## Industrial Resources - Cumberland County

Kentucky Library Research Collections  
Western Kentucky University, [spcol@wku.edu](mailto:spcol@wku.edu)

Follow this and additional works at: [https://digitalcommons.wku.edu/cumberland\\_cty](https://digitalcommons.wku.edu/cumberland_cty)

 Part of the [Business Administration, Management, and Operations Commons](#), [Growth and Development Commons](#), and the [Infrastructure Commons](#)

---

### Recommended Citation

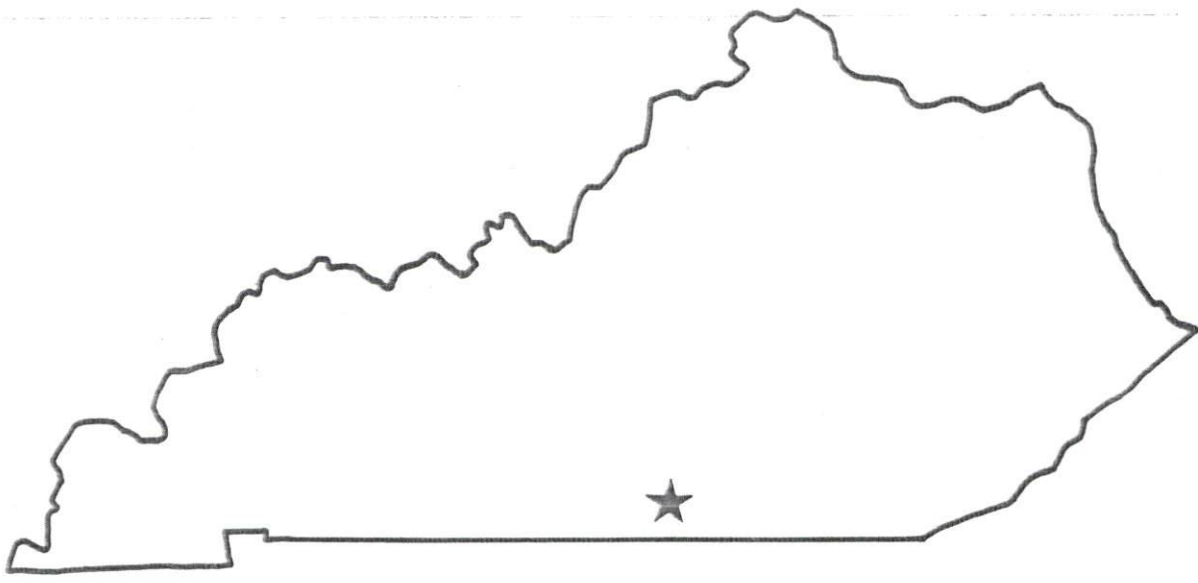
Kentucky Library Research Collections, "Industrial Resources - Cumberland County" (1988). *Cumberland County*. Paper 5.  
[https://digitalcommons.wku.edu/cumberland\\_cty/5](https://digitalcommons.wku.edu/cumberland_cty/5)

This Report is brought to you for free and open access by TopSCHOLAR®. It has been accepted for inclusion in Cumberland County by an authorized administrator of TopSCHOLAR®. For more information, please contact [topscholar@wku.edu](mailto:topscholar@wku.edu).

**RESOURCES FOR ECONOMIC DEVELOPMENT**

---

# Burkesville



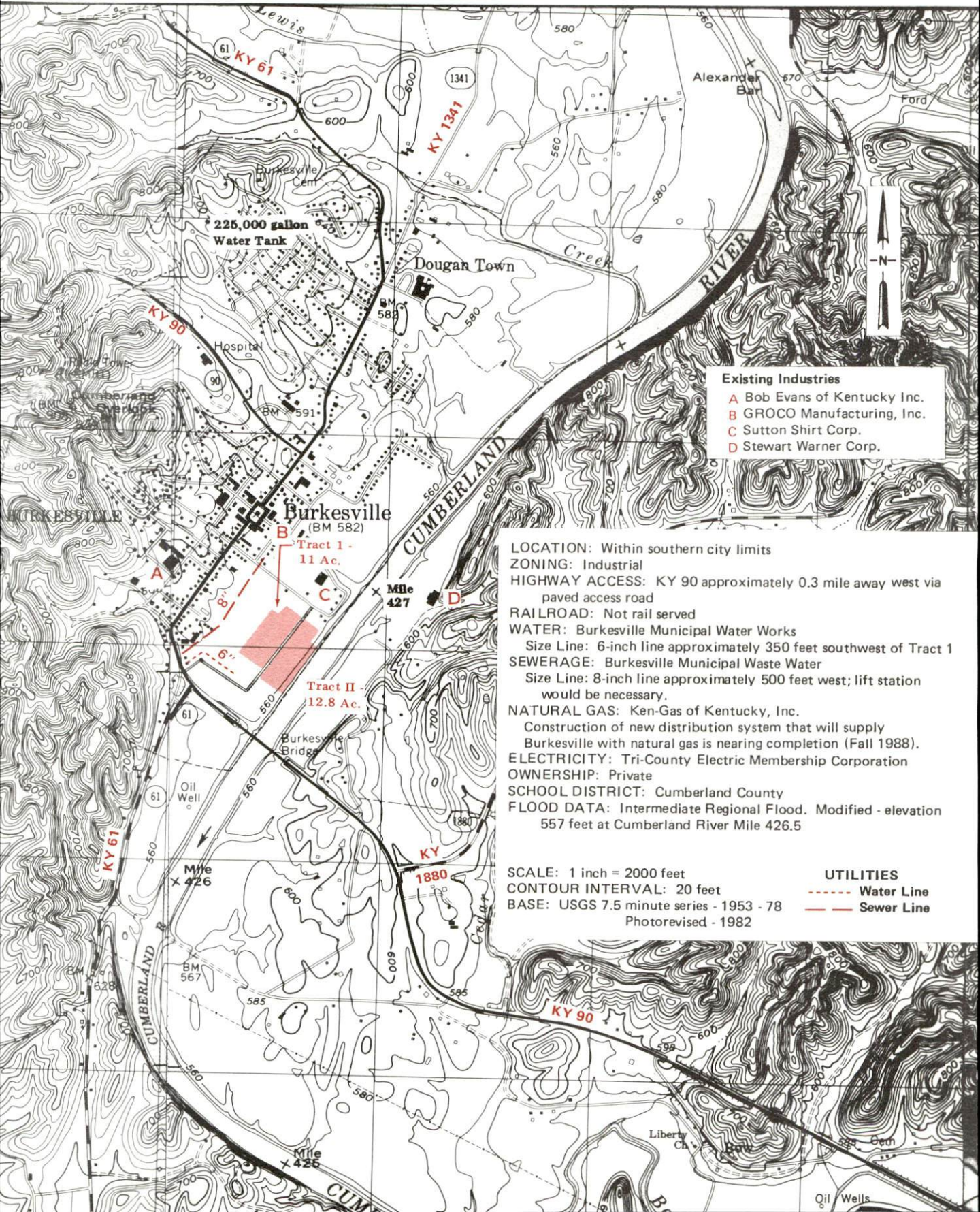
---

**KENTUCKY**  
Open for Business



# BURKESVILLE, KENTUCKY --- Site 188 --- 23.8 Acres

For more information contact the Cabinet for Economic Development, Department of Business Development, Industrial Development & Marketing Division, Capital Plaza Tower, Frankfort, Kentucky 40601 (502-564-7140)



- Existing Industries**
- A Bob Evans of Kentucky Inc.
  - B GROCO Manufacturing, Inc.
  - C Sutton Shirt Corp.
  - D Stewart Warner Corp.

**LOCATION:** Within southern city limits  
**ZONING:** Industrial  
**HIGHWAY ACCESS:** KY 90 approximately 0.3 mile away west via paved access road  
**RAILROAD:** Not rail served  
**WATER:** Burkesville Municipal Water Works  
 Size Line: 6-inch line approximately 350 feet southwest of Tract 1  
**SEWERAGE:** Burkesville Municipal Waste Water  
 Size Line: 8-inch line approximately 500 feet west; lift station would be necessary.  
**NATURAL GAS:** Ken-Gas of Kentucky, Inc.  
 Construction of new distribution system that will supply Burkesville with natural gas is nearing completion (Fall 1988).  
**ELECTRICITY:** Tri-County Electric Membership Corporation  
**OWNERSHIP:** Private  
**SCHOOL DISTRICT:** Cumberland County  
**FLOOD DATA:** Intermediate Regional Flood. Modified - elevation 557 feet at Cumberland River Mile 426.5

**SCALE:** 1 inch = 2000 feet  
**CONTOUR INTERVAL:** 20 feet  
**BASE:** USGS 7.5 minute series - 1953 - 78  
 Photorevised - 1982

- UTILITIES**
- Water Line
  - Sewer Line



RESOURCES FOR ECONOMIC DEVELOPMENT

BURKESVILLE, KENTUCKY

Prepared by  
The Kentucky Department of Business Development  
Division of Research and Planning  
in cooperation with  
The Burkesville-Cumberland County Chamber of Commerce

1988



Program manager - Andrew Dennis; research - Jerry Tolliver; clerical - Bobbi Graves; graphics - Tony Cecconi, Robert Owens, Pat Coleman; cartography - Site Evaluation Branch, Division of Industrial Development and Marketing. Cost of printing paid from state funds.

## TABLE OF CONTENTS

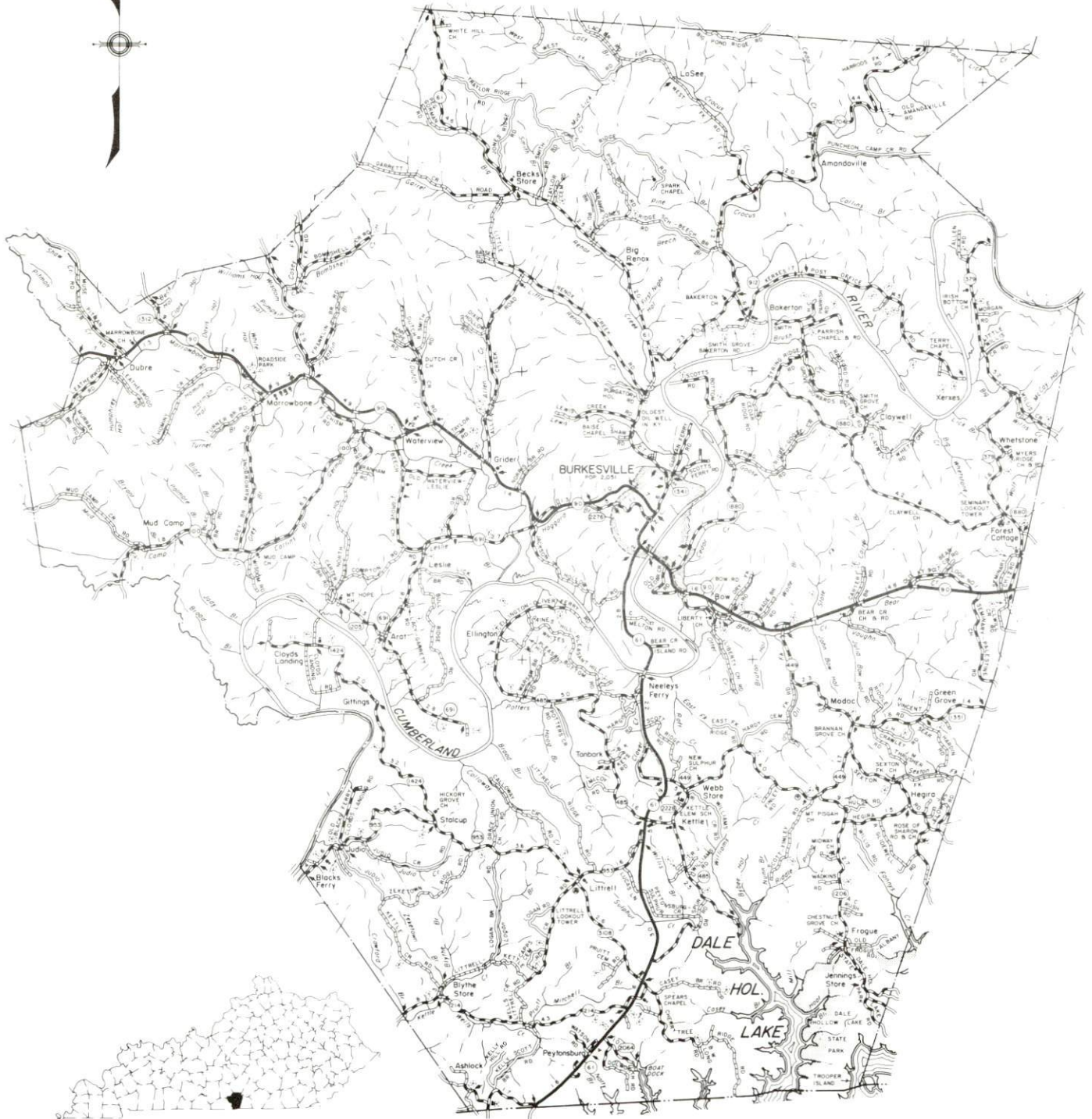
<u>Chapter</u>	<u>Page</u>
INDUSTRIAL SITES . . . . .	i
BURKESVILLE, KENTUCKY - A RESOURCE PROFILE . . . . .	1
THE LABOR MARKET STATISTICS . . . . .	2
Labor Market Area Map . . . . .	2
Population . . . . .	3
Population Projections . . . . .	3
Unemployment Rates, 1980-1987 - Line Chart . . . . .	4
Labor Force Characteristics of Residents, 1987 . . . . .	5
Selected Components of Nonagricultural Employment, by Place of Work, 1987 . . . . .	5
Estimated Male Labor Supply . . . . .	6
Estimated Female Labor Supply . . . . .	6
Average Placement Wages . . . . .	7
Per Capita Personal Income . . . . .	7
Average Weekly Wages of Workers Covered by Unemployment Insurance F.Y. 1986-87 - Bar Chart . . . . .	8
Average Weekly Wages by Industry, by Place of Work, 1987 . . . . .	9
EXISTING INDUSTRY . . . . .	10
Cumberland County Manufacturing Firms, Their Products and Employment . . . . .	10
Labor Organizations in Manufacturing Firms . . . . .	11
Selected Industrial Services . . . . .	12
TRANSPORTATION . . . . .	13
Rail . . . . .	13
Highways . . . . .	13
Truck Service . . . . .	13
Air . . . . .	14
Air Express Service . . . . .	16
Water . . . . .	16
POWER AND FUEL . . . . .	17
Electricity . . . . .	17
Natural Gas . . . . .	17
WATER AND SEWERAGE . . . . .	18
Public Water Supply . . . . .	18
Sewerage . . . . .	20

<u>Chapter</u>	<u>Page</u>
CLIMATE . . . . .	22
LOCAL GOVERNMENT . . . . .	23
Structure . . . . .	23
Planning and Zoning . . . . .	23
Local Fees and Licenses . . . . .	23
State and Local Property Taxes . . . . .	24
Combined State and Local Rates Per \$100 Valuation, 1987 . . . . .	24
Safety . . . . .	25
Police . . . . .	25
Fire . . . . .	25
Rescue Service . . . . .	25
Refuse Collection and Disposal . . . . .	25
EDUCATION . . . . .	26
Public Schools . . . . .	26
Area Colleges and Universities . . . . .	26
Vocational Training . . . . .	27
HEALTH . . . . .	29
Local Medical Personnel . . . . .	29
Hospitals . . . . .	29
Other Medical Facilities . . . . .	29
Ambulance Service . . . . .	29
OTHER LOCAL FACILITIES . . . . .	30
Communications . . . . .	30
Library Services . . . . .	30
Religious Institutions . . . . .	30
Financial Institutions . . . . .	31
Hotels and Motels . . . . .	31
RECREATION . . . . .	32
COMMUNITY IMPROVEMENTS . . . . .	35



# GENERAL HIGHWAY MAP CUMBERLAND COUNTY KENTUCKY

PREPARED BY THE  
KENTUCKY TRANSPORTATION CABINET  
DEPARTMENT OF HIGHWAYS  
DIVISION OF PLANNING  
IN COOPERATION WITH THE  
U.S. DEPARTMENT OF TRANSPORTATION  
FEDERAL HIGHWAY ADMINISTRATION



## BURKESVILLE, KENTUCKY - A RESOURCE PROFILE

Burkesville, the county seat of Cumberland County, is situated in south central Kentucky's Cumberland River Valley, 133 miles northeast of Nashville, Tennessee, and 145 miles south of Louisville, Kentucky. Burkesville had a 1986 estimated population of 2,220 persons.

Cumberland County, located adjacent to the Kentucky-Tennessee state line, is a well-dissected plateau in which the most conspicuous topographic feature is the Cumberland River's broad meandering loops. The county has a land area of 304 square miles, and had a 1986 estimated population of 7,530 persons.

**The Economic Framework** - The total number of Cumberland County residents employed in 1987 averaged 3,369. Manufacturing firms in the county reported 782 employees; wholesale and retail trade provided 332 jobs; 306 people were employed in service occupations; and state and local government accounted for 234 employees.

**Labor Supply** - There is a current estimated labor supply of 4,517 men and 4,461 women available for industrial jobs in the labor market area. In addition, from 1988 through 1992, 2,945 young men and 2,775 young women in the area will become 18 years of age and potentially available for industrial jobs.

**Transportation** - Burkesville is served by Kentucky Highway 90, a "AAA"-rated highway. Seven common carrier trucking companies provide interstate and/or intrastate service to Burkesville. The nearest airports offering scheduled commercial airline service are Nashville Metropolitan Airport near Nashville, Tennessee; Standiford Field near Louisville, Kentucky; and Lexington, Kentucky's Bluegrass Airport, all within 150 miles of Burkesville. Albany-Spring Creek Airport, 22 miles southeast of Burkesville near Albany, has one paved 2,600-foot runway. Burkesville is located 39 miles east of Glasgow, where CSX Transportation operates the privately-owned Glasgow Railroad. The nearest navigable waterway is the Cumberland River at Celina, Tennessee, 25 miles south of Burkesville.

**Power and Fuel** - The Tri-County Electric Membership Corporation, whose source of electricity is Tennessee Valley Authority, provides electric power to Burkesville and most of Cumberland County. A natural gas system is scheduled to be installed in Burkesville by September of 1988.

**Education** - The Cumberland County Public School System provides the residents of Cumberland County with primary and secondary education. There are three colleges and one state university located within 75 miles of Burkesville. Vocational training is provided by the Clinton Area Vocational Education Center, 18 miles southeast of Burkesville, and by the Somerset State Vocational-Technical School, and the Bowling Green State Vocational-Technical School, both within 75 miles of Burkesville.







## LABOR MARKET STATISTICS

The Burkesville Labor Market Area includes Cumberland County and the adjoining Kentucky counties of Adair, Clinton, Metcalfe, Monroe and Russell. The Labor Market Area also includes Clay County in Tennessee.

### POPULATION

Area	1986*	1980	1970	Percent Nonwhite
				1980
Burkesville, KY	2,220	2,051	1,717	14.4
Labor Market Area	77,791	75,064	65,046	-
Cumberland County, KY	7,530	7,289	6,850	5.4
Adair County, KY	15,811	15,233	13,037	3.6
Clinton County, KY	9,891	9,321	8,174	0.2
Metcalfe County, KY	9,695	9,484	8,177	3.0
Monroe County, KY	12,154	12,353	11,642	3.0
Russell County, KY	14,810	3,708	10,542	0.9
Clay County, TN	7,900	7,676	6,624	1.7

\* Population estimates.

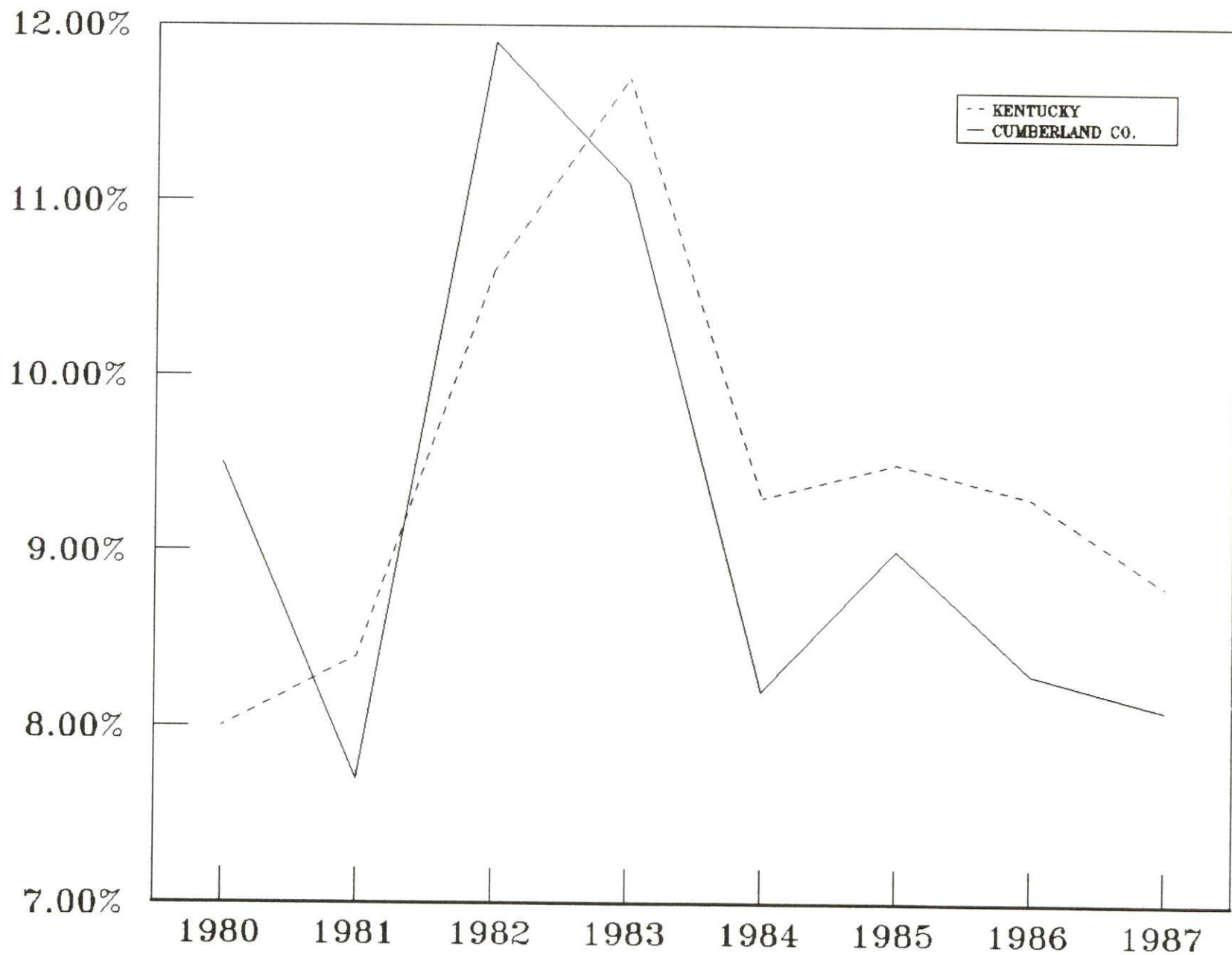
Sources: U.S. Department of Commerce, Bureau of the Census, Provisional Estimates of the Population of Counties: July 1, 1986, Series P-26, No. 86-A, August 1987; University of Louisville, Urban Studies Center, Population Unit; 1980 Census of Population, General Population Characteristics - Tennessee, PC80-1-B44; 1970 Census of Population, General Social and Economic Characteristics - Tennessee, PC(1)-C44.

### POPULATION PROJECTIONS

Area	1990	1995	2000	2010
Labor Market Area	81,982	84,784	86,775	-
Cumberland County, KY	7,537	7,685	7,761	7,855
Adair County, KY	16,338	16,804	17,087	17,373
Clinton County, KY	10,509	11,053	11,467	12,076
Metcalfe County, KY	10,741	11,186	11,482	11,905
Monroe County, KY	12,876	13,122	13,284	13,469
Russell County, KY	15,940	16,784	17,344	18,068
Clay County, TN	8,041	8,150	8,350	N/A

Source: University of Louisville, Urban Studies Center, Population Research Unit, How Many Kentuckians: Population Forecasts, 1980-2020, the 1986 Edition, Spring 1986. University of Tennessee, Department of Sociology and the Tennessee Center for Health Statistics, April 1986.

# UNEMPLOYMENT RATES



**LABOR FORCE CHARACTERISTICS OF RESIDENTS, 1987**

	<u>Cumberland County</u>	<u>Labor Market Area*</u>
Civilian Labor Force	3,664	40,652
Employment	3,369	37,404
Unemployment	295	3,248
Rate of Unemployment (%)	8.1	8.0

\* Includes Tennessee county.

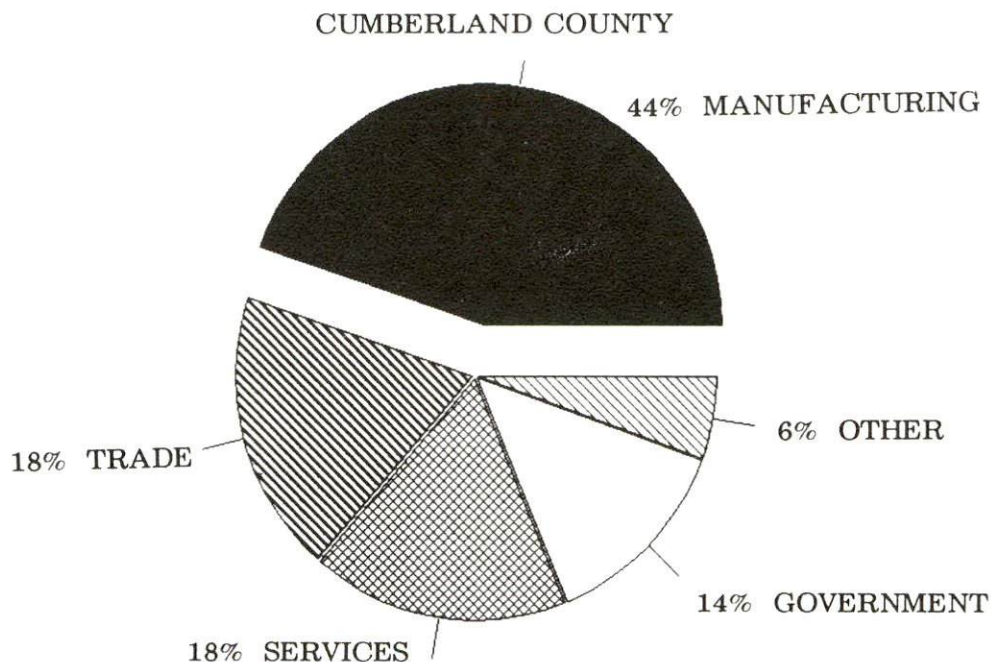
Source: Kentucky Cabinet for Human Resources, Kentucky Labor Force Estimates, Annual Averages, 1987. Tennessee Department of Employment Security, Research and Statistics Division, Labor Force Estimates Summary, Annual Averages 1987.

**SELECTED COMPONENTS OF NONAGRICULTURAL EMPLOYMENT  
BY PLACE OF WORK, 1987**

	<u>Cumberland County</u>	<u>Labor Market Area*</u>
All Industries (total)	1,750	16,480
Manufacturing	782	7,541
Wholesale & Retail Trade	332	2,778
Services	306	1,908
State/Local Government	234	2,933
Contract Construction	10	455

\* Does not include Tennessee county.

Note: Excludes domestic workers, railway workers, certain nonprofit corporations, majority of federal government workers, and self-employed workers. Source: Kentucky Cabinet for Human Resources, Average Monthly Workers Covered by Kentucky Unemployment Insurance Law, 1987.





ESTIMATED MALE LABOR SUPPLY  
BURKESVILLE LABOR MARKET AREA

Area	Current				Future
	Total Male	Unemployed	Under-employed	Not in Labor Force	Becoming 18 years of age 1988 thru 1992
Labor Market Area*	4,517	-	-	-	2,945
Cumberland	477	201	276	0	261
Adair	868	436	432	0	594
Clinton	860	276	296	288	362
Metcalfe	635	267	288	80	398
Monroe	574	329	245	0	476
Russell	906	476	430	0	567
Clay (TN)	197	N/A	N/A	N/A	287

ESTIMATED FEMALE LABOR SUPPLY  
BURKESVILLE LABOR MARKET AREA

Area	Current				Future
	Total Female	Unemployed	Under-employed	Not in Labor Force	Becoming 18 years of age 1988 thru 1992
Labor Market Area*	4,461	-	-	-	2,775
Cumberland	267	114	153	0	253
Adair	617	354	259	4	550
Clinton	891	234	275	382	376
Metcalfe	990	297	214	479	349
Monroe	675	304	233	138	477
Russell	908	313	323	272	511
Clay (TN)	113	N/A	N/A	N/A	259

\* Additional workers may be drawn from other nearby counties.

Note: Unemployed - persons unemployed and actively seeking work; Underemployed - persons employed but working only 14 to 26 weeks per year; Not in Labor Force - represents the number of persons who would enter the labor force if suitable employment were available (based on the assumption that persons in Kentucky would like to participate in the labor force in the same proportion that they do nationally).

Sources: Kentucky Cabinet for Human Resources, Kentucky Labor Supply Estimates by County, 1986. Kentucky Department of Economic Development, Future Labor Supply Becoming 18 Years of Age, 1988 thru 1992. U.S. Department of Commerce, Bureau of the Census, 1980 Census of Population, General Population Characteristics, Tennessee. Tennessee Department of Employment Security, Research and Statistics Section, 1986.

## AVERAGE PLACEMENT WAGES

Cumberland County is served by the Somerset local office of the Kentucky Department for Employment Services. The focus of the following data is on job placements made by the Somerset local office and may therefore be used as an indicator of the wages which employers in the area pay new employees. During the twelve months which ended on June 30, 1987, the local employment office filled 3,643 job openings in various occupational categories. The average hourly wage for selected occupational categories were:

<u>OCCUPATIONAL CATEGORY</u>	<u>NUMBER OF PLACEMENTS</u>	<u>AVERAGE WAGE(\$)</u>
All Occupations	3,643	3.70
Clerical	1,291	3.41
Sales	139	3.86
Services (excluding domestic)	400	3.33
Agricultural, Fishery, Forestry, etc.	29	4.04
Processing	33	3.61
Machine Trades	229	4.19
Bench Work	1,043	3.72
Structural	190	4.36
Motor Freight/ Transportation	35	4.61
Packaging and Materials Handling	159	4.74
Other	24	3.64

The Somerset local office also serves Adair, Casey, Clinton, Green, McCreary, Pulaski, Russell, Taylor, and Wayne Counties. The above occupational categories are taken from the Dictionary of Occupational Titles published by the U.S. Department of Labor.

Source: Kentucky Cabinet for Human Resources, Department for Employment Services.

## PER CAPITA PERSONAL INCOME

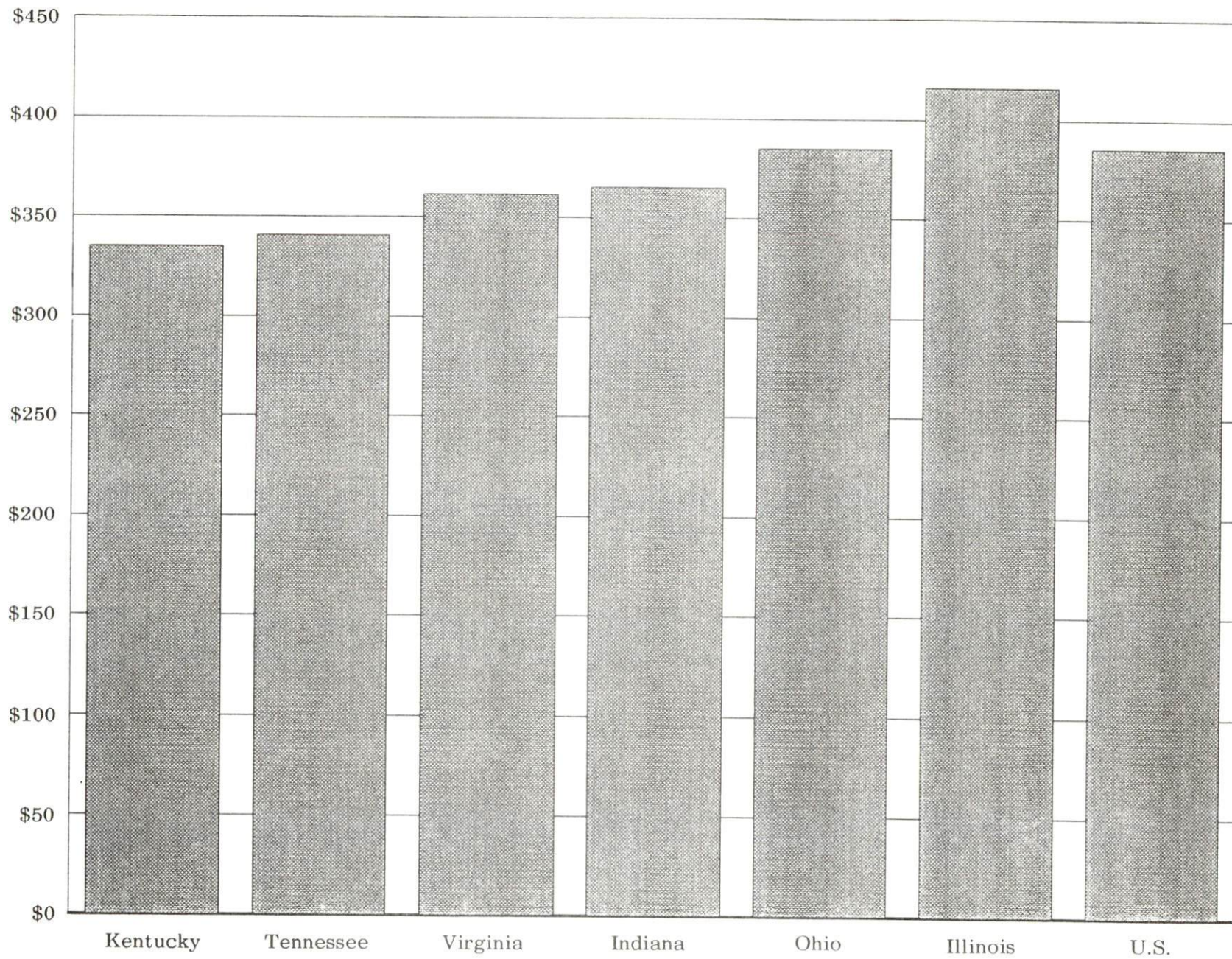
<u>Area</u>	<u>1982</u>	<u>1986</u>	<u>Percent Change</u>
Cumberland County	\$5,992	\$7,313	22.0
Labor Market Area Range*	\$5,357 - 6,846	\$6,618 - 9,065	-
Kentucky	9,277	11,342	22.3
U.S.	11,480	14,636	27.5

\* Does not include Tennessee county.

Sources: Kentucky Economic Information System, April 1988.



AVERAGE WEEKLY WAGES OF WORKERS COVERED BY  
UNEMPLOYMENT INSURANCE F.Y. 1986-87





AVERAGE WEEKLY WAGES BY INDUSTRY  
BY PLACE OF WORK, 1987

	<u>Cumberland County</u>	<u>Adair County</u>	<u>Clinton County</u>
All Industries	\$200.38	\$238.24	\$200.33
Mining & Quarrying	181.64	210.29	370.13
Contract Construction	162.05	258.78	124.74
Manufacturing	187.05	246.54	169.52
Transportation, Communications & Public Utilities	186.42	307.44	240.87
Wholesale & Retail Trade	174.86	155.69	161.96
Finance, Insurance & Real Estate	248.13	308.60	251.49
Services	183.48	215.71	201.65
State/Local Government	297.26	311.46	251.67
Other	*	187.63	127.32
	<u>Metcalfe County</u>	<u>Monroe County</u>	<u>Russell County</u>
All Industries	\$205.27	\$221.81	\$234.41
Mining & Quarrying	164.06	0	*
Contract Construction	314.48	138.72	295.80
Manufacturing	158.95	220.11	234.34
Transportation, Communications & Public Utilities	430.46	551.99	311.43
Wholesale & Retail Trade	163.34	181.93	164.58
Finance, Insurance & Real Estate	236.08	280.76	295.65
Services	239.28	151.19	189.92
State/Local Government	262.41	259.52	292.94
Other	*	177.25	100.28

\* Not disclosed.

Note: The average weekly wage for each category includes the salaries and wages of all persons working for that type business. For example, the manufacturing category includes both production workers and administrative personnel. Excludes domestic workers, railway workers, certain nonprofit corporations, majority of federal government workers, and self-employed workers.

Source: Kentucky Cabinet for Human Resources, Average Weekly Wages of Workers Covered by Kentucky Unemployment Insurance Law, 1987.

EXISTING INDUSTRY

CUMBERLAND COUNTY MANUFACTURING FIRMS,  
THEIR PRODUCTS AND EMPLOYMENT

<u>Firm</u> <u>(Establishment date)</u>	<u>Product</u>	<u>1987</u> <u>Average Employment</u>	<u>Labor</u> <u>Unions</u>
<b>Burkesville</b>			
Burkesville-Cumberland County Press, Inc. (1920)	Newspaper, commercial printing	6	
Cumberland Stove Com- pany (1982)	Wood burning stoves	4	
Bob Evans of Kentucky, Inc. (1970)	Men's & women's uniforms	280	
Farmers Feed Mill (1956)	Feed	3	
Groco Manufacturing, Inc. (1987)	Ladies' blouses	60	
Lake Cumberland Cedar, Inc. (1985)	Cedar lumber	12	
Johnny Rich Lumber Company, Inc. (1966)	Rough lumber	26	
Gaddie-Shamrock Stone, Inc. (1961)	Crushed stone, agricultural lime	5	
Stewart Warner Corpor- ation, Southwind Division (1980)	Heat transfer products, truck heaters, oil coolers, personal heaters	60	
Sutton Shirt Corporation (1971)	Shirts	241	

(Continued)

<u>Firm</u> <u>(Establishment date)</u>	<u>Product</u>	<u>1987</u> <u>Average Employment</u>	<u>Labor</u> <u>Unions</u>
Marrowbone			
Oshkosh B'Gosh, Inc. (1979)	Men's & boys' jeans	207	Garment Workers*
York & Vibbert, Inc. (1966)	Lumber, custom sawing, pallet parts, crossties	17	

\* See Labor Organizations below.

Sources: Kentucky Department of Economic Development, 1988 Kentucky Directory of Manufacturers; Division of Research and Planning.

#### LABOR ORGANIZATIONS IN MANUFACTURING FIRMS

Union

United Garment Workers  
of America, AFL-CIO

Representing workers at:

Oshkosh B'gosh, Inc.

SELECTED INDUSTRIAL SERVICES

<u>Types of Service</u>	<u>Location</u>	<u>Mileage from Burkesville</u>
Custom Data Processing	Somerset, Kentucky	70
Custom Plastics Producers	Bowling Green, Kentucky Franklin, Kentucky	72 88
Electric Motor Repair	Bowling Green, Kentucky	72
Grinding, Precision & Tool	Glasgow, Kentucky	39
Heat Treating Facilities	Nashville, Tennessee Louisville, Kentucky Lexington, Kentucky	133 145 146
Industrial Equipment & Supplies	Bowling Green, Kentucky	72
Industrial Gases	Glasgow, Kentucky	39
Industrial Waste Removal	Somerset, Kentucky	70
Machine Shops, Tool & Die	Albany, Kentucky Tompkinsville, Kentucky	18 29
Metal Castings	Horse Cave, Kentucky	54
Metal Finishers	Horse Cave, Kentucky	54
Metal Service Centers	Bowling Green, Kentucky	72
Millwrights	Bowling Green, Kentucky	72
Public Warehouse Facilities	Bowling Green, Kentucky	72

Sources: Kentucky Department of Economic Development, Kentucky Directory of Selected Industrial Services, 1987; Division of Research and Planning.



## TRANSPORTATION

### Rail

Line nearest Burkesville - The nearest rail service is provided by CSX Transportation at Glasgow, 39 miles west of Burkesville. The privately-owned Glasgow Railroad is operated by CSX Transportation.

For details on routing, schedules, rates, and services contact:

Manager  
Industrial Development  
CSX Transportation  
908 West Broadway  
P. O. Box 2157  
Louisville, Kentucky 40201  
(502) 587-7746

### Highways

Burkesville is served by Kentucky Highway 90, a "AAA"-rated (80,000-pound gross load limit) trucking highway, and by Kentucky Highway 61, which is "AAA"-rated south of Burkesville. Burkesville is 14 miles west of U.S. Highway 127 and 31 miles southeast of an interchange of the Cumberland Parkway, a multilane toll road. Kentucky 90 and the Cumberland Parkway provide access to Interstate 65 approximately 50 miles west of Burkesville. Kentucky 90 is part of the Appalachian Highway System network which provides Burkesville with access to Interstate 75, 74 miles northeast of the city. Construction of an improved access route from Burkesville to Interstate 40 south of the state line is under way.

### Truck Service

American Freight Systems, Inc.\*  
Averitt Express, Inc.\*\*  
Jones Truck Lines, Inc.\*\*  
Manning Motor Express, Inc.\*\*

Overnite Transportation Company\*\*  
Sanders & Leigh Truck Line\*\*  
Yellow Freight Systems, Inc.\*\*

\* Interstate service only.

\*\* Interstate and intrastate service.

Source: American Motor Carrier Directory, Spring 1988.

HIGHWAY MILES AND TRUCK TRANSIT TIME IN DAYS FROM  
BURKESVILLE, KENTUCKY, TO SELECTED MARKET CENTERS

City	Highway Miles	Delivery		City	Highway Miles	Delivery Time TL
		Time TL				
Atlanta, GA	375	1		Los Angeles, CA	2,158	4
Baltimore MD	687	2		Louisville, KY	145	1
Birmingham, AL	329	1		Nashville, TN	133	1
Chicago, IL	437	1		New Orleans, LA	650	2
Cincinnati, OH	224	1		New York, NY	849	2
Cleveland, OH	463	1		Pittsburgh, PA	489	1
Detroit, MI	483	2		St. Louis, MO	350	1
Knoxville, TN	191	1				

Note: Mileage computations are via the best interstate or primary highways, not necessarily the most direct route of travel.

Sources: Rand McNally Deluxe Motor Carriers' Road Atlas, 1987. Official Kentucky Mileage Map, 1980. Delivery time - Overnite Transportation Company, P. O. Box 236, East Bernstadt, Kentucky 40729.

**Air**

Local\*

Location: Albany-Spring Creek Airport  
4 miles southwest of Albany, Kentucky;  
22 miles southeast of Burkesville

Runway: 1 paved  
Length: 2,600 feet

Traffic Control: Wind sock

Lighting: Runway lights, sunset to sunrise

Services: Fuel - 100LL; minor A & P repairs, part-time; tie-down; hangar; charter pilot, part-time; flight training; taxi, motel, restaurant

Air Freight Service: Chartered air freight services must be arranged

(Continued)

\* A Clinton-Cumberland County airport board was recently formed for the purpose of developing a new joint local airport. A site has been selected and the masterplan completed. Construction will begin as funds become available.

Nearest Scheduled Commercial Airline Services

Standiford Field  
Location: 4 miles southeast of center of Louisville, Kentucky;  
140 miles north of Burkesville  
Runways: 2 paved  
Length: 10,000 feet; 7,250 feet  
Traffic  
Control: Control Tower  
Lighting: Runways, obstructions, beacon and approach; touch-  
down lights and center line on one runway  
Services: American Airlines, Delta, Eastern, Piedmont,  
Northwest, TWA, United, USAir, Jetstream,  
Allegheny Commuter, Comair, Braniff; fuel - 100  
and jet-A; major A & P repairs, major Avionics  
repairs, APU, charter, oxygen, U.S. Customs; taxi,  
car rentals, limousine, courtesy car, public  
transit; Weather Bureau, restaurant, snack bar,  
gift shop, USO, bank  
Air Freight  
Service: Air freight terminal

Bluegrass Airport  
Location: 4 miles west of Lexington, Kentucky;  
147 miles northeast of Burkesville  
Runways: 2 paved  
Length: 7,000 feet; 3,500 feet  
Traffic  
Control: Control tower  
Lighting: Approach lighting system, beacon, runways and  
obstructions lighted, VASI  
Services: Delta, Piedmont, USAir, Allegheny Commuter, TWA,  
Jetstream United Express, Eastern Metro, Comair,  
American Eagle; fuel - 100LL and jet-A; hangars,  
tie-downs; major A & P repairs; major Avionics  
repairs; APU, charter, flight instruction, oxygen,  
plane rentals, survival equipment; taxi,  
limousine, car rentals, courtesy car, weather  
information; restaurant, snack bar  
Air Freight  
Service: Air freight terminal

(Continued)



Location: Nashville Metropolitan Airport  
 6 miles southeast of Nashville, Tennessee;  
 139 miles southwest of Burkesville  
 Runways: 3 paved  
 Length: 8,500 feet; 7,700 feet; 4,300 feet  
 Traffic  
 Control: Control tower  
 Lighting: Beacon, runway  
 Services: American, Delta, Eastern, Pan Am, Piedmont,  
 Northwest, TWA, United, USAir, Allegheny Commuter,  
 Southwest, Comair, Braniff, American Eagle; fuel -  
 100LL, jet-A; tie-downs, hangars; major A & P  
 repairs, major Avionics repairs; APU, charter,  
 flight instruction, oxygen, plane rental, survival  
 equipment, U.S. Customs; taxi, limousine, car  
 rental, courtesy car, public transit; weather  
 information; restaurants, snack bars, hotel,  
 business center  
 Air Freight  
 Service: Air freight terminal

#### Air Express Service

Several major companies offer air express services in Kentucky. These companies provide a quick means of shipping small to medium-sized packages expeditiously.

#### Water

The nearest navigable waterway is the Cumberland River at Celina, Tennessee, 25 miles south of Burkesville, where a 9-foot navigation channel begins.

## POWER AND FUEL

### Electricity

Company serving Burkesville and Cumberland County - Tri-County Electric  
Membership Corporation  
Source of power - Tennessee Valley Authority  
For industrial rates contact:

South Kentucky Industrial Development  
Association, Inc.  
P. O. Box 726  
Hopkinsville, Kentucky 42240  
(502) 885-5392

and/or

Tri-County Electric Membership  
Corporation  
405 College Street  
P. O. Box 40  
Lafayette, Tennessee 37083  
(615) 666-2111

### Natural Gas

Plans are being made to provide natural gas service to Burkesville. Four- and six-inch mains will be run to Burkesville by Ken-Gas of Kentucky, Inc. The city's industrial site will be included in the service area. Service is scheduled to begin during the fall of 1988.





Name of water district - Marrowbone Water District  
P. O. Box 112  
Marrowbone, Kentucky 42759  
(502) 864-3133

Area served - Marrowbone Valley, Little Renox, Big Renox, Bakerton  
Date when water district began operating - December 1968  
Source of raw water - Cumberland River  
Capacity of treatment plant - 203,000 gallons per day  
Treatment processes - Rapid mix, coagulation, flocculation, sedimentation,  
filtration, chlorination, fluoridation  
Average amount of water used in a 24-hour period - 140,000 gallons  
Peak amount of water used in a 24-hour period - 200,000 gallons  
Storage capacity - 300,000 gallons (including clear well)  
Size lines - 8, 6, 4, 3, and 2 inches  
Water pressure - 50 psi to 100 psi

MONTHLY WATER RATES

First	2,000 gallons	\$6.85 (Minimum)
Next	2,000 gallons	2.25 per M gallons
Next	2,000 gallons	1.95 per M gallons
Next	4,000 gallons	1.60 per M gallons
Next	10,000 gallons	1.40 per M gallons
All over	20,000 gallons	1.20 per M gallons

Tap-on charge:

5/8- x 3/4-inch meter - \$300  
1-inch meter - \$600

Name of water district - South Cumberland Water District  
P. O. Box 177  
Burkesville, Kentucky 42717  
(502) 864-4141

Area served - Southern Cumberland County  
Date when water district began operating - 1976  
Source of supply of treated water - Burkesville Municipal Water Works  
Average amount of water used in a 24-hour period - 125,000 gallons  
Peak amount of water used in a 24-hour period - 150,000 gallons  
Storage capacity - 200,000 gallons  
Size lines - 2 through 8 inches  
Water pressure - 30 psi to 100 psi

(Continued)



## MONTHLY WATER RATES

### 5/8- x 3/4-inch and 3/4-inch meters:

First	2,000 gallons	\$10.20 (Minimum)
Next	3,000 gallons	3.75 per M gallons
Next	5,000 gallons	2.70 per M gallons
All over	10,000 gallons	1.70 per M gallons

### 1-inch meter:

First	5,000 gallons	\$25.50 (Minimum)
Next	5,000 gallons	2.70 per M gallons
All over	10,000 gallons	1.70 per M gallons

### 1 1/2-inch meter:

First	12,500 gallons	\$63.75 (Minimum)
All over	12,500 gallons	1.70 per M gallons

### 2-inch meter:

First	25,000 gallons	\$127.50 (Minimum)
All over	25,000 gallons	1.70 per M gallons

### Tap-on charge:

#### Meter Size

5/8- x 3/4-inch or 3/4-inch	\$300
1-inch	375
1 1/2-inch	735
2-inch or larger	Actual cost of installation

## Sewerage

Company serving **Burkesville** -      **Burkesville Municipal Waste Water  
City Hall  
P. O. Box 177  
Burkesville, Kentucky 42717  
(502) 864-4141**

Design capacity - 250,000 gallons per day

Average daily flow - 185,000 gallons

Type of treatment - Secondary

Treatment processes - Screening, grit removal, extended aeration,  
activated sludge, chlorination, sludge drying beds

Treated effluent discharged into - Cumberland River

Size of sanitary mains - 6, 8, and 10 inches

Size of storm mains - 12 through 30 inches

(Continued)

Monthly rates - Based on water usage:

First	2,000 gallons	\$4.10 (Minimum)
Next	13,000 gallons	1.50 per M gallons
Next	15,000 gallons	1.25 per M gallons
All over	30,000 gallons	1.10 per M gallons

A surcharge is assessed to customers discharging waste water with BOD and SS concentrations in excess of 240 mg/l.

Tap-on charge: None

## CLIMATE

### Cumberland County

#### Temperature

Normal (30-year record)	58.80 degrees
Average annual 1986	59.50 degrees
Record highest, September 1954 (45-year record)	103.00 degrees
Record lowest, January 1985 (45-year record)	-24.00 degrees
Normal heating degree days (30-year record) (Heating degree day totals are the sums of negative departures of average daily temperatures from 65 degrees F.)	3,658

#### Precipitation

Normal (30-year record)	47.29 inches
Mean annual snowfall (30-year record)	12.40 inches
Total precipitation 1986	32.48 inches
Mean number days precipitation (.01 inch or more) (44-year record)	126.50
Mean number days thunderstorms (44-year record)	46.80

#### Prevailing winds (through 1963)

Northeast

#### Relative Humidity (26-year record)

1 a.m.	80 percent
7 a.m.	85 percent
1 p.m.	59 percent
7 p.m.	63 percent

Source: U.S. Department of Commerce, Environmental Science Services Administration, Climatological Data, 1986. Station of record: Knoxville, Tennessee.



## LOCAL GOVERNMENT

### Structure

Burkesville is served by a mayor and six council members. The mayor is elected to a four-year term and the council members serve two-year terms. Cumberland County is served by a county judge/executive and eight magistrates. The county judge and magistrates serve four-year terms.

### Planning and Zoning

City agency - Planning and Zoning Commission of Burkesville, Kentucky  
Zoning enforced - Within the city of Burkesville  
Subdivision regulations enforced - Within the corporate limits of Burkesville, and one mile beyond  
Local codes enforced - Building and housing  
Mandatory state codes enforced - Kentucky Plumbing code, National Electric Code, Kentucky Boiler Regulations and Standards, Kentucky Building Code (modeled after BOCA code)

### Local Fees and Licenses

The City of Burkesville levies an occupational license tax of one percent on wages and net profits of businesses, with a \$200 maximum tax.

A 3 percent tax is levied on utilities receipts for schools in Cumberland County. Tax is paid by all consumers of utilities as an add-on to the utilities bills. Exempted are receipts from utilities services that are resold and the receipts from the sale of energy or energy producing fuels that exceed 3 percent of the cost of production in manufacturing, processing, mining or refining.

## State and Local Property Taxes

All property in Kentucky, except items exempted by the state constitution, is taxed by the state. Property which also may be taxed by local jurisdictions includes land and buildings, finished goods inventories, automobiles, trucks, office furniture and office equipment. Local taxing jurisdictions in Kentucky include counties, cities, and school districts.

All property in Kentucky is assessed at 100 percent of fair cash value.

### COMBINED STATE AND LOCAL RATES PER \$100 VALUATION, 1987

	Site Inside City of Burkesville	Site Inside Unincorporated Cumberland County
Land and Buildings	\$0.836	\$0.612
Manufacturing		
Machinery	0.150	0.150
Pollution Control		
Equipment	0.150	0.150
Inventories		
Raw materials	0.001	0.001
Goods in Process	0.001	0.001
Finished Goods	0.6183	0.3943
Automobiles & Trucks	1.0703	0.8443
Other Tangible		
Personal Property	1.0673	0.8433
Intangibles (Accounts receivable*, money in hand, stock, notes, bonds)	0.250	0.250
Goods Stored in Public Warehouses in Transit Status	0.001	0.001
Private Leaseholds in Industrial Revenue Bond Financed Facilities	0.015	0.015

\* Accounts receivable are taxed at 85 percent of face value, for an effective rate of \$0.2125 per \$100 valuation.

## Safety

Police	Burkesville	Cumberland County
Total staff	4	3
Radio-patrol cars	2	2
<b>Fire*</b>		
Insurance Services Office, Public Protection Classification	6	10
Volunteers	18	**
<b>Rescue Service</b>		

The Cumberland County Rescue Squad and members of the Burkesville Fire Department provide rescue service to Burkesville and Cumberland County.

## Refuse Collection and Disposal

The city of Burkesville's municipal sanitation department provides refuse collection and disposal service to Burkesville and to all industries located in the county.

\* Includes copyrighted material of ISO Commercial Risk Services, Inc., with its permission.

\*\* Cumberland County residents receive fire protection service from the Burkesville Fire Department and the Marrowbone Fire Department.



## EDUCATION

### Public Schools

	Cumberland County*
Total Enrollment (June 1988)	1,177
Kindergarten	108
Elementary	473
Middle School	283
High School	313
 Pupil-Teacher Ratio (1986-87)	 17-1
 Percent High School Graduates to College (1986-87)	 40.7
 Expenditures Per Pupil (1986-87)	 \$2,388.00

### Area Colleges and Universities

<u>Name</u>	<u>Location (Miles distant)</u>	<u>Enrollment (Fall, 1987)</u>	<u>Highest Degree Conferred</u>
Lindsey Wilson College	Columbia (29)	1,030	Baccalaureate
Campbellsville College	Campbellsville (69)	660	Baccalaureate
Somerset Community College	Somerset (70)	1,479	Associate
Western Kentucky University**	Bowling Green (72)	13,520	Masters, Specialist***

\* The Cumberland County School System recently completed constructing a new \$1,947,000 middle school which serves grades 6-8. Plans are currently under way to renovate and expand the Cumberland County Elementary School. Cost of this project is approximately \$2.3 million.

\*\* Western Kentucky University recently opened a campus in Glasgow, Kentucky, 37 miles northwest of Burkesville. Enrollment at the Glasgow campus was 783 for the spring of 1988.

\*\*\* Joint doctoral degree programs are offered in cooperation with the University of Kentucky, Lexington, and cooperative doctoral degree programs are offered with the University of Louisville. The degrees are issued by the University of Kentucky or the University of Louisville.

## Vocational Training

The Bluegrass State Skills Corporation, an independent public corporation created and funded by the Kentucky General Assembly, provides programs of skills training to meet the needs of business and industry from entry level to advanced training, and from upgrading present employees to retraining experienced workers.

The Bluegrass State Skills Corporation is the primary source for skills training assistance for a new or existing company. The Corporation works in partnership with other employment and job training resources and programs, as well as Kentucky's economic development activities, to package a program customized to meet the specific needs of a company.

Vocational training is available at both the state vocational-technical schools and the area vocational education centers. The state vocational-technical schools are post-secondary institutions. The area vocational education centers are designed to supplement the curriculum of high school students. Both the state vocational-technical schools and the area vocational education centers offer evening courses to enable working adults to upgrade current job skills.

Arrangements can be made to provide training in the specific production skills required by an industrial plant. Instruction may be conducted either in the vocational school or in the industrial plant, depending upon the desired arrangement and the availability of special equipment.

### Nearest State Schools

Somerset State Vocational-Technical School  
Somerset, 70 miles distant

Business & Office	Electronics
Accounting/Management	Graphic Arts
Clerical	Machine Shop
Data Processing	Welding
Secretarial	Learning Resource Center
Consumer & Home Economics	Vocational Improvement
Consumer & Family Life	Programs
Skills	Public Service Occupations
Health & Personal Services	Business/Industry Security
Occupations	Training
Health Services	CPR Training
Practical Nursing	Electrical Safety Training
Industrial Education	Emergency Medical Care
Auto Body Repair	Fire Service Training
Auto Mechanics	First Aid & Safety
Diesel Mechanics	Rescue & Emergency Services
Drafting (with CAD/CAM)	Training

(Continued)

Bowling Green State Vocational-Technical School  
Bowling Green, 72 miles distant

Agriculture	Auto Mechanics
Adult Agriculture	Automated Manufacturing/ Robotics
Business & Office	Carpentry
Accounting/Management	Diesel Mechanics
Clerical	Electricity
Exploratory Business & Office	Electronics
Secretarial	Graphic Arts
Distributive Education	Industrial Maintenance
Retailing	Machine Shop
Consumer & Home Economics	Masonry
Commercial Foods	Plumbing
Consumer & Family Life Skills	Welding
Health & Personal Services	Learning Resources Center
Occupations	Public Service Occupations
Dental Assisting	Business/Industry Security Training
Health Services	CPR Training
Nurse Assisting	Electrical Safety Training
Radiologic Technology	Emergency Medical Care
Respiratory Therapy Technician	Fire Service Training
Surgical Technology	First Aid & Safety
Industrial Education	Rescue & Emergency Services Training
Air Conditioning	
Auto Body Repair	

Nearest Area Education Center

Clinton County Area Vocational Education Center  
Albany, 18 miles distant

Business & Office	Industrial Education
Accounting Management	Auto Mechanics
Exploratory Business & Office	Carpentry
Secretarial	Electricity
Health & Personal Services	Welding
Occupations	
Health Services	



## HEALTH

### Local Medical Personnel

Physicians - 3  
Dentists - 4

### Hospitals

<u>General Hospital</u>	<u>Location</u>	<u>Beds</u>
Cumberland County Hospital*	Burkesville	31

Medical staff - 3 physicians, 10 registered nurses, and 12 licensed practical nurses

### Other Medical Facilities

Cumberland County Health Department  
Cumberland Valley Manor (nursing home)

### Ambulance Service

Name - Cumberland County Ambulance Service  
Staff - 28 emergency medical technicians

\* Plans are currently under way for a new addition to the Cumberland County Hospital, which would include 16 skilled nursing beds.

## OTHER LOCAL FACILITIES

### Communications

Telephone -	Duo County Telephone Cooperative Corporation, Inc.;
Telegraph -	General Telephone Company Western Union Toll-Free number, 1-800-325-6000
Newspapers - Weekly and circulation -	Cumberland County News  3,000
Radio -	WKYR-AM
Television - Cable service - Educational Television -	Multivision Cable TV  The Kentucky Educational Television (K.E.T.) network is available statewide

### Library Services

Public library - The Cumberland County Library  
Size collection - 43,157 volumes  
Circulation, 1986-87 - 58,961

### Religious Institutions

#### Cumberland County

Denominations -	Assembly of God Baptist Catholic Christian Church of Christ Church of God Church of God of Prophecy Church of the Lord Jesus Christ	Colored Methodist Episcopal (CME) Jehovah's Witnesses Methodist Nazarene Presbyterian Seventh Day Adventist United Pentecostal
-----------------	--	--

Nearest Synagogues - Nashville, Tennessee, 133 miles southwest  
Louisville, Kentucky, 145 miles north  
Lexington, Kentucky, 146 miles northeast

**Financial Institutions**

<u>Banks</u>	<u>Assets</u>	<u>Deposits</u>	<u>Statement Date</u>
Bank of Cumberland	\$37,360,000	\$34,012,000	12/31/87
Bank of Marrowbone	18,201,675	15,960,888	12/31/87

**Hotels and Motels**

Total number - 2  
Total rooms - 58



## RECREATION

### Local

A supervised recreation program is held each summer at the Veterans Memorial Park in Burkesville. The park features a swimming pool, lighted baseball and softball fields, a basketball court, a miniature golf course, three lighted tennis courts, a 3/8-mile running track, 1,000 feet of river frontage, and a picnic area. The fairground is also located at the park.

Other public recreational facilities include school playgrounds, basketball courts, tennis courts, and a baseball field. A bowling facility is also located at Burkesville.

A country club is located at 76 Falls, 15 miles from Burkesville, and features a golf course and swimming pool. Membership is open to residents of Cumberland and Clinton Counties.

The Cumberland County Sportsmen's Club owns a 60-acre farm 10 miles south of Burkesville, and sponsors regular trap shoots.

Dale Hollow Lake, nine miles south of Burkesville, is one of the most beautiful lakes in the state of Kentucky. The lake is 63 miles long, with a surface area of some 48 square miles. Its clear, clean water is attractive to fishermen, boaters, swimmers, scubadivers, and all-around sportsmen. Its shoreline is dotted with well established boat docks, fishing camps, launching ramps, motels, and other vacation facilities. These 620 miles of shoreline abound in small game, and Dale Hollow itself serves as a resting place for migratory waterfowl. But fish are the thing Dale Hollow is nationally famous for -- a wide variety of fish including some of the best sustained bass population in the state. The world record smallmouth grew to its monstrous size -- 11 pounds, 15 ounces -- in Dale Hollow and was taken out of the Kentucky section of the lake. Dale Hollow winds through the mountains and valleys of the Cumberland foothills, creating inlets and islands that beckon the explorer and convince the vacationer that he's found a world apart.

In addition to the Dale Hollow State Park, other marinas and resorts near Burkesville include: Hendrick's Creek Resort; Sulphur Creek Resort; Wisdom Dock and Wolf River Resort and Marina.

The Cumberland River at Burkesville is a popular trout fishing area. The state of Kentucky stocks tens of thousands of rainbow trout, brown trout, and strippers there annually. One of the most spectacular fishing trips in the county is to float down the Cumberland River from the Wolf Creek Dam to the Burkesville boat launching ramp, a distance of 17 scenic river miles of excellent trout fishing.

Annual events held at Burkesville include the men's and women's Southern Kentucky Softball Tournament, hosted by Burkesville; the Cumberland County Fair, held each August; a three-day arts and crafts show held each September; and the Cumberland County Oil Festival, held each September to show appreciation to the oil industry and to commemorate the first oil well drilled in Cumberland County in 1829.

## Area (Within 65 miles)

**Lake Cumberland State Resort Park** near Jamestown, 25 miles northeast of Burkesville, is a 3,000-acre park located on the 50,000-acre Lake Cumberland, which sports excellent bass, bluegill, and crappie fishing. The park features a modern 63-room resort lodge which is perched on a high bluff above the lake. The lodge has a swimming pool, a dining room, a gift shop, and a multi-purpose activities center. Other park facilities include an additional swimming pool, riding stables, tennis courts, hiking trails, a nature center, a 9-hole golf course, miniature golf, a picnic area, planned recreation, and a playground. A marina offers houseboats, and fishing boats and motors for rent plus year-round launching ramps.

**Old Mulkey Meeting House State Shrine**, 38 miles southwest of Burkesville near Tompkinsville, offers picnic areas and playgrounds. The house was built in 1804, and is the oldest log meeting house in the state. Daniel Boone's sister is buried in the graveyard and authentic records written in pokeberry ink are on display.

**The Daniel Boone National Forest**, approximately 50 miles east of Burkesville, covers 640,000 acres of timberland in eastern Kentucky. It encompasses much of Kentucky's great beauty and provides a vacation paradise. There are scenic hiking trails, rivers and streams stocked with a variety of fish, hunting preserves, camping sites, and numerous other natural and historical attractions.

**Mammoth Cave National Park** is located 52 miles northwest of Burkesville near Cave City. Beneath 52,000 park acres, Mammoth Cave is among the major tourist attractions of all times. It is the largest cave network ever discovered, with over 300 miles of caverns. Some famous sights are Snowball Dining Room (267 feet below surface), Frozen Niagara, Crystal Lake, and Bottomless Pit. The park also features scenic boat trips on the Green River and nature and hiking trails. Park accommodations include a hotel with distinctive gift shops featuring native Kentucky and Southern Highland handicrafts, a motor lodge, hotel cottages, and woodland cottages. Other park facilities include the hotel dining room and coffee shop, a service center, group meeting facilities, a campground, boat rides, a picnic area, and tennis and shuffleboard courts. The park is open for tours every day of the year (except Christmas Day).

**Nolin River Lake** is just north of Mammoth Cave National Park. The lake has a surface area of 5,800 acres and offers facilities for camping, boating, and fishing.

**Barren River Lake State Resort Park**, 53 miles west of Burkesville near Glasgow, is a full-facility resort park offering a 51-room resort lodge, 12 cottages, a coffee shop, a heated lodge and cottage pool, a beach, riding stables, nature trails, open and covered boat slips, a 9-hole golf course, lighted handball and tennis courts, shuffleboard, park camping with a service building, a restaurant, fishing and pleasure boat rentals, picnic areas, and a playground. Barren River Lake, which covers 10,000 acres, is a popular area for skiing, sailing, fishing, and swimming.



General Burnside State Park, 54 miles northeast of Burkesville, is Kentucky's only island state park. Rising out of Lake Cumberland and surrounded by beautiful Kentucky mountains, the park offers excellent fishing, an 18-hole golf course which is open year-round, a picnic area, a 110-site camping area for tents and recreational vehicles, a marina on the mainland near the park, a community pool, and recreation.

The Big South Fork National River and Recreation Area, 64 miles east of Burkesville near Whitley City, was developed as an outdoor recreation area by the U.S. Army Corps of Engineers in cooperation with the National Park Service. The area lies along the Big South Fork of the Cumberland River in Kentucky and Tennessee and encompasses some of the state's most rugged and scenic terrain. Recreational opportunities in the National Park Area include hiking, camping, horseback riding and picnicking, whitewater rafting, canoeing and kayaking trips. The Big South Fork Scenic Railway offers a chance to see part of the rugged Cumberland River area by rail. The train operates on a regular schedule between Stearns and the Big South Fork National River and Recreation Area near the historic Blue Heron Coal Tipple, a distance of about 5 miles each direction. The historic mining community of Blue Heron, a "boom-town" in the 1930's, will be recreated with interpretive exhibits. It is scheduled to open by Spring 1989.

Green River Lake State Park near Campbellsville, 65 miles north of Burkesville, is made up of 1,300 acres surrounding an 8,200-acre lake. The park is open all year-round and offers 156 campsites, a service building, playground, planned recreation, beaches, boat docks, fishing, and a picnic area.



## COMMUNITY IMPROVEMENTS

### Recent

GROCO Manufacturing, Inc., recently located in Burkesville. The company manufactures ladies' blouses and employs 60 workers.

The Cumberland County School System recently completed construction of a new \$1,947,000 middle school which serves grades 6-8.

A Clinton-Cumberland County airport board was recently formed for the purpose of developing a new joint local airport. A site has been selected and a masterplan completed. Construction will begin as funds become available.

The city of Burkesville has recently experienced an impressive revitalization. Old buildings have been torn down to make way for attractive new residences and businesses. Store fronts on Main Street have been renovated. Major residential revitalization projects include the Hill Project, Daugantown Project, and the Burkesville Manor (a new apartment complex for the elderly and handicapped).

Recent commercial additions to Burkesville include: a new Dairy Queen, Pizza Hut, Riverfront Do-It Center, and Riverside IGA.

### Planned

Plans are being made to provide natural gas service to Burkesville. Four 6-inch mains will be run to Burkesville by Ken-Gas of Kentucky, Inc. The city's industrial site will be included in the service area. Service is scheduled to begin the fall of 1988.

Plans are currently under way to construct a new water treatment plant in Burkesville. This additional plant will have a capacity of over 500,000 gpd and will cost approximately \$750,000. Completion of the project is scheduled for the spring of 1989.

Plans are under way to renovate and expand the Cumberland County Elementary School. Cost of the project is approximately \$2.3 million.



**Cabinet for Economic Development  
Department of Business Development  
Capital Plaza Tower  
Frankfort, Kentucky 40601  
(502) 564-7140**