

1979

Industrial Resources - Daviess County

Kentucky Library Research Collections
Western Kentucky University, spcol@wku.edu

Follow this and additional works at: https://digitalcommons.wku.edu/daviess_cty

 Part of the [Business Administration, Management, and Operations Commons](#), [Growth and Development Commons](#), and the [Infrastructure Commons](#)

Recommended Citation

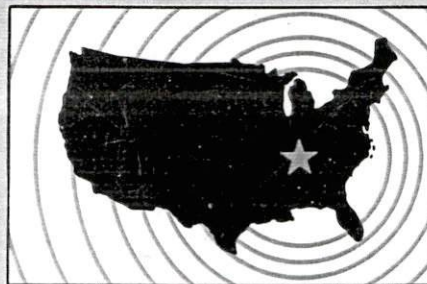
Kentucky Library Research Collections, "Industrial Resources - Daviess County" (1979). *Daviess County*. Paper 8.
https://digitalcommons.wku.edu/daviess_cty/8

This Report is brought to you for free and open access by TopSCHOLAR®. It has been accepted for inclusion in Daviess County by an authorized administrator of TopSCHOLAR®. For more information, please contact topscholar@wku.edu.

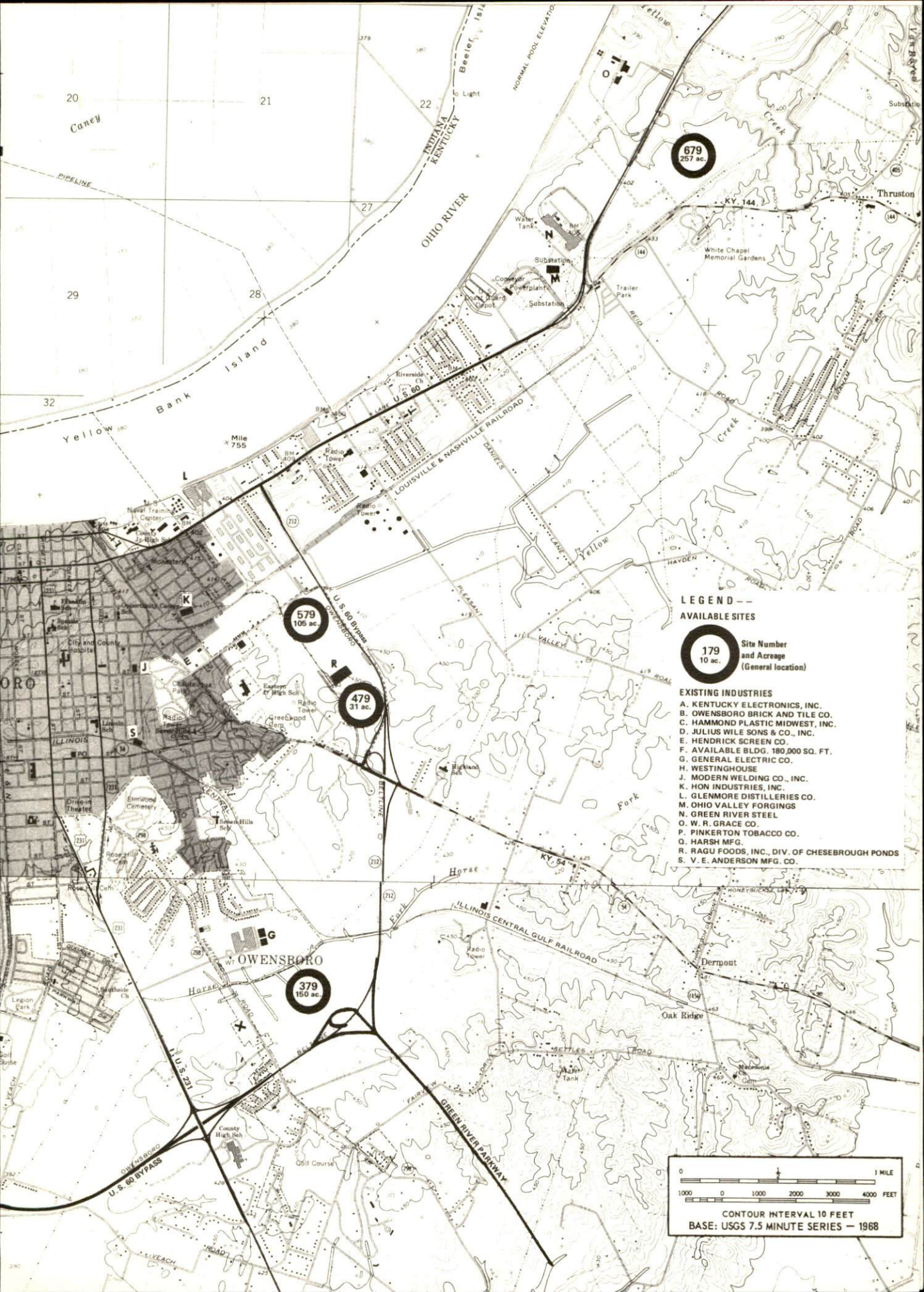
INDUSTRIAL RESOURCES

OWENSBORO

**Kentucky
first**



DEPARTMENT OF COMMERCE



679
257 ac.

579
105 ac.

479
31 ac.

379
150 ac.

LEGEND --
AVAILABLE SITES

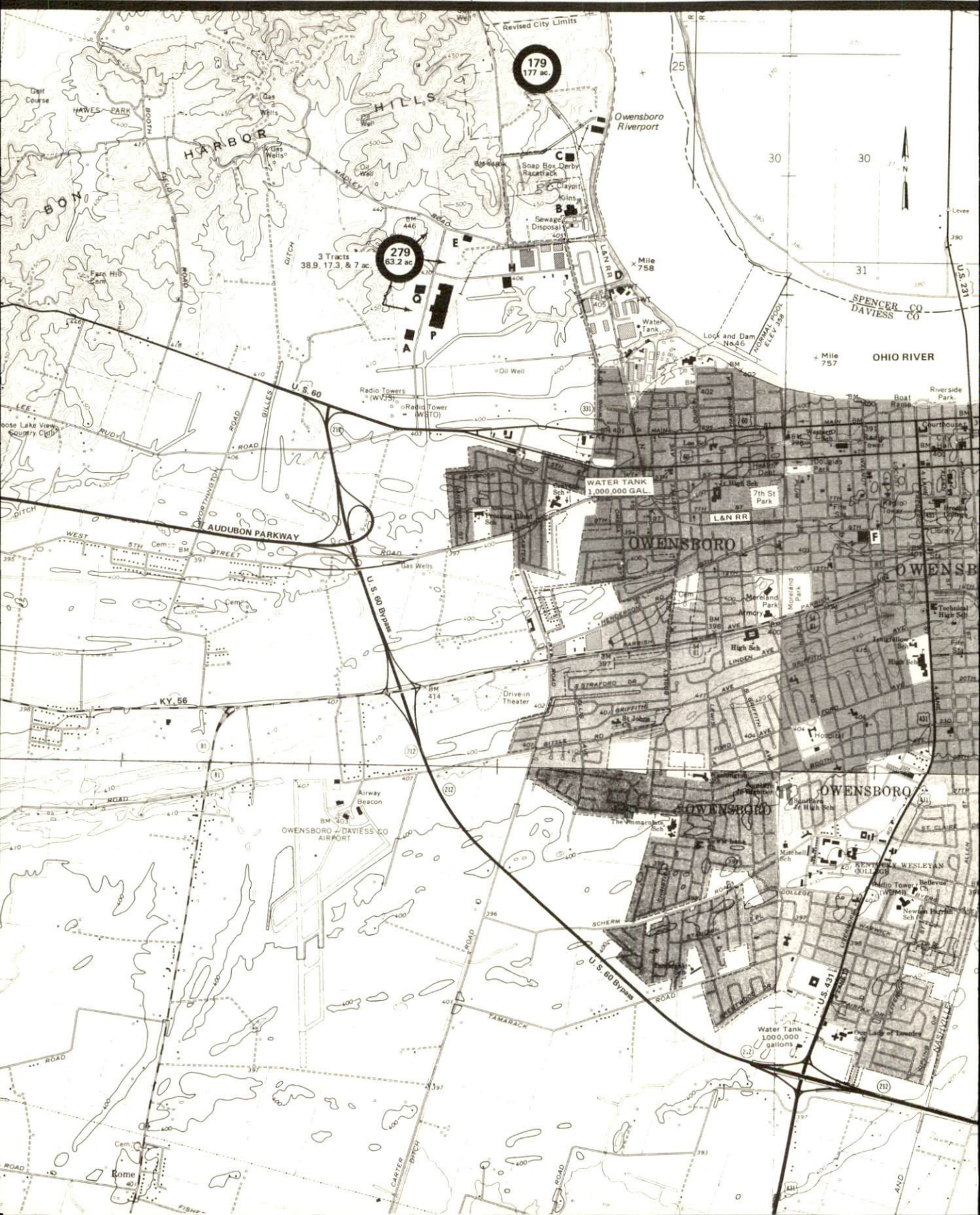
179
10 ac.
Site Number
and Acreage
(General location)

- EXISTING INDUSTRIES
- A. KENTUCKY ELECTRONICS, INC.
 - B. OWENSBORO BRICK AND TILE CO.
 - C. HAMMOND PLASTIC MIDWEST, INC.
 - D. JULIUS WILE SONS & CO., INC.
 - E. HENDRICK SCREEN CO.
 - F. AVAILABLE BLDG. 180,000 SQ. FT.
 - G. GENERAL ELECTRIC CO.
 - H. WESTINGHOUSE
 - J. MODERN WELDING CO., INC.
 - K. HON INDUSTRIES, INC.
 - L. GLENMORE DISTILLERIES CO.
 - M. OHIO VALLEY FORGINGS
 - N. GREEN RIVER STEEL
 - O. W. R. GRACE CO.
 - P. PINKERTON TOBACCO CO.
 - Q. HARSH MFG.
 - R. RAGU FOODS, INC., DIV. OF CHESEBROUGH PONDS
 - S. V. E. ANDERSON MFG. CO.

0 1 MILE
1000 0 1000 2000 3000 4000 FEET
CONTOUR INTERVAL 10 FEET
BASE: USGS 7.5 MINUTE SERIES - 1968

OWENSBORO, KENTUCKY --- Index to Industrial Sites --- 1979

For detailed data on individual sites, contact Owensboro-Daviess County Chamber of Commerce, 119 West 2nd Street, Owensboro, Kentucky 42301, Phone (502) 926-1860, or the Industrial Development Division, Kentucky Department of Commerce, Capital Plaza Tower, Frankfort, Kentucky 40601, Phone (502) 564-7140.



OWENSBORO RIVERPORT AUTHORITY



INDUSTRIAL PARK
POST OFFICE BOX 657
OWENSBORO, KENTUCKY 42301
PHONE (502) 926-4238
PORT DIRECTOR: TONY RINALDO
TERMINAL MANAGER: JAN DOUGLAS

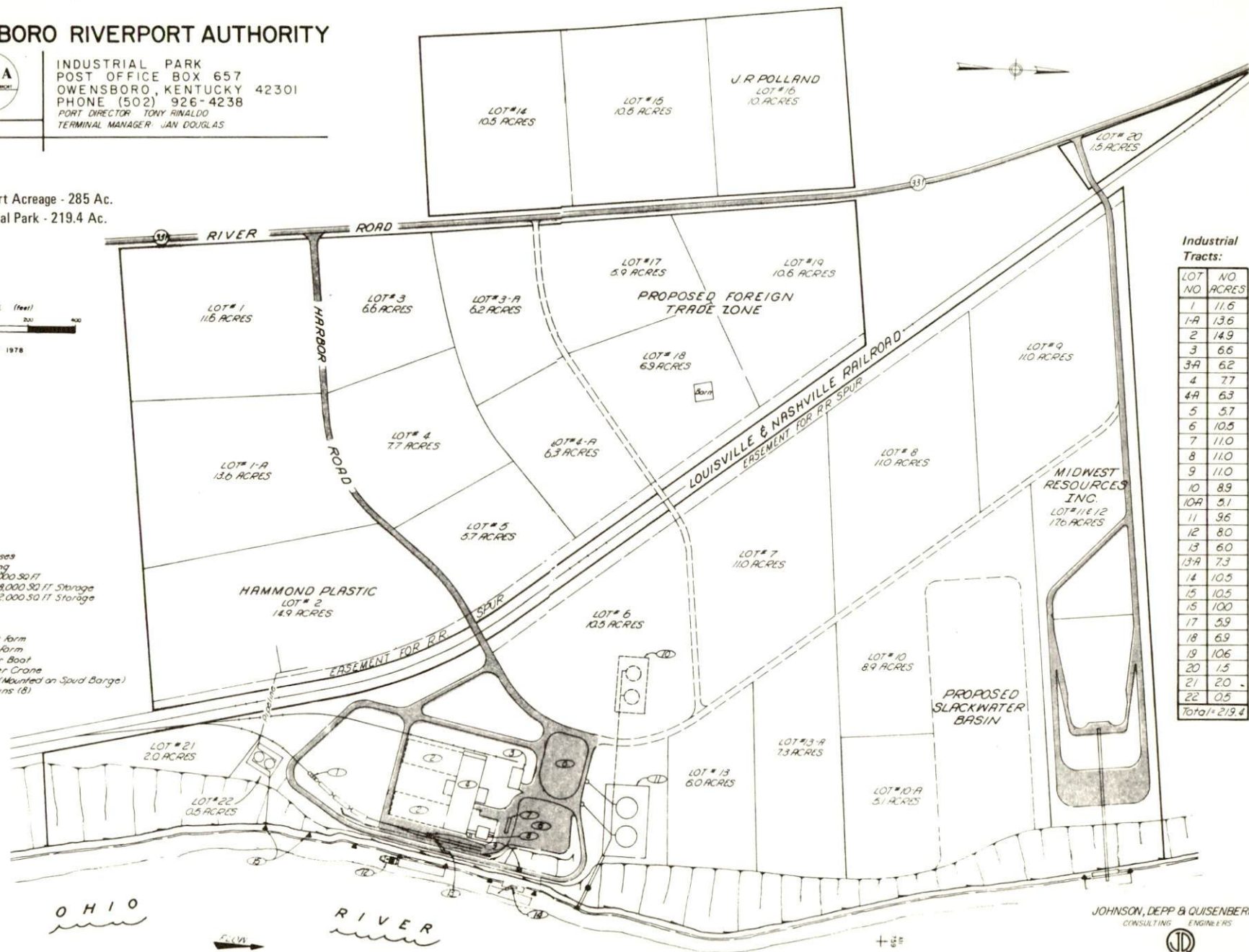
Total Riverport Acreage - 285 Ac.
Industrial Park - 219.4 Ac.

SCALE (feet)
0 100 200 300 400

NOV 1978

Port Facilities:

- (1) Truck Mobile
- (2) Future Warehouses
- (3) Service Building
- (4) Warehouse 30,000 SQ FT
- (5) Asphalt Pbd 48,000 SQ FT Storage
- (6) Asphalt Pbd 52,000 SQ FT Storage
- (7) Scales
- (8) Office
- (9) Hoppers
- (10) Proposed Tank Farm
- (11) Existing Tank Farm
- (12) 680 HP Harbor Boat
- (13) 110 Ton Crawler Crane
- (14) 110 Ton Crane (Mounted on Spud Barge)
- (15) Mooring Dolphins (18)



Industrial Tracts:

LOT NO.	ACRES
1	11.6
1-A	13.6
2	14.9
3	6.6
3-A	6.2
4	7.7
4-A	6.3
5	5.7
6	10.5
7	11.0
8	11.0
9	11.0
10	8.9
10-A	5.1
11	9.6
12	8.0
13	6.0
13-A	7.3
14	10.5
15	10.5
15	10.0
17	5.9
18	6.9
19	10.6
20	1.5
21	2.0
22	0.5
Total = 219.4	

JOHNSON, DEPP & QUISENBERRY
CONSULTING ENGINEERS



INDUSTRIAL RESOURCES

OWENSBORO, KENTUCKY

Prepared by
The Kentucky Department of Commerce
Division of Research and Planning
in cooperation with
The Owensboro-Daviess County Chamber of Commerce

1979

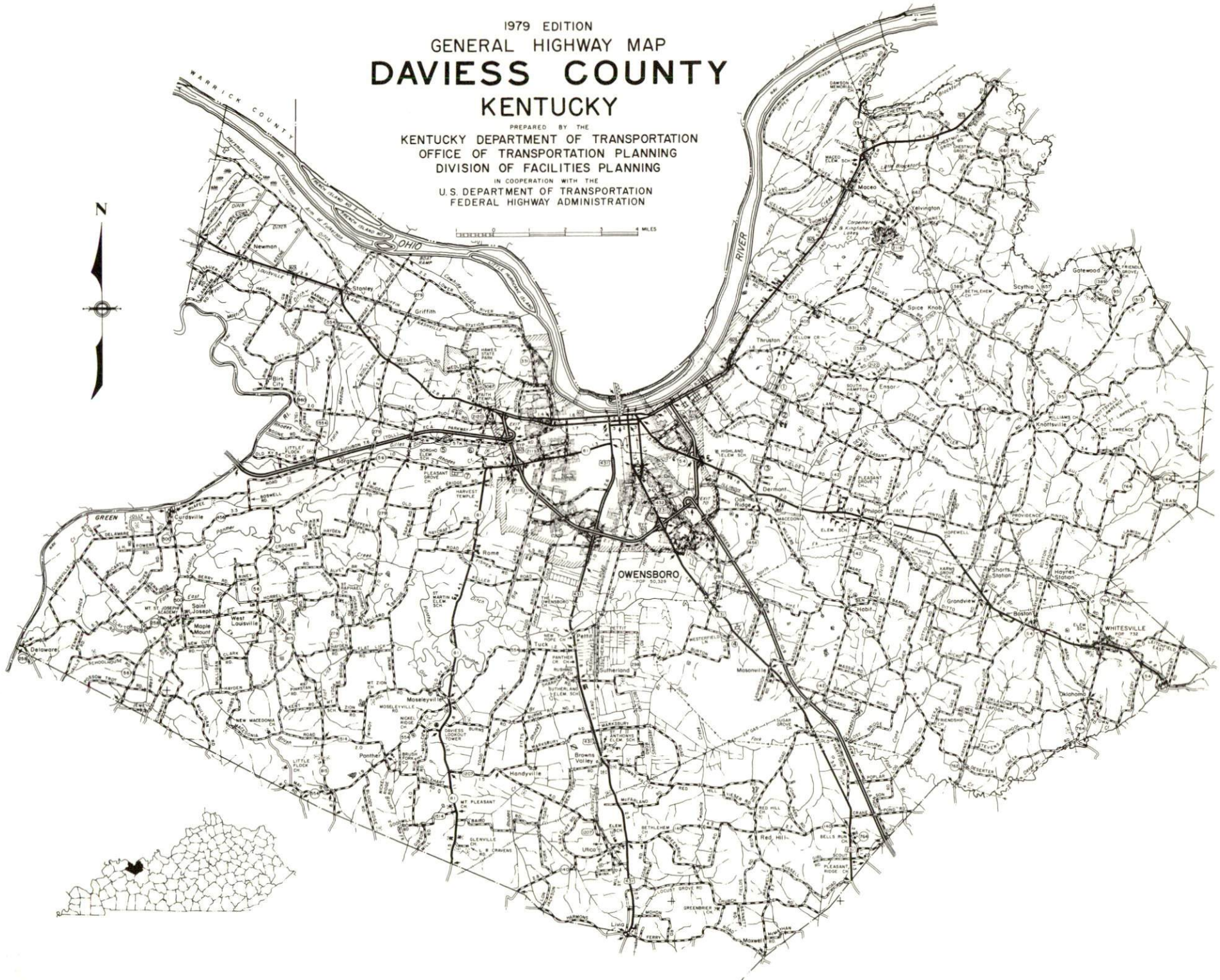
TABLE OF CONTENTS

<u>Chapter</u>	<u>Page</u>
INDUSTRIAL SITES	i
SUMMARY OF INDUSTRIAL RESOURCES - OWENSBORO, KENTUCKY	1
THE LABOR MARKET AREA	6
Population	6
Labor Force Characteristics of Residents, 1978	6
Major Owensboro Manufacturing Firms, Their Products and Employment	7
Labor Organizations	9
Industrial Services	10
Estimated Male Labor Supply	11
Estimated Female Labor Supply	11
Average Weekly Wages by Industry, by Place of Work, 1977 . .	12
Per Capita Personal Income	14
TRANSPORTATION	15
Rail	15
Highways	15
Truck Service	16
Air	18
Bus	19
Taxi	19
Rental Services	19
Water	19
River Terminals - Owensboro, Kentucky	20
POWER AND FUEL	21
Electricity	21
Natural Gas	24
Other Fuels	24
WATER AND SEWERAGE	25
Water	25
Sewerage	30
CLIMATE	31

<u>Chapter</u>	<u>Page</u>
LOCAL GOVERNMENT	32
City	32
County	32
Assessed Value of Property, 1978-79	32
Property Taxes	33
Combined State and Local Rates Per \$100 Valuation, 1978 . .	33
Utilities Gross Receipts Tax for Schools	34
Planning and Zoning	34
Safety	34
Police	34
Fire	34
Rescue Service	35
Refuse Collection and Disposal	35
EDUCATION	37
Public Schools	37
Nonpublic Schools	37
Area Colleges and Universities	39
Vocational Schools	40
HEALTH	43
Local Medical Personnel	43
Hospitals	43
Other Medical Facilities	43
Ambulance Service	43
Public Health	44
OTHER LOCAL FACILITIES	45
Communications	45
Library Services	46
Religious Institutions	46
Financial Institutions	49
Hotels and Motels	49
Clubs and Organizations	49
RECREATION	51
COMMUNITY IMPROVEMENTS	53

1979 EDITION
GENERAL HIGHWAY MAP
DAVISS COUNTY
KENTUCKY

PREPARED BY THE
KENTUCKY DEPARTMENT OF TRANSPORTATION
OFFICE OF TRANSPORTATION PLANNING
DIVISION OF FACILITIES PLANNING
IN COOPERATION WITH THE
U.S. DEPARTMENT OF TRANSPORTATION
FEDERAL HIGHWAY ADMINISTRATION



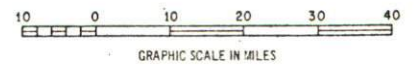
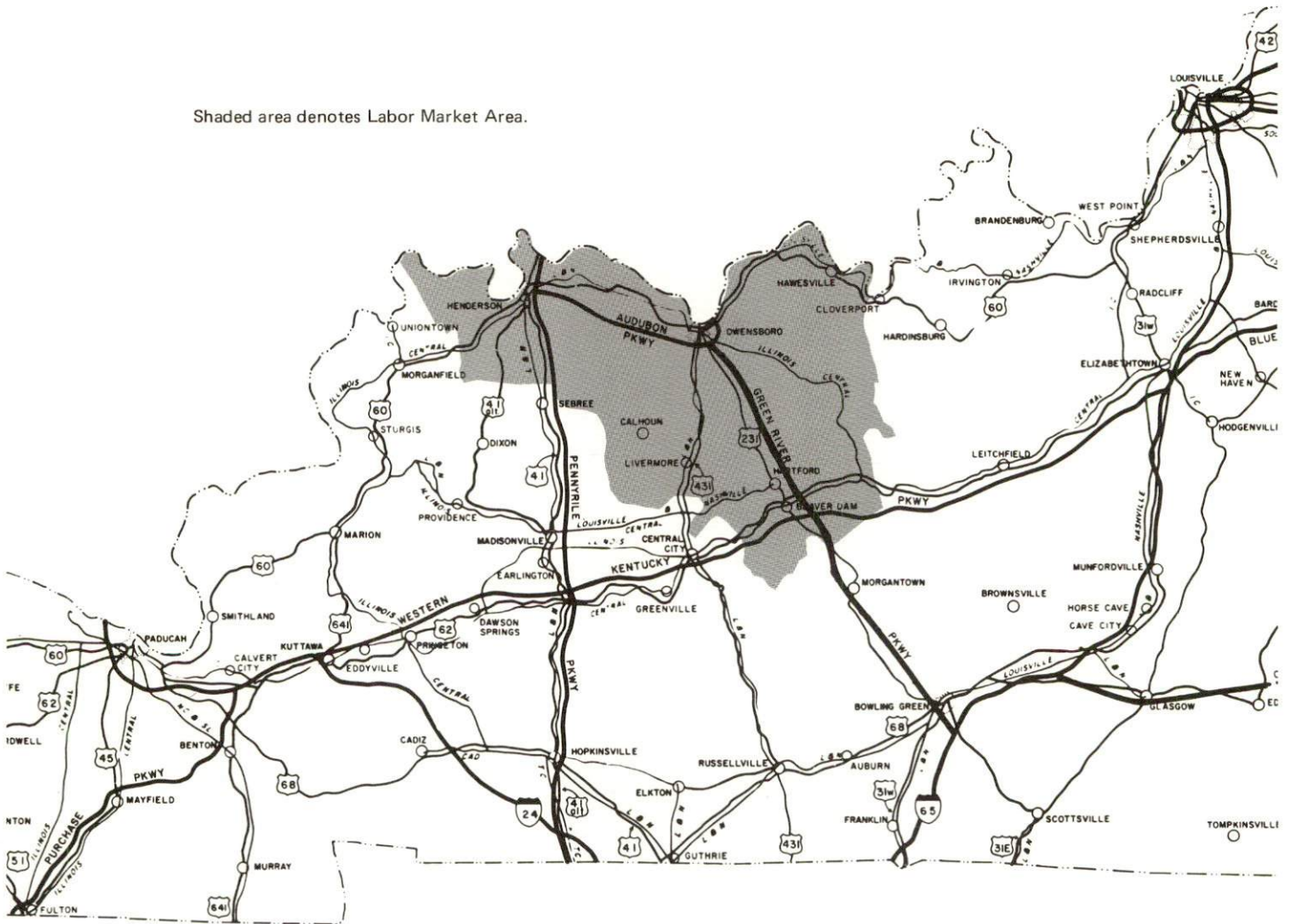


Aerial View of Owensboro, Kentucky

OWENSBORO LABOR MARKET AREA

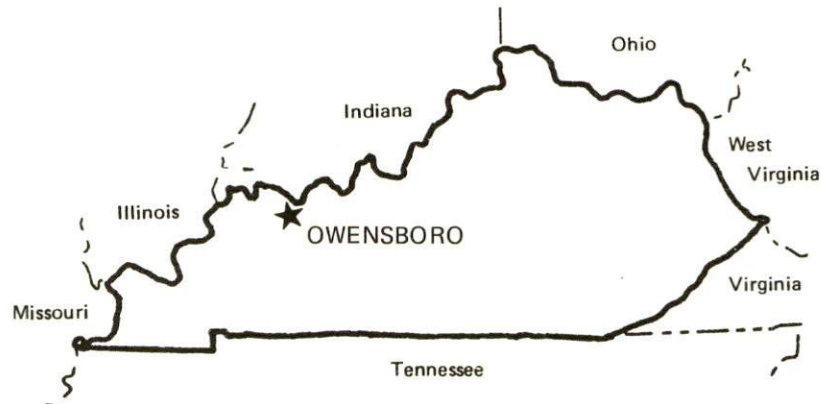


Shaded area denotes Labor Market Area.



SUMMARY OF INDUSTRIAL RESOURCES OWENSBORO, KENTUCKY

LOCATION



Road Distance in Miles:

Atlanta	375	Baltimore	708
Chicago	332	Detroit	470
New York	858	St. Louis	210

POPULATION

City of Owensboro, 1976	50,845
Daviess County, 1977	80,300
Labor Market Area, 1977	156,900
% Nonwhite, Daviess County, 1970	4.3

LABOR ANALYSIS

Labor Market Area - Daviess, Hancock, Henderson, McLean, and Ohio Counties

Estimated available workers from labor market area, 1977:

Male	4,380*	Female	5,177*
Unemployment rate, 1978		Labor Market Area	5.1%
Daviess County	5.1%	McLean County	5.2%
Hancock County	5.3%	Ohio County	4.1%
Henderson County	6.0%		

*The labor supply will be supplemented by the number of men and women in the adjoining Indiana counties of Spencer and Warrick who are available for industrial jobs.

Total employment, Daviess County, 1978 - 35,745
 Manufacturing employment in labor market area, 1977 - 15,620
 Major local manufacturing plants:

<u>Name</u>	<u>Employment</u>
<u>Field Packing Company, Inc.</u>	<u>426</u>
<u>General Electric Company,</u>	
<u>Small Motor Division</u>	<u>492</u>
<u>General Electric Company,</u>	
<u>Tube Division</u>	<u>1,610</u>
<u>Glenmore Distilleries Company</u>	<u>300</u>
<u>Green River Steel</u>	<u>655</u>
<u>Murphy-Miller Company</u>	<u>350</u>
<u>Pinkerton Tobacco Company</u>	<u>300</u>

Labor unions in local manufacturing plants:

Carpenters; Teamsters; Bakery, Confectionery and Tobacco Workers;
Allied Industrial Workers; Guards Union; Distillery Workers;
Firemen and Oilers; Boilermakers; Steelworkers; Plant Guard
Workers; Hod Carriers; Laborers; Upholsterers; Electrical Workers
(IBEW)

TRANSPORTATION

Highways:

Interstate - I-64, 36 miles north; I-65, 74 miles south
 Parkways - Green River Parkway, Audubon Parkway
 U. S. Highways - 60, 231 and 431

Rail:

Railroads - Louisville & Nashville Railroad and Illinois Central
Gulf Railroad
 Piggyback service - Available at Owensboro on the L & N Railroad

Truck:

Number of interstate motor carriers - 13; Local terminals - 4

Water:

Nearest navigable river - Ohio
 Nearest public riverport - Owensboro Riverport Authority

Air:

Scheduled Airline Service -
Owensboro-Daviess County Airport, 3.5 miles from Owensboro
Airline serving - Air Kentucky (commuter)
Evansville Dress Regional Airport, Evansville, 44 miles from Owensboro
Airlines serving - Allegheny, Delta and Eastern

UTILITIES AND SERVICES

Electricity:

Local distributor - Owensboro Municipal Utilities
Source of power - Owensboro Municipal Utilities

Natural Gas:

Local distributor - Western Kentucky Gas Company
Source of supply - Texas Gas Transmission Corporation
Available for new industry - No

Other Fuels:

Number of local propane distributors - 7
Number of local distillate fuel oil distributors - 6

Water, treated:

Local supplier - Municipal
Excess municipal system capacity - 6,476,000 gpd
Expansions planned - No

Water, raw:

Sources for industrial use - Ohio River and wells

Sewer:

Excess treatment capacity - 3,500,000 gpd
Planned expansions - No

Industrial Services:

	<u>Location</u>	<u>Miles Distant</u>
Tool & Die, Machine & Pattern Shops	<u>Owensboro, Kentucky</u>	<u>--</u>
Metal Service Centers	<u>Owensboro, Kentucky</u>	<u>--</u>
Heat Treating	<u>Evansville, Indiana</u>	<u>40</u>
Metal Finishers	<u>Hartford, Kentucky</u>	<u>29</u>
	<u>Evansville, Indiana</u>	<u>40</u>
Electric Motor Repair	<u>Owensboro, Kentucky</u>	<u>--</u>

CLIMATE

Temperature, Normal - 56.0 degrees F.
Precipitation, Normal - 41.88 inches
Snowfall, Mean Annual - 13.4 inches
Prevailing winds - South-southwest
Relative humidity (%) - 6 a.m. 81; 6 p.m. 62

GOVERNMENT

Type - Mayor-City Commission-City Manager

Police personnel - full-time - 170

Fire department personnel - full-time - 99

Fire insurance rating (A.I.A.), class - Inside city - 3
Outside city - 7, 8, and 9

TAXES

Property taxes:

Combined state and local rates per \$100 valuation, 1978
(100% assessment)

	<u>Inside City of Owensboro</u>	<u>Outside City</u>
1. Land and buildings	\$1.515	\$0.757
2. Mfg. machinery, raw materials, goods in process, pollution control equipment	0.150	0.150
3. Finished goods, office equipment, vehicles, other tangibles	1.650	0.892
4. Intangibles (accounts rec., notes, bonds, etc.)	0.250	0.250
5. Leaseholds in I. R. bond financed plants	0.015	0.015

Special local taxes:

Net profits tax - 1 percent in the city of Owensboro

Utilities tax - 3% of electric, gas, water, sewer, telephone services

EDUCATION

State vocational-technical school - Daviess County State Vocational-Technical School

Area vocational technical school - Owensboro Vocational-Technical School

College or university - Brescia College, Kentucky Wesleyan College, and Owensboro Business College, all located in Owensboro

Public Schools:

High school enrollment - 5,036; Student/teacher ratio - 19-1

Middle school enrollment - 3,229; Student/teacher ratio - 15-1

Elementary school enrollment - 6,872; Student/teacher ratio - 18-1

Nonpublic Schools:

Owensboro

Enrollment - 2,665; Student/teacher ratio - 25-1

Daviess County

Enrollment - 1,742; Student/teacher ratio - 23-1

FINANCIAL INSTITUTIONS

Banks - 3; Total assets - \$307,006,226.25

Savings and loan associations - 3; Total assets - \$233,188,804.57

COMMUNICATIONS

Local newspaper - Messenger-Inquirer - Daily

Local radio stations - WVJS-AM; WSTO-FM; WOMI-AM; WBKR-FM

Television reception - Cable service; Educational television

MEDICAL

Number of physicians locally - 85; Number of dentists locally - 40

Hospitals - Owensboro-Daviess County Hospital and Our Lady of Mercy Hospital; Total number of beds - 591

RELIGIOUS FACILITIES

Churches - 204 in Daviess County; Synagogue - Adath Israel, Owensboro

PUBLIC LODGING AND CONVENTION FACILITIES

Total number hotels and motels - 16; Total rooms - 1,182

Convention and meeting room capacity - Up to 2,500

RECREATION FACILITIES

Public golf courses - 1; Parks and playgrounds - 14; Tennis courts - 29;

Swimming pools - 4; Country clubs - 2

Other major facilities - Sportscenter; YWCA; Family-Y

Nearest state parks -

John James Audubon State Park, 30 miles west of Owensboro

Golf; Camping; Swimming; Fishing; Hiking; Boating; Lodgings

Ben Hawes State Park, 4 miles west of Owensboro

Golf; Tennis; Hiking; Softball, Archery

THE LABOR MARKET AREA

POPULATION			
Area	1977*	1970	Percent Nonwhite 1970
Owensboro	50,845**	50,329	6.3
Labor Market Area	156,900	150,449	N/A
Daviess County	80,300	79,486	4.3
Hancock County	7,400	7,080	2.0
Henderson County	37,400	36,031	8.4
McLean County	10,400	9,062	0.9
Ohio County	21,400	18,790	1.4

*Provisional Estimates.

**1976 Population Estimates.

Sources: U. S. Department of Commerce, Bureau of the Census, Census of Population, 1970. U. S. Department of Commerce, Bureau of the Census, Current Population Reports, Series P-25, No. 756, January 1979; Series P-26, No. 77-17, November 1978.

LABOR FORCE CHARACTERISTICS OF RESIDENTS, 1978		
	Daviess County	Labor Market Area
Civilian Labor Force	37,656	75,285
Employment	35,745	71,423
Agricultural	1,403	3,264
Nonagricultural	34,342	68,159
Unemployment	1,911	3,862
Rate of Unemployment (%)	5.1	5.1

Source: Kentucky Department for Human Resources, Kentucky Labor Force Estimates, Annual Averages, 1978.

MAJOR OWENSBORO MANUFACTURING FIRMS,
THEIR PRODUCTS AND EMPLOYMENT*

Firm (Establishment date)	Product	Employment			Organized
		Total	Male	Female	
V. E. Anderson Manufacturing Company (1943)	Aluminum windows and doors, wood windows, insulating glass	225	200	25	**
Colonial Baking Company (1959)	Bread and rolls	187	170	17	**
Field Packing Company, Inc. (1915)	Meat packing	426	362	64	
General Electric Company, Small Motor Division (1977)	Electric motors	492	223	269	**
General Electric Company, Tube Division (1918)	Radio and tele- vision tubes and components, special elec- tron tubes	1,610	470	1,140	**
Glenmore Distilleries Company (1869)	Whiskey, gin, vodka, cocktails	300	225	75	**
W. R. Grace Company, Polyfibron Division (1959)	Battery separators, latex, cellulosic fibers	266	239	27	**
Green River Steel, Division of Jessop Steel, An Athlone Company (1952)	Bars, billets, blooms, stainless steel, carbon and alloy steel	655	632	23	**
Kentucky Electronics, Inc. (1960)	Wire drawing, cathode ray tube parts, electro- mechanical as- semblies	169	77	92	**
Medley Distilling Company (1940)	Whiskey, animal feed supplement	191	131	60	
Modern Welding Company, Inc. (1933)	Storage tanks, pressure vessels, fabricated structural steel	160	154	6	

<u>Firm (Establishment date)</u>	<u>Product</u>	<u>Employment</u>			<u>Organized</u>
		<u>Total</u>	<u>Male</u>	<u>Female</u>	
Murphy-Miller Company (1945)	Office chairs	350	272	78	**
Opportunity Center Workshop (1960)	Styrofoam products, corsages, grading and surveyor stakes, paper floral sleeves	85	42	43	
Owensboro Brick & Tile Company (1952)	Brickettes, face brick	100	95	5	
Owensboro Grain Company (1946)	Soybean oil, meal	102	100	2	
Owensboro Ice Cream & Dairy Products (1927)	Fluid milk, ice cream	74	69	5	**
Owensboro Publishing Company (1929)	Newspaper	120	65	55	**
Pinkerton Tobacco Company (1973)	Chewing and smoking tobacco	300	N/A	N/A	**
Premium Allied Tool, Inc. (1966)	Metal stampings, wire forms, weldments	120	90	30	
Ragu Foods, Inc., Division Cheeseborough-Ponds (1974)	Spaghetti sauce, cooking sauces	107	37	70	
Westinghouse Incandescent Lamp Plant (1945)	Incandescent lamps	234	100	134	**
Whitehall Furniture, Inc. (1968)	Wood office furniture	99	73	26	

*Firms with 70 or more employees.

**See Labor Organizations below.

Source: Kentucky Department of Commerce, Division of Research and Planning.

LABOR ORGANIZATIONS

<u>Company</u>	<u>Union</u>
V. E. Anderson Manufacturing Company	United Brotherhood of Carpenters and Joiners of America, AFL-CIO; International Brotherhood of Teamsters, Chauffeurs, Warehousemen and Helpers of America, (Truck Drivers)
Baskin-Robbins, Inc.	International Brotherhood of Teamsters, Chauffeurs, Warehousemen and Helpers of America
Colonial Baking Company	Bakery, Confectionery and Tobacco Workers' International Union, AFL-CIO,CLC; International Brotherhood of Teamsters, Chauffeurs, Warehousemen and Helpers of America
General Electric Company	International Union, Allied Industrial Workers of America, AFL-CIO; International Guards Union of America
Glenmore Distilleries Company	Distillery, Wine and Allied Workers' International Union, AFL-CIO,CLC; International Brotherhood of Firemen and Oilers, AFL-CIO
W. R. Grace Company	International Brotherhood of Boilermakers, Iron Shipbuilders, Blacksmiths, Forgers and Helpers, AFL-CIO
Green River Steel	United Steelworkers of America, AFL-CIO; United Plant Guard Workers International Union
Katterjohn Concrete Company	Hod Carriers and Common Laborers
Kentucky Concrete Pipe Company	Laborers' International Union of North America, AFL-CIO
Kentucky Electronics, Inc.	United Steelworkers of America, AFL-CIO
Lloyds Mechanical Erection Company	United Brotherhood of Carpenters and Joiners of America, AFL-CIO
Murphy-Miller, Inc.	Upholsterers International Union of North America, AFL-CIO
Ohio Valley Forgings	International Brotherhood of Boilermakers, Iron Shipbuilders, Blacksmiths, Forgers and Helpers, AFL-CIO
Omico, Inc.	United Food and Commercial Workers Union of North America, AFL-CIO

<u>Company</u>	<u>Union</u>
Owensboro Concrete Company	International Brotherhood of Teamsters, Chauffeurs, Warehousemen and Helpers of America
Owensboro Ice Cream & Dairy Products	International Brotherhood of Teamsters, Chauffeurs, Warehousemen and Helpers of America
Owensboro Publishing Company	Owensboro Printing Pressmen and Assistants Union
Pinkerton Tobacco Company	Bakery, Confectionery and Tobacco Workers' International Union, AFL-CIO,CLC
Transit-Mix Concrete	International Brotherhood of Teamsters, Chauffeurs, Warehousemen and Helpers of America
Westinghouse Corporation	International Brotherhood of Electrical Workers, AFL-CIO
Westinghouse Incandescent Lamp Plant	International Union, Allied Industrial Workers of America, AFL-CIO
Julius Wile Sons & Company, Inc.	Distillery, Wine & Allied Workers' International Union, AFL-CIO,CLC; International Brotherhood of Firemen and Oilers, AFL-CIO

INDUSTRIAL SERVICES

	<u>Location</u>	<u>Miles Distant</u>
Tool & Die, Machine & Pattern Shops	Owensboro, Kentucky	--
Metal Service Centers	Owensboro, Kentucky	--
Heat Treating	Evansville, Indiana	40
Metal Finishers	Hartford, Kentucky	29
	Evansville, Indiana	40
Electric Motor Repair	Owensboro, Kentucky	--

Source: Kentucky Department of Commerce, Division of Research and Planning.

ESTIMATED MALE LABOR SUPPLY
OWENSBORO LABOR MARKET AREA*

Area	Current			Future	
	Total	Not in Labor Force	Unemployed	Under-employed	Reaching 18 years of age before 1985
Labor Market					
Area	4,380	0	2,320	2,060	7,708
Daviess	2,318	0	1,238	1,080	4,205
Hancock	201	0	91	110	407
Henderson	930	0	480	450	1,832
McLean	299	0	179	120	400
Ohio	632	0	332	300	864

*The labor supply will be supplemented by the number of men in the adjoining Indiana counties of Spencer and Warrick who are available for industrial jobs.

Sources: Kentucky Department for Human Resources, Kentucky Labor Supply Estimates by County, 1977. Kentucky Department of Commerce, Future Labor Supply Before 1985.

ESTIMATED FEMALE LABOR SUPPLY
OWENSBORO LABOR MARKET AREA*

Area	Current			Future	
	Total	Not in Labor Force	Unemployed	Under-employed	Reaching 18 years of age before 1985
Labor Market					
Area	5,177	1,180	1,057	2,940	7,487
Daviess	2,098	0	528	1,570	4,092
Hancock	439	260	39	140	358
Henderson	1,682	680	272	730	1,798
McLean	467	240	77	150	407
Ohio	491	0	141	350	832

*The labor supply will be supplemented by the number of women in the adjoining Indiana counties of Spencer and Warrick who are available for industrial jobs.

Sources: Kentucky Department for Human Resources, Kentucky Labor Supply Estimates by County, 1977. Kentucky Department of Commerce, Future Labor Supply Before 1985.

AVERAGE WEEKLY WAGES BY INDUSTRY,
BY PLACE OF WORK, 1977

	<u>Daviess County</u>	<u>Hancock County</u>	<u>Henderson County</u>
All Industries	\$193.81	\$312.96	\$188.51
Mining & Quarrying	261.24	262.54	281.93
Contract Construction	216.14	243.01	273.13
Manufacturing	234.18	346.36	212.70
Transportation, Communications & Public Utilities	283.40	*	246.80
Wholesale & Retail Trade	143.29	109.22	141.14
Finance, Insurance & Real Estate	187.74	138.32	168.43
Services	142.72	109.57	156.17
Other	143.22	*	107.39

	<u>McLean County</u>	<u>Ohio County</u>
All Industries	\$162.63	\$266.12
Mining & Quarrying	313.73	*
Contract Construction	130.65	209.64
Manufacturing	158.19	161.68
Transportation, Communications & Public Utilities	225.84	198.32
Wholesale & Retail Trade	137.57	124.46
Finance, Insurance & Real Estate	135.04	174.00
Services	115.54	123.94
Other	*	*

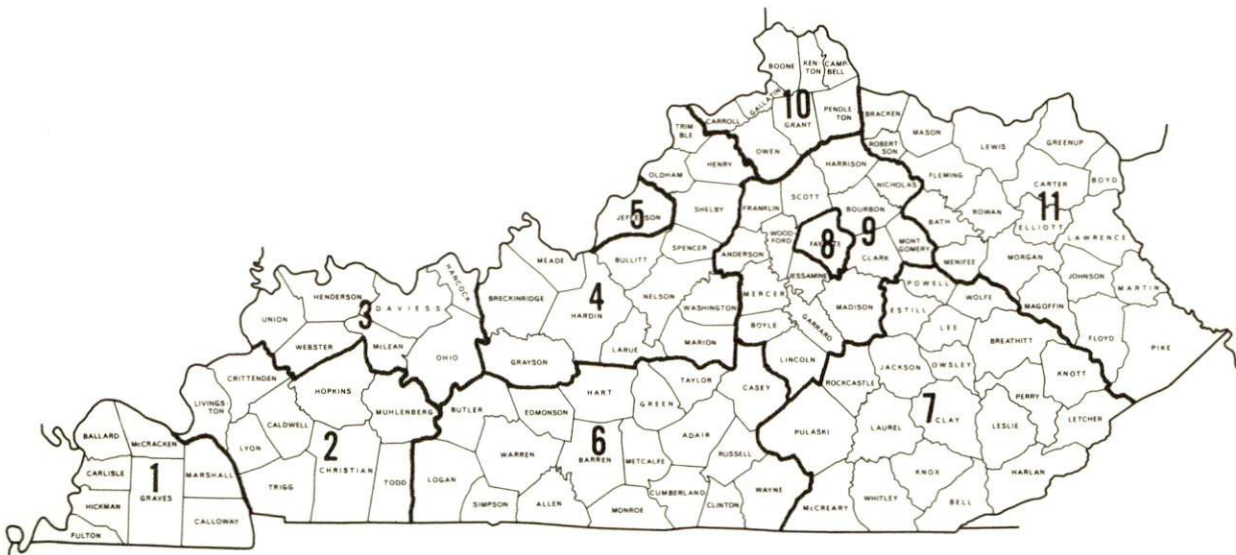
*Not disclosed.

Note: Excludes domestic workers, railway workers; certain nonprofit corporations; majority of federal, state, and local government workers; and self-employed workers.

Source: Kentucky Department for Human Resources, Average Weekly Wages of Workers Covered by Kentucky Unemployment Insurance Law, 1977.

Occupational wage rates for specific industries are usually not available to most government agencies, and wage data furnished to state employment agencies by individual industrial employers is protected from disclosure by federal law. The most reliable up-to-date wage information can be obtained by direct contact with local employers.

Associated Industries of Kentucky, a voluntary organization of Kentucky businesses, regularly collects occupational wage rates and fringe benefits data from participating member firms. Data is compiled for over 127 clearly defined office, production, and service occupations. Tabulations are published for eleven regions of Kentucky, as shown on the map below. It should be noted that the data may be weighted by the preponderance of firms in the larger cities and may be somewhat higher than the rates paid in the smaller communities. Data from these tabulations are available, upon request, from the Kentucky Department of Commerce, Frankfort, Kentucky 40601.



Associated Industries of Kentucky Area Wage Surveys

PER CAPITA PERSONAL INCOME

<u>Area</u>	<u>1977</u>	<u>1973</u>	<u>Percent Change</u>
Daviess County	\$6,926	\$4,392	57.7
Labor Market Area			
Range	\$4,937 - 7,074	\$3,536 - 4,475	N/A
Kentucky	5,989	4,021	48.9
U. S.	7,026	4,980	41.1

Source: U. S. Department of Commerce, Bureau of Economic Analysis,
April 1979.

TRANSPORTATION

Rail

Line serving Owensboro - Louisville & Nashville Railroad

Services - Main lines; one local freight from Louisville to Owensboro and return daily; one northbound and one southbound through freights daily; switching facilities; team track space for five to seven cars; siding space available in a small yard; piggyback facilities

Line serving Owensboro - Illinois Central Gulf Railroad

Services - Branch line; freight service from main line at Horse Branch to Owensboro and return three times weekly; switching facilities; team track space for 15 cars; siding space for 10 cars; nearest Illinois Central Gulf Railroad piggyback facilities at Evansville, Indiana, 40 miles northwest of Owensboro, and at Princeton, Kentucky, 85 miles southwest of Owensboro

For details on routing, schedules, rates, and services, contact:

Manager of Industrial Development
Louisville & Nashville Railroad
908 West Broadway
Louisville, Kentucky 40201
(502) 587-5000

and/or

Manager of Industrial Development
Illinois Central Gulf Railroad
112 North 4th Street
240 Pierce Building
St. Louis, Missouri 63102
(314) 241-9400

Highways

U. S. Highways 60, 231 and 431 and Kentucky Routes 54, 56 and 81 converge at Owensboro. The city is encircled by a four-lane limited access bypass, the Wendell H. Ford Expressway. Highway access is also provided by two parkways. The Audubon Parkway is a four-lane toll road that extends from Owensboro westward and connects with the north-south Pennyryle Parkway, 27 miles away. The Green River Parkway, also a four-lane toll road, extends from Owensboro southward and connects with the Western Kentucky Parkway, 34 miles away, and with Interstate 65 at Bowling Green, 74 miles away. An interchange of Interstate 64, providing direct access to Louisville and St. Louis, is located 36 miles north of Owensboro.

Truck Service

Company

A & H Truck Line, Inc.* (T)
Branch Motor Express
Company**
Interstate Motor Freight
System*
Majors Transit, Inc.*
McLean Trucking Company* (T)
Overnite Transportation
Company*
Owensboro Express, Inc.** (T)
(operated by Bowling Green
Express, Inc.)
Roadway Express, Inc.*
Robbins Truck Line, Inc.**
Smith's Transfer Corporation*
Springfield Express, Inc.*
T.I.M.E.-DC, Inc.*
Transport Motor Express,
Inc.* (T)

Home Office

1111 East Louisiana Street
Evansville, Indiana 47711
114 Fifth Avenue
New York, New York 10011
134 Grandville Avenue, S.W.
Grand Rapids, Michigan 49503
P. O. Box 7
Caneyville, Kentucky 42721
P. O. Box 213
Winston-Salem, North Carolina 27102
1000 Semmes Avenue
P. O. Box 1216
Richmond, Virginia 23209
P. O. Box 66, Route 14
Bowling Green, Kentucky 42101
1077 Gorge Boulevard
Akron, Ohio 44309
Route 1
Hardinsburg, Kentucky 40143
P. O. Box 1000
Staunton, Virginia 24401
P. O. Box 310
Memorial Boulevard
Springfield, Tennessee 37172
P. O. Box 2550
Lubbock, Texas 79408
Meyer Road
P. O. Box 958
Ft. Wayne, Indiana 46801

(T) Local terminal.

*Interstate only.

**Interstate and intrastate only.

Other Freight ServicesNearest Shipping Center or Home Office

Purolator Courier Corporation*
 United Parcel Service*
 KATO Express (air cargo
 service)**

Owensboro, Kentucky
 Owensboro, Kentucky
 Elizabethtown, Kentucky

HIGHWAY MILES AND TRUCK TRANSIT TIME IN DAYS FROM
 OWENSBORO, KENTUCKY, TO SELECTED MARKET CENTERS

City	Highway Miles	Delivery Time TL	City	Highway Miles	Delivery Time TL
Atlanta, Ga.	375	2	Los Angeles, Ca.	2,055	6
Baltimore, Md.	708	2	Louisville, Ky.	110	1
Birmingham, Ala.	329	2	Nashville, Tenn.	133	N/A
Chicago, Ill.	332	2	New Orleans, La.	650	3
Cincinnati, Ohio	211	1	New York, N. Y.	858	4
Cleveland, Ohio	455	2	Pittsburgh, Pa.	498	2
Detroit, Mich.	470	2	St. Louis, Mo.	210	2
Knoxville, Tenn.	310	2			

Source: Delivery Time Only - Owensboro Express, Inc., P. O. Box 66,
 Route 14, Bowling Green, Kentucky 42101.

*For regular scheduled pickups or for occasional pickups arrangements must be made with the Louisville office of Purolator Courier Corporation or United Parcel Service.

**Daily pickup and delivery service is available to and from Standiford Field in Louisville. Arrangements for service should be made through the home office in Elizabethtown.

Air

Scheduled Airline Service

Owensboro-Daviess County Airport
Location: 3.5 miles west-southwest of Owensboro
Runways: 2 paved
Length: 6,500 feet; 3,700 feet
Traffic
Control: Control tower, ground control, ILS System
Lighting: Beacon, runways, wind sock, obstruction lights and taxi light, MALS/RAIL, VASI, REIL, MALS
Services: Air Kentucky Airlines (commuter air carrier), charter, 100 octane and Jet A fuel, storage, major A & E repairs, general flying service, taxi, rental cars, direct line to motel, restaurant
Air Freight Service: Air freight accepted on a space available basis

Evansville Dress Regional Airport
Location: 4 miles north of Evansville, Indiana; 44 miles northwest of Owensboro
Runways: 3 paved
Length: 8,021 feet; 5,088 feet; 2,968 feet
Traffic
Control: Tower, ground control, arrival and departure control, clearance, radar, Automatic Terminal Information Service
Lighting: Beacon and runway lights
Services: Allegheny, Delta and Eastern Airlines, Fuel - LL-100, major repairs, major avionics repair, hangars and tie downs, Flight Service Station, APU, charter, flight instruction, plane rental, car rental, courtesy car, limousine, taxi, restaurant
Air Freight Service: Air freight terminal regularly serviced by freight carrying airlines

Bus - Owensboro Transit System (Intracity)

Greyhound Bus Lines

Fuqua Bus Lines, Inc.

Evansville & Ohio Valley Transportation & Bus Lines

Taxi - 2 companies - 24-hour, radio-dispatched service

Rental Services - Car, truck and trailer rentals

Water

Located on the Ohio River, a major river in the Eastern United States Inland Waterways System, Owensboro is an excellent location for riverport facilities. Navigation on the Ohio River is being improved by the construction of new and larger locks and dams under the supervision of the U. S. Corps of Engineers. This project, in part, provides for the number of lockages to be reduced from 46 to 18 and the present method of double locking large tows to be eliminated by the new 1,200-foot lock chambers. In addition, the Tennessee-Tombigbee Waterway, scheduled to be completed in the early 1980's, will reduce the distance to the Gulf by nearly 400 miles. These improvements will substantially decrease transportation time and cost.

The Owensboro Riverport Authority was established in 1967 by the city of Owensboro for the purpose of developing riverport facilities and developing land to attract river-oriented industries. The authority officially opened a \$5.6 million public river terminal in June 1976. This facility, located on a 50-acre site at Ohio River Mile 759, has a 30,000-square-foot transfer warehouse, 9,300 square yards of paved outside storage, two 1.2 million gallon liquid storage tanks, and two 110-ton cranes (one located on a spud barge) for the transfer of commodities. The facility has eight mooring dolphins and space for approximately 30 to 40 barges. Tug and fleeting service is available 24 hours a day. The riverport is located on a main line of the L & N Railroad and is served by a short "AAA" highway connection to the parkway and interstate systems. A 230-acre fully developed industrial park is located adjacent to the riverport facility.

Commercial barge lines providing regular service to Owensboro include American Commercial Barge Line Company, Federal Barge Lines Inc., Riverway, Union Mechling Corporation and Walker Towing Corporation. Irregular barge service is provided by Ohio Barge Line.

RIVER TERMINALS - OWENSBORO, KENTUCKY

Owner or Operator	Type of Freight	Shelter
Owensboro River Rail Terminal (Division of Owensboro River Sand & Gravel)*	Steel, scrap iron and miscellaneous freight	None
Owensboro River Terminal	Petroleum products	Storage tanks
Owensboro Riverport Authority**	General cargo	Warehouse/ storage tanks
Ashland Oil & Refining Company and Owensboro Ashland Company (Sohio-Ashland)	Oil (crude)	Storage tanks
Texaco, Inc.	Petroleum products	Storage tanks
Glenmore Distilleries	Grain alcohol	Storage tanks
Standard Oil Company (Kentucky)	Petroleum products and fuel oil	Storage tanks
Mid-America Terminal of Kentucky, Inc.	Coal	None
Missouri Portland Cement Company	Bulk cement	Silos
Owensboro Grain Company, Inc.	Grain	None
Owensboro River Sand & Gravel Company	Sand and gravel	Silos, truck- loading hoppers and garage
Murphy Grain and Milling Company	Grain	None
Green Coal Company	Coal	None
Marks Steel Products Company	Molasses	Storage tanks

*Private and public facility.

**Public facility; all others are private.

POWER AND FUEL

Electricity

Company serving Owensboro - Owensboro Municipal Utilities

Source of power - Owensboro Municipal Utilities

Total generating capacity - 415,000 KW

For industrial rates contact:

General Manager
Owensboro Municipal Utilities
115 East Fourth Street
Owensboro, Kentucky 42301
(502) 926-3200

Company serving the major part of Daviess County - Green River

Electric Corporation

Source of power - Big Rivers Electric Corporation

Total generating capacity - 678,300 KW

For industrial rates contact:

Green River Electric Corporation
3111 Fairview Drive
P. O. Box 1389
Owensboro, Kentucky 42301
(502) 926-4141

Company serving a small part of Daviess County - Kentucky Utilities

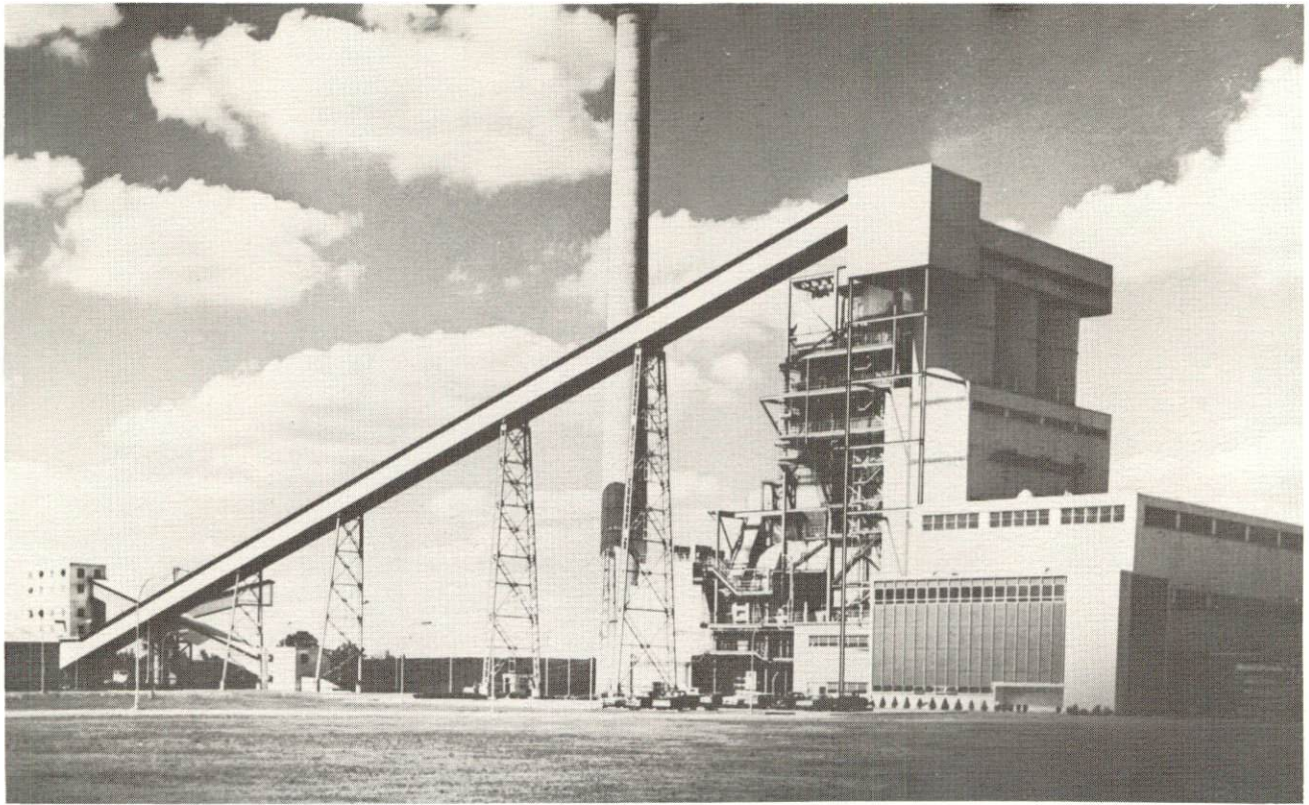
Company

Source of power - Kentucky Utilities Company

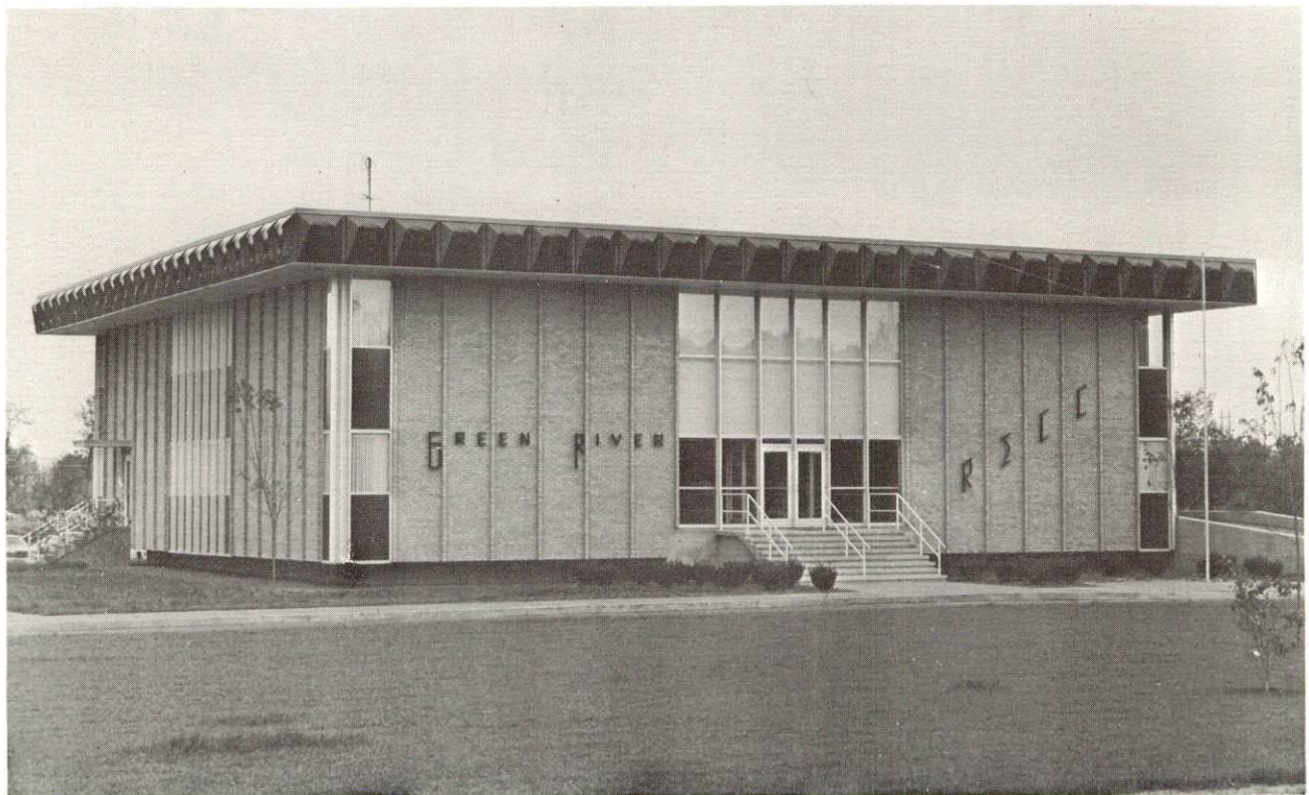
Total generating capacity - 2,238,400 KW

For industrial rates contact:

Industrial Development Department
Kentucky Utilities Company
120 South Limestone Street
Lexington, Kentucky 40507
(606) 255-1461



Owensboro Municipal Utilities Electric Generating Station



Green River Electric Corporation



Western Kentucky Gas Company Building - General Office



Texas Gas Transmission Corporation, Owensboro

Natural Gas

Company serving Owensboro - Western Kentucky Gas Company
Source of supply - Texas Gas Transmission Corporation
Size of transmission mains - 4 to 36 inches
Distribution mains - 2 to 12 inches
Distribution pressure - 4 ounces to 35 psi
Btu content - 1,000 per cubic foot
Specific gravity - 0.589
For rates and supplies contact:

Director of Marketing
Western Kentucky Gas Company
311 West 7th Street
Owensboro, Kentucky 42301
(502) 684-8811

Other Fuels

Propane

Empiregas, Inc. of Owensboro, 2108 Calhoun Road, Owensboro
Industrial Petroleum Supply, 3520 New Hartford Pike, Owensboro
Jay's LP Gas, Inc., Texaco LP Gas Products, Pleasant Valley
Road, Owensboro
Miles LP Gas, Inc., Keller Road, Owensboro
Pargas of Owensboro, 308 East 25th Street, Owensboro
Suburban Gas and Heating Company, Pyrofax Gas Service, 2124
Calhoun Road, Owensboro
Sure Gas, Inc., 1301 Daviess Street, Owensboro

Fuel oils

Distillate fuel oil -

Ashland Petroleum Company, 1021 East 2nd Street, Owensboro
T. J. Barlett Company - Gulf Heating Oil, 1309 West 9th Street,
Owensboro
D. R. Hayden Oil Company, Sunoco Products, 1414 East 15th Street,
Owensboro
Industrial Petroleum Supply, 3520 New Hartford Pike, Owensboro
Marathon Oil Company, Pleasant Valley Road, Owensboro
Quality Oil Company, Inc., Distributor of Amoco Oil Products,
Pleasant Valley Road, Owensboro

Residual fuel oil - Arrangements must be made with the refinery.

Low sulphur content coal - Available in eastern Kentucky.

WATER AND SEWERAGE

Water

Company serving Owensboro - Owensboro Municipal Utilities
115 East Fourth Street
Owensboro, Kentucky 42301
(502) 926-3200

Source - 29 wells*

Treatment plant capacity - 20,000,000 gallons per day

Average daily consumption - 10,000,000 gallons

Peak daily consumption - 13,524,000 gallons

Type treatment - Aeration, lime softening, chlorination,
filtration, fluoridation

Storage capacity - 6,000,000 gallons

Size lines - 2 to 24 inches

Average pressure - 55 psi

Average temperature - 57 degrees F.

(Contd.)

*Lines were recently extended to three new wells.

MONTHLY WATER RATES FOR DOMESTIC, COMMERCIAL
AND INDUSTRIAL CONSUMERS

<u>Cubic Feet Delivered in Any One Month</u>	<u>Inside City Per 100 Cu. Ft.</u>	<u>Outside City Per 100 Cu. Ft.</u>
First 1,500	\$0.446	\$0.669
Next 8,500	0.342	0.512
Next 190,000	0.246	0.369
All over 200,000	0.202	0.304

<u>Minimum Charge for Metered Service</u>	<u>Inside City</u>	<u>Outside City</u>
5/8 and 3/4-inch meter	\$ 1.59	\$ 2.39
1-inch meter	4.38	6.56
1 1/4-inch meter	7.16	10.74
1 1/2-inch meter	9.55	14.32
2-inch meter	15.91	23.87
3-inch meter	28.43	42.65
4-inch meter	43.17	64.76
6-inch meter	79.56	110.34
8-inch meter	159.12	238.68

<u>Fire Protection Service (Monthly Fees)</u>	<u>Inside City</u>	<u>Outside City</u>
2-inch service connection	\$ 5.37	\$ 7.90
4-inch service connection	10.53	15.80
6-inch service connection	15.21	22.82
8-inch service connection	19.89	29.84

Tap-on charges

3/4-inch tap	\$135	
1-inch tap	205	
1 1/2-inch tap	370	
2-inch tap	Charge at actual cost of installation	

Name of water district - West Daviess County Water District*
2430 East Fourth Street
Owensboro, Kentucky 42301
(502) 685-5594

Area served - West Daviess County

Date when water district began operating - 1968

Source of supply of treated water - Owensboro Municipal Utilities

Average amount of water used in a 24-hour period - 450,000 gallons

Peak amount of water used in a 24-hour period - 700,000 gallons

Storage capacity - 650,000 gallons

Average pressure - 70 psi

Average temperature - 62 degrees F.

Size lines - 3 to 12 inches

Monthly rates -

First	2,000 gallons	\$6.50 (Minimum)
Next	2,000 gallons	2.50 per M gallons
Next	2,000 gallons	2.00 per M gallons
Next	4,000 gallons	1.75 per M gallons
Next	20,000 gallons	1.55 per M gallons
Next	20,000 gallons	1.40 per M gallons
Next	20,000 gallons	1.25 per M gallons
Next	30,000 gallons	1.10 per M gallons
Next	50,000 gallons	1.00 per M gallons
Next	50,000 gallons	.80 per M gallons
Next	50,000 gallons	.65 per M gallons
All over	250,000 gallons	.50 per M gallons

Tap-on charge: 3/4- by 5/8-inch meter - \$250

*Two planned connector lines, one from West Louisville to Panther and another from Highway 81 to the Pettit-Sutherland area, are designed to serve additional customers and improve water pressure. Construction of a new storage tank is planned at Utica.

Name of water district - Southeast Daviess County Water District*
2430 East Fourth Street
Owensboro, Kentucky 42301
(502) 685-5594

Area served - Southeast Daviess County

Date when water district began operating - 1966

Source of supply of treated water - Owensboro Municipal Utilities

Average amount of water used in a 24-hour period - 600,000 gallons

Peak amount of water used in a 24-hour period - 1,000,000 gallons

Storage capacity - 750,000 gallons

Average pressure - 82 psi

Average temperature - 62 degrees F.

Size lines - 2 to 12 inches

Monthly rates -

First	2,000 gallons	\$5.00 (Minimum)
Next	8,000 gallons	1.075 per M gallons
Next	10,000 gallons	.975 per M gallons
Next	20,000 gallons	.875 per M gallons
All over	40,000 gallons	.775 per M gallons

Tap-on charge: 3/4- by 5/8-inch meter - \$250

*The water district plans to extend another line to the municipal water system to serve as an auxiliary source of treated water. A new storage tank is to be built at Masonville.

Name of water district - East Daviess County Water District*

Route 1, Box 231

Philpot, Kentucky 42366

(502) 281-5187

Area served - East Daviess County and portions of Ohio and Hancock Counties

Date when water district began operating - 1972

Source of supply of treated water - Owensboro Municipal Utilities

Average amount of water used in a 24-hour period - 116,000 gallons

Storage capacity - 350,000 gallons

Average pressure - 70 psi

Size lines - 3, 6, and 8 inches

Monthly rates -

Residential

5/8-inch by 3/4-inch Meter

First	2,000 gallons	\$ 6.75 (Minimum)
Next	4,000 gallons	1.75 per M gallons
Next	4,000 gallons	1.50 per M gallons
Next	40,000 gallons	1.25 per M gallons
Over	50,000 gallons	1.00 per M gallons

Commercial

1-inch Meter

First	6,000 gallons	\$13.75 (Minimum)
Next	4,000 gallons	1.50 per M gallons
Next	40,000 gallons	1.25 per M gallons
Over	50,000 gallons	1.00 per M gallons

1 1/2-inch Meter

First	10,000 gallons	\$19.75 (Minimum)
Next	40,000 gallons	1.25 per M gallons
Over	50,000 gallons	1.00 per M gallons

Industrial

2-inch Meter

First	20,000 gallons	\$32.25 (Minimum)
Next	30,000 gallons	1.25 per M gallons
Over	50,000 gallons	1.00 per M gallons

Tap-on charges:	5/8-inch by 3/4-inch Meter	\$ 250
	3/4-inch Meter	300
	1-inch Meter	350
	1 1/2-inch Meter	500
	2-inch Meter	750
	3-inch Meter	1,000
	4-inch Meter or larger	Actual cost

*The water district has recently completed a 100,000-gallon storage tank and plans to install 63 miles of additional water lines.

Surface water sources - Ohio River and Green River
Average discharge - Ohio River at Evansville, Indiana - 133,300 cfs
(34 years, unadjusted, USGS); Green River at Lock 2, at Calhoun,
Kentucky - 10,890 cfs (47 years, unadjusted, USGS)
Expected ground water yield - 500 to 1,000 gpm along the Ohio River;
5 to 50 gpm in western tip of county; 5 gpm or less over remainder
of county

Sewerage

Company serving Owensboro - Owensboro Sewer Commission
City Hall
101 East Fourth Street
Owensboro, Kentucky 42301
(502) 684-7251

Design capacity - 12,000,000 gallons per day

Average daily flow - 8,500,000 gallons

Treatment - Primary and secondary

Type treatment - Grit removal, primary settling, activated biological
filtration tower, aeration, final clarifiers, chlorination, pur fax
sludge treatment, sludge dewatering by drying beds and belt press

Treated effluent discharged into - Ohio River

Size of sanitary mains - 8 to 18 inches

Size of storm mains - 12 to 96 inches

Rates - Inside city limits - 56.1¢ per 100 cubic feet of metered water
Outside city limits - 78.7¢ per 100 cubic feet of metered water

Tap-on charge: \$150 where the city sewer commission must provide
a connection to the system

CLIMATE

Daviess County

Temperature

Normal (30-year record)	56.0 degrees
Average annual 1977	56.4 degrees
Record highest, July, 1954 (37-year record)	105.0 degrees
Record lowest, February, 1951 (37-year record)	-23.0 degrees
Normal heating degree days (30-year record)	4,629
(Heating degree day totals are the sums of negative departures of average daily temperatures from 65 degrees F.)	

Precipitation

Normal (30-year record)	41.88 inches
Mean annual snowfall (37-year record)	13.40 inches
Total precipitation 1977	50.08 inches
Mean number days precipitation (.01 inch or more) (37-year record)	115
Mean number days thunderstorms (37-year record)	46

Prevailing Winds (14-year record)

South-southwest

Relative Humidity (16-year record)

Midnight	78 percent
6 a.m.	81 percent
Noon	59 percent
6 p.m.	62 percent

Source: U. S. Department of Commerce, Environmental Science
Services Administration, Climatological Data, 1977.
Station of record: Evansville, Indiana.

LOCAL GOVERNMENT

City

Structure - Mayor - 4-year term; 4 commissioners - 2-year terms;
city manager

Budget 1978-79 - General Fund	\$11,156,203
Water Fund	1,530,000
Sewer Fund	1,700,461
Electric Fund	14,400,000

Fees and licenses - Occupational license fees: One percent of all salaries, wages, commissions and other compensation earned by every person in the City for work done or services rendered in the City, and one percent of the net profits of all businesses, professions or occupations from activities conducted in the City; motor vehicle license fee - \$2.50 per year

County

Structure - County Judge/Executive - 4-year term;
3 commissioners - 4-year terms

Budget 1978-79 - General Fund \$1,764,970; Road Fund \$1,421,830

Assessed Value of Property, 1978-79

<u>Classes of Property</u>	<u>Owensboro</u>	<u>Daviess County</u>
Real Estate	\$421,515,716	\$702,419,719
Tangibles	122,459,855	194,221,891

Property Taxes

All property in Kentucky is assessed at 100 percent of fair cash value.

Land and buildings are taxed by the state and may be taxed by local jurisdictions. The state rate is \$0.315 per \$100 of assessed valuation.

Manufacturing machinery, raw materials inventories, pollution control equipment, and goods in the process of manufacture are not subject to local taxation. The state rate is \$0.15 per \$100.

Other tangible personal property owned by manufacturers (automobiles, trucks, finished goods, office furniture, office equipment) is taxed by the state at \$0.45 per \$100 and may be taxed by local jurisdictions.

Property stored in public warehouses in a transit status is not subject to local taxation. The state rate is only \$0.015 per \$100.

Intangible personal property located in Kentucky (money in hand, shares of stock, notes, bonds, accounts receivable, and other credits) is taxed by the state at \$0.25 per \$100, and is not subject to local taxation.

Private leaseholds in industrial facilities owned by cities or counties and financed by industrial revenue bonds are subject to a state tax of \$0.015 per \$100 of value (essentially the lessee's equity, adjusted for appreciation or depreciation). Local taxation is not permitted.

Combined State and Local Rates Per \$100 Valuation, 1978* (100% assessment)

	<u>Inside City of Owensboro</u>	<u>Outside City</u>
1. Land and buildings	\$1.515	\$0.757
2. Mfg. machinery, raw materials, goods in process, pollution control equipment	0.150	0.150
3. Finished goods, office equipment, vehicles, other tangibles	1.650	0.892
4. Intangibles (accounts receivable, notes, bonds, etc.)	0.250	0.250
5. Leaseholds in I. R. bond financed plants	0.015	0.015

*Kentucky Department of Commerce.

Utilities Gross Receipts Tax for Schools

A 3 percent tax is levied on utilities receipts for schools in Daviess County. Tax is paid by all consumers of utilities as an add-on to the utilities bills. Exempted are receipts from utilities services that are resold and the receipts from the sale of energy or energy producing fuels that exceed 3 percent of the cost of production in manufacturing, processing, mining or refining.

Planning and Zoning

Joint agency - Owensboro Metropolitan Planning Commission
Zoning enforced - All areas
Subdivision regulations enforced - All areas
Local codes enforced - Housing (city only) and building (county-wide)
Mandatory state codes enforced - Plumbing, National Fire Protection Association Code, National Building Code (for major buildings and residential construction containing more than 12 bedrooms per building)

Safety

<u>Police</u>	<u>Owensboro</u>	<u>Daviess County</u>
Total staff	170	21
Radio-patrol cars	32	10
<u>Fire</u>		
American Insurance		
Association Fire Rating	3	*
Full-time staff	99	

*The Daviess County Fire Department has 10 fire protection areas and 12 fire stations which are manned by 20 full-time employees and approximately 330 volunteers. The American Insurance Association fire ratings for each fire protection area are listed below.

Daviess County F.P.A. #1	7 & 9
Knottsville F.P.A.	8 & 9
Masonville F.P.A.	8 & 9
Mosleyville F.P.A.	8 & 9
St. Joseph F.P.A.	8 & 9
Stanley F.P.A.	9
Thruston-Dermot F.P.A.	7 & 9
Utica F.P.A.	8 & 9
Whitesville F.P.A.	8 & 9
Yelvington F.P.A.	8 & 9

Rescue Service

Owensboro Fire Department Rescue Squad:

Staff - Operated by Owensboro Fire Department personnel

Equipment - Rescue truck, dragging equipment, resusitator, boat and motor, ambulance, Jaws of Life

Personnel training - Fire training, Red Cross first aid

Refuse Collection and Disposal

	<u>Owensboro</u>	<u>Daviess County</u>
Type service	Municipal	Private
Fee charged:		
residential	\$3 per month	
commercial and industrial	*	\$2.50 per cubic yard (34 cubic yard container)
Collection frequency:		
residential	Weekly	
commercial and industrial	*	As needed
Trash pickup	Call basis	Call basis
Disposal method	Landfill	Landfill

*Commercial and industrial establishments are charged according to the volume of refuse. Fees range from \$3 to \$45 per month. Establishments that use Dempster-Dumpsters will be charged at the rate of \$5 per pick up, but not more than \$100 per month. Refuse will be collected when necessary.



Apollo High School



Daviess County High School



Owensboro High School

EDUCATION

Public Schools

	<u>Owensboro Independent</u>	<u>Daviess County</u>
Total Enrollment (September, 1978)	6,088	9,194
Elementary	2,703	4,169
Middle School	1,387	1,842
High School	1,998	3,138
Student-Teacher Ratio	15-1	20-1
Elementary	15-1	20-1
Middle School	14-1	17-1
High School	17-1	21-1
Accreditation	Southern Association of Colleges and Schools	Southern Association of Colleges and Schools
Percent High School Graduates to College	42.3	37.7
Expenditures Per Pupil (1977-78)	\$1,251.72	\$994.60
Bonded Indebtedness, June 30, 1978	\$3,615,000	\$4,887,000

Nonpublic Schools

	<u>Owensboro</u>	<u>Daviess County</u>
Total Enrollment	2,665	1,742
Elementary	1,715	1,347
High School	950	395
Student-Teacher Ratio	25-1	23-1
Elementary	27-1	25-1
High School	23-1	19-1

Mount Saint Joseph Academy, located at Maple Mount, Kentucky, 15 miles from Owensboro, is a resident and day student high school for girls. This school was established in 1874 and is accredited by the Southern Association of Colleges and Schools.



Mount Saint Joseph Academy

Area Colleges and Universities

<u>Name</u>	<u>Location (Miles distant)</u>	<u>Enrollment (Fall, 1978)</u>	<u>Highest Degree Conferred</u>
Brescia College	Owensboro	832	Baccalaureate*
Kentucky Wesleyan College	Owensboro	854	Baccalaureate*
Henderson Community College	Henderson (30)	762	Associate
Indiana State University, Evansville Campus	Evansville, Indiana (40)	2,868	Academic and Professional
University of Evansville	Evansville, Indiana (40)	6,554	Academic and Professional
St. Meinrad College (men)	St. Meinrad, Indiana (46)	203	Baccalaureate
Madisonville Community College	Madisonville (47)	675	Associate

Owensboro Business College is a private, coeducational college which offers associate degree programs in specialized business, accounting, data processing, real estate, hospitality administration, and fashion merchandising. The college is accredited by the Association of Independent Colleges and Schools and is a recognized candidate for Junior College of Business. Student enrollment was approximately 600 in 1978.

*The Owensboro Higher Education Consortium was formed in 1969 to provide graduate level programs on the local campuses. Murray State University and Western Kentucky University provide the faculty members and issue the degrees.

Vocational Schools

Nearest State School

Location	Daviess County State Vocational- Technical School
Curriculum	Owensboro Business and Office Clerical Secretarial Consumer and Home Economics Child Care Services Food Services Marketing and Distributive Education Health and Personal Services Occupations Cosmetology Industrial Education Auto Body Repair Auto Mechanics Building Maintenance Diesel Mechanics Drafting Graphic Arts (Printing) Small Engine Repair Welding Public Service Programs Fire Service Training (Regional Service) Learning Resource Center

Nearest Area Technical School

Location	Owensboro Vocational-Technical School
Curriculum	Owensboro
	Health and Personal Services Occupations
	Health Careers
	Licensed Practical Nursing
	Nurses Assistant
	Industrial Education
	Air Conditioning and Heating
	Appliance Repair
	Carpentry-Building Trades
	Electronics (Communications)
	Electronics (Home Entertainment)
	Electronics (Industrial)
	Industrial Electricity
	Machine Shop
	Maintenance Mechanics
	Masonry
	Office Machines Repair
	Plumbing
	Sheet Metal
	Welding

Arrangements can be made to provide training in the specific production skills required by an industrial plant. Instruction may be conducted either in the vocational school or in the industrial plant, depending upon the desired arrangement and the availability of special equipment.



Owensboro-Daviess County Hospital



Our Lady of Mercy Hospital

HEALTH

Local Medical Personnel

Physicians - 85
Dentists - 40

Hospitals

<u>General Hospitals</u>	<u>Location</u>	<u>Beds</u>
Owensboro-Daviess County Hospital	Owensboro	458
Our Lady of Mercy Hospital	Owensboro	133

Owensboro-Daviess County Hospital

General hospital facilities - 10 operating rooms, 2 recovery rooms, OB section, X-ray, pharmacy, physical therapy, clinical pathology laboratories, emergency room, intensive care unit, coronary care unit, inhalation therapy department, nursery, cafeteria, gift shop

Medical staff - 100 doctors and dentists, 163 registered nurses, 89 licensed practical nurses

Our Lady of Mercy Hospital

General hospital facilities - 4 operating rooms, 1 recovery room, X-ray, emergency room, pharmacy, intensive care-coronary care unit, respiratory therapy

Medical staff - 100 doctors and dentists, 60 registered nurses, 35 licensed practical nurses

Other Medical Facilities

Green River Comprehensive Care Center
Green River District Home Health Agencies

Ambulance Service

Name - Owensboro-Daviess County Ambulance Service, Inc., (based at the Owensboro-Daviess County Hospital)
Staff - Full time: 7 emergency medical technicians
Part time: 5 emergency medical technicians
Service - 24-hour, radio-dispatched service throughout the county
Equipment - 4 modular ambulances

Public Health

Facility - Daviess County Health Department

Staff - Full time: 11 community health nurses, 2 licensed practical nurses, 5 health environmentalists, 2 community health workers, 4 clerk typists

Part time: 6 pediatricians, 1 dentist, 1 physical therapist, 1 plumbing inspector, 1 nutritionist, 1 rural sanitary engineer

OTHER LOCAL FACILITIES

Communications

Telephone - South Central Bell Telephone Company
Services - All standard services

Telegraph - Western Union
Services - Counter service, toll-free number to send telegrams,
mailgrams or international messages

Postal - U. S. Post Office
Class - First
Mail received - Five times daily
Mail dispatched - Five times daily

Newspaper - Messenger-Inquirer
Daily and circulation - 32,500
Other papers received - Louisville Courier-Journal, Louisville
Times, Evansville Press and Evansville Courier

Radio - WVJS-AM, WSTO-FM (stereo), WOMI-AM, WBKR-FM (stereo)
Stations received from - Henderson and Madisonville, Kentucky;
Evansville, Indiana; Chicago, Illinois

Television - WVJS-Channel 2, operating from 3:45 - 9 p.m. daily
Cable service
Reception from - Henderson, Kentucky; Evansville, Indiana
Cable reception from - Louisville, Paducah and Bowling Green,
Kentucky; Olney, Illinois; Evansville, Indiana

Educational Television - Madisonville, Kentucky, transmitter -
Channel 35; Evansville, Indiana, transmitter - Channel 9;
Carbondale, Illinois, transmitter - Channel 8

Library Services

Public library - Owensboro-Daviess County Public Library

Size collection - 95,200 volumes

Circulation, 1977-78 - 320,529 (library and bookmobile)

Services - Bookmobile, microfilm, framed paintings, movie films, filmstrips, children's story hour, children's programs, services for the blind, business research service, headquarters for Audubon Regional Library, participates in Head Start, interlibrary loan, teenage and adult book club, library auditorium, movie programs, wheelchairs and strollers available, lending service for 35 mm projectors and screen, Polaroid cameras, motion picture cameras, cable TV (KET for GED certificate), and mini-gallery

College library - Brescia College Library

Size collection - 103,000 volumes

Special collections - Kentuckiana

Services - Audiovisuals, microform readers, listening room, slide projectors, individual study units for viewing and listening, newspapers, magazines, interlibrary loan and access to OCLC through a Louisville college.

College library - Kentucky Wesleyan College Library

Size collection - 76,924 volumes (158,853 items)

Special collections - Methodism (Kentucky United Methodist Heritage Center), Kentucky Collection, the Dr. & Mrs. M. D. Orrahood Collection on first editions of American and English Literature

Services - Magazines, newspapers, microfiche, audiovisuals, interlibrary loan, Owensboro Graduate Consortium.

Religious Institutions

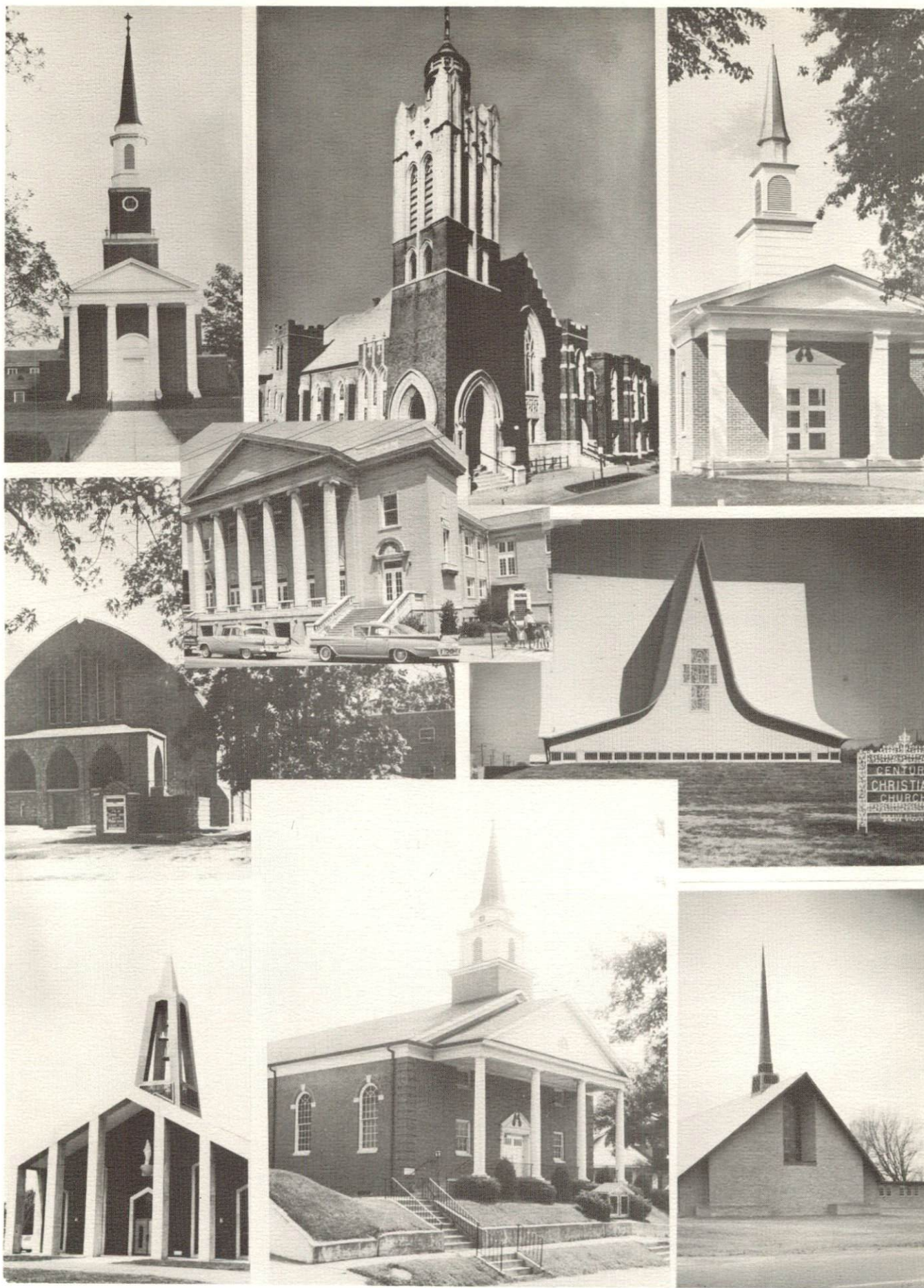
	<u>Owensboro</u>	<u>Daviess County</u>
Number of churches -	70	134
Denominations -	27 denominations represented in the county	
Number of synagogues -	1	
Congregation -	Adath Israel (reform)	



Owensboro Public Library



Daviess County Courthouse



Some of Owensboro's 70 churches

Financial Institutions

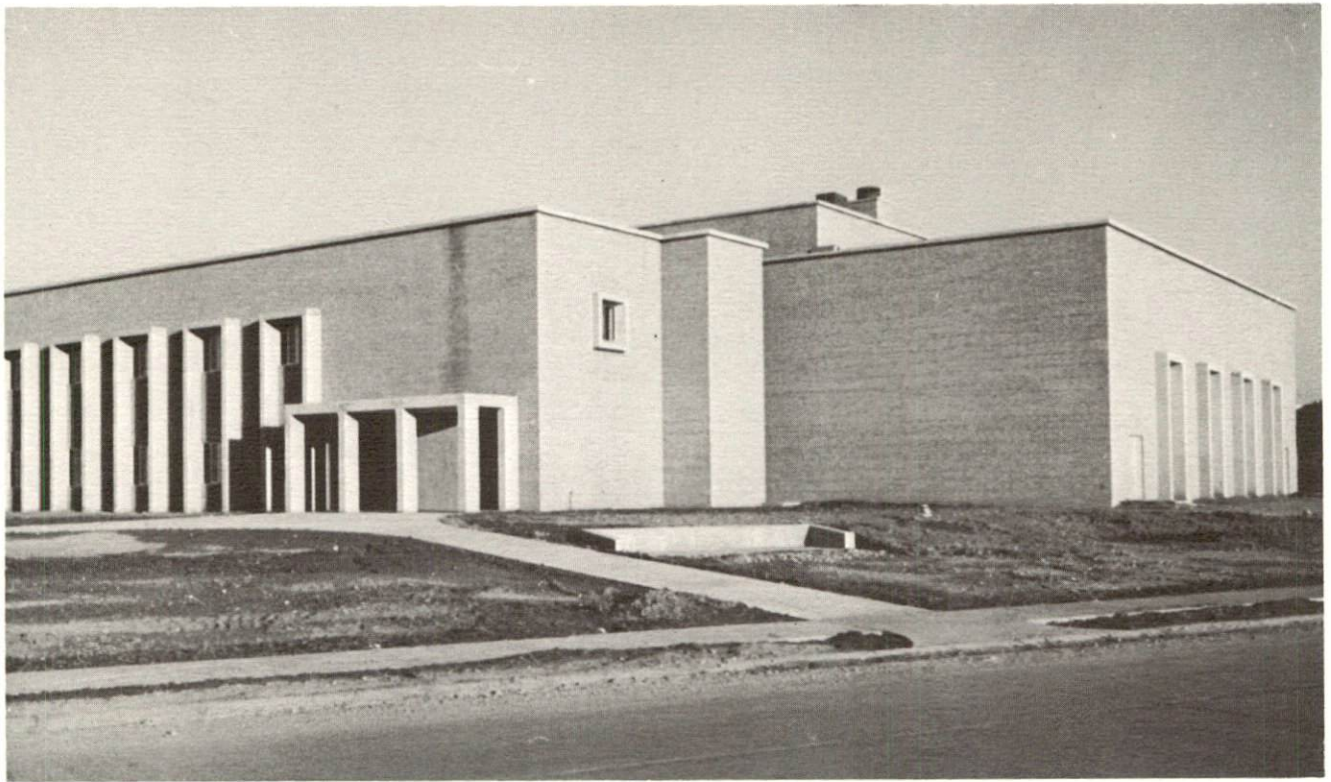
<u>Banks</u>	<u>Assets</u>	<u>Deposits</u>	<u>Statement Date</u>
Central Bank and Trust Company	\$ 82,744,196.96	\$ 74,105,709.54	6/30/78
Citizens State Bank	91,676,754.99	79,446,587.59	6/30/78
Owensboro National Bank	132,585,274.30	113,015,900.51	6/30/78
<u>Savings and Loan Associations</u>	<u>Assets</u>	<u>Savings Accounts</u>	<u>Statement Date</u>
First Home Federal Savings and Loan Association	\$ 64,604,512.54	\$ 54,826,167.74	12/31/77
Lincoln Federal Savings and Loan Association	46,033,725.61	36,280,680.54	12/31/77
Owensboro Federal Savings and Loan Association	122,550,566.42	111,197,380.45	6/30/78

Hotels and Motels

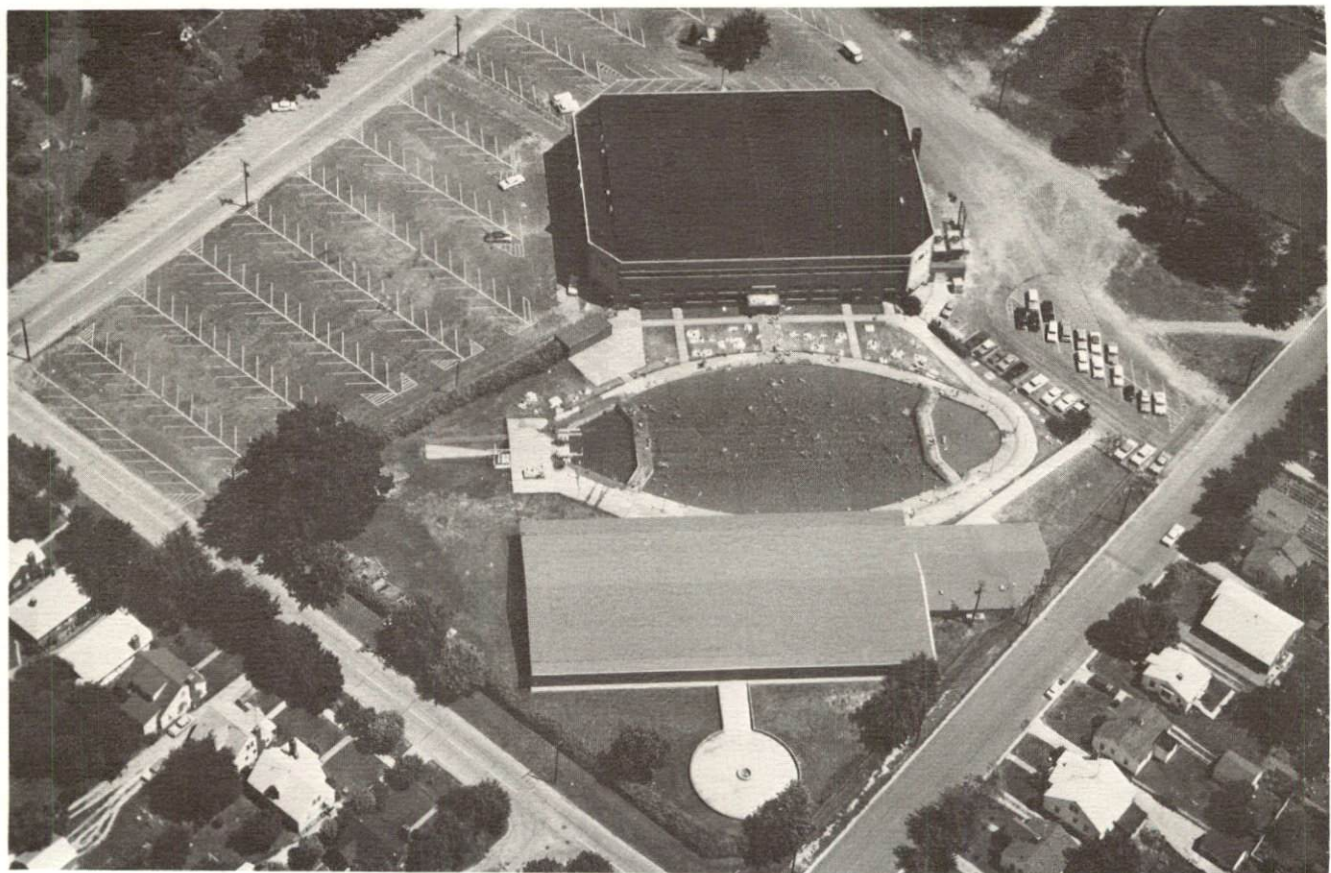
Total number - 16
Total units - 1,182

Clubs and Organizations

There are approximately 175 clubs and organizations in Owensboro which include most major civic, business, professional, fraternal, charitable, sports, agricultural and youth organizations.



Family-Y, Owensboro



Owensboro Sportscenter

RECREATION

Local

Owensboro has excellent public recreation facilities that are sponsored and maintained by the Owensboro Parks and Recreation Department. Public recreation facilities include 14 parks and playgrounds, 4 swimming pools, a 9-hole golf course, 29 tennis courts, 12 baseball diamonds, 9 basketball courts, and a croquet court. Shifley Park is a 10-acre park with a baseball diamond, football field, playground equipment, and shelter house. Similar facilities are available at the recently completed Thompson-Berry Park. Owensboro's Sportscenter has an air-conditioned, 7,000-seat auditorium-arena, and a covered ice rink. The Sportscenter is the home court of the nationally known Kentucky Wesleyan College Panthers, winner of the NCAA small college championship four times since 1966.

Private recreation facilities at Owensboro include two country clubs with golf courses, six swimming pools, four indoor and three outdoor movie theaters, two bowling facilities, YWCA, Family-Y, and indoor and outdoor tennis courts.

The Owensboro Hydrofair, an annual race for hydroplanes, is held in June and offers a number of events and activities over a two-week period. Major events include a parade, a beauty pageant, a hot-air balloon race, flatboat races, the statewide tug of war championship, sports tournaments, and stunt flying. Other entertainment includes rock concerts, square dancing, and folk festivals.

The International Barbecue Festival is held each year in Owensboro in April. This annual event will feature cooking competition, cooking exhibitions, mime and puppet shows, square dancing, clogging exhibition, fiddling, battle of the bands, a petting zoo, and a number of other festivities.

The Owensboro Symphony Orchestra, the Owensboro Youth Orchestra, the Theatre Workshop, the Owensboro Museum of Fine Arts, and the Owensboro Area Museum of Natural Science provide a wide variety of cultural events and attractions. Owensboro's Festival of Arts features art exhibits, dramatics, music events, and writing seminars. Kentucky Wesleyan College and Brescia College also offer cultural events.

Other interesting attractions of the Owensboro area are Glenmore's Little Museum which features the second largest miniature bottle collection in the United States and artifacts of the distilling industry; the world's largest sassafras tree; tours of strip mining areas and coal mines; and tours of Pinkerton Tobacco Company.

Ben Hawes State Park, 4 miles west of Owensboro, is a 300-acre park open year round. It contains a softball field, tennis courts, an archery range, hiking trails, a picnic area and shelters, and an 18-hole and a 9-hole golf course.

Three recreation areas in the Owensboro vicinity are Windy Hollow Campground and Recreation Area, Diamond Lake Recreation Area, and Miller Lakes, Inc. These areas offer facilities for camping, swimming, fishing, boating, and hiking.

Area (Within 60 miles)

John James Audubon State Park, 30 miles to the west at Henderson, is a 692-acre park where the famed naturalist gathered material for his paintings, "The Birds of America." Many paintings by Audubon and his sons, and 126 first-edition prints of his paintings are on display at the Audubon Memorial and Nature Museum which is the focal point of the park. Other park features include the Audubon woods, a bird sanctuary and a 12-acre nature lake. The park has cottages and camping sites and recreation facilities include a 28-acre recreation lake, a beach and bathhouse, rental rowboats and pedal boats, a dock, a 9-hole golf course, picnic shelters and playgrounds. The Audubon Trail, located at the park, offers 9- and 3-mile marked trails starting from the museum.

Horse racing is another attraction available in Henderson. James C. Ellis Park and Thoroughbred Race Track provides two months of racing during the summer, and Midwest Harness Raceway features harness racing in the spring and fall.

Rough River Dam State Resort Park, located approximately 45 miles southeast of Owensboro, is a 377-acre park on Rough River Lake. The park has a 40-room lodge with a dining room, coffee shop, gift shop, and meeting room. Cottages and camping sites are also available. Recreation facilities include a launching ramp with open and covered slips, rental boats, fishing, a 9-hole golf course, a swimming pool, a sand beach with bathhouse complex, three tennis courts, an archery range, hiking trails and picnic and playground areas. Cruise boat excursions on Rough River Lake are available on the "Lady of the Lake."

Lake Malone State Park, approximately 60 miles south of Owensboro, consists of 338 acres on Lake Malone. Facilities at the park include campsites, a meeting room, a boat dock with open slips and a launching ramp, fishing, a beach and bathhouse, a playground, picnic areas, and a game court. Located across from the entrance to the park is privately owned Lake Malone Inn, featuring luxury rooms, a restaurant, a beach and swimming lake, boating, fishing, tennis, and nature trails.

The Lincoln Boyhood National Memorial, 30 miles north of Owensboro at Lincoln City, Indiana, preserves the Lincoln farm and the burial site of Nancy Hanks Lincoln. The memorial contains reconstructed log buildings, an exhibit shelter, and a visitor center with an auditorium and museum.

Santa Claus Land, located 35 miles northeast of Owensboro at Santa Claus, Indiana, is a 45-acre amusement park with a Christmas theme.

COMMUNITY IMPROVEMENTS

Industrial and Commercial

Two companies have constructed new production facilities in the 230-acre riverport industrial park. Hammond Plastic Midwest, Inc., a manufacturer of polystyrene pellets, opened a plant in June 1977. Hammond now plans to construct a barge unloading station so that the company can receive the petroleum products, which are used in production, by barge. Also the National Molasses Company has relocated its bulk distribution terminal to the riverport industrial site.

Baskin-Robbins, Inc., has completed a \$3 million expansion of its production facilities that will increase production and employment at the plant.

General Electric Company has moved its small motor section to Owensboro from Schenectady, New York. The new facility has added 492 new jobs to the area.

In 1978 eight manufacturing firms announced plans to expand facilities.

A new 366-unit motel and convention facility has been constructed on the Ohio River. This outstanding facility has an indoor swimming pool, a supper club that features nationally-known entertainment, and convention and meeting room capacity up to 2,500.

A 400,000-square-foot regional shopping mall has opened recently.

Transportation

The Owensboro Riverport Authority is continually adding facilities to this \$5.6 million public river terminal. The riverport now has general cargo and warehousing facilities and two liquid cargo terminals. The paving of 9,300 square yards of outside storage area is currently under way.

The Owensboro-Daviess County Airport has constructed 15 additional T-hangar units. The airport has purchased 95 acres in order to relocate fixed base operations and provide expanded facilities for general aviation.

Health

The Owensboro-Daviess County Hospital has constructed a \$7 million surgical wing that has eight operating rooms, laboratory, recovery room, emergency room services, and radiology, physical therapy and pulmonary respiratory departments. The hospital has now taken over the administration of the Owensboro-Daviess County Ambulance Service to insure effective coordination of emergency operations.

Utilities

Owensboro Municipal Utilities has extended water lines to three additional wells.

The East Daviess County Water District has recently completed a 100,000-gallon storage tank and plans to install 63 miles of additional water lines.

The Southeast Daviess County Water District plans to extend another line to the municipal water system to serve as an auxiliary source of treated water. A new storage tank is to be built at Masonville.

The West Daviess County Water District plans the construction of two connector lines and a storage tank to provide service to additional customers.

Education

The Daviess County School System has completed renovation of the Philpot Elementary School.

The Owensboro Independent School District has initiated a work-order orientation and experience program which is designed to develop healthy work attitudes.

The Owensboro Vocational-Technical School has dedicated a new 72,000-square-foot classroom building which allows space for expanded curriculum.

Kentucky Wesleyan College recently completed extensive renovation of a facility for use in the nursing program. An associate degree in nursing and associate and baccalaureate degrees in criminal justice have been added at the college. Psychological, career counseling, and development programs in reading and math have been added to the curriculum.

Public Safety

The Owensboro Police Department has purchased a mobile unit for use in the new crime prevention program.

The Owensboro Fire Department has acquired a new 85-foot aerial platform truck.

The Daviess County Fire Department has opened two substations and plans another substation.

Recreation

A lighted softball field, tennis courts, a play area and soccer field are under construction at Thompson-Berry Park. The city has acquired English Park, an old lock and dam site, and has begun extensive construction in an effort to convert the site into a riverside park.

A wave pool complex will be added to the facilities at Ben Hawes State Park.

Other

The Owensboro Metropolitan Planning Commission has received approval of a new city-county land use plan.

Program manager: Patsy Wallace; Production supervisor: Pam Riley;
Research: Terry Patterson; Clerical: Annette Mitchell; Graphics:
Frank Ferrante, Tony Cecconi, Richard Spencer; Cartography: Industrial
Development Division. Cost of printing paid from state funds.

Kentucky Department of Commerce
Capital Plaza Tower
Frankfort, Kentucky 40601

Office of the Commissioner
(502) 564-4270

Industrial Development Division
(502) 564-7140

Existing Industries Division
(502) 564-4300

Office of Minority Business Enterprise
(502) 564-2064

Agribusiness Division
(502) 564-6784

International Trade and Investment
Promotion Division
(502) 564-2170

Research and Planning Division
(502) 564-4886
Map Sales Office
133 Holmes Street
(502) 564-4715

Kentucky Development Finance Authority (KDFA)
(502) 564-4554

Kentucky Film Commission
(502) 564-2240