

1985

Industrial Resources - Franklin County - Frankfort

Kentucky Library Research Collections
Western Kentucky University, spcol@wku.edu

Follow this and additional works at: https://digitalcommons.wku.edu/franklin_cty

 Part of the [Business Administration, Management, and Operations Commons](#), [Growth and Development Commons](#), and the [Infrastructure Commons](#)

Recommended Citation

Kentucky Library Research Collections, "Industrial Resources - Franklin County - Frankfort" (1985). *Franklin County*. Paper 7.
https://digitalcommons.wku.edu/franklin_cty/7

This Report is brought to you for free and open access by TopSCHOLAR®. It has been accepted for inclusion in Franklin County by an authorized administrator of TopSCHOLAR®. For more information, please contact topscholar@wku.edu.

IR
446

FRANKLIN COUNTY

RESOURCES
FOR
ECONOMIC
DEVELOPMENT

FRANKFORT



KENTUCKY

The Business Environment is Right

FRANKFORT, KENTUCKY --- Index to Industrial Sites --- 1985

For more information contact the Department of Economic Development, Office of Business Development, Industrial Development Division, Capital Plaza Tower, Frankfort, Kentucky 40601 (502-564-7140).





Existing Industries

- A Ancient Age Distilling Co., Inc.
- B Available Industrial Bldg. (125,000 sq. ft. on 30 Acres)
- C National Distillers Products Co.
- D Union Underwear Co., Inc.
- E Fast Food Merchandisers
- F Aerobrazo Corp.
- G General Electric Co.
- H Webster Electric - Frankfort Operation
- I Southern Moldings Inc.
- J Topy Industries LTD.
- K Lehman-Meade Co., Inc.
- L Industrial Supply Co., Inc.
- M Bendix Corporation - Frankfort Plant
- N Porritts & Spencer Western Inc.

Site 385 -
8.9 Acres

Site 485 - 112 Acres

Site 585 -
38.6 Acres

Site 785 -
13.4 Acres

Site 685 -
17 Acres

CONTOUR INTERVAL 10 FEET

BASE: USGS 7.5 MINUTE SERIES — 1970

Photorevised - 1978

RESOURCES FOR ECONOMIC DEVELOPMENT
FRANKFORT, KENTUCKY

Prepared by
The Kentucky Department of Economic Development
Division of Research and Planning
in cooperation with
The Frankfort/Franklin County Chamber of Commerce

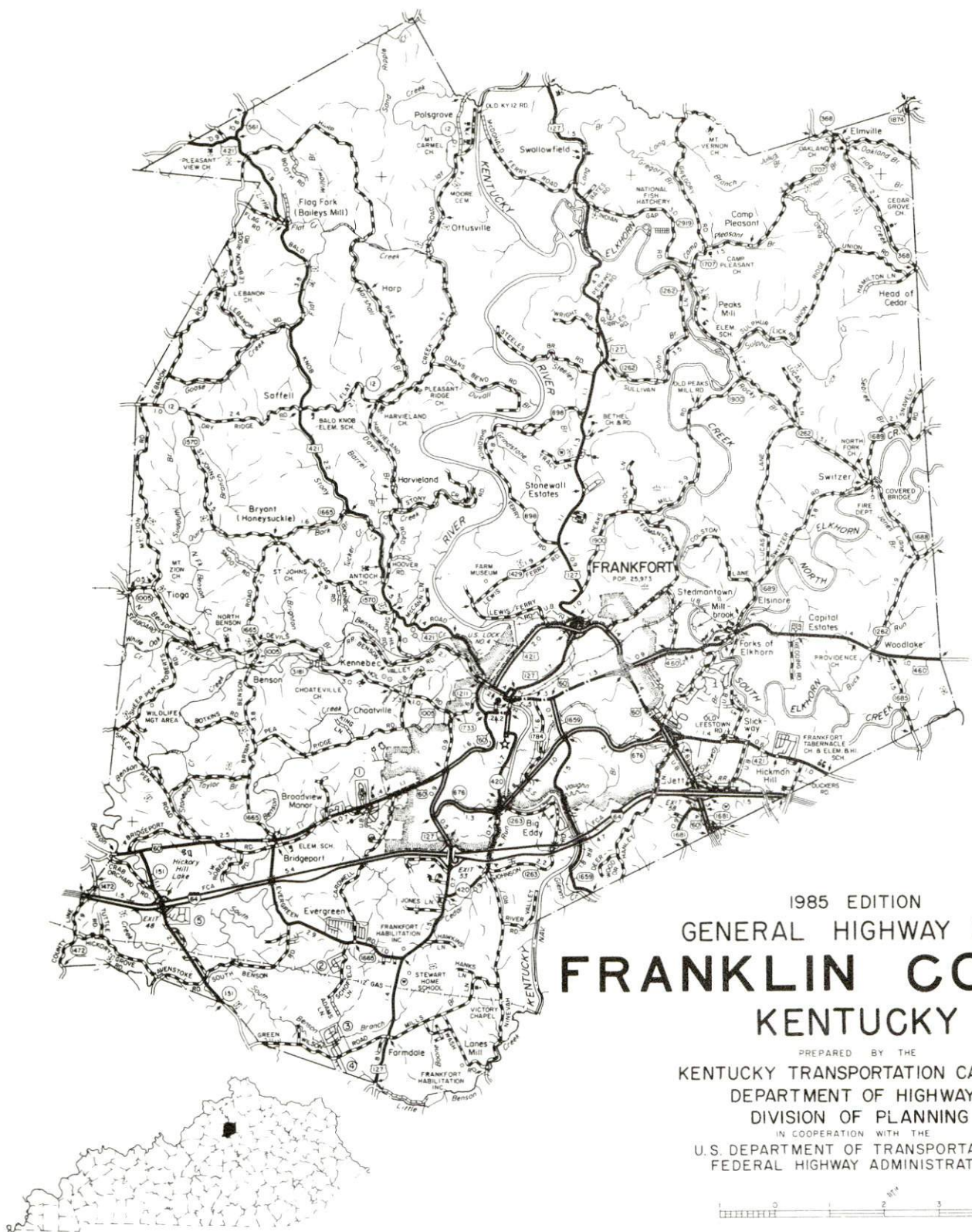
1985

Program manager - Andrew Dennis; research - James R. Thompson; clerical - Bobbi Graves; graphics - Frank Ferrante, Tony Cecconi, Robert Owens; cartography - Site Evaluation Branch, Division of Industrial Development and Marketing. Cost of printing paid from state funds.

TABLE OF CONTENTS

<u>Chapter</u>	<u>Page</u>
INDUSTRIAL SITES	i
FRANKFORT, KENTUCKY - A RESOURCE PROFILE	1
THE LABOR MARKET AREA.....	3
Population	3
Labor Force Characteristics of Residents, 1983	3
Selected Components of Nonagricultural Employment, by Place of Work, 1983	4
Frankfort Manufacturing Firms, Their Products and Employment.....	4
Labor Organizations in Manufacturing Firms	7
Industrial Services	9
Estimated Male Labor Supply	10
Estimated Female Labor Supply	10
Average Weekly Wages By Industry, by Place of Work, 1983	11
Per Capita Personal Income	13
TRANSPORTATION	14
Rail	14
Highways	14
Truck Service	15
Air	17
Bus	17
Taxi.....	17
Rental Services	17
Water	17
POWER AND FUEL	18
Electricity	18
Natural Gas	19
Other Fuels	20
WATER AND SEWERAGE	21
Public Water Supply	21
Raw Water	22
Sewerage	22
CLIMATE	23

<u>Chapter</u>	<u>Page</u>
LOCAL GOVERNMENT	24
City	24
County	24
Assessed Value of Property, 1984	24
Property Taxes	24
Combined State and Local Rates Per \$100 Valuation, 1984	25
Utilities Gross Receipts Tax for Schools	25
Planning and Zoning	26
Safety	26
Police	26
Fire	26
Rescue Service	26
Refuse Collection and Disposal	27
EDUCATION	28
Public Schools	28
Nonpublic Schools	28
Area Colleges and Universities	29
Vocational Schools	30
HEALTH	32
Local Medical Personnel	32
Hospitals	32
Other Medical Facilities	32
Ambulance Service	32
OTHER LOCAL FACILITIES	33
Communications	33
Library Services	34
Religious Institutions	35
Financial Institutions	35
Hotels and Motels	35
Clubs and Organizations	36
RECREATION	38
COMMUNITY IMPROVEMENTS	43

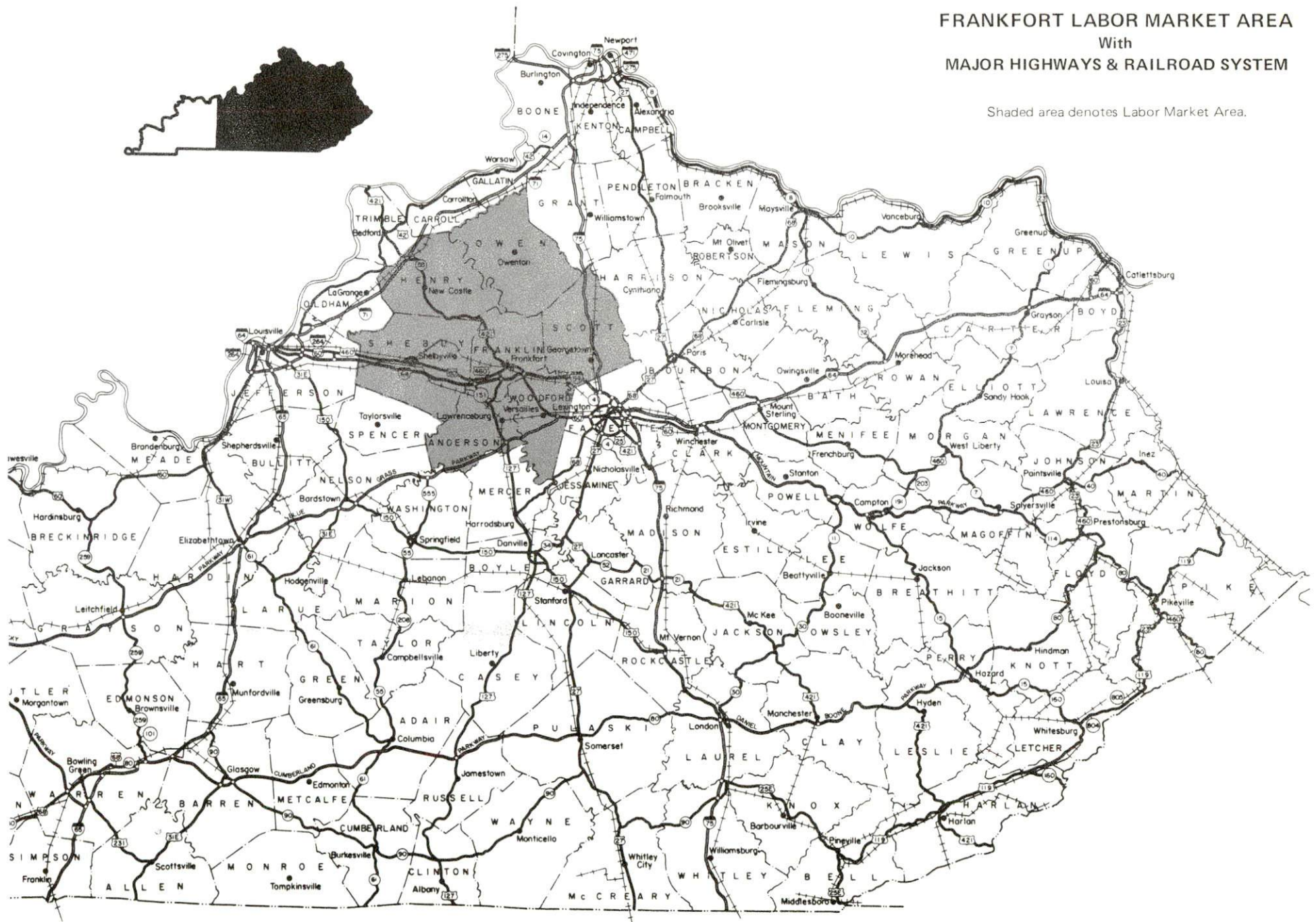


1985 EDITION
GENERAL HIGHWAY MAP
FRANKLIN COUNTY
KENTUCKY

PREPARED BY THE
KENTUCKY TRANSPORTATION CABINET
DEPARTMENT OF HIGHWAYS
DIVISION OF PLANNING
IN COOPERATION WITH THE
U.S. DEPARTMENT OF TRANSPORTATION
FEDERAL HIGHWAY ADMINISTRATION

FRANKFORT LABOR MARKET AREA With MAJOR HIGHWAYS & RAILROAD SYSTEM

Shaded area denotes Labor Market Area.



FRANKFORT, KENTUCKY - A RESOURCE PROFILE

Frankfort, the capital of Kentucky and home of Kentucky State University, is located in central Kentucky's Blue Grass Region. Frankfort, the county seat of Franklin County, is located 29 miles northwest of Lexington, Kentucky; 53 miles east of Louisville, Kentucky; and 88 miles southwest of Cincinnati, Ohio. In 1982, Frankfort had an estimated population of 26,025.

Franklin County, with a rolling to hilly terrain, has a land area of 212 square miles. The Kentucky River runs through the middle portion of the county while Elkhorn Creek cuts through the eastern part of the county. In 1982, Franklin County had an estimated population of 42,600.

The Economic Framework

The total number of Franklin County residents employed in 1983 averaged 18,380, with nonagricultural jobs accounting for 18,000 workers. Manufacturing firms in the county reported 3,190 employees; wholesale and retail trade provided 3,230 jobs; 2,230 people were employed in service occupations; state and local government accounted for 11,215 employees; and contract construction firms provided 780 jobs. Manufacturing employment is greatest in textile mill products, food and kindred products, and transportation equipment industries.

Per capita personal income in Franklin County in 1983 was \$11,956. Between 1979 and 1983, per capita income increased by 34 percent.

The Frankfort labor market area includes Franklin County and the adjoining counties of Anderson, Henry, Owen, Scott, Shelby, and Woodford. The total number of residents employed in the labor market area in 1983 averaged 65,580, with nonagricultural jobs accounting for 59,780 workers. Manufacturing firms in the area reported 11,010 employees; wholesale and retail trade provided 7,690 jobs; 5,530 people were employed in service occupations; state and local government accounted for 14,310 employees; and contract construction firms provided 1,470 jobs.

Resources for Growth

1. Labor Supply - There is a current estimated labor supply of 7,830 men and 6,330 women available for industrial jobs in the labor market area. In addition, from 1985 through 1989, 5,810 young men and 5,560 young women in the area will become 18 years of age and potentially available for industrial jobs.

2. Transportation - The Seaboard System Railroad provides main line rail service to Frankfort. Piggyback services are available from Frankfort through the Louisville ramp. Frankfort is served by I-64; U.S. 60, 127, 421 and 460; and Kentucky 676; all "AAA" rated (80,000-pound gross load limit) trucking highways. Thirty-two trucking companies have the authority to serve Frankfort with interstate and/or intrastate service. The nearest scheduled airline service is available at Blue Grass Field, 5 miles west of Lexington, 23 miles southeast of Frankfort. The Capital City Airport, one mile west of Frankfort, has a 5,000-foot paved runway. Frankfort is located on the Kentucky River where a 6-foot navigation channel is maintained.

3. Power and Fuel - Electric power is provided to Frankfort and parts of Franklin County by the Frankfort Electric and Water Plant Board, which is supplied by the Kentucky Utilities Company. Franklin County is also served by the Kentucky Utilities Company, an electric generation and transmission company, and Fox Creek Rural Electric Cooperative Corporation, which is supplied by the East Kentucky Power Cooperative. Natural gas service is provided to Frankfort by Columbia Gas of Kentucky, Inc., which is supplied by the Columbia Gas Transmission Corporation. Three distributors of propane and five distributors of distillate fuel oil serve Frankfort.

4. Education - Primary and secondary education is provided to Frankfort and Franklin County by the Frankfort Independent School System and the Franklin County School System. The Frankfort Independent School System and the Franklin County School System are accredited by the Southern Association of Colleges and Schools. Four nonpublic schools also operate in Frankfort.

Kentucky State University is Kentucky's unique, small liberal studies-oriented institution of higher learning in Frankfort. The university offers academic programs leading to two-year associate degrees, four-year baccalaureate degrees and the masters degree in public affairs. The 1984 enrollment at Kentucky State University was 2,066. In addition, five universities, five senior colleges, one two-year college, and two community colleges are located within 55 miles of Frankfort.

The Central Kentucky State Vocational-Technical School, in Lexington, 29 miles southeast, offers training in 34 different courses. The Franklin County Area Vocational Education Center, in Frankfort, offers training in seven different courses.

THE LABOR MARKET AREA

The Frankfort Labor Market Area includes Franklin County and the adjoining Kentucky counties of Anderson, Henry, Owen, Scott, Shelby and Woodford.

POPULATION				
Area	1982*	1980	1970	Percent Nonwhite 1980
Frankfort	26,025	25,973	21,902	12.9
Labor Market Area	140,900	138,980	113,600	N/A
Franklin County	42,600	41,830	34,481	8.7
Anderson County	12,900	12,567	9,358	3.9
Henry County	12,900	12,740	10,910	5.5
Owen County	9,000	8,924	7,470	2.5
Scott County	21,800	21,813	17,948	7.3
Shelby County	23,700	23,328	18,999	11.4
Woodford County	18,000	17,778	14,434	8.0

* Population estimates.

Note: The 1980 city counts of population by race are provisional.

Sources: U.S. Department of Commerce, Bureau of the Census, 1980 Census of Population and Housing, March 1981; 1980 Census of Population, Number of Inhabitants; Local Population Estimates, Series P-26, June 1984, September 1984.

LABOR FORCE CHARACTERISTICS OF RESIDENTS, 1983

	Franklin County	Labor Market Area
Civilian Labor Force	19,967	70,826
Employment	13,382	65,579
Agricultural	385	5,795
Nonagricultural	17,997	59,784
Unemployment	1,585	5,247
Rate of Unemployment (%)	7.9	7.4

Source: Kentucky Cabinet for Human Resources, Kentucky Labor Force Estimates, Annual Averages, 1983.

SELECTED COMPONENTS OF NONAGRICULTURAL EMPLOYMENT,
BY PLACE OF WORK, 1983

	<u>Franklin County</u>	<u>Labor Market Area</u>
All Industries (total)	21,825	43,578
Manufacturing	3,186	11,013
Wholesale & Retail Trade	3,233	7,692
Services	2,226	5,527
State/Local Government	11,215	14,307
Contract Construction	784	1,470

Note: Excludes domestic workers, railway workers, certain nonprofit corporations, majority of federal government workers, and self-employed workers.

Source: Kentucky Cabinet for Human Resources, Average Monthly Workers Covered by Kentucky Unemployment Insurance Law, 1983.

FRANKFORT MANUFACTURING FIRMS,
THEIR PRODUCTS AND EMPLOYMENT

<u>Firm (Establishment date)</u>	<u>Product</u>	<u>Employment</u>			<u>Labor Unions</u>
		<u>Total</u>	<u>Male</u>	<u>Female</u>	
Aerobraz Corporation (1980)	Heat treating, brazing	32	18	14	
Ancient Age Distilling Company, Inc. (1869)	Whiskey, distillers dried grain	175	125	50	Distillery Workers; Firemen & Oilers; Machinists
Bendix Corporation Frankfort Plant, Heavy Vehicle Systems Group (1967)	Air brake components	478	--	--	Guards; Industrial Workers; Machinists*
Capital City Tool, Inc. (1973)	Custom metal parts, machine shop, dies and fixtures	17	15	2	

(Continued)

<u>Firm (Establishment date)</u>	<u>Product</u>	<u>Employment</u>			<u>Labor Unions</u>
		<u>Total</u>	<u>Male</u>	<u>Female</u>	
Frankfort Habilitation, Inc. (1972)	Wood furniture, pallets, plastic molded parts	75	50	25	
Frankfort Materials Company (1964)	Bituminous concrete	7	--	--	
Frankfort Publishing Company (1917)	Newspaper, commercial printing	41	29	12	
Frankfort Tool & Die (1968)	Tools and dies, fixtures, weldments, punch and press stamping	4	2	2	
General Electric Company (1971)	Plastic parts and material	300	180	120	
Harrod Concrete and Stone Company (1970)	Ready-mixed concrete, crushed stone, agricultural lime	130	125	5	Steelworkers; Teamsters*
Horn and Goin Company (1949)	Ready-mixed concrete	11	10	1	
Lee Masonry Products (1964)	Concrete block, precast concrete products	13	12	1	
Lukjan Metal Products, Inc. (1972)	Sheet metal fabrication	20	17	3	
Lyons Lumber Company (1909)	Millwork	11	10	1	
National Distillers Products Company, Old Crow Distilling Company (1835)	Whiskey, feed	108	--	--	Distillery Workers; Firemen & Oilers; Guards; Plumbers*

(Continued)

<u>Firm (Establishment date)</u>	<u>Product</u>	<u>Employment</u>			<u>Labor Unions</u>
		<u>Total</u>	<u>Male</u>	<u>Female</u>	
National Distillers Products Company, Old Grand Dad Distilling Company (1901)	Whiskey, feed	442	--	--	Distillery Workers; Firemen & Oilers; Guards; Plumbers*
National Distillers Products Company, Old Taylor Distilling Company (1887)	Whiskey, feed	35	--	--	Distillery Workers; Firemen & Oilers; Guards; Plumbers*
Porritts and Spencer, Western, Inc. (1983)	Papermakers, wet felts	71	54	17	
Progressive Printers (1972)	Offset printing	3	3	--	
Rebecca Ruth Candy, Inc. (1929)	Candy	16	5	11	
Roberts Printing Company, Inc. (1910)	Offset printing, magazine and book printing	10	8	2	
Southern Moldings, Inc. (1974)	Metal stamping, roll forming, wire products	250	140	110	
Trig, Inc. (1963)	Thermal temperature control devices, emissions control components, electric range components	120	30	90	

(Continued)

<u>Firm (Establishment date)</u>	<u>Product</u>	<u>Employment</u>			<u>Labor Unions</u>
		<u>Total</u>	<u>Male</u>	<u>Female</u>	
Union Underwear Company, Inc. (1932)	Men's and boys' knit briefs and T-shirts, children's printed underwear	999	118	881	
Webster Electric Frankfort Operations, Division of Sta-Rite Industries (1954)	Ignition and high voltage transformers, hydraulic pumps, fuel units and valves	170	55	115	Industrial Workers*

*See Labor Organizations below.

Sources: Kentucky Department of Economic Development, 1985 Kentucky Directory of Manufacturers; Division of Research and Planning

The Topy Corporation has begun construction of a \$26 million automobile wheel production plant. The 120,000-square-foot facility, which will employ approximately 80 people, will be completed in January 1986.

LABOR ORGANIZATIONS IN MANUFACTURING FIRMS

<u>Union</u>	<u>Representing workers at:</u>
Distillery, Wine and Allied Workers' International Union, AFL-CIO-CLC	Ancient Age Distilling Company; National Distillers Products Company, Old Crow Distilling Company; National Distillers Products Company, Old Grand Dad Distilling Company; National Distillers Products Company, Old Taylor Distilling Company

(Continued)

Union

Representing workers at:

International Brotherhood of
Firemen and Oilers, AFL-CIO

Ancient Age Distilling Company;
National Distillers Products Company,
Old Crow Distilling Company;
National Distillers Products Company,
Old Grand Dad Distilling Company;
National Distillers Products Company,
Old Taylor Distilling Company

International Guards Union
of America

Bendix Corporation Frankfort Plant, Heavy
Vehicle Systems Group;
National Distillers Products Company,
Old Crow Distilling Company;
National Distillers Products Company,
Old Grand Dad Distilling Company;
National Distillers Products Company,
Old Taylor Distilling Company

International Union, Allied
Industrial Workers of
America, AFL-CIO

Bendix Corporation Frankfort Plant, Heavy
Vehicle Systems Group;
Webster Electric Frankfort Operations,
Division of Sta-Rite Industries

International Association of
Machinists and Aerospace
Workers, AFL-CIO

Ancient Age Distilling Company;
Bendix Corporation Frankfort Plant, Heavy
Vehicle Systems Group;

United Association of
Journeymen and Apprentices
of the Plumbing and Pipe
Fitting Industry of the
United States and Canada,
AFL-CIO

National Distillers Products Company,
Old Crow Distilling Company;
National Distillers Products Company,
Old Grand Dad Distilling Company;
National Distillers Products Company,
Old Taylor Distilling Company

United Steelworkers of
America, AFL-CIO

Harrod Concrete and Stone Company

International Brotherhood
of Teamsters, Chauffeurs,
Warehousemen and Helpers
of America

Harrod Concrete and Stone Company

INDUSTRIAL SERVICES

<u>Types of Services</u>	<u>Location</u>	<u>Mileage from Frankfort</u>
Custom Plastics Producers	Georgetown	18
	Shelbyville	24
Electric Motor Repair	Lexington	29
Grinding, Precision & Tool	Georgetown	18
Heat Treating Facilities	Frankfort	-
	Georgetown	18
Industrial Equipment & Supplies	Frankfort	-
	Lexington	29
Industrial Gases	Lexington	29
Industrial Waste Removal	Frankfort	-
	Lexington	29
Machine Shops, Tool & Die	Frankfort	-
Metal Finishers	Georgetown	18
	Lexington	29
Metal Service Centers	Lexington	29
Millwrights	Lexington	29
Public Warehousing Facilities	Lexington	29

Sources: Kentucky Department of Economic Development, Kentucky Directory of Selected Industrial Services, 1985; Division of Research and Planning.

ESTIMATED MALE LABOR SUPPLY
FRANKFORT LABOR MARKET AREA

Area	Current				Future
	Total Male	Unemployed	Under-employed	Not in Labor Force	Becoming 18 years of age 1985 thru 1989
Labor Market					
Area*	7,830	3,151	2,516	2,163	5,812
Franklin	2,780	983	787	1,010	1,731
Anderson	1,016	299	143	574	547
Henry	885	371	201	313	530
Owen	707	240	201	266	334
Scott	1,034	514	520	0	895
Shelby	891	496	395	0	935
Woodford	517	248	269	0	840

ESTIMATED FEMALE LABOR SUPPLY
FRANKFORT LABOR MARKET AREA

Area	Current				Future
	Total Female	Unemployed	Under-employed	Not in Labor Force	Becoming 18 years of age 1985 thru 1989
Labor Market					
Area*	6,330	2,096	3,100	1,134	5,560
Franklin	1,573	602	971	0	1,546
Anderson	588	263	228	97	523
Henry	1,003	256	229	518	536
Owen	608	91	137	380	338
Scott	921	291	630	0	860
Shelby	986	355	492	139	962
Woodford	651	238	413	0	795

* Additional workers may be drawn from other nearby counties.

Note: Unemployed - persons unemployed and actively seeking work;
Underemployed - persons employed but working only 14 to 26 weeks per year;
Not in Labor Force - represents the number of persons who would enter the labor force if suitable employment were available (based on the assumption that persons in Kentucky would like to participate in the labor force in the same proportion that they do nationally).

Sources: Kentucky Cabinet for Human Resources, Kentucky Labor Supply Estimates by County, 1983. Kentucky Department of Economic Development, Future Labor Supply Becoming 18 Years of Age, 1985 thru 1989.

AVERAGE WEEKLY WAGES BY INDUSTRY,
BY PLACE OF WORK, 1983

	<u>Franklin County</u>	<u>Anderson County</u>	<u>Henry County</u>	<u>Owen County</u>
All Industries	\$310.19	\$279.50	\$242.22	\$236.12
Mining & Quarrying	*	*	0	0
Contract Construction	369.32	231.63	201.40	236.16
Manufacturing	337.77	341.91	344.83	*
Transportation, Communications & Public Utilities	410.97	385.85	288.30	*
Wholesale & Retail Trade	172.36	209.75	149.26	186.63
Finance, Insurance & Real Estate	314.23	262.63	298.73	224.71
Services	228.60	166.04	167.71	131.85
State/Local Government	349.47	276.49	278.56	223.73
Other	202.99	152.47	179.54	*
	<u>Scott County</u>	<u>Shelby County</u>	<u>Woodford County</u>	
All Industries	\$255.99	\$247.09	\$298.42	
Mining & Quarrying	*	0	*	
Contract Construction	258.43	187.61	236.39	
Manufacturing	334.72	285.99	381.35	
Transportation, Communications & Public Utilities	405.89	366.87	386.63	
Wholesale & Retail Trade	157.39	186.11	168.46	
Finance, Insurance & Real Estate	270.89	265.51	244.47	
Services	189.31	199.90	214.79	
State/Local Government	233.25	322.21	273.11	
Other	278.08	209.68	278.71	

* Not disclosed.

Note: Excludes domestic workers, railway workers, certain nonprofit corporations, majority of federal government workers, and self-employed workers.

Source: Kentucky Cabinet for Human Resources, Average Weekly Wages of Workers Covered by Kentucky Unemployment Insurance Law, 1983.

Associated Industries of Kentucky, a voluntary organization of Kentucky businesses, regularly collects occupational wage rates and fringe benefits data from participating member firms. Data are compiled for over 127 clearly defined office, production, and service occupations. Tabulations are published for nine geographical areas of Kentucky, as shown on the map below. It should be noted that the data may be weighted by the preponderance of firms in the larger cities and may be somewhat higher than the rates paid in the smaller communities. Data from these tabulations are available, upon request, from the Kentucky Department of Economic Development, Frankfort, Kentucky 40601.



PER CAPITA PERSONAL INCOME

<u>Area</u>	<u>1979</u>	<u>1983</u>	<u>Percent Change</u>
Franklin County	\$ 8,919	\$ 11,956	34.1
Labor Market Area Range	\$5,156 - 8,919	\$6,669 - 14,317	N/A
Kentucky	7,124	9,396	31.9
U. S.	8,651	11,687	35.1

Sources: U.S. Department of Commerce, Bureau of Economic Analysis; Commerce News, August 28, 1984; May 7, 1985. Kentucky Economic Information System, June 1985.

TRANSPORTATION

Rail

Line serving **Frankfort** - Seaboard System Railroad

Services - Main line; one northbound freight and one southbound freight stop daily; two northbound and two southbound through freights daily; switching services; team track space for four cars; siding space for 50 cars. Piggyback service is available at Frankfort. Seaboard provides piggyback service from Frankfort through the Louisville ramp with highway service substituted for rail between the two cities. Rates are charged from Frankfort.

For details on routing, schedules, rates, and services, contact:

Manager of Industrial Development
Seaboard System Railroad
P. O. Box 2157
Louisville, Kentucky 40201
(502) 587-5228

Highways

Major "AAA" rated (80,000-pound gross load limit) highways serving Frankfort include Interstate 64; U.S. Highways 60, 127, 421 and 460. Interstate 64, a major east-west highway, passes through Frankfort with interchanges southeast and southwest of the downtown area, and connects with Interstate 75, 22 miles east of Frankfort near Lexington. The Blue Grass Parkway, a multi-lane toll road, is 19 miles south of Frankfort via U.S. 127.

The realignment and reconstruction of the intersection of U.S. 60, U.S. 460, and U.S. 421, in east Frankfort, is currently under way. The \$2 million project, which will aid in easing the flow of traffic, will be completed in Spring 1986.

The West Connector, which will complete a four-lane loop around Frankfort, is planned for construction in 1987. The \$16.3 million highway project will run from the intersection of U.S. 127 and U.S. 60 on the west side of Frankfort to the intersection of U.S. 421, Mero Street, and Clinton Street near the Capital Plaza Complex. The estimated completion date will be 1989.

Truck Service

<u>Company</u>	<u>Home Office</u>
ANR Freight System, Inc.*	P. O. Box 5070 Denver, Colorado 80217
American Freight System, Inc.**	9393 West 110th Street Overland Park, Kansas 66210
Bailey's Express, Inc.*	Middletown, Connecticut 06457
Bestway Express, Inc.**	Nashville, Tennessee 37210
Bishop Motor Express*	Grand Rapids, Michigan 49502
Buske Lines, Inc.**	P. O. Box 349 Litchfield, Illinois 62056
CCC Highway, Inc.*	Cleveland, Ohio 44115
C. L. Motor Freight, Inc.*	2605 Commercial Lane Columbus, Ohio 43232
C W Transport, Inc.*	610 High Street Wisconsin Rapids, Wisconsin 54494
Carolina Freight Carriers Corporation*	P. O. Box 697 Cherryville, North Carolina 28021
Central Transport, Inc.**	34200 Mound Road Sterling Heights, Michigan 48077
Claxon Truck Line, Inc.*(T)	P. O. Box 678 Frankfort, Kentucky 40602
Consolidated Freightways Corporation of Delaware*	175 Linfield Drive Menlo Park, California 94025
Duff Truck Line, Inc.*	P. O. Box 359 Lima, Ohio 45802
General Highway Express, Inc.**	Sidney, Ohio 45365
Lawrenceburg Transfer Company, Inc.*	P. O. Box 267 Lawrenceburg, Kentucky 40342
Leoni Motor Express, Inc.*	Chicago Heights, Illinois 60411
The Mason and Dixon Lines, Inc.*	Kingsport, Tennessee 37662
McLean Trucking Company**	P. O. Box 213 Winston-Salem, North Carolina 27102
Middlewest Freightways, Inc.*	6810 Prescott Avenue St. Louis, Missouri 63147
The O.K. Trucking Company*(T)	3000 East Crescentville Road Cincinnati, Ohio 45241
Overnite Transportation Company*	P. O. Box 1216 Richmond, Virginia 23209
Owenton Express, Inc.*	Owenton, Kentucky 40359
Pacific Intermountain Express*	P. O. Box 8004 Walnut Creek, California 94596
Pilot Freight Carriers, Inc.	P. O. Box 27153 Winston-Salem, North Carolina 27153

(Continued)

<u>Company</u>	<u>Home Office</u>
Priority Freight Systems, Inc.**	P. O. Box 7098 Akron, Ohio 44306
R-W Service System, Inc.*	20225 Goddard Road Taylor, Michigan 48180
Renner's Express, Inc.**	P. O. Box 882 Indianapolis, Indiana 46206
Roadway Express, Inc.*	1077 Gorge Boulevard Akron, Ohio 44310
Ryder/P-I-E Nationwide, Inc.**	Jacksonville, Florida 32203
Smith's Transfer Corporation**	P. O. Box 1000 Staunton, Virginia 24401
Suburban Motor Freight, Inc.*	P. O. Box 1739 Columbus, Ohio 43216
United Trucking Service, Inc.*	8505 West Warren Dearborn, Michigan 48126

* Interstate and intrastate service.

** Interstate service only.

(T) Local terminal.

Source: American Motor Carrier Directory, Spring 1985.

<u>Other Freight Services</u>	<u>Nearest Office or Shipping Center</u>
Airborne Express	Lexington, 29 miles southeast
Emery	Lexington, 29 miles southeast
Federal Express	Lexington, 29 miles southeast
Purolator Courier	Lexington, 29 miles southeast
United Parcel Service	Lexington, 29 miles southeast

HIGHWAY MILES AND TRUCK TRANSIT TIME IN DAYS FROM
FRANKFORT, KENTUCKY, TO SELECTED MARKET CENTERS

City	Highway Miles	Delivery Time TL	City	Highway Miles	Delivery Time TL
Atlanta, Ga.	391	1	Los Angeles, Ca.	2,161	4
Baltimore, Md.	570	1	Louisville, Ky.	53	1
Birmingham, Ala.	417	1	Nashville, Tenn.	221	1
Chicago, Ill.	345	1	New Orleans, La.	738	2
Cincinnati, Ohio	88	1	New York, N. Y.	732	N/A
Cleveland, Ohio	332	1	Pittsburgh, Pa.	372	1
Detroit, Mich.	347	1	St. Louis, Mo.	316	1
Knoxville, Tenn.	198	1			

Note: Mileage computations are via the best interstate or primary highways, not necessarily the most direct route of travel.

Sources: Rand McNally Road Atlas, 1979. Official Kentucky Mileage Map, 1980.
Delivery time - Overnite Transportation Company, P. O. Box 99308, Louisville, Kentucky 40299.

Air

Local

Location: Capital City Airport
One mile west of Frankfort
Runways: One paved
Length: 5,000 feet
Traffic
Control: Wind tee
Lighting: Beacon, runway lights sundown to sunrise,
REILS and VASI
Services: 100 octane, jet fuel; hangar; storage; taxi

Nearest Scheduled Commercial Airline Service

Location: Blue Grass Field
5 miles west of Lexington, Kentucky;
23 miles southeast of Frankfort
Runways: 2 paved
Length: 7,000 feet; 3,500 feet
Traffic
Control: Tower
Lighting: Approach lighting system, beacon, runways and
obstructions lighted, VASI
Services: Delta, Piedmont, United, USAir, Allegheny Commuter,
Comair, Tennessee Airways; fuel - 100LL and
jet-A; hangars, tie-downs; major A & P repairs;
major Avionics repairs; APU, charter, flight
instruction, oxygen, plane rentals, survival
equipment; taxi, limousine, car rentals, courtesy
car, weather information; restaurant, snack bar
Air Freight
Service: Air freight terminal

Bus - Southern Greyhound Bus Lines; Trailways Bus System; Frankfort Bus Line
(intracity service)

Taxi - Radio-dispatched service - 7 a.m. to 6 p.m. daily

Rental Services - Automobile, truck and trailer rentals available locally

Water

Frankfort is located on the Kentucky River where a 6-foot navigation channel is maintained. Unloading facilities for sand and gravel are located at Frankfort on the Kentucky River. Frankfort is only 53 miles from Louisville where the Louisville and Jefferson County Riverport Authority and the Port of Louisville are located on the Ohio River.

The Louisville and Jefferson County Riverport Authority has been designated as a Foreign Trade Zone and offers complete U.S. customs services for exports and imports.

POWER AND FUEL

Electricity

Company serving **Frankfort and south central portion of Franklin County** -
Frankfort Electric & Water Plant Board*
Source of power - Kentucky Utilities Company
Total generating capacity - 3,164,000 KW**
For industrial rates contact:

Frankfort Electric & Water
Plant Board
315 West Second Street
P. O. Box 308
Frankfort, Kentucky 40602
(502) 223-3401

Company serving **eastern portion of Franklin County** - Kentucky Utilities
Company
Source of power - Kentucky Utilities Company
Total generating capacity - 3,164,000 KW**
For industrial rates contact:

Industrial Development Department
Kentucky Utilities Company
One Quality Street
Lexington, Kentucky 40507
(606) 255-1461

* The Frankfort Electric and Water Plant Board recently completed the installation of a substation transformer. The \$165,000 transformer will serve as a backup system.

* Kentucky Utilities Company's total generating capacity will be increased when a new 650,000 KW generation plant is completed in Hancock County in 1993.

Company serving **western portion of Franklin County** - Fox Creek Rural Electric Cooperative Corporation

Source of power - East Kentucky Power Cooperative

Total generating capacity - 1,309,000 KW*

For industrial rates contact:

Industrial Development Division
East Kentucky Power Cooperative
P.O. Box 707
Winchester, Kentucky 40391
(606) 744-4812

and/or

Fox Creek RECC
Highway 62 East
P. O. Box 211
Lawrenceburg, Kentucky 40342
(502) 839-3442 or (800) 372-7160

Natural Gas

Company serving **Frankfort** - Columbia Gas of Kentucky, Inc.

Source of supply - Columbia Gas Transmission Corporation

Size of transmission mains - 6, 8, 10 and 12 inches (supplier) 6 and 8 inches (distributor)

Distribution mains - 2 to 12 inches

Distribution pressure - 4 ounces to 240 psi

Btu content - 1,000 per cubic foot

Specific gravity - 0.6

For rates and supplies contact:

Columbia Gas of Kentucky, Inc.
115 West Main Street
P. O. Box 429
Frankfort, Kentucky 40602
(502) 223-8237

* East Kentucky Power Cooperative's total generating capacity will be increased when a new 650,000 KW coal-fired generation plant is completed in southeast Clark County in 1992.

Other Fuels

Propane

Burley Oil Company
633 Versailles Road
Frankfort, Kentucky 40601

Silgas, Inc.
Old Finchville Road
Shelbyville, Kentucky 40065

Southern States Cooperative, Inc.
Jett Petroleum Service
P. O. Box 632, Mills Lane
Frankfort, Kentucky 40602

Fuel oils

Distillate fuel oil -

Burley Oil Company
633 Versailles Road
Frankfort, Kentucky 40601

D. B. Grugin Oil Company, Inc.
P. O. Box 219
Frankfort, Kentucky 40602

Phillips 66
Louisville Road
Frankfort, Kentucky 40601

Pitts Petroleum Products
Chevron Jobber
Route 8, Old Harrodsburg Road
P. O. Box 5
Frankfort, Kentucky 40602

Robinson-Gorham Oil Company
Barrett Avenue
Frankfort, Kentucky 40601

Residual fuel oil - Arrangements must be made with the refinery.

Low sulphur content coal - Available in Kentucky.

WATER AND SEWERAGE

Public Water Supply

Company serving **Frankfort** - Frankfort Electric & Water Plant Board
315 West Second Street, P. O. Box 308
Frankfort, Kentucky 40602
(502) 223-3401

Source - Kentucky River

Treatment plant capacity - 18,000,000 gallons per day

Average daily consumption - 7,000,000 gallons

Peak daily consumption - 9,000,000 gallons

Treatment processes - Coagulation, sedimentation, chlorination, rapid mix, flocculation, filtration, fluoridation

Calcium content - 039.0 ppm

Iron content - 0.04 ppm

Hardness - 160.0 ppm as calcium carbonate

Storage capacity - 11,205,000 gallons

Size lines - 2 inches to 16 inches

Water pressure - 25 to 138 psi

MONTHLY WATER RATES

(Within City)

First	2,000 gallons	\$3.50 (Minimum)
Next	3,000 gallons	1.75 per M gallons
Next	20,000 gallons	1.50 per M gallons
Next	175,000 gallons	1.25 per M gallons
Next	800,000 gallons	1.00 per M gallons
All over	1,000,000 gallons	.70 per M gallons

(Outside City)

First	2,000 gallons	\$7.00 (Minimum)
Next	3,000 gallons	3.50 per M gallons
Next	20,000 gallons	1.50 per M gallons
Next	175,000 gallons	1.25 per M gallons
Next	800,000 gallons	1.00 per M gallons
All over	1,000,000 gallons	.70 per M gallons

Tap-on charge:

5/8 or 3/4-inch -	\$ 2.00 (inside city)
	250.00 (outside city)
1-inch -	100.00
1 1/2-inch -	325.00
2-inch -	450.00

Meter sizes larger than 2-inch the actual cost of the meter will be applied.

Raw Water

Surface water sources - Kentucky River and Elkhorn Creek

Average discharge - Kentucky River at Lock 4 at Frankfort - 7,099 cfs (58 years, USGS, unadjusted); Elkhorn Creek near Frankfort - 611 cfs (46 years, USGS)

Expected ground water yield - 5 gpm or less along entire western boundary and northeast corner; 5 to 50 gpm along Kentucky River in south central portion of county and a portion along southeast boundary; 50 to 200 gpm along Kentucky River in north central portion of county and along Elkhorn Creek

Sewerage

Company serving **Frankfort** - Frankfort Municipal Sewer Board
1200 Kentucky Avenue
Frankfort, Kentucky 40601
(502) 875-2448

Design capacity - 8,900,000 gallons per day

Average daily flow - 4,500,000 gallons

Treatment - Secondary

Type treatment - Screening bar, grit removal, oxidation ditch, extended aeration, activated sludge, secondary sedimentation, ozone, filter press

Treated effluent discharged into - Kentucky River

Size of sanitary mains - 8 to 48 inches

Size of storm mains - 12 to 66 inches

Monthly rates based on water usage -

\$1.45 per M gallons for residential customers

\$1.65 per M gallons for industrial customers

Tap-on charge:

\$300 (Inside city limits)

\$360 (Outside city limits)

CLIMATE

Franklin County

Temperature

Normal (30-year record)	54.90 degrees
Average annual 1984	55.30 degrees
Record highest, August 1983 (40-year record)	103.00 degrees
Record lowest, January 1963 (40-year record)	-21.00 degrees
Normal heating degree days (30-year record) (Heating degree day totals are the sums of negative departures of average daily temperatures from 65 degrees F.)	4,814

Precipitation

Normal (30-year record)	45.68 inches
Mean annual snowfall (29-year record)	16.30 inches
Total precipitation 1984	42.27 inches
Mean number days precipitation (.01 inch or more) (40-year record)	130.80
Mean number days thunderstorms (40-year record)	46.00

Prevailing Winds (through 1963)

South

Relative Humidity

1 a.m.	77 percent (20-year record)
7 a.m.	81 percent (21-year record)
1 p.m.	60 percent (21-year record)
7 p.m.	64 percent (21-year record)

Source: U.S. Department of Commerce, Environmental Science Services
Administration, Climatological Data, 1984. Station of record: Lexington,
Kentucky.

LOCAL GOVERNMENT

City

Structure - Mayor - 4-year term; 4 commissioners - 2-year terms; city manager

Budget 1984-85 - General Fund \$5,899,847

Water Fund 2,061,000

Sewer Fund 901,774

Fees and licenses - Occupational license fee of one percent of all salaries, wages, commissions and other compensation earned by every person in the city for work done or services rendered in the city, and one percent of the net profits of all businesses, professions or other activities conducted in the city. Regulatory license fees range from \$10 to \$500 annually.

County

Structure - County Judge/Executive - 4-year term; 6 magistrates - 4-year terms

Budget 1984-85 - General Fund \$1,368,263; Road Fund \$816,790

Assessed Value of Property, 1984

<u>Classes of Property</u>	<u>Frankfort</u>	<u>Franklin County</u>
Real Estate	\$402,596,034	\$660,763,904
Tangibles	83,861,665	139,229,483

Property Taxes

All property in Kentucky is assessed at 100 percent of fair cash value.

Land and buildings are taxed by the state and may be taxed by local jurisdictions. The 1984 state rate is \$0.22 per \$100 of assessed valuation.

Manufacturing machinery, raw materials inventories, pollution control equipment, and goods in the process of manufacture are not subject to local taxation. The state rate is \$0.15 per \$100.

Other tangible personal property owned by manufacturers (automobiles, trucks, finished goods, office furniture, office equipment) is taxed by the state at \$0.45 per \$100 and may be taxed by local jurisdictions.

Intangible personal property located in Kentucky (money in hand, shares of stock, notes, bonds, accounts receivable, and other credits) is taxed by the state at \$0.25 per \$100, and is not subject to local taxation.

Property stored in public warehouses in a transit status is not subject to local taxation. The state rate is only \$0.015 per \$100.

Private leaseholds in industrial facilities owned by cities or counties and financed by industrial revenue bonds are subject to a state tax of \$0.015 per \$100 of value (essentially the lessee's equity, adjusted for appreciation or depreciation). Local taxation is not permitted.

* Excludes Homestead Exemptions.

Combined State and Local Rates Per \$100 Valuation, 1984*
(100% assessment)

Kentucky school districts levy property taxes on property located within individual school district boundaries. Two types of school districts are operated in Kentucky: 1) independent school districts which usually operate within a single city and often do not cover the entire city; and 2) common school districts which operate in portions of counties not covered by independent districts and cover the entire county when there is no independent district. School district boundaries are mutually exclusive and do not cross.

	Site Inside City of Frankfort and within the Frankfort <u>School District</u>	Site Inside City of Frankfort and within the Franklin County <u>School District</u>	Site Inside Unincorporated Franklin County
1. Land and buildings	\$0.9780	\$0.8810	\$0.6310
2. Mfg. machinery, raw materials, goods in process, pollution control equipment	0.1500	0.1500	0.1500
3. Automobiles and trucks	1.3420	1.2650	1.0150
4. Finished goods, office equipment, other tangibles	1.2420	1.1600	0.9100
5. Intangibles (accounts receivable, notes, bonds, etc.)	0.2500	0.2500	0.2500
6. Property stored in public warehouses in a transit status	0.0150	0.0150	0.0150
7. Leaseholds in industrial revenue bond financed plants	0.0150	0.0150	0.0150

Utilities Gross Receipts Tax for Schools

A 3 percent tax is levied on utilities receipts for schools in Franklin County. Tax is paid by all consumers of utilities as an add-on to the utilities bills. Exempted are receipts from utilities services that are resold and the receipts from the sale of energy or energy producing fuels that exceed 3 percent of the cost of production in manufacturing, processing, mining or refining.

* Kentucky Department of Economic Development.

Planning and Zoning

Joint agency - Frankfort-Franklin County Planning Commission
Participating cities - Frankfort
Zoning enforced - City of Frankfort only
Subdivision regulations enforced - County-wide
Local codes enforced - Building code enforced county-wide; housing code enforced in Frankfort
Mandatory state codes enforced - Kentucky Plumbing Code, National Electric Code, Kentucky Boiler Regulations and Standards, Kentucky Building Code (modeled after BOCA code)

Safety

Police	Frankfort	Franklin County
Total staff	57 full-time 5 part-time	5 full-time 5 part-time
Radio-patrol cars	56	3

Fire

Insurance Services Office, Public Protection Classification	3	9/10*
Full-time staff	63	17

Rescue Service

Frankfort-Franklin County Disaster and Emergency Services:

Number of part-time staff - 2
Number of volunteers - 68
Equipment - Two rescue boats, two rescue vehicles, water and land search equipment, emergency lighting unit
Personnel training - Radio communications, land and water recovery search, skywarn

Emergency rescue service is also provided to Frankfort and Franklin county by units from the City of Frankfort Fire Department, which maintains 5 fully-equipped rescue vehicles.

* Within 5 road miles of a fire station, class 9 applies.

Refuse Collection and Disposal

	Frankfort	Franklin County
Type service	Municipal*	Private
Fee charged:		
residential	None	By contract
commercial	N/A	By contract
industrial	N/A	By contract
Collection frequency:		
residential	Weekly	Weekly
commercial	N/A	By contract
industrial	N/A	By contract
Trash pickup	Weekly	By contract
Disposal method	Landfill	Landfill

* Residential service only; business and industrial service must be arranged through private contractors.

EDUCATION

Public Schools

	Frankfort Independent	Franklin County
Total Enrollment (Spring, 1985)	804	6,290
Kindergarten	57	395
Elementary	485	2,372
Middle School	--	1,608
High School	262	1,915
Accreditation	Southern Association of Colleges and Schools	Southern Association of Colleges and Schools
Pupil-Teacher Ratio (1983-84)	17-1	20-1
Percent High School Graduates to College (1983-84)	56.4	56.6
Expenditures Per Pupil (1983-84)	\$2,592.99	\$ 1,825.87
Bonded Indebtedness (June 30, 1984)	0	\$12,170,000

Nonpublic Schools

	Capital Day	Good Shepherd
Total Enrollment	176	306
Elementary	176	306
Pupil-Teacher Ratio	13-1	20-1
	Montessori Children's House	Tabernacle Christian
Total Enrollment	78	62
Elementary	78	32
High School	--	30
Pupil-Teacher Ratio	15-1	10-1

Area Colleges and Universities

<u>Name</u>	<u>Location (Miles distant)</u>	<u>Enrollment (Fall, 1984)</u>	<u>Highest Degree Conferred</u>
Kentucky State University	Frankfort	2,066	Masters
Midway College	Midway (12)	352	Associate
Georgetown College	Georgetown (18)	1,298	Masters
Lexington Community College	Lexington (29)	2,573	Associate
Transylvania University	Lexington (29)	787	Baccalaureate*
University of Kentucky	Lexington (29)	21,237	Doctorate, M.D., D.M.D., J.D.
Asbury College	Wilmore (31)	1,067	Baccalaureate
Centre College	Danville (44)	748	Baccalaureate
Eastern Kentucky University	Richmond (52)	12,357	Masters, Specialist**
Bellarmino College	Louisville (53)	2,710	Masters
Jefferson Community College	Louisville (53)	6,767	Associate
Spalding University	Louisville (53)	1,126	Masters, Specialist
University of Louisville	Louisville (53)	19,794	Doctorate, M.D., D.M.D., J.D.
St. Catharine College	Springfield (54)	180	Associate

Kentucky State University

Kentucky State University, located in Frankfort, is Kentucky's unique, small liberal studies-oriented institution of higher learning. The university offers academic programs leading to two-year associate degrees, four-year baccalaureate degrees and the masters degree in public affairs. KSU provides pre-professional instruction, and Kentucky professional schools reserve a percentage of their admissions for KSU graduates. The first phase of a five-year engineering degree program is also offered in cooperation with the University of Kentucky at Lexington and the University of Maryland. The Whitney Young College of Leadership Studies at KSU offers a unique program of study based upon the Great Books of the Western World. A continuing education program, evening and off-campus classes, a weekend college, and other specialized programs are offered through the university's Community College to meet the varied needs and interests of the area. The university is the home of the Governmental Services Center, which develops, coordinates, and implements state government worker training programs.

* Courses in a masters degree program are taught on the Transylvania campus by faculty members of Xavier University of Cincinnati. The degree is issued by Xavier University.

** Joint doctoral degree programs are offered in cooperation with the University of Kentucky, Lexington. The degrees are issued by the University of Kentucky.

Vocational Schools

Both the state vocational-technical schools and the area vocational education centers are operated by the Kentucky Department of Education. The state vocational-technical schools enroll persons full time who are at least 16 years of age and not in school. These students attend classes for six hours each day. The area vocational education centers are designed to accommodate high school students who are at least 15 years of age. These students attend vocational school for three hours each day. The state vocational-technical schools and the area education centers offer evening courses to enable working adults to upgrade current job skills.

Nearest State School

Location	Central Kentucky State Vocational-Technical School
Miles Distant	Lexington 29
Curriculum	Business and Office Accounting Clerical Secretarial Consumer and Home Economics Commercial Foods Distributive Education Retail Training - Merchandising/Food Marketing Hotel/Motel - Waiter/Waitress-Housekeeping Services Health and Personal Services Occupations Cosmetology Dental Assistant Nurse's Aide Practical Nursing Surgical Technician Ward Clerk Medications Aide Home Health Care Geriatric Industrial Education Air Conditioning Auto Body Repair Auto Mechanics Carpentry Drafting (with CAD/CAM) Electronics Graphic Arts Industrial Electricity Machine Shop Masonry Welding Learning Resource Center GED

(Continued)

- Public Service
 - E.M.T. Training
 - Fire Training
 - C.P.R.
 - First Aid
 - Industrial Fire Brigade Training
- Apprenticeship
 - Electrical
 - Tool and Die
- Up-Grade Programs

Nearest Area Education Center

Location	Franklin County Area Vocational Education Center
Curriculum	Frankfort Industrial Education <ul style="list-style-type: none"> Auto Body Repair Auto Mechanics Drafting Electricity Machine Shop Welding Marketing and Retailing

Arrangements can be made to provide training in the specific production skills required by an industrial plant. Instruction may be conducted either in the vocational school or in the industrial plant, depending upon the desired arrangement and the availability of special equipment.

HEALTH

Local Medical Personnel

Physicians - 70
Dentists - 28

Hospitals

<u>General Hospital</u>	<u>Location</u>	<u>Beds</u>
King's Daughters' Memorial Hospital	Frankfort	190

General hospital facilities -Five operating rooms, recovery room, clinical reference, laboratory, CAT scanner, X-ray, CCU/ICU, emergency room, pharmacy, digital vascular imaging, OB section with birthing and nursery, neurology services including EEG, physical therapy, respiratory therapy, nuclear medicine, social services, outpatient surgery, and ultrasound

Medical staff - 45 medical doctors, 9 dentists, 97 registered nurses (76 full time, 21 part time), 7 licensed practical nurses, 30 nursing technicians

Other Medical Facilities

Franklin County Health Center
West Bluegrass District Health Department

Ambulance Service

Name - Frankfort-Franklin County Ambulance Service
Staff - 12 with advanced first aid training; emergency medical technician training
Service - 24-hour, county-wide
Equipment - Four ambulances, extrication vehicle, drag hooks, oxygen and resuscitation equipment; access to civil defense boat

OTHER LOCAL FACILITIES

Communications

Telephone -	South Central Bell Telephone Company
Telegraph -	Western Union
Services -	Toll-free number, 1-800-325-6000; counter service available
Postal -	U.S. Post Office
Class -	First
Mail received -	Five times daily
Mail dispatched -	Four times daily
Newspaper -	
Daily except	
Saturday -	The State Journal
Circulation -	11,350 daily; 12,300 Sunday
Other papers	
received from -	Louisville and Lexington, Kentucky; Cincinnati, Ohio
Radio -	WFKY-AM, WKYW-FM, WKED-AM, WVBA-FM
Major stations	
received from -	Louisville and Lexington, Kentucky; Cincinnati, Ohio
Television -	Cable 10 - Local programming, 7:00 p.m. to 8:30 p.m. with some exceptions for longer programs
Airwave reception	
from -	Louisville and Lexington, Kentucky
Cable service	
Number of cable	
channels -	25
Kentucky	
Educational	
Television -	Owenton transmitter, Channel 52

Library Services

Public library - Paul Sawyer Public Library

Size collection - 60,000 volumes

Circulation, 1983-84 - 140,000

Services - Phone and personal reference service, preschool story hour and children's programming, art exhibits, records, magazines, paperbacks, films, copying machine, audiovisuals for loan, classroom collections, Interlibrary Loan, bookmobile service to suburban and rural areas, meeting room facilities, large-type books

University library - Blazer Library, Kentucky State University

Size collection - 261,566 volumes (149,119 books; 51,245 federal documents; 39,952 microforms; 21,250 bound periodicals)

Special collection - 11,500 volumes of literature by and about Afro-American blacks

Services - All collegiate library services; photocopiers; computer assisted reference service (on-line bibliographic searching); New York Times, Pittsburgh Courier, Louisville Courier-Journal, Lexington Leader, Louisville Defender and Lexington Herald on microfilm

Kentucky Department for Libraries and Archives

State Library Services Division - serves state agencies and public libraries

Size collection - 105,264 volumes; 74,152 federal documents; 4,383 films; 635 periodicals and newspapers

Circulation, 1983-84 - 30,019 books; 16,428 information and loan requests

Services - Information services including Info-Ky (Courier-Journal and Louisville Times on-line index), periodicals and newspapers, federal documents, films, microforms, microfilm and microfiche reader/printers, Kentuckiana materials, audiovisuals, Interlibrary Loan, telephone directories

State Public Records Division (Archives) - serves governmental agencies and the general public

Services - Archival holdings of 80,000 cubic feet of state and local records; microfilm holdings of 22,000 reels; complete set of laboratories; microfilming for state and local government agencies; public monthly and annual checklist of Kentucky documents; document preservation laboratory for state and local government agencies; records retention schedules prepared for state and local government agencies; disaster response team for any public repository; guide to holdings in public repositories; grant programs for local government records management; consultant and advisory services; public research room

Religious Institutions

Denominations -	AME Apostolic Assembly of God Baha'i Baptist Catholic Christian Christian Science Church of Christ Church of God Episcopal	Gospel Assembly Jehovah's Witnesses Lutheran Methodist Nazarene Pentecostal Presbyterian Salvation Army Seventh Day Adventists Wesleyan
Nearest Synagogues -	Lexington, 29 miles southeast	
Congregations -	Adath Israel (reform) Ohavey Zion (traditional)	

Financial Institutions

<u>Banks</u>	<u>Assets</u>	<u>Deposits</u>	<u>Statement Date</u>
Farmers Bank and Capital Trust Company	\$284,501,613.00	\$202,051,631.00	12/31/84
Republic Saving Bank	30,488,336.04	28,775,506.10	12/31/84
The State National Bank of Frankfort, Inc.	66,525,985.61	58,437,528.68	12/31/84
<u>Savings and Loan Associations</u>	<u>Assets</u>	<u>Savings Accounts</u>	<u>Statement Date</u>
The Cumberland* First Federal	\$931,126,689.00	\$730,647,368.00	12/31/84
Savings and Loan Association of Frankfort	77,711,745.12	69,406,014.35	12/31/84

Hotels and Motels

Total number - 7**
Total rooms - 570

* Figures are included from banks in Frankfort, Bowling Green, Harrodsburg, Lexington, Louisville, Maysville, Scottsville, and Shelbyville.

** Construction of two motels is currently under way and is scheduled for completion in late 1985. With the completion of these motels, the total number of rooms available in Frankfort will be 668.

Clubs and Organizations

Alcoholics Anonymous	Daughters of the American Revolution
Alpha Delta Kappa	Delta Theta Chi
Altrusa Club	Eastern Star
American Association of University Women	Ebonettes
American Business Women's Association	Elks
American Cancer Society	Elks Lodge Auxiliary
American Contract Bridge League	Fellowship of Christian Athletes
American Disabled Veterans	Frankfort Arts Foundation
American Legion	Frankfort Association of Insurance Women
American Legion Auxiliary	Frankfort Association of Life Underwriters
American Radio Relay League	Frankfort Backgammon Club
American Red Cross	Frankfort Bird Club
American Society of Civil Engineers	Frankfort Boat Club
American War Mothers	Frankfort Career Development Center
Arthritis Foundation	Frankfort Croquet Club
Audubon Society	Frankfort Dulcimer Group
Beta Sigma Phi	Frankfort-Franklin County Chamber of Commerce
Big Brothers & Big Sisters	Frankfort Ministerial Association
Bluegrass Orchid Society	Frankfort Sportsman Club
Bluegrass Toastmasters	Frankfort Square Dance Club
Bluegrass West Comprehensive Care Center	Frankfort Women's Club
Board of Realtors	Franklin County Bar Association
Boy Scouts	Franklin County Council on Aging
Bureau for Volunteer Service	Franklin County Council of Garden Clubs
Business and Professional Women's Clubs	Franklin County Democratic Women's Club
Capital Amateur Radio Society	Franklin County Emergency Assist C. B. Radio Club, Inc.
Capital City Philatelic Association	Franklin County 4-H Council
Capital City Retired Teachers' Association	Franklin County Humane Society
Capital City Shrine Club	Franklin County Medical Society
Capitolite	Franklin County Plumbers Association
Central Kentucky Genealogical Society	Franklin County Trust for Historical Preservation
Child Development Center	Franklin County Young Democrats
Chinese Style Karate Club	Fraternal Order of Police
Christian Women's Club	Future Business Leaders of America
Church Women United	Future Farmers of America
Civitan Club	Future Homemakers of America
Colonial Dames	Future Teachers of America
Common Cause	Garden Clubs
Community Chorus	Gideons International
Community Council	
Cub Scouts	

Girl Scouts
 Great Books
 Hadassah
 Heart Fund Memorials
 Heritage Women's Club
 Hiram Lodge
 Historic Frankfort, Inc.
 Home Builders Association
 Homemakers Clubs
 Human Relations Forum
 Human Services Council
 Independent Order of Odd
 Fellows
 Jaycee Women
 Jaycees
 JaySirs
 Junior Achievement
 Junior Optimist Band
 Kentucky Historical Society
 Kentucky Junior Historical
 Society
 Kentucky Society of
 Professional Engineers
 Kentucky State University
 Alumni Club
 Key Club
 King's Daughters' Residence
 Association
 King's Daughters' Silent
 Workers
 Kiwanis
 Knights of Columbus
 La Jardinier Club
 La Leche League
 The Links, Inc.
 Lions Club
 Little Theater
 March of Dimes

Masons
 Masonic Temple Association
 Mizpah Lodge
 Moose
 National Secretarial
 Association
 Navy League
 Neighborhood Watch Groups
 Optimist Club
 Paul Sawyer Art Club
 Pegasus Players
 Phi Beta Psi
 Radio Club
 Right to Life
 Rotary Club
 Ruritan
 Salvation Army
 Senior Citizens
 Shriners
 Singles Club
 Sunshine Workers
 Take Off Pounds Sensibly (TOPS)
 3-Link Rebekah Lodge
 Tourist & Hospitality
 Association
 United Daughters of the
 Confederacy
 United Nations Association
 United Way
 Veterans of Foreign Wars
 Veterans of Foreign Wars Ladies
 Auxiliary
 Weight Watchers
 Welcome Wagon
 Women's Progressive Club
 YMCA
 Younger Women's Club

RECREATION

Local

The city of Frankfort provides excellent recreational facilities and organized programs for the youth, adults and senior citizens of the community. These programs range from strenuous sports to leisurely family activities.

A full-time recreation staff organizes and promotes supervised sporting activities each year. Featured sports leagues include girls' and adult softball; Instructional League, Minor League, Little League and Babe Ruth League baseball; summer and fall league tennis; instructional and fifth grade basketball; archery club; croquet club; volleyball; and golf. Annual tournaments held in Frankfort include softball, baseball, tennis, and the prestigious Governor's Open golf tournament which is held at Juniper Hills Golf Course.

Other special events sponsored by the Frankfort Parks and Recreation Board include the annual Easter Egg Hunt for children 12 years of age and under, the Labor Day Picnic, splash parties at the East Frankfort Pool, and baseball camp.

The Frankfort Flotilla, sponsored by the Frankfort Boat Club, offers such events as boat races, a parade of boats, music and a beauty contest.

The Franklin County Fair is an annual event held in July.

The Capital Expo Festival, held annually in June, is an arts and crafts fair with ethnic food booths and live entertainment. The Expo, sponsored by the Frankfort/Franklin County Chamber of Commerce, also offers a Miss Teen Expo beauty contest, a 10K run, a hot air balloon race, fireworks, and an "Ole Time" Fiddler's Contest.

The Frankfort quilt Festival is held annually in March.

Frankfort's excellent recreational facilities include the 124-acre, family-oriented Juniper Hills Park, with an 18-hole regulation golf course and pro-shop, an Olympic-size swimming pool, four lighted tennis courts, a lighted softball field, two lighted sand volleyball courts, horseshoe pits, a basketball court, a playground, picnic facilities, a tree arboretum, and a shelter.

The 47-acre East Frankfort Park has a swimming pool, four lighted tennis courts, lighted Minor League and Instructional League baseball fields, a lighted softball field, concrete and sand volleyball courts, two basketball courts, nature trails, playground equipment, picnic facilities and two shelters with restrooms.

South Frankfort Park has a concrete volleyball court, a playground, two basketball courts, picnic facilities and a shelter with restrooms.

Capital View Park, a 150-acre recreational park, was completed in Summer 1984. The park includes two lighted softball fields, volleyball courts, picnic facilities, playground, a 6.2-mile running trail with seven exercise stations, nature trails, and a shelter with restrooms.

State Stadium is the site of many little league baseball games in Frankfort.

Private recreational facilities in Frankfort are as extensive as the public facilities. The country club offers an 18-hole golf course, swimming pool and tennis courts. Two bowling facilities and five movie theaters - four indoor and one drive-in - are available to the public.

The Frankfort YMCA offers numerous programs for children and adults. The facility, located in the Capital Plaza area, includes a swimming pool, a racquetball court, a handball court, weight lifting equipment, a fitness center, and a ladies exercise room. Planned programs include pre-school, elementary through high school, and adult swimming classes. Special children's programs include art classes, gymnastics, seasonal ball teams, and bus trips. Adult classes are organized in art and bridge. Regular exercise classes are available for adults.

Frankfort has an active senior citizens group which maintains a senior citizens center and provides a variety of services to members in the community, including meals, transportation (a wheelchair bus for the handicapped is available), university courses, health services, homemaker and maintenance services to homebound members, and recreational programs. Recreational facilities, a library, a dining room and a kitchen are available at the center.

Frankfort, lying in the heart of the Bluegrass, is the capital of the Commonwealth. Explored in 1751, incorporated as a city in 1786, and designated the capital of the Commonwealth of Kentucky in 1792, the city provides numerous tourist attractions.

The bodies of Daniel and Rebecca Boone were brought to Frankfort twenty-five years after Boone's death in Missouri, and are buried in the Frankfort Cemetery. Boone's rifle and other relics of his life are displayed in the museum of the Kentucky Historical Society in Frankfort.

The Old State Capitol and Kentucky History Museum on Broadway is an architectural gem. It was the first Greek Revival building west of the Alleghenies. Its circular marble stairway, perfectly balanced, supports itself by its own weight.

The Corner of Celebrities, an area consisting of two square blocks of downtown Frankfort, is a treasury of interesting architecture. Here are the old homes and home sites of thirty-six prominent federal officials. Three of the homes, Liberty Hall, the Orlando Brown House, and the Vest-Lindsey House, have been restored to their original condition and are open to the public as museums.

Frankfort is also the place of origin of Bibb lettuce, a widely-known delicacy. It was developed by John Bibb in his garden in back of his house on Wapping Street.

Kentucky State University on East Main Street is an undergraduate and graduate institution with an enrollment of about 2,300. Founded in 1886, the university offers fifty different areas of study, and offers a variety of recreational and cultural programs which are open to the Frankfort community.

The Capitol building houses the executive offices and the legislature. Completed in 1910, the only power machinery used in construction was a steam-driven concrete mixer.

Located on the west lawn behind the Capitol is the Floral Clock. Resting on a 100-ton planter above a reflecting pool, the clock has a 34-foot face and uses 20,000 plants grown in state greenhouses.

The Governor's Mansion, located just east of the Capitol, has been the official residence of Kentucky's governors since 1914. A restoration project was completed early in 1983.

The Kentucky Military History Museum at the Old State Arsenal features famous Kentucky rifles and other military memorabilia.

Area (Within 55 miles)

The **Buckley Wildlife Sanctuary** is located 12 miles south of Frankfort. The 278-acre site was established by a private citizen as a memorial and was developed by the Audubon Society. The area provides trail walks and group tours can be arranged.

The **Headley-Whitney Museum**, 18 miles southeast of Frankfort on the Old Frankfort Pike, features displays of fine jewelry, art, and shells.

The **Kentucky Horse Park**, a park dedicated to horses and to man's love for horses, is located 23 miles southeast of Frankfort near Lexington. The park, which contains more than 1,000 acres of Kentucky Bluegrass, features the International Museum of the Horse; the Man O'War Memorial; an antique carriage display; horseback and pony rides; walking farm tours; horse-drawn tours; a restaurant; a gift shop; and a campground area, which offers swimming, tennis, and planned activities. Numerous special events are held year-round and include various horse shows, steeplechasing, dressage, polo games, and rodeos.

Lexington, 29 miles southeast of Frankfort, offers a variety of cultural, sporting, and recreational activities. Thoroughbred and harness racing is presented at Keeneland Race Course and the Red Mile Harness Track during several meets each year. The University of Kentucky and Transylvania University offer a number of sporting events. The University of Kentucky basketball games are held at Rupp Arena, the world's largest basketball arena. Other attractions include Lexington Philharmonic concerts, Lexington Children's Theatre, and plays performed by Broadway touring companies, all held in the recently renovated Opera House.

Taylorsville Lake, 34 miles southwest of Frankfort near Taylorsville, was developed by the U.S. Army Corps of Engineers. The 3,050-acre lake and 10,700-acre recreation area offer facilities for fishing, boating, swimming, and wildlife recreation.

Waveland State Shrine, 34 miles southeast of Frankfort near Lexington, features an 1847 Greek Revival mansion depicting Kentucky lifestyles from the days of early settlers to the antebellum era of gentility and elegance as well as the Civil War and postwar periods. The shrine also includes the Kentucky Life Museum and a plantation village on ten acres with many shops and displays.

Old Fort Harrod State Park, 35 miles south of Frankfort, is a 28-acre park in Harrodsburg that features a full-scale reproduction of the original Fort Harrod. The park also contains the log cabin where Abraham Lincoln's parents were wed, the Mansion Museum which houses mementos associated with the great periods of Kentucky history, a pioneer cemetery, and a federal monument dedicated to pioneers. The "Legend of Daniel Boone" and "Lincoln" are two excellent outdoor dramas which are performed at the Old Fort Amphitheater during the summer months.

Herrington Lake, 42 miles south of Frankfort near Danville and Harrodsburg, was developed by the Kentucky Utilities Company in 1925. Dix River Dam near Pleasant Hill is located on the 3,600-acre lake. Fishing, boating, and swimming can all be enjoyed on the lake. Camping and fishing facilities are available near Danville and Harrodsburg.

Pleasant Hill, a restored Shaker Village located 42 miles south of Frankfort, is a National Historic Landmark. Over 20 buildings and grounds have been restored to display unique Shaker skills in furniture making, crafts, and architecture. Dining rooms, lodging, craft shops, and seasonal festivals and plays are offered.

Constitution Square State Shrine, 44 miles south of Frankfort in Danville, is a reproduction of Kentucky's first courthouse square, including the original 1792 post office which was the first in the west.

E. P. "Tom" Sawyer State Park, 45 miles west of Frankfort, is located near Louisville. Recreational facilities include an outdoor Olympic-size pool, a bathhouse, 12 lighted tennis courts, a picnic area, an archery range, and soccer fields. Planned recreation and a playground are offered year-round. Indoor facilities are available for basketball, volleyball, exercise classes, dance classes and various other events.

Perryville Battlefield State Shrine, 45 miles south of Frankfort near Perryville, is the site of the largest Civil War battle in Kentucky. A museum, a picnic area, and a playground are located on the grounds.

Lincoln Homestead State Park, 46 miles southwest of Frankfort near Springfield, is a 153-acre park on land settled by Abraham Lincoln's family. The actual building in which Nancy Hanks, mother of President Lincoln, lived during her courtship with Thomas Lincoln is preserved here as well as a replica of the 1782 cabin where Thomas Lincoln lived as a boy. The park also has a museum, a gift shop, a picnic area, and an 18-hole golf course.

White Hall State Shrine, 46 miles southeast of Frankfort near Richmond, one of the grand estate houses of post-Civil War Kentucky, is the Italianate mansion of Cassius Marcellus Clay, the early abolitionist and politician. Kentucky handcrafts are sold in the White Hall gift shop, only a short walk from the mansion.

General Butler State Resort Park is located 47 miles northwest of Frankfort near Carrollton. The park includes a 30-acre lake, a boat dock, a 9-hole golf course, a miniature golf course, a swimming pool, playgrounds, shuffleboard, tennis courts, planned recreation, fishing, camping, horseback riding, 58 lodge rooms, cottages, and gift shops. General Butler's family home, the Butler Mansion, has been restored and contains a museum of Ohio River lore. Another unique feature is the Ski Butler ski area that has five ski runs, a ski shop, rental equipment, a ski school and chair lifts.

Isaac Shelby State Shrine, 49 miles south of Frankfort near Danville, is the burial site of Kentucky's first governor and one of the Commonwealth's foremost statesmen.

Louisville, 53 miles west of Frankfort provides a wide variety of recreational opportunities. The most noted recreational event in Louisville is the Kentucky Derby at Churchill Downs. The "Run for the Roses" is the oldest continuously held horse race in the United States. Other attractions include: Kentucky Center for the Arts, Macauley Theatre, Actors Theatre of Louisville, Louisville Children's Theatre, the Louisville Bach Society, the Louisville Orchestra, the Louisville Ballet, the Kentucky Opera Association, several museums, the Louisville Zoological Gardens, University of Louisville sporting events, rock concerts, and the "Belle of Louisville" sternwheeler.

The spirit of Daniel Boone and his pioneers is reborn at **Fort Boonesborough State Park** in Boonesboro, 54 miles southeast of Frankfort. In the re-created fort, pioneer crafts of the eighteenth century are demonstrated by using functioning antiques from the frontier era. Cabins are furnished as they would have been in the days of Boone and documentary films are presented which depict the struggle of the first Kentuckians to make the Kentucky wilderness a home. A gift shop within the fort offers for sale all the handcrafted items made at the fort. Other recreational facilities and activities of the park include the finest sand beach on the Kentucky River with a modern bathhouse and a modern camping area with 187 sites.

My Old Kentucky Home State Park, 55 miles southwest of Frankfort in Bardstown, portrays an image of the South's gentle and leisurely home life before the Civil War. The restored Georgian Colonial mansion is where composer Stephen Foster visited and where he was inspired to write "My Old Kentucky Home." One of the nation's most successful outdoor dramas, "The Stephen Foster Story", is presented in the park's amphitheatre during the summer months. The park also offers a 40-site campground, a gift shop, a 9-hole golf course and pro shop, a picnic area, and planned recreation.

COMMUNITY IMPROVEMENTS

Recent

The Frankfort Electric and Water Plant Board recently completed the installation of a substation transformer. The \$165,000 transformer will serve as a backup system.

Several businesses which have recently located in Frankfort include: Pic Pac, White Castle, Grand Junction Hamburger Station, Kentucky Port-A-John, Angie Workman Business Services and Printing Services, Computerland, and Winn-Dixie.

The Franklin County School System has recently completed several projects which include: construction of a \$1.8 million gymnasium and auditorium at the Western Hills High School; construction of a cafeteria at Bondurant Middle School; installation of air conditioning at Bald Knob, Peaks Mill, Collins Lane and Bridgeport elementary schools, and Franklin County High School; and implementation of extensive drug and alcohol abuse prevention program.

Construction of the Capital Plaza Hotel, a 195-room complex, was completed in January, 1984. Total cost of the complex was \$12 million.

The addition of a \$3.8 million cafeteria to Hill Student Center at Kentucky State University was completed in January, 1985.

Construction of an Aquaculture Research Facility, on Kentucky State University's campus was completed in Fall, 1984. Total cost of the facility was \$800,000.

A \$55,000 renovation and rehabilitation project of the East Frankfort Fire Station was complete in Summer 1984.

Construction of Capital View Park, a 150-acre recreational park, was completed in Spring 1985. The \$175,000 park includes two lighted softball fields, shelter building with restrooms, playground, volleyball courts, picnic facilities, a 6.2 miles running trail with seven exercise stations, and nature trails.

Under Way

The Topy Corporation has begun construction of a \$26 million automobile wheel production plant. The 120,000-square-foot facility, which will employ approximately 80 people, will be completed in January 1986.

The realignment and reconstruction of the intersection of U.S. 60, U.S. 460, and U.S. 421, in east Frankfort, is currently under way. The \$2 million project, which will aid in easing the flow of traffic, will be completed in Spring 1986.

Projects currently under construction at Kentucky State University include: the renovation of Hume Hall into administration offices, the conversion of Underwood Hall into Community Research Service Center and offices and campus-wide masonry repairs.

Several projects currently under way within the Franklin County School System include: implementation of a research based teaching-learning model for teachers; expansion of advanced placement programs at the high schools and addition of fine arts programs at the middle schools.

The rehabilitation of the Southern Hotel is currently under way. The \$1.6 million project, which will provide 52 units for the elderly, will be completed in the Summer, 1985.

Best Western Motel, a 60-unit complex is currently under construction. The \$1.6 million project is scheduled for completion in December, 1985.

Construction of the Super-8 Motel, a 38-unit motel complex is under way. The scheduled completion of the \$500,000 motel is Fall 1985.

Planned

The West Connector, which will complete a four-lane loop around Frankfort, is planned for construction in 1987. The \$16.3 million highway project will run from the intersection of U.S. 127 and U.S. 60 on the west-side of Frankfort to the intersection of U.S. 421, Mero Street, and Clinton Street, near the Capital Plaza Complex. The estimated completion time will be approximately 2½ years.

Kentucky State University has plans for a \$2.6 million renovation of Young Hall, a \$4.5 million extension of North Campus utility tunnel system, a \$1 million renovation of Combs Hall, a \$2 million renovation of North Campus heating, air conditioning, and ventilation systems, and a \$750,000 landscaping project on the North Campus.

The City of Frankfort has plans to build a \$150,000 fire training center. The center is to be completed in Summer 1985.

The Frankfort Independent School System has plans for the renovation and addition to the Second Street Elementary School. The \$3 million project will include the addition of a gymnasium, cafeteria, resource center, music complex, art room, and offices.

Kentucky Commerce Cabinet
Department of Economic Development
Capital Plaza Tower
Frankfort, Kentucky 40601
(502) 564-7140