

1972

Industrial Resources - Fulton County - Fulton

Kentucky Library Research Collections
Western Kentucky University, spcol@wku.edu

Follow this and additional works at: https://digitalcommons.wku.edu/fulton_cty

 Part of the [Business Administration, Management, and Operations Commons](#), [Growth and Development Commons](#), and the [Infrastructure Commons](#)

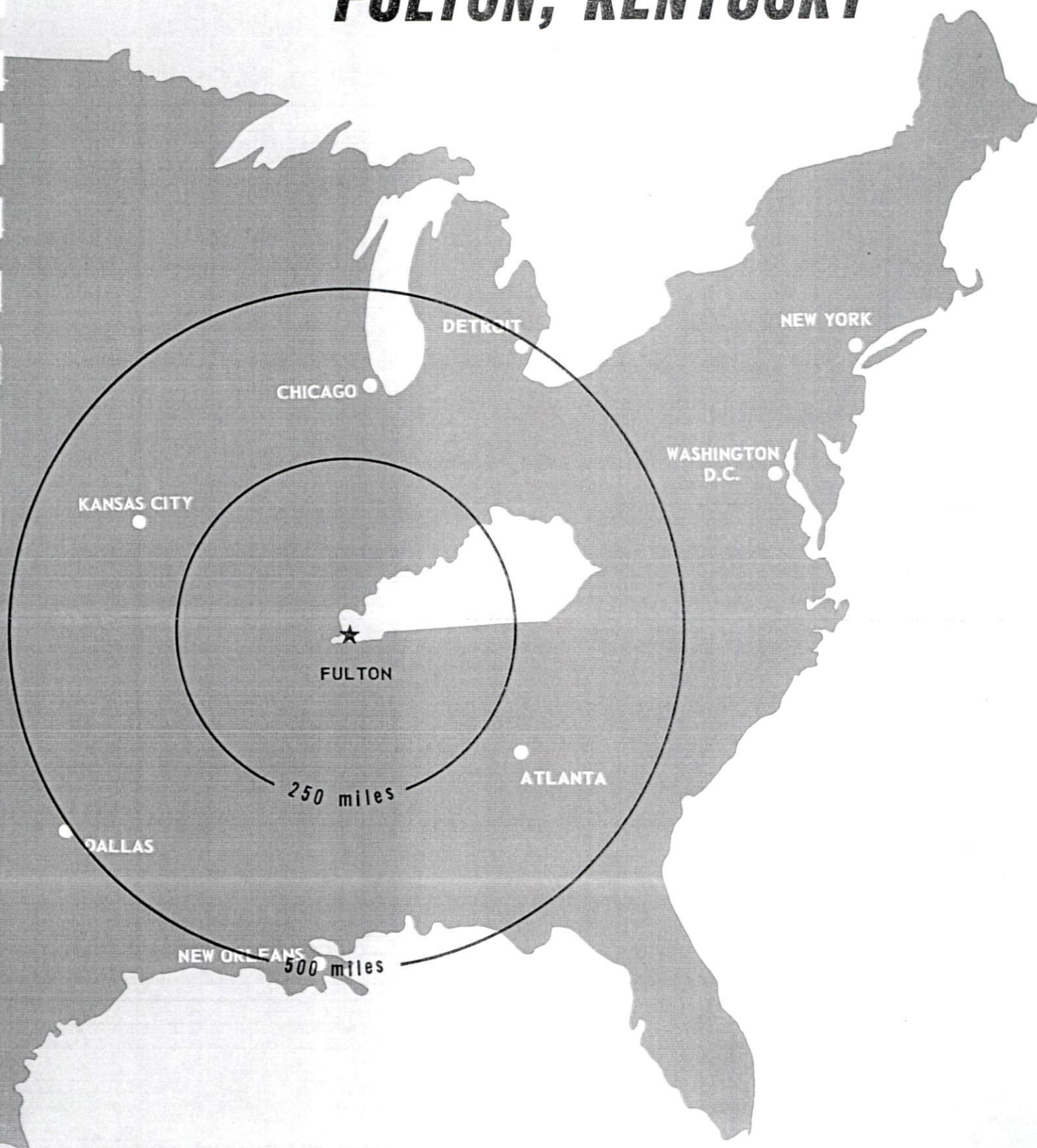
Recommended Citation

Kentucky Library Research Collections, "Industrial Resources - Fulton County - Fulton" (1972). *Fulton County*. Paper 16.
https://digitalcommons.wku.edu/fulton_cty/16

This Report is brought to you for free and open access by TopSCHOLAR®. It has been accepted for inclusion in Fulton County by an authorized administrator of TopSCHOLAR®. For more information, please contact topscholar@wku.edu.

INDUSTRIAL RESOURCES

FULTON, KENTUCKY

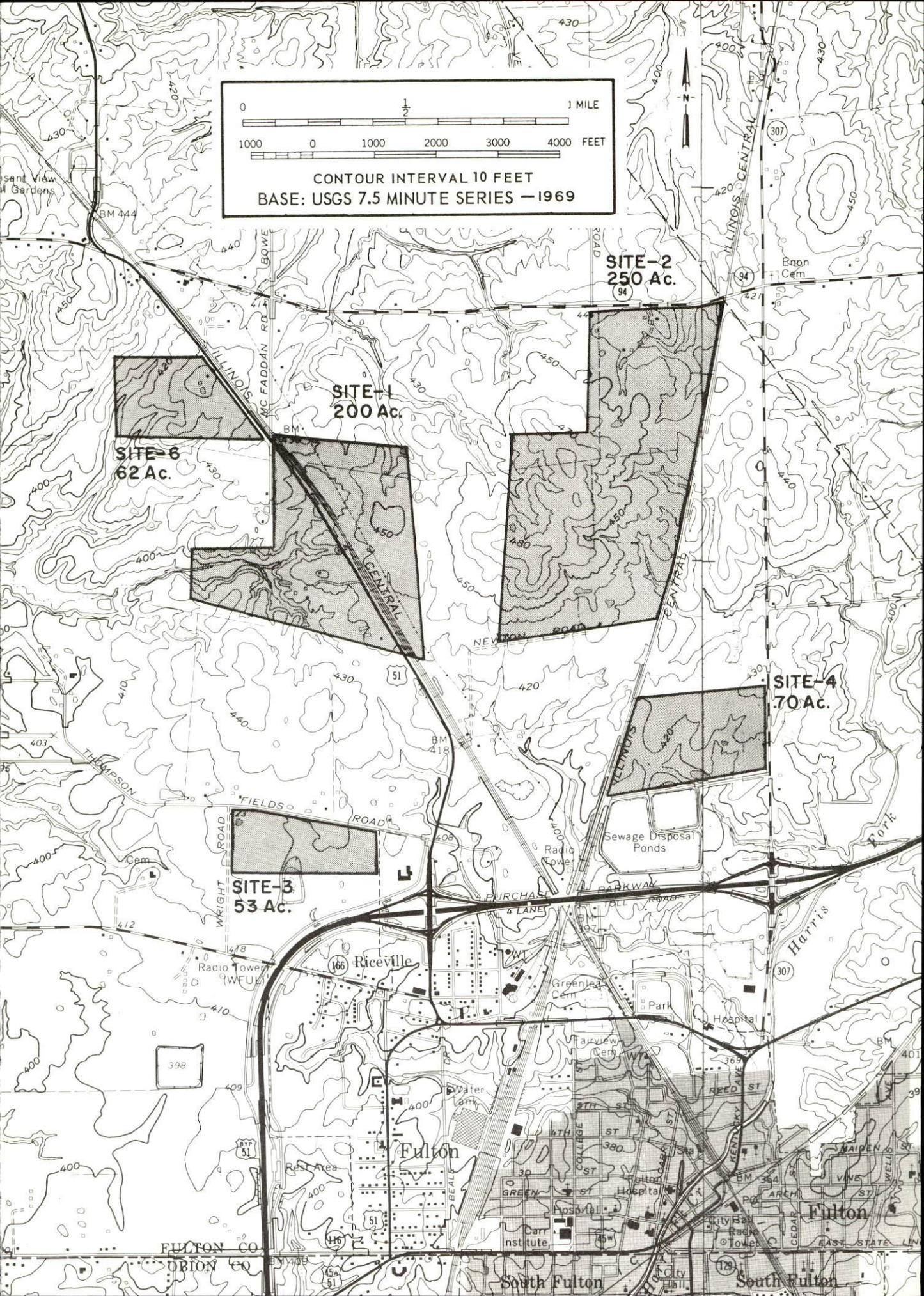
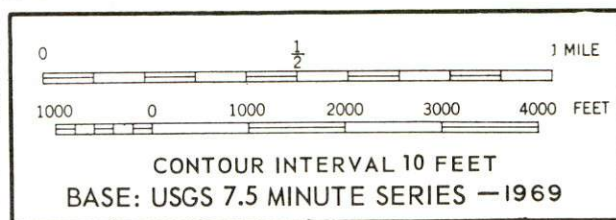


FULTON INDUSTRIAL SITES

1972

For more information about the following sites, contact Mr. Kenneth Crews, Fulton Industrial Corporation, Fulton, Kentucky; or the Kentucky Department of Commerce, Frankfort, Kentucky.

- SITE #1: ACREAGE: 200 acres
LOCATION: Approximately 1.7 miles from north city limits
HIGHWAY ACCESS: U. S. 51 bisects the site
RAILROADS: Illinois Central Railroad bisects the site.
WATER: Southwestern Kentucky Water District
SIZE LINE: 8-inch line on site
GAS: Fulton Utility System; cost of extending to site will be negotiated.
ELECTRICITY: Fulton Electric System
SEWERAGE: Fulton Utility System; cost of extending to site will be negotiated.
OPTIONED BY: Fulton-South Fulton Chamber of Commerce
- SITE #2: ACREAGE: 250 acres
LOCATION: Approximately 3 miles from north city limits via U. S. 51 and Kentucky 94
HIGHWAY ACCESS: Kentucky Route 94 borders the site on the north.
RAILROADS: Illinois Central Railroad borders the site on the east.
WATER: Southwestern Kentucky Water District
SIZE LINE: 6-inch line 100 feet from site
GAS: Fulton Utility System; cost of extending to site will be negotiated.
ELECTRICITY: Fulton Electric System
SEWERAGE: Fulton Utility System; cost of extending to site will be negotiated.
OPTIONED BY: Fulton-South Fulton Chamber of Commerce
- SITE #3: ACREAGE: 53 acres
LOCATION: Borders western city limits
HIGHWAY ACCESS: Wright Road along western boundary; Fields Road along northern boundary; 2,000 feet from Purchase Parkway
WATER: Fulton Utility System
SIZE LINE: 10-inch line on site
GAS: Fulton Utility System
SIZE MAIN: 4-inch main on site
ELECTRICITY: Fulton Electric System
SEWERAGE: Fulton Utility System; 8-inch line on site
OPTIONED BY: Fulton-South Fulton Chamber of Commerce
- SITE #4: ACREAGE: 70 acres
LOCATION: .5 mile from north city limits
HIGHWAY ACCESS: Kentucky Route 307 borders the site on the east.
RAILROADS: Illinois Central Railroad borders the site on the west.
WATER: Fulton Utility System
SIZE LINE: 6-inch line 200 feet from site
GAS: Fulton Utility System; cost of extending to site will be negotiated.
ELECTRICITY: Fulton Electric System
SEWERAGE: Fulton Utility System; cost of extending to site will be negotiated.
OWNERSHIP: Fulton Industrial Corporation
- SITE #6: ACREAGE: 62 acres
LOCATION: 2.2 miles northwest of city limits
HIGHWAY ACCESS: Site fronts on U. S. 51
RAILROADS: Illinois Central Railroad across U. S. 51
WATER: Southwestern Kentucky Water District
SIZE LINE: 8-inch line on site
GAS: Fulton Utility System; cost of extending to site will be negotiated.
ELECTRICITY: Fulton Electric System
SEWERAGE: Fulton Utility System; cost of extending to site will be negotiated.
OPTIONED BY: Fulton-South Fulton Chamber of Commerce



CURRENT INDUSTRIAL RESOURCES

CURRENT INDUSTRIAL RESOURCES, FULTON, KENTUCKY

This is a 1973 supplement to "Industrial Resources, Fulton, Kentucky" which was published in 1972.

Population

	<u>1970</u>	<u>1960</u>
Fulton	3,250	3,265
Fulton County	10,183	11,256
Labor Market Area	52,740	53,632
(Includes Fulton, Carlisle, Graves, and Hickman Counties.)		

General Employment Characteristics

<u>Industry</u>	<u>Employment 1971</u>	
	<u>Fulton County</u>	<u>Labor Market Area</u>
TOTAL	4,290	18,610
Agricultural	610	2,850
Nonagricultural	3,680	15,760
Manufacturing	740	5,038
Government	420	1,970
Trade and Services	1,176	4,353
Other	1,344	4,399

Manufacturing Employment

<u>Type Industry</u>	<u>Fulton County</u>			<u>Labor Market Area</u>		
	<u>Sept. 1972</u>	<u>Sept. 1962</u>	<u>% Change</u>	<u>Sept. 1972</u>	<u>Sept. 1962</u>	<u>% Change</u>
TOTAL	746	644	+ 15.8	5,416	4,185	+ 29.4
Food & Kindred Products	104	77	+ 35.1	249	318	- 21.7
Apparel, Textiles, Leather	370	472	- 21.6	2,429	2,594	- 6.4
Lumber, Furniture	30	47	- 36.2	70	177	- 60.5
Printing & Publishing, Paper	22	17	+ 29.4	95	75	+ 26.7
Chemicals, Petroleum & Coal, Rubber	41	23	+ 78.3	1,480	528	+180.3
Stone, Clay & Glass	179	8	+2137.5	609	174	+250.0
Machinery & Metal Products, Equipment	0	0	0	257	288	- 10.8
Other	0	0	0	227	31	+632.3

There are presently 19 manufacturing firms in Fulton. Major firms, employment, and year started operations:

<u>Firms</u>	<u>Employment</u>	<u>Year Started Operations</u>
Ashby Veneer & Lumber Co.	30	1956
Hadley Adhesives & Chemical Company	30	1971
Henry I. Siegel Co., Inc.	265	1937
Turner Dairies, Inc.	52	1972
Turner Dairies, Inc. of Fulton	60	1941
Graphite Products Division, Carborundum Company	140	1967
Roper Pecan Company	67	1940
West Kentucky Lumber Co.	35	1954

Labor Supply

	<u>Fulton County</u>			<u>Labor Market Area</u>		
	<u>Total</u>	<u>Male</u>	<u>Female</u>	<u>Total</u>	<u>Male</u>	<u>Female</u>
Current (1972)	1,926	947	979	9,188	5,003	4,185
Potential additions next five years	993	502	491	4,816	2,457	2,359

Personal Income

Fulton County, 1970: Per Capita - \$2,739*
1960: Per Capita - \$1,363

*Unadjusted for commuting.

Power and Fuel

<u>Electric Distributors</u>	<u>Source of Supply</u>	
Fulton Electric System	Tennessee Valley Authority	
Kentucky Utilities Company	Kentucky Utilities Company	
Hickman-Fulton RECC	Tennessee Valley Authority	
<u>Natural Gas Distributor</u>	<u>Specific Gravity</u>	<u>Btu per cu. ft.</u>
Fulton Utility System	.60	1,000

Water and Sewerage

Water: Daily treatment capacity - 1,500,000 gallons; average daily use - 700,000 gallons; peak daily use - 950,000 gallons; storage capacity - 680,000 gallons; size distribution lines - 4, 6, 8, and 10 inches

Rates:	First	3,000 gallons	\$2.40 (Minimum)
	Next	5,000 gallons	.65 per M gallons
	Next	5,000 gallons	.55 per M gallons
	Next	7,000 gallons	.50 per M gallons
	Next	10,000 gallons	.35 per M gallons
	Next	20,000 gallons	.25 per M gallons
	Next	50,000 gallons	.20 per M gallons
	Next	100,000 gallons	.20 per M gallons
	Next	100,000 gallons	.18 per M gallons
	All over	300,000 gallons	.15 per M gallons

Water District: Southwestern Kentucky Water District

Water: Purchases treated water from City of Fulton municipal system; amount of water which can be purchased in a 24-hour period: 1,224,000 gallons; peak daily use - 50,000 gallons; size distribution lines - 8, 6, 4, 3, and 2 inches; storage capacity - 200,000 gallons

Rates:	First	2,000 gallons	\$5.00 (Minimum)
	Next	5,000 gallons	1.25 per M gallons
	Next	5,000 gallons	.90 per M gallons
	Next	8,000 gallons	.70 per M gallons
	Next	10,000 gallons	.60 per M gallons
	Next	20,000 gallons	.50 per M gallons
	Next	50,000 gallons	.40 per M gallons

Sewerage: Type treatment - Lagoon (40 acres); design population - 4,500; size of sewer mains - 8, 10, and 12 inches

Rates: 50 percent of monthly water bill

Local Government

Business Fees and Licenses - Payroll license tax - 1% of gross wages; business license fee varies - \$5.00 (minimum annual), maximum license fee is based on annual gross receipts

Property Tax Rates

Property tax rates per \$100 of assessed valuation, 1972

	<u>Fulton</u>	<u>Fulton County</u>
State	\$.015	\$.015
County	.231	.231
School	1.043	.448
City	.330	
Total	\$1.619	\$.694

Tax for Schools

Fulton County levies a 3 percent tax on utilities receipts for schools.

Industrial Sites

The five sites shown on the 1972 Fulton site map are still available for industrial use.

INDUSTRIAL RESOURCES

FULTON, KENTUCKY

Prepared by

The Kentucky Department of Commerce

in cooperation with

The Fulton-South Fulton Chamber of Commerce

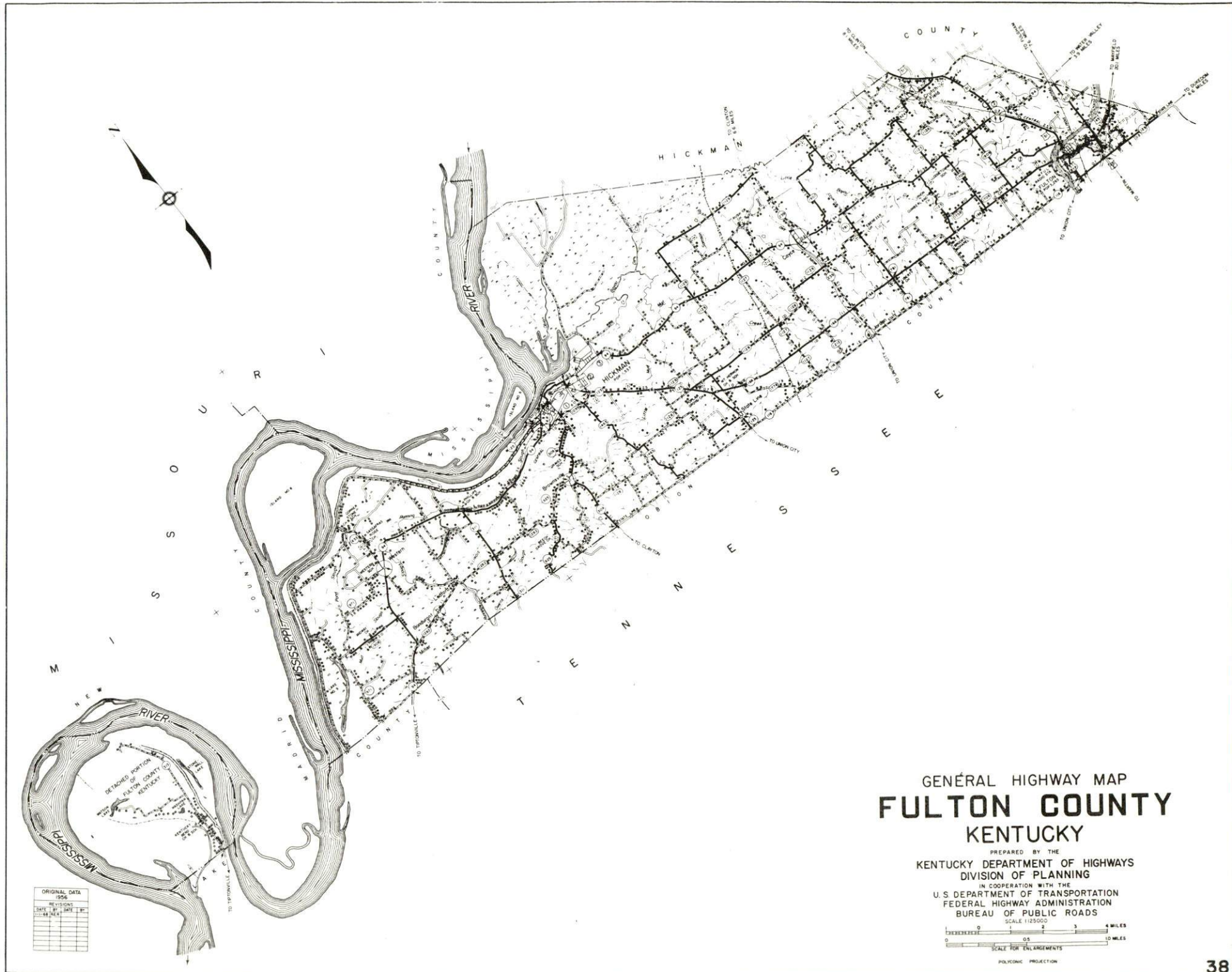
1972

This copy has been prepared by the Kentucky Department of Commerce, Division of Research and Planning, and the cost of printing paid from state funds.

TABLE OF CONTENTS

<u>Chapter</u>	<u>Page</u>
INDUSTRIAL SITES	i
FULTON, KENTUCKY - A RESOURCE PROFILE	1
THE LABOR MARKET	5
Population Trends	5
General Employment Characteristics, 1970	5
Manufacturing Employment Trends by Industry	5
Fulton Manufacturing Firms, Their Products and Employment	6
Wage Rates for Selected Occupations	8
Labor Organizations	8
Current and Future Labor Supply	9
Total Personal Income	9
Per Capita Personal Income	9
EDUCATION	10
Public Schools	10
Vocational Schools	10
Colleges and Universities	12
TRANSPORTATION	13
Rail	13
Truck Service	13
Air	14
Water	14
Bus	14
Taxi	14
POWER AND FUEL	15
Electricity	15
Natural Gas	15

<u>Chapter</u>	<u>Page</u>
WATER AND SEWERAGE	16
Water	16
Sewerage	17
LOCAL GOVERNMENT	18
City	18
County	18
Assessed Value of Property, 1970	18
Local General Property Tax Rates Per \$100 of Assessed Valuation, 1971.	18
Planning and Zoning	19
Safety	19
Police	19
Fire	19
Sanitation	19
HEALTH	20
Hospitals.	20
Nursing Homes	20
Public Health.	20
OTHER LOCAL FACILITIES	21
Communications	21
Library Services	21
Religious Institutions	23
Financial Institutions	23
Hotels and Motels	23
Clubs and Organizations	23
RECREATION	25
Local	25
Area	25
AGRICULTURE - NATURAL RESOURCES - CLIMATE	26
Agriculture	26
Natural Resources	26
Climate	27
HISTORY	28



GENERAL HIGHWAY MAP
FULTON COUNTY
KENTUCKY

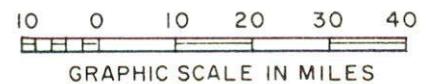
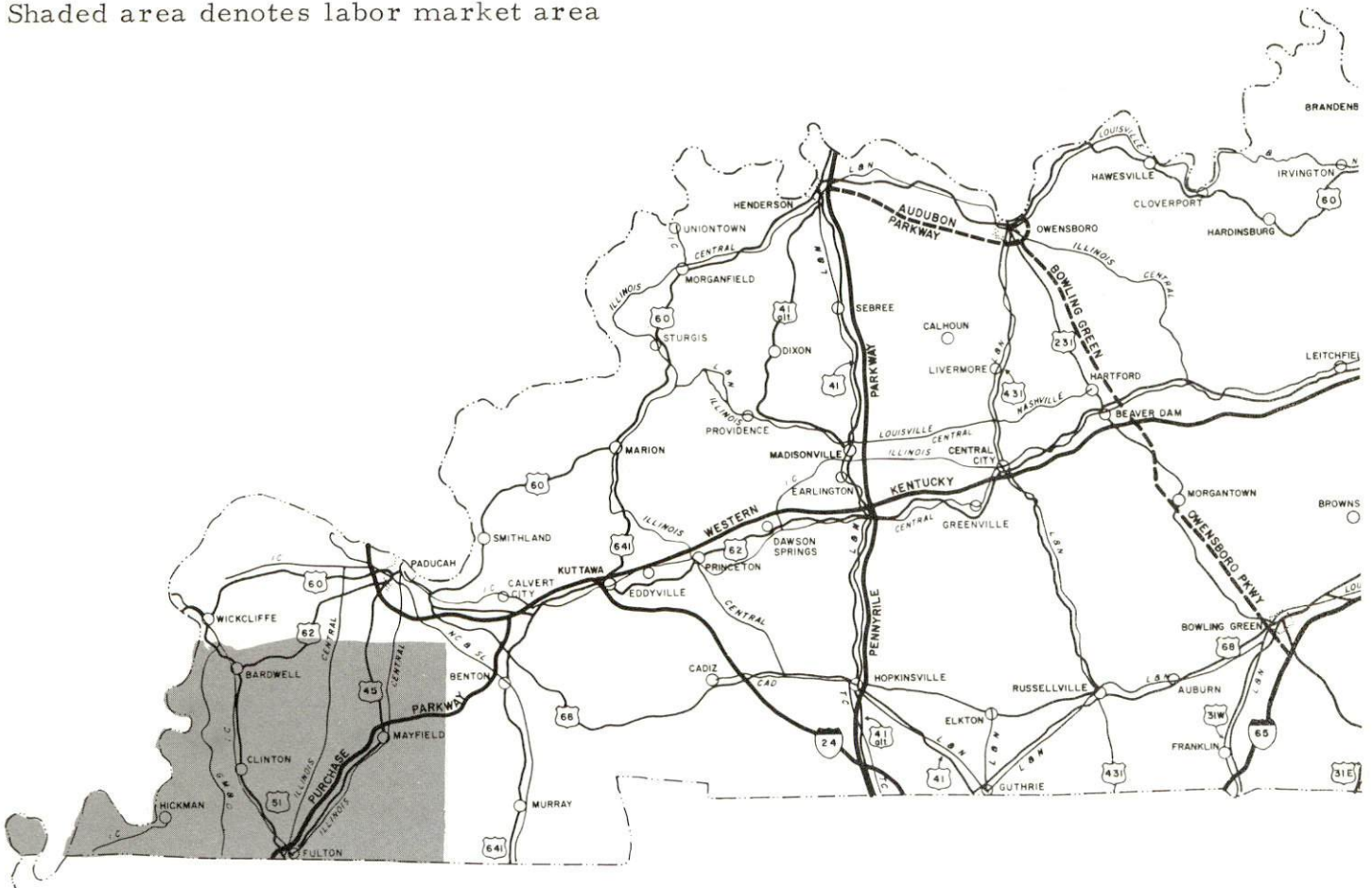
PREPARED BY THE
KENTUCKY DEPARTMENT OF HIGHWAYS
DIVISION OF PLANNING
IN COOPERATION WITH THE
U.S. DEPARTMENT OF TRANSPORTATION
FEDERAL HIGHWAY ADMINISTRATION
BUREAU OF PUBLIC ROADS



ORIGINAL DATA	1956
REVISIONS	
DATE BY DATE BY	
11-14-56	

FULTON LABOR MARKET AREA

Shaded area denotes labor market area



FULTON, KENTUCKY - A RESOURCE PROFILE

Location

Fulton is geographically located on the Kentucky-Tennessee state line. Fulton is in Fulton County, Kentucky, and South Fulton is in Obion County, Tennessee. The two towns are in the extreme western parts of Kentucky and Tennessee near the Mississippi River. Although Fulton and South Fulton operate, by necessity, as two municipalities, in reality they are one, possessing one Chamber of Commerce as well as other phases of community activity and are joined in a united endeavor toward continued growth.

Fulton is 47 miles south of Paducah, Kentucky, 197 miles south of St. Louis, Missouri, and 127 miles north of Memphis, Tennessee.

The 1970 population of Fulton was 3,250 and Fulton County had a 1970 population of 10,183.

The Economic Framework

Total employment in Fulton County in 1970 averaged 4,000 with agriculture providing 600 jobs, manufacturing 700, trade and services 1,250, and government 400. Since 1960 manufacturing employment has increased by approximately 19 percent. Major industrial products are: men's and boys' clothing, and graphite products.

Per capita income in the county in 1969 was \$2,670. Between 1959 and 1969, per capita personal income in the county increased approximately 84 percent.

The Fulton labor market area includes Fulton County and the surrounding Kentucky counties of Hickman, Carlisle, and Graves; and Weakley, Obion, and Lake Counties, Tennessee. In 1970 employment in the Kentucky portion of the labor market area totaled 18,600 jobs with agriculture providing 3,000, manufacturing 4,985, trade and services 4,215 and government 1,000. Industrial employment in this area has increased approximately 14 percent since 1960 with sharpest gains in the chemical, rubber, machinery and metal products industries.

Resources for Growth

1. There is a current estimated labor supply of 1,880 men and 1,335 women available for industrial jobs in the labor market area. In addition, 2,980 young men and 2,800 young women will become 18 years of age by 1977 and potentially available for work. Also, the current labor supply would be increased by the number of men and women in the adjoining Tennessee Counties who are available for industrial jobs.

2. The local transportation capability is excellent. Fulton is the junction point at which all north-south-east rails of the Illinois Central Railroad converge. The Jackson Purchase Parkway, near the city limits, connects with the Western Kentucky Parkway and will connect with I-24 upon its completion. Fulton is only 20 miles away from the water transportation facilities of the Mississippi River. The Fulton Municipal Airport has a 2,600-foot paved runway capable of accommodating light aircraft. Commercial air service is available at Barkley Field, Paducah, Kentucky, only 47 miles distant.

3. Tennessee Valley Authority provides abundant electric power to the Fulton Electric System. Hickman-Fulton RECC provides electric power in the county and is supplied by TVA. Kentucky Utilities Company also provides electric power in the county. Natural gas is furnished in Fulton by the Fulton Utility System, whose source of supply is the Texas Gas Transmission Corporation. The raw water supply is adequate for continued growth.

4. Industrial sites - Fulton has five sites available for industrial use.

5. Education is an important growth asset for Fulton. Two school systems operate within the county. Two universities and one community college are within 50 miles of the county.

The West Kentucky and Tilghman Area Vocational Schools are located in Paducah, Kentucky, only 47 miles distant, and offer training in 13 and 19 courses, respectively.

Fulton County will have a new vocational school in the Spring of 1972.

Community Programs for Improvement

Fulton's recently completed community projects include: a new \$1 million, 48,000-square-foot city high school; a sixty-bed nursing home; a new chemical and adhesive plant; a new supermarket; construction of new hangars at the airport; and a new aerator for the water system. Fulton's community projects under construction include: an Urban Renewal project,

comprising 43.5 acres; 80 low-rent, public housing units; and a new bank. Fulton's planned community improvements include: a large freight classification yard for the Illinois Central Railroad; a new city hall; a new fire station and a new pumper truck; and Operation Townlift by TVA, which is a program to revitalize the downtown area.

Recreation, Entertainment and Livability

The International Banana Festival is held in Fulton the first week in September each year and draws thousands of visitors.

One of the best 18-hole golf courses in America boasting the "Best Fairways in the South" is located just outside the city limits.

Boat races are held annually at Hickman on the Mississippi River, 20 miles west of Fulton.

Columbus-Belmont Battlefield State Park, 25 miles distant, has camping accommodations only. The facilities include miniature golf, hiking trails, picnic area and shelter, and playground.

A portion of the Reelfoot National Wildlife Refuge extends into the southern portion of western Fulton County.

Kentucky Dam Village State Resort Park, 43 miles distant, is a 1,200-acre park with a village inn, lake cottages and camping facilities, pool, 18-hole golf course, bridle paths, playground, tennis court, airstrip, and Kentucky Lake for boating and fishing.

Lake Barkley State Resort Park, 58 miles distant, is a 3,000-acre resort park. The facilities include a lodge and cottages, and camping sites. Recreational activities include fishing, boating, swimming, and golfing.

Lake Barkley, formed by Barkley Dam, has 1,004 miles of shoreline bordering its 93,000-acre reservoir. Recreational activities include fishing, boating, camping, swimming, hunting, and picnicking. The dam near Grand Rivers is 157 feet high and 10,180 feet long.

Land Between the Lakes National Recreational Area consists of 170,000 acres of wooded ridge formed into a peninsula by Kentucky and Barkley Lakes. Activities include: fishing, water sports, hunting, and camping.

Kentucky Lake and Kentucky Dam, with 2,380 miles of shoreline, is the longest of any man-made lake in the world. The recreational activities include fine fishing and water sports, swimming, boating, and water skiing. The huge dam is TVA's largest and controls the waters of the Tennessee River near its junction with the Ohio River at Paducah. The dam is 206 feet high, 8,422 feet long, and cost \$115 million.

Kenlake State Resort Park, 41 miles distant, is an 1,800-acre resort park with hotel, cottages and camping facilities. The park activities include: fishing, boating, pool and lake swimming, horseback riding, golfing, tennis, and shuffleboard.

THE LABOR MARKET

POPULATION TRENDS^{1/}

Area	1970	Population		Percent Change	
		1960	1950	1960-70	1950-60
Fulton	3,250	3,265	3,224	- 0.5	+ 1.3
Labor Market Area	53,190	53,632	59,016	- 0.8	- 9.1
Fulton County	10,183	11,256	13,668	- 9.5	-17.6
Carlisle County	5,354	5,608	6,206	- 4.5	- 9.6
Graves County	30,939	30,021	31,364	+ 3.1	- 4.3
Hickman County	6,264	6,747	7,778	- 7.2	-15.3

GENERAL EMPLOYMENT CHARACTERISTICS, 1970^{2/}

Major Employment Group	Employment	
	Fulton County	Labor Market Area
TOTAL	4,000	18,600
Agricultural	600	3,000
Nonagricultural	3,400	15,600
Manufacturing	700	4,986
Trade and Services	1,249	4,215
Government	400	1,000
Other	1,051	5,363

MANUFACTURING EMPLOYMENT TRENDS BY INDUSTRY SEPTEMBER 1970 AND 1960^{3/}

Industry	Fulton County			Labor Market Area		
	1970	1960	% Change	1970	1960	% Change
TOTAL	765	642	+19.2	5,069	4,454	+ 13.8
Food & Kindred Products	129	82	+57.3	273	372	- 26.6
Apparel, Textiles, Leather	420	453	- 7.3	2,347	3,219	- 27.1
Lumber & Furniture	0	78		87	289	- 69.9
Printing, Publishing, Paper	21	16	+31.3	85	74	+ 14.9
Chemicals, Petroleum, Coal, Rubber	10	0		1,130	0	
Stone, Clay & Glass	6	13	-53.8	368	133	+ 176.7
Primary Metals	0	0		0	302	
Machinery & Metal Products*	179	0		544	14	+3785.7
Other	0	0		235	51	+ 360.8

*One manufacturing plant has been reclassified from electrical machinery to stone, clay, and glass industries (1971).

FULTON MANUFACTURING FIRMS,
THEIR PRODUCTS AND EMPLOYMENT ^{4/}

Firm	Product	Employment		
		Total	Male	Female
Ashby Veneer & Lumber Co.	Lumber, wood chips, switch ties	30	30	0
Browder Milling Co., Inc.	Feed	10	9	1
Brundige Sausage Co.	Sausage	5	5	
Fulton County News	Newspaper, letterpress printing	4	2	2
Fulton Ice Co., Inc.	Ice	10	9	1
Fulton Publishing Co., Inc.	Newspaper, com- mercial printing	10	6	4
Hadlay Adhesives & Chemical Co.	Adhesives	60		
B. J. Pritchard Ornamental Iron Co.	Ornamental ironwork	1	1	0
Henry I. Siegel Co., Turner Dairies, Inc., of Fulton	Boys' & men's clothing	265	45	220
	Milk, ice cream	60	55	5

Companies Located in South Fulton, Tennessee

Central Products Co.	Heating & air condi- tioning ducts	13	12	1
Wood Structures	Laminated beams	6	6	0
Jiffy Steamer Co.	Steam presses	11	10	1
Jones Coal & Concrete Co.	Concrete	6	5	1
Martin Machine Works	Tools, dies & jigs	32	26	6
Henry I. Siegel Co., Inc.	Men's & boys' clothing	403	73	330
Waymatic Fabricating Co.	Concession trailers & display racks	25	23	2



Ferry-Morse Seed Company



Downtown Shopping District

WAGE RATES FOR SELECTED OCCUPATIONS
FULTON, KENTUCKY^{5/}

<u>Classification</u>	<u>Starting</u>	<u>Wages Per Hour</u>	
		<u>Maximum</u>	<u>Prevailing</u>
<u>Production Employees</u>			
Assembler	\$1.60	\$3.00	\$2.50
Inspector	1.60	3.00	2.50
Production Laborer	1.60	2.75	2.25
Welder, Arc or Acetylene (Class-A)	1.60	3.25	2.80
<u>Service Employees</u>			
Electrician (Class-A)	\$1.60	\$4.25	\$2.75
Laborer	1.60	3.00	2.25
Machinist	1.60	3.25	2.75
Mechanic, Maintenance	1.60	3.25	2.75
Truck Driver, Industrial (Class-A)	1.60	2.50	2.25
<u>Office Employees</u>			
Bookkeeper	\$1.60	\$2.25	\$1.90
File Clerk	1.60	2.25	1.90
Receptionist	1.60	2.25	1.90
Secretary	1.60	2.50	2.00
Typist	1.60	2.25	1.90

LABOR ORGANIZATIONS

<u>Union</u>	<u>Representing workers at:</u>
Amalgamated Clothing Workers of America	Henry I. Siegel Co. (Fulton plant only)

CURRENT AND FUTURE LABOR SUPPLY -
FULTON LABOR MARKET AREA

Area	Current Labor Supply, 1971 ^{6/}			Future Labor Supply by 1977 (Becoming 18 Years of Age) ^{7/}		
	Total	Male	Female	Total	Male	Female
Labor Market Area	3,215	1,879	1,336	5,776	2,979	2,797
Fulton County	396	163	233	1,173	600	573
Carlisle County	656	410	246	582	281	301
Graves County	1,815	1,105	710	3,317	1,725	1,592
Hickman County	348	201	147	704	373	331

TOTAL PERSONAL INCOME^{8/}

Area	1969*	1959	% Change
Fulton County	\$ 27,802,000	\$ 17,014,000	+63.4
Labor Market Area	140,033,000	71,019,000	+97.2
Kentucky	9,202,000,000	4,655,000,000	+97.6

PER CAPITA PERSONAL INCOME^{9/}

Area	1969*	1959	% Change
Fulton County	\$ 2,670	\$1,451	+84.0
Labor Market Area	\$2,180 to 2,770	\$1,069 to 1,451	N.A.
Kentucky	2,847	1,552	+83.4

*Preliminary figures.

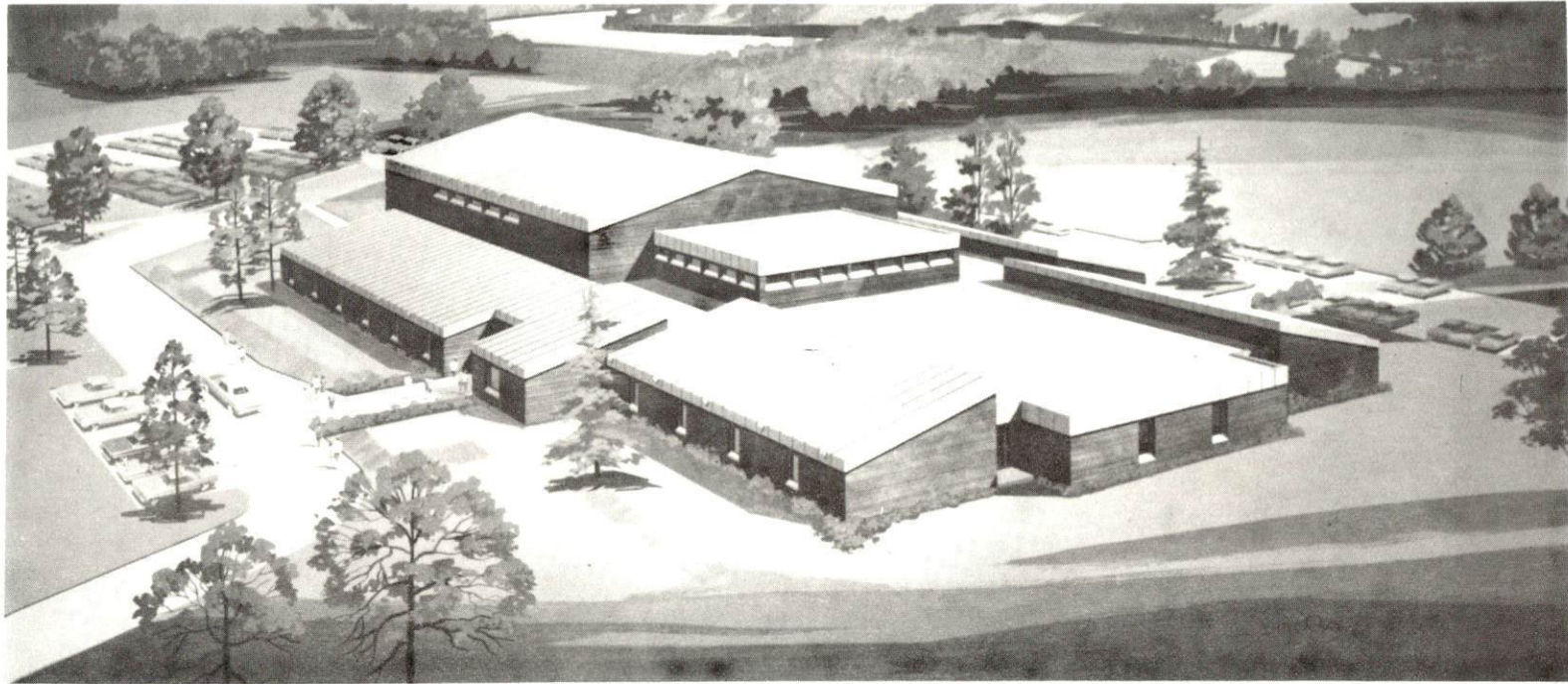
EDUCATION

Public Schools

	<u>Fulton</u>	<u>Fulton County</u>
Total Enrollment	646	1,527
Elementary	315	428
Junior High	123	696
High School	208	403
Student-Teacher Ratio	15-1	20-1
Elementary	16-1	19-1
Junior High	12-1	24-1
High School	16-1	18-1
State Rating of High School	Standard	Standard
Other Accreditations	The Southern Association of Colleges and Schools	
Percent High School Graduates to College	56.3	33.8
Current Expenditures Per Pupil	\$443.13	\$428.31
Bonded Indebtedness, June 30, 1971	\$1,001,000	\$333,000

Vocational Schools

	<u>Nearest Area School</u>
Location	West Kentucky Area Vocational School
Miles Distant	Paducah
Curriculum	47
	General Clerical
	Secretarial-Steno
	Electronics (Communications)
	Auto Body Repair, Auto Mechanics
	Barbering, Carpentry
	Commercial Foods, Cosmetology
	Drafting, Electricity
	Masonry
	Tailoring



F U L T O N H I G H S C H O O L

Nearest Area School

Location	Tilghman Area Vocational School
Miles Distant	Paducah
Curriculum	47
	Distributive Education
	Health Careers
	Nurse Aide
	Practical Nursing
	Surgical Technician
	Ward Clerk
	Electronics (Communications)
	Highway Technology
	Appliance Repair
	Auto Body Repair
	Auto Mechanics
	Carpentry
	Cosmetology
	Drafting
	Electricity
	Machine Shop
	Welding
	Service Station Attendant
	Small Engine Repair

Colleges and Universities

<u>Name</u>	<u>Area - Within 50 miles</u>		<u>Highest Degree Conferred</u>
	<u>Location</u>	<u>Enrollment</u>	
Murray State University	Murray, Kentucky	7,063	Masters
Paducah Community College	Paducah, Kentucky	1,228	Associate
University of Tennessee, Martin Branch	Martin, Tennessee	4,500	Masters

TRANSPORTATION

Rail

Line serving Fulton - Illinois Central Railroad

Services - Passenger, freight, siding, switching, piggyback service,
REA Express

RAILWAY TRANSIT TIME FROM FULTON, KENTUCKY, TO: 10/

City	No. of Days		City	No. of Days	
	CL			CL	
Atlanta, Ga.	3		Los Angeles, Calif.	5	
Birmingham, Ala.	2		Louisville, Ky.	2	
Chicago, Ill.	2		Nashville, Tenn.	3	
Cincinnati, Ohio	3		New Orleans, La.	3	
Cleveland, Ohio	3		New York, N. Y.	4	
Detroit, Mich.	3		Pittsburgh, Pa.	3	
Knoxville, Tenn.	3		St. Louis, Mo.	2	

Truck Service

<u>Company</u>	<u>Home Office</u>
A & H Truck Line, Inc.	Evansville, Indiana
Harper Truck Service, Inc.	Paducah, Kentucky
McLean Trucking Co.	Winston-Salem, North Carolina
Paschall Truck Lines, Inc.	Murray, Kentucky
Spector Freight System, Inc.	Chicago, Illinois
T.I.M.E. - DC, Inc.	Lubbock, Texas
United Parcel Service	Louisville, Kentucky

HIGHWAY MILES AND TRUCK TRANSIT TIME IN DAYS FROM
FULTON, KENTUCKY, TO SELECTED MARKET CENTERS

City	Highway Miles	Delivery Time ^{11/}		City	Highway Miles	Delivery Time	
		LTL	TL			LTL	TL
Atlanta, Ga.	405	2-3	1	Los Angeles, Calif.	1,861	9-11	4-5
Birmingham, Ala.	362	2-3	2	Louisville, Ky.	261	1-2	1
Chicago, Ill.	428	2	1	Nashville, Tenn.	149	1-2	1
Cincinnati, Ohio	382	2	1	New Orleans, La.	449	3	2
Cleveland, Ohio	626	3	1-2	New York, N. Y.	1,030	3-4	2
Detroit, Mich.	645	3	1-2	Pittsburgh, Pa.	665	3	2
Knoxville, Tenn.	336	3	1	St. Louis, Mo.	197	1-2	1

Air

	<u>Local</u>	<u>Nearest Commercial</u>
Location:	Fulton Municipal Airport 2 miles northwest of Fulton	Barkley Field 8 miles west of Paducah, 47 miles from Fulton
Runways:	1 paved	2 paved
Length:	2,600 feet	4,000 feet; 6,500 feet
Traffic		
Control:	Wind sock	Wind tee, radio
Lighting:	Runway lights, sunset to sunrise	Beacon, boundary, obstruction, runway lights and runway end identification lights
Services:		80 and 100 octane; jet fuel; Delta and Ozark Airlines; taxi; limousine; U-Drive-It; storage; major A & E repairs

Water

Mississippi River, 20 miles
distant. Port facilities
available. 7 barge lines
serve this port.

Bus

Greyhound Bus Lines
Continental Trailways
Brooks Bus Lines

Taxi

3 companies, 24-hour service

POWER AND FUEL

Electricity

Company serving Fulton - Fulton Electric System

Source of power - Tennessee Valley Authority

Total generating capacity - 19,400,000 KW

Industrial rates furnished by - Fulton Electric System, Fulton,
Kentucky

Company serving Fulton County - Kentucky Utilities Company

Source of power - Kentucky Utilities Company

Total generating capacity - 1,215,000 KW

Industrial rates furnished by - Kentucky Utilities Company,
Clinton, Kentucky

Company serving Fulton County - Hickman-Fulton RECC

Source of power - Tennessee Valley Authority

Total generating capacity - 19,400,000 KW

Industrial rates furnished by - Hickman-Fulton RECC, Hickman,
Kentucky

Natural Gas

Company serving Fulton - Fulton Utility System

Source of supply - Texas Gas Transmission Corporation

Size of transmission mains - 4-inch (Fulton Utility System)
30-inch (Texas Gas)

Distribution mains - 6, 4, and 2 inches

Btu content - 1,000

Specific gravity - .60

Distribution pressure - 24 to 28 psi

Rates - Industrial rate negotiated

WATER AND SEWERAGE

Water

Company serving Fulton - Fulton Utility System

Source - 3 deep wells

Treatment plant capacity - 1,500,000 gpd

Average daily consumption - 750,000 gallons

Peak daily consumption - 1,000,000 gallons

Type treatment - Aeration, Ph adjustment, lime, chlorine, and water softeners

Storage capacity - 350,000 gallons

Size mains - 4, 6, 8, and 10 inches

Average pressure - 55 psi

Average temperature - 55° F.

MONTHLY WATER RATES FOR WHOLESALE AND INDUSTRIAL CONSUMERS

First	3,000 gallons	\$2.40 (Minimum)
Next	5,000 gallons	.65 per M gallons
Next	5,000 gallons	.55 per M gallons
Next	7,000 gallons	.50 per M gallons
Next	10,000 gallons	.35 per M gallons
Next	20,000 gallons	.25 per M gallons
Next	50,000 gallons	.20 per M gallons
Next	100,000 gallons	.20 per M gallons
Next	100,000 gallons	.18 per M gallons
All over	300,000 gallons	.15 per M gallons

Name of water district - Fulton County - South Western Kentucky Water District

Area served - Western portion of Fulton County

Date when water district began operating - August, 1971

Source of supply of treated water - City of Fulton

Amount of water which can be purchased in a 24-hour period - 1,224,000 gallons

Average amount of water used in a 24-hour period - 35,000 gallons

Peak amount of water used in a 24-hour period - 50,000 gallons

Water district storage facilities and capacities:

<u>Facility</u>	<u>Capacity</u>
Elevated tank	100,000 gallons
Elevated tank	100,000 gallons

Average pressure - 52 psi

Average temperature - 65° F.

Size mains - 8, 6, 4, 3, and 2 inches

Rates:

First	2,000 gallons	\$5.00 (Minimum)
Next	5,000 gallons	1.25 per M gallons
Next	5,000 gallons	.90 per M gallons
Next	8,000 gallons	.70 per M gallons
Next	10,000 gallons	.60 per M gallons
Next	20,000 gallons	.50 per M gallons
Next	50,000 gallons	.40 per M gallons

Surface water sources - Mississippi River, Bayou de Chien and Obion
Creeks

Average discharge - Bayou de Chien near Clinton (in neighboring
Hickman County) 87.9 cfs (30-year, USGS)

Expected ground water yield - 500 to 1,000 gpm over entire county.

Sewerage

Company serving Fulton - Fulton Utility Company

Design population - 4,400

Average daily flow - 28,000 to 30,000 gallons

Treatment - Secondary

Type treatment - Lagoon

Treated effluent discharged into - Obion Creek

Size of sanitary mains - 8, 12, and 24 inches

Size of storm mains - 18 to 36 inches

Rates - 50 percent of monthly water bill

LOCAL GOVERNMENT

City

Structure - Mayor - 4-year term; 4 commissioners - 2-year terms;
city manager

Budget 1971-72 - General Fund \$307,013; Gas, Water and Sewer
Fund \$397,690

Fees and licenses - Occupational license varies from \$5 to \$400
per year; payroll license tax of 1 percent of gross salary; auto
sticker \$5 per year.

County

Structure - County Judge - 4-year term; 4 magistrates - 4-year terms

Budget 1971 - 72 - General Fund \$106,400; Road Fund \$74,184

Assessed Value of Property, 1970

<u>Classes of Property*</u>	<u>Fulton</u>	<u>Fulton County</u>
Real Estate & Tangibles	\$16,743,787	
Real Estate		\$49,632,417
Tangibles		17,194,355
Public Service	1,585,284	8,432,471 (1969)

Local General Property Tax Rates Per \$100 of Assessed Valuation, 1971 ¹²/

<u>Taxing Unit**</u>	<u>Fulton</u>	<u>Fulton County</u>
State	\$.015	\$.015
County	.225	.225
School	.949	.432
City	.300	
Total	\$1.489	\$.672

*Property assessed at 100 percent of fair value.

**Manufacturing machinery, raw materials inventories and goods in
process inventories are not subject to local tax. State rate is only
\$0.15 per \$100.

Planning and Zoning

Agency - Fulton Planning and Zoning Commission

Plans completed - Base Map, Existing Land Use Map, Existing Land

Use Analysis - Population and Economic Study

Codes adopted - Building Code, Housing Code, Plumbing Code,

Electric Code, Fire Code, Gas Code

Safety

<u>Police</u>	<u>Fulton</u>	<u>Fulton County</u>
Total staff	11	5
Radio-patrol cars	2	2
Ambulance	1	
<u>Fire</u>		
American Insurance Association Fire Rating	7	
Full-time staff	3	
Volunteers	18	
Equipment:		
750-gpm pumper	1	
500-gpm pumper	1	
station wagon	1	

Sanitation

	<u>Fulton</u>	<u>Fulton County</u>
Type service	municipal	private
Cost:		
residential	\$1.50 per month	\$1.50 per month
business	contracted	negotiated
Collection frequency:		
residential	once a week	when desired
business	as needed	negotiated
Trash pickup	Saturdays - by request	when desired
Disposal method	land fill	land fill

HEALTH

Hospitals

<u>General Hospital</u>	<u>Location</u>	<u>Beds</u>
Fulton Hospital	Fulton	46
General hospital facilities - Operating room, delivery room, emergency room, X-ray and laboratory		
Medical staff - 6 medical doctors, 7 registered nurses, 1 graduate licensed practical nurse, and 7 licensed practical nurses		
Hillview Hospital	Fulton	34
General hospital facilities - Operating room, emergency room, X-ray, laboratory, and EKG facilities		
Medical staff - 2 medical doctors, 1 registered nurse, 3 graduate licensed practical nurses, 3 licensed practical nurses		

Nursing Homes

	<u>Number</u>	<u>Beds</u>
Extended care homes	2	44
Personal care homes	1	17

Public Health

Facility - Fulton County Health Center
Staff - Nurse, clerk, sanitarian
Budget 1971-72 - \$47,842

OTHER LOCAL FACILITIES

Communications

Telephone - South Central Bell Telephone Company
Services - Standard

Telegraph - Western Union
Services - Telephone

Postal - U. S. Post Office
Class - First
Mail received - Three times daily
Mail dispatched - Three times daily

Newspapers - Fulton Daily Leader and Fulton County News (weekly)
Circulation - 3,000 and 1,600, respectively
Other papers received from - Louisville and Paducah, Kentucky;
Memphis, Tennessee

Radio - WFUL, AM-FM
Stations received from - Paducah and Louisville, Kentucky;
Memphis and Nashville, Tennessee; St. Louis, Missouri;
Chicago, Illinois

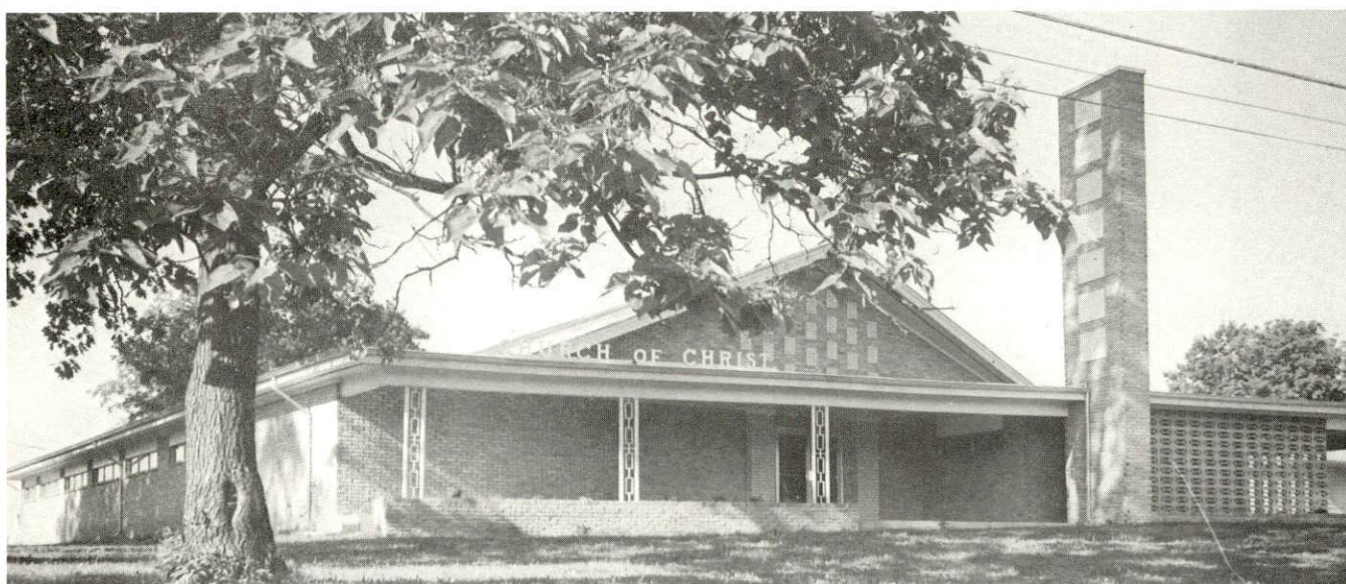
Television -
Cable Service
Reception from - Paducah, Kentucky; Cape Girardeau, Missouri;
Harrisburg, Illinois; Memphis, Jackson and Nashville, Tennessee
Kentucky Educational Television - Murray transmitter, Channel 21

Library Services

Public Libraries - Fulton Public Library
Size collection - 25,000 volumes
Circulation, 1970 - 41,000 volumes
Services - Bookmobile, films, magazines, records, pictures,
reading program, story hour



First Methodist Church



Church of Christ

Religious Institutions

Number of churches - 14

Denominations - Assembly of God, Baptist, Catholic, Christian, Christian Scientist, Church of Christ, Church of God, Episcopal, Jehovah's Witnesses, Latter Day Saints, Methodist, Nazarene, Presbyterian, Seventh Day Adventist

Financial Institutions

<u>Bank</u>	<u>Statement as of June 30, 1971</u>	
	<u>Assets</u>	<u>Deposits</u>
The City National Bank	\$12,838,188	\$11,904,676
Fulton Bank	9,539,086	8,704,226
<u>Savings and Loan Associations</u>	<u>Assets</u>	<u>Shared Accounts</u>
First Federal Savings & Loan Association	\$ 7,012,159	\$ 6,338,530

Hotels and Motels

<u>Number</u>	<u>Units</u>
6	178

Clubs and Organizations

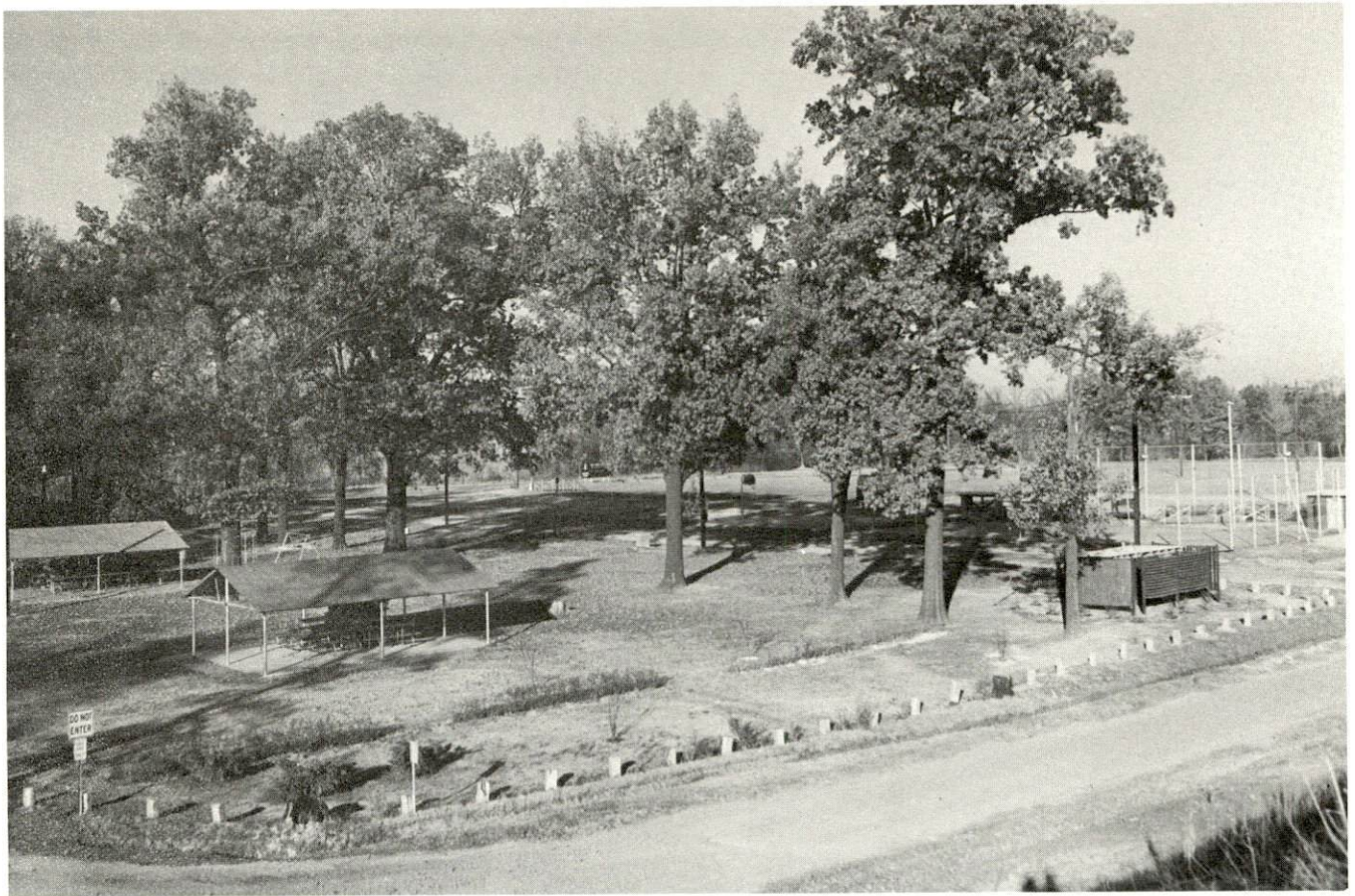
Business and Civic - Rotary, Lions, Civitan, Chamber of Commerce, Jaycees, Twin Cities Development Association, Young Men's Business Club, Kiwanis

Fraternal - Elks, Masons, American Legion, Veterans of World War I

Women's - Federated Women's Club, Business & Professional Women's Club, Homemakers, Garden Club, American Legion Auxiliary, Eastern Star

Youth - Girl Scouts, Boy Scouts, Brownies, Little League, Pony League, Babe Ruth League, 4-H, FHA, FFA

Other - Twin Cities Art Guild



Fulton Park



Willow Plunge Swimming Pool

RECREATION

Local

Public Recreation Facilities

Supervised program - (During summer months)

Parks - 2

Playgrounds - 4

Swimming pool - 1

Tennis courts - 3

Baseball diamonds - 5

Football fields - 2

Private Recreation Facilities

Country club - 1

Golf course - 1

Swimming pool - 1

Movie theaters - 2 (1 indoor, 1 drive-in)

Bowling lane - 1 (8 lanes)

Tourist Attractions

International Banana Festival in September

Cultural Events

Art Show

Area (Within 60 miles)

Columbus - Belmont Battlefield State Park

Reelfoot Lake and Reelfoot National Wildlife Refuge

Mid-South Boat Races

Kentucky Dam Village State Resort Park

Kenlake State Resort Park

Lake Barkley State Resort Park

Land Between the Lakes National Recreation Area

Kentucky Lake and Dam

AGRICULTURE - NATURAL RESOURCES - CLIMATE

Agriculture 13/

	<u>Fulton County</u>	<u>Labor Market Area</u>
Total land area (acres)	129,920	770,560
Percent of area in farm land	82.9	74.8
Number of farms	453	4,370
Average size of farms (acres)	237.6	132.1
1964 value of all farm products	\$5,475,291	\$22,441,722
Value per farm	12,087	5,135
Total crop sales	3,621,725	10,671,084
Total livestock & livestock products	1,853,565	11,766,606
1969 agricultural production included:		
Dark tobacco (lbs.)	7,000	3,224,000
Corn (bu.)	955,000	4,582,000
Cattle and calves (number)	13,300	101,800
Hogs and pigs (number)	23,500	108,500
Milk production (1968) (lbs.)	5,640,000	63,916,000

Natural Resources

Principal mineral resources	Sand and gravel
Other mineral resources	Clay, oil, and gas
Acres of commercial forest land	32,300
Most abundant tree species	Red oaks, white oaks, cottonwood, sweetgum, hickories, ash, and soft maples

Temperature

Annual mean (30-year record)	59.6 degrees
Average annual 1970	58.7 degrees
Record highest September, 1954 (28-year record)	104.0 degrees
Record lowest January, 1963 (28-year record)	- 5.0 degrees
Seasonal heating degree-days (30-year record)	3,821

Precipitation

Mean annual total (30-year record)	45.23 inches
Mean annual snow and sleet (28-year record)	10.0 inches
Total precipitation 1970	48.06 inches
Mean number days precipitation (28-year record) (.01 inches or more)	114
Average number days thunderstorms (22-year record)	53
Prevailing winds (22-year record)	Southwest

HISTORY

Fulton County lies at the extreme western tip of Kentucky, bordered by the Mississippi River to the west and Tennessee to the south. Several of the county's 184 square miles are detached from the rest, lying within a great coil of the Mississippi, so that one must pass either through Missouri or Tennessee to get to the area. The soils are alluvial, especially in the Mississippi bottoms, which extend some twenty-five miles inland, and clay-based in the uplands, where there are some small hills whose soil is productive.

In 1811 a powerful earthquake spent its greatest force in Fulton County, causing violent changes in its land surface. At this time the Mississippi River actually flowed backwards for several hours, and several lakes were created, including Reelfoot Lake to the south.

Fulton became Kentucky's ninety-ninth county, carved out of Hickman County in 1845 and named in honor of Robert Fulton, whose famous steamboat, "The Clermont," was the first commercially successful one in America. Hickman, the county seat, was first settled by James Mills in 1819 and named Mills Point. In 1837 its name was changed to Hickman for the family of the wife of G. W. L. Marr, who then owned the townsite. This river town of 3,048 persons in 1970 serves the surrounding agricultural region as a shipping point. It is built on three levels of a large bluff overlooking the Mississippi. Mark Twain mentioned Hickman in his Life on the Mississippi as one of the most beautiful towns along the river.

The town of Fulton lies on the Kentucky-Tennessee border and plays an important economic role by receiving nearly all banana shipments coming into the county via the Mississippi and readying them for shipment throughout America. Known as the "Banana Capital of America," Fulton is the home of an annual International Banana Festival.

In 1850, five years after its formation, the county had a population of 4,446. By 1950 this had reached 13,668, subsequently declining to 11,256 in 1960 and 10,183 in 1970.

Agriculture accounted for 600 of the county's 4,000 employed in 1970, with corn, cattle and hogs principal products. Fulton County also produces over nine-tenths of the cotton grown in Kentucky on large tracts of land, still called plantations, in the Mississippi bottom lands. Manufacturing employment stood at 700 in 1970, with heaviest concentration in the production of apparel, food-related and mineral products industries. Largest

of the county's firms are in Fulton: Henry I. Siegel Company, making men's and boys' clothing, and Ferry-Morse Seed Company, which packages garden seed. In Hickman are Hickman Garment Corporation, making men's and boys' jackets, and Graphite Products Division of The Carborundum Company.

John Luther Jones, the "Casey" Jones immortalized in song and story for his bravery as a railroad engineer, was a native of Fulton County.

SOURCES OF INFORMATION

- 1/ U. S. Department of Commerce, Bureau of the Census, Census of Population, 1950, 1960, 1970.
- 2/ Kentucky Department of Economic Security, Division of Research and Statistics.
- 3/ Kentucky Department of Economic Security, Number of Workers in Manufacturing Industries Covered by Kentucky Unemployment Insurance Law Classified by Industry and County, September 1970-1960.
- 4/ Kentucky Department of Commerce, 1972 Kentucky Directory of Manufacturers. Fulton-South Fulton Chamber of Commerce.
- 5/ Kentucky Department of Economic Security, Division of Employment Services, Mayfield Office.
- 6/ Kentucky Department of Economic Security, Kentucky Labor Supply Estimates by County, January 1971.
- 7/ Kentucky Department of Commerce, Future Labor Supply by 1977.
- 8/ University of Kentucky, Office of Development Services and Business Research, Total Personal Income for Kentucky.
- 9/ University of Kentucky, Office of Development Services and Business Research, Per Capita Income in Kentucky.
- 10/ Illinois Central Railroad, Louisville, Kentucky.
- 11/ McLean Trucking Company, Winston-Salem, North Carolina.
- 12/ Kentucky Department of Revenue.
- 13/ U. S. Department of Commerce, Bureau of the Census, Census of Agriculture, 1964. U. S. Department of Agriculture and Kentucky Department of Agriculture, Kentucky Agricultural Statistics, 1970.
- 14/ U. S. Department of Commerce, Environmental Science Services Administration, Climatological Data, 1970.

All other information was obtained from governmental offices, local businesses and organizations.