

1991

# Industrial Resources: Grayson County - Leitchfield

Kentucky Library Research Collections  
Western Kentucky University, [spcol@wku.edu](mailto:spcol@wku.edu)

Follow this and additional works at: [https://digitalcommons.wku.edu/grayson\\_cty](https://digitalcommons.wku.edu/grayson_cty)



Part of the [Business Administration, Management, and Operations Commons](#), [Growth and Development Commons](#), and the [Infrastructure Commons](#)

---

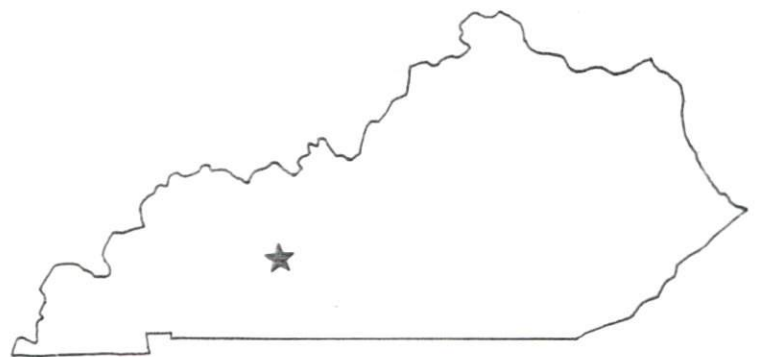
## Recommended Citation

Kentucky Library Research Collections, "Industrial Resources: Grayson County - Leitchfield" (1991). *Grayson County*. Paper 6.  
[https://digitalcommons.wku.edu/grayson\\_cty/6](https://digitalcommons.wku.edu/grayson_cty/6)

This Report is brought to you for free and open access by TopSCHOLAR®. It has been accepted for inclusion in Grayson County by an authorized administrator of TopSCHOLAR®. For more information, please contact [topscholar@wku.edu](mailto:topscholar@wku.edu).

I.R. 682 Grayson  
***Resources for Economic Development***

# Leitchfield- Grayson County



**KENTUCKY**  
*Open for Business*

---

RESOURCES FOR ECONOMIC DEVELOPMENT  
LEITCHFIELD-GRAYSON COUNTY, KENTUCKY

Prepared by  
The Kentucky Cabinet for Economic Development  
Division of Research and Planning  
in cooperation with  
Grayson County Chamber of Commerce

1991

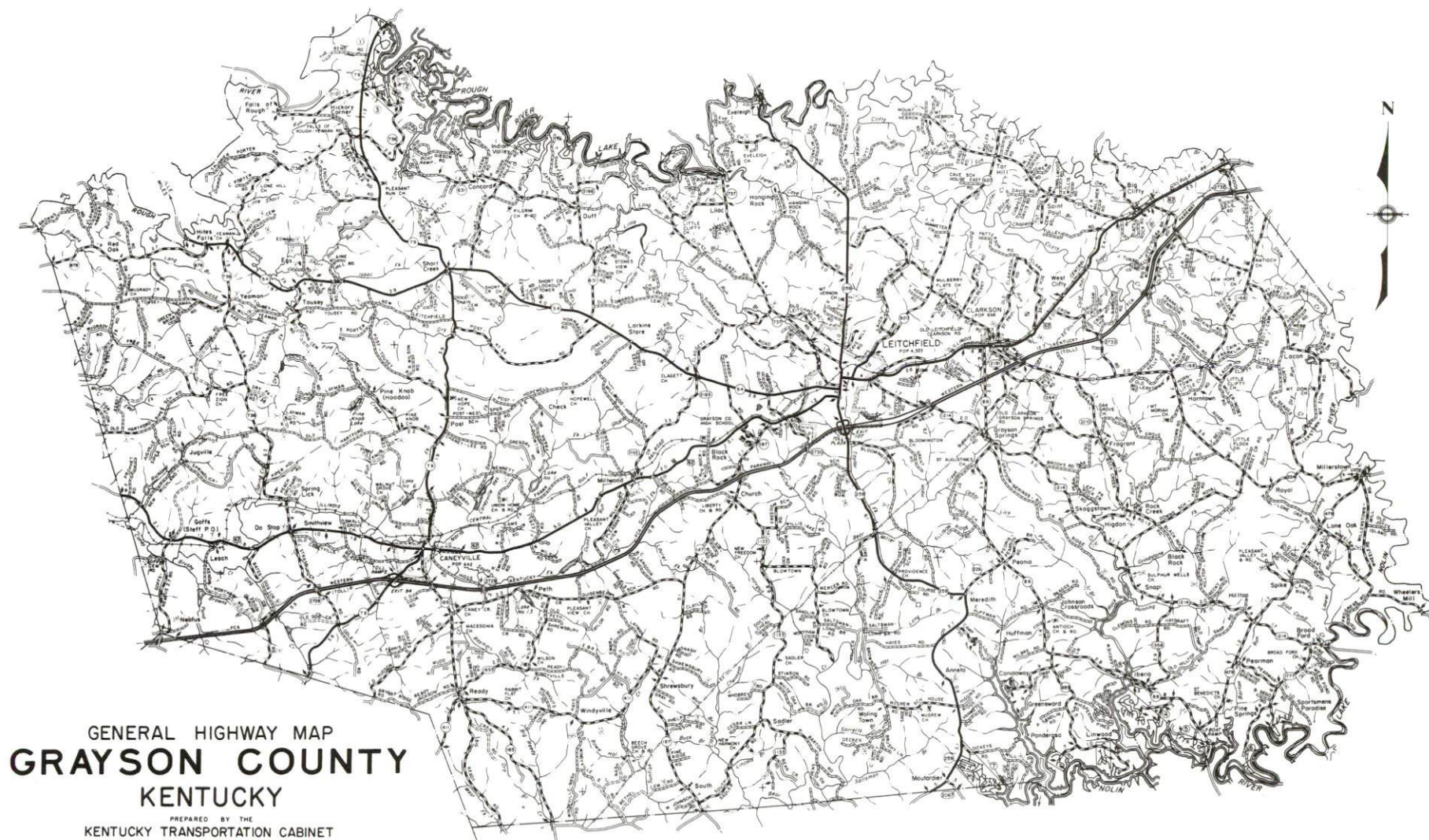
Division Director - Pamela K. Riley; program manager - Keith Roberts; research - Jane E. Sullivan; clerical - Wanda Sharp; graphics - Robert Owens, Pat Coleman; cartography - Edwin Scott, Dave Clark. Cost of printing paid from state funds.

## TABLE OF CONTENTS

<u>Chapter</u>	<u>Page</u>
LEITCHFIELD-GRAYSON COUNTY, KENTUCKY - A RESOURCE PROFILE .	1
THE LABOR MARKET STATISTICS .....	2
Labor Market Area Map .....	2
Population .....	3
Population Projections.....	3
Estimated Labor Supply.....	3
Labor Force Characteristics of Residents, 1989 .....	4
Selected Components of Nonagricultural Employment, by Place of Work, 1989 .....	5
Per Capita Personal Income .....	6
Average Placement Wages .....	7
Average Weekly Wages of Workers Covered by Unemployment Insurance 1988 - Bar Chart .....	8
Average Weekly Wages by Industry, by Place of Work, 1988 .....	9
EXISTING INDUSTRY .....	10
Grayson County Manufacturing Firms, Their Products and Employment .....	10
Labor Organizations in Manufacturing Firms.....	11
Selected Industrial Services .....	12
TRANSPORTATION.....	13
Highways .....	13
Truck Service .....	13
Selected Market Location Map .....	14
Rail.....	15
Air .....	15
Water .....	15
UTILITIES .....	16
Electricity .....	16
Natural Gas .....	16
Public Water Supply .....	17
Sewerage .....	17
CLIMATE.....	18

<u>Chapter</u>	<u>Page</u>
LOCAL GOVERNMENT.....	19
Structure .....	19
Planning and Zoning .....	19
Local Fees and Licenses .....	19
State and Local Property Taxes .....	20
Combined State and Local Rates Per \$100 Valuation, 1989 .....	20
EDUCATION .....	22
Public Schools .....	22
Area Colleges and Universities .....	22
Vocational Training .....	23
OTHER LOCAL FACILITIES .....	24
Local Medical Personnel .....	24
Hospitals .....	24
Other Medical Facilities and Services.....	24
Banks and Savings & Loan Associations .....	24
Newspapers .....	24
Telephone Service .....	24
RECREATION.....	25
COMMUNITY IMPROVEMENTS .....	26





GENERAL HIGHWAY MAP  
**GRAYSON COUNTY**  
KENTUCKY

PREPARED BY THE  
KENTUCKY TRANSPORTATION CABINET  
DEPARTMENT OF HIGHWAYS  
DIVISION OF PLANNING  
IN COOPERATION WITH THE  
U.S. DEPARTMENT OF TRANSPORTATION  
FEDERAL HIGHWAY ADMINISTRATION

0 1 2 3 4 MILES  
Ponders





## LEITCHFIELD-GRAYSON COUNTY, KENTUCKY - A RESOURCE PROFILE

Leitchfield, the county seat of Grayson County, is situated near the eastern edge of the Western Kentucky Coal Field Region. Leitchfield is located 77 miles southwest of Louisville, Kentucky; 115 miles north of Nashville, Tennessee; and 257 miles east of St. Louis, Missouri. In 1988, Leitchfield had an estimated population of 5,240.

Caneyville, located 13 miles west of Leitchfield, had a 1988 estimated population of 642. Clarkson, located four miles east of Leitchfield, had a 1988 estimated population of 720.

Grayson County, with a land area of 493 square miles, is characterized by flat-topped, sandstone-capped ridges. In 1988, Grayson County had an estimated population of 22,200.

**The Economic Framework** - The total number of Grayson County residents employed in 1989 averaged 8,499. Manufacturing firms in the county reported 2,174 employees; wholesale and retail trade provided 1,148 jobs; 450 people were employed in service occupations; state and local government accounted for 953 employees; and contract construction firms provided 188 jobs.

**Labor Supply** - There is a current estimated labor supply of 23,752 persons available for industrial jobs in the labor market area. In addition, from 1990 through 1994, 14,092 young persons in the area will become 18 years of age and potentially available for industrial jobs.

**Transportation** - Leitchfield is served by the Western Kentucky Parkway and U.S. 62, both "AAA"-rated highways, and Kentucky 259, a "AA"-rated highway. Fourteen common carriers provide interstate and/or intrastate trucking service to Leitchfield, while one trucking company maintains a terminal in Leitchfield. The Paducah and Louisville Railway provides main line rail service to Leitchfield. The nearest scheduled commercial airline service is available at Standiford Field in Louisville, 73 miles northeast of Leitchfield. The Leitchfield-Grayson County Airport, five miles southeast of Leitchfield, maintains a 4,000-foot paved runway.

**Power and Fuel** - Electric power is provided to Leitchfield and Grayson County by the Kentucky Utilities Company. Grayson County is also provided electric power by the Warren Rural Electric Cooperative Corporation. Natural gas is provided to Leitchfield by Leitchfield Utilities.

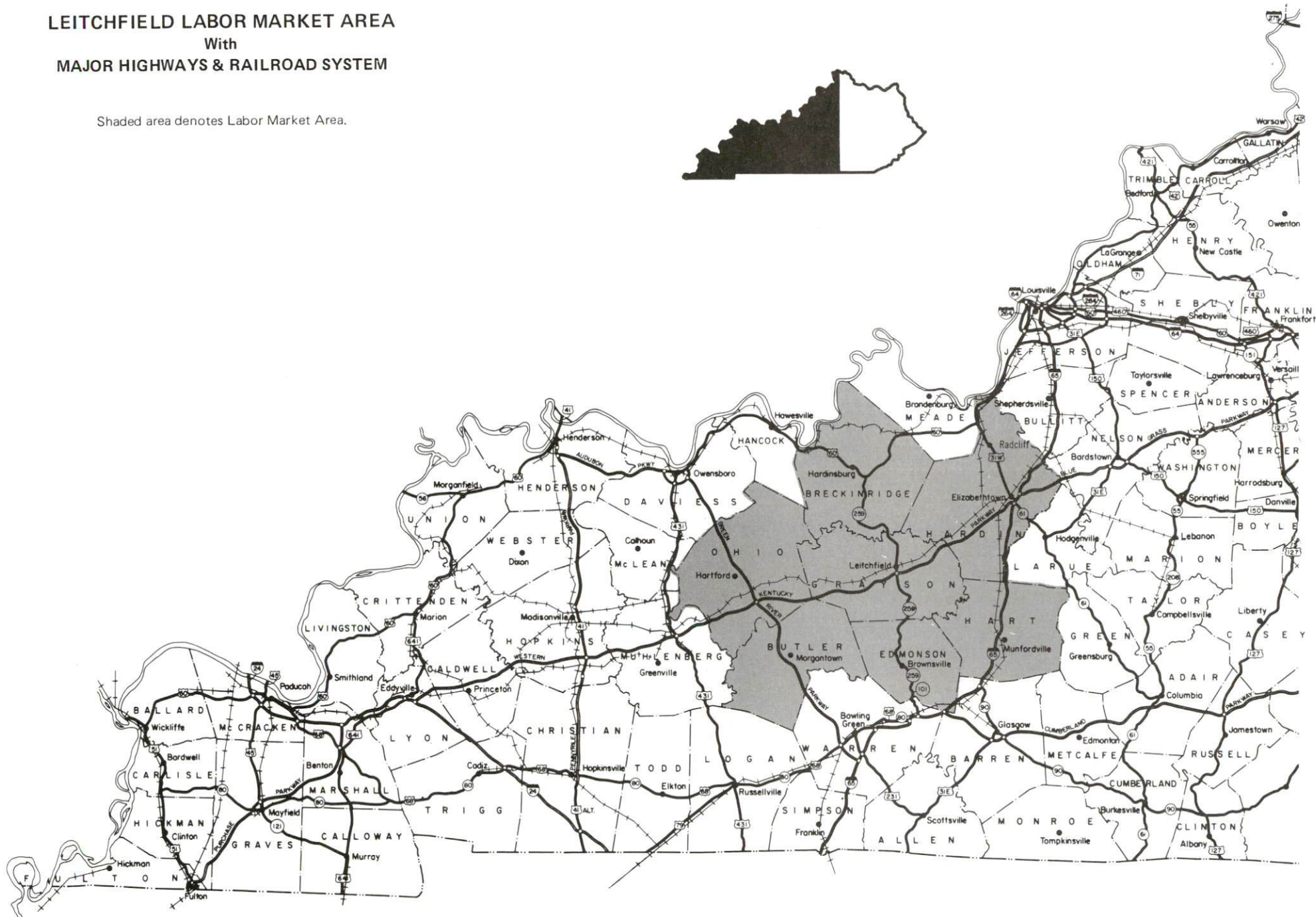
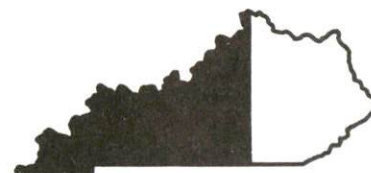
**Education** - The Grayson County School System, which is accredited by the Southern Association of Colleges and Schools, provides public education to Leitchfield and Grayson County. One nonpublic school operates in Leitchfield. Eleven colleges and universities are located within 80 miles of Leitchfield. Vocational training is available at Grayson County Area Vocational Education Center in Leitchfield and at Elizabethtown State Vocational-Technical School, 32 miles northeast of Leitchfield.



# LEITCHFIELD LABOR MARKET AREA

With  
MAJOR HIGHWAYS & RAILROAD SYSTEM

Shaded area denotes Labor Market Area.



## LABOR MARKET STATISTICS

The Leitchfield-Grayson County Labor Market Area includes Grayson County and the adjoining Kentucky counties of Breckinridge, Butler, Edmonson, Hardin, Hart and Ohio.

POPULATION			
	<u>1988*</u>	<u>1980</u>	<u>1970</u>
Labor Market Area	182,100	184,819	160,899
Caneyville	642	550	530
Clarkson	720	669	660
Leitchfield	5,240	4,533	2,983
Grayson County	22,200	20,854	16,445

\* Population estimates.

Sources: U.S. Department of Commerce, Bureau of the Census, August 1989; November 1989.

POPULATION PROJECTIONS				
	<u>2000</u>	<u>2010</u>	<u>2020</u>	<u>2030</u>
Labor Market Area	187,460	192,130	194,060	193,070
Grayson County	24,150	25,230	25,960	26,210

Source: University of Louisville, Urban Studies Center, State Data Center.

ESTIMATED LABOR SUPPLY					
	Current				Future
	<u>Total</u>	<u>Unemployed</u>	<u>Employed Part-Time</u>	<u>Not in Labor Force</u>	<u>Becoming 18 years of age 1990 thru 1994</u>
Labor Market Area*	23,752	5,539	9,008	9,205	14,092
Grayson County	4,045	904	1,178	1,963	1,657

\* Additional workers may be drawn from other nearby counties.

Note: Unemployed - persons unemployed and actively seeking work; Employed Part-Time - persons employed but working only 14 to 26 weeks per year; Not in Labor Force - represents the number of persons who would enter the labor force if suitable employment were available (based on the assumption that persons in Kentucky would like to participate in the labor force in the same proportion that they do nationally).

Sources: Kentucky Cabinet for Human Resources, Kentucky Labor Supply Estimates by County, 1989. Kentucky Cabinet for Economic Development, Future Labor Supply Becoming 18 Years of Age, 1990 thru 1994.

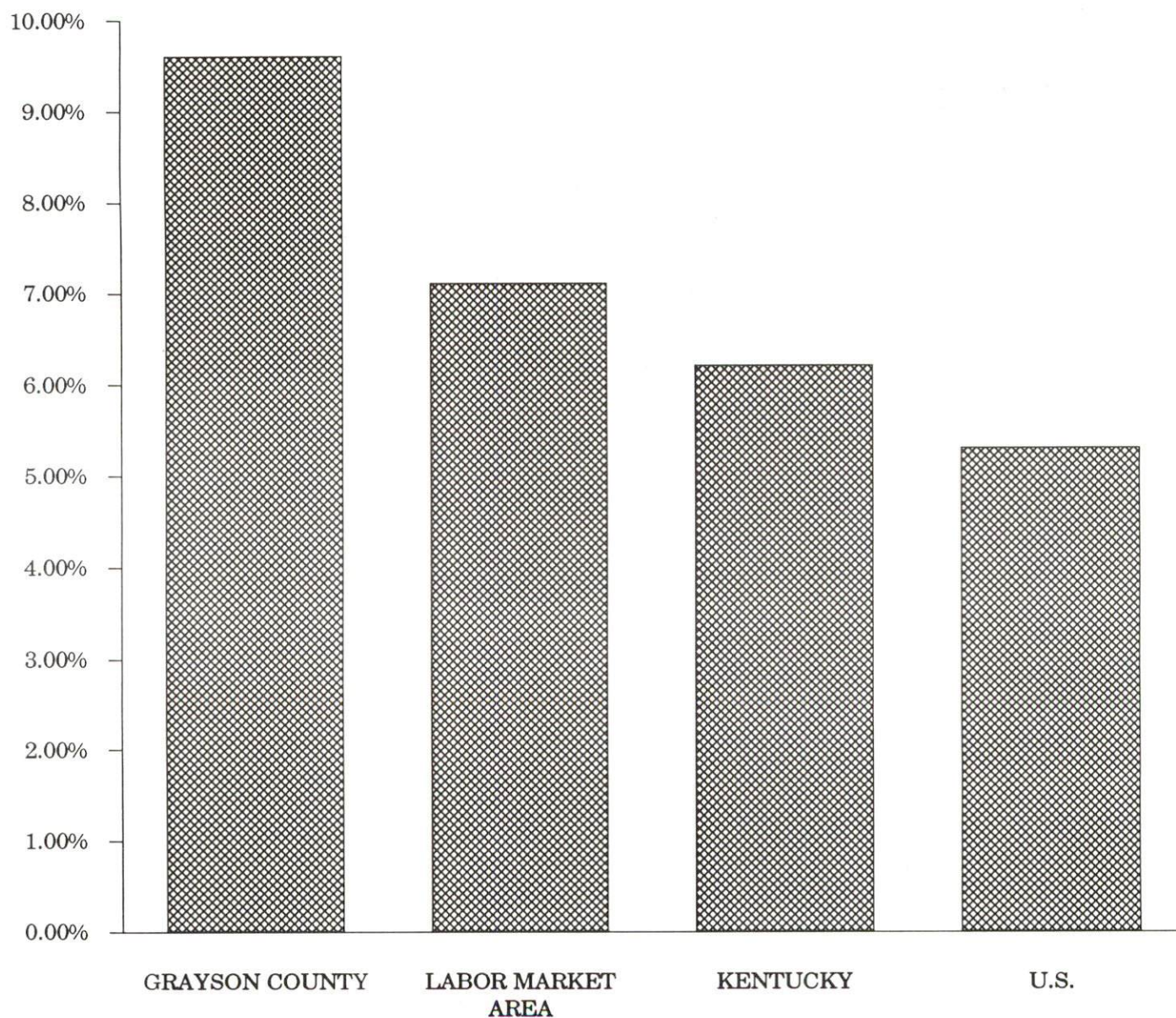


# LABOR FORCE CHARACTERISTICS OF RESIDENTS, 1989

	<u>Grayson County</u>	<u>Labor Market Area</u>
Civilian Labor Force	9,403	77,245
Employment	8,499	71,706
Unemployment	904	5,539
Rate of Unemployment (%)	9.6	7.1

Source: Kentucky Cabinet for Human Resources, Kentucky Labor Force Estimates, Annual Averages, 1989.

## UNEMPLOYMENT RATES 1989

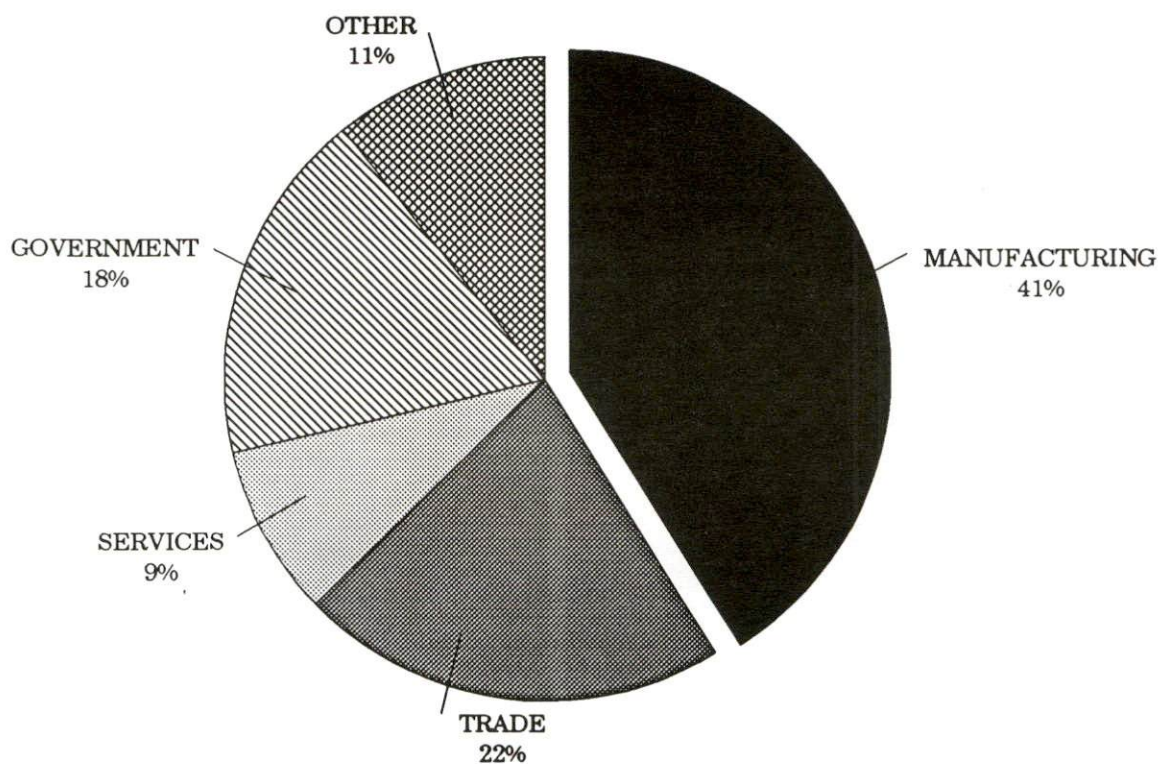


SELECTED COMPONENTS OF NONAGRICULTURAL EMPLOYMENT  
BY PLACE OF WORK, 1989

	Grayson County	Labor Market Area
All Industries (total)	5,279	43,860
Manufacturing	2,174	11,733
Wholesale & Retail Trade	1,148	11,407
Services	450	6,236
State/Local Government	953	8,013
Contract Construction	188	1,953

**Note:** Excludes domestic workers, railway workers, certain nonprofit corporations, majority of federal government workers, and self-employed workers.  
**Source:** Kentucky Cabinet for Human Resources, Average Monthly Workers Covered by Kentucky Unemployment Insurance Law, 1989.

GRAYSON COUNTY



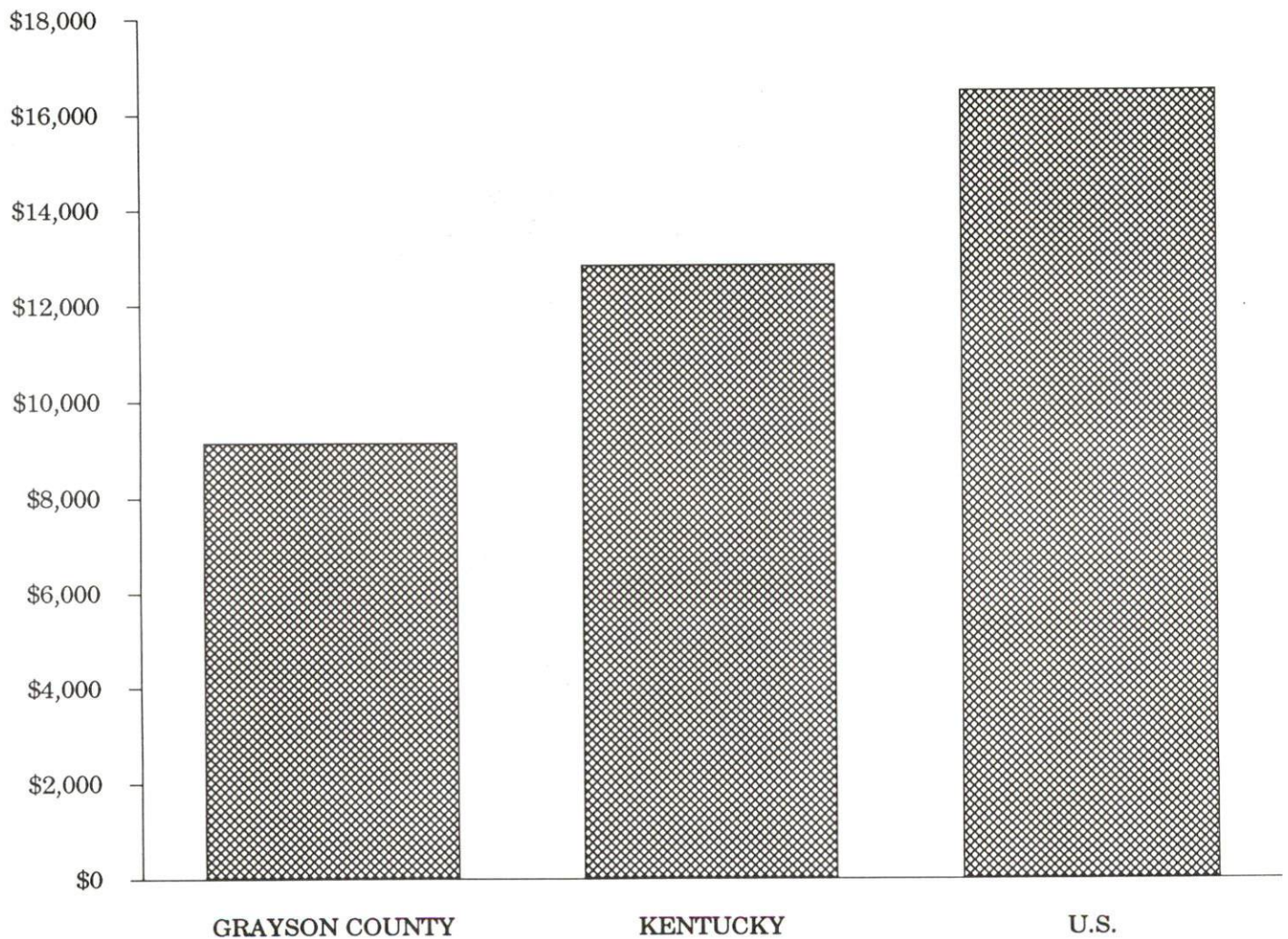


PER CAPITA PERSONAL INCOME

Area	1984	1988	Percent Change
Grayson County	\$7,881	\$9,136	15.9
Labor Market Area Range	\$5,717 - \$9,322	\$7,200 - \$12,193	-
Kentucky	\$10,411	\$12,830	23.2
U.S.	\$13,116	\$16,490	25.7

Sources: U.S. Bureau of Economic Analysis, Kentucky Economic Information System, April 1990.

PER CAPITA PERSONAL INCOME  
1988



## AVERAGE PLACEMENT WAGES

Grayson County is served by the Elizabethtown local office of the Kentucky Department for Employment Services. The focus of the following data is on job placements made by the Elizabethtown local office and may therefore be used as an indicator of the wages which employers in the area pay new employees. During the twelve months which ended on June 30, 1990, the local employment office filled 3,805 job openings in various occupational categories. The average hourly wage for selected occupational categories were:

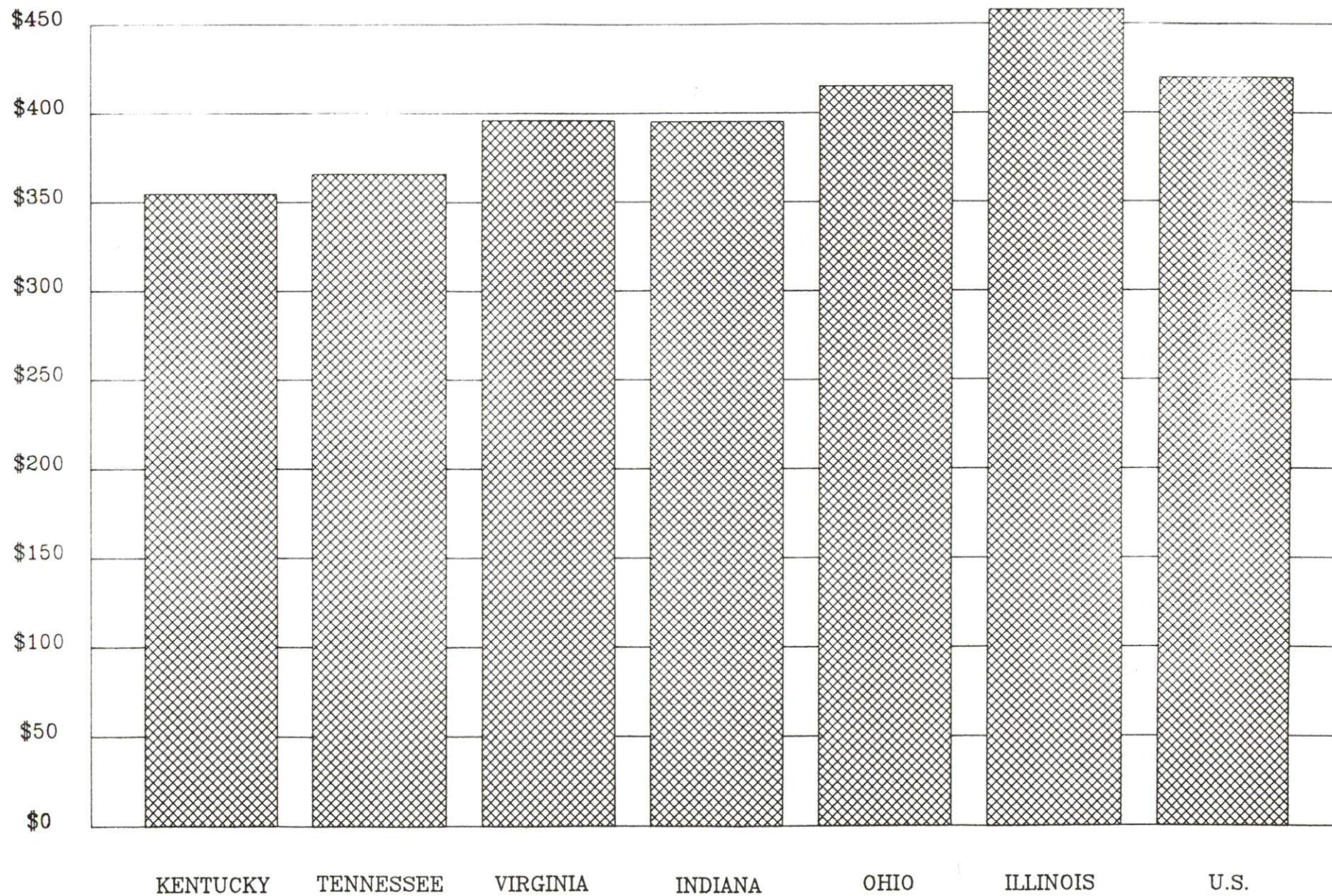
<u>OCCUPATIONAL CATEGORY</u>	<u>NUMBER OF PLACEMENTS</u>	<u>AVERAGE WAGE(\$)</u>
All Occupations	3,805	4.99
Clerical	1,126	4.17
Sales	161	4.32
Services (excluding domestic)	691	4.90
Agricultural, Fishery, Forestry, etc.	34	3.82
Processing	115	6.67
Machine Trades	422	5.75
Bench Work	540	5.31
Structural	310	5.98
Motor Freight/ Transportation	90	6.20
Packaging and Materials Handling	197	5.07
Other	5	6.62

The Elizabethtown local office also serves Breckinridge, Hardin, Larue, and Meade Counties. The above occupational categories are taken from the Dictionary of Occupational Titles published by the U.S. Department of Labor.

Source: Kentucky Cabinet for Human Resources, Department for Employment Services.



AVERAGE WEEKLY WAGES OF WORKERS COVERED BY  
UNEMPLOYMENT INSURANCE - 1988





AVERAGE WEEKLY WAGES BY INDUSTRY  
BY PLACE OF WORK, 1988

	Grayson County	Kentucky (State- Wide)	Tennessee	Virginia
All Industries	\$255.61	\$352.31	\$363.12	\$392.56
Mining & Quarrying	646.01	603.27	495.85	596.88
Contract Construction	219.26	380.71	394.27	422.27
Manufacturing	262.52	464.92	416.73	452.60
Transportation, Communications & Public Utilities	335.40	468.17	485.13	554.17
Wholesale & Retail Trade	200.88	238.88	N/A	N/A
Finance, Insurance & Real Estate	286.07	401.17	269.27	466.23
Services	195.39	298.98	343.48	391.67
State/Local Government	310.39	377.81	403.21	457.00
	<u>Indiana</u>	<u>Ohio</u>	<u>Illinois</u>	<u>U. S.</u>
All Industries	\$392.63	\$411.08	\$454.10	\$416.33
Mining & Quarrying	635.77	579.73	674.62	660.40
Contract Construction	449.87	465.46	584.10	469.85
Manufacturing	532.06	569.98	555.83	517.62
Transportation, Communications & Public Utilities	502.69	519.17	584.83	542.33
Wholesale & Retail Trade	N/A	N/A	N/A	N/A
Finance, Insurance & Real Estate	406.58	444.33	579.88	532.52
Services	317.98	348.48	402.38	384.31
State/Local Government	395.31	428.10	453.12	442.71

N/A Not Available.

Note: The average weekly wage for each category includes the salaries and wages of all persons working for that type business. For example, the manufacturing category includes both production workers and administrative personnel. Excludes domestic workers, railway workers, certain nonprofit corporations, majority of federal government workers, and self-employed workers.

Source: Kentucky Cabinet for Human Resources, Average Weekly Wages of Workers Covered by Kentucky Unemployment Insurance Law, 1988. U.S. Department of Labor, Bureau of Labor Statistics, Average Annual Pay by State and Industry, August 29, 1989.



## EXISTING INDUSTRY

### GRAYSON COUNTY MANUFACTURING FIRMS, THEIR PRODUCTS AND EMPLOYMENT

<u>Firm</u> <u>(Establishment date)</u>	<u>Product</u>	<u>1989</u> <u>Average Employment</u>
<b>Caneyville</b>		
Otis Bryant & Son Milling Company (1962)	Feed	19
Ray's Custom Processing (1982)	Meat processing	3
D & D Manufacturing, Inc. (1989)	Women's clothing	75
<b>Clarkson</b>		
Crop Production Services (1966)	Bulk fertilizer blending	5
Walter T. Kelley Company (1953)	Honey extracting equipment, bee comb foundation, bee hives	60
<b>Falls of the Rough</b>		
Byrd Tool Corporation (1987)	Cutting tools for wood working industry	19
<b>Leitchfield</b>		
Aton Components (1989)	Miniature light bulbs,	175
Baillie Lumber Company, Inc. (1981)	Lumber, kiln dried	71
Bel Cheese, Inc. (1958)	Cream, cheese	210
Campbell Hausfeld (1979)	Power painting equipment, air compressors	248
Embrys Commercial Printing (1969)	Commercial printing	1
Eureka Lumber & Pallet Company, Inc. (1973)	Wood shipping boxes, cases, wood pallets and skids, crates, miscellaneous wood shipping devices	16
Golf Heads & Sales of Kentucky, Inc. (1979)	Golf clubs, golf head turnings	6
Grayson County News-Gazette (1940)	Newspaper	9
Grayson County Ready Mix, Inc. (1966)	Ready mix concrete	5
I.M.S. Manufacturing Company, Inc. (1983)	Women's shorts, slacks, skirts men's sport coats, blazers	235

(Continued)

<u>Firm</u> <u>(Establishment date)</u>	<u>Product</u>	<u>1989</u> <u>Average Employment</u>
Larimer & Norton, Inc. (1984)	Golf clubs, baseball bats	12
Leggett & Platt (1969)	Metal furniture parts	247
Leitchfield Machining, Inc. (1980)	Production machining	19
Leitchfield Persimmon, Inc. (1985)	Kiln dried golf head blanks	6
Leitchfield Plastics (1989)	Injection molded plastics	185
Lowes Concrete, Inc. (1946)	Precast concrete products, ready mixed concrete, concrete blocks	26
Middle Ground, Inc. (1975)	Golf clubs	25
Mid Park, Inc. (1978)	Reinforcement for concrete, hinges and pins, farm gates, metal stamping	43
Phar-Shar Manufacturing Company, Inc. (1979)	Childrens, ladies, men's clothing	425
Rauco, Inc. (1978)	Golf clubs	15
The Record (1980)	Newspaper, commercial printing, tabloids	4
Scotty's Stone Company (1983)	Agricultural lime, crushed stone	20
Tell City Chair Company (1974)	Furniture components	92
Twin Lakes Manufacturing Company, Inc. (1986)	Women's clothing	100
Vermont American Corporation (1977)	Saw blades, hedge trimmer blades	280
Worley Printing Company, Inc. (1965)	Lithographic printing, screen printing	6
<b>Millwood</b>		
W.M. Cramer Lumber and Dry Kiln Company (1985)	Kiln dry lumber	9
Escue Wood Preserving, Inc. (1980)	Wood preserving	55

Sources: Kentucky Cabinet for Economic Development, Division of Research and Planning. Leitchfield-Grayson County Chamber of Commerce.

#### LABOR ORGANIZATIONS IN MANUFACTURING FIRMS

<u>Union</u>	<u>Representing workers at:</u>
Aluminum, Brick and Glass Workers International Union, AFL-CIO	Vermont American Corporation, Leitchfield Division
International Union of Electronic, Electrical Technical Salaried and Machine Workers, AFL-CIO	Leggett and Platt

# SELECTED INDUSTRIAL SERVICES

<u>Types of Services</u>	<u>Location</u>	<u>Mileage from Leitchfield</u>
Custom Data Processing	Elizabethtown, Kentucky	32
Custom Plastics Producers	Morgantown, Kentucky	33
Electric Motor Repair	Leitchfield, Kentucky	-
Grinding, Precision & Tool	Owensboro, Kentucky	55
Heat Treating Facilities	Louisville, Kentucky	76
Industrial Equipment & Supplies	Bowling Green, Kentucky	53
	Owensboro, Kentucky	55
Industrial Gases	Elizabethtown, Kentucky	32
Industrial Waste Removal	Elizabethtown, Kentucky	32
Machine Shops, Tool & Die	Leitchfield, Kentucky	-
Metal Castings	McHenry, Kentucky	39
Metal Finishers	Elizabethtown, Kentucky	32
Metal Service Centers	Bowling Green, Kentucky	53
	Owensboro, Kentucky	55
Millwrights	Radcliff, Kentucky	49
Public Warehouse Facilities	Elizabethtown, Kentucky	32

Sources: Kentucky Cabinet for Economic Development, Kentucky Directory of Selected Industrial Services, 1987; Division of Research and Planning.



## TRANSPORTATION

### Highways

Major highways serving Leitchfield are the Western Kentucky Parkway and U.S. Highway 62, both of which are "AAA"-rated (80,000-pound gross load limit) trucking highways; and Kentucky Highway 259, a "AA"-rated (62,000-pound gross load limit) trucking highway. Downtown Leitchfield is located approximately one mile north of an interchange to the Western Kentucky Parkway which connects with Interstate 65 and the Blue Grass Parkway at Elizabethtown, 32 miles northeast. The Western Kentucky Parkway also provides direct access to the Green River Parkway, 32 miles west of Leitchfield.

#### HIGHWAY MILES FROM LEITCHFIELD, KENTUCKY, TO SELECTED MARKET CENTERS

City	Highway Miles	City	Highway Miles
Atlanta, GA	353	Los Angeles, CA	2,085
Baltimore, MD	675	Louisville, KY	77
Birmingham, AL	302	Nashville, TN	115
Chicago, IL	363	New Orleans, LA	635
Cincinnati, OH	177	New York, NY	836
Cleveland, OH	434	Pittsburgh, PA	463
Detroit, MI	435	St. Louis, MO	257
Knoxville, TN	260		

Note: Mileage computations are via the best interstate or primary highways, not necessarily the most direct route of travel.

Sources: Rand McNally Deluxe Motor Carriers' Road Atlas, 1989. Official Kentucky Mileage Map, 1980.

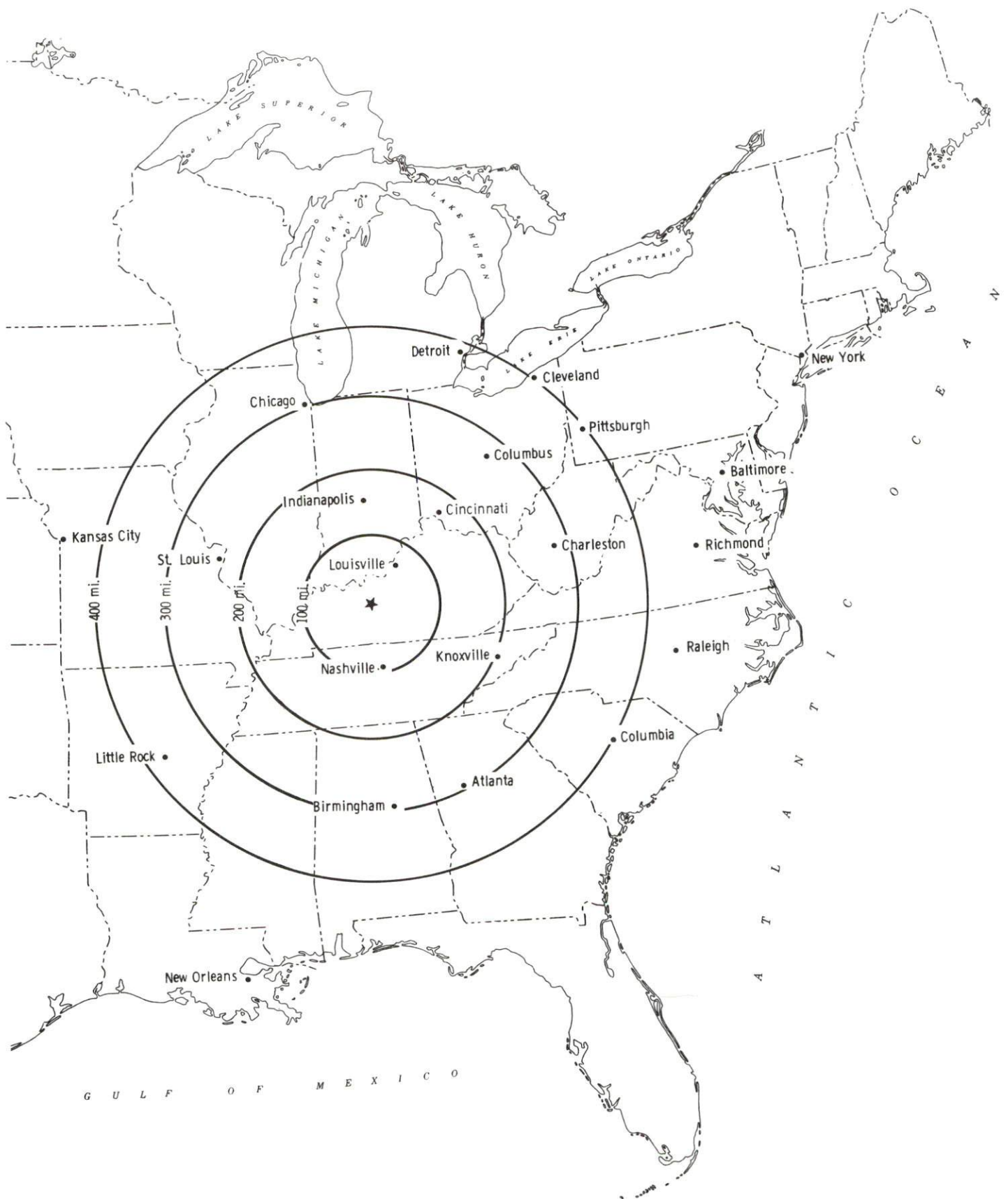
### Truck Service

Trucking service is available from fourteen common carriers who provide interstate and/or intrastate service to Leitchfield. One trucking company maintains a terminal in Leitchfield.

Source: American Motor Carrier Directory, Fall 1990.



## Selected Market Centers



## Rail

Main line rail service is provided to Leitchfield by the Paducah and Louisville Railway. The nearest piggyback facilities are provided by CSX Transportation in Owensboro, Kentucky, 55 miles northwest.

For details on routing, schedules, rates, and services contact:

Vice President - Marketing and Sales  
Paducah and Louisville Railway  
1500 Kentucky Avenue  
Paducah, Kentucky 42001  
(502) 444-4341

## Air

### Local

Location:	Leitchfield-Grayson County Airport 5 miles southeast of Leitchfield
Runways:	1 paved
Length:	4,000 feet
Traffic	
Control:	Wind sock
Lighting:	MIRL, VASI, rotating beacon, lighted wind sock, radio activated lighted runway
Services:	100LL fuel, tie downs, A & P repairs, aircraft rental, avionics shop

### Nearest Scheduled Commercial Airline Service

Location:	Standiford Field 4 miles southeast of center of Louisville, Kentucky; 73 miles northeast of Leitchfield
Air Service:	Air Toronto, Delta, Eastern, Northwest, American, TWA, United, USAir, Continental, ComAir, JetStream, Simmons Eagle
Daily Arrivals & Departures:	164

### Air Express Service

Several major companies offer air express services in Kentucky. These companies provide a quick means of shipping small to medium-sized packages expeditiously.

## Water

Leitchfield is located approximately 50 miles northeast of the Green River near Central City, where a nine-foot navigation channel is maintained to the confluence of the Green and Ohio Rivers. The Ohio River, one of the nation's major commercial waterways, is accessible 55 miles northwest at Owensboro, where public riverport facilities are available.

## UTILITIES

### Electricity

Company serving Leitchfield and parts of Grayson County - Kentucky  
Utilities Company  
Source of power - Kentucky Utilities Company  
For industrial rates contact:

Industrial Development Department  
Kentucky Utilities Company  
One Quality Street  
Lexington, Kentucky 40507  
(606) 255-1461

Company serving a major portion of Grayson County - Warren Rural  
Electric Cooperative Corporation  
Source of power - Tennessee Valley Authority  
For industrial rates contact:

South Kentucky Industrial Development  
Association, Inc.  
P. O. Box 726  
Hopkinsville, Kentucky 42240  
(502) 885-5392

and/or

Warren Rural Electric Cooperative  
Corporation  
P.O. Box 1118  
Bowling Green, Kentucky 42102  
(502) 842-6541

### Natural Gas

Company serving Leitchfield - Leitchfield Utilities  
Source of supply - Texas Gas Transmission Corporation and gas well  
For rates and supplies contact:

Leitchfield Utilities  
314 West White Oak Street  
Leitchfield, Kentucky 42754  
(502) 259-4034

## Public Water Supply

Company serving Leitchfield -	Leitchfield Utilities 314 West White Oak Street Leitchfield, Kentucky 42754 (502) 259-4034
Source -	Rough River
Treatment plant capacity -	2,500,000 gallons per day
Average daily consumption -	1,300,000 gallons
Peak daily consumption -	1,500,000 gallons
Storage capacity -	1,200,000 gallons
Water pressure -	30 psi to 128 psi

Leitchfield Utilities recently completed construction of a 500,000 gallon elevated water tank at a cost of \$422,000. An additional \$730,000 was invested in 1990 in a line extension project which included the installation of a twelve-inch line from the new water storage tank to the new industrial park.

Name of water district -	Grayson County Water District P.O. Box 1118 Bowling Green, Kentucky 42102 (502) 842-0052
Area served -	Grayson County
Source of supply of treated water -	City of Leitchfield
Average daily consumption -	318,000 gallons
Peak daily consumption -	390,500 gallons
Storage capacity -	389,000 gallons
Water pressure -	35 psi to 145 psi

## Sewerage

Company serving Leitchfield -	Leitchfield Utilities 314 West White Oak Street Leitchfield, Kentucky 42754 (502) 259-4034
Design capacity -	1,300,000 gallons per day
Average daily flow -	800,000 gallons
Type of treatment -	Tertiary
Treated effluent discharged into -	Taylor Fork of Bear Creek



## CLIMATE

### Grayson County

#### Temperature

Normal (29-year record)	54.90 degrees
Average annual 1989	54.20 degrees
Record highest, July 1988 (45-year record)	103.00 degrees
Record lowest, January 1963 (45-year record)	-21.00 degrees
Normal heating degree days (29-year record)	4,814
(Heating degree day totals are the sums of negative departures of average daily temperatures from 65 degrees F.)	

#### Precipitation

Normal (29-year record)	45.68 inches
Mean annual snowfall (45-year record)	16.10 inches
Total precipitation 1989	53.16 inches
Mean number days precipitation (.01 inch or more) (45-year record)	129.50
Mean number days thunderstorms (45-year record)	45.30

#### Prevailing winds (through 1963)

South

#### Relative Humidity (26-year record, except 1 a.m. - 25-year record)

1 a.m.	77 percent
7 a.m.	81 percent
1 p.m.	60 percent
7 p.m.	64 percent

Source: U.S. Department of Commerce, Environmental Science Services Administration, Climatological Data, 1989. Station of record: Lexington, Kentucky.

## LOCAL GOVERNMENT

### Structure

Leitchfield is served by a mayor and six council members. The mayor serves a four-year term while the council members each serve two-year terms. Grayson County is served by a county judge/executive and six magistrates. Each official serves a four-year term.

### Planning and Zoning

There is no planning and zoning agency in Leitchfield or Grayson County at the present time.

Mandatory state codes enforced - Kentucky Plumbing Code, National Electric Code, Kentucky Boiler Regulations and Standards, Kentucky Building Code (modeled after BOCA code)

### Local Fees and Licenses

The City of Leitchfield levies an occupational license tax of one and two-tenths percent (1.2%) on wages of individuals on the net profits of businesses. Unloading licenses range from \$10 to \$35 per year.

## State and Local Property Taxes

All property in Kentucky, except items exempted by the state constitution, is taxed by the state. Property which also may be taxed by local jurisdictions includes land and buildings, finished goods inventories, automobiles, trucks, office furniture and office equipment. Local taxing jurisdictions in Kentucky include counties, cities, and school districts.

All property in Kentucky is assessed at 100 percent of fair cash value.

### COMBINED STATE AND LOCAL RATES PER \$100 VALUATION, 1989

	City of Caneyville	City of Clarkson
Land and Buildings	\$0.7400	\$0.6760
Manufacturing		
Machinery	0.1500	0.1500
Pollution Control		
Equipment	0.1500	0.1500
Inventories		
Raw Materials	0.0010	0.0010
Goods in Process	0.0010	0.0010
Finished Goods	0.6763	0.3763
Automobiles & Trucks	1.0443	0.7443
Other Tangible		
Personal Property	1.1253	0.8253
Intangibles (Accounts receivable*, money in hand, stock, notes, bonds)	0.2500	0.2500
Goods Stored in Public Warehouses in Transit Status	0.0010	0.0010
Private Leaseholds in Industrial Revenue Bond Financed Facilities	0.0150	0.0150

(Continued)



COMBINED STATE AND LOCAL RATES PER \$100 VALUATION, 1989

	City of Leitchfield	Unincorporated Grayson County
Land and Buildings	\$0.6800	\$0.5600
Manufacturing		
Machinery	0.1500	0.1500
Pollution Control		
Equipment	0.1500	0.1500
Inventories		
Raw Materials	0.0010	0.0010
Goods in Process	0.0010	0.0010
Finished Goods	0.4963	0.3763
Automobiles & Trucks	0.8643	0.7443
Other Tangible		
Personal Property	0.9453	0.8253
Intangibles (Accounts		
receivable*, money		
in hand, stock,		
notes, bonds)	0.2500	0.2500
Goods Stored in Public		
Warehouses in Transit		
Status	0.0010	0.0010
Private Leaseholds in		
Industrial Revenue		
Bond Financed		
Facilities	0.0150	0.0150

\* Accounts receivable are taxed at 85 percent of face value, for an effective rate of \$0.2125 per \$100 valuation.

## EDUCATION

### Public Schools

#### Grayson County

Total Enrollment (Fall, 1989)	3,943
Accreditation	Southern Association of Colleges and Schools
Pupil-Teacher Ratio (1988-89)	18.4-1
Percent High School Graduates to College (1988-89)	42.3
Expenditures Per Pupil (1988-89)	\$2,507.55

### Area Colleges and Universities

<u>Name</u>	<u>Location (Miles distant)</u>	<u>Enrollment (Fall, 1989)</u>
Elizabethtown Community College	Elizabethtown, Kentucky (32)	3,009
Western Kentucky University	Bowling Green, Kentucky (53)	14,821
Brescia College	Owensboro, Kentucky (55)	689
Kentucky Wesleyan College	Owensboro, Kentucky (55)	716
Owensboro Community College	Owensboro, Kentucky (55)	2,125
Campbellsville College	Campbellsville, Kentucky (74)	760
Saint Catharine College	Springfield, Kentucky (75)	3,724
Bellermine College	Louisville, Kentucky (77)	3,724
Jefferson Community College	Louisville, Kentucky (77)	9,039
Spalding University	Louisville, Kentucky (77)	1,112
University of Louisville	Louisville, Kentucky (77)	23,182

## Vocational Training

Vocational training is available at both the state vocational-technical schools and the area vocational education centers. The state vocational-technical schools are post-secondary institutions. The area vocational education centers are designed to supplement the curriculum of high school students. Both the state vocational-technical schools and the area vocational education centers offer evening courses to enable working adults to upgrade current job skills.

Arrangements can be made to provide training in the specific production skills required by an industrial plant. Instruction may be conducted either in the vocational school or in the industrial plant, depending upon the desired arrangement and the availability of special equipment.

### Bluegrass State Skills Corporation

The Bluegrass State Skills Corporation, an independent public corporation created and funded by the Kentucky General Assembly, provides programs of skills training to meet the needs of business and industry from entry level to advanced training, and from upgrading present employees to retraining experienced workers.

The Bluegrass State Skills Corporation is the primary source for skills training assistance for a new or existing company. The Corporation works in partnership with other employment and job training resources and programs, as well as Kentucky's economic development activities, to package a program customized to meet the specific needs of a company.

<u>Vocational School</u>	<u>Location (Miles distant)</u>	<u>Cumulative Enrollment 1989-1990</u>
Grayson County Area Vocational Education Center	Leitchfield, Kentucky	314
Elizabethtown State Vocational School	Elizabethtown, Kentucky (32)	797



## OTHER LOCAL FACILITIES

### Local Medical Personnel

Grayson County

Physicians - 15

Dentists - 4

### Hospitals

<u>General Hospital</u>	<u>Location</u>	<u>Beds</u>
Grayson County Hospital	Leitchfield	75

Medical staff - 17 staff physicians, 65 registered nurses, and 12 licensed practical nurses

### Other Medical Facilities

Communicare  
Grayson County Health Center  
Lincoln Trail District Health  
Department  
Leitchfield Grayson County  
Ambulance Service, Inc.

### Banks and Savings and Loan Associations

#### Leitchfield

Citizens Bank and Trust Company of  
Grayson County  
Leitchfield Deposit Bank and Trust Company  
First Federal Savings and Loan Association of  
Leitchfield

#### Caneyville

Bank of Caneyville

#### Clarkson

Bank of Clarkson

### Newspapers

Grayson County News - Gazette (twice weekly)

### Telephone Service

General Telephone Company of  
Kentucky serves Leitchfield  
Continental Telephone Company of  
Kentucky serves Grayson County

## Local

Leitchfield provides many recreation programs which include baseball and softball leagues. The Grayson County Middle School gymnasium is open to adults in the community for organized sports such as volleyball, swimming, badminton, floor tennis and table tennis. Three parks, two playgrounds, five baseball fields, two tennis courts, an archery range, and a municipal swimming pool are also available to residents for recreational activities. A city-county sports complex includes a football field, a baseball field, soccer field, a swimming pool, basketball courts, tennis courts, a running track, and a playground. The reconstruction of a eight-acre lake is planned for one of the parks. In addition, two softball fields will be added.

Private recreational facilities include a 14-lane bowling facility; a lake and pay-fishing area; Allen's Lake and Waterslide; and a golf club, which is available to residents on a membership basis. Facilities at the Lakeview Club include an nine-hole golf course; a clubhouse with a proshop, snack bar, locker room and party room; a driving range; a putting green; a swimming pool; and tennis courts.

Pine Knob, an outdoor theater located in Caneyville, 13 miles west of Leitchfield, provides unique entertainment in a quaint historic setting. The 400-seat outdoor theater features two shows including the "Dock Brown Show", which is based on the book "Dock Brown, the Grayson County Outlaw", and "Down in Hoodoo Holler".

Noteworthy for its spaciousness, **Rough River Dam State Resort Park** at Falls of Rough is 18 miles northwest of Leitchfield. The 637-acre park on Rough River Lake features a 40-room lodge with a dining room, a coffee shop, a gift shop, a meeting room, and a 2,500-foot lighted airstrip. Cottages and camping sites are also available. Recreational facilities include a launching ramp, a dock with open and covered slips, fishing and pleasure boat rentals, a 9-hole, 3-par golf course, a swimming pool, a sand beach with a bathhouse complex, tennis courts, an archery range, hiking and fitness trails, picnic and playground areas, and planned recreation. Cruise boat excursions on Rough River Lake are available on the "Lady of the Lake" in season.

**Nolin River Lake** is just north of Mammoth Cave National Park. The lake has a surface area of 5,800 acres and offers facilities for camping, boating, and fishing.

**Mammoth Cave National Park** is located 42 miles southeast of Leitchfield near Cave City. Beneath 52,000 park acres, Mammoth Cave is among the major tourist attractions of all times. It is the largest cave network ever discovered, with over 300 miles of caverns. Some famous sights are Snowball Dining Room (267 feet below surface), Frozen Niagara, Crystal Lake, and Bottomless Pit. The park also features scenic boat trips on the Green River and nature and hiking trails. Park accommodations include a hotel with distinctive gift shops featuring native Kentucky and Southern Highland handicrafts, a motor lodge, hotel cottages, and woodland cottages. Other park facilities include the hotel dining room and coffee shop, a service center, group meeting facilities, a campground, boat rides, a picnic area, and tennis and shuffleboard courts. The park is open for tours every day of the year (except Christmas Day).

## Area (Within 60 miles)

Abraham Lincoln's Birthplace National Historic Site  
Bernheim Forest Arboretum and Nature Center  
My Old Kentucky Home State Park

## COMMUNITY IMPROVEMENTS

### Recent

D & D Manufacturing opened in Caneyville in 1990. The women's clothing manufacturer employs 75 people. Leitchfield Plastics, an injection molding producer, has recently opened in Leitchfield. The manufacturer which employs 140, occupies a spec building in Leitchfield's Industrial Park. Aton Components opened in Leitchfield in 1989. Aton, which occupies the Ampad Building in the Industrial Park, manufactures light bulbs and has 175 employees.

Recent plant expansions have occurred at Bel Cheese, Inc., Campbell Hausfeld, Inc., IMS Manufacturing Company, Leggett and Platt, Inc., Leitchfield Machining, Mid-Park, Inc., Vermont American, and Byrd Tool Corporation.

The City of Leitchfield Utilities has constructed a 500,000 gallon elevated storage tank at a cost of \$422,000. The Utilities company has also completed a line extension project which included the installation of a 12-inch line from the new water storage tank to the Industrial Park.

### Underway

A new \$2 million elementary school will be completed in the spring of 1991 and opened for the 1991-92 school year. New classroom additions have been approved for construction at the Grayson County High School for the coming year as well as renovations at all other schools which include the middle school and the three elementary schools.

The Grayson County Water District plans to install 9.9 miles of 6-inch water lines and approximately 54.3 miles of 4-inch water lines. The project will include the installation of 562 meters to serve an estimated 1,600 residents.

### Planned

The City of Leitchfield has applied for a Land and Water Conservation Act Grant to revitalize an existing city park. The city plans to construct two new softball facilities at the park. In addition, the city has invested \$25,000 in improvements to local recreational facilities in 1990.





**KENTUCKY**  
*Open for Business*

---

Cabinet for Economic Development • Capital Plaza Tower  
Frankfort, Kentucky 40601 • (502) 564-7140