

1993

# Industrial Resources: Greenup County

Kentucky Library Research Collections  
Western Kentucky University, [spcol@wku.edu](mailto:spcol@wku.edu)

Follow this and additional works at: [https://digitalcommons.wku.edu/greenup\\_cty](https://digitalcommons.wku.edu/greenup_cty)

 Part of the [Business Administration, Management, and Operations Commons](#), [Growth and Development Commons](#), and the [Infrastructure Commons](#)

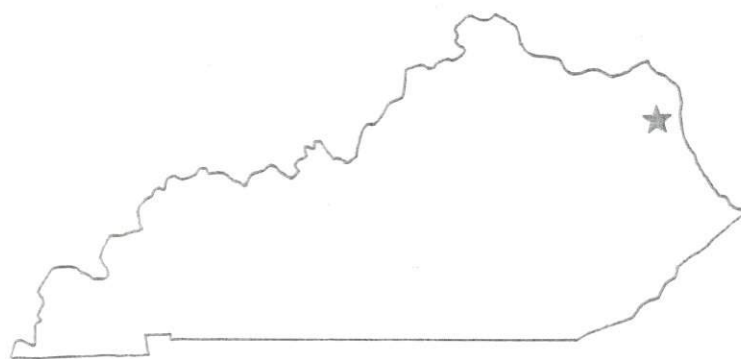
---

## Recommended Citation

Kentucky Library Research Collections, "Industrial Resources: Greenup County" (1993). *Greenup County*. Paper 3.  
[https://digitalcommons.wku.edu/greenup\\_cty/3](https://digitalcommons.wku.edu/greenup_cty/3)

This Report is brought to you for free and open access by TopSCHOLAR®. It has been accepted for inclusion in Greenup County by an authorized administrator of TopSCHOLAR®. For more information, please contact [topscholar@wku.edu](mailto:topscholar@wku.edu).

# Boyd & Greenup Counties



**KENTUCKY**

---

RESOURCES FOR ECONOMIC DEVELOPMENT  
BOYD AND GREENUP COUNTIES, KENTUCKY

Prepared by  
The Kentucky Cabinet for Economic Development  
Division of Research  
in cooperation with  
The Chamber of Commerce of Boyd and Greenup Counties, Inc.  
and  
The Economic Development Corporation of Boyd and Greenup Counties  
and  
Local Governments of Boyd and Greenup Counties

1993

Division Director - Pamela K. Riley; program manager - Keith Roberts; research - Barry K. Holder, Jr.; clerical - Wanda Sharp; graphics - Robert Owens, Pat Coleman; cartography - Edwin Scott, Dave Clark. Cost of printing paid from state funds.



## TABLE OF CONTENTS

<u>Chapter</u>	<u>Page</u>
BOYD AND GREENUP COUNTIES, KENTUCKY - A RESOURCE PROFILE ..	1
THE LABOR MARKET STATISTICS .....	2
Population .....	2
Estimated Labor Supply .....	2
Labor Force Characteristics of Residents, 1992 .....	3
Selected Components of Nonagricultural Employment, by Place of Work, 1992 .....	4
Per Capita Personal Income .....	5
Average Weekly Wages of Workers Covered by Unemployment Insurance 1991 - Bar Chart .....	6
Average Weekly Wages by Industry, by Place of Work, 1991 .....	7
Average Placement Wages .....	8
EXISTING INDUSTRY .....	9
Major Boyd and Greenup Counties Manufacturing Firms, Their Products and Employment .....	9
Labor Organizations in Manufacturing Firms .....	11
Selected Industrial Services .....	12
TRANSPORTATION .....	13
Highways .....	13
Truck Service .....	13
Selected Market Location Map .....	14
Rail .....	15
Air .....	15
Water .....	16
UTILITIES .....	17
Electricity .....	17
Natural Gas .....	17
Public Water Supply .....	18
Raw Water .....	20
Sewerage .....	21
CLIMATE .....	23

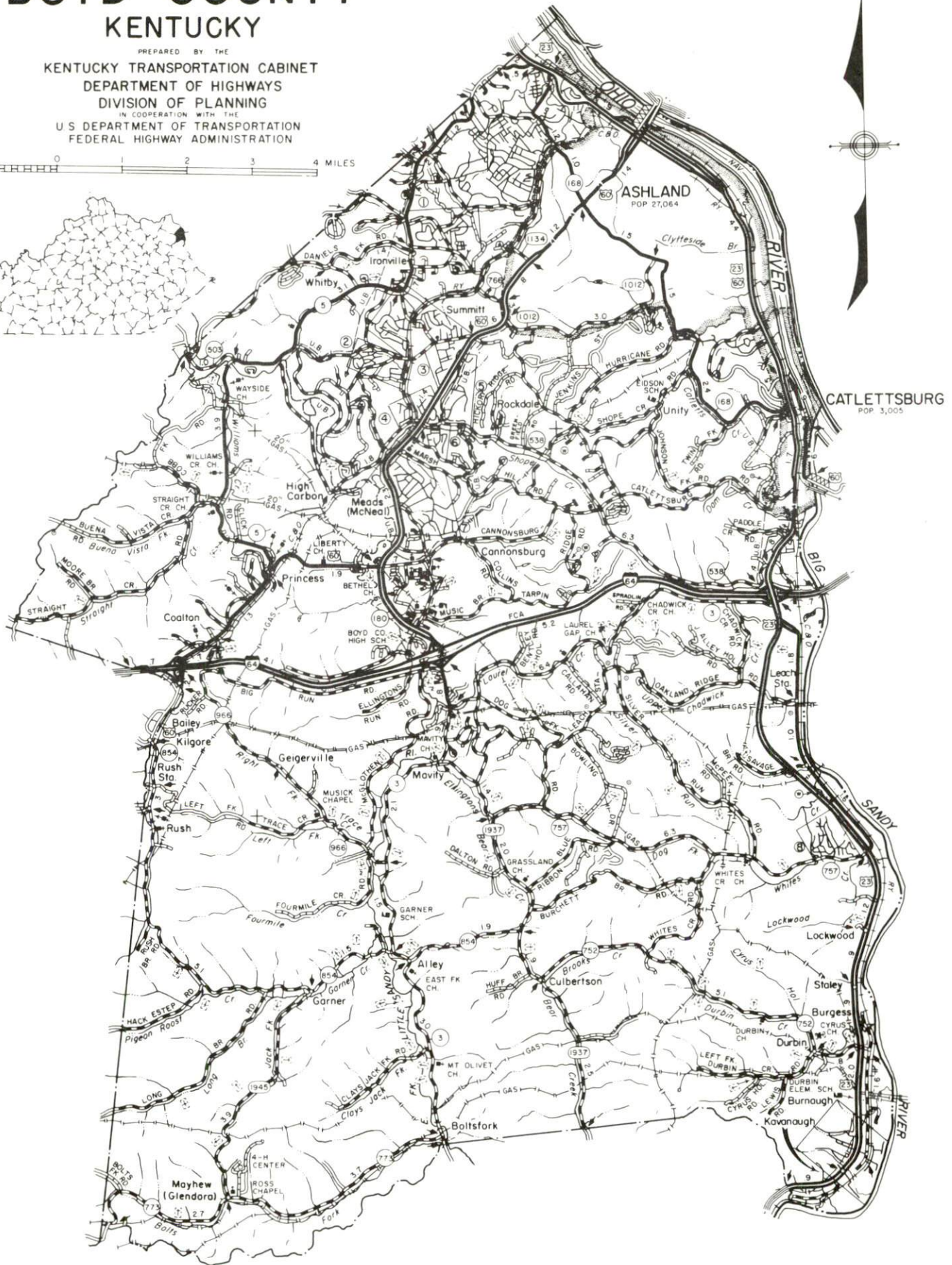
<u>Chapter</u>	<u>Page</u>
LOCAL GOVERNMENT .....	24
Structure .....	24
Planning and Zoning .....	24
Local Fees and Licenses .....	25
State and Local Property Taxes .....	26
EDUCATION .....	28
Public Schools .....	28
Nonpublic Schools .....	29
Area Colleges and Universities .....	29
Vocational Training .....	30
OTHER LOCAL FACILITIES .....	32
Local Medical Personnel .....	32
Hospitals .....	32
Other Medical Facilities and Services .....	32
Newspapers .....	32
Telephone Service .....	32
Hotels and Motels .....	32
Banks and Savings & Loan Associations .....	33
RECREATION .....	34
COMMUNITY IMPROVEMENTS .....	36



# GENERAL HIGHWAY MAP BOYD COUNTY KENTUCKY

PREPARED BY THE  
KENTUCKY TRANSPORTATION CABINET  
DEPARTMENT OF HIGHWAYS  
DIVISION OF PLANNING  
IN COOPERATION WITH THE  
U.S. DEPARTMENT OF TRANSPORTATION  
FEDERAL HIGHWAY ADMINISTRATION

0 1 2 3 4 MILES





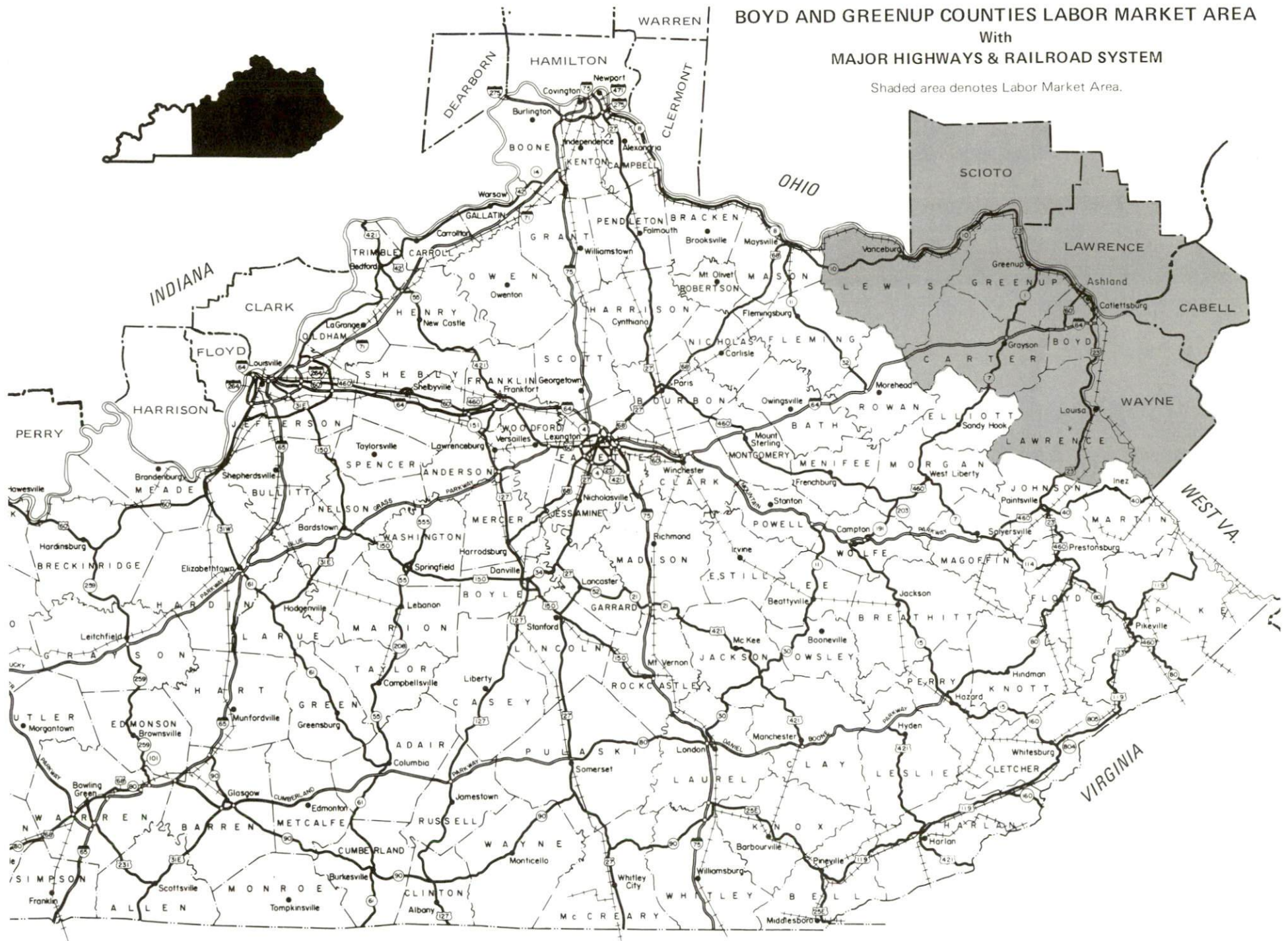
GENERAL HIGHWAY MAP  
**GREENUP COUNTY**  
KENTUCKY

PREPARED BY THE  
KENTUCKY TRANSPORTATION CABINET  
DEPARTMENT OF HIGHWAYS  
DIVISION OF PLANNING  
IN COOPERATION WITH THE  
U.S. DEPARTMENT OF TRANSPORTATION  
FEDERAL HIGHWAY ADMINISTRATION

0 1 2 3 4 MILES



Shaded area denotes Labor Market Area.





## BOYD AND GREENUP COUNTIES, KENTUCKY - A RESOURCE PROFILE

Boyd and Greenup counties, situated on the Ohio River in the Appalachian foothills of the tri-state area of Kentucky, Ohio and West Virginia, cover 506 square miles. Although part of the Eastern Kentucky Coal Fields Region, the topography is less rugged than that of other Coal Field counties. Centrally located in the eastern U.S., Kentucky is within 600 miles of 68% of the U.S. population and personal income, and 73% of all U.S. manufacturing production.

According to the 1990 census, Boyd County with two incorporated cities-Ashland and Catlettsburg, had a total population of 51,150. Ashland (1990 population of 23,622) is the largest city in the two counties and is located 67 miles west of Charleston, West Virginia; 195 miles east of Louisville, Kentucky; 134 miles southeast of Cincinnati, Ohio; and 264 miles northeast of Knoxville, Tennessee.

Greenup County had a 1990 population of 36,742. The County has eight incorporated cities: Bellefonte, Flatwoods, Greenup, Raceland, Russell, South Shore, Worthington and Wurtland.

**The Economic Framework** - The total number of Boyd and Greenup Counties residents employed in 1992 averaged 33,312. Manufacturing firms in the county reported 8,934 employees; wholesale and retail trade provided 8,059 jobs; 7,139 people were employed in service occupations; state and local government accounted for 3,776 employees; and contract construction firms provided 2,714 jobs.

**Labor Supply** - There is a current estimated labor supply of 19,250 persons available for industrial jobs in the labor market area. In addition, from 1993 through 1997, 10,955 young persons in the area will become 18 years of age and potentially available for industrial jobs.

**Transportation** - Commercial surface traffic routes which serve 35 interstate trucking lines are accessed from Interstate 64 which crosses through Boyd County. A major east-west route, I-64 provides access to I-75, I-65, I-71, I-77 and I-79. Other available highways are U.S. 23 and 60 and Kentucky Routes 7, 10 and 180. Rail service is available through CSX Transportation and Amtrack. The Ohio River has numerous private terminal facilities in both counties. Commercial air service is available through the Tri-State Airport, 14 miles southeast of Ashland. The Ashland Regional Airport in Greenup County maintains a 5,600-foot paved runway for general aviation and corporate transports.

**Power and Fuel** - Kentucky Power Company and Grayson Rural Electric Cooperative Corporation provide electrical power to Boyd and Greenup Counties. Natural gas service is supplied by Columbia Gas of Kentucky.

**Tax Incentives** - The Ashland Enterprise Zone offers tax incentives and regulatory relief to qualifying businesses which locate or expand activities within the zone's boundaries.

**Education** - Six public and two private school systems serve the area. Higher education is available through the University of Kentucky's Ashland Community College and the Morehead State University-Ashland Center, both of which offer associate and baccalaureate degrees in addition to continuing education programs and a variety of community-oriented services. Vocational training for major skill areas is available through the Ashland State Vocational-Technical School, plus three area vocational education centers, all located in Boyd and Greenup Counties.

## LABOR MARKET STATISTICS

The Boyd and Greenup Counties Labor Market Area includes Boyd and Greenup Counties and the adjoining Kentucky counties of Carter, Lawrence, and Lewis. Although not included in every statistical category below, the labor market is supplemented by the nearby Ohio Counties of Lawrence and Scioto, and the West Virginia Counties of Cabell and Wayne.

POPULATION			
	<u>1990</u>	<u>1980</u>	<u>1970</u>
Labor Market Area*	419,883	449,576	406,817
Boyd and Greenup Counties	87,892	94,645	85,568

\* Includes populations of Lawrence and Scioto Counties, Ohio; and Cabell and Wayne Counties, West Virginia.

Source: U.S. Department of Commerce, Bureau of the Census, January 1991.

ESTIMATED LABOR SUPPLY				
	Current		Not in Labor Force	Future
	<u>Total</u>	<u>Unemployed</u>		Becoming 18 years of age <u>1993 thru 1997</u>
Labor Market Area*	19,250	6,341	12,909	10,955
Boyd and Greenup Counties	11,116	3,418	7,698	6,595

\* These statistics do not completely reflect the total labor supply for the area. A significant number of workers are drawn from surrounding counties in Ohio, West Virginia, and nearby Kentucky counties as well.

Note: Unemployed - persons unemployed and actively seeking work; Not in Labor Force - represents the number of persons who would enter the labor force if suitable employment were available (based on the assumption that persons in Kentucky would like to participate in the labor force in the same proportion that they do nationally). Underemployed persons (employed only 14 to 26 weeks during the year) are no longer included in labor surplus estimates.

Sources: Kentucky Cabinet for Human Resources, Kentucky Labor Surplus Estimates by County, 1992. Kentucky Cabinet for Economic Development, Future Labor Supply Becoming 18 Years of Age, 1993 thru 1997.



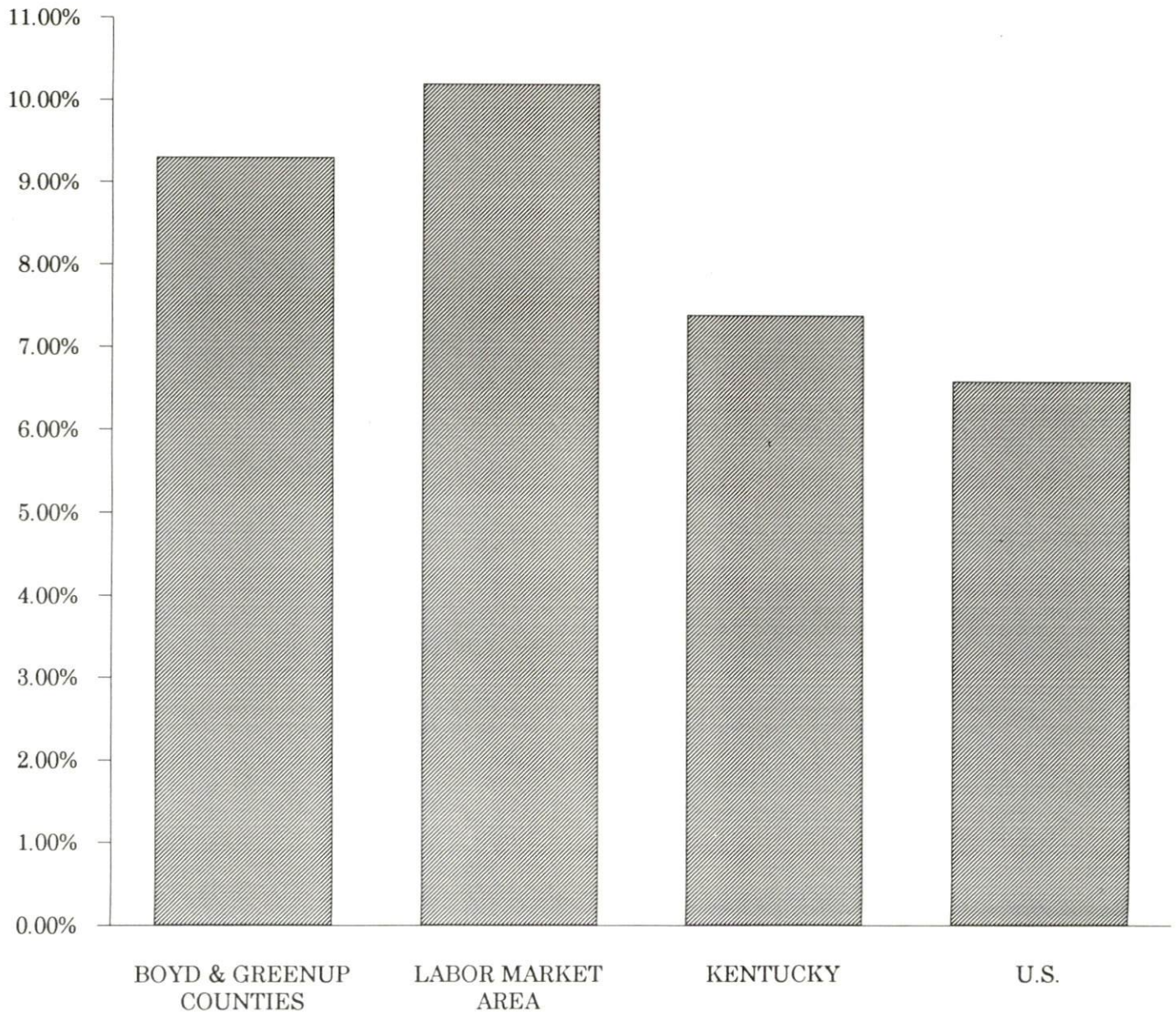
# LABOR FORCE CHARACTERISTICS OF RESIDENTS, 1992

	<u>Boyd and Greenup Counties</u>	<u>Labor Market Area*</u>
Civilian Labor Force	36,730	175,144
Employment	33,312	157,233
Unemployment	3,418	17,911
Rate of Unemployment (%)	9.3	10.2

\* Includes the two Ohio counties and the two West Virginia counties.

Source: Kentucky Cabinet for Human Resources, 1993; Ohio Bureau of Employment Services, 1993; West Virginia Division of Employment Security, 1993.

## UNEMPLOYMENT RATES 1992





SELECTED COMPONENTS OF NONAGRICULTURAL EMPLOYMENT  
BY PLACE OF WORK, 1992

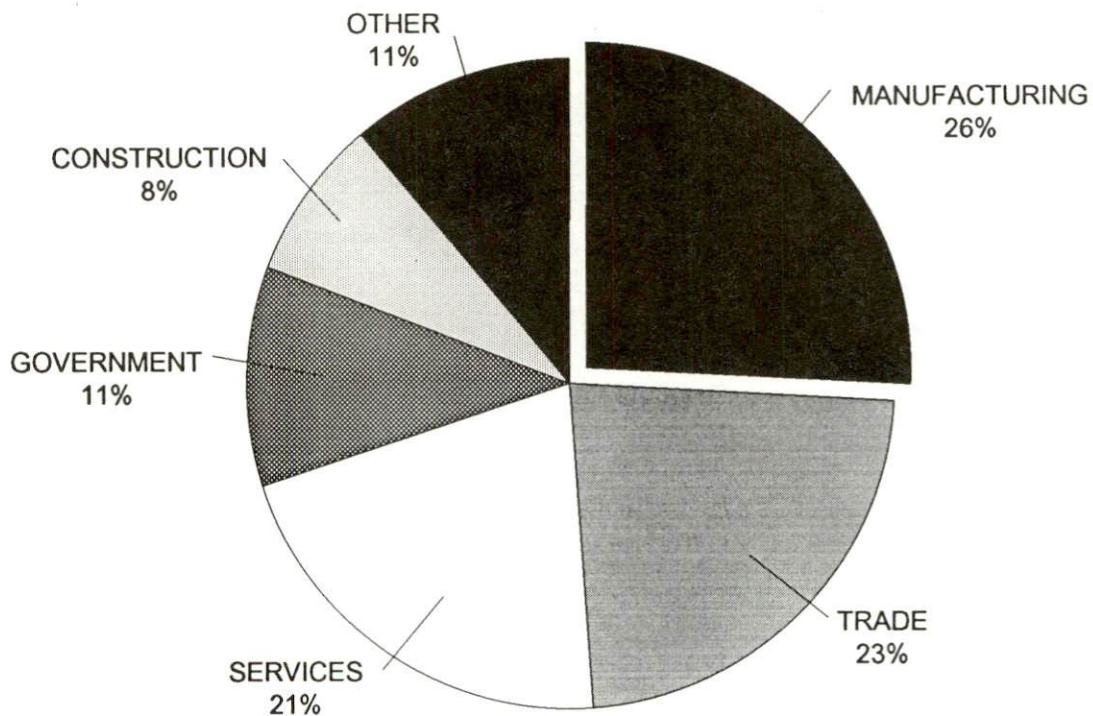
	Boyd and Greenup Counties	Labor Market Area*
All Industries (total)	35,024	44,447
Manufacturing	8,934	11,469
Wholesale & Retail Trade	8,059	10,189
Services	7,139	8,481
State/Local Government	3,776	5,832
Contract Construction	2,714	3,042

\* Includes the five Kentucky counties only.

Note: Excludes domestic workers, railway workers, certain nonprofit corporations, majority of federal government workers, and self-employed workers.

Source: Kentucky Cabinet for Human Resources, Average Monthly Workers Covered by Kentucky Unemployment Insurance Law, 1992.

BOYD & GREENUP COUNTIES



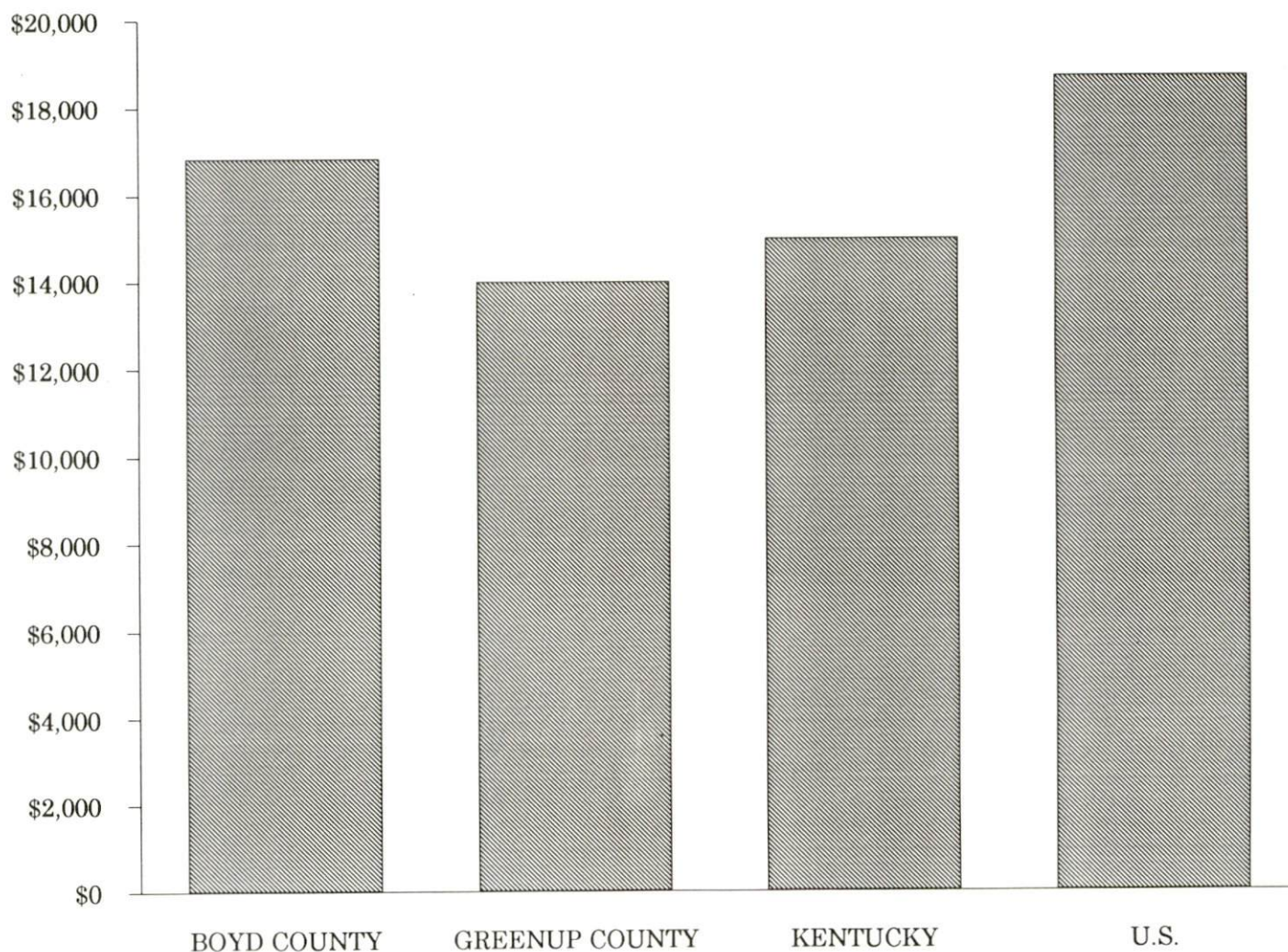
# PER CAPITA PERSONAL INCOME

Area	1986	1990	Percent Change
Boyd County	\$12,018	\$16,824	40.0
Greenup County	\$11,274	\$14,002	24.2
Labor Market Area Range*	\$7,651 - \$12,018	\$9,755 - \$16,824	-
Kentucky	\$11,273	\$14,992	33.0
U.S.	\$14,654	\$18,696	27.6

\* Includes the five Kentucky counties only.

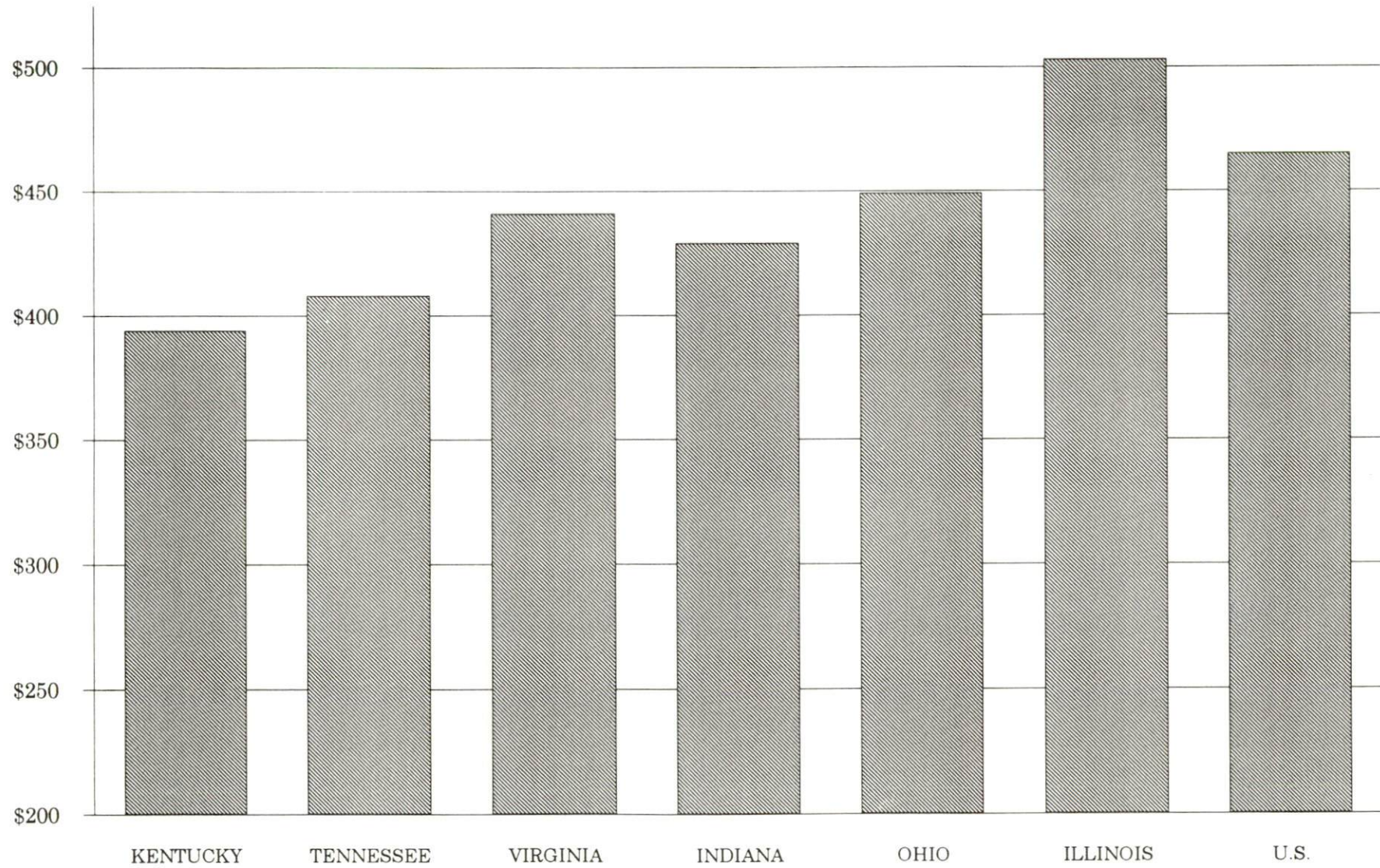
Source: U.S. Bureau of Economic Analysis, Kentucky Economic Information System, April 1992.

## PER CAPITA PERSONAL INCOME 1990





AVERAGE WEEKLY WAGES OF WORKERS COVERED BY  
UNEMPLOYMENT INSURANCE - 1991



AVERAGE WEEKLY WAGES BY INDUSTRY  
BY PLACE OF WORK, 1991\*

	Boyd County	Greenup County	Kentucky (State- Wide)	Tennessee
All Industries	\$462.68	\$479.84	\$394.46	\$408.00
Mining & Quarrying	675.78	N/A	661.68	528.00
Contract Construction	480.41	358.05	410.33	436.00
Manufacturing	686.08	743.45	505.56	477.00
Transportation, Communications & Public Utilities	574.73	572.25	528.78	541.00
Wholesale & Retail Trade	253.22	200.37	268.42	N/A
Finance, Insurance & Real Estate	403.94	362.92	449.89	495.00
Services	418.45	372.05	350.41	394.00
State/Local Government	398.84	369.25	413.84	N/A
	<u>Virginia</u>	<u>Indiana</u>	<u>Ohio</u>	<u>U. S.</u>
All Industries	\$441.00	\$429.00	\$449.00	\$465.00
Mining & Quarrying	655.00	708.00	609.00	747.00
Contract Construction	452.00	499.00	510.00	514.00
Manufacturing	509.00	583.00	613.00	579.00
Transportation, Communications & Public Utilities	605.00	531.00	567.00	599.00
Wholesale & Retail Trade	N/A	N/A	N/A	N/A
Finance, Insurance & Real Estate	523.00	458.00	498.00	596.00
Services	455.00	368.00	398.00	443.00
State/Local Government	N/A	N/A	N/A	N/A

\* Wages for U.S. and surrounding states rounded to nearest dollar.

N/A Not Available.

Note: The average weekly wage for each category includes the salaries and wages of all persons working for that type business. For example, the manufacturing category includes both production workers and administrative personnel. Excludes domestic workers, railway workers, certain nonprofit corporations, majority of federal government workers, and self-employed workers.

Source: Kentucky Cabinet for Human Resources, Average Weekly Wages of Workers Covered by Kentucky Unemployment Insurance Law, 1991. U.S. Department of Labor, Bureau of Labor Statistics, Employment and Wages, Annual Averages, 1991, January 1993.



## AVERAGE PLACEMENT WAGES

---

Boyd and Greenup Counties are served by the Ashland local office of the Kentucky Department for Employment Services. The focus of the following data is on job placements made by the Ashland local office and may therefore be used as an indicator of the wages which employers in the area pay new employees. During the twelve months which ended on June 30, 1993, the local employment office filled 2,456 job openings in various occupational categories. The average hourly wage for selected occupational categories were:

<u>OCCUPATIONAL CATEGORY</u>	<u>NUMBER OF PLACEMENTS</u>	<u>AVERAGE WAGE(\$)</u>
All Occupations	2,456	4.71
Clerical	580	4.40
Sales	55	3.69
Services (excluding domestic)	420	4.38
Agricultural, Fishery, Forestry, etc.	10	5.16
Processing	771	4.68
Machine Trades	21	5.33
Bench Work	12	4.50
Structural	103	6.61
Motor Freight/ Transportation	40	7.18
Packaging and Materials Handling	143	5.34

The Ashland local office also serves Carter, Elliott, and Lawrence Counties. The above occupational categories are taken from the Dictionary of Occupational Titles published by the U.S. Department of Labor.

---

Source: Kentucky Cabinet for Human Resources, Department for Employment Services.

# EXISTING INDUSTRY

## MAJOR BOYD & GREENUP COUNTIES MANUFACTURING FIRMS, THEIR PRODUCTS AND EMPLOYMENT\*

<u>Firm</u> <u>(Establishment date)</u>	<u>Product</u>	<u>1993</u> <u>Average Employment</u>
<b>Boyd County</b>		
<u>Ashland</u>		
A.C. Marble, Inc. (1960)	Bath tubs, vanity tops, shower walls, cultured marble	35
Area Advertising Agency, Inc. (1975)	Ball caps	20
Armco Steel Company, L.P. (1922)	Steel sheets and coils	2,168
Ashland Carbon Fibers, Division of Ashland Petroleum Company (1984)	Carbon fibers, petroleum pitch, carbon fiber paper	56
Ashland Fabricating and Welding Company (1954)	Steel fabricating job shop, coal processing equipment	30
Ashland Hide (1992)	Sole leather	75
Ashland Publishing Company, The Daily Independent (1921)	Newspaper	120
B & M Rechrome Company (1961)	Chrome and rubber bumpers	25
Bright Ideas Bakery (1951)	Bakery products	30
Columbus Showcase Company (1944)	Display showcases, display fixtures, hardware	40
Corbin, Ltd. (1983)	Men's and ladies' clothing	600
Gallaher's Printing and Office Products (1975)	Commercial printing and mailing	85
Heckett, Division of Harsco (1983)	Slag, crushed and expanded; metallic recovery	50
Johnsons Dairy, Inc. (1931)	Milk, cottage cheese, ice cream	50
Kentucky Electric Steel (1986)	Hot rolled steel bars	486
Mountain Enterprises, Inc. (1955)	Asphalt paving	20
Patton Lumber Company (1912)	Millwork, windows, lumber, trusses	22
Pennco, Inc. (1956)	Aluminum and wooden windows and doors, vinyl windows	100
RAM Technologies, Inc. (1977)	Custom electronic assemblies	50
U.S. Brick Company (1926)	Brick	33

(continued)

<u>Firm</u> <u>(Establishment date)</u>	<u>Product</u>	<u>1993</u> <u>Average Employment</u>
<u>Catlettsburg</u>		
Ashland Petroleum Company, Catlettsburg Refinery (1924)	Petroleum products, petrochemicals	1,600
Big Sandy Asphalt Company (1974)	Emulsified asphalt	20
Calgon Carbon Corporation (1960)	Activated carbon	330
INCO Alloys (1964)	Air induction, high nickel alloys, extruded induction nickel alloys	138
<u>Greenup County</u>		
<u>Greenup</u>		
CAE Vanguard, Inc. (1992)	Railcar axle builder	25
<u>Russell</u>		
Raceland Car Shop, CSX Transportation (1929)	Freight cars and components	100
<u>South Shore</u>		
MarkWest Hydrocarbon Partners, Ltd. (1958)	Fractionation products	33
North American Refractories Company (1902)	Special refractories	200
<u>Wurtland</u>		
Ametek, Inc. Microfoam Division (1983)	Plastic cushioning material	135
E.I. DuPont De Nemours and Company (1926)	Sulfuric acid	25
PCI, Inc. (1991)	Phthalocyanine chemicals	80

\* Firms with 20 or more employees.

Sources: Kentucky Cabinet for Economic Development, Division of Research; The Economic Development Corporation of Boyd and Greenup Counties.



## LABOR ORGANIZATIONS IN MANUFACTURING FIRMS

<u>Union</u>	<u>Representing workers at:</u>
<b>Boyd County</b>	
Aluminum, Brick and Glass Workers International Union, AFL-CIO	U.S. Brick Company
Amalgamated Clothing and Textile Workers Union, AFL-CIO	Corbin, Ltd.
Graphic Communications International Union, AFL-CIO	Ashland Publishing Company, The Daily Independent
International Brotherhood of Teamsters, Chauffeurs, Warehousemen and Helpers of America	Scioto Block, Inc.
International Typographical Union, AFL-CIO	Ashland Publishing Company, The Daily Independent; Dickenson Printing Company; Gallaher's Printing and Office Products
Oil, Chemical and Atomic Workers International Union, AFL-CIO	Armco Steel Company, L.P.; Ashland Petroleum Company, Catlettsburg Refinery
United Brotherhood of Carpenters and Joiners of America, AFL-CIO	Columbus Showcase Company
United Steelworkers of America, AFL-CIO-CLC	Armco Steel Company, L.P.; Calgon Carbon Corporation; Contech Construction Products, Inc.; Heckett, Division of Harsco; INCO Alloys; Kentucky Electric Steel
<b>Greenup County</b>	
Brotherhood of Railway Carmen of the United States and Canada, AFL-CIO	Raceland Car Shop, CSX Transportation
Brotherhood of Railway, Airline and Steamship Clerks, Freight Handlers, Express and Station Employees, AFL-CIO	Raceland Car Shop, CSX Transportation

(Continued)



<u>Union</u>	<u>Representing workers at:</u>
International Association of Machinists and Aerospace Workers, AFL-CIO	Raceland Car Shop, CSX Transportation
International Brotherhood of Boilermakers, Iron Ship Builders, Blacksmiths, Forgers and Helpers	Raceland Car Shop, CSX Transportation
International Brotherhood of Electrical Workers, AFL-CIO	Raceland Car Shop, CSX Transportation
International Brotherhood of Firemen and Oilers, AFL-CIO	Raceland Car Shop, CSX Transportation
Oil, Chemical and Atomic Workers International Union, AFL-CIO	MarkWest Hydrocarbon Partners, Ltd.
Sheet Metal Workers' International Association	Raceland Car Shop, CSX Transportation
United Steelworkers of America, AFL-CIO-CLC	North American Refractories Company

#### SELECTED INDUSTRIAL SERVICES

<u>Types of Services</u>	<u>Location</u>	<u>Mileage from Ashland</u>
Custom Plastics Producers	Wurtland, Kentucky	8
Electric Motor Repair	Ashland, Kentucky	-
Heat Treating Facilities	Lexington, Kentucky	121
Industrial Waste Removal	Ashland, Kentucky	-
	Greenup, Kentucky	10
Machine Shops, Tool & Die	Ashland, Kentucky	-
Metal Castings	Ironton, Ohio	4
Metal Finishers	Ashland, Kentucky	-
Metal Service Centers	Ashland, Kentucky	-
Millwrights & Riggers	Lexington, Kentucky	121

Sources: Kentucky Cabinet for Economic Development, Division of Research.

## TRANSPORTATION

### Highways

Interstate Highway 64, U.S. Highways 23 and 60, and Kentucky Route 180 are "AAA"-rated (80,000-pound gross load limit) trucking highways serving Boyd County. Interchanges of Interstate 64 are located 12 miles southwest of Ashland via U.S. 60, and eight miles southeast of Ashland (two miles south of Catlettsburg) via U.S. 23. A major east-west route, I-64 provides access to I-75, I-65, I-71, I-77 and I-79.

U.S. Highway 23 and Kentucky Route 10 also serve Greenup County. Both Kentucky routes are "AAA"-rated. U.S. 23 is a four-lane highway from South Portsmouth in northern Greenup County, through Greenup and Boyd Counties, and traverses eastern and southeastern Kentucky. In addition, "AA"-rated Kentucky Route 7 serves Greenup County.

U.S. Highway 52, a major four-lane highway from Portsmouth, Ohio, to Huntington, West Virginia, is located just across the Ohio River, and is accessible via bridges at South Portsmouth, Grays Branch, Russell, and Ashland, Kentucky.

Construction of Kentucky Highway 546, ("A-A" Highway) is under way in Greenup County. The 25-mile spur will traverse Greenup County into Lewis County and connect with the completed portion of the highway. It is scheduled for completion in 1995. Another spur extending from Vanceburg, south of Greenup County to I-64 at Grayson is also under construction. The entire 95-mile main highway will extend from the Greenup Lock and Dam near Greenup to Interstate 275 in northern Kentucky.

#### HIGHWAY MILES FROM ASHLAND, KENTUCKY, TO SELECTED MARKET CENTERS

City	Highway Miles	City	Highway Miles
Atlanta, GA	458	Los Angeles, CA	2,280
Baltimore, MD	428	Louisville, KY	195
Birmingham, AL	497	Nashville, TN	331
Chicago, IL	418	New Orleans, LA	836
Cincinnati, OH	134	New York, NY	613
Cleveland, OH	254	Pittsburgh, PA	258
Detroit, MI	306	St. Louis, MO	453
Knoxville, TN	264		

Note: Mileage computations are via the best interstate or primary highways, not necessarily the most direct route of travel.

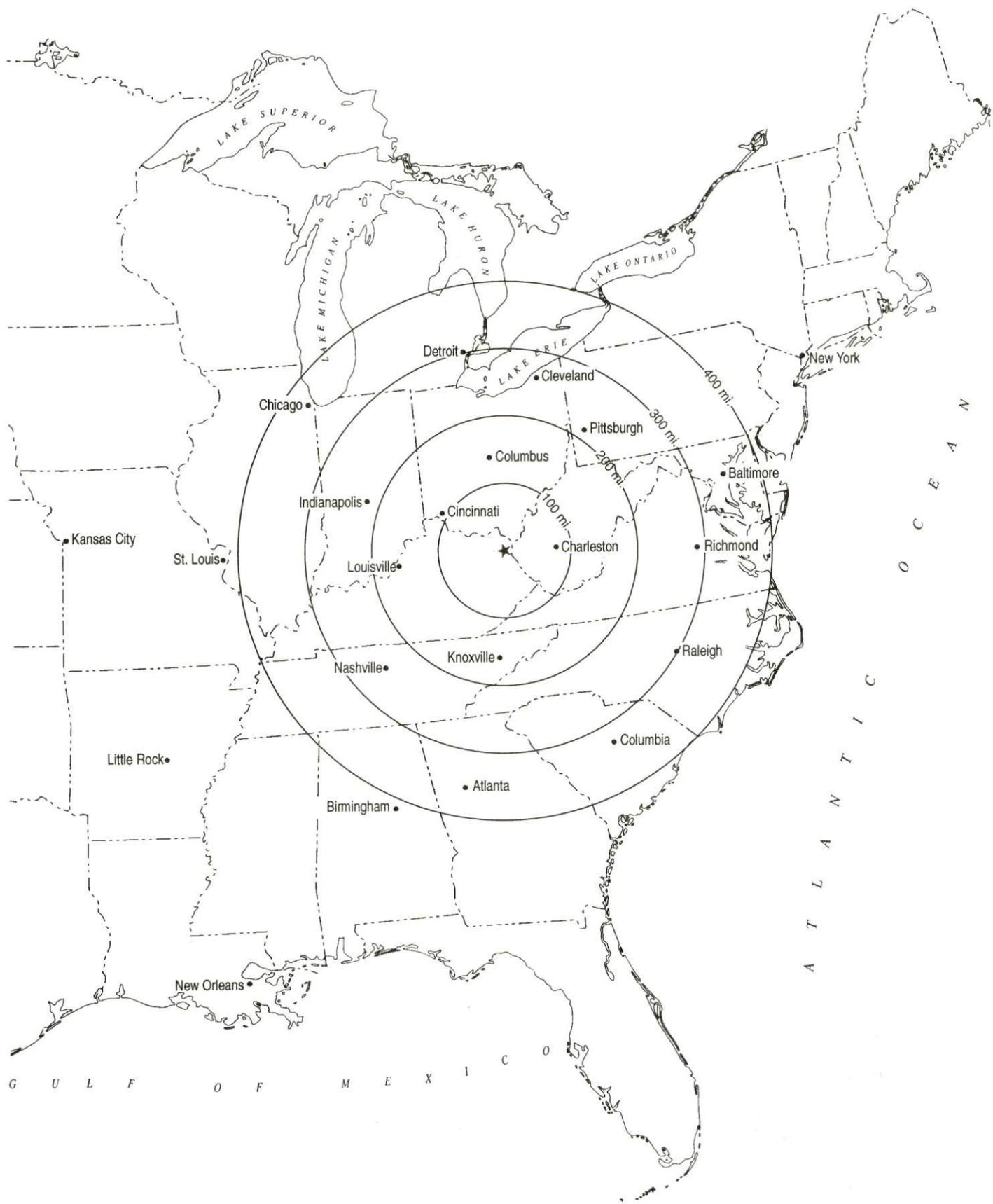
Sources: Rand McNally Standard Highway Mileage Guide, 1990. Official Kentucky Mileage Map, 1985.

### Truck Service

Thirty-five common carrier trucking companies provide interstate and/or intrastate service to Boyd and Greenup Counties.

Source: American Motor Carrier Directory, Fall 1993.

# Selected Market Centers





## Rail

CSX Transportation provides main line rail service to Boyd and Greenup Counties. The nearest piggyback facilities are located at Cincinnati, Ohio, 134 miles northwest of Ashland.

Amtrack provides passenger line service to the area with stations located at Catlettsburg-Ashland (Boyd County) and South Portsmouth (Greenup County).

In addition, the Norfolk Southern Railroad provides service to the area across the Ohio River in Ohio and West Virginia.

For details on routing, schedules, rates, and services contact:

Manager  
Industrial Development  
CSX Transportation  
9420 Bunsen Parkway  
Suite 212  
Louisville, Kentucky 40220  
(502) 499-3025

and/or

Amtrack Distribution Center  
1-800-872-7245

## Air

### Local

Location:	Ashland Regional Airport
Runways:	6 miles northwest of Ashland
Length:	1 paved
Traffic	5,600 feet
Control:	Wind sock
Lighting:	Sundown to sunrise, VASI, REIL, rotating beacon, runway lights
Services:	Jet-A fuel, 100LL octane and oil, major and minor A & P repairs, storage, flight instruction, pilot service, plane charter, FBO, AWOS system

### Nearest Scheduled Commercial Airline Service

Location:	Tri-State Airport (Walker-Long Field)
	3 miles southwest of Huntington, West Virginia;
	14 miles southeast of Ashland
Air Service:	ComAir, USAir, C.C. Air, Northwest Airlink
Daily Arrivals & Departures:	48

## Water

Ashland is located on the Ohio River, while Catlettsburg is located at the confluence of the Ohio and Big Sandy Rivers. A nine-foot navigation channel is maintained on the Ohio River and to a point nine miles south of Catlettsburg on the Big Sandy River.

Waterborne traffic on the Ohio and Big Sandy Rivers is extensive in the Ashland-Catlettsburg and Greenup County region. Numerous private terminal facilities operate in this area, providing bulk and general cargo transloading facilities for commercial freight.

## UTILITIES

### Electricity

Company serving Boyd County and portions of northern and eastern  
Greenup County, including Bellefonte, Flatwoods, Greenup,  
Raceland, Russell, South Shore, Worthington, and Wurtland -  
Kentucky Power Company  
Source of power - Kentucky Power Company  
For industrial rates contact:

Economic Development Manager  
Kentucky Power Company  
1701 Central Avenue  
P.O. Box 1428  
Ashland, Kentucky 41105-1428  
(606) 327-1244 Fax (606) 327-1246

Company serving a major portion of Greenup County - Grayson Rural  
Electric Cooperative Corporation  
Source of power - East Kentucky Power  
For industrial rates contact:

Industrial Development Department  
East Kentucky Power  
P.O. Box 707  
Winchester, Kentucky 40392-0707  
(606) 744-4812

and/or

Grayson Rural Electric Cooperative  
Corporation  
109 Bagby Park  
Grayson, Kentucky 41143  
(606) 474-5136 or (800) 562-3532

### Natural Gas

Company serving Boyd-Greenup Counties area - Columbia Gas of Kentucky  
Source of supply - Columbia Gas Transmission Corporation  
For rates and supplies contact:

Economic Development Department  
Columbia Gas of Kentucky  
70 Fountain Place  
Frankfort, Kentucky 40601  
(502) 227-4998 Fax (502) 227-7645

## Public Water Supply

### Boyd County

Company serving Ashland and Catlettsburg - City of Ashland Department  
of Utilities  
P.O. Box 1839  
Ashland, Kentucky 41105-1839  
(606) 327-2060

Source of raw water -	Ohio River
Treatment plant capacity -	12,000,000 gallons per day
Average daily consumption -	8,000,000 gallons
Peak daily consumption -	10,000,000 gallons
Storage capacity -	9,400,000 gallons
Water pressure -	25 psi to 150 psi

Name of water district - Big Sandy Water District  
18200 State Route 3  
Catlettsburg, Kentucky 41129  
(606) 928-2075

Area served - Portions of southern Boyd County  
Source of treated water - City of Kenova, West Virginia; City of  
Louisa, Kentucky  
Maximum amount of treated water which may be purchased - 600,000 gallons  
per day (Kenova, WV); 16,666 gallons per day (Louisa, Kentucky)  
Average daily consumption - 375,000 gallons  
Peak daily consumption - 475,000 gallons  
Storage capacity - 900,000 gallons  
Water pressure - 35 psi to 190 psi

Big Sandy Water District plans to construct 60 additional miles of water  
lines. The \$1.5 million project is scheduled for completion by Spring 1994.

Name of water district - Cannonsburg Water District  
1606 Cannonsburg Road  
Ashland, Kentucky 41102  
(606) 928-9808

Area served - Rural Boyd County (Cannonsburg, Coalton, Meads,  
Ponderosa and Graydon Heights)  
Source of treated water - City of Ashland  
Amount of water which may be purchased - 1,200,000 gallons  
Average daily consumption - 850,000 gallons  
Peak daily consumption - 950,000 gallons  
Storage capacity - 1,505,000 gallons  
Water pressure - 30 psi 150 psi



## Greenup County

Company serving **Bellefonte and Russell** - City of Russell  
P.O. Box 394  
Russell, Kentucky 41169  
(606) 836-9666

Source - Ohio River  
Source of treated water - City of Ashland  
Treatment plant capacity - 2,000,000 gallons per day  
Amount of water that can be purchased - 864,000 gallons  
Average daily consumption - 1,600,000 gallons  
Peak daily consumption - 1,900,000 gallons  
Storage capacity - 2,300,000 gallons  
Water pressure - 50 psi to 90 psi

Company serving **Flatwoods** - City of Flatwoods  
2513 Reed Street  
Flatwoods, Kentucky 41139  
(606) 836-9661

Source of treated water - City of Russell  
Amount of water that can be purchased - 750,000 gallons per day  
Average daily consumption - 554,401 gallons  
Peak daily consumption - 641,355 gallons  
Storage capacity - 650,000 gallons  
Water pressure - 30 psi to 70 psi

Company serving **Greenup** - Greenup Water and Sewer Department  
1005 Walnut Street  
Greenup, Kentucky 41144  
(606) 473-7331 (office)  
(606) 473-6757 (plant)

Source of raw water - Little Sandy River  
Treatment plant capacity - 1,000,000 gallons per day  
Average daily consumption - 575,000 gallons  
Peak daily consumption - 700,000 gallons  
Storage capacity - 900,000 gallons  
Water pressure - 30 psi to 130 psi

The City of Greenup is presently constructing several new water lines which will serve 300 new customers and is scheduled for completion by November 1993.

Company serving **Raceland** - Raceland Water Works  
711 Chinn Street  
Raceland, Kentucky 41169  
(606) 836-4522

Source of treated water - City of Russell  
Amount of water that can be purchased - 180,000 gallons per day  
(provisions can be made for an additional allowance)  
Average daily consumption - 210,000 gallons  
Peak daily consumption - 240,000 gallons  
Storage capacity - 100,000 gallons  
Water pressure - 50 psi to 125 psi



Company serving South Shore - South Shore Water Works Company, Inc.  
P.O. Box 485  
South Shore, Kentucky 41175  
(606) 932-3531

Source of raw water - 9 wells; pumping capacity of 725  
gallons per minute  
Treatment plant capacity - 900,000 gallons per day  
Average daily consumption - 500,000 gallons  
Peak daily consumption - 700,000 gallons  
Storage capacity - 400,000 gallons  
Water pressure - 50 psi to 70 psi

Company serving Worthington - City of Worthington  
P.O. Box 366  
Worthington, Kentucky 41183  
(606) 836-6821

Source of raw water - 3 wells; total pumping capacity of 252  
gallons per minute  
Treatment plant capacity - 250,000 gallons per day  
Average daily consumption - 134,000 gallons  
Peak daily consumption - 200,000 gallons  
Storage capacity - 250,000 gallons  
Water pressure - 50 psi to 55 psi

Company serving Wurtland - City of Wurtland Water Department  
500 Wurtland Avenue  
Wurtland, Kentucky 41144  
(606) 836-0227 (office)  
(606) 836-2722 (plant)

Source of raw water - 2 wells; total pumping capacity of 200  
gallons per minute  
Source of treated water - City of Greenup  
Amount of water that can be purchased - No specified limit  
Treatment plant capacity - 115,000 gallons per day  
Average daily consumption - At capacity  
Peak daily consumption - 145,000 gallons  
Storage capacity - 320,000 gallons  
Water pressure - 70 psi to 80 psi

The City of Wurtland recently constructed a new 120,000-gallon storage tank and plans to renovate its water treatment system.

#### Raw Water

Surface water sources - Ohio River, Big Sandy River, Little Sandy River, Tygarts Creek  
Average discharge - Ohio River at Greenup Dam, Kentucky - 90,550 cfs (22 years, USGS); Little Sandy River at Grayson, Kentucky - 475 cfs (53 years, USGS); Tygarts Creek near Greenup, Kentucky - 308 cfs (51 years, USGS)  
Expected ground water yield - 500 to 1,000 gpm along the Ohio River; 50 to 200 gpm in a band from southeastern Boyd County to east central Greenup County; 5 to 50 gpm over the remainder of the area

## Sewerage

### Boyd County

Company serving Ashland - City of Ashland Department of Utilities  
P.O. Box 1839  
Ashland, Kentucky 41105-1839  
(606) 327-2060

Design capacity - 11,000,000 gallons per day  
Average daily flow - 4,500,000 gallons  
Type of treatment - Secondary  
Treated effluent discharged into - Ohio River

Company serving Catlettsburg - Catlettsburg Wastewater Plant  
P.O. Box 533  
Catlettsburg, Kentucky 41129  
(606) 739-5145

Design capacity - 500,000 gallons per day  
Average daily flow - 225,000 gallons  
Type of treatment - Primary  
Treated effluent discharged into - Big Sandy River

The City of Catlettsburg plans to renovate its existing sewer plant and collection system by January 1995 at a cost of \$3 million.

### Greenup County

Company serving Bellefonte, Kenwood, Westwood, and portions of  
Flatwoods and Russell - Sanitation District #1 of Boyd  
and Greenup Counties  
P.O. Box 617  
Greenup, Kentucky 41144  
(606) 325-0204

Design capacity - 750,000 gallons per day  
Average daily flow - 650,000 gallons  
Type of treatment - Secondary  
Treated effluent discharged into - Ohio River

Sanitation District #1 plans to begin construction of a new sewer plant by January 1994.

Company serving Flatwoods, Raceland, and Russell -

Greenup County Environmental  
Commission  
P.O. Box 471  
Russell, Kentucky 41169  
(606) 836-4600

Design capacity - 2,050,000 gallons per day  
Average daily flow - 1,100,000 gallons  
Type of treatment - Secondary  
Treated effluent discharged into - Ohio River

Company serving Greenup - Greenup Water and Sewer Department  
1005 Walnut Street  
Greenup, Kentucky 41144  
(606) 473-7331 (office)  
(606) 473-7831 (plant)

Design capacity - 200,000 gallons per day  
Average daily flow - 150,000 gallons  
Type of treatment - Primary, secondary, and tertiary  
Treated effluent discharged into - Little Sandy River

The City of Greenup is in the process of completely renovating its existing sewer plant and will finish the project by November 1993.

Company serving South Shore - City of South Shore  
1661 East Second Avenue  
South Shore, Kentucky 41175  
(606) 932-6144

Design capacity - 390,000 gallons per day  
Average daily flow - 150,000 gallons  
Type of treatment - Secondary  
Treated effluent discharged into - Ohio River

The City of South Shore recently expanded its wastewater treatment plant from 200,000 gallons per day to 390,000 gallons per day at a cost of \$1 million. In addition, sewer service was extended to 300 new residential customers.

Company serving Worthington - City of Worthington  
P.O. Box 366  
Worthington, Kentucky 41183  
(606) 836-6821

Design capacity - 200,000 gallons per day  
Average daily flow - 135,000 gallons  
Type of treatment - Secondary  
Treated effluent discharged into - Ohio River

Company serving Wurtland - City of Wurtland Sewer Department  
500 Wurtland Avenue  
Wurtland, Kentucky 41144  
(606) 836-0227 (office)  
(606) 836-5215 (plant)

Design capacity - 1,100,000 gallons per day  
Average daily flow - 850,000 gallons  
Type of treatment - Secondary  
Treated effluent discharged into - Ohio River



## CLIMATE

### Boyd and Greenup Counties

#### Temperature

Normal (30-year record)	55.20	degrees
Average annual 1991	58.30	degrees
Record highest, July 1988 (31-year record)	102.00	degrees
Record lowest, January 1985 (31-year record)	-16.00	degrees
Normal heating degree days (30-year record)	4,676	
(Heating degree day totals are the sums of negative departures of average daily temperatures from 65 degrees F.)		

#### Precipitation

Normal (30-year record)	40.74	inches
Mean annual snowfall (30-year record)	25.20	inches
Total precipitation 1991	38.70	inches
Mean number days precipitation (.01 inch or more) (30-year record)	139.40	
Mean number days thunderstorms (29-year record)	41.40	

#### Prevailing winds

N/A

#### Relative Humidity (30-year record, except 1 a.m. - 29 year record)

1 a.m.	78 percent (26-year record)
7 a.m.	83 percent (27-year record)
1 p.m.	58 percent (27-year record)
7 p.m.	61 percent (27-year record)

Source: U.S. Department of Commerce, Environmental Science Services Administration, Climatological Data, 1991. Station of record: Huntington, West Virginia.

## LOCAL GOVERNMENT

### Structure

Boyd County is governed by a county judge/executive and three county commissioners. Each official is elected to a four-year term. Two incorporated cities are located in Boyd County. The City of Ashland is governed by a mayor and four city commissioners. The mayor is elected to a four-year term, while the city commissioners each serve two-year terms. In addition, the City of Ashland employs a city manager. The City of Catlettsburg is governed by a mayor elected to a four-year term and six city council members elected to two-year terms each.

Greenup County is governed by a county judge/executive and three commissioners. Each official is elected to a four-year term. Eight incorporated cities are located in Greenup County. The Cities of Bellefonte, South Shore and Wurtland are each governed by a mayor and four city commissioners. The Cities of Flatwoods, Greenup, Raceland, Russell and Worthington are each governed by a mayor and six council members. Each mayor is elected to a four-year term, while both the city commissioners and the council members each serve two-year terms.

### Planning and Zoning

City agency - City of Ashland Planning Commission

Zoning enforced - Within city limits

Subdivision regulations enforced - Within city limits

Local codes enforced - Building and housing

Mandatory state codes enforced - Kentucky Plumbing Code, National Electric Code, Kentucky Boiler Regulations and Standards, Kentucky Building Code (modeled after BOCA code)

City agency - Catlettsburg Planning and Zoning Commission

Zoning enforced - Within city limits

Subdivision regulations enforced - Within city limits

Mandatory state codes enforced - Kentucky Plumbing Code, National Electric Code, Kentucky Boiler Regulations and Standards, Kentucky Building Code (modeled after BOCA code)

Joint agency - Greenup County Joint Planning Commission

Participating cities - Bellefonte, Flatwoods, Greenup, Russell, and Worthington

Zoning enforced - Each participating area is responsible for developing and enforcing its own zoning regulations

Subdivision regulations enforced - Within the cities of Bellefonte, Flatwoods, Greenup, Russell, and Worthington

Local codes enforced - Housing codes in Bellefonte, Flatwoods, Greenup, Russell, and Worthington

Mandatory state codes enforced - Kentucky Plumbing Code, National Electric Code, Kentucky Boiler Regulations and Standards, Kentucky Building Code (modeled after BOCA code)

## Local Fees and Licenses

Ashland - Occupational license fee of 1 1/2% of the net profits of all businesses and professions from activities conducted within the city. Minimum fee of \$100 per year.

Catlettsburg - An occupational license fee of 1% of net profits of businesses and the gross salaries or wages of individuals is levied within the city.

Flatwoods - An annual business gross receipts fee with a minimum of \$50 is levied for gross receipts up to \$75,000. For all businesses exceeding \$75,000 in gross receipts, an additional fee generally ranging from \$75 to \$480 is levied. The absolute maximum fee is \$1,250.

Greenup - The City of Greenup does not levy any annual business license fees.

Raceland - An annual business license of \$25 is levied.

Russell - The City of Russell does not levy any annual business license fees.

South Shore - The city charges an annual business license of \$50.

Wurtland - The city levies a business license fee of \$25 annually.

Worthington - The City of Worthington does not levy any annual business license fees.



## PROPERTY TAXES

The Kentucky Constitution requires the state to tax all classes of taxable property, and state statutes allow local jurisdictions to tax only a few classes. All locally taxed property is subject to county taxes and school district taxes (either a county school district or an independent school district). Property located inside of city limits may also be subject to city property taxes.

Special local taxing jurisdictions (fire protection districts, watershed districts, and sanitation districts) levy taxes within their operating areas (usually a small portion of community or county).

Property assessments in Kentucky are at 100% fair cash value. Accounts receivable are taxed at 85% of face value.

### STATE PROPERTY TAX RATES PER \$100 VALUATION

<u>Selected Classes of Property</u>	<u>1992 State Rate</u>	<u>Local Taxation Permitted</u>
Real Estate	\$0.184	YES
Manufacturing Machinery	0.150	NO
Pollution Control Equipment	0.150	NO
Inventories		
Raw Materials	0.050	NO
Goods in Process	0.050	NO
Finished Goods	0.050	YES
Motor Vehicles	0.450	YES
Other Tangible Personal Property	0.450	YES
Intangibles (Accounts Receivable, Money on Hand)	0.250	NO

### LOCAL PROPERTY TAX RATES PER \$100 VALUATION, 1992

<u>Taxing Jurisdiction</u>	<u>Real Estate</u>	<u>Finished Goods &amp; Tangibles</u>	<u>Motor Vehicles</u>
Boyd County	\$0.2442	\$0.2422	\$0.2400
School Districts:			
Boyd County	0.3430	0.3430	0.5470
Ashland Independent	0.4810	0.4810	0.3330
Fairview Independent	0.7150	0.7150	0.6030
Russell Independent	0.4720	0.4720	0.4980
Cities:			
Ashland	0.5580	0.5580	0.5200
Catlettsburg	0.3278*	0.3278	0.3678
Fire Districts (6)	0.1000	0.1000	0.1000
Cannonsburg Fire District	0.0900	0.0900	0.1000

\* An additional \$0.2250 rate is levied on real estate located within the floodwall at Catlettsburg plus a \$0.0004 rate for civil service for all residents.

# LOCAL PROPERTY TAX RATES PER \$100 VALUATION, 1992

<u>Taxing Jurisdiction</u>	<u>Real Estate</u>	<u>Finished Goods &amp; Tangibles</u>	<u>Motor Vehicles</u>
Greenup County	\$0.1873	\$0.1877	\$0.1750
School Districts:			
Greenup County	0.5260	0.5260	0.4700
Raceland Independent	0.7330	0.7330	0.6580
Russell Independent	0.4720	0.4720	0.4980
Cities:			
Bellefonte	0.1316	0.1316	0.1278
Flatwoods	0.2156	None	None
Greenup	0.2030	0.2030	0.2030
Raceland	0.1600	None	None
Russell	0.3500	0.6240	0.6240
South Shore	0.2205	None	0.2062
Worthington	0.2600	0.2600	0.2470
Wurtland	0.1075	0.1075	0.1075

Eight fire protection districts and one ambulance district in Greenup County levy a special property tax, not county-wide. The rates range from \$0.0200 to \$0.1000.

## Enterprise Zones

The Ashland Enterprise zone offers tax incentives and regulatory relief to qualifying businesses which locate or expand activities within the zone's boundaries. The zone comprises 4.24 square miles which includes industrial land along the Ohio River, commercial and industrial land on U.S. 23 adjacent to and including the central business district, and residential areas in the southeast and southwest portions in the city. The City of Ashland offers a reduction in the annual property tax rate in its local incentives package.



## EDUCATION

### Public Schools

	Ashland Independent	Fairview Independent	Boyd County
Total Enrollment (Fall, 1992)	3,782	760	4,028
Accreditation	Southern Association of Colleges and Schools	Southern Association of Colleges and Schools	
Pupil-Teacher Ratio (1991-92)	18.0-1	18.2-1	17.9-1
Percent High School Graduates to College (1991-92)	79.2	57.9	70.3
Expenditures Per Pupil (1991-92)	\$3,436.46	\$3,969.53	\$3,502.70
	Raceland Independent	Russell Independent	Greenup County
Total Enrollment (Fall, 1992)	973	2,530	3,588
Accreditation		Southern Association of Colleges and Schools	
Pupil-Teacher Ratio (1991-92)	19.0-1	20.2-1	18.4-1
Percent High School Graduates to College (1991-92)	78.1	79.2	54.0
Expenditures Per Pupil (1991-92)	\$3,399.42	\$3,573.41	\$3,300.33

## Nonpublic Schools

<u>School</u>	<u>Enrollment</u>	<u>Grades</u>
Holy Family Elementary (Ashland)	145	PS-6
Rose Hill Christian School (Ashland)	274	PS-12

## Area Colleges and Universities

<u>Name</u>	<u>Location (Miles distant from Ashland)</u>	<u>Enrollment (Fall, 1992)</u>
Ashland Community College	Ashland, Kentucky	3,276
Ohio University (Ironton Campus)	Ironton, Ohio (4)	2,358
Marshall University	Huntington, West Virginia (17)	13,093
Kentucky Christian College	Grayson, Kentucky (23)	548
Shawnee State University	Portsmouth, Ohio (33)	3,484
Morehead State University	Morehead, Kentucky (57)	9,169
West Virginia State College	Institute, West Virginia (59)	4,896
University of Charleston	Charleston, West Virginia (67)	1,479

### Ashland Community College

Ashland Community College is a member of the University of Kentucky's Community College System and offers Associate degrees in arts, science and applied science. Students wishing to complete baccalaureate degree programs may transfer to other colleges or universities after completing two years of appropriate course work at Ashland Community College. Transfer students may also earn Associate of Arts or Science degrees. Associate of Applied Science degrees are offered in six areas: Accounting Technology; Business Technology with options in management, banking management, management information systems, real estate, and retail marketing; Computer Information Systems with microcomputer and programming options; Engineering Technology with electrical and computer repair options; Nursing; and Office Administration.

The College also offers Business and Industry Program services which focus on economic development activities, work place competencies' development and labor/management relations; non-credit Continuing Education classes for professional or personal development; and community service activities such as concerts, art exhibits, cultural programs, workshops, lectures, and a speaker's bureau. The College recently opened the Learning Resources Center which effectively consolidates several innovative programs of library services, a teleconferencing center, and the academic success program. Master's level courses including engineering and education are now available at the Center.

### Morehead State University-Ashland Center

Morehead State University operates an extension campus in Ashland. MSU-Ashland Center offers a variety of education programs for degree and non-degree seeking students. The extension campus, in cooperation with Ashland Community College, confers the same degrees as the Morehead State University main campus. In addition, the Center offers a Masters in Business Administration degree.

## VOCATIONAL-TECHNICAL TRAINING

Kentucky Tech schools are operated by the Cabinet for Workforce Development and provide secondary (Sec) and postsecondary (P/S) vocational-technical training.

<u>Local School District</u>	<u>Location (Mileage from Ashland)</u>	<u>Number of Program Offerings</u>	<u>Cumulative Enrollment 1991-1992</u>	<u>Approximate Number Completing Programs Annually</u>
Boyd County Area Vocational Education Center	Ashland	10	<u>Sec</u> 206	39
<u>Kentucky Tech Schools</u>				
Ashland State Vocational-Technical School	Ashland	14	<u>Sec</u> <u>P/S</u> 62 613	167
Greenup County Area Vocational Education Center	South Shore (31)	7	<u>Sec</u> 261	51
Russell Area Vocational Education Center	Russell (3)	5	<u>Sec</u> 204	16

### Customized Training

The Kentucky Tech system, through its Training and Development Coordinators, will provide technical assistance and will identify and develop low cost customized training programs and services for both established and prospective businesses. Businesses wanting to establish a customized training program should simply contact a Training and Development Coordinator located at the Kentucky Tech Northeast Region office in Ashland.

### Assessment Services

Kentucky Tech Career Connections offers to business, education, and government agencies customized assessment in career inventories, interest inventories, psychomotor skills and academic potential as well as pre-hire assessment. A Career Connections Assessment Center is located on the campus of Ashland SVTS.

### Articulation

Articulation agreements developed between various colleges and universities and the Kentucky Tech systems allow students to earn credits to be used when matriculating to degree programs at a college or university. Ashland SVTS has articulation agreements with Ashland Community College and Morehead State University.



### Tech Prep

Tech Prep is a combined secondary and postsecondary program of studies that leads to an associate degree or diploma in a vocational-technical field. Boyd County Public Schools in partnership with Ashland Community College, currently offer a tech prep program in Business and Health Technology.

### Adult Basic Education

Adult education programs are available to adults who want to develop new skills, improve basic skills or earn a high school equivalency diploma. In Boyd County, adult literacy and adult basic education are offered at the Ashland Learning Center.

### Bluegrass State Skills Corporation

The Bluegrass State Skills Corporation, an independent public corporation created and funded by the Kentucky General Assembly, provides programs of skills training to meet the needs of business and industry from entry level to advanced training, and from upgrading present employees to retraining experienced workers.

The Bluegrass State Skills Corporation is a major source for skills training assistance for a new or existing company. The Corporation works in partnership with other employment and job training resources and programs, as well as Kentucky's economic development activities, to package a program customized to meet the specific needs of a company.

## OTHER LOCAL FACILITIES

### Local Medical Personnel

(Boyd and Greenup Counties)  
Physicians - 158  
Dentists - 50

### Hospitals

<u>General Hospital</u>	<u>Location</u>	<u>Beds</u>
King's Daughters' Medical Center	Ashland	340
Our Lady of Bellefonte Hospital	Russell	194

#### King's Daughters' Medical Center

Medical staff - 155 physicians, 500 registered nurses and licensed practical nurses

A \$9.1 million expansion is under way at the King's Daughters' Medical Center. The project is scheduled for completion by November 1994. A \$1.1 million renovation/construction project for a medical plaza recently opened near the hospital.

#### Our Lady of Bellefonte Hospital

Medical staff - 130 affiliated physicians, 243 registered nurses

### Other Medical Facilities and Services

Fivco District Health Department  
Pathways, Inc.  
Bellefonte Cancer Center  
CareUnit (Bellefonte) - substance abuse facility  
Tri-State Nephrology Associates

### Ambulance Service

Twenty-four hour emergency and transfer ambulance service is available in the Boyd and Greenup Counties area.

### Newspapers

The Daily Independent (Ashland)  
Sunday Independent (Ashland)  
The Greenup County News-Times (Greenup)

### Telephone Service

General Telephone Company

### Hotels and Motels

Total number - 13  
Total rooms - 717

## Financial Institutions

### Banks

Bank of Ashland  
Charter One Bank  
First American Bank Corporation  
First And Peoples Bank & Trust  
Company  
Kentucky Bank & Trust Company  
Kentucky-Farmers Bank  
National City Bank

### Savings and Loan Associations

Ashland Federal Savings and  
Loan Association  
Catlettsburg Federal Savings and  
Loan Association  
First Federal Savings and Loan  
Association  
Home Federal Savings and Loan  
Association  
Russell Federal Savings and  
Loan Association



## RECREATIONAL AND CULTURAL ACTIVITIES

### Local

#### Boyd County

Public recreation facilities in the Ashland area include: Armco Park which contains a picnic area with shelters; Dawson Park with a swimming pool and playground area; Clyffeside Park which maintains a lighted baseball diamond, a basketball court, picnic areas and a shelter house; Central Park which contains 47 acres with three baseball diamonds, five tennis courts, playgrounds, picnic areas, a concession stand, a concert pavilion, a croquet court, and prehistoric Indian mounds; and 14 tennis courts (four of which are enclosed for year-round use) at the Ashland Tennis Center. Four public golf courses are located in Boyd County.

Catlettsburg provides many recreational opportunities including a public park, two baseball fields, a football field, a playground, picnic areas, and basketball and tennis courts. Construction of a jogging track is under way.

Privately-owned facilities open to the public include Camden Park, an amusement park near Huntington, West Virginia, nine miles east of Ashland; three bowling facilities with a combined total of 74 lanes; 12 cinemas; two riding academies; a roller rink with a 1,000-person capacity; two tennis centers; and the YMCA with a men's and women's health club, a children's gymnasium, and an indoor jogging track. Breezeland Swim Club, located in Ashland, has a pool, baby pool, concession stand, tennis courts, shuffleboard court, bathhouse, and lockers.

Organized recreation programs are available in most sports such as baseball, basketball, soccer, T-ball, football and softball through the Ashland Recreation Department. The Recreation Department also sponsors plays in Central Park, puppet shows, special seasonal events, and horseshoe and Frisbee tournaments. Organized baseball teams are available in Catlettsburg as well.

The first Tri-State Fair and Regatta initially held in 1978, has since become an annual event. Fair activities are held from June through August in Ashland, Kentucky; the Huntington, West Virginia, area; and in the Ironton, Ohio, area. Events include powerboat and jet-ski racing, a float boat race, air shows, fairs, horse shows, exhibitions, musical productions, arts and crafts shows, and live concerts in Ashland.

The Paramount Arts Center is the site of many popular entertainment events. Subscription series featuring plays, symphony concerts, and ballets, as well as individual events, are available at the Arts Center. Recent offerings have included a youth education series, a women's series, and noted performing artists. Groups may rent the building for conventions and performances. The Arts Center also features an art gallery with changing exhibits.

Located in downtown Ashland, the Kentucky Highlands Museum displays trace the cultural and industrial heritage of the area. The museum offers both permanent and special exhibits. The Ashland Area Art Gallery is also located downtown, which opens a new exhibit monthly featuring artists of regional and national acclaim.

The Tri-State Tomahawks in the Frontier League of minor league professional baseball provides entertainment for the Ashland area.

## Greenup County

Bellefonte Country Club is located in Greenup County. The country club maintains a swimming pool, an 18-hole golf course, a clubhouse, and two tennis courts.

The citizens of Flatwoods are provided an excellent city park, featuring four tennis courts, a multi-purpose court (for basketball, volleyball, shuffleboard, and horseshoes), and a swimming pool with facilities for the handicapped. Picnic tables and grills, playground equipment, restrooms, and a large parking area are available. The local Woman's Club sponsors annual Christmas parades and Miss Teen Pageants.

The City of Greenup has developed a small park on the bank of the Ohio River at Greenup, and a youth center for dances and games. The Greenup Old Fashion Days is an annual festival featuring sidewalk displays and old-fashioned dress. A private swim club is also available in Greenup.

The Greenup County Fair is held annually at the county fairgrounds, which features a tennis court, a baseball diamond, a concert pavilion, and a horse show ring. Little League football, basketball, and baseball are sponsored by community groups.

Small city parks in Raceland and Worthington feature playground equipment, picnic facilities and offer a variety of recreational opportunities.

The Rotary Club of South Shore has contributed to the development of a community park. The family-oriented park features a shelter house, tennis courts, basketball courts, a baseball field, and a horseshoe pit. Family entertainment and community events are held here periodically. A nine-hole golf course is located five miles from South Shore and is available for public use.

The Jesse Stuart Nature Preserve, located three miles southwest of Greenup, consists of 733 acres and is used for passive recreational activities and environmental education.

**Greenbo Lake State Resort Park**, which is located 15 miles west of Ashland, has a magnificent fieldstone lodge. The facility offers 34 rooms, a dining room, a gift shop, several meeting rooms, a lodge pool, an exhibit hall, and a recreational room. Other facilities and activities at the park include a well-equipped campground, a marina, miniature golf, tennis courts, playgrounds, shuffleboard, planned recreation, fishing, hiking, horseback riding, and picnicking.

River Bend Golf Course, an 18-hole public golf course, is located near Greenbo Lake State Resort Park west of Ashland.



## COMMUNITY IMPROVEMENTS

Ashland re-certified as a "Kentucky Certified City" in 1992, and is distinguished as a gold award winner recognizing ten consecutive years of certification. Re-certification is based on achievement in the following areas: existing industry assistance, small business assistance, educational resources, and community development factors of health care, public safety, arts and culture, recreation, governmental awareness and resources. In addition to receiving the 1992 Gold Award, Ashland was recognized as a Hall of Fame community. This category not only demonstrates that a community is adequately prepared for immediate growth, but also that the community has analyzed emerging economic trends, and has set about planning for the future. The Certified Cities Program is sponsored by the Kentucky Chamber of Commerce.

During 1991 and 1992, 19 companies have located, expanded, or are in the process of expanding manufacturing facilities in Boyd and Greenup Counties. This represents an overall investment of approximately \$155 million into the area. In addition, Ashland Petroleum Company plans a \$200 million expansion per year for the next five years, which started in 1991.

Construction of Kentucky Highway 546, ("A-A" Highway) is under way in Greenup County. The 25-mile spur will traverse Greenup County into Lewis County and connect with the completed portion of the highway. It is scheduled for completion in 1995. Another spur extending from Vanceburg, south of Greenup County to I-64 at Grayson is also under construction. The entire 95-mile main highway will extend from the Greenup Lock and Dam near Greenup to Interstate 275 in northern Kentucky.

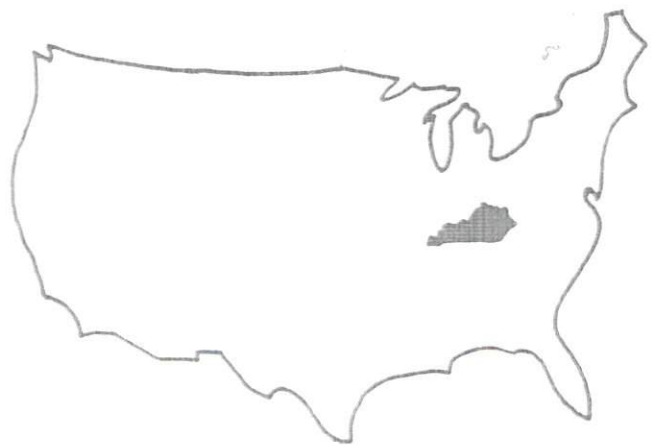
Seven separate water and/or sewer projects have been completed recently or are under way at four cities and in rural communities within Boyd and Greenup Counties. These infrastructural improvements enable the cities and rural areas to provide more than adequate treatment capacity for new industry and better overall distribution facilities.

All six public school systems which serve Boyd and Greenup Counties are planning or are currently involved in improvement projects. These projects include renovation and expansion of facilities, plus additions to the curricula including programs for advanced technology, computer use, and for gifted students.

A \$9.1 million expansion is under way at the King's Daughters' Medical Center. The project is scheduled for completion by November 1994. A \$1.1 million renovation/construction project for a medical plaza recently opened near the hospital.

Ashland Community College recently opened the Learning Resources Center which effectively consolidates several innovative programs into one building. New programs at the Center include: an expansion of library services, a teleconferencing center, and the academic success program. Master's level courses including engineering and education are now available through the teleconference facilities in the Center.





# KENTUCKY