

1991

# Industrial Resources: Hancock County

Kentucky Library Research Collections  
Western Kentucky University, [spcol@wku.edu](mailto:spcol@wku.edu)

Follow this and additional works at: [https://digitalcommons.wku.edu/hancock\\_cty](https://digitalcommons.wku.edu/hancock_cty)

 Part of the [Business Administration, Management, and Operations Commons](#), [Growth and Development Commons](#), and the [Infrastructure Commons](#)

---

## Recommended Citation

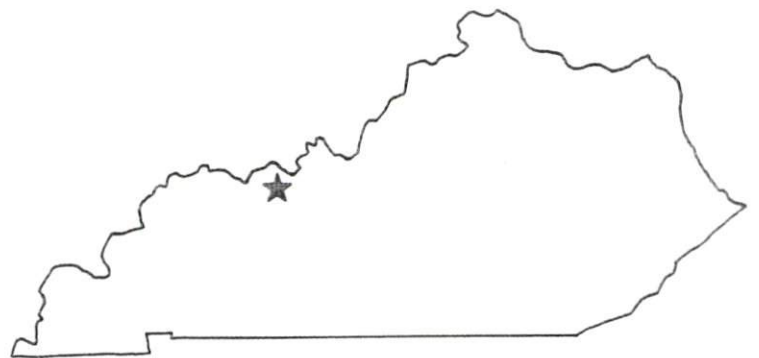
Kentucky Library Research Collections, "Industrial Resources: Hancock County" (1991). *Hancock County*. Paper 4.  
[https://digitalcommons.wku.edu/hancock\\_cty/4](https://digitalcommons.wku.edu/hancock_cty/4)

This Report is brought to you for free and open access by TopSCHOLAR®. It has been accepted for inclusion in Hancock County by an authorized administrator of TopSCHOLAR®. For more information, please contact [topscholar@wku.edu](mailto:topscholar@wku.edu).

LK 101  
Hancock Co

*Resources for Economic Development*

# Hancock County



**KENTUCKY**  
*Open for Business*

---

RESOURCES FOR ECONOMIC DEVELOPMENT  
HANCOCK COUNTY, KENTUCKY

Prepared by  
The Kentucky Cabinet for Economic Development  
Division of Research and Planning  
in cooperation with  
Hancock County Chamber of Commerce  
and  
Hancock County Industrial Foundation, Inc.  
and  
Hancock County Fiscal Court

1991

Division Director - Pamela K. Riley; program manager - Keith Roberts; research - Barry K. Holder, Jr.; clerical - Wanda Sharp; graphics - Robert Owens, Pat Coleman; cartography - Edwin Scott, Dave Clark. Cost of printing paid from state funds.

## TABLE OF CONTENTS

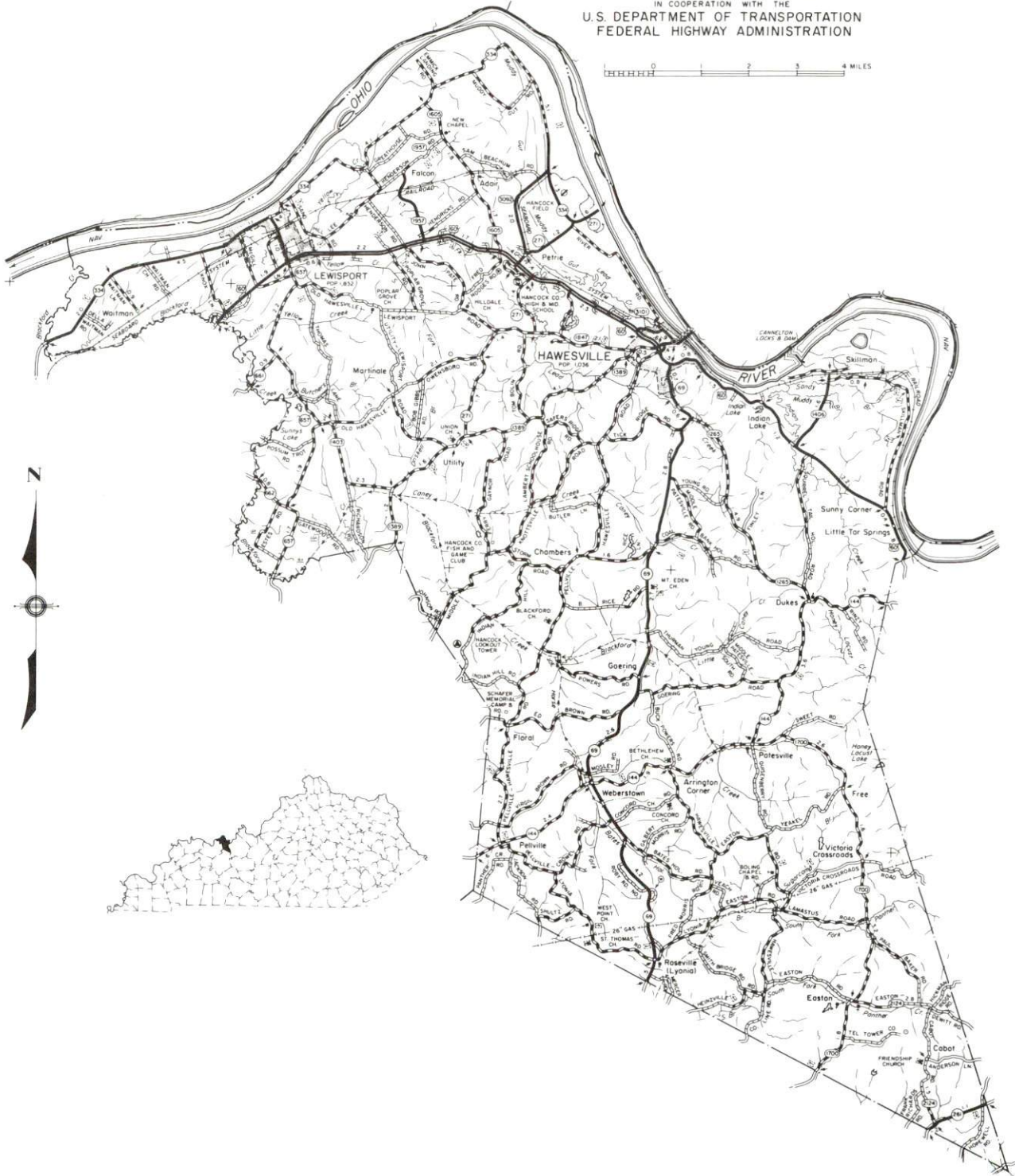
<u>Chapter</u>	<u>Page</u>
HANCOCK COUNTY, KENTUCKY - A RESOURCE PROFILE .....	1
THE LABOR MARKET STATISTICS .....	2
Labor Market Area Map .....	2
Population .....	3
Population Projections .....	3
Estimated Labor Supply .....	3
Labor Force Characteristics of Residents, 1990 .....	4
Selected Components of Nonagricultural Employment, by Place of Work, 1989 .....	5
Per Capita Personal Income .....	6
Average Placement Wages .....	7
Average Weekly Wages of Workers Covered by Unemployment Insurance 1989 - Bar Chart .....	8
Average Weekly Wages by Industry, by Place of Work, 1989 .....	9
EXISTING INDUSTRY .....	10
Hancock County Manufacturing Firms, Their Products and Employment .....	10
Labor Organizations in Manufacturing Firms .....	11
Selected Industrial Services .....	11
TRANSPORTATION .....	12
Highways .....	12
Truck Service .....	12
Selected Market Location Map .....	13
Rail .....	14
Air .....	14
Water .....	15
UTILITIES .....	16
Electricity .....	16
Natural Gas .....	16
Public Water Supply .....	17
Raw Water .....	18
Sewerage .....	18
CLIMATE .....	19

<u>Chapter</u>	<u>Page</u>
LOCAL GOVERNMENT .....	20
Structure .....	20
Planning and Zoning .....	20
Local Fees and Licenses .....	20
State and Local Property Taxes .....	21
EDUCATION .....	22
Public Schools .....	22
Nonpublic Schools .....	22
Area Colleges and Universities .....	22
Vocational Training .....	23
OTHER LOCAL FACILITIES.....	24
Local Medical Personnel .....	24
Hospitals.....	24
Other Medical Facilities and Services .....	24
Banks and Savings & Loan Associations.....	24
Newspapers .....	24
Telephone Service .....	24
RECREATION .....	25
COMMUNITY IMPROVEMENTS .....	26



GENERAL HIGHWAY MAP  
**HANCOCK COUNTY**  
**KENTUCKY**

PREPARED BY THE  
KENTUCKY TRANSPORTATION CABINET  
DEPARTMENT OF HIGHWAYS  
DIVISION OF PLANNING  
IN COOPERATION WITH THE  
U.S. DEPARTMENT OF TRANSPORTATION  
FEDERAL HIGHWAY ADMINISTRATION



## HANCOCK COUNTY, KENTUCKY - A RESOURCE PROFILE

Hancock County is located along the Ohio River at the edge of Kentucky's Western Coal Field Region. The county has two incorporated cities, Hawesville and Lewisport. Hawesville, the county seat, had a 1990 population of 998 persons. Lewisport, located ten miles northwest of Hawesville, is the larger of the two cities with a 1990 population of 1,778 persons. Hancock County, with a land area of 189 square miles, had a 1990 population of 7,864.

**The Economic Framework** - The total number of Hancock County residents employed in 1990 averaged 2,635. In 1989, manufacturing firms in the county reported 2,937 employees; wholesale and retail trade provided 171 jobs; 147 people were employed in service occupations; state and local government accounted for 338 employees; and contract construction firms provided 154 jobs.

**Labor Supply** - There is a current estimated labor supply of 16,760 persons available for industrial jobs in the labor market area. In addition, from 1990 through 1994, 10,365 young persons in the area will become 18 years of age and potentially available for industrial jobs.

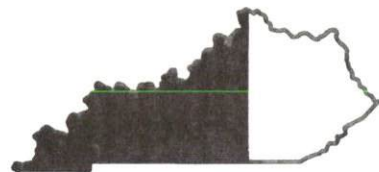
**Transportation** - Hawesville and Lewisport lie along U.S. Highway 60, a "AAA"-rated trucking highway which provides easy access to both north-south and east-west multi-lane routes at Owensboro, Kentucky, 25 miles southwest of Hawesville. Access to Interstate 64, a major east-west route, is only 27 miles north of Hawesville. Other "AAA"-rated highways in Hancock County include Kentucky Routes 69 and 657. Twenty-three common carrier trucking companies serve Hancock County. CSX Transportation provides main line rail freight service to Hawesville and Lewisport. Hancock Field, a local airport located between Hawesville and Lewisport, maintains a 5,000-foot runway which accommodates corporate jet traffic. Scheduled commercial airline service is available at Evansville Regional Airport, 69 miles west of Hawesville near Evansville, Indiana. Commuter air carrier service with connections to several major airlines is available at Owensboro-Daviess County Airport, 28 miles southwest of Hawesville near Owensboro. Both Hawesville and Lewisport are located on the Ohio River, where a nine-foot navigation channel is maintained.

**Power and Fuel** - Green River Electric Corporation provides electricity to Hancock County. Western Kentucky Gas Company provides natural gas service to Hawesville, while the City of Lewisport operates a municipal natural gas system.

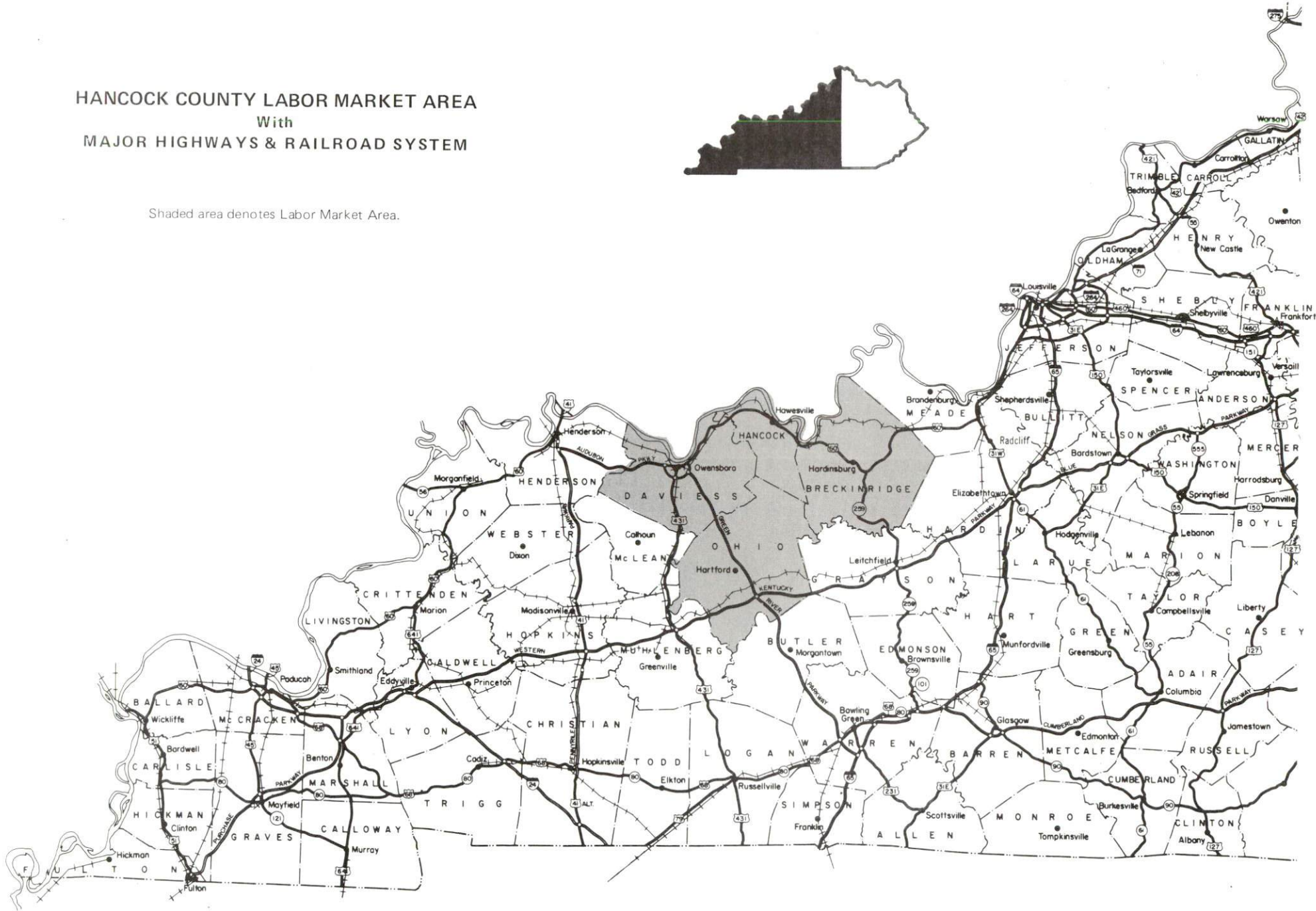
**Education** - The Hancock County School System, accredited by the Southern Association of Colleges and Schools, provides public education to the county. One nonpublic school also operates in Hancock County. Six institutions of higher learning are located within 65 miles of Hawesville. Vocational training is available at the Daviess County State Vocational-Technical School and the Owensboro Vocational-Technical School, both 25 miles southwest of Hawesville; at the Breckinridge County Area Vocational Education Center, 26 miles southeast of Hawesville; and at the Tell City Instructional Center, five miles north of Hawesville.



# HANCOCK COUNTY LABOR MARKET AREA With MAJOR HIGHWAYS & RAILROAD SYSTEM



Shaded area denotes Labor Market Area.



## LABOR MARKET STATISTICS

The Hancock County Labor Market Area includes Hancock County and the adjoining Kentucky counties of Breckinridge, Daviess and Ohio. In addition, the Labor Market Area is supplemented by the Indiana counties of Perry and Spencer.

### POPULATION

	1990	1980	1970
Labor Market Area	132,470	132,317	120,145
Hawesville	998	1,036	1,262
Lewisport	1,778	1,832	1,595
Hancock County	7,864	7,742	7,080

Source: U.S. Department of Commerce, Bureau of the Census, January 1991.

### POPULATION PROJECTIONS

	2000	2010	2020	2030
Labor Market Area	136,790	138,130	137,230	133,890
Hancock County	8,570	8,950	9,080	9,000

Source: University of Louisville, Urban Studies Center, State Data Center.

### ESTIMATED LABOR SUPPLY

	Current				Future
	Total	Unemployed	Employed Part-Time	Not in Labor Force	Becoming 18 years of age 1990 thru 1994
Labor Market Area*	16,760	4,496	6,040	6,224	10,365
Hancock County	1,560	258	372	930	683

\* Additional workers may be drawn from other nearby counties.

Note: Unemployed - persons unemployed and actively seeking work; Employed Part-Time - persons employed but working only 14 to 26 weeks per year; Not in Labor Force - represents the number of persons who would enter the labor force if suitable employment were available (based on the assumption that persons in Kentucky would like to participate in the labor force in the same proportion that they do nationally).

Sources: Kentucky Cabinet for Human Resources, Kentucky Labor Supply Estimates by County, 1989. Kentucky Cabinet for Economic Development, Future Labor Supply Becoming 18 Years of Age, 1990 thru 1994.

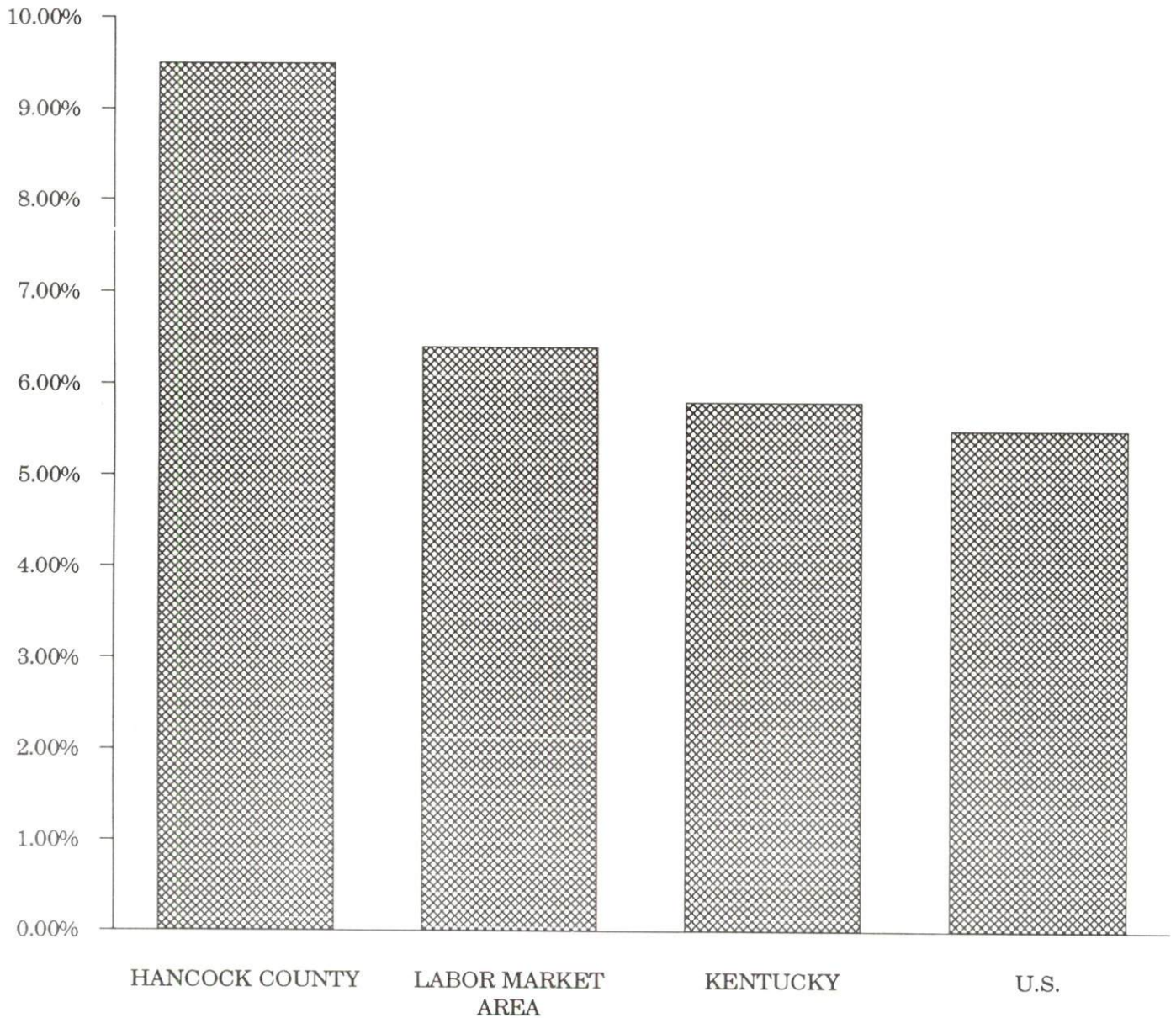


LABOR FORCE CHARACTERISTICS OF RESIDENTS, 1990

	Hancock County	Labor Market Area
Civilian Labor Force	2,910	61,953
Employment	2,635	58,012
Unemployment	275	3,941
Rate of Unemployment (%)	9.5	6.4

Source: Kentucky Cabinet for Human Resources, Kentucky Labor Force Estimates, Annual Averages, 1990.

UNEMPLOYMENT RATES  
1990

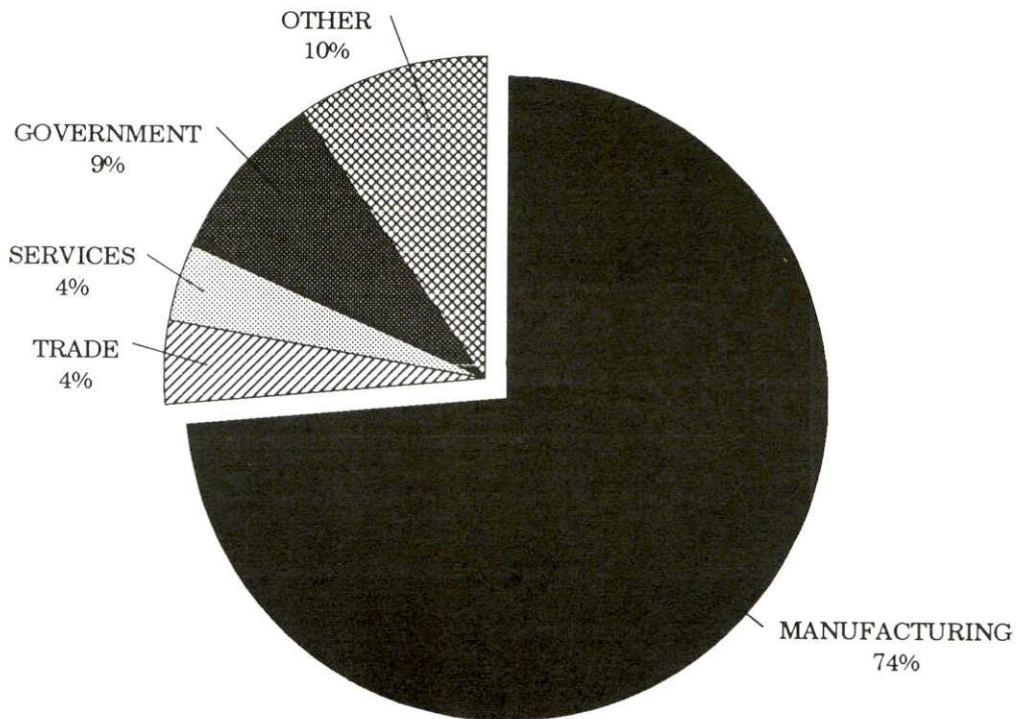


SELECTED COMPONENTS OF NONAGRICULTURAL EMPLOYMENT  
BY PLACE OF WORK, 1989

	<u>Hancock County</u>	<u>Labor Market Area</u>
All Industries (total)	3,984	44,027
Manufacturing	2,937	10,437
Wholesale & Retail Trade	171	11,113
Services	147	7,819
State/Local Government	338	6,654
Contract Construction	154	2,539

Note: Excludes domestic workers, railway workers, certain nonprofit corporations, majority of federal government workers, and self-employed workers.  
 Source: Kentucky Cabinet for Human Resources, Average Monthly Workers Covered by Kentucky Unemployment Insurance Law, 1989.

HANCOCK COUNTY



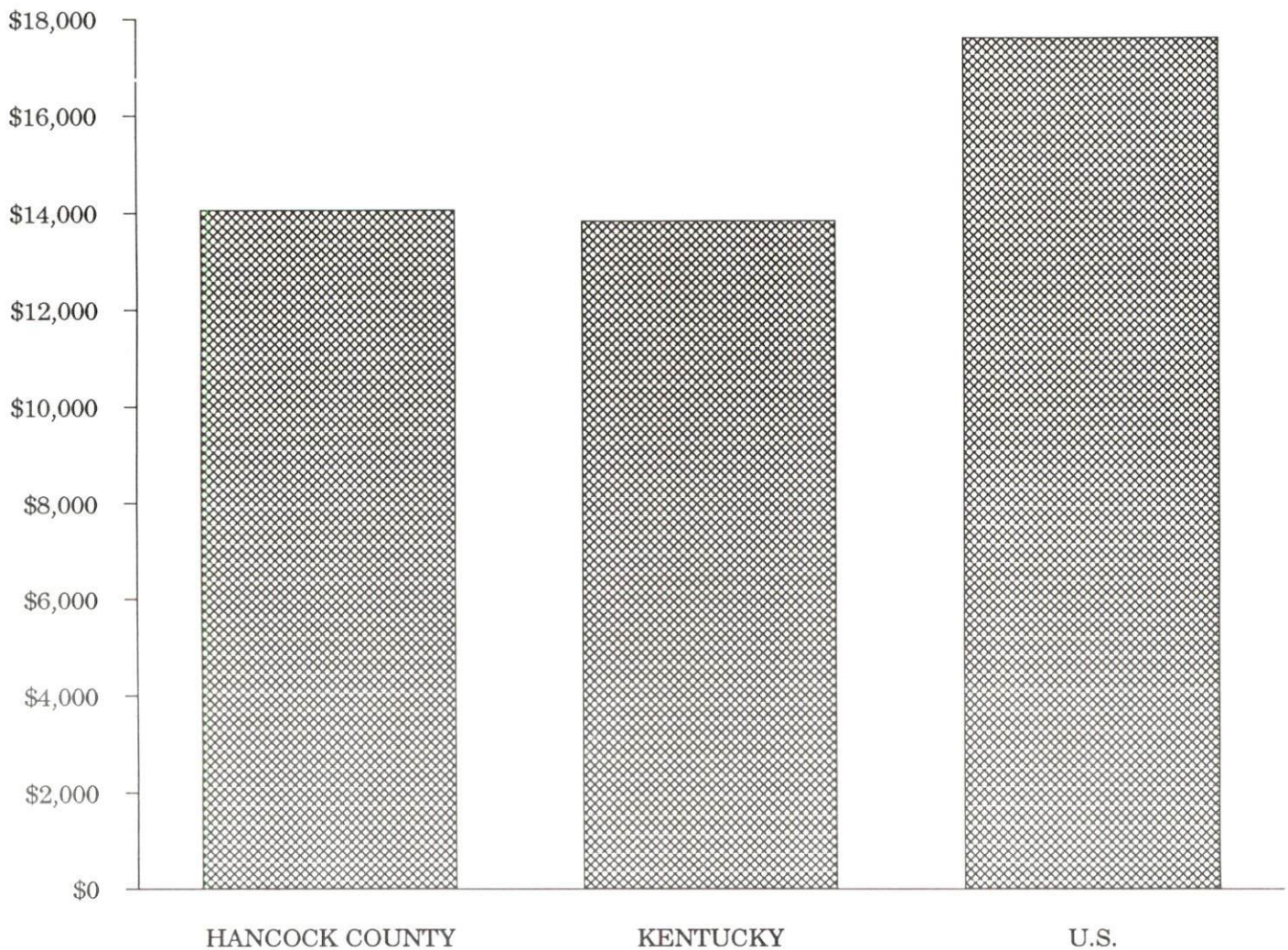


PER CAPITA PERSONAL INCOME

Area	1985	1989	Percent Change
Hancock County	\$11,081	\$14,060	26.9
Labor Market Area Range	\$8,917 - \$11,898	\$11,084 - \$14,769	-
Kentucky	\$10,755	\$13,823	28.5
U.S.	\$13,899	\$17,594	26.6

Source: U.S. Bureau of Economic Analysis, Kentucky Economic Information System, April 1990.

PER CAPITA PERSONAL INCOME  
1989





## AVERAGE PLACEMENT WAGES

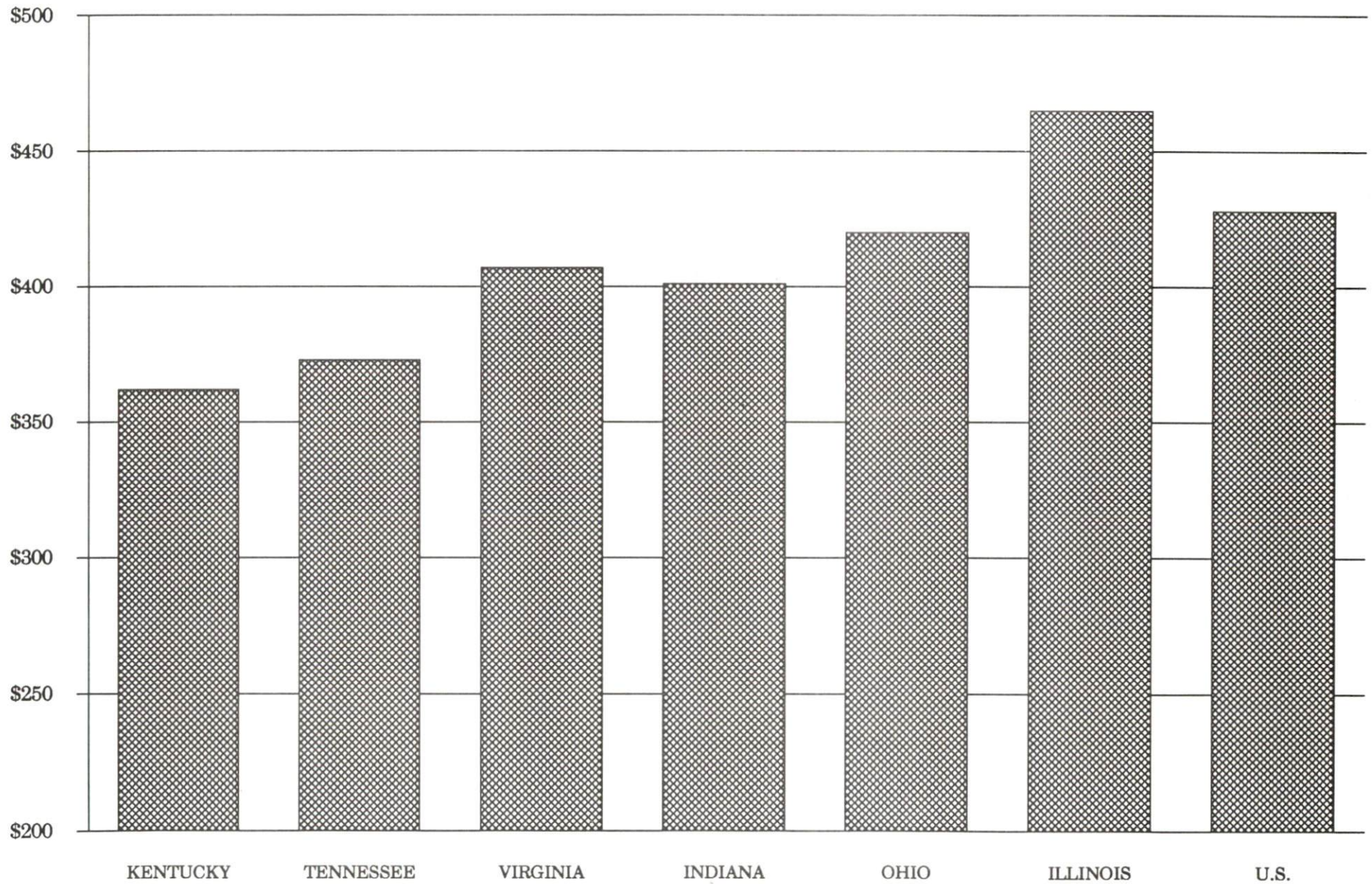
Hancock County is served by the Owensboro local office of the Kentucky Department for Employment Services. The focus of the following data is on job placements made by the Owensboro local office and may therefore be used as an indicator of the wages which employers in the area pay new employees. During the twelve months which ended on June 30, 1990, the local employment office filled 2,230 job openings in various occupational categories. The average hourly wage for selected occupational categories were:

<u>OCCUPATIONAL CATEGORY</u>	<u>NUMBER OF PLACEMENTS</u>	<u>AVERAGE WAGE(\$)</u>
All Occupations	2,230	4.82
Clerical	340	4.20
Sales	54	5.17
Services (excluding domestic)	275	3.63
Agricultural, Fishery, Forestry, etc.	48	3.61
Processing	326	6.60
Machine Trades	56	5.46
Bench Work	229	5.23
Structural	123	5.97
Motor Freight/ Transportation	29	4.95
Packaging and Materials Handling	729	4.39
Other	1	3.35

The Owensboro local office also serves Daviess, McLean, and Ohio Counties. The above occupational categories are taken from the Dictionary of Occupational Titles published by the U.S. Department of Labor.

Source: Kentucky Cabinet for Human Resources, Department for Employment Services.

AVERAGE WEEKLY WAGES OF WORKERS COVERED BY  
UNEMPLOYMENT INSURANCE - 1989





AVERAGE WEEKLY WAGES BY INDUSTRY  
BY PLACE OF WORK, 1989\*

	Hancock County	Kentucky (State- Wide)	Tennessee	Virginia
All Industries	\$602.49	\$362.03	\$373.00	\$407.00
Mining & Quarrying	N/A	623.82	522.00	576.00
Contract Construction	360.62	388.21	407.00	434.00
Manufacturing	703.88	472.92	431.00	470.00
Transportation, Communications & Public Utilities	575.34	482.22	493.00	575.00
Wholesale & Retail Trade	161.30	245.12	N/A	N/A
Finance, Insurance & Real Estate	276.19	417.89	448.00	488.00
Services	195.49	310.29	357.00	409.00
State/Local Government	303.67	370.61	N/A	N/A
	<u>Indiana</u>	<u>Ohio</u>	<u>Illinois</u>	<u>U. S.</u>
All Industries	\$401.00	\$420.00	\$465.00	\$428.00
Mining & Quarrying	693.00	596.00	707.00	688.00
Contract Construction	464.00	480.00	608.00	485.00
Manufacturing	546.00	580.00	566.00	534.00
Transportation, Communications & Public Utilities	504.00	533.00	582.00	556.00
Wholesale & Retail Trade	N/A	N/A	N/A	N/A
Finance, Insurance & Real Estate	418.00	456.00	594.00	544.00
Services	328.00	360.00	419.00	399.00
State/Local Government	N/A	N/A	N/A	N/A

\* Wages for U.S. and surrounding states rounded to nearest dollar.

N/A Not Available.

Note: The average weekly wage for each category includes the salaries and wages of all persons working for that type business. For example, the manufacturing category includes both production workers and administrative personnel. Excludes domestic workers, railway workers, certain nonprofit corporations, majority of federal government workers, and self-employed workers.

Source: Kentucky Cabinet for Human Resources, Average Weekly Wages of Workers Covered by Kentucky Unemployment Insurance Law, 1989. U.S. Department of Labor, Bureau of Labor Statistics, Employment and Wages, Annual Averages, 1989, October 1990.

## EXISTING INDUSTRY

### HANCOCK COUNTY MANUFACTURING FIRMS, THEIR PRODUCTS AND EMPLOYMENT

<u>Firm</u> (Establishment date)	<u>Product</u>	<u>1990</u> <u>Average Employment</u>
<b>Hawesville</b>		
Clarion Publishing Company (1893)	Newspaper, job printing	7
Hancock County Ready Mixed Concrete (1964)	Ready-mixed concrete, agricultural lime	7
National-Southwire Aluminum Company (1967)	Primary aluminum products	700
Southwire Company, Kentucky Division (1967)	Stranded aluminum cable and wire, aluminum rod	175
Willamette Industries, Inc., Kentucky Mills (1967)	Fine paper, bleached kraft hardwood pulp, paper corrugating medium	445
Worldsource Coil Coating, Inc. (1988)	Coating of metal	101
Wroe Pallets and Skids, Division of Wroe Lumber Company, Inc. (1985)	Wood pallets, wood specialty skids	15
<b>Lewisport</b>		
American Olean Tile Company (1959)	Quarry tile	188
Commonwealth Aluminum (1966)	Aluminum sheet, plate	830
Crescent Paper Tube Company (1991)	Paper tube	8
JMC Pallet Construction, Inc. (1982)	Wood pallets and skids	2
Pioneer Metals, Inc. (1988)	Roll forming metal roofing and siding, metal buildings and components	5

**Sources:** Kentucky Cabinet for Economic Development, Division of Research and Planning; Hancock County Chamber of Commerce.

## LABOR ORGANIZATIONS IN MANUFACTURING FIRMS

<u>Union</u>	<u>Representing workers at:</u>
<b>Hawesville</b>	
United Paperworkers International Union, AFL-CIO	Willamette Industries, Inc., Kentucky Mills
<b>Lewisport</b>	
United Steelworkers of America, AFL-CIO, CLC	Commonwealth Aluminum

### SELECTED INDUSTRIAL SERVICES

<u>Types of Services</u>	<u>Location</u>	<u>Mileage from Hawesville</u>
Custom Data Processing	Owensboro, Kentucky	25
Custom Plastics Producers	Owensboro, Kentucky	25
Electric Motor Repair	Owensboro, Kentucky	25
Grinding, Precision & Tool	Owensboro, Kentucky	25
Heat Treating Facilities	Evansville, Indiana	65
Industrial Equipment & Supplies	Owensboro, Kentucky	25
Industrial Gases	Owensboro, Kentucky	25
Industrial Waste Removal	Troy, Indiana Owensboro, Kentucky	8 25
Machine Shops, Tool & Die	Owensboro, Kentucky	25
Metal Castings	Henderson, Kentucky McHenry, Kentucky	55 57
Metal Finishers	Owensboro, Kentucky	25
Metal Service Centers	Owensboro, Kentucky	25
Millwrights	Owensboro, Kentucky	25
Public Warehouse Facilities	Owensboro, Kentucky	25

**Sources:** Kentucky Cabinet for Economic Development, Division of Research and Planning.



## TRANSPORTATION

### Highways

U.S. Highway 60 and Kentucky Routes 69 and 657 are all "AAA"-rated (80,000-pound gross load limit) trucking highways serving Hancock County. Both Hawesville and Lewisport lie along U.S. 60, which is four lanes wide between the two cities.

Hancock County also has easy access to the interstate highway system. Interstate 64, a major east-west route, is accessible 27 miles north of Hawesville via the Ohio River Bridge and Indiana Route 66 and 37. Interstate 64 provides multi-lane access to Interstate 65, a major north-south route, 78 miles northeast of Hawesville. Interstate 65 is also accessible, via Kentucky 69 and the multi-lane Green River Parkway, near Bowling Green, Kentucky, 85 miles south of Hawesville.

U.S. 60 provides easy access to the Audubon Parkway, an east-west, multi-lane highway; and to the Green River Parkway, a north-south multi-lane highway; both located at Owensboro, Kentucky, 25 miles southwest of Hawesville.

#### HIGHWAY MILES FROM HAWESVILLE, KENTUCKY, TO SELECTED MARKET CENTERS

City	Highway Miles	City	Highway Miles
Atlanta, GA	389	Los Angeles, CA	2,054
Baltimore, MD	669	Louisville, KY	75
Birmingham, AL	340	Nashville, TN	151
Chicago, IL	348	New Orleans, LA	665
Cincinnati, OH	175	New York, NY	829
Cleveland, OH	417	Pittsburgh, PA	459
Detroit, MI	415	St. Louis, MO	227
Knoxville, TN	297		

Note: Mileage computations are via the best interstate or primary highways, not necessarily the most direct route of travel.

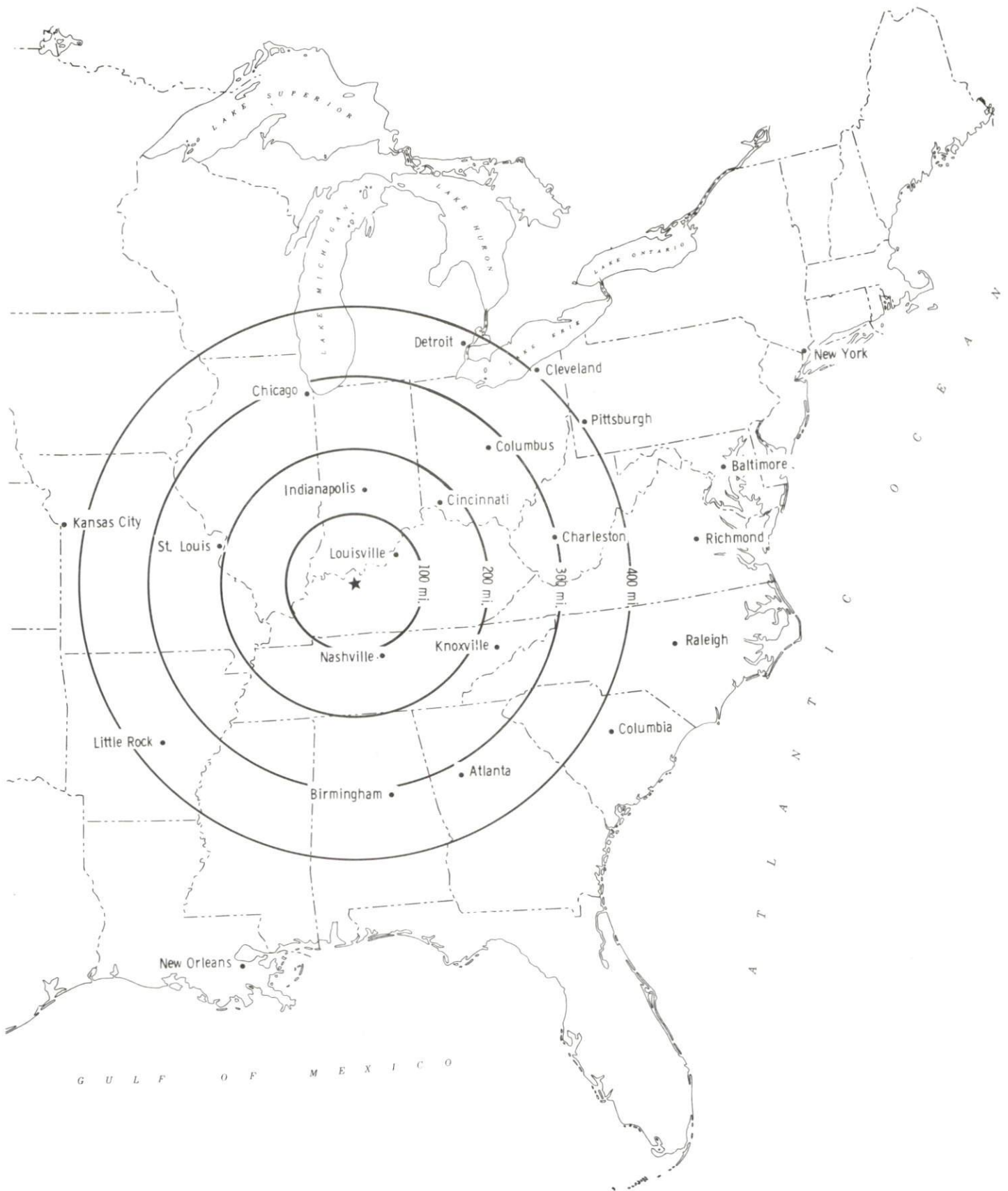
Sources: Rand McNally Deluxe Motor Carriers' Road Atlas, 1989. Official Kentucky Mileage Map, 1980.

### Truck Service

Twenty-three common carrier trucking companies provide interstate and/or intrastate service to Hancock County.

Source: American Motor Carrier Directory, Spring 1991.

# Selected Market Centers



## Rail

CSX Transportation provides main line rail service to Hawesville and Lewisport. Piggyback facilities are available 25 miles southwest at Owensboro, Kentucky.

For details on routing, schedules, rates, and services contact:

Manager  
Industrial Development  
CSX Transportation  
9420 Bunsen Parkway  
Suite 212  
Louisville, Kentucky 40220  
(502) 499-3025

## Air

### Local

Location: Hancock Field  
3 miles north of Hawesville and 7 miles east of  
Lewisport, adjacent to an industrial complex  
Runways: 1 paved (72,000-pound load limit)  
Length: 5,000 feet  
Traffic  
Control: IFR instrument approach, wind sock, right hand  
traffic pattern for runway  
Lighting: Runway lights sundown to sunrise  
Services: 100LL octane, charter, rental, minor A & P  
repairs  
Air Freight  
Services: Chartered air freight services must be arranged

### Nearest Scheduled Commercial Airline Service

Location: Owensboro-Daviess County Airport  
3 miles southwest of Owensboro, Kentucky;  
28 miles southwest of Hawesville  
Air Service: American Eagle, Northwest Air Link  
Daily Arrivals  
& Departures: 16

Location: Evansville Regional Airport  
3 miles north of Evansville, Indiana;  
68 miles west of Hawesville  
Air Service: ComAir, TransWorld Express, Northwest Air  
Link, USAir, Atlantic Southeast, Nashville  
Eagle, Simmons Express  
Daily Arrivals  
& Departures: 88

## Water

The Ohio River provides one of the most modernized lock and dam systems and heavily traveled freight transportation corridors in the nation. Hawesville and Lewisport are both located along the Ohio River, which forms Hancock County's northern boundary.

The Owensboro Riverport Authority operates a public riverport on the Ohio River 25 miles southwest of Hawesville at Owensboro. Facilities include more than 100,000-square-feet of general commodity warehousing; 1.2 million gallons of liquid storage capacity; four acres of paved outside storage; two 110-ton cranes and a coal preparation plant. The riverport is located on a main line of the CSX Rail System.



## UTILITIES

### Electricity

Company serving a major portion of Hancock County, including  
Hawesville and Lewisport - Green River Electric Corporation  
Source of power - Big Rivers Electric Corporation  
For industrial rates contact:

Green River Electric Corporation  
3111 Fairview Drive  
P.O. Box 1389  
Owensboro, Kentucky 42302  
(502) 926-4141

### Natural Gas

Company serving Hawesville - Western Kentucky Gas Company  
Source of supply - Texas Gas Transmission Corporation  
For rates and supplies contact:

Western Kentucky Gas Company  
P.O. Box 866  
Owensboro, Kentucky 42302  
(502) 685-8067

Company serving Lewisport - City of Lewisport  
Source of supply - Texas Gas Transmission Corporation  
For rates and supplies contact:

City of Lewisport  
P.O. Box 22  
City Hall  
Lewisport, Kentucky 42351  
(502) 295-3324

Company serving Hancock County's industrial complex - Western  
Kentucky Gas Company  
Source of supply - Local gas well production and Texas Gas  
Transmission Corporation  
For rates and supplies contact:

Western Kentucky Gas Company  
P.O. Box 866  
Owensboro, Kentucky 42302  
(502) 685-8067



## Public Water Supply

Company serving **Hawesville** - Hawesville Waterworks  
P.O. Box 157  
Hawesville, Kentucky 42348  
(502) 927-8707

Source - 4 wells; total pumping capacity of 500 gallons per minute  
Treatment plant capacity - 576,000 gallons per day  
Average daily consumption - 197,000 gallons  
Peak daily consumption - 325,000 gallons  
Storage capacity - 581,000 gallons  
Water pressure - 30 psi to 90 psi

Company serving **Lewisport** - City of Lewisport Municipal Waterworks  
P.O. Box 22  
City Hall  
Lewisport, Kentucky 42351  
(502) 295-3324

Source - Two deep wells; total pumping capacity of 400 gallons per minute  
Treatment plant capacity - 288,000 gallons per day; total pumping capacity 350 gallons per minute  
Average daily consumption - 189,000 gallons  
Peak daily consumption - 210,000 gallons  
Storage capacity - 250,000 gallons  
Water pressure - 40 psi to 62 psi

The Lewisport Municipal Waterworks recently completed construction of approximately 83,000 feet of rural water lines which added 90 new customers at a cost of \$200,000. In addition, construction of a new 500-gallon-per-minute water well is under way. The \$45,000 project is scheduled for completion by July 1991.

Name of water district - East Daviess County Water Association  
9210 Kentucky Route 144  
Philpot, Kentucky 42366  
(502) 281-5187

Area served - Southern Hancock County, east Daviess County, extreme northeastern Ohio County  
Source of supply of treated water - Owensboro Municipal Utilities  
Average daily consumption - 525,000 gallons  
Peak daily consumption - 650,000 gallons  
Storage capacity - 1,000,000 gallons  
Water pressure - 35 psi to 120 psi

## Raw Water

Surface water sources - Ohio River

Average discharge - Ohio River at Cannelton Dam - 125,700 cfs  
(14 years, USGS)

Expected ground water yield - 500 to 1,000 gpm along Ohio River; 50  
to 200 gpm in north-south band through central portion of the  
county; 5 gpm or less over most of the remainder of the county

## Sewerage

Company serving Hawesville -                      Hawesville Sewer System  
P.O. Box 157  
Hawesville, Kentucky 42348  
(502) 927-8707

Design capacity -                                      250,000 gallons per day  
Average daily flow -                                  121,000 gallons  
Type of treatment -                                  Primary  
Treated effluent discharged into - Lead Creek

Company serving Lewisport -                      City of Lewisport  
P.O. Box 22  
City Hall  
Lewisport, Kentucky 42351  
(502) 295-3324

Design capacity -                                      250,000 gallons per day  
Average daily flow -                                  130,000 gallons  
Type of treatment -                                  Secondary  
Treated effluent discharged into - Ohio River

The City of Lewisport recently constructed sludge drying beds at the wastewater treatment facility at a cost of \$30,000. In addition, construction of a lime settlement basin is in the planning stages. The \$20,000 project is scheduled for completion by Fall 1991.

## CLIMATE

### Hancock County

#### Temperature

Normal (29-year record)	55.70 degrees
Average annual 1989	55.20 degrees
Record highest, July 1954 (49-year record)	105.00 degrees
Record lowest, February 1951 (49-year record)	-23.00 degrees
Normal heating degree days (29-year record) (Heating degree day totals are the sums of negative departures of average daily temperatures from 65 degrees F.)	4,729

#### Precipitation

Normal (29-year record)	41.55 inches
Mean annual snowfall (49-year record)	13.80 inches
Total precipitation 1989	47.34 inches
Mean number days precipitation (.01 inch or more) (49-year record)	115.10
Mean number days thunderstorms (49-year record)	45.10

#### Prevailing winds (through 1963)

South-Southwest

#### Relative Humidity (28-year record)

Midnight	79 percent
6 a.m.	81 percent
Noon	59 percent
6 p.m.	62 percent

Source: U.S. Department of Commerce, Environmental Science Services Administration, Climatological Data, 1989. Station of record: Evansville, Indiana.



## LOCAL GOVERNMENT

### Structure

Hancock County is governed by a county judge/executive and four magistrates. Each county official serves a four-year term. Hawesville and Lewisport are both governed by mayor-city council forms of government. Each city has a mayor and six council members. The mayor is elected to a four-year term while the council members each serve two-year terms.

### Planning and Zoning

Joint agency - Hancock Urban Planning Commission  
Participating cities - Hawesville and Lewisport  
Zoning enforced - Hancock County from the Ohio River to one and one-half miles south of U.S. Highway 60  
Subdivision regulations enforced - Hancock County from the Ohio River to one and one-half miles south of U.S. Highway 60  
Local codes enforced - Building and housing in Hancock County from the Ohio River to one and one-half miles south of U.S. Highway 60  
Mandatory state codes enforced - Kentucky Plumbing Code, National Electric Code, Kentucky Boiler Regulations and Standards, Kentucky Building Code (modeled after BOCA code)

### Local Fees and Licenses

Hawesville levies an annual business license fee of \$30.50 and an annual vehicle sticker of \$7.50. Presently, there are no city business licenses or fees required for manufacturers in Lewisport. Hancock County levies an occupational license tax of one percent on wages and on net profits. Industries employing more than 100 persons are exempt from the tax on net profits.

## PROPERTY TAXES

The Kentucky Constitution requires the state to tax all classes of taxable property, and state statutes allow local jurisdictions to tax only a few classes. All locally taxed property is subject to county taxes and school district taxes (either a county school district or an independent school district). Property located inside of city limits may also be subject to city property taxes.

Special local taxing jurisdictions (fire protection districts, watershed districts, and sanitation districts) levy taxes within their operating areas (usually a small portion of community or county).

Property assessments in Kentucky are at 100% fair cash value. A 15% reduction is automatically granted for accounts receivable.

### STATE PROPERTY TAX RATES PER \$100 VALUATION

<u>Selected Classes of Property</u>	<u>1990 State Rate</u>	<u>Local Taxation Permitted</u>
Real Estate	\$0.189	YES
Manufacturing Machinery	0.150	NO
Pollution Control Equipment	0.150	NO
Inventories		
Raw Materials	0.050	NO
Goods in Process	0.050	NO
Finished Goods	0.050	YES
Motor Vehicles	0.450	YES
Other Tangible Personal Property	0.450	YES
Intangibles (Accounts Receivable, Money on Hand)	0.250	NO

### LOCAL PROPERTY TAX RATES PER \$100 VALUATION, 1990

<u>Taxing Jurisdiction</u>	<u>Real Estate</u>	<u>Finished Goods &amp; Tangibles</u>	<u>Motor Vehicles</u>
Hancock County	\$0.1330	\$0.1289	\$0.1239
School Districts:			
Hancock County	0.2990	0.2290	0.3110
Cities:			
Hawesville	0.4070	0.4070	0.4128
Lewisport	0.2400	0.2400	0.2400

## EDUCATION

### Public Schools

	Hancock County
Total Enrollment (Fall, 1990)	1,619
Accreditation	Southern Association of Colleges and Schools
Pupil-Teacher Ratio (1989-90)	18.8-1
Percent High School Graduates to College (1989-90)	49.0
Expenditures Per Pupil (1989-90)	\$3,115.14

Hancock County Employability Program was recently developed as a collaborative effort of local government, business/industry, employment services and schools (high school, vocational schools and community college) to address the skills needs for employers. It began as a concern of local schools and local government to increase the employment of Hancock County residents in local industries. An Industrial Advisory Council was formed to identify the skills/knowledge necessary for employment in local industries. A summary was compiled and strategies derived to provide the needed training for adults and high school students.

### Nonpublic Schools

<u>School</u>	<u>Enrollment</u>	<u>Grades</u>
Immaculate Conception Elementary	70	1-8

### Area Colleges and Universities

<u>Name</u>	<u>Location (Miles distant)</u>	<u>Enrollment (Fall, 1990)</u>
Brescia College	Owensboro, Kentucky (25)	756
Kentucky Wesleyan College	Owensboro, Kentucky (25)	707
Owensboro Community College	Owensboro, Kentucky (25)	2,415
Henderson Community College	Henderson, Kentucky (55)	1,371
University of Evansville	Evansville, Indiana (65)	3,051
University of Southern Indiana	Evansville, Indiana (65)	6,480



## Vocational Training

Vocational training is available at both the state vocational-technical schools and the area vocational education centers. The state vocational-technical schools are post-secondary institutions. The area vocational education centers are designed to supplement the curriculum of high school students. Both the state vocational-technical schools and the area vocational education centers offer evening courses to enable working adults to upgrade current job skills.

Arrangements can be made to provide training in the specific production skills required by an industrial plant. Instruction may be conducted either in the vocational school or in the industrial plant, depending upon the desired arrangement and the availability of special equipment.

### Bluegrass State Skills Corporation

The Bluegrass State Skills Corporation, an independent public corporation created and funded by the Kentucky General Assembly, provides programs of skills training to meet the needs of business and industry from entry level to advanced training, and from upgrading present employees to retraining experienced workers.

The Bluegrass State Skills Corporation is the primary source for skills training assistance for a new or existing company. The Corporation works in partnership with other employment and job training resources and programs, as well as Kentucky's economic development activities, to package a program customized to meet the specific needs of a company.

<u>Vocational School</u>	<u>Location (Miles distant)</u>	<u>Cumulative Enrollment 1989-1990</u>
Daviess County State Vocational- Technical School	Owensboro, Kentucky (25)	417
Owensboro Vocational-Technical School	Owensboro, Kentucky (25)	426
Breckinridge Area Vocational Education Center	Harned, Kentucky (26)	341

### Vocational-Technical College

The Ivy Tech Instructional Center at Tell City, Indiana, five miles north of Hawesville, provides vocational-technical training leading to the conferral of technical certificates in Administrative Office Technology/Secretarial, Industrial Maintenance, and Welding. The center is designed to accommodate students above the usual high school age and those who have withdrawn from high school. The college can develop programs and training opportunities designed to meet the special needs of business or industry.

## OTHER LOCAL FACILITIES

### Local Medical Personnel

Physicians - 2  
Dentists - 3  
Chiropractors - 1  
Optometrist - 2

### Hospitals

<u>General Hospital</u>	<u>Location</u>	<u>Beds</u>
Perry County Memorial Hospital	Tell City, Indiana, five miles from Hawesville	75
Owensboro-Daviess County Hospital	Owensboro, Kentucky, 25 miles from Hawesville	458
Mercy Hospital	Owensboro, Kentucky, 25 miles from Hawesville	145

#### **Perry County Memorial Hospital**

Medical staff - 15 physicians, 20 registered nurses, nine licensed practical nurses

#### **Owensboro-Daviess County Hospital**

Medical staff - 135 physicians, 425 registered nurses, 91 licensed practical nurses

#### **Mercy Hospital**

Medical staff - 135 physicians, 201 registered nurses, 61 licensed practical nurses

### Other Medical Facilities and Services

Green River Comprehensive Care Center  
Green River District Health Department, Hancock County  
Center (a public health facility)  
Hancock County Emergency Ambulance Service

### Banks and Savings & Loan Associations

Hancock Bank and Trust Company  
(Hawesville and Lewisport)  
Cardinal Federal Savings and Loan Association

### Newspapers

Hancock Clarion (weekly)

### Telephone Service

Hawesville - South Central Bell  
Lewisport - Lewisport Telephone Company

## RECREATION

### Local

A wide variety of recreational opportunities are available to the residents of Hancock County. The county offers six lighted baseball diamonds, four playgrounds, one skating rink and four county parks. Vastwood Park is a 340-acre park approximately three miles from Hawesville. Present facilities include four lighted baseball and softball diamonds; horseback riding trails; a new horse show arena; a volleyball area; a 20-acre lake with a beach, bathhouse, picnic area and playground (lifeguards are on duty all summer); and both primitive and recreational vehicle camping facilities. South Hancock Park features a softball diamond, two tennis courts, a croquet yard, a basketball court, a picnic area, and playground equipment. All park facilities are lighted.

Hawesville has a boat ramp on the Ohio River, a picnic area, two mini-parks and fairground facilities.

Lewisport offers a picnic area and boat ramp on the Ohio River and two mini-parks with tennis courts, basketball courts and playground equipment.

The Winward Heights Country Club, located between Hawesville and Lewisport, provides a clubhouse, a swimming pool, a nine-hole golf course, and several tennis courts.

Annual recreational events in Hancock County include the Hancock County Fair which includes a parade and a variety of sports events, contests, and shows. The annual Fourth of July Celebration is held at Vastwood Park, and features fireworks, booths, contests, tournaments, and entertainment.

The Hawesville Steamboat Festival is another local tradition offering an opportunity to enjoy parties, dancing, sports, contests, music exhibitions, shows, arts and crafts, demonstrations, antiques, and markets.

Annual events in Lewisport include the Lion Club Tractor Pull Contest, which offers picnic, exhibitions and prizes; and Lewisport Heritage Festival, held in June, which features arts and crafts, exhibits, barbecue, music, and fireworks.

The Hancock County Museum recently opened in Hawesville. Located in a restored railroad depot, the museum contains a collection of artifacts representing all facets of history in the county.

### Area (Within 45 miles)

Hoosier National Forest  
Holiday World (amusement park)  
Ben Hawes State Park  
Lincoln Boyhood National Memorial  
Rough River Dam State Resort Park



## COMMUNITY IMPROVEMENTS

### Industrial and Commercial Development

Crescent Paper Tube Company recently initiated operations in Lewisport. The paper tube manufacturer is initially employing eight persons.

WKCM-FM radio station recently began broadcasting from Hawesville.

### Utilities

The Lewisport Municipal Waterworks recently completed construction of approximately 83,000 feet of rural water lines which added 90 new customers at a cost of \$200,000. In addition, construction of a new 500-gallon-per-minute water well is under way. The \$45,000 project is scheduled for completion by July 1991.

The City of Lewisport recently constructed sludge drying beds at the wastewater treatment facility at a cost of \$30,000. In addition, construction of a lime settlement basin is in the planning stages. The \$20,000 project is scheduled for completion by Fall 1991.

### Education

Hancock County Employability Program was recently developed as a collaborative effort of local government, business/industry, employment services and schools (high school, vocational schools and community college) to address the skills needs for employers. It began as a concern of local schools and local government to increase the employment of Hancock Countians in local industries. An Industrial Advisory Council was formed to identify the skills/knowledge necessary for employment in local industries. A summary was compiled and strategies derived to provide the needed training for adults and high school students.

### Community Development

The "911" emergency communications system is being implemented in Hancock County.

The Hancock County Museum recently opened in Hawesville. Located in a restored railroad depot, the museum contains a collection of artifacts representing all facets of history in the county.

Construction of a senior citizens housing complex was recently completed in Hawesville.

Construction of a 36-bed nursing home is planned in Lewisport with an estimated completion date set for mid-1992.



**KENTUCKY**  
*Open for Business*

---

Cabinet for Economic Development • Capital Plaza Tower  
Frankfort, Kentucky 40601 • (502) 564-7140