

1971

Industrial Resources: Hardin County - Elizabethtown & Upton

Kentucky Library Research Collections
Western Kentucky University, spcol@wku.edu

Follow this and additional works at: https://digitalcommons.wku.edu/hardin_cty

 Part of the [Business Administration, Management, and Operations Commons](#), [Growth and Development Commons](#), and the [Infrastructure Commons](#)

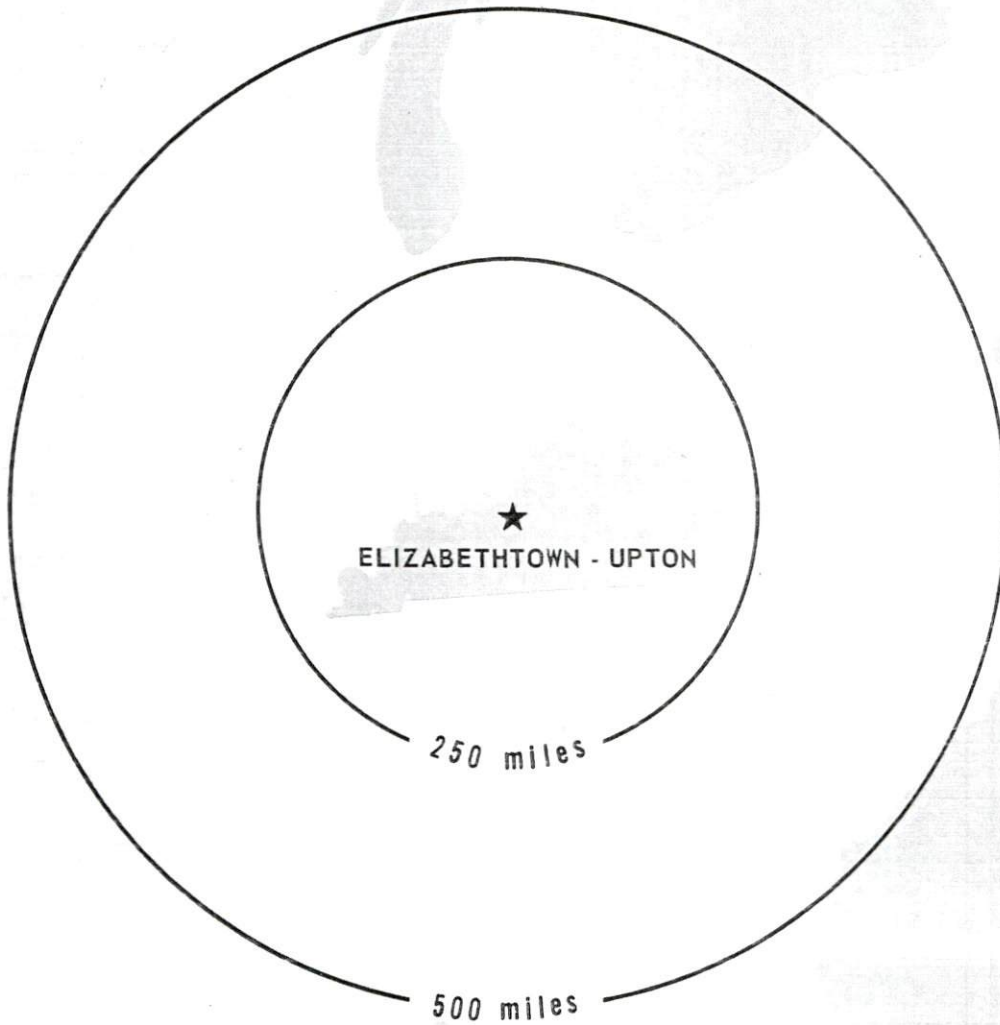
Recommended Citation

Kentucky Library Research Collections, "Industrial Resources: Hardin County - Elizabethtown & Upton" (1971). *Hardin County*. Paper 4.
https://digitalcommons.wku.edu/hardin_cty/4

This Report is brought to you for free and open access by TopSCHOLAR®. It has been accepted for inclusion in Hardin County by an authorized administrator of TopSCHOLAR®. For more information, please contact topscholar@wku.edu.

INDUSTRIAL
RESOURCES

ELIZABETHTOWN - UPTON
KENTUCKY



ELIZABETHTOWN INDUSTRIAL SITES

1971

For more information about the following sites, contact Mr. Lawrence Hughes, Elizabethtown Industrial Development Foundation, Inc., First Hardin National Bank, Elizabethtown, Kentucky 42701; or the Kentucky Department of Commerce, Washington and Wapping Streets, Frankfort, Kentucky 40601.

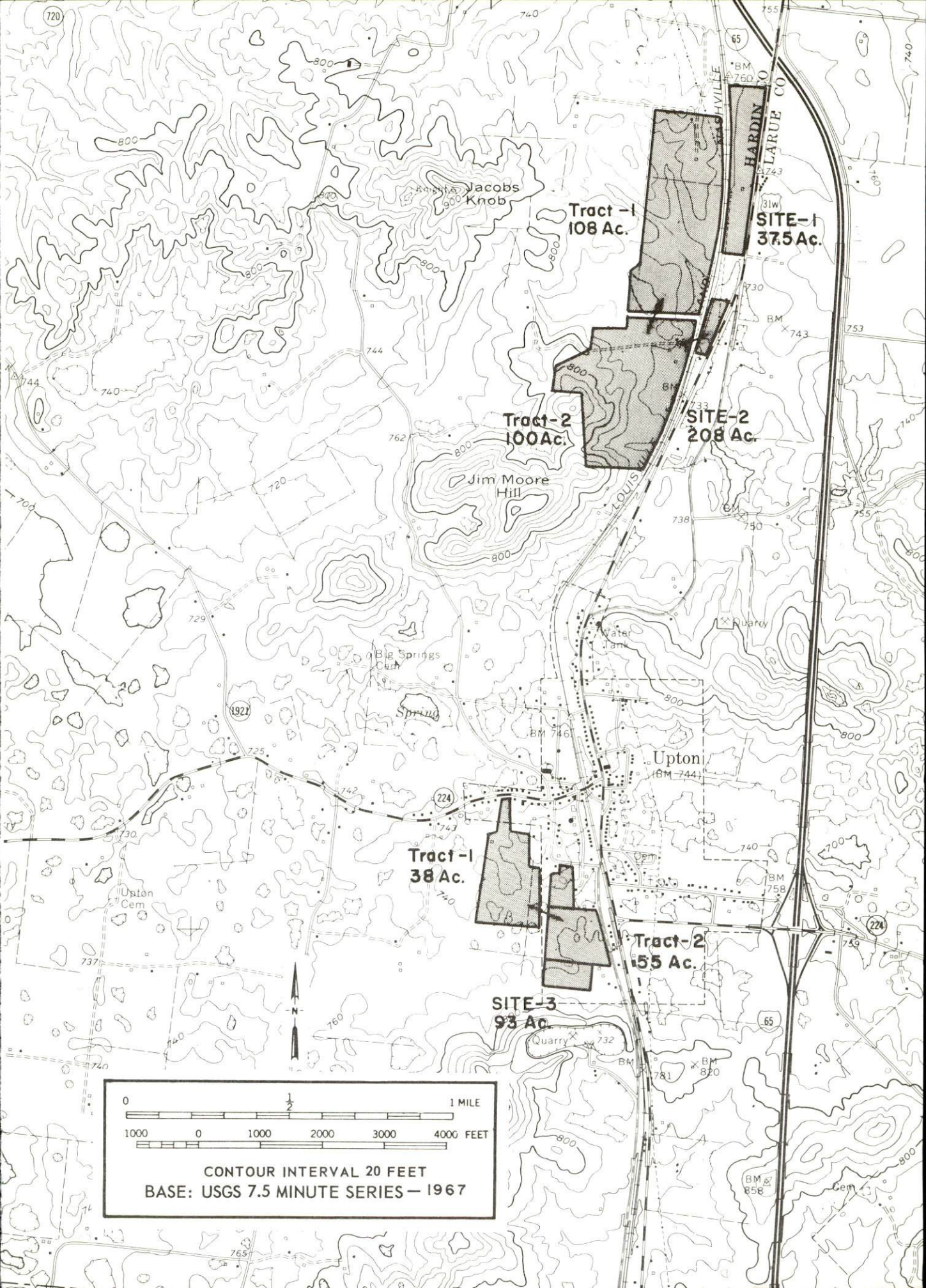
SITE #2: ACREAGE: 12.5 acres
LOCATION: Within southeast city limits
ZONING: Industrial
HIGHWAY ACCESS: Paved access road to site from U. S. 31-W;
approximately three-fourths mile from interchange on I-65
RAILROADS: Not rail served
WATER: Elizabethtown Water & Gas Company
SIZE LINE: 8-inch line approximately 600 feet from site
GAS: Elizabethtown Water & Gas Company
SIZE MAIN: 3-inch main 400 feet from site
ELECTRICITY: Kentucky Utilities Company
SEWERAGE: Municipal sewerage system; 8-inch main approximately
500 feet from site
OWNERSHIP: Privately owned

SITE #4: ACREAGE: Total 91.27 acres; 59.9 acres remain
LOCATION: Within northwest city limits
ZONING: Industrial
HIGHWAY ACCESS: Paved access road to site from U. S. 62 West
RAILROADS: Illinois Central Railroad borders site on south side.
WATER: Elizabethtown Water & Gas Company
SIZE LINE: 10-inch line at the site
GAS: Elizabethtown Water & Gas Company
SIZE MAIN: 2-inch high pressure main at the site
ELECTRICITY: Kentucky Utilities Company
SEWERAGE: Municipal sewerage system; 8-inch main at site
OWNERSHIP: Elizabethtown Industrial Foundation, Inc.

UPTON INDUSTRIAL SITES
1971

For more information about the following sites, contact Mr. Charles T. Wilcox, Chairman, Upton Industrial Land Development Committee, Upton, Kentucky 42784; or the Kentucky Department of Commerce, Washington and Wapping Streets, Frankfort, Kentucky 40601.

- SITE #1: ACREAGE: 37.5 acres
LOCATION: 1 mile north of city limits
HIGHWAY ACCESS: U. S. 31-W forms eastern boundary.
RAILROADS: Louisville & Nashville Railroad along western boundary
WATER: Upton Water Company
SIZE LINE: 8-inch line 1 mile from site
GAS: Natural gas not available
ELECTRICITY: Kentucky Utilities Company
SEWERAGE: Package plant necessary
OPTIONED BY: Upton Industrial Land Development Committee
- SITE #2: ACREAGE: 208 acres; Tract 1 - 108 acres, Tract 2 - 100 acres
LOCATION: 1 mile north of city limits
HIGHWAY ACCESS: Gravel access road from U. S. 31-W
RAILROADS: Louisville & Nashville Railroad along eastern boundary
WATER: Upton Water Company
SIZE LINE: 8-inch line one-fourth mile from southern boundary of site
GAS: Natural gas not available
ELECTRICITY: Kentucky Utilities Company
SEWERAGE: Package plant necessary
OPTIONED BY: Upton Industrial Land Development Committee
- SITE #3: ACREAGE: 93 acres; Tract 1 - 38 acres, Tract 2 - 55 acres
LOCATION: Southwestern part of city
HIGHWAY ACCESS: Two blocks from U. S. 31-W; Kentucky 224
RAILROADS: Louisville & Nashville Railroad within 250 feet of site
WATER: Upton Water Company
SIZE LINE: 8-inch line borders Tract 2
GAS: Natural gas not available
ELECTRICITY: Kentucky Utilities Company
SEWERAGE: Package plant necessary
OPTIONED BY: Upton Industrial Land Development Committee



Tract-1
108 Ac.

SITE-1
37.5 Ac.

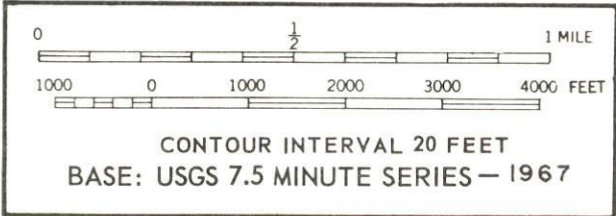
Tract-2
100 Ac.

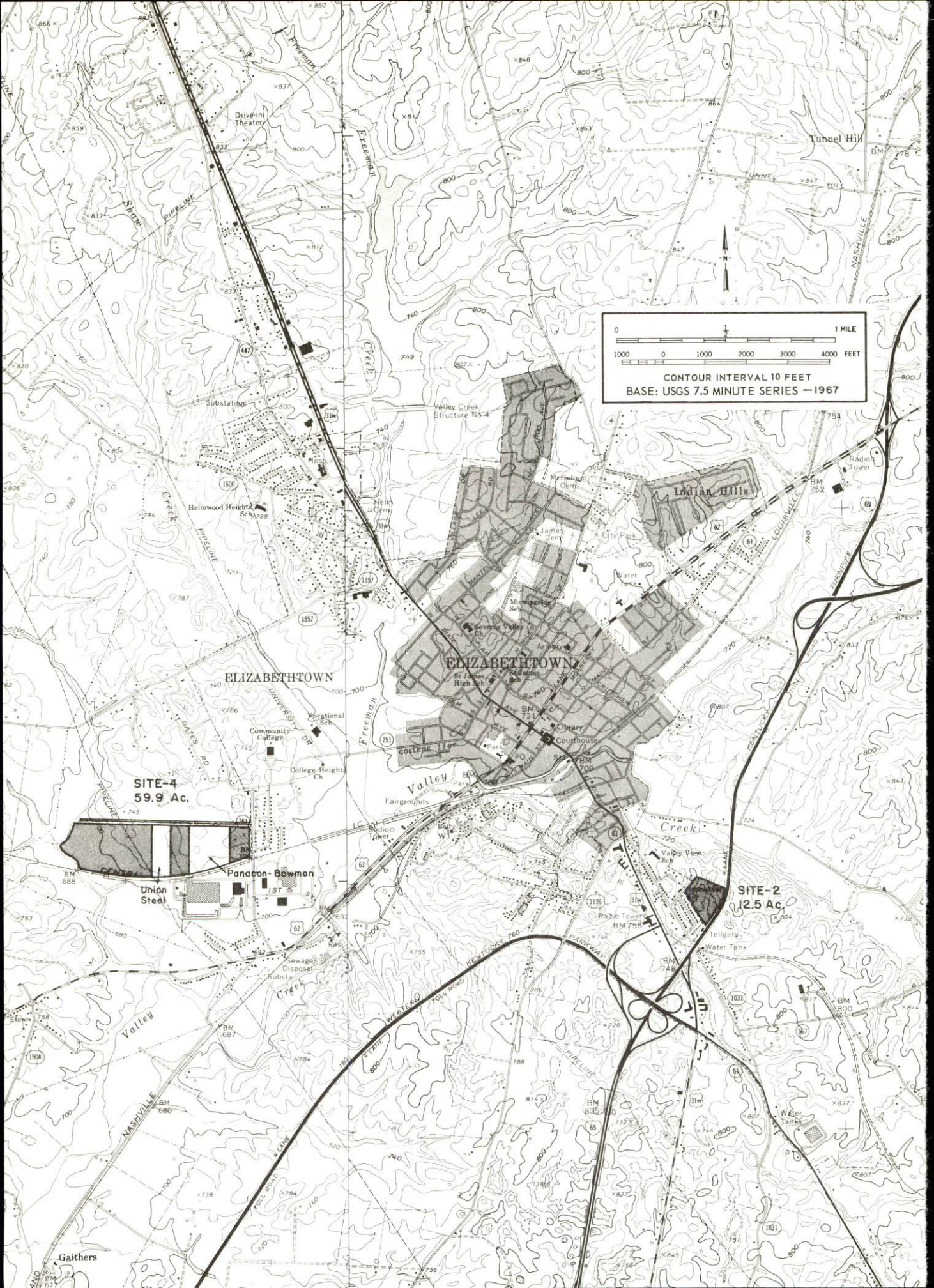
SITE-2
208 Ac.

Tract-1
38 Ac.

Tract-2
55 Ac.

SITE-3
93 Ac.





0 1 MILE
1000 0 1000 2000 3000 4000 FEET
CONTOUR INTERVAL 10 FEET
BASE: USGS 7.5 MINUTE SERIES -1967

SITE-4
59.9 Ac.

ELIZABETHTOWN

ELIZABETHTOWN

SITE-2
12.5 Ac.

Union Steel

Panaton-Bowman

Water Tank

Gaithers

Tunnel Hill

McCallum Cem.

James Cem.

City Park

Water Tanks

Valley Park

Valley View

Radio Towers

Water Tank

Water Tanks

Water Tanks

Water Tanks

Water Tanks

Water Tanks

Water Tanks

866 x
859
833
832
831
830

830
820
810
800
790
780
770
760
750
740
730
720
710
700
690
680
670
660
650
640
630
620
610
600
590
580
570
560
550
540
530
520
510
500
490
480
470
460
450
440
430
420
410
400
390
380
370
360
350
340
330
320
310
300
290
280
270
260
250
240
230
220
210
200
190
180
170
160
150
140
130
120
110
100
90
80
70
60
50
40
30
20
10
0

830
820
810
800
790
780
770
760
750
740
730
720
710
700
690
680
670
660
650
640
630
620
610
600
590
580
570
560
550
540
530
520
510
500
490
480
470
460
450
440
430
420
410
400
390
380
370
360
350
340
330
320
310
300
290
280
270
260
250
240
230
220
210
200
190
180
170
160
150
140
130
120
110
100
90
80
70
60
50
40
30
20
10
0

830
820
810
800
790
780
770
760
750
740
730
720
710
700
690
680
670
660
650
640
630
620
610
600
590
580
570
560
550
540
530
520
510
500
490
480
470
460
450
440
430
420
410
400
390
380
370
360
350
340
330
320
310
300
290
280
270
260
250
240
230
220
210
200
190
180
170
160
150
140
130
120
110
100
90
80
70
60
50
40
30
20
10
0

830
820
810
800
790
780
770
760
750
740
730
720
710
700
690
680
670
660
650
640
630
620
610
600
590
580
570
560
550
540
530
520
510
500
490
480
470
460
450
440
430
420
410
400
390
380
370
360
350
340
330
320
310
300
290
280
270
260
250
240
230
220
210
200
190
180
170
160
150
140
130
120
110
100
90
80
70
60
50
40
30
20
10
0

830
820
810
800
790
780
770
760
750
740
730
720
710
700
690
680
670
660
650
640
630
620
610
600
590
580
570
560
550
540
530
520
510
500
490
480
470
460
450
440
430
420
410
400
390
380
370
360
350
340
330
320
310
300
290
280
270
260
250
240
230
220
210
200
190
180
170
160
150
140
130
120
110
100
90
80
70
60
50
40
30
20
10
0

830
820
810
800
790
780
770
760
750
740
730
720
710
700
690
680
670
660
650
640
630
620
610
600
590
580
570
560
550
540
530
520
510
500
490
480
470
460
450
440
430
420
410
400
390
380
370
360
350
340
330
320
310
300
290
280
270
260
250
240
230
220
210
200
190
180
170
160
150
140
130
120
110
100
90
80
70
60
50
40
30
20
10
0

830
820
810
800
790
780
770
760
750
740
730
720
710
700
690
680
670
660
650
640
630
620
610
600
590
580
570
560
550
540
530
520
510
500
490
480
470
460
450
440
430
420
410
400
390
380
370
360
350
340
330
320
310
300
290
280
270
260
250
240
230
220
210
200
190
180
170
160
150
140
130
120
110
100
90
80
70
60
50
40
30
20
10
0

830
820
810
800
790
780
770
760
750
740
730
720
710
700
690
680
670
660
650
640
630
620
610
600
590
580
570
560
550
540
530
520
510
500
490
480
470
460
450
440
430
420
410
400
390
380
370
360
350
340
330
320
310
300
290
280
270
260
250
240
230
220
210
200
190
180
170
160
150
140
130
120
110
100
90
80
70
60
50
40
30
20
10
0

830
820
810
800
790
780
770
760
750
740
730
720
710
700
690
680
670
660
650
640
630
620
610
600
590
580
570
560
550
540
530
520
510
500
490
480
470
460
450
440
430
420
410
400
390
380
370
360
350
340
330
320
310
300
290
280
270
260
250
240
230
220
210
200
190
180
170
160
150
140
130
120
110
100
90
80
70
60
50
40
30
20
10
0

CURRENT INDUSTRIAL RESOURCES

CURRENT INDUSTRIAL RESOURCES, ELIZABETHTOWN-UPTON, KENTUCKY

This is a 1972 supplement to "Industrial Resources, Elizabethtown-Upton, Kentucky" which was published in 1971.

Population

	<u>1970</u>	<u>1960</u>
Elizabethtown	11,748	9,641
Upton	552	547
Hardin County	78,421	67,789
Labor Market Area	202,670	179,654
(Includes Hardin, Breckinridge, Bullitt, Grayson, Hart, Larue, Meade, and Nelson Counties.)		

General Employment Characteristics

<u>Industry</u>	<u>Employment 1970</u>	
	<u>Hardin County</u>	<u>Labor Market Area</u>
TOTAL	18,500	45,800
Agricultural	1,200	8,500
Nonagricultural	17,300	37,300
Manufacturing	2,100	6,757
Trade and Services	4,116	9,186
Government	7,200	10,800
Other	3,884	10,557

Manufacturing Employment

<u>Type Industry</u>	<u>Hardin County</u>			<u>Labor Market Area</u>		
	<u>1971</u>	<u>1961</u>	<u>%Change</u>	<u>1971</u>	<u>1961</u>	<u>%Change</u>
TOTAL	2,234	617	+ 262.1	7,310	3,720	+ 96.5
Food & kindred products	181	77	+ 135.1	1,729	1,607	+ 7.6
Tobacco	0	1	- 100.0	13	18	- 27.8
Apparel, textiles, leather	264	95	+ 177.9	1,640	550	+ 198.2
Lumber & furniture	12	20	- 40.0	297	185	+ 60.5
Printing, publishing paper	78	50	+ 56.0	728	192	+ 279.2
Chemicals, petroleum, coal, rubber	741	11	+6,636.4	1,398	501	+ 179.0
Stone, clay & glass	74	102	- 27.5	255	406	- 37.2
Primary metals	0	0	0	75	0	-
Machinery & metal products	584	70	+ 234.3	852	70	+1,117.1
Other	300	191	+ 57.1	323	191	+ 69.1

There are presently 28 manufacturing firms in Elizabethtown and Upton. Major firms, employment, and year started operations:

<u>Firms</u>	<u>Employment</u>	<u>Year Started Operations</u>
Colt Industries, Crucible Magnetics Division	421	1965
Dow Corning Corporation	200	1963
E-town Sportswear Corporation	324	1960
Gates Rubber Company	529	1964
Ingraham Industries	460	1955

Labor Supply

	<u>Hardin County</u>			<u>Labor Market Area</u>		
	<u>Total</u>	<u>Male</u>	<u>Female</u>	<u>Total</u>	<u>Male</u>	<u>Female</u>
Current	2,015	1,059	956	11,120	5,457	5,663
Potential additions next five years	6,508	3,323	3,185	20,294	10,390	9,904

Personal Income

Hardin County, 1970: Total - \$332,419,000; Per Capita - \$4,134
 1960: Total - \$166,103,000; Per Capita - \$2,163

Education

The Hardin County School System includes 4 high schools with standard (3) and comprehensive (1) ratings, 3 junior high schools, and 22 elementary schools.

The Elizabethtown School District includes 1 high school with a comprehensive rating, 1 junior high school, and 5 elementary schools.

Nearest Area Vocational-Technical School: Elizabethtown State Vocational Technical School

Courses offered: Appliance Repair, Auto Mechanics, Carpentry, Drafting, Electricity, Welding

Size distribution lines - 8, 6, and 4 inches

Rates:

First	2,000 gallons	\$5.60 (minimum)
Next	2,000 gallons	1.50 per M gallons
Next	6,000 gallons	.80 per M gallons
Next	30,000 gallons	.70 per M gallons
Next	60,000 gallons	.60 per M gallons
Over	100,000 gallons	.50 per M gallons

Elizabethtown

Sewerage: Type treatment - primary and secondary, trickling filter, digester, drying beds; design capacity - 2,100,000 gallons per day or a design population of 2,100; size of sewer mains - 16, 12, 10, 8, and 6 inches
Rates - 70 percent of monthly water bill

Local Government

Property Tax Rates

Property tax rates per \$100 of assessed valuation, 1971

	<u>Elizabethtown</u>	<u>Upton</u>	<u>Hardin County</u>
State	\$.015	\$.015	\$.015
County	.194	.194	.194
School	.649	.407	.407
City	.220	NA	
Total	\$1.078	\$.616	\$.616

Tax for Schools

Hardin County levies a 3 percent tax on utilities receipts for schools.

Police Protection: Number of law enforcement officers - 20 (Elizabethtown);
5 (county)

Fire Protection: Number of full-time firemen - 14; number of volunteer firemen - 15; American Insurance Association fire rating, City of Elizabethtown, Classes 6 and 9

Industrial Sites

Three industrial sites are now available for industrial use in Elizabethtown. The three industrial sites published in the 1971 Industrial Resources brochure for Upton are still available.

ELIZABETHTOWN INDUSTRIAL SITES

1972

For more information about the following sites, contact Mr. Lawrence Hughes, Elizabethtown Industrial Development Foundation, Inc., First Hardin National Bank, Elizabethtown, Kentucky 42701; or the Kentucky Department of Commerce, Capital Plaza Office Tower, Frankfort, Kentucky 40601.

SITE #2: ACREAGE: 12.5 acres
LOCATION: Within southeast city limits
ZONING: Industrial
HIGHWAY ACCESS: Paved access road to site from U. S. 31-W;
approximately three-fourths mile from interchange on I-65
RAILROADS: Not rail served
WATER: Elizabethtown Water & Gas Company
SIZE LINE: 8-inch line approximately 600 feet from site
GAS: Elizabethtown Water & Gas Company
SIZE MAIN: 3-inch main 400 feet from site
ELECTRICITY: Kentucky Utilities Company
SEWERAGE: Municipal sewerage system; 8-inch main approximately
500 feet from site
OWNERSHIP: Privately owned

SITE #4: ACREAGE: Total 91.27 acres; 59.88 acres remain
LOCATION: Within northwest city limits
ZONING: Industrial
HIGHWAY ACCESS: Paved access road to site from U. S. 62 West
RAILROADS: Illinois Central Railroad borders site on south side.
WATER: Elizabethtown Water & Gas Company
SIZE LINE: 10-inch line at the site
GAS: Elizabethtown Water & Gas Company
SIZE MAIN: 2-inch high pressure main at the site
ELECTRICITY: Kentucky Utilities Company
SEWERAGE: Municipal sewerage system; 8-inch main at site
OWNERSHIP: Elizabethtown Industrial Foundation, Inc.

SITE #5: ACREAGE: 155 acres
LOCATION: 1 1/2 miles southeast of city
ZONING: Industrial
HIGHWAY ACCESS: Fronts on Kentucky 61 and Kentucky 1031
RAILROADS: Illinois Central Railroad 2,000 feet from site
WATER: Hardin County Water District #2
SIZE LINE: 8-inch line 2,800 feet north of site
GAS: Elizabethtown Water & Gas Company
SIZE MAIN: 8-inch main 3,800 feet north of site
ELECTRICITY: Kentucky Utilities Company
SEWERAGE: Elizabethtown Water & Gas Company
SIZE LINE: 8-inch line 2,200 feet north of site
OWNERSHIP: Privately owned

UPTON INDUSTRIAL SITES

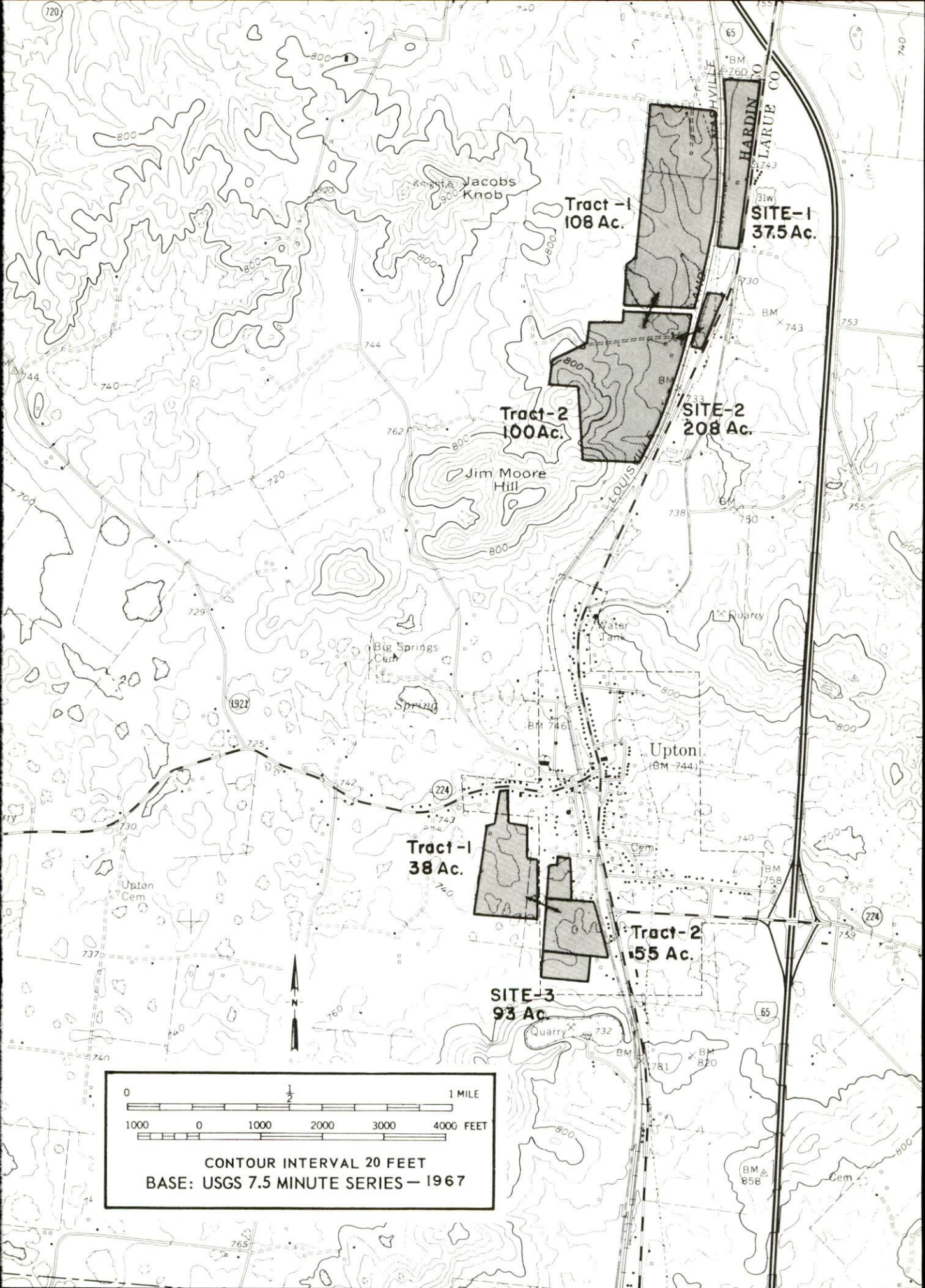
1972

For more information about the following sites, contact Mr. Charles T. Wilcox, Chairman, Upton Industrial Land Development Committee, Upton, Kentucky 42784; or the Kentucky Department of Commerce, Capital Plaza Office Tower, Frankfort, Kentucky 40601.

SITE #1: ACREAGE: 37.5 acres
LOCATION: 1 mile north of city limits
HIGHWAY ACCESS: U. S. 31-W forms eastern boundary.
RAILROADS: Louisville & Nashville Railroad along western boundary
WATER: Upton Water Company
SIZE LINE: 8-inch line 1 mile from site
GAS: Natural gas not available
ELECTRICITY: Kentucky Utilities Company
SEWERAGE: Package plant necessary
OPTIONED BY: Upton Industrial Land Development Committee

SITE #2: ACREAGE: 208 acres; Tract 1 -108 acres, Tract 2 - 100 acres
LOCATION: 1 mile north of city limits
HIGHWAY ACCESS: Gravel access road from U. S. 31-W
RAILROADS: Louisville & Nashville Railroad along eastern boundary
WATER: Upton Water Company
SIZE LINE: 8-inch line one-fourth mile from southern boundary of site
GAS: Natural gas not available
ELECTRICITY: Kentucky Utilities Company
SEWERAGE: Package plant necessary
OPTIONED BY: Upton Industrial Land Development Committee

SITE #3: ACREAGE: 93 acres; Tract 1 - 38 acres, Tract 2 - 55 acres
LOCATION: Southwestern part of city
HIGHWAY ACCESS: Two blocks from U. S. 31-W; Kentucky 224
RAILROADS: Louisville & Nashville Railroad within 250 feet of site
WATER: Upton Water Company
SIZE LINE: 8-inch line borders Tract 2
GAS: Natural gas not available
ELECTRICITY: Kentucky Utilities Company
SEWERAGE: Package plant necessary
OPTIONED BY: Upton Industrial Land Development Committee



Tract-1
108 Ac.

SITE-1
37.5 Ac.

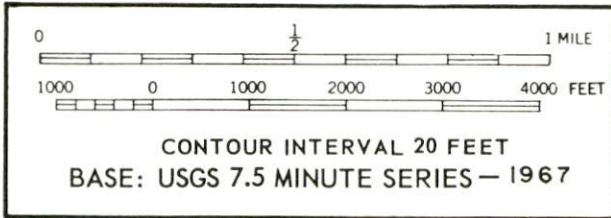
Tract-2
100 Ac.

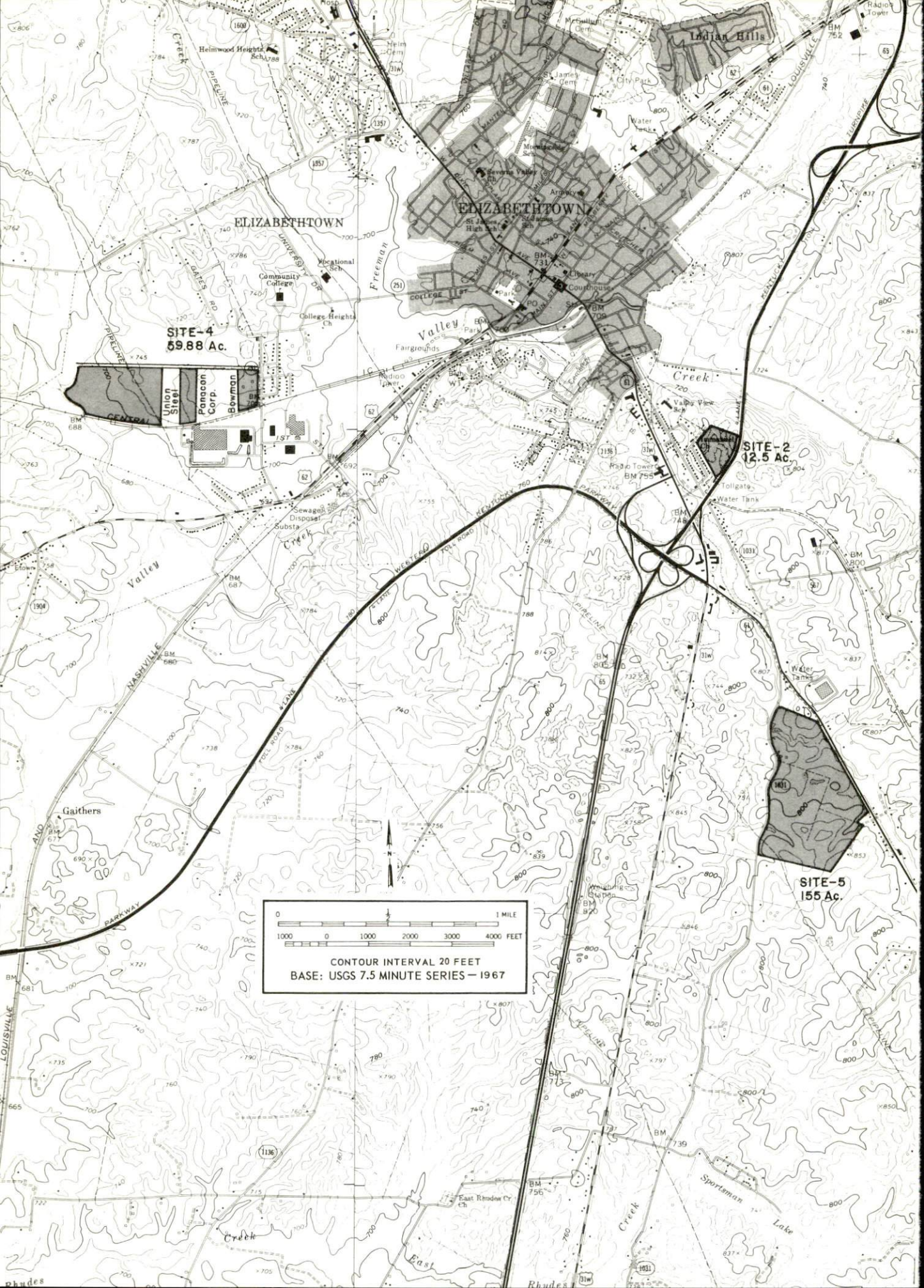
SITE-2
208 Ac.

Tract-1
38 Ac.

Tract-2
55 Ac.

SITE-3
93 Ac.





ELIZABETHTOWN

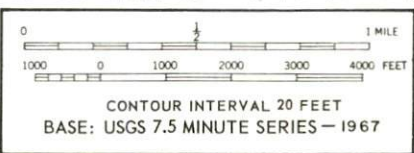
ELIZABETHTOWN

Indian Hills

SITE-4
59.88 Ac.

SITE-2
12.5 Ac.

SITE-5
155 Ac.



INDUSTRIAL RESOURCES
ELIZABETHTOWN-UPTON, KENTUCKY

Prepared by
The Kentucky Department of Commerce
in cooperation with
The Elizabethtown-Hardin County Chamber of Commerce
and
The City of Upton
1971

This copy has been prepared by the Kentucky Department of Commerce,
Division of Research and Planning, and the cost of printing paid from
state funds.

TABLE OF CONTENTS

<u>Chapter</u>	<u>Page</u>
INDUSTRIAL SITES	i
ELIZABETHTOWN-UPTON, KENTUCKY - A RESOURCE PROFILE	1
THE LABOR MARKET	5
Population Trends	5
General Employment Characteristics, 1969	5
Manufacturing Employment Trends by Industry	5
Major Elizabethtown-Upton Manufacturing Firms Their Products and Employment	6
Wage Rates for Selected Occupations	10
Labor Organizations	10
Current and Future Labor Supply	11
Total Personal Income	11
Per Capita Personal Income	11
EDUCATION	12
Public Schools	12
Parochial, Private and Special Schools	12
Vocational Schools	15
Colleges and Universities	15
TRANSPORTATION	16
Rail	16
Truck Service	16
Air	17
Bus	18
Taxi	18
Rental Services	18
POWER AND FUEL	19
Electricity	19
Natural Gas	19

<u>Chapter</u>	<u>Page</u>
WATER AND SEWERAGE	20
Water	20
Sewerage	22
LOCAL GOVERNMENT	23
City	23
County	23
Assessed Value of Property, 1971	23
Local General Property Tax Rates Per \$100 of Assessed Valuation, 1971	23
Utilities Gross Receipts Tax for Schools	24
Planning and Zoning	24
Safety	24
Police	24
Fire	24
Rescue Service	24
Sanitation	25
HEALTH	26
Hospitals	26
Nursing Homes	26
Public Health	26
OTHER LOCAL FACILITIES	29
Communications	29
Library Services	30
Religious Institutions	30
Financial Institutions	30
Hotels and Motels	31
Clubs and Organizations	31
RECREATION	33
Local	33
Area	33
AGRICULTURE - NATURAL RESOURCES - CLIMATE	34
Agriculture	34
Natural Resources	34
Climate	35
HISTORY	36

ELIZABETHTOWN-UPTON, KENTUCKY - A RESOURCE PROFILE

Location

Hardin County covers a land area of 616 square miles and is located in northcentral Kentucky. Elizabethtown, the largest town in the county, serves as the county seat. It is located near the center of the county 40 miles south of Louisville, 75 miles north of Bowling Green, and 150 miles southwest of Cincinnati, Ohio. The community of Upton is located 17 miles due south of Elizabethtown near I-65.

The 1970 population of Elizabethtown, a 1970 "All Kentucky City," was 11,748, while the population of Upton was 552. The 1970 population of Hardin County was 78,421.

The Economic Framework

Total employment in Hardin County in 1969 averaged 17,900 with agriculture providing 1,300 jobs, manufacturing 2,400, trade and services 4,240, and government 6,900. Since 1960 manufacturing employment has increased by approximately 218 percent, or 1,500 jobs. Major industrial products are: electric timing devices and motors, auto V-belts and auto hose, apparel, silicone sealants, ceramic, and alnico magnets.

Per capita income in the county in 1969 was \$4,280. Between 1959 and 1969, per capita personal income in the county increased approximately 95 percent.

The Elizabethtown-Upton labor market area includes Hardin, Breckinridge, Bullitt, Grayson, Hart, Larue, Meade, and Nelson Counties. Area employment in 1969 totaled 47,400 jobs with agriculture providing 9,100, manufacturing 7,020, trade and services 9,350, and government 10,400. Industrial employment in this area has increased approximately 72 percent since 1960 with sharpest gains in apparel, chemicals, rubber, and machinery and metal products.

Despite important industrial gains in recent years the area still has a deficit of 12,188 manufacturing jobs when measured against the national industrial employment-population ratio. This indicates an area where the potential for additional manufacturing production is excellent.

Resources for Growth

1. There is a current estimated labor supply of 6,295 men and 7,095 women available for industrial jobs in the labor market area. In addition, 12,690 young men and 12,075 young women will become 18 years of age by 1977 and potentially available for work.

2. The local transportation capability is good. The Louisville and Nashville Railroad and the Illinois Central Railroad provide a variety of services. Adequate trucking service is available. I-65, a north-south route, the Blue Grass Parkway, and the Western Kentucky Parkway converge at Elizabethtown. The Elizabethtown-Hardin County Airport has a 2,800-foot paved runway capable of accommodating light aircraft. Commercial air service is available at Standiford Field, Louisville, only 40 miles north of Elizabethtown.

3. Kentucky Utilities and Nolin RECC provide electric power to Elizabethtown, Upton, and portions of the county. Natural gas is furnished in Elizabethtown by the Elizabethtown Water and Gas Company, whose source of supply is the Texas Gas Transmission Corporation. Manufactured gas is supplied to Upton by five distributors.

4. Industrial sites - Elizabethtown has two sites available for industrial use and Upton has three sites available for industrial use.

5. Education is an important growth asset for Hardin County. Three school systems operate within the county. One University, three senior colleges, three community colleges, and two junior colleges are located within 50 miles of the county. The Elizabethtown Community College and Fort Knox Community College are located in the county.

The Elizabethtown Vocational Extension Center is located in Elizabethtown, and offers training in six different courses. The Jefferson County Area Vocational School is only 40 miles from Elizabethtown and offers 20 different courses.

Community Programs for Improvement

In 1970, Elizabethtown was designated as an "All Kentucky City." The award was the result of successful community programs. The city is actively continuing its programs for community improvements. Completed projects which have been beneficial in the city's growth include: the fourth and last flood control structure by U. S. Soil Conservation Service, which will be used for flood control, municipal water supply and recreation; two branch bank buildings; a new 100-unit motel; a new shopping center; and purchase of land for construction of a bypass. Projects under construction include: a new 3,000,000 gpd water treatment plant, a new 600,000 gallon

clear well and 8,000 feet of 12-inch lines; a new 1,000,000 gpd sewerage treatment plant, a new lift station, and a new 12-inch force main; two 12-unit, one 80-unit and one 40-unit apartment building; a new fire station; a medical center; widening of Kentucky 251 to four lanes; remodeling of old beverage plant for offices by Hardin County School Board; three new industries with total square footages of 94,000, 40,000 and 50,000.

Upton's community improvements include: additional acreage for two industrial sites and a new laundromat. A new shopping center is in the planning stages.

Recreation, Entertainment and Livability

Rough River Dam State Resort Park, 28 miles distant, is a 9,234-acre resort-type park on Rough River Reservoir with lodge, cottages and camping accommodations. Facilities and recreation include a lodge, pool, beach, bathhouse, boat and motor rentals, paddle boats, fishing, miniature golf, tennis, hiking, shuffleboard, picnic shelter, playground area, supervised recreation and a 2,500-foot paved airstrip inside the park.

Nolin Dam and Reservoir, located 30 miles distant, provides flood control for the Nolin River Basin. The Dam is 166 feet high and 908 feet long. The reservoir is 25 miles long at minimum level and 57 miles long at maximum level. Recreation facilities being developed on 1,023 acres of park area include: fishing, hiking, boating, camping, and picnicking.

Abraham Lincoln Birthplace National Historic Site, located 15 miles distant, at Hodgenville, Kentucky, includes 100 acres of the original Thomas Lincoln farm where Abe was born and lived until 2 1/2 years old. Nearby is Abraham Lincoln's boyhood home.

My Old Kentucky Home State Park, 25 miles distant, was originally called Federal Hill and was the home of Judge John Rowan. Here in 1852 Judge Rowan's young Pittsburg cousin Stephen Collins Foster was inspired to compose his immortal melody "My Old Kentucky Home," which later became the official song of Kentucky. Park facilities include: gift shop, amphitheatre, golf course, playground area, and camping accommodations.

Bernheim Forest, 25 miles distant near Shepherdsville, is a privately-operated 10,000-acre park and plant and wildlife sanctuary. There is an 8,000-acre natural forest that is stocked with deer, wild turkey, grouse and quail. Facilities include: a picnic area, foot trails, fishing, nature center, and museum.

Proximity to Louisville provides the area with entertainment such as the Kentucky Derby, the Kentucky State Fair, Actors' Theatre, Kentucky Opera Association, Louisville Ballet, Louisville Orchestra, harness racing and professional baseball and basketball.

Elizabethtown Municipal Park is a 30-acre park with facilities for swimming, picnicking, and golfing.

Freeman Lake Park is a 40-acre park with picnicking grills, tables, shelters, docks and an access ramp for lake boating (trolling motors only).

THE LABOR MARKET

POPULATION TRENDS^{1/}

Area	Population			Percent Change	
	1970	1960	1950	1960-70	1950-60
Elizabethtown	11,748	9,641	5,807	+21.9	+66.0
Upton	552	547	383	+ 0.9	+42.8
Labor Market Area	202,670	179,654	148,472	+12.8	+21.0
Hardin County	78,421	67,789	50,312	+15.7	+34.7
Breckinridge County	14,789	14,734	15,528	+ 0.4	- 5.1
Bullitt County	26,090	15,726	11,349	+65.9	+38.6
Grayson County	16,445	15,834	17,063	+ 3.9	- 7.2
Hart County	13,980	14,119	15,321	- 1.0	- 7.8
Larue County	10,672	10,346	9,956	+ 3.2	+ 3.9
Meade County	18,796	18,938	9,422	- 0.7	+101.0
Nelson County	23,477	22,168	19,521	+ 5.9	+ 13.6

GENERAL EMPLOYMENT CHARACTERISTICS, 1969^{2/}

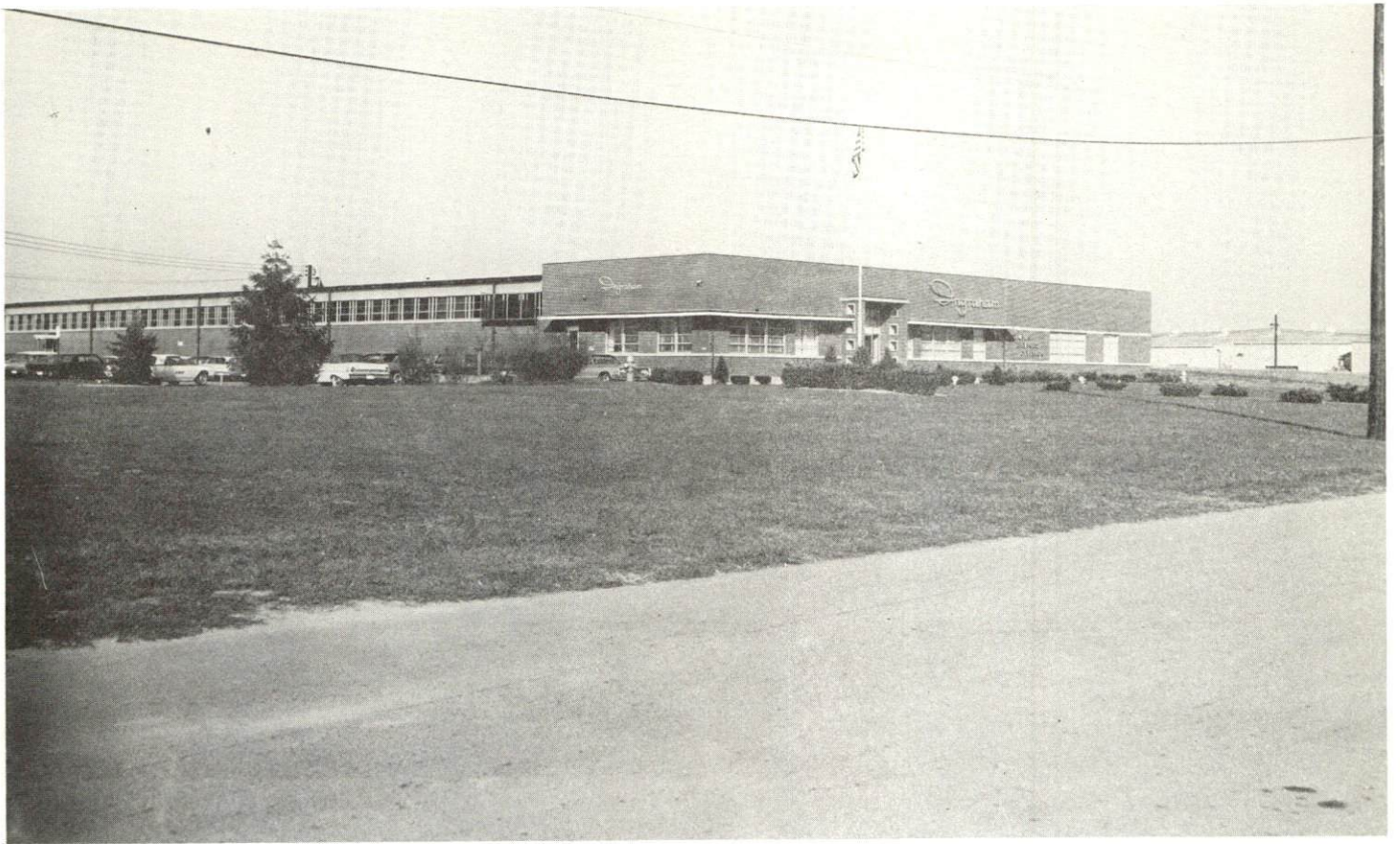
Major Employment Group	Employment	
	Hardin County	Labor Market Area
TOTAL	17,900	47,400
Agricultural	1,300	9,100
Nonagricultural	16,600	38,300
Manufacturing	2,400	7,018
Trade and Services	4,241	9,348
Government	6,900	10,400
Other	3,059	11,534

MANUFACTURING EMPLOYMENT TRENDS BY INDUSTRY
SEPTEMBER 1970 AND 1960^{3/}

Industry	Hardin County			Labor Market Area		
	1970	1960	%Change	1970	1960	%Change
TOTAL	2,187	687	+ 218.3	7,066	4,103	+ 72.2
Food & Kindred Products	186	71	+ 162.0	1,862	1,691	+ 10.1
Apparel, Textiles, Leather	283	154	+ 83.8	1,625	817	+ 98.9
Lumber & Furniture	3	21	- 600.0	226	203	+ 11.3
Printing, Publishing, Paper	76	44	+ 72.7	619	96	+ 544.8
Chemicals, Petroleum, Coal, Rubber	735	13	+5,553.9	1,424	576	+ 147.2
Stone, Clay & Glass	55	141	- 156.4	255	465	- 83.4
Machinery & Metal Products	640	52	+1,130.8	733	52	+1,309.6
Others	209	191	+ 9.4	322	203	+ 58.6

MAJOR ELIZABETHTOWN-UPTON MANUFACTURING FIRMS,
THEIR PRODUCTS AND EMPLOYMENT^{4/}

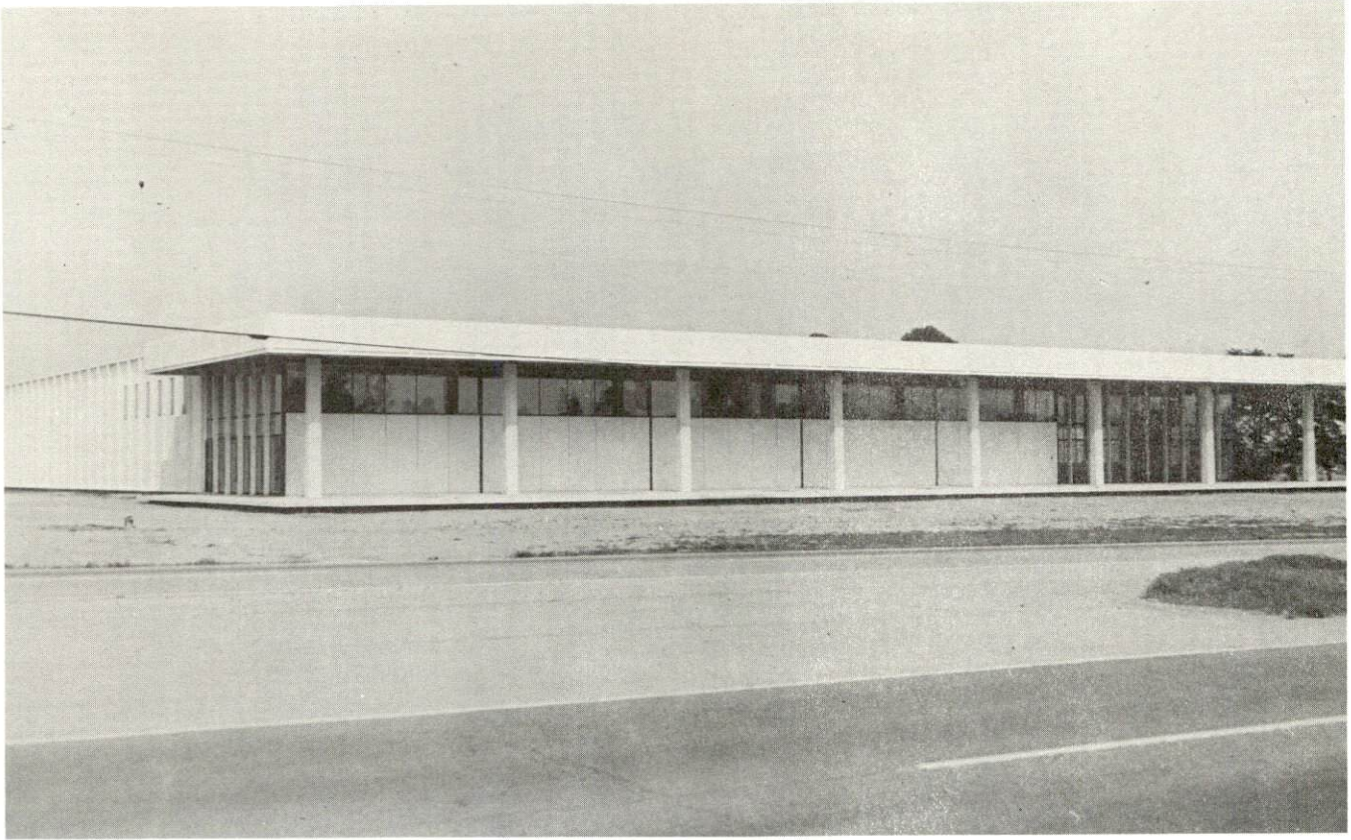
<u>Firm</u>	<u>Product</u>	<u>Employment</u>		
		<u>Total</u>	<u>Male</u>	<u>Female</u>
Armour & Co.	Cheese	26	23	3
Bean Publishing Co., Inc.	Newspaper printing	31	20	11
Coca-Cola Bottling Co.	Soft drinks	135	120	15
Colt Industries	Ceramic, alnico magnetics	421	339	82
Diecks Lumber Co., Inc.	Concrete block	37	35	2
Dow Corning Corp.	Silicone sealants	200		
E-Town Sportwear Corp.	Men's slacks	306	39	267
Elizabethtown Ice Cream Co.	Ice cream, ice	40	28	12
Gates Rubber Co.	Auto V-belts, curved auto hose	469	321	148
Ingraham Industries	Electric mechanical timing devices, motors, electric mechanical program switches, relays & solenoids	225	75	150
Interstate Auto Supply Co.	Rebuilt motors	32	27	5
The Jenkins-Essex Co., Inc.	Wood windows, doors, cabinets	52	44	8
Kent Records, Inc.	Phonograph records	35	10	25
Kentucky Galvanizing Co., Inc.	Steel fabrication, hot dip galvanizing	37	35	2



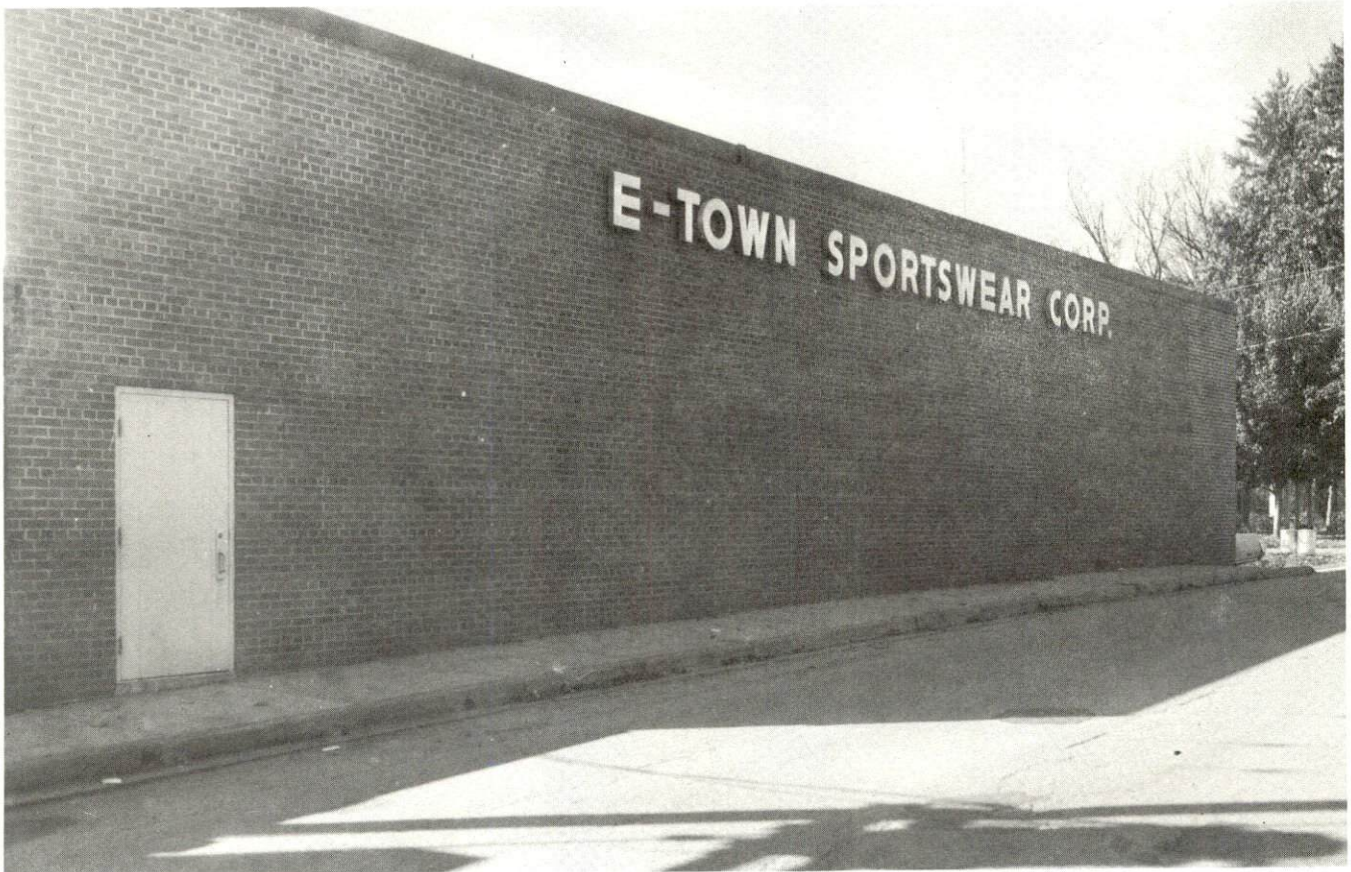
INGRAHAM INDUSTRIES



DOW CORNING CORP.



COCA-COLA BOTTLING CO.



E-TOWN SPORTSWEAR CORP.



GATES RUBBER CO.



COLT INDUSTRIES, CRUCIBLE MAGNETICS DIV.

WAGE RATES FOR SELECTED OCCUPATIONS
ELIZABETHTOWN, KENTUCKY ^{5/}

<u>Classification</u>	<u>Starting</u>	<u>Wages Per Hour</u>	
		<u>Maximum</u>	<u>Prevailing</u>
<u>Production Employees</u>			
Assembler	\$1.60	\$3.15	\$2.08
Inspector	1.60	3.15	2.08
Production Laborer	1.60	2.83	2.21
Welder, Arc or Acetylene (Class-A)	2.80	4.50	3.50
<u>Service Employees</u>			
Electrician (Class-A)	\$2.75	\$4.65	\$3.70
Laborer	2.00	4.08	2.50
Mechanic, Maintenance	2.80	6.00	3.50
Truck Driver, Industrial (Class-A)	1.60	3.56	2.60
<u>Office Employees</u>			
Bookkeeper	\$1.60	\$3.44	\$2.50
File Clerk	1.60	3.00	1.75
Receptionist	1.79	3.25	2.50
Secretary	2.00	3.27	2.43
Typist	1.60	3.27	1.87

LABOR ORGANIZATIONS

<u>Union</u>	<u>Representing workers at:</u>
International Union of Electrical, Radio, and Machine Workers	Colt Industries, Inc., Crucible Magnetics Division
Teamsters	Armour and Company
International Chemical Workers	Dow Corning Corporation
International Union of Electrical, Radio and Machine Workers	Gates Rubber Company
United Rubber, Cork, Linoleum and Plastic Workers of America	Gates Rubber Company
International Union of Electrical, Radio and Machine Workers	Ingraham Industries Division of McGraw Edison
Brewery Workers	Pepsi Cola Company
Amalgamated Clothing Workers	Elizabethtown Sportswear

CURRENT AND FUTURE LABOR SUPPLY -
HARDIN COUNTY LABOR MARKET AREA

Area	Current Labor Supply, 1971 ^{6/}			Future Labor Supply by 1977 (Becoming 18 Years of Age) ^{7/}		
	Total	Male	Female	Total	Male	Female
Labor Market Area	13,386	6,293	7,093	24,763	12,689	12,074
Hardin Co.	2,015	1,059	956	8,562	4,419	4,143
Breckinridge Co.	1,450	688	762	1,867	956	911
Bullitt Co.	886	341	545	3,451	1,751	1,700
Grayson Co.	2,000	1,215	785	2,125	1,085	1,040
Hart Co.	1,202	671	531	1,676	870	806
Larue Co.	2,898	1,201	1,697	1,396	715	681
Meade Co.	1,197	255	942	2,195	1,124	1,071
Nelson Co.	1,738	863	875	3,491	1,769	1,722

TOTAL PERSONAL INCOME^{8/}

Area	1969	1959	% Change
Hardin Co.	\$ 340,409,000	\$ 148,528,000	+129.2
Labor Market Area	578,340,000	271,679,000	+116.1
Kentucky	9,202,000,000	4,655,000,000	+ 97.6

PER CAPITA PERSONAL INCOME^{9/}

Area	1969	1959	% Change
Hardin Co.	\$ 4,280	\$ 2,190	+95.4
Labor Market Area	\$1,780 to 4,280	\$817 to 2,190	N.A.
Kentucky	2,847	1,552	+83.4

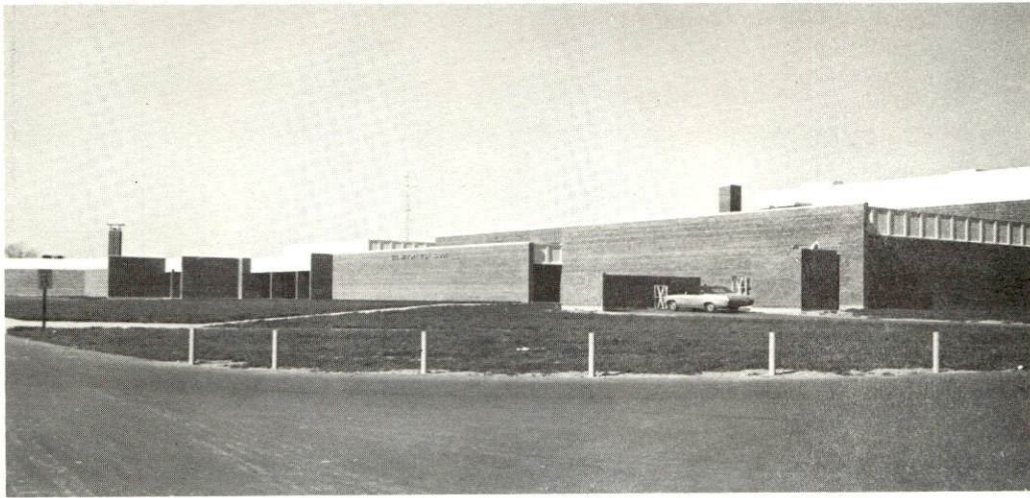
EDUCATION

Public Schools

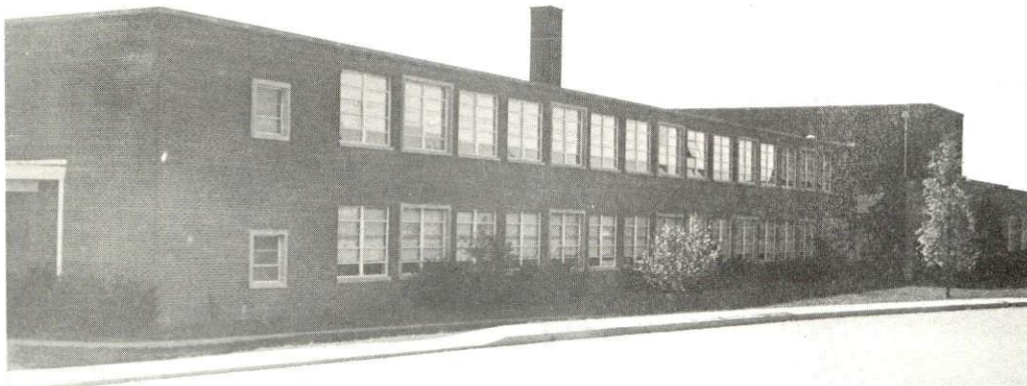
	<u>Elizabethtown</u>	<u>Hardin County</u>
Total Enrollment	2,574	8,913
Elementary	1,647	6,150
High School	927	2,763
Student-Teacher Ratio	26-1	28-1
Elementary	26-1	28-1
High School	27-1	28-1
State Rating of High School	Comprehensive (1)	Comprehensive (3) Standard (1)
Other Accreditations	The Southern Association of Colleges and Schools	
Percent High School Graduates to College	59.3	34.8
Current Expenditures Per Pupil	\$522.29	\$417.53
Bonded Indebtedness, June 30, 1971	\$3,273,000	\$4,175,000

Parochial, Private and Special Schools

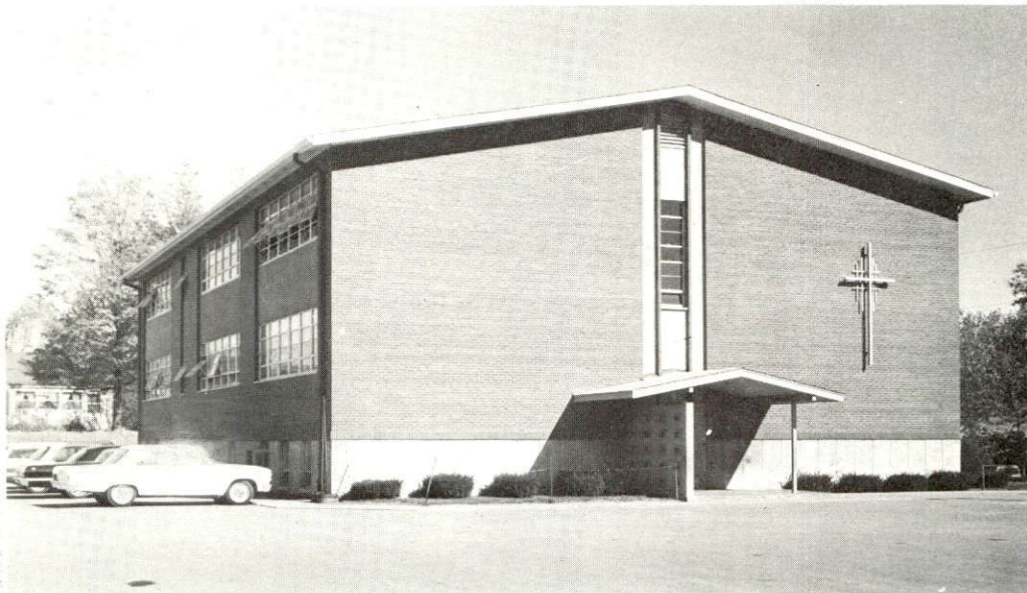
	<u>Private</u>	<u>Parochial</u>	<u>Ungraded</u>
Total Enrollment	4,987	621	21
Elementary	4,158	621	
High School	829		
Student-Teacher Ratio	28-1	27-1	21-1
Elementary	29-1	27-1	
High School	22-1		



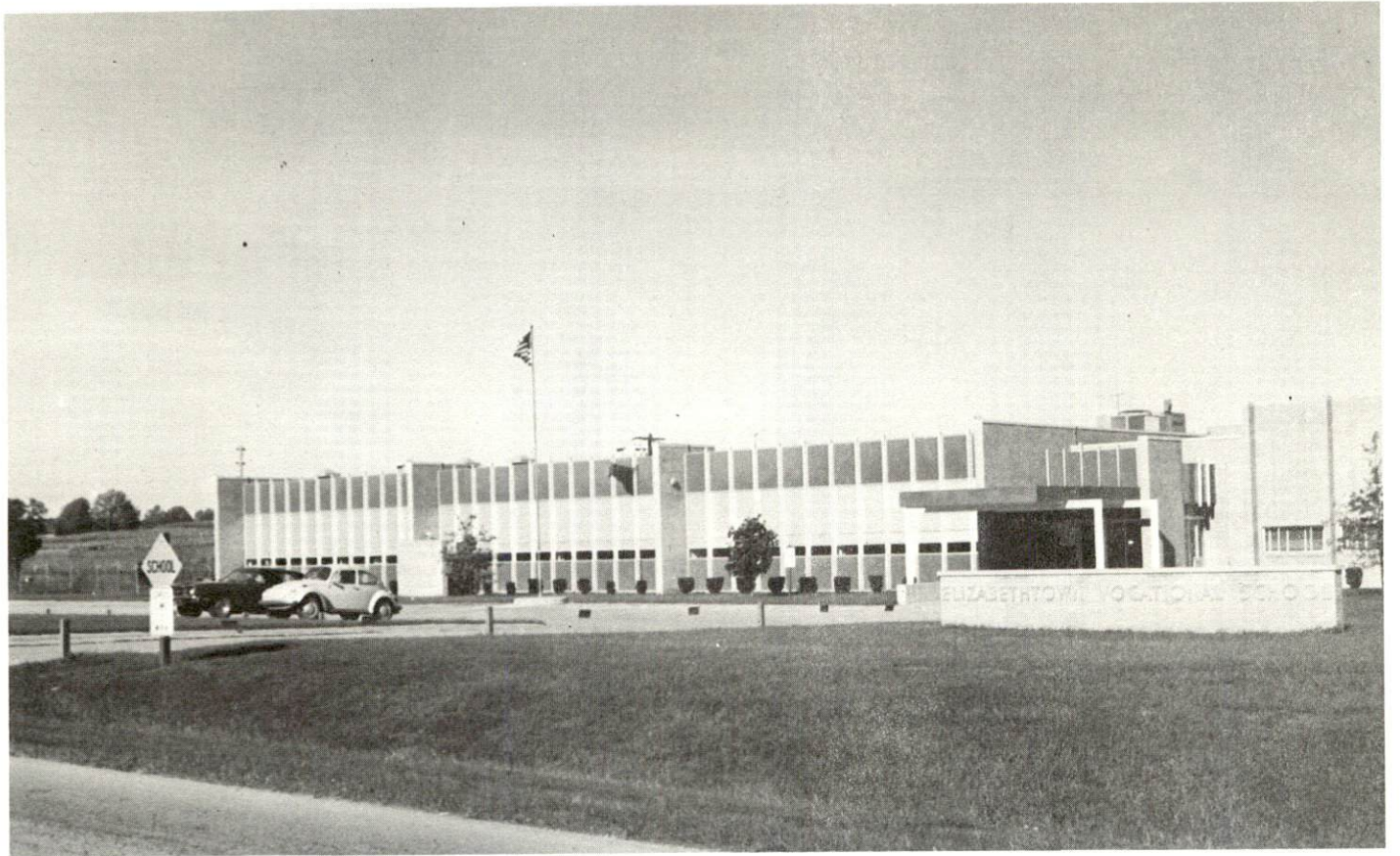
ELIZABETHTOWN
HIGH SCHOOL



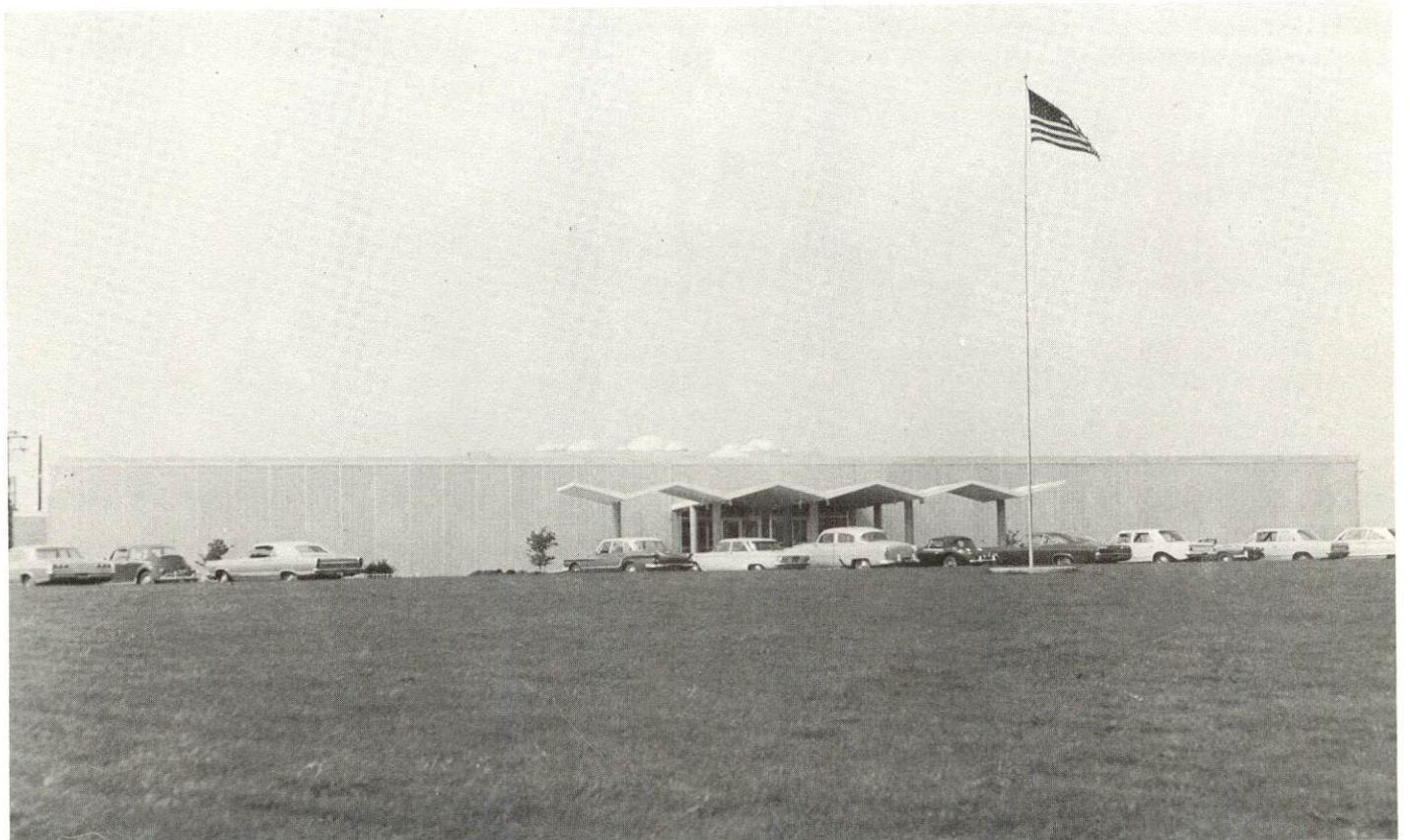
T. K. STONE
JUNIOR HIGH SCHOOL



ST. JAMES
ELEMENTARY
SCHOOL



ELIZABETHTOWN COMMUNITY COLLEGE



ELIZABETHTOWN VOCATIONAL SCHOOL

Vocational Schools

	<u>Nearest Area School</u>	<u>Nearest Extension Center</u>
Location	Jefferson County	Elizabethtown
Miles Distant	Louisville, Kentucky	
Curriculum	40 miles	
	Data Processing	Appliance Repair
	General Clerical	Auto Mechanics
	Secretarial-Steno	Carpentry
	Mechanics	Drafting
	Horticulture	Electricity, Welding
	Dental Assistant	
	Practical Nursing	
	Distributive Education	
	Electronics (Communications)	
	Air Conditioning & Refrigeration	
	Appliance Repair	
	Auto Body	
	Auto Mechanics	
	Commercial Foods	
	Drafting, Welding	
	Machine Shop	
	Office Machine Repair	
	Printing	
	Radio & TV Repair	

Colleges and Universities

<u>Name</u>	<u>Area - Within 50 Miles</u>		<u>Highest Degree Conferred</u>
	<u>Location</u>	<u>Enrollment</u>	
Elizabethtown Community College	Elizabethtown	679	Associate
Fort Knox Community College	Fort Knox	767	Associate
Lindsey Wilson College	Columbia	324	Associate
Campbellsville College	Campbellsville	859	Baccalaureate
St. Catharine Academy	St. Catharine	141	Associate
Jefferson Community College	Louisville	4,025	Associate
Bellarmino College	Louisville	1,655	Baccalaureate
Spalding College	Louisville	1,067	Masters
University of Louisville	Louisville	10,468	Ph.D., D.M.D. J.D., M.D.

TRANSPORTATION

Rail

Lines serving Elizabethtown - Illinois Central Railroad and Louisville & Nashville Railroad

Services - Freight, switching, siding, REA Express

Line serving Upton - Louisville & Nashville Railroad

Services - Freight, siding

RAILWAY TRANSIT TIME FROM ELIZABETHTOWN, KENTUCKY, TO: 10/

City	No. of Days		City	No. of Days	
	CL			CL	
Atlanta, Ga.	2		Los Angeles, Calif.	4	
Birmingham, Ala.	2		Louisville, Ky.	1	
Chicago, Ill.	3		Nashville, Tenn.	1	
Cincinnati, Ohio	2		New Orleans, La.	3	
Cleveland, Ohio	3		New York, N. Y.	5	
Detroit, Mich.	4		Pittsburgh, Pa.	4	
Knoxville, Tenn.	3		St. Louis, Mo.	2	

Truck Service

Company

Home Office

Associated Transport, Inc.	New York, New York
Best Way Express, Inc.	Nashville, Tennessee
Bowling Green Express, Inc.	Bowling Green, Kentucky
Central Motor Express, Inc.	Campbellsville, Kentucky
Crutcher Transfer Line, Inc.	Louisville, Kentucky
Dixie Ohio Express, Inc.	Akron, Ohio
Leitchfield Transfer	Leitchfield, Kentucky
McLean Trucking Co.	Winston-Salem, North Carolina
Southern Forwarding Co.	Memphis, Tennessee
Terminal Transport Co., Inc.	Atlanta, Georgia
Turner Expediting Service (Restricted)	Louisville, Kentucky
Wilson Freight Co. (Restricted S-B)	Cincinnati, Ohio
United Parcel Service	Louisville, Kentucky

HIGHWAY MILES AND TRUCK TRANSIT TIME IN DAYS FROM
ELIZABETHTOWN, KENTUCKY, TO SELECTED MARKET CENTERS

City	Highway Miles	Delivery Time <u>11</u> / LTL TL		City	Highway Miles	Delivery Time LTL TL	
		Atlanta, Ga.	359			2	1
Birmingham, Ala.	315	2	1	Louisville, Ky.	40	1	1
Chicago, Ill.	338	3	2	Nashville, Tenn.	128	1	1
Cincinnati, Ohio	150	1	1	New Orleans, La.	658	3	2
Cleveland, Ohio	391	2	2	New York, N. Y.	804	3	2
Detroit, Mich.	407	3	2	Pittsburgh, Pa.	435	3	2
Knoxville, Tenn.	296	2	1	St. Louis, Mo.	304	3	2

Air

	<u>Local</u>	<u>Nearest Commercial</u>
Location:	Elizabethtown-Hardin County Airport 4 miles north of Elizabethtown	Standiford Field
Runways:	1 paved	3 paved
Length:	2,800 ft.	5,000 ft. ; 7,250 ft. ; 7,800 ft.
Traffic Control:	Wind tee and wind sock	Control tower, approach and ground control, radar, guards, departure control
Lighting:	Sundown to sunrise	Runways, obstructions, beacon and approach lights, center line on runways
Services:	80, 100, 130 octane; flight instructions; transportation avail- able; restaurant across highway from field; charter; lodging by reservation	Air Board; 80, 100, 115 jet fuel; storage; major A & E repairs; Hertz and Avis National rent-a-car service; restaurant; taxi and city bus service; TWA, American, Eastern, Delta, Piedmont, Ozark and Allegheny Airlines

Bus

Elizabethtown - Greyhound Bus Lines, Kentucky Bus Lines, Trailways

Upton - Greyhound Bus Lines

Taxi

Elizabethtown - One company, 24-hour service

Rental Services

Car and truck rentals

POWER AND FUEL

Electricity

Company serving Elizabethtown and Upton - Kentucky Utilities Company

Source of power - Kentucky Utilities Company

Total generating capacity - 1,215,000 KW

Industrial rates furnished by - Kentucky Utilities Company,
Lexington, Kentucky

Company serving Hardin County - Nolin RECC

Source of power - East Kentucky Power Cooperative

Total generating capacity - 548,000 KW

Industrial rates furnished by - Nolin RECC, Elizabethtown, Kentucky

Natural Gas

Company serving Elizabethtown - Elizabethtown Water and Gas Company

Source of supply - Texas Gas Transmission Corporation

Size of transmission lines - 30-inch

Distribution lines - 8, 6, 4, and 2 inches

Btu content - 1,000

Specific gravity - .60

Distribution pressure - 25 to 30 psi

Rates:

HIGH LOAD FACTOR RATE SCHEDULE

First	20,000 cu. ft.	\$.90 per M cu. ft. used per month
Next	80,000 cu. ft.	.75 per M cu. ft. used per month
Next	400,000 cu. ft.	.65 per M cu. ft. used per month
Over	500,000 cu. ft.	.55 per M cu. ft. used per month

INTERRUPTIBLE GAS RATE SCHEDULE - Negotiated

Upton - Natural gas service is not available. Manufactured gas is supplied to Upton by five distributors.

WATER AND SEWERAGE

Water

Company serving Elizabethtown - Elizabethtown Water and Gas Company

Source - Two springs and two wells

Treatment plant capacity - 2,500,000 gpd*

Average daily consumption - 2,000,000 gallons

Peak daily consumption - 2,900,000 gallons

Type treatment - Flocculation, chlorination, filtering, and fluoridation

Storage capacity - 1,856,000 gallons

Size mains - 14, 12, 10, 8, 6, and 4 inches

Average pressure - 60 to 80 psi

Average temperature - 65° F.

MONTHLY WATER RATES FOR WHOLESALE AND INDUSTRIAL CONSUMERS

First	2,000 gallons	\$2.70 (Minimum)
Next	3,000 gallons	1.10 per M gallons
Next	5,000 gallons	.95 per M gallons
Next	5,000 gallons	.85 per M gallons
Next	10,000 gallons	.75 per M gallons
Next	10,000 gallons	.60 per M gallons
Next	20,000 gallons	.40 per M gallons
All over	55,000 gallons	.30 per M gallons

Company serving Upton - Upton Water Company

Source - Two deep wells

Treatment plant capacity - 450,000 gpd

Average daily consumption - 25,000 gallons

Peak daily consumption - 50,000 gallons

Type treatment - Softeners and chlorination

Storage capacity - 76,000 gallons

Size mains - 8, 6, 4, and 2 inches

Average pressure - 90 psi

Average temperature - 50 to 60° F.

* A new 3,000,000 gpd water treatment plant will be operational in the Fall of 1971.

MONTHLY WATER RATES FOR WHOLESALE
AND INDUSTRIAL CONSUMERS

First	4,000 gallons	\$7.00
Next	11,000 gallons	.80 per M gallons
Next	35,000 gallons	.70 per M gallons
Next	50,000 gallons	.60 per M gallons
All over first	100,000 gallons	.50 per M gallons

Name of water district - Hardin County Water District # 1
 Date when water district began operating - 1954
 Source of raw water - Spring fed impoundments - Saunders Springs Plant
 Deep wells - Muldraugh Plant
 Capacity of treatment plant - Saunders Springs Plant - 1,000,000 gpd;
 Muldraugh Plant - 2,000,000 gpd
 Type of treatment - Complete
 Average amount of water used in a 24-hour period - 1,200,000 gallons
 Peak amount of water used in a 24-hour period - 1,700,000 gallons
 Water district storage facilities and capacities:

Standpipes - 460,000 gallons
 Elevated tank - 80,000 gallons
 Ground storage - 350,000 gallons

Average pressure - 50 psi
 Average temperature - 70°
 Size mains - 2 to 14 inches; distribution mostly 6 and 8 inches;
 transmission 12 and 14 inches
 Rates:

Billing rate, 2-inch commercial meter
 Minimum rate entitles customer to 120,000 gallons
 of water per month - \$60
 First 120,000 gallons \$.50 per M gallons
 All over 120,000 gallons .40 per M gallons

Name of water district - Hardin County Water District # 2
 Area served - Hardin County
 Date when water district began operating - May 1, 1969
 Source of supply of treated water - Hardin County Water District # 1
 Amount of water which can be purchased in a 24-hour period - 1,000,000
 gallons

Average amount of water used in a 24-hour period - 350,000 gallons
Peak amount of water used in a 24-hour period - 600,000 gallons
Water district storage facilities and capacities:

Elevated tank - 90,000
Standpipe - 100,000
Elevated tank - 100,000

Average pressure - 110 psi
Size mains - 4, 6, and 8 inches

MONTHLY WATER RATES FOR WHOLESALE
AND INDUSTRIAL CONSUMERS

Minimum rate		\$5.60 (First 2,000 gallons)
Next	2,000 gallons	1.50 per M gallons
Next	6,000 gallons	.80 per M gallons
Next	30,000 gallons	.70 per M gallons
Next	60,000 gallons	.60 per M gallons
All over	100,000 gallons	.50 per M gallons

Surface water sources - Ohio, Salt and Rolling Fork Rivers
Average discharge - Ohio - unlimited Rolling Fork near Boston
1,642 cfs (31-years, USGS); Salt River at Shepherdsville 1,468 cfs
(31-years, USGS)
Expected ground water yield - Varies widely from 5 to 1,000 gpm
depending on locale, large springs are common

Sewerage

Company serving Elizabethtown - Elizabethtown Water and Gas Company
Design capacity - 1,100,000 gpd plus an 8-acre lagoon*
Average daily flow - 2,500,000 gallons
Treatment - Primary and secondary
Type treatment - Trickling filter, digesters, dry beds
Treated effluent discharged into - Valley Creek
Size of sanitary mains - 16, 12, 10, 8, and 6 inches
Rates - 33 1/3 percent of monthly water bill

Upton - Septic tanks are used for sewage disposal in Upton.

* A new 1,000,000 gpd sewage treatment plant will be operational in the
Fall of 1971.

LOCAL GOVERNMENT

City

Elizabethtown

Structure - Mayor - 4-year term; 6 councilmen - 2-year terms
 Budget 1971 - General Fund - \$625,800; Water and Sewer Fund - \$153,000; Gas Fund - \$210,000
 Fees and licenses - Occupational tax .8 of 1 percent of gross salaries with a minimum of \$25 per year

Upton

Structure - Mayor - 2-year term; 4 councilmen - 2-year terms
 Budget 1970 - General Fund \$2,289; Water and Sewer Fund \$14,035
 Fees and licenses - Business licenses \$25 per year

County

Structure - County Judge - 4-year term; 8 magistrates - 4-year terms
 Budget 1971-72 - General Fund \$371,814; Road Fund \$277,391

Assessed Value of Property, 1971

<u>Classes of Property *</u>	<u>Elizabethtown</u>	<u>Upton</u>	<u>Hardin County</u>
Real Estate & Tangibles		\$1,035,759	
Real Estate	\$79,160,565		\$229,418,416
Tangibles	16,802,592		43,510,484
Public Service			27,283,793 (1969)

Local General Property Tax Rates Per \$100 of Assessed Valuation, 1971 ^{12/}

<u>Taxing Unit**</u>	<u>Elizabethtown</u>	<u>Upton</u>	<u>Hardin County</u>
State	\$.015	\$.015	\$.015
County	.194	.194	.194
School	.649	.407	.407
City	.220	.160	
Total	\$ 1.078	\$.776	\$.616

*Property assessed at 100 percent of fair value.

**Manufacturing machinery, raw materials inventories and goods in process inventories are not subject to local tax. State rate is only \$0.15 per \$100.

Utilities Gross Receipts Tax for Schools

Hardin County levies a 3 percent tax on utilities receipts for schools. This tax is paid by all consumers of utilities. Exempted are receipts from utilities services that are resold and the receipts from the sale of energy or energy producing fuels that exceed 3 percent of the cost of production in manufacturing, processing, mining or refining.

Planning and Zoning

Agency - Elizabethtown Planning and Zoning Commission
Plans completed - Comprehensive Plan, Housing Study
Codes adopted - Building Code, Housing Code, Plumbing Code, Electric Code, Fire Code, Gas Code

Safety

<u>Police</u>	<u>Elizabethtown</u>	<u>Upton</u>	<u>Hardin County</u>
Total staff	19	*	5
Radio-patrol cars	14		4

*Three State Policemen reside in Upton.

Fire

American Insurance Association			
Fire Rating	6	N. A.	
Full-time staff	11		1
Volunteers	15	25	16
Equipment:			
1,000-gpm pumper	1		
750-gpm pumps	2	1	
500-gpm pumps	1		1
100-gpm pumps			4
ladder truck			2
utility truck	1		
Other	Reserve tank truck	Reserve tank truck 1 jeep	2 Jeeps automobile

Rescue Service

Hardin County Rescue Squad:
Number of volunteers - 16 (part of county fire department)
Equipment - Standard rescue equipment, 1 van
Personnel training - Scuba diving, Civil Defense, first aid

Sanitation

	<u>Elizabethtown</u>	<u>Upton</u>	<u>Hardin County*</u>
Type service	Private	Private	Private
Cost			
residential	35¢ per pickup	\$2 per mo.	\$2 per mo.
business	\$2 per mo.	\$3 per mo.	\$3 per mo.
Collection frequency			
residential	Weekly	Weekly	Weekly
business	As needed	Weekly	Weekly
Trash pickup	As needed	Weekly	Weekly
Disposal method	Land fill	Land fill	Land fill

* The county also provides a free sanitation service. Residents may dispose of refuse at collection points which are located throughout the county. The county provides pickup service at these points.

HEALTH

Hospitals

<u>General Hospital</u>	<u>Location</u>	<u>Beds</u>
Hardin Memorial Hospital	Elizabethtown	159

General hospital facilities and services - 3 operating rooms, fracture room, cysto room, X-ray room, intensive care, laboratory, pharmacy, emergency room, eye surgery, pediatrics, inhalation therapy, delivery room, nursery, blood bank, ambulance service

Medical staff - 30 doctors, 56 registered nurses, 26 graduate licensed practical nurses, pathologist, radiologist

Nursing Homes

	<u>Number</u>	<u>Beds</u>
Extended care homes	2	144
Personal care homes	3	115

Public Health

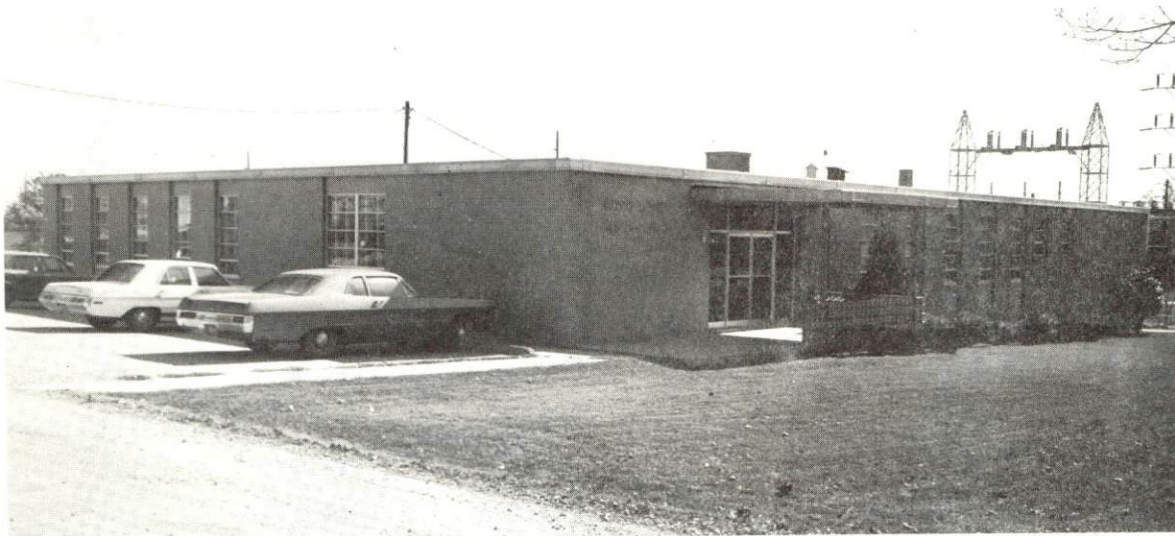
Facility - Hardin County Health Center

Staff - 1 administrative assistant, 5 nurses, 3 sanitarians, 3 clerk-typists, 1 custodian, 1 health officer, dental hygienist, dental auxiliary worker

Budget 1971-72 - \$141,048



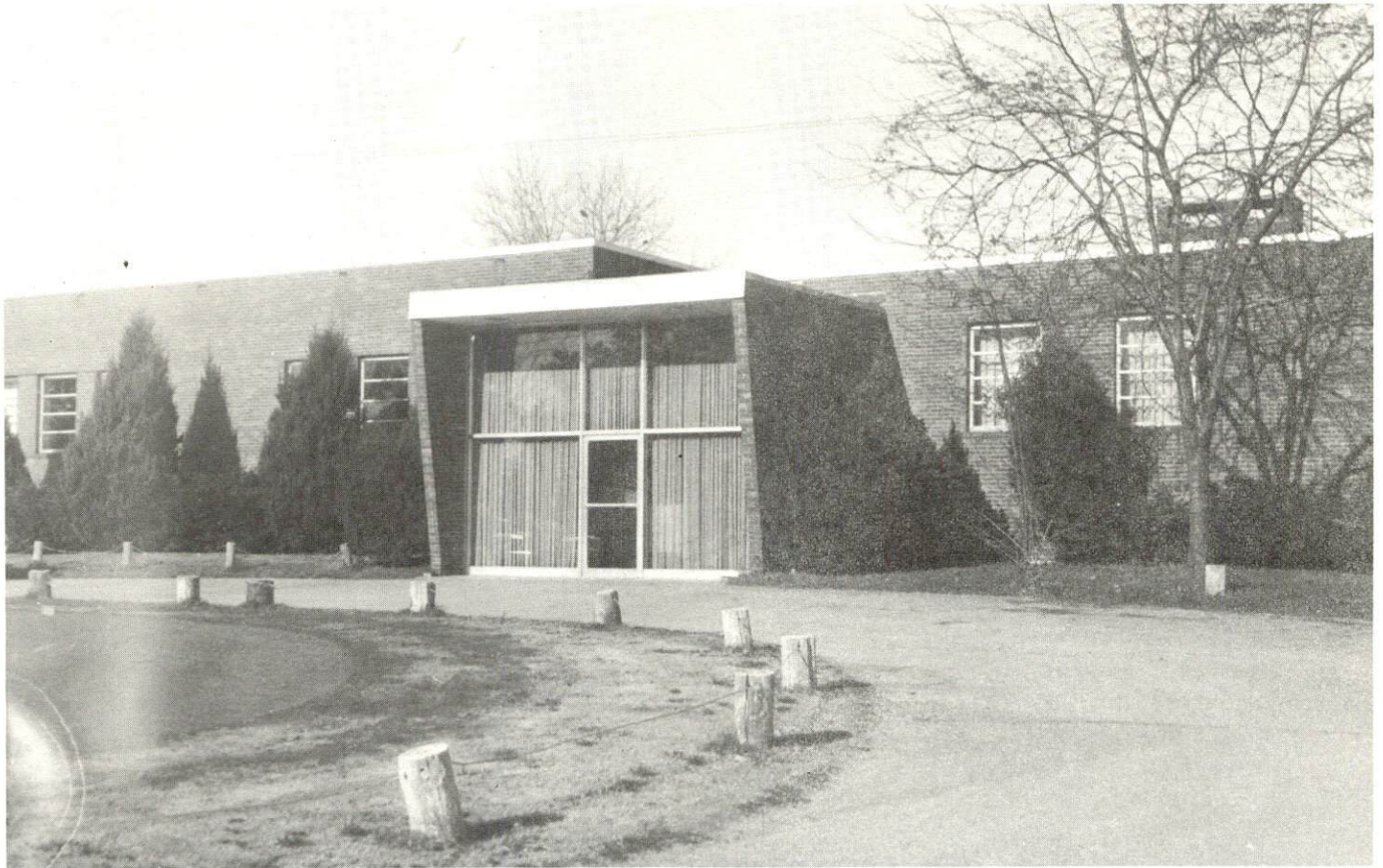
HARDIN
MEMORIAL
HOSPITAL



HARDIN
COUNTY
HEALTH
DEPT.



REGIONAL
HEARING
CENTER



ELIZABETHTOWN COUNTRY CLUB



SHELTERED WORKSHOP

OTHER LOCAL FACILITIES

Communications

Telephone - Elizabethtown and Upton - General Telephone Company
Services - Standard

Telegraph - Elizabethtown and Upton - Western Union Telegraph
Company
Services - Telephone and messenger

Postal -	<u>Elizabethtown</u>	<u>Upton</u>
Class U. S. Post Office	1	3
Mail received -	15	2
Mail dispatched -	14	2
 Newspapers -		
Semiweekly - Hardin Co. Enterprise; Elizabethtown News		
Circulation	8,500	8,700
Other papers		
received from - Louisville, Kentucky;		Elizabethtown
Nashville, Tennessee		and Louis- ville, Kentucky; Nashville, Tennessee
 Radio -		
Stations received	WIEL-AM; WQXE-FM	
from -	Louisville and Radcliff, Kentucky	Elizabethtown and Munford- ville, Kentucky
 Television -		
Cable Service		
Reception from -	Louisville, Bowling Green, and Lexington, Kentucky; Nashville, Tennessee; Evansville, Indiana	Louisville and Bowling Green, Kentucky; Evansville, Indiana; Nashville, Tennessee
 Kentucky Educa-		
tional Television -	Elizabethtown transmitter Channel 23	Elizabethtown transmitter Channel 23

Library Services

Public Library - Hardin County Free Public Library (Oxbow Regional System), Elizabethtown
Size collection - 42,888 volumes
Circulation, 1970-71 - 122,715 volumes plus 6,630 non-book material
Services - Bookmobile, children's story hour, records, pictures, tapes, library building is available for community programs

Public Library - Elizabethtown Community College Media Center
Size collection - 19,050 volumes
Circulation, 1970-71 - 8,658 volumes
Services - Magazines, films, art, records, record players, projector, pamphlets, newspapers, microfilm, video tape

Private Library - Brown Pusey (Elizabethtown)
Size collection - 2,000 volumes
Special collections - Historical

Religious Institutions

	<u>Elizabethtown</u>	<u>Upton</u>
Number of churches	18	3
Denominations	Baptist	Baptist (2)
	Methodist	Methodist
	Catholic	
	Christian	
	Church of Christ	
	Church of God	
	Episcopal	
	Lutheran	
	Nazarene	
	Pentecostal	
	Seventh Day Adventist	
	Presbyterian	

Financial Institutions

	<u>Statement as of June 30, 1971</u>	
<u>Banks</u>	<u>Assets</u>	<u>Deposits</u>
Citizens Bank of Elizabethtown	\$15,237,201	\$13,298,763
First Hardin National Bank (Elizabethtown)	40,993,419	36,247,084
Bank of Sonora	1,166,800	1,004,774
The Cecilian Bank	6,615,980	5,625,910

Savings and Loan Associations

Assets

Shared Accounts

The First Federal Savings
& Loan Association of
Elizabethtown

\$38,680,975

\$34,032,679

Hotels and Motels

Number

Units

17

744

Clubs and Organizations

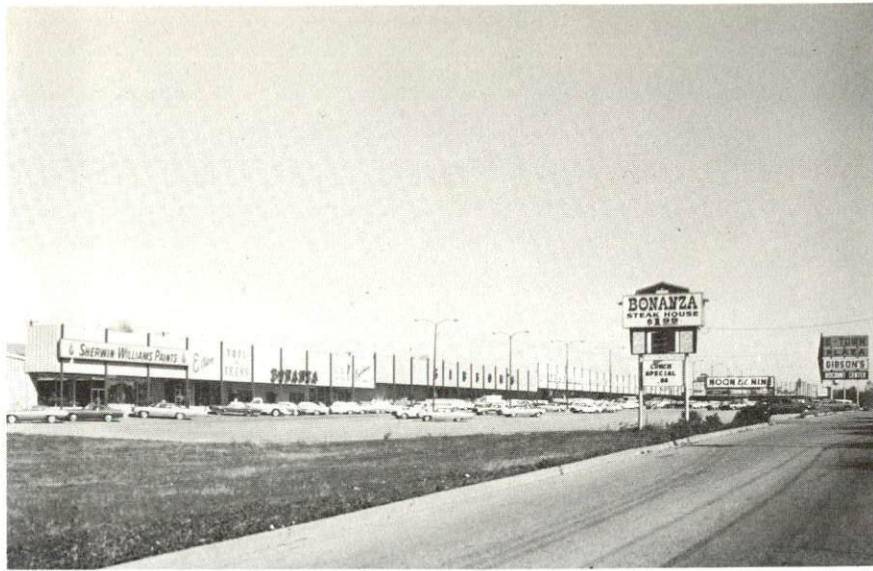
Elizabethtown - Upton

Business and Civic - Chamber of Commerce, Jaycees, Lions, Rotary,
Optimist, Civitan, Civic Club Council, Upton Industrial Land
Development, PTA

Fraternal - Knights of Columbus, Moose, American Legion, Masonic
Lodge, Modern Woodsmen, Shrine Club

Women's - Homemakers, Junior Woman's Club, Younger Woman's
Club, Woman's Club, Business and Professional Women's Club,
Eastern Star, DAR, League of Women Voters, Jaycettes, American
Legion Auxiliary

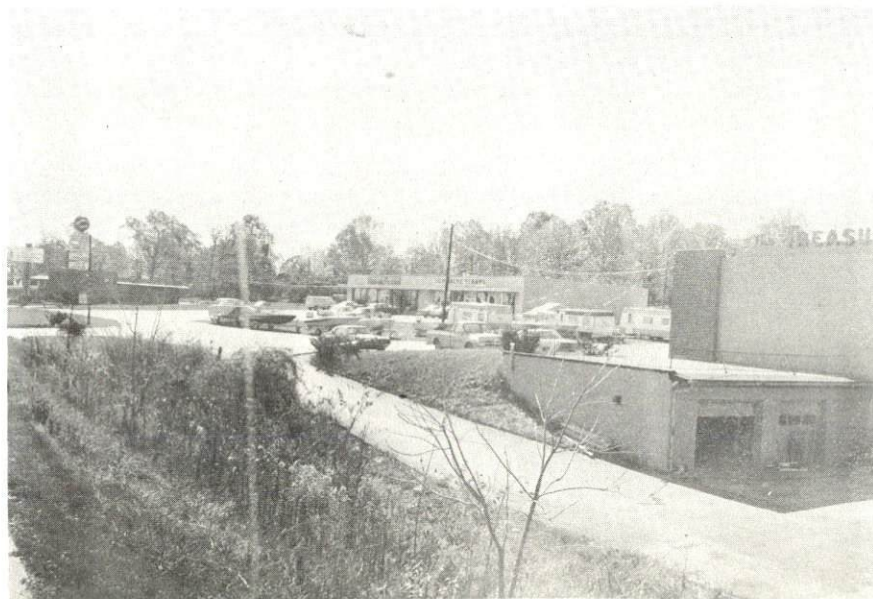
Youth - 4-H, FFA, FHA, Boy Scouts, Girl Scouts, Junior Achievement



E-TOWN PLAZA



HARDIN PLAZA



HELMWOOD PLAZA



HELMWOOD CENTER

RECREATION

Local

	<u>Elizabethtown</u>	<u>Upton</u>
Public Recreation Facilities	Yes	
Supervised program -	3	(3-acre park planned)
Playgrounds -	4	1
Swimming pool -	1	
Golf course -	1 par 3	
Tennis courts -	10	
Baseball diamonds -	3	1
Football field -	1	
Other -	driving range, 6 hand ball courts	Twilight Riding Club
Private Recreation Facilities		
Country club -	1	
Golf course -	1 (18-hole)	
Swimming pool -	1	
Movie theaters -	1 indoor, 1 drive-in	
Bowling lanes -	16 lanes	
Other -	4 tennis courts, practice putting green, driving range, Sportsman's Lake	Billiards
Tourist Attractions		
Brown-Pusey Community House		
The Patton Museum		
Lincoln Heritage House		
U. S. Gold Depository		
Severns Valley Baptist Church		

Area (Within 30 miles)

Rough River Dam State Resort Park
 Nolin Reservoir & Dam
 Abraham Lincoln Birthplace National Historic Site
 My Old Kentucky Home State Park
 Bernheim Forest

AGRICULTURE - NATURAL RESOURCES - CLIMATE

Agriculture 13/

	<u>Hardin County</u>	<u>Labor Market Area</u>
Total land area (acres)	394,240	2,188,160
Percent of area in farm land	66.0	74.0
Number of farms	2,033	12,127
Average size of farms (acres)	128.0	133.4
1964 value of all farm products	\$8,381,057	\$52,043,356
Value per farm	4,123	4,292
Total crop sales	3,237,638	24,211,484
Total livestock & livestock products	5,138,596	27,722,446
1968 agricultural production included:		
Burley tobacco (lbs.)	3,863,000	32,553,000
Corn (bu.)	1,461,000	6,352,000
Cattle and calves (number)	51,900	322,700
Hogs and pigs (number)	29,600	161,700
Milk production (1967) (lbs.)	42,160,000	280,380,000

Natural Resources

Principal mineral resources	Limestone
Other mineral resources	Petroleum, natural gas, rock asphalt, glass, sand and gravel, some clay
Acres of commercial forest land	149,300
Most abundant tree species	White oak, red oak, ash, hickory, yellow poplar, beech, hard maple, yellow pine

Climate 14/

Hardin County

Temperature	
Annual mean (30-year record)	55.6 degrees
Average annual 1970	54.5 degrees
Record highest July, 1966* (7-year record)	98.0 degrees
Record lowest January, 1966* (7-year record)	-10.0 degrees
Seasonal heating degree-days (30-year record)	4,683
Precipitation	
Mean annual total (30-year record)	44.73 inches
Mean annual snow and sleet (25-year record)	16.0 inches
Total precipitation 1969	39.50 inches
Mean number days precipitation (26-year record) (.01 inches or more)	129
Average number days thunderstorms (26-year record)	47
Prevailing winds (17-year record)	South

*Also on earlier dates, months or years.

HISTORY

Hardin County lies in the northcentral area of the state, its northern tip extending to the Ohio River. Rolling Fork of Salt River flows along its northeastern boundary, Rough River forms a part of the southwestern border, and Nolin River meanders through the southern portion of the county. The county's 616 square miles of territory is hilly in the north, rolling in the eastern and southern sections, and fairly level in the central area. The soil ranges from thin in the north to fertile in the south.

The first settlers who came to Hardin County included John Severns, after whom the valley in which Elizabethtown is located was first known, and Captain Thomas Helm, Colonel Andrew Hynes, and Samuel Haycraft. They chose the present site of Elizabethtown in 1780 and built three block-houses in a triangle about a mile apart. Also among these early settlers was Christopher Bush, whose daughter Sarah became the stepmother of Abraham Lincoln. The second oldest Baptist church in the state was built here in 1781.

Hardin became Kentucky's fifteenth county in 1792 and was named for Colonel John Hardin of Virginia, a Revolutionary War hero who came to Kentucky and fought in the Indian Wars. The first brick house in the county was built by Ben Helm and the first courthouse constructed in 1804. The first newspaper, The Western Intelligencer, was established in 1826.

Elizabethtown, the county seat, was built on land donated by Colonel Andrew Hynes and was named for his wife, Elizabeth. Now an important trade and industrial center, Elizabethtown had a 1970 population of 11,748. Elizabethtown Community College, a two-year institution in the University of Kentucky system, has an enrollment of over 600.

Radcliff, to the north, had a population of 7,881 in 1970, Vine Grove 2,987, and West Point, on the Ohio, had 1,741. Also in Hardin County is Fort Knox, depository for the nation's gold supply and a major army post.

Hardin County's population was 3,653 in 1800, and it has grown steadily and then rapidly since 1940. In 1950 the total had reached 50,312, by 1960 it was 67,789, and in 1970 it was 78,421.

Agriculture accounted for 1,300 of the county's 17,900 in 1969, with burley tobacco, corn, cattle, hogs, and milk the principal products. Over 1,800 manufacturing jobs were added in the 1960's, for a total of 2,487 in 1969. The greatest production was in machinery and metal products, chemical and rubber products, and apparel. Largest of the county's firms are: Crucible Magnetic Division of Colt Industries, Gates Rubber Company, which makes auto V-belts, E-Town Sportswear Company, and Ingraham Industries, which makes electrical devices.

Transportation access to Hardin County is excellent, with Interstate 65, the Blue Grass Parkway, and the Western Kentucky Parkway converging at Elizabethtown.

Among the many noted citizens of Hardin County was Thomas Lincoln, who lived for a while at Elizabethtown. Lincoln and his son, Abraham, later lived at Knob Creek, then a part of Hardin County. President James Buchanan also lived for a time at Elizabethtown. John L. Helm was Governor of Kentucky twice, and John Young Brown was also elected Governor. Duff Green, a member of President Andrew Jackson's "Kitchen Cabinet," lived in Hardin County, as did General George Custer during the time in which he wrote My Life On The Plains.

SOURCES OF INFORMATION

- 1/ U. S. Department of Commerce, Bureau of the Census, Census of Population, 1950, 1960, 1970.
- 2/ Kentucky Department of Economic Security, Division of Research and Statistics.
- 3/ Kentucky Department of Economic Security, Number of Workers in Manufacturing Industries Covered by Kentucky Unemployment Insurance Law Classified by Industry and County, September 1970-1960.
- 4/ Kentucky Department of Commerce, 1972 Kentucky Directory of Manufacturers.
- 5/ Kentucky Department of Economic Security, Division of Employment Services, Elizabethtown Office.
- 6/ Kentucky Department of Economic Security, Kentucky Labor Supply Estimates by County, January 1971.
- 7/ Kentucky Department of Commerce, Future Labor Supply by 1977.
- 8/ University of Kentucky, Office of Development Services and Business Research, Total Personal Income for Kentucky.
- 9/ University of Kentucky, Office of Development Services and Business Research, Per Capita Income in Kentucky.
- 10/ The Louisville & Nashville Railroad Company.
- 11/ Dixie Ohio Express, Inc., Akron, Ohio.
- 12/ Kentucky Department of Revenue.
- 13/ U. S. Department of Commerce, Bureau of the Census, Census of Agriculture, 1964. U. S. Department of Agriculture and Kentucky Department of Agriculture, Kentucky Agricultural Statistics, 1969.
- 14/ U. S. Department of Commerce, Environmental Science Services Administration, Climatological Data, 1970.

All other information was obtained from governmental offices, local businesses and organizations.