

1986

# Industrial Resources: Harrison County - Cynthiana

Kentucky Library Research Collection  
Western Kentucky University, [spcol@wku.edu](mailto:spcol@wku.edu)

Follow this and additional works at: [https://digitalcommons.wku.edu/harrison\\_cty](https://digitalcommons.wku.edu/harrison_cty)

 Part of the [Business Administration, Management, and Operations Commons](#), [Growth and Development Commons](#), and the [Infrastructure Commons](#)

---

## Recommended Citation

Kentucky Library Research Collection, "Industrial Resources: Harrison County - Cynthiana" (1986). *Harrison County*. Paper 7.  
[https://digitalcommons.wku.edu/harrison\\_cty/7](https://digitalcommons.wku.edu/harrison_cty/7)

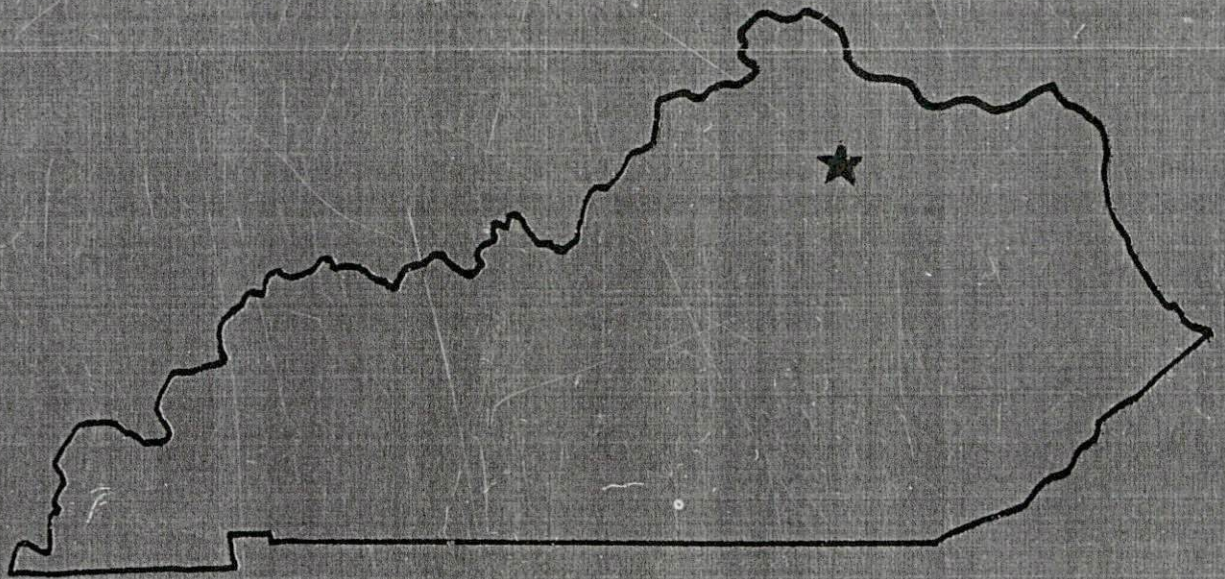
This Report is brought to you for free and open access by TopSCHOLAR®. It has been accepted for inclusion in Harrison County by an authorized administrator of TopSCHOLAR®. For more information, please contact [topscholar@wku.edu](mailto:topscholar@wku.edu).



**RESOURCES FOR ECONOMIC DEVELOPMENT**

---

# Cynthiana



---

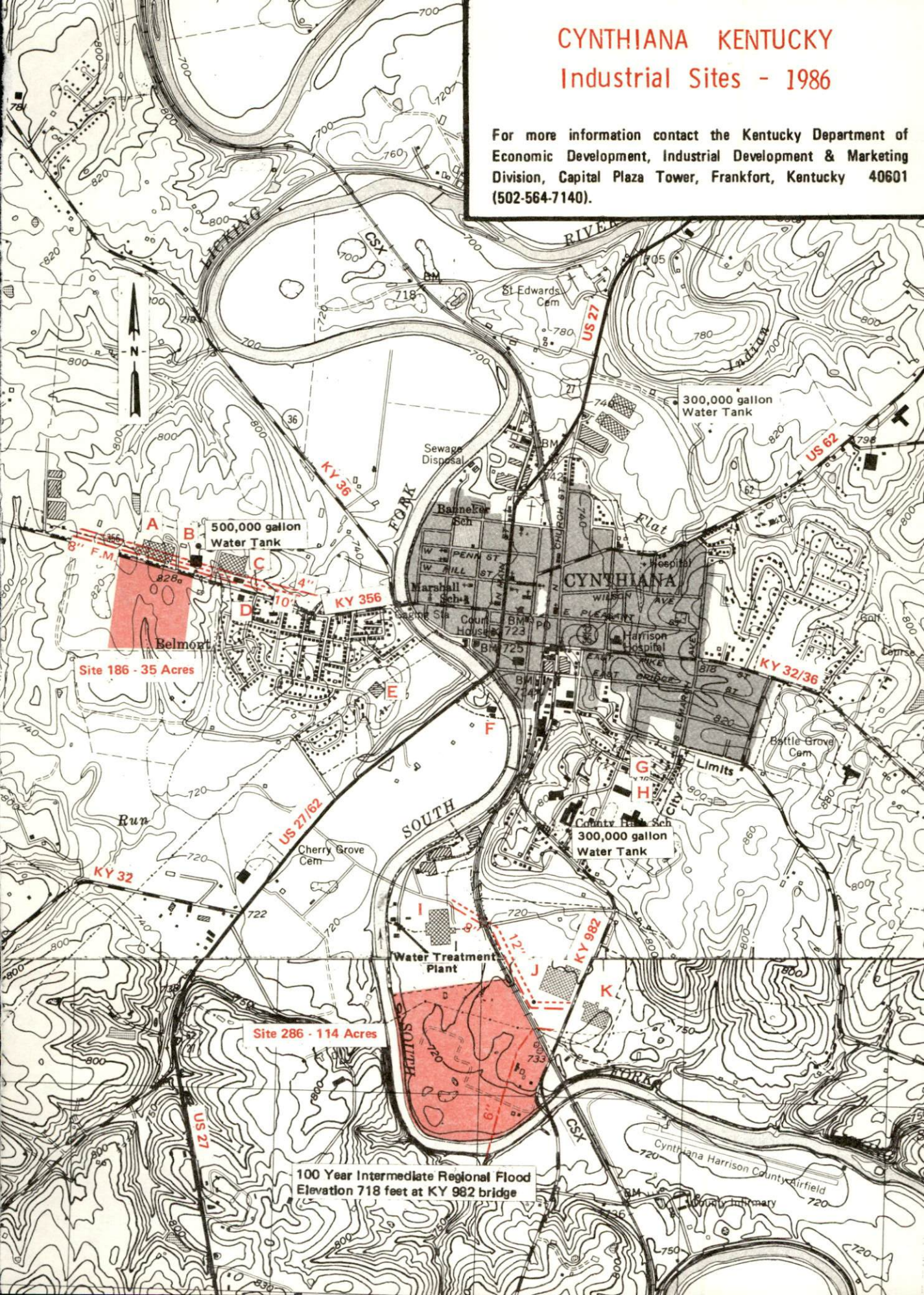
**KENTUCKY**  
The business environment is right.



# CYNTHIANA KENTUCKY

## Industrial Sites - 1986

For more information contact the Kentucky Department of Economic Development, Industrial Development & Marketing Division, Capital Plaza Tower, Frankfort, Kentucky 40601 (502-564-7140).



100 Year Intermediate Regional Flood Elevation 718 feet at KY 982 bridge



## Site 186 - 35 Acres

LOCATION: Adjacent to western city limits  
ZONING: Not zoned  
HIGHWAY ACCESS: Ky 356 adjacent to northern boundary  
RAILROAD: Not rail served  
WATER: City of Cynthiana Water Department  
Size Line: 10-inch line along north side of Ky 356  
SEWERAGE: City of Cynthiana Wastewater Treatment Plant  
Size Line: 8-inch line along north side of Ky 356  
NATURAL GAS: Columbia Gas of Kentucky  
Size Line: 4-inch line along north side of Ky 356  
ELECTRICITY: Harrison RECC  
OWNERSHIP: Private  
SCHOOL DISTRICT: Harrison County

## Site 286 - 114 Acres

LOCATION: Adjacent to southern city limits  
ZONING: Not zoned  
HIGHWAY ACCEDD: KY 982 adjacent to southeastern boundary  
RAILROAD: CSX adjacent to eastern boundary  
WATER: City of Cynthiana Water Department  
Size Line: 12-inch line approximately 100 feet east across  
CSX Railroad  
SEWERAGE: City of Cynthiana Wastewater Treatment Plant  
Size Line: 8-inch line approximately 100 feet east across  
CSX Railroad  
NATURAL GAS: Columbia Gas of Kentucky  
Size Line: 6-inch line crosses southeastern portion of site  
ELECTRICITY: Kentucky Utilities Company  
OWNERSHIP: Private  
SCHOOL DISTRICT: Harrison County

SCALE: 1 inch = 2000 feet  
CONTOUR INTERVAL: 20-10 feet  
BASE: USGS 7.5 Minute series - 1954-1969  
Photorevised - 1978

### UTILITIES

----- Water Line  
----- Sewer Line  
----- Gas Line

### Existing Industries

- A Bundy Tubing
- B E.D. Bullard Company
- C Cleveland Twist Drill
- D Production Plating Inc.
- E Marco Products Co.  
Available Industrial Building (44,000 sq. ft.)
- F Webber Farms Inc.
- G Cynthiana Publishing Co. Inc.
- H Jockey International Inc.
- I Ladish Co. Kentucky Division
- J Minnesota Mining and Mfg. Co.
- K Permcast Inc.



RESOURCES FOR ECONOMIC DEVELOPMENT  
CYNTHIANA, KENTUCKY

Prepared by  
The Kentucky Department of Economic Development  
Division of Research and Planning  
in cooperation with  
The Cynthiana-Harrison County Chamber of Commerce  
and  
The Harrison County Industrial Foundation

1986



Program manager - Andrew Dennis; research - Keith Roberts; clerical - Bobbi Graves; graphics - Frank Ferrante, Tony Cecconi, Robert Owens; cartography - Site Evaluation Branch, Division of Industrial Development and Marketing. Cost of printing paid from state funds.



## TABLE OF CONTENTS

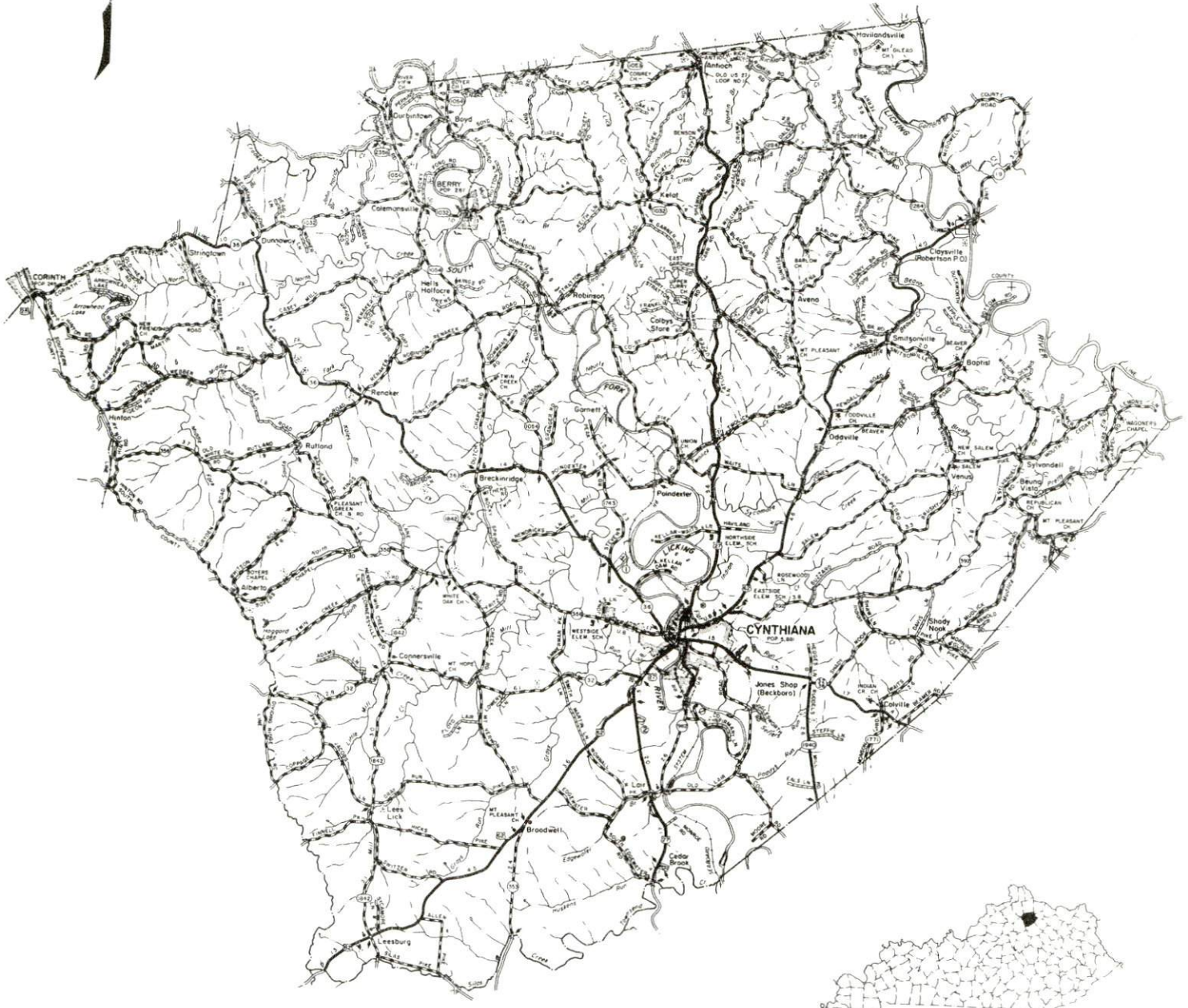
<u>Chapter</u>	<u>Page</u>
INDUSTRIAL SITES .....	i
CYNTHIANA, KENTUCKY - A RESOURCE PROFILE.....	1
LABOR MARKET STATISTICS .....	2
Population .....	2
Population Projections .....	2
Labor Force Characteristics of Residents, 1985 .....	3
Selected Components of Nonagricultural Employment, by Place of Work, 1985 .....	3
Per Capita Personal Income .....	3
Estimated Male Labor Supply .....	4
Estimated Female Labor Supply .....	4
Average Weekly Wages By Industry, by Place of Work, 1985 .....	5
EXISTING INDUSTRY .....	7
Cynthiana Manufacturing Firms, Their Products and Employment.....	7
Labor Organizations in Manufacturing Firms .....	8
Selected Industrial Services .....	9
TRANSPORTATION .....	10
Rail .....	10
Highways .....	10
Truck Service .....	10
Air.....	11
Air Express Service .....	12
Water .....	12
POWER AND FUEL .....	13
Electricity .....	13
Natural Gas .....	14
Other Fuels .....	14
WATER AND SEWERAGE .....	15
Public Water Supply .....	15
Sewerage .....	17



<u>Chapter</u>	<u>Page</u>
CLIMATE .....	18
LOCAL GOVERNMENT .....	19
Structure .....	19
Planning and Zoning .....	19
Local Fees and Licenses .....	19
State and Local Property Taxes .....	20
Safety .....	21
Police .....	21
Fire .....	21
Rescue Service .....	21
Refuse Collection and Disposal .....	21
EDUCATION .....	22
Public Schools .....	22
Nonpublic Schools .....	22
Area Colleges and Universities .....	23
Vocational Training .....	24
HEALTH .....	26
Local Medical Personnel .....	26
Hospitals .....	26
Other Medical Facilities .....	26
Ambulance Service .....	26
OTHER LOCAL FACILITIES .....	27
Communications .....	27
Library Services .....	27
Religious Institutions .....	27
Financial Institutions .....	28
Hotels and Motels .....	28
RECREATION .....	29
COMMUNITY IMPROVEMENTS .....	31

1986 EDITION  
GENERAL HIGHWAY MAP  
**HARRISON COUNTY**  
KENTUCKY

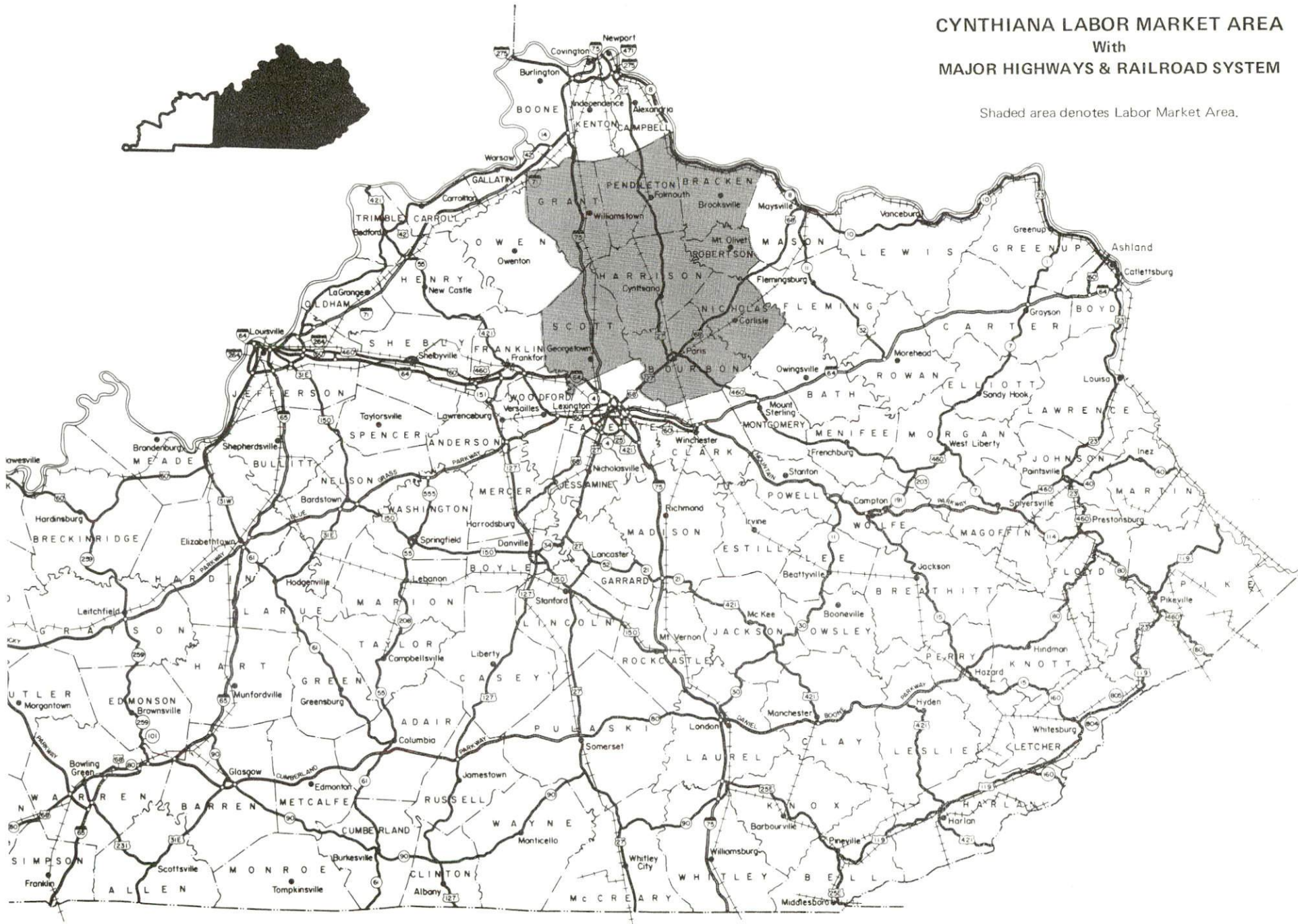
PREPARED BY THE  
KENTUCKY TRANSPORTATION CABINET  
DEPARTMENT OF HIGHWAYS  
DIVISION OF PLANNING  
IN COOPERATION WITH THE  
U.S. DEPARTMENT OF TRANSPORTATION  
FEDERAL HIGHWAY ADMINISTRATION





# CYNTHIANA LABOR MARKET AREA With MAJOR HIGHWAYS & RAILROAD SYSTEM

Shaded area denotes Labor Market Area.





## CYNTHIANA, KENTUCKY - A RESOURCE PROFILE

Cynthiana, the county seat of Harrison County, is located in north-central Kentucky. The city is 34 miles northeast of Lexington, Kentucky; 69 miles southeast of Cincinnati, Ohio; 99 miles east of Louisville, Kentucky; and 203 miles north of Knoxville, Tennessee. Cynthiana had a 1984 estimated population of 5,916.

Harrison County covers a land area of 310 square miles in the Blue Grass Region of Kentucky. The Licking River forms the eastern boundary of the county and the South Fork Licking River bisects the county. The 1984 estimated population of the county was 15,579.

**The Economic Framework** - The total number of Harrison County residents employed in 1985 averaged 6,475, with nonagricultural jobs accounting for 5,695 workers. Manufacturing firms in the county reported 1,780 employees; wholesale and retail trade provided 1,040 jobs; 620 people were employed in service occupations; state and local government accounted for 460 employees; and contract construction firms provided 130 jobs.

**Labor Supply** - There is a current estimated labor supply of 5,310 men and 6,410 women available for industrial jobs in the labor market area. In addition, from 1986 through 1990, 4,280 young men and 3,880 young women in the area will become 18 years of age and potentially available for industrial jobs.

**Transportation** - CSX Transportation, Inc., provides main line rail service to Cynthiana. Major highways serving the city are U.S. Highways 27 and 62. Kentucky Route 36 also serves Cynthiana. Interstate 75 is accessible 19 miles southwest via U.S. 62 and 30 miles northwest via Kentucky 36. Interstate 64 and the Mountain Parkway are accessible 31 miles south via U.S. 27 and Kentucky 627. Twenty-four trucking companies provide interstate and/or intrastate service to Cynthiana. The nearest scheduled commercial airline service is located at Lexington's Blue Grass Airport, 39 miles southwest of Cynthiana. The local Cynthiana-Harrison County Airport has a paved 3,200-foot runway.

**Power and Fuel** - Kentucky Utilities Company provides electric power to Cynthiana and parts of Harrison County. Harrison Rural Electric Cooperative Corporation provides power to the remainder of the county. Columbia Gas Company of Kentucky, Inc., provides Cynthiana and Harrison County with natural gas service. Two propane and four fuel oil distributors operate in Cynthiana.

**Education** - The Harrison County School System had a Fall 1986 enrollment of 2,910. Two nonpublic schools have facilities in Cynthiana. Several major colleges and universities are located within 55 miles of Cynthiana. Vocational training is available locally at the Harrison County Area Vocational Education Center. The Central Kentucky State Vocational-Technical School in Lexington, 34 miles from Cynthiana, is the nearest state vocational training center. The state school offers thirty-seven courses in varied areas of study.



## LABOR MARKET STATISTICS

The Cynthiana Labor Market Area includes Harrison County and the adjoining Kentucky counties of Bourbon, Bracken, Grant, Nicholas, Pendleton, Robertson and Scott.

POPULATION				
Area	1984*	1980	1970	Percent Nonwhite 1980
Cynthiana	5,916	5,881	6,356	6.8
Labor Market Area	99,041	97,846	86,428	N/A
Harrison County	15,579	15,166	14,158	3.2
Bourbon County	19,203	19,405	18,476	10.2
Bracken County	7,594	7,738	7,227	0.8
Grant County	14,248	13,308	9,999	0.4
Nicholas County	7,297	7,157	6,508	1.9
Pendleton County	10,815	10,989	9,949	0.5
Robertson County	2,362	2,270	2,163	0.4
Scott County	21,943	21,813	17,948	7.3

\* Population estimates.

Note: The 1980 city counts of population by race are provisional.

Sources: U.S. Department of Commerce, Bureau of the Census, 1980 Census of Population and Housing, March 1981; 1980 Census of Population, Number of Inhabitants. University of Louisville, Urban Studies Center, Population Unit, October 1985; Kentucky Population Research Notes, Issue Number One, May 1985.

POPULATION PROJECTIONS				
Area	1990	1995	2000	2010
Labor Market Area	105,554	109,894	113,209	118,125
Harrison County	16,300	16,822	17,165	17,661
Bourbon County	19,662	20,016	20,232	20,364
Bracken County	7,794	7,967	8,079	8,188
Grant County	15,539	16,628	17,520	18,957
Nicholas County	7,722	8,051	8,288	8,618
Pendleton County	11,253	11,619	11,889	12,262
Robertson County	2,422	2,470	2,486	2,498
Scott County	24,862	26,321	27,550	29,577

Source: University of Louisville, Urban Studies Center, Population Research Unit, How Many Kentuckians: Population Forecasts, 1980-2020, the 1986 Edition, Spring 1986.

LABOR FORCE CHARACTERISTICS OF RESIDENTS, 1985

	<u>Harrison County</u>	<u>Labor Market Area</u>
Civilian Labor Force	6,996	47,243
Employment	6,475	43,868
Agricultural	780	5,378
Nonagricultural	5,695	38,490
Unemployment	521	3,375
Rate of Unemployment (%)	7.4	7.1

Source: Kentucky Cabinet for Human Resources, Kentucky Labor Force Estimates, Annual Averages, 1985.

SELECTED COMPONENTS OF NONAGRICULTURAL EMPLOYMENT,  
BY PLACE OF WORK, 1985

	<u>Harrison County</u>	<u>Labor Market Area</u>
All Industries (total)	4,295	22,202
Manufacturing	1,776	7,275
Wholesale & Retail Trade	1,041	5,086
Services	624	2,608
State/Local Government	463	3,492
Contract Construction	127	878

Note: Excludes domestic workers, railway workers, certain nonprofit corporations, majority of federal government workers, and self-employed workers.

Source: Kentucky Cabinet for Human Resources, Average Monthly Workers Covered by Kentucky Unemployment Insurance Law, 1985.

PER CAPITA PERSONAL INCOME

<u>Area</u>	<u>1980</u>	<u>1984</u>	<u>Percent Change</u>
Harrison County	\$ 7,298	\$ 9,936	36.2
Labor Market Area Range	\$5,345 - 10,592	\$7,597 - 14,560	N/A
Kentucky	7,644	10,232	33.9
U. S.	9,494	12,772	34.5

Sources: U.S. Department of Commerce, Bureau of Economic Analysis. Kentucky Economic Information System, June 1986.



ESTIMATED MALE LABOR SUPPLY  
CYNTHIANA LABOR MARKET AREA

Area	Current			Future	
	Total Male	Unemployed	Under-employed	Not in Labor Force	
				Future Becoming 18 years of age 1986 thru 1990	
Labor Market					
Area*	5,309	2,057	2,213	1,039	4,279
Harrison	917	339	386	192	624
Bourbon	697	326	371	0	858
Bracken	506	216	163	127	359
Grant	626	351	275	0	638
Nicholas	566	145	172	249	287
Pendleton	818	249	120	449	524
Robertson	147	66	59	22	87
Scott	1,032	365	667	0	902

ESTIMATED FEMALE LABOR SUPPLY  
CYNTHIANA LABOR MARKET AREA

Area	Current			Future	
	Total Female	Unemployed	Under-employed	Not in Labor Force	
				Future Becoming 18 years of age 1986 thru 1990	
Labor Market					
Area*	6,414	1,318	2,226	2,870	3,880
Harrison	1,025	182	363	480	533
Bourbon	635	310	325	0	726
Bracken	856	81	144	631	327
Grant	1,185	200	328	657	599
Nicholas	567	113	164	290	282
Pendleton	1,027	206	188	633	459
Robertson	255	19	57	179	83
Scott	864	207	657	0	871

\* Additional workers may be drawn from other nearby counties.

Note: Unemployed - persons unemployed and actively seeking work;  
Underemployed - persons employed but working only 14 to 26 weeks per year;  
Not in Labor Force - represents the number of persons who would enter the labor force if suitable employment were available (based on the assumption that persons in Kentucky would like to participate in the labor force in the same proportion that they do nationally).

Sources: Kentucky Cabinet for Human Resources, Kentucky Labor Supply Estimates by County, 1985. Kentucky Department of Economic Development, Future Labor Supply Becoming 18 Years of Age, 1986 thru 1990.

AVERAGE WEEKLY WAGES BY INDUSTRY,  
BY PLACE OF WORK, 1985

	<u>Harrison County</u>	<u>Bourbon County</u>	<u>Bracken County</u>	<u>Grant County</u>
All Industries	\$291.80	\$272.43	\$248.37	\$238.95
Mining & Quarrying	0	*	0	0
Contract Construction	315.96	351.62	194.66	211.93
Manufacturing	400.22	357.15	*	278.19
Transportation, Communications & Public Utilities	375.93	342.85	359.13	404.20
Wholesale & Retail Trade	149.12	204.11	163.84	166.18
Finance, Insurance & Real Estate	276.14	305.16	251.01	257.80
Services	213.58	182.34	113.07	192.43
State/Local Government	287.91	280.39	226.20	278.32
Other	244.01	268.42	*	158.67
	<u>Nicholas County</u>	<u>Pendleton County</u>	<u>Robertson County</u>	<u>Scott County</u>
All Industries	\$230.11	\$253.03	\$224.93	\$296.56
Mining & Quarrying	0	*	0	*
Contract Construction	166.23	172.13	0	288.22
Manufacturing	*	331.38	0	396.26
Transportation, Communications & Public Utilities	*	243.96	*	429.01
Wholesale & Retail Trade	141.75	169.79	103.30	156.21
Finance, Insurance & Real Estate	309.00	207.06	*	303.88
Services	*	142.79	106.61	210.12
State/Local Government	246.54	247.36	226.17	258.29
Other	238.85	197.25	*	278.23

\* Not disclosed.

Note: The average weekly wage for each category includes the salaries and wages of all persons working for that type business. For example, the manufacturing category includes both production workers and administrative personnel. Excludes domestic workers, railway workers, certain nonprofit corporations, majority of federal government workers, and self-employed workers.

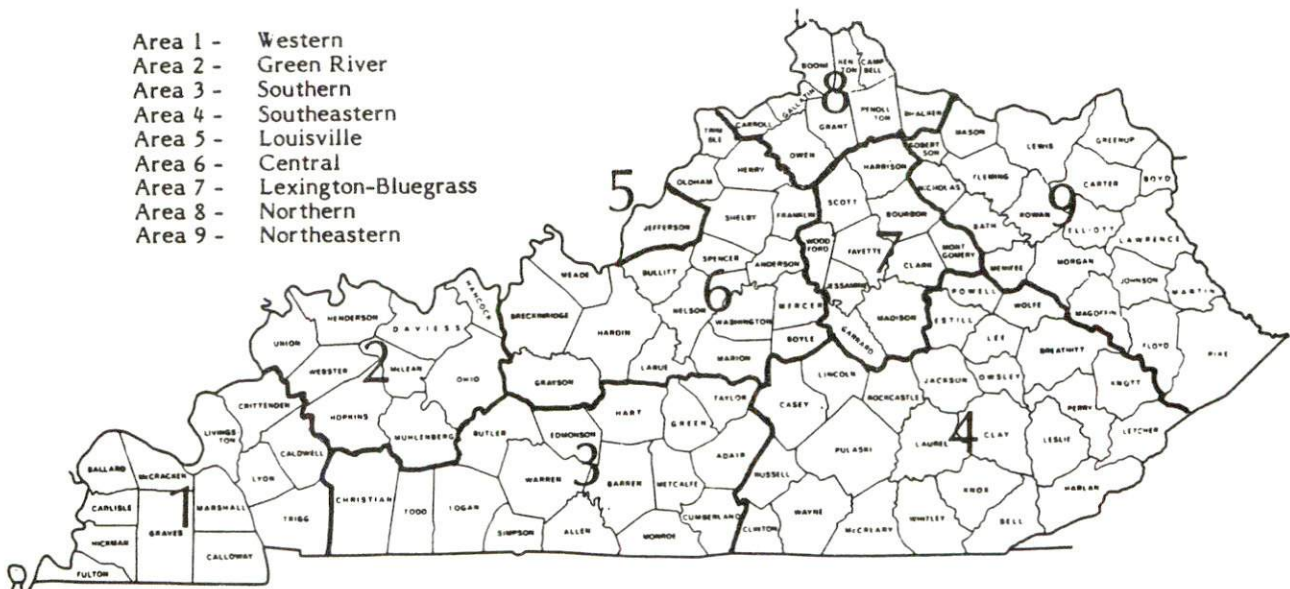
Source: Kentucky Cabinet for Human Resources, Average Weekly Wages of Workers Covered by Kentucky Unemployment Insurance Law, 1985.



Occupational wage rates for specific industries are usually not available to most government agencies, and wage data furnished to state employment agencies by individual industrial employers are protected from disclosure by federal law. The most reliable up-to-date wage information can be obtained by direct contact with local employers.

Associated Industries of Kentucky, a voluntary organization of Kentucky businesses, regularly collects occupational wage rates and fringe benefits data from participating member firms. Data are compiled for over 127 clearly defined office, production, and service occupations. Tabulations are published for nine geographical areas of Kentucky, as shown on the map below. It should be noted that the data may be weighted by the preponderance of firms in the larger cities and may be somewhat higher than the rates paid in the smaller communities. Data from these tabulations are available, upon request, from the Kentucky Department of Economic Development, Frankfort, Kentucky 40601.

- Area 1 - Western
- Area 2 - Green River
- Area 3 - Southern
- Area 4 - Southeastern
- Area 5 - Louisville
- Area 6 - Central
- Area 7 - Lexington-Bluegrass
- Area 8 - Northern
- Area 9 - Northeastern



Associated Industries of Kentucky Area Wage Surveys

## EXISTING INDUSTRY

### CYNTHIANA MANUFACTURING FIRMS, THEIR PRODUCTS AND EMPLOYMENT

Firm (Establishment date)	Product	Employment			Labor Unions
		Total	Male	Female	
E. D. Bullard Company (1972)	Safety head-gear and equipment	139	32	107	
Bundy Tubing, Division of Bundy Corporation (1965)	Steel tubing-automotive, refrigeration coils	236	202	34	Auto Workers*
Burley Belt Fertilizer Company (1948)	Fertilizer	4	3	1	
Cleveland Twist Drill, Cynthiana Plant, an Acme Cleveland Corporation (1972)	Wire drills	164	135	29	
Concrete Materials Corporation (1960)	Ready-mixed concrete	3	3	0	
Custom Wood Products (1980)	Wood storage buildings	13	--	--	
Cynthiana Publishing Company, Inc. (1945)	Newspaper, web printing, type-setting	44	21	23	
Grede Perm Cast (1970)	Gray iron castings	282	220	62	
Harrison County Ready Mix (1985)	Ready-mixed concrete	5	--	--	
Harrison Machine Shop, Inc. (1942)	Metal fabrication, heavy equipment and machinery repair, metal painting and finishing	18	15	3	

(Continued)



<u>Firm (Establishment date)</u>	<u>Product</u>	<u>Employment</u>			<u>Labor Unions</u>
		<u>Total</u>	<u>Male</u>	<u>Female</u>	
Hicks Tool & Die Company (1981)	Machine shop, tools and dies, jigs and fixtures	5	4	1	
Jockey International, Inc. (1968)	Men's knit underwear	180	10	170	
Ladish Company, Kentucky Division (1961)	Stainless steel valves, fittings, forged steel fittings	201	190	11	Steelworkers*
Marco Products Company (1948)	Sewer clean-out tools	57	47	10	
Minnesota Mining & Manufacturing Company (3-M) (1969)	Printing products, overhead projectors, transparent tape, note pads	296	117	179	
Taylor Farms Country Hams, Inc. (1895)	Country hams, bacon	1	0	1	
Webber Farms, Inc. (1947)	Sausage, BBQ products	200	182	18	

\*See Labor Organizations below.

Sources: Kentucky Department of Economic Development, 1986 Kentucky Directory of Manufacturers; Division of Research and Planning

#### LABOR ORGANIZATIONS IN MANUFACTURING FIRMS

##### Union

##### Representing workers at:

International Union, United Automobile, Aerospace and Agricultural Implement Workers of America  
United Steelworkers of America, AFL-CIO

Bundy Tubing, Division of Bundy Corporation  
Ladish Company, Kentucky Division

SELECTED INDUSTRIAL SERVICES

<u>Types of Services</u>	<u>Location</u>	<u>Mileage from Cynthiana</u>
Custom Plastics Producers	Georgetown	21
Electric Motor Repair	Lexington	34
Grinding, Precision & Tool	Georgetown	21
Heat Treating Facilities	Georgetown	21
Industrial Equipment & Supplies	Lexington	34
Industrial Gases	Lexington	34
Industrial Waste Removal	Butler Lexington	33 34
Machine Shops, Tool & Die	Cynthiana	-
Metal Finishers	Georgetown	21
Metal Service Centers	Lexington	34
Millwrights	Lexington	34
Public Warehouse Facilities	Paris	15

Sources: Kentucky Department of Economic Development, Kentucky Directory of Selected Industrial Services, 1985; Division of Research and Planning.



## TRANSPORTATION

### Rail

Line serving **Cynthiana** - CSX Transportation, Inc.

Services - Main line; one northbound and one southbound daily freight stops daily; five northbound and five southbound through freights daily; switching services; team track space for 15 cars; siding space for 50 cars. Nearest piggyback facilities are located in Covington, 61 miles north.

For details on routing, schedules, rates, and services contact:

Manager of Industrial Development  
CSX Transportation  
P.O. Box 2157  
Louisville, Kentucky 40201  
(502) 587-5228

### Highways

Major highways serving Cynthiana are U.S. Highways 27 and 62, both AAA-rated trucking highways (80,000-pound gross load limit). U.S. Highway 62 is AA-rated (62,000-pound gross load limit) from Cynthiana northeast to Mt. Olivet. Kentucky Route 36, which is a AA-rated trucking highway from Cynthiana northwest to Interstate 75, also serves the city. Interchanges of Interstate 75 are located 19 miles southwest via U.S. 62, and 30 miles northwest via Kentucky 36. The junction of Interstate 64 and the Mountain Parkway is 31 miles south via U.S. 27 and Kentucky 627.

Extensive improvement is planned for U.S. Highway 62 from Cynthiana to Interstate 75. Plans are to straighten and completely reconstruct the highway. Construction is planned to begin in the fall of 1987.

### Truck Service

ABF Cartage, Inc.*	Holland Motor Express, Inc.*
ANR Freight System, Inc.**	Lawrenceburg Transfer Company, Inc.*
ARA/Smith's**	Manning Freight Lines*
Bailey's Express, Inc.*	Middlewest Freightways, Inc.*
Bestway Express, Inc.*	O. K. Trucking Company*
Bishop Motor Express*	Owenton Express, Inc.*
Bowman Transportation, Inc.**	P-I-E Nationwide, Inc.**
CW Transport, Inc.*	Preston Trucking Company, Inc.*
Central Transport, Inc.**	R-W Service System, Inc.*
Consolidated Freightways Corporation of Delaware*	Roadway Express, Inc.*
Craig's Express, Inc.**	Suburban Motor Freight, Inc.*
Duff Truck Line, Inc.*	
General Highway Express, Inc.*	

\* Interstate and intrastate service.

\*\* Intrastate service only.

Source: American Motor Carrier Directory, Fall 1986.

HIGHWAY MILES AND TRUCK TRANSIT TIME IN DAYS FROM  
CYNTHIANA, KENTUCKY, TO SELECTED MARKET CENTERS

City	Highway Miles	Delivery		City	Highway Miles	Delivery	
		Time TL				Time TL	
Atlanta, Ga.	396	1		Los Angeles, Ca.	2,207	6	
Baltimore, Md.	566	2		Louisville, Ky.	99	1	
Birmingham, Ala.	432	1		Nashville, Tenn.	244	1	
Chicago, Ill.	356	1		New Orleans, La.	761	2	
Cincinnati, Ohio	69	1		New York, N. Y.	716	2	
Cleveland, Ohio	313	1		Pittsburgh, Pa.	356	2	
Detroit, Mich.	328	1		St. Louis, Mo.	362	1	
Knoxville, Tenn.	203	1					

Note: Mileage computations are via the best interstate or primary highways, not necessarily the most direct route of travel.

Sources: Rand McNally Road Atlas, 1979. Official Kentucky Mileage Map, 1985.  
Delivery time - Lawrenceburg Transfer Company, Inc., Highway 127, P. O. Box 267, Lawrenceburg, Kentucky 40342.

**Air**

Local

Location: Cynthiana-Harrison County Airport\*  
 1.5 miles south of Cynthiana  
 Runways: 1 paved  
 Length: 3,200 feet  
 Traffic  
 Control: Wind sock and lighted wind tee  
 Lighting: Runway lights-sundown to sunrise, VASI, REIL, RTGBCN  
 Services: 80 and 100LL fuel; major A & P repairs; hangar, tie down;  
 taxi; A and I service

(Continued)

\* The Cynthiana-Harrison County Airport recently remodeled the terminal and an air-conditioned lounge was added to the facility.



### Nearest Scheduled Commercial Airline Service

Location: Bluegrass Airport  
5 miles west of Lexington, Kentucky;  
39 miles southwest of Cynthiana

Runways: 2 paved  
Length: 7,000 feet; 3,500 feet

Traffic Control: Tower

Lighting: Approach lighting system, beacon, runways and  
obstructions lighted, VASI

Services: Delta, Piedmont, United, USAir, Allegheny Commuter,  
Piedmont Commuter, Eastern Metro, Comair, American  
Eagle; fuel - 100LL and jet-A; hangars, tie-downs; major  
A & P repairs; major Avionics repairs; APU, charter, flight  
instruction, oxygen, plane rentals, survival equipment; taxi,  
limousine, car rentals, courtesy car, weather information;  
restaurant, snack bar

Air Freight Service: Air freight terminal

### **Air Express Service**

Several major companies offer air express services in Kentucky. These companies provide a quick means of shipping small to medium-sized packages expeditiously.

### **Water**

The nearest navigable waterway is the Kentucky River at Frankfort, 39 miles southwest of Cynthiana, where a 6-foot navigation channel is maintained. The Ohio River, with a 9-foot navigation channel, is accessible 47 miles northeast of Cynthiana at Maysville, where a general cargo facility is proposed for development.

## POWER AND FUEL

### Electricity

Company serving **Cynthiana and parts of Harrison County** - Kentucky Utilities Company

Source of power - Kentucky Utilities Company  
For industrial rates contact:

Industrial Development Department  
Kentucky Utilities Company  
One Quality Street  
Lexington, Kentucky 40507  
(606) 255-1461

Company serving **major portion of Harrison County** - Harrison County Rural Electric Cooperative Corporation

Source of power - East Kentucky Power Cooperative  
For industrial rates contact:

Industrial Development Division  
East Kentucky Power Cooperative  
P.O. Box 707  
Winchester, Kentucky 40391  
(606) 744-4812

and/or

General Manager  
Harrison County Rural Electric  
Cooperative Corporation  
P. O. Box 130  
Cynthiana, Kentucky 41031  
(606) 234-3131



## Natural Gas

Company serving **Cynthiana** - Columbia Gas of Kentucky, Inc.  
Source of supply - Columbia Gas Transmission, Inc.  
Size of transmission mains - 10 and 12-inch (supplier); 6 and 8-inch (distributor)  
Distribution mains - 2 to 10 inches\*  
Distribution pressure - 4 ounces to 200 psi\*  
Btu content - 1,025 per cubic foot  
Specific gravity - 0.60  
For rates and supplies contact:

District Marketing Manager  
Columbia Gas of Kentucky, Inc.  
P. O. Box 241  
Lexington, Kentucky 40584  
(606) 255-3612

## Other Fuels

### Propane

Southern States-Cynthiana  
Cooperative\*\*  
Railroad Avenue  
Cynthiana, Kentucky 41031

Stan Harvey Gas Company\*\*  
115 West Pike Street  
Cynthiana, Kentucky 41031

### Fuel oils

Distillate fuel oil -

Ashland Oil Distributor,  
Division of Harrison Motor  
Company  
Connersville Pike  
Cynthiana, Kentucky 41031

Coe Oil Service, Inc.  
U.S. Highway 27  
Cynthiana, Kentucky 41031

Chevron USA, Inc.  
319 South Church Street  
Cynthiana, Kentucky 41031

Northfield Oil Company\*\*  
Falmouth Pike  
Cynthiana, Kentucky 41031

Residual fuel oil - Arrangements must be made with the refinery.

Low sulphur content coal - Available in Kentucky.

\* Columbia Gas of Kentucky is presently replacing approximately 3,000 feet of gas line in Cynthiana and upgrading their high pressure system.  
\*\* Bulk plant.

## WATER AND SEWERAGE

### Public Water Supply

Company serving **Cynthiana** - City of Cynthiana Water Department\*  
P. O. Box 67  
Cynthiana, Kentucky 41031  
(606) 234-3707

Source - South Licking River\*\*

Treatment plant capacity - 2,800,000 gallons per day

Average daily consumption - 2,170,000 gallons

Peak daily consumption - 2,740,000 gallons

Treatment processes - Aeration, rapid mix, coagulation, flocculation, sedimentation, filtration, chlorination, fluoridation, carbon

Storage capacity - 1,800,000 gallons (including clear well)

Size lines - 4 to 12 inches

Water pressure - 75 to 120 psi

### MONTHLY WATER RATES

0 -	2,000 gallons	\$4.76 (Minimum)
2,000 -	8,000 gallons	1.71 per M gallons
8,000 -	20,000 gallons	1.16 per M gallons
20,000 -	50,000 gallons	0.85 per M gallons
50,000 -	100,000 gallons	0.67 per M gallons
100,000 -	1,000,000 gallons	0.49 per M gallons
Over	1,000,000 gallons	0.30 per M gallons

There is an additional charge of 33 1/3 percent of the above schedule of rates charged to consumers for water which is delivered outside the city limits.

#### Tap-on charge:

Inside city limits - No charge

Outside city limits -

Residential - \$100 plus cost of labor and materials

Commercial - \$200 plus cost of labor and materials

\* Facilities at the Cynthiana Water Treatment Plant are planned to be renovated in the future. No specific date for renovation had been determined as of August 1986.

\*\* A 16-inch waterline, to supplement the water supply to the Cynthiana Water Department, is planned for construction in mid-1987. The 13-mile waterline will supply approximately 3 million gallons of additional raw water per day from the Licking River near Claysville. The estimated cost of the project is \$2 million.



Name of water district - Harrison County Water Association  
P. O. Box 215  
Cynthiana, Kentucky 41031  
(606) 234-4284

Area served - Harrison County and North Bourbon County  
Date when water district began operating - 1968  
Source of supply of treated water - City of Cynthiana Water Department  
Average amount of water used in a 24-hour period - 383,000 gallons  
Peak amount of water used in a 24-hour period - 428,540 gallons  
Storage capacity - 546,000 gallons  
Size lines - 3 to 10 inches  
Water pressure - 35 to 120 psi

MONTHLY WATER RATES

5/8-Inch X 3/4-Inch Meter

First	2,000 gallons	\$10.50	Minimum bill
Next	1,000 gallons	3.70	per M gallons
Next	2,000 gallons	3.20	per M gallons
Next	45,000 gallons	2.55	per M gallons
Over	50,000 gallons	2.05	per M gallons

3/4-Inch Meter

First	3,000 gallons	\$14.20	Minimum bill
Next	2,000 gallons	3.20	per M gallons
Next	45,000 gallons	2.55	per M gallons
Over	50,000 gallons	2.05	per M gallons

1-Inch Meter

First	5,000 gallons	\$20.60	Minimum bill
Next	45,000 gallons	2.55	per M gallons
Over	50,000 gallons	2.05	per M gallons

1 1/2-Inch Meter

First	10,000 gallons	\$33.35	Minimum bill
Next	40,000 gallons	2.55	per M gallons
Over	50,000 gallons	2.05	per M gallons

2-Inch Meter

First	15,000 gallons	\$46.10	Minimum bill
Next	35,000 gallons	2.55	per M gallons
Over	50,000 gallons	2.05	per M gallons

Tap-on charge:

5/8 x 3/4-inch meter	\$350
3/4-inch meter	350
1-inch meter	450
1 1/2-inch meter	600
2-inch meter	850

## Sewerage

Company serving **Cynthiana** - City of Cynthiana Waste Water  
Treatment Plant\*  
North Locust Street  
P. O. Box 67  
Cynthiana, Kentucky 41031  
(606) 234-2437

Design capacity - 1,500,000 gallons per day  
Average daily flow - 725,000 gallons  
Type of treatment - Primary, secondary, tertiary  
Treatment processes - Flow equalization, screening, grit removal, primary  
sedimentation, contact stabilization, rotating biological contactors,  
chlorination, filter press, tertiary filter  
Treated effluent discharged into - South Licking River  
Size of sanitary mains - 6 to 24 inches  
Size of storm mains - 16 to 24 inches  
Monthly rates - Based on metered water consumption

First 2,000 gallons -	\$3.60 (Minimum)
2,000 - 500,000 gallons -	1.46 per M gallons
Over 500,000 gallons -	0.67 per M gallons

### Tap-on charge:

Inside city limits - No charge  
Outside city limits -  
Residential - \$100 plus cost of labor and materials  
Commercial - \$200 plus cost of labor and materials

\* The Cynthiana Waste Water Treatment Plant has plans to make improvements to the lift stations and force mains. A specific date for this project had not been determined as of August 1986.



# CLIMATE

## Harrison County

### Temperature

Normal (30-year record)	54.90 degrees
Average annual 1985	54.60 degrees
Record highest, August 1983 (41-year record)	103.00 degrees
Record lowest, January 1963 (41-year record)	-21.00 degrees
Normal heating degree days (30-year record) (Heating degree day totals are the sums of negative departures of average daily temperatures from 65 degrees F.)	4,814

### Precipitation

Normal (30-year record)	45.68 inches
Mean annual snowfall (30-year record)	16.50 inches
Total precipitation 1985	37.75 inches
Mean number days precipitation (.01 inch or more) (41-year record)	130.70
Mean number days thunderstorms (41-year record)	45.80

### Prevailing Winds (through 1963)

South

### Relative Humidity

1 a.m.	77 percent (21-year record)
7 a.m.	82 percent (22-year record)
1 p.m.	60 percent (22-year record)
7 p.m.	64 percent (22-year record)

Source: U.S. Department of Commerce, Environmental Science Services Administration, Climatological Data, 1985. Station of record: Lexington, Kentucky.

## LOCAL GOVERNMENT

### Structure

Cynthiana is served by a mayor and four commissioners. The mayor serves a four-year term, the commissioners serve a two-year term. Harrison County is served by a county judge/executive and eight magistrates. The county judge/executive and magistrates all serve four-year terms.

### Planning and Zoning\*

Joint agency - Cynthiana-Berry Planning and Zoning Commission  
Participating cities - Cynthiana and Berry  
Zoning enforced - Within the city limits of Cynthiana and Berry  
Subdivision regulations enforced - Within the city limits and five miles beyond the city limits of Cynthiana and Berry  
Local codes enforced - Building codes within the city limits of Cynthiana and Berry  
Mandatory state codes enforced - Kentucky Plumbing Code, National Electric Code, Kentucky Boiler Regulations and Standards, Kentucky Building Code (modeled after BOCA code)

### Local Fees and Licenses

Cynthiana levies a 1½ percent occupational license tax on gross wages, salaries, commissions, and other compensation earned in the city. The 1½ percent tax is also levied on net profits on sales of all businesses, professions, or occupations for activities conducted inside the city limits. Regulatory license fees for specified businesses range from \$5 to \$300 per year.

---

\* Efforts are under way to establish county-wide planning and zoning in Harrison County. The agency will be a joint city-county commission. A referendum will be conducted by the spring of 1987 to determine if the agency will be established.



## State and Local Property Taxes

All property in Kentucky, except items exempted by the state constitution, is taxed by the state. Property which also may be taxed by local jurisdictions includes land and buildings, finished goods inventories, automobiles, trucks, office furniture and office equipment. Local taxing jurisdictions in Kentucky include counties, cities, and school districts.

All property in Kentucky is assessed at 100 percent of fair cash value.

### COMBINED STATE AND LOCAL RATES PER \$100 VALUATION, 1985

	<u>Cynthiana</u>	<u>Unincorporated Harrison County</u>
Land and Buildings	\$ 0.884	\$ 0.724
Manufacturing Machinery	0.150	0.150
Pollution Control Equipment	0.150	0.150
Inventories		
Raw materials	0.001*	0.001*
Goods in Process	0.001*	0.001*
Finished Goods	0.669*	0.509*
Automobiles and Trucks	1.105	0.945
Other Tangible Personal Property	1.118	0.958
Intangibles (Accounts receivable, money in hand, stock, notes, bonds)	0.250**	0.250**
Goods Stored in Public Warehouses in Transit Status	0.001*	0.001*
Private Leaseholds in Industrial Revenue Bond Financed Facilities	0.015	0.015

\* Includes 1986 state rate.

\*\* Accounts receivable are taxed at 85 percent of face value, for an effective rate of \$0.2125 per \$100 valuation.

## Safety

Police	Cynthiana	Harrison County
Total staff	15	4 full-time 1 part-time
Radio-patrol cars	5	2
<b>Fire*</b>		
Insurance Services Office, Public Protection Classification	6	**
Full-time staff	19	--
Volunteers	12	25
<b>Rescue Service</b>		

Cynthiana and Harrison County are provided rescue service by the Harrison County Rescue Squad. The rescue squad is staffed by members of the Harrison County Volunteer Fire Department.

## Refuse Collection and Disposal

The city of Cynthiana provides refuse collection and disposal within the city. The collection of refuse in Harrison County is handled by a private contractor. In addition, there are 68 dumpsters located throughout the county.

---

\* Includes copyrighted material of ISO Commercial Risk Services, Inc., with its permission.

\*\* The Harrison County Fire Protection area has a rating of class 9 within five road miles of a responding fire station and class 10 more than five road miles.



## EDUCATION

### Public Schools

#### Harrison County\*

Total Enrollment (Fall 1986)	2,912
Kindergarten	216
Elementary	1,420
Junior High	461
High School	815
 Pupil-Teacher Ratio (1984-85)	 20-1
 Percent High School Graduates to College (1984-85)	 45.5
 Expenditures Per Pupil (1984-85)	 \$1,700.78

### Nonpublic Schools

<u>School</u>	<u>Enrollment</u>	<u>Grades</u>
St. Edwards Elementary	100	1-8
Faith Christian School	20	K-12

\* A ten-room addition is being added to the Harrison County Junior High School to be used as a middle school. Completion is scheduled for August 1987 at an estimated cost of \$750,000.

## Area Colleges and Universities

<u>Name</u>	<u>Location (Miles distant)</u>	<u>Enrollment (Fall, 1985)</u>	<u>Highest Degree Conferred</u>
Georgetown College	Georgetown (21)	1,315	Masters
Midway College	Midway (31)	314	Associate
Lexington Community College	Lexington (34)	2,538	Associate
Transylvania University	Lexington (34)	856	Baccalaureate*
University of Kentucky	Lexington (34)	20,895	Doctorate, M.D., D.M.D., J.D.
Kentucky State University	Frankfort (39)	2,012	Masters
Maysville Community College	Maysville (47)	766	Associate
Northern Kentucky University	Highland Heights (51)	8,697	Masters, J.D.
Asbury College	Wilmore (52)	980	Baccalaureate
Eastern Kentucky University	Richmond (53)	12,229	Masters, Specialist**

\* Courses in a masters degree program are taught on the Transylvania campus by faculty members of Xavier University of Cincinnati. The degree is issued by Xavier University.

\*\* Joint doctoral degree programs are offered in cooperation with the University of Kentucky, Lexington. The degrees are issued by the University of Kentucky.

## Vocational Training

The Bluegrass State Skills Corporation, an independent public corporation created and funded by the Kentucky General Assembly, provides programs of skills training to meet the needs of business and industry from entry level to advanced training, and from upgrading present employees to retraining experienced workers.

The Bluegrass State Skills Corporation is the primary source for skills training assistance for a new or existing company. The Corporation works in partnership with other employment and job training resources and programs, as well as Kentucky's economic development activities, to package a program customized to meet the specific needs of a company.

Vocational training is available at both the state vocational-technical schools and the area vocational education centers. The state vocational-technical schools are post-secondary institutions. The area vocational education centers are designed to supplement the curriculum of high school students. Both the state vocational-technical schools and the area vocational education centers offer evening courses to enable working adults to upgrade current job skills.

Arrangements can be made to provide training in the specific production skills required by an industrial plant. Instruction may be conducted either in the vocational school or in the industrial plant, depending upon the desired arrangement and the availability of special equipment.

(Continued)



### Nearest State School

Central Kentucky State Vocational-Technical School  
Lexington, Kentucky, 34 miles distant

#### Academic Related Subjects

Language

Math

Technical Related Math

#### Business & Office

Accounting

Clerical

Secretarial

#### Consumer & Home Economics

Commercial Foods

#### Distributive Education

Retail Training-Merchandising/  
Food Marketing

Hotel/Motel-Waiter/Waitress-  
Housekeeping Services

#### Health & Personal Services Occupations

Cosmetology

Dental Assistant

Nurse's Aide

Practical Nursing

Surgical Technician

Ward Clerk

Medications Aide

Home Health Care

Geriatric

#### Industrial Education

Air Conditioning

Auto Body Repair

Auto Mechanics

Carpentry

Drafting (with CAD/CAM)

Electronics

Graphic Arts

Industrial Electricity

Machine Shop

Masonry

Welding

#### Learning Resource Center

GED

#### Public Service

E.M.T. Training

Fire Training

Cardiopulmonary Resuscitation

First Aid

Industrial Fire Brigade Training

#### Apprenticeship

Electrical

Tool & Die

#### Up-Grade Programs

### Nearest Area Education Center

Harrison County Area Vocational Education Center  
Cynthiana, Kentucky

#### Business & Office

Accounting Management

Clerical

Secretarial

#### Health & Personal Services Occupations

Health Careers

#### Industrial Education

Auto Mechanics

Carpentry-Building Trades

Industrial Electricity

Machine Shop

Welding

## HEALTH

### Local Medical Personnel

Physicians - 12 full-time  
                  9 part-time  
Dentists - 7

### Hospitals

<u>General Hospital</u>	<u>Location</u>	<u>Beds</u>
Harrison Memorial Hospital	Cynthiana	99

Medical staff - 11 physicians, 43 registered nurses, and 17 licensed practical nurses

### Other Medical Facilities

Harrison County Comprehensive Care Center  
WEDCO District, Harrison County Health Center and Home Health Service (a public health facility)

### Ambulance Service

Name - Brown Ambulance Service, Inc.  
Staff - 8 emergency medical technicians, and 2 registered nurses

## OTHER LOCAL FACILITIES

### Communications

Telephone -	South Central Bell Telephone Company
Telegraph -	Western Union Toll-free number, 1-800-325-6000
Newspaper - Weekly and circulation -	Cynthiana Democrat 5,600
Radio -	WCYN - AM & FM
Television - Airwave reception from - Cable service - Educational television -	Lexington and Louisville, Kentucky; Cincinnati, Ohio Cynthiana Cable Television The Kentucky Educational Television (K.E.T.) network is available statewide

### Library Services

Public library - Cynthiana Public Library  
Size collection - 52,681 volumes  
Circulation, 1985-86 - 56,970 (includes Berry Branch)

### Religious Institutions

Denominations -	Assembly of God Baptist Catholic Christ Victory Church Christian Church of Christ Church of the Advent Episcopal Church of the Nazarene Disciples of Christ Christian Church	First Apostolic Church First Church of God Full Gospel Tabernacle Hinton Church of God Methodist Pentecostal Church of God Pilgrim Holiness Presbyterian Seventh Day Adventist
Nearest Synagogues - Congregations -	Lexington, 34 miles southwest of Cynthiana Adath Israel (reform) Ohavey Zion (traditional)	



## Financial Institutions

<u>Banks</u>	<u>Assets</u>	<u>Deposits</u>	<u>Statement Date</u>
Farmers National Bank	\$56,772,000.00	\$45,286,000.00	6/30/86
Harrison Deposit Bank and Trust Company	26,525,000.00	24,204,000.00	12/31/85
The National Bank of Cynthiana	61,147,903.00	53,827,021.00	12/31/85

<u>Savings and Loan Associations</u>	<u>Assets</u>	<u>Savings Accounts</u>	<u>Statement Date</u>
First Federal Savings and Loan Association of Cynthiana	\$40,916,380.00	\$38,121,922.00	6/30/86

## Hotels and Motels

Total number - 1  
Total rooms - 27

## RECREATION

### Local

The Cynthiana-Harrison County Recreation Department provides public recreational opportunities through a county-wide program. Public recreation facilities include three parks, two mini-parks, and a gymnasium. The department also leases all recreational facilities at the high school for public use. These facilities include a swimming pool, four tennis courts, and three baseball diamonds.

River Road Park is a 15-acre recreational facility located on the South Fork Licking River. The park contains a baseball diamond, two softball diamonds, a large picnic shelter, a picnic area, a concession stand, restrooms, shuffleboard courts, four basketball courts, and volleyball courts.

Reverend Ross Park is an 8-acre facility featuring a tennis court, a basketball court, a playground, a picnic area, and three shelters.

Pleasant Street Park offers a basketball court, a picnic area, and a playground.

The department oversees summer little league activities at the high school ball fields. It also schedules a variety of activities at the gymnasium including volleyball, and a winter basketball program. Adult softball leagues are offered by the recreation department. Classes in Karate and Jazzercise are also available.

Annual events in Cynthiana include the Harrison County Fair, a charity horseshow, an Iris Festival, and a Burley Festival.

Private recreational facilities available in Cynthiana include an indoor movie theater, a drive-in theater, bowling lanes, a health spa, and a country club with a swimming pool and 9-hole golf course.

### Area (Within 55 miles)

**Blue Licks Battlefield State Park** is located near Mt. Olivet, 24 miles east of Cynthiana. The 100-acre park is on the site of the last Revolutionary War battle in Kentucky. A museum features Indian and pioneer artifacts, an audiovisual program, and prehistoric bones from animals trapped at Blue Licks. Facilities include ten primitive campsites, a gift shop, picnic shelters and grills, a playground, a snack bar, and an Olympic-size swimming pool. Fishing is available at the Licking River which runs through the park.

**Kincaid Lake State Park**, 26 miles north of Cynthiana near Falmouth, offers many opportunities for the outdoors lover. The park offers a 175-acre lake, a sand beach, a 209-site campground, a gift shop/grocery store, a bathhouse, swimming, boating, hiking, picnicking, an amphitheatre, shuffleboard, miniature golf, tennis, and organized recreational programs in the summer months.



**The Kentucky Horse Park**, a park dedicated to horses and to man's love for horses, is located 28 miles southwest of Cynthiana near Lexington. The park, which contains more than 1,000 acres of Kentucky Bluegrass, features the International Museum of the Horse; the Man O'War Memorial; an antique carriage display; horseback and pony rides; walking farm tours; horse-drawn tours; a restaurant; a gift shop; and a campground area, which offers swimming, tennis, and planned activities. Numerous special events are held year-round and include various horse shows, steeplechasing, dressage, polo games, and rodeos.

**Lexington**, 34 miles southwest of Cynthiana, offers a variety of cultural, sporting, and recreational activities. Thoroughbred and harness racing is presented at Keeneland Race Course and the Red Mile Harness Track during several meets each year. The University of Kentucky and Transylvania University offer a number of sporting events. The University of Kentucky basketball games are held at Rupp Arena, the world's largest basketball arena. Other attractions include Lexington Philharmonic concerts, Lexington Children's Theatre, and plays performed by Broadway touring companies, all held in the recently renovated Opera House.

**Waveland State Shrine**, 39 miles southwest of Cynthiana near Lexington, features an 1847 Greek Revival mansion depicting Kentucky lifestyles from the days of early settlers to the antebellum era of gentility and elegance as well as the Civil War and postwar periods. The shrine also includes the Kentucky Life Museum and a plantation village on ten acres with many shops and displays.

**Frankfort**, the capital of Kentucky, is 39 miles southwest of Cynthiana. Points of interest in Frankfort include the Capitol Building, a 34-foot floral clock, the Daniel Boone Monument, several museums, and old homes with their original furnishings. Frankfort is also the home of Kentucky State University which offers many cultural activities and sporting events.

The spirit of Daniel Boone and his pioneers is reborn at **Fort Boonesborough State Park** in Boonesboro, 40 miles south of Cynthiana. In the re-created fort, pioneer crafts of the eighteenth century are demonstrated by using functioning antiques from the frontier era. Cabins are furnished as they would have been in the days of Boone and documentary films are presented which depict the struggle of the first Kentuckians to make the Kentucky wilderness a home. A gift shop within the fort offers for sale all the handcrafted items made at the fort. Other recreational facilities and activities of the park include the finest sand beach on the Kentucky River with a modern bathhouse and a modern camping area with 187 sites.

**White Hall State Shrine**, 47 miles south of Cynthiana near Richmond, one of the grand estate houses of post-Civil War Kentucky, is the Italianate mansion of Cassius Marcellus Clay, the early abolitionist and politician. Kentucky handcrafts are sold in the White Hall gift shop, only a short walk from the mansion.

**Big Bone Lick State Park** in Boone County, 52 miles northwest of Cynthiana, provides a unique combination of educational and recreational pleasures. Visitors can walk through the natural outdoor museum with replicas and exhibits that tell the story of Big Bone Lick. Recreational activities and facilities include a modern campground with 62 sites, fishing in a nearby lake, an indoor museum and gift shop, picnic grounds, tennis, shuffleboard, volleyball, basketball, horseshoes, planned recreation, and a swimming pool in the camping area.



## COMMUNITY IMPROVEMENTS

### Recent

Minnesota Mining and Manufacturing Company (3M) recently completed a 137,000-square-foot expansion to their plant. Cost was approximately \$30 million.

Bundy Tubing and the Ladish Company recently announced plans for expansions to their Cynthiana plants. Combined estimated cost of the expansions is \$2 million.

The Cynthiana-Harrison County Airport recently remodeled the terminal and an air-conditioned lounge was added to the facility.

A new shopping center, Southside Plaza Shopping Center, was completed in the spring of 1986.

### Under Way

A ten-room addition is under way at the Harrison County Junior High School to be used as a middle school. Completion is scheduled for August 1987 at an estimated cost of \$750,000.

Efforts are under way to establish county-wide planning and zoning in Harrison County. The agency will be a joint city-county commission. A referendum will be conducted by the spring of 1987 to determine if the agency will be established.

Columbia Gas Company is replacing approximately 3,000 feet of gas lines in Cynthiana and Harrison County and upgrading their high pressure system.

The City of Cynthiana is presently replacing deteriorated fire hydrants.

### Planned

A 16-inch waterline, which will supplement the water supply to the Cynthiana Water Department, is planned for construction in mid-1987. The 13-mile waterline will supply approximately 3 million gallons of additional raw water per day from the Licking River near Claysville. The estimated cost of the project is \$2 million.

Extensive improvement is planned for U.S. Highway 62 from Cynthiana to Interstate 75. Plans are to straighten and completely reconstruct the highway. Construction is planned to begin in the fall of 1987.

Facilities at the Cynthiana water treatment plant are planned to be renovated. The Cynthiana wastewater treatment plant also has plans to make improvements to the lift stations and force mains. A specific date for these projects had not been determined as of August 1986.

A new downtown mall is planned for Cynthiana. The proposed mall will cover an approximate one-half block area and contain 8 or 9 stores. Projected cost is \$700,000.