

1984

Industrial Resources: Henderson County - Henderson

Kentucky Library Research Collection
Western Kentucky University, spcol@wku.edu

Follow this and additional works at: https://digitalcommons.wku.edu/henderson_cty



Part of the [Business Administration, Management, and Operations Commons](#), [Growth and Development Commons](#), and the [Infrastructure Commons](#)

Recommended Citation

Kentucky Library Research Collection, "Industrial Resources: Henderson County - Henderson" (1984). *Henderson County*. Paper 8.
https://digitalcommons.wku.edu/henderson_cty/8

This Report is brought to you for free and open access by TopSCHOLAR®. It has been accepted for inclusion in Henderson County by an authorized administrator of TopSCHOLAR®. For more information, please contact topscholar@wku.edu.

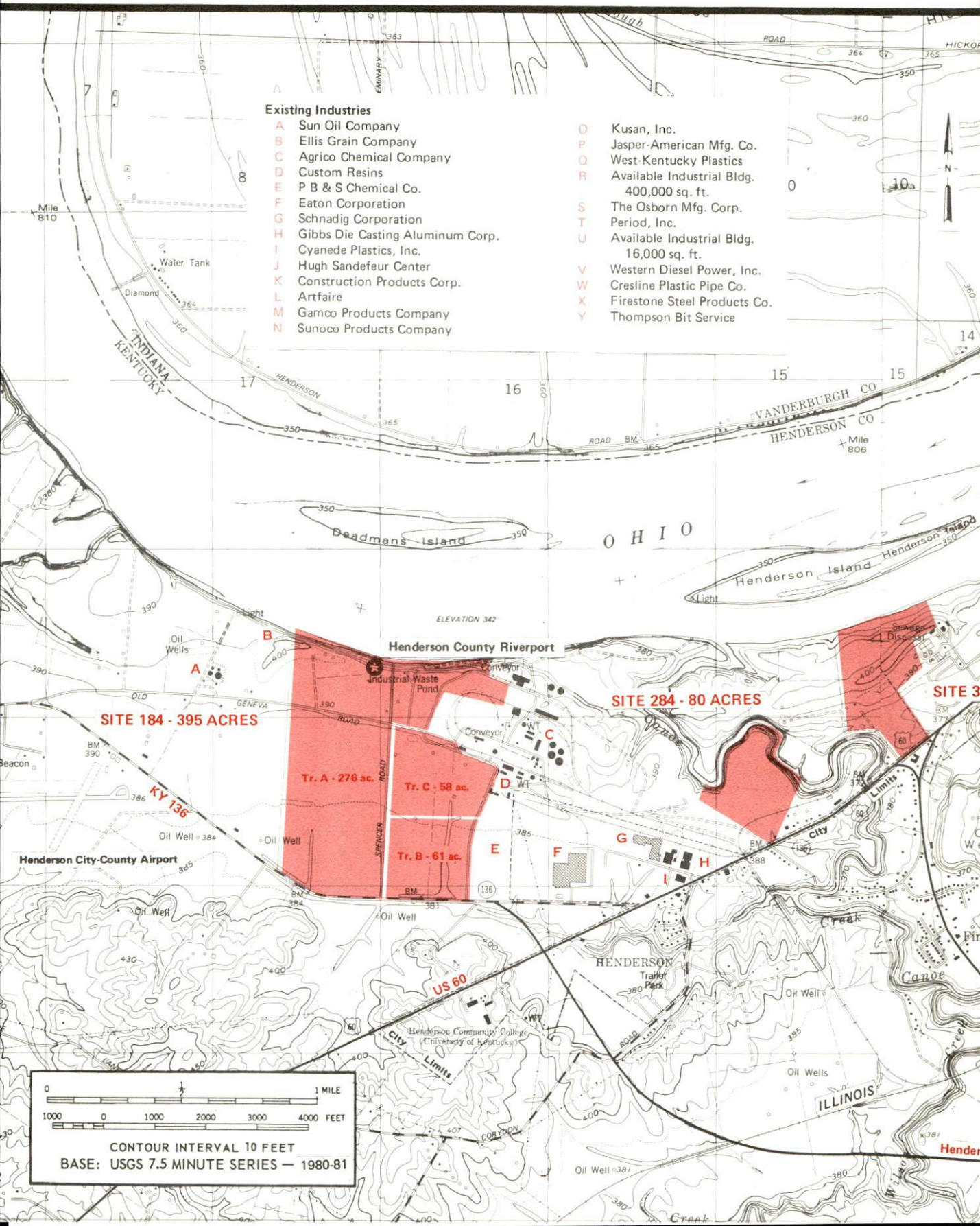
1984

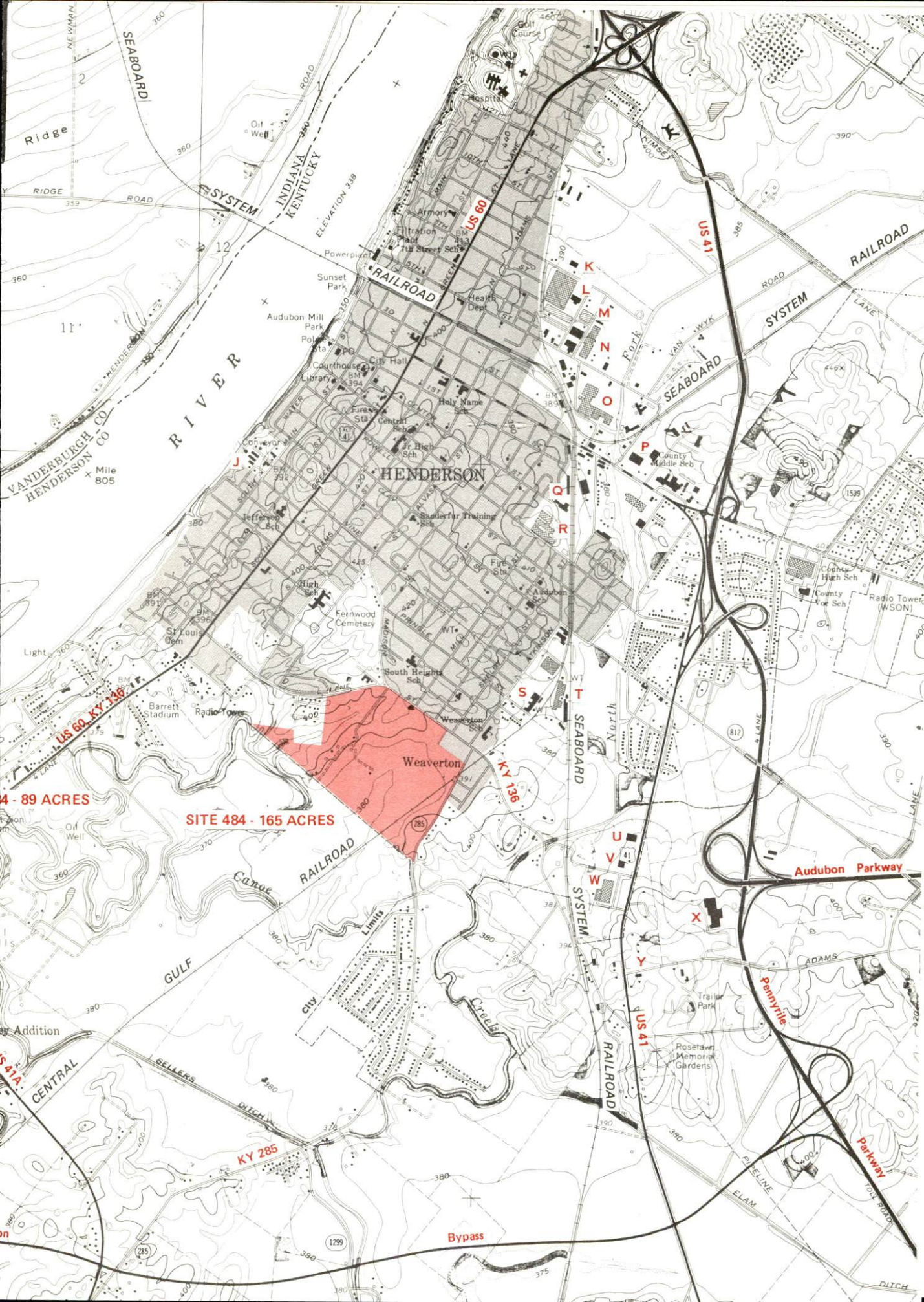
**A comprehensive
report on**

Henderson, Ky.



For detailed data on individual sites contact the Kentucky Department of Economic Development, Industrial Development & Marketing Division, Capital Plaza Tower, Frankfort, Kentucky 40601 (502-564-7140).





A COMPREHENSIVE REPORT ON
HENDERSON, KENTUCKY

Prepared by
The Kentucky Department of Economic Development
Division of Research and Planning
in cooperation with
The Henderson Area Economic Development Council
and
The Henderson-Audubon Area Chamber of Commerce

1984

Program manager - Pamela Riley; research - James R. Thompson; clerical - Bobbi Medley; graphics - Frank Ferrante, Tony Cecconi, Robert Owens; cartography - Site Evaluation Branch, Division of Industrial Development. Cost of printing paid from state funds.

TABLE OF CONTENTS

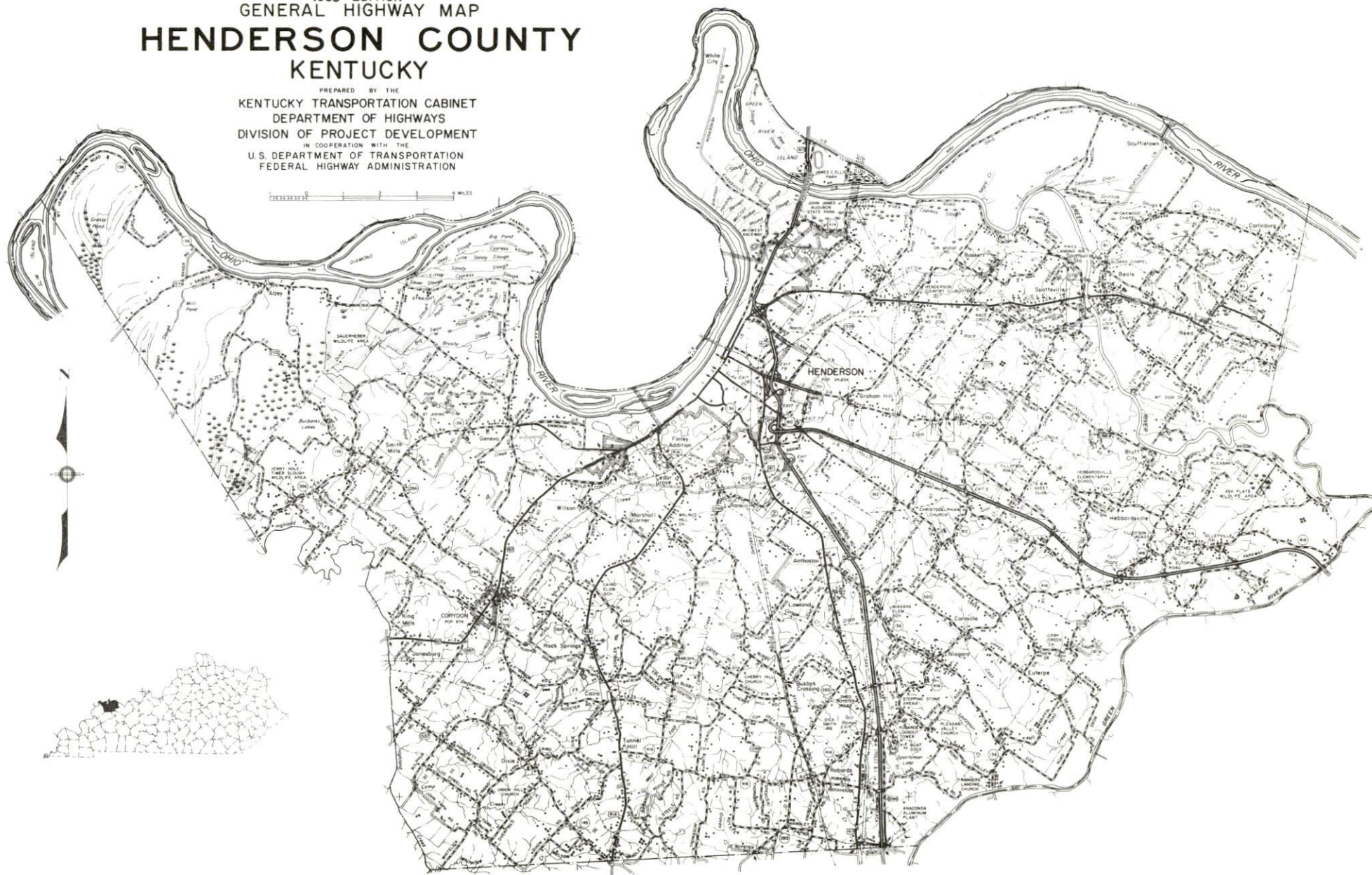
<u>Chapter</u>	<u>Page</u>
INDUSTRIAL SITES	i
HENDERSON, KENTUCKY - A RESOURCE PROFILE	1
THE LABOR MARKET AREA	3
Population	3
Labor Force Characteristics of Residents, 1982	3
Selected Components of Nonagricultural Employment, by Place of Work, 1982	4
Henderson Manufacturing Firms, Their Products and Employment	5
Labor Organizations in Manufacturing Firms	7
Industrial Services	8
Estimated Male Labor Supply	9
Estimated Female Labor Supply	9
Average Weekly Wages By Industry, by Place of Work, 1982	10
Per Capita Personal Income	12
TRANSPORTATION	13
Rail	13
Highways	14
Truck Service	14
Air	16
Bus	17
Taxi	17
Rental Services	17
Water	17
POWER AND FUEL	20
Electricity	20
Natural Gas	21
Other Fuels	21
WATER AND SEWERAGE	22
Public Water Supply	22
Raw Water	24
Sewerage	24
CLIMATE	25

<u>Chapter</u>	<u>Page</u>
LOCAL GOVERNMENT	26
City	26
County	26
Assessed Value of Property, 1983	26
Property Taxes	27
Combined State and Local Rates Per \$100 Valuation, 1983	27
Utilities Gross Receipts Tax for Schools	28
Planning and Zoning	28
Safety	28
Police	28
Fire	28
Rescue Service	28
Refuse Collection and Disposal	29
EDUCATION	30
Public Schools	30
Nonpublic Schools	30
Area Colleges and Universities	31
Vocational Schools	32
HEALTH	34
Local Medical Personnel	34
Hospitals	34
Other Medical Facilities	34
Ambulance Service	35
Public Health	35
OTHER LOCAL FACILITIES	36
Communications	36
Library Services	37
Religious Institutions	37
Financial Institutions	38
Hotels and Motels	38
Clubs and Organizations	38
RECREATION	39
COMMUNITY IMPROVEMENTS	42

1983 EDITION
GENERAL HIGHWAY MAP
HENDERSON COUNTY
KENTUCKY

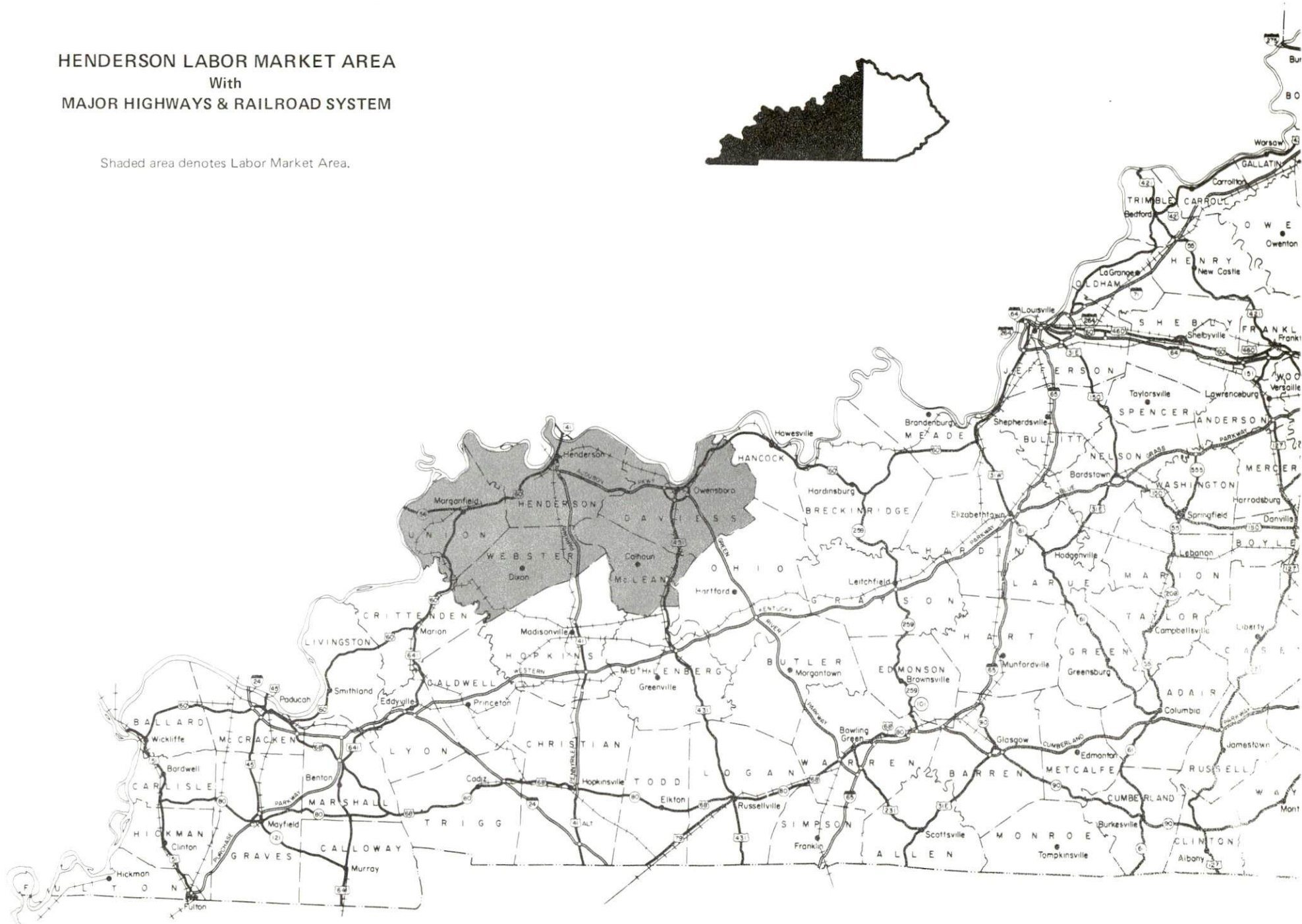
PREPARED BY THE
KENTUCKY TRANSPORTATION CABINET
DEPARTMENT OF HIGHWAYS
DIVISION OF PROJECT DEVELOPMENT
IN COOPERATION WITH THE
U.S. DEPARTMENT OF TRANSPORTATION
FEDERAL HIGHWAY ADMINISTRATION

0 1 2 3 4 5 6 7 8 9 10 MILES



HENDERSON LABOR MARKET AREA With MAJOR HIGHWAYS & RAILROAD SYSTEM

Shaded area denotes Labor Market Area.



HENDERSON, KENTUCKY - A RESOURCE PROFILE

Henderson, the county seat of Henderson County, is located in northwestern Kentucky along the banks of the Ohio River. The city had a 1980 population of 24,834. Henderson is located 10 miles south of Evansville, Indiana; 126 miles southwest of Louisville, Kentucky; 142 miles northwest of Nashville, Tennessee; and 178 miles southeast of St. Louis, Missouri.

Henderson County covers a land area of 438 square miles in the Western Coal Field Region of Kentucky. The Ohio River forms the northern boundary of the county. Henderson County had a population of 40,849 in 1980.

The Economic Framework

The total number of Henderson County residents employed in 1982 averaged 18,000, with nonagricultural jobs accounting for 17,400 workers. Manufacturing employers in the county reported 4,140 workers; wholesale and retail trade 3,190; services 2,590; and state and local government 1,590. Manufacturing employment is greatest in primary metal industries and transportation equipment.

Per capita personal income in Henderson County in 1981 was \$10,069. Between 1977 and 1981, per capita income increased by 46 percent.

The Henderson labor market area includes Henderson County, the four adjoining Kentucky counties, and three neighboring Indiana counties. The total number of residents of the Kentucky portion of the labor market area employed in 1982 averaged 78,030, with nonagricultural jobs accounting for 74,780 workers. Manufacturing employers in the area reported 11,780 workers; wholesale and retail trade 12,130; services 9,110; state and local government 7,210; and mining and quarrying 5,860.

Resources for Growth

1. Labor Supply - There is a current labor supply of 6,825 men and 8,070 women available for industrial jobs in the labor market area. In addition, from 1984 through 1988, 7,250 young men and 6,880 young women in the area will become 18 years of age and potentially available for work.

2. Transportation - The Seaboard System Railroad provides main line service and the Illinois Central Gulf Railroad provides branch line service to Henderson. Henderson is served directly by U.S. Highways 41, 41A, and 60 and the Pennyryle and Audubon Parkways. In addition, Interstate 64 is located 23 miles north of Henderson. Thirty common carriers have the authority to serve Henderson. The nearest commercial airport, Evansville Dress Regional Airport, is located 14 miles north of Henderson. The Henderson City-County Airport, 3 miles southwest of Henderson, has a 3,800-foot paved runway and offers charter service. Henderson is located on the Ohio River and the Henderson County Riverport Authority operates port facilities at mile 808 on the Ohio River.

3. Power and Fuel - Electric power is provided to Henderson and part of Henderson County by Municipal Power and Light, a municipally-owned generating company. Kentucky Utilities Company, an electric generation and transmission company, and the Henderson-Union Rural Electric Cooperative Corporation, which is supplied by the Big Rivers Electric Corporation, also serve Henderson County. Natural gas service is provided by the Henderson Municipal Gas System, which is supplied by the Texas Gas Resources Corporation. Five distributors of propane and six distributors of distillate fuel oil serve Henderson.

4. Education - Primary and secondary education is provided to Henderson and Henderson County by the Henderson County School System.

Henderson Community College, a part of the University of Kentucky Community College System, offers two years of liberal arts and career-oriented programs leading to the Associate in Applied Science, the Associate in Arts, or the Associate in Science degree. The community college also offers continuing education and community service programs. The Fall 1982 enrollment was 1,042.

In addition, three universities, four senior colleges and three community colleges are located within 100 miles of Henderson.

The Daviess County State Vocational-Technical School and the Owensboro Vocational-Technical School, located in Owensboro, 30 miles east, offer training in a total of 27 different courses. The Henderson County Area Vocational Education Center, located in Henderson, offers training in 10 courses.

THE LABOR MARKET AREA

The Henderson Labor Market Area includes Henderson County and the adjoining Kentucky counties of Daviess, McLean, Union and Webster. The northern boundary of Henderson County is formed by the Ohio River where it borders the state of Indiana. The Henderson Labor Market Area also encompasses the neighboring Indiana counties of Posey, Vanderburgh and Warrick.

POPULATION			
Area	1980	1970	Percent Nonwhite
Henderson	24,834	22,976	11.0
Evansville, IN-KY, MSA	276,252*	254,515*	N/A
Labor Market Area	169,541	153,743	N/A
Henderson County	40,849	36,031	7.7
Daviess County	85,949	79,486	4.5
McLean County	10,090	9,062	0.8
Union County	17,821	15,882	18.9
Webster County	14,832	13,282	6.1

* Evansville, Indiana-Kentucky Metropolitan Statistical Area (includes Henderson County in Kentucky and Posey, Vanderburgh and Warrick Counties in Indiana). Boundaries are based on the counties included in the MSA as of June 30, 1983, when Gibson County, Indiana was deleted from the area.

Note: The 1980 counts of population by race are provisional.

Sources: U.S. Department of Commerce, Bureau of the Census, 1980 Census of Population and Housing, March 1981; 1980 Census of Population, Number of Inhabitants. Population Research Unit, Urban Studies Center, University of Louisville, Kentucky Demographics: The 1980 Census of Kentucky, Characteristics of Population, Households, Housing, January 1982. Indiana State Data Center.

LABOR FORCE CHARACTERISTICS OF RESIDENTS, 1982		
	Henderson County	Labor Market Area*
Civilian Labor Force	19,846	85,645
Employment	17,997	78,027
Agricultural	595	3,250
Nonagricultural	17,402	74,777
Unemployment	1,849	7,618
Rate of Unemployment (%)	9.3	8.9

* Henderson County and the four adjoining Kentucky counties.

Source: Kentucky Cabinet for Human Resources, Kentucky Labor Force Estimates, Annual Averages, 1982.

SELECTED COMPONENTS OF NONAGRICULTURAL EMPLOYMENT,
BY PLACE OF WORK, 1982

	<u>Henderson County</u>	<u>Labor Market Area*</u>
All Industries (total)	13,727	53,864
Manufacturing	4,143	11,783
Wholesale & Retail Trade	3,187	12,129
Services	2,594	9,107
State/Local Government	1,587	7,208
Mining & Quarrying	652	5,863

* Henderson County and the four adjoining Kentucky counties.

Note: Excludes domestic workers, railway workers, certain nonprofit corporations, majority of federal government workers, and self-employed workers.

Source: Kentucky Cabinet for Human Resources, Average Monthly Workers Covered by Kentucky Unemployment Insurance Law, 1982.

HENDERSON MANUFACTURING FIRMS,
THEIR PRODUCTS AND EMPLOYMENT*

<u>Firm</u> (Establishment date)	<u>Product</u>	<u>Employment</u>			<u>Labor Unions</u>
		<u>Total</u>	<u>Male</u>	<u>Female</u>	
ARCO Aluminum Company (1970)	Primary aluminum ingot, aluminum extrusion billet, aluminum sheet ingot	817	741	76	Aluminum Workers**
Artfaire (1968)	Gift wrapping, printed and laminated paper and foils	150	65	85	Laborers**
Construction Products Corporation (1960)	Prestressed concrete products, ready-mixed concrete	55	54	1	Laborers; Teamsters**
Cresline Plastic Pipe Company (1966)	Plastic pipe and fittings	125	120	5	Machinists**
Cyanede Plastics, Inc. (1951)	Molded thermo- plastics	149	--	--	
Eaton Corporation, Axle Division, Henderson Plant (1970)	Axle assembly-- trucks	213	192	21	Steelworkers**
Firestone Steel Products Company (1973)	Truck wheels and rims	530	459	71	Auto Workers**
Gamco Products Company (1956)	Zinc die castings, custom and proprietary plastics	299	147	152	
Gibbs Die Casting Aluminum Corporation (1966)	Aluminum die castings, magnesium die castings	320	180	140	

(Contd.)

<u>Firm</u> (Establishment date)	<u>Product</u>	<u>Employment</u>			<u>Labor Unions</u>
		<u>Total</u>	<u>Male</u>	<u>Female</u>	
Gleaner and Journal Publishing Company (1885)	Newspaper, job printing	67	32	35	
Kusan, Inc. (1946)	Games; toys; plastic auto, refrigerator, and custom parts	170	57	113	
The Osborn Manufacturing Corporation (1946)	Industrial maintenance brushes	63	35	28	Furniture Workers**
P B & S Chemical Company (1947)	Chemicals	100	--	--	
Period, Inc. (1939)	Furniture for motels and hotels, custom furniture	89	56	33	
Hugh E. Sandefur Training Center (1967)	Corrugated partitions and pads, survey stakes	124	72	52	
Schnadig Corporation, International Tables Division (1979)	Wood tables	116	60	56	Upholsterers**
Scott Lumber, Inc. (1945)	Hardwood lumber, skids	102	96	6	
Sonoco Products Company (1967)	Fiber containers, aluminum steel ends	51	38	13	
West Kentucky Plastics (1969)	Custom molded plastics	70	24	46	

* Firms with 50 or more employees.

** See Labor Organizations below.

Source: Kentucky Department of Economic Development, 1984 Kentucky Directory of Manufacturers; Division of Research and Planning.

LABOR ORGANIZATIONS IN MANUFACTURING FIRMS

<u>Union</u>	<u>Representing workers at:</u>
Aluminum, Brick and Glass Workers International Union, AFL-CIO	ARCO Aluminum Company
Laborer's International Union of North America, AFL-CIO	Artfaire Construction Products Corporation
International Brotherhood of Teamsters, Chauffeurs, Warehousemen and Helpers of America	Concrete Service Company Construction Products Corporation
International Association of Machinists and Aerospace Workers, AFL-CIO	Cresline Plastic Pipe Company
International Chemical Workers Union, AFL-CIO	Custom Resins, Division of Bemis Company, Inc.
United Steelworkers of America, AFL-CIO	Eaton Corporation, Axle Division, Henderson Plant
International Union, United Automobile, Aerospace and Agricultural Implement Workers of America	Firestone Steel Products Company
United Furniture Workers of America, AFL-CIO	The Osborn Manufacturing Corporation
Upholsterer's International Union of North America, AFL-CIO	Schnadig Corporation, International Tables Division
International Union of Operating Engineers	Western Diesel Services, Inc.

INDUSTRIAL SERVICES

<u>Types of Services</u>	<u>Location</u>	<u>Mileage from Henderson</u>
Custom Plastics Producers	Henderson, Kentucky	-
Electric Motor Repair	Henderson, Kentucky	-
Grinding, Precision & Tool	Evansville, Indiana	10
Heat Treating Facilities	Evansville, Indiana	10
Industrial Equipment & Supplies	Evansville, Indiana	10
Industrial Gases	Henderson, Kentucky	-
Industrial Waste Removal	Henderson, Kentucky	-
Machine Shops, Tool & Die	Henderson, Kentucky	-
Metal Finishers	Evansville, Indiana	10
Metal Service Centers	Owensboro, Kentucky	30
Millwrights	Evansville, Indiana	10

Source: Kentucky Department of Economic Development, Kentucky Directory of Selected Industrial Services, 1983.

ESTIMATED MALE LABOR SUPPLY
HENDERSON LABOR MARKET AREA

Area	Current			Not in Labor Force	Future
	Total	Unemployed	Under- employed		Becoming 18 years of age 1984 thru 1988
Labor Market					
Area*	6,825	4,297	2,528	0	7,248
Henderson	1,472	941	531	0	1,753
Daviess	3,641	2,368	1,273	0	3,754
McLean	416	293	123	0	431
Union	784	417	367	0	692
Webster	512	278	234	0	618

*Additional workers may be drawn from other nearby counties.

Note: Unemployed - persons unemployed and actively seeking work;
Underemployed - persons employed but working only 14 to 26 weeks per year;
Not in Labor Force - represents the number of persons who would enter the labor force if suitable employment were available (based on the assumption that persons in Kentucky would like to participate in the labor force in the same proportion that they do nationally).

Sources: Kentucky Cabinet for Human Resources, Kentucky Labor Supply Estimates by Area Development District and County, 1982. Kentucky Department of Economic Development, Future Labor Supply Becoming 18 Years of Age, 1984 thru 1988.

ESTIMATED FEMALE LABOR SUPPLY
HENDERSON LABOR MARKET AREA

Area	Current			Not in Labor Force	Future
	Total	Unemployed	Under- employed		Becoming 18 years of age 1984 thru 1988
Labor Market					
Area*	8,068	3,321	3,513	1,234	6,880
Henderson	2,061	908	862	291	1,652
Daviess	3,396	1,573	1,823	0	3,578
McLean	531	207	152	172	416
Union	736	291	445	0	637
Webster	1,344	342	231	771	597

*Additional workers may be drawn from other nearby counties.

Note: Unemployed - persons unemployed and actively seeking work;
Underemployed - persons employed but working only 14 to 26 weeks per year;
Not in Labor Force - represents the number of persons who would enter the labor force if suitable employment were available (based on the assumption that persons in Kentucky would like to participate in the labor force in the same proportion that they do nationally).

Sources: Kentucky Cabinet for Human Resources, Kentucky Labor Supply Estimates by Area Development District and County, 1982. Kentucky Department of Economic Development, Future Labor Supply Becoming 18 Years of Age, 1984 thru 1988.

AVERAGE WEEKLY WAGES BY INDUSTRY,
BY PLACE OF WORK, 1982

	<u>Henderson County</u>	<u>Daviess County</u>	<u>McLean County</u>
All Industries	\$ 291.95	\$ 294.05	\$ 249.02
Mining & Quarrying	406.81	418.51	*
Contract Construction	345.07	326.74	297.58
Manufacturing	357.62	393.47	260.91
Transportation, Communications & Public Utilities	371.92	450.16	492.43
Wholesale & Retail Trade	206.38	195.48	202.59
Finance, Insurance & Real Estate	261.78	273.52	210.53
Services	254.03	232.62	161.64
State/Local Government	267.39	271.79	219.82
Other	208.09	231.03	*
	<u>Union County</u>	<u>Webster County</u>	
All Industries	\$ 403.52	\$ 348.23	
Mining & Quarrying	605.54	602.05	
Contract Construction	282.64	374.06	
Manufacturing	237.41	252.23	
Transportation, Communications & Public Utilities	414.65	*	
Wholesale & Retail Trade	184.96	187.11	
Finance, Insurance & Real Estate	297.06	250.93	
Services	213.24	132.93	
State/Local Government	252.48	233.19	
Other	263.76	135.14	

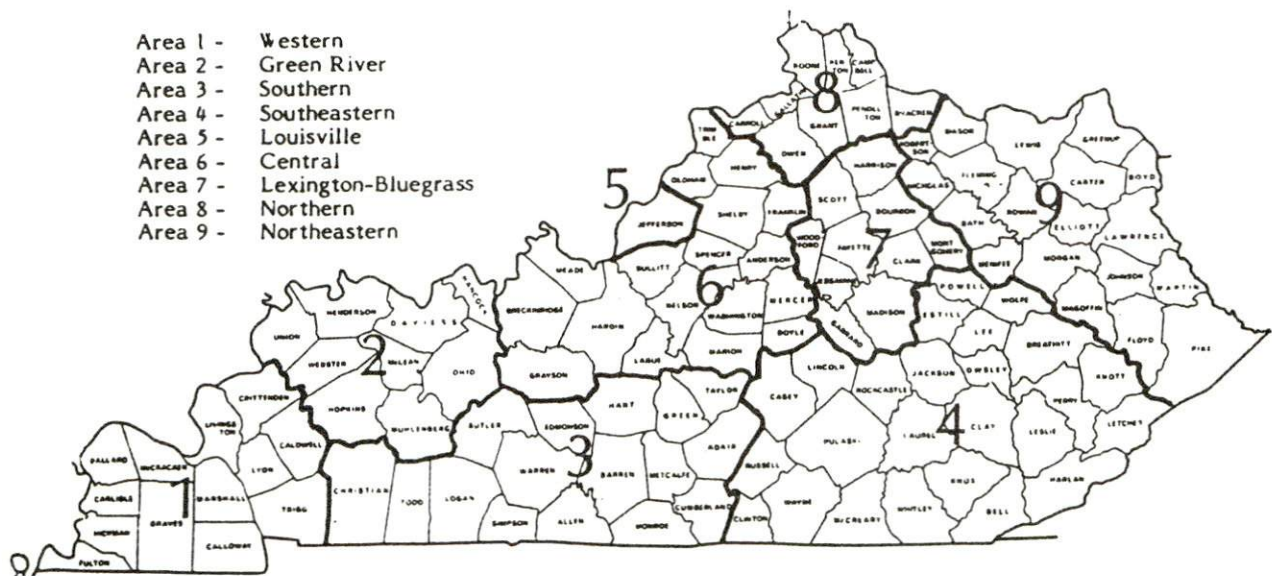
*Not disclosed.

Note: Excludes domestic workers, railway workers, certain nonprofit corporations, majority of federal government workers, and self-employed workers.

Source: Kentucky Cabinet for Human Resources, Average Weekly Wages of Workers Covered by Kentucky Unemployment Insurance Law, 1982.

Occupational wage rates for specific industries are usually not available to most government agencies, and wage data furnished to state employment agencies by individual industrial employers are protected from disclosure by federal law. The most reliable up-to-date wage information can be obtained by direct contact with local employers.

Associated Industries of Kentucky, a voluntary organization of Kentucky businesses, regularly collects occupational wage rates and fringe benefits data from participating member firms. Data are compiled for over 127 clearly defined office, production, and service occupations. Tabulations are published for nine geographical areas of Kentucky, as shown on the map below. It should be noted that the data may be weighted by the preponderance of firms in the larger cities and may be somewhat higher than the rates paid in the smaller communities. Data from these tabulations are available, upon request, from the Kentucky Department of Economic Development, Frankfort, Kentucky 40601.



PER CAPITA PERSONAL INCOME

<u>Area</u>	<u>1977</u>	<u>1981</u>	<u>Percent Change</u>
Henderson County	\$ 6,904	\$ 10,069	45.8
Labor Market Area Range*	\$5,591 - 6,904	\$7,943 - 10,069	N/A
Kentucky	5,797	8,416	45.2
U. S.	6,984	10,495	50.3

* Henderson County and the four adjoining Kentucky counties.

Source: U. S. Bureau of Economic Analysis, Kentucky Economic Information System, May 1983.

TRANSPORTATION

Rail

Line serving **Henderson** - Seaboard System Railroad

Services - Main line; 1 northbound and 1 southbound freight makes daily stops plus 1 local freight travelling to and from Madisonville, Kentucky, makes daily stops; 10 northbound and 9 southbound through freights daily; switching facilities with a switch engine stationed at the Henderson yard; team track space for 18 cars; siding space on yard tracks for 225 cars; piggyback facilities are located at Evansville, Indiana, 10 miles north of Henderson

Line serving **Henderson** - Illinois Central Gulf Railroad

Services - Branch line; 1 freight makes daily stops; switching services; team track space for 4 cars; yard storage for 80 cars; the nearest ICG piggyback facilities are located at Paducah, Kentucky, 99 miles southwest of Henderson

For details on routing, schedules, rates, and services, contact:

Manager of Industrial Development
Seaboard System Railroad
P.O. Box 32290
Louisville, Kentucky 40232
(502) 587-5228

and/or

Manager of Industrial Development
Illinois Central Gulf Railroad
Central Region
Pet Plaza
400 South 4th Street
St. Louis, Missouri 63102
(314) 622-6430

Highways

Henderson is served by the Pennyriple Parkway, the Audubon Parkway, and U.S. Highways 41, 41A, and 60. The Pennyriple Parkway is a four-lane toll road that extends from Henderson southward and connects with the Western Kentucky Parkway, 46 miles to the south. The Audubon Parkway, also a four-lane toll road, connects Henderson with Owensboro, Kentucky. An interchange of Interstate 64 is located 23 miles north of Henderson via U.S. 41.

Two highway projects, which improved the flow of traffic in and around Henderson, were recently completed. They included a \$4.44 million project to resurface the U.S. 41 northbound bridge that connects Henderson and Evansville, and the construction of an interchange on the Audubon Parkway at its junction with Kentucky 1078.

Also, the construction of the \$12.2 million Henderson Bypass is currently under way. The bypass, which will extend from Kentucky 136 and U.S. 60 west of Henderson to the Pennyriple Parkway, is expected to be completed in early 1985.

Truck Service

<u>Company</u>	<u>Home Office</u>
A & H Truck Lines, Inc.*	Evansville, Indiana 47711
Advance Transportation Company*	5005 South 6th Street Milwaukee, Wisconsin 53201
ANR Freight System, Inc.*	One Woodward Avenue Detroit, Michigan 48226
American Freight System, Inc.**	9393 West 110th Street Overland Park, Kansas 66210
Branch Motor Express Company*	114 Fifth Avenue New York, New York 10011
C & H Transportation Company, Inc.*	Dallas, Texas 75227
Central Transport, Inc.*	34200 Mound Road Sterling Heights, Michigan 48007
Clairmont Transfer Company**	1803 Seventh Avenue North Escanaba, Michigan 49829
Cleveland and Todd Trucking*	2250 South Green Henderson, Kentucky 42420
Commercial Lovelace Motor Freight, Inc.*	3400 Refugee Road Columbus, Ohio 43227
Duff Truck Line, Inc.**	Broadway and Vine Streets Lima, Ohio 45802
Expressway, Inc.*	1105 St. Louis Louisville, Kentucky 40210
F.M.S. Transportation* (Truck load only)	P.O. Box 22628 St. Louis, Missouri 63147
Leoni Motor Express, Inc.*	Chicago Heights, Illinois 60411

(Cont'd)

CompanyHome Office

Ligon Specialized Hauler,
Inc.*

Highway 85 East
Madisonville, Kentucky 42431

The Maryland Transportation
Company**

1111 Frankfurst Avenue
Baltimore, Maryland 21225

McLean Trucking Company**

P.O. Box 213
Winston-Salem, North Carolina 27102

Richard L. Morgan Agency,
Inc.*

Kansas City, Kansas 66115

North Shore & Central
Illinois Freight Company*
Orscheln Express**
Overnite Transportation
Company*

Chicago, Illinois 60608
St. Louis, Missouri 63147

R-W Service System, Inc.*

1000 Semmes Avenue
Richmond, Virginia 23209
20225 Goddard Road

Razorback Express, Inc.*
Renner's Express, Inc.*

Taylor, Michigan 48180
Harrison, Arkansas 72601
1350 South West Street
Indianapolis, Indiana 46206

Roadway Express, Inc.**

1077 Gorge Boulevard
Akron, Ohio 44310

Robbins Truck Line, Inc.*

P.O. Box 429
Hardinsburg, Kentucky 40143

Ryder/P-I-E Nationwide, Inc.**

2050 Kings Road
Jacksonville, Florida 32203

Smith's Transfer Corporation**

P.O. Box 1000
Staunton, Virginia 24401

Transcon Lines*

101 Continental Boulevard
El Segundo, California 90245

United Trucking Service,
Inc. (T)*

8505 West Warren
Dearborn, Michigan 48126

(T) Local terminal.

* Interstate and intrastate service.

** Interstate service only.

Source: American Motor Carrier Directory, Spring 1984.

Other Freight Services

Emery
Federal Express
Purolator Courier
United Parcel Service

Nearest Office or Shipping Center

Evansville, Indiana, 10 miles north
Evansville, Indiana, 10 miles north
Evansville, Indiana, 10 miles north
Owensboro, Kentucky, 30 miles east

HIGHWAY MILES AND TRUCK TRANSIT TIME IN DAYS FROM
HENDERSON, KENTUCKY, TO SELECTED MARKET CENTERS

City	Highway Miles	Delivery Time TL	City	Highway Miles	Delivery Time TL
Atlanta, Ga.	384	1	Los Angeles, Ca.	2,023	4
Baltimore, Md.	724	2	Louisville, Ky.	126	1
Birmingham, Ala.	338	1	Nashville, Tenn.	142	1
Chicago, Ill.	302	1	New Orleans, La.	659	2
Cincinnati, Ohio	227	1	New York, N. Y.	874	2
Cleveland, Ohio	471	1	Pittsburgh, Pa.	514	2
Detroit, Mich.	486	1	St. Louis, Mo.	178	1
Knoxville, Tenn.	319	1			

Note: Mileage computations are via the best interstate or primary highways, not necessarily the most direct route of travel.

Sources: Rand McNally Road Atlas, 1979. Official Kentucky Mileage Map, 1980.
Delivery time - Robbins Truck Lines, Inc., P.O. Box 429, Hardinsburg, Kentucky 40143.

AirLocal

Location: Henderson City-County Airport
3 miles southwest of Henderson and adjacent to the
Henderson County Riverport Authority

Runways: 1 paved
Length: 3,800 feet with clear approaches*

Traffic Control: Wind sock, wind tee, and unicom
Lighting: Runway lights and rotating beacon
Services: 100LL octane; Jet A-50; piston and turbine approved repair
station; hangar and tie-down; airplane and helicopter
charter service; flight training; taxi; APU;
oxygen and nitrogen; Cessna dealer; Bell helicopter
customer service facilities

Air Freight Service: Chartered air freight services may be arranged

(Cont'd)

* The Henderson City-County Airport plans to lengthen its runway from 3,800 feet to 5,000 feet in 1984.

Nearest Scheduled Commercial Airline Service

Location: Evansville Dress Regional Airport
4 miles north of Evansville, Indiana;
14 miles north of Henderson

Runways: 3 paved

Length: 8,021 feet; 5,088; 3,500 feet

Traffic

Control: Tower

Lighting: Beacon, runway

Services: Eastern, USAir, Britt Airways, Comair, Air Illinois;
fuel - 100LL, Jet-A; hangars, tie-downs; major A & P
repairs, major Avionics repairs; flight instruction,
APU, charter, oxygen, plane rental, survival equipment;
taxi, car rentals, courtesy car; weather information;
restaurant

Air Freight

Service: Air freight terminal

Bus - Greyhound Bus Lines; HART (Henderson Area Rapid Transit), an intracity system

Taxi - 2 companies (1 with 24-hour service)

Rental Services - Auto, truck, trailer, and equipment rentals

Water

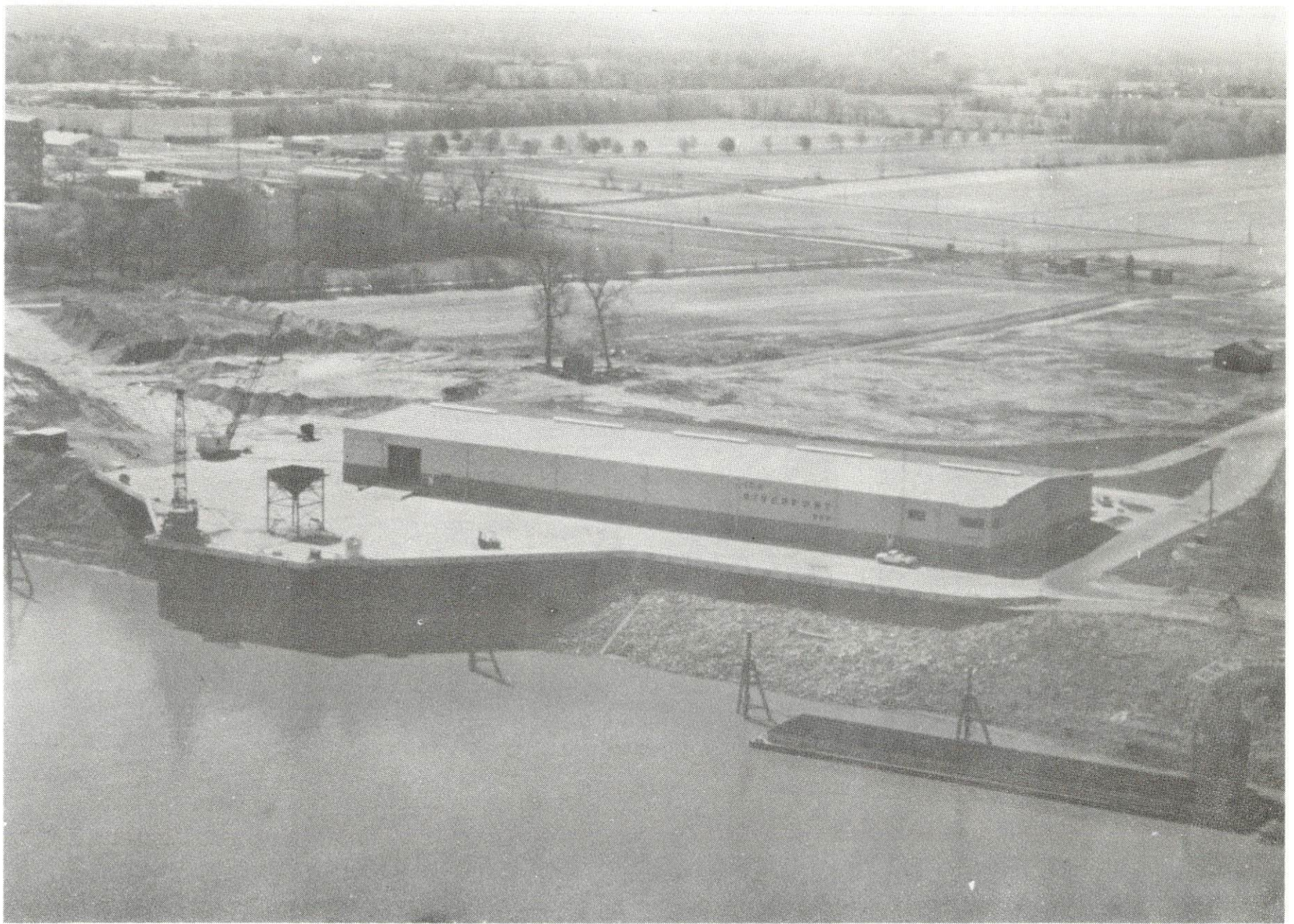
Henderson is strategically located on the banks of the Ohio River near the confluence of the Green and Ohio Rivers. The Ohio River has a 9-foot navigation channel for its entire length and a minimum channel width of 300 feet. The Ohio River runs into the Mississippi River approximately 205 river miles from Henderson. A 9-foot navigation channel is maintained on the Green River from Morgantown, Kentucky, to Henderson.

The Henderson County Riverport Authority operates port facilities at mile 808 on the Ohio River at Henderson. The Riverport offers full port facilities, coal loading facilities, bulk and cargo handling, warehousing and yard storage, and intermodal transportation.

Port facilities include a bulk material loading system with dump scales, which has a loading capacity of 800 tons per hour, and can handle grain, coal and a variety of other bulk materials; a 42,000-square-foot, sprinkled, freezeproof transit warehouse designed to handle materials from barge, rail or truck; and 4,000 feet of river frontage which provides a sizeable fleet area with river towing services available.

Equipment includes a 125-ton electric pedestal crane capable of loading and unloading barge, truck and rail; and a 60-ton crawler crane, end loaders, fork lifts and numerous other pieces of equipment used in material handling and barge cleaning. The terminal accommodates all types of integrated transportation activities, such as stevedoring, warehousing, and distribution.

(Cont'd)



HENDERSON COUNTY RIVERPORT

Materials being handled from or to barge, dock, truck, rail or warehouse include: coal, coke, stone, gravel, sand, lime, fertilizers, phosphate, potash, salt, chrome alloy, cryolite, grains, steel, aluminum, castings, wire, steel pipe and rods, concrete products, construction materials, and coal production equipment.

The riverport and the adjoining industrial park consist of 276 acres, with options on two additional tracts which total 119 acres. Adjoining the western city limits of Henderson on Highway 136 within the commercial zone of Evansville and in sight of the Henderson City-County Airport, the port-industrial park will be connected to the Pennyrile and Audubon Parkways by the southern bypass now under construction.

For more information contact:

Port Director
Henderson County Riverport Authority
Route 2, Box 16, Highway 136
Henderson, Kentucky 42420
(502) 826-1636

POWER AND FUEL

Electricity

Company serving **Henderson** and parts of **Henderson County** - Municipal Power and Light

Source of power - Municipally-owned generators

Total generating capacity - 353,000 KW*

For industrial rates contact:

Municipal Power and Light
P.O. Box 8
Henderson, Kentucky 42420
(502) 826-2726

Company serving parts of **Henderson County** - Kentucky Utilities Company

Source of power - Kentucky Utilities Company

Total generating capacity - 2,639,100 KW**

For industrial rates contact:

Industrial Development Department
Kentucky Utilities Company
One Quality Street
Lexington, Kentucky 40507
(606) 255-1461

Company serving a major portion of **Henderson County** - Henderson-Union Rural Electric Cooperative Corporation

Source of power - Big Rivers Electric Corporation

Total generating capacity - 1,184,000 KW***

For industrial rates contact:

Henderson-Union RECC
P.O. Box 18
Henderson, Kentucky 42420
(502) 826-3991 or 1-800-242-7069

* The Henderson Municipal Power and Light, during the winter of 1982, increased its generating capacity from 334,000 KW to 353,000 KW.

** A new generating unit is under construction in Carroll County. Due to be completed in 1984, the unit will have a generating capacity of 511,000 KW.

*** Big Rivers Electric Corporation's total generating capacity will be increased when the new 440,000 KW D. B. Wilson generating plant in Ohio County is put into operation in mid-1984.

Natural Gas

Company serving **Henderson** - Henderson Municipal Gas System
Source of supply - Texas Gas Resources Corporation
Size of transmission mains - 6 and 8 inches (supplier); 6 inches (distributor)
Distribution mains - 1½ to 10 inches
Distribution pressure - 4 ounces to 175 psi (maximum of loop line)
Btu content - 1,005 per cubic foot
Specific gravity - 0.60
For rates and supplies contact:

Manager of Public Utilities
Henderson Municipal Gas System
P.O. Box 452
Henderson, Kentucky 42420
(502) 827-5671

Other Fuels

Propane

Henderson Propane, Inc.
2101 South Green Street
Henderson, Kentucky 42420

Texgas Corporation
1641 Madison
Henderson, Kentucky 42420

Lin-Gas, Inc.
2270 South Green Street
Henderson, Kentucky 42420

Union Propane Gas Company
U.S. 60 South
Morganfield, Kentucky 42437

Southern States Henderson
Co-op, Inc.
146 McKinley Street
Henderson, Kentucky 42420

Fuel oils

Distillate fuel oil -

Ashland Oil Bulk Plant
2063 Clay Street
Henderson, Kentucky 42420

Hayes Oil Company (Arco)
Old 41A South
Henderson, Kentucky 42420

Chevron USA, Inc.
Tom Emmick Agent
1124 Second Street
Henderson, Kentucky 42420

Palmer Oil Company
1638 Clay Street
Henderson, Kentucky 42420

A. B. Eargood & Son, Inc.
(Sunoco)
400 North Adams Street
Henderson, Kentucky 42420

Shelton Foeman Gulf Distributor
U.S. Highway 60 West
Morganfield, Kentucky 42437

Residual fuel oil - Arrangements must be made with the refinery.

Low sulphur content coal - Available in Kentucky.

WATER AND SEWERAGE

Public Water Supply

Company serving **Henderson** - Municipal Water and Sewer Department
 510 North Water Street
 Henderson, Kentucky 42420
 (502) 826-2421

Source - Ohio River

Treatment plant capacity - 6,000,000 gallons per day

Average daily consumption - 4,500,000 gallons

Peak daily consumption - 5,800,000 gallons

Type treatment - Coagulation, sedimentation and chlorination

Storage capacity - 6,700,000 gallons including clear well

Size lines - 30, 24, 20, 12, 10, 8, 6, 4 and 2 inches

Average pressure - 55 psi

Average temperature - 84 degrees F.

MONTHLY WATER RATES

Inside City

First	400 cu. ft.	\$0.80	per 100 cu. ft.
Next	600 cu. ft.	0.70	per 100 cu. ft.
Next	1,500 cu. ft.	0.60	per 100 cu. ft.
Next	7,500 cu. ft.	0.55	per 100 cu. ft.
All over	10,000 cu. ft.	0.45	per 100 cu. ft.

Minimum Monthly Bill (City)

5/8- x 3/4-inch meter	\$ 3.20	per month
1-inch meter	4.25	per month
1 1/4-inch meter	5.50	per month
1 1/2-inch meter	6.50	per month
2-inch and larger meter	15.00	per month

Outside City

First	400 cu. ft.	\$1.60	per 100 cu. ft.
Next	600 cu. ft.	1.40	per 100 cu. ft.
Next	1,500 cu. ft.	1.20	per 100 cu. ft.
Next	7,500 cu. ft.	1.10	per 100 cu. ft.
All over	10,000 cu. ft.	1.00	per 100 cu. ft.

Minimum Monthly Bill (Outside city)

5/8- x 3/4-inch meter	\$ 6.40	per month
1-inch meter	8.50	per month
1 1/4-inch meter	11.00	per month
1 1/2-inch meter	13.00	per month
2-inch and larger meter	30.00	per month

(Cont'd)

Tap-on charges:

3/4-inch	\$275
1-inch	\$375
1 1/2-inch	\$575
2-inch	\$750
Over 2-inch	Cost of labor and material

6-inch sprinkler tap	\$1,000
8-inch sprinkler tap	\$1,200

Name of water district - Henderson County Water District*

P.O. Box 655

Henderson, Kentucky 42420

(502) 826-9802

Area served - Henderson County and parts of Webster County

Date when water district began operating - July 1967

Source of supply of treated water - Henderson Municipal Water and Sewer Department

Average amount of water used in a 24-hour period - 687,360 gallons

Peak amount of water used in a 24-hour period - 804,200 gallons

Storage capacity - 740,000 gallons**

Average pressure - 45 psi

Average temperature - 88 degrees F.

Size lines - 10, 8, 6, 4, 3 and 2 inches

Monthly rates -

First	2,000 gallons	\$6.25 (Minimum)
Next	8,000 gallons	2.00 per M gallons
Next	5,000 gallons	1.75 per M gallons
Next	5,000 gallons	1.50 per M gallons
Next	10,000 gallons	1.25 per M gallons
Next	20,000 gallons	1.00 per M gallons
Over	50,000 gallons	.65 per M gallons

2-inch meter	\$25.00 minimum
3-inch meter	Individual contracts

Tap-on charges:

5/8 x 3/4-inch	Non-bore	\$180
5/8 x 3/4-inch	Bore	\$250
2-inch and above		Actual cost of installation

* The Henderson County Water District has plans to build a \$1.56 million water treatment plant. The treatment capacity will be 1.5 million gallons per day.

** The Henderson County Water District has plans to construct three storage tanks at Spottsville, Hebbardsville, and Smith Mills. The capacity of each tank will range from 30,000 to 40,000 gallons.

Raw Water

Surface water sources - Ohio River and Green River

Average discharge - Ohio River at Evansville, Indiana - 133,300 cfs (34 years (1940-74), USGS, unadjusted); Green River at Lock 2, at Calhoun, Kentucky- 11,160 cfs (52 years, USGS, unadjusted)

Expected ground water yield - 500 to 1,000 gpm along Ohio River; 5 to 50 gpm through the central part of the county; 5 gpm or less over remainder of county.

Sewerage

Company serving **Henderson** - Municipal Water and Sewer Department
510 North Water Street
Henderson, Kentucky 42420
(502) 826-2421

Design capacity - 7,500,000 gallons per day

Average daily flow - 4,500,000 gallons

Type of treatment - Secondary

Treatment process - Settling, mixing, A.B.T. filter, aeration, chlorination and drying beds*

Treated effluent discharged into - Ohio River

Size of sanitary mains - 36, 24, 18, 12 and 8 inches

Rates - 100 percent of monthly water bill

Tap-on charge: 6-inch service tap	\$300
8-inch service tap	\$500

* The Henderson Municipal Water and Sewer Department recently completed the construction of 18 new drying beds, which replaced the 12 old beds. Total cost of the project was \$246,000.

CLIMATE

Henderson County

Temperature

Normal (30-year record)	56.00 degrees
Average annual 1982	56.30 degrees
Record highest, July 1954 (42-year record)	105.00 degrees
Record lowest, February 1951 (42-year record)	-23.00 degrees
Normal heating degree days (30-year record)	4,629
(Heating degree day totals are the sums of negative departures of average daily temperatures from 65 degrees F.)	

Precipitation

Normal (30-year record)	41.88 inches
Mean annual snowfall (43-year record)	13.90 inches
Total precipitation 1982	52.68 inches
Mean number days precipitation (.01 inch or more) (42-year record)	116
Mean number days thunderstorms (42-year record)	45

Prevailing Winds (14-year record)

South-southwest

Relative Humidity (21-year record)

Midnight	78 percent
6 a.m.	81 percent
Noon	59 percent
6 p.m.	62 percent

Source: U.S. Department of Commerce, Environmental Science Services Administration, Climatological Data, 1982. Station of record: Evansville, Indiana.

LOCAL GOVERNMENT

City

Structure - Mayor - 4-year term; 4 commissioners - 2-year terms; city manager

Budget 1983-84 - General Fund \$5,216,000

Water and Sewer Fund 1,013,000

City Gas System 9,429,000

Electric Fund 11,000,000

Fees and licenses - Motor vehicle wheel tax - \$12.50 per year; privilege license taxes range from \$5 to \$200 per year, depending on the type of business; the privilege license tax for most businesses, trades, occupations, professions or other enterprises conducted within the city limits is \$100 where an office and place of business is maintained in the city and \$200 where no office or place of business is maintained in the city.

County

Structure - County Judge/Executive - 4-year term; 5 magistrates - 4-year terms

Budget 1983-84 - General Fund \$762,385; Road Fund \$846,203

Assessed Value of Property, 1983*

<u>Classes of Property</u>	<u>Henderson</u>	<u>Henderson County</u>
Real Estate	\$294,119,900	\$671,358,780
Tangibles	80,224,830	146,888,405

* Excludes Homestead Exemptions.

Property Taxes

All property in Kentucky is assessed at 100 percent of fair cash value.

Land and buildings are taxed by the state and may be taxed by local jurisdictions. The state rate is \$0.221 per \$100 of assessed valuation.

Manufacturing machinery, raw materials inventories, pollution control equipment, and goods in the process of manufacture are not subject to local taxation. The state rate is \$0.15 per \$100.

Other tangible personal property owned by manufacturers (automobiles, trucks, finished goods, office furniture, office equipment) is taxed by the state at \$0.45 per \$100 and may be taxed by local jurisdictions.

Intangible personal property located in Kentucky (money in hand, shares of stock, notes, bonds, accounts receivable, and other credits) is taxed by the state at \$0.25 per \$100, and is not subject to local taxation.

Property stored in public warehouses in a transit status is not subject to local taxation. The state rate is only \$0.015 per \$100.

Private leaseholds in industrial facilities owned by cities or counties and financed by industrial revenue bonds are subject to a state tax of \$0.015 per \$100 of value (essentially the lessee's equity, adjusted for appreciation or depreciation). Local taxation is not permitted.

Combined State and Local Rates Per \$100 Valuation, 1983* (100% assessment)

	Site Inside City of <u>Henderson</u>	Site Inside Unincorporated <u>Henderson County</u>
1. Land and buildings	\$1.0261	\$0.6248
2. Mfg. machinery, raw materials, goods in process, pollution control equipment	0.1500	0.1500
3. Finished goods, office equipment, vehicles, other tangibles	1.2561	0.8548
4. Intangibles (accounts rec., notes, bonds, etc.)	0.2500	0.2500
5. Property stored in public warehouses in a transit status	0.0150	0.0150
6. Leaseholds in industrial revenue bond financed plants	0.0150	0.0150

* Kentucky Department of Economic Development.

Utilities Gross Receipts Tax for Schools

A 3 percent tax is levied on utilities receipts for schools in Henderson County. Tax is paid by all consumers of utilities as an add-on to the utilities bills. Exempted are receipts from utilities services that are resold and the receipts from the sale of energy or energy producing fuels that exceed 3 percent of the cost of production in manufacturing, processing, mining or refining.

Planning and Zoning

Joint agency - Henderson City-County Planning Commission*

Zoning enforced - All areas

Subdivision regulations enforced - All areas

Local codes enforced - Building and housing codes enforced in the city of Henderson only

Mandatory state codes enforced - Kentucky Plumbing Code, National Electric Code, Kentucky Boiler Regulations and Standards, Kentucky Building Code (modeled after BOCA code)

Safety

Police	Henderson	Henderson County
Total staff	50 full-time	14 full-time
	17 part-time	2 part-time
Radio-patrol cars	14	12

Fire

Insurance Services Office,
Public Protection

Classification	3	**
Full-time staff	56	--
Volunteers	--	211
Number of stations	4	11

Rescue Service

Henderson City-County Rescue Squad:

Number of volunteers - 30, which includes two certified dive rescue specialists

Equipment - 4-wheel drive pickup truck equipped with a winch, step van equipped with state required rescue equipment, Hustler all-terrain vehicle and transporter, 18-foot inboard-outboard boat, 16-foot utility boat with outboard motor, extrication kit and air chisel, cascade system generators, lights, saws and assorted rescue equipment

Personnel training - Rescue training, fire service training, first aid, emergency medical technician training, training to handle radioactive materials, CPR, water rescue and recovery training

* Participating cities are Henderson and Corydon.

** Four fire protection areas - Niagra, Reed, Robards and Spottsville - have a Class 9 rating within 5 road miles of a responding fire station. A Class 10 rating applies to the remainder of unincorporated Henderson County.

Refuse Collection and Disposal

Henderson

Type service	Municipal
Fee charged:	
residential	\$5.00 per month
business	\$14.30 to \$80.80 per month
industrial	\$14.30 to \$80.80 per month
Collection frequency:	
residential	Weekly
business	One to six times weekly
industrial	One to six times weekly
Trash pickup	As needed
Disposal method	City sanitary landfill

Henderson County provides a free sanitation service for residents of the county. Refuse may be disposed of at collection points which are located throughout the county. The county provides pick-up service at these points with disposal at the city sanitary landfill.

Industrial and commercial customers in Henderson County can contract with private companies for refuse collection services. Fees are based on volume and frequency of collection.

EDUCATION

Public Schools

Henderson County*

Total Enrollment (Spring 1983)	7,583
Elementary	4,086
Junior High	1,897
High School	1,600
Student-Teacher Ratio	22-1
Elementary	21-1
Junior High	21-1
High School	23-1
Percent High School Graduates to College (1982)	48.4
Expenditures Per Pupil (1982-83)	\$ 1,625.64
Bonded Indebtedness (June 30, 1983)	\$6,550,000

Nonpublic Schools

	<u>Holy Name</u>
Total Enrollment	443
Elementary	443
Student-Teacher Ratio	28-1
Elementary	28-1

* The Henderson County School System recently completed several improvement projects which include: the construction of a \$2.5 million elementary school at Spottsville, the construction of a \$476,000 cafeteria at the South Junior High School, the construction of a \$1.7 million athletic complex, the construction of a \$140,000 football field and track at South Junior High School, and installation of a \$300,000 computer system throughout the school system.

Area Colleges and Universities

<u>Name</u>	<u>Location (Miles Distant)</u>	<u>Enrollment (Fall, 1982)</u>	<u>Highest Degree Conferred</u>
Henderson Community College	Henderson, Kentucky	1,042	Associate
Indiana State University (Evansville Campus)	Evansville, Indiana (10)	3,664	Baccalaureate
University of Evansville	Evansville, Indiana (10)	4,761	Masters
Brescia College	Owensboro, Kentucky (30)	912	Baccalaureate*
Kentucky Wesleyan College	Owensboro, Kentucky (30)	923	Baccalaureate*
Madisonville Community College	Madisonville, Kentucky (39)	1,263	Associate
Oakland City College	Oakland City, Indiana (40)	562	Baccalaureate
St. Meinrad College (Men - Students for the priesthood only)	St. Meinrad, Indiana (62)	180	Baccalaureate
Hopkinsville Community College	Hopkinsville, Kentucky (71)	1,164	Associate
Paducah Community College	Paducah, Kentucky (99)	1,885	Associate
Western Kentucky University	Bowling Green, Kentucky (100)	12,855	Masters, Specialist**

* Courses in masters degree programs are taught on campus by faculty members of Western Kentucky University or Murray State University. The degrees are issued by Western Kentucky University or Murray State University.

** Joint doctoral degree programs are offered in cooperation with the University of Kentucky, Lexington, and cooperative doctoral degree programs are offered with the University of Louisville. The degrees are issued by the University of Kentucky or the University of Louisville.

Henderson Community College

Henderson Community College is part of the Community College System of the University of Kentucky and it is charged with three specific functions: (1) to offer career-oriented programs designed to prepare students for immediate technical or semi-professional employment; (2) to offer curricula for the first two years of a baccalaureate program, which courses parallel university offerings and are transferable to the Lexington campus of the University of Kentucky or to another four-year institution either public or private; and (3) to provide general educational opportunities for citizens in the immediate area. The community college offers the following degrees: Associate in Applied Science, Associate in Arts and Associate in Science.

Vocational Schools

Both the state vocational-technical schools and the area vocational education centers are operated by the Kentucky Department of Education. The state vocational-technical schools enroll persons full time who are at least 16 years of age and not in school. These students attend classes for six hours each day. The area vocational education centers are designed to accommodate high school students who are at least 15 years of age. These students attend vocational school for three hours each day. The state vocational-technical schools and the area education centers offer evening courses to enable working adults to upgrade current job skills.

Nearest State Schools

Location	Daviess County State Vocational-Technical School
Miles Distant	Owensboro
Curriculum	30
	Agriculture
	Agribusiness Education
	Business and Office
	Clerical
	Secretarial
	Consumer and Home Economics
	Child Care Services
	Commercial Foods
	Retailing I
	Health and Personal Services Occupations
	Cosmetology
	Industrial Education
	Auto Body Repair
	Auto Mechanics
	Diesel Mechanics
	Drafting
	Welding
	Learning Resource Center

(Cont'd)

Location	Owensboro Vocational-Technical School
Miles Distant	Owensboro
Curriculum	30 Health and Personal Services Occupations Emergency Medical Technician Health Services Licensed Practical Nursing Nursing Assistant Industrial Education Basic Electronics/Electricity Carpentry Communications Electronics Heating and Air Conditioning Home Entertainment Electronics Industrial Electricity Instrumentation Electronics Machine Shop Masonry Plumbing Sheet Metal Welding Learning Resource Center
	<u>Nearest Area Education Center</u>
Location	Henderson County Area Vocational Education Center
Curriculum	Henderson Business and Office Clerical Secretarial Model Office Distributive Education Health and Personal Services Occupations Industrial Education Auto Mechanics Carpentry-Building Trades Industrial Electricity Machine Shop Welding

Arrangements can be made to provide training in the specific production skills required by an industrial plant. Instruction may be conducted either in the vocational school or in the industrial plant, depending upon the desired arrangement and the availability of special equipment.

HEALTH

Local Medical Personnel

Physicians - 50
Dentists - 20

Hospitals

<u>General Hospital</u>	<u>Location</u>	<u>Beds</u>
Community Methodist Hospital*	Henderson	209

General hospital facilities and services - 4 operating rooms, 18 bed ICU/CCU, 16 normal nursery bassinets and 4 Level II neonatal care beds, 5 X-ray and diagnostic treatment rooms and nuclear medicine, ultrasound and computerized axial tomographic scanning (CAT Scan) services, emergency care department with 24-hour physician coverage, outpatient ambulatory surgical services with 2 operating and 2 treatment rooms, cardio-pulmonary services, chaplaincy services, laboratory facilities, pharmacy and physical therapy rehabilitation services.

Medical Staff - 50 doctors, 38 consultant doctors, 130 registered nurses, 70 graduate licensed practical nurses, 5 certified registered nurse anesthetists, 22 laboratory technicians, 4 pharmacists, 5 physical therapists, 2 physical therapist assistants, 2 respiratory therapists, 7 respiratory technicians and 15 X-ray technicians.

Other Medical Facilities

The Green River Comprehensive Care Center, a local mental health facility, provides a program of diagnostic evaluation and treatment which involves professionals especially trained to deal with situations involving personal feelings of uneasiness, family problems, marital problems, alcohol or drug related problems, child services, services for the mentally retarded, personality assessments for employment purposes, consulting services to industry, and services for the aged. The center also provides consultation and educational services for the promotion of positive personality growth through good mental habits. The staff includes psychiatrists, psychologists, social workers, psychiatric nurses, rehabilitative therapists and other professionals.

* The Community Methodist Hospital recently completed a \$2 million expansion which added outpatient surgical capabilities. Another recent improvement was the acquisition of an \$800,000 CAT scanner. There are plans for expansion in the obstetrical and newborn areas, office space, the chapel, and a child care center for employees.

Ambulance Service

Name - Henderson Emergency Ambulance Service

Staff - Director, 13 paramedics, 11 emergency medical technicians

Service - 24-hour, county-wide

Equipment - 2 modular ambulances and 2 van-type ambulances, fully-equipped;
all equipment meets current government regulations.

Public Health

Facility - Green River District Health Department, Henderson County Health Center

Staff - Full-time - Family planning nurse, 4 community health nurses, 3 health environmentalists, 5 clerks

Part-time - District director for health services (local health officer), district director of administrative services, social worker, health educator, community health worker, clerk, nutritionist, 2 family-planning nurses

OTHER LOCAL FACILITIES

Communications

Telephone - Services -	South Central Bell Telephone Company Standard
Telegraph - Services -	Western Union Toll-free number, 1-800-325-5100
Postal - Class - Mail received - Mail dispatched -	U.S. Post Office First Three times daily Three times daily
Newspapers - Daily and circulation - Other papers received from -	The Gleaner 14,198 Louisville, Kentucky; Evansville, Indiana
Radio - Major stations received from -	WSON-AM; WKDQ-FM; WHKC-FM Louisville and Owensboro, Kentucky; Evansville, Indiana; Nashville, Tennessee
Television - Antenna - Cable service - Educational Television -	5 channels 10 channels Channel 9, Evansville, Indiana, transmitter Channel 31, Henderson-Owensboro, Kentucky, transmitter Channel 35, Madisonville, Kentucky, transmitter

Library Services

Public library - Henderson County Public Library

Size collection - 74,160 volumes

Circulation, 1982-83 - 170,326

Special collections - Extensive local genealogy collection

Services - Bookmobile, magazines, newspapers, 1,400 records, audiovisuals, audiovisual equipment loan, microfilm, microfilm reader, microfilm printer, photocopier, framed paintings, Interlibrary Loan, weekly story hour, 2 meeting rooms, listening room

College library - Henderson Community College Library

Size collection - 30,073 volumes

Special collections - Kentucky Authors, French and Spanish literature

Services - Magazines, newspapers, audiovisuals, audiovisual equipment, microforms, microfilm reader, microfilm reader-printer, microfiche reader-printer, records, record players, photocopier, listening room, Interlibrary Loan, meeting room

Religious Institutions

Number of churches - 73 in Henderson County

Denominations -	AME-Zion	Episcopal
	Assembly of God	Lutheran
	Baptist	Methodist
	Catholic	Nazarene
	Christian	One God Assembly
	Church of Christ	Pentecostal
	Church of God in Christ	Presbyterian
	Church of God of Prophecy	Salvation Army
	Church of Jesus Christ	Seventh Day Adventist
	Christ of Latter Day Saints	United Church of Christ
		United Methodist

Nearest synagogues - Evansville, Indiana, 10 miles north

Congregations - Adath Israel (reform)

Financial Institutions

<u>Banks</u>	<u>Assets</u>	<u>Deposits</u>	<u>Statement Date</u>
Farmers Bank and Trust Company	\$ 68,388,514.59	\$ 61,119,725.59	6/30/83
First National Bank	60,702,253.43	51,984,519.59	6/30/83
Henderson County State Bank (Corydon)	12,975,061.65	11,097,233.31	6/30/83
Ohio Valley National Bank	65,994,572.84	58,578,541.99	12/31/82
<u>Savings and Loan Associations</u>	<u>Assets</u>	<u>Savings Accounts</u>	<u>Statement Date</u>
Great Financial Federal	\$820,526,608.78	\$721,354,749.33	6/30/83
Henderson Home Federal Savings and Loan Association	46,726,217.45	41,501,620.65	6/30/83
Union Federal Savings and Loan	252,349,153.35	214,464,737.60	12/31/82

Hotels and Motels

Total number - 7
Total rooms - Approximately 400

Clubs and Organizations

There are approximately 100 clubs and organizations in Henderson and Henderson County which include most major civic, business, professional, fraternal, charitable, farm, and youth organizations.

RECREATION

Local

Henderson offers a wide range of recreational opportunities for all ages. Public recreation facilities available in the city include seven parks, three municipal swimming pools, a 9-hole municipal golf course and pro shop, thirteen lighted tennis courts, thirteen ball diamonds and four football fields. Two community centers -- The Community and Youth Center and the John F. Kennedy Community Center -- provide year-round recreational activities. The Henderson Park and Recreation Department sponsors many softball and basketball leagues each year and supervised playground programs are offered during the summer months. Swimming instructions are offered at all three pools and tennis instructions are available to all age groups during the summer. A bicycle motocross track is located at Atkinson Park where racing events are held.

The Henderson County YMCA is very active in recruiting new members and promoting physical fitness. Its staff provides instruction in fitness programs ranging from aquatic sports to exercises designed for pre-school children through adulthood. The Henderson County Family YMCA has an indoor swimming pool, a health club, and four lighted tennis courts (three of which are available to the public in the evenings through a cooperative arrangement with the city and county). The Henderson Country Club features an 18-hole golf course, swimming pool, and tennis courts. Other private recreational facilities include an indoor movie theater, a drive-in theater, a roller rink, and two bowling facilities.

Just north of Henderson is the John James Audubon State Park, a 692-acre park where the famed naturalist gathered material for his paintings, "The Birds of America." Many paintings by Audubon and his sons, and 126 first-edition prints of his paintings are on display at the Audubon Memorial and Nature Museum which is the focal point of the park. A 350-acre portion of the park has been designated as a nature preserve. Other features include the Audubon woods, a bird sanctuary and a 12-acre nature preserve lake. The park has cottages and camping sites and recreational facilities include a 28-acre recreation lake, a beach and bathhouse, rental rowboats and pedal boats, a dock, a 9-hole golf course, hiking trails, picnic shelters and playgrounds. Organized recreational programs are offered during the summer.

Horse racing is another attraction available in Henderson. James C. Ellis Park and Thoroughbred Race Track provide two months of racing during the summer, and Audubon Raceway features night harness racing in the spring and fall.

Henderson's location on the Ohio River affords the opportunity for a variety of water sports. An annual event that is very popular is the Great Ohio River Flatboat Race from Owensboro to Henderson.

Henderson has several special events which are held annually. They include the Flatboat Day Festival, held in August in culmination of the Great Ohio River Flatboat Race; the Big Rivers Arts and Crafts Show, held the first weekend in October; Christmas Village, held the first weekend in December; and the Carosel of Arts, held in late May or early June.

The construction of the Ralph G. Hays Boat Launching Facility was recently completed. The facility, located on the north end of Atkinson Park, has parking for 100 cars and trailers, picnic sites and restrooms nearby.

Area (Within 75 miles)

Evansville, Indiana, 10 miles north of Henderson, Kentucky, is a major urban area with a wide variety of entertainment and recreational offerings. Among its major attractions are the Evansville Museum, the Mesker Park Zoological Gardens, cultural events such as the Evansville Philharmonic performances, and numerous restaurants, nightclubs, and theaters.

The **Sauerheber Wildlife Refuge**, 14 miles west of Henderson, is a wintering area for over 20,000 Canadian geese. Regulated fishing and hunting is permitted.

Higginson-Henry Wildlife Area is located 25 miles southwest of Henderson, near Morganfield. With 5,420 acres, including an 80-acre lake, the refuge has facilities for boating, picnicking, hiking, and biking. Regulated hunting is allowed in season.

Ben Hawes State Park, 22 miles east of Henderson near Owensboro, is a 300-acre park which is open year-round. It contains tennis courts, hiking trails, a picnic area and shelters, and an 18-hole and 9-hole golf course.

Owensboro - Kentucky's third largest city - is located 30 miles east of Henderson. The city features numerous recreational and cultural opportunities, including two museums, a symphony orchestra, well-known restaurants, and convention center facilities. Special annual events in the Owensboro area include the International Barbecue Festival and Great Ohio River Flatboat Race.

New Harmony, Indiana, 38 miles northwest of Henderson, overlooks the Wabash River on the western edge of Indiana and is a treasure of restored and preserved buildings from the 1814-1824 era. Another attraction of the community is its beautiful roofless church.

Lincoln's Boyhood National Memorial, 52 miles northeast of Henderson at Lincoln City, Indiana, is the homesite of Abraham Lincoln from age seven to twenty-one. The visitor can walk the marked trails where young Lincoln walked to borrow books, hear law cases, hew logs, and work neighbors' farms.

Santa Claus Land, 55 miles northeast of Henderson in Santa Claus, Indiana, is a theme park filled with acres of rides, live shows and unique attractions for the entire family.

Embraced by probably the most beautiful wooded area in Western Kentucky, **Pennyrile Forest State Resort Park** at Dawson Springs is located 63 miles south of Henderson. The lodge and cottages nestled within the trees provide excellent accommodations. Other facilities and activities include a dining room, a gift shop, rental rowboats and pedal boats, a 9-hole golf course, hiking trails, horseback riding, picnicking, playgrounds, shuffleboard, swimming at the lodge pool and off a sand beach, and two tennis courts. Lake Beshear, only four miles from the lodge, sports good fishing.

Noteworthy for its spaciousness, **Rough River Dam State Resort Park** at Falls of Rough is 70 miles southeast of Henderson. The 377-acre park on Rough River Lake has a 40-room lodge with a dining room, a coffee shop, a gift shop, and a meeting room. Cottages and camping sites are also available. Recreational facilities include a launching ramp, a dock with open and covered slips, fishing and pleasure boat rentals, a 9-hole, 3-par golf course, a swimming pool, a sand beach with a bathhouse complex, tennis courts, an archery range, hiking trails, picnic and playground areas, and planned recreation. Cruise boat excursions on Rough River Lake are available on the "Lady of the Lake" in season.

Lake Malone State Park, located in southern Muhlenberg County, 75 miles southeast of Henderson, offers camping facilities, swimming, fishing, and boating on a 788-acre lake. Playground facilities and picnic shelters are located in a beautiful scenic cliff area. Located across from the entrance to the park is an inn, featuring luxury rooms, a restaurant, a swimming lake, a beach, boating, fishing, tennis, and nature trails.

COMMUNITY IMPROVEMENTS

Recent

Recent advances have been made in Henderson's efforts to encourage economic and industrial development. A full-time executive director was hired for the new Henderson Area Development Council, which is a consortium of varied development interests working in unity. In addition, the community established an industry retention program, a revolving loan program for local businesses, and a "clean community" campaign with volunteers to keep the community looking its best.

Two highway projects, which improved the flow of traffic in and around Henderson, were recently completed. They included a \$4.44 million project to resurface the U.S. 41 northbound bridge that connects Henderson and Evansville and the construction of an interchange on the Audubon Parkway at its junction with Kentucky 1078.

The Henderson Municipal Water and Sewer Department recently completed the construction of 18 new drying beds, which replaced the 12 old beds. Total cost of the project was \$246,000.

Sewer line service was recently extended into the Henderson Industrial Park at a cost of \$78,000.

The Community Methodist Hospital recently completed a \$2 million expansion, which added outpatient surgical capabilities. Another recent improvement was the acquisition of an \$800,000 CAT scanner.

The Henderson Municipal Power and Light, during the winter of 1982, increased its generating capacity from 334,000 KW to 353,000 KW.

The Henderson County School System recently completed several improvement projects which included: the construction of a \$2.5 million elementary school at Spottsville, the construction of a \$476,000 cafeteria at the South Junior High School, the construction of a \$1.7 million athletic complex, the construction of a \$140,000 football field and track at South Junior High School, and installation of a \$300,000 computer system throughout the school system.

A county-wide radio dispatching system was recently installed at City Hall. The \$40,000 system is used to handle communications for police, fire, and ambulance services.

The Henderson Police Department recently completed a \$185,000 major renovation and expansion of its office building.

The construction of Redbanks Towers, a 102-unit apartment complex for the elderly, was recently completed. Total cost of the project was \$2.9 million.

The construction of the Ralph G. Hays Boat Launching Facility was completed in May 1983. The \$717,000 facility has parking for 100 cars and trailers, picnic sites, and restrooms.

Under Way

The Henderson Municipal Water and Sewer Department is in the process of relaying water lines at the construction on site of 41A Bypass. Total cost of the project is \$120,000.

The Henderson County Water District is currently installing 5.5 miles of water line on Highway 416 between Robards and Cairo. The \$40,000 project is scheduled to be completed in the spring of 1984.

Construction of the \$12.2 million Henderson Bypass is currently under way. The bypass, which will extend from Kentucky 136 and U.S. 60 west of Henderson to the Pennyriple Parkway, is expected to be completed in early 1985.

A \$1.1 million drainage project, which consists of grading, clearing and widening Canoe Creek, is currently under way and is expected to be completed in December of 1984.

A \$1.4 million Community Development Program is currently under way. It includes land acquisition, utility improvements, and housing improvements to Dixon, Vine, Adams, and Alvaxis Streets.

Planned

The Henderson County Water District has plans to build a \$1.56 million water treatment plant which will have a design capacity of 1.5 million gallons per day. There are also plans to construct three water storage tanks to be located at Spottsville, Hebbardsville and Smith Mills. The capacity of each tank will range from 30,000 to 40,000 gallons. Construction of a water line on Highway 145 between Dixie and Corydon and construction of a pumping station at Poole are also planned.

The Henderson City-County Airport has plans to lengthen the runway from 3,800 feet to 5,000 feet in 1984.

The Community Methodist Hospital has plans for expansion in the obstetrical and newborn areas, office space, the chapel, and a child care center for employees.

The City of Henderson plans to construct a plant that will convert solid waste to energy.

There are plans to build a new shopping center next to the Henderson County High School.