

1977

# Industrial Resources: Henry County - Eminence

Kentucky Library Research Collection  
Western Kentucky University, [spcol@wku.edu](mailto:spcol@wku.edu)

Follow this and additional works at: [https://digitalcommons.wku.edu/henry\\_cty](https://digitalcommons.wku.edu/henry_cty)

 Part of the [Business Administration, Management, and Operations Commons](#), [Growth and Development Commons](#), and the [Infrastructure Commons](#)

---

## Recommended Citation

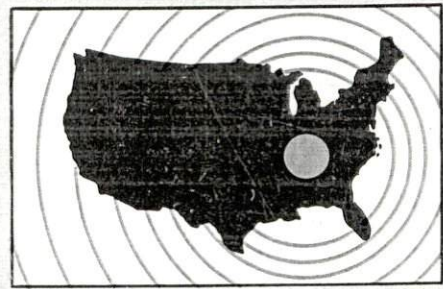
Kentucky Library Research Collection, "Industrial Resources: Henry County - Eminence" (1977). *Henry County*. Paper 12.  
[https://digitalcommons.wku.edu/henry\\_cty/12](https://digitalcommons.wku.edu/henry_cty/12)

This Report is brought to you for free and open access by TopSCHOLAR®. It has been accepted for inclusion in Henry County by an authorized administrator of TopSCHOLAR®. For more information, please contact [topscholar@wku.edu](mailto:topscholar@wku.edu).

# INDUSTRIAL RESOURCES

## EMINENCE

*Kentucky  
first*

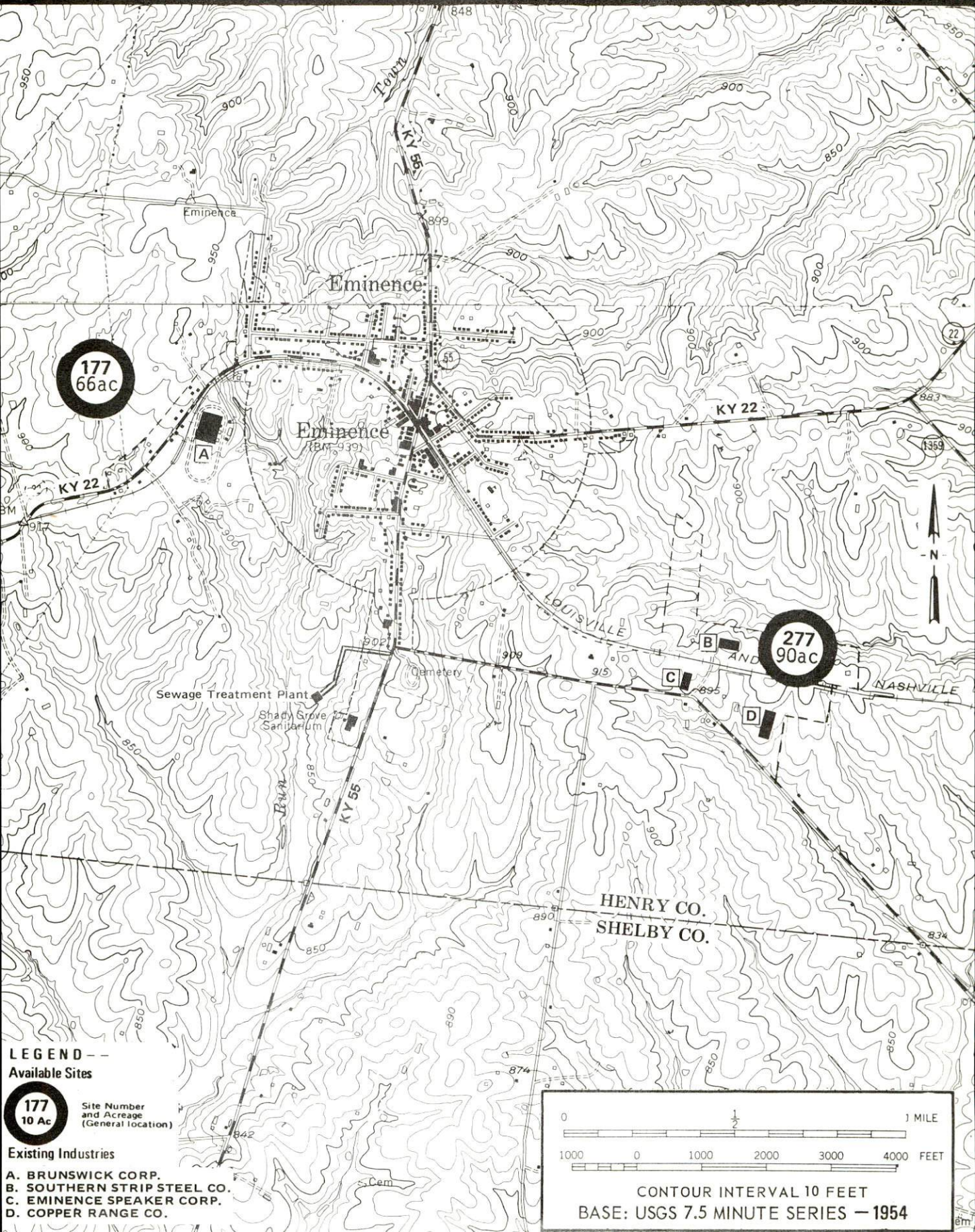


**DEPARTMENT OF COMMERCE**



# EMINENCE, KENTUCKY -- Index to Industrial Sites -- 1977

For detailed data on individual sites, contact Mr. F. C. Keiser, Farmers Deposit Bank, Eminence, Kentucky 40019, or the Industrial Development Division, Kentucky Department of Commerce, Capital Plaza Tower, Frankfort, Kentucky 40601.



**177**  
66ac

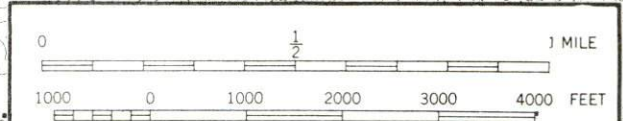
**277**  
90ac

## LEGEND -- Available Sites

**177**  
10 Ac Site Number and Acreage (General location)

## Existing Industries

- A. BRUNSWICK CORP.
- B. SOUTHERN STRIP STEEL CO.
- C. EMINENCE SPEAKER CORP.
- D. COPPER RANGE CO.



CONTOUR INTERVAL 10 FEET  
BASE: USGS 7.5 MINUTE SERIES - 1954



INDUSTRIAL RESOURCES

EMINENCE, KENTUCKY

Prepared by  
The Kentucky Department of Commerce  
Division of Research and Planning  
in cooperation with  
The Eminence Chamber of Commerce

1977



Production Supervisor: Patsy Wallace; research: Terry Patterson;  
clerical: Linda Fint; graphics: N. C. Montague, Frank Ferrante,  
Tony Cecconi, Richard Spencer; Cartography: Industrial Development  
Division. Cost of printing paid from state funds.

TABLE OF CONTENTS

<u>Chapter</u>	<u>Page</u>
INDUSTRIAL SITES. . . . .	i
EMINENCE, KENTUCKY - A RESOURCE PROFILE . . . . .	1
THE LABOR MARKET AREA . . . . .	3
Population. . . . .	3
Labor Force Characteristics of Residents, 1975. . . . .	3
Nonagricultural Employment by Industry, by Place of Work, 1975. . . . .	4
Eminence Manufacturing Firms, Their Products and Employment . . . . .	5
Labor Organizations . . . . .	5
Estimated Male Labor Supply . . . . .	8
Estimated Female Labor Supply . . . . .	8
Average Weekly Wages by Industry, by Place of Work, 1975. . . . .	9
Per Capita Personal Income. . . . .	11
TRANSPORTATION. . . . .	12
Nearest Rail. . . . .	12
Highways. . . . .	12
Truck Service . . . . .	13
Air . . . . .	14
Taxi. . . . .	14
Rental Services . . . . .	14
POWER AND FUEL. . . . .	15
Electricity . . . . .	15
Natural Gas . . . . .	16
Other Fuels . . . . .	17
WATER AND SEWERAGE. . . . .	18
Water . . . . .	18
Sewerage. . . . .	21
CLIMATE . . . . .	22

Dept. of Commerce

11-30-77

<u>Chapter</u>	<u>Page</u>
LOCAL GOVERNMENT. . . . .	23
City. . . . .	23
County. . . . .	23
Assessed Value of Property, 1976-77 . . . . .	23
Property Taxes. . . . .	23
Local Property Tax Rate Per \$100 of Assessed Valuation, 1976 . . . . .	24
Utilities Gross Receipts Tax for Schools. . . . .	24
Planning and Zoning . . . . .	24
Safety. . . . .	24
Police. . . . .	24
Fire. . . . .	24
Solid Waste . . . . .	25
EDUCATION . . . . .	27
Public Schools. . . . .	27
Area Colleges and Universities. . . . .	28
Vocational Schools. . . . .	29
HEALTH. . . . .	31
Local Medical Personnel . . . . .	31
Hospitals . . . . .	31
Other Medical Facilities. . . . .	31
Ambulance Service . . . . .	31
Public Health . . . . .	31
OTHER LOCAL FACILITIES. . . . .	33
Communications. . . . .	33
Library Services. . . . .	33
Religious Institutions. . . . .	35
Financial Institutions. . . . .	35
Clubs and Organizations . . . . .	35
RECREATION. . . . .	36
COMMUNITY IMPROVEMENTS. . . . .	38



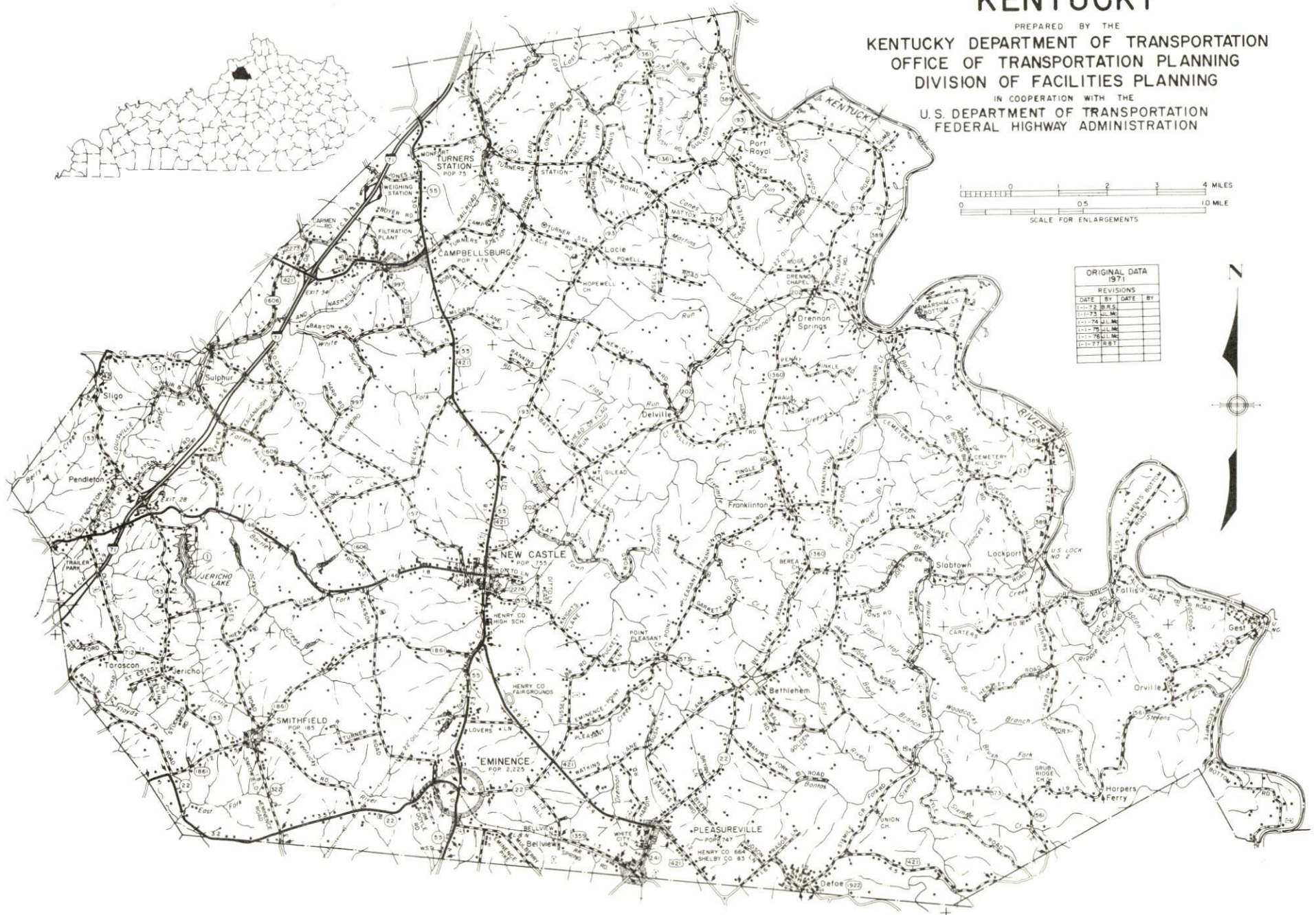
# GENERAL HIGHWAY MAP HENRY COUNTY KENTUCKY

PREPARED BY THE  
KENTUCKY DEPARTMENT OF TRANSPORTATION  
OFFICE OF TRANSPORTATION PLANNING  
DIVISION OF FACILITIES PLANNING

IN COOPERATION WITH THE  
U.S. DEPARTMENT OF TRANSPORTATION  
FEDERAL HIGHWAY ADMINISTRATION



ORIGINAL DATA 1971		
REVISIONS		
DATE	BY	DATE
11-72	W.M.	
11-73	W.M.	
11-74	W.M.	
11-75	W.M.	
11-76	W.M.	
11-77	W.M.	

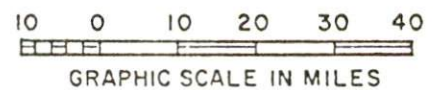
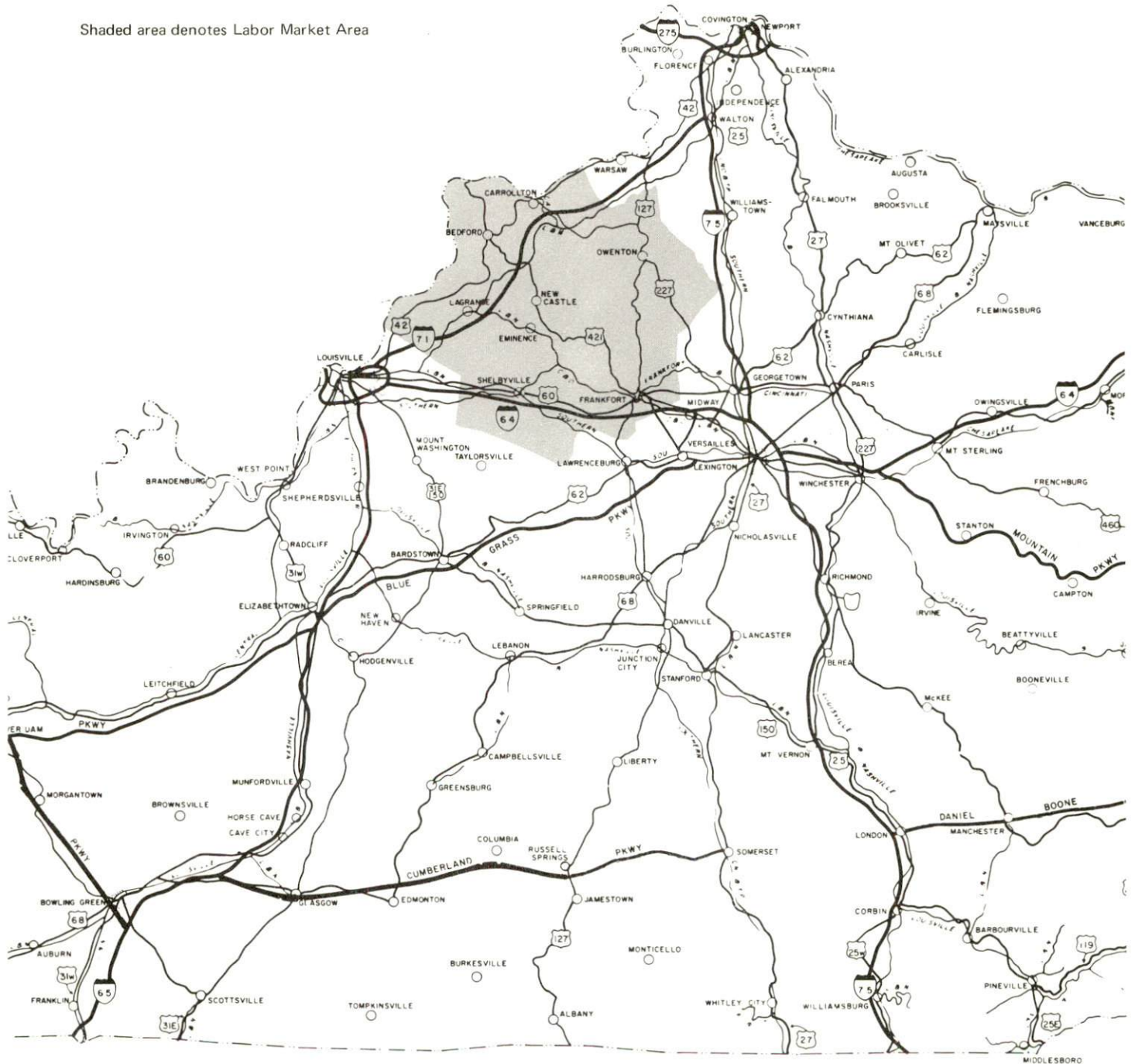




# EMINENCE LABOR MARKET AREA



Shaded area denotes Labor Market Area



## EMINENCE, KENTUCKY - A RESOURCE PROFILE

Eminence, the largest town in Henry County, is located in the southernmost part of the county only 14 miles from Interstates 71 and 64. It is only 42 miles from Louisville, Kentucky; 57 miles from Lexington, Kentucky; and 78 miles from Cincinnati, Ohio. Eminence had an estimated population of 2,061 in 1973.

Henry County, with a land area of 289 square miles, is located in the northwestern portion of Kentucky's Bluegrass Region. It is bounded on the east by the Kentucky River. In 1975, Henry County had an estimated population of 11,500.

### The Economic Framework

The total number of Henry County residents employed in 1975 averaged 4,730, with nonagricultural jobs accounting for 3,580 workers. Manufacturing employers in the county reported 460 workers; construction firms 60; transportation, communications, and public utilities 80; wholesale and retail trade 370; finance, insurance, and real estate 110; and employees in the service industries 110. Major industrial products are bowling bags, golf bags, and carryalls.

Total unemployment in Henry County averaged 8.1 percent of the labor force in 1975.

Per capita personal income in the county in 1974 was \$4,342, an increase of 47.2 percent since 1970.

The Eminence labor market area includes Henry and the six adjoining counties. The total number of residents of the labor market area employed in 1975 averaged 44,380, with nonagricultural jobs accounting for 38,540 workers. Manufacturing employers in the area reported 6,630 workers; construction firms 1,380; transportation, communications, and public utilities 1,050; wholesale and retail trade 5,460; finance, insurance, and real estate 960; and employees in the service industries 6,060.

### Resources for Growth

1. Labor Supply - There is a current labor supply of 5,650 men and 4,140 women available for industrial jobs in the labor market area. In addition, 4,890 young men and 4,660 young women in the area will become 18 years of age before 1983 and potentially available for work.



2. Transportation - The nearest rail service, provided by the Louisville and Nashville Railroad and the Southern Railway System, is at Shelbyville, 12 miles distant. Kentucky Highway 55 and U.S. Highway 421 afford easy access to Interstates 64 and 71, 14 miles away. There are four truck lines serving Eminence. Air freight and commercial air services are available at Standiford Field in Louisville, Kentucky, approximately 42 miles distant.

3. Utilities and Fuel - Electricity is furnished to Eminence by the Kentucky Utilities Company and to Henry County by the Shelby RECC. Natural gas service is provided to Eminence by the Louisville Gas and Electric Company. There are three propane distributors and eleven distillate fuel oil distributors in the Eminence area. Low sulphur content coal is available in eastern Kentucky.

4. Education - Two public school systems operate within Henry County. Four universities, four senior colleges, one university extension campus, one community college, one junior college, and one technical institute are located within a 60-mile radius of Eminence. The Jefferson State Vocational-Technical School at Jeffersontown, 30 miles distant, and the Shelby County Area Vocational Education Center at Shelbyville, 12 miles distant, provide excellent vocational curricula.

THE LABOR MARKET AREA

POPULATION			
Area	1975*	1970	Percent Nonwhite
			1970
Eminence	2,061**	2,225	21.3
Labor Market Area	109,000	100,419	N.A.
Henry County	11,500	10,910	7.2
Carroll County	8,600	8,523	2.6
Franklin County	37,300	34,481	8.0
Oldham County	18,400	14,687	8.9
Owen County	7,900	7,470	3.6
Shelby County	19,700	18,999	12.9
Trimble County	5,600	5,349	0.1

\*Provisional Estimates.

\*\*1973 Population Estimates.

Sources: U. S. Department of Commerce, Bureau of the Census, Census of Population, 1970. U. S. Department of Commerce, Bureau of the Census, Current Population Reports, Series P-25, No. 562, June 1975; Series P-26, No. 75-17, May 1976.

LABOR FORCE CHARACTERISTICS OF RESIDENTS, 1975

	Henry County	Labor Market Area
Civilian Labor Force	5,148	47,094
Employment	4,731	44,377
Agricultural	1,152	5,840
Nonagricultural	3,579	38,537
Unemployment	417	2,717
Rate of Unemployment (%)	8.1	5.8

Source: Kentucky Department for Human Resources, Kentucky Labor Force Estimates, Annual Averages, 1975.

NONAGRICULTURAL EMPLOYMENT  
BY INDUSTRY, BY PLACE OF WORK, 1975

	Henry County	Labor Market Area
All Industries	1,214	21,733
Mining & Quarrying	*	*
Contract Construction	61	1,383
Manufacturing	458	6,632
Food & Kindred Products	6	838
Tobacco	0	76
Apparel, Textiles, Leather	30	1,415
Lumber, Furniture	0	311
Printing & Publishing, Paper	7	231
Chemicals, Petroleum & Coal,		
Rubber	12	736
Stone, Clay & Glass	5	126
Primary Metals	27	300
Machinery, Metal Products,		
Equipment	87	2,150
Other Manufacturing	284	451
Transportation, Communications &		
Public Utilities	83	1,048
Wholesale & Retail Trade	370	5,463
Finance, Insurance & Real Estate	106	958
Services	114	6,055
Other	6	107

\*Not disclosed.

Note: Excludes domestic workers, railway workers; certain nonprofit corporations; majority of federal, state, and local government workers; and self-employed workers. Labor market area totals for some employment categories exclude employment that was not disclosed for individual counties. Manufacturing detail may not add to totals because of rounding of base data.

Source: Kentucky Department for Human Resources, Average Monthly Workers Covered by Kentucky Unemployment Insurance Law, 1975.



EMINENCE MANUFACTURING FIRMS,  
THEIR PRODUCTS AND EMPLOYMENT

<u>Firm (Establishment date)</u>	<u>Product</u>	<u>Employment</u>			<u>Organized</u>
		<u>Total</u>	<u>Male</u>	<u>Female</u>	
Bluegrass Stamping and Manufacturing Corporation (1975)	Wheels for lawn and garden implements	7	7	0	
Eminence Speaker Corporation (1966)	Electronic speakers, magnetizers	58	8	50	
Hussey Metals Division, Copper Range Company (1966)	Copper products	34	32	2	
MacGregor Division, Brunswick Corporation (1961)	Bowling and golf bags, carryalls	200	60	140	*
Southern Strip Steel Company (1971)	Cold rolled steel strip and sheet, steel slitting	50	44	6	

\*See Labor Organizations below.

Source: Kentucky Department of Commerce, Division of Research and Planning.

LABOR ORGANIZATIONS

<u>Union</u>	<u>Representing manufacturing workers at:</u>
Amalgamated Clothing Workers of America	MacGregor Division, Brunswick Corporation

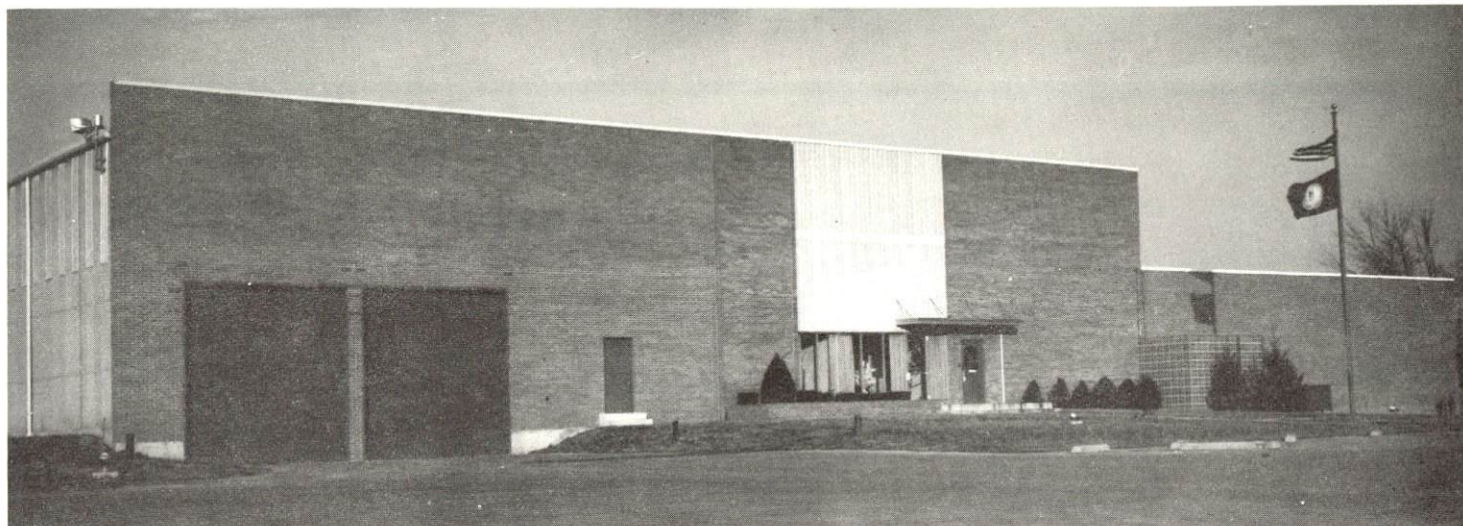


MACGREGOR DIVISION,  
BRUNSWICK CORPORATION



EMINENCE SPEAKER CORPORATION





HUSSEY METALS DIVISION,  
COPPER RANGE COMPANY



SOUTHERN STRIP STEEL COMPANY



ESTIMATED MALE LABOR SUPPLY  
EMINENCE LABOR MARKET AREA

Area	Current			Under- employed	Future
	Total	Not in Labor Force	Unemployed		Reaching 18 yrs. of age before 1983
Labor Market					
Area	5,650	1,750	1,980	1,920	4,888
Henry	490	0	320	170	519
Carroll	340	0	200	140	439
Franklin	2,940	1,750	560	630	1,663
Oldham	740	0	330	410	709
Owen	310	0	140	170	329
Shelby	660	0	350	310	926
Trimble	170	0	80	90	303

Sources: Kentucky Department for Human Resources, Kentucky Labor Supply Estimates by County, 1976. Kentucky Department of Commerce, Future Labor Supply before 1983.

ESTIMATED FEMALE LABOR SUPPLY  
EMINENCE LABOR MARKET AREA

Area	Current			Under- employed	Future
	Total	Not in Labor Force	Unemployed		Reaching 18 yrs. of age before 1983
Labor Market					
Area	4,140	1,290	740	2,110	4,664
Henry	290	0	90	200	444
Carroll	390	110	70	210	402
Franklin	2,150	1,050	310	790	1,584
Oldham	420	0	100	320	733
Owen	300	130	50	120	313
Shelby	490	0	100	390	927
Trimble	100	0	20	80	261

Sources: Kentucky Department for Human Resources, Kentucky Labor Supply Estimates by County, 1976. Kentucky Department of Commerce, Future Labor Supply before 1983.

AVERAGE WEEKLY WAGES BY INDUSTRY,  
BY PLACE OF WORK, 1975

	<u>Henry County</u>	<u>Carroll County</u>	<u>Franklin County</u>	<u>Oldham County</u>
All Industries	\$119.35	\$160.50	\$152.28	\$141.01
Mining & Quarrying	*	*	*	*
Contract Construction	108.39	197.96	219.90	180.17
Manufacturing	131.67	178.45	159.65	169.69
Transportation, Communications & Public Utilities	134.75	219.26	209.49	213.42
Wholesale & Retail Trade	103.54	109.20	108.61	127.43
Finance, Insurance & Real Estate	130.31	156.79	172.40	151.75
Services	106.81	91.67	153.72	97.74
Other	82.24	57.72	90.48	71.57

	<u>Owen County</u>	<u>Shelby County</u>	<u>Trimble County</u>
All Industries	\$120.60	\$134.80	\$ 90.84
Mining & Quarrying	0	0	0
Contract Construction	116.97	118.24	113.39
Manufacturing	101.02	177.07	97.48
Transportation, Communications & Public Utilities	208.40	185.93	0
Wholesale & Retail Trade	107.52	111.33	55.83
Finance, Insurance & Real Estate	134.28	152.48	144.91
Services	139.77	94.85	92.99
Other	0	*	*

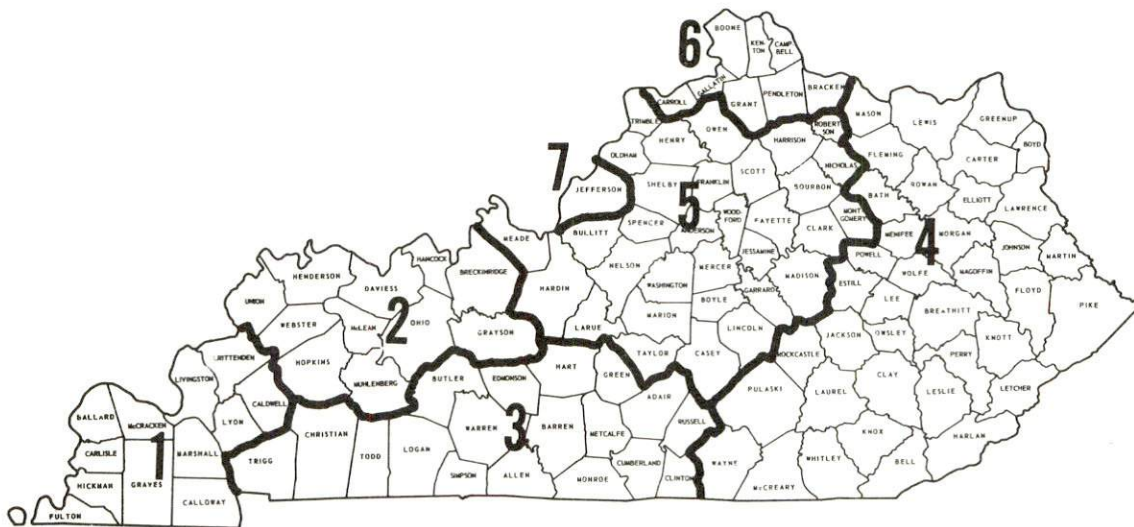
\*Not disclosed.

Note: Excludes domestic workers, railway workers; certain nonprofit corporations; majority of federal, state, and local government workers; and self-employed workers.

Source: Kentucky Department for Human Resources, Average Weekly Wages of Workers Covered by Unemployment Insurance, 1975.

Occupational wage rates for specific industries are usually not available to most government agencies, and wage data furnished to state employment agencies by individual industrial employers is protected from disclosure by federal law. The most reliable up-to-date wage information can be obtained by direct contact with local employers.

Associated Industries of Kentucky, a voluntary organization of Kentucky businesses, regularly collects occupational wage rates and fringe benefits data from participating member firms. Data is compiled for over 127 clearly defined office, production, and service occupations. Tabulations are published for seven regions of Kentucky, as shown on the map below. It should be noted that the data may be weighted by the preponderance of firms in the larger cities and may be somewhat higher than the rates paid in the smaller communities. Data from these tabulations are available, upon request, from the Kentucky Department of Commerce, Frankfort, Kentucky 40601.



Associated Industries of Kentucky Area Wage Surveys

PER CAPITA PERSONAL INCOME

<u>Area</u>	<u>1974</u>	<u>1970</u>	<u>Percent Change</u>
Henry County	\$4,342	\$2,949	47.2
Labor Market Area Range	\$3,644 - 5,067	\$2,358 - 3,590	N.A.
Kentucky	4,442	3,112	42.7
U.S.	5,448	3,966	37.4

Sources: U. S. Department of Commerce, Bureau of Economic Analysis, Survey of Current Business, August 1975. U.S. Department of Commerce, Bureau of Economic Analysis, March 1976.



## TRANSPORTATION

### Nearest Rail

Line serving Shelbyville, 12 miles south of Eminence - Louisville and Nashville Railroad

Services - 1 local freight daily; 2 northbound and 2 southbound through freights daily;\* team track space for 5 cars; siding space for approximately 25 cars; nearest piggyback facilities, 27 miles away at Frankfort

Line serving Shelbyville - Southern Railway System

Services - 2 through freights daily; switching facilities; team track space for 10 cars; siding space for 25 cars; nearest piggyback facilities, 46 miles away at Louisville

For details on routing, schedules, rates, and services, contact:

Manager of Industrial Development  
Louisville and Nashville Railroad  
908 West Broadway  
Louisville, Kentucky 40203  
(502) 587-5000

and/or

District Sales Manager  
Southern Railway System  
1402 South 15th Street  
Louisville, Kentucky 40210  
(502) 637-7643

### Highways

Kentucky Highways 22 and 55 intersect Eminence. U.S. Highway 421, only 2 miles northeast of Eminence, provides access to Interstate 71, 14 miles north. Also, Interstate 64 is only 14 miles south, via Kentucky Highway 55.

\*One of each is a Chessie System freight.

Truck Service

<u>Company</u>	<u>Home Office</u>
Branch Motor Express Company	114 Fifth Avenue New York, New York 10011
Cooper-Jarrett, Inc.	23 South Essex Avenue Orange, New Jersey 07051
Owenton Express, Inc.	Route #2 Owenton, Kentucky 40359
Wilson Freight Company	11353 Reed Hartman Boulevard Cincinnati, Ohio 45241

<u>Other Freight Services</u>	<u>Nearest Shipping Center</u>
United Parcel Service	Louisville, 42 miles distant

HIGHWAY MILES AND TRUCK TRANSIT TIME IN DAYS FROM  
EMINENCE, KENTUCKY, TO SELECTED MARKET CENTERS

<u>City</u>	<u>Delivery</u>		<u>City</u>	<u>Delivery</u>	
	<u>Highway Miles</u>	<u>Time TL</u>		<u>Highway Miles</u>	<u>Time TL</u>
Atlanta, Ga.	424	3	Los Angeles, Calif.	2,150	7
Birmingham, Ala.	406	2	Louisville, Ky.	42	Same or next day
Chicago, Ill.	365	2	Nashville, Tenn.	210	1
Cincinnati, Ohio	78	1	New Orleans, La.	727	3
Cleveland, Ohio	322	3	New York, N.Y.	725	3
Detroit, Mich.	337	3	Pittsburgh, Pa.	365	2
Knoxville, Tenn.	283	1-2	St. Louis, Mo.	305	1

Source: Delivery Time Only - Owenton Express, Inc., Route #2, Owenton, Kentucky 40359

Air

Nearest Commercial

Standiford Field  
Location: Louisville, Kentucky, 42 miles distant  
Runways: 3 paved  
Length: 7,800, 7,250, and 5,000 feet  
Traffic  
Control: Control tower, approach control, ground control, guards, clearance delivery, radar service: departure control  
Lighting: Runways, obstructions, beacon, and approach and touchdown lights, center line on runways 1-19  
Services: Allegheny, American, Delta, Eastern, Ozark, Piedmont, and TWA Airlines; 100 octane and jet fuel; Louisville-Jefferson County Air Board; major A & E repairs; Weather Bureau; Hertz; Avis; National and Budget rent-a car services; storage; taxi; city bus service; restaurant  
Air Freight  
Service: Freight carrying airlines regularly service this terminal

Taxi - 24-hour service

Rental Services - Car, truck, and trailer rentals

POWER AND FUEL

Electricity

Company serving Eminence - Kentucky Utilities Company  
Source of power - Kentucky Utilities Company  
Total generating capacity - 1,839,000 KW  
For industrial rates contact:

Industrial Development Department  
Kentucky Utilities Company  
120 South Limestone Street  
Lexington, Kentucky 40507  
(606) 255-1461

Company serving Henry County - Shelby RECC  
Source of power - East Kentucky Power Cooperative  
Total generating capacity - 868,000 KW  
For industrial rates contact:

Industrial Development Division  
East Kentucky Power Cooperative  
P. O. Box 707  
Winchester, Kentucky 40391  
(606) 744-4812

and/or

Shelby RECC  
P. O. Box 311  
Shelbyville, Kentucky 40065  
(502) 633-4420



Natural Gas

Company serving Eminence - Louisville Gas and Electric Company

Source of supply - Texas Gas Transmission Corporation

Size of transmission mains - 26 inches (supplier)

8 inches (distributor)

Distribution mains - 4 and 2 inches

Distribution pressure - 20 psi

Btu content - 1,000 per cubic foot

Specific gravity - .060

For rates and supplies contact:

Industrial Manager and Developer  
Louisville Gas and Electric Company  
P. O. Box 354  
Louisville, Kentucky 40201  
(502) 566-4250

Other Fuels

Propane

Big 3 Gas Company of Shelby  
County  
U.S. 60 W  
Shelbyville, Kentucky 40065

Southern States Henry Cooperative  
Elm Street  
Eminence, Kentucky 40019

Silgas, Inc.  
Old Finchville Road  
Shelbyville, Kentucky 40065

Fuel Oils

Distillate fuel oil -

Crume-Hundley Oil Company, Inc.  
801 South 3rd  
Shelbyville, Kentucky 40065

J. T. Moore Oil Company  
Sulphur, Kentucky 40070

Gray Oil Company  
U. S. 60  
Shelbyville, Kentucky 40065

J. C. Newcomb & Son, Inc.  
East Elm  
Eminence, Kentucky 40019

Long Oil Company  
U. S. 60 W  
Shelbyville, Kentucky 40065

Southern States Shelbyville  
Cooperative, Inc.  
South 7th  
Shelbyville, Kentucky 40065

Marathon Oil Company  
South Main  
Eminence, Kentucky 40019

Standard Oil Company  
North 7th  
Shelbyville, Kentucky 40065

Marathon Oil Company  
415 2nd  
Shelbyville, Kentucky 40065

WPB Oil Company, Inc.  
Goodman Avenue  
Shelbyville, Kentucky 40065

Mattick Oil Company, Inc.  
Campbellsburg, Kentucky 40011

Residual fuel oil - Arrangements must be made with the refinery.

Low sulphur content coal - Available in eastern Kentucky.

## WATER AND SEWERAGE

### Water

Company serving Eminence - Eminence Water Works\*

P. O. Box 21

Eminence, Kentucky 40019

(502) 845-4159

Sources - Lake; purchase treated water from Henry County Water District #2

Treatment plant capacity - 250,000 gpd\*\*

Average daily consumption - 120,000 gallons

Peak daily consumption - 350,000 gallons

Type treatment - Sedimentation, flocculation, filtration, chlorination

Storage capacity - 75,000 gallons

Size lines - 12, 8, and 6 inches

Average pressure - 50 psi

Average temperature - 46 degrees F.

#### MONTHLY WATER RATES FOR WHOLESALE AND INDUSTRIAL CONSUMERS

---

First	2,000 gallons	\$5.20 Minimum
Next	5,000 gallons	2.20 per M gallons
Next	5,000 gallons	1.80 per M gallons
Next	8,000 gallons	1.50 per M gallons
Next	30,000 gallons	1.10 per M gallons
Next	150,000 gallons	1.00 per M gallons
All over	200,000 gallons	.90 per M gallons

Tap-on charge: Residential - \$100

Commercial and Industrial - Negotiated

---

\*New water mains and a 300,000-gallon storage tank are being installed.

\*\*Kentucky Department for Natural Resources and Environmental Protection.



Name of water district - Henry County Water District #2  
P. O. Box 219  
Campbellsburg, Kentucky 40011  
(502) 532-6279

Area served - Henry County and portions of Trimble, Oldham, and  
Carroll Counties

Date when water district began operating - 1969

Source of raw water - Wells

Capacity of treatment plant - 1,008,000 gpd

Type of treatment - Chlorination and fluoridation

Average amount of water used in a 24-hour period - 850,000 gallons

Peak amount of water used in a 24-hour period - 970,000 gallons

Storage capacity - 270,000 gallons

Average pressure - 125 psi

Average temperature - 65 degrees F.

Size lines - 12, 10, 8, 6, 4, 3, and 2 inches

Rates -

First	2,500 gallons	\$7.50 (Minimum charge)
Next	2,500 gallons	2.45 per M gallons
Next	5,000 gallons	1.65 per M gallons
Next	10,000 gallons	1.10 per M gallons
Next	80,000 gallons	.65 per M gallons
All over	100,000 gallons	.55 per M gallons

Tap-on charge: \$200.00

\*The water district has recently added two new wells for water supply and 31 miles of 3-inch line.

Name of water district - Henry County Water District\*  
Pleasureville, Kentucky 40057  
(502) 878-2031

Area served - South central Henry County around Pleasureville; north central Shelby County north of Cropper

Date when water district began operating - 1959

Source of raw water - Reservoir

Capacity of treatment plant - 144,000 gpd

Type of treatment - Chlorination, fluoridation, alum, lime

Average amount of water used in a 24-hour period - 100,000 gallons

Peak amount of water used in a 24-hour period - 144,000 gallons

Storage capacity - 175,000 gallons

Average pressure - 65 psi

Size lines - 6 inches

Rates -

In Pleasureville (and North Pleasureville)

First	2,000 gallons	\$4.00
All over	2,000 gallons	1.00 per M gallons

Outside Pleasureville

First	2,000 gallons	\$5.50
Next	3,000 gallons	1.40 per M gallons
Next	3,000 gallons	1.25 per M gallons
All over	8,000 gallons	1.00 per M gallons

Tap-on charge: \$ 75 in Pleasureville  
\$125 outside Pleasureville

Surface water sources - Kentucky River

Average discharge - Kentucky River at Lockport, 8,307 cfs (51-year record, unadjusted USGS)

Expected ground water yield - 50 to 200 gpm along southern portion of the Kentucky River Valley; 5 to 50 gpm along northern portion of the Kentucky River Valley; 5 gpm or less in the remaining portion of the county

\*An engineering study of the water system is underway. The possibility of increasing the capacity of the treatment plant is being considered.

Sewerage

Company serving Eminence - Eminence Water Works  
P. O. Box 21  
Eminence, Kentucky 40019  
(502) 845-4159

Design capacity - 170,000 gpd  
Average daily flow - 164,000 gallons  
Treatment - Primary and secondary  
Type treatment - Aeration, clarifier, settling basin  
Treated effluent discharged into - Fox Run Creek  
Size of sanitary mains - 8 and 10 inches  
Rates - 50 percent of monthly water bill  
Tap-on charge: \$85



## CLIMATE

### Henry County

#### Temperature

Normal (30-year record)	55.2 degrees
Average annual 1975	55.9 degrees
Record highest, July, 1966 (12-year record)	98.0 degrees
Record lowest, January, 1972 (12-year record)	-11.0 degrees
Normal heating degree days (30-year record)	4,729
(Heating degree day totals are the sums of negative departures of average daily temperatures from 65 degrees F.)	

#### Precipitation

Normal (30-year record)	44.49 inches
Mean annual snowfall (30-year record)	15.60 inches
Total precipitation 1975	59.11 inches
Mean number days precipitation (.01 inch or more) (31-year record)	131
Average number days thunderstorms (31-year record)	47

Prevailing Winds (17-year record) South

#### Relative Humidity

1 a.m.	76 percent (11-year record)
7 a.m.	81 percent (12-year record)
1 p.m.	59 percent (12-year record)
7 p.m.	64 percent (12-year record)

Source: U.S. Department of Commerce, Environmental Science Services Administration, Climatological Data, 1975. Station of record: Lexington, Kentucky.

## LOCAL GOVERNMENT

### City

Structure - Mayor - 4-year term; 6 councilmen - 2-year terms  
Budget 1977 - General Fund \$ 90,000  
                  Water and Sewer Fund 140,000  
Fees and licenses - Occupational license fees vary from \$25 to \$75  
annually

### County

Structure - County Judge - 4-year term; 6 magistrates - 4-year terms  
Budget 1976-77 - General Fund \$213,047; Road Fund \$86,000

### Assessed Value of Property, 1976-77

<u>Classes of Property</u>	<u>Eminence</u>	<u>Henry County</u>
Real Estate	\$10,174,264	\$83,565,984
Tangibles	2,952,933	14,267,435

### Property Taxes

All property in Kentucky is assessed at 100 percent of fair cash value.

Land and buildings are taxed by the state and may be taxed by local jurisdictions. The state rate is \$0.315 per \$100 of assessed valuation. Beginning January 1, 1977, local school tax rates were reduced by \$0.30 per \$100 valuation and the state rate was increased by \$0.30 per \$100 (from \$0.015), resulting in no net change in the combined state and local rates.

Manufacturing machinery, raw materials inventories, pollution control equipment, and goods in the process of manufacture are not subject to local taxation. The state rate is \$0.15 per \$100.

Other tangible personal property owned by manufacturers (automobiles, trucks, finished goods, office furniture, office equipment) is taxed by the state at \$0.45 per \$100 and may be taxed by local jurisdictions. Beginning January 1, 1977, local school rates were reduced by \$0.30 per \$100 valuation and the state rate was raised by \$0.30 per \$100 (from \$0.15).

Property stored in public warehouses in a transit status is not subject to local taxation. The state rate is only \$0.015 per \$100.

Intangible personal property located in Kentucky (money in hand, shares of stock, notes, bonds, accounts, and other credits) is taxed by the state at \$0.25 per \$100, and is not subject to local taxation.

(Contd.)

Intangible personal property owned by corporations in Kentucky as a result of business transactions performed out-of-state, but having a tax situs in Kentucky (accounts receivable, notes, bonds, credits, non-domestic bank deposits, licensing or royalty agreements, shares of stock of any affiliated company, etc.) is taxed by the state at \$0.015 and is not subject to local taxation.

Local Property Tax Rate Per \$100 of Assessed Valuation, 1976\*

<u>Taxing Jurisdiction</u>	<u>Eminence</u>	<u>Henry County</u>
County	\$.244	\$.244
School	.769	.615
City	.350	

Special (not county wide): Watershed - \$.100

Utilities Gross Receipts Tax For Schools

A 3 percent tax is levied on utilities receipts for schools in Henry County. Tax is paid by all consumers of utilities as an add-on to the utilities bills. Exempted are receipts from utilities services that are resold and the receipts from the sale of energy or energy producing fuels that exceed 3 percent of the cost of production in manufacturing, processing, mining or refining.

Planning and Zoning

At the present time, Eminence has no planning and zoning organization.

Safety

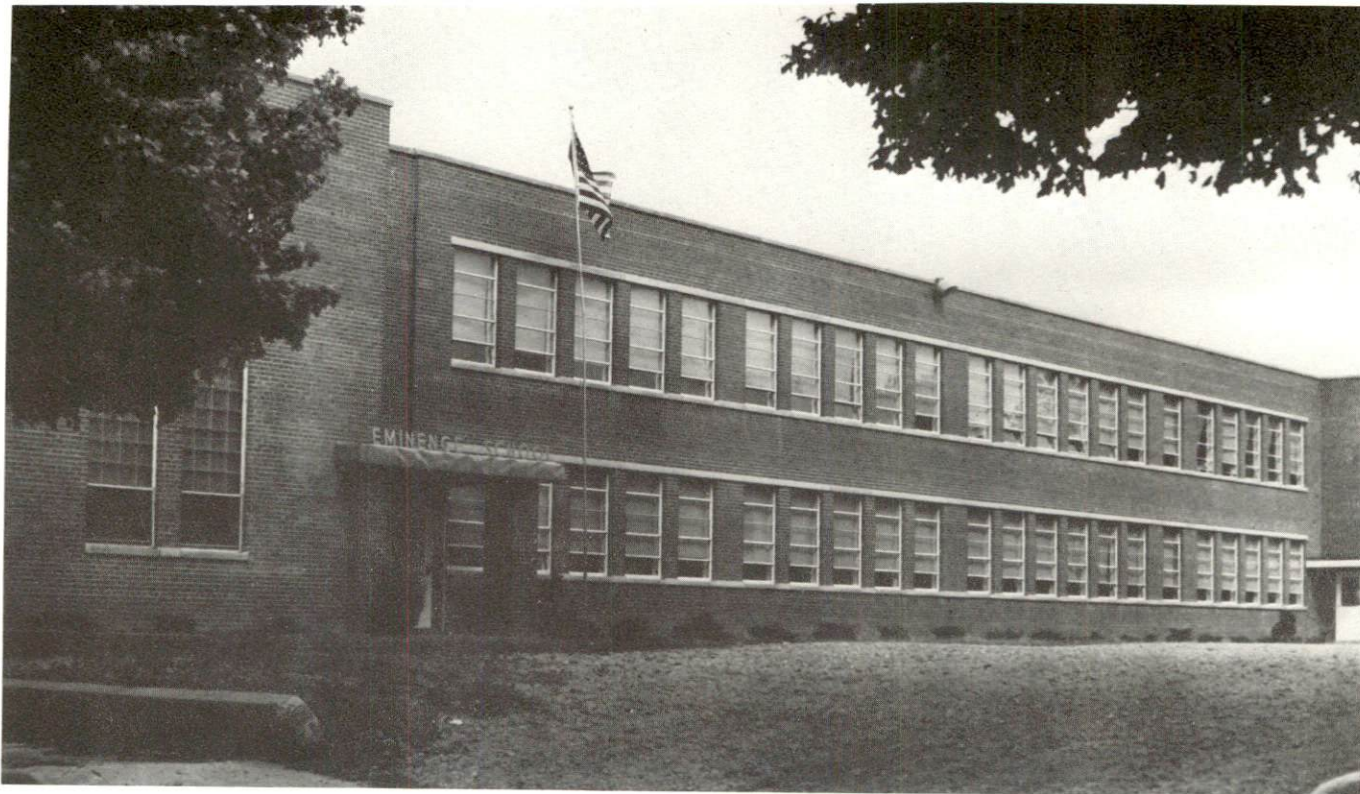
<u>Police</u>	<u>Eminence</u>	<u>Henry County</u>
Total staff	4	3
Radio-patrol cars	2	2
<u>Fire</u>		
American Insurance Association Fire Rating	8	
Volunteers	25	

\*Kentucky Department of Revenue, Kentucky Property Tax Rates, 1976.



Solid Waste

	<u>Eminence</u>	<u>Henry County</u>
Type service	Private	Private
Fee charged:		
residential	\$4 monthly	\$4 monthly
business	Contract	Contract
industrial	Contract	Contract
Collection frequency:		
residential	Weekly	Weekly
business	Contract	Contract
industrial	Contract	Contract
Disposal method	Landfill	Landfill



EMINENCE SCHOOL BUILDING



HENRY COUNTY PUBLIC LIBRARY

EDUCATION

Public Schools

	<u>Eminence Independent</u>	<u>Henry County</u>
Total Enrollment (March, 1977)	548	1,905
Elementary	291	757
Middle School		512
High School	257	636
Student-Teacher Ratio	18-1	22-1
Elementary	19-1	20-1
Middle School		23-1
High School	17-1	22-1
Percent High School Graduates to College	18.2	28.3
Expenditures Per Pupil (1975-76)	\$792.73	\$773.28
Bonded Indebtedness, June 30, 1976	\$243,000	\$2,092,000



Area Colleges and Universities

<u>Name</u>	<u>Location (Miles distant)</u>	<u>Enrollment (Fall, 1976)</u>	<u>Highest Degree Conferred</u>
Kentucky State University	Frankfort (27)	2,389	Masters
Hanover College	Hanover, Indiana (40)	903	Baccalaureate
University of Louisville	Louisville (42)	16,300	Ph.D., M.D., D.M.D., J.D.
Spalding College	Louisville (42)	1,053	Masters
Bellarmino College	Louisville (42)	1,705	Baccalaureate
Jefferson Commu- nity College	Louisville (42)	5,180	Associate
Southwest Campus	Louisville (42)	690	Associate
Midway Junior College	Midway (47)	333	Associate
Indiana University Southwest	New Albany, Indiana (47)	2,965	Academic, Professional Masters
Georgetown College	Georgetown (51)	1,020	Masters
University of Kentucky	Lexington (57)	22,525	Ph.D., M.D., D.M.D., J.D.
Transylvania University	Lexington (57)	752	Masters*
Lexington Tech- nical Institute	Lexington (57)	1,765	Associate

\*Courses are taught on the Transylvania campus by Xavier University of Cincinnati faculty members. The degree is issued by Xavier University.

Vocational Schools

Nearest State School

Location	Jefferson State Vocational-Technical School
Miles Distant	Jeffersontown
Curriculum	30
	Agriculture
	Agriculture Mechanics
	Horticulture
	Business and Office
	Clerical
	Data Processing
	Model Office
	Secretarial
	Health and Personal Service Occupations
	Cosmetology
	Dental Assisting
	Medical Assisting
	Nurse Aide
	Practical Nursing
	Surgical Technician
	Industrial Education
	Air Conditioning and Heating
	Auto Body Repair
	Auto Mechanics
	Carpentry-Building Trades
	Diesel Mechanics
	Drafting
	Electronics
	Graphic Arts (printing)
	Industrial Electricity
	Industrial Maintenance Mechanics
	Machine Shop
	Masonry
	Plumbing
	Welding

Nearest Area Education Center

Location	Shelby County Area Vocational Education Center
Miles Distant	Shelbyville
Curriculum	12
	Business and Office
	Accounting Junior Management
	Clerical
	Secretarial
	Industrial Education
	Auto Mechanics
	Carpentry
	Electricity
	Machine Shop
	Welding

Arrangements can be made to provide training in the specific production skills required by an industrial plant. Instruction may be conducted either in the vocational school or in the industrial plant, depending upon the desired arrangement and the availability of special equipment.



## HEALTH

### Local Medical Personnel

Physicians - 2  
Dentists - 1

### Hospitals

<u>Nearest General Hospital</u>	<u>Location</u>	<u>Beds</u>
King's Daughters' Hospital	Shelbyville, 12 miles distant	76

General hospital facilities - 6-bed coronary care and intensive care unit, 2 operating rooms, cystoscopic room, obstetrical section, physical therapy, emergency room, X-ray, laboratory, respiratory therapy, pharmacy

Medical staff - 13 physicians, 6 consulting physicians, 20 registered nurses, 7 licensed practical nurses, pharmacist

### Other Medical Facilities

Henry County Clinic, located in Eminence, has a staff which includes two general practitioners, three office nurses, lab technician, bookkeeper, receptionist, steno clerk, housekeeper, and office girl (part time). The clinic has 12 examining rooms, X-ray equipment, and facilities to care for minor cuts and breaks.

### Ambulance Service\*

Name - Henry County Emergency Squad #2  
Staff - 20 volunteers  
Service - 24-hour service to the Eminence area  
Equipment - One ambulance with all basic first aid and emergency rescue equipment

### Public Health

Facility - Henry County Health Department  
Staff - Two public health nurses, family planning specialist, sanitarian, plumbing inspector, home health nurse, community health worker, 2 clerks

\*Similar squads are located at Pleasureville, Campbellsburg, and New Castle in Henry County.



HENRY COUNTY CLINIC



NEW RESIDENTIAL CONSTRUCTION

## OTHER LOCAL FACILITIES

### Communications

Telephone - South Central Bell Telephone Company  
Services - Modern system

Telegraph - Western Union  
Services - By telephone

Postal - U. S. Post Office  
Class - Second  
Mail received - Twice daily  
Mail dispatched - Twice daily

Newspapers -	Henry County Local (New Castle)	The Patriot Statesmen (Campbellsburg)
Weekly and circulation -	4,600	1,400
Other papers received from -	Lexington and Louisville, Kentucky	

Radio - WSTL-AM  
Stations received from - Shelbyville, Lexington, and Louisville,  
Kentucky; Cincinnati, Ohio

Television -  
Reception from - Lexington and Louisville, Kentucky;  
Cincinnati, Ohio

Kentucky Educational  
Television - Louisville transmitter, Channel 68

### Library Services

Public library - Henry County Public Library  
Size collection - 41,396 volumes  
Circulation, 1975-76 - 269,180  
Services - Bookmobile, framed pictures, films, projectors, records,  
periodicals, children's story hours, summer reading and film  
program, photo copy machine, local authors and Kentucky history  
collections, library headquarters for Kentuckiana Library  
Development District (5-county region)





FARMERS DEPOSIT BANK



SOUTH CENTRAL BELL TELEPHONE COMPANY

### Religious Institutions

Number of churches - 10

Denominations - Baptist  
Catholic  
Christian  
Church of God  
Disciples of Christ  
Methodist  
Pentecostal  
Presbyterian

Nearest Synagogues - Louisville, 42 miles distant

Congregations - Adath Israel (reform)  
Adath Jeshurun (conservative)  
Anshei Sfard (orthodox)  
Brith Sholom (reform)  
Keneseth Israel (orthodox)

### Financial Institutions

<u>Banks</u>	<u>Assets</u>	<u>Deposits</u>	<u>Statement Date</u>
Farmers Deposit Bank	\$18,117,313.71	\$16,522,897.33	12/31/76

### Clubs and Organizations

Business and Civic - Eminence Chamber of Commerce, Eminence Improvement Company, Jaycees, Lions, Rotary

Fraternal - American Legion, VFW, Masons, IOOF

Women's - Eastern Star, Rebekahs, Literary Club, DAR, Homemakers

Youth - FHA, Beta Club, FBLA, FTA, Speech Club, Little League, Junior Pro Basketball

Other - Saddle Club, Jo Anne Tandy Singers

## RECREATION

### Local

Eminence has two public parks which contain two playgrounds, a swimming pool, a baseball diamond, and football field. Two tennis courts are now under construction. Supervised Little League baseball and football programs are offered.

The Henry County Fairgrounds, located 2 miles east of Eminence, is the site of the annual county fair which features agricultural exhibits, rides, and special events. The Henry County Country Club, 5 miles north of Eminence, provides a clubhouse, swimming pool, two tennis courts, and an 18-hole golf course. Two outdoor theaters are also located in the area.

The Lake Jericho Recreation Area, 12 miles from Eminence, offers camping, picnicking, fishing, boating, and a 136-acre lake.

The Ohio River, only 34 miles north of Eminence, and the Kentucky River, which forms the county's eastern boundary, also provide additional opportunities for water sports.

Frankfort, 27 miles distant, is the state capitol city and site of many historical places of interest.

In Shelbyville, 12 miles south of Eminence, the Wakefield-Scearce Galleries features a fine collection of English antiques and rare and unusual silver. The well-known Science Hill Inn is housed in the same location. Additionally, the 325-acre Guist Creek Lake, which offers facilities for fishing, boating, picnicking and camping, is only 4 miles east of Shelbyville.

Louisville, 42 miles away, offers a wide variety of cultural activities and sporting events.





HENRY COUNTY COUNTRY CLUB



EMINENCE MUNICIPAL SWIMMING POOL



## COMMUNITY IMPROVEMENTS

### Recent:

1. The Eminence Independent School District has constructed a new school library.
2. The Henry County School System has remodeled the kitchen facilities at an elementary school and added dining space to the high school cafeteria.
3. South Central Bell Telephone Company has completed a \$2.1 million project that included the construction of an exchange building and installation of a modern telephone system.
4. The city has purchased and renovated a building that now houses the city offices and fire department.
5. The police department and jail have been rebuilt.
6. The Henry County Water District #2 has added two new wells and 31 miles of 3-inch line.
7. The Eminence Volunteer Fire Department has purchased a rescue equipment van and a truck for controlling grass fires.

### Underway:

1. The Eminence Water Works is installing new water mains and a 300,000-gallon storage tank.
2. A \$110,000 multi-purpose room is being added to the Henry County Public Library facilities.
3. Two tennis courts are being constructed.

### Planned:

1. The Eminence Independent School District plans to remodel the high school administrative offices and the former library building.
2. The Henry County School System plans to construct a building that will contain band, art, and industrial art classrooms at the high school.
3. The Henry County Water District is conducting an engineering study of the water system. The possibility of increasing the capacity of the treatment plant is being considered.