

1976

Industrial Resources: Jessamine County - Nicholasville

Kentucky Library Research Collections
Western Kentucky University, spcol@wku.edu

Follow this and additional works at: https://digitalcommons.wku.edu/jessamine_cty



Part of the [Business Administration, Management, and Operations Commons](#), [Growth and Development Commons](#), and the [Infrastructure Commons](#)

Recommended Citation

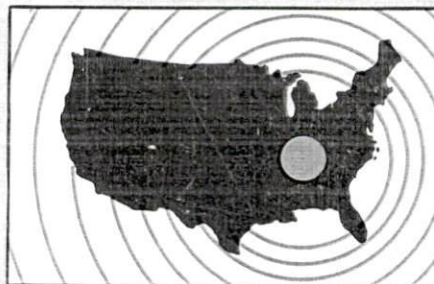
Kentucky Library Research Collections, "Industrial Resources: Jessamine County - Nicholasville" (1976). *Jessamine County*. Paper 10.
https://digitalcommons.wku.edu/jessamine_cty/10

This Report is brought to you for free and open access by TopSCHOLAR®. It has been accepted for inclusion in Jessamine County by an authorized administrator of TopSCHOLAR®. For more information, please contact topscholar@wku.edu.

INDUSTRIAL RESOURCES

Nicholasville, Kentucky

**Kentucky
first**



DEPARTMENT OF COMMERCE

NICHOLASVILLE, KENTUCKY -- Index to Industrial Sites -- 1976

For detailed data on individual sites, contact Mr. Shelby Combs, Mayor, 517 North Main Street; Nicholasville, Kentucky 40356, or the Industrial Development Division, Kentucky Department of Commerce, Capital Plaza Tower, Frankfort, Kentucky 40601.

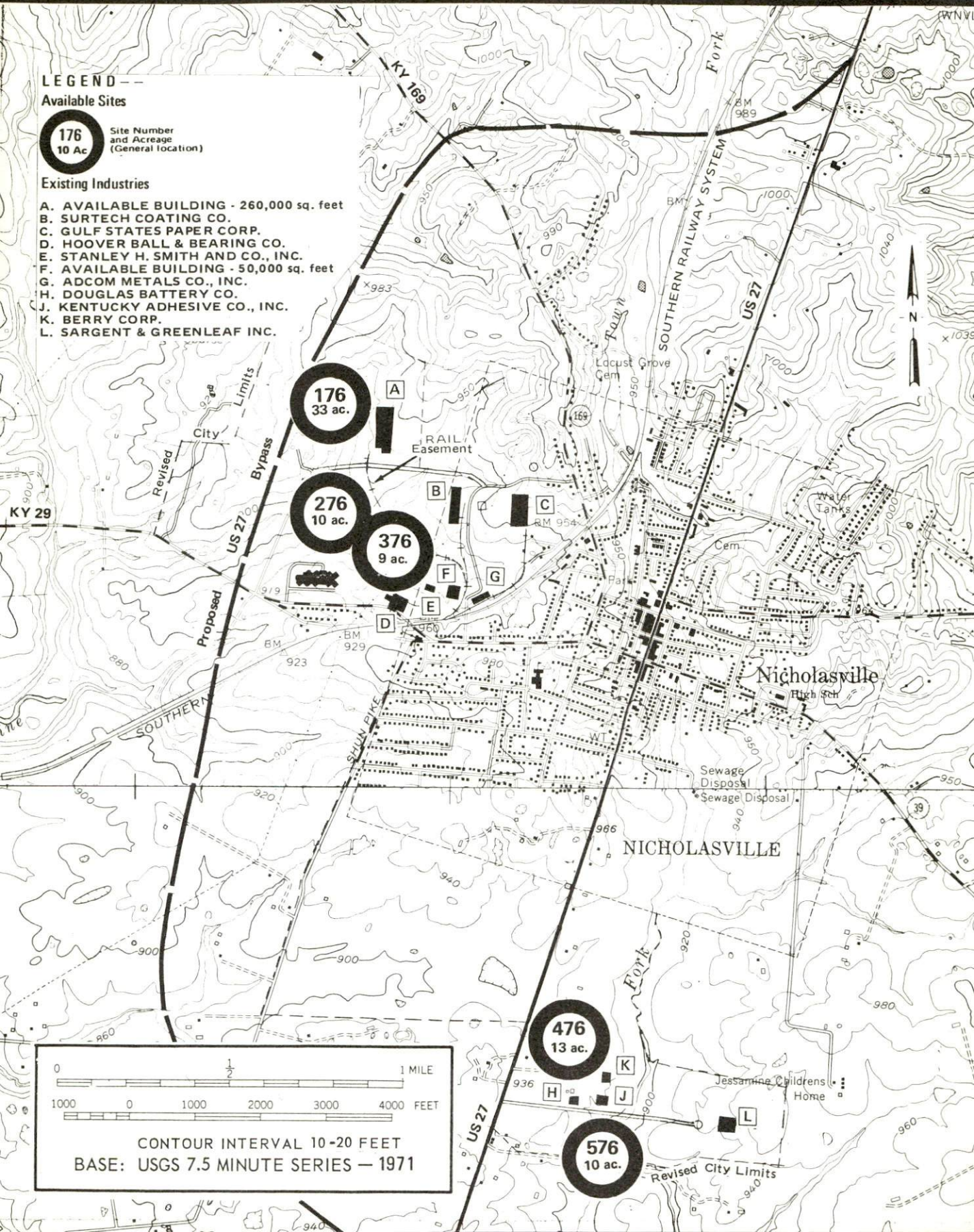
LEGEND --

Available Sites

176
10 ac.
Site Number and Acreage
(General location)

Existing Industries

- A. AVAILABLE BUILDING - 260,000 sq. feet
- B. SURTECH COATING CO.
- C. GULF STATES PAPER CORP.
- D. HOOVER BALL & BEARING CO.
- E. STANLEY H. SMITH AND CO., INC.
- F. AVAILABLE BUILDING - 50,000 sq. feet
- G. ADCOM METALS CO., INC.
- H. DOUGLAS BATTERY CO.
- J. KENTUCKY ADHESIVE CO., INC.
- K. BERRY CORP.
- L. SARGENT & GREENLEAF INC.



CONTOUR INTERVAL 10-20 FEET

BASE: USGS 7.5 MINUTE SERIES -- 1971

INDUSTRIAL RESOURCES
NICHOLASVILLE, KENTUCKY

Prepared by
The Kentucky Department of Commerce
in cooperation with
The Jessamine County Chamber of Commerce

1976

This copy has been prepared by the Kentucky Department of Commerce, Division of Research and Planning, and the cost of printing paid from state funds.

Production Supervisor

Patsy Wallace

Research

Craig Turner

Clerical

Mildred Keefer

Graphics

N. C. Montague

Frank Ferrante

Tony Cecconi

Cartography

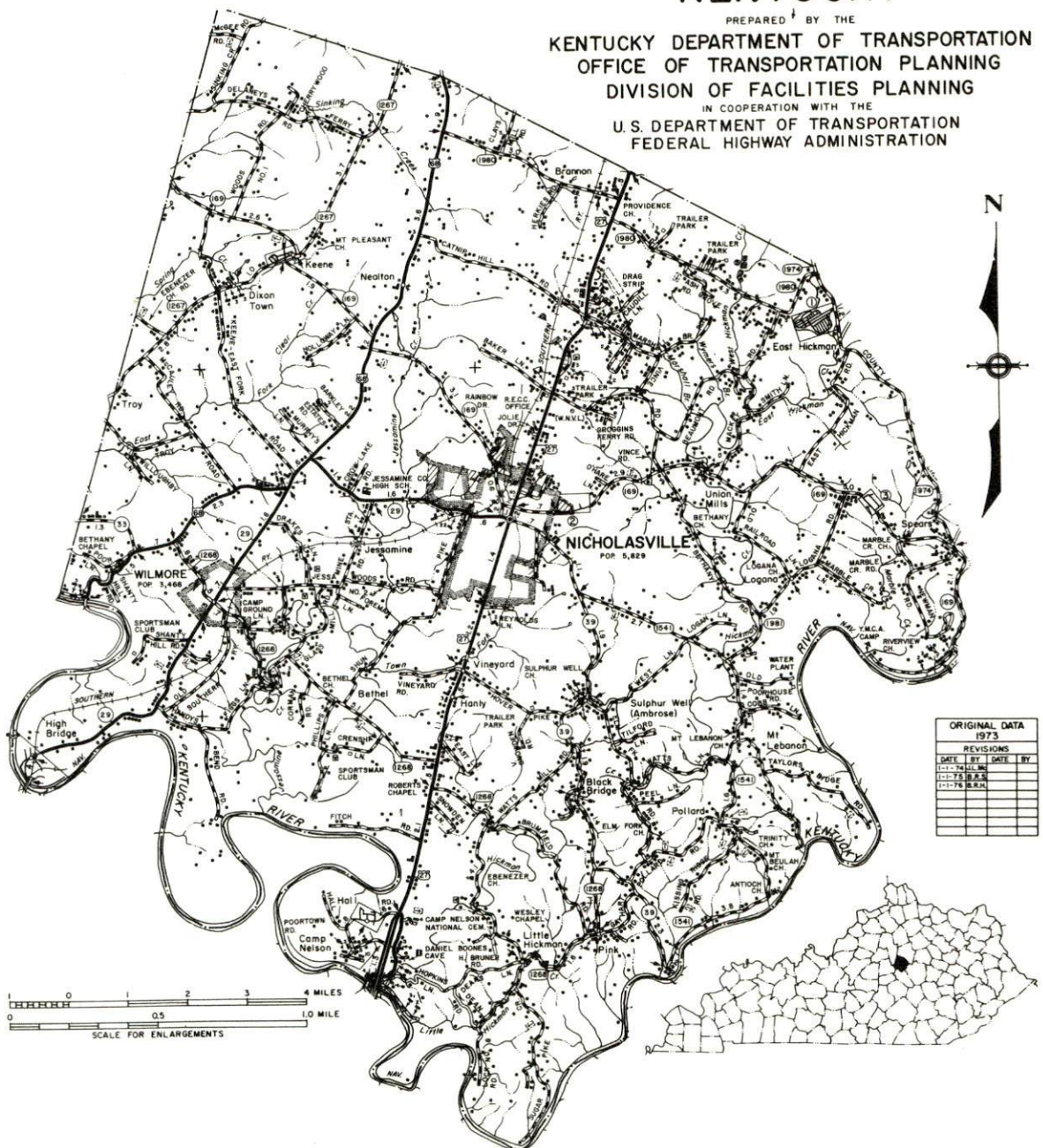
Site Development Section

TABLE OF CONTENTS

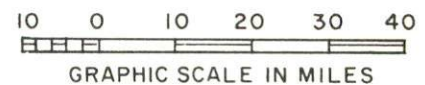
<u>Chapter</u>	<u>Page</u>
INDUSTRIAL SITES	i
NICHOLASVILLE, KENTUCKY - A RESOURCE PROFILE	1
THE LABOR MARKET AREA	3
Population	3
General Employment Characteristics, 1974	3
Manufacturing Employment By Industry	4
Jessamine County Manufacturing Firms, Their Products and Employment.	4
Labor Organizations.	5
Estimated Male Labor Supply.	6
Estimated Female Labor Supply	6
Wages	7
Per Capita Personal Income	8
TRANSPORTATION	9
Rail	9
Highways.	9
Truck Service	10
Air	11
Taxi.	11
Rental Services.	11
POWER AND FUEL	12
Electricity	12
Natural Gas	13
Other Fuels	13
WATER AND SEWERAGE	14
Water	14
Sewerage.	16
CLIMATE	17

<u>Chapter</u>	<u>Page</u>
LOCAL GOVERNMENT	18
City.	18
County	18
Assessed Value of Property, 1975	18
Property Taxes	19
Local Property Tax Rate Per \$100 of Assessed Valuation, 1975	19
Utilities Gross Receipts Tax for Schools	19
Planning and Zoning	19
Safety.	20
Police	20
Fire	20
Rescue Service	20
Solid Waste	20
EDUCATION	21
Public Schools	21
Area Colleges and Universities	22
Vocational Schools	23
HEALTH.	24
Local Medical Personnel	24
Hospitals	24
Other Medical Facilities	24
Ambulance Service	24
Nursing Homes.	24
Public Health	24
OTHER LOCAL FACILITIES	27
Communications	27
Library Services	27
Religious Institutions	28
Financial Institutions	28
Hotels and Motels	28
Clubs and Organizations.	29
RECREATION	30
COMMUNITY IMPROVEMENTS.	31
HISTORY.	33

PREPARED BY THE
KENTUCKY DEPARTMENT OF TRANSPORTATION
OFFICE OF TRANSPORTATION PLANNING
DIVISION OF FACILITIES PLANNING
IN COOPERATION WITH THE
U.S. DEPARTMENT OF TRANSPORTATION
FEDERAL HIGHWAY ADMINISTRATION



A map showing the six counties in the Lexington, Kentucky area: Woodford, Fayette, Jessamine, Mercer, Madison, and Garrard. The counties are arranged in a roughly circular pattern around the city of Lexington, which is located in the center of the map.



NICHOLASVILLE, KENTUCKY - A RESOURCE PROFILE

Nicholasville, a growing, thriving town in the heart of Kentucky's Bluegrass Region, is the county seat of Jessamine County. Nicholasville is located 8 miles from Lexington, 89 miles from Louisville, and 90 miles from Cincinnati. In 1973, Nicholasville had a population of 6,805.

Jessamine County covers an area of 177 square miles. The county, with its gently rolling farm land and its modern industrial plants, had a population of 21,100 in 1974, having experienced a growth in population of 55 percent since 1960.

The Economic Framework

The total number of Jessamine County residents employed in 1974 averaged 8,950, including 980 in agriculture and 1,080 in government. Manufacturing employers in the county reported 780 workers; trade and services firms employed 1,120. Major industrial products are: locks, men's and boys' jeans, and folding cartons.

Total unemployment in Jessamine County averaged 2.6 percent of the labor force in 1974.

Per capita personal income in the county in 1974 was \$3,570, an increase of 41.7 percent since 1970.

The Nicholasville labor market area includes Jessamine and the five adjoining counties. The total number of residents of the labor market area employed in 1974 averaged 147,110, including 8,595 in agriculture and 32,780 in government. Manufacturing employers in the labor market area reported 29,130 workers; trade and services firms employed 53,300.

Resources for Growth

1. Labor Supply - There is a current labor supply of 10,160 men and 9,820 women available for industrial jobs in the labor market area. In addition, 12,970 young men and 12,390 young women in the area will become 18 years of age before 1982 and potentially available for work.

2. Transportation - Nicholasville is served by the Southern Railway System offering a variety of services. U. S. Highways 27 and 68 and several Kentucky Highways serve Jessamine County. In addition, Interstate 64 (east-west) and Interstate 75 (north-south) intersect approximately 12 miles northeast of Nicholasville. Seven truck lines serve the Nicholasville area. The nearest commercial airport, Blue Grass Field, is located approximately 12 miles north of Nicholasville.

3. Utilities and Fuel - Electric power is provided to Nicholasville by the City of Nicholasville Utilities, whose source of supply is the Kentucky Utilities Company. Jessamine County is served by the Blue Grass RECC, whose source of supply is the East Kentucky Power Cooperative. Nicholasville is provided natural gas by the Delta Natural Gas Company, whose source of supply is the Tennessee Gas Transmission Corporation. One distributor of propane and four distributors of distillate fuel oil supply customers in the Nicholasville area.

4. Education - A consolidated public school system operates in Jessamine County. Eight universities and senior colleges, two junior colleges, and a technical institute are located within 40 miles of Nicholasville. Asbury College and Asbury Theological Seminary are located in Jessamine County. The Central Kentucky State Vocational-Technical School, offering 17 courses, and the Fayette County Area Vocational Education Center, offering 12 courses, are both located in Lexington, only 8 miles north of Nicholasville.

THE LABOR MARKET AREA

POPULATION

Area	1974*	1970	Percent Nonwhite
			1970
Nicholasville	6,805**	5,829	10.1
Labor Market Area	296,600	274,334	
Jessamine County	21,100	17,430	6.8
Fayette County	186,900	174,323	12.7
Garrard County	9,400	9,457	7.6
Madison County	46,200	42,730	6.8
Mercer County	17,400	15,960	5.1
Woodford County	15,600	14,434	10.8

*Provisional Estimates.

**1973 Population Estimates.

Sources: U. S. Department of Commerce, Bureau of the Census, Census of Population, 1970. U. S. Bureau of the Census, Current Population Reports, Series P-25, No. 562, June 1975; Series P-26, No. 120, June 1975.

GENERAL EMPLOYMENT CHARACTERISTICS, 1974

Major Employment Group	Employment by Place of Residence of Workers	
	Jessamine County	Labor Market Area
Total Employment	8,947	147,113
Agriculture	984	8,595
Government	1,081	32,779
	Employment by Location of Jobs	
	Jessamine County	Labor Market Area
Manufacturing	777	29,134
Trade and Services	1,119	53,297

Source: Kentucky Department for Human Resources, Bureau for Administration and Operations.

MANUFACTURING EMPLOYMENT BY INDUSTRY
SEPTEMBER 1975

<u>Industry</u>	<u>Jessamine County</u>	<u>Labor Market Area</u>
TOTAL	1,066	25,459
Food & Kindred Products	0	1,610
Tobacco	0	585
Apparel, Textiles, Leather	122	1,941
Lumber, Furniture	9	178
Printing & Publishing, Paper	219	2,496
Chemicals, Petroleum &		
Coal, Rubber	3	462
Stone, Clay & Glass	30	1,741
Primary Metals	73	313
Machinery, Metal Products,		
Equipment	610	14,375
Other	0	1,758

Source: Kentucky Department for Human Resources, Number of Workers in Manufacturing Industries Covered by Kentucky Unemployment Insurance Law Classified by Industry and County, September, 1975.

JESSAMINE COUNTY MANUFACTURING FIRMS,
THEIR PRODUCTS AND EMPLOYMENT

<u>Firm</u> (Establishment date)	<u>Product</u>	<u>Employment</u>		
		<u>Total</u>	<u>Male</u>	<u>Female</u>
<u>Nicholasville</u>				
Adcom Metals Company, Inc. (1970)	Bright plating and annealed wire	40	39	1
Berry Corporation (1973)	Metal fabrication, joint sealing equipment	12	11	1
Faulkner-Fain Company, Inc. (1957)	Wood store, bank fixtures, cabinets, institutional furniture	10	8	2
Gulf States Paper Corporation (1970)	Folding cartons	109		
Hoover Ball and Bearing Company (1973)	Precision steel balls	25	22	3
Jessamine Publishing Company, Inc. (1956)	Newspaper, job printing	9	5	4
Kentucky Adhesive Company, Inc. (1939)	Industrial commercial adhesives	5	4	1
Pioneer Laboratories, Inc. (1974)	Commercial and industrial chemicals	3	2	1
Sargent and Greenleaf, Inc. (1973)	Locks	250	175	75

<u>Firm</u> (Establishment date)	<u>Product</u>	<u>Employment</u>		
		<u>Total</u>	<u>Male</u>	<u>Female</u>
Stratton Lumber and Howe Company, Inc. (1947)	Lumber	25	22	3
Surtech Coating Company (1972)	Paper and plastic coating material	85		
Teater and Cassity Farm Service (1955)	Fertilizer, feed	10	8	2
Wings Mixed Concrete Company, Inc. (1969)	Ready mixed concrete	22	20	2

Wilmore

Crouse Concrete and Builders Supply Company (1961)	Ready mixed concrete	6	6	0
Tococo, Inc. (1971)	Men's and boys' jeans	100	14	86

Source: Kentucky Department of Commerce, Division of Research and Planning.

LABOR ORGANIZATIONS

There are presently no labor organizations representing manufacturing workers in Jessamine County.

ESTIMATED MALE LABOR SUPPLY
NICHOLASVILLE LABOR MARKET AREA

Area	Current			Future	
	Total	Not in Labor Force	Unemployed	Under-employed	Reaching 18 yrs. of age before 1982
Labor Market					
Area	10,160	270	2,730	7,160	12,974
Jessamine	690	0	170	520	881
Fayette	5,760	0	1,640	4,120	8,258
Garrard	560	270	130	160	475
Madison	2,270	0	420	1,850	1,821
Mercer	570	0	260	310	738
Woodford	310	0	110	200	801

Sources: Kentucky Department for Human Resources, Kentucky Labor Supply Estimates by County, 1975. Kentucky Department of Commerce, Future Labor Supply before 1982.

ESTIMATED FEMALE LABOR SUPPLY
NICHOLASVILLE LABOR MARKET AREA

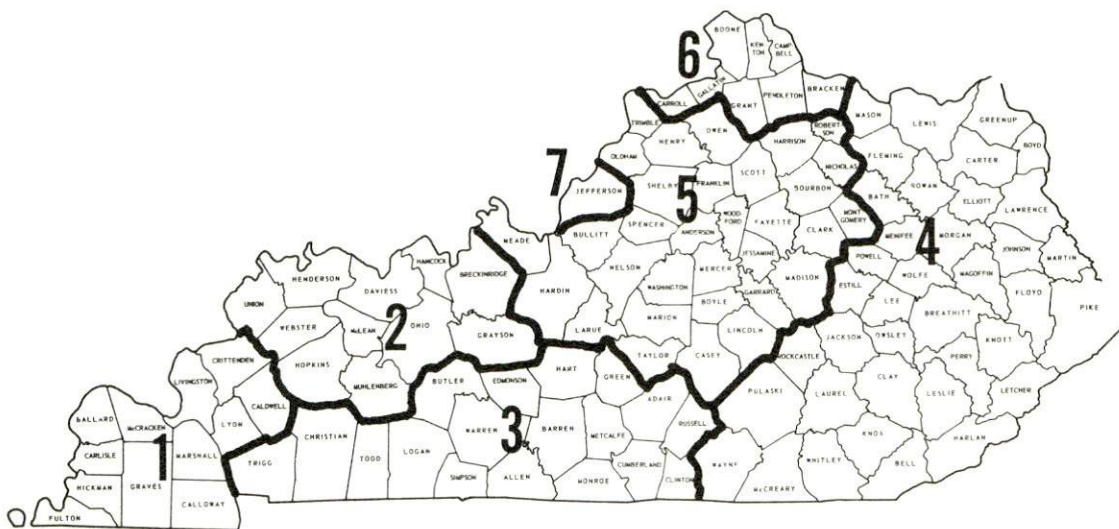
Area	Current			Future	
	Total	Not in Labor Force	Unemployed	Under-employed	Reaching 18 yrs. of age before 1982
Labor Market					
Area	9,820	380	1,370	8,070	12,388
Jessamine	710	0	70	640	827
Fayette	5,550	0	710	4,840	7,939
Garrard	630	380	80	170	439
Madison	2,070	0	280	1,790	1,727
Mercer	460	0	150	310	722
Woodford	400	0	80	320	734

Sources: Kentucky Department for Human Resources, Kentucky Labor Supply Estimates by County, 1975. Kentucky Department of Commerce, Future Labor Supply before 1982.

WAGES

Occupational wage rates for specific industries are usually not available to most government agencies, and wage data furnished to state employment agencies by individual industrial employers is protected from disclosure by federal law. The most reliable up-to-date wage information can be obtained by direct contact with local employers.

Associated Industries of Kentucky, a voluntary organization of Kentucky businesses, regularly collects occupational wage rates and fringe benefits data from participating member firms. Data is compiled for over 127 clearly defined office, production, and service occupations. Tabulations are published for seven regions of Kentucky, as shown on the map below. It should be noted that the data may be weighted by the preponderance of firms in the larger cities and may be somewhat higher than the rates paid in the smaller communities. Data from these tabulations are available, upon request, from the Kentucky Department of Commerce, Frankfort, Kentucky 40601.



Associated Industries of Kentucky Area Wage Surveys

PER CAPITA PERSONAL INCOME

<u>Area</u>	<u>1974</u>	<u>1970</u>	<u>Percent Change</u>
Jessamine County	\$3,570	\$2,519	41.7
Labor Market Area			
Range	\$3,510 - 5,507	\$2,505 - 4,020	N.A.
Kentucky	4,442	3,112	42.7
U. S.	5,448	3,966	37.4

Sources: U. S. Department of Commerce, Bureau of Economic Analysis, Survey of Current Business, August 1975. U. S. Department of Commerce, Bureau of Economic Analysis, March 1976.

TRANSPORTATION

Rail

Line serving Nicholasville - Southern Railway System

Services - 2 local freights daily, 20 through freights daily, switching facilities, siding for approximately 18 cars at each depot; nearest piggyback service - Danville, 23 miles southwest of Nicholasville

For details on routing, schedules, rates, and services, contact:

District Sales Manager
Southern Railway System
701 South Broadway
Lexington, Kentucky 40508
(606) 252-2242

Highways

Nicholasville is served by U. S. Highway 27 and Kentucky Highways 29, 169, and 39. In addition, Interstate 64 (east-west) and Interstate 75 (north-south) intersect approximately 12 miles northeast of Nicholasville. A committee has been formed to study the widening of U. S. 27 from New Circle Road in Lexington to Camp Nelson Bridge at the Kentucky River and the possibility of a by-pass around Nicholasville. A four-lane section of road approximately 5 miles long has been completed in the Camp Nelson area.

Truck Service

<u>Company</u>	<u>Home Office</u>
Cooper-Jarret, Inc.	23 South Essex Avenue Orange, New Jersey 07050
Eldridge Truck Line	West Highway 80 Somerset, Kentucky 42501
Great Lakes Express	1150 North Niagara Saginaw, Michigan 48602
McLean Trucking Company	P. O. Box 213 Winston-Salem, North Carolina 27102
Turner Expediting Service	P. O. Box 21333 Standiford Field Louisville, Kentucky 40221
United Trucking Service, Inc.	1143 Winchester Road Lexington, Kentucky 40505
Wilson Freight Company	3636 Follett Avenue Cincinnati, Ohio 45223

<u>Other Freight Services</u>	<u>Nearest Shipping Center</u>
United Parcel Service	Lexington, 8 miles north

HIGHWAY MILES AND TRUCK TRANSIT TIME IN DAYS FROM NICHOLASVILLE, KENTUCKY, TO SELECTED MARKET CENTERS

City	Delivery		City	Delivery	
	Highway Miles	Time TL		Highway Miles	Time TL
Atlanta, Ga.	360	1	Los Angeles, Calif.	2,188	4
Birmingham, Ala.	396	2	Louisville, Ky.	89	1
Chicago, Ill	364	2	Nashville, Tenn.	206	1
Cincinnati, Ohio	90	1	New Orleans, La.	725	2
Cleveland, Ohio	329	2	New York, N. Y.	715	3
Detroit, Mich.	349	1	Pittsburgh, Pa.	355	3
Knoxville, Tenn.	163	1	St. Louis, Mo.	343	2

Source: Delivery Time Only - United Trucking Service, Inc., 1143
Winchester Road, Lexington, Kentucky 40505.

Air

Nearest Commercial

Location:	Blue Grass Field 12 miles north of Nicholasville at Lexington
Runways:	2 paved
Length:	6,500 feet; 3,500 feet
Traffic Control:	Tower; guards; radar services - arrival/departure, Stage II contact approach control, ground control; Automatic Terminal Information Service
Lighting:	Approach lighting system, beacon, runways and obstructions lighted
Services:	Delta, Eastern, Piedmont and Allegheny Airlines; Fuel - 24 hour service, 80, 100, 145 and jet fuel; Repair Services - major A & E repairs, Certified Avionics repair station; National Weather Service; flight instructions; charter service; storage; taxi, limousine, and car rentals; restaurant
Air Freight Service:	Air freight accepted on a space available basis

Taxi - One company serves Nicholasville with 24-hour service

Rental Services - Car rentals are available in Nicholasville.
Complete car, truck and bus rental services
are available in Lexington, 8 miles north of
Nicholasville.

POWER AND FUEL

Electricity

Company serving Nicholasville - City of Nicholasville Utilities

Source of power - Kentucky Utilities Company

Total generating capacity - 1,615,000 KW

For industrial rates contact:

City of Nicholasville Utilities
517 North Main Street, P. O. Box 158
Nicholasville, Kentucky 40356
(606) 885-9473

and/or

Kentucky Utilities Company
Industrial Development Department
120 South Limestone Street
Lexington, Kentucky 40507
(606) 255-1461

Company serving Jessamine County - Blue Grass Rural Electric
Cooperative Corporation

Source of power - East Kentucky Power Cooperative

Total generating capacity - 496,000 KW

For industrial rates contact:

Industrial Development Division
East Kentucky Power Cooperative
P. O. Box 707
Winchester, Kentucky 40391
(606) 744-4812

and/or

Director of Member Services
Blue Grass RECC
P. O. Box 188
Nicholasville, Kentucky 40356
(606) 885-4191

Natural Gas

Company serving Nicholasville - Delta Natural Gas Company, Inc.
Source of supply - Tennessee Gas Transmission Corporation
Size of transmission mains - 36-inch (supplier); 4, 6, and 8 inches
(distributor)
Distribution mains - 2-inch
Distribution pressure - 0 - 60 psi
Btu content - 1,040 per cubic foot
Specific gravity - .60
For rates and supplies contact:

Delta Natural Gas Company
120 South Main Street
Winchester, Kentucky 40391
(606) 744-6171

Other Fuels

Propane

Suburban Propane, 121 North Fourth Street, Nicholasville,
Kentucky 40356
Propane is also available from suppliers in Lexington,
8 miles south of Nicholasville.

Fuel oils

Distillate fuel oil -

Arco Petroleum Products, Danville Pike, Nicholasville, Kentucky
40356
Ashland Oil Company, 200 West Maple, Nicholasville, Kentucky
40356
East Service Station, 505 North Main, Nicholasville, Kentucky
40356
Texaco Oil Company, North Lexington Avenue, Wilmore, Kentucky
40390

Residual fuel oil - Arrangements must be made with the refinery.

Low sulphur content coal - Available from eastern Kentucky.

WATER AND SEWERAGE

Water

Company serving Nicholasville - City of Nicholasville Utilities
P. O. Box 158, 517 North Main Street
Nicholasville, Kentucky 40356
(606) 885-9473

Source - Kentucky River

Treatment plant capacity - 1,440,000 gallons per day*

Average daily consumption - 1,200,000 gallons

Peak daily consumption - 1,500,000 gallons

Type treatment - Coagulation, sedimentation, rapid sand filters,
and pre and post-chlorination

Storage capacity - 1,800,000 gallons

Size lines - 4, 6, 8, 10, and 12 inches

Average pressure - 65 psi

Average temperature - 55 degrees F.

MONTHLY WATER RATES FOR WHOLESALE AND INDUSTRIAL CONSUMERS

First	2,000 gallons	\$2.75 (Minimum)
Next	3,000 gallons	.80 per M gallons
Next	15,000 gallons	.75 per M gallons
Next	30,000 gallons	.70 per M gallons
Next	50,000 gallons	.60 per M gallons
Over	100,000 gallons	.50 per M gallons

Tap-on charge: \$100

*The treatment plant is in the process of increasing its capacity to 3,000,000 gallons per day.

Name of water district - Jessamine County Water District No. 3
517 North Main, P. O. Box 158
Nicholasville, Kentucky 40356
(606) 885-9473

Area served - Southwest section of Jessamine County
Date when water district began operating - March 1969
Source of supply of treated water - City of Nicholasville
Average amount of water used in a 24-hour period - 30,000 gallons
Average pressure - 65 psi
Average temperature - 55 degrees F.
Size lines - 2, 3, 4, and 6 inches
Rates -

First	2,000 gallons per month	\$7.50 (Minimum)
Next	3,000 gallons per month	2.50 per M gallons
Next	5,000 gallons per month	1.25 per M gallons
Next	15,000 gallons per month	.90 per M gallons
Next	25,000 gallons per month	.70 per M gallons

Tap-on charge: \$65 plus installation cost

Name of water district - Lexington-South Elkhorn Water District
200 West Maple Street
Nicholasville, Kentucky 40356
(606) 885-9314

Area served - Northwest section of Jessamine County
Date when water district began operating - February 1967
Source of supply of treated water - City of Nicholasville
Average amount of water used in a 24-hour period - 56,000 gallons
Storage capacity - 50,000 gallons
Average pressure - 50 psi
Size lines - 4 and 6 inches
Rates -

First	2,000 gallons per month	\$7.50 (Minimum)
Next	2,000 gallons per month	2.00 per M gallons
Next	3,000 gallons per month	1.50 per M gallons
Next	20,000 gallons per month	1.00 per M gallons
All over	27,000 gallons per month	.65 per M gallons

Tap-on charge: \$65 plus installation cost

Name of water district - Jessamine County Water District No. 1
200 West Maple Street
Nicholasville, Kentucky 40356
(606) 885-9314

Area served - 1.5 miles on each side of U. S. 27 North
Date when water district began operating - February 1967
Source of supply of treated water - City of Nicholasville
Average amount of water used in a 24-hour period - 99,000 gallons
Average pressure - 45 psi
Size lines - 3 and 6 inches
Rates -

First	3,000 gallons	\$7.50 (Minimum)
Next	7,000 gallons	1.00 per M gallons
All over 10,000 gallons		.80 per M gallons

Tap-on charge:	5/8-inch meter	\$150
	3/4-inch meter	200
	1-inch meter	300
	1 1/2-inch meter	500

Surface water sources - Kentucky River
Average discharge - Kentucky River at Salvisa, 6759 cfs (50 year record, USGS)
Expected ground water yield - 200 to 500 gpm in the southwestern portion of the county, 50 to 200 gpm in the southeastern portion, and 5 to 50 gpm in the remainder of the county

Sewerage

Company serving Nicholasville - City of Nicholasville Utilities*
P. O. Box 158, 517 North Main Street
Nicholasville, Kentucky 40356
(606) 885-9473

Design capacity - 750,000 gallons per day
Average daily flow - 375,000 gallons
Treatment - Primary and secondary
Type treatment - Settling tank, trickling filter, clarifiers, chlorine, digester and drying bed
Treated effluent discharged into - Town Branch of Jessamine Creek
Size of sanitary mains - 6 to 15 inches
Size of storm mains - 6 to 36 inches
Rates - Minimum \$1.50 per month for residential, minimum \$2.10 per month for commercial or 40% of water bill (residential and commercial), whichever is greater

Tap-on charge: \$150

*201 Facilities Plan underway.

CLIMATE

Jessamine County

Temperature

Annual mean (30-year record)	55.2 degrees
Average annual 1974	55.1 degrees
Record highest, July, 1966 (11-year record)	98.0 degrees
Record lowest, January, 1972 (11-year record)	-11.0 degrees
Normal heating degree days (30-year record)	4,729
(Heating degree day totals are the sums of negative departures of average daily temperatures from 65 degrees F.)	

Precipitation

Mean annual total (30-year record)	44.49 inches
Mean annual snowfall (30-year record)	15.70 inches
Total precipitation 1974	60.09 inches
Mean number days precipitation (.01 inch or more) (30-year record)	130
Average number days thunderstorms (30-year record)	47

Prevailing Winds (17-year record) South

Relative Humidity (11-year record)

1 a.m.	76 percent
7 a.m.	81 percent
1 p.m.	59 percent
7 p.m.	64 percent

Source: U. S. Department of Commerce, Environmental Science Services
Administration, Climatological Data, 1974. Station of record:
Lexington, Kentucky.

LOCAL GOVERNMENT

City

Structure - Mayor - 4-year term; 4 councilmen - 4-year terms;

City manager

Budget 1976 - General Fund \$ 516,400

Water and Sewer Fund;

Electric System 1,628,000

Fees and licenses - Occupational license ordinance - minimum \$5, maximum \$500; Retail merchants, gross receipts - minimum \$15, maximum (sliding scale) \$15 to \$110 - gross receipts of up to \$150,000, over \$150,000 - \$.50 per \$1,000 up to \$500,000, over \$500,000 - \$.30 per \$1,000

County

Structure - County Judge - 4-year term; 5 magistrates - 4-year terms

Budget 1974-75 - General Fund \$354,838; Road Fund \$155,350

Assessed Value of Property, 1975

<u>Classes of Property</u>	<u>Nicholasville</u>	<u>Jessamine County</u>
Real Estate	\$50,743,899	\$135,789,976
Tangibles	10,654,115	31,341,678

Property Taxes

Land and buildings are taxed by the state and may be taxed by local jurisdictions. The state rate is \$0.015 per \$100 of assessed valuation.

Tangible personal property owned by manufacturers (automobiles, trucks, finished goods, office furniture, office equipment) is taxed by the state at \$0.15 per \$100 and may be taxed by local jurisdictions.

Manufacturing machinery, raw materials inventories, pollution control equipment, and goods in process inventories are not subject to local taxation. The state rate is \$0.15 per \$100.

Property stored in public warehouses is not subject to local taxation. The state rate is only \$0.015 per \$100.

All property is assessed at 100 percent of fair cash value.

Local Property Tax Rate Per \$100 of Assessed Valuation, 1975*

<u>Taxing Jurisdiction</u>	<u>Nicholasville</u>	<u>Jessamine County</u>
County	\$.199	\$.199
School	.497	.497
City	.250	

Utilities Gross Receipts Tax for Schools

Jessamine County levies a 3 percent tax on utilities receipts for schools. This tax is paid by all consumers of utilities as an add-on to the utilities bills. Exempted are receipts from utilities services that are resold and the receipts from the sale of energy or energy producing fuels that exceed 3 percent of the cost of production in manufacturing, processing, mining or refining.

Planning and Zoning

City agency - Nicholasville Planning Commission

Zoning enforced - City only

Subdivision regulations enforced - City and 5 miles beyond city limits

Local codes enforced - Building and electric

Mandatory state codes enforced - Plumbing, National Fire Protection

Association Code, National Building Code (for major buildings and

residential construction containing more than 12 bedrooms per building)

*Kentucky Department of Revenue, Kentucky Property Tax Rates, 1975.

Safety

<u>Police</u>	<u>Nicholasville</u>	<u>Jessamine County</u>
Total staff	10	6
Radio-patrol cars	3	3

Fire

American Insurance Association Fire Rating	7	
Full-time staff	4	
Volunteers	22	14

Rescue Service

Jessamine County Rescue Squad:

Number of volunteers - 18

Equipment - A utility van, dragging equipment, boats and motors, ambulance, and other standard rescue and first aid equipment

Personnel training - First aid training, basic rescue training

Solid Waste

	<u>Nicholasville</u>	<u>Jessamine County</u>
Type service	Private	Private
Fee charged:		
residential	\$6 per month	Contract
business	Contract	Contract
industrial	Contract	Contract
Collection frequency:		
residential	Twice weekly	When desired
business	When desired	When desired
industrial	When desired	When desired
Trash pickup	When desired	When desired
Disposal method	Landfill	Landfill

EDUCATION

Public Schools

Jessamine County

Total Enrollment	
(Fall, 1975)	4,207
Elementary	2,233
Junior High	1,148
High School	826
Student-Teacher Ratio	24-1
Elementary	22-1
Junior High	28-1
High School	22-1
Percent High School	
Graduates to College	42.0
Expenditures Per Pupil	
(1974-75)	\$578.54
Bonded Indebtedness,	
June 30, 1975	\$5,186,000*

*Includes advance refunding issues - \$2,000,000.

Area Colleges and Universities

<u>Name</u>	<u>Location (Miles Distant)</u>	<u>Enrollment (Fall, 1975)</u>	<u>Highest Degree Conferred</u>
Asbury College	Wilmore (6)	1,225	Baccalaureate
Berea College	Berea (37)	1,504	Baccalaureate
Centre College	Danville (23)	775	Baccalaureate
Eastern Kentucky University	Richmond (23)	13,430	Masters, Ph. D. *
Georgetown College	Georgetown (31)	1,062	Masters
Kentucky State University	Frankfort (31)	2,246	Masters
Lexington Technical Institute	Lexington (8)	1,654	Associate
Midway Junior College	Midway (19)	350	Associate
Southeastern Christian Junior College	Winchester (31)	91	Associate
Transylvania University	Lexington (8)	722	Masters**
University of Kentucky	Lexington (8)	22,526	Ph. D, M.D., D. M. D., J. D.

*Cooperative program with the University of Kentucky, Lexington, for a Ph. D. in education only.

**Courses for the Master's degree in business administration are taught on the Transylvania campus by Xavier University of Cincinnati faculty members. The degree is issued by Xavier University.

Vocational Schools

	<u>Nearest State School</u>	<u>Nearest Area Education Center</u>
	Central Kentucky State Vocational-Technical School	Fayette County Area Vocational Education Center
Location	Lexington	Lexington
Miles Distant	8 miles north of Nicholasville	8 miles north of Nicholasville
Curriculum	General Clerical Steno-Secretarial Practical Nursing Learning Lab Electronics Auto Body Repair Auto Mechanics Commerical Foods Cosmetology Drafting Industrial Electricity Graphic Arts Machine Shop Office Machine Repair Sheet Metal Welding Equine Education	Agribusiness Health and Personal Services Industrial Education Appliance Repair Auto Body Auto Mechanics Carpentry Drafting Electricity Machine Shop Masonry Radio and TV Welding

Arrangements can be made to provide training in the specific production skills required by an industrial plant. Instruction may be conducted either in the vocational school or in the industrial plant, depending upon the desired arrangement and the availability of special equipment.

HEALTH

Local Medical Personnel

Physicians - 10
Dentists - 12

Hospitals

The nearest hospital facilities serving Jessamine County are located in Lexington, 8 miles north of Nicholasville. There are four general hospitals in the Lexington area: Central Baptist, Good Samaritan, St. Joseph and the University Medical Center. Four special hospitals are also located in Lexington: Cardinal Hills Convalescent Hospital, Eastern State Hospital, Shriners Hospital for Crippled Children, and the Veterans Administration Hospital.

Other Medical Facilities

Jessamine County Comprehensive Care Center

Ambulance Service

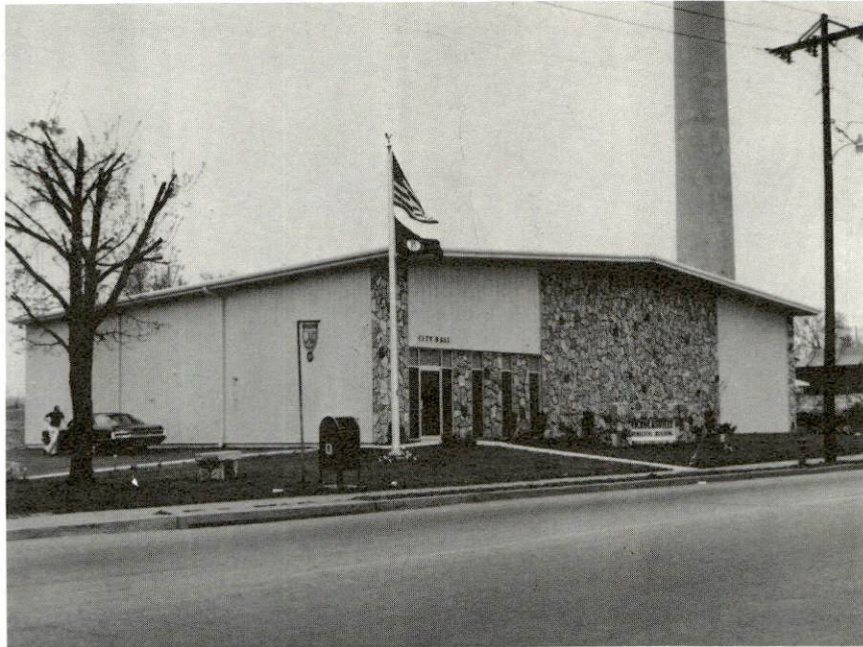
Ambulance services are provided by two local funeral homes.

Nursing Homes

	<u>Number</u>	<u>Beds</u>
Intermediate and personal care homes	1	80
Personal care homes	1	36

Public Health

Facility - Jessamine County Health Department
Staff - 2 registered nurses, 1 sanitarian, 1 clerk, 1 health officer (part time), 1 plumbing inspector (part time), Blue Grass Family Planning Counselor, 1 nurse (part time), 1 clerk (part time), 2 health service aides (part time)



NICHOLASVILLE MUNICIPAL BUILDING



WITHERS MEMORIAL PUBLIC LIBRARY

EDGEWOOD PLAZA



OTHER LOCAL FACILITIES

Communications

Telephone - General Telephone Company
Services - Standard

Telegraph - Western Union
Services - Telephone or messenger

Postal - U. S. Post Office
Class - First
Mail received - Twice daily
Mail dispatched - Twice daily

Newspapers - Jessamine Journal
Weekly and circulation - 3,800
Other papers received from - Cincinnati, Ohio; Lexington
and Louisville, Kentucky

Radio - WNVL - AM
Stations received from - Cincinnati, Ohio; Lexington
and Louisville, Kentucky

Television -
Cable service
Reception from - Cincinnati, Ohio; Lexington and
Louisville, Kentucky
Kentucky Educational
Television - Lexington transmitter, Channel 46

Library Services

Public library - Withers Memorial Library
Size collection - 25,545 volumes
Circulation, 1974-75 - 121,888 volumes
Services - Magazines, periodicals, copy machine, film projector,
slide projector, records, art, film strips, story hour, inter-
library loan, summer reading program, programs for historical
society, programs for art society, programs for mentally handi-
capped, services for shut-ins, talking books for the blind, book-
mobile, career education material, book reviews, reader-printer,
local displays, meeting rooms and services for the aging

Religious Institutions

Number of churches - 41 churches in Jessamine County

Denominations - Assembly of God, Catholic, Church of Christ, Episcopal, Interdenominational, Nazarene, Seventh Day Adventist, Baptist, Christian, Church of God, Holiness, Methodist, Presbyterian

Nearest Synagogues - Lexington, 8 miles north of Nicholasville

Congregations - Adath Israel (reform)

Ohavey Zion (traditional)

Financial Institutions

<u>Banks</u>	<u>Assets</u>	<u>Deposits</u>	<u>Statement Date</u>
The First National Bank and Trust Company	\$25,627,494	\$22,866,284	12/31/75
The Farmers Bank	15,064,058	13,874,348	12/31/75

<u>Savings and Loan Associations</u>	<u>Assets</u>	<u>Shared Accounts</u>	<u>Statement Date</u>
Jessamine First Federal Savings and Loan Association	\$ 4,908,525	\$ 4,426,857	12/31/75

Hotels and Motels

Total number - 4

Total units - 60

Clubs and Organizations

Business and Civic - Rotary, Lions, Chamber of Commerce,
Jaycees, PTA, Art Guild, Historical Society, Civic Club

Fraternal - American Legion, VFW, Masons, Odd Fellows

Women's - Junior Woman's Club, Women's Club, Homemakers,
Business and Professional Women, Garden Club, Eastern Star

Youth - Boy Scouts, Cub Scouts, Girl Scouts, Brownies, Sea
Scouts, FFA, FHA, Little League baseball, softball, basketball,
Babe Ruth League, baseball, Booster Club, 4-H

Other - Sportsman Club, Laymen for Christ, Ministerial
Association, Fair Board, Association for Mentally Retarded

RECREATION

Local

The City-County Parks and Recreation Board has been granted 25 acres of land to be developed as a complete recreational facility. Three public areas in the Nicholasville park system have been improved - the six-acre Green Thumb Park, the four-acre Rock Fence Park, and the Carolina Memorial Community Center. Three additional parks are available for local residents.

Youth athletic programs include Little League, Babe Ruth baseball, softball, football and basketball. Over 1,500 boys are involved in these athletic programs. Each program has a corresponding cheerleading program for girls.

The Lone Oak Country Club offers: golf (18 holes), swimming, volleyball and tennis. One drive-in theater is located nearby.

Area (Within 35 miles)

Located around Nicholasville are three of the states finest parks - Fort Boonesborough State Park, Kentucky State Horse Park, and Old Fort Harrod State Park. All three of these state parks offer similar facilities: Playground, picnic area, and gift shop. Fort Boonesborough also offers boating, fishing, restaurant, campsites and swimming.

Six state shrines are located within 35 miles of Nicholasville: Constitution Square State Shrine, Isaac Shelby State Shrine, Perryville Battlefield State Shrine, Waveland State Shrine, White Hall State Shrine, and the William Whitley House State Shrine.

Other tourist attractions include: Almahurst horse farm, Daniel Boone Cave, Herrington Lake, Keeneland Race Track, Big Red Mile Trotting Track, Calumet horse farm, Chaumiere, Camp Nelson, and Headly Museum. Lexington, 8 miles distant, offers Little Theater Groups, The Central Kentucky Concert and Lecture Series, and the Central Kentucky Philharmonic Orchestra. The many colleges in the area offer a wide variety of cultural and sporting events.

COMMUNITY IMPROVEMENTS

Recent:

1. A new city hall and municipal building has been constructed.
2. The General Telephone Company has replaced their old facility with a more spacious addition on Main Street.
3. A new building houses the Withers Memorial Library. The new building which provides more space and better equipment was made possible by a large grant provided by the Kentucky Department of Libraries and Archives.
4. The city's electrical system was improved by the addition of a new generating plant and power lines.
5. Several of Nicholasville's older buildings have been re-constructed or completely razed for new or existing businesses.
6. The Edgewood Plaza Shopping Center, a modern shopping center south of Nicholasville, has added 23 new buildings and 21 new occupants since 1973.
7. The First National Bank and Trust Company has constructed a new branch bank in the Edgewood Plaza Shopping Center.
8. The Nicholasville Planning Commission has approved over 950 residential building lots throughout various subdivisions.
9. A new substation has doubled the city's electric power output since 1974.

Underway:

1. Property on South Main Street is being developed into a group of specialty shops.
2. The Nicholasville water treatment plant is in the process of increasing capacity to 3,000,000 gallons per day.
3. A 201 Facilities Plan is in the process.
4. A new apartment complex is being constructed south of town.

5. A committee has been formed to study the widening of U. S. 27 from New Circle Road in Lexington to the Camp Nelson Bridge at the Kentucky River, with the possibility of a by-pass around Nicholasville.

Jessamine County School Improvements

1. Completed additions to the high school include: a materials center, a library, two biology laboratories, a physical science laboratory, an art laboratory, a large instructional room, and city sanitary sewer.

2. New bleachers, public restrooms, a refreshment stand, and dressing room facilities have been completed at the football stadium.

3. A new building and renovation of the Wilmore Elementary School are in the preliminary planning stage.

4. The high school now offers a vocational-special education program and work study program. Drafting and small engine repair are now being offered in the industrial arts program.

HISTORY

Jessamine County, the thirty-sixth county formed in the state, dates from 1798. Its territory of 177 square miles was taken from Fayette County. The Kentucky River forms approximately one-half of its boundary from the southeast to the southwest. The topography of Jessamine County ranges from gently rolling land in the north to hilly and broken surface along the river. The palisades along the Kentucky River are among the most beautiful in the country. Perpendicular cliffs rise to heights of more than 300 feet in many places. Jedidiah Morse, a geographer, wrote in 1789 that the area which now includes Jessamine County "may be called an extensive garden ... the banks of the Kentucky and Dix Rivers are to be reckoned among the natural curiosities of the country ... (and) these rivers have the appearance of deep artificial canals."

The first settlers in Jessamine County were Joseph Drake, reputed to be a descendant of Sir Francis Drake, and Colonel George Nicholas. Drake settled about six miles west of Nicholasville in the early 1780's, while Nicholas settled within the present city limits during the early 1790's. About the same time Matthew Patton and his sons moved from the Potomac River valley in Virginia to Jessamine County near Nicholasville and brought a herd of purebred cattle with them. It was from this herd that the American strain of shorthorn cattle had its beginning in Kentucky.

The county was named by Colonel John Price in honor of the flower ... the Jessamine ... which grows along the creeks in the area. (There are erroneous legends that the county was named for Jessamine Douglas, a beautiful girl who was murdered by the Indians, and also that it was named for Jessamine Creek.) Soon after its formation, Jessamine County began to build a government which has, with several improvements through the years, proved to be efficient and progressive.

Nicholasville, the county seat, was named for Colonel George Nicholas, a native of Williamsburg, Virginia, who settled there in the early 1790's. He was a member of the Convention in Danville that wrote Kentucky's first Constitution.

In 1812, Edward Phipps became the first saddle and harness maker in Jessamine County. About 50 distilleries were in operation by 1825. Meredith Wright built a powder mill in 1826, and Robert Young opened a factory for the production of silk and fur hats the next year. Campbell

Steele set up a flour mill in 1830. Thomas Bryan erected the first paper mill in 1837, and John Barkley established a hemp factory about the same time. Henry Metcalfe, a son of John Metcalfe, opened the first Sunday School in the county in 1843.

Jessamine County's population has increased from 5,461 in 1800 to a high of 21,100 in 1974. From 1960 to 1974, the population experienced a growth of 55 percent.

In 1974 total employment averaged 8,950, with 7,960 people employed in non-agricultural jobs. Manufacturing provided 780 jobs. Major industrial products are locks, men's and boys' jeans, and folding cartons. Largest among Jessamine County's manufacturing plants are: Sargent and Greenleaf, Inc., Tococo, Inc., and Gulf States Paper Corporation.