

1989

Industrial Resources: Johnson County - Paintsville

Kentucky Library Research Collections
Western Kentucky University, spcol@wku.edu

Follow this and additional works at: https://digitalcommons.wku.edu/johnson_cty



Part of the [Business Administration, Management, and Operations Commons](#), [Growth and Development Commons](#), and the [Infrastructure Commons](#)

Recommended Citation

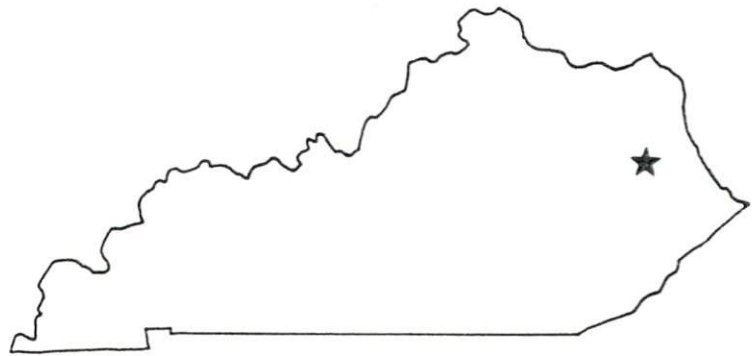
Kentucky Library Research Collections, "Industrial Resources: Johnson County - Paintsville" (1989). *Johnson County*. Paper 6.
https://digitalcommons.wku.edu/johnson_cty/6

This Report is brought to you for free and open access by TopSCHOLAR®. It has been accepted for inclusion in Johnson County by an authorized administrator of TopSCHOLAR®. For more information, please contact topscholar@wku.edu.

Johnson

Resources for Economic Development

Paintsville



KENTUCKY
Open for Business

RESOURCES FOR ECONOMIC DEVELOPMENT

PAINTSVILLE, KENTUCKY

Prepared by
The Kentucky Cabinet for Economic Development
Division of Research and Planning
in cooperation with
The Paintsville/Johnson County Chamber of Commerce

1989

Division Director - Pamela K. Riley; program coordinator - Keith Roberts; research - Scott Hourigan; clerical - Bobbi Graves; graphics - Robert Owens, Pat Coleman; cartography - Edwin Scott, Dave Clark. Cost of printing paid from state funds.

TABLE OF CONTENTS

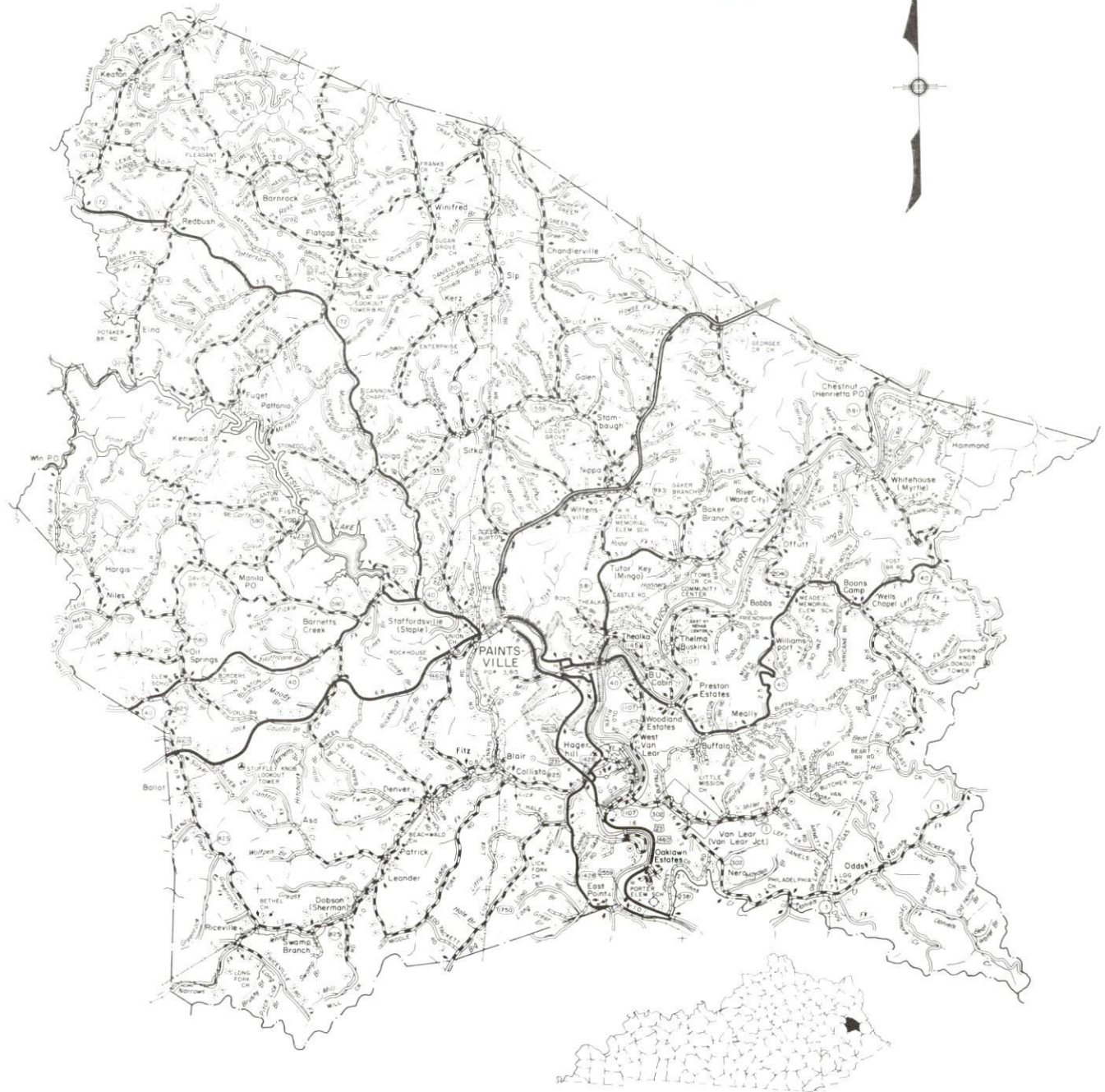
<u>Chapter</u>	<u>Page</u>
PAINTSVILLE, KENTUCKY - A RESOURCE PROFILE	1
THE LABOR MARKET STATISTICS	2
Labor Market Area Map	2
Population	3
Population Projections	3
Estimated Labor Supply	3
Labor Force Characteristics of Residents, 1988	4
Selected Components of Nonagricultural Employment, by Place of Work, 1988	5
Per Capita Personal Income	6
Average Placement Wages	7
Average Weekly Wages of Workers Covered by Unemployment Insurance F.Y. 1987-88 - Bar Chart	8
Average Weekly Wages by Industry, by Place of Work, 1988	9
EXISTING INDUSTRY	10
Paintsville Manufacturing Firms, Their Products and Employment	10
Labor Organizations in Manufacturing Firms	10
Selected Industrial Services	11
TRANSPORTATION	12
Highways	12
Truck Service	12
Selected Market Location Map	13
Rail	14
Air	14
UTILITIES	15
Electricity	15
Natural Gas	15
Public Water Supply	16
Sewerage	16
CLIMATE	17

<u>Chapter</u>	<u>Page</u>
LOCAL GOVERNMENT	18
Structure	18
Planning and Zoning	18
Local Fees and Licenses	18
State and Local Property Taxes	19
Combined State and Local Rates Per \$100 Valuation, 1988	19
EDUCATION	20
Public Schools	20
Nonpublic Schools	20
Area Colleges and Universities	20
Vocational Training	21
OTHER LOCAL FACILITIES	22
Local Medical Personnel	22
Hospitals	22
Other Medical Facilities and Services	22
Banks and Savings & Loan Associations	22
Newspapers	22
Telephone Service	22
RECREATION.	23
COMMUNITY IMPROVEMENTS	24

GENERAL HIGHWAY MAP JOHNSON COUNTY KENTUCKY

PREPARED BY THE
KENTUCKY TRANSPORTATION CABINET
DEPARTMENT OF HIGHWAYS
DIVISION OF PLANNING

IN COOPERATION WITH THE
U.S. DEPARTMENT OF TRANSPORTATION
FEDERAL HIGHWAY ADMINISTRATION



PAINTSVILLE, KENTUCKY - A RESOURCE PROFILE

Paintsville, the county seat of Johnson County, is located in the Eastern Coal Field Region of Kentucky. Paintsville, with a 1986 estimated population of 3,780, is located 116 miles southeast of Lexington, Kentucky; 189 miles southeast of Louisville, Kentucky; 194 miles southeast of Cincinnati, Ohio; and 214 miles northeast of Knoxville, Tennessee.

Johnson County, with a 1987 estimated population of 24,800, has a land area of 264 square miles.

The Economic Framework - The total number of Johnson County residents employed in 1988 averaged 6,980. Manufacturing firms in the county reported 372 employees; wholesale and retail trade provided 1,648 jobs; 841 people were employed in service occupations; state and local government accounted for 1,119 employees; and contract construction firms provided 172 jobs.

Labor Supply - There is a current estimated labor supply of 32,749 persons available for industrial jobs in the labor market area. In addition, from 1989 through 1993, 11,566 young persons in the area will become 18 years of age and potentially available for industrial jobs.

Transportation - Rail service is provided to Paintsville by CSX Transportation. Major highways serving Paintsville include U.S. 23 and U.S. 460. The Mountain Parkway is located eighteen miles southwest via U.S. 460. Interstate 64 is located fifty-six miles north via U.S. 23 and ninety-four miles northwest via U.S. 460 and the Mountain Parkway. Eleven trucking companies provide Paintsville with interstate and/or intrastate service. Combs Airport, five miles south of Paintsville, has a 3,200-foot paved runway. Big Sandy Regional Airport, twenty miles southeast of Paintsville, has a 5,000-foot paved runway. Tri-State Airport (Walker-Long Field), nine miles southwest of Huntington, West Virginia, fifty-five miles northeast of Paintsville, offers the nearest scheduled commercial airline service.

Power and Fuel - Electric power is provided to Paintsville and Johnson County by the Kentucky Power Company, an electric generation and transmission company. Johnson County is also served by the Big Sandy Rural Electric Cooperative Corporation, which is supplied by the East Kentucky Power Cooperative. Natural gas is provided to Paintsville by Paintsville City Utilities, which is supplied by Kentucky-West Virginia Gas Company.

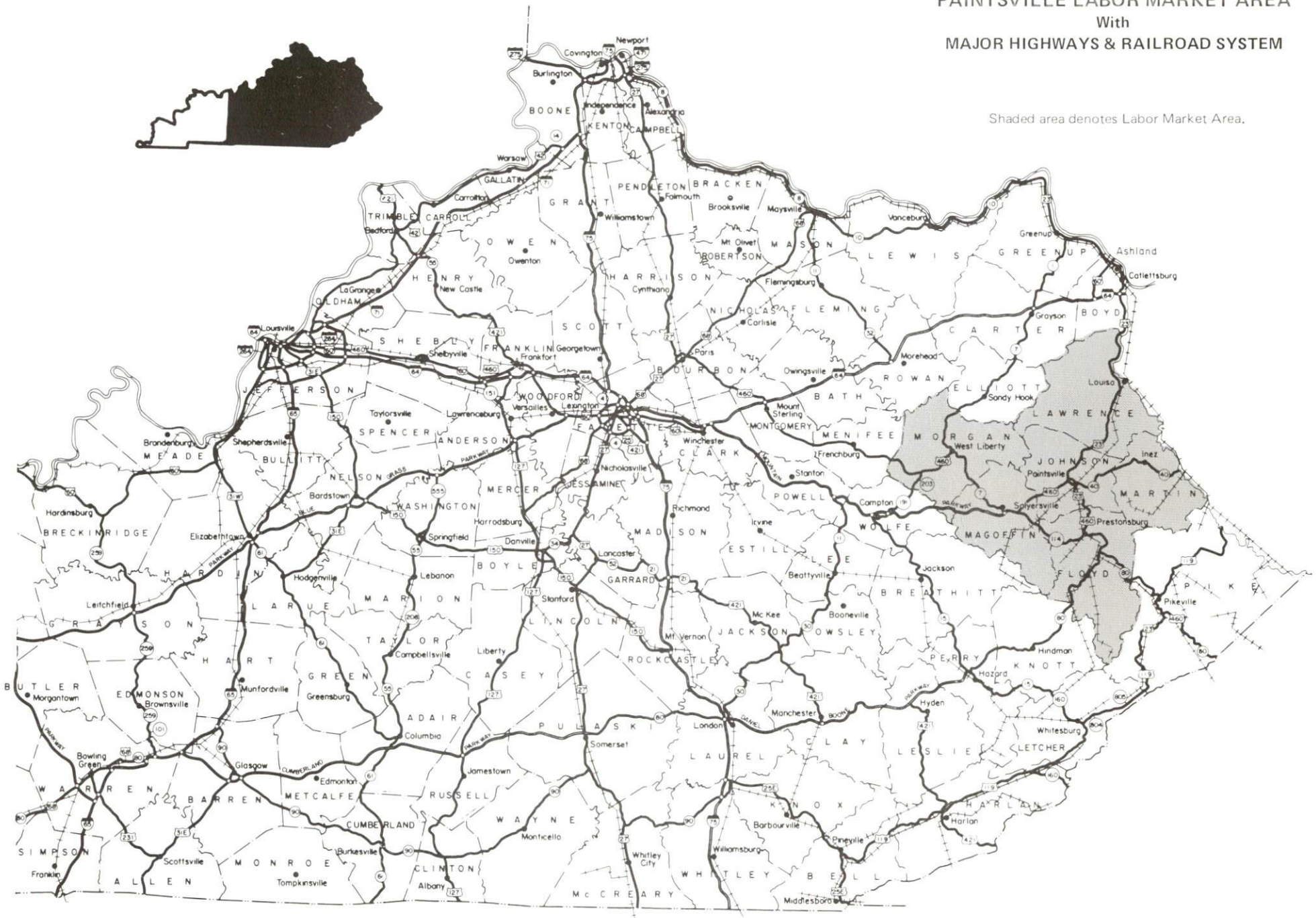
Education - Primary and secondary education is provided by the Paintsville Independent and Johnson County School Systems. Excel College, located in Paintsville, is a two-year business college offering associate degrees in business administration, accounting, executive secretarial, and legal secretarial. Two universities, three senior colleges, and three community colleges are located within 70 miles of Paintsville. Vocational education is provided to Paintsville and Johnson County by the Mayo State Vocational-Technical School, located in Paintsville.

PAINTSVILLE LABOR MARKET AREA

With

MAJOR HIGHWAYS & RAILROAD SYSTEM

Shaded area denotes Labor Market Area.



LABOR MARKET STATISTICS

The Paintsville Labor Market Area includes Johnson County and the adjoining Kentucky counties of Floyd, Lawrence, Magoffin, Martin, and Morgan.

POPULATION

	1987*	1980	1970
Labor Market Area	127,900	126,860	93,993
Paintsville	3,780	3,815	3,868
Johnson County	24,800	24,432	17,539

* Population estimates. City estimates are for 1986.

Sources: U.S. Department of Commerce, Bureau of the Census, October 1988; University of Louisville, Urban Studies Center, Population Unit.

POPULATION PROJECTIONS

	1990	1995	2000	2010
Labor Market Area	137,375	144,317	150,534	160,508
Johnson County	27,071	28,292	29,360	31,082

Source: University of Louisville, Urban Studies Center, State Data Center.

ESTIMATED LABOR SUPPLY

	Current				Future
	Total	Unemployed	Employed Part-Time	Not in Labor Force	Becoming 18 years of age 1989 thru 1993
Labor Market Area*	32,749	6,377	4,922	21,450	11,566
Johnson Co.	6,282	1,335	980	3,967	2,102

* Additional workers may be drawn from other nearby counties.

Note: Unemployed - persons unemployed and actively seeking work; Employed Part-Time - persons employed but working only 14 to 26 weeks per year; Not in Labor Force - represents the number of persons who would enter the labor force if suitable employment were available (based on the assumption that persons in Kentucky would like to participate in the labor force in the same proportion that they do nationally).

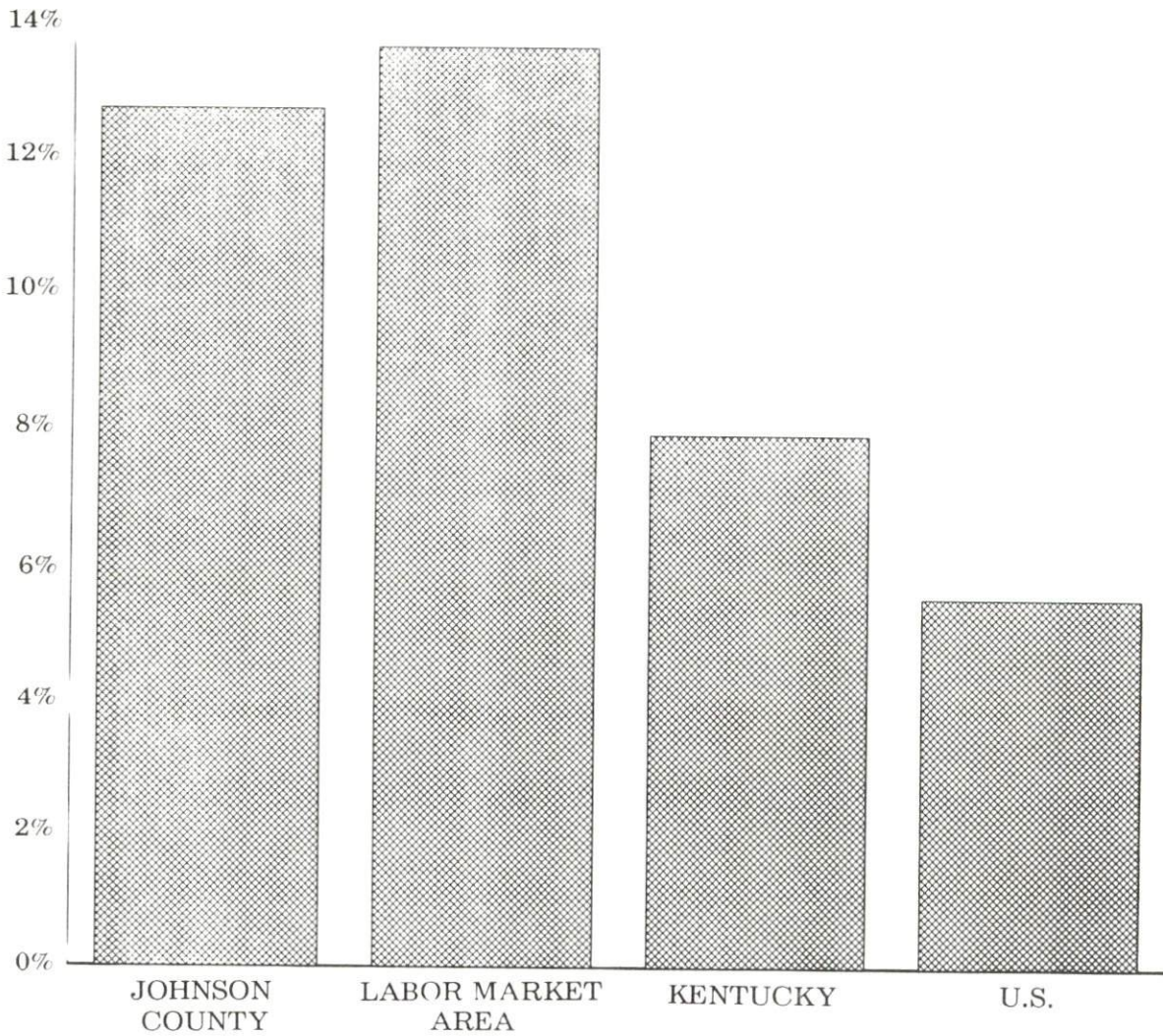
Sources: Kentucky Cabinet for Human Resources, Kentucky Labor Supply Estimates by County, 1987. Kentucky Cabinet for Economic Development, Future Labor Supply Becoming 18 Years of Age, 1989 thru 1993.

LABOR FORCE CHARACTERISTICS OF RESIDENTS, 1988

	Johnson County	Labor Market Area
Civilian Labor Force	7,992	40,078
Employment	6,980	34,623
Unemployment	1,012	5,455
Rate of Unemployment (%)	12.7	13.6

Source: Kentucky Cabinet for Human Resources, Kentucky Labor Force Estimates, Annual Averages, 1988.

UNEMPLOYMENT RATES
1988

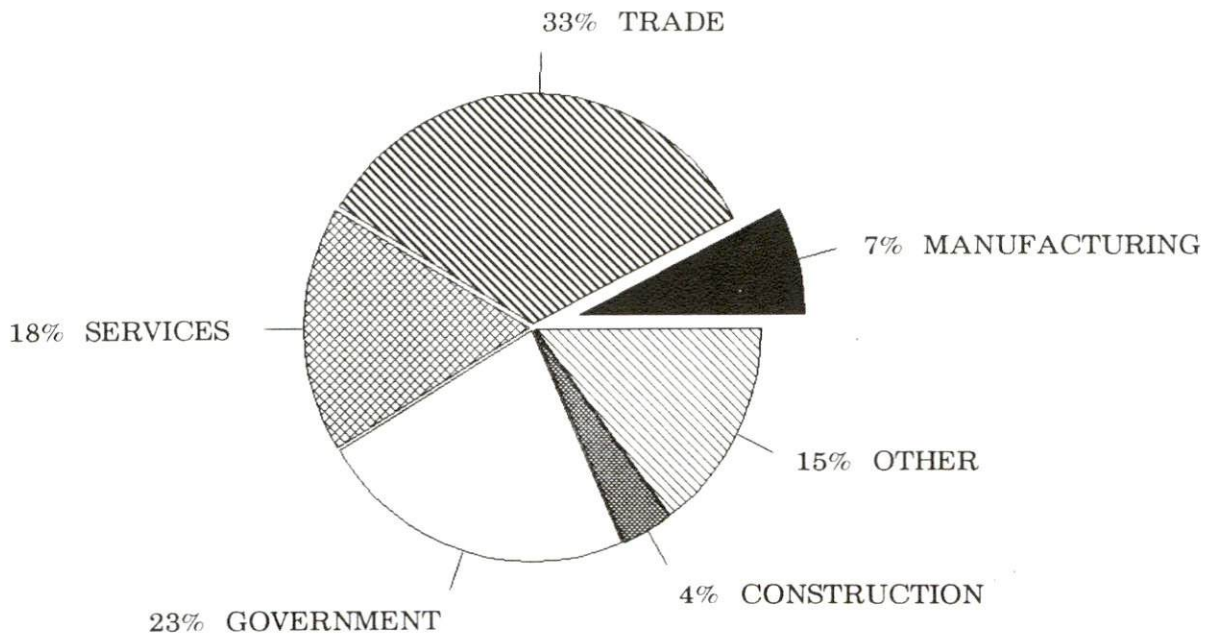


SELECTED COMPONENTS OF NONAGRICULTURAL EMPLOYMENT
BY PLACE OF WORK, 1988

	Johnson County	Labor Market Area
All Industries (total)	4,880	24,679
Manufacturing	372	1,267
Wholesale & Retail Trade	1,648	6,514
Services	841	4,183
State/Local Government	1,119	4,883
Contract Construction	172	925

Note: Excludes domestic workers, railway workers, certain nonprofit corporations, majority of federal government workers, and self-employed workers.
Source: Kentucky Cabinet for Human Resources, Average Monthly Workers Covered by Kentucky Unemployment Insurance Law, 1988.

JOHNSON COUNTY

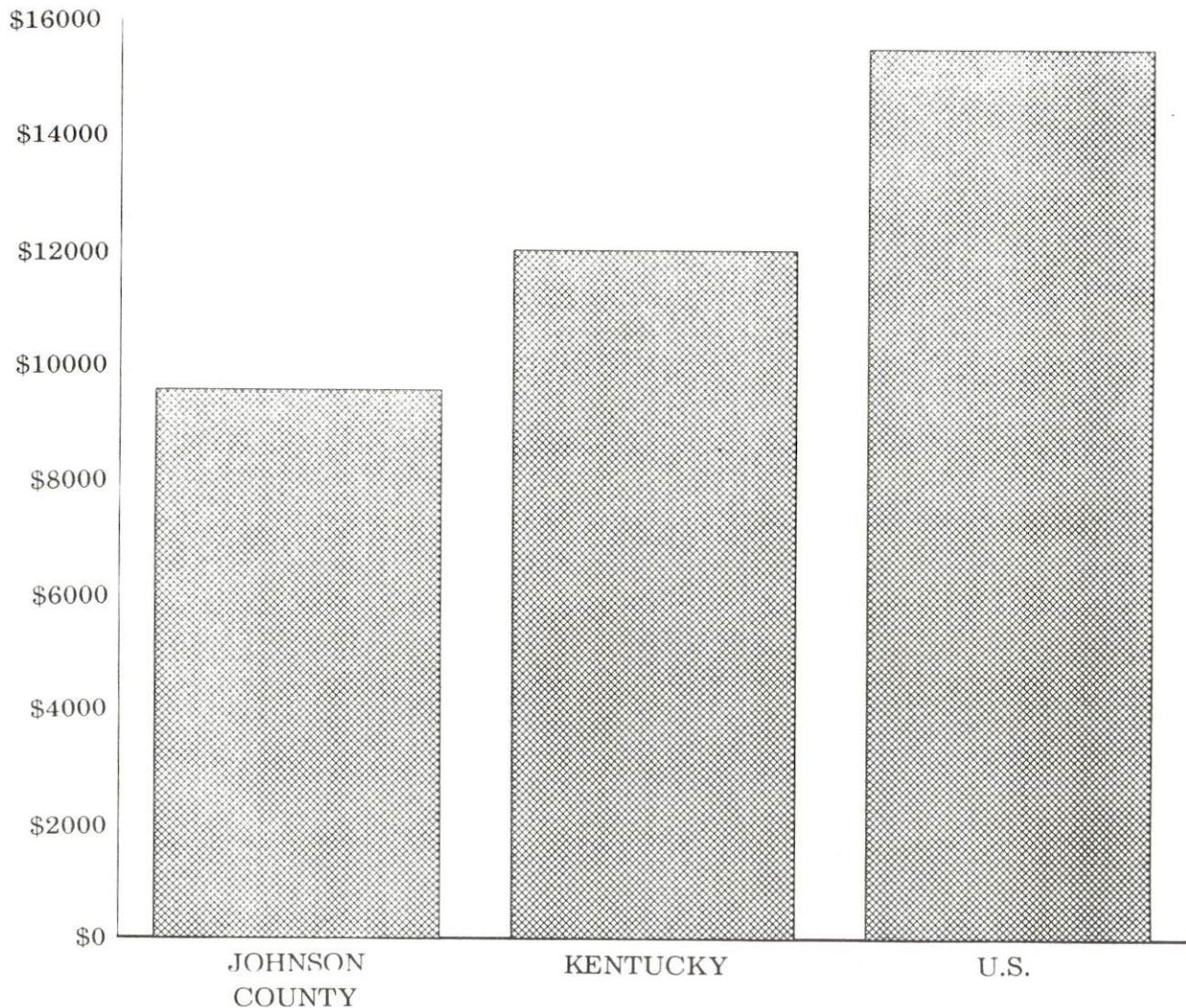


PER CAPITA PERSONAL INCOME

Area	1983	1987	Percent Change
Johnson County	\$8,329	\$9,557	14.7
Labor Market Area Range	\$6,107 - 8,506	\$7,212 - 9,557	-
Kentucky	\$9,513	\$11,997	26.1
U.S.	\$12,098	\$15,484	28.0

Sources: U.S. Bureau of Economic Analysis, Kentucky Economic Information System, August 1988 and April 1989.

PER CAPITA PERSONAL INCOME
1987



AVERAGE PLACEMENT WAGES

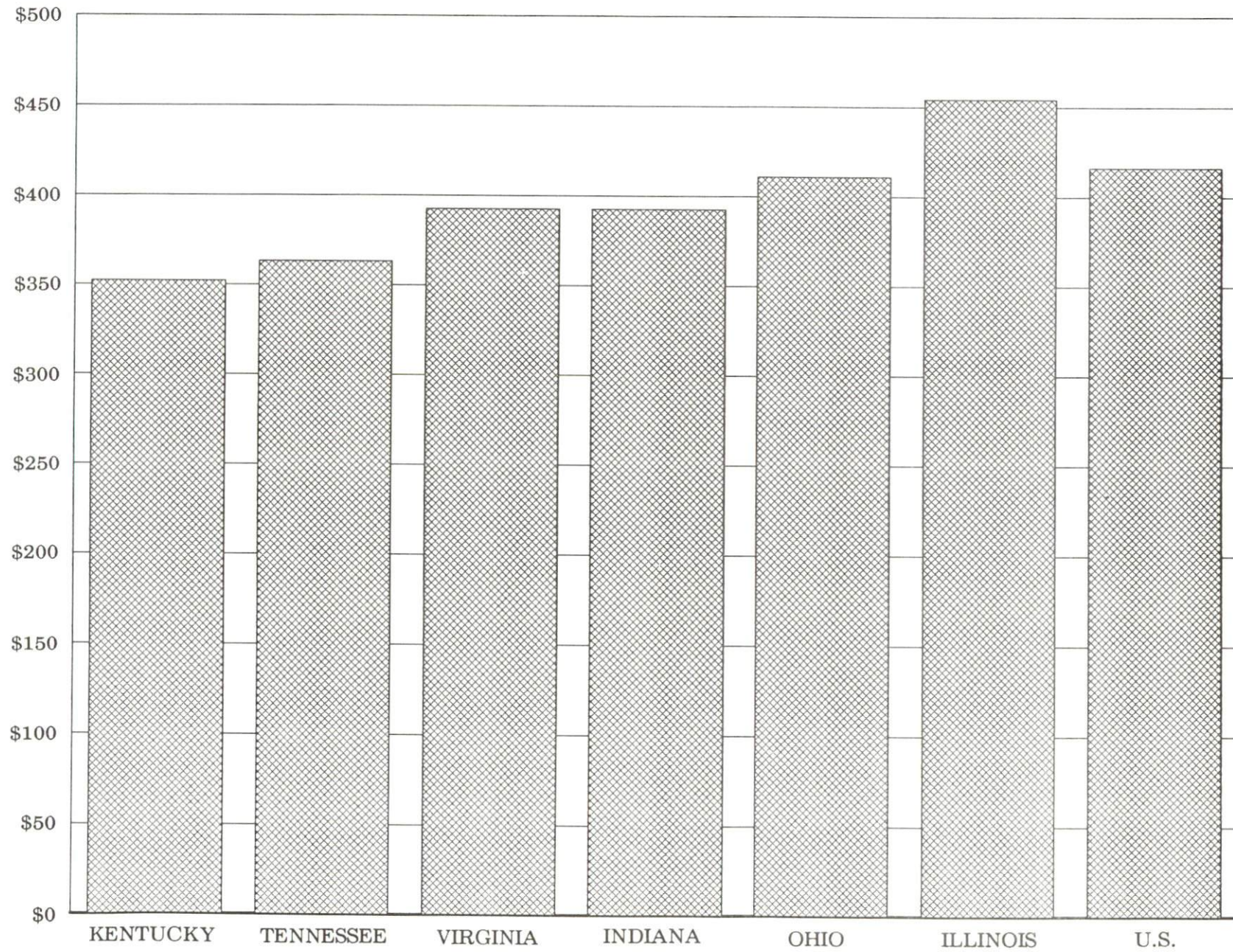
Johnson County is served by the Prestonsburg local office of the Kentucky Department for Employment Services. The focus of the following data is on job placements made by the Prestonsburg local office and may therefore be used as an indicator of the wages which employers in the area pay new employees. During the twelve months which ended on June 30, 1988, the local employment office filled 1,459 job openings in various occupational categories. The average hourly wage for selected occupational categories were:

<u>OCCUPATIONAL CATEGORY</u>	<u>NUMBER OF PLACEMENTS</u>	<u>AVERAGE WAGE(\$)</u>
All Occupations	1,459	3.89
Clerical	379	3.60
Sales	114	3.69
Services (excluding domestic)	645	3.42
Agricultural, Fishery, Forestry, etc.	7	6.07
Processing	10	3.79
Machine Trades	10	6.71
Bench Work	2	5.00
Structural	115	4.85
Motor Freight/ Transportation	26	7.85
Packaging and Materials Handling	65	3.87
Other	26	9.22

The Prestonsburg local office also serves Floyd, Magoffin and Martin Counties. The above occupational categories are taken from the Dictionary of Occupational Titles published by the U.S. Department of Labor.

Source: Kentucky Cabinet for Human Resources, Department for Employment Services.

AVERAGE WEEKLY WAGES OF WORKERS COVERED BY
UNEMPLOYMENT INSURANCE F. Y. 1987-88



AVERAGE WEEKLY WAGES BY INDUSTRY
BY PLACE OF WORK, 1988

	Johnson County	Kentucky (State- Wide)	Tennessee	Virginia
All Industries	\$294.74	\$352.31	\$363.12	\$392.56
Mining & Quarrying	401.55	603.27	495.85	596.88
Contract Construction	256.74	380.71	394.27	422.27
Manufacturing	*	464.92	416.73	452.60
Transportation, Communications & Public Utilities	396.87	468.17	485.13	554.17
Wholesale & Retail Trade	231.39	238.88	N/A	N/A
Finance, Insurance & Real Estate	322.42	401.17	269.27	466.23
Services	282.68	298.98	343.48	391.67
State/Local Government	318.13	377.81	403.21	457.00
	<u>Indiana</u>	<u>Ohio</u>	<u>Illinois</u>	<u>U. S.</u>
All Industries	\$392.63	\$411.08	\$454.10	\$416.33
Mining & Quarrying	635.77	579.73	674.62	660.40
Contract Construction	449.87	465.46	584.10	469.85
Manufacturing	532.06	569.98	555.83	517.62
Transportation, Communications & Public Utilities	502.69	519.17	584.83	542.33
Wholesale & Retail Trade	N/A	N/A	N/A	N/A
Finance, Insurance & Real Estate	406.58	444.33	579.88	532.52
Services	317.98	348.48	402.38	384.31
State/Local Government	395.31	428.10	453.12	442.71

* Not disclosed.

N/A Not Available.

Note: The average weekly wage for each category includes the salaries and wages of all persons working for that type business. For example, the manufacturing category includes both production workers and administrative personnel. Excludes domestic workers, railway workers, certain nonprofit corporations, majority of federal government workers, and self-employed workers.

Source: Kentucky Cabinet for Human Resources, Average Weekly Wages of Workers Covered by Kentucky Unemployment Insurance Law, 1988. U.S. Department of Labor, Bureau of Labor Statistics, Average Annual Pay by State and Industry, August 29, 1989.

EXISTING INDUSTRY

PAINTSVILLE MANUFACTURING FIRMS, THEIR PRODUCTS AND EMPLOYMENT

<u>Firm</u> (Establishment date)	<u>Product</u>	1988 <u>Average Employment</u>
Adams Construction Company (1962)	Crushed limestone, concrete ready mix, bituminous concrete	24
American Standard, Inc. (1969)	Plumbing fittings	350
Commercial Printing Company (1955)	Book publishing, offset printing	5
Diagnostic Reagents and Supplies, Inc. (1989)	Laboratory reagents, saline solutions, isotonic diluents for blood samples stains; bacteriological, biological	2
Excalibur of Paintsville, Inc. (1989)	Screw machine products	17
Fouts Wood Products, Inc. (1988)	Lumber	15
McGahan Feed Company, Inc. (1942)	Feed	9
Red's Machine Shop, Inc. (1979)	Machine shop, portable boring bar machines	6
Sandy Valley Press, Inc. (1964)	Job printing, newspaper	11
TMC Print Shop (1985)	Commercial printing	5

Sources: Kentucky Cabinet for Economic Development, 1989 Kentucky Directory of Manufacturers; Division of Research and Planning.

LABOR ORGANIZATIONS IN MANUFACTURING FIRMS

Union

United Steelworkers of America, AFL-CIO

Representing workers at:

Adams Construction Company;
American Standard, Inc.

SELECTED INDUSTRIAL SERVICES

<u>Types of Services</u>	<u>Location</u>	<u>Mileage from Paintsville</u>
Custom Data Processing	Prestonsburg, Kentucky	13
Custom Plastics Producers	Ashland, Kentucky	64
Electric Motor Repair	Martin, Kentucky	25
Grinding, Precision & Tool	Huntington, West Virginia	64
Heat Treating Facilities	Richmond, Kentucky	112
	Lexington, Kentucky	116
Industrial Equipment & Supplies	Ashland, Kentucky	64
	Huntington, West Virginia	64
Industrial Gases	Prestonsburg, Kentucky	13
Industrial Waste Removal	Ashland, Kentucky	64
Machine Shops, Tool & Die	Paintsville, Kentucky	-
Metal Castings	Cynthiana, Kentucky	125
Metal Finishers	Richmond, Kentucky	112
	Lexington, Kentucky	116
Metal Service Centers	Pikeville, Kentucky	40
Millwrights	Stanton, Kentucky	72
Public Warehouse Facilities	Paris, Kentucky	110
	Lexington, Kentucky	116

Sources: Kentucky Cabinet for Economic Development, Kentucky Directory of Selected Industrial Services, 1987; Division of Research and Planning.

TRANSPORTATION

Highways

Major highways serving Paintsville include U.S. 23 and U.S. 460, both "AAA"-rated (80,000-pound gross load limit) trucking highways. Kentucky Highway 40, a "AA"-rated (62,000-pound gross load limit) trucking highway, also serves Paintsville. Access to the Mountain Parkway is eighteen miles southwest of Paintsville via U.S. 460. The Mountain Parkway intersects with Interstate 64, ninety-four miles northwest of Paintsville. Access to Interstate 64 is also available fifty-six miles north of Paintsville via U.S. 23. Kentucky 80, seventeen miles south of Paintsville, is a multi-lane highway which provides access to the Daniel Boone Parkway, fifty-nine miles southeast of Paintsville. The Daniel Boone Parkway then connects with Interstate 75, 118 miles southwest of Paintsville.

HIGHWAY MILES FROM PAINTSVILLE, KENTUCKY, TO SELECTED MARKET CENTERS

City	Highway Miles	City	Highway Miles
Atlanta, GA	409	Los Angeles, CA	2,275
Baltimore MD	474	Louisville, KY	189
Birmingham, AL	464	Nashville, TN	326
Chicago, IL	459	New Orleans, LA	804
Cincinnati, OH	194	New York, NY	663
Cleveland, OH	328	Pittsburgh, PA	303
Detroit, MI	452	St. Louis, MO	447
Knoxville, TN	214		

Note: Mileage computations are via the best interstate or primary highways, not necessarily the most direct route of travel.

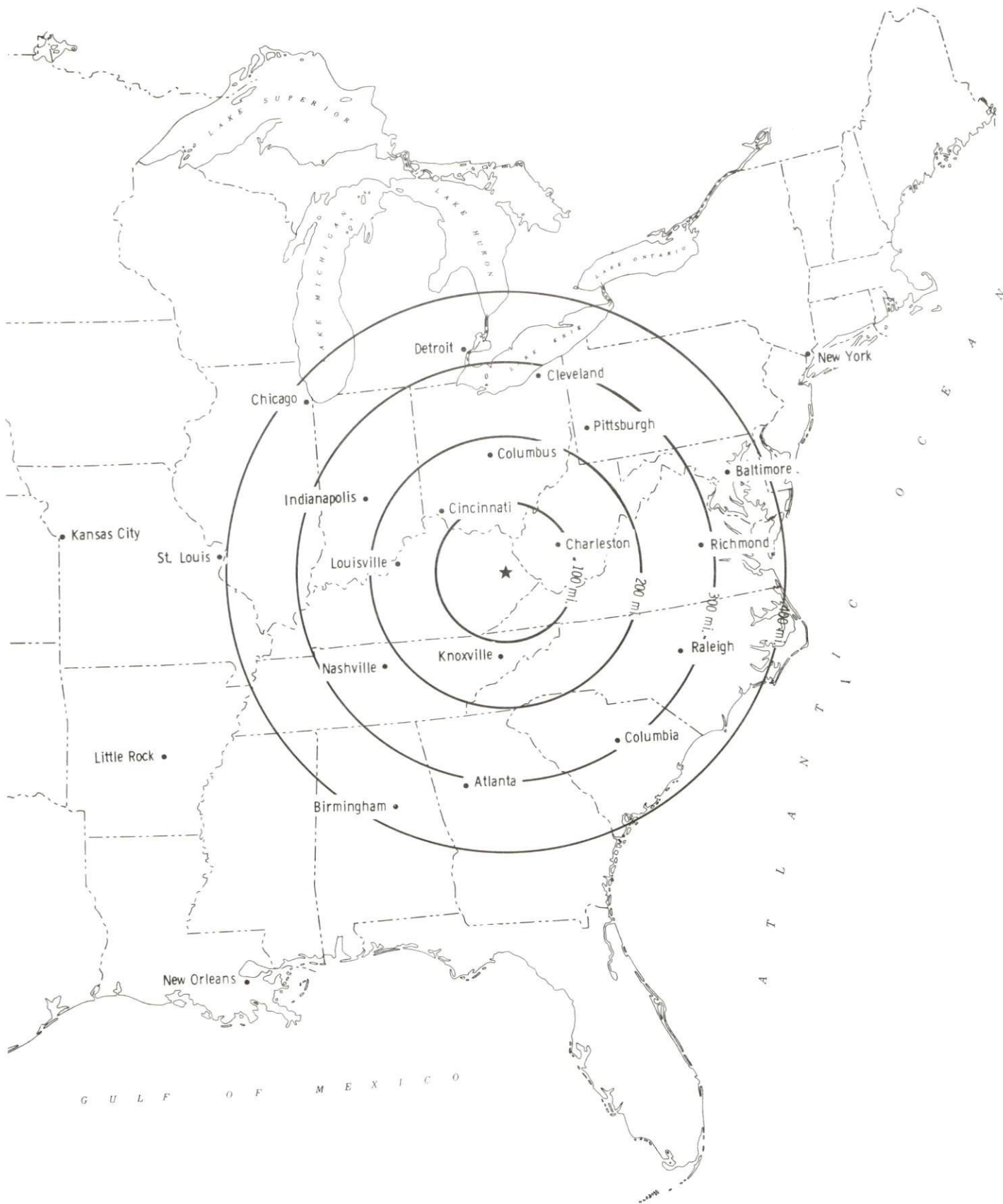
Sources: Rand McNally Deluxe Motor Carriers' Road Atlas, 1989. Official Kentucky Mileage Map, 1980.

Truck Service

Eleven common carrier trucking companies provide interstate and/or intrastate service to Paintsville.

Source: American Motor Carrier Directory, Fall 1989.

Selected Market Centers



Rail

CSX Transportation provides main line rail service to Paintsville. Southern Railway provides the nearest piggyback facilities, which are located at Georgetown, 124 miles east of Paintsville.

For details on routing, schedules, rates, and services contact:

Manager
Industrial Development
CSX Transportation
908 West Broadway
P. O. Box 2157
Louisville, Kentucky 40201
(502) 587-7746

Air

Local

Location: Combs Airport
5 miles south of Paintsville
Runways: 1 paved
Length: 3,200 feet
Traffic
Control: Wind sock
Lighting: None
Services: 100LL octane, jet-A fuel, flight instruction

Location: Big Sandy Regional Airport
20 miles southeast of Paintsville
Runways: 1 paved
Length: 5,000 feet
Traffic
Control: Unicom
Lighting: Rotating beacon, pilot controlled runway & taxiway
lights, PAPI
Services: Jet-A, AV-Gas fuel; light mechanic work; flight
instruction; rental cars; aircraft rental

Nearest Scheduled Commercial Airline Service

Location: Tri-State Airport (Walker-Long Field)
3 miles southwest of Huntington, West Virginia;
58 miles northeast of Paintsville
Air Service: ComAir, USAir, C.C. Air
Daily Arrivals
& Departures: 34

UTILITIES

Electricity

Company serving Paintsville and parts of Johnson County - Kentucky
Power Company
Source of power - Kentucky Power Company
For industrial rates contact:

Kentucky Power Company
1701 Central Avenue
P. O. Box 1428
Ashland, Kentucky 41101
(606) 327-1111

Company serving parts of Johnson County - Big Sandy Rural Electric
Cooperative Corporation
Source of power - East Kentucky Power Cooperative
For industrial rates contact:

Big Sandy RECC
Eleventh Street
P. O. Box 1746
Paintsville, Kentucky 41240
(606) 789-4095

and/or

Industrial Development Division
East Kentucky Power Cooperative
P. O. Box 707
Winchester, Kentucky 40391
(606) 744-4812

Natural Gas

Company serving Paintsville - Paintsville City Utilities
Source of supply - Kentucky-West Virginia Gas Company
For rates and supplies contact:

Paintsville City Utilities
P. O. Box 631
Paintsville, Kentucky 41240
(606) 789-2630

Public Water Supply

Company serving Paintsville -	Paintsville City Utilities P. O. Box 631 Paintsville, Kentucky 41240 (606) 789-2630
Source - Big Sandy River	
Treatment plant capacity -	3,000,000 gallons per day
Average daily consumption -	1,400,000 gallons
Peak daily consumption -	1,600,000 gallons
Storage capacity -	2,550,000 gallons
Water pressure -	79 to 92 psi

Construction of a 500,000-gallon water tank is expected to be completed in October 1989.

Sewerage

Company serving Paintsville -	Paintsville City Utilities P. O. Box 631 Paintsville, Kentucky 41240 (606) 789-2630
Design capacity -	990,000 gallons per day
Average daily flow -	482,000 gallons
Type of treatment -	Secondary
Treated effluent discharged into -	Big Sandy River

CLIMATE

Johnson County

Temperature

Normal (30-year record)	55.90 degrees
Average annual 1987	56.70 degrees
Record highest, July 1952 (42-year record)	102.00 degrees
Record lowest, January 1985 (42 year record)	-21.00 degrees
Normal heating degree days (30-year record) (Heating degree day totals are the sums of negative departures of average daily temperatures from 65 degrees F.)	4,356

Precipitation

Normal (30-year record)	41.24 inches
Mean annual snowfall (50-year record)	16.50 inches
Total precipitation 1987	33.28 inches
Mean number days precipitation (.01 inch or more) (42-year record)	133.20
Mean number days thunderstorms (44-year record)	43.30

Prevailing winds (through 1963)

Northeast

Relative Humidity (26-year record)

1 a.m.	80 percent
7 a.m.	85 percent
1 p.m.	57 percent
7 p.m.	63 percent

Source: U.S. Department of Commerce, Environmental Science Services Administration, Climatological Data, 1987. Station of record: Bristol, Johnson City, Kingsport, Tennessee.

LOCAL GOVERNMENT

Structure

Paintsville is served by a mayor and six council members. Johnson County is served by a county judge/executive and three commissioners.

Planning and Zoning

City agency - Paintsville Planning & Zoning Commission

Zoning enforced - Yes

Subdivision regulations enforced - City only

Local codes enforced - Building and housing

Mandatory state codes enforced - Kentucky Plumbing code, National Electric Code, Kentucky Boiler Regulations and Standards, Kentucky Building Code (modeled after BOCA code)

Local Fees and Licenses

The City of Paintsville levies an occupational license tax of 1% on gross salaries of individuals and 1% on net profits of businesses, a business license fee of \$25 per year, and an itinerant merchant fee of \$50 for 30 calendar days.

State and Local Property Taxes

All property in Kentucky, except items exempted by the state constitution, is taxed by the state. Property which also may be taxed by local jurisdictions includes land and buildings, finished goods inventories, automobiles, trucks, office furniture and office equipment. Local taxing jurisdictions in Kentucky include counties, cities, and school districts.

All property in Kentucky is assessed at 100 percent of fair cash value.

COMBINED STATE AND LOCAL RATES PER \$100 VALUATION, 1988

	Paintsville and Paintsville Independent School District	Paintsville and Johnson County School District	Unincorporated Johnson County
Land and Buildings	\$1.230	\$0.894	\$0.784
Manufacturing			
Machinery	0.150	0.150	0.150
Pollution Control			
Equipment	0.150	0.150	0.150
Inventories			
Raw Materials	0.001	0.001	0.001
Goods in Process	0.001	0.001	0.001
Finished Goods	1.020	0.684	0.5736
Automobiles & Trucks	1.450	1.218	1.1076
Other Tangible			
Personal Property	1.469	1.133	1.0226
Intangibles (Accounts receivable*, money in hand, stock, notes, bonds)	0.250	0.250	0.250
Goods Stored in Public Warehouses in Transit Status	0.001	0.001	0.001
Private Leaseholds in Industrial Revenue Bond Financed Facilities	0.015	0.015	0.015

* Accounts receivable are taxed at 85 percent of face value, for an effective rate of \$0.2125 per \$100 valuation.

EDUCATION

Public Schools

	Paintsville Independent	Johnson County
Total Enrollment (Fall, 1987)	904	4,401
Accreditation	Southern Association of Colleges and Schools	
Pupil-Teacher Ratio (1987-88)	17.2-1	21.2-1
Percent High School Graduates to College (1987-88)	75.7	34.5
Expenditures Per Pupil (1987-88)	\$2,763.32	\$2,301.44

Nonpublic Schools

<u>School</u>	<u>Enrollment</u>	<u>Grades</u>
Our Lady of the Mountains Elementary	85	K-8

Area Colleges and Universities

<u>Name</u>	<u>Location (Miles distant)</u>	<u>Enrollment (Fall, 1988)</u>
Excel College	Paintsville, Kentucky	85
Prestonsburg Community College	Prestonsburg, Kentucky (13)	2,088
Pikeville College	Pikeville, Kentucky (40)	915
Alice Lloyd College	Pippa Passes, Kentucky (53)	507
Lees College	Jackson, Kentucky (59)	432
Hazard Community College	Hazard, Kentucky (63)	1,042
Ashland Community College	Ashland, Kentucky (64)	2,614
Marshall University	Huntington, West Virginia (65)	12,350
Morehead State University	Morehead, Kentucky (67)	7,379

Excel College

Excel College, located in Paintsville, is a two-year accredited business college. Established in 1985, Excel College offers associate degrees in business administration, accounting, executive secretarial, and legal secretarial.

Vocational Training

Vocational training is available at both the state vocational-technical schools and the area vocational education centers. The state vocational-technical schools are post-secondary institutions. The area vocational education centers are designed to supplement the curriculum of high school students. Both the state vocational-technical schools and the area vocational education centers offer evening courses to enable working adults to upgrade current job skills.

Arrangements can be made to provide training in the specific production skills required by an industrial plant. Instruction may be conducted either in the vocational school or in the industrial plant, depending upon the desired arrangement and the availability of special equipment.

Bluegrass State Skills Corporation

The Bluegrass State Skills Corporation, an independent public corporation created and funded by the Kentucky General Assembly, provides programs of skills training to meet the needs of business and industry from entry level to advanced training, and from upgrading present employees to retraining experienced workers.

The Bluegrass State Skills Corporation is the primary source for skills training assistance for a new or existing company. The Corporation works in partnership with other employment and job training resources and programs, as well as Kentucky's economic development activities, to package a program customized to meet the specific needs of a company.

<u>Vocational School</u>	<u>Location (Miles distant)</u>	<u>Enrollment Fall, 1987</u>
Mayo State Vocational-Technical School	Paintsville	1,075
Floyd County Area Vocational Education Center (Garth)	Martin (25)	349
Martin County Area Vocational Education Center	Inez (24)	261

OTHER LOCAL FACILITIES

Local Medical Personnel

Physicians - 37
Dentists - 14

Hospitals

<u>General Hospital</u>	<u>Location</u>	<u>Beds</u>
Paul B. Hall Regional Medical Center	Paintsville	72
Highlands Regional Medical Center	8 miles south of Paintsville	184

Paul B. Hall Regional Medical Center

Medical staff - 35 doctors, 40 registered nurses, 20 licensed practical nurses

Highlands Regional Medical Center

Medical staff - 60 doctors, 73 registered nurses, 52 licensed practical nurses

Other Medical Facilities and Services

Paintsville Health Care Center
Burchett's Ambulance Service
Sandy Valley Medical Clinic
Big Sandy Health Department
Johnson County Rescue Squad, Inc.

Banks and Savings & Loan Associations

Citizens National Bank
First National Bank
Family Federal Savings & Loan Association

Newspapers

The Paintsville Herald (weekly)

Telephone Service

South Central Bell

RECREATION

Local

Excellent recreational facilities are provided for the citizens of Paintsville. The Paintsville park and playground, which covers a 16-acre area, offers a lighted Little League field, a lighted baseball and softball field, lighted tennis courts, basketball courts, a swimming pool, an Olympic racing pool, and a service building with restroom facilities.

A community center provides covered facilities and a lighted area for family outings. A 5-acre park adjacent to the center features a Little League field, basketball courts, racquetball courts, a 320-meter running track, playground equipment, and grills.

Other facilities available to Paintsville residents include baseball/softball diamonds, and croquet, horseshoe, basketball, volleyball, tennis and handball courts.

Paintsville Country Club has an 18-hole golf course, a swimming pool, and several tennis courts, which are open to the public. Several notable golf tournaments are held there each year.

A stadium owned by the Paintsville Independent School District is the site for football games, an annual horse show, and events connected with the annual Apple Festival.

Paintsville Lake, a 1,139-acre recreational lake, is located 4 miles west of Paintsville. Recreational opportunities include fishing, boating, swimming, and hunting.

Area (Within 80 miles)

Jenny Wiley State Resort Park
Dewey Lake
Grayson Lake State Park
Breaks Interstate Park
Natural Bridge State Resort Park
Red River Gorge
Cave Run Lake
Greenbo Lake State Resort Park

COMMUNITY IMPROVEMENTS

Recent

Construction of the second phase of the Big Sandy Regional Airport has recently been completed. Phase Two included construction of a terminal, installation of lighting, and construction of an access road.

Expansion and renovation of the Paintsville City Utilities sewerage treatment plant, doubling the plant's capacity, was completed in May 1988, costing \$6 million. They also installed 25 miles of new water line from Staffordsville to Keaton. This was completed in October 1989, costing \$800,000.

Johnson County Project 2000, a non-profit economic development association with 125 members, was organized in February 1988.

Construction of a four-county regional jail was completed in Paintsville, opening in 1987.

The reconstruction and widening of the intersection of U.S. 23 and U.S. 460 was completed in Fall 1986.

The Paintsville Independent School District constructed a multi-purpose classroom complex at the Paintsville Elementary School in 1987, costing \$2.5 million.

The City of Paintsville recently constructed a new fire station building.

The Johnson County School System opened an alternative school for troubled juveniles in October 1989.

Fouts Wood Products, Inc., a lumber manufacturer employing 15 persons, located in Paintsville in 1988.

Excalibur of Paintsville, Inc., a screw machine product manufacturer employing 17 persons, located in Paintsville in 1989.

Under Way

The reconstruction and rerouting of 25 miles of U.S. 23, converting it from a two-lane to a four-lane highway from Paintsville to Prestonsburg, is currently under construction at a cost of \$87 million. The project will also convert Kentucky Highway 3 to a four-lane trucking highway connecting it with the city of Inez.

Development of a county-wide 911 emergency phone number is under way and is expected to be in use by June 1990.

Construction of the Johnson County Craft Center Market, designed to sell and promote local products, is currently under way and is scheduled to be completed in June 1990, costing \$50,000.

Paintsville City Utilities is renovating sections of the city's water line at a cost of \$550,000 and is expected to be completed in March 1990. They are also improving the city of Van Lear's water lines at a cost of \$500,000, and completing the project in May 1990.

Street and sidewalk renovation and reconstruction is under way in downtown Paintsville. The completion of the \$120,000 project will be June 1990.

The Johnson County Water District is in the process of expanding the water lines at a cost of \$600,000, and completing the project in June 1990.

Planned

Construction of a new post office in Paintsville is planned to begin in June 1990. Completion of the project is expected in December 1991 at a cost of \$2 million.

A downtown civic center is being planned for Paintsville, costing \$3.5 million. Facilities will include a 5,000-seat arena.

Construction of new recreational areas at Paintsville Lake is planned to start in June 1990. New facilities include a summer youth camp, restaurant, swimming area, and new campsites. The project is expected to be completed in June 1991 at a cost of \$5 million.

Restoration and renovation of the John C. C. Mayo Mansion is planned and is expected to be finished by December 1990 at a cost of \$500,000.

Paintsville City Utilities is planning to install \$300,000 of new water lines starting in June 1990 and finishing in December 1990.

Restoration and renovation of two historic sites, the Jenny Wiley Grave and the Loretta Lynn Homeplace, is being planned.