

1980

Industrial Resources: Knox County - Barbourville

Kentucky Library Research Collections
Western Kentucky University, spcol@wku.edu

Follow this and additional works at: https://digitalcommons.wku.edu/knox_cty

 Part of the [Business Administration, Management, and Operations Commons](#), [Growth and Development Commons](#), and the [Infrastructure Commons](#)

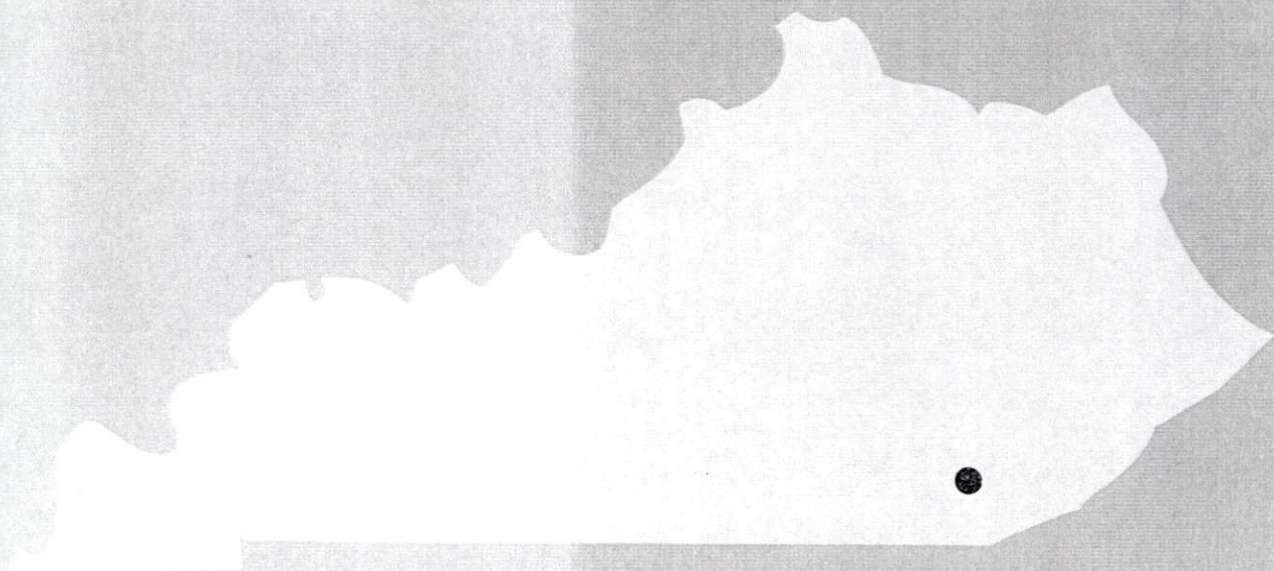
Recommended Citation

Kentucky Library Research Collections, "Industrial Resources: Knox County - Barbourville" (1980). *Knox County*. Paper 8.
https://digitalcommons.wku.edu/knox_cty/8

This Report is brought to you for free and open access by TopSCHOLAR®. It has been accepted for inclusion in Knox County by an authorized administrator of TopSCHOLAR®. For more information, please contact topscholar@wku.edu.

1K
820

**A comprehensive
report on
Barbourville, Ky.**



KENTUCKY & CO.
The state that's run like a business.

A COMPREHENSIVE REPORT ON
BARBOURVILLE, KENTUCKY

Prepared by
The Kentucky Department of Commerce
Division of Research and Planning
in cooperation with
The Knox County Chamber of Commerce

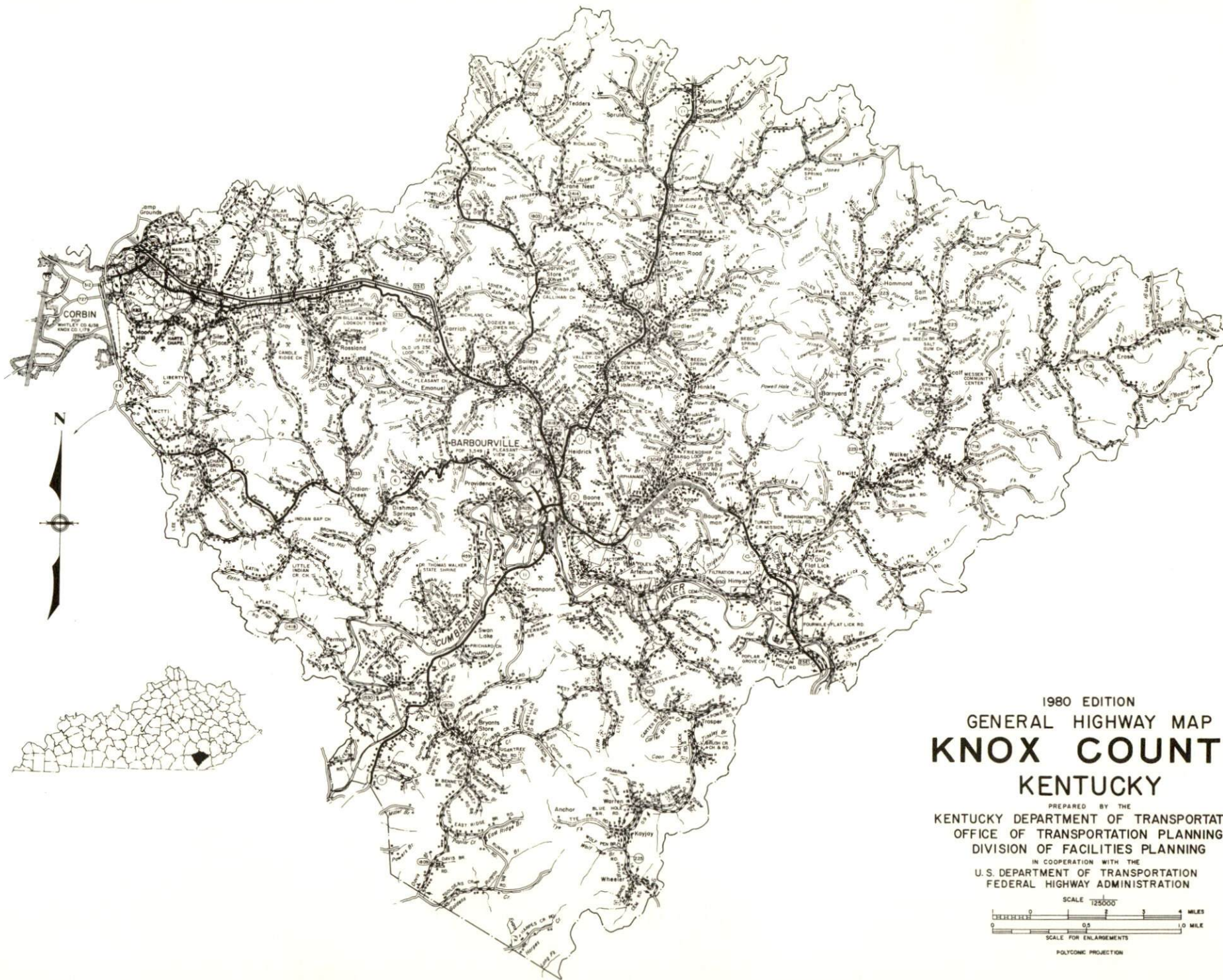
1980

Program manager - Brenda Roberts; research - Michael Haynes; clerical - Linda Fint, Annette Mitchell; graphics - Frank Ferrante, Tony Cecconi; cartography - Economic Development Division. Cost of printing paid from state funds.

TABLE OF CONTENTS

<u>Chapter</u>	<u>Page</u>
INDUSTRIAL SITES	i
THE LABOR MARKET AREA	1
Population	1
Labor Force Characteristics of Residents, 1979	1
Estimated Male Labor Supply	2
Estimated Female Labor Supply	2
Barbourville Manufacturing Firms, Their Products and Employment	3
Labor Organizations in Manufacturing Firms	3
Industrial Services	4
Average Weekly Wages by Industry, by Place of Work, 1979	5
Per Capita Personal Income	7
TRANSPORTATION	8
Rail	8
Highways	8
Truck Service	9
Air	11
Bus	12
Taxi	12
Rental Services	12
Water	12
POWER AND FUEL	13
Electricity	13
Natural Gas	14
Other Fuels	15
WATER AND SEWERAGE	16
Water	16
Sewerage	17
CLIMATE	18

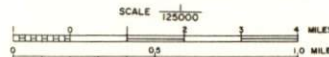
<u>Chapter</u>	<u>Page</u>
LOCAL GOVERNMENT	19
City	19
County	19
Assessed Value of Property	19
Property Taxes	19
Combined State and Local Rates Per \$100 Valuation, 1979	20
Planning and Zoning	20
Safety	20
Police	20
Fire	20
Rescue Service	21
Refuse Collection and Disposal	21
EDUCATION	22
Public Schools	22
Area Colleges and Universities	23
Vocational Schools	24
HEALTH	25
Local Medical Personnel	25
Hospitals	25
Other Medical Facilities	25
Ambulance Service	25
Public Health	25
OTHER LOCAL FACILITIES	26
Communications	26
Library Services	26
Religious Institutions	27
Financial Institutions	27
Hotels and Motels	27
Clubs and Organizations	28
RECREATION	29
COMMUNITY IMPROVEMENTS	31



1980 EDITION
 GENERAL HIGHWAY MAP
KNOX COUNTY
 KENTUCKY

PREPARED BY THE
 KENTUCKY DEPARTMENT OF TRANSPORTATION
 OFFICE OF TRANSPORTATION PLANNING
 DIVISION OF FACILITIES PLANNING

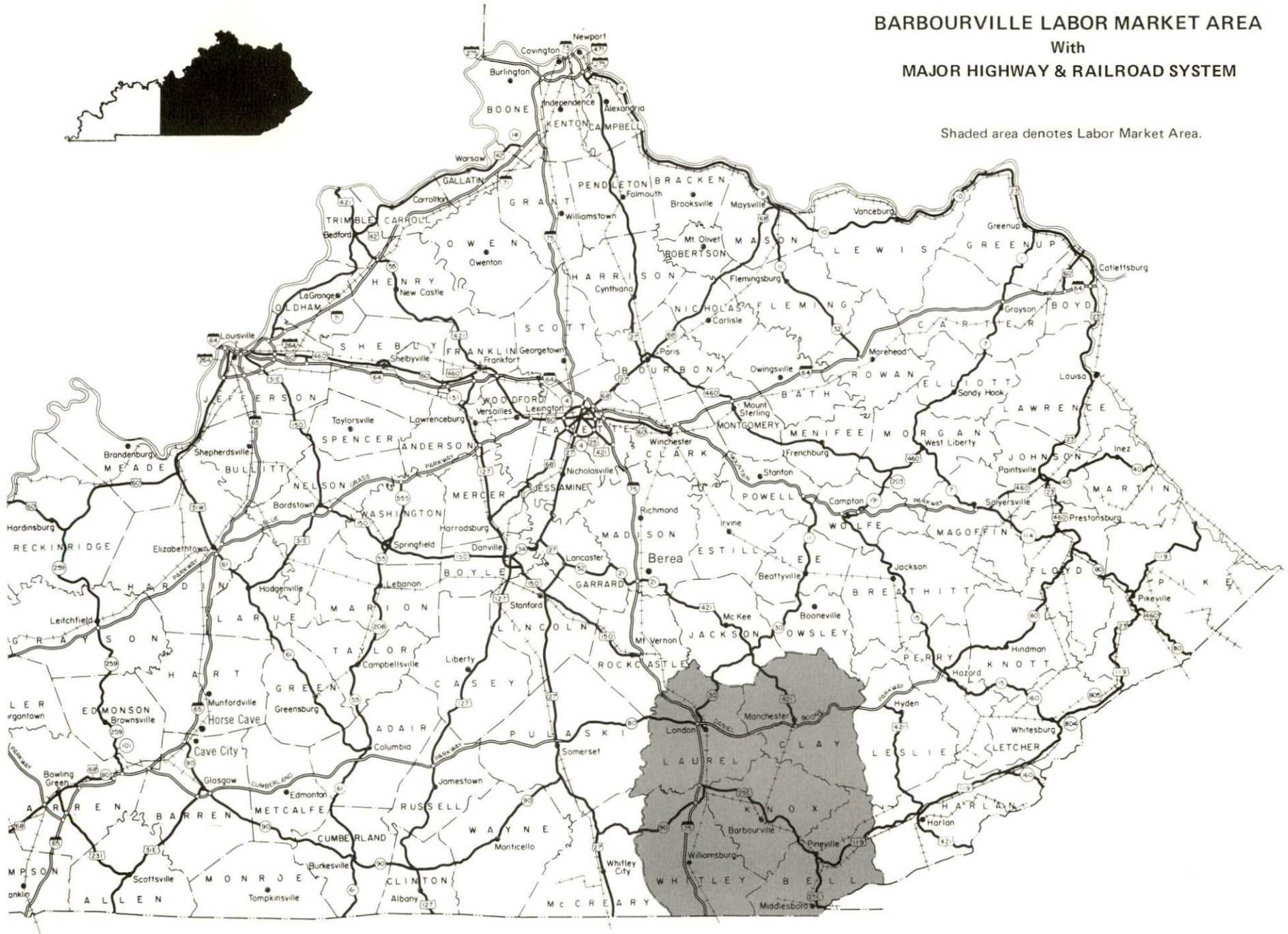
IN COOPERATION WITH THE
 U.S. DEPARTMENT OF TRANSPORTATION
 FEDERAL HIGHWAY ADMINISTRATION



POLYCONIC PROJECTION

BARBOURVILLE LABOR MARKET AREA With MAJOR HIGHWAY & RAILROAD SYSTEM

Shaded area denotes Labor Market Area.



THE LABOR MARKET AREA

The Labor Market Area includes Knox County and the adjoining Kentucky counties of Bell, Clay, Laurel and Whitley.

Area	POPULATION		
	1978*	1970	Percent Nonwhite**
Barbourville	3,701**	3,549	3.9
Labor Market Area	150,100	124,822	N/A
Knox County	28,700	23,689	1.5
Bell County	33,500	31,121	3.6
Clay County	21,800	18,481	2.0
Laurel County	35,200	27,386	0.9
Whitley County	30,900	24,145	0.6

*Provisional Estimates.

**1978 Population Estimates; 1970 Percent Nonwhite for city; 1978 Percent Nonwhite for counties.

Sources: U.S. Department of Commerce, Bureau of the Census, Census of Population, 1970. U.S. Department of Commerce, Bureau of the Census, Current Population Reports, Series P-26, No. 78-17, August 1979. U.S. Department of Commerce, Bureau of the Census, April 30, 1980. University of Louisville, Urban Studies Center, Population Research Unit, "Kentucky's Population Disaggregations of 1978 Estimates," January 1980.

LABOR FORCE CHARACTERISTICS OF RESIDENTS, 1979

	Knox County	Labor Market Area
Civilian Labor Force	12,096	60,274
Employment	11,214	55,828
Agricultural	339	1,451
Nonagricultural	10,875	54,377
Unemployment	882	4,446
Rate of Unemployment (%)	7.3	7.4

Source: Kentucky Department for Human Resources, Kentucky Labor Force Estimates, Annual Averages, 1979.

ESTIMATED MALE LABOR SUPPLY
BARBOURVILLE LABOR MARKET AREA

Area	Current			Under- employed	Future
	Total	Not in Labor Force	Unemployed		Reaching 18 years of age before 1986
Labor Market Area*	5,522	998	2,314	2,210	6,484
Knox	1,115	186	459	470	1,226
Bell	1,110	220	510	380	1,566
Clay	859	144	355	360	1,167
Laurel	1,267	235	552	480	1,432
Whitley	1,171	213	438	520	1,093

*Additional workers may be drawn from other nearby counties.

Sources: Kentucky Department for Human Resources, Kentucky Labor Supply Estimates by County, 1979. Kentucky Department of Commerce, Future Labor Supply before 1986.

ESTIMATED FEMALE LABOR SUPPLY
BARBOURVILLE LABOR MARKET AREA

Area	Current			Under- employed	Future
	Total	Not in Labor Force	Unemployed		Reaching 18 years of age before 1986
Labor Market Area*	4,422	450	2,132	1,840	6,052
Knox	850	87	423	340	1,231
Bell	991	108	473	410	1,497
Clay	551	61	330	160	1,012
Laurel	1,041	100	501	440	1,348
Whitley	989	94	405	490	964

*Additional workers may be drawn from other nearby counties.

Sources: Kentucky Department for Human Resources, Kentucky Labor Supply Estimates by County, 1979. Kentucky Department of Commerce, Future Labor Supply before 1986.

Note: "Not in Labor Force" represents those persons who are not now in the labor force, but would enter the labor force if suitable employment were available. Unemployed persons are those persons who are unemployed and actively seeking work. Underemployed persons are those persons who are employed, but are working only 14 to 26 weeks per year.

BARBOURVILLE MANUFACTURING FIRMS,
THEIR PRODUCTS AND EMPLOYMENT

Firm (Establishment date)	Product	Employment			Labor Unions
		Total	Male	Female	
Advocate Publishing Company (1938)	Newspaper, commercial printing	11	7	4	
East Kentucky Steel, Inc. (1968)	Hollow metal doors and frames	71	66	5	Steelworkers*
Lawson Furniture Company (1970)	Upholstered furniture	95	65	30	
Marshall Lumber Company (1962)	Lumber	25	25	0	
Tremco, Inc. (1973)	Industrial sealants	150	95	55	Steelworkers*
Warners Warnaco, Inc. (1966)	Brassieres, girdles	270	7	263	
E. K. Wood Products Company (1962)	Furniture dimension millwork, custom kiln drying	85	83	2	Teamsters*

*See Labor Organizations below.

Source: Kentucky Department of Commerce, Division of Research and Planning.

LABOR ORGANIZATIONS IN MANUFACTURING FIRMS

Union

Representing workers at:

United Steelworkers of America,
AFL-CIO

East Kentucky Steel, Inc.;
Tremco, Inc.

International Brotherhood of
Teamsters, Chauffeurs,
Warehousemen and Helpers
of America

E. K. Wood Products Company

INDUSTRIAL SERVICES

	<u>Location</u>	<u>Miles Distant</u>
Tool & Die, Machine & Pattern Shops	Harlan, Kentucky	51
Metal Service Centers	Knoxville, Tennessee; Lexington, Kentucky	100; 102
Heat Treating	Richmond, Kentucky	78
Metal Finishers	Richmond, Kentucky	78
Electric Motor Repair	Corbin, Kentucky	16

Source: Kentucky Directory of Selected Industrial Services, 1979.

AVERAGE WEEKLY WAGES BY INDUSTRY,
BY PLACE OF WORK, 1979

	<u>Knox County</u>	<u>Bell County</u>	<u>Clay County</u>
All Industries	\$201.73	\$244.23	\$243.91
Mining & Quarrying	330.46	420.33	362.80
Contract Construction	231.72	245.76	190.48
Manufacturing	213.70	205.27	162.04
Transportation, Communications & Public Utilities	203.45	283.01	244.24
Wholesale & Retail Trade	140.85	165.68	214.82
Finance, Insurance & Real Estate	207.13	223.88	166.93
Services	180.89	185.55	171.34
Other	*	*	*

	<u>Laurel County</u>	<u>Whitley County</u>
All Industries	\$205.55	\$204.34
Mining & Quarrying	306.27	338.43
Contract Construction	307.69	245.45
Manufacturing	201.73	174.92
Transportation, Communications & Public Utilities	249.71	309.10
Wholesale & Retail Trade	174.12	174.41
Finance, Insurance & Real Estate	196.82	192.13
Services	176.64	172.87
Other	145.39	141.67

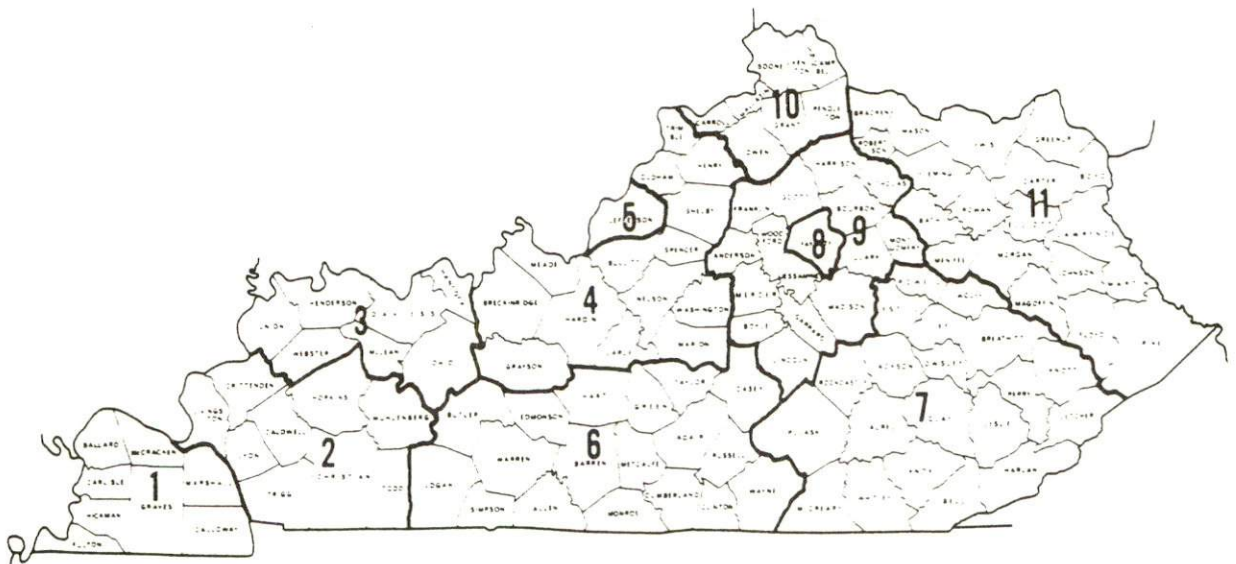
*Not disclosed.

Note: Excludes domestic workers, railway workers, certain nonprofit corporations, majority of federal government workers, and self-employed workers. Effective January 1, 1979, the Kentucky Unemployment Insurance Law extended coverage to include all state and local government agencies (shown in the Services category).

Source: Kentucky Department for Human Resources, Average Weekly Wages of Workers Covered by Kentucky Unemployment Insurance Law, 1979.

Occupational wage rates for specific industries are usually not available to most government agencies, and wage data furnished to state employment agencies by individual industrial employers is protected from disclosure by federal law. The most reliable up-to-date wage information can be obtained by direct contact with local employers.

Associated Industries of Kentucky, a voluntary organization of Kentucky businesses, regularly collects occupational wage rates and fringe benefits data from participating member firms. Data is compiled for over 127 clearly defined office, production, and service occupations. Tabulations are published for eleven regions of Kentucky, as shown on the map below. It should be noted that the data may be weighted by the preponderance of firms in the larger cities and may be somewhat higher than the rates paid in the smaller communities. Data from these tabulations are available, upon request, from the Kentucky Department of Commerce, Frankfort, Kentucky 40601.



Associated Industries of Kentucky Area Wage Surveys

PER CAPITA PERSONAL INCOME

<u>Area</u>	<u>1978</u>	<u>1974</u>	<u>Percent Change</u>
Knox County	\$4,283	\$2,840	50.8
Labor Market Area			
Range	\$4,202 - 5,582	\$2,620 - 3,716	N/A
Kentucky	6,605	4,524	46.0
U.S.	7,840	5,428	44.4

Source: U.S. Department of Commerce, Bureau of Economic Analysis,
April 1980.

TRANSPORTATION

Rail

Line serving Barbourville - Louisville & Nashville Railroad

Services - One northbound and one southbound freight stops daily; nine northbound and nine southbound through freights daily; switching facilities; team track space for 20 cars; and siding space for 16 cars. The nearest L & N piggyback facilities are available in Knoxville, Tennessee, 100 miles south. Southern Railway piggyback facilities are available in Danville, Kentucky, 85 miles northwest of Barbourville.

For details on routing, schedules, rates, and services, contact:

Director of Industrial Development
Louisville & Nashville Railroad
P. O. Box 32290
Louisville, Kentucky 40232
(502) 587-5723

Highways

Access to Interstate 75 is only 17 miles northwest of Barbourville via U.S. 25E, a four-lane "AAA" rated highway with an 80,000 pound gross load limit. The Daniel Boone Parkway, a four-lane limited-access toll road, is accessible 24 miles north via Kentucky 11, a "AA" rated highway with a 62,000 pound gross load limit. Barbourville is also served by Kentucky 6, a "AA" rated highway which runs west out of Barbourville.

Truck Service

<u>Company</u>	<u>Home Office</u>
Bronaugh Motor Express, Inc.*	1025 Nandino Boulevard Lexington, Kentucky 40511
Consolidated Freightways Corporation of Delaware*	175 Linfield Drive Menlo Park, California 94025
The Mason and Dixon Lines, Inc.**	P. O. Box 969 Kingsport, Tennessee 37662
McLean Trucking Company**	P. O. Box 213 Winston-Salem, North Carolina 27102
Overnite Transportation Company*	1000 Semmes P. O. Box 1216 Richmond, Virginia 23209
Smith's Transfer Corporation**	P. O. Box 1000 Staunton, Virginia 24401
United Trucking Service, Inc.	8505 West Warren Dearborn, Michigan 48126
<u>Other Freight Services</u>	<u>Nearest Shipping Center or Home Office</u>
Purolator Courier Corporation***	London, 28 miles northwest
United Parcel Service***	London, 28 miles northwest

*Both interstate and intrastate.

**Interstate only.

***For regular scheduled pickups or for occasional pickups, arrangements must be made with the Louisville office of Purolator Courier Corporation or United Parcel Service.

HIGHWAY MILES AND TRUCK TRANSIT TIME IN DAYS FROM
BARBOURVILLE, KENTUCKY, TO SELECTED MARKET CENTERS

City	Highway Miles	Delivery		City	Highway Miles	Delivery	
		Time*	TL			Time*	TL
Atlanta, Ga.	293	1		Los Angeles, Ca.	2,282	7-8	
Baltimore, Md.	643	2		Louisville, Ky.	174	1	
Birmingham, Ala.	354	1-2		Nashville, Tenn.	234	1	
Chicago, Ill.	452	1-2		New Orleans, La.	696	2	
Cincinnati, Ohio	180	1		New York, N. Y.	805	3	
Cleveland, Ohio	419	1-2		Pittsburgh, Pa.	445	1-2	
Detroit, Mich.	439	3		St. Louis, Mo.	437	1	
Knoxville, Tenn.	100	1					

*Truck transit time does not include the day of pickup.

Note: Mileage computations are via the best interstate or primary highways, not necessarily the most direct route of travel.

Sources: Rand McNally Road Atlas, 1979. Official Kentucky Mileage Map, 1979. Delivery time - Overnite Transportation Company, P. O. Box 1216, Richmond, Virginia 23209.

Air

Commuter Airport

Location: London-Corbin Airport (Magee Field)
3 miles south-southeast of London, Kentucky;
25 miles northwest of Barbourville

Runways: 1 paved
Length: 6,000 feet

Traffic Control: Wind sock and FSS advisory service on 123.6

Lighting: Beacon, runway and obstruction lights,
REIL on R/W 5

Services: Allegheny commuter air carrier, 100
octane, JP-A-50, taxi, car rental,
aircraft rental, weather, flight training,
charter and ambulance service, vending
machines

Air Freight Service: Air carriers accept air freight on a space
available basis.

Nearest Scheduled Airline Service

Location: Blue Grass Field
4 1/2 miles west of Lexington, Kentucky;
106 1/2 miles north of Barbourville

Runways: 2 paved
Length: 6,500 feet; 3,500 feet

Traffic Control: Tower

Lighting: Approach lighting system, beacon, runways
and obstructions lighted, VASI

Services: Delta, Frontier, Piedmont, and USAir
airlines; Tennessee Airways commuter
air carrier; fuel - 24-hour service, 100,
and jet fuel; repair service - major A & E
repairs, Certified Avionics repair station;
National Weather Service; flight instructions;
charter service; storage; taxi, limousine
and car rentals; restaurant

Air Freight Service: Air freight terminal

(Contd.)

Nearest Scheduled Airline Service

Location: McGhee Tyson Airport
12 miles south of Knoxville, Tennessee;
112 miles south of Barbourville

Runways: 2 paved
Length: 9,000 feet; 6,000 feet

Traffic Control: Tower

Lighting: Beacon, runway

Services: American, Delta, Piedmont, Republic, and
United airlines; Tennessee Airways
commuter air carrier; 100 octane and
jet fuel; minor repairs and major
Avionics repairs; hangars and tie-downs;
charter service; flight instructions;
plane rental; U.S. Customs; car rentals;
limousine; weather information; restaurant

Air Freight Service: Air freight terminal

Bus - Southern Greyhound Bus Lines

Taxi - One company, 24-hour service

Rental Services - U-haul services are available in Barbourville;
auto rentals are available at the London-Corbin
Airport (Magee Field), 25 miles distant.

Water

The nearest navigable waterway to Barbourville is the Kentucky River. A six-foot navigation channel is maintained on the Kentucky River at Beattyville, Kentucky, 72 miles north of Barbourville.

POWER AND FUEL

Electricity

Company serving Barbourville and part of Knox County - Barbourville
Water and Electric Company
Source of power - Kentucky Utilities Company
Total generating capacity - 2,383,767 KW
For industrial rates contact:

Barbourville Water and Electric Company
P. O. Box 651
Barbourville, Kentucky 40906
(606) 546-3187

and/or

Industrial Development Department
Kentucky Utilities Company
One Quality Street
Lexington, Kentucky 40507
(606) 255-1461

Company serving major portions of Knox County - Cumberland Valley
Rural Electric Cooperative Corporation
Source of power - East Kentucky Power Cooperative
Total generating capacity - 809,720 KW
For industrial rates contact:

Industrial Development Division
East Kentucky Power Cooperative
P. O. Box 707
Winchester, Kentucky 40391
(606) 744-4812

and/or

Cumberland Valley RECC
Highway 25E
Gray, Kentucky 40734
(606) 528-2677

Company serving remaining portions of Knox County - Kentucky
Utilities Company

Source of power - Kentucky Utilities Company

Total generating capacity - 2,383,767 KW

For industrial rates contact:

Industrial Development Department
Kentucky Utilities Company
One Quality Street
Lexington, Kentucky 40507
(606) 255-1461

Natural Gas

Company serving Barbourville - Peoples Gas Company of Kentucky

Source of supply - Wiser Oil Company

Size of transmission mains - 8 and 6 inches (supplier);
6 inches (distributor)

Distribution mains - 6, 4, and 2 inches

Distribution pressure - 4 ounces to 25 psi

Btu content - 1,160 per cubic foot

Specific gravity - 0.680

For rates and supplies contact:

Manager
Peoples Gas Company of Kentucky
513 South Main Street
Corbin, Kentucky 40701
(606) 528-3611

Company serving portions of Knox County - Delta Natural Gas Company, Inc.

Source of supply - Columbia Gas, Yellow Hill, Graham, and Michaelis

Size of transmission mains - 8 inches (supplier);
4 inches (distributor)

Distribution mains - 4 inches

Distribution pressure - 10 to 80 psi

Btu content - 1,140 per cubic foot

Specific gravity - 0.72

For rates and supplies contact:

Manager
Delta Natural Gas Company, Inc.
Route 1, Box 30-A
Winchester, Kentucky 40391
(606) 744-6171

Other Fuels

Propane

Cumberland Valley Propane, Inc. Highway 25E & Kentucky 1304 Bimble, Kentucky 40915	Manchester Sales & Service 110 Richmond Road Manchester, Kentucky 40962
Empiregas, Inc., of Corbin Highway 25 North Corbin, Kentucky 40701	Swafford Furniture Store 112 Main Street Manchester, Kentucky 40962
Lewis LP Gas, Inc. Route 1 Barbourville, Kentucky 40906	Williams Energy Company Camp Ground Road Corbin, Kentucky 40701

Fuel Oils

Distillate fuel oil -

Ashland Petroleum Company Route 6 London, Kentucky 40741	High Speed Oil Company Route 6, Box 73 London, Kentucky 40741
Curry Oil Company South Dixie Highway London, Kentucky 40741	Miracle's Chevron U.S.A. P. O. Box 667 Pineville, Kentucky 40977
G & M Oil Company Pineville Road Barbourville, Kentucky 40906	Ormsby Oil Company, Inc. P. O. Box 430 London, Kentucky 40741
Helton's Oil Corporation Highway 312 Corbin, Kentucky 40701	

Residual fuel oil - Arrangements must be made with the refinery.

Low sulphur content coal - Available locally.

WATER AND SEWERAGE

Water

Company serving Barbourville - Barbourville Water and Electric Company*
 P. O. Box 651
 Barbourville, Kentucky 40906
 (606) 546-3187

Source - Cumberland River
 Treatment plant capacity - 1,300,000 gallons per day
 Average daily consumption - 750,000 gallons
 Peak daily consumption - 900,000 gallons
 Type treatment - Flocculation, upflow clarifiers, sand filters,
 chlorination
 Storage capacity - 1,390,000 gallons
 Size lines - 2, 3, 4, 6, 8, and 12 inches
 Average pressure - 80 psi

MONTHLY WATER RATES (Inside city)

Minimum	1,500 gallons	\$2.50	
Next	50,000 gallons	.80 per M gallons	
Next	23,500 gallons	.70 per M gallons	
Next	25,000 gallons	.60 per M gallons	
All over	100,000 gallons	.55 per M gallons	
1-inch meter minimum	2,000 gallons (minimum)		\$ 5.50
2-inch meter minimum	2,000 gallons (minimum)		16.50
3-inch meter minimum	2,000 gallons (minimum)		32.50
4-inch meter minimum	2,000 gallons (minimum)		50.00

MONTHLY WATER RATES (Outside city)

First	1,000 gallons	\$4.00	
Next	99,000 gallons	1.00 per M gallons	
All over	100,000 gallons	.80 per M gallons	
1-inch meter minimum	2,000 gallons (minimum)		\$ 5.50
2-inch meter minimum	2,000 gallons (minimum)		16.50
3-inch meter minimum	2,000 gallons (minimum)		32.50
4-inch meter minimum	2,000 gallons (minimum)		50.00

Tap-on charge: Inside city limits - \$50.00 (negotiable
 if sprinkler system is used)
 Outside city limits - \$100.00

*The Barbourville Water and Electric Company plans to install an 18-inch water line from Barbourville to Laurel Lake near Corbin, at a cost of approximately \$3 million. Completion is expected in three to four years. Long-range plans include a water treatment plant at the Laurel Lake site.

MONTHLY WATER RATES
(Area previously served by Richland Water District)

First	1,000 gallons	\$6.50 (Minimum)
Next	2,000 gallons	1.90 per M gallons
Next	3,000 gallons	1.75 per M gallons
Next	4,000 gallons	1.50 per M gallons
Next	15,000 gallons	1.40 per M gallons
Next	25,000 gallons	1.20 per M gallons
Next	50,000 gallons	1.10 per M gallons
All over	100,000 gallons	.90 per M gallons

2-inch meter minimum \$42.55

Tap-on charge: \$250.00

Surface water sources - Cumberland River

Average discharge - Cumberland River at Barbourville, Kentucky -
1,787 cfs (40 years, USGS)

Expected ground water yield - 50 to 200 gpm over major portion of
Knox County

Sewerage

Company serving Barbourville - Barbourville Water and Electric Company
P. O. Box 651
Barbourville, Kentucky 40906
(606) 546-3187

Design capacity - 1,000,000 gallons per day

Average daily flow - 500,000 gallons

Treatment - Tertiary

Type treatment - Aerated lagoons, chlorination, flocculation, settling

Treated effluent discharged into - Cumberland River

Size of sanitary mains - 6, 8, and 10 inches

Size of storm mains - 12, 18, and 24 inches

Rates - 75 percent of water bill

Tap-on charge: \$200

CLIMATE

Knox County

Temperature

Normal (30-year record)	59.7 degrees
Average annual 1979	58.3 degrees
Record highest, September, 1954 (38-year record)	103.0 degrees
Record lowest, January, 1966 (38-year record)	-9.0 degrees
Normal heating degree days (30-year record) (Heating degree day totals are the sums of negative departures of average daily temperatures from 65 degrees F.)	3,478

Precipitation

Normal (30-year record)	46.18 inches
Mean annual snowfall (37-year record)	12.70 inches
Total precipitation 1979	53.89 inches
Mean number days precipitation (.01 inch or more) (37-year record)	128
Mean number days thunderstorms (37-year record)	47

Prevailing Winds (14-year record)

Northeast

Relative Humidity (19-year record)

1 a.m.	79 percent
7 a.m.	85 percent
1 p.m.	59 percent
7 p.m.	62 percent

Source: U.S. Department of Commerce, Environmental Science
Services Administration, Climatological Data, 1979.
Station of record: Knoxville, Tennessee.

LOCAL GOVERNMENT

City

Structure - Mayor - 4-year term; 6 council members - 2-year terms
Estimated budget 1981 - General Fund \$ 251,900
Receipts 1978-79 - Water, Sewer and
Electric \$1,906,249
Fees and licenses - Building permits \$5.00

County

Structure - County Judge/Executive - 4-year term;
8 magistrates - 4-year terms
Budget 1980-81 - General Fund \$520,347; Road Fund \$396,097

Assessed Value of Property

<u>Classes of Property</u>	<u>Barbourville (1980)</u>	<u>Knox County (1979-80)</u>
Real Estate	\$23,085,395	\$113,483,673
Tangibles	6,339,983	44,421,117

Property Taxes

All property in Kentucky is assessed at 100 percent of fair cash value.

Land and buildings are taxed by the state and may be taxed by local jurisdictions. The state rate is \$0.279 per \$100 of assessed valuation.

Manufacturing machinery, raw materials inventories, pollution control equipment, and goods in the process of manufacture are not subject to local taxation. The state rate is \$0.15 per \$100.

Other tangible personal property owned by manufacturers (automobiles, trucks, finished goods, office furniture, office equipment) is taxed by the state at \$0.45 per \$100 and may be taxed by local jurisdictions.

Property stored in public warehouses in a transit status is not subject to local taxation. The state rate is only \$0.015 per \$100.

Intangible personal property located in Kentucky (money in hand, shares of stock, notes, bonds, accounts receivable, and other credits) is taxed by the state at \$0.25 per \$100, and is not subject to local taxation.

Private leaseholds in industrial facilities owned by cities or counties and financed by industrial revenue bonds are subject to a state tax of \$0.015 per \$100 of value (essentially the lessee's equity, adjusted for appreciation or depreciation). Local taxation is not permitted.

Combined State and Local Rates Per \$100 Valuation, 1979*
(100% assessment)

	<u>Inside City of Barbourville</u>	<u>Outside City</u>
1. Land and buildings	\$1.259	\$0.693
2. Mfg. machinery, raw materials, goods in process, pollution control equipment	0.150	0.150
3. Finished goods, office equipment, vehicles, other tangibles	1.430	0.864
4. Intangibles (accounts receivable, notes, bonds, etc.)	0.250	0.250
5. Leaseholds in industrial revenue bond financed plants	0.015	0.015

Planning and Zoning

City agency - Barbourville Planning and Zoning Commission
 Zoning enforced - City only
 Subdivision regulations enforced - City only
 Mandatory state codes enforced - Kentucky Plumbing Code, National Electric Code, Kentucky Boiler Regulations and Standards, National Fire Protection Association Standards of Safety (for buildings with an occupancy of less than 100 persons), Kentucky Building Code (modeled after BOCA code and applying to buildings with an occupancy of 100 or more persons)

Safety

<u>Police</u>	<u>Barbourville</u>	<u>Knox County</u>
Total staff	11	6
Radio-patrol cars	5	2
 <u>Fire</u>		
American Insurance Association Fire Rating	7	10
Full-time staff	1	--
Volunteers	30	50

*Kentucky Department of Commerce.

Rescue Service

Knox County Rescue Squad:

Number of volunteers - 20

Equipment - 2 radio-equipped private cars, 1 squad car, 2 generators,
2 boats, 3 motors, 5 ambulances which belong to the Knox County

Ambulance Service

Personnel training - Civil defense, first aid

Refuse Collection and Disposal

	<u>Barbourville</u>	<u>Knox County</u>
Type service	Private	Private
Fee charged:		
residential	\$3 per month	Negotiated
business	Negotiated	Negotiated
industrial	Negotiated	Negotiated
Collection frequency:		
residential	Twice weekly	Negotiated
business	Negotiated	Negotiated
industrial	Negotiated	Negotiated
Trash pickup	Twice weekly	Negotiated
Disposal method	Landfill	Landfill

EDUCATION

Public Schools

	<u>Barbourville Independent</u>	<u>Knox County</u>
Total Enrollment (Spring 1980)	394	5,512
Elementary	234	4,087
Junior High	60	--
High School	100	1,425
Student-Teacher Ratio	12-1	18-1
Elementary	16-1	N/A
Junior High	15-1	--
High School	8-1	N/A
Accreditation		Southern Association of Colleges and Schools
Percent High School Graduates to College	69.6	23.2
Expenditures Per Pupil (1978-79)	\$1,069.07	\$938.19
Bonded Indebtedness, June 30, 1979	\$124,000	\$3,862,000

Area Colleges and Universities

<u>Name</u>	<u>Location (Miles distant)</u>	<u>Enrollment (Fall, 1979)</u>	<u>Highest Degree Conferred</u>
Union College	Barbourville, Kentucky	894	Masters, Specialist
Sue Bennett Junior College	London, Kentucky (31)	250	Associate
Lincoln Memorial University	Harrogate, Tennessee (35)	1,067	Baccalaureate
Cumberland College	Williamsburg, Kentucky (48)	2,073	Baccalaureate
Hazard Community College	Hazard, Kentucky (64)	306	Associate
Somerset Community College	Somerset, Kentucky (65)	894	Associate
Berea College	Berea, Kentucky (68)	1,434	Baccalaureate
Southeast Community College	Cumberland, Kentucky (74)	487	Associate
Eastern Kentucky University	Richmond, Kentucky (78)	13,668	Masters, Specialist*

Union College, founded in 1879 by progressive citizens of Barbourville, celebrated its centennial in 1979. In addition to liberal arts, science, and business courses, the college offers a Washington Semester, an Appalachian Semester, and an Environmental Studies program. Evening continuing education classes are offered as well as a Master of Arts in Education and a reading specialist program.

*Joint doctoral degree programs are offered in cooperation with the University of Kentucky, Lexington, and cooperative doctoral degree programs are offered with Michigan State University and the University of Maryland.

Vocational Schools

Both the state vocational-technical schools and the area vocational education centers are operated by the Kentucky Department of Education. The state vocational-technical schools enroll persons full time who are at least 16 years of age and not in school. These students attend classes for six hours each day. The area vocational education centers are designed to accommodate high school students who are at least 15 years of age. These students attend vocational school for three hours each day. The state vocational-technical schools and the area education centers offer evening courses to enable working adults to upgrade current job skills.

Nearest State School

Location	Laurel County State Vocational-Technical School
Miles Distant	London
Curriculum	31
	Consumer and Home Economics
	Commercial Foods
	Consumer and Family Life Skills
	Health and Personal Services Occupations
	Cosmetology
	Medical Assistant
	Industrial Education
	Air Conditioning and Heating
	Auto Body Repair
	Auto Mechanics
	Carpentry
	Drafting
	Electricity
	Machine Shop
	Masonry
	Welding
	Learning Resource Center

Nearest Area Education Center

Location	Knox County Area Vocational Education Center
Curriculum	Barbourville
	Health and Personal Services Occupations
	Health Careers
	Industrial Education
	Carpentry
	Diesel Mechanics
	Drafting
	Industrial Electricity
	Welding

Arrangements can be made to provide training in the specific production skills required by an industrial plant. Instruction may be conducted either in the vocational school or in the industrial plant, depending upon the desired arrangement and the availability of special equipment.

HEALTH

Local Medical Personnel

Physicians - 7
Dentists - 3

Hospitals

<u>General Hospital</u>	<u>Location</u>	<u>Beds</u>
Knox County General Hospital	Barbourville	50

General hospital facilities - Operating room, X-ray, laboratory, emergency room, nursery, delivery room, pharmacy, EKG, blood bank, physical therapy, dietary service

Medical staff - 6 physicians; 3 physicians on consulting staff; 12 registered nurses; 17 licensed practical nurses; specialists in pathology, radiology, and pediatrics

Other Medical Facilities

Cumberland River Comprehensive Care Center

Ambulance Service

Name - Knox County Ambulance Service (county-wide service)
Staff - 30
Service - Emergency medical treatment and transportation
Equipment - 5 fully-equipped ambulances

Public Health

Facility - Knox County Health Department and Knox County Home Health Agency
Staff - Administrator, 1 RN home health coordinator, 2 health environmentalists, 8 clerks, 5 registered nurses, 5 licensed practical nurses, 3 home health aides, 1 community health aide, 1 social worker, 1 nutritionist, 1 physical therapist (contract basis)

OTHER LOCAL FACILITIES

Communications

Telephone - Kentucky Telephone Company
Services - Standard

Telegraph - Western Union
Services - Standard

Postal - U.S. Post Office
Class - First
Mail received - Once daily
Mail dispatched - Twice daily

Newspapers - The Barbourville Mountain Advocate
Weekly and circulation - 5,000
Other papers
received from - Louisville, Lexington, Corbin, and London,
Kentucky; Knoxville, Tennessee

Radio - WYKY-AM & FM
Stations received from - Louisville, Lexington, Corbin, London,
and Middlesboro, Kentucky;
Knoxville, Tennessee

Television -
Cable service
Reception from - Lexington, Kentucky; Knoxville, Tennessee;
Asheville, North Carolina; Bristol, Virginia;
Atlanta, Georgia
Kentucky Educational
Television - Somerset transmitter, Channel 29

Library Services

Public library - Knox County Public Library
Size collection - 50,000 volumes
Circulation, 1979 - 69,000
Services - Bookmobile, magazines, films, records, art, projectors,
phonographs, athletic equipment, story hour

Private library - Weeks Library at Union College (open to the public)
Size collection - 76,000 volumes
Special collections - Lincoln Civil War Collection (800 volumes),
music library
Services - Learning resources center, copy machine, magazines
and various business publications

Religious Institutions

Number of churches - 7
Denominations - Baptist
Catholic
Christian
Church of Christ
Methodist
Pentecostal
Seventh Day Adventists

Nearest Synagogues - Lexington, 102 miles northwest
Congregations - Adath Israel (reform)
Ohavey Zion (traditional)

Financial Institutions

<u>Banks</u>	<u>Assets</u>	<u>Deposits</u>	<u>Statement Date</u>
American Fidelity Bank and Trust	\$22,022,794.05	\$17,790,670.59	6/30/80
Union National Bank	55,831,453.91	50,911,218.66	6/30/80
<u>Savings and Loan Associations</u>	<u>Assets</u>	<u>Savings Accounts</u>	<u>Statement Date</u>
First Federal Savings and Loan Association	\$35,440,954.79	\$29,860,417.42	12/31/79

Hotels and Motels

Total number - 2
Total rooms - 54

Clubs and Organizations

American Association of University Women
American Business Women's Association
American Legion
American Legion Auxiliary
Boy Scouts
Brownies
Cancer Society
Chamber of Commerce
Cub Scouts
Daughters of America
Daughters of the American Revolution
Eastern Star
4-H
Future Farmers of America (FFA)
Future Homemakers of America (FHA)
Future Teachers of America (FTA)
Garden Club
Girl Scouts
Jaycees
Junior Women's Club
Kiwanis
Masonic Lodge
Medical Society
Ministerial Association
Parents-Teachers Association (PTA)
Red Cross
Shrine
Town & Country Homemakers Club
Veterans of Foreign Wars
Women's Club
Younger Women's Club

RECREATION

Local

The Barbourville Recreational Park has become the new hub of community recreation with two lighted ball fields for simultaneous baseball and softball games, three tennis courts, a playground and tot-lot. Other public recreational facilities include a park, three playgrounds, three tennis courts, three baseball diamonds, one football field, one softball field, a badminton court, and a swimming pool.

Private recreational facilities include a country club with a swimming pool, two tennis courts, and fishing facilities.

Union College is the center for many concerts, lectures, and plays. Local residents are invited to attend most of the school's cultural and sporting events.

Barbourville's Daniel Boone Festival is a popular tourist attraction. The fall event features a beauty contest, a parade, a horse show, and southern cooking.

Area (Within 50 miles)

Pine Mountain State Resort Park, near Pineville, is located in the 2,500-acre Kentucky Ridge State Forest. The park offers lodge and cottage accommodations, camping sites, swimming, horseback riding, golfing, hiking, and a Nature Center with exhibits.

The Daniel Boone National Forest just west of Barbourville is a vast timberland which encompasses hundreds of natural and historical attractions and provides ample opportunities for camping, boating, fishing and hiking.

Cumberland Falls State Resort Park is located in the midst of the Daniel Boone National Forest near Corbin. Cumberland Falls are often called the "Niagara of the South". By night when the moon is full, the mist from the falls shows a mysterious moonbow, one of two such phenomena in the world. Little Eagle Falls, a mountain creek which tumbles 125 feet into the Cumberland River, is also a part of the 1,794-acre park. The park offers a lodge, cottages, camping sites, and facilities for swimming, fishing, hiking, and horseback riding.

The 4,200-acre Laurel Lake is also located in the Daniel Boone National Forest. Camping and fishing facilities are available at the lake and numerous recreational facilities are under development.

(Contd.)

Levi Jackson Wilderness Road State Park, located south of London, is the site where Boone's Trace and Wilderness Road pioneer trails converge. The park features the Mountain Life Museum, a reproduced pioneer settlement, and facilities for camping, swimming, horseback riding, hiking, and organized recreation.

Cumberland Gap National Historical Park, near Middlesboro, features a museum of frontier days; Pinnacle Mountain (2,460 feet) which overlooks three states; caves; Old Iron furnace; and Hensley Settlement mountain village restoration.

Dr. Thomas Walker State Shrine, located southeast of Barbourville, features a replica of the cabin built by Dr. Walker, a physician and surveyor, who led the first documented expedition through Cumberland Gap around 1750. This 12-acre park has a playground and a picnic shelter.

COMMUNITY IMPROVEMENTS

The water district that formerly served northeastern Knox County, the Richland Water District, has been purchased by the municipally-owned Barbourville Water and Electric Company.

The 27-acre Barbourville Recreational Park opened in the spring of 1979 on land leased from Union College. Facilities include two ball fields allowing simultaneous baseball and softball, three tennis courts, a playground including a tot-lot, a 500-space parking lot and a combination administrative office and concession stand. A public swimming pool and a basketball court will be added later.

The construction of a \$2 million coal tipple has been completed at Artemus, Kentucky, near Barbourville.

A \$1.7 million, 3,500-seat physical education facility at Knox Central High School was completed in 1978.

Additional subjects were added to the Barbourville Independent School System curriculum to attain state certification for the 1979-80 school year.

Construction is proceeding on the expansion to four lanes of an additional 5-mile section of U.S. Highway 25E between Heidrick (near Barbourville) running south to Turkey Creek (near the Knox-Bell County line). Long-range plans will provide four-lane access from Corbin to Pineville via Barbourville.

Major renovation and revitalization continues on Barbourville's Second Street area. Renovation of 30 privately-owned residences is complete. Funding for the \$1.8 million program will come from the Federal Department for Housing and Urban Development, Farmer's Home Administration, and the Kentucky Housing Corporation. Seventy single-family dwellings and 56 apartment units will be constructed in the area with completion expected in early 1982. In addition, \$190,000 has been received from the Kentucky Flood Abatement Program to improve storm drainage for the area, and the Barbourville Water and Electric Company has already installed a new 8-inch water line to serve the area.

A \$2.5 million Community Development Block Grant has been approved for Knox County to revitalize 30 existing privately-owned structures and to improve streets, sidewalks, water lines and sewer lines in the Rosenwald area. The project, financed by the Federal Department of Housing and Urban Development, is expected to be completed in 1983.

A \$500,000 grant from the Federal Department for Housing and Urban Development has been received and site work has begun for the Whitesburg Housing Development. The 20-acre site will include 60 single-family units for low-and moderate-income families. Completion is expected in late 1981.

(Contd.)

Construction will begin November 1, 1980, on the \$1.3 million Union Manor Apartment Complex on property purchased from Union College. The 62-unit complex for low-and moderate-income families will be financed through the Kentucky Mortgage Corporation and is expected to be completed in mid-1982.

The City of Barbourville has received a \$30,000 grant from the Federal Department of the Interior's Heritage Recreational Commission and the Federal Department for Housing and Urban Development for an inner-city park designed for senior citizens. Boone Manor Park will include an exercise course, walk paths, and a shelter house.

Construction will begin in the spring of 1981 on a \$2 million apartment complex in Knox County. The 46-unit complex, to be known as Boone Village, should be completed in about a year. Funds for the project will be provided by the Farmer's Home Administration.

The City of Barbourville will spend approximately \$250,000 to construct a new pump station that will facilitate the draining of a ponding area, freeing the site for future residential or commercial development.

Union College has proposed the construction of a \$4 million library and learning resource center to replace the Abigail E. Weeks Memorial Library that was built in 1941. Construction is expected to be completed in the mid-1980's.

A new elementary school is planned from the Grays and Lynn Camp area of Knox County. The facility is expected to house approximately 750 students in kindergarten through sixth grade.