

1991

Industrial Resources: LaRue County - Hodgenville

Kentucky Library Research Collections
Western Kentucky University, spcol@wku.edu

Follow this and additional works at: https://digitalcommons.wku.edu/larue_cty



Part of the [Business Administration, Management, and Operations Commons](#), [Growth and Development Commons](#), and the [Infrastructure Commons](#)

Recommended Citation

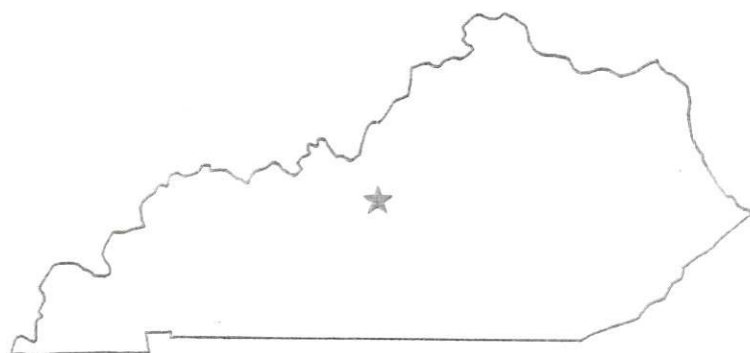
Kentucky Library Research Collections, "Industrial Resources: LaRue County - Hodgenville" (1991). *LaRue County*. Paper 2.
https://digitalcommons.wku.edu/larue_cty/2

This Report is brought to you for free and open access by TopSCHOLAR®. It has been accepted for inclusion in LaRue County by an authorized administrator of TopSCHOLAR®. For more information, please contact topscholar@wku.edu.

K-107
Rue Co

Resources for Economic Development

Hodgenville



KENTUCKY
Open for Business

RESOURCES FOR ECONOMIC DEVELOPMENT
HODGENVILLE, KENTUCKY

Prepared by
The Kentucky Cabinet for Economic Development
Division of Research and Planning
in cooperation with
LaRue County Chamber of Commerce
and
LaRue County Industrial Foundation

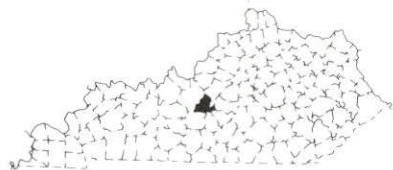
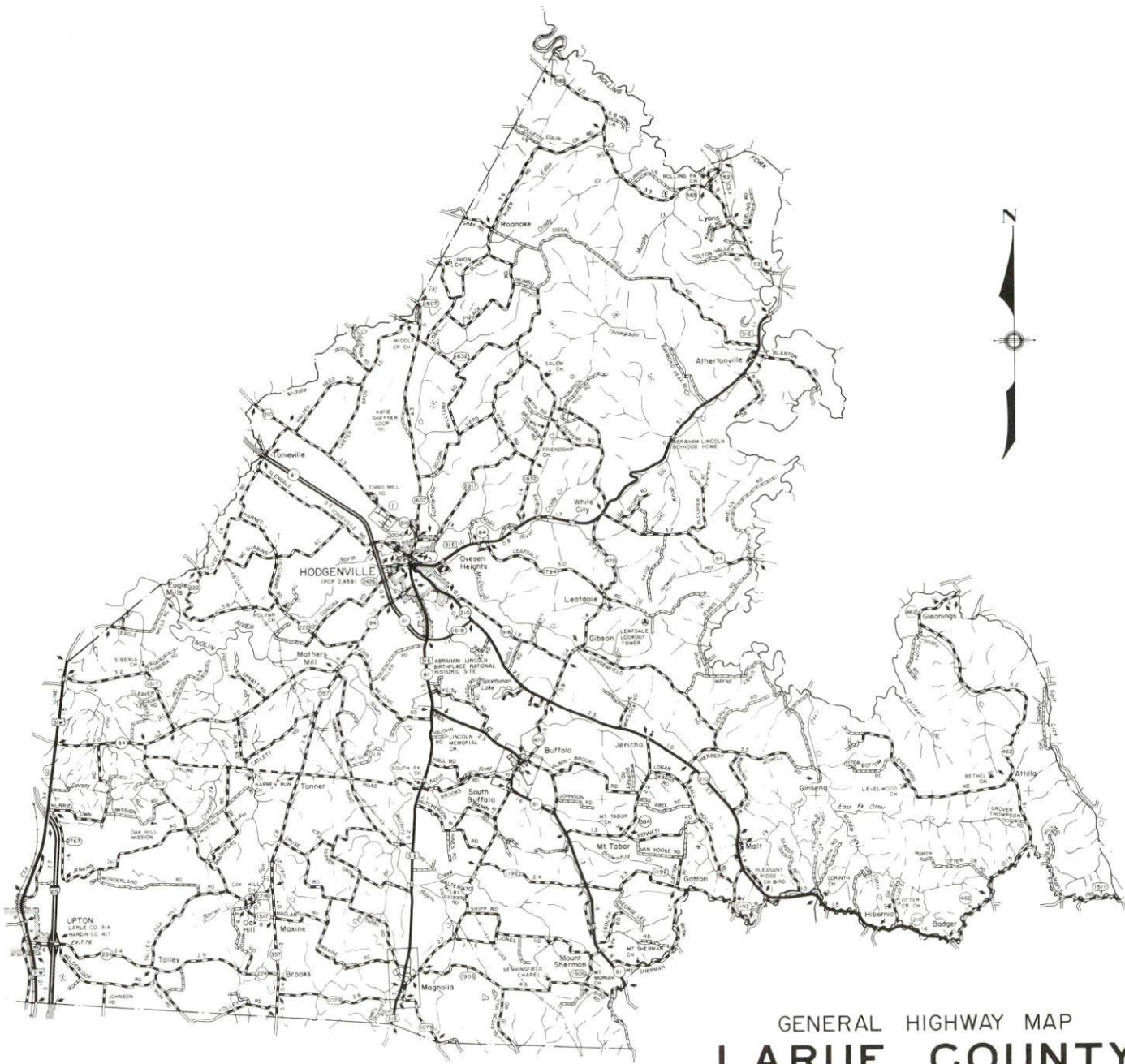
1991

Division Director - Pamela K. Riley; program manager - Keith Roberts; research - Richard H. Cobb; clerical - Wanda Sharp; graphics - Robert Owens, Pat Coleman; cartography - Edwin Scott, Dave Clark. Cost of printing paid from state funds.

TABLE OF CONTENTS

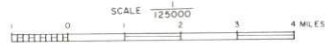
<u>Chapter</u>	<u>Page</u>
HODGENVILLE, KENTUCKY - A RESOURCE PROFILE	1
THE LABOR MARKET STATISTICS	2
Labor Market Area Map	2
Population	3
Population Projections	3
Estimated Labor Supply	3
Labor Force Characteristics of Residents, 1990	4
Selected Components of Nonagricultural Employment, by Place of Work, 1989	5
Per Capita Personal Income	6
Average Placement Wages	7
Average Weekly Wages of Workers Covered by Unemployment Insurance 1989 - Bar Chart	8
Average Weekly Wages by Industry, by Place of Work, 1989	9
EXISTING INDUSTRY	10
LaRue County Manufacturing Firms, Their Products and Employment	10
Recent Industrial Developments	11
Labor Organizations in Manufacturing Firms	11
Selected Industrial Services	12
TRANSPORTATION	13
Highways	13
Truck Service	13
Selected Market Location Map	14
Rail	15
Air	15
UTILITIES	16
Electricity	16
Natural Gas	16
Public Water Supply	17
Sewerage	17
CLIMATE	18

<u>Chapter</u>	<u>Page</u>
LOCAL GOVERNMENT	19
Structure	19
Planning and Zoning	19
Local Fees and Licenses	19
State and Local Property Taxes	20
EDUCATION	21
Public Schools	21
Area Colleges and Universities	21
Vocational Training	22
OTHER LOCAL FACILITIES	23
Local Medical Personnel	23
Hospitals	23
Other Medical Facilities and Services	23
Banks and Savings & Loan Associations	23
Newspapers	23
Telephone Service	23
RECREATION	24
COMMUNITY IMPROVEMENTS	26



GENERAL HIGHWAY MAP **LARUE COUNTY** KENTUCKY

PREPARED BY THE
 KENTUCKY TRANSPORTATION CABINET
 DEPARTMENT OF HIGHWAYS
 DIVISION OF PLANNING
 IN COOPERATION WITH THE
 U.S. DEPARTMENT OF TRANSPORTATION
 FEDERAL HIGHWAY ADMINISTRATION



HODGENVILLE, KENTUCKY - A RESOURCE PROFILE

Hodgenville, county seat of LaRue County and birthplace of Abraham Lincoln, is located in south-central Kentucky's Mississippian Plateaus Region, 56 miles south of Louisville, Kentucky, and 140 miles northeast of Nashville, Tennessee. The city had a 1990 population of 2,721 persons.

LaRue County, with a generally low, rolling topography, has a land area of 263 square miles. LaRue County had a 1990 population of 11,679 persons.

The Economic Framework - The total number of LaRue County residents employed in 1990 averaged 4,978. In 1989, manufacturing firms in the county reported 489 employees; wholesale and retail trade provided 380 jobs; 248 people were employed in service occupations; state and local government accounted for 391 employees; and contract construction firms provided 134 jobs.

Labor Supply - There is a current estimated labor supply of 17,402 persons available for industrial jobs in the labor market area. In addition, from 1990 through 1994, 14,372 young persons in the area will become 18 years of age and potentially available for industrial jobs.

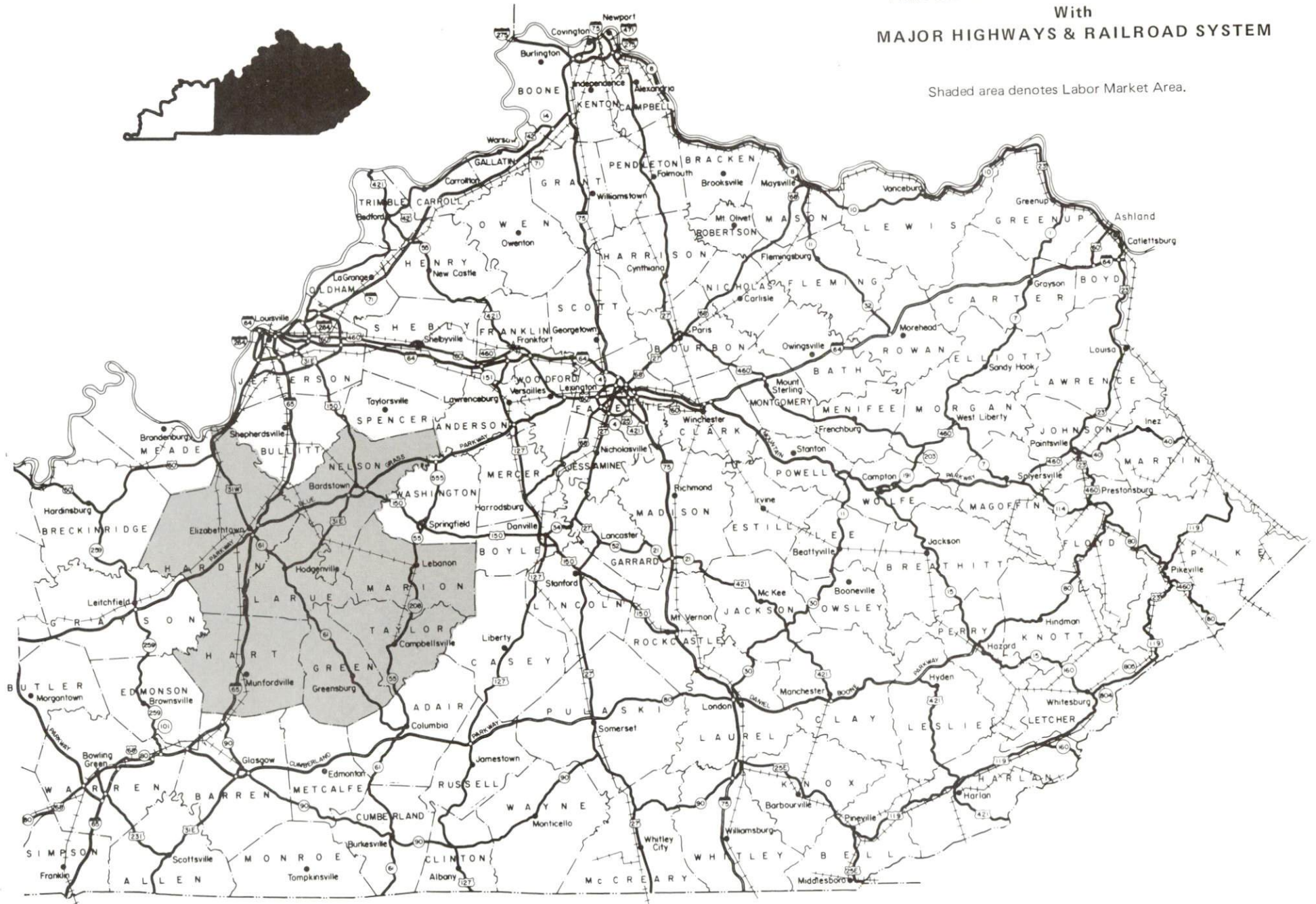
Transportation - The Lincoln Parkway (a segment of Kentucky Route 61) is a four-lane highway connecting Hodgenville with Elizabethtown, 12 miles northwest, where a network of multi-lane highways converge. Other "AAA"-rated trucking highways serving Hodgenville include U.S. Highway 31-E and Kentucky Route 210. There are 12 common carrier trucking companies providing Hodgenville with interstate and/or intrastate service. CSX Transportation provides branch line rail service to Hodgenville. The nearest scheduled commercial airline service is available at Louisville's Standiford Field, 51 miles north of Hodgenville. An airport with a 5,000-foot runway is located 16 miles northwest of Hodgenville near Elizabethtown.

Power and Fuel - Hodgenville and parts of LaRue County receive electric power from Kentucky Utilities Company. Most of LaRue County is served by the Nolin Rural Electric Cooperative Corporation. Natural gas service to Hodgenville is provided by Louisville Gas and Electric Company.

Education - The LaRue County School System provides LaRue County residents with primary and secondary education. There are nine colleges and universities located within 80 miles of Hodgenville. Vocational training is available at the Elizabethtown State Vocational-Technical School, 12 miles northwest of Hodgenville; at the Nelson County Area Vocational Education Center, 25 miles northeast of Hodgenville; and at the Green County Area Vocational Education Center, 28 miles south of Hodgenville.

HODGENVILLE LABOR MARKET AREA With MAJOR HIGHWAYS & RAILROAD SYSTEM

Shaded area denotes Labor Market Area.



LABOR MARKET STATISTICS

The Hodgenville Labor Market Area includes LaRue County and the adjoining Kentucky counties of Green, Hardin, Hart, Marion, Nelson, and Taylor.

POPULATION			
	<u>1990</u>	<u>1980</u>	<u>1970</u>
Labor Market Area	193,535	193,950	170,752
Hodgenville	2,721	2,531	2,562
LaRue County	11,679	11,922	10,672

Source: U.S. Department of Commerce, Bureau of the Census, January 1991.

POPULATION PROJECTIONS				
	<u>2000</u>	<u>2010</u>	<u>2020</u>	<u>2030</u>
Labor Market Area	199,530	204,810	207,180	206,200
LaRue County	11,670	11,320	10,780	10,050

Source: University of Louisville, Urban Studies Center, State Data Center.

ESTIMATED LABOR SUPPLY					
	Current				Future
	<u>Total</u>	<u>Unemployed</u>	<u>Employed Part-Time</u>	<u>Not in Labor Force</u>	<u>Becoming 18 years of age 1990 thru 1994</u>
Labor Market Area*	17,402	5,465	9,073	2,864	14,372
LaRue County	1,839	335	399	1,105	855

* Additional workers may be drawn from other nearby counties.

Note: Unemployed - persons unemployed and actively seeking work; Employed Part-Time - persons employed but working only 14 to 26 weeks per year; Not in Labor Force - represents the number of persons who would enter the labor force if suitable employment were available (based on the assumption that persons in Kentucky would like to participate in the labor force in the same proportion that they do nationally).

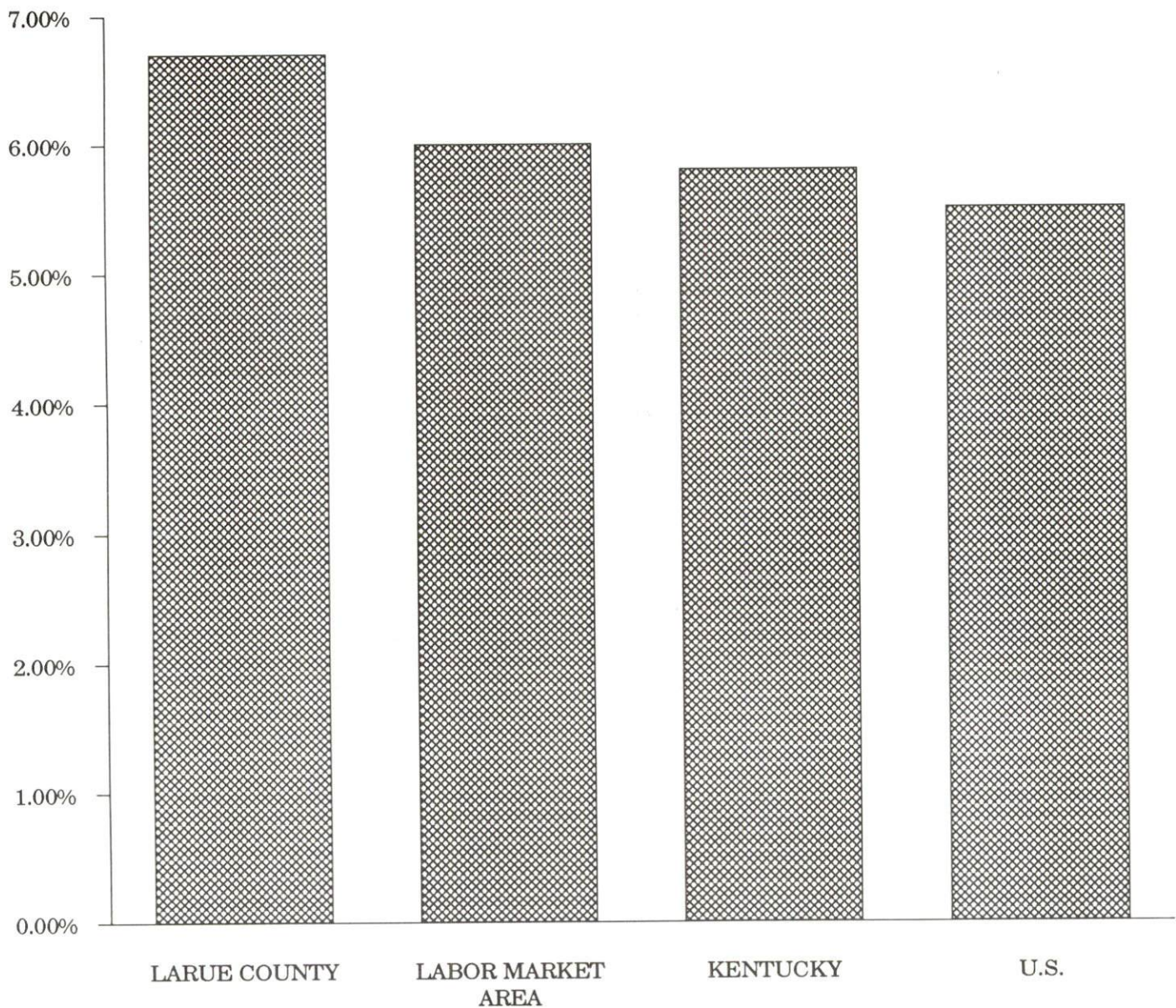
Sources: Kentucky Cabinet for Human Resources, Kentucky Labor Supply Estimates by County, 1989. Kentucky Cabinet for Economic Development, Future Labor Supply Becoming 18 Years of Age, 1990 thru 1994.

LABOR FORCE CHARACTERISTICS OF RESIDENTS, 1990

	<u>LaRue County</u>	<u>Labor Market Area</u>
Civilian Labor Force	5,337	90,930
Employment	4,978	85,469
Unemployment	359	5,461
Rate of Unemployment (%)	6.7	6.0

Source: Kentucky Cabinet for Human Resources, Kentucky Labor Force Estimates, Annual Averages, 1990.

UNEMPLOYMENT RATES 1990

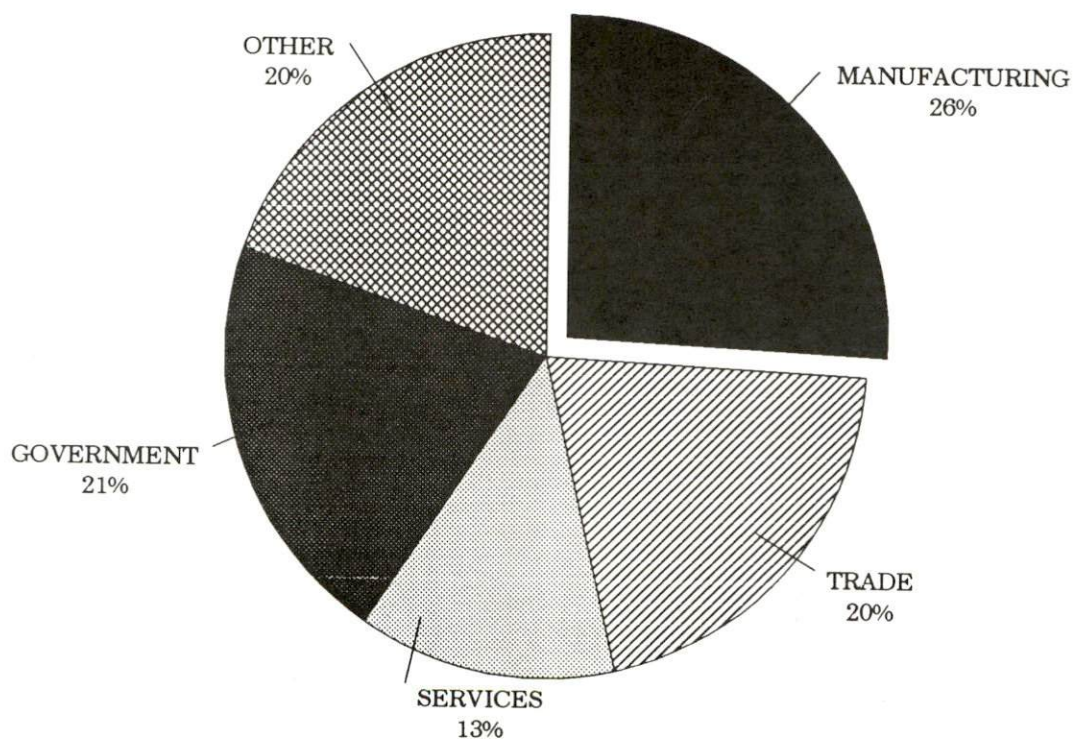


SELECTED COMPONENTS OF NONAGRICULTURAL EMPLOYMENT
BY PLACE OF WORK, 1989

	LaRue County	Labor Market Area
All Industries (total)	1,872	52,453
Manufacturing	489	16,307
Wholesale & Retail Trade	380	13,452
Services	248	7,529
State/Local Government	391	8,223
Contract Construction	134	2,512

Note: Excludes domestic workers, railway workers, certain nonprofit corporations, majority of federal government workers, and self-employed workers.
Source: Kentucky Cabinet for Human Resources, Average Monthly Workers Covered by Kentucky Unemployment Insurance Law, 1989.

LARUE COUNTY

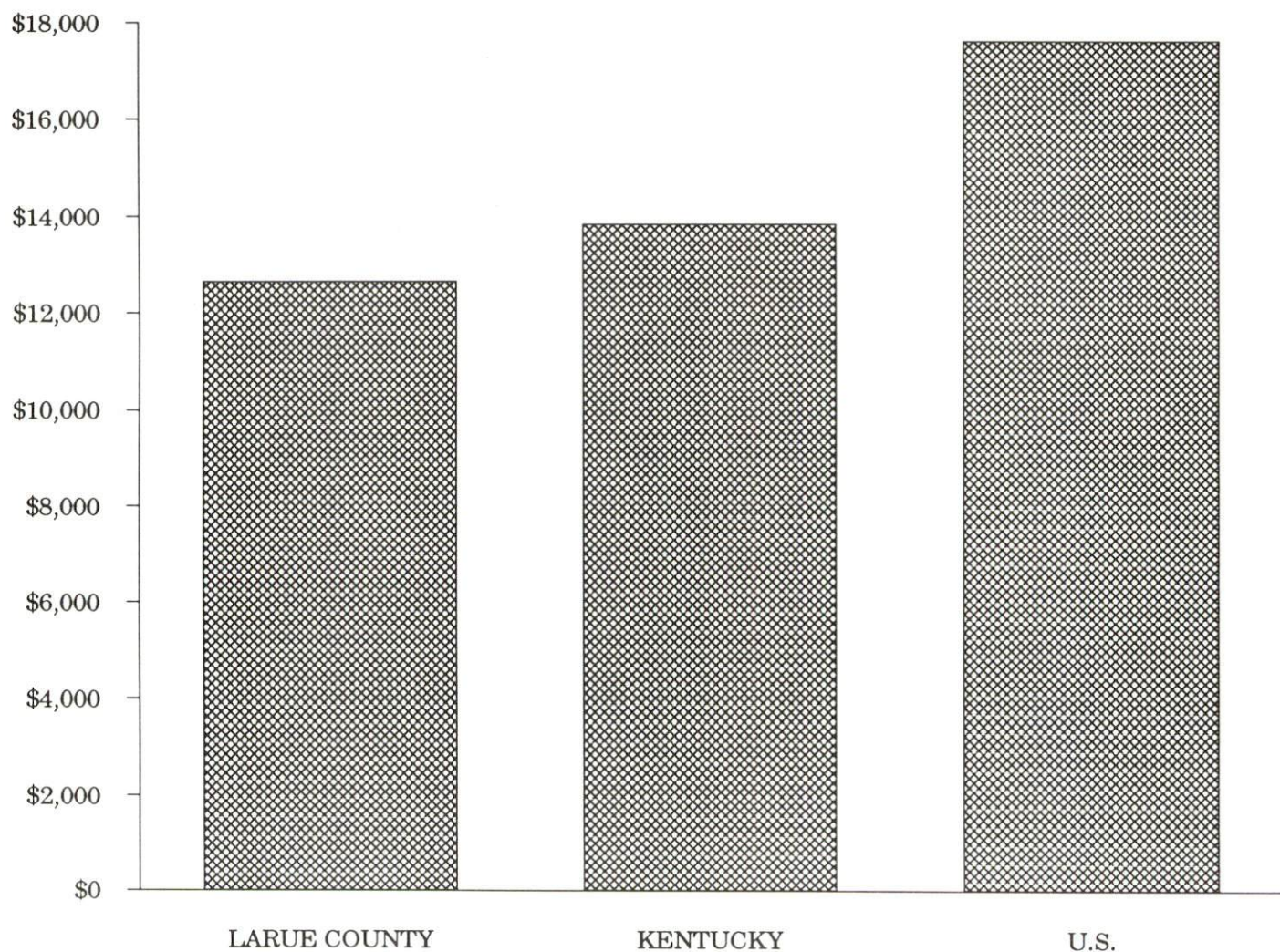


PER CAPITA PERSONAL INCOME

Area	1985	1989	Percent Change
LaRue County	\$9,290	\$12,640	36.1
Labor Market Area Range	\$8,386 - \$9,911	\$11,210 - \$13,277	-
Kentucky	\$10,755	\$13,823	28.5
U.S.	\$13,899	\$17,594	26.6

Source: U.S. Bureau of Economic Analysis, Kentucky Economic Information System, April 1990.

PER CAPITA PERSONAL INCOME
1989



AVERAGE PLACEMENT WAGES

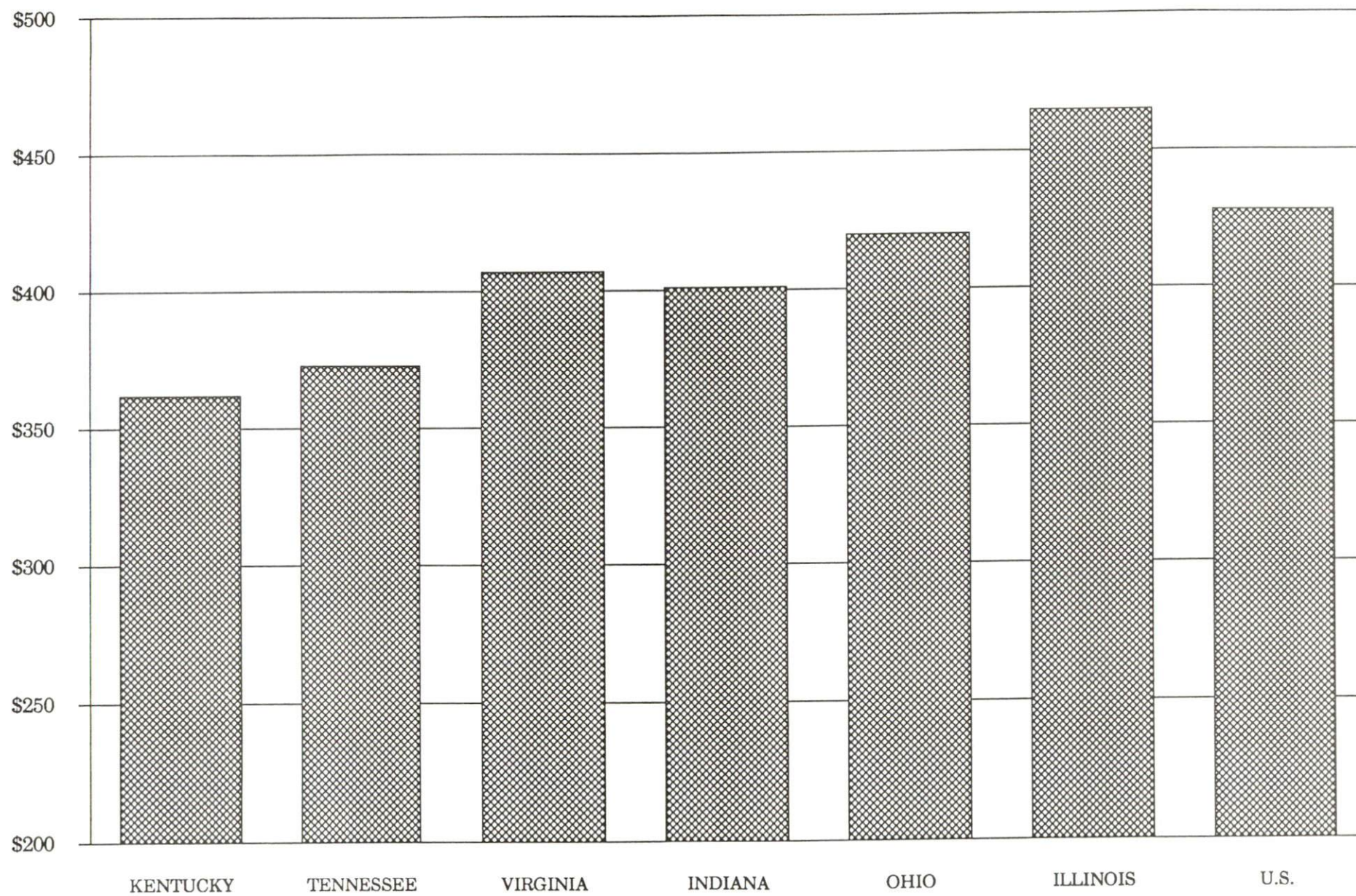
LaRue County is served by the Elizabethtown local office of the Kentucky Department for Employment Services. The focus of the following data is on job placements made by the Elizabethtown local office and may therefore be used as an indicator of the wages which employers in the area pay new employees. During the twelve months which ended on June 30, 1990, the local employment office filled 3,805 job openings in various occupational categories. The average hourly wage for selected occupational categories were:

<u>OCCUPATIONAL CATEGORY</u>	<u>NUMBER OF PLACEMENTS</u>	<u>AVERAGE WAGE(\$)</u>
All Occupations	3,805	4.99
Clerical	1,126	4.17
Sales	161	4.32
Services (excluding domestic)	691	4.90
Agricultural, Fishery, Forestry, etc.	34	3.82
Processing	115	6.67
Machine Trades	422	5.75
Bench Work	540	5.31
Structural	310	5.98
Motor Freight/ Transportation	90	6.20
Packaging and Materials Handling	197	5.07
Other	5	6.62

The Elizabethtown local office also serves Breckinridge, Grayson, Hardin, and Meade Counties. The above occupational categories are taken from the Dictionary of Occupational Titles published by the U.S. Department of Labor.

Source: Kentucky Cabinet for Human Resources, Department for Employment Services.

AVERAGE WEEKLY WAGES OF WORKERS COVERED BY
UNEMPLOYMENT INSURANCE - 1989



AVERAGE WEEKLY WAGES BY INDUSTRY
BY PLACE OF WORK, 1989*

	<u>LaRue County</u>	<u>Kentucky (State- Wide)</u>	<u>Tennessee</u>	<u>Virginia</u>
All Industries	\$250.77	\$362.03	\$373.00	\$407.00
Mining & Quarrying	N/A	623.82	522.00	576.00
Contract Construction	248.37	388.21	407.00	434.00
Manufacturing	228.40	472.92	431.00	470.00
Transportation, Communications & Public Utilities	440.46	482.22	493.00	575.00
Wholesale & Retail Trade	201.67	245.12	N/A	N/A
Finance, Insurance & Real Estate	274.83	417.89	448.00	488.00
Services	219.68	310.29	357.00	409.00
State/Local Government	308.18	370.61	N/A	N/A
	<u>Indiana</u>	<u>Ohio</u>	<u>Illinois</u>	<u>U. S.</u>
All Industries	\$401.00	\$420.00	\$465.00	\$428.00
Mining & Quarrying	693.00	596.00	707.00	688.00
Contract Construction	464.00	480.00	608.00	485.00
Manufacturing	546.00	580.00	566.00	534.00
Transportation, Communications & Public Utilities	504.00	533.00	582.00	556.00
Wholesale & Retail Trade	N/A	N/A	N/A	N/A
Finance, Insurance & Real Estate	418.00	456.00	594.00	544.00
Services	328.00	360.00	419.00	399.00
State/Local Government	N/A	N/A	N/A	N/A

* Wages for U.S. and surrounding states rounded to nearest dollar.
N/A Not Available.

Note: The average weekly wage for each category includes the salaries and wages of all persons working for that type business. For example, the manufacturing category includes both production workers and administrative personnel. Excludes domestic workers, railway workers, certain nonprofit corporations, majority of federal government workers, and self-employed workers.

Source: Kentucky Cabinet for Human Resources, Average Weekly Wages of Workers Covered by Kentucky Unemployment Insurance Law, 1989. U.S. Department of Labor, Bureau of Labor Statistics, Employment and Wages, Annual Averages, 1989, October 1990.

EXISTING INDUSTRY

LARUE COUNTY MANUFACTURING FIRMS, THEIR PRODUCTS AND EMPLOYMENT

<u>Firm</u> <u>(Establishment date)</u>	<u>Product</u>	<u>1990</u> <u>Average Employment</u>
Hodgenville		
Crop Production Services (1970)	Blended fertilizer	4
Crucible Magnetics Engineered Product (1990)	Magnetic pump couplings, holdings, precision fabricated magnets	12
Hawes Cabinetry (1983)	Custom wood cabinets	3
Lincoln Trail Concrete (1966)	Ready-mixed concrete	4
Master Built Cabinets (1988)	Custom wood cabinets	11
Morrison Farm Service (1949)	Fertilizer, feed	13
Mouser Industries (1972)	Wood cabinets	11
Nationwide Uniform Corporation (1961)	Industrial uniforms	450
Ronnie's Custom Cabinets (1975)	Wood cabinets, wood furniture	3
Thompson's Heading & Stave Mill (1965)	Lumber, staves, headings	70
Buffalo		
Meers Tire Service, Inc. (1955)	Tire fabric for recaps	20
Magnolia		
Morrison Farm Service (1953)	Fertilizer	3
Sonora		
Knaggen, Inc. (1988)	Kitchen cabinet doors, modular wood furniture, wood products	70

Sources: Kentucky Cabinet for Economic Development, Division of Research and Planning.

RECENT INDUSTRIAL DEVELOPMENTS

Nationwide Uniform Corporation recently expanded its facility by 60,000 square feet. The additional space will be utilized for a computer cutting operation. An increase of employment is anticipated.

The LaRue County Industrial Foundation has expanded the industrial park to 90 acres. The park has on-site utilities, industrial capacity water lines, and will be extending the sewer lines to the property by late 1991.

LABOR ORGANIZATIONS IN MANUFACTURING FIRMS

Union

International Brotherhood of
Teamsters, Chauffeurs,
Warehousemen, and Helpers
of America

Representing workers at:

National Uniform Corporation

SELECTED INDUSTRIAL SERVICES

<u>Types of Services</u>	<u>Location</u>	<u>Mileage from Hodgenville</u>
Custom Data Processing	Elizabethtown	12
Custom Plastics Producers	Lebanon	36
	Springfield	44
Electric Motor Repair	Elizabethtown	12
	Lebanon	36
Grinding, Precision & Tool	Clermont	31
	Glasgow	44
Heat Treating Facilities	Louisville	56
Industrial Equipment & Supplies	Springfield	44
	Louisville	56
Industrial Gases	Elizabethtown	12
	Campbellsville	30
Industrial Waste Removal	Elizabethtown	12
Machine Shops, Tool & Die	Elizabethtown	12
Metal Castings	Horse Cave	38
Metal Finishers	Elizabethtown	12
Metal Service Centers	Louisville	56
Millwrights	Radcliff	29
Public Warehouse Facilities	Elizabethtown	12

Sources: Kentucky Cabinet for Economic Development, Division of Research and Planning.

TRANSPORTATION

Highways

The Lincoln Parkway, U.S. Highway 31-E south of Hodgenville, and Kentucky Route 210 north of Hodgenville and through the city are all "AAA"-rated (80,000-pound gross load limit) trucking highways serving Hodgenville. The Lincoln Parkway (a segment of Kentucky Route 61) is a four-lane highway extending from U.S. Highway 31-E south of Hodgenville, around the city's west side, and north of Elizabethtown, 12 miles northwest of Hodgenville, where a network of east-west and north-south highways converge. These include Interstate Highway 65, the Blue Grass Parkway, and the Western Kentucky Parkway -- all multi-lane, controlled-access highways.

U.S. Highway 31-E north of the city and Kentucky Routes 61 and 210 south of the city are "AA"-rated (62,000-pound gross load limit) trucking highways.

A \$2.5 million road improvement project to U.S. Highway 31E is completed. The improvements consists of straightening sections, widening other areas, and rebuilding two bridges.

HIGHWAY MILES FROM HODGENVILLE, KENTUCKY,
TO SELECTED MARKET CENTERS

City	Highway Miles	City	Highway Miles
Atlanta, GA	378	Los Angeles, CA	2,131
Baltimore, MD	617	Louisville, KY	56
Birmingham, AL	327	Nashville, TN	140
Chicago, IL	343	New Orleans, LA	656
Cincinnati, OH	157	New York, NY	794
Cleveland, OH	398	Pittsburgh, PA	424
Detroit, MI	415	St. Louis, MO	314
Knoxville, TN	250		

Note: Mileage computations are via the best interstate or primary highways, not necessarily the most direct route of travel.

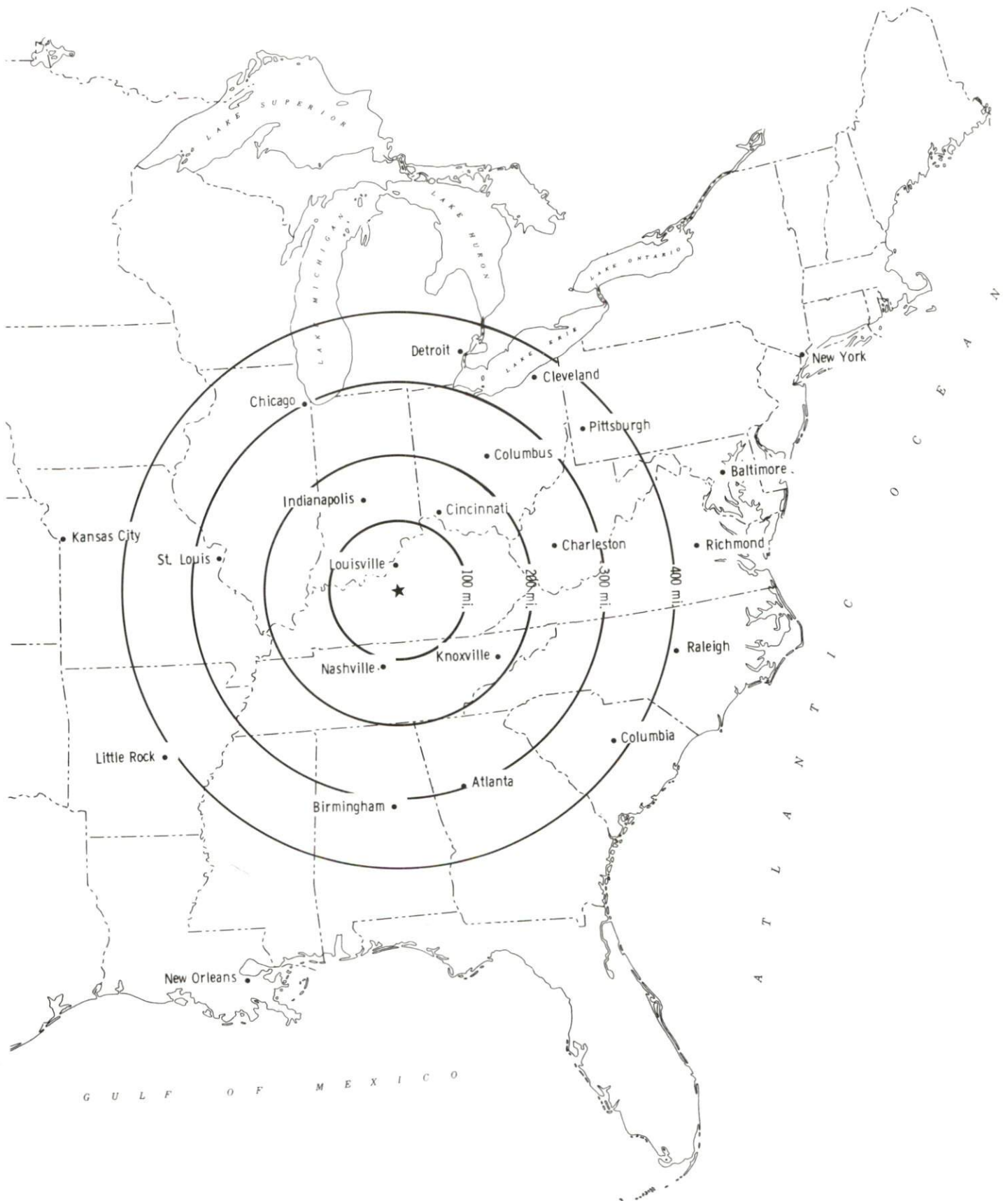
Sources: Rand McNally Deluxe Motor Carriers' Road Atlas, 1989. Official Kentucky Mileage Map, 1980.

Truck Service

Twelve common carrier trucking companies provide interstate and/or intrastate service to Hodgenville.

Source: American Motor Carrier Directory, Spring 1991.

Selected Market Centers



Rail

CSX Transportation provides branch line rail service to Hodgenville, which connects with both Paducah and Louisville Railway and CSX Transportation main line rail service at Elizabethtown, twelve miles northwest of Hodgenville.

For details on routing, schedules, rates, and services contact:

Manager
Industrial Development
CSX Transportation
9420 Bunsen Parkway
Suite 212
Louisville, Kentucky 40220
(502) 499-3025

and/or

Vice President - Marketing and Sales
Paducah and Louisville Railway
1500 Kentucky Avenue
Paducah, Kentucky 42001
(502) 444-4341

Air

Local

Location:	Addington Field 4 miles west of Elizabethtown; 16 miles northwest of Hodgenville
Runways:	1 paved
Length:	5,000 feet
Traffic	
Control:	Unicom, wind sock
Lighting:	Runway and beacon, VASI, REILS, lighted taxiway
Services:	100 octane, jet-A fuel, charter, major A & P repairs, hangar, tie-down, flight instruction, lease car, FBO

Nearest Scheduled Commercial Airline Service

Location:	Standiford Field 4 miles southeast of center of Louisville, Kentucky; 52 miles north of Hodgenville
Air Service:	Air Toronto, Delta, Northwest, American, Continental, TWA, United, USAir, ComAir, Midway
Daily Arrivals & Departures:	172

UTILITIES

Electricity

Company serving **Hodgenville** and parts of **LaRue County** - Kentucky
Utilities Company
Source of power - Kentucky Utilities Company
For industrial rates contact:

Industrial Development Department
Kentucky Utilities Company
One Quality Street
Lexington, Kentucky 40507
(606) 255-1461

Company serving a major portion of **LaRue County** - Nolin Rural Electric
Cooperative Corporation
Source of power - East Kentucky Power Cooperative
For industrial rates contact:

Industrial Development Division
East Kentucky Power Cooperative
P. O. Box 707
Winchester, Kentucky 40392-0707
(606) 744-4812

and/or

Nolin Rural Electric Cooperative
Corporation
612 East Dixie
Elizabethtown, Kentucky 42701
(502) 765-6153

Natural Gas

Company serving **Hodgenville** - Louisville Gas and Electric Company
Source of supply - Texas Gas Transmission Corporation
For rates and supplies contact:

Economic Development Department
Louisville Gas and Electric Company
P.O. Box 32010
Louisville, Kentucky 40232
In Kentucky: (502) 566-4246
Out of State: (800) 252-0226

Public Water Supply

Company serving Hodgenville -	Hodgenville Water Works P.O. Drawer 189 Hodgenville, Kentucky 42748 (502) 358-9515
Source -	North Fork-Nolin River
Treatment plant capacity -	518,000 gallons per day
Source of treated water -	Green River Valley Water District
Maximum amount available -	No set limit
Average daily consumption -	450,000 gallons
Peak daily consumption -	544,600 gallons
Storage capacity -	600,000 gallons
Water pressure -	35 psi to 70 psi

Sewerage

Company serving Hodgenville -	City of Hodgenville Municipal Sewer System 208 Lincoln Blvd. Hodgenville, Kentucky 42748 (502) 358-8521
Design capacity -	431,000 gallons per day
Average daily flow -	350,000 gallons
Type of treatment -	Secondary
Treated effluent discharged into -	North Fork - Nolin River

The City of Hodgenville Sewer Department recently completed several projects totaling \$2.5 million which included a new sewage treatment plant, expansion of sewer lines, and new lift station.

CLIMATE

LaRue County

Temperature

Normal (29-year record)	54.90 degrees
Average annual 1989	54.20 degrees
Record highest, July 1988 (45-year record)	103.00 degrees
Record lowest, January 1963 (45-year record)	-21.00 degrees
Normal heating degree days (29-year record)	4,814
(Heating degree day totals are the sums of negative departures of average daily temperatures from 65 degrees F.)	

Precipitation

Normal (29-year record)	45.68 inches
Mean annual snowfall (45-year record)	16.10 inches
Total precipitation 1989	53.16 inches
Mean number days precipitation (.01 inch or more) (45-year record)	129.50
Mean number days thunderstorms (45-year record)	45.30

Prevailing winds (through 1963)

South

Relative Humidity (26-year record, except 1 a.m. - 25-year record)

1 a.m.	77 percent
7 a.m.	81 percent
1 p.m.	60 percent
7 p.m.	64 percent

Source: U.S. Department of Commerce, Environmental Science Services Administration, Climatological Data, 1989. Station of record: Lexington, Kentucky.

LOCAL GOVERNMENT

Structure

The city of Hodgenville is served by a mayor and six council members. LaRue County is served by a county judge/executive and four magistrates.

Planning and Zoning

Joint agency - Land of Lincoln Planning & Zoning Commission
Participating cities - Hodgenville, Buffalo, Magnolia
Zoning enforced - All areas
Subdivision regulations enforced - All areas
Local codes enforced - Building and housing in all areas
Mandatory state codes enforced - Kentucky Plumbing Code, National Electric Code, Kentucky Boiler Regulations and Standards, Kentucky Building Code (modeled after BOCA code)

Local Fees and Licenses

Annual business license fees levied by the city of Hodgenville vary according to the type of business and range from \$25 to \$400. A \$50 truck loading and unloading fee is required annually. Automobile stickers are \$10 annually.

PROPERTY TAXES

The Kentucky Constitution requires the state to tax all classes of taxable property, and state statutes allow local jurisdictions to tax only a few classes. All locally taxed property is subject to county taxes and school district taxes (either a county school district or an independent school district). Property located inside of city limits may also be subject to city property taxes.

Special local taxing jurisdictions (fire protection districts, watershed districts, and sanitation districts) levy taxes within their operating areas (usually a small portion of community or county).

Property assessments in Kentucky are at 100% fair cash value. A 15% reduction is automatically granted for accounts receivable.

STATE PROPERTY TAX RATES PER \$100 VALUATION

<u>Selected Classes of Property</u>	<u>1990 State Rate</u>	<u>Local Taxation Permitted</u>
Real Estate	\$0.189	YES
Manufacturing Machinery	0.150	NO
Pollution Control Equipment	0.150	NO
Inventories		
Raw Materials	0.050	NO
Goods in Process	0.050	NO
Finished Goods	0.050	YES
Motor Vehicles	0.450	YES
Other Tangible Personal Property	0.450	YES
Intangibles (Accounts Receivable, Money on Hand)	0.250	NO

LOCAL PROPERTY TAX RATES PER \$100 VALUATION, 1990

<u>Taxing Jurisdiction</u>	<u>Real Estate</u>	<u>Finished Goods & Tangibles</u>	<u>Motor Vehicles</u>
LaRue County	\$0.2251	\$0.2370	\$0.2390
School Districts:			
LaRue	0.4490	0.4490	0.2500
Cities:			
Hodgenville	0.1580	0.1580	0.1940

EDUCATION

Public Schools

	LaRue County
Total Enrollment (Fall, 1990)	2,170
Pupil-Teacher Ratio (1989-90)	18.5-1
Percent High School Graduates to College (1989-90)	45.0
Expenditures Per Pupil (1989-90)	\$2,538.44

The LaRue County School System will initiate a building program in 1991, which will contain several major proposed projects. Construction of a new high school is one of the proposed projects.

Area Colleges and Universities

<u>Name</u>	<u>Location (Miles distant)</u>	<u>Enrollment (Fall, 1990)</u>
Elizabethtown Community College	Elizabethtown (12)	3,364
Campbellsville College	Campbellsville (30)	857
Saint Catharine College	Springfield (44)	257
Lindsey Wilson College	Columbia (48)	1,327
Bellarmine College	Louisville (56)	3,907
Jefferson Community College	Louisville (56)	10,240
Spalding University	Louisville (56)	1,028
University of Louisville	Louisville (56)	23,610
Western Kentucky University	Bowling Green (78)	15,240

Ten institutions of higher education operate extension campuses at Fort Knox Military Reservation, 27 miles northwest of Hodgenville. The extension campuses confer various graduate and undergraduate degree programs and are open to the public.

Vocational Training

Vocational training is available at both the state vocational-technical schools and the area vocational education centers. The state vocational-technical schools are post-secondary institutions. The area vocational education centers are designed to supplement the curriculum of high school students. Both the state vocational-technical schools and the area vocational education centers offer evening courses to enable working adults to upgrade current job skills.

Arrangements can be made to provide training in the specific production skills required by an industrial plant. Instruction may be conducted either in the vocational school or in the industrial plant, depending upon the desired arrangement and the availability of special equipment.

Bluegrass State Skills Corporation

The Bluegrass State Skills Corporation, an independent public corporation created and funded by the Kentucky General Assembly, provides programs of skills training to meet the needs of business and industry from entry level to advanced training, and from upgrading present employees to retraining experienced workers.

The Bluegrass State Skills Corporation is the primary source for skills training assistance for a new or existing company. The Corporation works in partnership with other employment and job training resources and programs, as well as Kentucky's economic development activities, to package a program customized to meet the specific needs of a company.

<u>Vocational School</u>	<u>Location (Miles distant)</u>	<u>Cumulative Enrollment 1989-1990</u>
Elizabethtown State Vocational- Technical School	Elizabethtown (12)	797
Nelson County Area Vocational Education Center	Bardstown (25)	188
Green County Area Vocational Education Center	Greensburg (28)	394

OTHER LOCAL FACILITIES

Local Medical Personnel

Physicians - 3

Dentists - 3

Hospitals

<u>General Hospital</u>	<u>Location</u>	<u>Beds</u>
Hardin Memorial Hospital	Elizabethtown, 12 miles northwest	300

Medical staff - 125 physicians, 341 registered nurses, 23 licensed practical nurses

A \$11.4 million expansion of the Hardin Memorial Hospital is scheduled to take place in the fall of 1991.

Other Medical Facilities and Services

LaRue County Health Department
LaRue County Home Health Agency
Sunrise Manor Nursing Home
Hodgenville Clinic
Magnolia Clinic

Banks and Savings & Loan Associations

Bank of Magnolia
Cumberland Federal Savings Bank
The Lincoln National Bank
The Peoples State Bank

Newspapers

The LaRue County Herald News

Telephone Service

GTE South

RECREATION

Local

Recreational opportunities are abundant and varied in Hodgenville and LaRue County. Local facilities include a city-county park with five lighted ball fields, four lighted tennis courts, a lighted pavilion, and a swimming pool.

The LaRue County Fairgrounds is the site of the oldest continuous fair in Kentucky. Facilities at the fairgrounds include a horseshow ring, a pavilion, grandstands, exhibition buildings, permanent horse stables, kitchen facilities, and parking areas. Fair activities include horseshows, cattle shows, pet shows, beauty contests, carnivals, home-life displays such as quilting and canning, and truck and tractor pulls.

The Lincoln Days Celebration is an annual event held each October in which local clubs and organizations put on a variety of activities. These include pioneer games, craft exhibitions, an art contest, a costume contest, railsplitting, the 10,000-meter Railsplitter Run marathon, a parade, a talent show, and the Abe Lincoln Look-Alike Contest.

Organized annual sports programs in Hodgenville include peanut league, pony league, and co-ed league baseball; league basketball; soccer; volleyball; gymnastics; aerobics; and horseshoes.

The LaRue County Sportsman's Club Lake, located 3 miles southeast of Hodgenville, offers camping sites, swimming, boating, fishing, a clubhouse, and a pavilion. The Mid-Kentucky Kennel Show is held annually at the lake. Salem Lake, located northeast of Hodgenville, also is being developed as a recreational area, and currently offers picnic areas and fishing.

Two buildings on Lincoln Square - the Woman's Club building and the community center building - are available to groups for meetings and projects. Community activities also are held at LaRue County High School.

The LaRue County Country Club is a private recreational facility featuring a nine-hole golf course and clubhouse.

Other points of interest include the downtown Hodgenville Historical District overlooked by the A.A. Weinmann Bronze Statue of Abraham Lincoln which is listed on the National Register of Historic Places. Several Civil War Campsites are scattered throughout the county.

The Lincoln Boyhood Home at Knob Creek Farm, a privately-managed historical site, was Lincoln's last home in Kentucky. The site offers a replica of the original Lincoln family cabin, a gift shop, picnic facilities, and special features allowing access for the handicapped.

Perhaps the area's most popular attraction is the **Abraham Lincoln Birthplace National Historic Site**, located 3 miles south of Hodgenville. The site features the log cabin which was the birthplace of Abraham Lincoln, enclosed within a granite memorial shrine. The grounds include 116 acres of the original Thomas Lincoln farm and a visitors' center with audiovisual programs and exhibits on the Lincoln family.

The community owned Lincoln Museum is located in the heart of downtown Hodgenville. The museum features historical dioramas of Lincoln's life.

Area (Within 50 miles)

Bernheim Forest Arboretum and
Nature Center
Green River Lake State Park
Kentucky Railway Museum
Lincoln Homestead State Park
Mammoth Cave National Park
My Old Kentucky Home State Park
Nolin River Lake

COMMUNITY IMPROVEMENTS

Recent

The LaRue County Industrial Foundation has expanded the industrial park to 90 acres. The park has on-site utilities, industrial capacity water lines, and will be extending the sewer lines to the property by late 1991.

Nationwide Uniform Corporation recently expanded its facility by 60,000 square feet. The additional space will be utilized for a computer cutting operation. An increase of employment is anticipated.

A \$2.5 million road improvement project to U.S. Highway 31E is completed. The improvements consisted of straightening sections, widening other areas, and rebuilding two bridges.

The City of Hodgenville Sewer Department recently completed several projects totaling \$2.5 million which included a new sewage treatment plant, expansion of sewer lines, and new lift stations.

The City of Hodgenville was recently designated as a historic district. This area will be listed in the National Register of Historic Places.

Under Way

Development of a new city park, Pioneer Park, is under way. The park will be used for local events and contain picnic area, shelters, and primitive camping.

Planned

The LaRue County School System will initiate a building program in 1991, which will contain several major proposed projects. Construction of a new high school is one of the proposed projects.

Long range plans for revitalization of the downtown area of Hodgenville are being designed.