

1985

## Industrial Resources: Lewis County - Vanceburg

Kentucky Library Research Collections  
Western Kentucky University, [spcol@wku.edu](mailto:spcol@wku.edu)

Follow this and additional works at: [https://digitalcommons.wku.edu/lewis\\_pty](https://digitalcommons.wku.edu/lewis_pty)



Part of the [Business Administration, Management, and Operations Commons](#), [Growth and Development Commons](#), and the [Infrastructure Commons](#)

---

### Recommended Citation

Kentucky Library Research Collections, "Industrial Resources: Lewis County - Vanceburg" (1985). *Lewis County*. Paper 7.  
[https://digitalcommons.wku.edu/lewis\\_pty/7](https://digitalcommons.wku.edu/lewis_pty/7)

This Report is brought to you for free and open access by TopSCHOLAR®. It has been accepted for inclusion in Lewis County by an authorized administrator of TopSCHOLAR®. For more information, please contact [topscholar@wku.edu](mailto:topscholar@wku.edu).

IR Lewis County

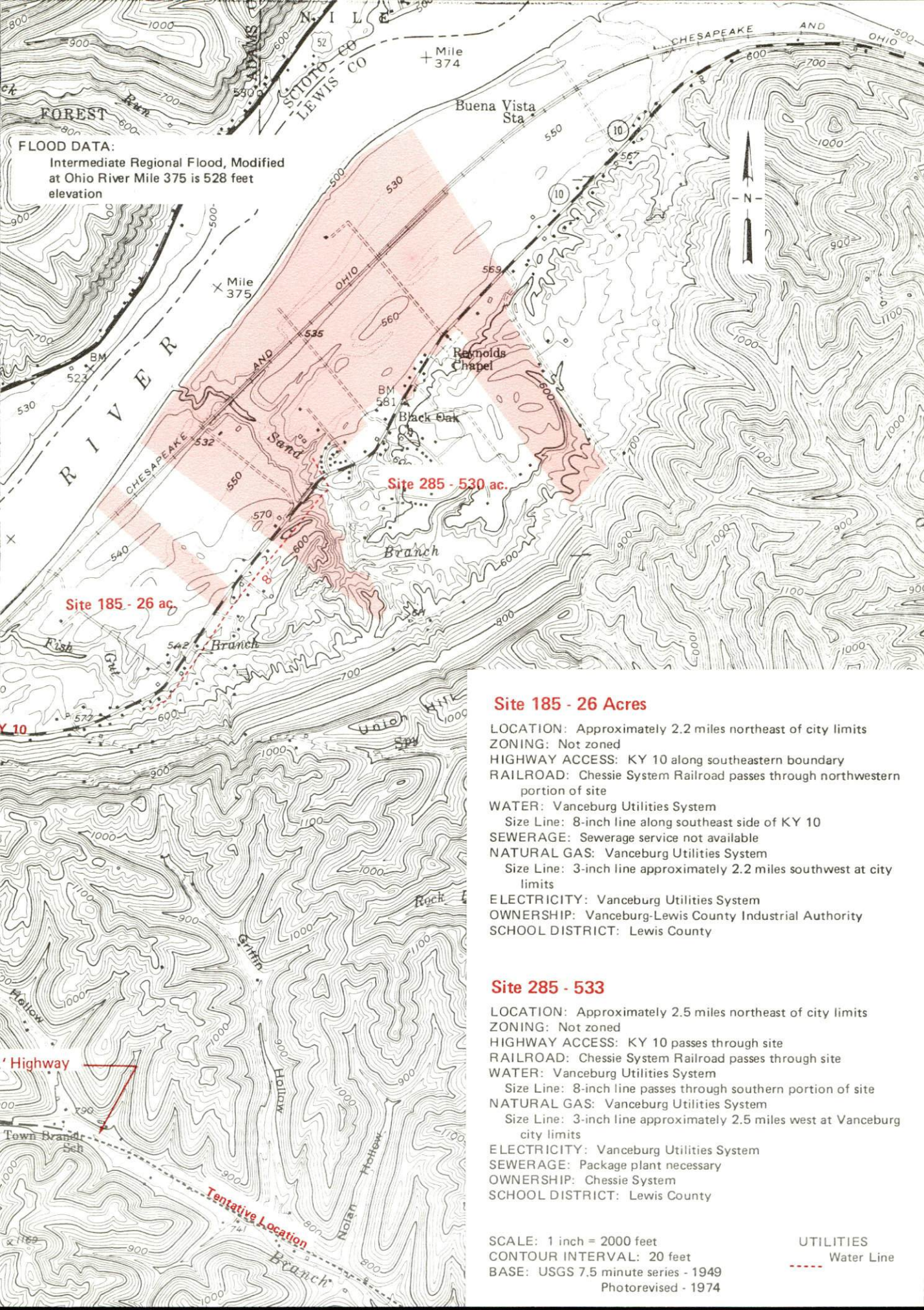
457

**RESOURCES  
FOR  
ECONOMIC  
DEVELOPMENT**

**VANCEBURG**

**KENTUCKY**  
The Business Environment is Right





#### FLOOD DATA:

Intermediate Regional Flood, Modified  
at Ohio River Mile 375 is 528 feet  
elevation

#### Site 185 - 26 Acres

**LOCATION:** Approximately 2.2 miles northeast of city limits  
**ZONING:** Not zoned  
**HIGHWAY ACCESS:** KY 10 along southeastern boundary  
**RAILROAD:** Chessie System Railroad passes through northwestern portion of site  
**WATER:** Vanceburg Utilities System  
Size Line: 8-inch line along southeast side of KY 10  
**SEWERAGE:** Sewerage service not available  
**NATURAL GAS:** Vanceburg Utilities System  
Size Line: 3-inch line approximately 2.2 miles southwest at city limits  
**ELECTRICITY:** Vanceburg Utilities System  
**OWNERSHIP:** Vanceburg-Lewis County Industrial Authority  
**SCHOOL DISTRICT:** Lewis County

#### Site 285 - 533

**LOCATION:** Approximately 2.5 miles northeast of city limits  
**ZONING:** Not zoned  
**HIGHWAY ACCESS:** KY 10 passes through site  
**RAILROAD:** Chessie System Railroad passes through site  
**WATER:** Vanceburg Utilities System  
Size Line: 8-inch line passes through southern portion of site  
**NATURAL GAS:** Vanceburg Utilities System  
Size Line: 3-inch line approximately 2.5 miles west at Vanceburg city limits  
**ELECTRICITY:** Vanceburg Utilities System  
**SEWERAGE:** Package plant necessary  
**OWNERSHIP:** Chessie System  
**SCHOOL DISTRICT:** Lewis County

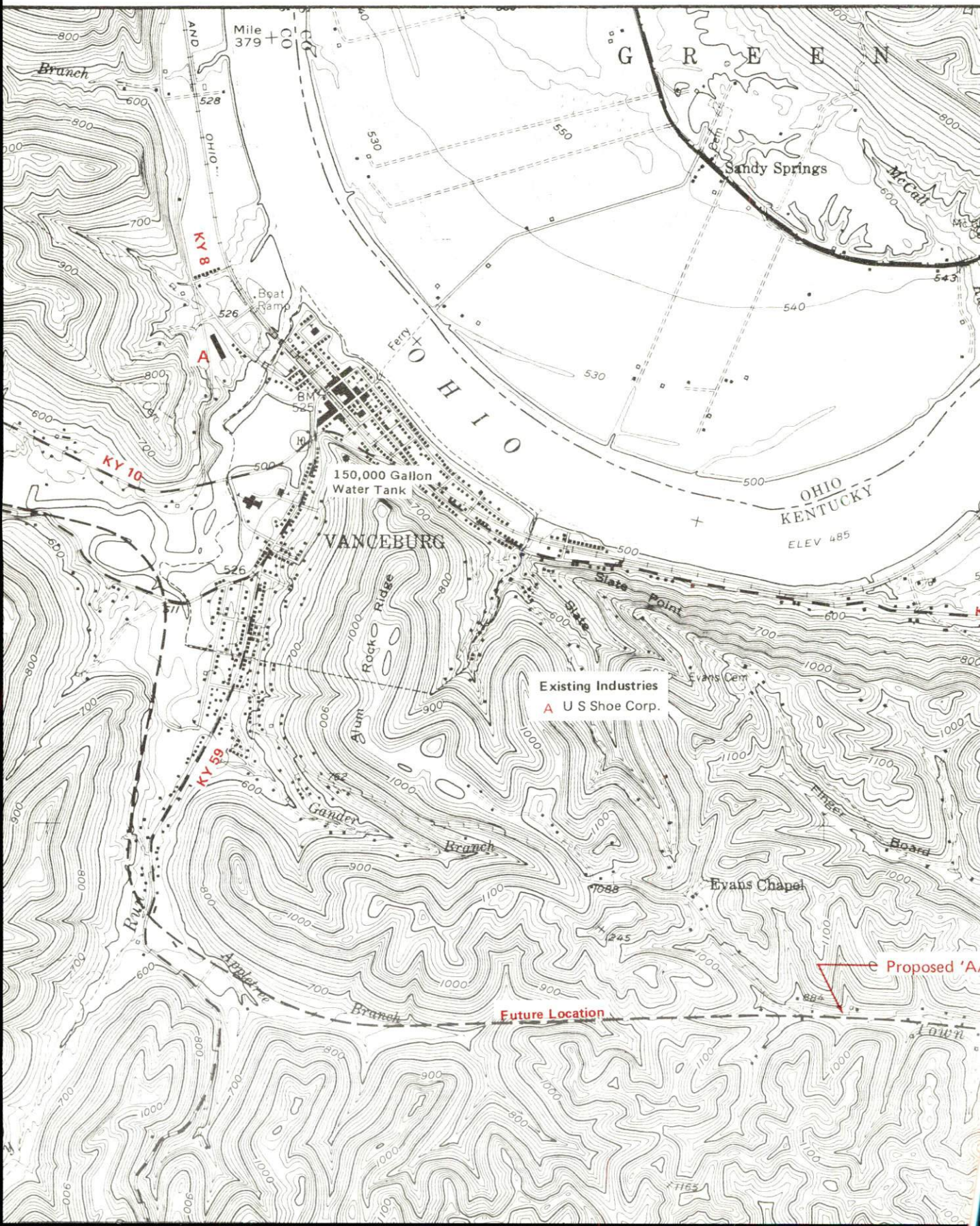
**SCALE:** 1 inch = 2000 feet  
**CONTOUR INTERVAL:** 20 feet  
**BASE:** USGS 7.5 minute series - 1949  
Photorevised - 1974

**UTILITIES**  
----- Water Line



## VANCEBURG, KENTUCKY --- Industrial Sites --- 1985

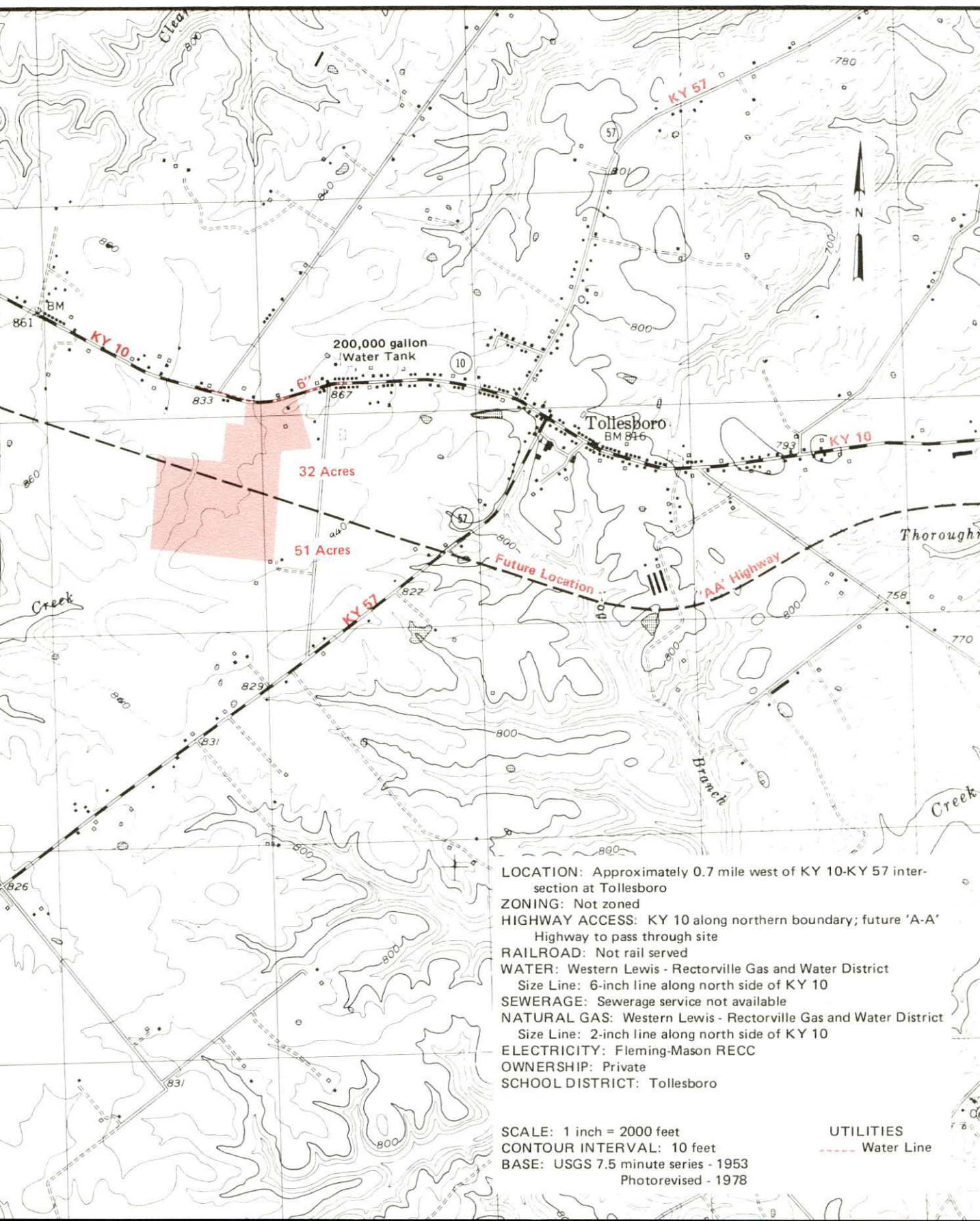
For more information contact the Kentucky Department of Economic Development, Industrial Development & Marketing Division, Capital Plaza Tower, Frankfort, Kentucky 40601 (502-564-7140).





# TOLLESBORO, KENTUCKY --- Site 185 --- 83 Acres

For more information contact the Kentucky Department of Economic Development, Industrial Development & Marketing Division, Capital Plaza Tower, Frankfort, Kentucky 40601 (502-564-7140).



LOCATION: Approximately 0.7 mile west of KY 10-KY 57 intersection at Tollesboro

ZONING: Not zoned

HIGHWAY ACCESS: KY 10 along northern boundary; future 'A-A' Highway to pass through site

RAILROAD: Not rail served

WATER: Western Lewis - Rectorville Gas and Water District  
Size Line: 6-inch line along north side of KY 10

SEWERAGE: Sewerage service not available  
NATURAL GAS: Western Lewis - Rectorville Gas and Water District  
Size Line: 2-inch line along north side of KY 10

ELECTRICITY: Fleming-Mason RECC

OWNERSHIP: Private

SCHOOL DISTRICT: Tollesboro

SCALE: 1 inch = 2000 feet

CONTOUR INTERVAL: 10 feet

BASE: USGS 7.5 minute series - 1953  
Photorevised - 1978

UTILITIES

----- Water Line



RESOURCES FOR ECONOMIC DEVELOPMENT  
VANCEBURG, KENTUCKY

Prepared by  
The Kentucky Department of Economic Development  
Division of Research and Planning  
in cooperation with  
The Vanceburg-Lewis County Industrial Authority

1985



Program manager - Andrew Dennis; research - James R. Thompson; clerical - Bobbi Graves; graphics - Frank Ferrante, Tony Cecconi, Robert Owens; cartography - Site Evaluation Branch, Division of Industrial Development and Marketing. Cost of printing paid from state funds.



## TABLE OF CONTENTS

<u>Chapter</u>	<u>Page</u>
INDUSTRIAL SITES .....	i
VANCEBURG, KENTUCKY - A RESOURCE PROFILE .....	1
THE LABOR MARKET AREA .....	3
Population .....	3
Labor Force Characteristics of Residents, 1984 .....	3
Selected Components of Nonagricultural Employment, by Place of Work, 1984 .....	4
Lewis County Manufacturing Firms, Their Products and Employment .....	4
Labor Organizations in Manufacturing Firms .....	5
Industrial Services .....	5
Estimated Male Labor Supply .....	6
Estimated Female Labor Supply .....	6
Average Weekly Wages By Industry, by Place of Work, 1984 .....	7
Per Capita Personal Income .....	9
TRANSPORTATION .....	10
Rail .....	10
Highways .....	10
Truck Service .....	11
Air .....	12
Bus .....	12
Taxi .....	12
Rental Services .....	12
Water .....	12
POWER AND FUEL .....	13
Electricity .....	13
Natural Gas .....	13
Other Fuels .....	14
WATER AND SEWERAGE .....	15
Public Water Supply .....	15
Raw Water .....	17
Sewerage .....	17
CLIMATE .....	18

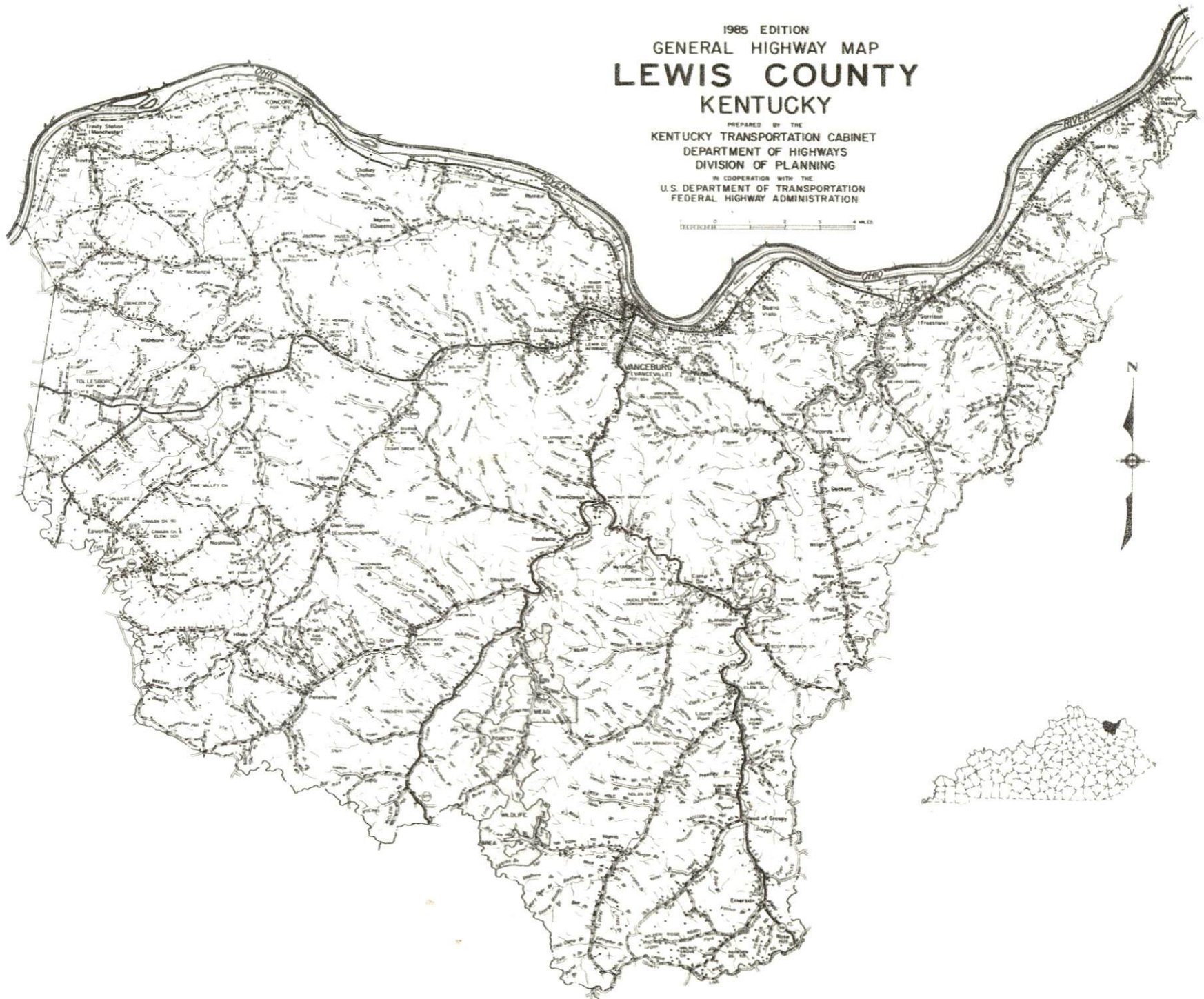


<u>Chapter</u>	<u>Page</u>
LOCAL GOVERNMENT .....	19
City .....	19
County .....	19
Assessed Value of Property, 1985 .....	19
Property Taxes .....	20
Combined State and Local Rates Per \$100 Valuation, 1984 .....	21
Planning and Zoning .....	21
Safety .....	21
Police .....	21
Fire .....	21
Refuse Collection and Disposal .....	22
EDUCATION .....	23
Public Schools .....	23
Area Colleges and Universities .....	24
Vocational Schools .....	25
HEALTH.....	27
Local Medical Personnel .....	27
Hospitals .....	27
Other Medical Facilities .....	28
Ambulance Service .....	28
OTHER LOCAL FACILITIES.....	29
Communications .....	29
Library Services .....	29
Religious Institutions .....	30
Financial Institutions .....	30
Clubs and Organizations .....	30
RECREATION .....	31
COMMUNITY IMPROVEMENTS .....	33

1985 EDITION  
GENERAL HIGHWAY MAP  
**LEWIS COUNTY**  
**KENTUCKY**

PREPARED BY THE  
KENTUCKY TRANSPORTATION CABINET  
DEPARTMENT OF HIGHWAYS  
DIVISION OF PLANNING  
IN COOPERATION WITH THE  
U.S. DEPARTMENT OF TRANSPORTATION  
FEDERAL HIGHWAY ADMINISTRATION

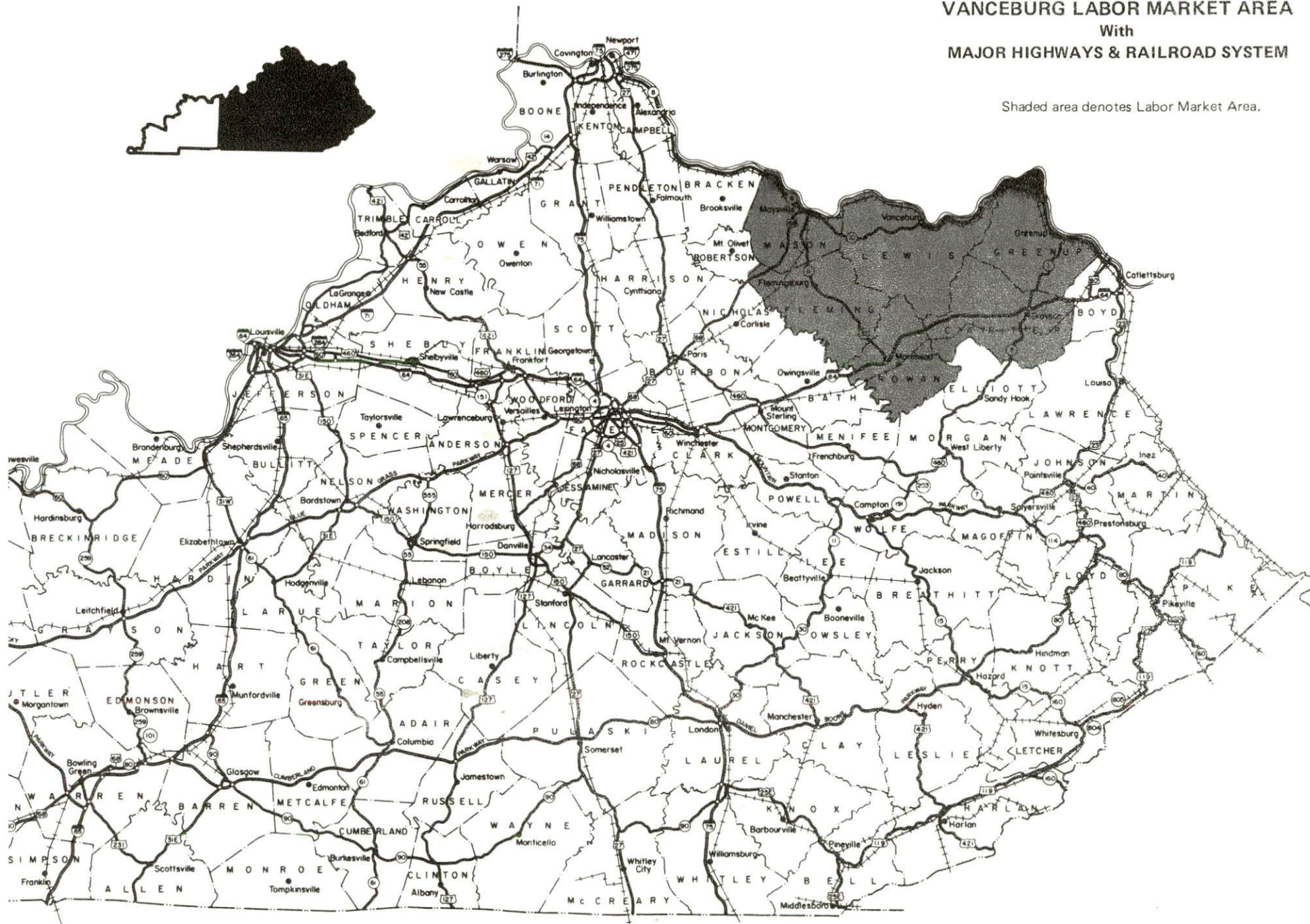
1 2 3 4 5 6 MILES  
DISTANCE





# VANCEBURG LABOR MARKET AREA With MAJOR HIGHWAYS & RAILROAD SYSTEM

Shaded area denotes Labor Market Area.



## VANCEBURG, KENTUCKY - A RESOURCE PROFILE

Vanceburg, the county seat of Lewis County, is located in the north central portion of Lewis County. With a 1982 estimated population of 1,999, Vanceburg is located 72 miles northwest of Huntington, West Virginia; 89 miles northeast of Lexington, Kentucky; 93 miles southeast of Cincinnati, Ohio; and 161 miles east of Louisville, Kentucky.

Lewis County, with a land area of 484 square miles, is located in northeastern Kentucky. The Ohio River forms the northern boundary of the county and the Licking River forms the southern boundary. The topography of Lewis County is hilly to mountainous. In 1982, Lewis County had an estimated population of 14,600.

### The Economic Framework

The total number of Lewis County residents employed in 1984 averaged 4,870, with nonagricultural jobs accounting for 4,340 workers. Manufacturing firms in the county reported 830 employees; wholesale and retail trade provided 200 jobs; 110 people were employed in service occupations; and state and local government accounted for 420 employees. Manufacturing employment is greatest in leather and leather products and lumber and wood products.

Per capita personal income in Lewis County in 1983 was \$5,362. Between 1979 and 1983, per capita income increased by 20.3 percent.

The Vanceburg labor market area includes Lewis County and the adjoining counties of Carter, Fleming, Greenup, Mason, and Rowan. The total number of residents employed in the labor market area in 1984 averaged 48,770, with nonagricultural jobs accounting for 45,580 workers. Manufacturing firms in the area reported 9,540 employees; wholesale and retail trade provided 6,330 jobs; 3,215 people were employed in service occupations; state and local government accounted for 5,690 employees; and contract construction firms provided 710 jobs.

### Resources for Growth

1. Labor Supply - There is a current estimated labor supply of 10,490 men and 10,730 women available for industrial jobs in the labor market area. In addition, from 1985 through 1989, 5,650 young men and 5,570 young women in the area will become 18 years of age and potentially available for industrial jobs.



2. Transportation - Main line rail service is provided to Vanceburg by the Chessie System Railroad. Vanceburg is served by Kentucky 10, a "AAA" rated (80,000-pound gross load limit) trucking highway, and Kentucky Highways 8 and 59, both "AA" rated (62,000-pound gross load limit) trucking highways. Interstate 64 is located approximately 28 miles south of Vanceburg. Construction of the Alexandria-to-Ashland highway is currently under way. The highway will run from I-275 in northern Kentucky to Vanceburg. Plans also include spurs starting at Vanceburg and running to I-64 at Grayson and to the proposed Greenup Dam Bridge at Greenup. Six common carriers provide Vanceburg with interstate and/or intrastate service. The nearest scheduled commercial airline service is Tri-State Airport (Walker-Long Field), 9 miles southwest of Huntington, West Virginia, 66 miles southeast of Vanceburg. The Fleming-Mason Airport, 39 miles southwest of Vanceburg, has a 5,000-foot runway to accommodate small aircraft.

3. Power and Fuel - Electric power is provided to Vanceburg and parts of Lewis County by the Vanceburg Electric System. Lewis County is also provided electric power by the Fleming-Mason Rural Electric Cooperative Corporation, which is supplied by the East Kentucky Power Cooperative. Natural gas service is provided to Vanceburg by the Vanceburg Utilities System, which is supplied by the Columbia Gas System. Two distributors of propane and three distributors of distillate fuel oil are located in Lewis County.

4. Education - Primary and secondary education is provided to Vanceburg and Lewis County by the Lewis County School System. The Lewis County School System has an enrollment of 3,040 students.

Five universities, one senior college, and four community colleges are located within 90 miles of Vanceburg.

The Ashland State Vocational-Technical School, in Ashland, provides training in 24 different courses. The Foster "Sid" Meade Area Vocational Education Center offers training in nine courses.

## THE LABOR MARKET AREA

The Vanceburg Labor Market Area includes Lewis County and the adjoining Kentucky counties of Carter, Fleming, Greenup, Mason and Rowan.

POPULATION				
Area	1984*	1980	1970	Percent Nonwhite 1980
Vanceburg	2,023	1,939	1,773	0.3
Labor Market Area	127,566	127,874	111,046	N/A
Lewis County	14,480	14,545	12,355	0.3
Carter County	25,669	25,060	19,850	0.2
Fleming County	12,488	12,323	11,366	1.9
Greenup County	38,649	39,132	33,192	0.6
Mason County	17,231	17,765	17,273	7.8
Rowan County	19,049	19,049	17,010	2.1

\* Population estimates.

Note: The 1980 city counts of population by race are provisional.

Sources: U.S. Department of Commerce, Bureau of the Census, 1980 Census of Population and Housing, March 1981; 1980 Census of Population, Number of Inhabitants. University of Louisville, Urban Studies Center, Population Unit, October 1985; Kentucky Population Research Notes, Issue Number One, May 1985.

### LABOR FORCE CHARACTERISTICS OF RESIDENTS, 1984

	Lewis County	Labor Market Area
Civilian Labor Force	5,842	55,797
Employment	4,873	48,772
Agricultural	533	3,195
Nonagricultural	4,340	45,577
Unemployment	969	7,025
Rate of Unemployment (%)	16.6	12.6

Source: Kentucky Cabinet for Human Resources, Kentucky Labor Force Estimates, Annual Averages, 1984.



SELECTED COMPONENTS OF NONAGRICULTURAL EMPLOYMENT,  
BY PLACE OF WORK, 1984

	<u>Lewis County</u>	<u>Labor Market Area</u>
All Industries (total)	1,723	28,122
Manufacturing	828	9,543
Wholesale & Retail Trade	197	6,329
Services	114	3,215
State/Local Government	420	5,692

Note: Excludes domestic workers, railway workers, certain nonprofit corporations, majority of federal government workers, and self-employed workers.

Source: Kentucky Cabinet for Human Resources, Average Monthly Workers Covered by Kentucky Unemployment Insurance Law, 1984.

LEWIS COUNTY MANUFACTURING FIRMS,  
THEIR PRODUCTS AND EMPLOYMENT

THEIR PRODUCTS AND EMPLOYMENT				
Firm (Establishment date)	Product	Employment		
		Total	Male	Female
Vanceburg				
Lewis County Herald Publishing Company (1924)	Newspaper	3	0	3
Moore and White Lumber Company, Inc. (1958)	Grade lumber, crossties, veneer logs	25	22	3
Rigdon Lumber Company (1982)	Precut lumber, wood pallets	12	11	1
C. J. Thomas and Son, Inc. (1945)	Wood pallets, wood chips, tobacco sticks	21	20	1
U.S. Shoe Corporation (1957)	Ladies' shoes	330	130	200
U.S. Shoe Corporation, Component Plant (1967)	Shoe ornaments, binding and lining, processing insoles	366	89	277
Tollesboro				
R. S. Salvage Company, Inc. (1964)	Pallets, lumber	5	4	1

Sources: Kentucky Department of Economic Development, 1985 Kentucky Directory of Manufacturers; Division of Research and Planning.

## LABOR ORGANIZATIONS IN MANUFACTURING FIRMS

There are no unions representing manufacturing workers in Lewis County at the present time.

### INDUSTRIAL SERVICES

<u>Types of Services</u>	<u>Location</u>	<u>Mileage from Vanceburg</u>
Custom Plastics Producers	Ashland, Kentucky	55
	Mt. Sterling, Kentucky	64
Electric Motor Repair	Maysville, Kentucky	31
	Morehead, Kentucky	39
Grinding, Precision & Tool	Huntington, West Virginia	72
	Winchester, Kentucky	77
Heat Treating Facilities	Georgetown, Kentucky	86
	Lexington, Kentucky	89
	Cincinnati, Ohio	93
Industrial Equipment & Supplies	Ashland, Kentucky	55
	Huntington, West Virginia	72
	Lexington, Kentucky	89
Industrial Gases	Huntington, West Virginia	72
	Lexington, Kentucky	89
	Cincinnati, Ohio	93
Industrial Waste Removal	Portsmouth, Ohio	25
Machine Shops, Tool & Die	Flemingsburg, Kentucky	32
Metal Finishers	Georgetown, Kentucky	86
	Lexington, Kentucky	89
Metal Service Centers	Morehead, Kentucky	39
Millwrights	Lexington, Kentucky	89
	Cincinnati, Ohio	93
Public Warehouse Facilities	Paris, Kentucky	70
	Lexington, Kentucky	89

Sources: Kentucky Department of Economic Development, Kentucky Directory of Selected Industrial Services, 1985; Division of Research and Planning.



ESTIMATED MALE LABOR SUPPLY  
VANCEBURG LABOR MARKET AREA

<u>Area</u>	<u>Current</u>			<u>Future</u>	
	<u>Total Male</u>	<u>Unemployed</u>	<u>Under-employed</u>	<u>Not in Labor Force</u>	<u>Becoming 18 years of age 1985 thru 1989</u>
Labor Market					
Area*	10,488	4,659	3,267	2,562	5,646
Lewis	1,594	687	382	525	725
Carter	2,628	1,496	751	381	1,174
Fleming	772	372	255	145	509
Greenup	3,465	1,108	846	1,511	1,828
Mason	716	412	304	0	704
Rowan	1,313	584	729	0	706

ESTIMATED FEMALE LABOR SUPPLY  
VANCEBURG LABOR MARKET AREA

<u>Area</u>	<u>Current</u>			<u>Future</u>	
	<u>Total Female</u>	<u>Unemployed</u>	<u>Under-employed</u>	<u>Not in Labor Force</u>	<u>Becoming 18 years of age 1985 thru 1989</u>
Labor Market					
Area*	10,723	2,366	3,185	5,172	5,571
Lewis	1,221	282	376	563	647
Carter	2,392	605	478	1,309	1,156
Fleming	946	209	332	405	530
Greenup	4,232	542	795	2,895	1,829
Mason	826	407	419	0	716
Rowan	1,106	321	785	0	693

\* Additional workers may be drawn from other nearby counties.

Note: Unemployed - persons unemployed and actively seeking work;  
Underemployed - persons employed but working only 14 to 26 weeks per year;  
Not in Labor Force - represents the number of persons who would enter the labor force if suitable employment were available (based on the assumption that persons in Kentucky would like to participate in the labor force in the same proportion that they do nationally).

Sources: Kentucky Cabinet for Human Resources, Kentucky Labor Supply Estimates by County, 1984. Kentucky Department of Economic Development, Future Labor Supply Becoming 18 Years of Age, 1985 thru 1989.

AVERAGE WEEKLY WAGES BY INDUSTRY,  
BY PLACE OF WORK, 1984

	<u>Lewis County</u>	<u>Carter County</u>	<u>Fleming County</u>
All Industries	\$ 195.34	\$ 240.82	\$ 223.67
Mining & Quarrying	0	439.45	*
Contract Construction	138.20	325.46	410.77
Manufacturing	167.03	185.88	195.71
Transportation, Communications & Public Utilities	204.84	381.03	371.30
Wholesale & Retail Trade	153.59	172.23	184.60
Finance, Insurance & Real Estate	233.68	252.13	245.58
Services	154.41	183.52	160.04
State/Local Government	274.80	280.15	259.83
Other	0	200.68	163.01
	<u>Greenup County</u>	<u>Mason County</u>	<u>Rowan County</u>
All Industries	\$ 413.08	\$ 279.78	\$ 260.48
Mining & Quarrying	*	*	325.55
Contract Construction	271.60	283.61	305.07
Manufacturing	568.26	334.84	253.24
Transportation, Communications & Public Utilities	456.76	493.14	390.98
Wholesale & Retail Trade	181.07	178.84	166.63
Finance, Insurance & Real Estate	260.92	252.38	314.72
Services	277.74	223.26	271.77
State/Local Government	255.57	275.17	303.71
Other	106.23	268.26	183.58

\* Not disclosed.

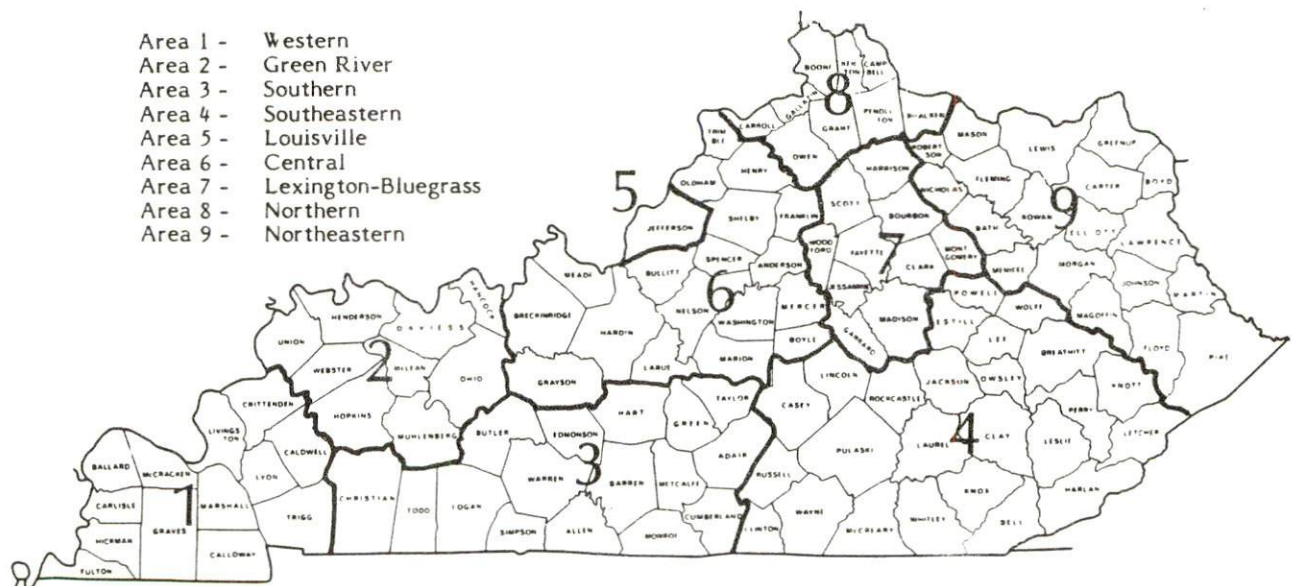
Note: Excludes domestic workers, railway workers, certain nonprofit corporations, majority of federal government workers, and self-employed workers.

Source: Kentucky Cabinet for Human Resources, Average Weekly Wages of Workers Covered by Kentucky Unemployment Insurance Law, 1984.



Occupational wage rates for specific industries are usually not available to most government agencies, and wage data furnished to state employment agencies by individual industrial employers are protected from disclosure by federal law. The most reliable up-to-date wage information can be obtained by direct contact with local employers.

Associated Industries of Kentucky, a voluntary organization of Kentucky businesses, regularly collects occupational wage rates and fringe benefits data from participating member firms. Data are compiled for over 127 clearly defined office, production, and service occupations. Tabulations are published for nine geographical areas of Kentucky, as shown on the map below. It should be noted that the data may be weighted by the preponderance of firms in the larger cities and may be somewhat higher than the rates paid in the smaller communities. Data from these tabulations are available, upon request, from the Kentucky Department of Economic Development, Frankfort, Kentucky 40601.



PER CAPITA PERSONAL INCOME

<u>Area</u>	<u>1979</u>	<u>1983</u>	<u>Percent Change</u>
Lewis County	\$ 4,456	\$ 5,362	20.3
Labor Market Area Range	\$4,456 - 7,406	\$ 5,362 - 9,260	N/A
Kentucky	7,124	9,396	31.9
U. S.	8,651	11,687	35.1

Sources: U.S. Department of Commerce, Bureau of Economic Analysis; Commerce News, August 28, 1984; May 7, 1985. Kentucky Economic Information System, June 1985.



## TRANSPORTATION

### Rail

Line serving **Vanceburg** - The Chessie System

Services - Main line; freights stop on an as needed basis; two eastbound and two westbound through freights daily; switching services; team track space for 40 cars; piggyback facilities available at Cincinnati, Ohio, 93 miles northwest of Vanceburg

For details on routing, schedules, rates, and services, contact:

The Chessie System  
Real Estate and Industrial  
Development Department  
Suite 500, Cornell Center  
11311 Cornell Park Drive  
Cincinnati, Ohio 45242  
(513) 369-5258

### Highways

Vanceburg is served by Kentucky Highway 10, a "AAA" rated (80,000-pound gross load limit) trucking highway, and Kentucky Highways 8 and 59, both "AA" rated (62,000-pound gross load limit) trucking highways. Lewis County is served by Kentucky 57, a "AAA" rated trucking highway, and Kentucky 344, a "AA" rated trucking highway. Access to Interstate 64 is 28 miles south of Vanceburg via Kentucky Highway 59.

Construction of the Alexandria-to-Ashland Highway is currently under way. The \$450 million highway starts at I-275 in northern Kentucky and runs to Vanceburg. Tentative plans also include spurs from Vanceburg to I-64 at Grayson and to the proposed Greenup Dam Bridge at Greenup.

## Truck Service

<u>Company</u>	<u>Home Office</u>
Bestway Express, Inc.*	Nashville, Tennessee 37210
Budig Western*	1100 Gest Street Cincinnati, Ohio 45203
Craig's Express, Inc.	U. S. Highway 27 Falmouth, Kentucky 41040
The Maryland Transportation Company**	1111 Frankfurst Avenue Baltimore, Maryland 21225
McDaniel Motor Express, Inc.***	Lexington, Kentucky 40505
Overnite Transportation Company*	P. O. Box 1216 Richmond, Virginia 23209

\* Interstate and intrastate service.

\*\* Interstate service only.

\*\*\* Intrastate service only.

Source: American Motor Carrier Directory, Fall 1985.

<u>Other Freight Services</u>	<u>Nearest Office or Shipping Center</u>
Airborne Express	Huntington, West Virginia, 72 miles southeast
Emery	Lexington, Kentucky, 89 miles southwest; Cincinnati, Ohio, 93 miles northwest
Federal Express	Huntington, West Virginia, 72 miles southeast
Purolator Courier	Ashland, Kentucky, 55 miles southeast
United Parcel Service	Maysville, Kentucky, 31 miles west

### HIGHWAY MILES AND TRUCK TRANSIT TIME IN DAYS FROM VANCEBURG, KENTUCKY, TO SELECTED MARKET CENTERS

City	Highway Miles	Delivery Time TL	City	Highway Miles	Delivery Time TL
Atlanta, Ga.	451	2	Los Angeles, Ca.	2,269	4
Baltimore, Md.	503	2	Louisville, Ky.	161	1
Birmingham, Ala.	487	2	Nashville, Tenn.	299	1
Chicago, Ill.	380	2	New Orleans, La.	818	3
Cincinnati, Ohio	93	1	New York, N. Y.	666	N/A
Cleveland, Ohio	263	1	Pittsburgh, Pa.	306	1
Detroit, Mich.	316	1	St. Louis, Mo.	424	1
Knoxville, Tenn.	259	1			

Note: Mileage computations are via the best interstate or primary highways, not necessarily the most direct route of travel.

Sources: Rand McNally Road Atlas, 1979. Official Kentucky Mileage Map, 1980.  
Delivery time - Overnite Transportation Company, P. O. Box 99308, Louisville, Kentucky 40299.



## Air

### Local

Location: Fleming-Mason Airport  
39 miles southwest of Vanceburg  
Runways: 1 paved  
Length: 5,000 feet  
Traffic  
Control: VOR, NDB, segmented circle, wind cone  
Lighting: VASI, MIRL, REIL, beacon - sundown to sunrise  
Services: 100LL and Jet A fuel; minor A & P repair; auto  
and aircraft rental; unicom, hangar tie-down;  
flight instructions, parachute jumping

### Nearest Scheduled Airline Service

Location: Tri-State Airport (Walker-Long Field)  
9 miles southwest of Huntington, West Virginia;  
66 miles southeast of Vanceburg  
Runways: 2 paved  
Length: 6,509 feet and 3,007 feet  
Traffic  
Control: Tower  
Lighting: Beacon, runway  
Services: Piedmont, USAir, Comair; fuel - 100LL, jet-A;  
tie-downs, hangars; major A & P repairs,  
major Avionics repairs; APU, charter, flight  
instruction, oxygen, plane rental, survival equipment,  
U.S. Customs; taxi, limousine, car rental; weather  
information; restaurant  
  
Air Freight  
Service: Air freight terminal

**Bus** - The Greyhound Bus Line provides service at Portsmouth, Ohio, 25 miles northeast of Vanceburg.

**Taxi** - One company, 24-hour service

**Rental Services** - Auto, truck and trailer rental is available at Portsmouth, Ohio, 25 miles northeast of Vanceburg.

## Water

The Ohio River, which forms the northern boundary of Lewis County, provides Vanceburg with excellent water transportation capabilities. The Maysville-Mason County Port Authority is planning to develop a public port on the Ohio River at Maysville, 31 miles west of Vanceburg. The planned port will serve as a general cargo facility. The Eastern Kentucky Port Authority is planning to develop a public port on the Ohio River at Ashland, 55 miles southeast of Vanceburg. Construction of the general cargo facility will be completed in 1986.

## POWER AND FUEL

### Electricity

Company serving **Vanceburg and a small portion of Lewis County** - Vanceburg Electric System

Source of power - Vanceburg Electric System

Total generating capacity - 70,000 KW\*

For industrial rates contact:

Vanceburg Electric System  
611 Front Street  
P. O. Box 117  
Vanceburg, Kentucky 41179  
(606) 796-2641

Company serving **Lewis County** - Fleming-Mason Rural Electric Cooperative Corporation

Source of power - East Kentucky Power Cooperative

Total generating capacity - 1,309,000 KW\*\*

For industrial rates contact:

Industrial Development Division  
East Kentucky Power Cooperative  
P.O. Box 707  
Winchester, Kentucky 40391  
(606) 744-4812

### Natural Gas

Company serving **Vanceburg** - Vanceburg Utilities System

Source of supply - Columbia Gas Transmission Company

Size of transmission mains - 4 and 6 inches (supplier); 4 inches (distributor)

Distribution mains - 1 to 6 inches

Distribution pressure - 12-15 psi

Btu content - 1,000 per cubic foot

Specific gravity - 0.60

For rates and supplies contact:

Vanceburg Utilities System  
P. O. Box 117  
Vanceburg, Kentucky 41179  
(606) 796-2641

- \* The installation of 16 miles of transmission line, east of Vanceburg, by the Vanceburg Electric System is scheduled for completion by 1987. The \$3 million project will also include the installation of two substations. Also, the Vanceburg Electric System plans to build an additional 70,000-kilowatt hydroelectric plant. Construction of the \$150 million facility will start in 1986 and will take 3 years to complete.
- \*\* East Kentucky Power Cooperative's total generating capacity will be increased when a new 650,000 KW coal-fired generation plant is completed in southeast Clark County in 1992.



Company serving **Tollesboro** - Western Lewis-Rectorville Water and Gas District  
Source of supply - Columbia Gas Transmission Corporation  
Size of transmission mains - 24-inch (supplier); 3-inch (distributor)  
Distribution mains - 2 and 3 inches  
Distribution pressure - 87 psi  
Btu content - 1,041 per cubic foot  
For rates and supplies contact:

Western Lewis-Rectorville  
Gas and Water District  
P. O. Box 633  
Maysville, Kentucky 41056  
(606) 564-9333

## Other Fuels

### Propane

Vanceburg Supply Company  
204 Market Street  
Vanceburg, Kentucky 41179

Stan Harvey Gas Company  
P. O. Box 201  
Tollesboro, Kentucky 41189

### Fuel oils

Distillate fuel oil -

Ashland Petroleum Company  
(Bulk plant)  
Box 570  
Vanceburg, Kentucky 41179

Lykins Oil Enterprises, Inc.  
P. O. Box 328  
Vanceburg, Kentucky 41179

Gilbert Oil Company  
546 Lexington Avenue  
Vanceburg, Kentucky 41179

Additional suppliers of propane and distillate fuel oil are located at Portsmouth, Ohio, 25 miles east of Vanceburg, Kentucky; Maysville, Kentucky, 31 miles west of Vanceburg; and Flemingsburg, Kentucky, 32 miles south of Vanceburg.

Residual fuel oil - Arrangements must be made with the refinery.

Low sulphur content coal - Available in Kentucky.

## WATER AND SEWERAGE

### Public Water Supply

Company serving **Vanceburg** - Vanceburg Utilities System  
P. O. Box 117  
Vanceburg, Kentucky 41179  
(606) 796-2641

Source - Two wells  
Treatment plant capacity - 720,000 gallons per day  
Average daily consumption - 240,000 gallons  
Peak daily consumption - 270,000 gallons  
Treatment processes - Chlorination and fluoridation  
Calcium content - 052.2 ppm  
Iron content - 0.04 ppm  
Hardness - 179.0 ppm as calcium carbonate  
Storage capacity - 350,000 gallons  
Size lines - 4 to 10 inches  
Water pressure - 40 to 50 psi

### MONTHLY WATER RATES

First	1,500 gallons	\$4.00 (Minimum)
Next	3,500 gallons	2.50 per M gallons
Next	5,000 gallons	2.00 per M gallons
Next	10,000 gallons	1.50 per M gallons
Next	30,000 gallons	1.25 per M gallons
All over	50,000 gallons	1.00 per M gallons

Tap-on charge: Cost of labor and materials

Name of water district - Western Lewis-Rectorville Water and  
Gas District\*  
Route 4  
Maysville, Kentucky 41056  
(606) 564-9333

Date when water district began operating - 1962  
Source - Two wells  
Treatment plant capacity - 216,000 gallons per day\*\*  
Average daily consumption - 170,000 gallons  
Peak daily consumption - 190,000 gallons  
Calcium content - 85.5 ppm  
Iron content - .01 ppm  
Hardness - 612.0 ppm as calcium carbonate  
Type treatment - Chlorination  
Storage capacity - 260,000 gallons (including clear well)  
Size lines - 6, 4, and 2 inches  
Water pressure - 35 to 90 psi

(Continued)

\* The Western Lewis-Rectorville Water and Gas District has plans to extend water service to the city of Burtonville.

\*\* Natural Resources and Environmental Protection Cabinet.



### MONTHLY WATER RATES

First	1,000 gallons	\$3.75 (Minimum)
Next	2,000 gallons	1.50 per M gallons
Next	2,000 gallons	1.00 per M gallons
Next	5,000 gallons	.85 per M gallons
Next	5,000 gallons	.75 per M gallons
All over	15,000 gallons	.65 per M gallons

Tap-on charge: \$225

Name of water district - Salt Lick Water Association, Inc.  
Route #7  
Vanceburg, Kentucky 41179  
(606) 796-2552

Area served - East of Vanceburg along Kentucky Route 10 to Charters, Kentucky

Date when water district began operating - 1969

Source of supply of treated water - Vanceburg Utilities System

Average amount of water used in a 24-hour period - 10,000 gallons

Peak amount of water used in a 24-hour period - 16,250 gallons

Calcium content - 052.2 ppm

Iron content - 0.04 ppm

Hardness - 179.00 ppm as calcium carbonate

Water pressure - 50 to 60 psi

Size lines - 3, 4 and 6 inches

Monthly rates -

First	1,500 gallons	\$5.90 (Minimum)
Next	3,500 gallons	1.25 per M gallons
Next	5,000 gallons	1.00 per M gallons
Next	10,000 gallons	.90 per M gallons
All over	20,000 gallons	.80 per M gallons

Tap-on charge: \$300

Name of water district - Black Oak Water Association, Inc.  
Route #2  
Vanceburg, Kentucky 41179  
(606) 796-3224

Area served - Black Oak area (east of Vanceburg along Kentucky Route 10)

Date when water district began operating - 1971

Source of supply of treated water - Vanceburg Utilities System

Average amount of water used in a 24-hour period - 10,000 gallons

Peak amount of water used in a 24-hour period - 15,000 gallons

Calcium content - 052.2 ppm

Iron content - 0.04 ppm

Hardness - 179.0 ppm as calcium carbonate

Water pressure - 30 to 40 psi

Size lines - 3 and 4 inches

(Continued)

Monthly fees including sales tax -

First	2,000 gallons	\$ 7.35 (Minimum)
	5,000 gallons	15.23
	10,000 gallons	21.79
	15,000 gallons	27.04
	20,000 gallons	32.29
All over	20,000 gallons	.84 per M gallons

Tap-on charge: \$200 plus, (if cost of actual installation exceeds \$200, customer must pay full cost)

**Raw Water**

Surface water sources - Ohio River and Cabin Creek

Average discharge - Ohio River at Greenup Dam, Kentucky - 92,530 cfs (15-year record, USGS); Cabin Creek near Tollesboro - 30.5 cfs (11-year record, USGS)

Expected ground water yield - 500 to 1,000 gpm along the Ohio River; 5 to 50 gpm in isolated bands throughout the county; 5 gpm or less over the remainder of the county

**Sewerage**

Company serving **Vanceburg** - Vanceburg Utilities System  
P. O. Box 117  
Vanceburg, Kentucky 41179  
(606) 796-2641

Design capacity - 250,000 gallons per day

Average daily flow - 200,000 gallons

Treatment - Primary

Type treatment - Aeration, clarifier, digester

Treated effluent discharged into - Ohio River

Size of sanitary mains - 6, 8, 10 and 12 inches

Size of storm mains - 10, 12, 14, 16 and 24 inches

Rates - 125% of monthly water bill

Tap-on charge: \$90



## CLIMATE

### Lewis County

#### Temperature

Normal (30-year record)	53.30 degrees
Average annual 1984	53.20 degrees
Record highest, August 1962 (23-year record)	102.00 degrees
Record lowest, January 1977 (23-year record)	-25.00 degrees
Normal heating degree days (30-year record)	5,247
(Heating degree day totals are the sums of negative departures of average daily temperatures from 65 degrees F.)	

#### Precipitation

Normal (30-year record)	40.14 inches
Mean annual snowfall (29-year record)	24.00 inches
Total precipitation 1984	42.00 inches
Mean number days precipitation (.01 inch or more) (37-year record)	129.40
Mean number days thunderstorms (37-year record)	43.30

#### Prevailing Winds (through 1963)

South-Southwest

#### Relative Humidity (22-year record)

1 a.m.	77 percent
7 a.m.	81 percent
1 p.m.	60 percent
7 p.m.	64 percent

Source: U.S. Department of Commerce, Environmental Science Services Administration, Climatological Data, 1984. Station of record: Cincinnati, Ohio, Greater Cincinnati Airport.

## LOCAL GOVERNMENT

### City

#### Vanceburg

Structure - Mayor - 4-year term; 6 council members - 2-year terms

Budget 1985-86 - General Fund \$415,571

Water and Sewer Fund 304,620

City Gas System 492,411

City Electric System 993,757

Fees and licenses - Occupational license fee - \$25.50 per year; occupational license tax of 1% on wages and net profits

### County

Structure - County Judge/Executive - 4-year term; 3 magistrates - 4-year terms

Budget 1984-85 - General Fund \$275,825; Road Fund \$423,000

#### Assessed Value of Property, 1985\*

<u>Classes of Property</u>	<b>Vanceburg</b>	<b>Lewis County</b>
Real Estate	\$10,807,740	\$91,991,020
Tangibles	2,184,754	26,767,957

\* Excludes Homestead Exemptions.



## Property Taxes

All property in Kentucky is assessed at 100 percent of fair cash value.

Land and buildings are taxed by the state and may be taxed by local jurisdictions. The 1984 state rate is \$0.22 per \$100 of assessed valuation.

Manufacturing machinery, raw materials inventories, pollution control equipment, and goods in the process of manufacture are not subject to local taxation. The state rate is \$0.15 per \$100. (**Note:** Effective January 1, 1986, the state rate for raw materials and goods in process will be reduced to \$0.001 per \$100.)

Other tangible personal property owned by manufacturers (automobiles, trucks, finished goods, office furniture, office equipment) is taxed by the state at \$0.45 per \$100 and may be taxed by local jurisdictions. (**Note:** Effective January 1, 1986, the state rate for finished goods will be reduced to \$0.001 per \$100.)

Intangible personal property located in Kentucky (money in hand, shares of stock, notes, bonds, accounts receivable, and other credits) is taxed by the state at \$0.25 per \$100, and is not subject to local taxation.

Property stored in public warehouses in a transit status is not subject to local taxation. The state rate is only \$0.015 per \$100. (**Note:** Effective January 1, 1986, the state rate will be reduced to \$0.001 per \$100.)

Private leaseholds in industrial facilities owned by cities or counties and financed by industrial revenue bonds are subject to a state tax of \$0.015 per \$100 of value (essentially the lessee's equity, adjusted for appreciation or depreciation). Local taxation is not permitted.

**Combined State and Local Rates Per \$100 Valuation, 1984\***  
(100% assessment)

	<u>Site Inside City of Vanceburg</u>	<u>Site Inside Unincorporated Lewis County</u>
1. Land and buildings	\$0.8140	\$0.6760
2. Mfg. machinery, raw materials, goods in process, pollution control equipment	0.1500	0.1500
3. Automobiles and trucks	1.0758	0.9358
4. Finished goods, office equipment, other tangibles	1.0698	0.9298
5. Intangibles (accounts receivable, notes, bonds, etc.)	0.2500	0.2500
6. Property stored in public warehouses in a transit status	0.0150	0.0150
7. Leaseholds in industrial revenue bond financed plants	0.0150	0.0150

**Planning and Zoning**

Presently there is no planning and zoning commission in Lewis County.

Mandatory state codes enforced - Kentucky Plumbing Code, National Electric Code, Kentucky Boiler Regulations and Standards, Kentucky Building Code (modeled after BOCA code)

**Safety**

<b>Police</b>	<b>Vanceburg</b>	<b>Lewis County</b>
Total staff	4 full-time 2 part-time	6
Radio-patrol cars	3	5

**Fire**

Insurance Services Office, Public Protection Classification	7**	***
Volunteers	20	100

\* Kentucky Department of Economic Development.

\*\* Construction of a new firehouse in south Vanceburg was completed in Fall 1985. This provides Vanceburg with two firehouses.

\*\*\* Lewis County is provided fire protection by six volunteer fire departments. The insurance services office, public protection classifications range from 7 to 10.



## Refuse Collection and Disposal

	Vanceburg	Lewis County
Type service	Municipal	Private
Fee charged:		
residential	\$3.50 monthly	\$4 monthly
commercial	\$10 to \$35 monthly	Based on volume
industrial	\$150 to \$400 monthly	Based on volume
Collection frequency:		
residential	Weekly	Weekly
commercial	Twice weekly	Based on volume
industrial	Daily	Based on volume
Disposal method	Landfill	Landfill

## EDUCATION

### Public Schools

#### Lewis County

Total Enrollment (August 1985)	3,038
Kindergarten	246
Elementary	1,353
Junior High	716
High School	723
Pupil-Teacher Ratio (1983-84)	20.5
Percent High School Graduates to College (1983-84)	28.3
Expenditures Per Pupil (1983-84)	\$ 1,705.13
Bonded Indebtedness (June 30, 1984)	\$3,865,000*

\* Includes School Building Authority bonds outstanding of \$1,765,000; local school district obligation of \$830,000.

## Area Colleges and Universities

<u>Name</u>	<u>Location (Miles distant)</u>	<u>Enrollment (Fall, 1984)</u>	<u>Highest Degree Conferred</u>
Shawnee State Community College	Portsmouth, Ohio (25)	2,314	Associate
Maysville Community College	Maysville, Kentucky (31)	654	Associate
Morehead State University	Morehead, Kentucky (39)	6,204	Masters, Specialist*
Ohio University (Ironton campus)	Ironton, Ohio (49)	1,012	Academic and Professional
Ashland Community College	Ashland, Kentucky (55)	1,997	Associate
Marshall University	Huntington, West Virginia (72)	11,332	Academic and Professional
Georgetown College	Georgetown, Kentucky (86)	1,298	Masters
Lexington Community College	Lexington, Kentucky (89)	2,573	Associate
Transylvania University	Lexington, Kentucky (89)	787	Baccalaureate**
University of Kentucky	Lexington, Kentucky (89)	21,237	Doctorate, M.D., D.M.D., J.D.

\* Joint doctoral degree programs are offered in cooperation with the University of Kentucky, Lexington. The degrees are issued by the University of Kentucky.

\*\* Courses in the masters degree program are taught on the Transylvania campus by faculty members of Xavier University of Cincinnati. The degree is issued by Xavier University.



## Vocational Schools

Both the state vocational-technical schools and the area vocational education centers are operated by the Kentucky Department of Education. The state vocational-technical schools enroll persons full time who are at least 16 years of age and not in school. These students attend classes for six hours each day. The area vocational education centers are designed to accommodate high school students who are at least 15 years of age. These students attend vocational school for three hours each day. The state vocational-technical schools and the area education centers offer evening courses to enable working adults to upgrade current job skills.

### Nearest State School

Ashland State Vocational-Technical School\*  
Ashland, Kentucky  
55 miles from Vanceburg

#### Academic Related Subjects

Computer Literacy  
Economics  
Employability Skills  
Math & Communications Skills  
Physical Science  
Study Skills  
Business & Office  
General Clerical  
Secretarial-Stenographic  
Consumer & Home Economics  
Commercial Foods  
Health & Personal Services Occupations  
Cosmetology  
Nurse Assistant  
Practical Nursing

#### Industrial Education

Auto Body Repair  
Auto Mechanics  
Carpentry-Building Trades  
Drafting (with CAD/CAM)  
Heavy Equipment Maintenance  
Industrial Electricity  
Industrial Electronics  
Instrumentation  
Machine Shop  
Radio & Television Repair  
Tool & Die Making  
Welding  
Learning Resources Center  
Computer Lab

\* In addition to the listed courses, Ashland State Vocational-Technical School offers several evening courses on a part-time basis.

Nearest Area Education Center

Foster "Sid" Meade Area Vocational Education Center  
Vanceburg, Kentucky

Business and Office

Accounting/Jr. Management  
Clerical  
Data Processing  
Introduction to Computers  
Secretarial

Industrial Education

Auto Body Repair  
Auto Mechanics  
Carpentry  
Welding

Arrangements can be made to provide training in the specific production skills required by an industrial plant. Instruction may be conducted either in the vocational school or in the industrial plant, depending upon the desired arrangement and the availability of special equipment.

## HEALTH

### Local Medical Personnel

Physicians - 2  
Dentists - 3  
Optometrists -1

### Hospitals

<u>General Hospital</u>	<u>Location</u>	<u>Beds</u>
Scioto Memorial Hospital	Portsmouth, Ohio, 25 miles from Vanceburg	225
Mercy Hospital	Portsmouth, Ohio, 25 miles from Vanceburg	212
Southern Hills Hospital	Portsmouth, Ohio, 25 miles from Vanceburg	125
Meadowview Regional Hospital	Maysville, Kentucky, 31 miles from Vanceburg	111
Fleming County Hospital	Flemingsburg, Kentucky, 32 miles from Vanceburg	52

### Scioto Memorial Hospital

General hospital facilities - Anesthesia, blood bank, cardiac lab, chapel and chaplain program, cobalt therapy, dietary, EEG, EKG, ENG, emergency department, home health care, intensive/coronary care, intensive care nursery, laboratory, maternity, newborn nursery, outpatient clinics, outpatient services, patient education, occupational therapy, pediatrics, pharmacy, physical therapy, radiology (X-ray), nuclear medicine, ultrasonography, CAT scanner, digital vascular imaging, recovery rooms, respiratory therapy, same-day surgery, social services, ambulatory care, speech and hearing services, surgery, women's center, and diabetic center

Medical staff - 90 physicians, 13 dentists, 153 registered nurses, 32 licensed practical nurses

### Mercy Hospital

General hospital facilities - Pathology, radiology, fluoroscopy, xerography, pediatrics and pediatric special observation, patient education, ultrasound, nuclear medicine, radiography, DVI, respiratory therapy, physical therapy, oncology, cardiac testing, EKG, EEG, pharmacy, dietetics, renal dialysis, social services, CT Scanner, vascular laboratory, emergency room, operating room, anesthesia, chapel, recovery suite, same-day surgery, enterostomal therapy, wellness center, ambulatory care, home health care, coronary/intensive care unit

Medical staff - 122 physicians and dentists, 133 registered nurses, 60 licensed practical nurses, 54 nursing assistants, 9 nurse technicians, 12 surgery technicians



### **Southern Hills Hospital**

General hospital facilities - Anesthesia, blood bank, cardiac lab, chapel, dietary, EEG, EKG, laboratory, patient education, pharmacy, physical therapy, radiology (X-ray), occupational therapy, recovery rooms, respiratory therapy, same day surgery, social services, and surgery

Medical staff - 68 physicians, 3 dentists, 35 registered nurses, 13 licensed practical nurses

### **Meadowview Regional Hospital**

General hospital facilities - Four operating suites, intensive/coronary care, anesthesia, blood bank, obstetrical unit, nursery, 24-hour emergency room physician coverage, physical therapy, respiratory therapy, nuclear medicine, medical staff library, pathology, birthing room, pediatrics, radiology, ultrasound, CAT Scanner, vascular laboratory, EKG, EEG, outpatient services, cardiology clinic, oncology clinic, ENT clinic

Medical staff - 22 physicians (family practitioners, general practitioners, anesthesiologist, orthopedic surgeon, ophthalmologist, urologist, general and vascular surgeons, obstetrician/gynecologist, emergency medicine specialist, radiologist), 61 registered nurses, 37 licensed practical nurses, two physical therapists, one certified respiratory therapy technician

### **Fleming County Hospital**

General hospital facilities - Operating room, recovery room, laboratory, X-ray, emergency room, physical therapy, respiratory therapy, pharmacy, special care unit, nuclear medicine, ultrasound, stress testing, pulmonary and cardiac rehabilitation programs

Medical staff - Eight active physicians, one full-time surgeon, one nurse anesthetist, one physical therapist, one respiratory therapist and one pharmacist, 32 registered nurses and six practical nurses

### **Other Medical Facilities**

Bel Air Clinic  
Lewis County Health Department  
Lewis County Primary Care Center  
Vanceburg Health Care Center, Inc.

### **Ambulance Service**

Name - Conley's Ambulance Service  
Staff - Seven emergency medical technicians full-time, four part-time  
Service - 24-hour county wide service; transferring service to area hospitals  
Equipment - Three fully-equipped ambulances and two back-ups

## OTHER LOCAL FACILITIES

### Communications

Telephone -	General Telephone Company
Telegraph -	Western Union
Services -	Toll-free number, 1-800-325-6000
Postal -	U.S. Post Office
Class -	Second
Mail received -	Once daily
Mail dispatched -	Once daily
Newspapers -	Lewis County Herald
Weekly and circulation -	4,500
Radio -	WKKS-AM/FM
Major stations received from -	Maysville and Lexington, Kentucky; Portsmouth and Cincinnati, Ohio; Huntington, West Virginia
Television -	
Airwave reception from -	Lexington, Kentucky; Cincinnati, Ohio; Huntington and Charleston, West Virginia
Cable service	
Number of cable channels -	18
Kentucky Educational Television -	Morehead transmitter, Channel 38

### Library Services

Public library - Lewis County Public Library  
Size collection - 30,368 volumes  
Circulation, 1984-85 - 56,053  
Services - Records, films, sports equipment, story hour, newspapers, magazines, paintings, conference room, audiovisual equipment, microfilm reader-printer, radio programs, bookmobile service to Tollesboro and Lewis County, talking books for the blind, Interlibrary Loan, summer reading program, services to shut-ins, guidance in development of special programs for organizations and individuals, tours upon request

## Religious Institutions

Number of churches - 8  
 Denominations - Baptist  
 Catholic  
 Christian  
 Christian Baptist  
 Church of God  
 Church of the First Born  
 Methodist

Nearest Synagogues - Portsmouth, Ohio, 25 miles from Vanceburg  
 Congregations - Bene Abraham (reform)

## Financial Institutions

<u>Banks</u>	<u>Assets</u>	<u>Deposits</u>	<u>Statement Date</u>
Citizens Deposit Bank and Trust	\$47,942,555.00	\$41,954,502.00	6/30/85
First National Bank of Lewis County	20,625,000.00	16,244,000.00	12/31/84

## Clubs and Organizations

Academic Boosters	Jaycettes
American Legion	Lewis County Chamber of Commerce
Babe Ruth Baseball	Lewis County Woman's Club
Boy Scouts	Lions Club
Civic Club	Little League
Crescendo	Masons
Cub Scouts	Ministerial Association
Eastern Star	Senior Citizens Center
4-H	Sportsman's Club
Future Farmers of America	Vanceburg Hot Rod Association
Future Homemakers of America	Vanceburg-Lewis County Improvement Association
Garden Club	Vanceburg-Lewis County Industrial Authority
Girl Scouts	Vanceburg-Merchants Association
Homemakers	
Jaycees	



## RECREATION

### Local

Public recreational facilities in Vanceburg are located at the Boat Dock Park, the Lewis County Schools, and Lock and Dam 32. The Boat Dock Park, located on a stream off the Ohio River, contains two lighted tennis courts, a basketball court, a volleyball court, a shelter house with picnic tables and grills, and playground equipment. Plans are in the works for a larger shelter with a stage, concessions and restroom facilities. The Lock & Dam 32 Park includes a softball diamond, horseshoe pitching, and picnic facilities on the Ohio River. The local schools offer a football field, a track and baseball fields.

The Ohio River borders Lewis County on the north and provides ideal boating, fishing and other water sport opportunities.

The July Jubilee is a week-long celebration held annually. The celebration includes a beauty pageant, baby show, pet show, athletic events, street vendors, gospel singing, 50's dance, teen dance, carnival, fire works, little league all-star baseball games, punch-out contest, and Bluegrass music.

The Sorghum Festival is held each year in September. The two-day event includes crafts, dancing, live music, and street vendors.

### Area (Within 60 miles)

**The Daniel Boone National Forest**, approximately 20 miles south of Vanceburg, covers 640,000 acres of timberland in eastern Kentucky. It encompasses much of Kentucky's great beauty and provides a vacation paradise. There are scenic hiking trails, rivers and streams stocked with a variety of fish, hunting preserves, camping sites, and numerous other natural and historical attractions.

**Carter Caves State Resort Park**, 38 miles southeast of Vanceburg, provides a restful atmosphere with its mountain wildflowers, a rippling stream, the underground wonders of three caves, a 28-room lodge, a restaurant, and a gift shop. Recreational facilities available include something for the whole family with playgrounds, two swimming pools (one Olympic-size), tennis courts, shuffleboard, a 9-hole golf course, miniature golf, boating, fishing, horseback riding, picnicking, and cave tours.

**Greenbo Lake State Resort Park**, which is located 46 miles southeast of Vanceburg near Ashland, has a magnificent fieldstone lodge. The lodge offers 36 rooms, a dining room, a gift shop, a meeting room, a lodge pool, and a recreation room. Other facilities and activities at or near the park include a well-equipped campground, a marina, miniature golf, tennis courts, playgrounds, shuffleboard, planned recreation, fishing, hiking, horseback riding, and picnicking.

**Cave Run Lake**, constructed by the U.S. Army Corps of Engineers, is located 49 miles southwest of Vanceburg within the 640,000-acre Daniel Boone National Forest. The lake area offers everything for the camper, the boatsman, the hunter, the fisherman, and "the lover of leisure."

**Grayson Lake State Park** is located 51 miles southeast of Vanceburg near Grayson. Facilities available include 71 campsites, a beach, and a picnic area. Good fishing and organized recreational programs can be found during the summer. The park is located in the 7,350-acre Grayson Lake Wildlife Area.

**Blue Licks Battlefield State Park** is located near Mt. Olivet, 56 miles southwest of Vanceburg. The 100-acre park is on the site of the last Revolutionary War battle in Kentucky. A museum features Indian and pioneer artifacts, an audiovisual program, and prehistoric bones from animals trapped at Blue Licks. Facilities include ten primitive campsites, a gift shop, picnic shelters and grills, a playground, a snack bar, and an Olympic-size swimming pool. Fishing is available at the Licking River which runs through the park.

## COMMUNITY IMPROVEMENTS

### Recent

The Salt Lick Water Association, Inc., has expanded service to include several new businesses.

The Vanceburg Utilities System recently extended service to include the Lewis County Shopping Center and the Green Valley Subdivision.

Construction of a new firehouse in south Vanceburg was completed in Fall 1985. This provides Vanceburg with two firehouses.

The Lewis County Shopping Mall opened in 1984 and includes a gas station, Food Land grocery store, Family Dollar store, auto parts store, and a sundry store. Also, a new Pic Pac grocery store, located in downtown Vanceburg, opened in Summer 1985.

The installation of 28 computers at the Foster "Sid" Meade Area Vocational Education Center and two computers at each local school was completed by the Lewis County School System in Summer 1985. Total cost of all the computers was \$45,000.

Construction of a new \$2.1 million junior high school by the Lewis County School System was completed in Summer 1985.

The new programs, which have been started by the Lewis County School System, include a gifted and talented program and a remediation program.

### Under Way

Construction of the Alexandria-to-Ashland Highway is currently under way. The \$450 million highway starts at I-275 in northern Kentucky and runs to Vanceburg. Tentative plans also include spurs from Vanceburg to I-64 at Grayson and to the proposed Greenup Dam Bridge at Greenup.

A 16-unit low to moderate income apartment complex is currently under construction and will be completed in Fall 1985.

### Planned

The Vanceburg Electric System plans to build an additional 70,000-kilowatt hydroelectric plant. Construction of the \$150 million facility will start in 1986 and will take 3 years to complete.

The installation of 16 miles of transmission line, east of Vanceburg, by the Vanceburg Electric System is planned to be completed by 1987. The \$3 million project will also include the installation of two substations.

A \$1.6 million downtown revitalization, which will include a mini-mall, is planned for Spring 1986.