

1970

Industrial Resources: Madison County - Richmond

Kentucky Library Research Collection
Western Kentucky University, spcol@wku.edu

Follow this and additional works at: https://digitalcommons.wku.edu/madison_cty



Part of the [Business Administration, Management, and Operations Commons](#), [Growth and Development Commons](#), and the [Infrastructure Commons](#)

Recommended Citation

Kentucky Library Research Collection, "Industrial Resources: Madison County - Richmond" (1970). *Madison County*. Paper 31.
https://digitalcommons.wku.edu/madison_cty/31

This Report is brought to you for free and open access by TopSCHOLAR®. It has been accepted for inclusion in Madison County by an authorized administrator of TopSCHOLAR®. For more information, please contact topscholar@wku.edu.

INDUSTRIAL RESOURCES

RICHMOND, KENTUCKY



RICHMOND INDUSTRIAL SITES

1970

RICHMOND INDUSTRIAL SITES

For more detailed information concerning the following sites, contact Mr. Howard Colyer, Richmond Chamber of Commerce or Mr. S. B. Sanders, Kentucky Utilities Company, Richmond, Kentucky, or the Kentucky Department of Commerce, Frankfort, Kentucky.

SITE #1: ACREAGE AND TOPOGRAPHY - 86 acres, level to gently rolling

LOCATION: 4.4 miles southeast of city

ZONING: None

HIGHWAY ACCESS: Duncannon Road to U. S. 25

RAILROADS: Louisville & Nashville Railroad, eastern boundary

WATER: Kingston-Terrill Water District. The water district, supplied by the Richmond Water, Gas and Sewerage Company, has an 8-inch main on Site #1. Capacity of the water district is presently 500 gpm - present usage is 100,000 gpd - capacity can be increased. Pressure is maintained at 67 psi.

GAS: Delta Natural Gas Company, Inc. There are two 4-inch mains in the immediate vicinity of Sites #1 and #2. The company is supplied by the Columbia Gulf Transmission Company. BTU content is approximately 1,040; specific gravity is .6.

ELECTRICITY: Kentucky Utilities Company

SEWERAGE: Package plant necessary

OPTIONED BY: Richmond Industrial Foundation

SITE #2: ACREAGE AND TOPOGRAPHY: 40.18 acres, gently rolling

LOCATION: 4.4 miles southeast of city

ZONING: Industrial

HIGHWAY ACCESS: Duncannon Road to U. S. 25

RAILROAD: Louisville & Nashville Railroad, western boundary

WATER: Kingston-Terrill Water District SIZE MAIN: 8-inch

GAS: Delta Natural Gas Company, Inc.

ELECTRICITY: Kentucky Utilities Company

SEWERAGE: Package plant necessary

OWNERSHIP: Private

INDUSTRIAL RESOURCES

RICHMOND, KENTUCKY

Prepared by

The Kentucky Department of Commerce

in cooperation with

The Richmond Chamber of Commerce

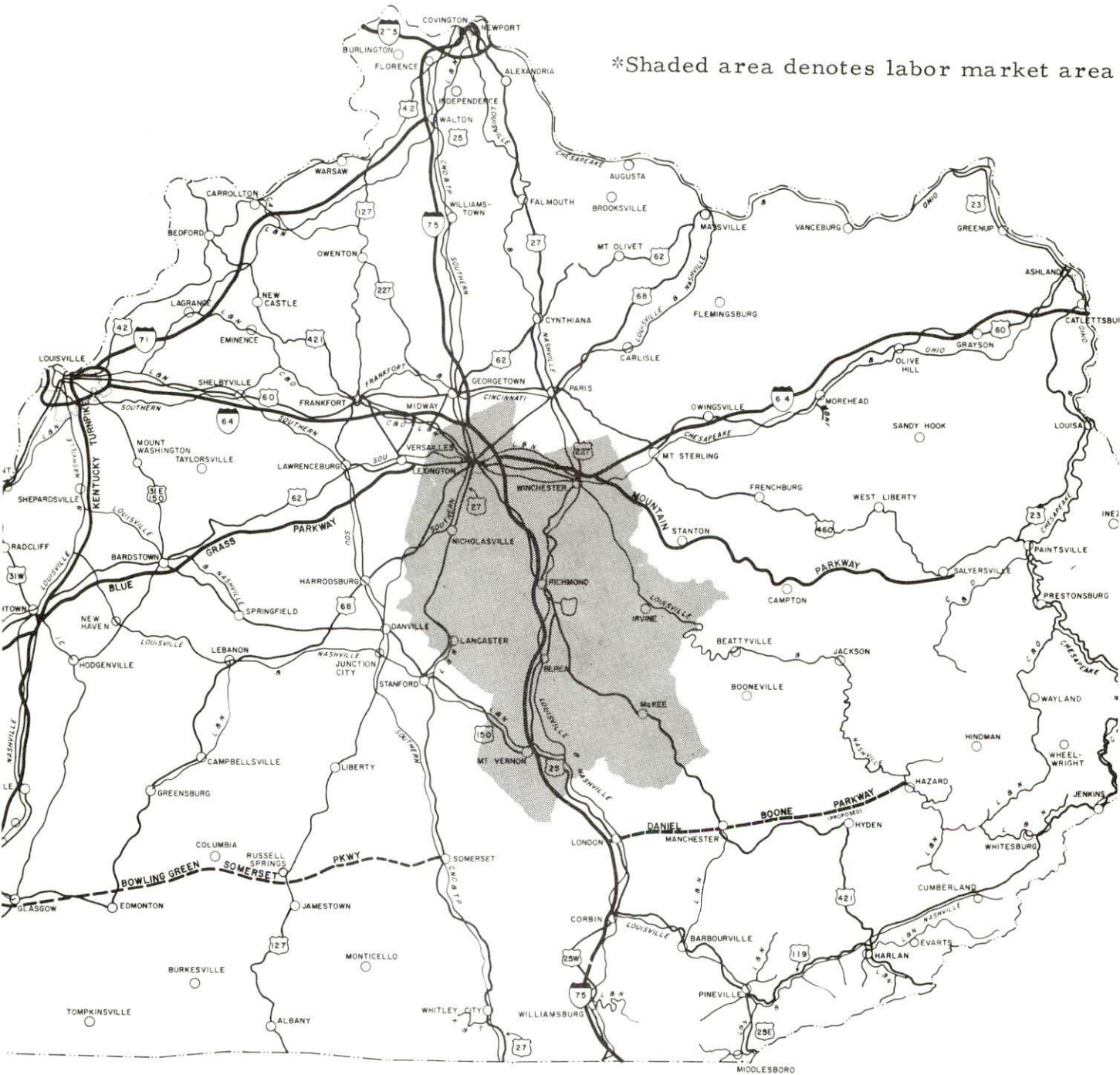
1970

TABLE OF CONTENTS

<u>Chapter</u>	<u>Page</u>
INDUSTRIAL SITES.	i
RICHMOND, KENTUCKY - A RESOURCE PROFILE	1
THE LABOR MARKET	4
Population Trends	4
General Employment Characteristics	4
Manufacturing Employment Trends by Industry	4
Richmond Manufacturing Firms, Their Products and Employment	5
Wage Rates for Selected Occupations	11
Labor Organizations	11
Current and Future Labor Supply.	12
Total Personal Income	12
Per Capita Personal Income	12
EDUCATION.	13
Public Schools	13
Parochial, Private and Special Schools	13
Vocational Schools	15
Colleges and Universities	15
TRANSPORTATION.	16
Rail	16
Truck Service	16
Air	17
Bus	17
Taxi	17
Rental Services	17
POWER AND FUEL	18
Electricity	18
Natural Gas	18
WATER AND SEWERAGE	19
Water.	19
Sewerage	19

<u>Chapter</u>	<u>Page</u>
LOCAL GOVERNMENT	20
City	20
County	20
Assessed Value of Property - 1969	20
Local General Property Tax Rates Per \$100 of Assessed Valuation - 1969	20
Planning and Zoning	21
Safety	21
Police	21
Fire	21
Sanitation	21
HEALTH	23
Hospitals	23
Nursing Homes	23
Public Health	23
OTHER LOCAL FACILITIES	25
Communications.	25
Library Services	25
Religious Institutions	26
Financial Institutions	26
Hotels and Motels	26
Clubs and Organizations	26
RECREATION	27
Local	27
Area	27
AGRICULTURE - NATURAL RESOURCES - CLIMATE	29
Agriculture	29
Natural Resources	29
Climate	29
HISTORY	30

RICHMOND LABOR MARKET AREA



RICHMOND, KENTUCKY - A RESOURCE PROFILE

Location

Richmond, the county seat of Madison County, is rich in history and tradition dating back to 1785. Geographically, Madison County is located in Kentucky's central Bluegrass Region and extends to the foothills of the Cumberland Mountains.

Richmond is 26 miles south of Lexington, 100 miles southeast of Louisville, and 115 miles southwest of the Ashland-Huntington area.

The Economic Framework

Total employment in Madison County averaged 12,295 in 1968. During the first nine years of the decade manufacturing employment increased by 975 jobs or 87.5 percent. Major industrial products are machine and metal products, rubber products, and glass. Substantial employment in printing will result when full employment is realized at Gibson Greeting Card Company at Berea.

Per capita income in the county in 1968 was \$2,167 or \$447 below the Kentucky average and ranked 28th among the state's 120 counties.

Area employment totaled 126,830 in 1968, including 10,835 jobs in agriculture and 22,280 jobs in manufacturing. Area industrial employment has almost doubled since 1959 with sharpest gains in the machinery and metal products, rubber and printing industries.

Despite important industrial gains in recent years the area still has a deficit of 6,470 manufacturing jobs when measured against the national industrial employment-population ratio. This indicates an area where the potential for additional manufacturing production is excellent.

Resources For Growth

1. There is a current estimated labor supply of 5,570 men and 4,810 women available for industrial jobs in the labor market area.

2. The local transportation capability is good. The Louisville & Nashville Railroad serves Richmond with a variety of services. An interchange to I-75 is 2 miles north of Richmond. A bypass 1 mile south of Richmond connects U. S. 25 and I-75. Commercial air service at Lexington is 30 minutes away.

3. Energy - gas, water and electricity - is available in large quantities.

4. Industrial sites - Richmond has three available industrial sites.

5. Education is an important growth asset for Richmond. Eastern Kentucky University, located in Richmond, is a coeducational public institution offering general and liberal arts programs, pre-professional and professional training in education and various other fields at both the undergraduate and graduate levels. Eastern also offers a joint doctoral program with the University of Kentucky leading toward the Ed. D. Degree in education. The campus embraces approximately 325 acres. The various academic buildings, dormitories, and other facilities are centered around a replica of an ancient Greek amphitheater which seats 2,500 persons. Eastern has provided more than six decades of educational service and had a 1969 enrollment of 9,180 students.

There are seven colleges within a 40-mile radius of Richmond. Berea College, in Madison County, is 13 miles distant; the University of Kentucky and Transylvania University in Lexington are 26 miles away.

Community Programs For Improvement

Recent community improvements: 1,000,000-gallon elevated water storage tank; new sewage treatment plant; new nursing home; seven subdivisions; two shopping centers; parking lot; extension of city limits; telephone company expansion; expansion of Robinson Tool & Die, Inc., and Westinghouse Electric Company, \$494,000 and \$593,000, respectively; two new plants - Okonite Company and the Richmond Tool & Stampings Company; new football field and stadium; new bus loading dock at Madison Central High; expansion of cafeteria facilities at Madison Central High; additional classrooms at Daniel Boone, Kit Carson, and White Hall Elementary Schools; and renovation of restroom facilities at Kingston, Kirksville, and Waco Elementary Schools.

A physical education building including gymnasium, four classrooms, instrumental music room and choral music room is to be completed in April, 1970. A \$330,000 vocational school is also scheduled for completion in April, 1970. A new \$3,000,000 hospital will be completed in March, 1970. A new \$1,137,337, six-story apartment building for senior citizens will be completed in 1971. This beautiful new building will have one hundred apartments with one and two bedrooms, air-conditioned recreation room, elevators, central laundry space, individual apartment control, arts and crafts area, outlets for television and a landscaped patio.

Recreation, Entertainment and Livability

Richmond and the surrounding area offer varied forms of recreation and entertainment. Eastern Kentucky University and the University of Kentucky provide top flight intercollegiate competition in football, basketball, swimming, tennis, golf, track and baseball. Lectures, art exhibits, concerts and drama are also open to the public.

Four race meets a year are held in Lexington, 26 miles from Richmond - in the spring and fall for thoroughbreds at Keeneland Race Course, and two for harness horses at the Lexington Big Red Mile Trotting Track.

Natural Bridge State Park, 45 miles from Richmond, has a resort lodge, Olympic pool, dining room, gift shop, cottages, tent and trailer camp sites, 55-acre lake, boating and boat rentals, bathhouse, picnic shelters, horseback riding, hiking and nature trails, fishing and supervised recreation.

Fort Boonesborough State Park, 13 miles from Richmond, and Clay's Ferry, 12 miles distant, are both located on the Kentucky River. Boating, skiing, and camping facilities are available.

Wilgreen Lake, 3 miles west of Richmond, covers approximately 250 acres. State-owned, it is a new recreational facility and was created primarily as a fishing lake, 2 1/2 miles long. Lake Reba, the city reservoir, is available for fishing, boating, and picnicking.

Blue Grass Army Depot, approximately 4 miles south of Richmond, allows fishing by permits and hunting in season.

THE LABOR MARKET

POPULATION TRENDS ^{1/}

Area	1969 (Est.)	1960	1950	Percent Change	
				1960-69	1950-60
Richmond	22,000 *	12,168	10,268	+80.8	+18.5
Labor Market Area	290,400	245,312	216,013	+18.4	+13.6
Madison County	37,600	33,482	31,179	+12.3	+ 7.4
Clark	23,300	21,075	18,898	+10.6	+11.5
Estill	13,200	12,466	14,677	+ 5.9	-15.1
Fayette	169,600	131,906	100,746	+28.6	+30.9
Garrard	9,500	9,747	11,029	- 2.5	-11.6
Jackson	9,700	10,677	13,101	- 9.2	-18.5
Jessamine	15,500	13,625	12,458	+13.8	+ 9.4
Rockcastle	12,000	12,334	13,925	- 2.7	-11.4

*1968 estimate by local planning commission.

GENERAL EMPLOYMENT CHARACTERISTICS ^{2/}

Major Employment Group	1968	1968
	Madison County	Labor Market Area
TOTAL	12,293	126,832
Agricultural	1,966	10,834
Nonagricultural	10,327	115,998
Manufacturing	2,091	22,280
Trade and Services	3,434	33,130
Government	4,849	29,131

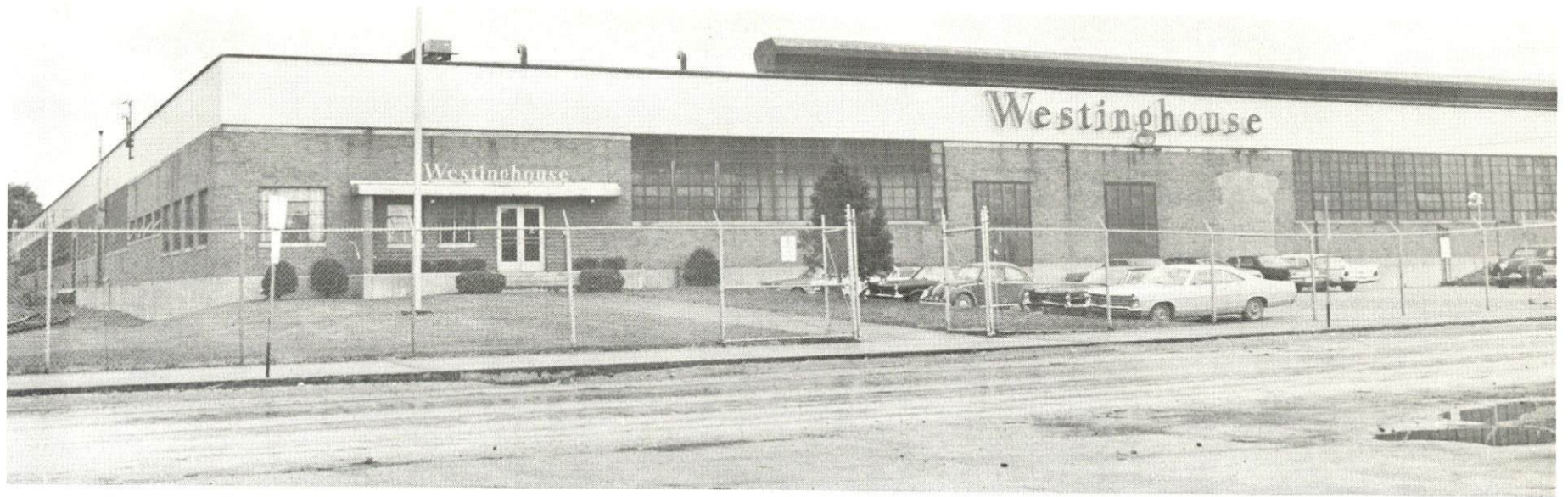
*June 1969 figure.

MANUFACTURING EMPLOYMENT TRENDS BY INDUSTRY SEPTEMBER 1959 AND 1968 ^{3/}

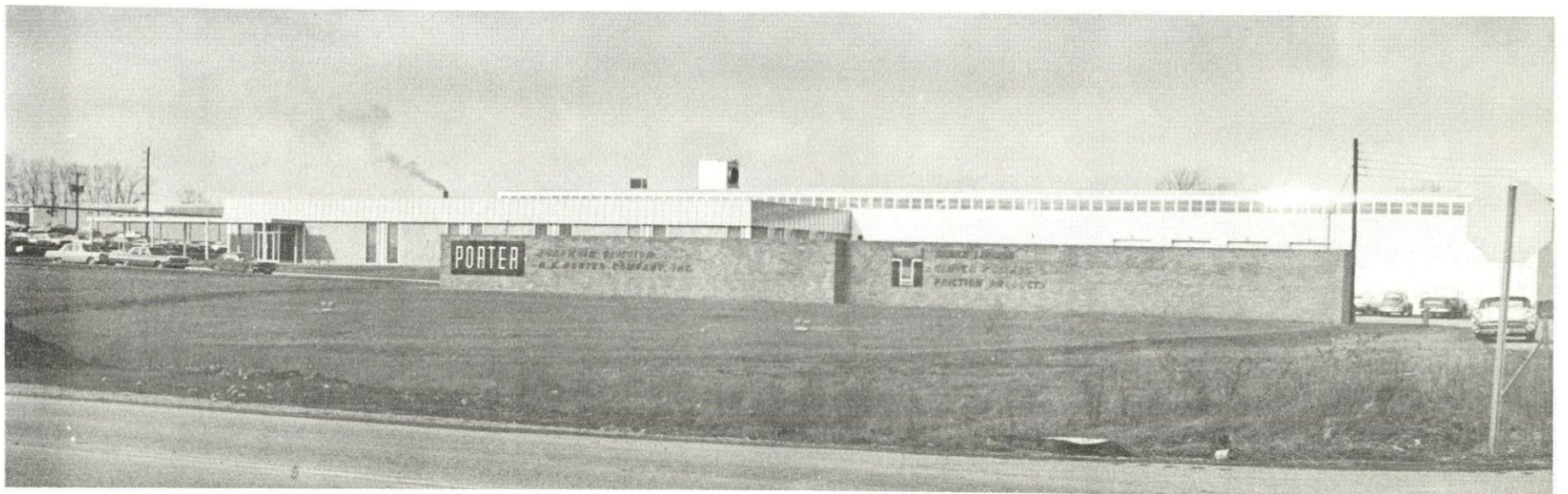
Industry	Madison County			Labor Market Area		
	1968	1959	%Change	1968	1959	%Change
TOTAL	2,091	1,115	+ 87.5	22,280	13,108	+ 70.0
Food & kindred products	94	109	- 13.8	1,438	1,498	- 4.0
Tobacco	4	4		947	1,328	- 28.7
Apparel, textiles, leather	64	63	+ 1.6	2,411	1,547	+ 55.9
Lumber & furniture	2	5	- 60.0	640	511	+ 25.2
Printing, publishing, paper	30	19	+ 57.9	1,374	729	+ 88.5
Chemicals, petroleum, coal, rubber	565	475	+ 18.9	1,513	567	+166.8
Stone, clay & glass	191	28	+582.1	612	583	+ 5.0
Primary metals	0	0		527	201	+162.2
Machinery & metal products	930	412	+125.7	11,808	6,039	+ 87.2
Other	211	0		1,010	105	+861.9

RICHMOND MANUFACTURING FIRMS,
THEIR PRODUCTS AND EMPLOYMENT ^{4/}

Firm	Product	Employment		
		Total	Male	Female
Beatrice Foods Company	Ice cream	55	43	12
Blue Grass Coca-Cola Bottling Co.	Soft drinks	15		
Builders Concrete Block Co., Inc.	Concrete blocks	16	16	0
The Daily Register Co., Inc.	Newspaper, offset printing	32	27	5
Kentucky Mixed Concrete Co., Inc.	Ready mixed concrete	11	10	1
Madison Ice Plant	Ice	10	9	1
National Metal Processing, Inc.	Heat treating	11	10	1
Okonite Company	Insulated cable	200		
H. K. Porter Co., Inc.	Brake linings, clutch facings	92	67	25
Richmond Tool & Stampings	Tools and metal stampings	4	4	0
Richmond Bakery	Bakery products	7	2	5
Richmond Ice Plant	Ice	10	9	1
Robinson Tool & Die, Inc.	Metal stampings	186	114	72
Uncle Charlie's Sausage Co.	Sausage, meat processing	85	78	7
Westinghouse Electric Corp.	Miniature electric light bulbs	801	197	604
Willoughby Supply, Inc.	Ready mixed concrete	10		
Blue Grass Electroplating Co.	Electroplating	15		



WESTINGHOUSE ELECTRIC CORPORATION - 100,000 SQUARE FEET



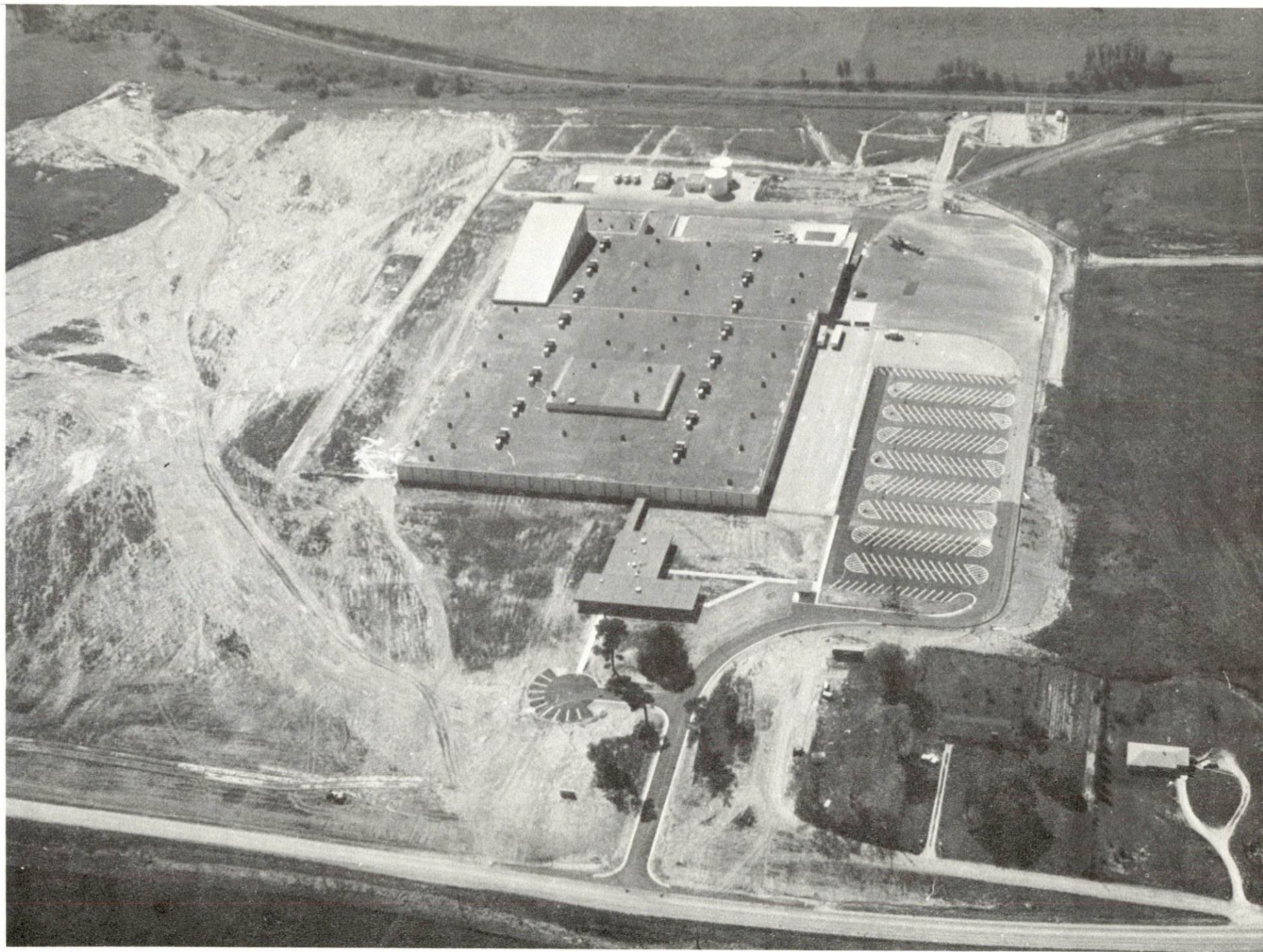
H. K. PORTER COMPANY, INC., THERMOID DIVISION



UNCLE CHARLIE'S SAUSAGE CO.



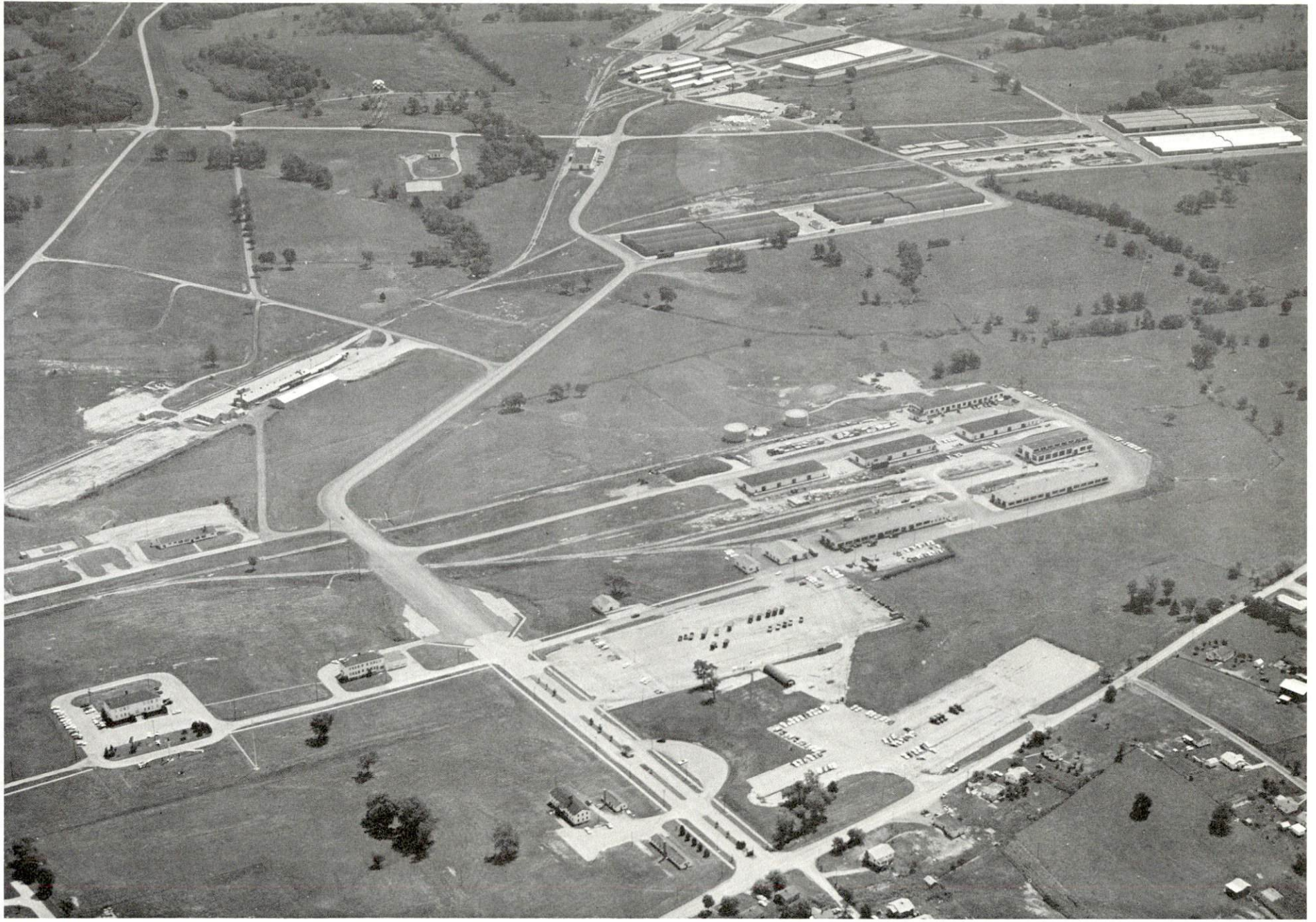
ROBINSON TOOL & DIE, INC.



AERIAL VIEW OF THE OKONITE COMPANY



RICHMOND TOOL AND STAMPINGS, INC.



AERIAL VIEW OF LEXINGTON-BLUE GRASS ARMY DEPOT
BLUE GRASS ACTIVITY

WAGE RATES FOR SELECTED OCCUPATIONS
RICHMOND, KENTUCKY ^{5/}

<u>Classification</u>	<u>Starting</u>	<u>Prevailing</u>
<u>Production Employees</u>		
Assembler	\$1.80	\$2.00
Inspector	2.25	2.50
Production Laborer	1.80	2.20
Welder, Arc or Acetylene (Class-A)	2.00	2.50
<u>Service Employees</u>		
Electrician (Class-A)	\$3.00	\$3.50
Laborer	1.60	1.80
Machinist	3.00	3.50
Mechanic, Maintenance	3.00	3.50
Truck Driver, Industrial (Class-A)	1.80	2.00
<u>Office Employees</u>		
Bookkeeper	\$2.50	\$3.00
File Clerk	1.60	1.75
Receptionist	1.60	1.75
Secretary	2.25	2.50
Typist	1.60	1.85

LABOR ORGANIZATIONS

<u>Union</u>	<u>Representing workers at:</u>
International Brotherhood of Electrical Workers	Westinghouse Electric Corporation
United Auto Workers	H. K. Porter Company, Inc.
Teamsters (drivers only)	Beatrice Foods Company

CURRENT AND FUTURE LABOR SUPPLY -
RICHMOND LABOR MARKET AREA

County	Current Labor Supply ^{6/} 1969			Future Labor Supply by 1975 ^{7/} (Becoming 18 Years of Age)		
	Total	Male	Female	Total	Male	Female
Labor Market Area	10,379	5,569	4,810	25,365	12,877	12,488
Madison	1,623	845	778	3,220	1,627	1,593
Clark	757	312	445	2,197	1,132	1,065
Estill	1,473	794	679	1,252	615	637
Fayette	2,064	1,167	897	13,675	6,894	6,781
Garrard	618	473	145	863	449	414
Jackson	1,648	729	919	1,265	669	596
Jessamine	530	276	254	1,485	748	737
Rockcastle	1,666	973	693	1,408	743	665

TOTAL PERSONAL INCOME ^{8/}

Area	1968	1959	%Change
Madison County	\$ 80,829,000	\$ 41,032,000	+ 97.0
Labor Market Area	829,989,000	390,301,000	+112.7
Kentucky	8,360,000,000	4,655,000,000	+ 79.6

PER CAPITA PERSONAL INCOME ^{9/}

Area	1968	1959	%Change
Madison County	\$2,167	\$1,244	+74.2
Labor Market Area	\$1,174 to \$3,492	\$467 to \$1,978	+151.4 to +76.5
Kentucky	\$2,614	\$1,552	+68.4

EDUCATION

Public Schools

	<u>Richmond Independent</u>	<u>Madison County</u>
Total Enrollment	1,456	4,892
Elementary	1,139	3,633
High School	317	1,259
Student-Teacher Ratio	21-1	21-1
Elementary	23-1	23-1
High School	16-1	19-1
State Rating of High School	Standard	Standard
Percent High School Graduates to College	43.1	46.6
Current Expenditures Per Pupil	\$377.44	\$344.75
Bonded Indebtedness	\$37,716	\$2,645,000

Parochial, Private and Special Schools

	<u>Private</u>	<u>Parochial</u>
Total Enrollment	732	75
Elementary	372	75
High School	360	
Student-Teacher Ratio	20-1	18-1
Elementary	26-1	18-1
High School	16-1	



AERIAL VIEW OF EASTERN KENTUCKY UNIVERSITY

Vocational Schools

	<u>Nearest Area School</u>	<u>Nearest Extension Center</u>
Location	Lexington	Lancaster
Miles Distant	26	24
Curriculum	Welding	Appliance Repair
	Drafting	Auto Mechanics
	Industrial Electricity	Carpentry
	Auto Body Repair	Drafting
	Machine Shop	Welding
	Radio and Television Repair	
	Carpentry	
	Home Appliance Repair	
	Auto Mechanics	
	Sheet Metal	
	Data Processing	
	General Clerical	
	Secretarial-Steno	
	Practical Nursing	
	Electronics	
	Tool and Dye Design	
	Printing	
	Commercial Foods	

A new vocational extension center is under construction in Richmond and completion is scheduled for April 1970.

Colleges and Universities

<u>Name</u>	<u>Area - Within 50 miles</u>		<u>Highest Degree Conferred</u>
	<u>Location</u>	<u>Enrollment</u>	
Eastern Kentucky University	Richmond	9,180	Masters
Berea College	Berea	1,394	Baccalaureate
University of Kentucky	Lexington	15,267	Ph. D. , M. D. , D. M. D. , J. D.
Transylvania University	Lexington	888	Baccalaureate
Centre College	Danville	740	Baccalaureate
Georgetown College	Georgetown	1,385	Masters
Asbury College	Wilmore	960	Baccalaureate

TRANSPORTATION

Rail

Lines serving - Louisville & Nashville Railroad

Services - Freight, siding, switching, piggyback, REA Express

RAILWAY TRANSIT TIME FROM RICHMOND, KENTUCKY, TO: 10/

No. of Days		No. of Days	
City	CL	City	CL
Atlanta, Ga.	3	Los Angeles, Calif.	5
Birmingham, Ala.	3	Louisville, Ky.	1
Chicago, Ill.	3	Nashville, Tenn.	2
Cincinnati, Ohio	1	New Orleans, La.	4
Cleveland, Ohio	3	New York, N. Y.	5
Detroit, Mich.	3	Pittsburgh, Pa.	4
Knoxville, Tenn.	2	St. Louis, Mo.	3

Truck Service

Company

Home Office

Bronaugh Motor Express, Inc.
 Dance Freight Line, Inc.
 Dixie Ohio Express, Inc.
 McDuffee Motor Freight, Inc.
 McLean Trucking Company
 Wilson Freight Company
 United Parcel Service

Lexington, Kentucky
 Lexington, Kentucky
 Akron, Ohio
 Lebanon, Kentucky
 Winston-Salem, North Carolina
 Cincinnati, Ohio
 Louisville, Kentucky

HIGHWAY MILES AND TRUCK TRANSIT TIME IN DAYS FROM
RICHMOND, KENTUCKY, TO SELECTED MARKET CENTERS

City	Highway Miles	Delivery		City	Highway Miles	Delivery	
		Time <u>11</u> / LTL				Time LTL	
Atlanta, Ga.	357	2		Los Angeles, Calif.	2,207	5	
Chicago, Ill.	381	2		Louisville, Ky.	100	1	
Cincinnati, Ohio	105	1		New Orleans, La.	870	3	
Cleveland, Ohio	349	2		New York, N. Y.	753	5	
Detroit, Mich.	367	3		Pittsburgh, Pa.	369	3	
Knoxville, Tenn.	166	1		St. Louis, Mo.	367	2	

Air

Nearest Commercial

Location: Blue Grass Field
 Lexington, Kentucky, 26 miles distant
 Runways: 3 paved
 Length: 6,500 ft. ; 3,500 ft. ; 3,500 ft.
 Traffic Control: Tower, approach and ground control, ILS system
 Lighting: Approach lighting, beacon, runways and obstruction
 lighted
 Services: Eastern, Delta, Piedmont, and Allegheny Airlines;
 80, 100 and 145 octane; jet fuel; major A & E repairs;
 storage; restaurant; weather bureau; charter service;
 taxi; car rental

Bus - Southern Greyhound Bus Lines

Taxi - 24-hour service

Rental Services - U-Haul-It

POWER AND FUEL

Electricity

Company serving - Kentucky Utilities Company
Source of power - Kentucky Utilities Company
Total generating capacity - 740,000 KW
Industrial rates furnished by - Kentucky Utilities Company, Industrial
Development Department, Lexington, Kentucky

Companies serving Madison County - Blue Grass and Clark Rural
Electric Cooperative Corporations
Source of power - East Kentucky Power Cooperative
Total generating capacity - 515,000 KW
Industrial rates furnished by - Blue Grass RECC, Nicholasville, Kentucky,
and Clark RECC, Winchester, Kentucky

Natural Gas

Company serving - Richmond Water, Gas & Sewerage Works
Source of supply - Kentucky Gas Transmission Corporation
Size of transmission lines - 8 inches
Distribution lines - 4, 6, 8, and 10 inches
BTU content - 1,000; Specific gravity - .60
Distribution pressure - 6 ounces
Peak demand at 0° F. - 7 1/2 million cu. ft. daily

Rates:

First	1,000 cu. ft.	\$2.00 per 1,000 cu. ft.
Next	9,000 cu. ft.	.86 per 1,000 cu. ft.
Excess		.70 per 1,000 cu. ft.

WATER AND SEWERAGE

Water

Company serving - Richmond Water, Gas & Sewerage Works
Source - Kentucky River and two impounded lakes
Treatment plant capacity - 3,250,000 gpd
Average daily consumption - 2,050,000 gallons
Peak daily consumption - 2,500,000 gallons
Type treatment - flocculation, sedimentation, filtration
Storage capacity - 2,400,000 gallons
Average pressure - 60 psi
Size mains - 12 and 20 inches

MONTHLY WATER RATES FOR WHOLESALE AND INDUSTRIAL CONSUMERS

First	300 cu. ft.	\$2.25 (Minimum)
Next	400 cu. ft.	.60 per 100 cu. ft.
Next	5,000 cu. ft.	.50 per 100 cu. ft.
Next	5,000 cu. ft.	.40 per 100 cu. ft.
All over	10,700 cu. ft.	.265 per 100 cu. ft.

Surface water sources - Kentucky River
Average discharge - about 5,100 cfs
Expected ground water yield - 5 gpm or less - over major portion of county
Yield along main streams - 50 to 200 gpm

Sewerage

Company serving - Richmond Water, Gas & Sewerage Works
Design capacity - 3,000,000 gpd
Average daily flow - 1,800,000 gallons
Treatment - primary and secondary
Type treatment - fluoridation, sludge drying beds
Treated effluent discharged into - Dreaming Creek and Tates Creek
Size of sanitary mains - 6 to 16 inches
Rates - 75 percent of water bill

LOCAL GOVERNMENT

City

Structure - mayor - 4-year term; 4 commissioners - 2-year terms;
city manager

Budget, 1969-70 - General Fund \$578,532.88; Water and Gas Fund
\$186,824.95; Sewer Fund \$12,720.43

Fees and licenses - The City of Richmond requires business occupational
licenses. Fees vary according to the type of business or occupation.

County

Structure - county judge - 4-year term; 8 magistrates - 4-year terms

Budget, 1969-70 - General Fund \$237,976; Road Fund \$115,389

Assessed Value of Property - 1969

<u>Classes of Property*</u>	<u>Richmond</u>	<u>Madison County</u>
Real Estate	\$53,257,561	\$145,647,660
Tangibles	9,774,629	21,328,055
Public Service	3,157,477	32,330,083

Local General Property Tax Rates Per \$100 of Assessed Valuation - 1969 ^{12/}

<u>Taxing Unit**</u>	<u>Richmond</u>	<u>Madison County</u>
State	\$.015	\$.015
County	.147	.147
School	.658	.402
City	.292	
Total	\$1.112	\$.564

*Property assessed at 100 percent of fair value.

**Manufacturing machinery, raw materials inventories and goods in
process inventories are not subject to local tax. State rate is only
\$.15 per \$100.

Planning and Zoning

Agency - Richmond Planning Commission

Plans completed - Base Map (Revision), Existing Land Use Analysis and Map (Revision), Population and Economic Base Study

Plans in process - Comprehensive Plan, Zoning Ordinance (Revision)

Codes adopted - Codes Enforcement and Inspection Program

Other programs - 135 low-rent housing units have been completed;

200 additional units are being planned.

Safety

Richmond

Madison County

Police

Total staff

24

4

Radio-patrol cars

5

4

Other equipment

patrol wagon

Fire

American Insurance Association

Fire Rating

6

Full-time staff

17

Volunteers

none

Equipment:

1,000 gpm pumpers

1

750 gpm pumpers

2

500 gpm pumpers

1

ladder truck

1

utility truck

1

Sanitation

Type service

municipal

contract

Cost

no cost

according to
volume

Collection frequency:

Business

daily

when desired

Residential

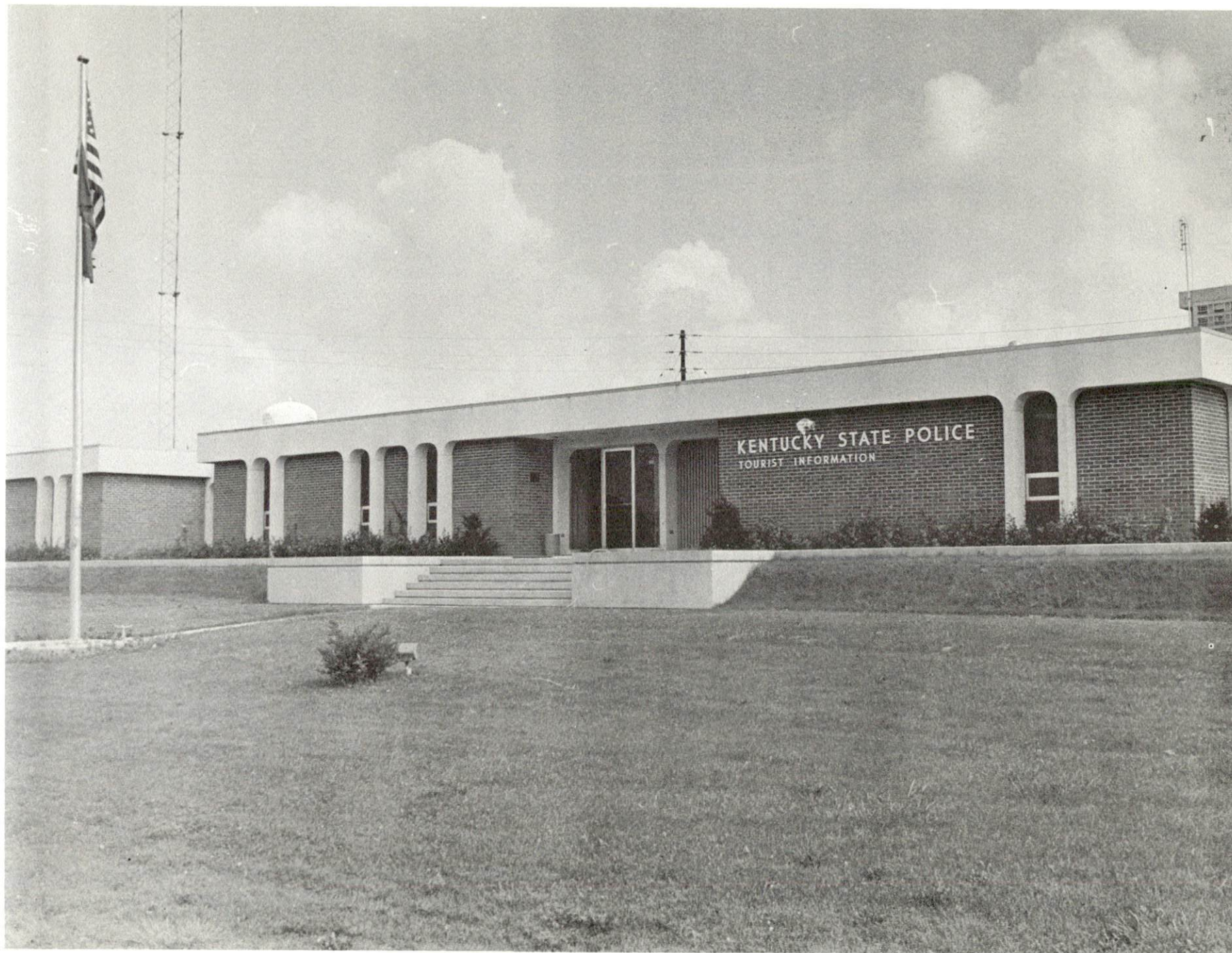
once weekly

when desired

Disposal method

dump

dump



KENTUCKY STATE POLICE POST NO. 7 - RICHMOND

HEALTH

Hospitals

	<u>Number</u>	<u>Beds</u>
General hospitals	1	103
General hospital facilities - 2 operating rooms, 1 minor operating room, fracture room, recovery room, intensive care room, 2 emergency rooms, laboratory, X-ray, obstetrics, 2 delivery rooms, nursery, 4 outpatient treatment rooms		
Medical staff - 10 doctors, 17 registered nurses, 10 graduate licensed practical nurses, 10 licensed practical nurses		

Nursing Homes

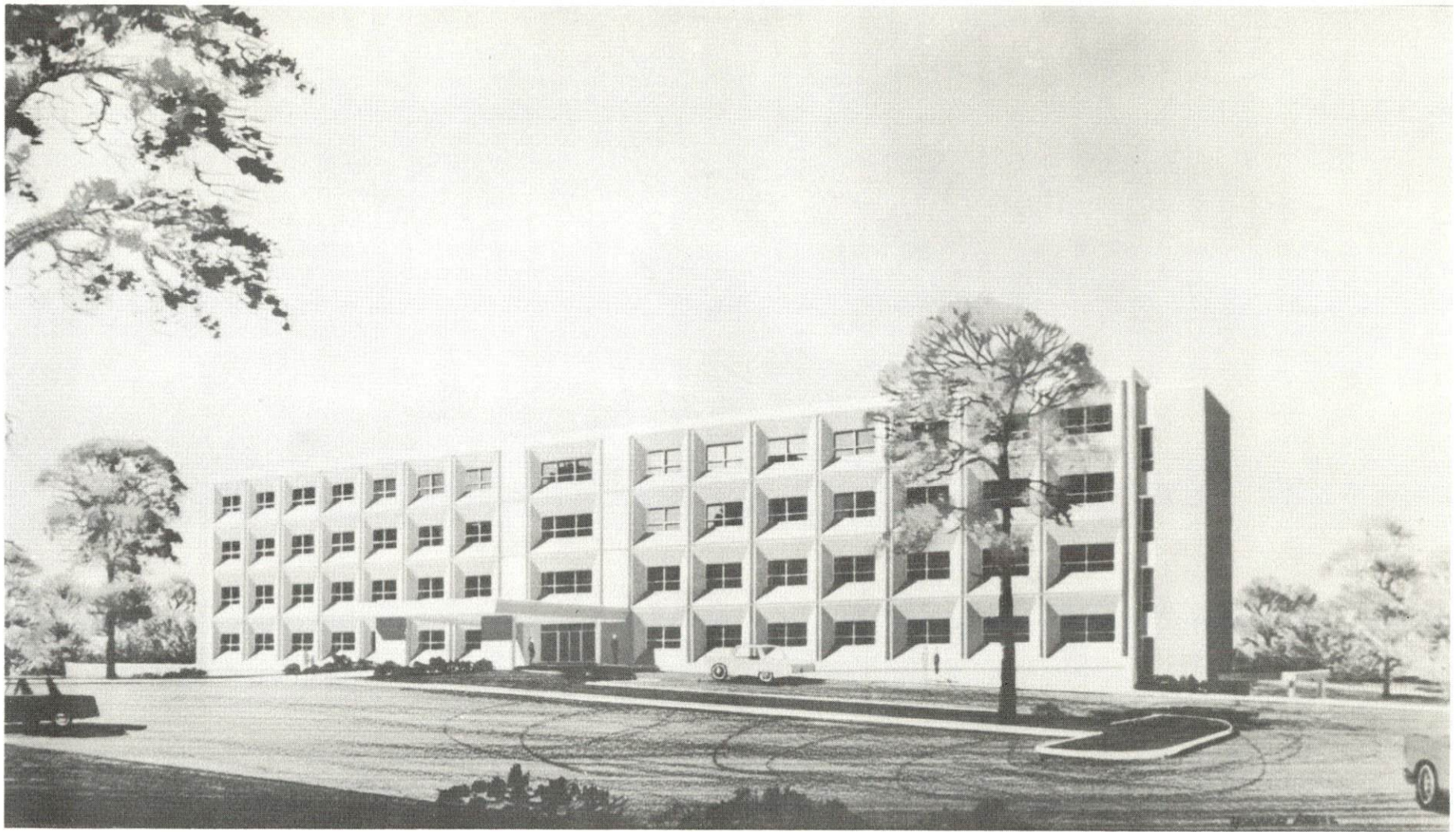
	<u>Number</u>	<u>Beds</u>
Extended care homes	1	92
Personal care homes	3	62

Public Health

Facility - Madison County Health Department

Staff - 4 nurses, sanitarian, health officer, M.D., 2 clerks

Budget, 1969-70 - \$79,361



PATTIE A. CLAY HOSPITAL - COST \$3.5 MILLION - COMPLETION DATE 1970

OTHER LOCAL FACILITIES

Communications

Telephone - South Central Bell Telephone Company
Services - standard

Telegraph - Western Union
Services - telephone and messenger

Postal - Class 1 U.S. Post Office
Mail received - 2 times daily
Mail dispatched - 3 times daily

Newspaper daily - Richmond Daily Register
Circulation - 6,189
Newspaper weekly - Madison County Post
Circulation - 740

Radio - station WEKY
Hours of operation AM - 24 hours
FM radio operated by - Eastern Kentucky University
Stations received from - Lexington, Louisville, Danville and Irvine,
Kentucky; Cincinnati, Ohio

Television - no local station
Cable service - Kentucky Cable Service
Reception from - Lexington and Louisville, Kentucky; Cincinnati, Ohio
Kentucky Educational Television - Channel 46 - Lexington transmitter

Library Services

Public Libraries - Richmond City-County Library
Size collection - 7,000 volumes
Circulation, 1968-69 - 12,234
Services - albums, magazines

Richmond Woman's Club Library
Size collection - 5,000 volumes
Circulation, 1968 - 1,400

John Grant Crabbe Library, Eastern Kentucky University
Volumes - 237,000
Circulation, 1968 - 173,000
Services - 15,000 reels and microfilm; 7,800 micro cards; 8,000
micro fiche; 79 newspapers; 2,054 magazines; 71,000 photo copies

Religious Institutions

Number of churches - 13

Denominations - Baptist, Christian Science, Church of God, Episcopal,
Methodist, Presbyterian, Church of the Nazarene, Catholic,
Jehovah's Witnesses

Financial Institutions

<u>Bank</u>	<u>Statement as of June 30, 1969</u>	
	<u>Assets</u>	<u>Deposits</u>
Madison National Bank of Richmond	\$16,799,208.06	\$15,230,856.22
State Bank & Trust Company	25,681,996.10	23,664,822.22
<u>Savings and Loan Associations</u>		
	<u>Assets</u>	<u>Shared Accounts</u>
First Federal Savings & Loan Association of Richmond	\$ 9,530,616.21	\$ 8,801,448.18

Hotels and Motels

Number - 9

Units - 442

Clubs and Organizations

Business and Civic - Chamber of Commerce, Jaycees, Heart Association,
Civitan, Rotary, Exchange, Kiwanis, Lions, Ruritan

Fraternal - American Legion, VFW, Elks, Masons, FOP, IOOF, DAV

Women's - Business and Professional Women, Altrusa, American
Association of University Women, Richmond Woman's Club, DAR
Boonesborough Chapter, Eastern Star, Job's Daughters, Junior Woman's
Club, League of Women Voters

Youth - Boy Scouts, Girl Scouts

RECREATION

Local

Public Recreation Facilities

Supervised program - Richmond Recreation Program

Parks - 1

Playgrounds - 3

Tennis courts - 1

Baseball diamonds - 4

Football fields - 3

Other - 4 gymnasiums

Private Recreation Facilities

Country clubs - 2

Golf courses - 2

Swimming pools - 2

Movie theaters - 2 indoor, 1 drive-in

Bowling lanes - 1

Other - Lexington Yacht Club

Tourist Attractions

White Hall, home of Cassius Clay; Birthplace of Kit Carson; Indian mounds at Round Hill and Moberly; Bybee pottery; Squire Boone Rock dated 1776

Cultural Events

Series of five concerts by Richmond Community Concert Association; lectures, drama, art exhibits at Eastern Kentucky University

Area (Within 25 miles)

Fort Boonesborough State Park, Wilgreen Lake, Berea College, Churchill Weavers, Boone Tavern, Lake Reba, and Blue Grass Army Depot



ARLINGTON HOUSE - EASTERN KENTUCKY UNIVERSITY
FACULTY - ALUMNI CENTER



MADISON COUNTRY CLUB

AGRICULTURE - NATURAL RESOURCES - CLIMATE

Agriculture 13/

	<u>Madison County</u>	<u>Labor Market Area</u>
Total land area (acres)	285, 440	1, 475, 840
Percent of area in farm land	85. 2	77. 2
Number of farms	2, 006	9, 505
Average size of farms (acres)	121. 2	119. 9
1964 value of all farm products	\$ 6, 511, 114	\$48, 404, 359
Value per farm	5, 513	6, 681
Total crop sales	5, 961, 739	29, 138, 777
Total livestock & livestock products	5, 093, 003	31, 541, 957
1967 agricultural production included:		
Burley tobacco (lbs.)	9, 525, 000	47, 113, 000
Corn (bu.)	822, 000	3, 341, 000
Cattle and calves (number)	57, 800	233, 300
Hogs and pigs (number)	14, 300	64, 600
Milk production (1966) (lbs.)	11, 570, 000	91, 940, 000

Natural Resources

Principal mineral resources	limestone
Other mineral resources	clays, sand and gravel
Acres of commercial forest land	49, 000
Most abundant tree species	red oak, white oak, yellow pine, hickory, ash, hard maple, and yellow poplar

Climate 14/

	<u>Madison County</u>
Temperature	
Annual mean (30-year record)	55. 6 degrees
Average annual 1968	54. 1 degrees
Record highest July, 1966+ (5-year record)	98 degrees
Record lowest January 1966+ (5-year record)	-10 degrees
Seasonal heating degree-days (30-year record)	4, 683
Precipitation	
Mean annual total (30-year record)	44. 73 inches
Mean annual snow and sleet (24-year record)	16. 0 inches
Total precipitation (1968)	43. 32 inches
Mean No. days precipitation (24-year record) (. 01 inch or more)	128
Average No. days thunderstorms (24-year record)	48
Prevailing winds (17-year record)	South

HISTORY

Madison County was the seventh county formed in Kentucky. Dating from 1785, it was taken from Lincoln County and later gave lands to help form Garrard, Nicholas, Clay, Estill, Rockcastle, and Jackson Counties. The largest of the Blue Grass counties - with 446 square miles of territory - it was named for James Madison, who was the fourth President of the United States and "the Father of the Constitution."

The Kentucky River flows along a portion of the eastern side of Madison County and forms all of its northern boundary. The county's surface is gently rolling in the western half, but becomes hilly and rough in the eastern section. Some tracts of timber are scattered throughout the county.

Richmond, the county seat, was named for Richmond, Virginia. It became the seat of county government in 1798 when Milford gave up that honor due to Richmond's more favorable location. Woodlawn, built by General Green Clay for his daughter, and Castlewood, the home of James Estill, Jr., are interesting landmarks.

Historical events of note include:

The Transylvania Company acquired lands in Kentucky in 1775 and the Boonesboro settlement in Madison County resulted from this transaction.

Several distilleries operated near the Kentucky River as early as 1783.

The first Madison County court was organized in 1786.

Berea College was founded in 1853.

The Battle of Richmond in 1862 was a Confederate victory.

Eastern Kentucky University was founded at Richmond in 1906.

Churchill Weavers was established in 1922.

Names worthy of remembrance are:

General Cassius Clay - noted abolitionist and in 1861 Minister to Russia. . .

John Miller - provided Richmond's site. . .

General Green Clay - served in the Virginia Legislature. . .

Kit Carson - a famous mountaineer, trapper, and guide. . .

William J. Stone and David Francis - Governors of Missouri. . .

James B. McCreary - twice Governor of Kentucky. . .

Francis S. Hutchins - served as President of Berea College. . .

Keen Johnson - Governor of Kentucky. . .

Madison County's early history shows many peaceful, prosperous days. By 1870, the great business of the county had gradually settled into stock-raising, while the production of hemp, which was once a leading crop, had almost ceased. In 1870, Madison was the second largest cattle producing county in the state, the fifth in hogs, and the fourth in corn production.

While agriculture remains important, the present-day Madison County is emerging as an industrial area and an educational center.

SOURCES OF INFORMATION

- 1/ U.S. Department of Commerce, Bureau of the Census, Census of Population, 1950, 1960. Department of Rural Sociology, University of Kentucky, Kentucky County Provisional Estimates: January 1, 1969.
- 2/ Kentucky Department of Economic Security, Division of Research and Statistics.
- 3/ Kentucky Department of Economic Security, Number of Workers in Manufacturing Industries Covered by Unemployment Insurance Law Classified by Industry and County, September 1959, September 1968.
- 4/ Kentucky Department of Commerce, 1970 Kentucky Directory of Manufacturers.
- 5/ Kentucky Department of Economic Security, Division of Employment Service, Winchester Office.
- 6/ Kentucky Department of Economic Security, Kentucky Labor Supply Estimates by County, January 1969.
- 7/ Kentucky Department of Commerce, Future Labor Supply by 1975.
- 8/ University of Kentucky, Office of Development Services and Business Research, Total Personal Income For Kentucky.
- 9/ University of Kentucky, Office of Development Services and Business Research, Per Capita Income in Kentucky.
- 10/ Louisville & Nashville Railroad, Louisville, Kentucky.
- 11/ McLean Trucking Company, Winston-Salem, North Carolina.
- 12/ Farmer & Humble, Certified Public Accountants, 1969 Kentucky Tax Rate Schedule.
- 13/ U.S. Department of Commerce, Bureau of the Census, Census of Agriculture, 1964. U.S. Department of Agriculture and Kentucky Department of Agriculture, Kentucky Agricultural Statistics, 1968.
- 14/ U.S. Department of Commerce, Environmental Science Services Administration, Climatological Data, 1967.

All other information was obtained from governmental offices, local businesses and organizations.