

1978

# Industrial Resources: Marion County - Lebanon

Kentucky Library Research Collections  
Western Kentucky University, [spcol@wku.edu](mailto:spcol@wku.edu)

Follow this and additional works at: [https://digitalcommons.wku.edu/marion\\_cty](https://digitalcommons.wku.edu/marion_cty)



Part of the [Business Administration, Management, and Operations Commons](#), [Growth and Development Commons](#), and the [Infrastructure Commons](#)

---

## Recommended Citation

Kentucky Library Research Collections, "Industrial Resources: Marion County - Lebanon" (1978). *Marion County*. Paper 7.  
[https://digitalcommons.wku.edu/marion\\_cty/7](https://digitalcommons.wku.edu/marion_cty/7)

This Report is brought to you for free and open access by TopSCHOLAR®. It has been accepted for inclusion in Marion County by an authorized administrator of TopSCHOLAR®. For more information, please contact [topscholar@wku.edu](mailto:topscholar@wku.edu).

# ***INDUSTRIAL RESOURCES***

## **LEBANON**

**Kentucky  
first**



**DEPARTMENT OF COMMERCE**



# LEBANON, KENTUCKY --- Site No. 178 -- 256 Acres

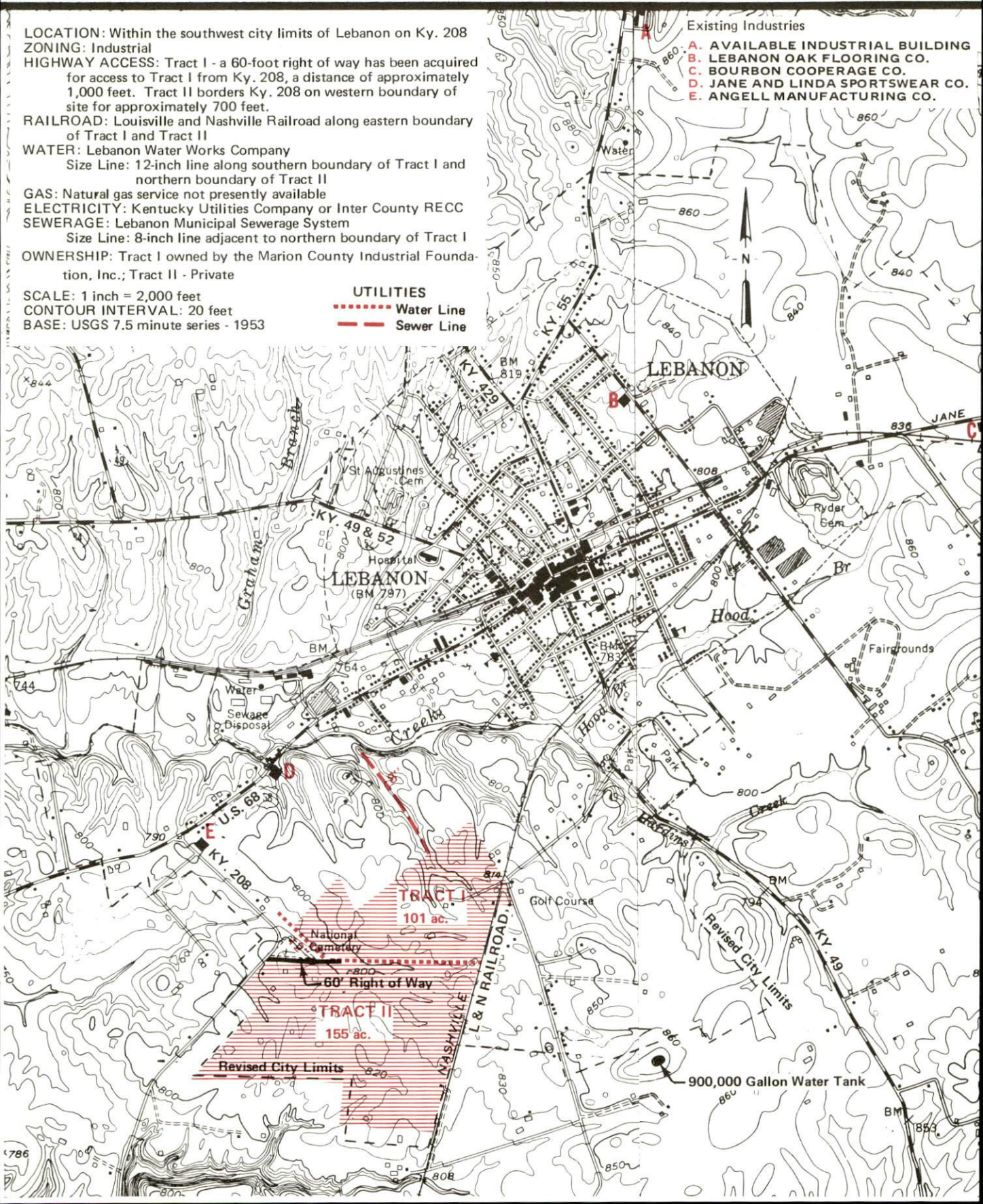
For more information contact Charles E. Lancaster, 102 West Main Street, Lebanon, Kentucky 40033, or the Kentucky Department of Commerce, Industrial Development Division, Capital Plaza Tower, Frankfort, Kentucky 40601.

**LOCATION:** Within the southwest city limits of Lebanon on Ky. 208  
**ZONING:** Industrial  
**HIGHWAY ACCESS:** Tract I - a 60-foot right of way has been acquired for access to Tract I from Ky. 208, a distance of approximately 1,000 feet. Tract II borders Ky. 208 on western boundary of site for approximately 700 feet.  
**RAILROAD:** Louisville and Nashville Railroad along eastern boundary of Tract I and Tract II  
**WATER:** Lebanon Water Works Company  
 Size Line: 12-inch line along southern boundary of Tract I and northern boundary of Tract II  
**GAS:** Natural gas service not presently available  
**ELECTRICITY:** Kentucky Utilities Company or Inter County RECC  
**SEWERAGE:** Lebanon Municipal Sewerage System  
 Size Line: 8-inch line adjacent to northern boundary of Tract I  
**OWNERSHIP:** Tract I owned by the Marion County Industrial Foundation, Inc.; Tract II - Private  
**SCALE:** 1 inch = 2,000 feet  
**CONTOUR INTERVAL:** 20 feet  
**BASE:** USGS 7.5 minute series - 1953

**UTILITIES**  
 ..... Water Line  
 --- Sewer Line

Existing Industries

- A. AVAILABLE INDUSTRIAL BUILDING
- B. LEBANON OAK FLOORING CO.
- C. BOURBON COOPERAGE CO.
- D. JANE AND LINDA SPORTSWEAR CO.
- E. ANGELL MANUFACTURING CO.



INDUSTRIAL RESOURCES

LEBANON, KENTUCKY

Prepared By  
The Kentucky Department of Commerce  
Division of Research and Planning  
in cooperation with  
The City of Lebanon

1978



Program manager: Patsy Wallace; Production supervisor: Pam Riley;  
Research: Prudence Mason; Clerical: Linda Fint; Graphics: Frank  
Ferrante, Tony Cecconi, Richard Spencer; Cartography: Industrial  
Development Division. Cost of printing paid from state funds.

# TABLE OF CONTENTS

<u>Chapter</u>	<u>Page</u>
INDUSTRIAL SITES . . . . .	i
SUMMARY OF INDUSTRIAL RESOURCES - LEBANON, KENTUCKY. . . . .	1
THE LABOR MARKET AREA. . . . .	6
Population . . . . .	6
Labor Force Characteristics of Residents, 1976 . . . . .	6
Major Marion County Manufacturing Firms, Their Products and Employment. . . . .	7
Labor Organizations. . . . .	7
Industrial Services. . . . .	8
Estimated Male Labor Supply. . . . .	9
Estimated Female Labor Supply. . . . .	9
Average Weekly Wages by Industry, by Place of Work, 1976 . . . . .	10
Per Capita Personal Income . . . . .	12
TRANSPORTATION . . . . .	13
Rail . . . . .	13
Highways . . . . .	13
Truck Service. . . . .	13
Air. . . . .	15
Bus. . . . .	15
Taxi . . . . .	15
Rental Services. . . . .	15
Water. . . . .	15
POWER AND FUEL . . . . .	16
Electricity. . . . .	16
Natural Gas. . . . .	17
Other Fuels. . . . .	17
WATER AND SEWERAGE . . . . .	19
Water. . . . .	19
Sewerage . . . . .	21
CLIMATE. . . . .	22

<u>Chapter</u>	<u>Page</u>
LOCAL GOVERNMENT . . . . .	23
City . . . . .	23
County . . . . .	23
Assessed Value of Property, 1977 . . . . .	23
Property Taxes . . . . .	23
Combined State and Local Rates Per	
\$100 Valuation, 1977 . . . . .	24
Utilities Gross Receipts Tax For Schools . . . . .	24
Planning and Zoning. . . . .	24
Safety . . . . .	25
Police. . . . .	25
Fire. . . . .	25
Rescue Service. . . . .	25
Solid Waste. . . . .	25
EDUCATION. . . . .	26
Public Schools . . . . .	26
Nonpublic Schools. . . . .	26
Area Colleges and Universities . . . . .	27
Vocational Schools . . . . .	28
HEALTH . . . . .	30
Local Medical Personnel. . . . .	30
Hospitals. . . . .	30
Other Medical Facilities . . . . .	30
Ambulance Service. . . . .	30
Public Health. . . . .	30
OTHER LOCAL FACILITIES . . . . .	31
Communications . . . . .	31
Library Services . . . . .	31
Religious Institutions . . . . .	32
Financial Institutions . . . . .	32
Hotels and Motels. . . . .	32
Clubs and Organizations . . . . .	33
RECREATION . . . . .	34
COMMUNITY IMPROVEMENTS . . . . .	36



IN COOPERATION WITH THE  
U.S. DEPARTMENT OF TRANSPORTATION  
FEDERAL HIGHWAY ADMINISTRATION

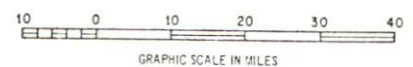
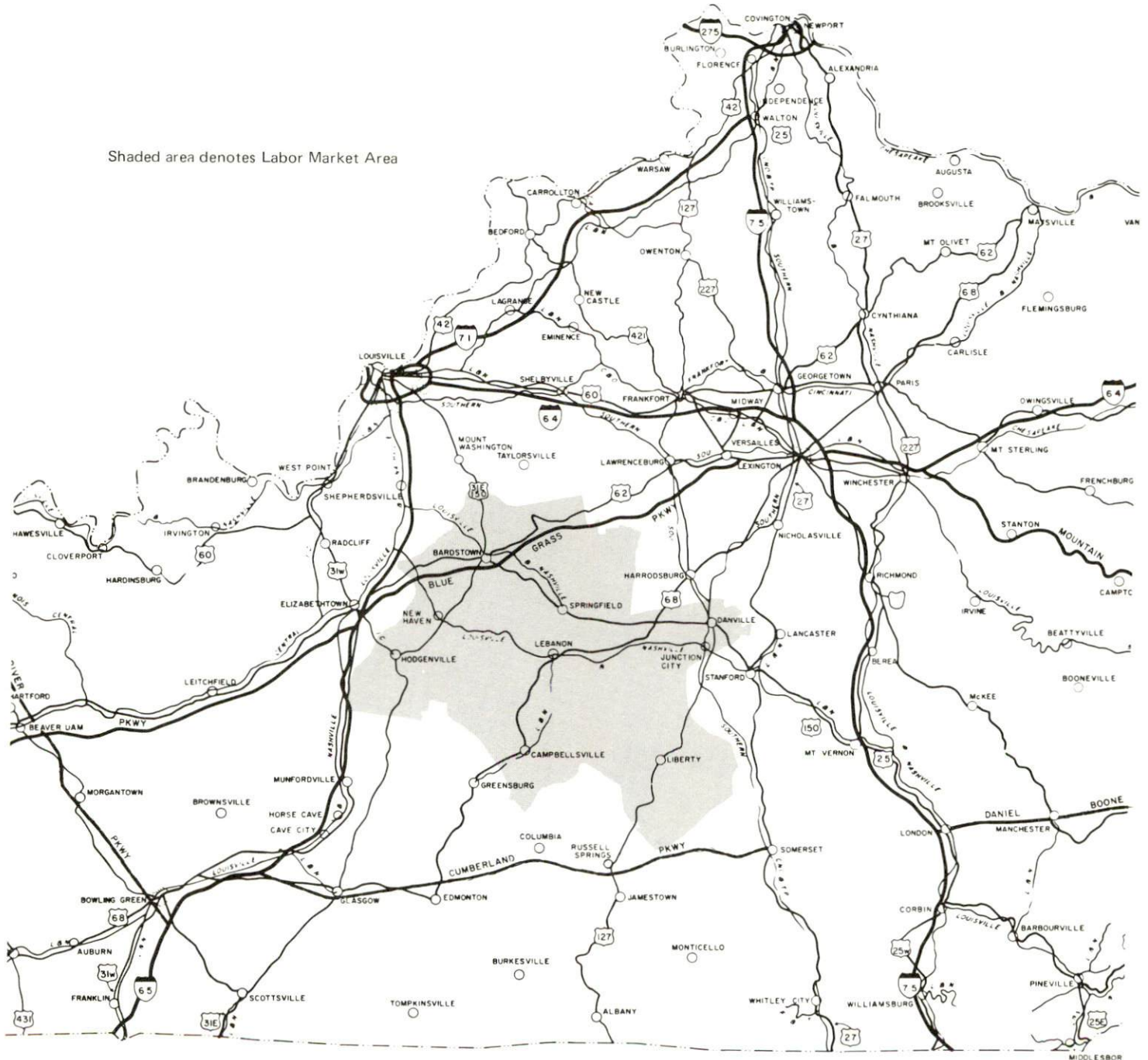


ORIGINAL DATA 1975			
REVISIONS			
DATE	BY	DATE	BY
1-1-75	J.M.		
1-1-77	R.B.T.		

# LEBANON LABOR MARKET AREA



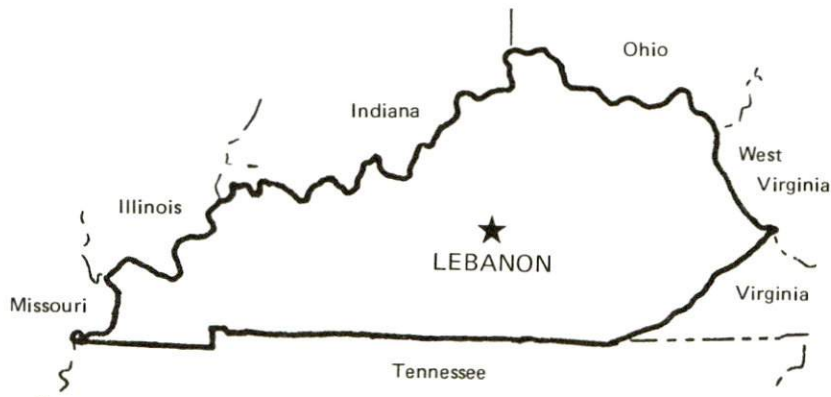
Shaded area denotes Labor Market Area





# SUMMARY OF INDUSTRIAL RESOURCES LEBANON, KENTUCKY

## LOCATION



## Road Distance in Miles:

Atlanta	<u>415</u>	Baltimore	603
Chicago	<u>356</u>	Detroit	<u>399</u>
New York	<u>765</u>	St. Louis	<u>327</u>

## POPULATION

City of Lebanon, 1975	5,588
Marion County, 1976	<u>16,400</u>
Labor Market Area, 1976	<u>117,700</u>
% Nonwhite - Marion County, 1970	<u>8.8</u>

## LABOR ANALYSIS

Labor Market Area - Marion, Boyle, Casey, Larue, Nelson, Taylor, and Washington Counties.

Estimated available workers from labor market area:

Male	<u>5,470</u>	Female	<u>3,980</u>
Unemployment rate, 1976		Labor Market Area	<u>5.9%</u>
Marion County	<u>8.3%</u>	Nelson County	<u>8.4%</u>
Boyle County	<u>4.2%</u>	Taylor County	<u>3.9%</u>
Casey County	<u>5.0%</u>	Washington County	<u>8.0%</u>
Larue County	<u>5.0%</u>		
Total employment, Marion County			<u>5,840</u>
Manufacturing employment in labor market area			<u>11,390</u>



Major Marion County manufacturing plants:

<u>Name</u>	<u>Employment</u>
<u>Angell Manufacturing Company</u>	<u>182</u>
<u>Bourbon Cooperage Company</u>	<u>104</u>
<u>Jane and Linda Sportswear</u>	<u>297</u>
<u>Lebanon Oak Flooring Company</u>	<u>66</u>
<u>Makers Mark Distillery, Inc.</u>	<u>52</u>

Labor unions in local manufacturing plants:

Electrical Workers, Coopers, Ladies' Garment Workers, Woodworkers

TRANSPORTATION

Highways:

Interstate - I-65, 48 miles  
Parkway - Blue Grass Parkway - 23 miles  
U. S. Highway - U. S. 68

Rail:

Railroad - Louisville and Nashville Railroad Company  
Distance to nearest L & N piggyback facilities - 64 miles

Truck:

Number of interstate motor carriers - 3  
Local terminals - 0

Water:

Nearest navigable river - Kentucky River, approximately 45 miles distant  
Nearest public port - On Ohio River at Louisville  
Distance - 65 miles

Air:

Nearest commercial service - Blue Grass Field, Lexington  
Distance - 62 miles; Airlines serving - Delta, Eastern, Piedmont,  
Allegheny, and Air Kentucky (commuter)  
Nearest local airport - Lebanon-Springfield Airport  
Distance - 4 miles; Runway length - 4,250 feet

## UTILITIES AND SERVICES

### Electricity:

Local distributor - Kentucky Utilities Company  
Source of power - Kentucky Utilities Company

### Natural Gas:

Local distributor - Western Kentucky Gas Company  
Source of supply - Tennessee Gas Pipeline Company  
Available for new industry - No\*

### Other Fuels:

Number of area propane distributors - 5  
Number of area distillate fuel oil distributors - 10

### Water, treated:

Local supplier - Municipal; Excess municipal system capacity - 800,000  
gallons per day; Expansions planned - No

### Water, raw:

Source for industrial use - Rolling Fork River

### Sewer:

Excess treatment capacity - 250,000 gallons per day  
Planned expansions - Yes

### Industrial Services

	<u>Location</u>	<u>Miles Distant</u>
Tool & Die, Machine & Pattern Shops	<u>Elizabethtown</u>	<u>51</u>
Metal Service Centers	<u>Lexington</u>	<u>62</u>
Heat Treating	<u>Louisville</u>	<u>64</u>
Metal Finishers	<u>Elizabethtown</u>	<u>51</u>
Electric Motor Repair	<u>Lebanon</u>	<u>--</u>

\*Conditions subject to change.

## CLIMATE

Temperature, Normal - 55.20 degrees F.  
Precipitation, Normal - 44.49 inches  
Snowfall, Mean Annual - 15.70 inches  
Prevailing winds - South  
Relative humidity (%) - 7 a.m. 81; 7 p.m. 63

GOVERNMENT

Type - Mayor - City Council  
Police personnel - full-time - 11  
Fire department personnel - volunteers - 18  
Fire insurance rating (A.I.A.), class - Inside city - 7  
Outside city - 10

## TAXES

Property taxes:

Combined state and local rates per \$100 valuation, 1977  
(100% assessment)

	<u>Inside City of Lebanon</u>	<u>Outside City</u>
1. Land and buildings	\$1.0065	\$0.7215
2. Mfg. machinery, raw materials, goods in process, pollution control equipment	0.150	0.150
3. Finished goods, office equipment, vehicles, other tangibles	1.1415	0.8565
4. Intangibles (accounts, notes, bonds, etc.)	0.250	0.250

Special local taxes:

Utilities tax - 3% of electric, gas, water, sewer, telephone services



## EDUCATION

State vocational-technical school - Elizabethtown, 51 miles  
Area vocational educational center - Lebanon  
Nearest colleges - Campbellsville College, 20 miles; Saint Catharine Junior College, 15 miles

### Public Schools:

High school enrollment - 1,041; Student/teacher ratio - 22-1  
Junior high school enrollment - 1,141; Student/teacher ratio - 20-1  
Elementary school enrollment - 1,725; Student/teacher ratio - 18-1

### Nonpublic Schools:

Enrollment - 533; Student/teacher ratio - 23-1

## FINANCIAL INSTITUTIONS

Banks - 5; Total assets - \$57,792,444.85  
Savings & loan association - 1; Total assets - \$6,679,523.39

## COMMUNICATIONS

Local newspaper - The Lebanon Enterprise - weekly  
Daily paper received from - Louisville  
Local radio station - WLBN-AM  
Television station - Cable service; reception from Lexington, Louisville, and Bowling Green, Kentucky

## MEDICAL

Number of physicians locally - 12; Number of dentists locally - 5  
Hospital - Mary Immaculate Hospital, Inc.; Number of beds - 75

## RELIGIOUS FACILITIES

Churches - 16; Nearest synagogue - Lexington, 62 miles

## PUBLIC LODGING

Total number hotels and motels - 2; Total rooms - 43

## RECREATION FACILITIES

Golf course - 1; Park - 1; Tennis courts - 10; Swimming pool - 2;  
Country club - 1  
Other major facilities - Civic center, skating rink, Sportsman's Lake  
Nearest state park - Green River Lake State Park, 20 miles  
Swimming; Fishing; Boating; Dining facility; Open year round

# THE LABOR MARKET AREA

## POPULATION

<u>Area</u>	<u>1976*</u>	<u>1970</u>	<u>Percent Nonwhite</u> <u>1970</u>
Lebanon	5,588**	5,528	17.8
Labor Market Area	117,700	113,520	N/A
Marion County	16,400	16,714	8.8
Boyle County	23,200	21,861	11.7
Casey County	14,000	12,930	0.3
Larue County	11,100	10,672	4.7
Nelson County	24,600	23,477	7.7
Taylor County	18,000	17,138	6.3
Washington County	10,400	10,728	10.6

\*Provisional Estimates.

\*\*1975 Population Estimates.

Sources: U. S. Department of Commerce, Bureau of the Census, Census of Population, 1970. U.S. Department of Commerce, Bureau of the Census, Current Population Reports, Series P-25, No. 665, May 1977; Series P-26, No. 76-17, July 1977.

## LABOR FORCE CHARACTERISTICS OF RESIDENTS, 1976

	<u>Marion County</u>	<u>Labor Market Area</u>
Civilian Labor Force	6,365	51,766
Employment	5,837	48,693
Agricultural	1,217	7,818
Nonagricultural	4,620	40,875
Unemployment	528	3,073
Rate of Unemployment (%)	8.3	5.9

Source: Kentucky Department for Human Resources, Kentucky Labor Force Estimates, Annual Averages, 1976.

MAJOR MARION COUNTY MANUFACTURING FIRMS  
THEIR PRODUCTS AND EMPLOYMENT\*

<u>Firm</u> (Establishment date)	<u>Product</u>	<u>Employment</u>			<u>Organized</u>
		<u>Total</u>	<u>Male</u>	<u>Female</u>	
<u>Lebanon</u>					
Angell Manufacturing Company (1965)	Name plates, plaques, trim	182	102	80	**
Bourbon Cooperage Company (1948)	White oak whiskey barrels	104	102	2	**
Jane and Linda Sportswear Company (1958)	Ladies' sportswear	297	33	264	**
Lebanon Oak Flooring Company (1916)	Flooring, furniture dimension	66	64	2	**
<u>Loretto</u>					
Makers Mark Distillery, Inc. (1953)	Whiskey, feed	52	28	24	

\*50 or more employees.

\*\*See Labor Organizations below.

Source: Kentucky Department of Commerce, 1978 Kentucky Directory of Manufacturers.

LABOR ORGANIZATIONS

<u>Union</u>	<u>Representing manufacturing workers at:</u>
International Brotherhood of Electrical Workers	Angell Manufacturing Company
International Ladies' Garment Workers' Union	Jane and Linda Sportswear
Coopers' International Union of North America	Bourbon Cooperage Company
International Woodworkers of America	Lebanon Oak Flooring Company



# INDUSTRIAL SERVICES

	<u>Location</u>	<u>Miles Distant</u>
Tool & Die, Machine and Pattern Shops	Elizabethtown	51
Metal Service Centers	Lexington	62
Heat Treating	Louisville	64
Metal Finishers	Elizabethtown	51
Electric Motor Repair	Lebanon	--
<u>Source: Kentucky Directory of Selected Industrial Services, 1977.</u>		

ESTIMATED MALE LABOR SUPPLY  
LEBANON LABOR MARKET AREA

Area	Current			Future	
	Total	Not in Labor Force	Unemployed	Under-employed	Reaching 18 years of age before 1983
Labor Market					
Area	5,470	0	3,340	2,130	6,309
Marion	900	0	620	280	1,032
Boyle	980	0	470	510	1,041
Casey	610	0	320	290	643
Larue	430	0	240	190	606
Nelson	1,200	0	840	360	1,538
Taylor	830	0	450	380	827
Washington	520	0	400	120	622

Sources: Kentucky Department for Human Resources, Kentucky Labor Supply Estimates by County, 1976. Kentucky Department of Commerce, Future Labor Supply before 1983.

ESTIMATED FEMALE LABOR SUPPLY  
LEBANON LABOR MARKET AREA

Area	Current			Future	
	Total	Not in Labor Force	Unemployed	Under-employed	Reaching 18 years of age before 1983
Labor Market					
Area	3,980	940	950	2,090	6,039
Marion	490	100	150	240	1,029
Boyle	750	60	200	490	944
Casey	830	490	100	240	608
Larue	350	70	60	220	568
Nelson	660	0	200	460	1,506
Taylor	510	60	140	310	836
Washington	390	160	100	130	548

Sources: Kentucky Department for Human Resources, Kentucky Labor Supply Estimates by County, 1976. Kentucky Department of Commerce, Future Labor Supply before 1983.

AVERAGE WEEKLY WAGES BY INDUSTRY,  
BY PLACE OF WORK, 1976

	<u>Marion County</u>	<u>Boyle County</u>	<u>Casey County</u>	<u>Larue County</u>
All Industries	\$121.32	\$158.22	\$101.62	\$112.28
Mining & Quarrying	*	*	0	0
Contract Construction	126.86	178.38	125.43	87.37
Manufacturing	150.58	183.35	92.79	112.00
Transportation, Com- munications & Public Utilities	148.60	220.42	172.95	211.21
Wholesale & Retail Trade	100.71	128.83	103.34	105.27
Finance, Insurance & Real Estate	136.33	158.28	138.54	154.07
Services	95.54	128.50	89.87	90.15
Other	69.80	124.88	0	46.29

	<u>Nelson County</u>	<u>Taylor County</u>	<u>Washington County</u>
All Industries	\$168.62	\$148.17	\$119.45
Mining & Quarrying	381.73	153.73	0
Contract Construction	186.79	162.61	220.66
Manufacturing	207.96	*	131.38
Transportation, Com- munications & Public Utilities	259.16	229.46	145.10
Wholesale & Retail Trade	117.30	104.08	85.07
Finance, Insurance & Real Estate	141.80	186.02	167.20
Services	98.68	112.41	82.76
Other	75.49	98.15	*

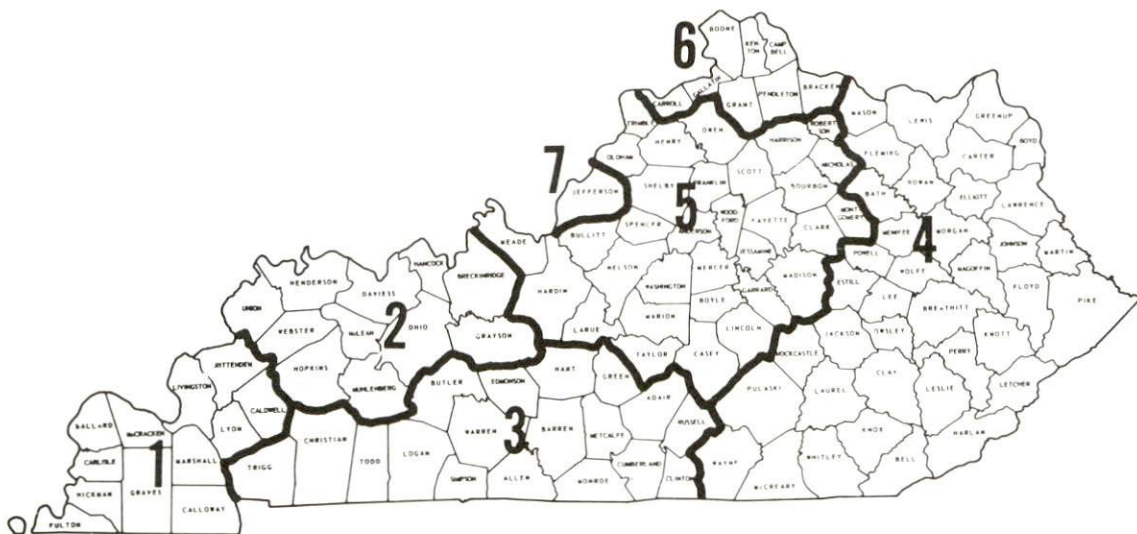
\*Not disclosed.

Note: Excludes domestic workers, railway workers; certain nonprofit corporations; majority of federal, state, and local government workers; and self-employed workers.

Source: Kentucky Department for Human Resources, Average Weekly Wages of Workers Covered By Unemployment Insurance, 1976.

Occupational wage rates for specific industries are usually not available to most government agencies, and wage data furnished to state employment agencies by individual industrial employers is protected from disclosure by federal law. The most reliable up-to-date wage information can be obtained by direct contact with local employers.

Associated Industries of Kentucky, a voluntary organization of Kentucky businesses, regularly collects occupational wage rates and fringe benefits data from participating member firms. Data is compiled for over 127 clearly defined office, production, and service occupations. Tabulations are published for seven regions of Kentucky, as shown on the map below. It should be noted that the data may be weighted by the preponderance of firms in the larger cities and may be somewhat higher than the rates paid in the smaller communities. Data from these tabulations are available, upon request, from the Kentucky Department of Commerce, Frankfort, Kentucky 40601.



Associated Industries of Kentucky Area Wage Surveys



PER CAPITA PERSONAL INCOME

<u>Area</u>	<u>1975</u>	<u>1971</u>	<u>Percent Change</u>
Marion County	\$3,825	\$2,583	48.1
Labor Market Area			
Range	\$2,579 - 5,349	\$1,776 - 3,432	N/A
Kentucky	4,886	3,314	47.4
U. S.	5,903	4,195	40.7

Sources: U.S. Department of Commerce, Bureau of Economic Analysis,  
Survey of Current Business, April 1977. U.S. Department of Commerce,  
Bureau of Economic Analysis, March 1976.

## TRANSPORTATION

### Rail

Line serving Lebanon - Louisville and Nashville Railroad Company

Services - Main line, passenger service, 2 freights stop daily (1 northbound and 1 southbound), 2 through freights daily (1 northbound and 1 southbound) with an occasional extra train, team track space for 75 cars; nearest Louisville and Nashville Railroad piggyback facilities are located at Louisville, 64 miles distant

For details on routing, schedules, rates, and services, contact:

Manager of Industrial Development  
Louisville and Nashville Railroad  
Company  
908 West Broadway  
Louisville, Kentucky 40203  
(502) 587-5000

### Highways

Lebanon has easy access to Interstate 65 and the Blue Grass Parkway. Access to I-65 is 48 miles northwest at Elizabethtown. An interchange of the Blue Grass Parkway is located 23 miles northwest of Lebanon.

Main highways leading into Lebanon are U.S. 68 and Kentucky Highway 55.

### Truck Service

#### Company

#### Home Office

Bestway Express, Inc.\*

905 Visco Drive  
Nashville, Tennessee 37210

Central Motor Express, Inc.\*\*

Post Office Drawer C  
Campbellsville, Kentucky 42718

Overnite Transportation  
Company\*\*

1000 Semmes Avenue  
Richmond, Virginia 23209

#### Other Freight Services

#### Nearest Shipping Center

United Parcel Service

Campbellsville, 20 miles south of  
Lebanon

\*Interstate only.

\*\*Interstate and Intrastate.

HIGHWAY MILES AND TRUCK TRANSIT TIME IN DAYS FROM  
LEBANON, KENTUCKY, TO SELECTED MARKET CENTERS

City	Highway Miles	Delivery		City	Highway Miles	Delivery	
		Time TL				Time TL	
Atlanta, Ga.	415	1		Los Angeles, Calif.	2,198	5	
Baltimore, Md.	603	3		Louisville, Ky.	64	1	
Birmingham, Ala.	369	1		Nashville, Tenn.	173	1	
Chicago, Ill.	356	1		New Orleans, La.	690	2	
Cincinnati, Ohio	140	1		New York, N. Y.	765	3	
Cleveland, Ohio	379	1		Pittsburgh, Pa.	405	1	
Detroit, Mich.	399	2		St. Louis, Mo.	327	1	
Knoxville, Tenn.	237	1					

Source: Delivery Time Only - Central Motor Express, Post Office  
Drawer C, Campbellsville, Kentucky 42718.



## Air

	<u>Local</u>	<u>Nearest Commercial</u>
	Lebanon-Springfield Airport*	Blue Grass Field
Location:	4 miles north of Lebanon	Lexington, 62 miles northeast of Lebanon
Runways:	1 paved	2 paved
Length:	4,250 feet	6,500 feet; 3,500 feet
Traffic Control:	Wind sock	Tower; guards; radar service - arrival and departure, Stage II contact approach control, ground control; Automatic Terminal Information Service, RVR runway
Lighting:	Sunset to sunrise, new medium intensity lighting system	Approach lighting, beacon, runways, obstruction lights
Services:	100 octane fuel; major and minor A&E repairs; 24 hour charter service; flight instruction; snack bar	Delta, Eastern, Piedmont, Allegheny and Air Kentucky (commuter) Airlines; National Weather Service; restaurant; flight instructions; charter service; storage; taxi, limousine, car rentals; 24-hour fuel, 80, 100, 145, and jet fuel; major A&E repairs, Certified Avionics repair station
Air Freight Service:	Charter air freight service is arranged on request	Freight accepted on a space available basis

Bus - Greyhound Bus Lines

Taxi - One company, 24-hour service

Rental Services - Truck and trailer rentals

Water - The nearest navigable river is the Kentucky River, approximately 45 miles northeast of Lebanon. Port facilities are available at Louisville on the Ohio River, approximately 65 miles from Lebanon.

\*The airport runway has recently been lengthened to 4,250 feet and widened to 75 feet; the northern approach has been cleared of obstructions; and a medium intensity lighting system has been installed. A nondirectional beacon landing system is currently being added.

## POWER AND FUEL

### Electricity

Company serving Lebanon and parts of Marion County -  
Kentucky Utilities Company  
Source of power - Kentucky Utilities Company  
Total generating capacity - 2,238,400 KW  
For industrial rates contact:

Industrial Development Department  
Kentucky Utilities Company  
120 South Limestone Street  
Lexington, Kentucky 40507  
(606) 255-1461

Companies serving Marion County - Inter-County Rural Electric  
Cooperative Corporation; Salt River Rural Electric  
Cooperative Corporation  
Source of power - East Kentucky Power Cooperative  
Total generating capacity - 867,000 KW  
For industrial rates contact:

Industrial Development Division  
East Kentucky Power Cooperative  
P. O. Box 707  
Winchester, Kentucky 40391  
(606) 744-4812

and/or

Inter-County RECC  
P. O. Box 87  
Hustonville Road  
Danville, Kentucky 40422  
(606) 236-4561

and/or

Salt River RECC  
111 West Brashear Avenue  
Bardstown, Kentucky 40004  
(502) 348-3931

## Natural Gas

Company serving Lebanon - Western Kentucky Gas Company  
Source of supply - Tennessee Gas Pipeline Company  
Size of transmission mains - 24 and 30 inches (supplier);  
6 inches (distributor)  
Distribution mains - 6, 4, 3, 2, and 1 1/4 inches  
Distribution pressure - Winter - 24 psi; Summer - 15 psi  
Btu content - 1,009 per cubic foot  
Specific gravity - .588  
For rates and supplies, contact:

Western Kentucky Gas Company  
251 West Main Street  
Lebanon, Kentucky 40033  
(502) 692-3103

## Other Fuels

### Propane (Within 25 miles)

Electric and Gas Company  
144 West Main Street  
Lebanon, Kentucky 40033

Hughes Gas Service  
550 West Main Street  
Lebanon, Kentucky 40033

Humkey-Rogers Sales and  
Service  
Campbellsville Road  
Lebanon, Kentucky 40033

Sure Flame Gas Company, Inc.  
Center  
New Haven, Kentucky 40051

Williams Energy Company  
550 West Main Street  
Lebanon, Kentucky 40033



## Fuel oils

### Distillate fuel oil - (Within 35 miles)

Abell's Arco (bulk plant)  
677 West Main Street  
Lebanon, Kentucky 40033

Ashland Petroleum Company  
Danville Pike  
Harrodsburg, Kentucky 40330

Ball Brothers Oil Company  
(Phillips 66) (bulk plant)  
Campbellsville Road  
Lebanon, Kentucky 40033

Clarke and Keller Oil Company  
Danville Pike  
Harrodsburg, Kentucky 40330

Gulf Heating Oil  
Dillehay Street  
Danville, Kentucky 40422

Hayden Oil Company (Ashland)  
(bulk plant)  
334 West Main Street  
Springfield, Kentucky 40069

Lewis Heher Oil Company, Inc.  
(Texaco) (bulk plant)  
730 South Columbia Avenue  
Campbellsville, Kentucky 42718

Marion Oil Company, Inc.  
(Sunoco) (bulk plant)  
West Main Street  
Lebanon, Kentucky 40033

Standard Oil Company (bulk plant)  
David Avenue  
Danville, Kentucky 40422

Watts and Durr Oil Company, Inc.  
Harrodsburg, Kentucky 40330

Residual fuel oil - Arrangements must be made with the refinery.

Low sulphur content coal - Available in Kentucky.

## WATER AND SEWERAGE

### Water

Company serving Lebanon - Lebanon Water Works Company  
South Proctor Knott Avenue  
Lebanon, Kentucky 40033  
(502) 692-2491

Source - Rolling Fork River

Treatment plant capacity - 2,000,000 gallons per day

Average daily consumption - 980,000 gallons

Peak daily consumption - 1,200,000 gallons

Type treatment - Coagulation, sedimentation, filtration,  
chlorination, flouridation

Storage capacity - 1,352,000 gallons

Size lines - 16, 12, 10, 8, and 6 inches

Average pressure - 74 psi

Average temperature - 55-60 degrees F.

### MONTHLY WATER FEES FOR WHOLESALE AND INDUSTRIAL CONSUMERS

<u>Cubic feet</u>	<u>Amount</u>	<u>Cubic feet</u>	<u>Amount</u>
200	\$ 3.13	1600-1700	\$13.25
200- 300	3.88	1700-1800	13.88
300- 400	4.63	1800-1900	14.50
400- 500	5.38	1900-2000	15.13
500- 600	6.13	2000-2100	15.63
600- 700	6.88	2100-2200	16.13
700- 800	7.63	2200-2300	16.63
800- 900	8.25	2300-2400	17.13
900-1000	8.88	2400-2500	17.63
1000-1100	9.50	2500-2600	18.13
1100-1200	10.13	2600-2700	18.63
1200-1300	10.75	2700-2800	19.13
1300-1400	11.38	2800-2900	19.63
1400-1500	12.00	2900-3000	20.13
1500-1600	12.63		

Next 2000 cubic feet - \$0.50 per cubic feet; next 10,000 cubic  
feet - \$0.44 per 100 cubic feet; all over 15,000 cubic  
feet - \$0.31 per 100 cubic feet

Tap-on charge: 3/4-inch - \$60; 1-inch - \$75; larger than  
1-inch - Cost of labor and materials

Name of water district - Marion County Water District\*  
P. O. Box 528  
Lebanon, Kentucky 40033  
(502) 692-2004

Area served - Northwestern Marion County

Date when water district began operating - June 1969

Source of supply of treated water - Lebanon Water Company

Average amount of water used in a 24-hour period - 189,573 gallons

Peak amount of water used in a 24-hour period - 200,000 gallons

Storage capacity - 255,000 gallons

Average pressure - 90 psi

Size lines - 3, 4 and 6 inches

Rates -

First	1,000 gallons	\$6.50 (Minimum)
Next	4,000 gallons	1.15 per M gallons
Next	5,000 gallons	1.05 per M gallons
Next	15,000 gallons	.90 per M gallons
Next	75,000 gallons	.80 per M gallons
Next	400,000 gallons	.65 per M gallons
Next	500,000 gallons	.55 per M gallons

Tap-on charge: 5/8 x 3/4-inch meter - \$250  
1-inch meter - 300  
2-inch meter - 450

Surface water sources - Rolling Fork River

Average discharge - Rolling Fork River near Lebanon, 332 cfs  
(38-year record)

Expected ground water yield - 5 gpm or less over entire county  
except for a small section in the eastern part of the county  
along the Rolling Fork River where the ground water yield  
ranges between 5 and 50 gpm

\*Improvements to the system, costing approximately \$594,000, will serve 200 new customers and are being financed by grants from EDA and HUD. Improvements will include a 100,000-gallon standpipe and 15 miles of 6-inch water lines serving Fairground's Road, Sulpher Spring Road, East Highway 68 and the community of Riley. Engineers are currently studying the feasibility of building 150 miles of new line which would serve nearly all of Marion County.



## Sewerage

Company serving Lebanon - City of Lebanon Sewer Department\*  
113 South Proctor Knott Avenue  
Lebanon, Kentucky 40033  
(502) 692-6272

Design capacity - 1,000,000 gallons per day

Average daily flow - 700,000 to 750,000 gallons

Treatment - Primary and secondary

Type treatment - Aeration, clarification, drying beds, grit chamber, polishing lagoons

Treated effluent discharged into - Hardins Creek

Size of sanitary mains - 8 to 21 inches

Size of storm mains - 10 inches to 4 x 5 feet

Rates - 52 percent of monthly water bill

Tap-on charge: Residential: \$60

Commercial: Actual cost of labor and materials

\*A 201 Facilities Plan has been completed and approval of the Environmental Protection Agency is pending.

## CLIMATE

### Marion County

#### Temperature

Normal (30-year record)	55.20 degrees
Average annual 1976	52.90 degrees
Record highest, September, 1954 (32-year record)	103.00 degrees
Record lowest, January, 1963 (32-year record)	-21.00 degrees
Normal heating degree days (30-year record)	4,729
(Heating degree day totals are the sums of negative departures of average daily temperatures from 65 degrees F.)	

#### Precipitation

Normal (30-year record)	44.49 inches
Mean annual snowfall (32-year record)	15.70 inches
Total precipitation 1976	37.48 inches
Mean number days precipitation (.01 inch or more) (32-year record)	130
Mean number days thunderstorms (32-year record)	47

#### Prevailing Winds (17-year record)

South

#### Relative Humidity

1 a.m.	76 percent (12-year record)
7 a.m.	81 percent (13-year record)
1 p.m.	59 percent (13-year record)
7 p.m.	63 percent (13-year record)

Source: U.S. Department of Commerce, Environmental Science Services Administration, Climatological Data, 1976. Station of record: Lexington, Kentucky.

## LOCAL GOVERNMENT

### City

Structure - Mayor - 4-year term; 6 councilmen - 2-year terms  
Budget 1977 - General Fund \$416,500  
Sewer Fund 92,000  
Fees and licenses - Occupational and business privilege licenses  
range from \$10 to \$100 annually

### County

Structure - County Judge/Executive - 4-year term;  
8 magistrates - 4-year terms  
Budget 1977-78 - General Fund \$189,200; Road Fund \$95,700

### Assessed Value of Property, 1977

<u>Classes of Property</u>	<u>Lebanon</u>	<u>Marion County</u>
Real Estate	\$35,578,660	\$116,744,270
Tangibles	9,263,817	17,555,701

### Property Taxes

All property in Kentucky is assessed at 100 percent of fair cash value.

Land and buildings are taxed by the state and may be taxed by local jurisdictions. The state rate is \$0.315 per \$100 of assessed valuation.

Manufacturing machinery, raw materials inventories, pollution control equipment, and goods in the process of manufacture are not subject to local taxation. The state rate is \$0.15 per \$100.

Other tangible personal property owned by manufacturers (automobiles, trucks, finished goods, office furniture, office equipment) is taxed by the state at \$0.45 per \$100 and may be taxed by local jurisdictions.

Property stored in public warehouses in a transit status is not subject to local taxation. The state rate is only \$0.015 per \$100.

Intangible personal property located in Kentucky (money in hand, shares of stock, notes, bonds, accounts, and other credits) is taxed by the state at \$0.25 per \$100, and is not subject to local taxation.

Intangible personal property owned by corporations in Kentucky as a result of business transactions performed out-of-state, but having a tax situs in Kentucky (accounts receivable, notes, bonds, credits, non-domestic bank deposits, licensing or royalty agreements, shares of stock of any affiliated company, etc.) is taxed by the state at \$0.015 and is not subject to local taxation.

Combined State and Local Rates Per \$100 Valuation, 1977\*  
(100% assessment)

	<u>Inside City of Lebanon</u>	<u>Outside City</u>
1. Land and buildings	\$1.0065	\$0.7215
2. Mfg. machinery, raw materials, goods in process, pollution control equipment	0.150	0.150
3. Finished goods, office equipment, vehicles, other tangibles	1.1415	0.8565
4. Intangibles (accounts, notes, bonds, etc.)	0.250	0.250

Utilities Gross Receipts Tax For Schools

A 3 percent tax is levied on utilities receipts for schools in Marion County. Tax is paid by all consumers of utilities as an add-on to the utilities bills. Exempted are receipts from utilities services that are resold and the receipts from the sale of energy or energy producing fuels that exceed 3 percent of the cost of production in manufacturing, processing, mining or refining.

Planning and Zoning

City agency - Lebanon Planning and Zoning Commission

Zoning enforced - City only

Subdivision regulations enforced - City and 3 miles beyond

Local codes enforced - Building

Mandatory state codes enforced - Plumbing, National Fire Protection Association Code, National Building Code (for major buildings and residential construction containing more than 12 bedrooms per building)

\*Kentucky Department of Commerce.



## Safety

<u>Police</u>	<u>Lebanon</u>	<u>Marion County</u>
Total staff	11 full time*	4
Radio-patrol cars	4	3

## Fire

American Insurance Association Fire Rating	7
Volunteers	18

## Rescue Service

### Marion County Rescue Squad:

Number of volunteers - 16

Equipment - 2 vehicles, torch outfit, porta-power, hammers, jacks, extraction equipment

Personnel training - All volunteers receive multimedia first aid training; 2 volunteers have had emergency medical technician training

## Solid Waste

	<u>Lebanon</u>	<u>Marion County</u>
Type service	Municipal	County
Fee charged:		
residential	\$2 per month	No charge
business	\$5 minimum	No charge
industrial	\$5 minimum	No industries in county
Collection frequency:		
residential	Weekly	Every other week
business	Daily	Every other week
industrial	Daily	No industries in county
Trash pickup	Annual cleanup campaign; leaf pickup in Autumn	Annual cleanup campaign
Disposal method	Sanitary landfill	Sanitary landfill**

\*The Lebanon Police Department recently received a Department of Justice award for their participation in a model Operation Identification theft prevention program. The city had an 80 percent participation rate in the project.

\*\*County uses city landfill.

## EDUCATION

### Public Schools

#### Marion County

Total Enrollment (1977)	3,907
Elementary	1,725*
Junior High	1,141
High School	1,041
Student-Teacher Ratio	19-1
Elementary	18-1
Junior High	20-1
High School	22-1
Percent High School Graduates to College	22.8
Expenditures Per Pupil (1976-77)	\$794.00
Bonded Indebtedness, June 30, 1977	\$2,962,000

### Nonpublic Schools

Total Enrollment	533
Elementary	533
Student-Teacher Ratio	23-1
Elementary	23-1

\*Includes Kindergarten enrollment of 108.

## Area Colleges and Universities

<u>Name</u>	<u>Location (Miles distant)</u>	<u>Enrollment (Fall, 1977)</u>	<u>Highest Degree Conferred</u>
Saint Catharine Junior College	Saint Catharine (15)	161	Associate
Campbellsville College	Campbellsville (20)	691	Baccalaureate
Centre College	Danville (31)	782	Baccalaureate
Lindsey Wilson Junior College	Columbia (39)	371	Associate
Asbury College	Wilmore (46)	1,272	Baccalaureate
Elizabethtown Community College	Elizabethtown (51)	1,548	Associate
Kentucky State University	Frankfort (59)	2,252	Masters
University of Kentucky	Lexington (62)	22,728	Ph.D., M.D., D.M.D., J.D.
Transylvania University	Lexington (62)	750	Masters*
Lexington Tech- nical Institute	Lexington (62)	2,030	Associate
Midway Junior College	Midway (63)	371	Associate
Berea College	Berea (64)	1,458	Baccalaureate
University of Louisville	Louisville (64)	17,799	Ph.D., M.D., D.M.D., J.D.
Spalding College	Louisville (64)	1,003	Masters
Jefferson Community College	Louisville (64)	5,036	Associate
Bellarmino College	Louisville (64)	1,782	Baccalaureate
Eastern Kentucky University	Richmond (67)	13,679	Masters, Ph.D.*
Somerset Community College	Somerset (69)	775	Associate
Georgetown College	Georgetown (71)	989	Masters

\*Courses in the Masters degree program are taught by Xavier University of Cincinnati faculty members. The degree is issued by Xavier University.

\*\*Cooperative program with the University of Kentucky, Lexington, for a Ph.D. in education only.

## Vocational Schools

### Nearest State School

Location	Elizabethtown State Vocational-Technical School
Miles Distant	Elizabethtown
Curriculum	51
	Agriculture
	Agriculture Mechanics
	Horticulture
	Business and Office
	Clerical
	Data Processing
	Model Office
	Secretarial
	Health and Personal Service Occupations
	Cosmetology
	Dental Assisting
	Medical Assisting
	Nurse Aide
	Practical Nursing
	Surgical Technician
	Industrial Education
	Air Conditioning and Heating
	Auto Body Repair
	Auto Mechanics
	Carpentry-Building Trades
	Diesel Mechanics
	Drafting
	Electronics
	Graphic Arts (Printing)
	Industrial Electricity
	Industrial Maintenance Mechanics
	Machine Shop
	Masonry
	Plumbing
	Welding



Nearest Area Education Center

Location	Marion County Area Vocational Education Center
	Lebanon
Curriculum	Business and Office
	Clerical
	Secretarial
	Health and Personal Service Occupations
	Health Careers
	Industrial Education
	Auto Body Mechanics
	Auto Mechanics
	Carpentry
	Heating, Air Conditioning and Refrigeration
	Industrial Electricity
	Welding

Arrangements can be made to provide training in the specific production skills required by an industrial plant. Instruction may be conducted either in the vocational school or in the industrial plant, depending upon the desired arrangement and the availability of special equipment.

## HEALTH

### Local Medical Personnel

Physicians - 12  
Dentists - 5

### Hospitals

<u>General Hospital</u>	<u>Location</u>	<u>Beds</u>
Mary Immaculate Hospital, Inc.	Lebanon	75

General hospital facilities - 2 operating rooms, emergency room, X-ray, laboratory, recovery room, pathology services, 2 delivery rooms. (A 38-bed skilled nursing facility, Marion Manor Nursing Home, Inc., is attached to the hospital.)

Medical staff - 12 doctors, 2 registered nurse anesthetists, 2 surgical technicians, 6 laboratory technicians, 2 X-ray technicians, 18 registered nurses, 23 licensed practical nurses, 1 social worker, 1 registered record administrator

### Other Medical Facilities

North Central Comprehensive Care Center

### Ambulance Service

Name - Marion County Ambulance Service  
Staff - 1 paramedic/registered inhalation therapist, 2 emergency medical technicians, 6 part-time employees with advanced Red Cross training (now receiving emergency medical technician training)  
Service - 24-hour service  
Equipment - 1 ambulance for transporting patients, 2 carry-all van ambulances (one for rescue operation, one for home calls); extraction equipment; all standard rescue equipment; 2 Bennet respirators; EKG scope; D. C. defibrillator

### Public Health

Facility - Marion County Health Department  
Staff - 3 registered nurses, 3 clerks, community health service aide, 1 environmentalist

## OTHER LOCAL FACILITIES

### Communications

Telephone - General Telephone Company  
Services - Standard

Telegraph - Western Union  
Services - Standard

Postal - U. S. Post Office  
Class - First  
Mail received - Twice daily  
Mail dispatched - Twice daily

Newspapers - The Lebanon Enterprise  
Weekly and circulation - 5,383  
Other papers received from - Louisville, Kentucky

Radio - WLBN-AM  
Stations received from - Louisville, Lexington, Campbellsville,  
and Danville, Kentucky;  
Nashville, Tennessee

Television -  
Cable service  
Reception from - Lexington, Louisville, and Bowling Green, Kentucky

Kentucky Educational  
Television - Elizabethtown transmitter - Channel 23  
Louisville transmitter - Channel 68

### Library Services

Public library - Marion County Public Library  
Size collection - 27,000 volumes  
Circulation, 1976-77 - 79,000  
Services - Member of Kentucky Inter-Library Communications Network,  
magazines, records, pictures, story hour, meeting room, films,  
projector, tapes, bookmobile, microfilm reader-printer, photo-  
copy machines

### Religious Institutions

Number of churches - 16

Denominations - A.M.E., Baptist, C.M.E., Catholic, Christian, Church of Christ, Church of God, Church of Jesus Christ of the Latter Day Saints, Jehovah's Witnesses, Methodist, Pentecostal, Presbyterian, Wesleyan Methodist

Nearest Synagogues - Lexington, 62 miles northeast

Congregations - Adath Israel (reform); Ohavey Zion (traditional)

### Financial Institutions

<u>Banks</u>	<u>Assets</u>	<u>Deposits</u>	<u>Statement Date</u>
<u>Lebanon</u>			
Citizens National Bank	\$14,351,870.05	\$13,111,338.83	6/30/77
Farmers National Bank	15,453,905.18	12,670,034.85	6/29/77
Marion National Bank	15,951,090.36	14,507,916.26	6/29/77
<u>Loretto</u>			
Bank of Loretto	6,712,461.19	5,997,215.22	6/30/77
<u>Gravel Switch</u>			
Peoples Bank	5,323,118.07	4,840,216.59	6/30/77
<u>Savings and Loan Associations</u>	<u>Assets</u>	<u>Savings Accounts</u>	<u>Statement Date</u>
Marion County Savings and Loan Association	\$ 6,679,523.39	\$ 5,899,274.90	6/30/77

### Hotels and Motels

Total number - 2

Total units - 43



### Clubs and Organizations

Business and Civic - Chamber of Commerce, Junior Chamber of Commerce, Kiwanis, Rotary, Optimist, Medical Society, Dental Society, Ministerial Association, Community Civic Club, Marion County Bar Association

Fraternal - American Legion, Masons, Knights of Columbus, VFW

Women's - VFW Auxiliary, American Legion Auxiliary, Homemakers, Eastern Star, Business and Professional Women's Club, Daughters of Isabella, Hospital Auxiliary, Woman's Civic Club, Monday Study Club, Thoreau Club

Youth - Boy Scouts, Cub Scouts, Brownies, FFA, FHA, 4-H, FTA, Beta Club, FBLA

Other - Sportsman Club, Saddle Club, Booster Club

## RECREATION

### Local

Public recreational facilities in or near Lebanon include eight tennis courts, one park, four playgrounds, one swimming pool, three baseball diamonds, two football fields, a civic center, and one skating rink.

Sportsman's Lake, near the Lebanon city limits, is a public recreational area owned by the State of Kentucky and operated by Marion County. The lake and surrounding area offers a clubhouse, a playground, and facilities for fishing, picnicking, and archery.

The Lebanon Country Club, a privately owned facility, offers a 9-hole golf course, a swimming pool, and 2 tennis courts.

Makers Mark Distillery at Loretto, is Kentucky's oldest operating mill and distillery on its original site. Tours are offered Monday through Friday. Facilities include a visitor reception house which features artifacts of old time distilling and a quarhouse, the old time equivalent of the modern package store. The Makers Mark Distillery has been entered on the National Register of Historic Places and has been named a Kentucky Landmark.

The Bourbon Cooperage Company, at Lebanon, which produces white oak whiskey barrels, offers tours of its facilities on request.

### Area (Within 65 miles)

Lebanon is located 64 miles southeast of Louisville and 62 miles southwest of Lexington, within one and one-half hours drive of Kentucky's two largest cities.

Recreation and entertainment in Louisville include the Kentucky Derby, thoroughbred racing at Churchill Downs and standardbred racing at Louisville Downs; the Louisville zoo; the state fair; museums; industry tours; sports events; and theatre, dance, orchestra, and symphony performances.

Recreation and entertainment in the Lexington area include thoroughbred racing at Keeneland, standardbred racing at the Red Mile, horse sales, sports events and concerts at Rupp Arena, lectures and special events at the University of Kentucky, national theatre tours at the newly renovated Grand Opera House, and symphony and ballet performances.

Outdoor recreational areas near Lebanon include Lake Cumberland State Resort Park, 55 miles distant; Bernheim Forest, 54 miles; Green River Lake State Park, about 20 miles; and Herrington Lake, about 30 miles.

Lake Cumberland State Resort Park offers a lodge and cabins, boating, swimming, fishing, a 9-hole golf course, seasonal horseback riding, bike rentals and trails, tennis, and camping.

Bernheim Forest is a 10,000-acre natural forest and sanctuary with an arboretum, fishing lakes, and a nature center and museum.

Green River Lake State Park features a marina, restaurant, swimming, boating, fishing, and picnic grounds.

Herrington Lake, developed by the Kentucky Utilities Company in 1925, offers boating, swimming, camping and fishing.

Historical attractions nearby include the Lincoln Homestead State Park, 8 miles; Perryville Battlefield State Shrine, 21 miles; Abraham Lincoln Birthplace National Historical Site, 36 miles; Constitution Square State Shrine, a reproduction of Kentucky's first courthouse square, 31 miles; Issac Shelby State Shrine, grave of Kentucky's first governor, 31 miles; and the William Whitley House State Shrine, first brick home west of the Alleghenies, 42 miles.

Especially notable historical attractions include My Old Kentucky Home State Park, 29 miles distant, where the house that inspired Stephen Foster to write "My Old Kentucky Home" is located and where "The Stephen Foster Story" outdoor drama is performed during the summers; Pleasant Hill, about 25 miles distant, a completely restored Shaker Village including lodging, craft shops, fall festival, and dining; and Old Fort Harrod State Park, 31 miles distant, featuring a full scale reproduction of the pioneer fort, a pioneer museum, the log cabin where Abraham Lincoln's parents were wed, and "The Legend of Daniel Boone" outdoor drama, which is performed in the summer months.



## COMMUNITY IMPROVEMENTS

### Utilities

A 201 Facilities Plan to upgrade sewerage services has been completed and has been submitted to EPA for approval.

The Marion County Water District is expanding its services to include Fairground's Road, Sulphur Spring Road, East Highway 68 and the community of Riley. A new 100,000-gallon stand-pipe will be installed. Also, a study is underway investigating the feasibility of installing 150 additional miles of new line and expanding the district's territory to include most of Marion County.

### Health and Safety

The Lebanon Fire Department moved into a new \$115,000 fire station in 1976.

The Marion County Rescue Squad began operating in 1976.

A \$350,000-\$400,000 improvement to Mary Immaculate Hospital, completed in the fall of 1977, included the installation of a sprinkler and fire alarm system, a nurse intercom system, piped-in oxygen, new patient furniture and renovation of patient rooms.

The Lebanon Police Department received a Department of Justice Award for their participation in the Operation Identification crime prevention project. The city had an 80 percent participation rate for the project.

### Recreation and Livability

Lebanon has received a \$420,000 public works grant to be used in renovating the downtown area. Work now in progress includes moving utility lines on two blocks of Main Street underground, new curbs, ramping and sidewalk resurfacing, new traffic signals, street lights, and landscaping.

Four new public tennis courts were opened in Lebanon in 1977. The project was financed with a \$50,897 matching grant from the Bureau of Outdoor Recreation.

Approximately 300 acres have been annexed into the city and are now receiving city services.



### Transportation

The Lebanon-Springfield Airport runway has recently been lengthened to 4,250 feet and the width has been increased to 75 feet. The northern approach has been cleared of obstructions, a medium intensity lighting system has been installed, and a nondirectional beacon landing system is currently being added.

### Commercial and Industrial

A new soft drink warehouse recently opened and provides employment for 40 people.

A 40,000-square-foot discount store and a new general rental center have recently opened.

A feed service is currently building a warehouse in Lebanon.

### Education

Three new combination shop/classrooms have been added to the Marion County Area Vocational Education Center at a cost of \$425,000. Three new subject areas are being taught at the vocational school.

New fire alarm systems have been installed in several schools.

### Communications

A new 3,000-watt 24-hour stereo FM radio station serving Lebanon and Springfield will open in 1978.