

1977

Industrial Resources: Mason County - Maysville

Kentucky Library Research Collections
Western Kentucky University, spcol@wku.edu

Follow this and additional works at: https://digitalcommons.wku.edu/mason_cty



Part of the [Business Administration, Management, and Operations Commons](#), [Growth and Development Commons](#), and the [Infrastructure Commons](#)

Recommended Citation

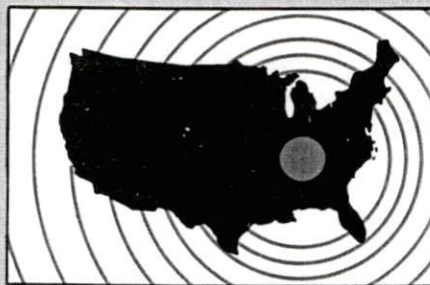
Kentucky Library Research Collections, "Industrial Resources: Mason County - Maysville" (1977). *Mason County*. Paper 11.
https://digitalcommons.wku.edu/mason_cty/11

This Report is brought to you for free and open access by TopSCHOLAR®. It has been accepted for inclusion in Mason County by an authorized administrator of TopSCHOLAR®. For more information, please contact topscholar@wku.edu.

INDUSTRIAL RESOURCES

MAYSVILLE

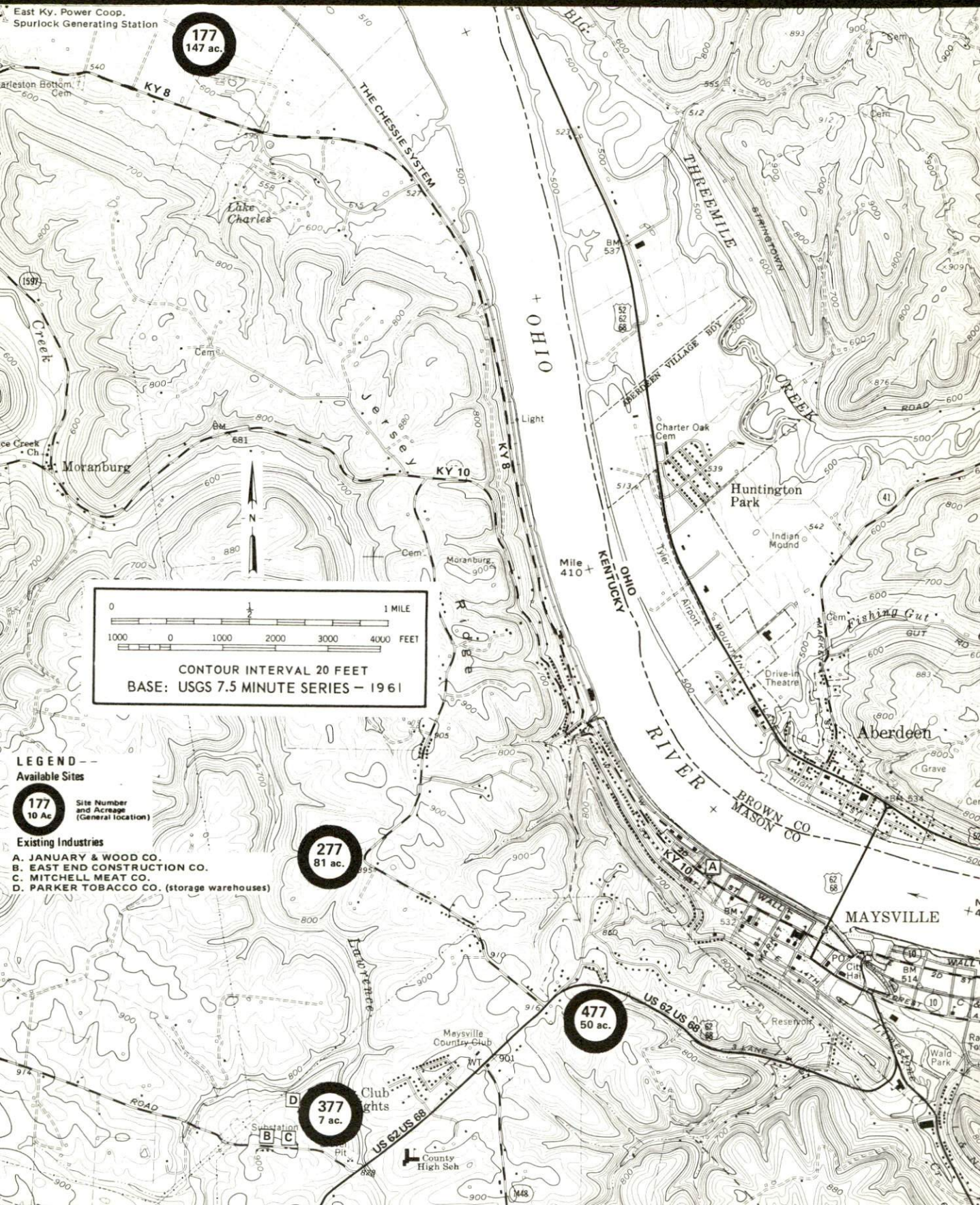
**Kentucky
first**



DEPARTMENT OF COMMERCE

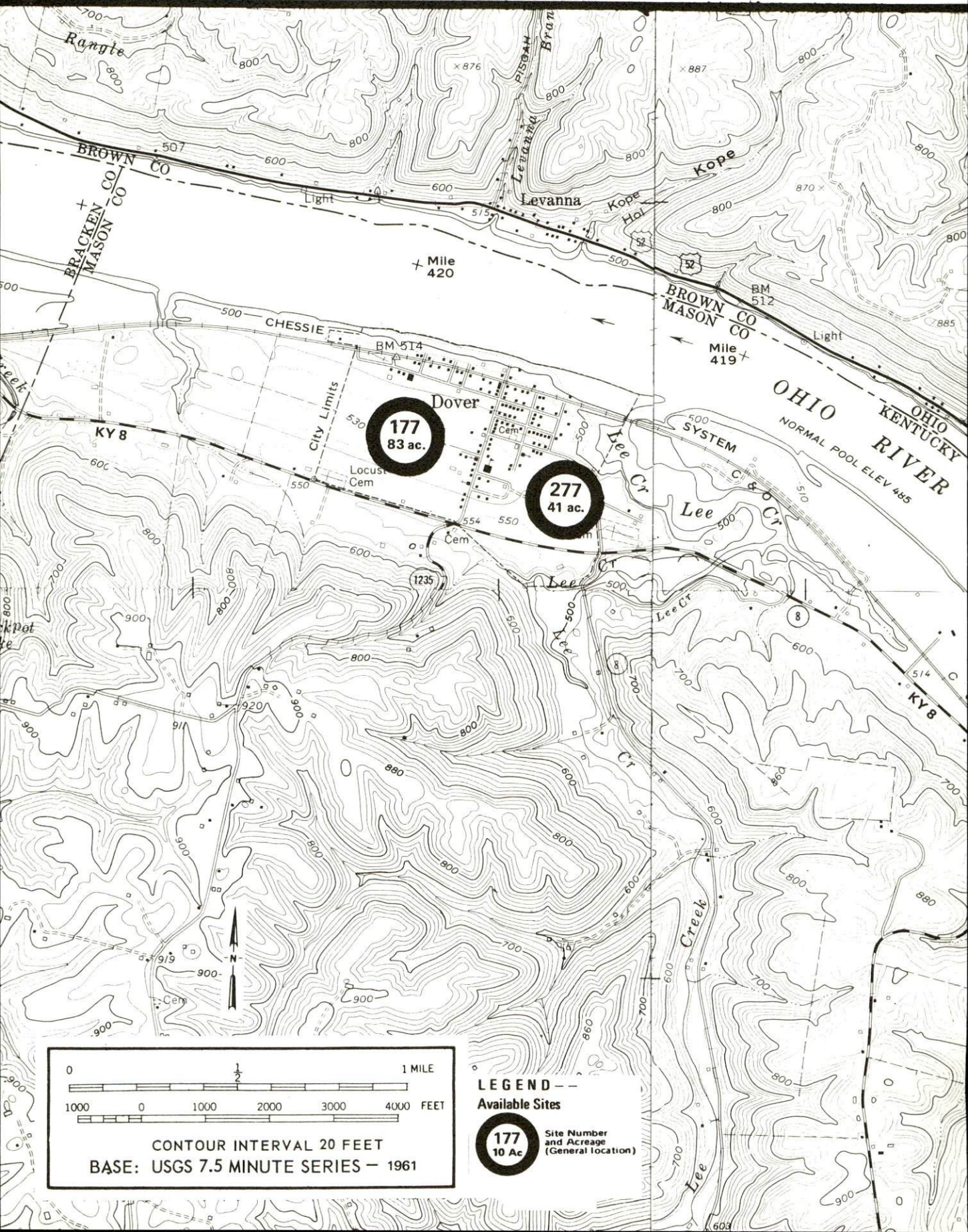
MAYSVILLE, KENTUCKY --- Index to Industrial Sites --- 1977

For detailed data on individual sites, contact the Industrial Development Division, Kentucky Department of Commerce,
Capital Plaza Tower, Frankfort, Kentucky 40601.



DOVER, KENTUCKY --- Index to Industrial Sites --- 1977

For detailed data on individual sites, contact Art Taylor, Taylor Insurance and Realty, 230 Main Street, Augusta, Kentucky 41002, or the Industrial Development Division, Kentucky Department of Commerce, Capital Plaza Tower, Frankfort, Kentucky 40601.



INDUSTRIAL RESOURCES

MAYSVILLE, KENTUCKY

Prepared by
The Kentucky Department of Commerce
Division of Research and Planning
in cooperation with
The Maysville-Mason County Chamber of Commerce

1977

Program manager: Patsy Wallace; production supervisor: Pam Riley;
research: Craig Turner; clerical: Linda Fint; graphics: N. C. Montague;
Frank Ferrante, Tony Cecconi, Richard Spencer; cartography: Industrial
Development Division. Cost of printing paid from state funds.

TABLE OF CONTENTS

<u>Chapter</u>	<u>Page</u>
INDUSTRIAL SITES	i
MAYSVILLE, KENTUCKY - A RESOURCE PROFILE	1
THE LABOR MARKET AREA	3
Population	3
Labor Force Characteristics of Residents, 1975	3
Nonagricultural Employment by Industry, by Place of Work, 1975	4
Maysville Manufacturing Firms, Their Products and Employment	5
Labor Organizations	7
Estimated Male Labor Supply	8
Estimated Female Labor Supply	8
Average Weekly Wages by Industry, by Place of Work, 1975	9
Per Capita Personal Income	11
TRANSPORTATION	12
Rail	12
Highways	12
Truck Service.	13
Air	14
Bus	14
Taxi	14
Rental Services.	14
Water.	14
POWER AND FUEL	15
Electricity.	15
Natural Gas	15
Other Fuels	16
WATER AND SEWERAGE	17
Water.	17
Sewerage	21
CLIMATE	22

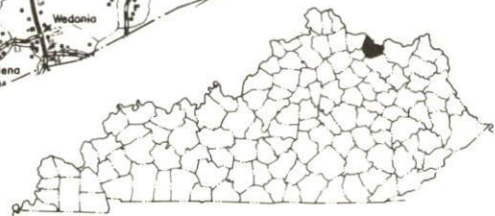
<u>Chapter</u>	<u>Page</u>
LOCAL GOVERNMENT	25
City	25
County	25
Assessed Value of Property, 1976	25
Property Taxes	25
Local Property Tax Rate Per \$100 of Assessed Valuation, 1976	26
Utilities Gross Receipts Tax for Schools	26
Planning and Zoning.	26
Safety	27
Police	27
Fire	27
Rescue Service	27
Solid Waste	27
EDUCATION	29
Public Schools	29
Nonpublic Schools	29
Area Colleges and Universities	30
Vocational Schools	31
HEALTH	32
Local Medical Personnel	32
Hospitals	32
Other Medical Facilities.	32
Public Health	32
OTHER LOCAL FACILITIES	35
Communications.	35
Library Services	35
Religious Institutions.	36
Financial Institutions	36
Hotels and Motels	36
Clubs and Organizations	37
RECREATION.	39
COMMUNITY IMPROVEMENTS.	41

PREPARED BY THE
KENTUCKY DEPARTMENT OF TRANSPORTATION
OFFICE OF TRANSPORTATION PLANNING
DIVISION OF FACILITIES PLANNING
IN COOPERATION WITH THE
U.S. DEPARTMENT OF TRANSPORTATION
FEDERAL HIGHWAY ADMINISTRATION

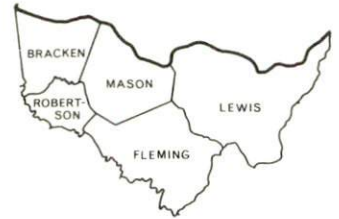
PREPARED BY THE

KENTUCKY DEPARTMENT OF TRANSPORTATION
OFFICE OF TRANSPORTATION PLANNING
DIVISION OF FACILITIES PLANNING

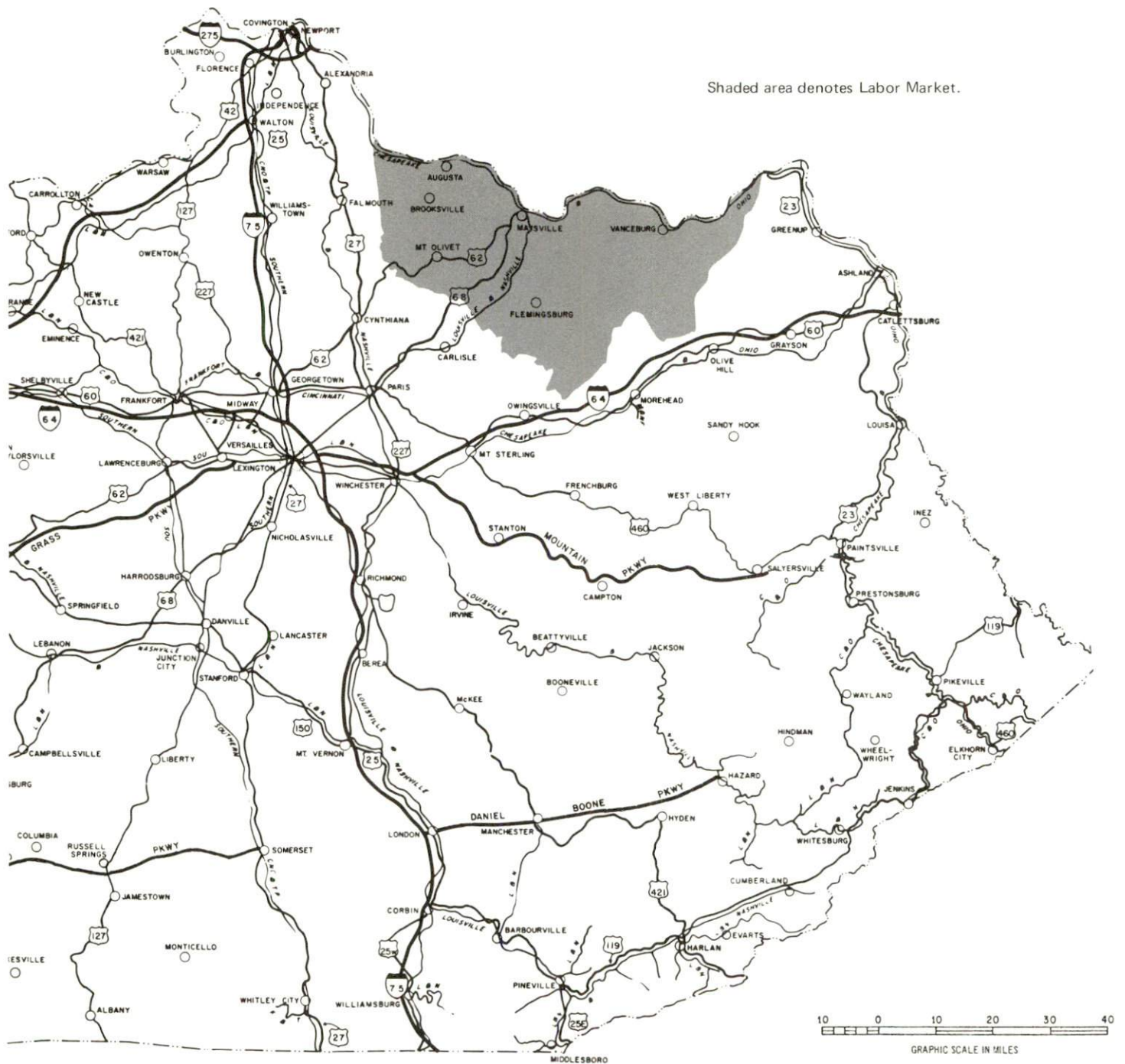
IN COOPERATION WITH THE
DEPARTMENT OF TRANSPORTATION
FEDERAL HIGHWAY ADMINISTRATION

[illegible]

MAYSVILLE LABOR MARKET AREA



Shaded area denotes Labor Market.



MAYSVILLE, KENTUCKY - A RESOURCE PROFILE

Maysville, the county seat of Mason County, is situated on the south bank of the Ohio River in the northeastern portion of Kentucky. Maysville, a thriving tobacco center, is located 67 miles northeast of Lexington, 139 miles northeast of Louisville, and 73 miles southeast of Cincinnati, Ohio. The city had a 1975 population of 7,164.

Mason County, comprising a land area of 238 square miles, had a population of 16,800 in 1976.

The Economic Framework

The total number of Mason County residents employed in 1975 averaged 8,210, with nonagricultural jobs accounting for 7,070 workers. Manufacturing employers in the county reported 2,600 workers; construction firms 330; transportation, communications, and public utilities 155; wholesale and retail trade 1,740; finance, insurance, and real estate 170; and employees in the service industries 780. Major industrial products are pulleys, v-belt drives, sprockets, ball and roller bearing units, and gear reducers; tobacco processing; cotton twine, cotton, and rayon yarns; and men's knit underwear.

Total unemployment in Mason County averaged 4.0 percent of the labor force in 1975.

Per capita personal income in the county in 1975 was \$5,162, an increase of 55.8 percent since 1971.

The Maysville labor market area includes Mason County, the four adjoining Kentucky counties, and Adams and Brown Counties in Ohio. The total number of residents in the Kentucky portion of the labor market area employed in 1975 averaged 19,375, with nonagricultural jobs accounting for 15,130 workers. Manufacturing employers in the area reported 4,290 workers; construction firms 430; transportation, communications, and public utilities 320; wholesale and retail trade 2,620; finance, insurance, and real estate 280; and employees in the service industries 1,050.

Resources for Growth

1. Labor Supply - There is a current estimated labor supply of 1,660 men and 2,550 women available for industrial jobs in the Kentucky portion of the labor market area. In addition, 2,460 young men and 2,430 young women in this area will become 18 years of age by 1983 and potentially available for work. The current labor supply would be supplemented by the number of men and women in the adjoining Ohio counties who are available for industrial jobs.

2. Transportation - The Chessie System and the Louisville and Nashville Railroad Company serve Maysville with a variety of services. U. S. highways 62 and 68, and State highways 10 and 11 serve Maysville and the surrounding area. Interstate 64 is located 41 miles to the south at Morehead. Interchanges to both Interstates 64 and 75 are located at Lexington, 67 miles southwest. There are seven truck lines serving Maysville. The Fleming-Mason Airport provides light aircraft service to the area. Commercial air service is available at Blue Grass Field in Lexington, 67 miles distant. Presently, two commercial barge lines operate at Maysville.

3. Utilities and Fuel - The Kentucky Utilities Company provides electricity to Maysville and sections of Mason County. The Fleming-Mason RECC also serves Mason County. Columbia Gas of Kentucky, Inc., whose source of supply is the Columbia Gas Transmission Corporation, provides natural gas to Maysville residents. There are six distillate fuel oil distributors and four propane distributors serving the Maysville area. Low sulphur content coal is available in Kentucky.

4. Education - Two public school systems operate in Mason County - the Mason County School System and the Maysville Independent School District.

The Maysville Community College, which opened in 1968, is a member of the University of Kentucky Community College System. In 1976, it offered more scholarships to students than any other community college in Kentucky. The college had a 1976 enrollment of 375.

The Maysville Area Vocational Education Center maintains a curriculum of six courses. The Central Kentucky Vocational-Technical School is located 67 miles southwest of Maysville in Lexington.

There are six universities, five senior colleges, one junior college, one community college, and a technical institute within 75 miles of Maysville.

THE LABOR MARKET AREA

POPULATION			Percent Nonwhite
Area	1976*	1970	1970
Maysville	7,164**	7,411	15.1
Labor Market Area	51,700	50,384	N/A
Mason County	16,800	17,273	9.3
Bracken County	7,800	7,227	1.0
Fleming County	12,000	11,366	2.5
Lewis County	12,900	12,355	0.2
Robertson County	2,200	2,163	0.6

*Provisional Estimates.

**1975 Population Estimates.

Sources: U. S. Department of Commerce, Bureau of the Census, Census of Population, 1970. U. S. Department of Commerce, Bureau of the Census, Current Population Reports, Series P-25, No. 665, May 1977; Series P-26, No. 76-17, July 1977.

LABOR FORCE CHARACTERISTICS OF RESIDENTS, 1975		
	Mason County	Labor Market Area
Civilian Labor Force	8,550	20,514
Employment	8,207	19,375
Agricultural	1,133	4,247
Nonagricultural	7,074	15,128
Unemployment	343	1,139
Rate of Unemployment (%)	4.0	5.6

Source: Kentucky Department for Human Resources, Kentucky Labor Force Estimates, Annual Averages, 1975.

NONAGRICULTURAL EMPLOYMENT
BY INDUSTRY, BY PLACE OF WORK, 1975

	<u>Mason County</u>	<u>Labor Market Area</u>
All Industries	5,801	9,179
Mining & Quarrying	*	*
Contract Construction	332	433
Manufacturing	2,602	4,293
Food & Kindred Products	99	128
Tobacco	239	239
Apparel, Textiles, Leather	506	1,592
Lumber, Furniture	0	113
Printing & Publishing, Paper	28	44
Chemicals, Petroleum & Coal,		
Rubber	20	263
Stone, Clay & Glass	68	72
Machinery, Metal Products,		
Equipment	1,641	1,825
Other Manufacturing	0	16
Transportation, Communications		
& Public Utilities	155	322
Wholesale & Retail Trade	1,740	2,622
Finance, Insurance & Real Estate	172	280
Services	780	1,049
Other	19	19

*Not disclosed.

Note: Excludes domestic workers, railway workers; certain nonprofit corporations; majority of federal, state, and local government workers; and self-employed workers. Labor market area totals for some employment categories exclude employment that was not disclosed for individual counties. Manufacturing detail may not add to totals because of rounding of base data.

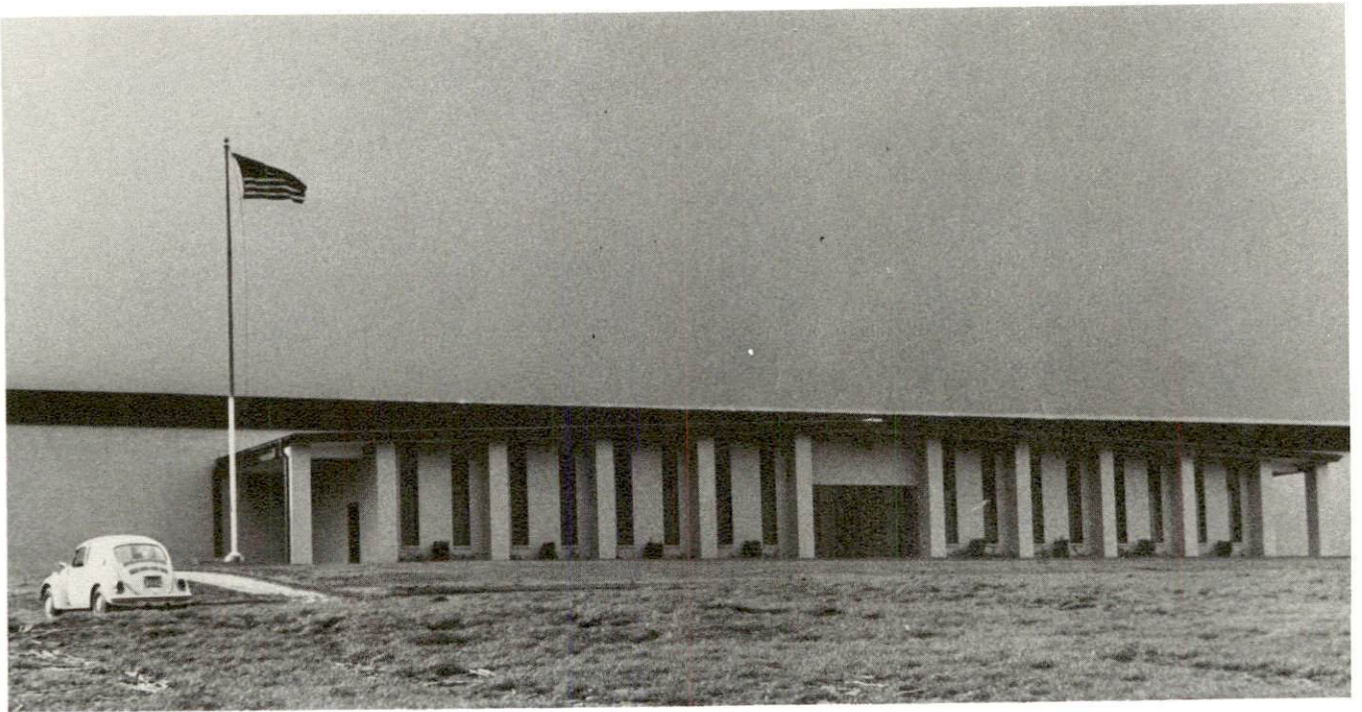
Source: Kentucky Department for Human Resources, Average Monthly Workers Covered by Kentucky Unemployment Insurance Law, 1975.

MAYSVILLE MANUFACTURING FIRMS,
THEIR PRODUCTS AND EMPLOYMENT

Firm (Establishment date)	Product	Employment			Organized
		Total	Male	Female	
Bill's Donut Shop (1962)	Donuts, trans- parent pudding, soft drinks	13	3	10	
Bluegrass Industries, Inc. (1973)	Men's knit underwear	299	27	272	
Browning Manufacturing Division, Emerson Electric Company (1886)	Pulleys, V-belt drives, sprock- ets, ball and roller bearing units, gear reducer	920	800	120	*
Carnation Company (1928)	Evaporated milk, tin cans	71	67	4	
Clover Leaf Dairy Products Company (1948)	Fluid milk	26	25	1	
Dravo Corporation (1974)	Lime and calcinating plant	130	126	4	
January and Wood Company (1851)	Cotton twine, cotton, rayon yarns	410	270	140	*
Magee's Bakery (1940)	Bakery products	4	1	3	
Maysville Ready Mix Con- crete Company (1950)	Ready mixed concrete	17	15	2	*
Ohio Valley Fertilizer, Inc. (1951)	Fertilizer	9	8	1	
Parker Tobacco Company, Inc. (1932)	Tobacco processing	420	300	120	
Southern Ice & Cold Storage Company (1949)	Ice	4	3	1	
Southwestern Tobacco Company, Inc.	Tobacco processing	150	75	75	
Standard Supply Company (1953)	Concrete block, precast concrete products	16	15	1	
Standard Tobacco Company (1932)	Concrete block, water tanks, burial vaults	56	51	5	
Sunier Machine Shop (1951)	Machine shop, electric motors, controls	2	2	0	
U.S. Shoe Corporation, Inc. (1972)	Ladies shoes, boots	160			

*See Labor Organizations below.

Source: Kentucky Department of Commerce, Division of Research and Planning.



BLUEGRASS INDUSTRIES, INC.



PARKER TOBACCO COMPANY - ONE OF FIVE NEW GREENHOUSES

LABOR ORGANIZATIONS

<u>Union</u>	<u>Representing manufacturing workers at:</u>
Teamsters	Maysville Ready Mix Concrete Company
United Steel Workers of America	Browning Manufacturing Division, Emerson Electric Company
United Textile Workers of America	January and Wood Company

ESTIMATED MALE LABOR SUPPLY
MAYSVILLE LABOR MARKET AREA

Area	Current			Future	
	Total	Not in Labor Force	Unemployed	Under-employed	Reaching 18 yrs. of age before 1983
Labor Market					
Area	1,660	0	800	860	2,460
Mason	540	0	240	300	824
Bracken	210	0	110	100	350
Fleming	380	0	190	190	533
Lewis	440	0	200	240	674
Robertson	90	0	60	30	79

Sources: Kentucky Department for Human Resources, Kentucky Labor Supply Estimates by County, 1976. Kentucky Department of Commerce, Future Labor Supply before 1983.

ESTIMATED FEMALE LABOR SUPPLY
MAYSVILLE LABOR MARKET AREA

Area	Current			Future	
	Total	Not in Labor Force	Unemployed	Under-employed	Reaching 18 yrs. of age before 1983
Labor Market					
Area	2,550	1,360	340	850	2,428
Mason	570	160	100	310	825
Bracken	700	520	50	130	353
Fleming	620	370	80	170	494
Lewis	420	150	90	180	667
Robertson	240	160	20	60	89

Sources: Kentucky Department for Human Resources, Kentucky Labor Supply Estimates by County, 1976. Kentucky Department of Commerce, Future Labor Supply before 1983.

AVERAGE WEEKLY WAGES BY INDUSTRY,
BY PLACE OF WORK, 1975

	<u>Mason County</u>	<u>Bracken County</u>	<u>Fleming County</u>
All Industries	\$153.75	\$144.61	\$123.77
Mining & Quarrying	0	0	*
Contract Construction	258.92	*	216.43
Manufacturing	176.83	178.59	113.67
Transportation, Com- munications & Public Utilities	230.92	191.57	189.29
Wholesale & Retail Trade	112.23	94.73	117.22
Finance, Insurance & Real Estate	144.42	135.97	153.44
Services	112.78	66.29	98.30
Other	101.38	0	*

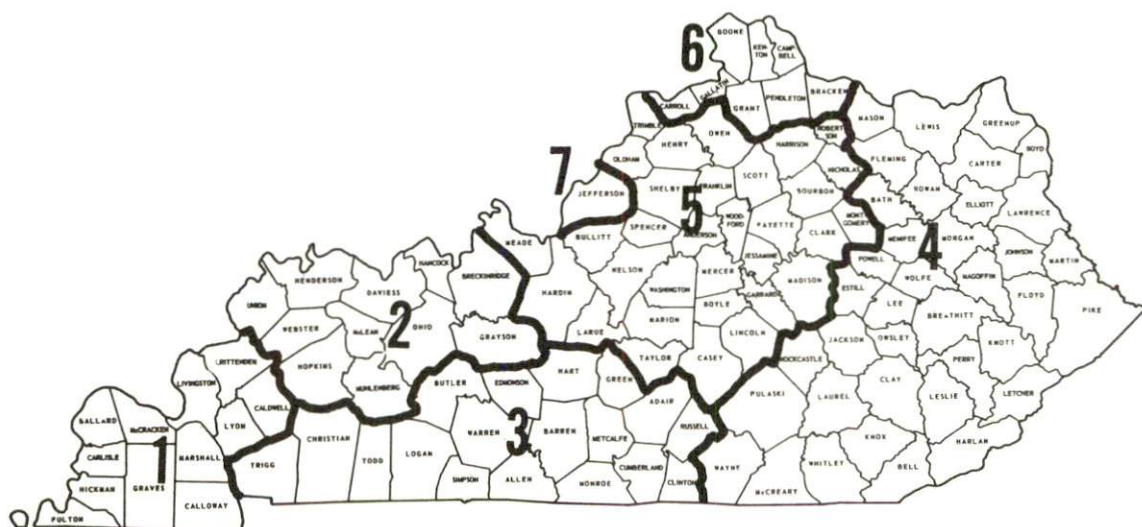
	<u>Lewis County</u>	<u>Robertson County</u>
All Industries	\$101.60	\$139.28
Mining & Quarrying	0	0
Contract Construction	114.47	94.61
Manufacturing	105.68	0
Transportation, Com- munications & Public Utilities	85.34	*
Wholesale & Retail Trade	80.59	63.95
Finance, Insurance & Real Estate	*	*
Services	90.51	150.60
Other	*	0

*Not disclosed.

Note: Excludes domestic workers, railway workers; certain nonprofit corporations; majority of federal, state and local government workers; and self-employed workers.

Source: Kentucky Department for Human Resources, Average Weekly Wages of Workers Covered By Unemployment Insurance, 1975.

Associated Industries of Kentucky, a voluntary organization of Kentucky businesses, regularly collects occupational wage rates and fringe benefits data from participating member firms. Data is compiled for over 127 clearly defined office, production, and service occupations. Tabulations are published for seven regions of Kentucky, as shown on the map below. It should be noted that the data may be weighted by the preponderance of firms in the larger cities and may be somewhat higher than the rates paid in the smaller communities. Data from these tabulations are available, upon request, from the Kentucky Department of Commerce, Frankfort, Kentucky 40601.



Associated Industries of Kentucky Area Wage Surveys

PER CAPITA PERSONAL INCOME

<u>Area</u>	<u>1975</u>	<u>1971</u>	<u>Percent Change</u>
Mason County	\$5,162	\$3,314	55.8
Labor Market Area			
Range	\$2,959 - 5,162	\$1,864 - 3,314	N/A
Kentucky	4,886	3,314	47.4
U. S.	5,903	4,195	40.7

Sources: U. S. Department of Commerce, Bureau of Economic Analysis,
Survey of Current Business, April 1977. U. S. Department
of Commerce, Bureau of Economic Analysis, March 1976.

TRANSPORTATION

Rail

Line serving Maysville - The Chessie System

Services - 3 eastbound and westbound freights daily; switching facilities; siding space for approximately 150 cars; nearest piggyback facilities at Cincinnati, Ohio, 73 miles distant

Line serving Maysville - Louisville and Nashville Railroad Company

Services - 1 northbound and 1 southbound freight 3 times weekly; switching facilities; team track space for 5 cars; nearest piggyback facilities at Lexington, 67 miles distant

For details on routing, schedules, rates, and services, contact:

Real Estate and Industrial Development
The Chessie System
610 Temple Bar Building
Cincinnati, Ohio 45202
(513) 369-5258

and/or

Manager of Industrial Development
Louisville and Nashville Railroad Company
908 West Broadway
Louisville, Kentucky 40203
(502) 587-5000

Highways

U. S. highways 62 and 68 and state highways 10 and 11 serve the Maysville area. U. S. Highway 52 is located just across the Ohio River from Maysville. This is an east-west route and provides Maysville with easy access to Portsmouth, Ohio, and Cincinnati, Ohio.

Interstate 64 interchanges are located 41 miles south of Maysville at Morehead, Kentucky, and 67 miles to the southwest at Lexington. An interchange of north-south Interstate 75 is also located at Lexington and 67 miles from Maysville.

Truck Service

Company

Home Office

Budig Western	1100 Gest Street Cincinnati, Ohio 45203
Interstate Motor Freight System	134 Grandville Avenue, S. W. Grand Rapids, Michigan 49502
McDaniel Motor Express, Inc.	1115 Winchester Road Lexington, Kentucky 40505
McLean Trucking Company	P. O. Box 213 Winston-Salem, North Carolina 27102
Overnite Transportation Company	1000 Semmes Avenue Richmond, Virginia 23209
Reinhardt Transfer Company	1410 Tenth Street Portsmouth, Ohio 45662
Turner Expediting Service	Box 21333, Standiford Field Louisville, Kentucky 40221

Other Freight Services

Shipping Center

United Parcel Service

Maysville

HIGHWAY MILES AND TRUCK TRANSIT TIME IN DAYS FROM MAYSVILLE, KENTUCKY, TO SELECTED MARKET CENTERS

City	Highway Miles	Delivery		City	Highway Miles	Delivery	
		Time TL				Time TL	
Atlanta, Ga.	429	3		Los Angeles, Cal.	2,247	8	
Birmingham, Ala.	465	3		Louisville, Ky.	139	2	
Chicago, Ill.	360	2		Nashville, Tenn.	277	2	
Cincinnati, Ohio	73	1		New Orleans, La.	794	3	
Cleveland, Ohio	276	2		New York, N. Y.	679	4	
Detroit, Mich.	332	2		Pittsburgh, Pa.	319	3	
Knoxville, Tenn.	242	3		St. Louis, Mo.	402	2	

Source: Delivery Time Only - Budig Western, 1100 Gest Street,
Cincinnati, Ohio 45203.

Air

Local

Fleming-Mason Airport
Location: 6 nautical miles south of Maysville
Runways: 1 paved
Length: 3,900 feet
Traffic Control: Segmented circle and wind cone
Lighting: Medium intensity runway lighting -
beacon - sundown to sunrise
Services: None

Nearest Commercial

Blue Grass Field
Location: Lexington, Kentucky, 67 miles distant
Runways: 2 paved
Length: 3,500 feet; 6,500 feet
Traffic Control: Control tower; guards; radar services -
arrival and departure control, ground
control, Stage II contact approach
control; Automatic Terminal Information
Service
Lighting: Approach lighting system, beacon,
runways and obstructions lighted
Services: Delta, Eastern, Piedmont, Allegheny,
and Air Kentucky Airlines; 100 and 145
octane, jet fuel; major A & E repairs;
storage; flight instructions; Weather
Bureau; charter service; restaurant;
taxi, limousine, and car rentals
Air Freight
Service: Air freight accepted on a space
available basis

Bus - Southern Greyhound Bus Lines; Trailways System;
City Transit (Intracity)

Taxi - Five companies (24-hour service)

Rental Services - Car, truck, and trailer rentals

Water

Maysville's location on the Ohio River provides the area with excellent water transportation capabilities. Presently, two commercial barge lines operate at Maysville - Crounse Corporation and Dravo Corporation, and there are two public landings. Four private river terminals are located within 5 miles of Maysville.

POWER AND FUEL

Electricity

Company serving Maysville and sections of Mason County - Kentucky
Utilities Company

Source of power - Kentucky Utilities Company

Total generating capacity - 1,839,000 KW

For industrial rates contact:

Industrial Development Department
Kentucky Utilities Company
120 South Limestone Street
Lexington, Kentucky 40507
(606) 255-1461

Company serving Mason County - Fleming-Mason RECC

Source of power - East Kentucky Power Cooperative

Total generating capacity - 868,000 KW

For industrial rates contact:

Industrial Development Division
East Kentucky Power Cooperative
P. O. Box 707
Winchester, Kentucky 40391
(606) 744-4812

and/or

Fleming-Mason RECC
P. O. Drawer 328
Flemingsburg, Kentucky 41041
(606) 845-2661

Natural Gas

Company serving Maysville - Columbia Gas of Kentucky, Inc.

Source of supply - Columbia Gas Transmission Corporation

Size of transmission mains - 8-inch (supplier)

6 and 8 inches (distributor)

Distribution mains - 2 through 10 inches

Distribution pressure - 10-inch water column

Btu content - 1,025 per cubic foot; Specific gravity - .62

For rates and supplies contact:

Columbia Gas of Kentucky, Inc.
State National Bank Building
33 West Second Street
Maysville, Kentucky 41056
(606) 564-3472

Other Fuels

Propane

Lang Blue Flame Gas
Company
200 West Second Street
Manchester, Ohio 45144

Williams Energy Company
Minerva, Kentucky 41062

Ripley Gas Company
28 North Second Street
Ripley, Ohio 45617

Stan Harvey Gas Company
919 Forest Avenue
Maysville, Kentucky 41056

Fuel oils

Distillate fuel oil -

Bowman Fuel, Inc.
Stark Avenue
Manchester, Ohio 45144

Chevron Oil Company
Blue Run Road
Maysville, Kentucky 41056

Russel M.C. Company
Texaco Products
Lexington Street
Maysville, Kentucky 41056

Breslin Oil Company
Lexington Street
Maysville, Kentucky 41056

Finch Oil Company
U. S. Highway 68
Maysville, Kentucky 41056

Union Oil Company
Blue Run Road
Maysville, Kentucky 41056

Residual fuel oil - Arrangements must be made with the refinery.

Low sulphur content coal - Available in Kentucky.

WATER AND SEWERAGE

Water

Company serving Maysville - Maysville Utility Commission
Cochran Building
Maysville, Kentucky 41056
(606) 564-3531

Source - Ohio River

Treatment plant capacity - 3,000,000 gallons per day

Average daily consumption - 1,300,000 gallons

Peak daily consumption - 1,800,000 gallons

Type treatment - Coagulated, filtered, chlorinated, fluoridated

Storage capacity - 2,950,000 gallons

Size lines - 2 to 16 inches

Average pressure - 150 psi

Average temperature - 65 degrees F.

MONTHLY WATER RATES FOR WHOLESALE AND INDUSTRIAL CONSUMERS

First	1,000 gallons	\$2.82 per M gallons
Next	3,000 gallons	1.41 per M gallons
Next	6,000 gallons	1.20 per M gallons
Next	40,000 gallons	.92 per M gallons
Next	200,000 gallons	.56 per M gallons
Next	250,000 gallons	.41 per M gallons
Next	500,000 gallons	.40 per M gallons
Over	1,000,000 gallons	.30 per M gallons

MINIMUM CHARGES

3/4-inch meter	\$ 2.82 per month
1 -inch meter	7.04 per month
1 1/4-inch meter	14.08 per month
1 1/2-inch meter	21.12 per month
1 3/4-inch meter	28.16 per month
2 -inch meter	35.20 per month
2 1/2-inch meter	42.24 per month
3 -inch meter	56.32 per month
4 -inch meter	70.40 per month
6 -inch meter	140.80 per month

Tap-on charge:

3/4-inch service	- \$ 90
1 -inch service	- 100
1 1/2-inch service	- 125
2 -inch service	- 150
Over 2 -inch service	- Actual cost of installation

Name of water district - Western Mason County Water District
Route 1
Dover, Kentucky 41034
(606) 882-2527
Area served - Western part of Mason County and eastern part of
Bracken County
Date when water district began operating - 1960
Source of raw water - Deep wells
Capacity of treatment plant - 300,000 gpd*
Type of treatment - Gas chlorine
Average amount of water used in a 24-hour period - 60,000 to
70,000 gallons
Storage capacity - 185,000 gallons
Average pressure - 80 psi
Size lines - 2, 3, 4, and 6 inches
Rates -

Property with less than 5 acres

First	1,500 gallons	\$5.00 Minimum Charge
Next	1,500 gallons	1.50 per M gallons
Next	1,000 gallons	1.00 per M gallons
Over	4,000 gallons	.80 per M gallons

Property with more than 5 acres

First	4,000 gallons	\$8.00 Minimum Charge
Over	4,000 gallons	.70 per M gallons

Tap-on charge - \$200 for house; \$250 for farm

*Kentucky Department for Natural Resources and Environmental Protection.

Name of water district - Western Lewis-Rectorville Water and Gas
District
P. O. Box 633
Maysville, Kentucky 41056
(606) 564-9333

Area served - Western Lewis County and eastern Mason County
Date when water district began operating - 1962
Source of raw water - Deep wells
Capacity of treatment plant - 216,000 gpd*
Type of treatment - Chlorination
Average amount of water used in a 24-hour period - 160,000 gallons
Peak amount of water used in a 24-hour period - 190,000 gallons
Storage capacity - 200,000 gallons
Average pressure - 35 psi
Average temperature - 34 degrees F.
Size lines - 2 to 8 inches
Rates -

First	1,000 gallons	\$3.75 Minimum Charge
Next	2,000 gallons	1.50 per M gallons
Next	2,000 gallons	1.00 per M gallons
Next	5,000 gallons	.85 per M gallons
Next	5,000 gallons	.75 per M gallons
Over	15,000 gallons	.65 per M gallons

Tap-on charge: \$175

*Kentucky Department for Natural Resources and Environmental Protection.

Name of water district - Washington-Lewisburg Water District
P. O. Box 536
Maysville, Kentucky 41056
(606) 564-9333

Area served - Washington, Lewisburg and rural areas between

Date when water district began operating - 1965

Source of supply of treated water - Maysville Utility Commission

Average amount of water used in a 24-hour period - 155,000 gallons

Peak amount of water used in a 24-hour period - 180,000 gallons

Storage capacity - 240,000 gallons

Average pressure - 75 psi

Average temperature - 34 degrees F.

Size lines - 4, 6, 8, and 10 inches

Rates -

Residential

First	3,000 gallons	\$ 7.00 Minimum Charge
Next	27,000 gallons	1.00 per M gallons
Over	30,000 gallons	.75 per M gallons

Commercial

First	40,000 gallons	\$50.00 Minimum Charge
Over	40,000 gallons	.75 per M gallons

Tap-on charge: \$200

Surface water sources - Ohio River and North Fork of Licking River

Average discharge - North Fork of Licking River near Lewisburg -

151 cfs (30-year record, USGS); Ohio River at Maysville -

91,010 cfs (23-year record (1940-63), USGS)

Expected ground water yield - 500-1,000 gpm along Ohio River alluvium;

5-50 gpm in a small central portion of the county; 5 gpm or less
over remainder of county.

Sewerage

Company serving Maysville - Maysville Utility Commission
Cochran Building
Maysville, Kentucky 41056
(606) 564-3531

Design capacity - 3,000,000 gallons per day

Average daily flow - 1,100,000 gallons

Treatment - Primary and secondary

Type treatment - Clarifier, digester, drying beds, activated sludge

Treated effluent discharged into - Ohio River

Size of sanitary mains - 6 to 12 inches

Size of combined sanitary-storm mains - 24 inches

Rates - 90 percent of monthly water bill

Tap-on charge: \$10 inspection fee

CLIMATE

Mason County

Temperature

Normal (30-year record)	54.0 degrees
Average annual 1976	52.0 degrees
Record highest, August, 1962 (15-year record)	102.0 degrees
Record lowest, January, 1963 (15-year record)	-19.0 degrees
Normal heating degree days (30-year record)	5,070
(Heating degree day totals are the sums of negative departures of average daily temperatures from 65 degree F.)	

Precipitation

Normal (30-year record)	39.04 inches
Mean annual snowfall (29-year record)	22.90 inches
Total precipitation 1976	30.29 inches
Mean number days precipitation (.01 inch or more) (29-year record)	129
Mean number days thunderstorms (29-year record)	44

Prevailing Winds (16-year record)

South-southwest

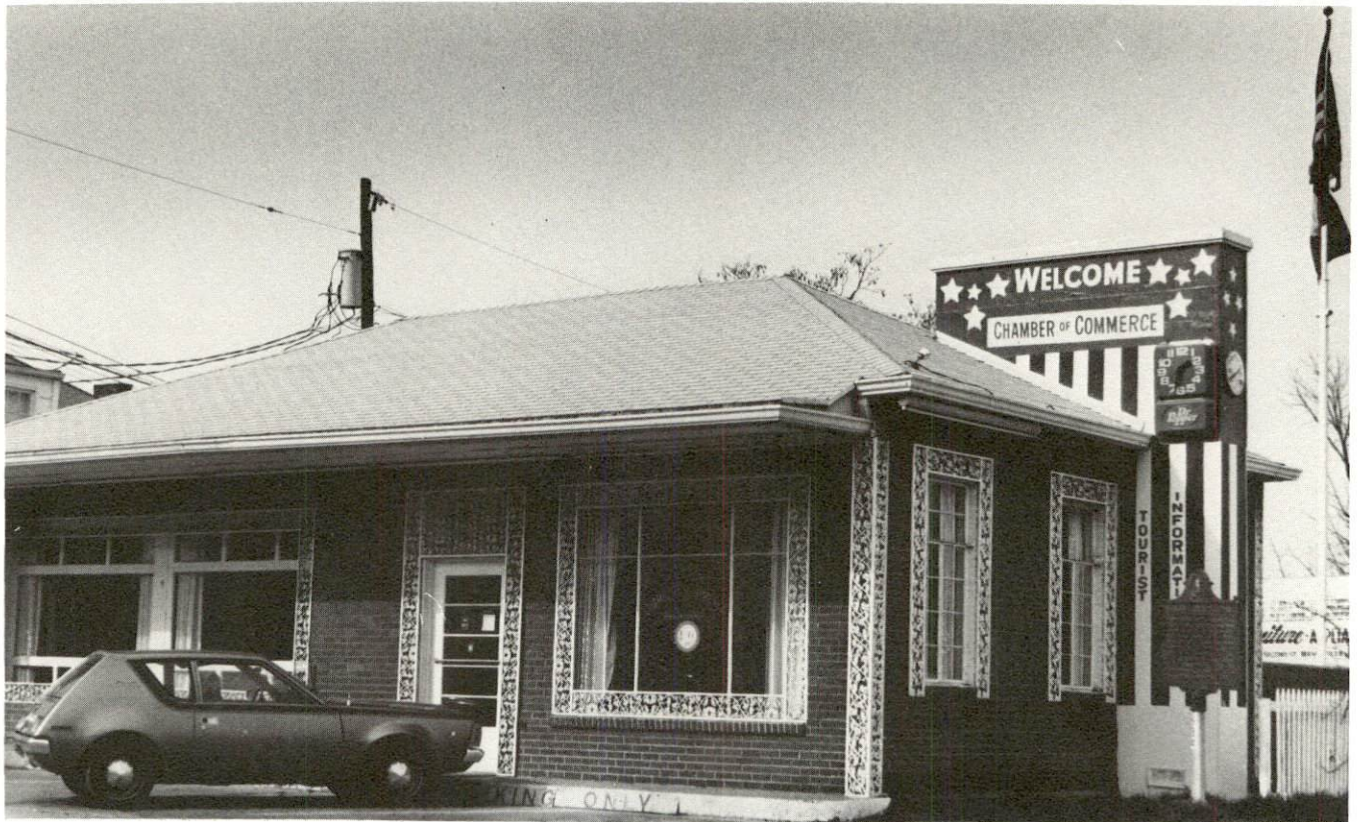
Relative Humidity (14-year record)

1 a.m.	77 percent
7 a.m.	81 percent
1 p.m.	59 percent
7 p.m.	63 percent

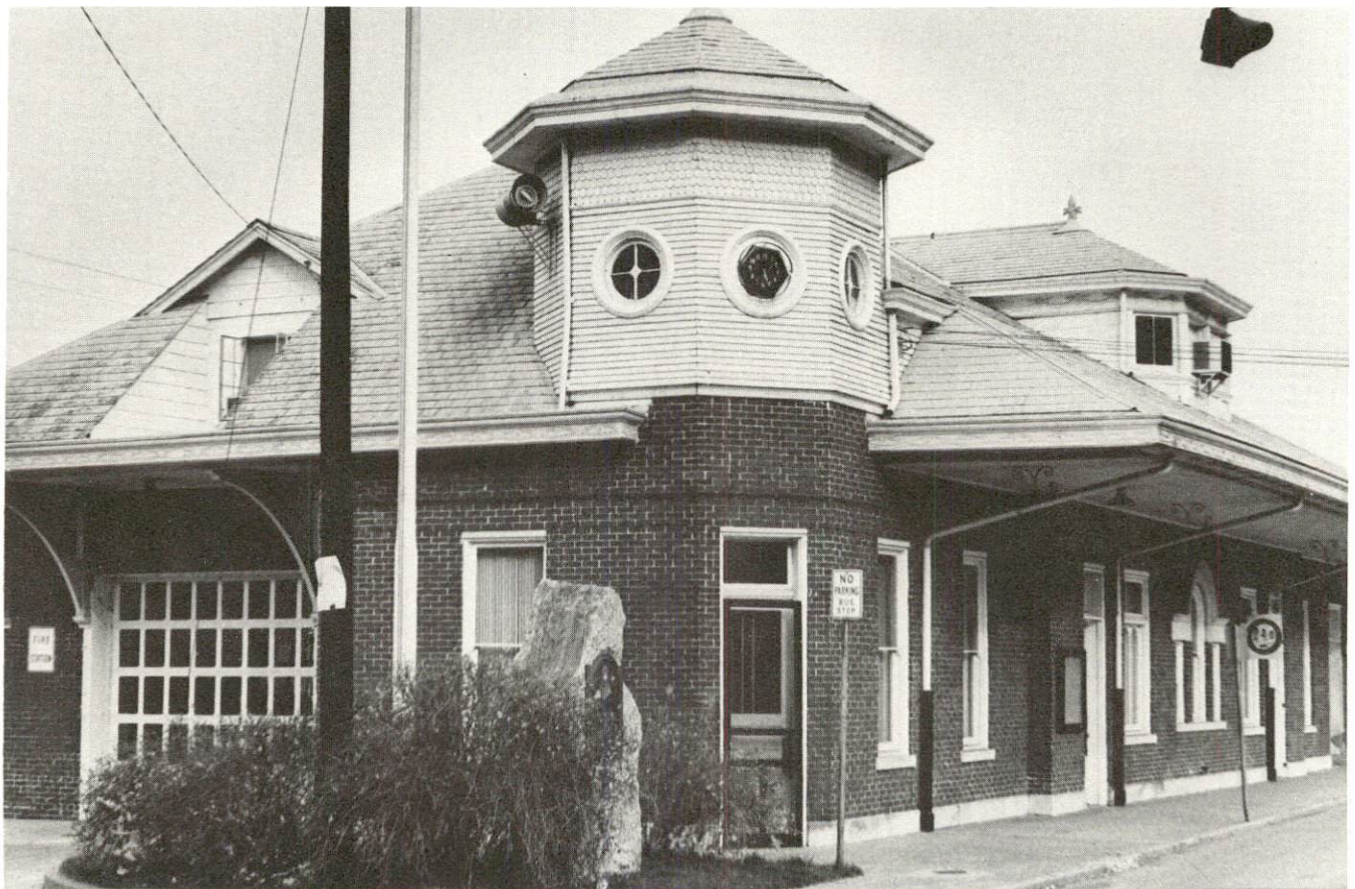
Source: U. S. Department of Commerce, Environmental Science Services Administration, Climatological Data, 1976. Station of record: Cincinnati, Ohio: Greater Cincinnati Airport.



MASON COUNTY COURTHOUSE



MAYSVILLE-MASON COUNTY CHAMBER OF COMMERCE



MAYSVILLE CITY BUILDING

LOCAL GOVERNMENT

City

Structure - Mayor - 4-year term; 4 councilmen - 2-year terms;
city manager

Budget 1976 - General Fund \$1,624,735

Fees and licenses - Annual occupational license fees for manufacturing firms are: \$150 for firms with less than 50 employees, \$225 for firms with less than 100 employees, and \$50 for each 100 employees or fraction thereof in addition to the above fees; 1½ percent occupational license tax on wages.

County

Structure - County Judge - 4-year term; 3 commissioners - 4-year terms

Budget 1976-77 - General Fund \$286,500; Road Fund \$73,700

Assessed Value of Property, 1976

<u>Classes of Property</u>	<u>Maysville</u>	<u>Mason County</u>
Real Estate	\$55,710,700	\$147,831,200
Tangibles	15,209,800	28,863,150

Property Taxes

All property in Kentucky is assessed at 100 percent of fair cash value.

Land and buildings are taxed by the state and may be taxed by local jurisdictions. The state rate is \$0.315 per \$100 of assessed valuation. Beginning January 1, 1977, local school tax rates were reduced by \$0.30 per \$100 valuation and the state rate was increased by \$0.30 per \$100 (from \$0.015), resulting in no net change in the combined state and local rates.

Manufacturing machinery, raw materials inventories, pollution control equipment, and goods in the process of manufacture are not subject to local taxation. The state rate is \$0.15 per \$100.

Other tangible personal property owned by manufacturers (automobiles, trucks, finished goods, office furniture, office equipment) is taxed by the state at \$0.45 per \$100 and may be taxed by local jurisdictions. Beginning January 1, 1977, local school rates were reduced by \$0.30 per \$100 valuation and the state rate was raised by \$0.30 per \$100 (from \$0.15).

Property stored in public warehouses in a transit status is not subject to local taxation. The state rate is only \$0.015 per \$100.

(Contd.)

Intangible personal property located in Kentucky (money in hand, shares of stock, notes, bonds, accounts, and other credits) is taxed by the state at \$0.25 per \$100, and is not subject to local taxation.

Intangible personal property owned by corporations in Kentucky as a result of business transactions performed out-of-state, but having a tax situs in Kentucky (accounts receivable, notes, bonds, credits, non-domestic bank deposits, licensing or royalty agreements, shares of stock of any affiliated company, etc.) is taxed by the state at \$0.015, and is not subject to local taxation.

Local Property Tax Rate Per \$100 of Assessed Valuation, 1976*

<u>Taxing Jurisdiction</u>	<u>Maysville</u>	<u>Mason County</u>
County	\$.190	\$.190
School	.623	.576
City	.270	

Utilities Gross Receipts Tax For Schools

A 3 percent tax is levied on utilities receipts for schools in Mason County. Tax is paid by all consumers of utilities as an add-on to the utilities bills. Exempted are receipts from utilities services that are resold and the receipts from the sale of energy or energy producing fuels that exceed 3 percent of the cost of production in manufacturing, processing, mining or refining.

Planning and Zoning

Joint agency - Maysville-Mason County Planning and Zoning Commission
Zoning enforced - City only
Subdivision regulations enforced - City and 5 miles beyond city limits
Local codes enforced - Housing and building
Mandatory state codes enforced - Plumbing, National Fire Protection Association Code, National Building Code (for major buildings and residential construction containing more than 12 bedrooms per building)

*Kentucky Department of Revenue, Kentucky Property Tax Rates, 1976.

Safety

Police

Total staff
Radio-patrol cars

Maysville

24
4

Mason County

6
6

Fire

American Insurance
Association Fire Rating
Full-time staff
Volunteers

6 and 9
16

Approximately
120

Rescue Service

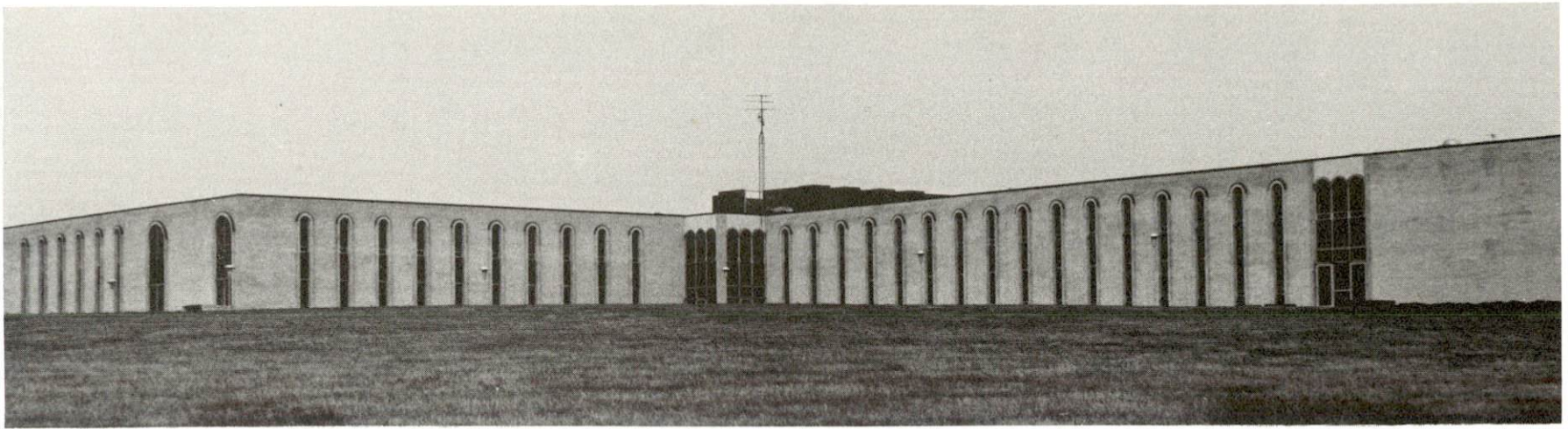
Maysville Rescue Squad (Operated by the Maysville Fire Department)
Equipment - Rescue squad truck equipped with two cots, resuscitator,
and other medical equipment and supplies
Personnel training - Standard first aid, multi-media first aid,
emergency medical training

Solid Waste

Maysville*

Type service	Municipal
Fee charged:	
residential	No charge
business	No charge
industrial	No charge
Collection frequency:	
residential	Weekly
business	Weekly
industrial	Weekly
Trash pickup	Weekly
Disposal method	Landfill

*The city does not provide collection service outside the city limits,
but manufacturing firms can make arrangements with the city to use
the landfill.



MAYSVILLE COMMUNITY COLLEGE



MASON COUNTY HIGH SCHOOL

EDUCATION

Public Schools

	<u>Maysville Independent</u>	<u>Mason County</u>
Total Enrollment (March 1977)	1,016	2,578
Elementary	546	1,304
Middle School	153	513
High School	317	761
Student-Teacher Ratio	16-1	21-1
Elementary	19-1	23-1
Middle School	14-1	21-1
High School	13-1	19-1
Accreditation	Southern Association of Colleges and Schools	
Percent High School Graduates to College	50.6	47.2
Expenditures Per Pupil (1975-76)	\$843.27	\$795.31
Bonded Indebtedness, June 30, 1976	\$677,000	\$2,896,000*

Nonpublic Schools

	<u>St. Patrick's</u>
Total Enrollment	251
Elementary	161
High School	90
Student-Teacher Ratio	17-1
Elementary	20-1
High School	13-1

*Includes advance refunding issue of \$970,000.

Area Colleges and Universities

<u>Name</u>	<u>Location (Miles distant)</u>	<u>Enrollment (Fall, 1976)</u>	<u>Highest Degree Conferred</u>
Maysville Community College	Maysville	375	Associate
Morehead State University	Morehead (44)	7,383	Masters, Ph.D.*
Southeastern Christian College	Winchester (65)	99	Associate
Georgetown College	Georgetown (66)	1,020	Masters
Lexington Technical Institute	Lexington (67)	1,765	Associate
Transylvania University	Lexington (67)	752	Masters**
University of Kentucky	Lexington (67)	22,525	Ph.D., M.D., D.M.D., J.D.
Thomas More College	Ft. Mitchell (70)	1,423	Baccalaureate
Northern Kentucky University***	Covington (71)	6,334	Masters, J.D.
College of Mount St. Joseph on the Ohio	Cincinnati (73)	778	Baccalaureate
Edgecliff College	Cincinnati (73)	662	Baccalaureate
Hebrew Union College	Cincinnati (73)	173	Ph.D.
University of Cincinnati	Cincinnati (73)	23,752	Academic and Professional
Xavier University	Cincinnati (73)	2,310	Masters

*Cooperative program with the University of Kentucky, Lexington, for a Ph.D. in education only.

**Courses in the Masters Degree program are taught on the Transylvania Campus by Xavier University of Cincinnati faculty members. The degree is issued by Xavier University.

***Salmon P. Chase College of Law is part of Northern Kentucky University.

Vocational Schools

	<u>Nearest State School</u>
Location	Central Kentucky State
Miles Distant	Vocational-Technical School
Curriculum	Lexington, Kentucky
	67
	Agriculture
	Equine Education
	Business and Office
	Clerical
	Secretarial
	Consumer and Home Economics
	Commerical Foods
	Consumer Education
	Health and Personal Service Occupations
	Cosmetology
	Orderly/Nurse Assistant
	Practical Nursing
	Marketing and Distributive Education
	Industrial Education
	Auto Body Repair
	Auto Mechanics
	Drafting
	Electronics
	Graphic Arts (Printing)
	Industrial Electricity
	Machine Shop
	Office Machine Repair
	Sheet Metal
	Welding
	Learning Resource Center

	<u>Nearest Area Education Center</u>
	Maysville [*] Area Vocational
Location	Education Center
Curriculum	Maysville
	Industrial Education
	Auto Body Repair
	Auto Mechanics
	Carpentry-Building Trades
	Drafting
	Industrial Electricity
	Welding

Arrangements can be made to provide training in the specific production skills required by an industrial plant. Instruction may be conducted either in the vocational school or in the industrial plant, depending upon the desired arrangement and the availability of special equipment.

HEALTH

Local Medical Personnel

Physicians - 13
Dentists - 6

Hospitals

<u>General Hospital</u>	<u>Location</u>	<u>Beds</u>
Hayswood Hospital	Maysville	113 acute; 30 extended care

General hospital facilities - 3 operating rooms, recovery room, partial intensive care, 2 X-ray units, obstetrical unit, nursery, laboratory, pharmacy, physical therapy, respiratory therapy, monitor cardiac care, medical staff library, and doctors' paging system

Medical staff - 11 doctors, 37 registered nurses, 18 licensed practical nurses, 2 physical therapists, 1 respiratory therapist

Other Medical Facilities

Mason County Comprehensive Care Center

Public Health

Facility - Mason County Health Department
Staff - 1 administrator, 3 nurses, 2 clerks, 1 sanitarian



JOHN N. BROWNING MEDICAL BUILDING



MAYSVILLE PUBLIC LIBRARY

OTHER LOCAL FACILITIES

Communications

Telephone - South Central Bell Telephone Company (Maysville)
Kentucky Telephone Company, a subsidiary of Continental
Telephone Service (Mason County)
Services - Standard

Telegraph - Western Union
Services - Telephone

Postal - U. S. Post Office
Class - First
Mail received - Twice daily
Mail dispatched - Twice daily

Newspapers -
Daily and circulation - The Ledger Independent, 8,500
Weekly and circulation - The Advertiser*, 17,000
Other papers
received from - Louisville and Lexington, Kentucky;
Cincinnati, Ohio

Radio - WFTM-AM-FM
Stations received from - Lexington, Kentucky;
Cincinnati and Dayton, Ohio

Television -
Cable Service
Reception from - Lexington, Kentucky; Cincinnati and Dayton, Ohio;
Huntington, West Virginia
Kentucky Educational
Television - Lexington-Richmond transmitter - Channel 46;
Morehead transmitter - Channel 38

Library Services

Public library - Mason County Library District
Size collection - 15,000 volumes
Circulation, 1976 - 98,622
Services - Bookmobile, records, film strips, microfilm reader-printer

*Free weekly publication of the Ledger Independent.

Religious Institutions

Number of churches - 25

Denominations - Baptist, Catholic, Christian, Church of Christ,
Church of God, Church of Latter Day Saints, Episcopal, Holiness,
Jehovah's Witnesses, Lutheran, Methodist, Nazarene, Pentecostal,
Presbyterian

Nearest Synagogues - Portsmouth, Ohio, 54 miles east of Maysville
Congregations - Bene Abraham (reform)

Financial Institutions

<u>Banks</u>	<u>Assets</u>	<u>Deposits</u>	<u>Statement Date</u>
Bank of Maysville	\$37,555,749.98	\$30,559,610.92	12/31/76
The State National Bank	36,125,198.00	31,830,304.00	12/31/76
The Security Bank and Trust Company	9,431,597.66	8,006,935.30	12/31/76
<u>Savings and Loan Associations</u>	<u>Assets</u>	<u>Savings Accounts</u>	<u>Statement Date</u>
First Federal Savings and Loan Association	\$ 7,614,818.00	\$ 6,680,205.00	12/31/76

Hotels and Motels

Total number - 7
Total units - 137

Clubs and Organizations

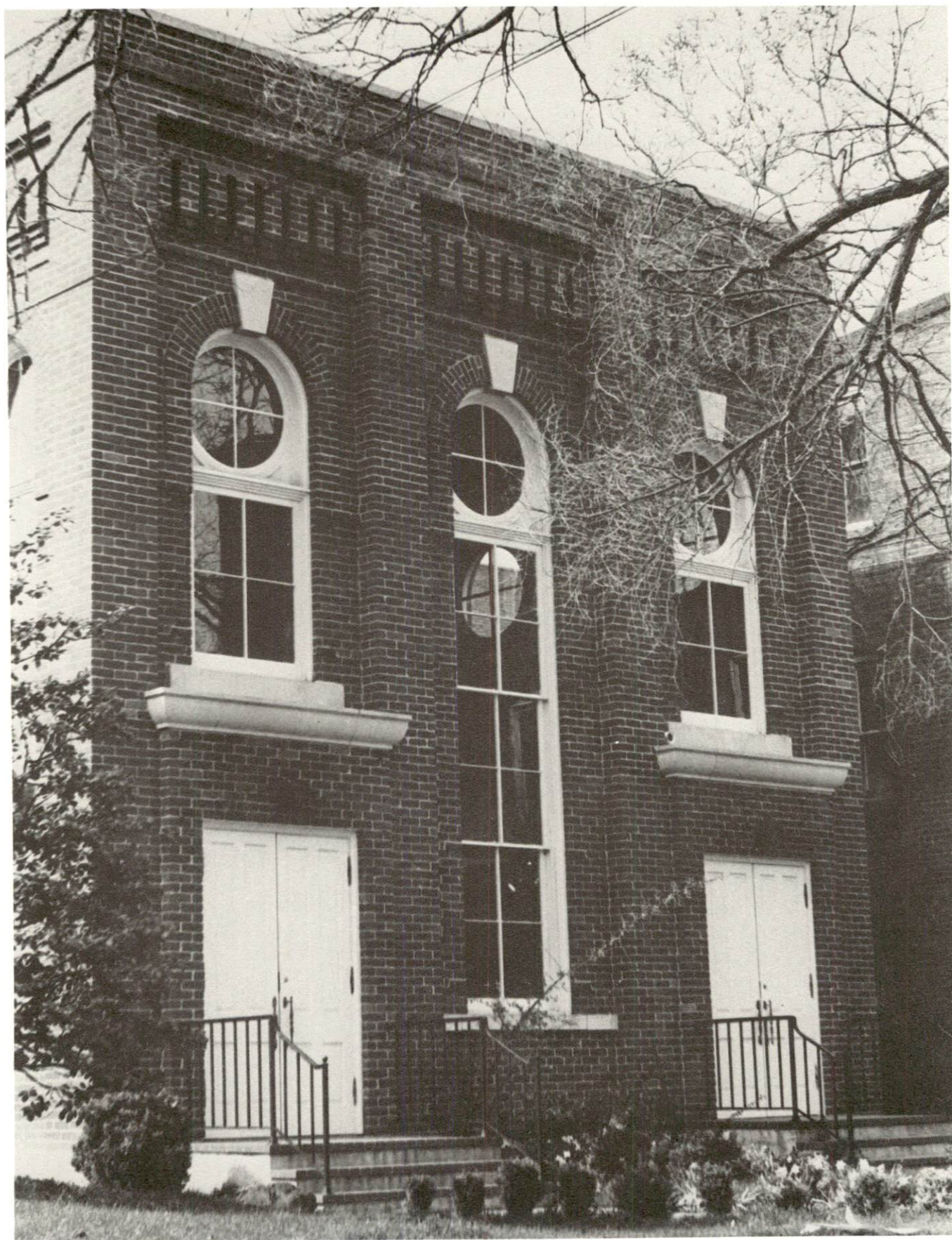
Business and Civic - Maysville-Mason County Chamber of Commerce, Jaycees, Lions, Rotary, Mason County Recreational Foundation

Fraternal - Masonic, Moose Lodge, IOOF, VFW, FOP, American Legion, Knights of Columbus, Knights of Pythias, Royal Arch, Fraternal Order of Eagles

Women's - Xi Omicron and Alpha Nu chapters of Beta Sigma Phi, American Association of University Women, DAR, Business and Professional Women's Club, Maysville Woman's Club, Younger Woman's Club, American Legion Auxiliary, Eastern Star, Homemakers Clubs, Garden Club

Youth - Boy Scouts, Girl Scouts, Cub Scouts, Brownies, FFA, FHA, 4-H, Beta Club, Campfire Girls, Tom Browning's Boys Club

Other - Game and Fish Club, Valley Bow Hunters



MASON COUNTY MUSEUM

RECREATION

Local

The city of Maysville offers numerous public recreation facilities and provides supervised programs. Five parks are located within the city limits. A new park located just outside of town offers softball diamonds, a swimming pool, and tennis courts. A public golf course and a football field are available.

Private recreation facilities include a country club with a pool and golf course, and two movie theaters.

Local tourist attractions include walking tours of Maysville and Washington. A Geranium Day Festival, an annual event held on May 1, opens the tourist season of historic Washington. Washington, located 4 miles from Maysville, was founded in 1786 and has been excellently preserved as a historical town with all the charm and quaintness of its earlier period. Other attractions include Mason County Court Day, held the first Monday in October, and the Little Theatre Group which provides entertainment at the Opera Theater.

Area

Rankin House State Memorial in Ripley, Ohio, 8 miles distant, is one of the restored stations of the underground railroad. It is reputedly the home in which Eliza in Uncle Tom's Cabin found refuge after crossing the ice on the Ohio River.

Adam's Lake State Park near West Union, Ohio, approximately 20 miles distant, is a 96-acre park offering picnicking, boating, and fishing.

Blue Licks Battlefield State Park, 25 miles southwest of Maysville, is the site of the last battle of the American Revolution, marking the end of Indian-pioneer struggle in Kentucky. This 100-acre park offers camping accommodations, Olympic-size swimming pool with bathhouse, hiking trails, picnic shelter, fishing, and playground. In addition, there is a museum featuring bones from the prehistoric salt "lick" in the area, Indian-pioneer relics, and guns.

Kincaid Lake State Park near Falmouth is approximately 40 miles west of Maysville. The park covers 446 acres and offers a 175-acre lake, hiking trails, beach, bathhouse, picnicking, camping, boating, swimming, amphitheatre, and miniature golf.

Shawnee State Forest, approximately 45 miles distant, is a 1,135-acre park west of Portsmouth, Ohio, providing camping, picnicking, hiking trails, boating, fishing, swimming, riding, golf, and lodging.

Daniel Boone National Forest is approximately 45 miles southeast of Maysville. In this area of science and geologic interest are natural sandstone arches, waterfalls, scenic overlooks, and remains of old iron furnaces.

Cave Run Lake, a 6,790-acre lake near Morehead and approximately 50 miles distant, is a recently completed project that offers camping and fishing.

Carter Caves State Resort Park, near Olive Hill, is approximately 65 miles southeast of Maysville. This resort park is located in a beautiful region abounding in natural bridges, caves, rugged cliffs, and mountain streams, and offers a lodge and camping facilities, swimming in a lake or pool, horseback riding, golf, playground, picnicking, boat rental and dock. In addition, one can enjoy tours of the caves from April through October.

Lexington, 67 miles southwest of Maysville, offers a variety of entertainment, cultural, and sporting events. There are symphony orchestras, theatre groups, concerts, lectures, art exhibits, and collegiate athletics at the University of Kentucky as well as Transylvania University. Thoroughbred and harness racing is available at Keeneland Race Course and the Red Mile Trotting Track. Another favorite pastime is touring historic homes and museums or just driving through Fayette County enjoying the countryside and beautiful horse farms.

COMMUNITY IMPROVEMENTS

Industrial:

Maysville welcomed four new industries in 1976.

Bluegrass Industries, Inc., has completed construction of a new \$1.4 million plant.

Dravo Corporation completed construction of a \$46 million facility.

Five additional greenhouses are now in operation at the Parker Tobacco Company.

Spurlock Unit 1, a coal field generating station of the East Kentucky Power Cooperative, was completed at a cost of \$125 million. Plans for a second unit are underway at an estimated cost of \$370 million. The station is located on the Ohio River.

The Crounse Corporation has added a third vessel to its fleet of 28 barges.

January and Wood Company added a \$500,000 expansion to its textile plant.

Commercial:

Maysville is the second largest burley tobacco market place in the world with sales totaling \$36.5 million in 1975.

The city is building a second mall on Market Street. The town's 70-year-old fountain is being restored and a play area for children will be added.

The city removed condemned housing and buildings next to the Ohio River and built parking lots with space for 400 cars.

There are plans to construct a 100-room Holiday Inn adjacent to U. S. 68 at the southwest city limits of Maysville.

A new Security Bank and Trust Company drive-in facility is now in operation.

Numerous businesses in the downtown area are renovating and decorating store fronts.

Government:

The Mason County Courthouse has been remodeled and over \$20,000 has been expended on renovation.

The Maysville Fire Department recently purchased a new rescue boat.

Recreation:

The 65-acre Maysville-Mason County Recreational Park is located in Washington, 4 miles from Maysville. Work has begun on a 12-acre lake which will cost \$35,000. This money comes from the Kentucky YMCA. The park offers an olympic size swimming pool, 3 asphalt tennis courts, two bathhouses, two softball diamonds, and playground equipment.

New restrooms were added to Wald Park, one of five parks located within the city limits.

A new electrical system is to be added to Beachwood Park.

Health:

A new \$1 million Medical Arts Building has recently been completed.

The hospital has acquired a cardiac monitor and a new power system has been installed to secure against interruption of power service.

Water and Sewerage:

The city is extending sewer mains to annexed suburbs. The plant now provides secondary treatment of sewage.

Education:

The Maysville Independent School System is remodeling and renovating the Jones Elementary School. The remodeling is to include two kindergarten rooms, band room, guidance lab, four Title I reading rooms, and two Head Start rooms.

The Mason County School System has completed construction of a new Middle School, grades 6-8. The Central School campus has converted from gas to coal. Plans are now underway for a new elementary building in the central campus area.

In 1790, two years after its formation, Mason County had 2,729 inhabitants. The population grew steadily to 20,773 in 1890. Since then the population of the county has been declining slowly, falling to 17,273 in 1970. The population of Maysville reached its peak in 1950 and since then has been declining slowly to 7,411 inhabitants in 1970.

Agriculture provided 1,320 of the county's 9,020 jobs in 1973, with burley tobacco, corn, cattle, milk, and hogs the principal products. Manufacturing provided 2,590 jobs in 1973. Browning Manufacturing Division of Emerson Electric Company, manufacturers of pulleys, V-belt drives, sprockets, ball roller bearing units, and worm gear reducers, is the largest manufacturing firm, employing over 1,000 workers.