

1985

Industrial Resources: McCracken County - Paducah

Kentucky Library Research Collections
Western Kentucky University, spcol@wku.edu

Follow this and additional works at: https://digitalcommons.wku.edu/mccracken_cty

 Part of the [Business Administration, Management, and Operations Commons](#), [Growth and Development Commons](#), and the [Infrastructure Commons](#)

Recommended Citation

Kentucky Library Research Collections, "Industrial Resources: McCracken County - Paducah" (1985). *McCracken County*. Paper 7.
https://digitalcommons.wku.edu/mccracken_cty/7

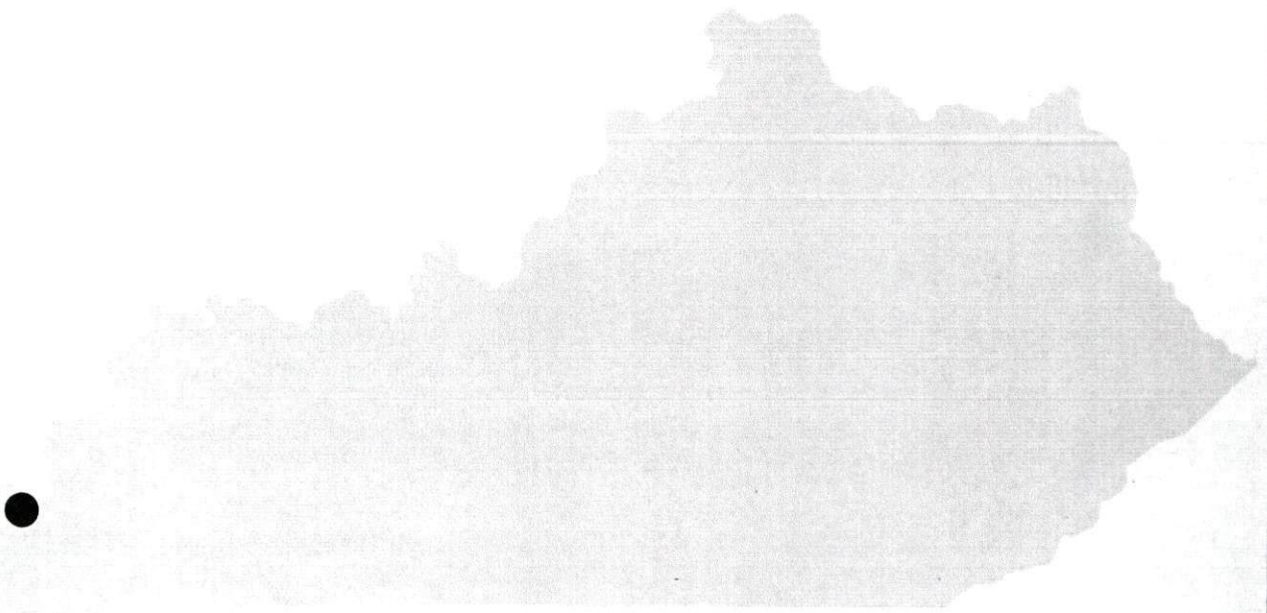
This Report is brought to you for free and open access by TopSCHOLAR®. It has been accepted for inclusion in McCracken County by an authorized administrator of TopSCHOLAR®. For more information, please contact topscholar@wku.edu.

IR
450

M^cCRACKEN COUNTY

**RESOURCES
FOR
ECONOMIC
DEVELOPMENT**

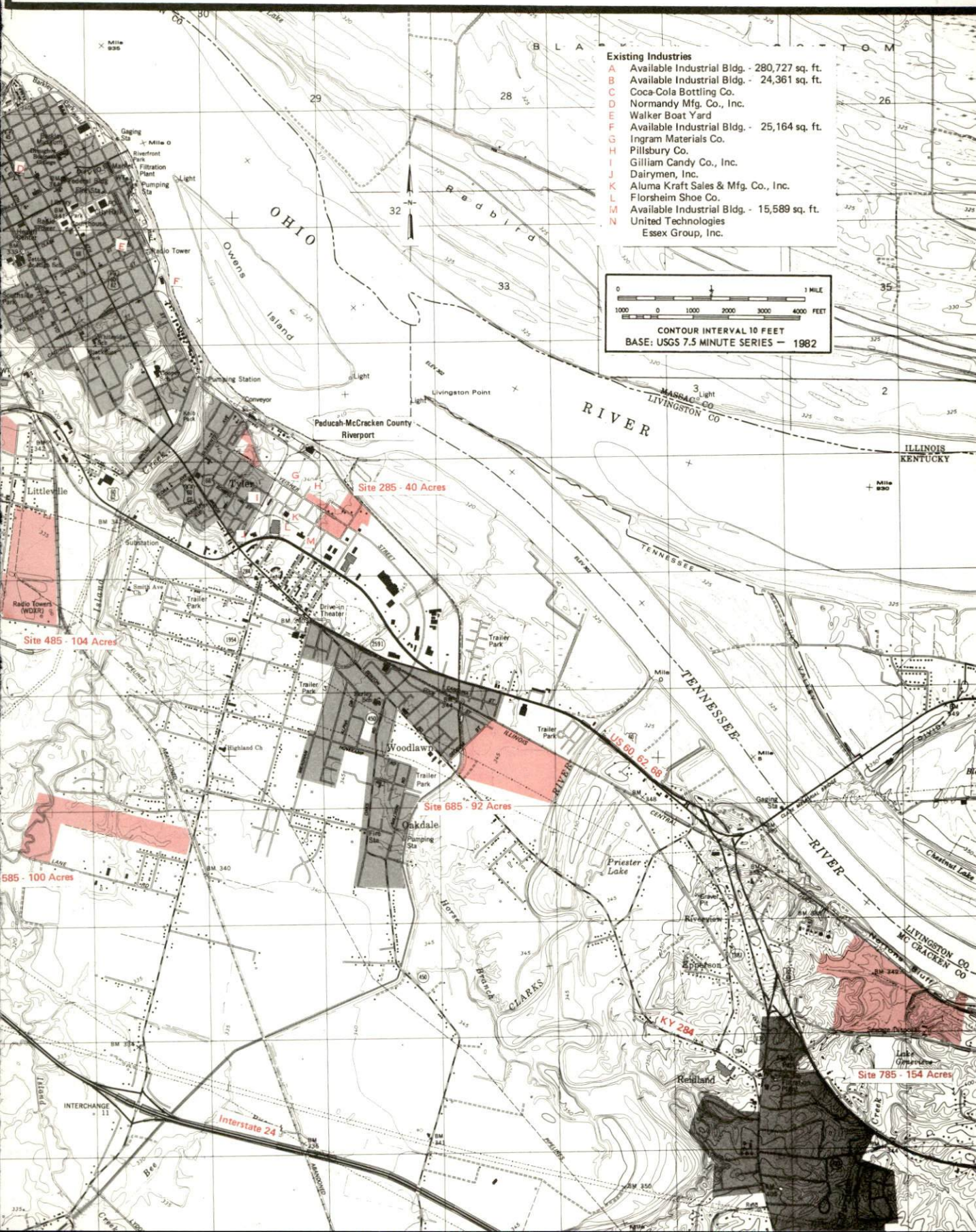
PADUCAH



KENTUCKY
The Business Environment is Right

PADUCAH. KENTUCKY --- Index to Industrial Sites --- 1985

For more information contact the Department of Economic Development, Office of Business Development, Industrial Development Division, Capital Plaza Tower, Frankfort, Kentucky 40601 (502-564-7140).





RESOURCES FOR ECONOMIC DEVELOPMENT
PADUCAH, KENTUCKY

Prepared by
The Kentucky Department of Economic Development
Division of Research and Planning
in cooperation with
The Paducah Area Chamber of Commerce
and
The Purchase Area Development District

1985

TABLE OF CONTENTS

<u>Chapter</u>	<u>Page</u>
INDUSTRIAL SITES	i
PADUCAH, KENTUCKY - A RESOURCE PROFILE	1
THE LABOR MARKET AREA	3
Population	3
Labor Force Characteristics of Residents, 1983	3
Selected Components of Nonagricultural Employment, by Place of Work, 1983	4
Major Paducah Manufacturing Firms, Their Products and Employment	4
Labor Organizations in Manufacturing Firms	6
Industrial Services	7
Estimated Male Labor Supply	8
Estimated Female Labor Supply	8
Average Weekly Wages By Industry, by Place of Work, 1983	9
Per Capita Personal Income	11
TRANSPORTATION	12
Rail	12
Highways	12
Truck Service	13
Air	14
Bus	15
Taxi	15
Rental Services	15
Water	15
POWER AND FUEL	16
Electricity	16
Natural Gas	17
Other Fuels	17
WATER AND SEWERAGE	18
Public Water Supply	18
Raw Water	23
Sewerage	23
CLIMATE	25

<u>Chapter</u>	<u>Page</u>
LOCAL GOVERNMENT	26
City	26
County	26
Assessed Value of Property	26
Property Taxes	27
Combined State and Local Rates Per \$100 Valuation, 1984	28
Planning and Zoning	28
Safety	29
Police	29
Fire	29
Rescue Service	29
Refuse Collection and Disposal	30
EDUCATION	31
Public Schools	31
Nonpublic Schools	31
Area Colleges and Universities	32
Vocational Schools	33
HEALTH.....	35
Local Medical Personnel	35
Hospitals	35
Other Medical Facilities	36
Ambulance Service	36
OTHER LOCAL FACILITIES.....	37
Communications	37
Library Services	38
Religious Institutions	38
Financial Institutions	39
Hotels and Motels	39
Clubs and Organizations	39
RECREATION	40
COMMUNITY IMPROVEMENTS	42

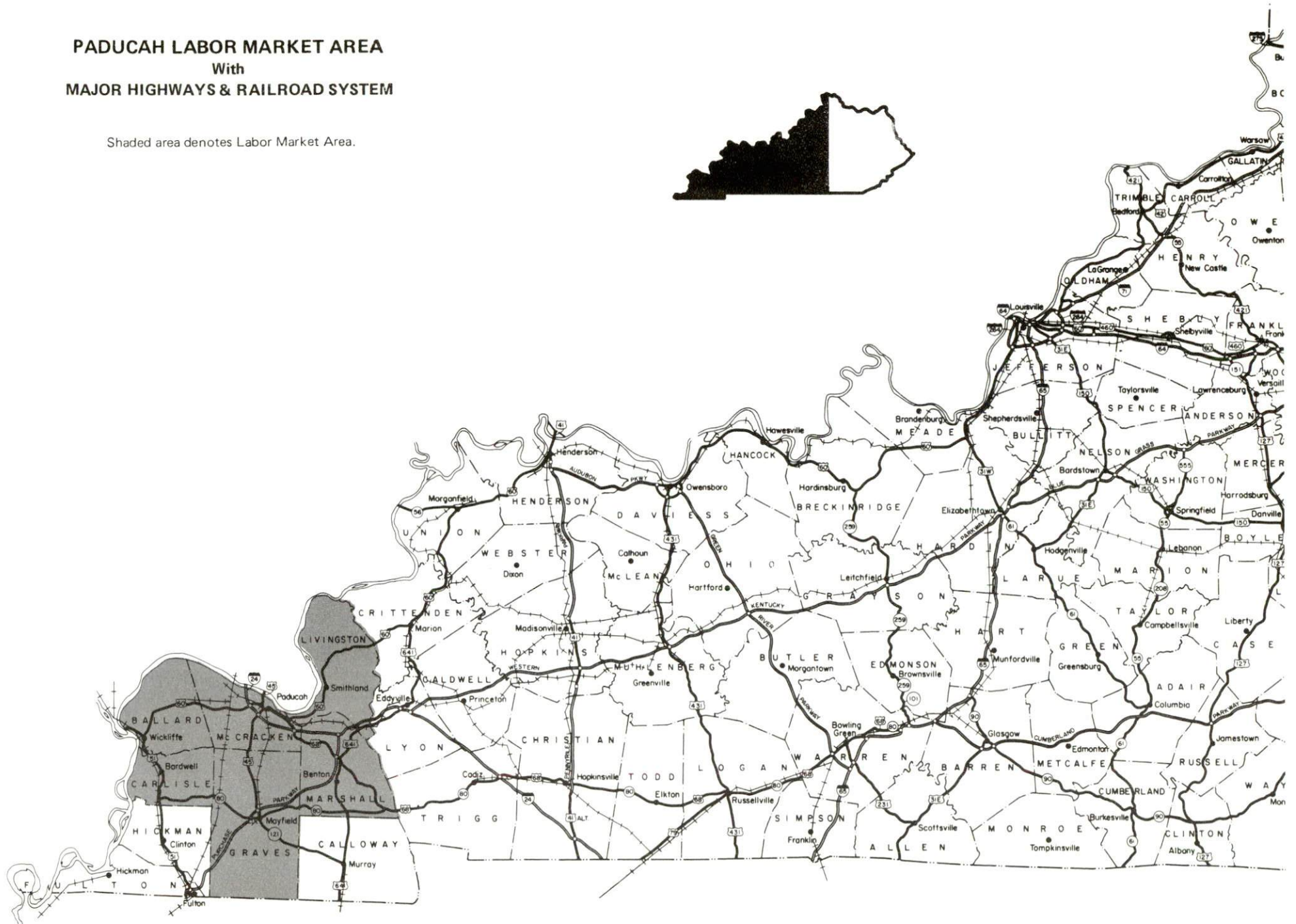
1985 EDITION
GENERAL HIGHWAY MAP
MCCRACKEN COUNTY
KENTUCKY

PREPARED BY THE
KENTUCKY TRANSPORTATION CABINET
DEPARTMENT OF HIGHWAYS
DIVISION OF PLANNING
IN COOPERATION WITH THE
U.S. DEPARTMENT OF TRANSPORTATION
FEDERAL HIGHWAY ADMINISTRATION



PADUCAH LABOR MARKET AREA With MAJOR HIGHWAYS & RAILROAD SYSTEM

Shaded area denotes Labor Market Area.



PADUCAH, KENTUCKY - A RESOURCE PROFILE

Paducah, the county seat of McCracken County, is the major economic center and largest urban area in Kentucky's Jackson Purchase Region. Paducah is located at the confluence of the Ohio and Tennessee Rivers (the head of the Tennessee-Tombigbee Waterway) approximately 48 river miles east of the confluence of the Ohio and Mississippi Rivers. Paducah is located 143 miles northwest of Nashville, Tennessee; 173 miles southeast of St. Louis, Missouri; and 223 miles southwest of Louisville, Kentucky. Paducah had a 1982 estimated population of 29,207 persons.

McCracken County, with a land area of 251 square miles, had a 1982 estimated population of 61,400 persons.

The Economic Framework

The total number of McCracken County residents employed in 1983 averaged 29,470, with nonagricultural jobs accounting for 29,130 workers. Manufacturing firms in the county reported 3,530 employees; wholesale and retail trade provided 7,690 jobs; 5,770 people were employed in service occupations; and state and local government accounted for 2,490 employees. Manufacturing employment is greatest in chemical and allied products, leather and leather products, and food and kindred products.

Per capita personal income in McCracken County in 1983 was \$11,264 or \$1,868 above the Kentucky average. Between 1979 and 1983, per capita income increased by 35 percent.

The Paducah labor market area includes McCracken County and the adjoining Kentucky counties of Ballard, Carlisle, Graves, Livingston, and Marshall. In addition, the labor market area is supplemented by persons living in southern Illinois. The total number of residents employed in the Kentucky portion of the labor market area in 1983 averaged 59,980, with nonagricultural jobs accounting for 57,900 workers. Manufacturing firms in the area reported 9,695 employees; wholesale and retail trade provided 11,680 jobs; 8,220 people were employed in service occupations; and state and local government accounted for 5,280 employees.

Resources for Growth

1. Labor Supply - There is a current estimated labor supply of 11,535 men and 10,275 women available for industrial jobs in the Kentucky portion of the labor market area. In addition, from 1985 through 1989, 5,440 young men and 5,170 young women in the area will become 18 years of age and potentially available for industrial jobs.

2. Transportation - The Illinois Central Gulf Railroad provides main line freight service to Paducah. The city is also served by the Paducah and Illinois Railroad, with 16 miles of track jointly owned and operated by Illinois Central Gulf and the Burlington Northern Railroad Company. Interstate Highway 24 has 5 interchanges at Paducah, and provides direct access to Interstate 57, 45 miles northwest of Paducah; to the Purchase Parkway, 22 miles southeast of Paducah; and to the Western Kentucky Parkway, 39 miles east of Paducah. "AAA"-rated (80,000-pound gross load limit) trucking highways serving Paducah include U.S. Highways 45, 60, and 62. Of the 19 trucking companies serving Paducah, 5 maintain local terminals. Barkley Regional Airport, 8 miles west of Paducah, offers commuter air carrier and charter services. The Paducah-McCracken County Riverport Authority operates a public riverport at Paducah at the confluence of the Ohio River and the Tennessee River.

3. Power and Fuel - The Paducah Power System, whose source of electricity is Tennessee Valley Authority, provides electric power to Paducah. The Big Rivers Electric Corporation provides electric power to most of McCracken County through the Jackson Purchase Electric Cooperative Corporation. Kentucky Utilities Company provides electric power to a small portion of the county. Western Kentucky Gas Company, whose source of supply is Texas Gas Resources Corporation, provides natural gas service to Paducah. There are two propane dealers and four fuel oil dealers in Paducah.

4. Education - The Paducah Independent School System and the McCracken County School System provide primary and secondary public education to McCracken County residents. Both systems are accredited by the Southern Association of Colleges and Schools.

The Paducah Community College is a unit of the University of Kentucky Community College System located at Paducah. The college confers associate degrees and had an enrollment of 1,916 students in the fall of 1984. Draughon's Junior College of Business is an accredited junior college of business located in Paducah. Five other institutions of higher learning are located within 75 miles of Paducah.

The West Kentucky State Vocational-Technical School is located at Paducah and offers training in 38 course areas. The Paducah Area Vocational Education Center, also at Paducah, offers training in 11 course areas.

THE LABOR MARKET AREA

The Paducah Labor Market Area includes McCracken County and the adjoining Kentucky counties of Ballard, Carlisle, Graves, Livingston and Marshall. The northern boundary of McCracken County is formed by the Ohio River. The labor market area also encompasses portions of southern Illinois.

POPULATION

Area	1982*	1980	1970	Percent Nonwhite
				1980
Paducah	29,207	29,315	31,627	19.4
Labor Market Area	143,400	144,500	130,827	N/A
McCracken County	61,400	61,310	58,281	10.5
Ballard County	8,500	8,798	8,276	3.8
Carlisle County	5,300	5,487	5,354	1.0
Graves County	33,000	34,049	30,939	4.7
Livingston County	9,300	9,219	7,596	0.4
Marshall County	25,900	25,637	20,381	0.2

* Population estimates.

Note: The 1980 city counts of population by race are provisional.

Sources: U.S. Department of Commerce, Bureau of the Census, 1980 Census of Population and Housing, March 1981; 1980 Census of Population, Number of Inhabitants; Local Population Estimates, Series P-26, June 1984, September 1984.

LABOR FORCE CHARACTERISTICS OF RESIDENTS, 1983

	McCracken County	Labor Market Area*
Civilian Labor Force	32,776	68,907
Employment	29,466	59,978
Agricultural	332	2,077
Nonagricultural	29,134	57,901
Unemployment	3,310	8,929
Rate of Unemployment (%)	10.1	13.0

* Includes McCracken County and the five adjoining Kentucky counties.

Source: Kentucky Cabinet for Human Resources, Kentucky Labor Force Estimates, Annual Averages, 1983.

SELECTED COMPONENTS OF NONAGRICULTURAL EMPLOYMENT,
BY PLACE OF WORK, 1983

	<u>McCracken County Labor Market Area*</u>	
All Industries (total)	23,409	41,842
Manufacturing	3,531	9,695
Wholesale & Retail Trade	7,691	11,682
Services	5,772	8,221
State/Local Government	2,486	5,276
Contract Construction	965	2,161

* Includes McCracken County and the five adjoining Kentucky counties.

Note: Excludes domestic workers, railway workers, certain nonprofit corporations, majority of federal government workers, and self-employed workers.

Source: Kentucky Cabinet for Human Resources, Average Monthly Workers Covered by Kentucky Unemployment Insurance Law, 1983.

MAJOR PADUCAH MANUFACTURING FIRMS,
THEIR PRODUCTS AND EMPLOYMENT*

Firm (Establishment date)	Product	Employment			Labor Unions
		Total	Male	Female	
Aluma Kraft Sales and Manufacturing Company, Inc. (1954)	Aluminum storm windows, doors, canopies and awnings	39	26	13	
Brown's Plating Service, Inc. (1959)	Plating	45	40	5	
Coca-Cola Bottling Company (1903)	Soft drinks	80	70	10	Operating Engineers**
Florsheim Shoe Company (1919)	Men's shoes	524	97	427	Food and Commercial Workers**
Genex Corporation (1983)	Chemical for sweetner, enzyme drain cleaner	80	55	25	
Gilliam Candy Company, Inc. (1927)	Candy	52	30	22	

(Continued)

Firm (Establishment date)	Product	Employment			Labor Unions
		Total	Male	Female	
Guy Gray Manufacturing Company, Inc. (1958)	Plumbing fixtures	30	24	6	
Hawley Products, Inc. (1984)	Loudspeaker equipment	38	16	22	
Martin Marietta Energy Systems, Inc. (1951)	U-235 for U.S. Government	1,290	1,108	182	Oil, Chemical, and Atomic Workers; Plant Guard Workers**
Metzger Packing Company, Inc. (1970)	Meat processing, sausage products	56	45	11	
Normandy Manufacturing Company, Inc. (1940)	Women's sportswear, women's dresses, women's robes	110	9	101	Ladies' Garment Workers**
The Paducah Sun (1929) Pebco, Inc. (1978)	Newspaper Slide gates, coal industry valves, materials handling systems	122 45	88 --	34 --	
Reynolds and Doyle, Inc. (1947)	Hospital cabinets, bank and school fixtures	30	28	2	
United Technologies, Essex Group, Inc. (1966)	Aluminum wire cable	247	212	35	Machinists**
Voice Communication Coil Division (1974)	Voice coils, choke, loudspeaker equipment, magnetizer-demagnetizer	50	13	37	

(Continued)

<u>Firm</u> (Establishment date)	<u>Product</u>	<u>Employment</u>			<u>Labor Unions</u>
		<u>Total</u>	<u>Male</u>	<u>Female</u>	
Walker Boat Yard (1946)	Building and repairing barges and boats	100	--	--	

* Firms with 30 or more employees.

** See Labor Organizations below.

Sources: Kentucky Department of Economic Development, 1985 Kentucky Directory of Manufacturers; Division of Research and Planning.

LABOR ORGANIZATIONS IN MANUFACTURING FIRMS

<u>Union</u>	<u>Representing workers at:</u>
Graphic Communications International Union, AFL-CIO	Leake Printing Company; L. C. Newman Printing Company;
International Association of Machinists and Aerospace Workers, AFL-CIO	Proform, Inc.; United Technologies, Essex Group, Inc.
International Ladies' Garment Workers Union, AFL-CIO	Normandy Manufacturing Company, Inc.
International Union of Operating Engineers, AFL-CIO	Coca-Cola Bottling Company
Oil, Chemical and Atomic Workers International Union, AFL-CIO	Martin-Marietta Energy Systems, Inc.
United Food and Commercial Workers International Union, AFL-CIO	Florsheim Shoe Company
United Plant Guard Workers of America International Union	Martin Marietta Energy Systems, Inc.

INDUSTRIAL SERVICES

<u>Types of Services</u>	<u>Location</u>	<u>Mileage from Paducah</u>
Custom Plastics Producers	Kuttawa, Kentucky	35
	Fulton, Kentucky	49
Electric Motor Repair	Paducah, Kentucky	-
Grinding, Precision & Tool	Evansville, Indiana	134
	Nashville, Tennessee	143
Heat Treating Facilities	Evansville, Indiana	134
	Nashville, Tennessee	143
Industrial Equipment & Supplies	Paducah, Kentucky	-
Industrial Gases	Paducah, Kentucky	-
Industrial Waste Removal	Paducah, Kentucky	-
Machine Shops, Tool & Die	Paducah, Kentucky	-
Metal Finishers	Paducah, Kentucky	-
Metal Service Centers	Greenville, Kentucky	96
	Russellville, Kentucky	114
	Owensboro, Kentucky	135
	Bowling Green, Kentucky	139
Millwrights	Paducah, Kentucky	-
Public Warehousing Facilities	Paducah, Kentucky	-

Sources: Kentucky Department of Economic Development, Kentucky Directory of Selected Industrial Services, 1983; Division of Research and Planning.

ESTIMATED MALE LABOR SUPPLY
PADUCAH LABOR MARKET AREA

Area	Current			Not in Labor Force	Future
	Total Male	Unemployed	Under- employed		Becoming 18 years of age 1985 thru 1989
Labor Market					
Area*	11,535	4,880	2,872	3,783	5,437
McCracken	2,854	1,745	1,109	0	2,277
Ballard	660	462	198	0	356
Carlisle	385	246	139	0	219
Graves	2,916	1,074	694	1,148	1,267
Livingston	679	450	229	0	370
Marshall	4,041	903	503	2,635	948

ESTIMATED FEMALE LABOR SUPPLY
PADUCAH LABOR MARKET AREA

Area	Current			Not in Labor Force	Future
	Total Female	Unemployed	Under- employed		Becoming 18 years of age 1985 thru 1989
Labor Market					
Area*	10,275	2,906	3,655	3,714	5,169
McCracken	2,839	1,272	1,567	0	2,160
Ballard	346	161	185	0	317
Carlisle	363	137	118	108	202
Graves	2,612	597	877	1,138	1,202
Livingston	409	155	223	31	344
Marshall	3,706	584	685	2,347	944

* Additional workers may be drawn from other nearby counties.

Note: Unemployed - persons unemployed and actively seeking work;
Underemployed - persons employed but working only 14 to 26 weeks per year;
Not in Labor Force - represents the number of persons who would enter the labor force if suitable employment were available (based on the assumption that persons in Kentucky would like to participate in the labor force in the same proportion that they do nationally).

Sources: Kentucky Cabinet for Human Resources, Kentucky Labor Supply Estimates by County, 1984. Kentucky Department of Economic Development, Future Labor Supply Becoming 18 Years of Age, 1985 thru 1989.

AVERAGE WEEKLY WAGES BY INDUSTRY,
BY PLACE OF WORK, 1983

	<u>McCracken County</u>	<u>Ballard County</u>	<u>Carlisle County</u>
All Industries	\$ 285.67	\$ 366.00	\$ 185.36
Mining & Quarrying	0	0	0
Contract Construction	370.39	310.41	230.64
Manufacturing	376.50	*	153.26
Transportation, Communications & Public Utilities	410.21	401.84	*
Wholesale & Retail Trade	202.63	202.26	158.00
Finance, Insurance & Real Estate	256.69	235.09	240.31
Services	283.75	158.39	179.40
State/Local Government	303.46	261.77	222.82
Other	159.05	*	*
	<u>Graves County</u>	<u>Livingston County</u>	<u>Marshall County</u>
All Industries	\$ 299.26	\$ 272.39	\$ 382.23
Mining & Quarrying	321.98	409.32	*
Contract Construction	210.34	534.74	461.46
Manufacturing	435.53	175.52	574.10
Transportation, Communications & Public Utilities	378.39	372.79	384.89
Wholesale & Retail Trade	192.35	135.88	173.11
Finance, Insurance & Real Estate	262.38	237.50	268.88
Services	193.94	206.41	240.63
State/Local Government	288.97	238.31	244.53
Other	202.17	*	159.84

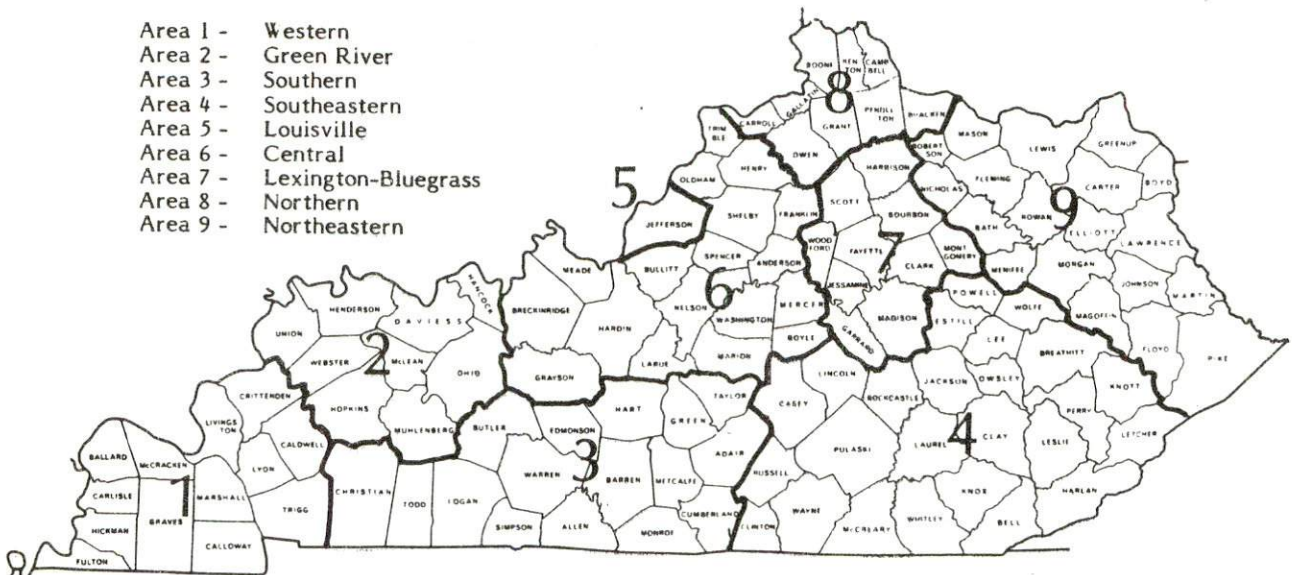
* Not disclosed.

Note: Excludes domestic workers, railway workers, certain nonprofit corporations, majority of federal government workers, and self-employed workers.

Source: Kentucky Cabinet for Human Resources, Average Weekly Wages of Workers Covered by Kentucky Unemployment Insurance Law, 1983.

Occupational wage rates for specific industries are usually not available to most government agencies, and wage data furnished to state employment agencies by individual industrial employers are protected from disclosure by federal law. The most reliable up-to-date wage information can be obtained by direct contact with local employers.

Associated Industries of Kentucky, a voluntary organization of Kentucky businesses, regularly collects occupational wage rates and fringe benefits data from participating member firms. Data are compiled for over 127 clearly defined office, production, and service occupations. Tabulations are published for nine geographical areas of Kentucky, as shown on the map below. It should be noted that the data may be weighted by the preponderance of firms in the larger cities and may be somewhat higher than the rates paid in the smaller communities. Data from these tabulations are available, upon request, from the Kentucky Department of Economic Development, Frankfort, Kentucky 40601.



Associated Industries of Kentucky Area Wage Surveys

Up to date occupational wage rates of the existing industries are maintained by South Kentucky Industrial Development Association, Post Office Box 726, Hopkinsville, Kentucky 42240.

PER CAPITA PERSONAL INCOME

<u>Area</u>	<u>1979</u>	<u>1983</u>	<u>Percent Change</u>
McCracken County	\$ 8,338	\$ 11,264	35.1
Labor Market Area Range*	\$6,860 - 8,338	\$7,456 - 11,264	N/A
Kentucky	7,124	9,396	31.9
U. S.	8,651	11,687	35.1

* Includes McCracken County and the five adjoining Kentucky counties.

Sources: U.S. Department of Commerce, Bureau of Economic Analysis; Commerce News, August 28, 1984; May 7, 1985. Kentucky Economic Information System, June 1985.

TRANSPORTATION

Rail

Line serving **Paducah** - Illinois Central Gulf Railroad

Services - 3 northbound and 3 southbound manifest freights making daily stops; switching services; ample team track and siding space available; piggyback facilities; car shop; major engine repair facilities

Local services - The Paducah and Illinois Railroad consists of 16 miles of track between Paducah, Kentucky, and Metropolis, Illinois. Local service on the Paducah and Illinois Railroad is provided by the Illinois Central Gulf Railroad and the Burlington Northern Railroad who share joint ownership and maintain reciprocal switching arrangements.

For details on routing, schedules, rates, and services, contact:

Manager of Industrial Development
Illinois Central Gulf Railroad
Central Region, Pet Plaza
400 South 4th Street
St. Louis, Missouri 63102
(314) 622-6430

and/or

Area Sales Manager
Burlington Northern Railroad Company
10795 Watson Road
St. Louis, Missouri 63127
(314) 965-0910

Highways

Interstate Highway 24 has 5 interchanges at Paducah and provides direct access to Interstate 57, 45 miles northwest of Paducah; to the Purchase Parkway, 22 miles southeast of Paducah; and to the Western Kentucky Parkway, 39 miles east of Paducah.

"AAA"-rated (80,000-pound gross load limit) trucking highways serving Paducah include U.S. Highways 45, 60, and 62. U.S. 45 connects with the Purchase Parkway, 25 miles south of Paducah. The Interstate 24 Downtown Loop Expressway provides direct access from downtown Paducah to Interstate 24.

Truck Service

Company

A & H Truck Line, Inc.*
 ANR Freight System, Inc.*

American Freight System, Inc.**
 (T)

Bestway Express, Inc.*
 Buske Lines, Inc.**

C & H Transportation Company,
 Inc.*
 Chicago Express Company, Inc.*

Henry Edwards Trucking Company*
 K & R Delivery, Inc.*

Leoni Motor Express, Inc.*
 McLean Trucking Company** (T)

North Shore & Central
 Illinois Freight Company*
 Nussbaum Trucking, Inc.*

Overnite Transportation
 Company*

R-W Service System, Inc.*

Roadway Express, Inc.* (T)

Smith's Transfer Corporation*
 (T)

United Trucking Service, Inc.*

Yellow Freight System, Inc.* (T)

Home Office

Evansville, Indiana 47711
 P. O. Box 5070
 Denver, Colorado 80217

9393 West 110th Street
 Overland Park, Kansas 66210
 Nashville, Tennessee 37210
 123 West Tyler Street
 P. O. Box 349
 Litchfield, Illinois 62056

Dallas, Texas 75227
 2418 South Loomis Avenue
 Chicago, Illinois 60608
 Clinton, Kentucky 42031
 15 West 460 Frontage Road
 Hinsdale, Illinois 60521-5523
 Chicago Heights, Illinois 60411
 P. O. Box 213
 Winston-Salem, North Carolina 27154

Chicago, Illinois 60608
 Route 51, North
 Normal, Illinois 61761

1000 Semmes Avenue
 P. O. Box 1216
 Richmond, Virginia 23209
 20225 Goddard Road
 Taylor, Michigan 48180
 1077 Gorge Boulevard
 Akron, Ohio 44310

P. O. Box 1000
 Staunton, Virginia 24401
 8505 West Warren
 Dearborn, Michigan 48126
 10990 Roe Avenue
 P. O. Box 7270
 Overland Park, Kansas 66207

* Interstate and intrastate service.

** Interstate service only.

(T) Local terminal

Source: American Motor Carrier Directory, Spring 1985.

Other Freight ServicesNearest Office or Shipping CenterAirborne Express
EmeryPaducah
Evansville, Indiana, 134 miles northeast
of Paducah;
Nashville, Tennessee, 143 miles southeast
of PaducahFederal Express
Purolator Courier
United Parcel ServicePaducah
Paducah
PaducahHIGHWAY MILES AND TRUCK TRANSIT TIME IN DAYS FROM
PADUCAH, KENTUCKY, TO SELECTED MARKET CENTERS

City	Highway Miles	Delivery Time TL	City	Highway Miles	Delivery Time TL
Atlanta, Ga.	385	2	Los Angeles, Ca.	1,989	3
Baltimore, Md.	802	2	Louisville, Ky.	223	1
Birmingham, Ala.	339	2	Nashville, Tenn.	143	1
Chicago, Ill.	365	1	New Orleans, La.	562	2
Cincinnati, Ohio	324	1	New York, N. Y.	964	5
Cleveland, Ohio	568	2	Pittsburgh, Pa.	604	2
Detroit, Mich.	583	2	St. Louis, Mo.	173	1
Knoxville, Tenn.	320	1			

Note: Mileage computations are via the best interstate or primary highways, not necessarily the most direct route of travel.

Sources: Rand McNally Road Atlas, 1979. Official Kentucky Mileage Map, 1980.
Delivery time - Overnite Transportation Company; 415 Maple Street; Cape Girardeau, Missouri 63701.

AirRegional Airport

Location: Barkley Regional Airport
8 miles west of Paducah

Runways: 2 paved
Length: 6,500 feet, 4,000 feet

Traffic Control: Control tower to open in 1985

Lighting: Runways have high-intensity edge lights, MALS-RAIL for ILS approach, medium intensity edge lights; taxiways have edge lighting; rotating beacon and lighted wind cone

Services: Allegheny Commuter and Britt Airways; air cargo; charter; servicing and A & P repairs; car rentals, limousine service; restaurant

Air Freight Service: Air carriers accept air freight on a space available basis.

(Continued)

Service by other major air carriers is also available at Evansville Dress Regional Airport at Evansville, Indiana, 138 miles northeast of Paducah.

Bus - Brooks Bus Line, Inc.; Greyhound Bus Line; Marianna Trailways; and Paducah Area Transit System (intracity)

Taxi - Two taxicab companies provide 24-hour service with radio-dispatched taxicabs.

Rental Services - Car, truck, and trailer rentals are available locally.

Water

The Paducah-McCracken County Riverport Authority operates an ice-free, deep water inland waterways port located at the confluence of the Ohio and Tennessee Rivers, 48 miles east of where the Ohio River flows into the Mississippi River, and at the head of the Tennessee-Tombigbee Waterway.

Port facilities include an 8-acre general cargo area, 35,000 square feet of warehouse space, about 40,000 square feet of open storage, a bulk handling facility which includes a storage bin and loading and unloading equipment, and a grain facility. The riverport has eight mooring cells and about 1,000 feet of river frontage with a four-barge capacity. Services include direct transfer from barge to rail car and from barge to truck. Ample switching service is available from local harbor service companies into both general cargo and bulk cargo facilities.

Approximately 40 acres of industrial property are available for river-oriented businesses. The riverport/industrial park complex is about six miles from I-24, and served by the recently completed I-24 Downtown Loop Expressway. Rail service is provided by the Illinois Central Gulf Railroad.

For more information contact:

Paducah-McCracken County Riverport
Authority
P. O. Box 2302
Paducah, Kentucky 42001
(502) 442-9326

POWER AND FUEL

Electricity

Company serving **Paducah** - Paducah Power System
Source of power - Tennessee Valley Authority
Total generating capacity - 30,900,470 KW
For industrial rates contact:

South Kentucky Industrial Development
Association, Inc.
P. O. Box 726
Hopkinsville, Kentucky 42240
(502) 885-5392

Company serving **major portion of McCracken County** - Jackson Purchase
Electric Cooperative Corporation
Source of power - Big Rivers Electric Corporation
Total generating capacity - 1,548,500 KW
For industrial rates contact:

Jackson Purchase Electric Cooperative
Corporation
2900 Irvin Cobb Drive
P. O. Box 3188
Paducah, Kentucky 42001
(502) 442-7321

Company serving **part of McCracken County** - Kentucky Utilities Company
Source of power - Kentucky Utilities Company
Total generating capacity - 3,164,000 KW*
For industrial rates contact:

Industrial Development Department
Kentucky Utilities Company
One Quality Street
Lexington, Kentucky 40507
(606) 255-1461

* Kentucky Utilities Company's total generating capacity will be increased when a new 650,000 KW generation plant is completed in Hancock County in 1993.

Natural Gas

Company serving **Paducah** - Western Kentucky Gas Company
Source of supply - Texas Gas Resources Corporation
Size of transmission mains - 26 inches (supplier); 6 and 8 inches (distributor)
Distribution mains - 2 through 6 inches
Distribution pressure - 20 to 30 psi
Btu content - 1,000 per cubic foot
Specific gravity - 0.60
For rates and supplies contact:

Western Kentucky Gas Company
P. O. Box 866
Owensboro, Kentucky 42302
(502) 685-8067

Other Fuels

Propane

Texgas Corporation
1101 North Beltline
Paducah, Kentucky 42001

Tri State Propane, Inc.
Route 4
Box 20
Paducah, Kentucky 42001

Fuel oils

Distillate fuel oil -

E. M. Bailey Distributing Company
1000 South 8th Street
Paducah, Kentucky 42001

McGary Enterprises, Inc.
1006 Walter Jetton Boulevard
Paducah, Kentucky 42001

Duke & Long Distributing Company
625 South 4th Street
Paducah, Kentucky 42001

W. E. Powers Oil Company
2352 Wayne Sullivan Drive
Paducah, Kentucky 42001

Residual fuel oil - Arrangements must be made with the refinery.

Low sulphur content coal - Available in Kentucky.

WATER AND SEWERAGE

Public Water Supply

Company serving **Paducah** - Paducah Water Works*
 401 Washington Street
 P. O. Box 2377
 Paducah, Kentucky 42002-2377
 (502) 442-2746

Source - Ohio River
 Treatment plant capacity - 12,000,000 gallons per day
 Average daily consumption - 6,237,825 gallons
 Peak daily consumption - 9,200,000 gallons
 Treatment processes - Inline mix, coagulation, flocculation, sedimentation,
 filtration, chlorination, fluoridation
 Calcium content - 16.2 ppm
 Iron content - 0.04 ppm
 Hardness - 81.0 ppm as calcium carbonate
 Storage capacity - 10,300,000 gallons
 Size lines - 2 to 30 inches
 Water pressure - 45 to 65 psi

MONTHLY WATER RATES

INSIDE CITY LIMITS

<u>Consumption</u>	<u>Charge per 1,000 Gallons</u>
0 to 1,500 gallons	\$2.62
1,501 to 10,000 gallons	2.13
10,001 to 100,000 gallons	1.77
100,001 to 500,000 gallons	1.27
500,001 to 1,000,000 gallons	1.08
All over 1,000,000 gallons	.85
Residential Minimum (1,500 gallons)	\$3.93
Commercial Minimum (3,000 gallons)	\$7.12

<u>Meter Size</u>	<u>Minimum Consumption</u>	<u>Minimum Monthly Charge</u>
5/8 inch	1,500 gallons each month	\$ 3.93
1 inch	7,500 gallons each month	16.71
1 1/2 inch	20,000 gallons each month	39.73
2 inch	40,000 gallons each month	75.13
3 inch	80,000 gallons each month	145.93
4 inch	150,000 gallons each month	244.83
6 inch	300,000 gallons each month	435.33

(Continued)

* A new 12,000,000-gallon-per-day water treatment and distribution system was completed in 1984 at a cost of approximately \$13,000,000. A \$118,500 improvement project at Forest Hills Booster Station was completed in 1985.

Meter Connection Charges

<u>Service Size</u>	<u>Charge</u>
5/8 inch	\$ 280.00
1 inch	355.00
1 1/2 inch	935.00
2 inch	1,090.00
3 inch	2,575.00
4 inch	3,470.00
6 inch	5,375.00

Fire Line Installation Charges

<u>Service Size</u>	<u>Charge</u>
4 inch	\$1,230.00
6 inch	1,370.00
8 inch	1,620.00
10 inch	2,460.00
12 inch	3,245.00

Standby Fire Protection

<u>Service Size</u>	<u>Charge Per Month</u>
4 inch	\$ 8.00
6 inch	10.00
8 inch	15.00
10 inch	30.00
12 inch	40.00

OUTSIDE CITY LIMITS

<u>Consumption</u>	<u>Charge per 1,000 Gallons</u>
0 to 2,500 gallons	\$ 2.78
2,501 to 10,000 gallons	2.78
10,001 to 100,000 gallons	2.29
100,001 to 500,000 gallons	1.66
500,001 to 1,000,000 gallons	1.40
All over 1,000,000 gallons	1.10
Residential Minimum (2,500 gallons)	\$ 6.95
Commercial Minimum (5,000 gallons)	\$13.90

(Continued)

<u>Meter Size</u>	<u>Minimum Consumption</u>	<u>Minimum Monthly Charge</u>
5/8 inch	2,500 gallons each month	\$ 6.95
1 inch	7,500 gallons each month	20.85
1 1/2 inch	20,000 gallons each month	50.70
2 inch	40,000 gallons each month	96.50
3 inch	80,000 gallons each month	188.10
4 inch	150,000 gallons each month	316.90
6 inch	300,000 gallons each month	565.90

Meter Connection Charges

<u>Service Size</u>	<u>Charge</u>
5/8 inch	\$ 360.00
1 inch	460.00
1 1/2 inch	1,220.00
2 inch	1,420.00
3 inch	3,360.00
4 inch	4,510.00
6 inch	6,985.00

Fire Line Installation Charges

<u>Service Size</u>	<u>Charge</u>
4 inch	\$1,600.00
6 inch	1,790.00
8 inch	2,110.00
10 inch	3,200.00
12 inch	4,220.00

Standby Fire Protection

<u>Service Size</u>	<u>Charge Per Month</u>
4 inch	\$ 9.00
6 inch	13.00
8 inch	25.00
10 inch	40.00
12 inch	60.00

Surcharge

<u>Area</u>	<u>Charge Per Month</u>
Woodlawn-Farley-Oakdale	\$2.00
Concord	3.50

\$0.50 each month is applied to hydrant maintenance

Name of water district - Reidland Water and Sewer District
 5514 Reidland Road
 Paducah, Kentucky 42001
 (502) 898-2443

Area served - Part of eastern McCracken County and part of western Marshall County

Date when water district began operating - 1954

Source of raw water - Wells; total pumping capacity - 800 gallons per minute

Capacity of treatment plant - 900,000 gallons per day

Treatment processes - Aeration, filtration, chlorination, fluoridation

Average amount of water used in a 24-hour period - 725,000 gallons

Peak amount of water used in a 24-hour period - 850,000 gallons

Calcium content - 47.7 ppm

Iron content - Less than 0.04 ppm

Hardness - 155.0 ppm as calcium carbonate

Storage capacity - 517,000 gallons

Size lines - 2, 4, 6, and 8 inches

Water pressure - 40 to 68 psi

MONTHLY WATER RATES

			<u>Surcharge</u>
First	3,000 gallons	\$3.00 (Minimum)	\$1.50
Next	7,000 gallons	.90 per M gallons	.30 per M gallons
Next	10,000 gallons	.70 per M gallons	.30 per M gallons
Next	50,000 gallons	.60 per M gallons	.30 per M gallons
All over	70,000 gallons	.50 per M gallons	.30 per M gallons

Tap-on charge: \$400.00

Name of water district - West McCracken County Water District
 Route 2, Box 178
 West Paducah, Kentucky 42086
 (502) 442-3337

Area served - Western portion of McCracken County

Date when water district began operating - 1967

Source of supply of treated water - Paducah Water Works

Average amount of water used in a 24-hour period - 230,000 gallons

Peak amount of water used in a 24-hour period - 290,000 gallons

Calcium content - 16.2 ppm

Iron content - 0.04 pm

Hardness - 81.0 ppm as calcium carbonate

Storage capacity - 250,000 gallons

Size lines - 2, 6, 8, and 10 inches

Water pressure - 50 to 100 psi

(Continued)

MONTHLY WATER RATES

5/8 x 3/4-inch meter

First	2,000 gallons	\$ 7.50 (Minimum)
Next	3,000 gallons	3.55 per M gallons
Next	5,000 gallons	3.05 per M gallons
Next	40,000 gallons	2.55 per M gallons
Next	50,000 gallons	2.30 per M gallons
Next	400,000 gallons	1.80 per M gallons
All over	500,000 gallons	1.30 per M gallons

3/4-inch meter

First	4,000 gallons	\$ 14.60 (Minimum)
Next	1,000 gallons	3.55 per M gallons
Next	5,000 gallons	3.05 per M gallons
Next	40,000 gallons	2.55 per M gallons
Next	50,000 gallons	2.30 per M gallons
Next	400,000 gallons	1.80 per M gallons
All over	500,000 gallons	1.30 per M gallons

1-inch meter

First	7,500 gallons	\$ 25.78 (Minimum)
Next	2,500 gallons	3.05 per M gallons
Next	40,000 gallons	2.55 per M gallons
Next	50,000 gallons	2.30 per M gallons
Next	400,000 gallons	1.80 per M gallons
All over	500,000 gallons	1.30 per M gallons

1 1/2-inch meter

First	15,000 gallons	\$ 46.15 (Minimum)
Next	35,000 gallons	2.55 per M gallons
Next	50,000 gallons	2.30 per M gallons
Next	400,000 gallons	1.80 per M gallons
All over	500,000 gallons	1.30 per M gallons

2-inch meter

First	30,000 gallons	\$ 84.40 (Minimum)
Next	20,000 gallons	2.55 per M gallons
Next	50,000 gallons	2.30 per M gallons
Next	400,000 gallons	1.80 per M gallons
All over	500,000 gallons	1.30 per M gallons

(Continued)

3-inch meter

First	75,000 gallons	\$192.90 (Minimum)
Next	25,000 gallons	2.30 per M gallons
Next	400,000 gallons	1.80 per M gallons
All over	500,000 gallons	1.30 per M gallons

4-inch meter

First	150,000 gallons	\$340.40 (Minimum)
Next	350,000 gallons	1.80 per M gallons
All over	500,000 gallons	1.30 per M gallons

Tap-on fee:

5/8 x 3/4-inch meter	\$ 325.00
3/4-inch meter	350.00
1-inch meter	375.00
1 1/2-inch meter	425.00
2-inch meter	625.00
2 1/2-inch meter	725.00
3-inch meter	1,025.00
4-inch meter	1,925.00

Raw Water

Surface water sources - Ohio and Tennessee Rivers

Average discharge - Ohio River at Metropolis, Illinois - 271,100 cfs (55 years, USGS, unadjusted); Tennessee River near Paducah - 65,450 cfs (18 years, USGS, unadjusted)

Expected ground water yield - 500 to 1,000 gpm throughout McCracken County

Sewerage

Company serving **Paducah** - Paducah Sewage Treatment Department
City Hall
5th and Washington Streets
Paducah, Kentucky 42001
(502) 444-8558

Design capacity - 6,000,000 gallons per day

Average daily flow - 5,400,000 gallons

Type of treatment - Secondary

Treatment processes - Screening, grit removal, primary sedimentation, activated sludge, secondary sedimentation, chlorination, anaerobic digester, sludge drying beds

Treated effluent discharged into - Ohio River

Size of sanitary mains - 8 to 102 inches

Monthly rates - based on water usage - \$0.42 per 1,000 gallons of water used; minimum charge - \$2.10

Tap-on charge: Variable, based upon location

Company serving **Reidland** - Reidland Water and Sewer District
5514 Reidland Road
Paducah, Kentucky 42001
(502) 898-2443

Design capacity - 300,000 gallons per day
Average daily flow - At capacity*
Type of treatment - Primary and secondary
Treatment processes - Screening, grit removal, trickling filter, chlorination,
aerobic digester, sludge drying beds
Treated effluent discharged into - Tennessee River
Size of sanitary mains - 6, 8, 10, and 12 inches
Monthly rates - 100 percent of water bill, not including surcharge applied to
water rates (\$5.00 minimum, \$10.00 maximum)
Tap-on charge: \$350

Company serving **portions of eastern McCracken County** -

Woodlawn, Oakdale, Husbands Road
Sanitation District #4
P. O. Box 3225
Paducah, Kentucky 42002-3225
(502) 443-3682

Design capacity - 500,000 gallons per day
Average daily flow - At capacity*
Type of treatment - Secondary*
Treatment processes - Lagoon system, chlorination*
Treated effluent discharged into - Island Creek
Size of sanitary mains - 8 to 15 inches
Monthly rates - Based on water usage; water service is provided by Paducah
Water Works

First	4,000 gallons	\$8.00 (Minimum)
Next	16,000 gallons	1.45 per M gallons
Next	20,000 gallons	1.35 per M gallons
Next	40,000 gallons	1.15 per M gallons
All over	80,000 gallons	1.05 per M gallons

Tap-on charge: \$650

* Kentucky Natural Resources and Environmental Protection Cabinet.

CLIMATE

McCracken County

Temperature

Normal (30-year record)	59.10 degrees
Average annual 1984	58.90 degrees
Record highest, July 1980 (42-year record)	104.00 degrees
Record lowest, January 1982 (42-year record)	-7.00 degrees
Normal heating degree days (30-year record) (Heating degree day totals are the sums of negative departures of average daily temperatures from 65 degrees F.)	3,913

Precipitation

Normal (30-year record)	47.65 inches
Mean annual snowfall (29-year record)	10.20 inches
Total precipitation 1984	55.82 inches
Mean number days precipitation (.01 inch or more) (42-year record)	112.90
Mean number days thunderstorms (23-year record)	51.50

Prevailing Winds (through 1964)

Southwest

Relative Humidity (22-year record)

Midnight	N/A
6 a.m.	82 percent
Noon	59 percent
6 p.m.	N/A

Source: U.S. Department of Commerce, Environmental Science Services
Administration, Climatological Data, 1984. Station of record: Cairo, Illinois.

LOCAL GOVERNMENT

City

Structure - Mayor - 4-year term; 4 council members - 2-year terms; city manager

Budget 1985-86 - General Fund	\$12,355,000 (includes sewer fund)
Water Fund	3,859,000
City Electric System	22,109,000

Fees and licenses - Payroll tax of 1 1/2 percent on employee earnings; business license taxes vary according to the type of business; most businesses pay an annual gross receipts license tax based on a schedule prescribed for each type of business; manufacturers pay annual license tax based on number of employees as shown below:

Number of Employees		License
Over	Not Over	Tax
0	10	\$ 37.50
10	20	75.00
20	30	112.50
30	40	150.00
40	50	187.50
50	60	225.00
60	70	262.50
70 and over		300.00

County

Structure - County Judge/Executive - 4-year term; 3 commissioners - 4-year terms

Budget 1984-85 - General Fund \$1,695,889; Road Fund \$1,029,194

Assessed Value of Property*

Classes of Property	Paducah (1985)	McCracken County (1984)
Real Estate	\$377,000,000	\$739,427,278
Tangibles	204,000,000	308,033,198

* Excludes Homestead Exemptions.

Property Taxes

All property in Kentucky is assessed at 100 percent of fair cash value.

Land and buildings are taxed by the state and may be taxed by local jurisdictions. The 1984 state rate is \$0.22 per \$100 of assessed valuation.

Manufacturing machinery, raw materials inventories, pollution control equipment, and goods in the process of manufacture are not subject to local taxation. The state rate is \$0.15 per \$100. (**Note:** Effective January 1, 1986, the state rate for raw materials and goods in process will be reduced to \$0.001 per \$100.)

Other tangible personal property owned by manufacturers (automobiles, trucks, finished goods, office furniture, office equipment) is taxed by the state at \$0.45 per \$100 and may be taxed by local jurisdictions. (**Note:** Effective January 1, 1986, the state rate for finished goods will be reduced to \$0.001 per \$100.)

Intangible personal property located in Kentucky (money in hand, shares of stock, notes, bonds, accounts receivable, and other credits) is taxed by the state at \$0.25 per \$100, and is not subject to local taxation.

Property stored in public warehouses in a transit status is not subject to local taxation. The state rate is only \$0.015 per \$100. (**Note:** Effective January 1, 1986, the state rate will be reduced to \$0.001 per \$100.)

Private leaseholds in industrial facilities owned by cities or counties and financed by industrial revenue bonds are subject to a state tax of \$0.015 per \$100 of value (essentially the lessee's equity, adjusted for appreciation or depreciation). Local taxation is not permitted.

Combined State and Local Rates Per \$100 Valuation, 1984*
(100% assessment)

Kentucky school districts levy property taxes on property located within individual school district boundaries. Two types of school districts are operated in Kentucky: 1) independent school districts which usually operate within a single city and often do not cover the entire city; and 2) common school districts which operate in portions of counties not covered by independent districts and cover the entire county when there is no independent district. School district boundaries are mutually exclusive and do not cross.

	Site Inside City of Paducah and within the Paducah Independent <u>School District</u>	Site Inside City of Paducah and within the McCracken County <u>School District</u>	Site Inside Unincorporated McCracken <u>County</u>
1. Land and buildings	\$1.448	\$1.066	\$0.540
2. Mfg. machinery, raw materials, goods in process, pollution control equipment	0.150	0.150	0.150
3. Automobiles and trucks	1.727	1.321	0.755
4. Finished goods, office equipment, other tangibles	1.758	1.352	0.786
5. Intangibles (accounts receivable, notes, bonds, etc.)	0.250	0.250	0.250
6. Property stored in public warehouses in a transit status	0.015	0.015	0.015
7. Leaseholds in industrial revenue bond financed plants	0.015	0.015	0.015

Planning and Zoning

City agency - Paducah Planning Commission
Zoning enforced - Within Paducah city limits
Subdivision regulations enforced - Within Paducah city limits
Local codes enforced - Building and housing codes enforced within Paducah city limits

County agency - McCracken County Planning Commission
Zoning enforced - None
Subdivision regulations enforced - All areas of McCracken County except Paducah city limits
Local codes enforced - Building code enforced in all areas of McCracken County except Paducah city limits
Mandatory state codes enforced - Kentucky Plumbing Code, National Electric Code, Kentucky Boiler Regulations and Standards, Kentucky Building Code (modeled after BOCA code)

* Kentucky Department of Economic Development.

Safety

Police	Paducah	McCracken County
Total staff	73	21 full-time 2 part-time
Radio-patrol cars	25	11

Fire	Paducah
Insurance Services Office, Public Protection Classification	3
Full-time staff	93
Volunteers	--

**McCracken County Fire
Protection Associations***

Insurance Services Office, Public Protection Classification	Concord - 6/9 Hendron - 6/9 Kevil - 9/9 Lone Oak - 5/9 Melber - 9/9 Reidland-Farley - 7/9 Symsonia - 8/9 West McCracken - 7/9
-------------------------------------------------------------------	----------------------------------------------------------------------------------------------------------------------------------------------------

The Kevil, Melber, and Symsonia Fire Protection Associations are headquartered in adjacent counties.

Rescue Service

McCracken County Disaster Emergency Service:

Number of volunteers - 80

Equipment - Mobile vehicles ranging from heavy rescue and fire-fighting trucks to light utility trucks, patrol boat, other boats and motors, 60 KW heavy-duty generator, mobile power generators, lights and power equipment, extrication equipment

Personnel training - Monthly drill, first aid, advanced first aid, emergency medical technician training, state fire school and fire fighting and rescue school, nuclear fallout training, cardiopulmonary resuscitation training

* Public protection classifications in McCracken County are based upon the distance from the property to a creditable fire hydrant and to a fire station. For property within 5 road miles of a fire station and within 1,000 feet of a fire hydrant, the base class applies. For property within 5 road miles of a fire station and more than 1,000 feet from a fire hydrant, a class 9 applies. All other property outside the Paducah city limits is class 10.

Refuse Collection and Disposal

Paducah

Type service	Municipal
Fee charged:	
residential	\$6.28 per month
commercial and industrial	By contract
Collection frequency:	
residential	Weekly
commercial and industrial	One to five times weekly
Disposal method	Landfill

EDUCATION

Public Schools

	Paducah Independent	McCracken County
Total Enrollment (Spring 1985)	3,996*	6,394**
Kindergarten	306	433
Elementary	1,667	2,714
Middle School	995	1,300
High School	1,017	1,889
Accreditation	Southern Association of Colleges and Schools	Southern Association of Colleges and Schools
Pupil-Teacher Ratio (1983-84)	19-1	23-1
Percent High School Graduates to College (1983-84)	53.1	54.1
Expenditures Per Pupil (1983-84)	\$ 2,103.69	\$ 1,755.30
Bonded Indebtedness (June 30, 1984)	\$6,725,000	\$4,540,000

Nonpublic Schools

	St. Mary's	St. John
Total Enrollment	580	120
Elementary	280	120
High School	300	-
Pupil-Teacher Ratio	19-1	17-1

Seven other nonpublic schools with enrollments of five or fewer students operate in McCracken County.

* Includes 11 homebound students and 57 special education students.

** Includes 58 special education students.

Area Colleges and Universities

<u>Name</u>	<u>Location (Miles distant)</u>	<u>Enrollment (Fall, 1984)</u>	<u>Highest Degree Conferred</u>
Paducah Community College	Paducah	1,916	Associate
Murray State University	Murray, Kentucky (47)	7,392	Masters, Specialist*
University of Tennessee, at Martin	Martin, Tennessee (61)	5,375	Masters
Southeast Missouri State University	Cape Girardeau, Missouri (71)	9,189	Masters and Specialist
Southern Illinois University at Carbondale	Carbondale, Illinois (72)	22,874	Academic and Professional
Bethel College	McKenzie, Tennessee (73)	520	Baccalaureate

Paducah Community College

The Paducah Community College is a unit of the University of Kentucky Community College System and offers courses leading to the degrees of associate in applied science, associate in arts and associate in science. The Community College System is charged with the following functions:

1. To offer career-oriented programs designed to prepare students for immediate technical or semi-professional employment.
2. To offer curricula for the first two years of a baccalaureate program, during which time courses parallel University offerings and are transferrable to the Lexington campus of the University of Kentucky or to another four-year institution either public or private.
3. To provide general educational opportunities for citizens in their immediate areas.

Draughon's Junior College

Draughon's Junior College of Business is an accredited, two-year junior college of business located in Paducah. The college confers an associate degree. The school's 1984 student enrollment was 395.

* Joint doctoral degree programs are offered in cooperation with the University of Kentucky, Lexington. The degrees are issued by the University of Kentucky.

Vocational Schools

Both the state vocational-technical schools and the area vocational education centers are operated by the Kentucky Department of Education. The state vocational-technical schools enroll persons full time who are at least 16 years of age and not in school. These students attend classes for six hours each day. The area vocational education centers are designed to accommodate high school students who are at least 15 years of age. These students attend vocational school for three hours each day. The state vocational-technical schools and the area education centers offer evening courses to enable working adults to upgrade current job skills.

	<u>Nearest State School</u>
Location	West Kentucky State Vocational-Technical School Paducah
Curriculum	Business and Office Accounting/Jr. Management Clerical Computer Science Court and Conference Reporting Data Processing Medical Secretary Secretarial Word Processing Health Occupations Dental Assistant Dental Lab Technology Assistant Dental Office Manager Expanded Duties Dental Auxiliary Medical Assistant Practical Nursing Radiology Respiratory Therapy Surgical Technician Personal Services Occupations Barbering Cosmetology Consumer and Home Economics Dietary Department Industrial Education Air Conditioning and Refrigeration Auto Body Repair Auto Mechanics Carpentry Civil and Highway Technology Diesel Mechanics Electricity Electronics Graphic Arts Masonry Machine Shop

(Continued)

Mechanical Shop
Mechanical Drafting
Welding
Special Vocational Programs
E.M.T. Training
Paramedic Training
First Aid and Safety
Fireman Training
Learning Resource Center

Nearest Area Education Center

Location
Curriculum

Paducah Area Vocational Education Center
Paducah
Health and Personal Services Occupations
Cosmetology
Health Services
Industrial Education
Auto Body Repair
Auto Mechanics
Carpentry
Electricity
Electronic Servicing Occupations
Machine Shop
Masonry
Small Engine Repair
Welding
Learning Resource Center

Arrangements can be made to provide training in the specific production skills required by an industrial plant. Instruction may be conducted either in the vocational school or in the industrial plant, depending upon the desired arrangement and the availability of special equipment.

HEALTH

Local Medical Personnel

Physicians - 142
Dentists - 43

Hospitals

<u>General Hospital</u>	<u>Location</u>	<u>Beds</u>
Lourdes Hospital*	Paducah	385
Western Baptist Hospital**	Paducah	367

Lourdes Hospital

General hospital facilities - Anesthesiology, electroencephalography, cardiology services, operating room, recovery room, ambulatory surgery, 24-hour physician coverage in emergency room, laboratory/pathology, pharmacy, speech and occupational therapy, physical therapy, respiratory therapy, radiology with nuclear medicine, ultrasonography, computerized tomography full body scanner, oncology, renal dialysis unit, inpatient psychiatric unit, intensive care unit, coronary care unit, progressive care unit, respiratory care unit, pediatric unit, cardiac rehabilitation program, hospice program, pastoral care, health promotion services, medical screening, social services, patient representative services, home health services, volunteer services

Medical staff - 161 physicians and dentists, 264 registered nurses, 152 licensed practical nurses

Western Baptist Hospital

General hospital facilities - Emergency room with 24-hour coverage; anatomical and clinical pathology laboratories; heart catheterization; intensive care, coronary care and progressive care units; cardiac rehabilitation program; open-heart surgery program; electrocardiology and electroencephalography departments; obstetrical unit; 3 delivery rooms; 6 labor rooms; 8 operating rooms; recovery room; X-ray department with ultrasound, nuclear medicine and radiation therapy; full-body CT scanner; noninvasive vascular laboratory; pharmacy; respiratory therapy and physical therapy departments; oncology unit; pediatric unit; level II neonatal nursery

Medical staff - 138 medical doctors and dentists, 155 registered nurses, 108 licensed practical nurses

* A \$12,000,000 expansion project at Lourdes Hospital is scheduled for completion by early 1986. Additions to the ground floor and first floor sections are being constructed.

** Western Baptist Hospital is designing a new \$3,600,000 regional cancer-treatment center, to be completed in 1987.

Other Medical Facilities

Easter Seals Center - Services, diagnoses and treatment for the handicapped
Purchase District Health Department, McCracken County Health Center - A
public health agency

Ambulance Service

Name - Angel of Mercy, Inc.
Staff - 15 emergency medical technicians
Service - 24-hour, county-wide service
Equipment - 5 fully equipped ambulances

OTHER LOCAL FACILITIES

Communications

Telephone -	South Central Bell Telephone Company
Telegraph - Services -	Western Union Telegraph Company Toll-free number, 1-800-325-6000, counter service available in Paducah
Postal - Class - Mail received - Mail dispatched -	U.S. Post Office First (Sectional center) 16 times daily 16 times daily
Newspapers - Daily and circulation - Weekly and circulation - Other papers received from -	The Paducah Sun; 31,600 daily; 36,000 Sunday The Kentucky News; 21,000 Chicago, Illinois; Evansville, Indiana; Louisville, Kentucky; St. Louis, Missouri; New York, New York; Memphis and Nashville, Tennessee
Radio - Stations received from -	WPAD-AM; WDDJ-FM; WDXR-AM; WKYX-AM; WKYQ-FM Marion, Illinois; Cape Girardeau and St. Louis, Missouri; Nashville and Memphis, Tennessee
Television - Airwave reception from - Cable service Number of cable channels - Kentucky Educational Television -	WPSD (Channel 6, NBC) Harrisburg, Illinois; Cape Girardeau, Missouri 28 Paducah transmitter, Channel 29

Library Services

Public library - Paducah Public Library

Size collection - 115,000 volumes

Circulation, 1983-84 - 175,272

Services - Bookmobile, reference section, newspapers, periodicals, Kentucky collection, Interlibrary Loan, filmstrips, films, records, cassettes, children's story hour, puppet theatre, art reproductions, Inter-City Outreach Program and community meeting room

College library - Matheson Learning Resource Center, Paducah Community College

Size collection - 31,063 volumes, 2,962 microforms, 7,277 non-print titles, 160 titles in periodical collection

Services - Audiovisuals, reference collection, public service rooms, typewriters, copy machines, meeting rooms, microforms, microform reader/printers, resource center for special projects, closed circuit television facilities, on-line information searches

Religious Institutions

Denominations - Assembly of God
 Baptist
 Catholic
 Christian
 Christian Science
 Church of Christ
 Church of God
 Church of God in Christ
 Cumberland Presbyterian
 Episcopal
 Full Gospel
 Holiness
 Jehovah's Witnesses
 Lutheran
 Methodist (A.M.E. and C.M.E.)
 Nazarene
 Pentecostal
 Presbyterian
 Salvation Army
 Seventh Day Adventists
 United Church of Christ
 United Methodist

Nearest Synagogue - Paducah
Congregations - Temple Israel (reform)

Financial Institutions

<u>Banks</u>	<u>Assets</u>	<u>Deposits</u>	<u>Statement Date</u>
Citizens Bank and Trust Company	\$285,136,604.00	\$244,151,524.00	12/31/84
The Paducah Bank and Trust Company	82,679,000.00	73,906,380.00	12/31/84
Peoples First National Bank and Trust Company	251,096,105.00	226,498,523.00	12/31/84
<u>Savings and Loan Associations</u>	<u>Assets</u>	<u>Savings Accounts</u>	<u>Statement Date</u>
First Federal Savings and Loan Association of Paducah	\$158,575,787.93	\$142,864,451.96	12/31/84
Home Federal Savings and Loan Association	132,334,694.53	120,234,923.44	12/31/83

Hotels and Motels*

Total number - 16
Total rooms - 1,349

Clubs and Organizations

There are over 200 clubs and organizations in Paducah which include most major civic, business, professional, fraternal, charitable, sports and youth organizations.

* Two new motels are scheduled to open in Paducah in 1985, with a total of 256 rooms.

RECREATION

Local

The Paducah Parks and Recreation Department provides a supervised public recreational program tailored for everyone from tots to senior citizens. Among the most popular programs offered are soccer and T-ball. A summer day camp is maintained for boys and girls (also available for exceptional children). Instruction in swimming, exercise, tennis, golf, baton, acrobatics, tap, ballet, pottery, ceramics and square dancing is offered. Public recreational facilities include 15 parks, 13 playgrounds, three swimming pools, 20 tennis courts, eight baseball diamonds, four racquetball courts, two football fields, four softball fields and one combination softball-baseball field.

Bob Noble Park, Paducah's largest park, offers a relaxing atmosphere amidst a lake, picnic areas, a pool, tennis courts, an amusement park, a waterslide, a model airplane field, and five baseball diamonds.

Private recreational facilities in Paducah include the Brooks Stadium baseball complex, three country clubs, three golf courses, five swimming pools, three indoor movie theaters (with another one being planned), one drive-in movie theater, seven tennis courts, a bowling center and a skating rink. An amusement park, a go-cart track, a motorcycle track and horseback riding stables are also available.

Other attractions include the Barkley Monument, the Alben Barkley Museum, the Market House Museum, the grave of Irvin S. Cobb, the Civic Plaza Park, the Red Line Tour of the city and river area, and the recently renovated Whitehaven Mansion.

A wide range of annual events are held in Paducah. The week-long Dogwood Fine Arts Festival, held during the latter half of April each year, features art shows, tours of the lighted Dogwood Trail, concerts and theatrical productions.

The 10-day Paducah Summer Festival is another annual event featuring musical shows, sky diving, balloon racing, boating, sidewalk sales, road races, contests, arts and crafts, and a variety of other entertainment scheduled at the end of July.

Old Market Days, held one weekend each October, offers booths and stalls set up to display and sell a variety of goods and foodstuffs, as well as arts and crafts demonstrations and concerts.

Other annual events include a three-day sanctioned rodeo, the Louise Mandrell Benefit Concert and Golf-Tennis Weekend, the Lion's Club Regional Easter Seals Telethon, and two annual arts and crafts shows.

Cultural opportunities include public lectures, the Paducah Art Guild, the Market House Theatre, the Community Concert Series, the Paducah Symphony Orchestra, a boys choir, and the Paducah Community College Performing Arts Series.

Area (Within 55 miles)

Kentucky Dam Village State Resort Park, located 27 miles east of Paducah near Gilbertsville, is one of the largest and most popular vacation resorts in Kentucky. A modern lodge with 72 rooms, six different cottage types, and a 225-site campground make up the accommodations. There is also a dining room overlooking Kentucky Lake, a coffee shop, a snack bar, two gift shops, a meeting room, an activities center, and a recreation room. Recreational activities to choose from include boating and fishing at the largest docking facility in the Kentucky parks system, golf at the 18-hole Village Green Course, fishing, hiking, horseback riding, picnicking, swimming at the lodge pool or off the sand beach, and tennis.

The Land Between the Lakes, located on a 170,000-acre wooded peninsula, is an outdoor recreational and conservational education center. Camping, swimming, fishing, boating, hiking, a buffalo herd on a 250-acre range, an Environmental Education Center for school study groups, an educational farm and a central station with films and displays are among the attractions. Kentucky Lake and Lake Barkley are among the top fishing and water sport recreation areas in the southeastern United States. The Land Between the Lakes area is 35 miles southeast of Paducah.

A Confederate cannon, a network of earthen trenches, and a massive chain and anchor give the feeling of being transported back to the Civil War. All of this and more can be discovered at **Columbus-Belmont Battlefield State Park** at Columbus, 41 miles southwest of Paducah. Other attractions at the 156-acre park include a 38-site campground, a gift shop, a historical hiking trail, miniature golf, a picnic area, and a playground. A visit to the museum at the park, which is in a building that served as a Civil War infirmary, offers a display of Civil War relics and early Indian artifacts and an audiovisual slide program on the Battle of Belmont.

Charm and serenity exemplify **Kenlake State Resort Park** which is located on Kentucky Lake, 50 miles southeast of Paducah. The park offers hotel and cottage accommodations and an efficient camping site. Other facilities include a 9-hole golf course, pool and lake swimming, horseback riding, hiking trails, fishing, boating, picnicking, planned recreation, and one of the finest tennis complexes in the area.

Lake Barkley State Resort Park, 53 miles southeast of Paducah near Cadiz, is located on an embayment of Lake Barkley. The magnificent lodge includes 120 rooms, four suites, nine cottages, a dining room, a coffee shop, a gift shop, two meeting rooms, and a recreation room. An activities center with a capacity for 400 and an 80-site campground are located near the lodge. A lodge pool, a beach and a bathhouse, an 18-hole golf course, tennis courts, a riding stable, a trapshooting range, a basketball court, hiking trails, playgrounds, and a picnic area comprise the recreational facilities. The marina near the lodge has everything for the "boat lover": covered and open slips, launching ramp, and rentals for fishing boats, skiing boats, and pleasure ride pontoons.

COMMUNITY IMPROVEMENTS

Recent

A new 12,000,000-gallon-per-day water treatment and distribution system was installed in 1984 at Paducah.

Two additional floors were recently constructed at Lourdes Hospital. The \$10,000,000 project allowed 62 new beds to be added.

A \$9,000,000 expansion project recently completed at Western Baptist Hospital provided 48 additional beds, an expanded outpatient surgery center, and a full-body CT scanner.

Paducah has added a trolley to its public transit system in the downtown area.

Under Way

The Paducah sewage treatment department is adding new aeration diffusers and a sludge return line to its treatment plant.

A 1.6-mile segment of U.S. Highway 62 west of Paducah is being widened to 4 lanes. Completion is scheduled for 1985. Also scheduled for completion in 1985 is a project to remove the raised median on U.S. Highway 60 from Bridge Street to Kentucky Street and replace it with a left-turn-only lane. The Kentucky Route 994 bridge over the Illinois Central Gulf Railroad is being replaced also.

Two new motels are scheduled to open in Paducah in 1985 with a total of 256 rooms.

A city riverfront park is being designed and is expected to have 1,200 feet of river frontage.

The Paducah Power System is installing a computer to automate control of the city's electrical power. The new system will handle load management, control of capacitors, and acquisition of data.

Western Baptist Hospital is in the design phase of a project to construct a regional cancer-treatment center. The \$3,600,000 facility will feature a linear accelerator and other related equipment when completed in 1987.

Lourdes Hospital is constructing ground floor and first floor additions to its facility. The \$12,000,000 project is scheduled for completion by 1986.