

1979

# Industrial Resources: Muhlenberg County - Greenville

Kentucky Library Research Collections  
Western Kentucky University, [spcol@wku.edu](mailto:spcol@wku.edu)

Follow this and additional works at: [https://digitalcommons.wku.edu/muhlenberg\\_cty](https://digitalcommons.wku.edu/muhlenberg_cty)

 Part of the [Business Administration, Management, and Operations Commons](#), [Growth and Development Commons](#), and the [Infrastructure Commons](#)

---

## Recommended Citation

Kentucky Library Research Collections, "Industrial Resources: Muhlenberg County - Greenville" (1979). *Muhlenberg County*. Paper 10.  
[https://digitalcommons.wku.edu/muhlenberg\\_cty/10](https://digitalcommons.wku.edu/muhlenberg_cty/10)

This Report is brought to you for free and open access by TopSCHOLAR®. It has been accepted for inclusion in Muhlenberg County by an authorized administrator of TopSCHOLAR®. For more information, please contact [topscholar@wku.edu](mailto:topscholar@wku.edu).

# ***INDUSTRIAL RESOURCES***

## **GREENVILLE**

**Kentucky  
first**



**DEPARTMENT OF COMMERCE**



# GREENVILLE, KENTUCKY --- Index to Industrial Sites --- 1979

For detailed data on individual sites, contact Mr. Wayne Cisney, Post Office Box 228, Greenville, Kentucky 42345, or the Industrial Development Division, Kentucky Department of Commerce, Capital Plaza Tower, Frankfort, Kentucky 40601.



## LEGEND -- Available Sites

**179**  
10 Ac  
Site Number  
and Acreage  
(General location)

## Existing Industries

- A. NATIONAL LOCK CO.
- B. AVAILABLE INDUSTRIAL BUILDING
- C. COWDEN MANUFACTURING CO.

0 1 1/2 1 MILE  
1000 0 1000 2000 3000 4000 FEET

CONTOUR INTERVAL 10 FEET  
BASE: USGS 7.5 MINUTE SERIES — 1963



INDUSTRIAL RESOURCES  
GREENVILLE, KENTUCKY

Prepared by  
The Kentucky Department of Commerce  
Division of Research and Planning  
in cooperation with  
The Greenville Chamber of Commerce

1979



# TABLE OF CONTENTS

<u>Chapter</u>	<u>Page</u>
INDUSTRIAL SITES . . . . .	i
SUMMARY OF INDUSTRIAL RESOURCES - GREENVILLE, KENTUCKY . . . . .	1
THE LABOR MARKET AREA . . . . .	6
Population . . . . .	6
Labor Force Characteristics of Residents, 1978 . . . . .	6
Greenville Manufacturing Firms, Their Products and Employment . . . . .	7
Labor Organizations . . . . .	8
Industrial Services . . . . .	8
Estimated Male Labor Supply . . . . .	11
Estimated Female Labor Supply . . . . .	11
Average Weekly Wages by Industry, by Place of Work, 1977 . . . . .	12
Per Capita Personal Income . . . . .	14
TRANSPORTATION . . . . .	15
Rail . . . . .	15
Highways . . . . .	15
Truck Service . . . . .	16
Air . . . . .	17
Bus . . . . .	20
Taxi . . . . .	20
Rental Services . . . . .	20
Water . . . . .	20
POWER AND FUEL . . . . .	22
Electricity . . . . .	22
Natural Gas . . . . .	22
Other Fuels . . . . .	25
WATER AND SEWERAGE . . . . .	26
Water . . . . .	26
Sewerage . . . . .	30
CLIMATE . . . . .	31

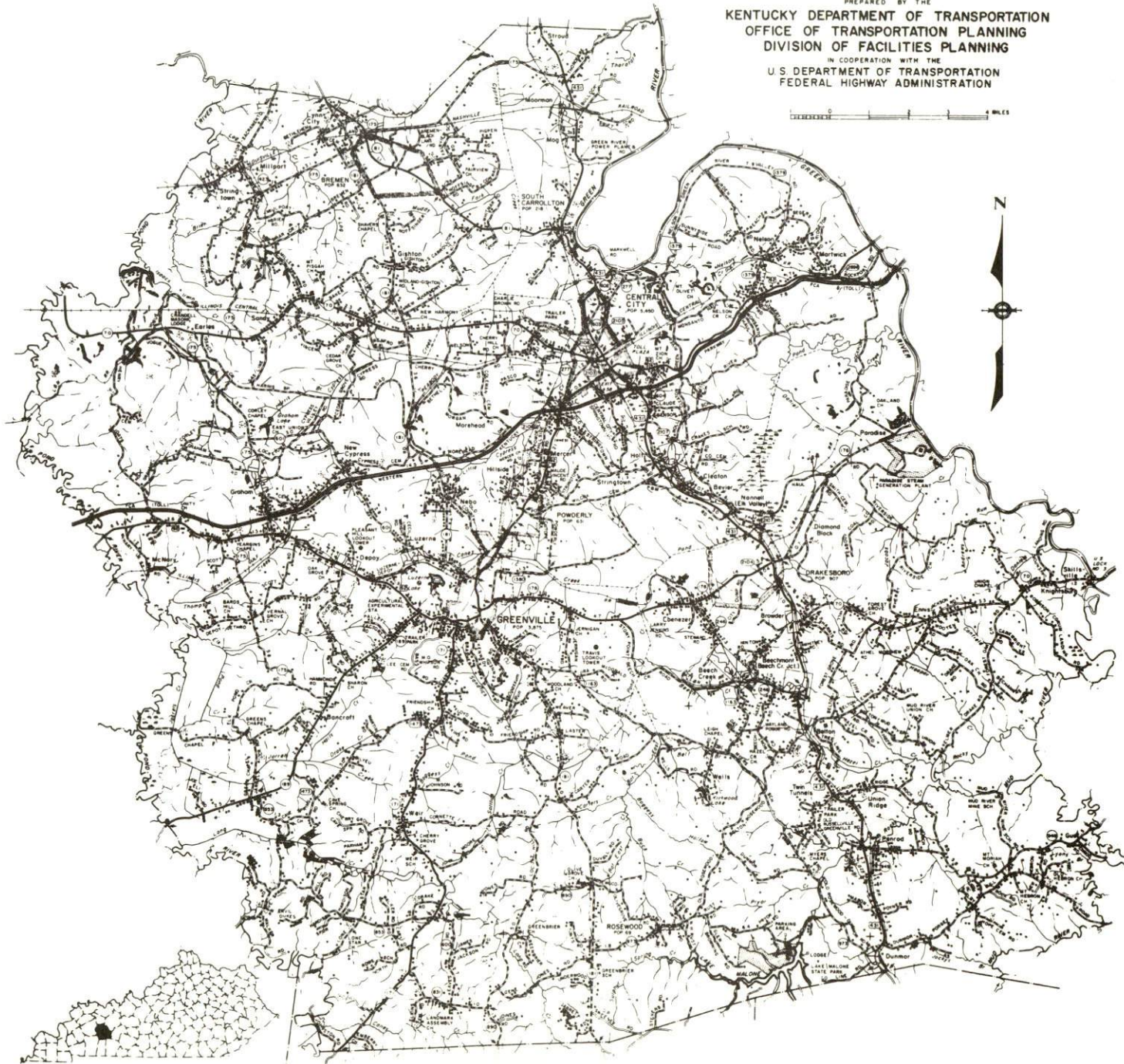
<u>Chapter</u>	<u>Page</u>
LOCAL GOVERNMENT . . . . .	32
City . . . . .	32
County . . . . .	32
Assessed Value of Property . . . . .	32
Property Taxes . . . . .	32
Combined State and Local Rates Per \$100 Valuation, 1978 . . .	33
Planning and Zoning . . . . .	33
Safety . . . . .	33
Police . . . . .	33
Fire . . . . .	33
Rescue Service . . . . .	34
Refuse Collection and Disposal . . . . .	34
EDUCATION . . . . .	35
Public Schools . . . . .	35
Nonpublic Schools . . . . .	35
Area Colleges and Universities . . . . .	37
Vocational Schools . . . . .	38
HEALTH . . . . .	39
Local Medical Personnel . . . . .	39
Hospitals . . . . .	39
Other Medical Facilities . . . . .	39
Ambulance Service . . . . .	39
Public Health . . . . .	39
OTHER LOCAL FACILITIES . . . . .	40
Communications . . . . .	40
Library Services . . . . .	40
Religious Institutions . . . . .	42
Financial Institutions . . . . .	42
Hotels and Motels . . . . .	42
Clubs and Organizations . . . . .	42
RECREATION . . . . .	44
COMMUNITY IMPROVEMENTS . . . . .	47



1979 EDITION  
GENERAL HIGHWAY MAP  
**MUHLENBERG COUNTY**  
KENTUCKY

PREPARED BY THE  
KENTUCKY DEPARTMENT OF TRANSPORTATION  
OFFICE OF TRANSPORTATION PLANNING  
DIVISION OF FACILITIES PLANNING  
IN COOPERATION WITH THE  
U.S. DEPARTMENT OF TRANSPORTATION  
FEDERAL HIGHWAY ADMINISTRATION

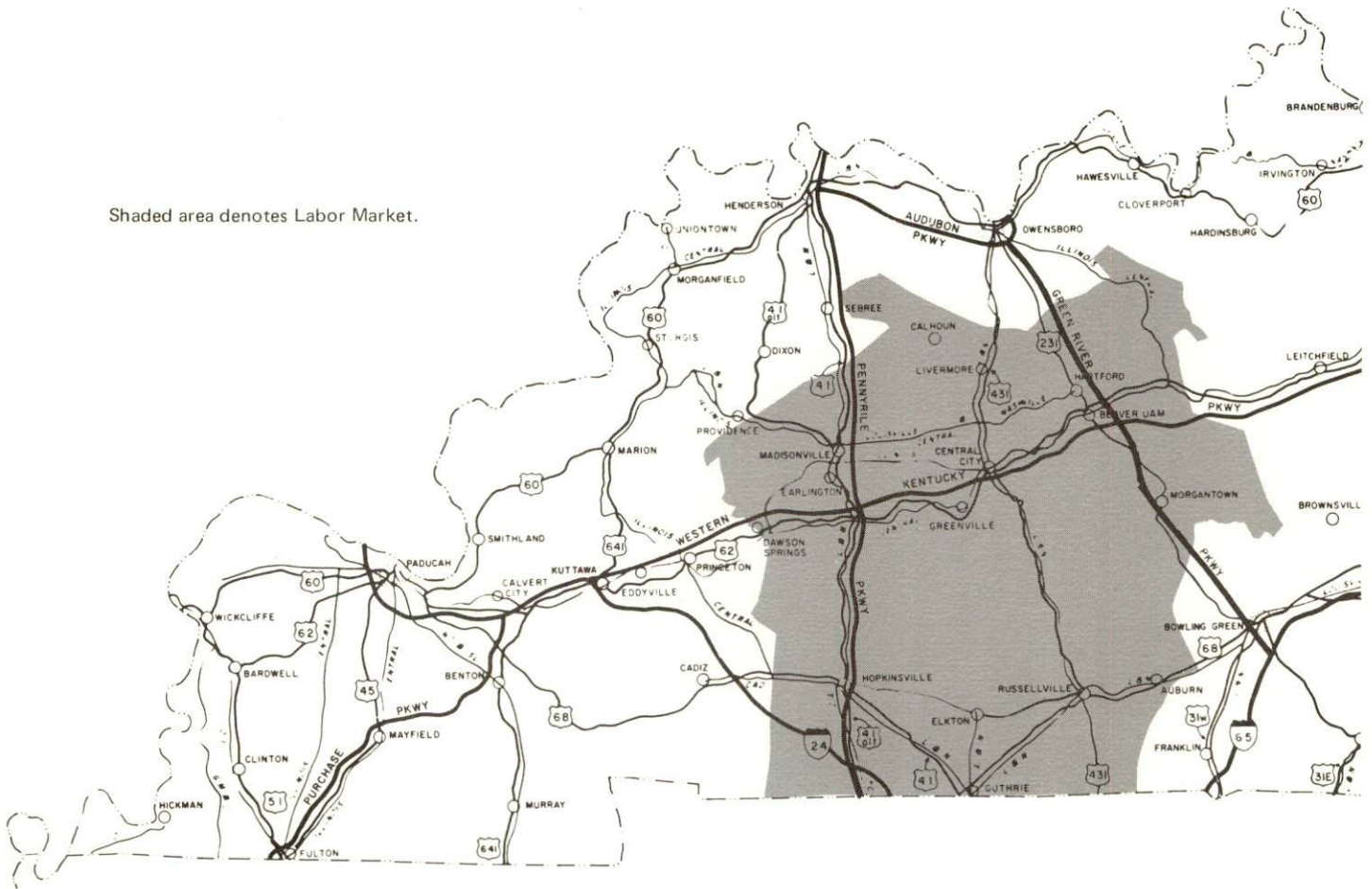
0 1 2 3 4 MILES



# GREENVILLE LABOR MARKET AREA



Shaded area denotes Labor Market.

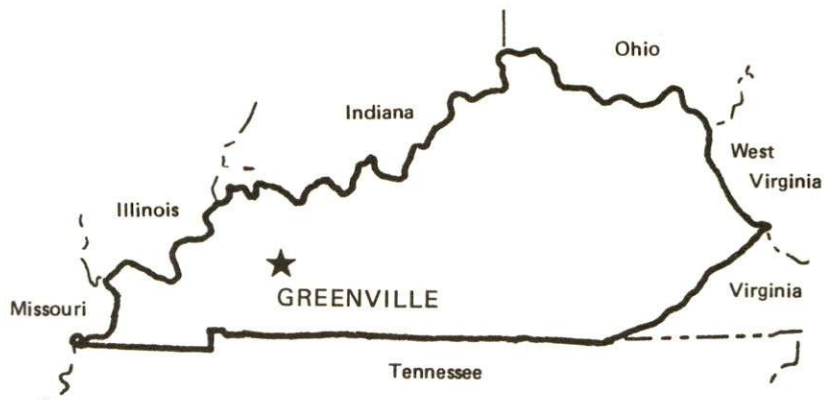


10 0 10 20 30 40  
GRAPHIC SCALE IN MILES



# SUMMARY OF INDUSTRIAL RESOURCES GREENVILLE, KENTUCKY

## LOCATION



## Road Distance in Miles:

Atlanta	<u>365</u>	Baltimore	<u>732</u>
Chicago	<u>366</u>	Detroit	<u>494</u>
New York	<u>882</u>	St. Louis	<u>244</u>

## POPULATION

City of Greenville, 1976	<u>4,230</u>
Muhlenberg County, 1977	<u>31,100</u>
Labor Market Area, 1977	<u>216,200</u>
% Nonwhite, Muhlenberg County, 1977	<u>4.1</u>

## LABOR ANALYSIS

Labor Market Area - Muhlenberg, Butler, Christian, Hopkins, Logan, McLean, Ohio, and Todd Counties

Estimated available workers from labor market area, 1977:

Male	<u>10,452</u>	Female	<u>7,603</u>
Unemployment rate, 1978		Labor Market Area	<u>5.2%</u>
Muhlenberg County	<u>5.4%</u>	Logan County	<u>4.7%</u>
Butler County	<u>6.2%</u>	McLean County	<u>5.2</u>
Christian County	<u>6.6%</u>	Ohio County	<u>4.1%</u>
Hopkins County	<u>4.0%</u>	Todd County	<u>6.3%</u>

Total employment, Muhlenberg County, 1978 - 12,390  
Mining employment in Muhlenberg County, 1977 - 3,595  
Manufacturing employment in labor market area, 1977 - 15,050  
Major local manufacturing plants:

<u>Name</u>	<u>Employment</u>
<u>Cowden-Greenville Company</u>	<u>180</u>
<u>Greenville Quarriers, Inc.</u>	<u>66</u>

Labor unions in local manufacturing plants:

Teamsters, Steelworkers

#### TRANSPORTATION

##### Rail:

Railroad - Illinois Central Gulf Railroad  
Distance to nearest piggyback - 46 miles

##### Highways:

Parkway - Western Kentucky Parkway, 8 miles distant  
U. S. Highway - U. S. 62

##### Truck:

Number of interstate motor carriers - 8

##### Water:

Nearest navigable river - Green River  
Nearest public riverport - Owensboro  
Distance - 44 miles

##### Air:

Nearest scheduled airline service - Owensboro-Daviess County Airport  
Distance - 44 miles; Airline serving - Air Kentucky (commuter)  
Nearest local airport - Muhlenberg County Airport, Greenville  
Runway length - 4,200 feet



## UTILITIES AND SERVICES

### Electricity:

Local distributor - Kentucky Utilities Company  
Source of power - Kentucky Utilities Company

### Natural Gas:

Local distributor - Western Kentucky Gas Company  
Source of supply - Texas Gas Transmission Corporation  
Available for new industry - No

### Other Fuels:

Number of area propane distributors - 4  
Number of area distillate fuel oil distributors - 5

### Water, treated:

Local supplier - Municipal  
Excess municipal system capacity - 352,300 gpd  
Storage capacity - 650,000 gallons  
Expansions planned - No

### Water, raw:

Surface water sources - Green River, Pond River

### Sewer:

Excess treatment capacity - 200,000 gpd; Planned expansions - No

### Industrial Services:

	<u>Location</u>	<u>Miles Distant</u>
Tool & Die, Machine & Pattern Shops	<u>Madisonville, Kentucky</u>	<u>27</u>
Metal Service Centers	<u>Owensboro, Kentucky</u>	<u>44</u>
Heat Treating	<u>Evansville, Indiana</u>	<u>71</u>
Metal Finishers	<u>Hartford, Kentucky</u>	<u>30</u>
Electric Motor Repair	<u>Madisonville, Kentucky</u>	<u>27</u>
Heavy Equipment Repair (mining, contracting, farm)	<u>Greenville, Kentucky</u>	<u>--</u>

## CLIMATE

Temperature, Normal - 59.4 degrees F.  
Precipitation, Normal - 46.0 inches  
Snowfall, Mean Annual - 11.2 inches  
Prevailing winds - South  
Relative humidity (%) - 6 a.m. 84; 6 p.m. 62

## GOVERNMENT

Type - Mayor-Councilmen

Police personnel - full-time - 7

Fire department personnel - full-time - 4, volunteer - 25

Fire insurance rating (A.I.A.), class - Inside city - 7

Outside city - 10

## TAXES

### Property taxes:

Combined state and local rates per \$100 valuation, 1978  
(100% assessment)

	<u>Inside City of Greenville</u>	<u>Outside City</u>
1. Land and buildings	\$1.002	\$0.540
2. Mfg. machinery, raw materials, goods in process, pollution control equipment	0.150	0.150
3. Finished goods, office equipment, vehicles, other tangibles	1.137	0.675
4. Intangibles (accounts rec., notes, bonds, etc.)	0.250	0.250
5. Leaseholds in I. R. bond financed plants	0.015	0.015

## EDUCATION

Nearest state vocational-technical school - Madisonville State Vocational-Technical School, 27 miles distant

Area vocational education center - Muhlenberg County Area Vocational Education Center

Nearest college or university - Madisonville Community College, 27 miles distant

### Public Schools:\*

High school enrollment - 1,835; Student/teacher ratio - 19-1

Junior high school enrollment - 892; Student/teacher ratio - 32-1

Elementary school enrollment - 3,219; Student/teacher ratio - 23-1

### Nonpublic Schools:

Enrollment - 58; Student/teacher ratio - 15-1

\*Greenville Independent and Muhlenberg County School Systems.



### FINANCIAL INSTITUTIONS

Banks - 1; Total assets - \$50,981,552.86

### COMMUNICATIONS

Local newspaper -

Weekly - Leader-News

Local radio stations - WMTA-AM, WNES-AM/FM

Television reception - Cable service

### MEDICAL

Number of physicians in Muhlenberg County - 13

Number of dentists in Muhlenberg County - 7

Hospital - Muhlenberg Community Hospital; Number of beds - 135

### RELIGIOUS FACILITIES

Churches - 22; Nearest synagogue - Hopkinsville, 41 miles distant

### PUBLIC LODGING

Total number hotels and motels - 2; Total rooms - 83

### RECREATION FACILITIES

Local golf courses; Parks; Tennis courts; Swimming pools; Country club

Nearest state park - Lake Malone State Park

Camping; Swimming; Fishing; Boating; Lodgings and dining facility  
at Lake Malone Inn

# THE LABOR MARKET AREA

POPULATION			Percent Nonwhite
Area	1977*	1970	1977
Greenville	4,230**	3,875	8.3**
Labor Market Area	216,200	192,119	N/A
Muhlenberg County	31,100	27,537	4.1
Butler County	10,800	9,723	0.6
Christian County	64,600	56,224	23.1
Hopkins County	44,400	38,167	7.3
Logan County	22,000	21,793	11.1
McLean County	10,400	9,062	0.8
Ohio County	21,400	18,790	1.3
Todd County	11,500	10,823	14.6

\*Provisional Estimates.

\*\*1976 Population Estimates; 1970 Percent Nonwhite.

Sources: U. S. Department of Commerce, Bureau of the Census, Census of Population, 1970. U. S. Department of Commerce, Bureau of the Census, Current Population Reports, Series P-25, No. 756, January 1979; Series P-26, No. 77-17, November 1978. University of Louisville, Urban Studies Center, Kentucky's Population Disaggregations of 1977 Estimates, December 1978.

LABOR FORCE CHARACTERISTICS OF RESIDENTS, 1978		
	Muhlenberg County	Labor Market Area
Civilian Labor Force	13,106	96,122
Employment	12,392	91,158
Agricultural	397	6,217
Nonagricultural	11,995	84,941
Unemployment	714	4,964
Rate of Unemployment (%)	5.4	5.2

Source: Kentucky Department for Human Resources, Kentucky Labor Force Estimates, Annual Averages, 1978.

GREENVILLE MANUFACTURING FIRMS,  
THEIR PRODUCTS AND EMPLOYMENT

<u>Firm</u> (Establishment date)	<u>Product</u>	<u>Employment</u>			<u>Organized</u>
		<u>Total</u>	<u>Male</u>	<u>Female</u>	
Anixter-Cable Service (1969)	Electrical cable	12	11	1	
Clinton Pallet Company (1976)	Pallets, skids	35	30	5	
Commercial Printing Service (1959)	Job printing	4	3	1	
Cowden-Greenville Company (1965)	Work and play clothes	180	15	165	*
Geibel Lumber Company, Inc. (1954)	Pallets, skids, hardwood lumber	25	24	1	
Greenville Leader- Central City News (1921)	Newspaper	12	6	6	
Greenville Quarries, Inc. (1948)	Crushed limestone, agricultural lime, bituminous concrete	66	62	4	*
Hahn & Company (1945)	Job printing	3	1	2	
Jessup Log & Lumber, Inc. (1971)	Mine timbers, pallet material	20	17	3	
Muhlenberg County Opportunity Center (1968)	Pallets and skids, signs, leather craft kit	37	18	19	
Muhlenberg Ready Mix Company, Inc. (1971)	Ready mix concrete	7	7	0	
Murphy Machine Company (1966)	Tools, dies	2	1	1	

\*See Labor Organizations below.

Source: Kentucky Department of Commerce, Division of Research and Planning.



## LABOR ORGANIZATIONS

<u>Union</u>	<u>Representing manufacturing workers at:</u>
International Brotherhood of Teamsters, Chauffeurs, Warehousemen and Helpers of America	Cowden-Greenville Company
United Steelworkers of America	Greenville Quarries, Inc.

## INDUSTRIAL SERVICES

	<u>Location</u>	<u>Miles Distant</u>
Tool & Die, Machine & Pattern Shops	Madisonville, Kentucky	27
Metal Service Centers	Owensboro, Kentucky	44
Heat Treating	Evansville, Indiana	71
Metal Finishers	Hartford, Kentucky	30
Electric Motor Repair	Madisonville, Kentucky	27
Heavy Equipment Repair (mining, contracting, farm)	Greenville, Kentucky	--

Source: Kentucky Department of Commerce, Division of Research and Planning.



Cowden-Greenville Company



Available Industrial Building





J. Zinsmeister Company  
Subsidiary of Wetterau, Inc.



ESTIMATED MALE LABOR SUPPLY  
GREENVILLE LABOR MARKET AREA

Area	Current			Future	
	Total	Not in Labor Force	Unemployed	Under- employed	Reaching 18 years of age before 1985
Labor Market					
Area	10,452	4,600	2,252	3,600	8,847
Muhlenberg	662	0	302	360	1,214
Butler	929	580	139	210	435
Christian	6,198	4,020	568	1,610	2,578
Hopkins	866	0	386	480	1,763
Logan	541	0	221	320	1,051
McLean	299	0	179	120	400
Ohio	632	0	332	300	864
Todd	325	0	125	200	542

Sources: Kentucky Department for Human Resources, Kentucky Labor Supply Estimates by County, 1977. Kentucky Department of Commerce, Future Labor Supply Before 1985.

ESTIMATED FEMALE LABOR SUPPLY  
GREENVILLE LABOR MARKET AREA

Area	Current			Future	
	Total	Not in Labor Force	Unemployed	Under- employed	Reaching 18 years of age before 1985
Labor Market					
Area	7,603	2,810	1,493	3,300	8,497
Muhlenberg	2,493	1,910	223	360	1,242
Butler	713	420	93	200	442
Christian	1,480	0	430	1,050	2,465
Hopkins	985	0	285	700	1,650
Logan	469	0	149	320	976
McLean	467	240	77	150	407
Ohio	491	0	141	350	832
Todd	505	240	95	170	483

Sources: Kentucky Department for Human Resources, Kentucky Labor Supply Estimates by County, 1977. Kentucky Department of Commerce, Future Labor Supply Before 1985.

AVERAGE WEEKLY WAGES BY INDUSTRY,  
BY PLACE OF WORK, 1977

	<u>Muhlenberg County</u>	<u>Butler County</u>	<u>Christian County</u>	<u>Hopkins County</u>
All Industries	\$279.13	\$138.61	\$159.73	\$216.78
Mining & Quarrying	419.06	218.56	215.18	379.09
Contract Construction	176.93	90.72	189.57	245.74
Manufacturing	139.45	118.82	175.57	206.07
Transportation, Communications & Public Utilities	269.20	170.55	207.48	252.98
Wholesale & Retail Trade	148.74	123.62	140.81	144.90
Finance, Insurance & Real Estate	160.02	157.30	165.96	171.46
Services	122.90	136.20	143.15	140.62
Other	105.08	0	141.25	114.39
	<u>Logan County</u>	<u>McLean County</u>	<u>Ohio County</u>	<u>Todd County</u>
All Industries	\$150.10	\$162.63	\$266.12	\$140.85
Mining & Quarrying	117.01	313.73	*	*
Contract Construction	151.98	130.65	209.64	118.79
Manufacturing	165.85	158.19	161.68	160.05
Transportation, Communications & Public Utilities	162.42	225.84	198.32	184.91
Wholesale & Retail Trade	113.97	137.57	124.46	113.36
Finance, Insurance & Real Estate	134.64	135.04	174.00	137.60
Services	110.89	115.54	123.94	96.63
Other	63.33	*	*	89.90

\*Not disclosed.

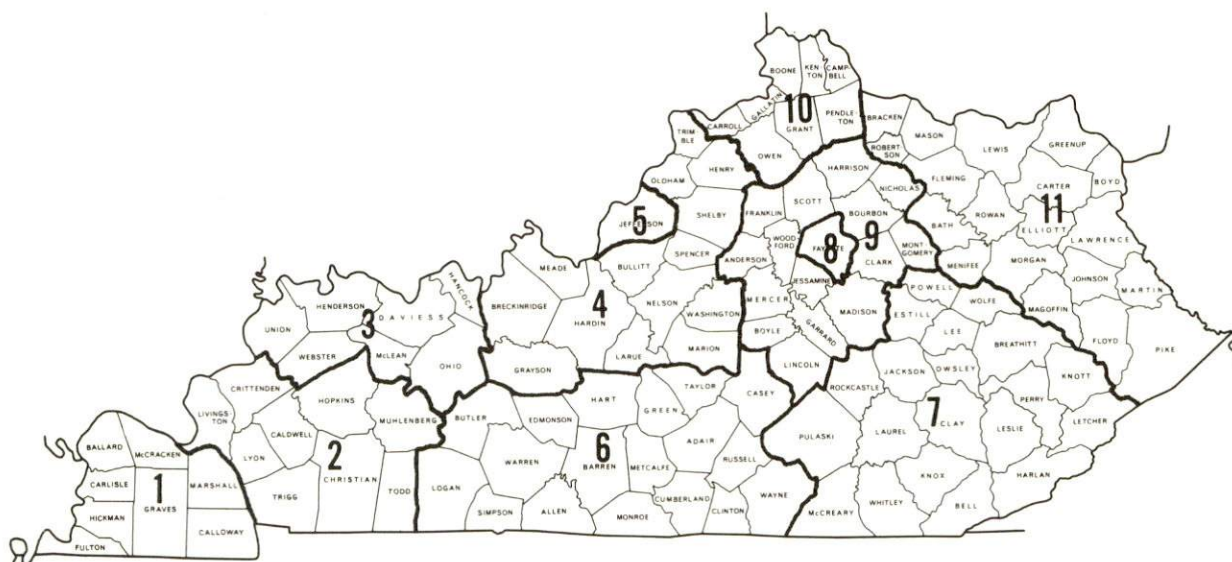
Note: Excludes domestic workers, railway workers; certain nonprofit corporations; majority of federal, state, and local government workers; and self-employed workers.

Source: Kentucky Department for Human Resources, Average Weekly Wages of Workers Covered by Kentucky Unemployment Insurance Law, 1977.



Occupational wage rates for specific industries are usually not available to most government agencies, and wage data furnished to state employment agencies by individual industrial employers is protected from disclosure by federal law. The most reliable up-to-date wage information can be obtained by direct contact with local employers.

Associated Industries of Kentucky, a voluntary organization of Kentucky businesses, regularly collects occupational wage rates and fringe benefits data from participating member firms. Data is compiled for over 127 clearly defined office, production, and service occupations. Tabulations are published for eleven regions of Kentucky, as shown on the map below. It should be noted that the data may be weighted by the preponderance of firms in the larger cities and may be somewhat higher than the rates paid in the smaller communities. Data from these tabulations are available, upon request, from the Kentucky Department of Commerce, Frankfort, Kentucky 40601.



Associated Industries of Kentucky Area Wage Surveys

PER CAPITA PERSONAL INCOME

<u>Area</u>	<u>1977</u>	<u>1973</u>	<u>Percent Change</u>
Muhlenberg County	\$6,407	\$4,015	59.6
Labor Market Area			
Range	\$3,865 - 7,526	\$2,583 - 4,973	N/A
Kentucky	5,989	4,021	48.9
U. S.	7,026	4,980	41.1

Source: U. S. Department of Commerce, Bureau of Economic Analysis,  
April 1979.

## TRANSPORTATION

### Rail

Line serving Greenville - Illinois Central Gulf Railroad

Services - Four northbound and four southbound through freights daily; switching facilities; team track space for 14 cars; house track space for 12 cars; siding storage for 65 - 70 cars; piggyback facilities at Princeton, 46 miles distant

For details on routing, schedules, rates, and services, contact:

Manager of Industrial Development  
Illinois Central Gulf Railroad Company  
112 North 4th Street  
240 Pierce Building  
St. Louis, Missouri 63102  
(314) 241-9400

### Highways

Greenville is served by U. S. Highway 62 and Kentucky Highways 181, 171, 176, 601, and 189. Access to the Western Kentucky Parkway is only 8 miles northeast of Greenville via U. S. 62.

A highway project is under way which will provide Greenville with improved highway access to Central City and the Western Kentucky Parkway. The bypass will extend from U. S. 431 north of Central City to U. S. 62 at Kentucky 189 in Greenville.



## Truck Service

### Company

A & H Truck Line, Inc.\*

Cooper-Jarrett, Inc.\*

Duff Truck Line, Inc.\*

Majors Transit, Inc.\*\*

McLean Trucking Company\*

Overnite Transportation  
Company\*

Roadway Express, Inc.\*

Springfield Express, Inc.\*

### Home Office

1111 East Louisana Street

Evansville, Indiana 47711

Hanover Plaza

Morristown, New Jersey 07960

P. O. Box 359

Lima, Ohio 45802

P. O. Box 7

Caneyville, Kentucky 42721

P. O. Box 213

Winston-Salem, North Carolina 27102

P. O. Box 1216

Richmond, Virginia 23209

1077 Gorge Boulevard

Akron, Ohio 44309

P. O. Box 310

Springfield, Tennessee 37172

### Other Freight Services

Purolator Courier

Corporation\*\*\*

United Parcel Service\*\*\*

KATO Express (air cargo  
service)\*\*\*\*

### Nearest Shipping Center

Owensboro, 44 miles distant

Madisonville, 27 miles distant

Elizabethtown, 91 miles distant

\*Interstate.

\*\*Interstate and Intrastate.

\*\*\*For regular scheduled pickups or for occasional pickups, arrangements must be made with the Louisville office of Purolator Courier Corporation or United Parcel Service.

\*\*\*\*Daily pickup and delivery service is available to and from Standiford Field in Louisville. Arrangements for service should be made through the home office in Elizabethtown.

HIGHWAY MILES AND TRUCK TRANSIT TIME IN DAYS FROM  
GREENVILLE, KENTUCKY, TO SELECTED MARKET CENTERS

City	Highway Miles	Delivery		City	Highway Miles	Delivery	
		Time TL				Time TL	
Atlanta, Ga.	365	3		Los Angeles, Ca.	2,089	4-5	
Baltimore, Md.	732	4		Louisville, Ky.	134	1	
Birmingham, Ala.	319	3		Nashville, Tenn.	123	2	
Chicago, Ill.	366	3		New Orleans, La.	640	2	
Cincinnati, Ohio	235	1		New York, N. Y.	882	4	
Cleveland, Ohio	479	2		Pittsburgh, Pa.	522	4	
Detroit, Mich.	494	3		St. Louis, Mo.	244	1	
Knoxville, Tenn.	300	2					

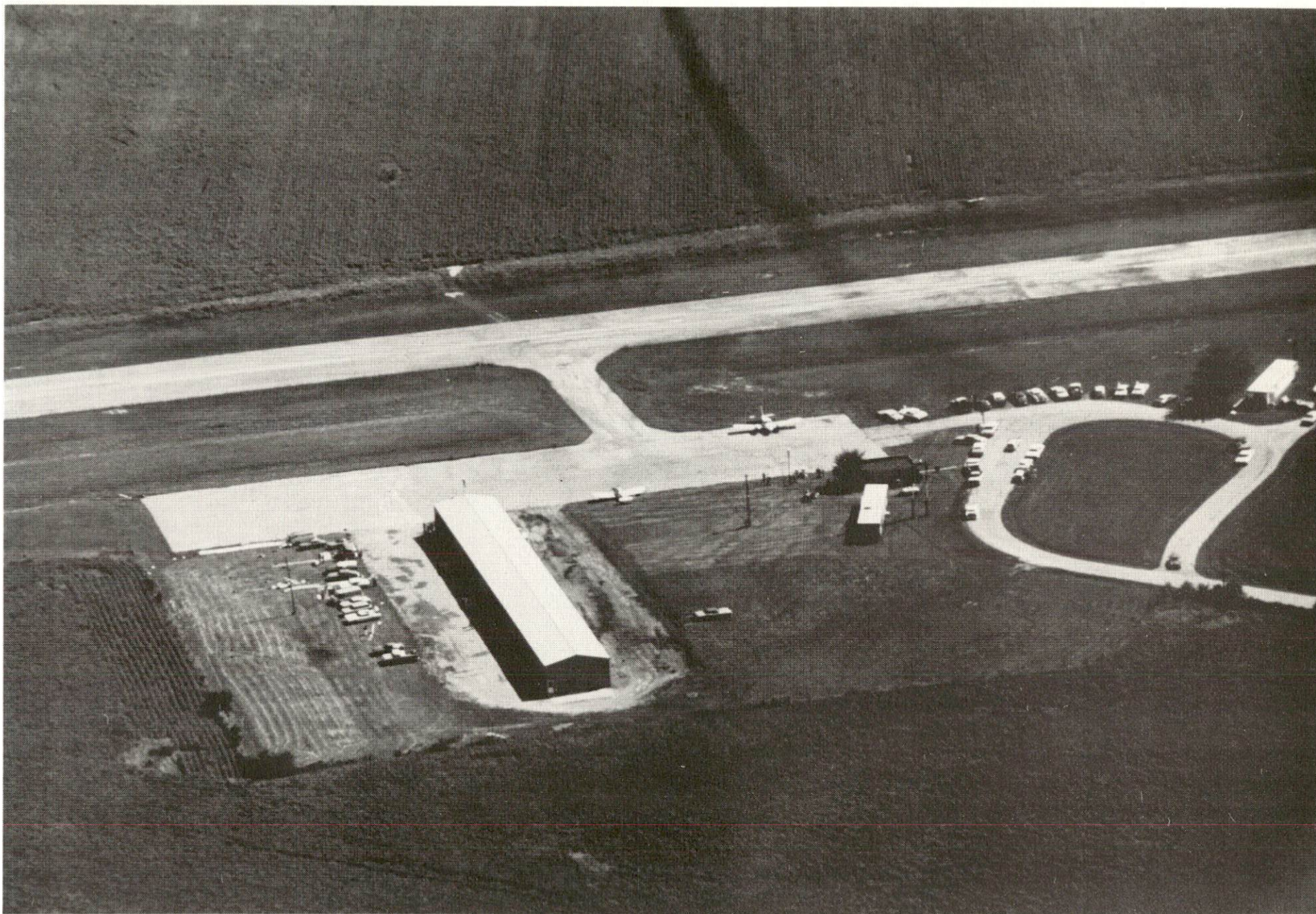
Source: Delivery Time Only - Majors Transit, Inc., P. O. Box 7,  
Caneyville, Kentucky 42721.

Air

Local

Location: Muhlenberg County Airport  
 Adjacent to Greenville city limits  
 Runways: 1 paved  
 Length: 4,200 feet  
 Traffic  
 Control: Wind tee, ILS  
 Lighting: Sundown to sunrise, runway  
 lights, rotating beacon, VASI,  
 strobe lights  
 Services: 100 octane, charter, flight instruction,  
 A & E repairs, hangars on space  
 available basis, tie downs, paved  
 parking lot, car rentals  
 Air Freight  
 Service: Chartered air freight services  
 must be arranged





Muhlenberg County Airport



### Nearest Scheduled Airline Service

Location:	Owensboro-Daviess County Airport 44 miles north of Greenville
Runways:	2 paved
Length:	6,500 feet; 3,700 feet
Traffic	
Control:	Control tower, ground control, ILS System
Lighting:	Beacon, runways, wind sock, obstruction lights and taxi lights, MALS/RAIL, VASI, REIL, MALS
Services:	Air Kentucky (commuter), charter, 100 octane, Jet A fuel, storage, major A & E repairs, general flying service, taxi, rental cars, direct line to motel, restaurant
Air Freight Service:	Air freight accepted on a space available basis
Location:	Evansville Dress Regional Airport 4 miles north of Evansville, Indiana; 71 miles northwest of Greenville
Runways:	3 paved
Length:	8,021 feet; 5,088 feet; 2,968 feet
Traffic	
Control:	Tower, ground control, arrival and departure control, clearance, radar, Automatic Terminal Information Service
Lighting:	Beacon and runway lights
Services:	Allegheny, Delta and Eastern Airlines; Fuel - LL-100; major repairs; major avionics repair; hangars and tie downs; Flight Service Station; APU; charter; flight instruction; plane rental; car rental, courtesy car, limousine, and taxi; restaurant
Air Freight Service:	Air freight terminal regularly serviced by freight carrying airlines

Bus - Greenville is served by the Tri-State Bus Line.

Taxi - Greenville is served by one taxi company.

Rental Services - Car and truck rentals are available.

Water

The nearest navigable river is the Green River, which forms the northeastern boundary of Muhlenberg County. A 9-foot navigational channel is maintained from Rochester to the Ohio River.

Public port facilities are located 44 miles north of Greenville on the Ohio River. The port provides general cargo and warehousing facilities as well as liquid cargo storage.



The Green River, which nearby joins the Ohio River, offers a waterway into Muhlenberg County, the "Coal Capital of the World."



## POWER AND FUEL

### Electricity

Company serving Greenville and portions of Muhlenberg County -  
Kentucky Utilities Company  
Source of power - Kentucky Utilities Company  
Total generating capacity - 2,238,400 KW  
For industrial rates contact:

Industrial Development Department  
Kentucky Utilities Company  
120 South Limestone Street  
Lexington, Kentucky 40507  
(606) 255-1461

Company serving Muhlenberg County - Pennyrile Rural Electric  
Cooperative Corporation  
Source of power - Tennessee Valley Authority  
Total generating capacity - 27,071,480 KW\*  
For industrial rates contact:

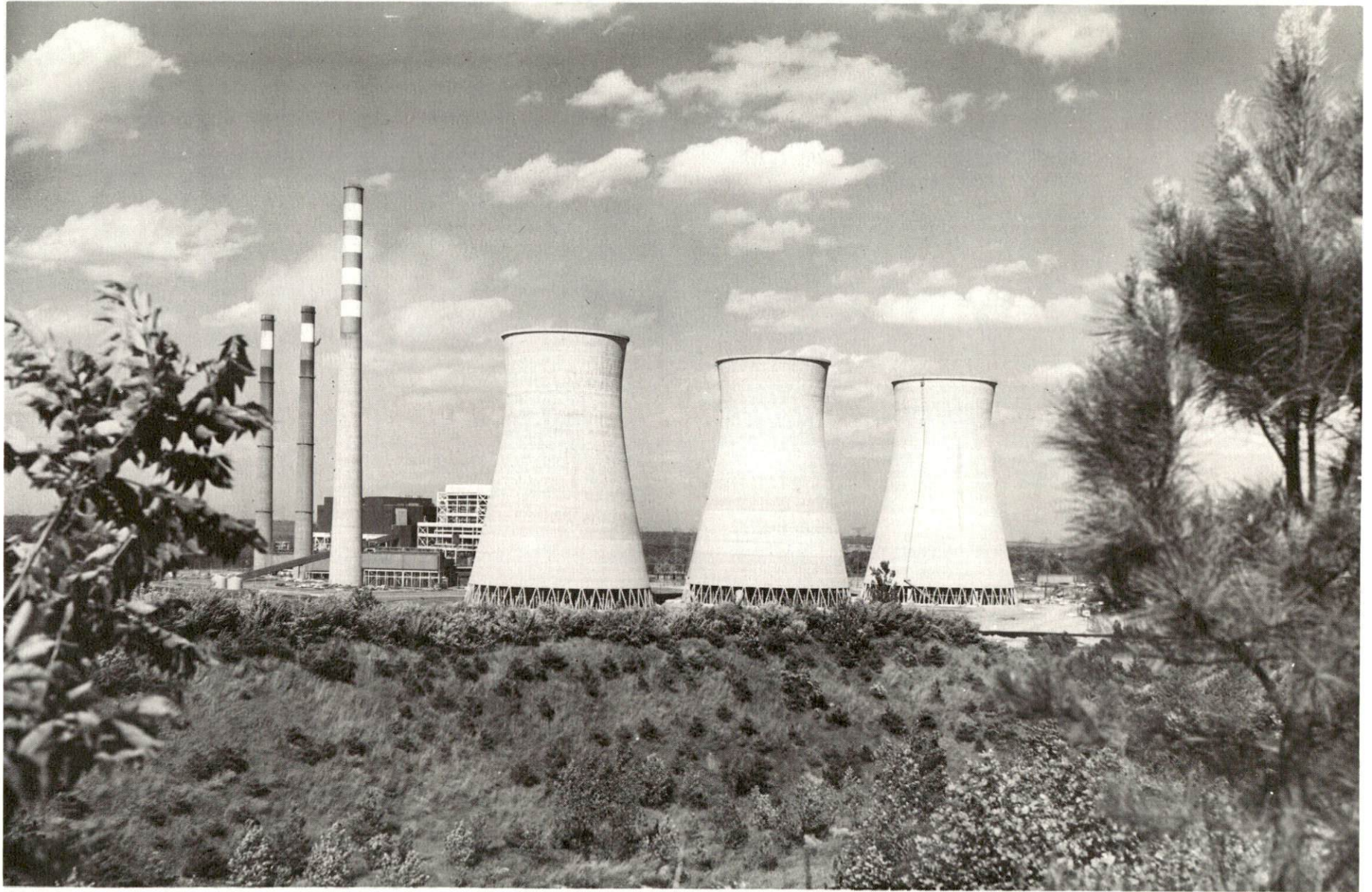
Pennyrile Rural Electric Cooperative  
Corporation  
2000 Harrison Street  
Hopkinsville, Kentucky 42240  
(502) 886-2555

### Natural Gas

Company serving Greenville - Western Kentucky Gas Company  
Source of supply - Texas Gas Transmission Corporation  
Size of transmission mains - 12-inch (supplier); 4-inch (distributor)  
Distribution mains - 2, 3, 4, and 6 inches  
Distribution pressure - 10 to 50 psi  
Btu content - 1,007 per cubic foot; Specific gravity - .60  
For rates and supplies contact:

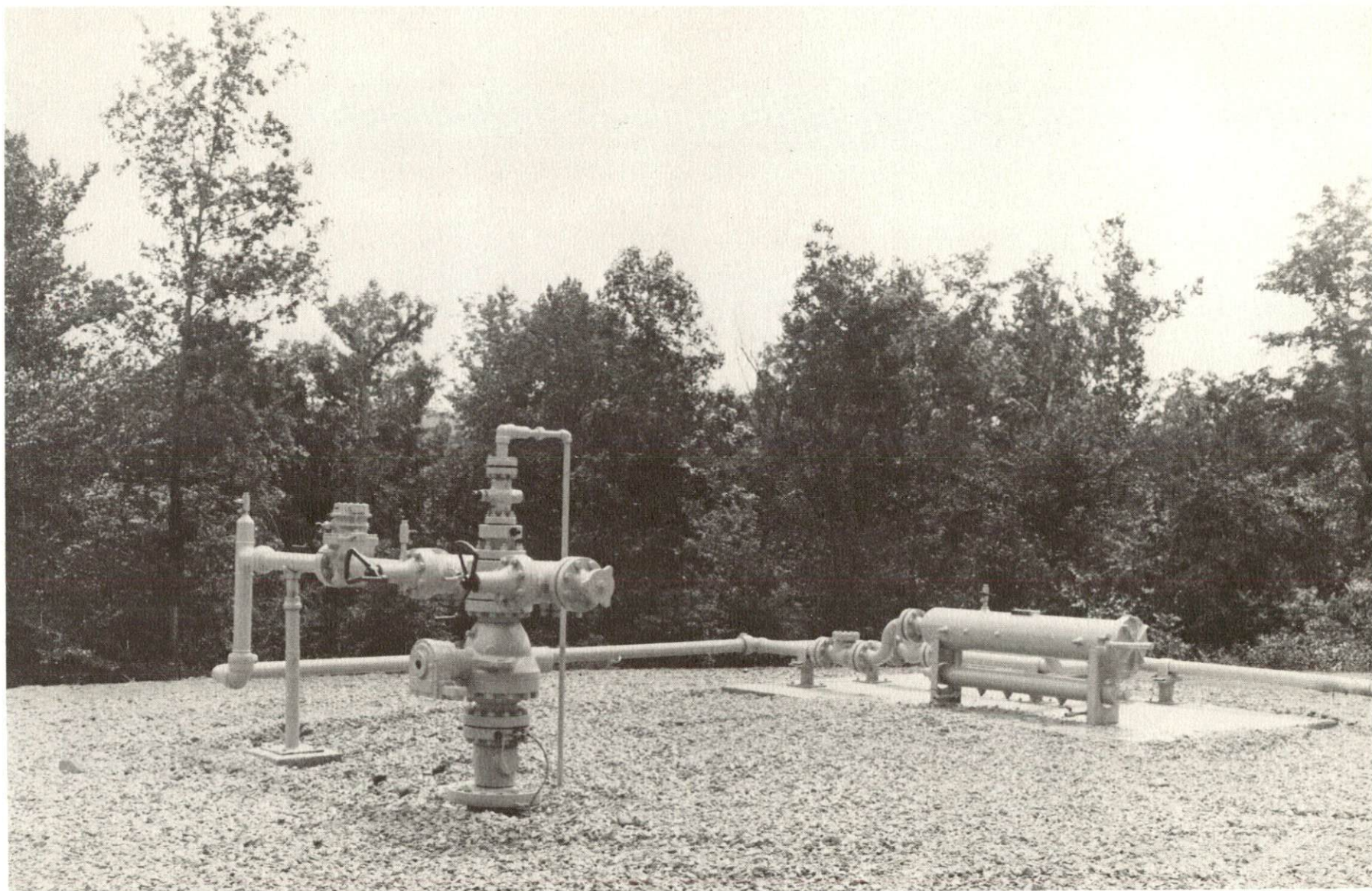
Western Kentucky Gas Company  
Industrial Development Department  
311 West 7th Street  
Owensboro, Kentucky 42301  
(502) 684-8811

\*1976 capacity in service - kilowatts.



TVA's Paradise Steam Plant





A typical gas storage well at Midland Underground Gas Storage Field, which covers 21,025 acres of Muhlenberg County and is operated by Texas Gas Transmission Corporation, of Owensboro.



Other Fuels (Within 8 miles)

Propane

Conrad & Smith, Inc., North Second Street, Central City  
Roy Lam Sales Company (Pyrofax), 124 South Second Street,  
Central City  
Southern States Cooperative, 212 West Depot Street, Greenville  
Texgas Corporation, Highway 70 W, Central City

Fuel oils

Distillate fuel oil - (Within 8 miles)

Amoco Oil Company, North Front Street, Central City  
Ashland Oil Company, West Depot Street, Greenville  
Darrell Baird Distributor (Gulf), 301 Walnut Street,  
Central City  
Conrad & Smith, Inc., North Second Street, Central City  
F. M. Puryear & Company (Texaco), West Depot Street,  
Greenville

Residual fuel oil - Arrangements must be made with the refinery.

Low sulphur content coal - Available in Kentucky.

\*A new 300,000-gallon elevated storage tank is being constructed at the Greenville Refinery to increase storage capacity to 650,000 gallons.

## WATER AND SEWERAGE

### Water

Company serving Greenville - Greenville Utilities Commission  
P. O. Box 283  
Greenville, Kentucky 42345  
(502) 338-2642

Source - Three lakes  
Treatment plant capacity - 750,000 gallons per day  
Average daily consumption - 339,100 gallons  
Peak daily consumption - 397,700 gallons  
Type treatment - Filtration, chlorine, lime, alum, fluoride  
Storage capacity - 650,000 gallons\*  
Size lines - 8, 6, and 4 inches  
Average pressure - 85 psi

#### MONTHLY WATER RATES FOR WHOLESALE AND INDUSTRIAL CONSUMERS

First	1,000 gallons	\$3.50 per M gallons
Next	1,000 gallons	1.40 per M gallons
Next	3,000 gallons	1.25 per M gallons
Next	5,000 gallons	1.00 per M gallons
Next	40,000 gallons	.85 per M gallons
Next	50,000 gallons	.75 per M gallons
All over	100,000 gallons	.65 per M gallons

Tap-on charge:	3/4-inch	\$125
	1-inch	175
	Over 1-inch	Cost of materials and labor

\*A new 300,000-gallon elevated storage tank has been completed, increasing storage capacity to 650,000 gallons.

Name of water district - Muhlenberg County Water District\*  
P. O. Box 348  
Greenville, Kentucky 42345  
(502) 338-1300

Area served - Cleaton, Drakesboro, Beech Creek, Beechmont, Belton,  
Browder, Route 1 Central City, Powderly, Nelson Creek, Route 1  
Graham, Depoy, and Route 1, 2, 3 and 4 Greenville

Date when water district began operating - 1966

Source of supply of treated water - City of Central City

Average amount of water used in a 24-hour period - 750,000 gallons

Storage capacity - 1,250,000 gallons

Average pressure - 80 psi

Size lines - 10 to 2 inches

Rates -

First	2,000 gallons	\$4.50
Next	6,000 gallons	1.50 per M gallons
Next	2,000 gallons	1.25 per M gallons
Next	20,000 gallons	1.00 per M gallons
Over	30,000 gallons	.75 per M gallons

Tap-on charge:	3/4-inch	\$350
	1-inch	450
	1 1/2-inch	550
	2-inch	750

\*120 miles of new 2- to 8-inch lines are being extended, providing service to an estimated 700 to 900 new customers.



Name of water district - Muhlenberg County Water District No. 1  
Route 1  
Graham, Kentucky 42344  
(502) 338-1447

Area served - Graham, Kentucky

Date when water district began operating - 1966

Source of raw water - Impounded lake

Capacity of treatment plant - 72,000 gallons per day\*

Type treatment - Coagulation with alum and lime, sedimentation,  
filtration, chlorine

Average amount of water used in a 24-hour period - 70,000 gallons\*

Storage capacity - 50,000 gallons\*

Average pressure - 85 psi

Size lines - 6, 4, and 3 inches

Rates -

First	2,000 gallons	\$4.00 (Minimum)
Next	3,000 gallons	1.00 per M gallons
Next	5,000 gallons	.90 per M gallons
Next	10,000 gallons	.80 per M gallons
Over	20,000 gallons	.60 per M gallons

Tap-on charge:	5/8-inch	\$200
	3/4-inch	225
	1-inch	250
	1 1/2-inch	300
	2-inch	350

\*Kentucky Department for Natural Resources and Environmental Protection.

Name of water district - Muhlenberg County Water District No. 3\*  
P. O. Box 67  
Breman, Kentucky 42325  
(502) 525-6333

Area served - Northern Muhlenberg County

Date when water district began operating - 1968

Source of supply of treated water - City of Central City

Average amount of water used in a 24-hour period - 233,300 gallons

Storage capacity - 500,000 gallons

Average pressure - 65 psi

Size lines - 6 and 8 inches

Rates -

First	2,000 gallons	\$6.00 (Minimum)
Next	8,000 gallons	2.00 per M gallons
Next	10,000 gallons	1.60 per M gallons
Next	30,000 gallons	1.25 per M gallons
Over	50,000 gallons	.95 per M gallons

Tap-on charge:	3/4-inch	\$250
	Over 3/4-inch	Cost of labor and materials

\*The Muhlenberg County Water District No. 3 is adding 10 miles of new 8- and 6-inch water lines to the system. Approximately 180 new customers will be served when the project is completed in the spring of 1979. Storage capacity was increased to 500,000 gallons with the completion of a new 250,000-gallon standpipe.



Surface water sources - Green River and Pond River  
Average discharge - Green River at Paradise, 9,093 cfs (28 years, USGS) unadjusted; Pond River near Apex, 259 cfs (37 years, USGS)  
Expected ground water yield - 50 to 200 gpm in band running east-west through south central portion of county; 5 to 50 gpm in band running east-west through central and north central portions of county; 5 gpm or less over remainder of county

#### Sewerage

Company serving Greenville - Greenville Utilities Commission  
P. O. Box 283  
Greenville, Kentucky 42345  
(502) 338-2642

Design capacity - 500,000 gallons per day  
Average daily flow - 300,000 gallons  
Treatment - Primary and secondary  
Type treatment - Clarifier, drying beds, digester, trickling filter  
Treated effluent discharged into - Caney Creek  
Size of sanitary mains - 10, 8, and 6 inches  
Size of storm mains - 36 inches  
Rates - 70 percent of monthly water bill with minimum rate of \$3.35 for the first 4,000 gallons of water used

Tap-on charge: \$100

## CLIMATE

### Muhlenberg County

#### Temperature

Normal (30-year record)	59.4 degrees
Average annual 1978	58.0 degrees
Record highest, July, 1952 (39-year record)	107.0 degrees
Record lowest, January, 1963 (39-year record)	-15.0 degrees
Normal heating degree days (30-year record)	3,696
(Heating degree day totals are the sums of negative departures of average daily temperatures from 65 degrees F.)	

#### Precipitation

Normal (30-year record)	46.00 inches
Mean annual snowfall (37-year record)	11.20 inches
Total precipitation 1978	53.44 inches
Mean number days precipitation (.01 inch or more) (37-year record)	119
Mean number days thunderstorms (37-year record)	55

Prevailing Winds (22-year record) South

#### Relative Humidity (13-year record)

Midnight	79 percent
6 a.m.	84 percent
Noon	58 percent
6 p.m.	62 percent

Source: U. S. Department of Commerce, Environmental Science  
Services Administration, Climatological Data, 1978.  
Station of record: Nashville, Tennessee.



## LOCAL GOVERNMENT

### City

Structure - Mayor - 4-year term; 6 councilmen - 2-year terms  
Income 1978 - General Fund \$328,540.00  
Water and Sewer Fund 347,648.55 (1977-78)  
Fees and licenses - Business licenses range from \$10 to \$120 annually;  
manufacturers with 25 employees or less - \$50 annually, more than  
25 employees - \$75 annually; auto sticker - \$10 annually

### County

Structure - County Judge/Executive - 4-year term;  
5 magistrates - 4-year terms  
Budget 1978-79 - General Fund \$444,550; Road Fund \$601,140

### Assessed Value of Property

<u>Classes of Property</u>	<u>Greenville (1978)</u>	<u>Muhlenberg County (1978-79)</u>
Real Estate	\$43,264,465	\$225,714,929
Tangibles	18,746,532	142,551,014

### Property Taxes

All property in Kentucky is assessed at 100 percent of fair cash value.

Land and buildings are taxed by the state and may be taxed by local jurisdictions. The state rate is \$0.315 per \$100 of assessed valuation.

Manufacturing machinery, raw materials inventories, pollution control equipment, and goods in the process of manufacture are not subject to local taxation. The state rate is \$0.15 per \$100.

Other tangible personal property owned by manufacturers (automobiles, trucks, finished goods, office furniture, office equipment) is taxed by the state at \$0.45 per \$100 and may be taxed by local jurisdictions.

Property stored in public warehouses in a transit status is not subject to local taxation. The state rate is only \$0.015 per \$100.

Intangible personal property located in Kentucky (money in hand, shares of stock, notes, bonds, accounts receivable, and other credits) is taxed by the state at \$0.25 per \$100, and is not subject to local taxation.

Private leaseholds in industrial facilities owned by cities or counties and financed by industrial revenue bonds are subject to a state tax of \$0.015 per \$100 of value (essentially the lessee's equity, adjusted for appreciation or depreciation). Local taxation is not permitted.

Combined State and Local Rates Per \$100 Valuation, 1978\*  
(100% assessment)

	<u>Inside City of Greenville</u>	<u>Outside City</u>
1. Land and buildings	\$1.002	\$0.540
2. Mfg. machinery, raw materials, goods in process, pollution control equipment	0.150	0.150
3. Finished goods, office equipment, vehicles, other tangibles	1.137	0.675
4. Intangibles (accounts rec., notes, bonds, etc.)	0.250	0.250
5. Leaseholds in I. R. bond financed plants	0.015	0.015

Planning and Zoning

Joint agency - Muhlenberg County Joint City/County Planning Commission  
Zoning enforced - Zoning is enforced within the cities of Central City and Greenville

Subdivision regulations enforced - Subdivision regulations are enforced within the cities of Central City and Greenville and 5 miles beyond the corporate limits of both cities

Local codes enforced - Building, housing and electrical

Mandatory state codes enforced - Plumbing, National Fire Protection Association Code, National Building Code (for major buildings and residential construction containing more than 12 bedrooms per building)

Safety

<u>Police</u>	<u>Greenville</u>	<u>Muhlenberg County</u>
Total staff	7	6
Radio-patrol cars	2	5
<u>Fire</u>		
American Insurance Association Fire Rating	7	10
Full-time staff	4	
Volunteers	25	

\*Kentucky Department of Commerce.



### Rescue Service

#### Central City Fire Department-Emergency Squad:\*

Number of volunteers - 26, including 8 emergency medical technicians and 1 cardiopulmonary resuscitation instructor

Equipment - 2 emergency trucks, boat and motor, dragging hooks, K-12 rescue saw, two 10-ton porta-powers, chain saw, pry bars, ropes, splints, oxygen equipment, 8 stretchers and 2 baskets, Scott air packs, first aid equipment, 5-ton jacks and chains, long and short spine boards, foam unit, life jackets, Webb straps, P.A. system

Personnel training - First aid, 20-hour state instructed course, emergency medical technician training

### Refuse Collection and Disposal

	<u>Greenville</u>	<u>Muhlenberg County</u>
Type service	Private	Containers are placed
Fee charged:		in various locations
residential	\$4 per month	throughout the county
business	Contract	for refuse disposal
industrial	Contract	
Collection frequency:		
residential	Once or twice weekly	
business	Contract	
industrial	Contract	
Trash pickup	Once weekly	
Disposal method	Sanitary landfill	

\*Operates within Muhlenberg County and on call to any surrounding county within reasonable driving distance.

# EDUCATION

## Public Schools

	<u>Greenville Independent</u>	<u>Muhlenberg County</u>
Total Enrollment*	951	4,995
Elementary	538 (K-6)	2,681
Junior High		892
High School	413 (7-12)	1,422
Student-Teacher Ratio	21-1	23-1
Elementary	23-1	23-1
Junior High		32-1
High School	19-1	19-1
Percent High School Graduates to College	39.2	15.4
Expenditures Per Pupil (1977-78)	\$824.08	\$972.08
Bonded Indebtedness, June 30, 1978	\$1,485,000	\$228,000

## Nonpublic Schools

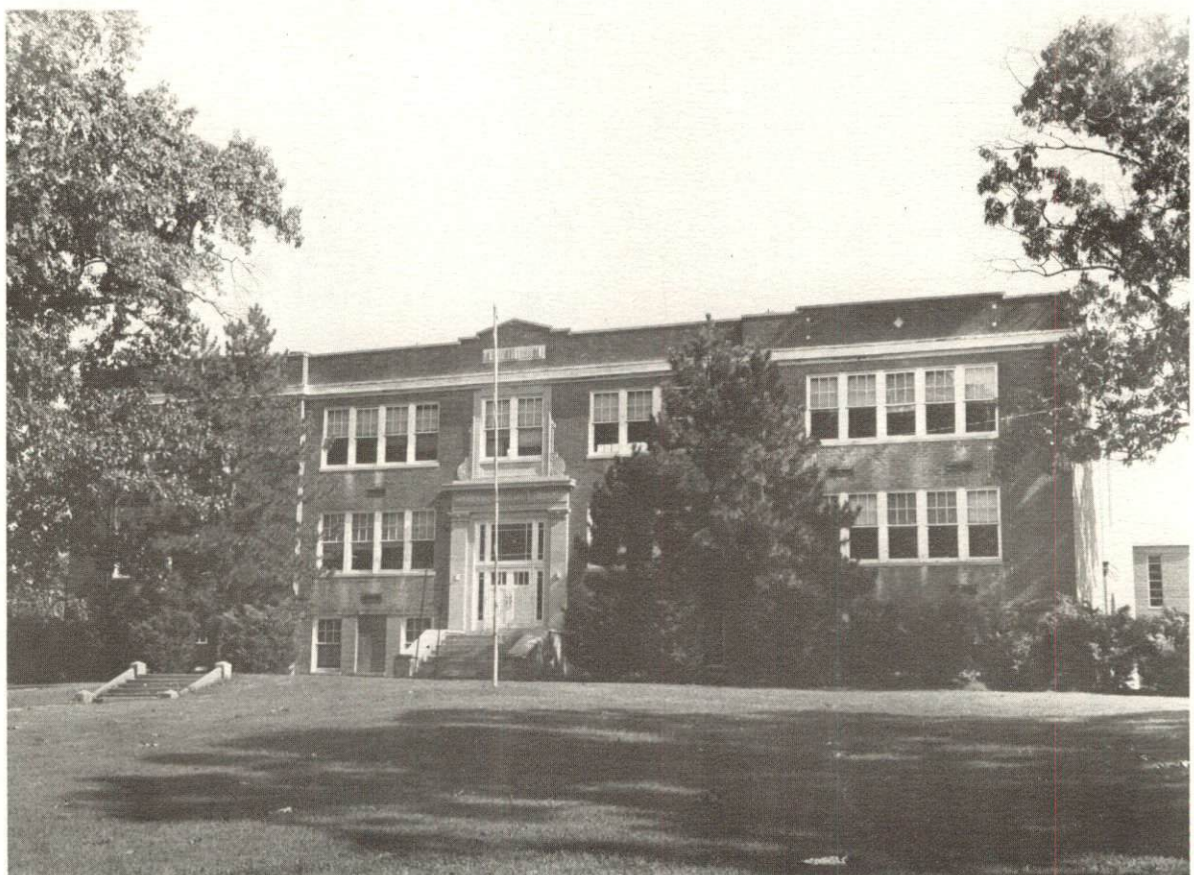
	<u>Muhlenberg County</u>
Total Enrollment	58
Elementary	58
Student-Teacher Ratio	15-1
Elementary	15-1

\*Greenville Independent School District - total enrollment as of March 1979; Muhlenberg County School System - total enrollment as of December 1978.





Greenville High School



Greenville Elementary School

### Area Colleges and Universities

<u>Name</u>	<u>Location (Miles distant)</u>	<u>Enrollment (Fall, 1978)</u>	<u>Highest Degree Conferred</u>
Madisonville Community College	Madisonville (27)	675	Associate
Hopkinsville Community College	Hopkinsville (41)	1,022	Associate
Brescia College	Owensboro (44)	832	Baccalaureate
Kentucky Wesleyan College	Owensboro (44)	854	Baccalaureate
Western Kentucky University	Bowling Green (58)	13,224	Masters, Specialist*
Henderson Community College	Henderson (64)	762	Associate

\*Joint doctoral degree programs are offered in cooperation with the University of Kentucky and cooperative doctoral degree programs are offered with the University of Louisville.



## Vocational Schools

	<u>Nearest State School</u>
Location	Madisonville State Vocational- Technical School
Miles Distant	Madisonville
Curriculum	27 Health and Personal Services Occupations Certified Lab Assistant Health Careers Medical Secretary Nurse-Aide/Orderly Radiological Technician Respiratory Therapy Surgical Technician Industrial Education Auto Body Repair Auto Mechanics Carpentry Drafting Electronics (Communications) Industrial Electricity Machine Shop Mining Equipment Maintenance Welding Learning Resource Center Public Service Programs Fire Service Training

	<u>Nearest Area Education Center</u>
Location	Muhlenberg County Area Vocational Education Center
Curriculum	Greenville Business and Office Accounting/Jr. Management Clerical Secretarial Health and Personal Services Occupations Health Careers Industrial Education Auto Mechanics Carpentry Industrial Electricity Welding

Arrangements can be made to provide training in the specific production skills required by an industrial plant. Instruction may be conducted either in the vocational school or in the industrial plant, depending upon the desired arrangement and the availability of special equipment.



## HEALTH

### Local Medical Personnel

#### Muhlenberg County

Physicians - 13  
Dentists - 7

### Hospitals

<u>General Hospital</u>	<u>Location</u>	<u>Beds</u>
Muhlenberg Community Hospital	Greenville	135*

General hospital facilities - Equipped to accommodate major and minor surgery, X-ray and EKG machines, laboratory, physical therapy and inhalation therapy, miner's respiratory clinic, emergency services, coronary care unit, maternity unit, nuclear medicine, stress testing, pulmonary function lab, skilled nursing facility

Medical staff - 13 doctors, 34 registered nurses, 50 licensed practical nurses

### Other Medical Facilities

Pennyroyal Center - Muhlenberg County Area Clinic

### Ambulance Service

Name - Community Ambulance Service (Department of Muhlenberg Community Hospital, Greenville)  
Staff - 7 emergency medical technicians - full-time  
6 emergency medical technicians - part-time  
Service - 24-hour service, county-wide  
Equipment - 4 fully equipped ambulances

### Public Health

Facility - Muhlenberg County Health Department  
Staff - 2 sanitarians, 3 registered nurses, 1 community health worker, 4 CETA workers, 5 clerks

\*105 beds in acute hospital, 30 beds in skilled nursing facility.

## OTHER LOCAL FACILITIES

### Communications

Telephone - South Central Bell Telephone Company  
Services - Standard

Telegraph - Western Union  
Services - Office and telephone

Postal - U. S. Post Office  
Class - First  
Mail received - Once daily  
Mail dispatched - Once daily

Newspapers - Leader-News  
Weekly and circulation - 9,000  
Other papers  
received from - Louisville, Madisonville and Owensboro,  
Kentucky; Evansville, Indiana

Radio - WMTA-AM, WNES-AM/FM  
Stations received from - Madisonville, Owensboro, Henderson and  
Russellville, Kentucky; Nashville  
Tennessee; Evansville, Indiana

Television -  
Cable service  
Reception from - Bowling Green, Henderson, Madisonville and  
Paducah, Kentucky; Evansville, Indiana;  
Nashville, Tennessee  
Kentucky Educational  
Television - Madisonville transmitter, Channel 35

### Library Services

Public library - Harbin Memorial Library, Greenville  
Size collection - 64,737 volumes (total Muhlenberg County Library)  
Circulation, 1977-78 - 132,377 (total Muhlenberg County Library)  
Services - Bookmobile, story hour, circulates periodicals, records,  
film, information file, visual equipment and sports equipment,  
framed pictures, audiovisual service, copier machine, book  
information by telephone, microfilm, microfiche, reader and  
printer, genealogical collection, ceramics and art shows, off-  
campus classes (Western Kentucky University)





First State Bank



### Religious Institutions

Number of churches - 22

Denominations - Assembly of God  
Baptist  
Christian  
Church of Christ  
Jesus Christ of Latter Day Saints  
Presbyterian  
United Methodist

Nearest Synagogue - Hopkinsville, 41 miles distant  
Congregation - Adath Israel (reform)

### Financial Institutions

<u>Banks</u>	<u>Assets</u>	<u>Deposits</u>	<u>Statement Date</u>
First State Bank	\$50,981,552.86	\$43,407,668.41	12/29/78

### Hotels and Motels

Total number - 2  
Total units - 83

### Clubs and Organizations

Aeolian Music Club  
Archery Club  
Athletic Boosters  
Babe Ruth League  
Band Boosters  
Beta Club  
Big M Bass Club  
Boys Clubs of America  
Brownies  
Business and Professional Women's Club  
Chamber of Commerce  
Citizens Bank Radio Club  
Coal Duster Square Dance Club  
Conservation Club  
Cub Scouts  
Daughters of the American Revolution  
Eastern Star  
4-H Club  
Future Business Leaders of America  
Future Farmers of America  
Future Homemakers of America  
Future Teachers of America  
Girl Scouts  
Homemakers of America

(Contd.)

Jaycees  
Jaycettes  
Junior Homemakers  
Key Club  
Kiwanis  
Lions  
Lioness  
Little League Baseball  
Little League Football  
Masons  
Medical Auxiliary  
Muhlenberg County React  
Parent-Teacher Association  
Red Cross  
Retail Merchants  
Rotary  
Rotarians  
Saddle Club  
Show Horse Club  
Sky Diving  
Sportsman's Club  
Teens Who Care  
Veterans of Foreign Wars  
Veterans of Foreign Wars Ladies Auxiliary  
Woman's Club



## RECREATION

### Local

Greenville offers a variety of local recreation facilities including two parks, six playgrounds, two baseball diamonds, six softball diamonds, three tennis courts and three picnic areas. The Greenville Country Club has a 9-hole golf course with exchange privileges with Central City, a new Olympic size swimming pool and tennis courts. The Terribonne Racket and Swim Club is situated on 35 acres and offers a 2,500-square-foot clubhouse. The club features tennis courts and an Olympic size swimming pool.

Local tourist attractions include: Coal Festival, Greenville Annual Men's Invitational Golf Tournament, Greenville Annual Arts and Crafts Fair, and local flea markets.

Lake Malone State Park, located in southern Muhlenberg County, offers camping facilities, swimming, fishing and boating on a 788-acre lake. Playground facilities and picnic shelters are located in a beautiful scenic cliff area. Located across from the entrance to the park is privately owned Lake Malone Inn, featuring luxury rooms, restaurant, swimming lake, beach, boating, fishing, tennis and nature trails.

### Area (Within 100 miles)

Greenville has easy access to many excellent recreational areas. The city is located near two of the largest inland lakes in America, Kentucky Lake and Lake Barkley. This lakeland area offers numerous recreational facilities for water sports, fishing, boating and camping.

Located around this lakeland area are four of the state's finest resort parks - Kentucky Dam Village State Resort Park, Kenlake State Resort Park, Lake Barkley State Resort Park and Pennyryle Forest State Resort Park. Also located near Greenville is Rough River Dam State Resort Park. All five of these resort parks offer the following facilities and recreational activities:

- Lakeside locations
- Lodge, cottages and camping accommodations
- Dining rooms, picnic area and gift shops
- Golf, swimming, fishing, playgrounds and  
planned recreation

Land Between the Lakes National Recreation Area, a 170,000-acre woodland formed into a peninsula by Kentucky Lake and Lake Barkley, is a major area for outdoor recreation, conservation, and environmental learning. There are facilities for fishing, boating, hiking, swimming, hunting, camping and picnicking.

Mammoth Cave National Park is located east of Greenville. The world famous Mammoth Cave offers the world's longest network of cavern corridors, 170 miles in length. Hotel, lodge and cottage accommodations are available. Activities provided include cave tours, campfire programs, nature trails, scenic boat trips on the Green River, tennis and shuffleboard courts, camping and picnic areas, and live handicraft exhibits.

John James Audubon State Park, located northwest of Greenville, covers more than 692 acres. The park offers camping, picnic areas, golf, planned recreation, fishing, boating, swimming and playgrounds. Audubon paintings and a nature center are additional attractions to see when visiting the park.

The Jefferson Davis Monument State Shrine is the site of the birthplace of Jefferson Davis. The shrine consists of a 351-foot obelisk surrounded by a park with picnic areas and a playground.





Lake Malone Inn



## COMMUNITY IMPROVEMENTS

In 1978, Greenville was selected as an "All Kentucky City." This award was presented to Greenville for its outstanding achievements in community development.

### Business Development

Commercial development and improvements in 1978 included eighteen face-lifting projects and eleven new buildings at a cost of \$1,642,000. Plans have been announced to spend an additional \$3,500,000 in 1979.

In 1978, the Muhlenberg County Opportunity Center announced plans for an expansion with an estimated additional investment of \$26,000.

Wetterau Food Services plans to add 77,000 square feet to its present warehousing facilities for perishable food products. The new center will create 20 new jobs. Construction will start in the spring of 1979 and will cost an estimated \$3,300,000.

The First State Bank is planning to erect a new building just east of its downtown location. The 30,000-square-foot building will have drive-in banking, night deposit, and 100 parking spaces.

The H. B. Reed Company is constructing a new plant near Greenville which will provide approximately 30 new jobs.

Big John's Plaza shopping center has been expanded to accommodate four new businesses and space has been leased to two other concerns.

### Utilities

The Kentucky Utilities Company has recently added a 7500 KVA 69KV/12KV substation to the Greenville Industrial Park.

The Greenville Utilities Commission recently added a 300,000-gallon elevated storage tank to its storage facilities.

The Muhlenberg County Water District No. 3 recently increased its storage capacity with the completion of a new 250,000-gallon standpipe. Also, the Water District is adding 10 miles of new 8- and 6-inch water lines to the system. Approximately 180 new customers will be served when the project is completed in the spring of 1979.

The Muhlenberg County Water District is extending 120 miles of new 2- to 8-inch lines, providing service to an estimated 700 to 900 new customers.

## Transportation

Funds have been approved for the construction of an administration building and installing security fencing at the Muhlenberg County Airport.

A highway project is under way which will provide Greenville with improved highway access to Central City and the Western Kentucky Parkway. The bypass will extend from U. S. 431 north of Central City to U. S. 62 at Kentucky 189 in Greenville.

Resurfacing Main Street was a major improvement to the central business district. Starting from the west end of U. S. 62 and extending 3 miles to the north boundary of the city limits, the old blacktop surface was completely extracted and new asphalt was laid allowing adequate drainage from the buildup of old pavement.

## Health

The Muhlenberg County Mental Health Center is now located in a new \$250,000 building.

Major areas of equipment and service expansion at the Muhlenberg Community Hospital during 1978 were fiberoptic diagnostic devices, fetal monitor, stress testing equipment and chemistry equipment. It has been proposed to the Board of Trustees and the Board has taken under consideration the construction of new areas. The new areas would house laboratory, radiology, pharmacy, coal miners respiratory clinic, emergency services, dietary and cafeteria, store rooms and purchasing, maintenance, housekeeping, respiratory therapy, EKG, business office, 30 private patient rooms, obstetrical department and public lobby.

The Community Ambulance Service has received four new fully equipped ambulances.

## Education

The Greenville Independent School District is planning to renovate the Greenville Elementary School. This project will begin during the summer of 1979 and will cost an estimated \$360,000. The new Greenville High School, which has a student capacity of 600, was completed at an approximate cost of \$1,800,000.

The Muhlenberg County School System has completed construction of the Lake Malone Elementary School. The school, which opened in September 1978, serves kindergarten through eighth grade students and is designed to accommodate 300 students.



## Recreation

The new J. P. Morgan Park, consisting of 15 acres, is being developed in two construction phases. The first phase includes two tennis courts, playground equipment, two pavilions with tables and benches, a vita track and paved parking. The second phase includes a swimming pool and amphitheater.

The First Baptist Church, located in downtown Greenville, is building a recreation center for youth in the community. The center will be housed in a vacant downtown building which is being furnished by the church.

## Other

The fire department has received a new \$60,000, 500-gpm pumper.

Eleven new subdivisions are presently in various stages of development.

A 4-acre tract has been selected for a 72-unit elderly complex, with construction scheduled to begin in early 1979.

Thirty apartments have recently been completed in three complexes by private developers, a complex containing 32 apartment units is now under construction, and plans are under way to construct an additional 40 apartment units.