

1980

# Industrial Resources: Nelson County - Bardstown and Bloomfield

Kentucky Library Research Collections  
Western Kentucky University, [spcol@wku.edu](mailto:spcol@wku.edu)

Follow this and additional works at: [https://digitalcommons.wku.edu/nelson\\_cty](https://digitalcommons.wku.edu/nelson_cty)



Part of the [Business Administration, Management, and Operations Commons](#), [Growth and Development Commons](#), and the [Infrastructure Commons](#)

---

## Recommended Citation

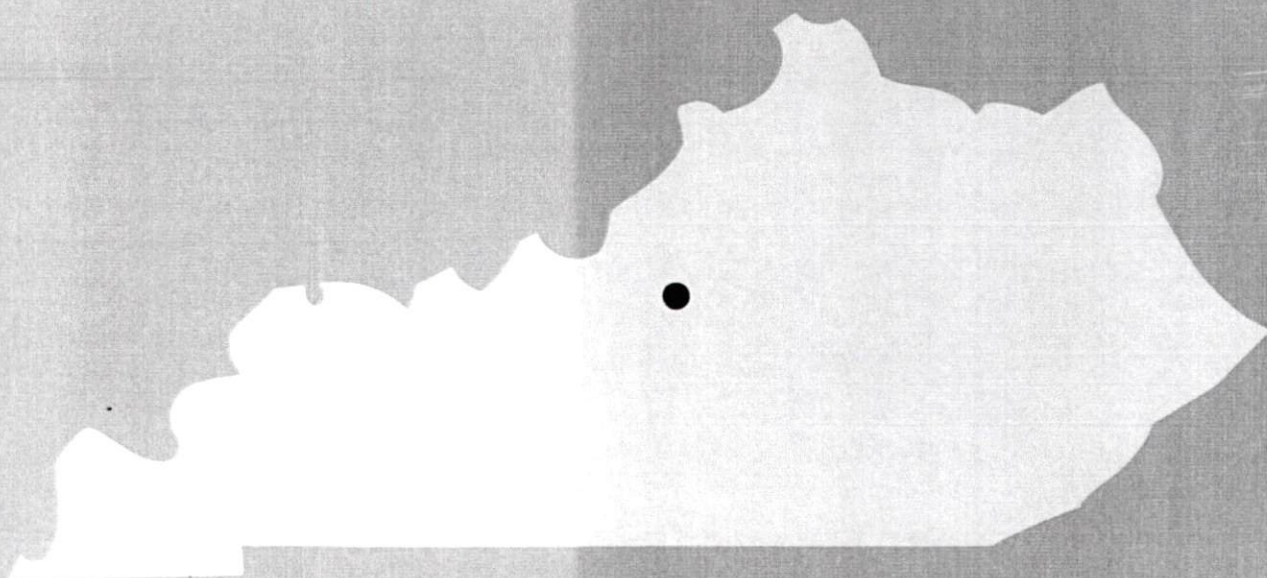
Kentucky Library Research Collections, "Industrial Resources: Nelson County - Bardstown and Bloomfield" (1980). *Nelson County*. Paper 8.  
[https://digitalcommons.wku.edu/nelson\\_cty/8](https://digitalcommons.wku.edu/nelson_cty/8)

This Report is brought to you for free and open access by TopSCHOLAR®. It has been accepted for inclusion in Nelson County by an authorized administrator of TopSCHOLAR®. For more information, please contact [topscholar@wku.edu](mailto:topscholar@wku.edu).

1R  
221

Nelson County

**A comprehensive  
report on  
Bardstown and  
Bloomfield, Ky.**

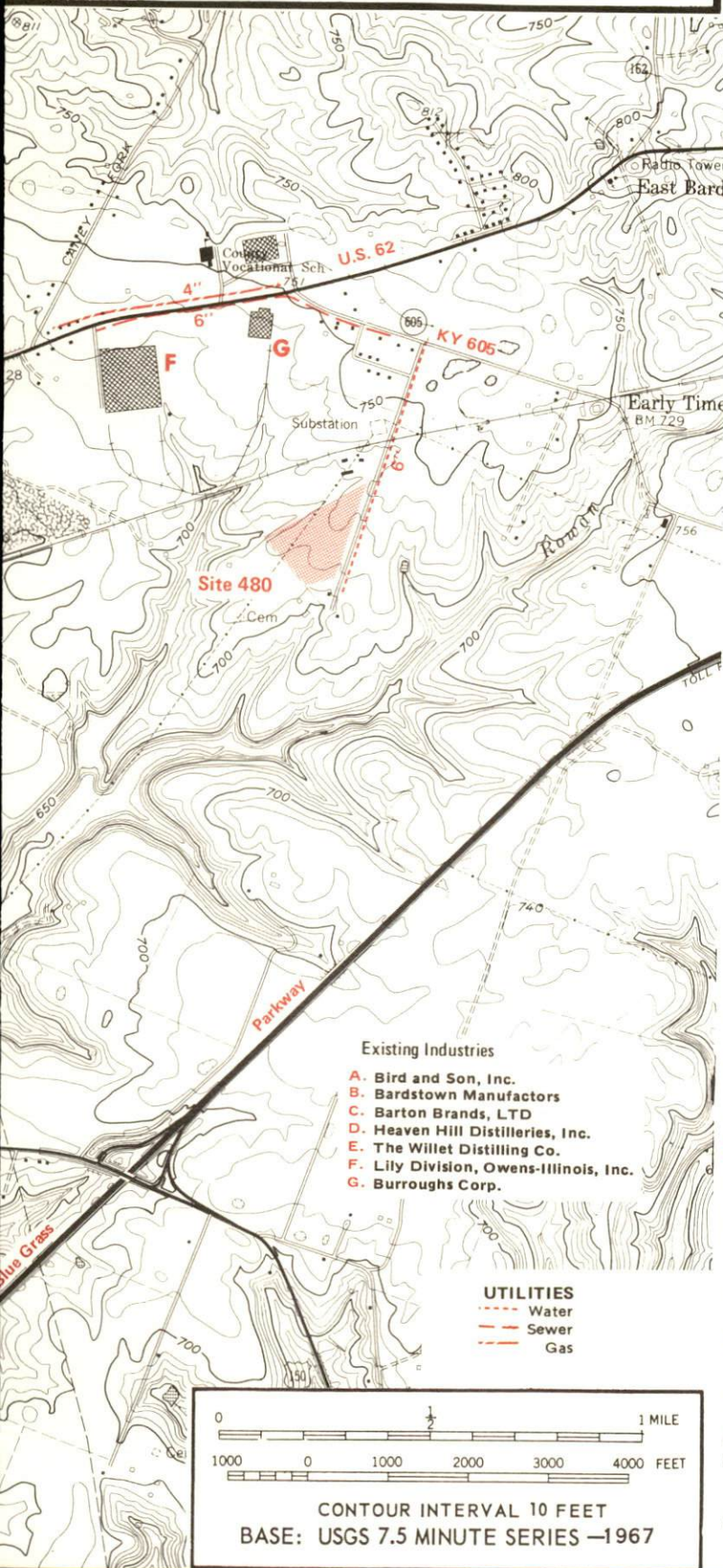


**KENTUCKY & CO.**  
The state that's run like a business.



# BARDSTOWN, KENTUCKY INDUSTRIAL SITES - - 1980

For more information contact Mr. Freeman Carothers, Vice President, Bardstown Industrial Development Corporation, P. O. Box 205, Bardstown, Kentucky 40004 or the Kentucky Department of Commerce, Economic Development Division, Capital Plaza Tower, Frankfort, Kentucky 40601.



## Site 180 - 200 Acres

**LOCATION:** Approximately 0.5 mile northwest of city limits  
**ZONING:** Agricultural  
**HIGHWAY ACCESS:** KY 332 adjacent to northeast boundary;  
 KY 245 approximately 200 feet from southeast boundary;  
 U.S. 31E, 150 approximately 1.2 miles east via KY 245; Blue  
 Grass Parkway interchange approximately 5 miles south via  
 U.S. 31E and KY 245  
**RAILROAD:** Louisville and Nashville Railroad adjacent to eastern  
 boundary  
**WATER:** Bardstown Municipal Light and Water Company  
 Size Line: 6-inch line approximately 600 feet east across Louisville  
 and Nashville Railroad; 8-inch line approximately 1600 feet  
 southeast across Louisville and Nashville Railroad  
**NATURAL GAS:** Louisville Gas and Electric Company  
 Size Line: 8-inch line approximately 600 feet east across Louisville  
 and Nashville Railroad  
**ELECTRICITY:** Salt River RECC  
**SEWERAGE:** Bardstown Municipal Sewerage Service  
 Size Line: 8-inch line approximately 300 feet east across Louisville  
 and Nashville Railroad  
**OWNERSHIP:** Private

## Site 280 - 66 Acres

**LOCATION:** Approximately 500 feet northwest of city limits  
**ZONING:** Industrial  
**HIGHWAY ACCESS:** KY 245 adjacent to southern boundary;  
 U.S. 31E, 150 approximately 0.5 mile east via KY 245; Blue  
 Grass Parkway interchange approximately 3.8 miles south via  
 U.S. 31E and Ky 245  
**RAILROAD:** Louisville and Nashville Railroad adjacent to eastern  
 boundary  
**WATER:** Bardstown Municipal Light and Water Company  
 Size Line: 8-inch line approximately 500 feet southeast across  
 Louisville and Nashville Railroad along south side of KY 245;  
 8-inch line approximately 600 feet east across Louisville and  
 Nashville Railroad  
**NATURAL GAS:** Louisville Gas and Electric Company  
 Size Line: 8-inch line approximately 400 feet east across Louisville  
 and Nashville Railroad  
**ELECTRICITY:** Salt River RECC  
**SEWERAGE:** Bardstown Municipal Sewerage Service  
 Size Line: 8-inch line approximately 300 feet east across Louisville  
 and Nashville Railroad  
**OWNERSHIP:** Bardstown Industrial Development Corporation

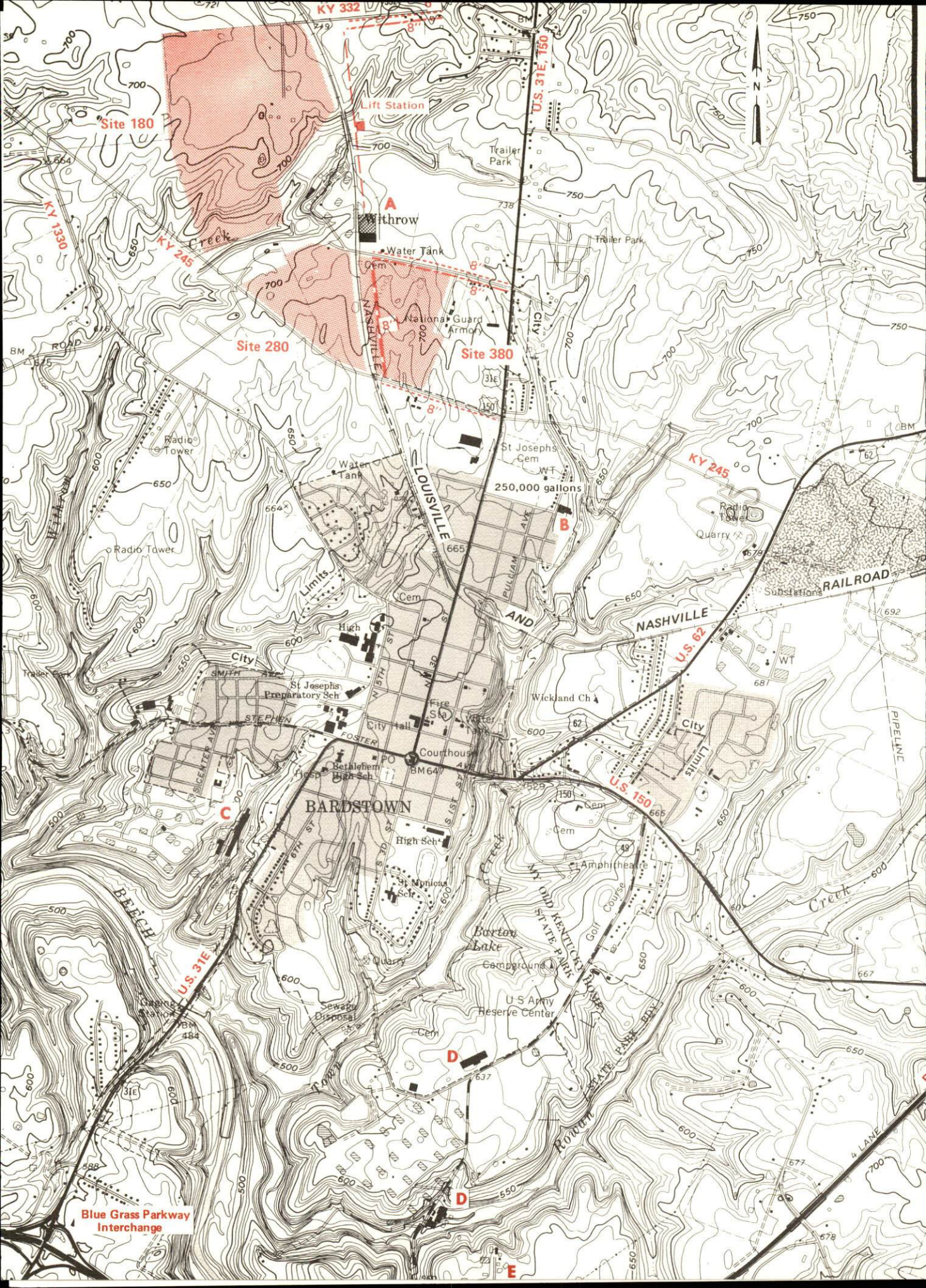
## Site 380 - 75 Acres

**LOCATION:** Adjacent to northwest city limits  
**ZONING:** Industrial  
**HIGHWAY ACCESS:** KY 245 adjacent to southern boundary;  
 U.S. 31E, 150 approximately 0.3 mile east via KY 245; Blue  
 Grass Parkway interchange approximately 3.5 miles south via  
 U.S. 31E and Ky 245  
**RAILROAD:** Louisville and Nashville Railroad adjacent to western  
 boundary  
**WATER:** Bardstown Municipal Light and Water Company  
 Size Line: 8-inch line approximately 100 feet north across paved  
 access road; 8-inch line approximately 100 feet south across  
 KY 245  
**NATURAL GAS:** Louisville Gas and Electric Company  
 Size Line: 8-inch line along northern boundary  
**ELECTRICITY:** Bardstown Municipal Light and Water Company  
**SEWERAGE:** Bardstown Municipal Sewerage Service  
 Size Line: 8-inch line passes through western section of site  
**OWNERSHIP:** Bardstown Industrial Development Corporation

## Site 480 - 20 Acres

**LOCATION:** Approximately 1.5 miles east of city limits  
**ZONING:** Industrial  
**HIGHWAY ACCESS:** KY 605 approximately 0.3 mile north via paved  
 access road; Blue Grass Parkway interchange approximately 4.5  
 miles south via KY 605, U.S. 62 and U.S. 31E  
**RAILROAD:** Louisville and Nashville Railroad approximately 500  
 feet north  
**WATER:** Bardstown Municipal Light and Water Company  
 Size Line: 6-inch line parallel to eastern boundary across paved  
 access road  
**NATURAL GAS:** Louisville Gas and Electric Company  
 Size Line: 4-inch line approximately 2500 feet north across U.S. 52  
**ELECTRICITY:** Kentucky Utilities Company  
**SEWERAGE:** Bardstown Municipal Sewerage Service  
 Size Line: 6-inch line approximately 2000 feet north along south  
 side of KY 605  
**OWNERSHIP:** Private







A COMPREHENSIVE REPORT ON  
BARDSTOWN AND BLOOMFIELD, KENTUCKY

Prepared by  
The Kentucky Department of Commerce  
Division of Research and Planning  
in cooperation with  
The Bardstown Chamber of Commerce  
and  
The City of Bloomfield

1980



Program manager - Brenda Roberts; research - John McMurray; clerical - Linda Fint, Annette Mitchell; graphics - Frank Ferrante, Tony Ceconi; cartography - Economic Development Division. Cost of printing paid from state funds.



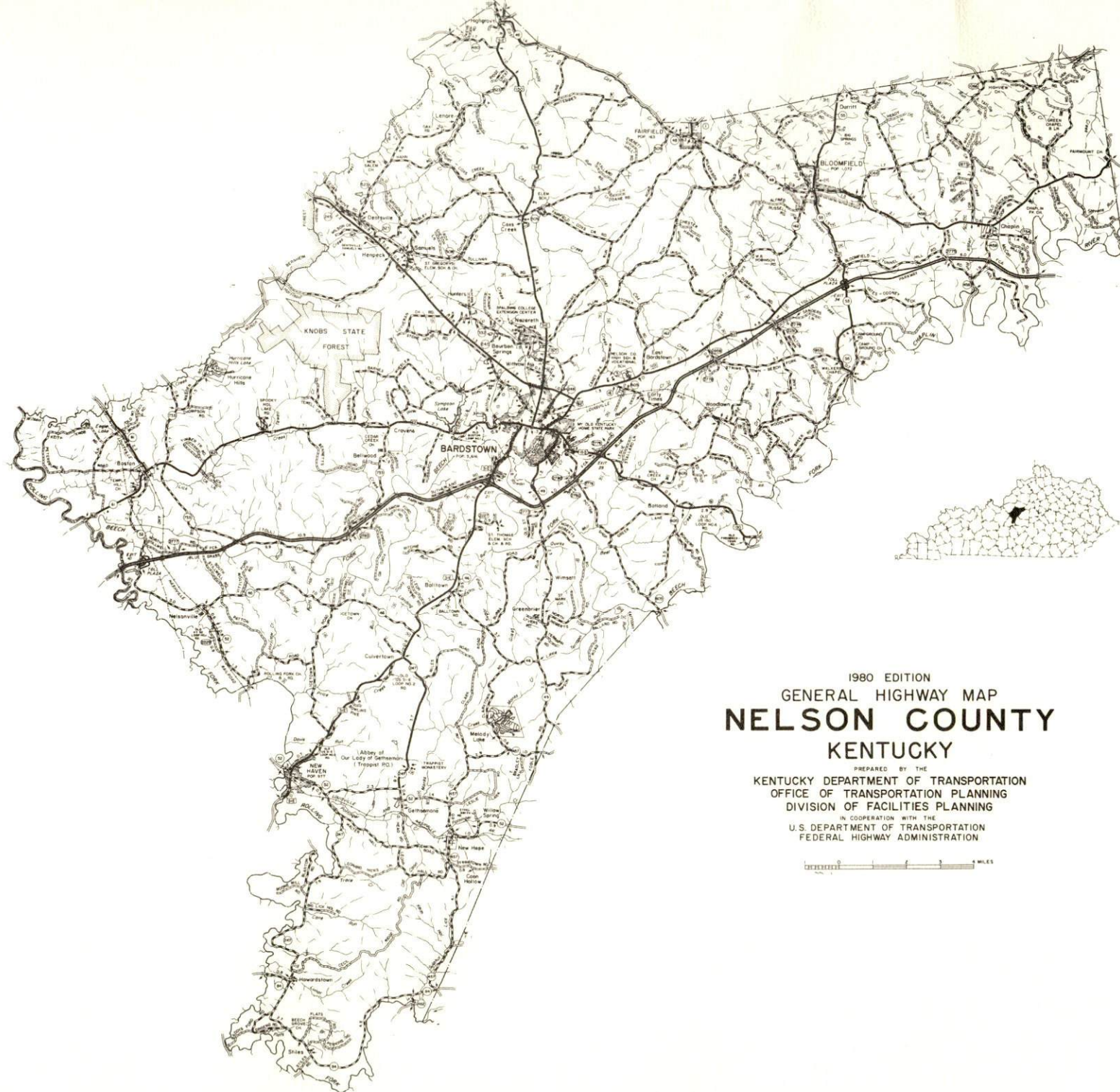
# TABLE OF CONTENTS

<u>Chapter</u>	<u>Page</u>
INDUSTRIAL SITES . . . . .	i
THE LABOR MARKET AREA . . . . .	1
Population . . . . .	1
Labor Force Characteristics of Residents, 1979 . . . . .	1
Estimated Male Labor Supply . . . . .	2
Estimated Female Labor Supply . . . . .	2
Nelson County Manufacturing Firms, Their Products and Employment . . . . .	3
Labor Organizations in Manufacturing Firms . . . . .	5
Industrial Services . . . . .	5
Average Weekly Wages by Industry, by Place of Work, 1979 . . . . .	6
Per Capita Personal Income . . . . .	8
TRANSPORTATION . . . . .	9
Rail . . . . .	9
Highways . . . . .	9
Truck Service . . . . .	10
Air . . . . .	11
Bus . . . . .	12
Taxi . . . . .	12
Rental Services . . . . .	12
Water . . . . .	12
POWER AND FUEL . . . . .	13
Electricity . . . . .	13
Natural Gas . . . . .	14
Other Fuels . . . . .	15
WATER AND SEWERAGE . . . . .	16
Water . . . . .	16
Sewerage . . . . .	18
CLIMATE . . . . .	19



<u>Chapter</u>	<u>Page</u>
LOCAL GOVERNMENT . . . . .	20
City . . . . .	20
County . . . . .	20
Assessed Value of Property . . . . .	20
Property Taxes . . . . .	21
Combined State and Local Rates Per \$100	
Valuation, 1979 . . . . .	21
Planning and Zoning . . . . .	22
Safety . . . . .	22
Police . . . . .	22
Fire . . . . .	22
Rescue Service . . . . .	22
Refuse Collection and Disposal . . . . .	22
EDUCATION . . . . .	23
Public Schools . . . . .	23
Nonpublic Schools . . . . .	23
Area Colleges and Universities . . . . .	24
Vocational Schools . . . . .	24
HEALTH . . . . .	26
Local Medical Personnel . . . . .	26
Hospitals . . . . .	26
Other Medical Facilities . . . . .	26
Ambulance Service . . . . .	26
Public Health . . . . .	26
OTHER LOCAL FACILITIES . . . . .	27
Communications . . . . .	27
Library Services . . . . .	28
Religious Institutions . . . . .	28
Financial Institutions . . . . .	28
Hotels and Motels . . . . .	29
Clubs and Organizations . . . . .	29
RECREATION . . . . .	30
COMMUNITY IMPROVEMENTS . . . . .	32





1980 EDITION  
GENERAL HIGHWAY MAP  
**NELSON COUNTY**  
**KENTUCKY**

PREPARED BY THE  
KENTUCKY DEPARTMENT OF TRANSPORTATION  
OFFICE OF TRANSPORTATION PLANNING  
DIVISION OF FACILITIES PLANNING  
IN COOPERATION WITH THE  
U.S. DEPARTMENT OF TRANSPORTATION  
FEDERAL HIGHWAY ADMINISTRATION



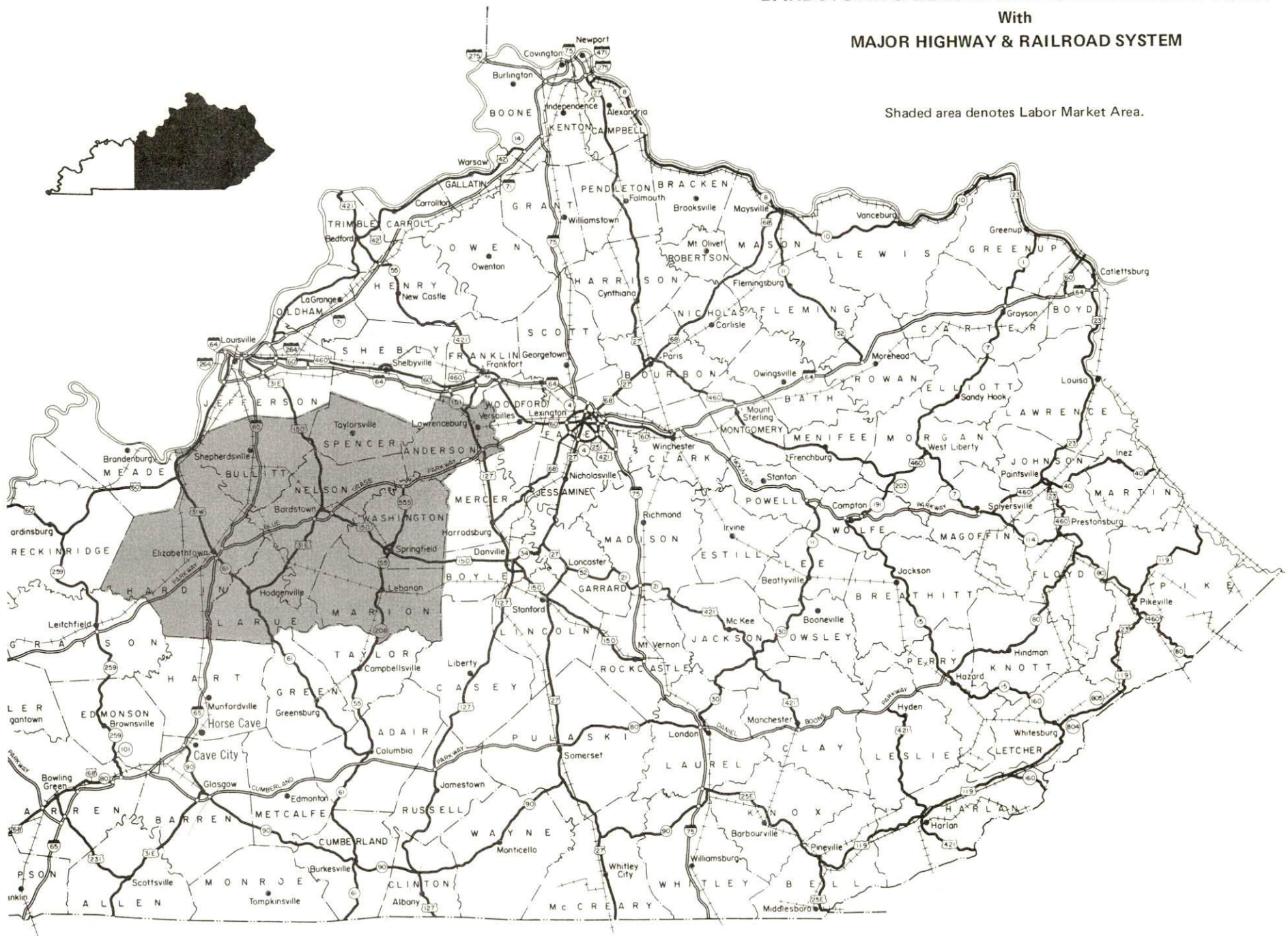


# BARDSTOWN & BLOOMFIELD LABOR MARKET AREA

## With

### MAJOR HIGHWAY & RAILROAD SYSTEM

Shaded area denotes Labor Market Area.



## THE LABOR MARKET AREA

The Labor Market Area includes Nelson County and the adjoining Kentucky counties of Anderson, Bullitt, Hardin, Larue, Marion, Spencer, and Washington.

Area	POPULATION		
	1978*	1970	Percent Nonwhite**
Bardstown	7,199**	5,816	15.4
Bloomfield	966**	1,072	20.9
Labor Market Area	200,000	180,948	N/A
Nelson County	26,400	23,477	8.0
Anderson County	11,400	9,358	4.8
Bullitt County	39,100	26,090	0.7
Hardin County	78,300	78,421	9.9
Larue County	11,600	10,672	5.0
Marion County	17,000	16,714	10.3
Spencer County	5,800	5,488	4.6
Washington County	10,400	10,728	13.3

\*Provisional Estimates.

\*\*1978 Population Estimates; 1970 Percent Nonwhite for cities; 1978 Percent Nonwhite for counties.

Sources: U.S. Department of Commerce, Bureau of the Census, Census of Population, 1970. U.S. Department of Commerce, Bureau of the Census, Current Population Reports, Series P-26, No. 78-17, August 1979. U.S. Department of Commerce, Bureau of the Census, April 30, 1980. University of Louisville, Urban Studies Center, Population Research Unit, "Kentucky's Population Disaggregations of 1978 Estimates," January 1980.

### LABOR FORCE CHARACTERISTICS OF RESIDENTS, 1979

	Nelson County	Labor Market Area
Civilian Labor Force	11,091	76,713
Employment	10,218	71,907
Agricultural	959	5,897
Nonagricultural	9,259	66,010
Unemployment	873	4,806
Rate of Unemployment (%)	7.9	6.3

Source: Kentucky Department for Human Resources, Kentucky Labor Force Estimates, Annual Averages, 1979.



ESTIMATED MALE LABOR SUPPLY  
BARDSTOWN AND BLOOMFIELD LABOR MARKET AREA

Area	Current			Future	
	Total	Not in Labor Force	Unemployed	Under-employed	Reaching 18 years of age before 1986
Labor Market Area*	7,851	1,247	2,504	4,100	8,978
Nelson	980	166	454	360	1,327
Anderson	317	80	127	110	478
Bullitt	1,034	250	384	400	1,749
Hardin	3,870	446	864	2,560	3,033
Larue	434	82	162	190	518
Marion	652	111	261	280	994
Spencer	188	41	67	80	303
Washington	376	71	185	120	576

\*Additional workers may be drawn from other nearby counties.

Sources: Kentucky Department for Human Resources, Kentucky Labor Supply Estimates by County, 1979. Kentucky Department of Commerce, Future Labor Supply before 1986.

ESTIMATED FEMALE LABOR SUPPLY  
BARDSTOWN AND BLOOMFIELD LABOR MARKET AREA

Area	Current			Future	
	Total	Not in Labor Force	Unemployed	Under-employed	Reaching 18 years of age before 1986
Labor Market Area*	5,863	511	2,302	3,050	8,502
Nelson	954	75	419	460	1,343
Anderson	333	33	120	180	441
Bullitt	1,095	92	353	650	1,606
Hardin	2,104	180	794	1,130	2,946
Larue	401	35	146	220	455
Marion	529	49	240	240	936
Spencer	117	16	61	40	253
Washington	330	31	169	130	522

\*Additional workers may be drawn from other nearby counties.

Sources: Kentucky Department for Human Resources, Kentucky Labor Supply Estimates by County, 1979. Kentucky Department of Commerce, Future Labor Supply before 1986.

Note: "Not in Labor Force" represents those persons who are not now in the labor force, but would enter the labor force if suitable employment were available. Unemployed persons are those persons who are unemployed and actively seeking work. Underemployed persons are those persons who are employed, but are working only 14 to 26 weeks per year.

NELSON COUNTY MANUFACTURING FIRMS,  
THEIR PRODUCTS AND EMPLOYMENT

Firm (Establishment date)	Product	Employment			Labor Unions
		Total	Male	Female	
Bardstown					
Bardstown Asphalt Company, Inc. (1958)	Asphalt	6	6	0	
Bardstown Manufacturers (1950)	Ladies' knit suits	160	10	150	Ladies' Garment Workers*
Bardstown Mills (1819)	Feed	8	8	0	
Barton Brands, Ltd. (1879)	Whiskey, distillers dried grains	285	200	85	Distillery Workers*
Bird and Son, Inc. (1966)	Building materials	250	205	45	Teamsters*
Boones Abattoir, Inc. (1946)	Meat processing	16	8	8	
Burroughs Corporation (1972)	Fabric business machine ribbons, paper rolls for business machines	210	75	135	Teamsters*
Cleveland Welding and Equipment Company (1950)	Steel tanks, miscellaneous steel fabrication	7	6	1	
Heaven Hill Distilleries, Inc. (1935)	Whiskey, gin, vodka, distillers dried grains	250	200	50	Distillery Workers*
Lily Division, Owens-Illinois, Inc. (1968)	Paper cups and plates, plastic cups and containers	570	390	180	Paperworkers*
Mago Construction Company, Inc. (1958)	Bituminous concrete surface mixes	22	19	3	

(Contd.)



<u>Firm</u> ( <u>Establishment date</u> )	<u>Product</u>	<u>Employment</u>			<u>Labor Unions</u>
		<u>Total</u>	<u>Male</u>	<u>Female</u>	
<u>Bardstown</u> (Contd.)					
R. A. Parrish Concrete Products (1958)	Concrete block, precast products, silo staves	17	16	1	
Standard Publishing Company (1900)	Newspaper, letterpress printing, offset printing	24	13	11	
The Willett Distilling Company (1937)	Whiskey	47	30	17	Distillery Workers*

Bloomfield

D. B. Sutherland and Sons, Inc. (1810)	Flour, corn meal, seasoned flour for meat and poultry, feed	20	16	4	
--	---	----	----	---	--

Boston

James B. Beam Distilling Company (1953)	Whiskey, distillers dried grain	70	66	4	Distillery Workers*
David E. Wallace (1950)	Country hams	2	2	0	
Kirby Woosley and Son (1950)	Lumber, crossties, chips	19	17	2	

New Haven

Log Homes, Inc. (1977)	Log homes	8	7	1	
------------------------	-----------	---	---	---	--

\*See Labor Organizations below.

Source: Kentucky Department of Commerce, Division of Research and Planning.

## LABOR ORGANIZATIONS IN MANUFACTURING FIRMS

<u>Union</u>	<u>Representing workers at:</u>
Distillery, Wine and Allied Workers' International Union, AFL-CIO-CLC	Barton Brands, Ltd. Heaven Hill Distilleries, Inc. The Willett Distilling Company James B. Beam Distilling Company
International Ladies' Garment Workers Union, AFL-CIO	Bardstown Manufacturers
International Brotherhood of Teamsters, Chauffeurs, Warehousemen and Helpers of America	Bird and Son, Inc. Burroughs Corporation
United Paperworkers International Union, AFL-CIO	Lily Division, Owens-Illinois, Inc.

## INDUSTRIAL SERVICES

	<u>Location</u>	<u>Miles Distant</u>
Tool & Die, Machine & Pattern Shops	Elizabethtown	25
Metal Service Centers	Louisville	40
Heat Treating	Louisville	40
Metal Finishers	Elizabethtown	25
Electric Motor Repair	Lebanon; Louisville	29; 40

Sources: Kentucky Directory of Selected Industrial Services, 1979.  
Kentucky Department of Commerce, Division of Research and Planning.



AVERAGE WEEKLY WAGES BY INDUSTRY,  
BY PLACE OF WORK, 1979

	<u>Nelson County</u>	<u>Anderson County</u>	<u>Bullitt County</u>	<u>Hardin County</u>
All Industries	\$205.18	\$198.45	\$193.34	\$196.82
Mining & Quarrying	347.48	*	*	*
Contract Construction	222.20	149.95	201.77	249.41
Manufacturing	274.60	253.86	279.71	252.19
Transportation, Communications & Public Utilities	292.90	317.77	225.74	232.27
Wholesale & Retail Trade	142.66	123.74	132.39	151.68
Finance, Insurance & Real Estate	172.38	172.86	184.54	196.48
Services	159.81	151.57	163.87	184.94
Other	111.82	*	196.33	78.47
	<u>Larue County</u>	<u>Marion County</u>	<u>Spencer County</u>	<u>Washington County</u>
All Industries	\$146.49	\$158.87	\$177.76	\$164.30
Mining & Quarrying	0	*	0	0
Contract Construction	115.48	135.29	261.63	239.11
Manufacturing	129.04	214.64	*	186.22
Transportation, Communications & Public Utilities	263.24	198.62	172.02	179.63
Wholesale & Retail Trade	125.76	129.09	132.41	132.36
Finance, Insurance & Real Estate	192.90	183.32	*	175.24
Services	164.61	139.04	171.73	148.20
Other	71.47	83.26	*	86.40

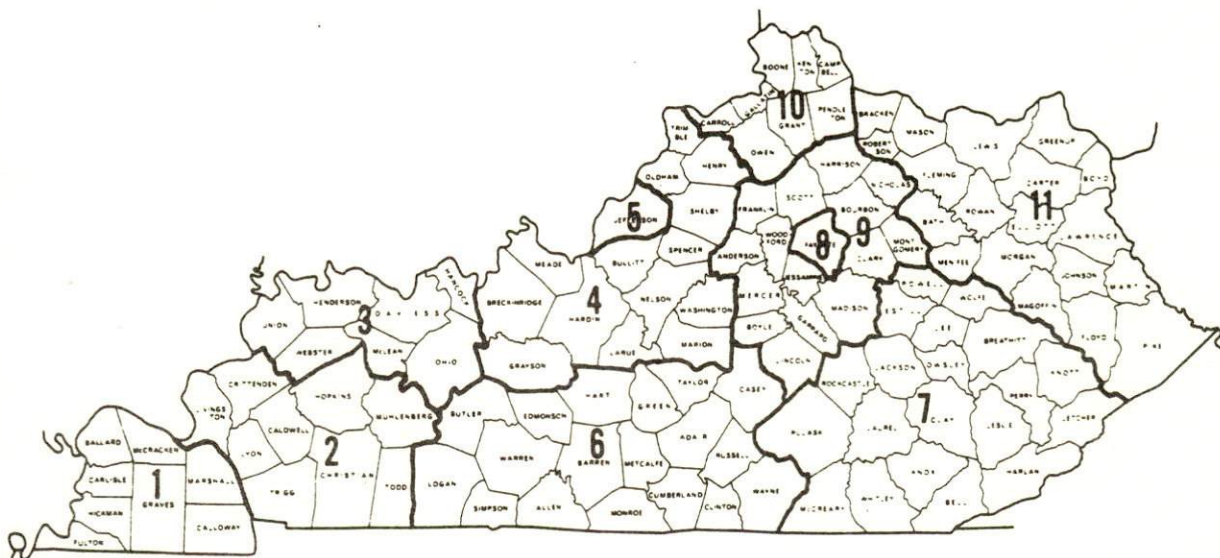
\*Not disclosed.

Note: Excludes domestic workers, railway workers; certain nonprofit corporations; majority of federal government workers; and self-employed workers. Effective January 1, 1979, the Kentucky Unemployment Insurance Law extended coverage to include all state and local government agencies (shown in the Services category).

Source: Kentucky Department for Human Resources, Average Weekly Wages of Workers Covered by Kentucky Unemployment Insurance Law, 1979.

Occupational wage rates for specific industries are usually not available to most government agencies, and wage data furnished to state employment agencies by individual industrial employers is protected from disclosure by federal law. The most reliable up-to-date wage information can be obtained by direct contact with local employers.

Associated Industries of Kentucky, a voluntary organization of Kentucky businesses, regularly collects occupational wage rates and fringe benefits data from participating member firms. Data is compiled for over 127 clearly defined office, production, and service occupations. Tabulations are published for eleven regions of Kentucky, as shown on the map below. It should be noted that the data may be weighted by the preponderance of firms in the larger cities and may be somewhat higher than the rates paid in the smaller communities. Data from these tabulations are available, upon request, from the Kentucky Department of Commerce, Frankfort, Kentucky 40601.



Associated Industries of Kentucky Area Wage Surveys



PER CAPITA PERSONAL INCOME

<u>Area</u>	<u>1978</u>	<u>1974</u>	<u>Percent Change</u>
Nelson County	\$5,843	\$3,876	50.7
Labor Market Area			
Range	\$4,443 - 6,594	\$3,440 - 5,222	N/A
Kentucky	6,605	4,524	46.0
U.S.	7,840	5,428	44.4

Source: U.S. Department of Commerce, Bureau of Economic Analysis,  
April 1980.

## TRANSPORTATION

### Rail

Line serving Bardstown - Louisville and Nashville Railroad

Services - Branch line, local turn around service daily; team track with space available for six cars, nearest piggyback facilities available at Louisville, 40 miles north of Bardstown

For details on routing, schedules, rates, and services, contact:

Director of Industrial Development  
Louisville and Nashville Railroad  
908 West Broadway  
Louisville, Kentucky 40201  
(502) 587-5723

Bloomfield is not rail served.

### Highways

Major highways serving Bardstown are the Bluegrass Parkway, U.S. 62, and U.S. 31-E and 150. The Bluegrass Parkway interconnects with Interstate 65, 23 miles west of Bardstown. In addition, Kentucky 245 provides direct access to northbound Interstate 65, 17 miles north-west of Bardstown.

Bloomfield is served by the Bluegrass Parkway, U.S. 62, and Kentucky Routes 48 and 55.



## Truck Service

### Company

#### Bardstown

Bestway Express, Inc.\*  
Central Motor Express, Inc.\*  
Consolidated Freightways  
Corporation of Delaware\*\*  
Cooper-Jarrett, Inc.\*\*  
Distillery Transfer Service,  
Inc. (Distillery products  
and supplies only)\*  
Interstate Motor Freight  
System\*\*  
Kentucky Truck Lines, Inc.  
(Distillery products  
and supplies only)\*\*\*  
Overnite Transportation  
Company\*

#### Bloomfield

Cooper-Jarrett, Inc.\*\*  
Interstate Motor Freight  
System\*\*  
Taylorsville Transfer Line\*

### Home Office

905 Visco Drive  
Nashville, Tennessee 37210  
P. O. Drawer C  
Campbellsville, Kentucky 42718  
175 Linfield Drive  
Menlo Park, California 94025  
Hanover Plaza  
Morristown, New Jersey 07960  
P. O. Box H  
Bardstown, Kentucky 40004  
110 Ionia, N.W.  
Grand Rapids, Michigan 49503  
601 Wilkinson Boulevard  
Frankfort, Kentucky 40601  
P. O. Box 1216  
1000 Semmes Avenue  
Richmond, Virginia 23209  
Hanover Plaza  
Morristown, New Jersey 07960  
110 Ionia, N.W.  
Grand Rapids, Michigan 49503  
P. O. Box 278  
Taylorsville, Kentucky 40071

\*Interstate and intrastate service.

\*\*Interstate service only.

\*\*\*Intrastate service only.

Other Freight Services

Purolator Courier Corporation\*  
 United Parcel Service\*  
 KATO Express, Inc. (air  
 cargo service)\*\*

Nearest Shipping Center or Home Office

Louisville, 40 miles distant  
 Louisville, 40 miles distant  
 Elizabethtown, 25 miles distant

HIGHWAY MILES AND TRUCK TRANSIT TIME IN DAYS FROM  
 BARDSTOWN, KENTUCKY, TO SELECTED MARKET CENTERS

City	Highway Miles	Delivery		City	Highway Miles	Delivery	
		Time*	TL			Time*	TL
Atlanta, Ga.	397	1		Los Angeles, Ca.	2,148	7-8	
Baltimore, Md.	599	1-2		Louisville, Ky.	40	1	
Birmingham, Ala.	351	1		Nashville, Tenn.	155	1	
Chicago, Ill.	332	1		New Orleans, La.	672	2	
Cincinnati, Ohio	136	1		New York, N. Y.	761	3	
Cleveland, Ohio	375	1		Pittsburgh, Pa.	401	1	
Detroit, Mich.	395	3		St. Louis, Mo.	303	1	
Knoxville, Tenn.	251	1					

\*Delivery time does not include the day of pickup.

Note: Mileage computations are via the best interstate or primary highways, not necessarily the most direct route of travel.

Sources: Rand McNally Road Atlas, 1979. Official Kentucky Mileage Map, 1979. Delivery time - Overnite Transportation Company, P. O. Box 1216, Richmond, Virginia 23209.

AirLocal

Location: Samuels Field  
 2 miles west of Bardstown  
 Runways: 1 paved  
 Length: 4,000 feet  
 Traffic  
 Control: Wind sock  
 Lighting: Sundown to sunrise, rotating beacon,  
 medium intensity runway edge lights,  
 REIL, obstruction lights, SAVASI  
 Services: Gas and oil (100, 80), charter,  
 flight instructions, hangar,  
 storage, repairs, maintenance  
 Air Freight  
 Service: Chartered air freight services  
 must be arranged

\*For regular scheduled pickups or for occasional pickups, arrangements must be made with the Louisville office of Purolator Courier Corporation or United Parcel Service.

\*\*Daily pickup and delivery service is available to and from Standiford Field in Louisville. Arrangements for service should be made through the home office in Elizabethtown.



### Nearest Scheduled Airline Service

Location: Standiford Field  
4 1/2 miles southeast of center of  
Louisville, Kentucky; 36 miles  
northwest of Bardstown

Runways: 3 paved  
Length: 7,800 feet; 7,250 feet; 5,000 feet

Traffic Control: Control tower

Lighting: Runways, obstructions, beacon and  
approach and touchdown lights,  
center line on one runway

Services: American, Delta, Eastern, Ozark,  
Piedmont, TWA and USAir airlines;  
Air Kentucky commuter air carrier;  
100 octane and jet fuel; major  
A & E repairs; storage; Louisville-  
Jefferson County Air Board; Hertz,  
Avis, National and Budget rental  
car services; taxi, city bus  
service; restaurant

Air Freight Service: Air freight terminal

#### Bardstown

#### Bloomfield

<u>Bus</u> -	Southern Greyhound Bus Lines	Nearest bus service at Bardstown, 13 miles distant
<u>Taxi</u> -	One company, 24-hour service	
<u>Rental Services</u> -	Local or one-way U-haul rentals, car and truck rentals	Nearest rental services at Bardstown, 13 miles distant

#### Water

Bardstown is located 40 miles from the Ohio River at Louisville where port facilities are available. The Louisville-Jefferson County Riverport has been designated as a Foreign Trade Zone and offers complete U.S. customs services for exports and imports.

POWER AND FUEL

Electricity

Company serving Bardstown - Bardstown Municipal Light and Water  
Company

Source of power - Kentucky Utilities Company

Total generating capacity - 2,383,767 KW

For industrial rates contact:

Industrial Development Department  
Kentucky Utilities Company  
One Quality Street  
Lexington, Kentucky 40507  
(606) 255-1461

and/or

Bardstown Municipal Light and  
Water Company  
220 North Fifth Street  
Bardstown, Kentucky 40004  
(502) 348-5947

Company serving Bloomfield and parts of Nelson County - Kentucky  
Utilities Company

Source of power - Kentucky Utilities Company

Total generating capacity - 2,383,767 KW

For industrial rates contact:

Industrial Development Department  
Kentucky Utilities Company  
One Quality Street  
Lexington, Kentucky 40507  
(606) 255-1461



Company serving most of Nelson County - Salt River Rural Electric  
Cooperative Corporation  
Source of power - East Kentucky Power Cooperative  
Total generating capacity - 867,000 KW  
For industrial rates contact:

Industrial Development Division  
East Kentucky Power Cooperative  
P. O. Box 707  
Winchester, Kentucky 40391  
(606) 744-4812

and/or

Salt River RECC  
111 West Brashear Avenue  
Bardstown, Kentucky 40004  
(502) 348-3931

#### Natural Gas

Company serving Bardstown - Louisville Gas and Electric Company  
Source of supply - Texas Gas Transmission Corporation  
Size of transmission mains - 26-inch (supplier);  
8-inch (distributor)  
Distribution mains - 8, 6, 4, and 2 inches  
Distribution pressure - 20 psi  
Btu content - 1,010 per cubic foot  
Specific gravity - 0.581  
For rates and supplies contact:

Manager  
Market Services Department  
Louisville Gas and Electric Company  
P. O. Box 32010  
Louisville, Kentucky 40232  
(502) 566-4253

Natural gas service is not available to Bloomfield.

## Other Fuels

### Propane

J. A. Bennett, Inc.  
Taylorsville, Kentucky 40071

Big 3 Gas Company of Lebanon  
Junction  
Preston Highway  
Lebanon Junction, Kentucky 40150

Coleman Gas Service Company  
1106 North Third Street  
Bardstown, Kentucky 40004

Doxol Gas of Bullitt County  
Highway 61 South  
Shepherdsville, Kentucky 40165

Greenwell Brothers Bottled and  
Bulk Gas  
Railroad Street  
Taylorsville, Kentucky 40071

Humphrey Brother's Hardware  
Main Street  
Bloomfield, Kentucky 40008

Bob Long S & T Hardware  
and Supply  
Poplar Street  
Lebanon Junction, Kentucky 40150

Masden Supply Company  
Poplar Street  
Lebanon Junction, Kentucky 40150

Ugite LP-Gas Service  
New Haven, Kentucky 40051

### Fuel oils

#### Distillate fuel oil -

Armstrong Marathon Service  
Bloomfield Road  
Taylorsville, Kentucky 40071

Bowling and Cecil Marathon  
Distributors  
Center Street  
New Haven, Kentucky 40051

Culver's Auto Salvage  
(Ashland)  
Culverton Street  
New Haven, Kentucky 40051

Newcomb Oil Company, Inc.  
(Gulf)  
1360 East John Rowan Street  
Bardstown, Kentucky 40004

Regal Oil Company, Inc.  
(Shell)  
P. O. Box 295  
Bloomfield, Kentucky 40008

Spank Oil Company (Amoco)  
West Stephen Foster  
Bardstown, Kentucky 40004

Sprigg Coal and Fuel Oil  
Company  
P. O. Box 517  
Bardstown, Kentucky 40004

Residual fuel oil - Arrangements must be made with the refinery.

Low sulphur content coal - Available in Kentucky.



## WATER AND SEWERAGE

### Water

Company serving Bardstown - Bardstown Municipal Light and Water  
Company\*  
220 North Fifth Street  
Bardstown, Kentucky 40004  
(502) 348-5947

Source - Sympson Lake

Treatment plant capacity - 2,300,000 gallons per day

Average daily consumption - 1,600,000 gallons

Peak daily consumption - 2,300,000 gallons

Type treatment - Coagulation, sedimentation, filtration, softening,  
fluoride adjustment, disinfection

Storage capacity - 2,665,000 gallons

Size lines - 16, 12, 10, 8, 6, 4, and 2 inches

Average pressure - 45 psi

Average temperature - 60 degrees F.

### MONTHLY WATER RATES

First	3,000 gallons	\$3.75 Minimum
Next	75,000 gallons	.535 per M gallons
All over	78,000 gallons	.435 per M gallons

Tap-on charge: Residential and commercial - \$100 inside city  
125 outside city  
Industrial - Negotiated

\*A preliminary engineering report is under way on an expansion project which will increase the capacity of the municipal water treatment plant to 3,000,000 gallons per day. Upon completion of this project, it will be possible to double the treatment capacity by inserting rapid rate filters.

Company serving Bloomfield - Bloomfield Municipal Water and Sewer  
Department\*  
P. O. Box 204  
Bloomfield, Kentucky 40008  
(502) 252-5746

Source - Treated water purchased from Taylorsville Water System  
Amount that can be purchased in a 30-day period - 5,000,000 gallons  
Average daily consumption - 100,000 gallons  
Peak daily consumption - 150,000 gallons  
Storage capacity - 373,000 gallons  
Size lines - 8, 6, 4, and 2 inches  
Average pressure - 70 psi

#### MONTHLY WATER RATES

First	2,000 gallons	\$4.45 Minimum
Next	3,000 gallons	.95 per M gallons
Next	5,000 gallons	.90 per M gallons
Next	5,000 gallons	.85 per M gallons
Next	5,000 gallons	.80 per M gallons
Next	30,000 gallons	.75 per M gallons
All over	50,000 gallons	.65 per M gallons

Tap-on charge: Residential - \$175  
Commercial - Actual cost of meter installation

Surface water sources - Rolling Fork and Beech Fork of Salt River  
Average discharge - Rolling Fork near Boston, 1,758 cfs  
(40 years, USGS)  
Expected ground water yield - 5 gpm or less over entire county

\*The Bloomfield Municipal Water and Sewer Department has a \$445,000 expansion project scheduled to begin in January of 1981. An 8-inch water main will be installed starting northeast of Bardstown and extending to Bloomfield. From Bloomfield, it will continue out U.S. Highway 62 to Hahn Ridge Road. The project also includes the installation of two pumping stations. Expected completion date is the fall of 1981.



## Sewerage

Company serving Bardstown - Bardstown Municipal Sewerage Service\*  
220 North Fifth Street  
Bardstown, Kentucky 40004  
(502) 348-5947

Design capacity - 750,000 gallons per day  
Average daily flow - 700,000 gallons  
Treatment - Primary and secondary  
Type treatment - Anaerobic digestion, drying beds, comminutor, clarifier and trickling filters  
Treated effluent discharged into - Town Creek  
Size of sanitary mains - 6, 8, 12, 16, and 18 inches  
Size of storm mains - Variable (separate from sanitary mains)  
Rates - First 3,000 gallons \$2.50 Minimum  
All over 3,000 gallons .25 per M gallons  
Tap-on charge: Residential and commercial - \$100 inside city  
175 outside city

Company serving Bloomfield - Bloomfield Municipal Water and Sewer  
Department  
P. O. Box 204  
Bloomfield, Kentucky 40008  
(502) 252-5746

Design capacity - 150,000 gallons per day  
Average daily flow - 100,000 gallons  
Treatment - Primary and secondary  
Type treatment - Aeration, clarifier, drying beds and lagoons  
Treated effluent discharged into - Simpson Creek  
Size of sanitary mains - 6, 8, and 12 inches  
Rates - 100 percent of monthly water bill  
Tap-on charge: \$125

\*The Bardstown Municipal Sewerage System is currently being improved and updated. The capacity of the sewage treatment plant will be increased to 3,000,000 gallons per day with completion scheduled for January 1981. Construction of the Withrow Creek interceptor line, which runs around the north, south, and west ends of town, and construction of a new pump station have been substantially completed and are now in operation.

## CLIMATE

### Nelson County

#### Temperature

Normal (30-year record)	55.2 degrees
Average annual 1978	53.0 degrees
Record highest, September, 1954 (34-year record)	103.0 degrees
Record lowest, January, 1963 (34-year record)	-21.0 degrees
Normal heating degree days (30-year record)	4,729
(Heating degree day totals are the sums of negative departures of average daily temperatures from 65 degrees F.)	

#### Precipitation

Normal (30-year record)	44.49 inches
Mean annual snowfall (34-year record)	16.70 inches
Total precipitation 1978	57.73 inches
Mean number days precipitation (.01 inch or more) (34-year record)	131
Mean number days thunderstorms (34-year record)	47

#### Prevailing Winds (17-year record)

South

#### Relative Humidity

1 a.m.	77 percent (14-year record)
7 a.m.	81 percent (15-year record)
1 p.m.	60 percent (15-year record)
7 p.m.	64 percent (15-year record)

Source: U.S. Department of Commerce, Environmental Science  
Services Administration, Climatological Data, 1978.  
Station of record: Lexington, Kentucky.



## LOCAL GOVERNMENT

### City

#### Bardstown

Structure - Mayor - 4-year term; 6 council members - 2-year terms

Budget 1980 - General Fund \$ 261,000

Water and Sewer Fund 508,000

City Electric System 1,750,000

Fees and licenses - Business licenses range from \$10 to \$500 a year depending on type of business; license for manufacturing establishments is \$125 per year

#### Bloomfield

Structure - Mayor - 4-year term; 6 council members - 2-year terms

Budget 1980-81 - General Fund \$45,925

Water and Sewer Fund 65,000

Fees and licenses - Business licenses range from \$5 to \$100 a year, depending on type of business

### County

Structure - County Judge/Executive - 4-year term;

5 magistrates - 4-year terms

Budget 1979-80 - General Fund \$618,563; Road Fund \$436,037

### Assessed Value of Property

<u>Classes of Property</u>	<u>Bardstown (1980)</u>	<u>Bloomfield (1979)</u>	<u>Nelson County (1980)</u>
Real Estate	\$58,637,111	\$7,243,796	\$285,823,880
Tangibles	15,952,879	1,836,094	54,143,615

## Property Taxes

All property in Kentucky is assessed at 100 percent of fair cash value.

Land and buildings are taxed by the state and may be taxed by local jurisdictions. The state rate is \$0.279 per \$100 of assessed valuation.

Manufacturing machinery, raw materials inventories, pollution control equipment, and goods in the process of manufacture are not subject to local taxation. The state rate is \$0.15 per \$100.

Other tangible personal property owned by manufacturers (automobiles, trucks, finished goods, office furniture, office equipment) is taxed by the state at \$0.45 per \$100 and may be taxed by local jurisdictions.

Property stored in public warehouses in a transit status is not subject to local taxation. The state rate is only \$0.015 per \$100.

Intangible personal property located in Kentucky (money in hand, shares of stock, notes, bonds, accounts receivable, and other credits) is taxed by the state at \$0.25 per \$100, and is not subject to local taxation.

Private leaseholds in industrial facilities owned by cities or counties and financed by industrial revenue bonds are subject to a state tax of \$0.015 per \$100 of value (essentially the lessee's equity, adjusted for appreciation or depreciation). Local taxation is not permitted.

### Combined State and Local Rates Per \$100 Valuation, 1979\* (100% assessment)

	<u>Inside City of Bardstown</u>	<u>Inside City of Bloomfield</u>	<u>Outside City</u>
1. Land and buildings	\$1.038	\$0.971	\$0.696
2. Mfg. machinery, raw materials, goods in process, pollution control equipment	0.150	0.150	0.150
3. Finished goods, office equipment, vehicles, other tangibles	1.209	1.142	0.867
4. Intangibles (accounts rec., notes, bonds, etc.)	0.250	0.250	0.250
5. Leaseholds in I. R. bond financed plants	0.015	0.015	0.015

\*Kentucky Department of Commerce.



## Planning and Zoning

Joint agency - Joint City-County Planning Commission of Nelson County\*

Zoning enforced - All areas

Subdivision regulations enforced - All areas

Local codes enforced - Building code enforced in city limits of Bardstown only

Mandatory state codes enforced - Kentucky Plumbing Code, National Electric Code, Kentucky Boiler Regulations and Standards, National Fire Protection Association Standards of Safety (for buildings with an occupancy of less than 100 persons), Kentucky Building Code (modeled after BOCA code and applying to buildings with an occupancy of 100 or more persons)

## Safety

<u>Police</u>	<u>Bardstown</u>	<u>Bloomfield</u>	<u>Nelson County</u>	
			<u>Police</u>	<u>Sheriff</u>
Total staff	15	4	4	4
Radio-patrol cars	4	1	4	4

## Fire

American Insurance  
Association Fire

Rating	6	8	10
Volunteers	25	21	N/A**

## Rescue Service

Rescue service is provided by the Bardstown Volunteer Fire Department.

## Refuse Collection and Disposal

	<u>Bardstown</u>	<u>Bloomfield</u>	<u>Nelson County</u>
Type service	Municipal	Private	Private
Fee charged:			
residential	\$3 per month	\$3.35 per month	\$4.40 per month
business	Varies (\$5 minimum)	Negotiated	Negotiated
industrial	Negotiated	--	Negotiated
Collection frequency:			
residential	Weekly	Weekly	Weekly
business	Daily	Twice weekly	Negotiated
industrial	Negotiated	--	Negotiated
Trash pickup	As needed	As needed	--
Disposal method	Landfill	Landfill	Landfill

\*Includes Nelson County and the cities of Bardstown, Bloomfield, Fairfield, and New Haven.

\*\*Bardstown-Nelson County Fire Department serves all of Nelson County.

# EDUCATION

## Public Schools

	<u>Bardstown Independent</u>	<u>Nelson County</u>
Total Enrollment (March, 1980)	1,509	3,874
Elementary	686	1,664
Junior High	--	1,050
Middle School	367	--
High School	456	1,160
Student-Teacher Ratio	16-1	19-1
Elementary	17-1	18-1
Junior High	--	18-1
Middle School	22-1	--
High School	12-1	21-1
Accreditation	Southern Association of Colleges and Schools	Southern Association of Colleges and Schools
Percent High School Graduates to College	30.6	27.5
Expenditures Per Pupil (1978-79)	\$1,247.77	\$1,069.96
Bonded Indebtedness, June 30, 1979	\$1,225,000	\$2,255,000

## Nonpublic Schools

	<u>Bardstown</u>	<u>Nelson County</u>
Total Enrollment	834	427
Elementary	495	427
High School	339	--
Student-Teacher Ratio	22-1	21-1
Elementary	28-1	21-1
High School	17-1	--



## Area Colleges and Universities

<u>Name</u>	<u>Location (Miles distant)</u>	<u>Enrollment (Fall, 1979)</u>	<u>Highest Degree Conferred</u>
St. Catharine Junior College	St. Catharine (14)	180	Associate
Elizabethtown Community College	Elizabethtown (25)	1,767	Associate
Bellarmino College	Louisville (40)	2,095	Masters
Jefferson Community College	Louisville (40)	4,205	Associate
Jefferson Southwest Community College	Louisville (40)	592	Associate
Spalding College	Louisville (40)	928	Masters
University of Louisville	Louisville (40)	19,156	Doctorate, M.D., D.M.D., J.D.
Centre College	Danville (44)	766	Baccalaureate
Campbellsville College	Campbellsville (45)	674	Baccalaureate

## Vocational Schools

### Nearest State School

Location	Elizabethtown State Vocational- Technical School
Miles Distant	Elizabethtown 25
Curriculum	Business and Office Clerical Consumer and Home Economics Commercial Foods Health and Personal Services Occupations Health Careers Industrial Education Appliance Repair Auto Mechanics Carpentry-Building Trades Commercial Heating and Air Conditioning Drafting Industrial Electricity Industrial Maintenance Machine Shop Radio and Television Repair Welding

Nearest Area Education Center

Location	Nelson County Area Vocational Education Center
Curriculum	Bardstown Health and Personal Services Occupations Health Careers Industrial Education Appliance Repair Auto Mechanics Carpentry-Building Trades Drafting Industrial Electricity Masonry Welding

Arrangements can be made to provide training in the specific production skills required by an industrial plant. Instruction may be conducted either in the vocational school or in the industrial plant, depending upon the desired arrangement and the availability of special equipment.



## HEALTH

### Local Medical Personnel

	<u>Bardstown</u>	<u>Bloomfield</u>
Physicians	12	2
Dentists	7	1

### Hospitals

<u>General Hospital</u>	<u>Location</u>	<u>Beds</u>
Flaget Memorial Hospital	Bardstown	52

General hospital facilities - X-ray equipment, clinical laboratory, operating room, emergency room, maternity ward, nursery, delivery room, cardiac intensive care unit, pharmacy, surgical recovery room, respiratory therapy department

Medical staff - 13 physicians, 12 registered nurses, 5 registered nurses (part time), 5 licensed practical nurses, 16 nurses' aides, 3 laboratory technologists, 1 registered X-ray technician

### Other Medical Facilities

North Central Comprehensive Care Center, Bardstown  
Sisters of Charity and Community Health Services

### Ambulance Service

Name - Bardstown Ambulance Service

Staff - 14 emergency medical technicians

Service - 24 hours a day, 7 days a week to Bardstown and part of Nelson County

Equipment - 2 ambulances fully equipped by EMT standards

Name - Bloomfield Ambulance Service

Staff - 12 emergency medical technicians

Service - 24 hours a day, 7 days a week to Bloomfield and the northeast section of Nelson County

Equipment - 1 ambulance fully equipped by EMT standards

Name - New Haven Ambulance Service

Staff - 5 emergency medical technicians

Services - 24 hours a day, 7 days a week to New Haven and part of Nelson County

Equipment - 1 ambulance fully equipped by EMT standards

### Public Health

Facility - Nelson County Health Department

Staff - 2 registered nurses (full time), 1 registered nurse (part time), 1 health environmentalist, 4 clerk typists (3 full time, 1 part time)

## OTHER LOCAL FACILITIES

### Communications

	<u>Bardstown</u>	<u>Bloomfield</u>
Telephone -	South Central Bell	South Central Bell
Services -	Standard	Standard
Telegraph -	Western Union office and a toll-free telephone number	Nearest counter service at Bardstown and a toll-free telephone number
Postal - U.S. Post Office		
Class -	First	Second
Mail received -	Twice daily	Once daily
Mail dispatched -	Twice daily	Once daily
Newspapers -	The Kentucky Standard	
Weekly and circulation -	9,200	
Other papers received from -	Louisville and Lexington, Kentucky	Bardstown, Louisville, and Lexington, Kentucky
Radio -	WBRT-AM, WOKH-FM	
Stations received from -	Elizabethtown, Louisville and Lexington, Kentucky; Cincinnati, Ohio; Nashville, Tennessee	Bardstown, Elizabeth- town, Shelbyville, Louisville and Lexington, Kentucky; Cincinnati, Ohio; Nashville, Tennessee
Television -		
Cable service	Yes	No
Reception from -	Louisville, Lexington and Bowling Green, Kentucky	Louisville and Lexington, Kentucky
Kentucky Educational Television -	Elizabethtown transmitter, Channel 23; Louisville transmitter, Channel 15	Elizabethtown transmitter, Channel 23; Louisville transmitter, Channel 15

### Library Services

Public library - Nelson County Public Library, Bardstown  
Branch library locations - Bloomfield, Boston, Chaplin, New Haven,  
Coxs Creek  
Size collection - 48,667 volumes  
Circulation, 1977-78 - 109,336 volumes  
Services - Bookmobile, periodicals, story hour, films, projectors,  
color TV, framed paintings, records, Interlibrary Loan service,  
microfilm reader-printer, copy machine, dial-a-story, engraver  
appliance, paper cutter, newspapers and magazines

### Religious Institutions

	<u>Bardstown</u>	<u>Bloomfield</u>
Number of churches -	12	8
Denominations -	AME Zion	Baptist
	Baptist	Christian
	Christian	Church of God
	Church of Christ	Church of God of
	Church of God	Prophecy
	Episcopal	Methodist
	Jehovah's Witnesses	Presbyterian
	Methodist	
	Presbyterian	
	Roman Catholic	

Nearest Synagogues - Louisville, Kentucky, 40 miles north of Bardstown  
Congregations - Adath Israel and Brith Shalom (reform); Anshei Sfard  
and Keneseth Israel (orthodox); Adath Jeshurun (conservative)

### Financial Institutions

<u>Banks</u>	<u>Assets</u>	<u>Deposits</u>	<u>Statement Date</u>
<u>Bardstown</u>			
Farmers Bank and Trust Company	\$31,448,661.44	\$26,445,901.66	12/31/79
Wilson and Muir Bank and Trust Company	26,461,725.00	21,631,159.00	6/30/79
<u>Bloomfield</u>			
Banking House of Muir, Wilson and Muir	\$15,575,829.27	\$13,556,722.98	12/31/79

(Contd.)



<u>Savings and Loan Associations</u>	<u>Assets</u>	<u>Savings Accounts</u>	<u>Statement Date</u>
Nelson County Federal Savings and Loan Association, Inc.	\$ 19,064,275.93	\$17,546,056.41	12/31/78
First Federal Savings and Loan Association of Elizabethtown*	112,590,248.91	96,251,161.75	12/31/79

#### Hotels and Motels

	<u>Bardstown</u>
Total number -	7
Total rooms -	250

#### Clubs and Organizations

##### Bardstown

American Veterans of World War II, Korea and Vietnam (AMVETS)	Jaycees
American Legion	Junior Achievement
Babe Ruth League	Junior Music Club
Bardstown Garden Club	Key Club
Bardstown Industrial Development Corporation	Kiwanis
Bardstown-Nelson County Chamber of Commerce	Knights of Columbus
Boy Scouts	Little League
Brownies	Masons
Cub Scouts	Minor League
Daughters of the American Revolution (DAR)	Nelson County Historical Society
Distributive Education Club of America (DECA)	Optimist
Eastern Star	Parents Without Partners
4-H	Peanuts League
Future Farmers of America (FFA)	Powder Puff Football
Girl Scouts	Rotary International
Homemakers	Senior Citizens
	Stephen Foster Music Club
	Track and Field Program
	Welcome Wagon
	Woman's Club

##### Bloomfield

American Legion	Field and Stream Club
Bardstown-Nelson County Civil Defense	Garden Club
Bloomfield Business Association	Girl Scouts
Bloomfield Historical Society	Homemakers
Bloomfield Tobacco Festival Association	Lions
Boy Scouts	Little League Baseball
Cub Scouts	Little League Basketball
Eastern Star	Little League Football
	Masons

\*Includes total assets of First Federal Savings and Loan Association of Elizabethtown.

## RECREATION

### Local

#### Bardstown

Bardstown provides various recreational facilities which include an Olympic-size swimming pool, a gymnasium, a golf course, a football field, and two baseball diamonds. Other facilities are basketball courts, volleyball courts, and nine tennis courts, six of which are lighted. Playground and picnic areas are conveniently located to provide for family gatherings. Supervised recreational programs are: organized baseball and softball leagues, tennis instruction, Little League football, volleyball, and basketball; arts and crafts; weight lifting; Red Cross swimming programs; and exercise and yoga instructions.

Private facilities available include a country club, swimming pool, tennis court, drive-in movie theater, bowling facility, skating rink, and lighted croquet court.

Bardstown, known as the bourbon capital of the world, offers many historical attractions. The most famous is My Old Kentucky Home State Park. The park is dominated by the stately Georgian colonial mansion, Federal Hill. Built circa 1800, the mansion was the home of Judge John Rowan whose Pittsburg cousin, Stephen Foster, visited here in 1852. Inspired by the surroundings, Stephen Foster wrote the song that has now become the official state song of Kentucky. Recreational facilities at the park include campsites, picnic areas, planned recreation, a playground, a 9-hole golf course, a museum and a souvenir shop. The outdoor drama, "The Stephen Foster Story", is performed at the park amphitheatre during the summer season June through September.

St. Joseph Cathedral, the first Catholic cathedral west of the Allegheny Mountains, was completed in 1819. The cathedral contains paintings which were personal gifts of Francis I of the Two Sicilies and Pope Leo XII.

Wickland, home of three governors, was completed in 1817. This beautiful three story brick mansion is the most perfect example of Georgian architecture in the United States. The owners occupy the home and provide personal tours of the mansion where the finest antique furniture is displayed.

The Old Talbott Tavern originally served as a stage coach stop. Erected in the latter part of the 18th century, the tavern is said to be the oldest hotel in continuous operation west of the Alleghenies.



Spalding Hall, established in 1819 as the St. Joseph College, served as a hospital for Union soldiers during the Civil War. It now houses a museum and an arts and crafts center.

The Barton Museum of Whiskey History displays a graphic picture of 170 years of the distilling industry in the United States.

#### Bloomfield

A supervised recreation program is provided in Bloomfield during the summer months. Facilities available are two playgrounds, two baseball diamonds, and one football field.

A new 12-acre city park has been constructed which provides tennis and basketball courts, a picnic area, horseshoe pitching, volleyball, and a fishing reservoir.

#### Area (Within 40 miles)

Louisville, 40 miles north of Bardstown, offers a wide variety of recreational, sporting, and cultural events. Most notable is the running of the Kentucky Derby. The most prestigious thoroughbred horse race in America is held at historic Churchill Downs on the first Saturday in May. The Kentucky Derby was modeled after the Epsom Derby (Darby) held at Epsom Downs in Surrey County, England.

Other famous Louisville attractions are the renowned sternwheeler, the Belle of Louisville, (the Belle vies for honors in the Great Steamboat Race held annually during the Derby Festival); the Kentucky Derby Museum; the Louisville Zoological Gardens; the Museum of Natural History and Science; and the J. B. Speed Art Museum. Seasonal performances of the arts are provided by Actors Theatre, the Louisville Ballet Company, the Kentucky Opera Association, the Louisville Bach Society, the Louisville Orchestra, and Shakespear-in-the-Park.

Bernheim Forest, 14 miles west of Bardstown, is a renowned 10,000-acre wildlife sanctuary with natural forests, lakes, an arboretum, a nature center, picnic areas, and hiking trails.

Lincoln Homestead State Park, approximately 25 miles southeast of Bardstown, is a 153-acre park on land originally settled by the Lincoln family in Kentucky. The original cabin of Nancy Hanks, Abraham Lincoln's mother, is located in the park plus blacksmith and carpenter shops of the period.

The Abraham Lincoln Birthplace National Historic site, located 25 miles southwest of Bardstown, is a granite memorial shrine that encloses the log cabin in which Abraham Lincoln was born. The site has become one of the most visited shrines in the United States since being completed in 1911. Located nearby is Sinking Spring, the limestone spring used by the Lincolns. Steps lead to the spring for visitor viewing.



## COMMUNITY IMPROVEMENTS

### Bardstown

Bardstown was selected as an "All Kentucky City" in 1979 by the Kentucky Chamber of Commerce.

Grants from the Department of Housing and Urban Development totaling over \$4 million have been approved to the cities of Bardstown, Bloomfield, New Haven and to Nelson County. The various projects have and will provide housing for elderly, low, and middle income families. New dwellings are to be constructed; existing dwellings are to be rehabilitated; old dormitories are being remodeled; sewer lines are being extended to some of the projects; and off-street parking areas are to be provided.

The Bardstown Municipal Light and Water Company has completed construction of one 250,000-gallon tank and one 500,000-gallon above ground storage tank for treated water.

A preliminary engineering report is under way on an expansion project which will increase the capacity of the municipal water treatment plant to 3,000,000 gallons per day. Upon completion of this project, it will be possible to double the treatment capacity by inserting rapid rate filters.

The Bardstown Municipal Sewerage System is currently being improved and updated. The capacity of the sewage treatment plant will be increased to 3,000,000 gallons per day with completion scheduled for January 1981. Construction of the Withrow Creek interceptor line, which runs around the north, south, and west ends of town, and construction of a new pump station have been substantially completed and are now in operation.

Bardstown has completed construction of its new Olympic, diving, and baby pool complex. In addition to the pool complex, the \$800,000 recreation grant provided for construction of six lighted tennis courts and three basketball courts.

The Nelson County Public Library has received a \$20,000 bookmobile and will provide service to all of Nelson County.

The Bardstown Independent School System has installed new lighting facilities at its football field. A baseball field is being developed and will be ready for the summer of 1980. Access ramps, restrooms, and drinking fountains are being adapted to meet the needs of the handicapped in all of the school system's buildings.

Farmers Bank and Trust Company has installed a "Teller-24" window machine. The machine, the only one in Nelson County, will provide

after-hour service to the bank's customers. Interior remodeling of the main office has provided additional floor space in the installment loan and bookkeeping departments.

A new process in the manufacture of vinyl siding has created the need for a major plant expansion by Bird and Son, Inc. A new 12,000-square-foot building has been constructed and new specialized machinery has been installed. The \$6 million project has provided employment for 35 additional employees.

A major expansion project at Heaven Hill Distilleries, Inc., will create jobs for 35 to 50 employees. The \$2.5 million project will include the construction of a 100,000-square-foot warehouse, a 4,000-square-foot tank processing room, and a 9,000-square-foot empty glass storage area. An additional bottling line is to be added and a 170,000-gallon storage tank will be constructed. Completion date for the project is scheduled for November 1981.

### Bloomfield

Bloomfield was selected as an "All Kentucky City" in 1978 and in 1979 by the Kentucky Chamber of Commerce.

The Bloomfield Municipal Water and Sewer Department has a \$445,000 expansion project scheduled to begin in January of 1981. An 8-inch water main will be installed starting northeast of Bardstown and extending to Bloomfield. From Bloomfield, it will continue out U.S. Highway 62 to Hahn Ridge Road. The project also includes the installation of two pumping stations. Expected completion date is the fall of 1981.

The second floor of the Bloomfield City Hall has been refurbished. In addition to being used partially for city administration, it is also available for use as a civic meeting hall.

A 26-unit housing development to provide homes for elderly and handicapped people is scheduled for completion in September 1980 by the Department of Housing and Urban Development.

Improvements to the Old Bardstown Road section of Bloomfield are new sidewalks, improving the drainage of the area, and repaving the streets.