

1976

Industrial Resources: Owen County - Owenton

Kentucky Library Research Collections
Western Kentucky University, spcol@wku.edu

Follow this and additional works at: https://digitalcommons.wku.edu/owen_cty

 Part of the [Business Administration, Management, and Operations Commons](#), [Growth and Development Commons](#), and the [Infrastructure Commons](#)

Recommended Citation

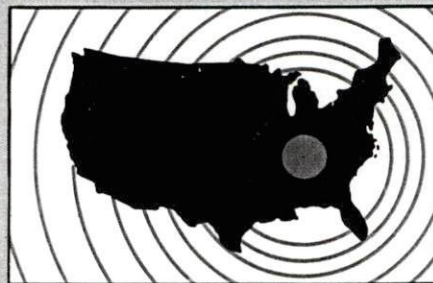
Kentucky Library Research Collections, "Industrial Resources: Owen County - Owenton" (1976). *Owen County*. Paper 10.
https://digitalcommons.wku.edu/owen_cty/10

This Report is brought to you for free and open access by TopSCHOLAR®. It has been accepted for inclusion in Owen County by an authorized administrator of TopSCHOLAR®. For more information, please contact topscholar@wku.edu.

INDUSTRIAL RESOURCES

Owenton

**Kentucky
first**



DEPARTMENT OF COMMERCE

OWENTON, KENTUCKY --- Site No. 176 -- 15 Acres

For more information contact Mr. Jay Congleton, First Farmers Bank and Trust Company, Owenton, Kentucky 40359, or the Industrial Development Division, Kentucky Department of Commerce, Capital Plaza Tower, Frankfort, Kentucky 40601.



LOCATION: Approximately 900 feet north of city limits
 ZONING: None
 HIGHWAY ACCESS: US 127 approximately 600 feet west via paved access road
 RAILROAD: Not rail served
 WATER: Owenton City Water Works
 Size Line: 12-inch line adjacent to southwestern corner
 GAS: Natural gas service not available
 ELECTRICITY: Kentucky Utilities Company
 SEWERAGE: Owenton City Sewerage System
 Size Line: 8-inch line adjacent to southwestern corner
 OWNERSHIP: Owen County Industrial Foundation

INDUSTRIAL RESOURCES

OWENTON, KENTUCKY

Prepared by
The Kentucky Department of Commerce
Division of Research and Planning
in cooperation with
The Owen County Chamber of Commerce
and
The Owen County Industrial Foundation, Inc.

1976

Production supervisor: Patsy Wallace; research: Terry Patterson;
clerical: Mildred Keefer; graphics: N. C. Montague, Frank Ferrante,
Tony Cecconi; cartography: Site Development Section. Cost of printing
paid from state funds.

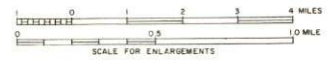
TABLE OF CONTENTS

<u>Chapter</u>	<u>Page</u>
INDUSTRIAL SITES	i
OWENTON, KENTUCKY - A RESOURCE PROFILE	1
THE LABOR MARKET AREA.	3
Population.	3
General Employment Characteristics, 1974	3
Manufacturing Employment by Industry	4
Owenton Manufacturing Firms,	
Their Products and Employment	4
Labor Organizations	4
Estimated Male Labor Supply	6
Estimated Female Labor Supply	6
Wages.	7
Per Capita Personal Income	8
TRANSPORTATION	9
Rail.	9
Highways	9
Truck Service	9
Air	11
Bus	11
Rental Services	11
POWER AND FUEL	12
Electricity.	12
Natural Gas	12
Other Fuels	13
WATER AND SEWERAGE	14
Water.	14
Sewerage	16
CLIMATE	17

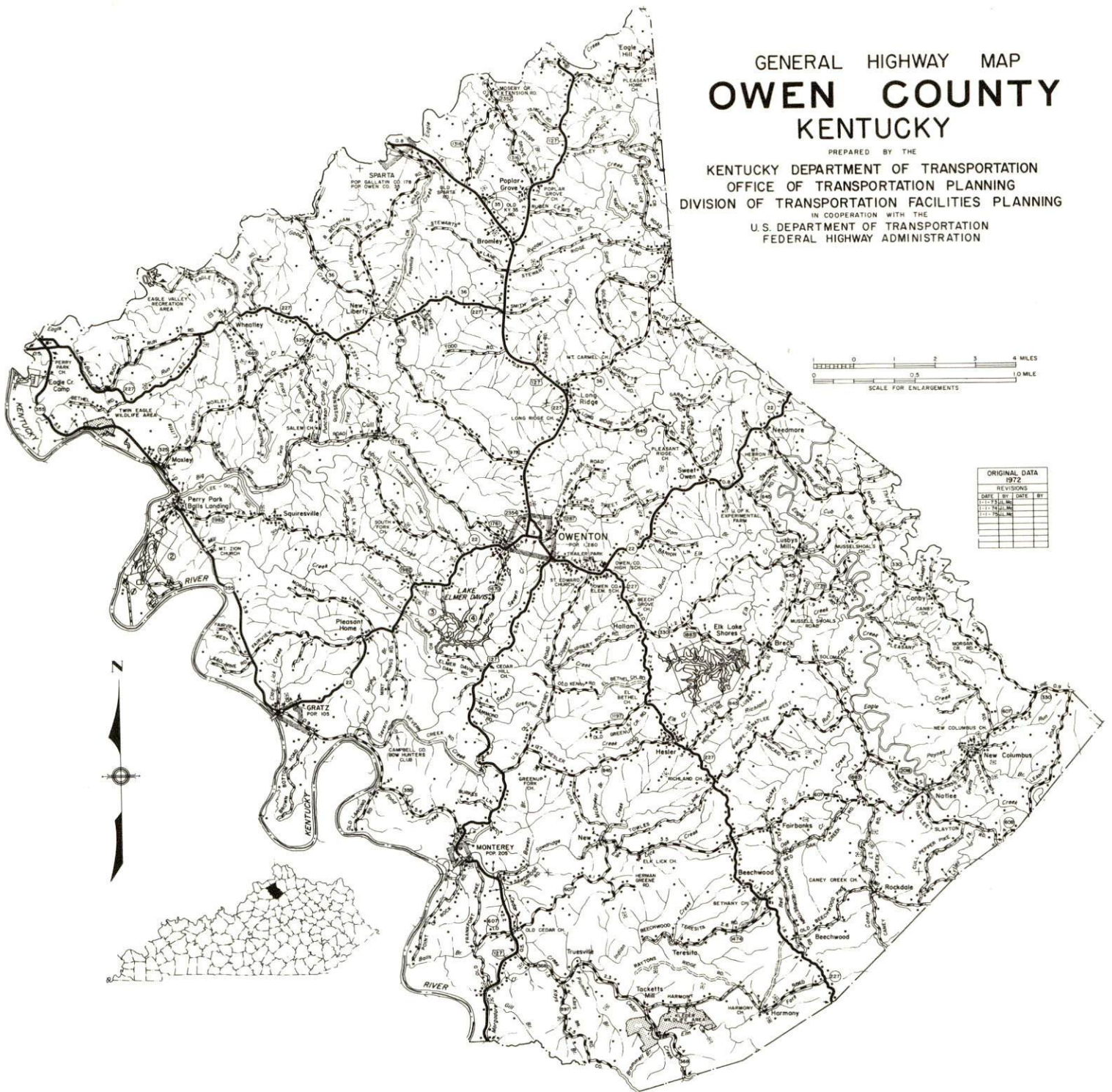
<u>Chapter</u>	<u>Page</u>
LOCAL GOVERNMENT	18
City	18
County	18
Assessed Value of Property.	18
Property Taxes	18
Local Property Tax Rate Per \$100 of Assessed Valuation, 1975 . .	19
Planning and Zoning	19
Safety.	19
Police	19
Fire.	19
Solid Waste	19
EDUCATION	20
Public Schools.	20
Area Colleges and Universities	22
Vocational Schools	23
HEALTH	25
Local Medical Personnel	25
Hospitals	25
Ambulance and Rescue Service	25
Nursing Homes	25
Public Health	25
OTHER LOCAL FACILITIES.	26
Communications	26
Library Services	26
Religious Institutions.	28
Financial Institutions.	28
Hotels and Motels	28
Clubs and Organizations	28
RECREATION	29
COMMUNITY IMPROVEMENTS	32
HISTORY	33

GENERAL HIGHWAY MAP OWEN COUNTY KENTUCKY

PREPARED BY THE
KENTUCKY DEPARTMENT OF TRANSPORTATION
OFFICE OF TRANSPORTATION PLANNING
DIVISION OF TRANSPORTATION FACILITIES PLANNING
IN COOPERATION WITH THE
U.S. DEPARTMENT OF TRANSPORTATION
FEDERAL HIGHWAY ADMINISTRATION



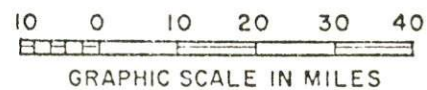
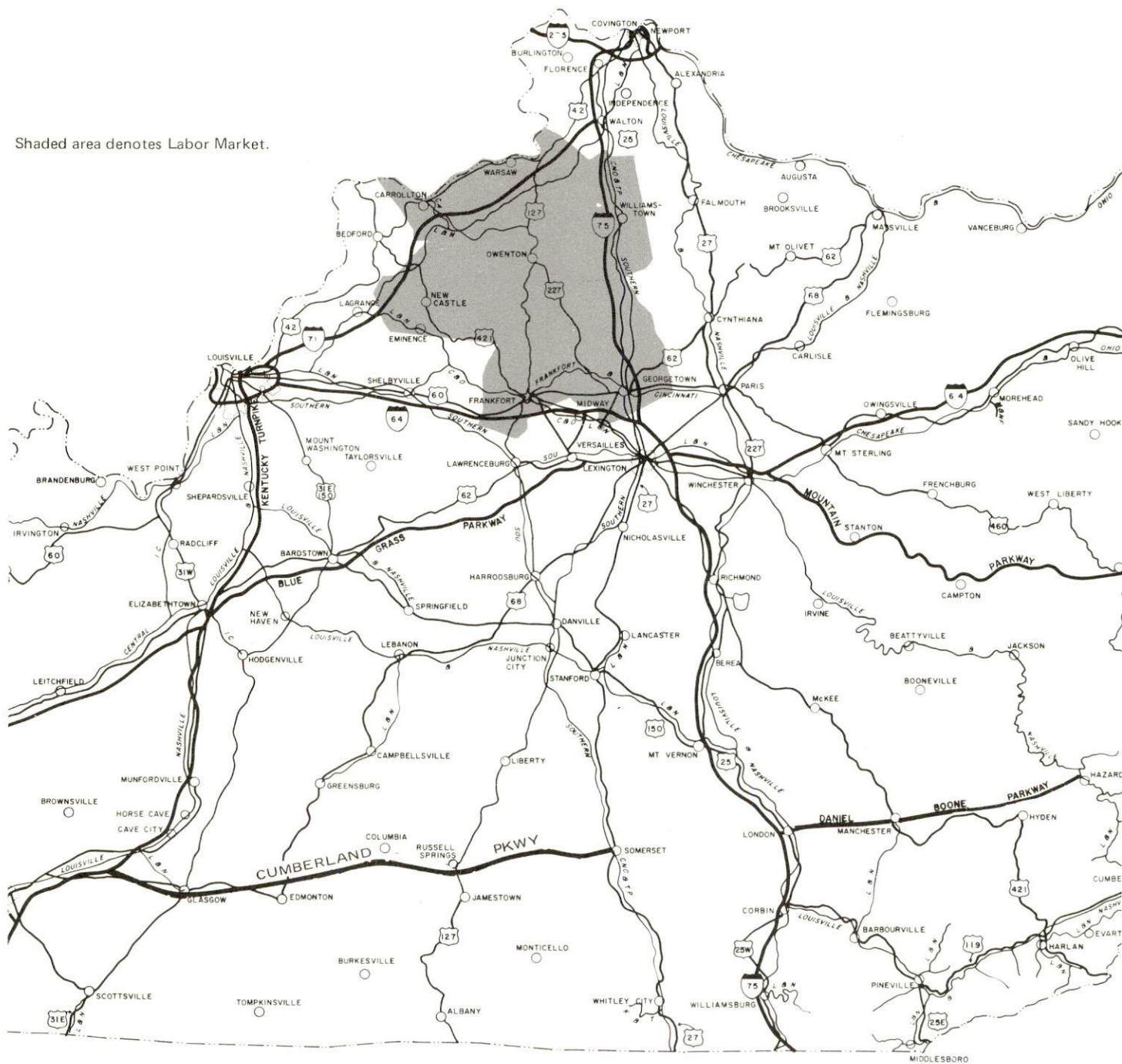
ORIGINAL DATA 1972			
REVISIONS			
DATE	BY	DATE	BY
11-1-72	MM		
11-1-72	MM		
11-1-72	MM		
11-1-72	MM		
11-1-72	MM		
11-1-72	MM		
11-1-72	MM		
11-1-72	MM		
11-1-72	MM		
11-1-72	MM		



OWENTON LABOR MARKET AREA



Shaded area denotes Labor Market.



OWENTON, KENTUCKY - A RESOURCE PROFILE

Owenton, the county seat of Owen County, is a small civic-minded town striving for growth and community improvement. It is located in the north central portion of the Bluegrass Region of Kentucky. Owenton is 51 miles northwest of Lexington, Kentucky, 69 miles northeast of Louisville, Kentucky and 58 miles southwest of Cincinnati, Ohio. Owenton had an estimated population of 1,177 in 1973.

Owen County, covering 351 square miles, is bordered on the west by the Kentucky River and on the north by Eagle Creek. The county's central location and its abundant waterways have contributed to the development of the county as a resort area. Owen County had an estimated population of 7,900 in 1975.

The Economic Framework

The total number of Owen County residents employed in 1974 averaged 3,150, including 940 in agriculture and 625 in government. Manufacturing employers in the county reported 210 workers; trade and services firms employed 270. Major industrial products are: sandals and cheese.

Total unemployment in Owen County averaged 3.8 percent of the labor force in 1974.

Per capita personal income in the county in 1974 was \$4,104, an increase of 53.2 percent since 1970.

The Owenton labor market area includes Owen and the six adjoining counties. The total number of residents of the labor market area employed in 1974 averaged 45,230, including 5,560 in agriculture and 10,330 in government. Manufacturing employers in the labor market area reported 7,760 workers; trade and services firms employed 10,170.

Resources for Growth

1. Labor Supply - There is a current labor supply of 3,810 men and 3,450 women available for industrial jobs in the labor market area. In addition, 4,520 young men and 4,250 young women in the area will become 18 years of age before 1982 and potentially available for work.

2. Transportation - The Louisville and Nashville Railroad provides freight service at Sparta, 14 miles from Owenton. Piggyback facilities are available at Frankfort, 30 miles away, and at Latonia, 40 miles away.

Owenton is served by U. S. Highway 127 and Kentucky Highways 22 and 227. Owenton is 17 miles south of Interstate 71 and 21 miles southwest of Interstate 75. One truck terminal is located in Owenton, and two other truck lines serve the town. Commercial air service is available at Covington, 55 miles north of Owenton, and at Lexington, 51 miles south of Owenton.

3. Utilities and Fuel - Electric power is supplied to the city of Owenton by the Kentucky Utilities Company. Owen County is served electricity by the Kentucky Utilities Company and Owen County RECC. Owenton does not have natural gas service. However, two distributors of propane and three distributors of distillate fuel oil serve Owenton. A 12-inch water main to the Kentucky River will provide an ample supply of raw water. Low sulphur content coal is available in eastern Kentucky.

4. Education - One public school system serves the county. Five universities, six senior colleges, one junior college and one technical institute are located within 60 miles of Owenton. Two state vocational schools - the Northern Kentucky Area Vocational-Technical School in Covington, offering 20 course areas, and the Central Kentucky State Vocational-Technical School in Lexington, offering 16 course areas - are located within 55 miles of Owenton. In addition, there are two area vocational centers - the Carroll County Area Vocational Education Center, offering six course areas, and the Franklin County Area Vocational Education Center, offering seven course areas - within 30 miles of Owenton.

THE LABOR MARKET AREA

POPULATION

<u>Area</u>	<u>1975*</u>	<u>1970</u>	<u>Percent Nonwhite</u>
			<u>1970</u>
Owenton	1,177**	1,280	3.7
Labor Market Area	100,300	93,465	N. A.
Owen County	7,900	7,470	3.6
Carroll County	8,600	8,523	2.6
Franklin County	37,300	34,481	8.0
Gallatin County	4,400	4,134	2.6
Grant County	11,700	9,999	0.7
Henry County	11,500	10,910	7.2
Scott County	18,900	17,948	9.4

*Provisional Estimates.

**1973 Population Estimates.

Sources: U. S. Department of Commerce, Bureau of the Census, Census of Population, 1970. U. S. Bureau of the Census, Current Population Reports, Series P-25, No. 562, June 1975; Series P-26, No. 75-17, May 1976.

GENERAL EMPLOYMENT CHARACTERISTICS, 1974

<u>Major Employment Group</u>	<u>Employment by Place of Residence of Workers</u>	
	<u>Owen County</u>	<u>Labor Market Area</u>
Total Employment	3,152	45,227
Agriculture	941	5,563
Government	625	10,334
	<u>Employment by Location of Jobs</u>	
	<u>Owen County</u>	<u>Labor Market Area</u>
Manufacturing	212	7,763
Trade and Services	269	10,167

Source: Kentucky Department for Human Resources, Bureau for Administration and Operations.

MANUFACTURING EMPLOYMENT BY INDUSTRY
SEPTEMBER 1975

<u>Industry</u>	<u>Owen County</u>	<u>Labor Market Area</u>
TOTAL	318	7,078
Food & Kindred Products	53	725
Tobacco	0	10
Apparel, Textiles, Leather	258	1,366
Lumber, Furniture	0	811
Printing & Publishing, Paper	7	122
Chemicals, Petroleum & Coal,		
Rubber	0	840
Stone, Clay & Glass	0	97
Primary Metals	0	85
Machinery, Metal Products,		
Equipment	0	2,134
Other	0	888

Source: Kentucky Department for Human Resources, Number of Workers in Manufacturing Industries Covered by Kentucky Unemployment Insurance Law Classified by Industry and County, September, 1975.

OWENTON MANUFACTURING FIRMS,
THEIR PRODUCTS AND EMPLOYMENT

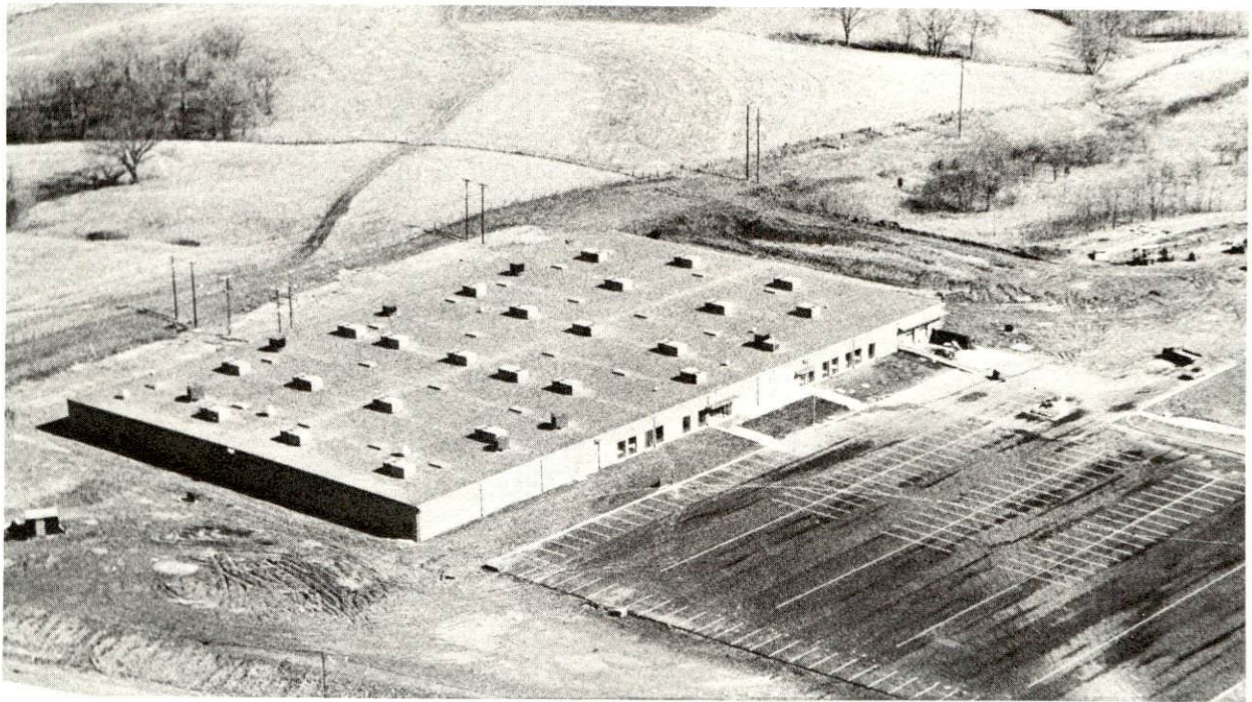
<u>Firm</u> (Establishment date) <u>Product</u>	<u>Employment</u>			<u>Organized</u>
	<u>Total</u>	<u>Male</u>	<u>Female</u>	
Kraft Foods Division (1936) Cheese	60	54	6	*
The News-Herald Pub- lishing Company (1868) Newspaper, job printing	7	2	5	
Scholl, Inc. (1972) Sandals	302	61	241	

*See Labor Organizations below.

Source: Kentucky Department of Commerce, Division of Research and Planning.

LABOR ORGANIZATIONS

<u>Union</u>	<u>Representing manufacturing workers at:</u>
Amalgamated Meat Cutters and Butcher Workmen of North America	Kraft Foods Division



SCHOLL, INC.



KRAFT FOODS

ESTIMATED MALE LABOR SUPPLY
OWENTON LABOR MARKET AREA

Area	Current			Future	
	Total	Not in Labor Force	Unemployed	Under-employed	Reaching 18 yrs. of age before 1982
Labor Market					
Area	3,810	1,180	920	1,710	4,524
Owen	240	0	70	170	334
Carroll	210	0	70	140	449
Franklin	2,120	1,120	390	610	1,641
Gallatin	140	60	30	50	205
Grant	250	0	80	170	470
Henry	290	0	120	170	510
Scott	560	0	160	400	915

Sources: Kentucky Department for Human Resources, Kentucky Labor Supply Estimates by County, 1975. Kentucky Department of Commerce, Future Labor Supply before 1982.

ESTIMATED FEMALE LABOR SUPPLY
OWENTON LABOR MARKET AREA

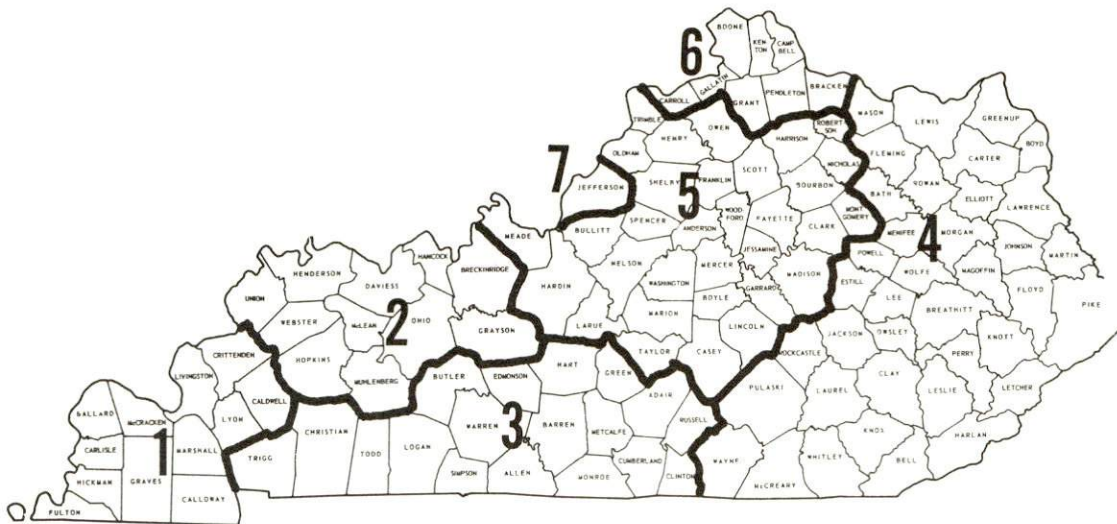
Area	Current			Future	
	Total	Not in Labor Force	Unemployed	Under-employed	Reaching 18 yrs. of age before 1982
Labor Market					
Area	3,450	740	760	1,950	4,250
Owen	370	200	50	120	321
Carroll	360	100	50	210	389
Franklin	1,240	190	280	770	1,606
Gallatin	380	250	20	110	192
Grant	240	0	50	190	463
Henry	250	0	200	50	448
Scott	610	0	110	500	831

Sources: Kentucky Department for Human Resources, Kentucky Labor Supply Estimates by County, 1975. Kentucky Department of Commerce, Future Labor Supply before 1982.

WAGES

Occupational wage rates for specific industries are usually not available to most government agencies, and wage data furnished to state employment agencies by individual industrial employers is protected from disclosure by federal law. The most reliable up-to-date wage information can be obtained by direct contact with local employers.

Associated Industries of Kentucky, a voluntary organization of Kentucky businesses, regularly collects occupational wage rates and fringe benefits data from participating member firms. Data is compiled for over 127 clearly defined office, production, and service occupations. Tabulations are published for seven regions of Kentucky, as shown on the map below. It should be noted that the data may be weighted by the preponderance of firms in the larger cities and may be somewhat higher than the rates paid in the smaller communities. Data from these tabulations are available, upon request, from the Kentucky Department of Commerce, Frankfort, Kentucky 40601.



Associated Industries of Kentucky Area Wage Surveys

PER CAPITA PERSONAL INCOME

<u>Area</u>	<u>1974</u>	<u>1970</u>	<u>Percent Change</u>
Owen County	\$4,104	\$2,679	53.2
Labor Market Area			
Range	\$3,767 - 5,067	\$2,420 - 3,590	N. A.
Kentucky	4,442	3,112	42.7
U. S.	5,448	3,966	37.4

Sources: U. S. Department of Commerce, Bureau of Economic Analysis, Survey of Current Business, August 1975. U. S. Department of Commerce, Bureau of Economic Analysis, March 1976.

TRANSPORTATION

Rail

Nearest rail service - Louisville & Nashville Railroad at Sparta,
14 miles distant

Services - Three northbound and three southbound freight stops
weekly; three northbound and three southbound through freights
daily; team track for 10 cars; siding space for 40 cars; nearest
piggyback facilities are at Latonia, 40 miles distant, and at
Frankfort, 30 miles distant.

For details on routing, schedules, rates, and services, contact:

Manager of Industrial Development
Louisville & Nashville Railroad
908 West Broadway
Louisville, Kentucky 40203
(502) 587-5000

Highways

U. S. Highway 127 and Kentucky Highways 22 and 227 serve
Owenton. U. S. 127, north of Owenton, has been completely recon-
structed and now provides an excellent access road to Interstate 71,
only 17 miles from Owenton. Also an interchange of Interstate 75
is located 21 miles northeast of Owenton via Kentucky 22.

Truck Service

Company

Home Office

E & G Motor Express

Route 1, U. S. 42
Pendleton, Kentucky 40055

O'Nan Transportation Company

P. O. Box 308
Carrollton, Kentucky 41008

Owenton Express, Inc. *

Route 2
Owenton, Kentucky 40359

Other Freight Services

Nearest Shipping Center

United Parcel Service

Lexington, 51 miles distant

*Local terminal.

HIGHWAY MILES AND TRUCK TRANSIT TIME IN DAYS FROM
OWENTON, KENTUCKY, TO SELECTED MARKET CENTERS

City	Delivery		City	Delivery	
	Highway Miles	Time TL		Highway Miles	Time TL
Atlanta, Ga.	413	3	Los Angeles, Calif.	2,177	4
Birmingham, Ala.	433	3	Louisville, Ky.	69	1
Chicago, Ill.	345	1	Nashville, Tenn.	237	1
Cincinnati, Ohio	58	1	New Orleans, La.	754	3
Cleveland, Ohio	302	1	New York, N. Y.	705	3
Detroit, Mich.	317	1	Pittsburgh, Pa.	345	2
Knoxville, Tenn.	226	1	St. Louis, Mo.	332	1

Source: Delivery Time Only - O'Nan Transportation Company, Inc., P. O.
Box 308, Carrollton, Kentucky 41008.

Air

Nearest Commercial Airports

	Blue Grass Field	Greater Cincinnati Airport
Location:	Lexington, 51 miles south	Covington, 55 miles north
Runways:	2 paved	3 paved
Length:	3,500 and 6,500 feet	5,500, 7,800 and 9,500 feet
Traffic		
Control:	Tower; guards; radar services - arrival/ departure, Stage II contact approach control, ground control; Automatic Terminal Information Service	Control tower; approach and departure control; ground control, clearance delivery; guards; ILS system
Lighting:	Approach lighting system, beacon, runways and obstructions lighted	Beacon, high intensity runway, approach slope, REIL, boundary sequence flashes, obstruction lights, Red T-bar and zone lights
Services:	Allegheny, Delta, Eastern, Piedmont, and Air Kentucky Airlines; 100 and 145 octane; jet fuel Major A & E repairs; National Weather Service; flight instruction; charter service; storage; restaurant; Certified Avionics repair station; taxi, limousine and car rentals	Allegheny, American, Delta, North Central, Piedmont, TWA, and Air Kentucky Airlines; Fuel 100, Jet A 50 and 650 turbine; Major A & E repairs; storage; airport limousine and taxi; restaurant and hotel
Air Freight		
Service:	Air freight accepted on a space available basis	Air freight terminal with regularly scheduled air shipments

Bus - Trailway Bus Line (limited service)

Rental Services - Truck and trailer rental

POWER AND FUEL

Electricity

Company serving Owenton and Owen County - Kentucky Utilities Company

Source of power - Kentucky Utilities Company

Total generating capacity - 1,615,500 KW

For industrial rates contact:

Industrial Development Department
Kentucky Utilities Company
120 South Limestone Street
Lexington, Kentucky 40507
(606) 255-1461

Company serving Owen County - Owen County RECC

Source of power - East Kentucky Power Cooperative

Total generating capacity - 496,000 KW

For industrial rates contact:

Industrial Development Division
East Kentucky Power Cooperative
P. O. Box 707
Winchester, Kentucky 40391
(606) 744-4812

and/or

Owen County RECC
Owenton, Kentucky 40359
(502) 484-3471

Natural Gas

Owenton does not have natural gas service.

Other Fuels

Propane

Crouch Gas Service
Glencoe, Kentucky 41046

Southern States Owenton Cooperative, Inc.
North Main Street
Owenton, Kentucky 40359

Fuel oils

Distillate fuel oil -

Ashland Petroleum Company
Georgetown Road
Owenton, Kentucky 40359

Shell Oil Plant
407 West Seminary Street
Owenton, Kentucky 40359

Standard Oil Company
Sparta, Kentucky 41086

Residual fuel oil - Arrangements must be made with the refinery.

Low sulphur content coal - Available in eastern Kentucky.

WATER AND SEWERAGE

Water

Company serving Owenton - Owenton City Water Works
P. O. Box 502
Owenton, Kentucky 40359
(502) 484-2313

Source - Thomas Lake*

Treatment plant capacity - 750,000 gpd

Average daily consumption - 400,000 gallons

Peak daily consumption - 600,000 gallons

Type treatment - Filtration, flocculation, chlorination,
sedimentation, iron removal, taste and odor removal

Storage capacity - 300,000 gallons

Size lines - 2, 4, 6 and 8 inches

Average pressure - 40 psi

Average temperature - 50 degrees F.

BIMONTHLY WATER RATES FOR WHOLESALE AND INDUSTRIAL CONSUMERS

Inside city limits:

First	4,000 gallons	\$7.15
Next	2,000 gallons	1.32 per M gallons
Next	4,000 gallons	1.10 per M gallons
Next	10,000 gallons	.88 per M gallons
Next	20,000 gallons	.715 per M gallons
Next	40,000 gallons	.55 per M gallons
All over	80,000 gallons	.44 per M gallons

Outside city limits:

First	4,000 gallons	\$7.80
Next	2,000 gallons	1.44 per M gallons
Next	4,000 gallons	1.20 per M gallons
Next	10,000 gallons	.96 per M gallons
Next	20,000 gallons	.78 per M gallons
Next	40,000 gallons	.60 per M gallons
All over	80,000 gallons	.48 per M gallons

Tap-on charge: Residential connection - 3/4-inch line,
\$150 per connection; commercial
connection - cost of material plus
25 percent plus \$100 service charge

*A 12-inch water main is being laid to the Kentucky River. Water will
be pumped from the river to Thomas Lake.

Name of water district - Tri- Village Water District
Owenton, Kentucky 40359
(502) 484-5774

Area served - Portions of Owen, Grant and Gallatin Counties
Date when water district began operating - 1961
Source of supply of treated water - Owenton City Water Works
Average amount of water used in a 24-hour period - 204,600
Peak amount of water used in a 24-hour period - 226,400
Storage capacity - 280,000 gallons
Average pressure - 50 psi
Size lines - 2, 3, 4 and 6 inches

MONTHLY WATER RATES FOR WHOLESALE
AND INDUSTRIAL CONSUMERS

Class "A" customers

First	25,000 gallons	\$25.00 Minimum
All over	25,000 gallons	1.00 per M gallons

Class "B" customers

First	6,000 gallons	\$10.00 Minimum
Next	4,000 gallons	1.35 per M gallons
All over	10,000 gallons	1.15 per M gallons

Class "C" customers

First	1,250 gallons	\$ 6.00 Minimum
Next	3,750 gallons	1.85 per M gallons
All over	5,000 gallons	1.35 per M gallons

Tap-on charge: \$450 for "A", \$350 for "B" and \$200
for "C" connections

Surface water sources - Kentucky River and Eagle Creek
Average discharge - Kentucky River at Lockport, 8,321 cfs (50 years, USGS); Eagle Creek at Glencoe 564 cfs (43 years, USGS)
Expected ground water yield - 50 to 200 gpm along the Kentucky River;
5 to 50 gpm in extreme northern and eastern portions of the county;
5 gpm or less in remainder of the county.

Sewerage

Company serving Owenton - Owenton City Sewerage System*
P. O. Box 502
Owenton, Kentucky 40359
(502) 484-2313

Design capacity - 225,000 gpd
Average daily flow - 150,000 gallons
Treatment - Primary and secondary
Type treatment - Aeration, trickling filters, drying beds
Treated effluent discharged into - Bell Creek
Size of sanitary mains - 4, 6, and 8 inches
Bimonthly rates -

First	4,000 gallons	\$6.05	per M gallons
Next	2,000 gallons	1.21	per M gallons
Next	4,000 gallons	.908	per M gallons
Next	10,000 gallons	.7563	per M gallons
Next	20,000 gallons	.61	per M gallons
Next	40,000 gallons	.4583	per M gallons
All over	80,000 gallons	.37813	per M gallons

Tap-on charge: Residential - \$150; commercial and
industrial - cost of material plus
25 percent

*A 201 Facilities Plan will begin in August, 1976.

CLIMATE

Owen County

Temperature

Annual mean (30-year record)	55.2 degrees
Average annual 1975	55.9 degrees
Record highest, July, 1966 (12-year record)	98.0 degrees
Record lowest, January, 1972 (12-year record)	-11.0 degrees
Normal heating degree days (30-year record)	4,729
(Heating degree day totals are the sums of negative departures of average daily temperatures from 65 degrees F.)	

Precipitation

Mean annual total (30-year record)	44.49 inches
Mean annual snowfall (30-year record)	15.60 inches
Total precipitation 1975	59.11 inches
Mean number days precipitation (.01 inch or more) (31-year record)	131
Average number days thunderstorms (31-year record)	47

<u>Prevailing Winds</u> (17-year record)	South
--	-------

Relative Humidity

1 a.m.	76 percent (11-year record)
7 a.m.	81 percent (12-year record)
1 p.m.	59 percent (12-year record)
7 p.m.	64 percent (12-year record)

Source: U. S. Department of Commerce, Environmental Science Services
Administration, Climatological Data, 1975. Station of record:
Lexington, Kentucky.

LOCAL GOVERNMENT

City

Structure - Mayor - 4-year term; 6 councilmen - 2-year terms
Budget 1976 - General Fund \$ 62,000
 Water and Sewer Fund 122,000
Fees and licenses - Occupational tax licenses range from \$6
to \$100 annually

County

Structure - County Judge - 4-year term; 4 magistrates - 4-year terms
Budget 1975-76 - General Fund \$123,295; Road Fund \$58,767

Assessed Value of Property

<u>Classes of Property</u>	<u>Owenton (1976)</u>	<u>Owen County (1975)</u>
Real Estate	\$6,468,216	\$68,902,992
Tangibles	2,188,342	8,643,467

Property Taxes

Land and buildings are taxed by the state and may be taxed by local jurisdictions. The state rate is \$0.015 per \$100 of assessed valuation.

Tangible personal property owned by manufacturers (automobiles, trucks, finished goods, office furniture, office equipment) is taxed by the state at \$0.15 per \$100 and may be taxed by local jurisdictions.

Manufacturing machinery, raw materials inventories, pollution control equipment, and goods in process inventories, are not subject to local taxation. The state rate is \$0.15 per \$100.

Property stored in public warehouses in a transit status is not subject to local taxation. The state rate is only \$0.015 per \$100.

All property is assessed at 100 percent of fair cash value.

Local Property Tax Rate Per \$100 of Assessed Valuation, 1975*

<u>Taxing Jurisdiction</u>	<u>Owenton</u>	<u>Owen County</u>
County	\$.265	\$.265
School	.693	.693
City	.310	

Planning and Zoning

A zoning ordinance is being prepared for the city of Owenton.

Safety

<u>Police</u>	<u>Owenton</u>	<u>Owen County</u>
Total	2 full-time 1 part-time	3
Radio-patrol cars	1	2
<u>Fire</u>		(2 districts)
American Insurance Association Fire Rating	8	
Volunteers	40	80

Solid Waste

	<u>Owenton</u>	<u>Owen County</u>
Type service	Private	Private
Fee charged:		
residential	\$1 to \$3 monthly	Contract
business	Contract	Contract
industrial	Contract	Contract
Collection frequency:		
residential	Weekly	Weekly
business	Contract	Contract
industrial	Contract	Contract
Trash pickup	When desired	When desired
Disposal method	Landfill	Landfill

*Kentucky Department of Revenue, Kentucky Property Tax Rates, 1975.

EDUCATION

Public Schools

Owen County

Total Enrollment (Fall, 1975)	1,615
Elementary	850
High School	765
Student-Teacher Ratio	21-1
Elementary	21-1
High School	21-1
Accreditation	Southern Association of Colleges and Schools
Percent High School Graduates to College	26.7
Expenditures Per Pupil (1974-75)	\$726.30
Bonded Indebtedness, June 30, 1975	\$2,324,000



OWEN COUNTY ELEMENTARY SCHOOL



OWEN COUNTY HIGH SCHOOL

Area Colleges and Universities

<u>Name</u>	<u>Location (Miles Distant)</u>	<u>Enrollment (Fall, 1975)</u>	<u>Highest Degree Conferred</u>
College of Mt. St. Joseph on the Ohio (women)	Cincinnati, Ohio (58)	886	B. A., B. S., B. S. N., B. F. A., B. M. E.
Edgecliffe	Cincinnati, Ohio (58)	930	A. A., B. F. A.
Georgetown College	Georgetown (35)	1,062	Masters
Hebrew Union College	Cincinnati, Ohio (58)	216	M. A., Ph. D., D. M. L.
Kentucky State University	Frankfort (30)	2,246	Masters
Lexington Technical Institute	Lexington (51)	1,654	Associate
Midway Junior College	Midway (45)	350	Associate
Northern Kentucky State College	Covington (55)	6,041	Masters, J. D.*
Thomas More College	Ft. Mitchell (50)	1,352	Baccalaureate
Transylvania University	Lexington (51)	722	Masters**
University of Cincinnati	Cincinnati, Ohio (58)	38,841	Academic and Professional
University of Kentucky	Lexington (51)	22,526	Ph. D., M. D., D. M. D., J. D.
Xavier University	Cincinnati, Ohio (58)	6,265	A. B., B. S., M. A., M. S.

*Salmon P. Chase College of Law is a part of Northern Kentucky State College.

**Courses are taught on the Transylvania campus by Xavier University of Cincinnati faculty members. The degree is issued by Xavier University.

Vocational Schools

Nearest Area Education Centers

	Carroll County Area Vocational Education Center	Franklin County Area Vocational Education Center
Location	Carrollton	Frankfort
Miles Distant	30	30
Curriculum	Business and Office Industrial Education Air Conditioning Auto Mechanics Carpentry Industrial Electricity Welding	Distributive Education Industrial Education Auto Body Repair Auto Mechanics Drafting Electricity Machine Shop Welding

Nearest State Schools

	Central Kentucky State Vocational-Technical School	Northern Kentucky State Vocational-Technical School
Location	Lexington	Covington
Miles Distant	51	55
Curriculum	Clerical Secretarial-Stenographical Commercial Foods Cosmetology Equine Education Practical Nursing Industrial Education Auto Body Repair Auto Mechanics Drafting Electronics Graphic Arts (Printing) Industrial Electricity Machine Shop Office Machine Repair Sheet Metal Welding	Clerical Data Processing Secretarial Child Care Services Clothing Services Commerical Foods Food Services Cosmetology Practical Nursing Industrial Education Air Conditioning and Heating Auto Body Repair Auto Mechanics Carpentry Commercial Art Drafting Electronics (Technology) Graphic Arts (Printing) Machine Shop Radio and TV Repair Welding

Arrangements can be made to provide training in the specific production skills required by an industrial plant. Instruction may be conducted either in the vocational school or in the industrial plant, depending upon the desired arrangement and the availability of special equipment.

HEALTH

Local Medical Personnel

Physicians - 2

Dentists - 2

Hospitals

<u>General Hospital</u>	<u>Location</u>	<u>Beds</u>
Owen County Memorial Hospital	Owenton	58

General hospital facilities - Laboratory, X-ray, emergency room
(also used for minor surgery), respiratory therapy, delivery
room for emergency use only

Medical staff - 2 doctors, 10 registered nurses, 2 graduate
licensed practical nurses

Ambulance and Rescue Service

Name - Owen County Life Squad

Staff - 3 registered emergency medical technicians, 1 staff member
with advanced first aid training

Service - 24-hour service throughout the county

Equipment - Ambulance (1974 Modulance Unit, fully equipped)

Nursing Homes

At the present time, there are no nursing homes in Owenton.
However, a 45-bed nursing home is planned.

Public Health

Facility - Owen County Health Department

Staff - 1 sanitarian, 2 registered nurses, 1 nutritionist (part time),
1 health officer (part time), 1 clerk

OTHER LOCAL FACILITIES

Communications

Telephone - South Central Bell Telephone Company
Services - Standard

Telegraph - No local service
Services - Telephone from Frankfort, Kentucky

Postal - U. S. Post Office
Class - Second
Mail received - Once daily
Mail dispatched - Once daily

Newspapers - The News Herald
Weekly and circulation - 3,200
Other papers received from - Louisville and Lexington, Kentucky;
Cincinnati, Ohio

Radio -
Stations received from - Louisville, Lexington, Frankfort, Carrollton
and Eminence, Kentucky; Cincinnati, Ohio

Television -
Reception from - Louisville and Lexington, Kentucky; Cincinnati,
Ohio
Kentucky Educational Television - Owenton transmitter, Channel 52

Library Services

Public library - Owen County Public Library
Size collection - 33,752 volumes
Circulation, 1975-76 - 127,834
Services - Movies, movie projector, movie screen, slide projector,
magazines, pictures, records, films, film strip projector, story
hour during summer months, organizational meeting room and
bookmobile



OWEN COUNTY PUBLIC LIBRARY



GLENNWOOD HALL RESORT

Religious Institutions

Number of churches - 6

Denominations - Baptist, Catholic, Christian, Methodist, Nazarene

Nearest Synagogues - Cincinnati, Ohio, 58 miles away; 16 synagogues including orthodox, reform, traditional and conservative

Financial Institutions

<u>Banks</u>	<u>Assets</u>	<u>Deposits</u>	<u>Statement Date</u>
First Farmers Bank & Trust Company	\$11,059,609.34	\$10,012,985.99	12/31/75
Peoples Bank & Trust Company	18,573,378.04	16,814,065.21	12/31/75

Hotels and Motels

Total number - 1

Total units - 10

Clubs and Organizations

Business and Civic - Owen County Chamber of Commerce, Owen County Industrial Foundation, Inc., Rotary, Lions, Ruritan, Jaycees

Fraternal - Masons, Odd Fellows, VFW

Women's - Homemaker's, Woman's Club, Rebekah Lodge, Historical Society, Jaycettes

Youth - Boy Scouts, Cub Scouts, FHA, FFA, 4-H, Little League football, basketball and baseball

RECREATION

Local

Owenton provides supervised Little League programs in basketball, football and baseball. The school playground, football field, gymnasiums and baseball diamonds are available for use. An 18-hole golf course is located in the county.

Twelve acres of land have been purchased for a county park. The park will include a basketball court, two tennis courts, baseball-softball diamond, picnic area, shelter house, and playground. In addition, the city plans to purchase and remodel the old elementary school building. It will be used as a meeting room, hall for social gatherings and an auxiliary gym for the schools.

The Owen County Fair Board has recently opened a 35-acre fairgrounds. Completed facilities include an exhibit building, concession stand, horse show ring, grandstand and a 5-acre parking lot at a total cost of \$50,000. A livestock barn and a canopy for the grandstand will be constructed by 1977.

The Owen County Sportsman Club provides a recreation building, tennis courts and swimming pool for its members.

Owen County is rapidly developing as a recreation area. Four private resorts - Eagle Creek Recreation Area, Elk Lake Shores, Hideaway Hills and Perry Park Resort - are now located in the county.

Eagle Creek Recreation Area, located at the junction of Eagle Creek and The Kentucky River, 20 miles from Owenton, offers fishing, boating, camping, and swimming.

Elk Lake Shores, only 6 miles from Owenton, offers fishing, boating and swimming on a 207-acre lake.

Hideaway Hills is a newly-developed area on Elmer Davis Lake. The resort provides fishing, swimming and tennis.

Perry Park Resort, 12 miles from Owenton, is a private resort. Twenty-six hundred acres of land have been utilized to make this resort one of the finest in the country. Located on the Kentucky River, it has a boat marina, restaurant and yacht club, an airstrip, stables, tennis courts, a clubhouse, a skeet range, camping areas, a championship 18-hole golf course and a driving range, two pools, and several hundred

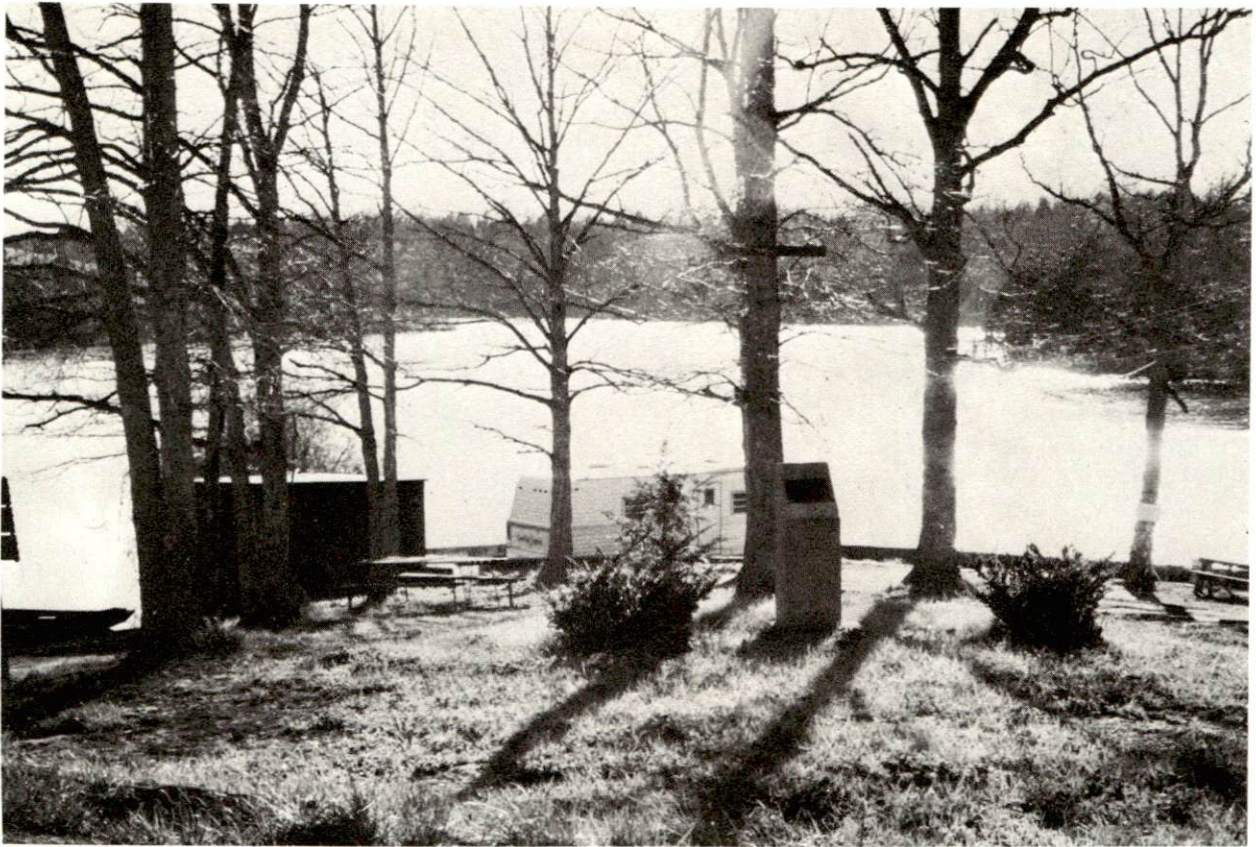
home sites. All of the facilities at Perry Park are open on a membership basis. A 100-room motel is in the planning stage.

Area (Within 45 miles)

General Butler State Resort Park is an 809-acre park located 30 miles northwest of Owenton near the confluence of the Ohio and Kentucky Rivers. The park has lodge and cottage accommodations and modern facilities for tent and trailer camping. Features of the park include a 25-acre lake, beach, bathhouse, heated pool, picnic and playground areas, miniature train ride, and miniature and 9-hole golf courses. Motor boats and paddle boats are available for rental and a dock is situated at the park. Recreational activities include pool and lake swimming, fishing, winter ice-skating, horseback riding, hiking, shuffleboards, and supervised recreation. The Butler Mansion contains a museum of Ohio River lore, with visual interpretations of the river-boat era.

Big Bone Lick State Park is a 512-acre park located 31 miles north of Owenton. The park offers camping facilities and picnic areas. Excavations at this site have revealed prehistoric animal remains at depths of 10 to 24 feet with the discovery of bones, and teeth of mammoth, elephant, and mastadon. The park museum contains these exhibits.

Kincaid Lake State Park is a 450-acre park located 44 miles northeast of Owenton. Park facilities include camping sites, a 175-acre lake, beach, bathhouse, picnic shelter, playground, nature trails, and a small amphitheatre. Boat and motor rentals, paddle boats, and dock are available. Recreational activities include swimming, fishing, badminton, shuffleboard, and miniature golf.



ELMER DAVIS LAKE



FAIRWAY CLUB GOLF COURSE

COMMUNITY IMPROVEMENTS

Recent:

1. The Owen County High School recently obtained accreditation by the Southern Association of Colleges and Schools. In addition, adult community education programs have been organized.

2. A 16-unit apartment building has been completed.

3. Southern States Owenton Cooperative, Inc., has moved into new facilities. Also a new auto dealership has opened.

Underway:

1. A 12-inch water main is being extended to the Kentucky River, which will serve as a source of raw water.

2. A zoning ordinance is being prepared for the city of Owenton.

3. The Owen County Courthouse is being remodeled, and the courthouse square is being repaved.

4. Twelve acres of land have been purchased for the construction of a county park. Planned facilities include a basketball court, tennis courts, baseball-softball diamond, picnic area, shelter house and playground.

5. The Owen County Fair Board has opened a 35-acre fairground area. An exhibit building, concession stand, 5-acre parking lot, grandstand and horse show ring have been completed at a cost of \$50,000. A livestock barn and an awning over the grandstands will be constructed for 1977.

Planned:

1. A 201 Facilities Plan is scheduled to begin in August, 1976.

2. Construction of a 500,000-gallon elevated water storage tank is being considered.

3. The city plans to purchase and remodel the old elementary school building. It will be used as a meeting room, hall for social gatherings and auxiliary gym for the public schools.

HISTORY

Owen County, the sixty-second county formed in Kentucky, dates from 1819. Its territory was taken from Franklin, Gallatin, and Scott Counties. The Kentucky River flows along the western side of this rectangle, and Eagle Creek forms the northern boundary. Its surface is gently rolling and its soil is fairly fertile. A good grade of lumber and some deposits of lead have been worked. Some of the shafts bored in the 1940's extended downward more than 300 feet. Current deposits cannot be extracted profitably. Limestone, sand, and vein minerals such as barite, galena, and sphalerite have been developed.

Settlers first came into the area during the American Revolutionary period. Among them were Colonel Abraham Owen, and Dr. Dale Owen who served the people as a country doctor for many years. The settlements they established were located along the Kentucky River and Eagle Creek. The Kentucky River afforded a commercial outlet for the entire region. Williamsburg, whose name was changed to Monterey after the Mexican War battle, was the chief port town. During the summers showboats docked there, and people from far and near came to enjoy the fun. The advent of the railroad and highway, which diverted attention from Monterey, spelled doom to visions held by some people that the town would someday become a metropolis. It is still an active rural village and many of its residents are employed by state government.

John C. Breckinridge, Vice President of the United States from 1857 to 1861, called the county "Sweet Owen" for its support in 1851, when 1,500 of the 2,000 Owen Countians cast their votes for him. Two years later they almost duplicated the feat.

During the Civil War two Confederate camps were located in Owen County. Camp Marshall was established on a hill near Lusby's Mill in the eastern part and commanded a wide view of the surrounding countryside. Another camp at Vallandingham's Barn was located near present-day Owenton. These camps were popular Southern outposts which were able to stem the tide against Northern pressure, with the exception of a few months when they fell under Union control. A greater percentage of Owen County's young men fought on the side of the Confederacy than from any other county in the state.

Owen County was named for Colonel Abraham Owen, a native of Prince Edward County, Virginia. He migrated to Kentucky during the late 1780's and settled in present-day Shelby County. He accompanied General Arthur St. Clair on the ill-fated invasion of Indian lands in 1791.

By 1796 he had become a land surveyor, and worked extensively in Owen County territory. He was elected to the State Legislature from Shelby County in 1799, and served as a member of the Constitutional Convention which wrote Kentucky's second Constitution. He served in the State Senate prior to joining General William Harrison's forces in the campaign against the Indians in 1811. He became one of General Harrison's aides-de-camp, and lost his life in the Battle of Tippecanoe on November 7, 1811.

Owenton, the county seat, is 1,000 feet above the sea level and had an estimated population of 1,177 in 1973. In 1821, Owenton became the county seat due to its central location. It was incorporated on December 18, 1828.

The county's earliest recorded population figure was 2,031 for 1820. In 1890, an all-time high of 17,676 was reached. By 1950, the population had declined to 9,755 and to 7,470 by 1970. The estimated population figure for 1975 indicated an increase to 7,900.

The total number of Owen County residents employed in 1974 averaged 3,150 including 940 in agriculture and 625 in government. Manufacturing employers in the county reported 210 workers; trade and services firms employed 270. The county's three manufacturing firms are Scholl, Inc., makers of sandals; Kraft Foods Division, producers of cheese; and The News Herald Publishing Company, publishers of newspapers and job printing.