

1984

Industrial Resources: Pendleton County - Falmouth and Butler

Kentucky Library Research Collections
Western Kentucky University, spcol@wku.edu

Follow this and additional works at: https://digitalcommons.wku.edu/pendleton_cty

 Part of the [Business Administration, Management, and Operations Commons](#), [Growth and Development Commons](#), and the [Infrastructure Commons](#)

Recommended Citation

Kentucky Library Research Collections, "Industrial Resources: Pendleton County - Falmouth and Butler" (1984). *Pendleton County*. Paper 6.
https://digitalcommons.wku.edu/pendleton_cty/6

This Report is brought to you for free and open access by TopSCHOLAR®. It has been accepted for inclusion in Pendleton County by an authorized administrator of TopSCHOLAR®. For more information, please contact topscholar@wku.edu.

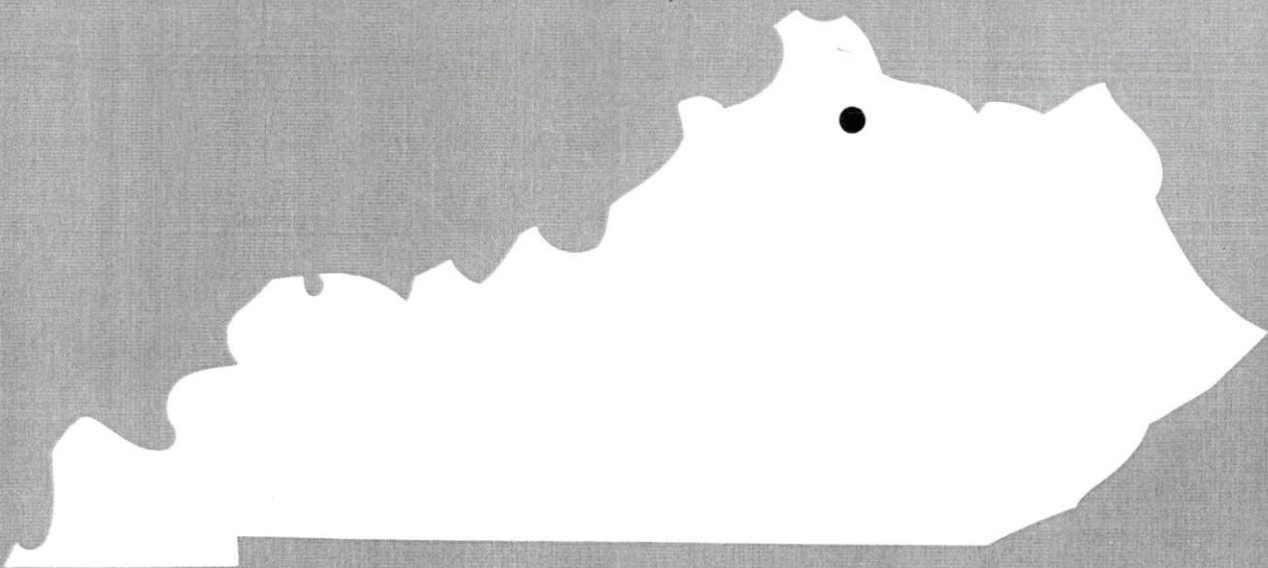
LK
397

Butler County

1984

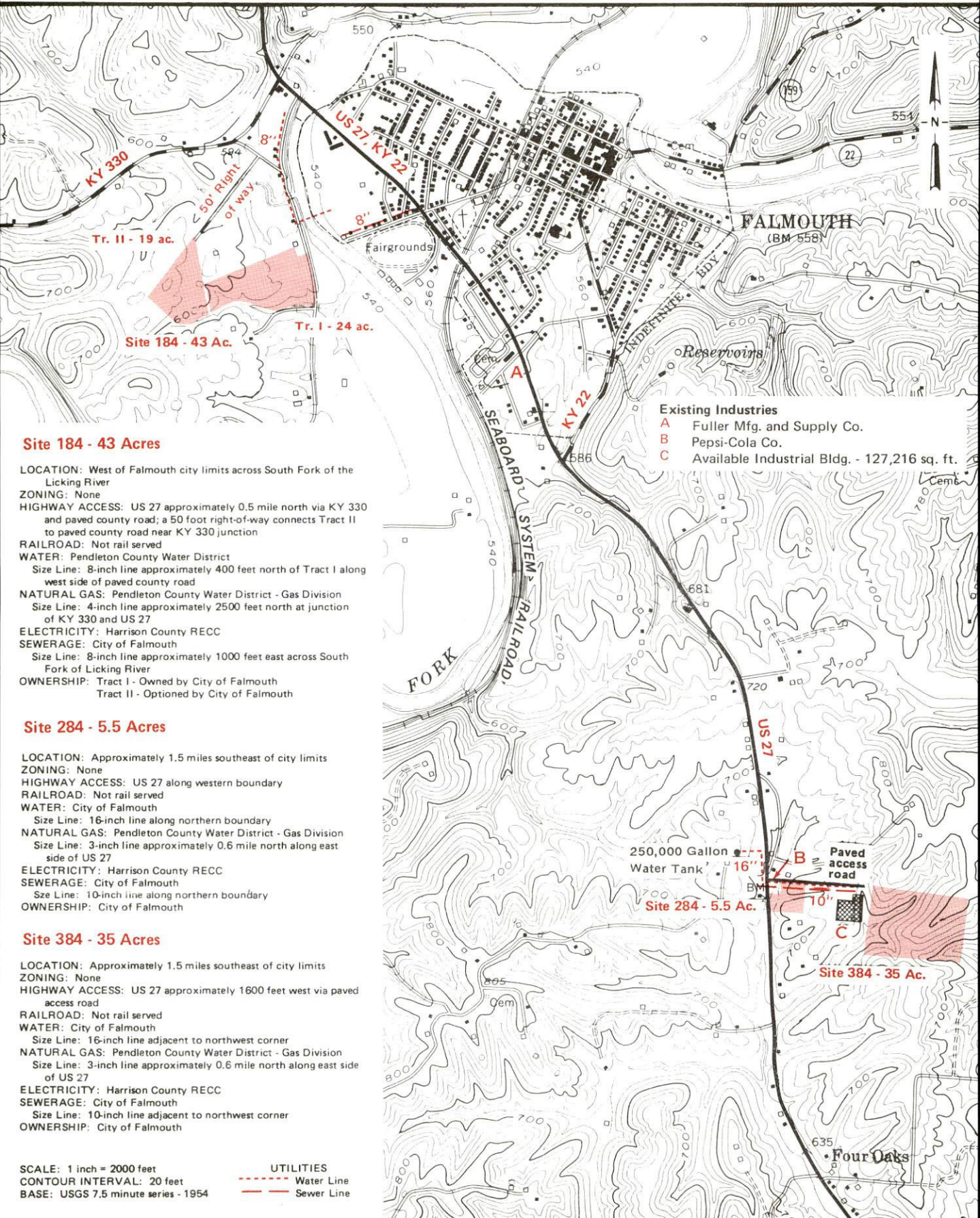
A comprehensive
report on

**Falmouth and
Butler, Ky.**



FALMOUTH, KENTUCKY -- Industrial Sites -- 1984

For more information contact the Kentucky Department of Economic Development, Industrial Development & Marketing Division, Capital Plaza Tower, Frankfort, Kentucky 40601 (502-564-7140).



Site 184 - 43 Acres

LOCATION: West of Falmouth city limits across South Fork of the Licking River
ZONING: None
HIGHWAY ACCESS: US 27 approximately 0.5 mile north via KY 330 and paved county road; a 50 foot right-of-way connects Tract II to paved county road near KY 330 junction
RAILROAD: Not rail served
WATER: Pendleton County Water District
 Size Line: 8-inch line approximately 400 feet north of Tract I along west side of paved county road
NATURAL GAS: Pendleton County Water District - Gas Division
 Size Line: 4-inch line approximately 2500 feet north at junction of KY 330 and US 27
ELECTRICITY: Harrison County RECC
SEWERAGE: City of Falmouth
 Size Line: 8-inch line approximately 1000 feet east across South Fork of Licking River
OWNERSHIP: Tract I - Owned by City of Falmouth
 Tract II - Optioned by City of Falmouth

Site 284 - 5.5 Acres

LOCATION: Approximately 1.5 miles southeast of city limits
ZONING: None
HIGHWAY ACCESS: US 27 along western boundary
RAILROAD: Not rail served
WATER: City of Falmouth
 Size Line: 16-inch line along northern boundary
NATURAL GAS: Pendleton County Water District - Gas Division
 Size Line: 3-inch line approximately 0.6 mile north along east side of US 27
ELECTRICITY: Harrison County RECC
SEWERAGE: City of Falmouth
 Size Line: 10-inch line along northern boundary
OWNERSHIP: City of Falmouth

Site 384 - 35 Acres

LOCATION: Approximately 1.5 miles southeast of city limits
ZONING: None
HIGHWAY ACCESS: US 27 approximately 1600 feet west via paved access road
RAILROAD: Not rail served
WATER: City of Falmouth
 Size Line: 16-inch line adjacent to northwest corner
NATURAL GAS: Pendleton County Water District - Gas Division
 Size Line: 3-inch line approximately 0.6 mile north along east side of US 27
ELECTRICITY: Harrison County RECC
SEWERAGE: City of Falmouth
 Size Line: 10-inch line adjacent to northwest corner
OWNERSHIP: City of Falmouth

Existing Industries

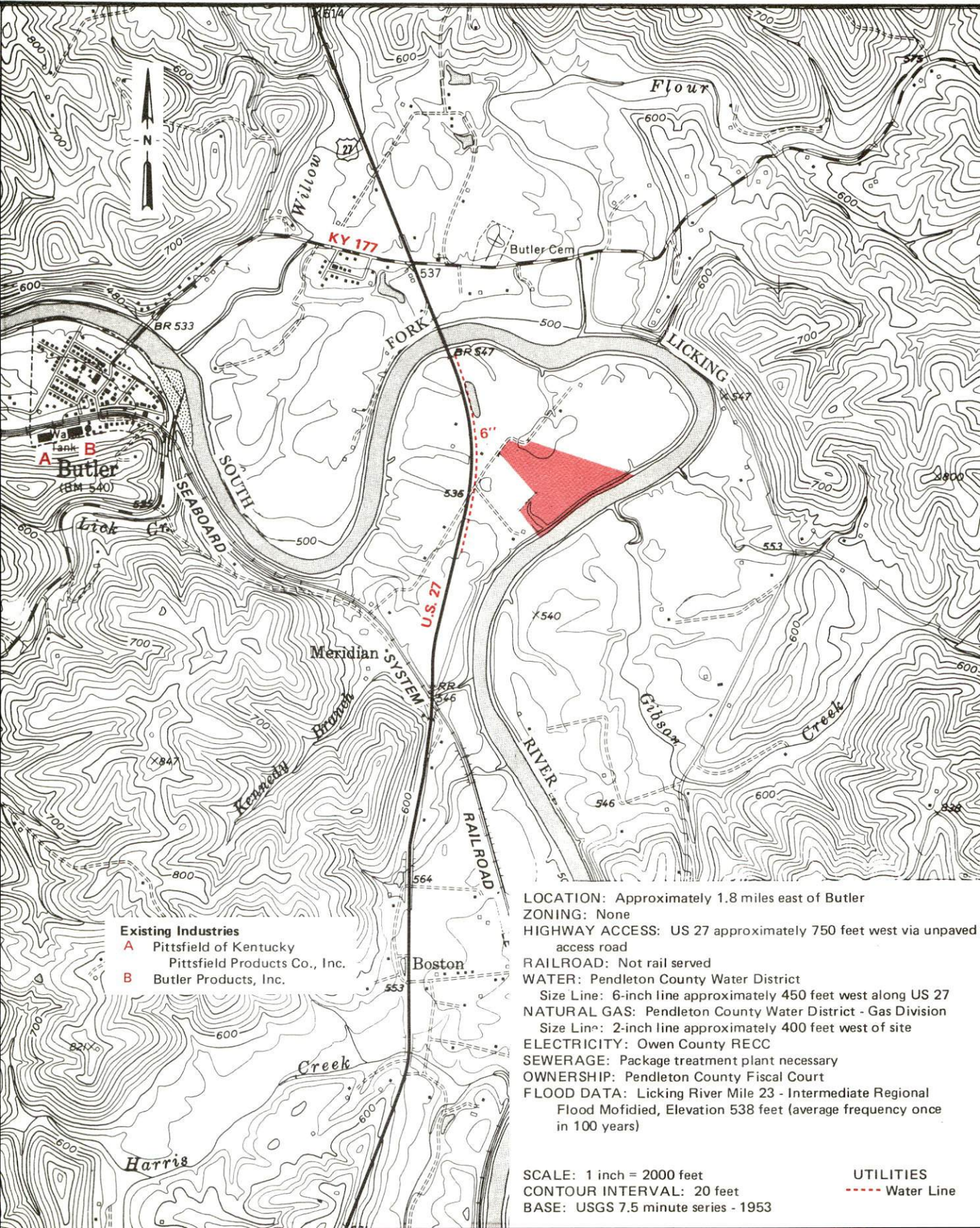
- A Fuller Mfg. and Supply Co.
- B Pepsi-Cola Co.
- C Available Industrial Bldg. - 127,216 sq. ft.

SCALE: 1 inch = 2000 feet
 CONTOUR INTERVAL: 20 feet
 BASE: USGS 7.5 minute series - 1954

UTILITIES
 - - - - - Water Line
 - - - - - Sewer Line

BUTLER, KENTUCKY --- Site 184 --- 24.7 Acres

For more information contact the Kentucky Department of Economic Development, Industrial Development & Marketing Division, Capital Plaza Tower, Frankfort, Kentucky 40601 (502-564-7140).



- Existing Industries**
- A** Pittsfield of Kentucky
Pittsfield Products Co., Inc.
 - B** Butler Products, Inc.

LOCATION: Approximately 1.8 miles east of Butler
 ZONING: None
 HIGHWAY ACCESS: US 27 approximately 750 feet west via unpaved access road
 RAILROAD: Not rail served
 WATER: Pendleton County Water District
 Size Line: 6-inch line approximately 450 feet west along US 27
 NATURAL GAS: Pendleton County Water District - Gas Division
 Size Line: 2-inch line approximately 400 feet west of site
 ELECTRICITY: Owen County RECC
 SEWERAGE: Package treatment plant necessary
 OWNERSHIP: Pendleton County Fiscal Court
 FLOOD DATA: Licking River Mile 23 - Intermediate Regional Flood Modified, Elevation 538 feet (average frequency once in 100 years)

SCALE: 1 inch = 2000 feet
 CONTOUR INTERVAL: 20 feet
 BASE: USGS 7.5 minute series - 1953

UTILITIES
 - - - - - Water Line

A COMPREHENSIVE REPORT ON
FALMOUTH AND BUTLER, KENTUCKY

Prepared by
The Kentucky Department of Economic Development
Division of Research and Planning
in cooperation with
The Pendleton County Chamber of Commerce

1984

Program manager - Pamela Riley; research - Bill Morris; clerical - Bobbi Graves; graphics - Frank Ferrante, Tony Cecconi, Robert Owens; cartography - Site Evaluation Branch, Division of Industrial Development and Marketing. Cost of printing paid from state funds.

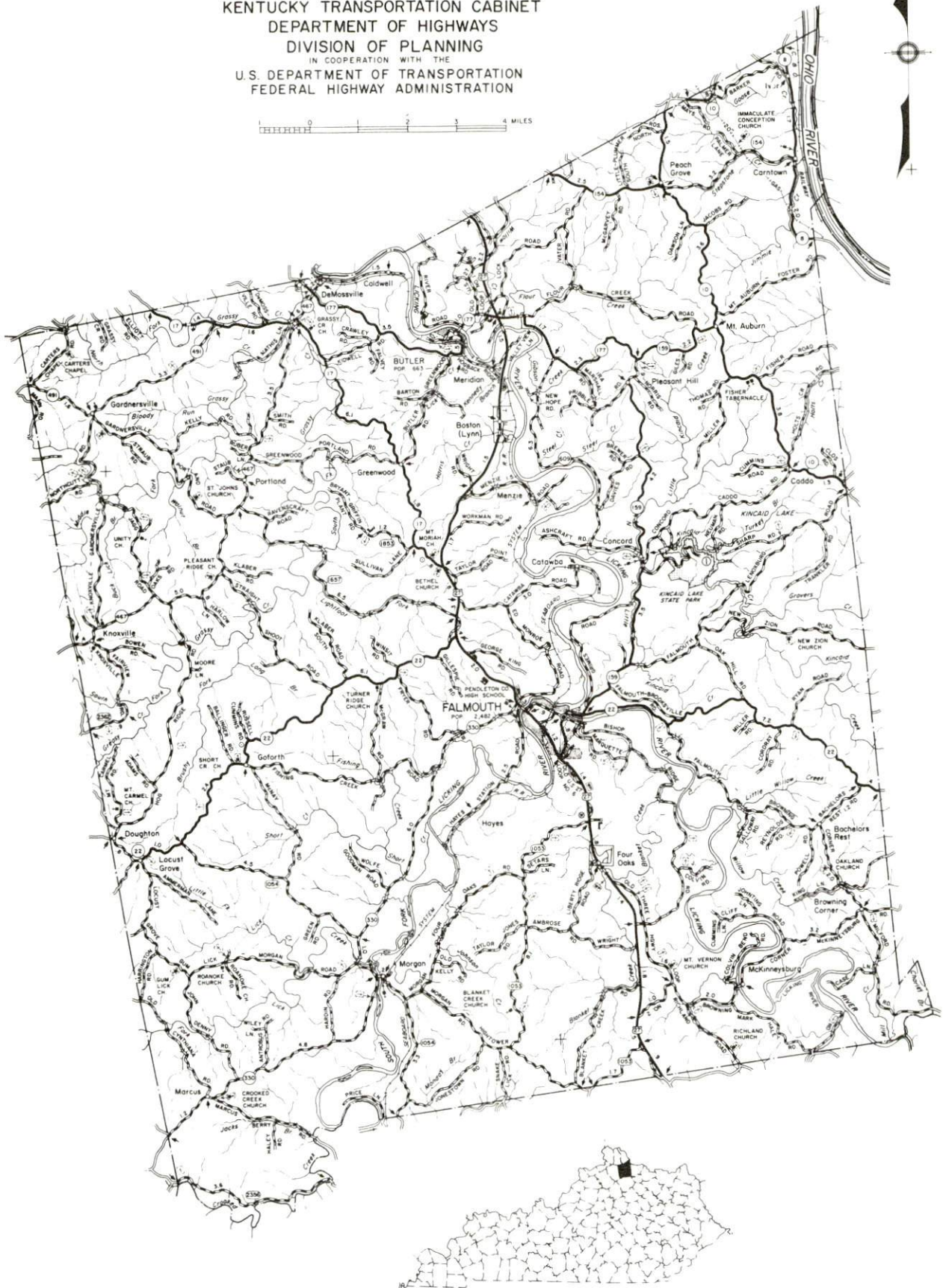
TABLE OF CONTENTS

<u>Chapter</u>	<u>Page</u>
INDUSTRIAL SITES	i
FALMOUTH AND BUTLER, KENTUCKY - A RESOURCE PROFILE	1
THE LABOR MARKET AREA	3
Population	3
Labor Force Characteristics of Residents, 1982	3
Selected Components of Nonagricultural Employment, by Place of Work, 1982	4
Falmouth and Butler Manufacturing Firms, Their Products and Employment	5
Labor Organizations in Manufacturing Firms	6
Industrial Services	7
Estimated Male Labor Supply	8
Estimated Female Labor Supply	8
Average Weekly Wages By Industry, by Place of Work, 1982	9
Per Capita Personal Income	11
TRANSPORTATION	12
Rail	12
Highways	12
Truck Service	13
Air	14
Bus	15
Rental Services	15
Water	15
POWER AND FUEL	16
Electricity	16
Natural Gas	17
Other Fuels	17
WATER AND SEWERAGE	18
Public Water Supply	18
Raw Water	20
Sewerage	21
CLIMATE	22

<u>Chapter</u>	<u>Page</u>
LOCAL GOVERNMENT	23
City	23
County	23
Assessed Value of Property, 1983	23
Property Taxes	24
Combined State and Local Rates Per \$100 Valuation, 1983	24
Planning and Zoning	25
Safety	25
Police	25
Fire	25
Refuse Collection and Disposal	25
EDUCATION	26
Public Schools	26
Area Colleges and Universities	27
Vocational Schools	28
HEALTH.....	30
Local Medical Personnel	30
Hospitals	30
Other Medical Facilities	31
Ambulance Service	31
Public Health.....	31
OTHER LOCAL FACILITIES.....	32
Communications	32
Library Services	32
Religious Institutions	33
Financial Institutions	33
Hotels and Motels	34
Clubs and Organizations	34
RECREATION	35
COMMUNITY IMPROVEMENTS	37

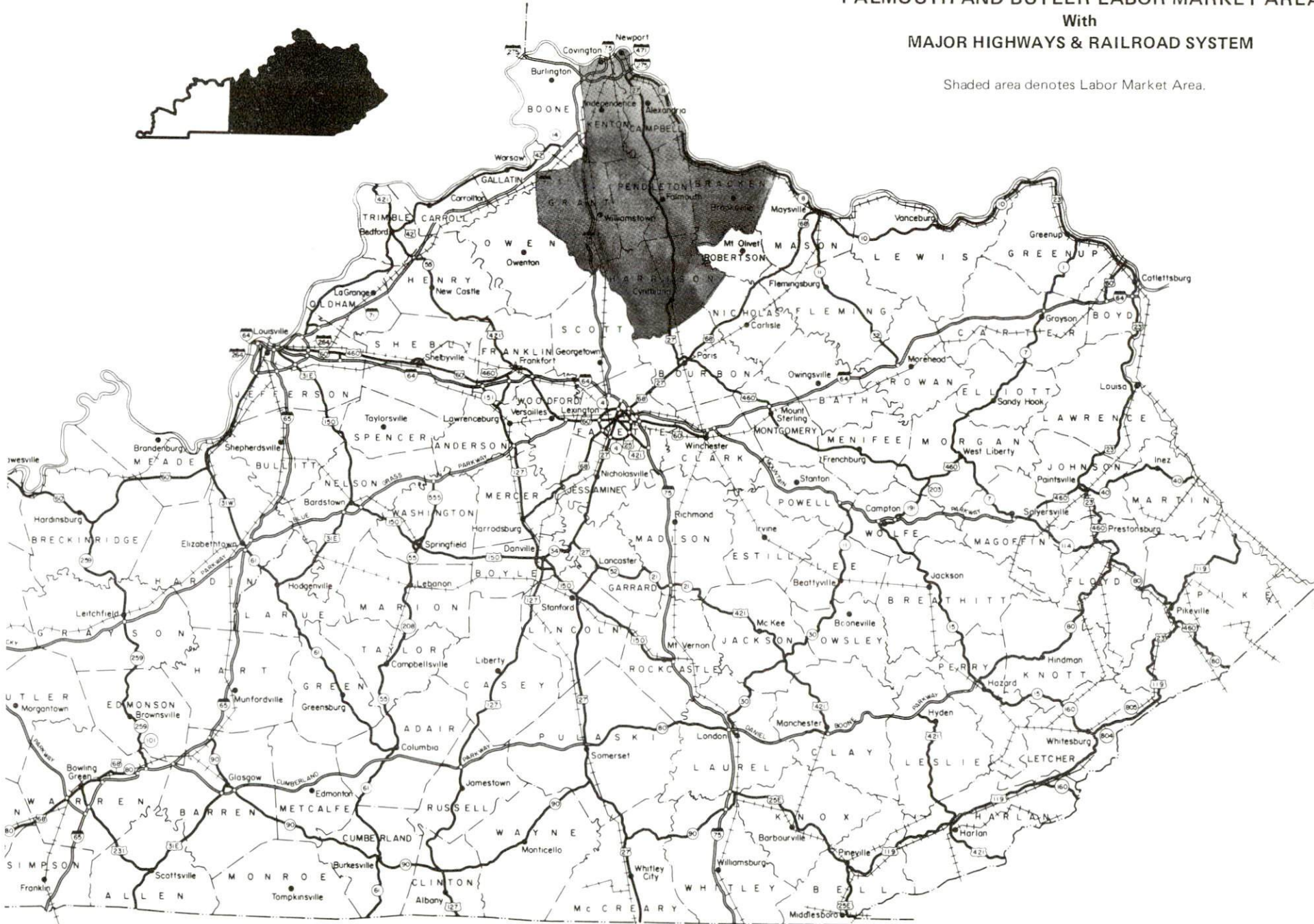
1984 EDITION
GENERAL HIGHWAY MAP
PENDLETON COUNTY
KENTUCKY

PREPARED BY THE
KENTUCKY TRANSPORTATION CABINET
DEPARTMENT OF HIGHWAYS
DIVISION OF PLANNING
IN COOPERATION WITH THE
U.S. DEPARTMENT OF TRANSPORTATION
FEDERAL HIGHWAY ADMINISTRATION



FALMOUTH AND BUTLER LABOR MARKET AREA With MAJOR HIGHWAYS & RAILROAD SYSTEM

Shaded area denotes Labor Market Area.



FALMOUTH AND BUTLER, KENTUCKY - A RESOURCE PROFILE

Falmouth, the county seat of Pendleton County, is located in the Licking River Valley in northern Kentucky, 37 miles south of Cincinnati, Ohio; 116 miles northeast of Louisville, Kentucky; and 52 miles north of Lexington, Kentucky. Falmouth had a 1980 population of 2,482 persons.

Butler is also located in the Licking River Valley, 12 miles north of Falmouth. Butler had a 1980 population of 663.

Pendleton County has a land area of 281 square miles. The northeast corner of the county is bounded by the Ohio River, and the Licking River flows northward through the central portion of the county. Pendleton County had a 1980 population of 10,989.

The Economic Framework

The total number of Pendleton County residents employed in 1982 averaged 3,720, with nonagricultural jobs accounting for 3,270 workers. Manufacturing employers in the county reported 450 workers, wholesale and retail trade 330, state and local government 330, and 120 employees in service occupations. Manufacturing employment is greatest in stone, clay and glass products and transportation equipment.

Per capita personal income in Pendleton County in 1981 was \$7,170. Between 1977 and 1981, per capita income increased 48 percent.

The Falmouth and Butler labor market area includes Pendleton County and the adjoining Kentucky counties of Bracken, Campbell, Grant, Harrison, and Kenton. The total number of residents of the labor market area employed in 1982 averaged 114,905, with nonagricultural jobs accounting for 111,940 workers. Manufacturing employers in this area reported 8,610 workers, wholesale and retail trade 15,840, state and local government 8,980, and 12,445 in the service industries.

Resources for Growth

1. Labor Supply - There is a current labor supply of 11,860 men and 13,080 women available for industrial jobs in the labor market area. In addition, from 1984 through 1988, 11,750 young men and 11,195 young women in the area will become 18 years of age and potentially available for industrial jobs.

2. Transportation - The Seaboard System Railroad provides freight services to Falmouth and Butler. U.S. Highway 27 and Kentucky Highway 22 west of Falmouth are "AAA"-rated, 80,000-pound gross load limit highways serving Falmouth. Kentucky Highway 22 east of Falmouth is a "AA"-rated, 62,000-pound gross load limit highway. Butler is one mile west of U.S. Highway 27, via Kentucky Highway 177, a "AA"-rated highway. Interstate 75 is 19 miles west of Falmouth via Kentucky 22, and Interstate 275 is 30 miles north of Falmouth via U.S. 27. One common carrier trucking company maintains terminal facilities at Falmouth. Eight other common carriers serve Falmouth, and five of these also serve Butler. The nearest scheduled commercial airline service is available at the Greater Cincinnati International Airport in Boone County, Kentucky, 44 miles northwest of Falmouth. The Pendleton County Airport has a paved 4,000-foot runway.

3. Power and Fuel - The City of Falmouth, whose source of power is Kentucky Utilities Company, provides electricity to Falmouth. Kentucky Utilities Company provides electricity to Butler and parts of Pendleton County. The remainder of Pendleton County is served by Harrison Rural Electric Cooperative Corporation and Owen County Rural Electric Cooperative Corporation, whose source of power is East Kentucky Power Cooperative. The Pendleton County Water District, Gas Division, provides natural gas service to Falmouth and Butler. Two propane dealers and three fuel oil dealers are located in Pendleton County.

4. Education - The Pendleton County School System enrolled 1,619 elementary school and 724 high school students in 1984.

There are 16 institutions of higher learning within 65 miles of Falmouth.

The Northern Campbell County Vocational-Technical School, located 30 miles north of Falmouth at Highland Heights, offers training in 7 course areas. The Northern Kentucky State Vocational-Technical School at Covington, 36 miles north of Falmouth, offers training in 16 course areas. The Northern Kentucky Health Occupations Center at Edgewood, 37 miles north of Falmouth, offers training in 4 course areas. The Campbell County Area Vocational Education Center at Alexandria, 22 miles north of Falmouth, and the Harrison County Area Vocational Education Center at Cynthiana, 22 miles south of Falmouth, offer instruction in 10 and 9 course areas, respectively.

THE LABOR MARKET AREA

The Falmouth and Butler Labor Market Area includes Pendleton County and the adjoining Kentucky counties of Bracken, Campbell, Grant, Harrison, and Kenton.

POPULATION			
<u>Area</u>	<u>1980</u>	<u>1970</u>	<u>Percent Nonwhite</u>
Falmouth	2,482	2,593	1.4
Butler	663	558	0.0
Labor Market Area	267,576	259,477	N/A
Pendleton County	10,989	9,949	0.5
Bracken County	7,738	7,227	0.8
Campbell County	83,317	88,704	1.3
Grant County	13,308	9,999	0.4
Harrison County	15,166	14,158	3.2
Kenton County	137,058	129,440	3.3

Note: The 1980 counts of population by race are provisional.

Sources: U.S. Department of Commerce, Bureau of the Census, 1980 Census of Population and Housing, March 1981; 1980 Census of Population, Number of Inhabitants. Population Research Unit, Urban Studies Center, University of Louisville, Kentucky Demographics: The 1980 Census of Kentucky, Characteristics of Population, Households, Housing, January 1982.

LABOR FORCE CHARACTERISTICS OF RESIDENTS, 1982

	<u>Pendleton County</u>	<u>Labor Market Area</u>
Civilian Labor Force	4,516	126,814
Employment	3,723	114,905
Agricultural	450	2,969
Nonagricultural	3,273	111,936
Unemployment	793	11,909
Rate of Unemployment (%)	17.6	9.4

Source: Kentucky Cabinet for Human Resources, Kentucky Labor Force Estimates, Annual Averages, 1982.

SELECTED COMPONENTS OF NONAGRICULTURAL EMPLOYMENT,
BY PLACE OF WORK, 1982

	<u>Pendleton County</u>	<u>Labor Market Area</u>
All Industries (total)	1,608	52,304
Manufacturing	453	8,609
Wholesale & Retail Trade	328	15,839
Services	123	12,445
State/Local Government	328	8,983
Contract Construction	72	2,189

Note: Excludes domestic workers, railway workers, certain nonprofit corporations, majority of federal government workers, and self-employed workers.

Source: Kentucky Cabinet for Human Resources, Average Monthly Workers Covered by Kentucky Unemployment Insurance Law, 1982.

FALMOUTH AND BUTLER MANUFACTURING FIRMS,
THEIR PRODUCTS AND EMPLOYMENT

<u>Firm</u> (Establishment date)	<u>Product</u>	<u>Employment</u>			<u>Labor Unions</u>
		<u>Total</u>	<u>Male</u>	<u>Female</u>	
Falmouth					
Falmouth Outlook (1907)	Newspaper, job printing	8	2	6	
Fuller Manufacturing and Supply Company (1952)	Remanufactured auto engines and parts	150	--	--	
Moores Machine Shop (1962)	Machine shop, weldments, extrusion dies, and injection molds	2	--	--	
Paynter's Generator Service (1983)	Generator rebuilding and repair	7	6	1	
Butler					
Black River Lime Company (1967)	Chemical and metallurgical quicklime products, hydrated lime	169	160	9	Steelworkers*
Butler Products, Inc. (1957)	Prop legs and stabilizing stands for trailers, driveshaft center bearing supports	35	33	2	Steelworkers*
Griffin Industries, Inc. (1942)	Rendering tallow grease, meat meal, hides	46	42	4	Teamsters*
Jay Gee, Inc. (1971)	Metal fabrication, machine shop	16	14	2	

(Contd.)

<u>Firm</u> (Establishment date)	<u>Product</u>	<u>Employment</u>			<u>Labor Unions</u>
		<u>Total</u>	<u>Male</u>	<u>Female</u>	
L & W Lumber Company (1979)	Skids, rough lumber, wood boxes	5	4	1	
Mago Construction Company, Inc. (1969)	Bituminous concrete surface mixes	3	3	--	
Pittsfield of Kentucky, Division Pittsfield Products Company, Inc. (1981)	Industrial filters	60	20	40	
Jesse Vater Manufacturing Company (1963)	Screw machine products	2	2	0	

* See Labor Organizations below.

Sources: Kentucky Department of Economic Development, 1984 Kentucky Directory of Manufacturers; Division of Research and Planning.

LABOR ORGANIZATIONS IN MANUFACTURING FIRMS

Union

Representing workers at:

International Brotherhood of
Teamsters, Chauffeurs,
Warehousemen and Helpers
of America

Griffin Industries, Inc.

United Steelworkers of
America, AFL-CIO

Black River Lime Company;
Butler Products, Inc.

INDUSTRIAL SERVICES

<u>Types of Services</u>	<u>Location</u>	<u>Mileage from Falmouth</u>
Custom Plastics Producers	Bellevue, Kentucky	35
	Florence, Kentucky	42
	Georgetown, Kentucky	43
Electric Motor Repair	Covington, Kentucky	36
	Cincinnati, Ohio	37
Grinding, Precision & Tool	Cincinnati, Ohio	37
	Erlanger, Kentucky	39
	Georgetown, Kentucky	43
Heat Treating Facilities	Cincinnati, Ohio	37
	Georgetown, Kentucky	43
Industrial Equipment & Supplies	Cincinnati, Ohio	37
	Florence, Kentucky	42
Industrial Gases	Cincinnati, Ohio	37
Industrial Waste Removal	Butler, Kentucky	12
Machine Shops, Tool & Die	Falmouth, Kentucky	-
Metal Finishers	Cynthiana, Kentucky	22
	Newport, Kentucky	35
	Covington, Kentucky	36
	Cincinnati, Ohio	37
Metal Service Centers	Covington, Kentucky	36
	Cincinnati, Ohio	37
Millwrights	Covington, Kentucky	36
	Cincinnati, Ohio	37
	Villa Hills, Kentucky	44

Sources: Kentucky Department of Economic Development, Kentucky Directory of Selected Industrial Services, 1983; Division of Research and Planning.

ESTIMATED MALE LABOR SUPPLY
FALMOUTH AND BUTLER LABOR MARKET AREA

Area	Current			Not in Labor Force	Future
	Total	Unemployed	Under- employed		Becoming 18 years of age 1984 thru 1988
Labor Market					
Area*	11,862	7,317	3,988	557	11,752
Pendleton	820	433	179	208	539
Bracken	757	302	106	349	338
Campbell	3,465	2,207	1,258	0	3,668
Grant	569	365	204	0	636
Harrison	637	433	204	0	629
Kenton	5,614	3,577	2,037	0	5,942

* Additional workers may be drawn from other nearby counties.

Note: Unemployed - persons unemployed and actively seeking work;
Underemployed - persons employed but working only 14 to 26 weeks per year;
Not in Labor Force - represents the number of persons who would enter the labor force if suitable employment were available (based on the assumption that persons in Kentucky would like to participate in the labor force in the same proportion that they do nationally).

Sources: Kentucky Cabinet for Human Resources, Kentucky Labor Supply Estimates by Area Development District and County, 1982. Kentucky Department of Economic Development, Future Labor Supply Becoming 18 Years of Age, 1984 thru 1988.

ESTIMATED FEMALE LABOR SUPPLY
FALMOUTH AND BUTLER LABOR MARKET AREA

Area	Current			Not in Labor Force	Future
	Total	Unemployed	Under- employed		Becoming 18 years of age 1984 thru 1988
Labor Market					
Area*	13,080	4,592	5,415	3,073	11,195
Pendleton	974	360	175	439	464
Bracken	938	114	139	685	330
Campbell	3,941	1,438	1,751	752	3,508
Grant	1,009	209	228	572	617
Harrison	633	232	324	77	552
Kenton	5,585	2,239	2,798	548	5,724

* Additional workers may be drawn from other nearby counties.

Note: Unemployed - persons unemployed and actively seeking work;
Underemployed - persons employed but working only 14 to 26 weeks per year;
Not in Labor Force - represents the number of persons who would enter the labor force if suitable employment were available (based on the assumption that persons in Kentucky would like to participate in the labor force in the same proportion that they do nationally).

Sources: Kentucky Cabinet for Human Resources, Kentucky Labor Supply Estimates by Area Development District and County, 1982. Kentucky Department of Economic Development, Future Labor Supply Becoming 18 Years of Age, 1984 thru 1988.

AVERAGE WEEKLY WAGES BY INDUSTRY,
BY PLACE OF WORK, 1982

	<u>Pendleton County</u>	<u>Bracken County</u>	<u>Campbell County</u>
All Industries	\$ 240.57	\$ 230.55	\$ 260.50
Mining & Quarrying	*	0	0
Contract Construction	168.36	152.91	330.25
Manufacturing	310.78	*	388.28
Transportation, Communications & Public Utilities	212.60	345.39	336.82
Wholesale & Retail Trade	150.96	162.88	184.01
Finance, Insurance & Real Estate	179.43	219.17	244.48
Services	123.85	110.09	260.61
State/Local Government	238.11	202.68	275.03
Other	*	*	164.33
	<u>Grant County</u>	<u>Harrison County</u>	<u>Kenton County</u>
All Industries	\$ 209.67	\$ 264.33	\$ 256.42
Mining & Quarrying	0	*	*
Contract Construction	218.92	307.07	361.59
Manufacturing	266.92	337.25	356.81
Transportation, Communications & Public Utilities	328.40	303.46	370.93
Wholesale & Retail Trade	161.74	164.72	198.05
Finance, Insurance & Real Estate	209.27	245.41	265.33
Services	133.13	188.95	237.55
State/Local Government	236.87	253.97	272.64
Other	101.93	204.81	159.71

* Not disclosed.

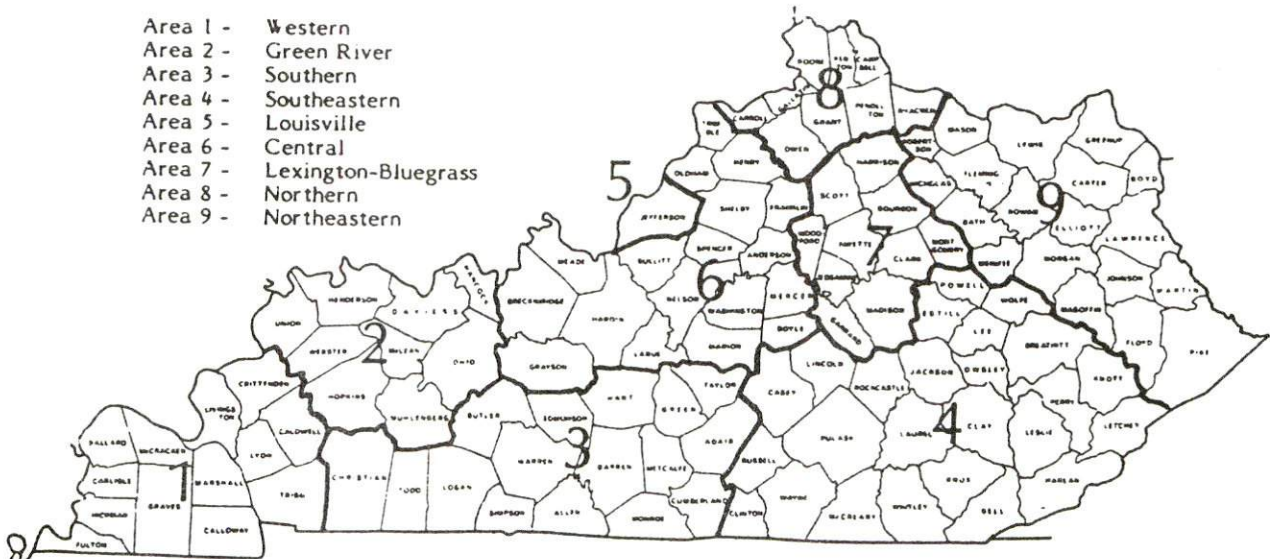
Note: Excludes domestic workers, railway workers, certain nonprofit corporations, majority of federal government workers, and self-employed workers.

Source: Kentucky Cabinet for Human Resources, Average Weekly Wages of Workers Covered by Kentucky Unemployment Insurance Law, 1982.

Occupational wage rates for specific industries are usually not available to most government agencies, and wage data furnished to state employment agencies by individual industrial employers are protected from disclosure by federal law. The most reliable up-to-date wage information can be obtained by direct contact with local employers.

Associated Industries of Kentucky, a voluntary organization of Kentucky businesses, regularly collects occupational wage rates and fringe benefits data from participating member firms. Data are compiled for over 127 clearly defined office, production, and service occupations. Tabulations are published for nine geographical areas of Kentucky, as shown on the map below. It should be noted that the data may be weighted by the preponderance of firms in the larger cities and may be somewhat higher than the rates paid in the smaller communities. Data from these tabulations are available, upon request, from the Kentucky Department of Economic Development, Frankfort, Kentucky 40601.

- Area 1 - Western
- Area 2 - Green River
- Area 3 - Southern
- Area 4 - Southeastern
- Area 5 - Louisville
- Area 6 - Central
- Area 7 - Lexington-Bluegrass
- Area 8 - Northern
- Area 9 - Northeastern



Associated Industries of Kentucky Area Wage Surveys

PER CAPITA PERSONAL INCOME

<u>Area</u>	<u>1977</u>	<u>1981</u>	<u>Percent Change</u>
Pendleton County	\$ 4,858	\$ 7,170	47.6
Labor Market Area Range	\$4,548 - 6,584	\$6,846 - 9,743	N/A
Kentucky	5,797	8,416	45.2
U. S.	6,984	10,495	50.3

Source: U. S. Bureau of Economic Analysis, Kentucky Economic Information System, May 1983.

TRANSPORTATION

Rail

Line serving **Falmouth** - Seaboard System Railroad

Services - Main line; daily turnaround service from Winchester Monday through Friday; 10 northbound and 10 southbound through freights daily; switching services available; team track space for 3 cars; siding space for 8 cars; nearest piggyback facilities available at Cincinnati, Ohio, 37 miles north

Line serving **Butler** - Seaboard System Railroad

Services - Main line; daily turnaround service from Winchester Monday through Friday; 10 northbound and 10 southbound through freights daily; switching services available; team track space for 4 cars; siding space for 6 cars; nearest piggyback facilities available at Cincinnati, Ohio, 27 miles north

For details on routing, schedules, rates, and services, contact:

Manager of Industrial Development
Seaboard System Railroad
P.O. Box 32290
Louisville, Kentucky 40232
(502) 587-5228

Highways

Falmouth is served by U.S. Highway 27, a "AAA"-rated (80,000-pound gross load limit) highway, and by Kentucky Route 22, which is "AAA"-rated west of Falmouth and "AA"-rated (62,000-pound gross load limit) east of Falmouth.

Butler is located 12 miles north of Falmouth via U.S. Highway 27 and Kentucky Route 177, also a "AA"-rated highway.

Access to Interstate 75 is 19 miles west of Falmouth via Kentucky Route 22, and 14 miles west of Butler via Kentucky Routes 177, 17, and 14, all "AA"-rated highways. Interstate 275 is 30 miles north of Falmouth via U.S. Highway 27. Falmouth is 37 miles southeast of Interstate 71; 52 miles north of Interstate 64; 53 miles north of the Mountain Parkway; and 62 miles northeast of the Blue Grass Parkway.

Truck Service

Company

Home Office

Falmouth and Butler

Craig's Express, Inc.*(T)	U.S. Highway 27 Falmouth, Kentucky 41040
Expressway, Inc.* (Falmouth only)	1105 St. Louis Louisville, Kentucky 40210
General Highway Express, Inc.* IML Freight, Inc.*	Sidney, Ohio 45365 P.O. Box 30277 Salt Lake City, Utah 84130
Interstate System**	110 Ionia NW Grand Rapids, Michigan 49503
Leoni Motor Express, Inc. * (Falmouth only)	Chicago Heights, Illinois 60411
McLean Trucking Company**	P.O. Box 213 Winston-Salem, North Carolina 27154
Roadway Express, Inc.* (Falmouth only)	1077 Gorge Boulevard Akron, Ohio 44310
Yellow Freight System, Inc.*	10990 Roe Avenue P.O. Box 7270 Overland Park, Kansas 66207

(T) Terminal at Falmouth.

* Interstate and intrastate service.

** Interstate service only.

Source: American Motor Carrier Directory, Spring, 1984.

Other Freight Services

Nearest Office or Shipping Center

Emery	Cincinnati, Ohio, 37 miles north of Falmouth
Federal Express	Erlanger, Kentucky, 39 miles northwest of Falmouth
Purolator Courier	Cincinnati, Ohio, 37 miles north of Falmouth
United Parcel Service	Cincinnati, Ohio, 37 miles north of Falmouth

HIGHWAY MILES AND TRUCK TRANSIT TIME IN DAYS FROM
FALMOUTH, KENTUCKY, TO SELECTED MARKET CENTERS

City	Highway Miles	Delivery		City	Highway Miles	Delivery	
		Time TL				Time TL	
Atlanta, Ga.	416	2		Los Angeles, Ca.	2,216	5	
Baltimore, Md.	534	2		Louisville, Ky.	116	Overnight	
Birmingham, Ala.	450	2		Nashville, Tenn.	262	1	
Chicago, Ill.	324	1		New Orleans, La.	779	3	
Cincinnati, Ohio	37	Overnight		New York, N. Y.	684	3	
Cleveland, Ohio	281	1		Pittsburgh, Pa.	324	1	
Detroit, Mich.	296	1		St. Louis, Mo.	377	1	
Knoxville, Tenn.	223	1					

Note: Mileage computations are via the best interstate or primary highways, not necessarily the most direct route of travel.

Sources: Rand McNally Road Atlas, 1979. Official Kentucky Mileage Map, 1980.
Delivery time - Craig's Express, Inc., U.S. Highway 27, Falmouth, Kentucky 41040.

Air

Local

Location: Pendleton County Airport*
3 miles southwest of Falmouth
Runways: 1 paved
Length: 4,000 feet
Traffic
Control: None
Lighting: None
Services: Hangar, tie-downs

(Cont'd)

* A new airport opened at Falmouth during Spring 1984. Construction of the \$1,000,000 facility began in 1982. Presently, the airport features a paved 4,000-foot runway, hangar space, and tie-downs.

Nearest Scheduled Commercial Airline Service

Greater Cincinnati International Airport in Boone County,
Kentucky

Location: 8 miles southwest of Covington, Kentucky;
44 miles northwest of Falmouth

Runways: 3 paved

Length: 9,500 feet; 7,800 feet; 5,500 feet

Traffic Control: Local and ground flight data, clearance delivery,
arrival and departure data, arrival and departure
radar, satellite control

Lighting: Beacon, VASI, MALS-RAIL, ALS-SFL, HIRL, CL, TDZ

Services: American, Delta, Pan Am, Piedmont, Republic, TWA,
United, USAir, Wright/Aeromech, Air Florida,
Britt Airways, Comair, Tennessee Airways,
Trans-Midwest; fuel - 100LL, 100, jet-A; hangars,
tie-downs; major A & P repairs, major Avionics
repairs; APU, charter, flight instruction,
oxygen, plane rental, survival equipment, U. S.
Customs; weather information; taxi, limousine,
car rentals, courtesy car; restaurant, snack bar;
hotel

Air Freight Services: Air freight terminal

Bus - Southern Greyhound Bus Lines

Rental Services - Truck and trailer rental services are available at Falmouth; car rentals are available at Covington, 36 miles north of Falmouth

Water

The nearest navigable waterway is the Ohio River near Bradford, Kentucky, 29 miles northeast of Falmouth. A 9-foot navigation channel is maintained along the entire length of the Ohio River. A 9-foot navigation channel is also maintained on the Licking River in the Northern Kentucky-Cincinnati area, 33 miles north of Falmouth, where riverport facilities are under development. This 9-foot navigation channel is maintained for a distance of 7 miles, to the Licking River's confluence with the Ohio River.

The Northern Kentucky Port Authority has been designated as a Foreign Trade Zone and offers complete U.S. Customs services for exports and imports.

POWER AND FUEL

Electricity

Company serving **Falmouth** - City of Falmouth
Source of power - Kentucky Utilities Company
Total generating capacity - 2,639,100 KW*
For industrial rates contact:

City of Falmouth
212 Main Street
Falmouth, Kentucky 41040
(606) 654-6937

Company serving **Butler and parts of Pendleton County** - Kentucky Utilities Company
Source of power - Kentucky Utilities Company
Total generating capacity - 2,639,100 KW*
For industrial rates contact:

Industrial Development Department
Kentucky Utilities Company
One Quality Street
Lexington, Kentucky 40507
(606) 255-1461

Companies serving remainder of **Pendleton County** - Harrison Rural Electric Cooperative Corporation; Owen County Rural Electric Cooperative Corporation
Source of power - East Kentucky Power Cooperative
Total generating capacity - 1,304,000 KW**
For industrial rates contact:

Industrial Development Division
East Kentucky Power Cooperative
P.O. Box 707
Winchester, Kentucky 40391
(606) 744-4812

* A new generating unit is under construction in Carroll County. Due to be completed in 1984, the unit will have a generating capacity of 511,000 KW.

** East Kentucky Power Cooperative's total generating capacity will be increased when a new 600,000 KW coal-fired generation plant is completed in southeast Clark County in 1992.

Natural Gas

Company serving **Falmouth and Butler** - Pendleton County Water District, Gas Division

Source of supply - Columbia Gas Transmission Corporation

Size of transmission mains - 20 inches (supplier); 4 to 6 inches (distributor)

Distribution mains - 2 to 4 inches

Distribution pressure - 20 to 125 psi

Btu content - 1,030 per cubic foot

Specific gravity - 0.65

For rates and supplies contact:

General Manager
Pendleton County Water District,
Gas Division
400 Main Street
Falmouth, Kentucky 41040
(606) 654-6964

Other Fuels

Propane

Midwest Bottle Gas Distributors,
Inc.*
Robbins Avenue, P.O. Box 150
Falmouth, Kentucky 41040

Suburban Propane*
1417 North Main
Williamstown, Kentucky 40197

Pyrofax Gas Corporation*
Highway 27
Route 2, Box 79 E
Falmouth, Kentucky 41040

Fuel oils

Distillate fuel oil -

Ashland Oil Company*
2nd and Park Streets
Falmouth, Kentucky 41040

Licking Valley Oil, Inc.*
U.S. Highway 27
Butler, Kentucky 41006

Dixie Oil Company*
Montjoy Street
Falmouth, Kentucky 41040

Residual fuel oil - Arrangements must be made with the refinery.

Low sulphur content coal - Available in Kentucky.

* Bulk plant.

WATER AND SEWERAGE

Public Water Supply

Company serving **Falmouth** - City of Falmouth*
212 Main Street
Falmouth, Kentucky 41040
(606) 654-6937

Source - Licking River
Treatment plant capacity - 1,000,000 gallons per day
Average daily consumption - 500,000 gallons
Peak daily consumption - 550,000 gallons
Type treatment - Flocculation, filtration, chlorination, and fluoridation
Storage capacity - 900,000 gallons
Size lines - 4 through 10 inches
Average pressure - 55 psi
Average temperature - N/A

MONTHLY WATER RATES

First	2,000 gallons	\$ 4.00 (Minimum bill)
Next	3,000 gallons	.85 per M gallons
Next	5,000 gallons	.70 per M gallons
Next	40,000 gallons	.58 per M gallons
All over	50,000 gallons	.75 per M gallons

Tap-on charge:

3/4-inch meter - \$200
Larger than 3/4-inch meter - Actual cost of labor and materials

* An \$835,000 investment is being made to renovate the Falmouth water treatment plant. The project began during the summer of 1984 and involves enlarging and covering a treated water reservoir, adding new pumps and screening devices, and construction of a new flocculation building with modern chemical feed equipment. Capacity of the treatment plant should be increased from 1,000,000 gallons per day to 1,500,000 gallons per day.

Company serving **Butler** - City of Butler Water and Sanitation*
Upper Mill Street
Butler, Kentucky 41006
(606) 472-5031

Source - Licking River
Treatment plant capacity - 150,000 gallons per day
Average daily consumption - 62,000 gallons
Peak daily consumption - 100,000 gallons
Type treatment - Filtration, chlorination, fluoridation
Storage capacity - 50,000 gallons
Size lines - 4 and 6 inches
Average pressure - 55 psi
Average temperature - 50 degrees F.

MONTHLY WATER RATES

First	2,000 gallons	\$ 5.04 (Minimum)
Next	3,000 gallons	1.44 per M gallons
Next	5,000 gallons	1.22 per M gallons
All over	10,000 gallons	.94 per M gallons

Tap-on charge:

\$150, plus \$75 deposit (refunded when service is disconnected)

* An improvement project to renovate the Butler water treatment and distribution system began in the summer of 1984. The \$286,000 project involves installation of new pumps, construction of a 200,000-gallon reservoir for storage of treated water, and extensions of water distribution lines.

Name of water district - Pendleton County Water District*
400 Main Street
Falmouth, Kentucky 41040
(606) 654-6964

Area served - Northern and central Pendleton County and southern Campbell County

Date when water district began operating - 1962

Source of supply of treated water - City of Falmouth and Campbell County Water District

Average amount of water used in a 24-hour period - 150,000 gallons

Peak amount of water used in a 24-hour period - 180,000 gallons

Storage capacity - 270,000 gallons

Average pressure - 100 psi

Average temperature - N/A

Size lines - 3 to 8 inches

MONTHLY WATER RATES

First	2,000 gallons	\$ 6.30 (Minimum)
Next	3,000 gallons	1.95 per M gallons
Next	10,000 gallons	1.25 per M gallons
Over	15,000 gallons	1.15 per M gallons

Tap-on charge:

Residential - \$300

Commercial - Actual cost of labor and materials

Raw Water

Surface water sources - Licking River, North Fork of Licking River, South Fork of Licking River

Average discharge - Licking River at Catawba, Kentucky - 4,148 cfs (56 years, USGS, unadjusted)

Expected ground water yield - 500 to 1,000 gpm along Ohio River in northeastern tip of county; 50 to 200 gpm along Licking River in southern section of county; 5 to 50 gpm along Licking River in northern section of county; 5 gpm or less in remainder of county

* The Pendleton County Water District has begun a \$1,000,000 improvement project. Water distribution lines are being extended in western Pendleton County, and a new 150,000-gallon water storage tank is being constructed.

Sewerage

Company serving **Falmouth** - City of Falmouth
212 Main Street
Falmouth, Kentucky 41040
(606) 654-6937

Design capacity - 390,000 gallons per day
Average daily flow - 300,000 gallons
Type of treatment - Primary and secondary*
Treatment processes - Aeration, clarifier, digester, chlorination and drying beds
Treated effluent discharged into - Licking River
Size of sanitary mains - 6, 8, 10 and 12 inches
Size of storm mains - N/A
Monthly rates - 50 percent of monthly water rates
Tap-on charge: \$200

Company serving **Butler** - City of Butler Water and Sanitation
Riverside Drive
Butler, Kentucky 41006
(606) 472-5031

Design capacity - 60,000 gallons per day
Average daily flow - 30,000 gallons
Type of treatment - Primary and secondary*
Treatment processes - Aeration, clarifier, and chlorination
Treated effluent discharged into - Licking River
Size of sanitary mains - 6, 8 and 10 inches
Size of storm mains - N/A
Monthly rates - Based on water usage

First	2,000 gallons	\$ 4.32 (Minimum)
Next	3,000 gallons	1.15 per M gallons
Next	5,000 gallons	.94 per M gallons
All over	10,000 gallons	.72 per M gallons

Tap-on charge: \$150

* Kentucky Natural Resources and Environmental Protection Cabinet.

CLIMATE

Pendleton County

Temperature

Normal (30-year record)	54.00 degrees
Average annual 1982	54.10 degrees
Record highest, August 1962 (21-year record)	102.00 degrees
Record lowest, January 1977 (21-year record)	-25.00 degrees
Normal heating degree days (30-year record) (Heating degree day totals are the sums of negative departures of average daily temperatures from 65 degrees F.)	5,070

Precipitation

Normal (30-year record)	39.04 inches
Mean annual snowfall (36-year record)	24.50 inches
Total precipitation 1982	45.14 inches
Mean number days precipitation (.01 inch or more) (35-year record)	129
Mean number days thunderstorms (35-year record)	44

Prevailing Winds (16-year record)

South-southwest

Relative Humidity (20-year record)

1 a.m.	77 percent
7 a.m.	81 percent
1 p.m.	60 percent
7 p.m.	64 percent

Source: U.S. Department of Commerce, Environmental Science Services Administration, Climatological Data, 1982. Station of record: Cincinnati, Ohio, Greater Cincinnati Airport.

LOCAL GOVERNMENT

City

Falmouth

Structure - Mayor - 4-year term; 6 council members - 2-year terms

Budget 1984 -	General Fund	\$301,684
	Water and Sewer Fund	225,000
	City Electric System	820,000

Fees and licenses - Business and occupational licenses range from \$2.50 to \$150 per year; unloading license - \$15 per year

Butler

Structure - Mayor - 4-year term; 6 council members - 2-year terms

Budget 1983-84 -	General Fund	\$30,580
	Water and Sewer Fund	55,000

Fees and licenses - Business and occupational licenses range from \$5 to \$100 per year, the license for manufacturing is \$50 per year; vehicle sticker - \$6 per year

County

Structure - County Judge/Executive - 4-year term; 8 magistrates - 4-year terms
 Budget 1983-84 - General Fund \$190,784; Road Fund \$429,400

Assessed Value of Property, 1983*

<u>Classes of Property</u>	Falmouth	Butler	Pendleton County
Real Estate	\$20,873,508	\$3,018,016	\$105,119,394
Tangibles	5,828,706	580,069	19,592,766

* Excludes Homestead Exemptions.

Property Taxes

All property in Kentucky is assessed at 100 percent of fair cash value.

Land and buildings are taxed by the state and may be taxed by local jurisdictions. The state rate is \$0.221 per \$100 of assessed valuation.

Manufacturing machinery, raw materials inventories, pollution control equipment, and goods in the process of manufacture are not subject to local taxation. The state rate is \$0.15 per \$100.

Other tangible personal property owned by manufacturers (automobiles, trucks, finished goods, office furniture, office equipment) is taxed by the state at \$0.45 per \$100 and may be taxed by local jurisdictions.

Intangible personal property located in Kentucky (money in hand, shares of stock, notes, bonds, accounts receivable, and other credits) is taxed by the state at \$0.25 per \$100, and is not subject to local taxation.

Property stored in public warehouses in a transit status is not subject to local taxation. The state rate is only \$0.015 per \$100.

Private leaseholds in industrial facilities owned by cities or counties and financed by industrial revenue bonds are subject to a state tax of \$0.015 per \$100 of value (essentially the lessee's equity, adjusted for appreciation or depreciation). Local taxation is not permitted.

Combined State and Local Rates Per \$100 Valuation, 1983* (100% assessment)

	<u>Site Inside City of Falmouth</u>	<u>Site Inside City of Butler</u>	<u>Site Inside Unincorporated Pendleton County</u>
1. Land and buildings	\$ 1.006	\$ 1.031	\$ 0.802
2. Mfg. machinery, raw materials, goods in process, pollution control equipment	0.150	0.150	0.150
3. Finished goods, office equipment, vehicles, other tangibles	1.296	1.321	1.092
4. Intangibles (accounts rec., notes, bonds, etc.)	0.250	0.250	0.250
5. Property stored in public warehouses in a transit status	0.015	0.015	0.015
6. Leaseholds in industrial revenue bond financed plants	0.015	0.015	0.015

* Kentucky Department of Economic Development.

Planning and Zoning

There are no active planning and zoning commissions operating in Falmouth, Butler or Pendleton County at the present time.

Mandatory state codes enforced - Kentucky Plumbing Code, National Electric Code, Kentucky Boiler Regulations and Standards, Kentucky Building Code (modeled after BOCA code)

Safety

Police

	Falmouth	Butler	Pendleton County
--	----------	--------	------------------

Total staff	14	1	2
Radio-patrol cars	2	1	2

Fire

Insurance Services Office,
Public Protection

	Falmouth	Butler	Pendleton County
Classification	7	8	10
Volunteers	42	22	*

Refuse Collection and Disposal

	Falmouth	Butler
Type service	Municipal	Private
Fee charged:		
residential	\$3 per month	\$3.50 per month
business	\$3 per month	\$15 per month
industrial	\$3 per month	\$15 per dumpster per month
Collection frequency:		
residential	Twice weekly	Weekly
business	Twice weekly	Weekly
industrial	As needed	Weekly
Trash pickup	Varies	N/A
Disposal method	Landfill	Landfill

Refuse collection in Pendleton County is provided by private companies.

* The Falmouth, Butler, and Northern Pendleton volunteer fire departments serve Pendleton County.

EDUCATION

Public Schools

Pendleton County*

Total Enrollment (Spring 1984)	2,343
Elementary	1,619
High School	724
Student-Teacher Ratio	20-1
Elementary	20-1
High School	18-1
Percent High School Graduates to College (1983)	24.2
Expenditures Per Pupil (1982-83)	\$ 1,509.48
Bonded Indebtedness (June 30, 1983)	\$1,829,000**

* The Pendleton County School System has begun a goal identification and development program which is designed to increase effectiveness among the system's teachers and administrators. Nationally recognized consultants are engaged on a regular basis to assist in the project.

** Includes \$1,465,000 refunding issue.

Area Colleges and Universities

<u>Name</u>	<u>Location (Mileage from Falmouth)</u>	<u>Enrollment (Fall, 1983)</u>	<u>Highest Degree Conferred</u>
Northern Kentucky University	Highland Heights, Kentucky (30)	9,361	Masters, J.D.
Athenaeum of Ohio Cincinnati Bible Seminary	Cincinnati, Ohio (37)	187	Masters
College of Mt. St. Joseph	Cincinnati, Ohio (37)	899	Academic and Professional
Hebrew Union College	Cincinnati, Ohio (37)	1,600	Masters
Southern Ohio College	Cincinnati, Ohio (37)	157	Academic and Professional
University of Cincinnati	Cincinnati, Ohio (37)	1,316	Associate
Xavier University	Cincinnati, Ohio (37)	38,533	Academic and Professional
Maysville Community College	Cincinnati, Ohio (37)	6,992	Masters
Thomas More College	Maysville, Kentucky (39)	653	Associate
Georgetown College	Fort Mitchell, Kentucky (42)	1,335	Baccalaureate
Lexington Community College	Georgetown, Kentucky (43)	1,302	Masters
Transylvania University	Lexington, Kentucky (52)	2,532	Associate
University of Kentucky	Lexington, Kentucky (52)	655	Baccalaureate*
Midway College	Lexington, Kentucky (52)	22,055	Doctorate, M.D., D.M.D., J.D.
Kentucky State University	Midway, Kentucky (53)	413	Associate
	Frankfort, Kentucky (61)	2,431	Masters

* Courses in a masters degree program are taught on the Transylvania campus by faculty members of Xavier University of Cincinnati. The degree is issued by Xavier University.

Vocational Schools

Both the state vocational-technical schools and the area vocational education centers are operated by the Kentucky Department of Education. The state vocational-technical schools enroll persons full time who are at least 16 years of age and not in school. These students attend classes for six hours each day. The area vocational education centers are designed to accommodate high school students who are at least 15 years of age. These students attend vocational school for three hours each day. The state vocational-technical schools and the area education centers offer evening courses to enable working adults to upgrade current job skills.

Nearest State Schools

Location	Northern Campbell County Vocational- Technical School
Miles Distant	Highland Heights 30 from Falmouth
Curriculum	Industrial Education Auto Mechanics (Foreign) Carpentry-Interior Finishing Commercial Arts Diesel Mechanics Graphic Arts Industrial Electronics Plumbing Learning Resource Center
Location	Northern Kentucky State Vocational- Technical School
Miles Distant	Covington 36 from Falmouth
Curriculum	Business and Office Occupations Clerical Data Processing Secretarial Consumer and Home Economics Child Care Services Commercial Foods Health and Personal Services Occupations Cosmetology Industrial Education Air Conditioning and Refrigeration Auto Body Repair and Refinishing Automotive Technology Carpentry Communications Electronics Drafting (with CAD/CAM) Electronics Machine Shop Masonry Welding Learning Resource Center

(Cont'd)

Location Northern Kentucky Health
 Occupations Center
 Edgewood
 Miles Distant 37 from Falmouth
 Curriculum Health and Personal Services Occupations
 Dental Assisting
 Licensed Practical Nursing
 Medical Assisting
 Medical Secretary

Nearest Area Education Centers

Location Campbell County Area Vocational
 Education Center
 Alexandria
 Miles Distant 22 from Falmouth
 Curriculum Health and Personal Services Occupations
 Health Careers
 Industrial Education
 Air Conditioning and Refrigeration
 Auto Body
 Auto Mechanics
 Carpentry
 Drafting
 Industrial Electricity
 Masonry
 Sheet Metal
 Welding

Location Harrison County Area Vocational
 Education Center
 Cynthiana
 Miles Distant 22 from Falmouth
 Curriculum Business and Office
 Accounting/Jr. Management
 Clerical
 Secretarial
 Health and Personal Services Occupations
 Health Careers
 Industrial Education
 Auto Mechanics
 Carpentry-Building Trades
 Industrial Electricity
 Machine Shop
 Welding

Arrangements can be made to provide training in the specific production skills required by an industrial plant. Instruction may be conducted either in the vocational school or in the industrial plant, depending upon the desired arrangement and the availability of special equipment.

HEALTH

Local Medical Personnel

	Falmouth	Butler
Physicians -	2	1
Dentists -	2	1

Hospitals

<u>General Hospital</u>	<u>Location</u>	<u>Beds</u>
Harrison Memorial Hospital	Cynthiana, 22 miles south of Falmouth	83 acute care 10 extended care 6 ICU-CCU
St. Luke Hospital, Inc.	Fort Thomas, 34 miles north of Falmouth	300 at main facility 28 at Falmouth facility

Harrison Memorial Hospital

General hospital facilities - 2 operating rooms, emergency room suite with treatment and trauma rooms, outpatient surgery, outpatient clinic, ICU-CCU, laboratory, X-ray, EKG, physical therapy, delivery room and nursery, respiratory therapy, ultrasound unit

Medical staff - 12 active staff physicians, dentist, 37 registered nurses, 20 licensed practical nurses, 46 nurse's aides, 2 registered nurse anesthetists, 4 medical technologists, lab assistant, 5 X-ray technologists, physical therapist, 3 respiratory therapists, 2 pharmacists (full-time), 3 pharmacists (part-time), dietician; emergency room coverage on weekends

St. Luke Hospital, Inc.

General hospital facilities - 9 operating rooms; facilities for specialties of orthopedics, otolaryngology, urology, and thoracic, plastic, neurological, optical, oral dental, and vascular surgery; intensive care unit; pharmacy; diagnostic laboratory; radiology, nuclear medicine facilities, and full-body CT scanner; EEG laboratory; carotid artery scans; respiratory therapy and pulmonary function laboratory; physical therapy and EKG departments for inpatients and outpatients; 24-hour physician coverage in emergency room

(Cont'd)

Regional facilities - The Northern Kentucky Regional Poison Information Center; Northern Kentucky Cancer Treatment Center; St. Luke Hospital CareUnit in Falmouth - an inpatient alcoholism rehabilitation unit

Medical staff - 105 active staff physicians, 101 courtesy staff physicians, 22 consulting physicians, and 11 honorary staff physicians; 298 registered nurses, 69 licensed practical nurses; 10 pharmacists; 2 physical therapists; 4 social workers

Other Medical Facilities

Comprehensive Care Center of Northern Kentucky - Falmouth Office
Butler Rest Home - 19 personal care beds
Falmouth Rest Home - 28 personal care beds
Grants Lake I.C. Home (located in Butler) - 32 intermediate care beds
St. Luke Hospital CareUnit at Falmouth - A 28-bed inpatient alcoholism rehabilitation center

Ambulance Service

Name - Stewart Ambulance
Staff - 7 emergency medical technicians
Service - 24-hour, county-wide service
Equipment - 1 ambulance, fully equipped

Public Health

Facility - Three Rivers District Health Department, Pendleton County Health Center
Staff - Full-time - Registered nurse, clerk, environmentalist, 2 home health nurses, 3 home health aides, home health clerk
Part-time - Nutritionist, W.I.C. clerk, custodian, plumbing inspector, vocational rehabilitation representative available 2 days per month

OTHER LOCAL FACILITIES

Communications

Telephone - Services -	The Cincinnati Bell Telephone Company Standard
Telegraph - Services -	Western Union Telegraph Company Toll-free number, 1-800-325-5100
Postal - Class - Mail received - Mail dispatched -	U.S. Post Office Second (In both Falmouth and Butler) Once daily (In both Falmouth and Butler) Once daily (In both Falmouth and Butler)
Newspapers - Weekly and circulation - Other papers received from -	The Falmouth Outlook - 6,000 Lexington, Louisville, and Covington, Kentucky; Cincinnati, Ohio
Radio - Stations received from -	WIOK-FM (Falmouth) Lexington, Louisville, and Covington, Kentucky; Cincinnati, Ohio
Television - Reception from -	Covington and Lexington, Kentucky; Columbus and Dayton, Ohio; Indianapolis, Indiana
Kentucky Educational Television -	Owenton transmitter, Channel 52 Covington transmitter, Channel 54 Falmouth translator 56

Library Services

Public library - Pendleton County Public Library
Size collection - 24,109 volumes
Circulation, 1982-83 - 76,077
Services - Film, slides, records, microfilm, microfilm reader, slide and film projector, copy machine, talking records, laminating machine, magazines, periodicals, art displays, pictures, bookmobile, Interlibrary Loan, story hour, summer reading programs, services to shut-ins, special programs for organizations upon request, meeting rooms, kitchen

Religious Institutions

Pendleton County

Denominations - Assembly of God
 Baptist
 Catholic
 Christian
 Church of Christ
 Church of God
 Disciples of Christ
 Methodist
 Nazarene
 Pilgrim Holiness

Nearest Synagogues - Cincinnati, Ohio, 37 miles north of Falmouth
 Congregations - 16 synagogues (orthodox, reform, traditional and conservative)

Financial Institutions

<u>Banks</u>	<u>Assets</u>	<u>Deposits</u>	<u>Statement Date</u>
Falmouth			
The Falmouth Deposit Bank	\$ 20,332,091.00	\$ 18,047,862.00	12/31/83
The First National Bank*	22,830,608.00	19,788,730.00	12/31/83
Butler			
The Farmers Bank	8,624,000.00	7,730,000.00	12/31/83
<u>Savings and Loan Associations</u>	<u>Assets</u>	<u>Savings Accounts</u>	<u>Statement Date</u>
Kentucky Enterprise Federal Savings and Loan Association**	\$250,781,129.16	\$234,645,825.70	12/31/83
Pendleton Federal Savings and Loan Association	10,614,765.00	10,220,146.00	12/31/83

* The First National Bank opened a branch at Butler in May of 1982, and a branch on U.S. Highway 27 in February of 1983.

** Includes main office in Newport and all branch offices.

Hotels and Motels

Pendleton County

Total number -	2
Total rooms -	24

Clubs and Organizations

American Legion
Chamber of Commerce
Daughters of America
Eastern Star
4-H Club
Future Farmers of America (FFA)
Future Homemakers of America (FHA)
Homemakers
Jaycees
Junior Woman's Club
Kincaid Park Association
Kincaid Theatre
Lions Club
Masonic Lodge
Odd Fellows
Pendleton County Fox Hunters
Pendleton County Sportsman's Club
Rotary Club
Woodmen of the World (WOW)
Young Woman's Club

RECREATION

Local

Kincaid Lake State Park, 4 miles northeast of Falmouth, offers many opportunities for the outdoors enthusiast. The park offers a 175-acre lake, a sand beach, an 84-site campground, a multi-purpose building, a bathhouse, swimming, boating, hiking, picnicking, an amphitheatre, badminton, shuffleboard, miniature golf, tennis, a gift and handicraft shop, and organized recreational programs in the summer months.

The **Pendleton County Country Club**, a private facility located in the northern part of the county, offers an 18-hole golf course, a clubhouse, a swimming pool, and two tennis courts.

Falmouth has one park with a playground and a tennis court. The city also has three lighted softball fields available for public use.

An annual flea market and homecoming is a popular event in Butler.

Other annual events in the Falmouth area include the 4-H Youth Fair, with shows and contests, and the Kentucky Wool Festival, featuring demonstrations, musical entertainment, and arts and crafts. Thaxton's South Fork Canoe Trails holds a sanctioned canoe race in Pendleton County. The Kincaid Theatre brings professional theatrical performances to Falmouth.

Area (Within 65 miles)

Big Bone Lick State Park in Boone County, 34 miles northwest of Falmouth, provides a unique combination of educational and recreational pleasures. Visitors can walk through the natural outdoor museum with replicas and exhibits that tell the story of Big Bone Lick. Recreational activities and facilities include a modern campground with 62 sites, fishing in a nearby lake, an indoor museum and gift shop, picnic grounds, tennis, shuffleboard, volleyball, basketball, horseshoes, planned recreation, and a swimming pool in the camping area.

Cincinnati, Ohio, is 37 miles north of Falmouth. Cincinnati provides a wide variety of entertainment, cultural facilities and activities, and sports events - all within a few minutes drive. The Cincinnati Zoo offers entertainment the whole family can enjoy. Kings Island is the largest family entertainment center in the entire Midwest. The Cincinnati Riverfront Stadium is the home of the Cincinnati Reds baseball and Bengals pro football teams. Cultural interests include the Cincinnati Symphony Orchestra, various art galleries and museums, libraries, and legitimate theaters presenting Broadway plays.

Latonia Race Course, approximately 45 miles northwest of Falmouth near Florence, Kentucky, offers thoroughbred racing and harness racing.

The Kentucky Horse Park, a park dedicated to horses and to man's love for horses, is located 49 miles south of Falmouth near Lexington. The park, which contains more than 1,000 acres of Kentucky Bluegrass, features the International Museum of the Horse; the Man O'War Memorial; an antique carriage display; horseback and pony rides; walking farm tours; horse-drawn tours; a restaurant; a gift shop; and a campground area, which offers swimming, tennis, and planned activities. Numerous special events are held year-round and include various horse shows, steeplechasing, dressage, polo games, and rodeos.

Lexington, 52 miles south of Falmouth, offers a variety of cultural, sporting, and recreational activities. Thoroughbred and harness racing is presented at Keeneland Race Course and the Red Mile Harness Track during several meets each year. The University of Kentucky and Transylvania University offer a number of sporting events. The University of Kentucky basketball games are held at Rupp Arena, the world's largest basketball arena. Other attractions include Lexington Philharmonic concerts, Lexington Children's Theatre, and plays performed by Broadway touring companies, all held in the recently renovated Opera House.

Blue Licks Battlefield State Park is located near Mt. Olivet, 56 miles southeast of Falmouth. The 100-acre park is on the site of the last Revolutionary War battle in Kentucky. A museum features Indian and pioneer artifacts, an audiovisual program, and prehistoric bones from animals trapped at Blue Licks. Facilities include ten primitive campsites, a gift shop, picnic shelters and grills, a playground, a snack bar, and an Olympic-size swimming pool. The Licking River - a popular fishing stream - runs through the park.

Waveland State Shrine, 57 miles south of Falmouth near Lexington, features an 1847 Greek Revival mansion depicting Kentucky lifestyles from the days of early settlers to the antebellum era of gentility and elegance as well as the Civil War and postwar periods. The shrine also includes the Kentucky Life Museum and a plantation village on ten acres with many shops and displays.

Frankfort, the capital of Kentucky, is 61 miles southwest of Falmouth. Points of interest in Frankfort include the Capitol Building, a 34-foot floral clock, the Daniel Boone Monument, several museums, and old homes with their original furnishings. Frankfort is also the home of Kentucky State University which offers many cultural activities and sporting events.

The spirit of Daniel Boone and his pioneers is reborn at **Fort Boonesborough State Park** in Boonesboro, 62 miles south of Falmouth. In the re-created fort, pioneer crafts of the eighteenth century are demonstrated by using functioning antiques from the frontier era. Cabins are furnished as they would have been in the days of Boone and documentary films are presented which depict the struggle of the first Kentuckians to make the Kentucky wilderness a home. A gift shop within the fort offers for sale all the handcrafted items made at the fort. Other recreational facilities and activities of the park include the finest sand beach on the Kentucky River with a modern bathhouse and a modern camping area with 187 sites.

COMMUNITY IMPROVEMENTS

Recent

A new airport opened at Falmouth during Spring, 1984. The airport features a 4,000-foot runway, hangar space, and tie-downs. The \$1,000,000 project was begun in 1982.

The First National Bank opened a Butler branch in 1982 and a U.S. 27 branch in 1983.

The city of Butler constructed 300 feet of sidewalks in 1983, and plans to construct an additional 600 feet of sidewalks in 1984. A \$100,000 revetment project was also completed along the bank of the Licking River in 1983.

A doctor's building has been constructed in Butler. The \$140,000 building offers space for a physician, a dentist, examining rooms, a waiting room, a nurse's station, a pharmacy, and a laboratory.

Under Way

The Pendleton County Water District is extending water lines west of Falmouth and adding a 150,000-gallon water storage tank in a \$1,000,000 expansion project.

Fuller Manufacturing and Supply Company began an expansion project in February of 1983 that has added 30 employees, renovated and modernized the company's offices, and expanded the sales area. Construction of a completely new facility is possible within the next five years.

An \$835,000 investment is being made to renovate the Falmouth water treatment plant. The project began during the summer of 1984 and involves enlarging and covering a treated water reservoir, adding new pumps and screening devices, and constructing a new flocculation building with modern chemical feed equipment. Capacity of the treatment plant should be increased from 1,000,000 gallons per day to 1,500,000 gallons per day when the project is completed.

An improvement project to renovate the Butler water treatment and distribution system began in the summer of 1984. The \$286,000 project involves installation of new pumps, construction of a 200,000-gallon reservoir for storage of treated water, and extensions of water distribution lines.

The Pendleton County School System recently began an effectiveness training and goal identification program for teachers and administrators. Consultants are brought in regularly to assist in the program.

Planned

Pittsfield of Kentucky, Division Pittsfield Products Company, Inc., plans to expand its facility in 1985. The \$125,000 project involves adding 12,500 square feet of manufacturing space, new equipment, and possibly up to 10 new employees.

A project to add passing lanes on upgrades of U.S. Highway 27 in Harrison, Pendleton, and Campbell counties is scheduled to begin in the fall of 1984. Priority is being given to construction of passing lanes at three sites between Falmouth and Alexandria. Plans are also being made to reconstruct Kentucky Route 22 between Falmouth and Interstate 75.

The senior citizens building at Butler is scheduled to be renovated at a cost of \$1,900,000.

Plans are being made to install a cable television system in Falmouth.