

1988

# Industrial Resources: Pike County

Kentucky Library Research Collections  
Western Kentucky University, [spcol@wku.edu](mailto:spcol@wku.edu)

Follow this and additional works at: [https://digitalcommons.wku.edu/pike\\_cty](https://digitalcommons.wku.edu/pike_cty)

 Part of the [Business Administration, Management, and Operations Commons](#), [Growth and Development Commons](#), and the [Infrastructure Commons](#)

---

## Recommended Citation

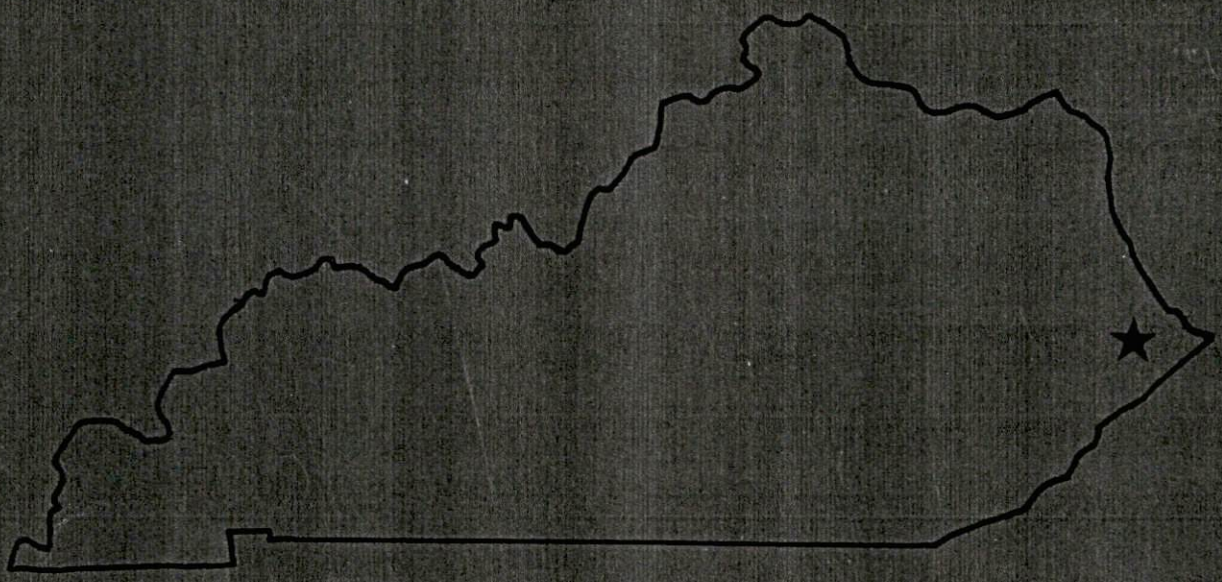
Kentucky Library Research Collections, "Industrial Resources: Pike County" (1988). *Pike County*. Paper 6.  
[https://digitalcommons.wku.edu/pike\\_cty/6](https://digitalcommons.wku.edu/pike_cty/6)

This Report is brought to you for free and open access by TopSCHOLAR®. It has been accepted for inclusion in Pike County by an authorized administrator of TopSCHOLAR®. For more information, please contact [topscholar@wku.edu](mailto:topscholar@wku.edu).

IR  
524 PIKE County, Ky

**RESOURCES FOR ECONOMIC DEVELOPMENT**

# Pike County

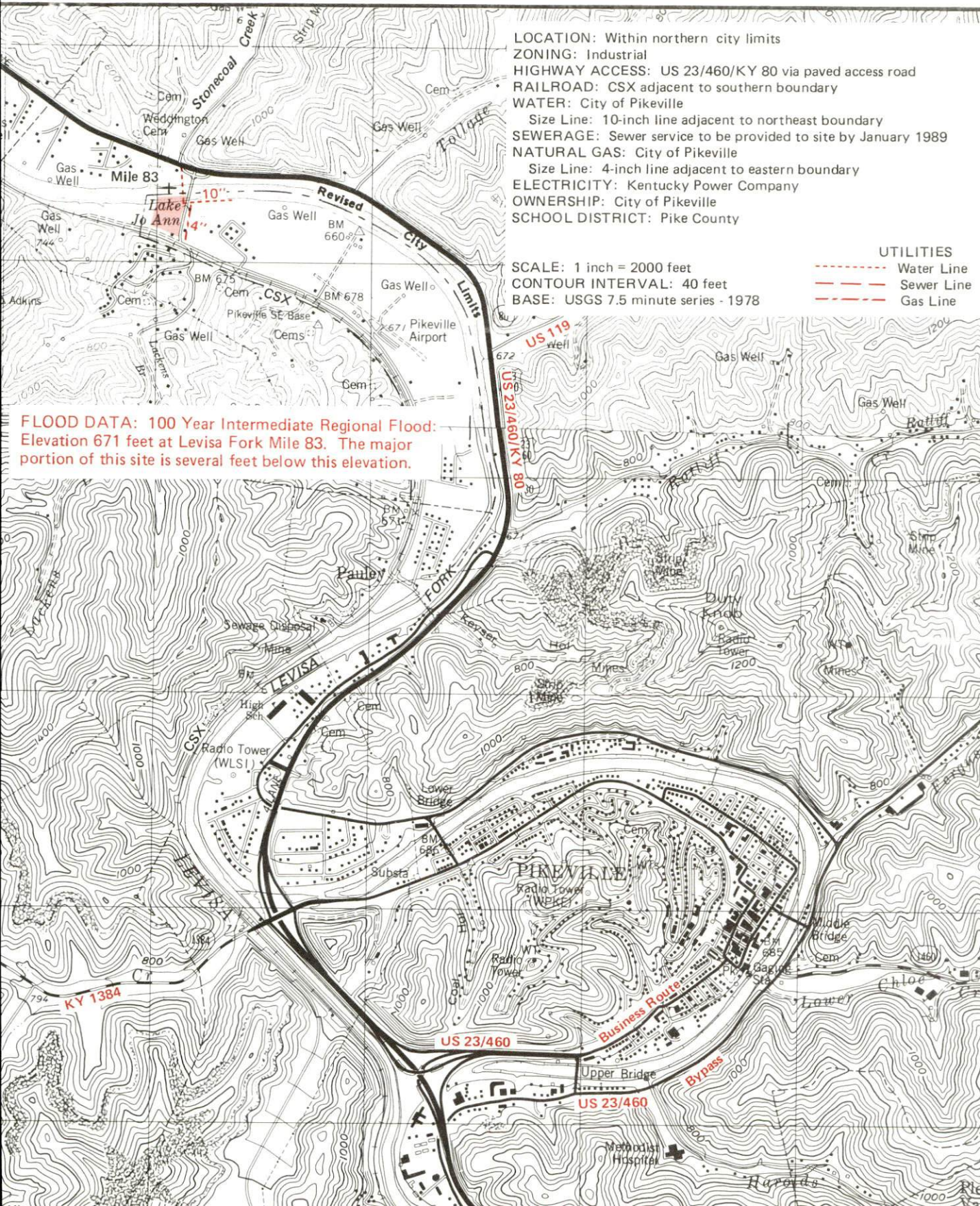


---

**KENTUCKY**  
The business environment is right.

# POTENTIAL SITE PIKEVILLE, KENTUCKY - 7 Acres

For more information contact the Kentucky Department of Economic Development, Industrial Development & Marketing Division, Capital Plaza Tower, Frankfort, Kentucky 40601 (502-564-7140).



LOCATION: Within northern city limits  
 ZONING: Industrial  
 HIGHWAY ACCESS: US 23/460/KY 80 via paved access road  
 RAILROAD: CSX adjacent to southern boundary  
 WATER: City of Pikeville  
 Size Line: 10-inch line adjacent to northeast boundary  
 SEWERAGE: Sewer service to be provided to site by January 1989  
 NATURAL GAS: City of Pikeville  
 Size Line: 4-inch line adjacent to eastern boundary  
 ELECTRICITY: Kentucky Power Company  
 OWNERSHIP: City of Pikeville  
 SCHOOL DISTRICT: Pike County

SCALE: 1 inch = 2000 feet  
 CONTOUR INTERVAL: 40 feet  
 BASE: USGS 7.5 minute series - 1978

UTILITIES  
 - - - - - Water Line  
 - - - - - Sewer Line  
 - - - - - Gas Line

**FLOOD DATA: 100 Year Intermediate Regional Flood:**  
 Elevation 671 feet at Levisa Fork Mile 83. The major portion of this site is several feet below this elevation.

RESOURCES FOR ECONOMIC DEVELOPMENT  
PIKE COUNTY, KENTUCKY

Prepared by  
The Kentucky Department of Economic Development  
Division of Research and Planning  
in cooperation with  
Pike County Chamber of Commerce

1988

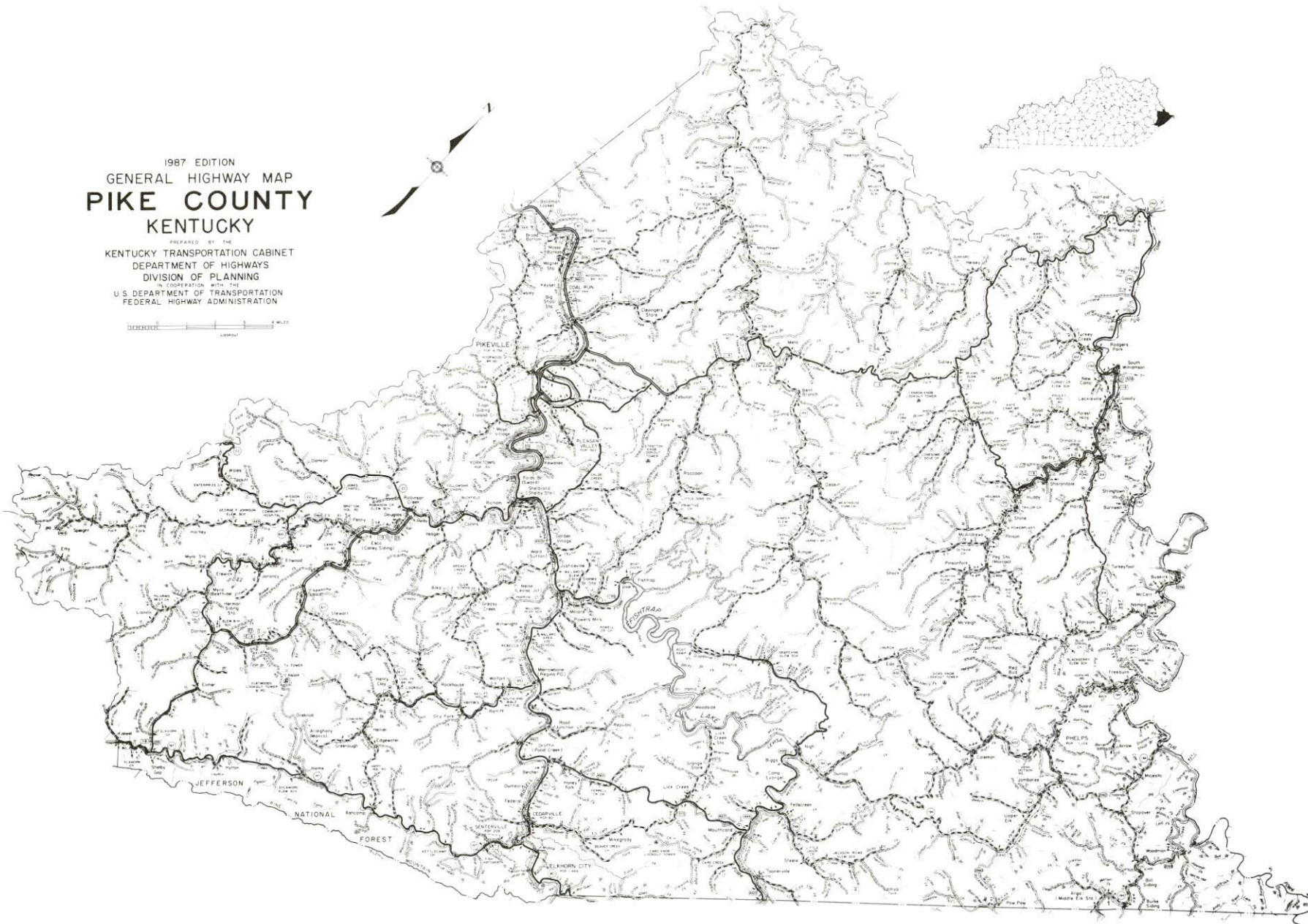
## TABLE OF CONTENTS

<u>Chapter</u>	<u>Page</u>
INDUSTRIAL SITES . . . . .	i
PIKE COUNTY, KENTUCKY - A RESOURCE PROFILE . . . . .	1
THE LABOR MARKET AREA . . . . .	2
Population . . . . .	2
Population Projections . . . . .	2
Labor Force Characteristics of Residents, 1986 . . . . .	3
Selected Components of Nonagricultural Employment, by Place of Work, 1986 . . . . .	3
Per Capita Personal Income . . . . .	4
Estimated Male Labor Supply . . . . .	5
Estimated Female Labor Supply . . . . .	5
Average Weekly Wages by Industry, by Place of Work, 1986 . . . . .	6
EXISTING INDUSTRY . . . . .	8
Pike County Manufacturing Firms, Their Products and Employment . . . . .	8
Labor Organizations in Manufacturing Firms . . . . .	9
Selected Industrial Services . . . . .	10
TRANSPORTATION . . . . .	11
Rail . . . . .	11
Highways . . . . .	11
Truck Service . . . . .	12
Air . . . . .	13
Water . . . . .	13
POWER AND FUEL . . . . .	14
Electricity . . . . .	14
Natural Gas . . . . .	14
Other Fuels . . . . .	15
WATER AND SEWERAGE . . . . .	16
Public Water Supply . . . . .	16
Sewerage . . . . .	18
CLIMATE . . . . .	20

<u>Chapter</u>	<u>Page</u>
LOCAL GOVERNMENT . . . . .	21
Structure . . . . .	21
Planning and Zoning . . . . .	21
Local Fees and Licenses . . . . .	21
State and Local Property Taxes . . . . .	22
Combined State and Local Rates Per \$100 Valuation, 1986 . . . . .	22
Safety . . . . .	24
Police . . . . .	24
Fire . . . . .	24
Rescue Service . . . . .	24
Refuse Collection and Disposal . . . . .	24
EDUCATION . . . . .	25
Public Schools . . . . .	25
Nonpublic Schools . . . . .	25
Area Colleges and Universities . . . . .	26
Vocational Training . . . . .	27
HEALTH. . . . .	29
Local Medical Personnel . . . . .	29
Hospitals . . . . .	29
Other Medical Facilities . . . . .	29
Ambulance Service . . . . .	29
OTHER LOCAL FACILITIES . . . . .	30
Communications . . . . .	30
Library Services . . . . .	30
Religious Institutions . . . . .	31
Financial Institutions . . . . .	31
Hotels and Motels . . . . .	31
RECREATION . . . . .	32
COMMUNITY IMPROVEMENTS . . . . .	34

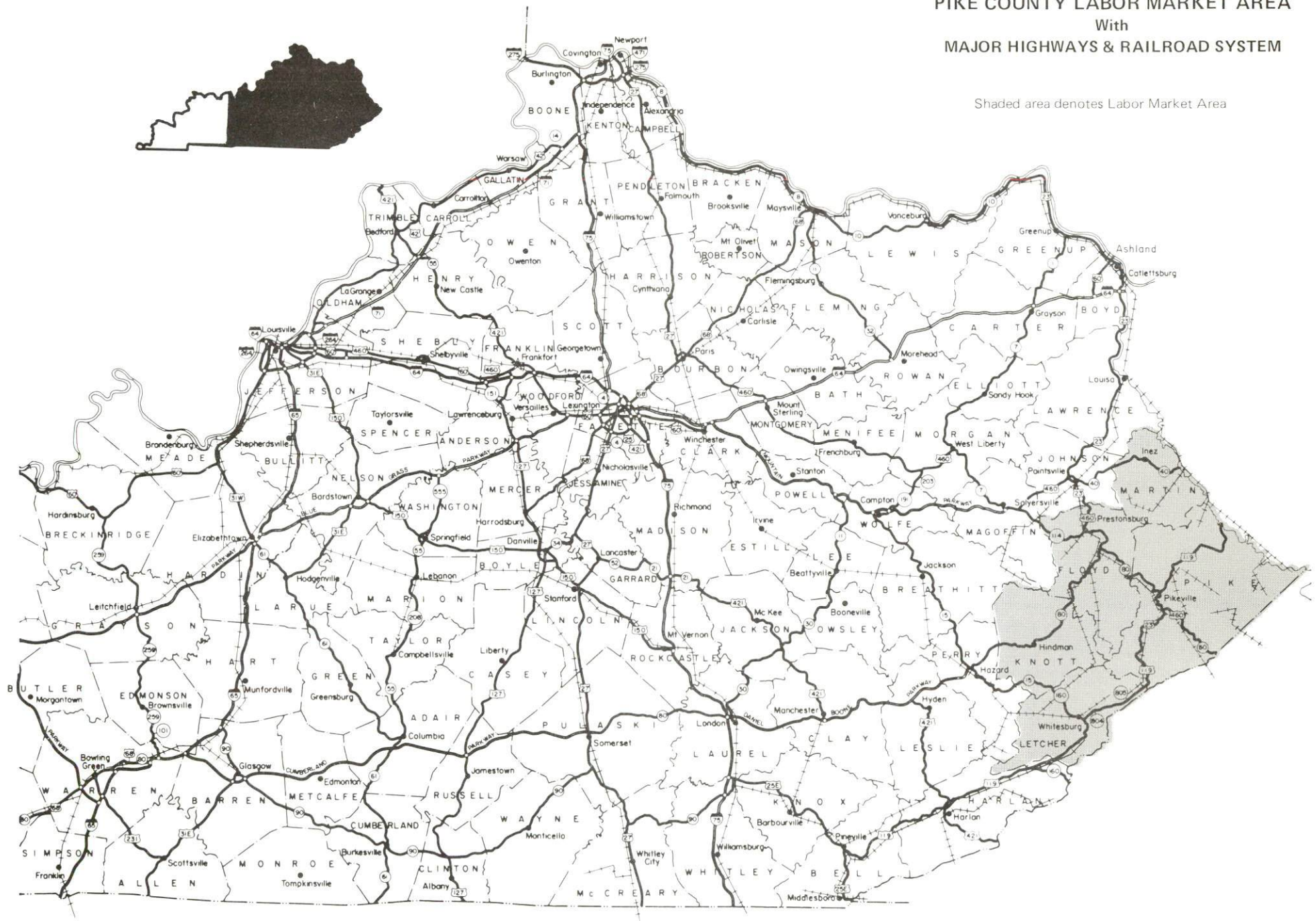
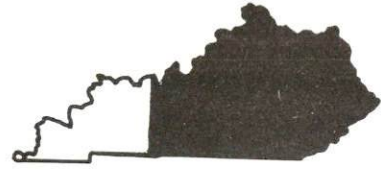
1987 EDITION  
GENERAL HIGHWAY MAP  
**PIKE COUNTY**  
KENTUCKY

PREPARED BY THE  
KENTUCKY TRANSPORTATION CABINET  
DEPARTMENT OF HIGHWAYS  
DIVISION OF PLANNING  
IN COOPERATION WITH THE  
U.S. DEPARTMENT OF TRANSPORTATION  
FEDERAL HIGHWAY ADMINISTRATION



# PIKE COUNTY LABOR MARKET AREA With MAJOR HIGHWAYS & RAILROAD SYSTEM

Shaded area denotes Labor Market Area





## PIKE COUNTY, KENTUCKY - A RESOURCE PROFILE

Pike County is located at the easternmost tip of Kentucky in the Eastern Coal Fields Region. Pike County covers 785 square miles of land area, and in addition to being Kentucky's largest county, it is also one of the largest underground bituminous coal-producing counties in the United States. The county had a 1986 estimated population of 83,600.

Pikeville, the county seat, is located along the Levisa Fork of the Big Sandy River. The city had a 1984 estimated population of 5,613. Pikeville is located 143 miles southeast of Lexington, Kentucky; 225 miles southeast of Cincinnati, Ohio; and 222 miles northeast of Knoxville, Tennessee.

Elkhorn City, 23 miles southeast of Pikeville on the Kentucky-Virginia border, had a 1984 estimated population of 1,468 persons.

**The Economic Framework** - The total number of Pike County residents employed in 1986 averaged 23,341. Manufacturing firms in the county reported 293 employees; wholesale and retail trade provided 4,630 jobs; 2,985 people were employed in service occupations; state and local government accounted for 2,967 employees; contract construction firms provided 399 jobs; and 6,635 people were employed by mining and quarrying operations.

**Labor Supply** - There is a current estimated labor supply of 21,492 men and 28,819 women available for industrial jobs in the labor market area. In addition, from 1987 through 1991, 9,451 young men and 8,890 young women in the area will become 18 years of age and potentially available for industrial jobs.

**Transportation** - CSX Transportation provides rail freight service to Shelbiana, 7 miles south of Pikeville, and to Elkhorn City. The Norfolk Southern Corporation provides service to numerous coal mining operations in Pike County. U.S. Highways 23 and 119 are "AAA"-rated highways serving Pikeville. U.S. 460 and Kentucky 80 are "AAA"-rated west of the city, and "AA"-rated east of the city. The Mountain Parkway, a multilane highway, is located 49 miles northwest of Pikeville. Elkhorn City is located 23 miles southeast of Pikeville via Kentucky 80. There are five trucking companies that provide interstate and/or intrastate service to Pikeville. The nearest scheduled commercial airline service is available at Huntington, West Virginia, 100 miles north of Pikeville. The Pikeville Regional Airport, 6 miles north of Pikeville, has a 5,000-foot paved runway.

**Power and Fuel** - Kentucky Power Company provides electric power to all of Pike County. Natural gas service is provided to Pikeville by the City of Pikeville. The sources of supply are Columbia Gas Transmission Corporation and 18 local gas wells. Lyda Gas Company, Inc., provides natural gas service to Elkhorn City. There are two propane dealers and five fuel oil dealers within 25 miles of Pikeville.

**Education** - The Pikeville Independent School System and the Pike County School System provide primary and secondary education in Pike County. One private elementary school also operates in Pike County. Pikeville College is a four-year, independent college affiliated with the United Presbyterian Church. There are eight other institutions of higher learning within 70 miles of Pikeville. Vocational training is available at the Mayo State Vocational-Technical School at Paintsville, 40 miles northwest of Pikeville. Area vocational education centers are located in the Pike County communities of Belfry, Millard, and Phelps.

## LABOR MARKET STATISTICS

The Pike County Labor Market Area includes Pike County and the adjoining Kentucky counties of Floyd, Knott, Letcher, and Martin.

### POPULATION

Area	1986*	1980	1970	Percent Nonwhite
				1980
Pikeville	5,613	4,756	5,205	3.8
Elkhorn City	1,468	1,446	1,081	0.6
Labor Market Area	197,500	192,439	144,188	-
Pike County	83,600	81,123	61,059	0.6
Floyd County	51,000	48,764	35,889	0.6
Knott County	18,400	17,940	14,698	0.8
Letcher County	30,100	30,687	23,165	1.2
Martin County	14,400	13,925	9,377	0.2

\* Population estimates. City estimates are for 1984.

Note: The 1980 city counts of population by race are provisional.

Sources: U.S. Department of Commerce, Bureau of the Census, 1980 Census of Population and Housing, March 1981; 1980 Census of Population, Number of Inhabitants. University of Louisville, Urban Studies Center, Population Unit, October 1985; University of Louisville, Urban Studies Center, State Data Center, June 1987 Newsletter, Vol. 5 No. 4.

### POPULATION PROJECTIONS

Area	1990	1995	2000	2010
Labor Market Area	209,972	219,952	228,753	242,255
Pike County	88,760	93,176	97,027	102,745
Floyd County	53,586	55,826	57,752	60,693
Knott County	19,056	19,698	20,295	21,253
Letcher County	32,901	34,590	36,096	38,459
Martin County	15,669	16,662	17,583	19,105

Source: University of Louisville, Urban Studies Center, Population Research Unit, How Many Kentuckians: Population Forecasts, 1980-2020, the 1986 Edition, Spring 1986.

LABOR FORCE CHARACTERISTICS OF RESIDENTS, 1986

	<u>Pike County</u>	<u>Labor Market Area</u>
Civilian Labor Force	27,345	62,071
Employment	23,341	53,181
Unemployment	4,004	8,890
Rate of Unemployment (%)	14.6	14.3

Source: Kentucky Cabinet for Human Resources, Kentucky Labor Force Estimates, Annual Averages, 1986.

SELECTED COMPONENTS OF NONAGRICULTURAL EMPLOYMENT  
BY PLACE OF WORK, 1986

	<u>Pike County</u>	<u>Labor Market Area</u>
All Industries (total)	19,690	41,349
Manufacturing	293	771
Wholesale & Retail Trade	4,630	9,114
Services	2,985	6,155
State/Local Government	2,967	6,666
Contract Construction	399	1,092
Mining & Quarrying	6,635	14,097

Note: Excludes domestic workers, railway workers, certain nonprofit corporations, majority of federal government workers, and self-employed workers.  
Source: Kentucky Cabinet for Human Resources, Average Monthly Workers Covered by Kentucky Unemployment Insurance Law, 1986.

PER CAPITA PERSONAL INCOME

<u>Area</u>	<u>1980</u>	<u>1984</u>	<u>Percent Change</u>
Pike County	\$ 7,264	\$ 8,291	14.1
Labor Market Area Range	\$6,097 - 7,264	\$6,851 - 8,291	-
Kentucky	7,644	10,232	33.9
U.S.	9,494	12,772	34.5

Sources: U.S. Department of Commerce, Bureau of Economic Analysis. Kentucky Economic Information System, June 1986.

ESTIMATED MALE LABOR SUPPLY  
PIKE COUNTY LABOR MARKET AREA

Area	Current				Future
	Total Male	Unemployed	Under-employed	Not in Labor Force	Becoming 18 years of age 1987 thru 1991
Labor Market Area*	21,492	5,992	4,048	11,452	9,451
Pike	8,376	2,728	1,562	4,086	3,922
Floyd	5,310	1,206	962	3,142	2,352
Knott	2,011	582	385	1,044	917
Letcher	3,916	1,009	899	2,008	1,514
Martin	1,879	467	240	1,172	746

ESTIMATED FEMALE LABOR SUPPLY  
PIKE COUNTY LABOR MARKET AREA

Area	Current				Future
	Total Female	Unemployed	Under-employed	Not in Labor Force	Becoming 18 years of age 1987 thru 1991
Labor Market Area*	28,819	2,898	3,208	22,713	8,890
Pike	11,996	1,276	1,354	9,366	3,826
Floyd	7,093	870	848	5,375	2,100
Knott	2,500	222	253	2,025	822
Letcher	4,794	357	450	3,987	1,404
Martin	2,436	173	303	1,960	738

\* Additional workers may be drawn from other nearby counties.

Note: Unemployed - persons unemployed and actively seeking work; Underemployed - persons employed but working only 14 to 26 weeks per year; Not in Labor Force - represents the number of persons who would enter the labor force if suitable employment were available (based on the assumption that persons in Kentucky would like to participate in the labor force in the same proportion that they do nationally).

Sources: Kentucky Cabinet for Human Resources, Kentucky Labor Supply Estimates by County, 1986. Kentucky Department of Economic Development, Future Labor Supply Becoming 18 Years of Age, 1987 thru 1991.

AVERAGE WEEKLY WAGES BY INDUSTRY  
BY PLACE OF WORK, 1986

	<u>Pike County</u>	<u>Floyd County</u>	<u>Knott County</u>
All Industries	\$372.97	\$346.13	\$364.93
Mining & Quarrying	546.63	535.25	486.45
Contract Construction	295.78	329.05	415.23
Manufacturing	397.57	354.36	218.65
Transportation, Communications & Public Utilities	397.06	406.06	298.36
Wholesale & Retail Trade	227.19	234.93	196.62
Finance, Insurance & Real Estate	362.97	326.99	461.77
Services	308.14	288.35	230.11
State/Local Government	284.62	294.86	289.70
Other	238.95	235.59	*

	<u>Letcher County</u>	<u>Martin County</u>
All Industries	\$336.05	\$559.73
Mining & Quarrying	501.53	755.64
Contract Construction	304.31	549.55
Manufacturing	242.52	*
Transportation, Communications & Public Utilities	313.91	331.03
Wholesale & Retail Trade	193.22	210.37
Finance, Insurance & Real Estate	294.73	*
Services	282.26	318.11
State/Local Government	267.21	255.25
Other	*	*

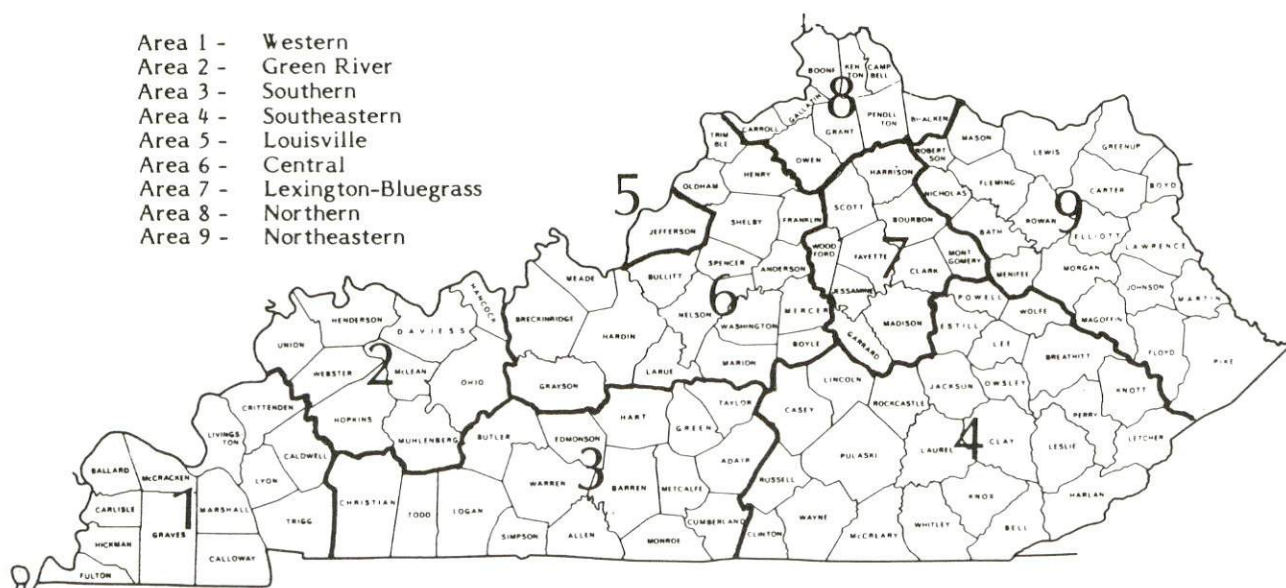
\* Not disclosed.

Note: The average weekly wage for each category includes the salaries and wages of all persons working for that type business. For example, the manufacturing category includes both production workers and administrative personnel. Excludes domestic workers, railway workers, certain nonprofit corporations, majority of federal government workers, and self-employed workers.

Source: Kentucky Cabinet for Human Resources, Average Weekly Wages of Workers Covered by Kentucky Unemployment Insurance Law, 1986.

Occupational wage rates for specific industries are usually not available to most government agencies, and wage data furnished to state employment agencies by individual industrial employers are protected from disclosure by federal law. The most reliable up-to-date wage information can be obtained by direct contact with local employers.

Associated Industries of Kentucky, a voluntary organization of Kentucky businesses, regularly collects occupational wage rates and fringe benefits data from participating member firms. Data are compiled for over 127 clearly defined office, production, and service occupations. Tabulations are published for nine geographical areas of Kentucky, as shown on the map below. It should be noted that the data may be weighted by the preponderance of firms in the larger cities and may be somewhat higher than the rates paid in the smaller communities. Data from these tabulations are available, upon request, from the Kentucky Department of Economic Development, Frankfort, Kentucky 40601.



Associated Industries of Kentucky Area Wage Surveys

EXISTING INDUSTRY

PIKE COUNTY MANUFACTURING FIRMS,  
THEIR PRODUCTS AND EMPLOYMENT

Firm (Establishment date)	Product	Average Employment			Labor Unions
		Total	Male	Female	
<b>Pikeville</b>					
Adams Construction Corporation (1955)	Ready-mixed concrete, bituminous concrete	36	30	6	Steel-workers*
Appalachian News-Express (1920)	Newspaper	22	9	13	
Damron's Welding & New Steel Sales, Inc. (1970)	Fabricated steel products	11	9	2	
East Kentucky Beverage Company, Inc. (1931)	Soft drinks	105	100	5	Steel-workers*
Executive Printing (1977)	Job printing	8	-	-	
Hydro Plate of Kentucky, Inc. (1983)	Hydraulic cylinders, pumps, valves, motors	10	9	1	
Industrial Rubber Products Company (1976)	Rubber knee pads	16	14	2	
Johnson Industries (1981)	Personnel carriers, mine	7	-	-	
Keene Garage Welding Shop (1945)	Machine shop, welding, repairs	6	6	-	

(Continued)



Firm (Establishment date)	Product	Average Employment			Labor Unions
		Total	Male	Female	
Kris Electrical Manufacturing Company, Inc. (1985)	Electrical mining equipment	9	-	-	
Mountain Enterprise (1974)	Asphalt, crushed limestone	18	15	3	Steel- workers*
Pikeville Ready Mix (1969)	Ready-mixed concrete	15	14	1	
Power Service Manufacturing Corporation (1985)	Electric mining equipment	10	-	-	
Printing By George (1985)	Job printing & graphic arts	10	-	-	
Robinson Creek					
Colley Block Company, Inc. (1958)	Concrete block	31	30	1	

\* See Labor Organizations below.

Sources: Kentucky Department of Economic Development, 1987 Kentucky Directory of Manufacturers; Division of Research and Planning.

#### LABOR ORGANIZATIONS IN MANUFACTURING FIRMS

##### Union

United Steelworkers of  
America, AFL-CIO

##### Representing workers at:

Adams Construction Corporation;  
East Kentucky Beverage Company,  
Inc.;  
Mountain Enterprises

SELECTED INDUSTRIAL SERVICES

<u>Types of Service</u>	<u>Location</u>	<u>Mileage from Pikeville</u>
Custom Data Processing	Prestonsburg, Kentucky	27
Custom Plastics Producers	Manchester, Kentucky	103
	Ashland, Kentucky	104
Electric Motor Repair	Pikeville, Kentucky	-
	Regina, Kentucky	13
	Martin, Kentucky	27
Grinding, Precision & Tool	Huntington, West Virginia	105
Heat Treating Facilities	Richmond, Kentucky	139
Industrial Equipment & Supplies	Richmond, Kentucky	139
	Ashland, Kentucky	104
	Lexington, Kentucky	143
Industrial Gases	Prestonsburg, Kentucky	27
Industrial Waste Removal	Ashland, Kentucky	104
Machine Shops, Tool & Die	Pikeville, Kentucky	-
Metal Castings	Middlesboro, Kentucky	138
Metal Finishers	Richmond, Kentucky	139
Metal Service Centers	Pikeville, Kentucky	-
Millwrights	Lexington, Kentucky	143
	Nicholasville, Kentucky	154
Public Warehouse Facilities	Paris, Kentucky	149

Sources: Kentucky Department of Economic Development, Kentucky Directory of Selected Industrial Services, 1985; Division of Research and Planning.

## TRANSPORTATION

### Rail

Line serving Shelbiana, 7 miles south of Pikeville - CSX Transportation

Services - Main line; freight service as needed; six eastbound and six westbound through freights daily; switch engine; team track space for eight cars. The nearest piggyback facilities are operated by CSX Transportation at Kingsport, Tennessee, 105 miles south of Shelbiana.

Line serving Elkhorn City - CSX Corporation Transportation

Services - Main line; one northbound and one southbound freights stop daily; six northbound and six southbound through freights daily; switching services; siding space for 206 cars. The nearest piggyback facilities are operated by CSX Transportation at Kingsport, Tennessee, 98 miles south of Elkhorn City.

The Norfolk Southern Corporation provides service to numerous coal mining operations in Pike County.

For details on routing, schedules, rates, and services contact:

Manager  
Industrial Development  
CSX Transportation  
908 West Broadway  
P. O. Box 2157  
Louisville, Kentucky 40201  
(502) 587-7746

### Highways

"AAA"-rated (80,000-pound gross load limit) highways serving Pikeville include U.S. Highways 23 and 119. U.S. 460 and Kentucky Route 80 are "AAA"-rated west of the city and "AA"-rated (62,000-pound gross load limit) east of the city. The Mountain Parkway, a multilane toll road, is located 49 miles northwest of Pikeville, and provides easy access to Interstate 64, 125 miles northwest of Pikeville. Elkhorn City is located 23 miles southeast of Pikeville via Kentucky Route 80.

U.S. Highway 119 connects Pikeville with Williamson, West Virginia, 32 miles northeast of Pikeville. Construction is currently under way to widen the road to four lanes.

## Truck Service

ARA/Smith's\*  
Consolidated Motor Express,  
Inc.\*\*  
Hazard Express\*\*

Manning Motor Express, Inc.\*  
Overnite Transportation  
Company\*\*

\* Interstate service only.

\*\* Interstate and intrastate service.

Source: American Motor Carrier Directory, Spring 1987.

### HIGHWAY MILES AND TRUCK TRANSIT TIME IN DAYS FROM PIKEVILLE, KENTUCKY, TO SELECTED MARKET CENTERS

City	Highway Miles	Delivery		City	Highway Miles	Delivery	
		Time TL				Time TL	
Atlanta, GA	415	1-2		Los Angeles, CA	2,323	5-7	
Baltimore MD	536	2		Louisville, KY	220	1	
Birmingham, AL	476	2-3		Nashville, TN	327	1	
Chicago, IL	495	2		New Orleans, LA	818	3	
Cincinnati, OH	225	1		New York, NY	708	2-3	
Cleveland, OH	398	1-2		Pittsburgh, PA	368	2-3	
Detroit, MI	484	2		St. Louis, MO	478	1-2	
Knoxville, TN	222	1					

Note: Mileage computations are via the best interstate or primary highways, not necessarily the most direct route of travel.

Sources: Rand McNally Deluxe Motor Carriers' Road Atlas, 1987. Official Kentucky Mileage Map, 1980. Delivery time - Hazard Express, Inc., P. O. Box 1599, Hazard, Kentucky 41701.

## Air

### Local

Pike County Regional Airport\*

Location: 6 miles north of Pikeville

Runways: 1 paved

Length: 5,000 feet

Traffic

Control: Wind sock

Lighting: Runway lights, sundown to sunrise

Services: 100LL and jet fuel; major A & P repairs; hangars and tie-downs; charter service; flight instruction; plane rentals

Air Freight Service: Chartered air freight services must be arranged

### Nearest Scheduled Commercial Airline Service

Tri-State Airport (Walker-Long Field)

Location: 3 miles southwest of Huntington, West Virginia; 100 miles north of Pikeville

Runways: 2 paved

Length: 6,509 feet and 3,007 feet

Traffic

Control: Tower

Lighting: Beacon, runway

Services: Piedmont, USAir, Comair, Christman; fuel - 100LL, jet-A; tie-downs, hangars; major A & P repairs, major Avionics repairs; APU, charter, flight instruction, oxygen, plane rental, survival equipment, U.S. Customs; taxi, limousine, car rental; weather information; restaurant

Air Freight Service: Air freight terminal

## Water

The nearest navigable river is the Big Sandy River. Pikeville is approximately 80 miles south of a point on the Big Sandy River where a 6-foot navigation channel begins, and approximately 90 miles south of a point where a 9-foot channel begins. The confluence of the Big Sandy and Ohio Rivers is approximately 100 miles north of Pikeville.

\* An extension of approximately 1,300 feet to the existing runway at the Pikeville/Pike County Airport has recently been completed, bringing the overall length of the runway to 5,000 feet. Plans are currently under way to construct an additional runway which would have a length of 6,200 feet.

## POWER AND FUEL

### Electricity

Company serving **Pike County** - Kentucky Power Company  
Source of power - Kentucky Power Company  
For industrial rates contact:

Kentucky Power Company  
1701 Central Avenue  
P. O. Box 1428  
Ashland, Kentucky 41101  
(606) 329-2220

and/or

Kentucky Power Company  
P. O. Box 3158  
Pikeville, Kentucky 41501  
(606) 437-3777

### Natural Gas

Company serving **Pikeville** - City of Pikeville  
Source of supply - Columbia Gas Transmission Corporation and 15  
local wells  
Size of transmission mains - 2, 3, and 4 inches (supplier); 2 to 6  
inches (distributor)  
Distribution mains - 2 to 6 inches  
Distribution pressure - 18 to 35 psi  
Btu content - 1,150 to 1,222 per cubic foot  
Specific gravity - .60  
For rates and supplies contact:

City of Pikeville  
304 Auxier Avenue  
Pikeville, Kentucky 41501  
(606) 432-3132

Lyda Gas Company, Inc., a privately-owned local gas company, serves  
Elkhorn City. The source of supply is one private gas well.

## Other Fuels

### Propane

Doxol Gas Products Company  
762 Collins Highway  
Pikeville, Kentucky 41572

Owens Bottled Gas Service  
Russell Street  
Elkhorn City, Kentucky 41522

### Fuel oils

#### Distillate fuel oil -

Ashland Petroleum Company  
U.S. 23 South  
P. O. Box 2070  
Pikeville, Kentucky 41501

Elkhorn City Oil Company  
Russell Street  
Elkhorn City, Kentucky 41522

Chapman's Oil Service  
Route 1, Box 713  
Elkhorn City, Kentucky 41522

Rogers Petroleum Services, Inc.  
Tollage Creek Road  
P. O. Box 162  
Pikeville, Kentucky 41501

Coleman Oil Company, Inc.  
P. O. Box 2009  
Shelbiana, Kentucky

Residual fuel oil - Arrangements must be made with the refinery.

Low sulphur content coal - Available in Kentucky.

## WATER AND SEWERAGE

### Public Water Supply

Company serving Pikeville - City of Pikeville  
304 Auxier Avenue  
Pikeville, Kentucky 41501  
(606) 437-5100 or 437-5123

Source - Levisa Fork of the Big Sandy River  
Treatment plant capacity - 6,000,000 gallons per day\*  
Average daily consumption - 2,000,000 gallons  
Peak daily consumption - 2,600,000 gallons  
Treatment processes - Coagulation, sedimentation, filtration,  
chlorination, fluoridation, rapid mix, flocculation  
Storage capacity - 1,955,000 gallons  
Size lines - 4 to 16 inches  
Water pressure - 35 to 120 psi

### MONTHLY WATER RATES

	<u>Inside City</u>	<u>Outside City</u>
First 2,000 gallons -	\$6.90 (Minimum)	\$8.02 (Minimum)
Next 3,000 gallons -	3.45 per M gallons	3.65 per M gallons
Next 5,000 gallons -	3.40 per M gallons	3.60 per M gallons
Next 10,000 gallons -	3.35 per M gallons	3.55 per M gallons
Next 30,000 gallons -	3.30 per M gallons	3.50 per M gallons
Next 950,000 gallons -	3.20 per M gallons	3.40 per M gallons
Over 1,000,000 gallons -	1.50 per M gallons	1.70 per M gallons

#### Tap-on charges:

3/4-inch meter - \$112.50  
1-inch meter - \$175.00  
Meter sizes between 1 and 2 inches - \$225.00  
2-inch meter - \$250.00

A surcharge of \$5.00 is applied to the above tap fees for each foot of concrete which must be cut for the installation.

\* Construction of a new 6,000,000-gallon-per-day water treatment plant has recently been completed.



Company serving Elkhorn City - Elkhorn City Water and Sewer Department  
P. O. Box 681  
Elkhorn City, Kentucky 41522  
(606) 754-9418 or 754-5080

Source - Russell Fork of the Big Sandy River  
Treatment plant capacity - 400,000 gallons per day  
Average daily consumption - 317,000 gallons  
Peak daily consumption - 377,000 gallons  
Treatment processes - Sedimentation, filtration, chlorination,  
fluoridation, rapid mix  
Storage capacity - 412,000 gallons  
Size lines - 4 and 6 inches  
Water pressure - 98 to 102 psi

#### MONTHLY WATER RATES

First	2,000 gallons	\$6.00 (Minimum)
Next	3,000 gallons	2.00 per M gallons
Next	5,000 gallons	1.80 per M gallons
All over	10,000 gallons	1.50 per M gallons

Water rates for customers residing outside the city limits are  
150 percent of the above rates.

Tap-on charges:

For tap-ons inside the city limits - \$250  
Charges for tap-ons outside the city limits are 150  
percent of the charges for inside city tap-ons.

Name of water district - Mountain Water District\*  
Box 1469  
Pikeville, Kentucky 41501  
(606) 432-6254

Area served - Pike County except Pikeville, Elkhorn City & Sandy  
Valley

Date when water district began operating - June 30, 1986

Source of supply of treated water - City of Pikeville, Kentucky;  
City of Williamson, West Virginia

Source of raw water - Russell Fork of the Big Sandy River

Capacity of treatment plant - 750,000 gallons per day

Treatment processes - Rapid mix, coagulation, flocculation, sedimentation,  
filtration, chlorination and fluoridation

Average amount of water used in a 24-hour period - 600,000 gallons

Peak amount of water used in a 24-hour period - 720,000 gallons

Storage capacity - 3,240,000 gallons

Size lines - 3 to 10 inches

Water pressure - 60 to 80 psi

\* The Mountain Water District has plans to extend water lines to the Big Creek area, Buskirk/Blackberry area, and to the Raccoon Creek area. Costs of these projects total \$6.2 million and are scheduled for construction beginning late 1987 through June 1988.



Tap-on charges:

Residence - \$300.00  
Business - \$500.00

A surcharge of \$5 is applied to the above tap fees for each foot of concrete which must be cut for the installation.

Company serving Elkhorn City - Elkhorn City Water and Sewer Department  
P. O. Box 681  
Elkhorn City, Kentucky 41522  
(606) 754-9418

Design capacity - 150,000 gallons per day  
Average daily flow - 160,000 gallons  
Type of treatment - Primary and secondary  
Treatment processes - Screening, grit removal, extended aeration,  
activated sludge, chlorination  
Treated effluent discharged into - Russell Fork of the Big Sandy  
River  
Size of sanitary mains - 8 inches  
Size of storm mains - None  
Monthly rates - 100 percent of monthly water bill  
Tap-on charge:

Inside city - \$300.00  
Outside city - \$450.00

## CLIMATE

### Pike County

#### Temperature

Normal (30-year record)	55.90 degrees
Average annual 1986	57.00 degrees
Record highest, July 1952 (41-year record)	102.00 degrees
Record lowest, January 1985 (41-year record)	-21.00 degrees
Normal heating degree days (30-year record) (Heating degree day totals are the sums of negative departures of average daily temperatures from 65 degrees F.)	4,356

#### Precipitation

Normal (30-year record)	41.24 inches
Mean annual snowfall (30-year record)	16.20 inches
Total precipitation 1986	33.49 inches
Mean number days precipitation (.01 inch or more) (41-year record)	133.40
Mean number days thunderstorms (43-year record)	43.50

#### Prevailing winds (through 1963)

Northeast

#### Relative Humidity (25-year record)

1 a.m.	80 percent
7 a.m.	85 percent
1 p.m.	57 percent
7 p.m.	63 percent

Source: U.S. Department of Commerce, Environmental Science Services Administration, Climatological Data, 1986. Station of record: Bristol, Johnson City, Kingsport, Tennessee.

## LOCAL GOVERNMENT

### Structure

The city of Pikeville is served by a mayor, four commissioners and a city manager. The mayor is elected to a four-year term and the commissioners serve two-year terms. Elkhorn City is served by a mayor elected to a four-year term and six council members which serve two-year terms. Pike County is served by a county judge/executive and four magistrates. The judge/executive and magistrates are elected to four-year terms.

### Planning and Zoning

Joint agency - Joint Planning Commission of Pikeville, Elkhorn City, and Pike County  
Participating cities - Pikeville and Elkhorn City  
Zoning enforced - City of Pikeville  
Subdivision regulations enforced - All areas of Pike County  
Local codes enforced - Building and housing within city of Pikeville  
Mandatory state codes enforced - Kentucky Plumbing code, National Electric Code, Kentucky Boiler Regulations and Standards, Kentucky Building Code (modeled after BOCA code)

### Local Fees and Licenses

Pikeville levies a one and one-half percent occupational license tax on wages, salaries, and commissions of individuals and on net profits of businesses.

The city of Pikeville levies a contractors occupational license fee of one-half percent of all local contracts.

Elkhorn City levies a license fee on businesses, occupations, and professions in the city. These fees range from \$25 to \$150 annually. Elkhorn City also levies a \$50 per year unloading fee and a \$5.00 per year auto sticker fee.

A 3 percent tax is levied on utilities receipts for schools in Pike County. Tax is paid by all consumers of utilities as an add-on to the utilities bills. Exempted are receipts from utilities services that are resold and the receipts from the sale of energy or energy producing fuels that exceed 3 percent of the cost of production in manufacturing, processing, mining or refining.

## State and Local Property Taxes

All property in Kentucky, except items exempted by the state constitution, is taxed by the state. Property which also may be taxed by local jurisdictions includes land and buildings, finished goods inventories, automobiles, trucks, office furniture and office equipment. Local taxing jurisdictions in Kentucky include counties, cities, and school districts.

All property in Kentucky is assessed at 100 percent of fair cash value.

### COMBINED STATE AND LOCAL RATES PER \$100 VALUATION, 1986

	Site Inside City of Pikeville and Within the Pikeville School District	Site Inside City of Pikeville and Within the Pike County School District
Land and Buildings	\$1.3030	\$0.8020
Manufacturing		
Machinery	0.1500	0.1500
Pollution Control		
Equipment	0.1500	0.1500
Inventories		
Raw materials	0.0010	0.0010
Goods in Process	0.0010	0.0010
Finished Goods	1.1199	0.6049
Automobiles & Trucks	1.6459	1.0539
Other Tangible		
Personal Property	1.5689	1.0539
Intangibles (Accounts receivable*, money in hand, stock, notes, bonds)	0.2500	0.2500
Goods Stored in Public Warehouses in Transit Status	0.0010	0.0010
Private Leaseholds in Industrial Revenue Bond Financed Facilities	0.0150	0.0150

(Continued)

	Site Inside City of Elkhorn City	Site Inside Unincorporated Pike County
Land and Buildings	\$0.8210	\$0.6210
Manufacturing		
Machinery	0.1500	0.1500
Pollution Control		
Equipment	0.1500	0.1500
Inventories		
Raw materials	0.0010	0.0010
Goods in Process	0.0010	0.0010
Finished Goods	0.6239	0.4239
Automobiles & Trucks	1.0729	0.8729
Other Tangible		
Personal Property	1.0729	0.8729
Intangibles (Accounts receivable*, money in hand, stock, notes, bonds)	0.2500	0.2500
Goods Stored in Public Warehouses in Transit Status	0.0010	0.0010
Private Leaseholds in Industrial Revenue Bond Financed Facilities	0.0150	0.0150

\* Accounts receivable are taxed at 85 percent of face value, for an effective rate of \$0.2125 per \$100 valuation.

## Safety

Police	Pikeville	Elkhorn City	Pike County
Total staff	15	4	27
Radio-patrol cars	6	2	30
<b>Fire*</b>			
Insurance Services Office, Public Protection Classification	7	9	**
Full-time staff	15	-	-
Volunteers	18	20	470
<b>Rescue Service</b>			

Rescue service is provided by the Pike County Emergency and Rescue Squad, Inc.

## Refuse Collection and Disposal

Refuse collection is provided to residents of Pikeville by the city of Pikeville. Private contractors provide refuse collection for residents of Elkhorn City. County residents are provided refuse collection by the Pike County government using county forces.

\* Includes copyrighted material of ISO Commercial Risk Services, Inc., with its permission.

\*\* Pike County has 21 volunteer fire departments which are operated by approximately 470 volunteers. Public protection classification ratings for these fire protection areas range from 9 to 10.



## EDUCATION

### Public Schools

	Pikeville Independent*	Pike County**
Total Enrollment (Fall 1987)	1,435	15,250
Kindergarten	119	1,119
Elementary	679	9,637
Junior High	226	-
High School	411	4,494
 Pupil-Teacher Ratio (1985-86)	 18-1	 21-1
 Percent High School Graduates to College (1985-86)	 73.8	 37.3
 Expenditures Per Pupil (1985-86)	 \$2,293.27	 \$1,859.13

### Nonpublic Schools

<u>School</u>	<u>Enrollment</u>	<u>Grades</u>
St. Francis of Assisi Elementary	70	K-6

\* Plans are under way to add five new classrooms at the Pikeville Elementary School. Cost of this project is \$325,000, and construction is to begin in the summer of 1988. Plans are also under way to acquire additional property and construct additional classrooms at the Pikeville High School. Construction is scheduled to begin in the spring of 1988.

\*\* Construction of a new \$6.5 million Shelby Valley High School is currently under way. This project, which will consolidate the Dorton & Virgie schools, is scheduled for completion in early 1990. Renovation and conversion of the Dorton School into an elementary school is currently under way. Cost of this project is \$1.6 million and is scheduled for completion in early 1990. Construction of a new \$6,000,000 high school at Phelps has been completed.

## Area Colleges and Universities

<u>Name</u>	<u>Location (Miles distant)</u>	<u>Enrollment (Fall, 1986)</u>	<u>Highest Degree Conferred</u>
Pikeville College	Pikeville, Kentucky	753	Baccalaureate
Prestonsburg Community College	Prestonsburg, Kentucky (27)	1,505	Associate
Southern West Virginia Community College	Williamson, West Virginia (32)	871	Associate
Clinch Valley College of the University of Virginia Alice Lloyd College	Wise, Virginia (54)	1,354	Baccalaureate
	Pippa Passes, Kentucky (58)	598	Baccalaureate
Southern West Virginia Community College	Logan, West Virginia (64)	2,618	Associate
Hazard Community College	Hazard, Kentucky (69)	776	Associate
Southeast Community College	Cumberland, Kentucky (73)	1,025	Associate

Pikeville College is a four-year, independent, co-educational college affiliated with the United Presbyterian Church. The institution is a liberal arts college offering courses leading to the degrees of Bachelor of Arts, Bachelor of Science, and Bachelor of Business Administration. Associate degrees are offered in nursing, accounting, secretarial science, and early childhood education. Through the Graduate Appalachian Consortium, Pikeville College and Morehead State University offer graduate level courses on the college campus.

## Vocational Training

The Bluegrass State Skills Corporation, an independent public corporation created and funded by the Kentucky General Assembly, provides programs of skills training to meet the needs of business and industry from entry level to advanced training, and from upgrading present employees to retraining experienced workers.

The Bluegrass State Skills Corporation is the primary source for skills training assistance for a new or existing company. The Corporation works in partnership with other employment and job training resources and programs, as well as Kentucky's economic development activities, to package a program customized to meet the specific needs of a company.

Vocational training is available at both the state vocational-technical schools and the area vocational education centers. The state vocational-technical schools are post-secondary institutions. The area vocational education centers are designed to supplement the curriculum of high school students. Both the state vocational-technical schools and the area vocational education centers offer evening courses to enable working adults to upgrade current job skills.

Arrangements can be made to provide training in the specific production skills required by an industrial plant. Instruction may be conducted either in the vocational school or in the industrial plant, depending upon the desired arrangement and the availability of special equipment.

### Nearest State School

Mayo State Vocational-Technical School  
Paintsville, Kentucky, 40 miles distant

Business & Office	Drafting
Accounting/Management	Electricity
Clerical	Electronics
Data Processing	Graphic Arts
Secretarial	Machine Shop
Consumer & Home Economics	Mine Equipment Operator
Consumer & Family Life	Mine Maintenance Technology
Skills	Welding
Health & Personal Services	Learning Resource Center
Occupations	Public Service Occupations
Cosmetology	Business/Industry Security
Practical Nursing	Training
Industrial Education	CPR Training
Air Conditioning	Electrical Safety Training
Auto Body Repair	Emergency Medical Care
Auto Mechanics	Fire Service Training
Carpentry	First Aid & Safety
Civil & Highway Technology	Rescue & Emergency Services
Diesel Mechanics	Training

Nearest Area Education Centers

Belfry Area Vocational Education Center  
Belfry, Kentucky (Pike County)

Health & Personal Services	Electricity
Occupations	Machine Shop
Health Services	Welding
Industrial Education	
Auto Mechanics	

Millard Area Vocational Education Center  
Millard, Kentucky (Pike County)

Business & Office	Industrial Education
Accounting/Management	Auto Mechanics
Clerical	Carpentry
Secretarial	Drafting
Health & Personal Services	Electricity
Occupations	Mine Maintenance Technology
Health Services	

Phelps Area Vocational Education Center  
Phelps, Kentucky (Pike County)

Health & Personal Services	Carpentry
Occupations	Electricity
Health Services	Welding
Industrial Education	
Auto Mechanics	

## HEALTH

### Local Medical Personnel

Physicians - 65  
Dentists - 32

### Hospitals

<u>General Hospital</u>	<u>Location</u>	<u>Beds</u>
The Methodist Hospital of Kentucky	Pikeville	227
Williamson Appalachian Regional Hospital	South Williamson, 31 miles northeast of Pikeville	143 acute care 50 skilled nursing

#### The Methodist Hospital of Kentucky

Medical staff - 78 physicians, 85 registered nurses, and 101 licensed practical nurses

#### Williamson Appalachian Regional Hospital

Medical staff - 49 physicians, 58 registered nurses, and 49 licensed practical nurses

### Other Medical Facilities

Mountain Comprehensive Care Center  
Pike County Health Department  
Upper Levisa Clinic - Marrowbone, Kentucky

### Ambulance Service

Name - ANS Ambulance Service - Pikeville  
Staff - 7 emergency medical technicians

Name - Appalachian Ambulance Service - Pikeville  
Staff - 4 full-time and 2 part-time emergency medical technicians

Name - Elkhorn City Area Ambulance Service  
Staff - 27 emergency medical technicians

Name - Phelps Ambulance Service, Inc.  
Staff - 3 emergency medical technicians

Name - Shelby Valley Ambulance Service, Inc.  
Staff - 7 emergency medical technicians

## OTHER LOCAL FACILITIES

### Communications

Telephone - Telegraph -	South Central Bell Telephone Company Western Union Toll-Free number, 1-800-325-6000
Newspapers - Three times weekly and circulation -	Appalachian News-Express  11,500
Radio -	WLSI-AM, WPKE-AM, WHJC-AM, WDHR-FM, WECL-FM, and WBPA-AM
Television - Cable service -	There are 24 cable T.V. systems operating in Pike County
Educational Television -	The Kentucky Educational Television (K.E.T.) network is available statewide

### Library Services

Public library - Pikeville Free Public Library Size collection - 31,000 volumes Circulation, 1985-86 - 41,607	
Public library - Pike County Public Library Size collection - 55,000 volumes Circulation, 1985-86 - 163,707	
College library - O'Rear Robinson Library Media Center of Pikeville College Size Collection - 90,600 volumes	

## Religious Institutions

Denominations -	Assembly of God	Jehovah's Witnesses
	Baptist	Lutheran
	Catholic	Methodist
	Christian	Missionary Alliance
	Church of Christ	Missionary Baptist
	Church of God	Pentecostal
	Church of Jesus Christ of Latter Day Saints	Presbyterian
	Episcopal	Primitive Baptist
	Freewill Baptist	Seventh Day Adventist
	Gospel	Southern Baptist
	Holiness	United Methodist
	Interdenominational	Wesleyan
Nearest Synagogues -	Ashland, Kentucky, 104 miles north of Pikeville Huntington, West Virginia, 150 miles north of Pikeville	
Congregations -	Agudath Achim (reform) B'nai Shalom (conservative & reform)	

## Financial Institutions

<u>Banks</u>	<u>Assets</u>	<u>Deposits</u>	<u>Statement Date</u>
The Citizens Bank	\$159,250,999.54	\$130,014,056.83	6/30/87
The First National Bank of Pikeville	221,801,270.00	201,725,481.00	6/30/87
Pikeville National Corporation and its subsidiaries (Pikeville National Bank and Trust Company and the First Security Bank and Trust Company)	442,850,701.00	375,233,807.00	6/30/87
<u>Savings and Loan Associations</u>	<u>Assets</u>	<u>Savings Account</u>	<u>Statement Date</u>
Family Federal Savings & Loan Association	\$69,015,303.00	\$65,138,384.00	12/31/86

## Hotels and Motels

Total number - 11  
Total rooms - 707

## RECREATION

### Local

Pike County is in the center of Kentucky's mountain vacationland and is surrounded by some of the most majestic scenery in the eastern United States.

Public recreational facilities in Pikeville include the 15-acre Bob Amos Park, offering ball fields, tennis courts, a track and a football field. The Hambley Recreational Facility - a youth center - features a tennis court, a covered swimming pool, Little League ball fields, a football field, and a mini park. The Pikeville City Park has basketball goals, a playground, and tennis courts. Also, several mini parks are located in Pikeville. The Fourth Street Community Recreation Center offers a gymnasium.

Elkhorn City recently completed construction of a city park offering a playground, a Little League ball field, and a swimming pool. Two tennis courts are located at the local school yard.

Swimming pools are also located in the communities of Virgie, Phelps, and Blackberry.

Private recreational facilities in Pike County include two country clubs with golf courses and swimming pools, a bowling alley, roller rinks, and seven indoor theaters.

Annual events in Pike County include Pikeville's Fourth of July Festival, featuring fireworks displays, and the Christmas Parade. Hillbilly Days, also held in Pikeville, features costume contests, food booths, games, bluegrass and country music, and a parade. The event benefits the Shriners Hospital for Crippled Children. The Apple Blossom Festival is held each year in Elkhorn City.

The Pike County Chamber of Commerce sponsors the annual Pike Area Coal Exposition, one of the largest coal expositions in the country.

Fishtrap Lake, 7 miles southeast of Pikeville, contains 1,131 acres of excellent boating and fishing. The lake extends about 18 1/2 miles up the Levisa Fork of the big Sandy River.

Breaks Interstate Park, near Elkhorn City on the Kentucky-Virginia border, is a unique park sponsored by Kentucky and Virginia which sits on the rim of the largest river canyon east of the Mississippi. The canyon (or breaks or gap) is a five-mile cut with 1,000-foot palisades on either side. Sometimes called the "Grand Canyon of the South" this park offers 4,600 acres of breathtaking scenery. Breaks Interstate Park is a full-facility resort park with a 36-room lodge, cottages, swimming pool, camping facilities and a visitors center.



## Area (Within 90 miles)

**Jenny Wiley State Resort Park**, 27 miles northwest of Pikeville near Prestonsburg, takes full advantage of its picturesque highland setting. The 1,700-acre park offers facilities and activities such as a 49-room lodge, a dining room, a gift shop, cottages, a lodge pool, sky lift, recreation rooms, campsites, picnic areas, planned recreation, playground, golf, hiking, horseback riding, miniature golf, shuffleboard, fishing, and fishing boat and pedal boat rentals. A summer music theatre presents Broadway musicals in a 90-seat amphitheater.

**Paintsville Lake State Park**, 40 miles northwest of Pikeville near Staffordville, Kentucky, is one of the newest in the state park system and offers a full-service marina at the 1,139 acre lake. The lake offers excellent fishing for bass, channel catfish, walleye, and trout.

**Kingdom Come State Park**, located 75 miles southwest of Pikeville near Cumberland, Kentucky, contains 1,283 beautiful mountain acres. It is named for John Fox, Jr.'s, "The Little Shepherd of Kingdom Come", which was written in 1903 and was the first U.S. novel to sell one million copies. Features include a three-acre fishing lake, pedal boats, a picnic area, a hiking trail, a playground, and Raven Rock, a fascinating stone formation with a large cave opening at the base. The park is located on the midway point of the Little Shepherd Trail, a hiking and driving trail which follows Pine Mountain from Harlan to Whitesburg.

**Buckhorn Lake State Resort Park**, 87 miles southwest of Pikeville at Buckhorn, is a full-facility resort park with a 36-room lodge. The lodge itself offers a dining room with a lake view, a gift shop, a pool, meeting rooms, and a recreation room. Other park facilities and activities include a beach, a bathhouse, a picnic shelter, a playground, mini-golf, tennis, hiking, a dock with open and covered slips, boat rentals, a 40-foot levee plus a fishing pier, bicycle rentals, and planned recreation.

## COMMUNITY IMPROVEMENTS

### Recent

The Pikeville "cut through", a \$77.6 million project to relocate the Levisa Fork River, the CSX Railroad and highways which formed a loop around Pikeville, has been completed. The original river bed has been filled to create additional land for community development. The U.S. 23 Pikeville By-pass has also been completed.

An extension of approximately 1,300 feet to the existing runway at the Pikeville/Pike County Airport has recently been completed, bringing the overall length of the runway to 5,000 feet. Plans are currently under way to construct an additional runway which would have a length of 6,200 feet.

Construction of a new 6,000,000-gallon-per-day water treatment plant for the city of Pikeville has recently been completed.

A \$250,000 renovation of the sewer treatment plant in Pikeville has recently taken place. Plans are currently under way to expand the sewer treatment plant capacity to 1.2 million gallons per day. Cost of this project is expected to be \$483,000.

A \$1 million extension of sewer trunk lines to the recently annexed Yorktown area has been recently completed. The project included a new main sewer pumping station.

Construction of a new \$6,000,000 high school at Phelps has been completed.

### Under Way

Pike County is presently implementing a county-wide water system. In addition to the existing waterlines in the Shelby Valley, Marrowbone, Pond Creek and Chloe Creek areas, a \$4,000,000 thirty-eight mile waterline construction project is in progress which, upon completion, will provide water for the Coon Creek, Upper Johns Creek, and Grapevine communities. An additional \$10,000,000 in funding has been obtained for the construction of waterlines to serve the Blackberry, Big Creek, and Peter Creek areas.

Construction of a new \$6.5 million Shelby Valley High School is currently under way. This project, which will consolidate the Dorton & Virgie schools, is scheduled for completion in early 1990.

Renovation and conversion of the Dorton School into an elementary school is currently under way. Cost of this project is \$1.6 million and is scheduled for completion in early 1990.

The county is presently attempting to acquire property for the construction of a park near Dorton, a park in the Grapevine area, and looking for an available site for a public golf course. Working with the Tourist Commission, Pike County is actively promoting whitewater rafting on the Russell Fork of the Big Sandy River. In a cooperative effort with the landowner, the Pike County Road Department is presently improving the road and parking area at Potters Ford to facilitate ingress/egress for rafters at that point. The county is also looking into the possibility of acquiring sites at Potters Ford and Pine Island for public use and making the necessary improvements.

#### **Planned**

Plans are currently under way to construct a new high school to consolidate Mulling and Johns Creek Schools. Cost of this project is estimated to be \$7.2 million.

Plans are under way to add five new classrooms at the Pikeville Elementary School. Cost of this project is \$325,000, and construction is to begin in the summer of 1988.

Plans are also under way to acquire additional property and construct additional classrooms at the Pikeville High School. Construction is scheduled to begin in the spring of 1988.

Construction of an enclosed 750,000-square-foot regional shopping mall at Pikeville is to begin in the fall of 1987. Completion is scheduled for fall 1988.