

1975

Industrial Resources: Russell County

Kentucky Library Research Collections
Western Kentucky University, spcol@wku.edu

Follow this and additional works at: https://digitalcommons.wku.edu/russell_cty

 Part of the [Business Administration, Management, and Operations Commons](#), [Growth and Development Commons](#), and the [Infrastructure Commons](#)

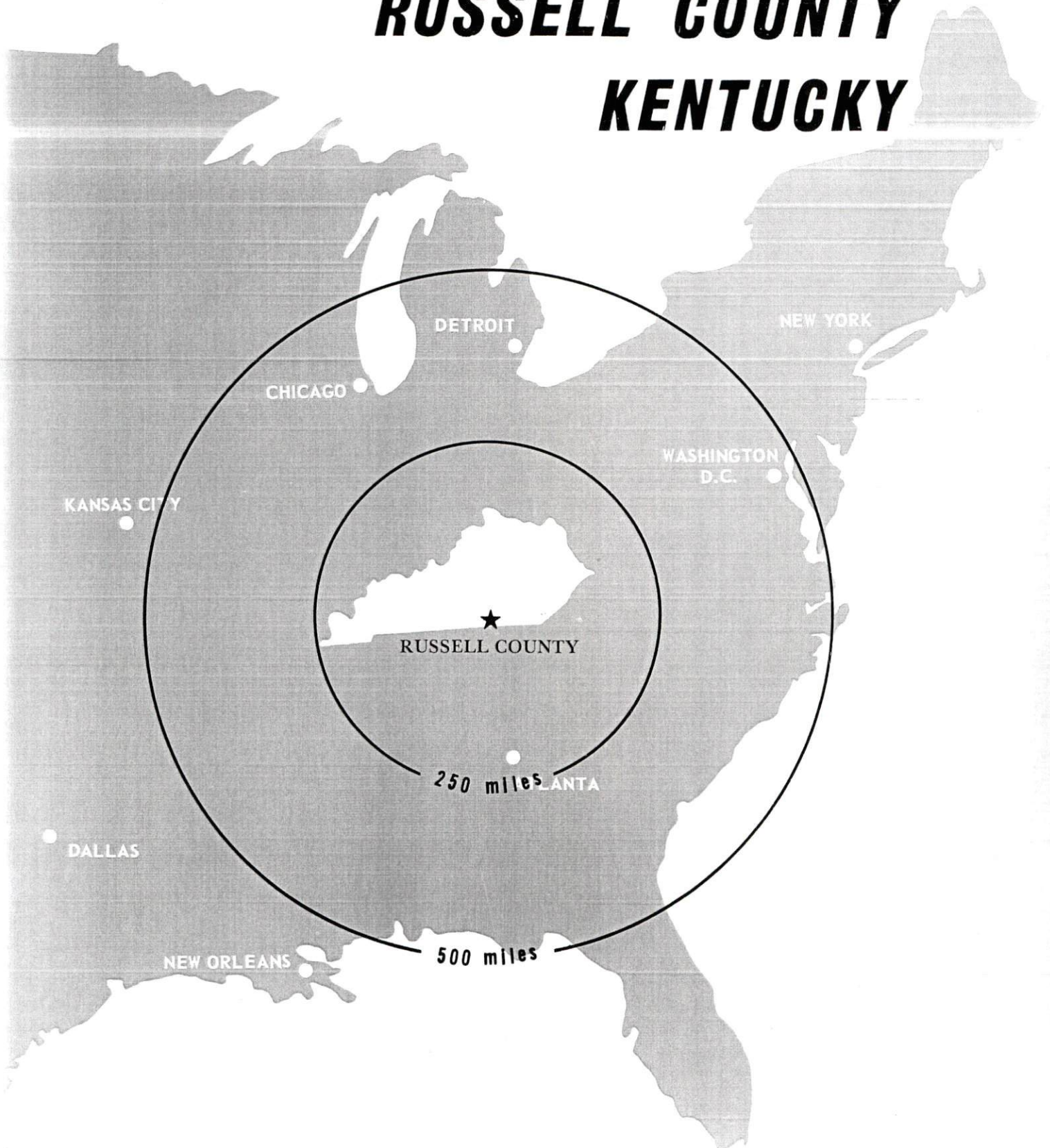
Recommended Citation

Kentucky Library Research Collections, "Industrial Resources: Russell County" (1975). *Russell County*. Paper 10.
https://digitalcommons.wku.edu/russell_cty/10

This Report is brought to you for free and open access by TopSCHOLAR®. It has been accepted for inclusion in Russell County by an authorized administrator of TopSCHOLAR®. For more information, please contact topscholar@wku.edu.

INDUSTRIAL RESOURCES

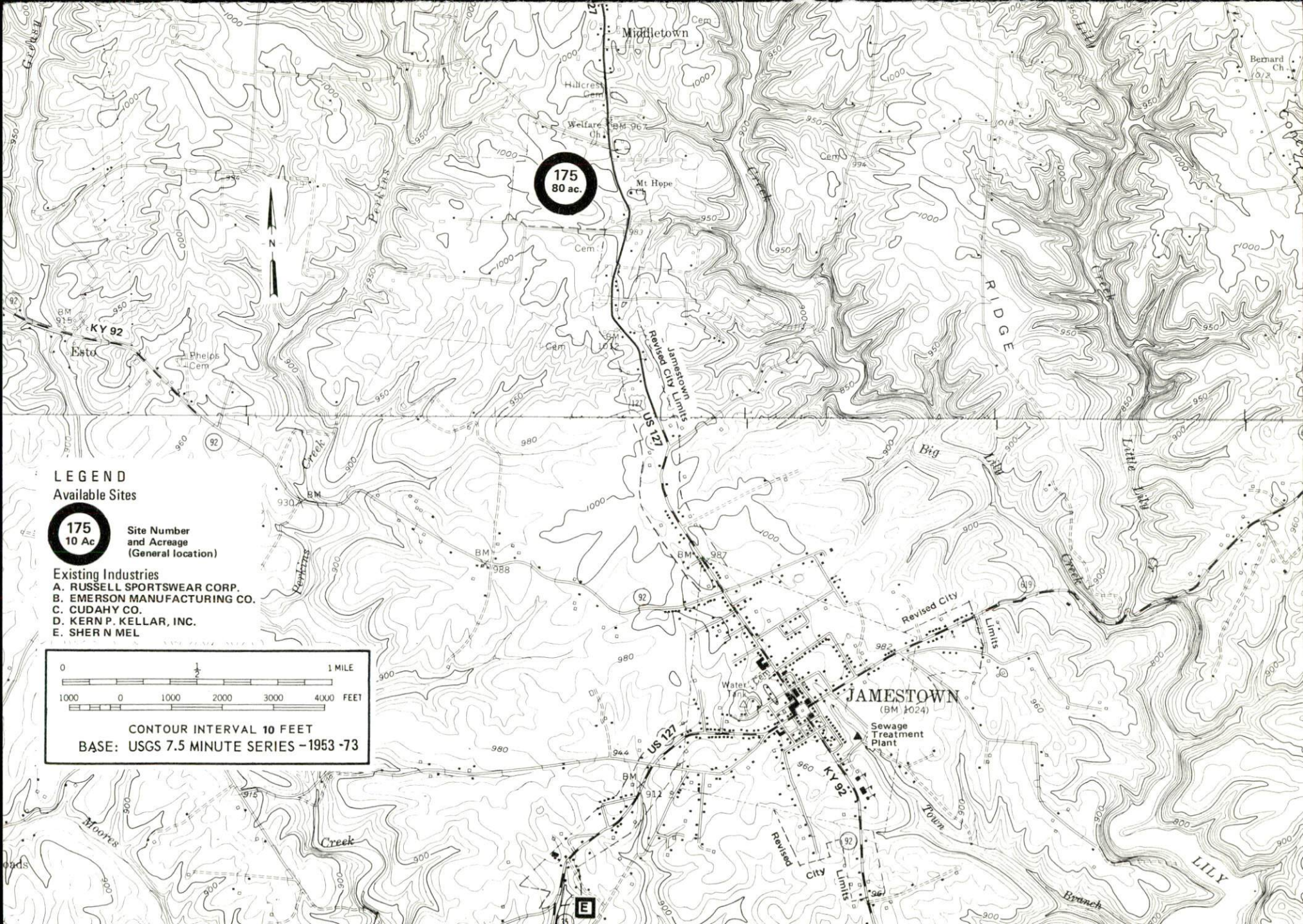
RUSSELL COUNTY KENTUCKY



RUSSELL COUNTY, KENTUCKY --- Index to Industrial Sites --- 1975

For detailed data on individual sites, contact Mr. Paul Walkup, Chairman, Russell County Industrial Committee, Court House Annex, Jamestown, Kentucky 42629, or the Industrial Development Division, Kentucky Department of Commerce, Capital Plaza Tower, Frankfort, Kentucky 40601.



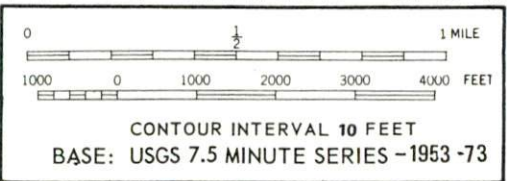


175
80 ac.

LEGEND
Available Sites

175
10 Ac Site Number and Acreage (General location)

- Existing Industries
- A. RUSSELL SPORTSWEAR CORP.
 - B. EMERSON MANUFACTURING CO.
 - C. CUDAHY CO.
 - D. KERN P. KELLAR, INC.
 - E. SHER N MEL



INDUSTRIAL RESOURCES
RUSSELL COUNTY, KENTUCKY

Prepared by
The Kentucky Department of Commerce
in cooperation with
The Russell County Development Association, Inc.

1975

Production Supervisor

Patsy Wallace

Research

Betty Clary

Clerical

Dorothy Tierney

Graphics

N. C. Montague
Frank Ferrante
Tony Cecconi

Cartography

Site Development Section

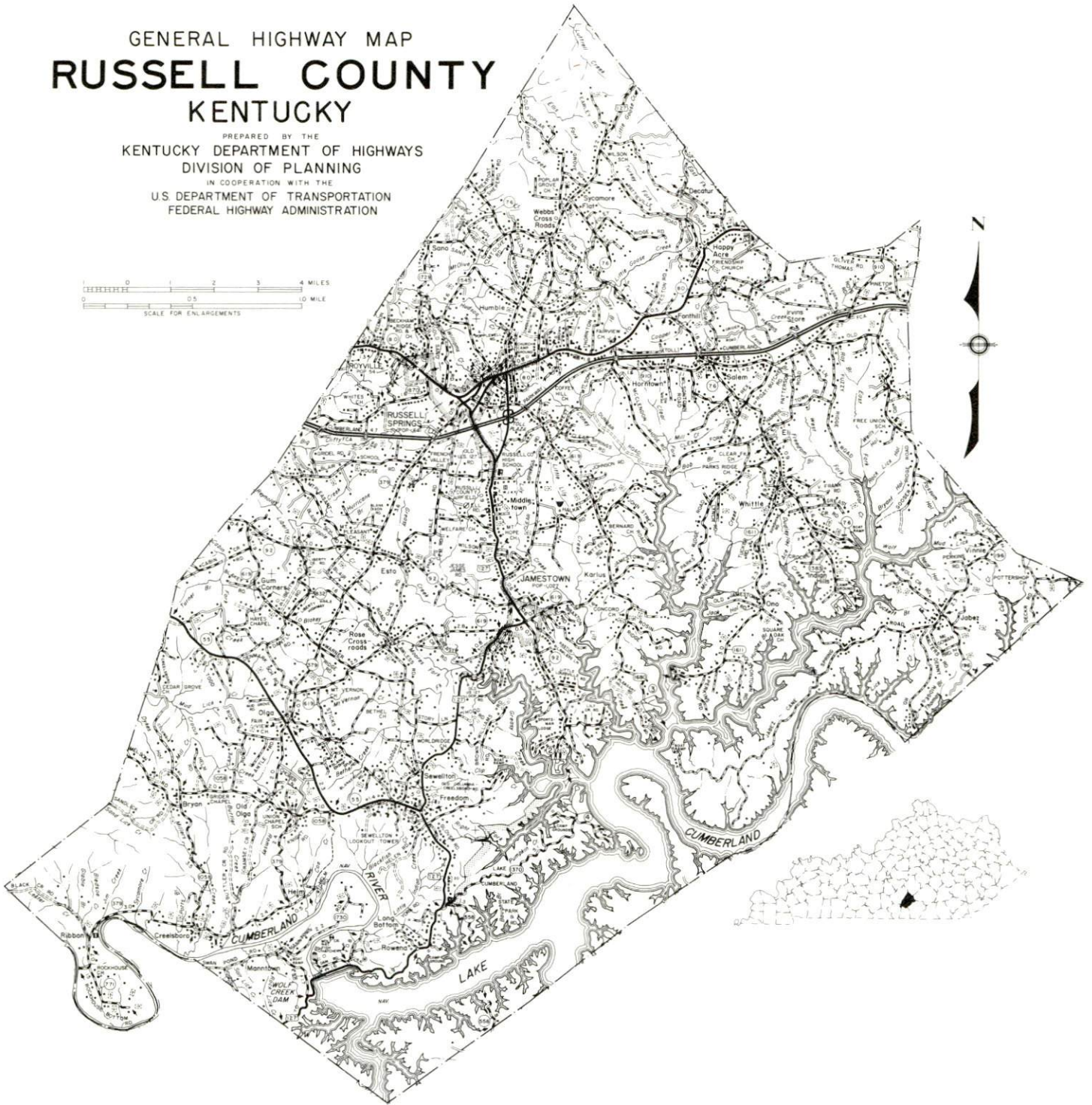
TABLE OF CONTENTS

<u>Chapter</u>	<u>Page</u>
INDUSTRIAL SITES	i
RUSSELL COUNTY, KENTUCKY - A RESOURCE PROFILE	1
THE LABOR MARKET AREA	3
Population	3
General Employment Characteristics, 1974	3
Manufacturing Employment by Industry	4
Russell County Manufacturing Firms, Their Products and Employment	5
Labor Organizations	7
Estimated Male Labor Supply	7
Estimated Female Labor Supply	7
Wages	8
Per Capita Personal Income	9
TRANSPORTATION	10
Rail	10
Highways	10
Truck Service	10
Air	11
Taxi	11
POWER AND FUEL	12
Electricity	12
Natural Gas	12
Other Fuels	12
WATER AND SEWERAGE	13
Water	13
Sewerage	15
CLIMATE	16
Temperature	16
Precipitation	16
Prevailing Winds	16
Relative Humidity	16

<u>Chapter</u>	<u>Page</u>
LOCAL GOVERNMENT	17
City	17
County	17
Assessed Value of Property, 1974-75	17
Property Taxes	18
Local Property Tax Rate Per \$100 of Assessed Valuation, 1975	18
Planning and Zoning	18
Safety	19
Police	19
Fire	19
Rescue Service	19
Solid Wastes	19
EDUCATION	20
Public Schools	20
Colleges and Universities	20
Vocational Schools	21
HEALTH	22
Local Medical Personnel	22
Hospitals	22
Ambulance Service	22
Public Health	22
OTHER LOCAL FACILITIES	23
Communications	23
Library Services	25
Religious Institutions	25
Financial Institutions	25
Hotels and Motels	25
Clubs and Organizations	26
RECREATION	27
Local	27
Area	27
COMMUNITY IMPROVEMENTS	29
HISTORY	31

GENERAL HIGHWAY MAP
RUSSELL COUNTY
KENTUCKY

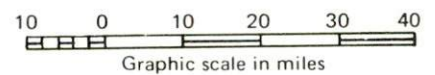
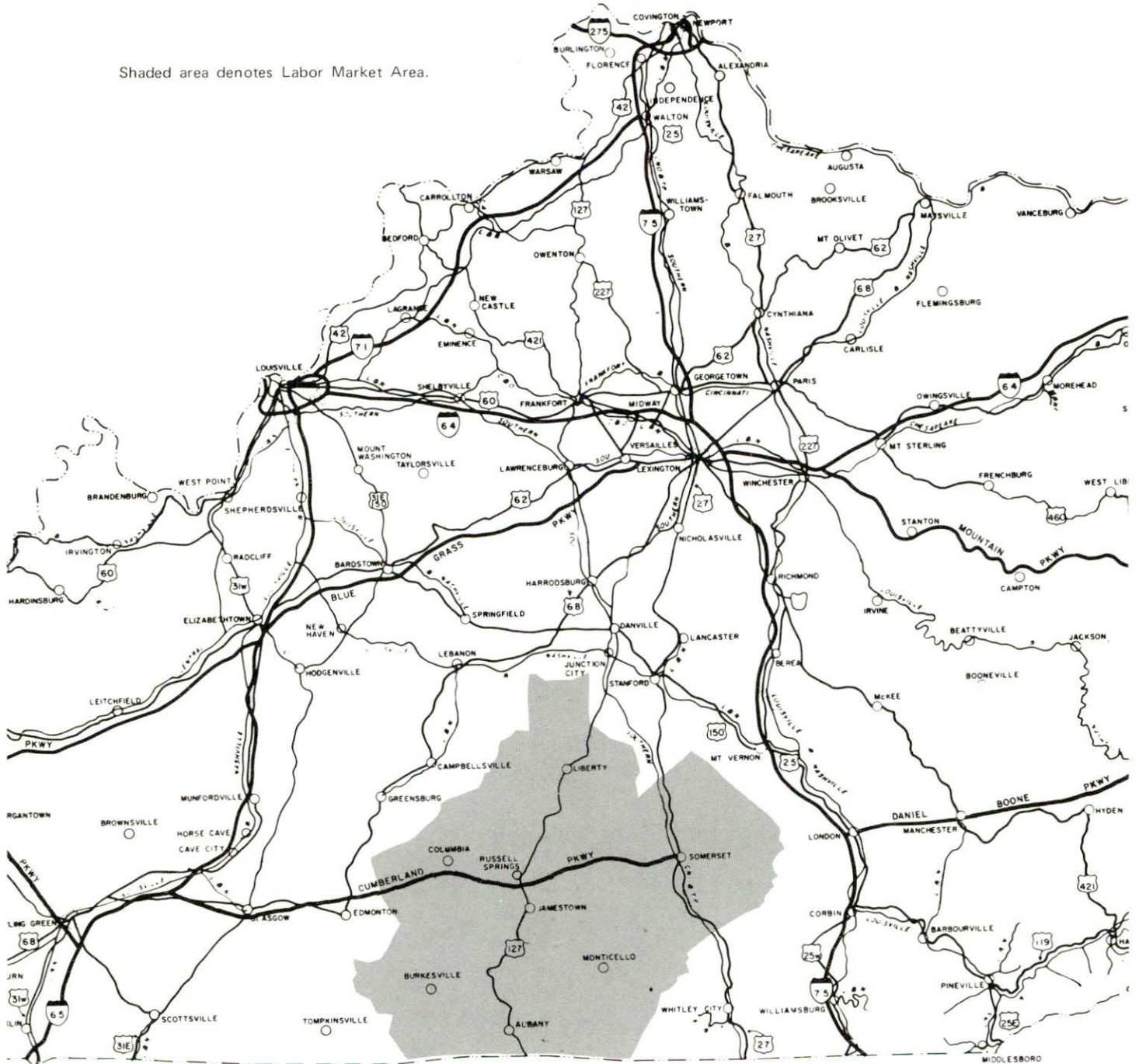
PREPARED BY THE
KENTUCKY DEPARTMENT OF HIGHWAYS
DIVISION OF PLANNING
IN COOPERATION WITH THE
U.S. DEPARTMENT OF TRANSPORTATION
FEDERAL HIGHWAY ADMINISTRATION



RUSSELL COUNTY LABOR MARKET AREA



Shaded area denotes Labor Market Area.



RUSSELL COUNTY, KENTUCKY - A RESOURCE PROFILE

Russell County is located in the Mississippian Plateau Region of south central Kentucky. The county covers a land area of 238 square miles. In 1974, the population for Russell County was 11,600.

Jamestown, the county seat of Russell County, is situated in the central portion of the county. Jamestown had a population of 1,006 in 1973.

The community of Russell Springs, located 6 miles north of Jamestown, was designated a 1974 All Kentucky City. Russell Springs had a 1973 population of 1,644. Louisville, Kentucky, is 108 miles north of Russell Springs, while Knoxville, Tennessee, is 94 miles south, and Nashville, Tennessee, is 129 miles southwest.

The Economic Framework

The total number of Russell County residents employed in 1974 averaged 3,450, including 570 in agriculture and 665 in government. Manufacturing employers in the county reported 860 workers and trade and services firms employed 550. The major industrial product is ladies' apparel.

Total unemployment in Russell County averaged 10.4 percent of the labor force in 1974.

Per capita personal income in the county in 1973 was \$2,527, an increase of 25.2 percent since 1969.

The Russell County labor market area includes Russell County and the six adjoining counties. The total number of residents of the labor market area employed in 1974 averaged 43,060, including 6,945 in agriculture and 5,285 in government. Manufacturing employers in the labor market area reported 8,280 workers and trade and services firms employed 7,080.

Resources for Growth

1. There is a current labor supply of 6,040 men and 6,250 women available for industrial jobs in the labor market area. In addition, 5,060 young men and 4,780 young women in the area will become 18 years of age before 1981 and potentially available for work.

2. Russell County is served by the Cumberland Parkway, U. S. Highway 127 and Kentucky Highways 80, 379, and 92. Rail service is available in Somerset, 27 miles from Russell Springs. Two truck lines serve Jamestown while three serve Russell Springs. Commercial air service is provided by the London-Corbin Airport (Magee Field) approximately 70 miles east of Russell Springs. The Russell County Airport, located $2\frac{1}{2}$ miles south of Russell Springs, is capable of accommodating light aircraft.

3. South Kentucky RECC provides electric power to Russell County, while Kentucky Utilities Company supplies power for Jamestown and Russell Springs. Natural gas is not available in Russell County. However, an adequate supply of propane and distillate fuel oil is available in the area.

4. One public school system operates in Russell County. Two senior colleges, a junior college and a community college are located within 60 miles of Russell County. The Somerset State Vocational School, located 27 miles from Russell Springs, offers training in twelve course areas; the Russell County Area Vocational Education Center in Jamestown offers training in five course areas.

THE LABOR MARKET AREA

POPULATION

Area	1974*	1970	Percent Nonwhite
			1970
Jamestown	1,006**	1,027	1.7
Russell Springs	1,644**	1,641	0.5
Labor Market Area	110,900	101,035	
Russell County	11,600	10,542	0.8
Adair County	14,200	13,037	4.6
Casey County	13,900	12,930	0.3
Clinton County	8,700	8,174	0.4
Cumberland County	6,900	6,850	6.5
Pulaski County	40,100	35,234	1.7
Wayne County	15,500	14,268	2.7

*Provisional Estimates.

**1973 Population Estimates

Sources: U. S. Department of Commerce, Bureau of the Census, Census of Population, 1970. U. S. Bureau of the Census, Current Population Reports, Series P-25, No. 562, June, 1975; Series P-26, No. 120, June, 1975.

GENERAL EMPLOYMENT CHARACTERISTICS, 1974

Major Employment Group	Employment	
	Russell County	Labor Market Area
TOTAL	3,446	43,060
Agricultural	568	6,945
Nonagricultural	2,878	36,115
Manufacturing	858	8,276
Government	665	5,285
Trade and Services	550	7,080

Source: Kentucky Department for Human Resources, Bureau for Administration and Operations.

MANUFACTURING EMPLOYMENT BY INDUSTRY
SEPTEMBER 1974

<u>Industry</u>	<u>Russell County</u>	<u>Labor Market Area</u>
TOTAL	832	8,367
Food & Kindred Products	14	392
Tobacco	0	1
Apparel, Textiles, Leather	649	3,807
Lumber, Furniture	109	2,373
Printing & Publishing, Paper	8	156
Chemicals, Petroleum & Coal,		
Rubber	2	374
Stone, Clay & Glass	0	492
Primary Metals	0	125
Machinery, Metal Products,		
Equipment	50	647

Source: Kentucky Department for Human Resources, Number of Workers in Manufacturing Industries Covered by Kentucky Unemployment Insurance Law Classified by Industry and County, September, 1974.

RUSSELL COUNTY MANUFACTURING FIRMS,
THEIR PRODUCTS AND EMPLOYMENT

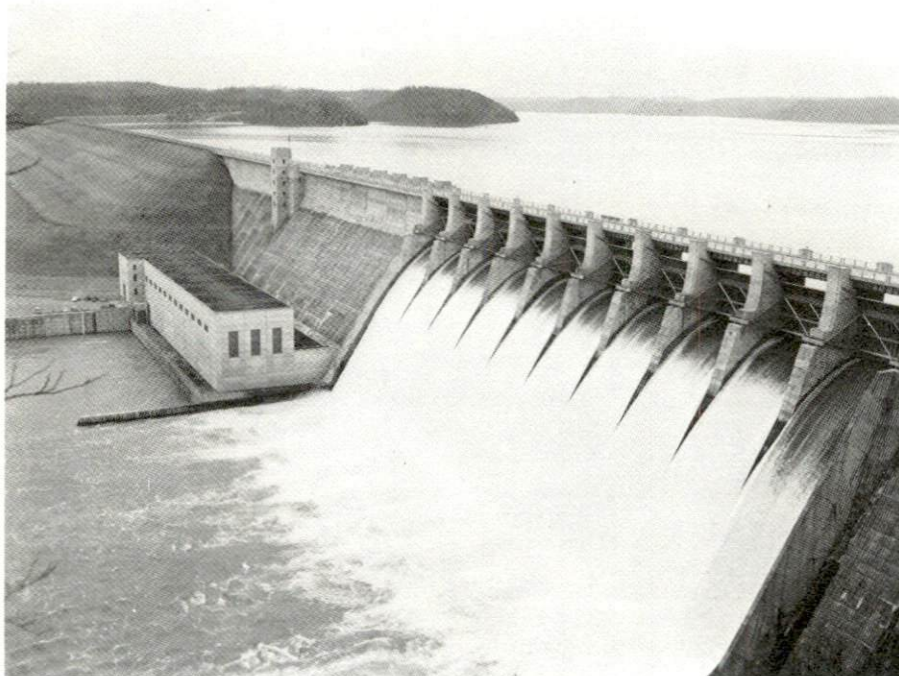
<u>Firm</u> (Establishment date) <u>Product</u>	<u>Employment</u>				
	<u>Total</u>	<u>Male</u>	<u>Female</u>	<u>Organized</u>	
<u>Jamestown</u>					
Amaranth Manufacturing Corporation (1972)	Farm gates, pick-up racks, dog kennels	62	55	7	
Farmers Feed Mill (1949)	Feed	1	1	0	
Russell County News (1913)	Newspaper, job printing	3	3	0	
Sher N Mel (1974)	Ladies' apparel	35	32	3	
<u>Russell Springs</u>					
Burley Belt Chemical Company (1971)	Fertilizer	4	4	0	
Burtin Cabinets (1971)	Kitchen cabinets, vanities	5	4	1	
Cudahy Company (1955)	Cheese	25	24	1	*
Elta Industries, Inc. (1975)	Custom plastics	N. A.			
Emerson Manufacturing Company (1954)	Wooden chair backs	24	21	3	
Gaskin Feed Supply (1975)	Feed	3	3	0	
Hi-Way Manufacturing Company (1959)	Furniture frames	14	9	5	
Kern P. Kellar, Inc. (1938)	Pallets, skids, crates, boxes, lumber	27	25	2	
Lawless Welding, Inc. (1954)	Septic tanks, fuel oil tanks	9	9	0	
Medaris Welding (1960)	Houseboats, trailers	5	5	0	
B. R. Plumber Lumber Co., Inc. (1970)	Lumber	13			
Russell County Feed Mill, Inc. (1961)	Animal health aids, chemicals	6	5	1	
Russell County Ready Mix	Concrete	8	8	0	
Russell Sportswear Corporation (1967)	Ladies' sports-wear	715	115	600	
W. H. Sandusky & Son (1956)	Lumber	12	12	0	
The Times Journal Publishing Co. (1949)	Newspaper, job printing	7	4	3	

*See Labor Organizations page 7.

Source: Kentucky Department of Commerce, Division of Research and Planning.



Russell Sportswear Corporation
Russell Springs



Wolf Creek Dam near Jamestown

LABOR ORGANIZATIONS

<u>Union</u>	<u>Representing manufacturing workers at:</u>
Amalgamated Meat Cutters and Butcher Workmen of North America	Cudahy Company

ESTIMATED MALE LABOR SUPPLY RUSSELL COUNTY LABOR MARKET AREA

<u>Area</u>	Current			Future	
	<u>Total</u>	<u>Not in</u> <u>Labor Force</u>	<u>Unemployed</u>	<u>Under-</u> <u>employed</u>	<u>Reaching 18 yrs.</u> <u>of age before 1981</u>
Labor Market					
Area	6,040	2,040	1,990	2,010	5,057
Russell	1,370	820	320	230	470
Adair	510	0	240	270	583
Casey	530	0	250	280	651
Clinton	650	210	160	280	423
Cumberland	430	150	100	180	370
Pulaski	1,990	860	590	540	1,804
Wayne	560	0	330	230	756

Sources: Kentucky Department for Human Resources, Kentucky Labor Supply Estimates by County, 1974. Kentucky Department of Commerce, Future Labor Supply before 1981.

ESTIMATED FEMALE LABOR SUPPLY RUSSELL COUNTY LABOR MARKET AREA

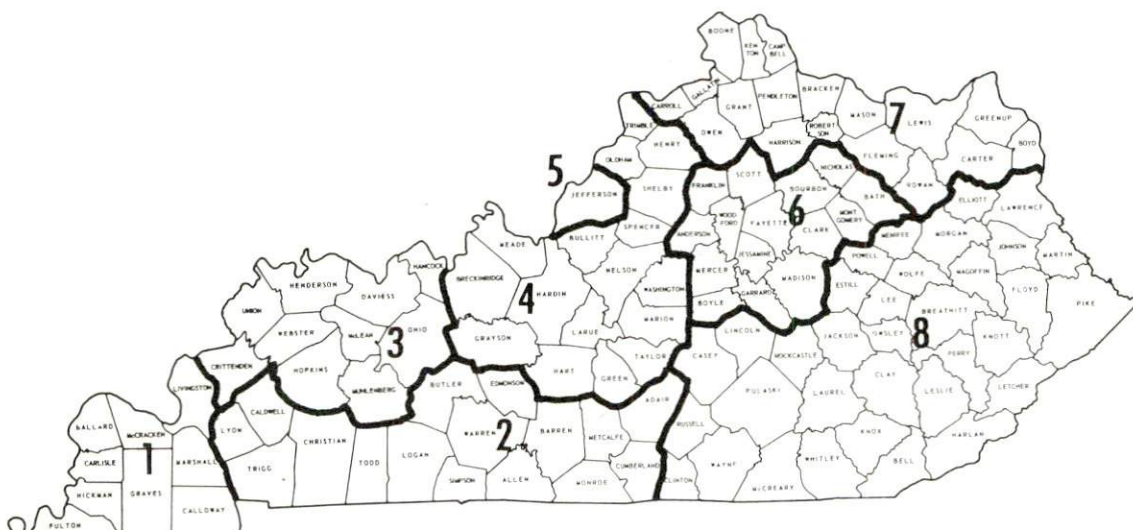
<u>Area</u>	Current			Future	
	<u>Total</u>	<u>Not in</u> <u>Labor Force</u>	<u>Unemployed</u>	<u>Under-</u> <u>employed</u>	<u>Reaching 18 yrs.</u> <u>of age before 1981</u>
Labor Market					
Area	6,250	3,980	640	1,630	4,782
Russell	1,030	740	80	210	479
Adair	460	180	110	170	601
Casey	710	350	140	220	625
Clinton	230	0	40	190	360
Cumberland	210	60	40	110	315
Pulaski	2,620	1,870	150	600	1,633
Wayne	990	780	80	130	769

Sources: Kentucky Department for Human Resources, Kentucky Labor Supply Estimates by County, 1974. Kentucky Department of Commerce, Future Labor Supply before 1981.

WAGES

Occupational wage rates for specific industries are usually not available to most government agencies, and wage data furnished to state employment agencies by industrial employers is protected from disclosure by federal law. The most reliable up-to-date wage information can be obtained by direct contact with local employers.

Associated Industries of Kentucky, a voluntary organization of Kentucky businesses, regularly collects occupational wage rates and fringe benefits data from participating member firms. Data is compiled for over 130 clearly defined office, production, and service occupations. Tabulations are published for eight regions of Kentucky, as shown on the map below. It should be noted that the data may be weighted by the preponderance of firms in the larger cities and may be somewhat higher than the rates paid in the smaller communities. Data from these tabulations are available, upon request, from the Kentucky Department of Commerce, Frankfort, Kentucky 40601.



Associated Industries of Kentucky Area Wage Surveys

PER CAPITA PERSONAL INCOME

<u>Area</u>	<u>1973</u>	<u>1969</u>	<u>% Change</u>
Russell County	\$2,527	\$2,019	+25.2
Labor Market Area Range	\$2,231 - 3,134	\$1,333 - 2,111	N. A.
Kentucky	4,050	2,894	+39.9
U. S.	5,041	3,733	+35.1

Sources: U. S. Department of Commerce, Office of Business Economics, Survey of Current Business, August, 1974. U. S. Department of Commerce, Bureau of Economic Analysis, April, 1975.

TRANSPORTATION

Rail

Nearest line serving Jamestown and Russell Springs - Southern Railway System at Somerset, 27 miles east of Russell Springs

Services - 2 northbound and 2 southbound freights stop daily; 28 through freights daily; switching facilities; siding space for 150 cars; piggy-back facilities available in Danville, 50 miles north of Russell Springs

For details on routing, schedules, rates, and services, contact:

District Sales Manager
Southern Railway System
701 South Broadway
Lexington, Kentucky 40508
(606) 252-2242

Highways

Jamestown and Russell Springs are both served by U. S. Highway 127. In addition, Jamestown is served by Kentucky Highway 92, while Russell Springs is served by the Cumberland Parkway, a four-lane toll road, and Kentucky Highways 80 and 379.

Truck Service

Company

Home Office

Jamestown

Eagle Express Company, Inc.

P. O. Box 679

Somerset, Kentucky 42501

Sanders & Leigh

Liberty, Kentucky 42539

Russell Springs

Eagle Express Company, Inc.

P. O. Box 679

Somerset, Kentucky 42501

Manning Motor Express, Inc.

1203 South Green Street

Glasgow, Kentucky 42141

Sanders & Leigh

Liberty, Kentucky 42539

Other Freight Service

Nearest Shipping Center

United Parcel Service

Danville, 50 miles from Russell Springs

HIGHWAY MILES AND TRUCK TRANSIT TIME IN DAYS FROM RUSSELL SPRINGS, KENTUCKY, TO SELECTED MARKET CENTERS

City	Delivery		City	Delivery	
	Highway Miles	Time TL		Highway Miles	Time TL
Atlanta, Ga.	287	2	Los Angeles, Calif.	2,216	4
Birmingham, Ala.	325	2	Louisville, Ky.	108	1
Chicago, Ill.	445	2	Nashville, Tenn.	129	2
Cincinnati, Ohio	159	1	New Orleans, La.	646	3
Cleveland, Ohio	406	2	New York, N. Y.	809	3
Detroit, Mich.	418	2	Pittsburgh, Pa.	468	2
Knoxville, Tenn.	94	1	St. Louis, Mo.	371	2

Source: Delivery time only - Eagle Express Company, Inc., P. O. Box 680, Somerset, Kentucky.

Air

Local

Nearest Commercial

	Russell County Airport	London-Corbin Airport (Magee Field)
Location:	2½ miles south of Russell Springs	3 miles south-southeast of London and 70 miles east of Russell Springs
Runways:	1 paved	1 paved
Length:	2,800 feet	6,000 feet
Traffic Control:	Wind sock	Wind sock
Lighting:	Sunset to sunrise	Beacon, runway and obstruction lights
Services:	(Saturday and Sunday only) 80-100 octane, taxi	Piedmont Airlines, 80 and 100 octane, JP-A-50, taxi, car rentals, weather, flight training, charter and ambulance service
Air Freight Services:		Air freight accepted on a space-available basis

Taxi - 1 company - Jamestown; 2 companies - Russell Springs

POWER AND FUEL

Electricity

Company serving Jamestown and Russell Springs - Kentucky Utilities Company

Source of power - Kentucky Utilities Company

Total generating capacity - 1,615,500 KW

For industrial rates contact:

Kentucky Utilities Company
Industrial Development Division
Lexington, Kentucky
(606) 255-1461

Company serving Russell County - South Kentucky RECC

Source of power - East Kentucky Power Cooperative

Total generating capacity - 496,000 KW

For industrial rates contact:

South Kentucky RECC
P. O. Box 910
Somerset, Kentucky 42501
(606) 678-4121

Natural Gas

Natural gas service is not available in Jamestown or Russell Springs.

Other Fuels

Propane and butane

Ray Coe in Jamestown; Ashland and Doxol in Russell Springs

Fuel oils

Distillate fuel oil -

Arco and Wilkerson Burley Oil in Jamestown; Ashland and Aaron Oil Company in Russell Springs

Residual fuel oil - arrangements must be made with the refinery.

Low sulphur content coal - available in eastern Kentucky.

WATER AND SEWERAGE

Water

Company serving Jamestown - Jamestown Municipal Water Works
Jamestown, Kentucky 42629
(502) 343-4185

Source - Lake Cumberland
Treatment plant capacity - 252,000 gpd
Average daily consumption - 90,000 gallons
Peak daily consumption - 116,000 gallons
Type treatment - Fluoridation, chlorination, filtration, sedimentation,
and flocculation
Storage capacity - 150,000 gallons
Size lines - 4, 6, 8, and 10 inches
Average pressure - 65 psi
Average temperature - 65 - 70° F.

MONTHLY WATER RATES FOR WHOLESALE AND INDUSTRIAL CONSUMERS

2,000 gallons	\$ 6.00 (Minimum)	\$.15 per 100 gallons over
5,000 gallons	10.50	.125 per 100 gallons over
10,000 gallons	16.75	.10 per 100 gallons over
20,000 gallons	26.75	.075 per 100 gallons over
40,000 gallons	41.75	.05 per 100 gallons over

Tap-on charge: 3/4-inch and 1-inch meter - \$150
1 1/2-inch meter - 300
2-inch meter - 450

Company serving Russell Springs - Russell Springs City Sewer and
Water Works*
Russell Springs, Kentucky 42642
(502) 886-3981

Source - Spring and deep wells
Treatment plant capacity - 250,000 gpd
Average daily consumption - 200,000 gallons
Peak daily consumption - 240,000 gallons
Type treatment - Chlorination
Storage capacity - 200,000 gallons
Size lines - 4, 6, and 8 inches
Average pressure - 60 psi
Average temperature - 60° F.

MONTHLY WATER RATES FOR WHOLESALE
AND INDUSTRIAL CONSUMERS

First	3,000 gallons	\$1.40 per M gallons
Next	7,000 gallons	1.00 per M gallons
Next	10,000 gallons	.90 per M gallons
Next	30,000 gallons	.75 per M gallons
All over	50,000 gallons	.50 per M gallons

Minimum bill \$4.20 per month

Tap-on charge: \$75

Surface water sources - Lake Cumberland, Russell County, in pylon
of Wolfe Creek Dam on Cumberland River
Average discharge - Nearest gauging station Cumberland River near
Rowena 9,010 cfs (35 years - USGS, adjusted for storage)
Expected ground water yield - 5 to 50 gpm in northern half of county;
5 gpm or less in southern half and eastern and extreme northern tip
of county

*A new 300,000 gpd water treatment plant is scheduled for completion
in 1976.

Sewerage

Company serving Jamestown - Jamestown Municipal Water Works
Jamestown, Kentucky 42629
(502) 343-4185

Design capacity - 260,000 gpd
Average daily flow - 40,000 gallons
Treatment - Primary and secondary
Type treatment - Drying beds, clarifier, trickling filter, chlorination
Treated effluent discharged into - The Lily Creek Tributary of Lake
Cumberland
Size of sanitary mains - 6, 8, and 10 inches
Size of storm mains - 15 and 24 inches

Rates - 50 percent of monthly water rates

Tap-on charge: \$ 75 residential
150 commercial

Company serving Russell Springs - Russell Springs City Sewer and
Water Works*
Russell Springs, Kentucky 42642
(502) 886-3981

Design capacity - 350,000 gpd
Average daily flow - 82,000 gallons
Treatment - Primary and secondary
Type treatment - Settling tank, chlorine contact, extended aeration
Treated effluent discharged into - Lily Creek
Size of sanitary mains - 8 and 10 inches
Size of storm mains - 18 to 42 inches

Rates - One-third of water bill

Tap-on charge: \$100

*The sewage treatment plant was completed in 1974.

CLIMATE

Russell County

Temperature

Annual mean (30-year record)	59.7 degrees
Average annual 1974	60.1 degrees
Record highest, August, 1968 (14-year record)	99.0 degrees
Record lowest, January, 1966 (14-year record)	-9.0 degrees
Normal heating degree days (30-year record)	3,478
(Heating degree day totals are the sums of negative departures of average daily temperatures from 65 degrees F.)	

Precipitation

Mean annual total (30-year record)	46.18 inches
Mean annual snowfall (32-year record)	12.80 inches
Total precipitation 1974	59.33 inches
Mean number days precipitation (.01 inch or more) (32-year record)	128
Average number days thunderstorms (32-year record)	48

Prevailing Winds (14-year record) Northeast

Relative Humidity (29-year record)

1 A.M.	78 Percent
7 A.M.	84 Percent
1 P.M.	58 Percent
7 P.M.	62 Percent

*U. S. Department of Commerce, Environmental Science Services
Administration, Climatological Data, 1974. Station of record:
Knoxville, Tennessee.

LOCAL GOVERNMENT

City

Jamestown

Structure - Mayor - 4-year term; 6 councilmen - 2-year terms

Budget 1974-75 - General Fund	\$ 75,000
Water and Sewer Fund	110,000

Fees and licenses - Occupational license fees - \$24.50 annually;
unloading licenses - \$15.00 to \$24.50 annually

Russell Springs

Structure - Mayor - 4-year term; 6 councilmen - 2-year terms

Budget 1974-75 - General Fund	\$137,671
Water and Sewer Fund	82,293

Fees and licenses - Occupational license fees - \$25 to \$75 annually;
unloading licenses - \$20.50 to \$30.50 annually; vehicle license -
\$7.50 annually

County

Structure - County Judge - 4-year term; 4 magistrates - 4-year terms

Budget 1974-75 - General Fund	\$150,690
Road Fund	42,250

Assessed Value of Property, 1974-75

<u>Classes of Property</u>	<u>Jamestown</u>	<u>Russell Springs</u>	<u>Russell County</u>
Real Estate and Tangibles		\$15,043,010	
Real Estate	\$4,421,270		\$65,641,613*
Tangibles	1,454,777		13,388,562*

*1975.

Property Taxes

Land and buildings are taxed by the state and may be taxed by local jurisdictions. The state rate is \$0.015 per \$100 of assessed valuation.

Tangible personal property owned by manufacturers (automobiles, trucks, finished goods, office furniture, office equipment) is taxed by the state at \$0.15 per \$100 and may be taxed by local jurisdictions.

Manufacturing machinery, raw materials inventories, pollution control equipment and goods in process inventories are not subject to local taxation. The state rate is \$0.15 per \$100.

Property stored in public warehouses is not subject to local taxation. The state rate is only \$0.015 per \$100.

All property is assessed at 100 percent of fair cash value.

Local Property Tax Rate Per \$100 of Assessed Valuation, 1975*

<u>Taxing Jurisdiction</u>	<u>Jamestown</u>	<u>Russell Springs</u>	<u>Russell County</u>
County	\$.170	\$.170	\$.170
School	.358	.358	.358
City	.278	.260	

Planning and Zoning

Jamestown

There is no active planning and zoning commission in Jamestown.

Mandatory state codes enforced - Plumbing, National Fire Protection Association Code, National Building Code (for major buildings and residential construction containing more than 12 bedrooms per building)

Russell Springs

City agency - Russell Springs Planning and Zoning Commission

Zoning enforced - City only

Subdivision regulations enforced - City and 5 miles beyond city

Local codes enforced - Building, housing

Mandatory state codes enforced - Plumbing, National Fire Protection Association Code, National Building Code (for major buildings and residential construction containing more than 12 bedrooms per building)

*Kentucky Department of Revenue, Research Staff; Kentucky Department of Education, Division of Finance.

Safety

<u>Police</u>	<u>Jamestown</u>	<u>Russell Springs</u>	<u>Russell County</u>
Total staff	3	4	5
Radio-patrol cars	2	1	5

Fire

American Insurance

Association Fire

Rating

8

8

Volunteers

25

21

Rescue Service

Russell County Rescue Squad:

Number of volunteers - 40

Equipment - Six vehicles, including two ambulances owned by Russell County

Personnel training - First Aid, fire fighting, EMT training

Solid Wastes

	<u>Jamestown</u>	<u>Russell Springs</u>
Type service	Municipal	Municipal
Fee charged:		
residential	\$1.50 monthly	\$1.50 monthly
business	\$3.00 monthly	Contract
industrial	Based on use	Contract
Collection frequency:		
residential	Weekly	Weekly
business	Weekly	Contract
industrial	As needed	Contract
Trash pickup	Weekly	Weekly
Disposal method	County landfill	County landfill

EDUCATION

Public Schools

	<u>Russell County</u>
Total Enrollment (Fall, 1974)	2,603
Elementary	1,809
High School	794
Student-Teacher Ratio	22 - 1
Elementary	22 - 1
High School	22 - 1
Percent High School Graduates to College	41.8
Expenditures Per Pupil (1973-74)	\$552.06
Bonded Indebtedness, June 30, 1974	\$848,000

Colleges and Universities

<u>Name</u>	<u>Location</u>	<u>Distance*</u>	<u>Enrollment (Fall, 1974)</u>	<u>Highest Degree Conferred</u>
Campbellsville College	Campbellsville	33 miles	678	Baccalaureate
Centre College	Danville	51 miles	796	Baccalaureate
Lindsey Wilson Junior College	Columbia	14 miles	308	Associate
Somerset Community College	Somerset	27 miles	661	Associate

*Mileage from Russell Springs.

Vocational Schools

	<u>Nearest State School</u>	<u>Nearest Area Education Center</u>
	Somerset State Vocational- Technical School	Russell County Area Vocational Education Center
Location	Somerset	Jamestown
Miles Distant	27 miles from Russell Springs	
Curriculum	<u>Business and Office</u> Data Processing Clerical Secretarial <u>Distributive Education</u> Marketing and Dis- tributive Education <u>Health Occupations</u> Health Careers <u>Learning Lab</u> <u>Technical</u> Electronics (Technology) <u>Trade and Industrial</u> Aircraft Maintenance Technician Appliance Repair Auto Mechanics Drafting Machine Shop	<u>Health Occupations</u> Health Careers <u>Trade and Industrial</u> Auto Mechanics Carpentry Electricity Welding

Arrangements can be made to provide training in the specific production skills required by an industrial plant. Instruction may be conducted either in the vocational school or in the industrial plant, depending upon the desired arrangement and the availability of special equipment.

HEALTH

Local Medical Personnel

Physicians - 3
Dentists - 3

Hospitals

<u>General Hospital</u>	<u>Location</u>	<u>Beds</u>
Adair Memorial Hospital	Columbia, Kentucky, 13 miles from Russell Springs	36
Lake Cumberland Medical Center	Somerset, Kentucky, 27 miles from Russell Springs	175

Adair Memorial Hospital

General hospital facilities - Operating room, emergency room, X-ray, laboratory, delivery room, nursery

Medical staff - 5 doctors, 8 registered nurses, 11 graduate licensed practical nurses

Lake Cumberland Medical Center

The center, scheduled to open in May of 1976, will feature the most modern facilities and equipment available.

Other Medical Facilities

Lake Cumberland Comprehensive Care Center

Ambulance Service

Ambulance service is provided by the Russell County Rescue Squad

Public Health

Facility - Russell County Health Department
Staff - Health environmentalist, 2 registered nurses, clerk, clinician

OTHER LOCAL FACILITIES

Communications

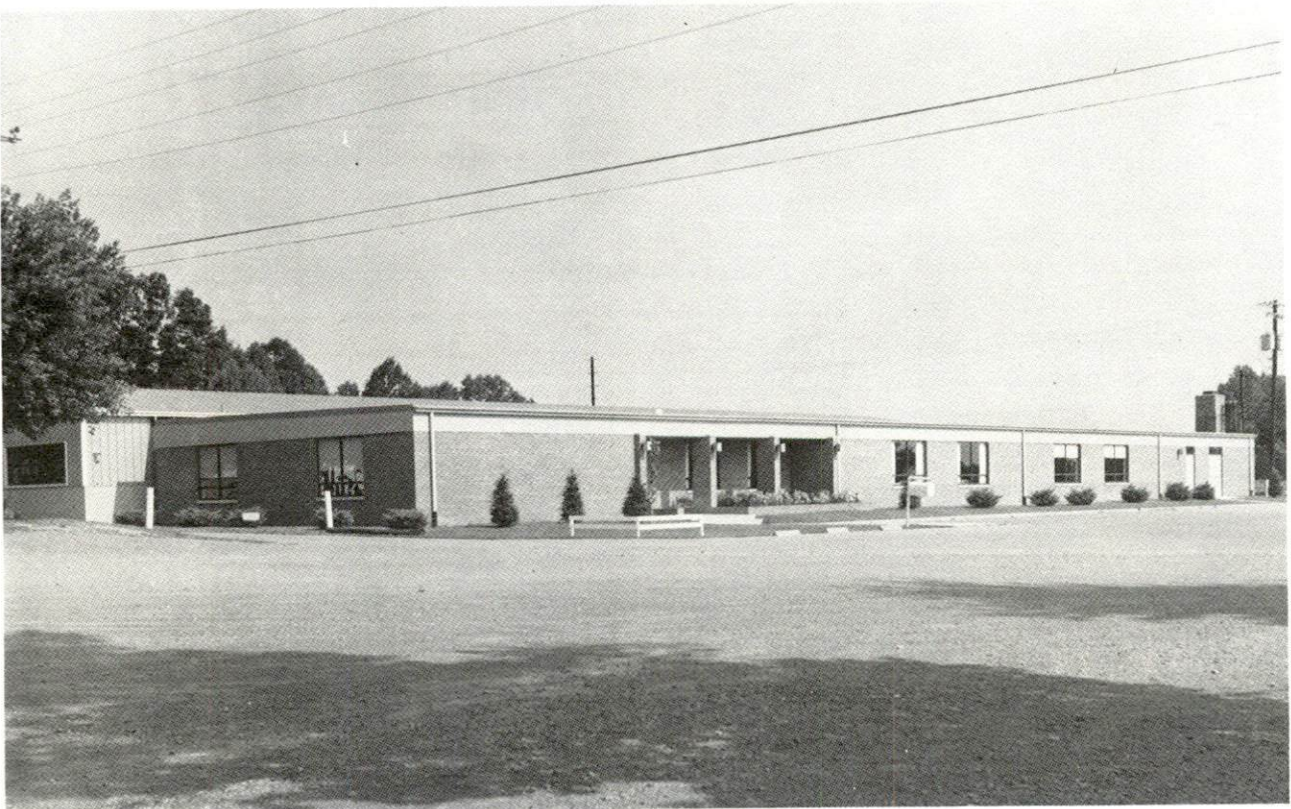
Telephone - Duo County Telephone Cooperative, Inc.
Services - Standard

Telegraph - Western Union
Services - Campbellsville office

	<u>Jamestown</u>	<u>Russell Springs</u>
Postal - U. S. Post Office		
Class -	Second	Second
Mail received -	Once daily	Twice daily
Mail dispatched -	Once daily	Twice daily
Newspapers -	Russell County News	The Times Journal
Bi-weekly and circulation -	2,900	
Weekly and circulation -		5,000
Other papers received from -	Louisville and Lexington, Kentucky	Louisville, Lexington, Somerset and Columbia, Kentucky
Radio -	WJRS-FM	WJKY-AM
Stations received from -	Lexington, Louisville, and Danville, Kentucky; Knoxville and Nashville, Tennessee	Lexington, Louisville, and Danville, Kentucky; Knoxville and Nashville, Tennessee
Television -		
Cable service -		
Reception from -	Lexington, Louisville, and Bowling Green, Kentucky; Knoxville, Tennessee	Lexington, Louisville, and Bowling Green, Kentucky; Knoxville, Tennessee
Kentucky Educational		
Television -	Somerset transmitter, Channel 29	Somerset transmitter, Channel 29



Russell County Library



Russell County Area Vocational Education Center

Library Services

Public library - Russell County Library

Size collection - 30,147 volumes

Circulation, 1974-75 - 64,945 volumes

Services - Bookmobile, story hour, records, projector, art, micro-film reader-printer, reading group, meeting room

Religious Institutions

Number of churches - 7 - Jamestown

Denominations - Baptist, Catholic, Christian, Church of Christ, Church of God, Methodist, Nazarene

Number of churches - 7 - Russell Springs

Denominations - Baptist, Christian, Church of God, Methodist, United Baptist

Nearest synagogues - Lexington, 81 miles from Russell Springs

Congregations - Adath Israel (reform); Ohavey Zion (traditional)

Financial Institutions

<u>Banks</u>	<u>Assets</u>	<u>Deposits</u>	<u>Statement Date</u>
<u>Jamestown</u>			
Bank of Jamestown	\$9,224,599.16	\$8,394,270.38	6/30/75
<u>Russell Springs</u>			
First National Bank	9,806,018.68	8,156,160.61	6/30/75

Hotels and Motels

Russell County

Total number 13
Total units 283

Clubs and Organizations

Jamestown

Business and Civic - Lions, Russell County Development Association,
Chamber of Commerce, Business and Professional Women's Club

Fraternal - Masonic Lodge, American Legion

Women's - Homemakers Club, Eastern Star

Youth - FFA, 4-H, FHA, Career Club, De Molay

Other - Saddle Club, Fish and Game Club

Russell Springs

Business and Civic - Lions, Chamber of Commerce, Jaycees, Merchants
Association, Business and Professional Women's Club

Fraternal - Masonic Lodge, VFW, American Legion, IOOF, Disabled
American Veterans

Women's - Homemakers Club, Welcome Wagon, Woman's Club, Eastern
Star

Youth - Boy Scouts, Girl Scouts, 4-H, FFA, De Molay

RECREATION

Local

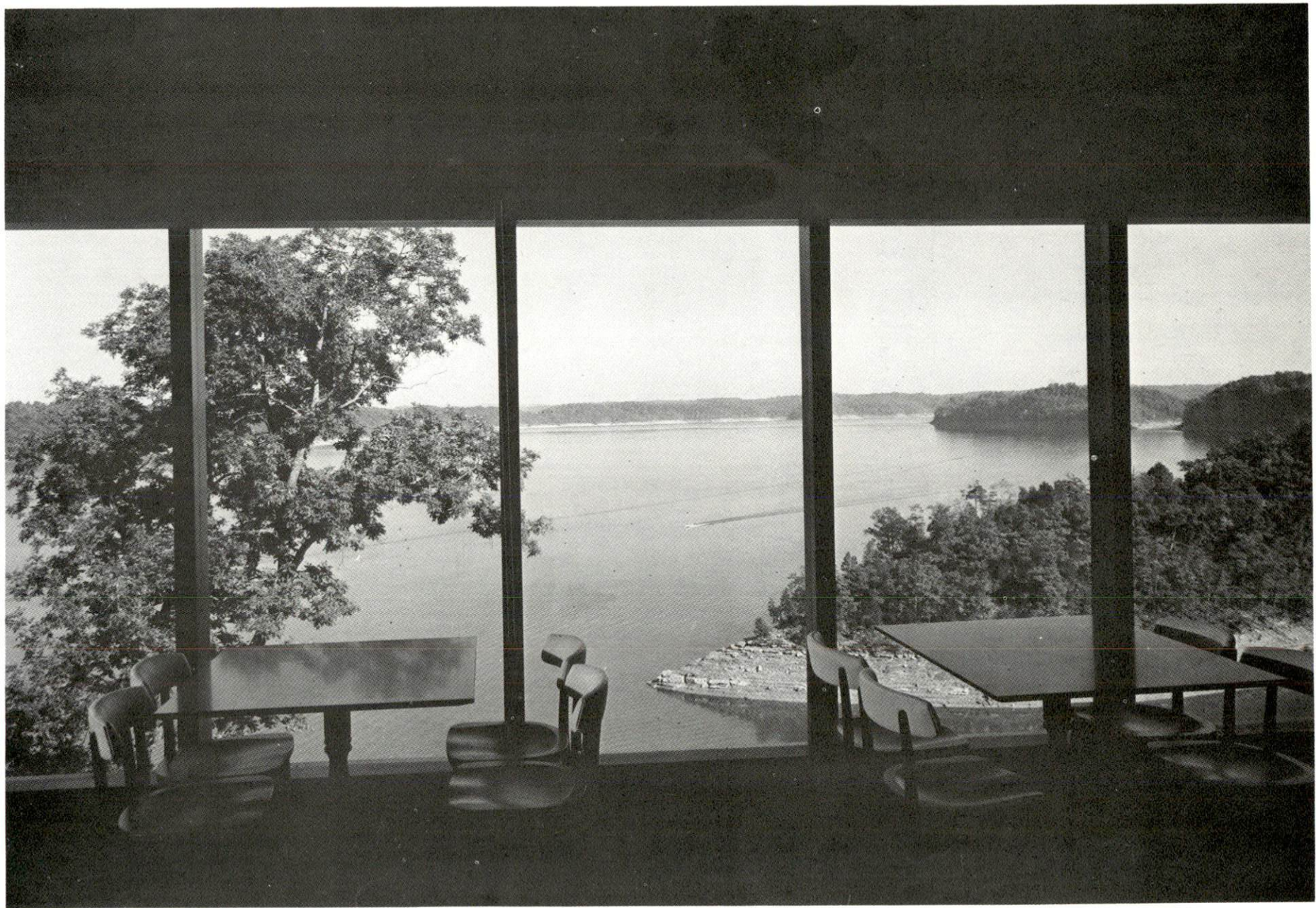
Public recreational facilities in Jamestown include three parks, a playground, a swimming pool, a golf course, tennis courts, and ball fields. Lake Cumberland State Resort Park is only 10 miles from Jamestown. Russell Springs has two parks, a playground, tennis courts, ball fields, and fairgrounds.

Private recreational facilities in Russell County include a country club, a golf course, a swimming pool, boat docks, drive-in movie theaters, a speedway, and a resort now under development.

Area (Within 50 miles)

Russell County is located in an area with excellent water recreational facilities. Lake Cumberland, which covers a large area of the county, has over 1,200 miles of shoreline. Lake Cumberland State Resort Park, 10 miles from Jamestown, features a lodge, cottages, restaurant, boating, fishing, golf, hiking, horseback riding, picnicking, playgrounds, convention center, shuffleboard, tennis, swimming, and camping.

Green River Lake State Park, Dale Hollow Lake State Park, and General Burnside State Park, all within 50 miles of Russell Springs, are located on or near major lakes and offer additional outdoor recreation.



Dining Room at Lake Cumberland State Resort Park

COMMUNITY IMPROVEMENTS

Jamestown

Improvements recently completed:

1. A new post office has been completed.
2. The Russell County Library has added a paved parking area.
3. A building previously used as a factory has been purchased by the city to be leased to a local manufacturer.

Improvements under way:

1. A 96-bed personal care rest home is now under construction.
2. A \$185,000 county jail is being built in Jamestown. The old jail will become a juvenile center.

Improvements planned:

1. Two tennis courts, as well as general improvements, are planned for Memorial Park in Jamestown.

Russell Springs

Improvements recently completed:

1. A new sewage treatment plant has been constructed and distribution lines have been extended.
2. Ninety-eight percent of the streets in Russell Springs have been resurfaced.
3. Three city parking lots have been built in the business district.
4. Russell Springs has a new fire house.
5. Extensive face-lifting in the business area has been completed.

Improvements under way:

1. An 80-acre city park is being developed. Facilities will include a ball park, tennis courts, a golf course and an amphitheatre.
2. A \$325,000 water treatment plant has been designed. Construction is scheduled to begin Spring 1976.

Improvements planned:

1. A savings and loan association is planning to open a branch bank in Russell Springs.
2. Development of a 20-acre lake has been proposed for additional water supply and recreational purposes.

Russell County

Improvements recently completed:

1. Cumberland Parkway has been completed through the northern portion of Russell County
2. Four manufacturers have located in Russell County in 1974-75.
3. Sixteen commercial and service businesses have recently opened in Russell County.
4. A sanitary landfill has been purchased.

Improvements under way:

1. A resort being developed near Lake Cumberland will have condominium apartments, a swimming pool, and tennis courts.
2. The Russell County Board of Education has initiated a program for exceptional children.

Improvements planned:

1. A three-vehicle ambulance service is scheduled to begin operation in Russell County in 1975. The service will have six trained personnel.
2. Expansion of the Russell County Area Vocational Center has been approved.

HISTORY

Russell County is located in the south central portion of Kentucky and covers 238 square miles of territory. A vast area of the county's southeastern section is covered by Lake Cumberland, a 101-mile long reservoir created in 1951 by Wolf Creek Dam on the Cumberland River. The hydro-electric dam and man-made lake are among the nation's largest. The county's land surface is mostly hilly and broken.

Prominent among the names of early settlers in the Russell County area was that of Patterson. Sam Patterson operated a sulfur spring at Big Boiling Springs, now Russell Springs, during the early years of the county's history. About 1825, a dozen log cabins were built at the spring to accommodate visitors for what were widely regarded as healing waters. A hotel was eventually built at the site. The first county court was held at the home of Jonathan Patterson in 1826.

Russell became Kentucky's eighty-first county in 1825. It was named for Colonel William Russell, who came from Virginia and joined Daniel Boone in an expedition against the Indians. In 1811, Russell was given command of the frontier area in Indiana, Illinois, and Missouri. He later became prominent in Kentucky politics. The Greasy Creek Woolen Mill, near present-day Jamestown, played a role in the county's early economic history.

Jamestown, the county seat, was incorporated in 1827. Originally called Jacksonville for Andrew Jackson, the town's name was changed for political reasons by the Whigs in 1836 to honor James Woolridge, who had donated the land for the townsite. In 1973, Jamestown had a population of 1,006.

In 1830, Russell County had 3,879 inhabitants. This number grew to an all-time high of 13,717 in 1950, followed by a decline to 11,076 in 1960. The population increased to 11,600 in 1974. Russell Springs is the county's largest town, with a 1973 population of 1,644.

Agriculture accounted for some 570 of the county's 3,450 employed in 1974. Manufacturing employment, which rose sharply during the 1960's and early 1970's, averaged 860 in 1974. Largest of the county's firms, at Russell Springs, is Russell Sportswear Corporation, which makes ladies' sportswear.

Lake Cumberland Resort Park is a 3,000-acre resort area, which offers lodging, camping and complete recreational facilities, and makes the Russell County area an important tourist attraction.