

1976

Industrial Resources: Taylor County - Campbellsville

Kentucky Library Research Collections
Western Kentucky University, spcol@wku.edu

Follow this and additional works at: https://digitalcommons.wku.edu/taylor_ctty



Part of the [Business Administration, Management, and Operations Commons](#), [Growth and Development Commons](#), and the [Infrastructure Commons](#)

Recommended Citation

Kentucky Library Research Collections, "Industrial Resources: Taylor County - Campbellsville" (1976). *Taylor County*. Paper 10.
https://digitalcommons.wku.edu/taylor_ctty/10

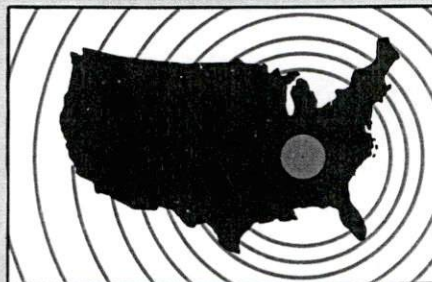
This Report is brought to you for free and open access by TopSCHOLAR®. It has been accepted for inclusion in Taylor County by an authorized administrator of TopSCHOLAR®. For more information, please contact topscholar@wku.edu.

Taylor

INDUSTRIAL RESOURCES

Campbellsville, Kentucky

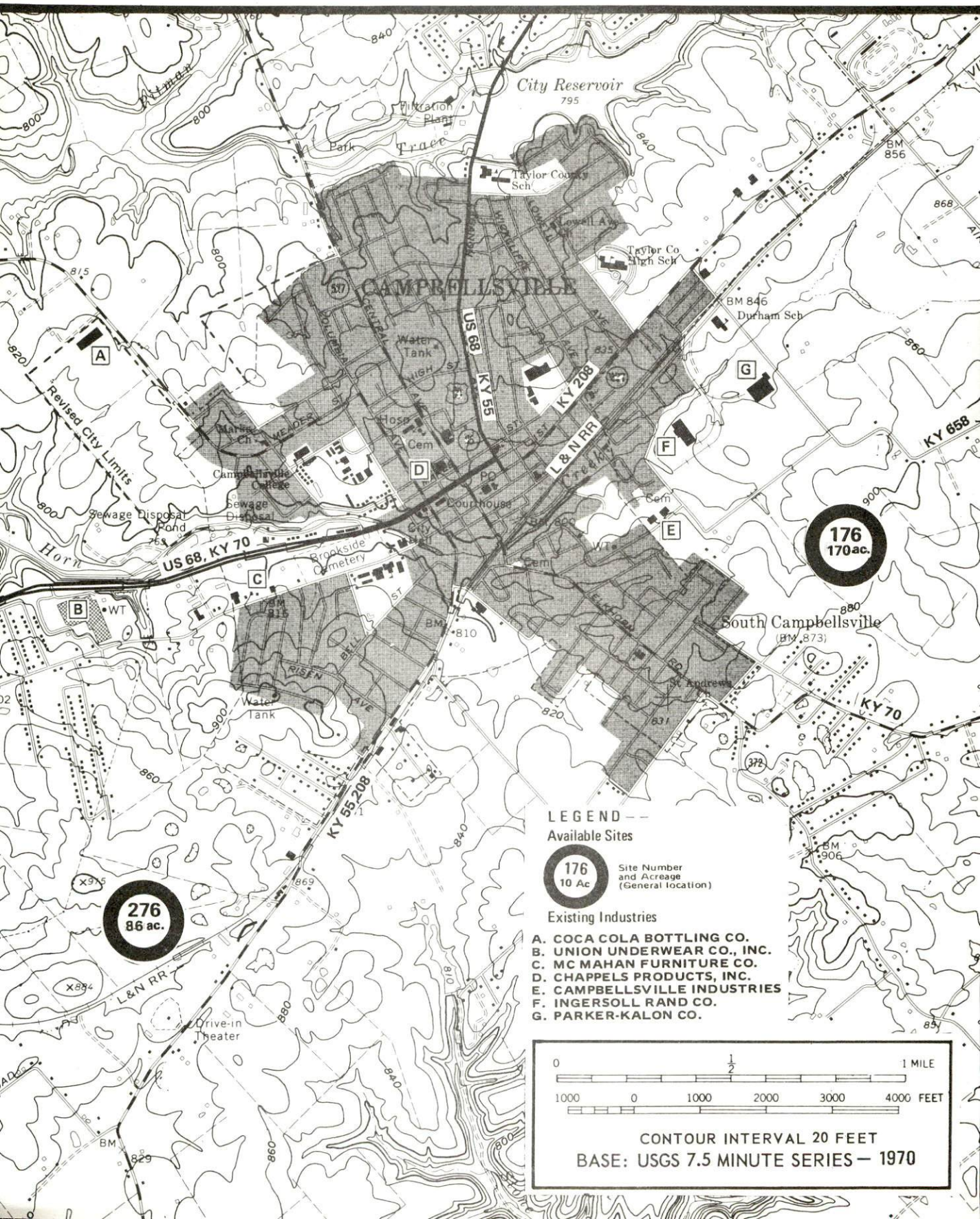
**Kentucky
first**



DEPARTMENT OF COMMERCE

CAMPBELLSVILLE, KENTUCKY --- Index to Industrial Sites -- 1976

For detailed data on individual sites, contact Mr. William Maupin, Kentucky Utilities Company, Campbellsville, Kentucky 42718, or the Kentucky Department of Commerce, Capital Plaza Tower, Frankfort, Kentucky 40601.



INDUSTRIAL RESOURCES
CAMPBELLSVILLE, KENTUCKY

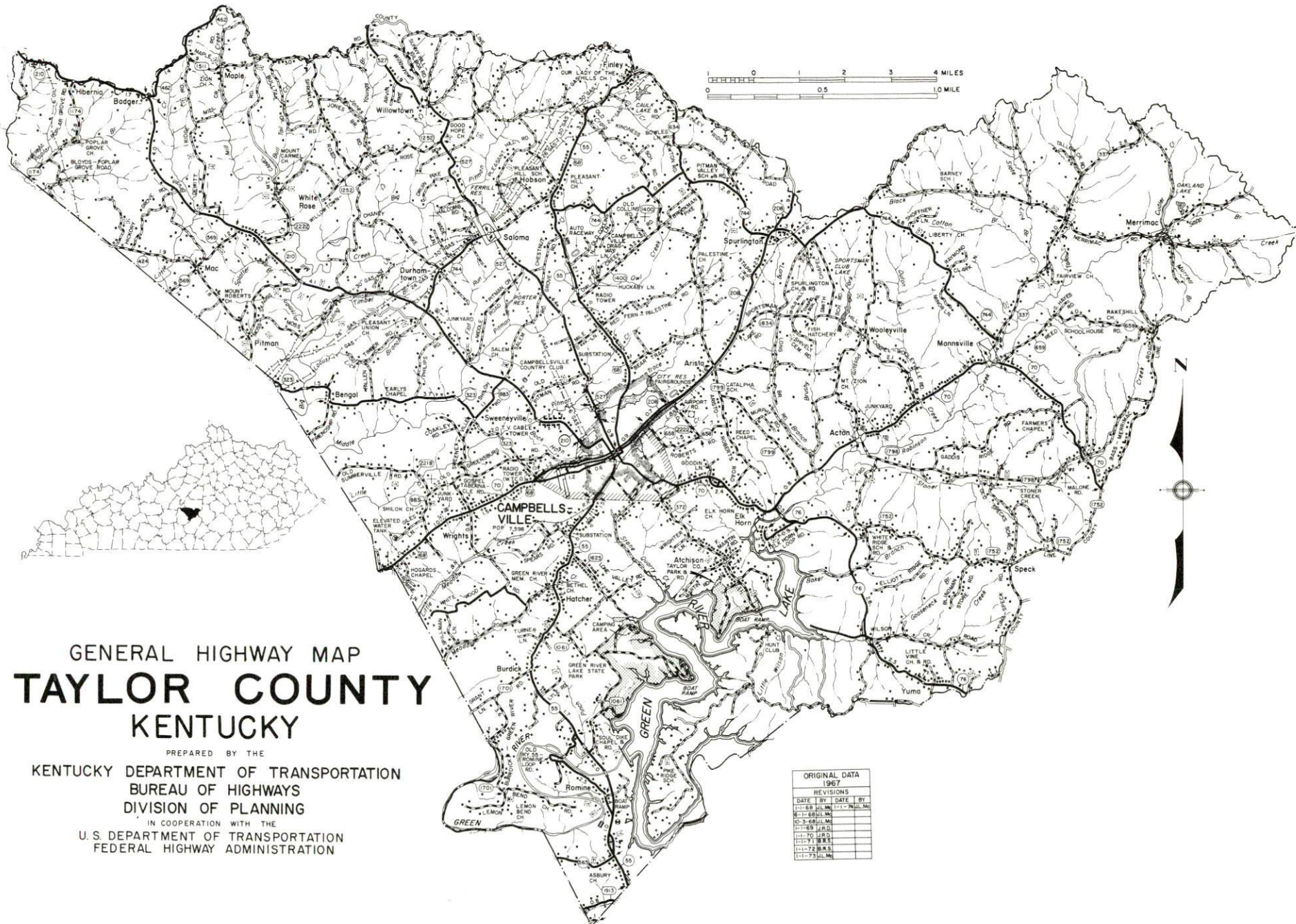
Prepared by
The Kentucky Department of Commerce
in cooperation with
The Campbellsville - Taylor County Chamber of Commerce

1976

TABLE OF CONTENTS

<u>Chapter</u>	<u>Page</u>
INDUSTRIAL SITES	i
CAMPBELLSVILLE, KENTUCKY - A RESOURCE PROFILE	1
THE LABOR MARKET AREA.	3
Population.	3
General Employment Characteristics, 1974	3
Manufacturing Employment by Industry	4
Major Campbellsville Manufacturing Firms, Their Products and Employment	5
Labor Organizations	5
Estimated Male Labor Supply	9
Estimated Female Labor Supply	9
Wages	10
Per Capita Personal income.	11
TRANSPORTATION	12
Rail.	12
Highways	12
Truck Service	13
Air	13
Bus	14
Taxi	14
Rental Services	14
POWER AND FUEL	15
Electricity.	15
Natural Gas	16
Other Fuels	16
WATER AND SEWERAGE	17
Water.	17
Sewerage	19
CLIMATE	20

<u>Chapter</u>	<u>Page</u>
LOCAL GOVERNMENT	21
City	21
County	21
Assessed Value of Property, 1975.	21
Property Taxes	21
Local Property Tax Rate Per \$100 of Assessed Valuation, 1975.	23
Planning and Zoning	23
Safety.	23
Police	23
Fire.	23
Rescue Service	23
Solid Waste	24
EDUCATION.	25
Public Schools.	25
Area Colleges and Universities	25
Vocational Schools	30
HEALTH	31
Local Medical Personnel	31
Hospitals	31
Ambulance Service.	31
Nursing Homes	31
Public Health	31
OTHER LOCAL FACILITIES.	33
Communications.	33
Library Services	33
Religious Institutions.	35
Financial Institutions.	35
Hotels and Motels	36
Clubs and Organizations	36
RECREATION	37
Local.	37
Area	37
COMMUNITY IMPROVEMENTS	40
HISTORY	42



GENERAL HIGHWAY MAP **TAYLOR COUNTY** KENTUCKY

PREPARED BY THE
 KENTUCKY DEPARTMENT OF TRANSPORTATION
 BUREAU OF HIGHWAYS
 DIVISION OF PLANNING
 IN COOPERATION WITH THE
 U.S. DEPARTMENT OF TRANSPORTATION
 FEDERAL HIGHWAY ADMINISTRATION

ORIGINAL DATA			
1967			
REVISIONS			
DATE	BY	DATE	BY
11-68	J.M.	11-68	J.M.
6-70	J.M.	6-70	J.M.
10-70	J.M.	10-70	J.M.
11-70	J.M.	11-70	J.M.
11-70	J.M.	11-70	J.M.
11-70	J.M.	11-70	J.M.
11-70	J.M.	11-70	J.M.

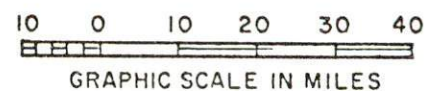


AERIAL VIEW OF CAMPBELLSVILLE, KENTUCKY

A map showing the six counties in the study area: Larue, Marion, Taylor, Green, Adair, and Casey. The counties are outlined in black and labeled with their names in all caps. Larue is in the top left, Marion is in the top center, Taylor is in the center, Green is in the bottom left, Adair is in the bottom center, and Casey is in the bottom right.

Shaded area denotes Labor Market Area.

This map illustrates the Louisville, Kentucky area, with the Labor Market Area shaded in gray. The shaded region encompasses the city of Louisville and extends into the surrounding counties of Jefferson, Shelby, and Jefferson-Dwight. Major highways are shown as thick black lines, and smaller roads are indicated by thinner lines. Numerous cities and towns are labeled, including Louisville, Jeffersonville, Bardonia, and Shelbyville. The map also shows the Green River and the Ohio River, along with various geographical features like hills and valleys.



CAMPBELLSVILLE, KENTUCKY - A RESOURCE PROFILE

Campbellsville, county seat of Taylor County, is located in the Green River Lake area of south central Kentucky. This attractive college town is 77 miles southeast of Louisville, Kentucky; 78 miles southwest of Lexington, Kentucky; 150 miles northeast of Nashville, Tennessee; and 156 miles southwest of Cincinnati, Ohio. Campbellsville had a 1973 estimated population of 7,675.

Taylor County, covering 277 square miles, had a 1974 estimated population of 18,300.

The Economic Framework

The total number of Taylor County residents employed in 1974 averaged 8,380, including 1,090 in agriculture and 630 in government. Manufacturing employers in the county reported 4,200 workers; trade and services firms employed 1,400. Major industrial products are men's and boys' underwear and infants' wear.

Total unemployment in Taylor County averaged 3.1 percent of the labor force in 1974.

Per capita personal income in the county in 1973 was \$3,635, an increase of 38.7 percent since 1969.

The Campbellsville labor market area includes Taylor and the five adjoining counties. The total number of residents of the labor market area employed in 1974 averaged 34,560, including 7,110 in agriculture and 3,520 in government. Manufacturing employers in the labor market area reported 7,280 workers; trade and services firms employed 4,620.

Resources for Growth

1. Labor Supply - There is a current labor supply of 2,890 men and 2,230 women available for industrial jobs in the labor market area. In addition, 4,190 young men and 4,020 young women in the area will become 18 years of age before 1982 and potentially available for work.

2. Transportation - The Louisville & Nashville Railroad serves Campbellsville with a variety of services. Campbellsville is located only 20 miles north of the Cumberland Parkway and 43 miles south of the Blue Grass Parkway. The Taylor County Airport, with a 4,000-foot runway, is capable of accommodating light aircraft. Commercial passenger and air cargo service is available at Standiford Field in Louisville, 77 miles distant, and at Blue Grass Field in Lexington, 78 miles distant.

3. Power and Fuel - In Campbellsville, natural gas service is provided by the Western Kentucky Gas Company, and electricity is furnished by the Kentucky Utilities Company. Taylor County is furnished electricity by the Taylor County RECC. One distributor of propane and butane and eight distributors of distillate fuel oil are located in Campbellsville. The local raw water supply from the Green River Lake is adequate for continued growth.

4. Education - Two public school systems, the Taylor County School System and the Campbellsville Independent School District, operate within the county.

Campbellsville College, located in Campbellsville, is a 4-year coeducational liberal arts college founded in 1906. One other senior college, one community college, and two junior colleges are located within 50 miles of Campbellsville.

The Green County Area Vocational Education Center, 11 miles distant, offers training in eight different courses. The nearest state vocational training facility, the Elizabethtown State Vocational-Technical School, is 40 miles northwest of Campbellsville and offers twelve different course areas.

THE LABOR MARKET AREA

POPULATION

<u>Area</u>	<u>1974*</u>	<u>1970</u>	<u>Percent Nonwhite</u>
			<u>1970</u>
Campbellsville	7,675**	7,598	5.8
Labor Market Area	84,600	80,841	
Taylor County	18,300	17,138	6.3
Adair County	14,200	13,037	4.6
Casey County	13,900	12,930	0.3
Green County	10,600	10,350	4.4
Larue County	11,300	10,672	4.7
Marion County	16,300	16,714	8.8

*Provisional Estimates.

**1973 Population Estimates.

Sources: U. S. Department of Commerce, Bureau of the Census, Census of Population, 1970. U. S. Bureau of the Census, Current Population Reports, Series P-25, No. 562, June 1975; Series P-26, No. 120, June 1975.

GENERAL EMPLOYMENT CHARACTERISTICS, 1974

<u>Major Employment Group</u>	<u>Employment by Place of Residence of Workers</u>	
	<u>Taylor County</u>	<u>Labor Market Area</u>
Total Employment	8,384	34,561
Agriculture	1,089	7,108
Government	630	3,517
 <u>Employment by Location of Jobs</u>		
	<u>Taylor County</u>	<u>Labor Market Area</u>
Manufacturing	4,196	7,282
Trade and Services	1,396	4,619

Source: Kentucky Department for Human Resources, Bureau for Administration and Operations.

MANUFACTURING EMPLOYMENT BY INDUSTRY
MARCH 1975

<u>Industry</u>	<u>Taylor County</u>	<u>Labor Market Area</u>
TOTAL	3,431	6,011
Food & Kindred Products	156	260
Apparel, Textiles, Leather	2,753	4,019
Lumber, Furniture	68	839
Printing & Publishing, Paper	23	141
Stone, Clay & Glass	0	23
Primary Metals	0	65
Machinery, Metal Products, Equipment	431	664

Source: Kentucky Department for Human Resources, Number of Workers in Manufacturing Industries Covered by Kentucky Unemployment Insurance Law Classified by Industry and County, March, 1975.

MAJOR CAMPBELLSVILLE MANUFACTURING FIRMS,
THEIR PRODUCTS AND EMPLOYMENT

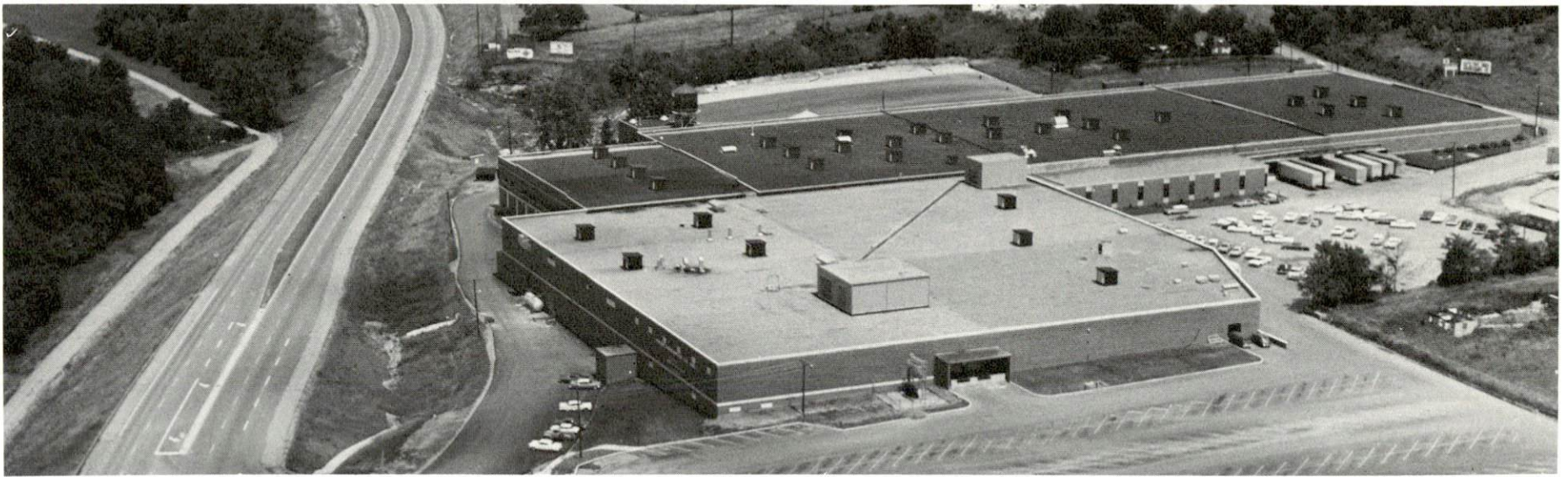
<u>Firm</u> (Establishment date)	<u>Product</u>	<u>Employment</u>			<u>Organized</u>
		<u>Total</u>	<u>Male</u>	<u>Female</u>	
Campbellsville Industries (1955)	Aluminum church steeple, alu- minum cupolas	46	41	5	
Carnation Company (1946)	Evaporated milk	17	16	1	*
Central Kentucky News- Journal (1910)	Newspaper, shop- ping guides, offset printing	20	9	11	
Chappell's Products, Inc. (1953)	Milk	77	69	8	*
Coca-Cola Bottling Company (1915)	Soft drinks	30	26	4	
Ingersoll Rand Company (1969)	Compressors	125	107	18	
McMahan Furniture Company (1943)	Cherry reproduc- tion furniture	35	34	1	
Nally & Gibson Stone Company	Agricultural lime	12	11	1	
Parker-Kalon, Division USM Corporation (1964)	Screws	345	311	34	*
Quality Displays, Inc. (1969)	Wooden displays, tape centers, lecterns	23	22	1	
Richland Manufacturing Company (1945)	Stove polish, arti- ficial arrange- ments	18	12	6	
Union Underwear Com- pany, Inc. (1948)	Men's and boys' underwear, infant's wear	3,300	525	2,775	

*See Labor Organizations below.

Source: Kentucky Department of Commerce, Division of Research and Planning.

LABOR ORGANIZATIONS

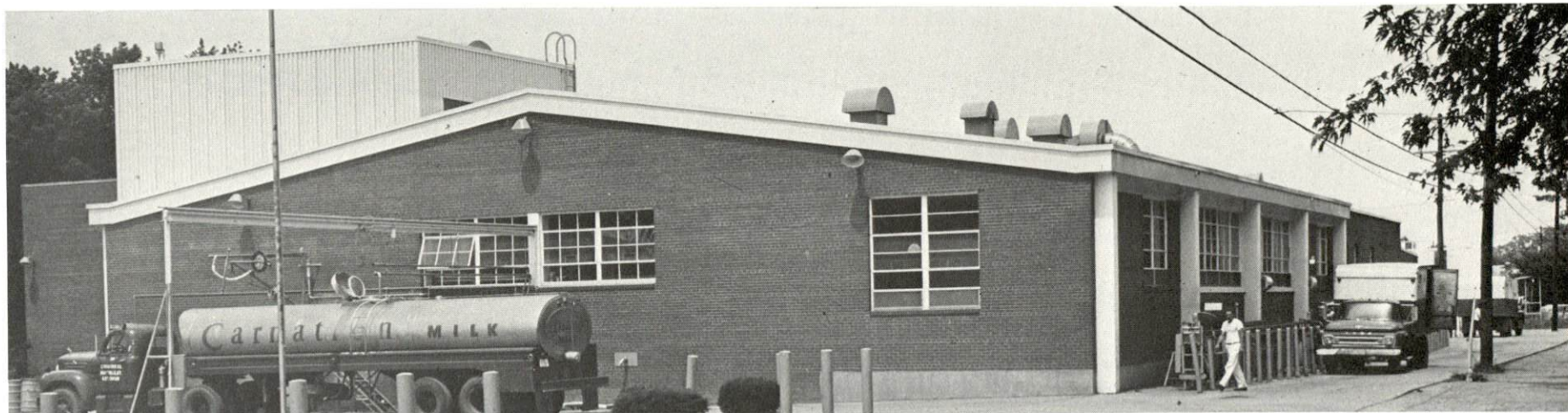
<u>Union</u>	<u>Representing manufacturing workers at:</u>
Teamsters	Carnation Company
Teamsters	Chappell's Products, Inc.
Teamsters	Parker-Kalon, Division of USM Corporation



UNION UNDERWEAR COMPANY



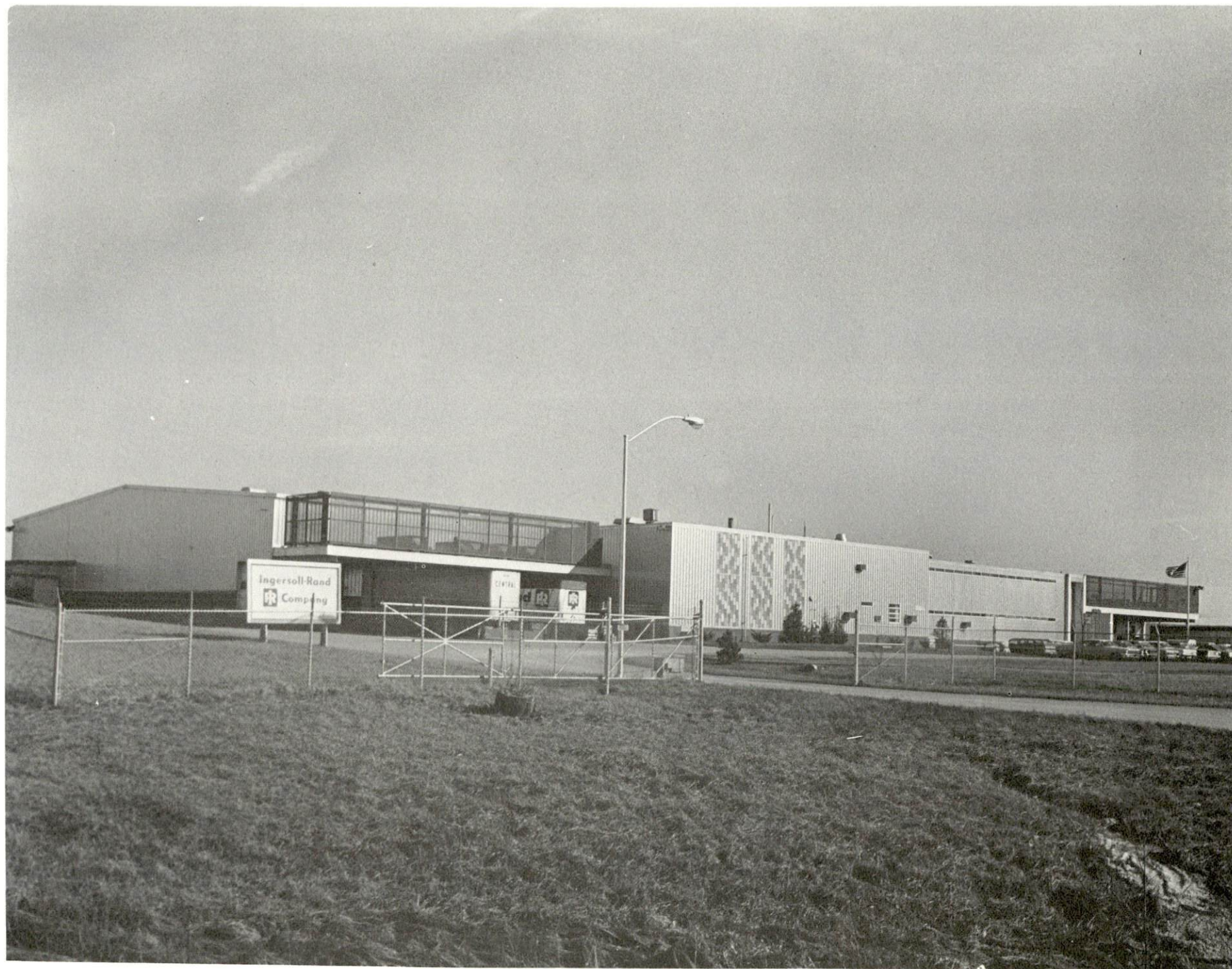
CAMPBELLSVILLE INDUSTRIES, INC.



CARNATION COMPANY



PARKER-KALON COMPANY



INGERSOLL-RAND COMPANY

ESTIMATED MALE LABOR SUPPLY
CAMPBELLSVILLE LABOR MARKET AREA

<u>Area</u>	<u>Current</u>			<u>Future</u>	
	<u>Total</u>	<u>Not in Labor Force</u>	<u>Unemployed</u>	<u>Under- employed</u>	<u>Reaching 18 yrs. of age before 1982</u>
Labor Market					
Area	2,890	60	1,310	1,520	4,186
Taylor	640	60	200	380	813
Adair	450	0	190	260	569
Casey	540	0	250	290	662
Green	240	0	110	130	505
Larue	330	0	150	180	594
Marion	690	0	410	280	1,043

Sources: Kentucky Department for Human Resources, Kentucky Labor Supply Estimates by County, 1975. Kentucky Department of Commerce, Future Labor Supply before 1982.

ESTIMATED FEMALE LABOR SUPPLY
CAMPBELLSVILLE LABOR MARKET AREA

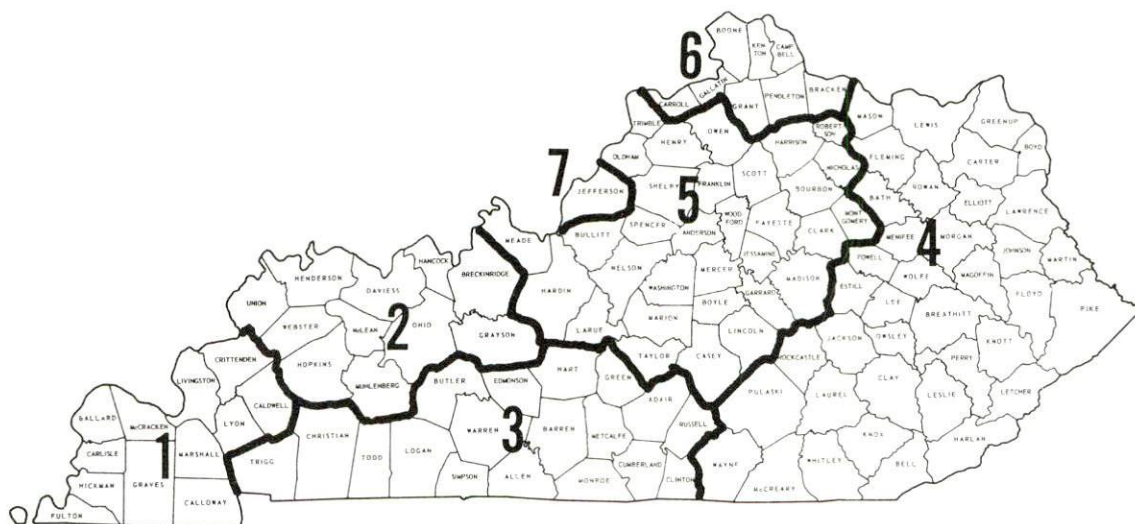
<u>Area</u>	<u>Current</u>			<u>Future</u>	
	<u>Total</u>	<u>Not in Labor Force</u>	<u>Unemployed</u>	<u>Under- employed</u>	<u>Reaching 18 yrs. of age before 1982</u>
Labor Market					
Area	2,230	510	400	1,320	4,019
Taylor	380	0	60	320	828
Adair	290	70	60	160	599
Casey	640	330	80	230	593
Green	300	110	30	160	430
Larue	260	0	50	210	552
Marion	360	0	120	240	1,017

Sources: Kentucky Department for Human Resources, Kentucky Labor Supply Estimates by County, 1975. Kentucky Department of Commerce, Future Labor Supply before 1982.

WAGES

Occupational wage rates for specific industries are usually not available to most government agencies, and wage data furnished to state employment agencies by individual industrial employers is protected from disclosure by federal law. The most reliable up-to-date wage information can be obtained by direct contact with local employers.

Associated Industries of Kentucky, a voluntary organization of Kentucky businesses, regularly collects occupational wage rates and fringe benefits data from participating member firms. Data is compiled for over 127 clearly defined office, production, and service occupations. Tabulations are published for seven regions of Kentucky, as shown on the map below. It should be noted that the data may be weighted by the preponderance of firms in the larger cities and may be somewhat higher than the rates paid in the smaller communities. Data from these tabulations are available, upon request, from the Kentucky Department of Commerce, Frankfort, Kentucky 40601.



Associated Industries of Kentucky Area Wage Surveys

PER CAPITA PERSONAL INCOME

<u>Area</u>	<u>1973</u>	<u>1969</u>	<u>Percent Change</u>
Taylor County	\$3,635	\$2,620	38.7
Labor Market Area			
Range	\$2,231 - 3,635	\$1,554 - 2,620	N.A.
Kentucky	4,050	2,894	39.9
U. S.	5,041	3,733	35.1

Sources: U. S. Department of Commerce, Office of Business Economics, Survey of Current Business, August, 1974. U. S. Department of Commerce, Bureau of Economic Analysis, April, 1975.

TRANSPORTATION

Rail

Line serving Campbellsville - Louisville & Nashville Railroad*
Services - Branch line, 3 freights weekly; team track for 6 cars;
nearest piggyback facilities are in Glasgow, 56 miles southwest of
Campbellsville

For details on routing, schedules, rates, and services, contact:

Director of Industrial Development
Louisville & Nashville Railroad
908 West Broadway
Louisville, Kentucky 40201
(502) 587-5000

Highways

U. S. Highway 68 and Kentucky Highways 55, 70, 208, and 210 serve Campbellsville. In addition, Campbellsville is located only 20 miles north of the Cumberland Parkway and 43 miles south of the Blue Grass Parkway.

A highway project is underway which, when completed, will greatly improve access to the Blue Grass and Cumberland Parkways from Campbellsville. Sections of this project, including a 5-mile section of Kentucky Highway 208 north of Campbellsville, have been completed. Construction is scheduled to begin soon on a 5-mile stretch of Kentucky Highway 55, extending south from Campbellsville to the Green River Lake. With the completion of this work, only the 20-mile section of highway from 5 miles north of Campbellsville to Springfield remains to be improved.

*Maximum weight of freight cars allowed on this branch line is 180,000 pounds gross weight.

Truck Service

Company

Home Office

Bronaugh Motor Express, Inc.

1025 Nandino Blvd.
Lexington, Kentucky 40511

Central Motor Express, Inc.*

P. O. Drawer C
Campbellsville, Kentucky 40011

Other Freight Services

Shipping Center

United Parcel Service

Campbellsville

HIGHWAY MILES AND TRUCK TRANSIT TIME IN DAYS FROM CAMPBELLVILLE, KENTUCKY, TO SELECTED MARKET CENTERS

City	Highway Miles	Delivery		City	Highway Miles	Delivery	
		Time TL				Time TL	
Atlanta, Ga.	378	1		Los Angeles, Calif.	2,185	4	
Birmingham, Ala.	346	1		Louisville, Ky.	77	1	
Chicago, Ill.	369	1		Nashville, Tenn.	150	1	
Cincinnati, Ohio	156	1		New Orleans, La.	688	2	
Cleveland, Ohio	403	1		New York, N. Y.	815	3	
Detroit, Mich.	415	2		Pittsburgh, Pa.	446	1	
Knoxville, Tenn.	185	1		St. Louis, Mo.	340	1	

Source: Delivery Time Only - Central Motor Express, Inc., P. O. Drawer C, Campbellsville, Kentucky 40011.

Air

Local

Location: Taylor County Airport
Campbellsville
Runways: 1 paved
Length: 4,000 feet
Traffic Control: Tetrahedron and wind sock
Lighting: Runway lights sundown to sunrise
Services: 100 octane, Jet A-50, charter service,
flight instructions, taxi, restaurant
Air Freight
Service: Chartered air freight services
must be arranged

*Local terminal.

Nearest Commercial Airports

	Standiford Field	Blue Grass Field
Location:	Louisville, 77 miles north of Campbellsville	Lexington, 78 miles northeast of Campbellsville
Runways:	3 paved	2 paved
Length:	7,800, 7,250 and 5,000 feet	6,500 and 3,500 feet
Traffic		
Control:	Tower, approach and ground control, guards, radar service, departure control	Tower, approach and ground control, guards, Automatic Terminal Information Service
Lighting:	Runways, obstructions, beacon and approach and touchdown lights, center line on runways 1-19	Approach lighting system, beacon, runways and obstructions lighted
Services:	TWA, American, Eastern, Delta, Piedmont, Ozark and Allegheny Airlines; Louisville-Jefferson County Air Board; 80, 100 and 115 octane and jet fuel; storage; A & E repairs; Hertz, Avis and National rent-a-car services; restaurant; taxi, and city bus; Budget Rent- A-Car service	Delta, Eastern, Piedmont, and Allegheny Airlines; National Weather Service; restaurant; flight instructions; charter service; storage; taxi, limousine, and car rentals
Air Freight		
Service:	Air freight terminal; regular air cargo service	Freight accepted on a space available basis

Bus - Southern Greyhound Bus Lines

Taxi - Two taxi companies, 24-hour service, radio equipped

Rental Services - Car, truck and trailer rentals

POWER AND FUEL

Electricity

Company serving Campbellsville - Kentucky Utilities Company

Source of power - Kentucky Utilities Company

Total generating capacity - 1,615,500 KW

For industrial rates contact:

Industrial Development Department
Kentucky Utilities Company
120 South Limestone Street
Lexington, Kentucky 40507
(606) 255-1461

Company serving Taylor County - Taylor County RECC

Source of power - East Kentucky Power Cooperative

Total generating capacity - 496,000 KW

For industrial rates contact:

Industrial Development Division
East Kentucky Power Cooperative
P. O. Box 707
Winchester, Kentucky 40391
(606) 744-4812

and/or

Taylor County RECC
West Main Street
Campbellsville, Kentucky 42718
(502) 465-4101

Natural Gas

Company serving Campbellsville - Western Kentucky Gas Company
Source of supply - Tennessee Gas Pipeline Company
Size of transmission mains - 24 inches (supplier); 6 inches (distributor)
Distribution mains - 2, 3, 4 and 6 inches
Distribution pressure - 6 ounces to 60 psi
Btu content - 1020 per cubic foot
Specific gravity - .58
For rates and supplies contact:

Western Kentucky Gas Company
311 West Seventh Street
Owensboro, Kentucky 42301
(502) 684-8811

Other Fuels

Propane and butane

Williams Energy Company, Columbia Road, Campbellsville,
Kentucky 42718

Fuel oils

Distillate fuel oil -

Ashland Petroleum Company, Columbia Road, Campbellsville,
Kentucky 42718
Gulf Oil Corporation, Columbia Road, Campbellsville,
Kentucky 42718
Haydon Oil Company, Lebanon Avenue, Campbellsville,
Kentucky 42718
J. Heber Lewis Oil Company, Inc., 730 South Columbia Avenue,
Campbellsville, Kentucky 42718
W. W. Long, Columbia Road, Campbellsville, Kentucky 42718
Sun Oil Company, Broad Street, Campbellsville, Kentucky 42718
White Oil Company, Route 6, Campbellsville, Kentucky 42718

Residual fuel oil - Arrangements must be made with the refinery.

Low sulphur content coal - Available in eastern Kentucky.

WATER AND SEWERAGE

Water

Company serving Campbellsville - Campbellsville Municipal Water
and Sewer System*
101 Terrie Street
Campbellsville, Kentucky 42718
(502) 465-3581

Source - City reservoir and Green River Lake
Treatment plant capacity - 2,400,000 gpd
Average daily consumption - 2,000,000 gallons
Peak daily consumption - 2,300,000 gallons
Type treatment - Coagulation, sedimentation, filtration, chlorination,
and fluoridation
Storage capacity - 2,235,000 gallons
Size lines - 16, 14, 12, 10, 8, and 6 inches
Average pressure - 140 psi

MONTHLY WATER RATES FOR WHOLESALE AND INDUSTRIAL CONSUMERS

Inside City

First	1,000 gallons	\$2.00 (Minimum)
Next	4,000 gallons	.80 per M gallons
Next	20,000 gallons	.70 per M gallons
Next	25,000 gallons	.60 per M gallons
Next	50,000 gallons	.50 per M gallons
Next	100,000 gallons	.40 per M gallons
Next	300,000 gallons	.36 per M gallons
Next	500,000 gallons	.30 per M gallons
Next	1,000,000 gallons	.28 per M gallons
Next	8,000,000 gallons	.18 per M gallons
All over	10,000,000 gallons	.13 per M gallons

(Cont.)

*Expansion of the treatment plant capacity to 6,000,000 gpd will be completed by the end of 1976. Also a 10-inch water main is being installed around the city to improve the distribution pressure.

Outside City

First	1,000 gallons	\$2.00 (Minimum)
Next	4,000 gallons	1.20 per M gallons
Next	20,000 gallons	1.05 per M gallons
Next	25,000 gallons	.80 per M gallons
Next	50,000 gallons	.67 per M gallons
Next	100,000 gallons	.53 per M gallons
Next	300,000 gallons	.48 per M gallons
Next	500,000 gallons	.40 per M gallons
Next	1,000,000 gallons	.37 per M gallons
Next	8,000,000 gallons	.18 per M gallons
All over	10,000,000 gallons	.13 per M gallons

Tapping Fees

<u>Meter Size</u>	<u>Inside City</u>	<u>Outside City</u>
5/8 - by 3/4-inch	\$ 100	\$ 250
3/4-inch	125	275
1-inch	150	300
1 1/2-inch	225	400
2-inch	350	500
2-inch compound	525	750
3-inch compound	800	900
4-inch compound	1,200	1,300
6-inch compound	2,400	2,500

Surface water sources - Green River, Green River Lake

Average discharge - Green River near Campbellsville - 988 cfs
(12-year record, USGS)

Expected ground water yield - 5 to 50 gpm in northwestern portion
of the county; 5 gpm or less in the remaining portion of the county

Sewerage

Company serving Campbellsville - Campbellsville Municipal Water
and Sewer System
101 Terrie Street
Campbellsville, Kentucky 42718
(502) 465-3581

Design capacity - 1,800,000 gpd*

Average daily flow - 1,400,000 gallons

Treatment - Primary and secondary

Type treatment - Aeration, clarifier, drying beds, screening house

Treated effluent discharged into - Buckhorn Creek

Size of sanitary mains - 12, 10, 8, and 6 inches

Rates - Based on water usage

Inside City

First	1,000 gallons	\$1.70	(Minimum)
Next	4,000 gallons	.68	per M gallons
Next	20,000 gallons	.60	per M gallons
Next	25,000 gallons	.51	per M gallons
Next	50,000 gallons	.425	per M gallons
Next	100,000 gallons	.34	per M gallons
Next	300,000 gallons	.306	per M gallons
Next	500,000 gallons	.255	per M gallons
Next	1,000,000 gallons	.238	per M gallons
Next	8,000,000 gallons	.153	per M gallons
All over	10,000,000 gallons	.1105	per M gallons

Outside City

First	1,000 gallons	\$3.83	(Minimum)
Next	4,000 gallons	1.02	per M gallons
Next	20,000 gallons	.89	per M gallons
Next	25,000 gallons	.68	per M gallons
Next	50,000 gallons	.5695	per M gallons
Next	100,000 gallons	.4505	per M gallons
Next	300,000 gallons	.408	per M gallons
Next	500,000 gallons	.34	per M gallons
Next	1,000,000 gallons	.3145	per M gallons
Next	8,000,000 gallons	.153	per M gallons
All over	10,000,000 gallons	.1105	per M gallons

Tap-on fee - \$75

*Construction of a new 4,000,000 gpd sewage treatment plant is scheduled to begin in 1976.

CLIMATE

Taylor County

Temperature

Annual mean (30-year record)	55.2 degrees
Average annual 1974	55.1 degrees
Record highest, July, 1966 (11-year record)	98.0 degrees
Record lowest, January, 1972 (11-year record)	-11.0 degrees
Normal heating degree days (30-year record)	4,729
(Heating degree day totals are the sums of negative departures of average daily temperatures from 65 degrees F.)	

Precipitation

Mean annual total (30-year record)	44.49 inches
Mean annual snowfall (30-year record)	15.70 inches
Total precipitation 1974	60.09 inches
Mean number days precipitation (.01 inch or more) (30-year record)	130
Average number days thunderstorms (30-year record)	47

Prevailing Winds (17-year record)

South

Relative Humidity (11-year record)

1 a.m.	76 percent
7 a.m.	81 percent
1 p.m.	59 percent
7 p.m.	64 percent

Source: U. S. Department of Commerce, Environmental Science Services
Administration, Climatological Data, 1974. Station of record:
Lexington, Kentucky.

LOCAL GOVERNMENT

City

Structure - Mayor - 4-year term; 12 councilmen - 2-year terms
Income - General Fund \$512,475 (1975)
 Water and Sewer Fund 612,300 (1974)
Fees and licenses - Business license for manufacturing - \$80 annually;
 auto tax - \$10 annually; unloading license - \$30 annually

County

Structure - County Judge - 4-year term; 6 magistrates - 4-year terms
Budget 1975-76 - General Fund \$198,070; Road Fund \$46,300

Assessed Value of Property, 1975

<u>Classes of Property</u>	<u>Campbellsville</u>	<u>Taylor County</u>
Real Estate	\$35,298,465	\$108,792,769
Tangibles	7,097,358	18,320,219

Property Taxes

Land and buildings are taxed by the state and may be taxed by local jurisdictions. The state rate is \$0.015 per \$100 of assessed valuation.

Tangible personal property owned by manufacturers (automobiles, trucks, finished goods, office furniture, office equipment) is taxed by the state at \$0.15 per \$100 and may be taxed by local jurisdictions.

Manufacturing machinery, raw materials inventories, pollution control equipment, and goods in process inventories are not subject to local taxation. The state rate is \$0.15 per \$100.

Property stored in public warehouses is not subject to local taxation. The state rate is only \$0.015 per \$100.

All property is assessed at 100 percent of fair cash value.



CAMPBELLVILLE MUNICIPAL BUILDING



NEW CENTRAL SHOPPING CENTER

Local Property Tax Rate Per \$100 of Assessed Valuation, 1975*

<u>Taxing Jurisdiction</u>	<u>Campbellsville</u>	<u>Taylor County</u>
County	\$.251	\$.251
School	.622	.503
City	.300	

Planning and Zoning

City agency - Campbellsville Planning and Zoning Commission
Zoning enforced - City only
Subdivision regulations enforced - City and 3 miles beyond city limits
Local codes enforced - Housing and building
Mandatory state codes enforced - Plumbing, National Fire Protection Association Code, National Building Code (for major buildings and residential construction containing more than 12 bedrooms per building)

Safety

<u>Police</u>	<u>Campbellsville</u>	<u>Taylor County</u>
Total staff	17 policemen, 5 dispatchers	4
Radio-patrol cars	7	3

Fire

American Insurance Association Fire Rating	7	
Full-time staff	7	
Volunteers	23	23

Rescue Service

Taylor County Rescue Squad:

Number of volunteers - 42

Equipment - 4-wheel drive rescue vehicle, Citizens Band and 6 complete mobile radio systems, generators, dragging gear for 30 men, 12 divers, porta-power, 2 boats and motors, multi-media films, 16 mm projector, and teaching equipment for first aid course and Cardio Pulmonary Resuscitation

*Kentucky Department of Revenue, Research Staff.

Solid Waste

Type service
Fee charged:
 residential

 business
 industrial
Collection frequency:
 residential
 business
 industrial
Trash pickup
Disposal method

Campbellsville

Municipal

\$4.00 per month (inside city limits)
4.80 per month (outside city limits)
Contract
Contract

Weekly
Contract
Contract
Annually
Sanitary landfill

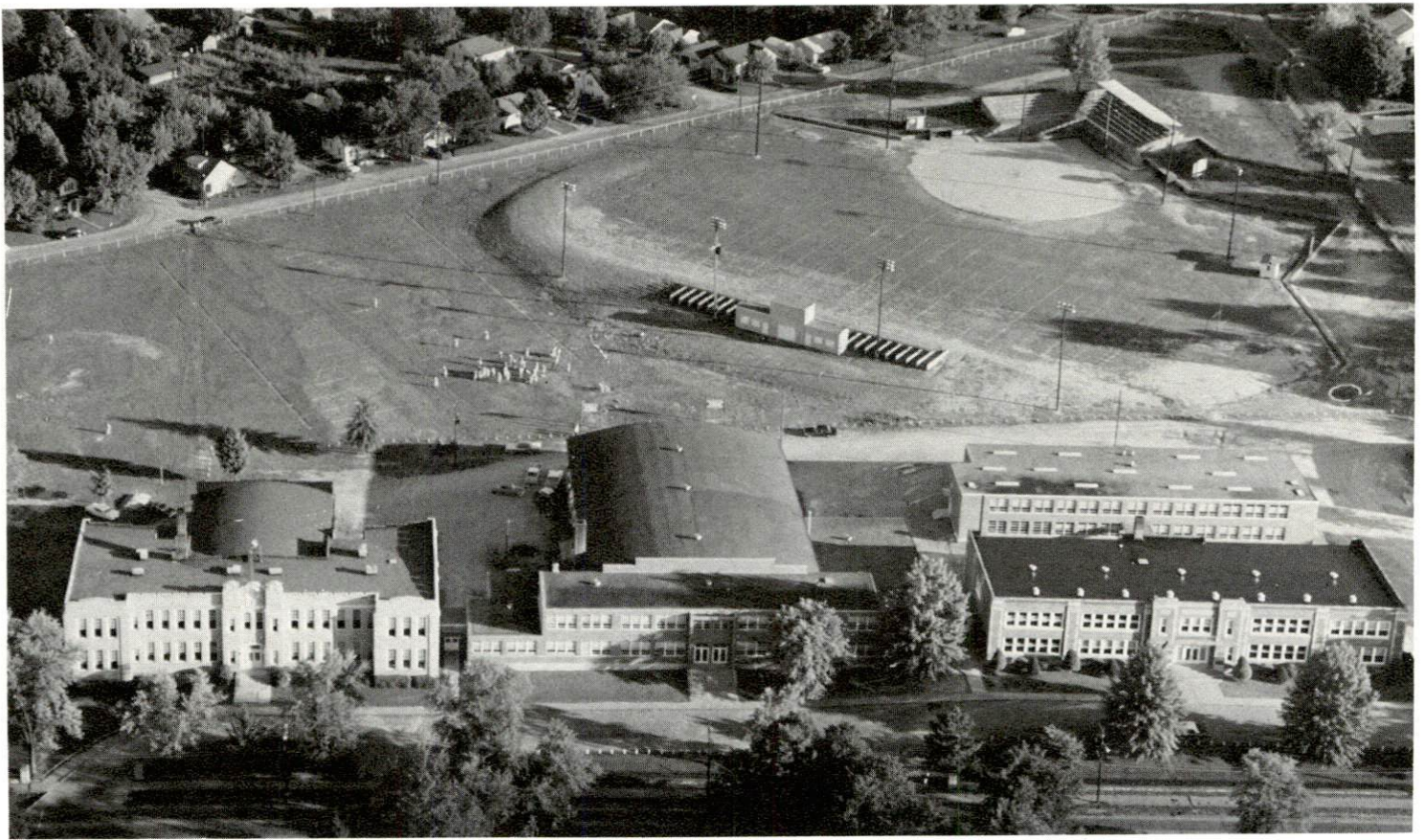
EDUCATION

Public Schools

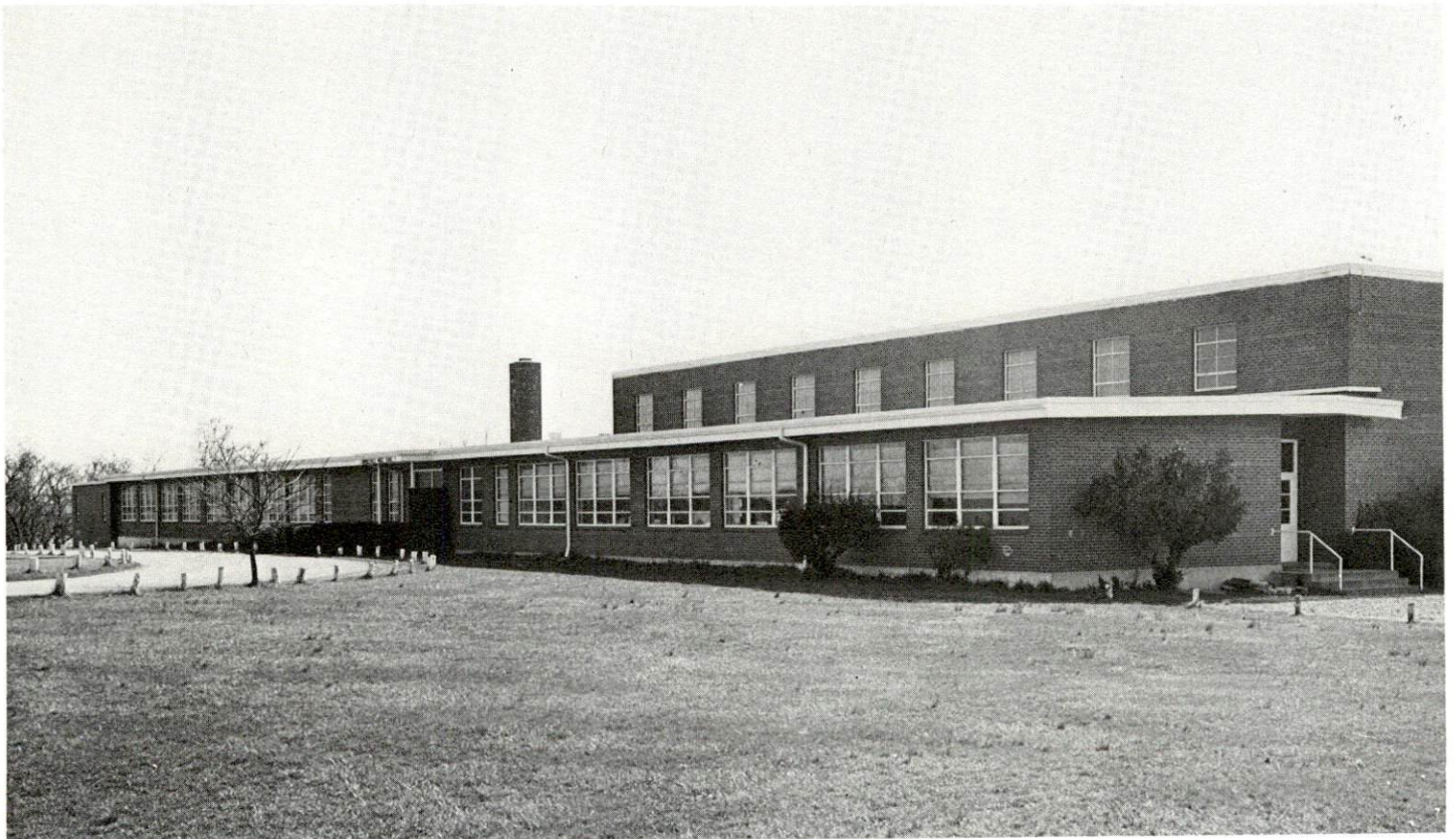
	<u>Campbellsville</u>	<u>Taylor County</u>
Total Enrollment		
(Fall, 1975)	1, 502	2, 532
Elementary	594	1, 277
Middle School	407	438
High School	501	817
Student-Teacher Ratio	19-1	20-1
Elementary	17-1	21-1
Middle School	20-1	20-1
High School	19-1	19-1
Accreditation	Southern Association of Colleges and Schools	Southern Association of Colleges and Schools
Percent High School Graduates to College	42. 6	28. 1
Expenditures Per Pupil (1974-75)	\$633. 71	\$650. 97
Bonded Indebtedness, June 30, 1975	\$939, 000	\$1, 481, 000

Area Colleges and Universities

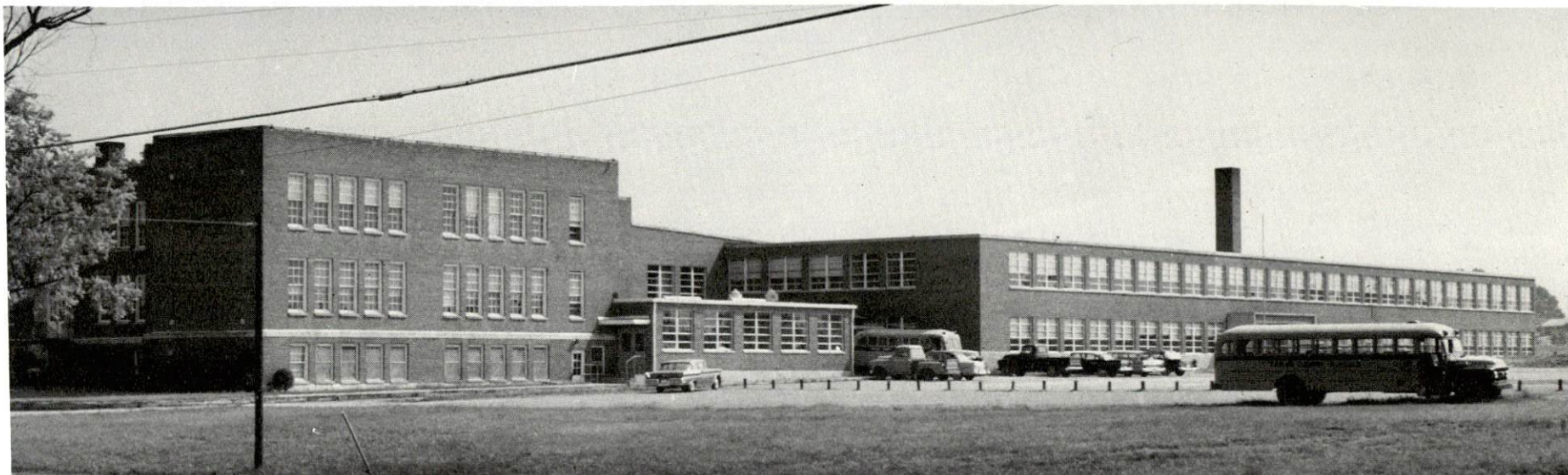
<u>Name</u>	<u>Location (Miles Distant)</u>	<u>Enrollment (Fall, 1975)</u>	<u>Highest Degree Conferred</u>
Campbellsville College	Campbellsville	711	Baccalaureate
Centre College	Danville (50)	775	Baccalaureate
Elizabethtown Community College	Elizabethtown (40)	1, 345	Associate
Lindsey Wilson Junior College	Columbia (19)	354	Associate
St. Catharine Junior College	St. Catharine (30)	144	Associate



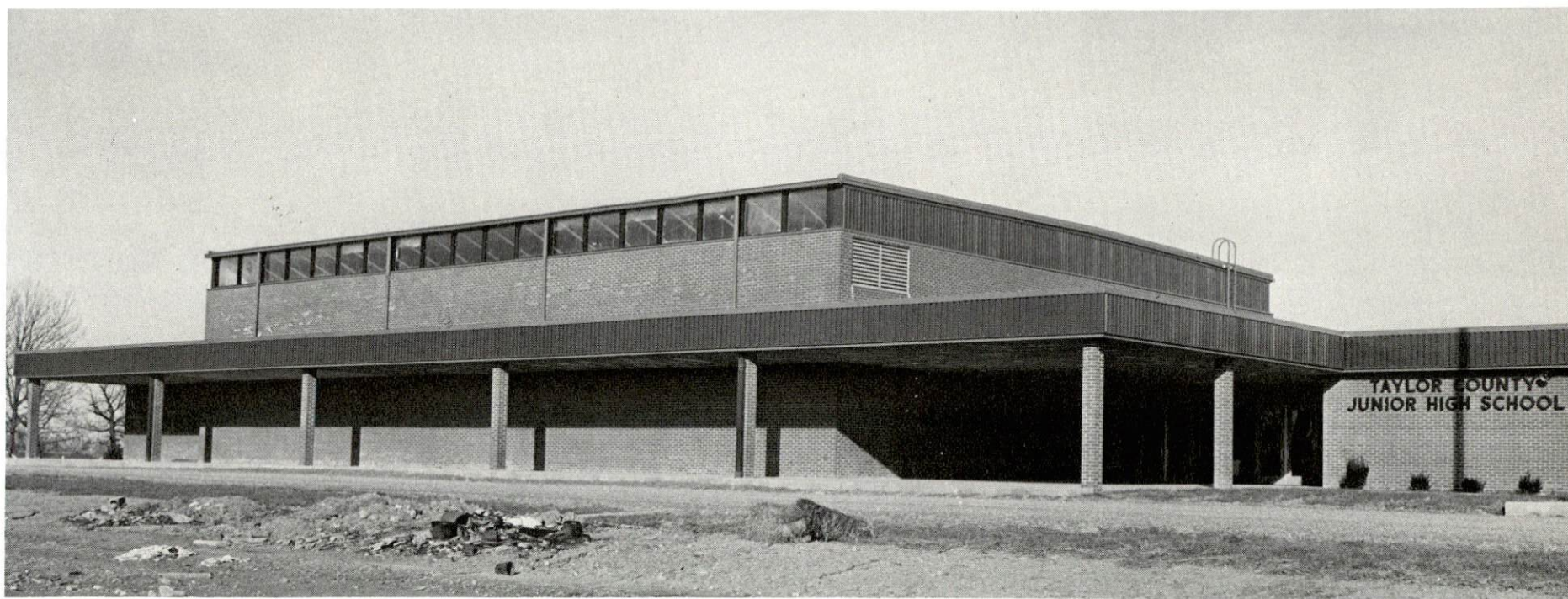
CAMPBELLVILLE HIGH SCHOOL



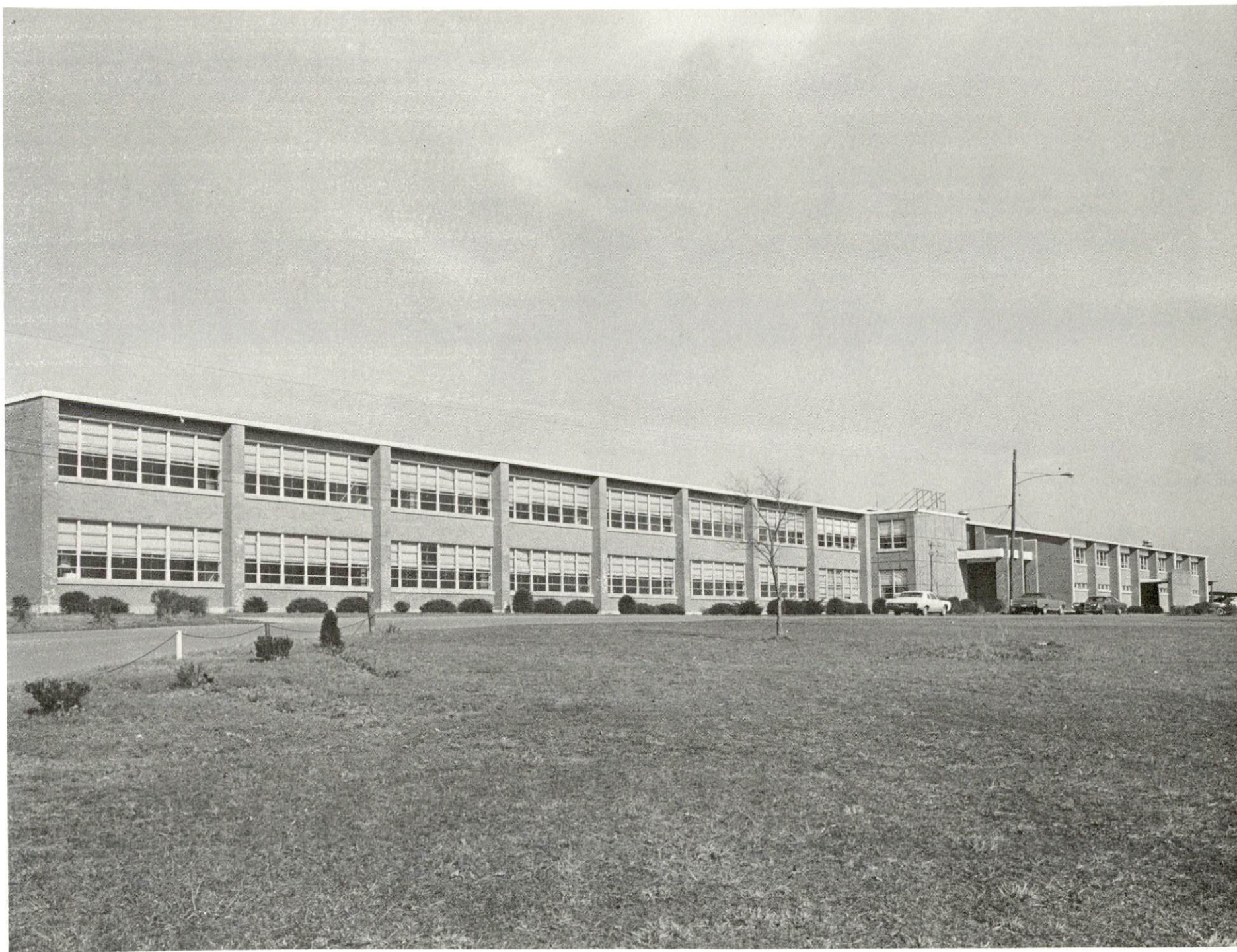
CAMPBELLVILLE MIDDLE SCHOOL



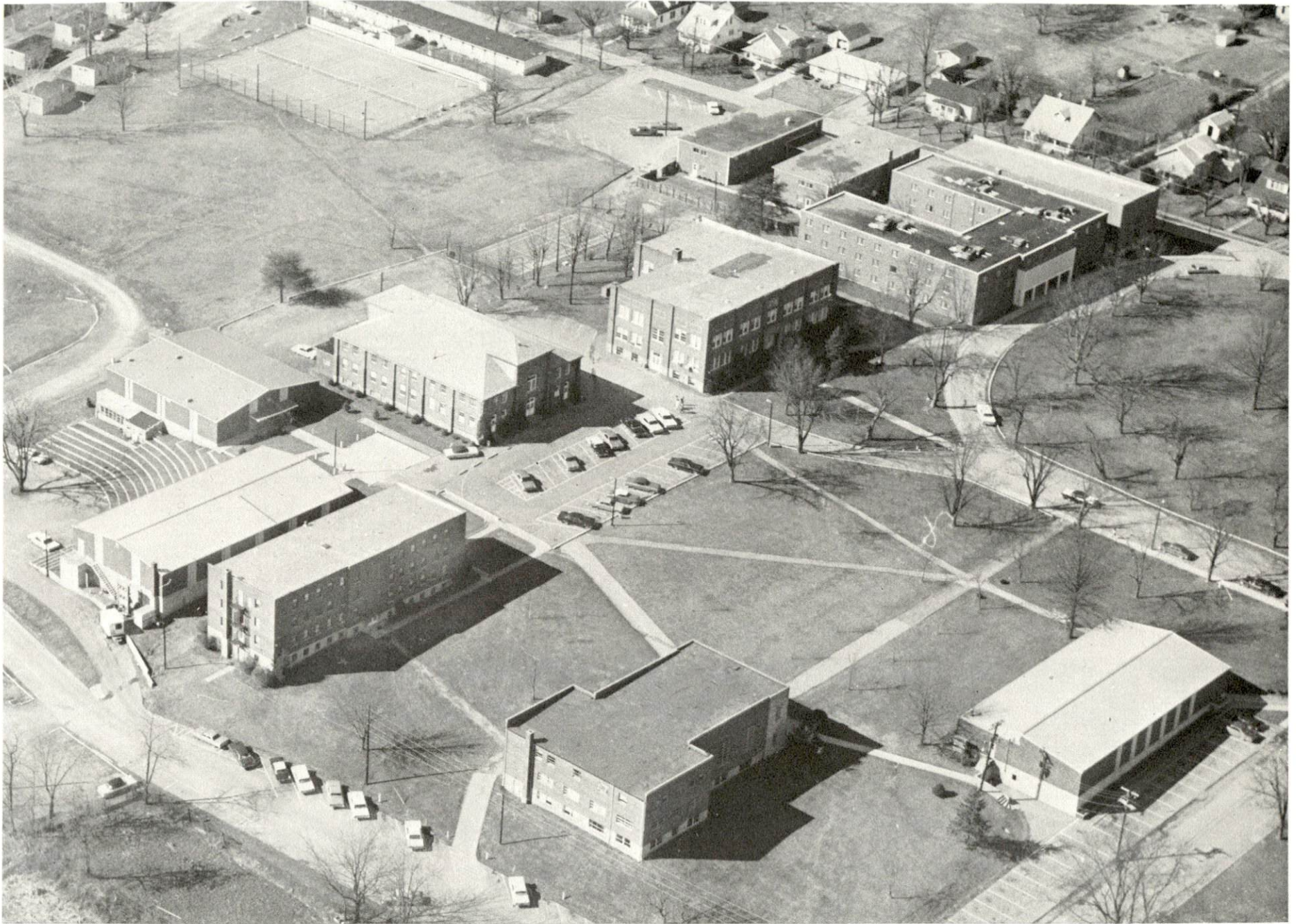
TAYLOR COUNTY GRADE SCHOOL



TAYLOR COUNTY JUNIOR HIGH SCHOOL



TAYLOR COUNTY HIGH SCHOOL



CAMPBELLVILLE COLLEGE

Vocational Schools

	<u>Nearest State School</u>	<u>Nearest Area Education Center</u>
	Elizabethtown State Vocational-Technical School	Green County Area Vocational Education Center
Location	Elizabethtown	Greensburg
Miles Distant	40	11
Curriculum	Commerical Foods Health and Personal Services Air Conditioning and Refrigeration Appliance Repair Auto Mechanics Carpentry Drafting Industrial Electricity Industrial Machine Repair Machine Shop Radio and TV Repair Welding	Business and Office Health and Personal Services Auto Body Auto Mechanics Carpentry Industrial Electricity Machine Shop Welding

Arrangements can be made to provide training in the specific production skills required by an industrial plant. Instruction may be conducted either in the vocational school or in the industrial plant, depending upon the desired arrangement and the availability of special equipment.

HEALTH

Local Medical Personnel

Physicians - 15
Dentists - 6

Hospitals

<u>General Hospital</u>	<u>Location</u>	<u>Beds</u>
Taylor County Hospital	Campbellsville	60*

General hospital facilities - Emergency room; 2 operating rooms; 2 X-ray labs; delivery room; inhalation therapy; recovery room; intensive care unit; coronary care unit; cafeteria; gift shop; hospital rooms equipped with individual heating baths, electrical beds, and telephones; Blood Bank; EKG machine; all modern up-to-date equipment

Medical Staff - 8 doctors including 1 surgeon; 12 registered nurses (full time); 4 registered nurses (part time); 4 licensed practical nurses; 3 laboratory technicians; 1 X-ray technician; 1 inhalation therapist; 1 dietician; 1 radiologist (part time); 1 pathologist (part time)

Ambulance Service

Name - Taylor County Ambulance Service
Staff - 6 Emergency Medical Technicians, 6 volunteers
Service - 24-hour service throughout the county
Equipment - 2 emergency ambulances, 1 convalescent ambulance

Nursing Homes

	<u>Number</u>	<u>Beds</u>
Extended care homes	1	71
Personal care homes	1	67

Public Health

Facility - Taylor County Health Department
Staff - 2 registered nurses; 2 clerks; 2 environmentalists (1 of which also serves as administrator); 1 field worker; 1 licensed practical nurse (part time); 1 registered nurse (part time); 1 records clerk (part time)

*A 30-bed addition is planned.



TAYLOR COUNTY HEALTH CENTER



TAYLOR COUNTY HOSPITAL

OTHER LOCAL FACILITIES

Communications

Telephone - General Telephone Company
Services - Direct dialing

Telegraph - Western Union
Services - Telephone and messenger

Postal - U. S. Post Office
Class - First
Mail received - Twice daily
Mail dispatched - Twice daily

Newspapers - Central Kentucky News-Journal
Bi-weekly and circulation - 12,500
Other papers received from - Louisville, Kentucky

Radio - WTCO AM-FM
Stations received from - Greensburg, Columbia, Lebanon, Danville,
Bowling Green, Lexington, and Louisville, Kentucky; Nashville,
Tennessee

Television -
Cable service
Reception from - Bowling Green, Lexington, and Louisville,
Kentucky; Nashville, Tennessee
Kentucky Educational Television - Elizabethtown transmitter,
channel 23; Somerset transmitter, channel 29

Library Services

Public library - Taylor County Public Library
Size collection - 15,100 volumes
Circulation, 1975 - 79,000 volumes
Services - Films, magazines, newspapers, microfilm reader-printer,
records, record player, talking book machines, paintings, com-
munity room, story-hour, film program, copying machines



CAMPBELLSVILLE BAPTIST CHURCH



OUR LADY OF PERPETUAL HELP CATHOLIC CHURCH

Private library - Campbellsville College Library (open to public)
 Size collection - 75,000 volumes
 Special collections - Kentucky children's curriculum, books about
 Kentucky, textbook collection, and government doctrines
 Services - Periodicals, magazines, newspapers, audio-visual
 equipment for classroom use, films, filmstrips, records, tapes,
 art, projectors, record player, microfilm copies of census data
 1790 to present, lecture series, film series, fine arts series

Religious Institutions

Number of churches - 18
 Denominations - Baptist
 Catholic
 Christian
 Church of Christ
 Church of God
 Methodist
 Presbyterian
 Nazarene

Nearest Synagogues - Louisville, 77 miles distant
 Congregations - Adath Israel (reform)
 Adath Jeshurun (conservative)
 Anshei Sfard (orthodox)
 Brith Sholom (reform)
 Keneseth Israel (orthodox)

Financial Institutions

<u>Banks</u>	<u>Assets</u>	<u>Deposits</u>	<u>Statement Date</u>
Citizens Bank & Trust Company	\$20,513,091.55	\$18,438,882.18	12/31/75
Taylor County Bank	21,780,912.36	19,741,123.13	12/31/75

<u>Savings and Loan Associations</u>	<u>Assets</u>	<u>Shared Accounts</u>	<u>Statement Date</u>
First Federal Savings and Loan Association	\$45,874,681.42	\$40,592,615.88	12/31/75

Hotels and Motels

Total number - 5

Total units - 68

Clubs and Organizations

Business and Civic - Rotary, Lions, Kiwanis, Jaycees, Chamber of Commerce, Parents and Teachers Association

Fraternal - American Legion

Women's - Woman's Club, Junior Woman's Club, American Legion Auxiliary, League of Women Voters, Business and Professional Women's Club, Homemaker's Club, American Association of University Women, DAR

Youth - Boy Scouts, Girl Scouts, Brownies, Cub Scouts, 4-H, FFA, FHA, Little League (football, baseball, and basketball), Babe Ruth baseball

Other - Green River Audubon Society, Sportsmen Club, Farm Bureau, National Farm Organization, Historical Society

RECREATION

Local

Campbellsville and Taylor County offer a wide variety of recreation and entertainment. Public recreational facilities in the city include two parks, four playgrounds, swimming pool, nine-hole golf course, four tennis courts, two baseball diamonds, and two football fields. In addition, 12 acres of land were added to one of the city parks to provide space for a new swimming pool and tennis courts. Taylor County plans to develop a 23-acre ball park that will feature a baseball diamond, three softball diamonds, two little league baseball diamonds, concession stand, and playground equipment. Available private facilities are a country club, nine-hole golf course, swimming pool, 16-lane bowling alley, and two movie theaters.

Campbellsville College offers entertainment such as drama, theater, and choir to the public. Campbellsville also has the Community Concert series each year.

The Taylor County Park is located on the Green River Lake. This 480-acre park has a beach, boat dock, restroom facilities, and 100 campsites with utility connections.

Green River Lake State Park, approximately 5 miles south of Campbellsville, is open all year, and offers 100 primitive campsites, beach, marina, boat dock, boat and motor rental, and a picnic area.

Area

Lake Cumberland State Resort Park, 38 miles distant in Jamestown, is a 3,000-acre resort park open all year. The park has lodge and cottage accommodations and camping facilities. Recreational activities include fishing, swimming, boating of various kinds, tennis, hiking, horseback riding, picnicking and golfing.

Abraham Lincoln Birthplace National Historic Site, located 30 miles northwest of Campbellsville near Hodgenville, includes 100 acres of original Thomas Lincoln farm and the little log cabin where Abraham Lincoln was born.

Located approximately 50 miles southwest of Campbellsville is the world-famous Mammoth Cave region, which covers more than 150 miles of charted caverns and vast areas not yet mapped. Besides the many unique cave formations, there are attractions such as underground cave boating trips and an underground cave dining room. Above ground this region offers a 51,000-acre national park, a state park, both with motel and lodging accommodations, and camping facilities. The area also offers two state shrines, two large lakes, many historical sights, festivals, hillside chair lifts, and wax museum.



MILLER PARK



CAMPBELLVILLE COUNTRY CLUB

COMMUNITY IMPROVEMENTS

Recent:

A new city street was constructed to relieve downtown traffic. The city also widened Broadway Street to four lanes and installed storm sewers.

Four new municipal parking lots, providing 200 additional parking spaces, have been constructed.

A new medical center has been constructed and another has added to its existing facilities.

Cabinet Makers of Kentucky has begun operation in a new 4,000-square foot building.

Two new subdivisions have been developed.

A new county ambulance service is now in operation.

A metro police force was formed, and four new patrol cars were purchased.

Planned:

The Campbellsville Independent School District plans to build a twelve-classroom addition to the high school.

Construction is scheduled to begin soon on a 5-mile section of Kentucky 55, extending south from Campbellsville to the Green River Lake. Similar construction has already been completed on a 5-mile portion of Kentucky 208 north of Campbellsville.

A 30-bed addition to the Taylor County Hospital is planned.

General Telephone Company has purchased land for the construction of a new warehouse and office facilities. The present office building will be remodeled to house additional central office equipment.

Underway:

The Campbellsville Municipal Water and Sewer System will begin construction on a new 4,000,000 gpd sewage treatment plant in 1976. The water treatment plant capacity is being increased to 6,000,000 gallons per day. In addition, a 10-inch water main is being installed around the city.

The Taylor County School System is building a school bus garage and a restroom and concession stand facility at the football field.

Twelve acres were added to one of the city parks to provide space for a new swimming pool and tennis courts. The county plans to develop a 23-acre park, which will offer six baseball or softball diamonds, a concession stand, and playground equipment.

The Taylor County Bank is constructing a new three-story building with a drive-in window.

HISTORY

Taylor County, covering 277 square miles, is located in the central part of Kentucky. Green River Lake covering 8,200 acres, lies in the southern part of the county, and Pitman Creek flows across its western side. Its surface is level in some areas and hilly in others, with Muldrow's Hills and the Knobs in the northern and eastern sections. The soil ranges from fertile in the river and creek bottoms to thin on the knobs, and more than 45 percent of its area is forested.

The first settlers in Taylor County were Virginians and North Carolinians, many of whom came to claim land in return for Revolutionary War services. The Reverend David Rice, an early Presbyterian leader known in history as Father Rice, established the first church in Kentucky in what is now Taylor County, and led an early fight against legalized slavery in the state.

Taylor was made Kentucky's one-hundredth county in 1848. Taken from Green County, it was named for General Zachary Taylor, who grew up in Kentucky and was elected President the year of the county's formation. In 1869 a group of some 150 Pennsylvania Dutch (German) families migrated to the area, making considerable impact on community life.

Campbellsville, the county seat, was named for one of the early settlers in the area, Adam Campbell. Incorporated in 1817, more than thirty years before the county was formed, Campbellsville has become a progressive community which was named an All Kentucky City in 1965, 1968, and 1969. Campbellsville College, a four-year institution, had an enrollment of 711 in 1975.

In 1850, two years after its formation, Taylor County had 7,250 inhabitants. The population grew steadily reaching 14,403 in 1950; 16,285 in 1960; and 18,300 in 1974. Campbellsville had a 1973 population of 7,675.

The total number of Taylor County residents employed in 1974 averaged 8,380; including 1,090 in agriculture and 630 in government. Manufacturing employers in the county reported 4,200 workers; trade and services firms employed 1,400. Major industrial products are: men's and boy's underwear and infant's wear.

Production Supervisor

Patsy Wallace

Research

Terry Patterson

Clerical

Mildred Keefer

Graphics

N. C. Montague

Frank Ferrante

Tony Cecconi

Cartography

Site Development Section

This copy has been prepared by the Kentucky Department of Commerce, Division of Research and Planning, and the cost of printing paid from state funds.