

1986

Industrial Resources: Woodford County - Versailles

Kentucky Library Research Collections
Western Kentucky University, spcol@wku.edu

Follow this and additional works at: https://digitalcommons.wku.edu/woodford_cty



Part of the [Business Administration, Management, and Operations Commons](#), [Growth and Development Commons](#), and the [Infrastructure Commons](#)

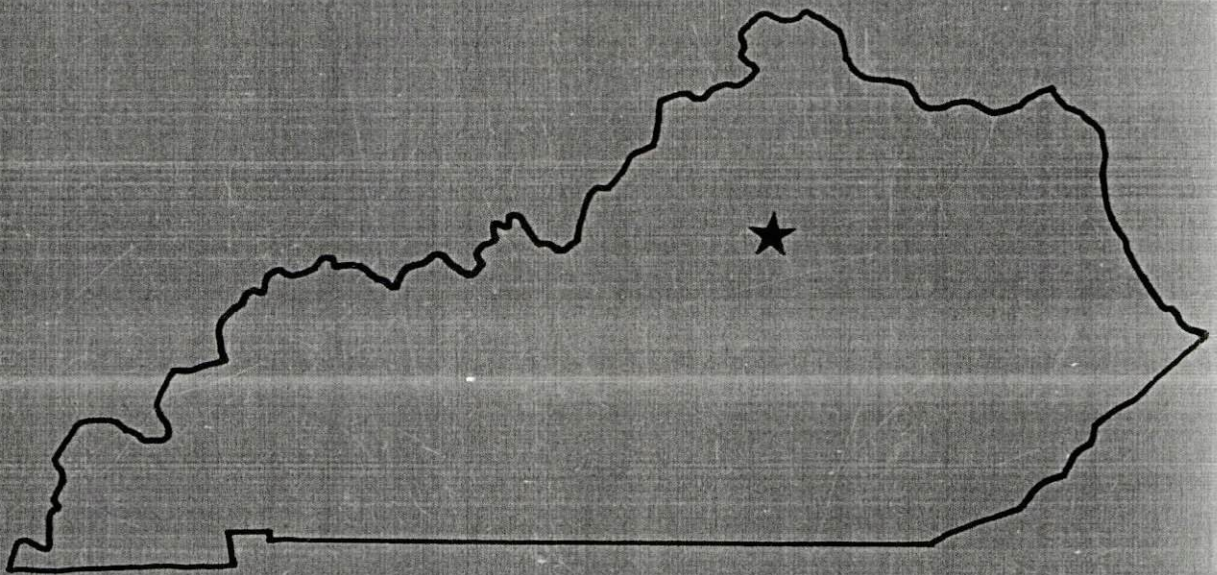
Recommended Citation

Kentucky Library Research Collections, "Industrial Resources: Woodford County - Versailles" (1986). *Woodford County*. Paper 6.
https://digitalcommons.wku.edu/woodford_cty/6

This Report is brought to you for free and open access by TopSCHOLAR®. It has been accepted for inclusion in Woodford County by an authorized administrator of TopSCHOLAR®. For more information, please contact topscholar@wku.edu.

RESOURCES FOR ECONOMIC DEVELOPMENT

Versailles



KENTUCKY
The business environment is right.

Site 186 - 90 Ac.

LOCATION: Partially within the northern city limits
ZONING: I-1; Light industrial
HIGHWAY ACCESS: US 60 Bypass adjacent to southwestern boundary
RAILROAD: Southern Railway along southern boundary
WATER: Versailles Municipal Water and Sewer Works
Size Line: 10-inch line along southwestern boundary along north side of US 60 Bypass
SEWERAGE: Versailles Municipal Water and Sewer Works
Size Line: 8-inch line along southwestern boundary along north side of US 60 Bypass; 6-inch force main line along western boundary
NATURAL GAS: Columbia Gas of Kentucky
Size Line: 4-inch line along south side of US 60 Bypass
ELECTRICITY: Kentucky Utilities Company
OWNERSHIP: Versailles Woodford County Economic Development Authority
SCHOOL DISTRICT: Woodford County

Site 286 - 15 Ac.

LOCATION: Within northern city limits
ZONING: I-2; Heavy industrial
HIGHWAY ACCESS: US 60 Bypass approximately 1250 feet south
RAILROAD: Not rail served
WATER: Versailles Municipal Water and Sewer Works
Size Line: 10-inch line approximately 1200 feet south along north side of US 60 Bypass
SEWERAGE: Versailles Municipal Water and Sewer Works
Size Line: 8-inch line approximately 1200 feet south along north side of US 60 Bypass; 6-inch force main line approximately 50 feet east
NATURAL GAS: Columbia Gas of Kentucky
Size Line: 4-inch line approximately 1400 feet south along south side of US 60 Bypass
ELECTRICITY: Kentucky Utilities Company
OWNERSHIP: Private
SCHOOL DISTRICT: Woodford County

SCALE: 1 inch = 2000 feet
CONTOUR INTERVAL: 10 feet
BASE: USGS 7.5 minute series - 1965
Photorevised - 1978

UTILITIES
----- Water Line
——— Sewer Line

Existing Industries

A Kuhlman Electric Co.
B Advanced Drainage Systems
C Texas Instruments Inc.
D Rand McNally & Co.
E M-B Food Corp.
F Keebler Co.
G GTE Products Corp.

For more information contact the Kentucky Department of
Economic Development, Industrial Development & Marketing
Division, Capital Plaza Tower, Frankfort, Kentucky 40601
(502-564-7140).

VERSAILLES, KENTUCKY

Industrial Sites -- 1986



RESOURCES FOR ECONOMIC DEVELOPMENT
VERSAILLES, KENTUCKY

Prepared by
The Kentucky Department of Economic Development
Division of Research and Planning
in cooperation with
The Woodford County Chamber of Commerce
and
The Versailles-Woodford County Economic Development Authority

1986

Program manager - Andrew Dennis; research - James R. Thompson; clerical - Bobbi Graves; graphics - Frank Ferrante, Tony Cecconi, Robert Owens; cartography - Site Evaluation Branch, Division of Industrial Development and Marketing. Cost of printing paid from state funds.

TABLE OF CONTENTS

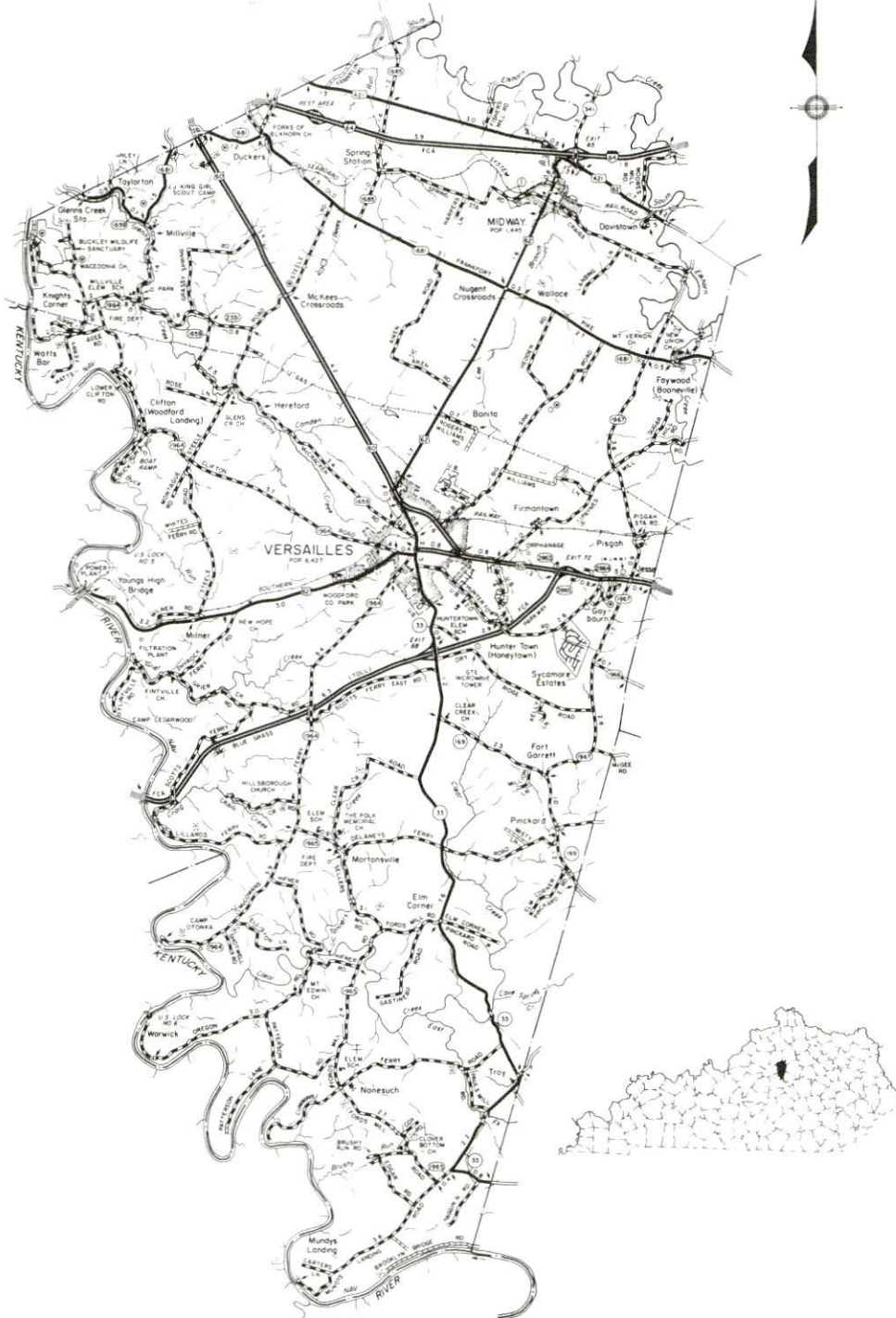
<u>Chapter</u>	<u>Page</u>
INDUSTRIAL SITES	i
VERSAILLES, KENTUCKY - A RESOURCE PROFILE	1
THE LABOR MARKET AREA.....	3
Population	3
Labor Force Characteristics of Residents, 1984	3
Selected Components of Nonagricultural Employment, by Place of Work, 1984	4
Versailles Manufacturing Firms, Their Products and Employment.....	4
Labor Organizations in Manufacturing Firms	5
Industrial Services	6
Estimated Male Labor Supply	7
Estimated Female Labor Supply	7
Average Weekly Wages By Industry, by Place of Work, 1984	8
Per Capita Personal Income	10
TRANSPORTATION	11
Rail	11
Highways	11
Truck Service	11
Air	13
Bus	13
Taxi.....	13
Rental Services	13
Water	14
POWER AND FUEL	15
Electricity	15
Natural Gas	16
Other Fuels	16
WATER AND SEWERAGE	17
Public Water Supply	17
Raw Water	17
Sewerage	18
CLIMATE	20

<u>Chapter</u>	<u>Page</u>
LOCAL GOVERNMENT	21
City	21
County	21
Assessed Value of Property, 1985	21
State and Local Property Taxes	22
Utilities Gross Receipts Tax for Schools	23
Planning and Zoning	23
Safety	23
Police	23
Fire	23
Rescue Service	23
Refuse Collection and Disposal	24
EDUCATION	25
Public Schools	25
Nonpublic Schools	25
Area Colleges and Universities	26
Vocational Schools	26
HEALTH.....	29
Local Medical Personnel	29
Hospitals	29
Other Medical Facilities	29
Ambulance Service	29
OTHER LOCAL FACILITIES.....	30
Communications	30
Library Services	30
Religious Institutions	31
Financial Institutions	31
Hotels and Motels	31
Clubs and Organizations	32
RECREATION	33
COMMUNITY IMPROVEMENTS	36

1985 EDITION
GENERAL HIGHWAY MAP
WOODFORD COUNTY
KENTUCKY

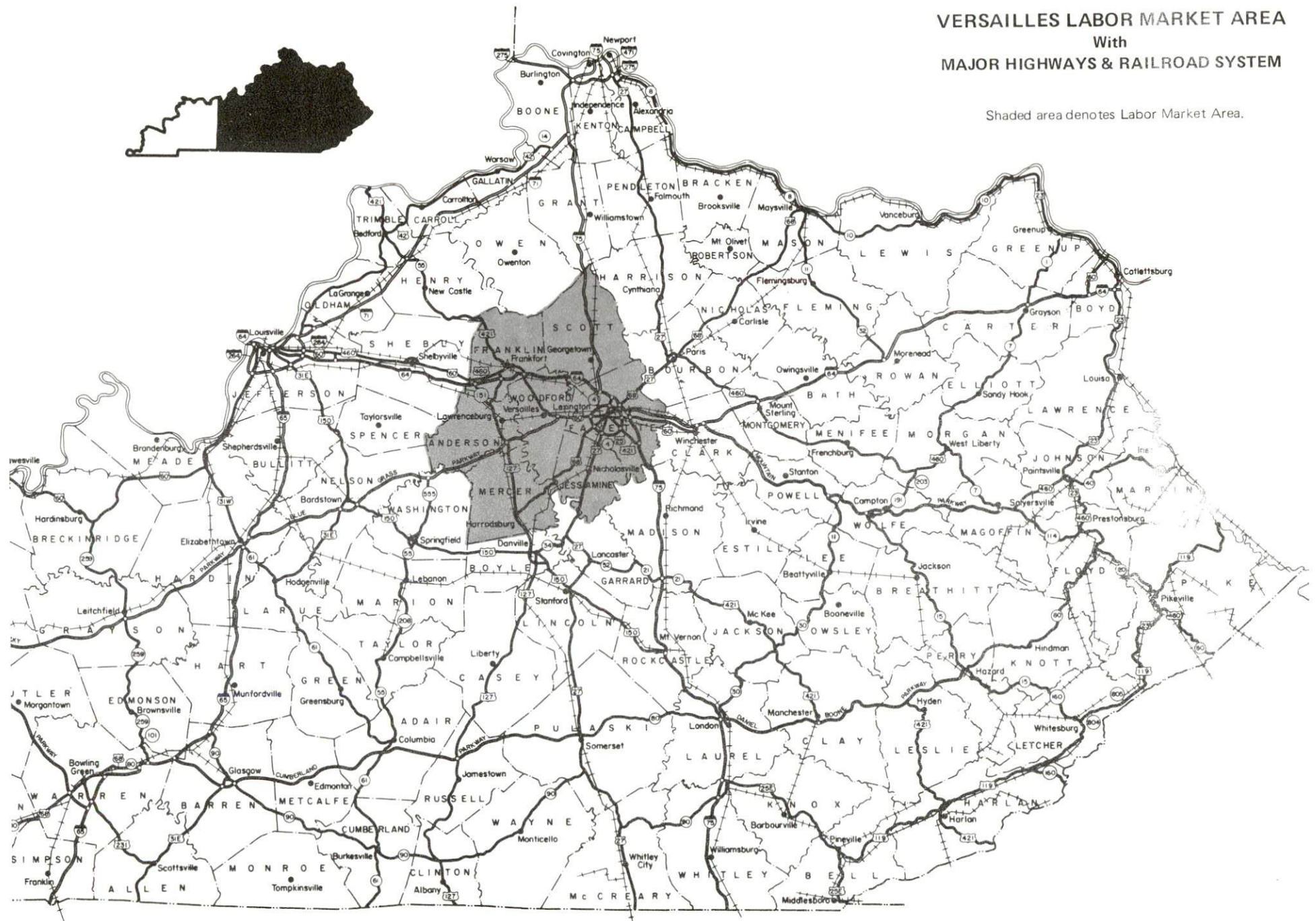
PREPARED BY THE
KENTUCKY TRANSPORTATION CABINET
DEPARTMENT OF HIGHWAYS
DIVISION OF PLANNING
IN COOPERATION WITH THE
U.S. DEPARTMENT OF TRANSPORTATION
FEDERAL HIGHWAY ADMINISTRATION

SCALE 1:25000
0 1 2 3 4 5 MILES



VERSAILLES LABOR MARKET AREA With MAJOR HIGHWAYS & RAILROAD SYSTEM

Shaded area denotes Labor Market Area.



VERSAILLES, KENTUCKY - A RESOURCE PROFILE

Versailles, the county seat of Woodford County, is located in central Kentucky's famous Bluegrass Region. Versailles is only 13 miles west of Lexington, Kentucky; 64 miles southeast of Louisville, Kentucky; 96 miles south of Cincinnati, Ohio; and 194 miles north of Knoxville, Tennessee. In 1984, Versailles had an estimated population of 6,977.

Located in the heart of thoroughbred country, Woodford County is the home of many beautiful horse farms. Woodford County, with a land area of 192 square miles, has a gently to moderately rolling limestone upland terrain. The Kentucky River forms the western boundary of the county. In 1984, Woodford County had an estimated population of 18,634.

The Economic Framework

The total number of Woodford County residents employed in 1984 averaged 10,350, with nonagricultural jobs accounting for 9,510 workers. Manufacturing firms in the county reported 2,940 employees; wholesale and retail trade provided 1,000 jobs; 780 people were employed in service occupations; state and local government accounted for 560 employees; and contract construction firms provided 160 jobs.

Per capita personal income in Woodford County in 1983 was \$14,317, or \$2,630 above the United States average. Between 1979 and 1983, per capita income increased by 62.9 percent.

The Versailles labor market area includes Woodford County and the adjoining counties of Anderson, Fayette, Franklin, Jessamine, Mercer, and Scott. The total number of residents employed in the labor market area in 1984 averaged 190,730, with nonagricultural jobs accounting for 184,490 workers. Manufacturing firms in the area reported 30,280 employees; wholesale and retail trade provided 36,810 jobs; 30,375 people were employed in service occupations; state and local government accounted for 32,390 employees; and contract construction firms provided 7,790 jobs.

Resources for Growth

1. Labor Supply - There is a current estimated labor supply of 15,960 men and 15,080 women available for industrial jobs in the labor market area. In addition, from 1986 through 1990, 13,310 young men and 12,770 young women in the area will become 18 years of age and potentially available for industrial jobs.

2. Transportation - Main line rail service is provided to Versailles by the Southern Railway System. Versailles is served directly by U.S. Highways 60 and 62, both "AAA" rated (80,000-pound gross load limit) trucking highways. The Blue Grass Parkway, a multi-lane toll road, is located three miles east of Versailles. Interchanges with Interstate 64 are located 8 miles northeast and 10 miles north. Access to Interstate 75 is 17 miles east. Twenty-eight common carriers have the authority to serve Versailles. Blue Grass Field, a major airport with scheduled airline service, is only 8 miles east of Versailles.

3. Power and Fuel - Electric power is provided to Versailles and Woodford County by the Kentucky Utilities Company, an electric generation and transmission company. Woodford County is also provided electric power by Fox Creek Rural Electric Cooperative Corporation, which is supplied by East Kentucky Power Cooperative, and Frankfort Electric and Water Plant Board, which is supplied by the Kentucky Utilities Company. Natural gas is provided to Versailles by Columbia Gas of Kentucky, Inc., which is supplied by the Columbia Gas Transmission Corporation. One distributor of propane and one distributor of distillate fuel oil are located in Versailles. Several additional distributors are available within 15 miles.

4. Education - Primary and secondary education is provided to Versailles and Woodford County by the Woodford County School System.

Four universities, six senior colleges and one community college are located within 55 miles of Versailles.

The Central Kentucky State Vocational-Technical School, located in Lexington, 13 miles east, offers training in 37 different courses. Also in Lexington, the Northside and Southside Area Vocational Education Centers offer training in a total of 17 courses.

THE LABOR MARKET AREA

The Versailles Labor Market Area includes Woodford County and the adjoining Kentucky counties of Anderson, Fayette, Franklin, Jessamine, Mercer and Scott.

POPULATION				
Area	1984*	1980	1970	Percent Nonwhite 1980
Versailles	6,977	6,427	5,679	12.1
Labor Market Area	355,135	343,229	283,934	N/A
Woodford County	18,634	17,778	14,434	8.0
Anderson County	13,334	12,567	9,358	3.9
Fayette County	210,150	204,165	174,323	14.5
Franklin County	43,728	41,830	34,481	8.7
Jessamine County	28,016	26,065	17,430	4.6
Mercer County	19,330	19,011	15,960	4.6
Scott County	21,943	21,813	17,948	7.3

* Population estimates.

Note: The 1980 city counts of population by race are provisional.

Sources: U.S. Department of Commerce, Bureau of the Census, 1980 Census of Population and Housing, March 1981; 1980 Census of Population, Number of Inhabitants, University of Louisville, Urban Studies Center, Population Unit, October 1985; Kentucky Population Research Notes, Issue Number One, May 1985.

LABOR FORCE CHARACTERISTICS OF RESIDENTS, 1984		
	Woodford County	Labor Market Area
Civilian Labor Force	10,762	200,586
Employment	10,346	190,729
Agricultural	837	6,235
Nonagricultural	9,509	184,494
Unemployment	416	9,857
Rate of Unemployment (%)	3.9	4.9

Source: Kentucky Cabinet for Human Resources, Kentucky Labor Force Estimates, Annual Averages, 1984.

SELECTED COMPONENTS OF NONAGRICULTURAL EMPLOYMENT,
BY PLACE OF WORK, 1984

	<u>Woodford County</u>	<u>Labor Market Area</u>
All Industries (total)	6,455	157,828
Manufacturing	2,938	30,283
Wholesale & Retail Trade	1,001	36,811
Services	776	30,375
State/Local Government	561	32,387
Contract Construction	161	7,788

Note: Excludes domestic workers, railway workers, certain nonprofit corporations, majority of federal government workers, and self-employed workers.

Source: Kentucky Cabinet for Human Resources, Average Monthly Workers Covered by Kentucky Unemployment Insurance Law, 1984.

VERSAILLES MANUFACTURING FIRMS,
THEIR PRODUCTS AND EMPLOYMENT

<u>Firm</u> (Establishment date)	<u>Product</u>	<u>Employment</u>			<u>Labor Unions</u>
		<u>Total</u>	<u>Male</u>	<u>Female</u>	
Advance Drainage Systems (1972)	Corrugated plastic pipe	15	13	2	
GTE Products Corporation (1964)	Flourescent lamps	354	242	112	
GTE Products Corporation, Glass Plant (1972)	Glass tubing	182	140	42	
Garrett Orchards and Farm Market (1951)	Cider	8	--	--	
Jomco (1953)	Special production machinery, custom machinery, machine parts and components	4	4	0	
Kaenzig Brothers Orchard (1932)	Cider	6	--	--	
Kuhlman Corporation, Distribution Transformer Division (1967)	Transformers	251	185	66	Auto Workers*

(Continued)

<u>Firm</u> (Establishment date)	<u>Product</u>	<u>Employment</u>			<u>Labor Unions</u>
		<u>Total</u>	<u>Male</u>	<u>Female</u>	
McCauley Brothers, Inc. (1938)	Feed	10	9	1	
Rand McNally and Company (1962)	Books, printing and binding, map publishing	820	511	309	
Texas Instruments, Inc. (1954)	Thermostats, pressure switch, relays	N/A			
Woodford Feed Company (1940)	Feed, fertilizer	28	25	3	
The Woodford Sun Company (1869)	Newspaper, offset printing	11	4	7	

* See Labor Organizations below.

Sources: Kentucky Department of Economic Development, 1985 Kentucky Directory of Manufacturers; Division of Research and Planning.

LABOR ORGANIZATIONS IN MANUFACTURING FIRMS

Union

International Union, United
Automobile, Aerospace and
Agricultural Implement
Workers of America

Representing workers at:

Kuhlman Corporation, Distribution
Transformer Division

INDUSTRIAL SERVICES

<u>Types of Services</u>	<u>Location</u>	<u>Mileage from Versailles</u>
Custom Plastics Producers	Lexington	13
	Georgetown	18
Electric Motor Repair	Lexington	13
Grinding, Precision & Tool	Georgetown	18
	Winchester	32
	Richmond	38
Heat Treating Facilities	Lexington	13
	Frankfort	15
	Georgetown	18
Industrial Equipment & Supplies	Lexington	13
	Frankfort	15
Industrial Gases	Lexington	13
Industrial Waste Removal	Lexington	13
	Frankfort	15
Machine Shops, Tool & Die	Versailles	-
Metal Finishers	Lexington	13
	Georgetown	18
Metal Service Centers	Lexington	13
Millwrights	Lexington	13
	Nicholasville	21
Public Warehouse Facilities	Lexington	13

Sources: Kentucky Department of Economic Development, Kentucky Directory of Selected Industrial Services, 1985; Division of Research and Planning.

ESTIMATED MALE LABOR SUPPLY
VERSAILLES LABOR MARKET AREA

Area	Current				Future
	Total Male	Unemployed	Under-employed	Not in Labor Force	Becoming 18 years of age 1986 thru 1990
Labor Market					
Area*	15,960	5,807	8,793	1,360	13,314
Woodford	527	212	315	0	827
Anderson	797	261	205	331	566
Fayette	8,719	3,122	5,597	0	7,443
Franklin	2,713	856	828	1,029	1,736
Jessamine	1,305	441	864	0	1,082
Mercer	907	569	338	0	758
Scott	992	346	646	0	902

ESTIMATED FEMALE LABOR SUPPLY
VERSAILLES LABOR MARKET AREA

Area	Current				Future
	Total Female	Unemployed	Under-employed	Not in Labor Force	Becoming 18 years of age 1986 thru 1990
Labor Market					
Area*	15,077	4,050	10,564	463	12,766
Woodford	678	204	474	0	784
Anderson	572	230	342	0	544
Fayette	8,978	2,303	6,675	0	7,136
Franklin	1,512	524	988	0	1,590
Jessamine	1,268	264	1,004	0	1,069
Mercer	1,219	329	427	463	772
Scott	850	196	654	0	871

* Additional workers may be drawn from other nearby counties.

Note: Unemployed - persons unemployed and actively seeking work;
Underemployed - persons employed but working only 14 to 26 weeks per year;
Not in Labor Force - represents the number of persons who would enter the labor force if suitable employment were available (based on the assumption that persons in Kentucky would like to participate in the labor force in the same proportion that they do nationally).

Sources: Kentucky Cabinet for Human Resources, Kentucky Labor Supply Estimates by County, 1984. Kentucky Department of Economic Development, Future Labor Supply Becoming 18 Years of Age, 1986 thru 1990.

AVERAGE WEEKLY WAGES BY INDUSTRY,
BY PLACE OF WORK, 1984

	<u>Woodford County</u>	<u>Anderson County</u>	<u>Fayette County</u>	<u>Franklin County</u>
All Industries	\$312.13	\$279.23	\$324.59	\$323.35
Mining & Quarrying	0	*	678.50	0
Contract Construction	233.65	237.03	337.45	362.69
Manufacturing	399.78	356.97	507.81	352.57
Transportation, Communications & Public Utilities	362.32	407.87	392.01	419.68
Wholesale & Retail Trade	166.67	206.51	215.75	176.33
Finance, Insurance & Real Estate	260.75	271.79	329.34	323.62
Services	238.40	173.48	278.14	225.26
State/Local Government	271.86	242.04	351.25	371.76
Other	292.79	177.06	268.98	193.39
	<u>Jessamine County</u>	<u>Mercer County</u>	<u>Scott County</u>	
All Industries	\$258.62	\$266.69	\$288.49	
Mining & Quarrying	*	0	*	
Contract Construction	287.09	299.03	322.25	
Manufacturing	303.66	355.50	385.84	
Transportation, Communications & Public Utilities	327.72	413.86	479.09	
Wholesale & Retail Trade	219.73	167.37	158.73	
Finance, Insurance & Real Estate	244.24	282.26	281.78	
Services	219.66	169.71	201.63	
State/Local Government	233.48	283.73	252.06	
Other	244.10	162.17	273.21	

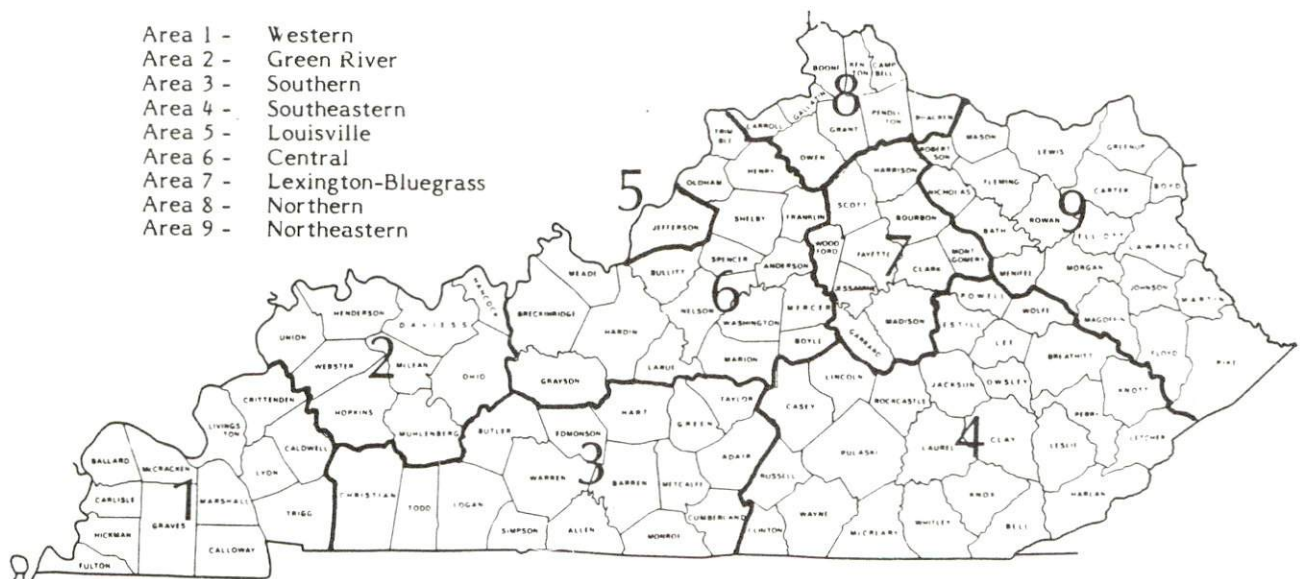
* Not disclosed.

Note: Excludes domestic workers, railway workers, certain nonprofit corporations, majority of federal government workers, and self-employed workers.

Source: Kentucky Cabinet for Human Resources, Average Weekly Wages of Workers Covered by Kentucky Unemployment Insurance Law, 1984.

Occupational wage rates for specific industries are usually not available to most government agencies, and wage data furnished to state employment agencies by individual industrial employers are protected from disclosure by federal law. The most reliable up-to-date wage information can be obtained by direct contact with local employers.

Associated Industries of Kentucky, a voluntary organization of Kentucky businesses, regularly collects occupational wage rates and fringe benefits data from participating member firms. Data are compiled for over 127 clearly defined office, production, and service occupations. Tabulations are published for nine geographical areas of Kentucky, as shown on the map below. It should be noted that the data may be weighted by the preponderance of firms in the larger cities and may be somewhat higher than the rates paid in the smaller communities. Data from these tabulations are available, upon request, from the Kentucky Department of Economic Development, Frankfort, Kentucky 40601.



Associated Industries of Kentucky Area Wage Surveys

PER CAPITA PERSONAL INCOME

<u>Area</u>	<u>1979</u>	<u>1983</u>	<u>Percent Change</u>
Woodford County	\$ 8,788	\$ 14,317	62.9
Labor Market Area Range	\$6,519 - 8,919	\$8,504 - 14,317	N/A
Kentucky	7,124	9,396	31.9
U. S.	8,651	11,687	35.1

Sources: U.S. Department of Commerce, Bureau of Economic Analysis; Commerce News, August 28, 1984; May 7, 1985. Kentucky Economic Information System, June 1985.

TRANSPORTATION

Rail

Line serving **Versailles** - Southern Railway System

Services - Branch line; one local freight traveling from Lexington to Versailles and return daily; switching services; team track space for three cars; nearest Southern Railway System piggyback facilities are located at Danville, 40 miles south of Versailles. Nearest Seaboard Systems Railroad piggyback facilities are located at Frankfort, 15 miles north.

For details on routing, schedules, rates, and services, contact:

District Sales Manager
Norfolk Southern Corporation
1402 South 15th Street
Louisville, Kentucky 40210
(502) 636-6023

Highways

Versailles is served by U.S. Highways 60 and 62, both class "AAA" (80,000-pound gross load limit) trucking highways. The Blue Grass Parkway, a multi-lane toll road, is located three miles east of the city.

Access onto Interstate 64, a major east-west route, is 8 miles to the northeast via U.S. 62 or 10 miles northwest via U.S. 60. Access onto Interstate 75, a major north-south highway, is located 17 miles east of Versailles at Lexington. Interstate 64 and 75 intersect approximately four miles north of Lexington.

Construction of a pedestrian overpass and sidewalks, from Merewood Subdivision across U.S. 60 Bypass to the high school, is planned.

Truck Service

<u>Company</u>	<u>Home Office</u>
ABF Freight System, Inc.*	301 South 11th Street Ft. Smith, Arkansas 72901
ANR Freight System, Inc.**	P. O. Box 5070 Denver, Colorado 80217
ARA/Smith's**	P. O. Box 1000 Staunton, Virginia 24401
American Freight System, Inc.**	9393 West 110th Street Overland Park, Kansas 66210
Bailey's Express, Inc.*	Middletown, Connecticut 06457
Bestway Express, Inc.**	Nashville, Tennessee 37210
Bishop Motor Express*	Grand Rapids, Michigan 49502

(Continued)

CompanyHome Office

CCC Highway, Inc.*	Cleveland, Ohio 44115
CW Transport, Inc.*	610 High Street Wisconsin Rapids, Wisconsin 54494
Carolina Freight Carriers, Inc.*	P. O. Box 697 Cherryville, North Carolina 28021
Central Transport, Inc.**	34200 Mound Road Sterling Heights, Michigan 48077
Claxon Truck Line, Inc.*	P. O. Box 678 Frankfort, Kentucky 40602
Consolidated Freightways Corporation of Delaware*	175 Linfield Drive Menlo Park, California 94025
Duff Truck Line, Inc.*	P. O. Box 359 Lima, Ohio 45802
General Highway Express, Inc.**	Sidney, Ohio 45365
Lawrenceburg Transfer Company, Inc.*	P. O. Box 267 Lawrenceburg, Kentucky 40342
Leoni Motor Express, Inc.*	Chicago Heights, Illinois 60411
McLean Trucking Company**	P. O. Box 213 Winston-Salem, North Carolina 27154
Middlewest Freightways, Inc.*	6810 Prescott Avenue St. Louis, Missouri 63147
The O.K. Trucking Company*	3000 East Crescentville Road Cincinnati, Ohio 45241
Overnite Transportation Company*	P. O. Box 1216 Richmond, Virginia 23209
Owenton Express, Inc.*	Owenton, Kentucky 40359
R-W Service System, Inc.*	20225 Goddard Road Taylor, Michigan 48180
Renner's Express**	P. O. Box 882 Indianapolis, Indiana 46206
Roadway Express, Inc.*	1077 Gorge Boulevard Akron, Ohio 44310
Ryder/PIE Nationwide, Inc.**	Jacksonville, Florida 32203
Suburban Motor Freight, Inc.*	P. O. Box 1739 Columbus, Ohio 43216
Transcon Lines*	P. O. Box 9220 Los Angeles, California 90009

* Interstate and intrastate service.

** Interstate service only.

Source: American Motor Carrier Directory, Fall 1985.

Other Freight ServicesNearest Office or Shipping Center

Airborne Express	Lexington, 13 miles east of Versailles
Emery	Lexington, 13 miles east of Versailles
Federal Express	Lexington, 13 miles east of Versailles
Purolator Courier	Lexington, 13 miles east of Versailles
United Parcel Service	Lexington, 13 miles east of Versailles

**HIGHWAY MILES AND TRUCK TRANSIT TIME IN DAYS FROM
VERSAILLES, KENTUCKY, TO SELECTED MARKET CENTERS**

City	Highway Miles	Delivery Time TL	City	Highway Miles	Delivery Time TL
Atlanta, Ga.	375	1	Los Angeles, Ca.	2,193	5
Baltimore, Md.	554	2	Louisville, Ky.	64	1
Birmingham, Ala.	411	1	Nashville, Tenn.	223	1
Chicago, Ill.	365	1	New Orleans, La.	740	2
Cincinnati, Ohio	96	1	New York, N. Y.	716	5
Cleveland, Ohio	330	1	Pittsburgh, Pa.	356	1
Detroit, Mich.	350	1	St. Louis, Mo.	348	1
Knoxville, Tenn.	194	1			

Note: Mileage computations are via the best interstate or primary highways, not necessarily the most direct route of travel.

Sources: Rand McNally Road Atlas, 1979. Official Kentucky Mileage Map, 1980.
Delivery time - Overnite Transportation Company, P. O. Box 1216, Richmond, Virginia 23209.

Air

Nearest Scheduled Commercial Airline Service

Location: Bluegrass Airport
5 miles west of Lexington, Kentucky;
8 miles east of Versailles

Runways: 2 paved

Length: 7,000 feet; 3,500 feet

Traffic

Control: Tower

Lighting: Approach lighting system, beacon, runways and
obstructions lighted, VASI

Services: Delta, Piedmont, United, USAir, Allegheny Commuter, Britt
Airways, Eastern Metro, Comair, Tennessee Airways; fuel -
100LL and jet-A; hangars, tie-downs; major A & P repairs;
major Avionics repairs; APU, charter, flight instruction,
oxygen, plane rentals, survival equipment; taxi, limousine,
car rentals, courtesy car, weather information; restaurant,
snack bar

Air Freight
Service: Air freight terminal

Bus - Southern Greyhound Bus Lines

Taxi - One company; 5 a.m. to 11 p.m. Monday through Friday; 5 a.m. to 12 p.m.
Saturday; 5 a.m. to 9 p.m. Sunday

Rental Services - Automobile, truck and trailer rentals are available locally.

Water

The Kentucky River, which flows along the western boundary of Woodford County, is located approximately 5 miles west of Versailles. A 6-foot navigation channel is maintained to the Ohio River.

POWER AND FUEL

Electricity

Company serving **Versailles and a major portion of Woodford County** - Kentucky
Utilities Company
Source of power - Kentucky Utilities Company
Total generating capacity - 3,164,000 KW
For industrial rates contact:

Industrial Development Department
Kentucky Utilities Company
One Quality Street
Lexington, Kentucky 40507
(606) 255-1461

Company serving **parts of western Woodford County** - Fox Creek Rural Electric
Cooperative Corporation
Source of power - East Kentucky Power Cooperative
Total generating capacity - 1,309,000 KW*
For industrial rates contact:

Industrial Development Division
East Kentucky Power Cooperative
P.O. Box 707
Winchester, Kentucky 40391
(606) 744-4812

and/or

Fox Creek RECC
Highway 62 East
P. O. Box 211
Lawrenceburg, Kentucky 40342
(502) 839-3442

Company serving **a small portion of northwestern Woodford County** - Frankfort
Electric and Water Plant Board
Source of power - Kentucky Utilities Company
Total generating capacity - 3,164,000 KW
For industrial rates contact:

Frankfort Electric & Water Plant Board
315 West Second Street
P. O. Box 308
Frankfort, Kentucky 40601
(502) 233-3401

* East Kentucky Power Cooperative's total generating capacity will be increased when a new 650,000 KW coal-fired generation plant is completed in southeast Clark County in 1992.

Natural Gas

Company serving **Versailles** - Columbia Gas of Kentucky, Inc.

Source of supply - Columbia Gas Transmission Corporation

Size of transmission mains - 10 and 12 inches (supplier); 6 and 12 inches (distributor)

Distribution mains - 2, 4 and 6 inches

Distribution pressure - 4 ounces to 25 psi

Btu content - 1,030 per cubic foot

Specific gravity - 0.57

For rates and supplies contact:

Marketing Manager
Columbia Gas of Kentucky, Inc.
P. O. Box 241
Lexington, Kentucky 40584
(606) 255-3612

Other Fuels

Propane

Olson's Gas Company
Lexington Pike
Versailles, Kentucky 40383

Additional suppliers of propane are located at Lawrenceburg, 10 miles west; Lexington, 13 miles east; and Frankfort, 15 miles north of Versailles.

Fuel oils

Distillate fuel oil -

Rainbow Coal and Oil Company
Lexington Pike
Versailles, Kentucky 40383

Additional suppliers of distillate fuel are located at Lawrenceburg, 10 miles west; Lexington, 13 miles east; and Frankfort, 15 miles north of Versailles.

Residual fuel oil - Arrangements must be made with the refinery.

Low sulphur content coal - Available in Kentucky

WATER AND SEWERAGE

Public Water Supply

Company serving **Versailles** - Versailles Water and Sewer Works*
196 South Main Street
Versailles, Kentucky 40383
(606) 873-5436

Source - Kentucky River and Big Sandy Well

Treatment plant capacity - 3,000,000 gallons per day (2 plants)

Average daily consumption - 1,000,000 gallons

Peak daily consumption - 2,500,000 gallons

Treatment processes - Sedimentation, chlorination, rapid mix, flocculation, filtration, fluoridation

Storage capacity - 2,700,000 gallons including clearwell

Size lines - 2, 4, 6, 8, 10, 12, and 16 inches

Water pressure - 40 to 70 psi

MONTHLY WATER RATES

Inside City

First	1,000 gallons	\$3.00 (Minimum)
Next	9,000 gallons	1.29 per M gallons
Next	15,000 gallons	1.22 per M gallons
Over	25,000 gallons	1.15 per M gallons

Outside City

First	1,000 gallons	\$4.75 (Minimum)
Next	9,000 gallons	1.94 per M gallons
Next	15,000 gallons	1.83 per M gallons
Over	25,000 gallons	1.74 per M gallons

Tap-on charge:

Inside city limits: \$750 (combination rate for water and sewer)

Outside city limits: \$850 (combination rate for water and sewer)

Raw Water

Surface water sources - Kentucky River and South Elkhorn Creek

Average discharge - Kentucky River at Lock 6, near Salvisa, Kentucky, 6,730 cfs (59-year record, USGS, unadjusted); South Elkhorn Creek at Fort Spring, Kentucky, 32.6 cfs (34-year record, USGS)

Expected ground water yield - Northeast border of county - 50 to 200 gpm;
remainder of county - 5 to 50 gpm

* The Versailles Water and Sewer Works plans to connect to the Kentucky-American Water Company, which will be a second source of supply in Spring 1986. The \$400,000 project will provide the Versailles Water and Sewer Works with access to an additional 3 million gallons of water a day.

Sewerage

Company serving **Versailles** - Versailles Water and Sewer Works*
196 South Main Street
Versailles, Kentucky 40383
(606) 873-5436

Design capacity - 2,040,000 gallons per day

Average daily flow - 800,000 gallons

Type of treatment - Primary, secondary, and tertiary

Treatment processes - Grit removal, primary sedimentation, lagoon system, trickling filter, secondary sedimentation, chlorination, aerobic digester, sludge drying beds, polishing lagoon

Treated effluent discharged into - Glen's Creek

Size of sanitary mains - 4 to 21 inches

Size of storm mains - 10 to 48 inches

Monthly rates - Inside city: 70 percent of monthly water bill

Outside city: 100 percent of monthly water bill

Tap-on charge:

Inside city limits: \$750 (combination rate for water and sewer)

Outside city limits: \$850 (combination rate for water and sewer)

Hookup for industry must be arranged

* The Versailles Water and Sewer Works plans to upgrade its sewerage system. The \$963,073 improvement, which is to be completed by 1988, will include the construction of a new filter to provide nitrification to remove ammonia nitrogen.

DISCHARGE LIMITATIONS

<u>Parameter</u>	<u>Maximum Daily Concentration (mg/l)</u>	
Ammonium Nitrate	30.00	
Arsenic, total	0.05	
Barium, total	1.60	
Beryllium, total	0.80	
Biochemical oxygen demand	250.00	
Boron, total	2.03	
Cadmium, total	0.02	
Chloride, total	400.00	
Chromium, hexavalent	0.25	
Chromium, total	0.50	
Color	300.00	ADMI units*
Copper, total	0.50	
Cyanide, amenable	0.02	
Cyanide, total	0.04	
Dissolved solids, total	1,200.00	
Fluoride	2.72	
Iron, total	10.00	
Lead, total	0.13	
Magnesium	50.00	
Manganese, total	0.44	
Mercury, total	0.006	
Nickel, total	1.00	
Phenols	0.08	
PCB	0.00	(None)
Selenium, total	0.02	
Silver, total	0.08	
Sulfate, total	400.00	
Sulfide	5.00	
Total suspended solids	300.00	
Zinc, total	1.35	

* American Dye Manufacturers Institute (ADMI)

CLIMATE

Woodford County

Temperature

Normal (30-year record)	54.90 degrees
Average annual 1984	55.30 degrees
Record highest, August 1983 (40-year record)	103.00 degrees
Record lowest, January 1963 (40-year record)	-21.00 degrees
Normal heating degree days (30-year record)	4,814
(Heating degree day totals are the sums of negative departures of average daily temperatures from 65 degrees F.)	

Precipitation

Normal (30-year record)	45.68 inches
Mean annual snowfall (29-year record)	16.30 inches
Total precipitation 1984	42.27 inches
Mean number days precipitation (.01 inch or more) (40-year record)	130.80
Mean number days thunderstorms (40-year record)	46.00

Prevailing Winds (through 1963)

South

Relative Humidity

1 a.m.	77 percent (20-year record)
7 a.m.	81 percent (21-year record)
1 p.m.	60 percent (21-year record)
7 p.m.	64 percent (21-year record)

Source: U.S. Department of Commerce, Environmental Science Services Administration, Climatological Data, 1984. Station of record: Lexington, Kentucky.

LOCAL GOVERNMENT

City

Structure - Mayor - 4-year term; 6 council members - 2-year terms

Budget 1985-86 - General Fund \$1,329,975

Water and Sewer Fund 755,300

Fees and licenses - Business license taxes range from \$25 to \$400 annually;
occupational license taxes - 1 percent of gross salaries of individuals and 1
percent of net profit of business

County

Structure - County Judge/Executive - 4-year term; 8 magistrates - 4-year terms

Budget 1984-85 - General Fund \$2,115,753; Road Fund \$828,933

Fees and licenses - Occupational license taxes - 1 percent of the net profits of
gross salaries of individuals and 1 percent of the net profit of businesses

Assessed Value of Property, 1985*

<u>Classes of Property</u>	Versailles	Woodford County
Real Estate	\$146,018,216	\$449,667,676
Tangibles	N/A**	72,265,853

* Excludes Homestead Exemptions.

** Tangible personal property is not taxed by the city of Versailles.

State and Local Property Taxes

All property in Kentucky, except items exempted by the state constitution, is taxed by the state. Property which also may be taxed by local jurisdictions includes land and buildings, finished goods inventories, automobiles, trucks, office furniture and office equipment. Local taxing jurisdictions in Kentucky include counties, cities, and school districts.

All property in Kentucky is assessed at 100 percent of fair cash value.

COMBINED STATE AND LOCAL RATES PER \$100 VALUATION, 1985

	<u>Versailles</u>	<u>Unincorporated Woodford County</u>
Land and Buildings	\$ 0.563	\$ 0.489
Manufacturing Machinery	0.150	0.150
Pollution Control Equipment	0.150	0.150
Inventories		
Raw materials	0.001*	0.001*
Goods in Process	0.001*	0.001*
Finished Goods	0.227*	0.277*
Automobiles and Trucks	0.732	0.732
Other Tangible Personal Property	0.726	0.726
Intangibles (Accounts receivable, money in hand, stock, notes, bonds)	0.250**	0.250**
Goods Stored in Public Warehouses in Transit Status	0.001*	0.001*
Private Leaseholds in Industrial Revenue Bond Financed Facilities	0.015	0.015

A special fire protection district tax (not county-wide) of \$0.035 per \$100 on real estate, \$0.041 per \$100 on tangible, and \$0.037 per \$100 on motor vehicles is levied in Woodford County.

Note: The city of Versailles does not levy a tax on tangible property including finished goods, automobiles and trucks.

* Includes 1986 state rate.

** Accounts receivable are taxed at 85 percent of face value, for an effective rate of \$0.2125 per \$100 valuation.

Utilities Gross Receipts Tax for Schools

A 3 percent tax is levied on utilities receipts for schools in Woodford County. Tax is paid by all consumers of utilities as an add-on to the utilities bills. Exempted are receipts from utilities services that are resold and the receipts from the sale of energy or energy producing fuels that exceed 3 percent of the cost of production in manufacturing, processing, mining or refining.

Planning and Zoning

Joint agency - Versailles-Midway-Woodford County Planning and Zoning Commission

Participating cities - Versailles and Midway

Zoning enforced - All areas

Subdivision regulations enforced - All areas

Local codes enforced - None

Mandatory state codes enforced - Kentucky Plumbing Code, National Electric Code, Kentucky Boiler Regulations and Standards, Kentucky Building Code (modeled after BOCA code)

Safety

Police

	Versailles	Woodford County Police Department	Woodford County Sherrif's Department
Total staff	12	13	5
Radio-patrol cars	6	13	1

Fire

	Versailles	Woodford County
Insurance Services Office, Public Protection Classification	7	9
Full-time staff	--	1
Volunteers	30	54

Rescue Service

Woodford County Rescue Squad:

Number of volunteers - 20

Equipment - Rescue van, diving equipment (3 sets of tanks, regulators & wet suits), dragging gear, portable generator, porto-power

Personnel training - First aid, emergency medical technicians

* Industrial customers must contract with private companies.

Refuse Collection and Disposal

	Versailles	Woodford County
Type service	Municipal	Private
Fee charged:		
residential	\$2 per month	\$9 per month
commercial	Based on volume	Based on volume
industrial	*	Based on volume
Collection frequency:		
residential	Twice weekly	Twice weekly
commercial	Twice weekly	Twice weekly
industrial	*	Based on volume
Disposal method	Landfill	Landfill

EDUCATION

Public Schools

Woodford County*

Total Enrollment (September 1985)	3,470
Kindergarten	199
Elementary	1,546
Middle School	511
High School	1,214
Accreditation	Southern Association of Colleges and Schools
Pupil-Teacher Ratio (1984-85)	19.8
Percent High School Graduates to College (1984-85)	50.4
Expenditures Per Pupil (1984-85)	\$1,800.94

Nonpublic Schools

St. Leo

Total Enrollment	153
Elementary (1-8)	153
Pupil-Teacher Ratio	19-1

* The Woodford County School System has tentative plans to construct a new elementary school at Midway; build a new or remodel the existing Versailles Elementary; install air conditioning of the high school and middle school; and construct an additional wing at the middle school. Also, several computer-oriented programs have recently been implemented.

Area Colleges and Universities

<u>Name</u>	<u>Location (Miles Distant)</u>	<u>Enrollment (Fall, 1985)</u>	<u>Highest Degree Conferred</u>
Midway College	Midway (8)	314	Associate
University of Kentucky	Lexington (13)	20,895	Doctorate, M.D., D.M.D., J.D.
Lexington Community College	Lexington (13)	2,538	Associate
Transylvania University	Lexington (13)	856	Baccalaureate*
Kentucky State University	Frankfort (15)	2,012	Masters
Asbury College	Wilmore (17)	980	Baccalaureate
Georgetown College	Georgetown (18)	1,315	Masters
Eastern Kentucky University	Richmond (38)	12,229	Masters, Specialist**
Centre College	Danville (40)	804	Baccalaureate
St. Catharine College	Springfield (47)	246	Associate
Berea College	Berea (52)	1,566	Baccalaureate

Vocational Schools

Both the state vocational-technical schools and the area vocational education centers are operated by the Kentucky Department of Education. The state vocational-technical schools enroll persons full time who are at least 16 years of age and not in school. These students attend classes for six hours each day. The area vocational education centers are designed to accommodate high school students who are at least 15 years of age. These students attend vocational school for three hours each day. The state vocational-technical schools and the area education centers offer evening courses to enable working adults to upgrade current job skills.

* Courses in a masters degree program are taught on the Transylvania campus by faculty members of Xavier University of Cincinnati. The degree is issued by Xavier University.

** Joint doctoral degree programs are offered in cooperation with the University of Kentucky, Lexington. The degrees are issued by the University of Kentucky.

Nearest State School

Central Kentucky State Vocational-Technical School
Lexington, Kentucky, 13 miles distant

Academic Related Subjects

Language

Math

Technical Related Math

Business & Office

Accounting

Clerical

Secretarial

Consumer & Home Economics

Commercial Foods

Distributive Education

Retail Training-Merchandising/

Food Marketing

Hotel/Motel-Waiter/Waitress-

Housekeeping Services

Health & Personal Services Occupations

Cosmetology

Dental Assistant

Nurse's Aide

Practical Nursing

Surgical Technician

Ward Clerk

Medications Aide

Home Health Care

Geriatric

Industrial Education

Air Conditioning

Auto Body Repair

Auto Mechanics

Carpentry

Drafting (with CAD/CAM)

Electronics

Graphic Arts

Industrial Electricity

Machine Shop

Masonry

Welding

Learning Resource Center

GED

Public Service

E.M.T. Training

Fire Training

Cardiopulmonary Resuscitation

First Aid

Industrial Fire Brigade Training

Apprenticeship

Electrical

Tool & Die

Up-Grade Programs

Nearest Area Education Centers

Northside Area Vocational Education Center
Lexington, Kentucky, 13 miles distant

Agriculture

Horticulture

Health & Personal Services Occupations

Health Careers

Industrial Education

Auto Mechanics

Auto parts

Electricity

Diesel Mechanics

Graphic Arts

Machine Shop

Welding

(Continued)

Southside Area Vocational Education Center
Lexington, Kentucky, 13 miles distant

Health & Personal Services Occupations

Health Careers

Industrial Education

Air Conditioning & Refrigeration

Auto Body Repair

Auto Mechanics

Carpentry

Electronic Services

Masonry

Plumbing

Arrangements can be made to provide training in the specific production skills required by an industrial plant. Instruction may be conducted either in the vocational school or in the industrial plant, depending upon the desired arrangement and the availability of special equipment.

HEALTH

Local Medical Personnel

Physicians - 20
Dentists - 11

Hospitals

<u>General Hospital</u>	<u>Location</u>	<u>Beds</u>
Woodford Memorial Hospital	Versailles	71

General hospital facilities - 2 operating rooms (1 equipped for orthopedic surgery), 6 emergency rooms, 2 delivery rooms, obstetrics, 10 bassinets, recovery room, 3-bed intensive-coronary care unit, respiratory therapy, physical therapy, laboratory, X-ray department, pharmacy

Medical staff - 27 physicians, 45 registered nurses (15 part-time), 10 nurses on a special call-in program who are oriented and work when called in to relieve regular staff when sick or on vacation, 12 licensed practical nurses, 4 operating room personnel, 7 laboratory personnel (4 medical technologists, 3 medical technicians), 15 intensive-coronary care unit personnel, 2 registered pharmacists, 1 pharmacy technician, 5 X-ray personnel, 1 dietician, 2 registered respiratory therapists, 1 certified respiratory therapist, 2 respiratory therapy technicians, 2 physical therapists, 2 physical therapy technicians, 1 occupational therapist

Other Medical Facilities

Comprehensive Care Center
Woodford Family Health Care Center
Woodford County Health Department

Ambulance Service

Name - Woodford County Ambulance Service
Staff - 8 registered emergency medical technicians (full-time)
Service - 24-hour, county-wide
Equipment - Two fully-equipped ambulances, one van

OTHER LOCAL FACILITIES

Communications

Telephone - Services -	General Telephone of Kentucky Standard
Telegraph - Services -	Western Union Toll-Free number, 1-800-325-6000
Postal - Class - Mail received - Mail dispatched -	U.S. Post Office First Once daily Once daily
Newspapers - Weekly and circulation - Other papers received from -	Woodford Sun 5,500 Lexington, Louisville, and Frankfort, Kentucky
Radio - Major stations received from -	WJMM-FM Lexington, Louisville, Georgetown, and Frankfort, Kentucky; Cincinnati, Ohio
Television - Airwave reception from - Cable service Number of cable channels - Kentucky Educational Television -	 Lexington and Louisville, Kentucky; Cincinnati, Ohio 29 Lexington-Richmond transmitter, Channel 46

Library Services

Public library - Logan-Helm Woodford County Library
Size collection - 37,876 volumes
Circulation, 1984-85 - 77,881
Services - Books, records, microfilm reader-printer, 16 mm film projectors, photocopier, newspapers, magazines, interlibrary loan through Kentucky Department of Libraries and Archives, story hours, films, bookmobile, reference, community meeting rooms, art exhibits, materials for visually handicapped, special programs sponsored by Friends of the Library

Religious Institutions

Woodford County

Number of churches -	49	
Denominations -	A.M.E.	Episcopal
	Assembly of God	House of Prayer in Jesus'
	Baptist	Name
	Catholic	Jehovah's Witnesses
	Christian	Methodist
	Church of Christ	Nazarene
	Church of God	Presbyterian
	Church of Jesus Christ	Seventh Day Adventist
	Church of the Living Waters	
Nearest Synagogues -	Lexington, 13 miles east	
Congregations -	Adath Israel (reform)	
	Ohavey Zion (traditional)	

Financial Institutions

<u>Banks</u>	<u>Assets</u>	<u>Deposits</u>	<u>Statement Date</u>
First National Bank of Versailles	\$ 9,950,157.28	\$ 9,140,626.60	6/30/85
The Woodford Bank and Trust Company	68,804,935.97	61,011,866.53	6/28/85
United Bank and Trust Company	70,924,112.75	61,432,798.07	6/30/85
<u>Savings and Loan Associations</u>	<u>Assets</u>	<u>Savings Accounts</u>	<u>Statement Date</u>
Future Federal Savings Bank	\$561,771,445.53	\$470,398,460.94	12/31/84

Hotels and Motels

Accommodations are available in Lexington, 13 miles east, and Frankfort, 15 miles north.

Clubs and Organizations

American Legion	Woodford County Chamber of Commerce
American Legion Auxiliary	Woodford County Democratic Committee
Bluegrass Council of Boy Scouts	Woodford County Education Association
Buckley Hills Audubon Society	Woodford County Fair Association
Civitan Club	Woodford County Farm Bureau
Craig's Creek Muzzle Loaders, Inc.	Woodford County Heritage Commission
Daughters of the American Revolution	Woodford County Historical Society
Eastern Star	Woodford County Humane Society
Friends of the Library	Woodford County Interaction Agencies
Homemakers	Woodford County Jaycees
Kiwanis Club	Woodford County Literacy Council
Knights of Pythias	Woodford County Mental Retardation Association
Lions Club	Woodford County Ministerial Association
Little Garden Club	Woodford County Republican Committee
Masons	Woodford County Woman's Club
Midway Women's Club	Woodford Gardeners
Millville Sportsman Club	Woodford Improvement League
Oddfellows	Woodford Memorial Hospital Auxiliary
Optimist Club	Woodford Memorial Hospital Board
Protect Each Other Sisterhood	
Rotary Club	
Taylor Manor Gray Ladies	
Wilderness Road Girl Scouts	
Woodford Care	
Woodford County Antique Dealers Association	
Woodford County Bar Association	
Woodford County Board of Realtors	
Woodford County Business and Professional Women's Club	

RECREATION

Local

Versailles offers a year-round recreational program with a full-time staff. The Versailles-Woodford County Recreational Department operates and maintains a variety of recreational facilities which are available for public use. There are three parks located in Versailles.

The Big Spring Park offers a complete recreational program with a community center, swimming pool, pavillion, maintenance area, basketball facility, outdoor volleyball court, VITA course with twenty exercise stations, soccer field and three parking facilities. In addition, the Big Spring Recreation Center offers gymnastics, karate, tennis, physical fitness, dance, swim lessons, square dancing, clogging and various workshops.

The Appollo Park offers one pavillion, two basketball facilities, and playground equipment. Also, Merewood Park provides one pavillion, one basketball facility and playground equipment.

Other facilities in the Versailles area include three county parks, seven playgrounds, twelve tennis courts, six baseball diamonds, two football fields and seven basketball courts and an 18-hole public golf course.

Private recreational facilities include Woodford Hills Country Club with an 18-hole private golf course, a swimming pool, and the two tennis courts. An additional private pool, at Woodmere, is operated in Versailles.

A June Celebration, the Woodford County Fair and a Jaycees Festival are annual events.

Tourist attractions around Versailles include the Woodburn Farm, the first horse breeding farm in the United States; Woodford County Historical Society Museum; Crittenden Cabin (built in 1784), which was the birthplace of John Crittenden, Kentucky governor between 1848-50; Versailles Historical Park on South Main Street honors eight Civil War generals; and Pisgah Presbyterian Church, 3 miles east of Versailles, is a 1812 Gothic structure. Clyde E. Bucklye Wildlife Sanctuary, north of Versailles, was established by a private citizen as a memorial and was developed by the Audubon Society. The area provides trail walks and group tours can be arranged.

Area (Within 40 miles)

Lexington, 13 miles east of Versailles, offers a variety of cultural, sporting, and recreational activities. Thoroughbred and harness racing is presented at Keeneland Race Course and the Red Mile Harness Track during several meets each year. The University of Kentucky and Transylvania University offer a number of sporting events. The University of Kentucky basketball games are held at Rupp Arena, the world's largest basketball arena. Other attractions include Lexington Philharmonic concerts, Lexington Children's Theatre, and plays performed by Broadway touring companies, all held in the recently renovated Opera House.

Frankfort, the capital of Kentucky, is 15 miles northwest of Versailles. Points of interest in Frankfort include the Capitol Building, a 34-foot floral clock, the Daniel Boone Monument, several museums, and old homes with their original furnishings. Frankfort is also the home of Kentucky State University which offers many cultural activities and sporting events.

Waveland State Shrine, 18 miles southeast of Versailles near Lexington, features an 1847 Greek Revival mansion depicting Kentucky lifestyles from the days of early settlers to the antebellum era of gentility and elegance as well as the Civil War and postwar periods. The shrine also includes the Kentucky Life Museum and a plantation village on ten acres with many shops and displays.

The Kentucky Horse Park, a park dedicated to horses and to man's love for horses, is located 21 miles northeast of Versailles near Lexington. The park, which contains more than 1,000 acres of Kentucky Bluegrass, features the International Museum of the Horse; the Man O'War Memorial; an antique carriage display; horseback and pony rides; walking farm tours; horse-drawn tours; a restaurant; a gift shop; and a campground area, which offers swimming, tennis, and planned activities. Numerous special events are held year-round and include various horse shows, steeplechasing, dressage, polo games, and rodeos.

Pleasant Hill, a restored Shaker Village located 23 miles south of Versailles, is a National Historic Landmark. Over 20 buildings and grounds have been restored to display unique Shaker skills in furniture making, crafts, and architecture. Dining rooms, lodging, craft shops, and seasonal festivals and plays are offered.

Herrington Lake, 23 miles south of Versailles near Danville and Harrodsburg, was developed by the Kentucky Utilities Company in 1925. Dix River Dam near Pleasant Hill is located on the 3,600-acre lake. Fishing, boating, and swimming can all be enjoyed on the lake. Camping and fishing facilities are available near Danville and Harrodsburg.

Old Fort Harrod State Park, 31 miles southwest of Versailles, is a 28-acre park in Harrodsburg that features a full-scale reproduction of the original Fort Harrod. The park also contains the log cabin where Abraham Lincoln's parents were wed, the Mansion Museum which houses mementos associated with the great periods of Kentucky history, a pioneer cemetery, and a federal monument dedicated to pioneers. The "Legend of Daniel Boone" and "Lincoln" are two excellent outdoor dramas which are performed at the Old Fort Amphitheater during the summer months.

White Hall State Shrine, 32 miles southeast of Versailles near Richmond, one of the grand estate houses of post-Civil War Kentucky, is the Italianate mansion of Cassius Marcellus Clay, the early abolitionist and politician. Kentucky handcrafts are sold in the White Hall gift shop, only a short walk from the mansion.

Taylorsville Lake, 39 miles west of Versailles near Taylorsville, was developed by the U.S. Army Corps of Engineers. The 3,050-acre lake and 10,700-acre recreation area offer facilities for fishing, boating, swimming, and wildlife recreation.

Constitution Square State Shrine, 40 miles southwest of Versailles in Danville, is a reproduction of Kentucky's first courthouse square, including the original 1792 post office which was the first in the west.

The spirit of Daniel Boone and his pioneers is reborn at **Fort Boonesborough State Park** in Boonesboro, 40 miles southeast of Versailles. In the re-created fort, pioneer crafts of the eighteenth century are demonstrated by using functioning antiques from the frontier era. Cabins are furnished as they would have been in the days of Boone and documentary films are presented which depict the struggle of the first Kentuckians to make the Kentucky wilderness a home. A gift shop within the fort offers for sale all the handcrafted items made at the fort. Other recreational facilities and activities of the park include the finest sand beach on the Kentucky River with a modern bathhouse and a modern camping area with 187 sites.

COMMUNITY IMPROVEMENTS

Recent

Versailles was chosen as a "Kentucky Certified City" in 1985. The award is based on achievement in the following categories: economic development, transportation, public affairs, utilities, health, commercial development, housing, education and recreation. The Certified Cities Program is sponsored by the Kentucky Chamber of Commerce.

The Versailles-Woodford County Economic Development Authority was formed in early 1985. A 125-acre tract of land has been purchased by the EDA to use for a proposed industrial park.

The Woodford County School System has recently implemented several computer-oriented programs. Approximately \$530,000 has been invested in the last two years.

An abandoned private school was recently renovated into Margaret Hall Manor, a 54-unit housing complex for the elderly.

Clifton Pike, a 40-unit apartment complex was completed in Fall 1985. Total cost was \$800,000.

Under Way

Street and sewer construction is under way at the new Colony Subdivision. The 26-acre development will have 78 units.

Planned

GTE Sylvania Glass and Fluorescent Lamp plants have announced plans for a \$25 million expansion. The expansion, which will take two years to complete, will include the addition of 125,000 square feet of warehouse and manufacturing space and increase employment by 200.

The Versailles Water and Sewer Works plans to connect to the Kentucky-American Water Company, which will be a second source of supply, in Spring 1986. The \$400,000 project will provide Versailles Water and Sewer Works with an additional 3 million gallons of water a day.

The Versailles Water and Sewer Works plans to upgrade its sewerage system. The \$963,073 improvement, which is to be completed by 1988, will include the construction of a new filter to provide nitrification to remove unwanted gas.

Construction of a pedestrian overpass and sidewalks, from Merewood Subdivision across U.S. 60 Bypass to the high school, is planned.

Hunter Ridge, an 80-acre housing development project, is planned for 1986.

The Woodford County School System has tentative plans to construct a new elementary school at Midway; build a new or remodel the existing Versailles Elementary; install air conditioning of the high school and middle school; and construct an additional wing at the middle school.

Construction of 50 townhouses is planned for the corner of Clifton and Lawrenceburg Roads.

The Woodford County School System, in conjunction with the Woodford County Fiscal Court and the city of Versailles, has plans to build a \$750,000 athletic complex. The complex will consist of a stadium for football and soccer; practice field for soccer and football; fitness center; and baseball and softball fields.

Ryne Creek Apartments, a 42-unit middle income housing complex, is planned for construction in Spring 1986.