

1994

Industrial Resources: Anderson County

Kentucky Library Research Collections
Western Kentucky University, spcol@wku.edu

Follow this and additional works at: https://digitalcommons.wku.edu/anderson_cty

 Part of the [Business Administration, Management, and Operations Commons](#), [Growth and Development Commons](#), and the [Infrastructure Commons](#)

Recommended Citation

Kentucky Library Research Collections, "Industrial Resources: Anderson County" (1994). *Anderson County*. Paper 8.
https://digitalcommons.wku.edu/anderson_cty/8

This Report is brought to you for free and open access by TopSCHOLAR®. It has been accepted for inclusion in Anderson County by an authorized administrator of TopSCHOLAR®. For more information, please contact topsolar@wku.edu.

IR
858

Anderson

Kentucky

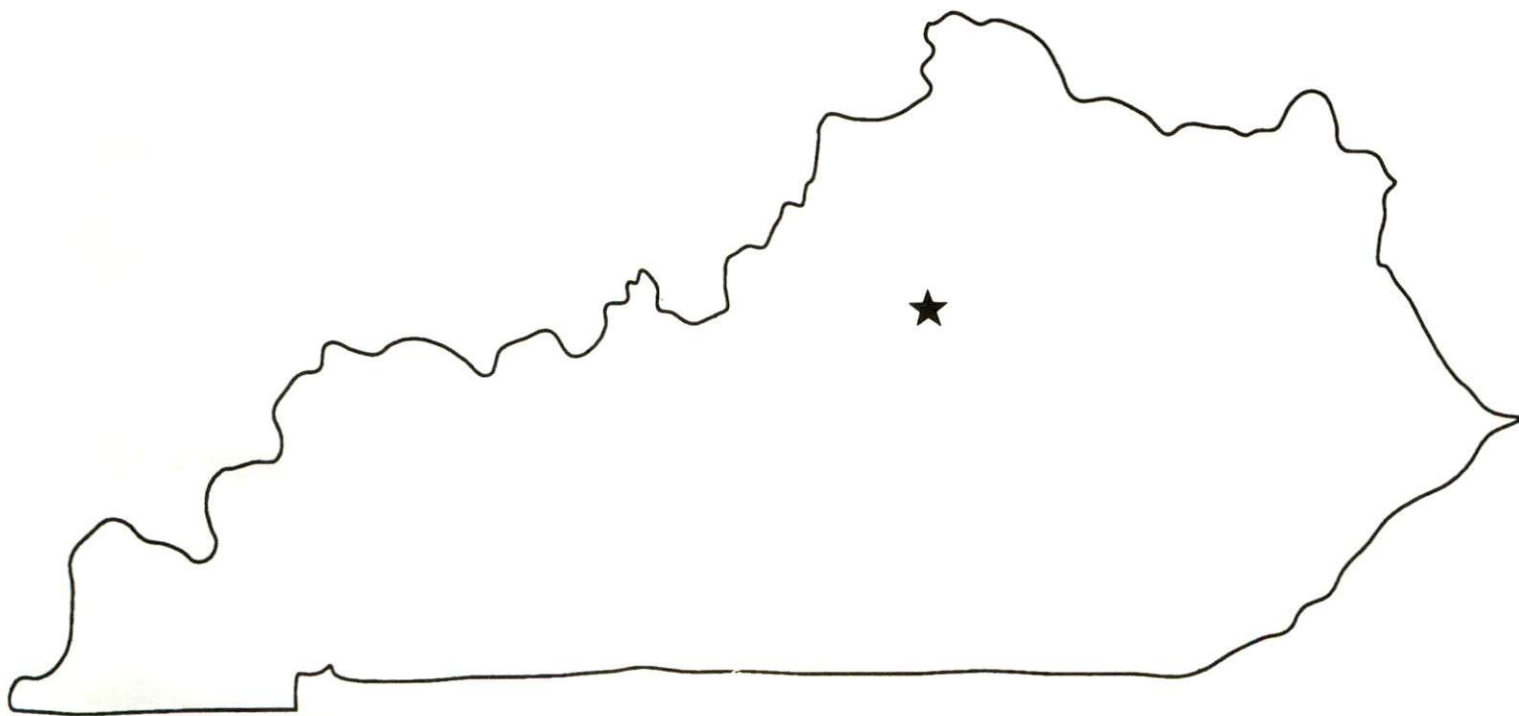
Resources For Economic Development

Albany
Barbourville
Ballard County
Bardstown • Booneville Berea
Bowling Green • Boyd & Greenup Counties
Bracken County • Brandenburg • Breckinridge
Brownsville • Bullitt County • Burkesville • Cadiz
Campbellsville • Campton • Carlisle • Carlisle County
Carrollton • Cave City • Clinton • Columbia • Corbin • Cynthia
Danville • Dawson Springs • Edmonton • Elizabethtown • Estill County
Elliott County • Falmouth & Butler • Flemingsburg • Frankfort • Franklin
Frenchburg • Fulton County • Gallatin County • Georgetown • Grant County • Greensburg
Grayson & Olive Hill • Glasgow • Hancock County • Harlan County • Harrodsburg • Hart County
Hazard • Henderson • Henry County • Hodgenville • Hopkinsville-Christian County • Jackson County
Jackson • Knott County • LaGrange & Buckner • Lancaster • Lawrenceburg • Lebanon • Leitchfield-
Grayson County • Letcher County • Lexington • Liberty-Casey County • Logan County • Louisville
London • Louisa • Lyon County • Madisonville & Earlington • Manchester • Marshall County • Mayfield
Maysville • McCreary County • Marion • McLean County • Middlesboro & Pineville • Monticello • Morehead
Morgantown • Mt. Sterling • Mt. Vernon • Muhlenberg County • Murray • Nicholasville • Northern Kentucky
Ohio County • Owensboro • Owenton • Owingsville • Paducah • Paintsville • Paris • Pike County • Powell
Prestonsburg • Princeton • Radcliff • Richmond • Russell County • Scottsville • Shelbyville • Somerset
Springfield • Stamping Ground • Stanford-Lincoln County • Tompkinsville & Gamaliel • Taylorville
Todd County • Union County • Vanceburg • Versailles • Webster County • West Liberty • Williamsburg
Winchester, Kentucky

Kentucky

Resources For Economic Development

Lawrenceburg



Prepared by
The Kentucky Cabinet for Economic Development
Division of Research
in cooperation with
Anderson County Chamber of Commerce
and
The Lawrenceburg-Anderson County Industrial Foundation, Inc.

1994

Division Director - Pamela K. Riley; program manager - Keith Roberts; research - Keith Roberts; clerical - Wanda Sharp; graphics - Robert Owens. Cost of printing paid from state funds.

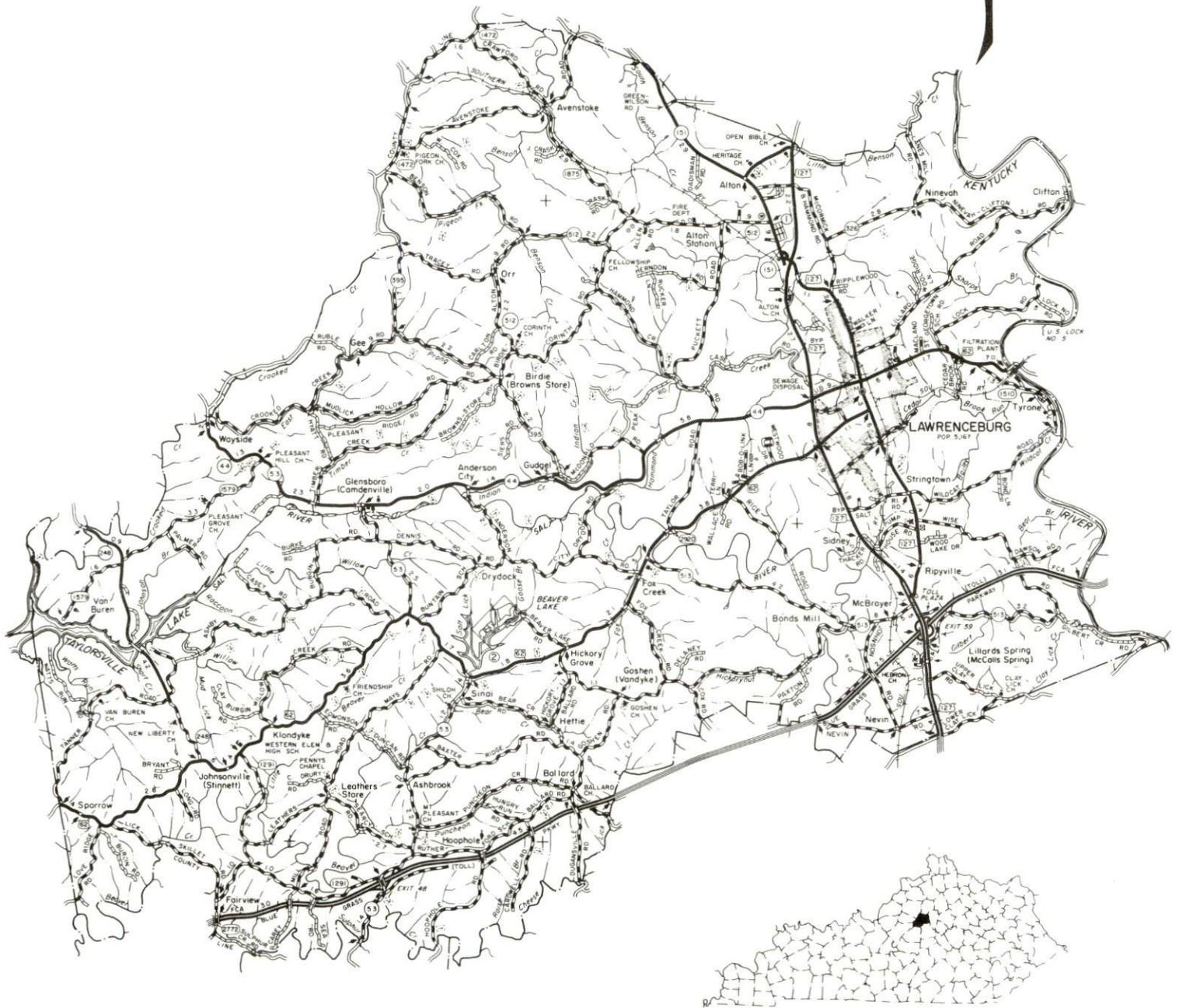
TABLE OF CONTENTS

<u>Chapter</u>	<u>Page</u>
LAWRENCEBURG, KENTUCKY - A RESOURCE PROFILE	1
THE LABOR MARKET STATISTICS	2
Labor Market Area Map	2
Population	3
Population Projections	3
Estimated Labor Supply	3
Labor Force Characteristics of Residents, 1993	4
Selected Components of Nonagricultural Employment, by Place of Work, 1992	5
Per Capita Personal Income	6
Average Placement Wages	7
Average Weekly Wages of Workers Covered by Unemployment Insurance 1992 - Bar Chart	8
Average Weekly Wages by Industry, by Place of Work, 1992	9
EXISTING INDUSTRY	10
Lawrenceburg Manufacturing Firms, Their Products and Employment	10
Labor Organizations in Manufacturing Firms	11
Selected Industrial Services	12
TRANSPORTATION	13
Highways	13
Truck Service	13
Selected Market Location Map	14
Rail	15
Air	15
Water	15
UTILITIES	16
Electricity	16
Natural Gas	16
Public Water Supply	17
Sewerage	17
CLIMATE	18

<u>Chapter</u>	<u>Page</u>
LOCAL GOVERNMENT	19
Structure	19
Planning and Zoning	19
Local Fees and Licenses	19
State and Local Property Taxes	20
EDUCATION	21
Public Schools	21
Area Colleges and Universities	21
Vocational Training	22
OTHER LOCAL FACILITIES	24
Local Medical Personnel	24
Hospitals	24
Other Medical Facilities and Services	24
Banks and Savings & Loan Associations	24
Newspapers	24
Telephone Service	24
RECREATION	25

GENERAL HIGHWAY MAP ANDERSON COUNTY KENTUCKY

PREPARED BY THE
KENTUCKY TRANSPORTATION CABINET
DEPARTMENT OF HIGHWAYS
DIVISION OF PLANNING
IN COOPERATION WITH THE
U.S. DEPARTMENT OF TRANSPORTATION
FEDERAL HIGHWAY ADMINISTRATION



LAWRENCEBURG, KENTUCKY - A RESOURCE PROFILE

Lawrenceburg, the county seat of Anderson County, is located in the rolling to hilly terrain of central Kentucky's famous Bluegrass Region. The 1992 estimated population of Anderson County was 15,612. Lawrenceburg is located 23 miles west of Lexington, Kentucky; 56 miles east of Louisville, Kentucky; and 105 miles south of Cincinnati, Ohio. The city had an estimated 1992 population of 6,354.

The Economic Framework - The total number of Anderson County residents employed in 1993 averaged 8,083. In 1992, manufacturing firms in the county reported 970 employees; wholesale and retail trade provided 895 jobs; 327 people were employed in service occupations; state and local government accounted for 553 employees; and contract construction firms provided 121 jobs.

Labor Supply - There is a current estimated labor supply of 5,747 persons available for industrial jobs in the labor market area. In addition, from 1995 through 1999, 12,877 young persons in the area will become 18 years of age and potentially available for industrial jobs.

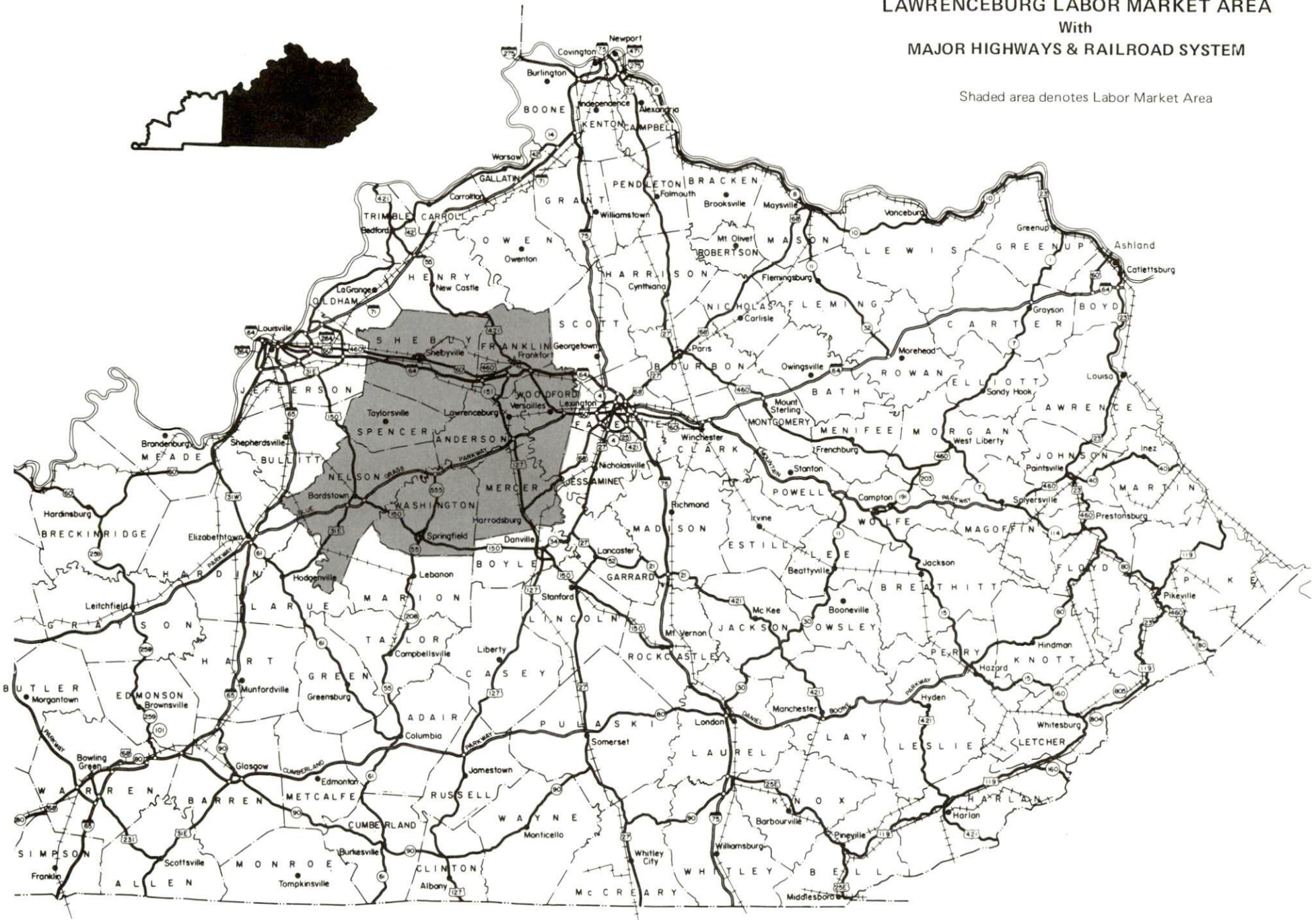
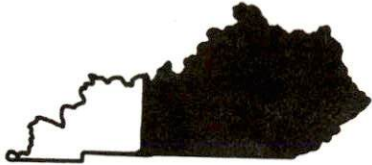
Transportation - Major "AAA"-rated trucking highways serving Lawrenceburg are U.S. Highways 127 and 62, and Kentucky Highway 151. Kentucky Highway 44, a "AA"-rated trucking highway, also serves Lawrenceburg. The Blue Grass Parkway is located four miles south of Lawrenceburg, and Interstate 64 can be accessed 10 miles north. Thirty-five trucking companies provide interstate and/or intrastate service to Lawrenceburg. The nearest small craft airport is located in Frankfort, 14 miles north of Lawrenceburg. The nearest scheduled commercial airline service is available at the Blue Grass Airport, 18 miles east of Lawrenceburg near Lexington. Rail service is provided to Lawrenceburg by the Norfolk Southern Corporation.

Power and Fuel - Kentucky Utilities Company provides electric power to Lawrenceburg and parts of Anderson County. Fox Creek Rural Electric Cooperative Corporation serves most of Anderson County. Natural gas service is provided by the Western Kentucky Gas Company.

Education - Primary and secondary public education is provided to Lawrenceburg by the Anderson County School System. There are fifteen institutions of higher learning located within sixty miles of the city. In addition, vocational education facilities are available in Frankfort, Harrodsburg, and Lexington, all within 23 miles of Lawrenceburg.

LAWRENCEBURG LABOR MARKET AREA With MAJOR HIGHWAYS & RAILROAD SYSTEM

Shaded area denotes Labor Market Area



LABOR MARKET STATISTICS

The Lawrenceburg Labor Market Area includes Anderson County and the adjoining Kentucky counties of Franklin, Mercer, Nelson, Shelby, Spencer, Washington, and Woodford.

POPULATION

	<u>1992*</u>	<u>1990</u>	<u>1980</u>	<u>1970</u>
Labor Market Area	175,181	169,593	158,791	132,925
Lawrenceburg	6,354	5,911	5,167	3,579
Anderson County	15,612	14,571	12,567	9,358

* Population estimates.

Source: U.S. Department of Commerce, Bureau of the Census.

POPULATION PROJECTIONS

	<u>1995</u>	<u>2000</u>	<u>2010</u>	<u>2020</u>
Labor Market Area	177,097	184,007	194,189	199,781
Anderson County	15,968	17,319	19,455	20,991

Note: Population projections are from Moderate Growth Series forecast.

Source: University of Louisville, Urban Studies Center, State Data Center.

ESTIMATED LABOR SUPPLY

	<u>Current</u>		<u>Not in Labor Force</u>	<u>Future</u>
	<u>Total</u>	<u>Unemployed</u>		<u>Becoming 18 years of age 1995 thru 1999</u>
Labor Market Area*	5,747	4,890	857	12,877
Anderson County	1,145	443	702	1,149

* Additional workers may be drawn from other nearby counties.

Note: Unemployed - persons unemployed and actively seeking work; Not in Labor Force - represents the number of persons who would enter the labor force if suitable employment were available (based on the assumption that persons in Kentucky would like to participate in the labor force in the same proportion that they do nationally). Underemployed persons (employed only 14 to 26 weeks during the year) are no longer included in labor surplus estimates.

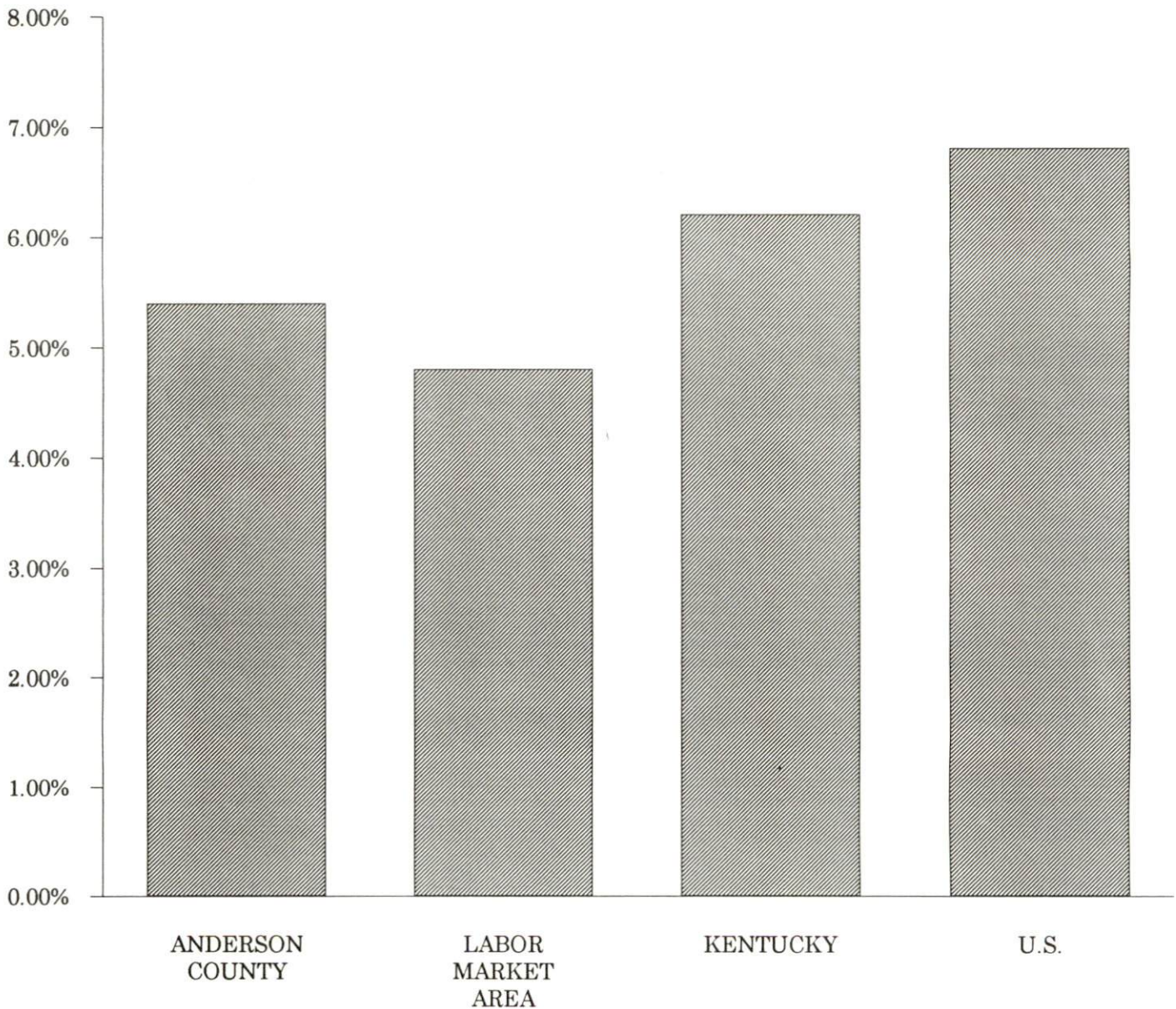
Sources: Kentucky Cabinet for Human Resources, Kentucky Labor Surplus Estimates by County, 1992. Kentucky Cabinet for Economic Development, Future Labor Supply Becoming 18 Years of Age, 1995 thru 1999.

LABOR FORCE CHARACTERISTICS OF RESIDENTS, 1993

	<u>Anderson County</u>	<u>Labor Market Area</u>
Civilian Labor Force	8,544	95,675
Employment	8,083	91,117
Unemployment	461	4,558
Rate of Unemployment (%)	5.4	4.8

Source: Kentucky Cabinet for Human Resources, Kentucky Labor Force Estimates, Annual Averages, 1993.

**UNEMPLOYMENT RATES
1993**

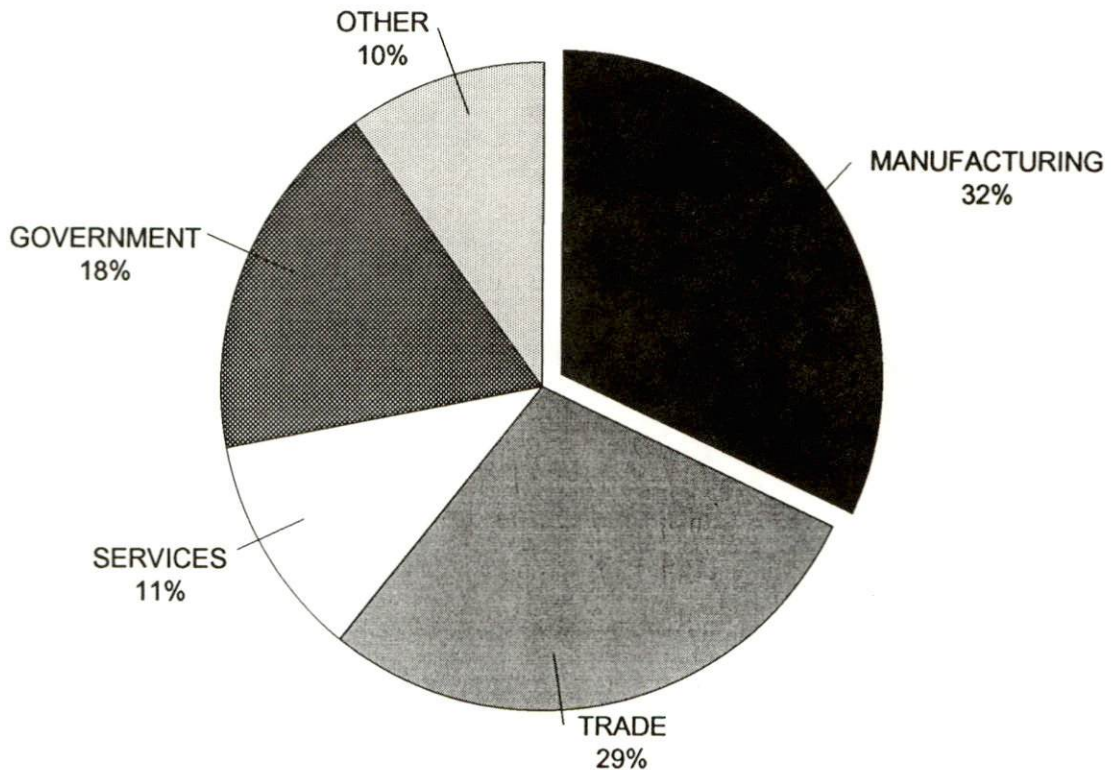


SELECTED COMPONENTS OF NONAGRICULTURAL EMPLOYMENT
BY PLACE OF WORK, 1992

	<u>Anderson County</u>	<u>Labor Market Area</u>
All Industries (total)	3,075	68,648
Manufacturing	970	18,765
Wholesale & Retail Trade	895	12,546
Services	327	9,316
State/Local Government	553	19,817
Contract Construction	121	2,809

Note: Excludes domestic workers, railway workers, certain nonprofit corporations, majority of federal government workers, and self-employed workers.
Source: Kentucky Cabinet for Human Resources, Average Monthly Workers Covered by Kentucky Unemployment Insurance Law, 1992.

ANDERSON COUNTY

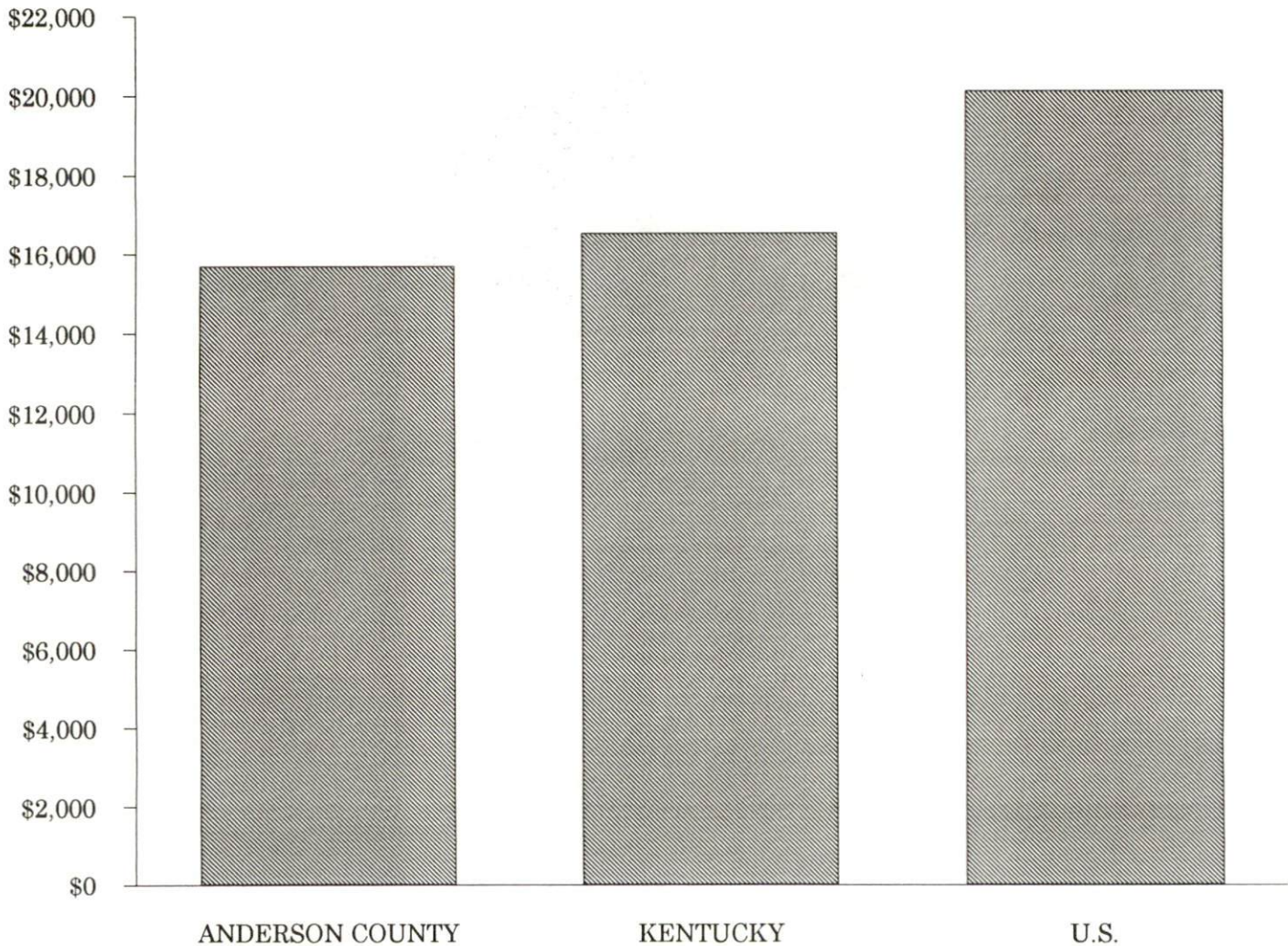


PER CAPITA PERSONAL INCOME

Area	1988	1992	Percent Change
Anderson County	\$12,863	\$15,687	22.0
Labor Market Area Range	\$10,590 - \$18,747	\$15,137 - \$21,219	-
Kentucky	\$12,751	\$16,528	29.6
U.S.	\$16,610	\$20,105	21.0

Source: U.S. Bureau of Economic Analysis, Regional Economic Information System, April 1994.

PER CAPITA PERSONAL INCOME
1992



AVERAGE PLACEMENT WAGES

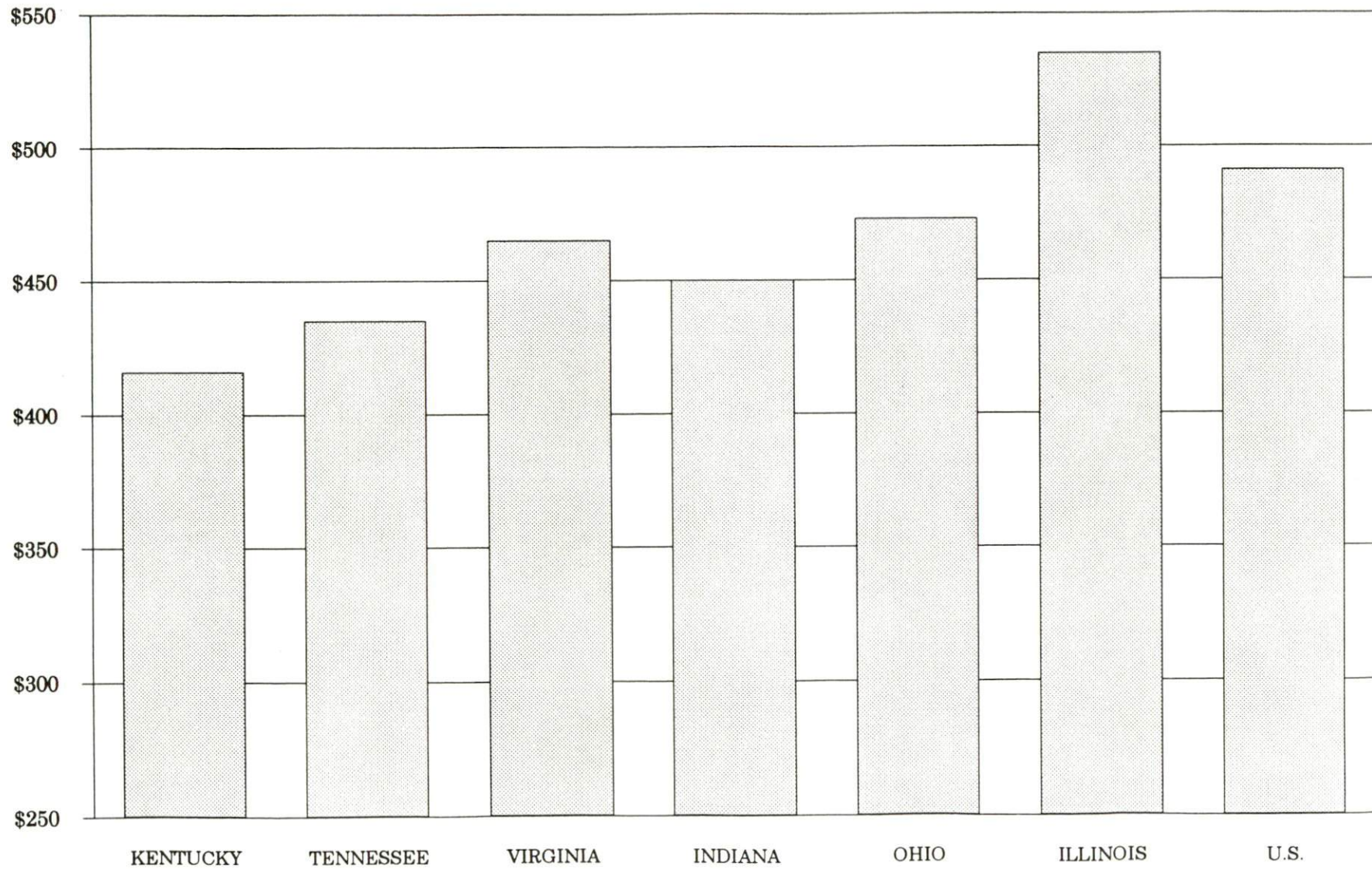
Anderson County is served by the Frankfort local office of the Kentucky Department for Employment Services. The focus of the following data is on job placements made by the Frankfort local office and may therefore be used as an indicator of the wages which employers in the area pay new employees. During the twelve months which ended on June 30, 1994, the local employment office filled 1,698 job openings in various occupational categories. The average hourly wage for selected occupational categories were:

<u>OCCUPATIONAL CATEGORY</u>	<u>NUMBER OF PLACEMENTS</u>	<u>AVERAGE WAGE(\$)</u>
All Occupations	1,698	5.51
Clerical	175	4.88
Sales	32	4.59
Services (excluding domestic)	219	4.51
Agricultural, Fishery, Forestry, etc.	21	4.42
Processing	116	6.12
Machine Trades	208	7.29
Bench Work	610	5.32
Structural	56	7.59
Motor Freight/ Transportation	13	5.43
Packaging and Materials Handling	201	5.33
Other	22	4.95

The Frankfort local office also serves Franklin and Woodford Counties. The above occupational categories are taken from the Dictionary of Occupational Titles published by the U.S. Department of Labor.

Source: Kentucky Cabinet for Human Resources, Department for Employment Services.

**AVERAGE WEEKLY WAGES OF WORKERS COVERED BY
UNEMPLOYMENT INSURANCE - 1992**



AVERAGE WEEKLY WAGES BY INDUSTRY
BY PLACE OF WORK, 1992*

	Anderson County	Kentucky (State- Wide)	Tennessee	Virginia
All Industries	\$379.28	\$415.94	\$435.00	\$465.00
Mining & Quarrying	N/A	685.48	564.00	690.00
Contract Construction	300.64	431.97	456.00	456.00
Manufacturing	526.58	535.73	510.00	535.00
Transportation, Communications & Public Utilities	550.50	560.84	561.00	637.00
Wholesale & Retail Trade	279.12	282.29	N/A	N/A
Finance, Insurance & Real Estate	368.59	493.68	548.00	576.00
Services	233.65	371.91	419.00	483.00
State/Local Government	368.61	434.01	N/A	N/A
	<u>Indiana</u>	<u>Ohio</u>	<u>Illinois</u>	<u>U. S.</u>
All Industries	\$450.00	\$473.00	\$535.00	\$491.00
Mining & Quarrying	731.00	639.00	787.00	799.00
Contract Construction	504.00	525.00	658.00	527.00
Manufacturing	609.00	653.00	652.00	612.00
Transportation, Communications & Public Utilities	548.00	590.00	674.00	632.00
Wholesale & Retail Trade	N/A	N/A	N/A	N/A
Finance, Insurance & Real Estate	511.00	545.00	728.00	670.00
Services	386.00	419.00	488.00	468.00
State/Local Government	N/A	N/A	N/A	N/A

* Wages for U.S. and surrounding states rounded to nearest dollar.

N/A Not Available.

Note: The average weekly wage for each category includes the salaries and wages of all persons working for that type business. For example, the manufacturing category includes both production workers and administrative personnel. Excludes domestic workers, railway workers, certain nonprofit corporations, majority of federal government workers, and self-employed workers.

Source: Kentucky Cabinet for Human Resources, Average Weekly Wages of Workers Covered by Kentucky Unemployment Insurance Law, 1992. U.S. Department of Labor, Bureau of Labor Statistics, Employment and Wages, Annual Averages, 1992, October 1993.

EXISTING INDUSTRY

LAWRENCEBURG MANUFACTURING FIRMS,
THEIR PRODUCTS AND EMPLOYMENT

<u>Firm</u> <u>(Establishment date)</u>	<u>Product</u>	<u>1993</u> <u>Average Employment</u>
Algood Food Company (1993)	Jams, jellies, preserves, sauces, BBQ sauce	15
Anderson County Farm Service (1953)	Feed	6
Anderson News (1877)	Newspaper	7
Anderson Packaging, Inc. (1980)	Chipboard and corrugated products	25
Anderson Tool & Die (1974)	Custom machines, tools, dies, molds	6
Boulevard Distillers & Importers, Inc. (1855)	Distilled spirits	145
Cromwell-Williams Ltd. (1985)	Decorated ceramic glass items	10
Custom Tool & Manufacturing Company (1987)	Electronic wiring harnesses, production machining	8
Edwards Sausage Company (1939)	Barbeque ribs and sausage	55
Florida Tile Industries, Division of Florida Tile Industries, Inc. (1968)	Wall tile	300
General Cable Company (1974)	Telephone cable	233
Glo-Marr Products, Inc. (1988)	Animal healthcare products	8
Graphics Productions (1994)	Commercial printing	2
The House of Seagram (1895)	Dried feed, bourbon whiskey	45
Independent Tool, Inc. (1982)	Parts and specially machined prototypes, fixtures, tools and dies	9
Kentucky Nutrition Service, Inc. (1980)	Livestock mineral mixes	9
The Kentucky Stone Company (1936)	Crushed stone, agricultural lime	19
Lawrenceburg Assembly Operations (1993)	Keyboard assembly	143

(Continued)

<u>Firm</u> <u>(Establishment date)</u>	<u>Product</u>	<u>1993</u> <u>Average Employment</u>
Lawrenceburg Printing (1971)	Commercial offset printing	4
Lawrenceburg Supply Company (1907)	Ready-mix concrete, lumber, hardware	20
Mago Construction Company, Inc. (1970)	Bituminous concrete surface mixes	4
Peddeck, Inc. (1990)	Waterbed pedestals and decking	3
Pedigreed Specialty Furniture Products (1991)	Waterbed drawer pedestals	10
Tracy & Company (1986)	Therapeutic pads and lotion for horses' feet, handles for rasps	1
Universal Fasteners, Inc. (1955)	Metal and plastic hardware (Apparel)	240

Sources: Kentucky Cabinet for Economic Development, Division of Research; Lawrenceburg-Anderson County Industrial Foundation, Inc.

LABOR ORGANIZATIONS IN MANUFACTURING FIRMS

<u>Union</u>	<u>Representing workers at:</u>
Distillery, Wine and Allied Workers' International Union, AFL-CIO-CLC	Boulevard Distillers and Importers, Inc.; The House of Seagram
International Brotherhood of Firemen and Oilers, AFL-CIO	The House of Seagram
International Ladies' Garment Workers Union, AFL-CIO	Universal Fasteners, Inc.
International Association of Machinists and Aerospace Workers, AFL-CIO	Universal Fasteners, Inc.

SELECTED INDUSTRIAL SERVICES

<u>Types of Services</u>	<u>Location</u>	<u>Mileage from Frankfort</u>
Custom Plastics Producers	Versailles, Kentucky	10
	Frankfort, Kentucky	14
Electric Motor Repair	Frankfort, Kentucky	14
Heat Treating Facilities	Frankfort, Kentucky	14
Industrial Waste Removal	Frankfort, Kentucky	14
Machine Shops, Tool & Die	Lawrenceburg, Kentucky	-
Metal Castings	Cynthiana, Kentucky	48
Metal Finishers	Lexington, Kentucky	23
Metal Service Centers	Lexington, Kentucky	23
Millwrights & Riggers	Lexington, Kentucky	23

Sources: Kentucky Cabinet for Economic Development, Division of Research.

TRANSPORTATION

Highways

Major highways serving Lawrenceburg are U.S. Highways 127 and 62, and Kentucky Highways 44 and 151. U.S. 127, U.S. 62, and Kentucky 151 are "AAA"-rated (80,000-pound gross load limit) trucking highways. Kentucky 44 is a "AA"-rated (62,000-pound gross load limit) trucking highway. The Blue Grass Parkway, a multi-lane highway extending east and west, is accessible four miles south of Lawrenceburg via U.S. 127. Interstate 64, a major east-west highway, lies ten miles north of Lawrenceburg via U.S. 127. Interstate 64 connects with Interstate 75, a major north-south corridor, twenty-eight miles from Lawrenceburg.

Construction was recently completed on a section of U.S. 127 from Interstate 64 to the Blue Grass Parkway converting it to four lanes.

HIGHWAY MILES FROM LAWRENCEBURG, KENTUCKY, TO SELECTED MARKET CENTERS

City	Highway Miles	City	Highway Miles
Atlanta, GA	386	Los Angeles, CA	2,141
Baltimore, MD	554	Louisville, KY	56
Birmingham, AL	416	Nashville, TN	192
Chicago, IL	340	New Orleans, LA	714
Cincinnati, OH	105	New York, NY	743
Cleveland, OH	343	Pittsburgh, PA	371
Detroit, MI	361	St. Louis, MO	317
Knoxville, TN	192		

Note: Mileage computations are via the best interstate or primary highways, not necessarily the most direct route of travel.

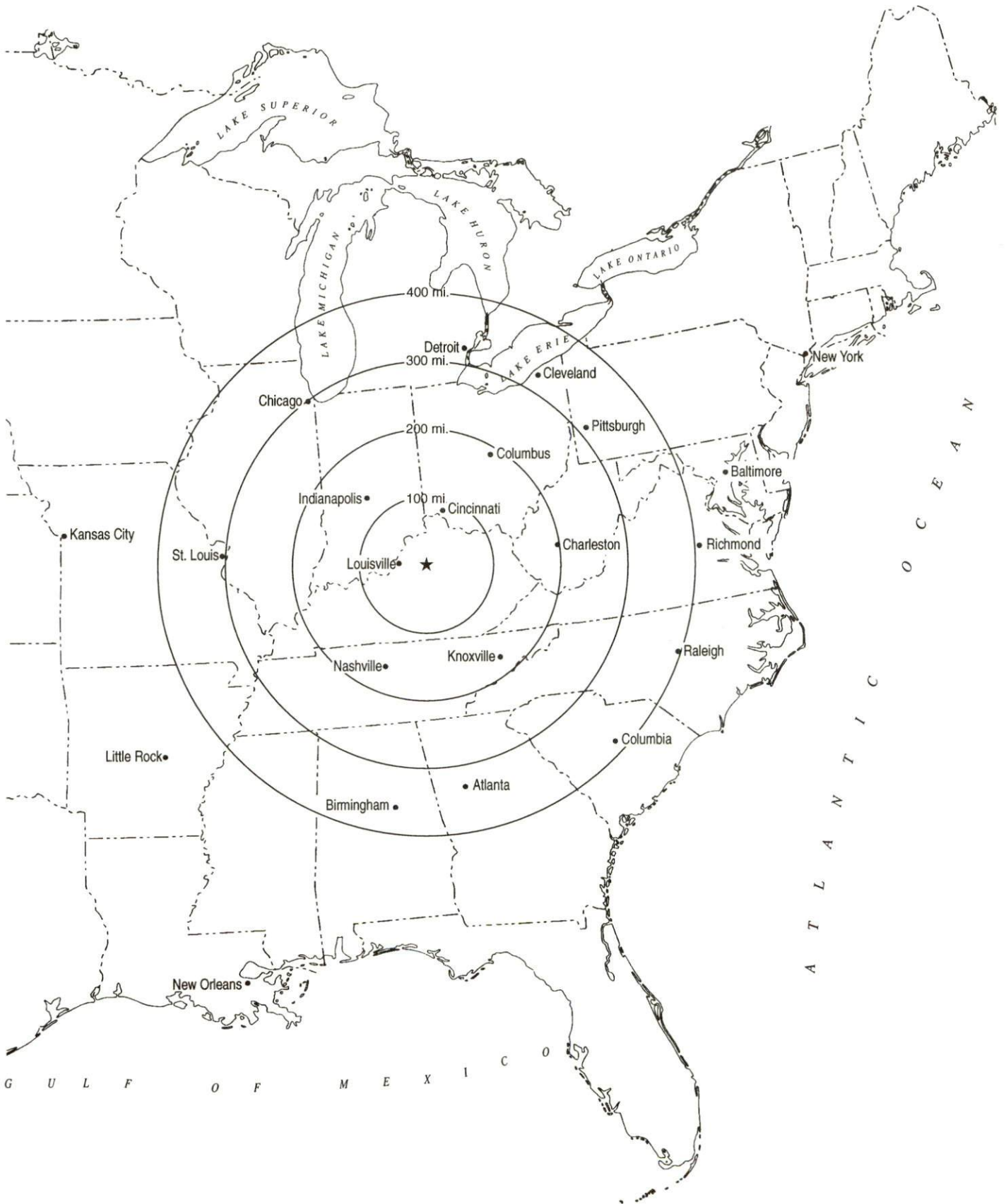
Sources: Rand McNally Standard Highway Mileage Guide, 1990. Official Kentucky Mileage Map, 1985.

Truck Service

Thirty-five firms provide interstate and/or intrastate trucking service to Lawrenceburg. One trucking firm maintains a terminal in Lawrenceburg.

Source: American Motor Carrier Directory, Fall 1994.

Selected Market Centers



Rail

Main line rail service is provided to Lawrenceburg by the Norfolk Southern Corporation. The nearest intermodal facility is operated by Norfolk Southern and is located in Georgetown, Kentucky, twenty-seven miles northeast.

For details on routing, schedules, rates, and services contact:

Industrial Development Manager
Norfolk Southern Corporation
Industrial Development Department
The Tower Suite 2904
611 Commerce Street
Nashville, Tennessee 37203
(615) 254-3398

Air

Nearest Small Craft Airport

Location:	Capital City Airport One mile west of Frankfort, 14 miles north of Lawrenceburg
Runways:	One paved
Length:	5,000 feet (100 feet wide)
Traffic Control:	Wind tee
Lighting:	Beacon, runway lights sundown to sunrise, REILS and VASI
Services:	100 octane, jet fuel; hangar; storage; auto rentals; taxi

Nearest Scheduled Commercial Airline Service

Location:	Blue Grass Airport 4 miles west of Lexington, Kentucky; 18 miles east of Lawrenceburg
Air Service:	American Eagle, Atlantic Southeast, ComAir, Delta, Northwest AirlinK, TW Express, United Express, USAir
Daily Arrivals & Departures:	120

Water

Lawrenceburg is located 14 miles from a point on the Kentucky River in Frankfort, where a six-foot navigation channel is maintained.

Lawrenceburg is located 56 miles east of Louisville, where the Louisville and Jefferson County Riverport and the Port of Louisville are located on the Ohio River. The Louisville and Jefferson County Riverport has been designated as a Foreign Trade Zone and offers complete U.S. Customs services for exports and imports.

UTILITIES

Electricity

Company serving Lawrenceburg and portions of eastern Anderson County -
Kentucky Utilities Company
Source of power - Kentucky Utilities Company
For industrial rates contact:

Economic Development Department
Kentucky Utilities Company
One Quality Street
Lexington, Kentucky 40507
(606) 255-2100

Company serving the majority of Anderson County - Fox Creek Rural
Electric Cooperative Corporation
Source of power - East Kentucky Power
For industrial rates contact:

Industrial Development Department
East Kentucky Power
P.O. Box 707
Winchester, Kentucky 40392-0707
(606) 744-4812

and/or

Fox Creek Rural Electric Cooperative
Corporation
P.O. Box 150
Lawrenceburg, Kentucky 40342
(502) 839-3442 or (800) 372-7160
Fax (502) 839-5051

Natural Gas

Company serving Lawrenceburg - Western Kentucky Gas Company
Source of supply - Texas Gas Transmission Corporation
For rates and supplies contact:

Western Kentucky Gas Company
2401 New Hartford Road
P.O. Box 866
Owensboro, Kentucky 42302-0866
(502) 685-8069

Public Water Supply

Company serving Lawrenceburg - City of Lawrenceburg
205 East Woodford Street
P.O. Box 347
Lawrenceburg, Kentucky 40342
(502) 839-5372

Source - Kentucky River
Treatment plant capacity - 3,000,000 gallons per day
Average daily consumption - 2,264,900 gallons
Peak daily consumption - 2,566,000 gallons
Storage capacity - 2,175,000 gallons
Water pressure - 30 psi to 65 psi

Sewerage

Company serving Lawrenceburg - City of Lawrenceburg
205 East Woodford Street
P.O. Box 347
Lawrenceburg, Kentucky 40342
(502) 839-5372

Design capacity - 1,900,000 gallons per day
Average daily flow - 1,264,000 gallons
Type of treatment - Secondary
Treated effluent discharged into - Hammond Creek

CLIMATE

Anderson County

Temperature

Normal (30-year record)	54.90 degrees
Average annual 1992	55.10 degrees
Record highest, July 1988 (48-year record)	103.00 degrees
Record lowest, January 1963 (48-year record)	-21.00 degrees
Normal heating degree days (30-year record) (Heating degree day totals are the sums of negative departures of average daily temperatures from 65 degrees F.)	4,814

Precipitation

Normal (30-year record)	45.68 inches
Mean annual snowfall (48-year record)	15.50 inches
Total precipitation 1992	49.09 inches
Mean number days precipitation (.01 inch or more) (48-year record)	129.80
Mean number days thunderstorms (48-year record)	44.70

Prevailing winds (through 1963) South

Relative Humidity (29-year record, except 1 a.m. - 28-year record)

1 a.m.	77 percent
7 a.m.	82 percent
1 p.m.	60 percent
7 p.m.	64 percent

Source: U.S. Department of Commerce, Environmental Science Services Administration, Climatological Data, 1992. Station of record: Lexington, Kentucky.

LOCAL GOVERNMENT

Structure

The city of Lawrenceburg is governed by a mayor and six council members. The mayor serves a four-year term and the council members serve two-year terms. Anderson County is served by a county judge/executive and six magistrates, each of which serve a four-year term.

Planning and Zoning

Joint agency - Lawrenceburg-Anderson County Kentucky Joint Planning Commission

Participating cities - Lawrenceburg

Zoning enforced - All areas

Subdivision regulations enforced - All areas

Local codes enforced - Building and Housing (all areas)

Mandatory state codes enforced - Kentucky Plumbing Code, National Electric Code, Kentucky Boiler Regulations and Standards, Kentucky Building Code (modeled after BOCA code)

Local Fees and Licenses

The City of Lawrenceburg levies business license fees ranging from \$25 to \$500. Anderson County also requires businesses to pay annual license fees ranging from \$25 to \$150.

PROPERTY TAXES

The Kentucky Constitution requires the state to tax all classes of taxable property, and state statutes allow local jurisdictions to tax only a few classes. All locally taxed property is subject to county taxes and school district taxes (either a county school district or an independent school district). Property located inside of city limits may also be subject to city property taxes.

Special local taxing jurisdictions (fire protection districts, watershed districts, and sanitation districts) levy taxes within their operating areas (usually a small portion of community or county).

Property assessments in Kentucky are at 100% fair cash value. Accounts receivable are taxed at 85% of face value.

STATE PROPERTY TAX RATES PER \$100 VALUATION

<u>Selected Classes of Property</u>	<u>1993 State Rate</u>	<u>Local Taxation Permitted</u>
Real Estate	\$0.180	YES
Manufacturing Machinery	0.150	NO
Pollution Control Equipment	0.150	NO
Inventories		
Raw Materials	0.050	NO
Goods in Process	0.050	NO
Finished Goods	0.050	YES
Motor Vehicles	0.450	YES
Other Tangible Personal Property	0.450	YES
Intangibles (Accounts Receivable, Money on Hand)	0.250	NO

LOCAL PROPERTY TAX RATES PER \$100 VALUATION, 1993

<u>Taxing Jurisdiction</u>	<u>Real Estate</u>	<u>Finished Goods & Tangibles</u>	<u>Motor Vehicles</u>
Anderson County	\$0.1750	\$0.2088	\$0.2186
School Districts:			
Anderson County	0.4320	0.4320	0.5100
Cities:			
Lawrenceburg	0.2350	0.3270	0.2290

EDUCATION

Public Schools

Anderson County

Total Enrollment (Fall, 1993)	2,952
Pupil-Teacher Ratio (1991-92)	18.9-1
Percent High School Graduates to College (1991-92)	50.9
Expenditures Per Pupil (1991-92)	\$3,311.55

The Anderson County School System plans to construct a new middle school. Construction is scheduled to begin in the Fall 1994 and be complete in the Fall 1996. Estimated cost of the new facility is \$6-\$7 million.

Area Colleges and Universities

<u>Name</u>	<u>Location (Miles distant)</u>	<u>Enrollment (Fall, 1993)</u>
Kentucky State University	Frankfort, Kentucky (14)	2,487
Midway College	Midway, Kentucky (18)	932
Lexington Community College	Lexington, Kentucky (23)	5,046
Transylvania University	Lexington, Kentucky (23)	917
University of Kentucky	Lexington, Kentucky (23)	24,288
Asbury College	Wilmore, Kentucky (25)	1,155
Georgetown College	Georgetown, Kentucky (27)	1,383
Centre College	Danville, Kentucky (28)	949
Saint Catharine College	Springfield, Kentucky (36)	386
Eastern Kentucky University	Richmond, Kentucky (49)	16,391
Bellarmino College	Louisville, Kentucky (56)	2,943
Jefferson Community College	Louisville, Kentucky (56)	11,184
Spalding University	Louisville, Kentucky (56)	1,221
University of Louisville	Louisville, Kentucky (56)	21,826
Berea College	Berea, Kentucky (60)	1,591

VOCATIONAL-TECHNICAL TRAINING

Kentucky Tech schools are operated by the Cabinet for Workforce Development and provide secondary (Sec) and postsecondary (P/S) vocational-technical training.

<u>Kentucky Tech Schools</u>	<u>Location (Mileage from Lawrenceburg)</u>	<u>Number of Program Offerings</u>	<u>Cumulative Enrollment 1992-1993</u>	<u>Approximate Number Completing Programs Annually</u>
Central Kentucky State Vocational- Technical School	Lexington (23)	21	<u>P/S</u> 755	240
Harrodsburg Area Vocational Education Center	Harrodsburg (19)	6	<u>Sec</u> <u>P/S</u> 196 32	112
<u>Other Vocational Schools</u>				
Franklin County Area Vocational Education Center	Frankfort (14)	5	<u>Sec</u> <u>P/S</u> 173 2	1

The construction of a \$3.9 million advanced technology center was approved by the General Assembly in 1992 and is expected to be completed in June, 1995. The Anderson County Advanced Technology Center will consist of approximately 47,700 square feet of instructional space, including a flexible use health lab, an industry multi-use lab, an industry seminar center and a technical library. Programs to be offered include electronics, environmental technology, hydraulics/pneumatics, machine tool technology and public service training.

Customized Training

The Kentucky Tech system, through its Training and Development Coordinators, will provide technical assistance and will identify and develop low-cost customized training programs and services for both established and prospective businesses. Businesses wanting to establish a customized training program should simply contact a Training and Development Coordinator located on the campus of Kentucky Tech-Central.

Assessment Services

Kentucky Tech Career Connections offers to business, education, and government agencies testing packages for evaluating job applicants, selecting employees for promotional consideration and developing training programs within the organization. A Career Connections Assessment Center is located on the campus of Kentucky Tech-Central.

Tech Prep

Tech Prep is a combined secondary and postsecondary program of studies that leads to an associate degree or diploma in a vocational-technical field. The Anderson County Board of Education, through the Bluegrass Tech Prep Consortium, is currently in the second-year implementation of the tech prep program in Business, Health, Engineering and Architecture.

Adult Education Services

Adult education programs are available to adults who want to develop new skills, improve basic skills or earn a high school equivalency diploma. In Lawrenceburg, adult education and adult literacy programs are provided through the Anderson County Board of Education.

Bluegrass State Skills Corporation

The Bluegrass State Skills Corporation, an independent public corporation created and funded by the Kentucky General Assembly, provides programs of skills training to meet the needs of business and industry from entry level to advanced training, and from upgrading present employees to retraining experienced workers.

The Bluegrass State Skills Corporation is a major source for skills training assistance for a new or existing company. The Corporation works in partnership with other employment and job training resources and programs, as well as Kentucky's economic development activities, to package a program customized to meet the specific needs of a company.

OTHER LOCAL FACILITIES

Local Medical Personnel

Physicians - 3
Dentists - 5

Hospitals

<u>General Hospitals</u>	<u>Location (Mileage from Lawrenceburg)</u>	<u>Beds</u>
Woodford Memorial Hospital	Versailles (10)	73
Bluegrass Regional Medical Center	Frankfort (14)	190

Woodford Memorial Hospital

Medical staff - 9 active physicians, 37 physicians on courtesy staff,
46 registered nurses, 11 licensed practical nurses

Bluegrass Regional Medical Center

Medical staff - 45 physicians, 22 physicians on courtesy staff,
129 registered nurses, 3 licensed practical nurses

Other Medical Facilities and Services

Anderson County Comprehensive Care Center
Anderson County Health Department
Anderson Emergency Medical Services
Bluegrass Regional Medical Center
Lawrenceburg Medical Clinic
Lawrenceburg Partial Hospitalization Program

Banks and Savings & Loan Associations

Anderson National Bank
The Lawrenceburg National Bank
Harrodsburg First Federal Savings &
Loan Association (Lawrenceburg branch)

Newspapers

Anderson News (weekly)

Telephone

South Central Bell

Radio

WKYL 102.1-FM

RECREATION

Local

Recreational opportunities in Lawrenceburg include baseball, softball, basketball and soccer. There are two public parks in Lawrenceburg which provide three playgrounds, a swimming pool, an 18-hole golf course, tennis courts, and football fields.

Beaver Lake, located approximately 10 miles southwest of Lawrenceburg off U.S. 62, provides a 170-acre fishing lake. Facilities at the lake include boat slips, year-round boat rental and primitive camping.

The Sportsman Club, located adjacent to the Bluegrass Parkway, provides a shooting range and a clubhouse.

Lexington, 23 miles east of Lawrenceburg offers a variety of cultural, sporting, and recreational activities. Thoroughbred and harness racing is presented at Keeneland Race Course and the Red Mile Harness Track offering several meets each year. The University of Kentucky and Transylvania University provide a number of sporting events. The University of Kentucky holds basketball games at Rupp Arena. Other attractions include Lexington Philharmonic concerts, Lexington Children's Theatre, Lexington Children's Museum, and plays performed by Broadway touring companies, all held in the Opera House. In addition, located in the heart of downtown Lexington, the historical Victorian Square offers a taste of nostalgia with its many quaint shops and restaurants.

Area (Within 40 miles)

Kentucky's State Capital
Old Fort Harrod State Park
Taylorsville Lake State Park
Constitution Square State Historic Site
Herrington Lake
Shaker Village of Pleasant Hill
Waveland State Historic Site
The Kentucky Horse Park
Lincoln Homestead State Park
Isaac Shelby Cemetery State Historic Site
Perryville Battlefield State Historic Site
My Old Kentucky Home State Park