

1992

Industrial Resources: Bourbon County - Paris

Kentucky Library Research Collections
Western Kentucky University, spcol@wku.edu

Follow this and additional works at: https://digitalcommons.wku.edu/bourbon_cty

 Part of the [Business Administration, Management, and Operations Commons](#), [Growth and Development Commons](#), and the [Infrastructure Commons](#)

Recommended Citation

Kentucky Library Research Collections, "Industrial Resources: Bourbon County - Paris" (1992). *Bourbon County*. Paper 5.
https://digitalcommons.wku.edu/bourbon_cty/5

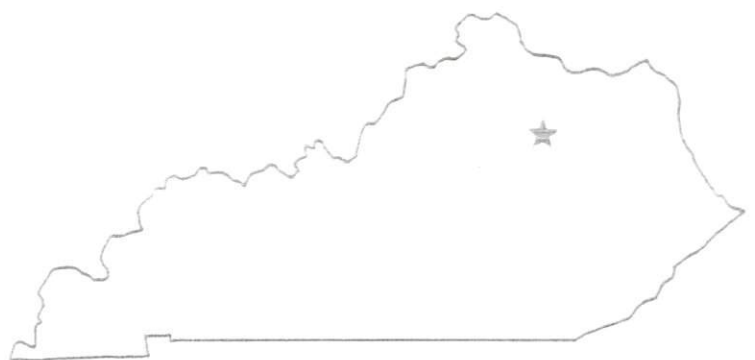
This Report is brought to you for free and open access by TopSCHOLAR®. It has been accepted for inclusion in Bourbon County by an authorized administrator of TopSCHOLAR®. For more information, please contact topscholar@wku.edu.

LK
742

Bourbon

Resources for Economic Development

Paris



KENTUCKY

RESOURCES FOR ECONOMIC DEVELOPMENT
PARIS, KENTUCKY

Prepared by
The Kentucky Cabinet for Economic Development
Division of Research and Planning
in cooperation with
Paris Industrial Development Corporation
and
Paris-Bourbon County Chamber of Commerce

1992

Division Director - Pamela K. Riley; program manager - Keith Roberts; research - Richard H. Cobb; clerical - Wanda Sharp; graphics - Robert Owens, Pat Coleman; cartography - Edwin Scott, Dave Clark. Cost of printing paid from state funds.

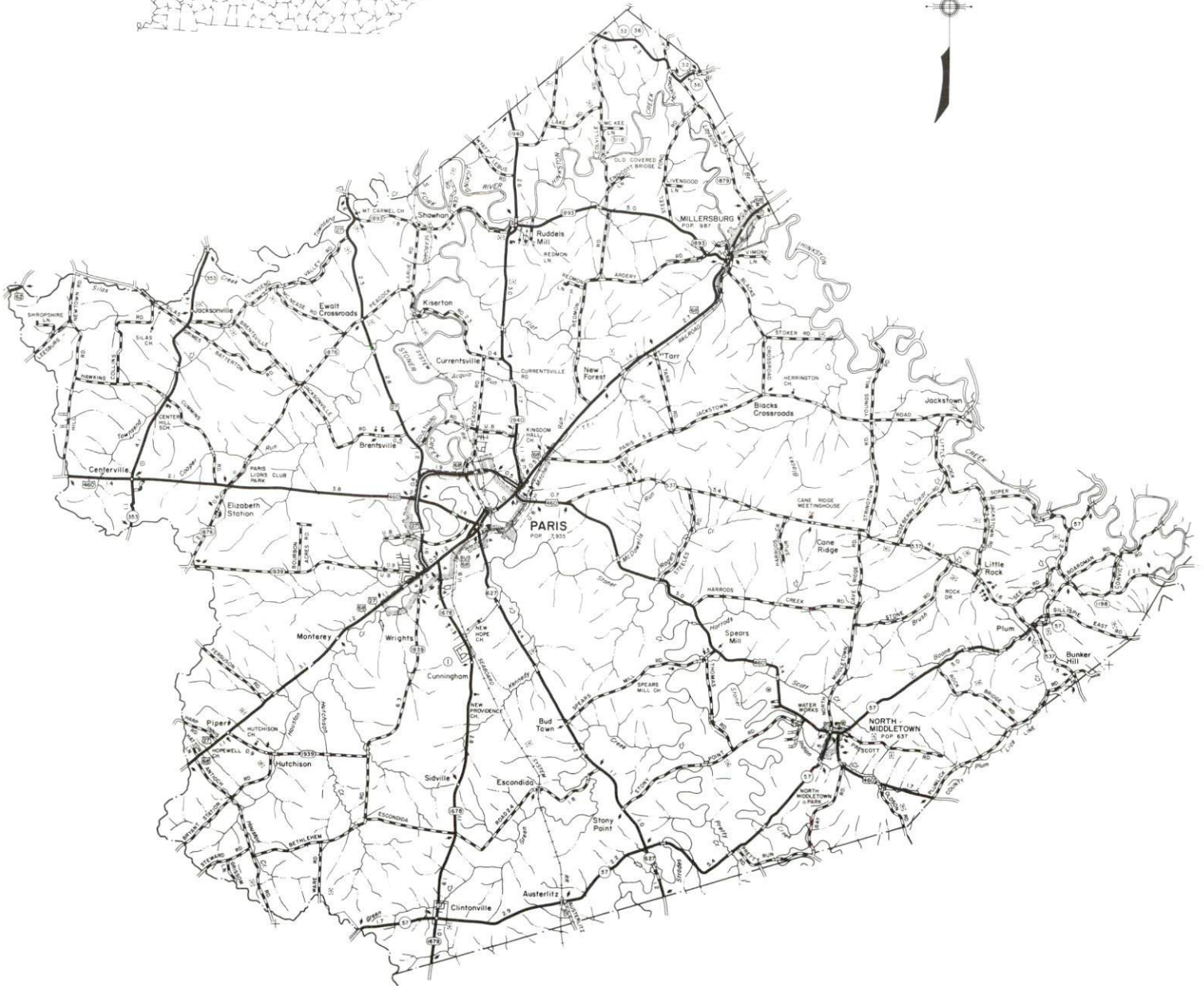
TABLE OF CONTENTS

<u>Chapter</u>	<u>Page</u>
PARIS, KENTUCKY - A RESOURCE PROFILE	1
THE LABOR MARKET STATISTICS	2
Labor Market Area Map.....	2
Population	3
Population Projections	3
Estimated Labor Supply	3
Labor Force Characteristics of Residents, 1990	4
Selected Components of Nonagricultural Employment, by Place of Work, 1990	5
Per Capita Personal Income	6
Average Placement Wages	7
Average Weekly Wages of Workers Covered by Unemployment Insurance 1990 - Bar Chart	8
Average Weekly Wages by Industry, by Place of Work, 1990	9
EXISTING INDUSTRY	10
Paris Manufacturing Firms, Their Products and Employment.....	10
Labor Organizations in Manufacturing Firms.....	10
Selected Industrial Services	11
TRANSPORTATION	12
Highways	12
Truck Service	12
Selected Market Location Map.....	13
Rail	14
Air	14
UTILITIES	15
Electricity	15
Natural Gas	15
Public Water Supply	16
Sewerage	16
CLIMATE	17

<u>Chapter</u>	<u>Page</u>
LOCAL GOVERNMENT	18
Structure	18
Planning and Zoning	18
Local Fees and Licenses	18
State and Local Property Taxes	19
EDUCATION	20
Public Schools	20
Nonpublic Schools	20
Area Colleges and Universities	20
Vocational Training	21
OTHER LOCAL FACILITIES	22
Local Medical Personnel	22
Hospitals	22
Other Medical Facilities and Services	22
Banks and Savings & Loan Associations	22
Newspapers	22
Telephone Service	22
RECREATION	23
COMMUNITY IMPROVEMENTS	24

GENERAL HIGHWAY MAP
BOURBON COUNTY
KENTUCKY

PREPARED BY THE
KENTUCKY TRANSPORTATION CABINET
DEPARTMENT OF HIGHWAYS
DIVISION OF PLANNING
IN COOPERATION WITH THE
U. S. DEPARTMENT OF TRANSPORTATION
FEDERAL HIGHWAY ADMINISTRATION



PARIS, KENTUCKY - A RESOURCE PROFILE

Paris, the county seat of Bourbon County, is located in central Kentucky's Bluegrass Region, an area famous for its many beautiful horse farms and its gently-rolling topography. The city is located 19 miles northeast of Lexington, Kentucky; 84 miles south of Cincinnati, Ohio; and 191 miles north of Knoxville, Tennessee. In 1990, Paris had a population of 8,730.

Bourbon County has a land area of 292 square miles and in 1990 had a population of 19,236.

The Economic Framework - The total number of Bourbon County residents employed in 1990 averaged 9,506. Manufacturing firms in the county reported 1,114 employees; wholesale and retail trade provided 1,331 jobs; 679 people were employed in service occupations; state and local government accounted for 762 employees; and contract construction firms provided 266 jobs.

Labor Supply - There is a current estimated labor supply of 31,361 persons available for industrial jobs in the labor market area. In addition, from 1992 through 1996, 22,541 young persons in the area will become 18 years of age and potentially available for industrial jobs.

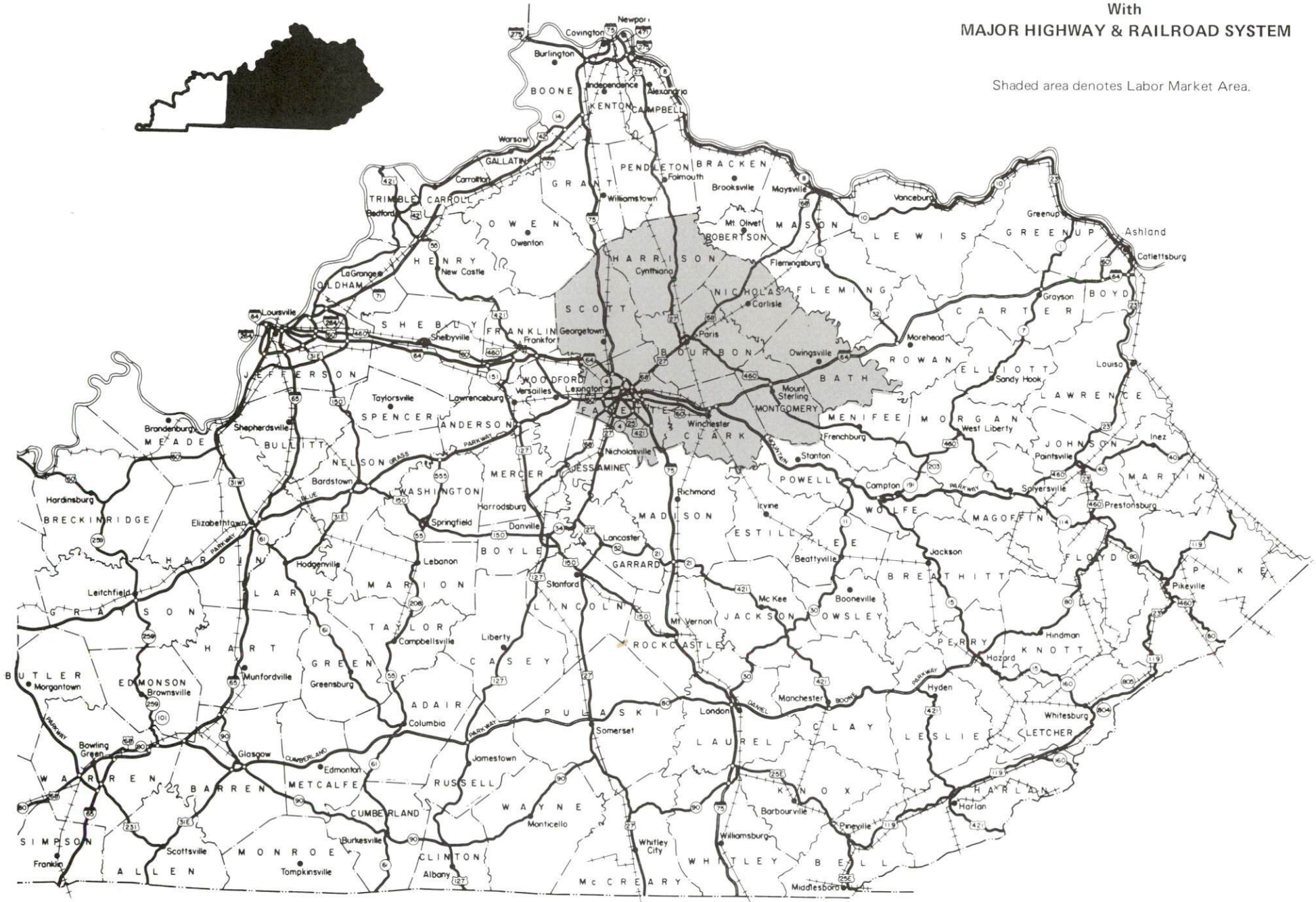
Transportation - Paris is served by U.S. Highways 27, 68, 460 and Kentucky Route 627, all of which are "AAA"-rated trucking highways. Thirty-seven trucking firms provide service to Paris. CSX Transportation and TransKentucky Transportation Railroad provide main line rail service. Cynthiana-Harrison County Airport, fourteen miles north of Paris, is the nearest small craft airport. The nearest scheduled commercial airline service is available at Bluegrass Airport near Lexington, Kentucky, 23 miles southwest of Paris.

Power and Fuel - Paris receives electric power from the City of Paris Combined Utilities Company and Kentucky Utilities Company (the two companies interchange electric power). Clark Rural Electric Cooperative Corporation and Harrison Rural Electric Cooperative Corporation provide electric power to Bourbon County. Natural gas service is provided to Paris by Columbia Gas of Kentucky.

Education - Primary and secondary education is provided by the Paris Independent School System and by the Bourbon County School System. Both school systems are accredited by the Southern Association of Colleges and Schools. Three non-public schools also operate in Bourbon County. There are twelve institutions of higher learning located within 60 miles of Paris. Vocational training facilities are available within 19 miles of Paris at Cynthiana and Lexington.

PARIS LABOR MARKET AREA
With
MAJOR HIGHWAY & RAILROAD SYSTEM

Shaded area denotes Labor Market Area.



LABOR MARKET STATISTICS

The Paris Labor Market Area includes Bourbon County and the adjoining Kentucky counties of Bath, Clark, Fayette, Harrison, Montgomery, Nicholas, and Scott.

POPULATION

	<u>1990</u>	<u>1980</u>	<u>1970</u>
Labor Market Area	350,191	326,099	280,102
Paris	8,730	7,935	7,823
Bourbon County	19,236	19,405	18,476

Source: U.S. Department of Commerce, Bureau of the Census, January 1991.

POPULATION PROJECTIONS

	<u>2000</u>	<u>2010</u>	<u>2020</u>	<u>2030</u>
Labor Market Area	374,330	384,810	389,410	385,470
Bourbon County	19,990	20,090	19,930	19,430

Source: University of Louisville, Urban Studies Center, State Data Center.

ESTIMATED LABOR SUPPLY

	<u>Current</u>				<u>Future</u>
	<u>Total</u>	<u>Unemployed</u>	<u>Employed Part-Time</u>	<u>Not in Labor Force</u>	<u>Becoming 18 years of age 1992 thru 1996</u>
Labor Market Area*	31,361	8,553	19,124	3,684	22,541
Bourbon County	1,373	478	728	167	1,511

* Additional workers may be drawn from other nearby counties.

Note: Unemployed - persons unemployed and actively seeking work; Employed Part-Time - persons employed but working only 14 to 26 weeks per year; Not in Labor Force - represents the number of persons who would enter the labor force if suitable employment were available (based on the assumption that persons in Kentucky would like to participate in the labor force in the same proportion that they do nationally).

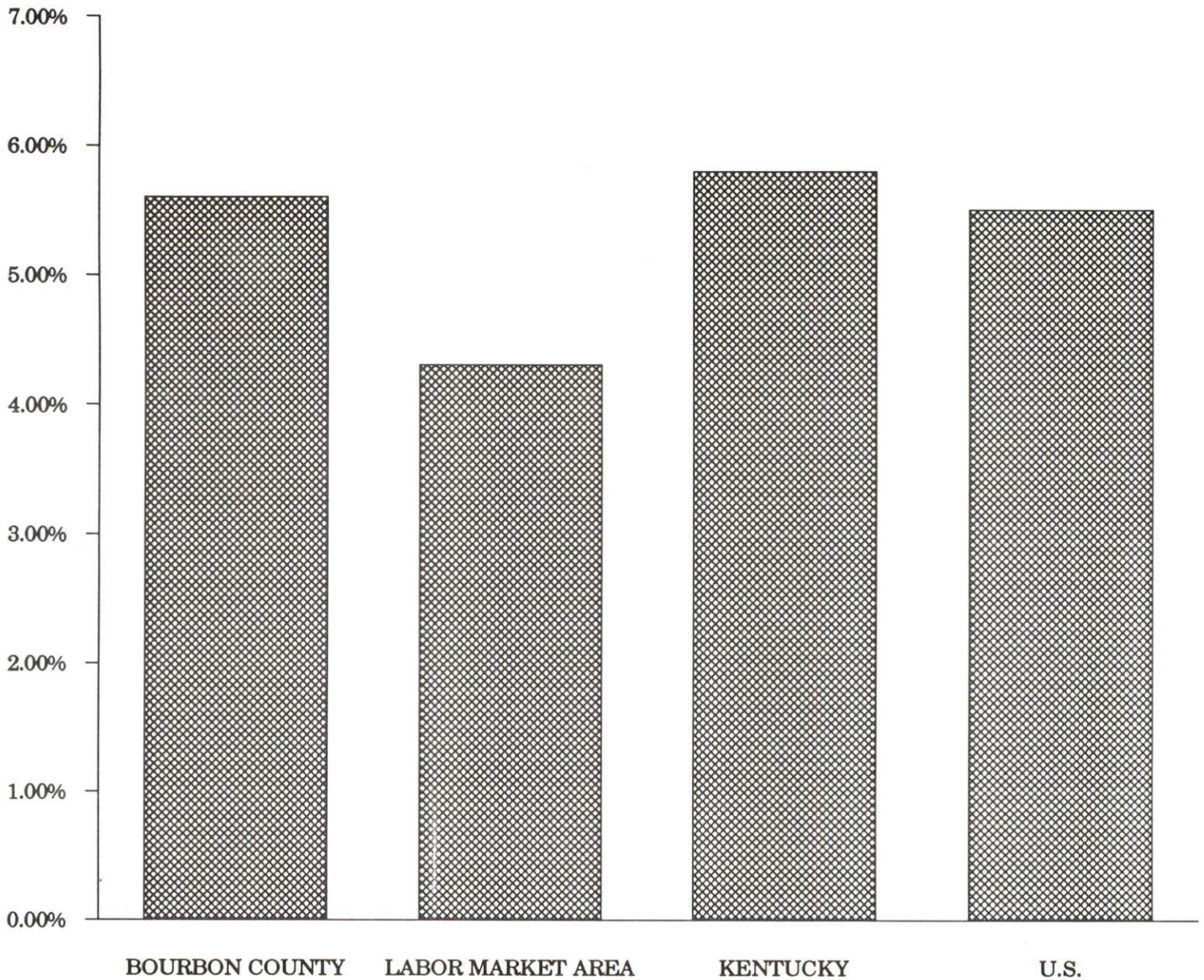
Sources: Kentucky Cabinet for Human Resources, Kentucky Labor Supply Estimates by County, 1989. Kentucky Cabinet for Economic Development, Future Labor Supply Becoming 18 Years of Age, 1992 thru 1996.

LABOR FORCE CHARACTERISTICS OF RESIDENTS, 1990

	<u>Bourbon County</u>	<u>Labor Market Area</u>
Civilian Labor Force	10,066	196,405
Employment	9,506	187,864
Unemployment	560	8,541
Rate of Unemployment (%)	5.6	4.3

Source: Kentucky Cabinet for Human Resources, Kentucky Labor Force Estimates, Annual Averages, 1990.

**UNEMPLOYMENT RATES
1990**

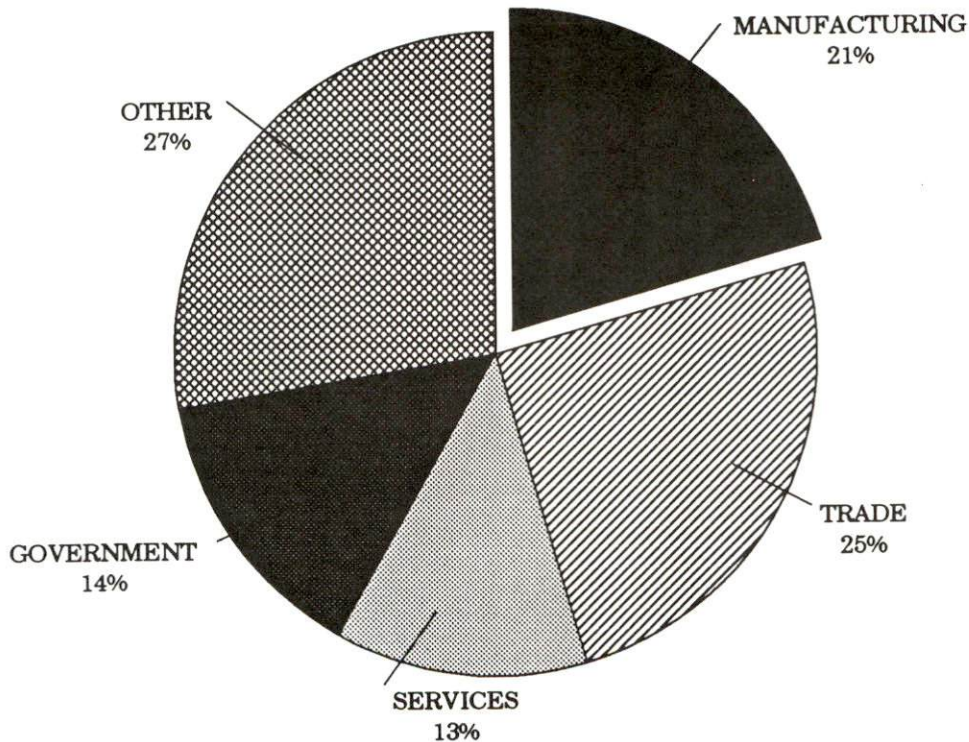


SELECTED COMPONENTS OF NONAGRICULTURAL EMPLOYMENT
BY PLACE OF WORK, 1990

	Bourbon County	Labor Market Area
All Industries (total)	5,337	175,262
Manufacturing	1,114	33,347
Wholesale & Retail Trade	1,331	44,029
Services	679	40,514
State/Local Government	762	26,292
Contract Construction	266	9,120

Note: Excludes domestic workers, railway workers, certain nonprofit corporations, majority of federal government workers, and self-employed workers.
 Source: Kentucky Cabinet for Human Resources, Average Monthly Workers Covered by Kentucky Unemployment Insurance Law, 1990.

BOURBON COUNTY

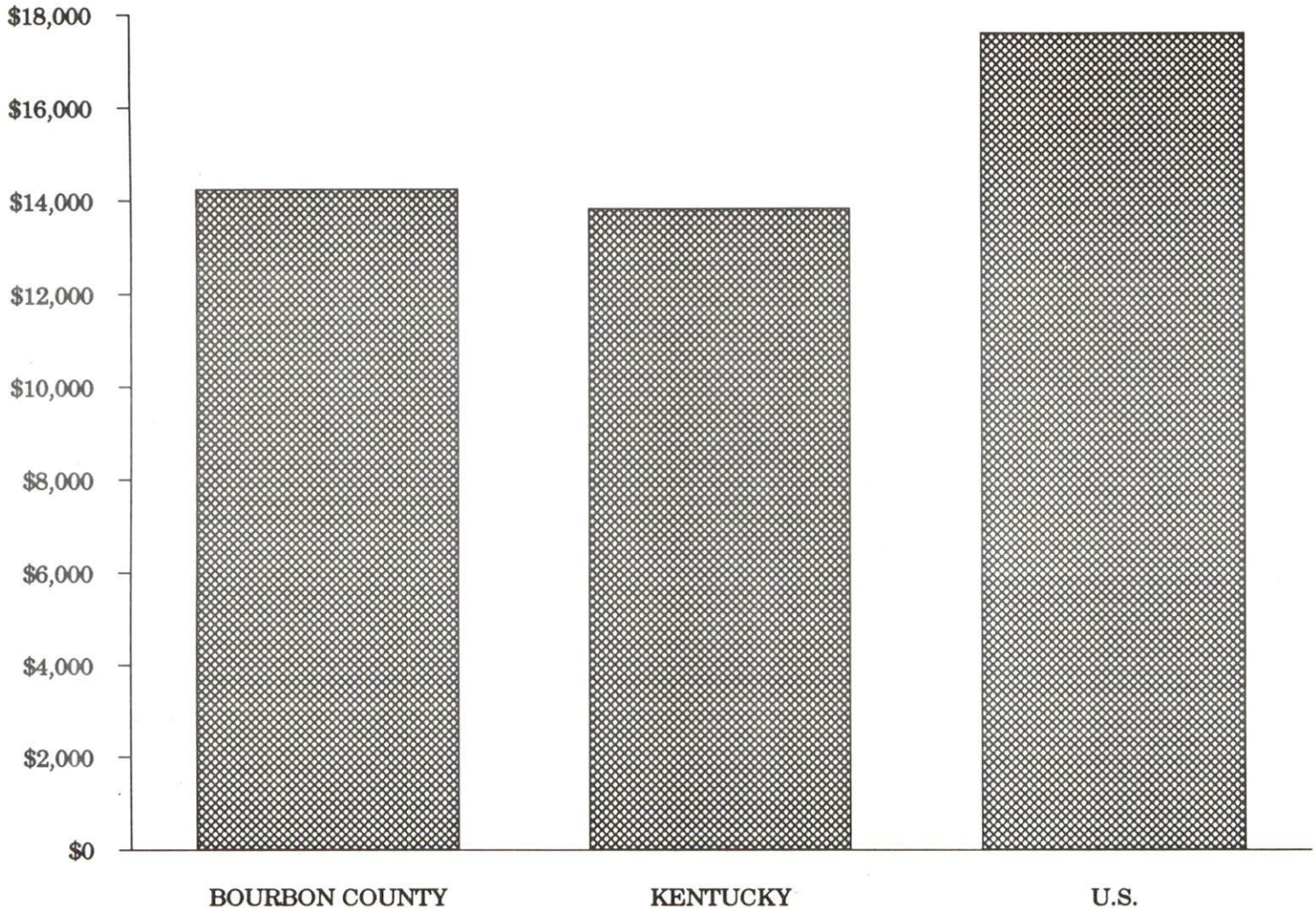


PER CAPITA PERSONAL INCOME

<u>Area</u>	<u>1985</u>	<u>1989</u>	<u>Percent Change</u>
Bourbon County	\$12,116	\$14,232	17.5
Labor Market Area Range	\$7,591 - \$14,214	\$10,006 - \$17,401	-
Kentucky	\$10,755	\$13,823	28.5
U.S.	\$13,899	\$17,594	26.6

Source: U.S. Bureau of Economic Analysis, Kentucky Economic Information System, April 1991.

PER CAPITA PERSONAL INCOME
1989



AVERAGE PLACEMENT WAGES

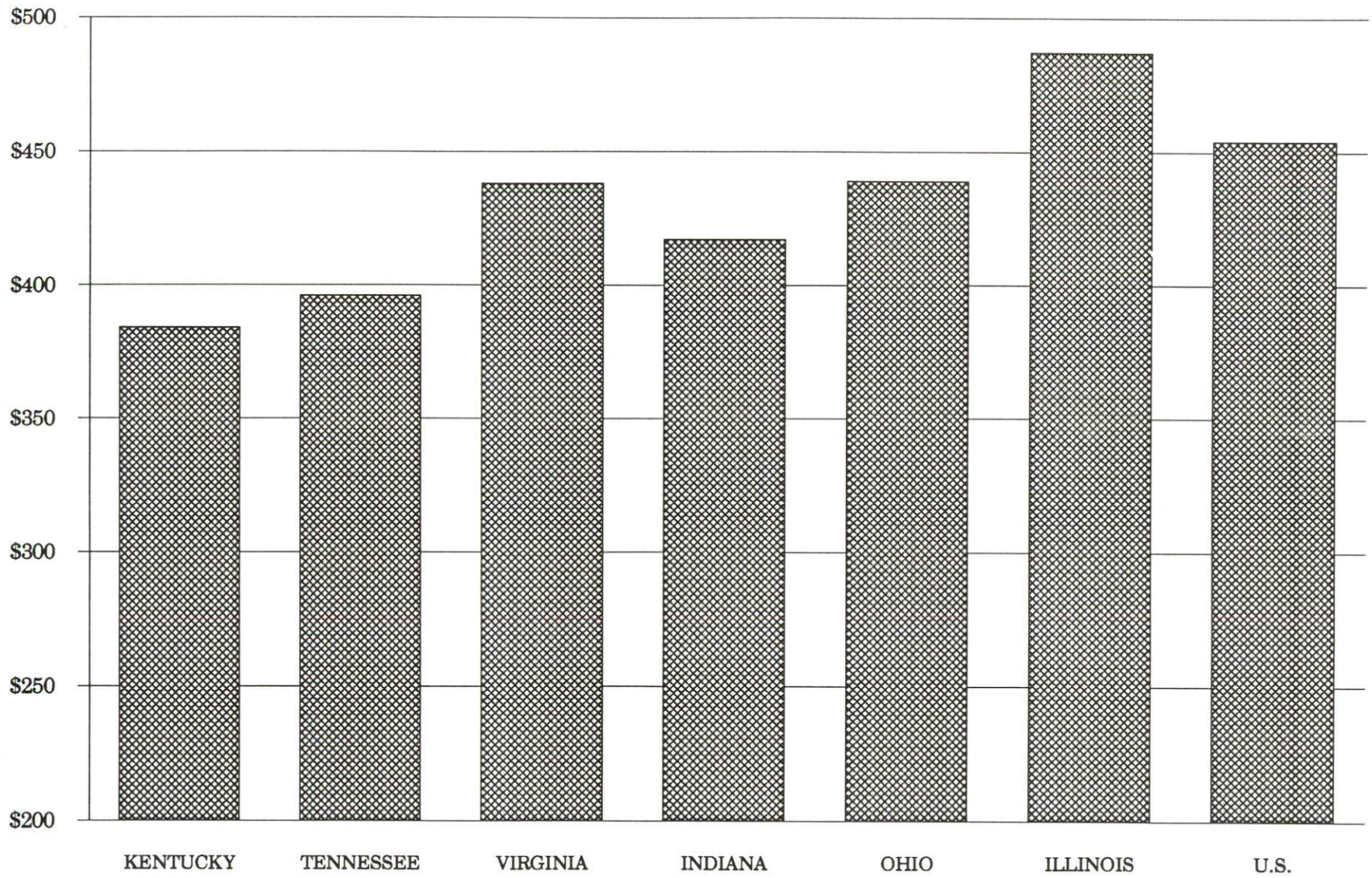
Bourbon County is served by the Georgetown local office of the Kentucky Department for Employment Services. The focus of the following data is on job placements made by the Georgetown local office and may therefore be used as an indicator of the wages which employers in the area pay new employees. During the twelve months which ended on June 30, 1991, the local employment office filled 1,867 job openings in various occupational categories. The average hourly wage for selected occupational categories were:

<u>OCCUPATIONAL CATEGORY</u>	<u>NUMBER OF PLACEMENTS</u>	<u>AVERAGE WAGE(\$)</u>
All Occupations	1,867	5.62
Clerical	142	4.21
Sales	15	4.66
Services (excluding domestic)	324	4.33
Agricultural, Fishery, Forestry, etc.	24	3.91
Processing	36	6.18
Machine Trades	75	6.40
Bench Work	669	5.00
Structural	441	8.07
Motor Freight/ Transportation	28	5.69
Packaging and Materials Handling	62	4.73
Other	3	6.00

The Georgetown local office also serves Harrison, Nicholas, and Scott Counties. The above occupational categories are taken from the Dictionary of Occupational Titles published by the U.S. Department of Labor.

Source: Kentucky Cabinet for Human Resources, Department for Employment Services.

AVERAGE WEEKLY WAGES OF WORKERS COVERED BY
UNEMPLOYMENT INSURANCE - 1990



AVERAGE WEEKLY WAGES BY INDUSTRY
BY PLACE OF WORK, 1990*

	Bourbon County	Kentucky (State- Wide)	Tennessee	Virginia
All Industries	\$317.01	\$379.97	\$396.00	\$438.00
Mining & Quarrying	N/A	654.24	535.00	635.00
Contract Construction	432.47	401.70	421.00	444.00
Manufacturing	401.76	496.95	449.00	487.00
Transportation, Communications & Public Utilities	422.70	500.70	523.00	575.00
Wholesale & Retail Trade	252.41	255.93	N/A	N/A
Finance, Insurance & Real Estate	342.96	434.93	469.00	508.00
Services	224.41	329.76	378.00	430.00
State/Local Government	354.44	392.28	N/A	N/A
	<u>Indiana</u>	<u>Ohio</u>	<u>Illinois</u>	<u>U. S.</u>
All Industries	\$417.00	\$439.00	\$487.00	\$454.00
Mining & Quarrying	746.00	619.00	747.00	714.00
Contract Construction	475.00	504.00	624.00	503.00
Manufacturing	561.00	595.00	590.00	555.00
Transportation, Communications & Public Utilities	519.00	553.00	610.00	578.00
Wholesale & Retail Trade	N/A	N/A	N/A	N/A
Finance, Insurance & Real Estate	442.00	478.00	619.00	571.00
Services	349.00	382.00	444.00	423.00
State/Local Government	N/A	N/A	N/A	N/A

* Wages for U.S. and surrounding states rounded to nearest dollar.

N/A Not Available.

Note: The average weekly wage for each category includes the salaries and wages of all persons working for that type business. For example, the manufacturing category includes both production workers and administrative personnel. Excludes domestic workers, railway workers, certain nonprofit corporations, majority of federal government workers, and self-employed workers.

Source: Kentucky Cabinet for Human Resources, Average Weekly Wages of Workers Covered by Kentucky Unemployment Insurance Law, 1990. U.S. Department of Labor, Bureau of Labor Statistics, Employment and Wages, Annual Averages, 1990, November 1991.

EXISTING INDUSTRY

PARIS MANUFACTURING FIRMS, THEIR PRODUCTS AND EMPLOYMENT

Firm (Establishment date)	Product	1991 Average Employment
Apex Enterprises, Inc. (1973)	Tool & die	5
Bluegrass Ready Mix (1967)	Ready-mixed concrete	4
Bourbon Graphics (1984)	Commercial printing	5
Central Light Alloy (1989)	Aluminum wheels and discs	71
Central Manufacturing Company (1988)	Auto wheels	205
The Citizen Advertiser, Inc. (1807)	Newspaper publishing, job printing	14
Dimensional Hardwoods, Inc. (1984)	Architectural millwork & custom, hardwood dimension & flooring, wood products	28
Faulconer Manufacturing Company, Inc. (1969)	Fiberglass products, bank fixtures, custom interiors, wood office cabinets	5
Hinkle Contracting Corporation (1962)	Asphalt	3
I.T.W. Ramset/Red Head (1979)	Fastening systems, stud guns	90
Kentucky Textiles, Inc. (1981)	Knit sweat pants, tops, men's, boys & women's swimwear	700
Lane Pharmaceuticals, Inc. (1988)	Veterinary products	8
Mallinckrodt, Inc. (1978)	Inorganic chemicals, organic chemicals	201
Paris Machining Company (1972)	Steering arms, axle components, non-electrical computer hardware, small assembly	30
Quillin Leather & Tack (1979)	Tack and halters, leather goods	6
Weatherly Consumer Products (1972)	Fertilizer spikes	85

Sources: Kentucky Cabinet for Economic Development, Division of Research and Planning; Paris Industrial Development Corporation, Paris-Bourbon County Chamber of Commerce.

LABOR ORGANIZATIONS IN MANUFACTURING FIRMS

There are presently no labor unions representing manufacturing firms in Paris.

SELECTED INDUSTRIAL SERVICES

<u>Types of Services</u>	<u>Location</u>	<u>Mileage from Paris</u>
Custom Data Processing	Lexington	19
Custom Plastics Producers	Georgetown Lexington	18 19
Electric Motor Repair	Lexington	19
Grinding, Precision & Tool	Georgetown Lexington	18 19
Heat Treating Facilities	Georgetown Lexington	18 19
Industrial Equipment & Supplies	Lexington	19
Industrial Gases	Lexington	19
Industrial Waste Removal	Lexington Mt. Sterling	19 26
Machine Shops, Tool & Die	Paris	-
Metal Castings	Cynthiana	15
Metal Finishers	Lexington	19
Metal Service Centers	Lexington	19
Millwrights	Lexington	19
Public Warehouse Facilities	Paris	-

Sources: Kentucky Cabinet for Economic Development, Division of Research and Planning.

TRANSPORTATION

Highways

Paris is served by U.S. Highways 27, 68, 460 and Kentucky Route 627. All are "AAA"-rated (80,000 pound gross load limit) trucking highways. Kentucky Route 1940 a "AA"-rated (62,000 pound gross load limit) trucking highway also provides service to Paris. Interstate 75 can be accessed near Georgetown, 16 miles west of Paris. Interstate 64 can be accessed near Lexington, 15 miles southwest of Paris.

HIGHWAY MILES FROM PARIS, KENTUCKY, TO SELECTED MARKET CENTERS

City	Highway Miles	City	Highway Miles
Atlanta, GA	383	Los Angeles, CA	2,178
Baltimore, MD	524	Louisville, KY	92
Birmingham, AL	415	Nashville, TN	229
Chicago, IL	365	New Orleans, LA	749
Cincinnati, OH	84	New York, NY	722
Cleveland, OH	331	Pittsburgh, PA	361
Detroit, MI	342	St. Louis, MO	350
Knoxville, TN	191		

Note: Mileage computations are via the best interstate or primary highways, not necessarily the most direct route of travel.

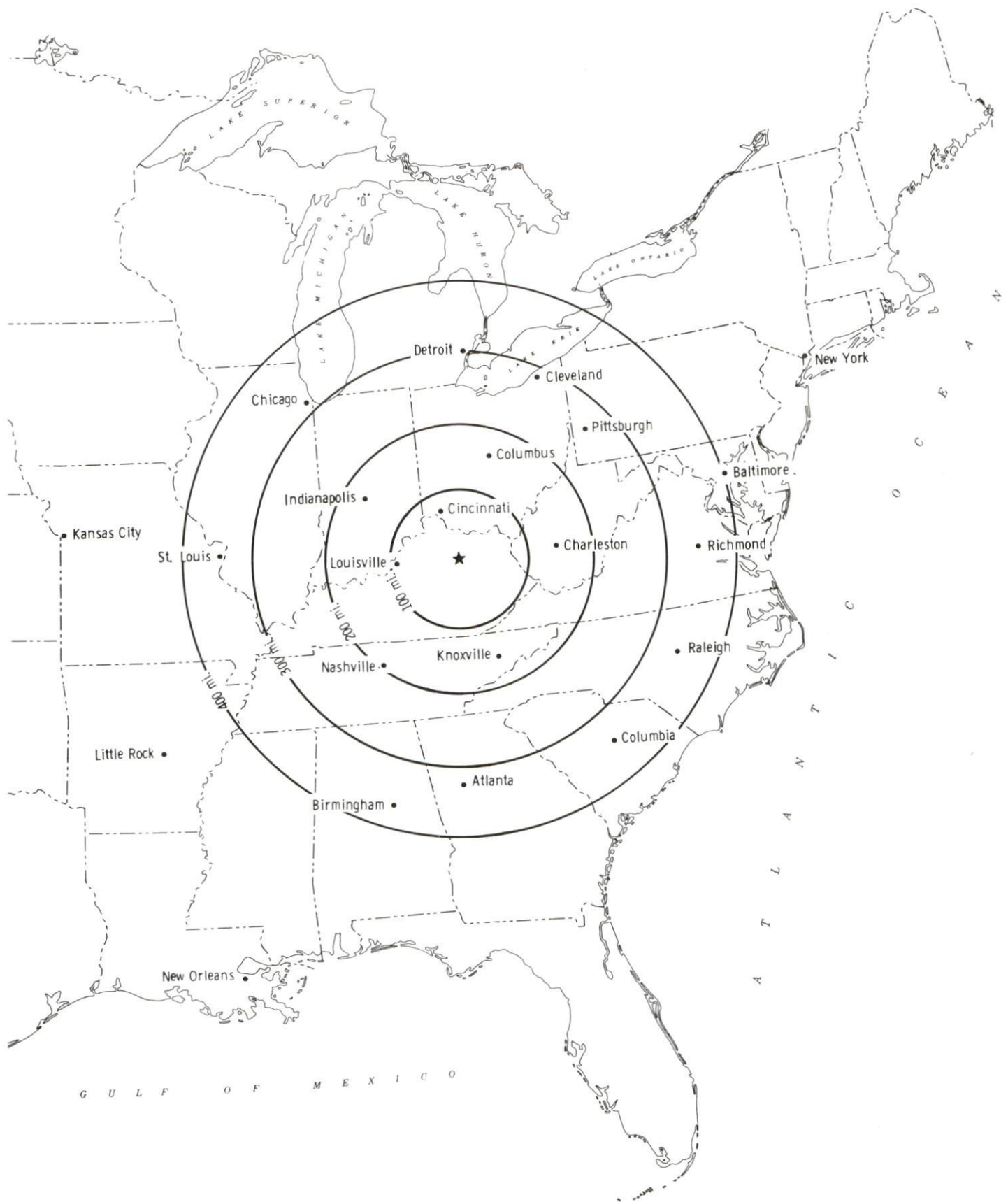
Sources: Rand McNally Deluxe Motor Carriers' Road Atlas, 1989. Official Kentucky Mileage Map, 1980.

Truck Service

Thirty-seven common carrier trucking companies provide interstate and/or intrastate service to Paris.

Source: American Motor Carrier Directory, Spring 1992.

Selected Market Centers



Rail

Main line rail service is provided to Paris by CSX Transportation and by TransKentucky Transportation Railroad, a connecting line extending from Paris to Maysville. The nearest piggyback facility is located at Georgetown, 18 miles west of Paris, and is operated by the Norfolk Southern Railway System.

For details on routing, schedules, rates, and services contact:

Manager
Industrial Development
CSX Transportation
9420 Bunsen Parkway
Suite 212
Louisville, Kentucky 40220
(502) 499-3025

and/or

President
TransKentucky Transportation
Railroad (TTI)
105 Winchester Street
Paris, Kentucky 40631
(606) 987-1589

Air

Nearest Small Craft Airport

Location: Cynthiana-Harrison County Airport
1.5 miles south of Cynthiana;
14 miles north of Paris

Runways: 1 paved

Length: 3,200 feet

Traffic

Control: Wind sock and lighted wind tee

Lighting: Runway lights-sundown to sunrise, VASI,
REIL, RTGBCN

Services: 80 and 100LL fuel; major A & P repairs;
hangars, tie-downs; taxi; A and I service,
Painting

Nearest Scheduled Commercial Airline Service

Location: Bluegrass Airport
4 miles west of Lexington, Kentucky;
23 miles southwest of Paris

Air Service: Delta, USAir, United Express, American Eagle,
ComAir, TW Express, Atlantic Southeast
Airlines, Northwest AirlinK, Henson Airlines

Daily Arrivals
& Departures: 120

UTILITIES

Electricity

Company serving parts of Paris - City of Paris Combined Utilities
Source of power - City of Paris Combined Utilities and Kentucky
Kentucky Utilities Company
For industrial rates contact:

City of Paris Combined Utilities
800 Pleasant Street
Paris, Kentucky 40361-1790
(606) 987-2110

and/or

Industrial Development Department
Kentucky Utilities Company
One Quality Street
Lexington, Kentucky 40507
(606) 255-2100

Company serving parts of Paris and Bourbon County - Kentucky
Utilities Company
Source of power - Kentucky Utilities Company
For industrial rates contact:

Industrial Development Department
Kentucky Utilities Company
One Quality Street
Lexington, Kentucky 40507
(606) 255-2100

Company serving parts of Bourbon County - Clark Rural Electric
Cooperative Corporation and Harrison Rural Electric
Cooperative Corporation
Source of power - East Kentucky Power Cooperative
For industrial rates contact:

Industrial Development Division
East Kentucky Power Cooperative
P.O. Box 707
Winchester, Kentucky 40392-0707
(606) 744-4812

Natural Gas

Company serving Paris - Columbia Gas of Kentucky, Inc.
Source of supply - Columbia Gas Transmission Corporation
For rates and supplies contact:

Columbia Gas of Kentucky, Inc.-
429 Main Street
P.O. Box 304
Paris, Kentucky 40361
(606) 987-4450

Public Water Supply

Company serving Paris - City of Paris Combined Utilities
800 Pleasant Street
Paris, Kentucky 40361-1790
(606) 987-2118 Fax (606) 987-4640

Source - Stoner Creek
Treatment plant capacity - 3,000,000 gallons per day
Average daily consumption - 1,200,000 gallons
Peak daily consumption - 1,800,000 gallons
Storage capacity - 2,908,700 gallons
Water pressure - 35 psi to 100 psi

Sewerage

Company serving Paris - City of Paris Combined Utilities
800 Pleasant Street
Paris, Kentucky 40361-1790
(606) 987-2116 Fax (606) 987-4640

Design capacity - 2,200,000 gallons per day
Average daily flow - 1,000,000 gallons
Type of treatment - Secondary
Treated effluent discharged into - Stoner Creek

The City of Paris Combined Utilities is in the construction phase of adding new residential sewer lines at a cost of \$220,000.

CLIMATE

Bourbon County

Temperature

Normal (29-year record)	54.90 degrees
Average annual 1990	57.10 degrees
Record highest, July 1988 (46-year record)	103.00 degrees
Record lowest, January 1963 (46-year record)	-21.00 degrees
Normal heating degree days (29-year record) (Heating degree day totals are the sums of negative departures of average daily temperatures from 65 degrees F.)	4,814

Precipitation

Normal (29-year record)	45.68 inches
Mean annual snowfall (30-year record)	15.90 inches
Total precipitation 1990	53.16 inches
Mean number days precipitation (.01 inch or more) (46-year record)	129.50
Mean number days thunderstorms (46-year record)	45.10

Prevailing winds (through 1963)

South

Relative Humidity (27-year record, except 1 a.m. - 26-year record)

1 a.m.	77 percent
7 a.m.	81 percent
1 p.m.	60 percent
7 p.m.	64 percent

Source: U.S. Department of Commerce, Environmental Science Services Administration, Climatological Data, 1990. Station of record: Lexington, Kentucky.

LOCAL GOVERNMENT

Structure

The city of Paris is served by a mayor, four commissioners, and a city manager. Bourbon County is served by a county judge/executive and seven magistrates.

Planning and Zoning

Joint agency - Paris - Bourbon County Joint Planning and Zoning Commission

Participating cities - Paris, North Middletown, Millersburg

Zoning enforced - All areas

Subdivision regulations enforced - All areas

Local codes enforced - Building and housing (All areas)

Mandatory state codes enforced - Kentucky Plumbing Code, National

Electric Code, Kentucky Boiler Regulations and Standards, Kentucky

Building Code (modeled after BOCA code)

Local Fees and Licenses

The City of Paris levies an occupational license tax of one and one-half percent of the gross salaries, wages, commissions and other compensations earned by individuals for work done or services performed or rendered in the city and a one and one-half percent tax is levied on net profits of all businesses. Annual business license fees ranging from \$25 to \$500 are charged to businesses in Paris.

PROPERTY TAXES

The Kentucky Constitution requires the state to tax all classes of taxable property, and state statutes allow local jurisdictions to tax only a few classes. All locally taxed property is subject to county taxes and school district taxes (either a county school district or an independent school district). Property located inside of city limits may also be subject to city property taxes.

Special local taxing jurisdictions (fire protection districts, watershed districts, and sanitation districts) levy taxes within their operating areas (usually a small portion of community or county).

Property assessments in Kentucky are at 100% fair cash value. A 15% reduction is automatically granted for accounts receivable.

STATE PROPERTY TAX RATES PER \$100 VALUATION

<u>Selected Classes of Property</u>	<u>1991 State Rate</u>	<u>Local Taxation Permitted</u>
Real Estate	\$0.187	YES
Manufacturing Machinery	0.150	NO
Pollution Control Equipment	0.150	NO
Inventories		
Raw Materials	0.050	NO
Goods in Process	0.050	NO
Finished Goods	0.050	YES
Motor Vehicles	0.450	YES
Other Tangible Personal Property	0.450	YES
Intangibles (Accounts Receivable, Money on Hand)	0.250	NO

LOCAL PROPERTY TAX RATES PER \$100 VALUATION, 1991

<u>Taxing Jurisdiction</u>	<u>Real Estate</u>	<u>Finished Goods & Tangibles</u>	<u>Motor Vehicles</u>
Bourbon County	N/A	N/A	\$0.2170
School Districts:			
Bourbon County	0.4610	0.4610	0.5470
Paris Independent	0.5570	0.5570	0.5530
Cities:			
Paris	0.1600	0.1600	0.1700

EDUCATION

Public Schools

	Paris Independent	Bourbon County
Total Enrollment (Fall, 1991)	980	2,682
Pupil-Teacher Ratio (1990-91)	13.3-1	17.9-1
Percent High School Graduates to College (1990-91)	58.1	54.0
Expenditures Per Pupil (1990-91)	\$3,729.65	\$3,118.72

Nonpublic Schools

<u>School</u>	<u>Enrollment</u>	<u>Grades</u>
Meteer School	39	Preschool
Millersburg Military Institute (Millersburg)	72	7-12
St. Mary's School	49	1-6

The Bourbon County School System is constructing a new elementary school. The \$3.2 million facility is scheduled for completion in the fall of 1992.

The Paris Independent School System has recently completed \$2.25 million in construction projects. A new library and media center was added to the elementary school. New additions to the middle school include: a new library, media center, art room and home economics area. At the high school additions include: two new classrooms to be utilized for special education, a new library, media center, art room and gymnasium.

Area Colleges and Universities

<u>Name</u>	<u>Location (Miles distant)</u>	<u>Enrollment (Fall, 1991)</u>
Georgetown College	Georgetown (18)	1,547
Lexington Community College	Lexington (19)	4,985
Transylvania University	Lexington (19)	1,038
University of Kentucky	Lexington (19)	24,132
Midway College	Midway (28)	722
Kentucky State University	Frankfort (36)	2,534
Asbury College	Wilmore (37)	1,081
Eastern Kentucky University	Richmond (38)	16,525
Maysville Community College	Maysville (48)	1,231
Berea College	Berea (52)	1,606
Centre College	Danville (54)	880
Morehead State University	Morehead (55)	8,812

Vocational Training

Vocational training is available at both the state vocational-technical schools and the area vocational education centers. The state vocational-technical schools are post-secondary institutions. The area vocational education centers are designed to supplement the curriculum of high school students. Both the state vocational-technical schools and the area vocational education centers offer evening courses to enable working adults to upgrade current job skills.

Arrangements can be made to provide training in the specific production skills required by an industrial plant. Instruction may be conducted either in the vocational school or in the industrial plant, depending upon the desired arrangement and the availability of special equipment.

Bluegrass State Skills Corporation

The Bluegrass State Skills Corporation, an independent public corporation created and funded by the Kentucky General Assembly, provides programs of skills training to meet the needs of business and industry from entry level to advanced training, and from upgrading present employees to retraining experienced workers.

The Bluegrass State Skills Corporation is the primary source for skills training assistance for a new or existing company. The Corporation works in partnership with other employment and job training resources and programs, as well as Kentucky's economic development activities, to package a program customized to meet the specific needs of a company.

<u>Vocational School</u>	<u>Location (Miles distant)</u>	<u>Cumulative Enrollment 1990-1991</u>
Harrison County Area Vocational Education Center	Cynthiana (15)	439
Central Kentucky State Vocational- Technical School	Lexington (19)	2,043
Fayette East Area Vocational Education Center	Lexington (19)	261
Fayette South Area Vocational Education Center	Lexington (19)	340

OTHER LOCAL FACILITIES

Local Medical Personnel

Physicians - 17
Dentists - 7

Hospitals

<u>General Hospital</u>	<u>Location</u>	<u>Beds</u>
Bourbon General Hospital	Paris	58

Medical staff - 14 active physicians, 27 courtesy physicians,
35 registered nurses, 11 licensed practical nurses

Other Medical Facilities and Services

Bluegrass Medical Clinic
Bourbon County Comprehensive Care Center
Bourbon County Health Department
Paris-Bourbon County Emergency Medical Service
Stoner Creek Centre

Banks and Savings & Loan Associations

Blue Grass Federal Savings and Loan Association
Bourbon Agricultural Deposit Bank & Trust Company
Fifth Third Bank

Newspapers

The Bourbon County Citizens (weekly)
The Bourbon Times (weekly)
The Citizen Advertiser (weekly)

Telephone Service

South Central Bell

RECREATION

Local

A number of public recreational facilities are available in Paris. Bourbon Park, a 30-acre county park, contains lighted softball/baseball fields, a track, a tennis court, fairground facilities, pavilion, basketball/volleyball courts (one court can be flooded during winter months for ice skating), exercise stations, picnic areas, and horseshoe pits.

Garrard Park, operated by the city, features nine tennis courts, a lighted softball/baseball field, and a picnic pavilion. The city plans to add a basketball court in the near future. There are three additional limited facility parks located throughout the county and two soccer fields. The City of Paris also sponsors Little league and Babe Ruth league baseball programs.

Private recreational facilities include a country club, with a nine-hole golf course and swimming pool, a commercial nine-hole golf course, a YMCA with an olympic-size swimming pool and fitness center. Paris residents also benefit from a local bowling alley and drive-in theater.

Area (Within 65 miles)

The Kentucky Horse Park
Blue Licks Battlefield State Park
Waveland State Historic Site
Kentucky State Capital
The Daniel Boone National Forest
Kincaid Lake State Park
Shaker Village of Pleasant Hill
Fort Boonesborough State Park
White Hall State Historic Site
Keeneland Race Course
Red Mile Harness Track

COMMUNITY IMPROVEMENTS

Paris re-certified as a "Kentucky Certified City" in 1991, and is distinguished as a gold award winner recognizing six consecutive years of certification. Re-certification is based on achievement in the following areas: existing industry assistance, small business assistance, educational resources, and community development factors of health care, public safety, arts and culture, recreation, governmental awareness and resources. The Certified Cities Program is sponsored by the Kentucky Chamber of Commerce.

Recent

The Paris Independent School System has recently completed \$2.25 million in construction projects. A new library and media center was added to the elementary school. New additions to the middle school included: a new library, media center, art room and home economics area. At the high school additions include: two new classrooms to be utilized for special education, a new library, media center, art room and gymnasium.

Mallinckrodt, Inc. has established a scholarship for achievers at both Paris High School and Bourbon County High School. The scholarship will be available to students pursuing a career in the sciences with preference given to those majoring in chemistry, chemical engineering or environmental science. The students will receive \$1,000 per year for up to four years at an accredited, four year institution of higher learning.

Paris is an active member in the Kentucky Main Street Program. The Paris-Bourbon County Revitalization Organization has held seminars for local merchants to help them better market and advertise their product. A Paint Partnership Project was initiated also to assist downtown merchants in facade improvements.

Under Way

A new \$2.3 million county jail is being constructed. The 73-bed facility is scheduled for completion in March 1993.

The Bourbon County School System is constructing a new elementary school. The \$3.2 million facility is scheduled for completion in the fall of 1992.

The City of Paris Combined Utilities is in the construction phase of adding new residential sewer lines at a cost of \$220,000.

Bourbon County, in an effort to address environmental concerns, has implemented a mandatory trash pickup. The county also plans to initiate mandatory recycling in the summer of 1992.

Planned

The City of Paris is planning to renovate the old Bourbon County Hospital. City government offices and the Paris police department plan to utilize the newly renovated building.