

1988

Industrial Resources: Boyle County - Danville

Kentucky Library Research Collections
Western Kentucky University, spcol@wku.edu

Follow this and additional works at: https://digitalcommons.wku.edu/boyle_cty

 Part of the [Business Administration, Management, and Operations Commons](#), [Growth and Development Commons](#), and the [Infrastructure Commons](#)

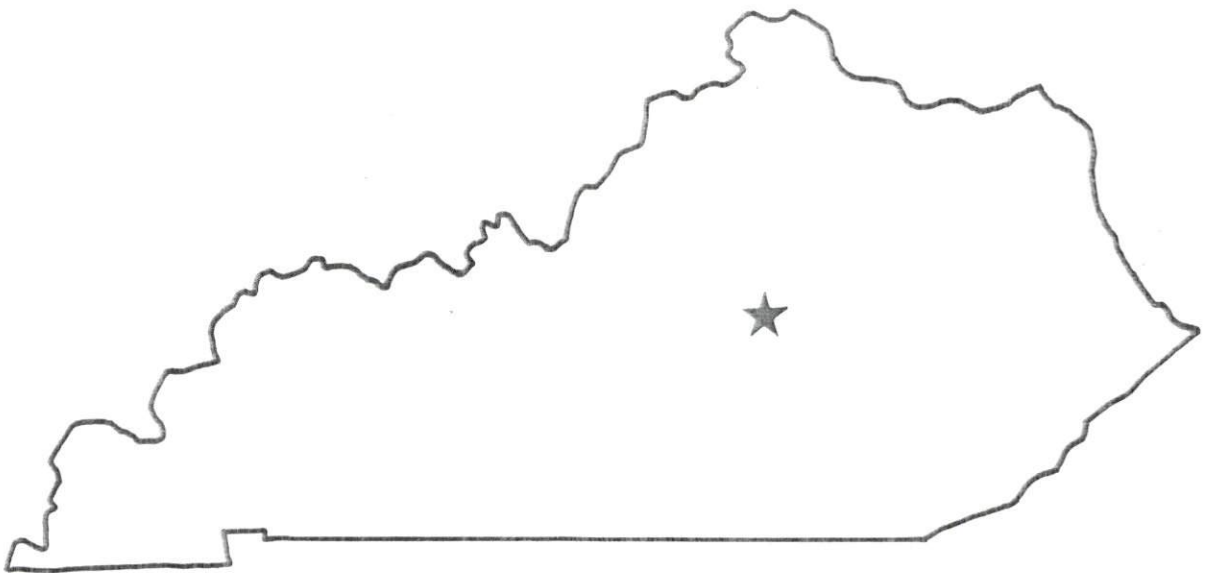
Recommended Citation

Kentucky Library Research Collections, "Industrial Resources: Boyle County - Danville" (1988). *Boyle County*. Paper 17.
https://digitalcommons.wku.edu/boyle_cty/17

This Report is brought to you for free and open access by TopSCHOLAR®. It has been accepted for inclusion in Boyle County by an authorized administrator of TopSCHOLAR®. For more information, please contact topscholar@wku.edu.

RESOURCES FOR ECONOMIC DEVELOPMENT

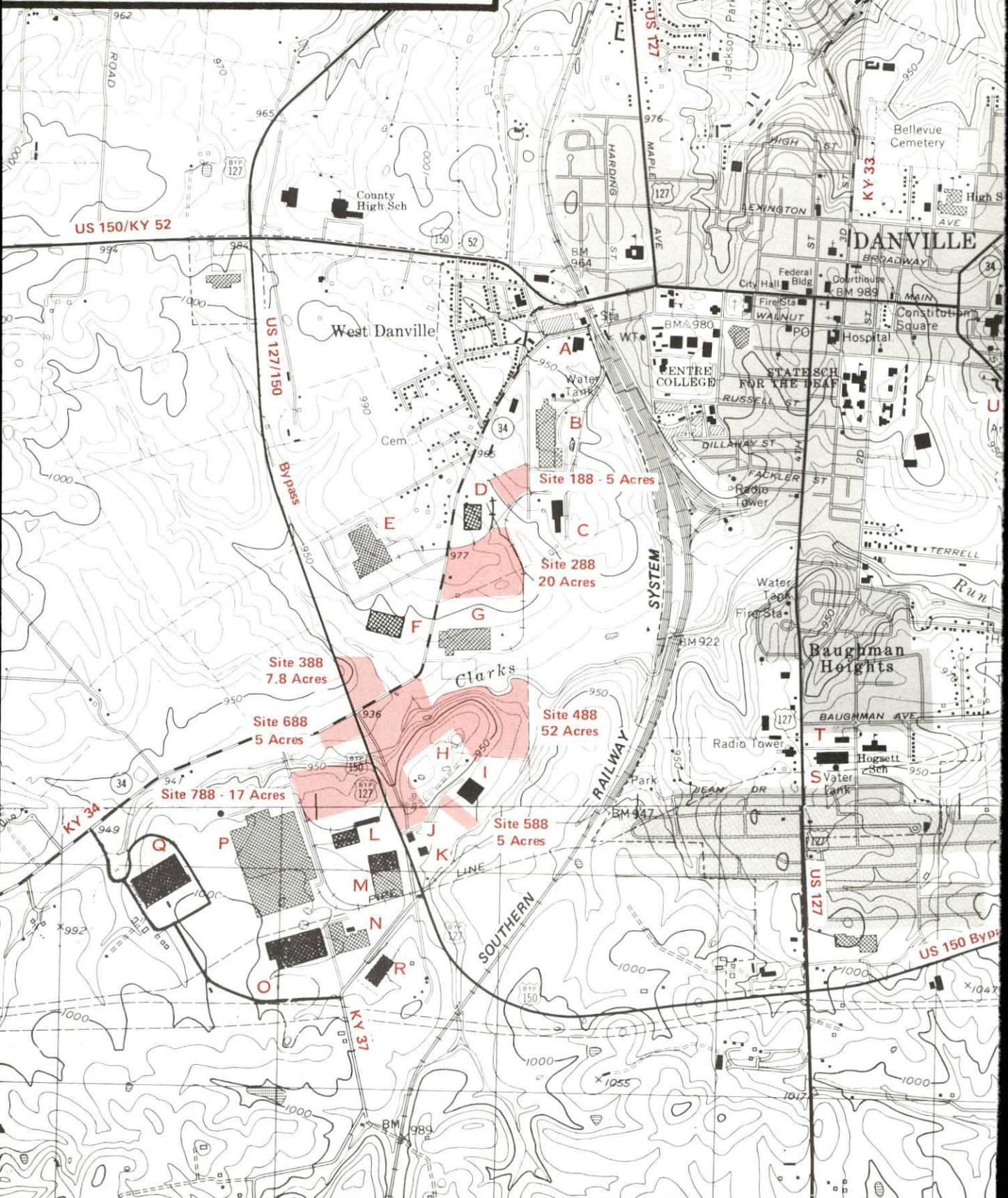
Danville

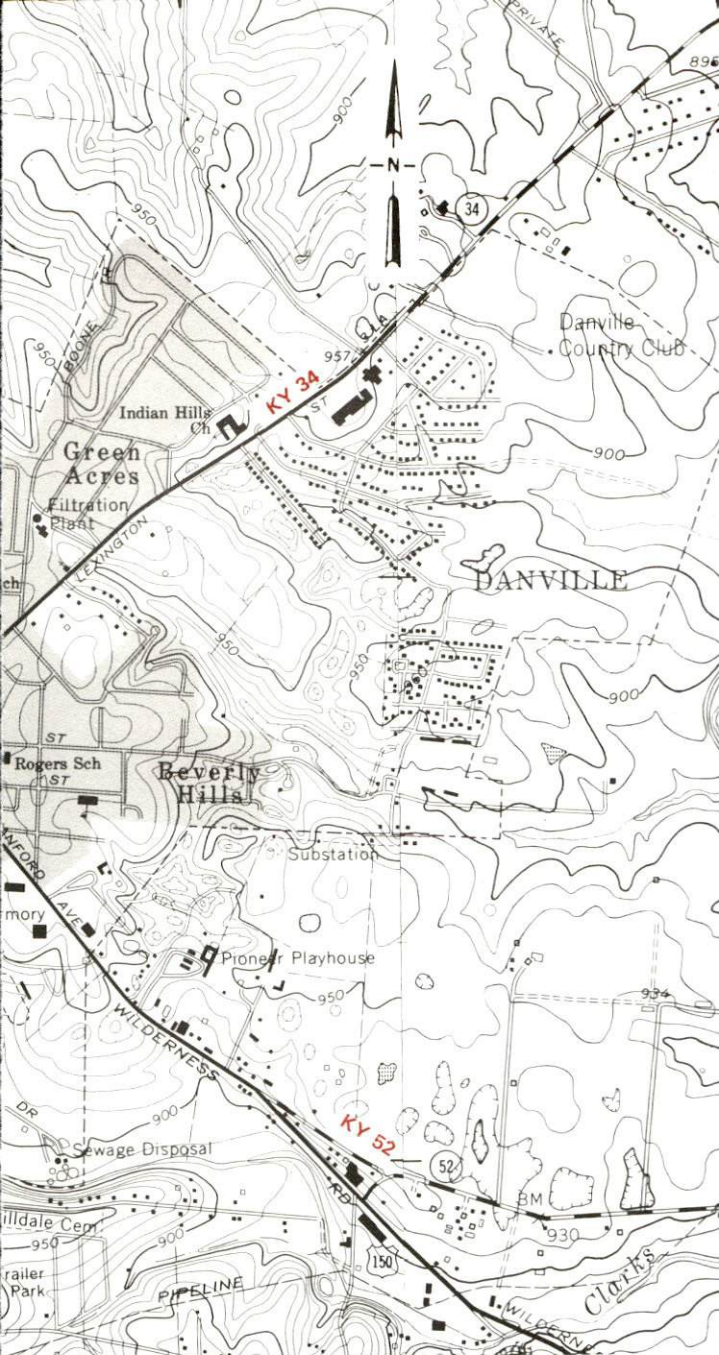


DANVILLE, KENTUCKY

Index to Industrial Sites - 1988

For more information contact the Cabinet for Economic Development, Department of Business Development, Industrial Development & Marketing Division, Capital Plaza Tower, Frankfort, Kentucky 40601 (502-564-7140)





Existing Industries

- A Sellers Engineering Co.
- B North American Philips Lighting Corp.
- C Greenleaf Plant Foods
- D Deerfield Plastics Co., Inc.
- E Whirlpool Corp.
- F Kay-Bee Toy & Hobby Shops Inc.
- G Mathews Conveyors
- H Dana Corp.
- I Fred Cain Farm Equipment Co.
- J Sun Chemical Co.
- K Servomation of Kentucky
- L Available Industrial Bldg (138,000 sq. ft.)
- M ATR Wire & Cable Co., Inc.
- N Jackson Furniture of Danville
- O Thom-McAn Distribution Center
- P American Greetings Corp.
- Q R. R. Donnelly & Sons Co.
- R Davis Metal Sales Inc.
- S Genesco Inc.
- T Available Industrial Bldg. (20,000 sq. ft.)
- U Available Industrial Bldg. (48,720 sq. ft.)

SCALE: 1 inch = 2000 feet

CONTOUR INTERVAL: 10-20 feet

BASE: USGS 7.5 minute series - 1952-1967

Photorevised 1979

RESOURCES FOR ECONOMIC DEVELOPMENT

DANVILLE, KENTUCKY

Prepared by
The Kentucky Department of Business Development
Division of Research and Planning
in cooperation with
The Danville-Boyle County Chamber of Commerce

1988

Program manager - Andrew Dennis; research - Keith Roberts; clerical - Bobbi Graves; graphics - Tony Cecconi, Robert Owens, Pat Coleman; cartography - Site Evaluation Branch, Division of Industrial Development and Marketing. Cost of printing paid from state funds.

TABLE OF CONTENTS

<u>Chapter</u>	<u>Page</u>
INDUSTRIAL SITES	i
DANVILLE, KENTUCKY - A RESOURCE PROFILE	1
THE LABOR MARKET STATISTICS	2
Population	2
Population Projections	2
Labor Force Characteristics of Residents, 1986	3
Selected Components of Nonagricultural Employment, by Place of Work, 1986	3
Per Capita Personal Income	4
Estimated Male Labor Supply	5
Estimated Female Labor Supply	5
Average Weekly Wages by Industry, by Place of Work, 1986	6
EXISTING INDUSTRY	8
Danville Manufacturing Firms, Their Products and Employment	8
Labor Organizations in Manufacturing Firms	10
Distribution Centers	10
Selected Industrial Services	11
TRANSPORTATION	12
Rail	12
Highways	12
Truck Service	13
Air	14
Air Express Service	14
Water	14
POWER AND FUEL	15
Electricity	15
Natural Gas	15
Other Fuels	16
WATER AND SEWERAGE	17
Public Water Supply	17
Sewerage	18
CLIMATE	20

<u>Chapter</u>	<u>Page</u>
LOCAL GOVERNMENT	21
Structure	21
Planning and Zoning	21
Local Fees and Licenses	21
State and Local Property Taxes	22
Combined State and Local Rates Per \$100 Valuation, 1987	22
Safety	23
Police	23
Fire	23
Rescue Service	23
Refuse Collection and Disposal	23
EDUCATION	24
Public Schools	24
Special Schools	24
Area Colleges and Universities	25
Vocational Training	26
HEALTH	28
Local Medical Personnel	28
Hospitals	28
Other Medical Facilities	28
Ambulance Service	28
OTHER LOCAL FACILITIES	29
Communications	29
Library Services	29
Religious Institutions	29
Financial Institutions	30
Hotels and Motels	30
Clubs and Organizations	31
RECREATION	32
COMMUNITY IMPROVEMENTS	34

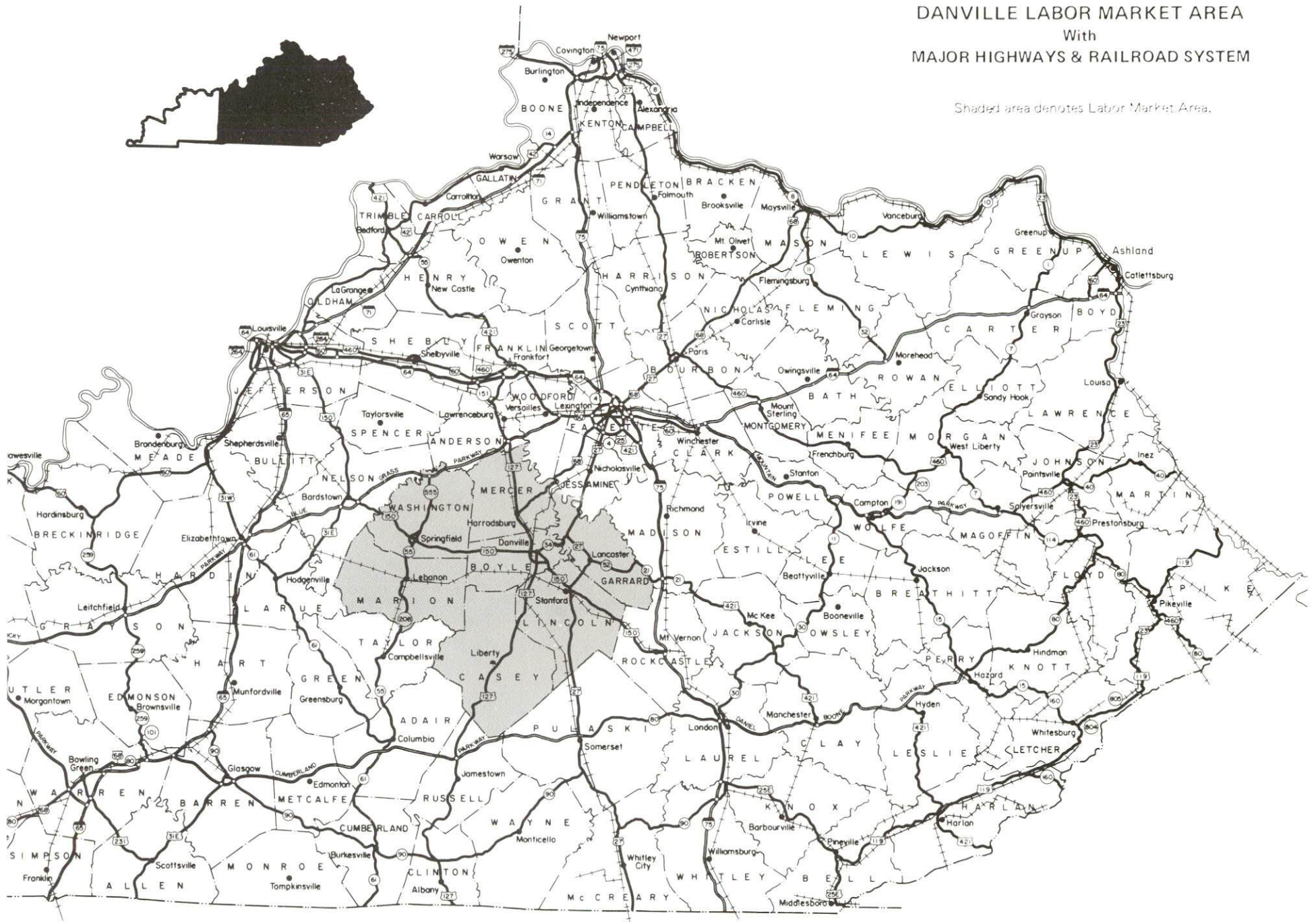
1987 EDITION
GENERAL HIGHWAY MAP
BOYLE COUNTY
KENTUCKY

PREPARED BY THE
KENTUCKY TRANSPORTATION CABINET
DEPARTMENT OF HIGHWAYS
DIVISION OF PLANNING
IN COOPERATION WITH THE
U.S. DEPARTMENT OF TRANSPORTATION
FEDERAL HIGHWAY ADMINISTRATION



DANVILLE LABOR MARKET AREA
With
MAJOR HIGHWAYS & RAILROAD SYSTEM

Shaded area denotes Labor Market Area.



DANVILLE, KENTUCKY - A RESOURCE PROFILE

Danville, the county seat of Boyle County, is located in the gently rolling landscape of central Kentucky's Blue Grass Region. The city's central location and excellent transportation facilities contribute to the city's growth as a manufacturing and distribution center. Danville had an estimated population of 13,160 in 1986. Danville is located 35 miles southwest of Lexington, Kentucky; 83 miles southeast of Louisville, Kentucky; 154 miles north of Knoxville, Tennessee; and 113 miles south of Cincinnati, Ohio.

Boyle County, with a land area of 182 square miles, had a 1986 estimated population of 25,500 persons.

The Economic Framework - The total number of Boyle County residents employed in 1986 averaged 11,675. Manufacturing firms in the county reported 3,955 employees; wholesale and retail trade provided 3,530 jobs; 1,820 people were employed in service occupations; state and local government accounted for 1,360 employees; contract construction firms provided 330 jobs; and 30 people were employed by mining and quarrying operations.

Labor Supply - There is a current estimated labor supply of 7,800 men and 9,775 women available for industrial jobs in the labor market area. In addition, from 1988 through 1992, 4,880 young men and 4,650 young women in the area will become 18 years of age and potentially available for industrial jobs.

Transportation - Main line rail service is provided to Danville by the Southern Railway System. Major "AAA"-rated (80,000-pound gross load limit) highways serving Danville are U.S. Highways 127 and 150. Twenty-six common carrier trucking companies provide interstate and/or intrastate service to the city. The Danville-Boyle County Airport, four miles south of Danville, maintains two paved runways of 4,800 and 2,400 feet. The nearest scheduled commercial airline service is available at the Bluegrass Airport near Lexington, 43 miles northeast of Danville.

Power and Fuel - Kentucky Utilities Company provides electric power to Danville and portions of Boyle County. The major portion of Boyle County is served by Inter-County Rural Electric Cooperative Corporation. Western Kentucky Gas Company provides natural gas service to Danville. Four propane dealers and seven distillate fuel oil dealers are located within 15 miles of the city.

Education - Primary and secondary education is provided to Danville and Boyle County by the Danville Independent School System and the Boyle County School System. The Danville Independent School System is accredited by the Southern Association of Colleges and Schools. The Kentucky School for the Deaf is also located in Danville. Centre College, located in Danville, is an independent, four-year college which confers Bachelor of Arts and Bachelor of Science degrees. The Fall 1987 enrollment at Centre College was 882. The Kentucky College of Business, also located in Danville, confers the Associate in Science degree. In addition, three universities, two senior colleges, a junior college and a community college are located within 36 miles of Danville. Central Kentucky State Vocational-Technical School is located in Lexington, 35 miles northeast of Danville, and offers instruction in 26 course areas. The Harrodsburg Area Vocational Education Center, 9 miles north of Danville at Harrodsburg, and the Garrard County Area Vocational Education Center at Lancaster, 12 miles east of Danville, each offer training in seven course areas.

LABOR MARKET STATISTICS

The Danville Labor Market Area includes Boyle County and the adjoining Kentucky counties of Casey, Garrard, Lincoln, Marion, Mercer, and Washington.

POPULATION

Area	1986*	1980	1970	Percent Nonwhite
				1980
Danville	13,160	12,942	11,542	14.9
Labor Market Area	118,700	117,475	104,313	-
Boyle County	25,500	25,066	21,861	9.5
Casey County	15,000	14,818	12,930	0.3
Garrard County	11,800	10,853	9,457	5.5
Lincoln County	19,300	19,053	16,663	4.2
Marion County	17,700	17,910	16,714	8.0
Mercer County	19,200	19,011	15,960	4.6
Washington County	10,200	10,764	10,728	10.3

* Population estimates.

Note: The 1980 city counts of population by race are provisional.

Sources: U.S. Department of Commerce, Bureau of the Census, 1980 Census of Population and Housing, March 1981; 1980 Census of Population, Number of Inhabitants. University of Louisville, Urban Studies Center, Population Unit.

POPULATION PROJECTIONS

Area	1990	1995	2000	2010
Labor Market Area	123,008	126,817	129,622	133,139
Boyle County	26,345	27,301	27,973	28,632
Casey County	15,776	16,244	16,615	17,133
Garrard County	11,849	12,252	12,543	12,899
Lincoln County	19,831	20,392	20,810	21,324
Marion County	18,232	18,639	18,939	19,367
Mercer County	20,567	21,549	22,290	23,377
Washington County	10,408	10,440	10,452	10,407

Source: University of Louisville, Urban Studies Center, Population Research Unit, How Many Kentuckians: Population Forecasts, 1980-2020, the 1986 Edition, Spring 1986.

LABOR FORCE CHARACTERISTICS OF RESIDENTS, 1986

	<u>Boyle County</u>	<u>Labor Market Area</u>
Civilian Labor Force	12,775	52,997
Employment	11,675	46,954
Unemployment	1,100	6,043
Rate of Unemployment (%)	8.6	11.4

Source: Kentucky Cabinet for Human Resources, Kentucky Labor Force Estimates, Annual Averages, 1986.

SELECTED COMPONENTS OF NONAGRICULTURAL EMPLOYMENT
BY PLACE OF WORK, 1986

	<u>Boyle County</u>	<u>Labor Market Area</u>
All Industries (total)	11,868	26,837
Manufacturing	3,955	8,107
Wholesale & Retail Trade	3,526	6,897
Services	1,818	4,043
State/Local Government	1,364	4,457
Contract Construction	333	1,085
Mining & Quarrying	33	60

Note: Excludes domestic workers, railway workers, certain nonprofit corporations, majority of federal government workers, and self-employed workers.
Source: Kentucky Cabinet for Human Resources, Average Monthly Workers Covered by Kentucky Unemployment Insurance Law, 1986.

PER CAPITA PERSONAL INCOME

<u>Area</u>	<u>1980</u>	<u>1984</u>	<u>Percent Change</u>
Boyle County	\$ 7,643	\$ 10,428	36.4
Labor Market Area Range	\$4,533 - 7,643	\$5,871 - 10,428	-
Kentucky	7,644	10,232	33.9
U.S.	9,494	12,772	34.5

Sources: U.S. Department of Commerce, Bureau of Economic Analysis. Kentucky Economic Information System, June 1986.

ESTIMATED MALE LABOR SUPPLY
DANVILLE LABOR MARKET AREA

Area	Current				Future
	Total Male	Unemployed	Under-employed	Not in Labor Force	Becoming 18 years of age 1988 thru 1992
Labor Market Area*	7,796	3,505	2,705	1,586	4,884
Boyle	1,122	558	564	0	1,083
Casey	1,997	391	460	1,146	632
Garrard	840	353	287	200	434
Lincoln	1,391	772	379	240	821
Marion	1,169	743	426	0	747
Mercer	769	422	347	0	744
Washington	508	266	242	0	423

ESTIMATED FEMALE LABOR SUPPLY
DANVILLE LABOR MARKET AREA

Area	Current				Future
	Total Female	Unemployed	Under-employed	Not in Labor Force	Becoming 18 years of age 1988 thru 1992
Labor Market Area*	9,775	2,538	2,434	4,803	4,646
Boyle	1,208	542	613	53	992
Casey	2,036	257	292	1,487	599
Garrard	1,083	290	199	594	362
Lincoln	1,919	474	370	1,075	781
Marion	1,153	359	268	526	758
Mercer	1,709	318	439	952	730
Washington	667	298	253	116	424

* Additional workers may be drawn from other nearby counties.

Note: Unemployed - persons unemployed and actively seeking work; Underemployed - persons employed but working only 14 to 26 weeks per year; Not in Labor Force - represents the number of persons who would enter the labor force if suitable employment were available (based on the assumption that persons in Kentucky would like to participate in the labor force in the same proportion that they do nationally).

Sources: Kentucky Cabinet for Human Resources, Kentucky Labor Supply Estimates by County, 1986. Kentucky Department of Economic Development, Future Labor Supply Becoming 18 Years of Age, 1988 thru 1992.

AVERAGE WEEKLY WAGES BY INDUSTRY
BY PLACE OF WORK, 1986

	<u>Boyle County</u>	<u>Casey County</u>	<u>Garrard County</u>	<u>Lincoln County</u>
All Industries	\$318.77	\$224.89	\$220.50	\$222.70
Mining & Quarrying	616.59	*	*	0
Contract Construction	269.71	243.01	270.97	188.17
Manufacturing	427.20	187.53	203.58	234.70
Transportation, Communications & Public Utilities	427.69	473.06	360.45	276.70
Wholesale & Retail Trade	219.73	167.44	144.79	154.14
Finance, Insurance & Real Estate	330.56	286.51	278.58	257.75
Services	262.68	155.29	234.34	218.82
State/Local Government	306.42	285.04	242.97	275.59
Other	244.00	*	173.08	87.18

	<u>Marion County</u>	<u>Mercer County</u>	<u>Washington County</u>
All Industries	\$241.18	\$284.73	\$236.51
Mining & Quarrying	*	0	316.61
Contract Construction	181.45	298.81	288.24
Manufacturing	297.60	392.71	301.59
Transportation, Communications & Public Utilities	263.48	442.29	184.75
Wholesale & Retail Trade	175.86	166.29	174.35
Finance, Insurance & Real Estate	261.63	291.10	301.32
Services	240.52	189.50	152.97
State/Local Government	261.19	285.22	234.00
Other	187.60	196.75	165.90

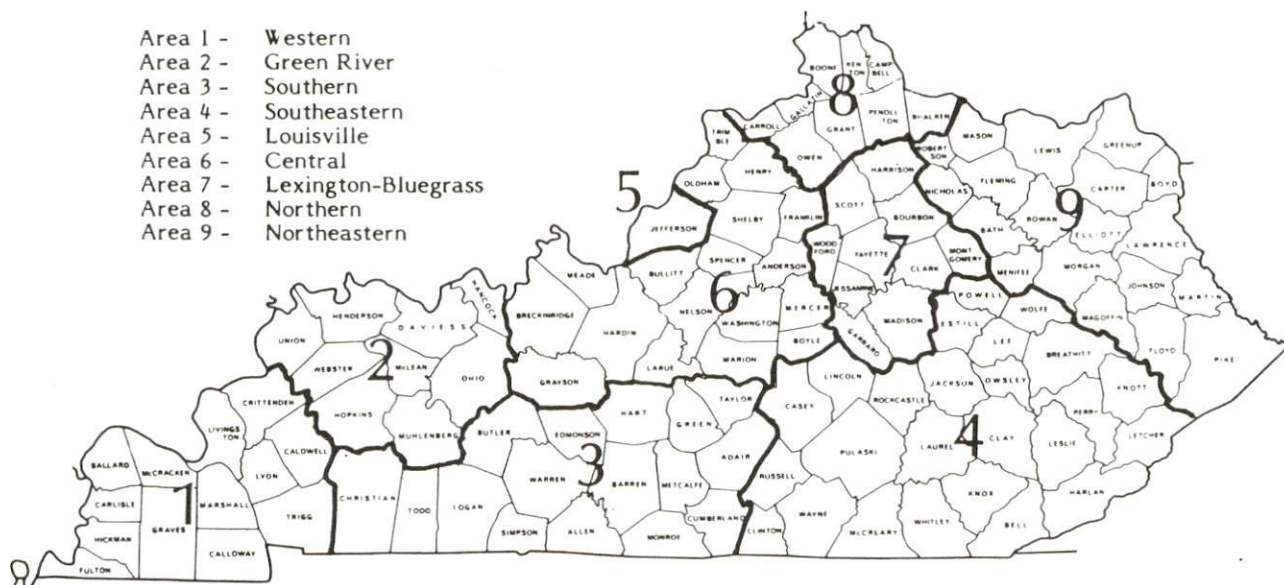
* Not disclosed.

Note: The average weekly wage for each category includes the salaries and wages of all persons working for that type business. For example, the manufacturing category includes both production workers and administrative personnel. Excludes domestic workers, railway workers, certain nonprofit corporations, majority of federal government workers, and self-employed workers.

Source: Kentucky Cabinet for Human Resources, Average Weekly Wages of Workers Covered by Kentucky Unemployment Insurance Law, 1986.

Occupational wage rates for specific industries are usually not available to most government agencies, and wage data furnished to state employment agencies by individual industrial employers are protected from disclosure by federal law. The most reliable up-to-date wage information can be obtained by direct contact with local employers.

Associated Industries of Kentucky, a voluntary organization of Kentucky businesses, regularly collects occupational wage rates and fringe benefits data from participating member firms. Data are compiled for over 127 clearly defined office, production, and service occupations. Tabulations are published for nine geographical areas of Kentucky, as shown on the map below. It should be noted that the data may be weighted by the preponderance of firms in the larger cities and may be somewhat higher than the rates paid in the smaller communities. Data from these tabulations are available, upon request, from the Kentucky Department of Economic Development, Frankfort, Kentucky 40601.



Associated Industries of Kentucky Area Wage Surveys

EXISTING INDUSTRY

DANVILLE MANUFACTURING FIRMS,
THEIR PRODUCTS AND EMPLOYMENT

Firm (Establishment date)	Product	Average Employment			Labor Unions
		Total	Male	Female	
Ad-Mart (1984)	Display lettering	40	-	-	
ATR Wire & Cable Company, Inc. (1971)	Steel tire cord & bead wire	690	539	151	
Advocate Communica- tions, Inc., DBA- Advocate-Messenger Company (1965)	Newspaper	65	29	36	
Boyle Block Company (1943)	Concrete block	20	19	1	
Burkman Industries, Inc. (1979)	Animal feeds	29	27	2	
Fred Cain Farm Equip- ment Company (1959)	Tractor accessories, field tillers	32	30	2	
Caldwell Stone Company, Inc. (1928)	Agricultural lime, crushed stone	18	17	1	
Concrete Materials Corporation (1948)	Ready-mixed concrete, septic tanks, water troughs, concrete block	7	7	0	
Danville Machine Com- pany, Inc. (1973)	Screw machine products, custom machine products	9	9	0	
Davis Metal Sales, Inc. (1982)	Steel roofing & siding, steel fabrication	28	20	8	
Deerfield Plastics Company, Inc. (1978)	Polyethylene film	57	54	3	

(Continued)

Firm (Establishment date)	Product	Average Employment			Labor Unions
		Total	Male	Female	
R. R. Donnelley & Sons Company (1985)	Catalogs, magazines	N/A	-	-	
The Elements Pottery (1972)	Hand crafted pottery, hand rolled beeswax candles	6	4	2	
Genesco, Inc. (1946)	Ladies' shoes, men's shoes	87	14	73	
Greenleaf Plant Foods of Danville, Inc. (1953)	Fertilizer mixing	7	5	2	
Jackson of Danville (1946)	Upholstered chairs & sofas, tables	80	64	16	
Kapp Uniforms (1972)	Parade equipment, men's & women's band uniforms	29	4	25	
Kentucky Machine Works, Inc. (1983)	Machine shop, metal fabrica- tion	3	2	1	
Lee Machine Shop, Inc. (1981)	Machine shop	5	5	0	
Mathews Conveyor Company (1973)	Unit handling conveyors	490	-	-	
North American Philips Lighting Corporation (1952)	Glass bulbs, tubing	400	320	80	Flint Glass Workers*
Pioneer Vocational/ Industrial Services, Inc. (1969)	Foam packaging, industrial subassemblies	50	25	25	
Royal Crown Bottling Company (1938)	Soft drinks	41	38	3	
Sellers Engineering Company (1947)	Boilers, com- mercial gas-fired water heaters, deaerating equipment	N/A	-	-	

(Continued)

Firm (Establishment date)	Product	Average Employment			Labor Unions
		Total	Male	Female	
Swiss Ice Company (1971)	Ice	6	5	1	
Whirlpool Corporation (1970)	Trash com- pactors, ice makers for re- frigerators, vacuum cleaners	971	597	374	

* See Labor Organizations below.

Sources: Kentucky Department of Economic Development, 1987 Kentucky Directory of Manufacturers; Division of Research and Planning.

LABOR ORGANIZATIONS IN MANUFACTURING FIRMS

Union	Representing workers at:
American Flint Glass Workers Union, AFL-CIO	North American Philips Lighting Corporation

DISTRIBUTION CENTERS

Firm (Establishment date)	Employment
American Greetings Corporation (1965)	793
Kay-Bee Toy and Hobby Shop, Inc. (1985)	80
Thom McAn Shoe Company, Inc. (1981)	150

Source: Danville-Boyle County Chamber of Commerce.

SELECTED INDUSTRIAL SERVICES

<u>Types of Service</u>	<u>Location</u>	<u>Mileage from Danville</u>
Custom Data Processing	Danville	-
Custom Plastics Producers	Danville	-
Electric Motor Repair	Lebanon	31
	Lexington	35
Grinding, Precision & Tool	Lexington	35
	Richmond	36
Heat Treating Facilities	Lexington	35
	Richmond	36
Industrial Equipment & Supplies	Springfield	27
Industrial Gases	Lexington	35
Industrial Waste Removal	Lexington	35
	Richmond	36
Machine Shops, Tool & Die	Danville	-
Metal Castings	Cynthiana	63
Metal Finishers	Lexington	35
	Richmond	36
Metal Service Centers	Lexington	35
	Richmond	36
Millwrights	Nicholasville	23
Public Warehouse Facilities	Danville	-

Sources: Kentucky Department of Economic Development, Kentucky Directory of Selected Industrial Services, 1987; Division of Research and Planning.

TRANSPORTATION

Rail

Line serving Danville - Southern Railway System

Services - Main line; nine northbound freights and nine southbound freights make daily stops; nine southbound and nine northbound through freights daily; switch engine; team track space for five cars; ample siding space; piggyback facilities. Danville is a major rail terminal, trains stop for cars and crew changes.

For details on routing, schedules, rates, and services contact:

District Sales Manager
Norfolk Southern Corporation
1402 South 15th Street
Louisville, Kentucky 40210
(502) 636-6023

Highways

U.S. Highways 127 and 150 are "AAA"-rated (80,000-pound gross load limit) highways serving Danville. U.S. 127 provides Danville with four-lane access to the Blue Grass Parkway, 25 miles to the north. The Blue Grass Parkway is a four-lane toll road which connects with Interstate 65, 84 miles west of Danville.

U.S. 150 provides direct access to Interstate 75, 38 miles southeast of Danville. Interstate 75 is also accessible 38 miles east of Danville via U.S. 150 and Kentucky Route 1295. U.S. 127 continues south to the multi-lane Cumberland Parkway, 51 miles south of Danville.

Kentucky Routes 33, 34 and 52, all "AA"-rated highways (62,000-pound gross load limits), also serve Danville.

Truck Service

ANR Freight System, Inc.*	Manning Motor Express, Inc.**
American Freight System, Inc.*	Middlewest Freightways, Inc.**
Averitt Express, Inc.**	The O.K. Trucking Company**
Bailey's Express, Inc.**	Overnite Transportation
Bowman Transportation, Inc.*	Company**
Buske Lines, Inc.*	P-I-E Nationwide, Inc.*
CW Transport, Inc.**	Preston Trucking Company, Inc.**
Carolina Freight Carriers	Quick Freight Systems**
Corporation**	R & L Transfer, Inc.**
Central Transport, Inc.*	Roadway Express, Inc.**
Consolidated Freightways	Sanders & Leigh Truck Line**
Corporation of Delaware**	Smith's Transfer Corporation*
Duff Truck Line, Inc.**	Spartan Express, Inc.**
Jones Truck Lines, Inc.**	Transcon Lines**
Lawrenceburg Transfer Company,	
Inc.**	

* Interstate service only.

** Interstate and intrastate service.

Source: American Motor Carrier Directory, Fall 1987.

HIGHWAY MILES AND TRUCK TRANSIT TIME IN DAYS FROM DANVILLE, KENTUCKY, TO SELECTED MARKET CENTERS

City	Highway Miles	Delivery		City	Highway Miles	Delivery	
		Time TL				Time TL	
Atlanta, GA	349	1		Los Angeles, CA	2,169	4	
Baltimore MD	568	2		Louisville, KY	83	1	
Birmingham, AL	402	1		Nashville, TN	195	1	
Chicago, IL	369	1		New Orleans, LA	709	3	
Cincinnati, OH	113	1		New York, NY	746	3	
Cleveland, OH	352	1		Pittsburgh, PA	376	1	
Detroit, MI	371	1		St. Louis, MO	342	1	
Knoxville, TN	154	1					

Note: Mileage computations are via the best interstate or primary highways, not necessarily the most direct route of travel.

Sources: Rand McNally Deluxe Motor Carriers' Road Atlas, 1987. Official Kentucky Mileage Map, 1980. Delivery time - Overnite Transportation Company, 213 Blue Sky Parkway, Lexington, Kentucky 40509.

Air

Local

Location: Goodall Field, Danville-Boyle County Airport*
4 miles south of Danville
Runways: Two paved
Length: 4,800 feet and 2,400 feet
Traffic
Control: Wind sock, instrument approach, Unicom 122.8
Lighting: Rotating beacon, sundown to sunrise; VASI, REILS
Services: 100 octane, jet-A; major and minor A & P repairs;
hangar; tie-down; flight instruction; aircraft
rental

Air Freight
Service: Chartered air freight service must be arranged

Nearest Scheduled Commercial Airline Service

Location: Bluegrass Airport
4 miles west of Lexington, Kentucky;
36 miles northeast of Danville
Runways: 2 paved
Length: 7,000 feet; 3,500 feet
Traffic
Control: Tower
Lighting: Approach lighting system, beacon, runways and
obstructions lighted, VASI
Services: Delta, Piedmont, United, USAir, Allegheny Commuter,
TWA, Continental Jet Express, Piedmont Commuter,
Eastern Metro, Comair, American Eagle; fuel -
100LL and jet-A; hangars, tie-downs; major A & P
repairs; major Avionics repairs; APU, charter,
flight instruction, oxygen, plane rentals,
survival equipment; taxi, limousine, car rentals,
courtesy car, weather information; restaurant,
snack bar

Air Freight
Service: Air freight terminal

Air Express Service

Several major companies offer air express services in Kentucky. These companies provide a quick means of shipping small to medium-sized packages expeditiously.

Water

Danville is located approximately 44 miles south of the Kentucky River at Frankfort, where a six-foot navigation channel is maintained.

* Tentative improvement plans being made for Goodall Field include lengthening the 4,800-foot runway to 5,000 feet and constructing a taxiway parallel to the runway. Construction of an 8,000-square-foot administration building/maintenance hangar was recently completed.

POWER AND FUEL

Electricity

Company serving Danville and portions of Boyle County - Kentucky
Utilities Company
Source of power - Kentucky Utilities Company
For industrial rates contact:

Industrial Development Department
Kentucky Utilities Company
One Quality Street
Lexington, Kentucky 40507
(606) 255-1461

Company serving a major portion of Boyle County - Inter-County Rural
Electric Cooperative Corporation
Source of power - East Kentucky Power Cooperative
For industrial rates contact:

Industrial Development Division
East Kentucky Power Cooperative
P. O. Box 707
Winchester, Kentucky 40391
(606) 744-4812

and/or

Inter-County RECC
P. O. Box 87
Danville, Kentucky 40422
(606) 236-4561

Natural Gas

Company serving Danville - Western Kentucky Gas Company
Source of supply - Tennessee Gas Transmission Corporation
Size of transmission mains - 26 inches (supplier); 6 inches (distributor)
Distribution mains - 2 to 6 inches
Distribution pressure - Up to 30 psi
Btu content - 1,000 per cubic foot
Specific gravity - 0.60
For rates and supplies contact:

District Manager
Western Kentucky Gas Company
311 West Seventh Street
Owensboro, Kentucky 42301
(502) 685-8067

Other Fuels (Within 15 miles)

Propane

Bright's Bottle Gas Company
100 West Brook Street
Box 321
Burgin, Kentucky 40310

Buckeye Gas Products Company
Highway 127
P. O. Box 280
Hustonsville, Kentucky 40437

Jack Campbell Bottle Gas
Route 3
Danville, Kentucky 40422

Southern States Boyle Cooperative,
Inc.
Route 4
Lebanon Road
Danville, Kentucky 40422

Fuel oils

Distillate fuel oil -

Acton-Massey Oil Company
Box 178
Danville, Kentucky 40422

Ashland Petroleum Company
Danville Pike
Route 2
Harrodsburg, Kentucky 40330

Ensslin Enterprises, Inc.
David Road
Danville, Kentucky 40422

Jack & Doug Little Gulf Oil
Products
Highway 150 Bypass
Box 202
Danville, Kentucky 40422

Scheuer Oil Company
Stanford Road
Box 687
Danville, Kentucky 40422

Southern States Boyle Cooperative,
Inc.
Route 4
Lebanon Road
Danville, Kentucky 40422

Texaco, Inc.
1211 Lebanon Road
Box 274
Danville, Kentucky 40422

Residual fuel oil - Arrangements must be made with the refinery.

Low sulphur content coal - Available in Kentucky.

WATER AND SEWERAGE

Public Water Supply

Company serving Danville - City of Danville Municipal Water Works
and Sewer Systems*
P. O. Box 670
Danville, Kentucky 40422
(606) 238-1241

Source - Herrington Lake
Treatment plant capacity - 5,000,000 gallons per day
Average daily consumption - 4,194,116 gallons
Peak daily consumption - 5,639,800 gallons
Treatment processes - Coagulation, sedimentation, filtration, chlorination,
rapid mix, flocculation, and fluoridation
Storage capacity - 5,000,000 gallons
Size lines - 6 to 16 inches
Water pressure - 40 psi to 90 psi

MONTHLY WATER RATES FOR RESIDENTIAL AND COMMERCIAL CONSUMERS

First	300 cubic feet	\$4.05 (Minimum)
Next	1,500 cubic feet	1.01 per 100 cubic feet
Next	2,000 cubic feet	.81 per 100 cubic feet
All over	3,800 cubic feet	.79 per 100 cubic feet

Residential and commercial customers outside the city limits
are assessed a 60 percent surcharge on the total water bill
(including the sewer charge).

MONTHLY WATER RATES FOR INDUSTRIAL CONSUMERS

First	20,000 cubic feet	\$200.00 (Minimum)
Next	80,000 cubic feet	.80 per 100 cubic feet
Next	100,000 cubic feet	.62 per 100 cubic feet
Next	300,000 cubic feet	.52 per 100 cubic feet
All over	500,000 cubic feet	.50 per 100 cubic feet

(Continued)

* The city of Danville has plans for an expansion project at the freshwater treatment plant. The plant will be upgraded to a design capacity of eight million gallons per day. This \$3.5 million project is scheduled to be completed in the summer of 1989.

Tap-on charge:

	<u>Inside City</u>	<u>Outside City</u>
Residential -	\$ 50	\$ 80
Commercial -	100	160
Industrial -	By agreement	By agreement

Sewerage

Company serving Danville - City of Danville Municipal Water Works
and Sewer Systems
P. O. Box 670
Danville, Kentucky 40422
(606) 238-1240

Average design capacity - 2,700,000 gallons per day

Peak capacity - 6,000,000 gallons per day

Average daily flow - 3,350,000 gallons

Type of treatment - Secondary

Treatment processes - Screening, activated sludge, chlorination, sludge
drying beds, post aeration, oxidation ditch

Treated effluent discharged into - Clarks Run Creek

Size of sanitary mains - 8 inches to 36 inches

Size of storm mains - 15 to 60 inches

Monthly rates - Residential and commercial customers are charged
40 percent of monthly water bill. Industrial customers are
charged 80 percent of monthly water bill. A surcharge of 60
percent of the monthly sewer bill is assessed to industrial
customers outside the city limits. Large industrial plants may
arrange special contracts with the city.

Tap-on charge:

	<u>Inside City</u>	<u>Outside city</u>
Residential -	\$ 50	\$ 80
Commercial -	100	160
Industrial -	By agreement	By agreement

Industrial Wastewater Discharge Limits

<u>Analysis</u>	<u>Monthly Average*</u>	<u>Maximum Day*</u>
BOD	300	450
COD	450	990
Total Suspended Solids	350	500
Total Chromium	1.0	2.0
Hexavalent Chromium	0.02	0.02
Iron	5.0	7.0
Copper	1.1	1.3
Phenol	0.5	0.5
pH	5.5 - 9.0	5.5 - 9.0
Zinc	1.5	2.0
Total Oil and Grease	50	75
Nickel	0.7	1.0
Lead	0.3	0.6
Boron	1.0	2.0
Cadmium	0.06	0.10
Silver	.10	.20
Total Kjeldahl Nitrogen (TKN)	40.0	60.0
Cyanide	.10	0.15
Liquid or Vapor	150°F(65°C)	150°F(65°C)
Arsenic	0.10	0.10
Mercury	0.01	0.01

* Values in milligrams per liter (mg/l)

CLIMATE

Boyle County

Temperature

Normal (30-year record)	54.90 degrees
Average annual 1986	54.40 degrees
Record highest, August 1983 (42-year record)	103.00 degrees
Record lowest, January 1963 (42-year record)	-21.00 degrees
Normal heating degree days (30-year record) (Heating degree day totals are the sums of negative departures of average daily temperatures from 65 degrees F.)	4,814

Precipitation

Normal (30-year record)	45.68 inches
Mean annual snowfall (30-year record)	16.40 inches
Total precipitation 1986	34.86 inches
Mean number days precipitation (.01 inch or more) (42-year record)	130.30
Mean number days thunderstorms (42-year record)	45.60

Prevailing winds (through 1963)

South

Relative Humidity

1 a.m.	77 percent (22-year record)
7 a.m.	82 percent (23-year record)
1 p.m.	60 percent (23-year record)
7 p.m.	64 percent (23-year record)

Source: U.S. Department of Commerce, Environmental Science Services Administration, Climatological Data, 1986. Station of record: Lexington, Kentucky.

LOCAL GOVERNMENT

Structure

The city of Danville is served by a mayor, four city commissioners, and a city manager. The mayor serves a four-year term and the commissioners serve two-year terms. Boyle County is served by a county judge/executive and six magistrates. The county judge/executive and magistrates are elected to four-year terms.

Planning and Zoning

Joint agency - Danville-Boyle County Planning & Zoning Commission
Participating cities - Danville, Perryville, Junction City
Zoning enforced - All areas
Subdivision regulations enforced - All areas
Local codes enforced - Building and housing codes enforced county-wide
Mandatory state codes enforced - Kentucky Plumbing code, National Electric Code, Kentucky Boiler Regulations and Standards, Kentucky Building Code (modeled after BOCA code)

Local Fees and Licenses

The city of Danville levies a business license fee on businesses within the city. The fee is \$25 annually for all businesses. An occupational license fee of one percent is levied on wages, salaries, and commissions of individuals and on net profits of businesses with a minimum of \$25. A \$5 auto sticker is required for vehicles owned by city residents.

Boyle County levies an occupational license fee of 0.25 of one percent on wages, salaries, and commissions of individuals and on net profits of businesses.

State and Local Property Taxes

All property in Kentucky, except items exempted by the state constitution, is taxed by the state. Property which also may be taxed by local jurisdictions includes land and buildings, finished goods inventories, automobiles, trucks, office furniture and office equipment. Local taxing jurisdictions in Kentucky include counties, cities, and school districts.

All property in Kentucky is assessed at 100 percent of fair cash value.

COMBINED STATE AND LOCAL RATES PER \$100 VALUATION, 1987

	Danville/ Danville Independent School District	Danville/ Boyle County School District	Unincorporated Boyle County
Land and Buildings	\$1.052	\$0.897	\$0.684
Manufacturing			
Machinery	0.150	0.150	0.150
Pollution Control			
Equipment	0.150	0.150	0.150
Inventories			
Raw materials	0.001	0.001	0.001
Goods in Process	0.001	0.001	0.001
Finished Goods	0.845	0.695	0.484
Automobiles & Trucks	1.254	0.974	0.974
Other Tangible			
Personal Property	1.294	1.144	0.933
Intangibles (Accounts receivable*, money in hand, stock, notes, bonds)	0.250	0.250	0.250
Goods Stored in Public Warehouses in Transit Status	0.001	0.001	0.001
Private Leaseholds in Industrial Revenue Bond Financed Facilities	0.015	0.015	0.015

* Accounts receivable are taxed at 85 percent of face value, for an effective rate of \$0.2125 per \$100 valuation.

Safety

Police	Danville	Boyle County
Total staff	33	7
Radio-patrol cars	13	6
Fire*		
Insurance Services Office, Public Protection Classification	4	**
Full-time staff	23	-
Volunteers	20	127
Rescue Service		

Rescue service is provided by the Danville-Boyle County Rescue Squad and by volunteer squads in Junction City, Perryville, Parksville, and Forkland.

Refuse Collection and Disposal

Refuse collection and disposal in Danville and Boyle County is provided by private contractors. Boyle County also provides three compacting stations in the county where residents may dispose of refuse at no charge.

* Includes copyrighted material of ISO Commercial Risk Services, Inc., with its permission.

** Six fire departments serve the Boyle County fire district. Property located within five road miles of a fire station maintains a class 7 rating. Class 10 applies to all other areas in unincorporated Boyle county not within the fire district.

EDUCATION

Public Schools

	Danville Independent*	Boyle County**
Total Enrollment (Fall 1987)	1,954	2,506
Kindergarten	115	162
Elementary	805	1,138
Junior High	458	-
Middle School	-	365
High School	576	841
Accreditation	Southern Association of Colleges and Schools	
Pupil-Teacher Ratio (1985-86)	18-1	18-1
Percent High School Graduates to College (1985-86)	66.4	54.5
Expenditures Per Pupil (1985-86)	\$2,211.22	\$1,963.82

Special Schools

Kentucky School for the Deaf

Total Enrollment	320
Elementary	217
High School	103

The Kentucky School for the Deaf is a state-supported institution for the hearing impaired. The school's instructional program offers both elementary and secondary education, as well as vocational training and career preparation programs.

* The Danville Independent School System plans to construct a new gymnasium and renovate the cafeteria at the Hogsett Elementary School. This project is scheduled to be completed in the spring of 1989 at an estimated cost of \$360,000.

** The Boyle County School System recently completed a \$360,000 renovation project at the Junction City and Perryville Elementary Schools. Two new classrooms were also added at Perryville Elementary School.

Area Colleges and Universities

<u>Name</u>	<u>Location (Miles distant)</u>	<u>Enrollment (Fall, 1987)</u>	<u>Highest Degree Conferred</u>
Centre College	Danville	881	Baccalaureate
Asbury College	Wilmore (24)	925	Baccalaureate
Saint Catharine College	Springfield (27)	265	Associate
Berea College	Berea (34)	1,621	Baccalaureate
Lexington Community College	Lexington (35)	2,995	Associate
Transylvania University	Lexington (35)	1,042	Baccalaureate*
University of Kentucky	Lexington (35)	22,461	Doctorate, M.D., D.M.D., J.D.
Eastern Kentucky University	Richmond (36)	13,099	Masters, Specialist**

Centre College

Centre College, founded in 1819, is a small, independently governed, four-year college with a heritage of academic excellence. The college offers majors in 21 programs and confers both Bachelor of Science and Bachelor of Arts degrees. Centre also offers a 3-2 engineering program (3 years at Centre and 2 years at an engineering school) in cooperation with 6 major universities nationwide. Centre College is accredited by the Southern Association of Colleges and Schools and is the country's smallest co-educational college with a chapter of Phi Beta Kappa.

Kentucky College of Business

Kentucky College of Business is accredited as a junior college of business, and the Danville location is one of the school's five campuses in the state. The college offers six degree programs and six diploma programs in secretarial, business management, legal and medical secretary, data processing, and accounting fields. The college confers the Associate in Science degree.

* Courses in a masters degree program are taught on the Transylvania campus by faculty members of Xavier University of Cincinnati. The degree is issued by Xavier University.

** Joint doctoral degree programs are offered in cooperation with the University of Kentucky, Lexington. The degrees are issued by the University of Kentucky.

Vocational Training

The Bluegrass State Skills Corporation, an independent public corporation created and funded by the Kentucky General Assembly, provides programs of skills training to meet the needs of business and industry from entry level to advanced training, and from upgrading present employees to retraining experienced workers.

The Bluegrass State Skills Corporation is the primary source for skills training assistance for a new or existing company. The Corporation works in partnership with other employment and job training resources and programs, as well as Kentucky's economic development activities, to package a program customized to meet the specific needs of a company.

Vocational training is available at both the state vocational-technical schools and the area vocational education centers. The state vocational-technical schools are post-secondary institutions. The area vocational education centers are designed to supplement the curriculum of high school students. Both the state vocational-technical schools and the area vocational education centers offer evening courses to enable working adults to upgrade current job skills.

Arrangements can be made to provide training in the specific production skills required by an industrial plant. Instruction may be conducted either in the vocational school or in the industrial plant, depending upon the desired arrangement and the availability of special equipment.

Nearest State School

Central Kentucky State Vocational-Technical School
Lexington, 35 miles northeast of Danville

Business & Office	Drafting (with CAD/CAM)
Accounting/Management	Electricity
Clerical	Electronics
Secretarial	Graphic Arts
Consumer & Home Economics	Machine Shop
Commercial Foods	Mine Equipment Operator
Consumer & Family Life	Welding
Skills	Learning Resource Center
Health & Personal Services	Public Service Occupations
Occupations	Business/Industry Security
Cosmetology	Training
Dental Assisting	CPR Training
Practical Nursing	Electrical Safety Training
Surgical Technology	Emergency Medical Care
Industrial Education	Fire Service Training
Air Conditioning	First Aid & Safety
Auto Body Repair	Rescue & Emergency Services
Auto Mechanics	Training
Carpentry	

Nearest Area Education Centers

Danville School of Health Occupations
Danville

Health & Personal Services
Occupations
Health Services
Practical Nursing

Learning Resource Center

Harrodsburg Area Vocational Education Center
Harrodsburg, 9 miles north of Danville

Business & Office
Clerical
Secretarial
Health & Personal Services
Occupations
Health Services

Industrial Education
Auto Mechanics
Carpentry
Electricity
Welding
Learning Resource Center

Garrard County Area Vocational Education Center
Lancaster, 12 miles east of Danville

Health & Personal Services
Occupations
Health Services
Industrial Education
Auto Mechanics

Carpentry
Drafting
Electricity
Welding
Learning Resource Center

HEALTH

Local Medical Personnel

Physicians - 55

Dentists - 9

Hospitals

<u>General Hospital</u>	<u>Location</u>	<u>Beds</u>
Ephraim McDowell Memorial Hospital*	Danville	177

Medical staff - 50 physicians, 112 registered nurses, and 99 licensed practical nurses

Other Medical Facilities

Southern Bluegrass Comprehensive Care Center
Boyle County Health Department

Ambulance Service

Name - Danville-Boyle County Rescue Squad
Staff - 27 volunteers

* A major renovation/expansion project was recently completed at the Ephraim McDowell Memorial Hospital. The project included relocation of the OB/GYN section, relocation and expansion of the critical care facilities, and the addition of a twelve-bed psychiatric unit.

OTHER LOCAL FACILITIES

Communications

Telephone -	South Central Bell Telephone Company
Telegraph -	Western Union
	Toll-Free number, 1-800-325-6000
Newspapers -	
Daily and circulation -	The Advocate-Messenger - 12,010
Weekly and circulation -	The Kentucky Advocate - 12,697
Radio -	WDFB-AM, WHIR-AM, WKLO-AM
Television -	WDKY
Airwave reception from -	Louisville and Lexington, Kentucky
Cable service -	RV Cablevision, Inc.
Educational Television -	The Kentucky Educational Television (K.E.T.) network is available statewide

Library Services

Public library - Danville-Boyle County Public Library
Size collection - 55,000 volumes
Circulation, 1986-87 - 152,000
College library - The Grace Doherty Library - Centre College
Size collection - 135,000 volumes

Religious Institutions

Denominations -	AME	Episcopal
	Apostolic	Interdenominational
	Baptist	Jehovah's Witnesses
	Catholic	Lutheran
	Christian	Nazarene
	Church of Christ	Pentecostal
	Church of God	Presbyterian
	Church of Jesus Christ of Latter Day Saints	Salvation Army
	Community Service	United Methodist
Nearest Synagogues -	Lexington, 35 miles northeast	
Congregations -	Adath Israel (reform)	
	Ohavey Zion (traditional)	

Financial Institutions

<u>Banks</u>	<u>Assets</u>	<u>Deposits</u>	<u>Statement Date</u>
Bank of Danville	\$75,094,932.00	\$66,439,005.00	6/30/87
Citizens National Bank	53,547,000.00	49,172,000.00	9/30/87
Farmers National Bank	97,705,000.00	83,878,000.00	9/30/87

<u>Savings and Loan Associations</u>	<u>Assets</u>	<u>Deposits</u>	<u>Statement Date</u>
Central Kentucky Federal Savings and Loan Association	\$ 37,794,574.25	\$ 34,415,932.36	6/30/87
Great Financial Federal	1,031,693,484.00	879,688,059.00	6/30/87

Hotels and Motels

Total number - 4
Total rooms - 220

Clubs and Organizations

Al-Anon
Alcoholics Anonymous
Alpha Delta Kappa
Altrusa
Ambassadors
American Association of
 University Women
American Cancer Society
American Legion
Bar Association
Board of Realtors
Boy Scouts
Boyle Community Association
Boyle County Homemakers
Brotherhood
Business and Professional
 Women's Club
Busy Sunshine Club
Central Kentucky Wildlife
 Refuge
Centre Circle
Chamber of Commerce
Constitution Squares
Danville Business Association
Danville Community Theatre
Daughters of the American
 Revolution
Democratic Women's Club
Demolay
Eastern Star
Ephraim McDowell Memorial
 Hospital Auxiliary
Fair Board
Garden Clubs
Girl Scouts
Heart Fund
Historical Society
Home Builders Association
Industrial Council
Jaycees
Jaycettes
Junior Achievement
Kentucky Club
Kiwanis
Knights of Columbus
Ladies Domestic Economy Club
Lions
Masonic Lodge
Medical Society
Ministerial Association
Newcomers
Optimist
Pythian Sisters
Republican Party
Retired and Veteran Railroad
 Club
Retired Teachers
Right to Life
Rotary
Salvation Army
Shriners
United Way
Wilderness Road Amateur Radio
 Club
Wilderness Trace Arts League
Wilderness Trail Riding Club
Women's Club

RECREATION

Local

Danville and Boyle County offer a wide variety of recreational opportunities. Public recreation facilities include three large parks, five mini-parks, nine playgrounds, two tennis courts, three baseball diamonds, four softball fields, four football fields and four soccer fields. The Danville-Boyle County Recreational Department offers year-round programs for all ages. The city sponsors exercise, karate, indoor soccer, and arts and crafts programs. A supervised playground program is available during the summer months, and sports enthusiasts may participate in leagues for basketball, football, baseball, softball, fast-pitch softball, and soccer. The state YMCA also offers a variety of year-round activities.

Private recreational facilities include a country club, a golf course, two swimming pools, four movie theatres, a bowling facility, a roller-skating rink and a racquetball court.

A community theatre is also active in Danville, and presents several productions each year.

Constitution Square State Shrine, in Danville, is a reproduction of Kentucky's first courthouse square, including the original 1792 post office which was the first in the west.

The McDowell House is the home in which pioneer surgeon Dr. Ephraim McDowell lived and worked. Now a registered national historic landmark, the house is located adjacent to Constitution Square and is open to the public year-round. The Apothecary Shop next door displays authentic 18th and 19th century pharmaceuticals.

The Centre College campus is the site of a variety of intercollegiate sports activities throughout the fall, winter and spring months. The college's track is available for public use. The Norton Center for the Arts, also located on the Centre campus, offers a variety of cultural and entertainment activities, including art exhibitions, concerts and theatrical performances by national touring companies to the college and the community-at-large.

Dining and outdoor theatre is available at Pioneer Playhouse. An 18th century village has been constructed on the theatre grounds, depicting a typical street scene at the time Kentucky's constitution was adopted.

Perryville Battlefield State Shrine, 13 miles west of Danville near Perryville, is the site of the largest Civil War battle in Kentucky. A museum, a gift shop, a picnic area, and a playground are located on the grounds.

Crawford Springs Park, a small county park two miles from Perryville, offers a nature area, picnic and barbecue equipment, and wildflower and tree identification.

Central Kentucky Wildlife Refuge, a 500-acre, non-profit refuge, is located in western Boyle County. Open seven days per week, it offers hiking trails, and a wildflower walk is scheduled each April.

Area (Within 20 miles)

Isaac Shelby State Shrine, 5 miles south of Danville near Danville, is the burial site of Kentucky's first governor and one of the Commonwealth's foremost statesmen.

Herrington Lake, 8 miles northeast of Danville near Danville and Harrodsburg, was developed by the Kentucky Utilities Company in 1925. Dix River Dam near Pleasant Hill is located on the 3,600-acre lake. Fishing, boating, and swimming can all be enjoyed on the lake. Camping and fishing facilities are available near Danville and Harrodsburg.

Old Fort Harrod State Park, 9 miles north of Danville, is a 28-acre park in Harrodsburg that features a full-scale reproduction of the original Fort Harrod. The park also contains the log cabin where Abraham Lincoln's parents were wed, the Mansion Museum which houses mementos associated with the great periods of Kentucky history, a pioneer cemetery, and a federal monument dedicated to pioneers. The "Legend of Daniel Boone" and "Lincoln" are two excellent outdoor dramas which are performed at the Old Fort Amphitheater during the summer months.

Pleasant Hill, a restored Shaker Village located 12 miles north of Danville, is a National Historic Landmark. Over 20 buildings and grounds have been restored to display unique Shaker skills in furniture making, crafts, and architecture. Dining rooms, lodging, craft shops, and seasonal festivals and plays are offered.

William Whitley House State Shrine, 19 miles southeast of Danville near Stanford, is the first brick house west of the Allegheny Mountains, built 1787-94. Whitley laid out Kentucky's first race track here and started U.S. counterclockwise racing. The facility provides picnic and playground areas in a ten-acre park.

COMMUNITY IMPROVEMENTS

Recent

Danville has been chosen as a "Kentucky Certified City" for six consecutive years. The award is based on achievement in the following categories: economic development, transportation, public affairs, utilities, health, commercial development, housing, education, and recreation. The Certified Cities Program is sponsored by the Kentucky Chamber of Commerce.

The Whirlpool Corporation recently moved its Floor Care Division and its Product Engineering and Design Division to the Danville facility. Deerefield Plastics Company, R.R. Donnelley & Sons Company, and Genesco, Inc., have also recently completed expansions at their Danville manufacturing facilities.

Construction of an 8,000-square-foot administration building/maintenance hangar was recently completed at the Danville-Boyle County Airport.

A major renovation/expansion project was recently completed at the Ephraim McDowell Memorial Hospital. The project included relocation of the OB/GYN section, relocation and expansion of the critical care facilities, and the addition of a twelve-bed psychiatric unit.

The Boyle County School System recently completed a \$360,000 renovation project at the Junction City and Perryville Elementary Schools. Two new classrooms were also added at Perryville Elementary School.

Under Way

U.S. Highway 127 North, from Danville to Harrodsburg, is presently being reconstructed. The northbound two-lane section has been completed.

Planned

The city of Danville has plans for an expansion project at the fresh water treatment plant. The plant will be upgraded to a design capacity of eight million gallons per day. This \$3.5 million project is scheduled to be completed in the summer of 1989.

The Danville Independent School System plans to construct a new gymnasium and renovate the cafeteria at the Hogsett Elementary School. This project is scheduled to be completed in the spring of 1989 at an estimated cost of \$360,000.

The Danville-Boyle County Airport plans to lengthen the 4,800-foot runway to 5,000 feet and construct a taxiway parallel to the runway.

A highway improvement project is planned for Kentucky Route 34 from Danville to U.S. Highway 27. Included in this project will be the construction of a new bridge and widening of the highway.



**Cabinet for Economic Development
Department of Business Development
Capital Plaza Tower
Frankfort, Kentucky 40601
(502) 564-7140**