

12-1999

Industrial Resources: Bracken County

Kentucky Library Research Collections
Western Kentucky University, spcol@wku.edu

Follow this and additional works at: https://digitalcommons.wku.edu/bracken_cty

 Part of the [Business Administration, Management, and Operations Commons](#), [Growth and Development Commons](#), and the [Infrastructure Commons](#)

Recommended Citation

Kentucky Library Research Collections, "Industrial Resources: Bracken County" (1999). *Bracken County*. Paper 2.
https://digitalcommons.wku.edu/bracken_cty/2

This Report is brought to you for free and open access by TopSCHOLAR®. It has been accepted for inclusion in Bracken County by an authorized administrator of TopSCHOLAR®. For more information, please contact topscholar@wku.edu.

Bracken

Kentucky

Resources For Economic Development

Bracken County

December 1999

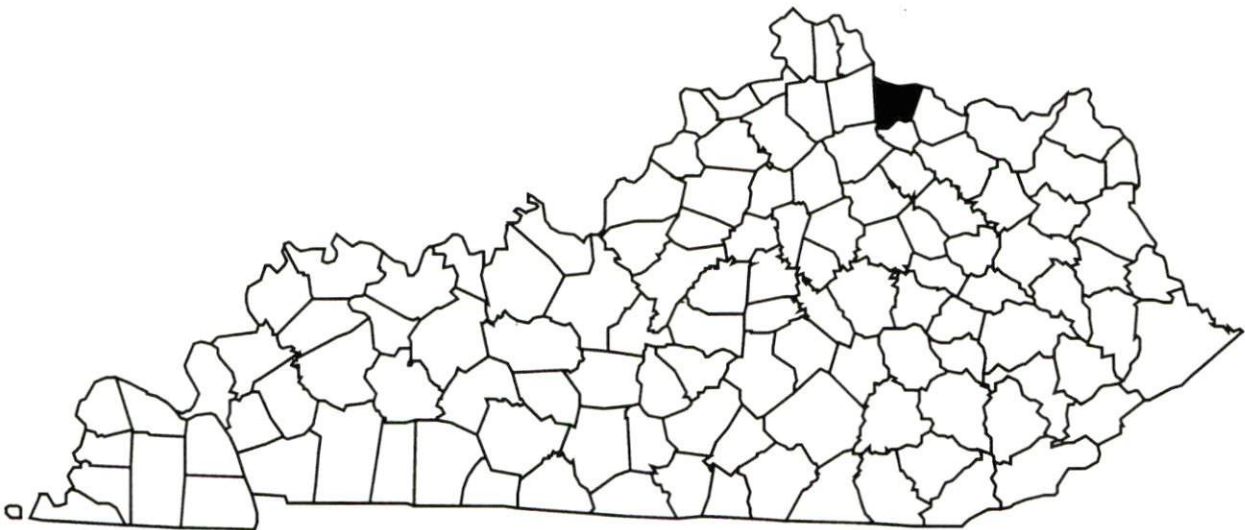
Albany
 Barbourville
 Ballard County
 Bardstown • Booneville Berea
 Bowling Green • Boyd & Greenup Counties
 Bracken County • Brandenburg • Breckinridge
 Brownsville • Bullitt County • Burkesville • Cadiz
 Campbellsville • Campton • Carlisle • Carlisle County
 Carrollton • Cave City • Clinton • Columbia • Corbin • Cynthiana
 Danville • Dawson Springs • Edmonton • Elizabethtown • Estill County
 Elliott County • Falmouth & Butler • Flemingsburg • Frankfort • Franklin
 Frenchburg • Fulton County • Gallatin County • Georgetown • Grant County • Greensburg
 Grayson & Olive Hill • Glasgow • Hancock County • Harlan County • Harrodsburg • Hart County
 Hazard • Henderson • Henry County • Hodgenville • Hopkinsville-Christian County • Jackson County
 Jackson • Knott County • LaGrange & Buckner • Lancaster • Lawrenceburg • Lebanon • Leitchfield
 Grayson County • Letcher County • Lexington • Liberty-Casey County • Logan County • Louisville
 London • Louisa • Lyon County • Madisonville & Earlington • Manchester • Marshall County • Mayfield
 Maysville • McCreary County • Marion • McLean County • Middlesboro & Pineville • Monticello • Morehead
 Morgantown • Mt. Sterling • Mt. Vernon • Muhlenberg County • Murray • Nicholasville • Northern Kentucky
 Ohio County • Owensboro • Owenton • Owingsville • Paducah • Paintsville • Paris • Pike County • Powell
 Prestonsburg • Princeton • Radcliff • Richmond • Russell County • Scottsville • Shelbyville • Somerset
 Springfield • Stamping Ground • Stanford-Lincoln County • Tompkinsville & Garrard • Tazewell
 Todd County • Union County • Vanhook • Versailles • Washington • West Liberty • Whitesburg
 Winchester, Kentucky

Kentucky

Resources For Economic Development

Bracken County

December 1999



Prepared by
Kentucky Cabinet for Economic Development
Division of Research
in cooperation with
Bracken County and the City of Brooksville

Kentucky Cabinet for Economic Development
Division of Research
500 Mero Street
2300 Capital Plaza Tower
Frankfort, KY 40601
Telephone: (502) 564-4886
Fax: (502) 564-3256
Email: econdev@mail.state.ky.us

Cost of printing paid from state funds.

TABLE OF CONTENTS

	Page
BRACKEN COUNTY, KENTUCKY – A RESOURCE PROFILE.....	1
LABOR MARKET STATISTICS.....	3
Population.....	3
Population Projections.....	3
Estimated Labor Supply.....	3
Labor Force Characteristics of Residents, 1998.....	4
Work Force Commuting Patterns, 1990.....	4
Selected Components of Nonagricultural Employment by Place of Work, 1997.....	4
Per Capita Personal Income.....	6
Average Placement Wages.....	6
Average Weekly Wages by Industry by Place of Work, 1997.....	7
EXISTING INDUSTRY.....	8
Bracken County Manufacturing Firms, Their Products and Employment.....	8
Labor Organizations in Bracken County.....	8
Selected Industrial Services – Within 50 Miles of Augusta.....	9
TRANSPORTATION.....	10
Highways.....	10
Truck Service.....	10
Rail.....	12
Air.....	12
Water.....	12
UTILITIES.....	13
Electricity.....	13
Natural Gas.....	14
Public Water Supply.....	14
Raw Water.....	15
Sewerage.....	15
CLIMATE.....	16
LOCAL GOVERNMENT.....	17
Structure.....	17
Planning and Zoning.....	17
Local Fees and Licenses.....	17
Sales and Use Tax.....	17
State and Local Property Taxes.....	17
EDUCATION.....	19
Primary and Secondary Schools.....	19
Colleges and Technical Schools.....	19
OTHER LOCAL FACILITIES.....	22
RECREATION.....	23
APPENDIX A - DEFINITIONS.....	24

BRACKEN COUNTY, KENTUCKY – A RESOURCE PROFILE

Bracken County, with an estimated 1998 population of 8,455, has a land area of 203 square miles. Bracken County is located in the Outer Bluegrass Region of northern Kentucky.

Augusta, situated along the Ohio River in northern Bracken County, had an estimated 1998 population of 1,434. Augusta is located 42 miles southeast of Cincinnati, Ohio; 127 miles northeast of Louisville, Kentucky; and 329 miles southwest of Pittsburgh, Pennsylvania. Brooksville, the county seat of Bracken County, had an estimated 1998 population of 716. Brooksville is located eight miles south of Augusta.

The Economic Framework – Bracken County firms employed 1,442 people in 1997. Contract construction firms provided 45 jobs; mining and quarrying firms in the county employed 0; manufacturing firms in the county reported N/A employees; wholesale and retail trade provided 247 jobs; 403 were employed in the service industry; and state and local government accounted for 369 jobs.

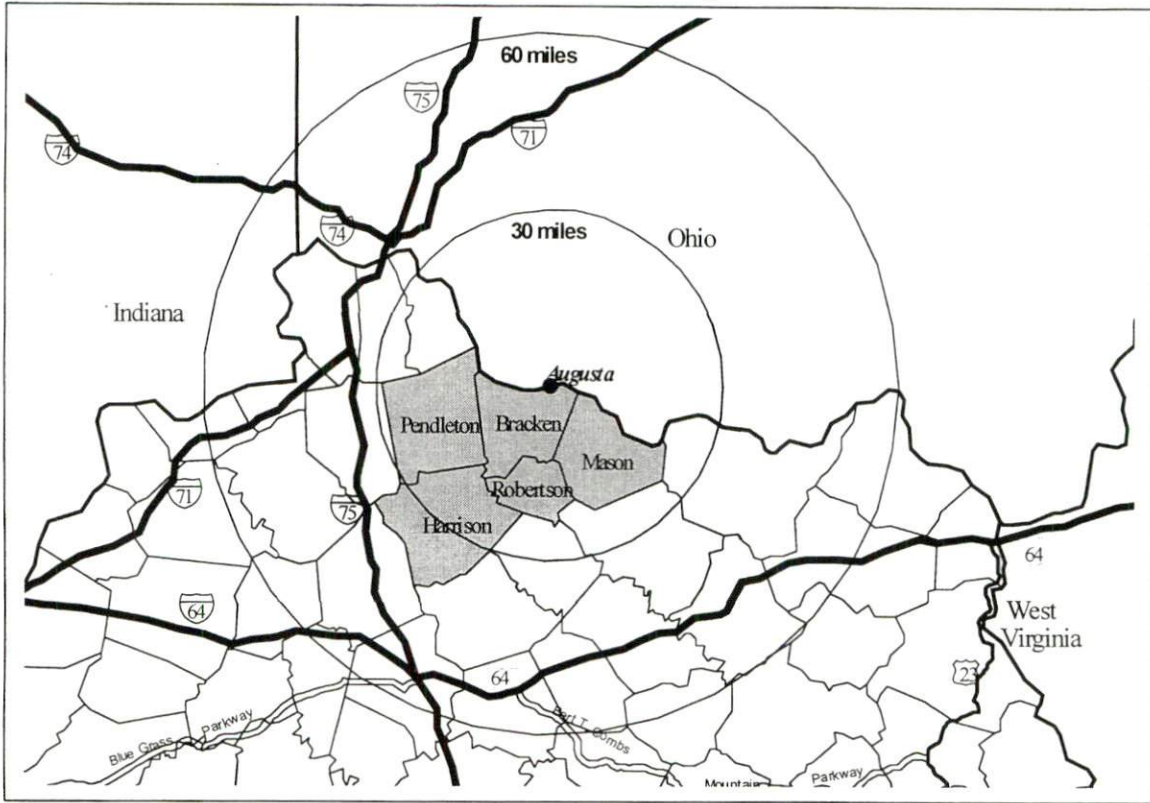
Labor Supply – There is a current estimated labor supply of 7,900 persons available for industrial jobs in the labor market area. In addition, from 1999 through 2003, approximately 4,356 young persons in the labor market area will become 18 years of age and potentially available for industrial jobs.

Transportation – Major highways serving Bracken County include Kentucky Highways 8 and 9, both AAA-rated (80,000-pound gross load limit) trucking highways. Kentucky Highways 10, 19, 22, and 1159 are all AA-rated (62,000-pound gross load limit) trucking highways. Eighteen common carrier trucking companies provide interstate and/or intrastate service to Bracken County. CSX Transportation provides main line rail service to Augusta. The Cincinnati/Northern Kentucky International Airport near Covington, Kentucky, and the Blue Grass Airport near Lexington, Kentucky, provide the nearest scheduled commercial airline services. The Fleming-Mason Airport, 19 miles southeast of Augusta, has a 5,000-foot paved runway. The Cynthia-Harrison County Airport, 42 miles southwest of Augusta, maintains a 3,200-foot paved runway.

Power and Fuel – The Kentucky Utilities Company provides electric power to Augusta, Brooksville, and portions of Bracken County. The Harrison Rural Electric Cooperative Corporation provides electric power to most of western Bracken County. The remainder of the county is served by the Fleming-Mason Rural Electric Cooperative Corporation. The Augusta Utility Department provides natural gas service to Augusta and vicinity. Brooksville Utilities provides natural gas service to Brooksville and surrounding areas.

Education – Primary and secondary education is provided to Augusta by the Augusta Independent School System and to the remainder of Bracken County by the Bracken County School System. Seventeen institutions of higher learning are located within 60 miles of Augusta. The nearest area technology centers (ATC) providing secondary education are Mason County ATC in Maysville and C. E. McCormick ATC in Alexandria. The nearest technical colleges providing post-secondary education are Northern Kentucky Technical College Highland Heights Campus in Highland Heights; Northern Kentucky Technical College Covington Campus in Covington; and Northern Kentucky Technical College Edgewood Campus in Edgewood.

Labor Market Area Maps



Note: To obtain detailed topographical and general highway maps contact Maps and Publications at 502-564-4715, or for industrial site maps contact the Site Evaluation Division at 502-564-7140.

LABOR MARKET STATISTICS

The Bracken County labor market area includes Bracken County and the following additional counties: Harrison, Mason, Pendleton, and Robertson.

Population

	<u>1980</u>	<u>1990</u>	<u>1995*</u>	<u>1998*</u>
Labor Market Area	53,923	54,840	57,740	58,953
Bracken County	7,738	7,766	8,236	8,455
Augusta	1,455	1,336	1,390	1,434
Brooksville	680	670	695	716
Germantown	347	213	215	216

Note: * Population estimates. N/A – Data not available.

Source: U.S. Department of Commerce, Bureau of the Census.

Population Projections

	<u>2000</u>	<u>2010</u>	<u>2020</u>
Labor Market Area	59,655	61,955	63,217
Bracken County	8,389	8,585	8,630

Source: University of Louisville, Urban Studies Center, State Data Center.

Estimated Labor Supply

	<u>Available Labor, 1998</u>			<u>Under- employed</u>	<u>Future Labor Becoming 18 years of age 1999 through 2003</u>
	<u>Total</u>	<u>Unemployed</u>	<u>Potential Labor Supply</u>		
Labor Market Area	7,900	1,032	1,231	5,637	4,356
Bracken County	921	164	193	564	590

Note: Unemployed – people not working but actively seeking work. Potential Labor Supply – represents the number of persons not in the labor force, but would like a job (based on national estimates). Underemployed – people employed in wholesale/retail trade and non-professional services. See Appendix for further explanation.

Sources: U.S. Department of Labor, Bureau of Labor Statistics. U.S. Department of Commerce, Bureau of the Census. Kentucky Cabinet for Economic Development, Future Labor Supply Becoming 18 Years of Age, 1999 through 2003.

Labor Force Characteristics of Residents, 1998

	<u>Bracken County</u>	<u>Labor Market Area</u>
Civilian Labor Force	3,786	27,379
Employed	3,622	26,347
Unemployed	164	1,032
Unemployment Rate (%)	4.3	3.8

Source: U.S. Department of Labor, Bureau of Labor Statistics.

Work Force Commuting Patterns, 1990

Workers commuting into Bracken County	204
Workers commuting out of Bracken County	1,663
Workers residing and working in Bracken County	1,399

Source: University of Louisville, State Data Center.

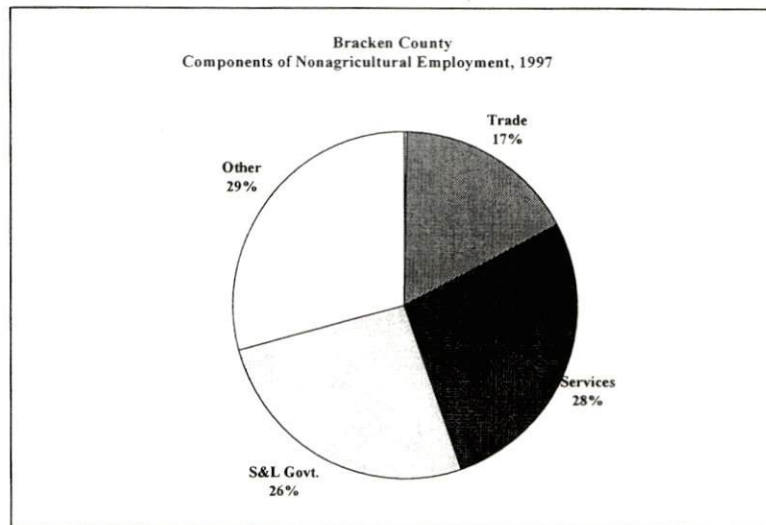
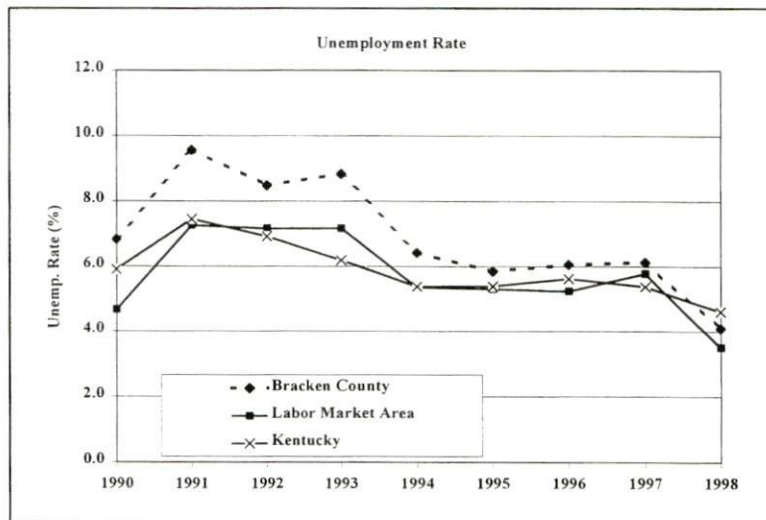
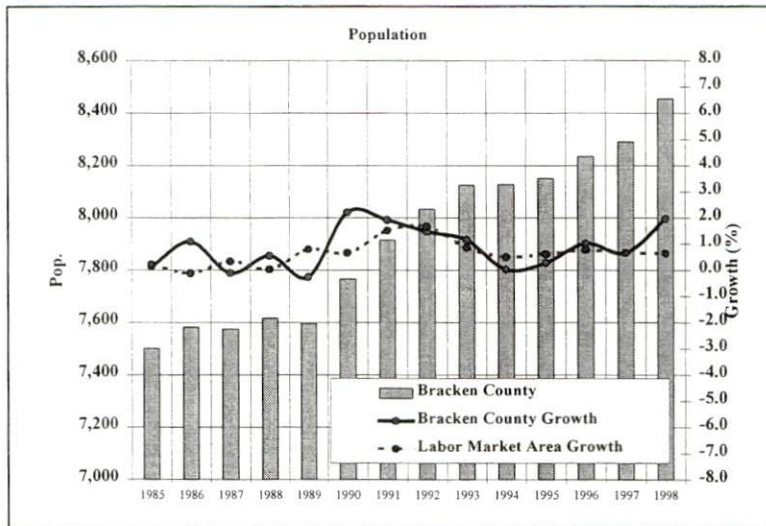
Selected Components of Nonagricultural Employment by Place of Work, 1997

	<u>Bracken County</u>	<u>Labor Market Area</u>
All Industries	1,442	18,110
Mining & Quarrying	0	0
Contract Construction	45	526
Manufacturing	N/A	5,384
Transportation & Public Utilities	65	748
Wholesale & Retail Trade	247	4,272
Finance, Insurance, & Real Estate	54	507
Services	403	3,200
State & Local Government	369	2,755
Other	N/A	82

Note: Excludes domestic workers, railway workers, certain nonprofit corporations, majority of federal government workers, and self-employed workers. N/A – Data not available.

Source: Kentucky Workforce Development Cabinet, Average Monthly Workers Covered by Kentucky Unemployment Insurance Law, 1997.

Selected Charts



Per Capita Personal Income

	<u>1993</u>	<u>1997</u>	<u>Percent Change (1993-1997)</u>
Bracken County	\$12,869	\$16,082	25.0%
Kentucky	\$17,309	\$20,570	18.8%
U.S.	\$21,368	\$25,288	18.3%
Labor Market Area Range	\$12,869 - \$15,617	\$16,082 - \$18,630	-

Source: U.S. Department of Commerce, Bureau of Economic Analysis, 1998.

Average Placement Wages

The Kentucky Department for Employment Services local office in Maysville serves Bracken County. The focus of the following data is on job placements made by the Maysville local office and may therefore be used as an indicator of the wages which employers in the area pay new employees. During the twelve months ended on June 30, 1998, the local employment office filled Bracken County job openings in various occupational categories. The average hourly wage for selected occupational categories were:

	<u>Number of Placements</u>	<u>Average Wage (\$)</u>
All Occupations	1,777	6.19
Professional, Technical & Managerial	18	7.42
Clerical	84	5.29
Sales	13	6.76
Domestic	2	5.58
Services (excluding domestic)	163	5.31
Agricultural, Fishery, Forestry, etc.	1	6.00
Processing	20	7.40
Machine Trades	131	5.75
Bench Work	301	6.34
Structural	89	7.61
Motor Freight & Transportation	16	6.74
Packaging & Materials Handling	910	5.99
Other	29	14.01

Note: Occupational categories are taken from the Dictionary of Occupational Titles published by the U.S. Department of Labor. The Maysville local office serves Bracken, Fleming, Lewis, Mason, and Robertson Counties.

Source: Kentucky Workforce Development Cabinet, Department for Employment Services.

Average Weekly Wages by Industry by Place of Work, 1997

	<u>Bracken County</u>	<u>Kentucky (Statewide)</u>	<u>Tennessee</u>	<u>Virginia</u>
All Industries	\$348.78	\$488.00	\$521.00	\$555.00
Mining & Quarrying	0.00	790.00	839.00	772.00
Contract Construction	339.67	516.00	561.00	544.00
Manufacturing	N/A	644.00	621.00	644.00
Transportation & Public Utilities	627.54	648.00	653.00	761.00
Wholesale & Retail Trade	245.16	337.00	391.00	392.00
Finance, Insurance, & Real Estate Services	417.65	613.00	696.00	748.00
State & Local Government	224.01	440.00	495.00	580.00
	362.51	484.00	494.00	530.00
	<u>Indiana</u>	<u>Ohio</u>	<u>Illinois</u>	<u>U.S.</u>
All Industries	\$530.00	\$553.00	\$634.00	\$578.00
Mining & Quarrying	849.00	773.00	881.00	961.00
Contract Construction	604.00	619.00	765.00	610.00
Manufacturing	732.00	776.00	792.00	737.00
Transportation & Public Utilities	633.00	669.00	764.00	724.00
Wholesale & Retail Trade	351.00	384.00	452.00	411.00
Finance, Insurance, & Real Estate Services	624.00	682.00	938.00	863.00
State & Local Government	452.00	486.00	575.00	547.00
	510.00	567.00	615.00	576.00

Note: The average weekly wage for each category includes salaries and wages of all persons working for that type of business. For example, the manufacturing category includes both production workers and administrative personnel. Domestic workers, railway workers, certain nonprofit corporations, majority of federal government workers, and self-employed workers are excluded. Wages for U.S. and surrounding states rounded to nearest dollar. N/A – Data not available.

Sources: Kentucky Workforce Development Cabinet, Average Weekly Wages of Workers Covered by Kentucky Unemployment Insurance Law, 1997. U.S. Department of Labor, Bureau of Labor Statistics, Employment and Wages, Annual Averages, 1997, December 1998.

EXISTING INDUSTRY

Bracken County Manufacturing Firms, Their Products and Employment

<u>Firm</u>	<u>Product(s)</u>	<u>1998 Emp.</u>	<u>Date Established</u>
Augusta			
Auto Fastener Group	Repackaging of automotive after-market products	8	1990
Clopay Plastic Products Co.	Surgical supplies; polyethylene & polypropylene film	250	1956
Neider, F. A. Co.	Metal stampings, fasteners & furniture glides	20	1883
R J Technology Inc.	Small glass insulators for automotive air bags	6	1995
Brooksville			
Bay Publishing Inc.	Newspaper publishing & typesetting	4	1927
Kerns Meat Processing Plant	Slaughtering & meat processing	8	N/A
Stewart's Farm Supply	Grain & feed mixing	3	1981
Wood Lumber Co.	Wooden dog houses & utility sheds	1	1947
Foster			
Riverton Machinery & Foundry	Aluminum foundry & steel molds	8	1994
Germantown			
Germantown Milling Co.	Feed mill	4	1910

Note: N/A - Data not available.

Sources: Kentucky Directory of Manufacturers published by Harris InfoSource in cooperation with the Kentucky Cabinet for Economic Development, Division of Research.

Labor Organizations in Bracken County

There are no unions representing manufacturing workers in Bracken County.

Source: Kentucky Cabinet for Economic Development, Division of Research.

Selected Industrial Services – Within 50 Miles of Augusta

Miles	City	Custom Plastics Producers	Electric Motor Repair	Heat Treating Facilities	Industrial Waste Removal	Machine Shops, Tool & Die	Metal Castings	Metal Finishers	Metal Service Centers	Mill- wrights & Riggers
16	Maysville		X			X				
27	Berry					X				
31	Cynthiana					X	X			
32	Williamstown	X								
33	Covington					X				
34	Bellevue					X				
34	Newport				X			X		
34	Walton				X					
35	Park Hills		X							
36	Elsmere	X								
36	Erlanger	X				X				X
38	Florence	X							X	
38	Villa Hills									X
41	Paris					X				
43	Burlington					X			X	
43	Hebron					X		X		
49	Georgetown	X		X		X				
49	Mount Sterling					X		X		
50	Morehead		X		X	X				

Note: Miles are calculated as the straight-line distance from city center to city center; not road miles.

Source: Kentucky Cabinet for Economic Development, Division of Research.

TRANSPORTATION

Highways

Bracken County is served by Kentucky Highways 8 and 9, both AAA-rated (80,000-pound gross load limit) trucking highways. Kentucky Highways 10, 19, 22, and 1159 are AA-rated (62,000-pound gross load limit) trucking highways providing service to the county.

Interstate 75, a major north-south corridor, is accessible from Augusta via Kentucky Routes 19 and 9, and Interstate 275, 43 miles northwest. Access to Interstate 64 is available near Morehead, 63 miles southeast of Augusta. Access to AAA-rated U.S. Highway 52, in Ohio, is available in Augusta via toll ferry.

Highway Miles from Augusta, Kentucky to Selected Market Centers

<u>City</u>	<u>Highway Miles</u>	<u>City</u>	<u>Highway Miles</u>
Atlanta, GA	451	Indianapolis, IN	154
Baltimore, MD	521	Kansas City, MO	636
Birmingham, AL	474	Knoxville, TN	241
Charleston, WV	157	Lexington, KY	70
Chicago, IL	335	Louisville, KY	127
Cincinnati, OH	42	Minneapolis, MN	746
Cleveland, OH	291	Nashville, TN	283
Columbia, SC	501	New Orleans, LA	815
Columbus, OH	147	New York, NY	678
Dallas, TX	945	Pittsburgh, PA	329
Des Moines, IA	631	Raleigh, NC	474
Detroit, MI	306	Richmond, VA	475
Evansville, IN	244	St. Louis, MO	386
Huntington, WV	108	Tallahassee, FL	722

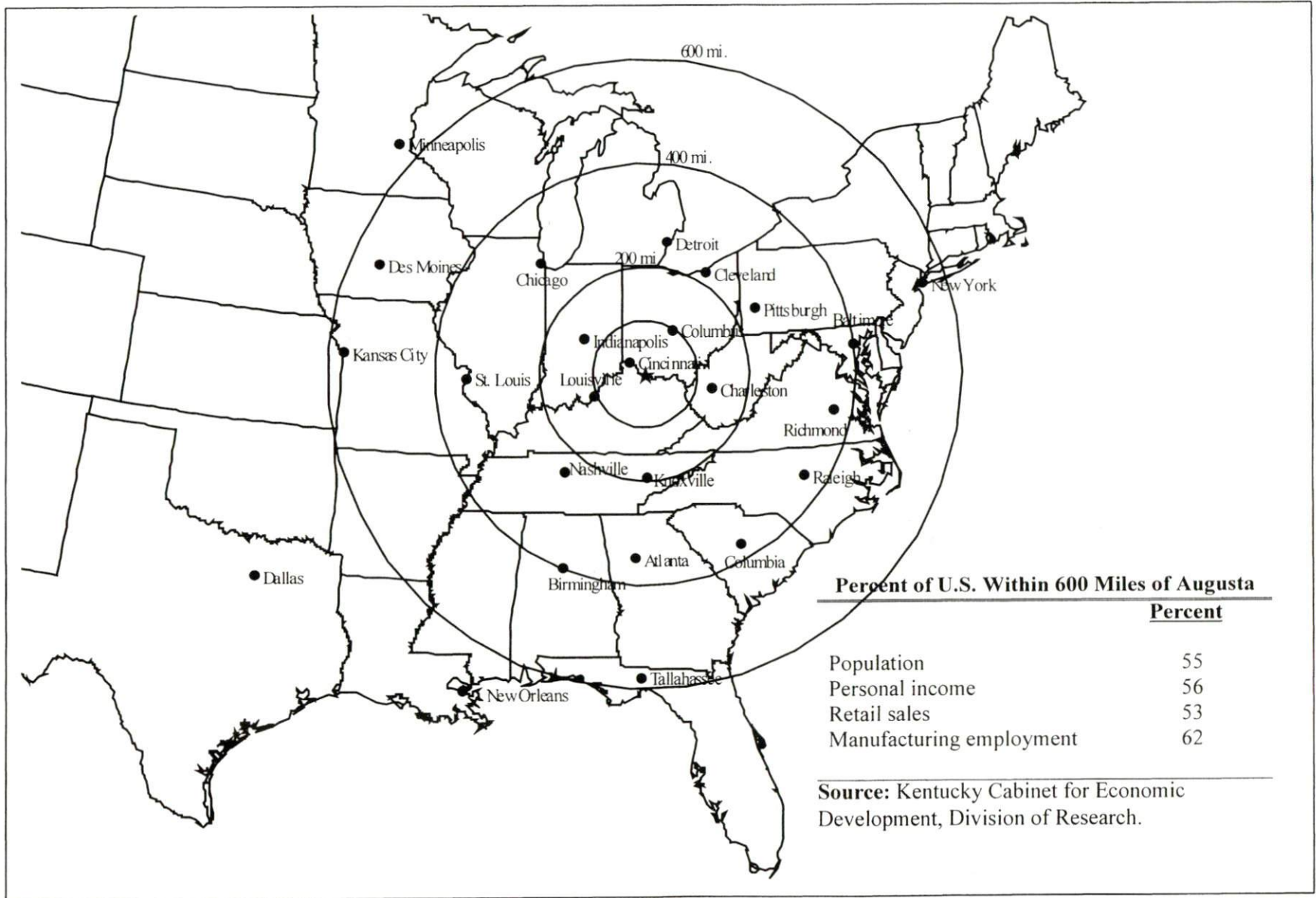
Note: Mileage computations are via the best interstate or primary highways, not necessarily the most direct route of travel.

Source: AAA Map 'n' Go, DeLORME, 1998.

Truck Service

Eighteen common carrier trucking companies provide interstate and/or intrastate service to Bracken County. American Motor Carrier Directory, 2000 Edition.

Selected Market Centers Map



Rail

CSX Transportation provides main line rail service to Augusta. The nearest intermodal facilities are available at Cincinnati, Ohio; 42 miles northwest of Augusta.

For details on routing, schedules, rates, and services contact:

Manager of Industrial Development
CSX Transportation
9420 Bunsen Parkway, Suite 212
Louisville, KY 40220
(502) 499-3025

Air

Local

Fleming-Mason Airport

Location: Flemingsburg, KY
Distance from Augusta: 19 miles southeast
Phone: (606) 742-2411
Number of runways: 1
Length and type of longest runway: 5,000 feet (asphalt)

Cynthiana-Harrison County Airport

Location: Cynthiana, KY
Distance from Augusta: 42 miles southwest
Phone: (606) 234-8477
Number of runways: 1
Length and type of longest runway: 3,200 feet (asphalt)

Commercial/International

Cincinnati/Northern Kentucky International Airport

Location: Covington, KY
Distance from Augusta: 59 miles northwest
Phone: (606) 767-3151
Air service: Air Trans, American, American Eagle, Comair, Continental, Continental Express, Delta, Northwest, Northwest AirlinK, Skyway, Sunworld, SwissAir, TWA, United, US Airways, US Airways Express
Daily arrivals & departures: 1,060

Blue Grass Airport

Location: Lexington, KY
Distance from Augusta: 67 miles southwest
Phone: (606) 254-9336
Air service: ASA, Comair, Continental Express, Delta, Northwest AirlinK, TW Express, United Express, US Airways
Daily arrivals & departures: 192

Water

Augusta is located on the Ohio River, one of the most heavily traveled inland waterways in the United States. A nine-foot navigation channel is maintained along the entire length of the Ohio River.

UTILITIES

Electricity

Service area: **Augusta, Brooksville and portions of Bracken County**
Company: Kentucky Utilities Company
Source of power: Kentucky Utilities Company
For industrial rates contact:

Kentucky Utilities Company
Economic Development Department
One Quality Street
Lexington, KY 40507
(606) 255-2100

Service area: **most of western Bracken County**
Company: Harrison Rural Electric Cooperative Corporation
Source of power: East Kentucky Power Cooperative
For industrial rates contact:

Harrison Rural Electric Cooperative Corporation
Oddville Avenue
P.O. Box 130
Cynthiana, KY 41031
(606) 234-3131

and/or

East Kentucky Power Cooperative
Industrial Development Department
4775 Lexington Road, P.O. Box 707
Winchester, KY 40391
(606) 744-4812

Service area: **portions of southcentral, southeastern and extreme northeastern Bracken County**
Company: Fleming-Mason Rural Electric Cooperative Corporation
Source of power: East Kentucky Power Cooperative
For industrial rates contact:

Fleming-Mason Rural Electric Cooperative Corporation
Elizaville Road
P.O. Drawer 328
Flemingsburg, KY 41041
(606) 845-2661

and/or

East Kentucky Power Cooperative
Industrial Development Department
4775 Lexington Road
P.O. Box 707
Winchester, KY 40391
(606) 744-4812

Natural Gas

Service area: **Augusta and vicinity**
Company: Augusta Utility Department
Source of supply: Columbia Gas Transmission Company
For rates and supplies contact:

Augusta Utility Department
219 Main Street
Augusta, KY 41002
(606) 756-2183

Service area: **Brooksville and vicinity**
Company: Brooksville Utilities
Source of supply: Columbia Gas Transmission Company
For rates and supplies contact:

Brooksville Utilities
P.O. Box 216
Brooksville, KY 41004
(606) 735-2501

Public Water Supply

Service area: **Bracken County**
Company: Bracken County Water District
103 Woodward Avenue
P.O. Box 201
Brooksville, KY 41004
(606) 735-3513

Treatment facilities information:
Average daily consumption: 479,000 gallons per day
Peak daily consumption: 847,900 gallons per day
Storage capacity: 600,000 gallons per day
Water pressure: 15 psi to 87 psi
Additional water source (maximum available for purchase): Augusta Regional Water Treatment Plant (930,000 gallons per day)

Service area: **Augusta**
Company: Augusta Utility Department
219 Main Street
Augusta, KY 41002
(606) 756-2183

Treatment facilities information:
Source of raw water: Two wells
Treatment plant capacity: 1,440,000 gallons per day
Average daily consumption: 150,000 gallons
Peak daily consumption: 175,000 gallons
Storage capacity: 300,000 gallons
Water pressure: 60 psi to 75 psi
Additional water source (maximum available for purchase): Augusta Regional Water Treatment Plant (1,728,000 gallons)

Service area: **Brooksville**
Company: Brooksville Utilities
P.O. Box 216
Brooksville, KY 41004
(606) 735-2501

Treatment facilities information:
Average daily consumption: 60,000 gallons per day
Peak daily consumption: 72,000 gallons per day
Storage capacity: 50,000 gallons per day
Water pressure: 40 psi to 48 psi

Raw Water

Surface water sources – Ohio River, North Fork Licking River
Average discharge – Ohio River at Greenup Dam, Kentucky; 89,770 cfs (27 year record)
Expected ground water yield – 500 to 1,000 gpm along the Ohio River; 50 to 200 gpm in extreme southwestern
Bracken County; 5 to 50 gpm in the remainder of the county

Sewerage

Service area: **Augusta**
Company information: Augusta Utility Department
219 Main Street
Augusta, KY 41002
(606) 756-2183

Design capacity: 330,000 gallons per day
Average daily flow: 150,000 gallons
Type of treatment: Primary
Treated effluent discharged into: Ohio River

Improvements:

Service area: **Brooksville**
Company information: Brooksville Utilities
P.O. Box 216
Brooksville, KY 41004
(606) 735-2501

Design capacity: 125,000 gallons per day
Average daily flow: 60,000 gallons per day
Type of treatment: Primary
Treated effluent discharged into: Locust Creek

CLIMATE

Bracken County

Temperature

Normal (51-year record)	53.7 degrees
Average annual, 1998	56.2 degrees
Record highest, July 1988 (37-year record)	103 degrees
Record lowest, January 1977 (37-year record)	-25 degrees
Normal heating degree days (30-year record)	5,248
Normal cooling degree days (30-year record)	996

Precipitation

Normal (30-year record)	41.33 inches
Mean annual snowfall (30-year record)	23.6 inches
Total precipitation, 1998	51.39 inches
Mean number days precipitation (0.01 inch or more) (30-year record)	128.5
Mean number days thunderstorms (52-year record)	42.8

Prevailing Winds (28-year record)

Southwest

Relative Humidity (30-year record)

1 a.m.	77 percent
7 a.m.	81 percent
1 p.m.	59 percent
7 p.m.	63 percent

Notes: Heating degree day totals are the sums of negative departures of average daily temperatures from 65 degrees F. Cooling degree day totals are the sums of positive departures of average daily temperatures from 65 degrees F.

Source: U.S. Department of Commerce, National Climatic Data Center, Local Climatological Data, 1998.
Station of record: Cincinnati, Ohio.

LOCAL GOVERNMENT

Structure

The Cities of Augusta and Brooksville are each governed by a mayor and six council members. The mayors serve a four-year term while the council members serve two-year terms. Bracken County is governed by a county judge/executive and eight magistrates. Each county official serves a four-year term.

Planning and Zoning

There are no planning and zoning agencies operating within Bracken County at the present time.

Mandatory state codes enforced - Kentucky Plumbing Code, National Electric Code, Kentucky Boiler Regulations and Standards, Kentucky Building Code (modeled after BOCA code)

Local Fees and Licenses

The City of Augusta levies a one percent occupational license tax on wages, salaries, and commissions of individuals employed within the city and on net profits of businesses located within the city. The tax cannot exceed \$100 per year for an individual or business. Manufacturing firms are levied a one percent license tax based on annual gross receipts. The tax cannot exceed \$500.

The City of Brooksville levies a business license fee on all business enterprises and activities within the city. Certain specified businesses pay a flat rate, and all others pay an amount ranging from \$37.50 to \$900 annually, on the basis of gross receipts. The wages, salaries, and commissions of individuals employed within the city are taxed at a rate of 1.75 percent.

Sales and Use Tax

A state sales and use tax is levied at the rate of 6.0% on the purchase or lease price of taxable goods and on utility services. Local sales taxes are not levied in Kentucky.

State and Local Property Taxes

The Kentucky Constitution requires the state to tax all classes of taxable property, and state statutes allow local jurisdictions to tax only a few classes. All locally taxed property is subject to county taxes and school district taxes (either a county school district or an independent school district). Property located inside the city limits may also be subject to city property taxes. Property assessments in Kentucky are at 100% fair cash value. Accounts receivable are taxed at 85% of face value. Special local taxing jurisdictions (fire protection districts, watershed districts, and sanitation districts) levy taxes within their operating areas (usually a small portion of community or county).

State Property Tax Rates Per \$100 Valuation

<u>Selected Classes of Property</u>	<u>State Rate, 1998</u>	<u>Local Taxation Permitted</u>
Real Estate	\$0.153	Yes
Manufacturing Machinery	0.150	No
Pollution Control Equipment	0.150	No
Inventories:		
Raw Materials	0.050	No
Goods in Process	0.050	No
Finished Goods	0.050	Yes
Motor Vehicles	0.450	Yes
Other Tangible Personal Property	0.450	Yes
Intangibles (Accounts Receivable, Money on Hand)	0.250	No

Source: Property Tax Rates 1998, Kentucky Revenue Cabinet, Department of Property Valuation.

Local Property Tax Rates Per \$100 Valuation, 1998

<u>Taxing Jurisdiction</u>	<u>Real Estate</u>	<u>Finished Goods & Tangibles</u>	<u>Motor Vehicles</u>
<u>County</u>			
Bracken County	0.3377	0.4140	0.3530
<u>Cities</u>			
Augusta	0.1630	0.2190	0.2190
Brooksville	0.2030	0.3720	0.3725
Germantown	0.0000	0.0000	0.0000
<u>School Districts</u>			
Augusta Independent	0.6490	0.6490	0.5760
Bracken County	0.3940	0.4250	0.5250

Source: Property Tax Rates 1998, Kentucky Revenue Cabinet, Department of Property Valuation.

EDUCATION

Primary and Secondary Schools

Public School District Enrollments and Expenditures, 1996-97

	<u>Total Enrollment</u>	<u>Expenditures Per Pupil</u>	<u>Pupil to Teacher Ratio</u>
Augusta Independent	308	7,051	16.5
Bracken County	1,265	5,125	17.6

Source: Kentucky Department of Education, Office of Curriculum, Assessment, and Accountability.

Transition to Adult Life of High School Graduates, 1996-97

<u>County-wide</u>	<u>Number of Graduates</u>	<u>Percent of Total Graduates (%)</u>
Total High School Graduates	122	
To College	53	43.4
To Vocational/Technical School	6	4.9
To Workforce	47	38.5
To Work & School	3	2.5
To Military	1	0.8
Other	12	9.8

Source: Kentucky Department of Education, Office of Curriculum, Assessment, and Accountability.

Nonpublic Schools, 1997-98

	<u>Enrollment</u>	<u>Grades</u>
St. Augustine Elementary	70	1-8

Source: Kentucky Schools Directory 1997-98, Kentucky Department of Education.

Colleges and Technical Schools

Area Colleges and Universities Within 60 Miles of Augusta

<u>Miles</u>	<u>Institution</u>	<u>Location</u>	<u>Enrollment (Fall 1997)</u>
16	Maysville Community College	Maysville	1,294
30	Northern Kentucky University	Highland Heights	11,785
35	Thomas More College	Crestview Hills	1,322
37	Athenaeum of Ohio	Cincinnati, OH	104
37	College of Mt. St. Joseph	Cincinnati, OH	2,205

Area Colleges and Universities Within 60 Miles of Augusta (continued)

<u>Miles</u>	<u>Institution</u>	<u>Location</u>	<u>Enrollment (Fall 1997)</u>
37	Hebrew Union College, Cincinnati Campus	Cincinnati, OH	147
37	Southern Ohio College, Cincinnati Campus	Cincinnati, OH	500
37	University of Cincinnati	Cincinnati, OH	35,000
37	Xavier University	Cincinnati, OH	6,423
47	Wilmington College	Wilmington, OH	1,092
49	Georgetown College	Georgetown	1,626
50	Morehead State University	Morehead	8,208
56	Lexington Community College	Lexington	5,558
56	Transylvania University	Lexington	1,021
56	University of Kentucky	Lexington	24,171
57	Midway College	Midway	968
57	Shawnee State University	Portsmouth, OH	3,505
Total Enrollment			104,929

Note: Miles are calculated as the straight-line distance from Augusta, not road miles.

Source: Kentucky Council on Higher Education.

Kentucky Technical Schools Within 60 Miles of Augusta

<u>Miles</u>	<u>Institution</u>	<u>Location</u>	<u>Enrollment (1997-98)</u>		
			<u>Sec</u>	<u>P/S</u>	<u>Total</u>
16	Mason County ATC	Maysville	185	33	218
24	C. E. McCormick ATC	Alexandria	241	1	242
30	Northern KY Technical College Highland Heights Campus	Highland Heights	30	212	242
31	Harrison County ATC	Cynthiana	720	5	725
33	Chapman Academic Vocational Education Center	Covington	147	0	147
33	Northern KY Technical College Covington Campus	Covington	7	473	480
34	Northern KY Technical College Edgewood Campus	Edgewood	0	248	248
35	J. D. Patton ATC	Fort Mitchell	185	0	185
39	Foster Mead Vocational Education Center	Vanceburg	215	0	215
43	Boone County ATC	Hebron	175	3	178
49	Montgomery County ATC	Mt. Sterling	692	0	692
50	Rowan County Technical College	Morehead	99	417	516
54	Clark County ATC	Winchester	207	2	209
56	Central KY Technical College Lexington Campus	Lexington	0	1,154	1,154
56	Eastside Center for Applied Technology	Lexington	345	0	345

Kentucky Technical Schools Within 60 Miles of Augusta (continued)

<u>Miles</u>	<u>Institution</u>	<u>Location</u>	<u>Enrollment (1997-98)</u>		
			<u>Sec</u>	<u>P/S</u>	<u>Total</u>
56	Southside Center for Applied Technology	Lexington	261	0	261
56	Carter County Vocational School	Olive Hill	170	0	170
Total Enrollment			3,679	2,548	6,227

Notes: Kentucky Tech secondary schools (Sec), called area technology centers (ATC), are operated by the Cabinet for Workforce Development and the post-secondary schools (P/S), called technical colleges, are governed by the Kentucky Community and Technical College System (KCTCS). Adult courses may be offered at some secondary technical schools. Miles are calculated as the straight-line distance from Augusta, not road miles.

Source: Kentucky Workforce Development Cabinet, KCTCS.

Customized Training

The Kentucky Tech system, through its training and development coordinators, will provide technical assistance and will identify and develop low-cost customized training programs and services for both established and prospective businesses. Businesses wanting to establish a customized training program should contact a Training and Development Coordinator at the Northern Kentucky Technical College Covington Campus in Covington, or the Central Kentucky Technical College Lexington Campus in Lexington.

Assessment Services

Kentucky Tech Career Connections offers business, education, and government agencies testing packages for evaluating job applicants, selecting employees for promotional consideration and developing training programs within the organization. The Career Connections Assessment Center serving the Bracken County area is located at the Northern Kentucky Technical College Covington Campus in Covington and the Central Kentucky Technical College Lexington Campus in Lexington.

Adult Education Services

Adult education programs are available to adults who want to develop new academic skills, improve basic skills, or earn a high school equivalency diploma. In Bracken County, adult basic education and adult literacy classes are administered through the Bracken County Literacy Program in Brooksville.

Bluegrass State Skills Corporation

The Bluegrass State Skills Corporation (BSSC) was established in 1984 by the General Assembly of the Commonwealth of Kentucky as an independent, de jure corporation to stimulate economic development through customized business and industry specific skills training programs. The BSSC works with business and industry and Kentucky's educational institutions to establish programs of skills training. The BSSC is attached to the Cabinet for Economic Development for administrative purposes, in recognition of the relationship between economic development and skills training efforts.

The BSSC is comprised of two economic development tools, matching grants and the newly authorized Skills Training Investment Credit Act. The BSSC grant program is available to new, expanding and existing business and industry. Eligible training activities include pre-employment skills training and assessment; entry level, skills upgrade and occupational upgrade training; train-the-trainer travel; and capacity-building. The Skills Training Investment Credit Act provides tax credits to existing businesses for skills upgrade training.

OTHER LOCAL FACILITIES

Local Medical Personnel

Physicians - 5

Dentists - 2

Hospitals

<u>General Hospital</u>	<u>Location</u>	<u>Beds</u>
Columbia Hospital-Maysville	Maysville, Kentucky	111
Harrison Memorial Hospital	Cynthiana, Kentucky	99

Other Medical Facilities and Services

Bracken County Ambulance Service

Bracken County Comprehensive Care Center

Bracken County Health Department

Comprehend of Maysville

Extended Care-Augusta

Rural Home Health Services of Augusta

Banks and Savings & Loan Associations

Bank of Germantown (Germantown)

First National Bank (Brooksville)

Trans Financial Bank (Augusta)

Newspapers

Bracken County News (weekly)

Telephone Service

GTE Kentucky

RECREATION

Public recreation facilities in Bracken County include the Jett Memorial Park located in Brooksville. The park offers a swimming pool, a tennis court, a picnic shelter, a playground, and mini-golf. The Augusta Community Park in Augusta features a tennis court and a bandstand for public concerts. Mains Memorial Park, located in historic Augusta, features a fountain and memorial marker. The Germantown City Park provides a ball field and horseshoe pits.

Historic Augusta is a river town built around the Augusta Public Square and site of Augusta College (1822-1847), the first established Methodist College. Augusta is the location of the home of Dr. Joshua Taylor Bradford, world famous surgeon; the homes of General John Payne and the parents of General George C. Marshall. The town is built over an ancient burial ground. The Augusta Ferry Boat is one of only two still operating on the Ohio River. Many of Augusta's unique bed-and-breakfast inns, antique shops, and galleries, are listed on the National Register of Historic Places.

Brooksville, in the center of the county, is the county seat of Bracken County. Once called Woodward's Crossroads, the beautiful Courthouse, built in 1915 and the original jail built in 1833, are located here. The Ware Hotel, built before 1800, is one of the oldest buildings. When the first courthouse was being built, court was held in the hotel.

Walcott Covered Bridge, one of Kentucky's oldest remaining covered bridges, is located five miles north of Brooksville. The 75-foot long bridge was constructed in 1824.

Special events in Bracken County include the annual Sternwheel Regatta, July 4th Celebration, Christmas Parade, Germantown Celebration, Augusta Heritage Days, Brooksville Harvest Festival, Winter Craft Festival, Writers Round Table, and Old Fashion Christmas in Augusta.

Area (Within 65 miles)

Blue Licks Battlefield State Park
Fort Boonesborough State Park
Keeneland Race Course
Kentucky Horse Park
Kincaid Lake State Park
Kincaid Regional Theatre
Waveland State Historic Site

APPENDIX A - DEFINITIONS

Geographic definition of the labor market area

A county's labor market area is defined as the base county, adjacent counties, and any other major commuting counties. Adjacency is used to define the labor market area primarily because of the small size of Kentucky's counties. The major commuting counties are defined from the point of view of the base county. Major commuting counties are those counties that comprise 90% of the base county's total commuters. The source of the commuting patterns is the 1990 journey-to-work data available from the U.S. Department of Commerce, Bureau of Economic Analysis.

Example – Logan County

To determine the labor market area for Logan County the following steps are taken. First, the counties with workers commuting into Logan county are listed in ascending order (see the table below). The cumulative percent is calculated. Next, all counties that comprise up to 90% of the commuters are included in the labor market area (actually the cut-off will be the county that breaks the 90% threshold – Montgomery County, TN at 92.6% in this case). Although Robertson is not a major commuter county, it is included since it is adjacent. The Logan County labor market is then comprised of the seven bold-faced counties in the table below.

Labor Market Area – Logan County (Example Only)				
<u>Adjacent to Logan</u>	<u>Commuter County</u>	<u>Commuters into Logan</u>	<u>Percent of Total Commuters</u>	<u>Cumulative Percent</u>
Y	Todd	385	24.4%	24.4%
Y	Warren	377	23.9	48.4
Y	Muhlenberg	365	23.2	71.5
Y	Simpson	162	10.3	81.8
Y	Butler	116	7.4	89.1
	Montgomery, TN	55	3.5	92.6
	Christian	36	2.3	94.9
	Sumner, TN	35	2.2	97.1
Y	Robertson, TN	25	1.6	98.7
	Davidson, TN	20	1.3	100.0
	<i>Total Commuters into Logan County</i>	1,576	100.0	

Source: U.S. Department of Commerce, Bureau of Economic Analysis. Regional Economic Information System, CD-ROM. August 1997.

Potential Labor Supply

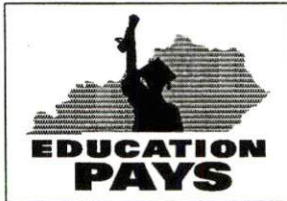
The potential labor supply is an estimate of those persons not classified as in the labor force (not employed and not unemployed), but who want a job. The assumption is that people not in the labor force at the local level would like a job at the same rate as the nation. The U.S. Department of Labor, Bureau of Labor Statistics provides national, yearly estimates of the percent of the people not in the labor force who want a job. This percent is applied to the county-level number of people not in the labor force.

Underemployed

Wholesale/retail trade and non-professional services have historically paid low wages. The assumption is that workers in these industries would take higher paying jobs if they were available. Non-professional services excludes Miscellaneous Repair Services (SIC 7600), Health Services (SIC 8000), Legal Services (SIC 8100), and Engineering and Management Services (SIC 8700).

Total Available Labor

Total available labor is the sum of the number of unemployed, potential labor supply, and underemployed. Please note that the number of unemployed is the only generally accepted measure of labor availability. The other concepts are weaker measures and should be used with caution.



Kentucky

Cabinet For Economic Development

2300 Capital Plaza Tower, 500 Mero Street, Frankfort, KY 40601, 502 • 564 • 7140



Printed on recycled paper.