

1993

## Industrial Resources: Bullitt County

Kentucky Library Research Collections  
Western Kentucky University, [spcol@wku.edu](mailto:spcol@wku.edu)

Follow this and additional works at: [https://digitalcommons.wku.edu/bullitt\\_cty](https://digitalcommons.wku.edu/bullitt_cty)

 Part of the [Business Administration, Management, and Operations Commons](#), [Growth and Development Commons](#), and the [Infrastructure Commons](#)

---

### Recommended Citation

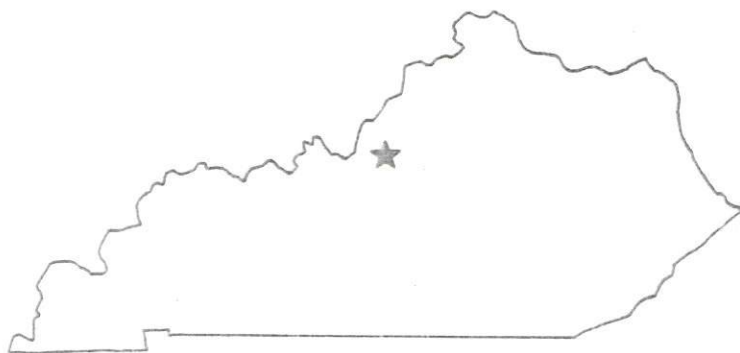
Kentucky Library Research Collections, "Industrial Resources: Bullitt County" (1993). *Bullitt County*. Paper 4.  
[https://digitalcommons.wku.edu/bullitt\\_cty/4](https://digitalcommons.wku.edu/bullitt_cty/4)

This Report is brought to you for free and open access by TopSCHOLAR®. It has been accepted for inclusion in Bullitt County by an authorized administrator of TopSCHOLAR®. For more information, please contact [topscholar@wku.edu](mailto:topscholar@wku.edu).

IK  
713 Bullitt

*Resources for Economic Development*

# Bullitt County



**KENTUCKY**

---

RESOURCES FOR ECONOMIC DEVELOPMENT  
BULLITT COUNTY, KENTUCKY

Prepared by  
The Kentucky Cabinet for Economic Development  
Division of Research  
in cooperation with  
Bullitt County Chamber of Commerce

1993

Division Director - Pamela K. Riley; program manager - Keith Roberts; research - Barry K. Holder, Jr.; clerical - Wanda Sharp; graphics - Robert Owens, Pat Coleman; cartography - Edwin Scott, Dave Clark. Cost of printing paid from state funds.

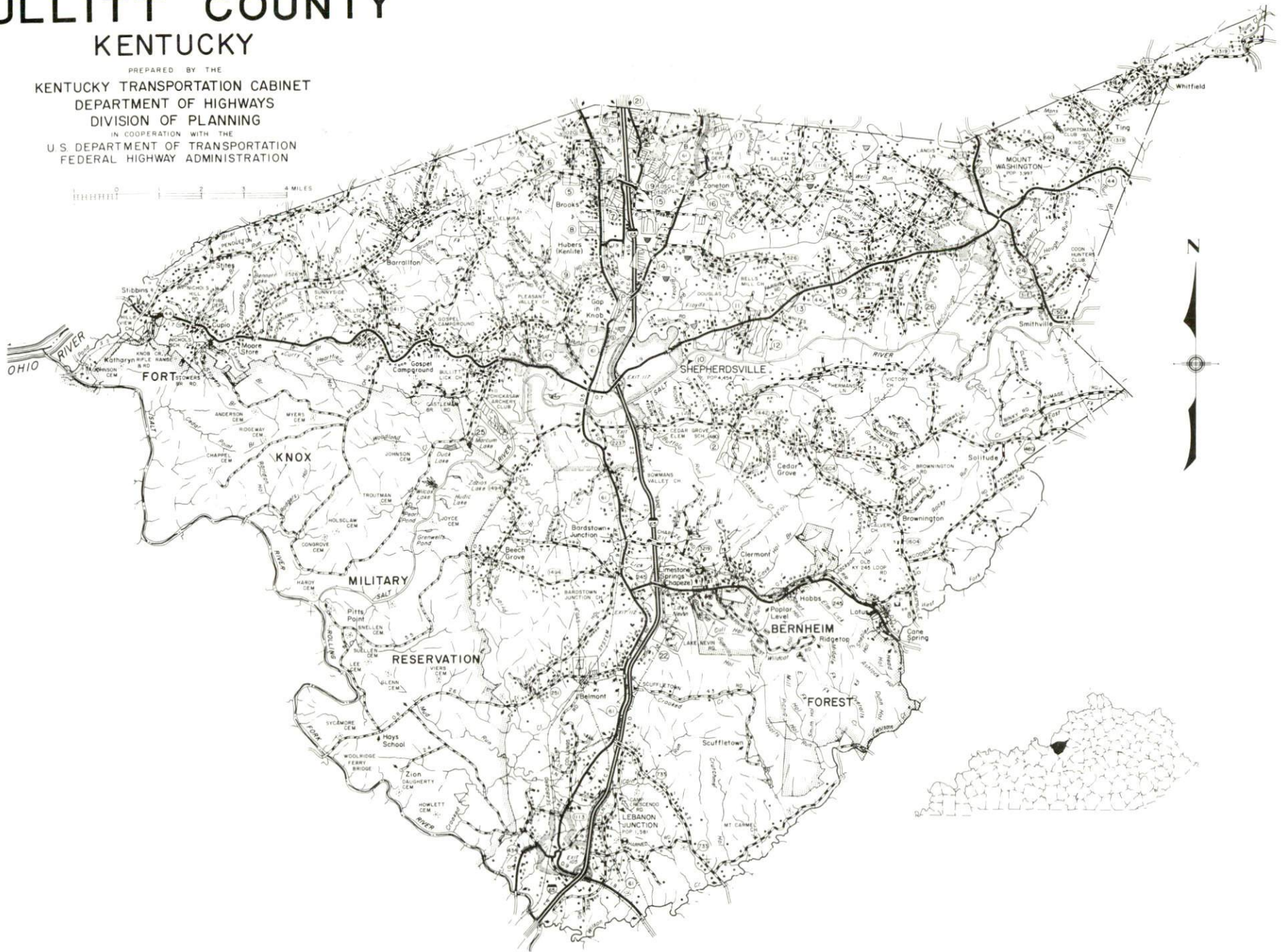
## TABLE OF CONTENTS

<u>Chapter</u>	<u>Page</u>
BULLITT COUNTY, KENTUCKY - A RESOURCE PROFILE .....	1
THE LABOR MARKET STATISTICS .....	2
Labor Market Area Map .....	2
Population .....	3
Population Projections .....	3
Estimated Labor Supply .....	3
Labor Force Characteristics of Residents, 1991 .....	4
Selected Components of Nonagricultural Employment, by Place of Work, 1991 .....	5
Per Capita Personal Income .....	6
Average Placement Wages .....	7
Average Weekly Wages of Workers Covered by Unemployment Insurance 1990 - Bar Chart .....	8
Average Weekly Wages by Industry, by Place of Work, 1990 .....	9
EXISTING INDUSTRY .....	10
Bullitt County Manufacturing Firms, Their Products and Employment .....	10
Labor Organizations in Manufacturing Firms .....	11
Selected Industrial Services .....	12
TRANSPORTATION .....	13
Highways .....	13
Truck Service .....	13
Selected Market Location Map .....	14
Rail .....	15
Air .....	15
Bus .....	15
Water .....	15
UTILITIES .....	16
Electricity .....	16
Natural Gas .....	17
Public Water Supply .....	17
Sewerage .....	18
CLIMATE .....	20

<u>Chapter</u>	<u>Page</u>
LOCAL GOVERNMENT .....	21
Structure .....	21
Planning and Zoning .....	21
Local Fees and Licenses .....	21
State and Local Property Taxes .....	22
EDUCATION .....	23
Public Schools .....	23
Nonpublic Schools .....	23
Area Colleges and Universities .....	23
Vocational Training .....	24
OTHER LOCAL FACILITIES .....	26
Local Medical Personnel .....	26
Hospitals .....	26
Other Medical Facilities and Services .....	26
Banks and Savings & Loan Associations .....	26
Newspapers .....	26
Telephone Service .....	26
RECREATION .....	27
COMMUNITY IMPROVEMENTS .....	28

# GENERAL HIGHWAY MAP BULLITT COUNTY KENTUCKY

PREPARED BY THE  
KENTUCKY TRANSPORTATION CABINET  
DEPARTMENT OF HIGHWAYS  
DIVISION OF PLANNING  
IN COOPERATION WITH THE  
U.S. DEPARTMENT OF TRANSPORTATION  
FEDERAL HIGHWAY ADMINISTRATION



## BULLITT COUNTY, KENTUCKY - A RESOURCE PROFILE

Bullitt County is located in north central Kentucky at the junction of the Outer Blue Grass and the Knobs Regions. The county covers a land area of 299 square miles. Bullitt County had a 1990 population of 47,567 persons.

Shepherdsville, the county seat of Bullitt County, is located 20 miles south of Louisville, Kentucky; 121 miles southwest of Cincinnati, Ohio; and 152 miles northeast of Nashville, Tennessee. Shepherdsville had a population of 4,805 persons in 1990. Other cities in Bullitt County include Hillview, located five miles northeast of Shepherdsville, with a 1990 population of 6,119; Lebanon Junction, located 12 miles south of Shepherdsville, with a 1990 population of 1,741; and Mt. Washington, 11 miles east of Shepherdsville, with a 1990 population of 5,226.

**The Economic Framework** - The total number of Bullitt County residents employed in 1991 averaged 20,898. Manufacturing firms in the county reported 2,036 employees; wholesale and retail trade provided 2,044 jobs; 777 people were employed in service occupations; state and local government accounted for 1,515 employees; and contract construction firms provided 431 jobs.

**Labor Supply** - There is a current estimated labor supply of 66,258 persons available for industrial jobs in the labor market area. In addition, from 1993 through 1997, 58,056 young persons in the area will become 18 years of age and potentially available for industrial jobs.

**Transportation** - Bullitt County is served by Interstate 65, a major north-south highway. Other "AAA"-rated trucking highways serving Bullitt County include U.S. 31E and 150, Kentucky 44, and Kentucky 61. Twenty-nine trucking companies provide service to Bullitt County, including one company with a local terminal. CSX Transportation provides main line rail service to Shepherdsville and Lebanon Junction. R.J. Corman Railroad Corporation provides short line rail service just south of Shepherdsville. The nearest scheduled commercial airline service is available at Louisville's Standiford Field, located 15 miles north of Shepherdsville. Public riverport facilities also are located at Louisville.

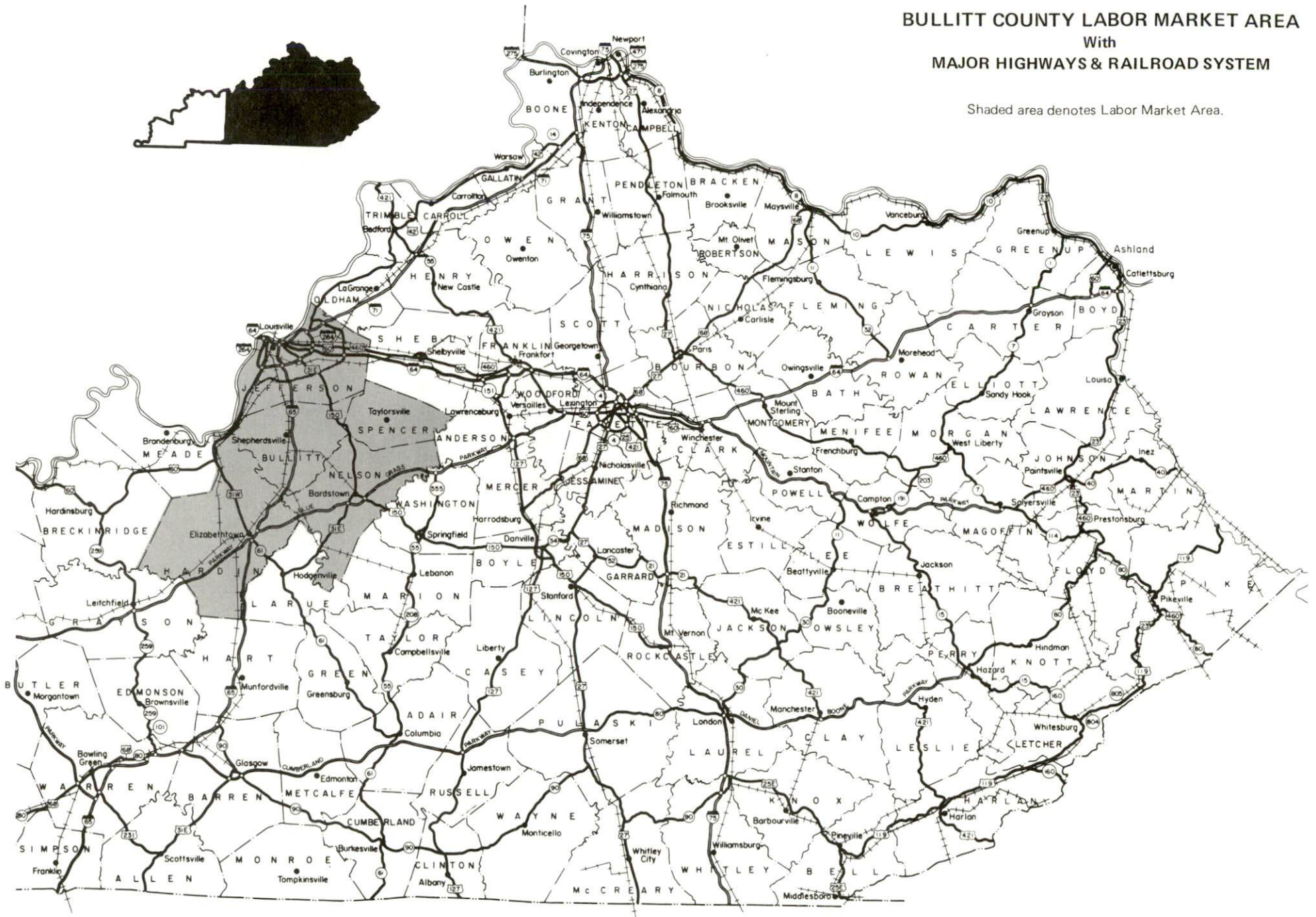
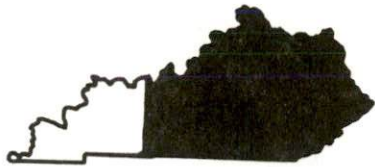
**Power and Fuel** - Louisville Gas and Electric Company provides electric power to Shepherdsville, Mt. Washington, Hillview, and parts of Bullitt County. Kentucky Utilities Company provides electric power to Lebanon Junction, and East Kentucky Power Cooperative serves the remainder of the county through the Salt River Electric Cooperative Corporation. Louisville Gas and Electric company also provides natural gas service to Shepherdsville, Mt. Washington, and Hillview.

**Education** - The Bullitt County School System provides primary and secondary education for residents of Bullitt County. Three nonpublic schools also operate in the county. Seven colleges and universities are located within 40 miles of Shepherdsville. The Jefferson State Vocational-Technical School at Louisville, 20 miles north of Shepherdsville, the Elizabethtown State Vocational-Technical School at Elizabethtown, 26 miles southwest of Shepherdsville, and the Bullitt County Area Vocational Education Center at Shepherdsville provide vocational education to Bullitt County.



# BULLITT COUNTY LABOR MARKET AREA With MAJOR HIGHWAYS & RAILROAD SYSTEM

Shaded area denotes Labor Market Area.



## LABOR MARKET STATISTICS

The Bullitt County Labor Market Area includes Bullitt County and the adjoining Kentucky counties of Hardin, Jefferson, Nelson, and Spencer.

POPULATION			
	1990	1980	1970
Labor Market Area	838,255	850,408	828,531
Hillview	6,119	7,124	N/A
Lebanon Junction	1,741	1,581	1,571
Mt. Washington	5,226	3,997	2,020
Shepherdsville	4,805	4,454	2,769
Bullitt County	47,567	43,346	26,090

Source: U.S. Department of Commerce, Bureau of the Census, January 1991.  
N/A: Not available.

POPULATION PROJECTIONS				
	1995	2000	2010	2020
Labor Market Area	848,109	851,291	851,326	844,024
Bullitt County	51,370	54,736	59,579	62,371

Note: Population projections are from Moderate Growth Series forecast.  
Source: University of Louisville, Urban Studies Center, State Data Center.

ESTIMATED LABOR SUPPLY				
	Current			Future
	Total	Unemployed	Employed Part-Time	Not in Labor Force
	Becoming 18 years of age 1993 thru 1997			
Labor Market Area*	66,258	25,666	37,995	2,597
Bullitt County	5,629	1,153	2,174	2,302
				58,056
				4,073

\* Additional workers may be drawn from other nearby counties.

Note: Unemployed - persons unemployed and actively seeking work; Employed Part-Time - persons employed but working only 14 to 26 weeks per year; Not in Labor Force - represents the number of persons who would enter the labor force if suitable employment were available (based on the assumption that persons in Kentucky would like to participate in the labor force in the same proportion that they do nationally).

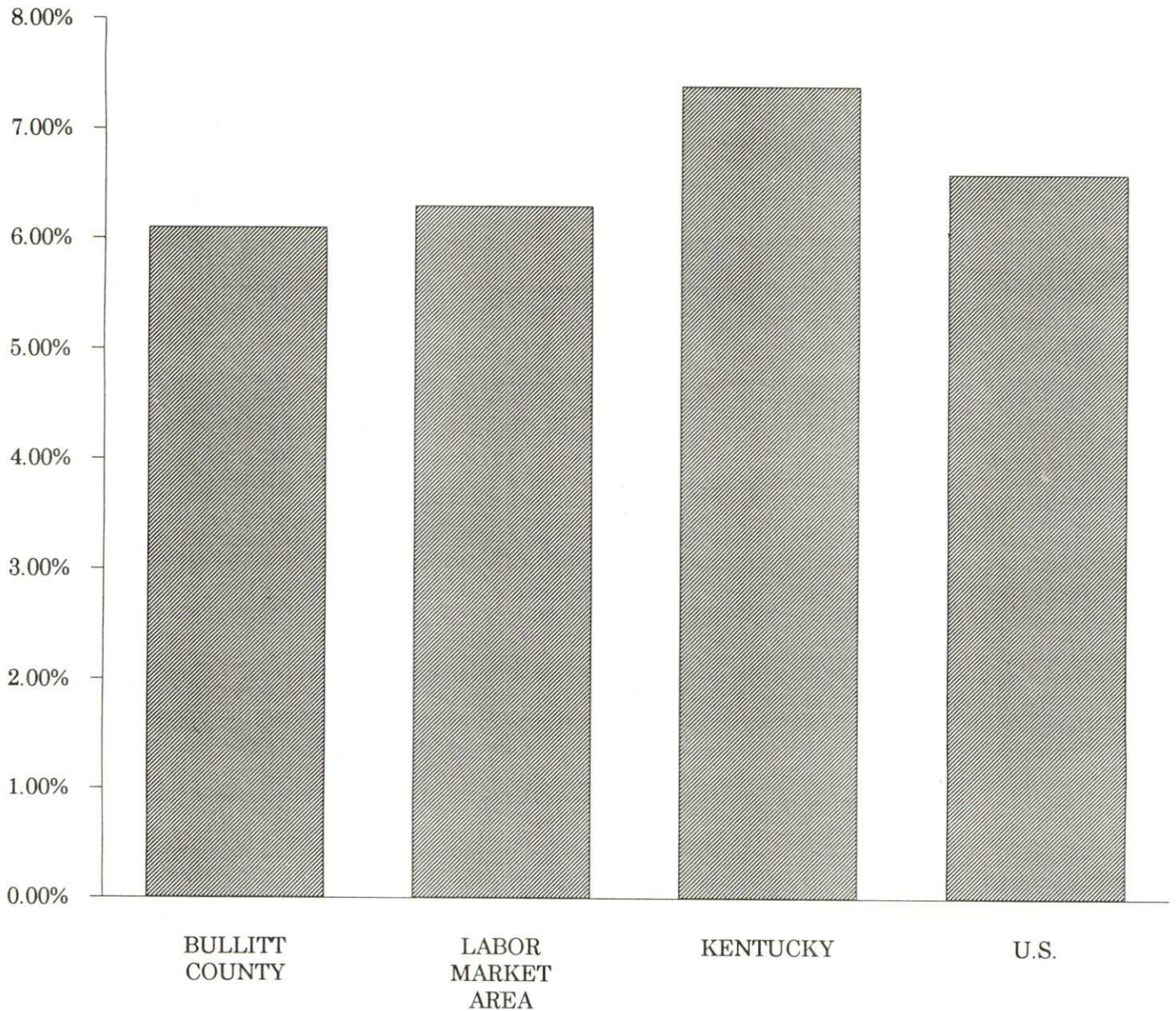
Sources: Kentucky Cabinet for Human Resources, Kentucky Labor Supply Estimates by County, 1989. Kentucky Cabinet for Economic Development, Future Labor Supply Becoming 18 Years of Age, 1992 thru 1996.

**LABOR FORCE CHARACTERISTICS OF RESIDENTS, 1991**

	<u>Bullitt County</u>	<u>Labor Market Area</u>
Civilian Labor Force	22,267	444,265
Employment	20,898	416,138
Unemployment	1,369	28,127
Rate of Unemployment (%)	6.1	6.3

**Source:** Kentucky Cabinet for Human Resources, Kentucky Labor Force Estimates, Annual Averages, 1991.

**UNEMPLOYMENT RATES  
1991**

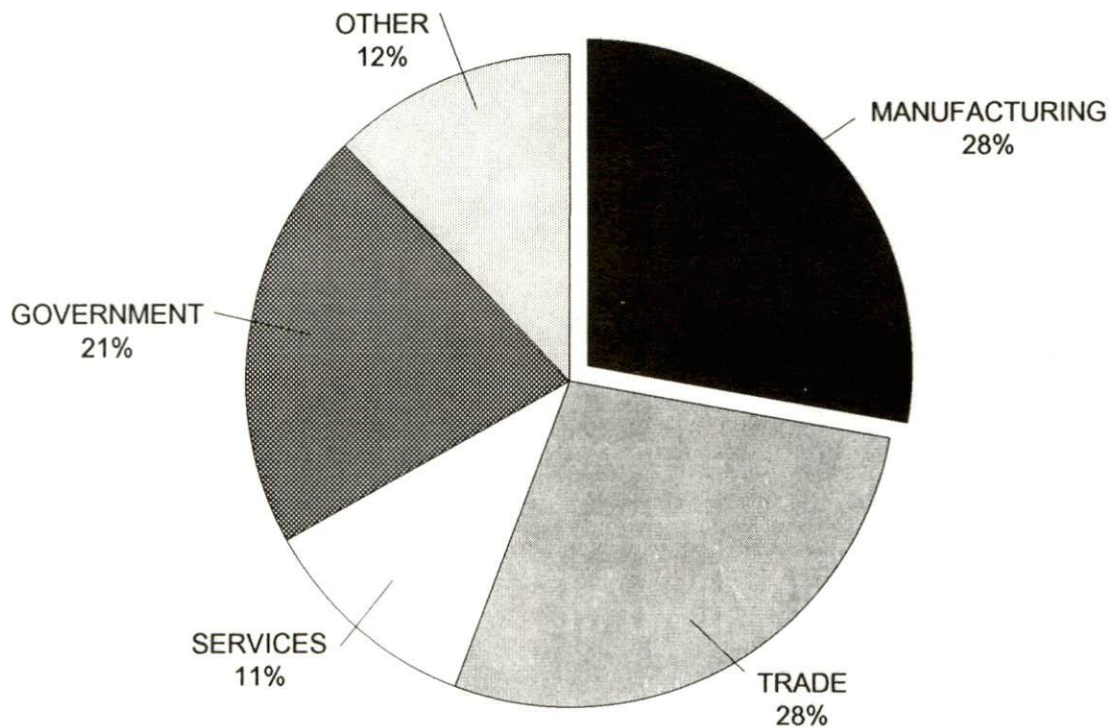


**SELECTED COMPONENTS OF NONAGRICULTURAL EMPLOYMENT  
BY PLACE OF WORK, 1991**

	<u>Bullitt County</u>	<u>Labor Market Area</u>
All Industries (total)	7,343	401,569
Manufacturing	2,036	77,283
Wholesale & Retail Trade	2,044	105,437
Services	777	106,405
State/Local Government	1,515	39,872
Contract Construction	431	18,403

**Note:** Excludes domestic workers, railway workers, certain nonprofit corporations, majority of federal government workers, and self-employed workers.  
**Source:** Kentucky Cabinet for Human Resources, Average Monthly Workers Covered by Kentucky Unemployment Insurance Law, 1991.

**BULLITT COUNTY**

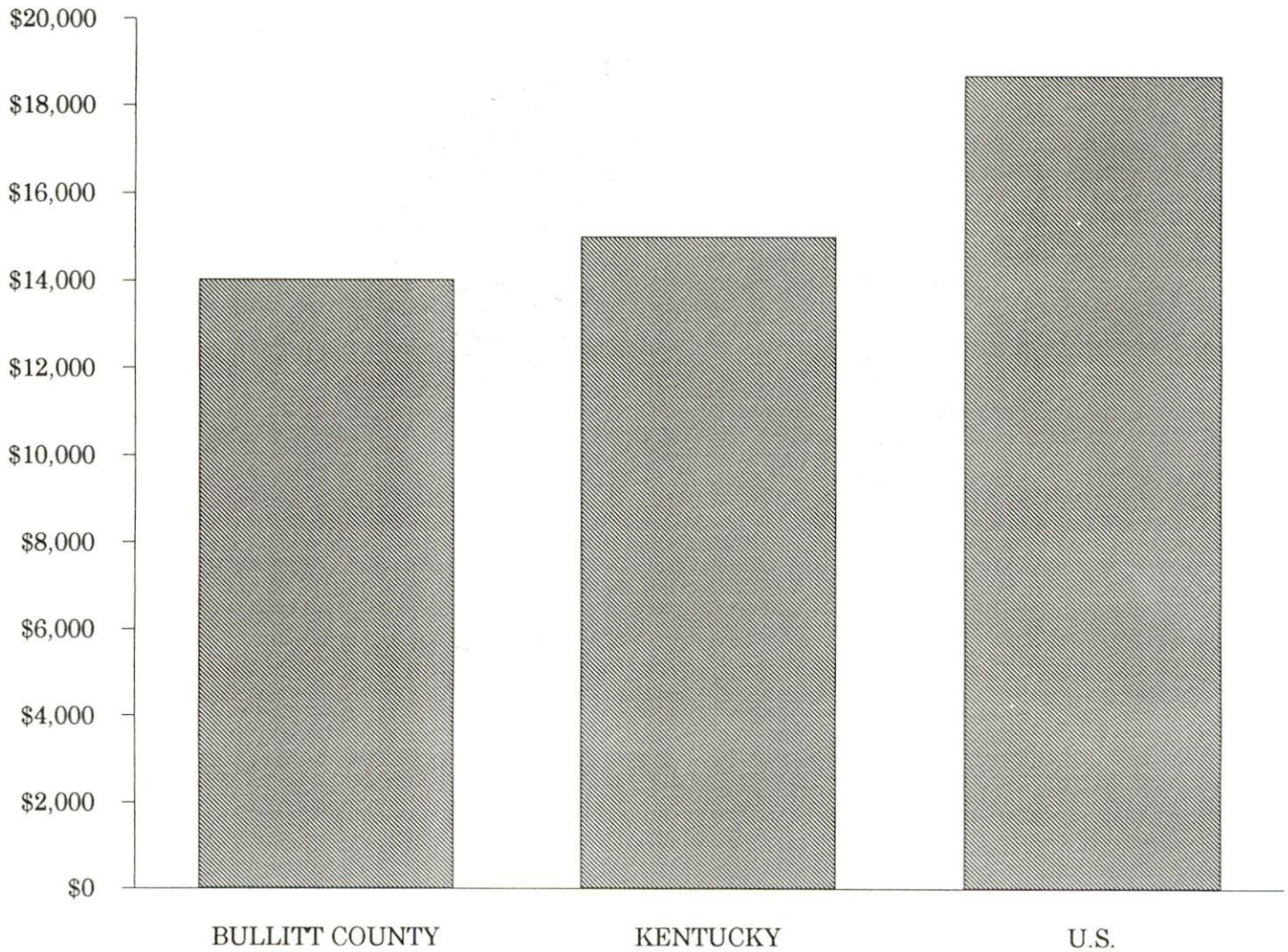


PER CAPITA PERSONAL INCOME

<u>Area</u>	<u>1986</u>	<u>1990</u>	<u>Percent Change</u>
Bullitt County	\$10,484	\$14,030	33.8
Labor Market Area Range	\$9,385 - \$14,496	\$12,844 - \$19,140	-
Kentucky	\$11,273	\$14,992	33.0
U.S.	\$14,654	\$18,696	27.6

Source: U.S. Bureau of Economic Analysis, Kentucky Economic Information System, April 1992.

PER CAPITA PERSONAL INCOME  
1990



## AVERAGE PLACEMENT WAGES

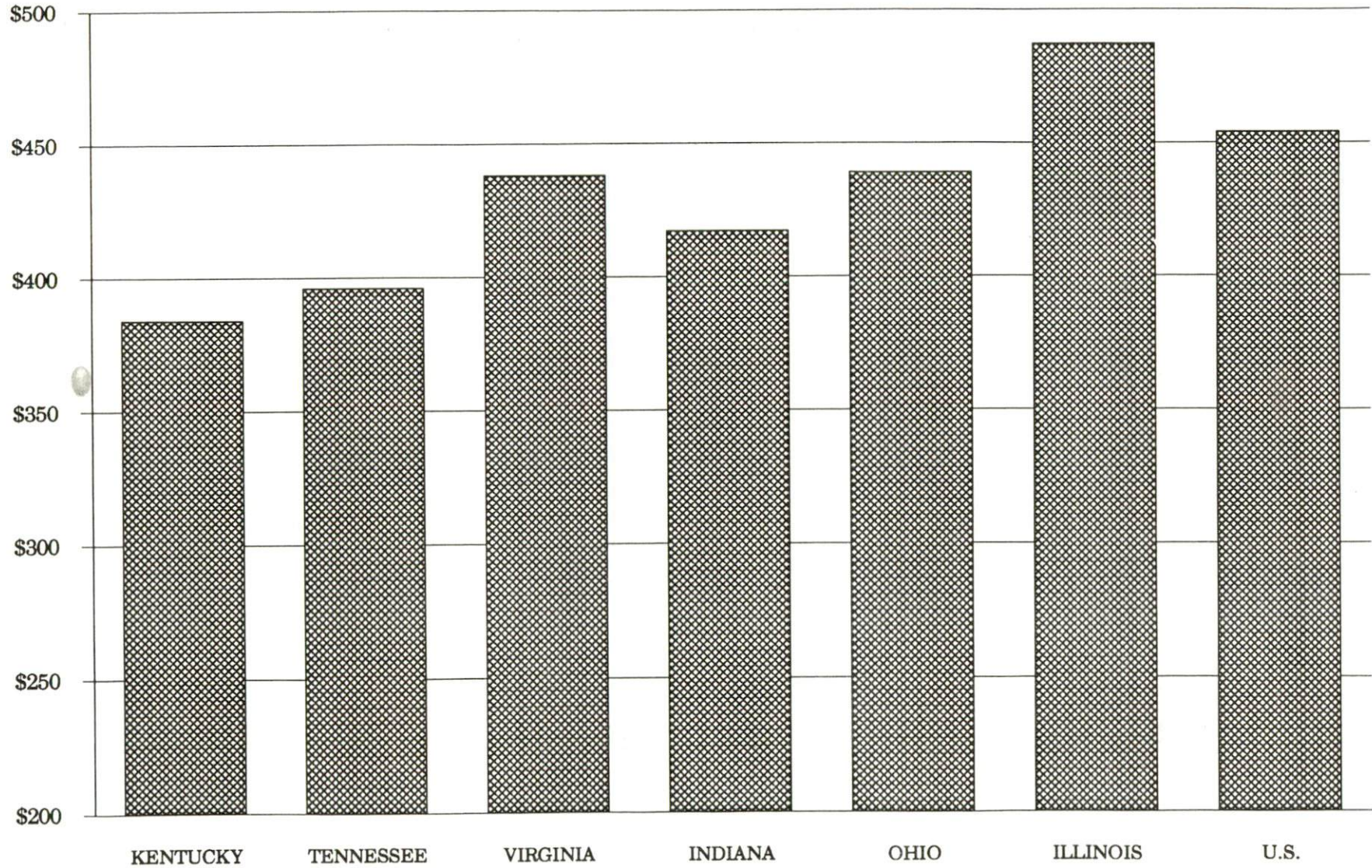
Bullitt County is served by the Louisville local office of the Kentucky Department for Employment Services. The focus of the following data is on job placements made by the Louisville local office and may therefore be used as an indicator of the wages which employers in the area pay new employees. During the twelve months which ended on June 30, 1990, the local employment office filled 15,967 job openings in various occupational categories. The average hourly wage for selected occupational categories were:

<u>OCCUPATIONAL CATEGORY</u>	<u>NUMBER OF PLACEMENTS</u>	<u>AVERAGE WAGE(\$)</u>
All Occupations	15,967	5.24
Clerical	3,716	4.54
Sales	554	4.38
Services (excluding domestic)	1,901	3.85
Agricultural, Fishery, Forestry, etc.	259	4.01
Processing	808	4.97
Machine Trades	913	6.28
Bench Work	800	5.29
Structural	1,131	6.50
Motor Freight/ Transportation	408	4.36
Packaging and Materials Handling	5,079	6.00
Other	113	3.58

The Louisville local office also serves Henry, Jefferson, Oldham, Shelby, Spencer, and Trimble Counties. The above occupational categories are taken from the Dictionary of Occupational Titles published by the U.S. Department of Labor.

Source: Kentucky Cabinet for Human Resources, Department for Employment Services.

AVERAGE WEEKLY WAGES OF WORKERS COVERED BY  
UNEMPLOYMENT INSURANCE - 1990



AVERAGE WEEKLY WAGES BY INDUSTRY  
BY PLACE OF WORK, 1990\*

	Bullitt County	Kentucky (State- Wide)	Tennessee	Virginia
All Industries	\$314.06	\$379.97	\$396.00	\$438.00
Mining & Quarrying	N/A	654.24	535.00	635.00
Contract Construction	304.03	401.70	421.00	444.00
Manufacturing	431.16	496.95	449.00	487.00
Transportation, Communications & Public Utilities	364.68	500.70	523.00	575.00
Wholesale & Retail Trade	189.37	255.93	N/A	N/A
Finance, Insurance & Real Estate	302.65	434.93	469.00	508.00
Services	223.50	329.76	378.00	430.00
State/Local Government	359.22	392.28	N/A	N/A
	<u>Indiana</u>	<u>Ohio</u>	<u>Illinois</u>	<u>U. S.</u>
All Industries	\$417.00	\$439.00	\$487.00	\$454.00
Mining & Quarrying	746.00	619.00	747.00	714.00
Contract Construction	475.00	504.00	624.00	503.00
Manufacturing	561.00	595.00	590.00	555.00
Transportation, Communications & Public Utilities	519.00	553.00	610.00	578.00
Wholesale & Retail Trade	N/A	N/A	N/A	N/A
Finance, Insurance & Real Estate	442.00	478.00	619.00	571.00
Services	349.00	382.00	444.00	423.00
State/Local Government	N/A	N/A	N/A	N/A

\* Wages for U.S. and surrounding states rounded to nearest dollar.

N/A Not Available.

Note: The average weekly wage for each category includes the salaries and wages of all persons working for that type business. For example, the manufacturing category includes both production workers and administrative personnel. Excludes domestic workers, railway workers, certain nonprofit corporations, majority of federal government workers, and self-employed workers.

Source: Kentucky Cabinet for Human Resources, Average Weekly Wages of Workers Covered by Kentucky Unemployment Insurance Law, 1990. U.S. Department of Labor, Bureau of Labor Statistics, Employment and Wages, Annual Averages, 1990, November 1991.



## EXISTING INDUSTRY

### BULLITT COUNTY MANUFACTURING FIRMS, THEIR PRODUCTS AND EMPLOYMENT

<u>Firm</u> <u>(Establishment date)</u>	<u>Product</u>	<u>1992</u> <u>Average Employment</u>
<b>Brooks</b>		
Best Made Pallett, Inc. (1982)	Pallet stock	10
Bullitt Machines, Inc. (1970)	Rubber blasting mats	6
Kentucky Solite Corporation (1972)	Aggregate for concrete & block	45
Phyl-Lar Cabinet Company (1979)	Kitchen cabinets, counter tops, restaurant fixtures	3
<b>Clermont</b>		
Jim Beam Brands Company (1795)	Dried grains distillers, cocktails, cordials, vodka, whiskey	485
Magnum Mold and Tool Corporation (1982)	Plastic injection molds, plastic parts	54
<b>Hillview</b>		
MSI, Inc. (1988)	Dies	16
Pape's Archery (1990)	Arrows and bow strings for archery	70
Ziniz, Inc. (1969)	Conveyors, steel fabrication, special machines	50
<b>Lebanon Junction</b>		
Mac Manufacturing Company (1957)	Automatic barrel stenciler, automatic barrel filling devices, barrel lifts	18
Publishers Printing Company, Lebanon Junction Plant (1991)	Printing trade magazines, offset lithographic printing	130
<b>Mt. Washington</b>		
B & B Screw Machine Specialists, LTD (1965)	Screws, shafts and collars, screw machine products	27
Bullitt Fire Sprinklers, Inc. (1974)	Steel pipe, pipe fittings and couplings	15
Harvey Hardware Company (1979)	Door hardware	12

(Continued)

<u>Firm</u> <u>(Establishment date)</u>	<u>Product</u>	<u>1992</u> <u>Average Employment</u>
Hercules Coach and Manufacturing Company, Inc. (1988)	Motor homes, entertainers' coaches	20
Hite Ready Mix (1968)	Ready-mixed concrete	14
Technical Conveyors, Inc. (1986)	Conveyors, robotics programmable controls	70
Thompson Custom Cabinets (1974)	Wood cabinets	22
<b>Shepherdsville</b>		
Anderson Applied Technology (1964)	Printing press controls, infeed tension controls, roller speed controls	2
B & B Mfg. and Industrial Sewing (1986)	Protective cases, canvas bags, auto seat straps	7
Bullitt County Stone Company (1967)	Agricultural lime, crushed stone	25
Interlake, Inc. (1973)	Conveyors	274
Mago Construction Company, Inc. (1967)	Hot mix asphalt	3
Monarch Hardware Manufacturing, Inc. (1965)	Door hardware and closures	50
Piccola Manufacturing, Inc. (1957)	Steel and aluminum fabrication, material handling equipment	20
Publishers Printing Company (1866)	Offset lithographic printing	950
Quality Stone & Ready Mix, Inc. (1960)	Ready-mixed concrete, crushed limestone	25
Charles H. Reichmuth, Inc. (1962)	Rough lumber, ties	11
Standard Publishing Company (1985)	Commercial printing, newspapers	50

---

Sources: Kentucky Cabinet for Economic Development, Division of Research.

## LABOR ORGANIZATIONS IN MANUFACTURING FIRMS

<u>Union</u>	<u>Representing workers at:</u>
Distillery, Wine and Allied Workers' International Union, AFL-CIO-CLC	Jim Beam Brands Company
International Union, Allied Industrial Workers of America, AFL-CIO	Interlake, Inc.
International Union of Operating Engineers, AFL-CIO	Bullitt County Stone Company
International Brotherhood of Teamsters, Chauffeurs, Warehousemen and Helpers of America	Kentucky Solite Corporation
Millwrights, Conveyors, and Machinery Erectors Union	Technical Conveyors, Inc.; Ziniz, Inc.

## SELECTED INDUSTRIAL SERVICES

<u>Types of Services</u>	<u>Location</u>	<u>Mileage from Shepherdsville</u>
Custom Plastics Producers	Clermont	6
Electric Motor Repair	Louisville	20
Heat Treating Facilities	Louisville	20
Industrial Waste Removal	Shepherdsville Mt. Washington	- 11
Machine Shops, Tool & Die	Clermont Hillview	6 6
Metal Castings	Louisville	20
Metal Finishers	Louisville	20
Metal Service Centers	Louisville	20
Millwrights and Riggers	Louisville Shively	20 21

Sources: Kentucky Cabinet for Economic Development, Division of Research.

## TRANSPORTATION

### Highways

Interstate 65, a major north-south highway, is routed through central Bullitt County. Interchanges are located at Shepherdsville, Clermont, Lebanon Junction, Kentucky Route 480, and Kentucky 1526. Interstate 65 provides access to I-64 and I-71 at Louisville, 20 miles north of Shepherdsville; and to the Western Kentucky and Bluegrass Parkways at Elizabethtown, 26 miles southwest of Shepherdsville.

Other "AAA"-rated (80,000-pound gross load limit) trucking highways serving Bullitt County include U.S. Highway 31E and 150, serving Mt. Washington; Kentucky Route 44, serving Mt. Washington and Shepherdsville; and Kentucky Route 61, serving Hillview, Shepherdsville and Lebanon Junction.

A bypass on U.S. 31E and U.S. 150 is currently under construction in Mt. Washington and scheduled for completion by late 1994.

#### HIGHWAY MILES FROM SHEPHERDSVILLE, KENTUCKY, TO SELECTED MARKET CENTERS

City	Highway Miles	City	Highway Miles
Atlanta, GA	413	Los Angeles, CA	2,105
Baltimore, MD	620	Louisville, KY	20
Birmingham, AL	339	Nashville, TN	152
Chicago, IL	307	New Orleans, LA	674
Cincinnati, OH	121	New York, NY	780
Cleveland, OH	368	Pittsburgh, PA	408
Detroit, MI	381	St. Louis, MO	278
Knoxville, TN	254		

Note: Mileage computations are via the best interstate or primary highways, not necessarily the most direct route of travel.

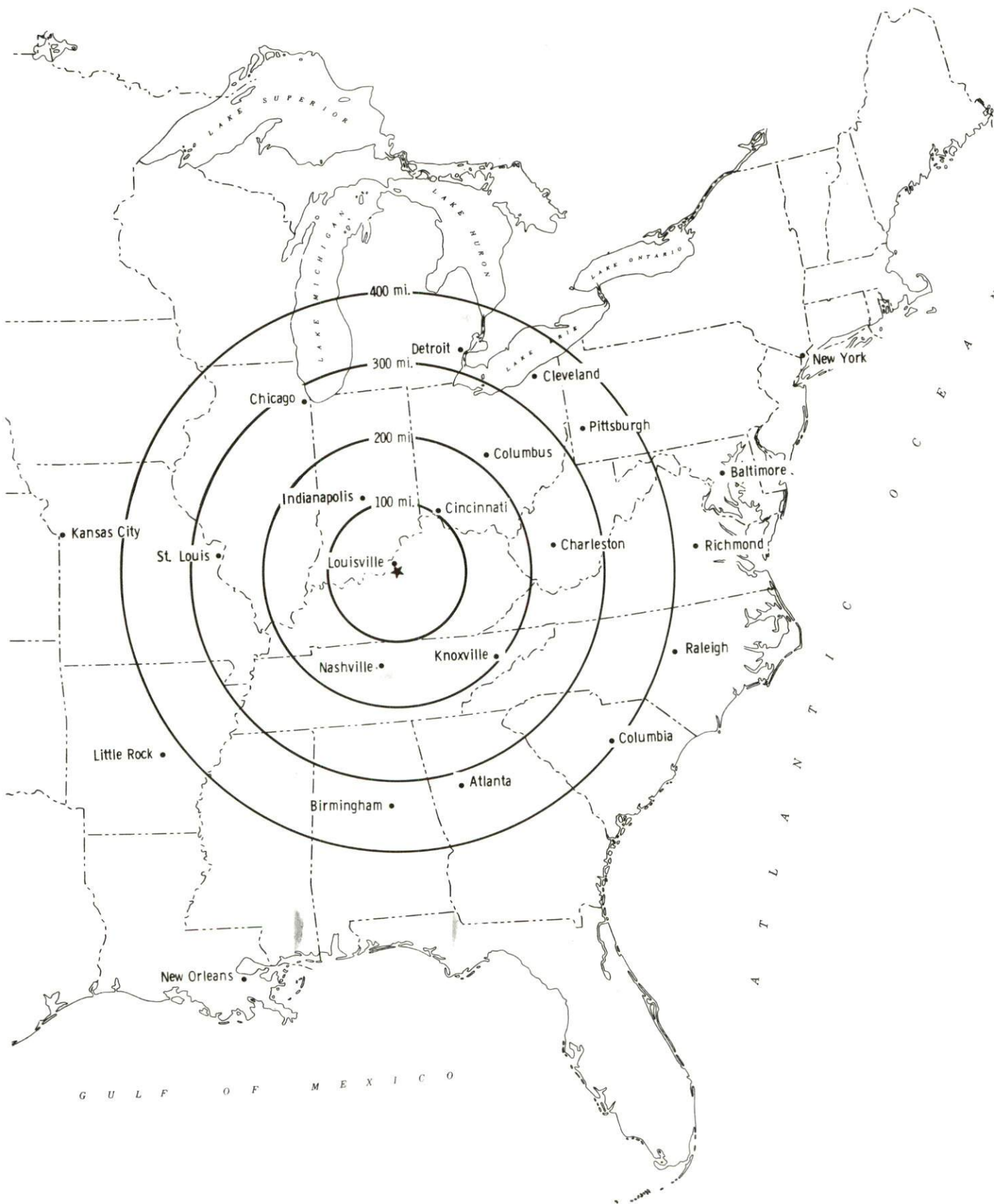
Sources: Rand McNally Standard Highway Mileage Guide, 1990. Official Kentucky Mileage Map, 1985.

### Truck Service

Twenty-nine trucking companies provide interstate and/or intrastate service to Bullitt County. One trucking firm maintains a terminal in Bullitt County.

Source: American Motor Carrier Directory, Spring 1993.

# Selected Market Centers



## Rail

CSX Transportation provides main line rail service to Shepherdsville and Lebanon Junction. R.J. Corman Railroad Corporation provides short line rail service extending from an area south of Shepherdsville to Bardstown, Kentucky. Intermodal facilities for several rail companies are available in Louisville, Kentucky, 20 miles north of Shepherdsville.

For details on routing, schedules, rates, and services contact:

Manager  
Industrial Development  
CSX Transportation  
9420 Bunsen Parkway  
Suite 212  
Louisville, Kentucky 40220  
(502) 499-3025

and/or

R.J. Corman Railroad Corporation  
P.O. Box 788  
Nicholasville, Kentucky 40356  
(606) 885-9457

## Air

### Nearest Scheduled Commercial Airline Service

Standiford Field  
Location: 4 miles southeast of center of Louisville, Kentucky;  
16 miles north of Shepherdsville  
Air Service: Air Toronto, Delta, Northwest, American,  
Continental, TWA, United, USAir, ComAir,  
Midway,  
Daily Arrivals  
& Departures: 172

## Bus

The Transit Authority of the River City (TARC), a Louisville intracity bus line, provides morning and evening express service between Louisville and Bullitt County.

## Water

The nearest navigable waterway is the Ohio River, 15 miles west of Shepherdsville, where a nine-foot navigation channel is maintained. The Louisville and Jefferson County Riverport Authority operates a public riverport complex on the Ohio River near Louisville, 20 miles north of Shepherdsville. The port complex offers facilities for cargo transfer and storage, and barge fleetings. The Louisville and Jefferson County Riverport Authority has been designated as a Foreign Trade Zone and offers complete U.S. Customs services for exports and imports.

## UTILITIES

### Electricity

Company serving Shepherdsville, Mt. Washington, and parts of Bullitt  
County - Louisville Gas and Electric Company

Source of power - Louisville Gas and Electric Company

For industrial rates contact:

Manager  
Economic Development Department  
Louisville Gas and Electric Company  
P.O. Box 32010  
Louisville, Kentucky 40232  
In Kentucky: (502) 627-3717  
Out of State: (800) 252-0226

Company serving Lebanon Junction - Kentucky Utilities Company

Source of power - Kentucky Utilities Company

For industrial rates contact:

Industrial Development Department  
Kentucky Utilities Company  
One Quality Street  
Lexington, Kentucky 40507  
(606) 255-2100

Company serving a major portion of Bullitt County - Salt River

Electric Cooperative Corporation

Source of power - East Kentucky Power Cooperative

For industrial rates contact:

Industrial Development Department  
East Kentucky Power Cooperative  
P.O. Box 707  
Winchester, Kentucky 40392-0707  
(606) 744-4812

and/or

Salt River Electric Cooperative  
Corporation  
Highway 44E  
Shepherdsville, Kentucky 40165  
(502) 543-3083 or (502) 955-9732

## Natural Gas

Company serving **Shepherdsville, Mt. Washington, and Hillview** -  
Louisville Gas and Electric Company  
Source of supply - Texas Gas Transmission Corporation  
For rates and supplies contact:

Manager  
Economic Development Department  
Louisville Gas and Electric Company  
P.O. Box 32010  
Louisville, Kentucky 40232  
In Kentucky: (502) 627-3717  
Out of State: (800) 252-0226

## Public Water Supply

Company serving **Shepherdsville** - Shepherdsville Water Company  
P.O. Box 400  
Shepherdsville, Kentucky 40165  
(502) 543-2923

Source of treated water -	Louisville Water Company
Amount of water that can be purchased -	1,080,000 gallons per day
Average daily consumption -	315,000 gallons
Peak daily consumption -	345,000 gallons
Storage capacity -	300,000 gallons
Water pressure -	50 psi to 65 psi

The Shepherdsville Water Company plans to construct a 100,000-gallon water storage tank.

Company serving **Lebanon Junction** - Lebanon Junction Water Works  
P.O. Box 69  
Lebanon Junction, Kentucky 40150  
(502) 833-4311

Source of treated water -	Bardstown Municipal Light and Water Company
Amount of water that can be purchased -	285,000 gallons per day*
Average daily consumption -	185,000 gallons
Peak daily consumption -	200,000 gallons
Storage capacity -	636,000 gallons
Water pressure -	50 psi to 140 psi

\*Lebanon Junction can negotiate for additional treated water allowance.



Company serving Mt. Washington - Mt. Washington Water & Sewer Company  
P.O. Box 285  
Mt. Washington, Kentucky 40047  
(502) 538-4216 or (502) 955-6784

Source of treated water - Louisville Water Company  
Amount of water that can be purchased - No specified limit  
Average daily consumption - 851,825 gallons  
Peak daily consumption - 997,419 gallons  
Storage capacity - 1,000,000 gallons  
Water pressure - 42 psi to 58 psi

The Mt. Washington Water and Sewer Company is in the process of constructing a 500,000-gallon elevated water storage tank which is scheduled for completion by Spring 1993. A 1,000,000-gallon water storage tank is planned for 1995.

Name of water district - Salt River Water District  
P.O. Box 430  
Shepherdsville, Kentucky 40165  
(502) 955-9281

Area served - portions of Shepherdsville and Bullitt County  
Source of supply of treated water - Louisville Water Company  
Amount of water that can be purchased - 1,080,000 gallons per day  
Average daily consumption - 350,000 gallons  
Peak daily consumption - 475,000 gallons  
Storage capacity - 590,000 gallons  
Water pressure - 75 psi to 120 psi

#### Sewerage

Company serving Shepherdsville - Shepherdsville Sewer Department  
P.O. Box 400  
Shepherdsville, Kentucky 40165  
(502) 543-2923

Design capacity - 1,000,000 gallons per day  
Average daily flow - 450,000 gallons  
Type of treatment - Secondary  
Treated effluent discharged into - Salt River

Company serving Lebanon Junction - Lebanon Junction Sewer Plant  
P.O. Box 69  
Lebanon Junction, Kentucky 40150  
(502) 833-4311

Design capacity - 285,000 gallons per day  
Average daily flow - 150,000 gallons  
Type of treatment - Secondary  
Treated effluent discharged into - Rolling Fork River

Company serving Mt. Washington - Mt. Washington Water and Sewer  
Company  
P.O. Box 285  
Mt. Washington, Kentucky 40047  
(502) 538-4216 or (502) 955-6784

Design capacity - 900,000 gallons per day  
Average daily flow - 540,000 gallons  
Type of treatment - Secondary  
Treated effluent discharged into - McCullough Run

Mt. Washington Water and Sewer Company recently completed a major renovation and expansion of its existing wastewater treatment facility. The 400,000-gallon-per-day plant was expanded to 900,000 gallons per day.

# CLIMATE

## Bullitt County

### Temperature

Normal (30-year record)	56.20 degrees
Average annual 1991	59.70 degrees
Record highest, July 1954 (44-year record)	105.00 degrees
Record lowest, January 1963 (44-year record)	-20.00 degrees
Normal heating degree days (30-year record) (Heating degree day totals are the sums of negative departures of average daily temperatures from 65 degrees F.)	4,525

### Precipitation

Normal (30-year record)	43.56 inches
Mean annual snowfall (44-year record)	16.30 inches
Total precipitation 1991	38.15 inches
Mean number days precipitation (.01 inch or more) (44-year record)	124.30
Mean number days thunderstorms (44-year record)	45.30

### Prevailing winds (through 1963)

South

### Relative Humidity (31-year record)

1 a.m.	76 percent
7 a.m.	81 percent
1 p.m.	58 percent
7 p.m.	61 percent

Source: U.S. Department of Commerce, Environmental Science Services Administration, Climatological Data, 1991. Station of record: Louisville, Kentucky.

## LOCAL GOVERNMENT

### Structure

The Cities of Shepherdsville, Lebanon Junction, and Mt. Washington are served by a mayor-city council form of government. Bullitt County is governed by a county judge/executive and four magistrates.

### Planning and Zoning

Joint agency - Bullitt County Planning Commission

Participating cities - Hillview, Lebanon Junction, Mt. Washington, and Shepherdsville

Zoning enforced - All areas

Subdivision regulations enforced - All areas

Local codes enforced - Building code within corporate limits of participating cities--Building codes for single family dwellings are enforced in Mt. Washington only

Mandatory state codes enforced - Kentucky Plumbing Code, National Electric Code, Kentucky Boiler Regulations and Standards, Kentucky Building Code (modeled after BOCA code)

### Local Fees and Licenses

Business license fees in Shepherdsville range from \$100 to \$4,000 per year. An unloading license fee of \$100 per year is also levied in Shepherdsville.

In Lebanon Junction, business license fees are \$31.25 per year for most businesses. Unloading licenses are \$43.75 per year.

Business license fees in Mt. Washington are \$40 per year for most businesses. Unloading licenses are also \$40 per year. Persons living and working in the city are also charged an annual \$5.00 auto sticker fee.

## PROPERTY TAXES

The Kentucky Constitution requires the state to tax all classes of taxable property, and state statutes allow local jurisdictions to tax only a few classes. All locally taxed property is subject to county taxes and school district taxes (either a county school district or an independent school district). Property located inside of city limits may also be subject to city property taxes.

Special local taxing jurisdictions (fire protection districts, watershed districts, and sanitation districts) levy taxes within their operating areas (usually a small portion of community or county).

Property assessments in Kentucky are at 100% fair cash value. A 15% reduction is automatically granted for accounts receivable.

### STATE PROPERTY TAX RATES PER \$100 VALUATION

<u>Selected Classes of Property</u>	<u>1992 State Rate</u>	<u>Local Taxation Permitted</u>
Real Estate	\$0.184	YES
Manufacturing Machinery	0.150	NO
Pollution Control Equipment	0.150	NO
Inventories		
Raw Materials	0.050	NO
Goods in Process	0.050	NO
Finished Goods	0.050	YES
Motor Vehicles	0.450	YES
Other Tangible Personal Property	0.450	YES
Intangibles (Accounts Receivable, Money on Hand)	0.250	NO

### LOCAL PROPERTY TAX RATES PER \$100 VALUATION, 1992

<u>Taxing Jurisdiction</u>	<u>Real Estate</u>	<u>Finished Goods &amp; Tangibles</u>	<u>Motor Vehicles</u>
Bullitt County	\$0.1588	\$0.2011	\$0.1995
School Districts:			
Bullitt County	0.3200	0.3200	0.3200
Cities:			
Shepherdsville	0.1800	0.1800	0.2069
Lebanon Junction	0.3400	0.3400	0.3400
Mt. Washington	0.2020	0.2020	0.2030
Other: (not county-wide)			
Fire Protection Districts			
Nichols	0.1000	0.1000	0.1000
Southeast	0.0850	0.0850	0.0850
Zoneton	0.0600	0.1000	0.1000
Mt. Washington	0.0600	0.0600	0.0700

## EDUCATION

### Public Schools

	<b>Bullitt County</b>
Total Enrollment (Fall, 1991)	10,025
Accreditation	Southern Association of Colleges and Schools
Pupil-Teacher Ratio (1990-91)	19.9-1
Percent High School Graduates to College (1990-91)	50.6
Expenditures Per Pupil (1990-91)	\$2,928.58

The Bullitt County School System currently has several building projects under way including construction of Bernheim Middle School, at a cost of \$5 million; a new auditorium at Bullitt Central High School; a new library at Nichols Elementary; and renovation of pre-school facilities at two elementary schools.

### Nonpublic Schools

<u>School</u>	<u>Enrollment</u>	<u>Grades</u>
Micah School	95	K-12
St. Aloysius Elementary	125	1-8
St. Benedict Elementary	62	1-8

### Area Colleges and Universities

<u>Name</u>	<u>Location (Miles distant)</u>	<u>Enrollment (Fall, 1992)</u>
Bellarmine College	Louisville, Kentucky (20)	2,977
Jefferson Community College	Louisville, Kentucky (20)	11,861
Spalding University	Louisville, Kentucky (20)	1,141
University of Louisville	Louisville, Kentucky (20)	22,634
Indiana University Southeast	New Albany, Indiana (23)	5,942
Elizabethtown Community College	Elizabethtown, Kentucky (26)	4,297
Saint Catharine College	Springfield, Kentucky (40)	353

## VOCATIONAL-TECHNICAL TRAINING

Kentucky Tech schools are operated by the Cabinet for Workforce Development and provide secondary (Sec) and postsecondary (P/S) vocational-technical training.

<u>Kentucky Tech Schools</u>	<u>Location (Mileage from Shepherdsville)</u>	<u>Number of Program Offerings</u>	<u>Cumulative Enrollment 1991-1992</u>		<u>Approximate Number Completing Programs Annually</u>
			<u>Sec</u>	<u>P/S</u>	
Bullitt County Area Vocational Education Center	Shepherdsville	7	247	6	62
Elizabethtown State Vocational- Technical School	Elizabethtown (26)	16	42	562	190
Jefferson State Vocational- Technical School	Louisville (20)	20	0	1,014	310

### Customized Training

The Kentucky Tech system, through its Training and Development Coordinators, will provide technical assistance and will identify and develop low cost customized training programs and services for both established and prospective businesses. Businesses wanting to establish a customized training program should simply contact a Training and Development Coordinator located at the Kentucky Tech Northwest Region office in Elizabethtown.

### Assessment Services

The Kentucky Tech Career Connections offers to business, education, and government agencies customized assessment in career inventories, interest inventories, psychomotor skills and academic potential, as well as pre-hire assessment. A Career Connections Assessment Center is located on the campus of both Elizabethtown SVTS and Jefferson SVTS.

### Adult Basic Education

Adult education programs are available to adults who want to develop new skills, improve basic skills, or earn a high school equivalency diploma. In Bullitt County, adult literacy is provided by the Bullitt County Adult Literacy Program and adult basic education is available through the Bullitt County Board of Education.

### Bluegrass State Skills Corporation

The Bluegrass State Skills Corporation, an independent public corporation created and funded by the Kentucky General Assembly, provides programs of skills training to meet the needs of business and industry from entry level to advanced training, and from upgrading present employees to retraining experienced workers.

The Bluegrass State Skills Corporation is a major source for skills training assistance for a new or existing company. The Corporation works in partnership with other employment and job training resources and programs, as well as Kentucky's economic development activities, to package a program customized to meet the specific needs of a company.



## OTHER LOCAL FACILITIES

### Local Medical Personnel

(Bullitt County)  
Physicians - 13  
Dentists - 13

### Hospitals

There are 17 hospitals with facilities for acute care, psychiatric care, rehabilitation, and chemical dependency treatment located in Louisville, 20 miles from Shepherdsville. Also, hospitals are located in nearby Elizabethtown, 26 miles southwest of Shepherdsville, and in Bardstown, 23 miles southeast of Shepherdsville.

### Other Medical Facilities and Services

Bullitt County Health Department  
Bullitt County PT Clinic (an outpatient therapy center)  
Seven Counties Service, Inc. (a mental health center)  
Colonial House of Shepherdsville (nursing home)  
Pleasantview Personal Care Home  
Bullitt County Emergency Medical Service (ambulance service)  
Green Meadows Health Care Center, Inc.

### Banks and Savings and Loan Associations

Bullitt County Bank  
The Peoples Bank of Bullitt County  
The Peoples Bank of Mt. Washington  
Bullitt Federal Savings and Loan Association

### Newspapers

Pioneer-News (bi-weekly)

### Telephone Service

ALLTEL Kentucky, Inc. (serves Mt. Washington, Shepherdsville and Hillview)  
South Central Bell (serves Lebanon Junction)

South Central Bell provides to its customers in Lebanon Junction a special calling zone which offers discounts on long distance calls to other nearby communities also served by South Central Bell.

## RECREATION

### Local

Bullitt County features a wide variety of recreational facilities and opportunities for all ages. The ten-acre Shepherdsville Recreational Park features three baseball fields, a football field, and a play area. Mt. Washington's public parks include a 25-acre community park with two baseball fields, two tennis courts, and a basketball court; and the Mt. Washington Lions Club Park featuring a playground and picnic area. Lebanon Junction has a three-acre city park with a tennis court, a basketball court, a picnic area, a tot lot, a shelter, and a ball field complex with two ball fields, a concession stand and restrooms. The Bullitt County Recreation Complex includes two softball fields, four baseball fields, a swimming pool, a soccer field, a playground, and a concession stand with restrooms. Bullitt County Parks and Recreation Department and the YMCA each provide an array of recreation programs for all ages. Facilities at the YMCA include: a fitness center, sauna, and racquetball court. An indoor swimming pool is planned.

**Bernheim Forest Arboretum and Nature Center**, located seven miles from Shepherdsville, is a privately endowed 10,000-acre forest and wildlife refuge. The area contains over 1,200 labeled varieties of plants, trees and shrubs; ornamental gardens; a nature center; nature trails and waterfowl ponds.

**The Jim Beam's American Outpost Museum and Tourist Center** offers tours of the James B. Beam Distilling Company, the world's largest bourbon producer. The museum and center are located near Clermont.

**Camp Crescendo**, a modern youth camp specializing in the training of high school bands, covers 300 acres near Lebanon Junction and features a junior Olympic pool, a 20-acre lake, and accommodations. The camp is available in off-season months for meeting and retreats.

The KOA Campground, near Shepherdsville, offers a walking tour of pre-historic Indian rock shelters.

Other recreational facilities include a saddle club horse show ring, the North Bullitt Little League Field, Valley View Lake, West Bullitt Recreation Park, three golf courses, a campground, a go-cart track, bowling centers, and skating rinks.

Louisville, 20 miles north of Shepherdsville, provides a wide variety of recreational opportunities. The most noted recreational event in Louisville is the Kentucky Derby at Churchill Downs. The "Run for the Roses" is the oldest continuously held horse race in the United States. Other attractions include: Kentucky Center for the Arts, Macauley Theatre, Actors Theatre of Louisville, Louisville Children's Theatre, the Louisville Bach Society, the Louisville Orchestra, the Louisville Ballet, the Kentucky Opera Association, several museums, the Louisville Zoological Gardens, University of Louisville sporting events, rock concerts, and the "Belle of Louisville" sternwheeler.

### Area (Within 50 miles)

My Old Kentucky Home State Park  
E.P. Tom Sawyer State Park  
Abraham Lincoln Birthplace National Historic Site  
Lincoln Homestead State Park  
Taylorsville Lake State Park

## COMMUNITY IMPROVEMENTS

### Recent

Major improvements to Interstate 65 have been completed since 1987. I-65 was widened to six lanes and several new interchanges were constructed, totaling five in the county.

A Community Development Block Grant provided funding for a water and sewer development project in Lebanon Junction which included the installation of a new water line to Publishers Printing and a new 300,000-gallon standpipe storage tank plus the construction of a new lift station and approximately 5,000 feet of force main, all serving Publishers Printing. Total cost of the project was approximately \$800,000.

Mt. Washington Water and Sewer Company recently completed a major renovation and expansion of its existing wastewater treatment facility. The 400,000-gallon-per-day plant was expanded to 900,000 gallons per day.

### Under Way

A private developer is in the process of developing a 200-acre industrial park in Shepherdsville. The property is adjacent to I-65 and has access to utilities.

A bypass on U.S. 31E and U.S. 150 is currently under construction in Mt. Washington and scheduled for completion by late 1994.

The Mt. Washington Water and Sewer Company is in the process of constructing a 500,000-gallon elevated water storage tank which is scheduled for completion by Spring 1993.

The Bullitt County School System has several building projects under way including construction of Bernheim Middle School, at a cost of \$5 million; a new auditorium at Bullitt Central High School; a new library at Nichols Elementary; and renovation of pre-school facilities at two elementary schools.

### Planned

Mt. Washington Water and Sewer Company plans the construction of a one million-gallon storage tank by 1995.

Shepherdsville Water Company plans to construct a new water line through the Pointe Subdivision extending to Blue Lick Road and a new 100,000-gallon storage tank. The \$400,000 project will reach completion in late 1993.



# KENTUCKY