

1979

Industrial Resources: Calloway County - Murray

Kentucky Library Research Collections
Western Kentucky University, spcol@wku.edu

Follow this and additional works at: https://digitalcommons.wku.edu/calloway_cty

 Part of the [Business Administration, Management, and Operations Commons](#), [Growth and Development Commons](#), and the [Infrastructure Commons](#)

Recommended Citation

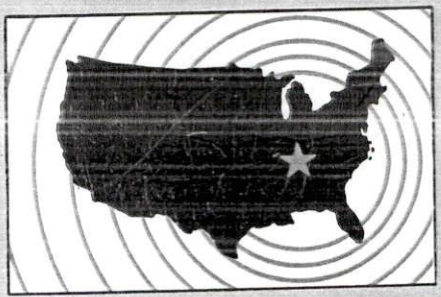
Kentucky Library Research Collections, "Industrial Resources: Calloway County - Murray" (1979). *Calloway County*. Paper 7.
https://digitalcommons.wku.edu/calloway_cty/7

This Report is brought to you for free and open access by TopSCHOLAR®. It has been accepted for inclusion in Calloway County by an authorized administrator of TopSCHOLAR®. For more information, please contact topscholar@wku.edu.

INDUSTRIAL RESOURCES

MURRAY

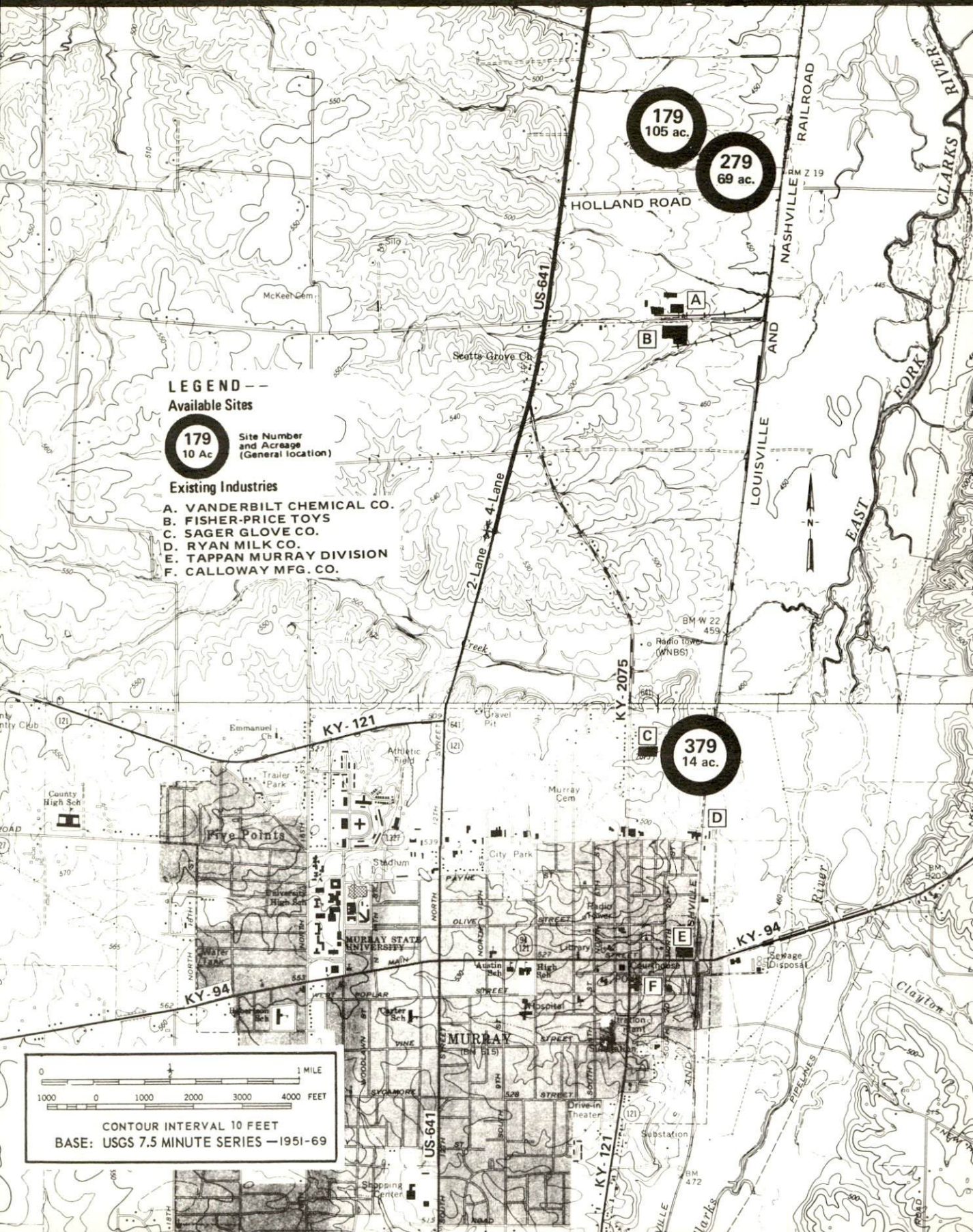
Kentucky
first



DEPARTMENT OF COMMERCE

MURRAY, KENTUCKY --- Index to Industrial Sites --- 1979

For detailed data on individual sites, contact Mr. James L. Johnson, Executive Director, Murray Chamber of Commerce, Murray, Kentucky 42071 or the Kentucky Department of Commerce, Industrial Development Division, Capital Plaza Tower, Frankfort, Kentucky 40601.

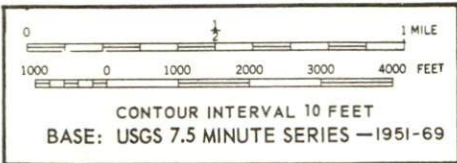


LEGEND -- Available Sites

179
10 Ac. Site Number and Acreage (General location)

Existing Industries

- A. VANDERBILT CHEMICAL CO.
- B. FISHER-PRICE TOYS
- C. SAGER GLOVE CO.
- D. RYAN MILK CO.
- E. TAPPAN MURRAY DIVISION
- F. CALLOWAY MFG. CO.



INDUSTRIAL RESOURCES

MURRAY, KENTUCKY

Prepared by
The Kentucky Department of Commerce
Division of Research and Planning
in cooperation with
The Murray-Calloway County Chamber of Commerce

1979

Program manager and research: Patsy Wallace; production supervisor:
Pam Riley; clerical: Linda Fint; graphics: Frank Ferrante, Tony
Cecconi and Richard Spencer; cartography: Industrial Development
Division. Cost of printing paid from state funds.

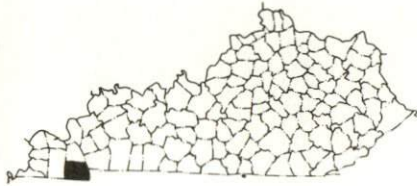
TABLE OF CONTENTS

<u>Chapter</u>	<u>Page</u>
INDUSTRIAL SITES	i
SUMMARY OF INDUSTRIAL RESOURCES - MURRAY, KENTUCKY	1
THE LABOR MARKET AREA	6
Population	6
Labor Force Characteristics of Residents, 1978	6
Murray Manufacturing Firms, Their Products and Employment	7
Labor Organizations	10
Industrial Services	10
Estimated Male Labor Supply	11
Estimated Female Labor Supply	11
Average Weekly Wages by Industry, by Place of Work, 1977	12
Per Capita Personal Income	14
TRANSPORTATION	15
Rail	15
Highways	15
Truck Service	16
Air	17
Bus	18
Taxi	18
Rental Services	18
Water	18
POWER AND FUEL	19
Electricity	19
Natural Gas	20
Other Fuels	20
WATER AND SEWERAGE	21
Water	21
Sewerage	25
CLIMATE	26

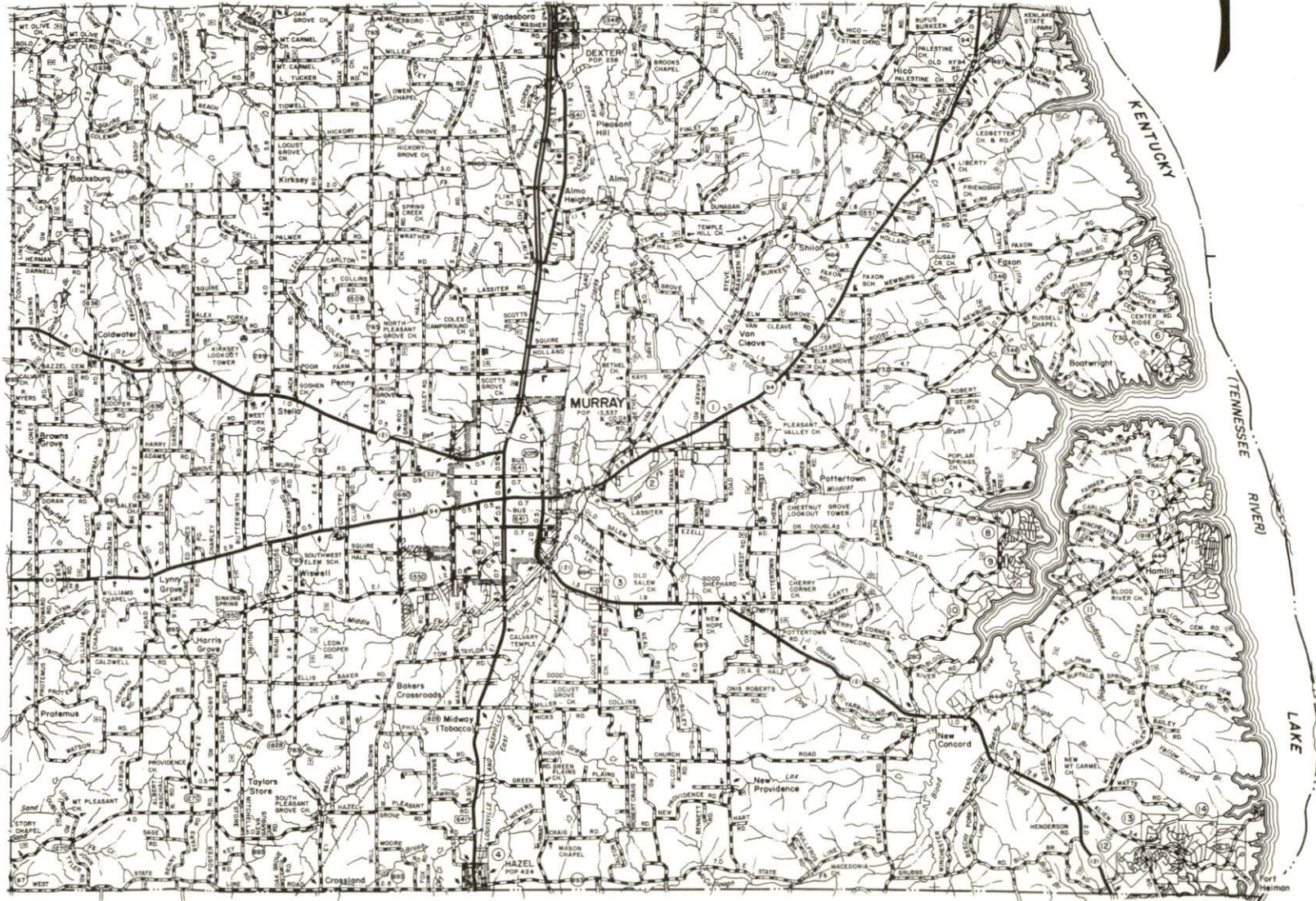
<u>Chapter</u>	<u>Page</u>
LOCAL GOVERNMENT	27
City	27
County	27
Assessed Value of Property	27
Property Taxes	27
Combined State and Local Rates Per \$100	
Valuation, 1978	28
Utilities Gross Receipts Tax for Schools	28
Planning and Zoning	28
Safety	29
Police	29
Fire	29
Rescue Service	29
Refuse Collection and Disposal	29
EDUCATION	30
Public Schools	30
Area Colleges and Universities	34
Vocational Schools	34
HEALTH	37
Local Medical Personnel	37
Hospitals	37
Ambulance Service	37
Public Health	37
OTHER LOCAL FACILITIES	38
Communications	38
Library Services	39
Religious Institutions	39
Financial Institutions	41
Hotels and Motels	41
Clubs and Organizations	41
RECREATION	43
COMMUNITY IMPROVEMENTS	44

1979 EDITION
GENERAL HIGHWAY MAP
CALLOWAY COUNTY
KENTUCKY

PREPARED BY THE
KENTUCKY DEPARTMENT OF TRANSPORTATION
OFFICE OF TRANSPORTATION PLANNING
DIVISION OF FACILITIES PLANNING
IN COOPERATION WITH THE
U.S. DEPARTMENT OF TRANSPORTATION
FEDERAL HIGHWAY ADMINISTRATION

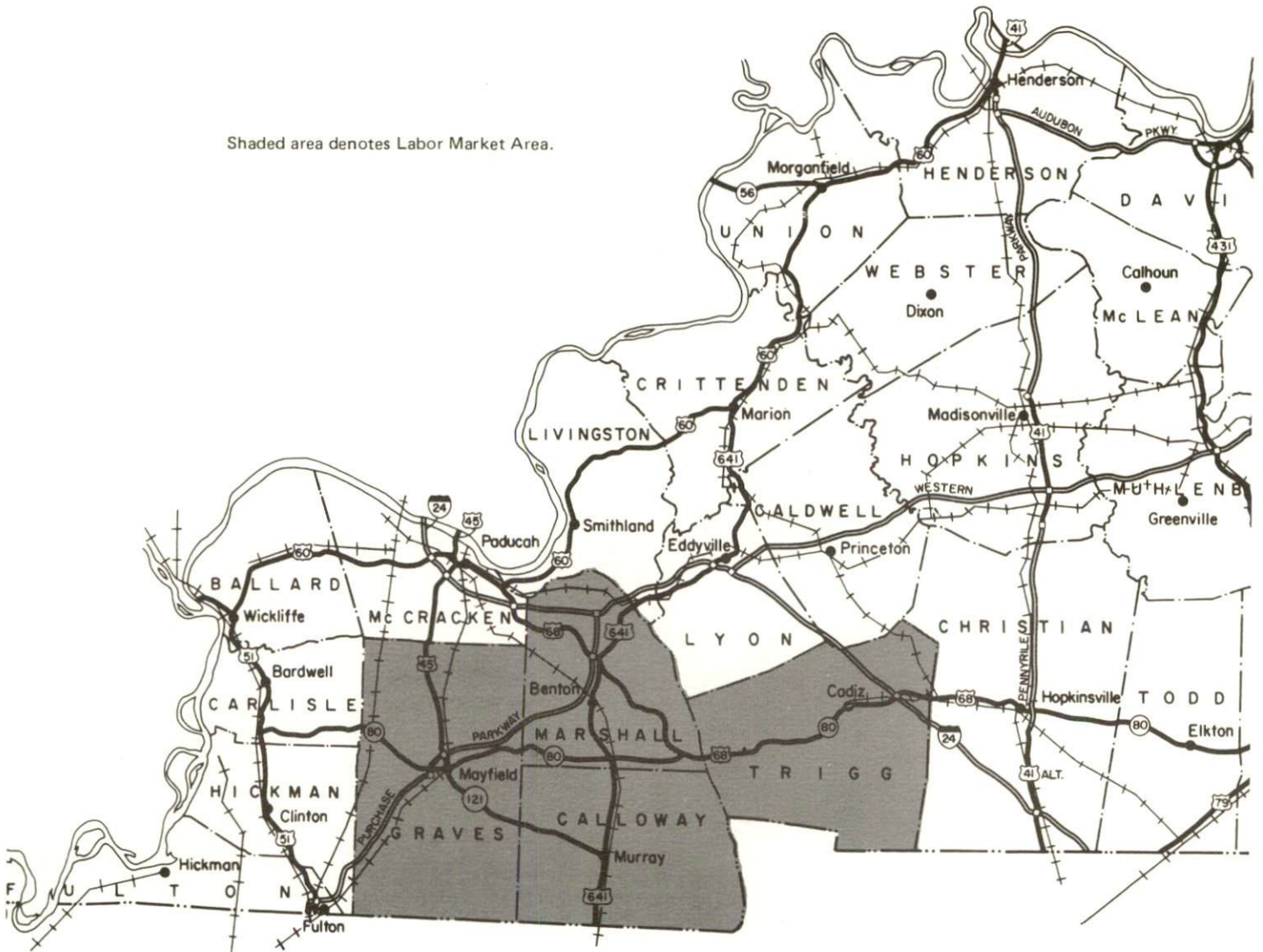


0 1 2 3 4 MILES



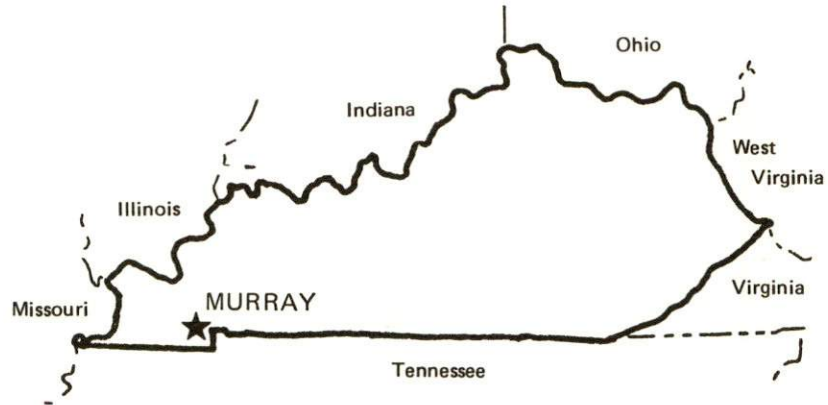
MURRAY LABOR MARKET AREA
With
MAJOR HIGHWAY & RAILROAD SYSTEM

Shaded area denotes Labor Market Area.



SUMMARY OF INDUSTRIAL RESOURCES
MURRAY, KENTUCKY

LOCATION



Road Distance in Miles:

Atlanta	<u>358</u>	Baltimore	<u>809</u>
Chicago	<u>407</u>	Detroit	<u>589</u>
New York	<u>977</u>	St. Louis	<u>213</u>

POPULATION

City of Murray, 1976	<u>14,329</u>
Calloway County, 1978	<u>28,900</u>
Labor Market Area, 1978	<u>96,400</u>
% Nonwhite, Calloway County, 1977	<u>3.2</u>

LABOR ANALYSIS

Labor Market Area - Calloway, Graves, Marshall and Trigg Counties

Estimated available workers from labor market area, 1977:*

Male	<u>5,430</u>	Female	<u>5,826</u>
Unemployment rate, 1978		Labor Market Area	<u>6.6%</u>
Calloway County	<u>4.4%</u>	Marshall County	<u>9.4%</u>
Graves County	<u>7.3%</u>	Trigg County	<u>6.1%</u>

Total employment, Calloway County, 1978 - 13,915
Manufacturing employment in labor market area, 1977 - 9,426

*Also includes Henry County, Tennessee.

Major local manufacturing plants:

<u>Name</u>	<u>Employment</u>
<u>Tappan Company, Murray Division</u>	<u>796</u>
<u>Fisher Price Toys</u>	<u>530</u>
<u>Calloway Manufacturing Company</u>	<u>290</u>
<u>Ryan Milk Company</u>	<u>115</u>
<u>Sager Glove Corporation</u>	<u>92</u>

Labor unions in local manufacturing plants:

Teamsters; Food and Commercial Workers; Auto Workers; Oil, Chemical and Atomic Workers

TRANSPORTATION

Highways:

Interstate - I-24, 28 miles away
Parkway - Purchase Parkway, 19 miles away
U.S. Highway - U.S. 641

Rail:

Railroad - Louisville and Nashville Railroad
Distance to nearest piggyback - 22 miles

Truck:

Number of interstate motor carriers - 7; Local terminals - 1

Water:

Nearest navigable waterway - Kentucky Lake
Nearest port - Port of Murray-Calloway County on Kentucky Lake
Distance - 12 miles

Air:

Nearest scheduled airline service - Barkley Field, Paducah
Distance - 46 miles; Airlines serving - Ozark, Air Illinois
(commuter), Air Kentucky (commuter)

Nearest local airport - Murray-Calloway County Airport (Kyle Field)
Distance - 5 miles; Runway length - 5,000 feet

UTILITIES AND SERVICES

Electricity:

Local distributor - Murray Electric System
Source of power - Tennessee Valley Authority

Natural Gas:

Local distributor - Murray Natural Gas System
Source of supply - Texas Gas Transmission Corporation
Available for new industry - No

Other Fuels:

Number of propane distributors - 1
Number of distillate fuel oil distributors - 5

Water, treated:

Local supplier - Municipal
Excess municipal system capacity - 1,750,000 gpd
Storage capacity - 3,450,000 gallons
Expansions planned - No

Water, raw:

Surface water sources - Kentucky Lake and Clark's River

Sewer:

Excess treatment capacity - At capacity
Planned expansions - New sewage treatment plant with designed
peak hydraulic flow of 12.1 million gpd

Industrial Services:

	<u>Location</u>	<u>Miles Distant</u>
Tool & Die, Machine & Pattern Shops	<u>Murray, Kentucky</u>	<u>--</u>
Metal Service Centers	<u>Murray, Kentucky</u>	<u>--</u>
Heat Treating	<u>Evansville, Indiana</u>	<u>137</u>
Metal Finishers	<u>Morganfield, Kentucky</u>	<u>100</u>
Electric Motor Repair	<u>Paducah, Kentucky</u>	<u>46</u>

CLIMATE

Temperature, Normal - 59.4 degrees F.
Precipitation, Normal - 46.0 inches
Snowfall, Mean Annual - 11.2 inches
Prevailing winds - South
Relative humidity (%) - 6 a.m. 84; 6 p.m. 62

GOVERNMENT

Type - Mayor-City Council
Police personnel - full-time - 27
Fire department personnel - full-time - 32; volunteer - 14
Fire insurance rating (A.I.A.), class - Inside city - 5
Outside city - 10

TAXES

Property taxes:

Combined state and local rates per \$100 valuation, 1978
(100% assessment)

	<u>Inside City of Murray</u>	<u>Outside City</u>
1. Land and buildings	\$1.205	\$0.620
2. Mfg. machinery, raw materials, goods in process, pollution control equipment	0.150	0.150
3. Finished goods, office equipment, vehicles, other tangibles	1.340	0.755
4. Intangibles (accounts receivable, notes, bonds, etc.)	0.250	0.250
5. Leaseholds in I. R. bond financed plants	0.015	0.015

EDUCATION

Nearest state vocational-technical school - West Kentucky State Vocational-Technical School, 46 miles away
Area vocational education center - Murray Area Vocational Education Center
University - Murray State University

Public Schools:

High school enrollment - 1,536; Student/teacher ratio - 19-1
Middle school enrollment - 511; Student/teacher ratio - 15-1
Elementary school enrollment - 2,678; Student/teacher ratio - 19-1

FINANCIAL INSTITUTIONS

Banks - 2; Total assets - \$170,583,690
Savings & loan associations - 3; Total assets - \$208,942,387

COMMUNICATIONS

Local newspapers - Daily - The Murray Ledger & Times; Weekly - Murray State News
Local radio stations - WNBS-AM, WAAW-FM, WKMS-FM, WSJP-AM
Television reception - Cable service

MEDICAL

Number of physicians locally - 31; Number of dentists locally - 16
Hospital - Murray-Calloway County Hospital
Number of beds - 178 (acute), 40 (long term care)

RELIGIOUS FACILITIES

Churches - 89; Nearest synagogue - Paducah, 46 miles distant

PUBLIC LODGING

Total number hotels and motels - 10; Total rooms - 354

RECREATION FACILITIES

Parks - 2; Tennis courts - 7; Swimming pools - 3; Country clubs - 2 with 18-hole golf courses
Other major facilities - Racquet club; Skating rink; Bowling facility
Nearest state park - Kenlake State Resort Park
Camping; Swimming; Fishing; Water skiing; Boating; Lodgings; Dining facility; Open year round

THE LABOR MARKET AREA

Area	POPULATION		
	1978*	1970	Percent Nonwhite**
Murray	14,329**	14,215	5.5
Labor Market Area	96,400	87,632	N/A
Calloway County	28,900	27,692	3.2
Graves County	33,100	30,939	4.9
Marshall County	24,400	20,381	0.2
Trigg County	10,000	8,620	18.7

*Provisional Estimates.

**1976 Population Estimates; 1970 Percent Nonwhite for city; 1977 Percent Nonwhite for counties.

Sources: U. S. Department of Commerce, Bureau of the Census, Census of Population, 1970. U. S. Department of Commerce, Bureau of the Census, Current Population Reports, Series P-25, No. 756, January 1979; Series P-26, No. 78-17, 1979. University of Louisville, Urban Studies Center, Kentucky's Population Disaggregations of 1977 Estimates, December 1978.

LABOR FORCE CHARACTERISTICS OF RESIDENTS, 1978

	Calloway County	Labor Market Area
Civilian Labor Force	14,553	43,671
Employment	13,915	40,795
Agricultural	593	2,278
Nonagricultural	13,322	38,517
Unemployment	638	2,876
Rate of Unemployment (%)	4.4	6.6

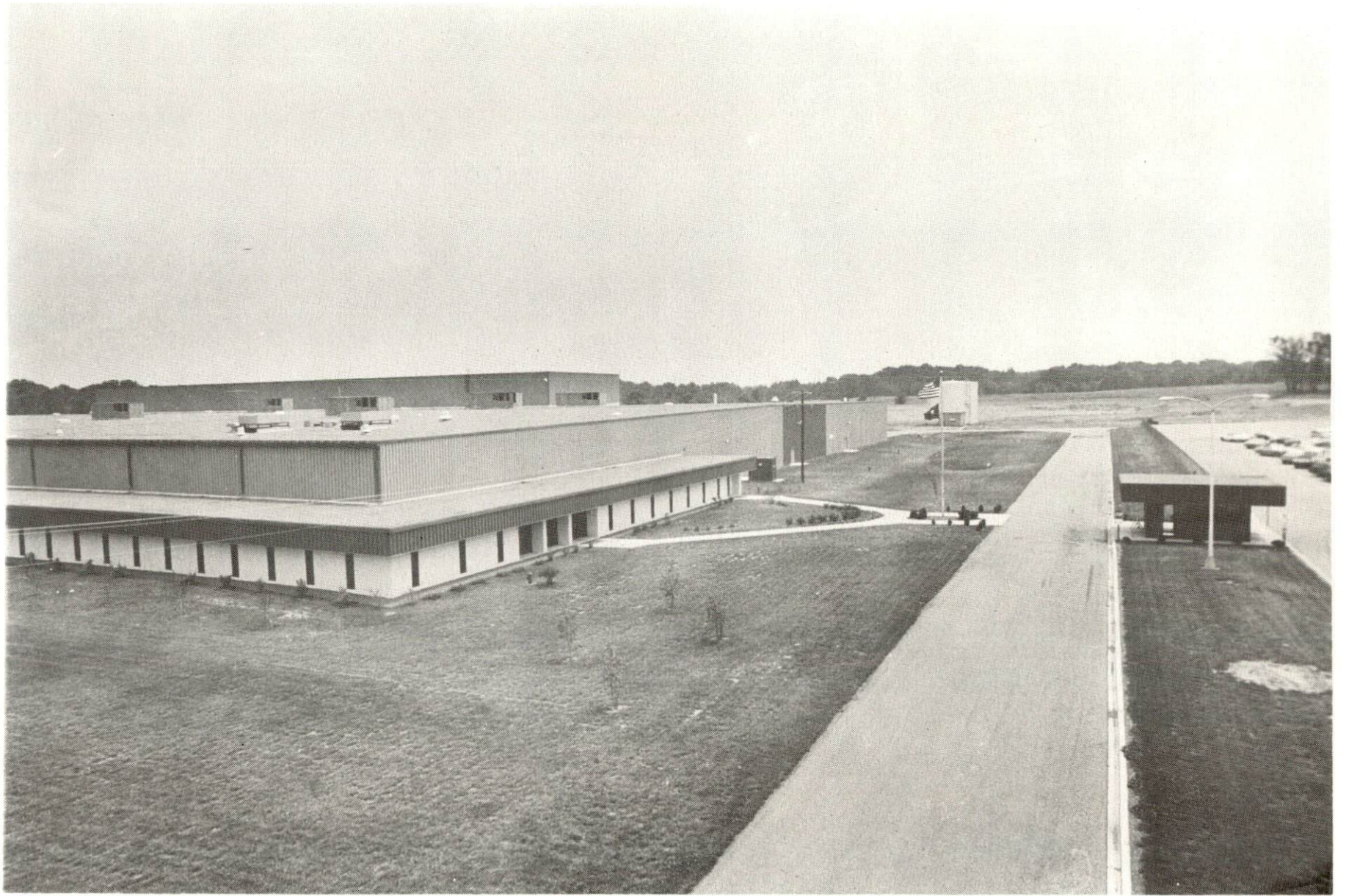
Source: Kentucky Department for Human Resources, Kentucky Labor Force Estimates, Annual Averages, 1978.

MURRAY MANUFACTURING FIRMS,
THEIR PRODUCTS AND EMPLOYMENT

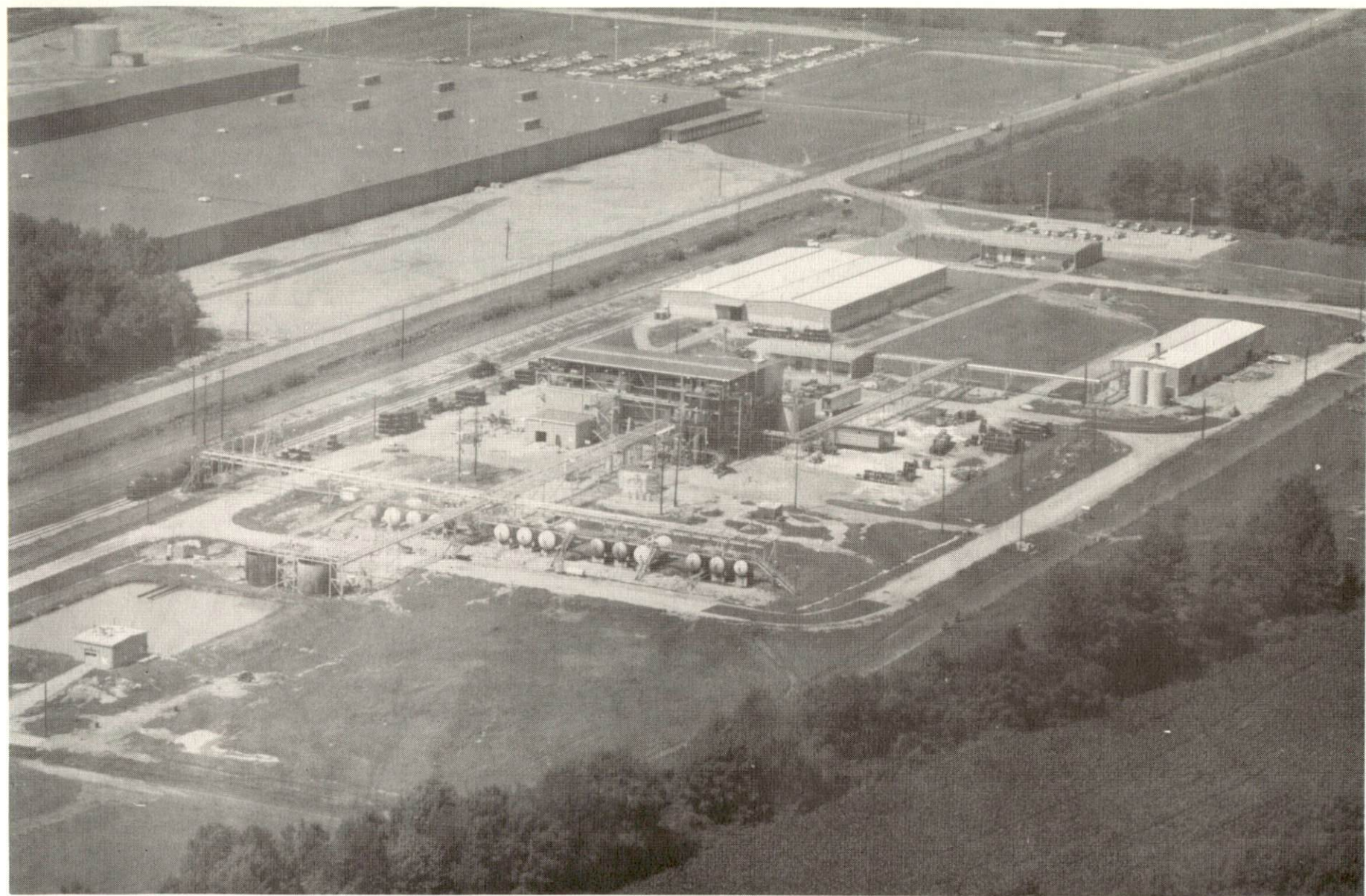
Firm (Establishment date)	Product	Employment			Organized
		Total	Male	Female	
Calloway Manufacturing Company (1976)	Jeans, skirts, shorts	290	30	260	
Ellis Popcorn Company, Inc. (1950)	Popcorn	4	3	1	
Fisher Price Toys (1973)	Toys	530	177	353	
Fitts Block & Ready Mix Company, Inc. (1945)	Concrete block, ready mixed concrete	17	17	0	*
General Silica Products, Inc., of Kentucky (1968)	Resin coated silica sand	12	11	1	
Hutson Chemical Company, Inc. (1938)	Fertilizer	20	17	3	
Murray Fabrics, Inc. (1955)	Knitted tubing	19	4	15	
Parker Popcorn Company, Inc. (1937)	Popcorn	12	11	1	
Redmon Stake Company (1969)	Wood stakes	3	2	1	
Ryan Milk Company (1929)	Cream, coffee creamers	115	100	15	*
Sager Glove Corporation (1965)	Safety apparel	92	14	78	
Tappan Company, Murray Division (1946)	Gas and electric ranges	796	613	183	*
The Murray Ledger & Times (1879)	Newspaper	26	14	12	
Vanderbilt Chemical Corporation (1969)	Industrial chemical additives	40	37	3	*
Weaver Popcorn Company (1947)	Popcorn	3	2	1	
Winchester Printing Services (1964)	Job printing, offset printing	10	5	5	
York Spring Company (1970)	Springs	12	5	7	

*See Labor Organizations below.

Source: Kentucky Department of Commerce, Division of Research and Planning.



FISHER PRICE TOYS



VANDERBILT CHEMICAL CORPORATION

LABOR ORGANIZATIONS

<u>Union</u>	<u>Representing manufacturing workers at:</u>
International Brotherhood of Teamsters, Chauffeurs, Warehousemen and Helpers of America	Fitts Block & Ready Mix Company, Inc. (drivers only)
United Food and Commercial Workers Union of North America, AFL-CIO	Ryan Milk Company
United Automobile, Aerospace and Agricultural Implement Workers of America	Tappan Company, Murray Division
Oil, Chemical and Atomic Workers International Union, AFL-CIO	Vanderbilt Chemical Corporation

INDUSTRIAL SERVICES

	<u>Location</u>	<u>Miles Distant</u>
Tool & Die, Machine & Pattern Shops	Murray, Kentucky	--
Metal Service Centers	Murray, Kentucky	--
Heat Treating	Evansville, Indiana	137
Metal Finishers	Morganfield, Kentucky	100
Electric Motor Repair	Paducah, Kentucky	46

Source: Kentucky Department of Commerce, Division of Research and Planning.

ESTIMATED MALE LABOR SUPPLY
MURRAY LABOR MARKET AREA

Area	Current			Under- employed	Future
	Total	Not in Labor Force	Unemployed		Reaching 18 years of age before 1985
Labor Market Area	5,430				4,584
Calloway	1,416	80	266	1,070	992
Graves	1,231	260	471	500	1,347
Marshall	2,036	1,240	466	330	877
Trigg	277	0	127	150	396
Henry (Tenn.)	340	N/A	N/A	N/A	972

Sources: Kentucky Department for Human Resources, Kentucky Labor Supply Estimates by County, 1977. Tennessee Department of Economic & Community Development, Available Labor, February 1978. Kentucky Department of Commerce, Future Labor Supply Before 1985.

ESTIMATED FEMALE LABOR SUPPLY
MURRAY LABOR MARKET AREA

Area	Current			Under- employed	Future
	Total	Not in Labor Force	Unemployed		Reaching 18 years of age before 1985
Labor Market Area	5,826				4,349
Calloway	1,381	90	321	970	918
Graves	1,199	0	569	630	1,247
Marshall	2,289	1,530	299	460	853
Trigg	267	0	97	170	388
Henry (Tenn.)	640	N/A	N/A	N/A	943

Sources: Kentucky Department for Human Resources, Kentucky Labor Supply Estimates by County, 1977. Tennessee Department of Economic & Community Development, Available Labor, February 1978. Kentucky Department of Commerce, Future Labor Supply Before 1985.

AVERAGE WEEKLY WAGES BY INDUSTRY,
BY PLACE OF WORK, 1977

	<u>Calloway County</u>	<u>Graves County</u>
All Industries	\$159.11	\$191.94
Mining & Quarrying	*	*
Contract Construction	163.87	204.41
Manufacturing	180.87	236.84
Transportation, Communications & Public Utilities	247.96	236.91
Wholesale & Retail Trade	116.50	130.25
Finance, Insurance & Real Estate	155.27	183.25
Services	180.48	130.04
Other	130.25	162.09

	<u>Marshall County</u>	<u>Trigg County</u>
All Industries	\$254.45	\$154.82
Mining & Quarrying	*	*
Contract Construction	288.97	194.76
Manufacturing	325.83	188.11
Transportation, Communications & Public Utilities	213.14	214.29
Wholesale & Retail Trade	126.10	94.94
Finance, Insurance & Real Estate	176.96	150.36
Services	113.57	106.02
Other	*	*

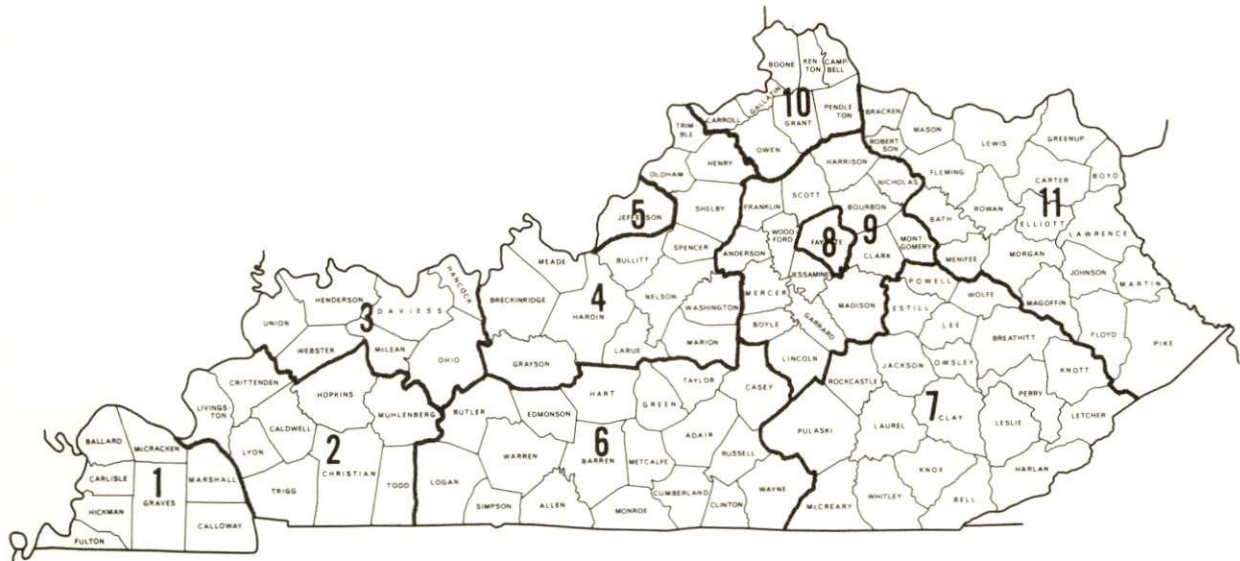
*Not disclosed.

Note: Excludes domestic workers, railway workers; certain nonprofit corporations; majority of federal, state, and local government workers; and self-employed workers.

Source: Kentucky Department for Human Resources, Average Weekly Wages of Workers Covered by Kentucky Unemployment Insurance Law, 1977.

Occupational wage rates for specific industries are usually not available to most government agencies, and wage data furnished to state employment agencies by individual industrial employers is protected from disclosure by federal law. The most reliable up-to-date wage information can be obtained by direct contact with local employers.

Associated Industries of Kentucky, a voluntary organization of Kentucky businesses, regularly collects occupational wage rates and fringe benefits data from participating member firms. Data is compiled for over 127 clearly defined office, production, and service occupations. Tabulations are published for eleven regions of Kentucky, as shown on the map below. It should be noted that the data may be weighted by the preponderance of firms in the larger cities and may be somewhat higher than the rates paid in the smaller communities. Data from these tabulations are available, upon request, from the Kentucky Department of Commerce, Frankfort, Kentucky 40601.



Associated Industries of Kentucky Area Wage Surveys

Up-to-date occupational wage rates of the existing industries are maintained by South Kentucky Industrial Development Association, Inc., Post Office Box 726, Hopkinsville, Kentucky 42240.

PER CAPITA PERSONAL INCOME

<u>Area</u>	<u>1977</u>	<u>1973</u>	<u>Percent Change</u>
Calloway County	\$4,976	\$3,383	47.1
Labor Market Area			
Range	\$4,976 - 6,015	\$3,383 - 3,907	N/A
Kentucky	5,989	4,021	48.9
U. S.	7,026	4,980	41.1

Source: U. S. Department of Commerce, Bureau of Economic Analysis, April 1979.

TRANSPORTATION

Rail

Line serving Murray - Louisville and Nashville Railroad

Services - One northbound and one southbound freight stops Monday through Saturday; switch engine; team track space for 3 cars; siding space for approximately 100 cars; nearest piggyback facilities at Paris, Tennessee, 22 miles distant

For details on routing, schedules, rates, and services, contact:

Manager of Industrial Development
Louisville & Nashville Railroad
Company
908 West Broadway
Louisville, Kentucky 40201
(502) 587-5723

Highways

Murray is served by U.S. Highway 641 and Kentucky Highways 94 and 121. An interchange of the Purchase Parkway is located 19 miles north of Murray at Benton via U.S. Highway 641.

Access to the Purchase Parkway will be greatly improved with the completed widening of U.S. 641 to four lanes from Murray to Benton. Four-lane construction is now under way on a 10.32-mile section beginning at Murray and extending north. This section is expected to be completed by June 1980. The remaining section connecting with the Purchase Parkway will be constructed as a new two-lane highway which will be widened to four lanes in the future.

The Purchase Parkway interconnects with Interstate 24 approximately 9 miles north of Benton. Interstate 24, which connects with Interstate 57 in Illinois and Interstate 59 at Chattanooga, Tennessee, is scheduled for completion in 1980.

Truck Service

<u>Company</u>	<u>Home Office</u>
Cooper-Jarrett, Inc.*	Hanover Plaza Morristown, New Jersey 07960
Harper Truck Service, Inc.**	1266 North 8th Street Paducah, Kentucky 42002
McLean Trucking Company*	P. O. Box 213 Winston-Salem, North Carolina 21702
Overnite Transportation Company*	1000 Semmes Avenue Richmond, Virginia 23209
Paschall Truck Lines, Inc.(T)**	Route 4 Murray, Kentucky 42071
T.I.M.E. - DC, Inc.*	P. O. Box 2550 Lubbock, Texas 79408
United Trucking Service, Inc.*	3047 Lonyo Road Detroit, Michigan 48209
<u>Other Freight Services</u>	<u>Nearest Shipping Center or Home Office</u>
Purolator Courier Corporation***	Paducah, 46 miles distant
United Parcel Service***	Paducah, 46 miles distant

HIGHWAY MILES AND TRUCK TRANSIT TIME IN DAYS FROM MURRAY, KENTUCKY, TO SELECTED MARKET CENTERS

City	Delivery		City	Delivery	
	Highway Miles	Time TL		Highway Miles	Time TL
Atlanta, Ga.	358	3	Los Angeles, Ca.	2,001	6
Baltimore, Md.	809	3	Louisville, Ky.	229	1
Birmingham, Ala.	312	3	Nashville, Tenn.	116	1
Chicago, Ill.	407	2	New Orleans, La.	574	2
Cincinnati, Ohio	330	2	New York, N. Y.	977	3
Cleveland, Ohio	574	3	Pittsburgh, Pa.	897	3
Detroit, Mich.	589	3	St. Louis, Mo.	213	1
Knoxville, Tenn.	293	2			

Source: Delivery Time Only - Harper Truck Service, Inc., 1266 North 8th Street, Paducah, Kentucky 42002.

(T)Local terminal.

*Interstate only.

**Interstate and Intrastate.

***For regular scheduled pickups or for occasional pickups, arrangements must be made with the Louisville office of Purolator Courier Corporation or United Parcel Service.

Air

Local

Murray-Calloway County Airport
(Kyle Field)
Location: 5 miles northwest of Murray
Runways: 1 paved
Length: 5,000 feet
Traffic
Control: Wind sock
Lighting: Rotating beacon, radio control
runway lighting system - with
low, medium or high intensities*
Services: 80 and 100 octane, hangar, tie down,
charter service, agricultural
service, flight instruction,
maintenance and repair
Air Freight
Service: Chartered air freight services
must be arranged

Nearest Scheduled Airline Service

Barkley Field
Location: Paducah, 46 miles northwest of Murray
Runways: 2 paved
Length: 6,500 and 4,000 feet
Traffic
Control: Tower: ground control, approach
control
Lighting: Beacon, boundary, obstruction, runway
lights and runway end identification
lights; medium intensity approach
lighting system - runway approach
indicator light
Services: Ozark, Air Illinois (commuter), and
Air Kentucky (commuter) Airlines;
100 octane and JA-1 fuel; charter;
Major A & E repairs; storage; taxi;
limousine; U-Drive-It; restaurant
Air Freight
Service: Freight accepted on a space available
basis

*The new radio control runway lighting system is expected to be in operation by late summer, 1979.

Bus - Murray-Calloway County Transit System; Brooks Bus Line, Inc.

Taxi - One company, 18-hour daily service, radio-dispatched

Rental Services - Car, truck and trailer rentals

Water

The Port of Murray-Calloway County is located on Kentucky Lake, approximately 12 miles from Murray. This large privately owned port is owned by the Hutson Chemical Company, Inc., and is operated by the Hutson Chemical Company and the Hutson Grain Company. The port can accommodate the unloading of eight barges simultaneously. New storage facilities have recently been constructed which have capacities for storing 30,000 tons of fertilizer and 500,000 bushels of grain.

POWER AND FUEL

Electricity

Company serving Murray - Murray Electric System
Source of power - Tennessee Valley Authority
Total generating capacity - 27,071,480 KW*
For industrial rates contact:

South Kentucky Industrial Development
Association, Inc.
P. O. Box 726
Hopkinsville, Kentucky 42240
(502) 885-5392

and/or

Murray Electric System
401 Olive Street
Murray, Kentucky 42071
(502) 753-5312

Company serving Calloway County - West Kentucky Rural Electric
Cooperative Corporation
Source of power - Tennessee Valley Authority
Total generating capacity - 27,071,480 KW*
For industrial rates contact:

South Kentucky Industrial Development
Association, Inc.
P. O. Box 726
Hopkinsville, Kentucky 42240
(502) 885-5392

and/or

West Kentucky RECC
1218 West Broadway
Mayfield, Kentucky 42066
(502) 247-1321

*1976 capacity in service - kilowatts.

Natural Gas

Company serving Murray - Murray Natural Gas System
Source of supply - Texas Gas Transmission Corporation*
Size of transmission mains - 26 and 30 inches (supplier)
6 inches (distributor)
Distribution mains - 2, 4 and 6 inches
Distribution pressure - 20 to 40 psi
Btu content - 1,006 per cubic foot
Specific gravity - 0.60
For rates and supplies contact:

Murray Natural Gas System
P. O. Box 466
Murray, Kentucky 42071
(502) 753-5626

Other Fuels

Propane

Texgas Corporation, Railroad Avenue, Murray

Fuel oils

Distillate fuel oil -

E. M. Bailey, Distributor (Standard Oil), Pogue Road, Murray
Gould Oil Company, Inc., Midway (approximately 5 miles south
of Murray)
Kentucky Lake Oil Company, New Concord Road, Murray
Rudy Lovett Distributing Company, Inc., (Phillips 66), 403 South
Second Street, Murray
Texaco Bulk Plant, South Second Street, Murray

Residual fuel oil - Arrangements must be made with the refinery.

Low sulphur content coal - Available in eastern Kentucky.

*The reserves of a gas well in Hopkins County have been purchased and will be used as an additional source of supply. This supply will be used as needed during curtailed periods, and it is anticipated that this supply will be on line by January 1980.

WATER AND SEWERAGE

Water

Company serving Murray - Murray Water and Sewerage System
 400 Olive Street
 Murray, Kentucky 42071
 (502) 753-4321

Source - Five deep wells
 Treatment plant capacity - 5,000,000 gallons per day
 Average daily consumption - 2,500,000 gallons
 Peak daily consumption - 3,250,000 gallons
 Type treatment - Iron removal, chlorination, fluoridation,
 pH adjustment
 Storage capacity - 3,450,000 gallons
 Size lines - 4, 6, 8, 10, 12 and 16 inches
 Average pressure - 50 psi; Average temperature - 59 degrees F.

MONTHLY WATER RATES FOR WHOLESALE
 AND INDUSTRIAL CONSUMERS

Inside City

Minimum bill		\$2.50
First	2,000 gallons	1.25 per M gallons
Next	2,000 gallons	1.11 per M gallons
Next	2,000 gallons	.95 per M gallons
Next	2,000 gallons	.81 per M gallons
Next	2,000 gallons	.70 per M gallons
Next	50,000 gallons	.56 per M gallons
All over	60,000 gallons	.35 per M gallons

Outside City

Minimum bill		\$3.00
First	2,000 gallons	1.50 per M gallons
Next	2,000 gallons	1.36 per M gallons
Next	2,000 gallons	1.20 per M gallons
Next	2,000 gallons	1.11 per M gallons
Next	2,000 gallons	.91 per M gallons
Next	50,000 gallons	.81 per M gallons
All over	60,000 gallons	.42 per M gallons

Tap-on charge:

<u>Meter Size</u>	<u>Inside City</u>	<u>Outside City</u>
3/4-inch	\$ 75	\$100
1-inch	90	115
1 1/2-inch	120	145
2-inch	135	160
Over 2-inch	Cost of materials and labor	

Name of water district - Dexter-Almo Heights Water District
Dexter, Kentucky 42036
(502) 437-4179

Area served - North Calloway County

Date when water district began operating - 1964

Source of supply of treated water - Murray Water and Sewerage
System

Average amount of water used in a 30-day period - 1,700,000 gallons

Size lines - 4, 6 and 8 inches

Rates -

First	2,000 gallons	\$7.00 (Minimum)
Next	3,000 gallons	2.00 per M gallons
Next	5,000 gallons	1.25 per M gallons
Next	10,000 gallons	1.00 per M gallons
Over	20,000 gallons	.75 per M gallons

Tap-on charge: 5/8-inch \$300

Name of water district - Murray #1 Water District
P. O. Box 384
Murray, Kentucky 42071
(502) 753-6612

Area served - East Calloway County

Date when water district began operating - 1964

Source of supply of treated water - Murray Water and Sewerage
System

Average amount of water used in a 30-day period - 2,067,000 gallons

Storage capacity - 50,000 gallons

Size lines - 6 and 8 inches

(Contd.)

Rates -

5/8-inch	First 2,000 gallons	\$ 4.50 Minimum
3/4-inch	First 3,000 gallons	6.10 Minimum
1-inch	First 5,000 gallons	9.30 Minimum
1 1/2-inch	First 10,000 gallons	15.55 Minimum
2-inch	First 16,000 gallons	21.25 Minimum

1 1/2-inch

First	10,000 gallons	\$15.55 (Minimum)
Next	10,000 gallons	.95 per M gallons
Next	30,000 gallons	.75 per M gallons
Next	50,000 gallons	.65 per M gallons
All over	100,000 gallons	.55 per M gallons

2-inch

First	16,000 gallons	\$21.25 (Minimum)
Next	4,000 gallons	.95 per M gallons
Next	30,000 gallons	.75 per M gallons
Next	50,000 gallons	.65 per M gallons
All over	100,000 gallons	.55 per M gallons

Tap-on charge:

5/8-inch	\$250
3/4-inch	300
1-inch	400
1 1/2-inch	550
2-inch	750

Name of water district - Murray #2 Water District
P. O. Box 216
Murray, Kentucky 42071
(502) 753-5099

Area served - Southeast Calloway County

Date when water district began operating - 1970

Source of supply of treated water - Murray Water and Sewerage
System

Average amount of water used in a 30-day period - 573,000 gallons

Size lines - 6 and 8 inches

Rates -

First	1,500 gallons	\$4.00 (Minimum)
Next	8,500 gallons	2.00 per M gallons
Next	40,000 gallons	1.00 per M gallons
Next	50,000 gallons	.75 per M gallons
Next	400,000 gallons	.50 per M gallons
Next	500,000 gallons	.40 per M gallons

Tap-on charge: 5/8-inch \$200

Name of water district - Murray #3 Water District
P. O. Box 643
Murray, Kentucky 42071
(502) 753-3797

Area served - West Calloway County

Date when water district began operating - 1970

Source of supply of treated water - Murray Water and Sewerage
System

Average amount of water used in a 30-day period - 733,300 gallons

Storage capacity - 50,000 gallons

Size lines - 6 inches

Rates -

First	1,500 gallons	\$6.75 (Minimum)
Next	3,500 gallons	3.75 per M gallons
Next	5,000 gallons	1.50 per M gallons
Next	10,000 gallons	1.25 per M gallons
Next	30,000 gallons	1.05 per M gallons
Next	50,000 gallons	.80 per M gallons
All over	100,000 gallons	.60 per M gallons

Tap-on charge:

5/8-inch	\$300
3/4-inch	300
1-inch	300
1 1/2-inch	400
2-inch	500

Surface water sources - Kentucky Lake and Clark's River
 Expected ground water yield - 5 to 50 gpm along the eastern boundary
 of the county bordering Kentucky Lake; 500 to 1,000 gpm over
 remainder of the county

Sewerage

Company serving Murray - Murray Water and Sewerage System*
 400 Olive Street
 Murray, Kentucky 42071
 (502) 753-4321

Design capacity - 2,500,000 gallons per day
 Average daily flow - At capacity
 Treatment - Primary and secondary
 Type treatment - Primary and secondary settling, trickling filter,
 digester, vacuum filter
 Treated effluent discharged into - East Fork of Clark's River
 Size of sanitary mains - 8, 10, 12, 15, 18 and 24 inches
 Rates (based on water usage) -

Inside City

First	2,000 gallons	\$2.50 (Minimum)
Next	2,000 gallons	.555 per M gallons
Next	2,000 gallons	.475 per M gallons
Next	2,000 gallons	.405 per M gallons
Next	2,000 gallons	.350 per M gallons
Next	50,000 gallons	.280 per M gallons
All over	60,000 gallons	.175 per M gallons

Outside City

First	2,000 gallons	\$3.00 (Minimum)
Next	2,000 gallons	.666 per M gallons
Next	2,000 gallons	.570 per M gallons
Next	2,000 gallons	.486 per M gallons
Next	2,000 gallons	.420 per M gallons
Next	50,000 gallons	.336 per M gallons
All over	60,000 gallons	.210 per M gallons

Tap-on charge: Inside city - \$100
 Outside city - \$200

*Plans are under way for the construction of a new sewage treatment plant. Step I of a 201 Facilities Plan has been completed and the city is presently waiting for approval of funds to begin the design stage of the project. The new plant will have a design organic load of 30,251 population equivalent and a peak hydraulic flow of 12.1 million gallons per day. Use of the existing sewage treatment plant will be discontinued.

CLIMATE

Calloway County

Temperature

Normal (30-year record)	59.4 degrees
Average annual 1978	58.0 degrees
Record highest, July, 1952 (39-year record)	107.0 degrees
Record lowest, January, 1963 (39-year record)	-15.0 degrees
Normal heating degree days (30-year record)	3,696
(Heating degree day totals are the sums of negative departures of average daily temperatures from 65 degrees F.)	

Precipitation

Normal (30-year record)	46.00 inches
Mean annual snowfall (37-year record)	11.20 inches
Total precipitation 1978	53.44 inches
Mean number days precipitation (.01 inch or more) (37-year record)	119
Mean number days thunderstorms (37-year record)	55

Prevailing Winds (22-year record)

South

Relative Humidity (13-year record)

Midnight	79 percent
6 a.m.	84 percent
Noon	58 percent
6 p.m.	62 percent

Source: U. S. Department of Commerce, Environmental Science
Services Administration, Climatological Data, 1978.
Station of record: Nashville, Tennessee.

LOCAL GOVERNMENT

City

Structure - Mayor - 4-year term; 12 councilmen - 2-year terms
Budget - General Fund \$1,868,936 (1979)
Income - Water and Sewer Fund 816,169 (1978)
Gas System 1,243,386 (fiscal year ended 4/78)
Fees and licenses - Annual occupational license tax on manufacturers:
Less than 25 employees - \$75, 26 to 50 employees - \$150, 51 to 250
employees - \$225, 251 to 500 employees - \$300, over 500 employees -
\$400; vehicle license - \$15 per vehicle, \$20 for trucks over 1½ tons

County

Structure - County Judge/Executive - 4-year term;
4 magistrates - 4-year terms
Budget 1978-79 - General Fund \$571,830; Road Fund \$254,000

Assessed Value of Property

<u>Classes of Property</u>	<u>Murray (1978)</u>	<u>Calloway County (1978-79)</u>
Real Estate	\$103,298,664	\$236,131,204
Tangibles	29,304,000	61,484,864

Property Taxes

All property in Kentucky is assessed at 100 percent of fair cash value.

Land and buildings are taxed by the state and may be taxed by local jurisdictions. The state rate is \$0.315 per \$100 of assessed valuation.

Manufacturing machinery, raw materials inventories, pollution control equipment, and goods in the process of manufacture are not subject to local taxation. The state rate is \$0.15 per \$100.

Other tangible personal property owned by manufacturers (automobiles, trucks, finished goods, office furniture, office equipment) is taxed by the state at \$0.45 per \$100 and may be taxed by local jurisdictions.

Property stored in public warehouses in a transit status is not subject to local taxation. The state rate is only \$0.015 per \$100.

Intangible personal property located in Kentucky (money in hand, shares of stock, notes, bonds, accounts receivable, and other credits) is taxed by the state at \$0.25 per \$100, and is not subject to local taxation.

Private leaseholds in industrial facilities owned by cities or counties and financed by industrial revenue bonds are subject to a state tax of \$0.015 per \$100 of value (essentially the lessee's equity, adjusted for appreciation or depreciation). Local taxation is not permitted.

Combined State and Local Rates Per \$100 Valuation, 1978*
(100% assessment)

	<u>Inside City of Murray</u>	<u>Outside City</u>
1. Land and buildings	\$1.205	\$0.620
2. Mfg. machinery, raw materials, goods in process, pollution control equipment	0.150	0.150
3. Finished goods, office equipment, vehicles, other tangibles	1.340	0.755
4. Intangibles (accounts receivable, notes, bonds, etc.)	0.250	0.250
5. Leaseholds in I. R. bond financed plants	0.015	0.015

Utilities Gross Receipts Tax for Schools

A 3 percent tax is levied on utilities receipts for schools in Calloway County. Tax is paid by all consumers of utilities as an add-on to the utilities bills. Exempted are receipts from utilities services that are resold and the receipts from the sale of energy or energy producing fuels that exceed 3 percent of the cost of production in manufacturing, processing, mining or refining.

Planning and Zoning

City agency - Murray Planning Commission
 Zoning enforced - Within corporate limits of Murray
 Subdivision regulations enforced - Within the city of Murray and 5 miles beyond corporate limits
 Local codes enforced - Building, housing
 Mandatory state codes enforced - Plumbing, National Fire Protection Association Code, National Building Code (for major buildings and residential construction containing more than 12 bedrooms per building)

*Kentucky Department of Commerce.

Safety

<u>Police</u>	<u>Murray</u>	<u>Calloway County</u>
Total staff	27	7
Radio-patrol cars	8	5

Fire

American Insurance Association Fire Rating	5
Full-time staff	32
Volunteers	14

Rescue Service

Calloway County Fire-Rescue, Inc.:

Number of volunteers - 35 (17 are emergency medical technicians)

Equipment - Two 750-gpm pumpers, one 1,000-gallon tanker, rescue van, two motor boats with dragging equipment

Personnel training - First aid, emergency medical technician training, fire fighting techniques and water rescue training

Refuse Collection and Disposal

	<u>Murray</u>
Type service	Municipal
Fee charged:	
residential	\$4.00 per month
business	\$1.65 per cubic yard
industrial	\$1.65 per cubic yard
Collection frequency:	
residential	Once a week
business	1 to 6 times per week depending on volume
industrial	1 to 6 times per week depending on volume
Trash pickup	Twice a year
Disposal method	Landfill

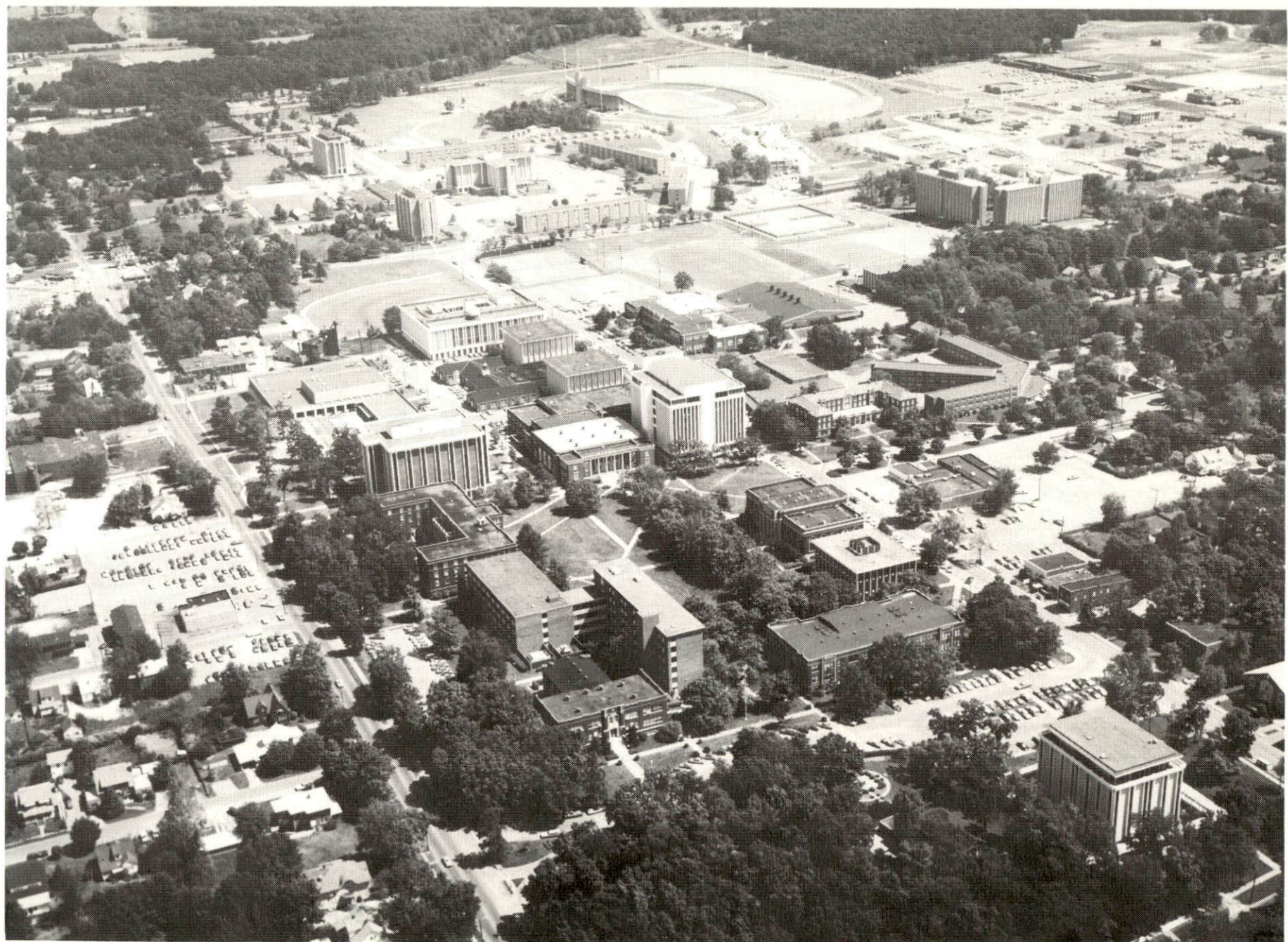
The city landfill is available free of charge for normal household refuse disposal to everyone with a city auto sticker. Commercial vehicles must pay a charge based on amount of refuse.

EDUCATION

Public Schools

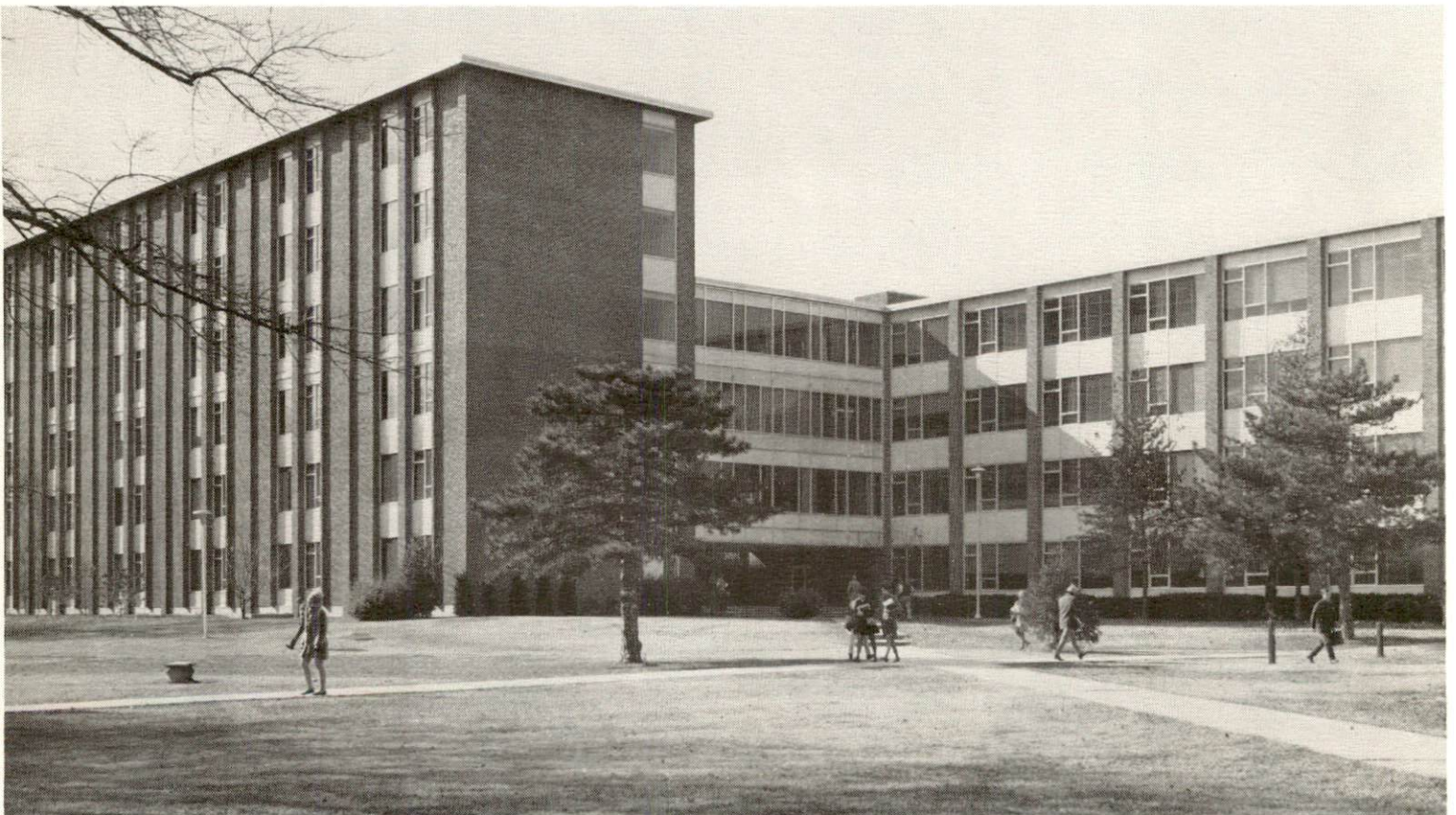
	<u>Murray Independent</u>	<u>Calloway County</u>
Total Enrollment (May, 1979)	1,766	2,959
Elementary	629 (K-4)	2,049
Middle School	511 (5-8)	
High School	626 (9-12)	910
Student-Teacher Ratio	17-3	19-1
Elementary	19-1	19-1
Middle School	15-1	
High School	17-1	20-1
Accreditation	Southern Association of Colleges and Schools	Southern Association of Colleges and Schools
Percent High School Graduates to College	72.3	25.1
Expenditures Per Pupil (1977-78)	\$965.41	\$837.77
Bonded Indebtedness, June 30, 1978	\$2,650,000*	\$2,730,000

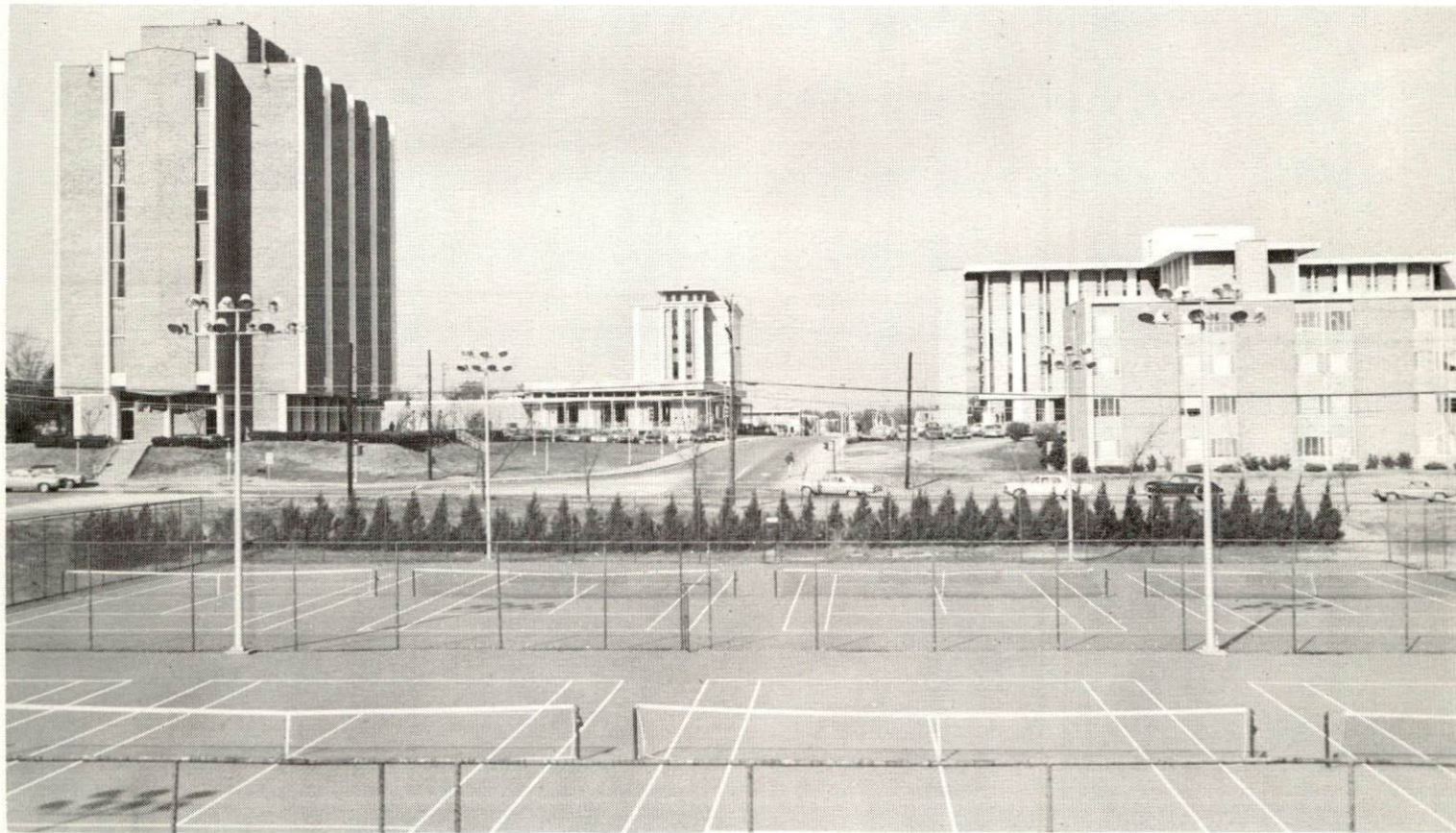
*Includes refunding issue - \$1,290,000.



AERIAL VIEW OF MURRAY STATE UNIVERSITY

MURRAY STATE UNIVERSITY





Area Colleges and Universities

<u>Name</u>	<u>Location (Miles distant)</u>	<u>Enrollment (Fall, 1978)</u>	<u>Highest Degree Conferred</u>
Murray State University	Murray, Kentucky	8,158	Masters, Specialist*
Paducah Community College	Paducah, Kentucky (46)	1,464	Associate
University of Tennessee at Martin	Martin, Tennessee (47)	5,125	Masters

Murray State University is a regional coeducational public institution of higher learning offering undergraduate, graduate, and professional instruction and regional continuing education programs. The university's main campus covers 238 acres in residential Murray.

Vocational Schools

	<u>Nearest State School</u>
Location	West Kentucky State Vocational- Technical School
Miles Distant	Paducah 46 miles from Murray
Curriculum	Business and Office Occupations Accounting Jr. Management Clerical Secretarial Consumer and Home Economics Commercial Foods Health and Personal Services Occupations Barbering Cosmetology Industrial Education Architectural Drafting Auto Body Repair and Painting Auto Mechanics Carpentry Electronics Industrial Electricity Masonry Tailoring Learning Resource Center

*Joint doctoral degree programs are offered in cooperation with the University of Kentucky, Lexington.

Nearest Area Education Center

Location
Curriculum

Murray Area Vocational Education
Center
Murray
Agriculture
Adult Agriculture
Business and Office Occupations
Clerical
Secretarial
Distributive Education
Health and Personal Services Occupations
Practical Nursing
Industrial Education
Auto Body Repair
Auto Mechanics
Carpentry
Major Appliance Repair

Arrangements can be made to provide training in the specific production skills required by an industrial plant. Instruction may be conducted either in the vocational school or in the industrial plant, depending upon the desired arrangement and the availability of special equipment.



MURRAY-CALLOWAY COUNTY HOSPITAL

HEALTH

Local Medical Personnel

Physicians - 31
Dentists - 16

Hospitals

<u>General Hospital</u>	<u>Location</u>	<u>Beds</u>
Murray-Calloway County Hospital	Murray	178 (acute) 40 (long term care)

General hospital facilities and services - 3 operating rooms; 6-bed intensive coronary unit; cardiac care linked by computer with Vanderbilt Hospital at Nashville, Tennessee, 24 hours a day for monitoring; diagnostic X-ray department with isotope scanner; zermamography; ultrasound; pharmacy; laboratory defibrillator; obstetric department; respiratory and physical therapy; social services department; holter monitoring; treadmill and stress testing; EEG testing; training facility for student nurses attending Murray State University

Medical staff - 36 doctors, 55 registered nurses (full time), 10 registered nurses (part time), 63 licensed practical nurses (full time), 6 licensed practical nurses (part time)

Ambulance Service

Name - Mercy Ambulance Service
Staff - 7 emergency medical technicians, with 1 having paramedical training
Service - County-wide, 24-hour service
Equipment - 2 fully equipped ambulances, 1 ambulance on standby

Public Health

Facility - Calloway County Health Department
Staff - Full time: Administrator, 2 sanitarians, 6 public health nurses, plumbing inspector, 3 clerks
Part time: Nutritionist, 3 public health nurses, physical therapist, speech and hearing pathologist

OTHER LOCAL FACILITIES

Communications

Telephone - South Central Bell Telephone Company
Services - Standard services, plus touch tone dialing

Telegraph - Western Union Telegraph Company
Services - Office, message delivery by telephone and messenger

Postal - U. S. Post Office - Main office and university station at
Murray State University

Class - First
Mail received - 3 times daily
Mail dispatched - 3 times daily

Newspapers -
Daily except Sunday
and circulation - The Murray Ledger & Times, 8,900
Weekly and circulation - Murray State News, 14,000
Other papers
received from - Louisville and Paducah, Kentucky;
Memphis and Nashville, Tennessee;
New York, New York

Radio - WNBS-AM, WAAW-FM, WKMS-FM, WSJP-AM
Stations received from - All radio networks and independent
stations within a 150-mile radius

Television -
Cable service
Reception from - 11 channels and constant weather scan which
includes Paducah, Kentucky; Jackson and
Nashville, Tennessee; Cape Girardeau,
Missouri; and Atlanta, Georgia; Home
Box office

Kentucky Educational
Television - Murray-Mayfield transmitter, Channel 21

Library Services

Public library - Calloway County Public Library

Size collection - 55,000 volumes

Circulation, 1977-78 - 221,959

Services - Bookmobile serves city and county, shut-in service through the bookmobile, films, periodicals, paintings, microfilms, story hour twice weekly, children's programs, adult and junior great books, discussion groups, book reviews held regularly, special displays, regularly scheduled programs in art displays and music, outreach program to disadvantaged, monthly luncheon held for variety of public programs, Jackson Purchase Regional Library headquarters

University library - Murray State University Library (open to the public)

Size collection - Over 500,000 resource materials

Special collections - Early history of Kentucky and Tennessee; genealogy; TVA publications; Jesse Stuart Collection, consisting of manuscripts and letters; Kentuckiana and Jackson Purchase Collections; manuscripts of Nathan B. Stubblefield, Harry Lee Waterfield, Mancil Vinson, and Edward T. Breathitt; the Gregory papers, and the Everett papers from Obion County, Tennessee; Murray Women's Club scrapebooks and records; Jackson Purchase newspapers on microfilm

Religious Institutions

Number of churches - 89

Denominations - Assembly of God

Baha'i

Baptist

Catholic

Christian

Christian Science

Church of Christ

Church of Jesus Christ of Latter Day Saints

Episcopal

Jehovah's Witnesses

Lutheran

Methodist

Nazarene

Pentecostal

Presbyterian

Seventh Day Adventist

Wayman Chapel AME

Nearest Synagogue - Paducah, 46 miles distant

Congregation - Temple Israel (reform)



CALLOWAY COUNTY PUBLIC LIBRARY

Financial Institutions

<u>Banks</u>	<u>Assets</u>	<u>Deposits</u>	<u>Statement Date</u>
Bank of Murray	\$102,307,700	\$93,331,937	12/31/78
Peoples Bank of Murray, Kentucky	68,275,990	62,358,322	12/31/78
<u>Savings and Loan Associations</u>	<u>Total Assets</u>	<u>Savings Accounts</u>	<u>Statement Date</u>
Home Federal Savings and Loan Association (Murray Branch)	\$92,359,182	\$82,469,307	12/31/78
Hopkinsville Federal Savings and Loan Association (Murray Branch)	86,569,930	79,655,442	12/29/78
Security Federal Savings and Loan Association of Mayfield (Murray Branch)	30,013,275	25,969,513	12/31/78

Hotels and Motels

Total number - 10
Total units - 354

Clubs and Organizations

Alcoholics Anonymous
American A.A.U.W.
American Legion
American Red Cross
Associated Women of Farm Bureau
Big "M" Club
Bluegrass CB Club
Boy Scouts of America
Business and Professional Women's Club
Calloway County Alcoholic Council
Calloway County Association for Retarded Children
Calloway County Bar Association
Calloway County Country Club
Calloway County Drug Council
Calloway County Farm Bureau
Calloway County Genealogical Society
Calloway County Homemakers Club
Calloway County Mental Health Association
Calloway County Medical Association
Civitan Club
Daughters of the American Revolution
Daughters of the Confederacy
Disabled Veterans

(Contd.)

4-H Council
Fraternal Order of Police
Girl Scouts
Kiwanis Club
Lions Club
Loyal Order of the Moose
Magazine Club
Murray Baseball Association
Murray-Calloway County Board of Realtors
Murray-Calloway County Insurance Association
Murray-Calloway County Shrine Club
Murray-Calloway County Chamber of Commerce
Murray Dental Society
Murray Hospital Association
Murray Jaycees
Murray League of Woman Voters
Murray Masonic Lodge
Murray Ministerial Association
Murray Squar-A-Naders
Murray Woman's Club
Natures Palette
National Secretaries Association
Oaks Country Club
Optimist Club
Professional Firefighters
Rose and Garden Club
Rotary Club
Seniors Citizens Project
Sons of the American Revolution
Thoroughbred Club
Tops Club
Veterans of Foreign Wars
Weight Watchers
Welcome Wagon Club
Woodmen of the World
Woodmen of the World Sorority

RECREATION

Local

The city of Murray has a year-round supervised recreational program. Two parks, two mini parks, three swimming pools - Olympic, training and infant, seven tennis courts, nine ball fields, six covered pavilions, picnic areas, bike and hiking trails, and playground equipment are available to the public. The Murray-Calloway County Community Theatre plans to produce three plays during the summer of 1979. The outdoor productions will be presented at the Playhouse in the Park, located in the new Murray-Calloway County Park.

Private recreational facilities include a skating rink, bowling facility, and four movie theaters. Two private country clubs with 18-hole golf courses and a racquet club with a swimming pool, tennis courts, and racquetball courts are located in the county. A new marina is being constructed on the Blood River Embayment of Kentucky Lake, only 8 miles from Murray.

Murray State University has sixteen lighted tennis courts, six racquetball courts, a lighted baseball-football field, four indoor basketball courts, sauna, weight rooms, indoor jogging track, outdoor track, indoor archery/golf range, gymnastic room, several open playing fields, and an indoor swimming pool. The Murray State University Thoroughbreds are perennial challengers for major honors in the eight men's and five women's intercollegiate sports in the Ohio Valley Conference. In addition, several lectures, recitals, concerts, and plays are presented each year on campus and are also open to the public.

Area (Within 35 miles)

Murray's location in the heart of Kentucky's Land of the Lakes region makes it an excellent recreation area. The city is located near two of the largest inland lakes in America - Kentucky Lake and Lake Barkley. This lakeland area offers numerous recreational facilities for water sports, fishing, boating and camping.

Located around this lakeland area are three of the state's finest resort parks - Kenlake State Resort Park, Lake Barkley State Resort Park, and Kentucky Dam Village State Resort Park. These resort parks offer the following facilities and recreational activities:

- Lakeside location
- Lodge, cottages and camping accommodations
- Dining rooms, picnic area and gift shops
- Golf, swimming, fishing, playgrounds, planned recreation

Land Between the Lakes National Recreation Area, a 170,000-acre woodland formed into a peninsula by Kentucky Lake and Lake Barkley, is a major area for outdoor recreation, conservation, and environmental learning. There are facilities for fishing, boating, hiking, swimming, hunting, camping and picnicking.

COMMUNITY IMPROVEMENTS

Industrial and Commercial

Calloway Manufacturing Company has expanded operations and nearly doubled the number of employees engaged in the manufacturing of jeans, skirts and shorts.

The Tappan Company, Murray Division, plans a major building expansion in the near future.

Fisher Price Toys has completed plans for a plant expansion which will be used in the manufacturing of plastic parts for the toy line.

Vanderbilt Chemical Corporation has a multimillion dollar expansion under way on the site of its major plant.

The Murray Ledger & Times has announced plans to expand facilities.

The Fitts Block & Ready Mix Company, Inc., has announced major expansion plans.

Sager Glove Corporation has moved into its new building and has increased employment with the addition of thirty new jobs. Plans are now under way for a future expansion.

Hawaiian Tropic recently moved into a new building.

The Kentucky Candy Company has completed a plant expansion.

Thirty-three new businesses opened in 1978. A new shopping center is now under construction with K-Mart as the anchor store.

A new office building is under construction in the downtown area.

Two savings and loan associations opened new branch facilities in Murray in 1978 - Security Federal Savings and Loan Association of Mayfield and the Home Federal Savings and Loan Association.

The Hopkinsville Federal Savings and Loan Association opened a second full service branch in Murray in 1978.

Transportation

U.S. 641 is being improved from Murray to the Purchase Parkway. Four-lane construction is now under way on a 10.32-mile section beginning at Murray and extending north. This section is expected to be completed by June 1980. The remaining section connecting with the Purchase Parkway will be constructed as a new two-lane highway which will be widened to four lanes in the future.

Plans for improving ten major bridge structures on Kentucky Highway 94E between Murray and the Marshall County line are now under way and the project is presently in the design stage.

Design has been completed and approved for four-laning 12th Street in Murray. Construction is expected to begin in 1981.

The runway at the Murray-Calloway County Airport (Kyle Field) has been widened to 100 feet and lengthened to 5,000 feet. Also, a new radio control runway lighting system is expected to be in operation by late summer, 1979.

New storage facilities have recently been constructed at the Port of Murray-Calloway County which have capacities for storing 30,000 tons of fertilizer and 500,000 bushels of grain.

Utilities

The Murray Electric System has purchased a large lot adjoining the Systems Offices for future expansion. Also, the Murray Electric System is constructing a new 69,000 volt substation which is expected to be in service by Mid-December 1979.

The reserves of a gas well in Hopkins County have been purchased and will be used as an additional source of supply for the Murray Natural Gas System. This supply will be used as needed during curtailed periods, and it is anticipated that this supply will be on line by January 1980.

Plans are under way for the construction of a new sewage treatment plant. Step I of a 201 Facilities Plan has been completed and the city is presently waiting for approval of funds to begin the design stage of the project. The new plant will have a design organic load of 30,251 population equivalent and a peak hydraulic flow of 12.1 million gallons per day. Use of the existing sewage treatment plant will be discontinued.

Education

The Calloway County School System is presently constructing a new middle school to house grades 7 and 8. The new facility is expected to be ready for occupancy in January 1980. Improvements being planned for the high school building include the addition of ten classrooms, air conditioning, and renovation of the original building. These improvements are expected to be completed by September 1980. Construction of a new football field and track will be completed by September 1979.

Recent improvements to facilities in the Murray Independent School District include painting the interior and exterior of the middle and elementary buildings and installing air conditioning. New windows and carpet have also been installed in the middle school. Additional improvements planned for the elementary schools include dropping the ceilings and placing insulation and new lights in all the rooms.

A contract has been let for the design of a new \$15 million sportscenter and convention hall to be constructed on the Murray State University campus. The new Waterfield Library building has been completed and is now in use, and work is progressing on the new Student Union building. Also, the all-electric heating and cooling plant is now in operation, and a fossil fuel unit is being added for emergency use.

Health

An \$8 million expansion at the Murray-Calloway County Hospital was recently completed and a new construction project is now under way which will add a new six-room operating suite, ten-bed recovery room, six-room X-ray department, new emergency room, and extensive modernization of other hospital departments. Also, a new heliport at the hospital is now being paved.

Two orthodontists have recently located offices in Murray.

Recreation

The new 100-acre Murray-Calloway County Park offers an Olympic pool, shelters, ball fields, and bike and hiking trails. The old 29-acre park is being improved.

A large skating rink opened in Murray in 1978.

A new year-round indoor tennis complex has been built at Kenlake State Park. Fully lighted and weather conditioned, the four indoor courts have a seating capacity for 1,200 spectators. New outdoor courts have also been completed. The complex is designed to attract world championship tennis tournaments.

Other

Plans are under way to construct a new \$1 million post office building. A site has been purchased and construction is scheduled to begin during the summer of 1979. Construction is expected to be completed during the summer of 1980.

A new radio station, WSJP-AM, began operating in September 1978.

Both the city and county have built new central garages and storage buildings.

Kentucky Department of Commerce
Capital Plaza Tower
Frankfort, Kentucky 40601

Office of the Commissioner
(502) 564-4270

Industrial Development Division
(502) 564-7140

Existing Industries Division
(502) 564-4300

Office of Minority Business Enterprise
(502) 564-2064

Agribusiness Division
(502) 564-6784

International Trade and Investment
Promotion Division
(502) 564-2170

Research and Planning Division
(502) 564-4886
Map Sales Office
133 Holmes Street
(502) 564-4715

Kentucky Development Finance Authority (KDFA)
(502) 564-4554

Kentucky Film Commission
(502) 564-2240