

4-2000

## Industrial Resources: Carlisle County

Kentucky Library Research Collections  
Western Kentucky University, [spcol@wku.edu](mailto:spcol@wku.edu)

Follow this and additional works at: [https://digitalcommons.wku.edu/carlisle\\_cty](https://digitalcommons.wku.edu/carlisle_cty)

 Part of the [Business Administration, Management, and Operations Commons](#), [Growth and Development Commons](#), and the [Infrastructure Commons](#)

---

### Recommended Citation

Kentucky Library Research Collections, "Industrial Resources: Carlisle County" (2000). *Carlisle County*. Paper 1.  
[https://digitalcommons.wku.edu/carlisle\\_cty/1](https://digitalcommons.wku.edu/carlisle_cty/1)

This Report is brought to you for free and open access by TopSCHOLAR®. It has been accepted for inclusion in Carlisle County by an authorized administrator of TopSCHOLAR®. For more information, please contact [topscholar@wku.edu](mailto:topscholar@wku.edu).

IR Carlisle  
1116

# Kentucky

## Resources For Economic Development

### Carlisle County

April 2000

Albany  
Barbourville  
Ballard County  
Bardstown • Booneville      Berea  
Bowling Green • Boyd & Greenup Counties  
Bracken County • Brandenburg • Breckinridge  
Brownsville • Bullitt County • Burkesville • Cadiz  
Campbellsville • Campton • Carlisle • Carlisle County  
Carrollton • Cave City • Clinton • Columbia • Corbin • Cynthiana  
Danville • Dawson Springs • Edmonton • Elizabethtown • Estill County  
Elliott County • Falmouth & Butler • Flemingsburg • Frankfort • Franklin  
Frenchburg • Fulton County • Gallatin County • Georgetown • Grant County • Greensburg  
Grayson & Olive Hill • Glasgow • Hancock County • Harlan County • Harrodsburg • Hart County  
Hazard • Henderson • Henry County • Hodgenville • Hopkinsville-Christian County • Jackson County  
Jackson • Knott County • LaGrange & Buckner • Lancaster • Lawrenceburg • Lebanon • Leitchfield-  
Grayson County • Letcher County • Lexington • Liberty-Casey County • Logan County • Louisville  
London • Louisa • Lyon County • Madisonville & Earlington • Manchester • Marshall County • Mayfield  
Maysville • McCreary County • Marion • McLean County • Middlesboro & Pineville • Monticello • Morehead  
Morgantown • Mt. Sterling • Mt. Vernon • Muhlenberg County • Murray • Nicholasville • Northern Kentucky  
Ohio County • Owensboro • Owenton • Owingsville • Paducah • Paintsville • Paris • Pike County • Powell  
Prestonsburg • Princeton • Radcliff • Richmond • Russell County • Scottsville • Shelbyville • Somerset  
Springfield • Stamping Ground • Stanford-Lincoln County • Tompkinsville & Gamaliel • Taylorsville  
Todd County • Union County • Vanceburg • Versailles • Webster County • West Liberty • Williamsburg  
Winchester, Kentucky

# Kentucky

## Resources For Economic Development

### Carlisle County

April 2000



Prepared by  
Kentucky Cabinet for Economic Development  
Division of Research  
in cooperation with  
Carlisle County Government  
Bardwell, KY

Kentucky Cabinet for Economic Development  
Division of Research  
500 Mero Street  
2300 Capital Plaza Tower  
Frankfort, KY 40601  
Telephone: (502) 564-4886  
Fax: (502) 564-3256  
Email: [econdev@mail.state.ky.us](mailto:econdev@mail.state.ky.us)

Cost of printing paid from state funds.

## TABLE OF CONTENTS

	Page
<b>CARLISLE COUNTY, KENTUCKY – A RESOURCE PROFILE .....</b>	<b>1</b>
<b>LABOR MARKET STATISTICS.....</b>	<b>3</b>
Population.....	3
Population Projections.....	3
Estimated Labor Supply .....	3
Labor Force Characteristics of Residents, 1998 .....	4
Work Force Commuting Patterns, 1990 .....	4
Selected Components of Nonagricultural Employment by Place of Work, 1997.....	4
Per Capita Personal Income.....	6
Average Placement Wages.....	6
Average Weekly Wages by Industry by Place of Work, 1998 .....	7
<b>EXISTING INDUSTRY .....</b>	<b>8</b>
Carlisle County Manufacturing Firms, Their Products and Employment .....	8
Labor Organizations in Carlisle County .....	8
Selected Industrial Services – Within 50 Miles of Bardwell.....	9
<b>TRANSPORTATION.....</b>	<b>10</b>
Highways.....	10
Truck Service .....	10
Rail .....	12
Air.....	12
Water .....	12
<b>UTILITIES.....</b>	<b>13</b>
Electricity .....	13
Natural Gas.....	14
Public Water Supply.....	15
Sewerage .....	15
<b>CLIMATE .....</b>	<b>17</b>
<b>LOCAL GOVERNMENT.....</b>	<b>18</b>
Structure .....	18
Planning and Zoning.....	18
Local Fees and Licenses.....	18
Sales and Use Tax .....	18
State and Local Property Taxes.....	18
<b>EDUCATION.....</b>	<b>20</b>
Primary and Secondary Schools.....	20
Colleges and Technical Schools.....	20
<b>OTHER LOCAL FACILITIES.....</b>	<b>23</b>
<b>RECREATION .....</b>	<b>24</b>
<b>APPENDIX A - DEFINITIONS .....</b>	<b>25</b>

## CARLISLE COUNTY, KENTUCKY – A RESOURCE PROFILE

Carlisle County is located in the extreme western portion of Kentucky in the Jackson Purchase Region. Bordered on the west by the Mississippi River, the county covers a land area of 193 square miles and the topography is composed of gently rolling hills and plains. Carlisle County had an estimated 1999 population of 5,386 persons.

Bardwell, the county seat of Carlisle County, is located 163 miles northwest of Nashville, Tennessee; 171 miles southeast of St. Louis, Missouri; and 244 miles southwest of Louisville, Kentucky. Bardwell had an estimated population of 820 in 1998.

**The Economic Framework** – Carlisle County firms employed 802 people in 1997. Contract construction firms provided 35 jobs; manufacturing firms in the county reported 198 employees; wholesale and retail trade provided 179 jobs; 75 were employed in the service industry; and state and local government accounted for 209 jobs.

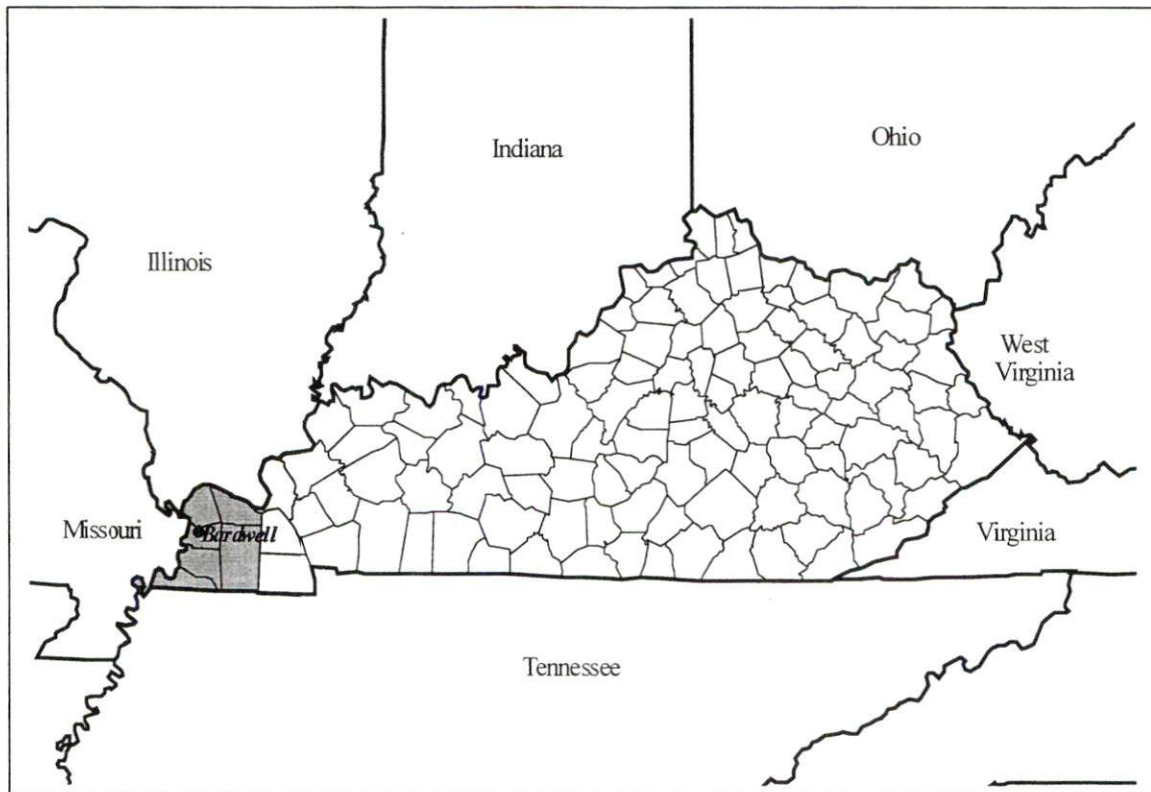
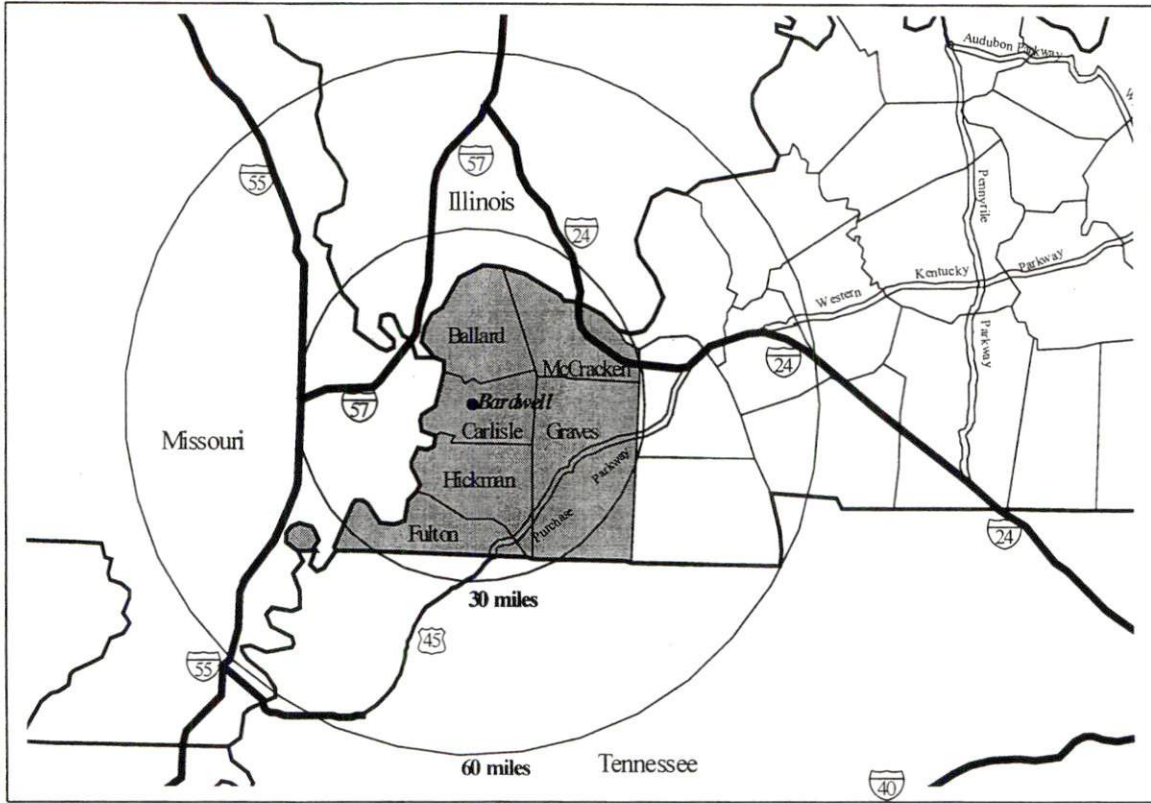
**Labor Supply** – There is a current estimated labor supply of 28,442 persons available for industrial jobs in the labor market area. In addition, from 2000 through 2004, approximately 8,722 young persons in the labor market area will become 18 years of age and potentially available for industrial jobs.

**Transportation** – Major highways serving Carlisle County are U.S. Highway 62, U.S. Highway 51, and Kentucky Highway 80. The Purchase Parkway, a multilane highway, can be accessed 29 miles southeast of Bardwell via U.S. Highway 51 and Kentucky Highway 80. Interstate 24 is accessible 26 miles northeast of Bardwell via U.S. Highway 62. Twenty firms provide interstate and/or intrastate trucking service to Carlisle County. The Illinois Central Railroad provides rail service to Carlisle County. The nearest commuter airline service is available at Barkley Regional Airport near Paducah, 24 miles northeast of Bardwell, and commercial airline service is available at Evansville, Indiana, 136 miles northeast of Bardwell; and at the Nashville International Airport, 172 miles southeast of Bardwell. Public riverport facilities are located at Hickman, Kentucky, on the Mississippi River, 33 miles southwest of Bardwell; and at Paducah, on the Tennessee River, 30 miles northeast of Bardwell.

**Power and Fuel** – Electric power is provided to Carlisle County by the Hickman-Fulton Counties Rural Electric Cooperative Corporation, Jackson Purchase Energy Corporation and West Kentucky Rural Electric Cooperative Corporation. A small portion of Carlisle County is served by the Kentucky Utilities Company. Bardwell is served by Bardwell City Utilities. Bardwell Gas System provides natural gas to Bardwell, while New Commonwealth Natural Gas Company provides gas service to Arlington.

**Education** – Carlisle County is served by the Carlisle County School System. Five senior colleges and one community college are located within 60 miles of Bardwell. The nearest area technology centers (ATC) providing secondary education are the Mayfield ATC in Mayfield; the Fulton County ATC in Hickman; and the Paducah ATC in Paducah. The West Kentucky Technical College in Paducah provides post-secondary education.

### Labor Market Area Maps



**Note:** To obtain detailed topographical and general highway maps contact Maps and Publications at 502-564-4715, or for industrial site maps contact the Site Evaluation Division at 502-564-7140.

## LABOR MARKET STATISTICS

The Carlisle County labor market area includes Carlisle County and the following additional counties: Ballard, Fulton, Graves, Hickman, and McCracken.

### Population

	<u>1980</u>	<u>1990</u>	<u>1998*</u>	<u>1999*</u>
Labor Market Area	124,680	123,406	126,942	127,160
Carlisle County	5,487	5,238	5,337	5,386
Bardwell	988	819	820	N/A
Arlington	511	449	449	N/A

**Note:** \* Population estimates. N/A – Data not available.

**Source:** U.S. Department of Commerce, Bureau of the Census.

### Population Projections

	<u>2000</u>	<u>2010</u>	<u>2020</u>
Labor Market Area	127,721	128,939	128,769
Carlisle County	5,420	5,400	5,266

**Source:** University of Louisville, Urban Studies Center, State Data Center.

### Estimated Labor Supply

	<u>Available Labor, 1998</u>			<u>Under-employed</u>	<u>Future Labor Becoming 18 years of age 2000 through 2004</u>
	<u>Total</u>	<u>Unemployed</u>	<u>Potential Labor Supply</u>		
Labor Market Area	28,442	3,323	2,473	22,646	8,722
Carlisle County	471	138	106	226	386

**Note:** Unemployed – people not working but actively seeking work. Potential Labor Supply – represents the number of persons not in the labor force, but would like a job (based on national estimates). Underemployed – people employed in wholesale/retail trade and non-professional services. See Appendix for further explanation.

**Sources:** U.S. Department of Labor, Bureau of Labor Statistics. U.S. Department of Commerce, Bureau of the Census. Kentucky Cabinet for Economic Development, Future Labor Supply Becoming 18 Years of Age, 2000 through 2004.



### Labor Force Characteristics of Residents, 1998

	<u>Carlisle County</u>	<u>Labor Market Area</u>
Civilian Labor Force	2,717	63,847
Employed	2,579	60,524
Unemployed	138	3,323
Unemployment Rate (%)	5.1	5.2

**Source:** U.S. Department of Labor, Bureau of Labor Statistics.

### Work Force Commuting Patterns, 1990

Workers commuting into Carlisle County	191
Workers commuting out of Carlisle County	1,350
Workers residing and working in Carlisle County	821

**Source:** University of Louisville, State Data Center.

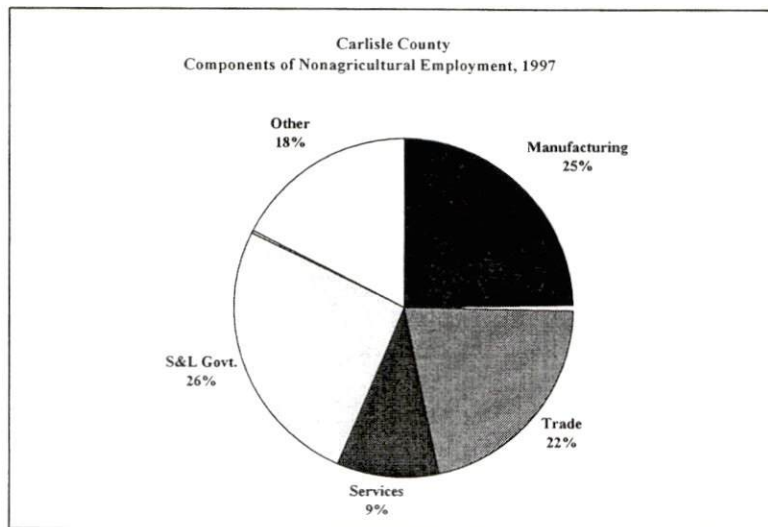
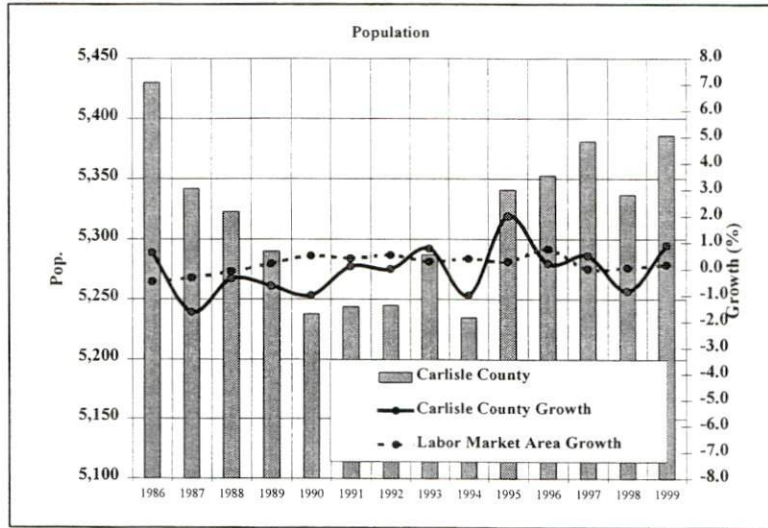
### Selected Components of Nonagricultural Employment by Place of Work, 1997

	<u>Carlisle County</u>	<u>Labor Market Area</u>
All Industries	802	56,904
Mining & Quarrying	0	115
Contract Construction	35	3,050
Manufacturing	198	11,544
Transportation & Public Utilities	24	3,601
Wholesale & Retail Trade	179	15,967
Finance, Insurance, & Real Estate	56	1,953
Services	75	13,913
State & Local Government	209	6,392
Other	27	326

**Note:** Excludes domestic workers, railway workers, certain nonprofit corporations, majority of federal government workers, and self-employed workers. N/A – Data not available.

**Source:** Kentucky Workforce Development Cabinet, Average Monthly Workers Covered by Kentucky Unemployment Insurance Law, 1997.

### Selected Charts



### Per Capita Personal Income

	<u>1993</u>	<u>1997</u>	<u>Percent Change</u> <u>(1993-1997)</u>
Carlisle County	\$16,249	\$18,852	16.0%
Kentucky	\$17,309	\$20,570	18.8%
U.S.	\$21,368	\$25,288	18.3%
Labor Market Area Range	\$15,747 - \$20,089	\$18,537 - \$24,231	-

**Source:** U.S. Department of Commerce, Bureau of Economic Analysis, 1998.

### Average Placement Wages

The Kentucky Department for Employment Services local office in Paducah serves Carlisle County. The focus of the following data is on job placements made by the Paducah local office and may therefore be used as an indicator of the wages which employers in the area pay new employees. During the twelve months ended on June 30, 1999, the local employment office filled Carlisle County job openings in various occupational categories. The average hourly wage for selected occupational categories were:

	<u>Number of Placements</u>	<u>Average Wage (\$)</u>
All Occupations	2,796	6.73
Professional, Technical & Managerial	43	7.63
Clerical	514	5.46
Sales	219	5.70
Domestic	21	5.11
Services (excluding domestic)	638	4.86
Agricultural, Fishery, Forestry, etc.	45	6.68
Processing	83	8.24
Machine Trades	53	7.07
Bench Work	88	5.87
Structural	691	9.12
Motor Freight & Transportation	224	8.59
Packaging & Materials Handling	167	6.32
Other	10	6.86

**Note:** Occupational categories are taken from the Dictionary of Occupational Titles published by the U.S. Department of Labor. The Paducah local office serves Ballard, Carlisle, Livingston, McCracken, and Marshall Counties.

**Source:** Kentucky Workforce Development Cabinet, Department for Employment Services.

**Average Weekly Wages by Industry by Place of Work, 1998**

	<u>Carlisle County</u>	<u>Kentucky (Statewide)</u>	<u>Tennessee</u>	<u>Virginia</u>
All Industries	\$338.59	\$512.00	\$546.00	\$595.00
Mining & Quarrying	0.00	808.00	896.00	799.00
Contract Construction	398.40	543.00	585.00	567.00
Manufacturing	311.47	666.00	641.00	670.00
Transportation & Public Utilities	N/A	686.00	674.00	842.00
Wholesale & Retail Trade	291.22	357.00	413.00	416.00
Finance, Insurance, & Real Estate Services	396.69	652.00	757.00	815.00
State & Local Government	278.97	462.00	521.00	628.00
	413.14	494.00	511.00	551.00
	<u>Indiana</u>	<u>Ohio</u>	<u>Illinois</u>	<u>U.S.</u>
All Industries	\$560.00	\$579.00	\$668.00	\$610.00
Mining & Quarrying	883.00	813.00	910.00	1,000.00
Contract Construction	642.00	650.00	804.00	641.00
Manufacturing	772.00	801.00	816.00	770.00
Transportation & Public Utilities	662.00	698.00	798.00	756.00
Wholesale & Retail Trade	371.00	409.00	479.00	435.00
Finance, Insurance, & Real Estate Services	686.00	736.00	1,023.00	935.00
State & Local Government	476.00	510.00	608.00	577.00
	529.00	586.00	638.00	598.00

**Note:** The average weekly wage for each category includes salaries and wages of all persons working for that type of business. For example, the manufacturing category includes both production workers and administrative personnel. Domestic workers, railway workers, certain nonprofit corporations, majority of federal government workers, and self-employed workers are excluded. Wages for U.S. and surrounding states rounded to nearest dollar. N/A – Data not available.

**Sources:** Kentucky Workforce Development Cabinet, Average Weekly Wages of Workers Covered by Kentucky Unemployment Insurance Law, 1998. U.S. Department of Labor, Bureau of Labor Statistics, Employment and Wages, Annual Averages, 1998, December 1999.

## EXISTING INDUSTRY

### Carlisle County Manufacturing Firms, Their Products and Employment

---

<u>Firm</u>	<u>Product(s)</u>	<u>1999 Emp.</u>	<u>Date Established</u>
<b>Arlington</b>			
Creative Visions Printing	Offset printing	1	1992
Grogan's Farm Inc.	Sausage	50	1971
Lynn's Specialty Sales	Advertising specialties & screen printing	5	1969
Owens Sawmill Inc.	Sawmill: hardwood lumber	14	1989
Wright's Sawmill Inc.	Sawmill: rough lumber	27	N/A
<b>Bardwell</b>			
Carlisle County News	Newspaper publishing	2	1894
Carlisle Manufacturing	Cultured marble sinks, panels, counter tops & products	4	1991
Ford Construction Co.	Ready-mixed concrete & livestock water tanks	5	1957
<b>Cunningham</b>			
Ceramics Designs Inc.	Ceramic lamp bases & vases	23	N/A

---

**Note:** N/A - Data not available.

**Sources:** Kentucky Directory of Manufacturers published by Harris InfoSource in cooperation with the Kentucky Cabinet for Economic Development, Division of Research.

### Labor Organizations in Carlisle County

---

There are no unions representing manufacturing workers in Carlisle County.

---

**Source:** Kentucky Cabinet for Economic Development, Division of Research.

**Selected Industrial Services – Within 50 Miles of Bardwell**

Miles	City	Custom Plastics Producers	Electric Motor Repair	Heat Treating Facilities	Industrial Waste Removal	Machine Shops, Tool & Die	Metal Castings	Metal Finishers	Metal Service Centers	Mill- wrights & Riggers
16	Kevil					X				
19	West Paducah					X				
22	Mayfield	X				X			X	
25	Paducah		X		X	X			X	
26	Fulton	X				X				
43	Murray		X			X			X	

**Note:** Miles are calculated as the straight-line distance from city center to city center; not road miles.

**Source:** Kentucky Cabinet for Economic Development, Division of Research.

## TRANSPORTATION

### Highways

Major highways serving Bardwell include U.S. 62 and U.S. 51; both are AAA-rated (80,000-pound gross load limit) trucking highways. U.S. Highway 51 connects Bardwell with both the Purchase Parkway, a multilane highway, at Fulton, 29 miles south; and with Interstate 57 near Cairo, Illinois, 19 miles northwest of Bardwell. U.S. 51 and Kentucky Highway 80 also connect Bardwell with the Purchase Parkway near Mayfield, 29 miles southeast. Access to Interstate 24 is available 26 miles northeast of Bardwell via U.S. 62.

### Highway Miles from Bardwell, Kentucky to Selected Market Centers

<u>City</u>	<u>Highway Miles</u>	<u>City</u>	<u>Highway Miles</u>
Atlanta, GA	409	Indianapolis, IN	320
Baltimore, MD	819	Kansas City, MO	400
Birmingham, AL	355	Knoxville, TN	341
Charleston, WV	456	Lexington, KY	284
Chicago, IL	387	Louisville, KY	244
Cincinnati, OH	341	Minneapolis, MN	766
Cleveland, OH	592	Nashville, TN	163
Columbia, SC	603	New Orleans, LA	572
Columbus, OH	448	New York, NY	979
Dallas, TX	614	Pittsburgh, PA	630
Des Moines, IA	609	Raleigh, NC	704
Detroit, MI	604	Richmond, VA	775
Evansville, IN	157	St. Louis, MO	171
Huntington, WV	407	Tallahassee, FL	680

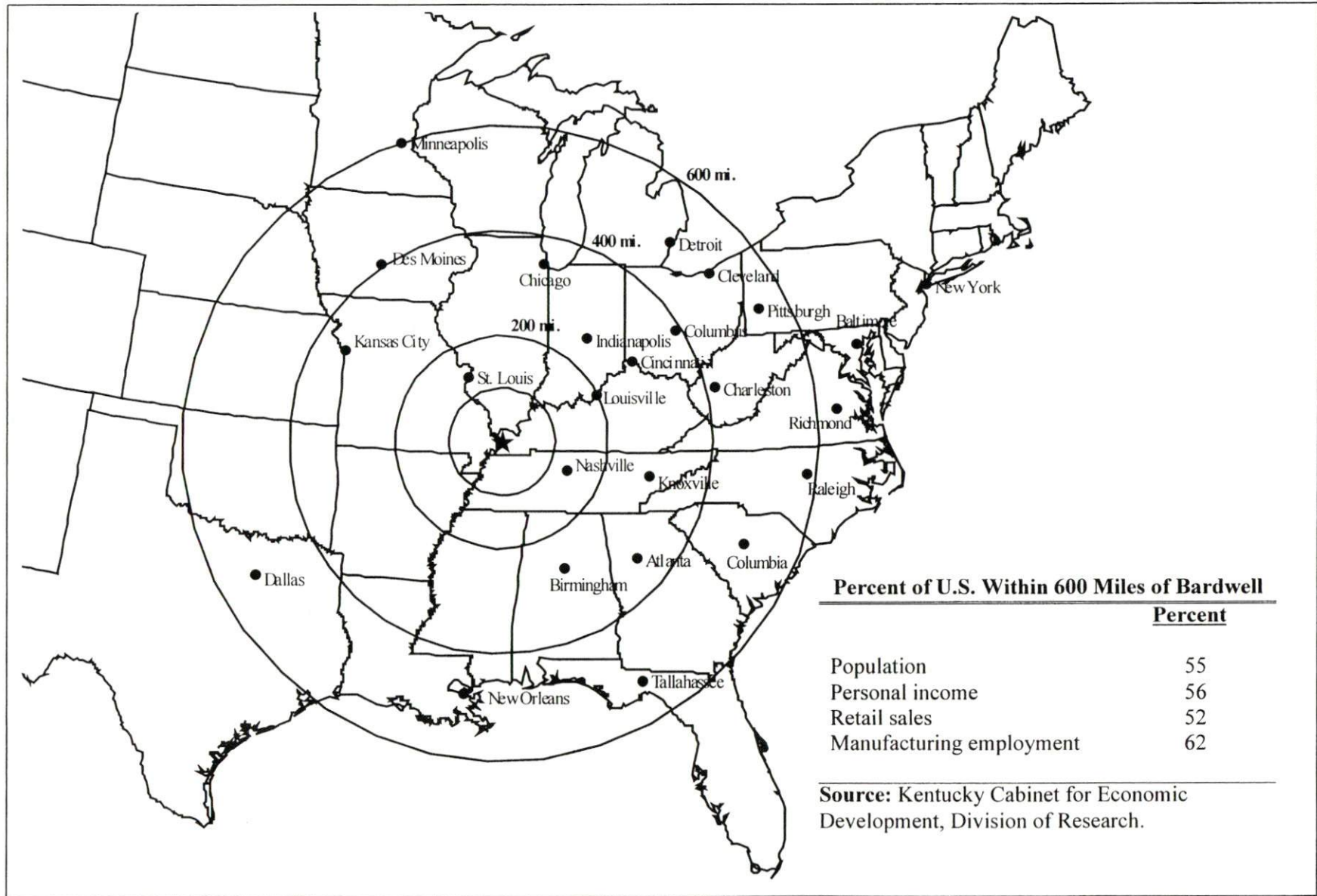
**Note:** Mileage computations are via the best interstate or primary highways, not necessarily the most direct route of travel.

**Source:** AAA Map 'n' Go, DeLORME, 1998.

### Truck Service

Twenty common carrier trucking companies provide interstate and/or intrastate service to Carlisle County. American Motor Carrier Directory, 2000 Edition.

### Selected Market Centers Map



**Percent of U.S. Within 600 Miles of Bardwell**

	<b>Percent</b>
Population	55
Personal income	56
Retail sales	52
Manufacturing employment	62

**Source:** Kentucky Cabinet for Economic Development, Division of Research.



## **Rail**

Main line rail is provided to the cities of Bardwell and Arlington by the Illinois Central Railroad. The nearest intermodal facilities are provided by the Paducah and Louisville Railroad at Paducah, thirty miles northeast of Bardwell.

For details on routing, schedules, rates, and services contact:

Industrial Development Department  
Illinois Central Railroad  
233 North Michigan Avenue  
Chicago, IL 60601  
(312) 819-7477

## **Air**

### **Local**

	<b>Barkley Regional Airport</b>
Location:	Paducah, KY
Distance from Bardwell:	24 miles northeast
Phone:	(270) 744-0521
Air service:	Northwest Airlinck, TW Express
Daily arrivals & departures:	18

### **Commercial/International**

	<b>Evansville Regional Airport</b>
Location:	Evansville, IN
Distance from Bardwell:	136 miles northeast
Phone:	(812) 421-4401
Air service:	ASA, Comair, American Eagle, Northwest, Airlinck, TWA Express, US Airways Express
Daily arrivals & departures:	98

	<b>Nashville International Airport</b>
Location:	Nashville, TN
Distance from Bardwell:	172 miles southeast
Phone:	(615) 275-1600
Air service:	Air Canada, American, American Eagle, Comair, Continental, Corporate Express, Delta, Delta Express, Midway Connection, Northwest, Skyway, Southwest, TWA, United, US Airways, US Airways Express, Trans States
Daily arrivals & departures:	364

## **Water**

Water transportation is an important asset to Carlisle County. Two major public riverports providing service to Carlisle County include the Hickman-Fulton County Riverport located on the Mississippi River, and the Paducah-McCracken County Riverport, located at the confluence of the Ohio and Tennessee Rivers. Private facilities are also available on the Mississippi River at Cairo, Illinois, 19 miles northwest of Bardwell.

## UTILITIES

### Electricity

Service area: **Arlington and parts of Carlisle County**  
Company: West Kentucky Rural Electric Cooperative Corporation  
Source of power: Tennessee Valley Authority  
For industrial rates contact:  
  
West Kentucky Rural Electric Cooperative Corporation  
1218 West Broadway  
P.O. Box 589  
Mayfield, KY 42066  
(270) 247-1321

and/or

South Kentucky Industrial Development Association, Inc. (TVA)  
Manager of Economic Development  
P.O. Box 726  
Hopkinsville, KY 42241-0726  
(270) 885-5392

Service area: **Bardwell**  
Company: Bardwell City Utilities  
Source of power: Kentucky Utilities Company  
For industrial rates contact:

Bardwell City Utilities  
P.O. Box 277  
Bardwell, KY 42023  
(270) 628-3833

and/or

Kentucky Utilities Company  
Economic Development Department  
One Quality Street  
Lexington, KY 40507  
(859) 255-2100

Service area: **northeastern Carlisle County**  
Company: Jackson Purchase Energy Corporation  
Source of power: Big Rivers Electric Corporation  
For industrial rates contact:

Jackson Purchase Energy Corporation  
2900 Irvin Cobb Drive  
P.O. Box 3188  
Paducah, KY 42002-3188  
(270) 442-7321

and/or

Big Rivers Electric Corporation

Manager of Economic Development  
201 Third Street  
P.O. Box 24  
Henderson, KY 42420  
(270) 827-2561

Service area: **parts of northcentral Carlisle County**  
Company: Kentucky Utilities Company  
Source of power: Kentucky Utilities Company  
For industrial rates contact:

Kentucky Utilities Company  
Economic Development Department  
One Quality Street  
Lexington, KY 40507  
(859) 255-2100

Service area: **western Carlisle County**  
Company: Hickman-Fulton Counties Rural Electric Cooperative Corporation  
Source of power: Tennessee Valley Authority  
For industrial rates contact:

Hickman-Fulton Counties Rural Electric Cooperative Corporation  
P.O. Box 190  
Hickman, KY 42050  
(270) 236-2521

and/or

South Kentucky Industrial Development Association, Inc. (TVA)  
Manager of Economic Development  
P.O. Box 726  
Hopkinsville, KY 42241-0726  
(270) 885-5392

## **Natural Gas**

Service area: **Arlington**  
Company: New Commonwealth Natural Gas Company, Inc.  
Source of supply: Trunkline Gas Company and Woodward Marketing, Inc.  
For rates and supplies contact:

New Commonwealth Natural Gas Company, Inc.  
P.O. Box 295  
Wickliffe, KY 42087  
(270) 335-3116

Service area: **Bardwell and portions of Cunningham**  
Company: Bardwell Gas System  
Source of supply: Trunkline Gas Company  
For rates and supplies contact:

Bardwell Gas System  
P.O. Box 277  
Bardwell, KY 42023  
(270) 628-3833

## Public Water Supply

Service area: **Bardwell**  
Company: Bardwell City Utilities  
P.O. Box 277  
Bardwell, KY 42023  
(270) 628-3833

### Treatment facilities information:

Source of raw water: Wells  
Treatment plant capacity: 140,000 gallons per day  
Average daily consumption: 100,000 gallons per day  
Peak daily consumption: 170,000 gallons per day  
Storage capacity: 140,000 gallons per day  
Water pressure: 25 psi to 80 psi

Improvements: Plans are currently underway for a new treatment plant at an estimated cost of \$325,000.

Service area: **Arlington**  
Company: Arlington Water and Sewer Department  
P.O. Box 399  
Arlington, KY 42021  
(270) 655-2261

### Treatment facilities information:

Source of raw water: Wells  
Well pumping capacity: 450 gallons per minute  
Treatment plant capacity: 500,000 gallons per day  
Average daily consumption: 35,000 gallons  
Peak daily consumption: 60,000 gallons  
Storage capacity: 125,000 gallons  
Water pressure: 45 psi to 102 psi

## Sewerage

Service area: **Bardwell**  
Company information: Bardwell City Utilities  
P.O. Box 277  
Bardwell, KY 42023  
(270) 628-3833

Design capacity: 130,000 gallons per day  
Average daily flow: 68,000 gallons  
Type of treatment: Primary

Treated effluent discharged into:	Truman Creek
Improvements:	Will hook to Carlisle County Regional Sewer Plant in the near future and no longer maintain facility.
Service area:	<b>Arlington</b>
Company information:	Arlington Water and Sewer Department P.O. Box 398 Arlington, KY 42021 (270) 655-2261
Design capacity:	70,000 gallons per day
Average daily flow:	35,000 gallons
Type of treatment:	Secondary
Treated effluent discharged into:	Long Creek

## CLIMATE

### Carlisle County

---

#### Temperature

Normal (16-year record)	50.0 degrees
Average annual, 1999	58.9 degrees
Record highest, August 1988 (16-year record)	104 degrees
Record lowest, January 1985 (16-year record)	-15 degrees
Normal heating degree days (30-year record)	4,279
Normal cooling degree days (30-year record)	1,475

#### Precipitation

Normal (30-year record)	49.31 inches
Mean annual snowfall (30-year record)	12.0 inches
Total precipitation, 1999	41.09 inches
Mean number days precipitation (0.01 inch or more) (30-year record)	107.9
Mean number days thunderstorms (17-year record)	55.3

#### Prevailing Winds (17-year record)

South

#### Relative Humidity (30-year record)

12 midnight	77 percent
6 a.m.	80 percent
12 noon	62 percent
6 p.m.	67 percent

---

**Notes:** Heating degree day totals are the sums of negative departures of average daily temperatures from 65 degrees F. Cooling degree day totals are the sums of positive departures of average daily temperatures from 65 degrees F.

**Source:** U.S. Department of Commerce, National Climatic Data Center, Local Climatological Data, 1999.  
Station of record: Paducah, Kentucky.

## **LOCAL GOVERNMENT**

### **Structure**

Bardwell is served by a mayor and six council members. Arlington is served by a mayor and four commission members. In both cities the mayor is elected to a four-year term and the council/commission members serve two year terms. Carlisle County is served by a county judge/executive and five magistrates which are elected to four-year terms.

### **Planning and Zoning**

There are currently no planning and zoning commissions in Carlisle County.

Mandatory state codes enforced - Kentucky Plumbing Code, National Electric Code, Kentucky Boiler Regulations and Standards, Kentucky Building Code (modeled after BOCA code)

### **Local Fees and Licenses**

The City of Arlington levies annual business license fees ranging from \$15 to \$40. The City of Bardwell does not levy any business license fees.

### **Sales and Use Tax**

A state sales and use tax is levied at the rate of 6.0% on the purchase or lease price of taxable goods and on utility services. Local sales taxes are not levied in Kentucky.

### **State and Local Property Taxes**

The Kentucky Constitution requires the state to tax all classes of taxable property, and state statutes allow local jurisdictions to tax only a few classes. All locally taxed property is subject to county taxes and school district taxes (either a county school district or an independent school district). Property located inside the city limits may also be subject to city property taxes. Property assessments in Kentucky are at 100% fair cash value. Accounts receivable are taxed at 85% of face value. Special local taxing jurisdictions (fire protection districts, watershed districts, and sanitation districts) levy taxes within their operating areas (usually a small portion of community or county).

**State Property Tax Rates Per \$100 Valuation**

<u>Selected Classes of Property</u>	<u>State Rate, 1999</u>	<u>Local Taxation Permitted</u>
Real Estate	\$0.148	Yes
Manufacturing Machinery	0.150	No
Pollution Control Equipment	0.150	No
Inventories:		
Raw Materials	0.050	No
Goods in Process	0.050	No
Finished Goods	0.050	Yes
Motor Vehicles	0.450	Yes
Other Tangible Personal Property	0.450	Yes
Intangibles (Accounts Receivable, Money on Hand)	0.250	No

**Source:** Property Tax Rates 1999, Kentucky Revenue Cabinet, Department of Property Valuation.

**Local Property Tax Rates Per \$100 Valuation, 1999**

<u>Taxing Jurisdiction</u>	<u>Real Estate</u>	<u>Finished Goods &amp; Tangibles</u>	<u>Motor Vehicles</u>
<b><u>County</u></b>			
Carlisle County	0.2680	0.2565	0.2619
<b><u>Cities</u></b>			
Arlington	0.4080	0.4080	0.4080
Bardwell	0.2360	0.1649	0.3600
<b><u>School Districts</u></b>			
Carlisle County	0.3100	0.3120	0.3200

**Source:** Property Tax Rates 1999, Kentucky Revenue Cabinet, Department of Property Valuation.



## EDUCATION

### Primary and Secondary Schools

#### Public School District Enrollments and Expenditures, 1998-99

	<u>Total Enrollment</u>	<u>Expenditures Per Pupil</u>	<u>Pupil to Teacher Ratio</u>
Carlisle County	871	\$5,154	15.9

**Source:** Kentucky Department of Education, Office of Curriculum, Assessment, and Accountability.

#### Transition to Adult Life of High School Graduates, 1996-97

<u>County-wide</u>	<u>Number of Graduates</u>	<u>Percent of Total Graduates (%)</u>
Total High School Graduates	40	
To College	21	52.5
To Vocational/Technical School	7	17.5
To Workforce	10	25.0
To Work & School	2	5.0
To Military	0	0.0
Other	0	0.0

**Source:** Kentucky Department of Education, Office of Curriculum, Assessment, and Accountability.

### Colleges and Technical Schools

#### Area Colleges and Universities Within 60 Miles of Bardwell

<u>Miles</u>	<u>Institution</u>	<u>Location</u>	<u>Enrollment (Fall 1999)</u>
25	Paducah Community College	Paducah	2,933
38	University of Tennessee, at Martin	Martin, TN	6,012
42	Southeast Missouri State University	Cape Girardeau, MO	8,200
43	Murray State University	Murray	8,914
58	Bethel College	McKenzie, TN	549
60	South Illinois University at Carbondale	Carbondale, IL	21,908
<b>Total Enrollment</b>			<b>48,516</b>

**Note:** Miles are calculated as the straight-line distance from Bardwell, not road miles.

**Source:** Kentucky Council on Higher Education.

## Kentucky Technical Schools Within 60 Miles of Bardwell

<u>Miles</u>	<u>Institution</u>	<u>Location</u>	<u>Enrollment (1997-98)</u>		
			<u>Sec</u>	<u>P/S</u>	<u>Total</u>
12	Ballard Vocational School	Barlow	254	0	254
22	Mayfield ATC	Mayfield	170	29	199
24	Fulton County ATC	Hickman	304	1	305
25	Paducah ATC	Paducah	496	24	520
25	West KY Technical College	Paducah	21	1,113	1,134
36	Marshall County Area Vocational Education Center	Benton	348	0	348
43	Murray ATC	Murray	237	23	260
<b>Total Enrollment</b>			1,830	1,190	3,020

**Notes:** Kentucky Tech secondary schools (Sec), called area technology centers (ATC), are operated by the Cabinet for Workforce Development and the post-secondary schools (P/S), called technical colleges, are governed by the Kentucky Community and Technical College System (KCTCS). Adult courses may be offered at some secondary technical schools. Miles are calculated as the straight-line distance from Bardwell, not road miles.

**Source:** Kentucky Workforce Development Cabinet, KCTCS.

### Customized Training

The Kentucky Tech system, through its training and development coordinators, will provide technical assistance and will identify and develop low-cost customized training programs and services for both established and prospective businesses. Businesses wanting to establish a customized training program should contact a Training and Development Coordinator at the West Kentucky Technical College in Paducah.

### Assessment Services

Kentucky Tech Career Connections offers business, education, and government agencies testing packages for evaluating job applicants, selecting employees for promotional consideration and developing training programs within the organization. The Career Connections Assessment Center serving the Carlisle County area is located at the West Kentucky Technical College in Paducah.

### Adult Education Services

Adult education programs are available to adults who want to develop new academic skills, improve basic skills, or earn a high school equivalency diploma. In the Carlisle County area, adult basic education and adult literacy classes are administered through the Carlisle County West Kentucky Education Consortium.

### Bluegrass State Skills Corporation

The Bluegrass State Skills Corporation (BSSC) was established in 1984 by the General Assembly of the Commonwealth of Kentucky as an independent, de jure corporation to stimulate economic development through customized business and industry specific skills training programs. The BSSC works with business and industry and Kentucky's educational institutions to establish programs of skills training. The BSSC is attached to the Cabinet for Economic Development for administrative purposes, in recognition of the relationship between economic development and skills training efforts.

The BSSC is comprised of two economic development tools, matching grants and the newly authorized Skills Training Investment Credit Act. The BSSC grant program is available to new, expanding and existing business and industry. Eligible training activities include pre-employment skills training and assessment; entry level, skills upgrade and occupational upgrade training; train-the-trainer travel; and capacity-building. The Skills Training Investment Credit Act provides tax credits to existing businesses for skills upgrade training.

## OTHER LOCAL FACILITIES

### Local Medical Personnel

Physicians - 2  
Dentists - 1

### Hospitals

<u>General Hospital</u>	<u>Location (mileage from Bardwell)</u>	<u>Beds</u>
PineLake Regional Hospital	Mayfield, (31 miles east)	107
Parkway Regional Hospital	Fulton, (29 miles south)	70
Lourdes Hospital	Paducah, (30 miles northeast)	389
Western Baptist Hospital	Paducah, (30 miles northeast)	379

### Other Medical Facilities and Services

Arlington Medical Center  
Baptist Prime Care  
Carlisle County Clinic  
Carlisle County Disaster Emergency Services  
Carlisle County Emergency Ambulance Service  
Carlisle County Fire/Rescue  
Carlisle County Health Department  
Countryside Health Care  
Purchase District Home Health Care  
West Kentucky Allied Services

### Banks and Savings & Loan Associations

Bardwell Deposit Bank  
Citizens Deposit Bank of Arlington

### Newspapers

The Carlisle County News (weekly)  
The Carlisle Weekly

### Telephone Service

GTE  
911 emergency dispatch communications system

## RECREATION

The twenty-acre Carlisle County Park near Bardwell includes a community center, a ball diamond, a horse show ring, two lighted tennis courts, a basketball court, shelter and picnic facilities, and public restrooms. Organized recreational programs include T-ball and Little League for boys and girls. Skeet and trap shooting is organized by 4-H, but open to all.

The Arlington American Legion Park, which is privately owned and operated, features a five-acre site which includes two ball diamonds, a skating rink, and a concession stand.

The Carlisle County Fair, held the second weekend in August, is held at the Carlisle County Park and attracts over 7,000 people. The Great River Road Extravaganza is held Memorial Day Weekend and features arts and crafts. The Carlisle County Fire and Rescue Rodeo is held the last weekend in October and also includes a junior rodeo for teens.

The state owned and maintained Winford Wildlife Management Area in Carlisle County provides a 237-acre hunting and fishing area with eastern woodlands and swamp terrain.

The Westvaco-Columbus Bottom Wildlife Management Area is located in Carlisle and Hickman Counties and owned by the Westvaco Corporation of Wickliffe, Kentucky. The Wildlife Area is a public/private partnership with the Kentucky Department of Fish and Wildlife Resources to provide a habitat for waterfowl and wildlife. It also serves as a renewable managed working forest producing timber for Westvaco. Visitors can enjoy watching the birds and animals, the special beauty of a typical Mississippi River bottom, or a brisk hike along forest roads and trails. In addition, there are 644 acres in the northern end of the management area open to public hunting year round with the purchase of a Westvaco hunting permit and valid state hunting license. Fishing is also permitted.

The Great River Road, a U.S. Scenic Byway extending along the western portion of Carlisle County, offers the traveler an opportunity to explore Kentucky life and recreational opportunities along the Mississippi River.

### **Area (Within 60 miles)**

Ballard County Wildlife Management Area  
Columbus-Belmont Battlefield State Park  
Kenlake State Resort Park  
Kentucky Dam Village State Resort Park  
Kentucky Bend  
Kentucky Lake  
Lake Barkley  
Land Between the Lakes  
Murphy's Pond  
Reelfoot Lake

## APPENDIX A - DEFINITIONS

### Geographic definition of the labor market area

A county's labor market area is defined as the base county, adjacent counties, and any other major commuting counties. Adjacency is used to define the labor market area primarily because of the small size of Kentucky's counties. The major commuting counties are defined from the point of view of the base county. Major commuting counties are those counties that comprise 90% of the base county's total commuters. The source of the commuting patterns is the 1990 journey-to-work data available from the U.S. Department of Commerce, Bureau of Economic Analysis.

### Example – Logan County

To determine the labor market area for Logan County the following steps are taken. First, the counties with workers commuting into Logan county are listed in ascending order (see the table below). The cumulative percent is calculated. Next, all counties that comprise up to 90% of the commuters are included in the labor market area (actually the cut-off will be the county that breaks the 90% threshold – Montgomery County, TN at 92.6% in this case). Although Robertson is not a major commuter county, it is included since it is adjacent. The Logan County labor market is then comprised of the seven bold-faced counties in the table below.

<b>Labor Market Area – Logan County (Example Only)</b>				
<u>Adjacent to Logan</u>	<u>Commuter County</u>	<u>Commuters into Logan</u>	<u>Percent of Total Commuters</u>	<u>Cumulative Percent</u>
Y	<b>Todd</b>	<b>385</b>	<b>24.4%</b>	<b>24.4%</b>
Y	<b>Warren</b>	<b>377</b>	<b>23.9</b>	<b>48.4</b>
Y	<b>Muhlenberg</b>	<b>365</b>	<b>23.2</b>	<b>71.5</b>
Y	<b>Simpson</b>	<b>162</b>	<b>10.3</b>	<b>81.8</b>
Y	<b>Butler</b>	<b>116</b>	<b>7.4</b>	<b>89.1</b>
	<b>Montgomery, TN</b>	<b>55</b>	<b>3.5</b>	<b>92.6</b>
	Christian	36	2.3	94.9
	Sumner, TN	35	2.2	97.1
Y	<b>Robertson, TN</b>	<b>25</b>	<b>1.6</b>	<b>98.7</b>
	Davidson, TN	20	1.3	100.0
	<i>Total Commuters into Logan County</i>	<i>1,576</i>	<i>100.0</i>	

**Source:** U.S. Department of Commerce, Bureau of Economic Analysis. Regional Economic Information System, CD-ROM. August 1997.

### **Potential Labor Supply**

The potential labor supply is an estimate of those persons not classified as in the labor force (not employed and not unemployed), but who want a job. The assumption is that people not in the labor force at the local level would like a job at the same rate as the nation. The U.S. Department of Labor, Bureau of Labor Statistics provides national, yearly estimates of the percent of the people not in the labor force who want a job. This percent is applied to the county-level number of people not in the labor force.

### **Underemployed**

Wholesale/retail trade and non-professional services have historically paid low wages. The assumption is that workers in these industries would take higher paying jobs if they were available. Non-professional services excludes Miscellaneous Repair Services (SIC 7600), Health Services (SIC 8000), Legal Services (SIC 8100), and Engineering and Management Services (SIC 8700).

### **Total Available Labor**

Total available labor is the sum of the number of unemployed, potential labor supply, and underemployed. Please note that the number of unemployed is the only generally accepted measure of labor availability. The other concepts are weaker measures and should be used with caution.