

1981

Industrial Resources: Clay County - Manchester

Kentucky Library Research Collections
Western Kentucky University, spcol@wku.edu

Follow this and additional works at: https://digitalcommons.wku.edu/clay_cty

 Part of the [Business Administration, Management, and Operations Commons](#), [Growth and Development Commons](#), and the [Infrastructure Commons](#)

Recommended Citation

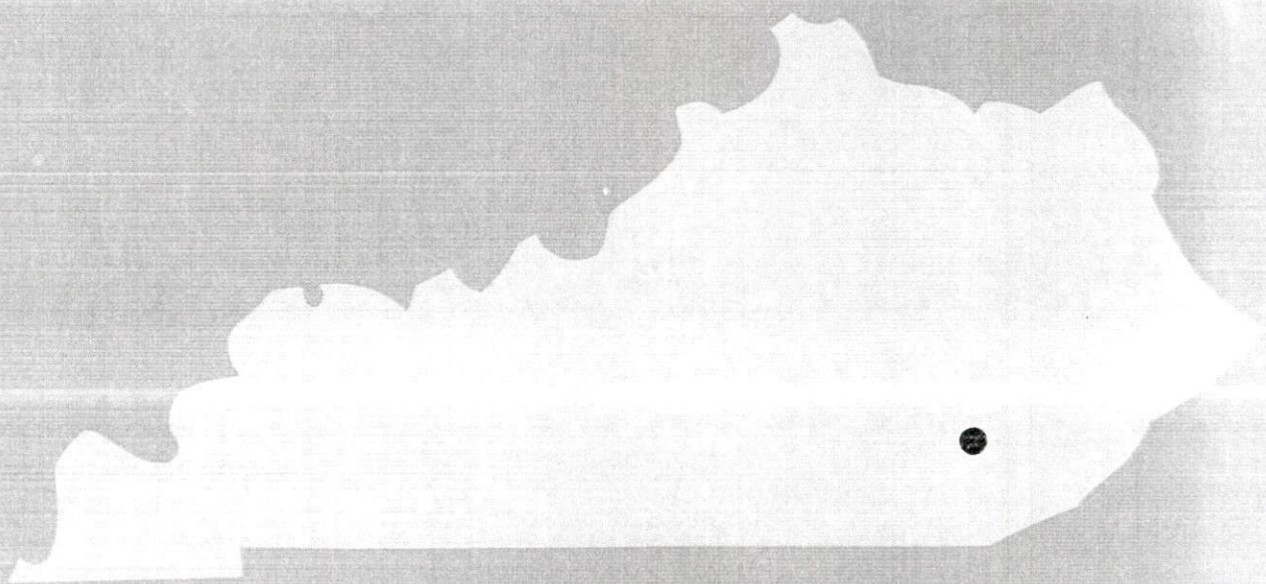
Kentucky Library Research Collections, "Industrial Resources: Clay County - Manchester" (1981). *Clay County*. Paper 12.
https://digitalcommons.wku.edu/clay_cty/12

This Report is brought to you for free and open access by TopSCHOLAR®. It has been accepted for inclusion in Clay County by an authorized administrator of TopSCHOLAR®. For more information, please contact topscholar@wku.edu.

17
228

Clay County

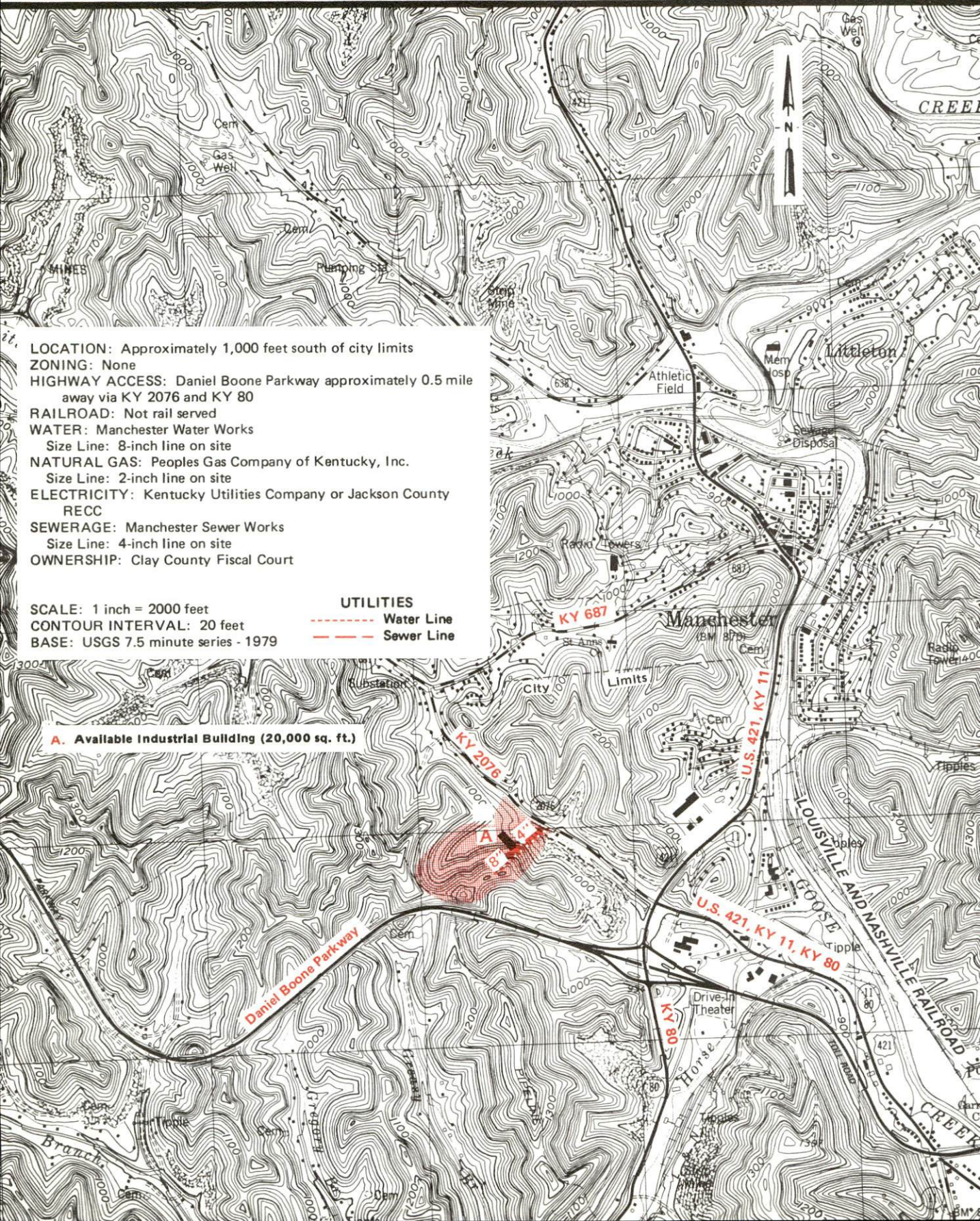
A comprehensive
report on
Manchester, Ky.



KENTUCKY & CO.
The state that's run like a business.

MANCHESTER, KENTUCKY --- Site 181 -- 30 Acres

For more information contact Mr. Harvey Hensley, First State Bank of Manchester, Manchester, Kentucky 40962, or the Kentucky Commerce Cabinet, Office of Industrial Development, New Industry Division, Capital Plaza Tower, Frankfort, Kentucky 40601.



LOCATION: Approximately 1,000 feet south of city limits
ZONING: None
HIGHWAY ACCESS: Daniel Boone Parkway approximately 0.5 mile away via KY 2076 and KY 80
RAILROAD: Not rail served
WATER: Manchester Water Works
Size Line: 8-inch line on site
NATURAL GAS: Peoples Gas Company of Kentucky, Inc.
Size Line: 2-inch line on site
ELECTRICITY: Kentucky Utilities Company or Jackson County RECC
SEWERAGE: Manchester Sewer Works
Size Line: 4-inch line on site
OWNERSHIP: Clay County Fiscal Court

SCALE: 1 inch = 2000 feet
CONTOUR INTERVAL: 20 feet
BASE: USGS 7.5 minute series - 1979

UTILITIES
----- Water Line
----- Sewer Line

A. Available Industrial Building (20,000 sq. ft.)

A COMPREHENSIVE REPORT ON
MANCHESTER, KENTUCKY

Prepared by
The Kentucky Department of Commerce
Division of Research and Planning
in cooperation with
The Clay County Development Association

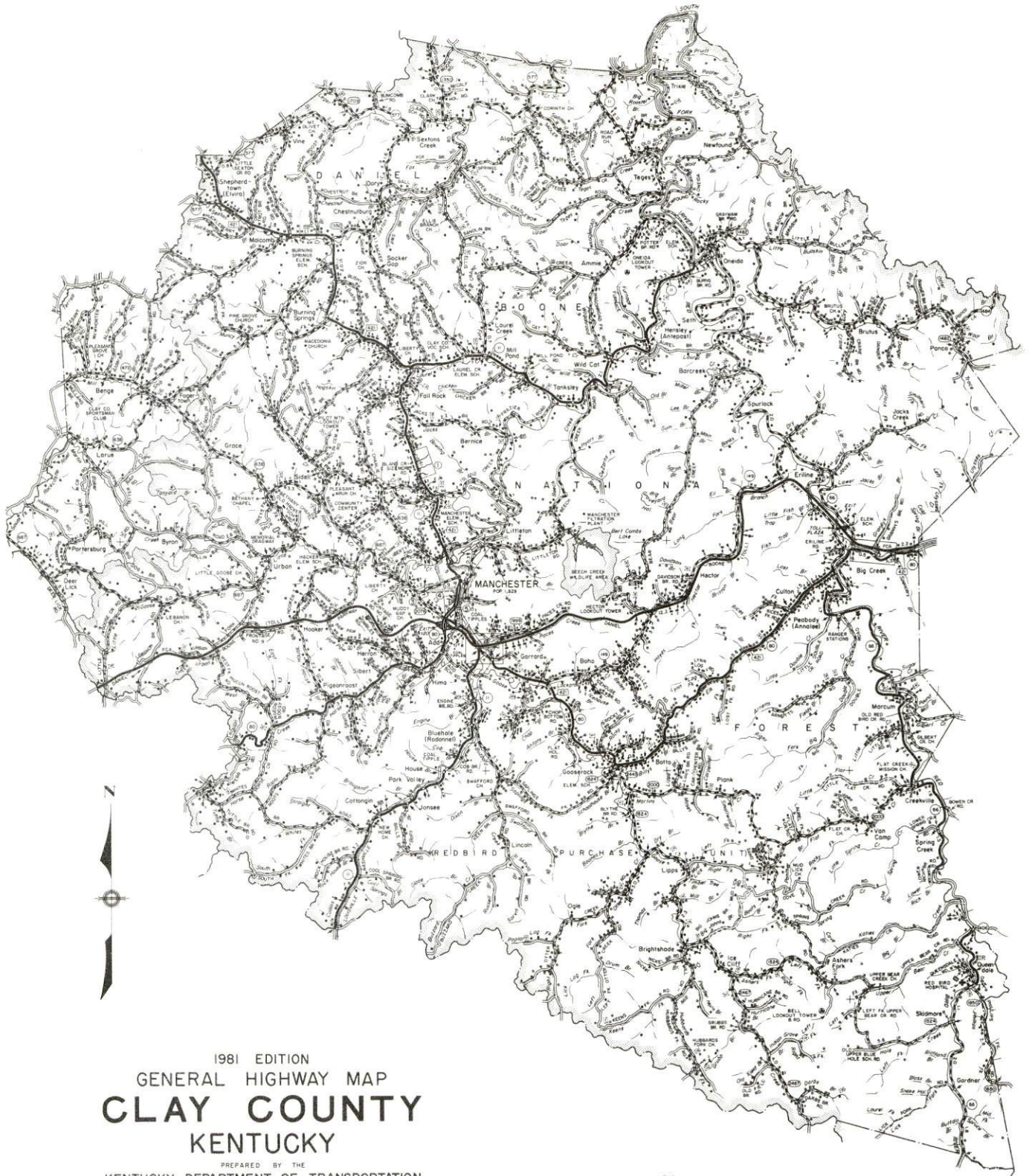
1981

Program supervisor - Brenda Roberts; research - Andrew Dennis; clerical Shirley Wood; graphics - Frank Ferrante, Tony Cecconi, Jimmy Thompson; cartography - Site Evaluation Section, Division of New Industries. Cost of printing paid from state funds.

TABLE OF CONTENTS

<u>Chapter</u>	<u>Page</u>
INDUSTRIAL SITES	i
THE LABOR MARKET AREA	1
Population	1
Labor Force Characteristics of Residents, 1980	1
Estimated Male Labor Supply	2
Estimated Female Labor Supply	2
Manchester Manufacturing Firms, Their Products and Employment	3
Labor Organizations in Manufacturing Firms	3
Industrial Services	4
Average Weekly Wages by Industry, by Place of Work, 1980	5
Per Capita Personal Income	7
TRANSPORTATION	8
Rail	8
Highways	8
Truck Service	8
Air	10
Bus	10
Rental Services	10
Water	10
POWER AND FUEL	11
Electricity	11
Natural Gas	12
Other Fuels	12
WATER AND SEWERAGE	13
Water	13
Raw Water	14
Sewerage	14
CLIMATE	15

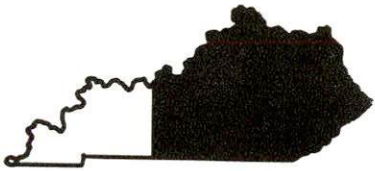
<u>Chapter</u>	<u>Page</u>
LOCAL GOVERNMENT	16
City	16
County	16
Assessed Value of Property, 1981	16
Property Taxes	16
Combined State and Local Rates Per \$100 Valuation, 1980	17
Planning and Zoning	17
Safety	18
Police	18
Fire	18
Rescue Service	18
Refuse Collection and Disposal	18
EDUCATION	19
Public Schools	19
Nonpublic Schools	19
Area Colleges and Universities	20
Vocational Schools	21
HEALTH	23
Local Medical Personnel	23
Hospitals	23
Other Medical Facilities	23
Ambulance Service	23
Public Health	23
OTHER LOCAL FACILITIES	24
Communications	24
Library Services	24
Religious Institutions	25
Financial Institutions	25
Hotels and Motels	25
Clubs and Organizations	26
RECREATION	27



1981 EDITION
 GENERAL HIGHWAY MAP
CLAY COUNTY
 KENTUCKY

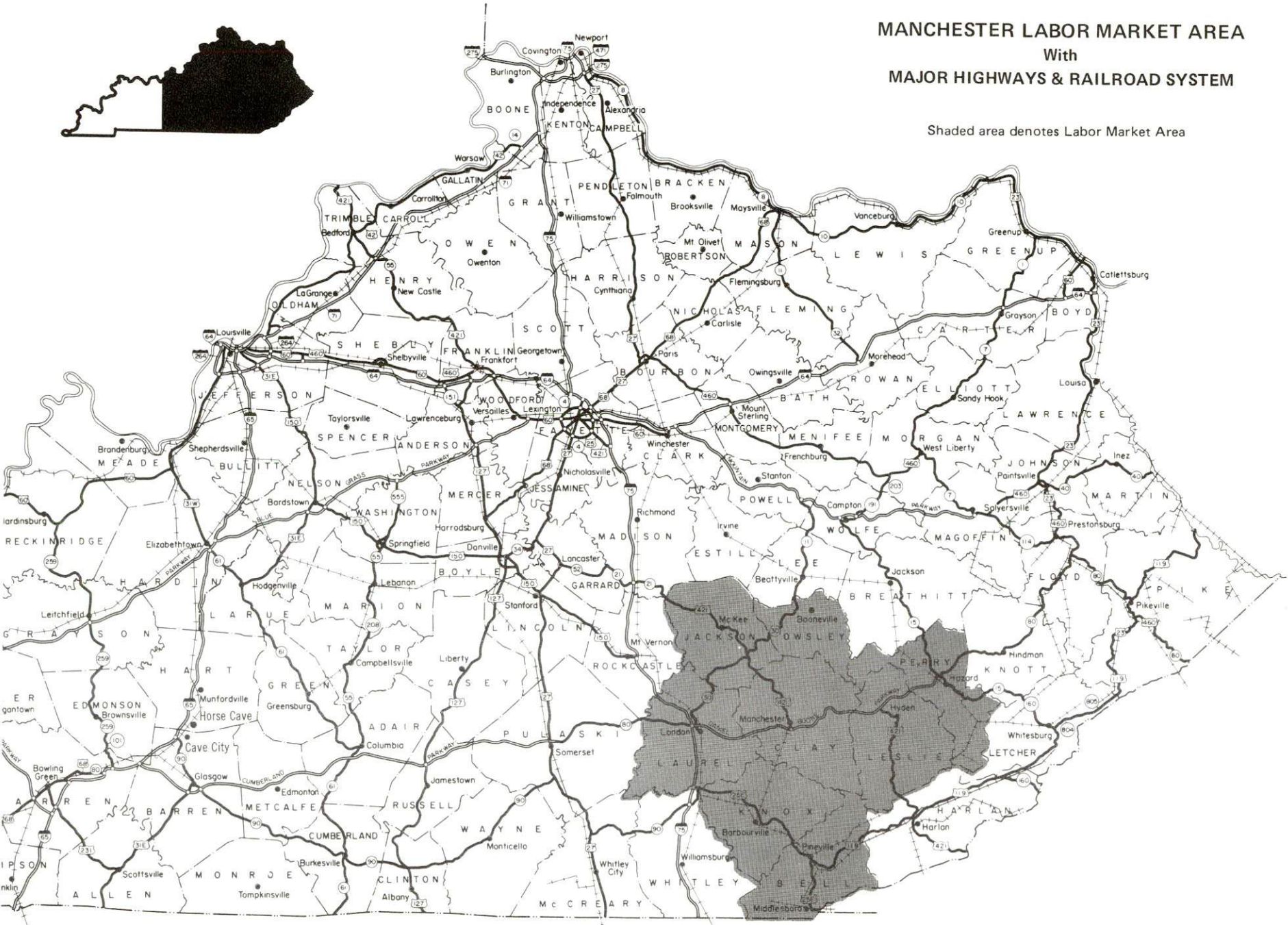
PREPARED BY THE
 KENTUCKY DEPARTMENT OF TRANSPORTATION
 BUREAU OF HIGHWAYS
 DIVISION OF PROJECT DEVELOPMENT
 IN COOPERATION WITH THE
 U.S. DEPARTMENT OF TRANSPORTATION
 FEDERAL HIGHWAY ADMINISTRATION





MANCHESTER LABOR MARKET AREA With MAJOR HIGHWAYS & RAILROAD SYSTEM

Shaded area denotes Labor Market Area



THE LABOR MARKET AREA

The Labor Market Area includes Clay County and the adjoining Kentucky counties of Bell, Jackson, Knox, Laurel, Leslie, Owsley, and Perry.

Area	POPULATION		
	1980	1970	Percent Nonwhite
Manchester	1,838	1,664	8.9
Labor Market Area	192,653	153,587	N/A
Clay County	22,752	18,481	1.7
Bell County	34,330	31,121	2.8
Jackson County	11,996	10,005	0.1
Knox County	30,239	23,689	1.3
Laurel County	38,982	27,386	1.0
Leslie County	14,882	11,623	0.2
Owsley County	5,709	5,023	0.2
Perry County	33,763	26,259	2.1

Note: The 1980 counts of population by race are provisional.

Source: U.S. Department of Commerce, Bureau of the Census, March 1981, as published in Special Report No. 8, State Data Center, Urban Studies Center, University of Louisville, March 1981.

	LABOR FORCE CHARACTERISTICS OF RESIDENTS, 1980	
	Clay County	Labor Market Area
Civilian Labor Force	7,377	72,161
Employment	6,572	65,002
Agricultural	264	2,133
Nonagricultural	6,308	62,869
Unemployment	805	7,159
Rate of Unemployment (%)	10.9	9.9

Source: Kentucky Department for Human Resources, Kentucky Labor Force Estimates, Annual Averages, 1980.

ESTIMATED MALE LABOR SUPPLY
MANCHESTER LABOR MARKET AREA

Area	Current			Under- employed	Future
	Total	Not in Labor Force	Unemployed		Reaching 18 years of age before 1986
Labor Market Area*	6,490	1,182	2,928	2,380	8,275
Clay	859	144	355	360	1,167
Bell	1,110	220	510	380	1,566
Jackson	445	77	208	160	495
Knox	1,115	186	459	470	1,226
Laurel	1,267	235	552	480	1,432
Leslie	387	88	219	80	720
Owsley	261	39	102	120	270
Perry	1,046	193	523	330	1,399

*Additional workers may be drawn from other nearby counties.

Note: Not in Labor Force - persons who would enter the labor force if suitable employment were available; Unemployed - persons unemployed and actively seeking work; Underemployed - persons employed but working only 14 to 26 weeks per year.

Sources: Kentucky Department for Human Resources, Kentucky Labor Supply Estimates by County, 1979. Kentucky Department of Commerce, Future Labor Supply before 1986.

ESTIMATED FEMALE LABOR SUPPLY
MANCHESTER LABOR MARKET AREA

Area	Current			Under- employed	Future
	Total	Not in Labor Force	Unemployed		Reaching 18 years of age before 1986
Labor Market Area*	5,131	521	2,700	1,910	7,886
Clay	551	61	330	160	1,012
Bell	991	108	473	410	1,497
Jackson	374	30	194	150	500
Knox	850	87	423	340	1,231
Laurel	1,041	100	501	440	1,348
Leslie	296	37	199	60	656
Owsley	149	16	93	40	260
Perry	879	82	487	310	1,382

*Additional workers may be drawn from other nearby counties.

Note: Not in Labor Force - persons who would enter the labor force if suitable employment were available; Unemployed - persons unemployed and actively seeking work; Underemployed - persons employed but working only 14 to 26 weeks per year.

Sources: Kentucky Department for Human Resources, Kentucky Labor Supply Estimates by County, 1979. Kentucky Department of Commerce, Future Labor Supply before 1986.

MANCHESTER MANUFACTURING FIRMS,
THEIR PRODUCTS AND EMPLOYMENT

Firm (Establishment date)	Product	Employment			Labor Unions*
		Total	Male	Female	
Boone Boy Industries, Inc. (1964)	Upholstered furniture	11	3	8	
Keith Lumber Company (1945)	Rough Lumber	13	13	0	
Kentucky Mountain Industries (1977)	Automobile parts, plumbing fixtures, air pollution control boxes	35	26	9	
London-Clay Ready Mix, Inc. (1971)	Ready-mixed concrete	5	5	0	
The Manchester Enterprise (1954)	Newspaper, job printing	6	3	3	
Mid South Electrics, Inc. (1968)	Small electrical appliances, metal stampings	124	49	75	

*See Labor Organizations below.

Source: Kentucky Department of Commerce, Division of Research and Planning.

LABOR ORGANIZATIONS IN MANUFACTURING FIRMS

There are no labor unions representing manufacturing workers in Manchester at this time.

The Clay County Development Association and the Kentucky Highlands Development Corporation are working together on a "spec" building in Manchester. The 20,000 square foot building is scheduled to be completed in 1981, at a cost of \$316,000.

INDUSTRIAL SERVICES

<u>Types of Services</u>	<u>Location</u>	<u>Mileage from Manchester</u>
Tool & Die, Machine & Pattern Shops	Manchester	-
Metal Service Centers	Lexington	95
Heat Treating	Richmond	71
Metal Finishers	Richmond	71
Electric Motor Repair	Corbin	34

Source: Kentucky Directory of Selected Industrial Services, 1979.

AVERAGE WEEKLY WAGES BY INDUSTRY,
BY PLACE OF WORK, 1980

	<u>Clay County</u>	<u>Bell County</u>	<u>Jackson County</u>	<u>Knox County</u>
All Industries	\$261.59	\$267.16	\$184.29	\$214.66
Mining & Quarrying	402.63	463.10	244.65	347.71
Contract Construction	219.30	282.61	176.58	247.14
Manufacturing	159.08	224.89	159.01	237.00
Transportation, Communications & Public Utilities	290.53	310.03	249.18	248.43
Wholesale & Retail Trade	188.60	170.44	159.52	167.28
Finance, Insurance & Real Estate	190.85	256.45	*	226.12
Services	146.13	200.83	145.40	170.65
State/Local Government	202.34	211.42	177.36	190.28
Other	*	84.24	*	*

	<u>Laurel County</u>	<u>Leslie County</u>	<u>Owsley County</u>	<u>Perry County</u>
All Industries	\$233.01	\$235.28	\$199.06	\$302.17
Mining & Quarrying	329.88	356.91	317.40	462.07
Contract Construction	363.87	139.15	186.83	247.36
Manufacturing	223.54	112.99	0	312.02
Transportation Communications & Public Utilities	289.34	262.27	*	306.43
Wholesale & Retail Trade	205.69	141.37	132.80	185.90
Finance, Insurance & Real Estate	211.04	185.90	*	320.93
Services	178.62	191.00	153.85	218.51
State/Local Government	227.92	199.64	202.63	218.80
Other	137.38	0	0	*

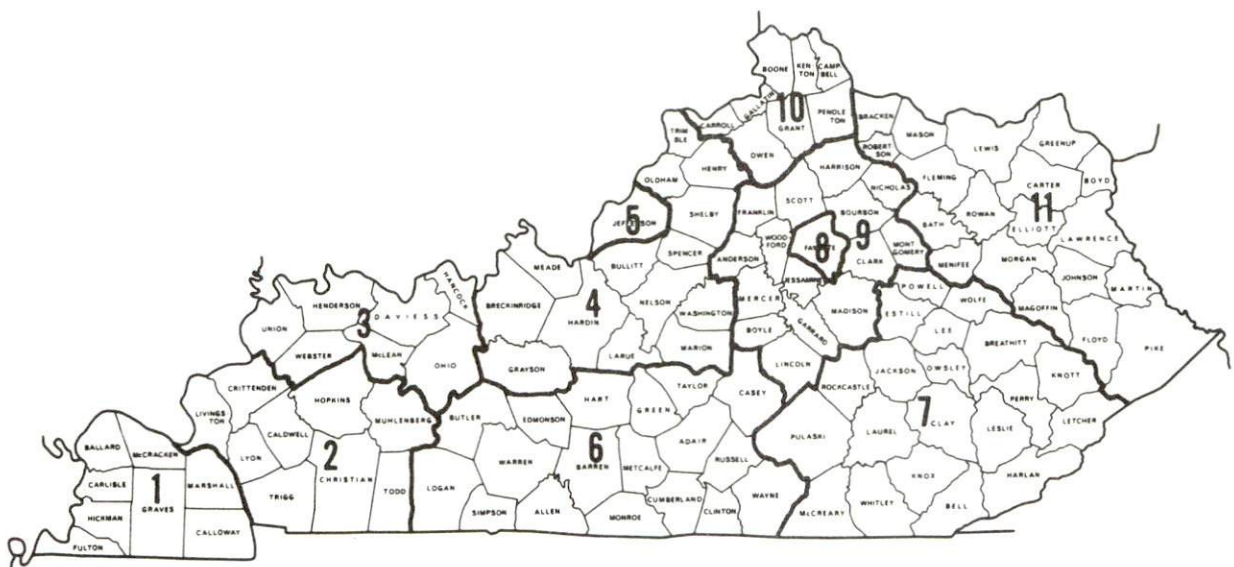
*Not disclosed.

Note: Excludes domestic workers, railway workers, certain nonprofit corporations, majority of federal government workers, and self-employed workers.

Source: Kentucky Department for Human Resources, Average Weekly Wages of Workers Covered by Kentucky Unemployment Insurance Law, 1980.

Occupational wage rates for specific industries are usually not available to most government agencies, and wage data furnished to state employment agencies by individual industrial employers is protected from disclosure by federal law. The most reliable up-to-date wage information can be obtained by direct contact with local employers.

Associated Industries of Kentucky, a voluntary organization of Kentucky businesses, regularly collects occupational wage rates and fringe benefits data from participating member firms. Data is compiled for over 127 clearly defined office, production, and service occupations. Tabulations are published for eleven regions of Kentucky, as shown on the map below. It should be noted that the data may be weighted by the preponderance of firms in the larger cities and may be somewhat higher than the rates paid in the smaller communities. Data from these tabulations are available, upon request, from the Kentucky Department of Commerce, Frankfort, Kentucky 40601.



Associated Industries of Kentucky Area Wage Surveys

PER CAPITA PERSONAL INCOME

<u>Area</u>	<u>1979</u>	<u>1975</u>	<u>Percent Change</u>
Clay County	\$4,876	\$2,996	62.8
Labor Marker Area Range	\$3,411 - 7,039	\$2,485 - 4,502	N/A
Kentucky	7,052	4,882	44.4
U.S.	8,637	5,861	47.4

Source: U.S. Department of Commerce, Bureau of Economic Analysis,
April 1981.

TRANSPORTATION

Rail

Line serving Manchester - Louisville and Nashville Railroad

Services - Two freights stop daily (line ends at Manchester; extra coal trains run to Manchester area as needed; switching facilities; team track space for 8 cars; siding space for 10 cars; nearest piggyback facilities located at Knoxville, Tennessee, 120 miles south.

For details on routing, schedules, rates, and services, contact:

Director of Industrial Development
Louisville and Nashville Railroad
P. O. Box 32290
Louisville, Kentucky 40232
(502) 587-5723

Highways*

Manchester is served by the Daniel Boone Parkway, an excellent 2-lane limited access toll road with passing lanes. U.S. 421 and Kentucky 80 and 11 also serve Manchester via the Daniel Boone Parkway.

Truck Service

<u>Company</u>	<u>Home Office</u>
Bronaugh Motor Express, Inc.**	1025 Nandino Boulevard Lexington, Kentucky 40511
Detherage Freight Line, Inc.**	Box 728 Somerset, Kentucky 42501
Smith's Transfer Corporation**	P. O. Box 1000 Staunton, Virginia 24401
United Trucking Service, Inc.**	8505 West Warren Dearborn, Michigan 48126

*Kentucky 80 is being widened to four lanes between London and Somerset and between Hazard and Prestonsburg. Construction is scheduled to be completed in October 1981.

**Both interstate and intrastate service.

Other Freight Services

Nearest Shipping Center

Purolator Courier Corporation *
United Parcel Service**

Lexington, 95 miles northwest
London, 20 miles west

HIGHWAY MILES AND TRUCK TRANSIT TIME IN DAYS FROM
MANCHESTER, KENTUCKY, TO SELECTED MARKET CENTERS

City	Highway Miles	Delivery		City	Highway Miles	Delivery Time TL
		Time TL				
Atlanta, Ga.	314	2		Los Angeles, Ca.	2,252	10
Baltimore, Md.	636	3		Louisville, Ky.	167	1
Birmingham, Ala.	374	2		Nashville, Tenn.	225	1
Chicago, Ill.	447	3		New Orleans, La.	716	3
Cincinnati, Ohio	173	1		New York, N. Y.	798	3-4
Cleveland, Ohio	412	2		Pittsburgh, Pa.	438	3
Detroit, Mich.	432	3		St. Louis, Mo.	430	2-3
Knoxville, Tenn.	120	1				

Note: Mileage computations are via the best interstate or primary highways, not necessarily the most direct route of travel.

Sources: Rand McNally Road Atlas, 1979. Official Kentucky Mileage Map, 1979. Delivery time - Bronaugh Motor Express, 1025 Nandino Boulevard, Lexington, Kentucky 40356.

*For regular scheduled pickups or for occasional pickups, arrangements must be made with the Lexington office of Purolator Courier Corporation.
**For regular scheduled pickups or for occasional pickups, arrangements must be made with the Louisville office of United Parcel Service.

Air

Local Airports

Sky Airport
Location: 2 1/2 miles southeast of Manchester
Runways: 1 turf
Length: 2,350 feet
Traffic
Control: Wind sock

Nearest Scheduled Commercial Airline Service*

Blue Grass Field
Location: 4 miles west of Lexington, Kentucky; 99 miles northwest of Manchester
Runways: 2 paved
Length: 6,500 feet; 3,500 feet
Traffic
Control: Tower
Lighting: Approach lighting system, beacon, runways, and obstructions lighted, VASI
Services: Delta, Frontier, Piedmont, and USAir airlines; Tennessee Airways commuter air carrier; fuel - 24 hour service, 100, and jet fuel; repair service - major A & E repairs, Certified Avionics repair station; National Weather Service; flight instructions; charter service, storage; taxi, limousine and car rentals; restaurant
Air Freight
Service: Air freight terminal

Bus - Trailways and Greyhound Bus Lines at London, Kentucky, 20 miles west of Manchester

Rental Services - Car, truck, and trailer rentals available at London, Kentucky, 20 miles west of Manchester

Water

The Kentucky River is the nearest navigable waterway in Kentucky. Manchester is 123 miles from a point on the Kentucky River near Frankfort where a 6-foot navigation channel is maintained. A 9-foot navigation channel is maintained on the Tennessee River, beginning at Knoxville, Tennessee, 120 miles south of Manchester.

*Commuter air carrier service is provided by Allegheny Commuter at the London-Corbin Airport which is located 3 miles south of London, Kentucky; 23 miles west of Manchester.

POWER AND FUEL

Electricity

Company serving Manchester and parts of Clay County - Kentucky Utilities Company

Source of power - Kentucky Utilities Company

Total generating capacity - 2,383,767 KW

For industrial rates contact:

Industrial Development Department
Kentucky Utilities Company
One Quality Street
Lexington, Kentucky 40507
(606) 255-1461

Company serving major portions of Clay County - Jackson County Rural Electric Cooperative Corporation

Source of power - East Kentucky Power Cooperative

Total generating capacity - 1,318,010 KW

For industrial rates contact:

Industrial Development Division
East Kentucky Power Cooperative
P. O. Box 707
Winchester, Kentucky 40391
(606) 744-4812

and/or

Jackson County RECC
P. O. Box 307
Highway 421 South
McKee, Kentucky 40447
(606) 287-7161

Natural Gas

Company serving Manchester - Peoples Gas Company of Kentucky

Source of supply - Wiser Oil Company

Size of transmission mains - 8 and 6 inches (supplier);
4 and 6 inches (distributor)

Distribution mains - 2 and 4 inches

Distribution pressure - 4 ounces to 59 psi

Btu content - 1020 per cubic foot;

Specific gravity - .68

For rates and supplies contact:

Peoples Gas Company of Kentucky
513 South Main Street
Corbin, Kentucky 40701
(606) 528-3611

Other Fuels

Propane

Buckeye Gas Products Company*
(Doxol)
Burning Springs Road
Manchester, Kentucky 40962

Swafford Furniture Company
(Doxol)
112 Main Street
Manchester, Kentucky 40962

Manchester Sales and Service,
Inc. (Doxol)
110 Richmond Road
Manchester, Kentucky 40962

Fuel oils

Distillate fuel oil -

Clay Oil Company (Texaco)
Route 6
Manchester, Kentucky 40962

Standard Oil Company
104 Lucas Street
Manchester, Kentucky 40962

Residual fuel oil - Arrangements must be made with the refinery.

Low sulphur content coal - Available locally.

*Bulk plant

WATER AND SEWERAGE

Water

Company serving Manchester - Manchester Water Works*
P. O. Box 275
Manchester, Kentucky 40962
(606) 598-3205

Source - Bert Combs Lake
Treatment plant capacity - 1,000,000 gallons per day
Average daily consumption - 700,000 gallons
Peak daily consumption - 750,000 gallons
Type treatment - Lime, alum, fluoride, chlorine filtered
Storage capacity - 735,000 gallons
Size lines - 2, 3, 4, 6 and 8 inches
Range of pressure - 35 to 90 psi
Average temperature - 40 degrees F.

MONTHLY WATER RATES

Inside City Limits

First	2,000 gallons	\$4.20 (minimum)
Next	8,000 gallons	1.40 per M gallons
Next	10,000 gallons	1.25 per M gallons
Next	20,000 gallons	1.10 per M gallons
All over	40,000 gallons	1.00 per M gallons

Outside City Limits

First	2,000 gallons	\$6.30 (minimum)
Next	8,000 gallons	2.10 per M gallons
Next	10,000 gallons	1.85 per M gallons
Next	20,000 gallons	1.65 per M gallons
All over	40,000 gallons	1.50 per M gallons

Tap-on charge: \$200

*A new 8-inch water line is being installed to provide more water and pressure to residents in high elevation areas. Work on the new line will begin in spring 1981.

Raw Water

Surface water sources - Goose Creek and Red Bird River
Average discharge - Goose Creek at Manchester, Kentucky - 279 cfs
(15 years, USGS); Red Bird River near Big Creek, Kentucky - 333 cfs
(7 years, USGS)
Expected ground water yield - 50 to 200 gpm along the southwestern and
southern boundaries of the county; 5 to 50 gpm over remainder of
the county.

Sewerage

Company serving Manchester - Manchester Water and Sewer Works
P. O. Box 275
Manchester, Kentucky 40962
(606) 598-2904
Design capacity - 350,000 gallons per day
Average daily flow - 250,000 gallons
Treatment - Primary and secondary
Type treatment - Chlorination, drying beds, trickling filter, digester
Treated effluent discharged into - Goose Creek
Size of sanitary mains - 6, 8, and 10 inches
Size of storm mains - 15 and 18 inches
Rates - 50 percent of monthly water bill

Tap-on charge: \$200

CLIMATE

Clay County

Temperature

Normal (30-year record)	59.7 degrees
Average annual 1980	59.1 degrees
Record highest, September, 1954 (39-year record)	103.0 degrees
Record lowest, January, 1966 (39-year record)	-9.0 degrees
Normal heating degree days (30-year record)	3,478
(Heating degree day totals are the sums of negative departures of average daily temperatures from 65 degrees F.)	

Precipitation

Normal (30-year record)	46.18 inches
Mean annual snowfall (38-year record)	12.8 inches
Total precipitation 1980	40.46 inches
Mean number days precipitation (.01 inch or more) (38-year record)	127
Mean number days thunderstorms (38-year record)	47

Prevailing Winds (14-year record)

Northeast

Relative Humidity (20-year record)

1 a.m.	79 percent
7 a.m.	85 percent
1 p.m.	59 percent
7 p.m.	62 percent

Source: U.S. Department of Commerce, Environmental Science Services Administration, Climatological Data, 1980. Station of record: Knoxville, Tennessee.

LOCAL GOVERNMENT

City

Structure - Mayor - 4-year term; 6 council members - 2-year terms
Budget 1981 - General Fund \$268,750
 Water and Sewer Fund 309,000
Fees and licenses - Business and professional licenses range from
\$5 to \$150 per year depending on the type of business; city
vehicle tax \$5

County

Structure - County Judge/Executive - 4-year term
5 magistrates - 4-year terms
Budget 1980-81 - General Fund \$381,088; Road Fund \$441,920

Assessed Value of Property, 1981

<u>Classes of Property</u>	<u>Manchester</u>	<u>Clay County</u>
Real Estate and Tangibles	\$15,576,000	-
Real Estate	-	\$64,954,152
Tangibles	-	44,716,634

Property Taxes

All property in Kentucky is assessed at 100 percent of fair cash value.

Land and buildings are taxed by the state and may be taxed by local jurisdictions. The state rate is \$0.241 per \$100 of assessed valuation.

Manufacturing machinery, raw materials inventories, pollution control equipment, and goods in the process of manufacture are not subject to local taxation. The state rate is \$0.15 per \$100.

Other tangible personal property owned by manufactures (automobiles, trucks, finished goods, office furniture, office equipment) is taxed by the state at \$0.45 per \$100 and may be taxed by local jurisdictions.

Property stored in public warehouses in a transit status is not subject to local taxation. The state rate is only \$0.015 per \$100.

Intangible personal property located in Kentucky (money in hand, shares of stock, notes, bonds, accounts receivable, and other credits) is taxed by the state at \$0.25 per \$100, and is not subject to local taxation.

Private leaseholds in industrial facilities owned by cities or counties and financed by industrial revenue bonds are subject to a state tax of \$0.015 per \$100 of value (essentially the lessee's equity, adjusted for appreciation or depreciation). Local taxation is not permitted.

Combined State and Local Rates Per \$100 Valuation, 1980*
(100% assessment)

	<u>Inside City of Manchester</u>	<u>Outside City</u>
1. Land and buildings	\$0.936	\$0.586
2. Mfg. machinery, raw materials, goods in process, pollution control equipment	0.150	0.150
3. Finished goods, office equipment, vehicles, other tangibles	1.145	0.795
4. Intangibles (accounts rec., notes, bonds etc.)	0.250	0.250
5. Leaseholds in industrial revenue bond financed plants	0.015	0.015

Planning and Zoning

Joint agency - Manchester - Clay County Planning and Zoning Commission
 Zoning enforced - City only
 Subdivision regulations - In some areas
 Local codes enforced - Buildings and housing
 Mandatory state codes enforced - Kentucky Plumbing Code, National Electric Code, Kentucky Boiler Regulations and Standards, National Fire Protection Association Standards of Safety (for buildings with and occupancy of less that 100 persons), Kentucky Building Code (modeled after BOCA code and applying to buildings with an occupancy of 100 or more persons)

*Kentucky Department of Commerce.

Safety

<u>Police</u>	<u>Manchester</u>	<u>Clay County</u>
Total staff	5 full-time; 1 part-time	1 full-time; 4 volunteers
Radio-patrol cars	6	3

Fire

American Insurance Association Fire Rating	7	10
Full-time staff	1	-
Volunteers	32	*

Rescue Service

The Manchester Fire Department provides rescue service.

Refuse Collection and Disposal

	<u>Manchester</u>
Type service	Municipal
Fee charged:	
residential	\$2.25 monthly
business	Based on volume
Collection frequency:	
residential	Twice weekly
business	Twice weekly
Trash pickup	Upon request
Disposal method	Sanitary landfill

The Clay County government has placed dumpsters throughout the county which may be used by any resident or business free of charge.

Several private haulers provide refuse collection services for some of the businesses and industries in Manchester and Clay County. Fees vary according to the type of service.

*Fire protection in north Clay County is provided by the Burning Springs Fire Department which has 30 volunteers. The Oneida Fire Department provides fire protection service in south Clay County with 21 volunteers.

EDUCATION

Public Schools

Clay County

Total Enrollment (February 1981)	5,158
Elementary	3,940 (Grades K-8)
High School	1,218
Student-Teacher Ratio	18-1
Elementary	17-1
High School	22-1
Percent High School Graduates to College	30.9
Expenditures Per Pupil (1979-80)	\$1,058.32
Bonded Indebtedness, (June 30, 1980)	0

Nonpublic Schools

	<u>Oneida Baptist Institute</u>	<u>Manchester Seventh Day Adventists</u>
Total Enrollment	350 (Grades 6-12)	14 (Grades 1-8)
Student-Teacher Ratio	14-1	7-1

Area Colleges and Universities

<u>Name</u>	<u>Location (Miles distant)</u>	<u>Enrollment (Fall 1980)</u>	<u>Highest Degree Conferred</u>
Sue Bennett College	London, Kentucky (20)	256	Associate
Union College	Barbourville, Kentucky (25)	929	Masters, Specialist
Hazard Community College	Hazard, Kentucky (41)	326	Associate
Cumberland College	Williamsburg, Virginia (51)	2,162	Baccalaureate
Somerset Community College	Somerset, Kentucky (54)	980	Associate
Berea College	Berea, Kentucky (58)	1,514	Baccalaureate
Lees Junior College	Jackson, Kentucky (62)	337	Associate
Eastern Kentucky University	Richmond, Kentucky (71)	14,185	Masters, Specialist*

*Joint doctoral degree programs are offered in cooperation with the University of Kentucky, Lexington, and cooperative doctoral degree programs are offered with Michigan State University and the University of Maryland.

Vocational Schools

Both the state vocational-technical schools and the area vocational education centers are operated by the Kentucky Department of Education. The state vocational-technical schools enroll persons full time who are at least 16 years of age and not in school. These students attend classes for six hours each day. The area vocational education centers are designed to accommodate high school students who are at least 15 years of age. These students attend vocational school for three hours each day. The state vocational-technical schools and the area education centers offer evening courses to enable working adults to upgrade current job skills.

Nearest State School

Location	Laurel County State Vocational-Technical School
Miles Distant	London
Curriculum	20
	Consumer and Home Economics
	Commercial Foods
	Consumer and Family Life Skills
	Health and Personal Services Occupations
	Cosmetology
	Medical Assistant
	Industrial Education
	Air Conditioning and Heating
	Auto Body Repair
	Auto Mechanics
	Carpentry
	Drafting
	Electricity
	Machine Shop
	Masonry
	Welding
	Learning Resource Center

Nearest Area Education Center

Location	Clay County Area Vocational Education Center
Curriculum	Manchester Industrial Education Auto Body Repair Auto Mechanics Carpentry Drafting Industrial Electricity Mining Careers Welding

Arrangements can be made to provide training in the specific production skills required by an industrial plant. Instruction may be conducted either in the vocational school or in the industrial plant, depending upon the desired arrangement and the availability of special equipment.

HEALTH

Local Medical Personnel

Physicians - 10
Dentists - 4

Hospitals

<u>General Hospital</u>	<u>Location</u>	<u>Beds</u>
Manchester Memorial Hospital	Manchester	63

General hospital facilities - Operating room, recovery room, 3-room emergency suite, OB section, X-ray, pediatrics, physical therapy, hydrotherapy, laboratory, blood bank, EKG, extended care section, EEG, intensive care unit, 4-suite office building with facilities for a dentist and 3 physicians

Medical staff - 10 physicians including specialists in surgery and pediatrics, 22 registered nurses, 22 licensed practical nurses; courtesy staff which includes a pathologist and radiologist.

Other Medical Facilities

Cumberland River Comprehensive Care Center

Ambulance Service

Name - Clay County Ambulance Service
Staff - 11 emergency medical technicians, 5 persons with EMT training, 5 dispatchers, 1 clerk, 4 drivers
Service - 24-hour
Equipment - 2 ambulances, fully-equipped

Public Health

Facility - Cumberland Valley District Health Department*
Staff - 1 physician, 1 administrator, 1 health educator, 2 environmentalists, 1 nutritionist, 14 clerks, 7 aides, 10 registered nurses, 3 licensed practical nurses, 1 health planner, 1 part-time social worker

*Also provides services for Clay County, Jackson County, Rockcastle County (home health), London (TB program), Pineville, Harlan and Barbourville (maternity and infant care programs).

OTHER LOCAL FACILITIES

Communications

Telephone - Kentucky Telephone Company
Services - Standard

Telegraph - Western Union
Services - Toll-free number (1-800-325-5100)

Postal - U.S. Post Office
Class - First
Mail received - Once daily
Mail dispatched - Once daily

Newspapers - The Manchester Enterprise
Weekly and circulation - 5,890
Other papers
received from - Lexington and Louisville, Kentucky;
Knoxville, Tennessee

Radio - WWXL-AM and FM
Stations received from - Louisville, Lexington, London, and
Corbin, Kentucky; Cincinnati, Ohio

Television -
Cable service
Reception from - Lexington, Kentucky; Knoxville and Johnson City,
Tennessee; Bristol, Virginia; Asheville,
North Carolina

Kentucky Educational
Television - Somerset transmitter, Channel 29

Library Services

Public library - Clay County Public Library
Size collection - 22,000 volumes
Circulation, 1979-80 - 154,000
Services - Bookmobile, records, record player, films, film
projector, magazines, newspapers, paintings, community meeting
room, adult education, arts and crafts program, right to read
program, alcor program, Neighborhood Youth Corps program,
story hour, microfilms with reader printer and copy service.

Religious Institutions

Number of churches in Clay County - 12

Denominations - Baptist
Catholic
Christian
Church of God
Jehovah's Witnesses
Pentecostal
Presbyterian
Seventh Day Adventist
United Methodist
Mennonite

Nearest Synagogues - Lexington, 95 miles away

Congregations - Adath Israel (reform)
Ohavey Zion (traditional)

Financial Institutions

<u>Banks</u>	<u>Assets</u>	<u>Deposits</u>	<u>Statement Date</u>
First State Bank	\$38,572,827.10	\$33,674,321.05	12/31/80
First National Bank	34,425,755.76	31,235,064.58	12/31/80

Hotels and Motels

Total number - 2
Total rooms - 58

Clubs and Organizations

American Legion
Bass Club
Boy Scouts
Brownies
Business and Professional Women's Club
Clay County Development Association
Coon and Quail Club
Federated Womans Club
Fish and Game Club
4-H
Fox Hunters Club
Future Farmers of America (FFA)
Girl Scouts
Homemakers
Jackson-Clay Community Action Agency
Jaycees
Kiwanis
Little League
Manchester Mental Health and Mental Retardation Association
Masonic Lodge
Medical Society
Ministerial Association
Red Cross
Saddle Club
Senior Citizens Club
Sportsmen's Club
The Turnabout Square Dance Group
Veterans of Foreign Wars (VFW)
Vocational Industrial Clubs of America
Younger Women's Club

RECREATION

Local

A recreational complex, financed from a HUD grant, was recently completed. Facilities include a swimming pool, meeting rooms, offices and kitchen. The Clay County government and the Younger Women's Club are working together to add basketball and tennis courts and a softball field to the complex.

The Christian Youth Center makes its facilities available for public use. Facilities include two basketball courts, a stage and a game room.

A city park and three tennis courts are available. There is a movie theatre located downtown.

Area (Within 65 miles)

Manchester is located in the heart of the Daniel Boone National Forest, a scenic timberland which stretches for 650,000 acres over Kentucky's eastern region.

Levi Jackson Wilderness Road State Park, 25 miles west of Manchester at London, is an 815-acre park located where the Boone Trace and Wilderness Road pioneer trails converge. In addition to a reproduced pioneer settlement, the park offers a pool, a bathhouse, hiking trails, horseback riding, shuffleboard, camp sites, a picnic area, a playground, and an amphitheatre. The Wilderness Road is thought to be the first state built road in the United States (1796-1875) and a section of the original road is preserved in the park.

Dr. Thomas Walker State Shrine, 25 miles south of Manchester near Barbourville is the site of the cabin built by Dr. Walker, who led the first documented expedition through Cumberland Gap around 1750. This 12-acre park contains a replica of the cabin, a playground, a picnic shelter, and an amphitheater.

Wood Creek Lake, 29 miles west of Manchester near London, provides a fishing site inside Daniel Boone National Forest.

Laurel River Lake, also located in Daniel Boone National Forest, is 38 miles southwest of Manchester, near Corbin. It is a new lake of about 4,200 acres, with a variety of recreational facilities being developed nearby.

Cumberland Falls State Resort Park is located 40 miles southwest of Manchester at Corbin in the Daniel Boone National Forest. The park is famous for Cumberland Falls which drops 68 feet over a rock precipice and shows one of only two known "moonbows" in the world at full moon. Little Eagle Falls, a mountain creek which tumbles 125 feet into the Cumberland River, is also part of the 1,794-acre park. The park offers
(Contd.)

lodge rooms, woodland suites, cottages, camping, fishing, swimming, hiking, horseback riding, picnicking, tennis, backpacking, horse shows, shuffleboard, planned recreation, a playground, a dance pavilion, and an amphitheater.

Pine Mountain State Resort Park in Pineville, 43 miles south from Manchester, provides the finest in mountain scenery and the ultimate in quiet comfort. The 2,500-acre park is located in the Kentucky Ridge State Forest and is the scene of the Mountain Laurel Festival each spring. Also featured is a 35-acre lake, 30 lodge rooms, seven rustic log cottages, a dining room, a gift shop, a meeting room, 36 camping sites, a lodge pool, fishing, a 9-hole golf course, hiking trails, a nature center, picnicking, playgrounds, shuffleboard, and planned recreation.

The Renfro Valley area near Mount Vernon, 45 miles northwest of Manchester, offers a wide variety of recreational opportunities. Boating and fishing are possible on Lake Linville, and area campgrounds offer over 100 sites for trailer and tent camping. Service buildings, grocery stores and a lodge are also located nearby.

The Central Kentucky Wildlife Management Area is a 1,635-acre site located 55 miles northwest of Manchester near Berea.

Cumberland Gap National Historic Park is located 59 miles south of Manchester, near Middlesboro. The Cumberland Gap is an 800-foot-deep natural break in the Cumberland Mountains through which early pioneers and settlers passed to settle the western lands. The park offers camping, hiking, picnicking, a visitor center with a museum and slide programs, a mountain village restoration, and organized recreational activities.

Carr Fork Lake, 59 miles east of Manchester, offers camping, fishing, boating and skiing. A pioneer village is located on the recreation area grounds.

General Burnside State Park, 62 miles west of Manchester, is Kentucky's only island state park. Rising out of Lake Cumberland and surrounded by beautiful Kentucky mountains, the park offers excellent fishing, an 18-hole golf course which is open year-round, a picnic area, a 150-site camping area for tents and recreational vehicles, a marina on the mainland near the park, and planned recreation.

Buckhorn Lake State Park, 65 miles northeast of Manchester at Buckhorn, is a full-facility resort park with a 36-room lodge. The lodge itself offers a dining room with a lake view, a gift shop, a pool, meeting rooms, and a recreation room. Other park facilities and activities include a beach, a bathhouse, a picnic shelter, 72 campsites, a playground, mini-golf, tennis, a dock with open and covered slips, boat rentals, a 40-foot levee plus a fishing pier, bicycle rentals, and planned recreation.

