

1987

Industrial Resources - Franklin County - Frankfort

Kentucky Library Research Collections
Western Kentucky University, spcol@wku.edu

Follow this and additional works at: https://digitalcommons.wku.edu/franklin_pty



Part of the [Business Administration, Management, and Operations Commons](#), [Growth and Development Commons](#), and the [Infrastructure Commons](#)

Recommended Citation

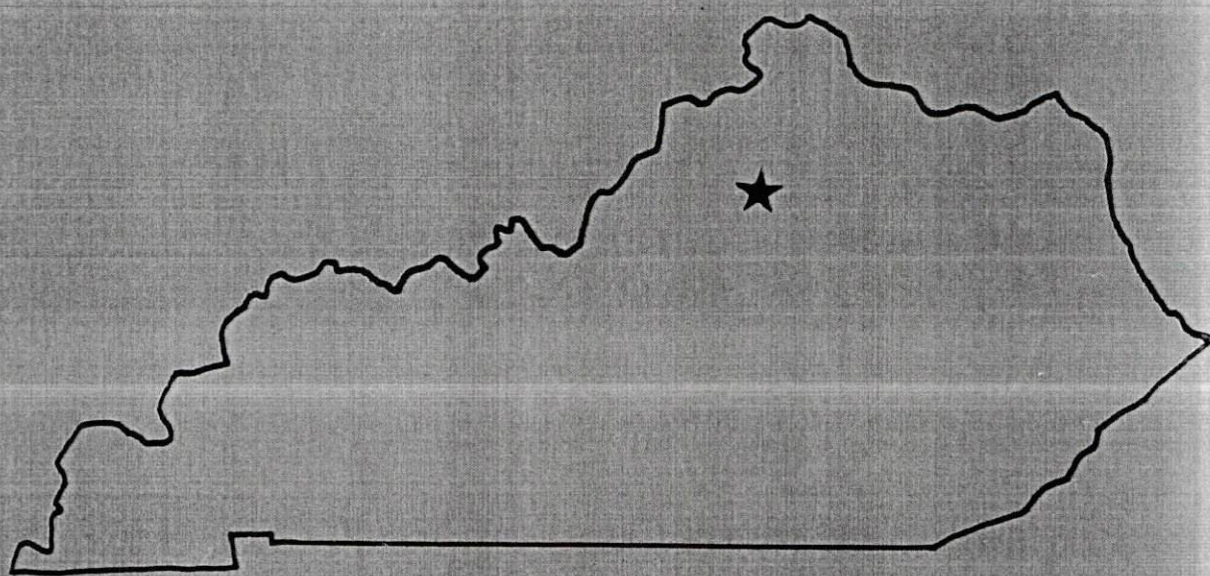
Kentucky Library Research Collections, "Industrial Resources - Franklin County - Frankfort" (1987). *Franklin County*. Paper 6.
https://digitalcommons.wku.edu/franklin_pty/6

This Report is brought to you for free and open access by TopSCHOLAR®. It has been accepted for inclusion in Franklin County by an authorized administrator of TopSCHOLAR®. For more information, please contact topscholar@wku.edu.

IR
535 Franklin County, Ky.

RESOURCES FOR ECONOMIC DEVELOPMENT

Frankfort

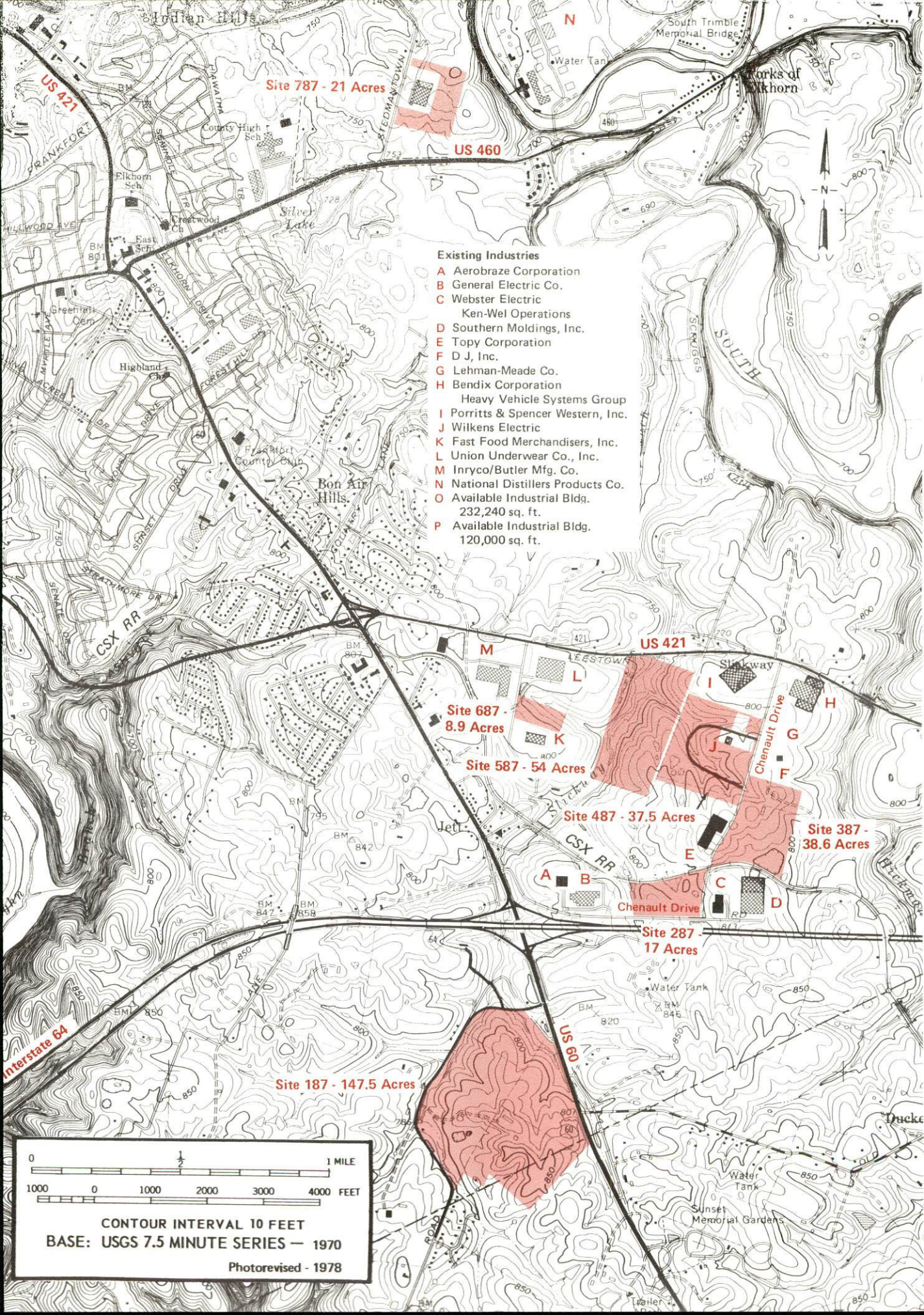


KENTUCKY
The business environment is right.

FRANKFORT, KENTUCKY --- Index to Industrial Sites --- 1987

For more information contact the Kentucky Department of Economic Development, Industrial Development & Marketing Division, Capital Plaza Tower, Frankfort, Kentucky 40601 (502-564-7140).





RESOURCES FOR ECONOMIC DEVELOPMENT

FRANKFORT, KENTUCKY

Prepared by
The Kentucky Department of Economic Development
Division of Research and Planning
in cooperation with
The Frankfort/Franklin County Chamber of Commerce

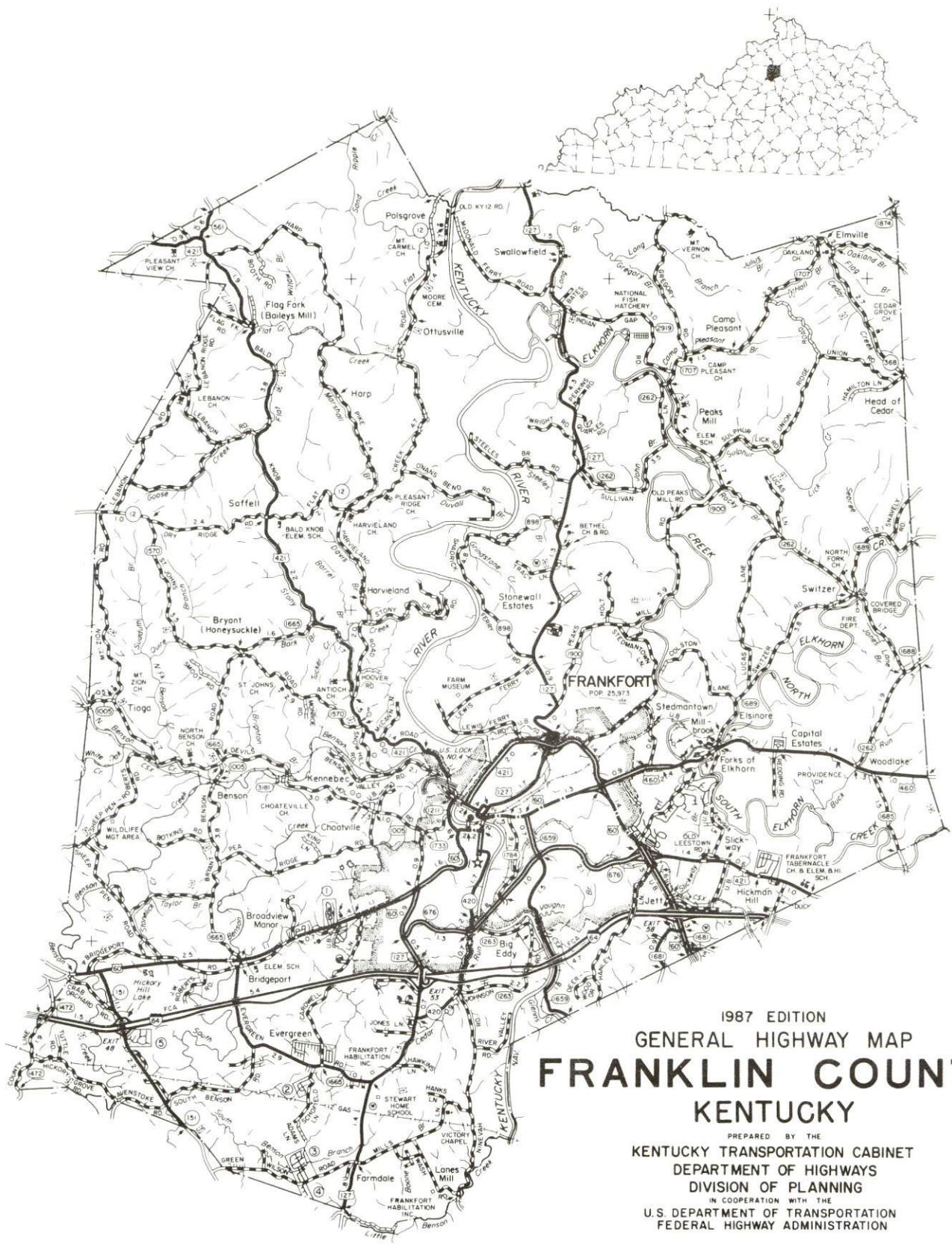
1987

Program manager - Andrew Dennis; research - Barry K. Holder, Jr.; clerical - Bobbi Graves; graphics - Tony Cecconi, Robert Owens, Pat Coleman; cartography - Site Evaluation Branch, Division of Industrial Development and Marketing. Cost of printing paid from state funds.

TABLE OF CONTENTS

<u>Chapter</u>	<u>Page</u>
INDUSTRIAL SITES	i
FRANKFORT, KENTUCKY - A RESOURCE PROFILE	1
THE LABOR MARKET AREA	3
Population	3
Population Projections	3
Labor Force Characteristics of Residents, 1986	4
Selected Components of Nonagricultural Employment, by Place of Work, 1986	4
Per Capita Personal Income	5
Estimated Male Labor Supply	6
Estimated Female Labor Supply	6
Average Weekly Wages by Industry, by Place of Work, 1986	7
EXISTING INDUSTRY	9
Frankfort Manufacturing Firms, Their Products and Employment	9
Labor Organizations in Manufacturing Firms	12
Selected Industrial Services	14
TRANSPORTATION	15
Rail	15
Highways	15
Truck Service	16
Air	17
Air Express Service	17
Water	18
POWER AND FUEL	19
Electricity	19
Natural Gas	20
Other Fuels	20
WATER AND SEWERAGE	21
Public Water Supply	21
Sewerage	22
CLIMATE	23

<u>Chapter</u>	<u>Page</u>
LOCAL GOVERNMENT	24
Structure	24
Planning and Zoning.	24
Local Fees and Licenses	24
State and Local Property Taxes.	25
Combined State and Local Rates Per \$100 Valuation, 1986	25
Safety.	26
Police	26
Fire	26
Rescue Service	26
Refuse Collection and Disposal.	26
EDUCATION.	27
Public Schools	27
Nonpublic Schools	28
Area Colleges and Universities	28
Vocational Training	29
HEALTH	31
Local Medical Personnel.	31
Hospitals	31
Other Medical Facilities.	31
Ambulance Service	31
OTHER LOCAL FACILITIES	32
Communications	32
Religious Institutions	32
Library Services	33
Financial Institutions	34
Hotels and Motels	34
RECREATION	35
COMMUNITY IMPROVEMENTS	39



[illegible]

FRANKFORT, KENTUCKY - A RESOURCE PROFILE

Frankfort, the capital of Kentucky and home of Kentucky State University, is located in central Kentucky's Blue Grass Region. Frankfort, the county seat of Franklin County, is located 29 miles northwest of Lexington, Kentucky; 54 miles east of Louisville, Kentucky; and 93 miles southwest of Cincinnati, Ohio. In 1984, Frankfort had an estimated population of 26,802.

Franklin County, with a rolling to hilly terrain, has a land area of 212 square miles. The Kentucky River traverses the middle portion of the county while Elkhorn Creek runs through the eastern part of the county. In 1986, Franklin County had an estimated population of 44,000.

The Economic Framework - The total number of Franklin County residents employed in 1986 averaged 21,750. Manufacturing firms in the county reported 3,360 employees; wholesale and retail trade provided 3,540 jobs; 2,740 people were employed in service occupations; state and local government accounted for 12,870 employees; and contract construction firms provided 840 jobs.

Labor Supply - There is a current estimated labor supply of 5,420 men and 7,040 women available for industrial jobs in the labor market area. In addition, from 1987 through 1991, 5,850 young men and 5,610 young women in the area will become 18 years of age and potentially available for industrial jobs.

Transportation - CSX Transportation provides main line rail service to the Frankfort community. Frankfort is also served by Interstate 64; U.S. Highways 60, 127, 421 and 460; and Kentucky Highway 676 ; all "AAA"-rated trucking highways. Thirty-nine common freight carriers have the authority to serve Frankfort with interstate and/or intrastate service. The nearest scheduled commercial airline service is available at Bluegrass Airport, 4 miles west of Lexington, 19 miles southeast of Frankfort. The Capital City Airport, one mile west of Frankfort, maintains a 5,000-foot runway. Frankfort is located on the Kentucky River where a 6-foot navigation channel is maintained.

Power and Fuel - Electric power is provided to Frankfort and parts of Franklin County by the Frankfort Electric and Water Plant Board, which is supplied by the Kentucky Utilities Company. Franklin County is also served by the Kentucky Utilities Company, an electric generation and transmission company, and Fox Creek Rural Electric Cooperative Corporation, which is supplied by the East Kentucky Power Cooperative. Natural gas service is provided to Frankfort by Columbia Gas of Kentucky, Inc., which is supplied by the Columbia Gas Transmission Corporation. Four distributors of propane and four distributors of distillate fuel oil serve Frankfort.

Education - Primary and secondary education is provided by the Frankfort Independent School System and by the Franklin County School System. Both systems are accredited by the Southern Association of Colleges and Schools. Two nonpublic schools also operate in Frankfort.

Kentucky State University is Kentucky's unique, small liberal studies-oriented institution of higher learning in Frankfort. The university offers academic programs leading to two-year associate degrees, four-year baccalaureate degrees and the masters degree in public affairs. The 1986 enrollment at Kentucky State University was 2,205. In addition, five universities, five senior colleges, one two-year college, and two community colleges are located within 55 miles of Frankfort.

The Central Kentucky State Vocational-Technical School, 29 miles southeast in Lexington, offers training in 27 different courses. The Franklin County Area Vocational Education Center, in Frankfort, provides training in seven different courses.

LABOR MARKET STATISTICS

The Frankfort Labor Market Area includes Franklin County and the adjoining Kentucky counties of Anderson, Henry, Owen, Scott, Shelby and Woodford.

POPULATION

<u>Area</u>	<u>1986*</u>	<u>1980</u>	<u>1970</u>	<u>Percent Nonwhite</u>
				<u>1980</u>
Frankfort	26,802	25,973	21,902	12.9
Labor Market Area	145,700	138,980	113,600	-
Franklin County	44,000	41,830	34,481	8.7
Anderson County	13,800	12,567	9,358	3.9
Henry County	13,300	12,740	10,910	5.5
Owen County	9,400	8,924	7,470	2.5
Scott County	22,200	21,813	17,948	7.3
Shelby County	24,000	23,328	18,999	11.4
Woodford County	19,000	17,778	14,434	8.0

* Population estimates. City estimates are for 1984.

Note: The 1980 city counts of population by race are provisional.

Sources: U.S. Department of Commerce, Bureau of the Census, 1980 Census of Population and Housing, March 1981; 1980 Census of Population, Number of Inhabitants. University of Louisville, Urban Studies Center, Population Unit, October 1985; University of Louisville, Urban Studies Center, State Data Center, June 1987 Newsletter, Vol. 5 No. 4.

POPULATION PROJECTIONS

<u>Area</u>	<u>1990</u>	<u>1995</u>	<u>2000</u>	<u>2010</u>
Labor Market Area	157,116	166,295	173,495	184,212
Franklin County	47,818	50,700	52,868	55,934
Anderson County	14,495	15,438	16,166	17,250
Henry County	14,159	14,815	15,319	16,030
Owen County	9,577	9,932	10,240	10,725
Scott County	24,862	26,321	27,550	29,577
Shelby County	25,724	27,068	28,101	29,615
Woodford County	20,481	22,021	23,251	25,081

Source: University of Louisville, Urban Studies Center, Population Research Unit, How Many Kentuckians: Population Forecasts, 1980-2020, the 1986 Edition, Spring 1986.

LABOR FORCE CHARACTERISTICS OF RESIDENTS, 1986

	<u>Franklin County</u>	<u>Labor Market Area</u>
Civilian Labor Force	22,950	72,669
Employment	21,747	68,469
Unemployment	1,203	4,200
Rate of Unemployment (%)	5.2	5.8

Source: Kentucky Cabinet for Human Resources, Kentucky Labor Force Estimates, Annual Averages, 1986.

SELECTED COMPONENTS OF NONAGRICULTURAL EMPLOYMENT
BY PLACE OF WORK, 1986

	<u>Franklin County</u>	<u>Labor Market Area</u>
All Industries (total)	24,592	50,168
Manufacturing	3,364	12,117
Wholesale & Retail Trade	3,536	9,335
Services	2,738	6,223
State/Local Government	12,874	16,374
Contract Construction	836	1,704

Note: Excludes domestic workers, railway workers, certain nonprofit corporations, majority of federal government workers, and self-employed workers.
Source: Kentucky Cabinet for Human Resources, Average Monthly Workers Covered by Kentucky Unemployment Insurance Law, 1986.

PER CAPITA PERSONAL INCOME

<u>Area</u>	<u>1980</u>	<u>1984</u>	<u>Percent Change</u>
Franklin County	\$ 9,694	\$ 12,810	32.1
Labor Market Area Range	\$5,711 - 10,006	\$7,926 - 15,361	-
Kentucky	7,644	10,232	33.9
U.S.	9,494	12,772	34.5

Sources: U.S. Department of Commerce, Bureau of Economic Analysis. Kentucky Economic Information System, June 1986.

ESTIMATED MALE LABOR SUPPLY
FRANKFORT LABOR MARKET AREA

Area	Current				Future
	Total Male	Unemployed	Under-employed	Not in Labor Force	Becoming 18 years of age 1987 thru 1991
Labor Market Area*	5,416	2,252	2,907	257	5,853
Franklin	1,538	669	869	0	1,735
Anderson	454	239	215	0	564
Henry	517	238	279	0	548
Owen	607	153	197	257	366
Scott	1,141	478	663	0	923
Shelby	646	297	349	0	928
Woodford	513	178	335	0	789

ESTIMATED FEMALE LABOR SUPPLY
FRANKFORT LABOR MARKET AREA

Area	Current				Future
	Total Female	Unemployed	Under-employed	Not in Labor Force	Becoming 18 years of age 1987 thru 1991
Labor Market Area*	7,043	1,948	3,550	1,545	5,611
Franklin	1,557	534	1,023	0	1,652
Anderson	680	274	355	51	543
Henry	1,108	214	374	520	489
Owen	695	76	164	455	354
Scott	1,022	352	670	0	877
Shelby	1,162	276	465	421	926
Woodford	819	222	499	98	770

* Additional workers may be drawn from other nearby counties.

Note: Unemployed - persons unemployed and actively seeking work; Underemployed - persons employed but working only 14 to 26 weeks per year; Not in Labor Force - represents the number of persons who would enter the labor force if suitable employment were available (based on the assumption that persons in Kentucky would like to participate in the labor force in the same proportion that they do nationally).

Sources: Kentucky Cabinet for Human Resources, Kentucky Labor Supply Estimates by County, 1986. Kentucky Department of Economic Development, Future Labor Supply Becoming 18 Years of Age, 1987 thru 1991.

AVERAGE WEEKLY WAGES BY INDUSTRY
BY PLACE OF WORK, 1986

	<u>Franklin County</u>	<u>Anderson County</u>	<u>Henry County</u>	<u>Owen County</u>
All Industries	\$337.85	\$301.71	\$272.68	\$255.80
Mining & Quarrying	0	*	0	0
Contract Construction	372.67	247.85	244.63	*
Manufacturing	367.02	407.09	383.91	*
Transportation, Communications & Public Utilities	479.48	433.23	341.81	*
Wholesale & Retail Trade	187.06	217.99	196.87	180.96
Finance, Insurance & Real Estate	352.47	315.05	302.64	250.03
Services	250.30	175.45	215.37	148.08
State/Local Government	382.93	264.84	295.30	250.35
Other	213.56	225.97	183.77	*
	<u>Scott County</u>	<u>Shelby County</u>	<u>Woodford County</u>	
All Industries	\$305.72	\$266.61	\$333.64	
Mining & Quarrying	418.05	0	0	
Contract Construction	303.38	224.50	236.57	
Manufacturing	435.05	324.46	456.92	
Transportation, Communications & Public Utilities	421.33	399.32	401.99	
Wholesale & Retail Trade	151.74	193.37	191.70	
Finance, Insurance & Real Estate	319.21	274.40	296.11	
Services	248.28	224.49	247.20	
State/Local Government	255.46	300.86	289.36	
Other	269.81	218.20	301.20	

* Not disclosed.

Note: The average weekly wage for each category includes the salaries and wages of all persons working for that type business. For example, the manufacturing category includes both production workers and administrative personnel. Excludes domestic workers, railway workers, certain nonprofit corporations, majority of federal government workers, and self-employed workers.

Source: Kentucky Cabinet for Human Resources, Average Weekly Wages of Workers Covered by Kentucky Unemployment Insurance Law, 1986.

Associated Industries of Kentucky, a voluntary organization of Kentucky businesses, regularly collects occupational wage rates and fringe benefits data from participating member firms. Data are compiled for over 127 clearly defined office, production, and service occupations. Tabulations are published for nine geographical areas of Kentucky, as shown on the map below. It should be noted that the data may be weighted by the preponderance of firms in the larger cities and may be somewhat higher than the rates paid in the smaller communities. Data from these tabulations are available, upon request, from the Kentucky Department of Economic Development, Frankfort, Kentucky 40601.



EXISTING INDUSTRY

FRANKFORT MANUFACTURING FIRMS, THEIR PRODUCTS AND EMPLOYMENT

Firm (Establishment date)	Product	Average Employment			Labor Unions
		Total	Male	Female	
Aerobraz Corporation (1980)	Heat treating, brazing	20	11	9	
Ancient Age Distilling Company, Inc. (1869)	Whiskey, distillers dried grain	175	125	50	Distillery Workers; Firemen & Oilers; Machin- ists*
Bendix Corporation Frankfort Plant, Heavy Vehicle Systems Group (1967)	Air brake components	478	-	-	Industrial Workers; Machin- ists*
Capital City Tool, Inc. (1973)	Custom metal parts, machine shop, dies & fixtures	17	15	2	
Frankfort Habilitation, Inc. (1972)	Wood furniture, pallets, plastic molded parts	100	60	40	
Frankfort Materials Company (1964)	Bituminous concrete	7	-	-	
Frankfort Publishing Company (1917)	Newspaper, commercial printing	41	29	12	

(Continued)

Firm (Establishment date)	Product	Average Employment			Labor Unions
		Total	Male	Female	
Frankfort Tool and Die (1968)	Tools & dies fixtures, weldments, punch & press stamping	4	2	2	
General Electric Company (1971)	Plastic parts & material	300	180	120	
Goins Printing Services, Inc. (1972)	Offset printing	3	3	0	
Harrod Concrete and Stone Company (1970)	Ready-mixed concrete, crushed stone & agricultural lime	130	125	5	Steel- workers; Team- sters*
Hulette Printing Company, Inc. (1962)	Commercial printing	5	-	-	
Inryco-Butler Manu- facturing Company (1986)	Architectural panels	100	70	30	
Lee Masonry Products (1964)	Concrete block, precast concrete products	15	-	-	
Lukjan Metal Products, Inc. (1972)	Sheet metal fabrication	32	29	3	
Lyons Lumber Company (1909)	Millwork	12	11	1	
James B. Beam Distilling Company, Old Crow Distilling Company (1835)	Whiskey, feed	70	-	-	Distillery Workers; Firemen & Oilers; Guards; Plumbers*

(Continued)

Firm (Establishment date)	Product	Average Employment			Labor Unions
		Total	Male	Female	
James B. Beam Distilling Company, Old Grand Dad Distilling Company (1901)	Whiskey, feed	270	-	-	Distillery Workers; Firemen & Oilers; Guards; Plumbers*
Porritts and Spencer, Western, Inc. (1983)	Papermakers, wet felts	71	54	17	
Rebecca Ruth Candy, Inc. (1929)	Candy	16	5	11	
Roberts Printing Company, Inc. (1910)	Offset printing, magazine & book printing	10	8	2	
Rodgers Concrete Company (1987)	Ready-mixed concrete	11	-	-	
Southern Moldings, Inc. (1974)	Metal stamping, roll forming, wire products	250	140	110	
Topy Corporation (1986)	Auto wheels	88	83	5	
Trig, Inc. (1963)	Thermal temperature control devices, emissions control components, electric range components	120	30	90	
Union Underwear Company, Inc. (1932)	Men's & boys' knit briefs & T-shirts, children's printed underwear	999	118	881	

(Continued)

Firm (Establishment date)	Product	Average Employment Labor			
		Total	Male	Female	Unions
Webster Electric, Frankfort Operations, Division of Sta-Rite Industries (1954)	Ignition & high voltage transformers, hydraulic pumps, fuel units & valves	170	55	115	Industrial Workers*

* See Labor Organizations below.

Sources: Kentucky Department of Economic Development, 1987 Kentucky Directory of Manufacturers; Division of Research and Planning.

LABOR ORGANIZATIONS IN MANUFACTURING FIRMS

<u>Union</u>	<u>Representing workers at:</u>
Distillery, Wine and Allied Workers' International Union, AFL-CIO-CLC	Ancient Age Distilling Company; James B. Beam Distilling Company, Old Crow Distilling Company; James B. Beam Distilling Company, Old Grand Dad Distilling Company
International Brotherhood of Firemen and Oilers, AFL-CIO	Ancient Age Distilling Company; James B. Beam Distilling Company, Old Crow Distilling Company; James B. Beam Distilling Company, Old Grand Dad Distilling Company
International Guards Union of America	James B. Beam Distilling Company, Old Crow Distilling Company; James B. Beam Distilling Company, Old Grand Dad Distilling Company

(Continued)

International Union, Allied
Industrial Workers of
America, AFL-CIO

International Association of
Machinists and Aerospace
Workers, AFL-CIO

United Steelworkers of
America, AFL-CIO
International Brotherhood
of Teamsters, Chauffeurs,
Warehousemen and Helpers
of America
United Association of
Journeymen and Apprentices
of the Plumbing and Pipe
Fitting Industry of the
United States and Canada,
AFL-CIO

Bendix Corporation Frankfort
Plant, Heavy Vehicle Systems
Group;
Webster Electric, Frankfort
Operations, Division of Sta-
Rite Industries

Ancient Age Distilling Company;
Bendix Corporation, Frankfort
Plant, Heavy Vehicle Systems
Group

Harrod Concrete and Stone Company

Harrod Concrete and Stone Company

James B. Beam Distilling
Company, Old Crow Distilling
Company;
James B. Beam Distilling
Company, Old Grand Dad
Distilling Company

SELECTED INDUSTRIAL SERVICES

<u>Types of Service</u>	<u>Location</u>	<u>Mileage from Frankfort</u>
Custom Plastics Producers	Georgetown	18
Electric Motor Repair	Lexington	29
Grinding, Precision & Tool	Georgetown	18
Heat Treating Facilities	Frankfort	-
Industrial Equipment & Supplies	Frankfort	-
Industrial Gases	Lexington	29
Industrial Waste Removal	Frankfort	-
Machine Shops, Tool & Die	Frankfort	-
Metal Finishers	Georgetown	18
Metal Service Centers	Lexington	29
Millwrights	Lexington	29
Public Warehouse Facilities	Lexington	29

Sources: Kentucky Department of Economic Development, Kentucky Directory of Selected Industrial Services, 1985; Division of Research and Planning.

TRANSPORTATION

Rail

Line serving Frankfort - CSX Transportation

Services - Main line; one northbound freight stops daily; one northbound and one southbound through freights daily; switching services; team track space for four cars; siding space for 75 cars. The nearest piggyback facilities are available in Louisville.

For details on routing, schedules, rates, and services contact:

Corporate Communications
CSX Transportation
908 West Broadway
Louisville, Kentucky 40203
(502) 587-5445

Highways

Major "AAA"-rated (80,000-pound gross load limit) highways serving Frankfort include Interstate 64; U.S. Highways 60, 127, 421 and 460; and Kentucky Highways 676 and a portion of 1659. Interstate 64, a major east-west corridor, passes through Frankfort with interchanges southeast and southwest of the downtown area, and connects with Interstate 75, 22 miles east of Frankfort near Lexington. The Blue Grass Parkway, a multi-lane toll road, is accessible 18 miles south of Frankfort via U.S. 127.

The realignment and reconstruction of the intersection of U.S. 60, U.S. 460 and U.S. 421, in east Frankfort, was recently completed. Total cost of the project exceeded \$2 million.

The West Connector, which will complete a four-lane loop around Frankfort, is currently under way and scheduled for completion late 1989. The \$30 million highway project will extend from the intersection of U.S. 60 and U.S. 127 on the west side of Frankfort, to the intersection of U.S. 421, Mero Street, and Clinton Street, near the Capital Plaza Complex.

Truck Service

ABF Cartage, Inc.*	Holland Motor Express, Inc.*
ANR Freight System, Inc.*	Jones Truck Lines, Inc.*
ARA/Smith's**	Lawrenceburg Transfer Company, Inc.*
American Freight System, Inc.**	Manning Motor Express, Inc.*
Averitt Express, Inc.*	Middlewest Freightways, Inc.*
Bailey's Express, Inc.*	O.K. Trucking Company*
Bishop Motor Express, Inc.*	Overnite Transportation Company*
Bowman Transportation, Inc.**	Owenton Express, Inc.*
Buske Lines, Inc.**	P-I-E Nationwide**
CCC Highway, Inc.*	Preston Trucking Company, Inc.*
CW Transport, Inc.*	Priority Freight Systems, Inc.**
Carolina Freight Carriers Corporation*	R-W Service System, Inc.*
Central Transport, Inc.**	R & L Transfer, Inc.*
Claxon Truck Line, Inc. (T)*	Roadway Express, Inc.*
Consolidated Freightways Corporation of Delaware*	Spartan Express, Inc.*
Duff Truck Line, Inc.*	Suburban Motor Freight, Inc.*
Harris Motor Express, Inc.*	Transcon Lines*
	WDP Transportation, Inc. (T)*

* Interstate and intrastate service.

** Interstate service only.

(T) Local terminal.

Source: American Motor Carrier Directory, Spring 1987; The Frankfort/Franklin County Chamber of Commerce.

HIGHWAY MILES AND TRUCK TRANSIT TIME IN DAYS FROM FRANKFORT, KENTUCKY, TO SELECTED MARKET CENTERS

City	Highway Miles	Delivery Time TL	City	Highway Miles	Delivery Time TL
Atlanta, GA	391	2	Los Angeles, CA	2,162	6
Baltimore MD	570	4	Louisville, KY	54	1
Birmingham, AL	395	2	Nashville, TN	207	1
Chicago, IL	346	1	New Orleans, LA	724	2
Cincinnati, OH	93	1	New York, NY	718	3
Cleveland, OH	332	1	Pittsburgh, PA	372	2
Detroit, MI	352	1	St. Louis, MO	317	1
Knoxville, TN	198	1			

Note: Mileage computations are via the best interstate or primary highways, not necessarily the most direct route of travel.

Sources: Rand McNally Deluxe Motor Carriers' Road Atlas, 1987. Official Kentucky Mileage Map, 1980. Delivery time - Lawrenceburg Transfer, Lawrenceburg, Kentucky 40342.

Air

Local

Location: Capital City Airport*
Runways: One mile west of Frankfort
Length: One paved
5,000 feet
Traffic
Control: Wind tee
Lighting: Beacon, runway lights sundown to sunrise, REILS and
VASI
Services: 100 octane, jet fuel; hangar; storage; auto rental;
taxi

Nearest Scheduled Commercial Airline Service

Location: Bluegrass Airport
4 miles west of Lexington, Kentucky;
19 miles southeast of Frankfort
Runways: 2 paved
Length: 7,000 feet; 3,500 feet
Traffic
Control: Tower
Lighting: Approach lighting system, beacon, runways and
obstructions lighted, VASI
Services: Delta, Piedmont, United, USAir, Allegheny Commuter,
TWA, Continental Jet Express, Piedmont Commuter,
Eastern Metro, Comair, American Eagle; fuel -
100LL and jet-A; hangars, tie-downs; major A & P
repairs; major Avionics repairs; APU, charter,
flight instruction, oxygen, plane rentals,
survival equipment; taxi, limousine, car rentals,
courtesy car, weather information; restaurant,
snack bar
Air Freight
Service: Air freight terminal

Air Express Service

Several major companies offer air express services in Kentucky. These companies provide a quick means of shipping small to medium-sized packages expeditiously.

* The Capital City Airport recently renovated its offices and resurfaced the existing runway. The combined total cost of the projects was approximately \$650,000.

Water

Frankfort is located on the Kentucky River where a 6-foot navigation channel is maintained. Unloading facilities for sand and gravel are located at Frankfort on the Kentucky River. Frankfort is 54 miles from Louisville where the Louisville and Jefferson County Riverport and the Port of Louisville are located on the Ohio River.

The Louisville and Jefferson County Riverport has been designated as a Foreign Trade Zone and offers complete U.S. customs services for exports and imports.

POWER AND FUEL

Electricity

Company serving Frankfort and south central portion of Franklin
County - Frankfort Electric & Water Plant Board*
Source of power - Kentucky Utilities Company
For industrial rates contact:

Frankfort Electric and Water
Plant Board
315 West Second Street
P. O. Box 308
Frankfort, Kentucky 40602
(502) 223-3401

Company serving eastern portion of Franklin County - Kentucky Utilities
Company
Source of power - Kentucky Utilities Company
For industrial rates contact:

Industrial Development Department
Kentucky Utilities Company
One Quality Street
Lexington, Kentucky 40507
(606) 255-1461

Company serving western portion of Franklin County - Fox Creek Rural
Electric Cooperative Corporation
Source of power - East Kentucky Power Cooperative
For industrial rates contact:

Industrial Development Division
East Kentucky Power Cooperative
P. O. Box 707
Winchester, Kentucky 40391
(606) 744-4812

and/or

Fox Creek RECC
1200 Versailles Road
P. O. Box 150
Lawrenceburg, Kentucky 40342
(502) 839-3442 or (800) 372-7160

* The Frankfort Electric and Water Plant Board plans to build an electrical substation and install a transformer at the Chenault Road Industrial Park. In addition, they plan to increase water storage capacity and distribution facilities in west Frankfort. Total cost of the two projects is estimated at \$3.5 million.

Natural Gas

Company serving Frankfort - Columbia Gas of Kentucky, Inc.

Source of supply - Columbia Gas Transmission Corporation and
Southwest and Appalachian Producers

Size of transmission mains - Up to 36 inches (supplier); 6 to 12
inches (distributor)

Distribution mains - 6 and 8 inches

Distribution pressure - 4 ounces to 240 psi

Btu content - 1,050 per cubic foot

Specific gravity - 0.6

For rates and supplies contact:

Columbia Gas of Kentucky, Inc.
115 West Main Street
P. O. Box 429
Frankfort, Kentucky 40602
(502) 223-8237

Other Fuels

Propane

Buckeye Gas Products Company
U.S. 127 Bypass
Lawrenceburg, Kentucky 40342

Silgas, Inc.
Old Finchville Road
Shelbyville, Kentucky 40065

H & S Gas and Appliances,
Inc.
U.S. Highway 60 East
Waddy, Kentucky 40076

Southern States Cooperative, Inc.
Jett Petroleum Service
P. O. Box 632, Mills Lane
Frankfort, Kentucky 40602

Fuel oils

Distillate fuel oil -

D. B. Grugin Oil Company,
Inc.
P. O. Box 219
Frankfort, Kentucky 40602

Robinson Oil Company
Versailles Road
Frankfort, Kentucky 40601

Phillips 66
Louisville Road
Frankfort, Kentucky 40601

Pitts Petroleum Products
Chevron Jobber
Route 8, Old Harrodsburg Road
P. O. Box S
Frankfort, Kentucky 40602

Residual fuel oil - Arrangements must be made with the refinery.

Low sulphur content coal - Available in Kentucky.

WATER AND SEWERAGE

Public Water Supply

Company serving Frankfort - Frankfort Electric & Water Plant Board
315 West Second Street, P. O. Box 308
Frankfort, Kentucky 40602
(502) 223-3401

Source - Kentucky River

Treatment plant capacity - 18,000,000 gallons per day

Average daily consumption - 6,500,000 gallons

Peak daily consumption - 10,000,000 gallons

Treatment processes - Coagulation, sedimentation, chlorination,
rapid mix, flocculation, filtration, fluoridation

Storage capacity - 13,375,000 gallons, including clearwells

Size lines - 2 inches to 24 inches

Water pressure - 17 to 133 psi

MONTHLY WATER RATES

(Within City)

First	2,000 gallons	\$3.50 (Minimum)
Next	3,000 gallons	1.75 per M gallons
Next	20,000 gallons	1.50 per M gallons
Next	175,000 gallons	1.25 per M gallons
Next	800,000 gallons	1.00 per M gallons
All over	1,000,000 gallons	.70 per M gallons

(Outside City)

First	2,000 gallons	\$7.00 (Minimum)
Next	3,000 gallons	3.50 per M gallons
Next	20,000 gallons	1.50 per M gallons
Next	175,000 gallons	1.25 per M gallons
Next	800,000 gallons	1.00 per M gallons
All over	1,000,000 gallons	.70 per M gallons

Tap-on charge:

5/8 or 3/4-inch -	\$ 2.00 (inside city)
	250.00 (outside city)
1-inch -	100.00
1 1/2-inch -	325.00
2-inch -	450.00

Meter sizes larger than 2-inch, the actual cost of the meter will be applied.

Sewerage

Company serving Frankfort - Frankfort Municipal Sewer Board
1200 Kentucky Avenue
Frankfort, Kentucky 40601
(502) 875-2448

Design capacity - 8,900,000 gallons per day

Average daily flow - 4,100,000 gallons

Type of treatment - Secondary

Treatment processes - Screening, grit removal, oxidation ditch,
extended aeration, activated sludge, secondary sedimentation,
ozone disinfection, filter press

Treated effluent discharged into - Kentucky River

Size of sanitary mains - 8 to 48 inches

Size of storm mains - 12 to 66 inches

Monthly rates - Based on water usage

\$1.45 per M gallons for residential customers

\$1.65 per M gallons for industrial customers

Tap-on charge:

\$300 (Inside city limits)

\$360 (Outside city limits)

The Frankfort Municipal Sewer Board is currently in the process of increasing its capacity of wastewater collection by 300 percent in the new industrial park area. Construction costs are estimated at \$100,000, with the anticipated completion date scheduled for Spring 1988.

CLIMATE

Franklin County

Temperature

Normal (30-year record)	54.90 degrees
Average annual 1985	54.60 degrees
Record highest, August 1983 (41-year record)	103.00 degrees
Record lowest, January 1963 (41-year record)	-21.00 degrees
Normal heating degree days (30-year record)	4,814
(Heating degree day totals are the sums of negative departures of average daily temperatures from 65 degrees F.)	

Precipitation

Normal (30-year record)	45.68 inches
Mean annual snowfall (30-year record)	16.50 inches
Total precipitation 1985	37.75 inches
Mean number days precipitation (.01 inch or more) (41-year record)	130.70
Mean number days thunderstorms (41-year record)	45.80

Prevailing winds (through 1963)

South

Relative Humidity

1 a.m.	77 percent (21-year record)
7 a.m.	82 percent (22-year record)
1 p.m.	60 percent (22-year record)
7 p.m.	64 percent (22-year record)

Source: U.S. Department of Commerce, Environmental Science Services Administration, Climatological Data, 1985. Station of record: Lexington, Kentucky.

LOCAL GOVERNMENT

Structure

The city of Frankfort is served by a mayor who serves a four-year term, four commissioners who serve two-year terms, and a city manager. Franklin County elects a county judge/executive and six magistrates, each serving a four-year term.

Planning and Zoning

Joint agency - Frankfort-Franklin County Planning Commission

Participating cities - Frankfort

Zoning enforced - Within the corporate limits of Frankfort only

Subdivision regulations enforced - County-wide

Local codes enforced - Building code and housing code enforced in Frankfort

Mandatory state codes enforced - Kentucky Plumbing code, National

Electric Code, Kentucky Boiler Regulations and Standards, Kentucky

Building Code (modeled after BOCA code)

Local Fees and Licenses

The city of Frankfort and Franklin County each levy an occupational license fee of one percent of all salaries, wages, commissions and other compensation earned by every person in the city and county for work done or services rendered, and one percent of the net profits of all businesses, professions or other activities conducted in both the city and the county. Regulatory license fees for most businesses range from \$10 to \$500 annually within the city of Frankfort.

A 3 percent tax is levied on utilities receipts for schools in Franklin County. Tax is paid by all consumers of utilities as an add-on to the utilities bills. Exempted are receipts from utilities services that are resold and the receipts from the sale of energy or energy producing fuels that exceed 3 percent of the cost of production in manufacturing, processing, mining or refining.

State and Local Property Taxes

All property in Kentucky, except items exempted by the state constitution, is taxed by the state. Property which also may be taxed by local jurisdictions includes land and buildings, finished goods inventories, automobiles, trucks, office furniture and office equipment. Local taxing jurisdictions in Kentucky include counties, cities, and school districts.

All property in Kentucky is assessed at 100 percent of fair cash value.

COMBINED STATE AND LOCAL RATES PER \$100 VALUATION, 1986

	Frankfort/ Frankfort Independent School District	Frankfort/ Franklin County School District	Unincorporated Franklin County
Land and Buildings	\$0.986	\$0.896	\$0.646
Manufacturing			
Machinery	0.150	0.150	0.150
Pollution Control			
Equipment	0.150	0.150	0.150
Inventories			
Raw materials	0.001	0.001	0.001
Goods in Process	0.001	0.001	0.001
Finished Goods	0.795	0.719	0.469
Automobiles & Trucks	1.242	1.165	0.915
Other Tangible			
Personal Property	1.244	1.168	0.918
Intangibles (Accounts receivable*, money in hand, stock, notes, bonds)	0.250	0.250	0.250
Goods Stored in Public Warehouses in Transit Status	0.001	0.001	0.001
Private Leaseholds in Industrial Revenue Bond Financed Facilities	0.015	0.015	0.015

* Accounts receivable are taxed at 85 percent of face value, for an effective rate of \$0.2125 per \$100 valuation.

Safety

Police	Frankfort	Franklin County
Total staff	48 full-time 9 part-time	8 full-time 4 part-time
Radio-patrol cars	48	9
Fire*		
Insurance Services Office, Public Protection Classification	3	**
Full-time staff	57	19

Rescue Service

Emergency rescue service is provided to Frankfort and Franklin County by the Frankfort-Franklin County Disaster and Emergency Services and by units from the City of Frankfort Fire Department.

Refuse Collection and Disposal

The city of Frankfort provides refuse collection and disposal to the residents within the corporate limits of Frankfort. Business and industrial service must be arranged through private contractors. Franklin County provides this type of service to residents and businesses through a private contract arrangement.

* Includes copyrighted material of ISO Commercial Risk Services, Inc., with its permission.

** Property located within the Franklin County Fire District is rated class 9. All other property in unincorporated Franklin County is rated as class 10.

EDUCATION

Public Schools

	Frankfort Independent	Franklin County
Total Enrollment (spring, 1987)	822	6,257
Kindergarten	50	437
Elementary	512	2,407
Middle School		1,414
High School	260	1,999
Accreditation	Southern Association of Colleges and Schools	Southern Association of Colleges and Schools
Pupil-Teacher Ratio (1985-86)	17-1	19-1
Percent High School Graduates to College (1985-86)	62.5	59.9
Expenditures Per Pupil (1985-86)	\$2,742.66	\$2,131.52

In the Franklin County School System there are six elementaries, two middle schools and two high schools. Advanced placement programs, for college credit, are offered in six different courses. There is also an innovative vocational education program. The middle schools' program includes a full year of foreign language for all students in the seventh and eighth grades. The program also includes thinking skills, humanities and speech. ACT scores, with 68 percent of those eligible taking the test, average a composite of 20.2. The SAT test average is 592 in math and 528 verbal. In the 1986-1987 school year a Franklin County teacher, Rosemary Weddington, was selected as Kentucky Teacher of the Year and Superintendent Dr. Faurest Coogle was chosen as the Outstanding Superintendent in Kentucky.

Frankfort Independent Schools was the first district to implement the eight-period day in their high school. This is an innovative program which allows students to take a wider variety of courses offered. In addition, advanced placement programs for college credits are offered in English and calculus at the high school. With respect to elementary education, the Challenge Program for academically gifted children is offered in grades 1-8. This is a pull-out program consisting of research based projects. Junior Great Books is an advanced discussion program implemented in conjunction with the Challenge Program. It is also offered in grades 9-12. Writing Across the Curriculum is an organized way to learn creative writing. With a different theme for each year, the program is used in grades 5-8 in math, social studies, language arts, science, music, and visual arts.

Nonpublic Schools

<u>School</u>	<u>Enrollment</u>	<u>Grades</u>
Capital Day Elementary	165	K-8
Good Shepherd Elementary	315	K-8

Area Colleges and Universities

<u>Name</u>	<u>Location (Miles distant)</u>	<u>Enrollment (Fall, 1986)</u>	<u>Highest Degree Conferred</u>
Kentucky State University	Frankfort	2,205	Masters
Midway College	Midway (12)	340	Associate
Georgetown College	Georgetown (18)	1,362	Masters
Lexington Community College	Lexington (29)	2,587	Associate
Transylvania University	Lexington (29)	970	Baccalaureate*
University of Kentucky	Lexington (29)	20,788	Doctorate, M.D., D.M.D., J.D.
Asbury College	Wilmore (35)	939	Baccalaureate
Centre College	Danville (42)	814	Baccalaureate
Saint Catharine College	Springfield (50)	280	Associate
Eastern Kentucky University	Richmond (52)	12,737	Masters, Specialist**
Bellarmino College	Louisville (54)	2,644	Masters
Jefferson Community College	Louisville (54)	6,996	Associate
Spalding University	Louisville (54)	1,154	Doctorate
University of Louisville	Louisville (54)	20,217	Doctorate, M.D., D.M.D., J.D.

* Courses in a masters degree program are taught on the Transylvania campus by faculty members of Xavier University of Cincinnati. The degree is issued by Xavier University.

** Joint doctoral degree programs are offered in cooperation with the University of Kentucky, Lexington. The degrees are issued by the University of Kentucky.

Kentucky State University

Kentucky State University, located in Frankfort, is Kentucky's unique, small liberal studies-oriented institution of higher learning. The university offers academic programs leading to two-year associate degrees, four-year baccalaureate degrees and the masters degree in public affairs. KSU provides pre-professional instruction, and Kentucky dentistry, medical, and law schools reserve a percentage of their admissions for KSU graduates. The first phase of a five-year engineering degree program is also offered in cooperation with the University of Kentucky at Lexington and the University of Maryland. The Whitney Young College of Leadership Studies at KSU offers a unique program of study based upon the Great Books of the Western World. A continuing education program, evening and off-campus classes, credit for KET college telecourses, and other specialized programs are offered through the university's Community College to meet the varied needs and interests of the area. The university is the home of the Governmental Services Center, which develops, coordinates, and implements state government worker training programs.

The university's Interinstitutional Graduate Center is a multi-institutional unit where courses and programs are offered by Eastern Kentucky University and the Universities of Kentucky and Louisville. The Community Research Service conducts U.S. Department of Agriculture-sponsored research in aquaculture and natural resources, human nutrition and home economics, plant and soil science, rural development and sociology, and agricultural marketing. The Cooperative Extension Program provides assistance to limited-resource farmers, homemakers, families, youth and communities in 22 Kentucky counties.

Vocational Training

The Bluegrass State Skills Corporation, an independent public corporation created and funded by the Kentucky General Assembly, provides programs of skills training to meet the needs of business and industry from entry level to advanced training, and from upgrading present employees to retraining experienced workers.

The Bluegrass State Skills Corporation is the primary source for skills training assistance for a new or existing company. The Corporation works in partnership with other employment and job training resources and programs, as well as Kentucky's economic development activities, to package a program customized to meet the specific needs of a company.

Vocational training is available at both the state vocational-technical schools and the area vocational education centers. The state vocational-technical schools are post-secondary institutions. The area vocational education centers are designed to supplement the curriculum of high school students. Both the state vocational-technical schools and the area vocational education centers offer evening courses to enable working adults to upgrade current job skills.

(Continued)

Arrangements can be made to provide training in the specific production skills required by an industrial plant. Instruction may be conducted either in the vocational school or in the industrial plant, depending upon the desired arrangement and the availability of special equipment.

Nearest State School

Central Kentucky State Vocational-Technical School
Lexington, 29 miles distant

Business & Office	Drafting (with CAD/CAM)
Accounting/Management	Electricity
Clerical	Electronics
Secretarial	Graphic Arts
Consumer & Home Economics	Machine Shop
Commercial Foods	Mine Equipment Operator
Consumer & Family Life	Welding
Skills	Learning Resource Center
Health & Personal Services	Public Service Occupations
Occupations	Business/Industry Security
Cosmetology	Training
Dental Assisting	CPR Training
Practical Nursing	Electrical Safety Training
Surgical Technology	Emergency Medical Care
Industrial Education	Fire Service Training
Air Conditioning	First Aid & Safety
Auto Body Repair	Rescue & Emergency Services
Auto Mechanics	Training
Carpentry	

Nearest Area Education Center

Franklin County Area Vocational Education Center
Frankfort

Distributive Education	Drafting
Retailing	Electricity
Industrial Education	Machine Shop
Auto Body Repair	Welding
Auto Mechanics	

HEALTH

Local Medical Personnel

Physicians - 60

Dentists - 19

Hospitals

<u>General Hospital</u>	<u>Location</u>	<u>Beds</u>
HCA King's Daughters' Memorial Hospital	Frankfort	190

Medical staff - 47 doctors, 100 registered nurses, and 3 licensed practical nurses

Other Medical Facilities

Franklin County Health Center

Franklin Medical Center

West Bluegrass District Health Department

Ambulance Service

Name - Frankfort-Franklin County Ambulance Service

Staff - 26 emergency medical technicians

OTHER LOCAL FACILITIES

Communications

Telephone -	South Central Bell Telephone Company
Telegraph -	Western Union
	Toll-Free number, 1-800-325-6000
Newspapers -	The State Journal
Daily and	
circulation -	11,500
Sunday and	
circulation -	12,500
Radio -	WFKY-AM, WKYW-FM, WKED-AM
Television -	
Airwave reception	
from -	Lexington and Louisville, Kentucky;
	Cincinnati, Ohio
Cable service -	Community Service, Inc.;
	Consolidated TV Cable Service
Educational	
Television -	The Kentucky Educational Television
	(K.E.T.) network is available
	statewide

Religious Institutions

Denominations -	AME	Gospel Assembly
	Apostolic	Jehovah's Witnesses
	Assembly of God	Lutheran
	Baha'i	Methodist
	Baptist	Nazarene
	Catholic	Pentecostal
	Christian	Presbyterian
	Christian Science	Salvation Army
	Church of Christ	Seventh Day Adventists
	Church of God	Wesleyan
	Episcopal	
Nearest Synagogues -	Lexington, 29 miles southeast	
Congregations -	Adath Israel (reform)	
	Ohavey Zion (traditional)	

Library Services

Public library - Paul Sawyer Public Library

Size collection - 65,000 volumes

Circulation, 1986-87 - 167,227

University library - Blazer Library, Kentucky State University

Size collection - 293,303 volumes

Kentucky Department for Libraries and Archives

Size collection - 114,000 volumes

Circulation 1986-87 - 47,000

Services - Information services including Info-Ky (Courier-Journal, Herald-Leader and other on-line information systems), periodicals and newspapers, federal documents, films, microforms, microfilm and microfiche reader/printers, Kentuckiana materials, spoken-word cassettes, audiovisuals, Interlibrary Loan, telephone directories

State Public Records Division (Archives) - serves governmental agencies and the general public

Services - Archival holdings of 80,000 cubic feet of state and local records; microfilm holdings of 22,000 reels; complete set of laboratories; microfilming for state and local government agencies; public monthly and annual checklist of Kentucky documents; document preservation laboratory for state and local government agencies; records retention schedules prepared for state and local government agencies; disaster response team for any public repository; guide to holdings in public repositories; grant programs for local government records management; consultant and advisory services; public research room

Financial Institutions

<u>Banks</u>	<u>Assets</u>	<u>Deposits</u>	<u>Statement Date</u>
Farmers Bank and Capital Trust Company	\$603,624,768.00	\$500,060,109.00	12/31/86
Republic Savings Bank	312,026,140.22	294,744,443.36	12/31/86
State National Bank of Frankfort, Inc.	81,632,498.00	65,276,234.00	12/31/86

<u>Savings and Loan Associations</u>	<u>Assets</u>	<u>Deposits</u>	<u>Statement Date</u>
The Cumberland First Federal Savings and Loan Association of Frankfort	\$907,550,000.00	\$692,283,000.00	12/31/86
	86,294,039.81	76,780,122.84	6/30/87

Hotels and Motels

Total number - 7
Total rooms - 690

RECREATION

Local

The city of Frankfort provides excellent recreational facilities and organized programs for the youth, adults and senior citizens of the community. These programs range from strenuous sports to leisurely family activities.

A full-time recreation staff organizes and promotes supervised sporting activities each year. Featured sports leagues include girls' and adult softball; Instructional League, Minor League, Little League and Babe Ruth League baseball; summer and fall league tennis; archery club; croquet club; volleyball; and golf. Annual tournaments held in Frankfort include softball, baseball, tennis, and the prestigious Governor's Open golf tournament which is held at Juniper Hills Golf Course. A six-week camp for the handicapped is conducted in cooperation with Contact, Inc.

Frankfort's recreational facilities include the 124-acre, family-oriented Juniper Hills Park, with an 18-hole regulation golf course and pro-shop, an Olympic-size swimming pool, four lighted tennis courts, a lighted softball field, two lighted sand volleyball courts, horseshoe pits, a basketball court, two playgrounds, picnic facilities, a tree arboretum, a shelter, and a gazebo.

The 150-acre recreation area, Capital View Park, includes two lighted softball fields, volleyball courts, picnic facilities, playground, a 6.2-mile running trail with seven exercise stations, nature trails, and two shelters with restrooms.

The 47-acre East Frankfort Park has a swimming pool, four lighted tennis courts, lighted minor League and Instructional League baseball fields, a lighted softball field, concrete and sand volleyball courts, two basketball courts, nature trails, playground equipment, picnic facilities and two shelters with restrooms. The park also includes a playground with therapeutic equipment.

South Frankfort Park has a concrete volleyball court, a playground, two basketball courts, picnic facilities and a shelter with restrooms.

Private recreational facilities in Frankfort are as extensive as the public facilities. The country club offers an 18-hole golf course, swimming pool and tennis courts. Two bowling facilities and five movie theaters (four indoor and one drive-in) are available to the public.

The Frankfort YMCA offers numerous programs for children and adults. The facility, located in the Capital Plaza Complex, includes a swimming pool, a racquetball court, a handball court, weight lifting equipment, fitness center, and a ladies exercise room.

Special local events include the Franklin County Fair, an annual event held in July; the Frankfort Quilt Festival, held annually in March; and the Christmas Candlelight Tour, an annual event held in November.

The Capital Expo festival, held annually the first full weekend in June, is an arts and crafts fair with ethnic food booths and live entertainment. The Expo, sponsored by the Frankfort/Franklin County Chamber of Commerce, also offers a Miss Teen Expo beauty contest, a hot air balloon race, fireworks, and an "Ole Time" Fiddler's Contest.

Frankfort, designated as the capital of Kentucky in 1792, provides numerous tourist attractions.

The bodies of Daniel and Rebecca Boone were brought to Frankfort twenty-five years after Boone's death in Missouri, and are buried in the Frankfort Cemetery. Boone's rifle and other relics of his life are displayed in the museum of the Kentucky Historical Society in Frankfort.

The Old State Capitol and Kentucky History Museum on Broadway is an architectural gem. It was the first Greek Revival building west of the Alleghenies. Its circular marble stairway, perfectly balanced, supports itself by its own weight.

The Corner of Celebrities, an area consisting of two square blocks of downtown Frankfort, is a treasure of interesting architecture. Located here are the old homes and home sites of thirty-six prominent federal officials. Three of the homes, Liberty Hall, the Orlando Brown House, and the Vest-Lindsey House, have been restored to their original condition and are open to the public as museums.

Frankfort is also the place of origin of Bibb lettuce, a widely-known delicacy. It was developed by John Bibb in his garden in back of his house on Wapping Street.

The Capitol building houses the executive offices and the legislature. Completed in 1910, the only power machinery used in construction was a steam-driven concrete mixer.

Located on the west lawn behind the Capitol is the Floral Clock. Resting on a 100-ton planter above a reflecting pool, the clock has a 34-foot face and uses 20,000 plants grown in state greenhouses.

The Governor's Mansion, located just east of the Capitol, has been the official residence of Kentucky's governors since 1914. A restoration project was completed early in 1983.

The Kentucky Military History Museum at the Old State Arsenal features famous Kentucky rifles and other military memorabilia.

The historic Gooch House, an 1890 Victorian building, houses the offices of the Frankfort/Franklin County Chamber of Commerce and Tourist Commission.

Area (Within 50 miles)

Lexington, 29 miles southeast of Frankfort, offers a variety of cultural, sporting, and recreational activities. Thoroughbred and harness racing is presented at Keeneland Race Course and the Red Mile Harness Track during several meets each year. The University of Kentucky and Transylvania University offer a number of sporting events. The University of Kentucky basketball games are held at Rupp Arena, the world's largest basketball arena. Other attractions include Lexington Philharmonic concerts, Lexington Children's Theatre, and plays performed by Broadway touring companies, all held in the recently renovated Opera House. In addition, located in the heart of downtown Lexington, the historical Victorian Square and Festival Market Place offer a taste of nostalgia with their many quaint shops and restaurants.

The Kentucky Horse Park, a park dedicated to horses and to man's love for horses, is located 30 miles east of Frankfort at Lexington. The park, which contains more than 1,000 acres of Kentucky Bluegrass, features the International Museum of the Horse; the Man O'War Memorial; the wide screen film "Thou Shalt Fly Without Wings"; an antique carriage display; horseback and pony rides; walking farm tours; horse-drawn tours; a restaurant; a gift shop; and a campground area, which offers swimming, tennis, and planned activities. Numerous special events are held year-round and include various horse shows, steeplechasing, dressage, polo games, and rodeos.

Taylorsville Lake State Park, 34 miles southwest of Frankfort near Taylorsville, was developed by the U.S. Army Corps of Engineers. The 3,050-acre lake and 10,700-acre recreation area features full-service marina facilities, fishing, boating, swimming, and wildlife recreation.

Waveland State Shrine, 34 miles southeast of Frankfort near Lexington, features an 1847 Greek Revival mansion depicting Kentucky lifestyles from the days of early settlers to the antebellum era of gentility and elegance as well as the Civil War and postwar periods. The shrine also includes the Kentucky Life Museum and a plantation village on ten acres with many shops and displays.

Old Fort Harrod State Park, 35 miles south of Frankfort, is a 28-acre park in Harrodsburg that features a full-scale reproduction of the original Fort Harrod. The park also contains the log cabin where Abraham Lincoln's parents were wed, the Mansion Museum which houses mementos associated with the great periods of Kentucky history, a pioneer cemetery, and a federal monument dedicated to pioneers. The "Legend of Daniel Boone" and "Lincoln" are two excellent outdoor dramas which are performed at the Old Fort Amphitheater during the summer months.

Herrington Lake, 41 miles south of Frankfort near Danville and Harrodsburg, was developed by the Kentucky Utilities Company in 1925. Dix River Dam near Pleasant Hill is located on the 3,600-acre lake. Fishing, boating, and swimming can all be enjoyed on the lake. Camping and fishing facilities are available near Danville and Harrodsburg.

Pleasant Hill, a restored Shaker Village located 42 miles south of Frankfort, is a National Historic Landmark. Over 20 buildings and grounds have been restored to display unique Shaker skills in furniture making, crafts, and architecture. Dining rooms, lodging, craft shops, and seasonal festivals and plays are offered.

Constitution Square State Shrine, 42 miles south of Frankfort in Danville, is a reproduction of Kentucky's first courthouse square, including the original 1792 post office which was the first in the west.

E. P. "Tom" Sawyer State Park, 45 miles west of Frankfort, is located near Louisville. Recreational facilities include an outdoor Olympic-size pool, a bathhouse, 12 lighted tennis courts, a one-mile fitness trail, a picnic area, an archery range, and soccer fields. Planned recreation and playground are offered year-round. Indoor facilities are available for basketball, volleyball, exercise classes, dance classes and various other events.

Perryville Battlefield State Shrine, 45 miles south of Frankfort near Perryville, is the site of the largest Civil War battle in Kentucky. A museum, a gift shop, a picnic area, and a playground are located on the grounds.

Lincoln Homestead State Park, 46 miles southwest of Frankfort near Springfield, is a 153-acre park on land settled by Abraham Lincoln's family. The actual building in which Nancy Hanks, mother of President Lincoln, lived during her courtship with Thomas Lincoln is preserved here as well as a replica of the 1782 cabin where Thomas Lincoln lived as a boy. The park also has a museum, a gift shop, a picnic area, and an 18-hole golf course.

White Hall State Shrine, 46 miles southeast of Frankfort near Richmond, one of the grand estate houses of post-Civil War Kentucky, is the Italianate mansion of Cassius Marcellus Clay, the early abolitionist and politician. Kentucky handcrafts are sold in the White Hall gift shop, only a short walk from the mansion.

General Butler State Resort Park is located 47 miles northwest of Frankfort near Carrollton. The park includes a 30-acre lake, a boat dock, a 9-hole golf course, a miniature golf course, a swimming pool, playgrounds, shuffleboard, tennis courts, planned recreation, fishing, camping, horseback riding, 57 lodge rooms, cottages, and gift shops. General Butler's family home, the Butler Mansion, has been restored and contains a museum of Ohio River lore. Another unique feature is the Ski Butler ski area that has six ski runs, a ski shop, rental equipment, a ski school and chair lifts.

Isaac Shelby State Shrine, 48 miles south of Frankfort near Danville, is the burial site of Kentucky's first governor and one of the Commonwealth's foremost statesmen.

COMMUNITY IMPROVEMENTS

Industrial Development

The Frankfort-Franklin County Industrial Foundation recently purchased an industrial park located at the intersection of U.S. 60 and Interstate 64. The 155-acre park will maintain an access road and provide public utilities including electric power, water and sewerage.

The Topy Corporation began operations in Frankfort during February of 1986. The 120,000-square-foot facility produces automobile wheels and employs 80 persons. Total investment for the development of this plant was approximately \$26 million, with plans for a \$14 million expansion project already under way. This 140,000-square-foot addition will increase employment by 25 persons.

The Inryco-Butler Manufacturing Company recently began its operations in Frankfort. The 250,000-square-foot facility manufactures architectural panels and employs 100 persons.

Transportation

The realignment and reconstruction of the intersection of U.S. 60, U.S. 460 and U.S. 421, in east Frankfort, was recently completed. Total cost of the project exceeded \$2 million.

The West Connector, which will complete a four-lane loop around Frankfort, is currently under way and scheduled for completion late 1989. The \$30 million highway project will extend from the intersection of U.S. 60 and U.S. 127 on the west side of Frankfort, to the intersection of U.S. 421, Mero Street, and Clinton Street, near the Capital Plaza Complex.

Utilities

The Frankfort Electric and Water Plant Board plans to build an electrical substation and install a transformer at the Chenault Road Industrial Park. In addition, they plan to increase water storage capacity and distribution facilities in west Frankfort. Total cost of the two projects is estimated at \$3.5 million.

The Frankfort Municipal Sewer Board is currently in the process of increasing its capacity of wastewater collection by 300 percent in the new industrial park area. Construction costs are estimated at \$100,000, with the anticipated completion date scheduled for Spring 1988.

Community Development

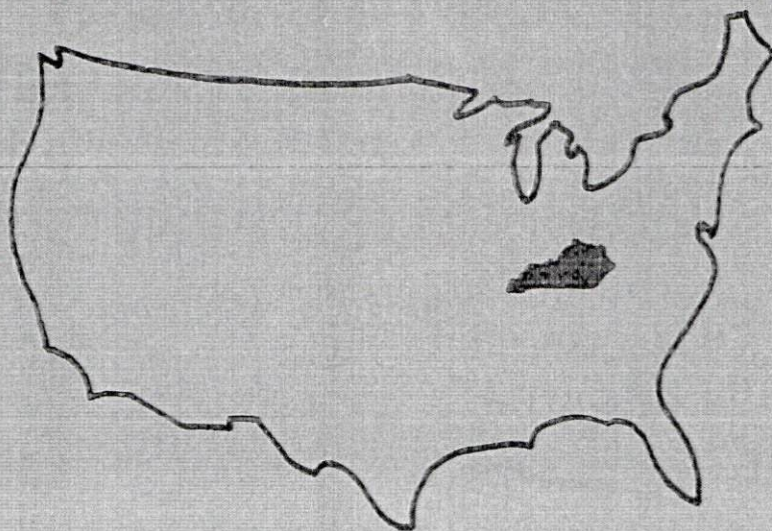
A \$750,000 HUD grant helped to complete phase one of the East Main Street revitalization project. Nineteen structures were demolished and residents were relocated to sufficient housing. In addition, properties were rehabilitated on the south end of Main Street. The city of Frankfort recently received an \$800,000 HUD grant designated for phase two of the rehabilitation project for East Main Street and High Street. The completion date is scheduled for Fall 1988. Contingent upon federal grant appropriations, the officials plan to engage into phase three of the community development and urban rehabilitation program. The project includes renovation and demolition of selected building structures in north Frankfort.

Education

Kentucky State University recently completed several projects, including the renovation of Young Hall and Combs Hall at a total cost of \$3.6 million; the extension of the utility-line tunnel to serve all north campus buildings, which totaled \$4.5 million; a \$1.9 million project to renovate Hume Hall, which serves as the principal administrative building; and a \$2.8 million renovation of the old Underwood Cafeteria, which was converted to a community research facility. Projects currently under way include north campus roadway and sidewalk construction and landscaping; a chiller addition to the heating and cooling plant; utility-line tunnel connections to three major buildings; a major addition to the Blazer Library, including a complete renovation of the existing facility; and the renovation of Carver Hall, Carver Hall Annex and Bell Gymnasium. Kentucky State University has plans for a \$400,000 animal care laboratory improvement project, an \$800,000 renovation of Hathaway Hall, a \$400,000 renovation of the Rosenwald Building, and a \$200,000 project to improve handicapped access.

The Franklin County School System recently completed an addition to Bondurant Middle School. The project included expansion to the existing building in the eighth grade area and total cost was approximately \$400,000. Projects and programs currently under way include the renovation of the former Thorn Hill School, which is being converted to an adult education facility; a program requiring one complete year of a foreign language at grades 7 and 8; the addition of process writing to the schools' curriculums in grades 7 through 12; and a program in vocational education combining math, science, computers, robotics, fiber optics and applied technology. Total cost of the projects and program implementation are expected to exceed \$640,000.

A \$3 million addition and renovation project at Second Street Elementary School, of the Frankfort Independent School System, is currently under way and scheduled for completion by September, 1989. The addition includes 11 classrooms, library, art room, office complex, cafeteria and gymnasium. The school system is also planning an addition-renovation project for Frankfort High School. This will include a complete renovation of the existing structure and construction of a new office complex, home economics room, art center, technology center and industrial arts center. Completion date is scheduled for September 1991.



Kentucky Commerce Cabinet
Department of Economic Development
Capital Plaza Tower
Frankfort, Kentucky 40601
(502) 564-7140