

1986

Industrial Resources: Henderson County - Henderson

Kentucky Library Research Collection
Western Kentucky University, spcol@wku.edu

Follow this and additional works at: https://digitalcommons.wku.edu/henderson_cty



Part of the [Business Administration, Management, and Operations Commons](#), [Growth and Development Commons](#), and the [Infrastructure Commons](#)

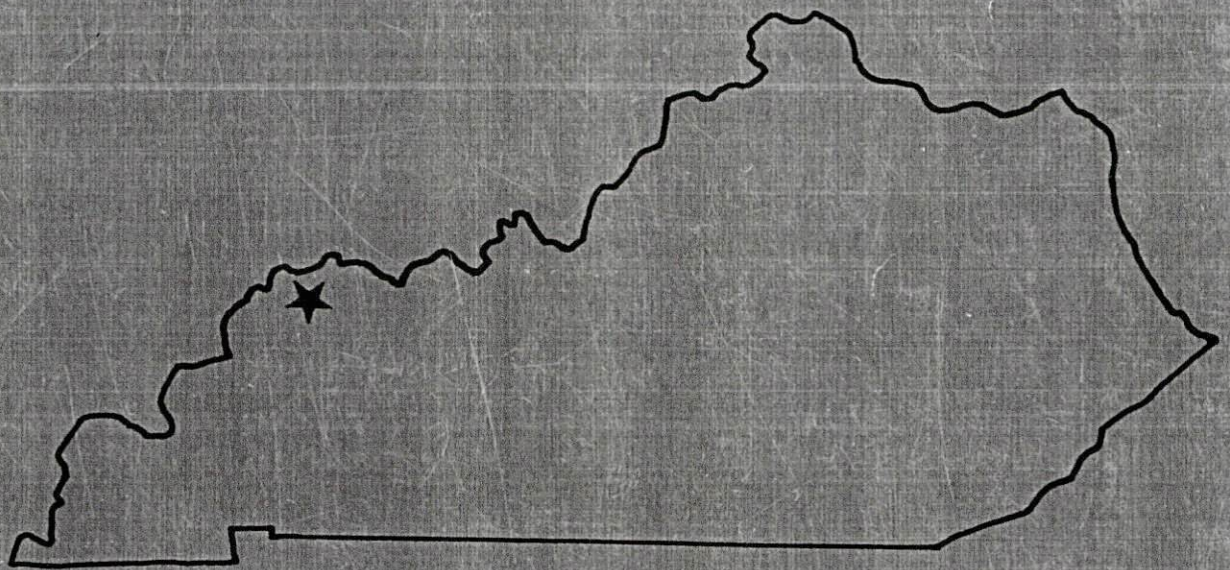
Recommended Citation

Kentucky Library Research Collection, "Industrial Resources: Henderson County - Henderson" (1986). *Henderson County*. Paper 7.
https://digitalcommons.wku.edu/henderson_cty/7

This Report is brought to you for free and open access by TopSCHOLAR®. It has been accepted for inclusion in Henderson County by an authorized administrator of TopSCHOLAR®. For more information, please contact topscholar@wku.edu.

RESOURCES FOR ECONOMIC DEVELOPMENT

Henderson



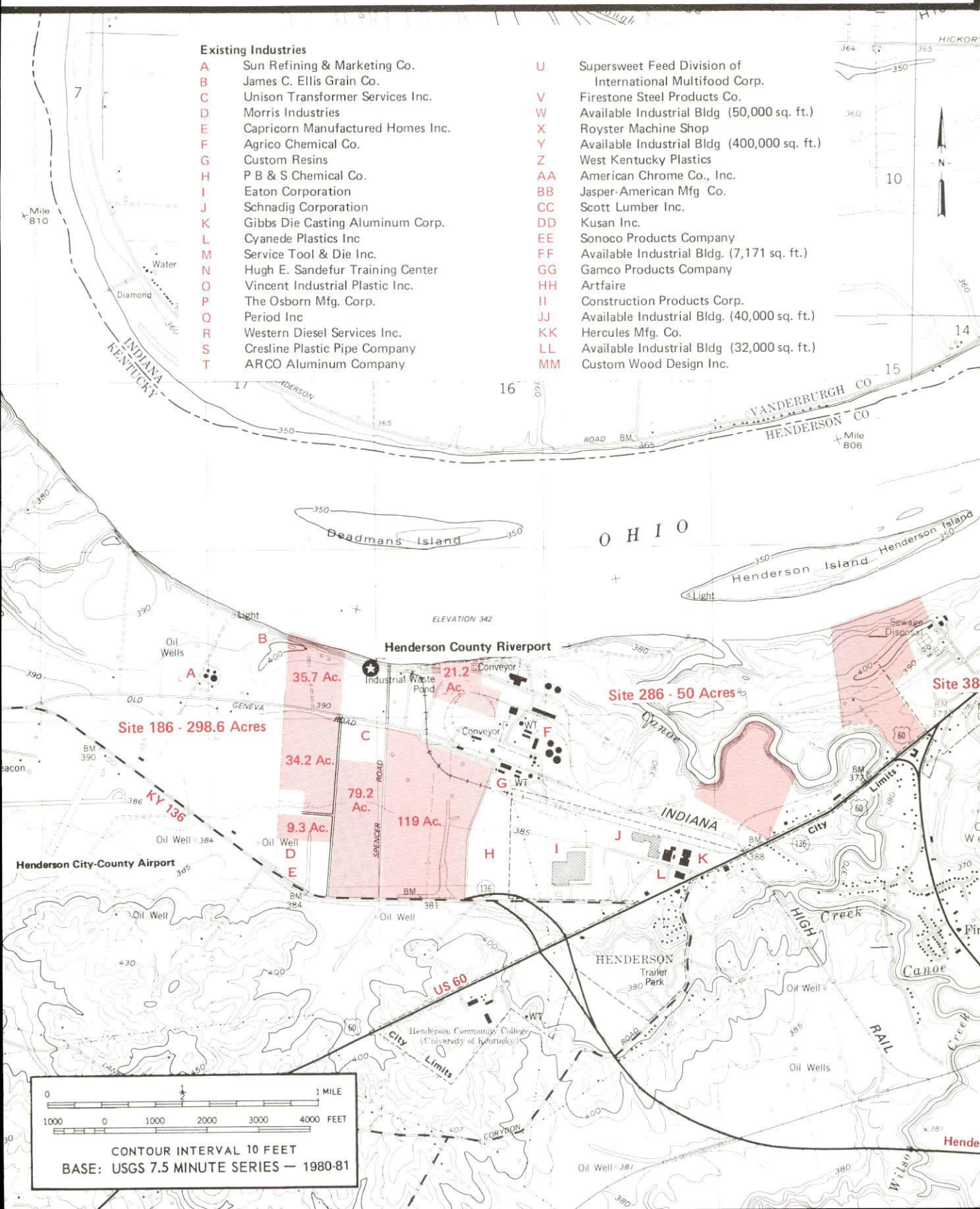
KENTUCKY
The business environment is right.

HENDERSON, KENTUCKY --- Index to Industrial Sites --- 1986

For detailed data on individual sites contact the Kentucky Department of Economic Development, Industrial Development & Marketing Division, Capital Plaza Tower, Frankfort, Kentucky 40601 (502-564-7140).

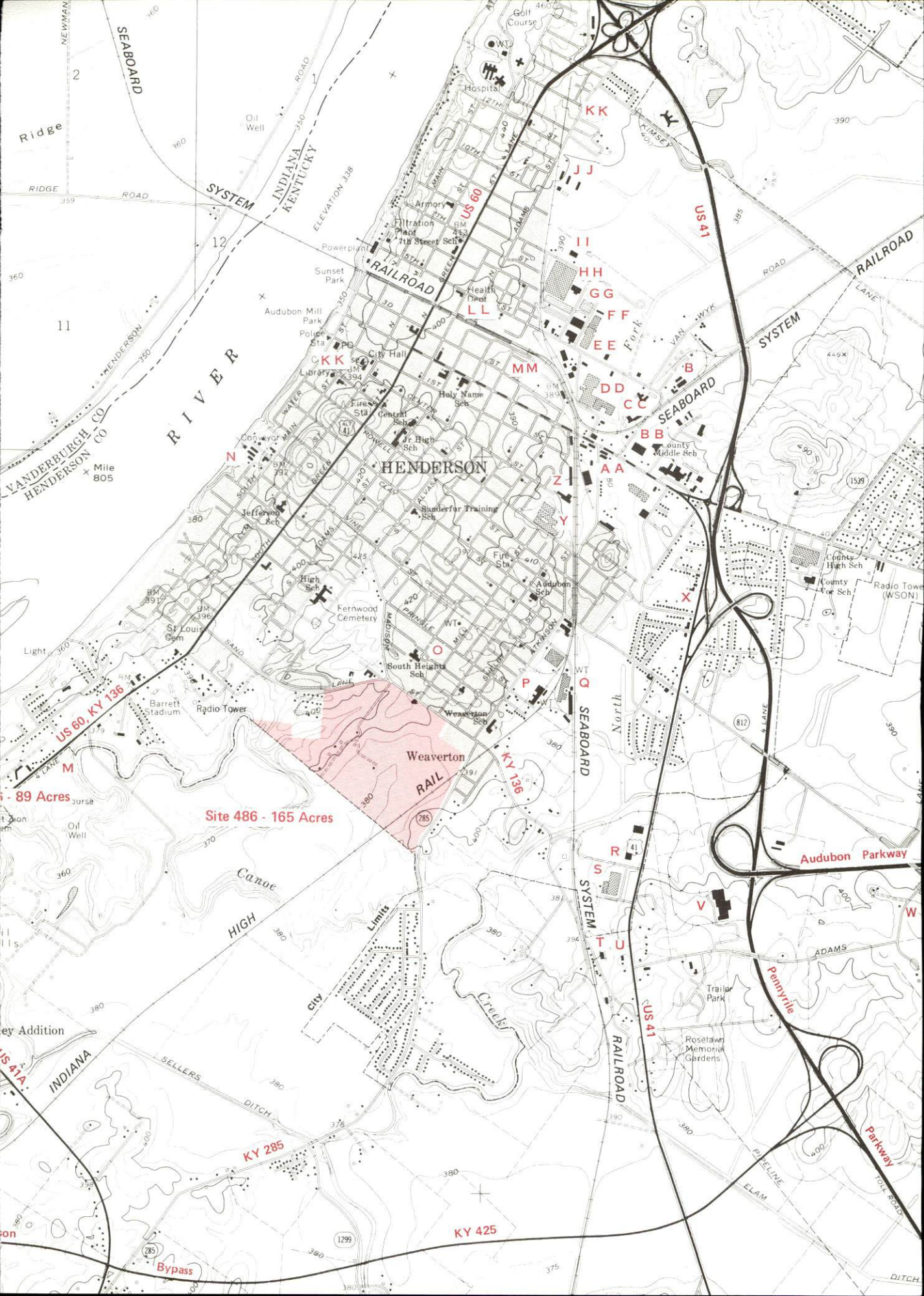
Existing Industries

A	Sun Refining & Marketing Co.	U	Supersweet Feed Division of International Multifood Corp.
B	James C. Ellis Grain Co.	V	Firestone Steel Products Co.
C	Unison Transformer Services Inc.	W	Available Industrial Bldg (50,000 sq. ft.)
D	Morris Industries	X	Royster Machine Shop
E	Capricorn Manufactured Homes Inc.	Y	Available Industrial Bldg (400,000 sq. ft.)
F	Agrico Chemical Co.	Z	West Kentucky Plastics
G	Custom Resins	AA	American Chrome Co., Inc.
H	P B & S Chemical Co.	BB	Jasper-American Mfg Co.
I	Eaton Corporation	CC	Scott Lumber Inc.
J	Schnadig Corporation	DD	Kusan Inc.
K	Gibbs Die Casting Aluminum Corp.	EE	Sonoco Products Company
L	Cyanede Plastics Inc	FF	Available Industrial Bldg. (7,171 sq. ft.)
M	Service Tool & Die Inc.	GG	Gamco Products Company
N	Hugh E. Sandefur Training Center	HH	Artfaire
O	Vincent Industrial Plastic Inc.	II	Construction Products Corp.
P	The Osborn Mfg. Corp.	JJ	Available Industrial Bldg. (40,000 sq. ft.)
Q	Period Inc	KK	Hercules Mfg. Co.
R	Western Diesel Services Inc.	LL	Available Industrial Bldg (32,000 sq. ft.)
S	Cresline Plastic Pipe Company	MM	Custom Wood Design Inc.
T	ARCO Aluminum Company		



0 1000 2000 3000 4000 FEET

CONTOUR INTERVAL 10 FEET
BASE: USGS 7.5 MINUTE SERIES — 1980-81



RESOURCES FOR ECONOMIC DEVELOPMENT
HENDERSON, KENTUCKY

Prepared by
The Kentucky Department of Economic Development
Division of Research and Planning
in cooperation with
The Henderson Area Economic Development Council
and
The Henderson-Audubon Area Chamber of Commerce

1986

Program manager - Andrew Dennis; research - James R. Thompson; clerical - Bobbi Graves; graphics - Frank Ferrante, Tony Cecconi, Robert Owens; cartography - Site Evaluation Branch, Division of Industrial Development and Marketing. Cost of printing paid from state funds.

TABLE OF CONTENTS

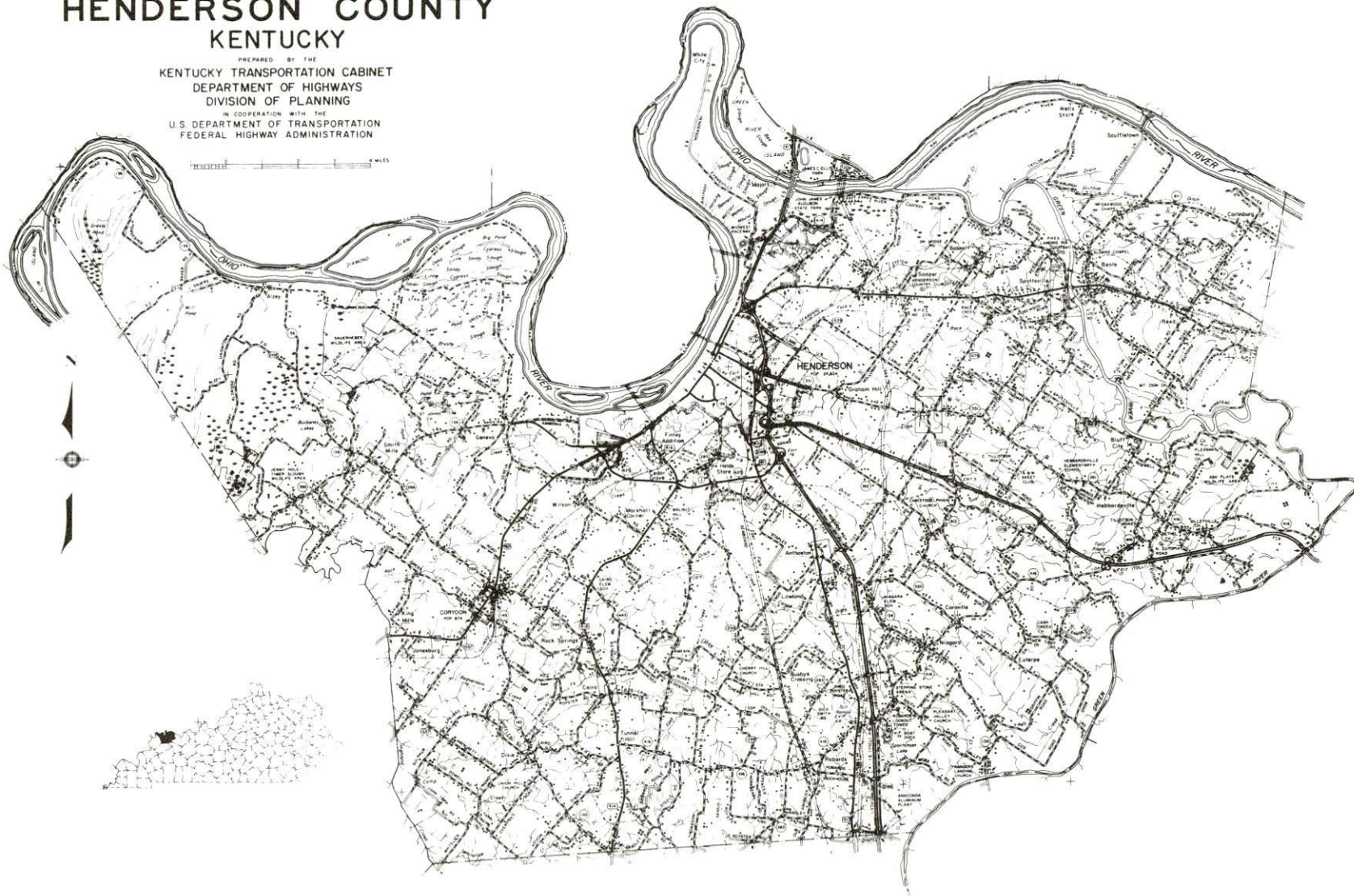
<u>Chapter</u>	<u>Page</u>
INDUSTRIAL SITES	i
HENDERSON, KENTUCKY - A RESOURCE PROFILE	1
THE LABOR MARKET AREA	3
Population	3
Labor Force Characteristics of Residents, 1984	3
Selected Components of Nonagricultural Employment, by Place of Work, 1984	4
Major Henderson Manufacturing Firms, Their Products and Employment	4
Labor Organizations in Manufacturing Firms	6
Industrial Services	7
Estimated Male Labor Supply	8
Estimated Female Labor Supply	8
Average Weekly Wages By Industry, by Place of Work, 1984	9
Per Capita Personal Income	11
TRANSPORTATION	12
Rail	12
Highways	12
Truck Service	13
Air	15
Bus	15
Taxi	15
Rental Services	15
Water	16
POWER AND FUEL	17
Electricity	17
Natural Gas	18
Other Fuels	18
WATER AND SEWERAGE	19
Public Water Supply	19
Raw Water	21
Sewerage	21
CLIMATE	22

<u>Chapter</u>	<u>Page</u>
LOCAL GOVERNMENT	23
City	23
County	23
Assessed Value of Property, 1985	23
State and Local Property Taxes	24
Utilities Gross Receipts Tax for Schools	25
Planning and Zoning	25
Safety	26
Police	26
Fire	26
Rescue Service	26
Refuse Collection and Disposal	26
EDUCATION	28
Public Schools	28
Nonpublic Schools	28
Area Colleges and Universities	29
Vocational Schools	30
HEALTH	32
Local Medical Personnel	32
Hospitals	32
Other Medical Facilities	32
Ambulance Service	32
OTHER LOCAL FACILITIES	33
Communications	33
Library Services	34
Religious Institutions	34
Financial Institutions	35
Hotels and Motels	35
Clubs and Organizations	36
RECREATION	37
COMMUNITY IMPROVEMENTS	39

1985 EDITION
GENERAL HIGHWAY MAP
HENDERSON COUNTY
KENTUCKY

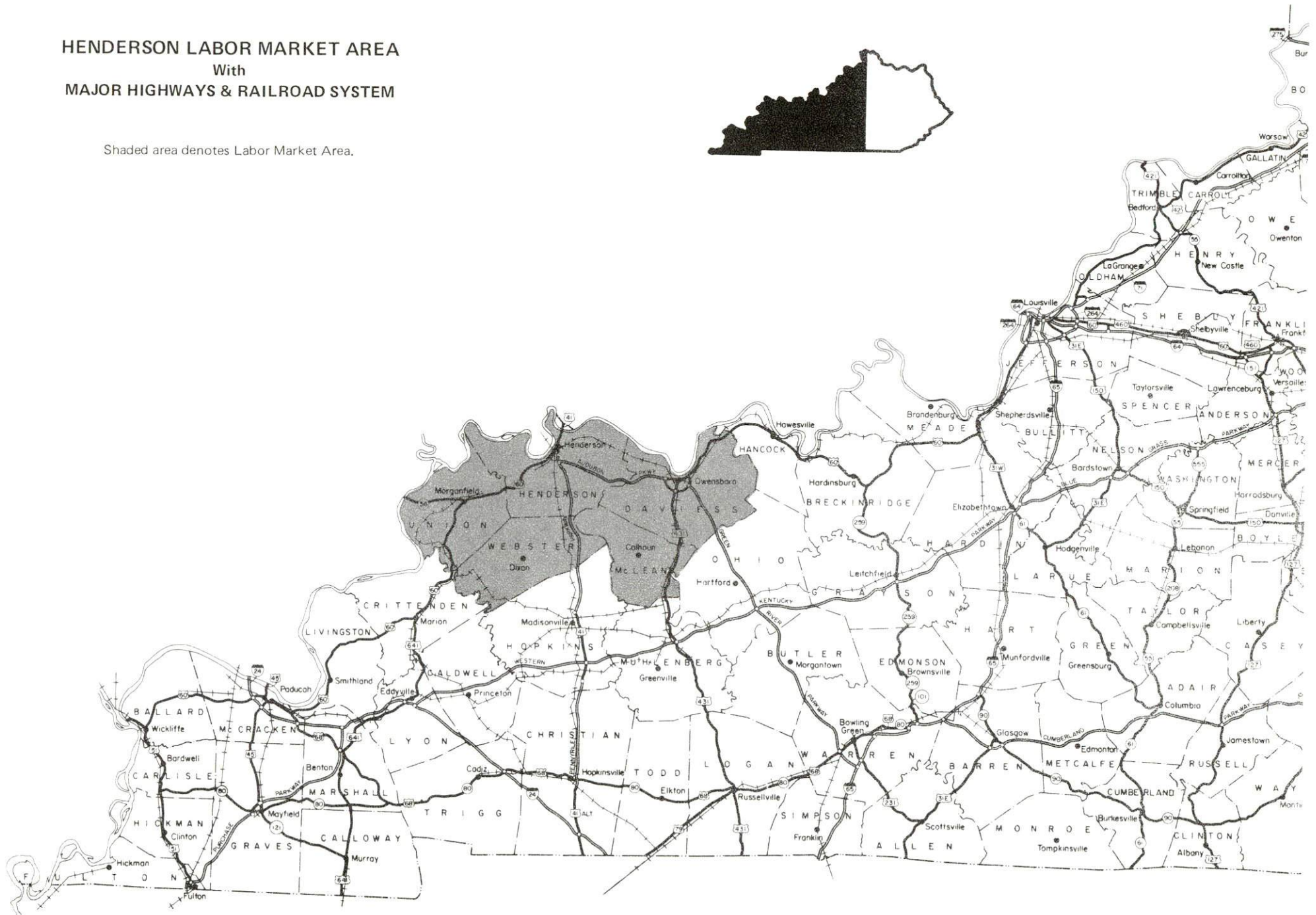
PREPARED BY THE
KENTUCKY TRANSPORTATION CABINET
DEPARTMENT OF HIGHWAYS
DIVISION OF PLANNING
IN COOPERATION WITH THE
U.S. DEPARTMENT OF TRANSPORTATION
FEDERAL HIGHWAY ADMINISTRATION

0 1 2 3 4 MILES



HENDERSON LABOR MARKET AREA
With
MAJOR HIGHWAYS & RAILROAD SYSTEM

Shaded area denotes Labor Market Area.



HENDERSON, KENTUCKY - A RESOURCE PROFILE

Henderson, the county seat of Henderson County, is located in northwestern Kentucky along the banks of the Ohio River. The city had a 1984 estimated population of 25,498. Henderson is located 10 miles south of Evansville, Indiana; 125 miles southwest of Louisville, Kentucky; 142 miles northwest of Nashville, Tennessee; and 178 miles southeast of St. Louis, Missouri.

Henderson County covers a land area of 438 square miles in the Western Coal Field Region of Kentucky. The Ohio River forms the northern boundary of the county. Henderson County had an estimated population of 42,156 in 1984.

The Economic Framework

The total number of Henderson County residents employed in 1984 averaged 18,950, with nonagricultural jobs accounting for 18,385 workers. Manufacturing firms in the county reported 5,250 employees; wholesale and retail trade provided 3,420 jobs; 2,720 people were employed in service occupations; state and local government accounted for 1,610 employees; contract construction firms provided 340 jobs; and 840 people were employed by mining and quarrying operations.

Per capita personal income in Henderson County in 1983 was \$10,348, or \$952 above the Kentucky average. Between 1979 and 1983, per capita income increased by 22.8 percent.

The Henderson labor market area includes Henderson County, the adjoining Kentucky counties of Daviess, McLean, Union, and Webster, and the adjoining Indiana counties of Posey, Vanderburgh and Warrick. The total number of residents employed in the Kentucky portion of the labor market area in 1984 averaged 79,710, with nonagricultural jobs accounting for 76,600 workers. Manufacturing firms in the area reported 13,240 employees; wholesale and retail trade provided 13,070 jobs; 10,030 people were employed in service occupations; state and local government accounted for 7,220 employees; contract construction firms provided 2,270 jobs; and 4,890 people were employed by mining and quarrying operations.

Resources for Growth

1. Labor Supply - There is a current estimated labor supply of 8,860 men and 8,670 women available for industrial jobs in the Kentucky portion of the labor market area. In addition, from 1986 through 1990, 7,340 young men and 6,880 young women in the area will become 18 years of age and potentially available for industrial jobs.

2. Transportation - The Seaboard System Railroad provides main line service and the Indiana Hi-Rail Corporation provides branch line service to Henderson. Henderson is served directly by U.S. Highways 41, 41A, and 60, and the Pennyriple and Audubon Parkways. In addition, Interstate 64 is located 23 miles north of Henderson. Twenty-six trucking companies serve Henderson. The nearest commercial airport, Evansville Dress Regional Airport, is located 14 miles north of Henderson. The Henderson City-County Airport, 3 miles southwest of Henderson, has a 4,800-foot paved runway. Henderson is located on the Ohio River and the Henderson County Riverport Authority operates port facilities at mile 808 on the Ohio River.

3. Power and Fuel - Electric power is provided to Henderson and part of Henderson County by the Municipal Power and Light, a municipally-owned generating company. Kentucky Utilities Company, an electric generation and transmission company, and the Henderson-Union Rural Electric Cooperative Corporation, which is supplied by the Big Rivers Electric Corporation, also serve Henderson County. Natural gas service is provided by the Henderson Municipal Gas System, which is supplied by the Texas Gas Transmission Corporation. Five distributors of propane and six distributors of distillate fuel oil serve Henderson.

4. Education - Primary and secondary education is provided to Henderson and Henderson County by the Henderson County School System. Henderson County School System had a 1985 fall enrollment of 7,718.

Henderson Community College, a part of the University of Kentucky Community College System, offers two years of liberal arts and career-oriented programs leading to the Associate in Applied Science, the Associate in Arts, or the Associate in Science degree. The community college also offers continuing education and community service programs. The Fall 1985 enrollment was 1,859.

In addition, three universities, four senior colleges and three community colleges are located within 100 miles of Henderson.

The Daviess County State Vocational-Technical School and the Owensboro Vocational-Technical School, located in Owensboro, 30 miles east, offer training in a total of 28 different courses. The Henderson County Area Vocational Education Center, located in Henderson, offers training in 10 courses.

THE LABOR MARKET AREA

The Henderson Labor Market Area includes Henderson County and the adjoining Kentucky counties of Daviess, McLean, Union and Webster. The northern boundary of Henderson is formed by the Ohio River where it borders the state of Indiana. The Henderson Labor Market Area also encompasses the neighboring Indiana counties of Posey, Vanderburgh and Warrick.

POPULATION				
Area	1984*	1980	1970	Percent Nonwhite 1980
Henderson	25,498	24,834	22,976	11.0
Evansville, IN-KY MSA**	281,400	276,522	254,515	N/A
Labor Market Area	172,976	169,541	153,743	N/A
Henderson County	42,156	40,849	36,031	7.7
Daviess County	88,269	85,949	79,486	4.5
McLean County	9,980	10,090	9,062	0.8
Union County	17,816	17,821	15,882	18.9
Webster County	14,755	14,832	13,282	6.1

* Population estimates.

** Evansville, Indiana-Kentucky Metropolitan Statistical Area (includes Henderson County in Kentucky and Posey, Vanderburgh and Warrick Counties in Indiana).

Note: The 1980 city counts of population by race are provisional.

Sources: U.S. Department of Commerce, Bureau of the Census, 1980 Census of Population and Housing, March 1981; 1980 Census of Population, Number of Inhabitants. University of Louisville, Urban Studies Center, Population Unit, October 1985; Kentucky Population Research Notes, Issue Number One, May 1985.

LABOR FORCE CHARACTERISTICS OF RESIDENTS, 1984

	Henderson County	Labor Market Area*
Civilian Labor Force	21,043	88,249
Employment	18,953	79,706
Agricultural	568	3,106
Nonagricultural	18,385	76,600
Unemployment	2,090	8,543
Rate of Unemployment (%)	9.9	9.7

* Includes Henderson County and the four adjoining Kentucky counties.

Source: Kentucky Cabinet for Human Resources, Kentucky Labor Force Estimates, Annual Averages, 1984.

SELECTED COMPONENTS OF NONAGRICULTURAL EMPLOYMENT,
BY PLACE OF WORK, 1984

	<u>Henderson County</u>	<u>Labor Market Area*</u>
All Industries (total)	15,495	56,511
Manufacturing	5,247	13,239
Wholesale & Retail Trade	3,422	13,066
Services	2,719	10,029
State/Local Government	1,611	7,217
Contract Construction	340	2,274
Mining & Quarrying	838	4,893

* Includes Henderson and the four adjoining Kentucky counties.

Note: Excludes domestic workers, railway workers, certain nonprofit corporations, majority of federal government workers, and self-employed workers.

Source: Kentucky Cabinet for Human Resources, Average Monthly Workers Covered by Kentucky Unemployment Insurance Law, 1984.

MAJOR HENDERSON MANUFACTURING FIRMS,
THEIR PRODUCTS AND EMPLOYMENT*

<u>Firm (Establishment date)</u>	<u>Product</u>	<u>Employment</u>			<u>Labor Unions</u>
		<u>Total</u>	<u>Male</u>	<u>Female</u>	
Alcan Ingot & Recycling (1970)	Primary aluminum ingot, aluminum extrusion billet, aluminum sheet ingot	627	582	45	Aluminum Workers**
Artfaire (1968)	Gift wrapping, printed and laminated paper and foils	250	75	175	Laborers**
Construction Products Corporation (1960)	Prestressed concrete products	55	54	1	Laborers; Teamsters**

(Continued)

<u>Firm (Establishment date)</u>	<u>Product</u>	<u>Employment</u>			<u>Labor Unions</u>
		<u>Total</u>	<u>Male</u>	<u>Female</u>	
Cresline Plastic Pipe Company (1966)	Plastic pipe and fittings	125	120	5	Machinists**
Cyanede Plastics, Inc. (1951)	Molded thermo-plastics	214	87	127	
Eaton Corporation, Axle Division, Henderson Plant (1970)	Truck axle assembly	320	268	52	Steelworkers**
Firestone Steel Products Company (1973)	Truck wheels and rims	961	814	147	Auto Workers**
Gamco Products Company (1956)	Zinc die castings	250	135	115	
Gibbs Die Casting Aluminum Corporation (1966)	Aluminum die castings, magnesium die castings	365	200	165	
Gleaner and Journal Publishing Company (1885)	Newspaper, job printing	67	32	35	
Kusan, Inc. (1946)	Plastic auto and refrigerator parts	325	198	127	
The Osborn Manufacturing Corporation (1946)	Industrial maintenance brushes	63	35	28	Furniture Workers**
P B & S Chemical Company (1947)	Chemicals	100	--	--	
Period, Inc. (1939)	Furniture for motels and hotels, custom furniture	89	56	33	
Hugh E. Sandefur Training Center (1967)	Corrugated partitions and pads, survey stakes	166	94	72	

(Continued)

<u>Firm (Establishment date)</u>	<u>Product</u>	<u>Employment</u>			<u>Labor Unions</u>
		<u>Total</u>	<u>Male</u>	<u>Female</u>	
Schnadig Corporation, International Tables Division (1979)	Wood tables	116	60	56	Upholsterers**
Scott Lumber, Inc. (1945)	Hardwood lumber, skids	121	115	6	
Sonoco Products Company (1967)	Aluminum steel ends	66	52	14	
Thompson Bit Service	Fabricated drill bits, hole openers, drill steel and collars	53	5	48	
West Kentucky Plastics (1969)	Custom molded plastics	70	24	46	

* Manufacturing firms with 50 or more employees.

** See Labor Organizations below.

Sources: Kentucky Department of Economic Development, 1985 Kentucky Directory of Manufacturers; Division of Research and Planning.

LABOR ORGANIZATIONS IN MANUFACTURING FIRMS

<u>Union</u>	<u>Representing workers at:</u>
Aluminum, Brick and Glass Workers International Union, AFL-CIO	Alcan Ingot and Recycling
Laborer's International Union of North America, AFL-CIO	Artfaire; Construction Products Corporation
International Brotherhood of Teamsters, Chauffeurs, Warehousemen and Helpers of America	Concrete Service Company; Construction Products Corporation
International Association of Machinists and Aerospace Workers, AFL-CIO	Cresline Plastic Pipe Company
International Chemical Workers Union, AFL-CIO	Custom Resins, Division of Bemis Company, Inc.
United Steelworkers of America, AFL-CIO	Eaton Corporation, Axle Division, Henderson Plant

(Continued)

UnionRepresenting workers at:

International Union, United
Automobile, Aerospace and
Agricultural Implement
Workers of America
United Furniture Workers
of America, AFL-CIO
Upholsterer's International
Union of North America,
AFL-CIO

Firestone Steel Products Company

The Osborn Manufacturing Corporation

Schnadig Corporation, International
Tables Division

International Union of
Operating Engineers

Western Diesel Services, Inc.

INDUSTRIAL SERVICES

<u>Types of Services</u>	<u>Location</u>	<u>Mileage from Henderson</u>
Custom Plastics Producers	Henderson, Kentucky	-
Electric Motor Repair	Henderson, Kentucky	-
Grinding, Precision & Tool	Evansville, Indiana	10
Heat Treating Facilities	Evansville, Indiana	10
Industrial Equipment & Supplies	Owensboro, Kentucky	30
Industrial Gases	Henderson, Kentucky	-
Industrial Waste Removal	Henderson, Kentucky	-
Machine Shops, Tool & Die	Henderson, Kentucky	-
Metal Finishers	Morganfield, Kentucky	23
Metal Service Centers	Owensboro, Kentucky	30
Millwrights	Evansville, Indiana	10
Public Warehouse Facilities	Henderson, Kentucky	-

Sources: Kentucky Department of Economic Development, Kentucky Directory of
Selected Industrial Services, 1985; Division of Research and Planning.

ESTIMATED MALE LABOR SUPPLY
HENDERSON LABOR MARKET AREA

Area	Current			Future	
	Total Male	Unemployed	Under-employed	Not in Labor Force	Becoming 18 years of age 1986 thru 1990
Labor Market					
Area*	8,858	4,819	3,572	467	7,341
Henderson	1,837	1,063	774	0	1,806
Daviess	4,320	2,574	1,746	0	3,759
McLean	630	381	249	0	452
Union	1,097	509	588	0	725
Webster	974	292	215	467	499

ESTIMATED FEMALE LABOR SUPPLY
HENDERSON LABOR MARKET AREA

Area	Current			Future	
	Total Female	Unemployed	Under-employed	Not in Labor Force	Becoming 18 years of age 1985 thru 1989
Labor Market					
Area*	8,674	3,724	4,111	839	6,883
Henderson	2,167	1,027	1,140	0	1,654
Daviess	3,827	1,711	2,116	0	3,603
McLean	489	269	220	0	407
Union	687	356	331	0	628
Webster	1,504	361	304	839	591

* Additional workers may be drawn from other nearby counties.

Note: Unemployed - persons unemployed and actively seeking work;
Underemployed - persons employed but working only 14 to 26 weeks per year;
Not in Labor Force - represents the number of persons who would enter the labor force if suitable employment were available (based on the assumption that persons in Kentucky would like to participate in the labor force in the same proportion that they do nationally).

Sources: Kentucky Cabinet for Human Resources, Kentucky Labor Supply Estimates by County, 1984. Kentucky Department of Economic Development, Future Labor Supply Becoming 18 Years of Age, 1986 thru 1990.

AVERAGE WEEKLY WAGES BY INDUSTRY,
BY PLACE OF WORK, 1984

	Henderson County	Daviess County	McLean County
All Industries	\$ 328.33	\$ 311.81	\$ 253.80
Mining & Quarrying	559.79	441.01	316.42
Contract Construction	313.09	313.86	176.20
Manufacturing	392.71	424.01	310.74
Transportation,			
Communications &			
Public Utilities	439.61	470.32	506.90
Wholesale & Retail Trade	215.41	206.59	195.19
Finance, Insurance &			
Real Estate	308.02	298.31	253.57
Services	266.80	252.39	167.97
State/Local Government	299.43	313.91	239.26
Other	244.04	237.89	*
	Union County	Webster County	
All Industries	\$ 422.54	\$ 350.51	
Mining & Quarrying	692.95	702.10	
Contract Construction	337.75	242.51	
Manufacturing	281.49	272.33	
Transportation,			
Communications &			
Public Utilities	474.13	513.25	
Wholesale & Retail Trade	192.89	201.83	
Finance, Insurance &			
Real Estate	292.06	255.77	
Services	235.99	147.47	
State/Local Government	277.50	282.08	
Other	264.11	165.16	

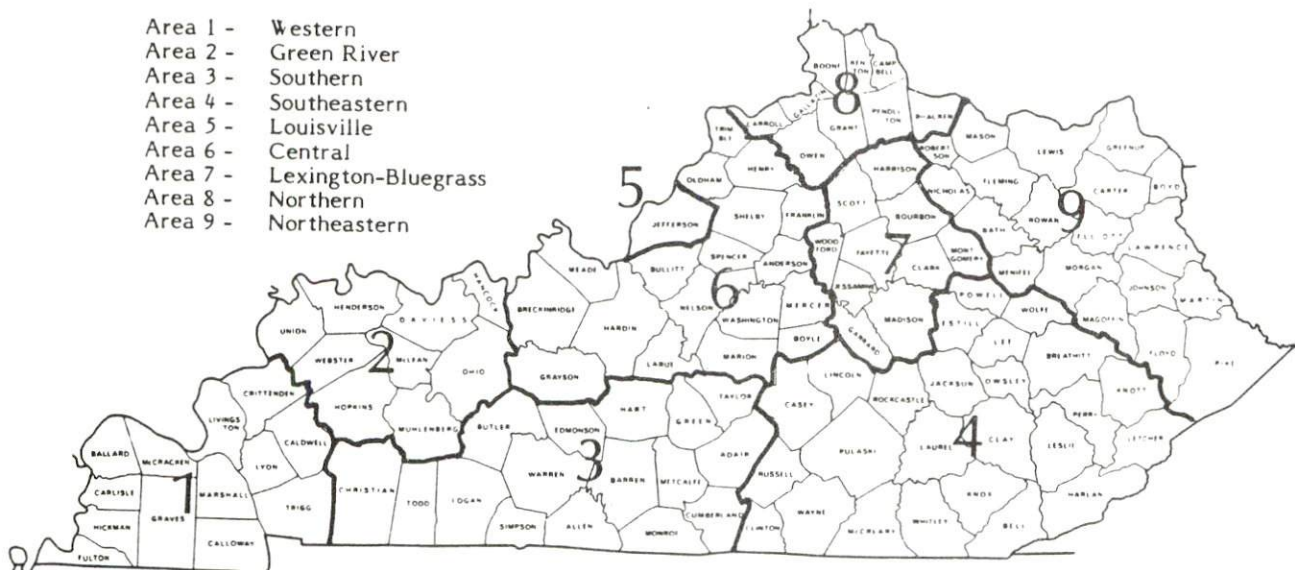
* Not disclosed.

Note: Excludes domestic workers, railway workers, certain nonprofit corporations, majority of federal government workers, and self-employed workers.

Source: Kentucky Cabinet for Human Resources, Average Weekly Wages of Workers Covered by Kentucky Unemployment Insurance Law, 1984.

Occupational wage rates for specific industries are usually not available to most government agencies, and wage data furnished to state employment agencies by individual industrial employers are protected from disclosure by federal law. The most reliable up-to-date wage information can be obtained by direct contact with local employers.

Associated Industries of Kentucky, a voluntary organization of Kentucky businesses, regularly collects occupational wage rates and fringe benefits data from participating member firms. Data are compiled for over 127 clearly defined office, production, and service occupations. Tabulations are published for nine geographical areas of Kentucky, as shown on the map below. It should be noted that the data may be weighted by the preponderance of firms in the larger cities and may be somewhat higher than the rates paid in the smaller communities. Data from these tabulations are available, upon request, from the Kentucky Department of Economic Development, Frankfort, Kentucky 40601.



Associated Industries of Kentucky Area Wage Surveys

PER CAPITA PERSONAL INCOME

<u>Area</u>	<u>1979</u>	<u>1983</u>	<u>Percent Change</u>
Henderson County	\$ 8,425	\$ 10,348	22.8
Labor Market Area Range	\$7,175 - 8,425	\$8,892 - 10,703	N/A
Kentucky	7,124	9,396	31.9
U. S.	8,651	11,687	35.1

Sources: U.S. Department of Commerce, Bureau of Economic Analysis; Commerce News, August 28, 1984; May 7, 1985. Kentucky Economic Information System, June 1985.

TRANSPORTATION

Rail

Line serving **Henderson** - Seaboard System Railroad

Services - Main line; 1 local freight traveling to and from Evansville, Indiana, makes daily stops; 5 northbound and 4 southbound through freights daily; switching services; team track space for 18 cars; siding space on yard tracks for 225 cars; piggyback facilities are located at Evansville, Indiana, 10 miles north of Henderson

Line serving **Henderson** - Indiana Hi-Rail Corporation

Services - Branch line; 1 freight makes daily round trip from Evansville, Indiana; switch engine; team track space for 4 cars; siding space for 80 cars; open switching available to Seaboard System Railroad, Norfolk Southern Railway, and Illinois Central Gulf Railroad; nearest piggyback facilities are located at Evansville, Indiana, 10 miles north

For details on routing, schedules, rates, and services, contact:

Manager of Industrial Development
Seaboard System Railroad
P.O. Box 2157
Louisville, Kentucky 40232
(502) 587-5228

and/or

President
Indiana Hi-Rail Corporation
RR #1
Connersville, Indiana 47331
(317) 825-0349 or (800) 428-6517

Highways

Henderson is served by the Pennyriple Parkway, the Audubon Parkway, and U.S. Highways 41, 41A, and 60, all "AAA" rated (80,000-pound gross load limit) trucking highways. The Pennyriple Parkway is a four-lane toll road that extends from Henderson southward and connects with the Western Kentucky Parkway, 46 miles to the south. The Audubon Parkway, also a four-lane toll road, connects Henderson with Owensboro, Kentucky. An interchange of Interstate 64 is located 23 miles north of Henderson via U.S. 41.

Construction of the \$12.2 million Henderson Bypass, which extends from Kentucky 136 and U.S. 60 west of Henderson to the Pennyriple Parkway, was completed in Summer 1985. Also, the replacement of a bridge on U.S. 60 West, in Henderson, is under way. The \$500,000 project will be completed in July 1986.

Truck Service

<u>Company</u>	<u>Home Office</u>
A & H Truck Lines, Inc.*	Evansville, Indiana 47711
Advance Transportation Company*	P. O. Box 2011 Milwaukee, Wisconsin 53201
ANR Freight System, Inc.*	P. O. Box 5070 Denver, Colorado 80217
American Freight System, Inc.**	9393 West 110th Street Overland Park, Kansas 66210
Bestway Express, Inc.*	Nashville, Tennessee 37210
C & H Transportation Company, Inc*	Dallas, Texas 75227
Carolina Freight Carriers Corporation*	P. O. Box 697 Cherryville, North Carolina 28021
Central Transport, Inc.*	34200 Mound Road Sterling Heights, Michigan 48007
Clairmont Transfer Company**	1803 Seventh Avenue North Escanaba, Michigan 49829
Cleveland and Todd Trucking*	2250 South Green Henderson, Kentucky 42420
Duff Truck Line, Inc.**	P. O. Box 359 Lima, Ohio 45802
Holland Motor Express, Inc.*	750 East 40th Street Holland, Michigan 49423
Leoni Motor Express, Inc.*	Chicago Heights, Illinois 60411
Majors Transit, Inc.*	P. O. Box 9 Caneyville, Kentucky 42721
The Maryland Transportation Company**	1111 Frankfurst Avenue Baltimore, Maryland 21225
McLean Trucking Company**	P.O. Box 213 Winston-Salem, North Carolina 27154
Nashville Clarksville Express, Inc.*	P. O. Box 607 St. Bethlehem, Tennessee 37155
North Shore & Central Illinois Freight Company*	Chicago, Illinois 60608
Overnite Transportation Company*	P. O. Box 1216 Richmond, Virginia 23209
Preston Trucking Company, Inc.*	151 Easton Boulevard Preston, Maryland 21655
R-W Service System, Inc.*	20225 Goddard Road Taylor, Michigan 48180
Renner's Express, Inc.*	P. O. Box 882 Indianapolis, Indiana 46206
Roadway Express, Inc.**	1077 Gorge Boulevard Akron, Ohio 44310
Ryder/P-I-E Nationwide, Inc.**	Jacksonville, Florida 32203

(Continued)

CompanyHome Office

Transcon Lines*

101 Continental Boulevard
El Segundo, California 90245United Trucking Service,
Inc. (T)*8505 West Warren
Dearborn, Michigan 48126

(T) Local terminal.

* Interstate and intrastate service.

** Interstate service only.

Source: American Motor Carrier Directory, Fall 1985.Other Freight ServicesNearest Office or Shipping Center

Airborne Express

Evansville, Indiana, 10 miles north

Emery

Evansville, Indiana, 10 miles north

Federal Express

Evansville, Indiana, 10 miles north

KATO Express, Inc.

Elizabethtown, Kentucky, 125 miles
southeast

Purolator Courier

Evansville, Indiana, 10 miles north

United Parcel Service

Evansville, Indiana, 10 miles north

HIGHWAY MILES AND TRUCK TRANSIT TIME IN DAYS FROM
HENDERSON, KENTUCKY, TO SELECTED MARKET CENTERS

City	Highway Miles	Delivery Time TL	City	Highway Miles	Delivery Time TL
Atlanta, Ga.	384	2-3	Los Angeles, Ca.	2,023	5-6
Baltimore, Md.	723	3	Louisville, Ky.	125	1-2
Birmingham, Ala.	338	2-3	Nashville, Tenn.	142	1-2
Chicago, Ill.	308	1-2	New Orleans, La.	659	2-3
Cincinnati, Ohio	226	1-2	New York, N. Y.	873	3-4
Cleveland, Ohio	470	2-3	Pittsburgh, Pa.	513	3
Detroit, Mich.	485	2-3	St. Louis, Mo.	178	1-2
Knoxville, Tenn.	319	1-2			

Note: Mileage computations are via the best interstate or primary highways, not necessarily the most direct route of travel.

Sources: Rand McNally Road Atlas, 1979. Official Kentucky Mileage Map, 1980.
Delivery time - Overnite Transportation Company, P. O. Box 1216, Richmond,
Virginia.

Air

Local

Location: Henderson City-County Airport*
3 miles southwest of Henderson and adjacent to the
Henderson County Riverport Authority

Runways: 1 paved

Length: 4,800 feet with clear approaches

Traffic

Control: Wind sock, wind tee, and unicom

Lighting: Runway lights and rotating beacon

Services: 100LL octane; Jet A-50; piston and turbine approved repair
station; hangar and tie-down; airplane and helicopter
charter service; flight training; taxi; APU;
oxygen and nitrogen; Cessna dealer; Bell helicopter
customer service facilities

Air Freight Service: Chartered air freight services may be arranged

Nearest Scheduled Commercial Airline Service

Location: Evansville Dress Regional Airport
4 miles north of Evansville, Indiana;
14 miles north of Henderson, Kentucky

Runways: 3 paved

Length: 8,021 feet; 5,088 feet; 3,500 feet

Traffic

Control: Tower

Lighting: Beacon, runway

Services: Eastern, USAir, Piedmont, Republic Express, Ozark Midwest,
Britt Airways, Comair; fuel - 100LL, jet-A; hangars,
tie-downs; major A & P repairs, major Avionics repairs;
flight instruction, APU, charter, oxygen, plane
rental, survival equipment; taxi, car rentals,
courtesy car; weather information; restaurant

Air Freight Service: Air freight terminal

Bus - Greyhound Bus Lines; HART (Henderson Area Rapid Transit), an intracity
system; GRITS (Green River Inter-county Transit System)

Taxi - 2 companies (1 with 24-hour service)

Rental Services - Auto, truck, trailer, and equipment rentals

* The Henderson City-County Airport completed the extension of its runway from
3,800 feet to 4,800 feet in October 1985.

Water

Henderson is strategically located on the banks of the Ohio River near the confluence of the Green and Ohio Rivers. The Ohio River has a 9-foot navigation channel for its entire length and a minimum channel width of 300 feet. The Ohio River runs into the Mississippi River approximately 205 river miles from Henderson. A 9-foot navigation channel is maintained on the Green River from Morgantown, Kentucky, to Henderson.

The Henderson County Riverport Authority operates port facilities at mile 808 on the Ohio River at Henderson. The Riverport offers full port facilities, coal loading facilities, bulk and cargo handling, warehousing and yard storage, and intermodal transportation.

Port facilities include a bulk material loading system with dump scales, which has a loading capacity of 800 tons per hour, and can handle grain, coal and a variety of other bulk materials; a 42,000-square-foot, sprinkled, freezeproof transit warehouse designed to handle materials from barge, rail or truck; and 4,000 feet of river frontage which provides a sizeable fleet area with river towing services available. Plans include the installation of rail-to-barge load-out facilities.

Equipment includes a 125-ton electric pedestal crane capable of loading and unloading barge, truck and rail; and a 60-ton crawler crane, end loaders, fork lifts and numerous other pieces of equipment used in material handling and barge cleaning. The terminal accommodates all types of integrated transportation activities, such as stevedoring, warehousing, and distribution.

Materials being handled from or to barge, dock, truck, rail or warehouse include: coal, coke, stone, gravel, sand, lime, fertilizers, phosphate, potash, salt, chrome alloy, cryolite, grains, steel, aluminum, castings, wire, steel pipe and rods, concrete products, construction materials, and coal production equipment.

The riverport and the adjoining industrial park consist of 276 acres, with options on two additional tracts which total 119 acres. Adjoining the western city limits of Henderson on Highway 136 within the commercial zone of Evansville and in sight of the Henderson City-County Airport, the port-industrial park is connected to the Pennyryle and Audubon Parkways by the Henderson Bypass, which was recently completed.

For more information contact:

Port Director
Henderson County Riverport Authority
Route 2, Box 16, Highway 136
Henderson, Kentucky 42420
(502) 826-1636

POWER AND FUEL

Electricity

Company serving **Henderson** and parts of **Henderson County** - Municipal Power and Light

Source of power - Municipally-owned generators

Total generating capacity - 353,000 KW

For industrial rates contact:

Municipal Power and Light
P.O. Box 8
Henderson, Kentucky 42420
(502) 826-2726

Company serving parts of **Henderson County** - Kentucky Utilities Company

Source of power - Kentucky Utilities Company

Total generating capacity - 3,164,000 KW*

For industrial rates contact:

Industrial Development Department
Kentucky Utilities Company
One Quality Street
Lexington, Kentucky 40507
(606) 255-1461

Company serving a major portion of **Henderson County** - Henderson-Union Rural Electric Cooperative Corporation

Source of power - Big Rivers Electric Corporation

Total generating capacity - 1,548,500 KW

For industrial rates contact:

Henderson-Union RECC
P.O. Box 18
Henderson, Kentucky 42420
(502) 826-3991 or 1-800-242-7069

* Kentucky Utilities Company's total generating capacity will be increased when a new 650,000 KW generation plant is completed in Hancock County in 1993.

Natural Gas

Company serving **Henderson** - Henderson Municipal Gas System
Source of supply - Texas Gas Transmission Corporation
Size of transmission mains - 6 and 8 inches (supplier); 6 inches (distributor)
Distribution mains - 1½ to 10 inches
Distribution pressure - 4 ounces to 175 psi (maximum of loop line)
Btu content - 1,005 per cubic foot
Specific gravity - 0.585
For rates and supplies contact:

Gas System Manager
Henderson Municipal Gas System
P.O. Box 452
Henderson, Kentucky 42420
(502) 827-5671

Other Fuels

Propane

Henderson Propane, Inc.
2101 South Green Street
Henderson, Kentucky 42420

Texgas Corporation
1641 Madison
Henderson, Kentucky 42420

Lin-Gas, Inc.
2270 South Green Street
Henderson, Kentucky 42420

Union Propane Gas Company
U.S. 60 South
Morganfield, Kentucky 42437

Southern States Henderson
Co-op, Inc.
146 McKinley Street
Henderson, Kentucky 42420

Fuel oils

Distillate fuel oil -

Ashland Oil Bulk Plant
2063 Clay Street
Henderson, Kentucky 42420

Home Oil & Gas Company
P. O. Box 397
Henderson, Kentucky 42420

Hahn Oil Company, Inc.
400 North Adams Street
Henderson, Kentucky 42420

Home Oil Terminal Company
P. O. Box 397
Henderson, Kentucky 42420

Hayes Oil Company (Arco)
Old 41A South
Henderson, Kentucky 42420

Palmer Oil Company
1638 Clay Street
Henderson, Kentucky 42420

Residual fuel oil - Arrangements must be made with the refinery.

Low sulphur content coal - Available in Kentucky.

WATER AND SEWERAGE

Public Water Supply

Company serving **Henderson** - Municipal Water and Sewer Department
510 North Water Street
Henderson, Kentucky 42420
(502) 826-2421

Source - Ohio River

Treatment plant capacity - 6,000,000 gallons per day

Average daily consumption - 4,900,000 gallons

Peak daily consumption - 5,800,000 gallons

Treatment processes - Coagulation, sedimentation, chlorination, rapid mix, flocculation, filtration, fluoridation

Calcium content - 040.1 ppm

Iron content - 0.04 ppm

Hardness - 168.0 ppm as calcium carbonate

Storage capacity - 6,700,000 gallons including clear well

Size lines - 2 through 24 inches

Average pressure - 35 to 75 psi

MONTHLY WATER RATES

Inside City

First	400 cubic feet	\$0.80 per 100 cubic feet
Next	600 cubic feet	0.70 per 100 cubic feet
Next	1,500 cubic feet	0.60 per 100 cubic feet
Next	7,500 cubic feet	0.55 per 100 cubic feet
All over	10,000 cubic feet	0.45 per 100 cubic feet

Minimum Monthly Bill (inside city)

5/8- x 3/4-inch meter	\$ 3.20 per month
1-inch meter	4.25 per month
1 1/4-inch meter	5.50 per month
1 1/2-inch meter	6.50 per month
2-inch and larger meter	15.00 per month

Outside City

First	400 cubic feet	\$1.60 per 100 cubic feet
Next	600 cubic feet	1.40 per 100 cubic feet
Next	1,500 cubic feet	1.20 per 100 cubic feet
Next	7,500 cubic feet	1.10 per 100 cubic feet
All over	10,000 cubic feet	1.00 per 100 cubic feet

(Continued)

Minimum Monthly Bill (Outside city)

5/8- x 3/4-inch meter	\$ 6.40 per month
1-inch meter	8.50 per month
1 1/4-inch meter	11.00 per month
1 1/2-inch meter	13.00 per month
2-inch and larger meter	30.00 per month

Tap-on charges:

3/4-inch	\$275
1-inch	\$375
1 1/2-inch	\$575
2-inch	\$750
Over 2-inch	Cost of labor and material
6-inch sprinkler tap	\$1,000
8-inch sprinkler tap	\$1,200

Name of water district - Henderson County Water District*
P.O. Box 655
655 South Main Street
Henderson, Kentucky 42420
(502) 826-9802

Area served - Henderson County and parts of Webster County

Date when water district began operating - July 1967

Source of supply of treated water - Henderson Municipal Water and Sewer Department

Average amount of water used in a 24-hour period - 802,000 gallons

Peak amount of water used in a 24-hour period - 1,262,000 gallons

Calcium content - 040.1 ppm

Iron content - 0.04 ppm

Hardness - 168.0 ppm as calcium carbonate

Storage capacity - 740,000 gallons*

Average pressure - 35 to 85 psi

Size lines - 10, 8, 6, 4, 3 and 2 inches

Monthly rates -

First	2,000 gallons	\$6.25 (Minimum)
Next	8,000 gallons	2.00 per M gallons
Next	5,000 gallons	1.75 per M gallons
Next	5,000 gallons	1.50 per M gallons
Next	10,000 gallons	1.25 per M gallons
Next	20,000 gallons	1.00 per M gallons
Over	50,000 gallons	.65 per M gallons

2-inch meter	\$25.00 minimum
3-inch meter	Individual contracts

(Continued)

* The Henderson County Water District has plans for a \$2.7 million expansion and renovation of the water system in 1986. The expansion will include 4 new 200,000-gallon water tanks, 3 new pump stations and extension of water service.

Tap-on charges:

5/8 x 3/4-inch Non-bore	\$180
5/8 x 3/4-inch Bore	\$250
1-inch	\$300
2-inch and above	Actual cost of installation

Raw Water

Surface water sources - Ohio River and Green River

Average discharge - Ohio River at Evansville, Indiana - 133,300 cfs (34 years, 1940-74, USGS, unadjusted); Green River at Lock 2, at Calhoun, Kentucky - 11,280 cfs (54 years, USGS, unadjusted)

Expected ground water yield - 500 to 1,000 gpm along Ohio River; 5 to 50 gpm through the central part of the county; 5 gpm or less over remainder of county.

Sewerage

Company serving **Henderson** - Municipal Water and Sewer Department
510 North Water Street
Henderson, Kentucky 42420
(502) 826-2421

Design capacity - 7,500,000 gallons per day

Average daily flow - 4,500,000 gallons

Type of treatment - Primary and secondary

Treatment processes - Screening, grit removal, primary sedimentation, extended aeration, secondary sedimentation, chlorination, aerobic digester, sludge drying beds

Treated effluent discharged into - Ohio River

Size of sanitary mains - 8 to 48 inches

Size of storm mains - 12 to 60 inches

Rates - 100 percent of monthly water bill

Tap-on charge: 6-inch service tap	\$300
8-inch service tap	\$500

CLIMATE

Henderson County

Temperature

Normal (30-year record)	55.70 degrees
Average annual 1984	55.80 degrees
Record highest, July 1954 (44-year record)	105.00 degrees
Record lowest, February 1951 (44-year record)	-23.00 degrees
Normal heating degree days (30-year record)	4,729
(Heating degree day totals are the sums of negative departures of average daily temperatures from 65 degrees F.)	

Precipitation

Normal (30-year record)	41.55 inches
Mean annual snowfall (29-year record)	14.10 inches
Total precipitation 1984	49.75 inches
Mean number days precipitation (.01 inch or more) (44-year record)	115.80
Mean number days thunderstorms (44-year record)	45.20

Prevailing Winds (through 1963)

South-Southwest

Relative Humidity (23-year record)

Midnight	78 percent
6 a.m.	81 percent
Noon	59 percent
6 p.m.	62 percent

Source: U.S. Department of Commerce, Environmental Science Services Administration, Climatological Data, 1984. Station of record: Evansville, Indiana.

LOCAL GOVERNMENT

City

Structure - Mayor - 4-year term; 4 commissioners - 2-year terms; city manager

Budget 1984-85 - General Fund \$6,155,950

Water and Sewer Fund 2,450,000

City Gas System 9,631,000

City Electric System 11,650,000

Fees and licenses - Motor vehicle license - \$25 per year; occupational license fees range from \$20 to \$2,250 (based on a sliding scale); the fee levied on manufacturing firms ranges from \$150 to \$2,000 based on gross revenue

County

Structure - County Judge/Executive - 4-year term; 5 magistrates - 4-year terms

Budget 1984-85 - General Fund \$914,735; Road Fund \$751,751

Assessed Value of Property, 1985*

<u>Classes of Property</u>	Henderson	Henderson County
Real Estate	\$322,763,555	\$716,300,365
Tangibles	66,592,789	202,201,816

* Excludes Homestead Exemptions.

State and Local Property Taxes

All property in Kentucky, except items exempted by the state constitution, is taxed by the state. Property which also may be taxed by local jurisdictions includes land and buildings, finished goods inventories, automobiles, trucks, office furniture and office equipment. Local taxing jurisdictions in Kentucky include counties, cities, and school districts.

All property in Kentucky is assessed at 100 percent of fair cash value.

COMBINED STATE AND LOCAL RATES PER \$100 VALUATION, 1985

	<u>Henderson</u>	<u>Unincorporated Henderson County</u>
Land and Buildings	\$ 1.029	\$ 0.6267
Manufacturing Machinery	0.150	0.150
Pollution Control Equipment	0.150	0.150
Inventories		
Raw materials	0.001*	0.001*
Goods in Process	0.001*	0.001*
Finished Goods	0.8121*	0.4108*
Automobiles and Trucks	1.2561	0.8548
Other Tangible Personal Property	1.2611	0.8598
Intangibles (Accounts receivable, money in hand, stock, notes, bonds)	0.250**	0.250**
Goods Stored in Public Warehouses in Transit Status	0.001*	0.001*
Private Leaseholds in Industrial Revenue Bond Financed Facilities	0.015	0.015

* Includes 1986 state rate.

** Accounts receivable are taxed at 85 percent of face value, for an effective rate of \$0.2125 per \$100 valuation.

Utilities Gross Receipts Tax for Schools

A 3 percent tax is levied on utilities receipts for schools in Henderson County. Tax is paid by all consumers of utilities as an add-on to the utilities bills. Exempted are receipts from utilities services that are resold and the receipts from the sale of energy or energy producing fuels that exceed 3 percent of the cost of production in manufacturing, processing, mining or refining.

Planning and Zoning

Joint agency - Henderson City-County Planning Commission

Participating cities - Henderson and Corydon

Zoning enforced - All areas

Subdivision regulations enforced - All areas

Local codes enforced - Housing in all areas; building in all areas except in one and two-family dwellings in county

Mandatory state codes enforced - Kentucky Plumbing Code, National Electric Code, Kentucky Boiler Regulations and Standards, Kentucky Building Code (modeled after BOCA code)

Safety

Police	Henderson	Henderson County
Total staff	51 full-time 17 part-time	9 full-time 2 part-time
Radio-patrol cars	14	9

Fire

Insurance Services Office,

Public Protection Classification	3	*
Full-time staff	57	--
Volunteers	--	202
Number of stations	4	11

Rescue Service

Henderson City-County Rescue Squad:

Number of volunteers - 25, which includes two certified dive rescue specialists and 11 emergency medical technicians

Equipment - Rescue van, step van equipped with state required rescue equipment, Hustler all-terrain vehicle and transporter, 18-foot inboard-outboard boat, two 16-foot utility boats with outboard motors, extrication kit and air chisel, cascade system generators, lights, saws and assorted rescue equipment

Personnel training - Rescue training, fire service training, first aid, emergency medical technician training, training to handle radioactive materials, CPR, water rescue and recovery training

Refuse Collection and Disposal

	Henderson
Type service	Municipal
Fee charged:	
residential	\$5.00 per month
business	\$14.30 to \$80.80 per month
industrial	\$14.30 to \$80.80 per month
Collection frequency:	
residential	Weekly
business	One to six times weekly
industrial	One to six times weekly
Disposal method	City sanitary landfill

(Continued)

* Four fire protection areas - Niagara, Reed, Robards and Spottsville - have a Class 9 rating within 5 road miles of a responding fire station. A Class 10 rating applies to the remainder of unincorporated Henderson County.

Henderson County provides a free sanitation service for residents of the county. Refuse may be disposed of at collection points which are located throughout the county. The county provides pick-up service at these points with disposal at the city sanitary landfill.

Industrial and commercial customers in Henderson County can contract with private companies for refuse collection services. Fees are based on volume and frequency of collection.

EDUCATION

Public Schools

Henderson County

Total Enrollment (Fall 1985)	7,718
Kindergarten	665
Elementary	3,402
Junior High	1,928
High School	1,723
Student-Teacher Ratio	22.1
Percent High School Graduates to College (1984-85)	54.1
Expenditures Per Pupil (1984-85)	\$ 1,863.88
Bonded Indebtedness (June 30, 1985)	\$6,055,000

Nonpublic Schools

Holy Name*

Total Enrollment	487
Elementary	487
Student-Teacher Ratio	25-1

* The Holy Name School System completed the construction of a new wing at the existing facilities in August 1985. The \$400,000 project included six new classrooms, one music room, a library, restroom facilities, and two offices.

Area Colleges and Universities

<u>Name</u>	<u>Location (Miles Distant)</u>	<u>Enrollment (Fall, 1985)</u>	<u>Highest Degree Conferred</u>
Henderson Community College	Henderson, Kentucky	1,859	Associate
University of Southern Indiana	Evansville, Indiana (10)	4,025	Baccalaureate
University of Evansville	Evansville, Indiana (10)	6,091	Masters
Brescia College	Owensboro, Kentucky (30)	744	Baccalaureate*
Kentucky Wesleyan College	Owensboro, Kentucky (30)	808	Baccalaureate*
Madisonville Community College	Madisonville, Kentucky (39)	1,330	Associate
Oakland City College	Oakland City, Indiana (40)	627	Baccalaureate & Masters in Arts in Religion
Hopkinsville Community College	Hopkinsville, Kentucky (71)	942	Associate
Paducah Community College	Paducah, Kentucky (99)	1,682	Associate
Western Kentucky University	Bowling Green, Kentucky (100)	11,259	Masters, Specialist**

* Courses in masters degree programs are taught on campus by faculty members of Western Kentucky University or Murray State University. The degrees are issued by Western Kentucky University or Murray State University.

** Joint doctoral degree programs are offered in cooperation with the University of Kentucky, Lexington, and cooperative doctoral degree programs are offered with the University of Louisville. The degrees are issued by the University of Kentucky or the University of Louisville.

Henderson Community College

Henderson Community College is part of the Community College System of the University of Kentucky and it is charged with three specific functions: (1) to offer career-oriented programs designed to prepare students for immediate technical or semi-professional employment; (2) to offer curricula for the first two years of a baccalaureate program, which courses parallel university offerings and are transferable to the Lexington campus of the University of Kentucky or to another four-year institution either public or private; and (3) to provide general educational opportunities for citizens in the immediate area. The community college offers the following degrees: Associate in Applied Science, Associate in Arts and Associate in Science. The Henderson Community College had a 1985 enrollment of 1,914, with approximately 1,000 enrolled at the branch community college in Owensboro.

Vocational Schools

Both the state vocational-technical schools and the area vocational education centers are operated by the Kentucky Department of Education. The state vocational-technical schools enroll persons full time who are at least 16 years of age and not in school. These students attend classes for six hours each day. The area vocational education centers are designed to accommodate high school students who are at least 15 years of age. These students attend vocational school for three hours each day. The state vocational-technical schools and the area education centers offer evening courses to enable working adults to upgrade current job skills.

Nearest State School

Daviess County State Vocational-Technical School
Owensboro, Kentucky, 30 miles distant

Business & Office	Industrial Education
Clerical	Auto Body Repair
Secretarial	Auto Mechanics
Consumer & Home Economics	Diesel Mechanics
Child Care Services	Drafting (with CAD/CAM)
Commercial Foods	Welding
Retailing I	Learning Resource Center
Fireman Training	Computer Lab
Health & Personal Services Occupations	
Cosmetology	

(Continued)

Owensboro Vocational-Technical School
Owensboro, Kentucky, 30 miles distant

Health & Personal Services Occupations	Home Entertainment Electronics
Emergency Medical Technician	Industrial Electricity
Health Careers	Instrumentation Electronics
Licensed Practical Nursing	Machine Shop
Nursing Assistant	Masonry
Industrial Education	Plumbing
Basic Electronics/Electricity	Sheet Metal
Carpentry	Welding
Communications Electronics	Computer Laboratory
Heating & Air Conditioning	Learning Resource Center

Nearest Area Education Center

Henderson County Area Vocational Education Center
Henderson

Business and Office	Industrial Education
Clerical	Auto Mechanics
Secretarial	Carpentry-Building Trades
Model Office	Industrial Electricity
Distributive Education	Machine Shop
Marketing and Retailing	Welding
Health and Personal Services Occupations	

Arrangements can be made to provide training in the specific production skills required by an industrial plant. Instruction may be conducted either in the vocational school or in the industrial plant, depending upon the desired arrangement and the availability of special equipment.

HEALTH

Local Medical Personnel

Physicians - 58
Dentists - 20

Hospitals

<u>General Hospital</u>	<u>Location</u>	<u>Beds</u>
Community Methodist Hospital*	Henderson	209

General hospital facilities and services - 4 operating rooms, 18 bed ICU/CCU, 16 normal nursery bassinets and 4 Level II neonatal care beds, 5 X-ray and diagnostic treatment rooms and nuclear medicine, ultrasound and computerized axial tomographic scanning (CAT Scan) services, emergency care department with 24-hour physician coverage, outpatient ambulatory surgical services with 2 operating and 2 treatment rooms, cardio-pulmonary services, chaplaincy services, laboratory facilities, pharmacy and physical therapy rehabilitation services

Medical Staff - 58 doctors, 44 consultant doctors, 125 registered nurses, 54 graduate licensed practical nurses, 5 certified registered nurse anesthetists, 21 laboratory technicians, 4 pharmacists, 4 physical therapists, 2 physical therapist assistants, 2 respiratory therapists, 10 respiratory technicians and 21 X-ray technicians

Other Medical Facilities

Green River Comprehensive Care Center
Green River District Health Department, Henderson County Health Center

Ambulance Service

Name - Henderson Emergency Ambulance Service
Staff - Director, 13 paramedics, 11 emergency medical technicians
Service - 24-hour, county-wide
Equipment - 2 modular ambulances and 2 van-type ambulances, fully-equipped;
all equipment meets current government regulations

* The Community Methodist Hospital recently completed a \$3 million expansion of the obstetrical and newborn areas, office space, and chapel services.

OTHER LOCAL FACILITIES

Communications

Telephone -	South Central Bell Telephone Company
Telegraph -	Western Union
Services -	Toll-free number, 1-800-325-6000
Postal -	U.S. Post Office
Class -	First
Mail received -	Three times daily
Mail dispatched -	Three times daily
Newspapers -	The Gleaner
Daily and	
circulation -	11,942
Sunday and	
circulation -	14,693
Other papers	
received from -	Louisville, Kentucky; Evansville, Indiana
Radio -	WSOY-AM; WKDQ-FM; WHKC-FM
Major stations	
received from -	Louisville and Owensboro, Kentucky; Evansville, Indiana; Nashville, Tennessee
Television -	
Airwave reception	
from -	Paducah, Kentucky; Evansville and Terri Haute, Indiana
Cable service	
Number of cable	
channels -	24
Kentucky Educational	
Television -	Channel 31, Henderson-Owensboro, Kentucky, transmitter
	Channel 35, Madisonville, Kentucky, transmitter

Library Services

Public library - Henderson County Public Library

Size collection - 78,844 volumes

Circulation, 1984-85 - 183,355

Special collections - Extensive local genealogy collection

Services - Bookmobile, magazines, newspapers, 2,633 records, audiovisuals, audiovisual equipment loan, microfilm, microfilm reader, microfilm printer, photocopiers, framed paintings, Interlibrary Loan, weekly story hours, 2 meeting rooms, listening room, personal computer for public use

College library - Henderson Community College Library

Size collection - 31,502 volumes

Special collections - Kentucky Authors, French and Spanish literature, Western Kentucky Cornealogy Collection

Services - Magazines, newspapers, audiovisuals, audiovisual equipment, microforms, microfilm reader, microfilm reader-printer, microfiche reader-printer, records, record players, photocopier, listening room, Interlibrary Loan, meeting room, micro computers

Religious Institutions

Number of churches - Approximately 75 in Henderson County

Denominations -	AME-Zion	Episcopal
	Assembly of God	Lutheran
	Baptist	Methodist
	Catholic	Nazarene
	Christian	One God Assembly
	Church of Christ	Pentecostal
	Church of God in Christ	Presbyterian
	Church of God of Prophecy	Salvation Army
	Church of Jesus Christ	Seventh Day Adventist
	Christ of Latter Day Saints	United Church of Christ
		United Methodist

Nearest synagogues - Evansville, Indiana, 10 miles north

Congregations - Adath Israel (reform)

Financial Institutions

<u>Banks</u>	<u>Assets</u>	<u>Deposits</u>	<u>Statement Date</u>
Farmers Bank and Trust Company	\$ 81,789,070.72	\$ 73,136,232.73	6/30/85
First National Bank	64,445,864.51	57,402,222.88	6/30/85
Henderson County State Bank (Corydon)	16,041,071.10	13,609,714.13	6/30/85
Ohio Valley National Bank	74,632,538.17	64,000,975.20	12/31/84
<u>Savings and Loan Associations</u>	<u>Assets</u>	<u>Savings Accounts</u>	<u>Statement Date</u>
Great Financial Federal	\$1,009,097,572.15	\$784,068,110.11	12/31/84
Henderson Home Federal Savings and Loan Association	61,512,285.94	53,031,921.58	6/30/85
Union Federal Savings and Loan	283,792,171.00	241,833,359.00	12/31/84

Hotels and Motels*

Total number - 10
Total rooms - 502

* Construction of a new 65-unit motel, Sugar Creek, was completed in Fall 1985.

Clubs and Organizations

A.A.R.P.	IOOF
Amateur Radio Club	Jaycees
American Cancer Society	Jerusalem Lodge #9
American Legion	Junior Girls Cotillion
American Red Cross Cardinal Chapter	Junior Women's League
Arthritis Foundation	Kentucky Lung Association
Arts Council	Knights of Columbus
Audubon Society	Knights of Columbus Auxiliary
B & PW Club	Ladies of the 80's
Bar Association	League of Women Voters
Beta Sigma Phi Gamma Epsilon	Legal Secretaries Association
Beta Sigma Phi XI Delta Theta	Leukemia Society of America, Inc.
Boy Scouts	Lioness
B.M.Y.	Lions
Church Women United	Junior Achievement
Chapter #65 Ram	Masonic Lodge
Commadery #14	Medical Auxiliary
Community College Alumni Council #88	Medical Society
Country Club	Methodist Hospital Auxiliary
County High Band Boosters	Ministerial Association
County High Boosters	Moose
County High Boosters Auxiliary	Muscular Dystrophy
Crafts Society	Music Club
D.A.R.	N.A.A.C.P.
Democratic Executive Committee	National Federation of the Blind
Democratic Women's Club	Optimist Club
Dream Factory	Professional Secretaries International
Duplicate Bridge	Audubon Chapter
Eastern Star	Rainbow Girls
Elks	Rebekah Lodge
Elks Auxiliary	Realtors
Elks Attucks Lodge	Republican Club
Epsilon Sigma Alpha Gamma Tau	Riverview School
Epsilon Sigma Alpha Gamma Theta	Rotary Club
Fair Board	Saddle Club
Farm Bureau	Salvation Army
Foster Parents Association	Senior Citizens
4-H	Shrine Club
Fraternal Order of Police	Singles Resource Group
Garden Club	Society of Art
Genealogical & Historical Society	Tops
Girl Scouts	Tennis Club
Green Valley Baptist Association	Mahogany Club
Heart Association	Toastmasters
Home Builders	Travelers Protective Association
Homemakers Association	United Way of Henderson County
Independent Insurance Agents of Henderson	Welcome Wagon
Independent Fee Appraisers	Weight Watchers
Industrial Association	White Shrine
Humane Society	Women of the Moose
	YMCA
	Woman's Club of Henderson

RECREATION

Local

Henderson offers a wide range of recreational opportunities for all ages. Public recreation facilities available in the city include seven parks, two municipal swimming pools, a 9-hole municipal golf course and pro shop, sixteen lighted tennis courts, thirteen ball diamonds and four football fields. Two community centers, the Senior Citizens Recreation Center and the John F. Kennedy Community Center, provide year-round recreational activities. The Henderson Park and Recreation Department sponsors many softball and basketball leagues each year and supervised playground programs are offered during the summer months. Swimming instructions are offered at all three pools and tennis instructions are available to all age groups during the summer. A bicycle motocross track is located at Atkinson Park where racing events are held. The City of Henderson will build three new tennis courts in Spring 1986.

The Henderson County YMCA is very active in recruiting new members and promoting physical fitness. Its staff provides instruction in fitness programs ranging from aquatic sports to exercises designed for pre-school children through adulthood. The Henderson County Family YMCA has an indoor swimming pool, a health club, and four lighted tennis courts (three of which are available to the public in the evenings through a cooperative arrangement with the city and county). The Henderson Country Club features an 18-hole golf course, swimming pool, and tennis courts. Other private recreational facilities include an indoor movie theater, a drive-in theater, a roller rink, and one bowling facility.

Just north of Henderson is the John James Audubon State Park, a 692-acre park where the famed naturalist gathered material for his paintings, "The Birds of America." Many paintings by Audubon and his sons, and 126 first-edition prints of his paintings are on display at the Audubon Memorial and Nature Museum which is the focal point of the park. Other features include the Audubon woods, a bird sanctuary and a 12-acre nature preserve lake. The park has year-round cottages and camping sites. Recreational facilities include a 28-acre recreation lake, a beach and a bathhouse, rental rowboats and pedal boats, a dock, a 9-hole golf course, hiking trails, picnic shelters and playgrounds. Organized recreational programs are offered during the summer.

Horse racing is another attraction available in Henderson. James C. Ellis Park and Thoroughbred Race Track provide two months of racing during the summer, and Audubon Raceway features night harness racing in the spring and fall.

Henderson's location on the Ohio River affords the opportunity for a variety of water sports. An annual event that is very popular is the Great Ohio River Flatboat Race from Owensboro to Henderson.

Henderson has several special events which are held annually. They include the Flatboat Day Festival, held in August in culmination of the Great Ohio River Flatboat Race; the Green River Arts and Crafts Show, held the first weekend in October; Christmas Village, held the first weekend in December; and the Carosel of Arts, held in late May or early June.

Area (Within 75 miles)

Evansville, Indiana, 10 miles north of Henderson, Kentucky, is a major urban area with a wide variety of entertainment and recreational offerings. Among its major attractions are the Evansville Museum, the Mesker Park Zoological Gardens, cultural events such as the Evansville Philharmonic performances, and numerous restaurants, nightclubs, and theaters.

The **Sauerheber Wildlife Refuge**, 14 miles west of Henderson, is a wintering area for over 20,000 Canadian geese. Regulated fishing and hunting is permitted.

Higginson-Henry Wildlife Area is located 25 miles southwest of Henderson, near Morganfield. With 5,420 acres, including an 80-acre lake, the refuge has facilities for boating, picnicking, hiking, and biking. Regulated hunting is allowed in season.

Ben Hawes State Park, 22 miles east of Henderson near Owensboro, is a 300-acre park which is open year-round. It contains tennis courts, hiking trails, a picnic area and shelters, plus an 18-hole and 9-hole golf course.

Owensboro, 30 miles east of Henderson, is Kentucky's third largest city. Owensboro is a source of many entertainment and recreational facilities associated with larger communities. Points of interest include museums, an orchestra and two colleges.

Lincoln's Boyhood National Memorial, 52 miles northeast of Henderson at Lincoln City, Indiana, is the homesite of Abraham Lincoln from age seven to twenty-one. The visitor can walk the marked trails where young Lincoln walked to borrow books, hear law cases, hew logs, and work neighbors' farms.

Santa Claus Land, 55 miles northeast of Henderson in Santa Claus, Indiana, is a theme park filled with acres of rides, live shows and unique attractions for the entire family.

Pennyrile Forest State Resort Park near Dawson Springs is located 68 miles south of Henderson. The 24-room lodge and cottages nestled within the trees provide excellent accommodations. Other facilities and activities include a dining room, a gift shop, rental rowboats and pedal boats, a 9-hole golf course, hiking trails, horseback riding, picnicking, playgrounds, shuffleboard, swimming at the lodge pool and off a sand beach, and two tennis courts. Lake Beshear, only four miles from the lodge, sports good fishing.

Lake Malone State Park, located in southern Muhlenberg County, 75 miles southeast of Henderson, offers camping facilities, swimming, fishing, and boating on a 788-acre lake. Playground facilities and picnic shelters are located in a beautiful scenic cliff area. Located across from the entrance to the park is an inn featuring luxury rooms, a restaurant, a swimming lake, a beach, boating, fishing, tennis, and nature trails.

COMMUNITY IMPROVEMENTS

Recent

Construction of the \$12.2 million Henderson Bypass, which extends from Kentucky 136 and U.S. 60 west of Henderson to the Pennyryle Parkway, was completed in Summer 1985.

The Henderson City-County Airport completed the extension of its runway from 3,800 feet to 4,800 feet in October 1985.

Extension of water, sewer and gas lines to the Henderson Riverport was completed in October 1985.

The Community Methodist Hospital recently completed a \$3 million expansion of the obstetrical and newborn areas, office space, and chapel services.

Morris Industries, which manufactures modular homes, located in Henderson in September 1985.

Royster Machine Company, Inc., recently completed a \$750,000 expansion which included a 10,000-square-foot addition and increased employment by 30.

Construction of a new 65-unit motel, Sugar Creek, was completed in Fall 1985.

The Holy name School System completed the construction of a new wing at the existing facilities in August 1985. The \$400,000 project included six new classrooms, one music room, a library, restroom facilities, and two offices.

The city of Henderson recently installed a city-wide alarm-warning system.

Under Way

Construction of a new access road to the Henderson Industrial Park is under way. The \$268,028 access road will be completed in Summer 1986.

Kusan, Inc., is currently undergoing a \$8.5 million renovation and expansion of its automobile and refrigerator plastic parts facility. The project will be completed in Spring 1986.

The replacement of a bridge and highway approaches on U.S. 60 West in Henderson is under way. The \$500,000 project will be completed in July 1986.

The John F. Kennedy Community Center is currently undergoing a \$470,000 expansion. The expansion, which includes the construction of a multi-purpose gymnasium, is scheduled to be completed in May 1986.

Planned

Unison Transformers Service, Inc., announced plans to build a new 40,000-square-foot facility at the Henderson Industrial Park. The \$10 million facility will start operation in Summer 1986.

Sisco Corporation has announced plans for the construction of a \$1.25 million corrugated packaging facility at the Henderson Industrial Park. The new facility will be in operation by Summer 1986.

The Henderson County Water District has plans for a \$2.7 million expansion and renovation of the water system in 1986. The expansion will include 4 new 200,000-gallon water tanks, 3 new pump stations and extension of water service.

Tri State Machinery Company plans to expand into a new \$560,000 facility. The new facility will be 3,000 square feet in the first phase and 14,500 square feet in the final phase.

The city of Henderson will build three new tennis courts in Spring 1986.

Extension of water service to the communities of Reed and Beals, by the Henderson County Water District, is planned for 1986.