

1991

Industrial Resources: Johnson County - Paintsville

Kentucky Library Research Collections
Western Kentucky University, spcol@wku.edu

Follow this and additional works at: https://digitalcommons.wku.edu/johnson_cty



Part of the [Business Administration, Management, and Operations Commons](#), [Growth and Development Commons](#), and the [Infrastructure Commons](#)

Recommended Citation

Kentucky Library Research Collections, "Industrial Resources: Johnson County - Paintsville" (1991). *Johnson County*. Paper 5.
https://digitalcommons.wku.edu/johnson_cty/5

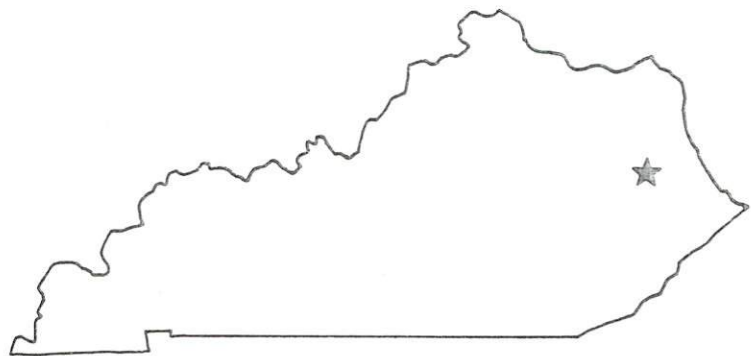
This Report is brought to you for free and open access by TopSCHOLAR®. It has been accepted for inclusion in Johnson County by an authorized administrator of TopSCHOLAR®. For more information, please contact topscholar@wku.edu.

712

Johnson Co.

Resources for Economic Development

Paintsville



KENTUCKY
Open for Business

RESOURCES FOR ECONOMIC DEVELOPMENT
PAINTSVILLE, KENTUCKY

Prepared by
The Kentucky Cabinet for Economic Development
Division of Research and Planning
in cooperation with
Paintsville-Johnson County Chamber of Commerce

1991

Division Director - Pamela K. Riley; program manager - Keith Roberts; research - Jane E. Sullivan; clerical - Wanda Sharp; graphics - Robert Owens, Pat Coleman; cartography - Edwin Scott, Dave Clark. Cost of printing paid from state funds.

TABLE OF CONTENTS

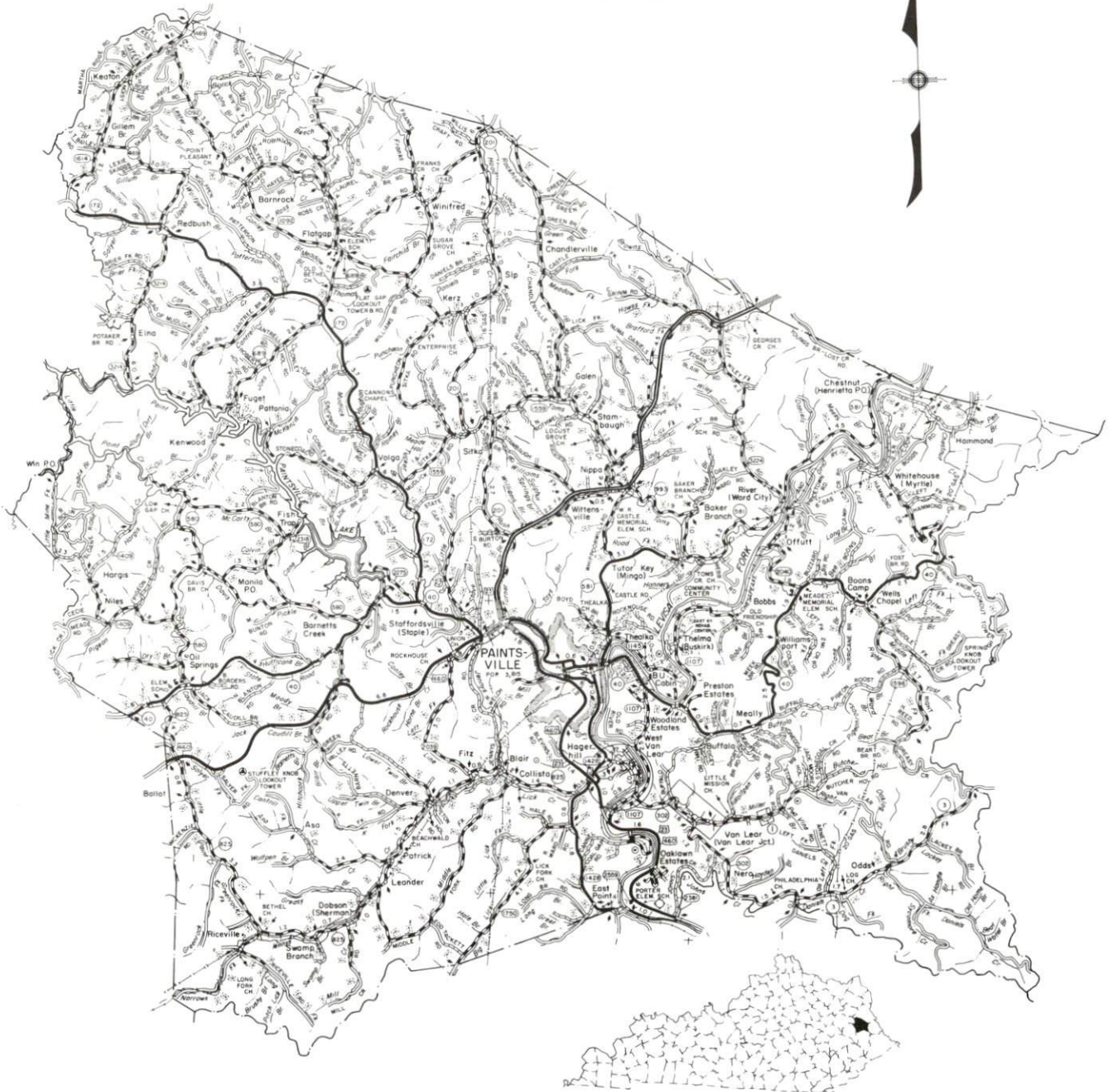
<u>Chapter</u>	<u>Page</u>
PAINTSVILLE, KENTUCKY - A RESOURCE PROFILE	1
THE LABOR MARKET STATISTICS	2
Labor Market Area Map	2
Population	3
Population Projections	3
Estimated Labor Supply.....	3
Labor Force Characteristics of Residents, 1990	4
Selected Components of Nonagricultural Employment, by Place of Work, 1989	5
Per Capita Personal Income	6
Average Placement Wages	7
Average Weekly Wages of Workers Covered by Unemployment Insurance 1989 - Bar Chart	8
Average Weekly Wages by Industry, by Place of Work, 1989	9
EXISTING INDUSTRY	10
Paintsville Manufacturing Firms, Their Products and Employment	10
Labor Organizations in Manufacturing Firms.....	10
Selected Industrial Services	11
TRANSPORTATION.....	12
Highways	12
Truck Service	12
Selected Market Location Map.....	13
Rail.....	14
Air.....	14
UTILITIES	15
Electricity	15
Natural Gas	15
Public Water Supply	16
Sewerage	16
CLIMATE	17

<u>Chapter</u>	<u>Page</u>
LOCAL GOVERNMENT	18
Structure	18
Planning and Zoning	18
Local Fees and Licenses	18
State and Local Property Taxes	19
EDUCATION.....	20
Public Schools	20
Nonpublic Schools	20
Area Colleges and Universities	20
Vocational Training.....	21
OTHER LOCAL FACILITIES.....	22
Local Medical Personnel	22
Hospitals.....	22
Other Medical Facilities and Services	22
Banks and Savings & Loan Associations.....	22
Newspapers	22
Telephone Service.....	22
RECREATION	23
COMMUNITY IMPROVEMENTS	24

GENERAL HIGHWAY MAP
JOHNSON COUNTY
KENTUCKY

PREPARED BY THE
KENTUCKY TRANSPORTATION CABINET
DEPARTMENT OF HIGHWAYS
DIVISION OF PLANNING

IN COOPERATION WITH THE
U.S. DEPARTMENT OF TRANSPORTATION
FEDERAL HIGHWAY ADMINISTRATION



PAINTSVILLE, KENTUCKY - A RESOURCE PROFILE

Paintsville, the county seat of Johnson County, is located in the Eastern Coal Field Region of Kentucky. Paintsville, with a 1990 population of 4,354, is located 116 miles southeast of Lexington, Kentucky; 186 miles southeast of Louisville, Kentucky; 159 miles southeast of Cincinnati, Ohio; and 201 miles northeast of Knoxville, Tennessee.

Johnson County, with a 1990 population of 23,248, has a land area of 264 square miles.

The Economic Framework - The total number of Johnson County residents employed in 1990 averaged 7,846. In 1989, manufacturing firms in the county reported 377 employees; wholesale and retail trade provided 1,896 jobs; 810 people were employed in service occupations; state and local government accounted for 1,157 employees; contract construction firms provided 185 jobs; and 265 people were employed by mining and quarrying operations.

Labor Supply - There is a current estimated labor supply of 32,923 persons available for industrial jobs in the labor market area. In addition, from 1990 through 1994, 11,420 young persons in the area will become 18 years of age and potentially available for industrial jobs.

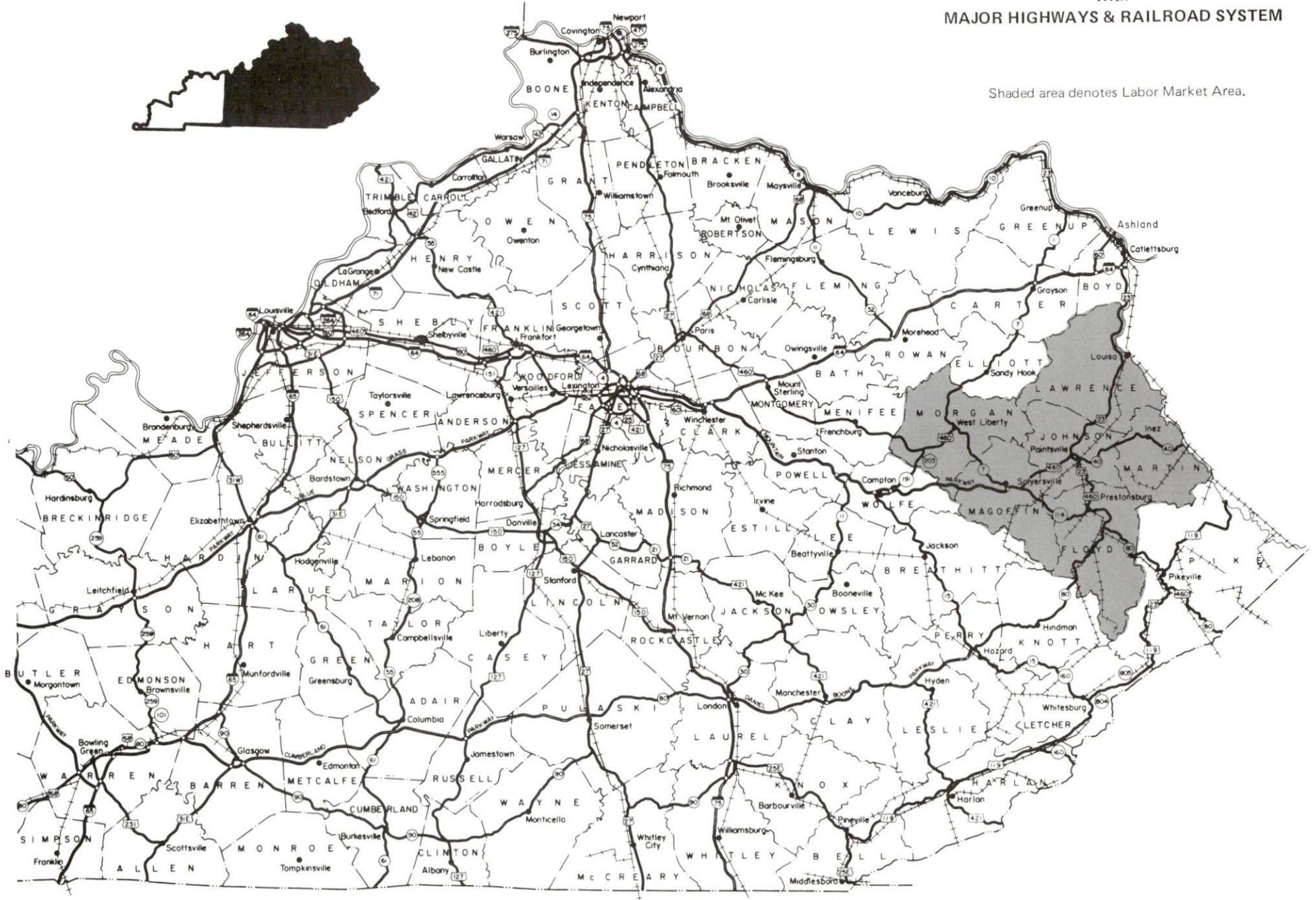
Transportation - Major highways serving Paintsville include U.S. 23, U.S. 460 and Kentucky Highway 40. The Mountain Parkway is located eighteen miles southwest via U.S. 460. Interstate 64 is located fifty-six miles north via U.S. 23 and ninety-four miles northwest via U.S. 460 and the Mountain Parkway. Rail service is provided to Paintsville by CSX Transportation. Fifteen trucking companies provide Paintsville with interstate and/or intrastate service. Combs Airport, five miles south of Paintsville, has a 3,200-foot paved runway. Big Sandy Regional Airport, twenty miles southeast of Paintsville, has a 5,000-foot paved runway. The nearest scheduled commercial airline service is available at the Tri-State Airport (Walker-Long Field), nine miles southwest of Huntington, West Virginia, fifty-five miles northeast of Paintsville.

Power and Fuel - Electric power is provided to Paintsville and Johnson County by the Kentucky Power Company, an electric generation and transmission company. Johnson County is also served by the Big Sandy Rural Electric Cooperative Corporation, which is supplied by the East Kentucky Power Cooperative. Natural gas is provided to Paintsville by Paintsville City Utilities, which is supplied by Kentucky-West Virginia Gas Company.

Education - Primary and secondary education is provided by the Paintsville Independent and Johnson County School Systems. Two universities, three senior colleges, and three community colleges are located within 70 miles of Paintsville. Vocational education is provided to Paintsville and Johnson County by the Mayo State Vocational-Technical School, located in Paintsville.

PAINTSVILLE LABOR MARKET AREA With MAJOR HIGHWAYS & RAILROAD SYSTEM

Shaded area denotes Labor Market Area.



LABOR MARKET STATISTICS

The Paintsville Labor Market Area includes Johnson County and the adjoining Kentucky counties of Floyd, Lawrence, Magoffin, Martin and Morgan.

	POPULATION		
	1990	1980	1970
Labor Market Area	118,083	126,860	93,993
Paintsville	4,354	3,815	3,868
Johnson County	23,248	24,432	17,539

Source: U.S. Department of Commerce, Bureau of the Census, January 1991.

	POPULATION PROJECTIONS			
	2000	2010	2020	2030
Labor Market Area	140,320	148,510	153,580	155,390
Johnson County	26,770	28,070	28,830	29,000

Source: University of Louisville, Urban Studies Center, State Data Center.

	ESTIMATED LABOR SUPPLY				
	Current				Future
	Total	Unemployed	Employed Part-Time	Not in Labor Force	Becoming 18 years of age 1990 thru 1994
Labor Market Area*	32,923	3,827	4,847	24,249	11,420
Johnson County	5,670	683	930	4,057	2,096

* Additional workers may be drawn from other nearby counties.

Note: Unemployed - persons unemployed and actively seeking work; Employed Part-Time - persons employed but working only 14 to 26 weeks per year; Not in Labor Force - represents the number of persons who would enter the labor force if suitable employment were available (based on the assumption that persons in Kentucky would like to participate in the labor force in the same proportion that they do nationally).

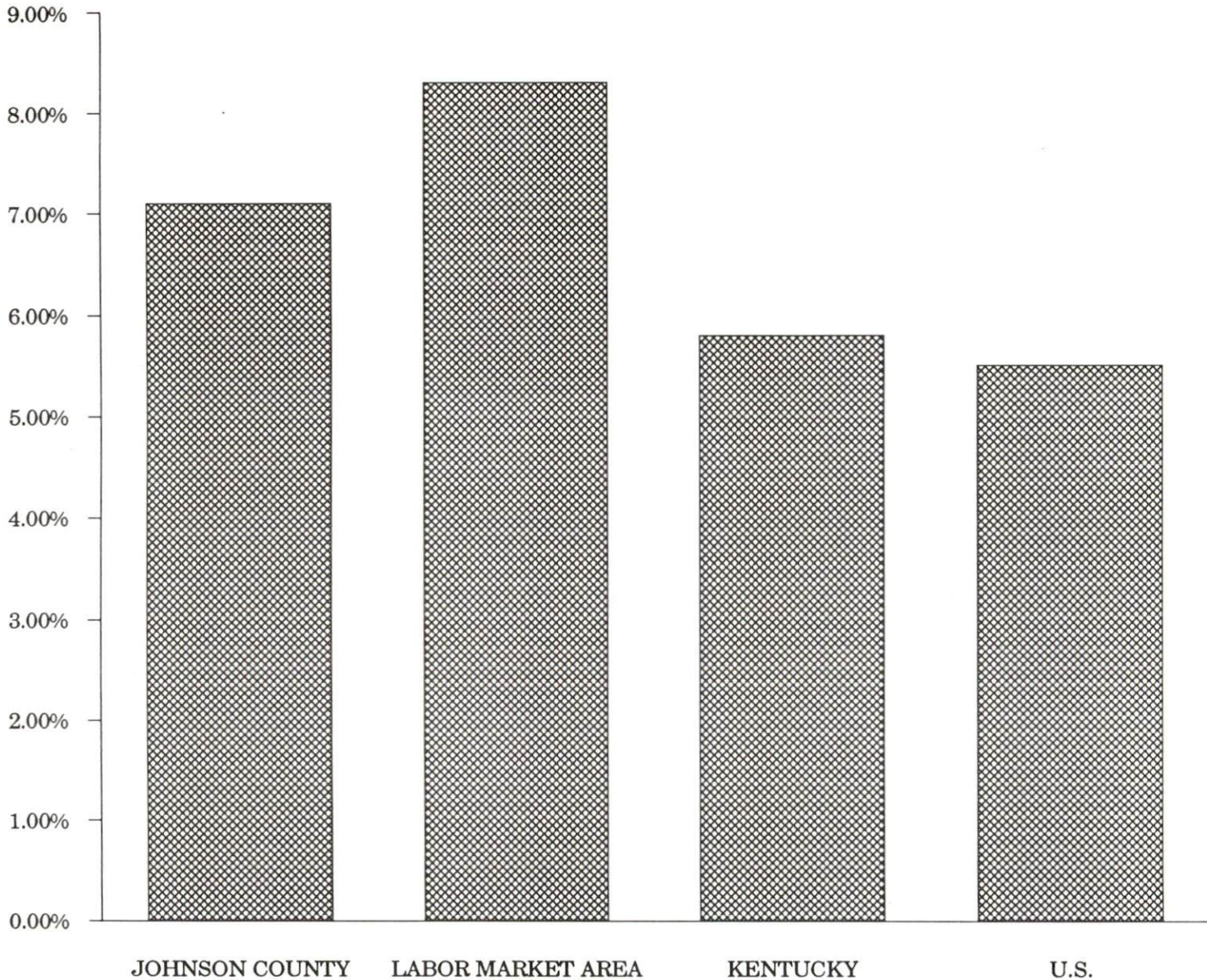
Sources: Kentucky Cabinet for Human Resources, Kentucky Labor Supply Estimates by County, 1989. Kentucky Cabinet for Economic Development, Future Labor Supply Becoming 18 Years of Age, 1990 thru 1994.

LABOR FORCE CHARACTERISTICS OF RESIDENTS, 1990

	<u>Johnson County</u>	<u>Labor Market Area</u>
Civilian Labor Force	8,445	39,363
Employment	7,846	36,065
Unemployment	599	3,298
Rate of Unemployment (%)	7.1	8.3

Source: Kentucky Cabinet for Human Resources, Kentucky Labor Force Estimates, Annual Averages, 1990.

**UNEMPLOYMENT RATES
1990**

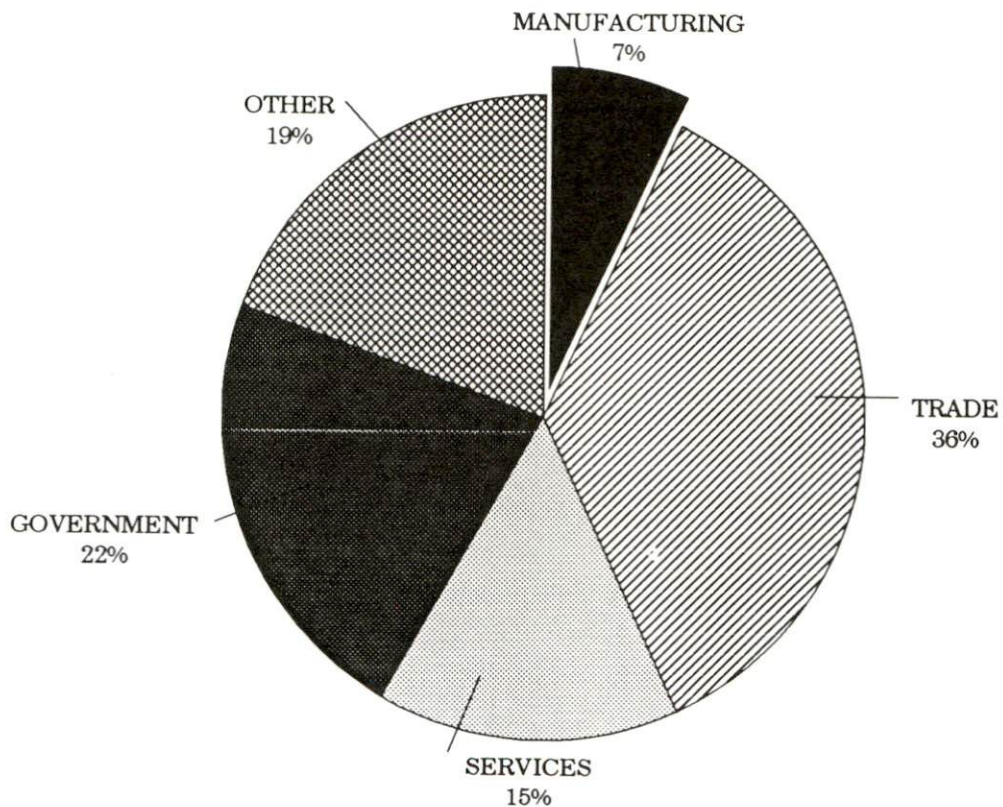


SELECTED COMPONENTS OF NONAGRICULTURAL EMPLOYMENT
BY PLACE OF WORK, 1989

	<u>Johnson County</u>	<u>Labor Market Area</u>
All Industries (total)	5,260	25,322
Manufacturing	377	1,083
Wholesale & Retail Trade	1,896	6,703
Services	810	4,191
State/Local Government	1,157	5,143
Contract Construction	185	1,053
Mining & Quarrying	265	4,144

Note: Excludes domestic workers, railway workers, certain nonprofit corporations, majority of federal government workers, and self-employed workers.
Source: Kentucky Cabinet for Human Resources, Average Monthly Workers Covered by Kentucky Unemployment Insurance Law, 1989.

JOHNSON COUNTY

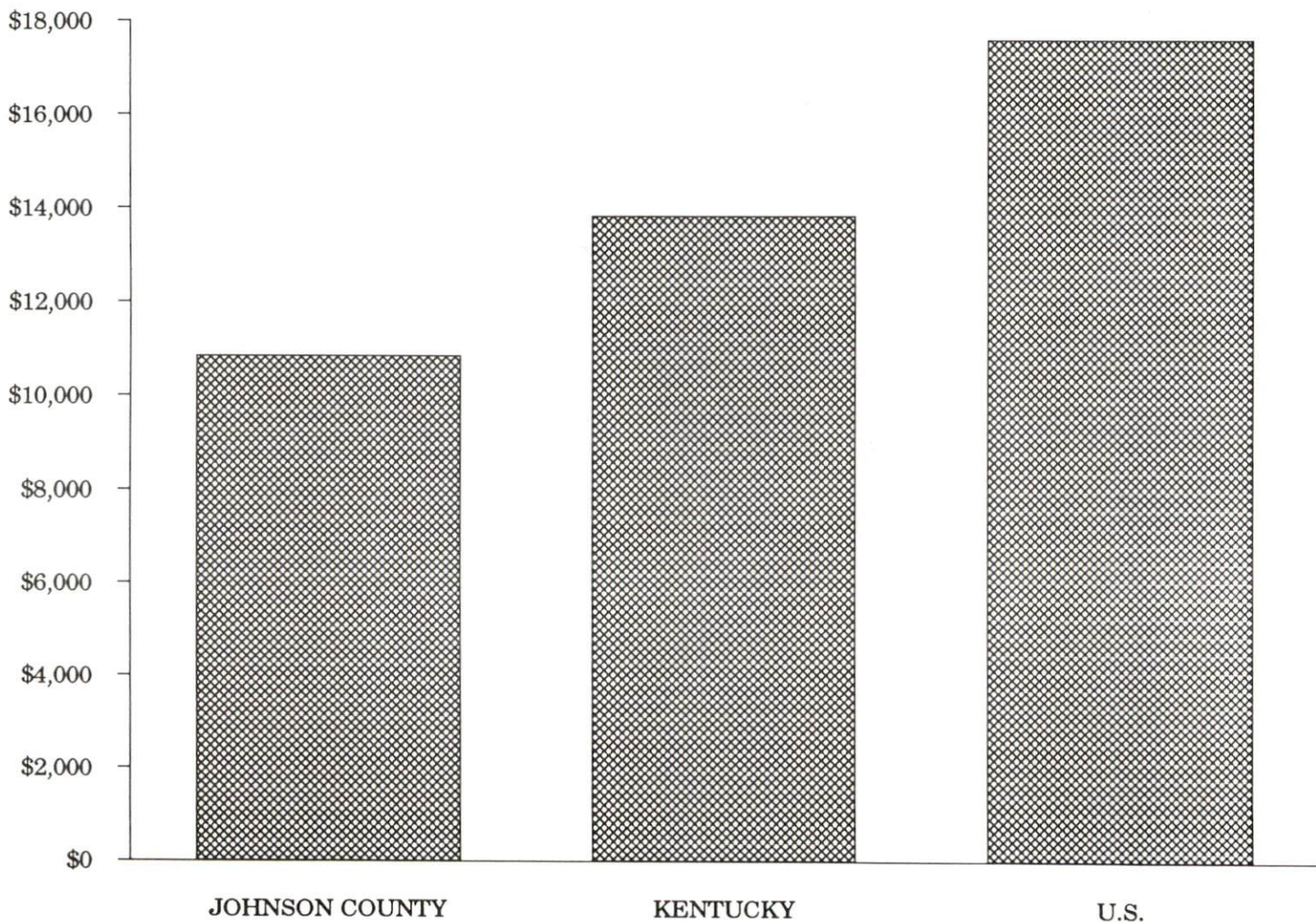


PER CAPITA PERSONAL INCOME

Area	1985	1989	Percent Change
Johnson County	\$8,875	\$10,840	22.1
Labor Market Area Range	\$6,621 - \$9,754	\$7,772 - \$10,840	-
Kentucky	\$10,755	\$13,823	28.5
U.S.	\$13,899	\$17,594	26.6

Source: U.S. Bureau of Economic Analysis, Kentucky Economic Information System, April 1990.

PER CAPITA PERSONAL INCOME
1989



AVERAGE PLACEMENT WAGES

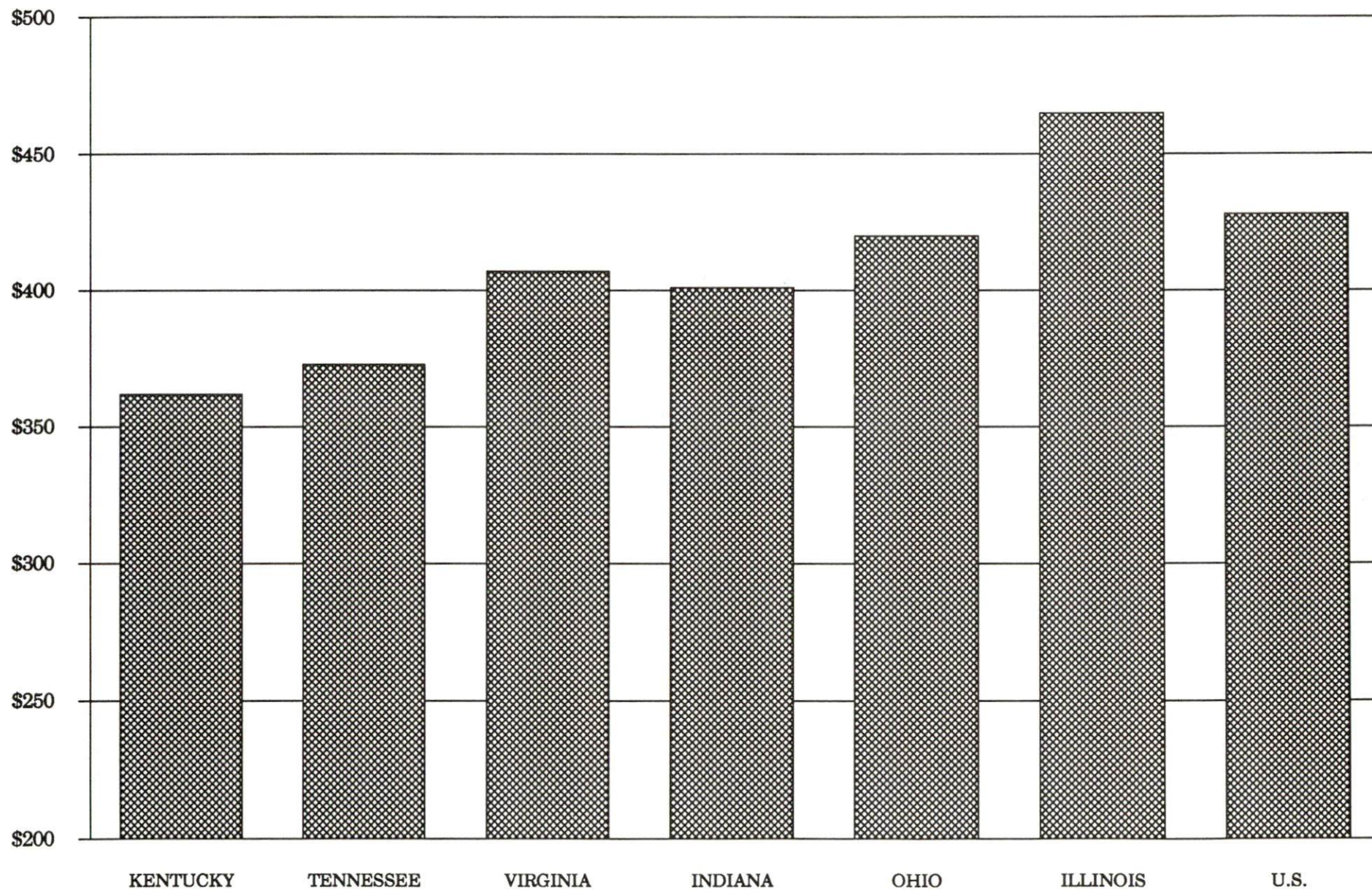
Johnson County is served by the Prestonsburg local office of the Kentucky Department for Employment Services. The focus of the following data is on job placements made by the Prestonsburg local office and may therefore be used as an indicator of the wages which employers in the area pay new employees. During the twelve months which ended on June 30, 1990, the local employment office filled 2,098 job openings in various occupational categories. The average hourly wage for selected occupational categories were:

<u>OCCUPATIONAL CATEGORY</u>	<u>NUMBER OF PLACEMENTS</u>	<u>AVERAGE WAGE(\$)</u>
All Occupations	2,098	4.67
Clerical	579	3.77
Sales	146	3.70
Services (excluding domestic)	516	3.60
Agricultural, Fishery, Forestry, etc.	7	7.52
Processing	6	4.30
Machine Trades	50	7.98
Bench Work	9	6.34
Structural	254	6.00
Motor Freight/ Transportation	68	9.10
Packaging and Materials Handling	276	4.05
Other	112	10.55

The Prestonsburg local office also serves Floyd, Magoffin, and Martin Counties. The above occupational categories are taken from the Dictionary of Occupational Titles published by the U.S. Department of Labor.

Source: Kentucky Cabinet for Human Resources, Department for Employment Services.

AVERAGE WEEKLY WAGES OF WORKERS COVERED BY
UNEMPLOYMENT INSURANCE - 1989



AVERAGE WEEKLY WAGES BY INDUSTRY
BY PLACE OF WORK, 1989*

	Johnson County	Kentucky (State- Wide)	Tennessee	Virginia
All Industries	\$300.32	\$362.03	\$373.00	\$407.00
Mining & Quarrying	468.45	623.82	522.00	576.00
Contract Construction	274.65	388.21	407.00	434.00
Manufacturing	429.93	472.92	431.00	470.00
Transportation, Communications & Public Utilities	381.53	482.22	493.00	575.00
Wholesale & Retail Trade	224.20	245.12	N/A	N/A
Finance, Insurance & Real Estate	314.93	417.89	448.00	488.00
Services	293.58	310.29	357.00	409.00
State/Local Government	330.12	370.61	N/A	N/A
	<u>Indiana</u>	<u>Ohio</u>	<u>Illinois</u>	<u>U. S.</u>
All Industries	\$401.00	\$420.00	\$465.00	\$428.00
Mining & Quarrying	693.00	596.00	707.00	688.00
Contract Construction	464.00	480.00	608.00	485.00
Manufacturing	546.00	580.00	566.00	534.00
Transportation, Communications & Public Utilities	504.00	533.00	582.00	556.00
Wholesale & Retail Trade	N/A	N/A	N/A	N/A
Finance, Insurance & Real Estate	418.00	456.00	594.00	544.00
Services	328.00	360.00	419.00	399.00
State/Local Government	N/A	N/A	N/A	N/A

* Wages for U.S. and surrounding states rounded to nearest dollar.

N/A Not Available.

Note: The average weekly wage for each category includes the salaries and wages of all persons working for that type business. For example, the manufacturing category includes both production workers and administrative personnel. Excludes domestic workers, railway workers, certain nonprofit corporations, majority of federal government workers, and self-employed workers.

Source: Kentucky Cabinet for Human Resources, Average Weekly Wages of Workers Covered by Kentucky Unemployment Insurance Law, 1989. U.S. Department of Labor, Bureau of Labor Statistics, Employment and Wages, Annual Averages, 1989, October 1990.

EXISTING INDUSTRY

PAINTSVILLE MANUFACTURING FIRMS, THEIR PRODUCTS AND EMPLOYMENT

<u>Firm</u> (Establishment date)	<u>Product</u>	<u>1990</u> <u>Average Employment</u>
Adams Construction Company (1962)	Crushed limestone, concrete ready mix, bituminous concrete	25
American Standard, Inc. (1969)	Plumbing fittings	500
Commercial Printing Company (1955)	Book publishing, offset printing	5
Fouts Wood Products, Inc. (1988)	Lumber	40
McGahan Feed Company, Inc. (1942)	Feed	9
Sandy Valley Press, Inc. (1964)	Newspaper	11
TMC Print Shop, Division of Mountain Chronicle (1985)	Commercial printing	8
Red's Machine Shop, Inc. (1979)	Machine shop, portable boring bar machines	6

Sources: Kentucky Cabinet for Economic Development, Division of Research and Planning.

LABOR ORGANIZATIONS IN MANUFACTURING FIRMS

Union

United Steelworkers of America,
AFL-CIO

Representing workers at:

Adams Construction Company
American Standard, Inc.

SELECTED INDUSTRIAL SERVICES

<u>Types of Services</u>	<u>Location</u>	<u>Mileage from Paintsville</u>
Custom Data Processing	Prestonsburg, Kentucky	13
Custom Plastics Producers	Ashland, Kentucky	64
Electric Motor Repair	Martin, Kentucky	25
Grinding, Precision & Tool	Ashland, Kentucky	64
Heat Treating Facilities	Richmond, Kentucky	112
	Lexington, Kentucky	116
Industrial Equipment & Supplies	Ashland, Kentucky	64
	Huntington, West Virginia	64
Industrial Gases	Prestonsburg, Kentucky	13
Industrial Waste Removal	Ashland, Kentucky	64
Machine Shops, Tool & Die	Van Lear, Kentucky	13
Metal Castings	Cynthiana, Kentucky	125
Metal Finishers	Richmond, Kentucky	112
	Lexington, Kentucky	116
Metal Service Centers	Richmond, Kentucky	112
	Lexington, Kentucky	116
Millwrights	Stanton, Kentucky	72
Public Warehouse Facilities	Lexington, Kentucky	116

Sources: Kentucky Cabinet for Economic Development, Division of Research and Planning.

TRANSPORTATION

Highways

Major highways serving Paintsville include U.S. 23 and U.S. 460, both "AAA"-rated (80,000-pound gross load limit) trucking highways. Kentucky Highway 40, a "AA"-rated (62,000-pound gross load limit) trucking highway, also serves Paintsville. Access to the Mountain Parkway is eighteen miles southwest of Paintsville via U.S. 460. The Mountain Parkway intersects with Interstate 64, ninety-four miles northwest of Paintsville. Access to Interstate 64 is also available fifty-six miles north of Paintsville via U.S. 23. Kentucky 80, seventeen miles south of Paintsville, is a multi-lane highway which provides access to the Daniel Boone Parkway, fifty-nine miles southeast of Paintsville. The Daniel Boone Parkway then connects with Interstate 75, 118 miles southwest of Paintsville.

Improvements to U.S. 23 are currently being made between Paintsville and Prestonsburg. The thirteen mile stretch of U.S. 23 will be converted to a four-lane trucking highway. Completion of the project is scheduled for 1993.

HIGHWAY MILES FROM PAINTSVILLE, KENTUCKY TO SELECTED MARKET CENTERS

City	Highway Miles	City	Highway Miles
Atlanta, GA	395	Los Angeles, CA	2,271
Baltimore, MD	473	Louisville, KY	186
Birmingham, AL	444	Nashville, TN	312
Chicago, IL	444	New Orleans, LA	783
Cincinnati, OH	159	New York, NY	658
Cleveland, OH	317	Pittsburgh, PA	304
Detroit, MI	369	St. Louis, MO	444
Knoxville, TN	201		

Note: Mileage computations are via the best interstate or primary highways, not necessarily the most direct route of travel.

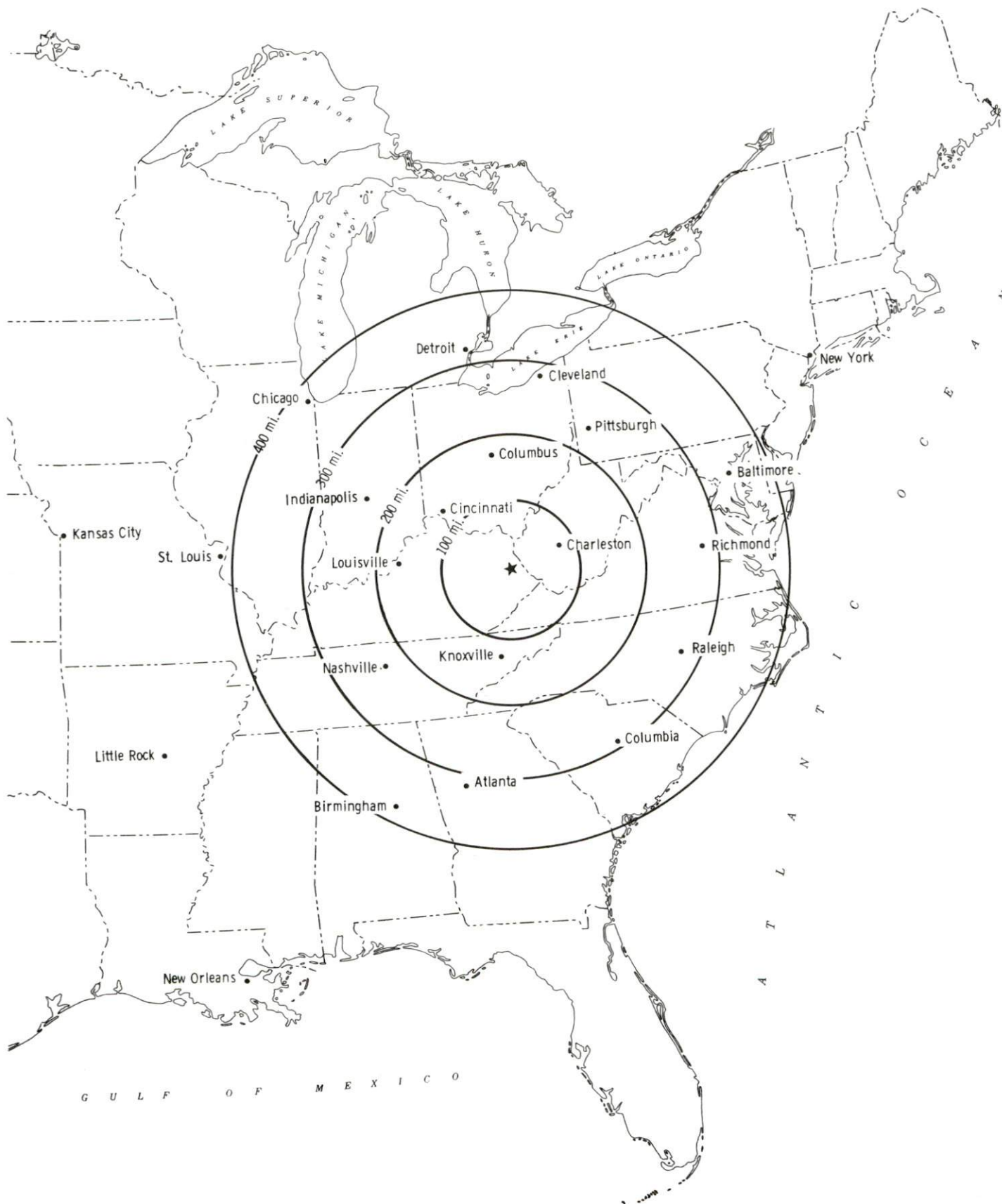
Sources: Rand McNally Deluxe Motor Carriers' Road Atlas, 1989. Official Kentucky Mileage Map, 1980.

Trucking Service

Fifteen trucking companies provide interstate and/or intrastate trucking service to Paintsville.

Source: American Motor Carrier Directory, Spring 1991.

Selected Market Centers



Rail

CSX Transportation provides main line rail service to Paintsville. Southern Railway provides the nearest piggyback facilities, which are located at Georgetown, 124 miles east of Paintsville.

For details on routing, schedules, rates, and services contact:

Manager
Industrial Development
CSX Transportation
9420 Bunsen Parkway
Suite 212
Louisville, Kentucky 40220
(502) 499-3025

Air

Local

Location: Combs Airport
5 miles south of Paintsville
Runways: 1 paved
Length: 3,200 feet
Traffic
Control: Wind sock
Lighting: None
Services: 100LL octane, jet-A fuel, flight instruction

Location: Big Sandy Regional Airport
20 miles southeast of Paintsville
Runways: 1 paved
Length: 5,000 feet
Traffic
Control: Unicom
Lighting: Rotating beacon, pilot controlled runway &
taxiway lights, PAPI
Services: Jet-A, AV-Gas fuel; light mechanic work; flight
instruction; rental cars; aircraft rental

Nearest Scheduled Commercial Airline Service

Location: Tri-State Airport (Walker-Long Field)
3 miles southwest of Huntington, West Virginia;
61 miles northeast of Paintsville
Air Service: ComAir, USAir, C.C. Air, United Express
Daily Arrivals
& Departures: 48

UTILITIES

Electricity

Company serving Paintsville and parts of Johnson County - Kentucky
Power Company
Source of power - Kentucky Power Company
For industrial rates contact:

Kentucky Power Company
1701 Central Avenue
P. O. Box 1428
Ashland, Kentucky 41101
(606) 327-1111

Company serving parts of Johnson County - Big Sandy Rural Electric
Cooperative Corporation
Source of power - East Kentucky Power Cooperative
For industrial rates contact:

Big Sandy Rural Electric
Cooperative Corporation
Eleventh Street
P.O. Box 1746
Paintsville, Kentucky 41240
(606) 789-4095

and/or

Industrial Development Division
East Kentucky Power Cooperative
P. O. Box 707
Winchester, Kentucky 40392-0707
(606) 744-4812

Natural Gas

Company serving Paintsville - Paintsville City Utilities
Source of supply - Kentucky-West Virginia Gas Company
For rates and supplies contact:

Paintsville City Utilities
P.O. Box 631
Paintsville, Kentucky 41240
(606) 789-2630

Public Water Supply

Company serving Paintsville - Paintsville City Utilities
P.O. Box 631
Paintsville, Kentucky 41240
(606) 789-2630

Source - Big Sandy River
Treatment plant capacity - 3,000,000 gallons per day
Average daily consumption - 1,500,000 gallons
Peak daily consumption - 1,800,000 gallons
Storage capacity - 1,750,000 gallons
Water pressure - 70 psi to 86 psi

Construction of a 500,000-gallon water tank was completed in 1989. Currently, filter controls in the water treatment plant are being upgraded at a cost of \$100,000. The Paintsville City Utilities plans to renovate the treatment plant in the near future.

Sewerage

Company serving Paintsville - Paintsville City Utilities
P.O. Box 631
Paintsville, Kentucky 41240
(606) 789-2630

Design capacity - 1,000,000 gallons per day
Average daily flow - 700,000 gallons
Type of treatment - Secondary
Treated effluent discharged into - Big Sandy River

CLIMATE

Johnson County

Temperature

Normal (29-year record)	55.90 degrees
Average annual 1989	55.50 degrees
Record highest, July 1952 (44-year record)	102.00 degrees
Record lowest, January 1985 (44 year record)	-21.00 degrees
Normal heating degree days (29-year record) (Heating degree day totals are the sums of negative departures of average daily temperatures from 65 degrees F.)	4,356

Precipitation

Normal (29-year record)	41.24 inches
Mean annual snowfall (52-year record)	16.50 inches
Total precipitation 1989	47.84 inches
Mean number days precipitation (.01 inch or more) (44-year record)	133.40
Mean number days thunderstorms (46-year record)	43.20

Prevailing winds (through 1963)

Northeast

Relative Humidity (27-year record)

1 a.m.	81 percent
7 a.m.	86 percent
1 p.m.	57 percent
7 p.m.	63 percent

Source: U.S. Department of Commerce, Environmental Science Services Administration, Climatological Data, 1989. Station of record: Bristol, Johnson City, Kingsport, Tennessee.

LOCAL GOVERNMENT

Structure

Paintsville is served by a mayor and six council members. Johnson County is served by a county judge/executive and three commissioners.

Planning and Zoning

City agency - Paintsville Planning and Zoning Commission

Zoning enforced - Yes

Subdivision regulations enforced - City only

Local codes enforced - Building and housing

Mandatory state codes enforced - Kentucky Plumbing Code, National

Electric Code, Kentucky Boiler Regulations and Standards, Kentucky

Building Code (modeled after BOCA code)

Local Fees and Licenses

The city of Paintsville levies an occupational license tax of 1% on gross salaries of individuals and 1% on net profits of businesses. A business license fee of \$25 per year, and an itinerant merchant fee of \$50 for 30 calendar days are also charged.

PROPERTY TAXES

The Kentucky Constitution requires the state to tax all classes of taxable property, and state statutes allow local jurisdictions to tax only a few classes. All locally taxed property is subject to county taxes and school district taxes (either a county school district or an independent school district). Property located inside of city limits may also be subject to city property taxes.

Special local taxing jurisdictions (fire protection districts, watershed districts, and sanitation districts) levy taxes within their operating areas (usually a small portion of community or county).

Property assessments in Kentucky are at 100% fair cash value. A 15% reduction is automatically granted for accounts receivable.

STATE PROPERTY TAX RATES PER \$100 VALUATION

<u>Selected Classes of Property</u>	<u>1990 State Rate</u>	<u>Local Taxation Permitted</u>
Real Estate	\$0.189	YES
Manufacturing Machinery	0.150	NO
Pollution Control Equipment	0.150	NO
Inventories		
Raw Materials	0.050	NO
Goods in Process	0.050	NO
Finished Goods	0.050	YES
Motor Vehicles	0.450	YES
Other Tangible Personal Property	0.450	YES
Intangibles (Accounts Receivable, Money on Hand)	0.250	NO

LOCAL PROPERTY TAX RATES PER \$100 VALUATION, 1990

<u>Taxing Jurisdiction</u>	<u>Real Estate</u>	<u>Finished Goods & Tangibles</u>	<u>Motor Vehicles</u>
Johnson County	\$0.2210	\$0.2186	\$0.2190
School Districts:			
Johnson County	0.4140	0.4140	0.4390
Paintsville Independent	0.7420	0.7420	0.6900
Cities:			
Paintsville	0.1152	0.1117	0.1104

EDUCATION

Public Schools

	Paintsville Independent	Johnson County
Total Enrollment (Fall, 1990)	962	4,182
Accreditation	Southern Association of Colleges and Schools	
Pupil-Teacher Ratio (1989-90)	17.9-1	20.5-1
Percent High School Graduates to College (1989-90)	84.6	47.8
Expenditures Per Pupil (1989-90)	\$3,006.71	\$2,519

Nonpublic Schools

<u>School</u>	<u>Enrollment</u>	<u>Grades</u>
Our Lady of the Mountains Elementary	90	K-8

Area Colleges and Universities

<u>Name</u>	<u>Location (Miles distant)</u>	<u>Enrollment (Fall, 1990)</u>
Prestonsburg Community College	Prestonsburg, Kentucky (13)	2,446
Pikeville College	Pikeville, Kentucky (40)	972
Alice Lloyd College	Pippa Passes, Kentucky (53)	548
Lees College	Jackson, Kentucky (59)	352
Hazard Community College	Hazard, Kentucky (63)	1,318
Ashland Community College	Ashland, Kentucky (64)	3,061
Marshall University	Huntington, West Virginia (65)	12,205
Morehead State University	Morehead, Kentucky (67)	8,622

Vocational Training

Vocational training is available at both the state vocational-technical schools and the area vocational education centers. The state vocational-technical schools are post-secondary institutions. The area vocational education centers are designed to supplement the curriculum of high school students. Both the state vocational-technical schools and the area vocational education centers offer evening courses to enable working adults to upgrade current job skills.

Arrangements can be made to provide training in the specific production skills required by an industrial plant. Instruction may be conducted either in the vocational school or in the industrial plant, depending upon the desired arrangement and the availability of special equipment.

Bluegrass State Skills Corporation

The Bluegrass State Skills Corporation, an independent public corporation created and funded by the Kentucky General Assembly, provides programs of skills training to meet the needs of business and industry from entry level to advanced training, and from upgrading present employees to retraining experienced workers.

The Bluegrass State Skills Corporation is the primary source for skills training assistance for a new or existing company. The Corporation works in partnership with other employment and job training resources and programs, as well as Kentucky's economic development activities, to package a program customized to meet the specific needs of a company.

<u>Vocational School</u>	<u>Location (Miles distant)</u>	<u>Cumulative Enrollment 1989-1990</u>
Mayo State Vocational-Technical School	Paintsville	963
Floyd County Area Vocational Education Center (Garth)	Martin (25)	301
Martin County Area Vocational Education Center	Inez (24)	225

OTHER LOCAL FACILITIES

Local Medical Personnel

Physicians - 23
Dentists - 7

Hospitals

<u>General Hospital</u>	<u>Location</u>	<u>Beds</u>
Paul B. Hall Regional Medical Center	Paintsville	72
Highland Regional Medical Center	8 miles south of Paintsville	184

Paul B. Hall Regional Medical Center

Medical staff - 26 active physicians; 11 courtesy physicians; 9 consulting physicians; 44 registered nurses; 24 licensed practical nurses

Highland Regional Medical Center

Medical staff - 34 active physicians; 26 courtesy physicians; 97 registered nurses; 71 licensed practical nurses

Other Medical Facilities and Services

Paintsville Health Care Center
Burchett's Ambulance Service
Sandy Valley Medical Clinic
Big Sandy Health Department
Johnson County Rescue Squad, Inc.

Banks and Savings & Loan Associations

Citizen National Bank
First National Bank
Family Federal Bank

Newspapers

The Paintsville Herald (weekly)

Telephone Service

South Central Bell

RECREATION

Local

Excellent recreational facilities are provided for the citizens of Paintsville. The Paintsville park and playground, which covers a 16-acre area, offers a lighted Little League field, a lighted baseball and softball field, lighted tennis courts, basketball courts, a swimming pool, an Olympic racing pool, and a service building with restroom facilities.

A community center provides covered facilities and a lighted area for family outings. A five-acre park adjacent to the center features a Little League field, basketball courts, racquetball courts, a 320-meter running track, playground equipment, and grills.

Paintsville Country Club has an 18-hole golf course, a swimming pool, and several tennis courts, which are open to the public. Several golf tournaments are held there each year.

A stadium owned by the Paintsville Independent School District is the site for football games, and events connected with the annual Apple Festival.

Paintsville Lake, a 1,139-acre recreational lake, is located four miles west of Paintsville. Recreational opportunities include fishing, boating, swimming, and hunting.

Area (Within 80 miles)

Jenny Wiley State Resort Park
Dewey Lake
Grayson Lake State Park
Breaks Interstate Park
Natural Bridge State Resort Park
Red River Gorge
Cave Run Lake
Greenbo Lake State Resort Park

COMMUNITY IMPROVEMENTS

Recent

Paintsville was chosen as a "Kentucky Certified City" in 1990. The award is based on achievement in the following categories: Economic development (includes tourism or industrial development), community organizations, utilities, infrastructure, community appearance, downtown revitalization, education, and recreation. The Certified Cities Program is sponsored by the Kentucky Chamber of Commerce.

Renovation of the water treatment plant was completed in July 1991. The \$100,000 project upgraded the plant's filter controls. In addition, a \$700,000 line extension project was implemented in 1989. The project has increased fire protection to many areas of Paintsville.

Construction of the Johnson County Craft Center Market was completed in June 1990. The \$50,000 facility is used to promote and sell local products.

Under Way

The reconstruction of U.S. 23 will be a major improvement to transportation in Paintsville when the project is completed in 1992. Thirteen miles of U.S. 23 are currently being converted to four-lanes and Kentucky Highway 3 will be converted to a four-lane trucking highway from U.S. 23 to the city of Inez.

The Paintsville Main Street Program has sponsored many promotions and celebrations designed to rejuvenate Paintsville's downtown. These efforts have increased occupancy rates for downtown buildings; six new businesses have opened in the downtown area since January 1991. A concert series will be held in the original Sipp Cinema, and self-guided and guided walking tours have been planned. Local banks have formed a low-interest loan pool for exterior renovation of downtown businesses.

Planned

The U.S. Corps of Engineers plans to sell land to the city of Paintsville for the development of a recreational area at Paintsville Lake. Plans for a lodge and campsite have been approved.