

1988

Industrial Resources: McCracken County - Paducah

Kentucky Library Research Collections
Western Kentucky University, spcol@wku.edu

Follow this and additional works at: https://digitalcommons.wku.edu/mccracken_cty

 Part of the [Business Administration, Management, and Operations Commons](#), [Growth and Development Commons](#), and the [Infrastructure Commons](#)

Recommended Citation

Kentucky Library Research Collections, "Industrial Resources: McCracken County - Paducah" (1988). *McCracken County*. Paper 6.
https://digitalcommons.wku.edu/mccracken_cty/6

This Report is brought to you for free and open access by TopSCHOLAR®. It has been accepted for inclusion in McCracken County by an authorized administrator of TopSCHOLAR®. For more information, please contact topscholar@wku.edu.

IR

518 McCracken County, Ky

RESOURCES FOR ECONOMIC DEVELOPMENT

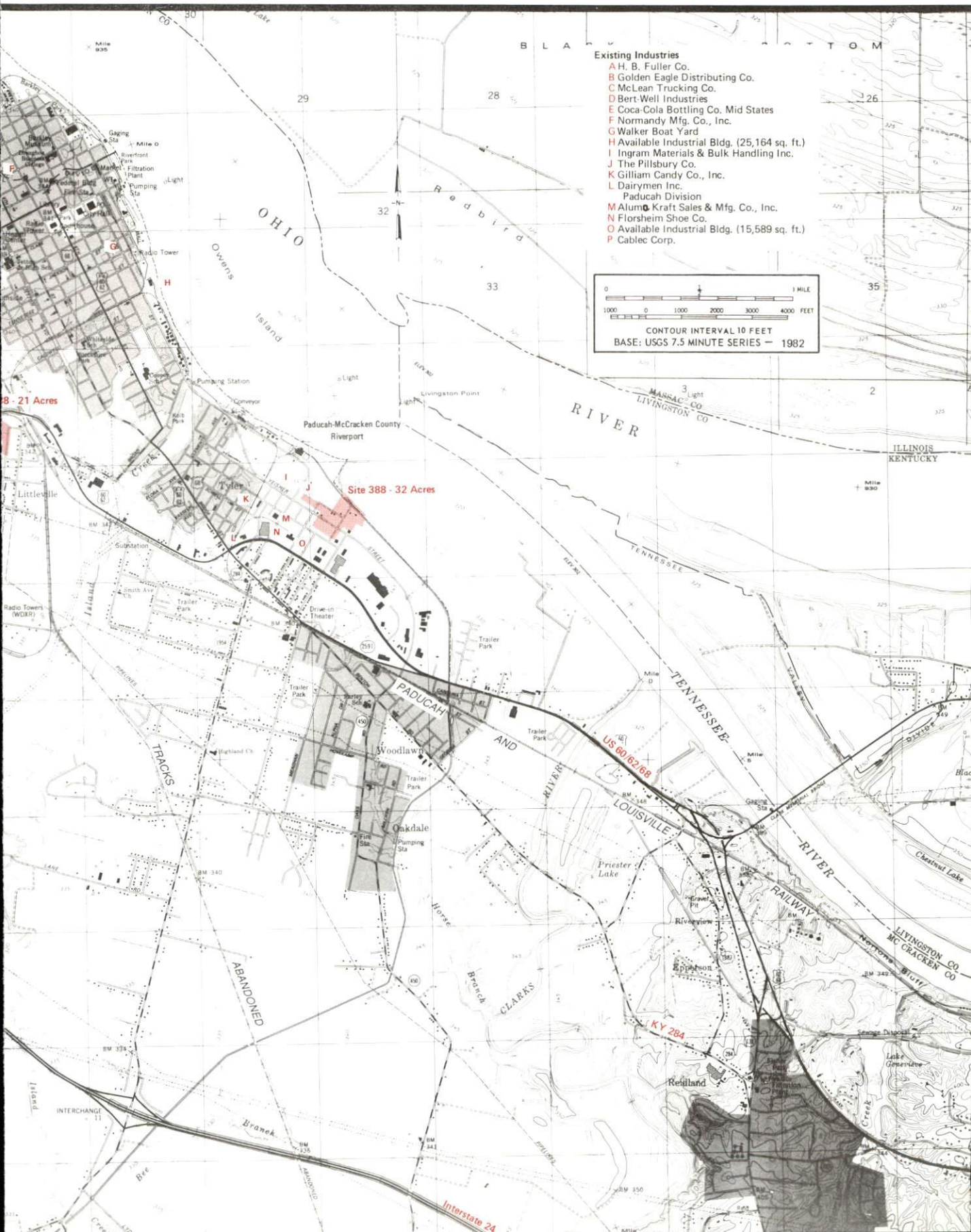
Paducah

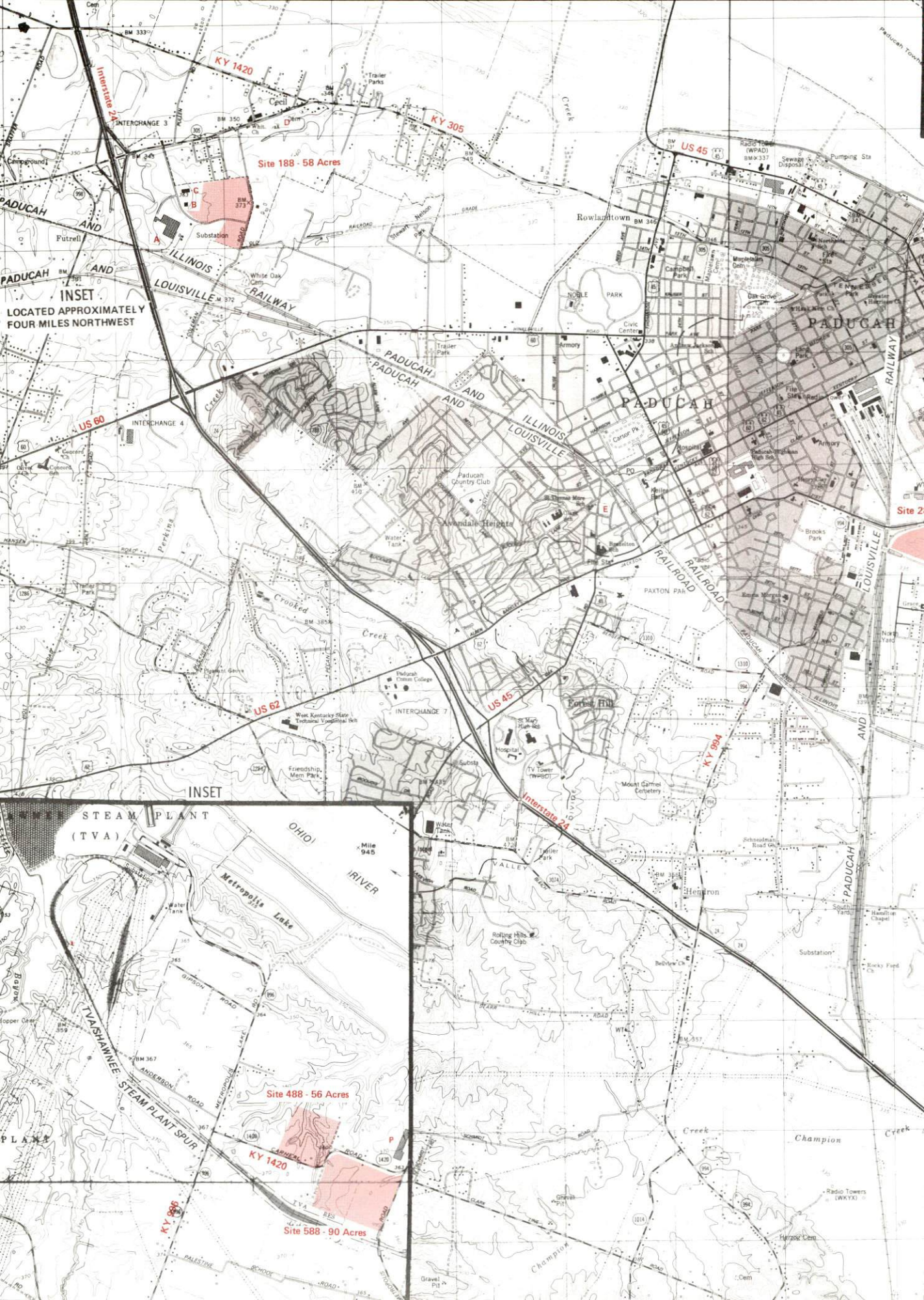


KENTUCKY
The business environment is right.

PADUCAH, KENTUCKY --- Index to Industrial Sites --- 1988

For detailed data on individual sites contact the Kentucky Department of Economic Development, Industrial Development & Marketing Division, Capital Plaza Tower, Frankfort, Kentucky 40601 (502-564-7140).





INSET
LOCATED APPROXIMATELY
FOUR MILES NORTHWEST

INSET
STEAM PLANT
(TVA)

Site 188 - 58 Acres

Site 488 - 56 Acres

Site 588 - 90 Acres

Site 2

RESOURCES FOR ECONOMIC DEVELOPMENT

PADUCAH, KENTUCKY

Prepared by
The Kentucky Department of Economic Development
Division of Research and Planning
in cooperation with
the Paducah Area Chamber of Commerce

1988

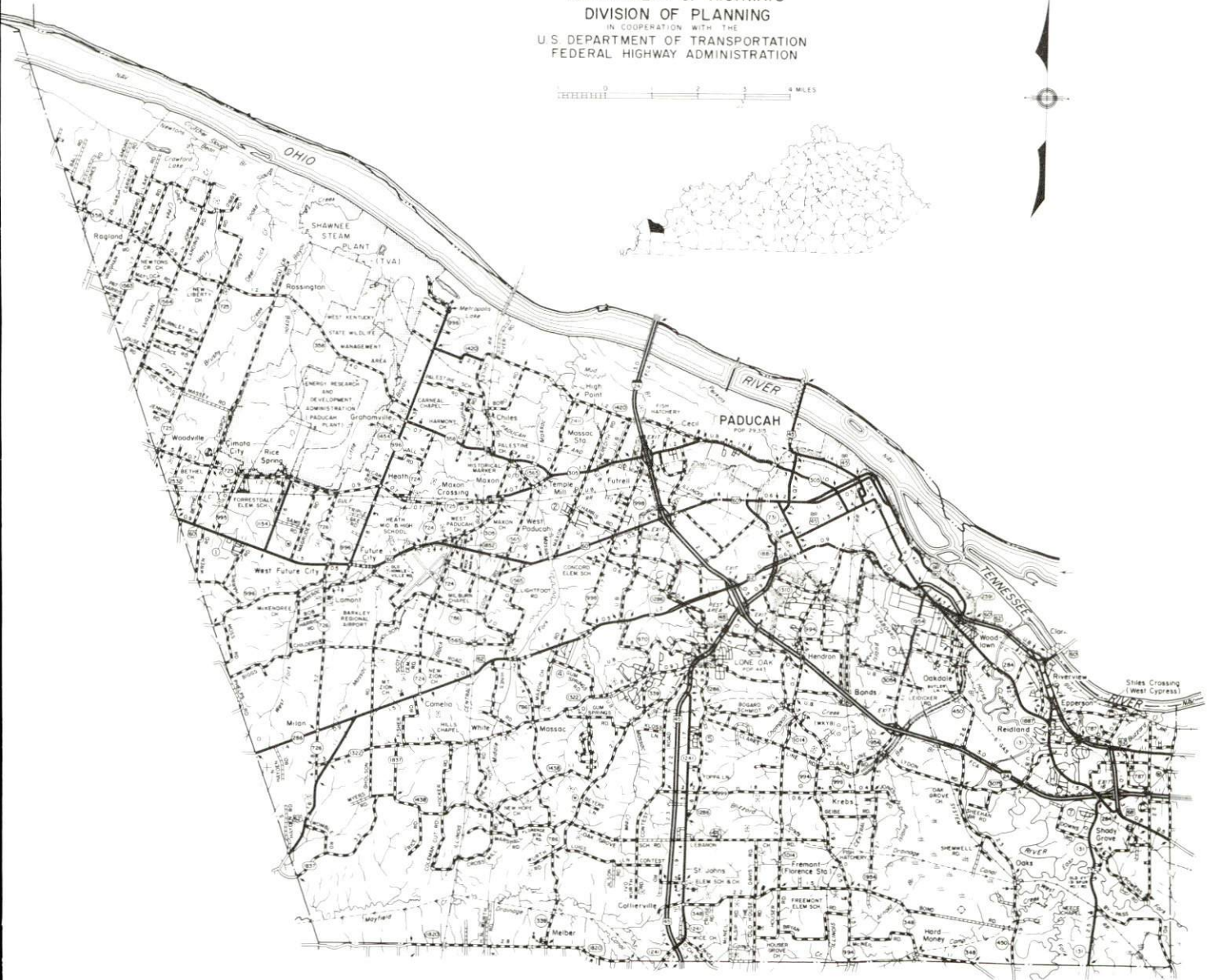
TABLE OF CONTENTS

<u>Chapter</u>	<u>Page</u>
INDUSTRIAL SITES	i
PADUCAH, KENTUCKY - A RESOURCE PROFILE	1
THE LABOR MARKET AREA	2
Population	2
Population Projections	2
Labor Force Characteristics of Residents, 1986	3
Selected Components of Nonagricultural Employment, by Place of Work, 1986	3
Per Capita Personal Income	4
Estimated Male Labor Supply	5
Estimated Female Labor Supply	5
Average Weekly Wages by Industry, by Place of Work, 1986	6
EXISTING INDUSTRY	8
Major Paducah Manufacturing Firms, Their Products and Employment	8
Labor Organizations in Manufacturing Firms	10
Selected Industrial Services	11
TRANSPORTATION	12
Rail	12
Highways	12
Truck Service	13
Air	14
Air Express Service	14
Water	15
POWER AND FUEL	16
Electricity	16
Natural Gas	17
Other Fuels	17
WATER AND SEWERAGE	18
Public Water Supply	18
Raw Water	23
Sewerage	23
CLIMATE	25

<u>Chapter</u>	<u>Page</u>
LOCAL GOVERNMENT	26
Structure	26
Planning and Zoning	26
Local Fees and Licenses	26
State and Local Property Taxes	27
Combined State and Local Rates Per \$100 Valuation, 1987	27
Safety	28
Police	28
Fire	28
Rescue Service	28
Refuse Collection and Disposal	28
EDUCATION	29
Public Schools	29
Nonpublic Schools	29
Area Colleges and Universities	30
Business Schools	31
Vocational Training	31
HEALTH	33
Local Medical Personnel	33
Hospitals	33
Other Medical Facilities	33
Ambulance Service	33
OTHER LOCAL FACILITIES	34
Communications	34
Library Services	34
Religious Institutions	35
Financial Institutions	35
Hotels and Motels	35
RECREATION	36
COMMUNITY IMPROVEMENTS	39

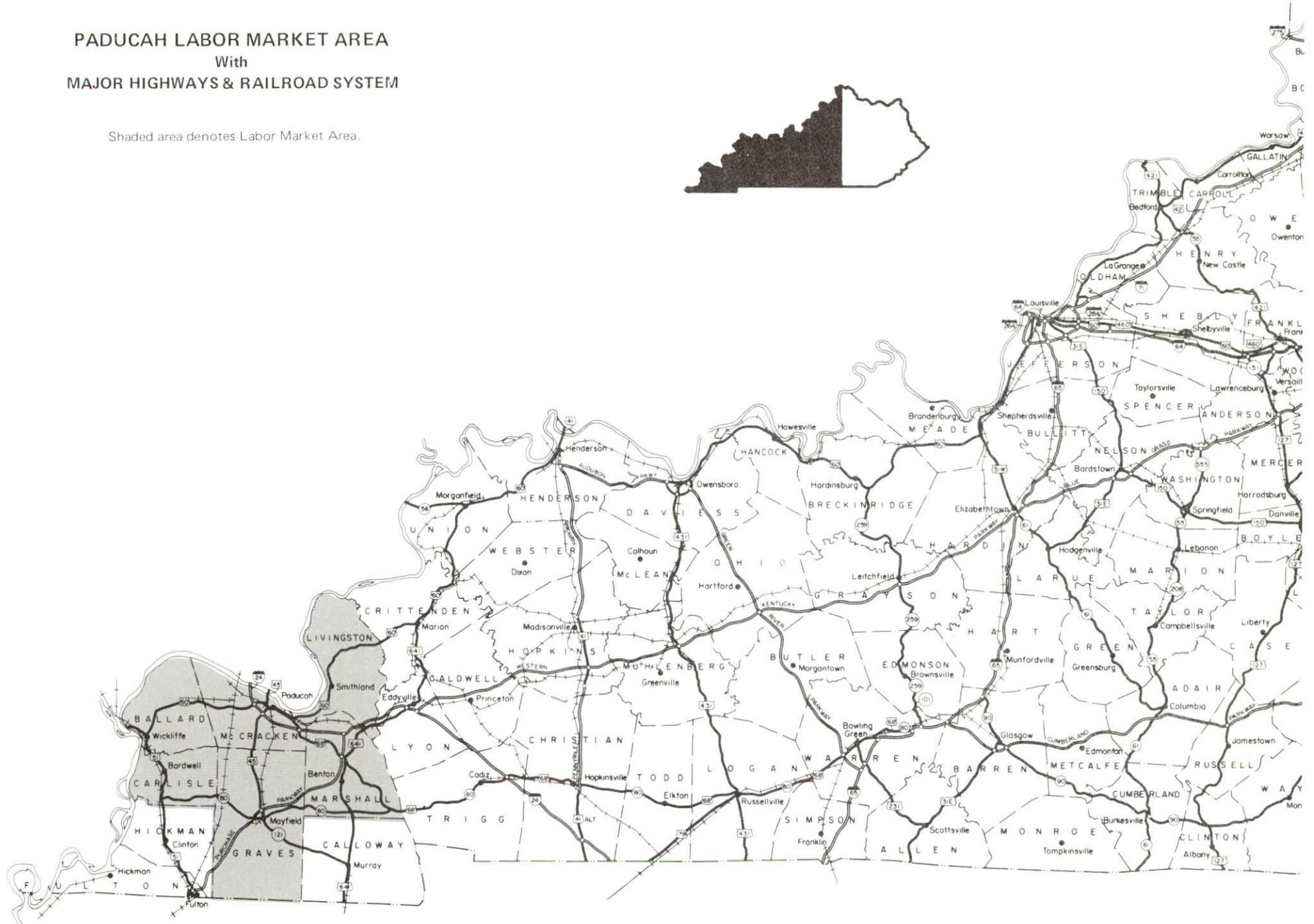
GENERAL HIGHWAY MAP
MCCRACKEN COUNTY
KENTUCKY

PREPARED BY THE
KENTUCKY TRANSPORTATION CABINET
DEPARTMENT OF HIGHWAYS
DIVISION OF PLANNING
IN COOPERATION WITH THE
U.S. DEPARTMENT OF TRANSPORTATION
FEDERAL HIGHWAY ADMINISTRATION



PADUCAH LABOR MARKET AREA With MAJOR HIGHWAYS & RAILROAD SYSTEM

Shaded area denotes Labor Market Area.



PADUCAH, KENTUCKY - A RESOURCE PROFILE

Paducah, the county seat of McCracken County, is the major economic center and the largest urban area in Kentucky's Jackson Purchase Region. Paducah is located at the confluence of the Ohio and Tennessee Rivers (the head of the Tennessee-Tombigbee Waterway) approximately 48 river miles east of the confluence of the Ohio and Mississippi Rivers. Paducah is located 143 miles northwest of Nashville, Tennessee; 173 miles southeast of St. Louis, Missouri; and 223 miles southwest of Louisville, Kentucky. Paducah had a 1984 estimated population of 29,095 persons.

McCracken County, with a land area of 251 square miles, had a 1986 estimated population of 60,300 persons.

The Economic Framework - The total number of McCracken County residents employed in 1986 averaged 24,780. Manufacturing firms in the county reported 3,120 employees; wholesale and retail trade provided 8,780 jobs; 6,450 people were employed in service occupations; state and local government accounted for 2,730 employees; and contract construction firms provided 1,180 jobs.

Labor Supply - There is a current estimated labor supply of 8,185 men and 13,910 women available for industrial jobs in the labor market area. In addition, from 1987 through 1991, 5,510 young men and 5,170 young women in the area will become 18 years of age and potentially available for industrial jobs.

Transportation - The Paducah and Louisville Railway provides main line rail service to Paducah. Connections with the Illinois Central Gulf Railroad and the Burlington Northern Railroad are located near Paducah. Major "AAA"-rated trucking highways serving the city are Interstate 24 and U.S. Highways 45, 60, and 62. The Interstate 24 Downtown Loop provides direct access from downtown to Interstate 24. Twenty-six trucking companies provide interstate and/or intrastate service to Paducah of which seven maintain local terminals. The Barkley Regional Airport, six miles west of Paducah, provides scheduled commercial airline service. The Paducah-McCracken County Riverport Authority operates a public riverport at the confluence of the Ohio and Tennessee Rivers.

Power and Fuel - The Paducah Power System provides electric power to Paducah. The Big Rivers Electric Corporation provides electric power to most of McCracken County through the Jackson Purchase Electric Cooperative Corporation. Kentucky Utilities Company provides electric power to a small portion of the county. Western Kentucky Gas Company provides natural gas service to Paducah. There are two propane dealers and three fuel oil dealers in Paducah.

Education - The Paducah Independent School System and the McCracken County School System provide primary and secondary public education to McCracken County residents. Both systems are accredited by the Southern Association of Colleges and Schools. The Paducah Community College is a unit of the University of Kentucky Community College System. The college confers associate degrees and had a Fall 1986 enrollment of 2,005 students. Five other colleges and universities are located within 75 miles of Paducah. The West Kentucky State Vocational-Technical School is located in Paducah and offers training in 34 course areas. The Paducah Area Vocational Education Center, also in Paducah, offers training in 11 course areas.

LABOR MARKET STATISTICS

The Paducah Labor Market Area includes McCracken County and the adjoining Kentucky counties of Ballard, Carlisle, Graves, Livingston, and Marshall. The northern boundary of McCracken County is formed by the Ohio River. The labor market area also encompasses portions of southern Illinois.

POPULATION

Area	1986*	1980	1970	Percent Nonwhite
				1980
Paducah	29,095	29,315	31,627	19.4
Labor Market Area	141,100	144,500	130,827	-
McCracken County	60,300	61,310	58,281	10.5
Ballard County	8,100	8,798	8,276	3.8
Carlisle County	5,000	5,487	5,354	1.0
Graves County	32,900	34,049	30,939	4.7
Livingston County	9,000	9,219	7,596	0.4
Marshall County	25,800	25,637	20,381	0.2

* Population estimates. City estimates are for 1984.

Note: The 1980 city counts of population by race are provisional.

Sources: U.S. Department of Commerce, Bureau of the Census, 1980 Census of Population and Housing, March 1981; 1980 Census of Population, Number of Inhabitants. University of Louisville, Urban Studies Center, Population Unit, October 1985; University of Louisville, Urban Studies Center, State Data Center, June 1987 Newsletter, Vol. 5 No. 4.

POPULATION PROJECTIONS

Area	1990	1995	2000	2010
Labor Market Area	147,706	151,003	152,978	155,197
McCracken County	63,541	65,055	66,037	67,334
Ballard County	8,348	8,406	8,436	8,408
Carlisle County	5,400	5,457	5,493	5,507
Graves County	34,184	35,030	35,536	36,217
Livingston County	9,308	9,425	9,472	9,436
Marshall County	26,925	27,630	28,004	28,295

Source: University of Louisville, Urban Studies Center, Population Research Unit, How Many Kentuckians: Population Forecasts, 1980-2020, the 1986 Edition, Spring 1986.

LABOR FORCE CHARACTERISTICS OF RESIDENTS, 1986

	<u>McCracken County</u>	<u>Labor Market Area*</u>
Civilian Labor Force	27,263	64,092
Employment	24,776	57,436
Unemployment	2,487	6,656
Rate of Unemployment (%)	9.1	10.4

* McCracken County and the five adjoining Kentucky counties.

Source: Kentucky Cabinet for Human Resources, Kentucky Labor Force Estimates, Annual Averages, 1986.

SELECTED COMPONENTS OF NONAGRICULTURAL EMPLOYMENT
BY PLACE OF WORK, 1986

	<u>McCracken County</u>	<u>Labor Market Area*</u>
All Industries (total)	25,561	46,319
Manufacturing	3,116	10,114
Wholesale & Retail Trade	8,778	13,291
Services	6,451	9,150
State/Local Government	2,726	5,788
Contract Construction	1,182	2,366
Mining & Quarrying	0	355

* McCracken County and the five adjoining Kentucky counties.

Note: Excludes domestic workers, railway workers, certain nonprofit corporations, majority of federal government workers, and self-employed workers.

Source: Kentucky Cabinet for Human Resources, Average Monthly Workers Covered by Kentucky Unemployment Insurance Law, 1986.

PER CAPITA PERSONAL INCOME

<u>Area</u>	<u>1980</u>	<u>1984</u>	<u>Percent Change</u>
McCracken County	\$ 8,980	\$ 12,053	34.2
Labor Market Area Range*	\$6,626 - 8,980	\$9,226 - 12,053	-
Kentucky	7,644	10,232	33.9
U.S.	9,494	12,772	34.5

* McCracken County and the five adjoining Kentucky counties.

Sources: U.S. Department of Commerce, Bureau of Economic Analysis. Kentucky Economic Information System, June 1986.

ESTIMATED MALE LABOR SUPPLY
PADUCAH LABOR MARKET AREA

Area	Current				Future
	Total Male	Unemployed	Under-employed	Not in Labor Force	Becoming 18 years of age 1987 thru 1991
Labor Market Area*	8,185	3,744	2,863	1,578	5,508
McCracken	3,180	1,278	1,113	789	2,366
Ballard	518	268	196	54	379
Carlisle	403	186	142	75	219
Graves	1,856	884	692	280	1,235
Livingston	593	371	222	0	380
Marshall	1,635	757	498	380	929

ESTIMATED FEMALE LABOR SUPPLY
PADUCAH LABOR MARKET AREA

Area	Current				Future
	Total Female	Unemployed	Under-employed	Not in Labor Force	Becoming 18 years of age 1987 thru 1991
Labor Market Area*	13,914	2,912	3,645	7,357	5,172
McCracken	5,596	1,209	1,569	2,818	2,273
Ballard	949	124	183	642	331
Carlisle	556	134	117	305	204
Graves	2,852	639	875	1,338	1,139
Livingston	859	168	218	473	336
Marshall	3,102	638	683	1,781	889

* Additional workers may be drawn from other nearby counties.

Note: Unemployed - persons unemployed and actively seeking work; Underemployed - persons employed but working only 14 to 26 weeks per year; Not in Labor Force - represents the number of persons who would enter the labor force if suitable employment were available (based on the assumption that persons in Kentucky would like to participate in the labor force in the same proportion that they do nationally).

Sources: Kentucky Cabinet for Human Resources, Kentucky Labor Supply Estimates by County, 1986. Kentucky Department of Economic Development, Future Labor Supply Becoming 18 Years of Age, 1987 thru 1991.

AVERAGE WEEKLY WAGES BY INDUSTRY
BY PLACE OF WORK, 1986

	<u>McCracken County</u>	<u>Ballard County</u>	<u>Carlisle County</u>
All Industries	\$306.30	\$420.49	\$214.29
Mining & Quarrying	*	0	0
Contract Construction	357.76	448.50	239.53
Manufacturing	425.59	601.55	200.08
Transportation, Communications & Public Utilities	437.32	449.76	0
Wholesale & Retail Trade	217.91	226.92	184.91
Finance, Insurance & Real Estate	307.23	255.52	283.85
Services	309.43	223.02	181.61
State/Local Government	323.67	269.68	257.57
Other	169.79	*	175.09
	<u>Graves County</u>	<u>Livingston County</u>	<u>Marshall County</u>
All Industries	\$330.78	\$321.70	\$400.21
Mining & Quarrying	414.05	494.26	*
Contract Construction	254.24	492.62	393.35
Manufacturing	480.66	175.78	635.94
Transportation, Communications & Public Utilities	452.10	474.41	424.10
Wholesale & Retail Trade	186.69	159.11	187.88
Finance, Insurance & Real Estate	291.68	253.70	303.28
Services	214.40	222.89	209.42
State/Local Government	313.97	249.39	278.49
Other	184.32	*	108.77

* Not disclosed.

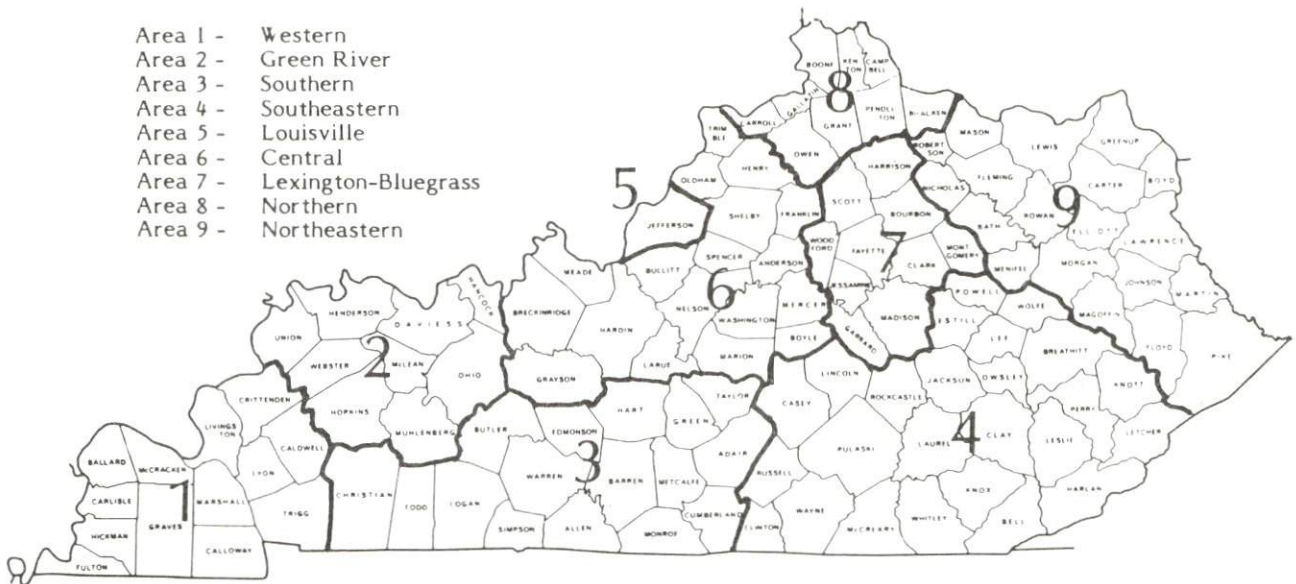
Note: The average weekly wage for each category includes the salaries and wages of all persons working for that type business. For example, the manufacturing category includes both production workers and administrative personnel. Excludes domestic workers, railway workers, certain nonprofit corporations, majority of federal government workers, and self-employed workers.

Source: Kentucky Cabinet for Human Resources, Average Weekly Wages of Workers Covered by Kentucky Unemployment Insurance Law, 1986.

Occupational wage rates for specific industries are usually not available to most government agencies, and wage data furnished to state employment agencies by individual industrial employers are protected from disclosure by federal law. The most reliable up-to-date wage information can be obtained by direct contact with local employers.

Associated Industries of Kentucky, a voluntary organization of Kentucky businesses, regularly collects occupational wage rates and fringe benefits data from participating member firms. Data are compiled for over 127 clearly defined office, production, and service occupations. Tabulations are published for nine geographical areas of Kentucky, as shown on the map below. It should be noted that the data may be weighted by the preponderance of firms in the larger cities and may be somewhat higher than the rates paid in the smaller communities. Data from these tabulations are available, upon request, from the Kentucky Department of Economic Development, Frankfort, Kentucky 40601.

- Area 1 - Western
- Area 2 - Green River
- Area 3 - Southern
- Area 4 - Southeastern
- Area 5 - Louisville
- Area 6 - Central
- Area 7 - Lexington-Bluegrass
- Area 8 - Northern
- Area 9 - Northeastern



Associated Industries of Kentucky Area Wage Surveys

EXISTING INDUSTRY

MAJOR PADUCAH MANUFACTURING FIRMS,
THEIR PRODUCTS AND EMPLOYMENT*

Firm (Establishment date)	Product	Average Employment			Labor Unions
		Total	Male	Female	
Aluma Kraft Sales and Manufacturing Company, Inc. (1954)	Aluminum storm windows, doors, canopies, & awnings	39	26	13	
Bert-Well Industries (1986)	Truck cab interiors	45	15	30	
Brown's Plating Service, Inc. (1959)	Plating	45	40	5	
Cablec Corporation (1966)	Aluminum and copper wire cable	187	165	22	Machin- ists**
Florsheim Shoe Company (1919)	Men's shoes	401	86	315	Food & Com- mercial Workers**
H. B. Fuller Corporation (1987)	Hot melt adhesives	100	-	-	
Gilliam Candy Company, Inc. (1927)	Candy	50	30	20	Bakery, Confec- tionary, & Tobacco Workers**
Guy Gray Manufacturing Company, Inc. (1958)	Plumbing fixtures	30	24	6	
Hawley Products, Inc. (1984)	Loudspeaker components	65	20	45	

(Continued)

Firm (Establishment date)	Product	Average Employment			Labor Unions
		Total	Male	Female	
Martin Marietta Energy Systems, Inc. (1951)	U-235 for U.S. Government	1,205	1,030	175	Oil, Chemical, & Atomic Workers; Plant Guard Workers**
Metzger Packing Company, Inc. (1970)	Meat processing, sausage products	56	45	11	
Middle States Coca- Cola Bottling Group, Inc. (1903)	Soft drinks	100	65	35	Operating Engi- neers; Team- sters**
Normandy Manufacturing Company, Inc. (1940)	Women's sports- wear, women's dresses, women's robes	96	6	90	Ladies' Garment Workers**
Paducah Printing Company (1907)	Multi-color printing, book publishing & printing, photocompo- sition	32	18	14	
The Paducah Sun (1929) Pebco, Inc. (1978)	Newspaper Slide gates, loading & automation equipment, materials handling	143	90	53	
Reynolds and Doyle, Inc. (1947)	Hospital cabinets, bank & school fixtures	40	29	11	
		30	28	2	

(Continued)

Firm (Establishment date)	Product	Average Employment			Labor Unions
		Total	Male	Female	
Synthetics, Inc. (1985)	Fiberglas barge covers, railcar covers, track collector pans	30	-	-	
VMV Enterprises, Inc. (1986)	Rebuild rail- road loco- motives, diesel engines & components	200	-	-	
Walker Boat Yard (1946)	Building & repairing barges & boats	150	-	-	

* Firms with 30 or more employees.

** See Labor Organizations below.

Sources: Kentucky Department of Economic Development, 1987 Kentucky Directory of Manufacturers; Division of Research and Planning.

LABOR ORGANIZATIONS IN MANUFACTURING FIRMS

<u>Union</u>	<u>Representing workers at:</u>
Graphic Communications International Union, AFL-CIO	Leake Printing Company; L. C. Newman Printing Company
International Association of Machinists and Aerospace Workers, AFL-CIO	Cablec Corporation
International Ladies' Garment Workers Union, AFL-CIO	Normandy Manufacturing Company, Inc.
International Union of Operating Engineers, AFL-CIO	Middle States Coca-Cola Bottling Group, Inc.
Oil, Chemical and Atomic Workers International Union, AFL-CIO	Martin-Marietta Energy Systems, Inc.
United Food and Commercial Workers International Union, AFL-CIO	Florsheim Shoe Company
United Plant Guard Workers of America International Union	Martin Marietta Energy Systems, Inc.

(Continued)

UnionRepresenting workers at:

Bakery, Confectionery and
Tobacco Workers International
Union, AFL-CIO
International Brotherhood of
Teamsters, Chauffeurs,
Warehousemen and Helpers of
America

Gilliam Candy Company

Middle States Coca-Cola Bottling
Group, Inc.

SELECTED INDUSTRIAL SERVICES

<u>Types of Service</u>	<u>Location</u>	<u>Mileage from Paducah</u>
Custom Data Processing	Paducah, Kentucky	-
Custom Plastics Producers	Kuttawa, Kentucky	35
Electric Motor Repair	Paducah, Kentucky	-
Grinding, Precision & Tool	Mayfield, Kentucky	27
Heat Treating Facilities	Evansville, Indiana	134
	Nashville, Tennessee	143
Industrial Equipment & Supplies	Paducah, Kentucky	-
Industrial Gases	Paducah, Kentucky	-
Industrial Waste Removal	Paducah, Kentucky	-
Machine Shops, Tool & Die	Paducah, Kentucky	-
Metal Castings	Henderson, Kentucky	130
Metal Finishers	Paducah, Kentucky	-
Metal Service Centers	Hopkinsville, Kentucky	86
	Greenville, Kentucky	92
Millwrights	Hopkinsville, Kentucky	86
Public Warehouse Facilities	Paducah, Kentucky	-

Sources: Kentucky Department of Economic Development, Kentucky Directory of Selected Industrial Services, 1987; Division of Research and Planning.

TRANSPORTATION

Rail

Line serving Paducah - Paducah and Louisville Railway, Inc.

Services: One northbound daily freight to Louisville, two northbound daily freights to Princeton, and one southbound daily freight to Mayfield; switching services and switch engine; ample team track and siding space available; piggyback facilities; connections with Illinois Central Gulf Railroad and Burlington Northern Railroad near Paducah

For details on routing, schedules, rates, and services contact:

Paducah and Louisville Railway
1500 Kentucky Avenue
Paducah, Kentucky 42001
(502) 443-1246

Highways

Interstate Highway 24 has 5 interchanges at Paducah and provides direct access to Interstate 57, 45 miles northwest of Paducah; to the Purchase Parkway, 22 miles southeast of Paducah; and to the Western Kentucky Parkway, 39 miles east of Paducah.

Major "AAA"-rated (80,000-pound gross load limit) trucking highways serving Paducah include U.S. Highways 45, 60, and 62. U.S. 45 connects with the Purchase Parkway, 25 miles south of Paducah. The Interstate 24 Downtown Loop Expressway provides direct access from downtown Paducah to Interstate 24.

Truck Service

A & H Truck Line, Inc. (T)*	Jones Truck Lines, Inc.*
ANR Freight System, Inc.*	K & R Delivery, Inc.*
Advance Transportation Company*	Majors (T)*
American Freight System, Inc. (T)**	Manning Motor Express, Inc.*
Apple City Express*	Milan Express Company, Inc.*
Averitt Express, Inc.*	North Shore & Central Illinois Freight Company*
Buske Lines, Inc.**	Nussbaum Trucking, Inc.*
Consolidated Freightways Corporation of Delaware*	Overnite Transportation Company (T)*
Edwards, Henry Trucking Company*	R-W Service System, Inc.*
Elfrink Truck Lines, Inc.*	Roadway Express, Inc. (T)*
F-F-E Transportation Services, Inc.*	Smith's Transfer Corporation (T)*
Honhenwald Truck Lines, Inc.*	Thompson, Steve D. Trucking, Inc.*
Humboldt Express, Inc.*	Yellow Freight System, Inc. (T)*

(T) Terminal.

* Interstate and intrastate service

** Interstate service only.

Source: American Motor Carrier Directory, Fall 1987.

HIGHWAY MILES AND TRUCK TRANSIT TIME IN DAYS FROM PADUCAH, KENTUCKY, TO SELECTED MARKET CENTERS

City	Highway Miles	Delivery		City	Highway Miles	Delivery	
		Time TL				Time TL	
Atlanta, GA	382	2		Los Angeles, CA	2,000	4	
Baltimore MD	794	3		Louisville, KY	223	1	
Birmingham, AL	332	2		Nashville, TN	143	1	
Chicago, IL	365	2		New Orleans, LA	657	2	
Cincinnati, OH	324	2		New York, NY	972	4	
Cleveland, OH	569	2		Pittsburgh, PA	611	4	
Detroit, MI	582	2		St. Louis, MO	173	1	
Knoxville, TN	319	2					

Note: Mileage computations are via the best interstate or primary highways, not necessarily the most direct route of travel.

Sources: Rand McNally Deluxe Motor Carriers' Road Atlas, 1987. Official Kentucky Mileage Map, 1980. Delivery time - Overnite Transportation Company, Highways 68 and I-24, Paducah, Kentucky 42001.

Air

Nearest Scheduled Commercial Airline Service

	Barkley Regional Airport*
Location:	6 miles west of Paducah
Runways:	2 paved
Length:	6,499 feet; 4,000 feet
Traffic	
Control:	Control tower
Lighting:	HIRL, MALSRail, REIL, VASI, MIRL, MITL, rotating beacon
Services:	Allegheny Commuter, American Eagle, Northwest Air Link, Trans World Express, fuel - 100LL and jet-A; hangar, 10 T-hangars, 45 tie-downs; major and minor A & P repairs; APU, charter, flight instruction, plane rental, aerial photography; car rentals, limousine, restaurant, weather information; Part 139 Airport Operating Certificate, airport security
Air Freight Service:	Air carriers accept air freight on a space available basis

Scheduled commercial airline service is also available at Evansville Dress Regional Airport near Evansville, Indiana, 138 miles northeast of Paducah; and the Nashville Metropolitan Airport near Nashville, Tennessee, 143 miles southeast of Paducah.

Air Express Service

Several major companies offer air express services in Kentucky. These companies provide a quick means of shipping small to medium-sized packages expeditiously.

* The Paducah Airport Authority has tentative plans to construct a new general aviation facility at the Barkley Regional Airport. The \$750,000 facility will contain a terminal, hangars, and tank facilities.

Water

The Paducah-McCracken County Riverport Authority operates an ice-free inland waterways port located at the confluence of the Ohio and Tennessee Rivers, 48 miles east of where the Ohio River flows into the Mississippi River, and at the head of the Tennessee-Tombigbee Waterway.

Port facilities include a general cargo area consisting of mooring cells, with a six-barge working capacity and a 20-ton tower crane. The grain handling facility transfers up to 500 tons per hour from truck or rail to barge. A 125-ton stationary crane is available for bulk handling. The general cargo facility has 35,200 square feet of warehouse storage and 25,000 square feet of outside paved storage. A bulk oil terminal is also located at the port. Switching and fleeting services are available 24-hours daily. Products transferred through the riverport include coal, fertilizer, corn, wheat, dry bulk, sand, and palletized materials.

Rail service is provided by the Illinois Central Gulf Railroad and the Paducah & Louisville Railway, Inc. Loading docks are available to provide direct access from warehouse to rail.

Approximately 60 acres of industrial property are available for development. This property is located within an established Enterprise Zone. The riverport-industrial park complex is approximately six miles from I-24, and served by the I-24 Downtown Loop Expressway.

For more information contact:

Paducah-McCracken County Riverport Authority
P. O. Box 2302
Paducah, Kentucky 42001
(502) 442-9326

POWER AND FUEL

Electricity

Company serving **Paducah** - Paducah Power System*

Source of power - Tennessee Valley Authority

For industrial rates contact:

South Kentucky Industrial Development
Association, Inc.

P. O. Box 726

Hopkinsville, Kentucky 42240

(502) 885-5392

and/or

Paducah Power System

P. O. Box 180

Paducah, Kentucky 42002

(502) 442-2711

Company serving a major portion of **McCracken County** - Jackson Purchase

Electric Cooperative Corporation

Source of power - Big Rivers Electric Corporation

For industrial rates contact:

Jackson Purchase Electric Cooperative
Corporation

2900 Irvin Cobb Drive

P. O. Box 3188

Paducah, Kentucky 42001

(502) 442-7321

Company serving part of **McCracken County** - Kentucky Utilities Company

Source of power - Kentucky Utilities Company

For industrial rates contact:

Industrial Development Department

Kentucky Utilities Company

One Quality Street

Lexington, Kentucky 40507

(606) 255-1461

* Paducah Power System plans to install an additional 25,000 kilowatt substation in the fall of 1988.

Natural Gas

Company serving Paducah - Western Kentucky Gas Company
Source of supply - Texas Gas Transmission Corporation
Size of transmission mains - 26 inches (supplier); 6 and 8 inches
(distributor)
Distribution mains - 2 to 8 inches
Distribution pressure - Up to 35 psi
Btu content - 1,000 per cubic foot
Specific gravity - 0.60
For rates and supplies contact:

Western Kentucky Gas Company
P. O. Box 866
Owensboro, Kentucky 42302
(502) 685-8067

Other Fuels

Propane

Texas Corporation
1101 North Beltline
Paducah, Kentucky 42001

Tri State Propane, Inc.
Route 4, Box 20
4710 Clarks River Road
Paducah, Kentucky 42001

Fuel oils

Distillate fuel oil -

E. M. Bailey Distributing
Company
1000 South 8th Street
Paducah, Kentucky 42001

W. E. Powers Oil Company
2352 Wayne Sullivan Drive
Paducah, Kentucky 42001

Duke & Long Distributing
Company
625 South 4th Street
Paducah, Kentucky 42001

Residual fuel oil - Arrangements must be made with the refinery.

Low sulphur content coal - Available in Kentucky.

WATER AND SEWERAGE

Public Water Supply

Company serving Paducah - Paducah Water Works*
 401 Washington Street
 P. O. Box 2377
 Paducah, Kentucky 42002-2377
 (502) 442-2746

Source - Ohio River

Treatment plant capacity - 12,000,000 gallons per day

Average daily consumption - 6,294,603 gallons

Peak daily consumption - 9,200,000 gallons

Treatment processes - Inline mix, coagulation, flocculation, sedimentation,
 filtration, chlorination, fluoridation

Storage capacity - 10,400,000 gallons

Size lines - 2 to 30 inches

Water pressure - 45 to 65 psi

MONTHLY WATER RATES

INSIDE CITY LIMITS

<u>Consumption</u>	<u>Charge per 1,000 Gallons</u>
0 to 1,500 gallons	\$2.62
1,501 to 10,000 gallons	2.13
10,001 to 100,000 gallons	1.77
100,001 to 500,000 gallons	1.27
500,001 to 1,000,000 gallons	1.08
All over 1,000,000 gallons	.85
Residential Minimum (1,500 gallons)	\$3.93
Commercial Minimum (3,000 gallons)	\$7.12

<u>Meter Size</u>	<u>Minimum Consumption</u>	<u>Minimum Monthly Charge</u>
5/8 inch	1,500 gallons each month	\$ 3.93
1 inch	7,500 gallons each month	16.71
1 1/2 inch	20,000 gallons each month	39.73
2 inch	40,000 gallons each month	75.13
3 inch	80,000 gallons each month	145.93
4 inch	150,000 gallons each month	244.83
6 inch	300,000 gallons each month	435.33

(Continued)

* Paducah Water Works recently installed a booster station and 28,000 feet of eight- and twelve-inch water mains. Approximate cost of these improvements was \$540,000.

Meter Connection Charges

<u>Service Size</u>	<u>Charge</u>
5/8 inch	\$ 290.00
1 inch	370.00
1 1/2 inch	975.00
2 inch	1,135.00
3 inch	2,685.00
4 inch	3,615.00
6 inch	5,605.00

Fire Line Installation Charges

<u>Service Size</u>	<u>Charge</u>
4 inch	\$1,285.00
6 inch	1,425.00
8 inch	1,690.00
10 inch	2,565.00
12 inch	3,385.00

Standby Fire Protection

<u>Service Size</u>	<u>Charge Per Month</u>
4 inch	\$ 8.00
6 inch	10.00
8 inch	15.00
10 inch	30.00
12 inch	40.00

OUTSIDE CITY LIMITS

<u>Consumption</u>	<u>Charge per 1,000 Gallons</u>
0 to 2,500 gallons	\$ 2.78
2,501 to 10,000 gallons	2.78
10,001 to 100,000 gallons	2.29
100,001 to 500,000 gallons	1.66
500,001 to 1,000,000 gallons	1.40
All over 1,000,000 gallons	1.10
Residential Minimum (2,500 gallons)	\$ 6.95
Commercial Minimum (5,000 gallons)	\$13.90

(Continued)

<u>Meter Size</u>	<u>Minimum Consumption</u>	<u>Minimum Monthly Charge</u>
5/8 inch	2,500 gallons each month	\$ 6.95
1 inch	7,500 gallons each month	20.85
1 1/2 inch	20,000 gallons each month	50.70
2 inch	40,000 gallons each month	96.50
3 inch	80,000 gallons each month	188.10
4 inch	150,000 gallons each month	316.90
6 inch	300,000 gallons each month	565.90

Meter Connection Charges

<u>Service Size</u>	<u>Charge</u>
5/8 inch	\$ 375.00
1 inch	475.00
1 1/2 inch	1,270.00
2 inch	1,480.00
3 inch	3,505.00
4 inch	4,700.00
6 inch	7,285.00

Fire Line Installation Charges

<u>Service Size</u>	<u>Charge</u>
4 inch	\$1,670.00
6 inch	1,865.00
8 inch	2,200.00
10 inch	3,340.00
12 inch	4,405.00

Standby Fire Protection

<u>Service Size</u>	<u>Charge Per Month</u>
4 inch	\$ 9.00
6 inch	13.00
8 inch	25.00
10 inch	40.00
12 inch	60.00

Surcharge

<u>Area</u>	<u>Charge Per Month</u>
Woodlawn-Farley-Oakdale	\$2.00
Concord	3.50

\$0.50 each month is applied to hydrant maintenance

Name of water district - Reidland Water and Sewer District*
 5514 Reidland Road
 Paducah, Kentucky 42003
 (502) 898-2443

Area served - Part of eastern McCracken County and part of western Marshall County

Date when water district began operating - 1954

Source of raw water - Wells; total pumping capacity - 1,000 gallons per minute

Capacity of treatment plant - 1,728,000 gallons per day

Treatment processes - Aeration, filtration, chlorination, fluoridation

Average amount of water used in a 24-hour period - 700,000 gallons

Peak amount of water used in a 24-hour period - 950,000 gallons

Storage capacity - 150,000 gallons

Size lines - 2 to 8 inches

Water pressure - 40 to 80 psi

MONTHLY WATER RATES

			<u>Surcharge</u>
First	3,000 gallons	\$3.00 (Minimum)	\$1.50
Next	7,000 gallons	.90 per M gallons	.30 per M gallons
Next	10,000 gallons	.70 per M gallons	.30 per M gallons
Next	50,000 gallons	.60 per M gallons	.30 per M gallons
All over	70,000 gallons	.50 per M gallons	.30 per M gallons

Tap-on charge: \$400.00

Name of water district - West McCracken County Water District
 8020 Ogden Landing Road
 West Paducah, Kentucky 42086
 (502) 442-3337

Area served - Western portion of McCracken County

Date when water district began operating - 1967

Source of supply of treated water - Paducah Water Works

Average amount of water used in a 24-hour period - 250,000 gallons

Peak amount of water used in a 24-hour period - 300,000 gallons

Storage capacity - 250,000 gallons

Size lines - 2 to 10 inches

Water pressure - 65 to 100 psi

(Continued)

* The Reidland Water & Sewer District recently completed the installation of new filters and expanded aeration at the water treatment plant. These improvements increased the treatment capacity to 1.7 million gallons per day.

MONTHLY WATER RATES

5/8 x 3/4-inch meter

First	2,000 gallons	\$8.55 (Minimum)
Next	3,000 gallons	4.00 per M gallons
Next	5,000 gallons	3.50 per M gallons
Next	40,000 gallons	2.90 per M gallons
Next	50,000 gallons	2.60 per M gallons
Next	400,000 gallons	2.00 per M gallons
All over	500,000 gallons	1.50 per M gallons

3/4-inch meter

First	4,000 gallons	\$16.55 (Minimum)
Next	1,000 gallons	4.00 per M gallons
Next	5,000 gallons	3.50 per M gallons
Next	40,000 gallons	2.90 per M gallons
Next	50,000 gallons	2.60 per M gallons
Next	400,000 gallons	2.00 per M gallons
All over	500,000 gallons	1.50 per M gallons

1-inch meter

First	7,500 gallons	\$29.30 (Minimum)
Next	2,500 gallons	3.50 per M gallons
Next	40,000 gallons	2.90 per M gallons
Next	50,000 gallons	2.60 per M gallons
Next	400,000 gallons	2.00 per M gallons
All over	500,000 gallons	1.50 per M gallons

1 1/2-inch meter

First	15,000 gallons	\$52.55 (Minimum)
Next	35,000 gallons	2.90 per M gallons
Next	50,000 gallons	2.60 per M gallons
Next	400,000 gallons	2.00 per M gallons
All over	500,000 gallons	1.50 per M gallons

2-inch meter

First	30,000 gallons	\$96.05 (Minimum)
Next	20,000 gallons	2.90 per M gallons
Next	50,000 gallons	2.60 per M gallons
Next	400,000 gallons	2.00 per M gallons
All over	500,000 gallons	1.50 per M gallons

3-inch meter

First	75,000 gallons	\$219.05 (Minimum)
Next	25,000 gallons	2.60 per M gallons
Next	400,000 gallons	2.00 per M gallons
All over	500,000 gallons	1.50 per M gallons

(Continued)

4-inch meter

First	150,000 gallons	\$384.05 (Minimum)
Next	350,000 gallons	2.00 per M gallons
All over	500,000 gallons	1.50 per M gallons

Tap-on fee:

5/8 x 3/4-inch meter	\$ 325.00
3/4-inch meter	350.00
1-inch meter	375.00
1 1/2-inch meter	425.00
2-inch meter	625.00
2 1/2-inch meter	725.00
3-inch meter	1,025.00
4-inch meter	1,925.00

Raw Water

Surface water sources - Ohio and Tennessee Rivers

Average discharge - Ohio River at Metropolis, Illinois - 272,200 cfs
(56 years, USGS, unadjusted); Tennessee River near Paducah -
65,450 cfs (18 years, USGS, unadjusted)

Expected ground water yield - 500 to 1,000 gpm throughout McCracken
County

Sewerage

Company serving Paducah - Paducah Wastewater Treatment Department*
300 South Fifth Street
P. O. Box 2267
Paducah, Kentucky 42001
(502) 444-8558

Design capacity - 6,000,000 gallons per day

Average daily flow - 5,300,000 gallons

Type of treatment - Primary and secondary

Treatment processes - Screening, grit removal, primary sedimentation,
activated sludge, secondary sedimentation, anaerobic digester, sludge
drying beds

Treated effluent discharged into - Ohio River

Size of sanitary mains - 4 to 108 inches

Size of storm mains - 8 to 108 inches

Monthly rates - Based on water usage - \$0.60 per 1,000 gallons of water
used; minimum charge - \$3.00

Tap-on charge: Variable, based upon location

* The city of Paducah is presently upgrading the facilities at the wastewater treatment plant. Projects under way include extending the lab area, adding pipe for contact stabilization, and installing a belt filter press and sludge thickener. These improvements are scheduled to be completed in the spring of 1988 at an estimated cost of \$4.5 million.

Company serving Reidland - Reidland Water and Sewer District
5514 Reidland Road
Paducah, Kentucky 42001
(502) 898-2443

Design capacity - 300,000 gallons per day
Average daily flow - 250,000 gallons
Type of treatment - Primary and secondary
Treatment processes - Trickling filter, chlorination, aerobic digester,
sludge drying beds, primary sedimentation
Treated effluent discharged into - Tennessee River
Size of sanitary mains - 6 to 12 inches
Monthly rates - 100 percent of water bill, not including surcharge applied
to water rates (\$5.00 minimum, \$10.00 maximum)
Tap-on charge: \$350

Company serving portions of eastern McCracken County -

Woodlawn, Oakdale, Husbands Road
Sanitation District #4
P. O. Box 3225
Paducah, Kentucky 42002-3225
(502) 443-3682

Design capacity - 500,000 gallons per day
Average daily flow - 475,000 gallons
Type of treatment - Secondary
Treatment processes - Lagoon system, chlorination
Treated effluent discharged into - Island Creek
Size of sanitary mains - 8 to 15 inches
Monthly rates - Based on water usage; water service is provided by
Paducah Water Works

First	4,000 gallons	\$8.00 (Minimum)
Next	16,000 gallons	1.45 per M gallons
Next	20,000 gallons	1.35 per M gallons
Next	40,000 gallons	1.15 per M gallons
All over	80,000 gallons	1.05 per M gallons

Tap-on charge: \$650

CLIMATE

McCracken County

Temperature

Normal (30-year record)	59.10 degrees
Average annual 1986	59.50 degrees
Record highest, July 1980 (44-year record)	104.00 degrees
Record lowest, January 1985 (44-year record)	-12.00 degrees
Normal heating degree days (30-year record) (Heating degree day totals are the sums of negative departures of average daily temperatures from 65 degrees F.)	3,913

Precipitation

Normal (30-year record)	47.65 inches
Mean annual snowfall (30-year record)	10.30 inches
Total precipitation 1986	41.63 inches
Mean number days precipitation (.01 inch or more) (44-year record)	112.30
Mean number days thunderstorms (23-year record)	51.50

Prevailing winds (through 1964)

Southwest

Relative Humidity (22-year record)

6 a.m.	N/A
Midnight	82 percent
6 p.m.	59 percent
Noon	N/A

Source: U.S. Department of Commerce, Environmental Science Services Administration, Climatological Data, 1986. Station of record: Cairo, Illinois.

LOCAL GOVERNMENT

Structure

The city of Paducah is served by a mayor, four council members, and a city manager. The mayor is elected to a four-year term and the council members two-year terms. McCracken County is served by a county judge/executive and three commissioners. The county judge/executive and commissioners are elected to four-year terms.

Planning and Zoning

City agency - Paducah Planning Commission
Zoning enforced - Within city limits of Paducah
Subdivision regulations enforced - Within city limits of Paducah
Local codes enforced - Building and housing codes within city limits of Paducah
Mandatory state codes enforced - Kentucky Plumbing code, National Electric Code, Kentucky Boiler Regulations and Standards, Kentucky Building Code (modeled after BOCA code)

County agency - McCracken County Planning Commission
Zoning enforced - None
Subdivision regulations enforced - All areas of McCracken County except within Paducah city limits
Local codes enforced - Building code enforced in all areas of McCracken County except within Paducah city limits
Mandatory state codes enforced - Kentucky Plumbing code, National Electric Code, Kentucky Boiler Regulations and Standards, Kentucky Building Code (modeled after BOCA code)

Local Fees and Licenses

The city of Paducah levies a 1 1/2% occupational license tax on wages, salaries, and commissions of persons employed within the city. Business license fees within the city vary according to the type of business. The business license fee for manufacturers is based on the number of employees.

McCracken County levies a one percent occupational license tax on wages, salaries, and commissions of individuals and on net profits of businesses. The tax is credited toward the city tax for employees within the city of Paducah.

A 3 percent tax is levied on utilities receipts for schools in the McCracken County School District. Tax is paid by all consumers of utilities as an add-on to the utilities bills. Exempted are receipts from utilities services that are resold and the receipts from the sale of energy or energy producing fuels that exceed 3 percent of the cost of production in manufacturing, processing, mining or refining.

State and Local Property Taxes

All property in Kentucky, except items exempted by the state constitution, is taxed by the state. Property which also may be taxed by local jurisdictions includes land and buildings, finished goods inventories, automobiles, trucks, office furniture and office equipment. Local taxing jurisdictions in Kentucky include counties, cities, and school districts.

All property in Kentucky is assessed at 100 percent of fair cash value.

COMBINED STATE AND LOCAL RATES PER \$100 VALUATION, 1987

	Paducah/ Paducah Independent School District	Paducah/ McCracken County School District	Unincorporated McCracken County
Land and Buildings	\$1.494	\$1.071	\$0.538
Manufacturing			
Machinery	0.150	0.150	0.150
Pollution Control			
Equipment	0.150	0.150	0.150
Inventories			
Raw materials	0.001	0.001	0.001
Goods in Process	0.001	0.001	0.001
Finished Goods	1.332	0.909	0.340
Automobiles & Trucks	1.781	1.365	0.796
Other Tangible			
Personal Property	1.781	1.358	0.789
Intangibles (Accounts receivable*, money in hand, stock, notes, bonds)	0.250	0.250	0.250
Goods Stored in Public Warehouses in Transit			
Status	0.001	0.001	0.001
Private Leaseholds in Industrial Revenue Bond Financed Facilities	0.015	0.015	0.015

Five fire protection districts in McCracken County levy property taxes on property located within its district. The rates range from \$0.066 to \$0.08 per \$100 valuation.

* Accounts receivable are taxed at 85 percent of face value, for an effective rate of \$0.2125 per \$100 valuation.

Safety

Police	Paducah	McCracken County
Total staff	65	19 full-time 3 part-time
Radio-patrol cars	22	10
Fire*		
Insurance Services Office, Public Protection Classification	3	**
Full-time staff	91	-
Volunteers	-	129
Rescue Service		

Rescue service is provided to Paducah and McCracken County by McCracken County Disaster Emergency Service.

Refuse Collection and Disposal

The city of Paducah provides refuse collection and disposal to residents and businesses within the city. Private contractors provide this service to the remainder of McCracken County.

* Includes copyrighted material of ISO Commercial Risk Services, Inc., with its permission.

** Ten fire districts provide fire protection in McCracken County. Property located within these districts have fire classification ratings of class five to class nine. Property in unincorporated McCracken County not within a fire district maintains a class 10 rating.

EDUCATION

Public Schools

	Paducah Independent*	McCracken County**
Total Enrollment (Fall, 1987)	3,679	6,665
Kindergarten	338	492
Elementary	1,386	2,885
Middle School	888	1,186
High School	1,067	2,102
Accreditation	Southern Association of Colleges and Schools	Southern Association of Colleges and Schools
Pupil-Teacher Ratio (1985-86)	19-1	22-1
Percent High School Graduates to College (1985-86)	68.4	46.8
Expenditures Per Pupil (1985-86)	\$2,386.56	\$1,945.48

Nonpublic Schools

<u>School</u>	<u>Enrollment</u>	<u>Grades</u>
St. John Elementary	115	K-8
St. Mary's Elementary	300	K-6
St. Mary's High School	300	7-12

* The Paducah Independent School System has recently implemented several new programs into the curriculum. Included in these additions are a Writing To Read program, language development for kindergarten, updated middle school math program, and expanded foreign language offerings at the high school level.

** The McCracken County School System has recently completed several improvement projects throughout the county. These improvements include a new football dressing room facility, addition of two mobile classroom units, and new roofs at the three high schools. Combined cost of these projects was approximately \$300,000.

Area Colleges and Universities

<u>Name</u>	<u>Location (Miles distant)</u>	<u>Enrollment (Fall, 1986)</u>	<u>Highest Degree Conferred</u>
Paducah Community College	Paducah	2,005	Associate
Murray State University	Murray, Kentucky (47)	7,073	Masters, Specialist*
University of Tennessee, at Martin	Martin, Tennessee (61)	4,928	Masters
Southeast Missouri State University	Cape Girardeau, Missouri (71)	8,856	Masters, Specialist
Southern Illinois University at Carbondale	Carbondale, Illinois (72)	23,261	Academic & Professional
Bethel College	McKenzie, Tennessee (73)	495	Baccalaureate

Paducah Community College

The Paducah Community College is a unit of the University of Kentucky Community College System and offers courses leading to the degrees of associate in applied science, associate in arts and associate in science. The Community College System is charged with the following functions:

1. To offer career-oriented programs designed to prepare students for immediate technical or semi-professional employment.
2. To offer curricula for the first two years of a baccalaureate program, during which time courses parallel University offerings and are transferable to the Lexington campus of the University of Kentucky or to another four-year institution either public or private.
3. To provide general educational opportunities for citizens in their immediate areas.

* Joint doctoral degree programs are offered in cooperation with the University of Kentucky, Lexington. The degrees are issued by the University of Kentucky.

Business Schools

Brannon Business Institute and Career Com are two-year specialized business schools located in Paducah. Both institutions offer academic programs to teach a practical knowledge of business procedures and techniques and create an environment conducive to preparation for the work place.

Vocational Training

The Bluegrass State Skills Corporation, an independent public corporation created and funded by the Kentucky General Assembly, provides programs of skills training to meet the needs of business and industry from entry level to advanced training, and from upgrading present employees to retraining experienced workers.

The Bluegrass State Skills Corporation is the primary source for skills training assistance for a new or existing company. The Corporation works in partnership with other employment and job training resources and programs, as well as Kentucky's economic development activities, to package a program customized to meet the specific needs of a company.

Vocational training is available at both the state vocational-technical schools and the area vocational education centers. The state vocational-technical schools are post-secondary institutions. The area vocational education centers are designed to supplement the curriculum of high school students. Both the state vocational-technical schools and the area vocational education centers offer evening courses to enable working adults to upgrade current job skills.

Arrangements can be made to provide training in the specific production skills required by an industrial plant. Instruction may be conducted either in the vocational school or in the industrial plant, depending upon the desired arrangement and the availability of special equipment.

(Continued)

Nearest State School

West Kentucky State Vocational-Technical School
Paducah

Business & Office	Auto Mechanics
Accounting/Management	Carpentry
Clerical	Civil & Highway Technology
Secretarial	Diesel Mechanics
Word Processing	Electricity
Health Occupations	Electronics
Dental Assisting	Graphic Arts
Medical Assisting	Masonry
Practical Nursing	Machine Shop
Radiologic Technology	Tailoring
Respiratory Therapy Technician	Welding
Surgical Technology	Learning Resource Center
Personal Services Occupations	Special Vocational Programs
Barbering	Vocational Improvement Program
Cosmetology	Public Service Occupations
Consumer & Home Economics	Business/Industry Security Training
Commercial Foods	CPR Training
Consumer & Family Life Skills	Electrical Safety Training
Industrial Education	Emergency Medical Care
Air Conditioning	Fire Service Training
Drafting	First Aid & Safety
Auto Body Repair	Rescue & Emergency Services Training

Nearest Area Education Center

Paducah Area Vocational Education Center
Paducah

Health & Personal Services Occupations	Electricity
Cosmetology	Electronics
Health Services	Machine Shop
Industrial Education	Masonry
Auto Body Repair	Small Engine Repair
Auto Mechanics	Welding
Carpentry	Developmental Occupation Programs
	Learning Resource Center

HEALTH

Local Medical Personnel

Physicians - 150

Dentists - 43

Hospitals

<u>General Hospital</u>	<u>Location</u>	<u>Beds</u>
Lourdes Hospital	Paducah	385
Western Baptist Hospital	Paducah	367

Lourdes Hospital

Medical staff - 149 physicians, 287 registered nurses, and 165 licensed practical nurses

Western Baptist Hospital

Medical staff - 173 physicians, 185 registered nurses, and 108 licensed practical nurses

Other Medical Facilities

Easter Seals Center - Services, diagnoses, and treatment for the handicapped

Purchase District Health Department, McCracken County Health Center

Ambulance Service

Name - Angel of Mercy, Inc.

Staff - 12 emergency medical technicians

OTHER LOCAL FACILITIES

Communications

Telephone -	South Central Bell Telephone Company
Telegraph -	Western Union
	Toll-Free number, 1-800-325-6000
Newspapers -	
Daily and circulation -	The Paducah Sun - 32,000
Sunday and circulation -	The Paducah Sun - 35,500
Weekly and circulation -	The West Kentucky News - 20,000
Radio -	WDXR-AM; WKYQ-FM, WKYX-AM, WPAD-AM, WDDJ-FM
Television -	WPSD (Channel 6, NBC)
Airwave reception from -	Harrisburg, Illinois; Cape Girardeau, Missouri
Cable service -	Comcast
Educational Television -	The Kentucky Educational Television (K.E.T.) network is available statewide

Library Services

Public library - Paducah Public Library
Size collection - 118,128 volumes
Circulation, 1986-87 - 188,261

Matheson Learning Resource Center - Paducah Community College
Size collection - 30,280 volumes, 7,811 audio-visual and 173
periodicals

Religious Institutions

Denominations -	Assembly of God	Jehovah's Witnesses
	Baptist	Lutheran
	Catholic	Methodist (A.M.E. and C.M.E.)
	Christian	Nazarene
	Christian Science	Pentecostal
	Church of Christ	Presbyterian
	Church of God	Salvation Army
	Church of God in Christ	Seventh Day Adventists
	Cumberland Presbyterian	United Church of Christ
	Episcopal	United Methodist
	Full Gospel	
	Holiness	
Nearest Synagogues -	Paducah	
Congregations -	Temple Israel (reform)	

Financial Institutions

<u>Banks</u>	<u>Assets</u>	<u>Deposits</u>	<u>Statement Date</u>
Citizens Bank & Trust Company	\$343,658,228.00	\$290,855,097.00	12/31/86
The Paducah Bank & Trust Company	95,116,581.00	84,707,834.00	12/31/86
Peoples First National Bank & Trust Company	306,583,492.00	281,290,407.00	6/30/87
<u>Savings and Loan Associations</u>	<u>Assets</u>	<u>Deposits</u>	<u>Statement Date</u>
First Federal Savings & Loan Association	\$161,446,000.00	\$145,871,000.00	9/30/87
Republic Savings Bank	312,026,140.22	294,744,443.36	12/31/86

Hotels and Motels

Total number - 20
Total rooms - 1,646

RECREATION

Local

The Paducah Parks and Recreation Department provides a supervised public recreational program tailored for everyone from tots to senior citizens. Among the most popular programs offered are soccer and T-ball. A summer day camp is maintained for boys and girls, (also available for exceptional children). Instruction in swimming, exercise, tennis, golf, baton, acrobatics, tap, ballet, pottery, ceramics and square dancing is offered. Public recreational facilities include 15 parks, 13 playgrounds, three swimming pools, 20 tennis courts, eight baseball diamonds, four racquetball courts, two football fields, four softball fields and one combination softball-baseball field.

Bob Noble Park, Paducah's largest park, offers a relaxing atmosphere amidst a lake, picnic areas, a pool, tennis courts, an amusement park, a waterslide, a model airplane field, and five baseball diamonds.

Private recreational facilities in Paducah include the Brooks Stadium baseball complex, three country clubs, three golf courses, five swimming pools, four indoor movie theaters, seven tennis courts, two bowling centers, and a skating rink. An amusement park, a go-cart track, a motorcycle track and horseback riding stables are also available.

Other attractions include the Barkley Monument, the Alben Barkley Museum, the Market House Museum, the grave of Irvin S. Cobb, the Civic Plaza Park, the Red Line Tour of the city and river area, and the recently renovated Whitehaven Mansion.

A wide range of annual events are held in Paducah. The week-long Dogwood Fine Arts Festival, held during the latter half of April each year, features art shows, tours of the lighted Dogwood Trail, concerts and theatrical productions.

The 10-day Paducah Summer Festival is another annual event featuring musical shows, sky diving, balloon racing, boating, sidewalk sales, road races, contests, arts and crafts, and a variety of other entertainment scheduled at the end of July.

Old Market Days, held one weekend each October, offers booths and stalls set up to display and sell a variety of goods and foodstuffs, as well as arts and crafts demonstrations and concerts.

Other annual events include a three-day sanctioned rodeo, the Louise Mandrell Benefit Concert and Golf-Tennis Weekend, the Lion's Club Regional Easter Seals Telethon, and two annual arts and crafts shows.

Cultural opportunities include public lectures, the Paducah Art Guild, the Market House Theatre, the Community Concert Series, the Paducah Symphony Orchestra, a boys choir, and the Paducah Community College Performing Arts Series.

Bluegrass Downs, the only racetrack in Kentucky to feature Quarter Horse racing, opened in Paducah in July 1987. The parimutual track features an enclosed clubhouse, dining room, lounge, and concession areas. The five-eighths mile oval is the home of the Anheuser-Busch Bluegrass Futurity, a \$100,000 stakes race for two-year-old American Quarter Horses.

Area (Within 55 miles)

Kentucky Dam Village State Resort Park, located 27 miles east of Paducah near Gilbertsville, is one of the largest and most popular vacation resorts in Kentucky. A modern lodge with 46 rooms, 67 cottages, and a 225-site campground make up the accommodations. The park includes a 4,000-foot lighted airstrip. There is also a dining room overlooking Kentucky Lake, a coffee shop, a snack bar, two gift shops, a meeting room, an activities center, and a recreation room. Recreational activities to choose from include boating and fishing at the largest docking facility in the Kentucky parks system, golf at the 18-hole Village Green Course, fishing, hiking, horseback riding, picnicking, swimming at the lodge pool or off the sand beach, and tennis.

The Land Between the Lakes, located on a 170,000-acre wooded peninsula, is an outdoor recreational and conservational education center. The Golden Pond Visitors Center offers a multimedia theatre/planetarium and observatory. Camping, swimming, fishing, boating, hiking, a buffalo herd on a 250-acre range, an Environmental Education Center for school study groups, an educational farm and a central station with films and displays are among the attractions. Kentucky Lake and Lake Barkley are among the top fishing and water sport recreation areas in the southeastern United States. The Land Between the Lakes area is 35 miles southeast of Paducah.

A Confederate cannon, a network of earthen trenches, and a massive chain and anchor give the feeling of being transported back to the Civil War. All of this and more can be discovered at Columbus-Belmont Battlefield State Park at Columbus, 41 miles southwest of Paducah. Other attractions at the 156-acre park include a 38-site campground, a gift shop, a historical hiking trail, miniature golf, a picnic area, and a playground. A visit to the museum at the park, which is in a building that served as a Civil War infirmary, offers a display of Civil War relics and early Indian artifacts and an audiovisual slide program on the Battle of Belmont.

Charm and serenity exemplify Kenlake State Resort Park which is located on Kentucky Lake, 50 miles southeast of Paducah. The park offers hotel and cottage accommodations and an efficient camping site. Other facilities include a 9-hole golf course, pool and lake swimming, horseback riding, hiking trails, fishing, boating, picnicking, planned recreation, and one of the finest tennis complexes in the area.

Lake Barkley State Resort Park, 53 miles southeast of Paducah near Cadiz, is located on an embayment of Lake Barkley. The magnificent lodge includes 130 rooms, five suites, 13 cottages, a dining room, a coffee shop, a gift shop, two meeting rooms, and a recreation room. An activities center with a capacity for 1,000, a complete fitness center, and an 80-site campground are located near the lodge. A lodge pool, a beach and a bathhouse, an 18-hole golf course, a pro shop, tennis courts, a riding stable, a trapshooting range, a basketball court, hiking trails, playgrounds, and a picnic area round out the recreational facilities. The marina near the lodge has everything for the "boat lover": covered and open slips, a launching ramp, and rentals for fishing boats, skiing boats, and pleasure ride pontoons. An airport is available also.

COMMUNITY IMPROVEMENTS

Recent

Paducah was chosen as a "Kentucky Certified City" in 1983-1987. The award is based on achievement in the following categories: economic development, transportation, public affairs, utilities, health, commercial development, housing, education and recreation. The Certified Cities Program is sponsored by the Kentucky Chamber of Commerce.

The H.B. Fuller Company recently began operations at its new Paducah manufacturing facility. The company manufactures industrial adhesives and employs approximately 100 persons.

Gilliam Candy Company has announced plans for a plant expansion in the spring of 1988. The expansion will include a 30,000 square foot (or more) addition and create an additional 40 to 50 jobs.

Bluegrass Downs, the only racetrack in Kentucky to feature Quarter Horse racing, opened in Paducah in July 1987. The parimutual track features an enclosed clubhouse, dining room, lounge, and concession areas. The five-eighths mile oval is the home of the Anheuser-Busch Bluegrass Futurity, a \$100,000 stakes race for two-year-old American Quarter Horses.

A new riverfront park was recently completed in Paducah. The park contains picnic areas and offers a scenic view over the Ohio River.

The McCracken County School System has recently completed several improvement projects throughout the county. These improvements include a new football dressing room facility, addition of two mobile classroom units, and new roofs at the three high schools. Combined cost of these projects was approximately \$300,000.

The Paducah Independent School System has recently implemented several new programs into the curriculum. Included in these additions are a Writing To Read program, language development for kindergarten, updated middle school math program, and expanded foreign language offerings at the high school level.

The Reidland Water & Sewer District recently completed the installation of new filters and expanded aeration at the water treatment plant. These improvements increased the treatment capacity to 1.7 million gallons per day.

Paducah Water Works recently installed a booster station and 28,000 feet of eight and twelve-inch water mains. Approximate cost of these improvements was \$540,000.

Under Way

The city of Paducah is presently upgrading the facilities at the wastewater treatment plant. Projects under way include extending the lab area, adding pipe for contact stabilization, and installing a belt filter press and sludge thickener. These improvements are scheduled to be completed in the spring of 1988 at an estimated cost of \$4.5 million.

Planned

A downtown highway improvement project is planned in Paducah. Husbands Road, from Interstate 24 to the Downtown Loop, is to be expanded from a two-lane to a four-lane highway. Construction is planned to begin in 1989.

A new 250-bed jail is planned for construction in the spring of 1988. The \$6.5 million dollar facility will be located adjacent to the McCracken County Courthouse and will employ approximately 60 persons.

The Paducah Airport Authority has tentative plans to construct a new general aviation facility at the Barkley Regional Airport. The \$750,000 facility will contain a terminal, hangars, and tank facilities.

Paducah Power Systems plans to install an additional 25,000 kilowatt substation in the fall of 1988.