

1995

# Industrial Resources: McCreary County

Kentucky Library Research Collections  
Western Kentucky University, [spcol@wku.edu](mailto:spcol@wku.edu)

Follow this and additional works at: [https://digitalcommons.wku.edu/mccreary\\_cty](https://digitalcommons.wku.edu/mccreary_cty)



Part of the [Business Administration, Management, and Operations Commons](#), [Growth and Development Commons](#), and the [Infrastructure Commons](#)

---

## Recommended Citation

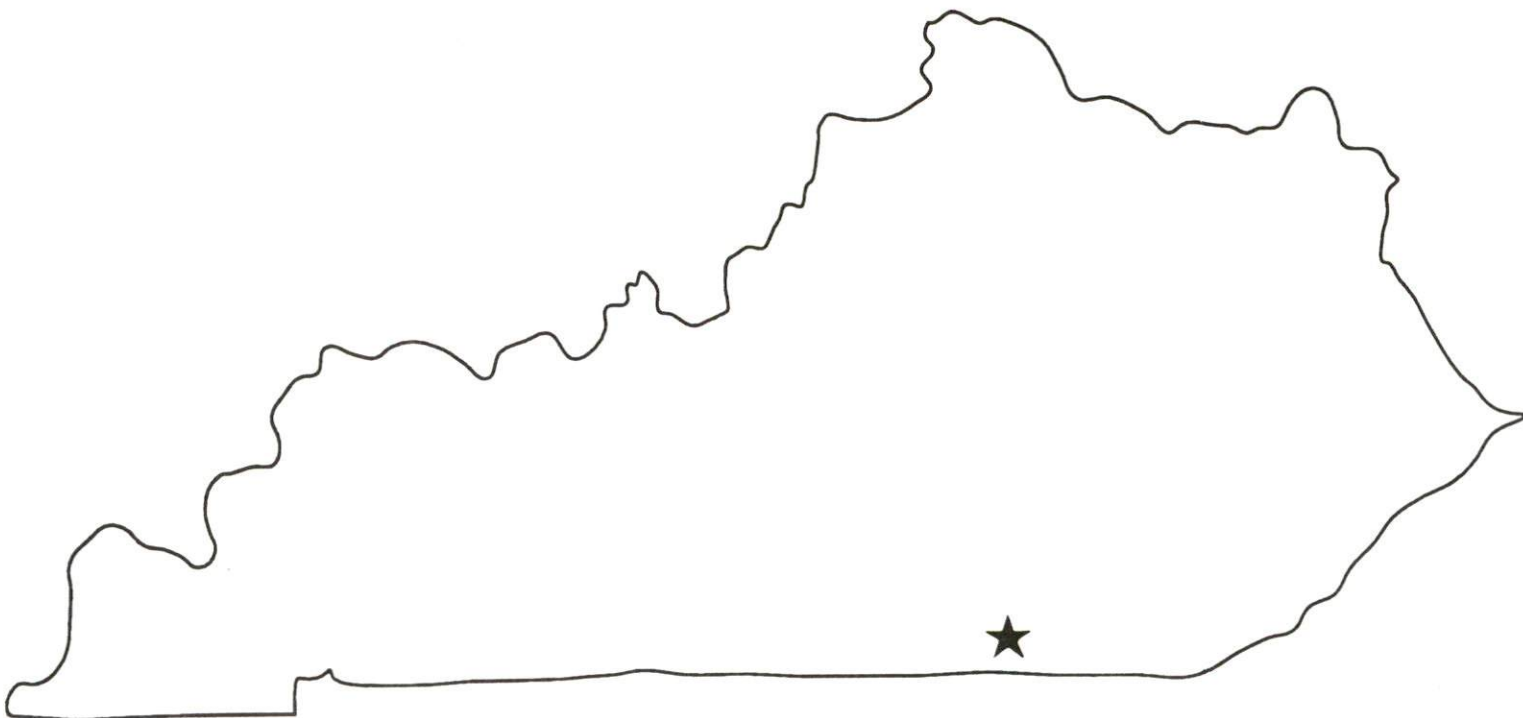
Kentucky Library Research Collections, "Industrial Resources: McCreary County" (1995). *McCreary County*. Paper 3.  
[https://digitalcommons.wku.edu/mccreary\\_cty/3](https://digitalcommons.wku.edu/mccreary_cty/3)

This Report is brought to you for free and open access by TopSCHOLAR®. It has been accepted for inclusion in McCreary County by an authorized administrator of TopSCHOLAR®. For more information, please contact [topscholar@wku.edu](mailto:topscholar@wku.edu).

# Kentucky

## **Resources For Economic Development**

### **McCreary County**



Prepared by  
The Kentucky Cabinet for Economic Development  
Division of Research  
in cooperation with  
McCreary County Economic Development Council  
McCreary County Fiscal Court

1995

Division Director - Ron Morgan; program manager - Keith Roberts; research - Leisa Saylor;  
clerical - Wanda Sharp; graphics - Robert Owens. Cost of printing paid from state funds.

## TABLE OF CONTENTS

Chapter	Page
MCCREARY COUNTY, KENTUCKY- A RESOURCE PROFILE.....	1
THE LABOR MARKET STATISTICS.....	2
Labor Market Area Map.....	2
Population.....	3
Population Projections.....	3
Estimated Labor Supply.....	3
Labor Force Characteristics of Residents, 1994.....	4
Selected Components of Nonagricultural Employment, by Place of Work, 1993.....	5
Per Capita Personal Income.....	6
Average Placement Wages.....	7
Average Weekly Wages of Workers Covered by Unemployment Insurance 1993 - Bar Chart.....	8
Average Weekly Wages by Industry, by Place of Work, 1993.....	9
EXISTING INDUSTRY.....	10
McCreary County Manufacturing Firms, Their Products and Employment.....	10
Recent Industrial Developments.....	11
Labor Organizations in Manufacturing Firms.....	11
Selected Industrial Services.....	12
TRANSPORTATION.....	13
Highways.....	13
Truck Service.....	13
Selected Market Location Map.....	14
Rail.....	15
Air .....	15
UTILITIES.....	17
Electricity.....	17
Natural Gas.....	17
Public Water Supply.....	18
Sewerage.....	18
CLIMATE.....	19

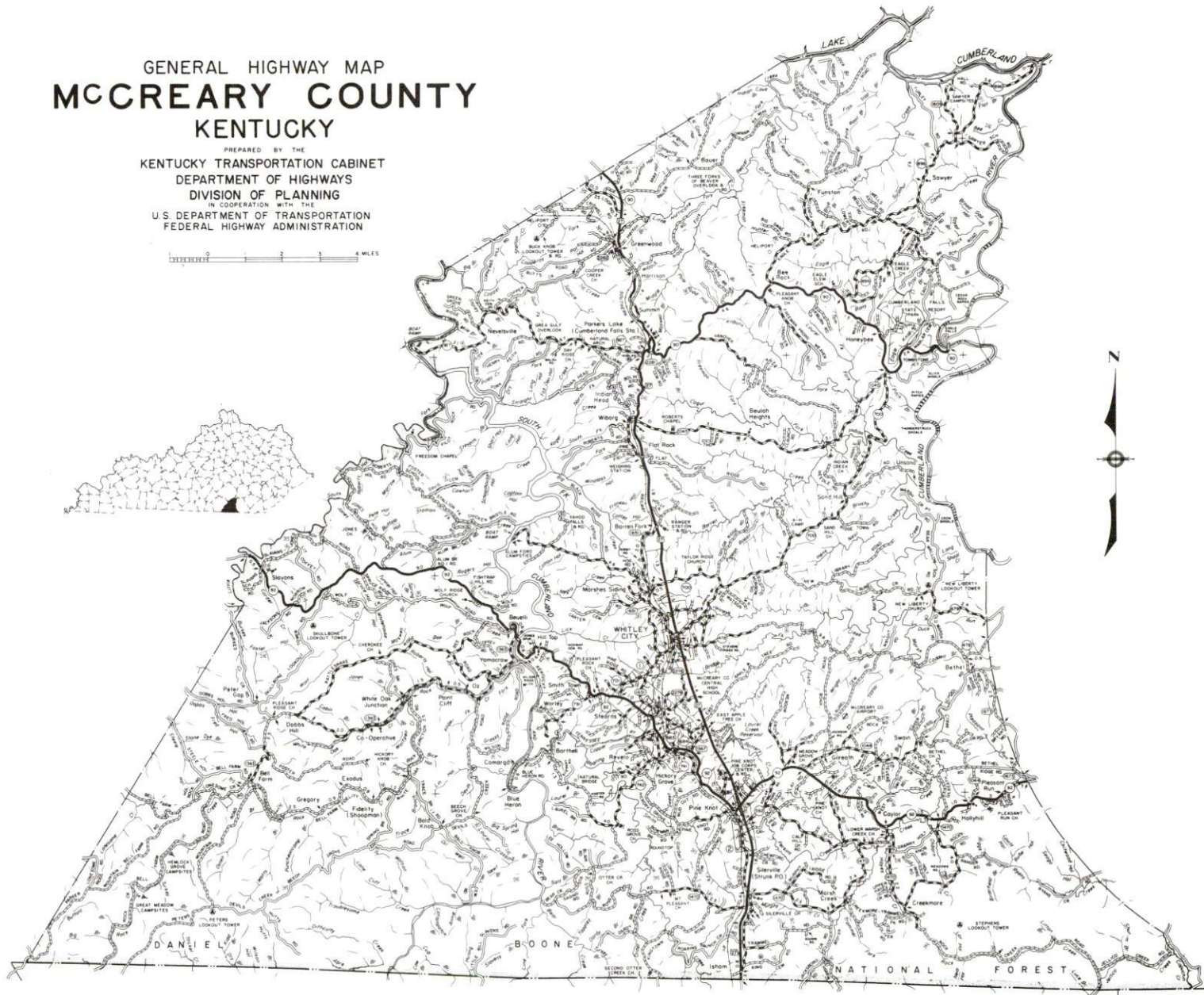
<u>Chapter</u>	<u>Page</u>
LOCAL GOVERNMENT.....	20
Structure.....	20
Planning and Zoning.....	20
State and Local Property Taxes.....	21
EDUCATION.....	22
Public Schools.....	22
Area Colleges and Universities.....	22
Vocational Training.....	23
OTHER LOCAL FACILITIES.....	25
Local Medical Personnel.....	25
Hospitals.....	25
Other Medical Facilities and Services.....	25
Banks and Savings & Loan Associations.....	25
Newspapers.....	25
Telephone Service.....	25
Library Service.....	25
RECREATION.....	26



GENERAL HIGHWAY MAP  
**MCCREARY COUNTY**  
KENTUCKY

PREPARED BY THE  
KENTUCKY TRANSPORTATION CABINET  
DEPARTMENT OF HIGHWAYS  
DIVISION OF PLANNING  
IN COOPERATION WITH THE  
U.S. DEPARTMENT OF TRANSPORTATION  
FEDERAL HIGHWAY ADMINISTRATION

0 1 2 3 4 MILES



## **MCCREARY COUNTY, KENTUCKY - A RESOURCE PROFILE**

McCreary County covers a land area of 427 square miles in the Eastern Coal Fields Region of Kentucky. The county is situated in the southern portion of the Daniel Boone National Forest. McCreary County had a 1992 estimated population of 15,897 persons. Whitley City, the county seat, is located 92 miles northwest of Knoxville, Tennessee; 161 miles southeast of Louisville, Kentucky; 111 miles south of Lexington; and 185 miles south of Cincinnati, Ohio. Stearns is located approximately three miles south of Whitley City, and Pine Knot is approximately five miles south of Whitley City.

**The Economic Framework** - The total number of McCreary County residents employed in 1994 averaged 6,155. In 1993, manufacturing firms in the county reported 1,127 employees; wholesale and retail trade provided 377 jobs; 384 people were employed in service occupations; state and local government accounted for 681 employees; and contract construction firms provided 17 jobs.

**Labor Supply** - There is a current estimated labor supply of 17,871 persons available for industrial jobs in the labor market area. In addition, from 1996 through 2000, 12,517 young persons in the area will become 18 years of age and potentially available for industrial jobs.

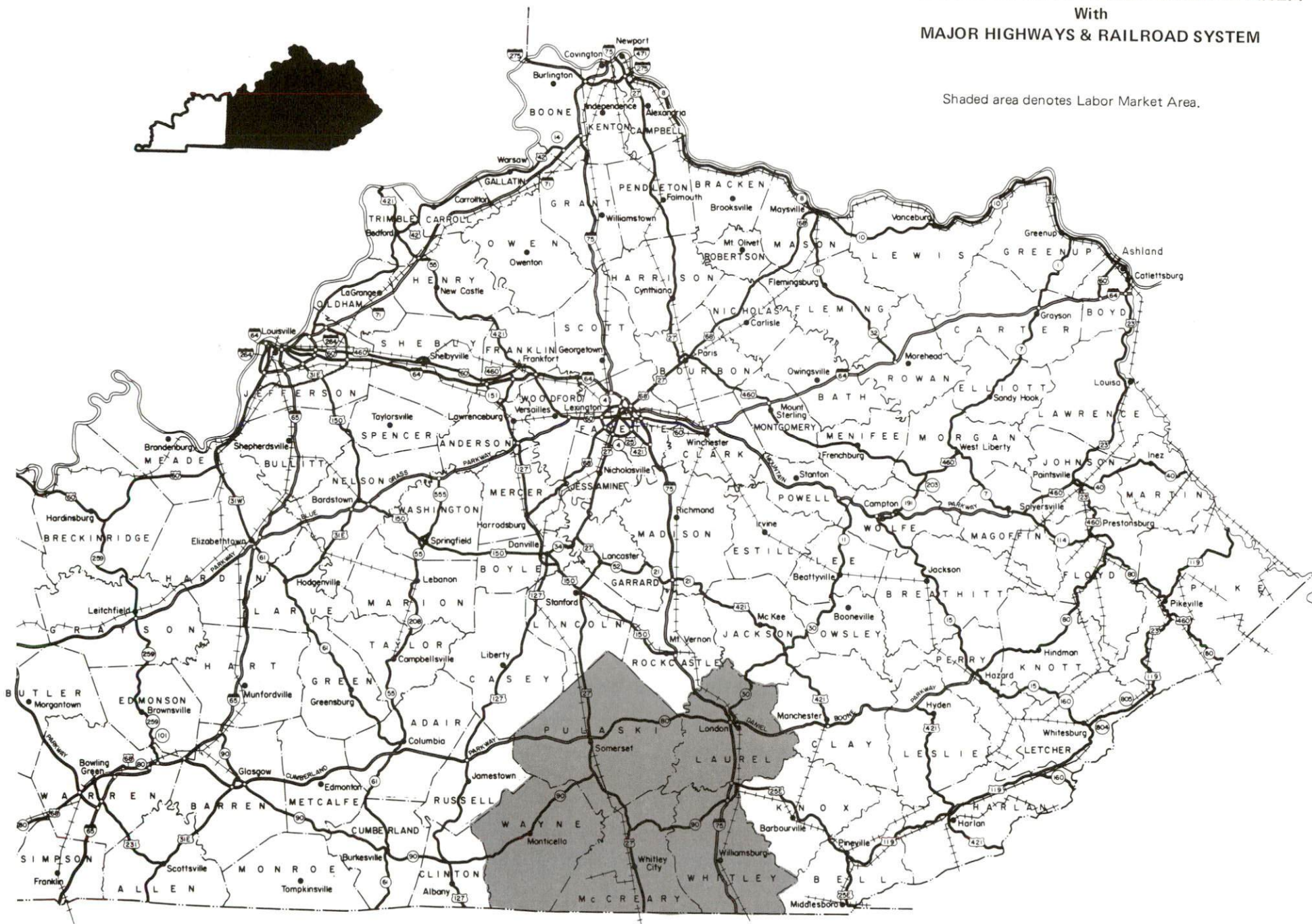
**Transportation** - Whitley City, Stearns and Pine Knot are directly served by U.S. Highway 27. Stearns is also served by Kentucky Highways 92 and 1651. Interstate 75 can be accessed 21 miles east of Pine Knot via Kentucky 92. The Cumberland Parkway is located 31 miles north of Whitley City via U.S. 27. Thirteen common carrier trucking companies provide interstate and/or intrastate service to McCreary County. The Norfolk Southern Corporation provides rail service to McCreary County. Stearns is also served by the Kentucky and Tennessee Railway. The nearest scheduled commercial airline service is available at McGhee-Tyson Airport in Knoxville, Tennessee, 102 miles southeast of Whitley City; and at Blue Grass Airport near Lexington, Kentucky, 115 miles north of Whitley City. The McCreary County Airport, located four miles northeast of Pine Knot, provides facilities for small aircraft.

**Power and Fuel** - Kentucky Utilities Company provides electricity to Whitley City, Stearns and Pine Knot, plus a small portion of McCreary County. A major portion of the county is served by South Kentucky Rural Electric Cooperative Corporation. Cumberland Valley Rural Electric Cooperative Corporation also serves a small portion of southeastern McCreary County. Natural gas is not currently available in McCreary County, but service is being extended to Pine Knot and southern McCreary County.

**Education** - Primary and secondary education is provided by the McCreary County School System. Twelve institutions of higher learning are located within 95 miles of Whitley City. Vocational training is available at Kentucky Tech-Somerset, 31 miles north of Whitley City; and at the Oneida State Vocational-Technical School in Oneida, Tennessee, 20 miles south of Whitley City. The nearest Area Vocational Education Center is located in Monticello, 32 miles west of Whitley City. In addition, the Pine Knot Civilian Conservation Center, a unit of the Job Corps training program, is located in Pine Knot.



With  
MAJOR HIGHWAYS & RAILROAD SYSTEM





## LABOR MARKET STATISTICS

The McCreary County Labor Market Area includes McCreary County and the adjoining Kentucky counties of Laurel, Pulaski, Wayne and Whitley. In addition, the labor market is supplemented by Scott County, Tennessee.

### POPULATION

	<u>1992*</u>	<u>1990</u>	<u>1980</u>	<u>1970</u>
Labor Market Area	164,652	159,324	150,837	113,581
Pine Knot**	N/A	1,549	1,389	N/A
Stearns**	N/A	1,550	1,557	N/A
Whitley City**	N/A	1,133	1,683	1,060
McCreary County	15,897	15,603	15,634	12,548

N/A: Not Available

\*Population estimates.

\*\* Whitley City, Stearns, and Pine Knot are unincorporated urban places which have been recognized as "census designated places" or "CDP's" by the Bureau of the Census for the 1990 census. The CDP's are closely settled population centers without incorporated limits; the boundaries are delineated by the Census Bureau.

Source: U.S. Department of Commerce, Bureau of the Census.

### POPULATION PROJECTIONS

	<u>1995</u>	<u>2000</u>	<u>2010</u>	<u>2020</u>
Labor Market Area	172,609	184,123	200,008	212,308
McCreary County	16,410	17,214	18,522	19,551

Note: Population projections are from High Growth Series forecast.

Source: University of Louisville, Urban Studies Center, State Data Center.

### ESTIMATED LABOR SUPPLY

	<u>Current</u>		<u>Future</u>	
	<u>Total</u>	<u>Unemployed</u>	<u>Not in Labor Force</u>	<u>Becoming 18 years of age 1996 thru 2000</u>
Labor Market Area*	17,871	5,249	12,622	12,517
McCreary County	2,134	597	1,537	1,336

\* Additional workers may be drawn from other nearby counties.

Note: Unemployed - persons unemployed and actively seeking work; Not in Labor Force - represents the number of persons who would enter the labor force if suitable employment were available (based on the assumption that persons in Kentucky would like to participate in the labor force in the same proportion that they do nationally). Underemployed persons (employed only 14 to 26 weeks during the year) are no longer included in labor surplus estimates.

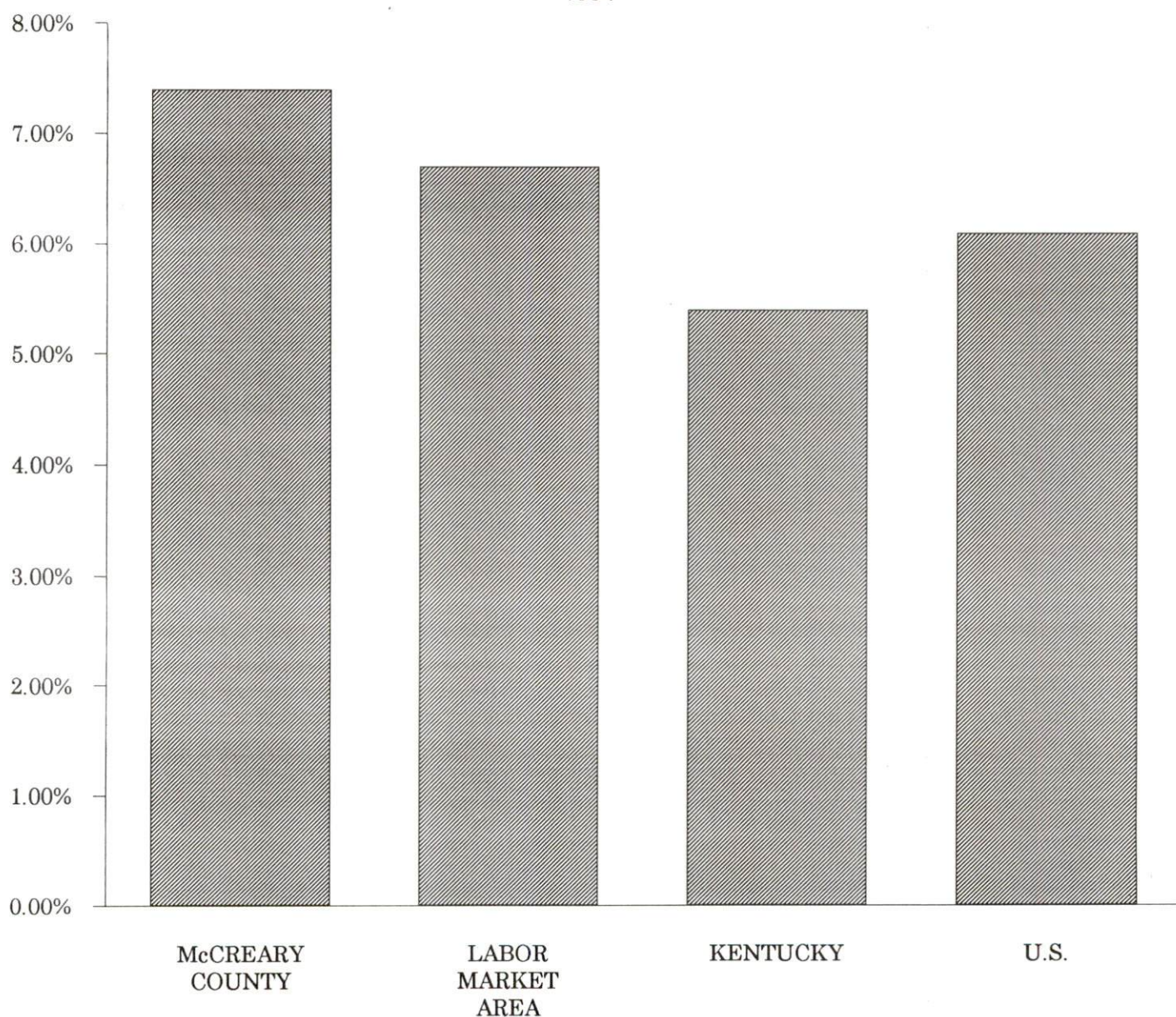
Sources: Kentucky Cabinet for Human Resources, Kentucky Labor Surplus Estimates by County, 1993. Kentucky Cabinet for Economic Development, Future Labor Supply Becoming 18 Years of Age, 1996 thru 2000.

# LABOR FORCE CHARACTERISTICS OF RESIDENTS, 1994

	<u>McCreary County</u>	<u>Labor Market Area</u>
Civilian Labor Force	6,649	71,548
Employment	6,155	66,774
Unemployment	494	4,774
Rate of Unemployment (%)	7.4	6.7

**Source:** Kentucky Cabinet for Human Resources, Kentucky Labor Force Estimates, Annual Averages, 1994

## UNEMPLOYMENT RATES 1994





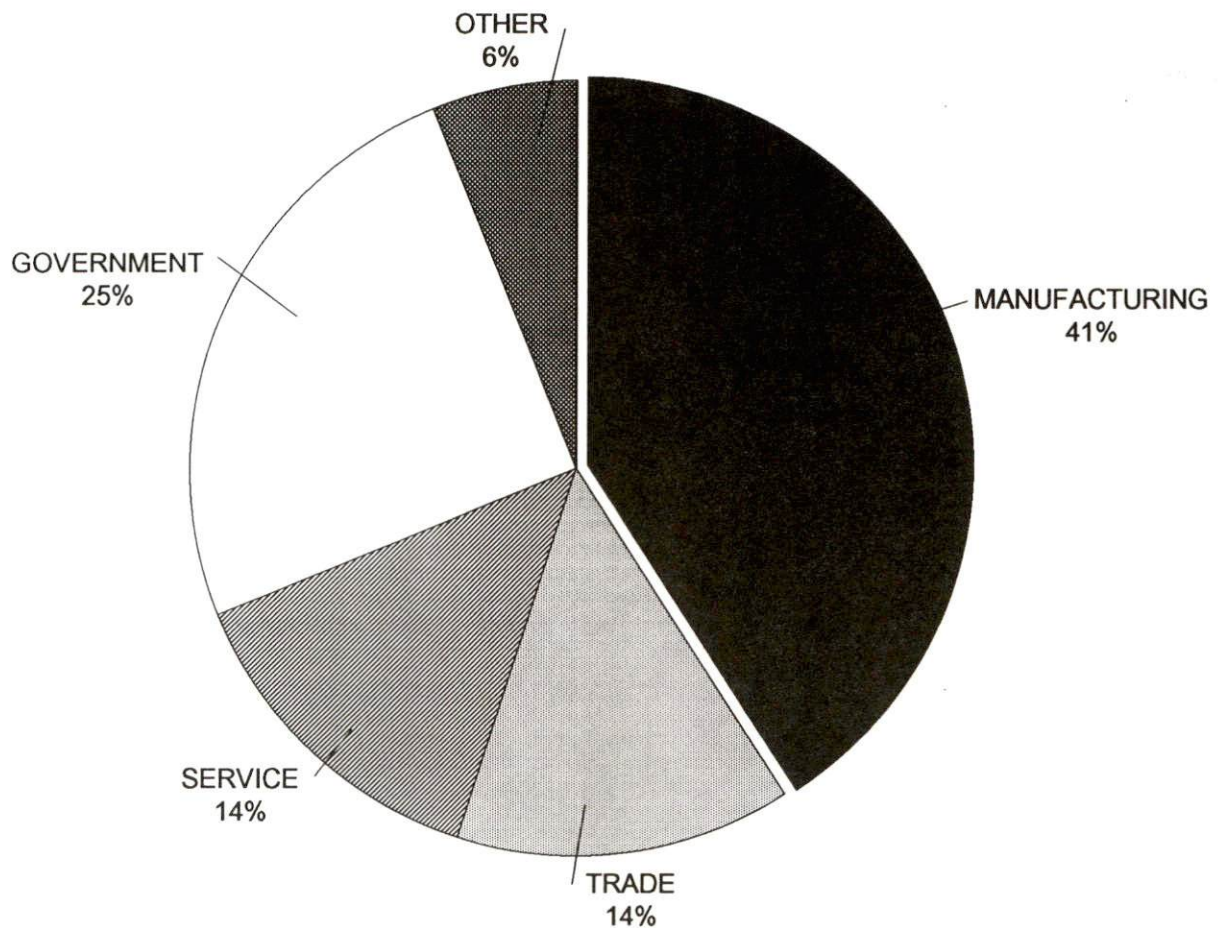
SELECTED COMPONENTS OF NONAGRICULTURAL EMPLOYMENT  
BY PLACE OF WORK, 1993

	<u>McCreary County</u>	<u>Labor Market Area</u>
All Industries (total)	2,760	53,543
Manufacturing	1,127	12,325
Wholesale & Retail Trade	377	14,707
Services	384	10,964
State/Local Government	681	8,370
Contract Construction	17	2,113

**Note:** Excludes domestic workers, railway workers, certain nonprofit corporations, majority of federal government workers, and self-employed workers.

**Source:** Kentucky Cabinet for Human Resources, Average Monthly Workers Covered by Kentucky Unemployment Insurance Law, 1993.

MCCREARY COUNTY



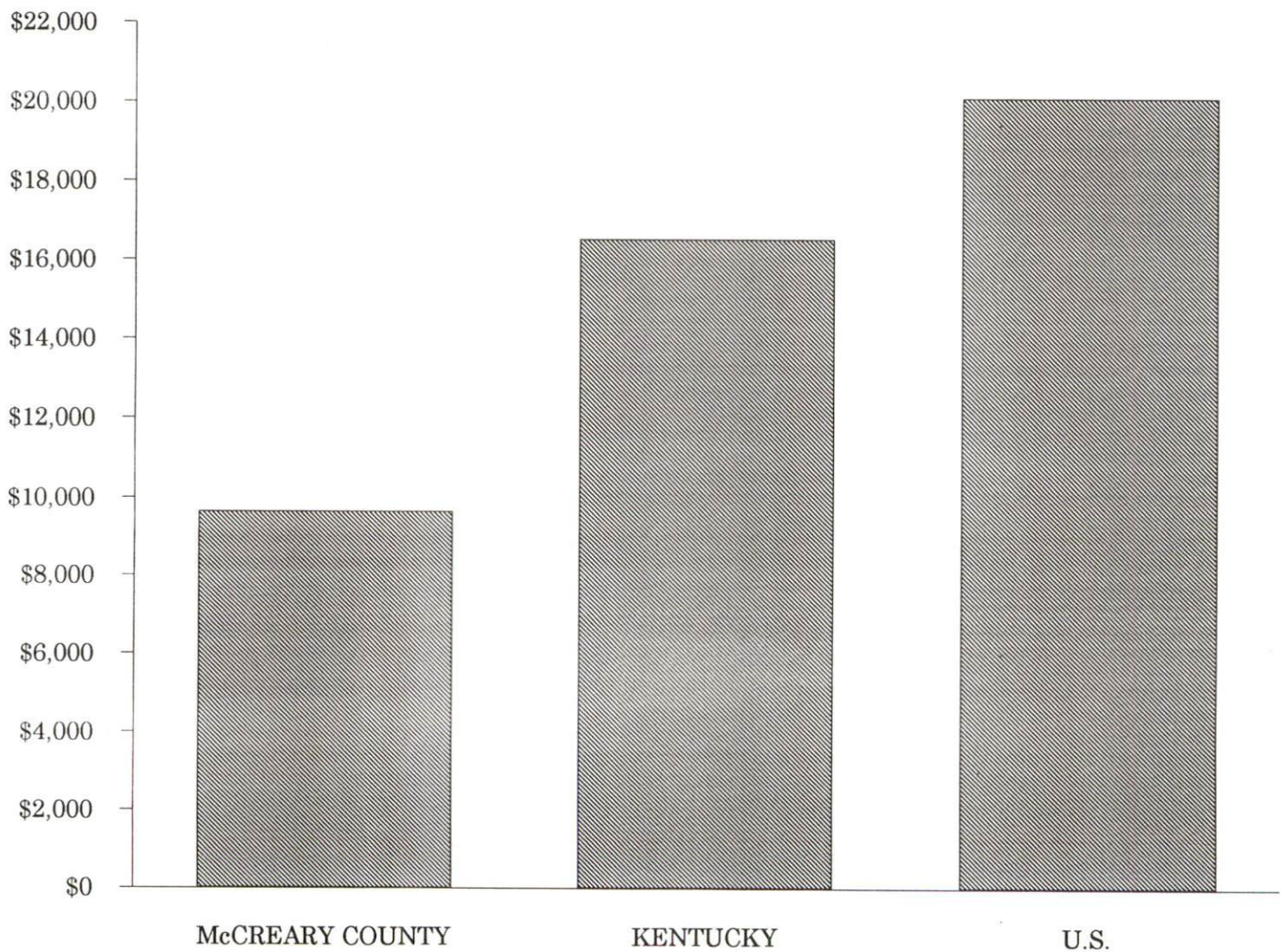


# PER CAPITA PERSONAL INCOME

<u>Area</u>	<u>1988</u>	<u>1992</u>	<u>Percent Change</u>
McCreary County	\$6,657	\$9,655	45.0
Labor Market Area Range	\$6,657 - \$10,807	\$9,655 - \$13,978	-
Kentucky	\$12,751	\$16,528	29.6
U.S.	\$16,610	\$20,105	21.0

**Source:** U.S. Department of Commerce, Bureau of Economic Analysis, Regional Economic Information System.

## PER CAPITA PERSONAL INCOME 1992



## AVERAGE PLACEMENT WAGES

---

McCreary County is served by the Somerset local office of the Kentucky Department for Employment Services. The focus of the following data is on job placements made by the Somerset local office and may therefore be used as an indicator of the wages which employers in the area pay new employees. During the twelve months which ended on June 30, 1994, the local employment office filled 4,713 job openings in various occupational categories. The average hourly wage for selected occupational categories were:

<u>OCCUPATIONAL CATEGORY</u>	<u>NUMBER OF PLACEMENTS</u>	<u>AVERAGE WAGE(\$)</u>
All Occupations	4,713	4.80
Clerical	1,154	4.35
Sales	101	4.43
Services (excluding domestic)	413	4.25
Agricultural, Fishery, Forestry, etc.	147	6.37
Processing	27	5.04
Machine Trades	470	5.55
Bench Work	1,635	4.75
Structural	318	5.09
Motor Freight/ Transportation	79	4.77
Packaging and Materials Handling	317	5.27

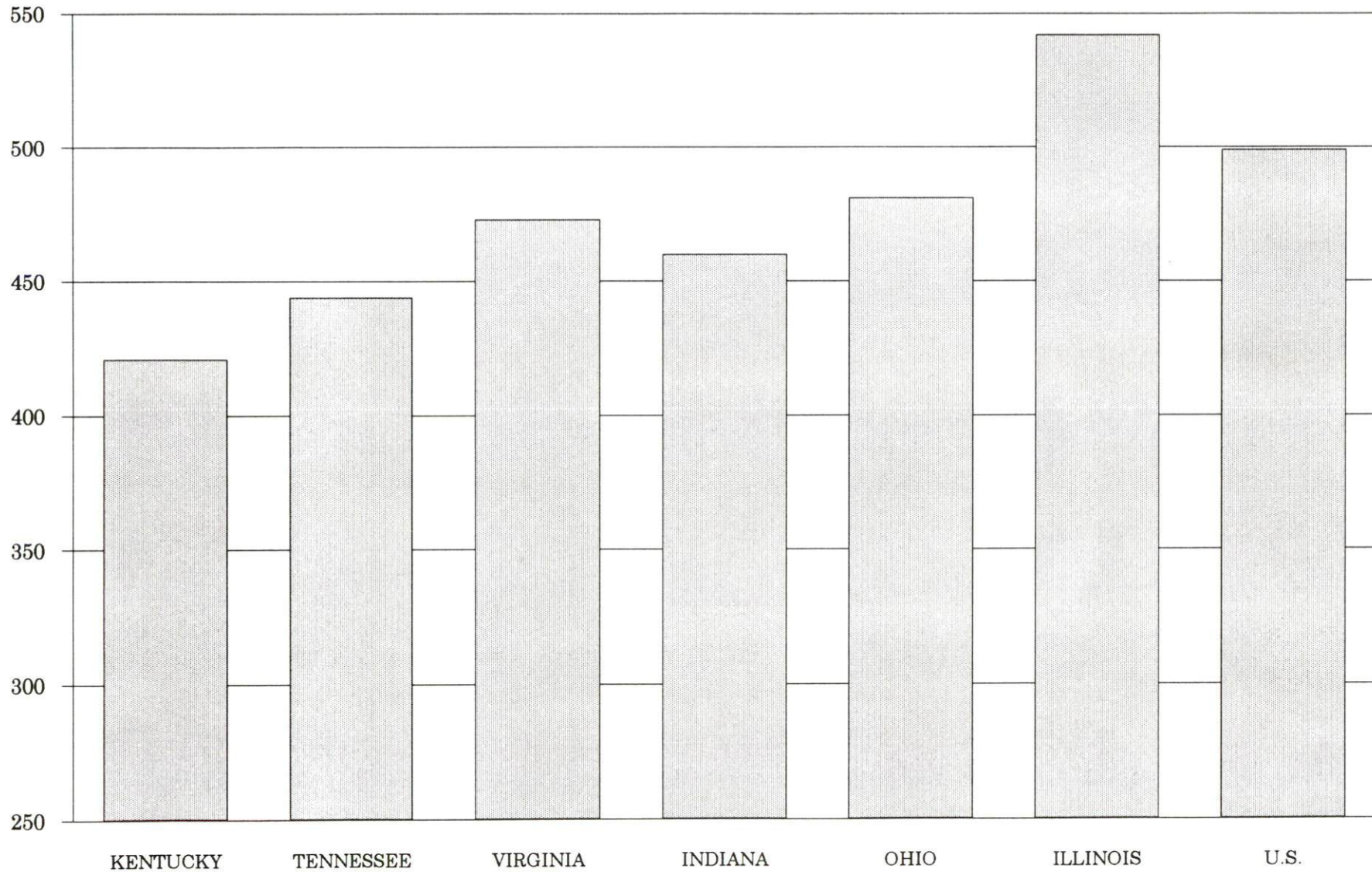
The Somerset local office also serves Adair, Casey, Clinton, Cumberland, Green, Pulaski, Russell, Taylor, and Wayne Counties. The above occupational categories are taken from the Dictionary of Occupational Titles published by the U.S. Department of Labor.

---

**Source:** Kentucky Cabinet for Human Resources, Department for Employment Services.



**AVERAGE WEEKLY WAGES OF WORKERS COVERED BY  
UNEMPLOYMENT INSURANCE - 1993**





AVERAGE WEEKLY WAGES BY INDUSTRY  
BY PLACE OF WORK, 1993\*

	<u>McCreary County</u>	<u>Kentucky (Statewide)</u>	<u>Tennessee</u>	<u>Virginia</u>
All Industries	\$299.46	\$421.30	\$444.00	\$473.00
Mining & Quarrying	385.33	691.01	605.00	684.00
Contract Construction	205.47	440.47	467.00	464.00
Manufacturing	256.77	541.18	522.00	543.00
Transportation, Communications & Public Utilities	403.82	567.94	572.00	648.00
Wholesale & Retail Trade	199.42	287.24	N/A	N/A
Finance, Insurance & Real Estate	360.92	449.89	495.00	523.00
Services	283.29	350.41	394.00	455.00
State/Local Government	414.85	413.84	N/A	N/A
	<u>Indiana</u>	<u>Ohio</u>	<u>Illinois</u>	<u>U. S.</u>
All Industries	\$460.00	\$481.00	\$542.00	\$499.00
Mining & Quarrying	757.00	645.00	738.00	816.00
Contract Construction	509.00	534.00	658.00	530.00
Manufacturing	629.00	670.00	667.00	623.00
Transportation, Communications & Public Utilities	561.00	600.00	682.00	643.00
Wholesale & Retail Trade	N/A	N/A	N/A	N/A
Finance, Insurance & Real Estate	527.00	568.00	748.00	693.00
Services	391.00	422.00	494.00	475.00
State/Local Government	N/A	N/A	N/A	N/A

\* Wages for U.S. and surrounding states rounded to nearest dollar.

N/A Not Available.

**Note:** The average weekly wage for each category includes the salaries and wages of all persons working for that type business. For example, the manufacturing category includes both production workers and administrative personnel. Excludes domestic workers, railway workers, certain nonprofit corporations, majority of federal government workers, and self-employed workers.

**Source:** Kentucky Cabinet for Human Resources, Average Weekly Wages of Workers Covered by Kentucky Unemployment Insurance Law, 1993. U.S. Department of Labor, Bureau of Labor Statistics, Employment and Wages, Annual Averages, 1993, October, 1994.

## EXISTING INDUSTRY

### MCCREARY COUNTY MANUFACTURING FIRMS, THEIR PRODUCTS AND EMPLOYMENT

<u>Firm</u> <u>(Establishment date)</u>	<u>Product</u>	<u>1994</u> <u>Average Employment</u>
<b>Pine Knot</b>		
Academy Broadway Corporation (1977)	Sleeping bags, back packs	140
D.H. Campbell, Inc. (1960)	Heavy equipment refurbishing	23
Kentucky Hills Industries (1970)	Cornshuck flowers and dolls, hand weavings, wood handcrafts	55
McCreary County Hardwoods, Inc. (1970)	Lumber crossties, pulpwood processing	20
Pine Knot Lumber Company, Inc. (1978)	Rough lumber, chips, sawdust, pallets, posts and guard rail materials	20
<b>Stearns</b>		
American Bag Corporation (1976)	Air bags for automobiles	415
Central Specialties, Inc. (1991)	Wood remanufacturing	45
J. Davis Enterprises, Inc. (1990)	Liners, canopies, tarps, tents for armed services	51
McCreary Manufacturing (1962)	Men's shirts, women's blouses	150
Outdoor Venture Corporation (1972)	Military tents	220
Stearns Railway Services (1988)	Railroad car refurbishing	6
<b>Strunk</b>		
C & P Lumber (1990)	Lumber, sawmill	7
Dillard Bryant Lumber (1992)	Lumber crossties	8
Gregory Lumber Company (1983)	Lumber, sawmill	25

(Continued)

<u>Firm (Establishment date)</u>	<u>Product</u>	<u>1994 Average Employment</u>
<b>Whitley City</b>		
Casual Sportswear (1992)	Uniform pants, mens and womens uniforms	45
McCreary County Ready Mix (1982)	Concrete block, ready-mixed concrete, precast concrete products	4
McCreary County Record (1918)	Newspaper	4
Mid-West Crafts, Inc. (1975)	Coal figurines	4
Monroe Mills (1991)	Pallets, lumber	36

---

**Sources:** Kentucky Cabinet for Economic Development, Division of Research; McCreary County Fiscal Court; McCreary County Economic Development Council.

### RECENT INDUSTRIAL DEVELOPMENTS

In 1994, American Bag Corporation expanded its operation in Stearns. The \$5,317,000 project included site development, building expansion, and increased sewer treatment capabilities. The plant size was increased from 18,000-square feet to 54,000-square feet, and an additional 150 people were employed.

The McCreary County Industrial Development Corporation has purchased a 53-acre industrial site in Pine Knot. The McCreary County Industrial Park includes three phase power, 8-inch water lines, and a rail spur. Plans to construct a 200,000 gallon elevated water storage tank and a 25,000 gallons-per-day waste water treatment plant are underway. The purchase of an additional 40 acres at the site is also planned.

### LABOR ORGANIZATIONS IN MANUFACTURING FIRMS

#### Union

Amalgamated Clothing and Textile  
Workers Union, AFL-CIO

#### Representing workers at:

Outdoor Venture Corporation



### SELECTED INDUSTRIAL SERVICES

<u>Types of Services</u>	<u>Location</u>	<u>Mileage from Whitley City</u>
Custom Plastics Producers	Corbin, Kentucky	40
Electric Motor Repair	Somerset, Kentucky	31
Heat Treating Facilities	Richmond, Kentucky	103
Industrial Waste Removal	Stearns, Kentucky	3
Machine Shops, Tool & Die	Somerset, Kentucky	31
	Monticello, Kentucky	32
Metal Castings	Middlesboro, Kentucky	76
Metal Finishers	Middlesboro, Kentucky	76
Metal Service Centers	Corbin, Kentucky	40
Millwrights & Riggers	Knoxville, Tennessee	92

**Sources:** Kentucky Cabinet for Economic Development, Division of Research; McCreary County Fiscal Court.

## TRANSPORTATION

### Highways

Whitley City, Pine Knot and Stearns are served directly by U.S. 27, a "AAA"-rated (80,000-pound gross load limit) trucking highway. Stearns is also served by Kentucky 92, a "AAA"-rated trucking highway from U.S. 27 west to Monticello. Kentucky 92 is a "AA"-rated (62,000-pound gross load limit) trucking highway from U.S. 27, which is 21 miles east of Pine Knot, to Interstate 75. Kentucky 90, another "AA"-rated highway, serves the northern portion of the county. The Cumberland Parkway, an east-west multi-lane toll road, is located 31 miles north of Whitley City via U.S. 27.

#### HIGHWAY MILES FROM WHITLEY CITY, KENTUCKY TO SELECTED MARKET CENTERS

City	Highway Miles	City	Highway Miles
Atlanta, GA	286	Los Angeles, CA	2,193
Baltimore, MD	607	Louisville, KY	161
Birmingham, AL	345	Nashville, TN	268
Chicago, IL	442	New Orleans, LA	684
Cincinnati, OH	185	New York, NY	807
Cleveland, OH	418	Pittsburgh, PA	460
Detroit, MI	443	St. Louis, MO	411
Knoxville, TN	92		

Note: Mileage computations are via the best interstate or primary highways, not necessarily the most direct route of travel.

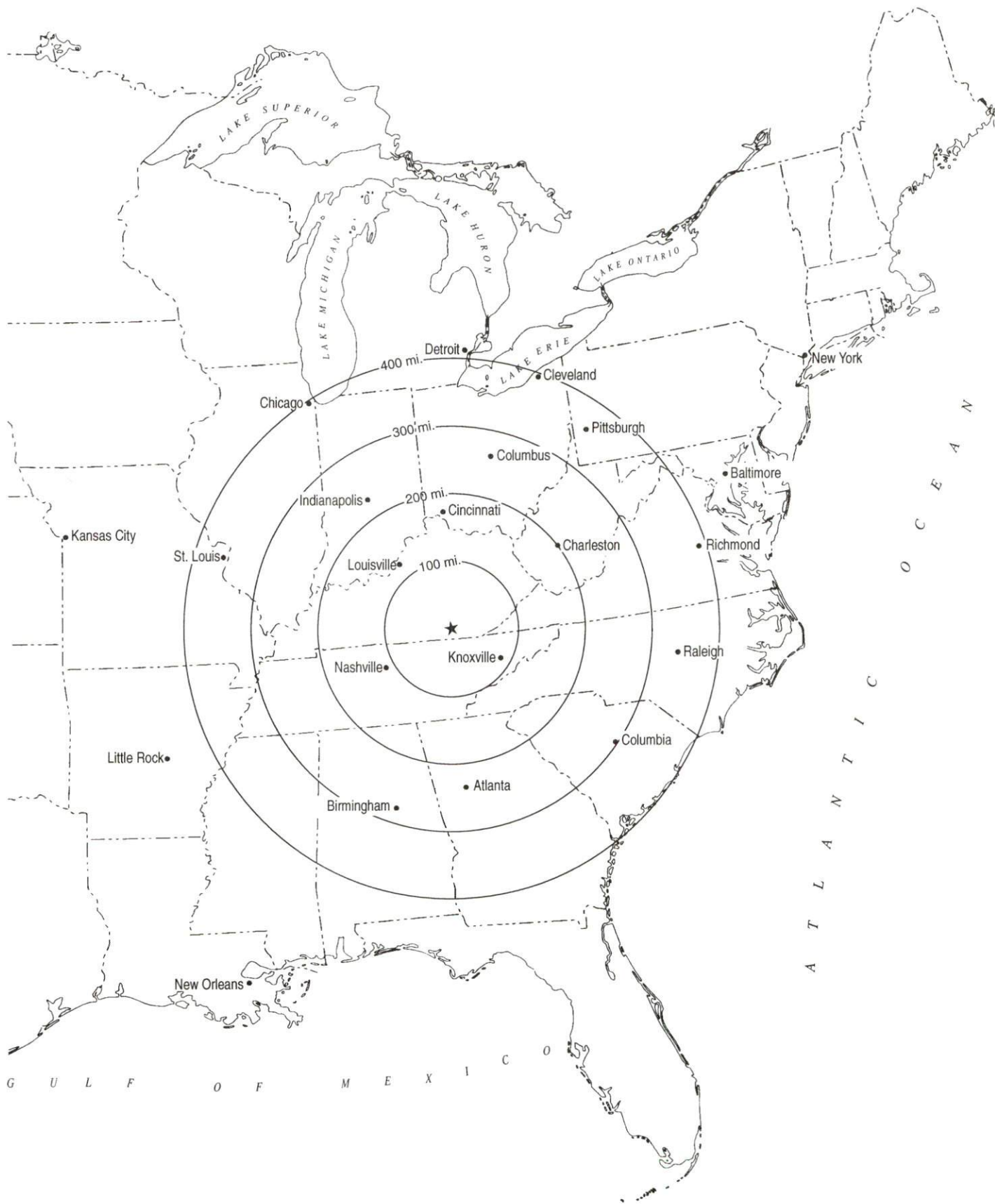
Sources: Rand McNally Standard Highway Mileage Guide, 1990. Official Kentucky Mileage Map, 1988.

### Truck Service

Thirteen trucking companies provide interstate and/or intrastate service to McCreary County. One trucking firm specializes in heavy equipment hauling.

Source: American Motor Carrier Directory, Spring 1995.

# Selected Market Centers





## Rail

Main line rail service is provided to Whitley City, Stearns, and Pine Knot by Norfolk Southern Corporation. Stearns is also served by Kentucky and Tennessee Railway. The nearest intermodal facilities are maintained by Norfolk Southern at Knoxville, 92 miles south of Whitley City.

For details on routing, schedules, rates, and services contact:

Industrial Development Manager  
Norfolk Southern Corporation  
Industrial Development Department  
The Tower Suite 2904  
611 Commerce Street  
Nashville, Tennessee 37203  
(615) 254-3398

and/or

Manager  
Kentucky and Tennessee Railway  
P.O. Box 368  
Stearns, Kentucky 42647  
(606) 376-5330

## Air

### Local

Location:	McCreary County Airport
Runways:	4 miles northeast of Pine Knot
Length:	One paved
Traffic	3,000 feet
Control:	Wind sock
Lighting:	None
Services:	100LL fuel, hangar, tie-downs

The McCreary County Airport Board is awaiting funding to extend the runway by 1,000 feet. Lighting of runway and avionics are also planned improvements.

Nearest Scheduled Commercial Airline Service

McGhee-Tyson Airport  
Location: 10 miles south of Knoxville, Tennessee;  
102 miles southeast of Whitley City  
Air Service: American Eagle, ComAir, Delta, Northwest,  
Northwest Airlink, TWA Express, United,  
United Express, USAir, USAir Express  
Daily Arrivals  
& Departures: 240

Blue Grass Airport  
Location: 4 miles west of Lexington, Kentucky;  
115 miles north of Whitley City  
Air Service: American Eagle, ASA, ComAir, Delta,  
Northwest Airlink, TW Express,  
United Express, USAir, USAir Express  
Daily Arrivals  
& Departures: 176

## UTILITIES

### Electricity

Company serving **Whitley City, Stearns, Pine Knot, and a small portion of central McCreary County** - Kentucky Utilities Company

Source of power - Kentucky Utilities Company

For industrial rates contact:

Economic Development Department  
Kentucky Utilities Company  
One Quality Street  
Lexington, Kentucky 40507  
(606) 255-2100

Company serving a **major portion of McCreary County** - South Kentucky

Rural Electric Cooperative Corporation

Company serving a **small portion of southeastern McCreary County** -

Cumberland Valley Rural Electric Cooperative Corporation

Source of power - East Kentucky Power

For industrial rates contact:

Industrial Development Department  
East Kentucky Power  
P.O. Box 707  
Winchester, Kentucky 40392-0707  
(606) 744-4812

### Natural Gas

Natural gas service is presently being extended to Pine Knot and southern McCreary County.



## **Public Water Supply**

Company serving **McCreary County** - McCreary County Water District  
P.O. Box 488  
Whitley City, Kentucky 42653  
(606) 376-2540

Source -	Laurel Creek Reservoir
Treatment plant capacity -	1,500,000 gallons per day
Average daily consumption -	945,000 gallons
Peak daily consumption -	1,015,000 gallons
Storage capacity -	1,125,000 gallons
Water pressure -	32 psi to 200 psi

The McCreary County Water District recently completed a \$530,000 project which included the installation of 30,000 LF of 10" water lines and the construction of a 200 gallon water storage tank. Plans have been submitted for the construction of 111,000 LF of various sized water lines, a 50,000 gallon and a 20,000 gallon water storage tank, and a booster pump station. The \$1,200,000 project is scheduled for completion in Spring, 1997. Long range plans include the construction of an additional 2,000,000 gallons-per-day water treatment facility and water storage tanks at Big Creek.

## **Sewerage**

Company serving **portions of McCreary County** - McCreary County Water District  
Sewer Department  
P.O. Box 488  
Whitley City, Kentucky 42653  
(606) 376-2540

Design capacity -	100,000 gallons per day
Average daily flow -	2,500 gallons per day
Type of treatment -	Primary
Treated effluent discharged into -	Bridgefork Creek

Septic tanks and several package treatment plants are also used for sewerage disposal in Whitley City, Stearns, and Pine Knot. Plans are underway for construction of a \$3.2 million pressurized sewer system. The new system will eliminate 13 package treatment plants and double treatment capacity. The projected completion date is Fall, 1996.

## CLIMATE

### McCreary County

Normal (30-year record)	57.60 degrees
Average annual 1993	58.90 degrees
Record highest, September 1954 (52-year record)	103.00 degrees
Record lowest, January 1985 (52-year record)	-24.00 degrees
Normal heating degree days (30-year record)	3,937
(Heating degree day totals are the sums of negative departures of average daily temperatures from 65 degrees F.)	

### Precipitation

Normal (30-year record)	47.14 inches
Mean annual snowfall (46-year record)	11.80 inches
Total precipitation 1993	45.09 inches
Mean number days precipitation (.01 inch or more) (51-year record)	126.30
Mean number days thunderstorms (51-year record)	47.00

### Prevailing winds (through 1963)

Northeast

### Relative Humidity (33-year record)

1 a.m.	81 percent
7 a.m.	86 percent
1 p.m.	59 percent
7 p.m.	63 percent

**Source:** U.S. Department of Commerce, Environmental Science Services Administration, Climatological Data, 1993. Station of record: Knoxville, Tennessee.

## **LOCAL GOVERNMENT**

### **Structure**

The communities of Whitley City, Stearns, and Pine Knot are unincorporated urban areas. McCreary County is governed by a county judge/executive and four magistrates. Each county official serves a four-year term.

### **Planning and Zoning**

There are no planning and zoning commissions in McCreary County at the present time.

Mandatory state codes enforced - Kentucky Plumbing Code, National Electric Code, Kentucky Boiler Regulations and Standards, Kentucky Building Code (modeled after BOCA code)



## PROPERTY TAXES

The Kentucky Constitution requires the state to tax all classes of taxable property, and state statutes allow local jurisdictions to tax only a few classes. All locally taxed property is subject to county taxes and school district taxes (either a county school district or an independent school district). Property located inside of city limits may also be subject to city property taxes.

Special local taxing jurisdictions (fire protection districts, watershed districts, and sanitation districts) levy taxes within their operating areas (usually a small portion of community or county).

Property assessments in Kentucky are at 100% fair cash value. Accounts receivable are taxed at 85% of face value.

### **STATE PROPERTY TAX RATES PER \$100 VALUATION**

<u>Selected Classes of Property</u>	<u>1993 State Rate</u>	<u>Local Taxation Permitted</u>
Real Estate	\$0.180	YES
Manufacturing Machinery	0.150	NO
Pollution Control Equipment	0.150	NO
Inventories		
Raw Materials	0.050	NO
Goods in Process	0.050	NO
Finished Goods	0.050	YES
Motor Vehicles	0.450	YES
Other Tangible Personal Property	0.450	YES
Intangibles (Accounts Receivable, Money on Hand)	0.250	NO

### **LOCAL PROPERTY TAX RATES PER \$100 VALUATION, 1993**

<u>Taxing Jurisdiction</u>	<u>Real Estate</u>	<u>Finished Goods &amp; Tangibles</u>	<u>Motor Vehicles</u>
McCreary County	\$0.2570	\$0.2730	\$0.3198
School Districts:			
McCreary County	0.4350	0.4350	0.3000
Other:			
Four Fire Protection Districts	0.1000	0.1000	0.1000

## EDUCATION

### Public Schools

#### McCreary County

Total Enrollment (Fall, 1994)	3,489
Pupil-Teacher Ratio (1993-94)	14.7-1
Percent High School Graduates to College (1992-93)	37.5
Expenditures Per Pupil (1991-92)	\$3,634.51

Construction of an athletic facility at the McCreary Central High School in Stearns is underway. The \$725,000 project is scheduled for completion in the Fall of 1995. A \$2 million expansion of Pine Knot Elementary School is also underway.

### Area Colleges and Universities

<u>Name</u>	<u>Location (Miles from Whitley City)</u>	<u>Enrollment (Fall, 1993)</u>
Cumberland College	Williamsburg, Kentucky (28)	1,518
Somerset Community College	Somerset, Kentucky (31)	2,813
Sue Bennett College	London, Kentucky (56)	497
Union College	Barbourville, Kentucky (56)	1,005
Lindsey Wilson College	Columbia, Kentucky (73)	1,170
Berea College	Berea, Kentucky (74)	1,591
Centre College	Danville, Kentucky (76)	949
Lincoln Memorial University	Harrogate, Tennessee (79)	1,904
Campbellsville College	Campbellsville, Kentucky (92)	1,163
Johnson Bible College	Knoxville, Tennessee (92)	483
Knoxville College	Knoxville, Tennessee (92)	844
University of Tennessee, at Knoxville	Knoxville, Tennessee (92)	26,122

### Local Higher Education Opportunities

Somerset Community College recently opened a branch campus in Whitley City. Several college level courses are offered such as Business, English, Mathematics, Science, Computers, Economics, and Humanities. These courses are transferable to the University of Kentucky.

Plans are underway for a 15,000-square-foot building expansion at the Whitley City campus. The \$2,000,000 project is scheduled for completion in 1997.

## VOCATIONAL-TECHNICAL TRAINING

Kentucky Tech schools are operated by the Cabinet for Workforce Development and provide secondary (Sec) and postsecondary (P/S) vocational-technical training.

<u>Kentucky Tech Schools</u>	<u>Location (Mileage from Whitley City)</u>	<u>Number of Program Offerings</u>	<u>Cumulative Enrollment 1993-1994</u>	<u>Approximate Number Completing Long Term Programs Annually</u>
			<u>Sec</u> <u>P/S</u>	
Kentucky Tech- Somerset	Somerset (31)	13	3 574	119
			<u>Sec</u> <u>P/S</u>	
Wayne County Area Vocational Education Center	Monticello (32)	5	147 7	36

### Customized Training

The Kentucky Tech system, through its Training and Development Coordinators, will provide technical assistance and will identify and develop low-cost customized training programs and services for existing, as well as new and expanding businesses and industries. Businesses and industries needing customized training or a continuing education program for its employees should contact a Training and Development Coordinator located at Kentucky Tech-Somerset, Somerset, Kentucky at (502) 679-4303.

### Assessment Services

Kentucky Tech Career Connections offers to business, education, and government agencies customized assessment in career inventories, interest inventories, psychomotor skills and academic potential as well as pre-hire assessment. A Career Connection assessment center is located at Kentucky Tech-Somerset, Somerset, Kentucky.

### Tech Prep

Tech Prep is a combined secondary and postsecondary program of studies that leads to an associate degree or diploma in a vocational-technical field. Kentucky Tech-Somerset and the Wayne County Area Vocational Education Center are currently implementing tech prep programs.



### Adult Education Services

Adult education programs are available to adults who want to develop new skills, or earn a high school equivalency degree. In McCreary County, adult literacy and basic education are provided by the McCreary County Learning Center, Depot Street, Stearns, Kentucky 42647; Family Life School (CAP) Christian Appalachian Project, P.O. Box 520, Whitley City, Kentucky 42653; and the McCreary County Adult Literacy Council, P.O. Box 8, Main Street - McCreary County Public Library, Whitley City, Kentucky, 42653.

### Bluegrass State Skills Corporation

The Bluegrass State Skills Corporation, an independent public corporation created and funded by the Kentucky General Assembly, provides programs of skills training to meet the needs of business and industry from entry level to advanced training, and from upgrading present employees to retraining experienced workers.

The Bluegrass State Skills Corporation is a major source for skills training assistance for a new or existing company. The Corporation works in partnership with other employment and job training resources and programs, as well as Kentucky's economic development activities, to package a program customized to meet the specific needs of a company.

## OTHER LOCAL FACILITIES

### Local Medical Personnel

Physicians - 7  
Dentists - 6

### Hospitals

<u>General Hospitals</u>	<u>Location</u>	<u>Beds</u>
Lake Cumberland Regional Hospital	Somerset, Kentucky; 31 miles north of Whitley City	227
Scott County Hospital	Oneida, Tennessee; 20 miles south of Whitley City	99

### Lake Cumberland Regional Hospital

Medical staff - 71 active staff physicians, 34 courtesy and consulting staff physicians, 198 registered nurses, 65 licensed practical nurses

### Scott County Hospital

Medical staff - 11 active staff physicians, 35 courtesy staff physicians, 30 registered nurses, 50 licensed practical nurses

### Other Medical Facilities and Services

Winchester, Patton and Burgess Clinic (open 365 days)  
Adanta Clinical Services  
McCreary Christian Care Center  
McCreary County Health Center  
McCreary County Ambulance Service  
Cumberland Manor Rest Home, Inc.  
McCreary County Health Care Facility  
Homehealth  
Lake Cumberland Homehealth  
Lifeline

### Banks and Savings & Loan Associations

Bank of McCreary County  
McCreary National Bank

### Newspapers

McCreary County Record

### Telephone Service

Highland Telephone Cooperative, Inc.

### Library Service

McCreary County Public Library (34,500 volumes)

## RECREATION

### Local

Recreational opportunities abound throughout McCreary County, ranging from indoor activities to rugged outdoor adventures. The McCreary County Park, just south of Whitley City, offers three baseball/softball fields, two basketball courts, a picnic area, a shelter, a children's playground, and hiking and fitness trails.

The Sandhill Conservation Camp, near Whitley City in McCreary County, offers an overnight lodge, 38 RV hook-ups, a horse show ring, a picnic shelter, a bathhouse, and a community building.

The Stearns Golf Course is a semi-private, nine-hole golf course with a swimming pool and lighted tennis courts on the premises. The Stearns golf course is rated among the best nine-hole courses in the southeastern United States by the Professional Golfer's Association of America. Limited food facilities are also available.

Recreation facilities at McCreary County schools include baseball fields, a football field, track, gymnasiums, tennis courts, softball fields, and a multi-purpose recreation area. Supervised recreational programs include T-ball, Babe Ruth League, church league, Little League basketball, and adult league softball.

Privately owned recreational facilities for miniature golf, roller skating and archery are also available in the area.

McCreary County is located in the southern portion of the Daniel Boone National Forest, a rugged 640,000-acre timberland stretching throughout east central Kentucky. Over 25 waterfalls and natural arches are located in McCreary County. Some of the scenic and recreational sites within 20 miles of Whitley City include Natural Arch Picnic and Scenic Area with a limestone arch, trails and sheltered picnic facilities; Sawyer Campground, featuring picnic areas and a boat launching ramp on Lake Cumberland; Yahoo Falls Picnic Area, with a shelter house, trails, and rugged scenic views of a 113-foot waterfall; Alum Ford, a camping and boat launching area; Turkey Creek boat launching ramp; Great Meadow Camping Area; Hemlock Grove with a picnic area and trout stream; Bell Farm Hunter and Horse Camp Site; Apple Tree Rifle Range; Barren Fork Primitive Camping Area; and Sheltowee Trace National Recreation Trail.

**The Big South Fork National River and Recreation Area** was developed by the U.S. Army Corps of Engineers in cooperation with the National Park Service. The "Recreation Area" is located along the Big South Fork of the Cumberland River from Whitley City in Kentucky, south to Oneida in Tennessee. Recreational opportunities in this rugged scenic area include whitewater rafting, canoeing, kayaking, camping, hiking, horseback riding and picnicking.

**The Blue Heron Recreation Area**, a restored mining camp, is operated by the National Park Service as part of the Big South Fork National River and Recreation Area. The Interpretive exhibits provides visitors with an opportunity to witness life as it would have been when the mining camp operated on the banks of the Big South Fork of the Cumberland River. A campground, scenic overlooks, and hiking trails are also located in the area.



**The Big South Fork Scenic Railway** offers a chance to see part of the rugged Cumberland River area by rail. The train operates on a regular schedule between Stearns and the Blue Heron Recreation Area within the Big South Fork National River and Recreation area, a distance of about six miles in each direction.

**The Stearns Museum** is housed in the 1907 office building for the Stearns Coal and Lumber Company, which operated from 1902-1976. Exhibits trace the area's history from prehistoric times through the "boom" of the coal and lumber industry.

**Cumberland Falls State Resort Park** is located on Kentucky Highway 90, 20 miles northeast of Whitley City near Corbin in the Daniel Boone National Forest. The park is famous for its "Falls" which drops 68 feet over a 125-foot wide ledge and shows one of only two known "moonbows" in the world. A "moonbow" is like a rainbow but is formed during a full moon on a clear night. The park offers a modern lodge with 53 rooms, 20 woodland duplexes, 26 cabins, camping, fishing, swimming, hiking, rafting, horseback riding, picnicking, tennis, planned recreation, a playground, and a gift shop. Also featured is a complete meeting facility which holds up to 300 people; meals are catered to large groups. Cumberland Falls attracts more than one million visitors a year.

**Lake Cumberland**, accessible by three launching ramps in McCreary County, 23 miles north of Whitley City, is one of the nation's most productive fishing lakes with excellent bass, bluegill and crappie fishing. Covering over 50,000 acres, with over 1,200 miles of shoreline, the lake is well known for its scenic beauty amid the surrounding palisades and woodlands.

**Area (Within 60 miles of Whitley City)**

General Burnside State Park  
Lake Cumberland State Resort Park  
Levi Jackson Wilderness Road State Park  
Laurel River Lake