

1975

Industrial Resources: Mercer County - Harrodsburg

Kentucky Library Research Collections
Western Kentucky University, spcol@wku.edu

Follow this and additional works at: https://digitalcommons.wku.edu/mercer_cty



Part of the [Business Administration, Management, and Operations Commons](#), [Growth and Development Commons](#), and the [Infrastructure Commons](#)

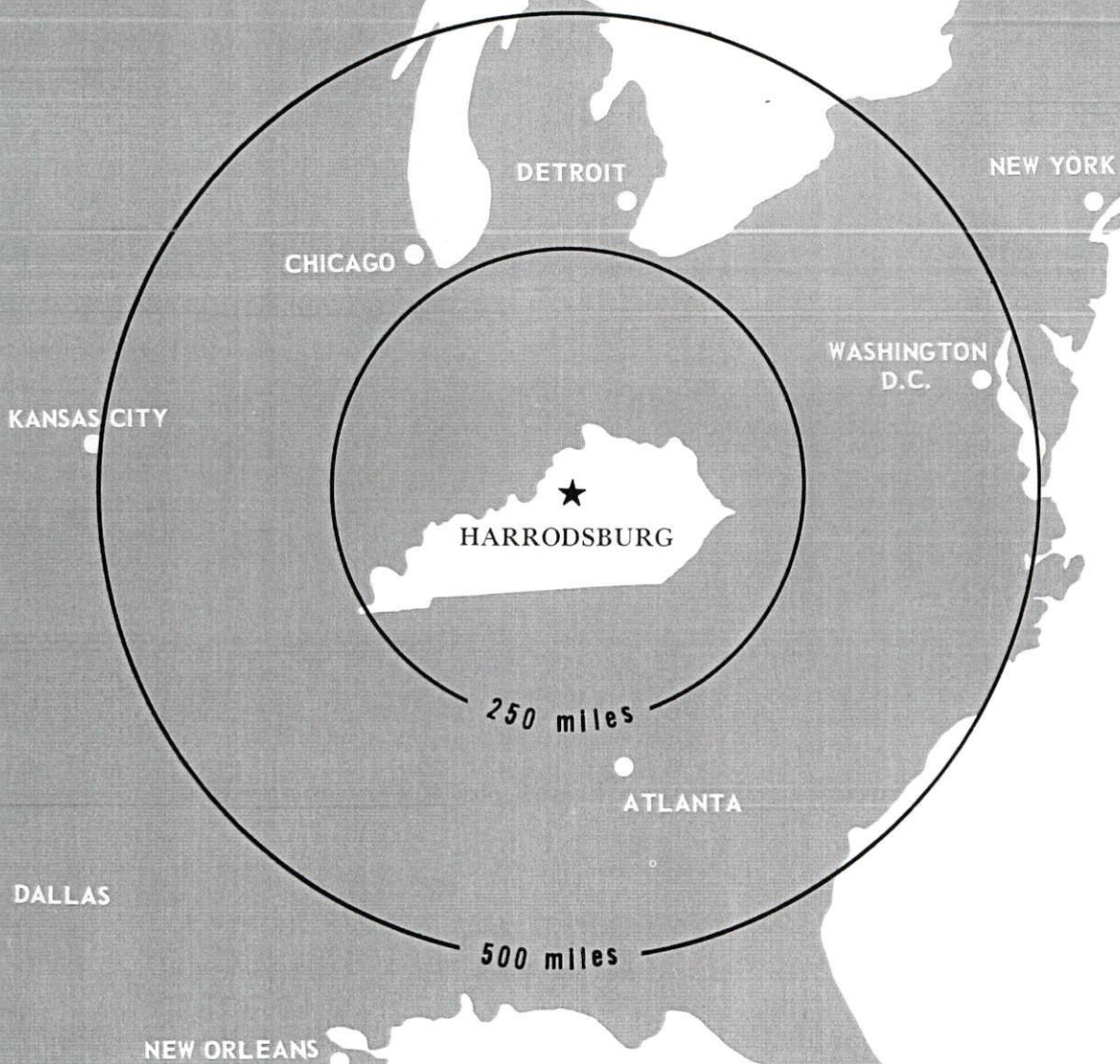
Recommended Citation

Kentucky Library Research Collections, "Industrial Resources: Mercer County - Harrodsburg" (1975). *Mercer County*. Paper 12.
https://digitalcommons.wku.edu/mercer_cty/12

This Report is brought to you for free and open access by TopSCHOLAR®. It has been accepted for inclusion in Mercer County by an authorized administrator of TopSCHOLAR®. For more information, please contact topscholar@wku.edu.

INDUSTRIAL RESOURCES

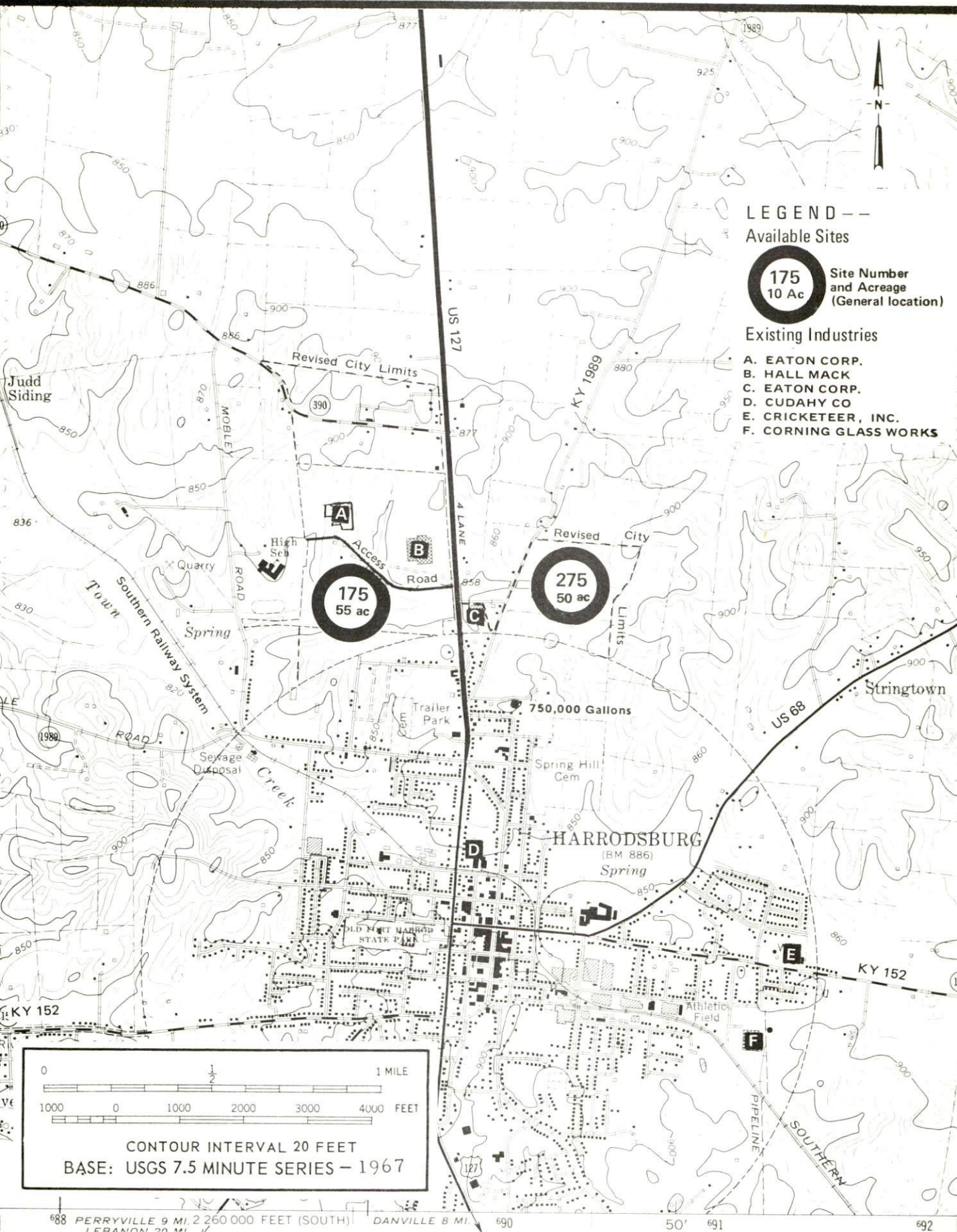
HARRODSBURG KENTUCKY



MERCER COUNTY, KENTUCKY

For detailed data on individual sites, contact Mr. Gene Royalty, Chairman, Mercer County Industrial Development Corporation, Harrodsburg, Kentucky, or the Kentucky Department of Commerce, Capital Plaza Tower, Frankfort, Kentucky 40601.

For detailed data on individual sites, contact Mr. Gene Royalty, Chairman, Mercer County Industrial Development Corporation, Harrodsburg, Kentucky, or the Kentucky Department of Commerce, Capital Plaza Tower, Frankfort, Kentucky 40601.



INDUSTRIAL RESOURCES
HARRODSBURG, KENTUCKY

Prepared by
The Kentucky Department of Commerce
in cooperation with
The Mercer Chamber of Commerce
and
The Mercer Industrial Development Corporation

1975

This copy has been prepared by the Kentucky Department of Commerce, Division of Research and Planning, and the cost of printing paid from state funds.

Production Supervisor

Patsy Wallace

Research

Robert McNeil Shipley

Clerical

Dorothy Tierney

Graphics

N. C. Montague

Frank Ferrante

Tony Cecconi

Cartography

Site Development Section

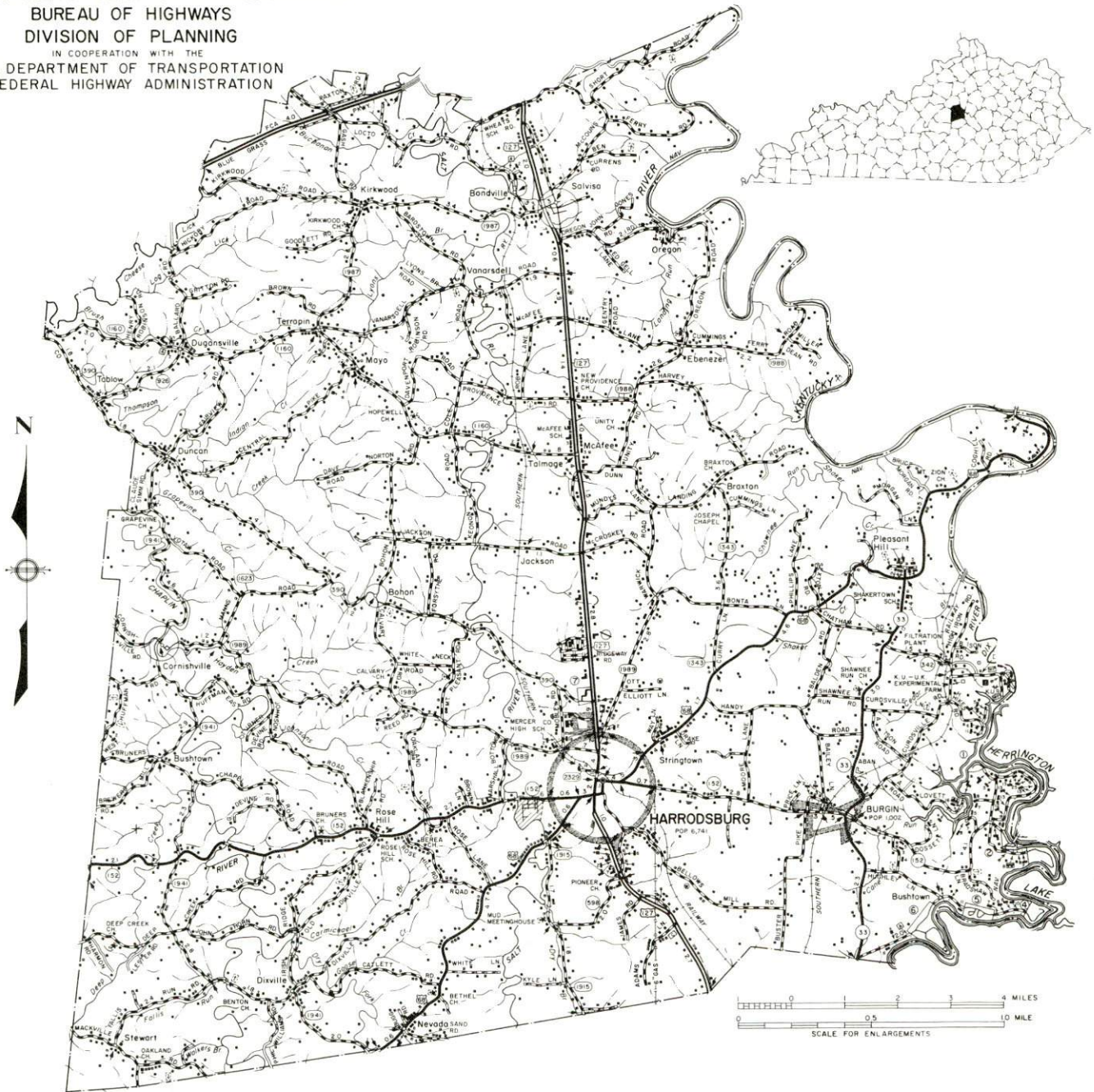
TABLE OF CONTENTS

| <u>Chapter</u> | <u>Page</u> |
|---|-------------|
| INDUSTRIAL SITES | i |
| HARRODSBURG, KENTUCKY - A RESOURCE PROFILE. | 1 |
| THE LABOR MARKET AREA. | 3 |
| Population | 3 |
| General Employment Characteristics, 1974 | 3 |
| Manufacturing Employment by Industry | 4 |
| Mercer County Manufacturing Firms, Their Products and Employment | 4 |
| Labor Organizations | 5 |
| Estimated Male Labor Supply | 8 |
| Estimated Female Labor Supply | 8 |
| Wages. | 9 |
| Per Capita Personal Income | 10 |
| TRANSPORTATION | 11 |
| Rail. | 11 |
| Highways | 11 |
| Truck Services. | 12 |
| Air | 13 |
| Bus | 13 |
| Taxi | 13 |
| Rental Services. | 13 |
| POWER AND FUEL | 14 |
| Electricity. | 14 |
| Natural Gas | 14 |
| Other Fuels | 15 |
| WATER AND SEWERAGE | 16 |
| Water | 16 |
| Sewerage | 19 |
| CLIMATE | 20 |

| <u>Chapter</u> | <u>Page</u> |
|---|-------------|
| LOCAL GOVERNMENT | .21 |
| City | .21 |
| County | .21 |
| Assessed Value of Property, 1974-75 | .21 |
| Property Taxes | .22 |
| Local Property Tax Rate Per \$100 of Assessed | |
| Valuation, 1975 | .22 |
| Planning and Zoning | .22 |
| Safety | .23 |
| Police | .23 |
| Fire | .23 |
| Rescue Service | .23 |
| Solid Wastes | .24 |
| EDUCATION | .26 |
| Public Schools | .26 |
| Nonpublic Schools | .26 |
| Area Colleges and Universities | .27 |
| Vocational Schools | .28 |
| HEALTH | .29 |
| Local Medical Personnel | .29 |
| Hospitals | .29 |
| Other Medical Facilities | .29 |
| Ambulance Service | .29 |
| Nursing Homes | .29 |
| Public Health | .30 |
| OTHER LOCAL FACILITIES | .31 |
| Communications | .31 |
| Library Services | .31 |
| Religious Institutions | .31 |
| Financial Institutions | .32 |
| Clubs and Organizations | .32 |
| RECREATION | .33 |
| COMMUNITY IMPROVEMENTS | .37 |
| HISTORY | .41 |

GENERAL HIGHWAY MAP
MERCER COUNTY
KENTUCKY

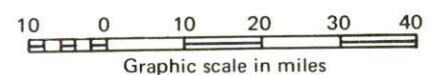
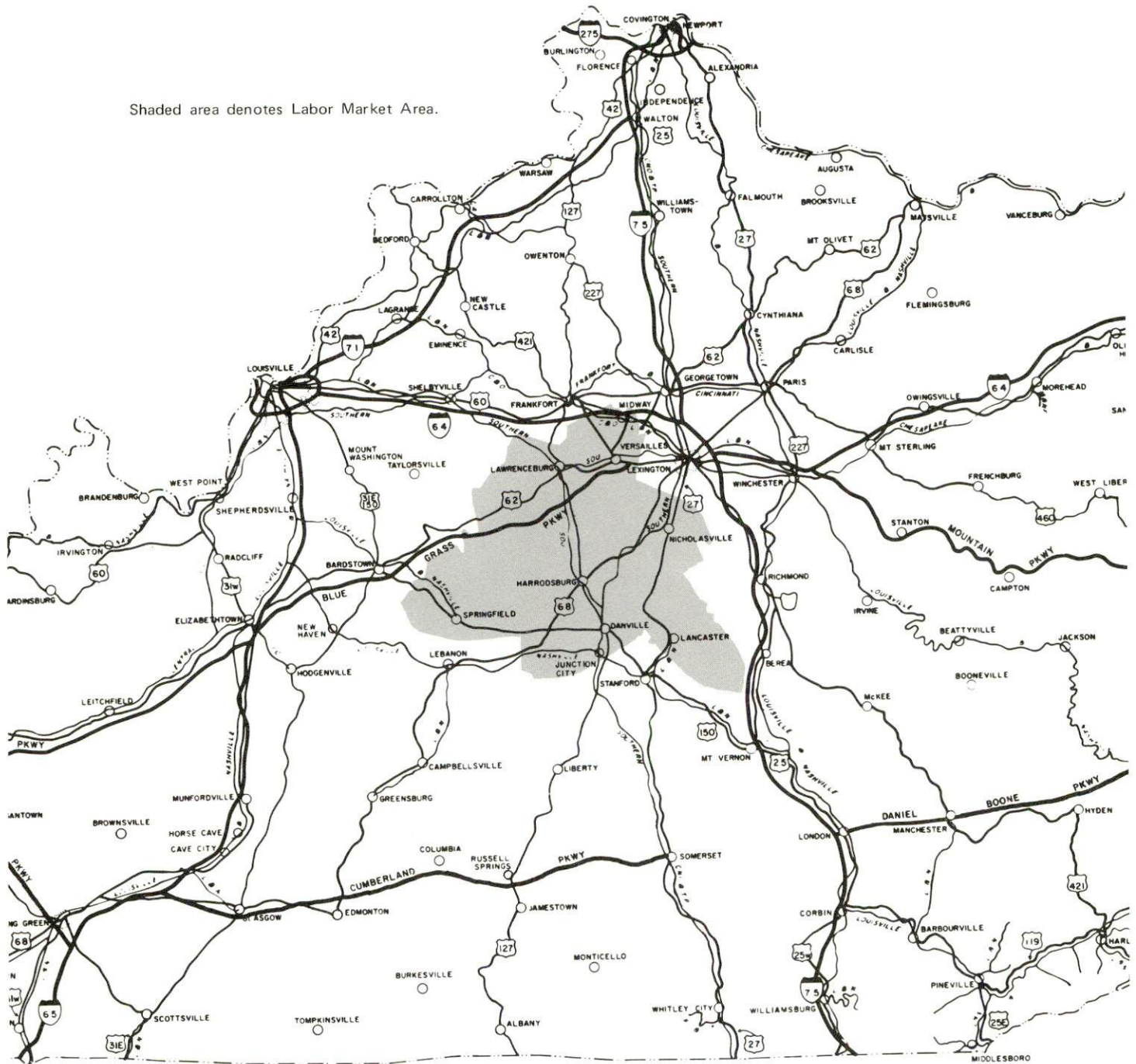
PREPARED BY THE
KENTUCKY DEPARTMENT OF TRANSPORTATION
BUREAU OF HIGHWAYS
DIVISION OF PLANNING
IN COOPERATION WITH THE
U.S. DEPARTMENT OF TRANSPORTATION
FEDERAL HIGHWAY ADMINISTRATION



HARRODSBURG LABOR MARKET AREA



Shaded area denotes Labor Market Area.



HARRODSBURG, KENTUCKY - A RESOURCE PROFILE

Harrodsburg holds the distinction of being the oldest town in Kentucky. In 1774, Captain James Harrod guided a small group of settlers down the Ohio and Kentucky Rivers to a site near the present Mercer County community of Salvisa. On June 16 of that year, they established the community of Harrodstown which became the first permanent English settlement west of the Alleghenies.

Harrodsburg, the county seat of Mercer County, had a population of 6,522 in 1973. It is located in the picturesque Bluegrass Region of central Kentucky, close to three major metropolitan areas: Lexington, Kentucky, 33 miles to the northeast; Louisville, Kentucky, 73 miles to the northwest; and Cincinnati, Ohio, 118 miles to the northeast.

Mercer County covers 256 square miles and had a 1974 population of 17,400.

The Economic Framework

The total number of Mercer County residents employed in 1974 averaged 9,480, including 1,140 in agriculture and 990 in government. Manufacturing employers in the county reported 2,335 workers; trade and services firms employed 1,320. Major industrial products are: automobile and truck air conditioners, electric shift components, speedometer adapters, optical and ophthalmic glass, men's sportcoats and suits, bathroom accessories, and women's dresses.

Total employment in Mercer County averaged 4.1 percent of the labor force in 1974.

Per capita personal income in the county in 1973 was \$4,150, an increase of 53.3 percent since 1969.

The Harrodsburg labor market area includes Mercer and the six adjoining counties. The total number of residents of the labor market area employed in 1974 averaged 50,470, including 6,850 in agriculture and 6,140 in government. Manufacturing employers in the labor market area reported 10,960 workers; trade and services firms employed 9,220.

Resources for Growth

1. Labor supply - There is a current labor supply of 3,590 men and 3,130 women available for industrial jobs in the labor market area. In addition, 4,950 young men and 4,625 young women in the area will become 18 years of age before 1981 and potentially available for work.

2. Transportation - The Southern Railway System provides Harrodsburg with a variety of rail services. Piggyback facilities are available at Danville, Kentucky, 9 miles south of Harrodsburg. Nine trucking lines serve Harrodsburg. The city is located at the intersection of U. S. Highways 127 and 68. In addition, Harrodsburg lies just 16 miles south of the Blue Grass Parkway, and 31 miles south of Interstate Highway 64. The Harrodsburg-Mercer County Airport is equipped with one 3,000-foot turf runway which can accommodate light aircraft. Commercial air service is available at Lexington's Blue Grass Field, 33 miles northeast of Harrodsburg.

3. Power and fuel - The Kentucky Utilities Company provides electric power to Harrodsburg and parts of Mercer County. The Inter-County Rural Electric Cooperative Corporation serves the portions of Mercer County not served by the Kentucky Utilities Company. Natural gas is supplied to Harrodsburg by the Western Kentucky Gas Company, whose source of supply is the Tennessee Gas Transmission Company. Harrodsburg has four propane and butane distributors within a 25-mile radius. Four distillate fuel oil distributors serve Harrodsburg, three located in the city and one in Danville, 9 miles to the south.

4. Education - Three public school systems operate in Mercer County: the Harrodsburg Independent School System, the Burgin Independent School System, and the Mercer County School System. Four universities, four senior colleges, two junior colleges, and one technical institute are located within 45 miles of Harrodsburg. The Central Kentucky State Vocational-Technical School in Lexington, 33 miles from Harrodsburg, offers training in seventeen areas. The Harrodsburg Area Vocational Education Center, in Harrodsburg, offers training in seven areas.

THE LABOR MARKET AREA

POPULATION

| <u>Area</u> | <u>1974*</u> | <u>1970</u> | <u>Percent Nonwhite</u> |
|-------------------|--------------|-------------|-------------------------|
| | | | <u>1970</u> |
| Harrodsburg | 6,522** | 6,741 | 8.7 |
| Burgin | 940** | 1,002 | 5.4 |
| Labor Market Area | 106,700 | 99,228 | |
| Mercer County | 17,400 | 15,960 | 5.1 |
| Anderson County | 10,600 | 9,358 | 4.8 |
| Boyle County | 22,100 | 21,861 | 11.7 |
| Garrard County | 9,400 | 9,457 | 7.6 |
| Jessamine County | 21,100 | 17,430 | 6.8 |
| Washington County | 10,500 | 10,728 | 10.6 |
| Woodford County | 15,600 | 14,434 | 10.8 |

*Provisional Estimates.

**1973 Population Estimates.

Sources: U. S. Department of Commerce, Bureau of the Census, Census of Population, 1970. U. S. Bureau of the Census, Current Population Reports, Series P-25, No. 562, June, 1975; Series P-26, No. 120, June, 1975.

GENERAL EMPLOYMENT CHARACTERISTICS, 1974

| <u>Major Employment Group</u> | <u>Employment</u> | |
|-------------------------------|----------------------|--------------------------|
| | <u>Mercer County</u> | <u>Labor Market Area</u> |
| TOTAL | 9,476 | 50,473 |
| Agricultural | 1,136 | 6,854 |
| Nonagricultural | 8,340 | 43,619 |
| Manufacturing | 2,335 | 10,962 |
| Government | 994 | 6,137 |
| Trade and Services | 1,323 | 9,221 |

Source: Kentucky Department for Human Resources, Bureau for Administration and Operations.

MANUFACTURING EMPLOYMENT BY INDUSTRY
SEPTEMBER 1974

| <u>Industry</u> | <u>Mercer County</u> | <u>Labor Market Area</u> |
|---|----------------------|--------------------------|
| TOTAL | 2,380 | 11,052 |
| Food & Kindred Products | 71 | 978 |
| Tobacco | 1 | 76 |
| Apparel, Textiles, Leather | 564 | 2,228 |
| Lumber, Furniture | 5 | 282 |
| Printing & Publishing, Paper | 18 | 1,180 |
| Chemicals, Petroleum & Coal, Rubber | 0 | 139 |
| Stone, Clay & Glass | 287 | 1,239 |
| Primary Metals | 0 | 112 |
| Machinery, Metal Products, Equipment | 577 | 2,749 |
| Other | 857 | 2,069 |

Source: Kentucky Department for Human Resources, Number of Workers in Manufacturing Industries Covered by Kentucky Unemployment Insurance Law Classified by Industry and County, September, 1974.

MERCER COUNTY MANUFACTURING FIRMS,
THEIR PRODUCTS AND EMPLOYMENT

| <u>Firm</u> (Establishment date) <u>Product</u> | <u>Employment</u> | | | |
|---|-------------------|-------------|---------------|------------------|
| | <u>Total</u> | <u>Male</u> | <u>Female</u> | <u>Organized</u> |
| <u>Harrodsburg</u> | | | | |
| Climate Control Division, Auto and truck Eaton Corporation (1969) | | | | |
| air conditioners, electric shift components, speedometer adapters | 548 | 278 | 270 | |
| Corning Glass Works (1952) | 428 | 228 | 200 | * |
| Optical, ophthalmic glass | | | | |
| Cricketeer Manufacturing (1957) | 425 | 15 | 410 | * |
| Men's sport coats, suits | | | | |
| Cudahy Company (1942) | 60 | 51 | 9 | * |
| Cheese, dried whey | | | | |
| Hall Mack, A Division of Textron (1967) | 323 | 219 | 104 | * |
| Bathroom accessories | | | | |
| Harrodsburg Herald (1884) | 18 | 9 | 9 | |
| Newspapers, offset printing, letterpress printing | | | | |

(Cont.)

| <u>Firm</u> (Establishment date) | <u>Product</u> | <u>Employment</u> | | | <u>Organized</u> |
|---|--------------------------|-------------------|-------------|---------------|------------------|
| | | <u>Total</u> | <u>Male</u> | <u>Female</u> | |
| Harrodsburg Ready Mix Concrete Company (1955) | Ready mixed concrete | 6 | 6 | 0 | |
| Kentucky Souvenirs, Inc. (1947) | Wood souvenirs, ceramics | 11 | 8 | 3 | |
| Lee Dog Food Company | Dog food processing | 7 | 7 | 0 | |
| Sandusky Mill (1920) | Feed | 8 | 7 | 1 | |

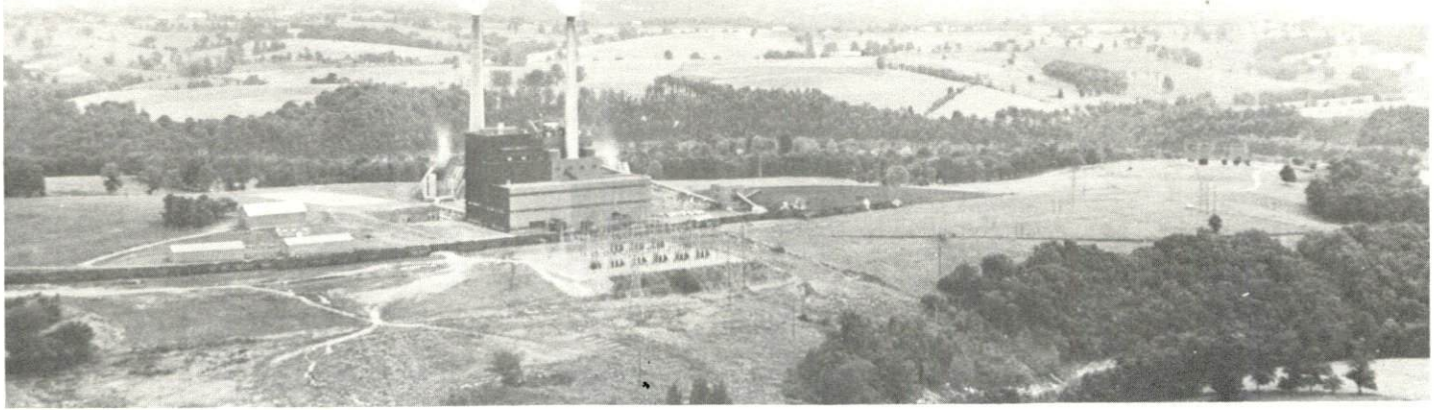
| | | | | | |
|---------------------------------|-----------------|-----|----|-----|---|
| <u>Burgin</u> | | | | | |
| Mercer Dress Corporation (1962) | Women's dresses | 230 | 30 | 200 | * |

*See Labor Organizations below.

Source: Kentucky Department of Commerce, Division of Research and Planning.

LABOR ORGANIZATIONS

| <u>Union</u> | <u>Representing manufacturing workers at:</u> |
|---|---|
| Amalgamated Clothing Workers of America | Cricketeer Manufacturing |
| Amalgamated Meat Cutters and Butcher Workmen of North America | Cudahy Company |
| American Flint Glass Workers Union of North America | Corning Glass Works |
| International Ladies' Garment Workers Union of America | Mercer Dress Corporation |
| United Steel Workers | Hall Mack, A Division of Textron |



E. W. BROWN GENERATING PLANT



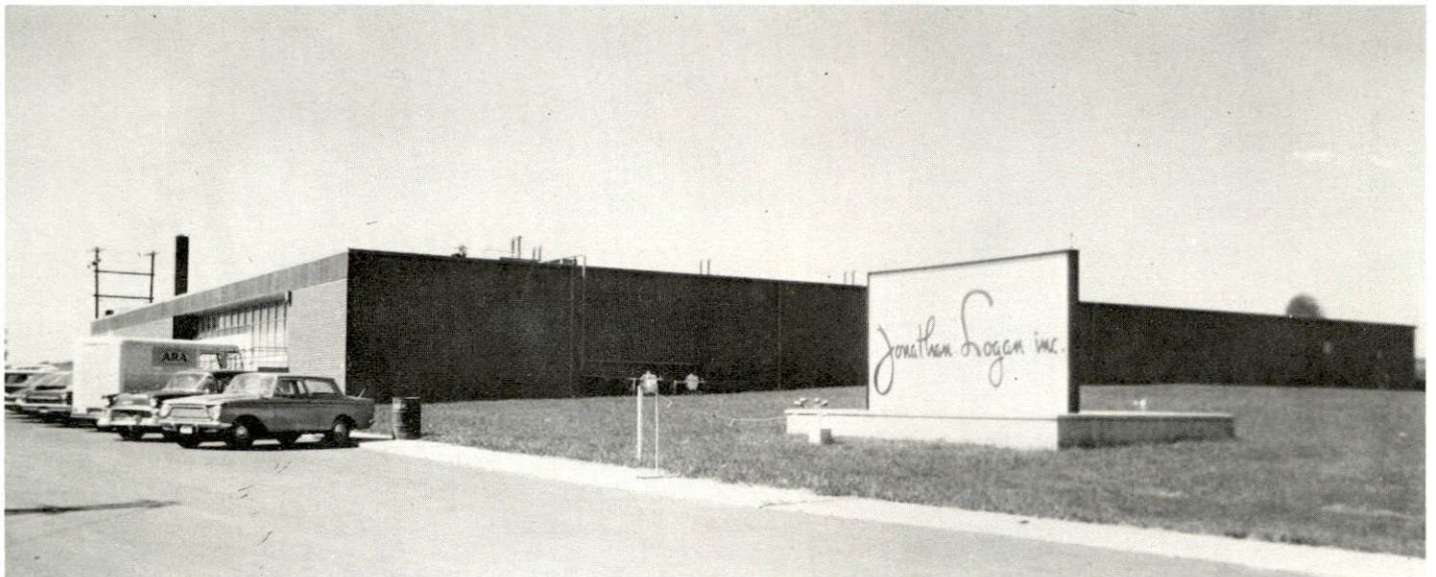
CORNING GLASS WORKS



CRICKETEER MANUFACTURING CORPORATION



CUDAHY FOODS COMPANY



MERCER DRESS CORPORATION
(JONATHAN LOGAN, INC.)

ESTIMATED MALE LABOR SUPPLY
HARRODSBURG LABOR MARKET AREA

| Area | Current | | | Future | |
|-------------------|---------|--------------------|------------|----------------|-------------------------------------|
| | Total | Not in Labor Force | Unemployed | Under-employed | Reaching 18 yrs. of age before 1981 |
| Labor Market Area | 3,590 | 400 | 1,290 | 1,900 | 4,946 |
| Mercer | 480 | 0 | 170 | 310 | 782 |
| Anderson | 230 | 0 | 120 | 110 | 426 |
| Boyle | 1,190 | 400 | 270 | 520 | 1,041 |
| Garrard | 300 | 0 | 140 | 160 | 481 |
| Jessamine | 690 | 0 | 210 | 480 | 848 |
| Washington | 380 | 0 | 260 | 120 | 596 |
| Woodford | 320 | 0 | 120 | 200 | 772 |

Sources: Kentucky Department for Human Resources, Kentucky Labor Supply Estimates by County, 1974. Kentucky Department of Commerce, Future Labor Supply before 1981.

ESTIMATED FEMALE LABOR SUPPLY
HARRODSBURG LABOR MARKET AREA

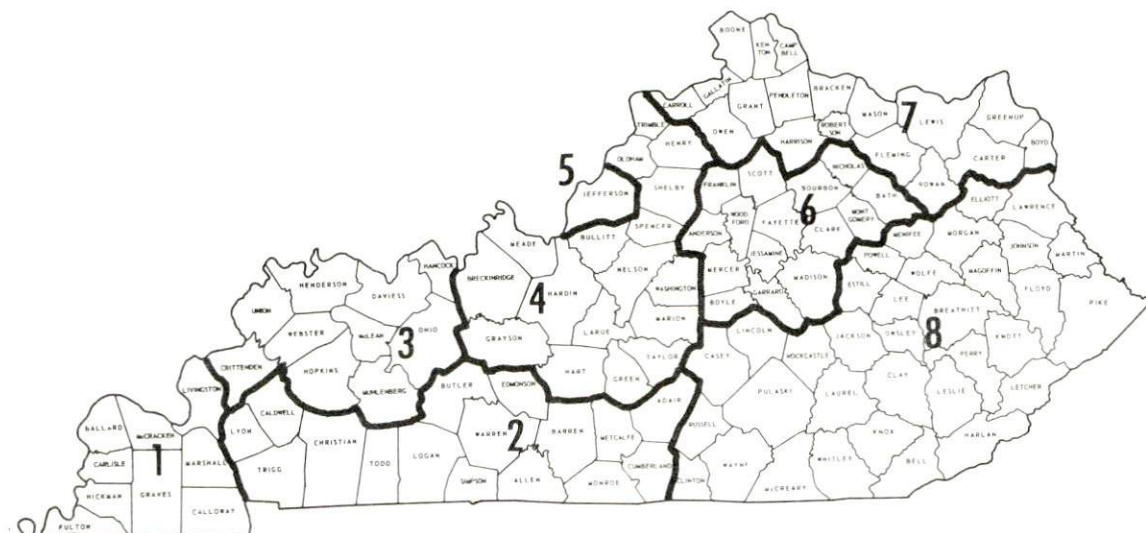
| Area | Current | | | Future | |
|-------------------|---------|--------------------|------------|----------------|-------------------------------------|
| | Total | Not in Labor Force | Unemployed | Under-employed | Reaching 18 yrs. of age before 1981 |
| Labor Market Area | 3,130 | 240 | 730 | 2,160 | 4,625 |
| Mercer | 390 | 0 | 90 | 300 | 697 |
| Anderson | 250 | 0 | 70 | 180 | 457 |
| Boyle | 780 | 140 | 150 | 490 | 945 |
| Garrard | 340 | 100 | 80 | 160 | 431 |
| Jessamine | 730 | 0 | 140 | 590 | 824 |
| Washington | 270 | 0 | 140 | 130 | 562 |
| Woodford | 370 | 0 | 60 | 310 | 709 |

Sources: Kentucky Department for Human Resources, Kentucky Labor Supply Estimates by County, 1974. Kentucky Department of Commerce, Future Labor Supply before 1981.

WAGES

Occupational wage rates for specific industries are usually not available to most government agencies, and wage data furnished to state employment agencies by industrial employers is protected from disclosure by federal law. The most reliable up-to-date wage information can be obtained by direct contact with local employers.

Associated Industries of Kentucky, a voluntary organization of Kentucky businesses, regularly collects occupational wage rates and fringe benefits data from participating member firms. Data is compiled for over 130 clearly defined office, production, and service occupations. Tabulations are published for eight regions of Kentucky, as shown on the map below. It should be noted that the data may be weighted by the preponderance of firms in the larger cities and may be somewhat higher than the rates paid in the smaller communities. Data from these tabulations are available, upon request, from the Kentucky Department of Commerce, Frankfort, Kentucky 40601.



Associated Industries of Kentucky Area Wage Surveys

PER CAPITA PERSONAL INCOME

| <u>Area</u> | <u>1973</u> | <u>1969</u> | <u>% Change</u> |
|-------------------------|-----------------|-----------------|-----------------|
| Mercer County | \$4,149 | \$2,706 | +53.3 |
| Labor Market Area Range | \$3,155 - 5,068 | \$2,233 - 3,890 | N.A. |
| Kentucky | 4,050 | 2,894 | +39.9 |
| U. S. | 5,041 | 3,733 | +35.1 |

Sources: U. S. Department of Commerce, Office of Business Economics, Survey of Current Business, August, 1974. U. S. Department of Commerce, Bureau of Economic Analysis, April, 1975.

TRANSPORTATION

Rail

Line serving Harrodsburg - Southern Railway System

Services - One local freight daily which can handle eastbound and westbound traffic; 5 westbound and 5 eastbound through freights daily; switching facilities; team track for 4 cars; additional siding space for 110 cars; piggyback facilities available at Danville, Kentucky, 9 miles south of Harrodsburg

For details on routing, schedules, rates, and services, contact:

District Sales Manager
Southern Railway System
1402 South 15th Street
Louisville, Kentucky 40210
(502) 637-7643

Highways

Harrodsburg is served by an excellent highway system. The Blue Grass Parkway (toll road), 16 miles north of the city, is easily accessible via a four-lane section of U. S. Highway 127. Interstate Highway 64 is 31 miles north of Harrodsburg via U. S. 127. Interstate Highway 75 is 47 miles to the east via U. S. 127 and 150. Interstate Highway 65 is 75 miles to the west via U. S. 127 and the Blue Grass Parkway. In addition, U. S. Highway 68 intersects Kentucky Highway 152 at Harrodsburg.

Truck Service

Company

Home Office

| | |
|---|--|
| Best Way Express, Inc. | 710 Poplar Avenue Nashville, Tennessee 37210 |
| Cooper-Jarrett, Inc. | 23 South Essex Avenue Orange, New Jersey 07050 |
| Ecklar-Moore Express, Inc. | 147 South Forbes Road Lexington, Kentucky 40505 |
| Lawrenceburg Transfer Company | Court Street Lawrenceburg, Kentucky 40342 |
| McDuffee Motor Freight, Inc. (United Trucking) | 3047 Lonyo Road Detroit, Michigan 48209 |
| McLean Trucking Company | 617 Waughtown Street Winston-Salem, North Carolina 27107 |
| O. K. Trucking Company | 1810 South Street Cincinnati, Ohio 45204 |
| Smith's Transfer Corporation of Virginia | P. O. Box 1000 Staunton, Virginia 24401 |
| Turner Expediting Service | Box 21333, Standiford Field Louisville, Kentucky 40221 |

Other Freight Services

Shipping Center

| | |
|-----------------------|---|
| United Parcel Service | Danville, 9 miles south of Harrodsburg |
|-----------------------|---|

HIGHWAY MILES AND TRUCK TRANSIT TIME IN DAYS FROM HARRODSBURG, KENTUCKY, TO SELECTED MARKET CENTERS

| City | Delivery | | City | Delivery | |
|------------------|------------------|------------|---------------------|------------------|------------|
| | Highway Miles | Time TL | | Highway Miles | Time TL |
| Atlanta, Ga. | 372 | 2 | Los Angeles, Calif. | 2,247 | 4 |
| Birmingham, Ala. | 396 | 2 | Louisville, Ky. | 73 | 1 |
| Chicago, Ill. | 365 | 2 | Nashville, Tenn. | 200 | 1 |
| Cincinnati, Ohio | 118 | 1 | New Orleans, La. | 738 | 2 |
| Cleveland, Ohio | 365 | 2 | New York, N. Y. | 777 | 3 |
| Detroit, Mich. | 377 | 1 | Pittsburgh, Pa. | 408 | 2 |
| Knoxville, Tenn. | 177 | 1 | St. Louis, Mo. | 336 | 1 |

Source: Delivery Time only - McDuffee Motor Freight, Inc., 3047 Lonyo Road, Detroit, Michigan 48209.

Air

| | <u>Local</u> | <u>Nearest Commercial</u> |
|-------------------------|---|---|
| | Harrodsburg-Mercer County Airport | Blue Grass Field |
| Location: | 2 miles north of Harrodsburg | Lexington, 33 miles northeast of Harrodsburg |
| Runways: | 1 turf | 2 paved |
| Length: | 3,000 feet | 6,500 feet; 3,500 feet |
| Traffic Control: | Wind sock | Tower; guards; radar services - arrival and departure, Stage II contact Approach Control; ground control; Automatic Terminal Information Service |
| Lighting: | Runway lights; on from sunset until 12 midnight | Approach lighting system beacon, runways and obstructions lighted |
| Services: | None | Delta, Eastern, Piedmont, and Allegheny Airlines; National Weather Service; restaurant; flight instructions; charter service; storage; taxi; limousine and car rentals; fuel; 24-hour service - 80, 100, 145, and jet fuel; repair service: major A & E repairs, Certified Avionics repair station |
| Air Freight Service: | | Freight accepted on a space- available basis |

Bus

Greyhound Bus Lines, Trailways Bus System

Taxi

24-hour, radio-dispatched service

Rental Services

Truck and trailer rentals

POWER AND FUEL

Electricity

Company serving Harrodsburg and parts of Mercer County - Kentucky
Utilities Company

Source of power - Kentucky Utilities Company

Total generating capacity - 1,615,500 KW

For industrial rates contact:

Kentucky Utilities Company
315 North Main Street
Harrodsburg, Kentucky 40330
(606) 734-2357

Company serving Mercer County - Inter-County RECC

Source of power - East Kentucky Power Cooperative

Total generating capacity - 496,000 KW

For industrial rates contact:

Inter-County RECC
P. O. Box 87
Danville, Kentucky 40422
(606) 236-4561

Natural Gas

Company serving Harrodsburg - Western Kentucky Gas Company

Source of supply - Tennessee Gas Transmission Company

Size of transmission mains - 16 to 30 inches (supplier);

6 inches (distributor)

Distribution mains - 2 to 6 inches

Distribution pressure - 25 psi (summer); 45 psi (winter);

maximum - 60 psi

Btu content - 1,020 per cubic foot; Specific gravity - .60

For rates and supplies contact:

Western Kentucky Gas Company
221 South Greenville Street
Harrodsburg, Kentucky 40330
(606) 734-2328

Other Fuels

Propane and butane

Bright's Bottle Gas Company, 100 West Brook Street
Burgin, Kentucky 40310
Suburban Propane, 121 North 4th Street
Nicholasville, Kentucky 40356
Sure Flame Gas Company, Inc.
Springfield, Kentucky 40069
Williams Energy Company (Doxol propane)
Moreland-Hustonville, Kentucky 40437

Fuel oils

Distillate fuel oil -

Watts and Durr Oil Company, Inc. (Arco)
202 North College Street, Harrodsburg, Kentucky 40330
Clark and Keller Oil Company (Ashland)
Danville Pike, Harrodsburg, Kentucky 40330
Marathon Oil Company
419 West Factory Street, Harrodsburg, Kentucky 40330
Texaco, Inc.
Hope Street, Danville, Kentucky 40422

Residual fuel oil - arrangements must be made with the refinery.

Low sulphur content coal - available in Kentucky.

WATER AND SEWERAGE

Water

Company serving Harrodsburg and parts of Mercer County -
City of Harrodsburg Water Department*
110 West Poplar Street
Harrodsburg, Kentucky 40330
(606) 734-4971

Source - Kentucky River
Treatment plant capacity - 2,000,000 gpd
Average daily consumption - 1,500,000 gallons
Peak daily consumption - 1,700,000 gallons
Type treatment - Conventional rapid sand filtration, chlorination,
fluoridation, sedimentation, coagulation
Storage capacity - 1,100,000 gallons
Size lines - 1 to 16 inches
Average pressure - 60 psi
Average temperature - 60 degrees F.

MONTHLY WATER RATES FOR WHOLESALE AND INDUSTRIAL CONSUMERS

| | | |
|-------|--------------------|------------------------|
| First | 250 cubic feet | \$2.50 (Minimum) |
| Next | 750 cubic feet | .85 per 100 cubic feet |
| Next | 3,000 cubic feet | .65 per 100 cubic feet |
| Next | 6,000 cubic feet | .45 per 100 cubic feet |
| Next | 25,000 cubic feet | .30 per 100 cubic feet |
| Next | 25,000 cubic feet | .28 per 100 cubic feet |
| Next | 50,000 cubic feet | .25 per 100 cubic feet |
| Over | 110,000 cubic feet | .22 per 100 cubic feet |

Tap-on charge: City - 3/4-inch meter \$200
County - 3/4-inch meter 300

*Expansion of the Harrodsburg water treatment plant is in the design stage.

Name of water district - North Mercer Water District
Walnut Street
Salvisa, Kentucky 40372
(606) 865-2292

Area served - North of Harrodsburg along U. S. Highway 127 to the
Mercer-Anderson County line

Date when water district began operating - November, 1965

Source of supply of treated water - City of Harrodsburg Water
Department

Average amount of water used in a 24-hour period - 142,030 gallons

Peak amount of water used in a 24-hour period - 213,045 gallons

Storage capacity - 180,000 gallons

Average pressure - 40 psi

Average temperature - 60 degrees F.

Size lines - 8, 6, 4, and 3 inches

Monthly rates -

Class B Meter (5/8 x 3/4 inches)

| | | |
|-------|----------------|-------------------|
| First | 4,000 gallons | \$5.75 (Minimum) |
| Next | 6,000 gallons | .85 per M gallons |
| Over | 10,000 gallons | .75 per M gallons |

Class A Meter (1-inch)

| | | |
|-------|----------------|-------------------|
| First | 18,000 gallons | \$15.00 (Minimum) |
| Over | 18,000 gallons | .75 per M gallons |

Tap-on charge: \$325

Name of water district - Lake Village Water Association, Inc.
116 East Main Street
Burgin, Kentucky 40310
(606) 748-5642

Area served - Eastern Mercer County and a small portion of eastern Boyle County

Date when water district began operating - January, 1970

Source of supply of treated water - Danville Water Department,
Danville, Kentucky

Average amount of water used in a 24-hour period - 160,000 gallons

Peak amount of water used in a 24-hour period - 185,000 gallons

Storage capacity - 47,000 gallons

Average pressure - 60 - 65 psi

Average temperature - 40 - 45 degrees F.

Size lines - 6-inch

Monthly rates -

| | | |
|-------|---------------|--------------------|
| First | 1,000 gallons | \$6.00 (Minimum) |
| Next | 2,000 gallons | 2.25 per M gallons |
| Next | 1,500 gallons | 1.75 per M gallons |
| Next | 1,500 gallons | 1.25 per M gallons |
| Over | 6,000 gallons | 1.00 per M gallons |

Tap-on charge: \$300

Surface water sources - Herrington Lake, Kentucky River, and Salt River

Average discharge - Kentucky River at Lock 6 near Salvisa 6,681 cfs (49-year record, unadjusted); Salt River near Harrodsburg 49.7 cfs (21-year record)

Expected ground water yield - 50-200 gallons per minute along Salt River; 5-50 gallons per minute along Kentucky River; less than 5 gallons per minute in remainder of county

Sewerage

Company serving Harrodsburg - City of Harrodsburg Sewerage
Department*
110 West Poplar Street
Harrodsburg, Kentucky 40330
(606) 734-4971

Design capacity - 500,000 gpd
Average daily flow - At capacity
Treatment - Primary and secondary
Type treatment - Grit removal, sludge drying beds, primary sedimentation, anaerobic sludge digestion, secondary sedimentation, trickle filter, chlorination
Treated effluent discharged into - Town Creek - Salt River
Size of sanitary mains - 4, 6, 8, 10, 12, 15, and 18 inches
Rates - 50 percent of monthly water bill

Tap-on charge: \$200

*Harrodsburg is presently completing a 201 Facilities Plan for improving the community's sewerage system.

CLIMATE

Mercer County

Temperature

| | |
|--|---------------|
| Annual mean (30-year record) | 55.2 degrees |
| Average annual 1974 | 55.1 degrees |
| Record highest, July, 1966 (11-year record) | 98.0 degrees |
| Record lowest, January, 1972 (11-year record) | -11.0 degrees |
| Normal heating degree days (30-year record) | 4,729 |
| (Heating degree day totals are the sums of negative departures of average daily temperatures from 65 degrees F.) | |

Precipitation

| | |
|---|--------------|
| Mean annual total (30-year record) | 44.49 inches |
| Mean annual snowfall (30-year record) | 15.70 inches |
| Total precipitation 1974 | 60.09 inches |
| Mean number days precipitation (.01-inch or more) (30-year record) | 130 |
| Average number days thunderstorms (30-year record) | 47 |

Prevailing Winds (17-year record) South

Relative Humidity (11-year record)

| | |
|--------|------------|
| 1 A.M. | 76 percent |
| 7 A.M. | 81 percent |
| 1 P.M. | 59 percent |
| 7 P.M. | 64 percent |

Source: U. S. Department of Commerce, Environmental Science
Services Administration, Climatological Data, 1974. Station
of record: Lexington, Kentucky.

LOCAL GOVERNMENT

City

Structure - Mayor - 4-year term; 4 commissioners - 4-year terms

| | |
|----------------------------|-----------|
| Budget 1974 - General Fund | \$559,728 |
| Water and Sewer Fund | 405,686 |

Fees and licenses - Occupational license fees: $\frac{3}{4}$ percent of annual gross wages and $\frac{3}{4}$ percent of annual net business profits (minimum - \$25). Unloading license: vehicles under $1\frac{1}{2}$ tons capacity - \$25 per annum; $1\frac{1}{2}$ tons capacity or more - \$50 per annum; $1\frac{1}{2}$ tons capacity or more using the city streets two or more days per week - \$75 per annum*

County

Structure - County Judge - 4-year term; 6 magistrates - 4-year terms

| | |
|-------------------------------|-----------|
| Budget 1975-76 - General Fund | \$137,821 |
| Road Fund | 145,600 |

Assessed Value of Property, 1974-75

| <u>Classes of Property</u> | <u>Harrodsburg</u> | <u>Mercer County</u> |
|----------------------------|--------------------|----------------------|
| Real Estate and Tangibles | \$47,938,621 | |
| Real Estate | | \$136,227,285 (1975) |
| Tangibles | | 21,909,937 (1975) |

*Excluded from unloading license: trucks owned by manufacturers delivering their own products to a licensed business less than twelve times per year.

Property Taxes

Land and buildings are taxed by the state and may be taxed by local jurisdictions. The state rate is \$0.015 per \$100 of assessed valuation.

Tangible personal property owned by manufacturers (automobiles, trucks, finished goods, office furniture, office equipment) is taxed by the state at \$0.15 per \$100 and may be taxed by local jurisdictions.

Manufacturing machinery, raw materials inventories, pollution control equipment and goods in process inventories are not subject to local taxation. The state rate is \$0.15 per \$100.

Property stored in public warehouses is not subject to local taxation. The state rate is only \$0.015 per \$100.

All property is assessed at 100 percent of fair cash value.

Local Property Tax Rate Per \$100 of Assessed Valuation, 1975*

| <u>Taxing Jurisdiction</u> | <u>Harrodsburg</u> | <u>Mercer County</u> |
|----------------------------|--------------------|----------------------|
| County | \$.193 | \$.193 |
| School | .836 | .643 |
| City | .272 | |

Planning and Zoning

Joint agency - Greater Mercer County Planning and Zoning Commission
Zoning enforced - In all areas

Subdivision regulations enforced - In all areas

Local codes enforced - Housing (City of Harrodsburg only) and building
(both City of Harrodsburg and Mercer County)

Mandatory state codes enforced - Plumbing, National Fire Protection
Association Code, National Building Code (for major buildings and
residential construction containing more than 12 bedrooms per building)

Other programs - Public housing and a privately financed neighborhood
development program

*Kentucky Department of Revenue; Kentucky Department of Education,
Bureau of Administration and Finance.

Safety

| <u>Police</u> | <u>Harrodsburg</u> | <u>Mercer County</u> |
|-------------------|--------------------|----------------------|
| Total staff | 9 | 4 |
| Radio-patrol cars | 2 | 3 |

Fire

| | | |
|--|---|--|
| American Insurance Association Fire Rating | 6 | |
| Full-time staff | 14 | |
| Volunteers | 10-15 part-time, on call 24 hours per day | 15 in Harrodsburg, 12-15 in Burgin, and 12-15 in Salvisa, on call 24 hours per day |

Rescue Service

Harrodsburg Fire Department Rescue Squad:

Number of volunteers - Regular fire department staff

Equipment - Rescue truck equipped with oxygen; MSA resusitator;

Stephenson resusitator; 4 portable generators; 3 fully equipped first aid kits; one complete set of air splints; complete dragging operation (boat, motor, trailer, life jackets, grappling hooks, oars, etc.); tire tools; chain saws, canvas stretchers

Personnel training - 2 emergency medical technicians, County Civil Defense director on fire department staff, first aid

Solid Wastes

Harrodsburg

| | |
|-----------------------|---------------------|
| Type service | Municipal* |
| Fee charged: | |
| residential | \$3 per month |
| business | \$5 per month |
| industrial | \$5 per month |
| Collection frequency: | |
| residential | One time per week |
| business | One time per week |
| industrial | One time per week** |
| Trash pickup | Weekly |
| Disposal method | Sanitary landfill |

Mercer County rents 12 dumpsters for the use of county residents which are placed at various locations throughout the county. The county hires a private contractor to collect the refuse. There is no charge to residents for this service.

*Any county resident on the Harrodsburg water system can have trash collected for the same rates as those paid by city residents.

**\$5 for each additional pickup.



HARRODSBURG MUNICIPAL BUILDING



JAMES B. HAGGIN MEMORIAL HOSPITAL

EDUCATION

Public Schools

| | <u>Harrodsburg Independent</u> | <u>Burgin Independent</u> | <u>Mercer County</u> |
|---|--|-------------------------------|--------------------------|
| Total Enrollment (Fall, 1974) | 1,389 | 471 | 1,975 |
| Elementary | 989 | 251 | 1,075 |
| High School | 400 | 220 | 900 |
| Student-Teacher Ratio | 23-1 | 24-1 | 26-1 |
| Elementary | 22-1 | 28-1 | 29-1 |
| High School | 26-1 | 20-1 | 23-1 |
| Accreditation | Southern Association of Colleges and Schools | | |
| Percent High School Graduates to College | 51.3 | 44.7 | 17.5 |
| Expenditures Per Pupil (1973-74) | \$562.60 | \$521.72 | \$546.18 |
| Bonded Indebtedness, June 30, 1974 | \$1,591,000 | \$761,000 | \$2,035,000 |

Nonpublic Schools

| | <u>St. Andrew</u> |
|-----------------------|-------------------|
| Total Enrollment | 59 |
| Elementary | 59 |
| Student-Teacher Ratio | 20-1 |
| Elementary | 20-1 |

The Mercer School for the Mentally Retarded maintains facilities for the education of 12 trainable mentally retarded pupils from the ages of 6 to 18. The school's staff includes one specially trained instructor and two aides.

Area Colleges and Universities

| <u>Name</u> | <u>Location</u> | <u>Distance</u> | <u>Enrollment (Fall, 1974)</u> | <u>Highest Degree Conferred</u> |
|------------------------------------|-----------------|-----------------|------------------------------------|-------------------------------------|
| Asbury College | Wilmore | 15 | 1,184 | Baccalaureate |
| Berea College | Berea | 43 | 1,411 | Baccalaureate |
| Centre College | Danville | 9 | 796 | Baccalaureate |
| Eastern Kentucky University | Richmond | 45 | 12,571 | Masters, Ph. D.* |
| Georgetown College | Georgetown | 45 | 1,118 | Masters |
| Kentucky State University | Frankfort | 35 | 2,174 | Masters |
| Lexington Tech- nical Institute | Lexington | 33 | 1,281 | Associate |
| Midway Junior College | Midway | 38 | 341 | Associate |
| St. Catharine Junior College | St. Catharine | 30 | 125 | Associate |
| Transylvania University | Lexington | 33 | 664 | Masters** |
| University of Kentucky | Lexington | 33 | 21,586 | Ph. D., M. D., D. M. D., J. D. |

*Cooperative program with the University of Kentucky, Lexington, for a Ph. D. in education only.

**Courses are taught on the Transylvania campus by Xavier University of Cincinnati faculty members. The degree is awarded by Xavier University.

Vocational Schools

| | <u>Nearest State School</u> | <u>Nearest Area Education Center</u> |
|---------------|--|--|
| | Central Kentucky State Vocational-Technical School | Harrodsburg Area Vocational Education Center |
| Location | Lexington, Kentucky | Harrodsburg, Kentucky |
| Miles Distant | 33 | |
| Curriculum | Clerical Steno-Secretarial Practical Nursing Learning Lab Electronics Auto Body Repair Auto Mechanics Commercial Foods Cosmetology Drafting Industrial Electricity Graphic Arts Machine Shop Office Machines Repair Sheet Metal Welding Equine Education | Clerical Secretarial Health Careers Auto Mechanics Carpentry - Building Trades Electricity Welding |

Arrangements can be made to provide training in the specific production skills required by an industrial plant. Instruction may be conducted either in the vocational school or in the industrial plant, depending upon the desired arrangement and the availability of special equipment.

HEALTH

Local Medical Personnel

Physicians - 5
Dentists - 6

Hospitals

| <u>General Hospital</u> | <u>Location</u> | <u>Beds</u> |
|-----------------------------------|-----------------|-------------|
| James B. Haggin Memorial Hospital | Harrodsburg | 80 |

General hospital facilities - 2 operating rooms, emergency room, X-ray department, laboratory, OB section, EKG, intensive care, pharmacy

Medical staff - 7 active physicians, 20 registered nurses, 23 licensed practical nurses

Other Medical Facilities

Bluegrass Regional Comprehensive Care Center

Staff: 2 administrative, a clerical, physician, psychiatrist, speech therapist, Doctor of Educational Psychology, social workers, 4 psychologists, 1 alcoholic and drug counselor, 4 mental health associates

Ambulance Service

Name - Mercer County Ambulance Service

Staff - 3 full-time and 3 part-time Emergency Medical Technicians
Service - 24-hour ambulance service for Mercer County

Equipment - 1 stationwagon type ambulance used mainly for transfers;
1 van ambulance used for emergencies; all standard emergency equipment

Nursing Homes

| | <u>Number</u> | <u>Beds</u> |
|--------------------|---------------|-------------|
| Personal care home | 1 | 99 |

Public Health

Facility - Mercer County Health Department

Staff - 2 registered nurses, clerk, health environmentalist, nutritionist (part time), family planning (1 part-time registered nurse and clerk)

OTHER LOCAL FACILITIES

Communications

Telephone - South Central Bell Telephone Company
Services - Standard

Telegraph - Western Union
Services - Toll free phone number for service

Postal - U. S. Post Office
Class - First
Mail received - Twice daily
Mail dispatched - Twice daily

Newspapers - The Harrodsburg Herald
Weekly and circulation - 5,500
Other papers received from - Louisville and Lexington, Kentucky

Radio - WHBN AM-FM
Stations received from - Louisville and Lexington, Kentucky

Television -
Cable service
Reception from - Louisville and Lexington, Kentucky; Cincinnati, Ohio
Kentucky Educational Television - Lexington transmitter - Channel 46

Library Services

Public library - Mercer County Public Library
Size collection - 21,432 volumes
Circulation, 1974-75 - 92,577
Services - Member - Kentucky Inter-Library Loan Communications
Network, story hour, films, film clips, 2 film projectors, 1 carousel
slide projector, a cassette tape recorder, paintings, magazines,
records, bookmobile

Religious Institutions

Number of churches - 52
Denominations - Baptist, Catholic, Christian, Church of Christ,
Church of God, Episcopal, Methodist, Presbyterian

Nearest synagogues - Lexington, Kentucky, 33 miles northeast
Congregations - Adath Israel (reform); Ohavey Zion (traditional)

Financial Institutions

| <u>Banks</u> | <u>Assets</u> | <u>Deposits</u> | <u>Statement Date</u> |
|---|---------------|----------------------------|---------------------------|
| State Bank and Trust Company | \$11,459,473 | \$10,245,419 | 6/30/75 |
| Mercer County National Bank | 10,445,637 | 7,441,559 | 6/30/75 |
| Citizens Bank and Trust Company - Burgin | 3,355,556 | 2,823,599 | 12/31/74 |
| <u>Savings and Loan Association</u> | <u>Assets</u> | <u>Shared Accounts</u> | <u>Statement Date</u> |
| Harrodsburg First Federal Savings and Loan Association | \$28,197,291 | \$26,262,326 | 6/30/75 |
| Mercer Federal Savings and Loan Association | 12,640,179 | 12,059,313 | 3/31/75 |

Clubs and Organizations

Business and Civic - Chamber of Commerce, Jaycees, Kiwanis, Lions, Rotary, Optimist, Ruritan, Medical Society, Ministerial Association, Red Cross, P. T. A.

Fraternal - American Legion, Masonic Lodge, VFW, Disabled American Veterans

Women's - Woman's Club, DAR, Eastern Star, Homemakers, Garden Club, Business and Professional Women's Club

Youth - Girl Scouts, Brownies, Boy Scouts, Cub Scouts, 4-H, FFA, FHA, Young Historian Club, Forensic Club

Other - Harrodsburg Historical Society, Mercer County Fish and Game Club, Mercer County Archery Club, Mercer Youth Council, Rook Club, Mercer County Roadrunners (camping enthusiasts)

RECREATION

Local

The Mercer County Recreation Department sponsors a supervised summer recreation program for youths, ages 9 - 15. This program is held in Salvisa, McAfee, Cornishville, and Burgin.

In addition, area public recreational facilities include: three parks, four playgrounds, one swimming pool, one golf course, five tennis courts, four baseball diamonds, three football fields, an archery range, and a roller rink. There are three private swimming pools and one drive-in movie theatre.

Tourist Attractions:

1. Old Fort Harrod State Park - full-scale reproduction of the original pioneer fort (pioneer museum; pioneer cemetery; log cabin where Abraham Lincoln's parents were wed; Mansion Museum dedicated to Lincoln, George Rogers Clark, and the Shakers; "The Legend of Daniel Boone" outdoor drama mid-June to late August; picnic area; shelter house; gift shop).
2. Pleasant Hill, restored Shaker Village - over 20 beautiful buildings and grounds restored to display unique Shaker skills in furniture making, crafts, and architecture (dining rooms, lodgings, craft shops).
3. Herrington Lake - (camping, boating, fishing, swimming).
4. The Pioneer Red Arrow Tour of Historical Places of Harrodsburg and Mercer County.

Area (Within 50 miles)

1. Constitution Square State Shrine, Danville - reproduction of Kentucky's first courthouse square.
2. Isaac Shelby State Shrine, near Danville - burial site of Kentucky's first governor and one of the state's foremost statesmen.
3. Perryville Battlefield State Shrine, near Perryville - site of the bloodiest Civil War battle in Kentucky (picnicking, playground, guided tours).

4. Lincoln Homestead State Park, near Springfield - original settlement of Abraham Lincoln's parents in Kentucky (reproduced cabins and shops - some original, picnicking, golf course).

5. My Old Kentucky Home, Bardstown - stately Georgian Colonial mansion where composer Stephen C. Foster was inspired to write the immortal song "My Old Kentucky Home" in 1852 ("The Stephen Foster Story" outdoor musical drama mid-June to Labor Day).

6. William Whitley House State Shrine, near Stanford - first brick home - fortress west of the Alleghenies, built 1787-94. Home of famous pioneer and Indian fighter Colonel William Whitley (park, picnic area).

7. Waveland State Shrine, Lexington - 1847 Greek Revival mansion (Kentucky Life Museum, plantation village with stores and shops).

8. White Hall State Shrine, near Richmond - home of Cassius M. Clay, famous abolitionist and statesman.

9. Fort Boonesborough State Park, near Richmond - reproduction of Pioneer fort built by Daniel Boone in 1775 (camping, swimming, boating, restaurant, playground, picnicking).

10. Green River Lake State Park, near Campbellsville - (camping, swimming, boating, fishing, restaurant, picnicking).

11. Bernheim Forest, near Shepherdsville - (natural forest, fishing lakes, nature center, nature museum).

Additional Cultural Events:

1. The University of Kentucky, Centre College, Eastern Kentucky University, Georgetown College, Transylvania University, Kentucky State University, and Berea College offer art exhibits, lectures, concerts, theatre, and sports events.

2. Lexington Philharmonic Orchestra.

3. Central Kentucky Concert and Lecture Series.

4. Central Kentucky Youth Symphony Society, Lexington.

5. "Wilderness Road" outdoor drama - Berea, late June-September 1.



OLD FORT HARROD STATE PARK



PLEASANT HILL (RESTORED SHAKER VILLAGE)

COMMUNITY IMPROVEMENTS

Recent:

1. Belmont Apartments, a 60-unit apartment complex for low and middle income families.
2. A new gymnasium and two new classrooms for the Burgin Independent School System.
3. A new emergency siren warning system for the fire department.
4. A new emergency electrical power generator for the police and fire departments.
5. A 67-car parking structure at the Harrodsburg Baptist Church, free and open to the public.
6. A new drive-in branch bank for the State Bank and Trust Company.
7. A new \$35,000 community shelter house and 8 acres for West Lane Park.
8. A new 130-car parking lot for Old Fort Harrod State Park.
9. Additional property for the City of Harrodsburg sanitary landfill and a new \$35,000 bulldozer.
10. Free trash pickup service at 12 dumpster sites for county residents.
11. Completion of six new subdivisions.
12. New mercury vapor lights along U. S. Highway 127.
13. \$45,000 renovation of the Mercer County Circuit Court Room.
14. Reconstruction of Curdsville Road.
15. Harrodsburg - awarded official recognition as an American Revolution Bicentennial Community.

16. A \$13,000 "mobile" Harrodsburg Heritage Center featuring historical, folk-life, and modern community exhibits.

17. A new 750-gpm pumper for the Mercer County Volunteer Fire Department.

18. \$300,000 in building additions for the Mercer County School System including an all-purpose athletic building, a Title I reading center, and a Board of Education office building.

19. Additions in curricula for the Mercer County School System including special education units, home and hospital instruction, and reading programs.

Underway:

1. A 201 Facilities Plan, the comprehensive program for sewerage improvement - expected to be submitted to E. P. A. in December, 1975.

2. Howard K. Bell Consulting Engineers, Inc., of Lexington - presently designing expansion of the Harrodsburg water treatment plant primarily involving an increase in water treatment capacity and larger water distribution lines.

3. A new Mercer County Public Library - scheduled to open January 1, 1976.

4. Elliott's Health Care Center, a 99-bed, \$1 million intermediate-personal care nursing home facility.

5. A new Second Class U. S. Post Office structure for Burgin.

6. One new subdivision.

7. Complete restoration of the Old Mud Meeting House, an early 19th century Dutch Reformed Church.

Planned:

1. Harrodsburg Community Center to include various recreation facilities, parking facilities, and a 300-seat conference room.

2. A 67-car downtown parking lot.

3. A new city park in Burgin to include tennis courts, basketball courts, and general recreation areas.

4. A new Harrodsburg National Guard Armory.
5. A new \$40,000 county jail.
6. Expansion of Young's Park ($5\frac{1}{2}$ acres) to include a picnic area and nature trails.
7. Restoration of historic St. Philip's Episcopal Church.
8. An industrial arts building for Mercer County High School.



MORGAN ROW, BUILT IN 1807, NOW HOUSES A PUBLIC LIBRARY, OFFICES AND MUSEUM OF THE HARRODSBURG HISTORICAL SOCIETY, AND PRIVATE OFFICES

HISTORY

Harrodsburg is known to its citizens as the city of "Firsts." It was here on June 16, 1774, that Captain James Harrod and a company of 31 men founded Harrodstown, later Harrodsburg, the first permanent English settlement west of the Alleghenies. In addition, the first school in the wilderness was established at Harrodsburg; the first practicing physician settled here; the first recorded sermon in Kentucky was preached here; and the first court in Kentucky met at Harrodsburg. The city also claims the distinction of being the cradle of industry in Kentucky. Ann McGinty brought the first spinning wheel over the Alleghenies to Old Fort Harrod and made the first linen and linsey-woolsey in the territory. William Pogue built Kentucky's first loom and plow at Harrodsburg in 1776. Also, the first grist mill driven by water power in Kentucky was built by Captain John McMurtrey near Shakertown in 1782.

Mercer County, the sixth county formed in Kentucky by the Virginia Legislature, dates from 1785. It was named for General Hugh Mercer, a native of Scotland and a noted surgeon. General Mercer served as a captain under then Colonel George Washington in Western Pennsylvania prior to the French and Indian War and later became a popular and well-known surgeon in Virginia. He joined the Continental Army at the beginning of the Revolution and was killed at the Battle of Princeton in early 1777.

The Shakers, a religious sect, settled at Pleasant Hill in the 1820's. Although isolated from traditional society due to their belief in celibacy, the Shakers contributed a great deal to the development of Mercer County. They operated a saw mill, a grist mill, and a fulling mill. Their craftsmanship was of a high caliber. Before the Civil War, the Shakers bought slaves and emancipated them. Eventually, the Shaker society began to die out, and the community at Pleasant Hill dissolved in 1910.

Daughters' College, founded in 1840, was one of the most prominent finishing schools for young women in the nation. It graduated over 400 students until its closing early in this century. Today, Daughters' College is Beaumont Inn, widely renowned for its fine southern cuisine.

Harrodsburg is the birthplace of three past Governors of the Commonwealth: John Adair, Gabriel Slaughter, and Beriah Magoffin.

Census figures from 1777 showed 198 settlers at Harrodsburg. By 1790, the county's population was 7,091 and had climbed to 18,720 by 1840. The population of Mercer County has varied only slightly in the 135 years since, totaling some 17,400 residents in 1974.

In 1974, total employment in Mercer County averaged 9,480 with the manufacturing sector providing 2,335 of these jobs. Major industrial firms and their products are: Climate Control Division, Eaton Corporation (auto and truck air conditioners, electric shift components, speedometer adapters); Corning Glass Works (optical and ophthalmic glass); Cricketeer Manufacturing (men's sportcoats and suits); Hall Mack, A Division of Textron (bathroom accessories); and Mercer Dress Corporation (women's dresses).