

1987

Industrial Resources: Montgomery County - Mount Sterling

Kentucky Library Research Collections
Western Kentucky University, spcol@wku.edu

Follow this and additional works at: https://digitalcommons.wku.edu/montgomery_cty



Part of the [Business Administration, Management, and Operations Commons](#), [Growth and Development Commons](#), and the [Infrastructure Commons](#)

Recommended Citation

Kentucky Library Research Collections, "Industrial Resources: Montgomery County - Mount Sterling" (1987). *Montgomery County*. Paper 7.
https://digitalcommons.wku.edu/montgomery_cty/7

This Report is brought to you for free and open access by TopSCHOLAR®. It has been accepted for inclusion in Montgomery County by an authorized administrator of TopSCHOLAR®. For more information, please contact topscholar@wku.edu.

IR
494 Montgomery County

RESOURCES FOR ECONOMIC DEVELOPMENT

Mt. Sterling

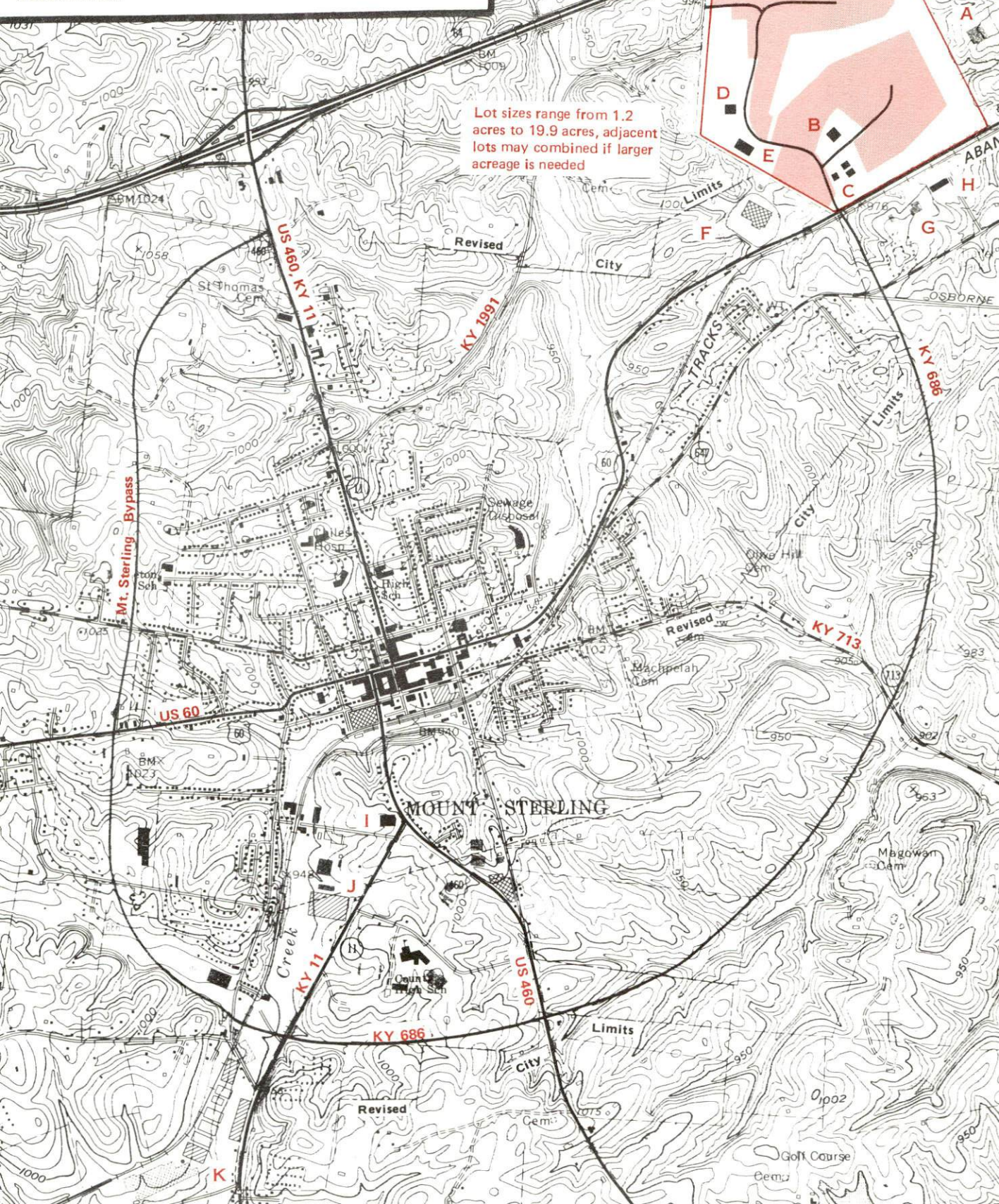


KENTUCKY
The business environment is right.

MOUNT STERLING, KENTUCKY

Site 187 - 150 Acres

For more information contact the Kentucky Department of Economic Development, Industrial Development & Marketing Division, Capital Plaza Tower, Frankfort, Kentucky 40601 (502-564-7140).



RESOURCES FOR ECONOMIC DEVELOPMENT

MT. STERLING, KENTUCKY

Prepared by
The Kentucky Department of Economic Development
Division of Research and Planning
in cooperation with
The Mt. Sterling-Montgomery County Chamber of Commerce

1987

Program manager - Andrew Dennis; research - Keith Roberts; clerical - Bobbi Graves; graphics - Frank Ferrante, Tony Cecconi, Robert Owens; cartography - Site Evaluation Branch, Division of Industrial Development and Marketing. Cost of printing paid from state funds.

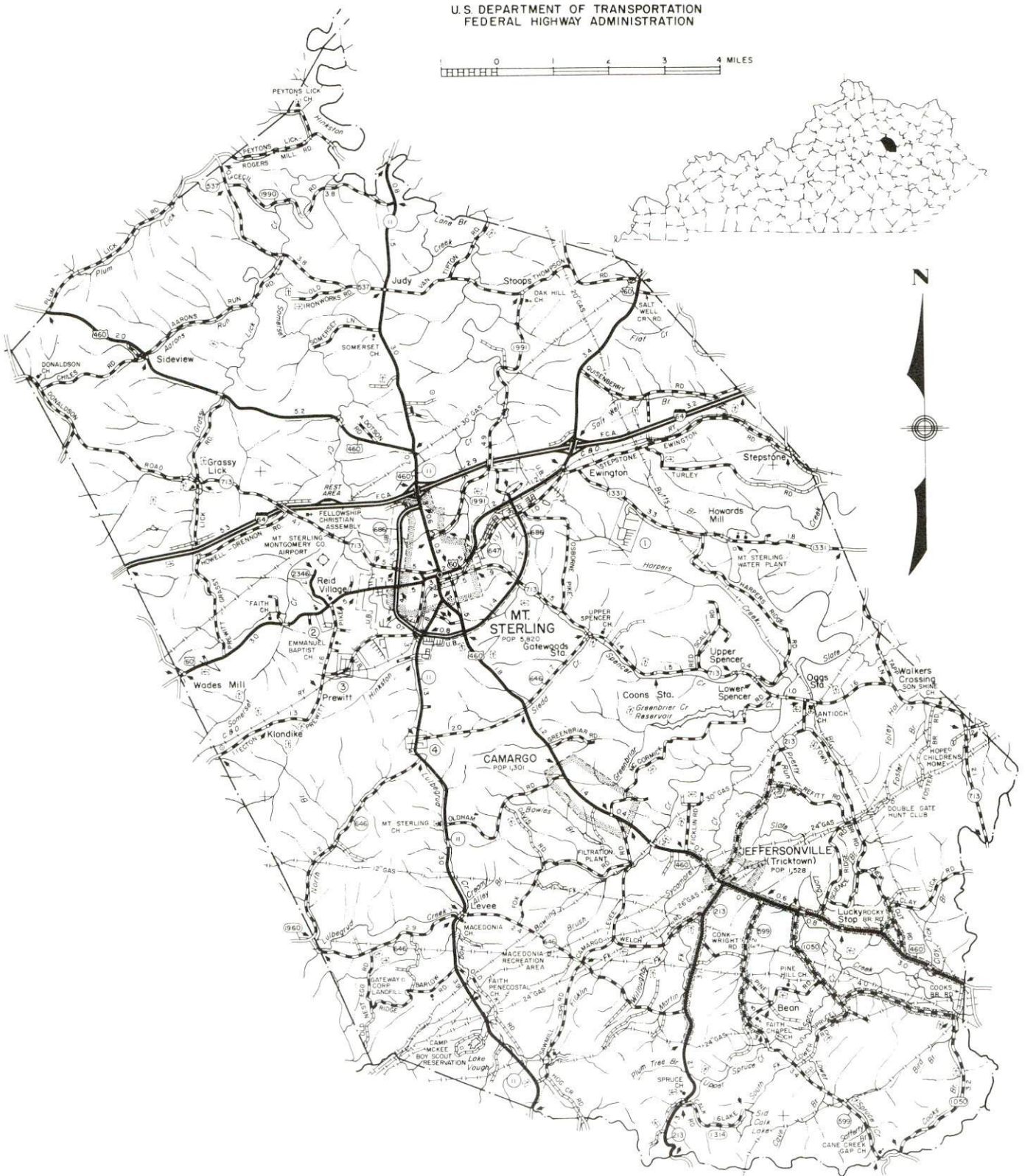
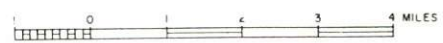
TABLE OF CONTENTS

<u>Chapter</u>	<u>Page</u>
INDUSTRIAL SITES	i
MT. STERLING, KENTUCKY - A RESOURCE PROFILE	1
LABOR MARKET STATISTICS	2
Population	2
Population Projections	2
Labor Force Characteristics of Residents, 1985	3
Selected Components of Nonagricultural Employment, by Place of Work, 1985	3
Per Capita Personal Income	3
Estimated Male Labor Supply	4
Estimated Female Labor Supply	4
Average Weekly Wages By Industry, by Place of Work, 1985	5
EXISTING INDUSTRY	7
Mt. Sterling Manufacturing Firms, Their Products and Employment	7
Labor Organizations in Manufacturing Firms	8
Selected Industrial Services	9
TRANSPORTATION	10
Rail	10
Highways	10
Truck Service	10
Air	11
Air Express Service	12
Water	12
POWER AND FUEL	13
Electricity	13
Natural Gas	13
Other Fuels	14
WATER AND SEWERAGE	15
Public Water Supply	15
Sewerage	16

<u>Chapter</u>	<u>Page</u>
CLIMATE	17
LOCAL GOVERNMENT	18
Structure	18
Planning and Zoning	18
Local Fees and Licenses	18
State and Local Property Taxes	19
Safety	20
Police	20
Fire	20
Rescue Service	20
Refuse Collection and Disposal	20
EDUCATION	21
Public Schools	21
Area Colleges and Universities	22
Vocational Training	23
HEALTH	25
Local Medical Personnel	25
Hospitals	25
Other Medical Facilities	25
Ambulance Service	25
OTHER LOCAL FACILITIES	26
Communications	26
Library Services	26
Religious Institutions	26
Financial Institutions	27
Hotels and Motels	27
RECREATION	28
COMMUNITY IMPROVEMENTS	30

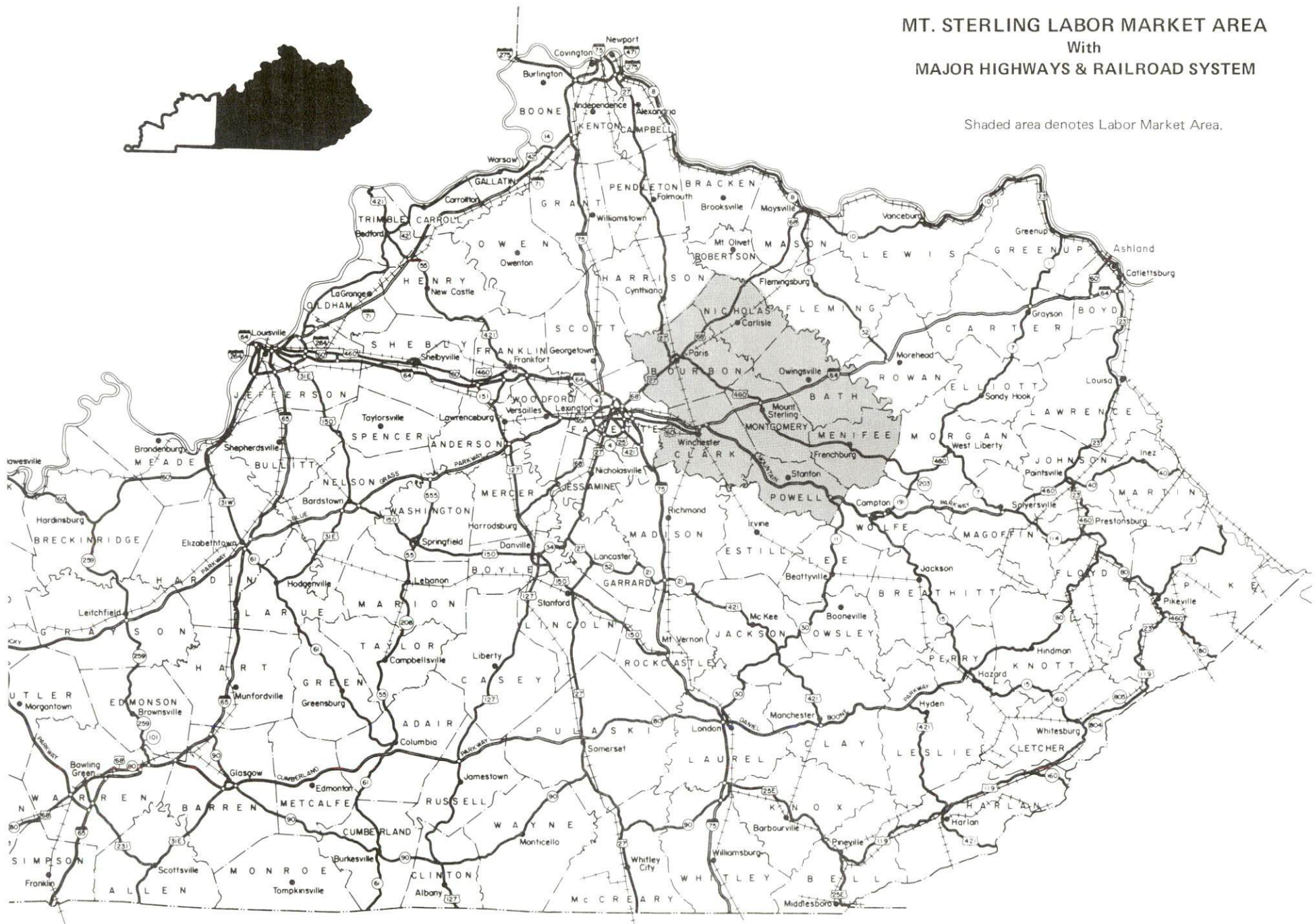
1986 EDITION
GENERAL HIGHWAY MAP
MONTGOMERY COUNTY
KENTUCKY

PREPARED BY THE
KENTUCKY TRANSPORTATION CABINET
DEPARTMENT OF HIGHWAYS
DIVISION OF PLANNING
IN COOPERATION WITH THE
U.S. DEPARTMENT OF TRANSPORTATION
FEDERAL HIGHWAY ADMINISTRATION



MT. STERLING LABOR MARKET AREA With MAJOR HIGHWAYS & RAILROAD SYSTEM

Shaded area denotes Labor Market Area.



MT. STERLING, KENTUCKY - A RESOURCE PROFILE

Mt. Sterling, the county seat of Montgomery County, is located in the Outer Blue Grass Region of central Kentucky. Mt. Sterling is 36 miles east of Lexington, Kentucky; 108 miles east of Louisville, Kentucky; 114 miles southeast of Cincinnati, Ohio; and 199 miles north of Knoxville, Tennessee. In 1984, the city had an estimated population of 6,479 persons. Montgomery County, with a land area of 199 square miles, had a 1984 estimated population of 20,344 persons.

The Economic Framework - The total number of Montgomery County residents employed in 1985 averaged 8,330, with nonagricultural jobs accounting for 7,840 workers. Manufacturing firms in the county reported 2,310 employees; wholesale and retail trade provided 2,080 jobs; 730 people were employed in service occupations; state and local government accounted for 710 employees; contract construction firms provided 275 jobs; and 50 people were employed by mining and quarrying operations.

Labor Supply - There is a current estimated labor supply of 5,600 men and 5,610 women available for industrial jobs in the labor market area. In addition, from 1987 through 1991, 4,640 young men and 4,205 young women in the area will become 18 years of age and potentially available for industrial jobs.

Transportation - Major highways serving the city are Interstate 64, U.S. Highways 60 and 460, and Kentucky Route 11. All are AAA-rated trucking highways. Twenty-three trucking companies provide interstate and/or intrastate service to Mt. Sterling. The Mt. Sterling-Montgomery County Airport, a local airport, has a 4,000-foot paved runway. The nearest scheduled commercial airline service is available at Lexington's Blue Grass Airport, 41 miles west of Mt. Sterling. CSX Transportation provides the nearest rail service at Winchester, 16 miles west of Mt. Sterling.

Power and Fuel - Electric power is provided to Mt. Sterling and parts of Montgomery County by the Kentucky Utilities Company. Montgomery County is also served by the Clark Rural Electric Cooperative Corporation. Natural gas service is provided by Columbia Gas of Kentucky, Inc. Three propane dealers and four fuel oil dealers serve Mt. Sterling.

Education - Primary and secondary education in Mt. Sterling and Montgomery County is provided by the Montgomery County School System, which is accredited by the Southern Association of Colleges and Schools. Ten colleges and universities are located within 55 miles of Mt. Sterling. Vocational training is available locally at the Montgomery County Area Vocational Education Center in Mt. Sterling. The Rowan State Vocational-Technical School in Morehead, 31 miles east, offers training in 18 course areas.

LABOR MARKET STATISTICS

The Mt. Sterling Labor Market Area includes Montgomery County and the adjoining Kentucky counties of Bath, Bourbon, Clark, Menifee, Nicholas and Powell.

POPULATION				
Area	1984*	1980	1970	Percent Nonwhite 1980
Mt. Sterling	6,479	5,820	5,083	14.1
Labor Market Area	103,344	101,173	85,427	N/A
Montgomery County	20,344	20,046	15,364	5.4
Bath County	10,220	10,025	9,235	3.3
Bourbon County	19,203	19,405	18,476	10.2
Clark County	29,223	28,322	24,090	6.5
Menifee County	5,309	5,117	4,050	1.3
Nicholas County	7,297	7,157	6,508	1.9
Powell County	11,748	11,101	7,704	1.2

* Population estimates.

Note: The 1980 city counts of population by race are provisional.

Sources: U.S. Department of Commerce, Bureau of the Census, 1980 Census of Population and Housing, March 1981; 1980 Census of Population, Number of Inhabitants. University of Louisville, Urban Studies Center, Population Unit, October 1985; Kentucky Population Research Notes, Issue Number One, May 1985.

POPULATION PROJECTIONS				
Area	1990	1995	2000	2010
Labor Market Area	108,389	112,448	115,651	119,984
Montgomery County	21,343	22,155	22,845	23,790
Bath County	10,596	10,878	11,083	11,339
Bourbon County	19,662	20,016	20,232	20,364
Clark County	31,081	32,565	33,731	35,330
Menifee County	5,539	5,750	5,921	6,161
Nicholas County	7,722	8,051	8,288	8,618
Powell County	12,446	13,033	13,551	14,382

Source: University of Louisville, Urban Studies Center, Population Research Unit, How Many Kentuckians: Population Forecasts, 1980-2020, the 1986 Edition, Spring 1986.

LABOR FORCE CHARACTERISTICS OF RESIDENTS, 1985

	<u>Montgomery County</u>	<u>Labor Market Area</u>
Civilian Labor Force	9,473	52,709
Employment	8,332	47,612
Agricultural	496	4,065
Nonagricultural	7,836	43,547
Unemployment	1,141	5,097
Rate of Unemployment (%)	12.0	9.7

Source: Kentucky Cabinet for Human Resources, Kentucky Labor Force Estimates, Annual Averages, 1985.

SELECTED COMPONENTS OF NONAGRICULTURAL EMPLOYMENT, BY PLACE OF WORK, 1985

	<u>Montgomery County</u>	<u>Labor Market Area</u>
All Industries (total)	6,503	26,573
Manufacturing	2,314	8,688
Wholesale & Retail Trade	2,078	6,746
Services	731	2,730
State/Local Government	708	3,575
Contract Construction	275	1,227
Mining & Quarrying	48	86

Note: Excludes domestic workers, railway workers, certain nonprofit corporations, majority of federal government workers, and self-employed workers.

Source: Kentucky Cabinet for Human Resources, Average Monthly Workers Covered by Kentucky Unemployment Insurance Law, 1985.

PER CAPITA PERSONAL INCOME

<u>Area</u>	<u>1980</u>	<u>1984</u>	<u>Percent Change</u>
Montgomery County	\$ 6,522	\$ 8,837	35.5
Labor Market Area Range	\$4,100 - 10,592	\$5,255 - 14,560	N/A
Kentucky	7,644	10,232	33.9
U. S.	9,494	12,772	34.5

Sources: U.S. Department of Commerce, Bureau of Economic Analysis. Kentucky Economic Information System, June 1986.

ESTIMATED MALE LABOR SUPPLY
MT. STERLING LABOR MARKET AREA

Area	Current			Future	
	Total Male	Unemployed	Under-employed	Not in Labor Force	Becoming 18 years of age 1987 thru 1991
Labor Market Area*	5,604	3,005	2,350	249	4,639
Montgomery	1,224	724	500	0	1,006
Bath	752	462	290	0	393
Bourbon	697	326	371	0	847
Clark	1,129	632	497	0	1,305
Menifee	493	260	233	0	238
Nicholas	566	145	172	249	303
Powell	743	456	287	0	547

ESTIMATED FEMALE LABOR SUPPLY
MT. STERLING LABOR MARKET AREA

Area	Current			Future	
	Total Female	Unemployed	Under-employed	Not in Labor Force	Becoming 18 years of age 1987 thru 1991
Labor Market Area*	5,614	2,092	2,269	1,253	4,205
Montgomery	1,318	417	529	372	873
Bath	739	194	213	332	418
Bourbon	635	310	325	0	726
Clark	1,275	639	636	0	1,162
Menifee	529	174	104	251	233
Nicholas	567	113	164	290	278
Powell	551	245	298	8	515

* Additional workers may be drawn from other nearby counties.

Note: Unemployed - persons unemployed and actively seeking work;
Underemployed - persons employed but working only 14 to 26 weeks per year;
Not in Labor Force - represents the number of persons who would enter the labor force if suitable employment were available (based on the assumption that persons in Kentucky would like to participate in the labor force in the same proportion that they do nationally).

Sources: Kentucky Cabinet for Human Resources, Kentucky Labor Supply Estimates by County, 1985. Kentucky Department of Economic Development, Future Labor Supply Becoming 18 Years of Age, 1987 thru 1991.

AVERAGE WEEKLY WAGES BY INDUSTRY,
BY PLACE OF WORK, 1985

	Montgomery County	Bath County	Bourbon County	Clark County
All Industries	\$251.56	\$227.46	\$272.43	\$318.58
Mining & Quarrying	301.86	0	*	*
Contract Construction	308.56	258.21	351.62	344.07
Manufacturing	300.06	*	357.15	399.16
Transportation, Communications & Public Utilities	330.86	435.45	342.85	508.00
Wholesale & Retail Trade	188.97	172.83	204.11	197.95
Finance, Insurance & Real Estate	269.18	240.25	305.16	294.13
Services	203.03	130.07	182.34	211.14
State/Local Government	285.51	268.38	280.39	280.77
Other	190.63	*	268.42	116.39
	Menifee County	Nicholas County	Powell County	
All Industries	\$208.72	\$230.11	\$226.54	
Mining & Quarrying	*	0	717.11	
Contract Construction	128.65	166.23	274.43	
Manufacturing	120.29	*	207.62	
Transportation, Communications & Public Utilities	146.46	*	337.48	
Wholesale & Retail Trade	186.49	141.75	162.25	
Finance, Insurance & Real Estate	125.33	309.00	289.51	
Services	125.36	*	156.07	
State/Local Government	249.31	246.54	244.86	
Other	*	238.85	*	

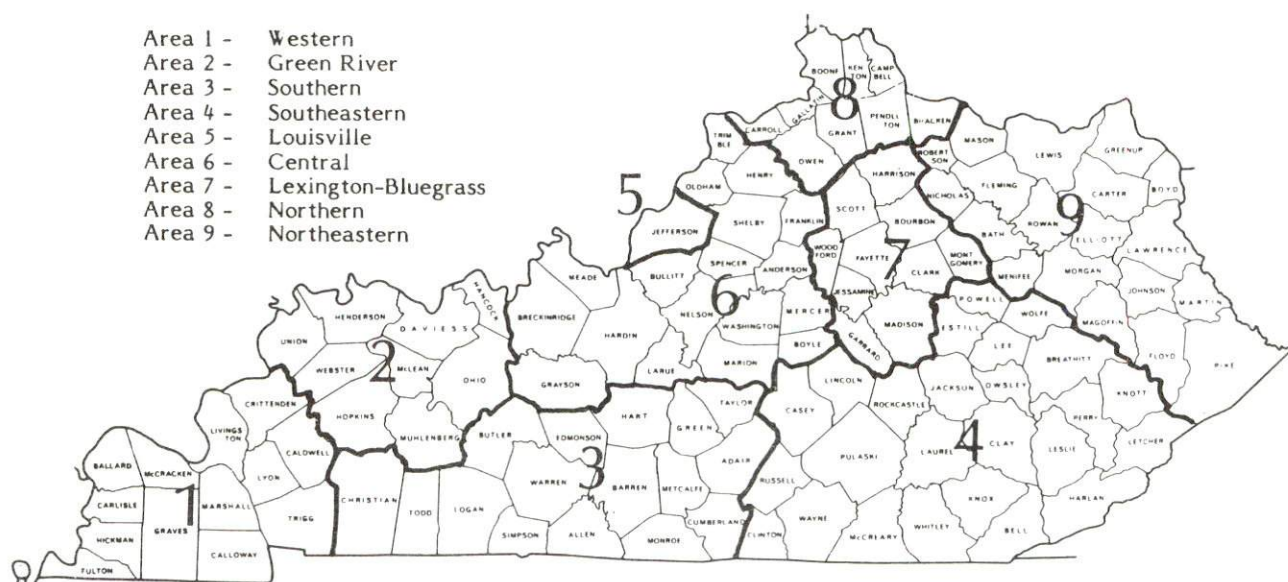
* Not disclosed.

Note: The average weekly wage for each category includes the salaries and wages of all persons working for that type business. For example, the manufacturing category includes both production workers and administrative personnel. Excludes domestic workers, railway workers, certain nonprofit corporations, majority of federal government workers, and self-employed workers.

Source: Kentucky Cabinet for Human Resources, Average Weekly Wages of Workers Covered by Kentucky Unemployment Insurance Law, 1985.

Occupational wage rates for specific industries are usually not available to most government agencies, and wage data furnished to state employment agencies by individual industrial employers are protected from disclosure by federal law. The most reliable up-to-date wage information can be obtained by direct contact with local employers.

Associated Industries of Kentucky, a voluntary organization of Kentucky businesses, regularly collects occupational wage rates and fringe benefits data from participating member firms. Data are compiled for over 127 clearly defined office, production, and service occupations. Tabulations are published for nine geographical areas of Kentucky, as shown on the map below. It should be noted that the data may be weighted by the preponderance of firms in the larger cities and may be somewhat higher than the rates paid in the smaller communities. Data from these tabulations are available, upon request, from the Kentucky Department of Economic Development, Frankfort, Kentucky 40601.



Associated Industries of Kentucky Area Wage Surveys

EXISTING INDUSTRY

MT. STERLING MANUFACTURING FIRMS, THEIR PRODUCTS AND EMPLOYMENT

<u>Firm (Establishment date)</u>	<u>Product</u>	<u>Employment</u>			<u>Labor Unions</u>
		<u>Total</u>	<u>Male</u>	<u>Female</u>	
Atlas Concrete Products (1946)	Ready mixed concrete, concrete septic tanks and products	8	7	1	
Elvridge's Barbeque (1950)	Pork and beef barbeque, hot dog sauce	4	--	--	
Emerson Contract Division (1965)	Home dishwashers	532	466	66	Auto Workers*
Hasco Newspapers, Inc. (1961)	Newspaper, commercial printing	23	10	13	
Highway Drainage Pipe, Inc. (1949)	Concrete pipe	15	--	--	
Ruth Hunt Candy (1923)	Candy	6	2	4	
Jockey International, Inc. (1955)	Men's woven under shorts, men's knit underwear	358	25	333	
Rex Moore Harness Shop (1949)	Harness	1	1	0	
Mt. Sterling Industries, Inc. (1966)	Tools, dies, jigs and fixtures, machine shop, special machinery, electro- mechanical assemblies	27	25	2	
Mountain Town Machining (1979)	Machine shop	12	--	--	

(Continued)

<u>Firm</u> (Establishment date)	<u>Product</u>	<u>Employment</u>			<u>Labor Unions</u>
		<u>Total</u>	<u>Male</u>	<u>Female</u>	
Plasti-Drum Corporation (1985)	Plastic drums	25	20	5	
Russell Engineering Company (1979)	Automated machines	15	--	--	
A. O. Smith Corporation (1964)	Hermetic motors	800	-	-	Electrical Workers*
Trojan Manufacturing Company (1960)	Coiled wire products, lamps, fluorescents, electro-mechanical sub-assembly	156	70	86	

*See Labor Organizations below.

Sources: Kentucky Department of Economic Development, 1986 Kentucky Directory of Manufacturers; Division of Research and Planning.

LABOR ORGANIZATIONS IN MANUFACTURING FIRMS

<u>Union</u>	<u>Representing workers at:</u>
International Brotherhood of Electrical Workers, AFL-CIO	A. O. Smith Corporation
International Union, United Automobile, Aerospace and Agricultural Implement Workers of America	Emerson Contract Division

SELECTED INDUSTRIAL SERVICES

<u>Types of Services</u>	<u>Location</u>	<u>Mileage from Mt. Sterling</u>
Custom Plastics Producers	Mt. Sterling	-
Electric Motor Repair	Winchester	16
Grinding, Precision & Tool	Winchester	16
Heat Treating Facilities	Lexington	36
	Richmond	38
Industrial Equipment & Supplies	Lexington	36
	Richmond	38
Industrial Gases	Lexington	36
Industrial Waste Removal	Lexington	36
	Richmond	38
Machine Shops, Tool & Die	Mt. Sterling	-
Metal Finishers	Lexington	36
	Richmond	38
Metal Service Centers	Lexington	36
	Richmond	38
Millwrights	Lexington	36
Public Warehouse Facilities	Paris	26

Sources: Kentucky Department of Economic Development, Kentucky Directory of Selected Industrial Services, 1985; Division of Research and Planning.

TRANSPORTATION

Rail

The nearest rail service is provided by CSX Transportation at Winchester, 16 miles west of Mt. Sterling.

For details on routing, schedules, rates, and services contact:

Manager of Industrial Development
CSX Transportation
P.O. Box 2157
Louisville, Kentucky 40201
(502) 587-5228

Highways

Major highways serving Mt. Sterling are Interstate 64 (with an interchange two miles north of central Mt. Sterling), U.S. Highways 60 and 460, and Kentucky Route 11. All are AAA-rated trucking highways (80,000-pound gross load limit). Access to Interstate 75 is available 30 miles west of Mt. Sterling via Interstate 64. An interchange of the Mountain Parkway, a multi-lane toll road providing access to eastern Kentucky, is located 14 miles west of the city. Kentucky Route 686, the Mt. Sterling Bypass, encircles the city and provides access to surrounding areas.

Truck Service

ABF Cartage, Inc.*
ANR Freight System, Inc.**
ARA/Smith's**
American Freight System, Inc.**
Bailey's Express, Inc.*
Bestway Express, Inc.**
Bishop Motor Express*
Carolina Freight Carriers
Corporation*
Central Transport, Inc.**
Duff Truck Line, Inc.*
General Highway Express, Inc.**
Holland Motor Express, Inc.*

Jones Truck Lines, Inc.*
Lawrenceburg Transfer Company,
Inc.*
Manning Motor Express, Inc.*
Middlewest Freightways, Inc.*
O.K. Trucking Company*
Overnite Transportation Company*
Owenton Express, Inc.*
P-I-E Nationwide, Inc.**
Preston Trucking Company, Inc.*
Roadway Express, Inc.*
Suburban Motor Freight, Inc.*

* Interstate and intrastate service.

** Interstate service only.

Source: American Motor Carrier Directory, Fall 1986.

HIGHWAY MILES AND TRUCK TRANSIT TIME IN DAYS FROM
MT. STERLING, KENTUCKY, TO SELECTED MARKET CENTERS

City	Highway Miles	Delivery Time TL	City	Highway Miles	Delivery Time TL
Atlanta, Ga.	398	1	Los Angeles, Ca.	2,216	5
Baltimore, Md.	522	2	Louisville, Ky.	108	1
Birmingham, Ala.	434	1	Nashville, Tenn.	246	1
Chicago, Ill.	388	2	New Orleans, La.	763	2
Cincinnati, Ohio	114	1	New York, N. Y.	694	-
Cleveland, Ohio	353	1	Pittsburgh, Pa.	354	1
Detroit, Mich.	373	1	St. Louis, Mo.	371	1
Knoxville, Tenn.	199	1			

Note: Mileage computations are via the best interstate or primary highways, not necessarily the most direct route of travel.

Sources: Rand McNally Road Atlas, 1979. Official Kentucky Mileage Map, 1985.
Delivery time - Overnite Transportation Company, 1020 Whipple Court,
Lexington, Kentucky 40574.

Air

Local

Location: Mt. Sterling-Montgomery County Airport*
Runways: 2 miles west of Mt. Sterling
Length: 1 paved
4,000 feet
Traffic
Control: Wind sock, tetrahedron, unicom
Lighting: Sunset to sunrise, rotating beacon, REIL, PAPPI
Services: Jet A & 100 LL fuel, charter, flight instruction, tie down,
hangar, minor A & P repairs, car rental
Air Freight
Services: Chartered air freight services must be arranged

(Continued)

* The Mt. Sterling-Montgomery County Airport recently completed a project extending the runway to 4,000 feet. The airport plans to construct additional T-hangars in the spring of 1987 and has tentative plans for a new taxiway and an additional 1,000-foot runway extension project.

Nearest Scheduled Commercial Airline Service

Location:	Bluegrass Airport 5 miles west of Lexington, Kentucky; 41 miles west of Mt. Sterling
Runways:	2 paved
Length:	7,000 feet; 3,500 feet
Traffic	
Control:	Tower
Lighting:	Approach lighting system, beacon, runways and obstructions lighted, VASI
Services:	Delta, Piedmont, United, USAir, Allegheny Commuter, Piedmont Commuter, Eastern Metro, Comair, American Eagle; fuel - 100LL and jet-A; hangars, tie-downs; major A & P repairs; major Avionics repairs; APU, charter, flight instruction, oxygen, plane rentals, survival equipment; taxi, limousine, car rentals, courtesy car, weather information; restaurant, snack bar
Air Freight	
Service:	Air freight terminal

Air Express Service

Several major companies offer air express services in Kentucky. These companies provide a quick means of shipping small to medium-sized packages expeditiously.

Water

The nearest navigable waterway is the Ohio River at Maysville, 49 miles north of Mt. Sterling. The Maysville-Mason County Port Authority plans to develop a public port at Maysville which will serve as a general cargo facility.

POWER AND FUEL

Electricity

Company serving **Mt. Sterling and parts of Montgomery County** - Kentucky Utilities Company

Source of power - Kentucky Utilities Company

For industrial rates contact:

Industrial Development Department
Kentucky Utilities Company
One Quality Street
Lexington, Kentucky 40507
(606) 255-1461

Company serving **parts of Montgomery County** - Clark Rural Electric Cooperative Corporation

Source of power - East Kentucky Power Cooperative

For industrial rates contact:

Industrial Development Division
East Kentucky Power Cooperative
P. O. Box 707
Winchester, Kentucky 40391
(606) 744-4812

and/or

Clark Rural Electric Cooperative
Corporation
P. O. Box 748
Winchester, Kentucky 40391
(606) 744-4251

Natural Gas

Company serving **Mt. Sterling** - Columbia Gas of Kentucky, Inc.

Source of supply - Columbia Gas Transmission Corporation

Size of transmission mains - 12 to 20 inches (supplier); 4 inches (distributor)

Distribution mains - 2 to 12 inches

Distribution pressure - 4 ounces to 45 psi

Btu content - 1,050 per cubic foot

Specific gravity - 0.065

For rates and supplies contact:

Marketing Department
Columbia Gas of Kentucky, Inc.
166 Walnut Street
Lexington, Kentucky 40584
(606) 255-3612

Other Fuels

Propane

Doxol Propane
Buckeye Gas Products Company
P. O. Box 795
Owingsville, Kentucky 40391

Southern States Cooperative, Inc.
Brooks Avenue
P. O. Box 667
Owingsville, Kentucky 40360

Eads Supply & LP Gas
Winchester Road
Mt. Sterling, Kentucky 40353

Fuel oils

Distillate fuel oil -

Bonfield Brothers, Inc.
Texaco Distributor
P. O. Box 415
Calk Avenue
Mt. Sterling, Kentucky 40353

Given Oil Service
P. O. Box 239
10 Denby Avenue
Mt. Sterling, Kentucky 40353

Gateway Gas and Oil
P. O. Box 749
125 South Queen
Mt. Sterling, Kentucky 40353

Bob Riley Distributors, Inc.
Chevron Distributor
Boggs Avenue
Richmond, Kentucky 40475

Residual fuel oil - Arrangements must be made with the refinery.

Low sulphur content coal - Available in eastern Kentucky.

WATER AND SEWERAGE

Public Water Supply

Company serving **Mt. Sterling** - Mt. Sterling Water and Sewer System
300 East Main Street
P. O. Box 392
Mt. Sterling, Kentucky 40353
(606) 498-0166

Source - Slate Creek Impoundment and Greenbriar Reservoir*
Treatment plant capacity - 3,000,000 gallons per day
Average daily consumption - 1,900,000 gallons
Peak daily consumption - 2,400,000 gallons
Type treatment - Chlorination, coagulation, sedimentation, filtration, fluoridation, flocculation, and rapid mix
Storage capacity - 1,500,000 gallons including clear well
Size lines - 6 to 16 inches
Average pressure - 60 to 100 psi

MONTHLY WATER RATES

(Billed in cubic feet)

		<u>Inside City</u> <u>(per 100 cubic feet)</u>	<u>Outside City</u> <u>(per 100 cubic feet)</u>
First	100 cubic feet	\$3.40	\$3.91
Next	600 cubic feet	1.40	1.61
Next	1,300 cubic feet	1.35	1.55
Next	1,300 cubic feet	1.20	1.38
Next	3,400 cubic feet	1.00	1.15
Next	6,600 cubic feet	.80	.92
Next	13,300 cubic feet	.60	.69
Next	26,700 cubic feet	.55	.63
All over	53,300 cubic feet	.50	.58

PRIVATE SPRINKLER LINE

	<u>Inside City</u>	<u>Outside City</u>
4-inch line	\$ 7.50	\$ 8.63
6-inch line	15.00	17.25

Private Fire Hydrant Charge: \$17.25 per month, per hydrant

Tap-on charge:

3/4 inch - \$250 (per meter)

1 inch and over - Cost of labor and materials, plus 25 percent (per meter)

* An expansion project at the Greenbriar Reservoir, which will double the raw water storage capacity, is under way. This estimated \$1 million project is scheduled to be completed in the fall of 1987.

Sewerage

Company serving **Mt. Sterling** - Mt. Sterling Water and Sewer System*
300 East Main Street
P. O. Box 392
Mt. Sterling, Kentucky 40353
(606) 498-0166

Design capacity - 3,000,000 gallons per day

Average daily flow - 1,700,000 gallons

Type of treatment - Tertiary

Treatment processes - Screening, grit removal, primary sedimentation, trickling filter, rotating biological contactors, chlorination, post aeration, sludge drying beds, flow equalization, anaerobic digester, secondary sedimentation

Treated effluent discharged into - Hinkston Creek

Size of sanitary mains - 6 to 30 inches

Size of storm mains - 10 to 36 inches

Monthly rates - (Based on water consumption)

First	100 cubic feet	\$2.90 Minimum
Next	600 cubic feet	1.45 per 100 cubic feet
Next	1,300 cubic feet	1.25 per 100 cubic feet
Next	1,300 cubic feet	1.10 per 100 cubic feet
Next	3,400 cubic feet	1.00 per 100 cubic feet
Next	6,600 cubic feet	1.00 per 100 cubic feet
Next	13,300 cubic feet	.85 per 100 cubic feet
Next	26,700 cubic feet	.80 per 100 cubic feet
All over	53,300 cubic feet	.80 per 100 cubic feet

Surcharge for waste beyond normal sewage:

<u>Type of Effluent</u>	<u>Rate</u>
Biochemical oxygen demand (BOD) loading in excess of 225 mg/l	\$.075 per pound
Suspended solids (SS) loading in excess of 225 mg/l	.113 per pound
Ammonia nitrogen (NH ₃) loading in excess of 8 mg/l	.339 per pound

Tap-on charge:

	<u>Residential</u>	<u>Commercial</u>
Inside city	\$ 125	\$250
Outside city	\$ 375	\$750

* The Mt. Sterling Water and Sewer System recently completed a \$9 million project which consisted of rebuilding the wastewater treatment plant and upgrading sewer mains.

CLIMATE

Montgomery County

Temperature

Normal (30-year record)	54.90 degrees
Average annual 1985	54.60 degrees
Record highest, August 1983 (41-year record)	103.00 degrees
Record lowest, January 1963 (41-year record)	-21.00 degrees
Normal heating degree days (30-year record)	4,814
(Heating degree day totals are the sums of negative departures of average daily temperatures from 65 degrees F.)	

Precipitation

Normal (30-year record)	45.68 inches
Mean annual snowfall (30-year record)	16.50 inches
Total precipitation 1985	37.75 inches
Mean number days precipitation (.01 inch or more) (41-year record)	130.70
Mean number days thunderstorms (41-year record)	45.80

Prevailing Winds (through 1963)

South

Relative Humidity

1 a.m.	77 percent (21-year record)
7 a.m.	82 percent (22-year record)
1 p.m.	60 percent (22-year record)
7 p.m.	64 percent (22-year record)

Source: U.S. Department of Commerce, Environmental Science Services Administration, Climatological Data, 1985. Station of record: Lexington, Kentucky.

LOCAL GOVERNMENT

Structure

The city of Mt. Sterling is served by a mayor and eight council members. The mayor serves a four-year term and the council members serve two-year terms. Montgomery County is served by a county judge/executive and three commissioners. The county judge/executive and commissioners are elected to four-year terms.

Planning and Zoning

City agency - Mt. Sterling Planning and Zoning Commission

Zoning enforced - Within city limits of Mt. Sterling

Subdivision regulations enforced - Within city limits of Mt. Sterling and five miles beyond

Local codes enforced - Building and housing

Mandatory state codes enforced - Kentucky Plumbing Code, National Electric Code, Kentucky Boiler Regulations and Standards, Kentucky Building Code (modeled after BOCA code)

Local Fees and Licenses

The city of Mt. Sterling levies a business license fee ranging from \$50 to \$150, depending on the number of employees. The city also levies a 1 percent occupational license tax on wages, salaries, and commissions of individuals employed in the city and on net profits of businesses operating in the city. An insurance premium tax of 10 percent is levied on all insurance policies issued within the city of Mt. Sterling. Montgomery County levies a 1% occupational license tax on wages, salaries, and commissions of individuals and on net profits of businesses in the county.

A 3 percent tax is levied on utilities receipts for schools in Montgomery County. Tax is paid by all consumers of utilities as an add-on to the utilities bills. Exempted are receipts from utilities services that are resold and the receipts from the sale of energy or energy producing fuels that exceed 3 percent of the cost of production in manufacturing, processing, mining or refining.

State and Local Property Taxes

All property in Kentucky, except items exempted by the state constitution, is taxed by the state. Property which also may be taxed by local jurisdictions includes land and buildings, finished goods inventories, automobiles, trucks, office furniture and office equipment. Local taxing jurisdictions in Kentucky include counties, cities, and school districts.

All property in Kentucky is assessed at 100 percent of fair cash value.

COMBINED STATE AND LOCAL RATES PER \$100 VALUATION, 1986

	<u>Mt. Sterling</u>	<u>Unincorporated Montgomery County</u>
Land and Buildings	\$ 1.034	\$ 0.788
Manufacturing Machinery	0.150	0.150
Pollution Control Equipment	0.150	0.150
Inventories		
Raw materials	0.001	0.001
Goods in Process	0.001	0.001
Finished Goods	0.861	0.617
Automobiles and Trucks	1.309	1.065
Other Tangible Personal Property	1.310	1.066
Intangibles (Accounts receivable, money in hand, stock, notes, bonds)	0.250*	0.250*
Goods Stored in Public Warehouses in Transit Status	0.001	0.001
Private Leaseholds in Industrial Revenue Bond Financed Facilities	0.015	0.015

One fire protection district in Montgomery County levies a special tax within its district boundaries. The rate is \$.08 per \$100 valuation.

* Accounts receivable are taxed at 85 percent of face value, for an effective rate of \$0.2125 per \$100 valuation.

Safety

Police	Mt. Sterling	Montgomery County
--------	--------------	-------------------

Total staff	15	9
Radio-patrol cars	10	5

Fire*

Insurance Services Office,

Public Protection

Classification

5

**

Full-time staff

16

8

Volunteers

8

35

Rescue Service

The Montgomery County Fire and Rescue Squad and the Montgomery County Disaster and Emergency Service provide rescue service to Mt. Sterling and Montgomery County.

Refuse Collection and Disposal

Private contractors provide refuse collection and disposal to residents and businesses in Mt. Sterling and Montgomery County.

* Includes copyrighted material of ISO Commercial Risk Services, Inc., with its permission.

** Property located within the Montgomery and Menifee County fire districts has a fire classification rating of 9. All other property in unincorporated Montgomery County has a rating of class 10.

EDUCATION

Public Schools

Montgomery County*

Total Enrollment (November 1986)	4,188
Kindergarten	291
Elementary	1,675
Middle School	955
High School	1,267
Accreditation	Southern Association of Colleges and Schools
Pupil-Teacher Ratio (1985-86)	18-1
Percent High School Graduates to College (1985-86)	42.9
Expenditures Per Pupil (1985-86)	\$1,927.49

* The Montgomery County School System is currently constructing a new elementary school in Camargo. Completion is scheduled for the spring of 1988 at an estimated cost of \$2.8 million. Construction of the new J. B. McNabb Middle School was completed in August 1986. The approximate cost of the school was \$7.5 million.

Area Colleges and Universities

<u>Name</u>	<u>Location (Miles distant)</u>	<u>Enrollment (Fall, 1986)</u>	<u>Highest Degree Conferred</u>
Morehead State University	Morehead (31)	5,894	Masters, Specialist*
Lexington Community College	Lexington (36)	2,587	Associate
Transylvania University	Lexington (36)	970	Baccalaureate**
University of Kentucky	Lexington (36)	20,788	Doctorate, M.D., D.M.D., J.D.
Eastern Kentucky University	Richmond (38)	12,737	Masters, Specialist*
Georgetown College	Georgetown (46)	1,362	Masters
Midway College	Midway (48)	340	Associate
Maysville Community College	Maysville (49)	727	Associate
Berea College	Berea (52)	1,587	Baccalaureate
Asbury College	Wilmore (55)	939	Baccalaureate

* Joint doctoral degree programs are offered in cooperation with the University of Kentucky, Lexington. The degrees are issued by the University of Kentucky.

** Courses in a masters degree program are taught on the Transylvania campus by faculty members of Xavier University of Cincinnati. The degree is issued by Xavier University.

Vocational Training

The Bluegrass State Skills Corporation, an independent public corporation created and funded by the Kentucky General Assembly, provides programs of skills training to meet the needs of business and industry from entry level to advanced training, and from upgrading present employees to retraining experienced workers.

The Bluegrass State Skills Corporation is the primary source for skills training assistance for a new or existing company. The Corporation works in partnership with other employment and job training resources and programs, as well as Kentucky's economic development activities, to package a program customized to meet the specific needs of a company.

Vocational training is available at both the state vocational-technical schools and the area vocational education centers. The state vocational-technical schools are post-secondary institutions. The area vocational education centers are designed to supplement the curriculum of high school students. Both the state vocational-technical schools and the area vocational education centers offer evening courses to enable working adults to upgrade current job skills.

Arrangements can be made to provide training in the specific production skills required by an industrial plant. Instruction may be conducted either in the vocational school or in the industrial plant, depending upon the desired arrangement and the availability of special equipment.

Nearest State School

Rowan State Vocational-Technical School
Morehead, 31 miles distant

Agriculture	Carpentry
Adult Farmer	Diesel Mechanics
Business & Office	Drafting
Clerical	Electricity
Secretarial	Machine Shop
Word Processing	Welding
Health & Personal Services Occupations	Special Vocational Programs
Health Careers	Consumer & Family Life Skills
Practical Nursing	Computer/Literacy
Respiratory Therapy	Public Service Occupations
Industrial Education	Fire Fighter Training
Air Conditioning/Refrigeration	Learning Resource Center
Auto Mechanics	

(Continued)

Nearest Area Education Center

Montgomery County Area Vocational Education Center
Mt. Sterling

Business & Office

Clerical

Secretarial

Health & Personal Services

Health Services Careers

Industrial Education

Auto Mechanics

Carpentry

Industrial Electricity

HEALTH

Local Medical Personnel

Physicians - 20 (full-time)
 23 (commuting specialists)
Dentists - 11 (local full-time)
 8 (commuting part-time)

Hospitals

<u>General Hospital</u>	<u>Location</u>	<u>Beds</u>
Mary Chiles Hospital, Inc.	Mt. Sterling	64 plus 40 skilled nursing beds

Medical staff - 19 doctors, 52 registered nurses, and 15 licensed practical nurses

Other Medical Facilities

Cave Run Clinic
Montgomery County Health Center (a public health facility)
Mt. Sterling Clinic
Mt. Sterling Medical Center
Pathways, Inc.

Ambulance Service

Name - Montgomery County Ambulance Service
Staff - 16 emergency medical technicians

OTHER LOCAL FACILITIES

Communications

Telephone -	South Central Bell Telephone Company
Telegraph -	Western Union Toll-free number, 1-800-325-6000
Newspaper - Weekly and circulation -	Mt. Sterling Advocate* 6,000
Radio -	WMST - AM & FM
Television - Airwave reception from -	Lexington and Louisville, Kentucky; Cincinnati, Ohio; Atlanta, Georgia; Chicago, Illinois
Cable service - Educational television -	Centel Cable Television of Kentucky The Kentucky Educational Television (K.E.T.) network is available statewide

Library Services

Public library - Mt. Sterling-Montgomery County Library
Size collection - 23,337 volumes
Circulation, 1985-86 - 113,152

Religious Institutions

Montgomery County

Denominations -	Assembly of God	Episcopal
	Baptist	Full Faith Gospel
	Catholic	Methodist
	Christian	Nazarene
	Christian Assembly	Nondenominational
	Church of Christ	Pentecostal
	Church of God	Presbyterian
Nearest Synagogues -	Lexington, 36 miles west of Mt. Sterling	
Congregations -	Adath Israel (reform)	
	Ohavey Zion (traditional)	

* The Mt. Sterling Advocate publishes a free weekly shopper's guide with a circulation of 25,700.

Financial Institutions

<u>Banks</u>	<u>Assets</u>	<u>Deposits</u>	<u>Statement Date</u>
Commonwealth Bank	\$15,373,608.18	\$14,250,057.11	6/30/86
Exchange Bank of Kentucky	44,052,477.19	36,541,480.46	6/30/86
Montgomery Bank and Trust Company	50,733,301.73	43,193,815.25	6/30/86
Mt. Sterling National Bank	47,609,988.00	41,779,978.00	9/30/86
Traders Bank and Trust Company	58,905,008.83	50,953,994.40	12/31/85

Hotels and Motels

Total number - 5
Total rooms - 190

RECREATION

Local

Mt. Sterling offers a variety of recreational opportunities for all ages. The **Mt. Sterling-Montgomery County Recreation, Tourism, and Convention Commission**, which has a full-time director and three staff members, maintains the facilities in the three local parks. The **Mt. Sterling-Montgomery County Pool and Park** contains two junior Olympic-size swimming pools, bathhouse facilities, four lighted tennis courts, an outdoor basketball court, a tot lot with a variety of playground equipment, and a picnic area with a covered shelter. A softball diamond is located at **Spencer Park** and **Pribble Park** has two Little League baseball diamonds, an all-purpose building, and a picnic area. Supervised programs are offered year round in activities such as softball, baseball, swimming, tennis, Little League football, soccer, and adult basketball and volleyball. In addition, the **Montgomery County Board of Education** maintains a variety of recreational facilities at the local schools which can be used for a number of supervised programs. These facilities include five gymnasiums, two football fields, three soccer fields, two Little League baseball diamonds, five tennis courts, three playgrounds and an outdoor basketball court. The Recreation Commission has located in a renovated building with offices and a recreation center offering ping-pong, pool, and pinball machines.

Private recreational facilities include a country club with a swimming pool and a 9-hole golf course; a drive-in movie theatre; Sid Calk Lake, Inc., a private recreational and real estate development; The McKee Boy Scout Reservation; and Greenbriar Lake, a fishing lake.

October Court Day is an annual event which attracts thousands of people to Mt. Sterling. With the old time trading and selling of everything from Barlow knives to hunting dogs, this event marks the opening of the fall term of court. **Court Day** is held on the third Monday in October, however, the festivities begin the Saturday before.

A new event held in Mt. Sterling is the old fashioned **Gate City Days**, which features a week of historic displays, games, costume contests, and the largest parade of the year.

Area (Within 40 miles)

The Daniel Boone National Forest, approximately 21 miles east of Mt. Sterling, covers 640,000 acres of timberland in eastern Kentucky. It encompasses much of Kentucky's great beauty and provides a vacation paradise. There are scenic hiking trails, rivers and streams stocked with a variety of fish, hunting preserves, camping sites, and numerous other natural and historical attractions.

The spirit of Daniel Boone and his pioneers is reborn at **Fort Boonesborough State Park** in Boonesboro, 21 miles southwest of Mt. Sterling. In the re-created fort, pioneer crafts of the eighteenth century are demonstrated by using functioning antiques from the frontier era. Cabins are furnished as they would have been in the days of Boone and documentary films are presented which depict the struggle of the first Kentuckians to make the Kentucky wilderness a home. A gift shop within the fort offers for sale all the handcrafted items made at the fort. Other recreational facilities and activities of the park include the finest sand beach on the Kentucky River with a modern bathhouse and a modern camping area with 187 sites.

Cave Run Lake, constructed by the U.S. Army Corps of Engineers, is located 26 miles east of Mt. Sterling within the 640,000-acre Daniel Boone National Forest. The lake area offers everything for the camper, the boatsman, the hunter, the fisherman, and "the lover of leisure."

Natural Bridge State Resort Park near Slade, 33 miles southeast of Mt. Sterling, is located in the Daniel Boone National Forest where cliffs and stone arches fill the landscape. The rugged awesomeness of the great Natural Bridge is the main attraction. The park has a 35-room resort lodge with a dining room and gift shop, ten rustic cottages, and 95 camping sites. Other facilities include a lake, a swimming pool, picnic shelters and playgrounds, hiking trails, and a riding stable.

White Hall State Shrine, 33 miles southwest of Mt. Sterling near Richmond, one of the grand estate houses of post-Civil War Kentucky, is the Italianate mansion of Cassius Marcellus Clay, the early abolitionist and politician. Kentucky handcrafts are sold in the White Hall gift shop, only a short walk from the mansion.

Blue Licks Battlefield State Park is located near Mt. Olivet, 35 miles north of Mt. Sterling. The 100-acre park is on the site of the last Revolutionary War battle in Kentucky. A museum features Indian and pioneer artifacts, an audiovisual program, and prehistoric bones from animals trapped at Blue Licks. Facilities include ten primitive campsites, a gift shop, picnic shelters and grills, a playground, a snack bar, and an Olympic-size swimming pool. Fishing is available at the Licking River which runs through the park.

Lexington, 36 miles west of Mt. Sterling, offers a variety of cultural, sporting, and recreational activities. Thoroughbred and harness racing is presented at Keeneland Race Course and the Red Mile Harness Track during several meets each year. The University of Kentucky and Transylvania University offer a number of sporting events. The University of Kentucky basketball games are held at Rupp Arena, the world's largest basketball arena. Other attractions include Lexington Philharmonic concerts, Lexington Children's Theatre, and plays performed by Broadway touring companies, all held in the recently renovated Opera House.

The Kentucky Horse Park, a park dedicated to horses and to man's love for horses, is located 39 miles west of Mt. Sterling near Lexington. The park, which contains more than 1,000 acres of Kentucky Bluegrass, features the International Museum of the Horse; the Man O'War Memorial; an antique carriage display; horseback and pony rides; walking farm tours; horse-drawn tours; a restaurant; a gift shop; and a campground area, which offers swimming, tennis, and planned activities. Numerous special events are held year-round and include various horse shows, steeplechasing, dressage, polo games, and rodeos.

COMMUNITY IMPROVEMENTS

Recent

Mt. Sterling was chosen as a "Kentucky Certified City" in 1981-1986. The award is based on achievement in the following categories: economic development, transportation, public affairs, utilities, health, commercial development, housing, education and recreation. The Certified Cities Program is sponsored by the Kentucky Chamber of Commerce.

Plasti-Drum Corporation recently constructed a manufacturing plant in Mt. Sterling. The plant is located in the Midland Trail Industrial Park and manufactures plastic containers.

A new stockyard was recently constructed in Mt. Sterling. The 60,000 square foot facility is one of the largest and most modern in central Kentucky. The grounds include a restaurant and overnight accommodations.

Two new shopping centers were recently completed. The centers contain a combined total of fifteen stores.

Construction of three new senior citizen complexes, with a total of 40 units, was completed in the fall, 1986. Remodeling of existing units was also performed during 1986. The approximate cost of these projects was \$1.7 million.

The Mt. Sterling-Montgomery County Department for Economic Development was established in September, 1986. The department currently is staffed by a full-time director and one part-time employee. A consultant of the Small Business Administration also works in conjunction with the department.

Construction of the new J. B. McNabb Middle School was completed in August, 1986. The approximate cost of the school was \$7.5 million.

The Mt. Sterling Water and Sewer System recently completed a \$9 million project which consisted of rebuilding the wastewater treatment plant and upgrading sewer mains.

The Mt. Sterling-Montgomery County Airport recently completed a project extending the runway to 4,000 feet.

Under Way

An expansion project at the Greenbriar Reservoir, which will double the raw water storage capacity, is under way. This estimated \$1 million project is scheduled to be completed in the fall, 1987.

The Montgomery County School System is currently constructing a new elementary school in Camargo. Completion is scheduled for the spring, 1988 at an estimated cost of \$2.8 million.

Construction of a new shopping center adjacent to the Mt. Sterling Bypass is under way. The shopping center will contain 8-10 stores.

A \$1.2 million revitalization project for the Smithville area is under way. The project consist of upgrading sewer lines, water lines, streets, curbs and gutters, and general property improvement.

Construction of the new Montgomery County Regional Jail is scheduled to be completed in June, 1987. The estimated \$3 million facility will employ 25 to 30 people.

Planned

The Mt. Sterling-Montgomery County Airport plans to construct additional hangars in the spring 1987. The airport also has tentative plans for a 1,000 foot runway extension project and a new taxiway.