

1982

# Industrial Resources: Muhlenberg County - Central City

Kentucky Library Research Collections  
Western Kentucky University, [spcol@wku.edu](mailto:spcol@wku.edu)

Follow this and additional works at: [https://digitalcommons.wku.edu/muhlenberg\\_cty](https://digitalcommons.wku.edu/muhlenberg_cty)

 Part of the [Business Administration, Management, and Operations Commons](#), [Growth and Development Commons](#), and the [Infrastructure Commons](#)

---

## Recommended Citation

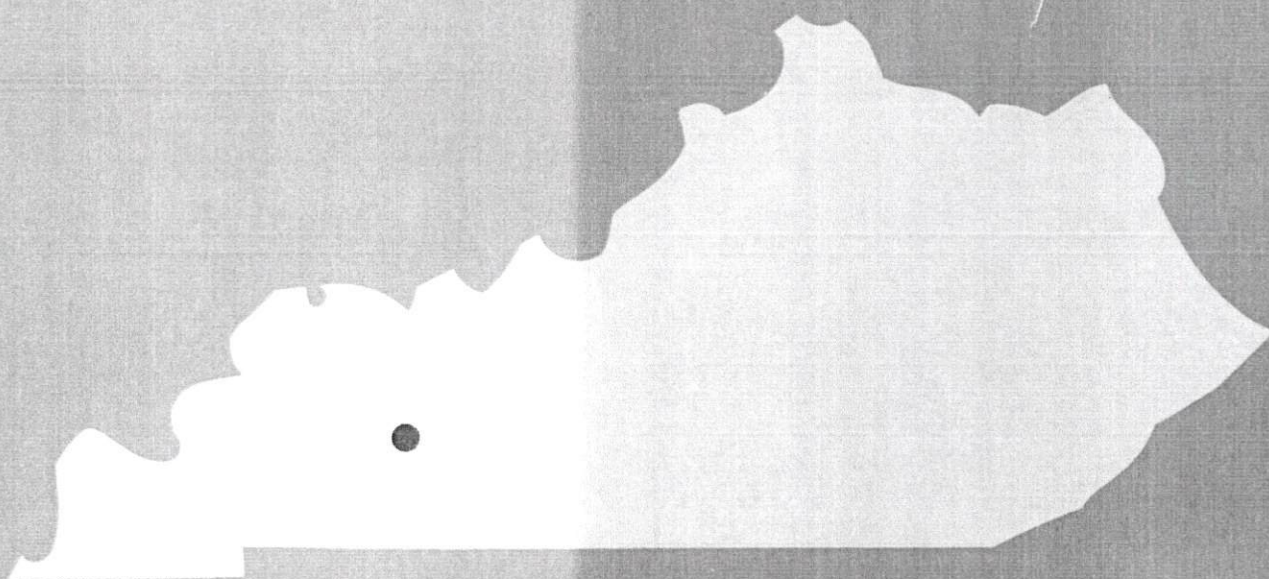
Kentucky Library Research Collections, "Industrial Resources: Muhlenberg County - Central City" (1982). *Muhlenberg County*. Paper 9.  
[https://digitalcommons.wku.edu/muhlenberg\\_cty/9](https://digitalcommons.wku.edu/muhlenberg_cty/9)

This Report is brought to you for free and open access by TopSCHOLAR®. It has been accepted for inclusion in Muhlenberg County by an authorized administrator of TopSCHOLAR®. For more information, please contact [topscholar@wku.edu](mailto:topscholar@wku.edu).

LR Muhlenberg Co.

327

**A comprehensive  
report on  
Greenville Ky.**



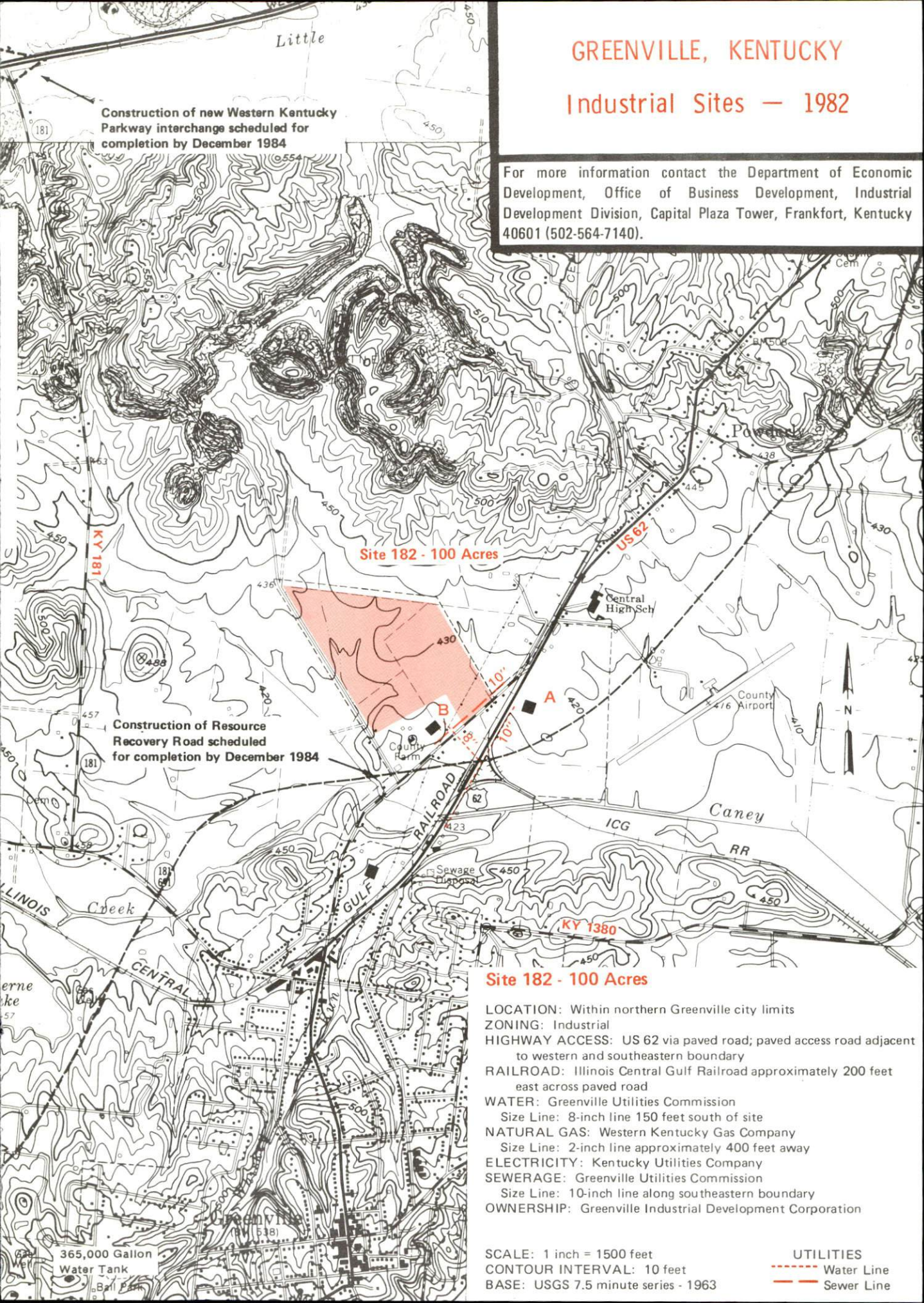
**KENTUCKY & CO.**  
The state that's run like a business.



# GREENVILLE, KENTUCKY

## Industrial Sites — 1982

For more information contact the Department of Economic Development, Office of Business Development, Industrial Development Division, Capital Plaza Tower, Frankfort, Kentucky 40601 (502-564-7140).







## Site 282 - 22 Acres

**LOCATION:** Approximately 1.8 miles west of Greenville city limits

**ZONING:** Not zoned

**HIGHWAY ACCESS:** US 62 adjacent to northern boundary

**RAILROAD:** Not rail served

**WATER:** Greenville Utilities Commission

Size Line: 6-inch line approximately 1200 feet southeast along north side of US 62

**NATURAL GAS:** Western Kentucky Gas Company

Size Line: 2-inch line along north side of US 62

**ELECTRICITY:** Kentucky Utilities Company

**SEWERAGE:** Greenville Utilities Commission

Size Line: 8-inch line approximately 1.2 miles southeast along north side of US 62

**OWNERSHIP:** Muhlenberg County Fiscal Court

**SCALE:** 1 inch = 1200 feet

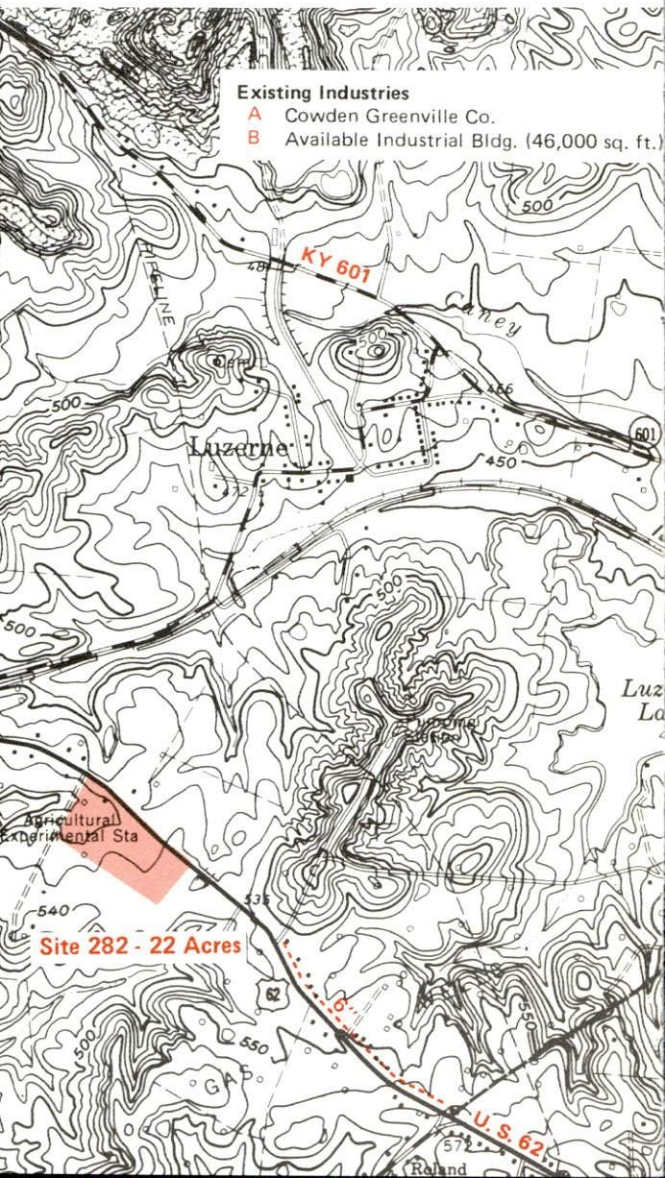
**CONTOUR INTERVAL:** 10 feet

**BASE:** USGS 7.5 minute series - 1963

### UTILITIES

----- Water Line

----- Sewer Line





A COMPREHENSIVE REPORT ON  
GREENVILLE, KENTUCKY

Prepared by  
The Kentucky Department of Economic Development  
Division of Research and Planning  
in cooperation with  
The Greenville Chamber of Commerce

1982



Program manager - Brenda Roberts; research - Andrew Dennis; clerical - Shirley Wood; graphics - Frank Ferrante, Tony Cecconi, Robert Owens; cartography - Site Evaluation Section, Industrial Development Division. Cost of printing paid from state funds.



# TABLE OF CONTENTS

<u>Chapter</u>	<u>Page</u>
INDUSTRIAL SITES . . . . .	i
GREENVILLE, KENTUCKY - A RESOURCE PROFILE . . . . .	1
THE LABOR MARKET AREA . . . . .	3
Population . . . . .	3
Labor Force Characteristics of Residents, 1981 . . . . .	3
Estimated Male Labor Supply . . . . .	4
Estimated Female Labor Supply . . . . .	4
Greenville Manufacturing Firms-	
Their Products and Employment . . . . .	5
Labor Organizations in Manufacturing Firms . . . . .	6
Industrial Services . . . . .	6
Average Weekly Wages by Industry,	
by Place of Work, 1981 . . . . .	7
Per Capita Personal Income . . . . .	9
TRANSPORTATION . . . . .	10
Rail . . . . .	10
Highways . . . . .	10
Truck Service . . . . .	11
Air . . . . .	13
Bus . . . . .	14
Taxi . . . . .	14
Rental Services . . . . .	14
Water . . . . .	14
POWER AND FUEL . . . . .	15
Electricity . . . . .	15
Natural Gas . . . . .	15
Other Fuels . . . . .	15
WATER AND SEWERAGE . . . . .	17
Public Water Supply . . . . .	17
Raw Water . . . . .	18
Sewerage . . . . .	19
CLIMATE . . . . .	20



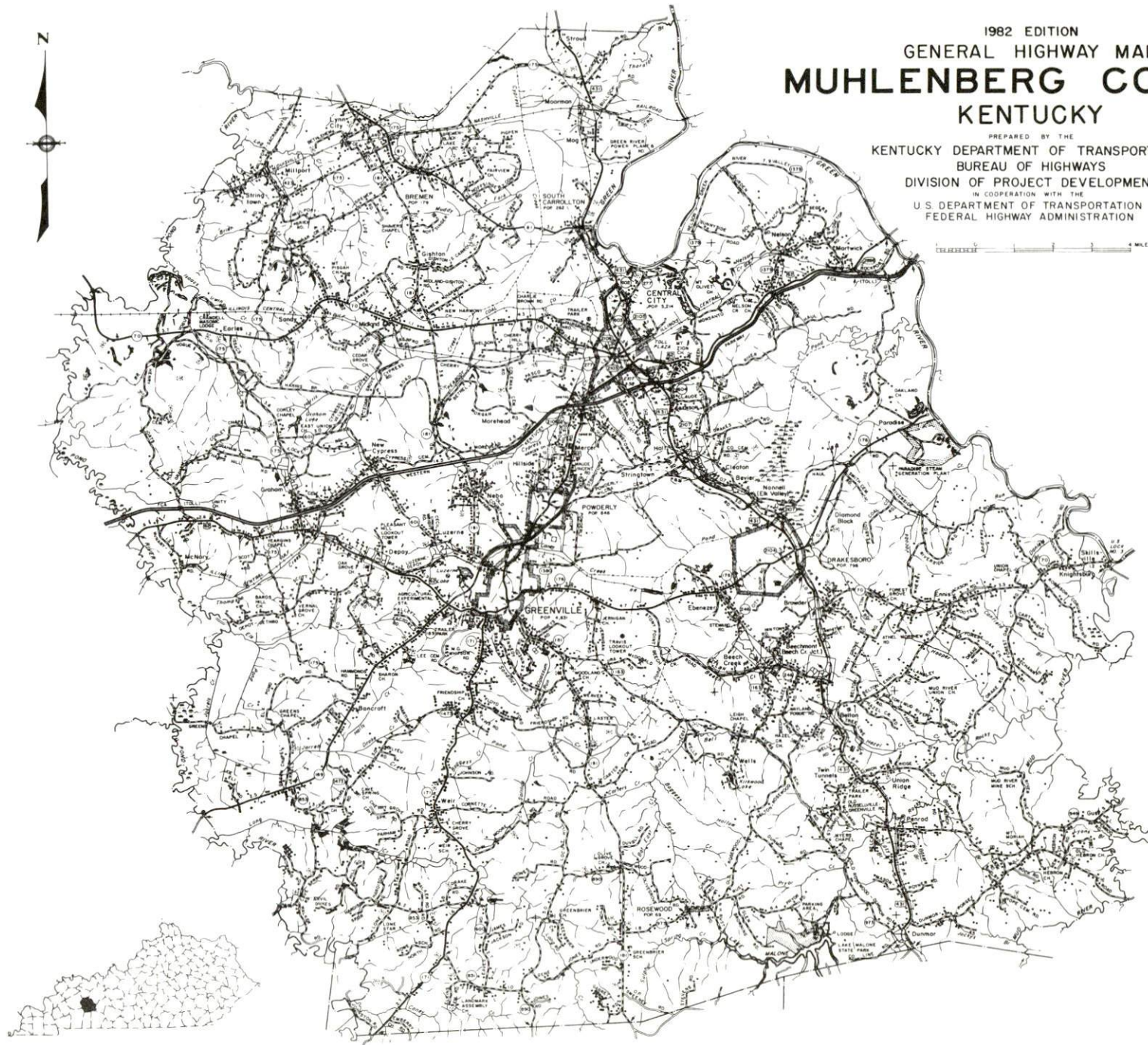
<u>Chapter</u>	<u>Page</u>
LOCAL GOVERNMENT . . . . .	21
City . . . . .	21
County . . . . .	21
Assessed Value of Property . . . . .	21
Property Taxes . . . . .	21
Combined State and Local Rates Per \$100 Valuation, 1981 . . . . .	22
Planning and Zoning . . . . .	22
Safety . . . . .	23
Police . . . . .	23
Fire . . . . .	23
Rescue Service . . . . .	23
Refuse Collection and Disposal . . . . .	23
EDUCATION . . . . .	24
Public Schools . . . . .	24
Nonpublic Schools . . . . .	24
Area Colleges and Universities . . . . .	25
Vocational Schools . . . . .	26
HEALTH . . . . .	28
Local Medical Personnel . . . . .	28
Hospitals . . . . .	28
Other Medical Facilities . . . . .	28
Ambulance Service . . . . .	28
Public Health . . . . .	28
OTHER LOCAL FACILITIES . . . . .	29
Communications . . . . .	29
Library Services . . . . .	29
Religious Institutions . . . . .	30
Financial Institutions . . . . .	30
Hotels and Motels . . . . .	30
Clubs and Organizations . . . . .	31
RECREATION . . . . .	32



1982 EDITION  
GENERAL HIGHWAY MAP  
**MUHLENBERG COUNTY**  
KENTUCKY

PREPARED BY THE  
KENTUCKY DEPARTMENT OF TRANSPORTATION  
BUREAU OF HIGHWAYS  
DIVISION OF PROJECT DEVELOPMENT  
IN COOPERATION WITH THE  
U.S. DEPARTMENT OF TRANSPORTATION  
FEDERAL HIGHWAY ADMINISTRATION

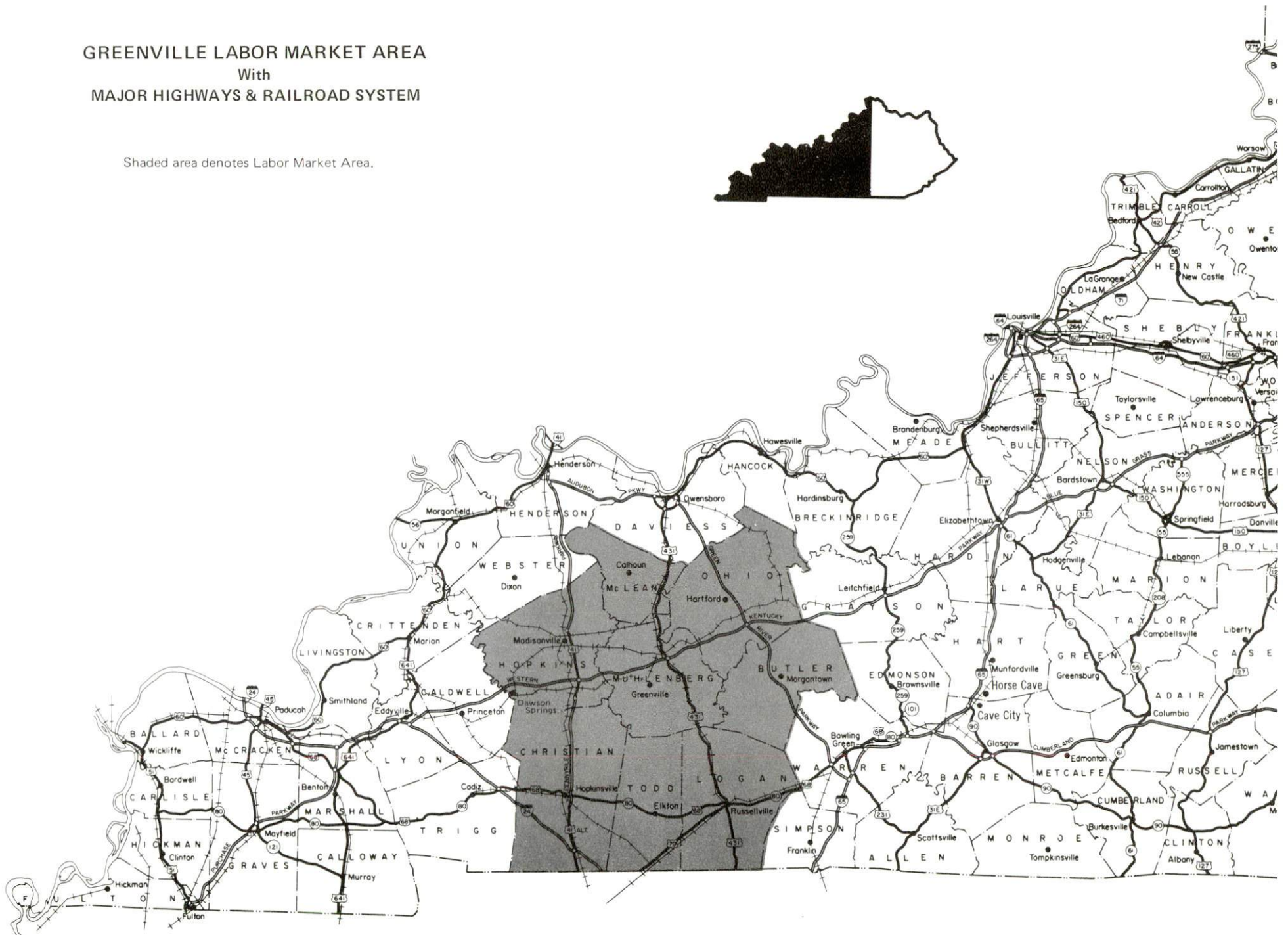
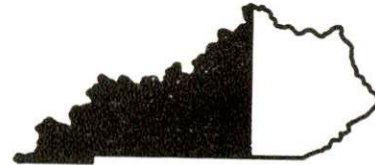
1 2 3 4 5 6 7 8 9 10 11 12 13 14 15 16 17 18 19 20 21 22 23 24 25 26 27 28 29 30 31 32 33 34 35 36 37 38 39 40 41 42 43 44 45 46 47 48 49 50 51 52 53 54 55 56 57 58 59 60 61 62 63 64 65 66 67 68 69 70 71 72 73 74 75 76 77 78 79 80 81 82 83 84 85 86 87 88 89 90 91 92 93 94 95 96 97 98 99 100





# GREENVILLE LABOR MARKET AREA With MAJOR HIGHWAYS & RAILROAD SYSTEM

Shaded area denotes Labor Market Area.



## GREENVILLE - A RESOURCE PROFILE

Greenville is the county seat of Muhlenberg County and a two time recipient of the "All Kentucky City" award. Greenville's location in Western Kentucky places it within 250 miles of Louisville, Kentucky; Nashville, Tennessee; St. Louis, Missouri and Cincinnati, Ohio. The city had a 1980 population of 4,631.

Muhlenberg County is in the heart of the Western Kentucky Coal Field Region and covers 481 square miles. The county had a 1980 population of 32,238.

### The Economic Framework

The total number of Muhlenberg County residents employed in 1981 averaged 12,570. including 372 in agriculture and 903 in government. Manufacturing employers in the county reported 690 workers; trade and services firms employed 2,667; mining employed 2,125. The greatest concentration of manufacturing employment in the county is in the apparel and lumber and wood products industries.

Per capita personal income in the county in 1980 was \$8,254, an increase of 43.3 percent since 1976.

The Greenville labor market area includes Muhlenberg and the seven adjoining counties. The total number of residents of the labor market area employed in 1981 averaged 86,582, including 5,776 in agriculture and 8,300 in government. Manufacturing employers in the labor market area reported 12,632 workers; trade and services firms employed 20,352 mining reported 6,053.

### Resources for Growth

1. There is a current estimated labor supply of 13,468 men and 9,468 women available for industrial jobs in the labor market area. In addition, 8,597 young men and 8,270 young women will become 18 years of age before 1986 and potentially available for work.

2. The Illinois Central Gulf Railroad provides rail transportation services to Greenville which include switching facilities, team track space, house track space and siding storage. The city is directly served by U. S. Highway 62, a "AAA" rated trucking route, and five Kentucky highways. In addition, the Western Kentucky Parkway, a multi-lane toll-road, serves Muhlenberg County. Eight common carriers serve Greenville. Muhlenberg County's northern and eastern borders are formed by the Green River on which a 9-foot navigational channel is maintained to the Ohio River. The nearest scheduled commercial airline service is available at Evansville Dress Regional Airport, 78 miles north of Greenville. Commuter air carrier service is available at the Owensboro-Daviess County Airport, 47 miles north of Greenville. The Muhlenberg County Airport can accommodate light aircraft.



3. Electric power is provided by the Kentucky Utilities Company and Pennyrile Rural Electric Cooperative Corporation with the Tennessee Valley Authority serving as the source of power. Natural gas service is provided by Western Kentucky Gas Company. There are four distributors of propane and five distributors of distillate fuel oil within eight miles.

4. Two public school systems operate in the Greenville area. The Greenville Independent School System serves approximately 1,000 students while the Muhlenberg County School System serves over 4,700. There are six institutions of higher learning within 65 miles of Greenville. The Madisonville State Vocational Technical School, 27 miles distant, offers training in 17 different courses. The Muhlenberg County Vocational Education Center offers eight courses.

## THE LABOR MARKET AREA

The Greenville Labor Market Area includes Muhlenberg County and the adjoining Kentucky counties of Butler, Christian, Hopkins, Logan, McLean, Ohio, and Todd.

Area	POPULATION		Percent Nonwhite
	1980	1970	
Greenville	4,631	3,875	10.2
Labor Market Area	224,221	192,119	N/A
Muhlenberg County	32,238	27,537	5.3
Butler County	11,064	9,723	0.6
Christian County	66,878	56,224	28.9
Hopkins County	46,174	38,167	7.2
Logan County	24,138	21,793	9.3
McLean County	10,090	9,062	0.8
Ohio County	21,765	18,790	1.4
Todd County	11,874	10,823	12.4

Note: The 1980 counts of population by race are provisional.

Sources: U. S. Department of Commerce, Bureau of the Census, 1980 Census of Population and Housing, March 1981. Population Research Unit, Urban Studies Center, University of Louisville, Kentucky Demographics: The 1980 Census of Kentucky, Characteristics of Population, Households, Housing, January 1982.

LABOR FORCE CHARACTERISTICS OF RESIDENTS, 1981		
	Muhlenberg County	Labor Market Area
Civilian Labor Force	14,081	94,976
Employment	12,570	86,582
Agricultural	372	5,776
Nonagricultural	12,198	80,806
Unemployment	1,511	8,394
Rate of Unemployment (%)	10.7	8.8

Source: Kentucky Cabinet for Human Resources, Kentucky Labor Estimates, Annual Averages, 1981.



ESTIMATED MALE LABOR SUPPLY  
GREENVILLE LABOR MARKET AREA

Area	Current				Future
	Total	Not in Labor Force	Unemployed	Under-employed	Reaching 18 years of age before 1986
Labor Market					
Area*	13,468	4,008	5,477	3,983	8,597
Muhlenberg	2,180	689	1,097	394	1,212
Butler	1,600	1,091	273	236	421
Christian	3,243	353	1,123	1,767	2,505
Hopkins	1,842	166	1,133	543	1,718
Logan	1,958	1,042	555	361	992
McLean	442	0	319	123	389
Ohio	1,042	0	706	336	821
Todd	1,161	667	271	223	539

\*Additional workers may be drawn from other nearby counties.

Note: Unemployed - persons unemployed and actively seeking work; Under-employed - persons employed but working only 14 to 26 weeks per year; Not in Labor Force - represents the number of persons who would enter the labor force if suitable employment were available (based on the assumption that persons in Kentucky would like to participate in the labor force in the same proportion that they do nationally).

Sources: Kentucky Cabinet for Human Resources, Kentucky Labor Supply Estimates by Area Development District and County, 1981. Kentucky Department of Economic Development, Future Labor Supply before 1986.

ESTIMATED FEMALE LABOR SUPPLY  
GREENVILLE LABOR MARKET AREA

Area	Current				Future
	Total	Not in Labor Force	Unemployed	Under-employed	Reaching 18 years of age before 1986
Labor Market					
Area*	9,468	2,945	2,917	3,606	8,270
Muhlenberg	1,225	423	414	388	1,157
Butler	397	446	228	223	419
Christian	2,953	996	858	1,099	2,426
Hopkins	1,606	401	428	777	1,628
Logan	1,018	182	462	374	981
McLean	252	0	100	152	379
Ohio	621	0	220	401	796
Todd	896	497	207	192	484

\*Additional workers may be drawn from other nearby counties.

Note: Unemployed - persons unemployed and actively seeking work; Under-employed - persons employed but working only 14 to 26 weeks per year; Not in Labor Force - represents the number of persons who would enter the labor force if suitable employment were available (based on the assumption that persons in Kentucky would like to participate in the labor force in the same proportion that they do nationally).

Sources: Kentucky Cabinet for Human Resources, Kentucky Labor Supply Estimates by Area Development District and County, 1981. Kentucky Department of Economic Development, Future Labor Supply before 1986.

GREENVILLE MANUFACTURING FIRMS,  
THEIR PRODUCTS AND EMPLOYMENT

Firm (Establishment date)	Product	Employment			Labor Unions*
		Total	Male	Female	
Anixter-Cable Service (1969)	Electrical cable	10	9	1	Teamsters*
Clinton Pallet Company (1976)	Pallets, skids	35	30	5	
Commercial Printing Service (1959)	Job print- ing	5	2	3	
Cowden Greenville Company (1965)	Jeans	198	17	181	Teamsters*
Geibel Lumber Company Inc. (1954)	Pallets, skids, hardwood lumber	24	22	2	
Greenville-Leader - Central City News (1921)	Newspaper	18	9	9	
Greenville Quarries Inc. (1948)	Crushed limestone, agricultural lime, bitu- minous con- crete	66	62	4	Steelworkers*
Jessup Log & Lumber Inc. (1971)	Mine timbers, pallet materials, wood chips	19	18	1	
Muhlenberg County Opportunity Center (1968)	Pallets and skids, signs, leather craft kit	60	25	35	
Muhlenberg Ready Mix Company Inc. (1971)	Ready-mixed concrete	9	-	-	Teamsters*
Murphy Machine Company (1966)	Tools, dies	2	1	1	

\*See Labor Organizations.

Source: Kentucky Department of Economic Development, Division of  
Research and Planning.



# LABOR ORGANIZATIONS IN MANUFACTURING FIRMS

## Union

## Representing workers at:

International Brotherhood of  
Teamsters, Chauffeurs,  
Warehousemen and Helpers  
of America

Anixter - Cable Service;  
Cowden Greenville Company;  
Muhlenberg Ready Mix Company, Inc.

United Steelworkers of  
America, AFL-CIO

Greenville Quarries, Inc.

## INDUSTRIAL SERVICES

<u>Types of Services</u>	<u>Location</u>	<u>Mileage from Greenville</u>
Tool & Die, Machine & Pattern Shops	Greenville, Kentucky	-
Metal Service Centers	Greenville, Kentucky	-
Heat Treating	Evansville, Indiana	74
Metal Finishers	Hartford, Kentucky	30
Electric Motor Repair	Madisonville, Kentucky	27

Sources: Kentucky Department of Economic Development, Kentucky Directory of Selected Industrial Services, 1981. Kentucky Department of Economic Development, Division of Research and Planning.

AVERAGE WEEKLY WAGES BY INDUSTRY,  
BY PLACE OF WORK, 1981

	<u>Muhlenberg County</u>	<u>Butler County</u>	<u>Christian County</u>	<u>Hopkins County</u>
All Industries	\$322.65	\$199.48	\$218.84	\$302.12
Mining & Quarrying	588.89	358.78	373.46	573.37
Contract Construction	333.71	163.56	278.90	300.37
Manufacturing	195.14	165.93	246.93	332.48
Transportation, Communications & Public Utilities	362.47	316.30	278.44	362.16
Wholesale & Retail Trade	210.14	176.61	189.44	200.37
Finance, Insurance & Real Estate	239.24	193.81	239.77	220.42
Services	184.85	145.18	180.53	208.16
State/Local Government	230.93	199.40	237.06	256.94
Other	225.79	*	159.53	171.62
	<u>Logan County</u>	<u>McLean County</u>	<u>Ohio County</u>	<u>Todd County</u>
All Industries	\$236.22	\$210.40	\$300.63	\$195.85
Mining & Quarrying	297.34	*	537.38	*
Contract Construction	350.53	165.47	409.51	260.52
Manufacturing	249.43	231.33	217.74	230.53
Transportation, Communications & Public Utilities	299.31	263.70	283.98	279.68
Wholesale & Retail Trade	168.47	191.82	162.94	139.70
Finance, Insurance & Real Estate	223.13	187.67	237.27	188.99
Services	167.11	174.05	175.96	108.90
State/Local Government	220.21	196.82	185.74	178.51
Other	190.47	*	109.14	119.79

\*Not disclosed.

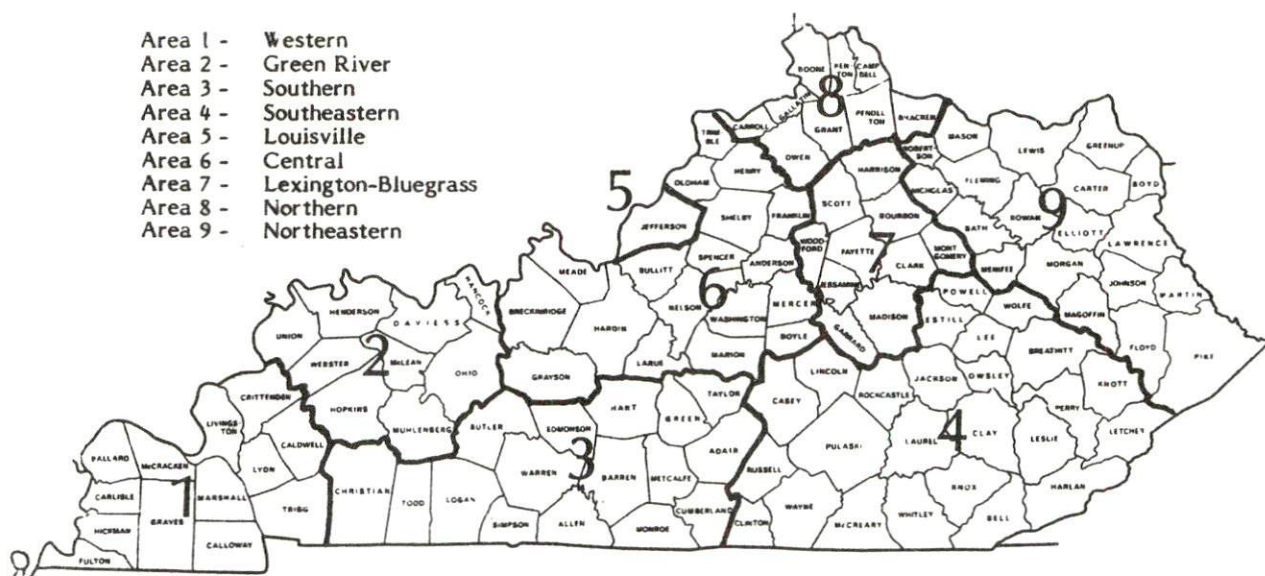
Note: Excludes domestic workers, railway workers, certain nonprofit corporations, majority of federal government workers, and self-employed workers.

Source: Kentucky Cabinet for Human Resources, Average Weekly Wages of Workers Covered by Kentucky Unemployment Insurance Law, 1981.



Occupational wage rates for specific industries are usually not available to most government agencies, and wage data furnished to state employment agencies by individual industrial employers are protected from disclosure by federal law. The most reliable up-to-date wage information can be obtained by direct contact with local employers.

Associated Industries of Kentucky, a voluntary organization of Kentucky businesses, regularly collects occupational wage rates and fringe benefits data from participating member firms. Data are compiled for over 127 clearly defined office, production, and service occupations. Tabulations are published for nine geographical areas of Kentucky, as shown on the map below. It should be noted that the data may be weighted by the preponderance of firms in the larger cities and may be somewhat higher than the rates paid in the smaller communities. Data from these tabulations are available, upon request, from the Kentucky Department of Economic Development, Frankfort, Kentucky 40601.



Associated Industries of Kentucky Area Wage Surveys

PER CAPITA PERSONAL INCOME

<u>Area</u>	<u>1976</u>	<u>1980</u>	<u>Percent Change</u>
Muhlenberg County	\$5,760	\$8,254	43.3
Labor Market Area			
Range	\$3,658 - 6,460	\$5,292 - 9,325	N/A
Kentucky	5,263	7,662	45.6
U. S.	6,367	9,511	49.4

Source: U. S. Bureau of Economic Analysis, Kentucky Economic Information System, June 1982.



## TRANSPORTATION

### Rail

Line serving Greenville - Illinois Central Gulf Railroad

Services - Four northbound and four southbound through freights daily; switching facilities; team track space for 14 cars; house track space for 12 cars; siding storage for 65-70 cars; piggyback facilities at Princeton, 46 miles distant

For details on routing, schedules, rates, and services, contact:

Director of Industrial Development  
Illinois Central Gulf Railroad  
Central Region  
Pet Plaza  
400 South 4th Street  
St. Louis, Missouri 63102  
(314) 622-6430

### Highways

Greenville is served by U. S. 62, a "AAA" rated (80,000 pound gross load limit) highway, and Kentucky Highways 181, 171, 176, 601, and 189. Access to the Western Kentucky Parkway, a multilane toll road, is nine miles northeast of Greenville via U. S. 62.

Currently under construction is a highway which will act as a by-pass for U. S. 62 on the northwest side of Greenville. When fully completed the highway will connect U. S. 62 west of Greenville with U. S. 431 approximately nine miles north of the city.

In addition, construction of a Greenville interchange off the Western Kentucky Parkway at Kentucky Highway 181 is scheduled to begin in 1984.

## Truck Service

### Company

### Home Office

A & H Truck Line Inc.*	1111 East Louisiana Street Evansville, Indiana 47711
Birmingham Nashville Express**	P. O. Box 100417 Nashville, Tennessee 37210
Duff Truck Line Inc.*	P. O. Box 359 Lima, Ohio 45802
Majors Transit Inc.**	P. O. Box 7 Caneyville, Kentucky 42721
McLean Trucking Company*	P. O. Box 213 Winston-Salem, North Carolina 27154
Overnite Transportation Company*	P. O. Box 1216 Richmond, Virginia 23209
Roadway Express Inc.*	1077 Gorge Boulevard Arkon, Ohio 44309
Robbins Truck Line Inc.**	Route 1 Hardinsburg, Kentucky 40143

\*Interstate only.

\*\*Interstate and intrastate.



Other Freight ServicesNearest Shipping Center or Home Office

Purolator Courier Corporation\*  
 United Parcel Service\*\*  
 KATO Express Inc. (air  
 cargo service)\*\*\*

Evansville, Indiana, 74 miles distant  
 Madisonville, Kentucky, 27 miles distant  
 Elizabethtown, Kentucky, 91 miles distant

HIGHWAY MILES AND TRUCK TRANSIT TIME IN DAYS FROM  
 GREENVILLE, KENTUCKY, TO SELECTED MARKET CENTERS

City	Highway Miles	Delivery		City	Highway Miles	Delivery	
		Time TL				Time TL	
Atlanta, Ga.	365	2		Los Angeles, Ca.	2,089	5	
Baltimore, Md.	732	4		Louisville, Ky.	134	1	
Birmingham, Ala.	319	2		Nashville, Tenn.	123	1	
Chicago, Ill.	366	1		New Orleans, La.	640	3	
Cincinnati, Ohio	235	1		New York, N. Y.	882	4	
Cleveland, Ohio	479	1		Pittsburgh, Pa.	522	3	
Detroit, Mich.	494	1		St. Louis, Mo.	244	1	
Knoxville, Tenn.	300	1					

Note: Mileage computations are via the best interstate or primary highways, not necessarily the most direct route of travel.

Sources: Rand McNally Road Atlas, 1979. Official Kentucky Mileage Map, 1979. Delivery time - Majors Transit Inc., P. O. Box 7, Caneyville, Kentucky 42721.

\*For regular scheduled pickups or for occasional pickups, arrangements must be made with the Evansville, Indiana, office of Purolator Courier Corporation.

\*\*For regular scheduled pickups or for occasional pickups, arrangements must be made with the Louisville, Kentucky office of United Parcel Service.

\*\*\*Daily pickup and delivery service is available to and from Standiford Field in Louisville. Arrangements for service should be made through the home office in Elizabethtown.

## Air

### Local

Muhlenberg County Airport  
Location: Adjacent to Greenville City Limits  
Runways: 1 paved  
Length: 4,200 feet  
Traffic  
Control: Wind tee, ADF  
Lighting: Sundown to sunrise, runway lights, rotating beacon,  
VASI, strobe lights  
Services: 100 octane, charter, flight instruction, A & P repairs,  
hangars on space available basic, tie downs, paved  
parking lot, car rentals  
Air Freight  
Service: Chartered air freight services must be arranged.

### Nearest Scheduled Airline Service\*

Evansville Dress Regional Airport  
Location: 4 miles north of Evansville, Indiana; 78 miles  
north of Greenville  
Runways: 3 paved  
Length: 8,021 feet; 5,088 feet; 3,500 feet  
Traffic  
Control: Tower  
Lighting: Beacon, runway  
Services: USAir, Eastern, Britt Airways, Comair; fuel - 80,  
100LL; hangars, tie-downs; major A & P repairs,  
major Avionics repairs; flight instruction, APU,  
charter, oxygen, plane rental, survival equipment;  
taxi, car rentals, courtesy car; weather information,  
restaurant  
Air Freight  
Service: Air freight terminal

\*Commuter air carrier service is provided by Allegheny Commuter at the Owensboro-Daviess County Airport which is located 3 1/2 miles west-south-west of Owensboro, Kentucky; 47 miles north of Greenville.



Bus - Marianna Coach Line

Taxi - One company.

Rental Services - Car, truck and trailer rentals are available locally.

Water

The nearest navigable river is the Green River, which forms the northeastern boundary of Muhlenberg County. A 9-foot navigational channel is maintained from Rochester to the Ohio River.

Public port facilities are located in Owensboro, 44 miles north of Greenville on the Ohio River. The port provides general cargo and warehousing facilities, coal loading facilities, as well as liquid cargo storage.

## POWER AND FUEL

### Electricity

Company serving Greenville and northern Muhlenberg County - Kentucky  
Utilities Company  
Source of power - Kentucky Utilities Company  
Total generating capacity - 2,639,100 KW\*  
For industrial rates contact:

Industrial Development Department  
Kentucky Utilities Company  
One Quality Street  
Lexington, Kentucky 40507  
(606) 255-1461

Company serving southern Muhlenberg County - Pennyryle Rural Electric  
Cooperative Corporation  
Source of power - Tennessee Valley Authority  
Total generating capacity - 31,109,160 KW  
For industrial rates contact:

South Kentucky Industrial Development  
Association Inc.  
P. O. Box 726  
Hopkinsville, Kentucky 42240  
(502) 885-5392

and/or

Pennyryle Rural Electric Cooperative Corporation  
2000 Harrison Street  
P. O. Box 551  
Hopkinsville, Kentucky 42240  
(502) 886-2555

\*A new generating unit is under construction in Carroll County. Due to be completed in 1984, the unit will have a generating capacity of 511,000 KW.

## Natural Gas

Company serving Greenville - Western Kentucky Gas Company  
Source of supply - Texas Gas Transmission Corporation  
Size of transmission mains - 6, 10, 12, and 18 inches (supplier);  
4 inches (distributor)  
Distribution mains - 2, 4 and 6 inches  
Distribution pressure - 5 to 50 psi  
Btu content - 1,004 per cubic foot  
Specific gravity - .60  
For rates and supplies contact:

Western Kentucky Gas Company  
311 West Seventh Street  
Owensboro, Kentucky 42301  
(502) 685-8000

## Other Fuels

### Propane (Within 8 miles)

Conrad & Smith Incorporated  
North Second Street  
Central City, Kentucky 42330

Southern States Cooperative  
212 West Depot Street  
Greenville, Kentucky 42345

Roy Lam Sales Company  
124 South Second Street  
Central City, Kentucky 42330

Texgas Corporation  
Highway 70 W  
Central City, Kentucky 42330

## Fuel Oils

### Distillate fuel oil - (Within 8 miles)

Ashland Oil Company  
West Depot Street  
Greenville, Kentucky 42345

F. M. Puryear & Company (Texaco)  
West Depot Street  
Greenville, Kentucky 42345

Darrell Baird Distributor  
(Gulf)  
301 Walnut Street  
Central City, Kentucky 42330

Quality Oil Company  
North Front Street  
Central City, Kentucky 42330

Conrad & Smith Incorporated  
North Second Street  
Central City, Kentucky 42330

Residual fuel oil - Arrangement must be made with the refinery.

Low sulphur content coal - Available in Kentucky.



## WATER AND SEWERAGE

### Public Water Supply

Company serving Greenville - Greenville Utilities Commission  
P. O. Box 283  
Greenville, Kentucky 42345  
(502) 338-2642

Source - Three lakes

Treatment plant capacity - 750,000 gallons per day

Average daily consumption - 500,000 gallons

Peak daily consumption - 633,000 gallons

Type treatment - Filtration, chlorine, lime, alum, fluoride

Storage capacity - 650,000 gallons

Size lines - 1, 2, 4, 6, 8 and 10 inches

Average pressure - 80 psi

### MONTHLY WATER RATES

First	1,000 gallons	\$3.90 per M gallons
Next	1,000 gallons	1.70 per M gallons
Next	3,000 gallons	1.60 per M gallons
Next	5,000 gallons	1.40 per M gallons
Next	40,000 gallons	1.00 per M gallons
All over	50,000 gallons	.90 per M gallons

Tap-on charge:	3/4-inch	\$125
	1-inch	175
	Over 1-inch	Cost of labor and materials

Name of water district - Muhlenberg County Water District  
P. O. Box 348  
Greenville, Kentucky 42345  
(502) 338-1300

Area served - Graham, Depoy, Nebo, R. R. #1, Central City, Powderly,  
R. R. #2, Greenville, Rosewood, Cleaton, R. R. #1, Greenville,  
Drakesboro, Browder

Date when water district began operating - 1967

Source of supply of treated water - City of Central City

Average amount of water used in a 24-hour period - 800,000

Storage capacity - 1,768,000 gallons

Average pressure - 75 psi

Size lines - 3 to 10 inches

Rates -

First	2,000 gallons	\$6.00 (Minimum)
Next	8,000 gallons	2.70 per M gallons
Next	10,000 gallons	2.30 per M gallons
Next	30,000 gallons	1.80 per M gallons
Over	50,000 gallons	1.10 per M gallons

Tap-on charge:	3/4-inch	\$350
	1-inch	450
	1 1/2-inch	550
	2-inch	750

Raw Water

Surface water sources - Green River and Pond River

Average discharge - Green River at Paradise, 9,522 cfs (31 years, USGS)  
unadjusted; Pond River near Apex, 269 cfs (40 years, USGS)

Expected ground water yield - 50 to 200 gpm in band running east-west  
through south central portion of county; 5 to 50 gpm in band running  
east-west through central and north central portions of county; 5  
gpm or less over remainder of county

## Sewerage

Company serving Greenville - Greenville Utilities Commission  
P. O. Box 283  
Greenville, Kentucky 42345  
(502) 338-2642

Design capacity - 500,000 gallons per day

Average daily flow - 350,000 gallons per day

Treatment - Primary and secondary

Type treatment - Clarifier, drying beds, digester, trickling filter

Treated effluent discharged into - Caney Creek

Size of sanitary mains - 6, 8 and 10 inches

Size of storm mains - 18 to 24 inches

Rates - 70 percent of monthly water bill with minimum rate of \$3.35  
for the first 3,500 gallons of water used.

Tap-on charge: \$100



## CLIMATE

### Muhlenberg County

#### Temperature

Normal (30-year record)	56.00 degrees
Average annual 1980	55.40 degrees
Record highest, July 1954 (40-year record)	105.00 degrees
Record lowest, February 1951 (40-year record)	-23.00 degrees
Normal heating degree days (30-year record)	4,629
(Heating degree day totals are the sums of negative departures of average daily temperatures from 65 degrees F.)	

#### Precipitation

Normal (30-year record)	41.88 inches
Mean annual snowfall (40-year record)	14.30 inches
Total precipitation 1980	35.76 inches
Mean number days precipitation (.01 inch or more) (40-year record)	115
Mean number days thunderstorms (40-year record)	45

#### Prevailing Winds (14-year record)

South-Southwest

#### Relative Humidity (19-year record)

Midnight	78 percent
6 a.m.	81 percent
Noon	59 percent
6 p.m.	62 percent

Source: U. S. Department of Commerce, Environmental Science  
Services Administration, Climatological Data, 1980.  
Station of record: Evansville, Indiana.

## LOCAL GOVERNMENT

### City

Structure - Mayor - 4-year term; 6 council members - 2-year terms  
Budget 1982 - General Fund \$702,690  
                  Water and Sewer Fund \$438,052  
Fees and licenses - Business licenses range from \$10 to \$120 annually;  
                  manufacturers with 25 employees or less - \$50 annually, more than  
                  25 employees - \$75 annually; auto sticker - \$10 annually

### County

Structure - County Judge/Executive - 4-year term;  
          5 magistrates - 4-year terms  
Budget 1981-82 - General Fund \$776,030; Road Fund \$1,310,167

### Assessed Value of Property, 1981\*

<u>Classes of Property</u>	<u>Greenville</u>	<u>Muhlenberg County</u>
Real Estate	\$60,690,776	\$309,755,575
Tangibles	20,519,352	182,817,700

### Property Taxes

All property in Kentucky is assessed at 100 percent of fair cash value.

Land and buildings are taxed by the state and may be taxed by local jurisdictions. The state rate is \$0.229 per \$100 of assessed valuation.

Manufacturing machinery, raw materials inventories, pollution control equipment, and goods in the process of manufacture are not subject to local taxation. The state rate is \$0.15 per \$100.

Other tangible personal property owned by manufacturers (automobiles, trucks, finished goods, office furniture, office equipment) is taxed by the state at \$0.45 per \$100 and may be taxed by local jurisdictions.

Property stored in public warehouses in a transit status is not subject to local taxation. The state rate is only \$0.015 per \$100.

Intangible personal property located in Kentucky (money in hand, shares of stock, notes, bonds, accounts receivable, and other credits) is taxed by the state at \$0.25 per \$100, and is not subject to local taxation.

Private leaseholds in industrial facilities owned by cities or counties and financed by industrial revenue bonds are subject to a state tax of \$0.015 per \$100 of value (essentially the lessee's equity, adjusted for appreciation or depreciation). Local taxation is not permitted.

\*Excludes Homestead Exemptions.

Combined State and Local Rates Per \$100 Valuation, 1981\*  
(100% assessment)

	<u>Inside City of Greenville</u>	<u>Site Inside Unincorporated Muhlenberg County</u>
1. Land and buildings	\$0.852	\$0.418
2. Mfg. machinery, raw materials, goods in process, pollution control equipment	0.150	0.150
3. Finished goods, office equipment, vehicles, other tangibles	1.073	0.639
4. Intangibles (accounts rec., notes, bonds, etc.)	0.250	0.250
5. Leaseholds in industrial revenue bond financed plants	0.015	0.015

Planning and Zoning

Joint agency - Muhlenberg County Joint Planning Commission  
 Zoning enforced - Within the cities of Greenville and Central City  
 Subdivision regulations enforced - Within the cities of Greenville and Central City and 5 miles beyond corporate limits  
 Local codes enforced - Buildings and housing  
 Mandatory state codes enforced - Kentucky Plumbing Code, National Electric Code, Kentucky Boiler Regulations and Standards, Kentucky Building Code (modeled after BOCA code)

\*Kentucky Department of Economic Development.



## Safety

<u>Police</u>	<u>Greenville</u>	<u>Muhlenberg County</u>
Total staff	7	6 full-time 1 part-time
Radio-patrol cars	2	5

## Fire

Insurance Services		
Office, Public		
Protection		
Classification	7	10
Full-time staff	4	-
Volunteers	26	-

## Rescue Service

Greenville Fire Department Rescue Squad:

Number of volunteers - 26 including 13 emergency medical technicians and 3 CPR instructors

Equipment - Two emergency trucks, boat and motor, dragging equipment, extraction equipment, porta power, oxygen and miscellaneous rescue equipment

Personnel training - First aid, EMT and CPR

## Refuse Collection and Disposal

	<u>Greenville</u>	<u>Muhlenberg County*</u>
Type service	Private	Containers are placed
Fee charged:		in various locations
residential	\$4 per month	throughout the county
business	Contract	for refuse disposal
industrial	Contract	
Collection frequency:		
residential	Once weekly	
business	Contract	
industrial	Contract	
Trash pickup	Once weekly	
Disposal method	Sanitary landfill	

\*Tentative plans are under way to establish "convenient sites" at various locations throughout the county for refuse disposal. Plans call for an attendant to be on duty.

## EDUCATION

### Public Schools

	<u>Greenville*</u> <u>Independent</u>	<u>Muhlenberg County**</u>
Total Enrollment (May 1982)	963 (includes kinder- garden)	4,776
Elementary	561	2,591
Junior High	-	788
High School	402	1,397
Student-Teacher Ratio	20-1	21-1
Elementary	22-1	22-1
Junior High	-	25-1
High School	18-1	19-1
Percent High School Graduates to College (1981)	57.8	18.8
Expenditures Per Pupil (1980-81)	\$1,237.33	\$1,417.61
Bonded Indebtedness (June 30, 1981)	\$1,726,000	\$111,000

### Nonpublic Schools (Muhlenberg County)

	<u>St. Joseph</u>
Total Enrollment	29
Elementary	29
Student-Teacher Ratio	10-1
Elementary	10-1

\*The Greenville School District recently completed expansions and renovations totaling \$400,000.

\*\*Muhlenberg County School officials plan \$1 million in expansions during 1982-83.

### Area Colleges and Universities

<u>Name</u>	<u>Location (Miles distant)</u>	<u>Enrollment (Fall, 1981)</u>	<u>Highest Degree Conferred</u>
Madisonville Community College	Madisonville (27)	966	Associate
Hopkinsville Community College	Hopkinsville (41)	1,082	Associate
Brescia College	Owensboro (44)	890	Baccalaureate/ Masters*
Kentucky Wesleyan College	Owensboro (44)	927	Baccalaureate/ Masters*
Western Kentucky University	Bowling Green (58)	13,174	Masters, Specialist/ Doctorate**
Henderson Community College	Henderson (64)	923	Associate

\*Masters degree programs are taught by members of the Western Kentucky University or Murray State University faculty. The degree is issued by Western Kentucky University.

\*\*Joint doctoral degree programs are offered in cooperation with the University of Kentucky, Lexington, and cooperative doctoral degree programs are offered with the University of Louisville.



## Vocational Schools

Both the state vocational-technical schools and the area vocational education centers are operated by the Kentucky Department of Education. The state vocational-technical schools enroll persons full time who are at least 16 years of age and not in school. These students attend classes for six hours each day. The area vocational education centers are designed to accommodate high school students who are at least 15 years of age. These students attend vocational school for three hours each day. The state vocational-technical schools and the area education centers offer evening courses to enable working adults to upgrade current job skills.

### Nearest State School

Location	Madisonville State Vocational-Technical School
Miles distant	Madisonville 27
Curriculum	Health and Personal Services Occupations Licensed Practical Nursing Medical Laboratory Technician - C Medical Secretary Nurse's Aide/Orderly Radiologic Technology Respiratory Therapy Surgical Technologist Industrial Education Auto Body Repair Auto Mechanics Carpentry Diesel Mechanics Drafting Electronics Industrial Electricity Machine Shop Mine Equipment Maintenance and Operations Welding Learning Resource Center

Nearest Area Education Center

Location	Muhlenberg County Area Vocational Education Center
Curriculum	Greenville Business and Office Accounting/Jr. Management Clerical Secretarial Health and Personal Services Occupations Health Careers Industrial Education Auto Mechanics Carpentry Industrial Electricity Welding

Arrangements can be made to provide training in the specific production skills required by an industrial plant. Instruction may be conducted either in the vocational school or in the industrial plant, depending upon the desired arrangement and the availability of special equipment.

## HEALTH

### Local Medical Personnel (Muhlenberg County)

Physicians - 21  
Dentists - 8

### Hospitals

<u>General Hospital</u>	<u>Location</u>	<u>Beds</u>
Muhlenberg Community Hospital*	Greenville	135*

General hospital facilities - Equipped to accommodate major and minor surgery (including vascular surgery), ultrasound, special procedures, X-ray and EKG machines, laboratory, physical therapy and inhalation therapy, miners' respiratory clinic, emergency services, coronary care unit, maternity unit, nuclear medicine, stress testing, pulmonary function lab, skilled nursing facility

Medical staff - 21 doctors, 42 registered nurses, 46 licensed practical nurses

### Other Medical Facilities

Pennyroyal Center - Muhlenberg County Area Clinic  
The Greenville Doctors Clinic  
The Central City Medical Building

### Ambulance Service

Name - Community Ambulance Service (Department of Muhlenberg Community Hospital)  
Staff - 14 emergency medical technicians (6-full-time, 8 part-time), 3 paramedics  
Service - 24-hour, county-wide  
Equipment - 4 fully-equipped ambulances

### Public Health

Facility - Muhlenberg County Health Department (Greenville & Central City)  
Staff - Administrator, one registered nurse, two licensed practical nurses, one environmentalist, four clerks

---

\*A major renovation project is under way at the Muhlenberg Community Hospital. The \$12 million project began during the summer of 1982 and is scheduled for completion during 1984.

\*\*105 beds in acute hospital, 30 beds in skilled nursing facility.



## OTHER LOCAL FACILITIES

### Communications

Telephone - South Central Bell Telephone Company  
Services - Standard

Telegraph - Western Union  
Services - Toll-free number, 1-800-325-5100

Postal - U. S. Post Office  
Class - First  
Mail received - Once daily  
Mail dispatched - Once daily

Newspapers - Leader-News  
Weekly and circulation - 9,200  
Other papers  
received from - Louisville, Madisonville and Owensboro,  
Kentucky; Evansville, Indiana

Radio - WMTA-AM, WNES-AM, WKYF-FM, WGKY-AM  
Stations received from - Madisonville, Owensboro, Henderson, Louisville  
and Russellville, Kentucky; Nashville,  
Tennessee; Evansville, Indiana

Television -  
Cable service  
Reception from - Bowling Green, and Paducah, Kentucky; Evansville,  
Indiana; Nashville, Tennessee; Atlanta, Georgia  
Kentucky Educational  
Television - Madisonville transmitter, Channel 35

### Library Services

Public library - Harbin Memorial Library, Greenville  
Size collection - 71,425 volumes (total Muhlenberg County Library)  
Circulation - 1980-81 - 143,166 (total Muhlenberg County Library)  
Services - Bookmobile, story hour, circulates periodicals, records,  
film, information file, visual equipment, framed pictures,  
audiovisual service, copier machine, book information by telephone,  
microfilm, microfiche, reader and printer, genealogical collection,  
ceramics and art shows, off-campus classes (Western Kentucky  
University and Madisonville Community College) and community  
meeting room.

### Religious Institutions

Number of churches - 22  
Denominations - AME Zion  
Assembly of God  
Baptist  
Christian  
Church of Christ  
Church of God  
Jesus Christ of Latter Day Saints  
Presbyterian  
United Methodist

Nearest Synagogues - Owensboro, 44 miles distant  
Congregations - Adath Israel

### Financial Institutions

<u>Banks</u>	<u>Assets</u>	<u>Deposits</u>	<u>Statement Date</u>
First State Bank	\$81,596,870.46	\$71,882,911.05	12/31/81

<u>Savings and Loan Association</u>	<u>Assets</u>	<u>Savings Accounts</u>	<u>Statement Date</u>
First Federal Savings and Loan Association	\$95,039,247.32	\$90,198,930.84	12/31/81

### Hotels and Motels

#### Muhlenberg County

Total number - 5  
Total rooms - 158

## Clubs and Organizations

Aeolian Music Club	Saddle Club
Archery Club	Show Horse Club
Art Guild	Sky Diving
Athletic Boosters	Sportsman's Club
Babe Ruth League	Teens Who Care
Band Boosters	Tops Club
Beta Club	Veterans of Foreign Wars
Big M Bass Club	Veterans of Foreign Wars
Boys Clubs of America	Ladies' Auxiliary
Boy Scouts	Woman's Club
Brownies	Young at Heart Club
Business and Professional Women's Club	
Chamber of Commerce	
Citizens' Band Radio Club	
Coal Duster Square Dance Club	
Conservation Club	
Cub Scouts	
Daughters of the American Revolution	
Eastern Star	
Fire Department Auxiliary	
4-H Club	
Future Business Leaders of America (FBLA)	
Future Farmers of America (FFA)	
Future Homemakers of America (FHA)	
Future Teachers of America (FTA)	
Genealogical and Historical Society	
Girl Scouts	
Homemakers of America	
Jaycees	
Jaycettes	
Junior Homemakers	
Key Club	
Kiwanis	
Lions	
Lioness	
Little League Baseball	
Little League Football	
Masons	
Medical Auxiliary	
Muhlenberg County React	
Parent-Teacher Association (PTA)	
Rebekah Lodge	
Red Cross	
Retail Merchants	
Retired Teachers	
Rotary	
Rotarians	



## RECREATION

### Local

Greenville offers a variety of local recreational facilities. The J. P. Morgan Memorial Park, a 15-acre recreation area on the east end of Greenville, contains a playground, a pavilion, two tennis courts, basketball courts and a vita course. In addition, construction of a swimming pool at the park will begin during 1982. Two baseball parks are located in the city providing organized leagues from T-ball to adults.

The Greenville Country Club has a 9-hole golf course with exchange privileges with Central City, a new Olympic-size swimming pool and tennis courts. The Terribonne Racket and Swim Club is situated on 35 acres and offers a 2,500-square-foot clubhouse. The club features tennis courts and an Olympic size swimming pool.

Local tourist attractions include: Coal Festival, Greenville Annual Men's Invitational Golf Tournament, Greenville Annual Arts and Crafts Fair, local flea markets, and the State Washer Pitching Championship.

Lake Malone State Park, located in southern Muhlenberg County, offers camping facilities, swimming, fishing and boating on a 788-acre lake. Playground facilities and picnic shelters are located in a beautiful scenic cliff area. Located across from the entrance to the park is an inn featuring luxury rooms, a restaurant, a swimming lake, a beach, boating, fishing, tennis, and nature trails.

### Area (Within 80 miles)

Embraced by probably the most beautiful wooded area in Western Kentucky, Pennyriple Forest State Resort Park at Dawson Springs is located 32 miles west of Greenville. The lodge and cottages nestled within the trees provide excellent accommodations. Other facilities and activities include a dining room, a gift shop, rental rowboats and pedal boats, a 9-hole golf course, hiking trails, horseback riding, picnicking, playgrounds, shuffleboard, swimming at the lodge pool and off a sand beach, and two tennis courts. Lake Beshear, only four miles from the lodge, sports good fishing.

Jefferson Davis Monument State Shrine is located 39 miles south of Greenville at Fairview. The shrine is at the site of the birthplace of Jefferson Davis, a former U. S. Senator, Secretary of War, and the only president of the Confederate States of America. The 16-acre park contains a 351-foot obelisk with an elevator to the top for viewing, a museum, a gift shop, and a playground with picnic tables.

Lake Barkley State Resort Park, 55 miles southwest of Greenville at Cadiz, is located on the scenic Little River embayment of the 58,000-acre Lake Barkley. The magnificent lodge includes 120 rooms, four suites, nine cottages, a dining room, a coffee shop, a gift shop, two meeting rooms, and a recreation room. An activities center with a capacity for 400 and a 80-site campground are located near the lodge. A lodge pool, a beach and a bathhouse, an 18-hole golf course, tennis courts, a riding stable, a trapshooting range, a basketball court, hiking trails, playgrounds, and a picnic area comprise the recreational facilities. The marina near the lodge has everything for the "boat lover": covered and open slips, launching ramp, and rentals for fishing boats, skiing boats, and pleasure ride pontoons.

Ben Hawes State Park, 57 miles north of Greenville near Owensboro, is a 300-acre park which is open year-round. It contains a softball field, tennis courts, an archery range, hiking trails, a picnic area and shelters, and an 18-and 9-hole golf course.

The Land Between the Lakes, located on a 170,000-acre wooded peninsula approximately 62 miles from Greenville, is an outdoor recreational and conservational education center. Camping, swimming, fishing, boating, hiking, a buffalo herd on a 250-acre range, an Environmental Education Center for school study groups, an educational farm and a central station with films and displays are among the attractions.

Just north of Henderson, 64 miles northwest of Greenville, is the John James Audubon State Park, a 692-acre park where the famed naturalist gathered material for his paintings. "The Birds of America." Many paintings by Audubon and his sons, and 126 first-edition prints of his paintings are on display at the Audubon Memorial and Nature Museum which is the focal point of the park. Other park features include the Audubon woods, a bird sanctuary, and a 12-acre nature preserve lake. The park has cottages and camping sites. Recreational facilities include a 28-acre recreational lake, a beach and a bathhouse, rental rowboats and pedal boats, a dock, a 9-hole golf course, hiking trails, picnic shelters, and playgrounds. Organized recreation programs are offered during the summer.

Charm and serenity exemplify Kenlake State Resort Park which is located on the 160,000-acre Kentucky Lake, 75 miles southwest of Greenville. The park offers hotel and cottage accommodations and an efficient camping site. Other facilities include a 9-hole golf course, pool and lake swimming, horseback riding, hiking trails, fishing, boating, picnicking, playgrounds, shuffleboard, planned recreation, and one of the finest tennis complexes in the area.

Noteworthy for its spaciousness and perfect grooming, Rough River Dam State Resort Park at Falls of Rough, is 75 miles northeast of Greenville. The 377-acre park on Rough River Lake has a 40-room lodge with a dining room, a coffee shop, a gift shop, and a meeting room. Cottages and camping sites are also available. Recreational facilities include a launching ramp, a dock with open and covered slips, fishing and pleasure boat rentals, a 9-hole golf course, a swimming pool, a sand beach with a bathhouse complex, three tennis courts, an archery



range, hiking trails, picnic and playground areas, and planned recreation. Cruise boat excursions on Rough River Lake are available on the "Lady of the Lake."

Kentucky Dam Village State Resort, located 78 miles west of Greenville at Gilbertsville, is one of the largest and most popular vacation resorts in Kentucky. A modern lodge with 72 rooms, six different cottage types, and a 225-site campground make up the accommodations. A recently completed convention center has a theater-seating capacity of 750 persons and a seating capacity of 500 for dinner. For smaller groups, the convention center can be partitioned. There is also a dining room overlooking the 160,000-acre Kentucky Lake, a coffee shop, a snack bar, two gift shops, a meeting room, an activities center, and a recreation room. Recreational activities to choose from include boating and fishing at the largest docking facility in the Kentucky parks system, golf at the 18-hole Village Green Course, hiking, horseback riding, picnicking, swimming at the lodge pool or off the sand beach, and tennis.