

1985

# Industrial Resources: Nicholas County - Carlisle

Kentucky Library Research Collections  
Western Kentucky University, [spcol@wku.edu](mailto:spcol@wku.edu)

Follow this and additional works at: [https://digitalcommons.wku.edu/nicholas\\_cty](https://digitalcommons.wku.edu/nicholas_cty)



Part of the [Business Administration, Management, and Operations Commons](#), [Growth and Development Commons](#), and the [Infrastructure Commons](#)

---

## Recommended Citation

Kentucky Library Research Collections, "Industrial Resources: Nicholas County - Carlisle" (1985). *Nicholas County*. Paper 6.  
[https://digitalcommons.wku.edu/nicholas\\_cty/6](https://digitalcommons.wku.edu/nicholas_cty/6)

This Report is brought to you for free and open access by TopSCHOLAR®. It has been accepted for inclusion in Nicholas County by an authorized administrator of TopSCHOLAR®. For more information, please contact [topscholar@wku.edu](mailto:topscholar@wku.edu).

IR Nicholas County

426

**RESOURCES  
FOR  
ECONOMIC  
DEVELOPMENT**

**CARLISLE**

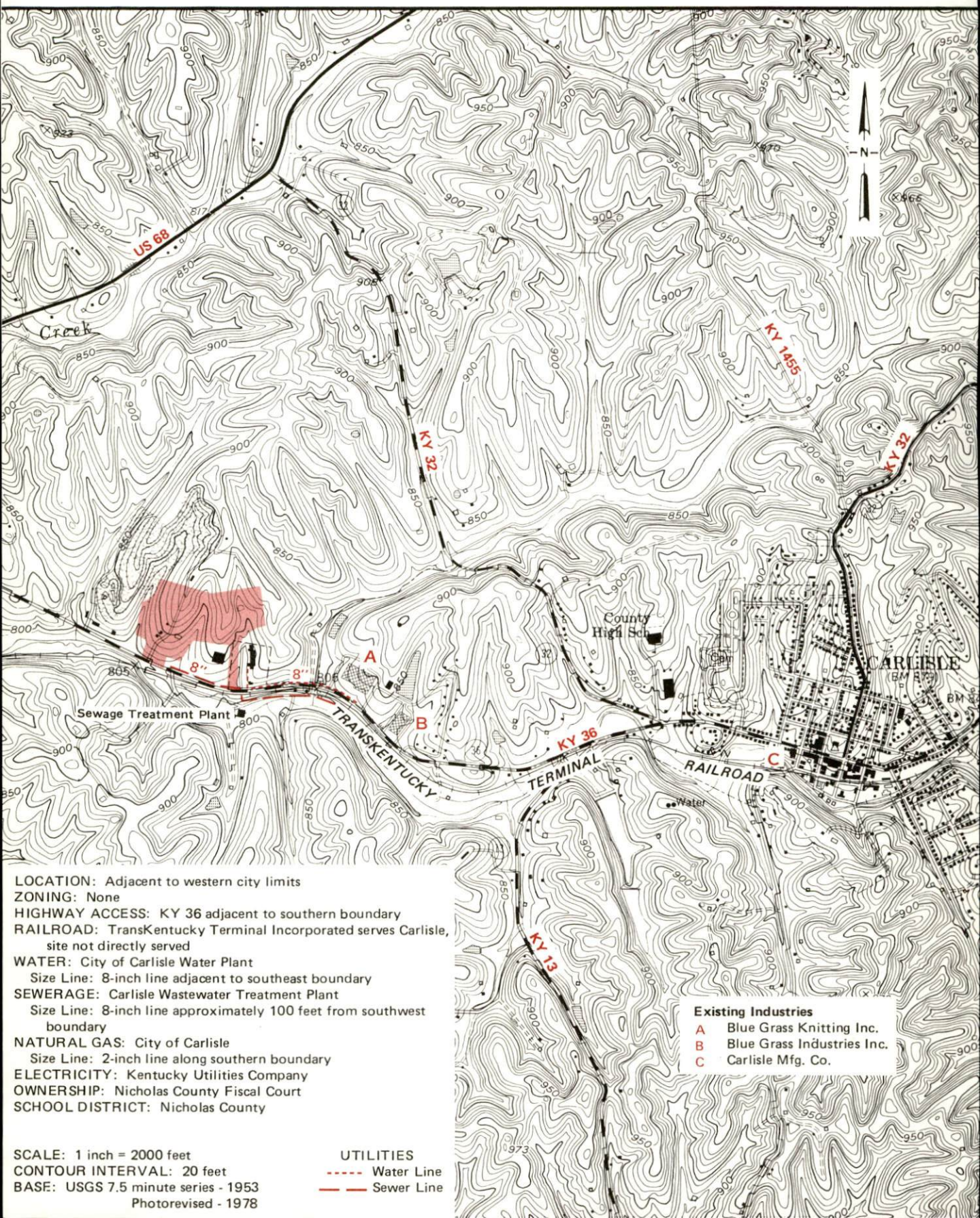
**KENTUCKY**

The Business Environment is Right



# CARLISLE, KENTUCKY --- Site 185 --- 42 Acres

For more information contact the Kentucky Department of Economic Development, Industrial Development & Marketing Division, Capital Plaza Tower, Frankfort, Kentucky 40601 (502-564-7140).





RESOURCES FOR ECONOMIC DEVELOPMENT

CARLISLE, KENTUCKY

Prepared by  
The Kentucky Department of Economic Development  
Division of Research and Planning  
in cooperation with  
The Carlisle-Nicholas County Chamber of Commerce

1985



Program manager - Andrew Dennis; research - James R. Thompson; clerical - Bobbi Graves; graphics - Frank Ferrante, Tony Cecconi, Robert Owens; cartography - Site Evaluation Branch, Division of Industrial Development and Marketing. Cost of printing paid from state funds.

## TABLE OF CONTENTS

<u>Chapter</u>	<u>Page</u>
INDUSTRIAL SITES .....	i
CARLISLE, KENTUCKY - A RESOURCE PROFILE .....	1
THE LABOR MARKET AREA.....	3
Population .....	3
Labor Force Characteristics of Residents, 1983 .....	3
Selected Components of Nonagricultural Employment, by Place of Work, 1983 .....	4
Carlisle Manufacturing Firms, Their Products and Employment.....	4
Labor Organizations in Manufacturing Firms .....	4
Industrial Services .....	5
Estimated Male Labor Supply .....	6
Estimated Female Labor Supply .....	6
Average Weekly Wages By Industry, by Place of Work, 1983 .....	7
Per Capita Personal Income .....	9
TRANSPORTATION .....	10
Rail .....	10
Highways .....	10
Truck Service .....	10
Air .....	12
Rental Services .....	12
Water .....	12
POWER AND FUEL .....	13
Electricity .....	13
Natural Gas .....	14
Other Fuels .....	14
WATER AND SEWERAGE .....	15
Public Water Supply .....	15
Raw Water .....	16
Sewerage .....	16
CLIMATE .....	17

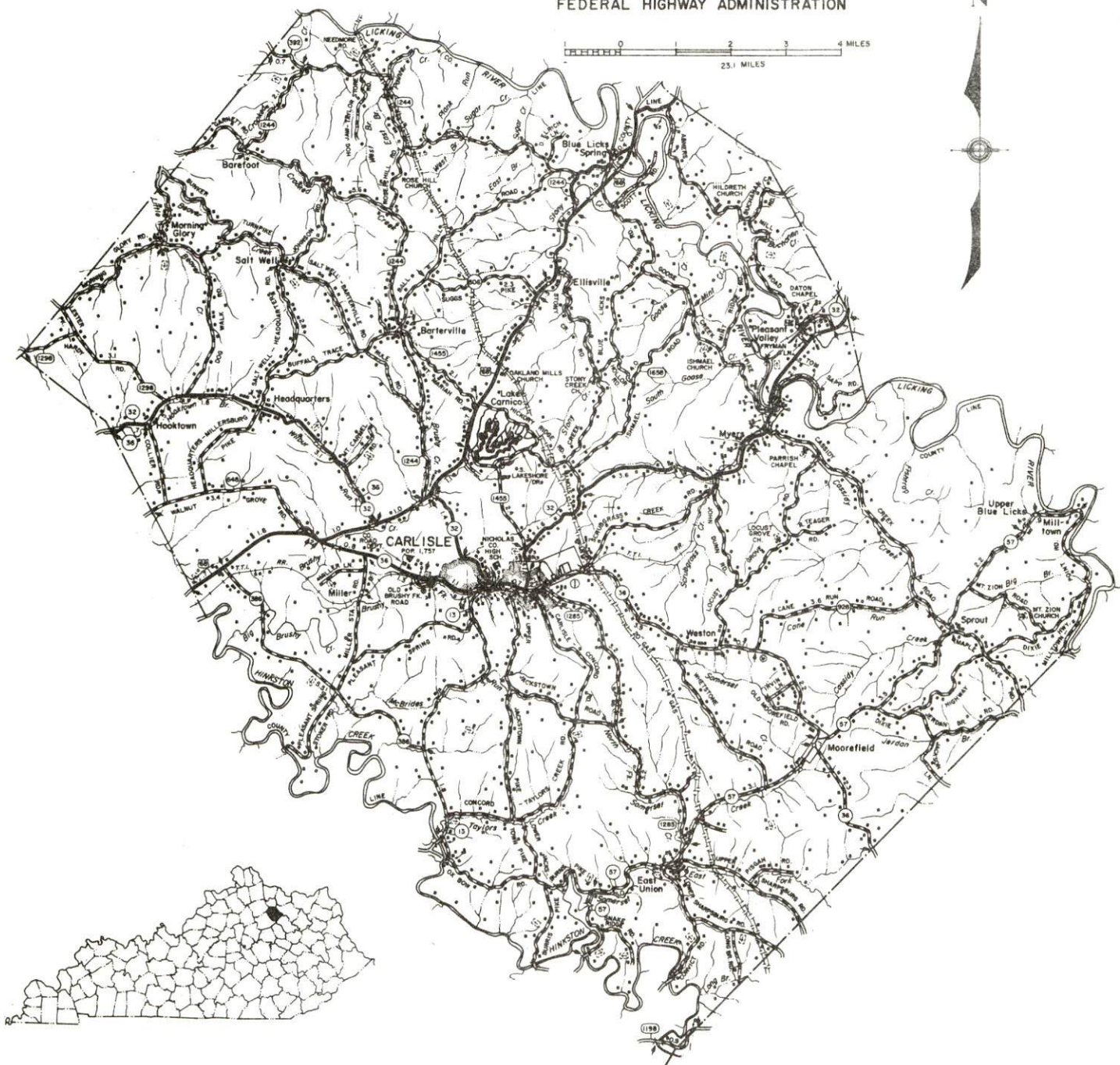


<u>Chapter</u>	<u>Page</u>
LOCAL GOVERNMENT .....	18
City .....	18
County .....	18
Assessed Value of Property, 1984 .....	18
Property Taxes .....	18
Combined State and Local Rates Per \$100 Valuation, 1984 .....	19
Planning and Zoning .....	19
Safety .....	19
Police .....	19
Fire .....	19
Rescue Service .....	20
Refuse Collection and Disposal .....	20
EDUCATION .....	21
Public Schools .....	21
Area Colleges and Universities .....	22
Vocational Schools .....	23
HEALTH .....	25
Local Medical Personnel .....	25
Hospitals .....	25
Other Medical Facilities .....	25
Ambulance Service .....	25
OTHER LOCAL FACILITIES .....	26
Communications .....	26
Library Services .....	26
Religious Institutions .....	27
Financial Institutions .....	27
Clubs and Organizations .....	27
RECREATION .....	28
COMMUNITY IMPROVEMENTS .....	30

1984 EDITION  
GENERAL HIGHWAY MAP  
**NICHOLAS COUNTY**  
**KENTUCKY**

PREPARED BY THE  
KENTUCKY TRANSPORTATION CABINET  
DEPARTMENT OF HIGHWAYS  
DIVISION OF PLANNING  
IN COOPERATION WITH THE  
U. S. DEPARTMENT OF TRANSPORTATION  
FEDERAL HIGHWAY ADMINISTRATION

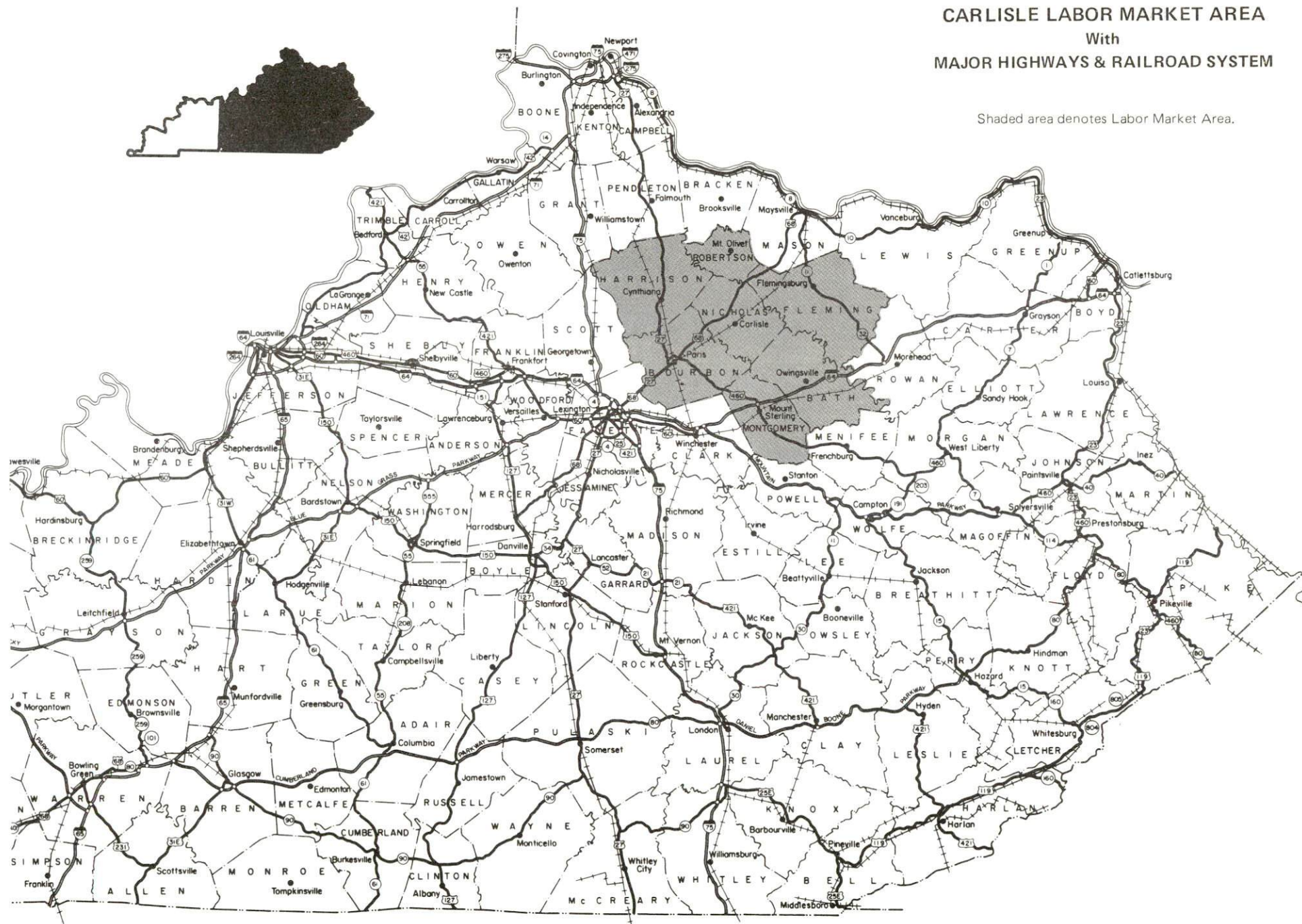
0 1 2 3 4 MILES  
25.1 KILOMETERS





# CARLISLE LABOR MARKET AREA With MAJOR HIGHWAYS & RAILROAD SYSTEM

Shaded area denotes Labor Market Area.





## **CARLISLE, KENTUCKY - A RESOURCE PROFILE**

Carlisle, Kentucky, the county seat of Nicholas County, is located in the Outer Blue Grass Region of central Kentucky. Carlisle is located 36 miles northeast of Lexington, Kentucky; 102 miles southeast of Cincinnati, Ohio; 108 miles east of Louisville, Kentucky; and 203 miles north of Knoxville, Tennessee. In 1982, Carlisle had an estimated population of 1,680.

Nicholas County covers a land area of 197 square miles of rolling to hilly terrain. In 1982, Nicholas County had an estimated population of 7,100.

### **The Economic Framework**

The total number of Nicholas County residents employed in 1983 averaged 2,640, with nonagricultural jobs accounting for 2,060 workers. Manufacturing firms in the county reported 560 employees; wholesale and retail trade provided 170 jobs; and state and local government accounted for 220 employees. Manufacturing employment is greatest in textile mill products.

Per capita personal income in Nicholas County in 1982 was \$7,234. Between 1978 and 1982, per capita income increased by 40.8 percent.

The Carlisle labor market area includes Nicholas County and the adjoining counties of Bath, Bourbon, Fleming, Harrison, Montgomery and Robertson. The total number of residents employed in the labor market area in 1983 averaged 37,200, with nonagricultural jobs accounting for 31,930 workers. Manufacturing firms in the area reported 6,160 employees; wholesale and retail trade provided 5,040 jobs; 2,220 people were employed in service occupations; state and local government accounted for 3,040 employees; and contract construction firms provided 760 jobs.

### **Resources for Growth**

1. Labor Supply - There is a current estimated labor supply of 5,520 men and 5,670 women available for industrial jobs in the labor market area. In addition, from 1985 through 1989, 3,810 young men and 3,455 young women in the area will become 18 years of age and potentially available for industrial jobs.

2. Transportation - Main line rail service is provided to Carlisle by TTI Systems, Inc. U.S. 68, a "AAA" rated (80,000-pound gross load limit) trucking highway located 5 miles north of Carlisle, is the principal highway serving Carlisle and Nicholas County. In addition, Carlisle is served directly by Kentucky 36 and Kentucky 32. Interchanges with Interstate 64 and Interstate 75 are located 32 miles southeast of Carlisle. Interstate and intrastate trucking service is available in Carlisle. The nearest scheduled commercial airline service is provided by Blue Grass Field, 5 miles west of Lexington, 41 miles southeast of Carlisle. The Cynthiana-Harrison County Airport, 1.5 miles south of Cynthiana, 19 miles northwest of Carlisle, maintains a 3,200-foot paved runway to accommodate small aircraft.



3. Power and Fuel - Electric power is provided to Carlisle and parts of Nicholas County by the Kentucky Utilities Company, an electric power generation and transmission company. Nicholas County is also provided electric power by the Harrison County Rural Electric Cooperative Corporation and Fleming-Mason Rural Electric Cooperative Corporation, which are supplied by the East Kentucky Power Cooperative. Natural gas service is provided by the City of Carlisle Gas System, which is supplied by the Columbia Gas Transmission Company. Three distributors of propane and four distributors of distillate fuel oil serve Carlisle.

4. Education - Primary and secondary education is provided to Carlisle and Nicholas County by the Nicholas County School System.

Four universities, two senior colleges, a junior college, and two community colleges are located within 55 miles of Carlisle.

The Central Kentucky State Vocational-Technical School in Lexington, 36 miles southwest, offers training in 34 courses. The Harrison County Area Vocational Education Center in Cynthiana, 19 miles west, offers training in 9 courses.

## THE LABOR MARKET AREA

The Carlisle Labor Market Area includes Nicholas County and the adjoining Kentucky counties of Bath, Bourbon, Fleming, Harrison, Montgomery and Robertson.

### POPULATION

Area	1982*	1980	1970	Percent Nonwhite
				1980
Carlisle	1,680	1,757	1,579	6.6
Labor Market Area	87,100	86,392	77,270	N/A
Nicholas County	7,100	7,157	6,508	1.9
Bath County	10,200	10,025	9,235	3.3
Bourbon County	19,200	19,405	18,476	10.2
Fleming County	12,500	12,323	11,366	1.9
Harrison County	15,400	15,166	14,158	3.2
Montgomery County	20,400	20,046	15,364	5.4
Robertson County	2,300	2,270	2,163	0.4

\* Population estimates.

Note: The 1980 city counts of population by race are provisional.

Sources: U.S. Department of Commerce, Bureau of the Census, 1980 Census of Population and Housing, March 1981; 1980 Census of Population, Number of Inhabitants; Local Population Estimates, Series P-26, June 1984, September 1984.

### LABOR FORCE CHARACTERISTICS OF RESIDENTS, 1983

	Nicholas County	Labor Market Area
Civilian Labor Force	2,959	41,424
Employment	2,644	37,198
Agricultural	587	5,268
Nonagricultural	2,057	31,930
Unemployment	315	4,226
Rate of Unemployment (%)	10.6	10.2

Source: Kentucky Cabinet for Human Resources, Kentucky Labor Force Estimates, Annual Averages, 1983.



SELECTED COMPONENTS OF NONAGRICULTURAL EMPLOYMENT,  
BY PLACE OF WORK, 1983

	<u>Nicholas County</u>	<u>Labor Market Area</u>
All Industries (total)	1,294	19,639
Manufacturing	556	6,164
Wholesale & Retail Trade	166	5,039
State/Local Government	223	3,042
Contract Construction	16	761

Note: Excludes domestic workers, railway workers, certain nonprofit corporations, majority of federal government workers, and self-employed workers.

Source: Kentucky Cabinet for Human Resources, Average Monthly Workers Covered by Kentucky Unemployment Insurance Law, 1983.

CARLISLE MANUFACTURING FIRMS,  
THEIR PRODUCTS AND EMPLOYMENT

<u>Firm (Establishment date)</u>	<u>Product</u>	<u>Employment</u>		
		<u>Total</u>	<u>Male</u>	<u>Female</u>
Blue Grass Industries, Inc. (1948)	Men's knit underwear, woven undershorts	458	56	402
Blue Grass Knitting, Inc. (1966)	Knitted fabrics	163	149	14
Carlisle Manufacturing Company (1968)	Automatic screw machine parts, screws, bolts, rivets, washers	10	9	1
The Carlisle Mercury (1867)	Newspaper, commercial printing	5	0	5

Sources: Kentucky Department of Economic Development, 1985 Kentucky Directory of Manufacturers; Division of Research and Planning.

LABOR ORGANIZATIONS IN MANUFACTURING FIRMS

There are no unions representing manufacturing firms in Carlisle at the present time.

## INDUSTRIAL SERVICES

<u>Types of Services</u>	<u>Location</u>	<u>Mileage from Carlisle</u>
Custom Plastics Producers	Mt. Sterling	24
	Winchester	34
	Georgetown	35
Electric Motor Repair	Winchester	34
	Lexington	36
	Maysville	36
Grinding, Precision & Tool	Georgetown	35
	Richmond	55
Heat Treating Facilities	Georgetown	35
	Lexington	36
	Frankfort	53
	Richmond	55
Industrial Equipment & Supplies	Lexington	36
	Frankfort	53
Industrial Gases	Lexington	36
	Richmond	55
Industrial Waste Removal	Lexington	36
	Frankfort	53
Machine Shops, Tool & Die	Paris	17
	Cynthiana	19
	Flemingsburg	21
	Mt. Sterling	24
Metal Finishers	Cynthiana	19
	Lexington	36
Metal Service Centers	Lexington	36
Millwrights	Lexington	36
	Nicholasville	48

Sources: Kentucky Department of Economic Development, Kentucky Directory of Selected Industrial Services, 1983; Division of Research and Planning.

ESTIMATED MALE LABOR SUPPLY  
CARLISLE LABOR MARKET AREA

Area	Current			Future	
	Total Male	Unemployed	Under-employed	Not in Labor Force	Becoming 18 years of age 1985 thru 1989
Labor Market					
Area*	5,521	2,656	1,513	1,352	3,809
Nicholas	615	177	98	340	291
Bath	871	455	193	223	407
Bourbon	638	341	297	0	870
Fleming	634	390	198	46	509
Harrison	630	424	206	0	651
Montgomery	1,806	752	492	562	994
Robertson	327	117	29	181	87

ESTIMATED FEMALE LABOR SUPPLY  
CARLISLE LABOR MARKET AREA

Area	Current			Future	
	Total Female	Unemployed	Under-employed	Not in Labor Force	Becoming 18 years of age 1985 thru 1989
Labor Market					
Area*	5,671	1,570	1,742	2,359	3,455
Nicholas	693	138	102	453	291
Bath	830	193	197	440	410
Bourbon	807	327	480	0	742
Fleming	896	219	181	496	530
Harrison	635	228	327	80	543
Montgomery	1,463	433	387	643	851
Robertson	347	32	68	247	88

\* Additional workers may be drawn from other nearby counties.

Note: Unemployed - persons unemployed and actively seeking work;  
Underemployed - persons employed but working only 14 to 26 weeks per year;  
Not in Labor Force - represents the number of persons who would enter the labor force if suitable employment were available (based on the assumption that persons in Kentucky would like to participate in the labor force in the same proportion that they do nationally).

Sources: Kentucky Cabinet for Human Resources, Kentucky Labor Supply Estimates by County, 1983. Kentucky Department of Economic Development, Future Labor Supply Becoming 18 Years of Age, 1985 thru 1989.



AVERAGE WEEKLY WAGES BY INDUSTRY,  
BY PLACE OF WORK, 1983

	<u>Nicholas County</u>	<u>Bath County</u>	<u>Bourbon County</u>	<u>Fleming County</u>
All Industries	\$217.67	\$216.39	\$259.09	\$213.86
Mining & Quarrying	0	0	*	*
Contract Construction	155.96	249.12	297.22	295.36
Manufacturing	*	142.96	312.86	183.72
Transportation, Communications & Public Utilities	362.83	414.24	351.73	337.55
Wholesale & Retail Trade	156.46	159.29	200.44	178.40
Finance, Insurance & Real Estate	279.74	219.80	303.74	241.08
Services	*	128.53	174.07	156.61
State/Local Government	225.66	258.72	304.92	254.30
Other	197.12	*	262.53	99.85
	<u>Harrison County</u>	<u>Montgomery County</u>	<u>Robertson County</u>	
All Industries	\$282.76	\$228.72	\$225.57	
Mining & Quarrying	*	*	0	
Contract Construction	*	285.39	*	
Manufacturing	375.69	264.71	0	
Transportation, Communications & Public Utilities	332.07	289.71	*	
Wholesale & Retail Trade	164.15	168.18	141.12	
Finance, Insurance & Real Estate	268.43	251.55	*	
Services	199.83	186.39	*	
State/Local Government	265.82	275.37	224.80	
Other	223.92	*	*	

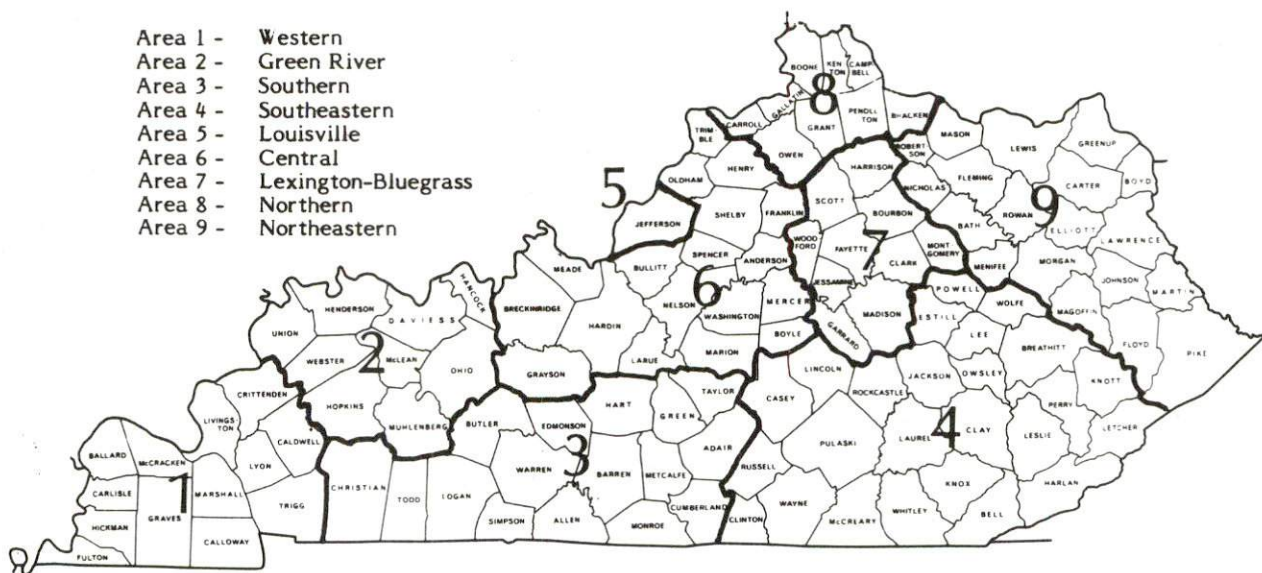
\* Not disclosed.

Note: Excludes domestic workers, railway workers, certain nonprofit corporations, majority of federal government workers, and self-employed workers.

Source: Kentucky Cabinet for Human Resources, Average Weekly Wages of Workers Covered by Kentucky Unemployment Insurance Law, 1983.

Occupational wage rates for specific industries are usually not available to most government agencies, and wage data furnished to state employment agencies by individual industrial employers are protected from disclosure by federal law. The most reliable up-to-date wage information can be obtained by direct contact with local employers.

Associated Industries of Kentucky, a voluntary organization of Kentucky businesses, regularly collects occupational wage rates and fringe benefits data from participating member firms. Data are compiled for over 127 clearly defined office, production, and service occupations. Tabulations are published for nine geographical areas of Kentucky, as shown on the map below. It should be noted that the data may be weighted by the preponderance of firms in the larger cities and may be somewhat higher than the rates paid in the smaller communities. Data from these tabulations are available, upon request, from the Kentucky Department of Economic Development, Frankfort, Kentucky 40601.



Associated Industries of Kentucky Area Wage Surveys



PER CAPITA PERSONAL INCOME

<u>Area</u>	<u>1978</u>	<u>1982</u>	<u>Percent Change</u>
Nicholas County	\$ 5,137	\$ 7,234	40.8
Labor Market Area Range	\$4,199 - 8,174	\$6,387 - 12,788	N/A
Kentucky	6,389	8,893	39.2
U. S.	7,776	11,100	42.7

Sources: U.S. Department of Commerce, Bureau of Economic Analysis, Survey of Current Business, April 1983; Commerce News, April 29, 1984. Kentucky Economic Information System, July 1984.

## TRANSPORTATION

### Rail

Line serving **Carlisle** - TTI Systems, Inc.

Services - Main line; freights make daily stops as needed; one northbound and one southbound through freight daily; team track space for 8 cars; siding space for 15 cars; switching services. The nearest piggyback facilities are operated by Seaboard System Railroad at Frankfort, 53 miles southwest. Seaboard provides piggyback service from Frankfort through the Louisville ramp with highway service substituted for rail between the two cities. Rates are charged from Frankfort

For details on routing, schedules, rates, and services, contact:

President  
T.T.I. Systems, Inc.  
199 East Main Street  
Lexington, Kentucky 40507  
(606) 253-9200

### Highways

U.S. 68, a "AAA" rated (80,000-pound gross load limit) trucking highway located 5 miles north of Carlisle, is the main thoroughfare in Nicholas County. In addition, Carlisle is served directly by Kentucky 36 and Kentucky 32. Interchanges with Interstate 64 and Interstate 75 are located 32 miles southeast of Carlisle via U.S. 68.

### Truck Service

#### Company

ANR Freight System, Inc.\*

Bailey's Express, Inc.\*\*

Bestway Express, Inc.\*\*

Carolina Freight Carriers  
Corporation\*\*

McLean Trucking Company\*

The O.K. Trucking Company\*\*

Overnite Transportation  
Company\*\*

Owenton Express, Inc.\*\*

#### Home Office

P.O. Box 5070

Denver, Colorado 80217

Middletown, Connecticut 06457

Nashville, Tennessee 37210

P.O. Box 697

Cherryville, North Carolina 28021

P.O. Box 213

Winston-Salem, North Carolina 27154

3000 East Crecentville Road

Cincinnati, Ohio 45241

P.O. Box 1216

Richmond, Virginia 23209

Owenton, Kentucky 40359

(Cont'd)



CompanyHome Office

Smith's Transfer Corporation\*\*

P.O. Box 1000  
Staunton, Virginia 24401

Suburban Motor Freight, Inc.\*\*

P.O. Box 1739  
Columbus, Ohio 43216

\* Interstate service only.

\*\* Interstate and intrastate service.

Source: American Motor Carrier Directory, Spring 1985.Other Freight ServicesNearest Office or Shipping Center

Aiborne Express

Lexington, 36 miles southwest

Emery

Lexington, 36 miles southwest

Federal Express

Lexington, 36 miles southwest

Purolator Courier

Lexington, 36 miles southwest

United Parcel Service

Maysville, 35 miles northeast

Lexington, 36 miles southwest

HIGHWAY MILES AND TRUCK TRANSIT TIME IN DAYS FROM  
CARLISLE, KENTUCKY, TO SELECTED MARKET CENTERS

City	Highway Miles	Delivery Time TL	City	Highway Miles	Delivery Time TL
Atlanta, Ga.	398	3	Los Angeles, Ca.	2,216	7
Baltimore, Md.	566	3	Louisville, Ky.	108	N/A
Birmingham, Ala.	434	3	Nashville, Tenn.	246	3
Chicago, Ill.	388	2	New Orleans, La.	763	3
Cincinnati, Ohio	102	1	New York, N. Y.	738	3
Cleveland, Ohio	346	3	Pittsburgh, Pa.	389	3
Detroit, Mich.	361	3	St. Louis, Mo.	371	N/A
Knoxville, Tenn.	203	3			

Note: Mileage computations are via the best interstate or primary highways, not necessarily the most direct route of travel.

Sources: Rand McNally Road Atlas, 1979. Official Kentucky Mileage Map, 1982.

Delivery time - Carolina Freight Carriers Corporation, 424 Fairman Road, Lexington, Kentucky 40511.

## Air

### Local

Location: Cynthiana-Harrison County Airport  
1.5 miles south of Cynthiana;  
19 miles northwest of Carlisle  
Runways: 1 paved  
Length: 3,200 feet  
Traffic  
Control: Wind sock and lighted wind tee  
Lighting: Runway lights - sundown to sunrise, VASI, REIL, RTGBCN  
Services: 80 and 100LL fuel; major A & P repairs; hangar, tie down;  
flight instructions; taxi; A and I service

### Nearest Scheduled Commercial Airline Service

Location: Blue Grass Field  
5 miles west of Lexington, Kentucky;  
41 miles southeast of Carlisle  
Runways: 2 paved  
Length: 7,000 feet; 3,500 feet  
Traffic  
Control: Tower  
Lighting: Approach lighting system, beacon, runways and  
obstructions lighted, VASI  
Services: Delta, Piedmont, United, USAir, Allegheny Commuter,  
Comair, Tennessee Airways; fuel - 100LL and  
jet-A; hangars, tie-downs; major A & P repairs;  
major Avionics repairs; APU, charter, flight  
instruction, oxygen, plane rentals, survival  
equipment; taxi, limousine, car rentals, courtesy  
car, weather information; restaurant, snack bar  
Air Freight  
Service: Air freight terminal

**Rental Services** - Truck and trailer rental services are available locally. Car rental services are available at Paris, 17 miles southwest of Carlisle.

## Water

The nearest navigable waterway is the Kentucky River at Frankfort, 53 miles southwest, where a 6-foot navigation channel is maintained. The Northern Kentucky Port Authority, in Campbell County, approximately 100 miles north, has been established for the purpose of developing a riverport on the east bank of the Licking River. The planned riverport has been designated as a Foreign Trade Zone.



## POWER AND FUEL

### Electricity

Company serving **Carlisle and the south central portion of Nicholas County** -  
Kentucky Utilities Company  
Source of power - Kentucky Utilities Company  
Total generating capacity - 3,164,000 KW\*  
For industrial rates contact:

Industrial Development Department  
Kentucky Utilities Company  
One Quality Street  
Lexington, Kentucky 40507  
(606) 255-1461

Company serving **the northeastern portion of Nicholas County** - Fleming-Mason  
Rural Electric Cooperative Corporation  
Source of power - East Kentucky Power Cooperative  
Total generating capacity - 1,309,000 KW\*\*  
For industrial rates contact:

Industrial Development Division  
East Kentucky Power Cooperative  
P.O. Box 707  
Winchester, Kentucky 40391  
(606) 744-4812

Company serving **the northwestern and southwestern portions of Nicholas County**  
- Harrison County Rural Electric Cooperative Corporation  
Source of power - East Kentucky Power Cooperative  
Total generating capacity - 1,309,000\*\*  
For industrial rates contact:

Industrial Development Division  
East Kentucky Power Cooperative  
P.O. Box 707  
Winchester, Kentucky 40391  
(606) 744-4812

\* Kentucky Utilities Company's total generating capacity will be increased when a new 650,000 KW generation plant is completed in Hancock County in 1993.

\*\* East Kentucky Power Cooperative's total generating capacity will be increased when a new 650,000 KW coal-fired generation plant is completed in southeast Clark County in 1992.

## Natural Gas

Company serving **Carlisle** - City of Carlisle Gas System\*

Source of supply - Columbia Gas Transmission Company

Size of transmission mains - 20-inch (supplier); 6-inch (distributor)

Distribution mains - 2 and 4 inches

Distribution pressure - 17 to 31 psi

Btu content - 1,027 per cubic foot

Specific gravity - .60

For rates and supplies contact:

City of Carlisle Gas System  
107 East Chestnut Street  
Carlisle, Kentucky 40311  
(606) 289-5300

## Other Fuels

### Propane

Buckeye Gas Products Company  
Elizaville Road  
Ewing, Kentucky 41039

Stan Harvey Gas Company  
115 West Pike Street  
Carlisle, Kentucky 40311

Southern States Cooperative, Inc.  
Brooks Avenue  
Owingsville, Kentucky 40360

### Fuel oils

Distillate fuel oil -

Ashland Oil Distributorship  
Division of Harrison Motor  
Connersville Pike  
Cynthiana, Kentucky 41031

Coe Oil Service, Inc.  
East Main Street  
Carlisle, Kentucky 40311

Chevron USA, Inc.  
319 South Church Street  
Cynthiana, Kentucky 41031

Northfield Oil Company  
Falmouth Pike  
Cynthiana, Kentucky 41031

Residual fuel oil - Arrangements must be made with the refinery.

Low sulphur content coal - Available in Kentucky.

\* The installation of a new gas system was completed in Fall 1984. Total cost of the project was \$682,332.

## WATER AND SEWERAGE

### Public Water Supply

Company serving **Carlisle** - City of Carlisle Water Plant\*

107 East Chestnut Street  
Carlisle, Kentucky 40311  
(606) 289-5535

Source - Two impounded lakes and Licking River

Treatment plant capacity - 822,600 gallons per day

Average daily consumption - 518,710 gallons

Peak daily consumption - 822,600 gallons

Treatment processes - Rapid mix, coagulation, flocculation, sedimentation, filtration, chlorination, fluoridation

Calcium content - 076.3 ppm

Iron content - 00.04 ppm

Hardness - 231.0 ppm as calcium carbonate

Storage capacity - 1,182,000 gallons

Size lines - 4, 6, 8, 10 and 12 inches

Water pressure - 30 to 80 psi

### MONTHLY WATER RATES

#### Inside City Limits

First	1,000 gallons	\$4.00 (Minimum)
Next	4,000 gallons	1.54 per M gallons
Next	5,000 gallons	1.49 per M gallons
Next	5,000 gallons	1.27 per M gallons
Next	10,000 gallons	1.16 per M gallons
Next	25,000 gallons	.95 per M gallons
All over	50,000 gallons	.90 per M gallons

#### Outside City

First	1,000 gallons	\$4.80 (Minimum)
Next	4,000 gallons	1.85 per M gallons
Next	5,000 gallons	1.79 per M gallons
Next	5,000 gallons	1.52 per M gallons
Next	10,000 gallons	1.39 per M gallons
Next	25,000 gallons	1.14 per M gallons
All over	50,000 gallons	1.08 per M gallons

#### Tap-on charge:

3/4-inch	\$150
1-inch	200
All larger	Cost of labor and materials

\* The City of Carlisle Water Plant has plans for the expansion of its existing water plant. The project, which includes increasing the capacity of the water treatment plant from 822,600 to 1,300,000 gallons per day and construction of a new 40,000 gallon clear well are scheduled for completion in 1986. Total cost of the project will be \$996,790.



## Raw Water

Surface water sources - Licking River and Hinkson Creek

Average discharge - South Fork Licking River at Cynthiana, Kentucky, 767 cfs  
(45-year record)

Expected ground water yield - 50 to 20 gpm along Licking River in northern part of the county; 5 to 50 gpm along the southeastern part of the county; 5 gpm or less over the remainder of the county

## Sewerage

Company serving **Carlisle** - City of Carlisle Wastewater Treatment Plant\*  
107 East Chestnut Street  
Carlisle, Kentucky 40311  
(606) 289-2196

Design capacity - 200,000 gallons per day

Average daily flow - 140,000 gallons

Type of treatment - Primary and secondary

Treatment processes - Screening, grit removal, trickling filter, chlorination, aerobic digester, sludge drying beds

Treated effluent discharged into - Brushy Fork Creek

Size of sanitary mains - 10 and 12 inches

Size of storm mains - 8, 12, 24, and 48 inches

Monthly rates - 50 percent of monthly water bill

Tap-on charge:

4-inch - \$85

6-inch - \$100

All larger - Cost of labor and materials

\* The City of Carlisle Wastewater Treatment Plant has plans to make repairs to the sewage collection system to help remove infiltration and inflow problems. Also, there are plans for a complete upgrade of the sewage treatment plant starting in 1986.

## CLIMATE

### Nicholas County

#### Temperature

Normal (30-year record)	54.90 degrees
Average annual 1983	55.50 degrees
Record highest, August 1983 (39-year record)	103.00 degrees
Record lowest, January 1963 (39-year record)	-21.00 degrees
Normal heating degree days (30-year record)	4,814
(Heating degree day totals are the sums of negative departures of average daily temperatures from 65 degrees F.)	

#### Precipitation

Normal (30-year record)	45.68 inches
Mean annual snowfall (39-year record)	16.20 inches
Total precipitation 1983	40.76 inches
Mean number days precipitation (.01 inch or more) (39-year record)	131
Mean number days thunderstorms (39-year record)	46

#### Prevailing Winds (17-year record)

South

#### Relative Humidity

1 a.m.	77 percent (19-year record)
7 a.m.	81 percent (20-year record)
1 p.m.	60 percent (20-year record)
7 p.m.	64 percent (20-year record)

Source: U.S. Department of Commerce, Environmental Science Services Administration, Climatological Data, 1983. Station of record: Lexington, Kentucky.

## LOCAL GOVERNMENT

### City

Structure - Mayor - 4-year term; 6 council members - 2-year terms

Budget 1984-85 - General Fund \$ 366,481

Water and Sewer Fund 343,503

City Gas System 1,387,244

Fees and licenses - Business license fees range from \$10 to \$75 yearly; city automobile sticker \$10 yearly; insurance license is 10 percent of total premiums collected the previous year

### County

Structure - County Judge/Executive - 4-year term; 5 magistrates - 4-year terms

Budget 1984-85 - General Fund \$286,415; Road Fund \$495,751

### Assessed Value of Property, 1984\*

<u>Classes of Property</u>	<u>Carlisle</u>	<u>Nicholas County</u>
Real Estate and Tangibles	\$34,237,123	
Real Estate		\$81,723,658
Tangibles		18,429,250

### Property Taxes

All property in Kentucky is assessed at 100 percent of fair cash value.

Land and buildings are taxed by the state and may be taxed by local jurisdictions. The 1984 state rate is \$0.22 per \$100 of assessed valuation.

Manufacturing machinery, raw materials inventories, pollution control equipment, and goods in the process of manufacture are not subject to local taxation. The state rate is \$0.15 per \$100.

Other tangible personal property owned by manufacturers (vehicles, finished goods, office furniture, office equipment) is taxed by the state at \$0.45 per \$100 and may be taxed by local jurisdictions.

Intangible personal property located in Kentucky (money in hand, shares of stock, notes, bonds, accounts receivable, and other credits) is taxed by the state at \$0.25 per \$100, and is not subject to local taxation.

Property stored in public warehouses in a transit status is not subject to local taxation. The state rate is only \$0.015 per \$100.

Private leaseholds in industrial facilities owned by cities or counties and financed by industrial revenue bonds are subject to a state tax of \$0.015 per \$100 of value (essentially the lessee's equity, adjusted for appreciation or depreciation). Local taxation is not permitted.

\* Excludes Homestead Exemptions.



**Combined State and Local Rates Per \$100 Valuation, 1984\***  
(100% assessment)

	Site Inside City of <u>Carlisle</u>	Site Inside Unincorporated <u>Nicholas County</u>
1. Land and buildings	\$ 1.127	\$ 0.890
2. Mfg. machinery, raw materials, goods in process, pollution control equipment	0.150	0.150
3. Automobiles and trucks	1.440	1.203
4. Finished goods, office equipment, other tangibles	1.360	1.123
5. Intangibles (accounts receivable, notes, bonds, etc.)	0.250	0.250
6. Property stored in public warehouses in a transit status	0.015	0.015
7. Leaseholds in industrial revenue bond financed plants	0.015	0.015

**Planning and Zoning**

City agency - Carlisle Planning and Zoning Commission

Zoning enforced - Yes

Subdivision regulations enforced - Within the city and three miles beyond corporate limits

Local codes enforced - Building and Housing

Mandatory state codes enforced - Kentucky Plumbing Code, National Electric Code, Kentucky Boiler Regulations and Standards, Kentucky Building Code (modeled after BOCA code)

**Safety**

Police	Carlisle	Nicholas County
Total staff	9	3
Radio-patrol cars	3	2
<b>Fire</b>		
Insurance Services Office, Public Protection Classification	7	10
Volunteers	12	13

\* Kentucky Department of Economic Development

## **Rescue Service**

### **Nicholas County Rescue Squad:**

Number of volunteers - 13

Equipment - Rescue van, oxygen tanks, police-ban radios, stretchers, and first aid equipment

Personnel training - One emergency medical technician; all personnel trained in basic first aid

## **Refuse Collection and Disposal**

### **Carlisle**

Type service	Private
Fee charged:	
residential	\$3.50 per month
commercial	\$7.00 to \$10.00 per month
industrial	\$135.00 per month
Collection frequency:	
residential	Once weekly
commercial	Daily
industrial	Daily
Disposal method	Landfill

Refuse collection and disposal is provided to Nicholas County by 40 collection sites at various locations throughout the county. This service is provided by Nicholas County at no charge.

## EDUCATION

### Public Schools

#### Nicholas County

Total Enrollment (December 1984)	1,226
Kindergarten	58
Elementary	805
High School	363
Student-Teacher Ratio	25-1
Kindergarten	29-1
Elementary	28-1
High School	18-1
Percent High School Graduates to College (1983-84)	38.4
Expenditures Per Pupil (1983-84)	\$ 1,710.72
Bonded Indebtedness (June 30, 1984)	\$1,238,000



## Area Colleges and Universities

<u>Name</u>	<u>Location (Miles distant)</u>	<u>Enrollment (Fall, 1984)</u>	<u>Highest Degree Conferred</u>
Georgetown College Lexington	Georgetown (35)	1,298	Masters
Community College Transylvania	Lexington (36)	2,573	Associate
University University of	Lexington (36)	787	Baccalaureate*
Kentucky	Lexington (36)	21,237	Doctorate, M.D., D.M.D., J.D.
Maysville Community College	Maysville (36)	654	Associate
Asbury College	Wilmore (48)	1,067	Baccalaureate
Midway College	Midway (48)	352	Associate
Kentucky State University	Frankfort (53)	2,066	Masters
Eastern Kentucky University	Richmond (55)	12,357	Masters, Specialist**

\* Courses in a masters degree program are taught on the Transylvania campus by faculty members of Xavier University of Cincinnati. The degree is issued by Xavier University.

\*\* Joint doctoral degree programs are offered in cooperation with the University of Kentucky, Lexington. The degrees are issued by the University of Kentucky.

## Vocational Schools

Both the state vocational-technical schools and the area vocational education centers are operated by the Kentucky Department of Education. The state vocational-technical schools enroll persons full time who are at least 16 years of age and not in school. These students attend classes for six hours each day. The area vocational education centers are designed to accommodate high school students who are at least 15 years of age. These students attend vocational school for three hours each day. The state vocational-technical schools and the area education centers offer evening courses to enable working adults to upgrade current job skills.

### Nearest State School

Location	Central Kentucky State Vocational-Technical School
Miles Distant	Lexington
Curriculum	36
	Business and Office
	Accounting
	Clerical
	Secretarial
	Consumer and Home Economics
	Commercial Foods
	Distributive Education
	Retail Training - Merchandising/Food Marketing
	Hotel/Motel - Waiter/Waitress-Housekeeping Services
	Health and Personal Services Occupations
	Cosmetology
	Dental Assistant
	Nurse's Aide
	Practical Nursing
	Surgical Technician
	Ward Clerk
	Medications Aide
	Home Health Care
	Geriatric
	Industrial Education
	Air Conditioning
	Auto Body Repair
	Auto Mechanics
	Carpentry
	Drafting (with CAD/CAM)
	Electronics
	Graphic Arts
	Industrial Electricity
	Machine Shop
	Masonry
	Welding
	Learning Resource Center
	GED

(Cont'd)

- Public Service
  - E.M.T. Training
  - Fire Training
  - C.P.R.
  - First Aid
  - Industrial Fire Brigade Training
- Apprenticeship
  - Electrical
  - Tool and Die
- Up-Grade Programs

Nearest Area Education Center

Location	Harrison County Area Vocational Education Center
Miles Distant	Cynthiana
Curriculum	19
	Business and Office
	Accounting/Jr. Management
	Clerical
	Secretarial
	Health and Personal Services Occupations
	Health Careers
	Industrial Education
	Auto Mechanics
	Carpentry-Building Trades
	Industrial Electricity
	Machine Shop
	Welding

Arrangements can be made to provide training in the specific production skills required by an industrial plant. Instruction may be conducted either in the vocational school or in the industrial plant, depending upon the desired arrangement and the availability of special equipment.



## HEALTH

### Local Medical Personnel

Physicians - 5  
Dentists - 3

### Hospitals

<u>General Hospital</u>	<u>Location</u>	<u>Beds</u>
Nicholas County Hospital	Carlisle	28

General hospital facilities - Emergency room, obstetrics, in-patient and out-patient surgery, radiology, laboratory, EKG, physical therapy, respiratory therapy, in-patient pharmacy

Medical staff - 5 physicians, 12 registered nurses, 6 licensed practical nurses

### Other Medical Facilities

Johnson Mathers Nursing Home  
WEDCO, Inc.

### Ambulance Service

Name - Nicholas County Ambulance Service  
Staff - Two emergency medical technicians  
Service - 24-hour, county-wide  
Equipment - Two fully-equipped ambulances

## OTHER LOCAL FACILITIES

### Communications

Telephone -	South Central Bell Telephone Company
Telegraph -	Western Union
Services -	Toll-free number, 1-800-325-5100
Postal -	U.S. Post Office
Class -	Second
Mail received -	Once daily
Mail dispatched -	Once daily
Newspapers -	The Carlisle Mercury
Weekly and circulation -	2,700
Other papers received from -	Lexington and Louisville, Kentucky; Cincinnati, Ohio
Radio -	
Stations received from -	Cynthiana, Owingsville, Lexington, Louisville, Mt. Sterling, Maysville, and Paris, Kentucky; Cincinnati, Ohio
Television -	
Airwave reception from -	Lexington and Louisville, Kentucky; Cincinnati, Ohio
Cable service	
Number of cable channels -	14
Kentucky Educational Television -	Lexington-Richmond transmitter, Channel 46

### Library Services

Public library - Nicholas County Public Library  
Size collection - 22,861  
Circulation, 1983-84 - 50,830  
Services - Bookmobile, copy machine, film and projector, magazines, meeting room open to public, pictures, records, record player, slide projector, story hour, filmstrips, view-lex machine, reader-printer, GED test manuals, micro-fiche reader, craft workshops

## Religious Institutions

### Carlisle

Number of churches - 11  
 Denominations - Assembly of God  
 Baptist  
 Bible Missionary  
 Catholic  
 Christian  
 Christian Baptist  
 Church of Christ  
 Methodist  
 Presbyterian

Nearest Synagogues - Lexington, 36 miles southwest  
 Congregations - Adath Israel (reform)  
 Ohavey Zion (traditional)

## Financial Institutions

<u>Banks</u>	<u>Assets</u>	<u>Deposits</u>	<u>Statement Date</u>
Deposit Bank of Carlisle, Kentucky	\$20,817,911.36	\$17,556,107.74	12/31/84
First National Bank	28,858,927.11	24,972,626.11	12/31/84

## Clubs and Organizations

American Legion	Future Homemakers of America
American Legion Auxiliary	Garden Club
Boy Scouts	Girl Scouts
Carlisle-Nicholas County	Homemakers Club
Chamber of Commerce	Hospital Auxiliary
Carlisle Rotary Club	Lions Club
Carlisle Woman's Club	Little League Baseball
Daugherty Lodge F. & A.M.	Little League Basketball
Eastern Star	Masons
Fish and Game Club	VFW
4-H Club	VFW Auxiliary
Future Farmers of America	



## RECREATION

### Local

Recreational facilities in Carlisle include three parks. The East End Recreational Park includes a ball field, tennis court, playground and a horse show rink. The West End Recreational Park, which is currently under construction, will include a horse show rink, tractor and truck pull track, two ball fields, a club house, playground equipment and a picnic area. The Community Action Park, which is also currently under construction, will offer a playground, picnic area, and a shelter house.

Lake Carnico, which includes a 150-acre lake, camping area, boat docks, park, boating and fishing facilities, is located 3 miles north of Carlisle. Also located at Lake Carnico is the Lake Carnico Country Club, which offers a 9-hole golf course and swimming pool. There are plans to build a tennis court in the near future.

Special events in Carlisle include the annual Blackberry Festival, Lions Club Horse Show, the Central Kentucky Fox Hunt, Carlisle-Nicholas County Chamber of Commerce Annual Truck and Tractor Pull, and Carlisle-Nicholas County Chamber of Commerce Christmas Parade.

Nicholas County contains several points of historical interest. Among these are Boone's Cabin, a restored log cabin that was Daniel Boone's last Kentucky home, Forest Retreat, home of Thomas Metcalfe, Kentucky's 10th governor, which is now a successful race horse farm, and the old Louisville and Nashville Railroad Depot Museum.

### Area (Within 60 miles)

**Blue Licks Battlefield State Park** is located near Mt. Olivet, 13 miles northeast of Carlisle. The 100-acre park is on the site of the last Revolutionary War battle in Kentucky. A museum features Indian and pioneer artifacts, an audiovisual program, and prehistoric bones from animals trapped at Blue Licks. Facilities include ten primitive campsites, a gift shop, picnic shelters and grills, a playground, a snack bar, and an Olympic-size swimming pool. Fishing is available at the Licking River which runs through the park.

**The Daniel Boone National Forest**, approximately 30 miles southeast of Carlisle, covers 640,000 acres of timberland in eastern Kentucky. It encompasses much of Kentucky's great beauty and provides a vacation paradise. There are scenic hiking trails, rivers and streams stocked with a variety of fish, hunting preserves, camping sites, and numerous other natural and historical attractions.

**Lexington**, 36 miles southwest of Carlisle, offers a variety of cultural, sporting, and recreational activities. Thoroughbred and harness racing is presented at Keeneland Race Course and the Red Mile Harness Track during several meets each year. The University of Kentucky and Transylvania University offer a number of sporting events. The University of Kentucky basketball games are held at Rupp Arena, the world's largest basketball arena. Other attractions include Lexington Philharmonic concerts, Lexington Children's Theatre, and plays performed by Broadway touring companies, all held in the recently renovated Opera House.

**The Kentucky Horse Park**, a park dedicated to horses and to man's love for horses, is located 38 miles southwest of Carlisle near Lexington. The park, which contains more than 1,000 acres of Kentucky Bluegrass, features the International Museum of the Horse; the Man O'War Memorial; an antique carriage display; horseback and pony rides; walking farm tours; horse-drawn tours; a restaurant; a gift shop; and a campground area, which offers swimming, tennis, and planned activities. Numerous special events are held year-round and include various horse shows, steeplechasing, dressage, polo games, and rodeos.

The spirit of Daniel Boone and his pioneers is reborn at **Fort Boonesborough State Park** in Boonesboro, 40 miles southwest of Carlisle. In the re-created fort, pioneer crafts of the eighteenth century are demonstrated by using functioning antiques from the frontier era. Cabins are furnished as they would have been in the days of Boone and documentary films are presented which depict the struggle of the first Kentuckians to make the Kentucky wilderness a home. A gift shop within the fort offers for sale all the handcrafted items made at the fort. Other recreational facilities and activities of the park include the finest sand beach on the Kentucky River with a modern bathhouse and a modern camping area with 187 sites.

**Waveland State Shrine**, 41 miles southwest of Carlisle near Lexington, features an 1847 Greek Revival mansion depicting Kentucky lifestyles from the days of early settlers to the antebellum era of gentility and elegance as well as the Civil War and postwar periods. The shrine also includes the Kentucky Life Museum and a plantation village on ten acres with many shops and displays.

**Kincaid Lake State Park**, 45 miles north of Carlisle near Falmouth, offers many opportunities for the outdoors lover. The park offers a 175-acre lake, a sand beach, a 209-site campground, a gift shop/grocery store, a bathhouse, swimming, boating, hiking, picnicking, an amphitheatre, shuffleboard, miniature golf, tennis, and organized recreational programs in the summer months.

**White Hall State Shrine**, 50 miles southwest of Carlisle near Richmond, one of the grand estate houses of post-Civil War Kentucky, is the Italianate mansion of Cassius Marcellus Clay, the early abolitionist and politician. Kentucky handcrafts are sold in the White Hall gift shop, only a short walk from the mansion.

**Natural Bridge State Resort Park** near Slade, 57 miles south of Carlisle, is located in the Daniel Boone National Forest where cliffs and stone arches fill the landscape. The rugged awesomeness of the great Natural Bridge is the main attraction. The park has a 35-room resort lodge with a dining room and gift shop, ten rustic cottages, and 95 camping sites. Other facilities include a lake, a swimming pool, picnic shelters and playgrounds, hiking trails, and a riding stable.



## COMMUNITY IMPROVEMENTS

### Recent

The City of Carlisle Gas System recently completed the installation of a new gas system. Total cost of the project was \$682,000.

The Nicholas County School System recently completed several projects which included: new carpet for the elementary school, the installation of a computer science program, and renovation of the high school including installation of air conditioning.

Construction of a new bridge on Walnut Street was recently completed. Total cost of the project was \$25,000.

The widening of Spring Street was recently completed. Total cost of the project was \$6,000.

Nicholas Square, a 48-unit apartment complex for moderate income families, was completed in Spring 1984.

### Under Way

Construction of West End Recreational Park is currently under way. The park will include a horse show rink, truck and tractor pulling track, two ball fields, playground equipment, club house, and a picnic area. The \$100,000 project is scheduled for completion in 1986.

The Community Action Park is currently under construction. The park will include a shelter house, picnic areas, and a playground. The project, which will be completed in December, 1985, will have a total cost of \$35,000.

### Planned

The City of Carlisle is planning an expansion of the existing water plant. The project, which includes increasing the capacity of the water treatment plant from 822,600 to 1,300,000 gallons per day and construction of a new 40,000-gallon clear well, is scheduled for completion in 1986. Total cost of the project will be \$996,790.

The City of Carlisle has plans to make repairs to the sewage collection system to help remove infiltration and inflow problems. Also, there are plans for a complete upgrade of the sewage treatment plant starting in 1986.