

1987

Industrial Resources: Oldham County - LaGrange and Buckner

Kentucky Library Research Collections
Western Kentucky University, spcol@wku.edu

Follow this and additional works at: https://digitalcommons.wku.edu/oldham_cty



Part of the [Business Administration, Management, and Operations Commons](#), [Growth and Development Commons](#), and the [Infrastructure Commons](#)

Recommended Citation

Kentucky Library Research Collections, "Industrial Resources: Oldham County - LaGrange and Buckner" (1987). *Oldham County*. Paper 6.
https://digitalcommons.wku.edu/oldham_cty/6

This Report is brought to you for free and open access by TopSCHOLAR®. It has been accepted for inclusion in Oldham County by an authorized administrator of TopSCHOLAR®. For more information, please contact topscholar@wku.edu.

Oldham County, Ky.

RESOURCES FOR ECONOMIC DEVELOPMENT

LaGrange & Buckner

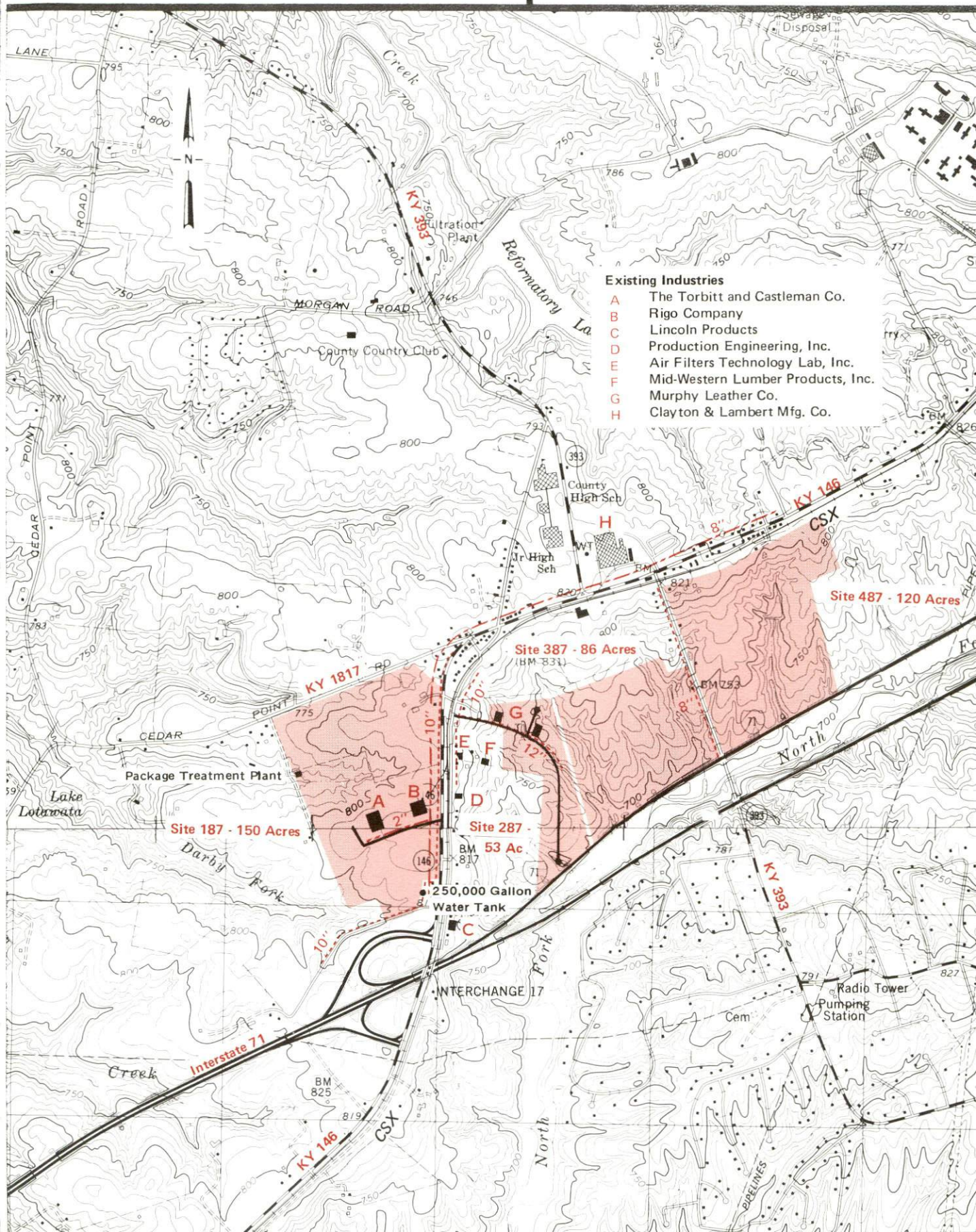


KENTUCKY
The business environment is right.

For more information contact the Kentucky Department of Economic Development, Industrial Development & Marketing Division, Capital Plaza Tower, Frankfort, Kentucky 40601 (502-564-7140).

BUCKNER, KENTUCKY

Industrial Sites -- 1987



La Grange, Kentucky

Industrial Sites - 1987

For more information contact the Kentucky Department of Economic Development, Industrial Development & Marketing Division, Capital Plaza Tower, Frankfort, Kentucky 40601 (502-564-7140).

Site 187 - 81 Acres

LOCATION: Approximately 1.0 mile northeast of city limits

ZONING: Industrial

HIGHWAY ACCESS: KY 146 adjacent to eastern boundary; Interstate 71 interchange approximately 2.9 miles southwest via KY 146 and KY 53

RAILROAD: Not rail served

WATER: LaGrange Utilities Commission

Size Line: 6-inch line approximately 800 feet south along west side of KY 146

SEWERAGE: Sewer service presently not available

NATURAL GAS: Louisville Gas and Electric Company

Size Line: 6-inch line approximately 1800 feet south along west side of KY 146

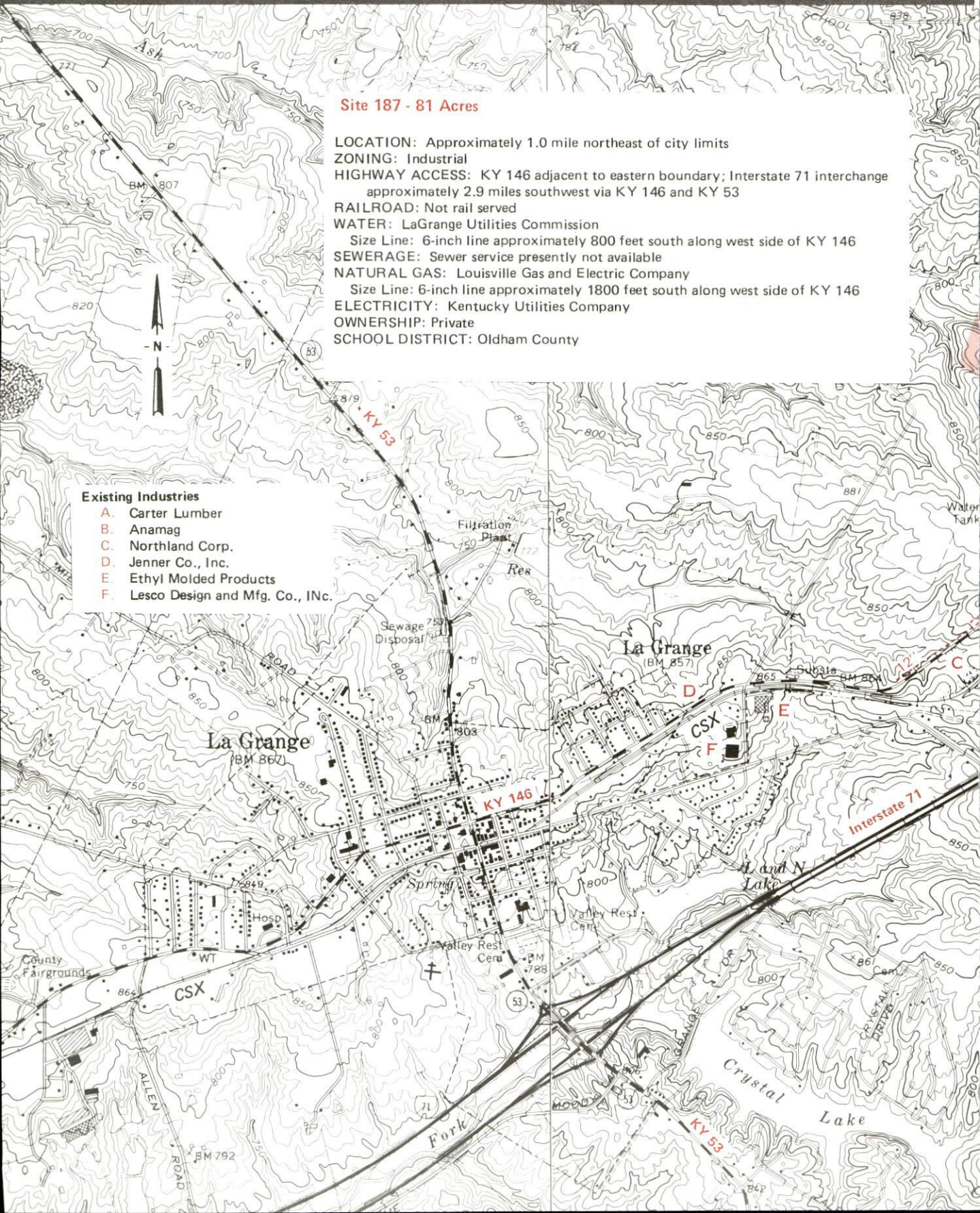
ELECTRICITY: Kentucky Utilities Company

OWNERSHIP: Private

SCHOOL DISTRICT: Oldham County

Existing Industries

- A. Carter Lumber
- B. Anamag
- C. Northland Corp.
- D. Jenner Co., Inc.
- E. Ethyl Molded Products
- F. Lesco Design and Mfg. Co., Inc.



RESOURCES FOR ECONOMIC DEVELOPMENT

LAGRANGE AND BUCKNER, KENTUCKY

Prepared by
The Kentucky Department of Economic Development
Division of Research and Planning
in cooperation with
The Oldham County Chamber of Commerce
and
The Oldham County Industrial and Economic Development Foundation

1987

Program manager - Andrew Dennis; research - Keith Roberts; clerical - Bobbi Graves; graphics - Tony Cecconi, Robert Owens, Pat Coleman; cartography - Site Evaluation Branch, Division of Industrial Development and Marketing. Cost of printing paid from state funds.

TABLE OF CONTENTS

<u>Chapter</u>	<u>Page</u>
INDUSTRIAL SITES	i
LAGRANGE AND BUCKNER, KENTUCKY - A RESOURCE PROFILE . . .	1
THE LABOR MARKET AREA	2
Population	2
Population Projections	2
Labor Force Characteristics of Residents, 1986	3
Selected Components of Nonagricultural Employment, by Place of Work, 1985	3
Per Capita Personal Income	4
Estimated Male Labor Supply	5
Estimated Female Labor Supply	5
Average Weekly Wages by Industry, by Place of Work, 1985	6
EXISTING INDUSTRY	8
Oldham County Manufacturing Firms, Their Products and Employment	8
Labor Organizations in Manufacturing Firms	11
Selected Industrial Services	12
TRANSPORTATION	13
Rail	13
Highways	13
Truck Service	14
Air	15
Air Express Service	15
Water	15
POWER AND FUEL	16
Electricity	16
Natural Gas	16
Other Fuels	17
WATER AND SEWERAGE	18
Public Water Supply	18
Raw Water	19
Sewerage	19
CLIMATE	21

<u>Chapter</u>	<u>Page</u>
LOCAL GOVERNMENT	22
Structure	22
Planning and Zoning	22
Local Fees and Licenses	22
State and Local Property Taxes	23
Combined State and Local Rates Per \$100 Valuation, 1986	23
Safety	24
Police	24
Fire	24
Rescue Service	24
Refuse Collection and Disposal	24
EDUCATION	25
Public Schools	25
Nonpublic Schools	25
Area Colleges and Universities	26
Vocational Schools	27
HEALTH	29
Local Medical Personnel	29
Hospitals	29
Other Medical Facilities	29
Ambulance Service	29
OTHER LOCAL FACILITIES	30
Communications	30
Library Services	30
Religious Institutions	30
Financial Institutions	31
Hotels and Motels	31
RECREATION	32
COMMUNITY IMPROVEMENTS	35

1986 EDITION
GENERAL HIGHWAY MAP
OLDHAM COUNTY
KENTUCKY

PREPARED BY THE
KENTUCKY TRANSPORTATION CABINET
DEPARTMENT OF HIGHWAYS
DIVISION OF PLANNING
IN COOPERATION WITH THE
U.S. DEPARTMENT OF TRANSPORTATION
FEDERAL HIGHWAY ADMINISTRATION

0 1 2 3 4 MILES

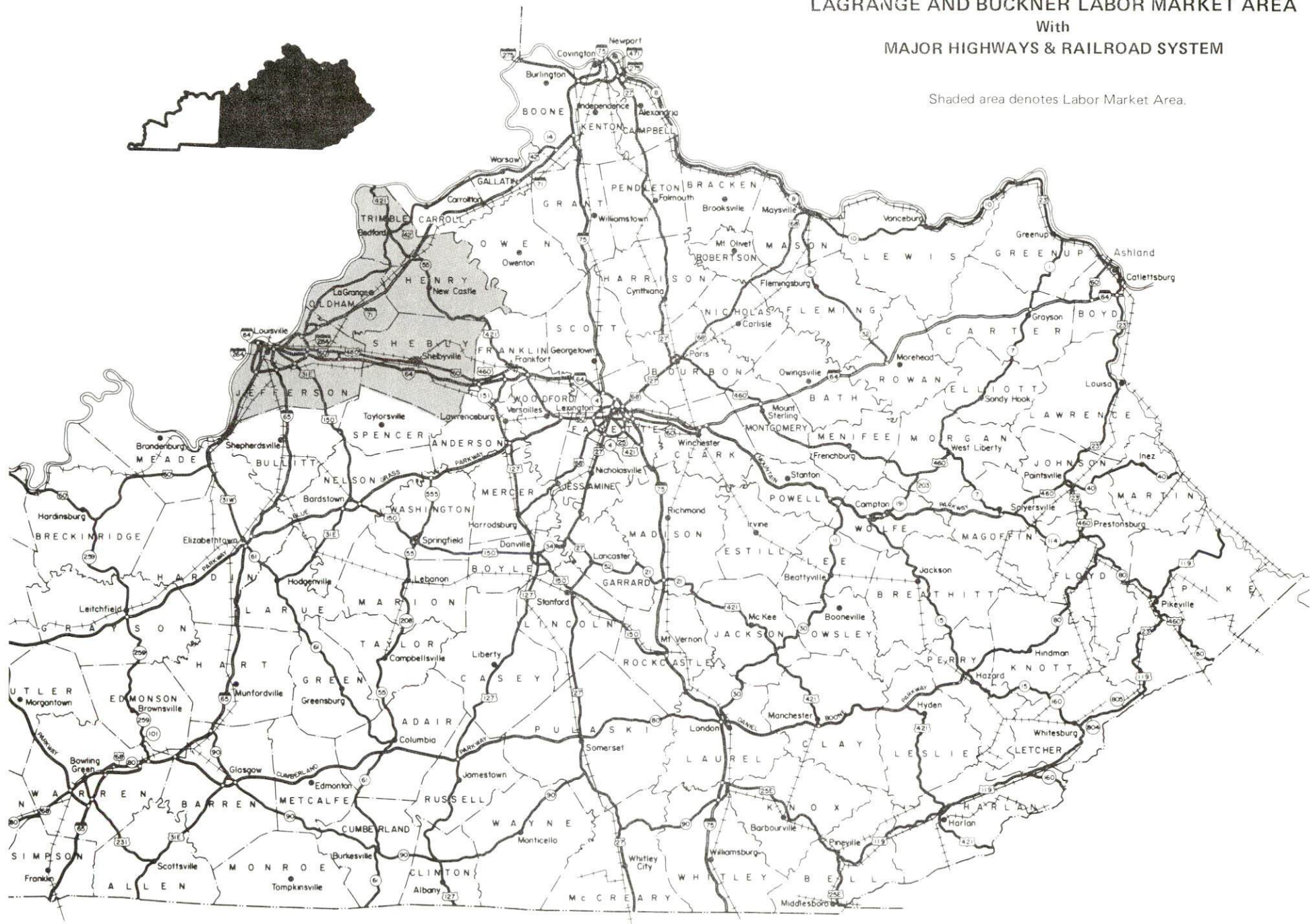


LAGRANGE AND BUCKNER LABOR MARKET AREA

With

MAJOR HIGHWAYS & RAILROAD SYSTEM

Shaded area denotes Labor Market Area.



LAGRANGE AND BUCKNER, KENTUCKY - A RESOURCE PROFILE

LaGrange, the county seat of Oldham County, is in north-central Kentucky. LaGrange is located 25 miles northeast of Louisville, Kentucky; 77 miles southwest of Cincinnati, Ohio; and 193 miles northeast of Nashville, Tennessee. Buckner, four miles southwest of LaGrange, is not an incorporated city. In 1984, LaGrange had an estimated population of 3,250 persons.

Oldham County lies in the Outer Blue Grass Region in north-central Kentucky. The county covers a total land area of 190 square miles. The Ohio River forms the northwest boundary of the county. In 1985, Oldham County had an estimated population of 29,786 persons.

The Economic Framework - The total number of Oldham County residents employed in 1986 averaged 13,120. In 1985, manufacturing firms in the county reported 680 employees; wholesale and retail trade provided 1,130 jobs; 990 people were employed in service occupations; state and local government accounted for 1,835 employees; and contract construction firms provided 670 jobs.

Labor Supply - There is a current estimated labor supply of 29,260 men and 33,250 women available for industrial jobs in the labor market area. In addition, from 1987 through 1991, 29,970 young men and 28,795 young women in the area will become 18 years of age and potentially available for industrial jobs.

Transportation - Main line rail service is provided to LaGrange and Buckner by CSX Transportation. Major highways directly serving LaGrange and Buckner are Interstate 71, a major north-south route, and Kentucky Highway 146. Twenty-two trucking companies provide interstate and/or intrastate service to the area. The nearest scheduled commercial airline service is located at Standiford Field, 30 miles southwest of LaGrange, near Louisville. Riverport facilities are available on the Ohio River at Louisville, 25 miles southwest of LaGrange.

Power and Fuel - Electric power is provided to LaGrange and part of Oldham County by the Kentucky Utilities Company. Buckner and part of Oldham County are served electric power by the Louisville Gas and Electric Company. LaGrange and Buckner are provided natural gas service by the Louisville Gas and Electric Company. One distributor of propane and three distributors of distillate fuel oil are located in the county.

Education - Primary and secondary education is provided to LaGrange, Buckner, and Oldham County by the Oldham County School System, which is accredited by the Southern Association of Colleges and Schools. Seven colleges and universities are located within 45 miles of LaGrange. The Jefferson State Vocational-Technical School in Louisville, 25 miles southwest of LaGrange, offers training in 27 courses. The Oldham County Area Vocational Education Center, located in Buckner, offers training in 5 courses.

LABOR MARKET STATISTICS

The LaGrange & Buckner Labor Market Area includes Oldham County and the adjoining Kentucky counties of Henry, Jefferson, Shelby and Trimble. The LaGrange & Buckner Labor Market Area also encompasses the Indiana county of Clark.

POPULATION

Area	1985*	1980	1970	Percent Nonwhite 1980
LaGrange	3,250	2,971	1,713	9.2
Labor Market Area	757,264	754,754	745,000	-
Oldham County	29,786	27,795	14,687	5.5
Henry County	13,344	12,740	10,910	5.5
Jefferson County	683,949	684,638	695,055	16.9
Shelby County	23,968	23,328	18,999	11.4
Trimble County	6,217	6,253	5,349	0.1

* Population estimates. City estimates are for 1984.

Note: The 1980 city counts of population by race are provisional.

Sources: U.S. Department of Commerce, Bureau of the Census, 1980 Census of Population and Housing, March 1981; 1980 Census of Population, Number of Inhabitants. University of Louisville, Urban Studies Center, Population Unit, October 1985; Kentucky Population Research Notes, Issue Number One, May 1985.

POPULATION PROJECTIONS

Area	1990	1995	2000	2010
Labor Market Area	765,348	772,117	777,447	781,759
Oldham County	33,587	36,628	39,212	43,090
Henry County	14,159	14,815	15,319	16,030
Jefferson County	685,347	686,874	687,921	685,944
Shelby County	25,724	27,068	28,101	29,615
Trimble County	6,531	6,732	6,894	7,080

Source: University of Louisville, Urban Studies Center, Population Research Unit, How Many Kentuckians: Population Forecasts, 1980-2020, the 1986 Edition, Spring 1986.

LABOR FORCE CHARACTERISTICS OF RESIDENTS, 1986

	<u>Oldham County</u>	<u>Labor Market Area*</u>
Civilian Labor Force	13,752	392,236
Employment	13,120	364,279
Unemployment	632	27,957
Rate of Unemployment (%)	4.6	7.1

* Includes Oldham County and the four adjoining Kentucky counties.

Source: Kentucky Cabinet for Human Resources, Kentucky Labor Force Estimates, Annual Averages, 1986.

SELECTED COMPONENTS OF NONAGRICULTURAL EMPLOYMENT BY PLACE OF WORK, 1985

	<u>Oldham County</u>	<u>Labor Market Area*</u>
All Industries (total)	6,030	326,813
Manufacturing	680	72,770
Wholesale & Retail Trade	1,127	86,869
Services	993	73,163
State/Local Government	1,835	32,780
Contract Construction	674	15,829
Mining & Quarrying	0	372

* Includes Oldham County and the four adjoining Kentucky counties.

Note: Excludes domestic workers, railway workers, certain nonprofit corporations, majority of federal government workers, and self-employed workers.

Source: Kentucky Cabinet for Human Resources, Average Monthly Workers Covered by Kentucky Unemployment Insurance Law, 1985.

PER CAPITA PERSONAL INCOME

<u>Area</u>	<u>1980</u>	<u>1984</u>	<u>Percent Change</u>
Oldham County	\$ 8,931	\$ 12,314	37.9
Labor Market Area			
Range*	\$5,918 - 9,599	\$8,283 - 12,901	-
Kentucky	7,644	10,232	33.9
U.S.	9,494	12,772	34.5

* Includes Oldham County and the four adjoining Kentucky counties.

Sources: U.S. Department of Commerce, Bureau of Economic Analysis. Kentucky Economic Information System, June 1986.

ESTIMATED MALE LABOR SUPPLY
LAGRANGE & BUCKNER LABOR MARKET AREA

Area	Current				Future
	Total Male	Unemployed	Under-employed	Not in Labor Force	Becoming 18 years of age 1987 thru 1991
Labor Market					
Area*	29,262	14,543	14,719	0	29,974
Oldham	1,110	276	834	0	1,421
Henry	517	238	279	0	548
Jefferson	26,646	13,617	13,029	0	26,795
Shelby	646	297	349	0	928
Trimble	343	115	228	0	282

ESTIMATED FEMALE LABOR SUPPLY
LAGRANGE & BUCKNER LABOR MARKET AREA

Area	Current				Future
	Total Female	Unemployed	Under-employed	Not in Labor Force	Becoming 18 years of age 1987 thru 1991
Labor Market					
Area*	33,254	13,414	18,202	1,638	28,795
Oldham	1,757	356	704	697	1,440
Henry	1,108	214	374	520	489
Jefferson	28,963	12,486	16,477	0	25,670
Shelby	1,162	276	465	421	926
Trimble	264	82	182	0	270

* Additional workers may be drawn from other nearby counties.

Note: Unemployed - persons unemployed and actively seeking work; Underemployed - persons employed but working only 14 to 26 weeks per year; Not in Labor Force - represents the number of persons who would enter the labor force if suitable employment were available (based on the assumption that persons in Kentucky would like to participate in the labor force in the same proportion that they do nationally).

Sources: Kentucky Cabinet for Human Resources, Kentucky Labor Supply Estimates by County, 1986. Kentucky Department of Economic Development, Future Labor Supply Becoming 18 Years of Age, 1987 thru 1991.

AVERAGE WEEKLY WAGES BY INDUSTRY
BY PLACE OF WORK, 1985

	<u>Oldham County</u>	<u>Henry County</u>	<u>Jefferson County</u>
All Industries	\$273.75	\$247.58	\$359.22
Mining & Quarrying	*	0	461.23
Contract Construction	306.47	212.26	362.24
Manufacturing	375.79	358.56	521.08
Transportation, Communications & Public Utilities	249.66	330.79	453.39
Wholesale & Retail Trade	207.57	155.54	257.85
Finance, Insurance & Real Estate	280.12	276.23	398.23
Services	195.05	182.40	281.04
State/Local Government	320.32	275.14	367.25
Other	219.12	206.50	215.16
	<u>Shelby County</u>	<u>Trimble County</u>	
All Industries	\$252.54	\$356.14	
Mining & Quarrying	0	0	
Contract Construction	199.71	295.74	
Manufacturing	307.46	*	
Transportation, Communications & Public Utilities	394.25	*	
Wholesale & Retail Trade	179.76	108.78	
Finance, Insurance & Real Estate	266.21	280.66	
Services	221.07	142.31	
State/Local Government	290.49	257.78	
Other	191.90	96.74	

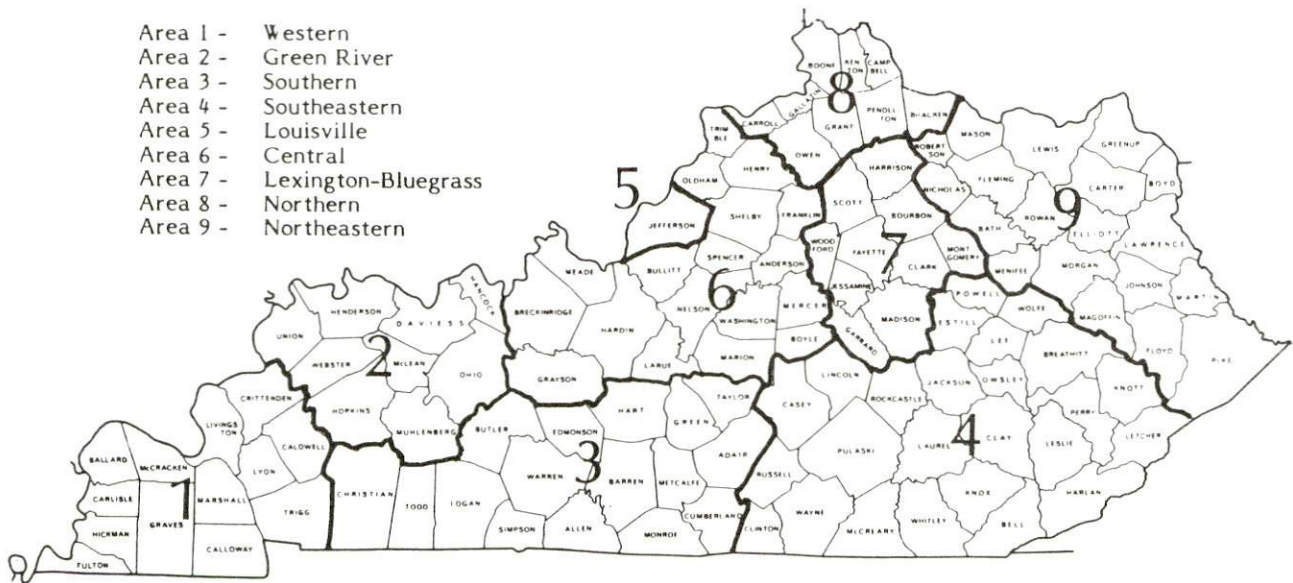
* Not disclosed.

Note: The average weekly wage for each category includes the salaries and wages of all persons working for that type business. For example, the manufacturing category includes both production workers and administrative personnel. Excludes domestic workers, railway workers, certain nonprofit corporations, majority of federal government workers, and self-employed workers.

Source: Kentucky Cabinet for Human Resources, Average Weekly Wages of Workers Covered by Kentucky Unemployment Insurance Law, 1985.

Occupational wage rates for specific industries are usually not available to most government agencies, and wage data furnished to state employment agencies by individual industrial employers are protected from disclosure by federal law. The most reliable up-to-date wage information can be obtained by direct contact with local employers.

Associated Industries of Kentucky, a voluntary organization of Kentucky businesses, regularly collects occupational wage rates and fringe benefits data from participating member firms. Data are compiled for over 127 clearly defined office, production, and service occupations. Tabulations are published for nine geographical areas of Kentucky, as shown on the map below. It should be noted that the data may be weighted by the preponderance of firms in the larger cities and may be somewhat higher than the rates paid in the smaller communities. Data from these tabulations are available, upon request, from the Kentucky Department of Economic Development, Frankfort, Kentucky 40601.



Associated Industries of Kentucky Area Wage Surveys

EXISTING INDUSTRY

OLDHAM COUNTY MANUFACTURING FIRMS, THEIR PRODUCTS AND EMPLOYMENT

Firm (Establishment date)	Product	Average Employment			Labor Unions
		Total	Male	Female	
LaGrange					
AnaMag (1965)	Copper magnet wire	182	143	39	Aluminum Brick and Glass Workers; Teamsters*
Blue Grass Electronics, Inc., (1972)	Burglar alarms, electronic security systems	37	9	28	
Joe Clark Quarry (1956)	Gravel, limestone, agricultural lime	20	17	3	
Ethyl Molded Products (1967)	Plastic injection molding closures	116	22	94	Steel- workers*
Fletcher Metals Inc., (1985)	Aluminum moldings	11	-	-	
Freeman Ready Mix Concrete Company (1957)	Ready mixed concrete, concrete septic and stock water tanks	4	3	1	

(Continued)

Firm (Establishment date)	Product	Average Employment			Labor Unions
		Total	Male	Female	
Jenner Company, Inc. (1981)	Engraved stationary; foil stamping and embossing	60	30	30	
Larkin Brothers and Yost Company (1933)	Hardwood lumber, hardwood dimension, veneer and plywood	4	4	0	
Lesco Design and Manufacturing Company, Inc. (1972)	Conveyors, cranes, steel fabrication	34	30	4	
Northland Corporation (1964)	Hardwood lumber, plywood, veneer dimension	49	43	6	
The Oldham Era, Inc., (1876)	Newspaper	16	3	13	
Southern States LaGrange Cooperative (1946)	Fertilizer, feed	9	7	2	
Buckner					
Allied Building Components, Inc. (1980)	Wood roof & floor trusses; wood wall panels	74	70	4	

(Continued)

<u>Firm</u> <u>(Establishment date)</u>	<u>Product</u>	<u>Average Employment</u>			<u>Labor</u> <u>Unions</u>
		<u>Total</u>	<u>Male</u>	<u>Female</u>	
Clayton and Lambert Manufacturing Company (1956)	Grain bins, steel side- walls and pools, grain dryers	65	53	12	Machinist; Steel- workers*
Rigo Company (1974)	Rodent killers, insecti- cides	30	10	20	
The Torbitt and Castleman Company (1899)	Syrups, barbecue sauce, chocolate syrup	14	8	6	
Crestwood					
Creative Engineering and Manufacturing, Inc. (1976)	Special machines, draperies, bedspreads	9	4	5	
Pewee Valley					
Kintec Wood Truss Manufacturing, Inc. (1976)	Wood roof and floor trusses	37	35	2	

* See Labor Organizations next page.

Sources: Kentucky Department of Economic Development, 1987 Kentucky Directory of Manufacturers; Division of Research and Planning.

LABOR ORGANIZATIONS IN MANUFACTURING FIRMS

<u>Union</u>	<u>Representing workers at:</u>
Aluminum, Brick, and Glass Workers International Union, AFL-CIO	AnaMag
International Association of Machinists and Aerospace Workers, AFL-CIO	Clayton and Lambert Manufacturing Company
International Brotherhood of Teamsters, Chauffeurs, Warehousemen and Helpers of America	AnaMag
United Steelworkers of America, AFL-CIO	Clayton and Lambert Manufacturing Company; Ethyl Molded Products

SELECTED INDUSTRIAL SERVICES

<u>Types of Service</u>	<u>Location</u>	<u>Mileage from LaGrange</u>
Custom Plastics Producers	LaGrange	-
Electric Motor Repair	Louisville	25
Grinding, Precision & Tool	Louisville	25
Heat Treating Facilities	Louisville	25
Industrial Equipment & Supplies	Louisville	25
Industrial Gases	Louisville	25
Industrial Waste Removal	Buckner	4
Machine Shops, Tool & Die	Shelbyville Louisville	19 25
Metal Finishers	Louisville	25
Metal Service Centers	Louisville	25
Millwrights	Louisville	25
Public Warehouse Facilities	Louisville	25

Sources: Kentucky Department of Economic Development, Kentucky Directory of Selected Industrial Services, 1985; Division of Research and Planning.

TRANSPORTATION

Rail

Line serving LaGrange and Buckner - CSX Transportation

Services - Main line; three northbound and three southbound through freights daily, stops made as needed; switching services; team track space for 10 cars; siding space for 22 cars; nearest piggyback facilities located in Louisville, 25 miles southwest of LaGrange

For details on routing, schedules, rates, and services contact:

Corporate Communications
CSX Transportation
908 West Broadway
Louisville, Kentucky 40203
(502) 587-5445

Highways

Major highways serving Oldham County are Interstate 71, U.S. Highway 42, and Kentucky Highways 146, 53, 393, and 22. All are "AAA"-rated trucking highways, 80,000-pound gross load limit.

Interstate 71, with interchanges located at LaGrange and Buckner, is a major north-south route connecting Louisville, Kentucky, and Cincinnati, Ohio. Interstate 71 intersects with Interstates 64 and 65 in Louisville, 25 miles southwest of LaGrange, and with Interstate 75 in Boone County, 56 miles northeast of LaGrange. U.S. 42 lies 4 miles north of LaGrange via Kentucky 53 and 5 miles north of Buckner via Kentucky 393. Kentucky 146 is a "AAA"-rated trucking highway serving LaGrange and Buckner.

Truck Service

A & H Truck Line, Inc.*
 ARA/Smith's**
 Bowman Transportation, Inc.**
 CW Transport, Inc.*
 Carolina Freight Carriers
 Corporation*
 Central Transport, Inc.*
 Consolidated Freightways
 Corporation of Delaware*
 Holland Motor Express, Inc.*
 Jones Truck Lines, Inc.*
 Manning Motor Express, Inc.*
 Murphy Motor Freight Lines, Inc.*

The O.K. Trucking Company*
 Old Dominion Freight Line,
 Inc.**
 Overnite Transportation Company*
 Owenton Express, Inc.*
 P-I-E Nationwide, Inc.*
 Preston Trucking Company, Inc.*
 R-W Service System, Inc.*
 Spartan Express, Inc.*
 Transcon Lines*
 Tyme Dedicated Truck Service,
 Inc.*
 Yellow Freight System, Inc.*

* Interstate and intrastate service.

** Interstate service only.

Source: American Motor Carrier Directory, Spring 1987.

HIGHWAY MILES AND TRUCK TRANSIT TIME IN DAYS FROM LAGRANGE, KENTUCKY, TO SELECTED MARKET CENTERS

City	Highway Miles	Delivery Time TL	City	Highway Miles	Delivery Time TL
Atlanta, GA	407	2	Los Angeles, CA	2,133	5
Baltimore MD	574	2	Louisville, KY	25	1
Birmingham, AL	389	2	Nashville, TN	193	1
Chicago, IL	317	2	New Orleans, LA	710	3
Cincinnati, OH	77	1	New York, NY	724	-
Cleveland, OH	321	2	Pittsburgh, PA	364	1
Detroit, MI	336	3	St. Louis, MO	288	1
Knoxville, TN	266	2			

Note: Mileage computations are via the best interstate or primary highways, not necessarily the most direct route of travel.

Sources: Rand McNally Road Atlas, 1979. Official Kentucky Mileage Map, 1980. Delivery time - Overnite Transportation Company, P. O. Box 99308, Louisville, Kentucky 40299.

Air

Nearest Scheduled Commercial Airline Service

	Standiford Field
Location:	4 miles southeast of center of Louisville, Kentucky; 30 miles southwest of LaGrange
Runways:	2 paved
Length:	10,000 feet; 7,250 feet
Traffic	
Control:	Control Tower
Lighting:	Runways, obstructions, beacon and approach; touch-down lights and center line on one runway
Services:	American Airlines, Delta, Eastern, Ozark, Piedmont, Northeast, TWA, United, USAir, Jetstream, Allegheny Commuter, Comair, Florida Express; fuel - 100 and jet-A; major A & P repairs, major Avionics repairs, APU, charter, oxygen, U.S. Customs; taxi, car rentals, limousine, courtesy car, public transit; Weather Bureau, restaurant, snack bar
Air Freight	
Service:	Air freight terminal

Air Express Service

Several major companies offer air express services in Kentucky. These companies provide a quick means of shipping small to medium-sized packages expeditiously.

Water

The Ohio River forms the northwestern boundary of Oldham County. A nine-foot navigation channel is maintained for the entire length of the Ohio River.

Port facilities are available on the Ohio River at Louisville, 25 miles southwest of LaGrange. The Louisville and Jefferson County Riverport Authority has been designated as a Foreign Trade Zone and offers complete U.S. Customs services for exports and imports. The Port of Louisville terminal, although privately-owned, is also available for public use.

POWER AND FUEL

Electricity

Company serving LaGrange and part of Oldham County - Kentucky
Utilities Company
Source of power - Kentucky Utilities Company
For industrial rates contact:

Industrial Development Department
Kentucky Utilities Company
One Quality Street
Lexington, Kentucky 40507
(606) 255-1461

Company serving Buckner and a major portion of Oldham County -
Louisville Gas and Electric Company
Source of power - Louisville Gas and Electric Company
For industrial rates contact:

Louisville Gas and Electric Company
311 West Chestnut Street
P. O. Box 32010
Louisville, Kentucky 40232
(502) 566-4241

Natural Gas

Company serving LaGrange and Buckner - Louisville Gas and Electric
Company
Source of supply - Texas Gas Transmission Corporation
Size of transmission mains - 26 to 30 inches (supplier);
8 inches (distributor)
Distribution mains - 2 to 8 inches
Distribution pressure - 35 psi to 90 psi
Btu content - 1,025 per cubic foot
Specific gravity - 0.60
For rates and supplies contact:

Economic Development and Market Research
Louisville Gas and Electric Company
P. O. Box 32010
Louisville, Kentucky 40232
(502) 566-4488

Other Fuels

Propane*

Wilhoyte Gas Service
U. S. Highway 42
Prospect, Kentucky 40059

Fuel oils

Distillate fuel oil - *

Ashland Oil Products
U. S. Highway 42 West
LaGrange, Kentucky 40031

Yochum Marathon Oil Company,
Inc.
2410 North Highway 53
LaGrange, Kentucky 40031

Eldridge Oil Company
409 West Jefferson Street
LaGrange, Kentucky 40031

Residual fuel oil - Arrangements must be made with the refinery.

Low sulphur content coal - Available in Kentucky.

* Fuel supplies are also available from distributors in the Louisville area.

WATER AND SEWERAGE

Public Water Supply

Company serving LaGrange - LaGrange Utilities Commission
412 West Jefferson Street
LaGrange, Kentucky 40031
(502) 222-9325

Source of treated water - Oldham County Water District
Average daily consumption - 609,000 gallons
Peak daily consumption - 890,000 gallons
Storage capacity - 1,100,000 gallons
Size lines - 2 to 12 inches
Water pressure - 44 psi to 91 psi

MONTHLY WATER RATES

First	2,000 gallons or less	\$5.70	Minimum
Next	3,000 gallons	2.40	per M gallons
Next	5,000 gallons	2.05	per M gallons
Next	10,000 gallons	1.70	per M gallons
Next	10,000 gallons	1.40	per M gallons
Next	20,000 gallons	1.20	per M gallons
All over	50,000 gallons	1.00	per M gallons

25 percent is added to all water bills outside the corporate limits of LaGrange.

Tap-on charge:

3/4-inch meter - \$225

All larger meters - Actual cost of labor and materials

Name of water district - Oldham County Water District
P. O. Box 51
Buckner, Kentucky 40010
(502) 222-1690

Area served - Buckner and a major portion of Oldham County

Date when water district began operating - 1966

Source of raw water - Wells (pumping capacity - 4,000 gallons per minute)

Capacity of treatment plant - 5,000,000 gallons per day

Treatment processes - Sedimentation, chlorination, fluoridation

Average amount of water used in a 24-hour period - 2,500,000 gallons

Peak amount of water used in a 24-hour period - 3,500,000 gallons

Storage capacity - 3,985,000 gallons (including clear well)

Size lines - 3 to 24 inches

Water pressure - 39 psi to 110 psi

(Continued)

MONTHLY WATER RATES

First	2,000 gallons	\$6.90 (minimum bill)
Next	3,000 gallons	2.30 per M gallons
Next	4,000 gallons	1.75 per M gallons
Next	11,000 gallons	1.15 per M gallons
Next	20,000 gallons	.92 per M gallons
All over	40,000 gallons	.72 per M gallons

Tap-on charge:

5/8-inch meter	\$390.00
3/4-inch meter	415.00
1-inch meter	530.00
1 1/2-inch meter	925.00
2-inch meter and above	Cost of labor and materials

Raw Water

Surface water sources - The Ohio River, Harrods Creek, and
Floyd's Fork of the Salt River
Average discharge - Ohio River at Markland Dam, 120,000 cfs
(15-year record, USGS); Harrods Creek near LaGrange,
39.3 cfs (17-year record, USGS); Floyd's Fork near
Crestwood, 54.7 cfs (6-year record, USGS)
Expected ground water yield - 500-1,000 gpm along the Ohio River;
5-50 gpm along Floyd's Fork; 5 gpm or less in the remainder
of the county

Sewerage

Company serving LaGrange - LaGrange Utilities Commission
412 West Jefferson Street
LaGrange, Kentucky 40031
(502) 222-9325
Design capacity - 775,000 gallons per day
Average daily flow - 362,000 gallons
Type of treatment - Secondary
Treatment processes - Screening, grit removal, oxidation ditch,
chlorination, sludge drying beds
Treated effluent discharged into - Curry's Fork tributary
Size of sanitary mains - 6 to 15 inches

(Continued)

Monthly rates -

First	2,000 gallons	\$6.36 (minimum)
Next	3,000 gallons	2.80 per M gallons
Next	5,000 gallons	2.60 per M gallons
Next	10,000 gallons	2.20 per M gallons
Next	10,000 gallons	2.00 per M gallons
Next	20,000 gallons	1.60 per M gallons
Next	50,000 gallons	1.40 per M gallons
All over	100,000 gallons	1.40 per M gallons

Tap-on charge:

Residential -	\$1,000.00
Commercial -	
3/4- to 1-inch	1,000.00
1 1/2-inch	1,500.00
2-inch	2,000.00
3-inch	3,000.00
4-inch or larger	1,000.00 per inch of line size

Buckner does not maintain a city-wide sewage treatment facility. Two subdivisions in the city have their own treatment capability. The remainder of Buckner's residents provide their own septic tanks.

CLIMATE

Oldham County

Temperature

Normal (30-year record)	56.10 degrees
Average annual 1985	56.20 degrees
Record highest, July 1954 (38-year record)	105.00 degrees
Record lowest, January 1963 (38-year record)	-20.00 degrees
Normal heating degree days (30-year record)	4,525
(Heating degree day totals are the sums of negative departures of average daily temperatures from 65 degrees F.)	

Precipitation

Normal (30-year record)	43.56 inches
Mean annual snowfall (30-year record)	17.30 inches
Total precipitation 1985	37.75 inches
Mean number days precipitation (.01 inch or more) (38-year record)	124.60
Mean number days thunderstorms (38-year record)	45.10

Prevailing winds (through 1963)

South

Relative Humidity (25-year record)

1 a.m.	76 percent
7 a.m.	81 percent
1 p.m.	59 percent
7 p.m.	61 percent

Source: U.S. Department of Commerce, Environmental Science Services Administration, Climatological Data, 1985. Station of record: Louisville, Kentucky.

LOCAL GOVERNMENT

Structure

LaGrange is served by a mayor and eight council members. Oldham County is served by a county judge/executive and eight magistrates. Buckner is not an incorporated city, therefore has no form of city government.

Planning and Zoning

Joint agency - Oldham County Joint Planning and Zoning Commission

Participating cities - LaGrange, Crestwood, and Pewee Valley

Zoning enforced - All areas

Subdivision regulations enforced - All areas

Local codes enforced - Building (commercial only); Housing (multi-family only)

Mandatory state codes enforced - Kentucky Plumbing code, National Electric Code, Kentucky Boiler Regulations and Standards, Kentucky Building Code (modeled after BOCA code)

Local Fees and Licenses

Businesses within the city of LaGrange are required to pay an annual license tax. The majority of businesses in LaGrange pay a flat annual license tax. The amount of the license ranges from \$26 to \$301 per year, depending upon the type of business. Businesses which are not required to pay the flat rate must pay a license tax based upon gross receipts. For those businesses which must pay a license tax based upon gross receipts, the minimum tax is \$51 and the maximum tax is \$301.

A 3 percent tax is levied on utilities receipts for schools in Oldham County. Tax is paid by all consumers of utilities as an add-on to the utilities bills. Exempted are receipts from utilities services that are resold and the receipts from the sale of energy or energy producing fuels that exceed 3 percent of the cost of production in manufacturing, processing, mining or refining.

State and Local Property Taxes

All property in Kentucky, except items exempted by the state constitution, is taxed by the state. Property which also may be taxed by local jurisdictions includes land and buildings, finished goods inventories, automobiles, trucks, office furniture and office equipment. Local taxing jurisdictions in Kentucky include counties, cities, and school districts.

All property in Kentucky is assessed at 100 percent of fair cash value.

COMBINED STATE AND LOCAL RATES PER \$100 VALUATION, 1986

	<u>LaGrange</u>	<u>Unincorporated Oldham County</u>
Land and Buildings	\$1.0539	\$0.796
Manufacturing		
Machinery	0.150	0.150
Pollution Control		
Equipment	0.150	0.150
Inventories		
Raw materials	0.001	0.001
Goods in Process	0.001	0.001
Finished Goods	1.054	0.789
Automobiles & Trucks	1.521	1.256
Other Tangible		
Personal Property	1.503	1.238
Intangibles (Accounts receivable*, money in hand, stock, notes, bonds)	0.250	0.250
Goods Stored in Public Warehouses in Transit		
Status	0.001	0.001
Private Leaseholds in Industrial Revenue Bond Financed Facilities	0.015	0.015

Fifteen fire protection districts levy a special property tax within their boundaries. The rates range from \$.05 to \$.10 per \$100 valuation.

* Accounts receivable are taxed at 85 percent of face value, for an effective rate of \$0.2125 per \$100 valuation.

Safety

Police*	LaGrange	Oldham County	
		Police	Sheriff
Total staff	6 full-time 1 part-time	9	7 full-time 5 part-time
Radio-patrol cars	6	9	Staff furnishes own cars

Fire**	LaGrange	Oldham County
Insurance Services Office, Public Protection Classification	5	***
Volunteers	47	99

Rescue Service

The LaGrange Fire and Rescue Department provides rescue service to both LaGrange and Buckner.

Refuse Collection and Disposal

Refuse collection and disposal is provided to LaGrange, Buckner, and Oldham County by private contractors.

* A Kentucky State Police Post is also located in LaGrange.

** Includes copyrighted material of ISO Commercial Risk Services, Inc., with its permission.

*** Nine fire departments provide service to Oldham County. Fire protection ratings range from class three to class nine within these districts. Property in unincorporated Oldham County, not within these districts, has a class ten rating.

EDUCATION

Public Schools

	Oldham County*
Total Enrollment (Feb. 1987)	6,426
Kindergarten	465
Elementary	2,504
Middle School	1,397
High School	2,060
Accreditation	Southern Association of Colleges and Schools
Pupil-Teacher Ratio (1985-86)	20-1
Percent High School Graduates to College (1985-86)	57.2
Expenditures Per Pupil (1985-86)	\$2,075.12

Nonpublic Schools

<u>School</u>	<u>Enrollment</u>	<u>Grades</u>
St. Francis Elementary	221	K-8
Immaculate Conception Elementary	111	K-8
St. Aloysius Elementary	253	1-8
Exploratorium Elementary	18	K-8

* The Oldham County School Board plans to construct a new elementary school and a new high school in Crestwood. The elementary school is scheduled to be completed in August 1988 and the high school in August 1989. Estimated cost of these new facilities is approximately \$10 million.

Area Colleges and Universities

<u>Name</u>	<u>Location (Miles distant)</u>	<u>Enrollment (Fall, 1986)</u>	<u>Highest Degree Conferred</u>
Bellarmino College	Louisville, Kentucky (25)	2,644	Masters
Jefferson Community College	Louisville, Kentucky (25)	6,996	Associate
Spalding University	Louisville, Kentucky (25)	1,154	Doctorate
University of Louisville	Louisville Kentucky (25)	20,217	Doctorate, M.D., D.M.D., J.D.
Indiana University Southeast	New Albany, Indiana (30)	4,657	Masters (Education only)
Hanover College	Hanover, Indiana (38)	1,075	Baccalaureate
Kentucky State University	Frankfort, Kentucky (41)	2,205	Masters

Vocational Training

The Bluegrass State Skills Corporation, an independent public corporation created and funded by the Kentucky General Assembly, provides programs of skills training to meet the needs of business and industry from entry level to advanced training, and from upgrading present employees to retraining experienced workers.

The Bluegrass State Skills Corporation is the primary source for skills training assistance for a new or existing company. The Corporation works in partnership with other employment and job training resources and programs, as well as Kentucky's economic development activities, to package a program customized to meet the specific needs of a company.

Vocational training is available at both the state vocational-technical schools and the area vocational education centers. The state vocational-technical schools are post-secondary institutions. The area vocational education centers are designed to supplement the curriculum of high school students. Both the state vocational-technical schools and the area vocational education centers offer evening courses to enable working adults to upgrade current job skills.

Arrangements can be made to provide training in the specific production skills required by an industrial plant. Instruction may be conducted either in the vocational school or in the industrial plant, depending upon the desired arrangement and the availability of special equipment.

(Continued)

Nearest State School

Jefferson State Vocational-Technical School
Louisville, 25 miles from LaGrange

Agriculture	Carpentry
Horticulture	Diesel Mechanics
Business & Office	Electricity
Accounting/Management	Electronics
Clerical	Graphic Arts
Data Processing	Machine Shop
Secretarial	Masonry
Consumer & Home Economics	Plumbing
Child Care	Welding
Commercial Foods	Learning Resource Center
Health & Personal Services	Public Service Occupations
Occupations	Business/Industry Security
Cosmetology	Training
Dental Assisting	CPR Training
Medical Assisting	Electrical Safety Training
Practical Nursing	Emergency Medical Care
Surgical Technology	Fire Service Training
Industrial Education	First Aid & Safety
Air Conditioning	Rescue & Emergency Services
Auto Body Repair	Training
Auto Mechanics	

Nearest Area Education Center

Oldham County Area Vocational Education Center
Buckner, 4 miles from LaGrange

Health & Personal Services	Carpentry
Occupations	Commercial Art
Health Services	Heating & Air Conditioning
Industrial Education	
Auto Mechanics	

HEALTH

Local Medical Personnel (Oldham County)

Physicians - 64

Dentists - 8

Hospitals

<u>General Hospital</u>	<u>Location</u>	<u>Beds</u>
Tri-County Community Hospital*	LaGrange	120

Medical staff - 42 active physicians and 44 registered nurses

Other Medical Facilities

Charterton Hospital (a drug and alcohol treatment facility)
Oldham County Health Department

Ambulance Service

Name - The LaGrange Fire and Rescue Department

Staff - 43 volunteers, 19 of the volunteers are trained emergency
medical technicians

* The new \$13 million Tri-County Community Hospital was completed in the fall of 1986.

OTHER LOCAL FACILITIES

Communications

Telephone -	South Central Bell Telephone Company
Telegraph -	Western Union
	Toll-Free number, 1-800-325-6000
Newspapers -	The Oldham Era
Weekly and circulation -	6,645
Television -	
Airwave reception from -	Louisville, Kentucky
Cable service -	Oldham County Cablevision
Educational Television -	The Kentucky Educational Television (K.E.T.) network is available statewide

Library Services

Public library - Oldham County Public Library
Size collection - 43,363 volumes
Circulation, 1985-86 - 127,380

Religious Institutions

Denominations -	African Methodist	Church of Latter Day
	Episcopal	Saints
	Assembly of God	Episcopal
	Baptist	Lutheran
	Catholic	Presbyterian
	Christian	Seventh day Adventist
	Church of Christ	United Methodist

Nearest Synagogues -	Louisville, 25 miles from LaGrange
Congregations -	Adath Israel Brith Sholom (reform)
	Adath Jeshurum (conservative)
	Anshei Sfard (orthodox)
	Keneseth Israel (orthodox)
	Sholom (reform)

Financial Institutions

<u>Banks</u>	<u>Assets</u>	<u>Deposits</u>	<u>Statement Date</u>
Citizens Fidelity Bank & Trust Company of Oldham County	\$77,836,065.97	\$60,060,428.21	6/30/86
Crestwood State Bank	55,918,736.77	49,424,464.02	12/31/86

<u>Savings and Loan Associations</u>	<u>Assets</u>	<u>Deposits</u>	<u>Statement Date</u>
First Nationwide Bank* (a federal savings bank)	\$13,197,979.00	\$9,674,080,000.00	6/30/86
Future Federal Savings Bank*	478,578,893.00	411,299,819.00	12/31/86

Hotels and Motels

Total number - 3
Total rooms - 244

* These institutions maintain offices in several other locations in addition to their offices in Oldham County.

RECREATION

Local

A year-round, supervised recreation program is open to all county residents. The program is operated through the Oldham County Board of Education and the various activities are conducted through the schools, using school recreational facilities.

The Oldham County Recreational Park is located 1 mile north of Buckner. The park contains a 56-acre fishing lake, volleyball courts, basketball courts, horseshoe pits, grills, picnic shelters, public restrooms, and parking facilities. There are plans for the construction of additional facilities at the Oldham County Recreational Park. They include a miniature golf course and additional soccer and football fields.

LaGrange sponsors Pony and Babe Ruth Baseball Leagues. In addition, there are a number of county-wide softball leagues, some operated by the Recreation Department and some private. Additional public recreational facilities in LaGrange and Buckner include two tennis courts, five baseball diamonds, and two football fields.

There is a small park located on the Ohio River near Westport, Kentucky. The park has facilities for launching small boats and a boat dock.

A new city park is currently being developed in LaGrange. The new 10-acre park will contain picnic areas, shelters, ball fields, and restrooms.

There are two private country clubs in the LaGrange and Buckner area. Each club maintains an 18-hole golf course and a swimming pool.

Area (Within 65 miles)

E. P. "Tom" Sawyer State Park, 18 miles southwest of LaGrange, is located near Louisville. Recreational facilities include an outdoor Olympic-size pool, a bathhouse, 12 lighted tennis courts, a one-mile fitness trail, a picnic area, an archery range, and soccer fields. Planned recreation and playground are offered year-round. Indoor facilities are available for basketball, volleyball, exercise classes, dance classes and various other events.

Louisville, 25 miles southwest of LaGrange, provides a wide variety of recreational opportunities. The most noted recreational event in Louisville is the Kentucky Derby at Churchill Downs. The "Run for the Roses" is the oldest continuously held horse race in the United States. Other attractions include: Kentucky Center for the Arts, Macauley Theatre, Actors Theatre of Louisville, Louisville Children's Theatre, the Louisville Bach Society, the Louisville Orchestra, the Louisville Ballet, the Kentucky Opera Association, several museums, the Louisville Zoological Gardens, University of Louisville sporting events, rock concerts, and the "Belle of Louisville" sternwheeler.

General Butler State Resort Park is located 26 miles northeast of LaGrange near Carrollton. The park includes a 30-acre lake, a boat dock, a 9-hole golf course, a miniature golf course, a swimming pool, playgrounds, shuffleboard, tennis courts, planned recreation, fishing, camping, horseback riding, 57 lodge rooms, cottages, and gift shops. General Butler's family home, the Butler Mansion, has been restored and contains a museum of Ohio River lore. Another unique feature is the Ski Butler ski area that has six ski runs, a ski shop, rental equipment, a ski school and chair lifts.

Taylorsville Lake State Park, 36 miles south of LaGrange near Taylorsville, was developed by the U.S. Army Corps of Engineers. The 3,050-acre lake and 10,700-acre recreation area features full-service marina facilities, fishing, boating, swimming, and wildlife recreation.

Frankfort, the capital of Kentucky, is 41 miles southeast of LaGrange. Points of interest in Frankfort include the Capitol Building, a 34-foot floral clock, the Daniel Boone Monument, several museums, and old homes with their original furnishings. Frankfort is also the home of Kentucky State University which offers many cultural activities and sporting events.

Bernheim Forest Arboretum and Nature Center, located 48 miles southwest of LaGrange, is a privately endowed 10,000-acre forest and wildlife refuge. The area contains over 1,400 labeled varieties of plants, trees and shrubs; ornamental gardens; a museum; nature trails and waterfowl ponds.

Big Bone Lick State Park in Boone County, 61 miles northeast of LaGrange, provides a unique combination of educational and recreational pleasures. Visitors can walk through the natural outdoor museum with replicas and exhibits that tell the story of Big Bone Lick. Recreational activities and facilities include a modern campground with 62 sites, fishing in a nearby lake, an indoor and outdoor museum and gift shop, picnic grounds, tennis, shuffleboard, volleyball, basketball, horseshoes, planned recreation, and a swimming pool in the camping area.

My Old Kentucky Home State Park, 63 miles southwest of LaGrange in Bardstown, portrays an image of the South's gentle and leisurely home life before the Civil War. The restored Georgian Colonial mansion is where composer Stephen Foster visited and where he was inspired to write "My Old Kentucky Home." One of the nation's most successful outdoor dramas, "The Stephen Foster Story", is presented in the park's amphitheatre during the summer months. The park also offers a 40-site campground, a gift shop, a 9-hole golf course and pro shop, a picnic area, and planned recreation.

The Kentucky Horse Park, a park dedicated to horses and to man's love for horses, is located 64 miles southeast of LaGrange at Lexington. The park, which contains more than 1,000 acres of Kentucky Bluegrass, features the International Museum of the Horse; the Man O'War Memorial; the wide screen film "Thou Shalt Fly Without Wings"; an antique carriage display; horseback and pony rides; walking farm tours; horse-drawn tours; a restaurant; a gift shop; and a campground area, which offers swimming, tennis, and planned activities. Numerous special events are held year-round and include various horse shows, steeplechasing, dressage, polo games, and rodeos.

COMMUNITY IMPROVEMENTS

Recent

Bluegrass Electronics, Jenner Company, Lesco Design and Manufacturing Company, and Torbitt and Castleman Company recently announced plans for plant expansions at their facilities in Oldham County.

Construction of the new \$13 million Tri-County Community Hospital was completed in the fall of 1986. The new hospital contains 120 beds.

A new 103-room motel was recently constructed in LaGrange. Also, several new retail businesses have begun operations in LaGrange.

Construction of a thoroughbred center, near LaGrange, was recently completed. The center contains a training track, six barns, and multi-family townhouses.

Under Way

A new city park is currently being developed in LaGrange. The new 10-acre park will contain picnic areas, shelters, ball fields, and restrooms.

L'Esprit, a 5,000-acre Arabian horse center, is currently under development. Farms within the development will be dedicated to the breeding, training, and selling of Arabian horses. Lasma East, a 730-acre anchor farm, contains breeding facilities, barns, and a training track. The development also contains a residential and commercial district.

Planned

A regional jail is planned to be constructed in the LaGrange area. The facility will consist of approximately 13,000 square feet and contain 71 beds. Construction of this \$2 million facility is scheduled to begin in the fall of 1987.

Construction of a cross-country running track and a little league football field are planned additions at the Oldham County Recreation Park. Renovation of the boat dock at Westport Park is also planned for the summer of 1987.

The Oldham County School Board plans to construct a new elementary school and a new high school in Crestwood. The elementary school is scheduled to be completed in August 1988 and the high school in August 1989. Estimated cost of these new facilities is approximately \$10 million.