

1987

# Industrial Resources: Pendleton County - Falmouth and Butler

Kentucky Library Research Collections  
Western Kentucky University, [spcol@wku.edu](mailto:spcol@wku.edu)

Follow this and additional works at: [https://digitalcommons.wku.edu/pendleton\\_cty](https://digitalcommons.wku.edu/pendleton_cty)



Part of the [Business Administration, Management, and Operations Commons](#), [Growth and Development Commons](#), and the [Infrastructure Commons](#)

---

## Recommended Citation

Kentucky Library Research Collections, "Industrial Resources: Pendleton County - Falmouth and Butler" (1987). *Pendleton County*. Paper 5.  
[https://digitalcommons.wku.edu/pendleton\\_cty/5](https://digitalcommons.wku.edu/pendleton_cty/5)

This Report is brought to you for free and open access by TopSCHOLAR®. It has been accepted for inclusion in Pendleton County by an authorized administrator of TopSCHOLAR®. For more information, please contact [topscholar@wku.edu](mailto:topscholar@wku.edu).



**RESOURCES FOR ECONOMIC DEVELOPMENT**

---

# Falmouth & Butler



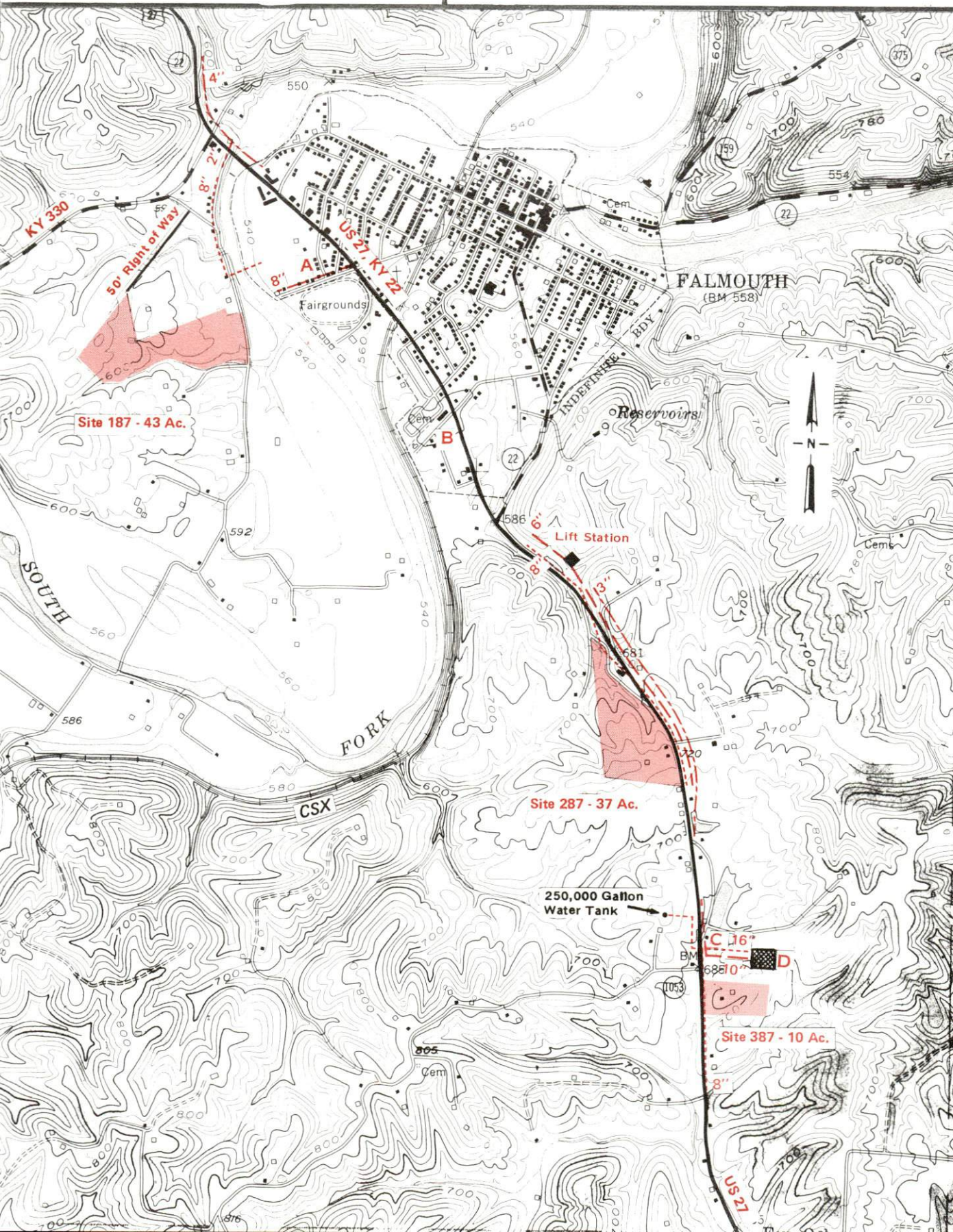
---

**KENTUCKY**  
The business environment is right.



For more information contact the Kentucky Department of  
Economic Development, Industrial Development & Marketing  
Division, Capital Plaza Tower, Frankfort, Kentucky 40601  
(502-564-7140).

## FALMOUTH, KENTUCKY Industrial Sites - 1987





### Site 187 - 43 Acres

LOCATION: West of Falmouth city limits across South Fork of the Licking River  
ZONING: Not zoned  
HIGHWAY ACCESS: US 27 approximately 0.5 mile northwest via KY 330 and paved county road  
RAILROAD: Not rail served  
WATER: Pendleton County Water District  
Size Line: 8-inch line approximately 400 feet north along west side of paved county road  
SEWERAGE: Package treatment plant necessary  
NATURAL GAS: Union Light, Heat and Power Company  
Size Line: 2-inch line approximately 2500 feet north at junction of US 27 and KY 330  
ELECTRICITY: Harrison County RECC  
OWNERSHIP: City of Falmouth  
SCHOOL DISTRICT: Pendleton County

### Site 287 - 37 Acres

LOCATION: Approximately 2500 feet south of Falmouth city limits  
ZONING: None  
HIGHWAY ACCESS: US 27 along southeastern boundary  
RAILROAD: Not rail served  
WATER: City of Falmouth  
Size Line: 8-inch line adjacent to northern boundary of site  
SEWERAGE: City of Falmouth  
Size Line: 8-inch line along southeastern boundary across US 27  
NATURAL GAS: Union Light, Heat and Power Company  
Size Line: 3-inch line along southeastern boundary across US 27  
ELECTRICITY: Harrison County RECC  
OWNERSHIP: Private  
SCHOOL DISTRICT: Pendleton County

### Site 387 - 10 Acres

LOCATION: Approximately 1.6 miles south of Falmouth city limits  
ZONING: None  
HIGHWAY ACCESS: US 27 along western boundary  
RAILROAD: Not rail served  
WATER: City of Falmouth  
Size Line: 8-inch line along western boundary; 16-inch line approximately 500 feet north  
SEWERAGE: City of Falmouth  
Size Line: 10-inch line approximately 500 feet north  
NATURAL GAS: Union Light, Heat and Power Company  
Size Line: 3-inch line approximately 1200 feet north along east side of US 27  
ELECTRICITY: Harrison County RECC  
OWNERSHIP: Private  
SCHOOL DISTRICT: Pendleton County

SCALE: 1 inch = 2000 feet  
CONTOUR INTERVAL: 20 feet  
BASE: USGS 7.5 minute series - 1954

#### UTILITIES

--- Water Line  
--- Sewer Line  
--- Gas Line

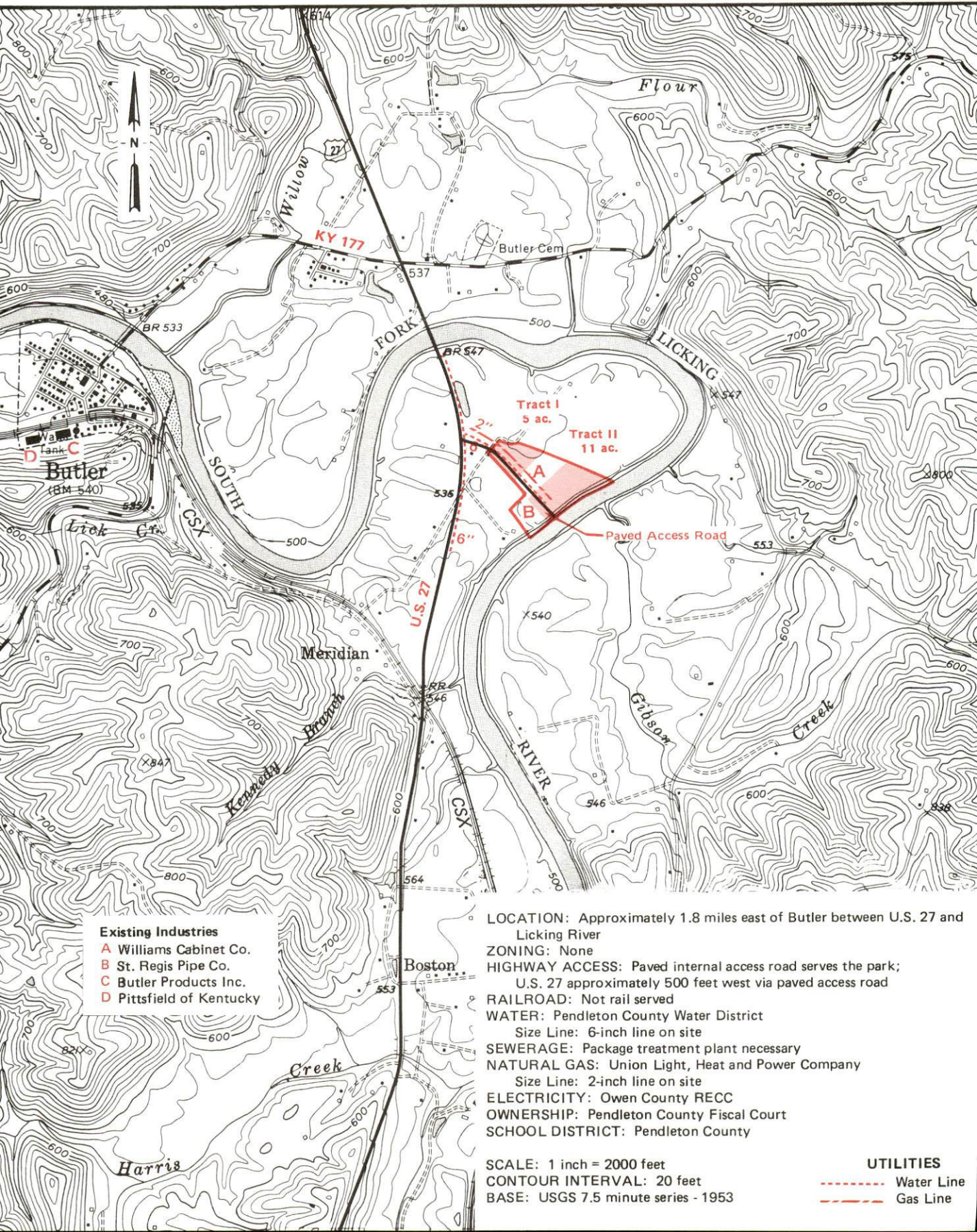
#### Existing Industries

- A Paynter's Generator Service
- B Fuller Mfg. and Supply Co.
- C Pepsi-Cola Distributing Co.
- D Available Industrial Building (127,216 sq. ft.)



# BUTLER, KENTUCKY --- Site 187 --- 16 Acres

For more information contact the Kentucky Department of Economic Development, Industrial Development & Marketing Division, Capital Plaza Tower, Frankfort, Kentucky 40601 (502-564-7140).



## Existing Industries

- A Williams Cabinet Co.
- B St. Regis Pipe Co.
- C Butler Products Inc.
- D Pittsfield of Kentucky

LOCATION: Approximately 1.8 miles east of Butler between U.S. 27 and Licking River

ZONING: None

HIGHWAY ACCESS: Paved internal access road serves the park;  
U.S. 27 approximately 500 feet west via paved access road

RAILROAD: Not rail served

WATER: Pendleton County Water District

Size Line: 6-inch line on site

SEWERAGE: Package treatment plant necessary

NATURAL GAS: Union Light, Heat and Power Company

Size Line: 2-inch line on site

ELECTRICITY: Owen County RECC

OWNERSHIP: Pendleton County Fiscal Court

SCHOOL DISTRICT: Pendleton County

SCALE: 1 inch = 2000 feet

CONTOUR INTERVAL: 20 feet

BASE: USGS 7.5 minute series - 1953

## UTILITIES

- Water Line
- Gas Line



RESOURCES FOR ECONOMIC DEVELOPMENT  
FALMOUTH AND BUTLER, KENTUCKY

Prepared by  
The Kentucky Department of Economic Development  
Division of Research and Planning  
in cooperation with  
The Pendleton County Chamber of Commerce

1987



Program manager - Andrew Dennis; research - Barry K. Holder, Jr.; clerical - Bobbi Graves; graphics - Tony Cecconi, Robert Owens, Pat Coleman; cartography - Site Evaluation Branch, Division of Industrial Development and Marketing. Cost of printing paid from state funds.



# TABLE OF CONTENTS

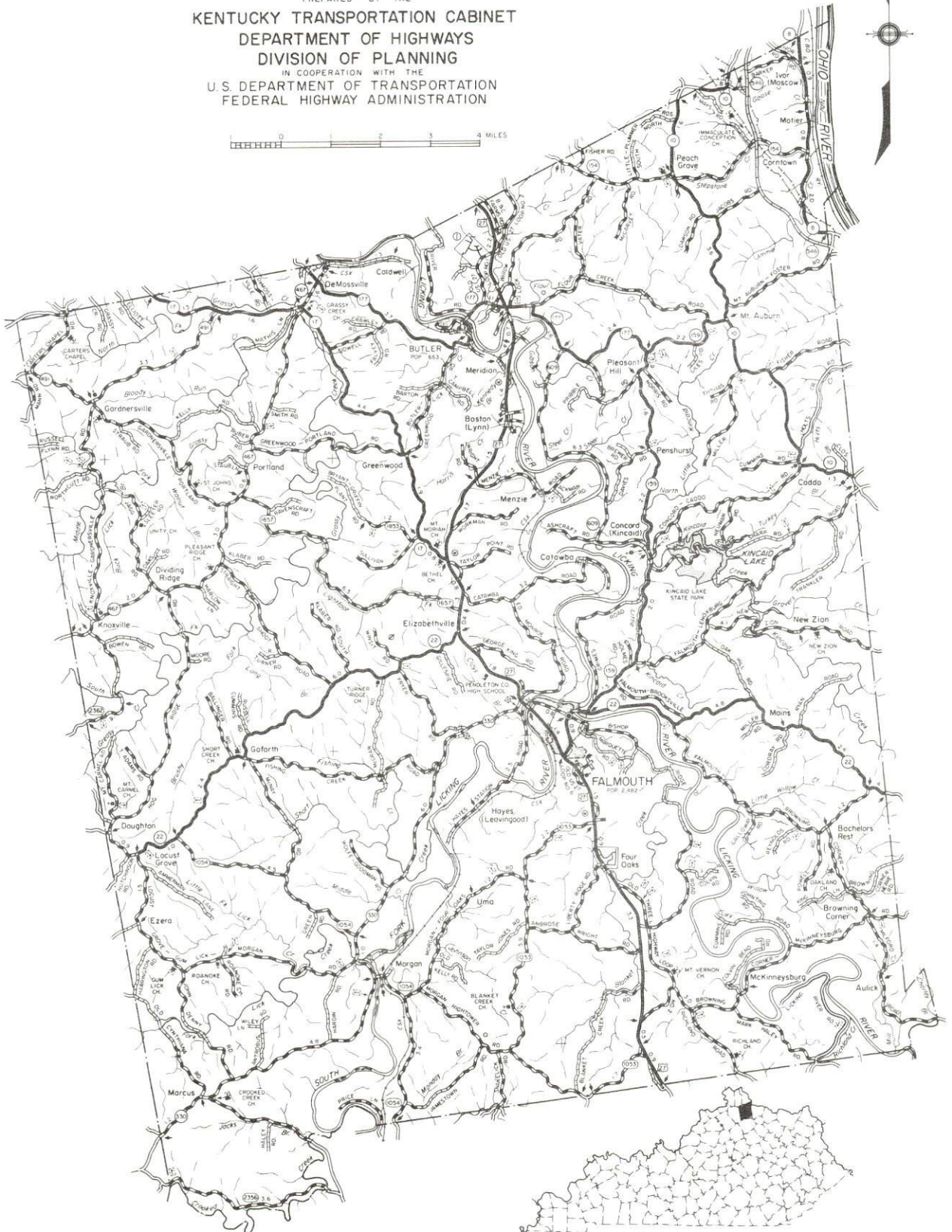
<u>Chapter</u>	<u>Page</u>
INDUSTRIAL SITES . . . . .	i
FALMOUTH AND BUTLER, KENTUCKY - A RESOURCE PROFILE . . .	1
THE LABOR MARKET AREA . . . . .	2
Population . . . . .	2
Population Projections . . . . .	2
Labor Force Characteristics of Residents, 1986 . . . . .	3
Selected Components of Nonagricultural Employment, by Place of Work, 1986 . . . . .	3
Per Capita Personal Income . . . . .	4
Estimated Male Labor Supply . . . . .	5
Estimated Female Labor Supply . . . . .	5
Average Weekly Wages by Industry, by Place of Work, 1986 . . . . .	6
EXISTING INDUSTRY . . . . .	8
Falmouth and Butler Manufacturing Firms, Their Products and Employment . . . . .	8
Labor Organizations in Manufacturing Firms . . . . .	10
Selected Industrial Services . . . . .	10
TRANSPORTATION . . . . .	11
Rail . . . . .	11
Highways . . . . .	11
Truck Service . . . . .	12
Air . . . . .	13
Air Express Service . . . . .	13
Water . . . . .	14
POWER AND FUEL . . . . .	15
Electricity . . . . .	15
Natural Gas . . . . .	16
Other Fuels . . . . .	16
WATER AND SEWERAGE . . . . .	18
Public Water Supply . . . . .	18
Raw Water . . . . .	20
Sewerage . . . . .	20
CLIMATE . . . . .	22

<u>Chapter</u>	<u>Page</u>
LOCAL GOVERNMENT . . . . .	23
Structure . . . . .	23
Planning and Zoning . . . . .	23
Local Fees and Licenses . . . . .	23
State and Local Property Taxes . . . . .	24
Combined State and Local Rates Per \$100 Valuation, 1986 . . . . .	24
Safety . . . . .	25
Police . . . . .	25
Fire . . . . .	25
Refuse Collection and Disposal . . . . .	25
EDUCATION . . . . .	26
Public Schools . . . . .	26
Area Colleges and Universities . . . . .	26
Vocational Training . . . . .	28
HEALTH . . . . .	30
Local Medical Personnel . . . . .	30
Hospitals . . . . .	30
Regional Facilities . . . . .	30
Other Medical Facilities . . . . .	31
Ambulance Service . . . . .	31
OTHER LOCAL FACILITIES . . . . .	32
Communications . . . . .	32
Library Services . . . . .	32
Religious Institutions . . . . .	32
Financial Institutions . . . . .	33
Hotels and Motels . . . . .	33
RECREATION . . . . .	34
COMMUNITY IMPROVEMENTS . . . . .	36



1987 EDITION  
GENERAL HIGHWAY MAP  
**PENDLETON COUNTY**  
**KENTUCKY**

PREPARED BY THE  
KENTUCKY TRANSPORTATION CABINET  
DEPARTMENT OF HIGHWAYS  
DIVISION OF PLANNING  
IN COOPERATION WITH THE  
U.S. DEPARTMENT OF TRANSPORTATION  
FEDERAL HIGHWAY ADMINISTRATION





With  
MAJOR HIGHWAYS & RAILROAD SYSTEM

Shaded area denotes Labor Market Area.



## **FALMOUTH AND BUTLER, KENTUCKY - A RESOURCE PROFILE**

Falmouth, the county seat of Pendleton County, is located in the Licking River Valley in northern Kentucky, 37 miles south of Cincinnati, Ohio; 115 miles northeast of Louisville, Kentucky; and 49 miles north of Lexington, Kentucky. Falmouth had an estimated population of 2,404 in 1984.

Butler is also located in the Licking River Valley, 10 miles north of Falmouth.

Pendleton County has a land area of 281 square miles. The northeast portion of the county is bounded by the Ohio River, and the Licking River flows northward through the central area of the county. Pendleton County had an estimated population of 10,900 in 1986.

**The Economic Framework** - The total number of Pendleton County residents employed in 1986 averaged 3,620. Manufacturing firms in the county reported 305 employees; wholesale and retail trade provided 415 jobs; 160 people were employed in service occupations; state and local government accounted for 418 employees; and contract construction firms provided 32 jobs.

**Labor Supply** - There is a current estimated labor supply of 10,785 men and 14,720 women available for industrial jobs in the labor market area. In addition, from 1987 through 1991, 11,365 young men and 10,698 young women in the area will become 18 years of age and potentially available for industrial jobs.

**Transportation** - CSX Transportation provides main line rail service to Falmouth and Butler. U.S. Highway 27 and Kentucky Highway 22 west of Falmouth are "AAA"-rated highways serving Falmouth. Butler is one mile west of U.S. Highway 27, via Kentucky Highway 177, a "AA"-rated highway. Eight common carriers serve Falmouth, and five of these serve Butler. The nearest scheduled commercial airline service is available at the Greater Cincinnati International Airport in Boone County, Kentucky, 44 miles north of Falmouth. The nearest navigable waterway is the Ohio River, near Bradford, Kentucky, 29 miles northeast of Falmouth.

**Power and Fuel** - The city of Falmouth, whose source of power is Kentucky Utilities Company, provides electricity to Falmouth. Kentucky Utilities Company also provides electricity to Butler and parts of Pendleton County. The remainder of Pendleton County is served by Harrison Rural Electric Cooperative Corporation and Owen County Rural Electric Cooperative Corporation. The Pendleton County Water District, Gas Division, provides natural gas service to Falmouth and Butler. Two propane and gas dealers and three fuel oil dealers are located in Pendleton County.

**Education** - Primary and secondary public education is provided by the Pendleton County School System. In addition, 15 institutions of higher learning are located within 65 miles of Falmouth. Vocational training facilities are available in Campbell County and Cynthiana, both within 25 miles of Falmouth.

## LABOR MARKET STATISTICS

The Falmouth and Butler Labor Market Area includes Pendleton County and the adjoining Kentucky counties of Bracken, Campbell, Grant, Harrison and Kenton.

### POPULATION

Area	1986*	1980	1970	Percent Nonwhite
				1980
Falmouth	2,404	2,482	2,593	1.4
Butler	651	663	558	0.0
Labor Market Area	267,700	267,576	259,477	-
Pendleton County	10,900	10,989	9,949	0.5
Bracken County	7,600	7,738	7,227	0.8
Campbell County	81,700	83,317	88,704	1.3
Grant County	14,100	13,308	9,999	0.4
Harrison County	15,800	15,166	14,158	3.2
Kenton County	137,600	137,058	129,440	3.3

\* Population estimates. City estimates are for 1984.

Note: The 1980 city counts of population by race are provisional.

Sources: U.S. Department of Commerce, Bureau of the Census, 1980 Census of Population and Housing, March 1981; 1980 Census of Population, Number of Inhabitants. University of Louisville, Urban Studies Center, Population Unit, October 1985; University of Louisville, Urban Studies Center, State Data Center, June 1987 Newsletter, Vol. 5 No. 4.

### POPULATION PROJECTIONS

Area	1990	1995	2000	2010
Labor Market Area	272,730	277,739	281,800	287,384
Pendleton County	11,253	11,619	11,889	12,262
Bracken County	7,794	7,967	8,079	8,188
Campbell County	79,407	77,947	76,871	74,640
Grant County	15,539	16,628	17,520	18,957
Harrison County	16,300	16,822	17,165	17,661
Kenton County	142,437	146,756	150,276	155,676

Source: University of Louisville, Urban Studies Center, Population Research Unit, How Many Kentuckians: Population Forecasts, 1980-2020, the 1986 Edition, Spring 1986.



# LABOR FORCE CHARACTERISTICS OF RESIDENTS, 1986

	<u>Pendleton County</u>	<u>Labor Market Area</u>
Civilian Labor Force	3,993	131,170
Employment	3,618	122,285
Unemployment	375	8,915
Rate of Unemployment (%)	9.4	6.8

Source: Kentucky Cabinet for Human Resources, Kentucky Labor Force Estimates, Annual Averages, 1986.

## SELECTED COMPONENTS OF NONAGRICULTURAL EMPLOYMENT BY PLACE OF WORK, 1986

	<u>Pendleton County</u>	<u>Labor Market Area</u>
All Industries (total)	1,611	61,485
Manufacturing	305	8,573
Wholesale & Retail Trade	415	20,005
Services	160	14,467
State/Local Government	418	9,856
Contract Construction	32	3,796

Note: Excludes domestic workers, railway workers, certain nonprofit corporations, majority of federal government workers, and self-employed workers.  
Source: Kentucky Cabinet for Human Resources, Average Monthly Workers Covered by Kentucky Unemployment Insurance Law, 1986.

PER CAPITA PERSONAL INCOME

<u>Area</u>	<u>1980</u>	<u>1984</u>	<u>Percent Change</u>
Pendleton County	\$ 6,558	\$ 8,664	32.1
Labor Market Area Range	\$6,482 - 8,492	\$8,664 - 11,778	-
Kentucky	7,644	10,232	33.9
U.S.	9,494	12,772	34.5

Sources: U.S. Department of Commerce, Bureau of Economic Analysis. Kentucky Economic Information System, June 1986.



ESTIMATED MALE LABOR SUPPLY  
PENDLETON COUNTY LABOR MARKET AREA

Area	Current				Future
	Total Male	Unemployed	Under-employed	Not in Labor Force	Becoming 18 years of age 1987 thru 1991
Labor Market					
Area*	10,785	4,913	4,958	914	11,365
Pendleton	915	181	125	609	508
Bracken	551	193	167	191	345
Campbell	2,846	1,518	1,328	0	3,493
Grant	619	329	290	0	634
Harrison	866	355	397	114	612
Kenton	4,988	2,337	2,651	0	5,773

ESTIMATED FEMALE LABOR SUPPLY  
PENDLETON COUNTY LABOR MARKET AREA

Area	Current				Future
	Total Female	Unemployed	Under-employed	Not in Labor Force	Becoming 18 years of age 1987 thru 1991
Labor Market					
Area*	14,720	3,972	6,403	4,345	10,698
Pendleton	1,151	194	192	765	478
Bracken	938	95	147	696	314
Campbell	4,068	1,284	1,885	899	3,291
Grant	1,123	246	350	527	585
Harrison	1,096	249	369	478	538
Kenton	6,344	1,904	3,460	980	5,492

\* Additional workers may be drawn from other nearby counties.

Note: Unemployed - persons unemployed and actively seeking work; Underemployed - persons employed but working only 14 to 26 weeks per year; Not in Labor Force - represents the number of persons who would enter the labor force if suitable employment were available (based on the assumption that persons in Kentucky would like to participate in the labor force in the same proportion that they do nationally).

Sources: Kentucky Cabinet for Human Resources, Kentucky Labor Supply Estimates by County, 1986. Kentucky Department of Economic Development, Future Labor Supply Becoming 18 Years of Age, 1987 thru 1991.

AVERAGE WEEKLY WAGES BY INDUSTRY  
BY PLACE OF WORK, 1986

	<u>Pendleton County</u>	<u>Bracken County</u>	<u>Campbell County</u>
All Industries	\$252.65	\$247.36	\$299.47
Mining & Quarrying	458.47	*	0
Contract Construction	198.95	301.80	350.05
Manufacturing	361.67	340.33	467.60
Transportation, Communications & Public Utilities	305.94	368.09	408.56
Wholesale & Retail Trade	167.91	153.50	210.45
Finance, Insurance & Real Estate	215.16	251.91	336.42
Services	146.61	121.01	313.52
State/Local Government	246.11	248.38	316.80
Other	179.84	*	193.68
	<u>Grant County</u>	<u>Harrison County</u>	<u>Kenton County</u>
All Industries	\$243.27	\$296.76	\$288.11
Mining & Quarrying	0	0	0
Contract Construction	185.71	347.87	361.94
Manufacturing	285.38	406.78	434.98
Transportation, Communications & Public Utilities	391.69	393.66	373.04
Wholesale & Retail Trade	173.88	150.45	222.78
Finance, Insurance & Real Estate	250.46	301.60	309.00
Services	211.26	219.54	263.32
State/Local Government	304.02	296.46	316.90
Other	121.68	242.04	213.08

\* Not disclosed.

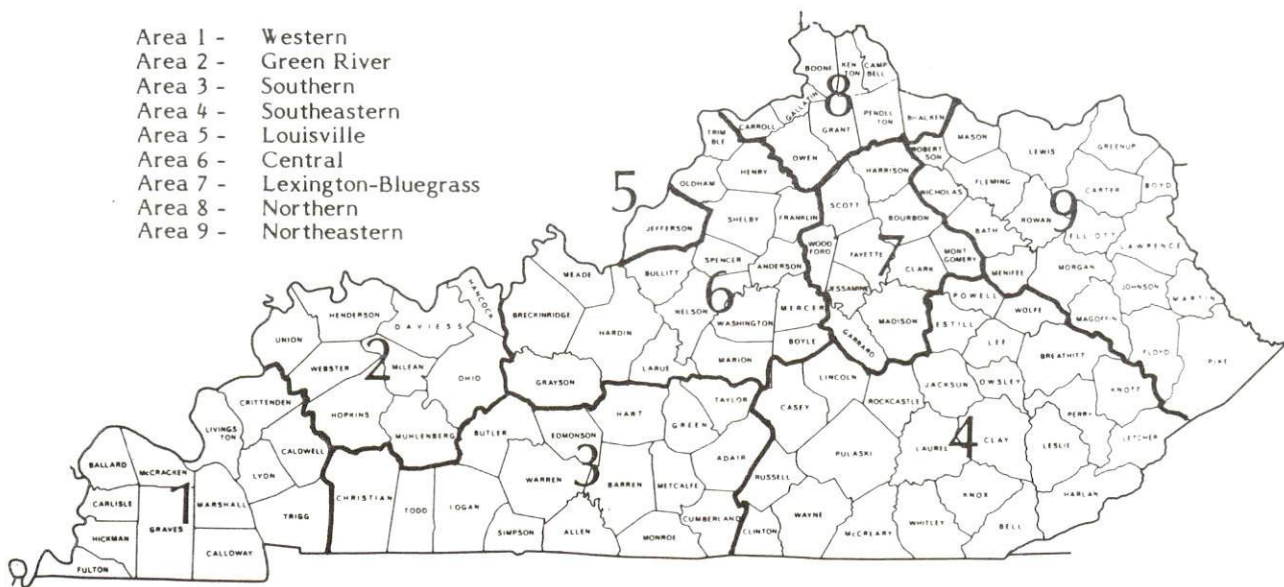
Note: The average weekly wage for each category includes the salaries and wages of all persons working for that type business. For example, the manufacturing category includes both production workers and administrative personnel. Excludes domestic workers, railway workers, certain nonprofit corporations, majority of federal government workers, and self-employed workers.

Source: Kentucky Cabinet for Human Resources, Average Weekly Wages of Workers Covered by Kentucky Unemployment Insurance Law, 1986.



Occupational wage rates for specific industries are usually not available to most government agencies, and wage data furnished to state employment agencies by individual industrial employers are protected from disclosure by federal law. The most reliable up-to-date wage information can be obtained by direct contact with local employers.

Associated Industries of Kentucky, a voluntary organization of Kentucky businesses, regularly collects occupational wage rates and fringe benefits data from participating member firms. Data are compiled for over 127 clearly defined office, production, and service occupations. Tabulations are published for nine geographical areas of Kentucky, as shown on the map below. It should be noted that the data may be weighted by the preponderance of firms in the larger cities and may be somewhat higher than the rates paid in the smaller communities. Data from these tabulations are available, upon request, from the Kentucky Department of Economic Development, Frankfort, Kentucky 40601.



Associated Industries of Kentucky Area Wage Surveys

# EXISTING INDUSTRY

## FALMOUTH AND BUTLER MANUFACTURING FIRMS, THEIR PRODUCTS AND EMPLOYMENT

Firm (Establishment date)	Product	Average Employment			Labor Unions
		Total	Male	Female	
Falmouth					
Fuller Manufacturing & Supply Company (1952)	Remanufactured auto engines and parts	148	133	15	
Moore's Machine Shop (1962)	Machine shop, weldments, extrusion dies and injection molds	1	-	-	
Outlook Publications, Inc. (1907)	Newspaper, shopper's pamphlet	8	1	7	
Paynter's Generator Service (1983)	Generator, alternator and starter rebuilding and repair	18	11	7	
Butler					
All Metal Manufac- turing Company, Inc. (1985)	Metal culverts	10	9	1	
Butler Products, Inc. (1957)	Prop legs and stabilizing stands for trailers, driveshaft center bearing supports	27	25	2	Steel- workers*

(Continued)



Firm (Establishment date)	Product	Average Employment			Labor Unions
		Total	Male	Female	
Dravo Lime Company, Black River Division (1967)	Chemical and metallurgical quicklime products, hydrated limestone	160	146	14	Steel- workers*
Griffin Industries, Inc. (1942)	Rendering tallow grease, meat meal, hides	46	42	4	Teamsters*
Jay Gee, Inc. (1971)	Metal fabri- cation, machine shop	15	14	1	
L & W Lumber Company (1979)	Skids, rough lumber, wood boxes	6	5	1	
Mago Construction Company, Inc. (1969)	Bituminous concrete surface mixes	3	3	0	
Medusa Aggregates Company (1977)	Crushed stone, agricultural lime	20	19	1	
Pittsfield of Kentucky, Division Pittsfield Products Company, Inc. (1981)	Industrial filters	60	20	40	
Jesse Vater Manu- facturing Company (1963)	Screw machine products	2	2	0	
Williams Cabinet Company (1987)	Cabinets	6	6	0	

\* See Labor Organizations below.

Sources: Kentucky Department of Economic Development, 1987 Kentucky Directory of Manufacturers; Division of Research and Planning; Pendleton County Chamber of Commerce.

## LABOR ORGANIZATIONS IN MANUFACTURING FIRMS

<u>Union</u>	<u>Representing workers at:</u>
International Brotherhood of Teamsters, Chauffeurs, Warehousemen and Helpers of America	Griffin Industries, Inc.
United Steelworkers of America, AFL-CIO	Butler Products, Inc.; Dravo Lime Company, Black River Division

## SELECTED INDUSTRIAL SERVICES

<u>Types of Service</u>	<u>Location</u>	<u>Mileage from Falmouth</u>
Custom Plastics Producers	Florence, Kentucky	42
	Georgetown, Kentucky	43
Electric Motor Repair	Cincinnati, Ohio	37
Grinding, Precision & Tool	Cincinnati, Ohio	37
	Georgetown, Kentucky	43
Heat Treating Facilities	Cincinnati, Ohio	37
	Georgetown, Kentucky	43
Industrial Equipment & Supplies	Cincinnati, Ohio	37
	Florence, Kentucky	42
Industrial Gases	Cincinnati, Ohio	37
Industrial Waste Removal	Butler, Kentucky	10
Machine Shops, Tool & Die	Falmouth, Kentucky	-
Metal Finishers	Newport, Kentucky	35
	Covington, Kentucky	36
Metal Service Centers	Covington, Kentucky	36
	Cincinnati, Ohio	37
Millwrights	Cincinnati, Ohio	37
	Erlanger, Kentucky	39
Public Warehouse Facilities	Maysville, Kentucky	39
	Florence, Kentucky	42

Sources: Kentucky Department of Economic Development, Kentucky Directory of Selected Industrial Services, 1985; Division of Research and Planning.



## TRANSPORTATION

### Rail

#### Line serving Falmouth - CSX Transportation

Services - Main line; weekly freight stops; both northbound and southbound through freights daily; switching services available; team track space for 15 cars; nearest piggyback facilities are available at Cincinnati, Ohio, 37 miles north

#### Line serving Butler - CSX Transportation

Services - Main line; northbound freight stops twice weekly; 10 northbound and 10 southbound through freights daily; switching services available; team track space for 6 cars; nearest piggyback facilities available at Cincinnati, Ohio, 27 miles north

For details on routing, schedules, rates, and services contact:

Corporate Communications  
CSX Transportation  
908 West Broadway  
Louisville, Kentucky 40203  
(502) 587-5445

### Highways\*

Falmouth is served by U.S. Highway 27, a "AAA"-rated (80,000-pound gross load limit) trucking highway, and by Kentucky Route 22, which is "AAA"-rated west of Falmouth and "AA"-rated (62,000-pound gross load limit) east of Falmouth.

Butler is located 10 miles north of Falmouth via U.S. Highway 27 and Kentucky Route 177, a "AA"-rated trucking highway.

Access to Interstate 75 is 19 miles west of Falmouth via Kentucky Route 22, a "AAA"-rated highway, and 14 miles west of Butler via Kentucky Routes 177, 17 and 14, all "AA"-rated highways. Interstate 275 is 30 miles north of Falmouth via U.S. Highway 27. Falmouth is 37 miles southeast of Interstate 71; 52 miles north of Interstate 64; 53 miles north of the Mountain Parkway; and 62 miles northeast of the Blue Grass Parkway.

---

\* A project to add passing lanes on upgrades of U.S. Highway 27 in Harrison, Pendleton and Campbell Counties is under way and scheduled for completion by Fall, 1987. Most of the attention has been devoted to construction at three sites between Falmouth and Alexandria. Plans are also being made to reconstruct Kentucky Route 22 between Falmouth and Interstate 75.

## Truck Service

### Falmouth and Butler

Carolina Freight Carriers  
Corporation\*  
Consolidated Freightways  
Corporation of Delaware\*  
Craig's Express, Inc.\*\*  
Jones Truck Lines, Inc.\*

Manning Motor Express, Inc.\*  
Owenton Express, Inc.\*  
Roadway Express, Inc.\*  
(Falmouth only)  
Transcon Lines\* (Falmouth only)  
Yellow Freight System, Inc.\*

\* Interstate and intrastate service.

\*\* Interstate service only.

Source: American Motor Carrier Directory, Spring 1987.

### HIGHWAY MILES AND TRUCK TRANSIT TIME IN DAYS FROM FALMOUTH, KENTUCKY, TO SELECTED MARKET CENTERS

City	Highway Miles	Delivery Time TL	City	Highway Miles	Delivery Time TL
Atlanta, GA	411	3	Los Angeles, CA	2,229	6
Baltimore MD	534	3	Louisville, KY	115	-
Birmingham, AL	451	3	Nashville, TN	263	3
Chicago, IL	324	2	New Orleans, LA	780	4
Cincinnati, OH	37	-	New York, NY	684	4
Cleveland, OH	281	-	Pittsburgh, PA	324	2
Detroit, MI	296	-	St. Louis, MO	384	2
Knoxville, TN	224	3			

Note: Mileage computations are via the best interstate or primary highways, not necessarily the most direct route of travel.

Sources: Rand McNally Deluxe Motor Carriers' Road Atlas, 1987. Official Kentucky Mileage Map, 1980. Delivery time - Carolina Freight Carriers, 7745 Foundation Drive, Florence, Kentucky 41042.



## Air

### Local

Location: Falmouth-Pendleton County Airport  
4 miles northwest of Falmouth  
Runways: 1 paved  
Length: 4,000 feet  
Traffic  
Control: Unicom  
Lighting: Runway lights - dusk to dawn  
Services: 100LL fuel, minor A & P repairs, hangar and tie  
downs

### Nearest Scheduled Commercial Airline Service

Location: Greater Cincinnati International Airport  
8 miles southwest of Covington, Kentucky;  
44 miles northwest of Falmouth  
Runways: 3 paved  
Length: 9,500 feet; 7,800 feet; 5,500 feet  
Traffic  
Control: Local and ground flight data, clearance  
delivery, arrival and departure data, arrival  
and departure radar, satellite control  
Lighting: Beacon, VASI, MALS-RAIL, ALS-SFL, HIRL, CL, TDZ  
Services: American, Continental, Delta, Pan Am, Piedmont,  
Northwest; fuel - 100LL, jet-A; hangars,  
tie-downs; major A & P repairs, major Avionics  
repairs; APU, charter, flight instruction,  
oxygen, plane rental, U.S. Customs; weather  
information; taxi, limousine, car rentals,  
courtesy car; restaurant, snack bar; hotel;  
business service centers  
Air Freight  
Services: Air freight terminal

### **Air Express Service**

Several major companies offer air express services in Kentucky. These companies provide a quick means of shipping small to medium-sized packages expeditiously.

## Water

The nearest navigable waterway is the Ohio River near Bradford, Kentucky, 29 miles northeast of Falmouth. A 9-foot navigation channel is maintained along the entire length of the Ohio River. A 9-foot navigation channel is also maintained on the Licking River in the Northern Kentucky-Cincinnati area, 33 miles north of Falmouth, extending a distance of 7 miles to the confluence with the Ohio River.

The Northern Kentucky Port Authority has been designated as a Foreign Trade Zone and offers complete U.S. Customs services for exports and imports.



## POWER AND FUEL

### Electricity

Company serving Falmouth - City of Falmouth  
Source of power - Kentucky Utilities Company  
For industrial rates contact:

City of Falmouth  
212 Main Street  
Falmouth, Kentucky 41040  
(606) 654-6937

Company serving Butler and parts of Pendleton County - Kentucky Utilities Company  
Source of power - Kentucky Utilities Company  
For industrial rates contact:

Industrial Development Department  
Kentucky Utilities Company  
One Quality Street  
Lexington, Kentucky 40507  
(606) 255-1461

Companies serving the remainder of Pendleton County - Harrison Electric Cooperative Corporation and Owen County Rural Electric Cooperative Corporation  
Source of power - East Kentucky Power Cooperative  
For industrial rates contact:

Industrial Development Division  
East Kentucky Power Cooperative  
P. O. Box 707  
Winchester, Kentucky 40391  
(606) 744-4812

and/or

Harrison RECC  
P. O. Box 130  
Cynthiana, Kentucky 41031  
(606) 234-3131

and/or

Owen County RECC  
510 Georgetown Road  
Owenton, Kentucky 40359  
(502) 484-3471

## Natural Gas

Company serving Falmouth and Butler - Pendleton County Water District,  
Gas Division\*

Source of supply - Columbia Gas Transmission Corporation

Size of transmission mains - 20-inch (supplier); 4 to 6 inches  
(distributor)

Distribution mains - 2, 3 and 4 inches

Distribution pressure - 25 to 130 psi

Btu content - 1,030 per cubic foot

Specific gravity - 0.60

For rates and supplies contact:

Pendleton County Water  
District, Gas Division  
400 Main Street  
Falmouth, Kentucky 41040  
(606) 654-6964

## Other Fuels

### Propane

Midwest Bottle Gas  
Distributors, Inc.  
South Robbins Avenue  
P. O. Box 150  
Falmouth, Kentucky 41040

Suburban Propane  
1417 North Main  
P. O. Box 159  
Williamstown, Kentucky 41097

Petroleum Gas Corporation  
U.S. Highway 27  
Route 2, Box 79E  
Falmouth, Kentucky 41040

---

\* The Union Light, Heat and Power Company, a subsidiary of Cincinnati Gas and Electric, has entered into an agreement to purchase the Pendleton County Water District, Gas Division, pending regulatory approval.



Fuel oils

Distillate fuel oil -

Ashland Oil Company  
2nd and Park Streets  
P. O. Box 230  
Falmouth, Kentucky 41040

Licking Valley Oil, Inc.  
U.S. Highway 27  
P. O. Box 246  
Butler, Kentucky 41006

Dixie Oil Company  
217 Montjoy Street  
P. O. Box 4  
Falmouth, Kentucky 41040

Residual fuel oil - Arrangements must be made with the refinery.

Low sulphur content coal - Available in Kentucky.

## WATER AND SEWERAGE

### Public Water Supply

Company serving Falmouth - City of Falmouth\*  
212 Main Street  
Falmouth, Kentucky 41040  
(606) 654-6937

Source - Licking River

Treatment plant capacity - 1,500,000 gallons per day

Average daily consumption - 500,000 gallons

Peak daily consumption - 700,000 gallons

Treatment processes - Aeration, rapid mix, flocculation, sedimentation,  
filtration, chlorination, and fluoridation

Storage capacity - 1,250,000 gallons

Size lines - 6 to 12 inches

Water pressure - 80 to 95 psi

### MONTHLY WATER RATES

First	2,000 gallons	\$7.88 (Minimum)
Next	3,000 gallons	1.67 per M gallons
Next	5,000 gallons	1.37 per M gallons
Next	40,000 gallons	1.13 per M gallons
All over	50,000 gallons	1.47 per M gallons

Tap-on charge: \$200

\* The city of Falmouth recently renovated its water treatment plant. The project included enlarging and covering the treated water reservoir, adding new pumps and screening devices, and constructing a new flocculation building with modern chemical feed equipment. Capacity of the treatment plant increased from 1,000,000 gallons per day to 1,500,000 gallons per day. Storage capacity was increased as well. The project included construction of an elevated water tank and expansion of the existing reservoir. The storage capacity is currently 1,250,000 gallons, up from 900,000 gallons. \$950,000 were invested in the completion of this project. Additional improvements include expansion of the existing reservoir and a 12-inch water line connecting Falmouth with the reservoir. Completion of the project is scheduled for 1989.



Company serving Butler - City of Butler Water and Sanitation\*  
Box 229  
Butler, Kentucky 41006  
(606) 472-5031

Source - Licking River

Treatment plant capacity - 200,000 gallons per day

Average daily consumption - 70,000 gallons

Peak daily consumption - 120,000 gallons

Treatment processes - Rapid mix, sedimentation, filtration, and chlorination

Storage capacity - 200,000 gallons

Size lines - 4, 6 and 8 inches

Water pressure - 50 to 65 psi

#### MONTHLY WATER RATES

First	2,000 gallons	\$10.80 (Minimum)
Next	3,000 gallons	3.30 per M gallons
Next	5,000 gallons	2.90 per M gallons
Next	10,000 gallons	2.30 per M gallons
All over	20,000 gallons	1.50 per M gallons

Tap-on charge: \$200, plus \$75 deposit (refunded when service is disconnected)

Name of water district - Pendleton County Water District\*\*  
400 Main Street  
Falmouth, Kentucky 41040  
(606) 654-6964

Area served - Northern, central and southern Pendleton County

Date when water district began operating - 1962

Source of supply of treated water - City of Falmouth and Campbell County Water District

Average amount of water used in a 24-hour period - 140,000 gallons

Peak amount of water used in a 24-hour period - 220,000 gallons

Storage capacity - 210,000 gallons

Size lines - 3, 4, 6 and 8 inches

Water pressure - 30 to 160 psi

(Continued)

\* The city of Butler recently completed a water treatment project involving construction of a reservoir, a glass-lined 200,000-gallon elevated water tank, a pumping station, and water lines. This water tank replaced the existing storage tank facility. The cost of the project totaled \$286,000.

\*\* The Pendleton County Water District is extending its water lines by 22 miles in western Pendleton County and adding a 150,000-gallon elevated water storage tank. Construction costs are expected to exceed \$1,000,000.

### MONTHLY WATER RATES

First	2,000 gallons	\$8.49 (Minimum)
Next	3,000 gallons	3.92 per M gallons
Next	10,000 gallons	3.82 per M gallons
Over	15,000 gallons	3.67 per M gallons

Tap-on charge:

Residential - \$250.00

Commercial - Actual cost of labor and materials

#### **Raw Water**

Surface water sources - Licking River, North Fork of Licking River,  
South Fork of Licking River

Average discharge - Licking River at Catawba, Kentucky - 4,148 cfs  
(59 years, USGS, unadjusted)

Expected ground water yield - 500 to 1,000 gpm along Ohio River in  
northeastern tip of county; 50 to 200 gpm along Licking River in  
southern section of county; 5 to 50 gpm along Licking River in  
northern section of county; 5 gpm or less in remainder of county

#### **Sewerage**

Company serving Falmouth - City of Falmouth  
212 Main Street  
Falmouth, Kentucky 41040  
(606) 654-6937

Design capacity - 390,000 gallons per day

Average daily flow - 300,000 gallons

Type of treatment - Primary and secondary

Treatment processes - Primary sedimentation, activated sludge,  
secondary sedimentation, chlorination, aerobic digester,  
anaerobic digester and sludge drying beds

Treated effluent discharged into - Licking River

Size of sanitary mains - 6, 8 and 10 inches

Size of storm mains - 10 and 24 inches

Monthly rates -

The sewer charge is 25% of the monthly water bill up to  
50,000 gallons with a minimum charge of \$1.97. Customers  
exceeding 50,000 gallons will be charged 25% of the monthly  
water bill for the first 50,000 gallons, then subsequently  
charged only 6.25% of the monthly water bill for the remaining  
usage.

Tap-on charge: \$200



Company serving Butler - City of Butler Water and Sanitation  
Box 229  
Butler, Kentucky 41006  
(606) 472-5031

Design capacity - 60,000 gallons per day

Average daily flow - 35,000 gallons

Type of treatment - Primary and secondary

Treatment processes - Extended aeration, secondary sedimentation  
and chlorination

Treated effluent discharged into - Licking River

Size of sanitary mains - 8-inch

Size of storm mains - N/A

Monthly rates - 50 percent of monthly water rate

Tap-on charge: \$200

## CLIMATE

### Pendleton County

#### Temperature

Normal (30-year record)	53.30 degrees
Average annual 1985	53.60 degrees
Record highest, August 1962 (24-year record)	102.00 degrees
Record lowest, January 1977 (24-year record)	-25.00 degrees
Normal heating degree days (30-year record)	5,247
(Heating degree day totals are the sums of negative departures of average daily temperatures from 65 degrees F.)	

#### Precipitation

Normal (30-year record)	40.14 inches
Mean annual snowfall (30-year record)	24.10 inches
Total precipitation 1985	44.13 inches
Mean number days precipitation (.01 inch or more) (38-year record)	129.50
Mean number days thunderstorms (38-year record)	42.90

#### Prevailing winds (through 1963)

South-Southwest

#### Relative Humidity (23-year record)

1 a.m.	77 percent
7 a.m.	81 percent
1 p.m.	60 percent
7 p.m.	64 percent

Source: U.S. Department of Commerce, Environmental Science Services Administration, Climatological Data, 1985. Station of record: Cincinnati, Ohio, Greater Cincinnati Airport.

## LOCAL GOVERNMENT

### Structure

The city of Falmouth is served by a mayor for a four-year term; and six council members, each serving two-year terms.

The city of Butler is served by a mayor for a four-year term; and 6 council members, each serving two-year terms.

Pendleton County is served by a county judge/executive for a four-year term, and eight magistrates, each serving four-year terms.

### Planning and Zoning

Presently, there are no active planning and zoning commissions operating in Falmouth, Butler or Pendleton County. However, local officials intend to form a planning commission and develop a comprehensive plan in the near future.

Mandatory state codes enforced - Kentucky Plumbing code, National Electric Code, Kentucky Boiler Regulations and Standards, Kentucky Building Code (modeled after BOCA code)

### Local Fees and Licenses

The city of Falmouth requires businesses to pay an occupational and business license fee ranging from \$5 to \$150 per year.

The city of Butler requires businesses to pay an occupational and business license fee ranging from \$5 to \$100 per year; the license for manufacturing is \$50 per year; the vehicle sticker is \$6 annually.



## State and Local Property Taxes

All property in Kentucky, except items exempted by the state constitution, is taxed by the state. Property which also may be taxed by local jurisdictions includes land and buildings, finished goods inventories, automobiles, trucks, office furniture and office equipment. Local taxing jurisdictions in Kentucky include counties, cities, and school districts.

All property in Kentucky is assessed at 100 percent of fair cash value.

### COMBINED STATE AND LOCAL RATES PER \$100 VALUATION, 1986

	Site Inside City of Falmouth	Site Inside City of Butler	Unincorporated Pendleton County
Land and Buildings	\$1.020	\$1.027	\$0.815
Manufacturing			
Machinery	0.150	0.150	0.150
Pollution Control			
Equipment	0.150	0.150	0.150
Inventories			
Raw materials	0.001	0.001	0.001
Goods in Process	0.001	0.001	0.001
Finished Goods	0.836	0.843	0.631
Automobiles & Trucks	1.354	1.372	1.149
Other Tangible			
Personal Property	1.285	1.292	1.080
Intangibles (Accounts receivable*, money in hand, stock, notes, bonds)	0.250	0.250	0.250
Goods Stored in Public Warehouses in Transit			
Status	0.001	0.001	0.001
Private Leaseholds in Industrial Revenue Bond Financed Facilities	0.015	0.015	0.015

\* Accounts receivable are taxed at 85 percent of face value, for an effective rate of \$0.2125 per \$100 valuation.

## Safety

### Police

	Falmouth	Butler	Pendleton County
Total staff	9	1	2
Radio-patrol cars	2	1	2

### Fire\*

Three volunteer fire departments serve Pendleton County including the Falmouth station, which has 40 volunteers and a public protection classification of 6; the Butler station, which has 20 volunteers and a classification of 8; and the Northern Pendleton station, which has 16 volunteers and a classification of 9. All other unincorporated areas have a class 10 rating.

## Refuse Collection and Disposal

The city of Falmouth provides municipal refuse collection service to both business and residential customers within the corporate limits. Refuse collection in Butler and Pendleton County is provided by private companies.

---

\* Includes copyrighted material of ISO Commercial Risk Services, Inc., with its permission.

## EDUCATION

### Public Schools

	Pendleton County*
Total Enrollment (Spring 1987)	2,359
Kindergarten	191
Elementary	1,096
Middle School	372
High School	700
Pupil-Teacher Ratio (1985-86)	20-1
Percent High School Graduates to College (1985-86)	33.3
Expenditures Per Pupil (1985-86)	\$1,833.56

### Area Colleges and Universities

<u>Name</u>	<u>Location (Miles from Falmouth)</u>	<u>Enrollment (Fall, 1986)</u>	<u>Highest Degree Conferred</u>
Northern Kentucky University	Highland Heights, Kentucky (29)	8,661	Masters, J.D.
Athenaeum of Ohio	Cincinnati, Ohio (37)	235	Masters

(Continued)

\* The Pendleton County School System has undertaken a project to improve Pendleton County High School. The construction includes expansion to the existing cafeteria, administrative offices and general improvements to the gymnasium area including new restrooms and concession stands. Completion of the project is scheduled for the summer of 1988. The school system also plans to expand several high school classrooms including science, special education, vocational education, home economics and business. Additionally, the school officials will designate a computer lab area and construct a theater auditorium.



## Area Colleges and Universities

<u>Name</u>	<u>Location (Miles from Falmouth)</u>	<u>Enrollment (Fall, 1986)</u>	<u>Highest Degree Conferred</u>
Cincinnati Bible Seminary	Cincinnati, Ohio (37)	817	Academic & Professional
Hebrew Union College	Cincinnati, Ohio (37)	139	Academic & Professional
Southern Ohio College	Cincinnati, Ohio (37)	1,095	Associate
University of Cincinnati	Cincinnati, Ohio (37)	35,322	Academic & Professional
Xavier University	Cincinnati, Ohio (37)	6,265	Masters
Maysville Community College	Maysville, Kentucky (39)	727	Associate
Thomas More College	Ft. Mitchell, Kentucky (42)	1,120	Baccalaureate
Georgetown College	Georgetown, Kentucky (43)	1,362	Masters
Lexington Community College	Lexington, Kentucky (49)	2,587	Associate
Transylvania University	Lexington, Kentucky (49)	970	Baccalaureate*
University of Kentucky	Lexington, Kentucky (49)	20,788	Doctorate, M.D., D.M.D., J.D.
Midway College	Midway, Kentucky (52)	340	Associate
Kentucky State University	Frankfort, Kentucky (61)	2,205	Masters

\* Courses in a masters degree program are taught on the Transylvania campus by faculty members of Xavier University of Cincinnati. The degree is issued by Xavier University.

## Vocational Training

The Bluegrass State Skills Corporation, an independent public corporation created and funded by the Kentucky General Assembly, provides programs of skills training to meet the needs of business and industry from entry level to advanced training, and from upgrading present employees to retraining experienced workers.

The Bluegrass State Skills Corporation is the primary source for skills training assistance for a new or existing company. The Corporation works in partnership with other employment and job training resources and programs, as well as Kentucky's economic development activities, to package a program customized to meet the specific needs of a company.

Vocational training is available at both the state vocational-technical schools and the area vocational education centers. The state vocational-technical schools are post-secondary institutions. The area vocational education centers are designed to supplement the curriculum of high school students. Both the state vocational-technical schools and the area vocational education centers offer evening courses to enable working adults to upgrade current job skills.

Arrangements can be made to provide training in the specific production skills required by an industrial plant. Instruction may be conducted either in the vocational school or in the industrial plant, depending upon the desired arrangement and the availability of special equipment.

### Nearest State Schools

Northern Kentucky State Vocational-Technical School  
Covington, Kentucky, 36 miles from Falmouth

Business & Office	Drafting (with CAD/CAM)
Clerical	Electronics
Data Processing	Instrumentation
Secretarial	Machine Shop
Consumer & Home Economics	Masonry
Child Care Services	Welding
Commercial Foods	Learning Resource Center
Consumer & Family Life	Public Service Occupations
Skills	Business/Industry Security
Health & Personal Services	Training
Occupations	CPR Training
Cosmetology	Electrical Safety Training
Industrial Education	Emergency Medical Care
Air Conditioning	Fire Service Training
Auto Body Repair	First Aid & Safety
Auto Mechanics	Rescue & Emergency Services
Carpentry	Training

(Continued)

Northern Campbell County Vocational-Technical School  
Highland Heights, Kentucky, 29 miles from Falmouth

Industrial Education  
Auto Mechanics  
Commercial Arts  
Diesel Mechanics  
Graphic Arts  
Plumbing

Special Vocational  
Developmental Occupation  
Programs  
Vocational Improvement  
Programs

Northern Kentucky Health Occupations Center  
Edgewood, Kentucky, 36 miles from Falmouth

Health & Personal Services  
Occupations  
Dental Assisting

Medical Assisting  
Medical Secretary  
Practical Nursing

Nearest Area Education Centers

Campbell County Area Vocational Education Center  
Alexandria, Kentucky, 22 miles from Falmouth

Health & Personal Services  
Occupations  
Health Services  
Industrial Education  
Air Conditioning  
Auto Body Repair  
Auto Mechanics  
Carpentry

Drafting  
Electricity  
Masonry  
Sheet Metal  
Welding  
Special Vocational  
Vocational Improvement  
Programs

Harrison County Area Vocational Education Center  
Cynthiana, Kentucky, 22 miles from Falmouth

Business & Office  
Accounting/Management  
Clerical  
Secretarial  
Health & Personal Services  
Occupations  
Health Services  
Industrial Education  
Auto Mechanics

Carpentry  
Electricity  
Machine Shop  
Welding  
Special Vocational  
Learning Resource Center



## HEALTH

### Local Medical Personnel

	Falmouth	Butler
Physicians -	4	1
Dentists -	2	1

### Hospitals

<u>General Hospital</u>	<u>Location</u>	<u>Beds</u>
Harrison Memorial Hospital	Cynthiana, 22 miles south of Falmouth	75 acute care 16 skilled nursing 8 intermediate care 6 ICU-CCU
St. Luke Hospital, Inc.	Ft. Thomas, 34 miles north of Falmouth	312 at main facility 28 at Falmouth facility

#### Harrison Memorial Hospital

Medical staff - 11 active staff physicians, 45 registered nurses and licensed practical nurses

#### St. Luke Hospital, Inc.

Medical staff - 112 active staff physicians, 122 courtesy staff physicians, 19 consulting physicians, 6 honorary staff physicians, and 15 emeritus staff physicians; 293 registered nurses; 47 licensed practical nurses

### Regional Facilities

The Northern Kentucky Regional Poison Information Center  
Northern Kentucky Cancer Treatment Center  
St. Luke Hospital Care Unit in Falmouth

### Other Medical Facilities

Comprehensive Care Center of Northern Kentucky - Falmouth office  
Butler Rest Home  
Falmouth Rest Home  
Grants Lake I.C. Home (located in Butler)  
Sharp's Personal Care Home  
Three Rivers District Health Department  
Pendleton County Health Center

### Ambulance Service

Name - Stewart's Ambulance Service  
Staff - Emergency medical technicians - 4 full-time, 4 part-time

## OTHER LOCAL FACILITIES

### Communications

Telephone -	The Cincinnati Bell Telephone Company
Telegraph -	Western Union
	Toll-Free number, 1-800-325-6000
Newspapers -	The Falmouth Outlook
Weekly and circulation -	4,900
Radio -	WIOK-FM (Falmouth)
Television -	
Airwave reception from -	Lexington and Newport, Kentucky; Cincinnati and Dayton, Ohio
Cable service* -	Falmouth Cable Television
Educational Television -	The Kentucky Educational Television (K.E.T.) network is available statewide

### Library Services

Public library - Pendleton County Public Library  
Size collection - 26,854 volumes  
Circulation, 1985-86 - 104,359

### Religious Institutions

Denominations -	Pendleton County	
	Assembly of God	Church of God
	Baptist	Disciples of Christ
	Catholic	Methodist
	Christian	Nazarene
	Church of Christ	Pilgrim Holiness
Nearest Synagogues -	Cincinnati, Ohio, 37 miles north of Falmouth	
Congregations -	16 synagogues (orthodox, reform, traditional and conservative)	

---

\* The city of Butler is currently negotiating with cable companies to expand its services to include the city of Butler and northern Pendleton County.



## Financial Institutions

<u>Banks</u>	<u>Assets</u>	<u>Deposits</u>	<u>Statement Date</u>
<b>Falmouth</b>			
The First National Bank	\$25,879,000.00	\$22,142,000.00	3/3/87
Kentucky National Bank of Pendleton County	22,202,880.00	18,953,146.00	12/31/86
<b>Butler</b>			
The Farmers Bank	11,824,000.00	10,316,000.00	12/31/86

<u>Savings and Loan Associations</u>	<u>Assets</u>	<u>Deposits</u>	<u>Statement Date</u>
<b>Falmouth</b>			
Kentucky Enterprise Federal Savings and Loan Association*	\$272,203,112.77	\$253,725,845.48	12/31/86
Pendleton Federal Savings and Loan Association	13,037,587.32	12,197,165.29	12/31/86

## Hotels and Motels

### Pendleton County

Total number -	2
Total rooms -	24

\* Includes main office in Newport and all branch offices.

## RECREATION

### Local

Kincaid Lake State Park, near Falmouth, offers many opportunities for the outdoors lover. The park offers a 175-acre lake, a sand beach, a 209-site campground, a gift shop/grocery store, a bathhouse, swimming, boating, hiking, picnicking, an amphitheatre, shuffleboard, miniature golf, tennis, and organized recreational programs in the summer months.

The Pendleton County Country Club, a private facility located in the northern part of the county, offers an 18-hole golf course, a clubhouse, a swimming pool, and two tennis courts.

Falmouth has one park with a playground and a tennis court. The city also has three lighted softball fields available for public use.

Annual events in the Falmouth area include the 4-H Youth Fair, with shows and contests, and the Kentucky Wool Festival, featuring demonstrations, musical entertainment, and arts and crafts. Thaxton's South Fork Canoe Trails holds a sanctioned canoe race in Pendleton County. The Kincaid Theatre attracts professional theatrical performances to Falmouth.

An annual flea market and homecoming is a popular event in Butler.

### Area (Within 65 miles)

Big Bone Lick State Park in Boone County, 34 miles northwest of Falmouth, provides a unique combination of educational and recreational pleasures. Visitors can walk through the natural outdoor museum with replicas and exhibits that tell the story of Big Bone Lick. Recreational activities and facilities include a modern campground with 62 sites, fishing in a nearby lake, an indoor and outdoor museum and gift shop, picnic grounds, tennis, shuffleboard, volleyball, basketball, horseshoes, planned recreation, and a swimming pool in the camping area.

Cincinnati, Ohio, is 37 miles north of Falmouth. Cincinnati provides a wide variety of entertainment, cultural facilities and activities, and sports events - all within a few minutes drive. The Cincinnati Zoo offers entertainment the whole family can enjoy. Kings Island is the largest family entertainment center in the entire Midwest. The Cincinnati Riverfront Stadium is the home of the Cincinnati Reds baseball and Bengals pro football teams. The Riverfront Coliseum offers NCAA basketball action with the University of Cincinnati Bearcats. Cultural interests include the Cincinnati Symphony Orchestra, various art galleries and museums, libraries, and legitimate theaters presenting Broadway plays.

The Kentucky Horse Park, a park dedicated to horses and to man's love for horses, is located 46 miles south of Falmouth at Lexington. The park, which contains more than 1,000 acres of Kentucky Bluegrass, features the International Museum of the Horse; the Man O'War Memorial; the wide screen film "Thou Shalt Fly Without Wings"; an antique carriage display; horseback and pony rides; walking farm tours; horse-drawn tours; a restaurant; a gift shop; and a campground area, which offers swimming, tennis, and planned activities. Numerous special events are held year-round and include various horse shows, steeplechasing, dressage, polo games, and rodeos.

Lexington, 49 miles south of Falmouth, offers a variety of cultural, sporting, and recreational activities. Thoroughbred and harness racing is presented at Keeneland Race Course and the Red Mile Harness Track during several meets each year. The University of Kentucky and Transylvania University offer a number of sporting events. The University of Kentucky basketball games are held at Rupp Arena, the world's largest basketball arena. Other attractions include Lexington Philharmonic concerts, Lexington Children's Theatre, and plays performed by Broadway touring companies, all held in the recently renovated Opera House. In addition, located in the heart of downtown Lexington, the historical Victorian Square and Festival Market Place offer a taste of nostalgia with their many quaint shops and restaurants.

Blue Licks Battlefield State Park is located near Mt. Olivet, 56 miles southeast of Falmouth. The 100-acre park is on the site of the last Revolutionary War battle in Kentucky. A museum features Indian and pioneer artifacts, an audiovisual program, and prehistoric bones from animals trapped at Blue Licks. Facilities include 51 campsites, a gift shop, picnic shelters and grills, miniature golf, a snack bar, and an Olympic-size swimming pool. Fishing is available at the Licking River which runs through the park.

Waveland State Shrine, 54 miles south of Falmouth near Lexington, features an 1847 Greek Revival mansion depicting Kentucky lifestyles from the days of early settlers to the antebellum era of gentility and elegance as well as the Civil War and postwar periods. The shrine also includes the Kentucky Life Museum and a plantation village on ten acres with many shops and displays.

Frankfort, the capital of Kentucky, is 61 miles southwest of Falmouth. Points of interest in Frankfort include the Capitol Building, a 34-foot floral clock, the Daniel Boone Monument, several museums, and old homes with their original furnishings. Frankfort is also the home of Kentucky State University which offers many cultural activities and sporting events.

The spirit of Daniel Boone and his pioneers is reborn at Fort Boonesborough State Park in Boonesboro, 62 miles south of Falmouth. In the re-created fort, pioneer crafts of the eighteenth century are demonstrated by using functioning antiques from the frontier era. Cabins are furnished as they would have been in the days of Boone and documentary films are presented which depict the struggle of the first Kentuckians to make the Kentucky wilderness a home. A gift shop within the fort offers for sale all the handcrafted items made at the fort. Other recreational facilities and activities of the park include the finest sand beach on the Kentucky River with a modern bathhouse and a modern camping area with 187 sites, picnic area, playground and miniature golf.



## COMMUNITY IMPROVEMENTS

### Recent

Through combined efforts several local officials recently formed an industrial foundation to include all of Pendleton County. By collecting contributions and stock investments for the foundation, \$16,000 has already been generated. The organization will serve as an industrial marketing tool for the community and offer supplemental financing for industrial prospects.

The City of Falmouth recently renovated its water treatment plant. The project included enlarging and covering the treated water reservoir, adding new pumps and screening devices, and constructing a new flocculation building with modern chemical feed equipment. Capacity of the treatment plant increased from 1,000,000 gallons per day to 1,500,000 gallons per day. Storage capacity was increased as well. The project included construction of an elevated water tank and expansion of the existing reservoir. The storage capacity is currently 1,250,000 gallons, up from 900,000 gallons. \$950,000 were invested in the completion of this project.

In 1985, Pittsfield of Kentucky, Division Pittsfield Products Company, Inc., expanded its facility. The \$125,000 project involved adding 12,500 square feet of manufacturing space, new equipment and approximately 10 additional employees.

The Williams Cabinet Company recently began operations in Butler. The 7,200-square-foot facility produces cabinets and employs 6 persons.

The City of Butler recently completed a water treatment project involving construction of a reservoir, a glass-lined 200,000-gallon elevated water tank, a pumping station, and water lines. This water tank replaced the existing storage tank facility. The cost of the project totaled \$286,000.

A cable television system was recently installed in Falmouth and surrounding areas.

### Under Way

The Pendleton County Water District is extending its water lines by 22 miles in western Pendleton County and adding a 150,000-gallon elevated water storage tank. Construction costs are expected to exceed \$1,000,000.

The City of Falmouth is spending \$160,000 to complete a water treatment project which began in 1984. The improvements include expansion of the existing reservoir and a 12-inch water line connecting Falmouth with the reservoir. Completion of the project is scheduled for 1989.

A project to add passing lanes on upgrades of U.S. Highway 27 in Harrison, Pendleton and Campbell counties is under way and scheduled for completion by Fall, 1987. Most of the attention has been devoted to construction at three sites between Falmouth and Alexandria. Plans are also being made to reconstruct Kentucky route 22 between Falmouth and Interstate 75.

The Pendleton County School System has undertaken a project to improve Pendleton County High School. The construction includes expansion to the existing cafeteria, administrative offices and general improvements to the gymnasium area including new restrooms and concession stands. Completion of the project is scheduled for the summer of 1988.

The Ram-Tek Corporation, a jet engine part remanufacturer plant located in Falmouth, is scheduled to open in the summer of 1987. This 2,400-square-foot facility is expected initially to employ only 5 persons but has tentative plans for expansion with potential employment of 50 persons.

### **Planned**

The Pendleton County School System plans to expand several high school classrooms including science, special education, vocational education, home economics and business. Additionally, the school officials will designate a computer lab area and construct a theater auditorium.

The City of Butler is currently negotiating with cable companies to expand its services to include the City of Butler and northern Pendleton County.