

1981

Industrial Resources: Wayne County - Monticello

Kentucky Library Research Collections
Western Kentucky University, spcol@wku.edu

Follow this and additional works at: https://digitalcommons.wku.edu/wayne_cty

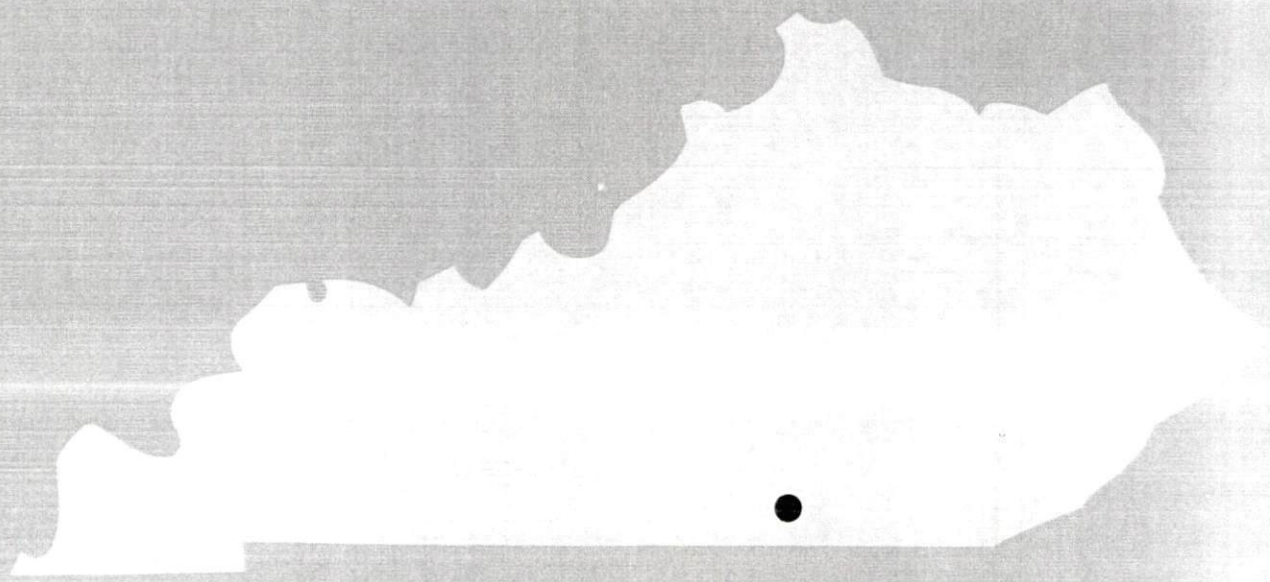
 Part of the [Business Administration, Management, and Operations Commons](#), [Growth and Development Commons](#), and the [Infrastructure Commons](#)

Recommended Citation

Kentucky Library Research Collections, "Industrial Resources: Wayne County - Monticello" (1981). *Wayne County*. Paper 6.
https://digitalcommons.wku.edu/wayne_cty/6

This Report is brought to you for free and open access by TopSCHOLAR®. It has been accepted for inclusion in Wayne County by an authorized administrator of TopSCHOLAR®. For more information, please contact topscholar@wku.edu.

A comprehensive
report on
Monticello, Ky.



KENTUCKY & CO.
The state that's run like a business

Site 181

LOCATION: Partially within northern city limits
ZONING: Not zoned
HIGHWAY ACCESS: Paved county road (old KY 90) adjacent to western boundary
RAILROAD: Not rail served
WATER: Monticello Utilities Commission
Size Line: 10-inch line along east side of old KY 90
GAS: Natural gas service not available
ELECTRICITY: Monticello Electric Plant Board
SEWERAGE: Monticello Utilities Commission
Size Line: 8-inch line at southeast corner of site
OPTIONED BY: Wayne County Industrial Foundation

Site 281

LOCATION: Partially within eastern city limits
ZONING: Industrial
HIGHWAY ACCESS: KY 90 approximately 1300 feet west via paved access road
RAILROAD: Not rail served
WATER: Monticello Utilities Commission
Size Line: 10-inch line adjacent to southwest corner of site
GAS: Natural gas service not available
ELECTRICITY: Monticello Electric Plant Board
SEWERAGE: Monticello Utilities Commission
Size Line: 8-inch line approximately 400 feet west of site
OWNERSHIP: Wayne County Industrial Foundation

Site 381

LOCATION: Within eastern city limits
ZONING: Industrial
HIGHWAY ACCESS: KY 90 approximately 600 feet west via unpaved access road
RAILROAD: Not rail served
WATER: Monticello Utilities Commission
Size Line: 10-inch line approximately 400 feet north; 8-inch line approximately 550 feet west
GAS: Natural gas service not available
ELECTRICITY: Monticello Electric Plant Board
SEWERAGE: Monticello Utilities Commission
Size Line: 8-inch line passes through site
OWNERSHIP: Private

Site 481

LOCATION: Approximately 100 feet from northwest city limits
ZONING: Not zoned
HIGHWAY ACCESS: KY 92 approximately 0.5 mile southwest via unpaved access road (new KY 90 will be approximately 150 feet from southern tip of site upon completion)
RAILROAD: Not rail served
WATER: Monticello Utilities Commission
Size Line: 6-inch line adjacent to northwest boundary
GAS: Natural gas service not available
ELECTRICITY: Monticello Electric Plant Board
SEWERAGE: Monticello Utilities Commission
Size Line: 8-inch line approximately 2000 feet southwest of site
OWNERSHIP: Wayne County Airport Board

SCALE: 1 inch = 2000 feet
CONTOUR INTERVAL: 20 feet
BASE: USGS 7.5 minute series - 1977

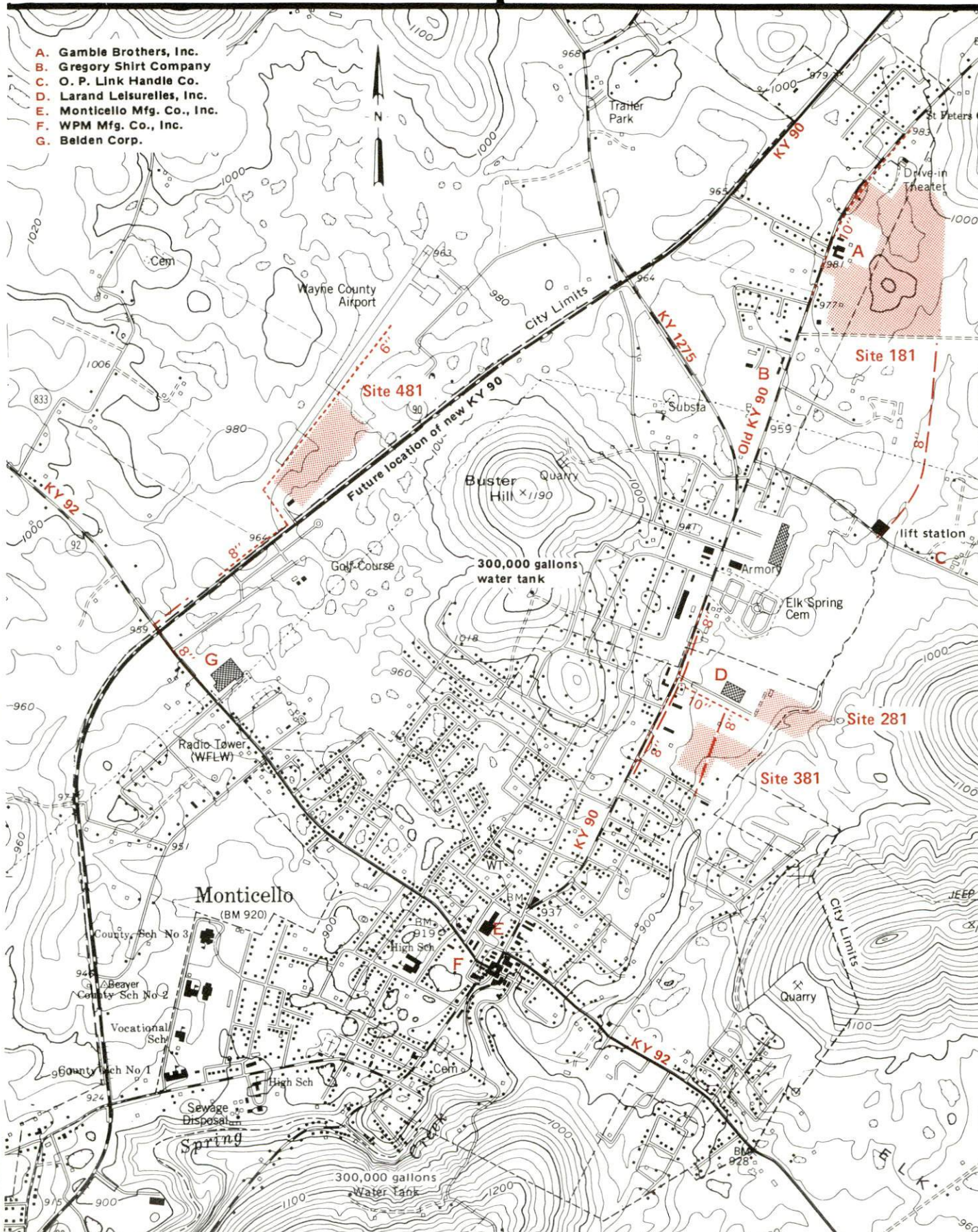
UTILITIES

----- Water Line
----- Sewer Line

For more information contact Mayor Carl Shearer, 118 Albany Road, Monticello, Kentucky 42633 or the Kentucky Commerce Cabinet, New Industries Division, Capital Plaza Tower, Frankfort, Kentucky 40601.

MONTICELLO, KENTUCKY

Industrial Sites --- 1981



A COMPREHENSIVE REPORT ON
MONTICELLO, KENTUCKY

Prepared by
The Kentucky Department of Commerce
Division of Research and Planning
in cooperation with
The Monticello-Wayne County Chamber of Commerce
and
The City of Monticello

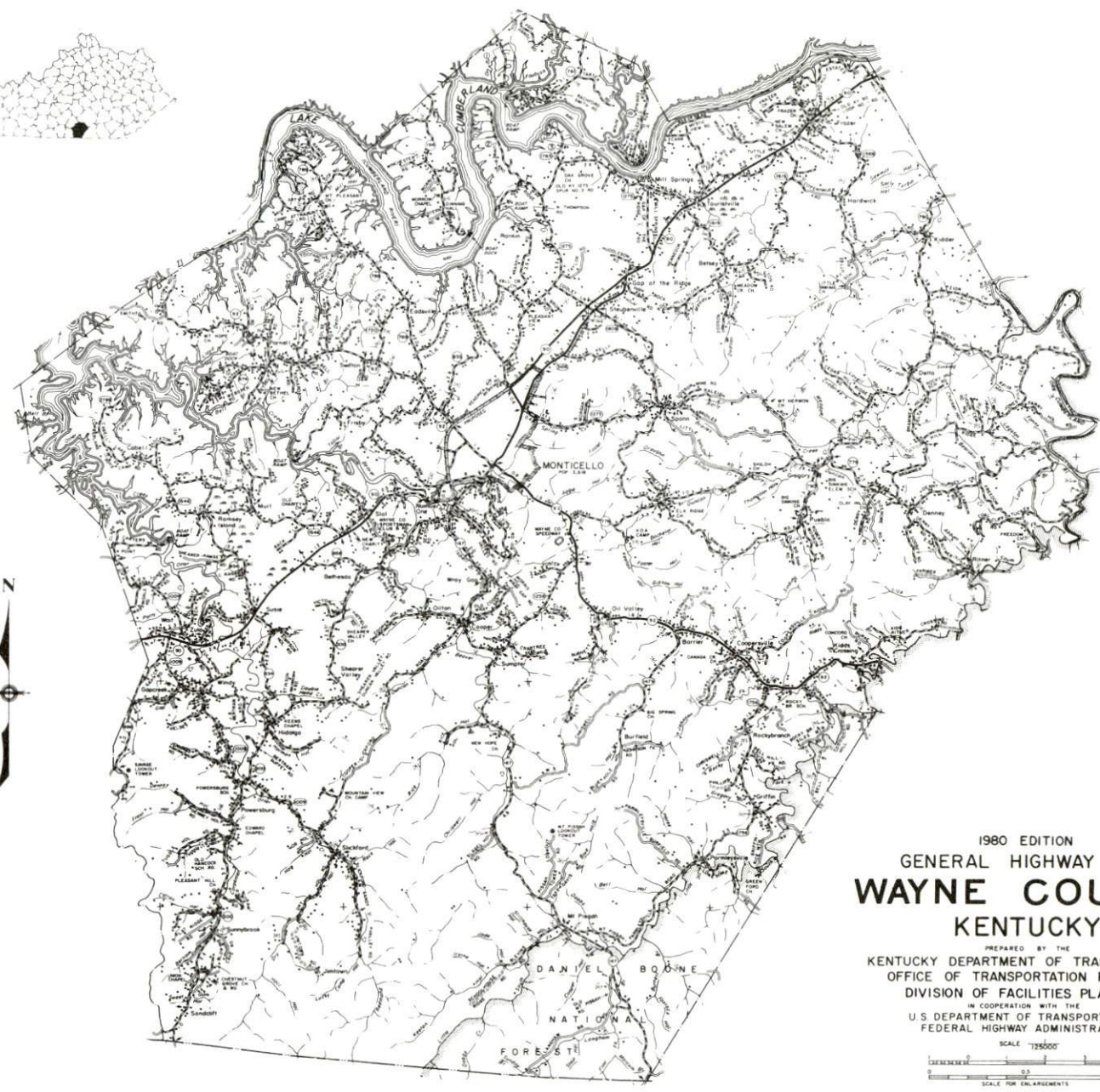
1981

Program manager - Brenda Roberts; research - John McMurray; clerical - Linda Fint, Annette Mitchell; graphics - Frank Ferrante, Tony Cecconi, Jimmy Thompson; cartography - Site Evaluation Section, Division of New Industries. Cost of printing paid from state funds.

TABLE OF CONTENTS

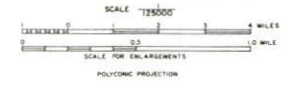
| <u>Chapter</u> | <u>Page</u> |
|--|-------------|
| INDUSTRIAL SITES | i |
| THE LABOR MARKET AREA | 1 |
| Population | 1 |
| Labor Force Characteristics of Residents, 1980 | 1 |
| Estimated Male Labor Supply | 2 |
| Estimated Female Labor Supply | 2 |
| Monticello Manufacturing Firms, Their Products and Employment | 3 |
| Labor Organizations in Manufacturing Firms | 5 |
| Industrial Services | 5 |
| Average Weekly Wages by Industry, by Place of Work, 1979 | 6 |
| Per Capita Personal Income | 8 |
| TRANSPORTATION | 9 |
| Rail | 9 |
| Highways | 9 |
| Truck Service | 10 |
| Air | 11 |
| Bus | 12 |
| Taxi | 12 |
| Rental Services | 12 |
| Water | 12 |
| POWER AND FUEL | 13 |
| Electricity | 13 |
| Natural Gas | 13 |
| Other Fuels | 14 |
| WATER AND SEWERAGE | 15 |
| Water | 15 |
| Sewerage | 17 |
| CLIMATE | 18 |

| <u>Chapter</u> | <u>Page</u> |
|--|-------------|
| LOCAL GOVERNMENT | 19 |
| City | 19 |
| County | 19 |
| Assessed Value of Property, 1980 | 19 |
| Property Taxes | 20 |
| Combined State and Local Rates Per \$100 | |
| Valuation, 1980 | 20 |
| Planning and Zoning | 21 |
| Safety | 21 |
| Police | 21 |
| Fire | 21 |
| Rescue Service | 21 |
| Refuse Collection and Disposal | 22 |
| EDUCATION | 23 |
| Public Schools | 23 |
| Area Colleges and Universities | 24 |
| Vocational Schools | 25 |
| HEALTH | 27 |
| Local Medical Personnel | 27 |
| Hospitals | 27 |
| Ambulance Service | 27 |
| Public Health | 27 |
| OTHER LOCAL FACILITIES | 28 |
| Communications | 28 |
| Library Services | 28 |
| Religious Institutions | 29 |
| Financial Institutions | 29 |
| Hotels and Motels | 29 |
| Clubs and Organizations | 30 |
| RECREATION | 31 |



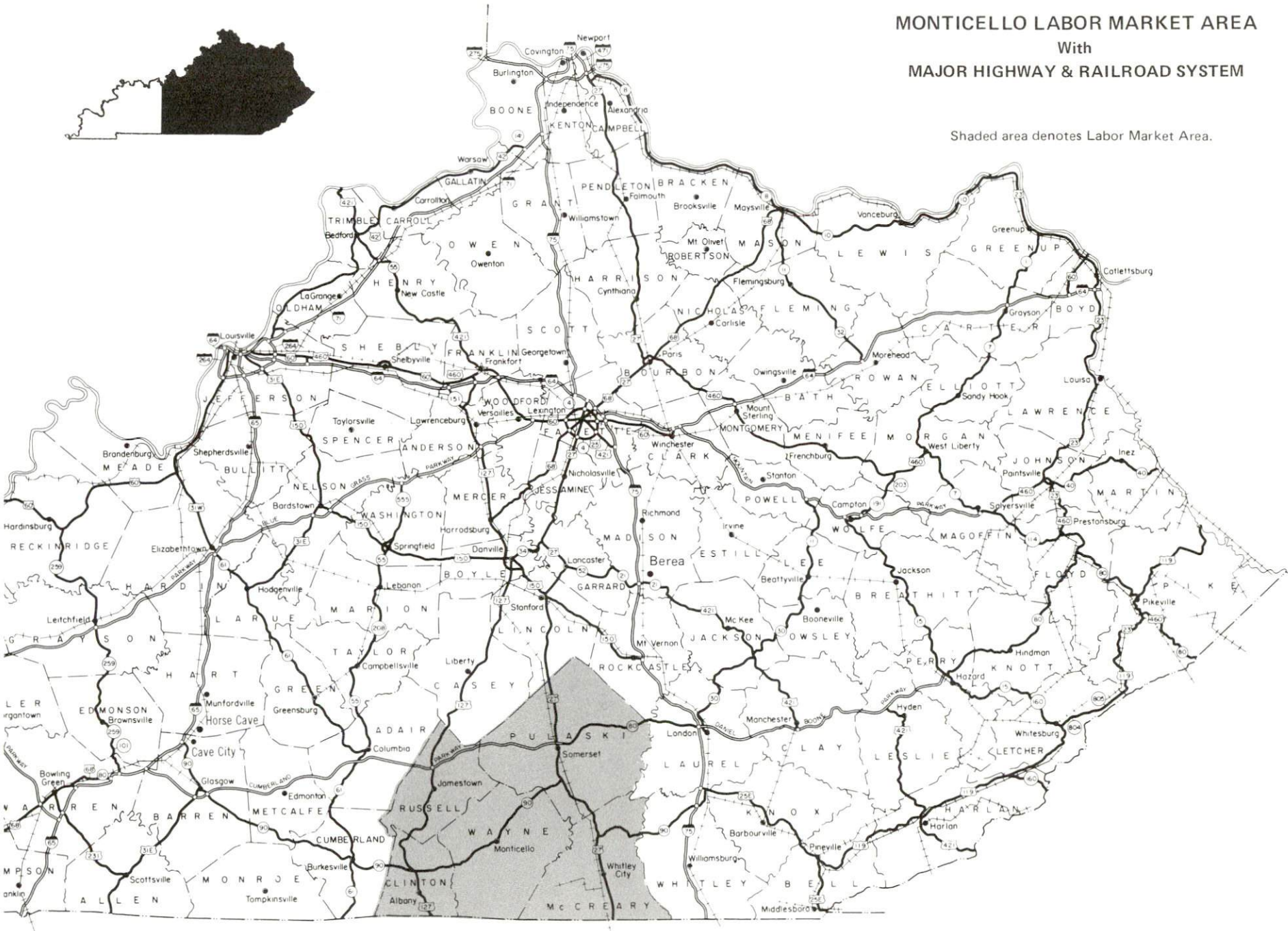
1980 EDITION
GENERAL HIGHWAY MAP
WAYNE COUNTY
KENTUCKY

PREPARED BY THE
KENTUCKY DEPARTMENT OF TRANSPORTATION
OFFICE OF TRANSPORTATION PLANNING
DIVISION OF FACILITIES PLANNING
IN COOPERATION WITH THE
U.S. DEPARTMENT OF TRANSPORTATION
FEDERAL HIGHWAY ADMINISTRATION



MONTICELLO LABOR MARKET AREA With MAJOR HIGHWAY & RAILROAD SYSTEM

Shaded area denotes Labor Market Area.



THE LABOR MARKET AREA

The Monticello Labor Market Area includes Wayne County and the adjoining Kentucky counties of Clinton, McCreary, Pulaski, and Russell.

| POPULATION | | | |
|-------------------|---------|--------|------------------|
| Area | 1980 | 1970 | Percent Nonwhite |
| Monticello | 5,677 | 3,618 | 3.9 |
| Labor Market Area | 101,488 | 80,766 | N/A |
| Wayne County | 17,022 | 14,268 | 2.4 |
| Clinton County | 9,321 | 8,174 | 0.2 |
| McCreary County | 15,634 | 12,548 | 1.7 |
| Pulaski County | 45,803 | 35,234 | 1.5 |
| Russell County | 13,708 | 10,542 | 0.9 |

Note: The 1980 counts of population by race are provisional.

Source: U.S. Department of Commerce, Bureau of the Census, March 1981, as published in Special Report No. 8, State Data Center, Urban Studies Center, University of Louisville, March 1981.

LABOR FORCE CHARACTERISTICS OF RESIDENTS, 1980

| | Wayne County | Labor Market Area |
|--------------------------|--------------|-------------------|
| Civilian Labor Force | 7,559 | 40,444 |
| Employment | 6,717 | 35,757 |
| Agricultural | 986 | 3,061 |
| Nonagricultural | 5,731 | 32,696 |
| Unemployment | 842 | 4,687 |
| Rate of Unemployment (%) | 11.1 | 11.6 |

Source: Kentucky Department for Human Resources, Kentucky Labor Force Estimates, Annual Averages, 1980.

ESTIMATED MALE LABOR SUPPLY
MONTICELLO LABOR MARKET AREA

| Area | Current | | | Future | |
|--------------------|---------|--------------------|------------|----------------|--------------------------------------|
| | Total | Not in Labor Force | Unemployed | Under-employed | Reaching 18 years of age before 1986 |
| Labor Market Area* | 4,045 | | | | 3,928 |
| Wayne | 642 | 115 | 287 | 240 | 666 |
| Clinton | 478 | 64 | 134 | 280 | 377 |
| McCreary | 599 | 99 | 230 | 270 | 654 |
| Pulaski | 1,574 | 303 | 701 | 570 | 1,641 |
| Russell | 532 | 84 | 228 | 220 | 440 |
| Pickett (Tenn.) | 220 | N/A | N/A | N/A | 150 |

*Additional workers may be drawn from other nearby counties.

Sources: Kentucky Department for Human Resources, Kentucky Labor Supply Estimates by County, 1979. Tennessee Department of Economic and Community Development, Available Labor, February 1979. Kentucky Department of Commerce, Future Labor Supply before 1986.

ESTIMATED FEMALE LABOR SUPPLY
MONTICELLO LABOR MARKET AREA

| Area | Current | | | Future | |
|--------------------|---------|--------------------|------------|----------------|--------------------------------------|
| | Total | Not in Labor Force | Unemployed | Under-employed | Reaching 18 years of age before 1986 |
| Labor Market Area* | 3,086 | | | | 3,793 |
| Wayne | 444 | 47 | 267 | 130 | 640 |
| Clinton | 344 | 27 | 127 | 190 | 336 |
| McCreary | 355 | 43 | 212 | 100 | 651 |
| Pulaski | 1,393 | 129 | 634 | 630 | 1,541 |
| Russell | 450 | 38 | 212 | 200 | 481 |
| Pickett (Tenn.) | 100 | N/A | N/A | N/A | 144 |

*Additional workers may be drawn from other nearby counties.

Sources: Kentucky Department for Human Resources, Kentucky Labor Supply Estimates by County, 1979. Tennessee Department of Economic and Community Development, Available Labor, February 1979. Kentucky Department of Commerce, Future Labor Supply before 1986.

Note: Not in Labor Force represents those persons who are not now in the labor force, but would enter the labor force if suitable employment were available. Unemployed persons are those persons who are unemployed and actively seeking work. Underemployed persons are those persons who are employed, but are working only 14 to 26 weeks per year.

MONTICELLO MANUFACTURING FIRMS,
THEIR PRODUCTS AND EMPLOYMENT

| Firm (Establishment date) | Product | Employment | | | Labor Unions |
|---|--|------------|------|--------|--------------------------|
| | | Total | Male | Female | |
| Bassett Products Company, Inc. (1928) | Agricultural lime, crushed limestone, ready-mixed concrete | 28 | 27 | 1 | |
| Belden Corporation (1973) | Electronic wire and cable | 400 | 230 | 170 | |
| Frank Bell (1941) | Lumber | 7 | 6 | 1 | |
| Farmers Supply and Produce Company (1957) | Feed | 11 | 10 | 1 | |
| Gamble Brothers, Inc. (1969) | Wood cabinet doors | 225 | 213 | 12 | Laborers* |
| Gregory Shirt Company (1973) | Men's shirts, women's blouses | 132 | 13 | 119 | |
| J. P. Hamer Lumber Company (1974) | Lumber | 20 | 19 | 1 | Furniture Workers* |
| Huff Lumber Company (1949) | Hickory dimension, dowels, skis | 9 | 8 | 1 | |
| Huffaker Manufacturing and Welding Service, Inc. (1978) | Wood products, pallets, farm equipment | 9 | 8 | 1 | |
| Lakeview Printing, Inc. (1974) | Commercial printing, rubber stamps | 4 | 3 | 1 | |
| Larand Leisurelies, Inc. (1969) | Women's and children's sleepwear | 204 | 15 | 189 | Ladies' Garment Workers* |
| O. P. Link Handle Company, Inc. (1950) | Hickory handle blanks, hickory barbecue wood and sawdust | 19 | 19 | -- | |

(Contd.)

| <u>Firm (Establishment date)</u> | <u>Product</u> | <u>Employment</u> | | | <u>Labor Unions</u> |
|---|--|-------------------|-------------|---------------|---------------------|
| | | <u>Total</u> | <u>Male</u> | <u>Female</u> | |
| Mago Construction Company, Inc. (N/A) | Bituminous concrete mixes | 18 | 15 | 3 | |
| McCutchen and Pyles Lumber Company, Inc. (1960) | Crossties, pallet, cedar lumber | 32 | 30 | 2 | |
| Monticello Block Company (1956) | Concrete block | 11 | 10 | 1 | |
| Monticello Flooring and Lumber Company (1971) | Wood flooring dimension stock, wood paneling molding | 57 | 55 | 2 | |
| Monticello Machine Shop (1948) | Machine shop, conveyors, sawmill | 22 | 20 | 2 | |
| Monticello Manufacturing Company, Inc. (1955) | Men's shirts, ladies' blouses, shirts | 260 | 40 | 220 | |
| W. P. M. Manufacturing Company, Inc. (1977) | Ladies' jeans and skirts, men's jeans | 120 | 15 | 105 | |
| Wayne County Outlook (1904) | Newspaper, job printing | 6 | 3 | 3 | |
| Wayne Lumber Company (1966) | Rough Lumber | 38 | 35 | 3 | |

*See Labor Organizations.

• Source: Kentucky Department of Commerce, Division of Research and Planning.

LABOR ORGANIZATIONS IN MANUFACTURING FIRMS

| <u>Union</u> | <u>Representing workers at:</u> |
|---|---------------------------------|
| Laborer's International Union of North America, AFL-CIO | Gamble Brothers, Inc. |
| International Ladies' Garment Workers Union, AFL-CIO | Larand Leisurelies, Inc. |
| United Furniture Workers of America, AFL-CIO | J. P. Hamer Lumber Company |

INDUSTRIAL SERVICES

| <u>Types of Services</u> | <u>Location</u> | <u>Mileage from Monticello</u> |
|--|---|------------------------------------|
| Tool & Die, Machine & Pattern Shops | Monticello, Kentucky | -- |
| Metal Service Centers | Lexington, Kentucky Knoxville, Tennessee | 105 121 |
| Heat Treating | Richmond, Kentucky | 110 |
| Metal Finishers | Lexington, Kentucky Richmond, Kentucky | 105 110 |
| Electric Motor Repair | Somerset, Kentucky | 29 |
| <u>Source: Kentucky Directory of Selected Industrial Services, 1979.</u> | | |

AVERAGE WEEKLY WAGES BY INDUSTRY,
BY PLACE OF WORK, 1979

| | <u>Wayne County</u> | <u>Clinton County</u> | <u>McCreary County</u> |
|---|-------------------------|---------------------------|----------------------------|
| All Industries | \$152.78 | \$139.68 | \$183.23 |
| Mining & Quarrying | 245.83 | * | 332.48 |
| Contract Construction | 185.49 | 79.57 | 162.76 |
| Manufacturing | 140.56 | 133.92 | 154.32 |
| Transportation, Communications & Public Utilities | 182.22 | 196.82 | 215.80 |
| Wholesale & Retail Trade | 125.19 | 116.72 | 120.99 |
| Finance, Insurance & Real Estate | 204.67 | 160.36 | 191.29 |
| Services | 166.90 | 155.44 | 166.40 |
| Other | * | * | * |

| | <u>Pulaski County</u> | <u>Russell County</u> |
|---|---------------------------|---------------------------|
| All Industries | \$193.74 | \$151.35 |
| Mining & Quarrying | 298.95 | * |
| Contract Construction | 163.58 | 281.28 |
| Manufacturing | 220.17 | 136.79 |
| Transportation, Communications & Public Utilities | 261.14 | 236.20 |
| Wholesale & Retail Trade | 148.68 | 116.44 |
| Finance, Insurance & Real Estate | 217.25 | 176.48 |
| Services | 184.00 | 151.03 |
| Other | 119.04 | 0 |

*Not disclosed.

Note: Excludes domestic workers, railway workers, certain nonprofit corporations, majority of federal government workers, and self-employed workers. Effective January 1, 1979, the Kentucky Unemployment Insurance Law extended coverage to include all state and local government agencies (shown in the Services category).

Source: Kentucky Department for Human Resources, Average Weekly Wages of Workers Covered by Kentucky Unemployment Insurance Law, 1979.

Up-to-date occupational wage rates of the existing industries are maintained by South Kentucky Industrial Development Association, Post Office Box 726, Hopkinsville, Kentucky 42240.

| PER CAPITA PERSONAL INCOME | | | |
|----------------------------|-----------------|-----------------|-----------------------|
| <u>Area</u> | <u>1979</u> | <u>1975</u> | <u>Percent Change</u> |
| Wayne County | \$4,349 | \$2,655 | 63.8 |
| Labor Market Area Range | \$3,592 - 5,956 | \$2,467 - 3,748 | N/A |
| Kentucky | 7,377 | 4,882 | 51.1 |
| U.S. | 8,757 | 5,861 | 49.4 |

Source: U.S. Department of Commerce, Bureau of Economic Analysis, April 1981.

TRANSPORTATION

Rail

Line serving Monticello - Southern Railway System at Burnside, 21 miles northeast of Monticello

Services - One northbound and one southbound freight stops daily; one local freight transfers daily from Somerset to Burnside and return; 30 through freights daily; switching facilities; team track space for 10 cars; siding space for approximately 50 cars; nearest piggyback facilities at Danville, 74 miles north of Monticello.

For details on routing, schedules, rates, and services, contact:

District Sales Manager
Southern Railway System
701 South Broadway
Lexington, Kentucky 40508
(606) 252-2242

Highways*

Monticello is served by Kentucky Highway 90, a "AAA" rated trucking highway, which connects with U.S. 27 just 21 miles northeast of Monticello; and Kentucky Highway 92, a "AA" rated trucking highway, which connects with U.S. 27, 35 miles southeast. U.S. 127 is 23 miles southwest of Monticello via Highway 90. The Cumberland Parkway is just 30 miles north of Monticello via Highway 90 and U.S. 27. Interstate 75, a major north-south route, is 53 miles east of Monticello via Highway 92.

*Kentucky Highway 90, west from Monticello to the Clinton County line, has been realigned and regraded. The \$5.7 million improvement provided an excellent class "AAA" highway to join with U.S. Highway 127, 23 miles southwest.

Truck Service

| <u>Company</u> | <u>Home Office</u> |
|---|--|
| Eagle Express Company* | P. O. Box 12047 1251 Georgetown Road Lexington, Kentucky 40580 |
| Eldridge Truck Line* | North Highway 27 P. O. Box 659 Somerset, Kentucky 42501 |
| Manning Motor Express, Inc.* | Westwood Avenue Glasgow, Kentucky 42141 |
| Monticello-Albany Freight Lines, Inc.*(T) | 160 South Main Street P. O. Box 85 Monticello, Kentucky 42633 |

| <u>Other Freight Services</u> | <u>Nearest Shipping Center or Home Office</u> |
|--|---|
| Purolator Courier Corporation** | Louisville, 160 miles northwest |
| United Parcel Service*** | London, 63 miles northeast |
| KATO Express, Inc. (air cargo service)**** | Elizabethtown, 164 miles northwest |

HIGHWAY MILES AND TRUCK TRANSIT TIME IN DAYS FROM
MONTICELLO, KENTUCKY, TO SELECTED MARKET CENTERS

| City | Delivery | | City | Delivery | |
|------------------|---------------|---------|------------------|---------------|---------|
| | Highway Miles | Time TL | | Highway Miles | Time TL |
| Atlanta, Ga. | 314 | 3 | Los Angeles, Ca. | 2,193 | 5 |
| Baltimore, Md. | 646 | 3 | Louisville, Ky. | 160 | 1 |
| Birmingham, Ala. | 357 | 3 | Nashville, Tenn. | 167 | 2 |
| Chicago, Ill. | 457 | 3 | New Orleans, La. | 684 | 4 |
| Cincinnati, Ohio | 183 | 1 | New York, N. Y. | 808 | 4 |
| Cleveland, Ohio | 422 | 2 | Pittsburgh, Pa. | 448 | 3 |
| Detroit, Mich. | 442 | 3 | St. Louis, Mo. | 423 | 2 |
| Knoxville, Tenn. | 121 | 2 | | | |

Note: Mileage computations are via the best interstate or primary highways, not necessarily the most direct route of travel.

Sources: Rand McNally Road Atlas, 1979. Official Kentucky Mileage Map, 1979. Delivery time - Eldridge Truck Line, P. O. Box 659, Somerset, Kentucky 42501.

(T)Local terminal.

*Interstate and intrastate service.

**For regular scheduled pickups or for occasional pickups, arrangements must be made with the Louisville office of Purolator Courier Corporation.

***For regular scheduled pickups or for occasional pickups, arrangements must be made with the Louisville office of United Parcel Service.

****Daily pickup and delivery service is available to and from Standiford Field in Louisville. Arrangements for service should be made through the home office in Elizabethtown.

Air

Local

Location: Monticello-Wayne County Airport
1.5 miles north of Monticello
Runways: 1 paved
Length: 4,000 feet
Traffic
Control: Wind sock
Lighting: Wind sock and runway lights, VASI
Services: Tie-down, 80 and 100 octane fuel,
A & E repairs, flight instructions
and transportation to motels and
restaurants

Nearest Scheduled Airline Service*

Location: Blue Grass Field
4.5 miles west of Lexington, Kentucky;
105 miles north of Monticello
Runways: 2 paved
Length: 6,500 feet; 3,500 feet
Traffic
Control: Tower
Lighting: Approach lighting system, beacon,
runways and obstructions lighted,
VASI
Services: Delta, Frontier, Piedmont, and USAir
airlines; Tennessee Airways commuter
air carrier; fuel - 24-hour service,
100, and jet fuel; repair service -
major A & E repairs, Certified Avionics
repair station; National Weather
Service; flight instructions; charter
service; storage; taxi, limousine and
car rentals; restaurant
Air Freight
Service: Air freight terminal

*Commuter air carrier service is provided by Allegheny Commuter at the London-Corbin Airport which is located 3 miles south of London, Kentucky, and 63 miles northeast of Monticello.

Bus - Greyhound Bus Lines and Somerset Suburban Carriers, Inc., serve Somerset, 29 miles distant.

Taxi - One company provides 24-hour service.

Rental Services - Nearest car, truck, and trailer rentals are available in Somerset, 29 miles distant.

Water

Lake Cumberland, 10 miles distant, is navigable for approximately 100 miles. Presently, barge service on the lake is being used for transport of coal to the John Sherman Cooper Power Station at Burnside, Kentucky.

POWER AND FUEL

Electricity

Company serving Monticello - City of Monticello Electric Plant Board
Source of power - Tennessee Valley Authority
Total generating capacity - 28,539,945 KW
For industrial rates contact:

South Kentucky Industrial Development
Association, Inc.
P. O. Box 726
Hopkinsville, Kentucky 42240
(502) 885-5392

and/or

City of Monticello Electric Plant Board
615 Columbia Avenue
Monticello, Kentucky 42633
(606) 348-8102

Company serving Wayne County - South Kentucky Rural Electric
Cooperative Corporation
Source of power - East Kentucky Power Cooperative
Total generating capacity - 1,318,010 KW
For industrial rates contact:

Industrial Development Division
East Kentucky Power Cooperative
P. O. Box 707
Winchester, Kentucky 40391
(606) 744-4812

and/or

South Kentucky RECC
P. O. Box 910
Somerset, Kentucky 42501
(606) 678-4121

Natural Gas

Natural gas service is not available in Monticello at the present time.

Other Fuels

Propane (Within 30 miles)

Ashland Oil Company
(bulk plant)
South Main Street
Monticello, Kentucky 42633

Pyrofax Gas Corporation
114 South Main Street
Somerset, Kentucky 42501

Kengas
100 Albany Road
Monticello, Kentucky 42633

Williams Energy Company
104 South Vine Street
Somerset, Kentucky 42501

Fuel oils

Distillate fuel oil - (Within 30 miles)

Ashland Oil Company
(bulk plant)
South Main Street
Monticello, Kentucky 42633

Somerset Oil
(bulk plant)
119 South Main Street
Monticello, Kentucky 42633

Lewis J. Heber Oil
Company, Inc.
Walnut Street
Burnside, Kentucky 42519

Wisdom Oil Company
100 Burkesville Road
Albany, Kentucky 42602

Residual fuel oil - Arrangements must be made with the refinery.

Low sulphur content coal - Available in Kentucky.

WATER AND SEWERAGE

Water

Company serving Monticello - Monticello Utility Commission*
P. O. Box 518
157 South Main Street
Monticello, Kentucky 42633
(606) 348-8473

Source - Lake Cumberland

Treatment plant capacity - 1,000,000 gallons per day

Average daily consumption - 725,000 gallons

Peak daily consumption - 950,000 gallons

Type treatment - Chlorination, coagulation, filtration, fluoridation

Storage capacity - 800,000 gallons

Size lines - 16, 12, 10, and 8 inches

Average pressure - 100 psi

Average temperature - 55 degrees F.

*The Monticello Utility Commission has a \$1 million improvement planned for its public water system. The project, to be completed in one to two years, will enable the commission to increase the water treatment plant capacity to 2,500,000 gallons per day, to install additional pumps at the raw water intake station, and to construct two above-ground storage tanks and a clearwell, creating an additional 600,000 gallons of storage.

MONTHLY WATER RATES

Residential
Inside Corporate Limits

| | | |
|-------|---------------|--------------------|
| First | 2,500 gallons | \$8.75 (Minimum) |
| Next | 2,000 gallons | 1.20 per M gallons |
| Next | 2,000 gallons | 1.10 per M gallons |
| Over | 6,500 gallons | 1.00 per M gallons |

Commercial
Inside Corporate Limits

| | | |
|-------|----------------|--------------------|
| First | 2,500 gallons | \$9.25 (Minimum) |
| Next | 7,500 gallons | 1.20 per M gallons |
| Next | 20,000 gallons | 1.10 per M gallons |
| Over | 30,000 gallons | 1.00 per M gallons |

All Customers
Outside Corporate Limits

| | | |
|-------|---------------|--------------------|
| First | 2,500 gallons | \$9.75 (Minimum) |
| Next | 2,000 gallons | 1.30 per M gallons |
| Next | 2,000 gallons | 1.20 per M gallons |
| Over | 6,500 gallons | 1.10 per M gallons |

Tap-on charge: Residential - \$100 inside corporate limits
150 outside corporate limits
Commercial and industrial - Negotiated

Surface water sources - Lake Cumberland

Extremes - Lake Cumberland at Jamestown, Kentucky - maximum contents
2,123,000 cfs - days; minimum 1,162,500 cfs - days (1979)

Expected ground water yield - 5 to 50 gpm in northwest; 5 gpm or less
in remainder of county

Sewerage

Company serving Monticello - Monticello Utility Commission*
P. O. Box 518
Monticello, Kentucky 42633
(606) 348-8473

Design capacity - 360,000 gallons per day

Average daily flow - 300,000 gallons

Treatment - Primary and secondary

Type treatment - Aeration, clarifier, drying beds

Treated effluent discharged into - Elk Creek

Size of sanitary mains - 10, 8, and 6 inches

Rates -

Residential - Minimum bill \$3.88 or 50 percent of water bill
with a maximum bill of \$10

Commercial - Minimum bill \$4.86 or 50 percent of water bill
with no maximum

Sprinkler charge - \$0.10 per sprinkler head per month

Tap-on charge - \$100

*Step I of a 201 Facilities Plan is under way.

CLIMATE

Wayne County

Temperature

| | |
|--|---------------|
| Normal (30-year record) | 59.7 degrees |
| Average annual 1979 | 58.3 degrees |
| Record highest, September 1954 (38-year record) | 103.0 degrees |
| Record lowest, January 1966 (38-year record) | -9.0 degrees |
| Normal heating degree days (30-year record) | 3,478 |
| (Heating degree day totals are the sums of negative departures of average daily temperatures from 65 degrees F.) | |

Precipitation

| | |
|---|--------------|
| Normal (30-year record) | 46.18 inches |
| Mean annual snowfall (37-year record) | 12.70 inches |
| Total precipitation 1979 | 53.89 inches |
| Mean number days precipitation (.01 inch or more) (37-year record) | 128 |
| Mean number days thunderstorms (37-year record) | 47 |

Prevailing Winds (14-year record)

Northeast

Relative Humidity (19-year record)

| | |
|--------|------------|
| 1 a.m. | 79 percent |
| 7 a.m. | 85 percent |
| 1 p.m. | 59 percent |
| 7 p.m. | 62 percent |

Source: U.S. Department of Commerce, Environmental Science
Services Administration, Climatological Data, 1979.
Station of record: Knoxville, Tennessee.

LOCAL GOVERNMENT

City

Structure - Mayor - 4-year term; 6 Council members - 2-year terms

Budget 1980 - General Fund \$300,000

Water and Sewer Fund 500,000

Fees and licenses - Business licenses range from \$10 to \$900 annually.

For manufacturers, the following fees apply:

| | |
|---|----------------|
| Less than 50 employees | \$225 annually |
| More than 50, but less than 100 employees | \$375 annually |
| More than 100 employees | \$450 annually |

County

Structure - County Judge/Executive - 4-year term;

4 magistrates - 4-year terms

Budget 1980-81 - General Fund \$245,750; Road Fund \$433,900

Assessed Value of Property, 1980

| <u>Classes of Property</u> | <u>Monticello</u> | <u>Wayne County</u> |
|----------------------------|-------------------|---------------------|
| Real Estate | \$30,962,291 | \$91,507,480 |
| Tangibles | 9,112,197 | 20,981,982 |

Property Taxes

All property in Kentucky is assessed at 100 percent of fair cash value.

Land and buildings are taxed by the state and may be taxed by local jurisdictions. The state rate is \$0.241 per \$100 of assessed valuation.

Manufacturing machinery, raw materials inventories, pollution control equipment, and goods in the process of manufacture are not subject to local taxation. The state rate is \$0.15 per \$100.

Other tangible personal property owned by manufacturers (automobiles, trucks, finished goods, office furniture, office equipment) is taxed by the state at \$0.45 per \$100 and may be taxed by local jurisdictions.

Property stored in public warehouses in a transit status is not subject to local taxation. The state rate is only \$0.015 per \$100.

Intangible personal property located in Kentucky (money in hand, shares of stock, notes, bonds, accounts receivable, and other credits) is taxed by the state at \$0.25 per \$100, and is not subject to local taxation.

Private leaseholds in industrial facilities owned by cities or counties and financed by industrial revenue bonds are subject to a state tax of \$0.015 per \$100 of value (essentially the lessee's equity, adjusted for appreciation or depreciation). Local taxation is not permitted.

Combined State and Local Rates Per \$100 Valuation, 1980* (100% assessment)

| | <u>Inside City of Monticello</u> | <u>Outside City</u> |
|---|--------------------------------------|-------------------------|
| 1. Land and buildings | \$1.066 | \$0.623 |
| 2. Mfg. machinery, raw materials, goods in process, pollution control equipment | 0.150 | 0.150 |
| 3. Finished goods, office equipment, vehicles, other tangibles | 1.275 | 1.047 |
| 4. Intangibles (accounts receivable, notes, bonds, etc.) | 0.250 | 0.250 |
| 5. Leaseholds in industrial revenue bond financed plants | 0.015 | 0.015 |

*Kentucky Department of Commerce.

Planning and Zoning

City agency - Monticello Planning Commission

Zoning enforced - None

Subdivision regulations enforced - None

Local codes enforced - None

Mandatory state codes enforced - Kentucky Plumbing Code, National Electric Code, Kentucky Boiler Regulations and Standards, National Fire Protection Association Standards of Safety (for buildings with an occupancy of less than 100 persons), Kentucky Building Code (modeled after BOCA code and applying to buildings with an occupancy of 100 or more Persons)

Safety

| <u>Police</u> | <u>Monticello</u> | <u>Wayne County</u> |
|---------------|-------------------|---------------------|
|---------------|-------------------|---------------------|

| | | |
|-------------------|----|---|
| Total staff | 10 | 4 |
| Radio-patrol cars | 5 | 3 |

Fire

| | | |
|--|----|----|
| American Insurance Association Fire Rating | 7 | 10 |
| Volunteers | 20 | * |

Rescue Service

Wayne County Rescue Squad:

Number of volunteers - 25

Equipment - 1 ambulance; 2 pickup trucks; 3 Thundercraft boats, 800-pound capacity; 3 aluminum boats; 3 outboard motors; dragging equipment; 2 jeeps; portable generator (5-KW)

Personnel training - 1 emergency medical technician, 12 trained in cardiopulmonary resuscitation procedures and basic first aid. Additional training has been provided in cooperation with the Civil Defense and Red Cross organizations. The rescue squad has also had training in radiological monitoring.

*Fire protection is provided to Wayne County residents by the Monticello Fire Department.

Refuse Collection and Disposal

Monticello

| | |
|-----------------------|-------------------|
| Type service | Municipal |
| Fee charged: | |
| residential | \$3.50 |
| business | \$3.50 to \$150 |
| industrial | Negotiated |
| Collection frequency: | |
| residential | Weekly |
| business | Twice weekly |
| industrial | Daily |
| Disposal method | Sanitary landfill |

Wayne County residents are served by private collectors who use the Monticello sanitary landfill.

EDUCATION

Public Schools

| | <u>Monticello Independent*</u> | <u>Wayne County</u> |
|---|------------------------------------|---------------------|
| Total Enrollment (Fall 1980) | 720 | 3,000 |
| Elementary | 520 | 1,735 |
| Middle School | -- | 450 |
| High School | 200 | 815 |
| Student-Teacher Ratio | 17-1 | 19-1 |
| Elementary | 16-1 | 18-1 |
| Middle School | -- | 20-1 |
| High School | 20-1 | 23-1 |
| Percent High School Graduates to College | 44.7 | 27.3 |
| Expenditures Per Pupil (1979-80) | \$1,057.85 | \$1,090.83 |
| Bonded Indebtedness, June 30, 1980 | \$249,000 | \$2,530,000 |

*The Monticello Independent School System has plans to construct a new building which will provide space for industrial arts, home economics and music. The \$1.4 million project is awaiting approval of the Kentucky School Building Authority.

Area Colleges and Universities

| <u>Name</u> | <u>Location (Miles distant)</u> | <u>Enrollment (Fall, 1980)</u> | <u>Highest Degree Conferred</u> |
|----------------------------------|-------------------------------------|------------------------------------|-------------------------------------|
| Somerset Community College | Somerset (29) | 980 | Associate |
| Cumberland College | Williamsburg (54) | 2,162 | Baccalaureate |
| Lindsey Wilson Junior College | Columbia (62) | 408 | Associate |
| Sue Bennett Junior College | London (63) | 256 | Associate |
| Berea College | Berea (72) | 1,514 | Baccalaureate |
| Centre College | Danville (74) | 749 | Baccalaureate |
| Campbellsville College | Campbellsville (81) | 698 | Baccalaureate |
| Eastern Kentucky University | Richmond (84) | 14,185 | Masters, Specialists* |

*Joint doctoral degree programs are offered in cooperation with the University of Kentucky, Lexington, and cooperative doctoral degree programs are offered with Michigan State University and the University of Maryland.

Vocational Schools

Both the state vocational-technical schools and the area vocational education centers are operated by the Kentucky Department of Education. The state vocational-technical schools enroll persons full time who are at least 16 years of age and not in school. These students attend classes for six hours each day. The area vocational education centers are designed to accommodate high school students who are at least 15 years of age. These students attend vocational school for three hours each day. The state vocational-technical schools and the area education centers offer evening courses to enable working adults to upgrade current job skills.

Nearest State School

| | |
|---------------|---|
| Location | Somerset State Vocational- Technical School |
| Miles Distant | Somerset 29 |
| Curriculum | Business and Office Accounting/Jr. Management Clerical Data Processing Secretarial Health and Personal Services Occupations Health Careers Licensed Practical Nursing* Industrial Education Appliance Repair Auto Body Repair Auto Mechanics Aviation Maintenance Technician Diesel Mechanics Drafting Graphic Arts (Printing) Machine Shop Technical Electronics Welding Learning Resource Center |

*This course is taught in cooperation with the Danville School of Practical Nursing.

Nearest Area Education Center

| | |
|------------|--|
| Location | Wayne County Vocational Education Center |
| Curriculum | Monticello |
| | Agribusiness |
| | Business and Office |
| | General Clerical |
| | Secretarial |
| | Health and Personal Services Occupations |
| | Health Careers |
| | Industrial Education |
| | Auto Mechanics |
| | Machine Shop |
| | Welding |

Arrangements can be made to provide training in the specific production skills required by an industrial plant. Instruction may be conducted either in the vocational school or in the industrial plant, depending upon the desired arrangement and the availability of special equipment.

HEALTH

Local Medical Personnel

Physicians - 10
Dentists - 6

Hospitals

| <u>General Hospital</u> | <u>Location</u> | <u>Beds</u> |
|-------------------------|-----------------|-------------|
| Wayne County Hospital | Monticello | 40 |

General hospital facilities - Emergency room, OB section, X-ray, laboratory, physical therapy

Medical staff - 10 general practitioners, 11 registered nurses, 5 licensed practical nurses, 9 nurses' aides, 4 lab technicians, 2 X-ray technicians, physical therapist and aide, dietary supervisor, pathologist, radiologist, 3 ward clerks, dietician on consulting basis

Ambulance Service

Name - Wayne County Ambulance - Division of Lake Cumberland Emergency Medical Service
Staff - 5 emergency medical technicians
Service - 24-hour, county-wide service
Equipment - 3 standard-equipped ambulances

Public Health

Facility - Wayne County Health Center
Staff - 2 registered nurses, 1 sanitarian, 1 health service aide, 1 office manager, 3 clerks, 1 clinician (part time)

OTHER LOCAL FACILITIES

Communications

Telephone - General Telephone Company
Services - Standard

Telegraph - Western Union Telegraph Company
Services - Toll-free number: 800-325-5100

Postal - U.S. Post Office
Class - First
Mail received - Once daily
Mail dispatched - Once daily

Newspapers - Wayne County Outlook; The Reporter
Weekly and circulation - 5,700; 2,500
Other papers
received from - Lexington, Louisville, and Somerset, Kentucky

Radio - WFLW-AM; WKYM-FM
Major stations
received from - Lexington and Louisville, Kentucky;
Knoxville and Nashville, Tennessee

Television - Local weather and news station
Cable service
Reception from - Lexington and Louisville, Kentucky;
Nashville and Knoxville, Tennessee
Kentucky Educational
Television - Channel 29, Somerset transmitter

Library Services

Public library - Wayne County Library
Size collection - 33,023 volumes
Circulation, 1979-80 - 133,879 (library and bookmobile)
Services - Bookmobile, magazines, filmstrips, microfilm, films,
phonograph records, framed paintings, audio-visual equipment,
story hour for preschool children, summer reading program, Great
Books discussion for adults, Wayne County-Monticello Library
Media Club, oral history program (tapes), meeting place for
Historical Society, community meeting room

Religious Institutions

Number of churches - 15
Denominations - Baptist
Catholic
Christian
Church of Christ
Church of God
Jehovah's Witnesses
Methodist
Nazarene
Pentecostal

Nearest Synagogues - Lexington, Kentucky, 109 miles distant
Congregations - Adath Israel (reform)
Ohavey Zion (traditional)

Financial Institutions

| <u>Banks</u> | <u>Assets</u> | <u>Deposits</u> | <u>Statement Date</u> |
|-----------------------------|------------------|-----------------|-----------------------|
| Monticello Banking Company* | \$ 39,003,978.40 | \$32,659,184.50 | 6/30/80 |
| Peoples State Bank | 19,931,188.00 | 17,093,963.00 | 6/30/80 |

| <u>Savings and Loan Associations</u> | <u>Assets</u> | <u>Capital</u> | <u>Statement Date</u> |
|---|------------------|-----------------|-----------------------|
| Mutual Federal Savings and Loan Association** | \$101,488,704.03 | \$83,169,200.43 | 12/31/79 |

Hotels and Motels

Total number - 5
Total rooms - 114

*The Monticello Banking Company has completed expansion and remodeling of its main office. An adjoining building was purchased and remodeled providing an additional 3,000 square feet of office space. A drive-in facility was constructed and features an automatic teller machine and a parking lot for 45 automobiles near the main office building.

**Total assets of the company with the main office located in Somerset.

Clubs and Organizations

American Legion
Bass Club
Boy Scouts
Brownies
Business and Professional Women's Club
CB Club
Cub Scouts
Demolay
Disabled American Veteran (DAV)
Eastern Star
4-H Club
Future Business Leaders of America (FBLA)
Future Farmers of America (FFA)
Future Homemakers of America (FHA)
Future Teachers of America (FTA)
Girl Scouts
Great Books Club
Junior Conservation
Key Club
Kiwanis Club
Lions Club
Little League
Masonic Lodge
Monticello-Wayne County Development Board
Parent Teachers Association (PTA)
Veterans of Foreign Wars (VFW)
Wayne County Band Boosters
Wayne County Chamber of Commerce
Wayne County Historical Society
Wayne County Jaycees
Wayne County-Monticello Library Media Club
Wayne County Sportsman Club
Woman's Club
Y-Teens

RECREATION

Local

Monticello has a supervised recreation program. The Monticello-Wayne County Memorial Park is an 86-acre facility which offers five shelters with one shelter used for roller skating, two playgrounds, three basketball courts, two lighted tennis courts, volleyball, badminton, horseshoe pitching, croquet, two softball fields, one baseball field, and horseback riding trails.

An indoor swimming pool is located at the Monticello High School and is available to the community for recreation and instruction.

Private recreational facilities include a country club, a 9-hole golf course, two swimming pools, a movie theater, and two tennis courts. Immanuel Baptist Church Camp has five cabins accommodating 42 people each; a staff house with a capacity of 16; a dining room for 200; a swimming pool; a softball field; and an activities building for basketball, volleyball and religious services.

The clubhouse of the newly formed Wayne County Sportsman's Club is available for community activities. The clubhouse is located on 50 acres and provides kitchen and dining facilities.

Area (Within 45 miles)

Lake Cumberland State Resort Park at Jamestown, 43 miles northwest of Monticello, is a 3,000-acre park located on the 50,000-acre Lake Cumberland, which sports excellent bass, bluegill, and crappie fishing. The park features a modern resort lodge which is perched on a high bluff above the lake. The lodge has a swimming pool, a dining room, a gift shop, and a multi-purpose convention center. Other park facilities include an additional swimming pool, riding stables, tennis courts, hiking trails, a 9-hole golf course, miniature golf, a picnic area, a playground, a 350-seat amphitheater, and a nature center. A marina offers houseboats, and fishing boats and motors for rent plus year-round launching ramps.

General Burnside State Park, 21 miles northeast of Monticello, is Kentucky's only island state park. Rising out of Lake Cumberland and surrounded by beautiful Kentucky mountains, the park offers excellent fishing, an 18-hole golf course which is open year-round, a picnic area, a 150-site camping area for tents and recreational vehicles, a marina on the mainland near the park, and planned recreation.

Dale Hollow Lake State Park, approximately 30 miles southwest of Monticello, is located on 3,497 lakeside acres in southeastern Cumberland County. Park facilities include a marina, a picnic area, and 144 sites for tent and trailer camping. A private resort located on the lake provides facilities for swimming, fishing, boating, and playground activities, and offers cabin and houseboat rentals. Another private campground has tent and trailer camping, houseboat rentals, and a picnic area.

Mill Springs Civil War Battle Site, 10 miles north of Monticello, contains the mill which bears its name. The mill, built in 1840 (20 years before the Civil War), still grinds corn meal today using a giant 40-foot overshot water wheel (as was used 140 years ago) and is thought to be the largest in the world. A roadside park at the battle site has a gift shop and a picnic area overlooking Lake Cumberland.