

1995

Industrial Resources: Breckinridge County

Kentucky Library Research Collections
Western Kentucky University, spcol@wku.edu

Follow this and additional works at: https://digitalcommons.wku.edu/breckinridge_cty

 Part of the [Business Administration, Management, and Operations Commons](#), [Growth and Development Commons](#), and the [Infrastructure Commons](#)

Recommended Citation

Kentucky Library Research Collections, "Industrial Resources: Breckinridge County" (1995). *Breckinridge County*. Paper 2.
https://digitalcommons.wku.edu/breckinridge_cty/2

This Report is brought to you for free and open access by TopSCHOLAR®. It has been accepted for inclusion in Breckinridge County by an authorized administrator of TopSCHOLAR®. For more information, please contact topscholar@wku.edu.

Kentucky

Resources For Economic Development

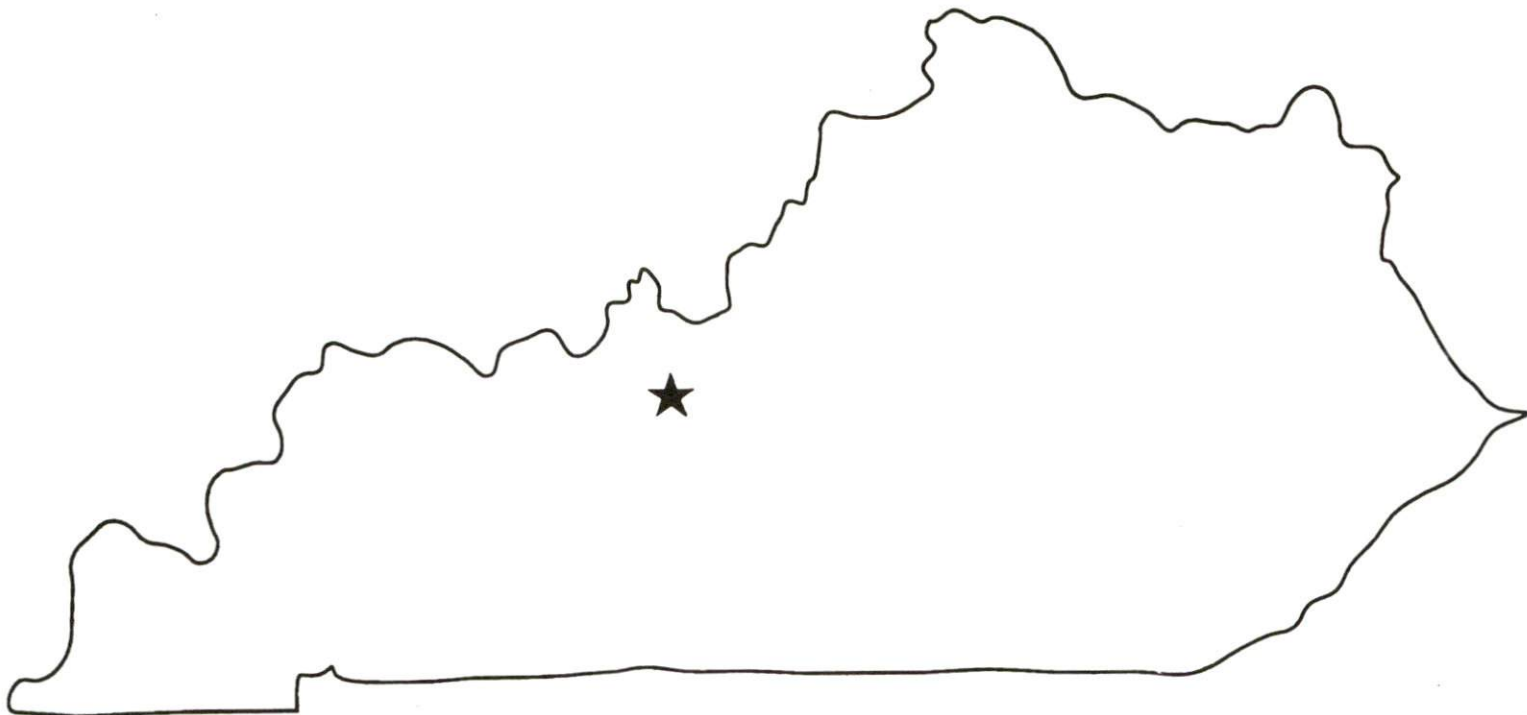
Breckinridge County

Albany
Barbourville
Ballard County
Bardstown • Booneville Berea
Bowling Green • Boyd & Greenup Counties
Bracken County • Brandenburg • Breckinridge
Brownsville • Bullitt County • Burkesville • Cadiz
Campbellsville • Campton • Carlisle • Carlisle County
Carrollton • Cave City • Clinton • Columbia • Corbin • Cynthiana
Danville • Dawson Springs • Edmonton • Elizabethtown • Estill County
Elliott County • Falmouth & Butler • Flemingsburg • Frankfort • Franklin
Frenchburg • Fulton County • Gallatin County • Georgetown • Grant County • Greensburg
Grayson & Olive Hill • Glasgow • Hancock County • Harlan County • Harrodsburg • Hart County
Hazard • Henderson • Henry County • Hodgenville • Hopkinsville-Christian County • Jackson County
Jackson • Knott County • LaGrange & Buckner • Lancaster • Lawrenceburg • Lebanon • Leitchfield-
Grayson County • Letcher County • Lexington • Liberty-Casey County • Logan County • Louisville
London • Louisa • Lyon County • Madisonville & Earlington • Manchester • Marshall County • Mayfield
Maysville • McCreary County • Marion • McLean County • Middlesboro & Pineville • Monticello • Morehead
Morgantown • Mt. Sterling • Mt. Vernon • Muhlenberg County • Murray • Nicholasville • Northern Kentucky
Ohio County • Owensboro • Owenton • Owingsville • Paducah • Paintsville • Paris • Pike County • Powell
Prestonsburg • Princeton • Radcliff • Richmond • Russell County • Scottsville • Shelbyville • Somerset
Springfield • Stamping Ground • Stanford-Lincoln County • Tompkinsville & Gamaliel • Taylorsville
Todd County • Union County • Vanceburg • Versailles • Webster County • West Liberty • Williamsburg
Winchester, Kentucky

Kentucky

**Resources For
Economic Development**

Breckinridge County



BRECKINRIDGE CO>\$4.00



CB11

Prepared by
The Kentucky Cabinet for Economic Development
Division of Research
in cooperation with
Breckinridge County Development Corporation

1995

Division Director - Ronald W. Morgan; program manager - Keith Roberts;
research - Keith Roberts; clerical - Wanda Sharp; graphics - Robert Owens. Cost
of printing paid from state funds.

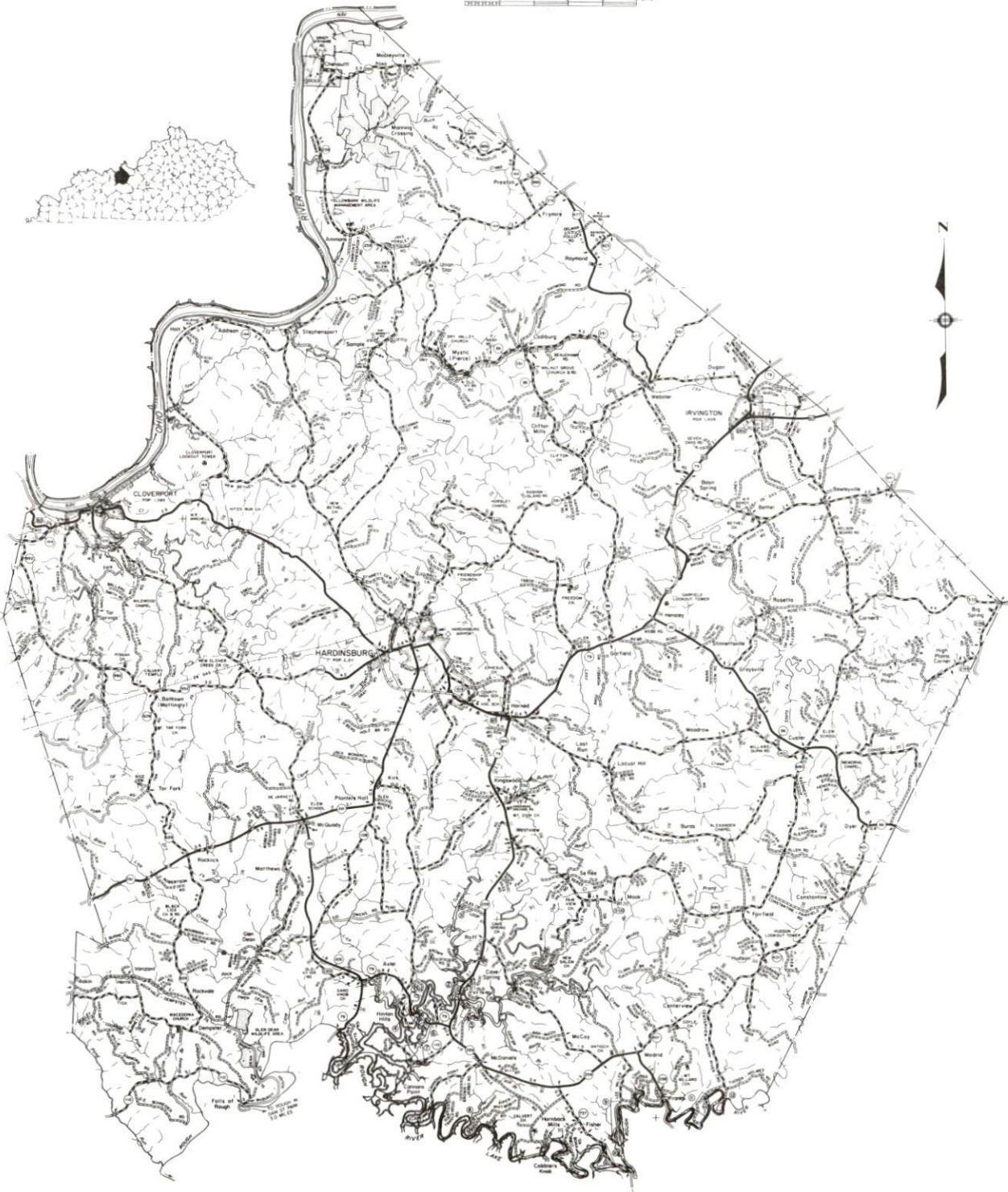
TABLE OF CONTENTS

<u>Chapter</u>	<u>Page</u>
BRECKINRIDGE COUNTY, KENTUCKY - A RESOURCE PROFILE	1
THE LABOR MARKET STATISTICS	2
Labor Market Area Map	2
Population	3
Population Projections	3
Estimated Labor Supply	3
Labor Force Characteristics of Residents, 1994	4
Selected Components of Nonagricultural Employment, by Place of Work, 1993	5
Per Capita Personal Income	6
Average Placement Wages	7
Average Weekly Wages of Workers Covered by Unemployment Insurance 1993 - Bar Chart	8
Average Weekly Wages by Industry, by Place of Work, 1993	9
EXISTING INDUSTRY	10
Breckinridge County Manufacturing Firms, Their Products and Employment	10
Recent Industrial Developments	10
Labor Organizations in Manufacturing Firms	11
Selected Industrial Services	11
TRANSPORTATION	12
Highways	12
Truck Service	12
Selected Market Location Map	13
Rail	14
Air	14
Water	14
UTILITIES	15
Electricity	15
Natural Gas	15
Public Water Supply	16
Raw Water	17
Sewerage	17
CLIMATE	18

<u>Chapter</u>	<u>Page</u>
LOCAL GOVERNMENT	19
Structure	19
Planning and Zoning	19
Local Fees and Licenses	19
State and Local Property Taxes	20
EDUCATION	21
Public Schools	21
Nonpublic Schools	21
Area Colleges and Universities	21
Vocational Training	22
OTHER LOCAL FACILITIES	24
Local Medical Personnel	24
Hospitals	24
Other Medical Facilities and Services	24
Banks and Savings & Loan Associations	24
Newspapers	24
Telephone Service	24
RECREATION	25

GENERAL HIGHWAY MAP
BRECKINRIDGE COUNTY
KENTUCKY

PREPARED BY THE
KENTUCKY TRANSPORTATION CABINET
DEPARTMENT OF HIGHWAYS
DIVISION OF PLANNING
IN COOPERATION WITH THE
U.S. DEPARTMENT OF TRANSPORTATION
FEDERAL HIGHWAY ADMINISTRATION



BRECKINRIDGE COUNTY, KENTUCKY - A RESOURCE PROFILE

Breckinridge County is situated in the northwestern section of central Kentucky's Mississippian Plateaus Region, and covers a land area of 572 square miles. The Ohio River, a major commercial waterway, forms the northwestern border of the county.

Breckinridge County, which had an estimated 1992 population of 16,521 persons, contains three principal cities; Hardinsburg, Cloverport, and Irvington. Hardinsburg, the county seat, had an estimated 1992 population of 2,052 persons. Cloverport, located 12 miles northwest of Hardinsburg, had an estimated population of 1,195. Irvington is 18 miles northeast of Hardinsburg and had an estimated 1992 population of 1,171 persons.

The Economic Framework - The total number of Breckinridge County residents employed in 1994 averaged 6,940. In 1993, manufacturing firms in the county reported 171 employees; wholesale and retail trade provided 737 jobs; 442 people were employed in service occupations; state and local government accounted for 618 employees; and contract construction firms provided 261 jobs.

Labor Supply - There is a current estimated labor supply of 13,120 persons available for industrial jobs in the labor market area. In addition, from 1996 through 2000, 14,505 young persons in the area will become 18 years of age and potentially available for industrial jobs.

Transportation - Principal highways serving Breckinridge County are U.S. Highway 60 and Kentucky Highway 79. The Western Kentucky Parkway is 31 miles south of Hardinsburg via Kentucky 79 and 259. Interstate 65 is accessible 43 miles southeast of Hardinsburg via U.S. 60, Kentucky 62 and 86. Fourteen common carrier trucking companies provide interstate and/or intrastate service to Breckinridge County. CSX Transportation provides rail service to Cloverport and Irvington. The nearest scheduled commercial airline service is available at Louisville International Airport, 66 miles northeast of Hardinsburg. The Breckinridge County Airport, in Hardinsburg, maintains a 3,700-foot paved runway. The Ohio River forms the north-northwestern boundary of Breckinridge County, where a nine-foot navigation channel is maintained. Hardinsburg is located 46 miles east of Owensboro, Kentucky, where a riverport is maintained.

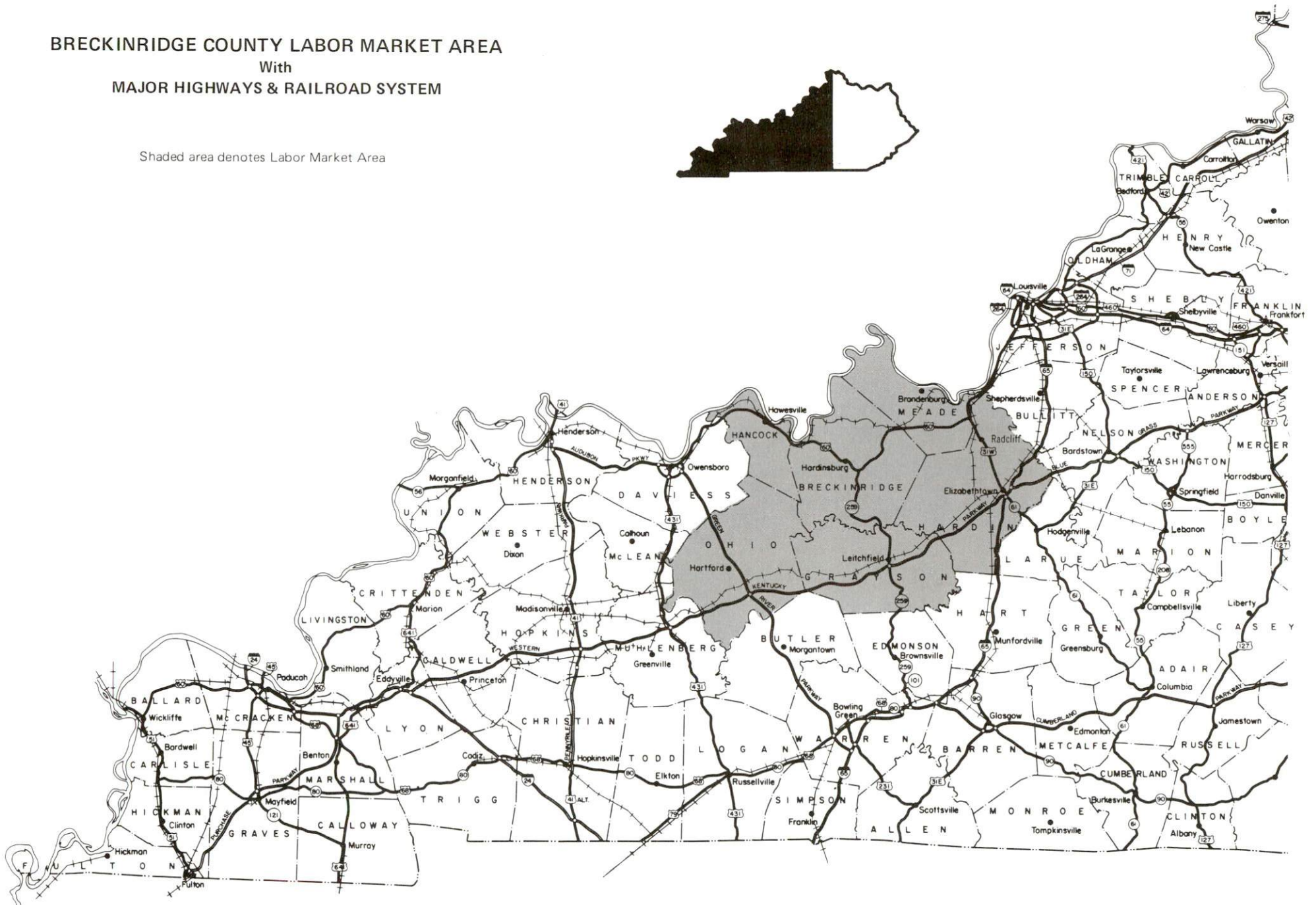
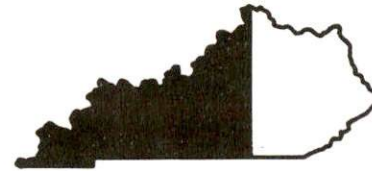
Power and Fuel - Meade County Rural Electric Cooperative Corporation, whose source of power is Big Rivers Electric Corporation, provides electric power to Breckinridge County. Western Kentucky Gas Company provides natural gas service to Hardinsburg and Cloverport, and Valley Gas, Inc., provides natural gas service to Irvington. The source of supply for both companies is Texas Gas Transmission Corporation.

Education - The Cloverport Independent School System provides primary and secondary public education to Cloverport. The Breckinridge County School System serves the remainder of the county. One private school also operates in Hardinsburg. Eight institutions of higher learning are located within 70 miles of Hardinsburg. Vocational training facilities are available in Elizabethtown, Owensboro, and Harned, Kentucky, all within 50 miles of Hardinsburg.

BRECKINRIDGE COUNTY LABOR MARKET AREA

With
MAJOR HIGHWAYS & RAILROAD SYSTEM

Shaded area denotes Labor Market Area



LABOR MARKET STATISTICS

The Breckinridge County Labor Market Area includes Breckinridge County and the adjoining Kentucky counties of Grayson, Hancock, Hardin, Meade, and Ohio.

POPULATION

	<u>1992*</u>	<u>1990</u>	<u>1980</u>	<u>1970</u>
Labor Market Area	175,678	179,741	178,987	154,321
Hardinsburg	2,052	1,906	2,211	1,547
Cloverport	1,195	1,207	1,585	1,388
Irvington	1,171	1,180	1,409	1,300
Breckinridge County	16,521	16,312	16,861	14,789

* Population estimates.

Source: U.S. Department of Commerce, Bureau of the Census.

POPULATION PROJECTIONS

	<u>1995</u>	<u>2000</u>	<u>2010</u>	<u>2020</u>
Labor Market Area	187,606	197,013	210,411	219,349
Breckinridge County	16,700	17,451	18,309	18,774

Note: Population projections are from High Growth Series forecast.

Source: University of Louisville, Urban Studies Center, State Data Center.

ESTIMATED LABOR SUPPLY

	<u>Current</u>		<u>Not in Labor Force</u>	<u>Future</u>
	<u>Total</u>	<u>Unemployed</u>		<u>Becoming 18 years of age 1996 thru 2000</u>
Labor Market Area*	13,120	5,396	7,724	14,505
Breckinridge County	1,474	513	961	1,323

* Additional workers may be drawn from other nearby counties.

Note: Unemployed - persons unemployed and actively seeking work; Not in Labor Force - represents the number of persons who would enter the labor force if suitable employment were available (based on the assumption that persons in Kentucky would like to participate in the labor force in the same proportion that they do nationally). Underemployed persons (employed only 14 to 26 weeks during the year) are no longer included in labor surplus estimates.

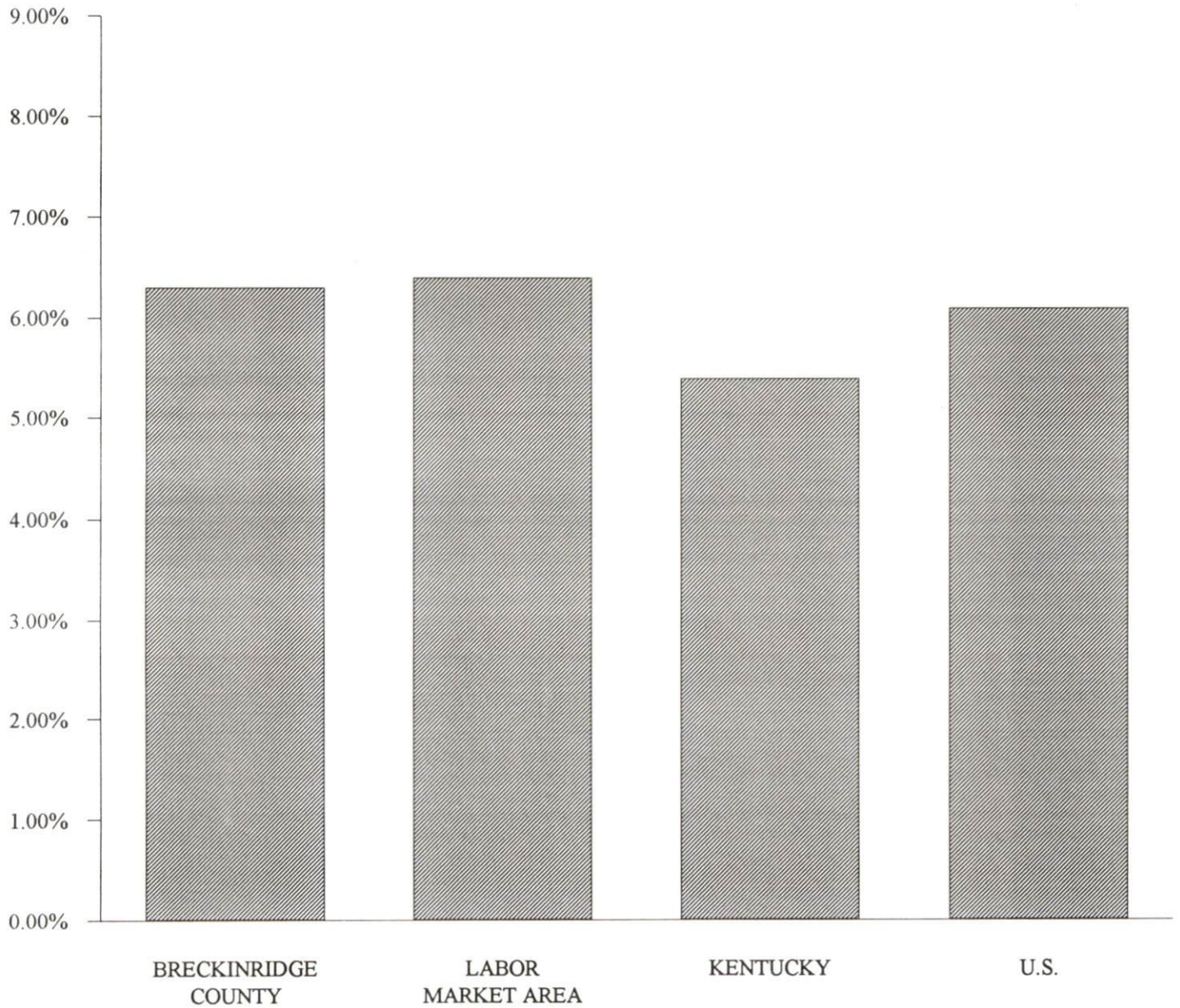
Sources: Kentucky Cabinet for Human Resources, Kentucky Labor Surplus Estimates by County, 1993. Kentucky Cabinet for Economic Development, Future Labor Supply Becoming 18 Years of Age, 1996 thru 2000.

LABOR FORCE CHARACTERISTICS OF RESIDENTS, 1994

	<u>Breckinridge County</u>	<u>Labor Market Area</u>
Civilian Labor Force	7,408	74,251
Employment	6,940	69,463
Unemployment	468	4,788
Rate of Unemployment (%)	6.3	6.4

Source: Kentucky Cabinet for Human Resources, Kentucky Labor Force Estimates, Annual Averages, 1994.

**UNEMPLOYMENT RATES
1994**

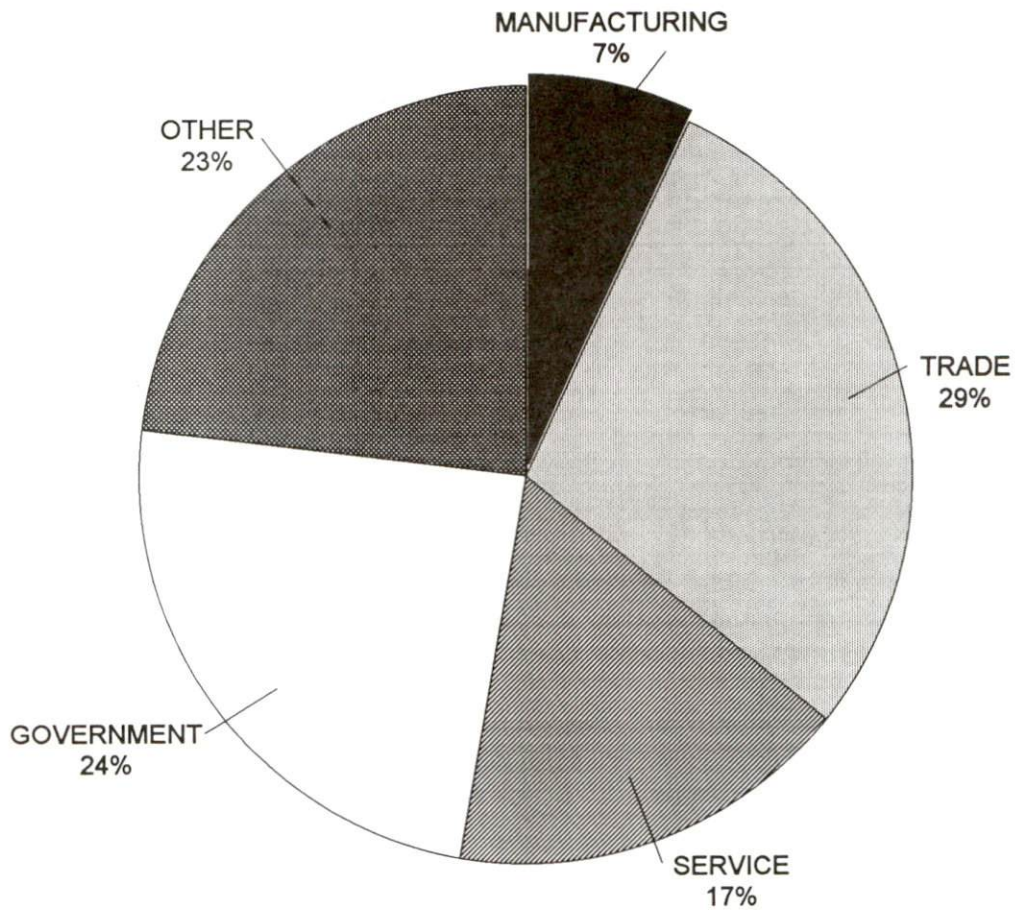


SELECTED COMPONENTS OF NONAGRICULTURAL EMPLOYMENT
BY PLACE OF WORK, 1993

	Breckinridge County	Labor Market Area
All Industries (total)	2,566	47,599
Manufacturing	171	11,876
Wholesale & Retail Trade	737	12,219
Services	442	7,272
State/Local Government	618	8,578
Contract Construction	261	2,207

Note: Excludes domestic workers, railway workers, certain nonprofit corporations, majority of federal government workers, and self-employed workers.
 Source: Kentucky Cabinet for Human Resources, Average Monthly Workers Covered by Kentucky Unemployment Insurance Law, 1993.

BRECKINRIDGE COUNTY

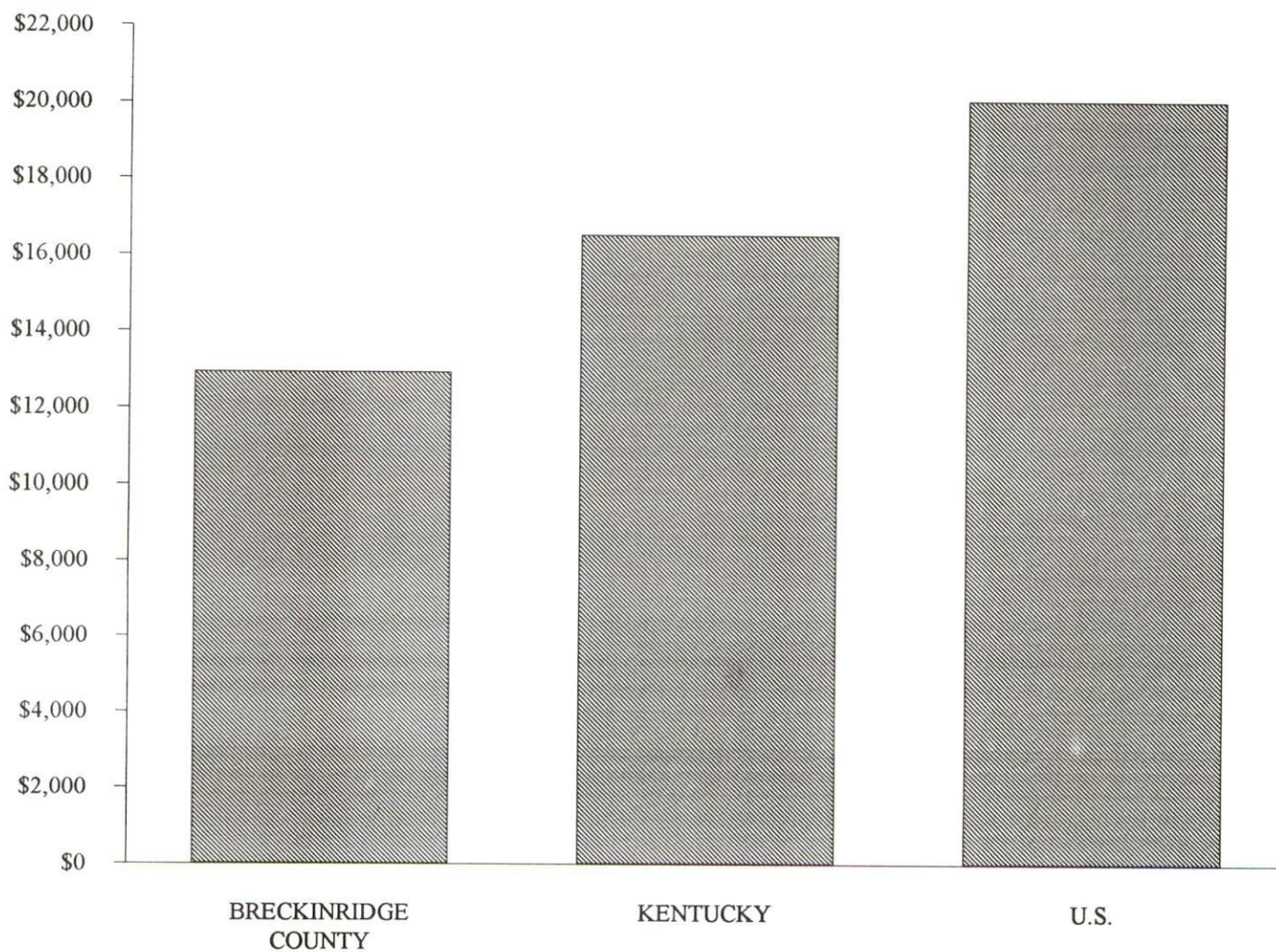


PER CAPITA PERSONAL INCOME

Area	1988	1992	Percent Change
Breckinridge County	\$9,760	\$12,932	32.5
Labor Market Area Range	\$9,481 - \$13,920	\$12,284 - \$17,773	-
Kentucky	\$12,751	\$16,528	29.6
U.S.	\$16,610	\$20,105	21.0

Source: U.S. Department of Commerce, Bureau of Economic Analysis, Regional Economic Information System.

PER CAPITA PERSONAL INCOME
1992



AVERAGE PLACEMENT WAGES

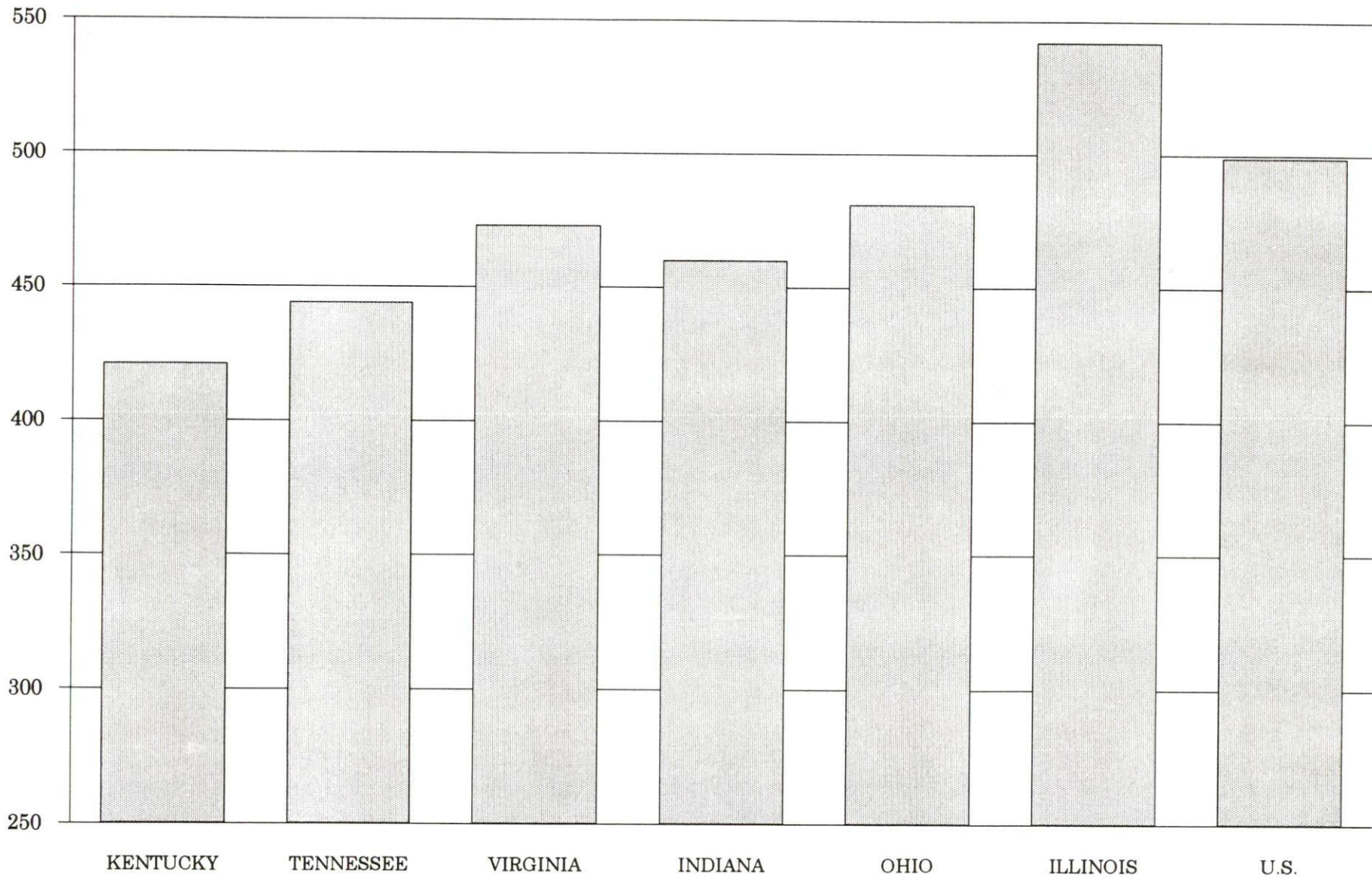
Breckinridge County is served by the Elizabethtown local office of the Kentucky Department for Employment Services. The focus of the following data is on job placements made by the Elizabethtown local office and may therefore be used as an indicator of the wages which employers in the area pay new employees. During the twelve months which ended on June 30, 1994, the local employment office filled 2,758 job openings in various occupational categories. The average hourly wage for selected occupational categories were:

<u>OCCUPATIONAL CATEGORY</u>	<u>NUMBER OF PLACEMENTS</u>	<u>AVERAGE WAGE(\$)</u>
All Occupations	2,758	5.51
Clerical	671	4.70
Sales	124	5.16
Services (excluding domestic)	368	4.80
Agricultural, Fishery, Forestry, etc.	33	5.51
Processing	15	10.36
Machine Trades	684	6.17
Bench Work	178	5.96
Structural	318	6.35
Motor Freight/ Transportation	91	5.09
Packaging and Materials Handling	201	5.13
Other	4	4.56

The Elizabethtown local office also serves Grayson, Hardin, Larue, and Meade Counties. The above occupational categories are taken from the Dictionary of Occupational Titles published by the U.S. Department of Labor.

Source: Kentucky Cabinet for Human Resources, Department for Employment Services.

**AVERAGE WEEKLY WAGES OF WORKERS COVERED BY
UNEMPLOYMENT INSURANCE - 1993**



AVERAGE WEEKLY WAGES BY INDUSTRY
BY PLACE OF WORK, 1993*

	Breckinridge County	Kentucky (State- Wide)	Tennessee	Virginia
All Industries	\$308.74	\$421.30	\$444.00	\$473.00
Mining & Quarrying	293.34	691.01	605.00	684.00
Contract Construction	345.76	440.47	467.00	464.00
Manufacturing	266.80	541.18	522.00	543.00
Transportation, Communications & Public Utilities	494.04	567.94	572.00	648.00
Wholesale & Retail Trade	217.34	287.24	N/A	N/A
Finance, Insurance & Real Estate	368.35	529.88	574.00	612.00
Services	245.44	377.50	424.00	492.00
State/Local Government	412.36	431.93	N/A	N/A
	<u>Indiana</u>	<u>Ohio</u>	<u>Illinois</u>	<u>U. S.</u>
All Industries	\$460.00	\$481.00	\$542.00	\$499.00
Mining & Quarrying	757.00	645.00	738.00	816.00
Contract Construction	509.00	534.00	658.00	530.00
Manufacturing	629.00	670.00	667.00	623.00
Transportation, Communications & Public Utilities	561.00	600.00	682.00	643.00
Wholesale & Retail Trade	N/A	N/A	N/A	N/A
Finance, Insurance & Real Estate	527.00	568.00	748.00	693.00
Services	391.00	422.00	494.00	475.00
State/Local Government	N/A	N/A	N/A	N/A

* Wages for U.S. and surrounding states rounded to nearest dollar.

N/A Not Available.

Note: The average weekly wage for each category includes the salaries and wages of all persons working for that type business. For example, the manufacturing category includes both production workers and administrative personnel. Excludes domestic workers, railway workers, certain nonprofit corporations, majority of federal government workers, and self-employed workers.

Source: Kentucky Cabinet for Human Resources, Average Weekly Wages of Workers Covered by Kentucky Unemployment Insurance Law, 1993. U.S. Department of Labor, Bureau of Labor Statistics, Employment and Wages, Annual Averages, 1993, October 1994.

EXISTING INDUSTRY

BRECKINRIDGE COUNTY MANUFACTURING FIRMS, THEIR PRODUCTS AND EMPLOYMENT

<u>Firm</u> <u>(Establishment date)</u>	<u>Product</u>	<u>1994</u> <u>Average Employment</u>
Hardinsburg		
Berco Inc. (1994)	Working apparel, coveralls	107
Breckinridge County Ready Mix Company (1974)	Ready-mixed concrete, precast products	12
Cloverport Mill, Division of Jasper American Manufacturing (1972)	Lumber	13
Eleanor Beard, Inc. (1920)	Ladies robes, hand quilted spreads, comforters	43
The Galante Studio, Inc. (1929)	Fabric and vinyl diaper bags, comforts, bedspreads, pillows	44
Herald News Publishing Company, Inc. (1876)	Newspaper	14
Office Products Specialty, Inc. (1988)	Paper pads, notebooks, file folders	18
White Stone Company (1958)	Crushed limestone	15
Irvington		
Community Milling Company (1919)	Feed	1
The Kentucky Stone Company (1936)	Crushed limestone, aglime	19
Webster		
Carter Lumber (1965)	Lumber, logs, crossties	6

Sources: Kentucky Cabinet for Economic Development, Division of Research.

RECENT INDUSTRIAL DEVELOPMENTS

Berco, Inc. is constructing a 20,000 square-foot expansion to its existing facility. The expansion is scheduled to be completed in the Spring 1995 and the company plans to add approximately 100 new employees.

LABOR ORGANIZATIONS IN MANUFACTURING FIRMS

There are currently no labor organizations representing workers in manufacturing firms in Breckinridge County.

SELECTED INDUSTRIAL SERVICES

<u>Types of Services</u>	<u>Location</u>	<u>Mileage from Hardinsburg</u>
Custom Plastics Producers	Leitchfield, Kentucky	30
Electric Motor Repair	Elizabethtown, Kentucky Owensboro, Kentucky	42 47
Heat Treating Facilities	Louisville, Kentucky	66
Industrial Waste Removal	Leitchfield, Kentucky	30
Machine Shops, Tool & Die	Leitchfield, Kentucky	30
Metal Castings	McHenry, Kentucky Owensboro, Kentucky	45 47
Metal Finishers	Elizabethtown, Kentucky Owensboro, Kentucky	42 47
Metal Service Centers	Elizabethtown, Kentucky Owensboro, Kentucky	42 47
Millwrights & Riggers	Owensboro, Kentucky	47

Sources: Kentucky Cabinet for Economic Development, Division of Research.

TRANSPORTATION

Highways

The principal route serving Breckinridge County is U.S. Highway 60, a "AAA"-rated (80,000-pound gross load limit) trucking highway. U.S. 60 connects Hardinsburg, Cloverport and Irvington. Other routes serving the county are Kentucky Highways 79, 86, 105, 144, 259 and 261.

The Western Kentucky Parkway is 31 miles south Hardinsburg via Kentucky 79 and 259, or 42 miles southeast of Hardinsburg via U.S. 60, Kentucky 86, and U.S. 62. Kentucky Highways 79, 86 and 259 are "AA"-rated (60,000-pound gross load limit) trucking highways between Hardinsburg and the Western Kentucky Parkway.

Interstate 65, a major north-south corridor, is accessible 43 miles southeast of Hardinsburg via U.S. 60, U.S. 62, and Kentucky 86.

Interstate 64 is accessible 50 miles north of Hardinsburg via U.S. 60 and Indiana Route 37, and also 34 miles north of Irvington via Kentucky Route 79 and Indiana Route 135.

The Green River Parkway, a multi-lane toll road, is 37 miles southwest of Hardinsburg via "AA"-rated Kentucky 261 and "AAA"-rated Kentucky 69.

Kentucky Route 60 is being widened to four lanes from Owensboro to Hardinsburg. The last section is expected to be completed by 2000.

HIGHWAY MILES FROM HARDINSBURG, KENTUCKY, TO SELECTED MARKET CENTERS

City	Highway Miles	City	Highway Miles
Atlanta, GA	389	Los Angeles, CA	2,077
Baltimore, MD	666	Louisville, KY	66
Birmingham, AL	329	Nashville, TN	146
Chicago, IL	353	New Orleans, LA	668
Cincinnati, OH	167	New York, NY	826
Cleveland, OH	414	Pittsburgh, PA	454
Detroit, MI	427	St. Louis, MO	250
Knoxville, TN	257		

Note: Mileage computations are via the best interstate or primary highways, not necessarily the most direct route of travel.

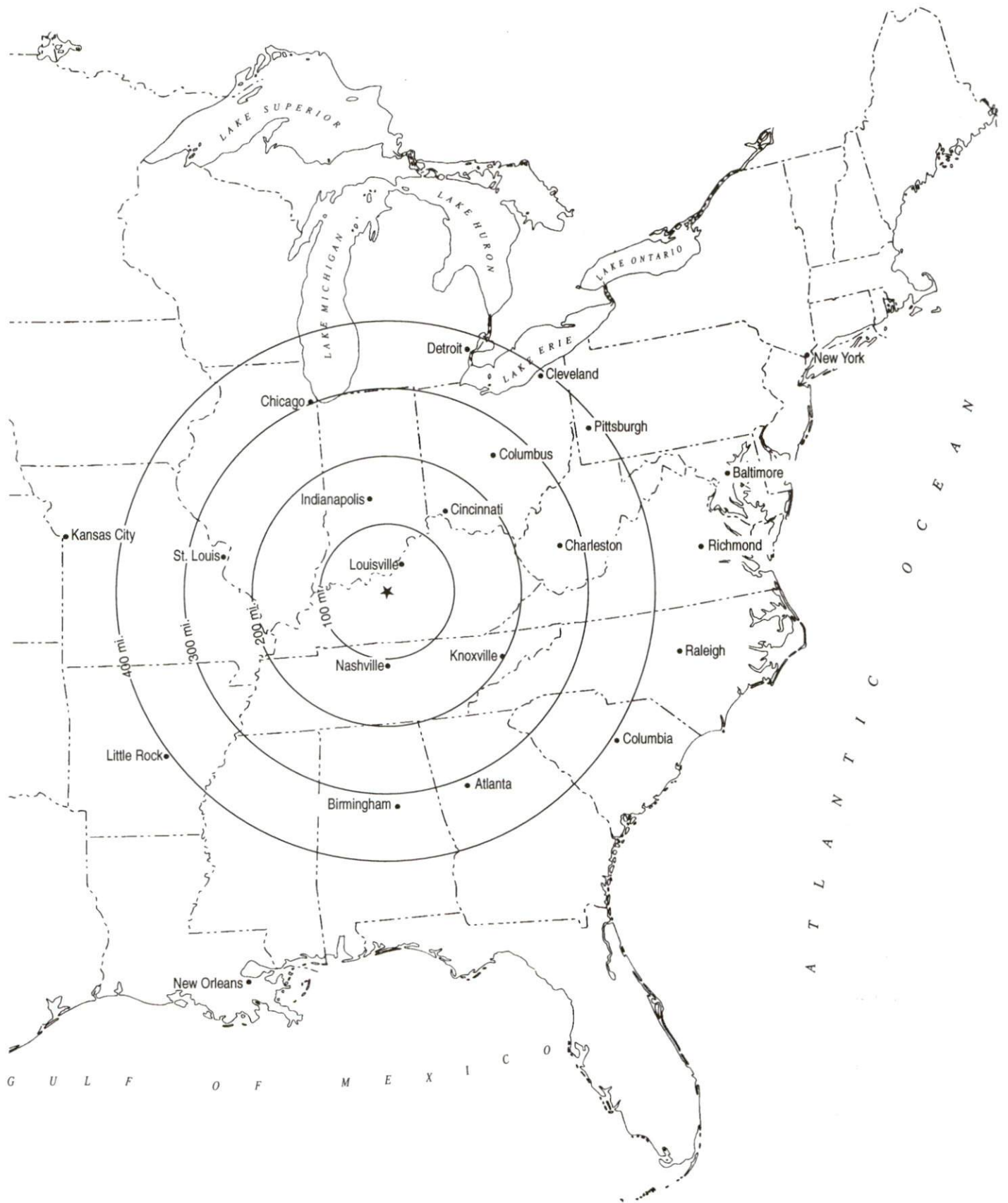
Sources: Rand McNally Standard Highway Mileage Guide, 1990. Official Kentucky Mileage Map, 1988.

Truck Service

There are currently fourteen common carrier trucking companies that provide interstate and/or intrastate service to Breckinridge County.

Source: American Motor Carrier Directory, Spring 1995.

Selected Market Centers



Rail

CSX Transportation provides main line rail service to Cloverport and Irvington. CSX Transportation also provides the nearest intermodal facilities at Owensboro, 47 miles west of Hardinsburg.

For details on routing, schedules, rates, and services contact:

Manager
Industrial Development
CSX Transportation
9420 Bunsen Parkway
Suite 212
Louisville, Kentucky 40220
(502) 499-3025

Air

Local

Location:	Breckinridge County Airport 1 mile east of Hardinsburg
Runways:	1 paved
Length:	3,700 feet
Traffic	
Control:	Wind sock
Lighting:	Sunset to sunrise, rotating beacon
Services:	Tie-downs

Nearest Scheduled Commercial Airline Service

Location:	Louisville International Airport 4 miles southeast of center of Louisville, Kentucky; 66 miles northeast of Hardinsburg
Air Service:	American, America West Express, American Eagle, ASA, ComAir, Continental, Continental Express, Delta, Northwest, Northwest Airlink, Southwest, TWA, United, United Express, USAir, USAir Express, Valujet
Daily Arrivals & Departures:	210

* Commuter air carrier service is provided by American Eagle and Northwest Air Link at the Owensboro-Daviess County Airport which is located 3.5 miles south-west of Owensboro, Kentucky; 49 miles west of Hardinsburg.

Water

The Ohio River forms the north-northwestern boundary of Breckinridge County. Hardinsburg is located 46 miles east of Owensboro, Kentucky, where a riverport is maintained. The Owensboro Riverport Authority operates the riverport facility on a 50-acre site at Ohio River Mile 759.

UTILITIES

Electricity

Company serving **Breckinridge County - Meade County Rural Electric Cooperative Corporation**

Source of power - Big Rivers Electric Corporation

For industrial rates contact:

Manager of Economic Development
Big Rivers Electric Corporation
P.O. Box 24
Henderson, Kentucky 42420
(502) 827-2561

and/or

Meade County Rural Electric
Cooperative Corporation
P.O. Box 489
Brandenburg, Kentucky 40108
(502) 422-2162 Fax #(502) 422-4705

Natural Gas

Company serving **Hardinsburg and Cloverport - Western Kentucky Gas Company**

Source of supply - Texas Gas Transmission Corporation

For rates and supplies contact:

Western Kentucky Gas Company
2401 New Hartford Road
P.O. Box 866
Owensboro, Kentucky 42302-0866
(502) 685-8069

Company serving **Irvington - Valley Gas, Inc.**

Source of supply - Texas Gas Transmission Corporation

For rates and supplies contact:

Valley Gas, Inc.
P.O. Box 218
Irvington, Kentucky 40146
(502) 547-2455

Public Water Supply

Company serving **Hardinsburg** - City of Hardinsburg
P.O. Box 753
Hardinsburg, Kentucky 40143
(502) 756-2213 Fax #(502) 756-5444

Source - Rough River Reservoir
Treatment plant capacity - 1,600,000 gallons per day
Average daily consumption - 700,000 gallons
Peak daily consumption - 1,000,000 gallons
Storage capacity - 1,137,000 gallons
Water pressure - 60 psi to 75 psi

Company serving **Cloverport** - Cloverport Water Treatment Plant
227 West Main
Cloverport, Kentucky 40111
(502) 788-6487

Source - 2 deep wells; each has a pumping capacity of 277 gpm
Treatment plant capacity - 300,000 gallons per day
Average daily consumption - 170,000 gallons
Peak daily consumption - 532,000 gallons
Storage capacity - 353,000 gallons
Water pressure - 79 psi to 89 psi

Company serving **Irvington** - Irvington Distribution Center
P.O. Box 374
Irvington, Kentucky 40146
(502) 547-3113

Source of supply of treated water - City of Hardinsburg
Maximum amount available - 200,000 gallons per day
Average daily consumption - 95,000 gallons
Peak daily consumption - 150,000 gallons
Storage capacity - 200,000 gallons
Water pressure - 64 psi to 72 psi

Raw Water

Surface water sources - Ohio River, Rough River, Rough River Lake, Tules Creek, Hardins Creek, Sinking Creek, Clover Creek and its Beech and Tar Forks
Average discharge - Ohio River at Louisville, Kentucky - 115,500 cfs (64 years, USGS); Rough River at Rough River Dam, near Falls of Rough, Kentucky - 751 cfs (33 years USGS)
Expected ground water yield - 500 to 1,000 gpm along the Ohio River; 50 to 200 gpm along a narrow strip from southwest to northeast Breckinridge County; 5 to 50 gpm at eastern and southwestern boundaries of the county; 5 gpm or less in the remainder of the county

Sewerage

Company serving **Hardinsburg** - City of Hardinsburg
P.O. Box 753
Hardinsburg, Kentucky 40143
(502) 756-2213 Fax #(502) 756-2029

Design capacity - 750,000 gallons per day
Average daily flow - 325,000 gallons
Type of treatment - Primary
Treated effluent discharged into - Hardin Creek

Company serving **Cloverport** - Cloverport Sewage Treatment Plant
227 West Main
Cloverport, Kentucky 40111
(502) 788-6487

Design capacity - 200,000 gallons per day
Average daily flow - 176,000 gallons
Type of treatment - Primary
Treated effluent discharged into - Ohio River

Company serving **Irvington** - Irvington Wastewater Plant
P.O. Box 374
Irvington, Kentucky 40146
(502) 547-3113

Design capacity - 154,000 gallons per day
Average daily flow - 60,000 gallons
Type of treatment - Tertiary
Treated effluent discharged into - Sinkholes

CLIMATE

Breckinridge County

Temperature

Normal (30-year record)	55.70 degrees
Average annual 1993	56.30 degrees
Record highest, July 1954 (53-year record)	105.00 degrees
Record lowest, February 1951 (53-year record)	-23.00 degrees
Normal heating degree days (30-year record) (Heating degree day totals are the sums of negative departures of average daily temperatures from 65 degrees F.)	4,729

Precipitation

Normal (30-year record)	41.55 inches
Mean annual snowfall (53-year record)	13.60 inches
Total precipitation 1993	45.83 inches
Mean number days precipitation (.01 inch or more) (53-year record)	115.40
Mean number days thunderstorms (53-year record)	45.30

Prevailing winds (through 1963)

South-Southwest

Relative Humidity (32-year record)

1 a.m.	79 percent
7 a.m.	82 percent
1 p.m.	59 percent
7 p.m.	63 percent

Source: U.S. Department of Commerce, Environmental Science Services Administration, Climatological Data, 1993. Station of record: Evansville, Indiana.

LOCAL GOVERNMENT

Structure

In Hardinsburg, Cloverport and Irvington, each city elects a mayor to serve a four-year term and six council members to serve two-year terms.

Breckinridge County is served by a county judge/executive and six magistrates. Each holds a four-year term.

Planning and Zoning

City agency - Hardinsburg Planning and Zoning Commission
Zoning enforced - Within the city of Hardinsburg
Subdivision regulations enforced - Within the city of Hardinsburg
Local codes enforced - Building
Mandatory state codes enforced - Kentucky Plumbing Code, National Electric Code, Kentucky Boiler Regulations and Standards, Kentucky Building Code (modeled after BOCA code)

City agency - Cloverport Planning and Zoning Commission
Zoning enforced - Within the city of Cloverport
Subdivision regulations enforced - None
Local codes enforced - Building
Mandatory state codes enforced - Kentucky Plumbing Code, National Electric Code, Kentucky Boiler Regulations and Standards, Kentucky Building Code (modeled after BOCA code)

City agency - Irvington Planning and Zoning Commission
Zoning enforced - Within the city of Irvington
Subdivision regulations enforced - Within city only
Local codes enforced - Building and housing
Mandatory state codes enforced - Kentucky Plumbing Code, National Electric Code, Kentucky Boiler Regulations and Standards, Kentucky Building Code (modeled after BOCA code)

Local Fees and Licenses

The City of Hardinsburg levies business license fees on various types of businesses ranging from \$25 to \$100. In addition, a fee of \$13 is charged for automobile stickers. The City of Cloverport also requires several types of businesses to pay a license fee ranging from \$5 to \$30 annually; and a \$13 annual fee is charged for automobile stickers. The City of Irvington charges businesses \$15 annually for a license fee; and \$10 annually for both an automobile sticker and unloading license.

PROPERTY TAXES

The Kentucky Constitution requires the state to tax all classes of taxable property, and state statutes allow local jurisdictions to tax only a few classes. All locally taxed property is subject to county taxes and school district taxes (either a county school district or an independent school district). Property located inside of city limits may also be subject to city property taxes.

Special local taxing jurisdictions (fire protection districts, watershed districts, and sanitation districts) levy taxes within their operating areas (usually a small portion of community or county).

Property assessments in Kentucky are at 100% fair cash value. Accounts receivable are taxed at 85% of face value.

STATE PROPERTY TAX RATES PER \$100 VALUATION

<u>Selected Classes of Property</u>	<u>1994 State Rate</u>	<u>Local Taxation Permitted</u>
Real Estate	\$0.172	YES
Manufacturing Machinery	0.150	NO
Pollution Control Equipment	0.150	NO
Inventories		
Raw Materials	0.050	NO
Goods in Process	0.050	NO
Finished Goods	0.050	YES
Motor Vehicles	0.450	YES
Other Tangible Personal Property	0.450	YES
Intangibles (Accounts Receivable, Money on Hand)	0.250	NO

LOCAL PROPERTY TAX RATES PER \$100 VALUATION, 1994

<u>Taxing Jurisdiction</u>	<u>Real Estate</u>	<u>Finished Goods & Tangibles</u>	<u>Motor Vehicles</u>
Breckinridge County	\$0.2042	\$0.2205	\$0.1924
School Districts:			
Breckinridge County	0.3990	0.3990	0.5570
Cloverport Independent	0.3900	0.4090	0.5690
Cities:			
Cloverport	0.3100	0.3300	0.3330
Hardinsburg	0.2710	0.2710	0.2800
Irvington	0.3230	0.3230	0.3200

EDUCATION

Public Schools

	Cloverport Independent	Breckinridge County
Total Enrollment (Fall, 1993)	346	2,777
Pupil-Teacher Ratio (1991-92)	15.9-1	17.6-1
Percent High School Graduates to College (1991-92)	43.5	43.8
Expenditures Per Pupil (1991-92)	\$3,622.51	\$3,506.84

Nonpublic Schools

<u>School</u>	<u>Enrollment</u>	<u>Grades</u>
St. Romuald Elementary	173	K-8

Area Colleges and Universities

<u>Name</u>	<u>Location (Miles distant)</u>	<u>Enrollment (Fall, 1993)</u>
Elizabethtown Community College	Elizabethtown, Kentucky (42)	4,232
Brescia College	Owensboro, Kentucky (46)	704
Kentucky Wesleyan College	Owensboro, Kentucky (46)	784
Owensboro Community College	Owensboro, Kentucky (46)	2,648
Bellarmino College	Louisville, Kentucky (66)	2,943
Jefferson Community College	Louisville, Kentucky (66)	11,184
Spalding University	Louisville, Kentucky (66)	1,221
University of Louisville	Louisville, Kentucky (66)	21,826

VOCAATIONAL-TECHNICAL TRAINING

Kentucky Tech schools are operated by the Cabinet for Workforce Development and provide secondary (Sec) and postsecondary (P/S) vocational-technical training.

<u>Kentucky Tech Schools</u>	<u>Location (Mileage from Hardinsburg)</u>	<u>Number of Program Offerings</u>	<u>Cumulative Enrollment</u>		<u>Approximate Number Completing Long-Term Programs Annually</u>
			<u>1993-1994</u>	<u>1993-1994</u>	
Kentucky Tech- Elizabethtown	Elizabethtown (42)	17	<u>Sec</u> 26	<u>P/S</u> 7,063	169
Kentucky Tech- Daviness County	Owensboro (46)	9	<u>Sec</u> 149	<u>P/S</u> 5,083	43
Kentucky Tech- Owensboro	Owensboro (46)	10	<u>Sec</u> 77	<u>P/S</u> 1,746	61
Breckinridge County Area Tech Center*	Harned (4)	6	<u>Sec</u> 541	<u>P/S</u> 27	61

* The Breckinridge County Area Tech Center has won many state and national awards. The vocational school has one of the best high school machine shop programs in Kentucky, featuring the latest computerized tool and die equipment. The vocational school boast a 82% or better job placement for students graduating.

Customized Training

The Kentucky Tech system, through its Training and Development Coordinators, will provide technical assistance and will identify and develop low-cost customized training programs and services for both established and prospective businesses. Businesses needing customized training should contact a Training and Development Coordinator located at Kentucky Tech-Owensboro Campus, 1501 Frederica Street, Owensboro, Kentucky 42301-3744 (502-686-3255) and Kentucky Tech-Jefferson Campus, 727, West Chestnut Street, Louisville, Kentucky 40203 (502-595-4223).

Assessment Services

Kentucky Tech Career Connections offers to business, education, and government agencies customized assessment in career inventories, interest inventories, pre-hire assessment, psychomotor skills and academic potential. A Career Connections Assessment Center is located at Kentucky Tech-Owensboro (502-686-3234) and Kentucky Tech-Elizabethtown (502-769-2371 Ext. 235).

Tech Prep

Tech Prep is a combined secondary and postsecondary program of studies that leads to an associate degree or diploma in a technical field. Kentucky Tech-Daviess County, offers programs in the area of cosmetology. Kentucky Tech-Owensboro, offers programs in the areas of electronics and health services. Kentucky Tech-Elizabethtown, offers programs in the areas of accounting/data processing, automotive technology, carpentry, computer aided drafting, electrical technology, electronics technology, food service technology and welding. Kentucky Tech-Breckinridge County offers programs in the areas of automotive technology, office technology, health services, precision machining and welding.

Adult Education Services

Adult education programs are available to adults who want to develop new skills, or earn a high school equivalency degree. In Breckinridge County, adult literacy and adult basic education are provided by the Cloverport Independent Board of Education and the Breckinridge County Operation Literacy, 108 Third Street, Hardinsburg, Kentucky 40143.

Bluegrass State Skills Corporation

The Bluegrass State Skills Corporation, an independent public corporation created and funded by the Kentucky General Assembly, provides programs of skills training to meet the needs of business and industry from entry level to advanced training, and from upgrading present employees to retraining experienced workers.

The Bluegrass State Skills Corporation is a major source for skills training assistance for a new or existing company. The Corporation works in partnership with other employment and job training resources and programs, as well as Kentucky's economic development activities, to package a program customized to meet the specific needs of a company.

OTHER LOCAL FACILITIES

Local Medical Personnel

Physicians - 11
Dentists - 5

Hospitals

<u>General Hospital</u>	<u>Location</u>	<u>Beds</u>
Breckinridge Memorial Hospital	Hardinsburg	45

Other Medical Facilities and Services

Lincoln Trail District Home Health Agency
Breckinridge Manor Personal Care Home
Breckinridge County Health Center
Cloverport Ambulance Service
Irvington Area Ambulance Service
McDaniels Ambulance Service
Trent-Dowell Funeral Home Ambulance Service
Hardinsburg Rescue Squad

Banks and Savings & Loan Associations

Breckinridge Bank of Cloverport
The Farmers Bank
First State Bank
First Federal Savings & Loan Association (Hardinsburg)

Newspapers

Breckinridge County Herald News (weekly)

Telephone Service

South Central Bell Telephone Company
Brandenburg Telephone Company

RECREATION

Local

A wide variety of recreational facilities and events are available in Breckinridge County. The Breckinridge Community Center at Hardinsburg has a nine-hole golf course, a swimming pool, tennis courts, and game and recreation areas. The Hardinsburg city park features volleyball, tennis courts, a playground, and a picnic area. Other miscellaneous facilities in Hardinsburg include playgrounds, ball fields, tennis courts, and a FFA camp.

The Breckinridge County Fairgrounds, located near Hardinsburg, features a lighted softball field for adult leagues in addition to the regular fair facilities. The fair is held the first week in August and offers six days of contests, displays, arts and crafts activities, and a parade.

Cloverport has a park situated on the Ohio River featuring boat-launching facilities. The U.S. Army Corps of Engineers has constructed a boat-launching ramp also. Other facilities at Cloverport include picnic areas, tennis courts and ball fields. Annual events in Cloverport include the Sacajawea Festival, held the first weekend in August, which features a parade, food, contests, plays, arts and crafts, music and fireworks. The Cloverport boosters hold a spring picnic with games and contests. During fishing season, Cloverport hosts bass tournaments each weekend.

Facilities in Irvington include the Chuck Carter Memorial Park with tennis courts, a lighted ball park, and a playground; and Irvington Community Park, which features a ball field, a basketball court, a playground, and a picnic area. A privately-owned skating rink and an arcade are also located at Irvington.

The Yellowbank Wildlife Management Area, located at the northern tip of Breckinridge County, is 4,055-acre area popular for seasonal hunting.

Tadpole Park was constructed in 1990 and has a pavillion, ball field, picnic shelter, playground, and rest rooms.

A new recreation complex was constructed in Hardinsburg. The park has three lighted ball fields, pavillion, playground, basketball courts, picnic shelters and rest rooms.

Noteworthy for its spaciousness, Rough River Dam State Resort Park at Falls of Rough is 20 miles south of Hardinsburg. The 637-acre park on Rough River Lake has a 40-room lodge with a dining room, a coffee shop, a gift shop, a meeting room, and a 2,500-foot lighted airstrip. Cottages and camping sites are also available. Recreational facilities include a launching ramp, a dock with open and covered slips, fishing and pleasure boat rentals, a 9-hole, par-3 golf course, a swimming pool, a sand beach with a bathhouse complex, tennis courts, and archery range, hiking and fitness trails, picnic and playground areas, and planned recreation. Cruise boat excursions on Rough River Lake are available on the "Lady of the Lake" in season.

Area (Within 70 miles of Hardinsburg)

Nolin River Lake
Ben Hawes State Park
Abraham Lincoln Birthplace National Historic Site
My Old Kentucky Home State Park
Bernheim Forest Arboretum and Nature Center

Kentucky

Cabinet For Economic Development

2300 Capital Plaza Tower, 500 Mero Street, Frankfort, KY 40601, 502 • 564 • 7140



Printed on recycled paper.