

1995

Industrial Resources: Bullitt County

Kentucky Library Research Collections
Western Kentucky University, spcol@wku.edu

Follow this and additional works at: https://digitalcommons.wku.edu/bullitt_cty

 Part of the [Business Administration, Management, and Operations Commons](#), [Growth and Development Commons](#), and the [Infrastructure Commons](#)

Recommended Citation

Kentucky Library Research Collections, "Industrial Resources: Bullitt County" (1995). *Bullitt County*. Paper 3.
https://digitalcommons.wku.edu/bullitt_cty/3

This Report is brought to you for free and open access by TopSCHOLAR®. It has been accepted for inclusion in Bullitt County by an authorized administrator of TopSCHOLAR®. For more information, please contact topscholar@wku.edu.

Kentucky

Resources For Economic Development

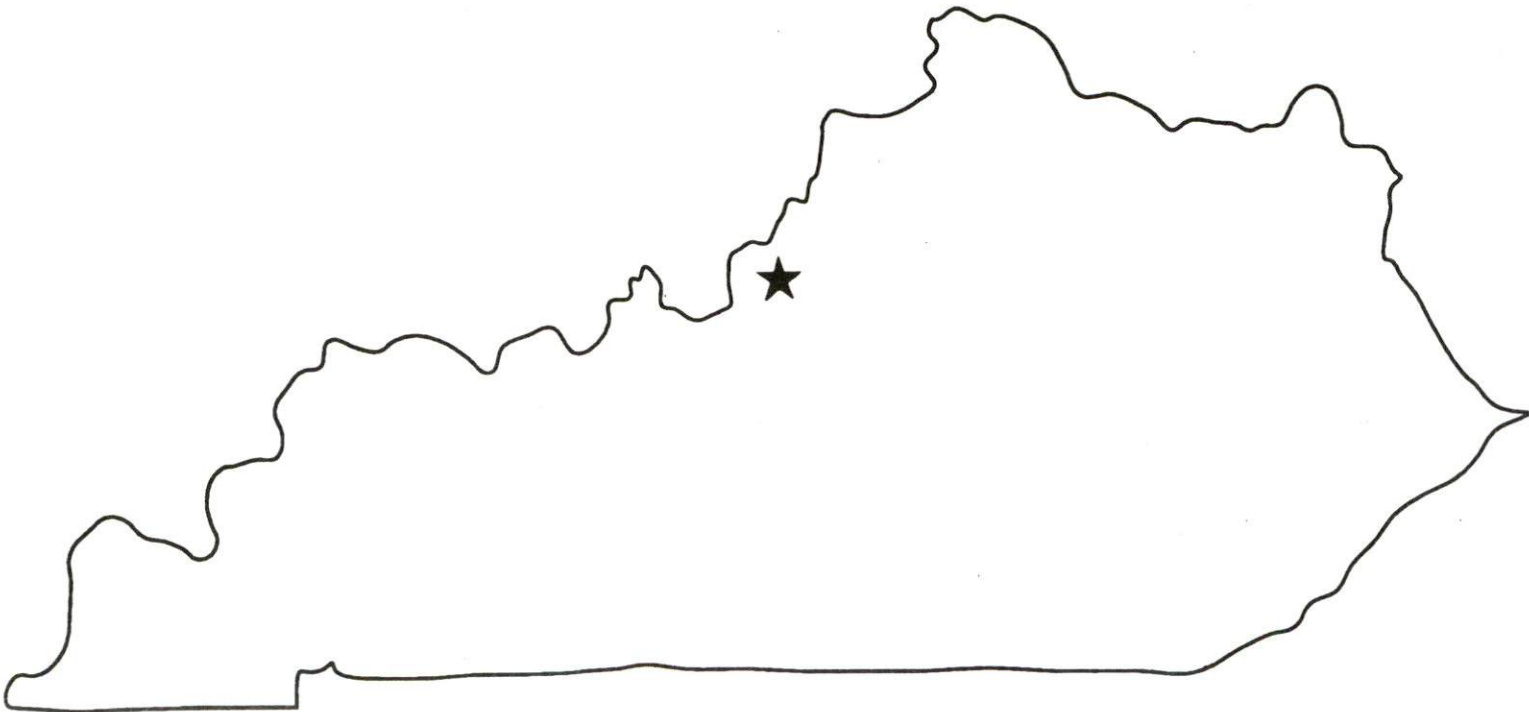
Bullitt County

Albany
Barbourville
Ballard County
Bardstown • Booneville Berea
Bowling Green • Boyd & Greenup Counties
Bracken County • Brandenburg • Breckinridge
Brownsville • Bullitt County • Burkesville • Cadiz
Campbellsville • Campton • Carlisle • Carlisle County
Carrollton • Cave City • Clinton • Columbia • Corbin • Cynthia
Danville • Dawson Springs • Edmonton • Elizabethtown • Estill County
Elliott County • Falmouth & Butler • Flemingsburg • Frankfort • Franklin
Frenchburg • Fulton County • Gallatin County • Georgetown • Grant County • Greensburg
Grayson & Olive Hill • Glasgow • Hancock County • Harlan County • Harrodsburg • Hart County
Hazard • Henderson • Henry County • Hodgenville • Hopkinsville-Christian County • Jackson County
Jackson • Knott County • LaGrange & Buckner • Lancaster • Lawrenceburg • Lebanon • Leitchfield-
Grayson County • Letcher County • Lexington • Liberty-Casey County • Logan County • Louisville
London • Louisa • Lyon County • Madisonville & Earlington • Manchester • Marshall County • Mayfield
Maysville • McCreary County • Marion • McLean County • Middlesboro & Pineville • Monticello • Morehead
Morgantown • Mt. Sterling • Mt. Vernon • Muhlenberg County • Murray • Nicholasville • Northern Kentucky
Ohio County • Owensboro • Owenton • Owingsville • Paducah • Paintsville • Paris • Pike County • Powell
Prestonsburg • Princeton • Radcliff • Richmond • Russell County • Scottsville • Shelbyville • Somerset
Springfield • Stamping Ground • Stanford-Lincoln County • Tompkinsville & Gamaliel • Taylorsville
Todd County • Union County • Vanceburg • Versailles • Webster County • West Liberty • Williamsburg
Winchester, Kentucky

Kentucky

Resources For Economic Development

Bullitt County



BULLITT CO BROCHURE>\$4.00



CB13-95

Prepared by
The Kentucky Cabinet for Economic Development
Division of Research
in cooperation with
Bullitt County Chamber of Commerce
and
Bullitt County Economic Development Authority

1995

Division Director - Ron Morgan; program manager - Keith Roberts; research - Keith Roberts; clerical - Wanda Sharp; graphics - Robert Owens. Cost of printing paid from state funds.

TABLE OF CONTENTS

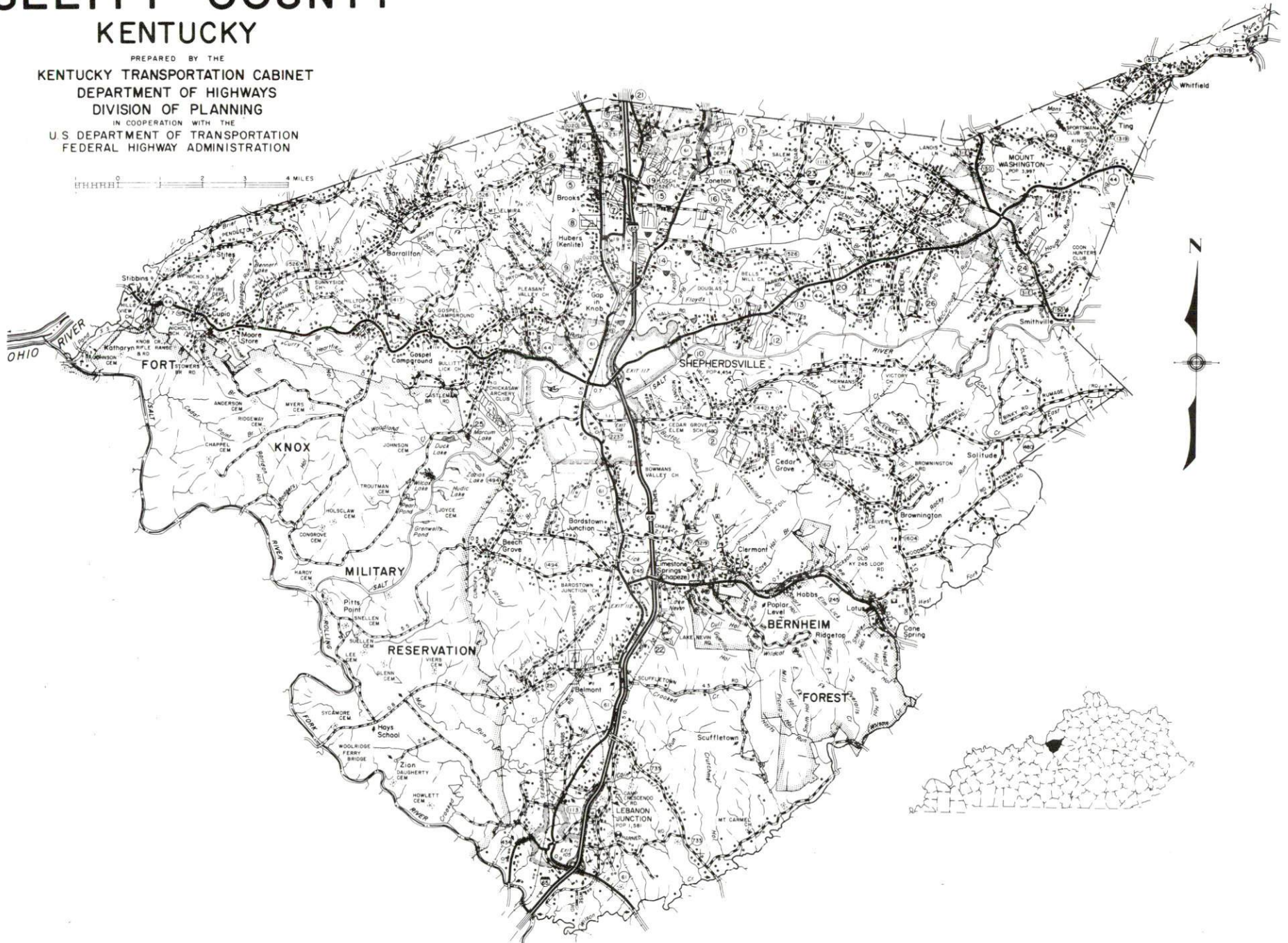
<u>Chapter</u>	<u>Page</u>
BULLITT COUNTY, KENTUCKY-A RESOURCE PROFILE	1
THE LABOR MARKET STATISTICS	2
Labor Market Area Map	2
Population	3
Population Projections	3
Estimated Labor Supply	3
Labor Force Characteristics of Residents, 1994	4
Selected Components of Nonagricultural Employment, by Place of Work, 1994	5
Per Capita Personal Income	6
Average Placement Wages	7
Average Weekly Wages of Workers Covered by Unemployment Insurance 1993 - Bar Chart	8
Average Weekly Wages by Industry, by Place of Work, 1993	9
EXISTING INDUSTRY	10
Bullitt County Manufacturing Firms, Their Products and Employment	10
Recent Industrial Developments	11
Labor Organizations in Manufacturing Firms	12
Selected Industrial Services	12
TRANSPORTATION	13
Highways	13
Truck Service	13
Selected Market Location Map	14
Rail	15
Air	15
Bus	15
Water	15
UTILITIES	16
Electricity	16
Natural Gas	17
Public Water Supply	17
Sewerage	18
CLIMATE	19

<u>Chapter</u>	<u>Page</u>
LOCAL GOVERNMENT	20
Structure	20
Planning and Zoning	20
Local Fees and Licenses	20
State and Local Property Taxes	21
EDUCATION	22
Public Schools	22
Nonpublic Schools	22
Area Colleges and Universities	22
Vocational Training	23
OTHER LOCAL FACILITIES	25
Local Medical Personnel	25
Hospitals	25
Other Medical Facilities and Services	25
Banks and Savings & Loan Associations	25
Newspapers	25
Telephone Service	25
RECREATION	26

GENERAL HIGHWAY MAP BULLITT COUNTY KENTUCKY

PREPARED BY THE
KENTUCKY TRANSPORTATION CABINET
DEPARTMENT OF HIGHWAYS
DIVISION OF PLANNING
IN COOPERATION WITH THE
U.S. DEPARTMENT OF TRANSPORTATION
FEDERAL HIGHWAY ADMINISTRATION

0 1 2 3 4 MILES



BULLITT COUNTY, KENTUCKY - A RESOURCE PROFILE

Bullitt County is located in north central Kentucky at the junction of the Outer Blue Grass and the Knobs Regions. The county covers a land area of 299 square miles. Bullitt County had an estimated 1992 population of 50,976 persons.

Shepherdsville, the county seat of Bullitt County, is located 20 miles south of Louisville, Kentucky; 121 miles southwest of Cincinnati, Ohio; and 152 miles northeast of Nashville, Tennessee. Shepherdsville had an estimated 1992 population of 5,509. Other cities in Bullitt County include Hillview, located five miles northeast of Shepherdsville, with an estimated 1992 population of 6,511; Lebanon Junction, located 12 miles south of Shepherdsville, with an estimated 1992 population of 2,192; and Mt. Washington, 11 miles east of Shepherdsville, with an estimated 1992 population of 6,326.

The Economic Framework - The total number of Bullitt County residents employed in 1994 averaged 26,551. Manufacturing firms in the county reported 2,729 employees; wholesale and retail trade provided 2,591 jobs; 1,010 people were employed in service occupations; state and local government accounted for 1,623 employees; and contract construction firms provided 621 jobs.

Labor Supply - There is a current estimated labor supply of 24,854 persons available for industrial jobs in the labor market area. In addition, from 1996 through 2000, 60,540 young persons in the area will become 18 years of age and potentially available for industrial jobs.

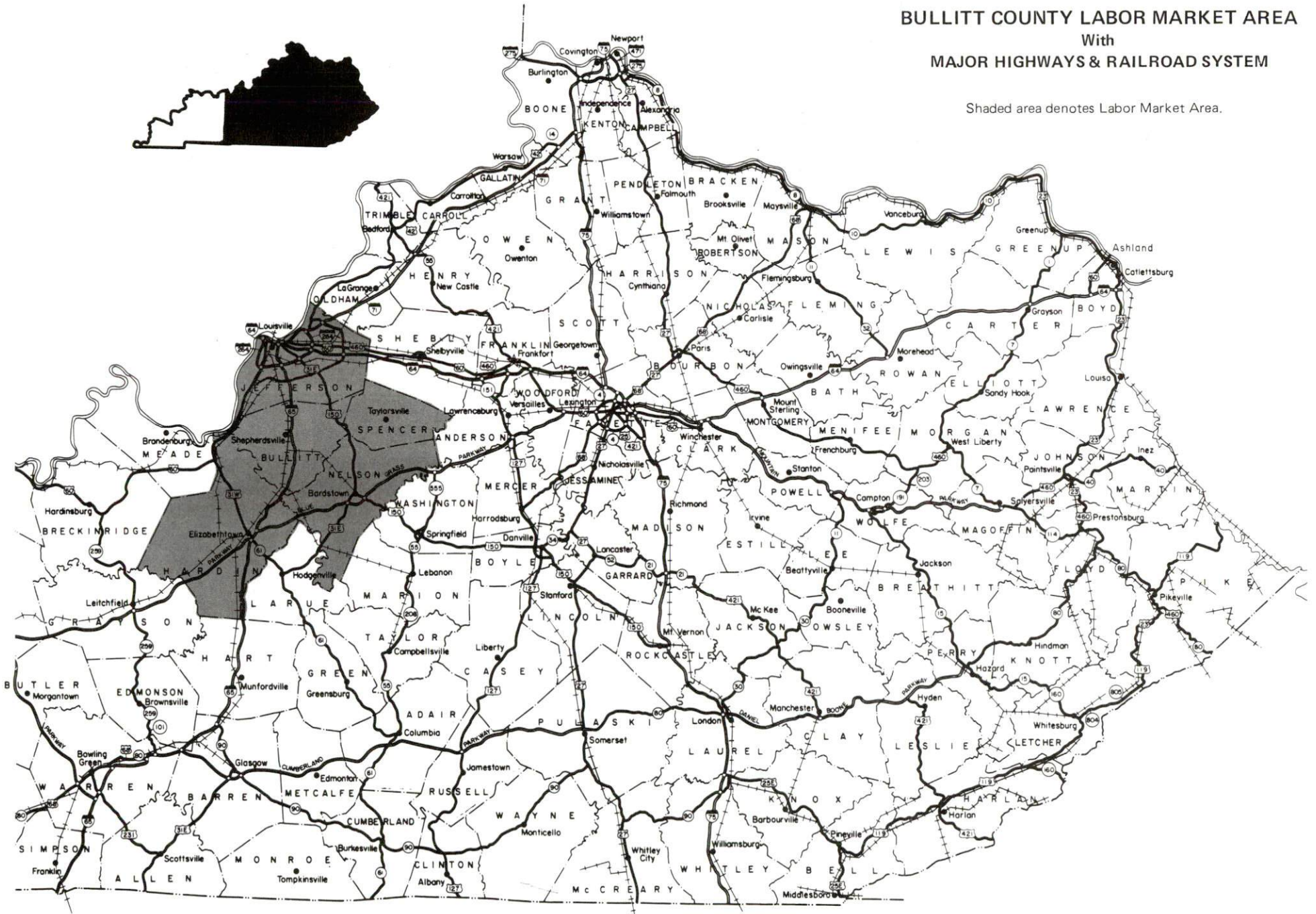
Transportation - Bullitt County is served by Interstate 65, a major north-south highway. Other "AAA" -rated trucking highways serving Bullitt County include U.S. 31E and 150, Kentucky 44, and Kentucky 61. Twenty-five trucking companies provide interstate and/or intrastate service to Bullitt County. CSX Transportation provides main line rail service to Shepherdsville and Lebanon Junction. R.J. Corman Railroad Corporation provides short line rail service just south of Shepherdsville. The nearest scheduled commercial airline service is available at the Louisville International Airport, located 15 miles north of Shepherdsville. Public riverport facilities also are located at Louisville.

Power and Fuel - Louisville Gas and Electric Company provides electric power to Shepherdsville, Mt. Washington, Hillview, and parts of Bullitt County. Kentucky Utilities Company provides electric power to Lebanon Junction, and East Kentucky Power serves the remainder of the county through the Salt River Electric Cooperative Corporation. Louisville Gas and Electric Company also provides natural gas service to Shepherdsville, Mt. Washington, and Hillview.

Education - The Bullitt County School System provides primary and secondary education for residents of Bullitt County. Three nonpublic schools also operate in the county. Seven colleges and universities are located within 40 miles of Shepherdsville. Kentucky Tech-Jefferson in Louisville, 20 miles north of Shepherdsville; Kentucky Tech-Elizabethtown, 26 miles southwest of Shepherdsville; and the Bullitt County Area Tech Center at Shepherdsville provide vocational education to Bullitt County.

BULLITT COUNTY LABOR MARKET AREA
 With
MAJOR HIGHWAYS & RAILROAD SYSTEM

Shaded area denotes Labor Market Area.



LABOR MARKET STATISTICS

The Bullitt County Labor Market Area includes Bullitt County and the adjoining Kentucky counties of Hardin, Jefferson, Nelson, and Spencer.

POPULATION

	<u>1992*</u>	<u>1990</u>	<u>1980</u>	<u>1970</u>
Labor Market Area	843,202	838,441	850,408	828,531
Hillview	6,511	6,119	5,196	N/A
Lebanon Junction	2,192	1,741	1,581	1,571
Mt. Washington	6,326	5,256	3,997	2,020
Shepherdsville	5,509	4,805	4,454	2,769
Bullitt County	50,976	47,567	43,346	26,090

*Population estimates.

Source: U.S. Department of Commerce, Bureau of the Census.

POPULATION PROJECTIONS

	<u>1995</u>	<u>2000</u>	<u>2010</u>	<u>2020</u>
Labor Market Area	864,129	879,600	933,016	974,887
Bullitt County	56,044	61,891	70,625	77,825

Note: Population projections are from High Growth Series forecast.

Source: University of Louisville, Urban Studies Center, State Data Center.

ESTIMATED LABOR SUPPLY

	<u>Current</u>			<u>Future</u>
	<u>Total</u>	<u>Unemployed</u>	<u>Not in Labor Force</u>	<u>Becoming 18 years of age 1996 thru 2000</u>
Labor Market Area*	24,854	22,828	2,026	60,540
Bullitt County	964	964	0	4,012

* Additional workers may be drawn from other nearby counties.

Note: Unemployed - persons unemployed and actively seeking work; Not in Labor Force - represents the number of persons who would enter the labor force if suitable employment were available (based on the assumption that persons in Kentucky would like to participate in the labor force in the same proportion that they do nationally). Underemployed persons (employed only 14 to 26 weeks during the year) are no longer included in labor surplus estimates.

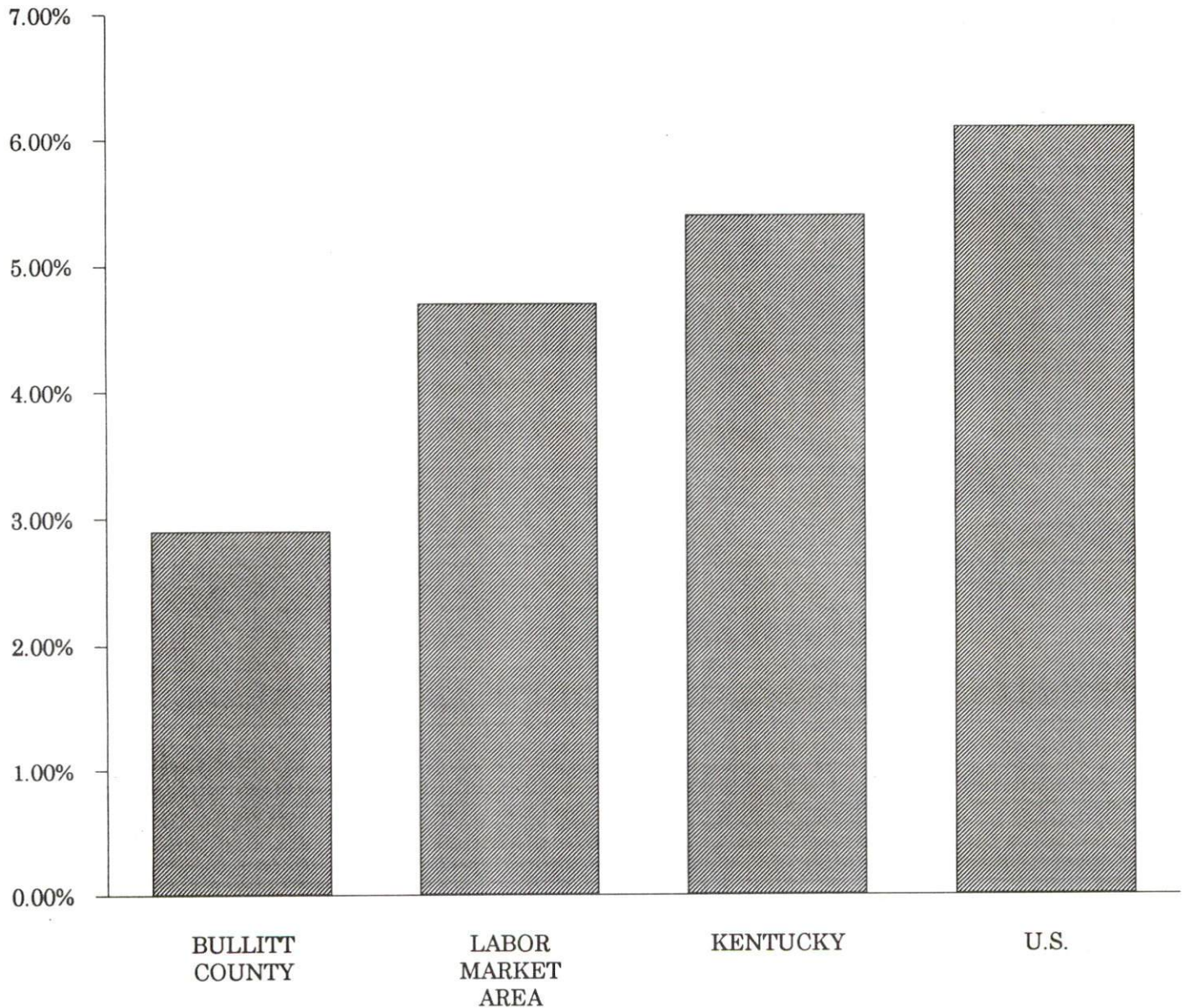
Sources: Kentucky Cabinet for Human Resources, Kentucky Labor Surplus Estimates by County, 1993. Kentucky Cabinet for Economic Development, Future Labor Supply Becoming 18 Years of Age, 1996 thru 2000.

LABOR FORCE CHARACTERISTICS OF RESIDENTS, 1994

	<u>Bullitt County</u>	<u>Labor Market Area</u>
Civilian Labor Force	27,346	446,175
Employment	26,551	425,305
Unemployment	795	20,870
Rate of Unemployment (%)	2.9	4.7

Source: Kentucky Cabinet for Human Resources, Kentucky Labor Force Estimates, Annual Averages 1994.

UNEMPLOYMENT RATES
1994



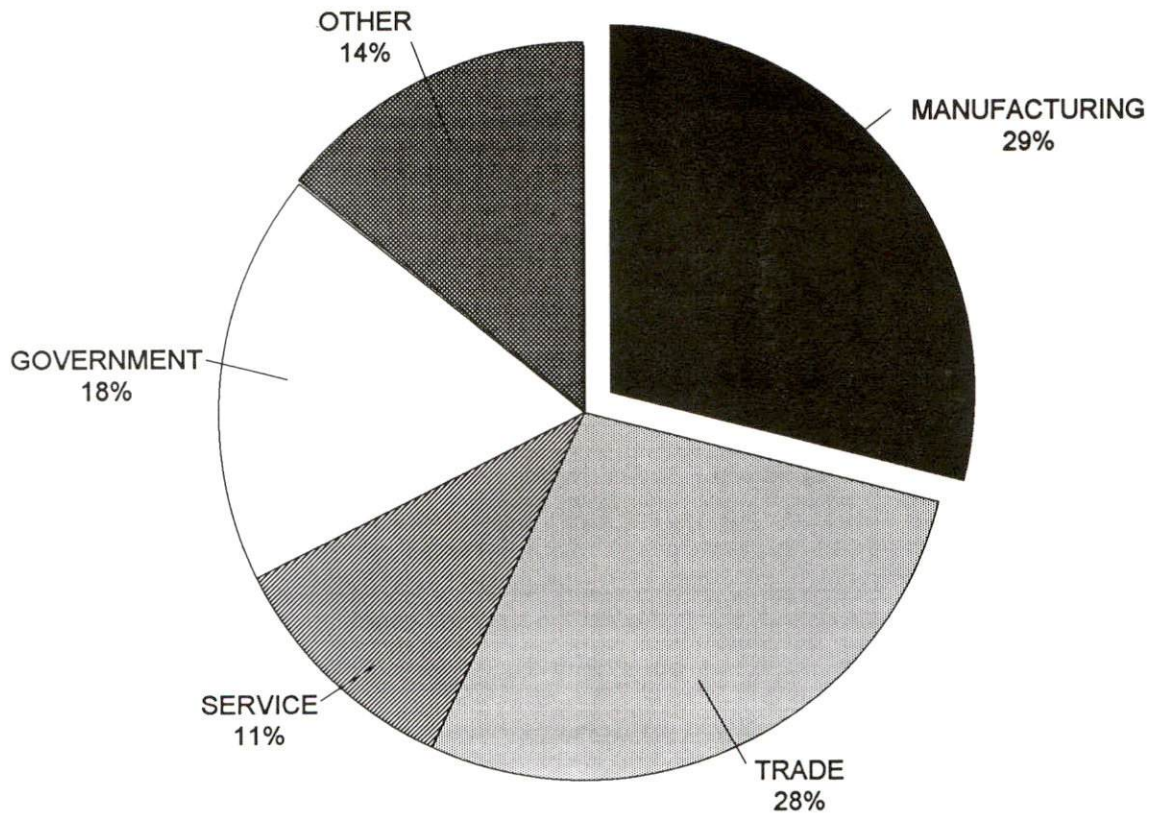
SELECTED COMPONENTS OF NONAGRICULTURAL EMPLOYMENT
BY PLACE OF WORK, 1994

	<u>Bullitt County</u>	<u>Labor Market Area</u>
All Industries (total)	9,290	435,516
Manufacturing	2,729	80,959
Wholesale & Retail Trade	2,591	110,324
Services	1,010	118,497
State/Local Government	1,623	43,020
Contract Construction	621	21,773

Note: Excludes domestic workers, railway workers, certain nonprofit corporations, majority of federal government workers, and self-employed workers.

Source: Kentucky Cabinet for Human Resources, Average Monthly Workers Covered by Kentucky Unemployment Insurance Law, 1994.

BULLITT COUNTY

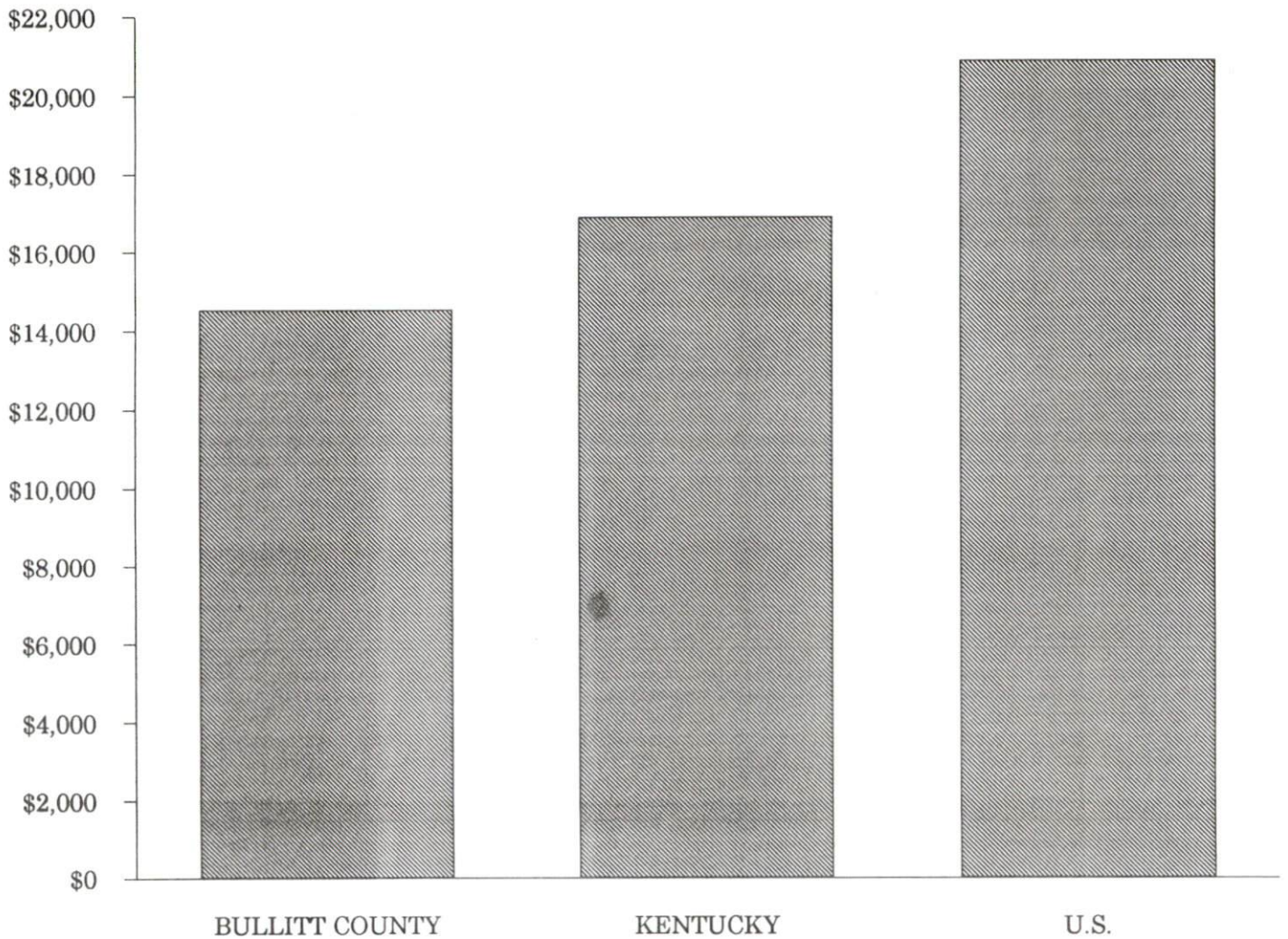


PER CAPITA PERSONAL INCOME

<u>Area</u>	<u>1989</u>	<u>1993</u>	<u>Percent Change</u>
Bullitt County	\$11,986	\$14,520	21.1
Labor Market Area Range	\$11,986 - \$17,985	\$14,520 - \$22,372	-
Kentucky	\$13,756	\$16,889	22.8
U.S.	\$17,690	\$20,800	17.6

Source: U.S. Department of Commerce, Bureau of Economic Analysis, Regional Economic Information System.

PER CAPITA PERSONAL INCOME
1993



AVERAGE PLACEMENT WAGES

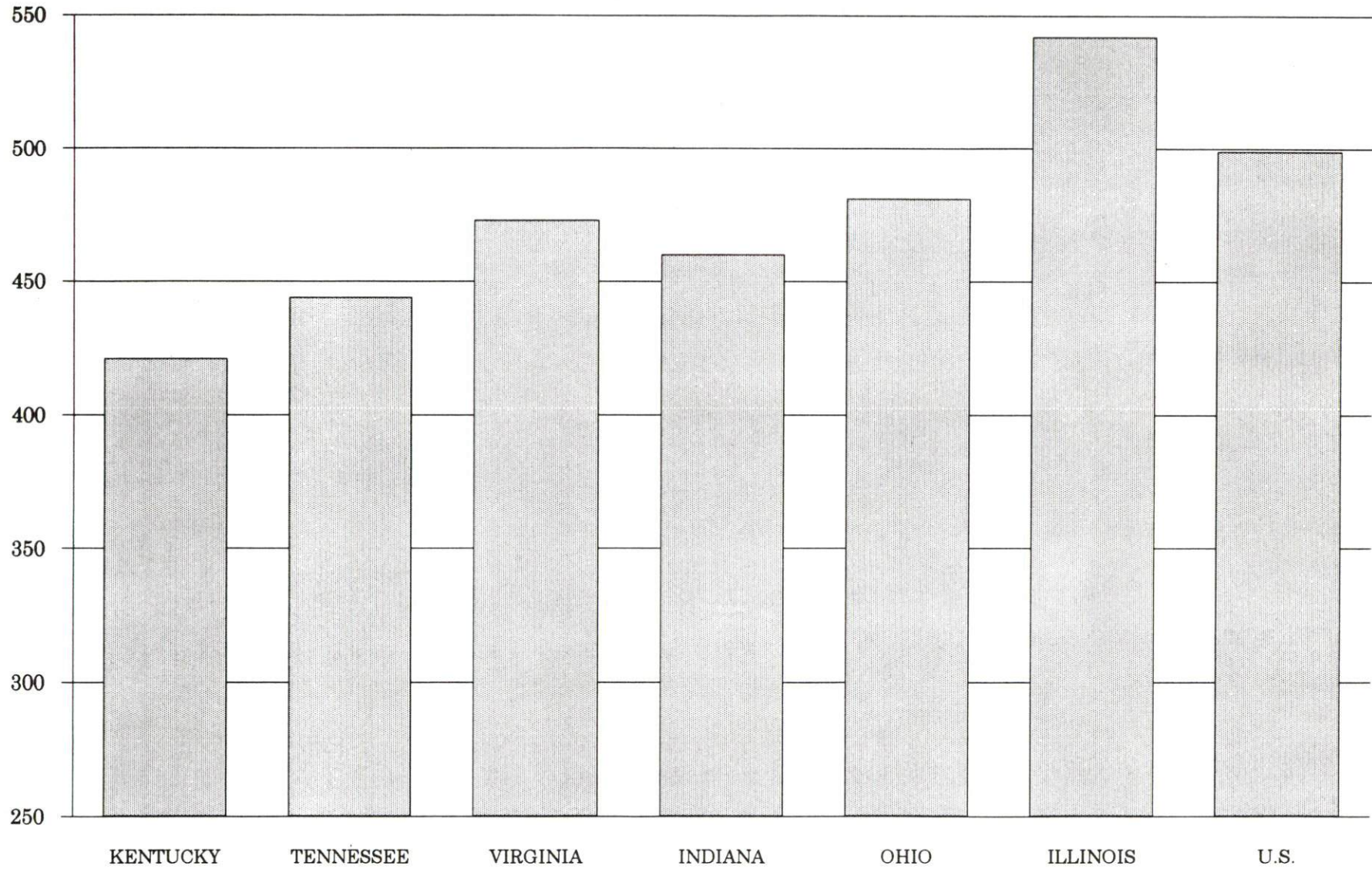
Bullitt County is served by the Louisville local office of the Kentucky Department for Employment Services. The focus of the following data is on job placements made by the Louisville local office and may therefore be used as an indicator of the wages which employers in the area pay new employees. During the twelve months which ended on June 30, 1995, the local employment office filled 19,219 job openings in various occupational categories. The average hourly wage for selected occupational categories were:

<u>OCCUPATIONAL CATEGORY</u>	<u>NUMBER OF PLACEMENTS</u>	<u>AVERAGE WAGE(\$)</u>
All Occupations	19,219	6.86
Clerical	858	5.99
Sales	378	5.78
Services (excluding domestic)	1,829	5.44
Agricultural, Fishery, Forestry, etc.	63	5.57
Processing	1,460	5.92
Machine Trades	605	7.02
Bench Work	2,716	4.80
Structural	1,813	10.91
Motor Freight/ Transportation	476	7.20
Packaging and Materials Handling	8,717	7.22
Other	29	6.05

The Louisville local office also serves Henry, Jefferson, Oldham, Shelby, Spencer, and Trimble Counties. The above occupational categories are taken from the Dictionary of Occupational Titles published by the U.S. Department of Labor.

Source: Kentucky Cabinet for Human Resources, Department for Employment Services.

**AVERAGE WEEKLY WAGES OF WORKERS COVERED BY
UNEMPLOYMENT INSURANCE - 1993**



AVERAGE WEEKLY WAGES BY INDUSTRY
BY PLACE OF WORK, 1993*

	<u>Bullitt County</u>	<u>Kentucky (Statewide)</u>	<u>Tennessee</u>	<u>Virginia</u>
All Industries	\$351.47	\$421.30	\$444.00	\$473.00
Mining & Quarrying	N/A	691.01	605.00	684.00
Contract Construction	303.20	440.47	467.00	464.00
Manufacturing	494.02	541.18	522.00	543.00
Transportation, Communications & Public Utilities	391.30	567.94	572.00	648.00
Wholesale & Retail Trade	225.53	287.24	N/A	N/A
Finance, Insurance & Real Estate	347.22	449.89	495.00	523.00
Services	254.16	350.41	394.00	455.00
State/Local Government	396.56	413.84	N/A	N/A
	<u>Indiana</u>	<u>Ohio</u>	<u>Illinois</u>	<u>U. S.</u>
All Industries	\$460.00	\$481.00	\$542.00	\$499.00
Mining & Quarrying	757.00	645.00	738.00	816.00
Contract Construction	509.00	534.00	658.00	530.00
Manufacturing	629.00	670.00	667.00	623.00
Transportation, Communications & Public Utilities	561.00	600.00	682.00	643.00
Wholesale & Retail Trade	N/A	N/A	N/A	N/A
Finance, Insurance & Real Estate	527.00	568.00	748.00	693.00
Services	391.00	422.00	494.00	475.00
State/Local Government	N/A	N/A	N/A	N/A

* Wages for U.S. and surrounding states rounded to nearest dollar.

N/A Not Available.

Note: The average weekly wage for each category includes the salaries and wages of all persons working for that type business. For example, the manufacturing category includes both production workers and administrative personnel. Excludes domestic workers, railway workers, certain nonprofit corporations, majority of federal government workers, and self-employed workers.

Source: Kentucky Cabinet for Human Resources, Average Weekly Wages of Workers Covered by Kentucky Unemployment Insurance Law, 1993. U.S. Department of Labor, Bureau of Labor Statistics, Employment and Wages, Annual Averages, 1993, October, 1994.

EXISTING INDUSTRY

BULLITT COUNTY MANUFACTURING FIRMS, THEIR PRODUCTS AND EMPLOYMENT

<u>Firm</u> <u>(Establishment date)</u>	<u>Product</u>	<u>1994</u> <u>Average Employment</u>
Brooks		
Best Made Pallett, Inc. (1982)	Pallet stock	35
Kentucky Solite Corporation (1972)	Aggregate for concrete & block	45
Clermont		
Chiller Manufacturing (1994)	Liquid cooling systems	10
Jim Beam Brands Company (1795)	Distillers dried grain, cocktails, cordials, vodka, whiskey	485
Hillview		
I.Q.L. Corporation (1994)	Metal fabrication	35
Papes Archery (1990)	Arrows & bow strings	70
Ziniz, Inc. (1969)	Conveyors, steel fabrication	95
MSI, Inc. (1988)	Dies	8
Lebanon Junction		
Mac Manufacturing Company (1957)	Barrel lifts	25
Publishers Printing Company, Lebanon Junction Plant (1991)	Offset lithographic printing	480
Mt. Washington		
B & B Screw Machine Specialists, LTD (1965)	Screws, shafts and collars, screw machine products	20
Bullitt Fire Sprinklers, Inc. (1974)	Steel pipe	9
Hite Ready Mix (1968)	Ready-mixed concrete	18
Technical Conveyors, Inc. (1986)	Conveyors, robotics programmable controls	50
Thompson Custom Cabinets, Inc. (1974)	Wood cabinets	18

(Continued)

<u>Firm</u> <u>(Establishment date)</u>	<u>Product</u>	<u>1994</u> <u>Average Employment</u>
Shepherdsville		
B & B Industrial Sewing (1986)	Protective cases, canvas bags, auto scat straps, contract sewing	7
Bullitt County Stone Company (1967)	Agricultural lime, crushed stone	25
Charles H. Reichmuth, Inc. (1962)	Rough lumber, ties	11
Interlake Company, Inc. (1973)	Conveyors	175
Mago Construction Company, Inc. (1967)	Hot mix asphalt	40
Maximum Machine Company, Inc. (1987)	Machine work	5
Monarch Hardware Manufacturing Company (1965)	Door hardware and closures	67
Piccola Manufacturing, Inc. (1957)	Steel and aluminum fabrication, material handling equipment	22
Publishers Printing Company (1866)	Offset lithographic printing	1,130
Quality Stone & Ready Mix, Inc. (1960)	Ready-mixed concrete, crushed limestone	29
Standard Publishing (1985)	Commercial printing, newspapers	50

Sources: Kentucky Cabinet for Economic Development, Division of Research; Bullitt County Economic Development Authority.

RECENT INDUSTRIAL DEVELOPMENTS

The Shepherdsville Business and Industrial Center, a 150-acre industrial site, is under phase I of development. The site is located on Kentucky Route 480 adjacent to Interstate 65. Additional acreage could potentially be acquired during phase II development.

LABOR ORGANIZATIONS IN MANUFACTURING FIRMS

<u>Union</u>	<u>Representing workers at:</u>
Distillery, Wine and Allied Workers' International Union, AFL-CIO-CLC	Jim Beam Brands Company
United Paperworkers International Union, AFL-CIO	Interlake Company, Inc.
International Union of Operating Engineers, AFL-CIO	Bullitt County Stone Company
International Brotherhood of Teamsters	Hite Ready Mix; Kentucky Solite Corporation
United Brotherhood of Carpenters and Joiners of America, AFL-CIO	Technical Conveyors, Inc.

SELECTED INDUSTRIAL SERVICES

<u>Types of Services</u>	<u>Location</u>	<u>Mileage from Shepherdsville</u>
Custom Plastics Producers	Clermont, Kentucky	6
Electric Motor Repair	Louisville, Kentucky Bardstown, Kentucky	20 23
Heat Treating Facilities	Louisville, Kentucky	20
Industrial Waste Removal	Shepherdsville, Kentucky Mt. Washington, Kentucky	- 11
Machine Shops, Tool & Die	Clermont, Kentucky	6
Metal Castings	Louisville, Kentucky	20
Metal Finishers	Louisville, Kentucky Bardstown, Kentucky	20 23
Metal Service Centers	Louisville, Kentucky Bardstown, Kentucky	20 23
Millwrights & Riggers	Louisville, Kentucky	20

Sources: Kentucky Cabinet for Economic Development, Division of Research.

TRANSPORTATION

Highways

Interstate 65, a major north-south highway, is routed through central Bullitt County. Interchanges are located at Shepherdsville, Clermont, Lebanon Junction, Kentucky Route 480, and Kentucky 1526. Interstate 65 provides access to I-64 and I-71 at Louisville, 20 miles north of Shepherdsville; and to the Western Kentucky and Bluegrass Parkways at Elizabethtown, 26 miles southwest of Shepherdsville.

Other "AAA"-rated (80,000-pound gross load limit) trucking highways serving Bullitt County include U.S. 31E and 150, serving Mt. Washington; Kentucky Route 44, serving Mt. Washington and Shepherdsville; and Kentucky Route 61, serving Hillview, Shepherdsville and Lebanon Junction.

A bypass on U.S. 31E and U.S. 150 is currently under construction in Mt. Washington and scheduled for completion by Fall 1995.

HIGHWAY MILES FROM SHEPHERDSVILLE, KENTUCKY, TO SELECTED MARKET CENTERS

City	Highway Miles	City	Highway Miles
Atlanta, GA	413	Los Angeles, CA	2,105
Baltimore, MD	620	Louisville, KY	20
Birmingham, AL	339	Nashville, TN	152
Chicago, IL	307	New Orleans, LA	674
Cincinnati, OH	121	New York, NY	780
Cleveland, OH	368	Pittsburgh, PA	408
Detroit, MI	381	St. Louis, MO	278
Knoxville, TN	254		

Note: Mileage computations are via the best interstate or primary highways, not necessarily the most direct route of travel.

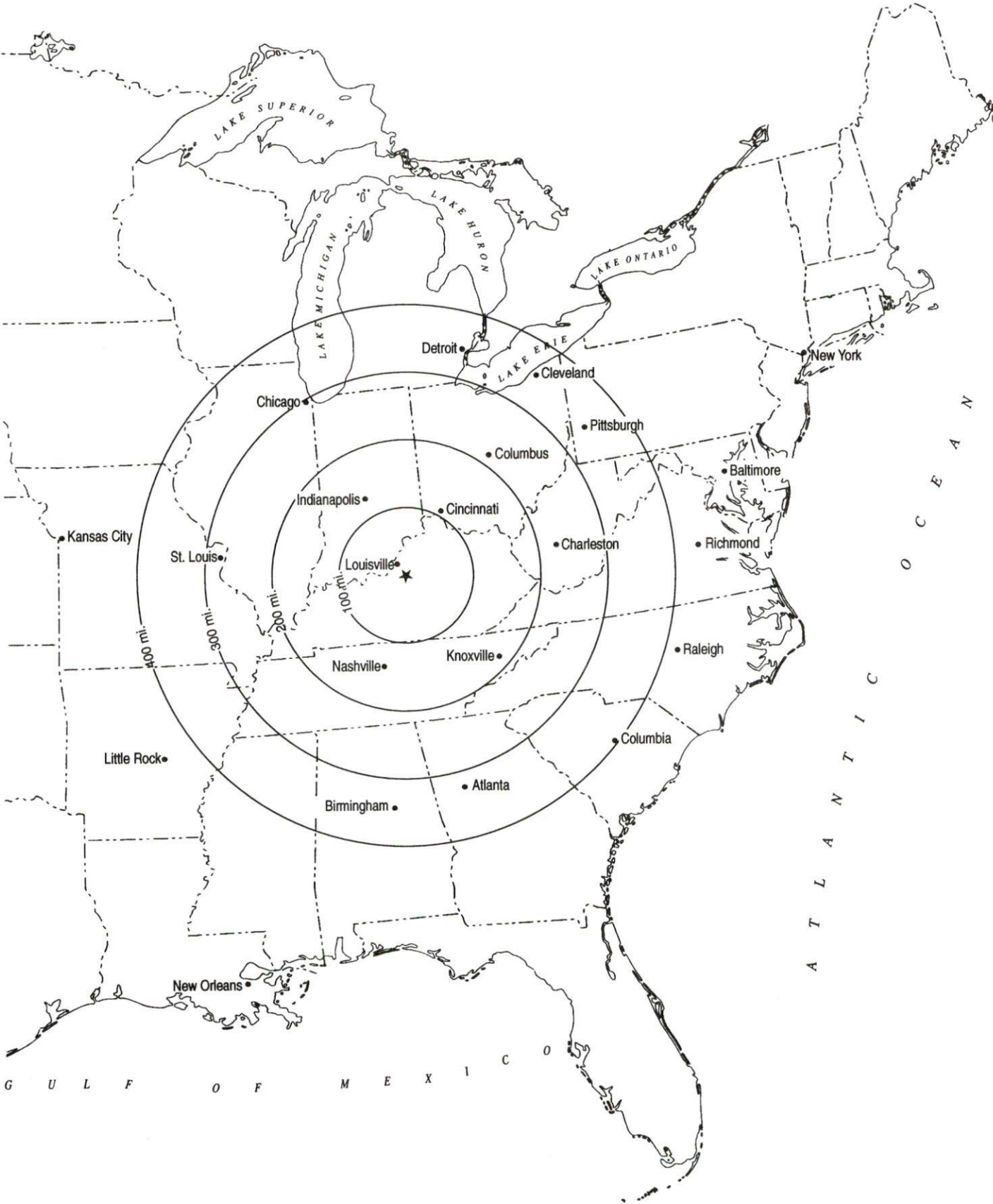
Sources: Rand McNally Standard Highway Mileage Guide, 1990. Official Kentucky Mileage Map, 1985.

Truck Service

Twenty-five trucking companies provide interstate and/or intrastate service to Bullitt County.

Source: American Motor Carrier Directory, Fall 1995.

Selected Market Centers



Rail

CSX Transportation provides main line rail service to Shepherdsville and Lebanon Junction. R.J. Corman Railroad Corporation provides short line rail service extending from an area south of Shepherdsville to Bardstown, Kentucky. Intermodal facilities for several rail companies are available in Louisville, Kentucky, 20 miles north of Shepherdsville.

For details on routing, schedules, rates, and services contact:

Manager
Industrial Development
CSX Transportation
9420 Bunsen Parkway
Suite 212
Louisville, Kentucky 40220
(502) 499-3025

and/or

R.J. Corman Railroad Corporation
P.O. Box 788
Nicholasville, Kentucky 40356
(606) 885-9457

Air

Nearest Scheduled Commercial Airline Service

Location: Louisville International Airport
4 miles southeast of center of Louisville, Kentucky;
16 miles north of Shepherdsville

Air Service: American, America West Express, American Eagle, ASA, ComAir, Continental, Continental Express, Northwest, Northwest Airlink, Southwest, TWA, United, USAir, USAir Express, Valujet, United Express, Delta

Daily Arrivals
& Departures: 210

Bus

The Transit Authority of the River City (TARC), a Louisville intracity bus line, provides morning and evening express service between Louisville and Bullitt County.

Water

The nearest navigable waterway is the Ohio River, 15 miles west of Shepherdsville, where a nine-foot navigation channel is maintained. The Louisville and Jefferson County Riverport Authority operates a public riverport complex on the Ohio River near Louisville, 20 miles north of Shepherdsville. The port offers facilities for cargo transfer and storage, and barge fleetings. The Louisville and Jefferson County Riverport Authority has been designated as a Foreign Trade Zone and offers complete U.S. Customs services for exports and imports.

UTILITIES

Electricity

Company serving **Shepherdsville, Mt. Washington, and parts of Bullitt County -**

Louisville Gas and Electric Company

Source of power - Louisville Gas and Electric Company

For industrial rates contact:

Economic Development Department
Louisville Gas and Electric Company
P.O. Box 32010
Louisville, Kentucky 40232
In Kentucky: (502) 627-3714
Out of State: (800) 252-0226

Company serving **Lebanon Junction -** Kentucky Utilities Company

Source of power - Kentucky Utilities Company

For industrial rates contact:

Economic Development Department
Kentucky Utilities Company
One Quality Street
Lexington, Kentucky 40507
(606) 255-2100

Company serving **a major portion of Bullitt County -** Salt River Electric

Cooperative Corporation

Source of power - East Kentucky Power

For industrial rates contact:

Industrial Development Department
East Kentucky Power
P.O. Box 707
Winchester, Kentucky 40392-0707
(606) 744-4812

and/or

Salt River Electric Cooperative
Corporation
111 West Brashear Avenue
Bardstown, Kentucky 40004
(502) 348-3931 or (502) 955-9753

Natural Gas

Company Serving **Shepherdsville, Mt. Washington, and Hillview** -
Louisville Gas and Electric Company
Source of supply - Texas Gas Transmission Corporation
For rates and supplies contact:

Louisville Gas and Electric Company
P.O. Box 32010
Louisville, Kentucky 40232
In Kentucky: (502) 627-3714
Out of State: (800) 252-0226

Public Water Supply

Company serving Shepherdsville -	Shepherdsville Water Company P.O. Box 400 Shepherdsville, Kentucky 40165 (502) 543-2923
Source of treated water -	Louisville Water Company and Kentucky Turnpike Water Company
Amount of water than can be purchased -	1,380,000 gallons per day
Average daily consumption -	360,000 gallons
Peak daily consumption -	441,000 gallons
Storage capacity -	260,000 gallons
Water pressure -	35 psi to 65 psi
Company serving Lebanon Junction -	Lebanon Junction Water Works P.O. Box 69 Lebanon Junction, Kentucky 40150 (502) 833-4311
Source of treated water -	Bardstown Municipal Light and Water Company
Amount of water than can be purchased -	285,000 gallons per day*
Average daily consumption -	230,000 gallons
Peak daily consumption -	265,000 gallons
Storage capacity -	636,000 gallons
Water pressure -	50 psi to 140 psi
*Lebanon Junction can negotiate for additional treated water allowance.	
Company serving Mt. Washington -	Mt. Washington Water & Sewer Company P.O. Box 285 Mt. Washington, Kentucky 40047 (502) 583-4216
Source of treated water -	Louisville Water Company
Amount of water than can be purchased -	No specified limit
Average daily consumption -	1,047,230 gallons
Peak daily consumption -	1,704,967 gallons
Storage capacity -	2,000,000 gallons
Water pressure -	35 psi to 75 psi

Name of water district - Kentucky Turnpike Water District
3396 Burkland Boulevard
Shepherdsville, Kentucky 40165
(502) 955-9281

Source of supply of treated water - Louisville Water Company
Amount of water than can be purchased - No set limit
Average daily consumption - 464,000 gallons
Peak daily consumption - 590,000 gallons
Storage capacity - 600,000 gallons
Water pressure - 80 psi to 120 psi

Sewerage

Company serving **Shepherdsville** - Shepherdsville Sewer Department
P.O. Box 400
Shepherdsville, Kentucky 40165
(502) 543-2923

Design capacity - 1,000,000 gallons per day
Average daily flow - 389,000 gallons
Type of treatment - Secondary
Treated effluent discharged into - Salt River

Company serving **Lebanon Junction** - Lebanon Junction Sewer Works
P.O. Box 69
Lebanon Junction, Kentucky 40150
(502) 833-4311

Design capacity - 185,000 gallons per day
Average daily flow - 165,000 gallons
Type of treatment - Secondary
Treated effluent discharged into - Rolling Fork River

Company serving **Mt. Washington** - Mt. Washington Water and Sewer
Company
P.O. Box 285
Mt. Washington, Kentucky 40047
(502) 538-4216

Design capacity - 900,000 gallons per day
Average daily flow - 480,000 gallons
Type of treatment - Secondary
Treated effluent discharged into - McCullough Run

CLIMATE

Bullitt County

Temperature

Normal (30-year record)	54.90 degrees
Average annual 1993	55.00 degrees
Record highest, July 1988 (49-year record)	103.00 degrees
Record lowest, January 1963 (49-year record)	-21.00 degrees
Normal heating degree days (30-year record) (Heating degree day totals are the sums of negative departures of average daily temperatures from 65 degrees F.)	4,814

Precipitation

Normal (30-year record)	45.68 inches
Mean annual snowfall (49-year record)	15.70 inches
Total precipitation 1993	45.58 inches
Mean number days precipitation (.01 inch or more) (49-year record)	130.00
Mean number days thunderstorms (49-year record)	44.60

Prevailing Winds (through 1963)

South

Relative Humidity (30-year record, except 1 a.m. - 29-year record)

1 a.m.	77 percent
7 a.m.	82 percent
1 p.m.	60 percent
7 p.m.	64 percent

Source: U.S. Department of Commerce, Environmental Science Services Administration, Climatological Data, 1993. Station of record: Lexington, Kentucky.

LOCAL GOVERNMENT

Structure

The cities of Shepherdsville, Lebanon Junction, and Mt. Washington are served by a mayor-city council form of government. Bullitt County is governed by a county judge/executive and four magistrates.

Planning and Zoning

Joint agency - Bullitt County Planning Commission
Participating cities - Hillview, Lebanon Junction, Mt. Washington, and Shepherdsville
Zoning enforced - All areas
Subdivision regulations enforced - All areas
Local codes enforced - Building codes (All areas)
Mandatory state codes enforced - Kentucky Plumbing Code, National Electric Code, Kentucky Boiler Regulations and Standards, Kentucky Building Code (modeled after BOCA code)

Local Fees and Licenses

The City of Shepherdsville levies an occupational license tax of 0.5% on all wages, salaries, and commissions of individuals employed within the city. Business license fees in Shepherdsville are \$50 per year. An unloading license fee of \$50 per year is also levied in Shepherdsville.

In Lebanon Junction, business license fees are \$31.25 per year for most businesses. Unloading licenses are \$43.75 per year.

Business license fees in Mt. Washington are \$40 per year for most businesses. Unloading licenses are also \$40 per year.

PROPERTY TAXES

The Kentucky Constitution requires the state to tax all classes of taxable property, and state statutes allow local jurisdictions to tax only a few classes. All locally taxed property is subject to county taxes and school district taxes (either a county school district or an independent school district). Property located inside of city limits may also be subject to city property taxes.

Special local taxing jurisdictions (fire protection districts, watershed districts, and sanitation districts) levy taxes within their operating areas (usually a small portion of community or county).

Property assessments in Kentucky are at 100% fair cash value. Accounts receivable are taxed at 85% of face value.

STATE PROPERTY TAX RATES PER \$100 VALUATION

<u>Selected Classes of Property</u>	<u>1994 State Rate</u>	<u>Local Taxation Permitted</u>
Real Estate	\$0.172	YES
Manufacturing Machinery	0.150	NO
Pollution Control Equipment	0.150	NO
Inventories		
Raw Materials	0.050	NO
Goods in Process	0.050	NO
Finished Goods	0.050	YES
Motor Vehicles	0.450	YES
Other Tangible Personal Property	0.450	YES
Intangibles (Accounts Receivable, Money on Hand)	0.250	NO

LOCAL PROPERTY TAX RATES PER \$100 VALUATION, 1994

<u>Taxing Jurisdiction</u>	<u>Real Estate</u>	<u>Finished Goods & Tangibles</u>	<u>Motor Vehicles</u>
Bullitt County	\$0.1598	\$0.2068	\$0.1995
School Districts:			
Bullitt County	0.4480	0.4480	0.4480
Cities:			
Shepherdsville	0.2000	0.2000	0.2000
Lebanon Junction	0.2600	0.3400	0.3400
Mt. Washington	0.1770	0.1770	0.2040
Other: (not county-wide)			
Fire Protection Districts			
Nichols	0.1000	0.1000	0.1000
Southeast	0.0870	0.1000	0.1000
Zoneton	0.0630	0.1000	0.1000
Mt. Washington	0.0610	0.1000	0.0700

EDUCATION

Public Schools

	Bullitt County
Total Enrollment (Fall, 1994)	9,939
Accreditation	Southern Association of Colleges and Schools
Pupil-Teacher Ratio (1991-92)	19.5-1
Percent High School Graduates to College (1991-92)	56.3
Expenditures Per Pupil (1991-92)	\$3,155.60

The Bullitt County School System is presently constructing a new \$5.2 million elementary school in Mt. Washington. Also underway is a \$6.5 million expansion and remodeling project at the Mt. Washington Middle School. A new auditorium is being constructed at the Bullitt Central High School.

Nonpublic Schools

<u>School</u>	<u>Enrollment</u>	<u>Grades</u>
Micah School	150	K-12
St. Aloysius Elementary	235	K-8
St. Benedict Elementary	80	Pre-8

Area Colleges and Universities

<u>Name</u>	<u>Location (Miles distant)</u>	<u>Enrollment (Fall, 1993)</u>
Bellarmino College	Louisville, Kentucky (20)	2,943
Jefferson Community College	Louisville, Kentucky (20)	11,184
Spalding University	Louisville, Kentucky (20)	1,221
University of Louisville	Louisville, Kentucky (20)	21,826
Indiana University Southeast	New Albany, Indiana (23)	5,770
Elizabethtown Community College	Elizabethtown, Kentucky (26)	4,232
Saint Catharine College	Springfield, Kentucky (40)	386

VOCATIONAL-TECHNICAL TRAINING

Kentucky Tech schools are operated by the Cabinet for Workforce Development and provide secondary (Sec) and postsecondary (P/S) vocational-technical training.

<u>Kentucky Tech Schools</u>	<u>Location (Mileage from Shepherdsville)</u>	<u>Number of Program Offerings</u>	<u>Cumulative Enrollment 1994-1995</u>		<u>Approximate Number Completing Long Term Programs Annually</u>
Bullitt County Area Tech Center	Shepherdsville	7	<u>Sec</u> 218	<u>P/S</u> 0	45
Kentucky Tech-Elizabethtown	Elizabethtown (26)	18	<u>Sec</u> 26	<u>P/S</u> 7,174	162
Kentucky Tech-Jefferson	Louisville (20)	23	<u>Sec</u> 0	<u>P/S</u> 5,931	197

Customized Training

The Kentucky Tech system, through its Training and Development Coordinators, will provide technical assistance and will identify and develop low-cost customized training programs and services for both established and prospective businesses. Businesses needing customized training programs should contact a Training and Development Coordinator located at the Kentucky Tech Northwest Region, 505 University Drive, Elizabethtown, Kentucky 42701 (502) 769-2326.

Assessment Services

Kentucky Tech Career Connections offers to business, education, and government agencies customized assessment in career inventories, interest inventories, psychomotor skills and academic potential, as well as pre-hire assessment. A Career Connections Assessment Center is located on the campus of Kentucky-Tech Elizabethtown (502) 769-2371, and the Jefferson campus, (502) 595-4136.

Tech Prep

Tech Prep is a combined secondary and postsecondary program of studies that leads to an associate degree or diploma in a technical field. Kentucky Tech-Elizabethtown offers programs in the area of automotive technology, carpentry, computer aided drafting, electrical technology, electronics technology, food service technology and welding. Kentucky Tech-Bullitt County Area Tech Center offers tech prep programs in food service technology and graphic arts.

Adult Education Services

Adult education programs are available to adults who want to develop new skills, improve basic skills or earn a high school equivalency diploma. In Bullitt County, adult literacy is provided by the Bullitt County Adult Learning Center and the Bullitt County Adult Library District.

Bluegrass State Skills Corporation

The Bluegrass State Skills Corporation, an independent public corporation created and funded by the Kentucky General Assembly, provides programs of skills training to meet the needs of business and industry from entry level to advanced training, and from upgrading present employees to retraining experienced workers.

The Bluegrass State Skills Corporation is a major source for skills training assistance for a new or existing company. The Corporation works in partnership with other employment and job training resources and programs, as well as Kentucky's economic development activities, to package a program customized to meet the specific needs of a company.

OTHER LOCAL FACILITIES

Local Medical Personnel

(Bullitt County)
Physicians - 15
Dentists - 14

Hospitals

There are 17 hospitals with facilities for acute care, psychiatric care, rehabilitation, and chemical dependency treatment located in Louisville, 20 miles from Shepherdsville. Also, hospitals are located in nearby Elizabethtown, 26 miles southwest of Shepherdsville, and in Bardstown, 23 miles southeast of Shepherdsville.

Other Medical Facilities and Services

Bullitt County Health Department
Bullitt County PT Clinic (an outpatient therapy center)
Seven Counties Service, Inc. (a mental health center)
Colonial House of Shepherdsville (nursing home)
Pleasantview Personal Care Home
Bullitt County Emergency Medical Service (ambulance service)
Green Meadows Health Care Center, Inc.

Banks and Savings & Loan Associations

Bullitt County Bank
First Federal Savings Bank
The Peoples Bank of Bullitt County
The Peoples Bank of Mt. Washington

Newspapers

Pioneer-News (bi-weekly)

Telephone Service

ALLTEL Kentucky, Inc. (serves Mt. Washington, Shepherdsville and Hillview)
South Central Bell (serves Lebanon Junction)

South Central Bell provides to its customers in Lebanon Junction a special calling zone which offers discounts on long distance calls to other nearby communities also served by South Central Bell.

RECREATION

Local

Bullitt County features a wide variety of recreational facilities and opportunities for all ages. The ten-acre Shepherdsville Recreational Park features three baseball fields, a football field, and a play area. Mt. Washington's public parks include a 25-acre community park with two baseball fields, two tennis courts, and a basketball court; and the Mt. Washington Lions Club Park features a playground and picnic area. Lebanon Junction has a three-acre city park with a tennis court, a basketball court, a picnic area, a tot lot, a shelter, and a ball field complex with two ball fields, a concession stand and restrooms. The Bullitt County Recreation Complex includes two softball fields, four baseball fields, a swimming pool, a soccer field, a playground, and a concession stand with restrooms. Bullitt County Parks and Recreation Department and the YMCA each provide an array of recreation programs for all ages. Facilities at the YMCA include: a fitness center, sauna, and racquetball court. An indoor swimming pool is planned.

Bernheim Forest Arboretum and Nature Center, located seven miles from Shepherdsville, is a privately endowed 10,000-acre forest and wildlife refuge. The area contains over 1,200 labeled varieties of plants, trees and shrubs; ornamental gardens; a nature center; nature trails and waterfowl ponds.

The Jim Beam's American Outpost Museum and Tourist Center offers tours of the James B. Beam Distilling Company, the world's largest bourbon producer. The museum and center are located near Clermont.

Camp Crescendo, a modern youth camp specializing in the training of high school bands, covers 300 acres near Lebanon Junction and features a junior Olympic pool, a 20-acre lake, and accommodations. The camp is available in off-season months for meeting and retreats.

The KOA Campground, near Shepherdsville, offers a walking tour of pre-historic Indian rock shelters.

Other recreational facilities include a saddle club horse show ring, the North Bullitt Little League Field, Valley View Lake, West Bullitt Recreation Park, three golf courses, a campground, a go-cart track, bowling centers, and skating rinks.

Louisville, 20 miles north of Shepherdsville, provides a wide variety of recreational opportunities. The most noted recreational event in Louisville is the Kentucky Derby at Churchill Downs. The "Run for the Roses" is the oldest continuously held horse race in the United States. Other attractions include: Kentucky Center for the Arts, Macauley Theatre, Actors Theatre of Louisville, Louisville Children's Theatre, the Louisville Bach Society, the Louisville Orchestra, the Louisville Ballet, the Kentucky Opera Association, several museums, the Louisville Zoological Gardens, University of Louisville sporting events, rock concerts, and the "Belle of Louisville" sternwheeler.

Area (Within 50 miles)

My Old Kentucky Home State Park
E.P. Tom Sawyer State Park
Abraham Lincoln Birthplace National Historic Site
Lincoln Homestead State Park
Taylorsville Lake State Park

Kentucky

Cabinet For Economic Development

2300 Capital Plaza Tower, 500 Mero Street, Frankfort, KY 40601, 502 • 564 • 7140



Printed on recycled paper.